



LABOUR FORCE

AUSTRALIA
PRELIMINARY

EMBARGO: 11:30AM (CANBERRA TIME) THURS 8 FEB 2001

JANUARY KEY FIGURES

TREND

	Dec 2000	Jan 2001	monthly change
Employed persons ('000)	9 081.8	9 072.1	-0.1 %
Unemployed persons ('000)	637.3	644.6	1.2 %
Unemployment rate (%)	6.6	6.6	0.1 pts
Participation rate (%)	63.5	63.4	-0.1 pts

SEASONALLY ADJUSTED

	Dec 2000	Jan 2001	monthly change
Employed persons ('000)	9 086.7	9 083.2	-3.5
Unemployed persons ('000)	643.2	648.9	5.6
Unemployment rate (%)	6.6	6.7	0.1 pts
Participation rate (%)	63.6	63.5	-0.1 pts

JANUARY KEY POINTS

TREND ESTIMATES

EMPLOYMENT

- decreased to 9,072,100.

UNEMPLOYMENT

- increased to 644,600.

UNEMPLOYMENT RATE

- increased slightly but the rounded estimate remained at 6.6%.

PARTICIPATION RATE

- decreased to 63.4%.

SEASONALLY ADJUSTED ESTIMATES

EMPLOYMENT

- decreased by 3,500 to 9,083,200. Full-time employment fell by 44,000 while part-time employment rose by 40,600.

UNEMPLOYMENT

- increased by 5,600 to 648,900. The number of persons looking for full-time work rose slightly to 479,200 and persons looking for part-time work rose by 5,300 to 169,600.

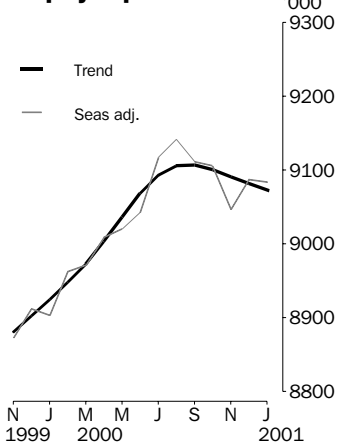
UNEMPLOYMENT RATE

- rose 0.1 percentage point to 6.7%. The male rate rose by 0.1 percentage point to 7.0% while the female rate decreased marginally to 6.2%.
- NSW 6.0% (6.0% last month); Vic 6.3% (6.1%); Qld 8.1% (8.2%); SA 7.3% (7.5%); WA 6.4% (5.9%); Tas 9.7% (8.3%).

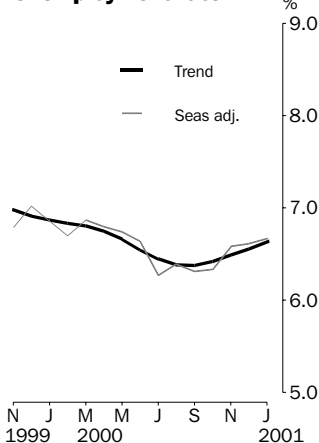
PARTICIPATION RATE

- decreased by 0.1 percentage point to 63.5%.

Employed persons



Unemployment rate



- For further information about these and related statistics, contact Mark Webb on 02 6252 6525, or the National Information Service on 1300 135 070.

NOTES

FORTHCOMING ISSUES

<i>ISSUE</i>	<i>RELEASE DATE</i>
February 2001	15 March 2001
March 2001	12 April 2001
April 2001	10 May 2001
May 2001	07 June 2001
June 2001	12 July 2001
July 2001	09 August 2001



FORTHCOMING CHANGES

The Labour Force Survey (LFS) questionnaire is being redesigned to better reflect current labour market phenomena and contemporary user needs. The new questionnaire is scheduled to be implemented in April 2001. More information is available in *Information Paper: Labour Force Survey Questionnaire Redesign* (Cat. no. 6294.0), which was released on 14 March 2000.



ROUNDING

Estimates of monthly change shown on page 1 have been calculated using unrounded estimates, and may be different from, but are more accurate than, movements obtained from the rounded estimates. The graphs on page 1 also depict movements calculated from unrounded estimates.



SAMPLING ERRORS

The estimates in this publication are based on a sample survey. Because the entire population is not enumerated, the published estimates and the movements derived from them are subject to sampling variability. Standard errors give a measure of this variability and appear on pages 30 and 31.

The 95% confidence intervals below provide another way of looking at the variability inherent in estimates from sample surveys. The interval bounded by the two limits is the 95% confidence interval. A 95% confidence interval indicates that we are 95% confident that the upper and lower limits enclose the true value of the estimate.

<i>SEASONALLY ADJUSTED DATA SERIES</i>	<i>MOVEMENTS DECEMBER 2000 TO JANUARY 2001</i>		
	<i>Monthly change</i>	<i>95% Confidence interval</i>	
Total employment	-3 500	-39 900	to 32 900
Total unemployment	5 600	-8 800	to 20 000
Unemployment rate	0.1 pts	-0.1 pts	to 0.3 pts
Participation rate	-0.1 pts	-0.3 pts	to 0.1 pts

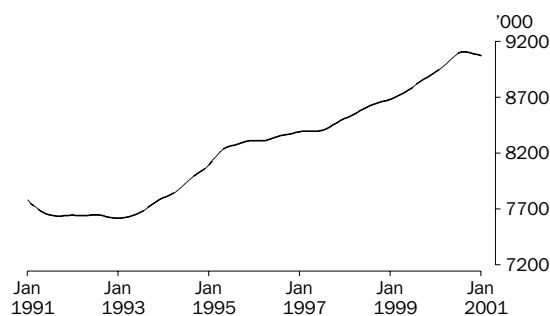


Dennis Trewin
Australian Statistician

PRINCIPAL LABOUR FORCE SERIES: Trend estimates

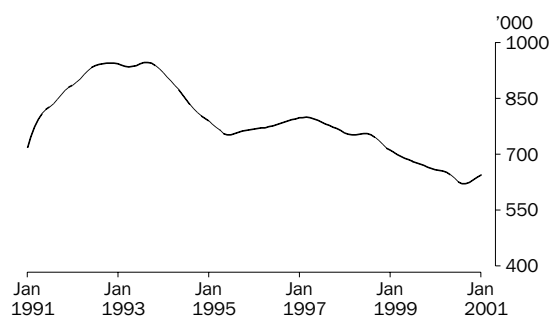
EMPLOYED PERSONS

The trend estimate of employed persons rose strongly from a low of 7,615,300 in January 1993 until mid 1995. The trend then continued to rise at a slower rate until May 1997, before showing stronger growth. The trend has fallen over the last four months to stand at 9,072,100 in January 2001.



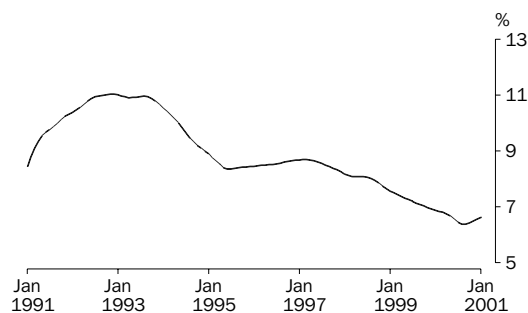
UNEMPLOYED PERSONS

The trend estimate of unemployed persons peaked at 946,800 in September 1993, before falling rapidly to 751,900 in June 1995. The trend then rose slowly reaching 799,400 in March 1997, before falling to 620,200 in September 2000. Recently the trend has risen to stand at 644,600 in January 2001.



UNEMPLOYMENT RATE

After reaching a high of 11.0% in mid 1992, the trend unemployment rate remained steady for twelve months, before falling rapidly to 8.3% in July 1995. The trend then rose slowly, reaching 8.7% in March 1997, before falling again. The trend estimate has risen slightly over the last four months to stand at 6.6% in January 2001.

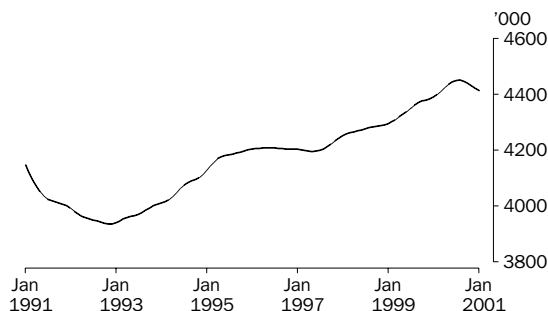


EMPLOYED PERSONS: Trend estimates

MALES EMPLOYED FULL TIME

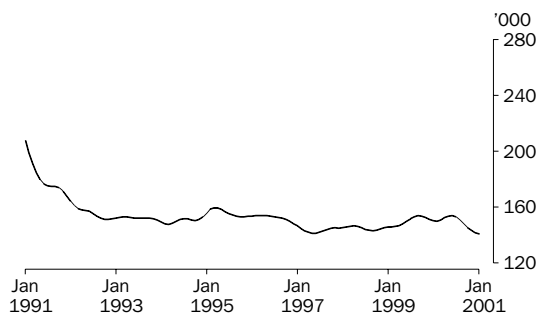
TOTAL

The trend estimate of males employed full time rose strongly from a low of 3,935,300 in December 1992 to 4,180,500 in June 1995. The trend then remained flat until May 1997, before increasing steadily to reach 4,450,900 in August 2000. Recently the trend estimate has fallen to 4,412,400 in January 2001.



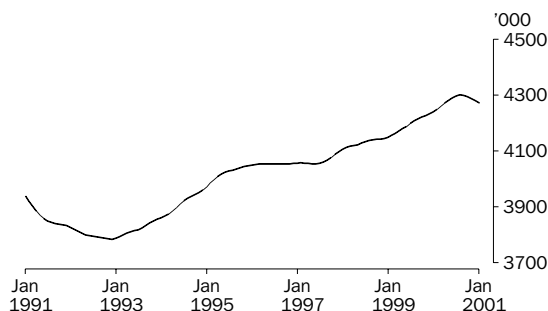
MALES AGED 15-19

After falling sharply to 151,000 in October 1992, the trend estimate for males aged 15-19 employed full time has since remained relatively stable. Over the last eight years, the trend estimate reached a high of 159,400 in March 1995, and has recently fallen to 140,700 in January 2001.



MALES AGED 20 AND OVER

From a low of 3,783,800 in December 1992, the trend estimate of males aged 20 and over employed full time rose steadily to reach 4,009,000 in April 1995. The trend then remained flat until mid 1997, before increasing slowly to 4,300,100 in August 2000. The trend estimate has since fallen to stand at 4,271,700 in January 2001.

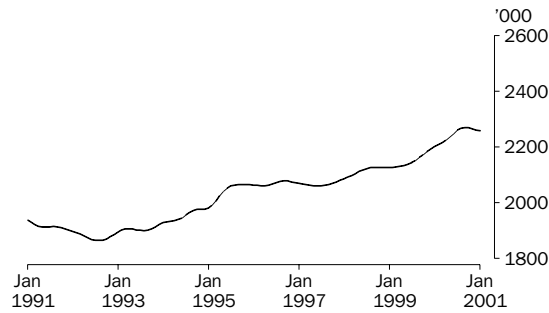


EMPLOYED PERSONS: Trend estimates

FEMALES EMPLOYED FULL TIME

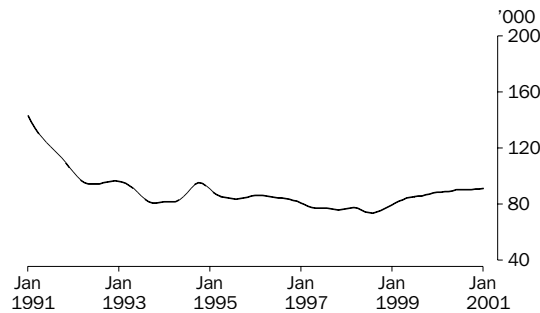
TOTAL

The trend estimate of females employed full time rose strongly from 1,863,700 in August 1992 to 2,064,500 in September 1995. The trend then remained relatively flat until June 1997, before rising to 2,269,400 in September 2000. Recently the trend estimate has fallen to 2,257,000 in January 2001.



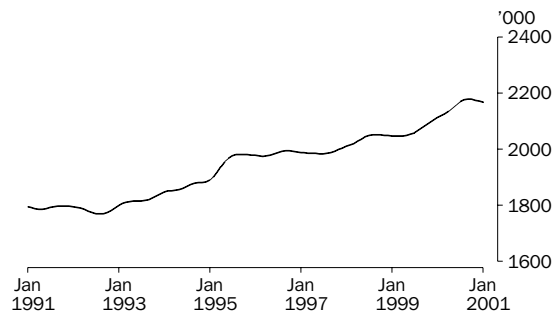
FEMALES AGED 15-19

The trend estimate of females aged 15-19 employed full time fell rapidly to 94,100 in June 1992. Although fluctuating, the trend fell slowly for the next six years to reach 73,600 in August 1998. The trend estimate has since risen to stand at 90,900 in January 2001.



FEMALES AGED 20 AND OVER

The trend estimate of females aged 20 and over employed full time rose steadily from a low of 1,769,100 in August 1992 to 1,980,800 in September 1995. The trend then remained flat until June 1997, before rising again. The trend has fallen over the last four months to stand at 2,166,100 in January 2001.



LABOUR FORCE STATUS (AGED 15 AND OVER): Original

Month	EMPLOYED.....			UNEMPLOYED.....			Labour force	Not in labour force	Civilian population aged 15 and over	Unemployment rate	Participation rate
	Full time	Part time	Total	Looking for f/t work	Looking for p/t work	Total					
	'000	'000	'000	'000	'000	'000	'000	'000	'000	%	%
MALES											
1999											
November	4 378.8	608.7	4 987.5	301.3	48.9	350.3	5 337.8	2 089.6	7 427.4	6.6	71.9
December	4 462.2	617.4	5 079.6	322.0	65.7	387.7	5 467.3	1 971.5	7 438.7	7.1	73.5
2000											
January	4 367.2	611.0	4 978.2	344.6	62.5	407.1	5 385.3	2 062.7	7 448.0	7.6	72.3
February	4 420.6	613.8	5 034.3	326.5	66.1	392.6	5 427.0	2 030.2	7 457.2	7.2	72.8
March	4 391.2	642.6	5 033.8	310.9	71.3	382.2	5 415.9	2 050.4	7 466.4	7.1	72.5
April	4 400.4	666.2	5 066.6	296.3	68.5	364.9	5 431.4	2 044.1	7 475.5	6.7	72.7
May	4 407.9	660.9	5 068.9	297.8	58.7	356.5	5 425.4	2 059.2	7 484.6	6.6	72.5
June	4 433.3	651.2	5 084.5	293.2	55.1	348.3	5 432.8	2 061.0	7 493.8	6.4	72.5
July	4 480.1	653.5	5 133.5	277.3	60.0	337.3	5 470.8	2 032.2	7 503.0	6.2	72.9
August	4 399.1	660.9	5 060.0	295.4	57.1	352.5	5 412.5	2 099.7	7 512.2	6.5	72.0
September	4 466.3	667.6	5 133.9	300.8	69.3	370.2	5 504.0	2 017.4	7 521.5	6.7	73.2
October	4 444.6	670.7	5 115.3	288.3	57.3	345.6	5 460.9	2 068.8	7 529.8	6.3	72.5
November	4 429.8	656.2	5 086.0	300.3	51.3	351.7	5 437.7	2 100.3	7 538.0	6.5	72.1
December	4 510.6	657.9	5 168.6	308.3	67.2	375.5	5 544.0	2 002.3	7 546.3	6.8	73.5
2001											
January	4 384.1	657.7	5 041.9	346.4	65.3	411.7	5 453.6	2 101.0	7 554.6	7.5	72.2
FEMALES											
1999											
November	2 178.0	1 727.3	3 905.3	167.5	92.1	259.6	4 164.9	3 488.7	7 653.7	6.2	54.4
December	2 263.8	1 703.4	3 967.2	184.7	94.8	279.5	4 246.7	3 417.4	7 664.1	6.6	55.4
2000											
January	2 208.0	1 587.8	3 795.8	188.5	100.7	289.2	4 085.0	3 587.3	7 672.3	7.1	53.2
February	2 189.2	1 681.6	3 870.7	200.8	125.2	326.1	4 196.8	3 483.7	7 680.5	7.8	54.6
March	2 201.2	1 715.0	3 916.2	197.4	120.6	318.0	4 234.2	3 454.5	7 688.7	7.5	55.1
April	2 212.6	1 725.6	3 938.2	181.8	112.6	294.4	4 232.6	3 464.4	7 697.0	7.0	55.0
May	2 200.7	1 746.9	3 947.6	186.0	100.4	286.4	4 234.1	3 471.3	7 705.3	6.8	54.9
June	2 222.3	1 749.1	3 971.4	152.5	107.7	260.3	4 231.7	3 482.0	7 713.7	6.2	54.9
July	2 296.1	1 725.0	4 021.1	145.0	94.2	239.2	4 260.3	3 462.4	7 722.7	5.6	55.2
August	2 232.9	1 755.6	3 988.4	149.0	99.8	248.8	4 237.2	3 494.4	7 731.6	5.9	54.8
September	2 294.6	1 764.8	4 059.4	154.2	107.6	261.8	4 321.2	3 419.4	7 740.7	6.1	55.8
October	2 275.5	1 734.3	4 009.8	145.0	94.8	239.8	4 249.6	3 498.9	7 748.5	5.6	54.8
November	2 267.2	1 714.3	3 981.5	154.5	94.8	249.3	4 230.8	3 525.4	7 756.2	5.9	54.5
December	2 313.3	1 742.7	4 055.9	167.6	94.5	262.1	4 318.1	3 445.9	7 764.0	6.1	55.6
2001											
January	2 261.2	1 642.9	3 904.1	172.7	105.1	277.8	4 181.9	3 589.6	7 771.5	6.6	53.8
PERSONS											
1999											
November	6 556.8	2 336.0	8 892.8	468.8	141.1	609.9	9 502.7	5 578.3	15 081.0	6.4	63.0
December	6 726.0	2 320.8	9 046.8	506.7	160.5	667.2	9 714.0	5 388.9	15 102.9	6.9	64.3
2000											
January	6 575.2	2 198.8	8 773.9	533.2	163.2	696.3	9 470.3	5 650.0	15 120.3	7.4	62.6
February	6 609.8	2 295.3	8 905.1	527.3	191.4	718.7	9 623.8	5 513.9	15 137.7	7.5	63.6
March	6 592.4	2 357.6	8 950.0	508.3	191.8	700.2	9 650.1	5 504.9	15 155.1	7.3	63.7
April	6 613.0	2 391.8	9 004.8	478.2	181.1	659.3	9 664.1	5 508.5	15 172.5	6.8	63.7
May	6 608.6	2 407.9	9 016.5	483.9	159.1	643.0	9 659.4	5 530.5	15 190.0	6.7	63.6
June	6 655.6	2 400.2	9 055.9	445.7	162.9	608.6	9 664.5	5 543.0	15 207.5	6.3	63.6
July	6 776.2	2 378.4	9 154.6	422.4	154.2	576.5	9 731.1	5 494.6	15 225.7	5.9	63.9
August	6 631.9	2 416.5	9 048.4	444.4	156.9	601.3	9 649.7	5 594.1	15 243.9	6.2	63.3
September	6 760.8	2 432.5	9 193.3	455.1	176.9	632.0	9 825.3	5 436.9	15 262.2	6.4	64.4
October	6 720.1	2 405.0	9 125.1	433.3	152.1	585.4	9 710.5	5 567.7	15 278.2	6.0	63.6
November	6 697.0	2 370.5	9 067.5	454.8	146.2	601.0	9 668.5	5 625.7	15 294.3	6.2	63.2
December	6 823.9	2 400.6	9 224.5	475.9	161.7	637.6	9 862.1	5 448.2	15 310.3	6.5	64.4
2001											
January	6 645.3	2 300.7	8 946.0	519.1	170.4	689.5	9 635.5	5 690.6	15 326.1	7.2	62.9

LABOUR FORCE STATUS (AGED 15 AND OVER): **Seasonally adjusted**

Month	EMPLOYED.....			UNEMPLOYED.....			Labour force '000	Unemp- loyment rate %	Partic- ipation rate %
	Full time '000	Part time '000	Total '000	Looking for f/t work '000	Looking for p/t work '000	Total '000			
MALES									
1999									
November	4 381.0	610.4	4 991.4	310.2	55.9	366.0	5 357.4	6.8	72.1
December	4 390.2	616.5	5 006.7	326.4	62.6	388.9	5 395.6	7.2	72.5
2000									
January	4 367.1	636.0	5 003.0	317.2	60.2	377.4	5 380.5	7.0	72.2
February	4 412.2	644.4	5 056.6	299.8	60.3	360.1	5 416.7	6.6	72.6
March	4 410.2	635.6	5 045.8	304.1	62.2	366.3	5 412.1	6.8	72.5
April	4 416.9	656.8	5 073.7	302.3	65.9	368.3	5 441.9	6.8	72.8
May	4 431.3	649.1	5 080.4	302.8	59.8	362.7	5 443.1	6.7	72.7
June	4 451.8	626.5	5 078.3	302.9	62.9	365.8	5 444.1	6.7	72.6
July	4 454.4	663.6	5 118.1	285.1	67.6	352.7	5 470.7	6.4	72.9
August	4 449.9	659.6	5 109.4	299.3	59.8	359.1	5 468.6	6.6	72.8
September	4 450.8	658.7	5 109.5	295.7	63.4	359.1	5 468.6	6.6	72.7
October	4 437.0	667.8	5 104.8	306.9	59.8	366.7	5 471.6	6.7	72.7
November	4 431.2	658.0	5 089.3	309.1	58.6	367.7	5 457.0	6.7	72.4
December	4 438.1	656.5	5 094.7	312.9	63.9	376.7	5 471.4	6.9	72.5
2001									
January	4 386.1	684.5	5 070.6	318.7	63.3	382.0	5 452.6	7.0	72.2
FEMALES									
1999									
November	2 178.2	1 703.2	3 881.4	178.4	101.5	279.9	4 161.2	6.7	54.4
December	2 201.6	1 704.0	3 905.7	182.8	100.7	283.4	4 189.1	6.8	54.7
2000									
January	2 204.0	1 696.4	3 900.3	175.3	102.1	277.4	4 177.7	6.6	54.5
February	2 192.8	1 713.0	3 905.8	175.2	108.2	283.4	4 189.3	6.8	54.5
March	2 221.9	1 703.1	3 925.0	188.2	107.3	295.5	4 220.5	7.0	54.9
April	2 227.7	1 706.8	3 934.5	180.7	107.5	288.2	4 222.7	6.8	54.9
May	2 221.9	1 718.0	3 939.9	188.5	100.9	289.4	4 229.3	6.8	54.9
June	2 248.5	1 715.2	3 963.7	160.2	117.0	277.2	4 240.9	6.5	55.0
July	2 261.7	1 738.0	3 999.7	155.4	101.6	257.1	4 256.8	6.0	55.1
August	2 270.6	1 761.8	4 032.4	157.9	106.6	264.5	4 296.9	6.2	55.6
September	2 279.4	1 722.4	4 001.9	154.7	99.6	254.3	4 256.2	6.0	55.0
October	2 267.9	1 733.5	4 001.4	151.8	96.9	248.7	4 250.1	5.9	54.9
November	2 267.6	1 690.2	3 957.8	164.6	104.8	269.4	4 227.2	6.4	54.5
December	2 248.9	1 743.2	3 992.0	166.0	100.5	266.5	4 258.5	6.3	54.8
2001									
January	2 256.9	1 755.8	4 012.6	160.5	106.3	266.8	4 279.5	6.2	55.1
PERSONS									
1999									
November	6 559.1	2 313.6	8 872.8	488.5	157.4	645.9	9 518.7	6.8	63.1
December	6 591.8	2 320.5	8 912.3	509.1	163.2	672.3	9 584.7	7.0	63.5
2000									
January	6 571.0	2 332.3	8 903.4	492.5	162.3	654.8	9 558.1	6.9	63.2
February	6 605.0	2 357.4	8 962.4	475.0	168.5	643.5	9 606.0	6.7	63.5
March	6 632.0	2 338.7	8 970.7	492.3	169.5	661.8	9 632.6	6.9	63.6
April	6 644.5	2 363.6	9 008.2	483.1	173.4	656.5	9 664.6	6.8	63.7
May	6 653.2	2 367.1	9 020.3	491.4	160.7	652.1	9 672.4	6.7	63.7
June	6 700.3	2 341.7	9 042.0	463.1	179.9	643.0	9 685.1	6.6	63.7
July	6 716.2	2 401.6	9 117.8	440.5	169.2	609.7	9 727.5	6.3	63.9
August	6 720.5	2 421.3	9 141.8	457.3	166.4	623.7	9 765.5	6.4	64.1
September	6 730.2	2 381.2	9 111.4	450.4	163.0	613.5	9 724.8	6.3	63.7
October	6 704.9	2 401.3	9 106.2	458.7	156.7	615.4	9 721.6	6.3	63.6
November	6 698.8	2 348.3	9 047.1	473.8	163.4	637.1	9 684.2	6.6	63.3
December	6 687.0	2 399.7	9 086.7	478.9	164.3	643.2	9 729.9	6.6	63.6
2001									
January	6 642.9	2 440.2	9 083.2	479.2	169.6	648.9	9 732.1	6.7	63.5

LABOUR FORCE STATUS (AGED 15 AND OVER): Trend(a)

Month	EMPLOYED.....			UNEMPLOYED.....			Labour force '000	Unemp- loyment rate %	Partic- ipation rate %
	Full time '000	Part time '000	Total '000	Looking for f/t work '000	Looking for p/t work '000	Total '000			
MALES									
1999									
November	4 379.5	617.6	4 997.1	319.7	61.9	381.6	5 378.8	7.1	72.4
December	4 383.5	623.2	5 006.8	317.0	60.9	377.9	5 384.7	7.0	72.4
2000									
January	4 389.6	630.5	5 020.1	313.2	60.5	373.6	5 393.7	6.9	72.4
February	4 398.7	637.0	5 035.7	308.9	61.0	369.9	5 405.6	6.8	72.5
March	4 410.2	642.0	5 052.2	305.2	61.9	367.1	5 419.3	6.8	72.6
April	4 422.8	645.1	5 067.9	301.8	62.8	364.6	5 432.5	6.7	72.7
May	4 434.8	647.4	5 082.2	298.9	63.3	362.2	5 444.4	6.7	72.7
June	4 444.2	649.8	5 094.0	296.9	63.4	360.3	5 454.2	6.6	72.8
July	4 450.0	652.6	5 102.6	296.2	63.1	359.3	5 461.9	6.6	72.8
August	4 450.9	655.8	5 106.8	297.1	62.4	359.5	5 466.3	6.6	72.8
September	4 447.3	659.0	5 106.3	299.8	61.8	361.6	5 467.9	6.6	72.7
October	4 439.9	662.1	5 102.0	303.9	61.5	365.4	5 467.4	6.7	72.6
November	4 431.0	664.9	5 095.9	308.4	61.4	369.8	5 465.7	6.8	72.5
December	4 421.5	667.9	5 089.3	312.6	61.5	374.1	5 463.5	6.8	72.4
2001									
January	4 412.4	669.2	5 081.6	316.8	61.8	378.6	5 460.2	6.9	72.3
FEMALES									
1999									
November	2 182.2	1 701.2	3 883.4	180.4	103.8	284.1	4 167.5	6.8	54.5
December	2 192.2	1 703.2	3 895.4	180.3	102.9	283.3	4 178.7	6.8	54.5
2000									
January	2 200.6	1 703.9	3 904.6	180.9	103.3	284.2	4 188.8	6.8	54.6
February	2 207.5	1 704.3	3 911.8	181.5	104.6	286.1	4 197.9	6.8	54.7
March	2 214.6	1 706.4	3 921.0	181.4	106.2	287.6	4 208.7	6.8	54.7
April	2 223.8	1 711.2	3 935.0	179.5	107.5	287.0	4 222.0	6.8	54.9
May	2 235.2	1 719.1	3 954.3	174.8	107.7	282.5	4 236.8	6.7	55.0
June	2 247.7	1 726.9	3 974.6	168.3	106.9	275.3	4 249.9	6.5	55.1
July	2 259.2	1 731.6	3 990.8	161.9	105.4	267.3	4 258.1	6.3	55.1
August	2 266.6	1 732.8	3 999.4	157.4	103.7	261.1	4 260.5	6.1	55.1
September	2 269.4	1 731.4	4 000.8	156.3	102.3	258.6	4 259.4	6.1	55.0
October	2 268.4	1 729.6	3 998.0	157.4	101.6	259.0	4 257.0	6.1	54.9
November	2 265.2	1 729.4	3 994.6	159.3	101.5	260.8	4 255.4	6.1	54.9
December	2 261.2	1 731.3	3 992.5	161.4	101.8	263.2	4 255.6	6.2	54.8
2001									
January	2 257.0	1 733.5	3 990.5	163.0	103.1	266.0	4 256.6	6.3	54.8
PERSONS									
1999									
November	6 561.7	2 318.8	8 880.5	500.1	165.7	665.8	9 546.3	7.0	63.3
December	6 575.7	2 326.5	8 902.2	497.3	163.8	661.2	9 563.4	6.9	63.3
2000									
January	6 590.3	2 334.4	8 924.7	494.0	163.8	657.8	9 582.5	6.9	63.4
February	6 606.2	2 341.3	8 947.5	490.4	165.6	656.0	9 603.5	6.8	63.4
March	6 624.8	2 348.4	8 973.2	486.6	168.1	654.7	9 628.0	6.8	63.5
April	6 646.6	2 356.4	9 002.9	481.3	170.3	651.5	9 654.5	6.7	63.6
May	6 670.1	2 366.5	9 036.5	473.7	171.0	644.7	9 681.3	6.7	63.7
June	6 691.9	2 376.7	9 068.6	465.2	170.3	635.5	9 704.1	6.5	63.8
July	6 709.2	2 384.3	9 093.5	458.1	168.5	626.6	9 720.0	6.4	63.8
August	6 717.6	2 388.6	9 106.2	454.6	166.1	620.7	9 726.8	6.4	63.8
September	6 716.7	2 390.4	9 107.1	456.0	164.1	620.2	9 727.3	6.4	63.7
October	6 708.3	2 391.7	9 100.0	461.3	163.0	624.3	9 724.4	6.4	63.6
November	6 696.2	2 394.3	9 090.5	467.7	162.9	630.6	9 721.1	6.5	63.6
December	6 682.6	2 399.2	9 081.8	474.0	163.3	637.3	9 719.1	6.6	63.5
2001									
January	6 669.4	2 402.8	9 072.1	479.8	164.8	644.6	9 716.8	6.6	63.4

(a) Trend estimates for July 2000 to December 2000 have been revised.

UNEMPLOYED PERSONS: Original

Month	NUMBER OF UNEMPLOYED PERSONS.....					UNEMPLOYMENT RATE.....					UNEMPLOYMENT TO POPULATION RATIO	
	Aged 15-19 looking for f/t work	Aged 20 and over looking for f/t work	Total looking for f/t work	Looking for p/t work	Total	Aged 15-19 looking for f/t work	Aged 20 and over looking for f/t work	Total looking for f/t work	Looking for p/t work	Total	Aged 15-19 looking for f/t work	Aged 20 and over looking for f/t work
	'000	'000	'000	'000	'000	%	%	%	%	%	%	%
MALES												
1999												
November	38.6	262.7	301.3	48.9	350.3	21.1	5.8	6.4	7.4	6.6	5.6	3.9
December	50.1	271.9	322.0	65.7	387.7	23.2	6.0	6.7	9.6	7.1	7.3	4.0
2000												
January	51.0	293.6	344.6	62.5	407.1	23.4	6.5	7.3	9.3	7.6	7.4	4.3
February	45.8	280.7	326.5	66.1	392.6	22.4	6.2	6.9	9.7	7.2	6.7	4.1
March	38.9	271.9	310.9	71.3	382.2	21.3	6.0	6.6	10.0	7.1	5.7	4.0
April	35.7	260.7	296.3	68.5	364.9	19.0	5.8	6.3	9.3	6.7	5.2	3.8
May	33.9	264.0	297.8	58.7	356.5	18.8	5.8	6.3	8.2	6.6	4.9	3.9
June	32.4	260.8	293.2	55.1	348.3	17.7	5.7	6.2	7.8	6.4	4.7	3.8
July	32.3	245.1	277.3	60.0	337.3	16.8	5.4	5.8	8.4	6.2	4.7	3.6
August	30.8	264.6	295.4	57.1	352.5	18.4	5.8	6.3	8.0	6.5	4.5	3.9
September	31.5	269.3	300.8	69.3	370.2	17.8	5.9	6.3	9.4	6.7	4.6	3.9
October	32.5	255.8	288.3	57.3	345.6	19.1	5.6	6.1	7.9	6.3	4.7	3.7
November	40.9	259.4	300.3	51.3	351.7	22.7	5.7	6.3	7.3	6.5	5.9	3.8
December	46.4	261.9	308.3	67.2	375.5	22.3	5.7	6.4	9.3	6.8	6.7	3.8
2001												
January	54.5	291.9	346.4	65.3	411.7	26.8	6.4	7.3	9.0	7.5	7.9	4.3
FEMALES												
1999												
November	29.2	138.3	167.5	92.1	259.6	25.7	6.2	7.1	5.1	6.2	4.5	2.0
December	37.8	146.9	184.7	94.8	279.5	27.7	6.4	7.5	5.3	6.6	5.8	2.1
2000												
January	32.7	155.8	188.5	100.7	289.2	24.3	6.9	7.9	6.0	7.1	5.0	2.2
February	31.8	169.1	200.8	125.2	326.1	25.1	7.5	8.4	6.9	7.8	4.8	2.4
March	27.8	169.6	197.4	120.6	318.0	24.7	7.4	8.2	6.6	7.5	4.2	2.4
April	28.6	153.3	181.8	112.6	294.4	25.1	6.7	7.6	6.1	7.0	4.3	2.2
May	31.8	154.2	186.0	100.4	286.4	27.3	6.8	7.8	5.4	6.8	4.8	2.2
June	26.0	126.5	152.5	107.7	260.3	23.7	5.6	6.4	5.8	6.2	3.9	1.8
July	25.3	119.7	145.0	94.2	239.2	21.4	5.2	5.9	5.2	5.6	3.8	1.7
August	23.8	125.2	149.0	99.8	248.8	21.6	5.5	6.3	5.4	5.9	3.6	1.8
September	21.9	132.4	154.2	107.6	261.8	20.1	5.7	6.3	5.7	6.1	3.3	1.9
October	20.1	124.9	145.0	94.8	239.8	19.2	5.4	6.0	5.2	5.6	3.0	1.8
November	23.1	131.4	154.5	94.8	249.3	21.0	5.7	6.4	5.2	5.9	3.5	1.9
December	33.4	134.2	167.6	94.5	262.1	24.5	5.7	6.8	5.1	6.1	5.1	1.9
2001												
January	31.4	141.3	172.7	105.1	277.8	22.8	6.2	7.1	6.0	6.6	4.7	2.0
PERSONS												
1999												
November	67.8	401.0	468.8	141.1	609.9	22.9	6.0	6.7	5.7	6.4	5.1	2.9
December	87.9	418.8	506.7	160.5	667.2	25.0	6.1	7.0	6.5	6.9	6.6	3.0
2000												
January	83.8	449.4	533.2	163.2	696.3	23.7	6.7	7.5	6.9	7.4	6.2	3.3
February	77.6	449.7	527.3	191.4	718.7	23.4	6.6	7.4	7.7	7.5	5.8	3.3
March	66.8	441.5	508.3	191.8	700.2	22.6	6.5	7.2	7.5	7.3	5.0	3.2
April	64.3	413.9	478.2	181.1	659.3	21.3	6.1	6.7	7.0	6.8	4.8	3.0
May	65.7	418.2	483.9	159.1	643.0	22.2	6.2	6.8	6.2	6.7	4.9	3.0
June	58.4	387.3	445.7	162.9	608.6	20.0	5.7	6.3	6.4	6.3	4.3	2.8
July	57.6	364.8	422.4	154.2	576.5	18.6	5.3	5.9	6.1	5.9	4.3	2.6
August	54.6	389.8	444.4	156.9	601.3	19.7	5.7	6.3	6.1	6.2	4.0	2.8
September	53.3	401.7	455.1	176.9	632.0	18.7	5.8	6.3	6.8	6.4	3.9	2.9
October	52.6	380.7	433.3	152.1	585.4	19.2	5.5	6.1	5.9	6.0	3.9	2.7
November	64.0	390.8	454.8	146.2	601.0	22.1	5.7	6.4	5.8	6.2	4.7	2.8
December	79.8	396.1	475.9	161.7	637.6	23.2	5.7	6.5	6.3	6.5	5.9	2.8
2001												
January	85.9	433.2	519.1	170.4	689.5	25.2	6.3	7.2	6.9	7.2	6.3	3.1

UNEMPLOYED PERSONS: Seasonally adjusted

Month	NUMBER OF UNEMPLOYED PERSONS....					UNEMPLOYMENT RATE.....					UNEMPLOYMENT TO POPULATION RATIO	
	Aged 15-19 looking for f/t work	Aged 20 and over looking for f/t work	Total looking for f/t work	Looking for p/t work	Total	Aged 15-19 looking for f/t work	Aged 20 and over looking for f/t work	Total looking for f/t work	Looking for p/t work	Total	Aged 15-19 looking for f/t work	Aged 20 and over looking for f/t work
	'000	'000	'000	'000	'000	%	%	%	%	%	%	%
MALES												
1999												
November	41.8	268.4	310.2	55.9	366.0	21.5	6.0	6.6	8.4	6.8	6.1	4.0
December	42.0	284.4	326.4	62.6	388.9	21.7	6.3	6.9	9.2	7.2	6.1	4.2
2000												
January	42.0	275.2	317.2	60.2	377.4	21.6	6.1	6.8	8.6	7.0	6.1	4.1
February	42.2	257.6	299.8	60.3	360.1	21.8	5.7	6.4	8.6	6.6	6.1	3.8
March	38.2	265.9	304.1	62.2	366.3	21.0	5.9	6.5	8.9	6.8	5.6	3.9
April	36.2	266.1	302.3	65.9	368.3	19.3	5.9	6.4	9.1	6.8	5.3	3.9
May	34.3	268.5	302.8	59.8	362.7	18.4	5.9	6.4	8.4	6.7	5.0	4.0
June	33.1	269.8	302.9	62.9	365.8	17.0	5.9	6.4	9.1	6.7	4.8	4.0
July	35.4	249.7	285.1	67.6	352.7	18.4	5.5	6.0	9.2	6.4	5.1	3.7
August	34.5	264.8	299.3	59.8	359.1	19.2	5.8	6.3	8.3	6.6	5.0	3.9
September	34.0	261.6	295.7	63.4	359.1	18.7	5.7	6.2	8.8	6.6	4.9	3.8
October	36.8	270.1	306.9	59.8	366.7	20.9	5.9	6.5	8.2	6.7	5.3	4.0
November	44.3	264.8	309.1	58.6	367.7	23.2	5.8	6.5	8.2	6.7	6.4	3.9
December	38.8	274.1	312.9	63.9	376.7	20.8	6.0	6.6	8.9	6.9	5.6	4.0
2001												
January	44.9	273.8	318.7	63.3	382.0	24.9	6.1	6.8	8.5	7.0	6.5	4.0
FEMALES												
1999												
November	30.3	148.1	178.4	101.5	279.9	25.4	6.6	7.6	5.6	6.7	4.6	2.1
December	30.1	152.6	182.8	100.7	283.4	25.4	6.7	7.7	5.6	6.8	4.6	2.2
2000												
January	26.6	148.7	175.3	102.1	277.4	23.3	6.6	7.4	5.7	6.6	4.1	2.1
February	27.3	147.9	175.2	108.2	283.4	23.3	6.6	7.4	5.9	6.8	4.2	2.1
March	27.1	161.1	188.2	107.3	295.5	23.5	7.0	7.8	5.9	7.0	4.1	2.3
April	29.0	151.7	180.7	107.5	288.2	25.0	6.6	7.5	5.9	6.8	4.4	2.2
May	32.0	156.6	188.5	100.9	289.4	26.1	6.8	7.8	5.5	6.8	4.9	2.2
June	29.9	130.3	160.2	117.0	277.2	25.0	5.7	6.7	6.4	6.5	4.5	1.8
July	30.0	125.4	155.4	101.6	257.1	25.2	5.5	6.4	5.5	6.0	4.6	1.8
August	27.2	130.7	157.9	106.6	264.5	22.4	5.7	6.5	5.7	6.2	4.1	1.8
September	24.3	130.5	154.7	99.6	254.3	21.2	5.6	6.4	5.5	6.0	3.7	1.8
October	22.7	129.0	151.8	96.9	248.7	20.9	5.6	6.3	5.3	5.9	3.4	1.8
November	23.9	140.8	164.6	104.8	269.4	20.7	6.1	6.8	5.8	6.4	3.6	2.0
December	26.6	139.4	166.0	100.5	266.5	22.4	6.1	6.9	5.5	6.3	4.0	2.0
2001												
January	25.5	135.0	160.5	106.3	266.8	21.8	5.9	6.6	5.7	6.2	3.9	1.9
PERSONS												
1999												
November	72.1	416.5	488.5	157.4	645.9	23.0	6.2	6.9	6.4	6.8	5.4	3.0
December	72.1	437.0	509.1	163.2	672.3	23.1	6.4	7.2	6.6	7.0	5.4	3.2
2000												
January	68.5	424.0	492.5	162.3	654.8	22.2	6.3	7.0	6.5	6.9	5.1	3.1
February	69.5	405.5	475.0	168.5	643.5	22.4	6.0	6.7	6.7	6.7	5.2	2.9
March	65.3	427.0	492.3	169.5	661.8	22.0	6.3	6.9	6.8	6.9	4.9	3.1
April	65.3	417.8	483.1	173.4	656.5	21.5	6.1	6.8	6.8	6.8	4.8	3.0
May	66.3	425.1	491.4	160.7	652.1	21.4	6.2	6.9	6.4	6.7	4.9	3.1
June	63.0	400.1	463.1	179.9	643.0	20.0	5.8	6.5	7.1	6.6	4.7	2.9
July	65.4	375.1	440.5	169.2	609.7	21.0	5.5	6.2	6.6	6.3	4.8	2.7
August	61.8	395.5	457.3	166.4	623.7	20.5	5.8	6.4	6.4	6.4	4.6	2.8
September	58.3	392.1	450.4	163.0	613.5	19.6	5.7	6.3	6.4	6.3	4.3	2.8
October	59.5	399.2	458.7	156.7	615.4	20.9	5.8	6.4	6.1	6.3	4.4	2.9
November	68.2	405.6	473.8	163.4	637.1	22.3	5.9	6.6	6.5	6.6	5.0	2.9
December	65.5	413.4	478.9	164.3	643.2	21.4	6.0	6.7	6.4	6.6	4.8	3.0
2001												
January	70.4	408.8	479.2	169.6	648.9	23.7	6.0	6.7	6.5	6.7	5.2	2.9

UNEMPLOYED PERSONS: Trend(a)

Month	NUMBER OF UNEMPLOYED PERSONS.....					UNEMPLOYMENT RATE.....					UNEMPLOYMENT TO POPULATION RATIO	
	<i>Aged 15-19 looking for f/t work</i>	<i>Aged 20 and over looking for f/t work</i>	<i>Total looking for f/t work</i>	<i>Looking for p/t work</i>	<i>Total</i>	<i>Aged 15-19 looking for f/t work</i>	<i>Aged 20 and over looking for f/t work</i>	<i>Total looking for f/t work</i>	<i>Looking for p/t work</i>	<i>Total</i>	<i>Aged 15-19 looking for f/t work</i>	<i>Aged 20 and over looking for f/t work</i>
	'000	'000	'000	'000	'000	%	%	%	%	%	%	%
MALES												
1999												
November	40.6	279.1	319.7	61.9	381.6	21.0	6.2	6.8	9.1	7.1	5.9	4.1
December	41.5	275.5	317.0	60.9	377.9	21.5	6.1	6.7	8.9	7.0	6.1	4.1
2000												
January	41.5	271.7	313.2	60.5	373.6	21.6	6.0	6.7	8.8	6.9	6.0	4.0
February	40.4	268.5	308.9	61.0	369.9	21.2	5.9	6.6	8.7	6.8	5.9	4.0
March	38.7	266.5	305.2	61.9	367.1	20.4	5.9	6.5	8.8	6.8	5.6	3.9
April	36.8	264.9	301.8	62.8	364.6	19.5	5.8	6.4	8.9	6.7	5.3	3.9
May	35.1	263.8	298.9	63.3	362.2	18.6	5.8	6.3	8.9	6.7	5.1	3.9
June	34.1	262.8	296.9	63.4	360.3	18.1	5.8	6.3	8.9	6.6	4.9	3.9
July	33.9	262.3	296.2	63.1	359.3	18.1	5.8	6.2	8.8	6.6	4.9	3.9
August	34.7	262.4	297.1	62.4	359.5	18.7	5.8	6.3	8.7	6.6	5.0	3.8
September	36.2	263.6	299.8	61.8	361.6	19.7	5.8	6.3	8.6	6.6	5.2	3.9
October	38.0	265.9	303.9	61.5	365.4	20.7	5.8	6.4	8.5	6.7	5.5	3.9
November	39.8	268.6	308.4	61.4	369.8	21.7	5.9	6.5	8.5	6.8	5.7	3.9
December	41.5	271.1	312.6	61.5	374.1	22.7	6.0	6.6	8.4	6.8	6.0	4.0
2001												
January	43.0	273.9	316.8	61.8	378.6	23.4	6.0	6.7	8.4	6.9	6.2	4.0
FEMALES												
1999												
November	29.7	150.7	180.4	103.8	284.1	25.4	6.7	7.6	5.7	6.8	4.5	2.2
December	28.9	151.5	180.3	102.9	283.3	24.7	6.7	7.6	5.7	6.8	4.4	2.2
2000												
January	28.2	152.7	180.9	103.3	284.2	24.2	6.7	7.6	5.7	6.8	4.3	2.2
February	28.0	153.5	181.5	104.6	286.1	24.0	6.8	7.6	5.8	6.8	4.3	2.2
March	28.5	153.0	181.4	106.2	287.6	24.3	6.7	7.6	5.9	6.8	4.3	2.2
April	29.2	150.3	179.5	107.5	287.0	24.7	6.6	7.5	5.9	6.8	4.4	2.1
May	29.8	145.1	174.8	107.7	282.5	25.0	6.3	7.3	5.9	6.7	4.5	2.1
June	29.6	138.7	168.3	106.9	275.3	24.8	6.0	7.0	5.8	6.5	4.5	2.0
July	28.6	133.2	161.9	105.4	267.3	24.1	5.8	6.7	5.7	6.3	4.3	1.9
August	27.1	130.3	157.4	103.7	261.1	23.1	5.7	6.5	5.6	6.1	4.1	1.8
September	25.7	130.5	156.3	102.3	258.6	22.1	5.7	6.4	5.6	6.1	3.9	1.8
October	24.8	132.6	157.4	101.6	259.0	21.6	5.7	6.5	5.5	6.1	3.8	1.9
November	24.5	134.8	159.3	101.5	260.8	21.3	5.8	6.6	5.5	6.1	3.7	1.9
December	24.5	136.9	161.4	101.8	263.2	21.3	5.9	6.7	5.6	6.2	3.7	1.9
2001												
January	24.6	138.3	163.0	103.1	266.0	21.3	6.0	6.7	5.6	6.3	3.7	1.9
PERSONS												
1999												
November	70.3	429.8	500.1	165.7	665.8	22.7	6.4	7.1	6.7	7.0	5.3	3.1
December	70.4	427.0	497.3	163.8	661.2	22.7	6.3	7.0	6.6	6.9	5.3	3.1
2000												
January	69.7	424.4	494.0	163.8	657.8	22.6	6.3	7.0	6.6	6.9	5.2	3.1
February	68.4	422.0	490.4	165.6	656.0	22.3	6.2	6.9	6.6	6.8	5.1	3.1
March	67.2	419.4	486.6	168.1	654.7	21.9	6.2	6.8	6.7	6.8	5.0	3.0
April	66.1	415.2	481.3	170.3	651.5	21.5	6.1	6.8	6.7	6.7	4.9	3.0
May	64.9	408.8	473.7	171.0	644.7	21.1	6.0	6.6	6.7	6.7	4.8	3.0
June	63.7	401.5	465.2	170.3	635.5	20.7	5.9	6.5	6.7	6.5	4.7	2.9
July	62.5	395.6	458.1	168.5	626.6	20.4	5.8	6.4	6.6	6.4	4.6	2.9
August	61.8	392.7	454.6	166.1	620.7	20.4	5.7	6.3	6.5	6.4	4.6	2.8
September	61.9	394.1	456.0	164.1	620.2	20.6	5.7	6.4	6.4	6.4	4.6	2.8
October	62.8	398.5	461.3	163.0	624.3	21.0	5.8	6.4	6.4	6.4	4.6	2.9
November	64.3	403.4	467.7	162.9	630.6	21.6	5.9	6.5	6.4	6.5	4.7	2.9
December	66.0	408.0	474.0	163.3	637.3	22.1	5.9	6.6	6.4	6.6	4.9	2.9
2001												
January	67.6	412.2	479.8	164.8	644.6	22.6	6.0	6.7	6.4	6.6	5.0	3.0

(a) Trend estimates for July 2000 to December 2000 have been revised.

PERSONS AGED 15 TO 19, Education and Labour Force: **Original**—January 2001

	EMPLOYED.....			UNEMPLOYED.....			Labour force	Not in labour force	Civilian population aged 15-19	Unemployment rate	Participation rate
	Full time	Part time	Total	Looking for f/t work	Looking for p/t work	Total					
	'000	'000	'000	'000	'000	'000	'000	'000	'000	%	%
ATTENDING NEITHER SCHOOL NOR A TERTIARY EDUCATIONAL INSTITUTION FULL TIME											
Males	131.0	57.1	188.2	47.1	8.3	55.4	243.6	46.4	290.0	22.8	84.0
Females	89.7	74.3	164.0	26.1	9.3	35.4	199.4	50.8	250.2	17.8	79.7
Persons	220.7	131.4	352.1	73.3	17.6	90.9	443.0	97.2	540.2	20.5	82.0
ATTENDING A TERTIARY EDUCATIONAL INSTITUTION FULL TIME											
Males	7.7	38.9	46.6	* 2.9	5.4	8.3	54.9	35.5	90.4	15.2	60.7
Females	11.1	58.7	69.8	* 2.1	6.7	8.8	78.6	29.3	107.9	11.2	72.9
Persons	18.8	97.6	116.4	5.0	12.1	17.2	133.5	64.8	198.3	12.8	67.3
ATTENDING SCHOOL											
Males	9.9	107.3	117.1	4.5	23.0	27.4	144.6	168.7	313.3	19.0	46.1
Females	5.7	116.9	122.6	* 3.1	24.9	28.0	150.6	153.6	304.2	18.6	49.5
Persons	15.5	224.2	239.7	7.6	47.9	55.5	295.2	322.4	617.5	18.8	47.8
TOTAL											
Males	148.6	203.3	351.9	54.5	36.7	91.2	443.1	250.6	693.7	20.6	63.9
Females	106.4	249.9	356.3	31.4	40.9	72.3	428.6	233.7	662.3	16.9	64.7
Persons	255.0	453.2	708.2	85.9	77.6	163.5	871.7	484.3	1 356.0	18.8	64.3

LABOUR FORCE STATUS (AGED 15 & OVER), States & Territories: **Original**—January 2001

	EMPLOYED.....			UNEMPLOYED.....			Labour force '000	Not in labour force '000	Civilian population aged 15 and over '000	Unemp- loyment rate %	Partic- ipation rate %
	Full time	Part time	Total	Looking for f/t work	Looking for p/t work	Total					
	'000	'000	'000	'000	'000	'000					
MALES											
New South Wales	1 473.0	207.1	1 680.0	107.4	18.6	126.0	1 806.1	745.2	2 551.3	7.0	70.8
Victoria	1 122.1	166.4	1 288.5	72.6	18.5	91.1	1 379.6	506.4	1 886.0	6.6	73.2
Queensland	805.1	120.1	925.2	79.8	12.3	92.1	1 017.3	385.0	1 402.3	9.1	72.5
South Australia	319.8	54.5	374.2	29.7	6.5	36.2	410.4	181.3	591.8	8.8	69.4
Western Australia	453.1	71.8	524.9	37.3	5.0	42.2	567.1	182.5	749.6	7.4	75.7
Tasmania	93.4	18.2	111.5	11.4	2.5	14.0	125.5	55.4	180.9	11.1	69.4
Northern Territory	43.5	7.7	51.2	4.3	* 0.5	4.8	56.0	17.8	73.8	8.6	75.9
Australian Capital Territory	74.1	12.1	86.2	3.9	1.4	5.3	91.5	27.4	118.9	5.8	77.0
Australia	4 384.1	657.7	5 041.9	346.4	65.3	411.7	5 453.6	2 101.0	7 554.6	7.5	72.2
FEMALES											
New South Wales	785.8	512.5	1 298.3	48.3	28.8	77.1	1 375.4	1 252.2	2 627.7	5.6	52.3
Victoria	564.9	412.3	977.2	41.8	28.1	69.9	1 047.1	915.6	1 962.7	6.7	53.3
Queensland	410.7	318.9	729.5	41.1	24.0	65.2	794.7	636.0	1 430.7	8.2	55.5
South Australia	157.0	133.7	290.7	14.3	7.5	21.7	312.4	304.6	617.0	7.0	50.6
Western Australia	220.9	185.5	406.4	18.1	10.4	28.5	434.9	315.4	750.3	6.5	58.0
Tasmania	43.4	43.4	86.8	5.1	3.7	8.8	95.6	95.4	191.0	9.2	50.0
Northern Territory	27.5	9.9	37.4	1.7	* 0.6	2.3	39.7	28.0	67.6	5.7	58.7
Australian Capital Territory	51.1	26.7	77.8	2.4	1.9	4.3	82.1	42.2	124.4	5.3	66.0
Australia	2 261.2	1 642.9	3 904.1	172.7	105.1	277.8	4 181.9	3 589.6	7 771.5	6.6	53.8
PERSONS											
New South Wales	2 258.8	719.6	2 978.4	155.7	47.4	203.1	3 181.5	1 997.5	5 179.0	6.4	61.4
Victoria	1 687.0	578.7	2 265.7	114.4	46.6	161.0	2 426.7	1 422.0	3 848.7	6.6	63.1
Queensland	1 215.8	438.9	1 654.7	120.9	36.3	157.2	1 812.0	1 021.0	2 833.0	8.7	64.0
South Australia	476.7	188.2	664.9	44.0	14.0	57.9	722.9	486.0	1 208.8	8.0	59.8
Western Australia	674.0	257.3	931.3	55.3	15.4	70.7	1 002.0	497.9	1 499.9	7.1	66.8
Tasmania	136.8	61.5	198.3	16.5	6.3	22.8	221.1	150.8	371.9	10.3	59.4
Northern Territory	71.0	17.6	88.7	6.0	1.0	7.0	95.7	45.8	141.5	7.4	67.6
Australian Capital Territory	125.2	38.8	164.0	6.3	3.4	9.7	173.7	69.6	243.3	5.6	71.4
Australia	6 645.3	2 300.7	8 946.0	519.1	170.4	689.5	9 635.5	5 690.6	15 326.1	7.2	62.9

UNEMPLOYED PERSONS—New South Wales, Victoria and Queensland: Original

Month	NUMBER OF UNEMPLOYED PERSONS.....					UNEMPLOYMENT RATE.....					UNEMPLOYMENT TO POPULATION RATIO	
	Aged 15-19 looking for f/t work	Aged 20 and over looking for f/t work	Total looking for f/t work	Looking for p/t work	Total	Aged 15-19 looking for f/t work	Aged 20 and over looking for f/t work	Total looking for f/t work	Looking for p/t work	Total	Aged 15-19 looking for f/t work	Aged 20 and over looking for f/t work
	'000	'000	'000	'000	'000	%	%	%	%	%	%	%
NEW SOUTH WALES												
1999												
November	18.6	113.4	131.9	35.0	167.0	20.7	4.9	5.5	4.7	5.3	4.2	2.4
December	29.4	120.5	149.9	47.1	197.0	26.0	5.1	6.1	6.3	6.1	6.6	2.6
2000												
January	24.9	135.2	160.1	40.5	200.6	21.4	5.8	6.6	5.8	6.4	5.6	2.9
February	22.9	129.9	152.8	59.2	212.0	20.8	5.6	6.3	7.6	6.6	5.2	2.8
March	18.6	131.8	150.4	56.0	206.5	19.5	5.7	6.2	7.0	6.4	4.2	2.8
April	15.4	118.5	133.9	49.0	182.9	15.5	5.1	5.5	6.2	5.7	3.5	2.5
May	17.4	115.4	132.8	49.1	181.9	18.2	5.0	5.5	6.1	5.6	3.9	2.5
June	19.3	106.7	126.0	50.6	176.6	19.5	4.6	5.2	6.4	5.5	4.3	2.3
July	17.4	99.9	117.4	43.1	160.5	16.7	4.2	4.8	5.5	5.0	3.9	2.1
August	19.3	107.9	127.2	46.2	173.4	20.5	4.7	5.3	5.8	5.4	4.3	2.3
September	16.5	112.3	128.9	51.7	180.5	17.6	4.8	5.3	6.3	5.5	3.7	2.4
October	16.2	108.9	125.1	44.1	169.2	18.3	4.7	5.2	5.5	5.3	3.6	2.3
November	19.6	112.3	131.9	43.5	175.4	21.4	4.8	5.5	5.5	5.5	4.4	2.4
December	26.1	121.7	147.8	41.8	189.6	24.1	5.2	6.0	5.2	5.8	5.8	2.6
2001												
January	29.4	126.3	155.7	47.4	203.1	26.3	5.5	6.4	6.2	6.4	6.6	2.7
VICTORIA												
1999												
November	14.6	98.6	113.2	42.1	155.3	24.5	6.0	6.6	6.5	6.6	4.5	2.9
December	18.0	100.3	118.3	47.0	165.3	23.8	5.9	6.6	7.3	6.8	5.5	2.9
2000												
January	20.8	100.6	121.4	47.3	168.7	26.7	6.0	7.0	7.9	7.2	6.4	2.9
February	16.8	105.0	121.8	53.0	174.8	24.9	6.2	6.9	8.5	7.3	5.2	3.0
March	15.4	103.9	119.3	54.4	173.7	26.4	6.1	6.8	8.3	7.2	4.7	3.0
April	14.0	99.1	113.1	51.3	164.4	25.0	5.9	6.5	7.8	6.9	4.3	2.8
May	17.3	103.6	120.9	42.7	163.6	27.8	6.1	6.9	6.5	6.8	5.3	3.0
June	12.3	96.3	108.5	41.9	150.4	21.5	5.7	6.2	6.4	6.2	3.8	2.8
July	13.0	87.8	100.8	43.5	144.3	21.7	5.1	5.6	6.6	5.9	4.0	2.5
August	8.9	96.9	105.8	40.3	146.1	16.3	5.7	6.1	6.1	6.1	2.7	2.8
September	11.2	102.2	113.5	48.3	161.8	18.2	5.9	6.3	7.2	6.6	3.4	2.9
October	10.3	94.3	104.6	39.8	144.4	17.0	5.4	5.8	6.2	5.9	3.1	2.7
November	11.5	92.8	104.3	36.8	141.1	18.4	5.4	5.8	5.8	5.8	3.5	2.6
December	12.9	89.4	102.3	46.0	148.2	17.7	5.1	5.6	7.1	6.0	3.9	2.5
2001												
January	12.7	101.6	114.4	46.6	161.0	18.4	5.9	6.3	7.5	6.6	3.9	2.9
QUEENSLAND												
1999												
November	15.6	88.4	104.0	30.0	134.0	23.2	7.0	7.9	6.2	7.4	6.0	3.5
December	19.1	99.7	118.8	30.6	149.4	25.1	7.8	8.8	6.4	8.2	7.3	4.0
2000												
January	16.7	101.0	117.7	36.9	154.6	22.4	8.0	8.8	8.1	8.6	6.4	4.0
February	15.5	106.4	121.8	33.4	155.2	22.7	8.4	9.2	6.9	8.6	5.9	4.2
March	15.1	102.2	117.4	39.5	156.8	23.0	8.1	8.8	8.2	8.7	5.8	4.0
April	16.4	94.3	110.7	38.8	149.5	24.2	7.5	8.4	7.7	8.2	6.3	3.7
May	13.6	95.6	109.3	31.2	140.5	21.7	7.6	8.3	6.3	7.7	5.2	3.8
June	12.4	87.1	99.5	35.5	135.0	19.4	6.9	7.5	7.1	7.4	4.7	3.4
July	13.3	82.4	95.6	36.4	132.1	19.1	6.5	7.1	7.3	7.2	5.0	3.2
August	11.5	90.4	101.9	32.3	134.2	20.0	7.1	7.7	6.6	7.4	4.4	3.5
September	12.3	89.1	101.5	36.7	138.2	20.6	6.9	7.5	7.4	7.5	4.7	3.5
October	11.5	85.1	96.6	36.2	132.8	19.1	6.7	7.2	7.5	7.3	4.4	3.3
November	14.6	88.7	103.2	32.8	136.0	23.3	6.9	7.7	6.8	7.5	5.5	3.5
December	18.8	91.4	110.2	40.9	151.1	25.0	7.1	8.1	8.2	8.1	7.1	3.6
2001												
January	21.8	99.1	120.9	36.3	157.2	29.9	7.8	9.0	7.6	8.7	8.2	3.9

UNEMPLOYED PERSONS—South Australia, Western Australia and Tasmania: **Original**

Month	NUMBER OF UNEMPLOYED PERSONS.....					UNEMPLOYMENT RATE.....					UNEMPLOYMENT TO POPULATION RATIO	
	Aged 15-19 looking for f/t work	Aged 20 and over looking for f/t work	Total looking for f/t work	Looking for p/t work	Total	Aged 15-19 looking for f/t work	Aged 20 and over looking for f/t work	Total looking for f/t work	Looking for p/t work	Total	Aged 15-19 looking for f/t work	Aged 20 and over looking for f/t work
	'000	'000	'000	'000	'000	%	%	%	%	%	%	%
SOUTH AUSTRALIA												
1999												
November	7.6	37.8	45.4	10.4	55.8	32.5	7.7	8.8	4.9	7.7	7.5	3.4
December	8.3	38.1	46.4	12.8	59.2	31.4	7.5	8.7	5.9	7.9	8.2	3.5
2000												
January	7.8	41.7	49.5	12.2	61.7	31.6	8.5	9.6	5.7	8.5	7.7	3.8
February	8.8	43.7	52.5	16.1	68.6	32.5	8.6	9.8	7.8	9.3	8.6	4.0
March	7.2	38.9	46.1	13.6	59.8	30.0	7.7	8.8	6.5	8.1	7.1	3.5
April	7.3	40.5	47.8	12.7	60.6	28.3	8.1	9.1	6.0	8.2	7.2	3.7
May	6.8	43.9	50.8	12.4	63.2	29.8	8.8	9.7	5.9	8.6	6.7	4.0
June	6.0	38.3	44.3	11.6	55.9	26.0	7.6	8.4	5.8	7.7	5.8	3.5
July	4.8	36.7	41.5	12.1	53.6	20.5	7.3	7.8	5.9	7.3	4.7	3.3
August	6.0	35.2	41.3	13.5	54.8	25.1	7.0	7.8	6.6	7.5	5.9	3.2
September	5.3	36.6	41.8	14.4	56.2	22.1	7.2	7.8	6.9	7.6	5.1	3.3
October	5.5	33.9	39.4	12.0	51.4	26.6	6.7	7.5	5.8	7.0	5.4	3.1
November	6.3	35.9	42.2	11.7	53.9	27.9	7.1	8.0	5.7	7.4	6.2	3.2
December	6.6	34.6	41.2	13.0	54.2	24.7	6.9	7.8	6.3	7.4	6.4	3.1
2001												
January	6.7	37.2	44.0	14.0	57.9	24.9	7.5	8.4	6.9	8.0	6.5	3.4
WESTERN AUSTRALIA												
1999												
November	7.6	41.9	49.5	14.3	63.8	18.7	6.1	6.9	5.3	6.4	5.5	3.1
December	8.2	38.3	46.5	15.0	61.5	19.2	5.6	6.4	5.6	6.2	6.0	2.9
2000												
January	8.5	47.6	56.1	18.1	74.2	19.8	7.0	7.8	6.8	7.5	6.2	3.6
February	8.7	43.6	52.3	19.2	71.6	21.3	6.4	7.2	7.1	7.2	6.3	3.3
March	6.9	43.9	50.8	18.3	69.1	19.3	6.5	7.1	6.6	7.0	5.0	3.3
April	7.9	40.6	48.4	19.5	68.0	22.1	6.0	6.8	7.1	6.8	5.7	3.0
May	6.0	38.4	44.5	15.1	59.6	17.5	5.7	6.3	5.5	6.1	4.3	2.9
June	4.6	36.7	41.2	15.4	56.7	14.2	5.5	5.9	5.5	5.8	3.3	2.7
July	4.9	39.1	43.9	11.9	55.8	13.0	5.7	6.1	4.5	5.7	3.5	2.9
August	4.9	37.7	42.6	17.3	59.9	15.3	5.6	6.0	6.1	6.1	3.5	2.8
September	4.5	39.2	43.7	16.3	60.0	14.7	5.7	6.1	5.8	6.0	3.2	2.9
October	5.2	37.8	42.9	12.6	55.5	17.0	5.5	6.0	4.6	5.6	3.7	2.8
November	7.9	40.1	48.0	13.2	61.2	22.0	5.9	6.7	4.9	6.2	5.7	3.0
December	10.5	36.7	47.3	13.4	60.7	23.9	5.3	6.4	4.9	6.0	7.5	2.7
2001												
January	9.9	45.5	55.3	15.4	70.7	23.8	6.6	7.6	5.6	7.1	7.0	3.3
TASMANIA												
1999												
November	2.0	13.9	15.9	5.1	21.0	24.7	9.4	10.2	8.3	9.6	5.9	4.1
December	3.2	13.3	16.4	4.6	21.0	32.1	9.0	10.4	7.0	9.4	9.1	4.0
2000												
January	2.8	13.8	16.6	4.3	20.8	31.2	9.4	10.6	6.8	9.5	8.0	4.1
February	3.1	12.0	15.1	5.1	20.2	32.8	8.3	9.7	8.1	9.3	8.9	3.6
March	2.4	12.6	14.9	5.1	20.0	26.9	8.7	9.7	7.7	9.1	6.8	3.7
April	2.4	12.1	14.6	5.3	19.8	29.5	8.3	9.5	8.1	9.1	7.0	3.6
May	3.2	12.2	15.4	3.9	19.4	32.4	8.4	9.9	6.1	8.8	9.3	3.6
June	2.8	13.6	16.4	3.9	20.2	29.2	9.2	10.5	6.1	9.2	8.1	4.0
July	3.0	11.5	14.5	3.9	18.4	35.1	8.1	9.6	5.9	8.5	8.7	3.4
August	3.0	14.7	17.7	4.0	21.8	34.4	10.2	11.6	6.2	10.0	8.7	4.4
September	2.0	14.9	16.9	4.3	21.2	25.1	10.2	11.0	6.5	9.7	5.8	4.4
October	3.0	13.3	16.3	3.9	20.2	40.0	9.1	10.6	5.9	9.2	8.6	4.0
November	2.5	12.8	15.3	4.8	20.1	32.3	8.6	9.8	7.2	9.1	7.3	3.8
December	3.1	12.5	15.5	3.9	19.5	30.0	8.5	9.9	5.6	8.6	8.8	3.7
2001												
January	2.8	13.7	16.5	6.3	22.8	28.4	9.5	10.8	9.3	10.3	8.2	4.1

UNEMPLOYED PERSONS—Northern Territory and Australian Capital Territory: **Original**

Month	NUMBER OF UNEMPLOYED PERSONS.....					UNEMPLOYMENT RATE.....					UNEMPLOYMENT TO POPULATION RATIO	
	Aged 15-19 looking for f/t work	Aged 20 and over looking for f/t work	Total looking for f/t work	Looking for p/t work	Total	Aged 15-19 looking for f/t work	Aged 20 and over looking for f/t work	Total looking for f/t work	Looking for p/t work	Total	Aged 15-19 looking for f/t work	Aged 20 and over looking for f/t work
	'000	'000	'000	'000	'000	%	%	%	%	%	%	%
NORTHERN TERRITORY												
1999												
November	1.0	1.3	2.3	* 0.9	3.3	21.8	1.9	3.1	* 4.5	3.4	6.8	1.1
December	* 0.7	3.0	3.7	1.0	4.7	* 19.0	4.0	4.7	5.3	4.9	* 5.1	2.4
2000												
January	1.0	3.1	4.0	1.2	5.3	30.5	4.5	5.6	6.1	5.7	6.7	2.5
February	* 0.5	3.9	4.4	1.6	6.0	* 17.0	5.4	5.8	9.2	6.4	* 3.3	3.1
March	* 0.3	2.9	3.2	* 0.8	4.0	* 9.0	3.8	4.0	* 4.2	4.1	* 2.1	2.3
April	* 0.3	3.4	3.7	1.2	5.0	* 9.3	4.7	4.9	6.3	5.2	* 2.3	2.7
May	* 0.3	3.6	3.9	1.2	5.1	* 9.1	5.1	5.2	6.2	5.4	* 2.0	2.8
June	* 0.4	3.7	4.1	* 0.7	4.8	* 12.1	5.1	5.4	* 3.5	5.0	* 2.8	2.9
July	* 0.6	3.1	3.6	* 0.9	4.6	* 14.6	4.4	4.9	* 4.6	4.8	* 3.8	2.5
August	* 0.3	2.5	2.8	1.1	3.9	* 9.5	3.6	3.9	5.6	4.2	* 2.1	2.0
September	* 0.7	3.0	3.7	2.1	5.7	* 17.9	4.1	4.7	9.1	5.7	* 4.5	2.4
October	* 0.3	2.8	3.2	1.2	4.4	* 9.2	3.8	4.1	5.4	4.4	* 2.3	2.3
November	* 0.7	3.8	4.5	* 0.7	5.2	* 19.4	5.2	5.8	* 3.1	5.2	* 4.6	3.0
December	1.2	4.5	5.7	* 0.8	6.5	34.4	6.0	7.3	* 3.5	6.5	8.4	3.6
2001												
January	1.6	4.4	6.0	1.0	7.0	35.6	6.1	7.8	5.5	7.4	10.7	3.5
AUSTRALIAN CAPITAL TERRITORY												
1999												
November	* 0.9	5.7	6.6	3.2	9.8	* 24.0	4.6	5.1	7.0	5.6	* 3.9	2.6
December	* 0.9	5.7	6.6	2.4	9.0	* 23.9	4.5	5.1	5.4	5.2	* 3.9	2.6
2000												
January	1.3	6.4	7.7	2.8	10.5	27.3	5.1	5.9	6.5	6.1	5.5	3.0
February	1.3	5.3	6.6	3.7	10.3	25.8	4.1	5.0	8.7	5.9	5.5	2.5
March	* 0.9	5.4	6.3	4.0	10.3	* 20.5	4.2	4.7	9.7	5.9	* 3.8	2.5
April	* 0.5	5.4	5.9	3.2	9.1	* 11.1	4.2	4.5	7.4	5.2	* 2.3	2.5
May	* 0.9	5.4	6.3	3.5	9.8	* 19.3	4.2	4.8	8.1	5.6	* 3.8	2.5
June	* 0.7	5.0	5.7	3.3	9.0	* 16.2	4.0	4.4	7.3	5.1	* 2.8	2.3
July	* 0.7	4.2	4.9	2.3	7.3	* 18.1	3.3	3.7	5.5	4.1	* 2.9	1.9
August	* 0.7	4.5	5.1	2.0	7.1	* 22.4	3.5	3.9	4.3	4.0	* 2.7	2.0
September	* 0.9	4.2	5.1	3.2	8.3	* 22.3	3.3	3.9	6.8	4.6	* 3.8	1.9
October	* 0.7	4.6	5.2	2.2	7.4	* 22.5	3.6	4.0	4.6	4.2	* 2.8	2.1
November	* 0.9	4.4	5.3	2.7	8.1	* 25.4	3.5	4.1	5.7	4.5	* 3.9	2.0
December	* 0.6	5.3	5.9	1.9	7.8	* 16.6	4.1	4.4	4.1	4.4	* 2.6	2.4
2001												
January	* 1.0	5.4	6.3	3.4	9.7	* 23.9	4.2	4.8	8.0	5.6	* 4.0	2.4

LABOUR FORCE STATUS (AGED 15 AND OVER)—New South Wales(a)

SEASONALLY ADJUSTED.....

TREND.....

Month	SEASONALLY ADJUSTED.....					TREND.....					Civilian population aged 15 and over '000
	Employed full time '000	Total employed '000	Total unemployed '000	Unemp- loyment rate %	Partic- ipation rate %	Employed full time '000	Total employed '000	Total unemployed '000	Unemp- loyment rate %	Partic- ipation rate %	
MALES											
1999											
November	1 502.4	1 686.4	97.0	5.4	71.0	1 500.3	1 686.8	110.8	6.2	71.6	2 510.5
December	1 505.3	1 688.3	118.2	6.5	71.8	1 500.8	1 689.0	109.6	6.1	71.5	2 514.5
2000											
January	1 495.8	1 685.9	111.5	6.2	71.4	1 500.9	1 692.9	108.3	6.0	71.5	2 517.7
February	1 503.5	1 701.9	103.3	5.7	71.6	1 502.0	1 698.8	107.1	5.9	71.6	2 520.9
March	1 497.8	1 701.6	109.7	6.1	71.8	1 504.8	1 705.8	106.1	5.9	71.8	2 524.0
April	1 507.5	1 715.6	102.7	5.6	71.9	1 509.3	1 712.9	105.0	5.8	71.9	2 527.6
May	1 514.2	1 724.1	100.9	5.5	72.1	1 514.3	1 719.0	103.9	5.7	72.0	2 531.1
June	1 525.0	1 721.3	104.4	5.7	72.0	1 517.8	1 723.0	103.2	5.7	72.1	2 534.7
July	1 518.7	1 725.8	107.9	5.9	72.3	1 518.6	1 724.8	103.3	5.6	72.0	2 537.6
August	1 519.5	1 718.6	101.0	5.6	71.6	1 515.5	1 723.7	103.8	5.7	71.9	2 540.5
September	1 507.5	1 726.0	104.1	5.7	71.9	1 509.1	1 720.0	105.1	5.8	71.8	2 543.5
October	1 500.3	1 719.9	106.1	5.8	71.7	1 501.1	1 714.7	107.0	5.9	71.6	2 545.5
November	1 492.5	1 704.9	106.8	5.9	71.1	1 493.2	1 708.6	109.4	6.0	71.4	2 547.4
December	1 488.4	1 704.3	115.5	6.3	71.4	1 485.6	1 702.2	112.0	6.2	71.2	2 549.4
2001											
January	1 471.4	1 685.6	117.4	6.5	70.7	1 479.3	1 695.9	114.4	6.3	71.0	2 551.3
FEMALES											
1999											
November	755.5	1 274.1	79.9	5.9	52.2	757.4	1 276.7	82.9	6.1	52.4	2 594.8
December	768.1	1 283.2	81.7	6.0	52.5	762.8	1 284.4	81.2	5.9	52.6	2 598.3
2000											
January	774.1	1 288.0	78.0	5.7	52.5	768.6	1 293.0	80.8	5.9	52.8	2 600.7
February	761.0	1 302.6	83.1	6.0	53.2	774.3	1 301.6	81.2	5.9	53.1	2 603.2
March	777.8	1 312.3	83.7	6.0	53.6	780.3	1 310.2	81.9	5.9	53.4	2 605.6
April	795.0	1 322.7	79.0	5.6	53.7	787.1	1 318.5	81.7	5.8	53.7	2 608.4
May	796.6	1 329.3	84.2	6.0	54.1	793.5	1 326.2	80.3	5.7	53.9	2 611.2
June	789.5	1 317.1	83.5	6.0	53.6	797.9	1 331.8	78.0	5.5	53.9	2 614.0
July	802.3	1 334.5	65.5	4.7	53.5	799.3	1 334.2	75.7	5.4	53.9	2 616.7
August	805.7	1 351.7	77.6	5.4	54.6	797.2	1 333.3	74.1	5.3	53.7	2 619.3
September	798.6	1 333.7	72.7	5.2	53.6	793.1	1 330.3	73.6	5.2	53.6	2 622.0
October	774.7	1 320.6	70.2	5.0	53.0	788.7	1 326.5	73.9	5.3	53.4	2 623.5
November	786.8	1 308.9	78.7	5.7	52.9	784.6	1 323.0	74.6	5.3	53.2	2 624.9
December	778.4	1 319.5	77.0	5.5	53.2	781.4	1 320.7	75.4	5.4	53.2	2 626.4
2001											
January	782.8	1 330.1	74.5	5.3	53.5	778.3	1 318.4	76.5	5.5	53.1	2 627.7
PERSONS											
1999											
November	2 257.9	2 960.5	176.9	5.6	61.5	2 257.7	2 963.6	193.7	6.1	61.8	5 105.3
December	2 273.4	2 971.5	199.9	6.3	62.0	2 263.6	2 973.4	190.9	6.0	61.9	5 112.8
2000											
January	2 269.9	2 974.0	189.5	6.0	61.8	2 269.5	2 985.9	189.1	6.0	62.0	5 118.4
February	2 264.5	3 004.5	186.4	5.8	62.3	2 276.3	3 000.4	188.4	5.9	62.2	5 124.0
March	2 275.7	3 013.9	193.3	6.0	62.5	2 285.1	3 016.0	188.0	5.9	62.5	5 129.7
April	2 302.5	3 038.2	181.8	5.6	62.7	2 296.3	3 031.4	186.7	5.8	62.7	5 136.0
May	2 310.8	3 053.4	185.1	5.7	63.0	2 307.7	3 045.2	184.1	5.7	62.8	5 142.3
June	2 314.5	3 038.4	187.9	5.8	62.7	2 315.7	3 054.8	181.2	5.6	62.9	5 148.6
July	2 321.0	3 060.2	173.4	5.4	62.7	2 317.9	3 059.0	179.0	5.5	62.8	5 154.3
August	2 325.2	3 070.3	178.6	5.5	63.0	2 312.7	3 057.0	177.9	5.5	62.7	5 159.9
September	2 306.0	3 059.7	176.8	5.5	62.7	2 302.1	3 050.3	178.7	5.5	62.5	5 165.5
October	2 275.0	3 040.5	176.2	5.5	62.2	2 289.8	3 041.2	181.0	5.6	62.3	5 169.0
November	2 279.3	3 013.8	185.4	5.8	61.9	2 277.8	3 031.6	184.1	5.7	62.2	5 172.4
December	2 266.8	3 023.9	192.5	6.0	62.1	2 267.0	3 022.8	187.3	5.8	62.0	5 175.8
2001											
January	2 254.2	3 015.6	191.9	6.0	61.9	2 257.6	3 014.3	190.9	6.0	61.9	5 179.0

(a) Trend estimates for July 2000 to December 2000 have been revised.

LABOUR FORCE STATUS (AGED 15 AND OVER)—Victoria(a)

SEASONALLY ADJUSTED.....

TREND.....

Month	SEASONALLY ADJUSTED.....					TREND.....					Civilian population aged 15 and over '000
	Employed full time '000	Total employed '000	Total unemployed '000	Unemp- loyment rate %	Partic- ipation rate %	Employed full time '000	Total employed '000	Total unemployed '000	Unemp- loyment rate %	Partic- ipation rate %	
MALES											
1999											
November	1 072.6	1 230.9	93.4	7.1	71.6	1 079.5	1 240.3	92.3	6.9	72.0	1 850.5
December	1 081.6	1 244.1	95.0	7.1	72.3	1 080.4	1 241.6	90.5	6.8	71.9	1 853.5
2000											
January	1 077.4	1 240.1	87.3	6.6	71.5	1 082.2	1 244.0	89.5	6.7	71.9	1 855.6
February	1 095.9	1 255.9	83.3	6.2	72.1	1 084.5	1 246.6	89.1	6.7	71.9	1 857.8
March	1 088.3	1 248.6	89.5	6.7	71.9	1 086.8	1 249.6	89.0	6.6	72.0	1 860.0
April	1 084.1	1 255.0	92.1	6.8	72.3	1 089.3	1 253.5	88.5	6.6	72.1	1 862.2
May	1 088.5	1 250.7	92.4	6.9	72.0	1 092.5	1 258.4	87.8	6.5	72.2	1 864.3
June	1 094.2	1 258.6	85.8	6.4	72.0	1 096.9	1 264.7	86.8	6.4	72.4	1 866.5
July	1 113.0	1 281.9	79.8	5.9	72.9	1 103.5	1 272.4	85.7	6.3	72.7	1 869.0
August	1 104.4	1 281.0	85.9	6.3	73.0	1 111.1	1 280.2	85.1	6.2	72.9	1 871.5
September	1 117.5	1 285.6	85.1	6.2	73.1	1 118.2	1 287.0	85.3	6.2	73.2	1 874.1
October	1 124.7	1 292.3	87.5	6.3	73.5	1 123.7	1 292.0	86.2	6.3	73.4	1 877.1
November	1 135.5	1 300.1	87.3	6.3	73.8	1 127.8	1 295.6	87.1	6.3	73.5	1 880.1
December	1 134.5	1 297.2	88.4	6.4	73.6	1 130.6	1 298.2	87.8	6.3	73.6	1 883.1
2001											
January	1 121.6	1 296.6	87.1	6.3	73.4	1 131.7	1 299.3	88.4	6.4	73.6	1 886.0
FEMALES											
1999											
November	541.1	972.2	69.9	6.7	54.0	542.6	973.5	72.0	6.9	54.2	1 930.7
December	552.9	981.1	70.4	6.7	54.4	545.4	975.3	72.3	6.9	54.2	1 933.4
2000											
January	548.9	972.2	73.9	7.1	54.1	547.2	976.5	72.9	6.9	54.2	1 935.4
February	544.1	976.7	74.4	7.1	54.3	548.6	978.2	73.8	7.0	54.3	1 937.5
March	552.9	985.6	75.8	7.1	54.7	550.2	981.7	74.2	7.0	54.4	1 939.5
April	546.4	977.1	73.3	7.0	54.1	552.0	987.1	74.1	7.0	54.7	1 941.5
May	550.1	992.5	73.7	6.9	54.9	554.3	993.7	73.2	6.9	54.9	1 943.4
June	567.2	1 004.4	70.9	6.6	55.3	557.3	1 000.0	71.9	6.7	55.1	1 945.3
July	562.1	1 010.8	72.2	6.7	55.6	560.2	1 004.1	70.2	6.5	55.2	1 947.8
August	555.9	1 007.4	65.2	6.1	55.0	562.4	1 005.1	68.3	6.4	55.0	1 950.3
September	561.3	1 000.6	69.7	6.5	54.8	563.8	1 003.8	66.5	6.2	54.8	1 952.8
October	571.1	1 004.7	64.9	6.1	54.7	564.7	1 001.6	64.9	6.1	54.5	1 955.3
November	567.2	992.8	61.2	5.8	53.8	565.5	999.9	63.7	6.0	54.3	1 957.8
December	562.1	995.2	60.0	5.7	53.8	565.9	999.1	62.9	5.9	54.2	1 960.3
2001											
January	566.4	1 007.4	66.9	6.2	54.7	566.6	998.8	62.5	5.9	54.1	1 962.7
PERSONS											
1999											
November	1 613.7	2 203.1	163.3	6.9	62.6	1 622.1	2 213.9	164.3	6.9	62.9	3 781.2
December	1 634.5	2 225.2	165.4	6.9	63.1	1 625.9	2 216.9	162.8	6.8	62.9	3 786.8
2000											
January	1 626.3	2 212.3	161.2	6.8	62.6	1 629.4	2 220.5	162.5	6.8	62.9	3 791.1
February	1 639.9	2 232.6	157.8	6.6	63.0	1 633.1	2 224.8	162.9	6.8	62.9	3 795.3
March	1 641.2	2 234.3	165.3	6.9	63.2	1 637.0	2 231.3	163.2	6.8	63.0	3 799.6
April	1 630.5	2 232.0	165.4	6.9	63.0	1 641.3	2 240.6	162.6	6.8	63.2	3 803.6
May	1 638.6	2 243.2	166.1	6.9	63.3	1 646.8	2 252.1	161.0	6.7	63.4	3 807.7
June	1 661.3	2 263.0	156.7	6.5	63.5	1 654.2	2 264.7	158.7	6.5	63.6	3 811.8
July	1 675.2	2 292.7	151.9	6.2	64.1	1 663.7	2 276.5	155.9	6.4	63.7	3 816.8
August	1 660.3	2 288.3	151.1	6.2	63.8	1 673.4	2 285.3	153.4	6.3	63.8	3 821.8
September	1 678.8	2 286.1	154.7	6.3	63.8	1 682.1	2 290.8	151.8	6.2	63.8	3 826.8
October	1 695.8	2 297.0	152.5	6.2	63.9	1 688.5	2 293.5	151.1	6.2	63.8	3 832.4
November	1 702.7	2 292.8	148.4	6.1	63.6	1 693.3	2 295.5	150.8	6.2	63.7	3 837.9
December	1 696.6	2 292.4	148.4	6.1	63.5	1 696.5	2 297.3	150.7	6.2	63.7	3 843.4
2001											
January	1 688.0	2 304.0	154.0	6.3	63.9	1 698.3	2 298.1	150.8	6.2	63.7	3 848.7

(a) Trend estimates for July 2000 to December 2000 have been revised.

LABOUR FORCE STATUS (AGED 15 AND OVER)—Queensland(a)

SEASONALLY ADJUSTED.....

TREND.....

Month	SEASONALLY ADJUSTED.....					TREND.....					Civilian population aged 15 and over '000
	Employed full time '000	Total employed '000	Total unemployed '000	Unemployment rate %	Participation rate %	Employed full time '000	Total employed '000	Total unemployed '000	Unemployment rate %	Participation rate %	
MALES											
1999											
November	820.4	936.1	76.2	7.5	73.7	814.5	926.9	81.1	8.0	73.4	1 374.1
December	818.2	927.7	83.5	8.3	73.5	813.8	928.8	81.3	8.0	73.4	1 376.6
2000											
January	811.3	932.2	83.7	8.2	73.7	814.3	931.6	81.4	8.0	73.5	1 378.6
February	811.9	937.2	78.5	7.7	73.6	816.1	935.0	81.4	8.0	73.6	1 380.7
March	819.2	931.6	81.2	8.0	73.2	818.9	938.8	81.3	8.0	73.8	1 382.7
April	819.4	942.8	84.7	8.2	74.2	822.4	942.6	81.3	7.9	74.0	1 384.5
May	828.8	950.2	77.1	7.5	74.1	826.2	946.3	81.0	7.9	74.1	1 386.2
June	834.8	949.2	82.0	8.0	74.3	828.8	948.8	80.6	7.8	74.2	1 388.0
July	827.0	951.6	81.8	7.9	74.3	829.4	949.5	80.0	7.8	74.1	1 390.1
August	825.6	946.8	78.1	7.6	73.6	827.9	948.2	79.4	7.7	73.8	1 392.2
September	832.1	949.5	80.7	7.8	73.9	825.0	945.5	79.2	7.7	73.5	1 394.2
October	816.8	937.8	76.6	7.5	72.7	821.6	942.3	79.6	7.8	73.2	1 396.2
November	813.2	936.3	79.1	7.8	72.6	818.4	939.4	80.2	7.9	72.9	1 398.1
December	825.3	944.2	81.9	8.0	73.3	815.3	936.7	81.1	8.0	72.7	1 400.1
2001											
January	805.7	928.6	85.4	8.4	72.3	813.0	934.2	82.3	8.1	72.5	1 402.3
FEMALES											
1999											
November	392.9	726.0	65.3	8.2	56.6	395.2	726.7	65.6	8.3	56.6	1 399.1
December	395.2	731.6	66.2	8.3	56.9	396.6	728.3	65.5	8.3	56.6	1 401.6
2000											
January	401.1	728.3	62.5	7.9	56.3	397.4	729.2	65.2	8.2	56.6	1 403.8
February	395.0	730.4	60.3	7.6	56.2	397.5	729.7	64.6	8.1	56.5	1 405.9
March	401.0	726.7	69.0	8.7	56.5	397.6	730.8	64.0	8.0	56.4	1 408.1
April	398.0	736.6	64.0	8.0	56.8	398.5	733.4	63.3	7.9	56.5	1 410.2
May	398.4	736.2	64.2	8.0	56.7	400.4	737.3	62.2	7.8	56.6	1 412.3
June	396.2	730.9	57.6	7.3	55.7	403.7	741.5	60.7	7.6	56.7	1 414.4
July	413.8	754.2	58.9	7.2	57.4	408.0	744.7	59.6	7.4	56.8	1 416.7
August	412.3	753.6	60.6	7.4	57.4	412.0	746.3	59.4	7.4	56.8	1 419.0
September	415.6	746.9	57.4	7.1	56.6	414.7	746.7	60.4	7.5	56.8	1 421.3
October	419.7	741.8	61.7	7.7	56.4	415.8	746.5	62.0	7.7	56.8	1 423.6
November	416.7	739.0	64.5	8.0	56.3	415.5	746.6	63.6	7.9	56.8	1 425.9
December	411.6	750.0	69.4	8.5	57.4	414.5	747.1	65.1	8.0	56.9	1 428.3
2001											
January	409.1	753.2	63.5	7.8	57.1	412.6	747.1	66.1	8.1	56.9	1 430.7
PERSONS											
1999											
November	1 213.2	1 662.1	141.4	7.8	65.0	1 209.7	1 653.6	146.7	8.1	64.9	2 773.2
December	1 213.3	1 659.3	149.8	8.3	65.1	1 210.4	1 657.2	146.9	8.1	64.9	2 778.2
2000											
January	1 212.4	1 660.5	146.2	8.1	64.9	1 211.7	1 660.8	146.6	8.1	65.0	2 782.4
February	1 206.9	1 667.6	138.8	7.7	64.8	1 213.6	1 664.7	146.0	8.1	65.0	2 786.6
March	1 220.2	1 658.3	150.1	8.3	64.8	1 216.5	1 669.7	145.3	8.0	65.0	2 790.8
April	1 217.4	1 679.5	148.7	8.1	65.4	1 220.9	1 676.0	144.5	7.9	65.1	2 794.7
May	1 227.3	1 686.4	141.3	7.7	65.3	1 226.6	1 683.6	143.2	7.8	65.3	2 798.6
June	1 231.0	1 680.0	139.6	7.7	64.9	1 232.4	1 690.3	141.3	7.7	65.3	2 802.4
July	1 240.7	1 705.8	140.6	7.6	65.8	1 237.4	1 694.2	139.6	7.6	65.3	2 806.8
August	1 237.9	1 700.4	138.7	7.5	65.4	1 239.9	1 694.5	138.8	7.6	65.2	2 811.1
September	1 247.7	1 696.4	138.1	7.5	65.2	1 239.7	1 692.1	139.6	7.6	65.1	2 815.5
October	1 236.5	1 679.6	138.2	7.6	64.5	1 237.4	1 688.8	141.6	7.7	64.9	2 819.8
November	1 229.9	1 675.3	143.6	7.9	64.4	1 233.8	1 685.9	143.9	7.9	64.8	2 824.1
December	1 236.9	1 694.3	151.3	8.2	65.3	1 229.9	1 683.8	146.2	8.0	64.7	2 828.4
2001											
January	1 214.7	1 681.8	148.9	8.1	64.6	1 225.6	1 681.2	148.4	8.1	64.6	2 833.0

(a) Trend estimates for July 2000 to December 2000 have been revised.

LABOUR FORCE STATUS (AGED 15 AND OVER)—South Australia(a)

SEASONALLY ADJUSTED.....

TREND.....

Month	SEASONALLY ADJUSTED.....					TREND.....					Civilian population aged 15 and over '000
	Employed full time '000	Total employed '000	Total unemployed '000	Unemp- loyment rate %	Partic- ipation rate %	Employed full time '000	Total employed '000	Total unemployed '000	Unemp- loyment rate %	Partic- ipation rate %	
MALES											
1999											
November	316.2	372.5	34.5	8.5	69.3	316.9	375.4	35.0	8.5	69.9	587.1
December	319.8	380.8	34.7	8.3	70.7	319.2	377.3	34.8	8.4	70.1	587.5
2000											
January	317.9	376.9	33.7	8.2	69.8	322.1	379.2	34.7	8.4	70.4	587.8
February	329.0	382.0	36.0	8.6	71.1	325.0	380.7	35.0	8.4	70.7	588.1
March	330.1	383.6	33.1	7.9	70.8	327.2	381.7	35.4	8.5	70.9	588.4
April	328.5	382.2	36.2	8.6	71.1	328.7	382.2	35.8	8.6	71.0	588.8
May	326.7	381.3	38.1	9.1	71.2	329.3	382.4	35.9	8.6	71.0	589.2
June	328.9	380.0	36.4	8.7	70.6	329.5	382.6	35.4	8.5	70.9	589.6
July	330.3	384.3	33.8	8.1	70.9	329.3	382.8	34.5	8.3	70.7	590.0
August	329.4	383.7	32.1	7.7	70.4	328.9	382.5	33.5	8.1	70.5	590.4
September	327.8	381.5	32.8	7.9	70.1	328.1	381.7	32.7	7.9	70.2	590.7
October	328.0	382.5	31.7	7.7	70.1	326.7	380.4	32.4	7.8	69.9	591.0
November	325.6	378.8	32.6	7.9	69.6	325.0	378.9	32.4	7.9	69.6	591.3
December	321.6	373.6	32.8	8.1	68.7	323.2	377.4	32.5	7.9	69.3	591.5
2001											
January	320.3	377.0	33.2	8.1	69.3	321.6	375.9	32.7	8.0	69.1	591.8
FEMALES											
1999											
November	153.1	298.0	23.4	7.3	52.4	152.9	296.4	24.6	7.7	52.3	613.6
December	156.2	300.4	24.3	7.5	52.9	152.6	297.2	24.6	7.7	52.4	613.8
2000											
January	147.3	300.1	22.8	7.1	52.6	152.1	296.8	24.9	7.7	52.4	614.0
February	152.9	292.4	27.9	8.7	52.1	151.5	295.6	25.1	7.8	52.2	614.2
March	153.8	293.2	25.1	7.9	51.8	151.3	294.0	25.3	7.9	52.0	614.4
April	150.7	293.0	25.9	8.1	51.9	151.7	293.0	25.3	7.9	51.8	614.7
May	147.9	292.4	24.8	7.8	51.6	153.1	293.2	24.9	7.8	51.7	614.9
June	158.5	291.6	22.9	7.3	51.1	155.1	294.5	24.2	7.6	51.8	615.2
July	155.1	297.9	23.6	7.3	52.2	157.1	296.1	23.5	7.4	51.9	615.5
August	160.7	299.6	24.2	7.5	52.6	158.4	297.4	23.0	7.2	52.0	615.8
September	162.6	299.4	22.3	6.9	52.2	158.8	297.9	22.5	7.0	52.0	616.0
October	156.6	297.5	20.2	6.4	51.5	158.4	298.0	22.1	6.9	51.9	616.3
November	156.5	296.1	23.4	7.3	51.8	157.5	297.8	21.6	6.8	51.8	616.6
December	155.2	296.7	21.2	6.7	51.5	156.6	297.6	21.1	6.6	51.7	616.9
2001											
January	156.6	298.7	19.9	6.3	51.6	156.1	297.2	20.7	6.5	51.5	617.0
PERSONS											
1999											
November	469.3	670.5	58.0	8.0	60.7	469.8	671.8	59.6	8.1	60.9	1 200.7
December	476.0	681.2	59.0	8.0	61.6	471.9	674.4	59.4	8.1	61.1	1 201.3
2000											
January	465.2	676.9	56.5	7.7	61.0	474.2	676.0	59.6	8.1	61.2	1 201.8
February	481.9	674.3	63.9	8.7	61.4	476.5	676.3	60.1	8.2	61.2	1 202.3
March	483.9	676.8	58.1	7.9	61.1	478.5	675.7	60.8	8.2	61.2	1 202.8
April	479.2	675.2	62.1	8.4	61.3	480.4	675.2	61.1	8.3	61.2	1 203.5
May	474.5	673.7	62.9	8.5	61.2	482.4	675.6	60.7	8.2	61.2	1 204.2
June	487.4	671.6	59.3	8.1	60.7	484.6	677.1	59.6	8.1	61.1	1 204.8
July	485.4	682.3	57.5	7.8	61.4	486.4	678.9	58.0	7.9	61.1	1 205.5
August	490.1	683.3	56.3	7.6	61.3	487.3	679.9	56.5	7.7	61.0	1 206.1
September	490.4	680.9	55.1	7.5	61.0	486.9	679.7	55.3	7.5	60.9	1 206.8
October	484.6	680.0	51.9	7.1	60.6	485.1	678.5	54.4	7.4	60.7	1 207.3
November	482.1	674.9	56.0	7.7	60.5	482.5	676.7	54.0	7.4	60.5	1 207.9
December	476.8	670.3	54.0	7.5	59.9	479.9	675.0	53.6	7.4	60.3	1 208.4
2001											
January	476.9	675.7	53.1	7.3	60.3	477.7	673.1	53.4	7.4	60.1	1 208.8

(a) Trend estimates for July 2000 to December 2000 have been revised.

LABOUR FORCE STATUS (AGED 15 AND OVER)—Western Australia(a)

SEASONALLY ADJUSTED.....

TREND.....

Month	SEASONALLY ADJUSTED.....					TREND.....					Civilian population aged 15 and over '000
	Employed full time '000	Total employed '000	Total unemployed '000	Unemp-loyment rate %	Partic-ipation rate %	Employed full time '000	Total employed '000	Total unemployed '000	Unemp-loyment rate %	Partic-ipation rate %	
MALES											
1999											
November	456.1	520.8	41.3	7.3	76.3	455.3	521.5	40.3	7.2	76.3	736.5
December	458.4	523.7	36.1	6.5	75.9	457.1	523.3	40.3	7.1	76.4	737.9
2000											
January	453.8	522.1	42.4	7.5	76.4	458.5	524.6	39.8	7.0	76.4	738.8
February	461.9	528.4	39.1	6.9	76.7	459.1	525.3	38.7	6.9	76.3	739.7
March	460.5	525.7	38.2	6.8	76.1	459.2	525.9	37.5	6.7	76.1	740.7
April	460.1	526.2	36.8	6.5	75.9	459.0	526.1	36.3	6.5	75.9	741.4
May	455.5	523.8	34.3	6.1	75.2	458.3	526.0	35.6	6.3	75.7	742.1
June	455.0	525.0	32.7	5.9	75.1	456.8	525.3	35.4	6.3	75.5	742.8
July	458.7	527.6	35.5	6.3	75.7	455.1	524.2	35.8	6.4	75.3	743.7
August	457.1	525.4	39.3	7.0	75.8	453.8	523.2	36.6	6.5	75.2	744.7
September	448.6	518.6	38.1	6.8	74.7	453.1	522.6	37.2	6.6	75.1	745.7
October	449.3	520.7	37.1	6.6	74.7	452.9	522.6	37.4	6.7	75.0	746.7
November	452.4	521.4	37.2	6.7	74.7	453.1	523.2	37.4	6.7	75.0	747.6
December	459.8	526.8	35.6	6.3	75.1	453.7	524.2	37.4	6.7	75.0	748.6
2001											
January	453.5	528.6	38.4	6.8	75.6	454.2	525.4	37.2	6.6	75.1	749.6
FEMALES											
1999											
November	218.7	405.6	26.2	6.1	58.6	212.5	400.4	25.2	5.9	57.8	736.7
December	211.6	402.4	23.9	5.6	57.8	213.5	402.0	25.0	5.9	57.9	738.0
2000											
January	210.6	401.9	24.9	5.8	57.8	213.5	402.6	25.3	5.9	57.9	738.9
February	213.1	401.5	23.5	5.5	57.4	212.7	402.0	26.1	6.1	57.9	739.9
March	213.1	401.3	26.7	6.2	57.8	211.3	400.7	27.0	6.3	57.7	740.9
April	213.0	400.5	32.4	7.5	58.4	209.8	399.5	27.6	6.5	57.6	741.8
May	206.9	397.6	27.4	6.4	57.2	208.8	399.3	27.4	6.4	57.4	742.6
June	204.5	400.8	25.7	6.0	57.4	208.9	400.1	26.4	6.2	57.4	743.4
July	211.3	396.9	24.7	5.9	56.6	210.2	401.9	25.1	5.9	57.4	744.5
August	210.0	405.3	24.5	5.7	57.7	212.7	404.6	24.0	5.6	57.5	745.5
September	218.4	412.2	20.4	4.7	57.9	215.8	407.5	23.6	5.5	57.8	746.5
October	220.5	410.9	23.6	5.4	58.1	218.3	410.1	23.9	5.5	58.1	747.4
November	220.7	408.0	27.7	6.4	58.2	220.1	412.2	24.4	5.6	58.3	748.4
December	222.2	417.1	23.6	5.4	58.8	221.2	413.9	24.9	5.7	58.6	749.4
2001											
January	218.0	413.9	25.8	5.9	58.6	221.5	415.3	25.3	5.8	58.8	750.3
PERSONS											
1999											
November	674.8	926.4	67.5	6.8	67.5	667.8	921.9	65.5	6.6	67.0	1 473.2
December	670.0	926.1	60.1	6.1	66.8	670.6	925.3	65.3	6.6	67.1	1 475.9
2000											
January	664.4	924.0	67.3	6.8	67.1	672.0	927.1	65.1	6.6	67.1	1 477.8
February	674.9	929.9	62.6	6.3	67.1	671.8	927.4	64.9	6.5	67.1	1 479.7
March	673.6	927.0	64.9	6.5	66.9	670.5	926.6	64.5	6.5	66.9	1 481.6
April	673.1	926.7	69.2	7.0	67.1	668.7	925.6	63.9	6.5	66.7	1 483.1
May	662.4	921.4	61.6	6.3	66.2	667.1	925.3	62.9	6.4	66.6	1 484.7
June	659.5	925.8	58.5	5.9	66.2	665.7	925.5	61.8	6.3	66.4	1 486.2
July	669.9	924.6	60.2	6.1	66.2	665.3	926.2	60.9	6.2	66.3	1 488.2
August	667.1	930.7	63.7	6.4	66.7	666.5	927.8	60.6	6.1	66.3	1 490.2
September	666.9	930.8	58.5	5.9	66.3	668.8	930.1	60.8	6.1	66.4	1 492.2
October	669.8	931.7	60.6	6.1	66.4	671.2	932.7	61.3	6.2	66.5	1 494.1
November	673.1	929.4	64.9	6.5	66.5	673.2	935.4	61.8	6.2	66.7	1 496.1
December	681.9	943.8	59.2	5.9	67.0	674.9	938.1	62.2	6.2	66.8	1 498.0
2001											
January	671.5	942.5	64.2	6.4	67.1	675.7	940.7	62.5	6.2	66.9	1 499.9

(a) Trend estimates for July 2000 to December 2000 have been revised.

LABOUR FORCE STATUS (AGED 15 AND OVER)—Tasmania(a)

SEASONALLY ADJUSTED.....

TREND.....

Month	SEASONALLY ADJUSTED.....					TREND.....					Civilian population aged 15 and over '000
	Employed full time '000	Total employed '000	Total unemployed '000	Unemployment rate %	Participation rate %	Employed full time '000	Total employed '000	Total unemployed '000	Unemployment rate %	Participation rate %	
MALES											
1999											
November	97.2	109.9	13.5	10.9	68.5	96.6	110.1	12.5	10.2	68.0	180.2
December	96.5	110.5	12.4	10.1	68.2	96.0	109.9	12.2	10.0	67.8	180.2
2000											
January	95.6	109.8	11.8	9.7	67.5	95.3	109.7	11.9	9.7	67.5	180.2
February	93.5	109.7	10.9	9.1	66.9	94.8	109.5	11.5	9.5	67.2	180.2
March	94.2	109.3	11.0	9.1	66.7	94.5	109.3	11.4	9.5	67.0	180.3
April	94.1	108.5	11.6	9.7	66.6	94.5	109.4	11.6	9.6	67.1	180.3
May	95.3	109.3	11.9	9.8	67.2	94.6	109.5	12.0	9.9	67.4	180.4
June	95.6	110.2	13.6	11.0	68.6	94.7	109.8	12.5	10.2	67.8	180.4
July	95.1	110.8	11.6	9.5	67.8	94.7	110.1	12.8	10.4	68.1	180.5
August	93.5	110.5	13.6	11.0	68.7	94.7	110.5	12.9	10.4	68.3	180.6
September	94.1	110.6	13.0	10.5	68.4	94.6	110.9	12.8	10.4	68.5	180.6
October	94.7	110.5	12.7	10.3	68.2	94.7	111.3	12.7	10.2	68.6	180.7
November	95.5	112.1	12.3	9.9	68.8	94.8	111.7	12.6	10.1	68.8	180.8
December	95.9	113.3	11.8	9.4	69.2	94.8	112.2	12.5	10.0	68.9	180.8
2001											
January	93.4	112.0	13.1	10.4	69.1	94.8	112.5	12.5	10.0	69.1	180.9
FEMALES											
1999											
November	43.9	88.0	8.0	8.4	50.6	43.9	88.0	7.7	8.0	50.4	189.9
December	42.9	88.9	7.6	7.9	50.8	43.5	88.5	7.8	8.1	50.7	189.9
2000											
January	43.2	89.8	7.9	8.1	51.4	43.2	88.9	8.0	8.3	51.0	190.0
February	42.7	88.3	7.8	8.1	50.6	43.3	89.1	8.2	8.4	51.2	190.0
March	44.0	89.9	8.3	8.5	51.7	43.7	89.2	8.3	8.5	51.3	190.1
April	43.7	88.2	9.2	9.4	51.2	44.2	89.2	8.3	8.5	51.3	190.2
May	45.1	88.7	8.6	8.9	51.2	44.6	89.1	8.3	8.5	51.2	190.3
June	46.2	90.7	7.2	7.4	51.4	44.6	89.0	8.2	8.4	51.0	190.3
July	43.4	88.6	7.5	7.8	50.5	44.5	88.9	8.1	8.3	50.9	190.4
August	44.3	88.7	8.6	8.8	51.1	44.2	88.9	8.0	8.2	50.9	190.5
September	43.3	87.6	8.6	8.9	50.4	43.9	89.0	7.9	8.2	50.9	190.6
October	43.3	89.7	7.4	7.6	50.9	43.7	89.2	7.9	8.1	50.9	190.7
November	44.9	89.5	8.2	8.4	51.2	43.6	89.4	7.9	8.1	51.0	190.8
December	43.5	91.6	6.8	6.9	51.5	43.5	89.5	7.8	8.0	51.0	190.9
2001											
January	42.8	88.0	8.4	8.8	50.5	43.5	89.7	7.8	8.0	51.0	191.0
PERSONS											
1999											
November	141.0	197.9	21.5	9.8	59.3	140.6	198.1	20.2	9.2	59.0	370.0
December	139.4	199.4	20.0	9.1	59.3	139.4	198.5	20.1	9.2	59.0	370.1
2000											
January	138.8	199.6	19.6	9.0	59.2	138.5	198.6	19.9	9.1	59.0	370.2
February	136.2	198.0	18.7	8.6	58.5	138.1	198.6	19.7	9.0	59.0	370.3
March	138.2	199.2	19.3	8.9	59.0	138.3	198.6	19.7	9.0	58.9	370.4
April	137.8	196.7	20.8	9.6	58.7	138.8	198.6	19.9	9.1	59.0	370.5
May	140.4	198.0	20.6	9.4	59.0	139.2	198.6	20.3	9.3	59.1	370.6
June	141.8	200.9	20.8	9.4	59.8	139.3	198.8	20.6	9.4	59.2	370.8
July	138.5	199.5	19.1	8.7	58.9	139.2	199.0	20.9	9.5	59.3	370.9
August	137.8	199.1	22.2	10.0	59.6	138.9	199.4	20.9	9.5	59.4	371.1
September	137.4	198.2	21.6	9.8	59.2	138.6	199.9	20.7	9.4	59.4	371.2
October	138.0	200.2	20.1	9.1	59.3	138.4	200.5	20.6	9.3	59.5	371.4
November	140.5	201.6	20.5	9.2	59.8	138.4	201.1	20.4	9.2	59.6	371.6
December	139.4	204.9	18.6	8.3	60.1	138.3	201.7	20.3	9.1	59.7	371.8
2001											
January	136.2	200.0	21.5	9.7	59.6	138.3	202.2	20.3	9.1	59.8	371.9

(a) Trend estimates for July 2000 to December 2000 have been revised.

LABOUR FORCE STATUS (AGED 15 AND OVER)—Northern Territory(a)

TREND.....

Month	Employed full time '000	Total employed '000	Total unemployed '000	Unemp- loyment rate %	Partic- ipation rate %	Civilian population aged 15 and over '000
MALES						
1999						
November	45.7	52.5	2.2	4.1	75.0	73.0
December	45.2	51.9	2.4	4.3	74.3	73.0
2000						
January	44.8	51.5	2.4	4.5	73.7	73.1
February	44.5	51.2	2.5	4.6	73.4	73.2
March	44.4	51.1	2.5	4.7	73.2	73.3
April	44.3	50.9	2.6	4.9	73.1	73.3
May	44.1	50.8	2.7	5.1	73.0	73.2
June	44.0	50.7	2.8	5.3	73.1	73.2
July	43.9	50.8	3.0	5.5	73.2	73.4
August	43.9	50.9	3.2	5.8	73.5	73.5
September	43.9	51.1	3.4	6.2	74.1	73.6
October	44.0	51.4	3.7	6.6	74.8	73.7
November	44.0	51.7	4.0	7.1	75.4	73.8
December	44.0	51.9	4.2	7.5	76.1	73.8
2001						
January	44.1	52.2	4.5	7.9	76.8	73.8
FEMALES						
1999						
November	27.6	40.2	2.0	4.8	63.5	66.4
December	27.7	40.0	2.1	4.9	63.3	66.5
2000						
January	27.9	40.0	2.1	5.0	63.2	66.6
February	28.1	40.1	2.1	5.1	63.4	66.7
March	28.2	40.2	2.2	5.1	63.5	66.7
April	28.1	40.1	2.2	5.1	63.2	66.8
May	27.8	39.8	2.1	5.0	62.6	66.9
June	27.5	39.6	2.0	4.8	62.1	67.0
July	27.4	39.6	1.9	4.6	61.9	67.1
August	27.5	39.9	1.8	4.4	62.3	67.1
September	27.8	40.4	1.8	4.3	62.9	67.1
October	28.2	40.8	1.8	4.3	63.4	67.3
November	28.5	41.0	1.9	4.5	63.7	67.4
December	28.7	41.0	2.0	4.6	63.7	67.5
2001						
January	28.9	40.9	2.0	4.7	63.6	67.6
PERSONS						
1999						
November	73.3	92.7	4.3	4.4	69.5	139.4
December	73.0	92.0	4.4	4.6	69.1	139.5
2000						
January	72.7	91.5	4.5	4.7	68.7	139.7
February	72.6	91.3	4.6	4.8	68.6	139.9
March	72.6	91.3	4.7	4.9	68.6	140.0
April	72.4	91.0	4.8	5.0	68.3	140.1
May	72.0	90.6	4.8	5.1	68.1	140.2
June	71.6	90.3	4.8	5.1	67.8	140.3
July	71.3	90.4	4.9	5.1	67.8	140.4
August	71.4	90.8	5.0	5.2	68.2	140.6
September	71.7	91.6	5.2	5.4	68.7	140.7
October	72.2	92.2	5.5	5.6	69.3	140.9
November	72.5	92.7	5.9	6.0	69.8	141.1
December	72.7	92.9	6.2	6.3	70.2	141.3
2001						
January	73.0	93.1	6.5	6.5	70.5	141.5

(a) Trend estimates for July 2000 to December 2000 have been revised. Estimates for the most recent three months may be subject to significant revisions as data for later months become available.

LABOUR FORCE STATUS (AGED 15 AND OVER)—Australian Capital Territory(a)

TREND.....

Month	Employed full time	Total employed	Total unemployed	Unemp- loyment rate	Partic- ipation rate	Civilian population aged 15 and over
	'000	'000	'000	%	%	'000
MALES						
1999						
November	71.5	86.0	5.5	6.0	79.2	115.5
December	72.0	86.4	5.4	5.9	79.2	115.7
2000						
January	72.5	86.7	5.3	5.8	79.2	116.1
February	72.9	86.8	5.3	5.8	79.1	116.6
March	73.3	87.0	5.4	5.8	78.9	117.0
April	73.8	87.2	5.4	5.8	78.7	117.5
May	74.3	87.5	5.2	5.7	78.6	118.0
June	74.8	87.9	5.1	5.5	78.5	118.6
July	75.3	88.4	5.0	5.3	78.6	118.7
August	75.8	88.9	4.9	5.2	78.9	118.9
September	75.9	89.2	4.9	5.2	79.1	119.0
October	75.8	89.3	5.0	5.3	79.2	119.0
November	75.4	89.1	5.0	5.3	79.2	118.9
December	75.0	88.9	5.1	5.4	79.0	118.9
2001						
January	74.6	88.6	5.1	5.5	78.8	118.9
FEMALES						
1999						
November	50.8	78.6	4.2	5.1	67.6	122.6
December	51.0	78.6	4.2	5.1	67.5	122.7
2000						
January	51.4	78.6	4.1	5.0	67.3	122.9
February	51.7	78.5	4.1	4.9	67.1	123.1
March	52.0	78.4	4.1	4.9	66.9	123.2
April	52.1	78.5	4.1	4.9	66.9	123.5
May	52.1	78.8	4.0	4.9	66.9	123.7
June	51.9	79.3	3.8	4.6	67.1	123.9
July	51.7	80.1	3.6	4.3	67.4	124.1
August	51.5	80.8	3.3	3.9	67.7	124.2
September	51.3	81.2	3.2	3.7	67.9	124.3
October	51.1	81.4	3.1	3.7	68.0	124.3
November	51.0	81.4	3.2	3.7	68.0	124.3
December	50.9	81.3	3.3	3.9	68.0	124.3
2001						
January	50.8	81.1	3.4	4.0	67.9	124.4
PERSONS						
1999						
November	122.3	164.5	9.7	5.6	73.2	238.1
December	123.0	165.0	9.6	5.5	73.2	238.3
2000						
January	123.8	165.3	9.4	5.4	73.1	239.0
February	124.6	165.3	9.4	5.4	72.9	239.6
March	125.3	165.4	9.4	5.4	72.7	240.3
April	125.9	165.7	9.4	5.4	72.6	241.0
May	126.4	166.3	9.3	5.3	72.6	241.7
June	126.7	167.2	9.0	5.1	72.7	242.5
July	127.0	168.5	8.6	4.8	72.9	242.8
August	127.2	169.7	8.2	4.6	73.2	243.1
September	127.2	170.4	8.1	4.5	73.4	243.4
October	126.9	170.7	8.1	4.5	73.5	243.3
November	126.4	170.6	8.2	4.6	73.5	243.3
December	125.9	170.2	8.3	4.7	73.4	243.2
2001						
January	125.3	169.7	8.5	4.8	73.2	243.3

(a) Trend estimates for July 2000 to December 2000 have been revised. Estimates for the most recent three months may be subject to significant revisions as data for later months become available.

EXPLANATORY NOTES

INTRODUCTION

1 This publication contains preliminary estimates of the civilian labour force derived from the Labour Force Survey component of the monthly population survey. Estimates for the current month are preliminary and subject to revision. Revised estimates for the current month and more detailed estimates will be published in *Labour Force, Australia* (Cat. no. 6203.0).

MONTHLY POPULATION SURVEY

2 The population survey is based on a multi-stage area sample of private dwellings (currently about 30,000 houses, flats, etc.) and a list sample of non-private dwellings (hotels, motels, etc.), and covers about 0.5% of the population of Australia. The information is obtained from the occupants of selected dwellings by specially trained interviewers. The interviews are generally conducted during the two weeks beginning on the Monday between the 6th and 12th of each month. The information obtained relates to the week before the interview (i.e. the reference week).

TELEPHONE INTERVIEWING

3 The ABS has introduced the use of telephone interviewing into the Labour Force Survey. Households selected for the Labour Force Survey are interviewed each month for 8 months, with one eighth of the sample being replaced each month. The first interview is conducted face-to-face. Subsequent interviews are conducted by telephone (if acceptable to the respondent). Telephone interviewing was phased in for each new sample group from August 1996 to February 1997.

4 During the period of implementation, the new method produced different estimates than would have been obtained under the old methodology. The effect peaked in November 1996, when it is estimated that the published estimate of total employment was about 36,000 to 48,000 lower than would have been measured under the old methodology. The effect dissipated over the final months of implementation and was no longer discernible from February 1997. Therefore, the estimates for February 1997 and onwards are directly comparable to estimates for periods prior to August 1996.

SCOPE OF SURVEY

5 The Labour Force Survey includes all persons aged 15 and over except members of the permanent defence forces, certain diplomatic personnel of overseas governments customarily excluded from census and estimated populations, overseas residents in Australia, and members of non-Australian defence forces (and their dependants) stationed in Australia.

COVERAGE

6 In the Labour Force Survey, coverage rules are applied which aim to ensure that each person is associated with only one dwelling, and hence has only one chance of selection. The coverage rules are necessarily a balance between theoretical and operational considerations. Nevertheless, the chance of a person being enumerated at two separate dwellings in the survey is considered to be negligible.

POPULATION BENCHMARKS

7 Labour Force Survey estimates are calculated in such a way as to add up to independent estimates of the civilian population aged 15 and over (population benchmarks). From February 1999, labour force estimates have been compiled using benchmarks based on the results of the 1996 Census of Population and Housing. Small revisions were made to many of the historical estimates from January 1995 to January 1999.

REVISION OF SERIES

8 From April 1986, the definition of employed persons was changed to include persons who worked without pay between 1 and 14 hours per week in a family business or on a farm (i.e. contributing family workers). For further information, see paragraphs 36 and 37 of the Explanatory Notes to the February 1987 issue of *Labour Force, Australia* (Cat. no. 6203.0).

EXPLANATORY NOTES

SURVEY SAMPLE REDESIGN

9 The Labour Force Survey sample was last reselected using information collected in the 1996 Census of Population and Housing.

10 The bulk of the new sample was phased in over the period September 1997 to April 1998, with one eighth of this portion of the sample being introduced every month. The remainder of the sample (about 15% of the total), which covers less settled areas of Australia and non-private dwellings was rotated in full for New South Wales, Victoria, Tasmania, Northern Territory and Australian Capital Territory in September 1997, and for Queensland, South Australia and Western Australia in October 1997. Such a pattern of implementation means that any changes to labour force estimates due to differences between the two samples, or any other influences, were spread over the eight months.

11 For further details, see *Information Paper: Labour Force Survey Sample Design* (Cat. no. 6269.0).

RELIABILITY OF ESTIMATES

12 Two types of error are possible in an estimate based on a sample survey: sampling error and non-sampling error.

Sampling error occurs because a sample, rather than the entire population, is surveyed. One measure of the likely difference resulting from not including all dwellings in the survey is given by the standard error. There are about two chances in three that a sample estimate will differ by less than one standard error from the figure that would have been obtained if all dwellings had been included in the survey, and about nineteen chances in twenty that the difference will be less than two standard errors. Standard errors of estimates for the latest month and of estimates of movements since the previous month are shown on pages 30 and 31. Standard errors of other estimates and other movements may be determined by using information in the Technical Notes in *Labour Force, Australia* (Cat. no. 6203.0).

Non sampling error arises from inaccuracies in collecting, recording and processing the data. Every effort is made to minimise reporting error by the careful design of questionnaires, intensive training and supervision of interviewers, and efficient data processing procedures.

SEASONAL ADJUSTMENT AND TREND ESTIMATION

13 Seasonally adjusted series are published in Tables 2, 5 and 12 to 17. Seasonal factors are reviewed annually to take account of each additional year's original data. The results of the latest review were used to compile the seasonally adjusted and trend estimates given in this publication. Information about the method of adjustment, and revised seasonally adjusted and trend estimates for all months from January 1998, were published in a feature article in the February 2000 issue of *Labour Force, Australia* (Cat. no. 6203.0).

14 Seasonal adjustment is a means of removing the estimated effects of normal seasonal variation from the series so that the effects of other influences on the series can be more clearly recognised. Seasonal adjustment does not aim to remove the irregular or non-seasonal influences which may be present in any particular month. This means that month-to-month movements of the seasonally adjusted estimates may not be reliable indicators of trend behaviour. For example, irregular factors unrelated to the trend account for more than half the seasonally adjusted movement with the following frequency:

- Employment: 6 in 10 monthly movements
- Unemployment: 8 in 10 monthly movements
- Unemployment rate: 7 in 10 monthly movements
- Participation rate: 9 in 10 monthly movements.

EXPLANATORY NOTES

SEASONAL ADJUSTMENT AND TREND ESTIMATION *continued*

15 The smoothing of seasonally adjusted series reduces the impact of the irregular component of the seasonally adjusted series, and creates trend estimates. These trend estimates are derived by applying a 13-term Henderson-weighted moving average to all months except the last six. The last six monthly trend estimates are obtained by applying surrogates of the Henderson average to the seasonally adjusted series. Trend series are used to analyse the underlying behaviour of the series over time. These are published in tables 3, 6 and 12 to 19.

16 While this smoothing technique enables estimates to be produced for the latest month, it does result in revisions to the most recent months as additional observations become available. Generally, subsequent revisions become smaller, and after three months have a negligible impact on the series. There will also be revisions as a result of the annual review of seasonal factors.

17 Trend estimates are published for the Northern Territory in table 18 and for the Australian Capital Territory in table 19. Unadjusted series for the two Territories have shown, historically, a high degree of variability, which can lead to considerable revisions to the seasonally adjusted estimates after each annual seasonal factor re-analysis. Seasonally adjusted estimates are not currently published for the two Territories. The most recent six months trend estimates are subject to revision. For the three most recent months, the revision may be relatively large. Inferences about trends drawn from smoothed seasonally adjusted (trend) estimates for months earlier than the latest three months are unlikely to be affected by month to month revisions. They may be affected by revision resulting from the annual re-analysis of seasonal factors.

18 For further information, see *A Guide to Interpreting Time Series—Monitoring 'Trends': an Overview* (Cat. no. 1348.0) or contact the Assistant Director, Time Series Analysis on (02) 6252 6345.

RELATED PUBLICATIONS

19 Users may also wish to refer to *Labour Force, Australia* (Cat. no. 6203.0). This publication contains a detailed list of related publications which are available from ABS Bookshops.

20 Current publications produced by the ABS are listed in the *Catalogue of Publications and Products* (Cat. no. 1101.0). The ABS also issues, on Tuesdays and Fridays, a *Release Advice* (Cat. no. 1105.0) which lists publications to be released in the next few days. The Catalogue and Release Advice are available from any ABS office.

UNPUBLISHED STATISTICS

21 As well as the statistics included in this and related publications, the ABS may have other relevant unpublished data available. Inquiries should be made to Mark Webb on 02 6252 6525 or to any ABS office.

EFFECTS OF ROUNDING

22 Estimates have been rounded and discrepancies may occur between sums of the component items and totals.

23 Estimates of movement shown in this publication are obtained by taking the difference of unrounded estimates. The movement estimate is then rounded to one decimal place. Therefore where a discrepancy occurs between the reported movement and the difference of the rounded estimates, the reported movement will be more accurate.

SYMBOLS AND OTHER USAGES

- * subject to sampling variability too high for most practical uses. See the Technical Notes in Cat. no. 6203.0 for more details.
- .. not applicable
- r revised
- pts percentage points

GLOSSARY

Actively looking for work	Includes writing, telephoning or applying in person to an employer for work; answering an advertisement for a job; checking factory noticeboards or the touchscreens at the Centrelink offices; being registered with Centrelink as a jobseeker; checking or registering with any other employment agency; advertising or tendering for work; and contacting friends or relatives.
Attending school	Persons aged 15 to 19 enrolled full time at secondary or high schools in the reference week.
Attending tertiary educational institution full time	Persons aged 15 to 24 enrolled full time at a TAFE college, university, or other educational institution in the reference week.
Employed	Persons aged 15 and over who, during the reference week: <ul style="list-style-type: none">■ worked for one hour or more for pay, profit, commission or payment in kind in a job or business, or on a farm (comprising employees, employers and own account workers); or■ worked for one hour or more without pay in a family business or on a farm (i.e. contributing family workers); or■ were employees who had a job but were not at work and were:<ul style="list-style-type: none">■ on paid leave,■ on leave without pay for less than four weeks up to the end of the reference week,■ stood down without pay because of bad weather or plant breakdown at their place of employment for less than four weeks up to the end of the reference week,■ on strike or locked out,■ on workers' compensation and expected to be returning to their job, or■ receiving wages or salary while undertaking full-time study; or■ were employers, own account workers or contributing family workers who had a job, business or farm, but were not at work.
Full-time workers	Employed persons who usually worked 35 hours or more a week (in all jobs) and those who, although usually working less than 35 hours a week, worked 35 hours or more during the reference week
Labour force	For any group, persons who were employed or unemployed, as defined.
Labour force status	A classification of the civilian population aged 15 and over into employed, unemployed or not in the labour force, as defined. The definitions conform closely to the international standard definitions adopted by the International Conferences of Labour Statisticians.
Not in the labour force	Persons who were not in the categories employed or unemployed as defined.
Participation rate	For any group, the labour force expressed as a percentage of the civilian population aged 15 and over in the same group.
Part-time workers	Employed persons who usually worked less than 35 hours a week and who did so during the reference week.
Seasonally adjusted series	A time series of estimates with the estimated effects of normal seasonal variation removed. See Explanatory Notes 13 to 14 for more detail.
Trend series	A smoothed seasonally adjusted series of estimates. See Explanatory Notes 15 to 17 for more detail.

GLOSSARY

Unemployed	Persons aged 15 and over who were not employed during the reference week, and: <ul style="list-style-type: none">■ had actively looked for full-time or part-time work at any time in the four weeks up to the end of the reference week and:<ul style="list-style-type: none">■ were available for work in the reference week, or would have been available except for temporary illness (i.e. lasting for less than four weeks to the end of the reference week), or■ were waiting to start a new job within four weeks from the end of the reference week and would have started in the reference week if the job had been available then; or■ were waiting to be called back to a full-time or part-time job from which they had been stood down without pay for less than four weeks up to the end of the reference week (including the whole of the reference week) for reasons other than bad weather or plant breakdown.
Unemployed looking for first full-time job	Unemployed persons looking for full-time work (as defined above) who had never worked full time for two weeks or more
Unemployed looking for full-time work	Unemployed persons who actively looked for full-time work, or were to resume a full-time job from which they had been stood down.
Unemployed looking for part-time work	Unemployed persons who had actively looked for part-time work only, or were to resume a part-time job from which they had been stood down.
Unemployment rate	For any group, the number of unemployed persons expressed as a percentage of the labour force in the same group.
Unemployment to population ratio	For any group, the number of unemployed persons expressed as a percentage of the civilian population in the same group.

STANDARD ERRORS

The estimates in this publication are based on information gained from the occupants of a sample survey of dwellings. Because the entire population is not surveyed, the published estimates are subject to sampling error. The most common way of quantifying such sampling error is to calculate the standard error for the published estimate or statistic.

LEVEL ESTIMATES

To illustrate, let us say the published level estimate for employed persons aged 15 to 19 is 500,000. The calculated standard error in this case is 8,700. The standard error is then used to interpret the level estimate of 500,000. For instance, the standard error of 8,700 indicates that:

- There are approximately two chances in three that the real value falls within the range 491,300 to 508,700 (500,000 + or - 8,700)
- There are approximately nineteen chances in twenty that the real value falls within the range 482,600 to 517,400 (500,000 + or - 17,400).

The real value in this case is the result we would obtain if we could enumerate the total population.

The following tables show the standard errors for this month's level estimates.

	EMPLOYED.....			UNEMPLOYED.....			Labour force	Not in labour force	Unemployment rate	Participation rate
	Full time	Part time	Total	Looking for f/t work	Looking for p/t work	Total				
	'000	'000	'000	'000	'000	'000				
NSW	18.4	9.9	21.9	5.3	3.6	5.8	22.8	17.1	0.2	0.4
Vic.	14.0	8.1	16.5	4.1	3.0	4.7	17.2	12.8	0.2	0.4
Qld	10.8	7.3	12.1	4.3	2.6	4.8	12.6	10.1	0.3	0.4
SA	5.0	3.5	5.7	1.9	1.2	2.2	5.9	5.0	0.3	0.5
WA	5.4	4.0	6.0	2.3	1.4	2.5	6.2	4.9	0.3	0.4
Tas.	1.8	1.4	2.1	0.8	0.6	0.9	2.2	1.9	0.4	0.6
NT	1.2	0.8	1.3	0.5	0.3	0.5	1.4	1.1	0.6	1.0
ACT	1.8	1.1	2.0	0.5	0.4	0.6	2.1	1.4	0.4	0.9
Males	21.3	9.6	23.1	7.5	4.0	8.1	24.4	15.3	0.1	0.3
Females	15.8	13.9	20.0	5.8	4.8	6.9	20.7	19.1	0.2	0.3
Persons	28.2	15.9	36.3	8.8	5.8	9.8	38.9	25.1	0.1	0.3

	NUMBER OF UNEMPLOYED PERSONS.....					UNEMPLOYMENT RATE.....				
	Aged 15-19 looking for f/t work	Aged 20 and over looking for f/t work	Total looking for f/t work	Looking for p/t work	Total	Aged 15-19 looking for f/t work	Aged 20 and over looking for f/t work	Total looking for f/t work	Looking for p/t work	Total
	'000	'000	'000	'000	'000	pts	pts	pts	pts	pts
NSW	3.1	4.9	5.3	3.6	5.8	2.7	0.2	0.2	0.5	0.2
Vic.	1.8	3.9	4.1	3.0	4.7	2.7	0.2	0.2	0.5	0.2
Qld	2.1	4.0	4.3	2.6	4.8	2.9	0.3	0.3	0.6	0.3
SA	0.9	1.8	1.9	1.2	2.2	3.4	0.4	0.4	0.6	0.3
WA	1.2	2.1	2.3	1.4	2.5	2.8	0.3	0.3	0.5	0.3
Tas.	0.4	0.8	0.8	0.6	0.9	4.1	0.5	0.5	0.8	0.4
NT	0.3	0.4	0.5	0.3	0.5	6.7	0.6	0.7	1.4	0.6
ACT	0.3	0.5	0.5	0.4	0.6	6.6	0.4	0.4	1.0	0.4
Males	3.8	7.1	7.5	4.0	8.1	1.9	0.2	0.2	0.6	0.1
Females	3.0	5.4	5.8	4.8	6.9	2.2	0.2	0.2	0.3	0.2
Persons	4.5	8.2	8.8	5.8	9.8	1.3	0.1	0.1	0.2	0.1

STANDARD ERRORS *continued*

MOVEMENT ESTIMATES

The following example illustrates how to use the standard error to interpret a movement estimate. Let us say that one month the published level estimate for females employed part time in Australia is 1,390,000; the next month the published level estimate is 1,400,000. The calculated standard error for the movement estimate is 13,000. The standard error is then used to interpret the published movement estimate of 10,000. For instance, the standard error of 13,000 indicates that:

- There are approximately two chances in three that the real movement over the two month period falls within the range -3,000 to 23,000 (10,000 + or - 13,000)
- There are approximately nineteen chances in twenty that the real movement falls within the range -16,000 to 36,000 (10,000 + or - 26,000).

The following tables show the standard errors for this month's movement estimates.

	EMPLOYED.....			UNEMPLOYED.....			Labour force	Not in labour force	Unemployment rate	Participation rate
	Full time	Part time	Total	Looking for f/t work	Looking for p/t work	Total				
	'000	'000	'000	'000	'000	'000				
NSW	10.0	6.8	11.0	4.0	2.7	4.4	11.2	9.5	0.1	0.2
Vic.	7.6	5.3	8.5	3.0	2.2	3.4	8.6	7.1	0.1	0.2
Qld	6.8	4.8	7.5	3.0	2.1	3.3	7.8	6.3	0.2	0.3
SA	3.1	2.3	3.5	1.4	0.9	1.5	3.6	3.1	0.2	0.3
WA	3.9	2.8	4.4	1.7	1.1	1.8	4.4	3.5	0.2	0.3
Tas.	1.2	1.0	1.4	0.6	0.4	0.7	1.5	1.3	0.3	0.4
NT	1.1	0.7	1.2	0.4	0.2	0.4	1.2	0.9	0.5	0.9
ACT	1.0	0.7	1.1	0.4	0.3	0.4	1.2	0.8	0.3	0.5
Males	14.1	7.1	14.8	5.7	3.2	6.0	15.2	10.8	0.1	0.2
Females	11.1	10.1	13.6	4.4	3.7	5.2	13.9	13.0	0.1	0.2
Persons	16.4	11.3	18.2	6.6	4.4	7.2	18.7	15.3	0.1	0.1

	NUMBER OF UNEMPLOYED PERSONS.....					UNEMPLOYMENT RATE.....				
	Aged 15-19 looking for f/t work	Aged 20 and over looking for f/t work	Total looking for f/t work	Looking for p/t work	Total	Aged 15-19 looking for f/t work	Aged 20 and over looking for f/t work	Total looking for f/t work	Looking for p/t work	Total
	'000	'000	'000	'000	'000	pts	pts	pts	pts	pts
NSW	2.3	3.7	4.0	2.7	4.4	2.0	0.2	0.2	0.4	0.1
Vic.	1.4	2.9	3.0	2.2	3.4	2.1	0.2	0.2	0.4	0.1
Qld	1.7	2.8	3.0	2.1	3.3	2.3	0.2	0.2	0.4	0.2
SA	0.7	1.3	1.4	0.9	1.5	2.6	0.3	0.3	0.4	0.2
WA	1.0	1.6	1.7	1.1	1.8	2.2	0.2	0.2	0.4	0.2
Tas.	0.3	0.6	0.6	0.4	0.7	3.2	0.4	0.4	0.6	0.3
NT	0.3	0.4	0.4	0.2	0.4	5.6	0.5	0.5	1.1	0.5
ACT	0.2	0.4	0.4	0.3	0.4	5.3	0.3	0.3	0.8	0.3
Males	2.9	5.3	5.7	3.2	6.0	1.4	0.1	0.1	0.4	0.1
Females	2.5	4.1	4.4	3.7	5.2	1.8	0.2	0.2	0.2	0.1
Persons	3.5	6.1	6.6	4.4	7.2	1.0	0.1	0.1	0.2	0.1

WHAT IF...? REVISIONS TO TREND ESTIMATES

EFFECT OF NEW SEASONALLY ADJUSTED ESTIMATES ON TREND ESTIMATES

Each time new seasonally adjusted estimates become available, trend estimates are revised (see paragraphs 13 and 14 of Explanatory Notes).

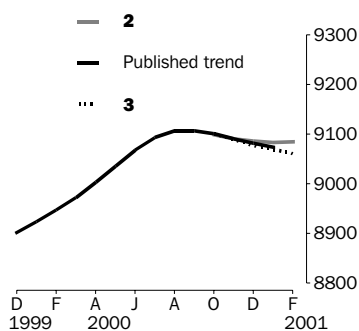
TREND REVISIONS

The examples in the tables below show four illustrative scenarios and the consequent revisions to previous trend estimates of employment and unemployment rate.

- 1** The February seasonally adjusted estimate is the same as the January estimate.
- 2** The February seasonally adjusted estimate is higher than the January estimate by:
 - +0.32% for employment
 - +1.88% for the unemployment rate
- 3** The February seasonally adjusted estimate is lower than the January estimate by:
 - -0.32% for employment
 - -1.88% for the unemployment rate
- 4** The February seasonally adjusted estimate results in a revised January trend estimate which is identical to the new February trend estimate.

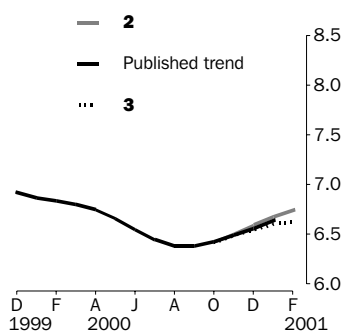
The percentage changes of 0.32% and 1.88% were chosen because they represent the average absolute monthly percentage changes in employment and the unemployment rate respectively.

EMPLOYMENT ('000)



		WHAT IF NEXT MONTH'S SEASONALLY ADJUSTED ESTIMATE IS:				
		1	2	3	4	
		9 083.2	9 112.5	9 053.9	9 104.0	
		<i>i.e. the same as Jan 2001</i>	<i>i.e. rises by 0.32%</i>	<i>i.e. falls by 0.32%</i>	<i>i.e. same trend for Jan & Feb</i>	
		TREND AS PUBLISHED				
2000	November	9 090.5	9 089.8	9 091.1	9 088.5	9 090.7
	December	9 081.8	9 081.5	9 085.9	9 077.2	9 084.6
2001	January	9 072.1	9 075.9	9 084.1	9 067.8	9 081.7
	February (new)	—	9 073.0	9 085.3	9 060.6	9 081.7

UNEMPLOYMENT RATE (%)



		WHAT IF NEXT MONTH'S SEASONALLY ADJUSTED ESTIMATE IS:				
		1	2	3	4	
		6.7	6.8	6.5	6.3	
		<i>i.e. the same as Jan 2001</i>	<i>i.e. rises by 1.88%</i>	<i>i.e. falls by 1.88%</i>	<i>i.e. same trend for Jan & Feb</i>	
		TREND AS PUBLISHED				
2000	November	6.5	6.5	6.5	6.5	6.5
	December	6.6	6.6	6.6	6.6	6.5
2001	January	6.6	6.6	6.7	6.6	6.5
	February (new)	—	6.7	6.7	6.6	6.5

FOR MORE INFORMATION...

- INTERNET* **www.abs.gov.au** the ABS web site is the best place to start for access to summary data from our latest publications, information about the ABS, advice about upcoming releases, our catalogue, and Australia Now—a statistical profile.
- LIBRARY* A range of ABS publications is available from public and tertiary libraries Australia-wide. Contact your nearest library to determine whether it has the ABS statistics you require, or visit our web site for a list of libraries.
- CPI INFOLINE* For current and historical Consumer Price Index data, call 1902 981 074 (call cost 77c per minute).
- DIAL-A-STATISTIC* For the latest figures for National Accounts, Balance of Payments, Labour Force, Average Weekly Earnings, Estimated Resident Population and the Consumer Price Index call 1900 986 400 (call cost 77c per minute).

INFORMATION SERVICE

Data which have been published and can be provided within five minutes are free of charge. Our information consultants can also help you to access the full range of ABS information—ABS user-pays services can be tailored to your needs, time frame and budget. Publications may be purchased. Specialists are on hand to help you with analytical or methodological advice.

- PHONE* **1300 135 070**
- EMAIL* **client.services@abs.gov.au**
- FAX* 1300 135 211
- POST* Client Services, ABS, GPO Box 796, Sydney 1041

WHY NOT SUBSCRIBE?

ABS subscription services provide regular, convenient and prompt deliveries of ABS publications and products as they are released. Email delivery of monthly and quarterly publications is available.

- PHONE* 1300 366 323
- EMAIL* subscriptions@abs.gov.au
- FAX* 03 9615 7848
- POST* Subscription Services, ABS, GPO Box 2796Y, Melbourne 3001



2620200001010
ISSN 1031-038X

RRP \$20.00