



BUSINESS INDICATORS

**AUSTRALIAN
CAPITAL
TERRITORY**

EMBARGO: 11:30AM (CANBERRA TIME) THURS 28 FEB 2002

C O N T E N T S

	<i>page</i>
Notes	2
Summary of findings	3
Selected business indicators	5
FEATURE ARTICLE	
The ACT Manufacturing Industry	6
TABLES	
1 Business indicators	11
2 ACT in relation to the rest of Australia	14
3 ACT in relation to the rest of Australia, percentage changes	15
INFORMATION	
Index of Feature Articles published in ACT Business Indicators	16

- For further information about these and related statistics, contact Amanda Lilley on Canberra 02 6207 0277 or the National Information and Referral Service on 1300 135 070.

NOTES

FORTHCOMING ISSUES	<i>ISSUE</i>	<i>RELEASE DATE</i>
	March 2002	28 March 2002
	April 2002	26 April 2002 (Final Issue)

SYMBOLS AND OTHER USAGES

m	million
no.	number
n.a.	not available
n.p.	not available for publication
p	preliminary
qtr	quarter
'000	thousands
%	per cent
. .	not applicable
—	nil or rounded to zero

Tracy Stewart
Regional Director, Australian Capital Territory

SUMMARY OF FINDINGS

UPDATED SERIES

Series updated in the summary of findings and tables since the January 2002 issue are: labour force, wage and salary earners, retail turnover, building approvals, new motor vehicle registrations, consumer price index, industrial disputes, average retail prices and housing finance.

The feature article this month, on page 6, is the ACT Manufacturing Industry.

Labour force At January 2002, ACT trend employment increased slightly (less than 1%) from December 2001, with 168,600 people employed. January 2002 was the fifth consecutive month of increase, following negative growth each month from October 2000 to July 2001. Nationally, trend employment fell 2% from the previous month to 9,132,800 people.

Having increased steadily during the 8 months leading to June 2001, the ACT trend estimate of unemployment has declined each month since, to 7,200 people in January 2002. This is the lowest number of unemployed people in the ACT since March 1989 (7,200 people). Nationally, trend unemployment increased slightly to 677,000 people.

The trend unemployment rate for the ACT fell slightly to 4.1% in January 2002. In contrast, the national trend unemployment rate remained steady at 6.8% for the same period.

The ACT trend labour force participation rate remained steady in January 2002 at 71.4%. It declined steadily from October 2000 (73.4%), to 71.4% in October 2001 and has remained at this figure since. The national trend increased slightly in January 2002 to 63.8%.

Wage and salary earners The trend number of wage and salary earners employed in the ACT increased to 159,100 people in the August quarter 2001, an increase of 2% from the previous quarter and 4% from the August quarter 2000. Excluding self-employed people, 56% of wage and salary earners in the ACT were employed in the private sector, compared with 80% nationally.

Retail turnover There was a slight increase in the ACT trend retail turnover in December 2001, up less than 1% from the previous month to \$292m. The turnover for December 2001 was an increase of 10% from the previous year. Nationally, trend retail turnover also rose slightly from the previous month to \$13,872m and increased 8% from December 2000.

Building approvals In December 2001, there were 313 dwelling units approved in the ACT, up 6% from the previous month and up 132% from December 2000. Nationally there were 14,104 dwelling unit approvals, a decrease of 2% from the previous month but an increase of 49% from December 2000.

The original value of non-residential building approvals for the ACT in December 2001 was \$24m. This figure remained relatively uniform over the 12 months leading to December 2001, although reached extremes of \$50m in July 2001 and \$8m in August 2001. The December 2001 figure was a increase of 80% from November 2001 and an increase of 93% from December 2000. The original value of new residential building approvals decreased by 51% to \$24m from November 2001 (\$50m).

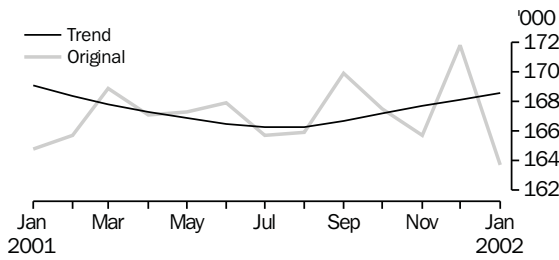
The original value of total building approvals has declined since a peak of \$87m in October 2001. In December 2001, the value of total buildings approved was \$54m, a decrease of 23% from the previous month. Nationally, the value of total building approvals in December 2001 was \$3,038m, down 14% from the previous month but up 26% from December 2000.

New motor vehicle registrations	In December 2001, the trend estimate of ACT new motor vehicle registrations decreased 1% from the previous month to 1,052 registrations, and decreased 11% from December 2000. The national trend rose 1% from the previous month, but decreased 3% from December 2000.
Consumer price index	Canberra experienced an increase of 1.3%, to 134.9 in the All Groups Index for the December quarter 2001, the greatest quarterly growth since September quarter 2000. The weighted average of the eight capital cities increased 0.9% to 135.4 during this period.
Industrial disputes	Working days lost per thousand employees in the ACT declined from 7 days for the year ended October 2000 to 5 days for the year ended October 2001. This figure has remained steady for the last 5 months. The ACT lost fewer working days per thousand employees than other States and Territories, except for Tasmania (3 working days).
Housing finance	In December 2001 the trend estimate of dwelling units financed (including re-financing) in the ACT was 734, falling 1% from the previous month and the sixth consecutive month of decline. This figure was however an increase of 1% from December 2000. The trend estimate of the value of commitments declined 1% compared with November 2001, but was up 24% from December 2000.

Nationally, the trend estimate of dwelling units financed (including re-financing) during December 2001 was 52,871, remaining steady from the previous month and increasing 18% from the December 2000 figure. The national trend estimate of the value of commitments in December 2001 remained steady from the previous month and increased 38% from the December 2000 figure.

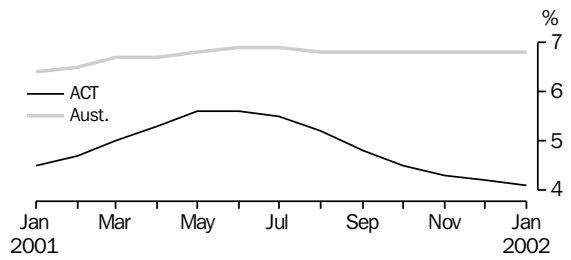
SELECTED BUSINESS INDICATORS

EMPLOYED PERSONS



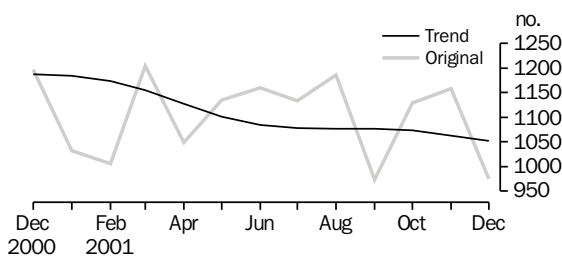
Source: Labour Force, Australia (Cat. no. 6202.0).

UNEMPLOYMENT RATE: trend series



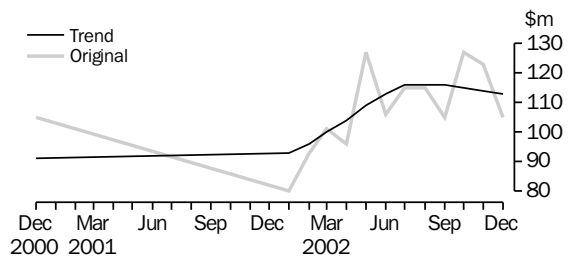
Source: Labour Force, Australia (Cat. no. 6202.0).

NEW MOTOR VEHICLE REGISTRATIONS



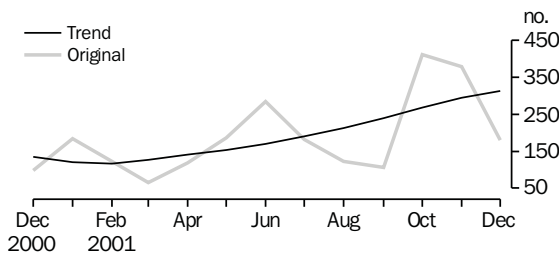
Source: New Motor Vehicle Registrations, Australia (Cat. no. 9301.0).

HOUSING FINANCE



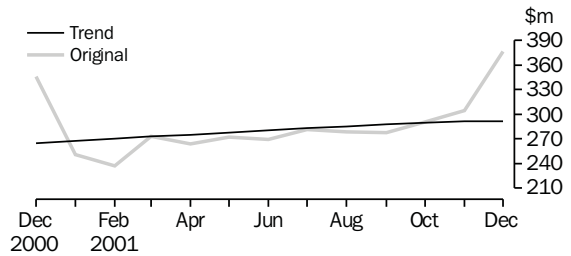
Source: Housing Finance, Australia (Cat. no. 5609.0).

BUILDING APPROVALS: Dwelling units approved



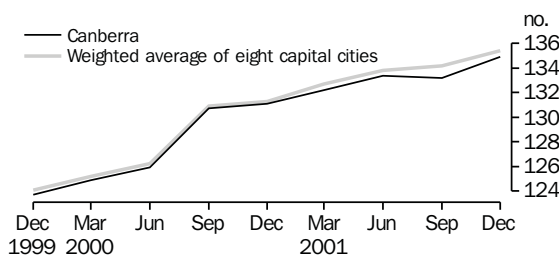
Source: Building Approvals, Australia (Cat. no. 8731.0).

RETAIL TRADE: Monthly turnover



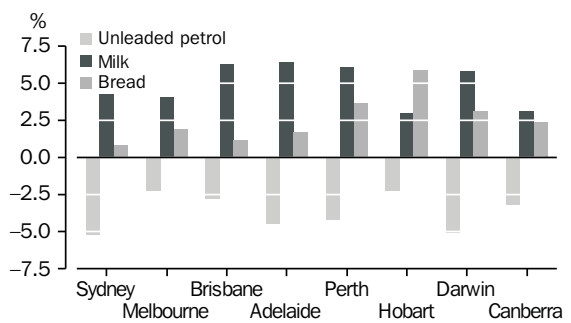
Source: Retail Trade, Australia (Cat. no. 8501.0).

CONSUMER PRICE INDEX



Source: Consumer Price Index, Australia (Cat. no. 6401.0).

AVERAGE RETAIL PRICES, change from previous qtr—December qtr 2001



Source: Average Retail Prices of Selected Items, Australia (Cat. no. 6402.0).

FEATURE ARTICLE

AUSTRALIAN CAPITAL TERRITORY MOTOR VEHICLES

Overview

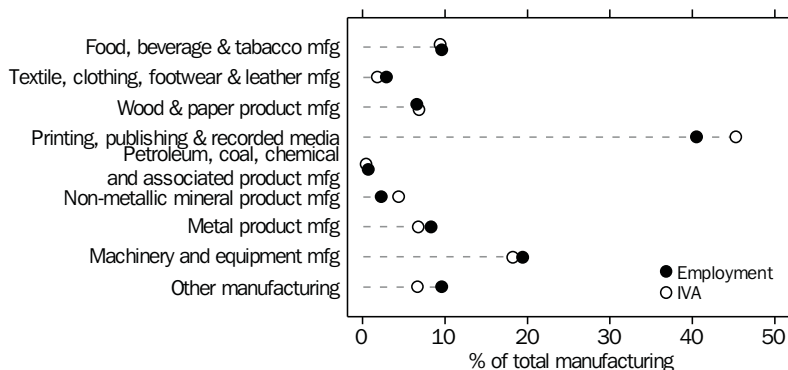
Turnover for manufacturing establishments operating in the Australian Capital Territory in 1999–2000 was \$667.4m. This represents a 25% increase in turnover in current price terms from the \$533.6m recorded for 1998–99 and compared with a national increase of 4%. ACT manufacturing establishments employed 3,916 people (up 20%) at 30 June 2000 and paid \$131.2m (up 20%) in wages and salaries.

Industry Value Added and Contribution

Industry Value Added (IVA) represents the net value of production minus resources used.

IVA in the ACT for 1999–2000 was \$245.4m. This was an increase of 13% from 1998–99 (\$218m) and compared with a 2% increase nationally. The industry subdivisions with the largest contributions to total manufacturing IVA in the ACT were 'Printing, publishing and recorded media' (45%), 'Machinery and equipment manufacturing' (18%) and 'Food, beverage and tobacco manufacturing' (9%).

ACT EMPLOYMENT AND IVA, BY INDUSTRY SUBDIVISION 1999–2000



Source: ABS, *Manufacturing Industry, NSW and ACT, 1999–2000* (Cat. no. 8221.1).

The ACT manufacturing industry subdivisions with the highest IVA per person employed in 1999–2000 were 'Non-metallic mineral product manufacturing' (\$120,100 per person employed) and 'Printing, publishing and recorded media' (\$70,100). 'Non-metallic mineral product manufacturing' was also the highest nationally, at \$105,700 per person employed.

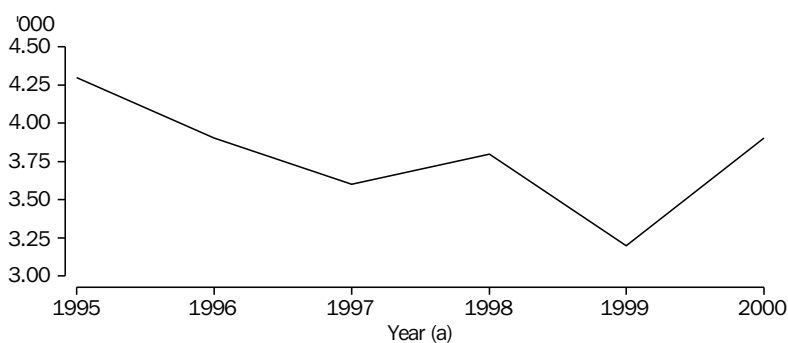
In 1999–2000, the contribution of the ACT to Australian total manufacturing employment was 0.4%. This remained steady from the 1998–99 figure. The contribution to turnover was slightly lower at 0.3%, while the ACT contribution towards total IVA was 0.4%. Both the ACT turnover and IVA contribution to the Australian total increased 0.1 percentage point from 1998–99.

In the ACT, manufacturing comprised 2% of total production in 1999–2000. This is the lowest proportion of all States and Territories. The contribution of manufacturing to total production was highest in Victoria and South Australia (both 16%), while the national proportion was 13%.

Employment and Wages

The ACT manufacturing industry employed 3,916 people at the end of June 2000 and paid \$131.2m in wages and salaries in 1999–2000. This represents an average of \$33,504 paid in annual wages and salaries per person employed within the manufacturing industry during 1999–2000, an increase of less than 1% on the 1998–99 figure (\$33,405). The national average rose by 2% to \$38,528. The employment figure in this average measures the number of people employed at the end of June and includes working proprietors. The wages and salaries figure excludes the drawings of working proprietors.

MANUFACTURING EMPLOYMENT, ACT, 1995–2000



(a) At 30 June.

Source: ABS, *Manufacturing Industry, NSW and ACT, 1999–2000* (Cat. no. 8221.1).

Employment in the ACT manufacturing industry increased by 20% (647 people) between June 1999 (3,269 people) and June 2000 (3,916 people). However, manufacturing employment over the five years from June 1995 (4,334 people) to June 2000 fell by 10% (418 people). Total ACT employment grew 8% from June 1999 to June 2000 and increased 9% from June 1995 to June 2000. Nationally, employment in the manufacturing industry fell 1% from June 1999 and 5% from June 1995. The national total employment figure grew 3% from June 1999 to June 2000 and increased 7% from June 1995.

Between June 1999 and June 2000, employment decreased in three of the nine manufacturing industry subdivisions, increasing in the other six. 'Textile, clothing, footwear and leather manufacturing' recorded the largest decrease (down 15% or 20 people). The largest increases were recorded in 'Printing, publishing and recorded media' (up 369 people or 30%), 'Machinery and equipment manufacturing' (up 179 people or 31%) and 'Metal product manufacturing' (up 88 people 37%).

Average wages and salaries paid per person at 30 June 2000 fell in four industry subdivisions and rose in the other five from 30 June 1999. The industry subdivisions recording the largest decreases in wages and salaries paid per person at the end of June were 'Metal product manufacturing' (down 18% to \$24,074) and 'Petroleum, coal, chemical and associated product manufacturing' (down 11% to \$28,571). The largest increases in wages and salaries paid per person were recorded in the industry subdivisions 'Non-metallic mineral product manufacturing' (up 38% to \$45,556) and 'Food, beverage and tobacco manufacturing' (up 19% to \$40,318).

Turnover Turnover rose, in current price terms, to \$667.4m for 1999–2000. This represents a 25% (or \$133.8m) increase on the \$533.6m recorded for 1998–99.

Seven of the nine industry subdivisions recorded an increase between 1998–99 and 1999–2000. ‘Non-metallic mineral product manufacturing’ had the largest increase in turnover (up 74% to \$49.4m). This was followed by ‘Food, beverage and tobacco manufacturing’ (up 52% to \$97.5m).

The industry subdivision ‘Wood and paper product manufacturing’ recorded the largest decrease in turnover (down 7% to \$48.6m), while ‘Machinery and equipment manufacturing’ recorded a decrease of 5%, falling to \$89.7m.

GLOSSARY

Employment at end of June Employment figures in this article measure the number of people employed at the end of June and include working proprietors. The wage and salary figures exclude the drawings of working proprietors. The number of working proprietors and working partners, plus all employees for whom pay as you earn (PAYE) tax is deducted (including permanent, part-time, temporary and casual employees, and managerial and executive employees) during the last pay period ending in June each year. Non-salaried directors, self-employed people such as consultants and contractors for whom PAYE tax is not deducted and volunteers are excluded.

Industry subdivision This is the broadest level category within the manufacturing industry division of ANZSIC and is recognised by a two-digit code, e.g. Industry Subdivision 23 for 'Wood and paper product manufacturing'. Industry subdivisions are built up from industry groups which, in turn, are built up from industry classes. The following list gives the manufacturing industry subdivision codes and their descriptions:

- 21 Food, beverage and tobacco mfg
- 22 Textile, clothing, footwear and leather mfg
- 23 Wood and paper product mfg
- 24 Printing, publishing and recorded media
- 25 Petroleum, coal, chemical and associated product mfg
- 26 Non-metallic mineral product mfg
- 27 Metal product mfg
- 28 Machinery and equipment mfg
- 29 Other manufacturing

Industry value added (IVA) IVA represents the value added by an industry to the intermediate inputs used by the industry.

The derivation of IVA is as follows:

	Turnover
plus	Closing inventories
less	Opening inventories
less	Intermediate input expenses
equals	IVA

However, it should be noted that IVA is not a measure of operating profit before tax. Wages, salaries and most other labour costs are not taken into account in its calculation and nor are most insurance premiums, interest expenses or depreciation and a number of lesser expenses.

Manufacturing establishment An establishment predominantly engaged in manufacturing activities. The data collected for such establishments cover all activities of the establishment (including non-manufacturing activities).

Reference period	Businesses are asked to report data for the financial year ended 30 June. However, if a business has a different financial year, it is asked to report for the 12-month period which ends between 1 October of the previous year and 30 September of the current year. This period is then used as a substitute for the financial year ended 30 June. For example, for the 1999–2000 collection, a business may have reported data for the year ended 31 December 1999.
Turnover	Turnover comprises sales (exclusive of excise and sales tax) of goods whether or not produced by the establishment and transfers of goods to other establishments of the same business, plus service income, funding by Federal, State or Local Governments for operational costs, and own account capital work. Excluded from turnover are interest income, income from natural resource royalties, funding by Federal, State or Local Governments for specific capital items, dividends, and receipts from the sale of fixed tangible assets. There are some conceptual differences between turnover as calculated in this publication and turnover as defined by the current international standards. These differences are explained in the ABS publication <i>Manufacturing Industry, NSW and ACT</i> (Cat. no. 8221.1).
Wages and salaries	The gross wages and salaries (including capitalised wages and salaries) of all employees of the establishment. The item includes severance, termination, and redundancy payments, salaries and fees of directors and executives, retainers and commissions of people who received a retainer, bonuses, and, recreation and other types of leave. Provision expenses for employee entitlements (e.g. provisions for annual leave and leave bonus, long service leave, sick leave, and severance, termination and redundancy payments) are also included. Payments for salary sacrifice and payments to self employed people such as consultants, contractors and people paid solely by commission without a retainer, are excluded. The drawings of working proprietors and partners are also excluded.
Source	ABS, <i>Manufacturing Industry, Australia, 1999–2000</i> (Cat. no. 8221.0). ABS, <i>Manufacturing Industry, New South Wales and Australian Capital Territory, 1999–2000</i> (Cat. no. 8221.1).

Indicator	Unit	ACT			Aust.		
		% change from			% change from		
		Latest figure	Previous period	Same period previous year	Latest figure	Previous period	Same period previous year
POPULATION, VITALS AND LABOUR							
POPULATION, Jun qtr 01	'000	314.2	0.3	1.0	19 386.7	0.3	1.2
Natural increase	no.	631	-18.7	-20.4	31 841	5.3	8.2
Net migration	no.	110	-5.2	120.0	20 606	-23.0	11.8
Total growth	no.	741	-16.9	204.9	52 447	-8.0	9.6
LABOUR FORCE							
Original series, Jan 01							
Employed	'000	163.7	-4.7	-0.7	9 123.8	-2.0	1.6
Unemployed	'000	8.7	20.8	-2.2	727.3	9.9	12.2
Unemployment rate	%	5.1	1.1	—	7.4	0.8	0.7
Participation rate	%	70.0	-2.8	-1.4	63.4	-0.9	0.6
Long-term unemployed, Dec 01	no.	1 719	70.7	-21.1	155 420	5.0	-3.2
Long-term unemployed as percentage of total unemployed, Dec 01	%	24.0	9.0	-4.0	23.5	—	-1.7
Trend series, Jan 01							
Employed	'000	168.6	0.3	-0.3	9 225.3	0.2	1.2
Unemployed	'000	7.2	-1.4	-10.0	677.0	0.4	8.7
Unemployment rate	%	4.1	-0.1	-0.4	6.8	—	0.4
Participation rate	%	71.4	—	-1.4	63.8	0.1	0.3
WAGE AND SALARY EARNERS							
Number employed, trend series, Aug 01							
Private sector	'000	89.1	3.2	6.2	6 076.3	1.1	3.5
Public sector	'000	70.0	0.4	0.4	1 499.8	1.6	3.2
Total	'000	159.1	2.0	3.6	7 576.1	1.2	3.4
Gross earnings, original series, Sep 01							
Private sector	\$m	751.8	0.6	18.8	53 449.7	2.0	7.6
Public sector	\$m	1 001.4	18.1	0.1	16 951.6	8.3	5.1
Total	\$m	1 753.2	9.9	7.3	70 401.3	3.5	7.0
JOB VACANCIES, Nov 01	'000	2.8	-12.5	-20.0	83.5	-9.9	-23.1
INDUSTRIAL DISPUTES IN PROGRESS, Oct 01							
Working days lost	'000	0.1	—	—	34.4	52.9	14.3
Days lost per '000 employees (year ended Oct 01)	no.	5.0	—	-28.6	48.0	—	-40.7
HOUSING AND BUILDING ACTIVITY							
HOUSING FINANCE, Dec 01							
Secured commitments to individuals for							
Original series							
Construction of dwellings	\$m	8.0	-27.3	—	1 002.0	-3.7	96.5
Purchase of new dwellings	\$m	8.0	33.3	60.0	293.0	-10.9	40.9
Purchase of established dwellings(a)	\$m	88.0	-17.8	-4.3	6 284.0	-12.2	23.6
Refinancing	\$m	15.0	-21.1	25.0	1 344.0	-8.7	13.8
Total housing commitments	\$m	105.0	-14.6	—	7 579.0	-11.1	30.6
Seasonally adjusted series							
Total housing commitments	\$m	112.0	2.8	6.7	8 099.0	2.2	31.6
Trend series							
Total housing commitments	\$m	113.0	-0.9	24.2	8 073.0	0.1	38.1
Dwelling units financed	no.	734	-0.7	0.8	52 871	-0.3	17.8
PRICE INDEX							
Established house price index, Sep qtr 01	no.	161.1	3.3	12.3	167.7	5.2	14.0
BUILDING APPROVALS, Dec 01							
Original series							
Dwelling units	no.	180	-52.4	85.6	12 249	-18.0	35.2
Value of new residential	\$m	24.4	-51.1	76.8	1 691.3	-18.5	35.3
Value of residential alterations and additions(b)	\$m	5.1	-16.4	88.9	258.2	-20.5	-2.7
Value of non-residential	\$m	23.6	80.2	93.4	1 088.2	-3.3	22.1
Value of total building	\$m	53.5	-22.7	86.4	3 037.8	-13.8	26.2
Trend series							
Dwelling units	no.	313	6.1	131.9	14 104	-2.0	48.7

(a) Includes refinancing.

(b) Includes conversion jobs.

Indicator	Unit	ACT			Aust.		
		% change from		Latest figure	% change from		Latest figure
		Latest figure	Previous period		Previous period	Same period previous year	
HOUSING AND BUILDING ACTIVITY continued							
BUILDING COMMENCEMENTS, Sep qtr 01							
New houses	no.	285	19.2	21.3	27 582	34.9	45.8
Value of houses commenced	\$m	43.4	11.9	19.9	4 043.4	34.5	51.3
Value of non-residential building commenced	\$m	72.3	55.2	156.2	2 844.7	-16.6	-4.7
Value of total commencements	\$m	172.0	48.8	90.8	10 089.3	16.4	29.9
ENGINEERING CONSTRUCTION, Sep qtr 01							
Private sector							
Value of work commenced	\$m	41.7	45.8	68.1	4 471.9	94.2	78.2
Value of work done	\$m	28.4	-25.8	-16.7	2 791.9	—	-1.5
Value of work yet to be done	\$m	36.0	166.7	-18.6	6 118.5	42.5	19.5
Public sector							
Value of work done	\$m	12.2	-33.0	-45.0	1 627.6	-30.0	-3.8
PRICES, WAGES AND CONSUMER SPENDING							
CONSUMER PRICE INDEX, Dec qtr 01(a)							
Food	no.	147.7	4.3	8.7	143.4	2.6	7.5
Housing(b)	no.	112.0	1.2	4.6	110.7	0.6	2.8
Transportation(b)	no.	136.4	-1.3	-2.1	136.1	-0.7	-0.2
All groups	no.	134.9	1.3	2.9	135.4	0.9	3.1
AVERAGE WEEKLY EARNINGS, Aug 01							
Full-time adult ordinary time earnings							
Original series							
Males	\$	1 021.8	1.5	10.8	888.3	1.7	4.7
Females	\$	866.8	1.1	4.2	751.1	1.9	5.7
Persons	\$	954.7	1.7	4.1	838.5	1.7	5.1
Trend series							
Males	\$	1 016.8	0.1	2.0	886.7	1.6	5.0
Females	\$	869.6	1.1	3.9	750.6	1.6	5.8
Persons	\$	951.0	0.9	3.1	837.6	1.6	5.4
WAGE COST INDEX, Sep qtr 01(c)							
Public sector	no.	112.0	1.5	3.5	114.4	1.0	3.7
Private sector	no.	113.6	1.3	3.2	113.4	1.2	3.6
Total	no.	112.6	1.4	3.4	113.6	1.1	3.6
RETAIL TURNOVER, Dec 01							
Trend series							
Food retailing	\$m	115.4	1.1	19.2	5 558.4	0.5	8.4
Department stores	\$m	26.8	—	1.9	1 148.3	0.8	4.1
Hospitality and services	\$m	49.4	—	10.3	2 391.1	-0.8	5.2
All other retailing	\$m	100.4	-0.3	3.4	4 773.9	0.6	9.3
Total	\$m	292.0	0.3	10.2	13 871.7	0.3	7.8

(a) Base year: 1989–90 = 100.0.

(b) The 14th Series Australian Consumer Price Index was introduced September quarter 2000. Some changes include an updated commodity classification and weighting pattern and changes in composition of some groups. For more details of changes, refer to *Information Paper: Introduction of the 14th Series Australian Consumer Price Index* (Cat. no. 6456.0) released 29 September 2000.

(c) Base of each index is September quarter 1997 = 100.0.

Indicator	Unit	ACT			Aust.		
		% change from			% change from		
		Latest figure	Previous period	Same period previous year	Latest figure	Previous period	Same period previous year
TOURIST ACCOMMODATION, Sep qtr 01							
Original series							
Room nights occupied	'000	293.4	-7.9	11.8	10 619.0	7.6	1.6
Room occupancy rate	%	62.4	-6.2	5.6	58.7	3.5	0.3
Guest nights	'000	513.2	-7.5	15.7	19 182.2	10.5	3.2
Guest arrivals	'000	232.7	-4.1	15.3	8 427.1	7.4	5.6
Takings from accommodation	\$'000	32 045.0	-13.5	7.3	1 226 522.0	10.4	-7.8
NEW MOTOR VEHICLE REGISTRATIONS, Dec 01							
Original series	no.	975	-15.8	-18.5	65 985	-6.0	-9.3
Seasonally adjusted series	no.	957	-12.9	-21.0	65 693	-2.2	-10.9
Trend series	no.	1 052	-1.0	-11.4	66 407	0.5	-2.5
STATE ACCOUNTS, Sep qtr 01							
Trend series (chain volume measure)(a)							
General government final consumption expenditure	\$m	2 610	0.5	0.2	30 312	—	0.5
Household final consumption expenditure	\$m	1 890	1.0	3.4	98 431	1.0	3.8
Private gross fixed capital formation	\$m	383	4.6	4.1	28 121	2.7	-2.1
Public gross fixed capital formation	\$m	204	-1.4	7.4	6 761	3.3	2.5
State final demand	\$m	5 086	0.9	1.8	163 494	1.1	1.9
GROSS STATE PRODUCT (trend, chain volume measures), 2000-01(b)							
	\$m	13 087	3.4	..	641 370	1.9	..
PRIVATE NEW CAPITAL EXPENDITURE, Sep qtr 01							
Original series (at current prices)							
Buildings and structures	\$m	58	-15.9	93.3	2 365	-8.5	-8.9
Equipment, plant and machinery	\$m	54	-30.8	-8.5	7 053	-7.5	-3.5
Total	\$m	112	-23.8	25.8	9 419	-7.7	-4.9
Trend series (at current prices)							
Buildings and structures	\$m	65	8.3	97.0	2 498	3.2	-4.6
Equipment, plant and machinery	\$m	64	-14.7	-11.1	7 127	-1.5	-5.0
Total	\$m	129	-4.4	22.9	9 625	-0.3	-4.9
BUSINESS EXPECTATIONS, TRADING PERFORMANCE, OPERATING INCOME							
Short term, expected change previous quarter, Mar qtr 02	%	-3.1	-3.0
Medium term, expected change previous year, Dec qtr 02	%	—	1.5
(a) Reference year for chain volume measures is 1999-00.							
(b) Reference year for chain volume measure is 1998-99.							
Source: Australian Demographic Statistics (Cat. no. 3101.0); National Income, Expenditure and Product, Australian National Accounts (Cat. no. 5206); Average Weekly Earnings, States and Australia (Cat. no. 6302.0); Building Activity, Australia (Cat. no. 8752.0); Building Approvals, Australia (Cat. no. 8731.0); Consumer Price Index (Cat. no. 6401.0); Housing Finance, Australia (Cat. no. 5609.0); House Price Indexes (Cat. no. 6416.0); Industrial Disputes, Australia (Cat. no. 6321.0); Job Vacancies, Australia (Cat. no. 6354.0); Labour Force, Australia, Preliminary (Cat. no. 6202.0); New Motor Vehicle Registrations, Australia Preliminary (Cat. no. 9301.0); Private New Capital Expenditure, State Estimates (Cat. no. 5646.0); Retail Trade, Australia (Cat. no. 8501.0); Tourist Accommodation, Australia (Cat. no. 8635.0); Wage Cost Index, Australia (Cat. no. 6345.0).							

Indicator	Unit	Latest period	NSW	Vic.	Qld	SA	WA	Tas.	NT	ACT	Aust.
POPULATION	'000	Jun qtr 01	6 532.5	4 829.0	3 627.8	1 502.4	1 909.8	470.3	197.6	314.2	19 386.7
LABOUR FORCE, trend series											
Employed persons	'000	Jan 01	3 066.8	2 332.1	1 720.9	684.5	945.4	199.8	97.5	168.6	9 225.3
Unemployment rate	%	Jan 01	6.4	6.6	8.0	6.9	6.5	8.7	8.3	4.1	6.8
WAGE AND SALARY EARNERS, trend series											
Private sector	'000	Aug qtr 01	1 993.6	1 662.8	1 079.2	441.0	632.2	124.4	54.0	89.1	6 076.3
Public sector	'000	Aug qtr 01	470.7	322.8	300.9	115.2	153.1	42.8	24.3	70.0	1 499.8
Total	'000	Aug qtr 01	2 464.3	1 985.6	1 380.1	556.2	785.3	167.2	78.3	159.1	7 576.1
STATE ACCOUNTS											
Gross state product (chain volume measures)(a)	\$m	1999-00	221 375	157 915	103 691	41 381	66 525	11 367	6 466	13 087	641 370
PRIVATE NEW CAPITAL EXPENDITURE											
Total (at current prices), trend series	\$m	Sep qtr 01	3 083	2 413	1 493	570	1 454	149	280	129	9 625
BUILDING APPROVALS											
Dwelling units approved, original series	no.	Dec 01	3 432	3 763	2 232	968	1 478	160	36	180	12 249
Dwelling units approved, trend series	no.	Dec 01	4 414	3 942	2 754	1 036	1 728	160	48	313	14 104
Value of non-residential building approved, original series	\$m	Dec 01	377.9	442.9	119.0	42.9	56.8	9.0	16.2	23.6	1 088.2
Value of all buildings approved, original series	\$m	Dec 01	951.6	1 084.5	471.7	163.7	261.0	28.2	23.7	53.5	3 037.8
ENGINEERING CONSTRUCTION, original series											
Value of engineering construction work done	\$m	Sep qtr 01	1 325.9	699.8	1 144.3	296.6	801.2	41.4	69.6	40.6	4 419.5
AVERAGE WEEKLY EARNINGS, trend series											
Full-time adult ordinary time earnings	\$	Feb 01	844.8	790.0	762.4	772.8	828.7	738.1	811.9	951.0	837.6
RETAIL TRADE TURNOVER, trend series											
	\$m	Dec 01	4 772.0	3 348.7	2 571.9	1 041.1	1 405.2	294.2	144.0	292.0	13 871.7
TOURIST ACCOMMODATION, original series											
Room nights occupied	'000	Sep qtr 01	3 429.2	1 649.2	3 155.7	521.9	956.3	190.9	422.3	293.4	10 619.0
Room occupancy rate	%	Sep qtr 01	57.0	55.5	65.2	53.5	54.6	38.3	73.3	62.4	58.7
NEW MOTOR VEHICLE REGISTRATIONS, trend series											
	no.	Dec 01	21 703	18 389	12 891	4 208	6 196	1 378	590	1 052	66 407
	Unit	Latest period	Syd.	Melb.	Bris.	Adel.	Perth	Hob.	Dar.	Canb.	Aust.
CONSUMER PRICE INDEX(b)											
Food	no.	Dec qtr 01	144.0	143.1	144.1	143.8	142.7	138.2	139.2	147.7	143.4
Housing	no.	Dec qtr 01	118.9	102.1	114.1	107.9	103.1	107.8	123.1	112.0	110.7
Transportation	no.	Dec qtr 01	137.5	135.8	136.2	134.4	135.2	130.4	131.5	136.4	136.1
All Groups	no.	Dec qtr 01	136.6	134.8	135.8	136.6	132.6	133.9	133.5	134.9	135.4
AVERAGE RETAIL PRICES											
Milk, supermarket sales (1 litre)	cents	Dec qtr 01	144	152	151	149	157	136	165	135	..
Bread, white loaf, sliced, supermarket sales (650g)(c)	cents	Dec qtr 01	256	270	251	241	250	271	263	256	..
Beef, rump steak (1kg)	cents	Dec qtr 01	1 568	1 428	1 408	1 501	1 570	1 331	1 432	1 600	..
Chicken, frozen (1kg)	cents	Dec qtr 01	402	368	329	343	403	399	378	376	..
Potatoes (1kg)	cents	Dec qtr 01	137	182	175	116	160	105	181	143	..
Coffee, instant (150g jar)	cents	Dec qtr 01	643	638	599	581	668	651	635	649	..
Scotch nip, public bar (30ml)	cents	Dec qtr 01	394	371	326	424	433	316	380	327	..
Private motoring petrol (1 litre)											
Super grade(d)	cents	Dec qtr 01	85.6	84.7	79.0	85.6	85.8	88.9	93.6	88.3	..
Unleaded	cents	Dec qtr 01	82.4	81.6	75.8	82.5	82.5	85.8	90.3	85.2	..

(a) Experimental series. Users are cautioned these estimates are derived indirectly by calculating a deflator from the expenditure components of the state series concerned. Therefore, in general, the sum of the state estimates does not equal the estimates for Australia. Reference year for chain volume measures is 1998-99.

(b) Base year: 1989-90 = 100.0. The 14th Series Australian Consumer Price Index was introduced September quarter 2000. Some changes include an updated commodity classification and weighting pattern and changes in composition of some groups. For more details of changes, refer to *Information Paper: Introduction of the 14th Series Australian Consumer Price Index* (Cat. no. 6456.0) released 29 September 2000.

(c) 680g in Hobart and Darwin.

(d) Includes lead replacement petrol where applicable.

Indicator	Latest period	NSW	Vic.	Qld	SA	WA	Tas.	NT	ACT	Aust.
	Jun qtr 01	0.2	0.3	0.4	0.1	0.3	—	0.4	0.3	0.3
POPULATION										
LABOUR FORCE, trend series										
Employed persons	Jan 01	0.1	-0.2	0.1	0.2	0.1	—	0.4	0.3	0.2
Unemployment rate	Jan 01	—	—	—	-0.1	—	-0.1	—	-0.1	—
WAGE AND SALARY EARNERS, trend series										
Private sector	Aug qtr 01	1.5	-0.4	2.1	1.1	2.4	-0.4	-5.1	3.2	1.1
Pubic sector	Aug qtr 01	1.9	1.1	2.1	1.4	0.8	1.7	3.0	0.4	1.6
Total	Aug qtr 01	1.6	-0.1	2.1	1.1	2.1	0.1	-2.7	2.0	1.2
STATE ACCOUNTS										
Gross state product (chain volume measures)(a)	1999-00	3.7	4.6	6.3	3.5	4.6	1.1	—	3.4	1.9
PRIVATE NEW CAPITAL EXPENDITURE										
Total (at current prices), trend series	Sep qtr 01	-3.6	-1.5	4.1	-4.8	1.3	10.4	6.9	-4.4	-0.3
BUILDING APPROVALS										
Dwelling units approved, original series	Dec 01	-24.8	0.2	-27.1	4.0	-26.9	-5.9	-28.0	-52.4	-18.0
Dwelling units approved, trend series	Dec 01	-0.6	-3.2	-0.5	5.0	-1.4	-0.6	-18.6	6.1	-2.0
Value of non-residential building approved, original series	Dec 01	-6.9	19.2	-25.1	-25.1	-42.3	-25.0	110.4	80.2	-3.3
Value of all buildings approved, original series	Dec 01	-20.0	6.3	-27.4	-5.8	-29.2	-21.4	39.4	-22.7	-13.8
ENGINEERING CONSTRUCTION, original series										
Value of engineering construction work done	Sep qtr 01	-24.1	-17.7	-11.5	-19.2	21.4	-56.7	46.2	-28.1	-13.6
AVERAGE WEEKLY EARNINGS, trend series										
Full-time adult ordinary time earnings	Feb 01	0.5	0.9	1.1	1.7	1.0	-0.3	0.4	0.9	1.6
RETAIL TRADE TURNOVER, trend series										
	Dec 01	0.3	0.2	0.3	0.2	0.8	0.4	0.3	0.3	0.3
TOURIST ACCOMMODATION, original series										
Room nights occupied	Sep qtr 01	6.4	1.8	16.0	—	5.9	-16.0	25.0	-7.9	7.6
Room occupancy rate	Sep qtr 01	2.9	0.4	8.0	-0.6	2.5	-7.3	13.8	-6.2	3.5
NEW MOTOR VEHICLE REGISTRATIONS, trend series										
	Dec 01	0.1	1.2	-0.2	-0.2	1.6	4.1	0.5	-1.0	0.5
	Latest period	Syd.	Melb.	Bris.	Adel.	Perth	Hob.	Dar.	Canb.	Aust.
CONSUMER PRICE INDEX(b)										
Food	Dec qtr 01	2.9	2.1	3.1	2.3	2.6	1.8	2.2	4.3	2.6
Housing	Dec qtr 01	0.6	0.7	0.4	1.0	0.6	0.4	-0.1	1.2	0.6
Transportation	Dec qtr 01	-1.2	0.1	0.1	-1.5	-1.2	-0.8	-0.5	-1.3	-0.7
All Groups	Dec qtr 01	0.9	0.9	1.2	1.0	0.8	0.8	0.8	1.3	0.9
AVERAGE RETAIL PRICES										
Milk, carton, supermarket sales	Dec qtr 01	4.3	4.1	6.3	6.4	6.1	3.0	5.8	3.1	..
Bread, white loaf, sliced, supermarket sales	Dec qtr 01	0.8	1.9	1.2	1.7	3.7	5.9	3.1	2.4	..
Beef, rump steak	Dec qtr 01	3.9	-0.8	3.8	6.6	15.5	6.7	9.1	8.7	..
Chicken, frozen	Dec qtr 01	9.5	-2.9	-4.1	1.5	11.0	6.7	-1.0	5.6	..
Potatoes	Dec qtr 01	7.0	-1.1	-1.1	11.5	2.6	4.0	-2.7	4.4	..
Coffee, instant (jar)	Dec qtr 01	7.3	12.3	6.6	2.7	5.7	—	16.1	8.5	..
Scotch nip, public bar	Dec qtr 01	0.3	-0.8	0.9	1.7	1.4	—	0.5	0.3	..
Private motoring petrol										
Super grade(c)	Dec qtr 01	-5.0	-2.1	-2.5	-4.4	-3.9	-1.9	-4.9	-3.1	..
Unleaded	Dec qtr 01	-5.2	-2.3	-2.8	-4.5	-4.2	-2.3	-5.1	-3.2	..

(a) Experimental series. Users are cautioned these estimates are derived indirectly by calculating a deflator from the expenditure components of the state series concerned. Therefore, in general, the sum of the state estimates does not equal the estimates for Australia. Reference year for chain volume measures is 1998-99.

(b) Base year: 1989-90 = 100.0. The 14th Series Australian Consumer Price Index was introduced September quarter 2000. Some changes include an updated commodity classification and weighting pattern and changes in composition of some groups. For more details of changes, refer to *Information Paper: Introduction of the 14th Series Australian Consumer Price Index* (Cat. no. 6456.0) released 29 September 2000.

(c) Includes lead replacement petrol where applicable.

INDEX OF FEATURE ARTICLES PUBLISHED IN ACT BUSINESS INDICATORS

<i>Issue</i>	<i>Title</i>	<i>Page reference</i>
Feb 2002	The ACT Manufacturing Industry	6
Jan 2002	Australian Capital Territory Motor Vehicles	7
Dec 2001	Causes of Death in the ACT	6
Nov 2001	Work-Related Injuries and Illness in the Australian Capital Territory	6
Oct 2001	ACT Government Funding for Cultural Activities	8
Sep 2001	Volunteers in the ACT	7
Aug 2001	Business Use of Information Technology (IT)	7
Jul 2001	Motor Vehicle Use in the ACT	7
Jun 2001	Cleaning Services Industry in the ACT	7
May 2001	Working Arrangements and Superannuation in the ACT	6
Apr 2001	Job Search Experience of Unemployed Persons in the ACT	7
Mar 2001	Population Growth in the ACT	6
Feb 2001	Labour Mobility in the ACT	7
Jan 2001	Child Care Industry in the ACT	7
Dec 2000	Cafes and Restaurants Industry in the ACT	6
Dec 2000	Legal Services Industry in the ACT	8
Nov 2000	Manufacturing Industry in the ACT	6
Oct 2000	Computing Services Industry 1998–99	6
Sep 2000	Motor Vehicle Use in the ACT	6
Aug 2000	Household Expenditure on Goods and Services in the ACT	6
Jul 2000	Small Business in the ACT	6
Jun 2000	Sports Attendance	7
Jun 2000	Attendance at Selected Cultural Venues	8
May 2000	Employee Earnings, Benefits and Trade Union Membership	7
Apr 2000	Emergency Services and Public Transport Usage in the ACT	8
Mar 2000	Forms of Employment	6
Feb 2000	Job Search Experience of Unemployed Persons	6
Jan 2000	Transition from Education to Work, May 1999	6
Dec 1999	Structure of the ACT Economy	6
Dec 1999	Participation in Sport and Physical Activities	7
Nov 1999	Crime and Safety in the ACT	6
Oct 1999	Labour Force Experience in the ACT	6
Sep 1999	Career Experience in the ACT	7
Sep 1999	Carers in the ACT	9
Aug 1999	Stock of Human Resources in Science and Technology	6
Jul 1999	Persons with a Disability in the ACT	6
Jun 1999	Participation in Education in the ACT	6
May 1999	Transition from Education to Work of Persons Aged 15–64 in the ACT	7
Apr 1999	Persons Not in the Labour Force in the ACT	6
Mar 1999	Education and Labour Force Status of the ACT's Young People	6
Feb 1999	Income and Living Standards in the ACT	6
Jan 1999	Education and Training Experience of ACT Resident	6
Dec 1998	Families and Labour Force Status in the ACT	6

FOR MORE INFORMATION...

- INTERNET* **www.abs.gov.au** the ABS web site is the best place to start for access to summary data from our latest publications, information about the ABS, advice about upcoming releases, our catalogue, and Australia Now—a statistical profile.
- LIBRARY* A range of ABS publications is available from public and tertiary libraries Australia-wide. Contact your nearest library to determine whether it has the ABS statistics you require, or visit our web site for a list of libraries.
- CPI INFOLINE* For current and historical Consumer Price Index data, call 1902 981 074 (call cost 77c per minute).
- DIAL-A-STATISTIC* For the latest figures for National Accounts, Balance of Payments, Labour Force, Average Weekly Earnings, Estimated Resident Population and the Consumer Price Index call 1900 986 400 (call cost 77c per minute).

INFORMATION SERVICE

Data which have been published and can be provided within five minutes are free of charge. Our information consultants can also help you to access the full range of ABS information—ABS user-pays services can be tailored to your needs, time frame and budget. Publications may be purchased. Specialists are on hand to help you with analytical or methodological advice.

- PHONE* **1300 135 070**
- EMAIL* **client.services@abs.gov.au**
- FAX* 1300 135 211
- POST* Client Services, ABS, GPO Box 796, Sydney 1041

WHY NOT SUBSCRIBE?

ABS subscription services provide regular, convenient and prompt deliveries of ABS publications and products as they are released. Email delivery of monthly and quarterly publications is available.

- PHONE* 1300 366 323
- EMAIL* subscriptions@abs.gov.au
- FAX* 03 9615 7848
- POST* Subscription Services, ABS, GPO Box 2796Y, Melbourne 3001



2130380002023
ISSN 1320-808X

RRP \$18.50