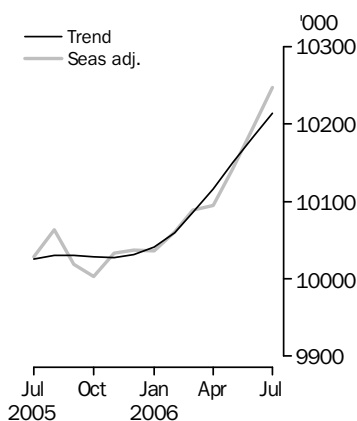


# LABOUR FORCE

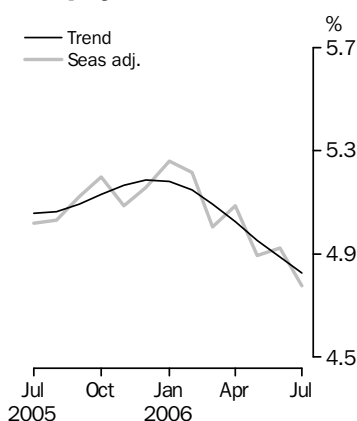
AUSTRALIA

EMBARGO: 11.30AM (CANBERRA TIME) THURS 10 AUG 2006

## Employed Persons



## Unemployment rate



## INQUIRIES

For further information about these and related statistics, contact the National Information and Referral Service on 1300 135 070 or Rebecca Cash on Canberra (02) 6252 6525.

## KEY FIGURES

	Jun 2006	Jul 2006	Jun 06 to Jul 06	Jul 05 to Jul 06
<b>Trend</b>				
Employed persons ('000)	10 183.6	10 214.2	30.6	1.9 %
Unemployed persons ('000)	523.2	518.0	-5.2	-3.0 %
Unemployment rate (%)	4.9	4.8	-0.1 pts	-0.2 pts
Participation rate (%)	64.7	64.8	0.1 pts	0.2 pts
<b>Seasonally Adjusted</b>				
Employed persons ('000)	10 196.9	10 247.5	50.7	2.2 %
Unemployed persons ('000)	528.0	513.9	-14.1	-3.0 %
Unemployment rate (%)	4.9	4.8	-0.1 pts	-0.2 pts
Participation rate (%)	64.8	65.0	0.1 pts	0.3 pts

## KEY POINTS

### TREND ESTIMATES (MONTHLY CHANGE)

- EMPLOYMENT increased to 10,214,200
- UNEMPLOYMENT decreased to 518,000
- UNEMPLOYMENT RATE decreased to 4.8%
- PARTICIPATION RATE increased to 64.8%.

### SEASONALLY ADJUSTED ESTIMATES (MONTHLY CHANGE)

#### EMPLOYMENT

- increased by 50,700 to 10,247,500. Full-time employment increased by 27,100 to 7,305,300 and part-time employment increased by 23,600 to 2,942,300.

#### UNEMPLOYMENT

- decreased by 14,100 to 513,900. The number of persons looking for full-time work decreased by 8,200 to 362,200 and the number of persons looking for part-time work decreased by 5,900 to 151,700.

#### UNEMPLOYMENT RATE

- decreased by 0.1 percentage point to 4.8%. The male unemployment rate decreased marginally to 4.7% and the female unemployment rate decreased by 0.3 percentage points to 4.8%.

#### PARTICIPATION RATE

- increased by 0.1 percentage point to 65.0%.

# NOTES

## FORTHCOMING ISSUES

<i>ISSUE</i>	<i>RELEASE DATE</i>
August 2006	7 September 2006
September 2006	12 October 2006
October 2006	9 November 2006
November 2006	7 December 2006
December 2006	11 January 2007
January 2007	8 February 2007

.....

## CENSUS

Labour Force estimates for July may include some employment generated by the progressive training of temporary staff recruited by the ABS to conduct the 2006 Census of Population and Housing. The progressive nature of this recruitment makes it difficult to estimate the net addition to employment from this activity for July. Employment estimates for August will also include temporary employment of persons in the conduct of the Census. It is expected an estimate of the size of the effect of the August recruitment activity on estimates for that month will be included in the next issue of this publication, due for release on 7 September 2006.

The net addition to employment for the month of August due to the previous censuses was estimated to be about 10,000 persons in both 2001 and 1996.

## SAMPLING ERRORS

The estimates in this publication are based on a sample survey. Because the entire population is not enumerated, the published estimates and the movements derived from them are subject to sampling variability. Standard errors give a measure of this variability and appear on pages 27 and 28.

The 95% confidence intervals below provide another way of looking at the variability inherent in estimates from sample surveys. The interval bounded by the two limits is the 95% confidence interval. A 95% confidence interval has a 95% chance of including the true value of the estimate.

## MOVEMENTS IN SEASONALLY ADJUSTED SERIES BETWEEN JUNE AND JULY 2006

.....

	<i>Monthly change</i> .....	<i>95% Confidence interval</i> .....	
Total Employment	50 700	-1 500	to 102 900
Total Unemployment	-14 100	-41 500	to 13 300
Unemployment rate	-0.1 pts	-0.3 pts	to 0.1 pts
Participation rate	0.1 pts	-0.3 pts	to 0.5 pts

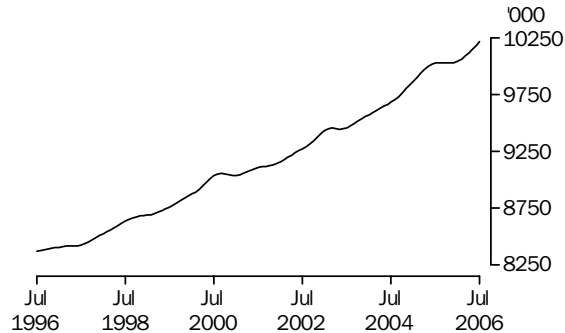
.....

Dennis Trewin  
Australian Statistician

# PRINCIPAL LABOUR FORCE SERIES TREND ESTIMATES

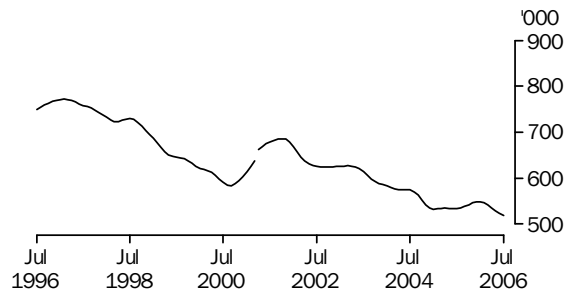
## EMPLOYED PERSONS

The trend estimate of employed persons rose from 8,374,400 in July 1996 to 9,056,400 in September 2000. The trend then fell slightly to 9,037,500 in January 2001, before generally rising to stand at a high of 10,214,200 in July 2006.



## UNEMPLOYED PERSONS

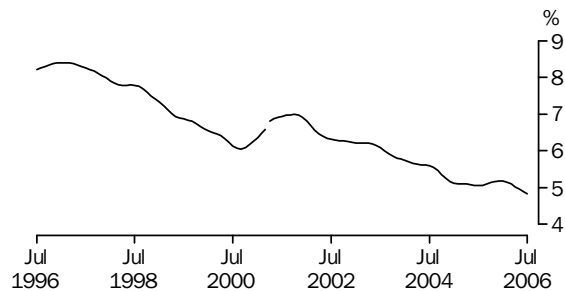
The trend estimate of unemployed persons rose from 749,300 in July 1996 to 771,700 in February 1997. The trend then generally fell to 583,800 in September 2000, before rising to 685,900 in October 2001. The trend then fell to 532,400 in January 2005, before rising to 548,700 in December 2005. Since then, the trend has fallen to stand at 518,000 in July 2006.



Series break at April 2001; see paragraph 13 of Explanatory Notes.

## UNEMPLOYMENT RATE

The trend unemployment rate rose from 8.2% in July 1996 to 8.4% in February 1997, before falling to 6.1% in September 2000. After rising to 7.0% in October 2001, the trend fell to 5.1% in July 2005. The trend rose slightly to 5.2% in December 2005, before falling to stand at 4.8% in July 2006.



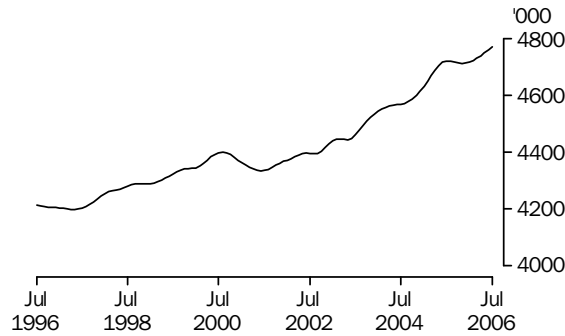
Series break at April 2001; see paragraph 13 of Explanatory Notes.

## EMPLOYED PERSONS TREND ESTIMATES

### MALES EMPLOYED FULL TIME

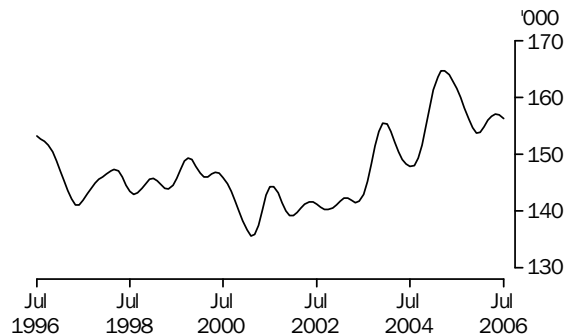
#### TOTAL

The trend estimate for males employed full time generally rose from 4,212,600 in July 1996 to 4,400,000 in August 2000, before falling to 4,334,300 in June 2001. Since then, the trend has generally risen to stand at 4,768,800 in July 2006.



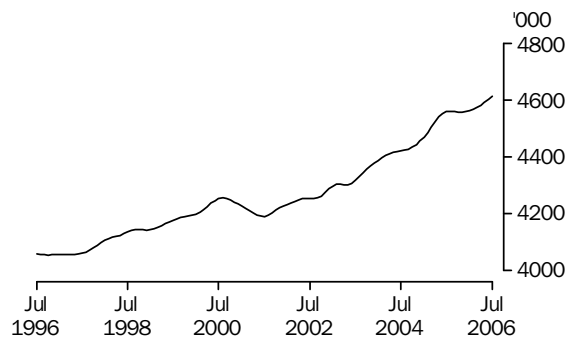
#### MALES AGED 15-19 YEARS

Although fluctuating, the trend estimate of males aged 15 to 19 years employed full time decreased from 153,100 in July 1996 to a low of 135,700 in February 2001. Despite falls in 2001 and 2004, the trend increased to 164,700 in April 2005. Since then, the trend has generally fallen to stand at 156,200 in July 2006.



#### MALES AGED 20 YEARS AND OVER

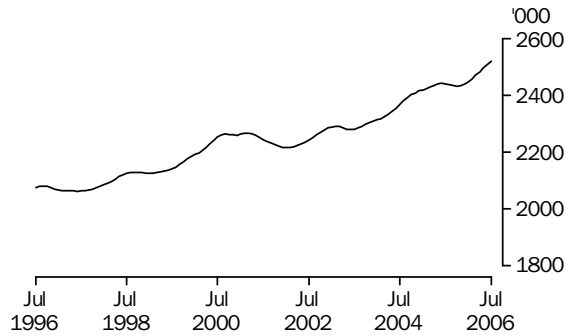
The trend estimate of males aged 20 and over employed full time rose gradually from 4,059,400 in July 1996 to 4,255,200 in August 2000. After falling to 4,191,000 in July 2001, the trend has generally risen to stand at 4,612,500 in July 2006.



FEMALES EMPLOYED FULL TIME

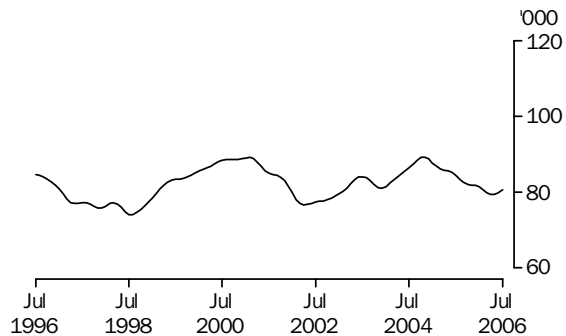
TOTAL

The trend estimate of females employed full time generally rose from 2,075,300 in July 1996 to 2,266,800 in March 2001. The trend then fell to 2,215,700 in January 2002, before generally rising to stand at 2,518,800 in July 2006.



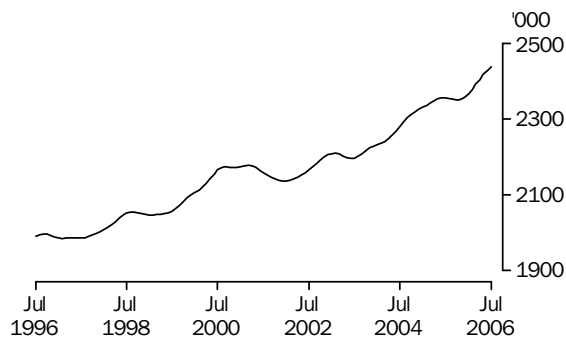
FEMALES AGED 15-19 YEARS

The trend estimate of females aged 15 to 19 employed full time generally fell from 84,700 in July 1996, to a low of 74,000 in August 1998. The trend rose to 89,100 in February 2001, before falling to 76,700 in April 2002. The trend then increased to 89,300 in November 2004, before generally falling to 80,600 in July 2006.



FEMALES AGED 20 YEARS AND OVER

The trend estimate of females aged 20 and over employed full time, generally rose from 1,990,700 in July 1996 to 2,177,900 in March 2001. After falling slightly to 2,135,400 in December 2001, the trend has generally risen to stand at 2,438,100 in July 2006.



LABOUR FORCE STATUS (AGED 15 YEARS & OVER): Trend

	EMPLOYED			UNEMPLOYED		UNEMPLOYMENT RATE			Participation rate
	Full time	Part time	Total	Looking for f/t work	Total	Labour force	Looking for f/t work	Total	
	'000	'000	'000	'000	'000	'000	%	%	
MALES									
July 2003	4 460.2	769.1	5 229.3	276.0	336.7	5 566.1	5.8	6.0	71.4
July 2004	4 568.6	795.5	5 364.1	250.9	313.5	5 677.6	5.2	5.5	71.6
2005									
July	4 720.0	808.2	5 528.2	224.6	283.6	5 811.8	4.5	4.9	72.3
August	4 719.9	808.5	5 528.3	227.5	286.6	5 814.9	4.6	4.9	72.2
September	4 717.0	808.1	5 525.1	230.7	290.6	5 815.8	4.7	5.0	72.2
October	4 714.1	807.8	5 521.9	233.9	295.0	5 816.9	4.7	5.1	72.1
November	4 712.3	808.7	5 521.1	236.2	298.8	5 819.9	4.8	5.1	72.0
December	4 712.5	811.4	5 523.9	236.5	300.7	5 824.6	4.8	5.2	72.0
2006									
January	4 715.4	815.6	5 531.0	235.1	300.0	5 831.0	4.7	5.1	72.0
February	4 721.1	821.1	5 542.2	232.4	297.0	5 839.1	4.7	5.1	72.0
March	4 728.8	827.1	5 555.9	229.4	292.7	5 848.6	4.6	5.0	72.0
April	4 737.6	832.8	5 570.3	226.5	288.0	5 858.3	4.6	4.9	72.1
May	4 748.1	837.2	5 585.3	224.0	283.8	5 869.1	4.5	4.8	72.1
June	4 759.3	840.8	5 600.1	222.1	280.3	5 880.4	4.5	4.8	72.2
July	4 768.8	844.5	5 613.2	220.5	277.5	5 890.8	4.4	4.7	72.2
FEMALES									
July 2003	2 280.5	1 947.1	4 227.6	180.2	277.2	4 504.8	7.3	6.2	55.8
July 2004	2 367.2	1 950.8	4 318.0	162.4	260.8	4 578.8	6.4	5.7	55.8
2005									
July	2 440.0	2 057.3	4 497.2	151.1	250.4	4 747.6	5.8	5.3	57.2
August	2 436.5	2 065.7	4 502.2	149.7	248.5	4 750.7	5.8	5.2	57.2
September	2 433.2	2 071.7	4 504.9	149.6	247.6	4 752.5	5.8	5.2	57.1
October	2 431.8	2 074.3	4 506.1	150.5	247.4	4 753.5	5.8	5.2	57.1
November	2 433.6	2 072.9	4 506.4	151.9	247.6	4 754.0	5.9	5.2	57.0
December	2 438.8	2 068.5	4 507.3	152.8	248.0	4 755.3	5.9	5.2	57.0
2006									
January	2 447.3	2 063.0	4 510.3	153.1	248.6	4 758.9	5.9	5.2	57.0
February	2 458.1	2 059.4	4 517.5	152.4	248.9	4 766.5	5.8	5.2	57.0
March	2 470.3	2 059.2	4 529.6	150.8	248.5	4 778.0	5.8	5.2	57.1
April	2 482.9	2 062.9	4 545.8	148.7	247.2	4 793.0	5.7	5.2	57.2
May	2 495.8	2 068.9	4 564.7	146.5	245.2	4 809.9	5.5	5.1	57.4
June	2 508.3	2 075.3	4 583.6	144.5	242.9	4 826.5	5.4	5.0	57.5
July	2 518.8	2 082.2	4 601.0	142.5	240.5	4 841.5	5.4	5.0	57.6
PERSONS									
July 2003	6 740.7	2 716.2	9 456.9	456.2	613.9	10 070.8	6.3	6.1	63.5
July 2004	6 935.8	2 746.3	9 682.1	413.3	574.2	10 256.3	5.6	5.6	63.6
2005									
July	7 160.0	2 865.5	10 025.5	375.7	534.0	10 559.4	5.0	5.1	64.6
August	7 156.3	2 874.2	10 030.5	377.2	535.1	10 565.7	5.0	5.1	64.6
September	7 150.2	2 879.8	10 030.0	380.3	538.2	10 568.3	5.0	5.1	64.5
October	7 145.9	2 882.1	10 028.0	384.5	542.4	10 570.5	5.1	5.1	64.5
November	7 145.9	2 881.6	10 027.5	388.0	546.4	10 573.9	5.2	5.2	64.4
December	7 151.3	2 879.9	10 031.2	389.3	548.7	10 579.9	5.2	5.2	64.4
2006									
January	7 162.6	2 878.6	10 041.3	388.2	548.6	10 589.8	5.1	5.2	64.4
February	7 179.2	2 880.5	10 059.7	384.8	545.9	10 605.6	5.1	5.1	64.4
March	7 199.1	2 886.4	10 085.5	380.2	541.1	10 626.6	5.0	5.1	64.4
April	7 220.5	2 895.7	10 116.2	375.2	535.2	10 651.4	4.9	5.0	64.5
May	7 244.0	2 906.0	10 150.0	370.6	529.0	10 679.0	4.9	5.0	64.6
June	7 267.5	2 916.1	10 183.6	366.6	523.2	10 706.9	4.8	4.9	64.7
July	7 287.5	2 926.7	10 214.2	363.1	518.0	10 732.3	4.7	4.8	64.8

LABOUR FORCE STATUS (AGED 15 YEARS & OVER): **Seasonally Adjusted**

	EMPLOYED			UNEMPLOYED		UNEMPLOYMENT RATE			Participation rate
	Full time	Part time	Total	Looking for f/t work	Total	Labour force	Looking for f/t work	Total	
	'000	'000	'000	'000	'000	'000	%	%	
MALES									
July 2003	4 446.6	774.9	5 221.5	279.1	341.7	5 563.2	5.9	6.1	71.4
July 2004	4 573.3	790.0	5 363.3	253.8	312.4	5 675.8	5.3	5.5	71.6
2005									
July	4 717.1	807.4	5 524.5	217.4	276.0	5 800.5	4.4	4.8	72.2
August	4 745.1	803.5	5 548.6	229.4	288.9	5 837.5	4.6	4.9	72.5
September	4 714.0	812.1	5 526.1	232.1	291.7	5 817.8	4.7	5.0	72.2
October	4 685.0	819.2	5 504.1	237.0	297.9	5 802.1	4.8	5.1	71.9
November	4 720.2	803.5	5 523.8	236.9	297.5	5 821.2	4.8	5.1	72.0
December	4 710.3	812.0	5 522.3	232.3	297.8	5 820.1	4.7	5.1	71.9
2006									
January	4 730.0	793.5	5 523.5	235.9	301.6	5 825.1	4.8	5.2	71.9
February	4 719.9	828.3	5 548.2	239.2	304.9	5 853.1	4.8	5.2	72.2
March	4 719.6	845.6	5 565.2	228.7	292.1	5 857.3	4.6	5.0	72.1
April	4 726.5	837.2	5 563.7	218.8	284.1	5 847.8	4.4	4.9	71.9
May	4 754.7	817.2	5 571.9	225.7	279.2	5 851.1	4.5	4.8	71.9
June	4 763.3	842.2	5 605.4	222.3	280.6	5 886.0	4.5	4.8	72.2
July	4 779.8	850.8	5 630.6	222.2	280.7	5 911.3	4.4	4.7	72.5
FEMALES									
July 2003	2 283.1	1 928.1	4 211.2	179.2	280.0	4 491.2	7.3	6.2	55.6
July 2004	2 360.7	1 948.7	4 309.3	172.6	267.8	4 577.1	6.8	5.9	55.8
2005									
July	2 445.3	2 058.2	4 503.5	151.8	253.9	4 757.4	5.8	5.3	57.3
August	2 435.7	2 079.7	4 515.4	146.0	244.4	4 759.8	5.7	5.1	57.3
September	2 441.8	2 051.2	4 492.9	153.1	249.3	4 742.3	5.9	5.3	57.0
October	2 413.2	2 085.9	4 499.1	151.2	250.7	4 749.8	5.9	5.3	57.0
November	2 430.8	2 078.8	4 509.6	147.5	240.3	4 749.9	5.7	5.1	57.0
December	2 439.4	2 075.2	4 514.6	150.6	248.1	4 762.7	5.8	5.2	57.1
2006									
January	2 455.1	2 057.7	4 512.8	160.5	255.7	4 768.5	6.1	5.4	57.1
February	2 466.8	2 045.1	4 511.9	154.5	248.5	4 760.5	5.9	5.2	56.9
March	2 455.9	2 067.5	4 523.3	147.6	239.3	4 762.6	5.7	5.0	56.9
April	2 478.6	2 052.3	4 530.9	147.1	257.0	4 787.9	5.6	5.4	57.2
May	2 499.2	2 072.0	4 571.2	146.2	242.8	4 814.0	5.5	5.0	57.4
June	2 514.9	2 076.5	4 591.4	148.0	247.4	4 838.8	5.6	5.1	57.6
July	2 525.5	2 091.4	4 616.9	140.0	233.2	4 850.1	5.3	4.8	57.7
PERSONS									
July 2003	6 729.7	2 703.0	9 432.7	458.3	621.6	10 054.3	6.4	6.2	63.4
July 2004	6 934.0	2 738.7	9 672.7	426.5	580.2	10 252.9	5.8	5.7	63.6
2005									
July	7 162.3	2 865.7	10 028.0	369.3	529.9	10 557.9	4.9	5.0	64.6
August	7 180.8	2 883.2	10 064.0	375.5	533.3	10 597.3	5.0	5.0	64.8
September	7 155.7	2 863.3	10 019.0	385.2	541.1	10 560.1	5.1	5.1	64.5
October	7 098.1	2 905.1	10 003.2	388.1	548.7	10 551.9	5.2	5.2	64.4
November	7 151.0	2 882.3	10 033.3	384.3	537.7	10 571.1	5.1	5.1	64.4
December	7 149.7	2 887.2	10 036.9	382.9	545.9	10 582.8	5.1	5.2	64.4
2006									
January	7 185.1	2 851.2	10 036.3	396.4	557.3	10 593.6	5.2	5.3	64.4
February	7 186.7	2 873.5	10 060.1	393.7	553.5	10 613.6	5.2	5.2	64.4
March	7 175.4	2 913.0	10 088.5	376.3	531.4	10 619.9	5.0	5.0	64.4
April	7 205.1	2 889.5	10 094.6	365.9	541.0	10 635.6	4.8	5.1	64.4
May	7 253.9	2 889.2	10 143.1	371.9	522.0	10 665.2	4.9	4.9	64.5
June	7 278.2	2 918.7	10 196.9	370.3	528.0	10 724.9	4.8	4.9	64.8
July	7 305.3	2 942.3	10 247.5	362.2	513.9	10 761.4	4.7	4.8	65.0

LABOUR FORCE STATUS (AGED 15 YEARS & OVER): Original

	EMPLOYED			UNEMPLOYED			UNEMPLOYMENT RATE			Participation rate	
	Full time	Part time	Total	Looking for f/t work	Total	Labour force	Not in labour force	Civilian population aged 15 years and over	Looking for f/t work		Total
	'000	'000	'000	'000	'000	'000	'000	'000	%		%
MALES											
July 2003	4 447.4	780.4	5 227.8	261.3	315.3	5 543.1	2 253.9	7 797.0	5.5	5.7	71.1
July 2004	4 571.6	795.3	5 366.9	236.7	287.3	5 654.3	2 269.3	7 923.6	4.9	5.1	71.4
2005											
July	4 715.4	812.1	5 527.5	201.8	252.1	5 779.6	2 259.0	8 038.6	4.1	4.4	71.9
August	4 691.4	806.7	5 498.1	218.7	271.5	5 769.6	2 279.0	8 048.6	4.5	4.7	71.7
September	4 737.9	808.9	5 546.8	232.7	295.9	5 842.7	2 215.7	8 058.5	4.7	5.1	72.5
October	4 683.7	838.6	5 522.3	225.4	281.4	5 803.7	2 265.5	8 069.2	4.6	4.8	71.9
November	4 706.2	793.2	5 499.4	224.6	276.2	5 775.6	2 304.4	8 080.0	4.6	4.8	71.5
December	4 781.1	810.6	5 591.7	226.5	294.6	5 886.3	2 204.4	8 090.8	4.5	5.0	72.8
2006											
January	4 720.7	757.5	5 478.1	265.2	336.1	5 814.2	2 286.0	8 100.2	5.3	5.8	71.8
February	4 745.2	795.3	5 540.5	264.5	338.9	5 879.4	2 230.5	8 109.9	5.3	5.8	72.5
March	4 721.1	855.5	5 576.6	229.7	301.7	5 878.4	2 241.0	8 119.4	4.6	5.1	72.4
April	4 714.7	856.4	5 571.1	220.5	291.5	5 862.6	2 266.4	8 129.1	4.5	5.0	72.1
May	4 742.2	823.9	5 566.2	227.5	282.9	5 849.1	2 289.8	8 138.8	4.6	4.8	71.9
June	4 736.0	865.2	5 601.3	220.1	273.2	5 874.5	2 274.0	8 148.5	4.4	4.7	72.1
July	4 777.5	855.1	5 632.6	205.5	255.6	5 888.2	2 270.4	8 158.6	4.1	4.3	72.2
FEMALES											
July 2003	2 289.0	1 922.8	4 211.8	166.1	256.6	4 468.5	3 604.9	8 073.4	6.8	5.7	55.3
July 2004	2 362.6	1 940.8	4 303.4	161.4	247.4	4 550.8	3 649.0	8 199.8	6.4	5.4	55.5
2005											
July	2 445.1	2 048.9	4 494.0	142.5	235.0	4 729.0	3 568.7	8 297.7	5.5	5.0	57.0
August	2 387.2	2 091.3	4 478.6	133.5	229.8	4 708.4	3 599.3	8 307.6	5.3	4.9	56.7
September	2 488.9	2 052.1	4 541.1	150.7	250.8	4 791.9	3 525.6	8 317.5	5.7	5.2	57.6
October	2 403.7	2 105.9	4 509.6	137.0	233.0	4 742.7	3 583.4	8 326.0	5.4	4.9	57.0
November	2 433.7	2 083.8	4 517.6	136.3	219.3	4 736.8	3 597.9	8 334.8	5.3	4.6	56.8
December	2 498.3	2 069.5	4 567.8	150.7	247.1	4 814.9	3 528.4	8 343.3	5.7	5.1	57.7
2006											
January	2 475.4	1 966.5	4 441.9	180.3	273.3	4 715.3	3 636.3	8 351.6	6.8	5.8	56.5
February	2 498.1	1 993.9	4 492.0	181.2	289.1	4 781.1	3 578.7	8 359.9	6.8	6.0	57.2
March	2 437.0	2 099.1	4 536.2	155.1	259.7	4 795.9	3 572.2	8 368.1	6.0	5.4	57.3
April	2 450.2	2 069.0	4 519.2	148.1	257.8	4 776.9	3 600.2	8 377.1	5.7	5.4	57.0
May	2 464.7	2 111.4	4 576.1	143.8	240.9	4 817.0	3 569.0	8 386.0	5.5	5.0	57.4
June	2 486.8	2 109.7	4 596.5	146.5	241.9	4 838.4	3 556.6	8 395.0	5.6	5.0	57.6
July	2 524.6	2 081.8	4 606.3	131.8	216.2	4 822.5	3 581.9	8 404.5	5.0	4.5	57.4
PERSONS											
July 2003	6 736.4	2 703.2	9 439.6	427.4	572.0	10 011.6	5 858.8	15 870.4	6.0	5.7	63.1
July 2004	6 934.2	2 736.2	9 670.4	398.0	534.7	10 205.1	5 918.3	16 123.4	5.4	5.2	63.3
2005											
July	7 160.6	2 861.0	10 021.6	344.3	487.1	10 508.7	5 827.7	16 336.3	4.6	4.6	64.3
August	7 078.7	2 898.0	9 976.7	352.2	501.3	10 478.0	5 878.2	16 356.2	4.7	4.8	64.1
September	7 226.8	2 861.1	10 087.9	383.4	546.7	10 634.6	5 741.4	16 376.0	5.0	5.1	64.9
October	7 087.4	2 944.5	10 031.9	362.4	514.5	10 546.4	5 848.9	16 395.3	4.9	4.9	64.3
November	7 139.9	2 877.1	10 017.0	360.8	495.5	10 512.4	5 902.4	16 414.8	4.8	4.7	64.0
December	7 279.5	2 880.1	10 159.5	377.2	541.7	10 701.2	5 732.8	16 434.1	4.9	5.1	65.1
2006											
January	7 196.1	2 724.0	9 920.1	445.5	609.4	10 529.5	5 922.3	16 451.8	5.8	5.8	64.0
February	7 243.3	2 789.2	10 032.5	445.7	628.1	10 660.6	5 809.2	16 469.8	5.8	5.9	64.7
March	7 158.1	2 954.6	10 112.8	384.8	561.5	10 674.2	5 813.3	16 487.5	5.1	5.3	64.7
April	7 164.9	2 925.4	10 090.3	368.6	549.3	10 639.5	5 866.6	16 506.2	4.9	5.2	64.5
May	7 206.9	2 935.3	10 142.2	371.3	523.8	10 666.1	5 858.8	16 524.9	4.9	4.9	64.5
June	7 222.8	2 975.0	10 197.8	366.6	515.1	10 712.9	5 830.7	16 543.5	4.8	4.8	64.8
July	7 302.0	2 936.9	10 239.0	337.4	471.7	10 710.7	5 852.3	16 563.0	4.4	4.4	64.7



LABOUR FORCE STATUS (AGED 15 YEARS & OVER)—New South Wales

	TREND					SEASONALLY ADJUSTED					Civilian population aged 15 years and over
	Employed full time	Total employed	Total unemployed	Unemployment rate	Participation rate	Employed full time	Total employed	Total unemployed	Unemployment rate	Participation rate	
	'000	'000	'000	%	%	'000	'000	'000	%	%	
MALES											
July 2003	1 495.6	1 739.2	110.5	6.0	70.4	1 486.3	1 724.7	114.2	6.2	70.0	2 627.4
July 2004	1 510.2	1 774.5	97.2	5.2	70.2	1 511.9	1 773.5	96.2	5.1	70.4	2 656.5
2005											
July	1 541.6	1 794.6	98.3	5.2	70.6	1 537.8	1 789.0	88.7	4.7	70.0	2 682.6
August	1 536.6	1 791.9	101.0	5.3	70.5	1 542.3	1 793.6	102.6	5.4	70.6	2 685.1
September	1 531.6	1 789.5	104.5	5.5	70.5	1 529.8	1 791.5	107.8	5.7	70.7	2 687.6
October	1 528.9	1 788.4	107.8	5.7	70.5	1 516.7	1 784.9	109.4	5.8	70.4	2 689.8
November	1 529.1	1 789.3	109.9	5.8	70.5	1 528.5	1 789.3	108.6	5.7	70.5	2 692.0
December	1 531.8	1 791.5	110.3	5.8	70.6	1 526.4	1 790.3	110.3	5.8	70.5	2 694.2
2006											
January	1 535.8	1 795.0	109.2	5.7	70.6	1 552.8	1 793.4	113.0	5.9	70.7	2 696.3
February	1 539.6	1 799.2	107.5	5.6	70.7	1 538.6	1 802.0	107.8	5.6	70.8	2 698.3
March	1 542.3	1 803.9	105.9	5.5	70.7	1 537.6	1 804.6	99.4	5.2	70.5	2 700.4
April	1 543.9	1 808.4	104.6	5.5	70.8	1 537.1	1 807.7	106.6	5.6	70.8	2 702.5
May	1 545.3	1 812.6	103.7	5.4	70.9	1 555.4	1 814.1	104.6	5.5	70.9	2 704.5
June	1 546.6	1 816.6	102.9	5.4	70.9	1 545.1	1 811.6	103.6	5.4	70.8	2 706.6
July	1 546.9	1 820.0	102.3	5.3	71.0	1 546.6	1 826.1	101.9	5.3	71.2	2 708.8
FEMALES											
July 2003	782.4	1 398.1	87.9	5.9	54.7	780.6	1 391.6	90.0	6.1	54.6	2 715.5
July 2004	801.8	1 412.0	86.7	5.8	54.6	800.6	1 407.7	91.1	6.1	54.6	2 745.2
2005											
July	805.7	1 459.8	74.7	4.9	55.4	802.5	1 468.4	75.7	4.9	55.8	2 767.9
August	807.1	1 463.3	73.7	4.8	55.5	804.3	1 470.0	71.1	4.6	55.6	2 770.7
September	809.7	1 465.6	73.9	4.8	55.5	811.4	1 461.3	74.4	4.8	55.4	2 773.4
October	813.0	1 466.8	74.7	4.8	55.5	804.7	1 459.8	76.0	5.0	55.3	2 775.2
November	816.6	1 466.1	75.5	4.9	55.5	819.1	1 466.6	73.4	4.8	55.5	2 777.2
December	819.5	1 464.1	76.4	5.0	55.4	827.5	1 469.4	77.0	5.0	55.6	2 779.0
2006											
January	821.4	1 462.1	77.4	5.0	55.4	821.1	1 466.2	83.0	5.4	55.7	2 780.9
February	821.8	1 460.8	78.3	5.1	55.3	824.2	1 461.7	73.1	4.8	55.2	2 782.9
March	821.7	1 460.2	79.0	5.1	55.3	814.0	1 456.0	75.0	4.9	55.0	2 784.8
April	821.4	1 460.8	79.4	5.2	55.3	819.7	1 439.7	87.4	5.7	54.8	2 787.0
May	821.6	1 462.4	79.6	5.2	55.3	826.1	1 480.7	74.9	4.8	55.8	2 789.2
June	821.8	1 464.3	79.4	5.1	55.3	825.8	1 472.3	85.2	5.5	55.8	2 791.4
July	822.2	1 466.2	79.0	5.1	55.3	817.9	1 459.9	73.9	4.8	54.9	2 793.9
PERSONS											
July 2003	2 278.0	3 137.3	198.4	5.9	62.4	2 266.9	3 116.4	204.2	6.1	62.1	5 342.9
July 2004	2 311.9	3 186.5	183.8	5.5	62.3	2 312.5	3 181.1	187.3	5.6	62.4	5 401.6
2005											
July	2 347.3	3 254.3	173.0	5.0	62.9	2 340.3	3 257.4	164.4	4.8	62.8	5 450.5
August	2 343.8	3 255.3	174.6	5.1	62.9	2 346.6	3 263.6	173.6	5.1	63.0	5 455.7
September	2 341.4	3 255.0	178.4	5.2	62.9	2 341.2	3 252.8	182.2	5.3	62.9	5 460.9
October	2 342.0	3 255.2	182.5	5.3	62.9	2 321.4	3 244.6	185.5	5.4	62.8	5 465.0
November	2 345.8	3 255.4	185.4	5.4	62.9	2 347.6	3 255.9	182.0	5.3	62.9	5 469.2
December	2 351.3	3 255.6	186.7	5.4	62.9	2 353.9	3 259.7	187.3	5.4	63.0	5 473.3
2006											
January	2 357.2	3 257.1	186.7	5.4	62.9	2 374.0	3 259.6	196.0	5.7	63.1	5 477.2
February	2 361.4	3 260.0	185.8	5.4	62.9	2 362.8	3 263.8	180.9	5.3	62.8	5 481.2
March	2 364.0	3 264.1	184.9	5.4	62.9	2 351.6	3 260.6	174.4	5.1	62.6	5 485.1
April	2 365.3	3 269.2	184.0	5.3	62.9	2 356.8	3 247.3	194.0	5.6	62.7	5 489.4
May	2 366.8	3 275.1	183.2	5.3	62.9	2 381.5	3 294.8	179.5	5.2	63.2	5 493.7
June	2 368.4	3 280.9	182.3	5.3	63.0	2 370.9	3 283.9	188.8	5.4	63.2	5 498.0
July	2 369.1	3 286.2	181.3	5.2	63.0	2 364.6	3 286.0	175.8	5.1	62.9	5 502.7

LABOUR FORCE STATUS (AGED 15 YEARS & OVER)—Victoria

	TREND					SEASONALLY ADJUSTED					Civilian population aged 15 years and over '000
	Employed full time	Total employed	Total unemployed	Unemployment rate	Participation rate	Employed full time	Total employed	Total unemployed	Unemployment rate	Participation rate	
	'000	'000	'000	%	%	'000	'000	'000	%	%	
MALES											
July 2003	1 103.1	1 297.8	77.6	5.6	71.3	1 102.2	1 297.9	80.9	5.9	71.5	1 928.7
July 2004	1 132.2	1 330.8	83.6	5.9	72.1	1 130.1	1 330.0	80.8	5.7	71.9	1 961.0
2005											
July	1 168.7	1 378.2	71.0	4.9	72.9	1 169.5	1 377.7	70.3	4.9	72.8	1 989.3
August	1 170.3	1 377.8	71.2	4.9	72.8	1 177.8	1 389.5	66.4	4.6	73.1	1 991.6
September	1 169.4	1 374.9	71.9	5.0	72.6	1 165.3	1 370.1	73.9	5.1	72.4	1 993.8
October	1 166.5	1 370.6	73.0	5.1	72.3	1 167.3	1 370.6	74.0	5.1	72.4	1 996.2
November	1 162.6	1 366.5	74.0	5.1	72.1	1 166.8	1 367.0	76.2	5.3	72.2	1 998.5
December	1 158.9	1 364.2	74.6	5.2	71.9	1 156.8	1 360.2	74.9	5.2	71.7	2 000.8
2006											
January	1 156.5	1 364.5	74.4	5.2	71.8	1 151.1	1 359.8	70.4	4.9	71.4	2 002.9
February	1 156.4	1 367.8	73.6	5.1	71.9	1 155.0	1 371.3	75.5	5.2	72.2	2 005.0
March	1 158.5	1 372.9	72.8	5.0	72.0	1 160.9	1 372.2	75.6	5.2	72.1	2 007.1
April	1 161.9	1 378.4	72.2	5.0	72.2	1 160.9	1 380.5	70.8	4.9	72.2	2 009.3
May	1 165.9	1 383.8	71.7	4.9	72.4	1 165.2	1 379.2	69.4	4.8	72.0	2 011.5
June	1 169.9	1 388.7	71.5	4.9	72.5	1 168.7	1 394.1	70.6	4.8	72.7	2 013.8
July	1 173.6	1 392.7	71.5	4.9	72.7	1 179.0	1 393.2	74.0	5.0	72.8	2 016.2
FEMALES											
July 2003	555.5	1 051.1	67.3	6.0	55.2	560.3	1 048.7	64.4	5.8	54.9	2 027.2
July 2004	587.1	1 076.7	66.2	5.8	55.5	583.3	1 077.4	67.4	5.9	55.6	2 059.1
2005											
July	594.7	1 105.8	70.5	6.0	56.5	594.4	1 091.1	72.3	6.2	55.9	2 083.0
August	594.1	1 105.9	70.7	6.0	56.4	587.0	1 108.3	70.8	6.0	56.5	2 085.3
September	594.0	1 107.9	70.5	6.0	56.5	597.0	1 099.4	71.9	6.1	56.1	2 087.5
October	594.7	1 111.8	69.9	5.9	56.6	599.8	1 119.7	70.6	5.9	57.0	2 089.6
November	596.3	1 117.0	69.0	5.8	56.7	594.2	1 117.9	66.7	5.6	56.6	2 091.8
December	598.4	1 121.9	68.0	5.7	56.8	592.7	1 122.4	66.6	5.6	56.8	2 093.9
2006											
January	600.3	1 125.2	67.2	5.6	56.9	601.4	1 123.9	70.5	5.9	57.0	2 095.9
February	601.9	1 127.5	66.6	5.6	56.9	607.5	1 129.8	65.9	5.5	57.0	2 097.8
March	603.3	1 129.7	66.2	5.5	56.9	602.0	1 129.6	62.6	5.3	56.8	2 099.8
April	604.4	1 132.4	65.7	5.5	57.0	605.7	1 130.5	69.5	5.8	57.1	2 102.1
May	605.2	1 135.5	65.1	5.4	57.1	600.4	1 133.7	64.0	5.3	56.9	2 104.4
June	605.9	1 138.6	64.5	5.4	57.1	608.0	1 137.6	65.3	5.4	57.1	2 106.7
July	606.2	1 141.5	63.8	5.3	57.2	607.4	1 147.3	62.7	5.2	57.4	2 109.0
PERSONS											
July 2003	1 658.6	2 348.9	144.9	5.8	63.0	1 662.6	2 346.6	145.3	5.8	63.0	3 955.9
July 2004	1 719.3	2 407.5	149.8	5.9	63.6	1 713.4	2 407.3	148.2	5.8	63.6	4 020.2
2005											
July	1 763.4	2 484.0	141.5	5.4	64.5	1 763.9	2 468.8	142.7	5.5	64.1	4 072.3
August	1 764.4	2 483.7	141.9	5.4	64.4	1 764.8	2 497.8	137.2	5.2	64.6	4 076.8
September	1 763.4	2 482.8	142.5	5.4	64.3	1 762.3	2 469.5	145.8	5.6	64.1	4 081.4
October	1 761.3	2 482.4	142.9	5.4	64.3	1 767.2	2 490.3	144.6	5.5	64.5	4 085.8
November	1 759.0	2 483.5	143.0	5.4	64.2	1 761.0	2 484.9	142.9	5.4	64.2	4 090.3
December	1 757.3	2 486.1	142.6	5.4	64.2	1 749.6	2 482.7	141.6	5.4	64.1	4 094.7
2006											
January	1 756.8	2 489.7	141.5	5.4	64.2	1 752.4	2 483.7	140.9	5.4	64.0	4 098.8
February	1 758.3	2 495.3	140.3	5.3	64.2	1 762.5	2 501.0	141.4	5.4	64.4	4 102.8
March	1 761.8	2 502.6	139.0	5.3	64.3	1 762.9	2 501.8	138.2	5.2	64.3	4 106.9
April	1 766.3	2 510.9	137.9	5.2	64.4	1 766.6	2 511.1	140.4	5.3	64.5	4 111.4
May	1 771.1	2 519.3	136.8	5.2	64.5	1 765.6	2 512.9	133.4	5.0	64.3	4 115.9
June	1 775.8	2 527.3	136.0	5.1	64.6	1 776.7	2 531.8	135.8	5.1	64.7	4 120.5
July	1 779.8	2 534.2	135.4	5.1	64.7	1 786.4	2 540.4	136.7	5.1	64.9	4 125.2

LABOUR FORCE STATUS (AGED 15 YEARS & OVER)—Queensland

	TREND					SEASONALLY ADJUSTED					Civilian population aged 15 years and over '000
	Employed full time	Total employed	Total unemployed	Unemployment rate	Participation rate	Employed full time	Total employed	Total unemployed	Unemployment rate	Participation rate	
	'000	'000	'000	%	%	'000	'000	'000	%	%	
MALES											
July 2003	842.3	993.4	69.7	6.6	71.8	839.7	992.0	69.9	6.6	71.7	1 480.3
July 2004	900.3	1 047.9	59.2	5.3	72.9	902.5	1 045.7	61.9	5.6	72.9	1 519.0
2005											
July	943.3	1 097.6	50.6	4.4	73.8	945.7	1 097.9	48.7	4.2	73.7	1 555.5
August	945.1	1 098.9	50.7	4.4	73.8	944.1	1 101.9	54.7	4.7	74.2	1 558.4
September	946.3	1 099.5	51.0	4.4	73.7	944.7	1 099.9	49.6	4.3	73.6	1 561.2
October	946.6	1 099.5	52.0	4.5	73.6	946.8	1 097.7	51.8	4.5	73.5	1 564.9
November	945.9	1 099.3	53.4	4.6	73.5	949.0	1 098.6	51.8	4.5	73.3	1 568.7
December	944.8	1 099.2	54.4	4.7	73.4	943.2	1 100.4	53.1	4.6	73.4	1 572.5
2006											
January	943.9	1 099.6	54.8	4.7	73.3	944.6	1 098.6	57.7	5.0	73.4	1 575.6
February	944.0	1 101.0	54.3	4.7	73.2	943.6	1 100.8	56.8	4.9	73.3	1 579.0
March	945.4	1 103.6	53.0	4.6	73.1	943.9	1 104.9	54.0	4.7	73.2	1 582.1
April	948.0	1 106.9	51.2	4.4	73.1	942.1	1 104.2	46.2	4.0	72.6	1 585.1
May	951.2	1 110.7	49.3	4.2	73.0	951.8	1 106.7	51.7	4.5	72.9	1 588.3
June	954.4	1 114.6	47.6	4.1	73.1	963.6	1 119.9	47.3	4.1	73.3	1 591.3
July	957.1	1 118.3	46.0	4.0	73.1	954.6	1 121.3	45.4	3.9	73.2	1 594.2
FEMALES											
July 2003	436.2	815.9	61.1	7.0	57.6	434.1	811.9	62.1	7.1	57.4	1 521.8
July 2004	464.8	845.4	51.7	5.8	57.5	466.0	840.0	51.4	5.8	57.1	1 560.7
2005											
July	492.3	896.6	54.3	5.7	59.7	495.2	900.1	54.6	5.7	59.9	1 592.4
August	491.1	897.5	54.0	5.7	59.6	490.9	895.9	55.6	5.8	59.7	1 595.2
September	488.9	897.5	53.2	5.6	59.5	494.0	902.2	53.9	5.6	59.8	1 597.9
October	486.3	896.8	52.4	5.5	59.3	482.0	895.2	51.8	5.5	59.2	1 600.6
November	484.1	895.8	52.1	5.5	59.1	482.7	896.8	49.7	5.2	59.0	1 603.4
December	483.4	895.6	52.0	5.5	59.0	481.3	892.4	50.6	5.4	58.7	1 606.1
2006											
January	485.0	896.9	52.4	5.5	59.0	485.9	896.4	53.8	5.7	59.1	1 608.8
February	489.1	900.1	52.8	5.5	59.1	493.1	897.4	55.2	5.8	59.1	1 611.4
March	495.1	904.9	52.9	5.5	59.3	486.4	909.3	52.2	5.4	59.6	1 614.1
April	502.0	910.7	52.6	5.5	59.6	502.9	907.2	51.4	5.4	59.3	1 616.6
May	508.9	916.6	52.2	5.4	59.8	511.1	917.3	53.3	5.5	59.9	1 619.1
June	515.4	922.3	51.8	5.3	60.1	518.5	920.2	51.0	5.2	59.9	1 621.6
July	520.8	927.3	51.3	5.2	60.3	523.0	934.4	51.4	5.2	60.7	1 624.3
PERSONS											
July 2003	1 278.5	1 809.2	130.8	6.7	64.6	1 273.8	1 803.9	132.0	6.8	64.5	3 002.1
July 2004	1 365.2	1 893.3	111.0	5.5	65.1	1 368.5	1 885.7	113.2	5.7	64.9	3 079.7
2005											
July	1 435.6	1 994.2	104.8	5.0	66.7	1 440.9	1 997.9	103.2	4.9	66.7	3 147.9
August	1 436.2	1 996.4	104.7	5.0	66.6	1 435.0	1 997.8	110.3	5.2	66.8	3 153.5
September	1 435.2	1 996.9	104.2	5.0	66.5	1 438.7	2 002.1	103.5	4.9	66.7	3 159.1
October	1 432.9	1 996.3	104.5	5.0	66.4	1 428.8	1 993.0	103.6	4.9	66.2	3 165.5
November	1 430.1	1 995.1	105.5	5.0	66.2	1 431.7	1 995.4	101.4	4.8	66.1	3 172.1
December	1 428.1	1 994.8	106.5	5.1	66.1	1 424.5	1 992.9	103.8	4.9	66.0	3 178.6
2006											
January	1 428.9	1 996.5	107.1	5.1	66.1	1 430.5	1 995.0	111.6	5.3	66.2	3 184.4
February	1 433.0	2 001.1	107.1	5.1	66.1	1 436.7	1 998.2	112.0	5.3	66.1	3 190.4
March	1 440.5	2 008.5	105.9	5.0	66.2	1 430.3	2 014.2	106.1	5.0	66.3	3 196.2
April	1 450.0	2 017.6	103.8	4.9	66.3	1 445.0	2 011.4	97.6	4.6	65.9	3 201.7
May	1 460.1	2 027.4	101.5	4.8	66.4	1 462.9	2 024.0	105.0	4.9	66.4	3 207.4
June	1 469.7	2 037.0	99.4	4.7	66.5	1 482.1	2 040.0	98.3	4.6	66.6	3 212.9
July	1 477.8	2 045.6	97.3	4.5	66.6	1 477.6	2 055.7	96.8	4.5	66.9	3 218.6

LABOUR FORCE STATUS (AGED 15 YEARS & OVER)—South Australia

	TREND					SEASONALLY ADJUSTED					Civilian population aged 15 years and over
	Employed full time	Total employed	Total unemp-loyed	Unemp-loyment rate	Partici-pation rate	Employed full time	Total employed	Total unemp-loyed	Unemp-loyment rate	Partici-pation rate	
	'000	'000	'000	%	%	'000	'000	'000	%	%	
MALES											
July 2003	338.7	396.6	27.1	6.4	69.8	340.5	398.0	27.5	6.5	70.1	606.8
July 2004	334.3	399.2	28.0	6.5	69.7	333.8	399.4	27.9	6.5	69.7	612.7
2005											
July	342.5	405.8	22.2	5.2	69.3	339.9	404.7	22.4	5.2	69.2	617.4
August	342.2	405.2	22.8	5.3	69.3	344.0	404.5	23.0	5.4	69.2	617.9
September	342.3	404.8	23.0	5.4	69.2	343.3	406.2	23.6	5.5	69.5	618.4
October	342.5	404.7	23.0	5.4	69.1	342.1	404.2	24.4	5.7	69.3	619.0
November	342.4	404.8	22.9	5.4	69.0	341.1	404.6	22.6	5.3	68.9	619.6
December	342.1	405.0	23.1	5.4	69.0	344.3	405.5	20.8	4.9	68.7	620.2
2006											
January	341.6	405.1	23.4	5.5	69.1	341.1	402.4	23.7	5.6	68.7	620.6
February	341.2	405.4	23.8	5.5	69.1	341.1	409.7	22.8	5.3	69.6	621.1
March	341.0	405.9	23.9	5.6	69.1	340.2	405.1	26.4	6.1	69.4	621.6
April	341.1	406.5	23.6	5.5	69.1	341.3	404.4	24.6	5.7	69.0	622.1
May	341.4	407.4	23.0	5.3	69.1	340.7	407.0	22.9	5.3	69.1	622.6
June	341.9	408.3	22.2	5.2	69.1	341.6	408.5	20.2	4.7	68.8	623.1
July	342.6	409.4	21.3	4.9	69.1	344.4	411.6	21.0	4.8	69.4	623.5
FEMALES											
July 2003	164.9	322.7	20.6	6.0	54.4	166.6	321.8	20.5	6.0	54.2	631.3
July 2004	160.6	320.8	19.7	5.8	53.5	160.0	320.0	20.6	6.1	53.5	636.4
2005											
July	168.9	335.8	15.8	4.5	55.0	169.8	337.8	13.7	3.9	54.9	639.7
August	168.6	336.2	15.3	4.3	54.9	171.6	336.9	15.0	4.3	55.0	640.1
September	168.5	336.7	15.2	4.3	54.9	168.8	335.6	15.6	4.4	54.8	640.5
October	168.9	337.1	15.6	4.4	55.0	162.2	334.4	15.3	4.4	54.6	641.0
November	169.7	337.6	16.1	4.6	55.1	171.8	338.5	15.2	4.3	55.1	641.5
December	170.8	338.1	16.7	4.7	55.3	171.1	339.5	19.2	5.3	55.9	642.0
2006											
January	171.9	338.5	17.1	4.8	55.3	174.6	340.1	15.3	4.3	55.3	642.5
February	172.7	338.6	17.3	4.9	55.4	172.2	338.0	18.2	5.1	55.4	642.9
March	173.1	338.7	17.4	4.9	55.3	173.1	336.4	16.7	4.7	54.9	643.3
April	173.0	338.8	17.4	4.9	55.3	171.9	339.9	17.9	5.0	55.6	643.8
May	173.2	339.2	17.5	4.9	55.4	172.8	338.3	17.6	4.9	55.2	644.3
June	173.4	339.7	17.6	4.9	55.4	174.6	340.8	16.7	4.7	55.4	644.7
July	173.5	340.2	17.9	5.0	55.5	173.4	340.6	18.6	5.2	55.7	645.2
PERSONS											
July 2003	503.6	719.4	47.7	6.2	62.0	507.1	719.8	48.0	6.2	62.0	1 238.0
July 2004	494.9	720.1	47.7	6.2	61.5	493.8	719.4	48.5	6.3	61.5	1 249.1
2005											
July	511.4	741.6	38.0	4.9	62.0	509.7	742.6	36.1	4.6	61.9	1 257.1
August	510.8	741.4	38.1	4.9	62.0	515.5	741.5	37.9	4.9	62.0	1 258.0
September	510.9	741.5	38.3	4.9	61.9	512.1	741.8	39.2	5.0	62.0	1 258.9
October	511.4	741.9	38.6	4.9	61.9	504.3	738.6	39.7	5.1	61.8	1 260.0
November	512.1	742.5	39.0	5.0	62.0	512.9	743.1	37.8	4.8	61.9	1 261.1
December	512.9	743.1	39.7	5.1	62.0	515.3	745.0	40.0	5.1	62.2	1 262.2
2006											
January	513.5	743.6	40.5	5.2	62.1	515.7	742.5	39.1	5.0	61.9	1 263.1
February	513.9	744.0	41.0	5.2	62.1	513.3	747.7	41.0	5.2	62.4	1 264.0
March	514.1	744.5	41.2	5.2	62.1	513.3	741.4	43.1	5.5	62.0	1 264.9
April	514.2	745.3	41.0	5.2	62.1	513.2	744.4	42.6	5.4	62.2	1 265.9
May	514.6	746.6	40.5	5.1	62.1	513.5	745.2	40.5	5.2	62.0	1 266.8
June	515.3	748.0	39.8	5.1	62.1	516.2	749.3	36.8	4.7	62.0	1 267.8
July	516.0	749.5	39.2	5.0	62.2	517.8	752.2	39.6	5.0	62.4	1 268.6

LABOUR FORCE STATUS (AGED 15 YEARS & OVER)—Western Australia

	TREND					SEASONALLY ADJUSTED					Civilian population aged 15 years and over
	Employed full time	Total employed	Total unemp-loyed	Unemp-loyment rate	Partici-pation rate	Employed full time	Total employed	Total unemp-loyed	Unemp-loyment rate	Partici-pation rate	
	'000	'000	'000	%	%	'000	'000	'000	%	%	
MALES											
July 2003	465.0	544.6	33.9	5.9	75.0	461.9	545.4	32.6	5.6	75.0	771.2
July 2004	470.7	551.2	26.4	4.6	73.3	470.8	548.5	26.0	4.5	73.0	787.5
2005											
July	503.5	587.1	26.2	4.3	76.5	502.8	585.6	27.7	4.5	76.5	801.7
August	504.7	589.0	25.4	4.1	76.5	511.7	589.5	25.7	4.2	76.6	803.1
September	505.3	590.4	24.5	4.0	76.4	507.8	595.9	23.0	3.7	76.9	804.6
October	505.8	591.5	24.0	3.9	76.4	502.2	589.1	23.3	3.8	76.0	806.0
November	506.6	592.5	23.7	3.9	76.3	504.2	590.4	22.6	3.7	75.9	807.3
December	507.8	593.7	23.8	3.8	76.4	507.4	594.2	24.9	4.0	76.6	808.7
2006											
January	509.3	595.0	23.8	3.8	76.4	508.7	593.4	24.3	3.9	76.3	810.0
February	511.3	596.3	23.4	3.8	76.4	513.5	595.4	24.3	3.9	76.4	811.3
March	513.2	597.6	22.4	3.6	76.3	516.4	603.2	22.0	3.5	76.9	812.7
April	514.8	598.6	21.2	3.4	76.1	513.7	598.0	21.6	3.5	76.1	814.1
May	516.3	599.3	20.0	3.2	75.9	512.8	596.4	18.9	3.1	75.5	815.4
June	517.8	600.0	18.8	3.0	75.8	516.0	598.1	19.6	3.2	75.6	816.8
July	519.3	600.7	17.9	2.9	75.6	524.4	603.7	16.9	2.7	75.8	818.4
FEMALES											
July 2003	213.6	417.6	27.5	6.2	56.9	213.5	417.6	29.6	6.6	57.2	782.4
July 2004	223.2	433.1	24.7	5.4	57.3	219.5	430.6	24.1	5.3	56.9	799.0
2005											
July	239.5	461.4	23.9	4.9	59.8	242.8	461.1	25.0	5.1	59.9	811.5
August	238.6	462.3	23.0	4.7	59.7	242.4	465.2	22.5	4.6	60.0	812.9
September	237.5	462.8	22.2	4.6	59.6	240.0	461.4	22.1	4.6	59.4	814.3
October	236.7	462.9	21.7	4.5	59.5	228.9	462.5	20.8	4.3	59.3	815.3
November	236.6	463.0	21.5	4.4	59.4	233.5	462.3	21.8	4.5	59.3	816.2
December	237.2	463.2	21.6	4.5	59.3	237.8	462.0	22.3	4.6	59.3	817.1
2006											
January	237.9	463.5	21.8	4.5	59.3	243.8	467.7	20.5	4.2	59.7	818.0
February	238.5	464.2	21.8	4.5	59.3	240.3	462.3	22.2	4.6	59.2	818.9
March	239.0	465.3	21.4	4.4	59.4	238.2	464.1	23.0	4.7	59.4	819.9
April	239.6	466.6	20.8	4.3	59.4	235.8	466.2	20.4	4.2	59.3	820.9
May	240.9	468.3	20.0	4.1	59.4	238.3	468.0	19.4	4.0	59.3	822.0
June	242.8	470.0	19.2	3.9	59.5	241.5	470.3	19.6	4.0	59.5	823.1
July	244.8	471.5	18.6	3.8	59.5	253.3	474.2	17.5	3.5	59.6	824.3
PERSONS											
July 2003	678.7	962.1	61.4	6.0	65.9	675.5	963.0	62.2	6.1	66.0	1 553.5
July 2004	693.9	984.3	51.1	4.9	65.3	690.3	979.0	50.1	4.9	64.9	1 586.5
2005											
July	743.0	1 048.5	50.1	4.6	68.1	745.6	1 046.7	52.6	4.8	68.1	1 613.2
August	743.3	1 051.3	48.4	4.4	68.1	754.2	1 054.7	48.1	4.4	68.2	1 616.0
September	742.8	1 053.2	46.8	4.3	68.0	747.7	1 057.2	45.1	4.1	68.1	1 618.9
October	742.6	1 054.4	45.7	4.2	67.9	731.1	1 051.6	44.1	4.0	67.6	1 621.2
November	743.3	1 055.5	45.3	4.1	67.8	737.7	1 052.7	44.4	4.0	67.6	1 623.5
December	745.0	1 056.9	45.4	4.1	67.8	745.2	1 056.2	47.2	4.3	67.9	1 625.8
2006											
January	747.2	1 058.5	45.5	4.1	67.8	752.5	1 061.1	44.8	4.1	67.9	1 628.0
February	749.9	1 060.5	45.1	4.1	67.8	753.7	1 057.7	46.5	4.2	67.7	1 630.3
March	752.3	1 062.9	43.8	4.0	67.8	754.6	1 067.3	45.0	4.0	68.1	1 632.5
April	754.4	1 065.2	42.0	3.8	67.7	749.5	1 064.2	42.1	3.8	67.7	1 635.0
May	757.2	1 067.6	40.0	3.6	67.6	751.1	1 064.4	38.3	3.5	67.3	1 637.4
June	760.6	1 070.0	38.1	3.4	67.6	757.6	1 068.4	39.2	3.5	67.5	1 639.9
July	764.2	1 072.2	36.4	3.3	67.5	777.7	1 077.9	34.3	3.1	67.7	1 642.8

	TREND					SEASONALLY ADJUSTED					Civilian population aged 15 years and over
	Employed full time	Total employed	Total unemployed	Unemployment rate	Participation rate	Employed full time	Total employed	Total unemployed	Unemployment rate	Participation rate	
	'000	'000	'000	%	%	'000	'000	'000	%	%	
MALES											
July 2003	96.9	113.2	9.9	8.0	66.4	97.7	114.1	7.8	6.4	65.8	185.4
July 2004	101.1	117.6	9.3	7.3	67.4	103.3	118.3	9.3	7.3	67.8	188.3
2005											
July	98.9	119.3	7.8	6.1	66.7	98.4	118.5	7.9	6.2	66.3	190.5
August	99.4	119.8	7.9	6.2	67.0	99.3	119.9	7.6	6.0	66.8	190.7
September	100.1	120.8	8.2	6.4	67.6	100.0	120.2	8.2	6.4	67.3	190.9
October	100.9	121.7	8.5	6.5	68.2	100.6	121.2	8.8	6.8	68.1	191.0
November	101.5	122.6	8.8	6.7	68.7	101.9	122.7	8.9	6.8	68.9	191.0
December	101.9	123.0	8.9	6.7	69.0	102.7	124.8	8.7	6.6	69.9	191.1
2006											
January	102.2	123.1	8.9	6.8	69.1	101.8	123.8	9.1	6.9	69.5	191.2
February	102.1	122.8	9.0	6.8	68.9	101.8	121.9	9.1	7.0	68.5	191.3
March	101.9	122.3	9.1	6.9	68.6	101.9	120.7	8.5	6.6	67.5	191.4
April	101.6	121.8	9.3	7.1	68.4	101.6	122.7	8.9	6.8	68.7	191.5
May	101.3	121.4	9.5	7.3	68.3	101.8	122.1	9.9	7.5	68.9	191.6
June	101.0	121.0	9.7	7.5	68.2	101.0	121.0	9.8	7.5	68.2	191.7
July	100.7	120.7	10.0	7.6	68.1	99.9	119.9	10.1	7.8	67.8	191.8
FEMALES											
July 2003	46.6	93.5	6.6	6.6	51.4	46.8	92.3	6.6	6.7	50.8	194.7
July 2004	47.4	96.1	6.0	5.9	51.7	48.2	96.4	6.4	6.2	52.0	197.6
2005											
July	50.9	100.5	6.4	5.9	53.6	51.9	100.8	5.8	5.5	53.4	199.5
August	50.8	100.8	6.7	6.2	53.9	51.2	101.5	6.4	5.9	54.1	199.6
September	50.2	101.1	7.0	6.5	54.1	51.4	101.6	6.5	6.1	54.1	199.7
October	49.5	101.2	7.2	6.6	54.2	47.3	100.3	8.9	8.2	54.7	199.8
November	48.8	101.2	7.2	6.6	54.2	49.4	101.2	7.9	7.2	54.6	199.9
December	48.2	101.2	7.0	6.5	54.1	48.0	101.0	5.3	5.0	53.2	200.0
2006											
January	48.1	101.2	6.8	6.3	54.0	48.0	102.0	6.7	6.2	54.3	200.1
February	48.5	101.4	6.6	6.1	53.9	48.3	101.1	6.7	6.2	53.8	200.2
March	49.2	101.8	6.4	5.9	54.0	49.7	102.3	6.7	6.1	54.4	200.3
April	50.2	102.5	6.3	5.8	54.2	48.9	100.7	6.3	5.9	53.4	200.5
May	51.2	103.3	6.0	5.5	54.5	50.9	103.1	6.2	5.7	54.5	200.6
June	52.2	104.2	5.8	5.2	54.8	54.0	105.1	6.0	5.4	55.3	200.7
July	53.0	105.1	5.4	4.9	55.0	53.0	106.2	4.6	4.1	55.2	200.9
PERSONS											
July 2003	143.5	206.7	16.5	7.4	58.7	144.4	206.4	14.4	6.5	58.1	380.1
July 2004	148.5	213.7	15.4	6.7	59.4	151.5	214.6	15.7	6.8	59.7	385.8
2005											
July	149.8	219.8	14.2	6.1	60.0	150.3	219.2	13.7	5.9	59.7	390.0
August	150.1	220.7	14.6	6.2	60.3	150.5	221.4	14.0	5.9	60.3	390.3
September	150.3	221.8	15.2	6.4	60.7	151.4	221.8	14.7	6.2	60.6	390.6
October	150.3	222.9	15.7	6.6	61.1	148.0	221.5	17.7	7.4	61.2	390.8
November	150.3	223.8	16.0	6.7	61.3	151.3	223.9	16.8	7.0	61.6	390.9
December	150.2	224.2	15.9	6.6	61.4	150.8	225.8	14.1	5.9	61.3	391.1
2006											
January	150.3	224.3	15.7	6.5	61.3	149.8	225.8	15.9	6.6	61.8	391.3
February	150.6	224.2	15.5	6.5	61.2	150.1	223.0	15.8	6.6	61.0	391.5
March	151.1	224.1	15.5	6.5	61.2	151.6	222.9	15.2	6.4	60.8	391.7
April	151.8	224.3	15.5	6.5	61.2	150.5	223.4	15.2	6.4	60.9	391.9
May	152.5	224.7	15.5	6.5	61.2	152.7	225.3	16.1	6.7	61.5	392.2
June	153.2	225.2	15.5	6.4	61.3	155.1	226.1	15.8	6.5	61.6	392.4
July	153.7	225.8	15.3	6.4	61.4	152.9	226.2	14.7	6.1	61.3	392.7

	TREND					Civilian population aged 15 years and over  '000
	Employed full time	Total employed	Total unemployed	Unemployment rate	Participation rate	
	'000	'000	'000	%	%	
MALES						
July 2003	44.2	53.9	3.2	5.6	77.4	73.8
July 2004	43.0	51.0	4.4	8.0	74.8	74.1
2005						
July	42.5	51.2	2.6	4.9	71.2	75.6
August	42.9	51.8	2.6	4.8	71.8	75.8
September	43.6	52.5	2.7	4.9	72.6	75.9
October	44.3	53.0	3.0	5.3	73.4	76.2
November	44.8	53.2	3.3	5.8	73.9	76.5
December	45.1	53.2	3.6	6.4	74.0	76.7
2006						
January	45.2	53.1	3.8	6.7	74.0	76.9
February	45.2	53.1	3.9	6.8	73.7	77.2
March	45.4	53.2	3.7	6.5	73.5	77.4
April	45.7	53.6	3.4	6.0	73.4	77.6
May	46.3	54.1	3.1	5.4	73.4	77.9
June	46.8	54.5	2.8	5.0	73.5	78.1
July	47.4	55.0	2.6	4.6	73.6	78.3
FEMALES						
July 2003	28.2	40.9	3.1	7.1	63.5	69.3
July 2004	29.0	43.8	3.0	6.4	67.0	69.8
2005						
July	31.3	44.0	2.2	4.7	65.2	70.9
August	31.4	44.3	2.2	4.7	65.5	71.0
September	31.3	44.4	2.3	4.9	65.6	71.2
October	31.0	44.3	2.4	5.2	65.4	71.4
November	30.9	44.2	2.6	5.5	65.3	71.7
December	30.9	44.2	2.7	5.8	65.4	71.9
2006						
January	31.1	44.3	2.9	6.1	65.6	72.0
February	31.5	44.7	2.9	6.1	66.0	72.1
March	31.9	45.2	2.8	5.9	66.6	72.2
April	32.4	45.8	2.7	5.6	67.2	72.3
May	32.8	46.4	2.6	5.4	67.8	72.4
June	33.2	47.0	2.5	5.1	68.4	72.5
July	33.6	47.5	2.4	4.9	68.9	72.5
PERSONS						
July 2003	72.3	94.8	6.3	6.3	70.6	143.0
July 2004	72.0	94.8	7.4	7.3	71.0	143.9
2005						
July	73.8	95.2	4.8	4.8	68.3	146.4
August	74.4	96.1	4.8	4.8	68.7	146.8
September	74.9	96.9	5.0	4.9	69.2	147.1
October	75.3	97.3	5.4	5.2	69.5	147.6
November	75.7	97.4	5.9	5.7	69.7	148.1
December	76.0	97.4	6.4	6.1	69.8	148.6
2006						
January	76.3	97.4	6.7	6.4	69.9	148.9
February	76.7	97.8	6.8	6.5	70.0	149.3
March	77.3	98.4	6.5	6.2	70.2	149.6
April	78.1	99.4	6.1	5.8	70.4	149.9
May	79.1	100.5	5.7	5.4	70.7	150.3
June	80.0	101.5	5.4	5.0	71.0	150.6
July	81.0	102.5	5.0	4.7	71.3	150.8

	TREND					<i>Civilian population aged 15 years and over</i>
	<i>Employed full time</i>	<i>Total employed</i>	<i>Total unemployed</i>	<i>Unemployment rate</i>	<i>Participation rate</i>	
	'000	'000	'000	%	%	
MALES						
July 2003	74.8	90.7	4.1	4.4	76.8	123.5
July 2004	77.2	91.8	3.8	4.0	76.3	124.5
2005						
July	79.4	94.0	3.0	3.1	77.0	126.0
August	79.4	94.1	3.0	3.1	77.0	126.1
September	79.2	94.2	3.0	3.1	77.0	126.1
October	79.1	94.3	3.0	3.1	77.0	126.3
November	79.1	94.5	3.0	3.0	77.1	126.4
December	79.3	94.7	3.0	3.1	77.3	126.5
2006						
January	79.6	95.1	3.1	3.2	77.5	126.6
February	80.0	95.3	3.3	3.4	77.8	126.7
March	80.3	95.5	3.5	3.5	78.0	126.8
April	80.7	95.5	3.6	3.6	78.1	126.9
May	81.0	95.5	3.6	3.6	78.0	127.0
June	81.3	95.5	3.5	3.6	77.9	127.1
July	81.6	95.4	3.4	3.4	77.7	127.3
FEMALES						
July 2003	52.2	83.0	3.6	4.2	66.0	131.4
July 2004	52.4	84.2	3.1	3.5	66.1	132.0
2005						
July	54.6	86.4	3.0	3.4	67.3	132.8
August	54.1	86.2	3.1	3.4	67.2	132.9
September	53.6	85.8	3.1	3.5	66.9	132.9
October	53.3	85.5	3.2	3.6	66.6	133.1
November	53.3	85.3	3.2	3.6	66.4	133.2
December	53.7	85.3	3.1	3.5	66.3	133.3
2006						
January	54.4	85.6	3.0	3.4	66.4	133.4
February	55.4	86.3	2.8	3.2	66.7	133.6
March	56.6	87.3	2.6	2.9	67.3	133.7
April	57.8	88.4	2.5	2.7	67.9	133.9
May	59.0	89.6	2.3	2.5	68.6	134.0
June	60.0	90.7	2.2	2.4	69.2	134.2
July	60.9	91.5	2.1	2.2	69.7	134.3
PERSONS						
July 2003	127.0	173.8	7.8	4.3	71.2	254.9
July 2004	129.6	176.0	6.9	3.8	71.0	256.6
2005						
July	134.1	180.4	6.0	3.2	72.0	258.8
August	133.4	180.3	6.1	3.2	72.0	258.9
September	132.8	180.0	6.1	3.3	71.8	259.1
October	132.4	179.8	6.2	3.3	71.7	259.3
November	132.4	179.7	6.1	3.3	71.6	259.6
December	133.0	180.0	6.1	3.3	71.6	259.8
2006						
January	134.0	180.6	6.2	3.3	71.8	260.1
February	135.4	181.6	6.2	3.3	72.1	260.3
March	136.9	182.8	6.1	3.2	72.5	260.5
April	138.5	183.9	6.0	3.2	72.8	260.8
May	140.0	185.1	5.9	3.1	73.2	261.1
June	141.4	186.1	5.7	3.0	73.4	261.3
July	142.5	186.9	5.5	2.8	73.6	261.6



Original—July 2006

	EMPLOYED			UNEMPLOYED			UNEMPLOYMENT RATE			Participation rate	
	Full time	Part time	Total	Looking for f/t work	Total	Labour force	Not in labour force	Civilian population aged 15 years and over	Looking for f/t work		Total
	'000	'000	'000	'000	'000	'000	'000	'000	%		%
MALES											
New South Wales	1 546.6	284.5	1 831.1	79.0	95.4	1 926.6	782.3	2 708.8	4.9	5.0	71.1
Victoria	1 179.4	217.6	1 397.0	52.1	67.3	1 464.3	551.8	2 016.2	4.2	4.6	72.6
Queensland	956.5	164.3	1 120.8	35.8	43.1	1 163.8	430.4	1 594.2	3.6	3.7	73.0
South Australia	345.6	67.4	412.9	14.6	18.4	431.4	192.1	623.5	4.1	4.3	69.2
Western Australia	521.6	80.2	601.8	11.8	15.7	617.5	200.9	818.4	2.2	2.5	75.5
Tasmania	97.9	21.1	119.0	8.7	10.3	129.3	62.6	191.8	8.1	7.9	67.4
Northern Territory	47.7	6.8	54.5	*1.9	*2.6	57.1	21.2	78.3	*3.8	*4.5	72.9
Australian Capital Territory	82.1	13.2	95.4	1.7	2.8	98.1	29.1	127.3	2.1	2.8	77.1
<b>Australia</b>	<b>4 777.5</b>	<b>855.1</b>	<b>5 632.6</b>	<b>205.5</b>	<b>255.6</b>	<b>5 888.2</b>	<b>2 270.4</b>	<b>8 158.6</b>	<b>4.1</b>	<b>4.3</b>	<b>72.2</b>
FEMALES											
New South Wales	817.6	651.0	1 468.5	43.3	68.4	1 537.0	1 256.9	2 793.9	5.0	4.5	55.0
Victoria	605.2	537.4	1 142.6	32.8	58.9	1 201.4	907.6	2 109.0	5.1	4.9	57.0
Queensland	527.5	411.4	938.9	30.5	46.8	985.7	638.6	1 624.3	5.5	4.7	60.7
South Australia	176.6	163.8	340.4	11.4	18.3	358.8	286.4	645.2	6.1	5.1	55.6
Western Australia	250.3	219.2	469.5	9.0	16.1	485.6	338.7	824.3	3.5	3.3	58.9
Tasmania	52.2	53.7	106.0	2.9	4.4	110.4	90.5	200.9	5.3	4.0	54.9
Northern Territory	34.2	13.8	48.1	*0.8	*1.6	49.6	22.9	72.5	*2.1	*3.2	68.4
Australian Capital Territory	61.0	31.4	92.4	*1.1	1.7	94.0	40.3	134.3	*1.7	1.8	70.0
<b>Australia</b>	<b>2 524.6</b>	<b>2 081.8</b>	<b>4 606.3</b>	<b>131.8</b>	<b>216.2</b>	<b>4 822.5</b>	<b>3 581.9</b>	<b>8 404.5</b>	<b>5.0</b>	<b>4.5</b>	<b>57.4</b>
PERSONS											
New South Wales	2 364.2	935.5	3 299.7	122.3	163.8	3 463.5	2 039.2	5 502.7	4.9	4.7	62.9
Victoria	1 784.6	755.0	2 539.6	84.9	126.2	2 665.8	1 459.4	4 125.2	4.5	4.7	64.6
Queensland	1 484.0	575.7	2 059.7	66.3	89.8	2 149.5	1 069.0	3 218.6	4.3	4.2	66.8
South Australia	522.2	231.2	753.4	26.0	36.8	790.2	478.5	1 268.6	4.7	4.7	62.3
Western Australia	771.9	299.4	1 071.3	20.8	31.8	1 103.1	539.6	1 642.8	2.6	2.9	67.2
Tasmania	150.1	74.8	225.0	11.6	14.7	239.7	153.1	392.7	7.2	6.1	61.0
Northern Territory	81.9	20.6	102.6	*2.7	4.2	106.7	44.1	150.8	*3.1	3.9	70.8
Australian Capital Territory	143.1	44.6	187.7	2.8	4.4	192.2	69.4	261.6	1.9	2.3	73.5
<b>Australia</b>	<b>7 302.0</b>	<b>2 936.9</b>	<b>10 239.0</b>	<b>337.4</b>	<b>471.7</b>	<b>10 710.7</b>	<b>5 852.3</b>	<b>16 563.0</b>	<b>4.4</b>	<b>4.4</b>	<b>64.7</b>

\* estimate is subject to sampling variability too high for most practical purposes

	EMPLOYED		UNEMPLOYED		UNEMPLOYMENT RATE		Participation rate	Employment to population ratio	Unemployment to population ratio – looking for full-time work
	Full time	Total	Looking for f/t work	Total	Looking for f/t work	Total			
	'000	'000	'000	'000	%	%			
MALES									
July 2003	142.9	331.8	36.6	70.8	20.4	17.6	57.4	47.3	5.2
July 2004	147.8	352.6	35.9	68.9	19.5	16.4	59.2	49.7	5.1
2005									
July	161.5	358.0	36.6	66.7	18.5	15.7	59.4	50.1	5.1
August	160.0	353.6	37.2	67.8	18.9	16.1	59.0	49.5	5.2
September	158.1	349.6	37.5	68.9	19.2	16.5	58.5	48.9	5.2
October	156.1	346.9	37.5	69.8	19.4	16.8	58.3	48.5	5.2
November	154.6	345.9	37.3	70.5	19.4	16.9	58.2	48.3	5.2
December	153.7	346.2	37.0	70.8	19.4	17.0	58.3	48.4	5.2
2006									
January	153.8	348.0	36.5	70.6	19.2	16.9	58.4	48.6	5.1
February	154.8	350.7	36.3	70.1	19.0	16.7	58.7	48.9	5.1
March	155.9	353.7	36.2	69.6	18.8	16.4	59.0	49.3	5.0
April	156.7	356.2	36.3	69.0	18.8	16.2	59.2	49.6	5.1
May	157.0	358.4	36.5	68.3	18.8	16.0	59.4	49.9	5.1
June	156.9	360.1	36.7	67.6	18.9	15.8	59.5	50.1	5.1
July	156.2	361.2	36.8	66.9	19.1	15.6	59.5	50.2	5.1
FEMALES									
July 2003	84.1	346.0	25.6	58.5	23.4	14.5	60.1	51.4	3.8
July 2004	86.4	354.7	28.4	66.3	24.8	15.7	61.7	52.0	4.2
2005									
July	84.4	366.2	27.1	64.3	24.3	14.9	62.9	53.5	4.0
August	83.3	364.5	27.1	65.0	24.6	15.1	62.8	53.3	4.0
September	82.5	361.9	27.1	65.2	24.7	15.3	62.4	52.9	4.0
October	82.0	359.1	26.9	64.5	24.7	15.2	61.9	52.5	3.9
November	81.8	356.7	26.6	63.0	24.5	15.0	61.3	52.1	3.9
December	81.8	354.8	26.2	61.6	24.3	14.8	60.8	51.8	3.8
2006									
January	81.4	353.2	26.0	60.8	24.2	14.7	60.5	51.6	3.8
February	80.6	352.3	26.0	60.9	24.4	14.7	60.3	51.4	3.8
March	79.9	352.3	26.2	61.3	24.7	14.8	60.4	51.4	3.8
April	79.4	353.2	26.3	62.0	24.9	14.9	60.5	51.5	3.8
May	79.4	355.0	26.3	62.3	24.9	14.9	60.8	51.7	3.8
June	79.9	357.4	26.2	62.3	24.7	14.8	61.1	52.0	3.8
July	80.6	359.8	25.9	62.2	24.3	14.7	61.4	52.4	3.8
PERSONS									
July 2003	227.0	677.8	62.2	129.3	21.5	16.0	58.7	49.3	4.5
July 2004	234.2	707.3	64.3	135.2	21.5	16.1	60.4	50.8	4.6
2005									
July	245.9	724.2	63.7	131.1	20.6	15.3	61.2	51.8	4.6
August	243.3	718.1	64.4	132.8	20.9	15.6	60.8	51.3	4.6
September	240.6	711.5	64.7	134.1	21.2	15.9	60.4	50.9	4.6
October	238.2	706.0	64.5	134.3	21.3	16.0	60.0	50.5	4.6
November	236.4	702.6	63.9	133.5	21.3	16.0	59.7	50.2	4.6
December	235.5	701.0	63.2	132.4	21.1	15.9	59.5	50.1	4.5
2006									
January	235.2	701.2	62.5	131.5	21.0	15.8	59.4	50.0	4.5
February	235.4	703.0	62.2	131.0	20.9	15.7	59.5	50.2	4.4
March	235.8	706.0	62.4	130.9	20.9	15.6	59.7	50.3	4.4
April	236.1	709.4	62.6	131.0	21.0	15.6	59.9	50.5	4.5
May	236.4	713.3	62.8	130.6	21.0	15.5	60.1	50.8	4.5
June	236.8	717.5	62.9	129.9	21.0	15.3	60.3	51.0	4.5
July	236.9	721.0	62.8	129.1	20.9	15.2	60.5	51.3	4.5

	EMPLOYED		UNEMPLOYED		UNEMPLOYMENT RATE		Participation rate	Employment to population ratio	Unemployment to population ratio – looking for full-time work
	Full time	Total	Looking for f/t work	Total	Looking for f/t work	Total			
	'000	'000	'000	'000	%	%			
MALES									
July 2003	140.5	323.5	36.1	71.5	20.4	18.1	56.3	46.1	5.1
July 2004	151.4	357.3	35.6	65.2	19.0	15.4	59.5	50.3	5.0
2005									
July	162.0	355.4	34.8	65.6	17.7	15.6	58.9	49.7	4.9
August	160.9	355.2	38.0	65.6	19.1	15.6	58.9	49.7	5.3
September	159.3	352.2	37.9	68.3	19.2	16.2	58.8	49.3	5.3
October	149.3	338.0	38.2	75.7	20.4	18.3	57.9	47.3	5.3
November	162.2	351.7	37.5	67.8	18.8	16.2	58.6	49.1	5.2
December	151.7	345.4	35.7	69.2	19.0	16.7	57.9	48.2	5.0
2006									
January	150.5	342.9	37.3	72.5	19.9	17.4	58.0	47.9	5.2
February	154.4	354.7	35.6	68.2	18.7	16.1	59.0	49.5	5.0
March	157.6	355.8	36.3	71.1	18.7	16.7	59.5	49.6	5.1
April	155.8	353.3	36.1	69.8	18.8	16.5	58.9	49.2	5.0
May	159.4	357.0	37.2	67.7	18.9	15.9	59.1	49.7	5.2
June	161.7	368.0	35.3	66.1	17.9	15.2	60.4	51.2	4.9
July	148.4	355.5	38.1	67.6	20.4	16.0	58.8	49.4	5.3
FEMALES									
July 2003	89.3	350.2	21.7	55.9	19.6	13.8	60.3	52.0	3.2
July 2004	82.2	352.4	30.4	68.9	27.0	16.4	61.8	51.7	4.5
2005									
July	83.6	365.3	28.3	71.7	25.3	16.4	63.9	53.4	4.1
August	82.9	366.7	25.4	61.6	23.4	14.4	62.6	53.6	3.7
September	84.3	363.9	28.2	65.5	25.0	15.3	62.8	53.2	4.1
October	80.6	352.6	29.0	66.9	26.5	15.9	61.3	51.5	4.2
November	80.2	359.8	25.0	62.5	23.8	14.8	61.7	52.6	3.7
December	80.4	351.6	25.5	61.4	24.0	14.9	60.3	51.4	3.7
2006									
January	85.3	357.1	26.7	59.9	23.8	14.4	60.9	52.1	3.9
February	83.3	352.2	26.1	60.1	23.9	14.6	60.2	51.4	3.8
March	75.7	352.1	24.7	56.0	24.6	13.7	59.6	51.4	3.6
April	81.0	351.3	27.5	70.1	25.3	16.6	61.4	51.2	4.0
May	77.1	350.3	25.9	60.9	25.2	14.8	59.9	51.0	3.8
June	75.7	357.7	28.4	63.5	27.3	15.1	61.3	52.1	4.1
July	88.2	368.1	23.7	58.9	21.2	13.8	62.2	53.6	3.5
PERSONS									
July 2003	229.8	673.7	57.8	127.4	20.1	15.9	58.3	49.0	4.2
July 2004	233.6	709.7	66.0	134.1	22.0	15.9	60.6	51.0	4.7
2005									
July	245.6	720.7	63.1	137.4	20.4	16.0	61.4	51.5	4.5
August	243.8	721.9	63.3	127.2	20.6	15.0	60.7	51.6	4.5
September	243.5	716.1	66.1	133.8	21.3	15.7	60.8	51.2	4.7
October	230.0	690.6	67.2	142.7	22.6	17.1	59.5	49.4	4.8
November	242.4	711.5	62.5	130.3	20.5	15.5	60.1	50.8	4.5
December	232.2	697.0	61.1	130.6	20.8	15.8	59.1	49.8	4.4
2006									
January	235.8	700.0	64.0	132.4	21.3	15.9	59.4	50.0	4.6
February	237.7	706.9	61.8	128.2	20.6	15.4	59.6	50.4	4.4
March	233.3	707.9	61.0	127.1	20.7	15.2	59.6	50.5	4.4
April	236.9	704.6	63.6	139.9	21.2	16.6	60.2	50.2	4.5
May	236.5	707.3	63.1	128.6	21.1	15.4	59.5	50.4	4.5
June	237.4	725.7	63.6	129.6	21.1	15.1	60.8	51.6	4.5
July	236.5	723.6	61.8	126.5	20.7	14.9	60.4	51.5	4.4

	EMPLOYED			UNEMPLOYED		Labour force	Not in labour force	Civilian population aged 15–19 years	UNEMPLOYMENT RATE		Participation rate	Unemployment to population ratio – looking for full-time work
	Full time	Part time	Total	Looking for f/t work	Total				Looking for f/t work	Total		
	'000	'000	'000	'000	'000				'000	'000		
NOT ATTENDING FULL-TIME EDUCATION												
<b>Males</b>												
July 2003	138.7	34.8	173.5	25.2	27.7	201.3	28.3	229.6	15.4	13.8	87.7	11.0
July 2004	142.9	37.8	180.7	25.3	26.8	207.6	25.6	233.2	15.0	12.9	89.0	10.8
July 2005	152.6	35.5	188.0	23.6	23.6	211.6	22.8	234.5	13.4	11.2	90.3	10.1
July 2006	138.0	45.1	183.1	26.0	27.1	210.3	25.5	235.8	15.9	12.9	89.2	11.0
<b>Females</b>												
July 2003	80.3	52.4	132.7	16.2	17.5	150.2	33.4	183.6	16.8	11.7	81.8	8.8
July 2004	75.7	58.5	134.2	21.0	24.3	158.5	29.3	187.9	21.7	15.3	84.4	11.2
July 2005	75.2	56.2	131.4	19.8	22.5	154.0	29.3	183.3	20.9	14.6	84.0	10.8
July 2006	77.3	51.4	128.7	20.0	22.0	150.7	33.2	183.9	20.5	14.6	82.0	10.9
<b>Persons</b>												
July 2003	219.0	87.2	306.2	41.4	45.3	351.5	61.7	413.2	15.9	12.9	85.1	10.0
July 2004	218.6	96.4	315.0	46.3	51.1	366.1	55.0	421.1	17.5	14.0	86.9	11.0
July 2005	227.8	91.7	319.5	43.4	46.1	365.6	52.2	417.8	16.0	12.6	87.5	10.4
July 2006	215.3	96.5	311.8	46.0	49.2	361.0	58.7	419.7	17.6	13.6	86.0	11.0
ATTENDING FULL-TIME EDUCATION												
<b>Males</b>												
July 2003	7.2	145.3	152.4	*4.4	31.4	183.9	287.9	471.8	*38.1	17.1	39.0	*0.9
July 2004	13.6	164.6	178.2	*3.4	26.8	205.0	271.8	476.7	*20.2	13.1	43.0	*0.7
July 2005	14.6	153.5	168.1	*4.4	30.2	198.3	281.8	480.1	*23.1	15.2	41.3	*0.9
July 2006	14.9	157.6	172.5	*4.5	28.2	200.7	282.7	483.4	*23.0	14.1	41.5	*0.9
<b>Females</b>												
July 2003	11.5	203.7	215.1	*3.7	28.5	243.7	246.1	489.8	*24.7	11.7	49.7	*0.8
July 2004	8.7	207.2	215.9	6.9	32.0	247.9	246.4	494.3	44.2	12.9	50.2	1.4
July 2005	10.6	221.0	231.6	6.0	35.9	267.4	233.4	500.8	36.1	13.4	53.4	1.2
July 2006	13.1	224.0	237.1	*1.8	26.0	263.1	240.1	503.3	*11.9	9.9	52.3	*0.4
<b>Persons</b>												
July 2003	18.6	348.9	367.6	8.2	59.9	427.5	534.1	961.6	30.5	14.0	44.5	0.8
July 2004	22.3	371.8	394.1	10.3	58.8	452.9	518.2	971.0	31.6	13.0	46.6	1.1
July 2005	25.2	374.5	399.6	10.4	66.1	465.7	515.2	980.9	29.1	14.2	47.5	1.1
July 2006	28.1	381.6	409.6	6.2	54.2	463.9	522.9	986.7	18.2	11.7	47.0	0.6
TOTAL												
<b>Males</b>												
July 2003	145.9	180.1	326.0	29.6	59.2	385.1	316.2	701.4	16.9	15.4	54.9	4.2
July 2004	156.5	202.4	358.9	28.7	53.6	412.5	297.4	710.0	15.5	13.0	58.1	4.0
July 2005	167.2	189.0	356.1	28.0	53.8	409.9	304.7	714.6	14.3	13.1	57.4	3.9
July 2006	153.0	202.6	355.6	30.5	55.4	411.0	308.3	719.2	16.6	13.5	57.1	4.2
<b>Females</b>												
July 2003	91.8	256.0	347.8	19.9	46.1	393.9	279.6	673.4	17.8	11.7	58.5	3.0
July 2004	84.4	265.7	350.1	27.8	56.3	406.4	275.7	682.1	24.8	13.9	59.6	4.1
July 2005	85.8	277.2	363.0	25.8	58.4	421.4	262.7	684.0	23.1	13.9	61.6	3.8
July 2006	90.4	275.4	365.8	21.7	48.0	413.9	273.3	687.2	19.4	11.6	60.2	3.2
<b>Persons</b>												
July 2003	237.6	436.2	673.8	49.5	105.2	779.0	595.8	1 374.8	17.2	13.5	56.7	3.6
July 2004	240.9	468.2	709.0	56.5	109.9	818.9	573.2	1 392.1	19.0	13.4	58.8	4.1
July 2005	253.0	466.1	719.1	53.8	112.2	831.3	567.3	1 398.6	17.5	13.5	59.4	3.8
July 2006	243.4	478.0	721.5	52.2	103.4	824.8	581.6	1 406.4	17.7	12.5	58.6	3.7

\* estimate is subject to sampling variability too high for most practical purposes

	EMPLOYED			UNEMPLOYED			Civilian population aged 15–19 years	UNEMPLOYMENT RATE		Participation rate	Unemployment to population ratio – looking for full-time work	
	Full time	Part time	Total	Looking for f/t work	Total	Labour force		Not in labour force	Looking for f/t work			Total
	'000	'000	'000	'000	'000	'000		'000	%			%
NOT ATTENDING FULL-TIME EDUCATION												
New South Wales	58.6	31.4	90.0	16.5	17.6	107.6	23.0	130.6	21.9	16.3	82.4	12.6
Victoria	37.4	17.8	55.2	8.6	8.9	64.1	9.1	73.2	18.7	13.8	87.6	11.8
Queensland	58.2	23.2	81.4	11.2	12.0	93.3	11.8	105.1	16.1	12.8	88.8	10.6
South Australia	13.4	8.1	21.5	4.3	4.9	26.3	5.4	31.7	24.4	18.4	83.0	13.6
Western Australia	34.5	11.4	46.0	3.4	3.8	49.8	5.8	55.6	9.1	7.6	89.6	6.2
Tasmania	6.5	2.6	9.1	*1.1	*1.1	10.2	*1.1	11.3	*14.3	*10.7	90.6	*9.7
Northern Territory	3.0	*0.4	3.4	*0.3	*0.5	3.9	2.1	6.0	*10.4	*12.2	65.0	*5.8
Australian Capital Territory	3.7	1.5	5.2	*0.5	*0.5	5.7	*0.5	6.2	*12.3	*9.1	91.3	*8.3
<b>Australia</b>	<b>215.3</b>	<b>96.5</b>	<b>311.8</b>	<b>46.0</b>	<b>49.2</b>	<b>361.0</b>	<b>58.7</b>	<b>419.7</b>	<b>17.6</b>	<b>13.6</b>	<b>86.0</b>	<b>11.0</b>
ATTENDING FULL-TIME EDUCATION												
New South Wales	11.1	108.3	119.4	*1.9	17.8	137.2	190.9	328.0	*14.9	13.0	41.8	*0.6
Victoria	*3.4	105.7	109.1	*0.6	14.5	123.6	144.4	268.0	*14.3	11.8	46.1	*0.2
Queensland	6.1	88.1	94.2	*1.5	9.6	103.8	75.0	178.8	*19.3	9.2	58.1	*0.8
South Australia	*0.9	27.6	28.5	*0.8	5.3	33.8	37.8	71.6	*48.6	15.7	47.2	*1.1
Western Australia	5.5	33.2	38.7	*1.3	4.5	43.1	48.2	91.3	*18.9	10.3	47.2	*1.4
Tasmania	*0.2	8.6	8.9	*0.1	*1.4	10.3	12.7	23.0	*29.3	*13.9	44.8	*0.4
Northern Territory	*0.3	2.9	3.2	—	*0.3	3.5	5.5	9.1	—	*9.4	39.0	—
Australian Capital Territory	*0.7	7.0	7.7	*0.1	*0.8	8.6	8.3	16.9	*11.2	*9.6	50.6	*0.5
<b>Australia</b>	<b>28.1</b>	<b>381.6</b>	<b>409.6</b>	<b>6.2</b>	<b>54.2</b>	<b>463.9</b>	<b>522.9</b>	<b>986.7</b>	<b>18.2</b>	<b>11.7</b>	<b>47.0</b>	<b>0.6</b>
TOTAL												
New South Wales	69.7	139.8	209.4	18.4	35.4	244.8	213.9	458.7	20.9	14.4	53.4	4.0
Victoria	40.8	123.5	164.3	9.2	23.4	187.7	153.5	341.2	18.4	12.5	55.0	2.7
Queensland	64.3	111.3	175.6	12.6	21.5	197.1	86.8	283.9	16.4	10.9	69.4	4.5
South Australia	14.3	35.7	50.0	5.1	10.2	60.1	43.2	103.3	26.5	16.9	58.2	5.0
Western Australia	40.0	44.7	84.7	4.7	8.2	92.9	54.0	146.9	10.5	8.9	63.2	3.2
Tasmania	6.8	11.2	18.0	*1.2	2.5	20.5	13.7	34.2	*14.9	12.3	59.9	*3.5
Northern Territory	3.2	3.4	6.6	*0.3	*0.8	7.4	7.6	15.0	*9.7	*10.9	49.3	*2.3
Australian Capital Territory	4.4	8.5	12.9	*0.6	*1.3	14.2	8.9	23.1	*12.1	*9.4	61.6	*2.6
<b>Australia</b>	<b>243.4</b>	<b>478.0</b>	<b>721.5</b>	<b>52.2</b>	<b>103.4</b>	<b>824.8</b>	<b>581.6</b>	<b>1 406.4</b>	<b>17.7</b>	<b>12.5</b>	<b>58.6</b>	<b>3.7</b>

\* estimate is subject to sampling variability too high for most practical purposes

— nil or rounded to zero (including null cells)

## WHAT IF...? REVISIONS TO TREND ESTIMATES

### EFFECT OF NEW SEASONALLY ADJUSTED ESTIMATES ON TREND ESTIMATES

#### TREND REVISIONS

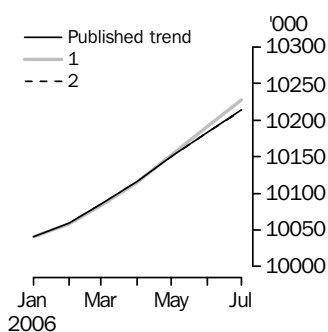
Each time new seasonally adjusted estimates become available, trend estimates are revised. This revision is a combined result of the concurrent seasonal adjustment process and the application of surrogates of the Henderson average to the seasonally adjusted series (see paragraphs 21 to 29 of the Explanatory Notes).

The examples in the tables below show two illustrative scenarios and the consequent revisions to previous trend estimates of employment and the unemployment rate. The revisions in the scenarios below are only due to the use of surrogates of the Henderson average, as the impact of revision of the seasonally adjusted estimates can not be estimated in advance.

- (1) The August seasonally adjusted estimate is *higher* than the July estimate by:  
0.26% for employment  
1.80% for the unemployment rate
- (2) The August seasonally adjusted estimate is *lower* than the July estimate by:  
0.26% for employment  
1.80% for the unemployment rate

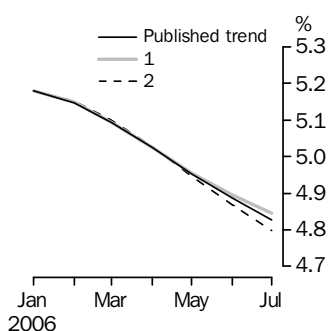
The percentage changes of 0.26% and 1.80% were chosen because they represent the average absolute monthly percentage changes in employment and the unemployment rate respectively.

#### EMPLOYMENT



	Trend as published	WHAT IF NEXT MONTH'S SEASONALLY ADJUSTED ESTIMATE IS:	
		(1) 10 274.2 i.e. rises by 0.26%	(2) 10 220.9 i.e. falls by 0.26%
<b>2006</b>			
April	10 116.2	10 115.2	10 116.1
May	10 150.0	10 152.5	10 150.1
June	10 183.6	10 191.2	10 183.3
July	10 214.2	10 227.6	10 212.8

#### UNEMPLOYMENT RATE



	Trend as published	WHAT IF NEXT MONTH'S SEASONALLY ADJUSTED ESTIMATE IS:	
		(1) 4.9 i.e. rises by 1.80%	(2) 4.7 i.e. falls by 1.80%
<b>2006</b>			
April	5.0	5.0	5.0
May	5.0	5.0	4.9
June	4.9	4.9	4.9
July	4.8	4.8	4.8

## EXPLANATORY NOTES

### INTRODUCTION

**1** This publication contains estimates of the civilian labour force derived from the Labour Force Survey component of the Monthly Population Survey. The full time series for estimates from this publication are also available electronically – see *Labour Force, Australia, Spreadsheets* (cat. no. 6202.0.55.001). More detailed estimates are released one week after this publication in various electronic formats – see *Labour Force, Australia, Detailed – Electronic Delivery* (cat. no. 6291.0.55.001) and *Labour Force, Australia, Detailed, Quarterly* (cat. no. 6291.0.55.003).

### CONCEPTS, SOURCES AND METHODS

**2** The conceptual framework used in Australia's Labour Force Survey aligns closely with the standards and guidelines set out in Resolutions of International Conferences of Labour Statisticians. Descriptions of the underlying concepts and structure of Australia's labour force statistics, and the sources and methods used in compiling the estimates, are presented in *Labour Statistics: Concepts, Sources and Methods* (cat. no. 6102.0.55.001) which is available on the ABS web site <<http://www.abs.gov.au>> (Methods, Classifications, Concepts & Standards).

### LABOUR FORCE SURVEY

**3** The Labour Force Survey is based on a multi-stage area sample of private dwellings (currently about 30,000 houses, flats, etc.) and a list sample of non-private dwellings (hotels, motels, etc.), and covers about 0.45% of the population of Australia. Information is obtained from the occupants of selected dwellings by specially trained interviewers.

**4** The information is collected using computer-assisted interviewing (CAI), whereby responses are recorded directly onto an electronic questionnaire on a notebook computer. The CAI method was progressively implemented from October 2003 to August 2004, replacing the 'pen and paper' method previously used.

**5** Households selected for the Labour Force Survey are interviewed each month for eight months, with one-eighth of the sample being replaced each month. The first interview is conducted face-to-face. Subsequent interviews are conducted by telephone (if acceptable to the respondent).

**6** The interviews are generally conducted during the two weeks beginning on the Monday between the 6th and 12th of each month. The information obtained relates to the week before the interview (i.e. the reference week). Each year, to deal with operational difficulties involved with collecting and processing the Labour Force Survey around the Christmas and New Year holiday period, interviews for December start four weeks after November interviews start, and January interviews start five weeks after December interviews start. As a result, January interviewing may commence as early as the 8th or as late as the 14th, depending on the year. Occasionally, circumstances that present significant operational difficulties for survey collection can result in a change to the normal pattern for the start of interviewing.

**7** Estimates from the Labour Force Survey are published first in this publication 31 days after the commencement of interviews for that month, with the exception of estimates for each December which are published 38 days after the commencement of interviews.

### SCOPE OF SURVEY

**8** The Labour Force Survey includes all persons aged 15 years and over except members of the permanent defence forces, certain diplomatic personnel of overseas governments customarily excluded from census and estimated population counts, overseas residents in Australia, and members of non-Australian defence forces (and their dependants) stationed in Australia.

### COVERAGE

**9** In the Labour Force Survey, coverage rules are applied which aim to ensure that each person is associated with only one dwelling, and hence has only one chance of selection. The coverage rules are necessarily a balance between theoretical and operational considerations. Nevertheless, the chance of a person being enumerated at two separate dwellings in the survey is considered to be negligible.

## EXPLANATORY NOTES *continued*

### POPULATION BENCHMARKS

**10** Labour Force Survey estimates are calculated in such a way as to add up to independent estimates of the civilian population aged 15 years and over (population benchmarks). From February 2004, labour force estimates have been compiled using benchmarks based on the results of the 2001 Census of Population and Housing. Revisions were made to historical estimates from January 1999 to January 2004.

### COMPARABILITY OF SERIES

**11** From April 1986, the definition of employed persons was changed to include persons who worked without pay between 1 and 14 hours per week in a family business or on a farm (i.e. contributing family workers). For further information, see paragraphs 36 and 37 of the Explanatory Notes to the February 1987 issue of *Labour Force, Australia* (cat. no. 6203.0).

**12** The ABS introduced telephone interviewing into the Labour Force Survey in August 1996. Implementation was phased in for each new sample group from August 1996 to February 1997. During the period of implementation, the new method produced different estimates than would have been obtained under the old methodology. The effect dissipated over the final months of implementation and was no longer discernible from February 1997. The estimates for February 1997 and onwards are directly comparable to estimates for periods prior to August 1996. For further details, see the feature article in the June 1997 issue of *Labour Force, Australia* (cat. no. 6203.0).

**13** From April 2001 the Labour Force Survey has been conducted using a redesigned questionnaire containing additional data items and some minor definitional changes. The definition of unemployed persons was changed to include all persons who were waiting to start work and were available to start in the reference week. This change was introduced in February 2004, when historical unit record data were revised from April 2001 to January 2004. This revision created a small trend break at April 2001 in unemployed persons and unemployment rate series. For further details, see *Information Paper: Forthcoming Changes to Labour Force Statistics* (cat. no. 6292.0).

**14** Core labour force series were revised in April 2001 for the period April 1986 to March 2001 for the remaining definitional changes introduced with the redesigned questionnaire, to reduce the impact of the changes on labour force series. For further details, see *Information Paper: Implementing the Redesigned Labour Force Survey Questionnaire* (cat. no. 6295.0) and *Information Paper: Questionnaires Used in the Labour Force Survey* (cat. no. 6232.0).

### SURVEY SAMPLE REDESIGN

**15** The Labour Force Survey sample was last reselected using information collected in the 2001 Census of Population and Housing.

**16** The bulk of the new sample was phased in over the period November 2002 to June 2003, with one-eighth of this portion of the sample being introduced every month. The remainder of the sample (about 18% of the total), which covers less settled areas of Australia and non-private dwellings was rotated in full for New South Wales, Victoria, Tasmania, Northern Territory and Australian Capital Territory in November 2002, and for Queensland, South Australia and Western Australia in December 2002. Such a pattern of implementation means that any changes to labour force estimates due to differences between the two samples, or any other influences, were spread over the eight months.

**17** For further details, see *Information Paper: Labour Force Survey Sample Design* (cat. no. 6269.0) and *Technical Report: New Labour Force Survey sample selections: analysis of the effect on estimates* in the October 2003 issue of *Australian Labour Market Statistics* (cat. no. 6105.0).



## EXPLANATORY NOTES *continued*

### RELIABILITY OF ESTIMATES

**18** Two types of error are possible in an estimate based on a sample survey: sampling error and non-sampling error.

**19** Sampling error occurs because a sample, rather than the entire population, is surveyed. One measure of the likely difference resulting from not including all dwellings in the survey is given by the standard error. There are about two chances in three that a sample estimate will differ by less than one standard error from the figure that would have been obtained if all dwellings had been included in the survey, and about nineteen chances in twenty that the difference will be less than two standard errors. Standard errors of estimates for the latest month and of estimates of movements since the previous month are shown on pages 27 and 28. Standard errors of other estimates and other movements may be determined by using information in the paper *Labour Force Survey Standard Errors* (cat. no. 6298.0) which is available free of charge on the ABS web site <<http://www.abs.gov.au>> (Statistics).

**20** Non-sampling error arises from inaccuracies in collecting, recording and processing the data. Every effort is made to minimise reporting error by the careful design of questionnaires, intensive training and supervision of interviewers, and efficient data processing procedures. Non-sampling error also arises because information cannot be obtained from all persons selected in the survey. The Labour Force Survey receives a high level of co-operation from individuals in selected dwellings, with the average response rate over the last year being 95%. See Glossary for definition of response rate.

### SEASONAL ADJUSTMENT AND TREND ESTIMATION

**21** Seasonal adjustment is a means of removing the estimated effects of normal seasonal variation from the series so that the effects of other influences on the series can be more clearly recognised. Seasonal adjustment does not aim to remove the irregular or non-seasonal influences which may be present in any particular month. This means that month-to-month movements of the seasonally adjusted estimates may not be reliable indicators of trend behaviour.

**22** The Labour Force Survey uses the concurrent seasonal adjustment method to derive seasonal factors. Concurrent seasonal adjustment uses data up to the current month to estimate seasonal factors for the current and all previous months. This process can result in revisions each month to estimates for earlier periods. However, in most instances, the only noticeable revisions will be to the seasonally adjusted estimates for the previous month and one year prior to the current month.

**23** Seasonal adjustment is able to remove the effect of events which occur at the same time in the survey every year. However, there are some events, like holidays, which are not always at the same time in the survey cycle or which are not at the same time across Australia. The effects of these types of events on LFS estimates cannot in all cases be removed, because the pattern of their effects cannot be determined. However, two events which are adjusted for in the seasonally adjusted series are the January interview start date and the timing of Easter.

**24** For more information on concurrent seasonal adjustment and survey proximity to holiday periods, see *Information Paper: Forthcoming Changes to Labour Force Statistics* (cat. no. 6292.0) released in December 2003.

**25** While seasonal factors for the complete time series are estimated each month, they will continue to be reviewed annually at a more detailed level to take into account each additional year's original data. This annual review will not normally result in significant changes to published estimates. The review will be conducted in February each year with the results released in the February issue of this publication.

## EXPLANATORY NOTES *continued*

### SEASONAL ADJUSTMENT AND TREND ESTIMATION *continued*

**26** The smoothing of seasonally adjusted series to produce 'trend' series reduces the impact of the irregular component of the seasonally adjusted series. These trend estimates are derived by applying a 13-term Henderson-weighted moving average to all months except the last six. The last six monthly trend estimates are obtained by applying surrogates of the Henderson average to the seasonally adjusted series. Trend estimates are used to analyse the underlying behaviour of a series over time.

**27** While this smoothing technique enables estimates to be produced for the latest month, it does result in revisions in addition to those caused by the revision of seasonally adjusted estimates. Generally, revisions due to the use of surrogates of the Henderson average become smaller, and after three months have a negligible impact on the series.

**28** Trend estimates are published for the Northern Territory in table 10 and for the Australian Capital Territory in table 11. Unadjusted series for the two territories have shown, historically, a high degree of variability, which can lead to considerable revisions to the seasonally adjusted estimates each month when seasonal factors are estimated. For this reason, seasonally adjusted estimates are not currently published for the two Territories. In addition, caution should be exercised in the interpretation of trend estimates for the two territories, particularly for the three most recent months, where revisions may be relatively large.

**29** For further information, see *A Guide to Interpreting Time Series – Monitoring Trends* (cat. no. 1349.0) or contact the Assistant Director, Time Series Analysis on (02) 6252 6345.

### RELATED PUBLICATIONS

**30** Users may also wish to refer to *Australian Labour Market Statistics* (cat. no. 6105.0). This publication contains additional tables and a detailed list of related publications. For further information about this publication, please contact the Assistant Director, Labour Market Statistics on (02) 6252 7636.

**31** ABS Information about the labour market can be found on the Labour theme page on the ABS web site <<http://www.abs.gov.au>> (Themes), or from ABS Bookshops.

**32** Current publications and other products released by the ABS are listed in the *Catalogue of Publications and Products* (cat. no. 1101.0). The Catalogue is available from any ABS office or the ABS web site <<http://www.abs.gov.au>> (Statistics). The ABS also issues a daily Release Advice on the web site (Future Releases) which details products to be released in the week ahead.

### DATA AVAILABLE ON REQUEST

**33** As well as the statistics included in this and related publications, the ABS may have other relevant data available. Inquiries should be made to the Labour Force contact officer on (02) 6252 6525 or to any ABS office.

### EFFECTS OF ROUNDING

**34** Estimates have been rounded and discrepancies may occur between sums of the component items and totals.

**35** Estimates of movement shown in this publication are obtained by taking the difference of unrounded estimates. The movement estimate is then rounded to one decimal place. Therefore where a discrepancy occurs between the reported movement and the difference of the rounded estimates, the reported movement will be more accurate.

### SYMBOLS AND OTHER USAGES

**36** SYMBOLS AND OTHER USAGES  
pts percentage points

## STANDARD ERRORS

### STANDARD ERRORS

The estimates in this publication are based on information gained from the occupants of a sample survey of dwellings. Because the entire population is not surveyed, the published estimates are subject to sampling error. The most common way of quantifying such sampling error is to calculate the standard error for the published estimate or statistic. For more information, see paragraph 19 of the Explanatory Notes.

### LEVEL ESTIMATES

To illustrate, let us say the published level estimate for employed persons aged 15–19 years is 700,000 and the associated standard error is 9,800. The standard error is then used to interpret the level estimate of 700,000. For instance, the standard error of 9,800 indicates that:

- There are approximately two chances in three that the real value falls within the range 690,200 to 709,800 (700,000 + or – 9,800)
- There are approximately nineteen chances in twenty that the real value falls within the range 680,400 to 719,600 (700,000 + or – 19,600).

The real value in this case is the result we would obtain if we could enumerate the total population.

The following table shows the standard errors for this month's level estimates.

AUSTRALIA												
.....												
		NSW	Vic.	Qld	SA	WA	Tas.	NT	ACT	Males	Females	Persons
<b>Aged 15 years and over</b>												
Employed												
Full time	'000	21.6	17.2	14.4	6.6	8.7	3.0	4.2	2.2	26.7	18.4	32.6
Part time	'000	13.5	11.0	9.7	4.4	5.8	2.1	1.4	1.3	10.0	16.4	20.2
Total	'000	25.0	20.2	15.6	7.6	9.6	3.6	5.1	2.3	29.0	26.2	37.0
Unemployed												
Looking for f/t work	'000	7.4	5.6	4.5	2.1	2.1	1.3	0.7	0.5	8.0	6.3	10.4
Looking for p/t work	'000	4.1	3.7	2.6	1.4	1.5	0.6	0.5	0.4	3.8	5.0	6.4
Total	'000	8.7	6.9	5.2	2.5	2.5	1.4	1.0	0.7	9.0	8.2	12.5
Labour force	'000	25.5	20.6	15.7	7.7	9.6	3.7	5.2	2.3	29.6	26.9	37.5
Not in labour force	'000	23.0	17.7	13.3	6.6	9.0	3.3	4.4	2.0	24.1	29.3	34.7
Unemployment rate												
Looking for f/t work	pts	0.3	0.3	0.3	0.4	0.3	0.8	0.8	0.4	0.2	0.2	0.1
Looking for p/t work	pts	0.4	0.5	0.4	0.6	0.5	0.7	2.3	0.8	0.4	0.2	0.2
Total	pts	0.2	0.3	0.2	0.3	0.2	0.6	0.9	0.4	0.2	0.2	0.1
Participation rate	pts	0.5	0.5	0.5	0.6	0.6	0.9	3.5	0.9	0.4	0.3	0.2
<b>Aged 15–19 years</b>												
Employed												
Full time	'000	3.3	2.4	2.6	1.0	1.7	0.5	0.5	0.4	4.4	3.6	5.4
Part time	'000	4.3	3.7	3.4	1.5	1.7	0.7	0.5	0.5	5.0	5.7	7.4
Total	'000	5.3	4.3	4.4	1.8	2.5	0.8	0.6	0.6	6.4	6.5	9.1
Unemployed												
Looking for f/t work	'000	2.7	1.7	1.9	0.9	0.9	0.3	0.2	0.2	3.0	2.5	3.9
Looking for p/t work	'000	2.6	2.1	1.6	0.9	0.8	0.4	0.3	0.3	2.7	2.8	3.9
Total	'000	3.8	2.7	2.5	1.3	1.3	0.5	0.4	0.4	4.0	3.7	5.6
Labour force	'000	5.8	4.7	4.7	2.0	2.7	0.9	0.7	0.7	6.9	6.9	9.8
Not in labour force	'000	7.4	5.6	4.0	2.1	2.8	1.0	1.1	0.7	7.4	6.9	10.9
Unemployment rate												
Looking for f/t work	pts	2.9	3.2	2.4	4.5	2.1	4.3	5.5	4.8	1.6	2.1	1.3
Looking for p/t work	pts	1.6	1.5	1.3	2.2	1.7	2.9	6.3	2.9	1.1	0.9	0.7
Total	pts	1.5	1.4	1.2	2.1	1.3	2.5	4.7	2.5	1.0	0.9	0.7
Participation rate	pts	1.3	1.4	1.7	1.9	1.8	2.7	4.4	2.9	1.0	1.0	0.7
Unemployment to population ratio – looking for f/t work	pts	0.6	0.5	0.7	0.9	0.6	1.0	1.3	1.1	0.4	0.4	0.3

## STANDARD ERRORS *continued*

### MOVEMENT ESTIMATES

The following example illustrates how to use the standard error to interpret a movement estimate. Let us say that one month the published level estimate for females employed part time in Australia is 1,890,000; the next month the published level estimate is 1,900,000 and the associated standard error for the movement estimate is 10,600. The standard error is then used to interpret the published movement estimate of 10,000. For instance, the standard error of 10,600 indicates that:

- There are approximately two chances in three that the real movement between the two months falls within the range -600 to 20,600 (10,000 + or - 10,600)
- There are approximately nineteen chances in twenty that the real movement falls within the range -11,200 to 31,200 (10,000 + or - 21,200).

The following table shows the standard errors for this month's movement estimates.

		AUSTRALIA										
		NSW	Vic.	Qld	SA	WA	Tas.	NT	ACT	Males	Females	Persons
<b>Aged 15 years and over</b>												
Employed												
Full time	'000	13.7	10.6	9.2	4.0	5.5	1.7	1.6	1.5	16.9	12.1	21.5
Part time	'000	8.4	6.8	5.5	2.5	3.3	1.2	0.8	0.9	7.1	11.0	13.1
Total	'000	16.5	12.9	11.8	5.5	7.2	2.3	1.8	1.8	18.5	16.6	26.1
Unemployed												
Looking for f/t work	'000	7.9	5.5	5.0	2.1	2.5	1.2	0.6	0.6	8.7	7.0	11.4
Looking for p/t work	'000	4.4	3.8	3.1	1.4	1.6	0.6	0.5	0.5	4.1	5.6	7.0
Total	'000	9.2	7.0	6.0	2.5	3.0	1.3	0.8	0.8	9.7	9.1	13.7
Labour force	'000	17.0	13.3	12.2	5.7	7.4	2.5	1.9	1.8	19.0	17.0	26.8
Not in labour force	'000	16.0	12.8	10.5	5.0	6.2	2.1	1.7	1.7	14.4	18.6	25.1
Unemployment rate												
Looking for f/t work	pts	0.3	0.3	0.3	0.4	0.3	0.8	0.9	0.4	0.2	0.3	0.1
Looking for p/t work	pts	0.5	0.5	0.5	0.6	0.5	0.8	2.6	0.9	0.4	0.2	0.2
Total	pts	0.3	0.3	0.3	0.3	0.3	0.6	1.0	0.4	0.2	0.2	0.1
Participation rate	pts	0.3	0.3	0.4	0.5	0.5	0.6	1.3	0.7	0.2	0.2	0.2
<b>Aged 15-19 years</b>												
Employed												
Full time	'000	2.6	1.8	2.1	0.8	1.3	0.4	0.3	0.3	3.5	2.9	4.1
Part time	'000	3.5	2.8	2.6	1.1	1.5	0.5	0.4	0.4	3.9	4.4	5.5
Total	'000	4.1	3.2	3.2	1.3	1.9	0.6	0.4	0.5	4.9	4.9	6.6
Unemployed												
Looking for f/t work	'000	3.2	1.8	2.0	0.9	1.0	0.4	0.1	0.2	3.1	3.0	4.4
Looking for p/t work	'000	2.6	2.3	1.8	0.9	0.9	0.5	0.2	0.4	3.0	3.0	4.3
Total	'000	4.1	2.9	2.8	1.3	1.4	0.6	0.3	0.4	4.4	4.3	6.2
Labour force	'000	4.4	3.4	3.3	1.4	2.0	0.6	0.5	0.5	5.2	5.2	7.0
Not in labour force	'000	4.9	3.7	2.8	1.4	1.8	0.6	0.7	0.5	5.4	5.1	7.1
Unemployment rate												
Looking for f/t work	pts	3.5	3.5	2.7	4.7	2.3	4.5	6.5	4.9	1.7	2.7	1.4
Looking for p/t work	pts	1.7	1.6	1.4	2.2	1.8	3.7	6.5	3.5	1.2	1.0	0.8
Total	pts	1.7	1.6	1.4	2.2	1.4	2.9	5.0	2.8	1.0	1.0	0.7
Participation rate	pts	1.0	1.0	1.2	1.4	1.3	1.9	3.2	2.2	0.7	0.8	0.5
Unemployment to population ratio - looking for f/t work												
	pts	0.7	0.5	0.7	0.9	0.7	1.1	0.9	1.0	0.4	0.4	0.3

## GLOSSARY

<b>Actively looking for work</b>	Includes writing, telephoning or applying in person to an employer for work; answering an advertisement for a job; checking factory noticeboards or the touchscreens at the Centrelink offices; being registered with Centrelink as a jobseeker; checking or registering with any other employment agency; advertising or tendering for work; and contacting friends or relatives.
<b>Attending full-time education</b>	Persons aged 15–24 years enrolled at secondary or high school or enrolled as a full time student at a Technical and Further Education (TAFE) college, university, or other educational institution in the reference week.
<b>Attending school</b>	Persons aged 15–19 years enrolled at secondary or high school in the reference week.
<b>Attending tertiary educational institution full time</b>	Persons aged 15–24 years enrolled full time at a TAFE college, university, or other educational institution in the reference week, except those persons aged 15–19 years who were still attending school.
<b>Civilian population aged 15 years and over</b>	All usual residents of Australia aged 15 years and over except members of the permanent defence forces, certain diplomatic personnel of overseas governments customarily excluded from census and estimated population counts, overseas residents in Australia, and members of non-Australian defence forces (and their dependants) stationed in Australia.
<b>Employed</b>	<p>All persons aged 15 years and over who, during the reference week:</p> <ul style="list-style-type: none"> <li>■ worked for one hour or more for pay, profit, commission or payment in kind in a job or business, or on a farm (comprising employees, employers and own account workers); or</li> <li>■ worked for one hour or more without pay in a family business or on a farm (i.e. contributing family workers); or</li> <li>■ were employees who had a job but were not at work and were: <ul style="list-style-type: none"> <li>■ away from work for less than four weeks up to the end of the reference week; or</li> <li>■ away from work for more than four weeks up to the end of the reference week and received pay for some or all of the four week period to the end of the reference week; or</li> <li>■ away from work as a standard work or shift arrangement; or</li> <li>■ on strike or locked out; or</li> <li>■ on workers' compensation and expected to return to their job; or</li> </ul> </li> <li>■ were employers or own account workers, who had a job, business or farm, but were not at work.</li> </ul>
<b>Employment to population ratio</b>	For any group, the number of employed persons expressed as a percentage of the civilian population in the same group.
<b>Full-time workers</b>	Employed persons who usually worked 35 hours or more a week (in all jobs) and those who, although usually working less than 35 hours a week, worked 35 hours or more during the reference week.
<b>Labour force</b>	For any group, persons who were employed or unemployed, as defined.
<b>Labour force status</b>	A classification of the civilian population aged 15 years and over into employed, unemployed or not in the labour force, as defined. The definitions conform closely to the international standard definitions adopted by the International Conferences of Labour Statisticians.
<b>Not in labour force</b>	Persons who were not in the categories employed or unemployed as defined.
<b>Participation rate</b>	For any group, the labour force expressed as a percentage of the civilian population aged 15 years and over in the same group.
<b>Part-time workers</b>	Employed persons who usually worked less than 35 hours a week (in all jobs) and either did so during the reference week, or were not at work in the reference week.

## GLOSSARY *continued*

---

<b>Response rate</b>	The number of fully responding dwellings expressed as a percentage of the total number of dwellings excluding sample loss. Examples of sample loss include: dwellings where all persons are out of scope and/or coverage; vacant dwellings; dwellings under construction; dwellings converted to non-dwellings; derelict dwellings; and demolished dwellings.
<b>Seasonally adjusted series</b>	A time series of estimates with the estimated effects of normal seasonal variation removed. See Explanatory Notes 21 to 25 for more detail.
<b>Trend series</b>	A smoothed seasonally adjusted series of estimates. See Explanatory Notes 26 to 28 for more detail.
<b>Unemployed</b>	Persons aged 15 years and over who were not employed during the reference week, and: <ul style="list-style-type: none"><li>■ had actively looked for full-time or part-time work at any time in the four weeks up to the end of the reference week and were available for work in the reference week; or</li><li>■ were waiting to start a new job within four weeks from the end of the reference week and could have started in the reference week if the job had been available then.</li></ul>
<b>Unemployed looking for full-time work</b>	Unemployed persons who: <ul style="list-style-type: none"><li>■ actively looked for full-time work; or</li><li>■ were waiting to start a new full-time job.</li></ul>
<b>Unemployed looking for part-time work</b>	Unemployed persons who: <ul style="list-style-type: none"><li>■ actively looked for part-time work only; or</li><li>■ were waiting to start a new part-time job.</li></ul>
<b>Unemployment rate</b>	For any group, the number of unemployed persons expressed as a percentage of the labour force in the same group.
<b>Unemployment to population ratio</b>	For any group, the number of unemployed persons expressed as a percentage of the civilian population in the same group.



**FOR MORE INFORMATION . . .**

*INTERNET*      **www.abs.gov.au** the ABS web site is the best place for data from our publications and information about the ABS.

*LIBRARY*      A range of ABS publications are available from public and tertiary libraries Australia wide. Contact your nearest library to determine whether it has the ABS statistics you require, or visit our web site for a list of libraries.

**INFORMATION AND REFERRAL SERVICE**

Our consultants can help you access the full range of information published by the ABS that is available free of charge from our web site, or purchase a hard copy publication. Information tailored to your needs can also be requested as a 'user pays' service. Specialists are on hand to help you with analytical or methodological advice.

- PHONE*                      1300 135 070
- EMAIL*                      client.services@abs.gov.au
- FAX*                              1300 135 211
- POST*                            Client Services, ABS, GPO Box 796, Sydney NSW 2001

**FREE ACCESS TO STATISTICS**

All ABS statistics can be downloaded free of charge from the ABS web site.

*WEB ADDRESS*      [www.abs.gov.au](http://www.abs.gov.au)



2620200007067  
ISSN 1448 2819

**RRP \$26.00**

