



TASMANIAN STATISTICAL INDICATORS

EMBARGO: 11:30AM (CANBERRA TIME) MON 8 MAY 2000

CONTENTS

	<i>page</i>
NOTES	2
MAIN FEATURES	3
LIST OF TABLES	7
 SUBJECT AREAS	
1 Population and demography	9
2 Labour force	10
3 Wages and prices	19
4 Production	23
5 Primary industry	24
6 Building	28
7 Finance	29
8 Tourism	30
9 Transport	32
10 Retail trade	32
11 Overseas trade	33
12 Australia and State comparisons	35
13 Tasmanian Statistical Divisions comparisons	36
 ADDITIONAL INFORMATION	
Map: Tasmanian Statistical Divisions	37

- For further information about these and related statistics, contact the National Information Service on 1300 135 070 or Wally Van Schie on Hobart 03 6222 5812.

NOTES

FORTHCOMING ISSUES	<i>ISSUE</i>	<i>RELEASE DATE</i>
	June 2000	8 June 2000
	July 2000	10 July 2000
	August 2000	8 August 2000
INTRODUCTION	1	This publication contains latest figures for a comprehensive range of economic indicators. Statistics shown in this publication are the latest available at the date of preparation and may be subject to revision in subsequent issues. In a number of cases figures appearing in this publication are preliminary and are subject to revision in subsequent issues. Reference should therefore always be made to the latest issue or to the statistical publication on the specific subject.
SEASONAL ADJUSTMENT AND TREND ESTIMATION	2	Seasonal adjustment is a means of removing the estimated effects of normal seasonal variation from the series so that the effects of other influences on the series can be more clearly recognised. Seasonal adjustment does not aim to remove the irregular or non-seasonal influences which may be present in any particular month. This means that month-to-month movements of the seasonally adjusted estimates may not be reliable indicators of trend behaviour.
	3	The smoothing of seasonally adjusted series reduces the impact of the irregular components of the seasonally adjusted series and creates trend estimates. These trend estimates are derived by applying a 13-term Henderson-weighted moving average to all months except the last six. The last six monthly trend estimates are obtained by applying surrogates of the Henderson average to the seasonally adjusted series. Trend series are used to measure the underlying behaviour of the series over time.
	4	While this smoothing technique enables estimates to be produced for the latest month, it does result in revisions to the most recent months as additional observations become available. Generally, subsequent revisions become smaller and after 3 months have a negligible impact on the series. Revisions also occur as a result of the annual review of seasonal factors.
ABBREVIATIONS AND SYMBOLS	n.a.	not available
	n.p.	not available for separate publication (but included in totals where applicable)
	n.y.a.	not yet available
	..	not applicable
	—	nil or rounded to zero
	p	preliminary—figure or series subject to revision
	r	figure or series revised since previous issue

Stevan R. Matheson
Regional Director, Tasmania

MAIN FEATURES

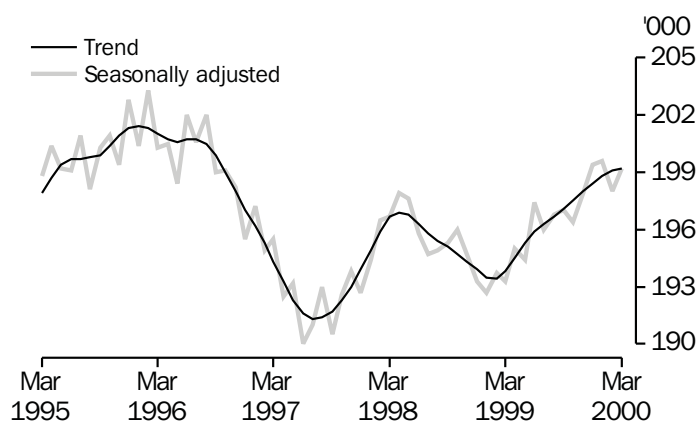
EMPLOYMENT

State comparisons

Trend estimates

There was an increase of 2.8% in Tasmania's employment over the 12 months to March 2000. The largest percentage increase in employment was in Western Australia (3.9%), followed by New South Wales (3.4%), South Australia (3.1%), Victoria (2.8%), and Queensland (1.7%). The increase in Australia's employment over the same period was 2.9%. (See table 39 and ABS catalogue number 6202.0.)

EMPLOYMENT, TASMANIA

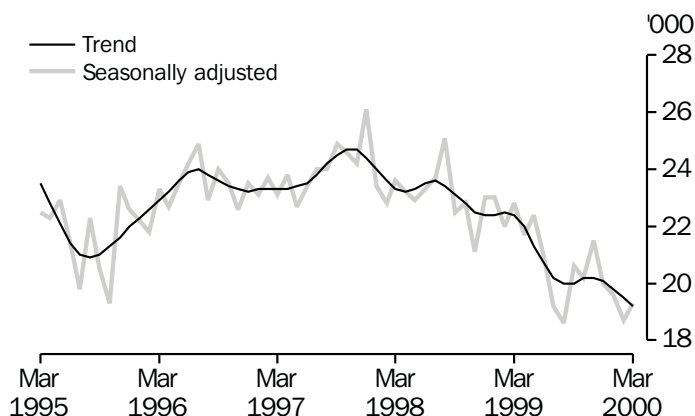


THE LABOUR FORCE

Trend estimates

There were an estimated 218,400 persons (based on *trend* estimates) in the labour force in March 2000 and an estimated 370,400 civilian Tasmanians aged 15 years or more, yielding a labour force participation rate of 59.0%. This compares with 58.4% in March 1999. The Australian labour force participation rate for February 2000 was 63.5%. This compares with 63.0% in March 1999. (See table 39 and ABS catalogue number 6202.0.)

UNEMPLOYMENT, TASMANIA



For Tasmanian males, the *trend* estimate of the participation rate was 67.0%, compared with 68.1% in March 1999. For Tasmanian females, the trend estimate of the participation rate was 51.4%, compared with 49.3% in March 1999. (See table 3.)

UNEMPLOYMENT

Trend estimates The *trend* estimate of the number of unemployed persons in Tasmania for March 2000 was 19,200. This compares with 22,400 for March 1999. The *trend* estimate of the unemployment rate of 8.8% in March 2000 compares with 10.4% in March 1999. The Australian *trend* estimate of the unemployment rate of 6.8% in March 2000 compares with 7.4% in March 1999. (See table 3 and 39, and ABS catalogue number 6202.0.)

LIVESTOCK SLAUGHTERING

Trend Estimates Monthly movements of *trend* estimates showed falls in all three livestock slaughtering series. Cattle and calves fell slightly, while sheep and lambs fell by 2.5% and pigs by 2.1%.

In February 2000, the *trend* estimate of the number of cattle and calves slaughtered was 22,300. This was 3.1% above the number for February 1999 but 6.2% below the number for February 1998. The *trend* estimate for the slaughtering of sheep and lambs was 79,700 in February 2000. This was 7.3% more than for February 1999, and 7.4% above the number for February 1998. The *trend* estimate of 5,300 pigs slaughtered in February 2000 was 17.1% less than for February 1999 and 15.9% less than the *trend* estimate for February 1998. (See table 21.)

BUILDING APPROVALS

Original terms There were 168 dwelling units approved during February 2000 in Tasmania, of which 135 were new houses and 33 were new other residential building. Glenorchy (27) registered the highest number of dwellings approved, followed by Kingborough (21) and Clarence (14). The number of dwelling units approved during February 2000 was 7.2% below the January 2000 figure of 181, but 54.1% above the February 1999 figure of 109.

At current prices, the value of total building was \$42.2 million in February 2000, with residential building contributing \$20.8 million and non-residential building \$21.4 million. (See table 27 and ABS catalogue number 8731.6.)

ENGINEERING CONSTRUCTION ACTIVITY

Original terms In *original* terms, the value of engineering construction work commenced in Tasmania in the December quarter 1999 was \$53.0 million, 24.6% below that in the September quarter 1999 and 28.0% above that in the December quarter 1998. Some 72.8% of the value of work commenced during the period was by the public sector (\$38.6 million).

The value of work done in Tasmania in the December quarter 1999 was \$53.1 million, 13.9% above that in the September quarter 1999 and 13.9% below that in the December quarter 1998. The value of work done by the public sector during the period was \$34.8 million.

The value of work yet to be done in Tasmania in the December quarter 1999 was \$45.6 million, 13.6% below that in the September quarter 1999 and 20.3% below that in the December quarter 1998. Some 52.9% of the value of work yet to be done was work by the public sector (\$24.1 million). (See ABS catalogue number 8762.0.)

HOUSING FINANCE

Trend estimates The *trend* estimate for the number of secured housing finance commitments entered into in Tasmania in February 2000 was 810 dwellings, lower than the previous month's 825, and also lower than the February 1999 figure of 893. The total value of commitments in February 2000 was \$68 million, the same as the previous month. The February 2000 figure was lower than the February 1999 figure when the total value of commitments was \$76 million.

Nationally, the total number of secured housing commitments entered into in February 2000 was 47,999, a decrease from the previous month's figure of 48,328. The value of these commitments increased between January and February 2000 from \$6,785 million to \$6,792 million. (See table 28.)

GOVERNMENT FINANCIAL ESTIMATES

For the first time, Government Finance Statistics (GFS) have been produced on an accrual basis. Due to jurisdictions being at different stages in implementing accrual accounting into their public accounts and budget management systems, *Government Finance Estimates, Australia 1999–2000* (ABS catalogue no. 5501.0) released earlier this month, are *experimental* estimates, and cover the General Government sector only. The ABS expects to release the full range of accrual GFS in the future.

The experimental estimates for the Tasmania General Government sector show that revenues are expected to increase by 2.1% from \$2,325 million in 1998–99 to \$2,374 million in 1999–2000. Expenses are expected to increase by slightly less, 1.3%, from \$2,292 million in 1998–99 to \$2,322 million in 1999–2000. As a result, the *net operating* balance is expected to increase from \$33 million in 1998–99 to \$52 million in 1999–2000. The estimates for all State Governments combined, however, show a significant decrease expected in *net operating* balance from \$4,907 million in 1998–99 to \$1,226 million in 1999–2000. This drop is mainly attributable to a marked fall in expected revenue of the Victoria State Government. Estimates for the Commonwealth Government forecast an increase in *net operating* balance from \$4,347 million in 1998–99 to \$5,752 million in 1999–2000.

Preliminary estimates of the Tasmania Government Balance Sheet show a Net Worth of \$6,062 million at 30 June 1999, comprising assets of \$10,040 million and liabilities of \$3,978 million. Land and fixed assets were estimated at \$5,430 million, while the bulk of the liabilities were made up of unfunded superannuation liability and other employee entitlements (\$1,654 million) and borrowing (\$1,545 million). (See ABS catalogue no. 5501.0.)

TOURIST ACCOMMODATION

Original terms Rooms and units available in licensed hotels, motels and guest houses, and serviced apartments with 15 or more rooms or units decreased by 1.1% in the December quarter 1999 compared with the December quarter 1998; however, there was an increase in capacity of motels and guest houses (0.2%) and serviced apartments (0.1%).

Rooms nights occupied decreased overall by 0.1% in the December quarter 1999 compared with the December quarter 1998. Room occupancy rates decreased from 56.2% to 56.0% overall, with rates decreasing for licensed hotels with facilities (from 56.7% to 56.2%) and motels and guest houses (from 53.3% to 52.2%), but increasing for serviced apartments (from 60.3% to 62.9%).

Takings from accommodation decreased by 6.2% overall in the December quarter 1999 compared with the December quarter 1998, with takings decreasing for motels and guest houses (by 9.5%) and licensed hotels with facilities (by 9.3%) but increasing for serviced apartments (by 7.7%). Average takings per room night occupied decreased for licensed hotels with facilities (from \$89 to \$81) and motels and guest houses (from \$88 to \$81), but increased for serviced apartments (from \$102 to \$105). (See table 31.)

NEW MOTOR VEHICLE REGISTRATIONS

Original terms There were 992 new motor vehicles (excluding motorcycles) registered in Tasmania during February 2000. This was 4.2% above the 952 registered in January 2000 and 6.9% above the February 1999 figure of 928. Of the new motor vehicles (excluding motorcycles) registered in February 2000 in Tasmania, 1 was a vehicle registered by vehicle rental businesses, compared with 59 registered by vehicle rental businesses in January 2000 and 23 in February 1999. (See table 34.)

RETAIL

Original terms In *original* terms, the estimate of retail turnover in Australia for February 2000 was \$10,871.2 million, 6.6% above the figure recorded in February 1999. In *original* terms, the estimate of retail turnover in Tasmania for February 2000 was \$254.3 million, 4.5% above the figure recorded in February 1999.

Trend estimates In *trend* terms, the estimate of retail turnover in Australia for February 2000 was \$11,929.6 million, 3.4% above the figure recorded in February 1999. In *trend* terms, the estimate of retail turnover in Tasmania for February 2000 was \$267.8 million, 0.7% above the figure recorded in February 1999. Following a long period of growth, the Tasmanian trend estimate has decreased for the last four months. However, growth in the Hospitality and services group remained strong. (See table 35 and ABS catalogue number 8501.0.)

OVERSEAS TRADE

The total value of Tasmania's overseas exports for the 1998–99 financial year was \$2,019 million. This contributed 2.3% to the Australian total of \$85,991 million.

The value of Tasmania's exports for the month of February 2000 was \$185 million, a fall of 20% over the month of January. Australia's exports for February totalled \$8,159 million, an increase of 20% over the January figure.

Tasmania's major export destinations for the month of February 2000 were Japan (\$48.8m), Hong Kong (\$20.3m) and Taiwan (\$18.0m). Major commodity groups exported for the month were non-ferrous metals (\$67.8m), and wood and woodchips (\$32.4m). For the financial year 1998–1999, major commodity groups exported were non-ferrous metals (\$544.3m), wood and woodchips (\$296.2m) and metallic ores and metal scrap (\$278.0m).

LIST OF TABLES

	Page
1 Population	9
2 Births, deaths and marriages	9
3 Labour force status	10
4 Labour force status by region, males	11
5 Labour force status by region, females	12
6 Labour force status by region, persons	13
7 Teenage labour market	14
8 All employed persons by occupation	15
9 Employed wage and salary earners, sector and industry	16
10 Average hours worked	16
11 Job vacancies	17
12 Industrial disputes	17
13 Average weekly earnings of employees	18
14 Indexes of total hourly rates of pay	18
15 Summary of annual movements in wages and prices	19
16 House price index numbers, Hobart	19
17 Consumer price index, Hobart and eight capital cities combined	20
18 Price index of materials used in building other than house building, Hobart	21
19 Production of selected commodities	23
20 Livestock slaughtering: original	24
21 Livestock slaughtering: seasonally adjusted and trend	24
22 Meat production	25
23 Principal mineral concentrates produced	25
24 Sawmills and plywood mills, logs delivered and timber produced	26
25 Chipping and grinding of wood	26
26 Logs delivered for milling or chipping	27
27 Building approvals	28
28 Secured housing commitments	28
29 Banking statistics	29
30 Private new capital expenditure by type of asset	29

LIST OF TABLES—continued

	Page
31 Accommodation establishments	30
32 National Parks, person entries	31
33 Tracks in National Parks, walker registrations	31
34 Registrations of new motor vehicles	32
35 Turnover of retail establishments at current prices	32
36 Value of overseas trade—Tasmania and Australia	33
37 Merchandise exports by selected countries and country groups	33
38 Merchandise exports by selected commodity groups	34
39 Major Statistical Indicators—Australia and State comparisons	35
40 Major Statistical Indicators—Tasmanian Statistical Divisions	36

1

POPULATION: Original

Year or quarter	Estimated resident population at end of period	Natural increase(a)	Net estimated migration gain	Total population growth	Annual growth rate(b)
	'000	'000	'000	'000	%
Year ended 30 June					
1997	473.5	2.4	-3.4	-1.0	-0.20
1998	471.7	2.1	-3.9	-1.8	-0.38
1999	470.3	2.5	-3.9	-1.4	-0.31
Quarter					
1997					
September	473.1	0.4	-0.9	-0.4	-0.31
December	472.6	0.5	-1.0	-0.4	-0.34
1998					
March	472.3	0.6	-1.0	-0.3	-0.38
June	471.7	0.5	-1.1	-0.6	-0.38
September p	471.4	0.5	-0.8	-0.3	-0.36
December p	470.9	0.7	-1.2	-0.4	-0.36
1999					
March p	470.5	0.6	-1.0	-0.5	-0.39
June p	470.3	0.7	-0.9	-0.2	-0.31
September p	470.1	0.5	-0.6	-0.1	-0.26

(a) Excess of live births registered over deaths registered (based on usual State of residence).
(b) Percentage growth from same quarter in previous year.
(Source: Australian Demographic Statistics, ABS catalogue number 3101.0.)

2

BIRTHS, DEATHS AND MARRIAGES(a): Original

Year or quarter	Births		Deaths		Infant mortality(b)		Marriages	
	No.	Rate(c)	No.	Rate(d)	Deaths	Rate(e)	No.	Rate(f)
Year ended 31 December								
1996	6 337	1.854	3 826	7.0	28	4.4	2 654	5.6
1997	5 974	1.768	3 837	6.8	43	7.2	2 672	5.6
1998	5 909	1.809	3 557	6.3	30	5.1	2 599	5.5
Quarter								
1997								
September	1 500	..	1 067	..	12	8.0	554	..
December	1 486	..	939	..	12	8.1	618	..
1998								
March	1 464	..	839	..	3	2.0	800	..
June	1 420	..	921	..	11	7.7	810	..
September	1 541	..	1 029	..	9	5.8	331	..
December	1 484	..	768	..	7	4.7	658	..
1999								
March p	1 471	..	914	..	9	6.1	808	..
June p	1 582	..	909	..	12	7.6	636	..
September p	1 555	..	1 035	..	16	10.3	327	..

(a) Usual residents of Tasmania.
(b) Deaths of children under one year of age.
(c) Total fertility rate. The sum of age-specific fertility rates (live births at each age of mother per female population of that age). It represents the number of children a woman would bear during her lifetime if she experienced current age-specific fertility rates at each age of her reproductive life.
(d) Standardised death rate. The overall death rate, per 1,000 persons, that would have prevailed in a standard population if it had experienced at each age the death rates of the population being studied. The standard population used in these calculations is all persons in the 1991 Australian population.
(e) Rate per 1,000 live births.
(f) Crude marriage rate is the number of marriages registered during the calendar year, per 1,000 estimated resident population at 30 June of that year.
(Source: Australian Demographic Statistics, ABS catalogue number 3101.0.)

3

LABOUR FORCE STATUS(a): **Seasonally adjusted and trend**

Month	Seasonally adjusted series(b)				Trend series(b)			
	Employed	Unemployed	Unemployment rate	Participation rate	Employed	Unemployed	Unemployment rate	Participation rate
	'000	'000	%	%	'000	'000	%	%
MALES								
1999								
March	107.8	15.0	12.2	68.1	108.1	14.7	12.0	68.1
April	109.1	13.9	11.3	68.2	108.7	14.4	11.7	68.3
May	109.2	14.6	11.8	68.7	109.5	13.9	11.3	68.4
June	111.0	13.4	10.8	69.0	110.1	13.3	10.8	68.5
July	110.5	12.7	10.3	68.3	110.4	12.9	10.5	68.4
August	110.5	11.5	9.4	67.7	110.4	12.7	10.3	68.3
September	110.2	13.1	10.6	68.4	110.4	12.6	10.3	68.3
October	109.8	12.5	10.2	67.9	110.2	12.6	10.3	68.2
November	109.9	13.5	10.9	68.5	110.1	12.5	10.2	68.0
December	110.5	12.4	10.1	68.2	110.0	12.3	10.1	67.8
2000								
January	109.8	11.8	9.7	67.5	109.8	11.9	9.8	67.6
February	109.7	10.9	9.1	66.9	109.7	11.5	9.5	67.3
March	109.3	11.0	9.1	66.7	109.6	11.1	9.2	67.0
FEMALES								
1999								
March	85.4	7.8	8.4	49.1	85.7	7.7	8.3	49.3
April	85.9	7.8	8.4	49.4	85.7	7.6	8.1	49.2
May	85.2	7.9	8.4	49.0	85.8	7.4	8.0	49.1
June	86.4	7.4	7.9	49.5	85.8	7.3	7.9	49.1
July	85.5	6.6	7.1	48.5	85.9	7.3	7.8	49.1
August	86.4	7.2	7.7	49.3	86.2	7.3	7.8	49.3
September	86.8	7.5	8.0	49.7	86.7	7.4	7.8	49.6
October	86.6	7.6	8.1	49.6	87.3	7.5	7.9	49.9
November	88.0	8.0	8.4	50.6	87.9	7.7	8.1	50.3
December	88.9	7.6	7.9	50.8	88.5	7.8	8.1	50.7
2000								
January	89.8	7.9	8.1	51.4	89.0	7.9	8.2	51.0
February	88.3	7.8	8.1	50.6	89.3	8.0	8.2	51.2
March	89.9	8.3	8.5	51.7	89.6	8.1	8.3	51.4
TOTAL								
1999								
March	193.3	22.8	10.5	58.4	193.8	22.4	10.4	58.4
April	195.0	21.7	10.0	58.6	194.5	22.0	10.2	58.5
May	194.4	22.4	10.3	58.6	195.3	21.3	9.9	58.5
June	197.4	20.9	9.6	59.0	195.9	20.7	9.5	58.5
July	196.0	19.2	8.9	58.2	196.3	20.2	9.3	58.5
August	196.8	18.6	8.6	58.2	196.7	20.0	9.2	58.6
September	197.0	20.6	9.5	58.8	197.1	20.0	9.2	58.7
October	196.4	20.2	9.3	58.5	197.5	20.2	9.3	58.8
November	197.9	21.5	9.8	59.3	198.0	20.2	9.3	59.0
December	199.4	20.0	9.1	59.3	198.4	20.1	9.2	59.0
2000								
January	199.6	19.6	9.0	59.2	198.8	19.8	9.1	59.1
February	198.0	18.7	8.6	58.5	199.1	19.5	8.9	59.0
March	199.2	19.3	8.9	59.0	199.2	19.2	8.8	59.0

(a) For explanation of terms and concepts, refer to *Labour Force, Australia*, ABS catalogue number 6203.0.

(b) Seasonal factors are reviewed annually to take account of each additional year's original data. The results of the review are used to compile revised seasonally adjusted and trend estimates each February. Trend estimates for the most recent months are also revised each month; see Notes on page 2.

(Source: *Labour Force Australia*, ABS catalogue number 6203.0.)

4

LABOUR FORCE STATUS BY REGION, MALES(a,b): **Original**

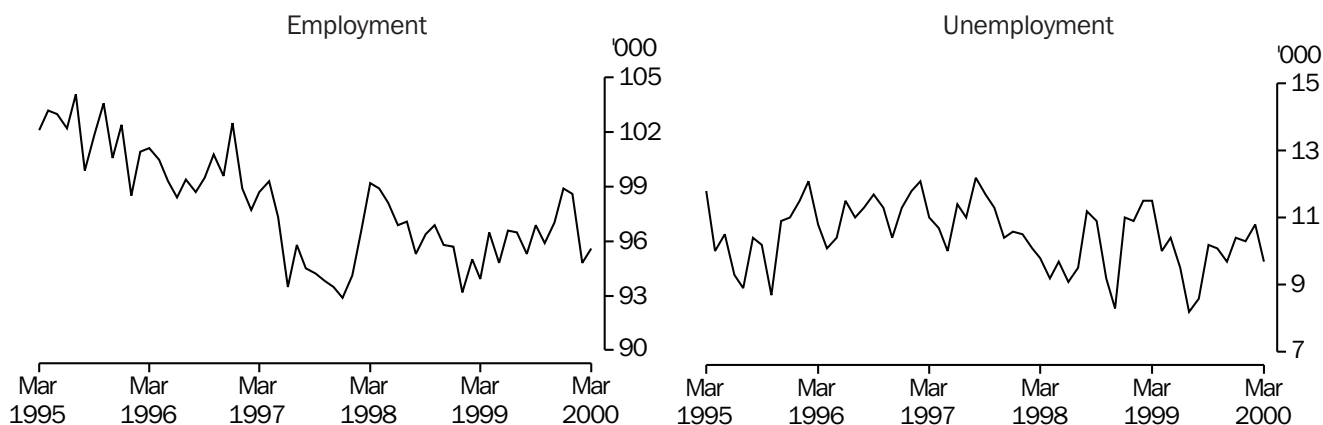
	<i>Total employed</i>	<i>Total unemployed</i>	<i>Unemployment rate</i>	<i>Participation rate</i>
<i>Month</i>	'000	'000	%	%
HOBART AND SOUTHERN STATISTICAL DIVISIONS				
1997				
March	54.6	6.3	10.3	68.4
1999				
March	51.7	7.7	13.0	68.9
2000				
January	53.7	5.8	9.8	66.9
February	51.9	5.4	9.4	65.6
March	51.7	5.0	8.7	65.4
NORTHERN STATISTICAL DIVISION				
1997				
March	33.9	3.8	10.1	72.7
1999				
March	31.8	3.9	10.9	68.4
2000				
January	31.5	2.9	8.4	67.8
February	31.6	2.9	8.5	67.2
March	32.6	2.5	7.1	67.6
MERSEY-LYELL STATISTICAL DIVISION				
1997				
March	24.4	3.5	12.5	71.3
1999				
March	24.7	3.7	13.0	67.7
2000				
January	24.2	3.9	13.9	69.4
February	26.4	3.3	11.0	71.4
March	25.4	3.8	13.1	70.0
TASMANIA				
1997				
March	113.0	13.6	10.8	70.2
1999				
March	108.2	15.3	12.4	68.5
2000				
January	109.4	12.6	10.3	67.7
February	109.9	11.5	9.5	67.4
March	109.7	11.3	9.3	67.1

(a) For explanation of terms and concepts, refer to *Labour Force, Australia*, ABS catalogue number 6203.0.

(b) Data in this table are original series, i.e. they are not part of a seasonally adjusted or a trend series. Accordingly, care should be exercised when using these data. New monthly data from each quarter (March, June, September and December) are published two months after the quarter.

(Source: Labour Force Estimates—microfiche tables.)

Hobart and Southern Statistical Divisions—Persons: **Original** (see Table 6.)



5

LABOUR FORCE STATUS BY REGION, FEMALES(a,b): **Original**

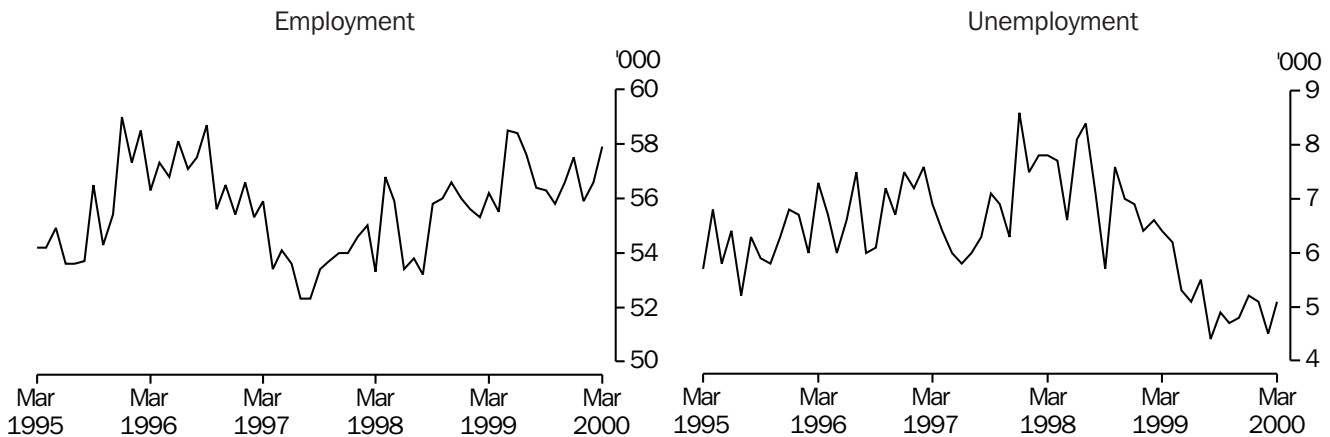
	<i>Total employed</i>	<i>Total unemployed</i>	<i>Unemployment rate</i>	<i>Participation rate</i>
<i>Month</i>	'000	'000	%	%
HOBART AND SOUTHERN STATISTICAL DIVISIONS				
1997				
March	44.1	4.7	9.7	51.1
1999				
March	42.2	3.8	8.3	49.9
2000				
January	44.9	4.4	9.0	52.1
February	42.9	5.5	11.3	51.3
March	43.9	4.7	9.7	52.2
NORTHERN STATISTICAL DIVISION				
1997				
March	22.0	3.1	12.3	47.6
1999				
March	24.4	2.5	9.4	51.1
2000				
January	24.4	2.2	8.2	48.5
February	25.0	1.6	6.1	48.5
March	25.3	2.7	9.5	50.2
MERSEY-LYELL STATISTICAL DIVISION				
1997				
March	17.0	2.1	10.9	46.8
1999				
March	18.9	1.8	8.8	46.2
2000				
January	19.2	1.6	7.7	51.7
February	19.6	1.6	7.3	51.8
March	20.7	1.4	6.1	53.5
TASMANIA				
1997				
March	83.0	9.9	10.6	49.2
1999				
March	85.4	8.1	8.7	49.3
2000				
January	88.6	8.2	8.5	51.0
February	87.5	8.6	9.0	50.6
March	89.9	8.7	8.9	51.9

(a) For explanation of terms and concepts, refer to *Labour Force, Australia*, ABS catalogue 6203.0.

(b) Data in this table are original series, i.e. they are not part of a seasonally adjusted or a trend series. Accordingly, care should be exercised when using these data. New monthly data from each quarter (March, June, September and December) are published two months after the quarter.

(Source: Labour Force Estimates—microfiche tables.)

Northern Statistical Division—Persons: **Original** (see Table 6.)



6

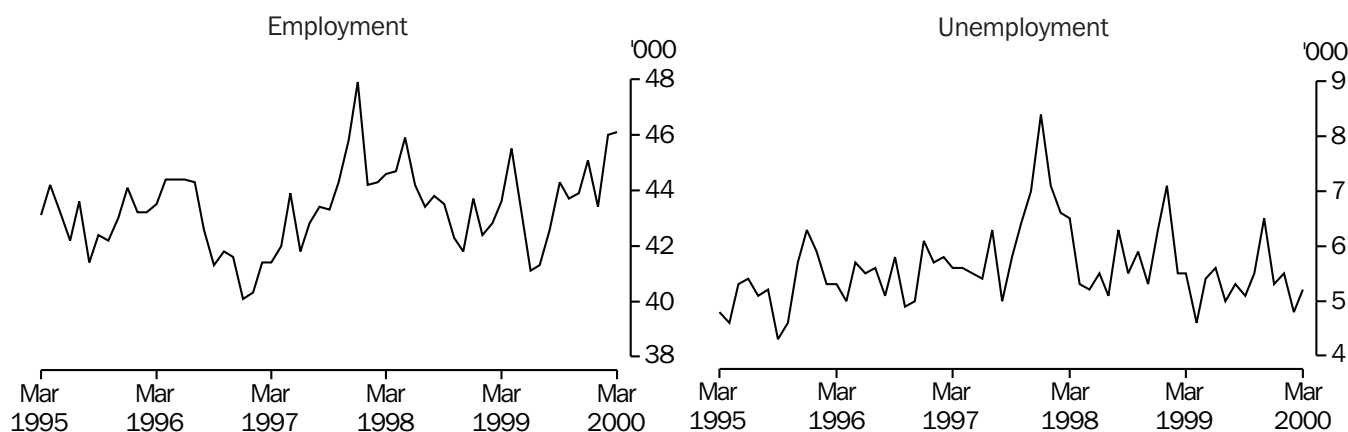
LABOUR FORCE STATUS BY REGION, PERSONS(a,b): **Original**

	Total employed	Total unemployed	Unemployment rate	Participation rate
Month	'000	'000	%	%
HOBART AND SOUTHERN STATISTICAL DIVISIONS				
1997				
March	98.7	11.0	10.1	59.4
1999				
March	93.9	11.5	11.0	59.1
2000				
January	98.6	10.3	9.4	59.2
February	94.8	10.8	10.2	58.2
March	95.6	9.7	9.2	58.5
NORTHERN STATISTICAL DIVISION				
1997				
March	55.9	6.9	11.0	60.0
1999				
March	56.2	6.4	10.2	59.7
2000				
January	55.9	5.1	8.3	57.7
February	56.6	4.5	7.4	57.6
March	57.9	5.1	8.2	58.6
MERSEY-LYELL STATISTICAL DIVISION				
1997				
March	41.4	5.6	11.9	58.8
1999				
March	43.6	5.5	11.2	56.6
2000				
January	43.4	5.5	11.2	60.6
February	46.0	4.8	9.5	61.7
March	46.1	5.2	10.1	61.8
TASMANIA				
1997				
March	196.0	23.5	10.7	59.5
1999				
March	193.6	23.5	10.8	58.7
2000				
January	198.0	20.8	9.5	59.1
February	197.5	20.2	9.3	58.8
March	199.6	20.0	9.1	59.3

(a) For explanation of terms and concepts, refer to *Labour Force, Australia*, ABS catalogue number 6203.0.

(b) Data in this table are original series, i.e. they are not part of a seasonally adjusted or a trend series. Accordingly, care should be exercised when using these data. New monthly data from each quarter (March, June, September and December) are published two months after the quarter. (Source: Labour Force Estimates—microfiche tables.)

Mersey-Lyell Statistical Division—Persons: **Original** (see Table 6.)



7

TEENAGE LABOUR MARKET(a,b,c): **Original**

Month	Employed		Unemployed		Labour force	Not in labour force	Civilian population aged 15-19	Unemployment rate	Unemployment population ratio	Participation rate
	Full-time	Total	Looking for full-time work	Total						
	'000	'000	'000	'000	'000	'000	'000	%	%	%
ATTENDING NEITHER SCHOOL NOR A TERTIARY INSTITUTION FULL TIME										
1997										
March	6.7	8.7	3.2	3.5	12.2	1.3	13.5	28.9	26.0	90.2
1999										
March	6.7	8.7	2.1	2.1	10.8	2.0	12.7	19.6	16.5	84.6
2000										
January	5.4	8.1	1.9	2.1	10.2	2.8	13.1	20.7	16.2	78.2
February	5.4	7.3	2.4	2.5	9.8	1.8	11.6	25.1	21.2	84.6
March	6.3	8.2	1.6	1.6	9.8	0.7	10.5	16.7	15.7	93.7
ATTENDING SCHOOL OR A TERTIARY INSTITUTION FULL TIME										
1997										
March	0.1	5.2	0.5	2.4	7.6	12.8	20.5	31.7	11.8	37.3
1999										
March	—	5.3	0.5	2.8	8.1	13.6	21.7	34.1	12.7	37.3
2000										
January	0.8	9.0	0.9	1.8	10.8	11.0	21.8	16.9	8.4	49.5
February	0.9	8.5	0.7	2.2	10.6	12.6	23.2	20.3	9.3	45.8
March	0.2	6.3	0.8	3.3	9.6	14.7	24.3	33.9	13.4	39.5
TOTAL										
1997										
March	6.8	13.9	3.8	5.9	19.8	14.2	34.0	30.0	17.5	58.3
1999										
March	6.7	14.0	2.6	4.9	18.9	15.6	34.5	25.8	14.1	54.8
2000										
January	6.2	17.1	2.8	3.9	21.0	13.8	34.8	18.7	11.3	60.3
February	6.3	15.8	3.1	4.6	20.4	14.4	34.8	22.6	13.2	58.7
March	6.4	14.5	2.4	4.9	19.4	15.4	34.8	25.3	14.1	55.8

(a) Persons aged 15-19 years.

(b) For explanation of terms and concepts, refer to *Labour Force, Australia*, ABS catalogue number 6203.0.

(c) Care should be exercised in using these series as some estimates are subject to high sampling variability.

(Source: Unpublished data, Labour Force Estimates.)

8

ALL EMPLOYED PERSONS BY OCCUPATION(a): **Original**

Occupation	February 1999	February 2000		Proportion of total employed		
	Persons	Males	Females	Persons	February 1999	February 2000
	'000	'000	'000	'000	%	%
Managers and administrators	10.6	11.6	3.6	15.2	5.5	7.7
Generalist managers	1.0	1.9	0.1	2.0	0.4	1.0
Specialist managers	3.9	3.8	1.0	4.8	2.0	2.5
Farmers and farm managers	5.6	5.8	2.5	8.4	2.9	4.2
Professionals	28.1	15.1	17.2	32.3	14.5	16.3
Science, building and engineering professionals	2.8	2.7	0.7	3.5	1.4	1.8
Business and information professionals	4.6	3.7	1.7	5.3	2.4	2.7
Health professionals	7.7	2.0	6.6	8.6	4.0	4.4
Education professionals	6.8	3.4	5.4	8.8	3.5	4.4
Social, arts and miscellaneous professionals	6.2	3.3	2.8	6.1	3.2	3.1
Associate professionals	17.9	11.6	7.6	19.2	9.3	9.7
Science, engineering and related associate professionals	3.5	2.3	0.4	2.7	1.8	1.4
Business and administration associate professionals	4.0	1.8	2.2	4.0	2.1	2.0
Managing supervisors (sales and service)	6.8	5.4	2.8	8.2	3.5	4.2
Other associate professionals	4.7	2.4	3.0	5.4	2.5	2.7
Tradespersons and related workers	26.4	23.7	3.0	26.7	13.7	13.5
Mechanical and fabrication engineering tradespersons	4.9	4.5	—	4.5	2.5	2.3
Automotive tradespersons	2.5	3.4	—	3.4	1.3	1.7
Electrical and electronics tradespersons	4.4	4.8	—	4.8	2.3	2.4
Construction tradespersons	5.4	4.3	—	4.3	2.8	2.2
Other tradespersons and related workers	9.2	6.8	3.0	9.8	4.8	4.9
Advanced clerical and service workers	3.7	1.0	5.6	6.6	1.9	3.3
Secretaries and personal assistants	2.2	—	2.5	2.5	1.1	1.3
Other advanced clerical and service workers	1.5	1.0	3.1	4.1	0.8	2.1
Intermediate clerical, sales and service workers	38.8	9.0	25.4	34.4	20.1	17.4
Intermediate clerical workers	22.1	3.9	14.5	18.4	11.4	9.3
Intermediate sales and related workers	3.9	2.3	0.7	3.0	2.0	1.5
Intermediate service workers	12.9	2.8	10.2	13.0	6.7	6.6
Intermediate production and transport workers	19.4	17.0	2.0	19.0	10.0	9.6
Intermediate plant operators	6.4	6.3	0.2	6.5	3.3	3.3
Intermediate machine operators	1.5	1.2	0.6	1.7	0.8	0.9
Road and rail transport drivers	6.1	6.7	0.2	6.9	3.2	3.5
Other intermediate production and transport workers	5.3	2.8	1.0	3.9	2.7	2.0
Elementary clerical, sales and service workers	23.8	7.3	13.9	21.1	12.3	10.7
Elementary clerks	2.1	1.4	1.2	2.6	1.1	1.3
Elementary sales workers	20.1	4.9	11.3	16.2	10.4	8.2
Elementary service workers	1.7	1.0	1.4	2.3	0.9	1.2
Labourers and related workers	24.4	13.6	9.4	22.9	12.7	11.6
Cleaners	5.7	1.4	4.5	5.9	3.0	3.0
Factory labourers	5.3	3.7	1.8	5.5	2.8	2.8
Other labourers and related workers	13.4	8.5	3.1	11.6	6.9	5.9
Total employed	193.1	109.9	87.5	197.5	100.0	100.0

(a) For explanation of terms and concepts, refer to *Labour Force, Australia*, ABS catalogue number 6203.0. (Source: Unpublished data, Labour Force Estimates.)

9

EMPLOYED WAGE AND SALARY EARNERS, SECTOR AND INDUSTRY(a): **Original**

Industry	Employees, November 1999			Percentage distribution	
	Private No. ('000)	Public No. ('000)	Private and public No. ('000)	November 1998	November 1999
Agriculture, forestry, & fishing	n.a.	0.6	0.6	0.4	0.4
Mining	1.2	—	1.2	0.9	0.8
Manufacturing	21.4	0.1	21.5	14.3	13.5
Electricity, gas & water, Construction	4.1	1.9	6.1	4.1	3.8
Wholesale & Retail trade	37.3	—	37.3	20.0	23.5
Accommodation, cafes & restaurants	9.9	—	10.0	6.6	6.3
Transport & storage	5.2	0.8	6.0	3.9	3.8
Communication services	0.4	1.9	2.3	1.5	1.4
Finance, insurance, Property & business services	14.5	0.8	15.4	9.8	9.7
Education	3.0	14.4	17.4	11.4	11.0
Government administration and defence	—	9.5	9.5	6.4	6.0
Health and community services	12.8	8.3	21.1	15.1	13.3
Cultural, recreational, Personal and other services	7.4	3.2	10.6	5.7	6.7
Total all industries	117.1	41.5	158.7	100.0	100.0

(a) For explanation of terms and concepts, refer to *Employed Wage and Salary Earners, Australia*, catalogue number 6248.0.
(Source: *Employed Wage and Salary Earners*, ABS catalogue number 6248.0.)

10

AVERAGE HOURS WORKED: **Original**

Month	Average weekly total hours worked, all employed persons(a)		
	Males	Females	Persons
1998			
November	38.1	27.1	33.2
1999			
February	36.7	25.6	31.8
May	38.8	28.0	34.0
August	39.2	28.1	34.3
November	39.8	27.2	34.1
2000			
February	37.1	24.7	31.6

(a) For explanation of terms and concepts, refer to *Labour Force, Australia*,
ABS catalogue number 6203.0.
(Source: Unpublished data.)

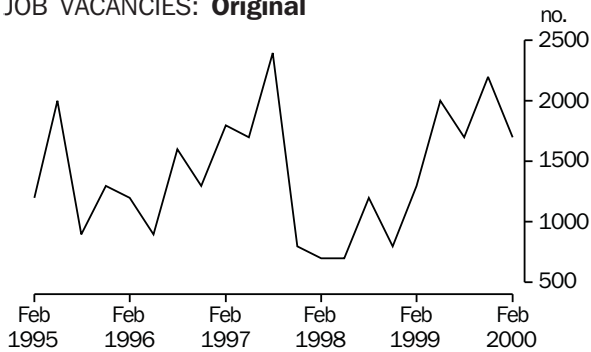
11

JOB VACANCIES(a,b): Original

Period	Number '000	Rate(c) %
1998		
November	0.8	0.5
1999		
February	1.3	0.8
May	2.0	1.4
August	1.7	1.0
November	2.2	1.3
2000		
February	1.7	1.0

- (a) For explanation of terms and concepts refer to *Job Vacancies Australia*, catalogue number 6354.0.
 (b) Care should be exercised in using these series as some estimates are subject to high sampling variability.
 (c) Job vacancies are expressed as a percentage of the number of job vacancies divided by the number of employees plus job vacancies.

JOB VACANCIES: Original



12

INDUSTRIAL DISPUTES(a): Original

Month	Working days lost '000	Twelve months ended	Working days lost per thousand employees no.
1999			
January	—	January	19
February	—	February	19
March	—	March	19
April	—	April	16
May	0.1	May	15
June	—	June	14
July	—	July	14
August	0.1	August	6
September	—	September	5
October	—	October	5
November	—	November	3
December	—	December	2
2000			
January	0.1	January	3
Twelve months ended 2000			
January	0.4		

- (a) For explanation of terms and concepts, refer to *Industrial Disputes, Australia*, ABS catalogue number 6321.0.

13

AVERAGE WEEKLY EARNINGS OF EMPLOYEES(a): **Original and trend**

Survey reference period	Full-time adult males		All males	Full-time adult females		All females	Full-time adult persons		All employees
	Weekly ordinary time earnings	Weekly total earnings	Weekly total earnings	Weekly ordinary time earnings	Weekly total earnings	Weekly total earnings	Weekly ordinary time earnings	Weekly total earnings	Weekly total earnings
	\$	\$	\$	\$	\$	\$	\$	\$	\$
ORIGINAL									
1998									
August	732.50	769.30	652.20	613.40	626.20	418.90	692.00	720.60	536.10
November	738.50	783.70	672.90	621.30	637.00	407.70	699.30	734.70	537.00
1999									
February	747.40	803.10	696.30	619.90	632.20	422.50	705.10	746.40	560.50
May	731.90	771.20	657.80	613.70	625.30	421.00	692.00	722.00	539.60
August	749.70	778.50	660.50	619.10	629.90	420.70	703.60	726.10	537.60
November	761.00	801.60	682.50	641.30	658.90	433.90	719.00	751.50	554.90
TREND(b)									
1998									
August	735.00	780.30	668.40	615.70	628.90	410.90	695.20	729.60	538.90
November	736.60	784.50	673.00	617.80	631.20	414.80	697.00	733.40	543.30
1999									
February	738.90	784.90	673.20	616.20	628.90	417.20	697.50	732.50	544.80
May	742.90	784.00	671.10	618.30	630.60	421.40	700.40	731.80	545.40
August	749.20	785.80	670.90	625.70	638.70	426.40	706.70	734.90	546.80
November	756.50	790.50	673.00	635.30	650.00	430.20	714.50	741.20	548.60

(a) For explanation of terms and concepts, refer to *Average Weekly Earnings, States and Australia*, ABS catalogue number 6302.0.

(b) ABS Trend estimates for the most recent months are revised, see Notes on page 2.

(Source: *Average Weekly Earnings, States and Australia*, ABS catalogue number 6302.0.)

14

INDEXES OF TOTAL HOURLY RATES OF PAY (EXCLUDING BONUSES)(a): **Original**
(Base of each index: September Quarter 1997 = 100.0)

Industry(b) or occupation	Index numbers				% change		
	Mar Qtr	Jun Qtr	Sep Qtr	Dec Qtr	Mar Qtr '99	Jun Qtr '99	Sep Qtr '99
	1999	1999	1999	1999	to Jun Qtr '99	to Sep Qtr '99	to Dec Qtr '99
SELECTED INDUSTRIES							
Manufacturing	104.7	104.8	105.2	105.8	0.1	0.4	0.6
Retail trade	103.7	104.1	105.1	105.7	0.4	1.0	0.6
Transport & storage	104.9	105.4	107.2	107.6	0.5	1.7	0.4
Finance & insurance	103.3	n.a.	n.a.	n.a.	n.a.	n.a.	n.a.
Government admin. & defence	102.7	103.2	104.4	104.7	0.5	1.2	0.3
Education	105.5	105.7	107.9	107.9	0.2	2.1	—
Health and community services	102.6	103.2	103.8	104.7	0.6	0.6	0.9
All industries(c)	103.9	104.6	105.5	106.0	0.7	0.9	0.5
OCCUPATION							
Professionals	104.7	105.1	106.5	106.8	0.4	1.3	0.3
Associate professionals	104.3	104.9	105.5	105.9	0.6	0.6	0.4
Tradespersons & related workers	104.0	104.3	105.0	105.6	0.3	0.7	0.6
Intermediate clerical, sales & service workers	103.7	103.9	105.1	105.7	0.2	1.2	0.6
Intermediate production & transport workers	104.3	105.0	105.4	105.8	0.7	0.4	0.4
Elementary clerical, sales & service workers	105.0	105.2	107.5	108.0	0.2	2.2	0.5
Labourers & related workers	103.2	103.6	104.4	105.0	0.4	0.8	0.6
All occupations	103.9	104.6	105.5	106.0	0.7	0.9	0.5

(a) These indexes are a measure of quarterly changes in wage and salary costs for employee jobs. They were compiled for the first time for the December quarter 1997. They are one of four sets of indexes that together comprise the Wage Cost Index.

For explanation of terms and concepts, refer to *Wage Cost Index, Australia*, ABS catalogue number 6345.0.

(b) Industry is shown at the ANZSIC division level for selected divisions.

(c) Excludes Agriculture, Forestry and Fishing.

(Source: Unpublished data.)

15

SUMMARY OF ANNUAL MOVEMENTS IN WAGES AND PRICES(a): **Original**

Period	CPI. All groups Hobart	Price index of materials used in house building. All groups, Hobart(b)	Price index of materials used in building other than house building.	Average weekly total earnings, full-time adult employees(c)
			All groups, Hobart(b)	
PERCENTAGE CHANGE FROM PREVIOUS YEAR				
1996-97	1.5	-0.5	1.0	4.6
1997-98	-0.1	0.7	0.9	5.1
1998-99	1.0	1.0	0.9	2.4
1997				
December	-0.1	0.7	0.9	4.6
1998				
March	-0.3	0.9	1.0	4.3
June	0.6	1.6	1.2	4.9
September	1.8	1.8	1.6	3.3
December	1.2	1.4	1.2	3.3
1999				
March	0.5	0.7	0.7	3.4
June	0.4	-0.1	0.2	-0.3
September	0.4	-0.3	0.1	0.8
December	1.1	0.2	-0.2	2.3

(a) Weekly award rates of pay collection has been discontinued from June 1997.

(b) Only quarterly data collected from June 1997. Earlier data has been re-compiled from monthly to quarterly.

(c) March, June, September and December data relates to February, May, August and November survey dates as published in 6302.0.

(Sources: Consumer Price Index, ABS catalogue number 6401.0; *Price Index of Materials Used in House Building*, ABS catalogue number 6408.0, (quarterly from June 1997); *Price Index of Materials Used in Other than House Building*, ABS catalogue number 6407.0, (quarterly from June 1997); *Average Weekly Earnings, States and Australia*, ABS catalogue number 6302.0.)

16

HOUSE PRICE INDEX NUMBERS(a), HOBART: **Original**

(Base of each Index: 1989-90 = 100.0)

	Established house price index		Project home price index	
	Index	% change(b)	Index	% change(b)
1996-97	128.5	-1.0	123.3	-0.1
1997-98	125.4	-2.4	123.3	—
1998-99	123.2	-1.8	123.3	—
1997				
December	123.9	0.3	123.3	—
1998				
March	129.5	4.5	123.3	—
June	124.8	-3.6	123.3	—
September	123.8	-0.8	123.3	—
December	121.7	-1.7	123.3	—
1999				
March	123.7	1.6	123.3	—
June	123.6	-0.1	123.3	—
September	125.3	1.4	124.0	0.6
December	127.8	2.0	125.4	1.1

(a) Used in calculating the mortgage interest charges component of the Consumer Price Index.

(b) Percentage change over previous period.

(Source: *House Price Indexes: Eight Capital Cities*, ABS catalogue number 6416.0.)

17

CONSUMER PRICE INDEX, HOBART AND EIGHT CAPITAL CITIES COMBINED(a,b): **Original**
(Base of each index: year 1989–90 = 100.0)

Period	Hobart					Transportation	Alcohol and tobacco
	Food	Clothing	Housing	Household equipment and operation			
1996							
December	120.6	105.6	104.8	119.4	121.8	152.7	
1997							
March	120.7	105.7	101.9	120.1	122.8	153.1	
June	121.0	105.3	98.4	120.1	121.7	153.5	
September	121.0	104.8	97.7	119.7	122.2	153.6	
December	121.7	106.0	95.5	119.7	122.1	155.6	
1998							
March	121.7	105.5	95.3	119.4	121.7	158.0	
June	122.3	105.3	95.5	119.5	120.5	160.2	
September	124.7	105.1	95.6	120.4	120.4	159.6	
December	125.0	105.7	95.4	120.8	118.6	159.1	
1999							
March	125.5	104.7	95.8	119.5	118.4	161.5	
June	126.8	104.6	95.9	119.4	120.4	160.0	
September	126.3	104.5	96.9	119.3	123.1	158.1	
December	127.5	103.9	97.4	119.1	123.8	163.3	

Period	Hobart			Weighted average of eight capital cities		
	Health and personal care	Recreation and education	Index, all groups	% change over previous period, all groups	Index	% change over previous period
1996						
December	154.8	116.8	121.3	0.2	120.3	0.2
1997						
March	159.4	120.5	121.9	0.5	120.5	0.2
June	162.6	119.2	121.3	-0.5	120.2	-0.2
September	153.0	119.2	120.6	-0.6	119.7	-0.4
December	160.9	120.6	121.2	0.5	120.0	0.3
1998						
March	162.7	121.7	121.5	0.2	120.3	0.3
June	166.1	122.6	122.0	0.4	121.0	0.6
September	171.5	122.5	122.8	0.7	121.3	0.2
December	169.5	124.2	122.7	-0.1	121.9	0.5
1999						
March	154.4	125.2	122.1	-0.5	121.8	-0.1
June	154.9	124.9	122.5	0.3	122.3	0.4
September	160.7	125.6	123.3	0.7	123.4	0.9
December	160.0	125.6	124.0	0.6	124.1	0.6

(a) Further information on construction of CPI indexes is contained in the bulletin *The Australian Consumer Price Index Concepts, Sources and Methods* (Catalogue No. 6461.0).

(b) The CPI is now published on a reference base of 1989–90 = 100.0.
(Source: *Consumer Price Index*, ABS catalogue number 6401.0.)

18

PRICE INDEX OF MATERIALS USED IN BUILDING OTHER THAN HOUSE BUILDING, HOBART(a): **Original**

(Base year: 1989–90 = 100.0)

<i>Index numbers for selected major building materials</i>						
<i>Period</i>	<i>Structural timber</i>	<i>Clay bricks</i>	<i>Ready mixed concrete</i>	<i>Precast concrete products</i>	<i>Steel decking, cladding etc.</i>	<i>Structural steel</i>
1996–97	110.3	125.3	116.2	132.2	115.0	126.2
1997–98	108.9	129.0	118.0	131.5	117.8	127.2
1998–99	109.1	130.8	119.5	131.6	110.8	128.0
1997						
December	106.6	129.4	116.8	131.2	118.9	127.1
1998						
March	109.2	129.4	120.4	131.7	118.9	127.4
June	112.4	129.4	119.9	131.7	114.3	127.4
September	109.4	130.2	119.2	131.7	111.3	127.7
December	108.9	131.1	120.6	131.7	111.3	128.1
1999						
March	108.9	131.1	120.4	131.5	110.3	128.1
June	109.2	130.8	117.9	131.5	110.3	128.1
September	108.2	126.9	119.4	131.6	113.7	128.8
December	111.7	126.9	118.0	131.6	104.6	128.8

<i>Index numbers for selected major building materials</i>							
<i>Period</i>	<i>Reinforcing steel bar, fabric and mesh</i>	<i>Aluminium windows</i>	<i>Fabricated steel products</i>	<i>Builders' hardware</i>	<i>Sand & aggregate</i>	<i>Paint & other coatings</i>	<i>Non-ferrous pipes & fittings</i>
1996–97	110.7	105.9	113.3	117.2	132.7	126.6	165.2
1997–98	112.7	107.2	114.7	113.7	124.5	127.3	164.3
1998–99	113.4	107.3	116.0	113.4	127.9	133.3	161.2
1997							
December	113.0	106.8	114.0	112.5	121.4	123.5	163.0
1998							
March	113.5	106.8	114.8	112.8	127.5	130.5	162.9
June	113.4	108.4	116.1	114.0	127.5	130.7	162.6
September	113.4	108.4	116.1	113.7	127.9	132.7	162.8
December	113.3	106.7	116.1	113.9	127.9	133.9	160.2
1999							
March	113.4	106.9	116.1	114.8	127.9	134.2	161.4
June	113.4	107.0	115.6	111.3	127.9	132.5	160.2
September	113.4	107.0	116.1	110.8	135.4	131.7	162.4
December	110.2	107.0	113.6	114.8	139.4	133.5	166.0

(a) Index numbers in this table have been recompiled to reflect the change to a quarterly collection basis from June 1997.

(Source: *Price Index of Materials Used in Other than House Building*, ABS catalogue number 6407.0.)

continued

18

PRICE INDEX OF MATERIALS USED IN BUILDING OTHER THAN HOUSE BUILDING, HOBART(a): **Original**—continued
(Base year: 1989–90 = 100.0)

Period	<i>All electrical materials</i>		<i>All mechanical services</i>		<i>All plumbing materials</i>	
	<i>Index</i>	<i>% change over previous period</i>	<i>Index</i>	<i>% change over previous period</i>	<i>Index</i>	<i>% change over previous period</i>
1996–97	117.4	-1.0	117.0	1.7	122.8	-3.8
1997–98	117.2	-0.2	117.0	—	121.9	-0.7
1998–99	115.8	-1.2	119.0	1.7	124.5	2.1
1997						
December	117.8	0.2	116.8	0.2	122.0	-0.7
1998						
March	116.9	-0.8	117.4	0.5	121.6	-0.3
June	116.5	-0.3	117.1	-0.3	121.0	-0.5
September	116.1	-0.3	117.8	0.6	124.9	3.2
December	116.8	0.6	119.1	1.1	124.1	-0.6
1999						
March	115.2	-1.4	119.4	0.3	124.4	0.2
June	115.2	—	119.5	0.1	124.5	0.1
September	115.9	0.6	119.3	-0.2	122.3	-1.8
December	117.5	1.4	119.8	0.4	126.5	3.4
		<i>All groups excluding electrical materials and mechanical services</i>		<i>All groups</i>		
			<i>% change over previous period</i>		<i>% change over previous period</i>	
<i>Period</i>	<i>Index</i>			<i>Index</i>		
1996–97	116.8		1.1	116.3		1.0
1997–98	118.0		1.0	117.4		0.9
1998–99	118.8		0.7	118.5		0.9
1997						
December	117.7		0.5	117.2		0.6
1998						
March	118.2		0.4	117.7		0.4
June	118.9		0.6	118.1		0.3
September	119.1		0.2	118.4		0.3
December	119.0		-0.1	118.6		0.2
1999						
March	118.8		-0.2	118.5		-0.1
June	118.4		-0.3	118.3		-0.2
September	118.8		0.3	118.5		0.2
December	118.4		-0.3	118.4		-0.1

(a) Index numbers in this table have been recompiled to reflect the change to a quarterly collection basis from June 1997.
(Source: *Price Index of Materials Used in Other than House Building*, ABS catalogue number 6407.0.)

Year or month	Dairy products(a)			Staff-hours worked	
	Whole milk(b)	Factory butter(c)	Factory cheese	Textile manufacturing(d)	Vegetable preserving
	million litres	tonnes	tonnes	'000	'000
1996-97	529.4	10 869	25 398	1 349	1 534
1997-98	542.8	8 745	26 835	1 125	1 128
1998-99	603.4	11 546	29 973	1 061	1 084
1999					
February	50.5	940	2 677	90	86
March	54.0	985	2 909	96	96
April	44.3	992	2 353	82	90
May	35.1	1 180	980	88	110
June	19.6	501	1 187	98	99
July	13.6	307	431	79	78
August	25.2	244	1 161	94	97
September	60.8	406	3 599	96	62
October	89.3	1 257	3 850	92	66
November	87.1	1 508	4 054	94	104
December	81.6	1 562	4 714	71	87
2000					
January	66.8	879	3 735	43	60
February	n.y.a.	n.y.a.	n.y.a.	96	90
Year or month (quarterly for electricity)	Newsprint(e)	Refined zinc	Metal. refin.	Electricity(g)	
	'000 tonnes	'000 tonnes	Index(f)	million kW.h	
1996-97	232.7	207.7	116.1	9 543	
1997-98	n.p.	197.0	116.6	9 700	
1998-99	n.p.	214.3	125.0	9 910	
1999					
February	n.p.	15.2	114.1	..	
March	n.p.	17.4	124.6	(Mar. qtr) 2 260	
April	n.p.	19.1	132.0	..	
May	n.p.	19.8	133.9	..	
June	n.p.	19.4	133.6	(June qtr) 2 570	
July	n.p.	18.8	133.8	..	
August	n.p.	20.7	138.2	..	
September	n.p.	19.1	130.2	(Sept qtr) 2 680	
October	n.p.	19.4	130.5	..	
November	n.p.	19.9	130.3	..	
December	n.p.	19.3	129.6	(Dec qtr) 2 390	
2000					
January	n.p.	20.1	130.3	..	
February	n.p.	18.6	126.4	..	

(a) Source: Australian Dairy Corporation.

(b) Includes the whole milk equivalent of farm cream intake.

(c) Includes butter equivalent of butter oil.

(d) Includes spinning, weaving and carpet making. Reported by establishments which manufacture textiles only, or manufacture clothing and textiles in the one plant.

(e) Excludes production of directory newsprint and high grade specialty paper.

(f) Metallurgical refining index (Base: 1979-80 = 100.0) Output from selected establishments covering the smelting and refining of ferro-alloys, zinc and aluminium. The weighting pattern is based on the establishments' value added as derived from the 1979-80 Manufacturing Census. For multi-product establishments, value added was apportioned to products on the basis of gross receipts from each product.

(g) Collected on a quarterly basis as from 1997.

(Source: Unpublished data.)

20

LIVESTOCK SLAUGHTERING: **Original**

Year or month	Cattle			Sheep	Lambs	Pigs
	Bulls, bullocks and steers	Cows and heifers	Calves			
	'000	'000	'000			
1996-97	109.4	93.2	43.5	367.7	358.2	73.3
1997-98	93.4	123.6	53.9	461.0	423.3	78.1
1998-99	94.8	116.3	61.0	439.9	480.1	81.2
1998						
February	8.1	10.4	0.2	56.2	33.0	5.6
1999						
February	8.1	11.0	0.2	58.9	44.1	5.2
March	7.3	10.0	0.5	44.4	45.8	8.5
April	8.9	11.3	1.9	36.4	44.4	6.8
May	9.4	11.2	1.6	33.6	39.6	6.4
June	10.2	11.0	1.0	40.5	43.8	8.8
July	10.1	8.7	2.2	36.3	39.8	6.6
August	8.4	6.0	26.7	24.8	38.6	6.5
September	8.0	6.6	27.2	24.3	32.0	6.9
October	8.0	7.8	7.7	38.7	33.6	4.5
November	8.4	7.8	0.9	45.6	31.3	4.7
December	9.6	10.1	0.2	67.5	36.5	7.2
2000						
January	8.9	8.1	0.2	55.6	38.4	4.3
February	9.3	10.1	0.2	67.7	46.1	5.3

(Source: Unpublished data.)

21

LIVESTOCK SLAUGHTERING: **Seasonally adjusted(a) and trend(b)**

Month	Seasonally adjusted			Trend		
	Cattle and calves	Sheep and lambs	Pigs	Cattle and calves	Sheep and lambs	Pigs
	'000	'000	'000	'000	'000	'000
1998						
February	23.7	70.3	6.5	23.8	74.2	6.3
1999						
February	22.4	81.5	6.0	21.6	74.3	6.4
March	21.9	72.1	8.1	21.8	73.9	6.6
April	22.3	70.6	6.8	22.3	75.4	6.8
May	22.0	73.1	6.6	23.1	79.2	7.0
June	23.1	81.4	7.3	24.3	85.1	7.0
July	24.4	92.4	5.7	25.2	91.2	6.8
August	30.0	115.5	7.8	25.5	95.0	6.6
September	25.8	82.8	6.6	25.1	95.1	6.3
October	23.7	100.9	5.1	24.2	92.0	6.0
November	21.8	84.1	5.8	23.3	87.8	5.7
December	19.4	77.7	5.6	22.7	84.3	5.5
2000						
January	25.1	77.9	4.9	22.5	81.7	5.5
February	23.9	88.8	6.2	22.3	79.7	5.3

(a) Seasonally adjusted factors are reviewed annually to take account of each additional year's original data. The results of the review are used to compile revised seasonally adjusted and trend estimates; see Notes page 2.

(b) ABS trend estimates for the most recent months are revised; see Notes page 2.

(Source: Unpublished data.)

22

MEAT PRODUCTION(a): Original

Year or month	Beef	Veal	Mutton	Lamb	Pigmeat(b)	Total
	tonnes	tonnes	tonnes	tonnes	tonnes	tonnes
1996-97	51 506	905	7 820	6 767	4 833	71 826
1997-98	53 061	1 148	9 840	8 072	4 915	77 042
1998-99	53 273	1 242	8 725	9 223	5 241	77 701
1998						
February	4 693	7	1 115	619	351	6 786
1999						
February	4 910	6	1 203	837	335	7 290
March	4 467	14	891	876	547	6 795
April	5 171	44	735	885	452	7 287
May	5 340	36	666	771	420	7 232
June	5 561	21	802	851	584	7 819
July	5 086	46	722	775	439	7 067
August	3 907	520	489	777	396	6 089
September	3 897	524	480	621	439	5 961
October	4 187	154	754	650	282	6 026
November	4 348	19	926	601	286	6 180
December	5 277	6	1 414	695	424	7 816
2000						
January	4 662	7	1 120	731	269	6 789
February	5 148	7	1 359	885	333	7 732

(a) Carcass weight.

(b) Includes pork used for production of bacon and ham.

(Source: Unpublished data.)

23

PRINCIPAL MINERAL CONCENTRATES PRODUCED: Original

Year or quarter	Copper	Iron (pellets)	Lead	Lead- zinc	Tin	Zinc
	'000 tonnes	'000 tonnes	'000 tonnes	'000 tonnes	'000 tonnes	'000 tonnes
1996-97	99.7	809.4	101.4	38.0	16.3	356.9
1997-98	109.6	820.8	84.6	26.2	16.2	335.4
1998-99	76.8	1 816.1	101.8	12.6	12.5	382.3
1997						
December	28.5	164.5	22.1	6.7	3.7	87.3
1998						
March	26.1	253.8	21.9	8.2	3.3	79.4
June	27.8	402.5	18.1	6.0	4.4	80.1
September	25.8	453.3	21.5	5.6	1.3	92.0
December	29.9	478.2	26.1	3.2	4.0	95.3
1999						
March	11.0	481.2	29.5	2.5	3.7	97.1
June	10.0	403.4	24.7	1.5	3.6	98.0
September	10.2	479.5	28.4	2.7	3.9	94.8
December	10.1	568.2	28.1	2.5	4.0	86.2

(Source: Mineral Resources Tasmania, Department of Infrastructure, Energy and Resources.)

24

SAWMILLS AND PLYWOOD MILLS, LOGS DELIVERED AND TIMBER PRODUCED: **Original**

Year or quarter	Tasmanian-grown logs delivered					Sawn, peeled and sliced timber produced(a)				
	Eucalypts	Hardwoods, excluding eucalypts(b)	Plant-ation(c) softwoods	Native softwoods(d)	Total	Eucalypts	Hardwoods, excluding eucalypts(b)	Plant-ation(c) softwoods	Native softwoods(d)	Total
1996-97	500.8	17.0	352.9	1.2	871.9	165.8	4.3	158.0	0.5	328.5
1997-98	496.8	24.3	357.7	1.6	880.3	171.1	5.3	167.3	0.4	344.2
1998-99	499.9	22.6	351.9	1.0	875.4	159.7	5.1	169.7	0.3	334.8
1997										
December	123.4	3.1	73.4	0.2	200.2	45.3	1.0	41.2	0.1	87.6
1998										
March	105.0	13.8	99.5	0.3	218.6	32.4	1.2	44.6	0.1	78.3
June	128.9	4.6	86.5	0.6	220.6	41.1	1.6	39.1	0.1	81.9
September	129.9	3.8	88.7	0.2	222.7	43.9	1.4	41.5	—	86.8
December	134.6	2.9	81.3	0.2	218.9	40.8	1.2	42.5	0.1	84.7
1999										
March	110.8	9.7	90.7	0.2	211.4	35.4	0.8	42.6	—	78.9
June	124.6	6.1	91.3	0.3	222.3	39.6	1.7	43.1	0.1	84.5
September	136.0	6.3	109.4	0.2	252.0	46.2	1.3	49.1	0.1	96.8
December	132.5	5.1	87.8	0.2	225.6	45.8	1.5	46.5	0.1	93.9

(a) Includes plywood, veneer and sliced timber production converted to an equivalent cubic measurement.

(b) Includes blackwood, myrtle, sassafras etc.

(c) Radiata pine.

(d) Includes Huon pine, celery top pine and King William pine.

(Source: Unpublished data.)

25

CHIPPING AND GRINDING OF WOOD(a): **Original**

Year or quarter	Producing locations(b)	Materials used(c)			
		no.	Logs delivered(d)	Sawmill offcuts	Chipped and ground wood production (('000 tonnes green weight))
			'000 m ³	'000 m ³	
1996-97	27	3 207.4	433.2	3 609.3	
1997-98	28	3 998.1	457.9	4 440.1	
1998-99	29	3 459.6	373.4	3 929.9	
1997					
December	28	999.2	113.6	1 100.1	
1998					
March	28	1 014.7	116.6	1 157.7	
June	28	1 048.0	120.9	1 118.3	
September	29	872.5	87.3	981.5	
December	29	798.3	112.0	889.5	
1999					
March	29	862.9	79.2	997.7	
June	29	925.9	94.9	1 061.1	
September	30	1 056.8	134.1	1 225.4	
December	30	1 075.4	96.4	1 207.3	

(a) Both hardwoods and softwoods, separate details are not available.

(b) Capable of producing at end of year or actually producing during quarter.

(c) Data reported by weight, converted to cubic measure by the factor 0.95 m³ per tonne.

(d) Includes log equivalent of limbwood and billets.

(Source: Unpublished data.)

26

LOGS DELIVERED FOR MILLING OR CHIPPING: **Original**

Year or quarter	Sawmilling and plywood milling			Chipping and grinding(a)			Total		
	Crown land(b)	Private land	Total	Crown land(b)	Private land	Total	Crown land(b)	Private land	Total
	'000 m ³	'000 m ³	'000 m ³	'000 m ³	'000 m ³	'000 m ³	'000 m ³	'000 m ³	'000 m ³
1996-97	725.6	146.4	871.9	1 627.4	1 580.0	3 207.4	2 353.0	1 726.3	4 079.3
1997-98	750.7	129.6	880.3	1 894.9	2 103.1	3 998.1	2 645.7	2 232.7	4 878.3
1998-99	754.2	121.2	875.4	1 562.6	1 897.0	3 459.6	2 316.7	2 018.2	4 334.9
1997									
December	166.6	33.6	200.2	485.0	514.3	999.2	651.5	547.9	1 199.4
1998									
March	191.9	26.7	218.6	466.6	548.1	1 014.7	658.5	574.9	1 233.3
June	191.2	29.4	220.6	478.5	569.5	1 048.0	669.7	598.9	1 268.6
September	188.3	34.3	222.7	341.0	531.5	872.5	529.4	565.8	1 095.2
December	185.5	33.4	218.9	422.4	375.9	798.3	607.9	409.3	1 017.2
1999									
March	184.1	27.3	211.4	367.0	495.8	862.9	551.1	523.2	1 074.3
June	196.2	26.1	222.3	432.1	493.8	925.9	628.3	519.9	1 148.2
September	221.8	30.2	252.0	554.0	502.7	1 056.8	775.8	532.9	1 308.7
December	202.5	23.1	225.6	643.1	432.3	1 075.4	845.6	455.4	1 301.0

(a) Logs used are generally below sawmilling standard; includes log equivalent of limbwood and billets.

(b) Comprises all areas (including concession areas) from which royalties are payable to Forestry Tasmania.

(Source: Unpublished data.)

27 BUILDING APPROVALS: Original

Year or month	Dwelling units				Value				
	New houses	New other residential buildings(a)	Other dwell. units created (conversions etc.)(b)	Total dwelling units	New dwelling units	Alterations and additions to residential buildings(c)	Non-residential building(d)		Total of all building
							Private	Total	
no.	no.	no.	no.	\$'000	\$'000	\$'000	\$'000	\$'000	
1996-97	1 593	251	17	1 861	157 428	35 323	121 490	158 970	351 720
1997-98	1 419	219	5	1 643	142 366	38 432	82 734	125 466	306 264
1998-99	1 297	104	9	1 410	131 241	36 795	115 752	174 545	342 580
1999									
February	97	12	—	109	10 719	2 655	4 164	4 234	17 609
March	116	9	1	126	12 077	3 092	10 237	16 463	31 632
April	110	14	2	126	12 418	3 917	23 814	26 864	43 198
May	94	—	1	95	8 517	2 678	5 303	10 122	21 317
June	76	11	1	88	8 955	3 526	5 321	7 266	19 746
July	147	9	2	158	15 197	3 728	15 315	18 702	37 627
August	101	16	1	118	11 734	3 861	8 174	10 176	25 770
September	129	4	—	133	13 366	3 687	23 142	23 267	40 320
October	142	19	—	161	15 563	4 253	8 786	9 840	29 656
November	155	26	2	183	15 696	3 939	4 334	6 204	25 839
December	160	20	—	180	18 344	2 646	8 166	13 091	34 081
2000									
January	140	28	13	181	21 302	4 342	5 811	6 355	31 999
February	135	33	0	168	16 458	4 333	20 656	21 394	42 185

(a) New individual dwelling units (e.g. flats, home units and villa units).

(b) From alterations and additions to residential building, conversions of non-residential building to residential building etc.

(c) Valued at \$10,000 and over. Includes conversions and dwelling units approved as part of alterations and additions or as part of the construction of non-residential building.

(d) Comprises non-residential building (new plus alterations and additions) valued at \$50,000 and over.

(Source: *Building Approvals, Tasmania*, ABS catalogue number 8731.6.)

28 SECURED HOUSING COMMITMENTS(a): Original, seasonally adjusted and trend

Month	Total number of dwellings(b)			Total value of commitments(c)		
	Original	Seasonally adjusted	Trend	Original	Seasonally adjusted	Trend
	no.	no.	no.	\$m	\$m	\$m
1999						
February	870	889	893	74	75	76
March	1 027	895	885	92	77	76
April	854	848	865	71	75	74
May	915	857	845	76	72	71
June	818	816	838	63	66	69
July	806	828	846	67	69	68
August	859	848	859	68	66	67
September	888	857	869	69	64	68
October	869	929	868	67	70	68
November	923	930	858	76	74	68
December	774	772	842	67	67	68
2000						
January	634	751	825	53	62	68
February	850	859	810	71	72	68

(a) New seasonal adjustment factors resulting from the annual seasonal reanalysis were introduced in the January 1998 issue.

(b) Includes new dwellings, established dwellings and refinancing. Excludes alterations and additions.

(c) Commitment is a firm offer of housing finance. It either has been, or is normally expected to be, accepted. Includes commitments to provide housing finance to employees and commitments accepted and cancelled in the same month. Excludes alterations and additions. Includes refinancing.

(Source: *Housing Finance for Owner Occupation, Australia*, ABS catalogue 5609.0.)

Month	Deposits				
	Current bearing interest	Current – not bearing interest	Fixed	Investment savings accounts	Statement savings accounts
	\$m	\$m	\$m	\$m	\$m
1999					
February	805	245	1 904	655	257
March	814	260	1 926	649	266
April	801	258	1 928	638	269
May	784	255	1 921	627	270
June	773	267	1 925	624	272
July	775	248	1 964	616	273
August	783	246	1 992	614	278
September	796	243	2 006	610	280
October	819	249	2 015	608	279
November	850	252	1 951	604	281
December	870	269	1 602	599	283
2000					
January	861	260	1 098	599	283
February	862	260	1039	595	282

Month	Deposits			Loans(b)
	Passbook/School savings accounts	Other	Total	
	\$m	\$m	\$m	
1999				
February	88	88	4 048	4 960
March	80	89	4 084	5 018
April	87	92	4 073	5 029
May	93	92	4 042	5 080
June	92	92	4 044	5 107
July	77	105	4 058	5 081
August	89	93	4 093	4 765
September	78	91	4 103	4 987
October	88	84	4 143	4 972
November	87	84	4 109	4 984
December	83	84	3 792	4 962
2000				
January	83	82	3 266	4 950
February	82	82	3 202	5 039

(a) Details are the averages of weekly figures for each month. The figures are derived from returns submitted by banks authorised under the *Banking Act* together with similar returns voluntarily submitted by the State banks; they exclude the Reserve Bank.

(b) Excludes non-resident loans.

(Source: Reserve Bank of Australia.)

Year or quarter	Buildings and structures	Equipment, plant, and machinery	Total
	\$m	\$m	\$m
	1997–98	169	477
1998–99	130	345	475
1998			
December	25	70	95
1999			
March	30	85	115
June	35	89	124
September	14	83	97
December	16	99	114

(a) Estimates based on a sample survey and therefore subject to sampling variability. Covers selected industries only—mining, manufacturing, finance, property and other selected industries.

(b) Current prices.

(Source: *State Estimates of Private New Capital Expenditure*, ABS catalogue number 5646.0.)

Period	Establish- ments no.	Guest rooms no.	Bed spaces no.	Persons employed no.	Room nights occupied '000	Room occup- ancy rate %	Guest nights '000	Bed occup- ancy rate %	Guest arrivals '000	Takings from accom- modation \$'000
LICENSED HOTELS WITH FACILITIES										
1998										
Dec qtr	54	2 897	7 910	2 958	151.0	56.7	241.9	33.2	132.2	13 462
1999										
Oct	n.a.	n.a.	n.a.	n.a.	52.2	58.0	82.6	33.3	48.4	3 829
Nov	n.a.	n.a.	n.a.	n.a.	54.0	62.1	84.1	35.0	49.2	4 589
Dec	n.a.	n.a.	n.a.	n.a.	43.9	48.8	75.2	30.2	41.8	3 789
Dec qtr	55	2 929	8 071	3 074	150.1	56.2	241.8	32.8	139.5	12 207
MOTELS AND GUEST HOUSES WITH FACILITIES										
1998										
Dec qtr	51	1 748	5 391	740	85.8	53.3	155.7	31.4	84.4	7 538
1999										
Oct	n.a.	n.a.	n.a.	n.a.	30.1	55.4	58.4	34.7	34.5	2 363
Nov	n.a.	n.a.	n.a.	n.a.	30.1	57.2	55.7	34.2	32.8	2 393
Dec	n.a.	n.a.	n.a.	n.a.	24.0	44.3	47.5	28.2	28.7	2 066
Dec qtr	51	1 752	5 431	735	84.2	52.2	161.6	32.3	96.0	6 822
SERVICED APARTMENTS										
1998										
Dec qtr	24	864	3 386	426	47.9	60.3	100.7	32.3	53.1	4 886
1999										
Oct	n.a.	n.a.	n.a.	n.a.	17.4	64.8	37.8	35.0	17.6	1 781
Nov	n.a.	n.a.	n.a.	n.a.	17.0	65.4	32.1	30.6	14.5	1 748
Dec	n.a.	n.a.	n.a.	n.a.	15.7	58.5	34.3	31.7	15.5	1 735
Dec qtr	24	865	3 487	419	50.0	62.9	104.2	32.5	47.7	5 264
TOTAL ESTABLISHMENTS										
1998										
Dec qtr	129	5 509	16 687	4 124	284.7	56.2	498.3	32.5	269.7	25 886
1999										
Oct	n.a.	n.a.	n.a.	n.a.	99.6	58.3	178.8	34.1	100.6	7 974
Nov	n.a.	n.a.	n.a.	n.a.	101.0	61.0	171.8	33.8	96.6	8 730
Dec	n.a.	n.a.	n.a.	n.a.	83.6	48.9	156.9	29.9	86.0	7 589
Dec qtr	130	5 546	16 989	4 228	284.3	56.0	507.5	32.6	283.2	24 293

(a) Comprising establishments with 15 or more rooms or units. Note: The Survey of Tourist Accommodation has been substantially revised from the March quarter 1998. Information in respect of 1998 has been retabulated on the basis of the new scope; 1998 data will, therefore, differ from previously published data. For an explanation, including definitions, refer to *Tourist Accommodation*, ABS catalogue number 8635.0.
(Source: *Tourist Accommodation Australia*, ABS catalogue number 8635.0. For more detailed information, see also *Tourist Accommodation, Small Area Data, Tasmania*, ABS product number 8635.6.40.001.)

32

NATIONAL PARKS, PERSON ENTRIES(a): Original

Tasmanian National Park attendance

Month	Cradle Mountain(b) (Lake Dove)	Lake St Clair(b) (Cynthia Bay)	Freycinet(b)	Mt Field(b)	Asbestos Range(c) (Bakers Beach)	Mole Creek Karst(d) (Marakooopa Cave)	Maria Island(e) (Darlington)
	no.	no.	no.	no.	no.	no.	no.
1999							
March	20 000	14 400	27 700	16 300	2 900	2 801	1 603
April	19 000	10 900	25 700	14 600	2 700	2 560	1 465
May	9 000	4 700	14 200	6 500	1 500	1 656	751
June	8 000	3 000	11 900	5 000	1 400	1 530	556
July	8 100	2 700	10 400	4 900	1 300	1 040	22
August	7 200	2 700	9 500	6 800	1 500	1 449	436
September	14 600	6 000	14 800	7 800	1 800	2 193	1 002
October	15 300	8 700	18 200	9 200	2 800	2 080	1 070
November	16 600	10 600	25 600	8 500	2 600	2 837	1 060
December	22 500	10 300	32 600	13 200	4 700	4 049	1 305
2000							
January	33 100	19 400	48 200	22 100	6 400	4 320	2 315
February	p 21 500	14 400	33 400	16 400	3 700	2 591	1 617
March	p 20 100	15 000	31 700	13 500	3 300	n.y.a.	n.y.a.

(a) A 'person entry' occurs whenever a visitor enters a National Park. Measurement occurs at the designated sites in brackets.

(b) Estimated through a combination of traffic and booth counts.

(c) Estimated through traffic counts.

(d) Number of people taken on a guided tour.

(e) The sum of ferry arrivals and estimated plane passengers.

(Source: Tasmanian Parks and Wildlife Service, Department of Primary Industries, Water and Environment.)

33

TRACKS IN NATIONAL PARKS, WALKER REGISTRATIONS(a): Original

Month(b)	Overland(c)	South Coast(d)	Freycinet(e)	Port Davey(d)	Frenchmans Cap
	no.	no.	no.	no.	no.
1999					
February	1 329	216	243	49	87
March	1 019	85	226	14	59
April	777	92	182	10	99
May	111	8	57	—	30
June	69	3	97	1	18
July	48	—	93	—	13
August	45	3	119	—	16
September	p 157	10	114	2	24
October	p 202	p 16	196	p 1	22
November	p 753	p 56	251	p 10	37
December	p 1 446	p 222	386	p 82	113
2000					
January	p 1 558	r p 288	587	r p 51	218
February	p 1 195	p 145	335	p 19	161
March	p 999	n.y.a.	317	n.y.a.	n.y.a.

(a) Numbers include only walkers who registered and represents their intention.

(b) Month of departure.

(c) Sum of registrations at Cradle Mt and Lake St Clair.

(d) Sum of registrations to walk the length of the track in any direction, irrespective of starting point.

(e) All overnight walkers registered in the park.

(Source: Tasmanian Parks and Wildlife Service, Department of Primary Industries, Water and Environment.)

34 REGISTRATIONS OF NEW MOTOR VEHICLES(a): Original

Period	Passenger vehicles	Other vehicles(b)	Total (excl. motor cycles)	Vehicles registered by vehicle rental businesses(c)	Motor cycles
	no.	no.	no.	no.	no.
1996-97	11 772	2 741	14 513	2 341	481
1997-98	13 232	2 740	15 972	2 544	542
1998-99	12 359	2 786	15 145	1 771	568
1999					
February	741	187	928	23	48
March	985	242	1 227	20	45
April	879	219	1 098	—	45
May	838	275	1 113	2	35
June	859	270	1 129	16	28
July	1 059	290	1 349	171	53
August	1 026	244	1 270	235	29
September	1 240	218	1 458	470	42
October	885	245	1 130	138	65
November	964	292	1 256	151	49
December	1 626	273	1 899	835	58
2000					
January	748	204	952	59	29
February	782	210	992	1	52

(a) Includes State and Commonwealth Government-owned motor vehicles other than those belonging to the defence services. Excludes tractors, plant and equipment, caravans and trailers.

(b) Comprises utilities, panel vans, rigid and articulated trucks and other truck-type vehicles (i.e. motor vehicles designed for purposes other than freight carrying, e.g. campervans, tow trucks, ambulances and hearses) and buses.

(c) These figures are included in previous columns.

(Source: *New Motor Vehicle Registrations, Australia*, ABS catalogue number 9303.0.40.003 and unpublished data.)

35 TURNOVER OF RETAIL ESTABLISHMENTS AT CURRENT PRICES(a): Original and trend

Period	Trend estimates(b)						Total(c)	Change from corresponding month of previous year
	Original	Food retailing	Clothing and soft good retailing	Household good retailing	Recreational good retailing	Hospitality and services	\$m	
	\$m	\$m	\$m	\$m	\$m	\$m	\$m	%
1996-97	3 022.6	1 290.1	182.4	323.3	187.2	460.7	3 032.2	..
1997-98	3 133.4	1 345.0	188.3	303.4	215.7	436.0	3 133.9	..
1998-99	3 142.7	1 344.0	189.5	312.9	203.1	430.5	3 150.2	..
1999								
Feb	243.4	113.5	15.9	27.8	17.1	36.4	266.0	2.7
Mar	268.7	113.9	15.9	27.9	17.2	36.4	267.4	3.8
Apr	261.2	113.9	15.8	27.6	17.4	36.3	268.0	4.3
May	255.5	113.7	15.8	27.3	17.5	36.3	268.2	4.5
Jun	251.0	113.6	15.6	27.1	17.6	36.4	268.4	4.5
Jul	261.8	114.0	15.4	27.2	17.6	36.7	269.0	4.7
Aug	256.6	114.8	15.1	27.4	17.7	37.2	270.0	5.0
Sep	260.8	115.8	14.8	27.4	17.9	37.9	270.9	5.4
Oct	268.9	116.7	14.5	27.3	18.0	38.6	270.9	5.2
Nov	276.1	117.3	14.2	27.2	18.1	39.2	270.2	4.4
Dec	364.9	117.6	14.0	27.1	18.1	39.9	269.4	3.2
2000								
Jan	258.2	117.8	13.9	27.2	18.0	40.6	268.6	1.9
Feb	254.3	117.8	13.8	27.2	18.0	41.2	267.8	0.7

(a) Excludes motor vehicles, parts, petrol, etc.

(b) Trend estimates for the most recent months have been revised. See Notes on page 2.

(c) Includes Department stores and Other retailing.

(Source: *Retail Trade, Australia*, ABS Catalogue number 8501.0.)

36

VALUE OF OVERSEAS TRADE(a), TASMANIA AND AUSTRALIA: **Original**

Period	Tasmania				Australia				
	Imports	Imports: change over preceding period		Exports	Exports: change over preceding period		Imports: change over preceding period	Exports(b)	Change over preceding period
		\$'m	%		\$'m	%			
1996-97	396	13	1 708	5	78 998	2	78 932	4	
1997-98	385	-3	2 136	25	90 684	15	87 768	11	
1998-99	407	6	2 019	-5	97 611	8	r 85 991	-2	
1999									
February	30	-6	140	4	7 112	-2	6 243	-1	
March	33	11	255	82	8 699	22	7 331	17	
April	29	-13	198	-23	7 731	-11	6 433	-12	
May	29	0	139	-30	7 746	0	6 967	8	
June	23	-22	243	75	8 142	5	r 6 892	-1	
July	39	75	158	-35	8 181	0	r 7 158	4	
August	32	-19	150	-5	r 8 871	8	r 7 349	3	
September	43	34	115	-23	r 8 965	1	r 7 391	1	
October	32	-26	222	r 93	r 10 211	14	r 7 990	8	
November	33	4	155	-30	9 668	-5	r 8 472	6	
December	31	-6	r 165	r 6	r 8 906	-8	r 8 365	-1	
2000									
January	35	12	231	r 40	r 8 108	-9	r 6 817	-18	
February	35	-1	185	-20	8 624	6	8 159	20	

(a) It is difficult to get a complete picture of Tasmania's trade performance as imports recorded by the ABS include only goods imported directly into the State from overseas, and reported by the Australian Customs Service. Many of Tasmania's goods imported for direct consumption, or input into further processing industries, arrive via interstate ports, and are not included in this table.

(b) Includes re-exports.

37

MERCHANDISE EXPORTS, by selected countries and country groups: **Original**

Period	European Community			East Asia			Hong Kong	ASEAN(a)	Total all countries
	United States of America	United Kingdom	Total European Community	Japan	Korea	Taiwan			
	\$'000	\$'000	\$'000	\$'000	\$'000	\$'000			
1996-97	117 245	166 308	299 844	467 855	64 135	93 951	100 881	364 586	1 708 322
1997-98	176 175	25 063	338 791	549 048	67 801	150 405	132 551	399 472	2 136 171
1998-99	235 787	28 691	278 037	466 406	101 177	150 071	152 533	353 441	2 019 182
1999									
February	13 874	3 491	14 475	33 156	11 379	10 973	12 835	23 056	139 944
March	37 059	4 124	86 867	41 498	7 925	11 682	11 872	38 793	255 336
April	31 625	3 548	17 877	34 933	9 824	10 190	15 591	27 285	197 726
May	16 130	2 544	9 143	33 234	4 965	12 897	14 322	22 457	138 931
June	13 810	1 855	76 630	58 220	12 947	13 709	13 184	30 452	243 056
July	25 199	2 834	14 114	25 878	9 485	13 917	r 17 716	31 017	r 158 655
August	13 943	792	5 106	r 41 207	7 389	16 731	18 708	25 769	r 150 057
September	11 467	881	6 810	r 28 484	7 093	14 051	9 514	19 714	r 115 015
October	15 629	3 383	82 622	r 45 575	8 844	r 12 201	8 971	24 566	r 221 953
November	8 367	1 141	r 6 210	r 40 317	12 089	15 738	r 13 760	r 32 598	r 155 180
December	r 14 110	364	r 6 495	r 40 165	13 507	14 735	r 17 583	r 28 938	r 165 088
2000									
January	15 075	1 214	r 76 008	r 37 350	r 9 180	r 16 838	r 17 086	r 29 965	r 231 086
February	21 178	951	11 616	48 838	13 379	18 049	20 318	32 597	185 373

(a) ASEAN member countries are: Brunei, Indonesia, Laos, Malaysia, Myanmar, Philippines, Singapore, Thailand and Viet Nam.

38 MERCHANDISE EXPORTS, by selected commodity groups: **Original**

Period	Meat and meat preparations	Dairy products	Fish, crustaceans and molluscs	Vegetables and fruit	Wood and woodchips	Textile fibres and wastes	Metallic ores and metal scrap
	\$'000	\$'000	\$'000	\$'000	\$'000	\$'000	\$'000
1996-97	55 604	110 108	121 996	36 541	241 388	38 762	184 100
1997-98	71 918	133 675	141 205	55 242	311 359	29 641	254 054
1998-99	65 026	102 709	136 268	54 907	r 296 164	24 999	278 001
1999							
February	6 027	7 514	10 290	4 646	24 055	1 413	13 551
March	5 034	12 277	7 613	9 368	30 656	4 989	25 070
April	5 229	12 071	13 251	13 563	24 162	1 938	20 539
May	6 307	7 720	9 516	10 942	22 669	475	15 242
June	7 900	8 173	9 071	4 508	33 433	715	37 755
July	6 603	3 421	r 14 166	3 718	17 037	1 538	r 19 287
August	5 650	3 053	r 13 590	2 568	31 988	891	r 15 297
September	5 008	2 503	r 14 468	1 397	19 151	2 051	r 12 218
October	5 330	4 256	r 8 894	r 446	r 27 680	1 111	23 997
November	5 977	4 494	r 12 774	432	r 24 706	1 604	29 618
December	r 7 307	3 723	r 16 013	422	r 23 316	3 913	r 28 970
2000							
January	r 6 199	r 7 366	r 11 677	r 754	r 32 065	1 460	r 21 075
February	8 085	5 667	11 336	3 460	32 370	1 812	13 860
Period	Medical and pharmaceut- ical products	Paper and paperboard	Iron and steel	Non-ferrous metals	Road vehicles & transport equipment	Other & combined confidential items	Total all commodity groups
	\$'000	\$'000	\$'000	\$'000	\$'000	\$'000	\$'000
1996-97	22 886	31 913	82 219	438 558	212 341	131 907	1 708 322
1997-98	34 755	21 222	76 463	557 126	280 251	169 261	2 136 171
1998-99	52 330	4 130	95 265	544 311	173 015	192 057	r 2 019 182
1999							
February	5 245	402	6 088	40 608	583	19 524	139 944
March	4 856	335	13 502	54 787	65 401	21 448	255 336
April	3 506	237	5 681	50 410	34 067	13 072	r 197 946
May	3 003	510	7 598	37 600	109	17 240	138 931
June	3 064	195	11 744	42 313	70 295	13 891	243 056
July	5 303	163	5 418	64 893	58	17 051	r 158 655
August	7 100	405	75	49 879	495	19 065	r 150 057
September	4 096	45	61	37 870	1 008	15 123	r 115 015
October	4 963	223	200	44 314	70 782	r 29 758	r 221 953
November	5 153	r 972	60	52 096	276	r 17 016	r 155 180
December	2 146	r 1184	2 156	51 888	50	r 23 998	r 165 088
2000							
January	3 367	r 535	169	r 55 551	72 222	r 18 646	r 231 086
February	6 425	1 465	146	67 835	631	32 283	185 373

	NSW	Vic.	Qld	SA	WA	Tas.	Aust.(a)
Population							
Estimated resident population, September 1999 ('000) p	6 428.7	4 726.6	3 525.6	1 494.8	1 868.2	470.1	19 021.4
Proportion of Australian population, September 1999 (%) p	33.8	24.8	18.5	7.9	9.8	2.5	100.0
Population growth rate, 12 months to September 1999 (%) p	1.2	1.2	1.6	0.5	1.6	-0.3	1.2
Labour Force							
Employment growth, 12 months to March 2000 (trend series) (%)							
Males	2.6	1.6	0.9	3.2	3.2	1.4	2.1
Females	4.5	4.5	2.8	3.1	4.8	4.6	4.0
Persons	3.4	2.8	1.7	3.1	3.9	2.8	2.9
Unemployment rate (trend series), March 2000 (%)	5.9	6.7	8.0	8.1	6.4	8.8	6.8
Unemployment growth, 12 months to March 2000 (trend series) (%)	-11.1	-9.6	2.0	-6.9	-5.6	-14.3	-7.0
Participation rate (trend series), March 2000 (%)	62.3	63.0	64.9	61.3	67.1	59.0	63.5
Job vacancy rate, February 2000 (%)	1.8	1.3	1.2	1.1	1.7	1.0	1.5
Working days lost through industrial disputes, 12 months to January 2000 (days per '000 employees)	127	116	40	28	65	3	89
Wages and Prices							
Average weekly total earnings, full-time adult employees (trend series) November 1999 (\$)							
Males	915.40	832.40	800.10	804.20	899.40	790.50	861.90
Females	724.50	711.00	639.90	662.30	661.80	650.00	697.20
Persons	843.70	789.60	740.40	751.90	814.00	741.20	800.70
Average weekly total earnings, full-time adult employees, growth rate (trend series), 12 months to November 1999 (%)	3.6	2.1	0.7	1.3	3.0	1.1	2.4
Consumer price index, all groups, annual growth to September quarter 1999 (%) (b)	1.8	1.9	1.2	1.7	1.9	0.4	1.7
Building							
% change in the number of total dwelling units approved: in the 12 months ended February 2000, over the same period previous year (r)	-0.8	20.6	—	26.5	20.7	17.0	8.8
February 1999 to February 2000	8.8	21.9	19.4	76.8	27.5	54.1	21.1
Private Investment and Retail Trade							
% change in private new capital expenditure, 12 months ended December 1999, over the same period previous year (original)	-4.5	0.2	3.6	-22.1	-27.9	-13.8	-8.0
% change in <i>trend</i> estimates turnover of retail establishments, February 2000 (change from corresponding month of the previous year)	2.5	4.9	4.1	3.0	2.3	0.7	3.4
Transport							
% change in number of new motor vehicles (excluding motorcycles) registered in the 12 months ended February 2000, over the same period previous year	-0.4	2.6	-15.3	-8.1	-9.4	-5.1	-4.3
Agriculture(a)							
% change in the number of livestock slaughtered 12 months ended February 2000 over the same period previous year (original)							
Cattle and calves	-13.9	-12.9	3.5	-9.3	-10.2	3.7	-6.5
Sheep and lambs	-2.3	6.9	11.3	-13.9	6.2	8.3	1.3
Tourism: Room occupancy rates							
Hotels, motels & guest houses, & serviced apartments with facilities, December quarter 1999 (%)	60.9	58.1	60.7	58.4	57.6	56.0	59.7
Australian National and State Accounts							
% change in Domestic (State) Final Demand(c), Chain Volume measures Trend Series							
Sep. qtr 1999 to Dec. qtr 1999	1.0	1.3	0.5	2.0	0.9	0.2	1.1
Dec. qtr 1998 to Dec. qtr 1999	6.5	6.0	2.5	6.5	3.0	4.6	4.9

(a) Australian totals include the ACT and NT, with the exception of Agriculture, which excludes both. (b) CPI applies to State capitals. (c) Total of four types of expenditure: Private investment, Private consumption, Government investment, Government consumption.

<i>Particulars</i>	<i>Unit</i>	<i>Greater Hobart and Southern Statistical Division</i>	<i>Northern Statistical Division</i>	<i>Mersey-Lyell Statistical Division</i>	<i>Tasmania</i>
Area , 30 June 1996	km ²	25 521	19 935	22 507	67 964
Population					
Estimated resident population, 30 June 1996	no.	230 187	134 047	110 209	474 443
Estimated resident population, 30 June 1999	no.	228 855	133 016	108 390	470 261
Births 1998(a)	no.	2 828	1 621	1 515	5 974
Deaths 1998(a)	no.	1 798	975	823	3 596
Labour Force (original), March 2000					
Total employed	no.	95 600	57 900	46 100	199 600
Total unemployed	no.	9 700	5 100	5 200	20 000
Unemployment rate	%	9.2	8.2	10.1	9.1
Participation rate	%	58.5	58.6	61.8	59.3
Schools, 1997(b)					
Government	no.	102	60	60	222
Non-government	no.	35	16	16	67
Full-time school students, 1997(b)					
Government	no.	29 355	17 913	15 653	62 921
Non-government	no.	12 128	4 909	4 199	21 236
Educational qualification, 1996 Census(c)					
Bachelor degree or higher(d)	no.	17 058	7 152	3 908	28 184
Undergraduate diploma	no.	5 893	3 268	2 181	11 374
Associate diploma	no.	3 775	1 902	1 466	7 184
Skilled vocational	no.	16 255	10 040	8 841	35 238
Basic vocational	no.	4 548	2 632	2 305	9 515
Agriculture					
Establishments with agricultural activity, 1997–98 season	no.	1 138	1 584	1 761	4 483
Total area of establishments	ha	751 167	837 147	326 171	1 914 485
Crops, production, 1997–98 season					
Potatoes	tonnes	2 785	119 771	251 022	373 578
Onions	tonnes	777	9 613	41 555	51 945
Apples	tonnes	36 097	4 427	6 168	46 693
Barley	tonnes	6 793	21 527	2 597	30 917
Livestock, 1997–98 season					
Beef cattle	no.	83 229	213 631	213 562	510 422
Dairy cattle	no.	7 845	79 693	130 180	217 718
Sheep and lambs	no.	1 768 448	1 926 966	173 454	3 868 868
Pigs	no.	3 235	14 899	6 165	24 299
Gross value of agric. production, 1997–98	\$m	148	243	287	678
Business locations, September 1998					
Locations with manufacturing activity					
Less than 20 employees	no.	424	327	257	1 008
20 or more employees	no.	83	67	48	198
Total	no.	507	394	305	1 206
Locations with retail activity					
Less than 20 employees	no.	2 046	1 346	1 133	4 525
20 or more employees	no.	82	43	35	160
Total	no.	2 128	1 389	1 168	4 685
Building, 1998–99					
Total dwelling units approved	no.	731	431	248	1 410
Value of total residential building approved	\$'000	87 612	50 579	29 843	168 035
Value of total building approved	\$'000	199 614	83 883	59 083	342 580
Dwellings, Census 1996(c)					
Total dwellings	no.	98 815	57 467	45 529	201 820
Occupied private dwellings	no.	85 255	49 759	40 183	175 197
Fully owned	no.	34 338	21 563	18 359	74 260

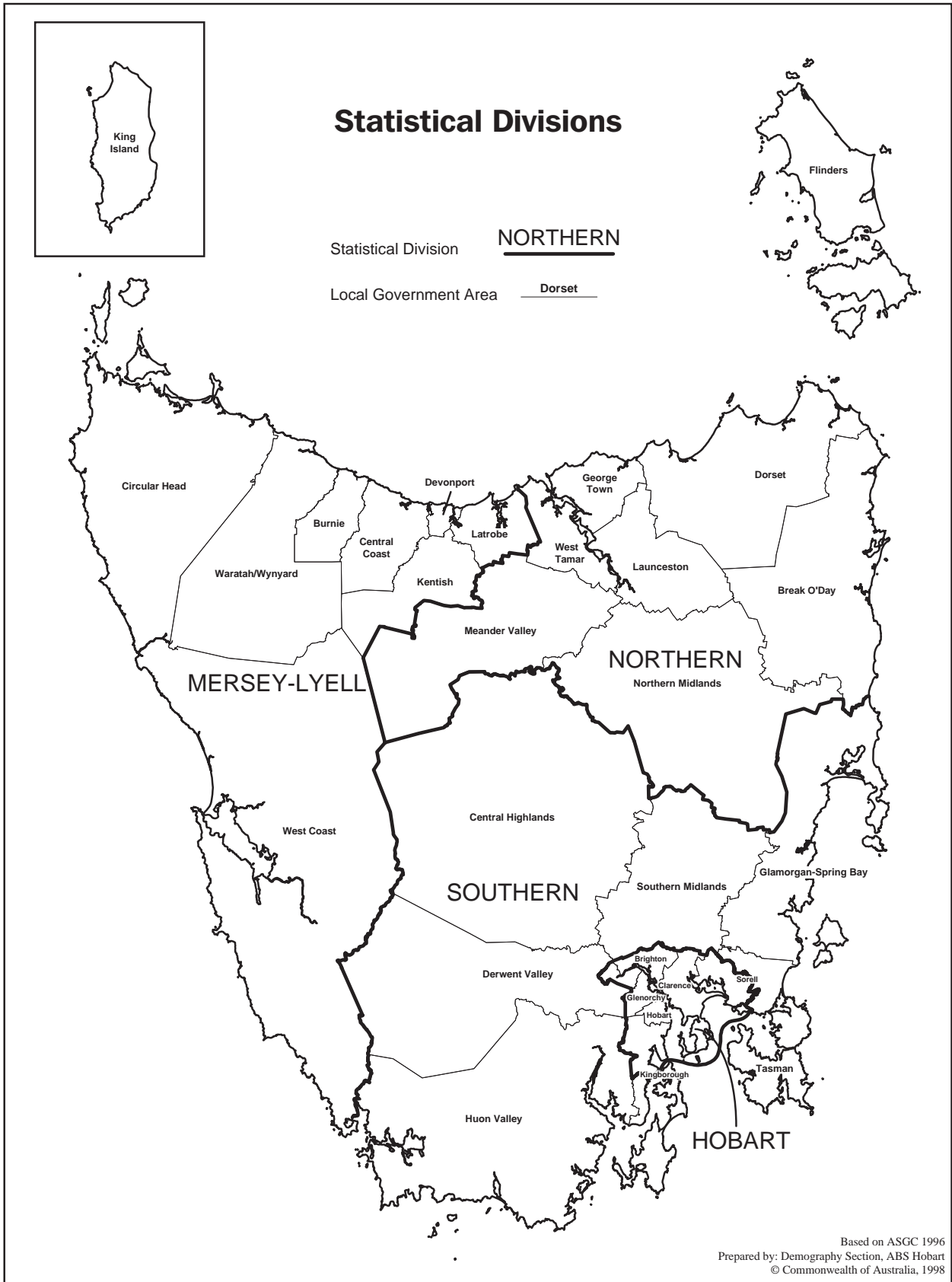
(a) Births and deaths are based on usual residence year of registration.

Total Tasmania includes usual residences other than Tasmanian Statistical Divisions.

(b) Source: DETYA and Tasmanian Department of Education.

(c) Total includes migratory statistical division.

(d) Includes higher degree, postgraduate diploma and bachelor degree.



FOR MORE INFORMATION...

- INTERNET* **www.abs.gov.au** the ABS web site is the best place to start for access to summary data from our latest publications, information about the ABS, advice about upcoming releases, our catalogue, and Australia Now—a statistical profile.
- LIBRARY* A range of ABS publications is available from public and tertiary libraries Australia-wide. Contact your nearest library to determine whether it has the ABS statistics you require, or visit our web site for a list of libraries.
- CPI INFOLINE* For current and historical Consumer Price Index data, call 1902 981 074 (call cost 75c per minute).
- DIAL-A-STATISTIC* For the latest figures for National Accounts, Balance of Payments, Labour Force, Average Weekly Earnings, Estimated Resident Population and the Consumer Price Index call 1900 986 400 (call cost 75c per minute).

INFORMATION SERVICE

Data which have been published and can be provided within five minutes are free of charge. Our information consultants can also help you to access the full range of ABS information—ABS user pays services can be tailored to your needs, time frame and budget. Publications may be purchased. Specialists are on hand to help you with analytical or methodological advice.

- PHONE* **1300 135 070**
- EMAIL* **client.services@abs.gov.au**
- FAX* 1300 135 211
- POST* Client Services, ABS, GPO Box 796, Sydney 1041

WHY NOT SUBSCRIBE?

ABS subscription services provide regular, convenient and prompt deliveries of ABS publications and products as they are released. Email delivery of monthly and quarterly publications is available.

- PHONE* 1300 366 323
- EMAIL* subscriptions@abs.gov.au
- FAX* 03 9615 7848
- POST* Subscription Services, ABS, GPO Box 2796Y, Melbourne 3001



2130360005006
ISSN 1034-1803

RRP \$18.00

© Commonwealth of Australia 2000

Produced by the Australian Bureau of Statistics