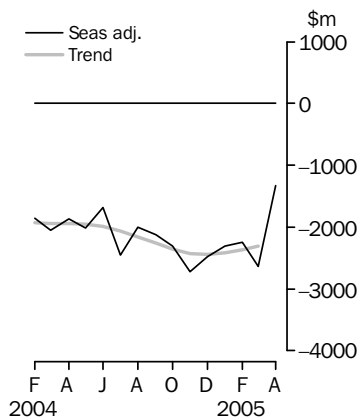


INTERNATIONAL TRADE IN GOODS AND SERVICES

AUSTRALIA

EMBARGO: 11.30AM (CANBERRA TIME) THURS 2 JUN 2005

Balance on goods and services



KEY FIGURES

	February 2005 \$m	March 2005 \$m	April 2005 \$m	Mar 05 to Apr 05 % change
TREND				
Balance on goods & services	-2 373	-2 310	-1 636	..
Credits (exports of goods & services)	13 454	13 573	14 292	..
Debits (imports of goods & services)	15 827	15 883	15 928	—
SEASONALLY ADJUSTED				
Balance on goods & services	-2 250	-2 635	-1 325	..
Credits (exports of goods & services)	13 426	13 352	14 595	9
Debits (imports of goods & services)	15 676	15 987	15 920	—

.. not applicable

— nil or rounded to zero (including null cells)

KEY POINTS

TREND ESTIMATES

- The provisional trend estimate of the balance on goods and services was a deficit of \$1,636m in April 2005. A trend break correction of \$600m has been applied in April 2005 to non-rural and other goods credits – see page 2 for more details.
- Goods and services credits rose \$719m to \$14,292m. After taking account of the trend break, non-rural and other goods rose \$92m and rural goods rose \$6m. Services credits rose \$21m (1%).
- Goods and services debits rose \$45m to \$15,928m. Intermediate and other goods rose \$47m (1%), consumption goods rose \$6m and capital goods rose \$1m. Services debits fell \$9m.

SEASONALLY ADJUSTED ESTIMATES

- In seasonally adjusted terms, the balance on goods and services was a deficit of \$1,325m in April, a decrease of \$1,310m on the deficit in March.
- Goods and services credits rose \$1,243m (9%) to \$14,595m. Non-rural and other goods rose \$1,167m (14%), mainly due to significant price increases for a range of commodities, and rural goods rose \$139m (7%). Services credits fell \$63m (2%).
- Goods and services debits fell \$67m to \$15,920m. Intermediate and other goods fell \$321m (5%) and consumption goods fell \$51m (1%), while capital goods rose \$253m (9%). Services debits rose \$52m (2%).

ORIGINAL ESTIMATES

- In original terms, the April balance on goods and services was a deficit of \$1,469m, a decrease of \$663m on the deficit in March. Goods and services credits rose \$900m (7%) and goods and services debits rose \$237m (2%).

INQUIRIES

For further information about these and related statistics, contact the National Information and Referral Service on 1300 135 070 or Artur Andrysiak on Canberra (02) 6252 6792.

NOTES

FORTHCOMING ISSUES

ISSUE	RELEASE DATE
May 2005	4 July 2005
June 2005	2 August 2005
July 2005	30 August 2005
August 2005	4 October 2005
September 2005	3 November 2005
October 2005	30 November 2005



REVISIONS

Revisions and timing adjustments for civil aircraft have been incorporated into estimates of the imports of goods and services since the previous issue of this publication. These changes increase the imports of civil aircraft in the months of November and December 2004. These aircraft had originally been excluded as the ABS was initially advised that they were under operating lease arrangements, with ownership remaining with a foreign entity. These revisions were reflected in the March quarter 2005 issue of *Balance of Payments and International Investment Position, Australia* (cat. no. 5302.0), which was released on 31 May 2005.

SEASONALLY ADJUSTED AND TREND ESTIMATES

The prices of some non-rural export commodities have significantly increased in April 2005 although the volumes of exports of these commodities remained relatively unchanged. This is apparent in the large value observed in the original estimates for April 2005. It is expected that the increased prices will continue to apply and will result in a shift in level of the current price measures of non-rural and other goods. The seasonally adjusted estimates also reflect the level shift resulting from the increase prices but the impact of this increase has been taken into account in determining the concurrent seasonal factors.

Since the price increase impact is likely to result in a permanent change in the level of the series (at least for the duration of the current contracts), an estimated trend break correction of \$600m has been applied in April 2005. As a minimum of three months are required for a trend break correction to be accurately estimated using time series techniques, the size of the trend break may be revised. Therefore, users should interpret the trend estimates for recent months with some caution. The April 2005 trend observation is not visible in the charts in this issue affected by the trend break.

CHANGE TO AUSSTATS TABLES

As advised to AusStats clients with the March 2005 issue of this publication, AusStats tables 1 to 36 are now only presented as excel spreadsheets (i.e. in .xls format). This format replaces the previous time series spreadsheets that were produced in .wks (lotus) format.

Dennis Trewin
Australian Statistician

CONTENTS

page

Tables on AusStats	4
--------------------	---

ANALYSIS

Analysis and comments	5
-----------------------	---

TABLES

INTERNATIONAL TRADE IN GOODS AND SERVICES – BALANCE OF PAYMENTS BASIS

1 Goods and services, summary, seasonally adjusted and trend estimates	10
2 Goods and services, summary, original	11
3 Goods credits, original	12
4 Goods debits, original	13
5 Services, summary, original	14
6 Services, summary, seasonally adjusted and trend estimates	15
7 Services, original, quarterly	16

INTERNATIONAL MERCHANDISE TRADE – RECORDED TRADE BASIS

8 International merchandise exports, by commodity	17
9 International merchandise imports, by commodity	20
10 International merchandise trade, by country and country groups	23
11 International merchandise trade, by state	24

OTHER TABLES

12 Period average exchange rates per Australian dollar	25
---	----

OTHER INFORMATION

Explanatory Notes	26
Appendix – Related articles	29

TABLES ON AUSSTATS

TABLES AVAILABLE ON AUSSTATS

Data available on the ABS web site <<http://www.abs.gov.au>> include:

- longer time series of all tables contained in this publication
- additional tables listed below:

Tables 21 to 36 inclusive are updated on annual basis - with the March issue for calendar year and with the September issue for financial year.

13 Merchandise exports by Broad Economic Category (BEC)

14 Merchandise exports by industry of origin (ANZSIC)

15 Merchandise imports by Broad Economic Category (BEC)

16 Merchandise imports by Balance of Payments Broad Economic Category (BoPBEC)

17 Merchandise imports by industry of origin (ANZSIC)

18 Merchandise exports, state by country and country groups

19 Merchandise imports, state by country and country groups

20 Monthly forward seasonal adjustment factors

21 International trade in services, credits, state by financial year

22 International trade in services, credits, financial year by state

23 International trade in services, debits, state by financial year

24 International trade in services, debits, financial year by state

25 International trade in services, credits, state by calendar year

26 International trade in services, credits, calendar year by state

27 International trade in services, debits, state by calendar year

28 International trade in services, debits, calendar year by state

29 International trade in services, credits, financial year by country and service

30 International trade in services, credits, service by financial year and by country

31 International trade in services, credits, calendar year by country and service

32 International trade in services, credits, service by calendar year and by country

33 International trade in services, debits, financial year by country and service

34 International trade in services, debits, service by financial year and by country

35 International trade in services, debits, calendar year by country and service

36 International trade in services, debits, service by calendar year and by country.

ANALYSIS AND COMMENTS

BALANCE ON GOODS AND SERVICES

The trend estimate of the balance on goods and services in April 2005 was a deficit of \$1,636m.

In seasonally adjusted terms, the balance on goods and services in April 2005 was a deficit of \$1,325m, a decrease of \$1,310m on the deficit in March.

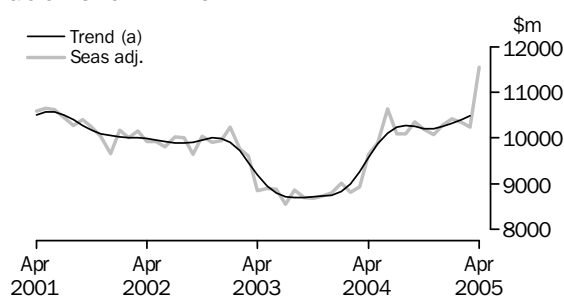
EXPORTS OF GOODS AND SERVICES

The trend estimate of goods and services credits rose \$719m between March and April to \$14,292m after a trend break correction of \$600m.

In seasonally adjusted terms, goods and services credits rose \$1,243m (9%) to \$14,595m. Non-rural and other goods rose \$1,167m (14%) and rural goods rose \$139m (7%), while services credits fell \$63m (2%).

Exports of goods

GOODS CREDITS



(a) A trend break of \$600m has been applied to April 2005.

RURAL GOODS

The trend estimate of rural goods exports rose \$6m to \$2,022m.

In seasonally adjusted terms, exports of rural goods rose \$139m (7%) to \$2,092m.

In original terms, exports of rural goods rose \$84m (4%) to \$2,116m.

Movements in the original series contributing to the rise in seasonally adjusted terms were:

- other rural, up \$97m (12%), in contrast to an average March to April fall of 7% over the previous three years
- meat and meat preparations, down \$13m (2%), compared with an average March to April fall of 10% over the previous three years
- wool and sheepskins, down \$9m (4%), compared with an average March to April fall of 23% over the previous three years.

Partly offsetting these effects were cereal grains and cereal preparations, up \$9m (2%), compared with an average March to April rise of 17% over the previous three years.

ANALYSIS AND COMMENTS *continued*

Exports of goods *continued*

NON-RURAL AND OTHER GOODS

The trend estimate of non-rural and other goods exports rose \$692m to \$9,161m after a trend break correction of \$600m.

In seasonally adjusted terms, exports of non-rural and other goods rose \$1,167m (14%) to \$9,448m.

In original terms, exports of non-rural and other goods rose \$964m (12%) to \$9,312m.

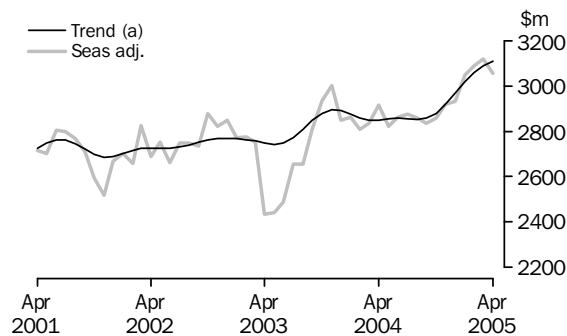
Movements in the original series contributing to the rise in seasonally adjusted terms were:

- coal, coke and briquettes, up \$435m (35%), compared with an average March to April rise of 2% over the previous three years (metalurgical coal prices rose 39% and volumes fell 1% between March and April)
- metal ores and minerals, up \$288m (18%), in contrast to an average March to April fall of less than 1% over the previous three years (non-agglomerated iron ore prices rose 41% and volumes fell 6% between March and April)
- transport equipment, up \$119m (28%), in contrast to an average March to April fall of 21% over the previous three years
- metals (excl. gold), up \$130m (18%), in contrast to an average March to April fall of 11% over the previous three years
- other mineral fuels, up \$89m (10%), in contrast to an average March to April fall of 8% over the previous three years
- other manufactures, up \$23m (2%), in contrast to an average March to April fall of 10% over the previous three years.

Partly offsetting these effects were other non-rural, down \$128m (13%), compared with an average March to April fall of less than 1% over the previous three years.

Exports of services

SERVICES CREDITS



In trend terms, services credits rose \$21m (1%) to \$3,109m.

Seasonally adjusted, services credits fell \$63m (2%) to \$3,055m.

Movements in the seasonally adjusted components contributing to this fall were:

- travel services, down \$32m (2%)
- other services, down \$30m (4%).

Seasonally adjusted, tourism related services credits fell \$50m (3%) to \$1,887m.

ANALYSIS AND COMMENTS *continued*

IMPORTS OF GOODS AND SERVICES

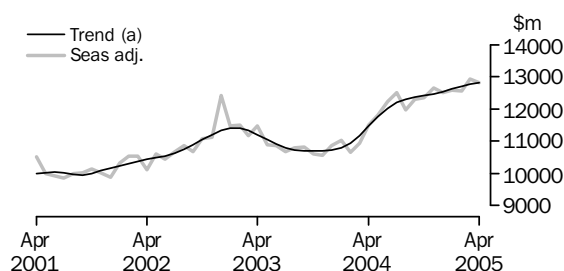
The trend estimate of goods and services debits rose \$45m between March and April to \$15,928m.

In seasonally adjusted terms, goods and services debits fell \$67m to \$15,920m.

Intermediate and other goods fell \$321m (5%) and consumption goods fell \$51m (1%), while capital goods rose \$253m (9%) and services debits rose \$52m (2%).

Imports of goods

GOODS DEBITS



(a) Trend estimates exclude abnormal imports of aircraft in December 2002.

CONSUMPTION GOODS

The trend estimate of imports of consumption goods rose \$6m to \$4,051m.

In seasonally adjusted terms, imports of consumption goods fell \$51m (1%) to \$3,974m.

In original terms, imports of consumption goods rose \$180m (5%) to \$3,881m.

The main movement in the original series contributing to the fall in seasonally adjusted terms was consumption goods n.e.s., down \$67m (6%), in contrast to an average March to April rise of 7% over the previous three years.

Partly offsetting this effect were:

- non-industrial transport equipment, up \$140m (13%), compared with an average March to April rise of 5% over the previous three years
- textiles, clothing and footwear, up \$53m (12%), in contrast to an average March to April fall of 1% over the previous three years.

CAPITAL GOODS

The trend estimate of imports of capital goods rose marginally to \$2,972m.

In seasonally adjusted terms, imports of capital goods rose \$253m (9%) to \$3,120m.

In original terms, imports of capital goods fell \$64m (2%) to \$2,832m.

The fall in the value of imports of capital goods in original terms is influenced by the fact that the number of effective trading days in April 2005 was lower than that in March 2005. To account for this difference, an adjustment of about 11 percentage points was applied prior to deriving the seasonally adjusted estimates.

The following commodity groups had the largest deviation from their three year average movement:

- automatic data processing equipment, down \$34m (6%), compared with an average March to April fall of 2% over the previous three years

ANALYSIS AND COMMENTS *continued*

Imports of goods continued

CAPITAL GOODS *continued*

- industrial transport equipment n.e.s., up \$21m (5%), compared with an average March to April rise of 11% over the previous three years.

INTERMEDIATE AND OTHER GOODS

The trend estimate of imports of intermediate and other goods rose \$47m (1%) to \$5,789m.

In seasonally adjusted terms, intermediate and other goods imports fell \$321m (5%) to \$5,721m.

In original terms, imports of intermediate and other goods fell \$58m (1%) to \$5,994m.

Movements in the original series contributing to the fall in seasonally adjusted terms were:

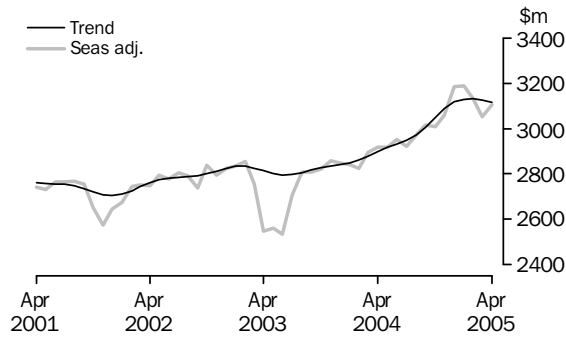
- organic and inorganic chemicals, down \$48m (13%), compared with an average March to April fall of 2% over the previous three years
- other goods, down \$54m (12%), compared with an average March to April fall of 4% over the previous three years
- other parts for capital goods, down \$64m (8%), compared with an average March to April fall of 3% over the previous three years
- primary industrial supplies n.e.s., down \$12m (12%), compared with an average March to April fall of less than 1% over the previous three years.

Partly offsetting these effects were:

- other merchandise goods, up \$86m (126%), compared with an average March to April rise of 11% over the previous three years
- fuels and lubricants, down \$22m (2%), compared with an average March to April fall of 4% over the previous three years (crude petroleum volumes fell 23% following volume growth of 29% in March, while prices rose 13% between March and April).

Imports of services

SERVICES DEBITS



In trend terms, services debits fell \$9m to \$3,116m.

Seasonally adjusted, services debits rose \$52m (2%) to \$3,105m.

Movements in the seasonally adjusted components contributing to this rise were:

- freight transportation services, up \$44m (7%)
- travel services, up \$7m (1%)
- passenger and other transportation services, up \$7m (1%).

Partly offsetting these effects were other services, down \$6m (1%).

Seasonally adjusted, tourism related services debits rose \$37m (2%) to \$1,598m.

GOODS AND SERVICES(a), Summary: Seasonally Adjusted and Trend Estimates

Months	BALANCE	CREDITS					DEBITS					
	On goods and services	Total goods and services	Total goods	Rural goods(b)	Non-rural and other goods(b)	Total services	Total goods and services	Total goods	Consumption goods	Capital goods	Intermediate and other goods	Total services
	\$m	\$m	\$m	\$m	\$m	\$m	\$m	\$m	\$m	\$m	\$m	\$m
SEASONALLY ADJUSTED												
2004												
February	-1 852	11 617	8 810	2 119	6 691	2 807	-13 469	-10 645	-3 345	-2 486	-4 814	-2 824
March	-2 055	11 771	8 936	2 047	6 889	2 835	-13 826	-10 931	-3 566	-2 613	-4 752	-2 895
April	-1 870	12 558	9 644	2 226	7 418	2 914	-14 428	-11 510	-3 827	-2 658	-5 025	-2 918
May	-2 013	12 716	9 895	2 415	7 480	2 821	-14 729	-11 811	-3 813	-2 819	-5 179	-2 918
June	-1 679	13 504	10 642	2 673	7 969	2 862	-15 183	-12 231	-3 949	-3 039	-5 243	-2 952
July	-2 451	12 971	10 097	2 411	7 686	2 874	-15 422	-12 501	-3 853	-3 196	-5 452	-2 921
August	-2 002	12 943	10 083	2 339	7 744	2 860	-14 945	-11 973	-3 756	-2 894	-5 323	-2 972
September	-2 125	13 193	10 358	2 292	8 066	2 835	-15 318	-12 302	-3 863	-2 883	-5 556	-3 016
October	-2 305	13 046	10 189	2 129	8 060	2 857	-15 351	-12 344	-3 823	-3 072	-5 449	-3 007
November	-2 724	12 995	10 075	2 095	7 980	2 920	-15 719	-12 660	-3 871	-3 115	-5 674	-3 059
December	-2 474	13 221	10 288	2 042	8 246	2 933	-15 695	-12 510	-3 869	-3 026	-5 615	-3 185
2005												
January	-2 308	13 470	10 420	2 003	8 417	3 050	-15 778	-12 590	-4 216	-2 810	-5 564	-3 188
February	-2 250	13 426	10 336	2 069	8 267	3 090	-15 676	-12 545	-4 022	-3 018	-5 505	-3 131
March	-2 635	13 352	10 234	1 953	8 281	3 118	-15 987	-12 934	-4 025	-2 867	-6 042	-3 053
April(c)	-1 325	14 595	11 540	2 092	9 448	3 055	-15 920	-12 815	-3 974	-3 120	-5 721	-3 105
TREND ESTIMATES												
2004												
February	-1 930	11 868	9 008	2 103	6 905	2 860	-13 798	-10 935	-3 559	-2 612	-4 764	-2 863
March	-1 941	12 114	9 267	2 199	7 068	2 847	-14 055	-11 175	-3 634	-2 666	-4 875	-2 880
April	-1 944	12 422	9 573	2 302	7 271	2 849	-14 366	-11 468	-3 720	-2 745	-5 003	-2 898
May	-1 953	12 726	9 872	2 388	7 484	2 854	-14 679	-11 762	-3 794	-2 836	-5 132	-2 917
June	-1 983	12 967	10 110	2 438	7 672	2 857	-14 950	-12 017	-3 843	-2 924	-5 250	-2 933
July	-2 057	13 095	10 241	2 436	7 805	2 854	-15 152	-12 202	-3 856	-2 993	-5 353	-2 950
August	-2 157	13 125	10 273	2 379	7 894	2 852	-15 282	-12 310	-3 845	-3 029	-5 436	-2 972
September	-2 261	13 105	10 248	2 284	7 964	2 857	-15 366	-12 361	-3 836	-3 034	-5 491	-3 005
October	-2 362	13 091	10 212	2 181	8 031	2 879	-15 453	-12 405	-3 858	-3 019	-5 528	-3 048
November	-2 423	13 130	10 210	2 102	8 108	2 920	-15 553	-12 464	-3 905	-2 997	-5 562	-3 089
December	-2 439	13 221	10 254	2 059	8 195	2 967	-15 660	-12 543	-3 959	-2 983	-5 601	-3 117
2005												
January	-2 419	13 336	10 319	2 035	8 284	3 017	-15 755	-12 625	-4 004	-2 975	-5 646	-3 130
February	-2 373	13 454	10 397	2 021	8 376	3 057	-15 827	-12 696	-4 032	-2 969	-5 695	-3 131
March	-2 310	13 573	10 485	2 016	8 469	3 088	-15 883	-12 758	-4 045	-2 971	-5 742	-3 125
April(c)	-1 636	14 292	11 183	2 022	9 161	3 109	-15 928	-12 812	-4 051	-2 972	-5 789	-3 116

(a) For sign conventions, see paragraph 9 of the Explanatory Notes.

(b) For all time periods, estimates for sugar, sugar preparations and honey are included in Non-rural and other goods.

(c) A trend break of \$600m has been applied to Non-rural and other goods credits in April 2005.

GOODS AND SERVICES(a), Summary: Original

	BALANCE	CREDITS					DEBITS					
	On goods and services	Total goods and services	Total goods	Rural goods(b)	Non-rural and other goods(b)	Total services	Total goods and services	Total goods	Con- sumption goods	Capital goods	Inter- mediate and other goods	Total services
FINANCIAL YEAR												
2001-02	-1 373	153 200	120 950	30 085	90 865	32 250	-154 573	-121 942	-37 422	-27 208	-57 312	-32 631
2002-03	-18 876	148 293	115 800	25 484	90 316	32 493	-167 169	-134 278	-41 228	-31 554	-61 496	-32 891
2003-04	-23 777	143 484	109 504	24 560	84 944	33 980	-167 261	-133 026	-42 916	-32 118	-57 992	-34 235
MONTHS												
2004												
February	-185	11 947	8 314	2 090	6 224	3 633	-12 132	-9 589	-3 092	-2 041	-4 456	-2 543
March	-2 278	12 014	9 236	2 139	7 097	2 778	-14 292	-11 529	-3 684	-2 681	-5 164	-2 763
April	-1 732	12 116	9 401	2 202	7 199	2 715	-13 848	-10 986	-3 486	-2 484	-5 016	-2 862
May	-1 392	12 585	10 149	2 519	7 630	2 436	-13 977	-11 166	-3 459	-2 704	-5 003	-2 811
June	-2 534	13 164	10 582	2 607	7 975	2 582	-15 698	-12 728	-3 791	-3 661	-5 276	-2 970
July	-1 969	13 553	10 129	2 379	7 750	3 424	-15 522	-12 462	-3 991	-3 237	-5 234	-3 060
August	-2 264	13 091	10 413	2 300	8 113	2 678	-15 355	-12 345	-3 940	-2 949	-5 456	-3 010
September	-3 359	13 028	10 567	2 293	8 274	2 461	-16 387	-13 121	-4 369	-3 023	-5 729	-3 266
October	-2 535	13 572	10 789	2 251	8 538	2 783	-16 107	-12 918	-4 188	-3 087	-5 643	-3 189
November	-3 610	12 916	10 112	2 123	7 989	2 804	-16 526	-13 519	-4 277	-3 370	-5 872	-3 007
December	-2 196	13 653	10 768	2 154	8 614	2 885	-15 849	-12 668	-3 804	-3 170	-5 694	-3 181
2005												
January	-1 792	12 759	9 264	1 717	7 547	3 495	-14 551	-11 267	-3 717	-2 415	-5 135	-3 284
February	-749	13 253	9 410	2 024	7 386	3 843	-14 002	-11 274	-3 712	-2 478	-5 084	-2 728
March	-2 132	13 398	10 380	2 032	8 348	3 018	-15 530	-12 649	-3 701	-2 896	-6 052	-2 881
April	-1 469	14 298	11 428	2 116	9 312	2 870	-15 767	-12 707	-3 881	-2 832	-5 994	-3 060
FINANCIAL YEAR TO DATE												
10 months ended April												
2004	-19 851	117 735	88 773	19 434	69 339	28 962	-137 586	-109 132	-35 666	-25 753	-47 713	-28 454
2005	-22 075	133 521	103 260	21 389	81 871	30 261	-155 596	-124 930	-39 580	-29 457	-55 893	-30 666

(a) For sign conventions, see paragraph 9 of the Explanatory Notes.

(b) For all time periods, estimates for sugar, sugar preparations and honey are included in Non-rural and other goods.

GOODS CREDITS: Original

							10 MONTHS ENDED APRIL		Change
	2001-02	2002-03	2003-04	Feb 2005	Mar 2005	Apr 2005	2004	2005	
	\$m	\$m	\$m	\$m	\$m	\$m	\$m	\$m	
Total goods credits	120 950	115 800	109 504	9 410	10 380	11 428	88 773	103 260	16.3
Rural goods									
Meat and meat preparations	6 246	5 655	5 758	539	628	615	4 529	5 665	25.1
Cereal grains and cereal preparations	6 481	4 487	5 094	463	365	374	3 944	4 568	15.8
Wool and sheepskins	3 687	3 545	2 778	231	246	237	2 231	2 326	4.3
Other rural	13 671	11 797	10 930	791	793	890	8 730	8 830	1.1
<i>Total rural goods(a)</i>	<i>30 085</i>	<i>25 484</i>	<i>24 560</i>	<i>2 024</i>	<i>2 032</i>	<i>2 116</i>	<i>19 434</i>	<i>21 389</i>	<i>10.1</i>
Non-rural goods									
Metal ores and minerals	14 774	14 523	14 888	1 241	1 643	1 931	11 878	15 352	29.2
Coal, coke and briquettes	13 430	11 987	11 001	1 242	1 249	1 684	8 628	13 146	52.4
Other mineral fuels	10 940	11 049	8 766	841	926	1 015	7 447	9 169	23.1
Metals (excl. gold)	9 650	8 711	7 759	621	733	863	6 220	7 241	16.4
Machinery	7 999	7 362	6 839	572	635	625	5 605	6 184	10.3
Transport equipment	5 686	6 273	5 155	356	426	545	4 296	4 032	-6.1
Other manufactures	13 758	13 485	13 276	1 095	1 192	1 215	10 871	11 552	6.3
Other non-rural(a)	7 009	8 234	9 286	819	950	822	7 551	8 795	16.5
<i>Total non-rural goods(a)</i>	<i>83 246</i>	<i>81 624</i>	<i>76 970</i>	<i>6 787</i>	<i>7 754</i>	<i>8 700</i>	<i>62 496</i>	<i>75 471</i>	<i>20.8</i>
Other goods									
<i>Total other goods(b)</i>	<i>7 619</i>	<i>8 692</i>	<i>7 974</i>	<i>599</i>	<i>594</i>	<i>612</i>	<i>6 843</i>	<i>6 400</i>	<i>-6.5</i>

(a) For all time periods, estimates for sugar, sugar preparations and honey are included in Other non-rural.

(b) Includes non-monetary gold.

GOODS DEBITS(a): Original

							10 MONTHS ENDED APRIL		Change %
	2001-02	2002-03	2003-04	Feb 2005	Mar 2005	Apr 2005	2004	2005	
	\$m	\$m	\$m	\$m	\$m	\$m	\$m	\$m	
Total goods debits	-121 942	-134 278	-133 026	-11 274	-12 649	-12 707	-109 132	-124 930	14.5
Consumption goods									
Food and beverages, mainly for consumption	-4 687	-5 067	-5 167	-421	-470	-480	-4 310	-4 856	12.7
Household electrical items	-3 166	-3 657	-3 793	-282	-273	-305	-3 171	-3 447	8.7
Non-industrial transport equipment	-9 930	-11 302	-12 326	-989	-1 069	-1 209	-10 091	-10 686	5.9
Textiles, clothing and footwear	-4 849	-5 237	-5 078	-571	-429	-482	-4 315	-5 010	16.1
Toys, books and leisure goods	-3 494	-3 740	-3 593	-251	-244	-256	-2 991	-3 126	4.5
Consumption goods n.e.s.	-11 296	-12 225	-12 959	-1 198	-1 216	-1 149	-10 788	-12 455	15.5
<i>Total consumption goods</i>	<i>-37 422</i>	<i>-41 228</i>	<i>-42 916</i>	<i>-3 712</i>	<i>-3 701</i>	<i>-3 881</i>	<i>-35 666</i>	<i>-39 580</i>	<i>11.0</i>
Capital goods									
Machinery and industrial equipment	-9 502	-11 007	-11 064	-1 041	-1 049	-1 056	-9 065	-11 154	23.0
ADP equipment	-5 055	-4 908	-5 138	-379	-528	-494	-4 019	-4 562	13.5
Telecommunications equipment	-3 643	-3 619	-4 105	-317	-367	-348	-3 270	-3 808	16.5
Civil aircraft	-1 513	-3 887	-3 061	-47	-138	-108	-2 374	-1 952	-17.8
Industrial transport equipment n.e.s.	-3 613	-3 881	-4 144	-331	-412	-433	-3 264	-4 066	24.6
Capital goods n.e.s.	-3 882	-4 252	-4 606	-363	-402	-393	-3 761	-3 915	4.1
<i>Total capital goods</i>	<i>-27 208</i>	<i>-31 554</i>	<i>-32 118</i>	<i>-2 478</i>	<i>-2 896</i>	<i>-2 832</i>	<i>-25 753</i>	<i>-29 457</i>	<i>14.4</i>
Intermediate and other merchandise goods									
Food and beverages, mainly for industry	-577	-736	-625	-51	-55	-52	-522	-542	3.8
Primary industrial supplies n.e.s.	-1 117	-1 220	-1 079	-70	-100	-88	-919	-871	-5.2
Fuels and lubricants	-8 823	-10 393	-9 917	-969	-1 394	-1 372	-7 953	-11 847	49.0
Parts for transport equipment	-6 827	-7 258	-6 548	-526	-632	-634	-5 463	-5 818	6.5
Parts for ADP equipment	-2 159	-2 011	-1 812	-120	-152	-150	-1 470	-1 468	-0.1
Other parts for capital goods	-8 216	-8 605	-8 553	-722	-819	-755	-6 959	-7 895	13.5
Organic and inorganic chemicals	-3 447	-3 089	-3 048	-332	-366	-318	-2 489	-3 009	20.9
Paper and paperboard	-2 225	-2 326	-2 242	-178	-194	-186	-1 886	-1 959	3.9
Textile yarn and fabrics	-1 830	-1 839	-1 576	-108	-107	-107	-1 304	-1 223	-6.2
Iron and steel	-1 765	-1 960	-2 026	-286	-291	-290	-1 674	-2 411	44.0
Plastics	-2 182	-2 478	-2 177	-201	-208	-201	-1 806	-2 053	13.7
Processed industrial supplies n.e.s.	-11 441	-12 238	-12 029	-1 115	-1 209	-1 284	-9 896	-11 704	18.3
Other merchandise goods	-1 563	-1 710	-1 234	-64	-68	-154	-1 071	-890	-16.9
<i>Total intermediate and other merchandise goods</i>	<i>-52 172</i>	<i>-55 863</i>	<i>-52 866</i>	<i>-4 742</i>	<i>-5 595</i>	<i>-5 591</i>	<i>-43 412</i>	<i>-51 690</i>	<i>19.1</i>
Other goods									
<i>Total other goods(b)</i>	<i>-5 140</i>	<i>-5 633</i>	<i>-5 126</i>	<i>-342</i>	<i>-457</i>	<i>-403</i>	<i>-4 301</i>	<i>-4 203</i>	<i>-2.3</i>

(a) For sign conventions, see paragraph 9 of the Explanatory Notes.

(b) Includes non-monetary gold.

SERVICES (a)(b), Summary: Original

	10 MONTHS ENDED APRIL								
	2001-02	2002-03	2003-04	Feb 2005	Mar 2005	Apr 2005	2004	2005	Change
	\$m	\$m	\$m	\$m	\$m	\$m	\$m	\$m	%
Credits									
Freight	1 001	920	830	64	65	64	683	671	-1.8
Other transportation	6 664	6 538	6 772	677	683	629	5 669	6 364	12.3
Travel	15 645	15 452	17 108	2 323	1 479	1 343	14 910	15 318	2.7
Other services	8 940	9 583	9 270	779	791	834	7 700	7 908	2.7
Total services credits	32 250	32 493	33 980	3 843	3 018	2 870	28 962	30 261	4.5
Debits									
Freight	-5 626	-5 808	-6 056	-582	-605	-641	-4 969	-6 315	27.1
Other transportation	-5 150	-5 152	-5 578	-410	-454	-490	-4 558	-4 766	4.6
Travel	-10 918	-11 012	-12 136	-929	-998	-1 114	-10 129	-11 186	10.4
Other services	-10 937	-10 919	-10 465	-807	-824	-815	-8 798	-8 399	-4.5
Total services debits	-32 631	-32 891	-34 235	-2 728	-2 881	-3 060	-28 454	-30 666	7.8
Memorandum items:									
Tourism related service credits(c)	19 800	19 503	21 081	2 728	1 887	1 684	18 302	19 024	3.9
Tourism related service debits(c)	-15 577	-15 691	-17 258	-1 295	-1 411	-1 559	-14 315	-15 522	8.4

(a) For sign conventions, see paragraph 9 of the Explanatory Notes.

(b) For more detailed trade in services by commodity, see table 7.

(c) For a more detailed explanation of tourism related services, see paragraphs 15 and 16 of the Explanatory Notes.

SERVICES (a), Summary: **Seasonally Adjusted and Trend Estimates**

	<i>Jul</i> 2004	<i>Aug</i> 2004	<i>Sep</i> 2004	<i>Oct</i> 2004	<i>Nov</i> 2004	<i>Dec</i> 2004	<i>Jan</i> 2005	<i>Feb</i> 2005	<i>Mar</i> 2005	<i>Apr</i> 2005
	\$m	\$m	\$m	\$m	\$m	\$m	\$m	\$m	\$m	\$m

SEASONALLY ADJUSTED

Credits

Freight	71	69	70	68	65	66	66	66	67	66
Other transportation	599	601	588	604	616	628	653	660	674	674
Travel	1 445	1 433	1 412	1 384	1 445	1 435	1 523	1 545	1 536	1 504
Other services	759	757	765	801	794	804	808	819	841	811
Total services credits	2 874	2 860	2 835	2 857	2 920	2 933	3 050	3 090	3 118	3 055

Debits

Freight	-594	-564	-624	-625	-653	-666	-707	-649	-591	-635
Other transportation	-444	-467	-484	-471	-481	-501	-499	-498	-486	-493
Travel	-1 055	-1 051	-1 082	-1 087	-1 107	-1 187	-1 145	-1 140	-1 123	-1 130
Other services	-828	-890	-826	-824	-818	-831	-837	-844	-853	-847
Total services debits	-2 921	-2 972	-3 016	-3 007	-3 059	-3 185	-3 188	-3 131	-3 053	-3 105

Memorandum items:

Tourism related service credits(b)	1 800	1 781	1 743	1 678	1 787	1 804	1 912	1 944	1 937	1 887
Tourism related service debits(b)	-1 438	-1 480	-1 529	-1 520	-1 550	-1 635	-1 610	-1 594	-1 561	-1 598

TREND ESTIMATES

Credits

Freight	72	71	69	67	67	66	66	66	66	66
Other transportation	597	597	599	606	618	631	646	658	669	677
Travel	1 421	1 417	1 416	1 423	1 440	1 465	1 492	1 514	1 530	1 541
Other services	764	767	773	783	795	805	813	819	823	825
Total services credits	2 854	2 852	2 857	2 879	2 920	2 967	3 017	3 057	3 088	3 109

Debits

Freight	-581	-597	-616	-636	-652	-660	-659	-652	-642	-632
Other transportation	-470	-469	-472	-478	-486	-491	-494	-495	-495	-495
Travel	-1 054	-1 064	-1 080	-1 101	-1 121	-1 135	-1 142	-1 143	-1 141	-1 138
Other services	-845	-842	-837	-833	-830	-831	-835	-841	-847	-851
Total services debits	-2 950	-2 972	-3 005	-3 048	-3 089	-3 117	-3 130	-3 131	-3 125	-3 116

Memorandum items:

Tourism related service credits(b)	1 759	1 751	1 747	1 758	1 785	1 825	1 867	1 902	1 928	1 946
Tourism related service debits(b)	-1 479	-1 488	-1 510	-1 539	-1 566	-1 585	-1 594	-1 597	-1 597	-1 596

(a) For sign conventions, see paragraph 9 of the Explanatory Notes.

(b) For a more detailed explanation of tourism related services, see paragraphs 15 and 16 of the Explanatory Notes.

	CREDITS				DEBITS			
	<i>Jun Qtr</i>	<i>Sep Qtr</i>	<i>Dec Qtr</i>	<i>Mar Qtr</i>	<i>Jun Qtr</i>	<i>Sep Qtr</i>	<i>Dec Qtr</i>	<i>Mar Qtr</i>
	2004	2004	2004	2005	2004	2004	2004	2005
	\$m	\$m	\$m	\$m	\$m	\$m	\$m	\$m
Services	7 733	8 563	8 472	10 356	-8 643	-9 336	-9 377	-8 893
Transportation services								
Passenger(c)	1 679	1 768	1 901	2 066	-1 297	-1 293	-1 190	-1 134
Freight	221	210	204	193	-1 622	-1 834	-2 020	-1 820
Other(c)	np	np	np	np	-206	-217	-223	-219
<i>Total transportation services</i>	<i>1 900</i>	<i>1 978</i>	<i>2 105</i>	<i>2 259</i>	<i>-3 125</i>	<i>-3 344</i>	<i>-3 433</i>	<i>-3 173</i>
Travel services								
Business	302	285	287	313	-700	-763	-715	-795
Personal								
Education-related	885	1 614	693	2 554	-142	-234	-152	-172
Other	2 293	2 453	2 901	2 875	-2 190	-2 469	-2 459	-2 313
Total personal	3 178	4 067	3 594	5 429	-2 332	-2 703	-2 611	-2 485
<i>Total travel services</i>	<i>3 480</i>	<i>4 352</i>	<i>3 881</i>	<i>5 742</i>	<i>-3 032</i>	<i>-3 466</i>	<i>-3 326</i>	<i>-3 280</i>
Communication services(d)	183	208	202	202	-205	-189	-187	-183
Construction services	27	21	20	19	—	—	—	—
Insurance services	173	171	171	171	-220	-218	-218	-218
Financial services	248	251	251	251	-146	-146	-146	-146
Computer and information services	297	289	320	287	-256	-266	-286	-201
Royalties and license fees	172	138	183	160	-456	-485	-535	-480
Other business services								
Merchanting and other trade-related	206	156	182	177	-55	-56	-58	-43
Operational leasing	5	5	4	4	-192	-186	-173	-220
Miscellaneous business, professional and technical								
Legal, accounting, management consulting and public relations	128	115	113	98	-76	-84	-79	-70
Advertising, market research and public opinion polling	22	22	30	19	-53	-26	-27	-28
Research and development	88	77	105	87	-42	-37	-41	-46
Architectural, engineering and other technical services	127	97	120	138	-97	-104	-91	-68
Agriculture, mining and on-site processing	31	30	30	26	-22	-24	-23	-25
Services between affiliated enterprises n.i.e.	245	245	340	261	-209	-180	-266	-202
Other	72	92	105	89	-70	-74	-81	-62
Total miscellaneous business, professional and technical	713	678	843	718	-569	-529	-608	-501
<i>Total other business services</i>	<i>924</i>	<i>839</i>	<i>1 029</i>	<i>899</i>	<i>-816</i>	<i>-771</i>	<i>-839</i>	<i>-764</i>
Personal, cultural and recreational services								
Audiovisual and related services	26	27	25	55	-152	-247	-160	-199
Other personal, cultural and recreational services	72	78	78	87	-25	-30	-57	-69
<i>Total other personal, cultural and recreational services</i>	<i>98</i>	<i>105</i>	<i>103</i>	<i>142</i>	<i>-177</i>	<i>-277</i>	<i>-217</i>	<i>-268</i>
Government services n.i.e.	231	211	207	224	-210	-174	-190	-180
Memorandum items:								
Tourism related services(e)	4 376	5 365	4 986	6 989	-4 408	-4 849	-4 610	-4 504

— nil or rounded to zero (including null cells)

np not available for publication but included in totals where applicable, unless otherwise indicated

(a) For sign conventions, see paragraph 9 of Explanatory Notes.

(b) For more information see paragraphs 13 and 14 of the Explanatory Notes.

(c) Passenger transportation credits include other transportation services credits.

(d) Communications services includes other services n.i.e..

(e) For a more detailed explanation of tourism related services, see paragraphs 15 and 16 of the Explanatory Notes.

					Per cent of total merchandise exports (a)	10 MONTHS ENDED APRIL	
		Feb 2005	Mar 2005	Apr 2005		2004	2005
		\$m	\$m	\$m	%	\$m	\$m
MAJOR COMMODITIES							
011	Meat of bovine animals	366	430	425	3.7	3 053	4 008
041	Wheat	302	234	187	1.6	2 601	2 993
268	Wool and other animal hair	199	218	207	1.8	2 002	2 041
281	Iron ore and concentrates	499	624	828	7.3	4 216	6 000
285	Aluminium ore and concentrates	331	378	426	3.7	3 000	3 628
321	Coal, not agglomerated	1 254	1 260	1 669	14.7	8 567	13 109
333	Crude petroleum oils	401	468	574	5.0	3 963	4 648
334	Refined petroleum oils	204	241	164	1.4	1 680	1 954
343	Natural gas	218	271	279	2.5	1 807	2 622
684	Aluminium	323	249	461	4.0	3 117	3 433
781	Passenger motor vehicles	228	250	228	2.0	2 411	2 203
971	Gold, non-monetary	447	368	433	3.8	4 850	4 644
SECTION AND DIVISION OF THE SITC							
0	Food and live animals(b)						
00	Live animals other than fish, crustaceans, molluscs and aquatic invertebrates	62	55	70	0.6	686	676
01	Meat and meat preparations	537	622	615	5.4	4 528	5 662
02	Dairy products and birds' eggs	184	198	188	1.7	1 746	1 968
03	Fish (not marine mammals), crustaceans, molluscs and aquatic invertebrates, and preparations thereof(b)	81	92	113	1.0	1 100	1 019
04	Cereals and cereal preparations(b)	462	364	374	3.3	3 944	4 553
05	Vegetables and fruit	88	94	108	0.9	994	1 042
06	Sugars, sugar preparations and honey(b)	13	18	12	0.1	151	169
07	Coffee, tea, cocoa, spices, and manufactures thereof	18	19	21	0.2	239	230
08	Feeding stuff for animals (excl. unmilled cereals)(b)	55	62	69	0.6	766	710
09	Miscellaneous edible products and preparations	35	38	36	0.3	381	390
	<i>Total food and live animals</i>	<i>1 536</i>	<i>1 563</i>	<i>1 605</i>	<i>14.1</i>	<i>14 537</i>	<i>16 419</i>
1	Beverages and tobacco						
11	Beverages	191	237	243	2.1	2 135	2 352
12	Tobacco and tobacco manufactures	4	5	6	—	66	87
	<i>Total beverages and tobacco</i>	<i>195</i>	<i>242</i>	<i>249</i>	<i>2.2</i>	<i>2 201</i>	<i>2 439</i>
2	Crude materials, inedible, except fuels(b)						
21	Hides, skins and furskins, raw(b)	53	51	59	0.5	520	565
22	Oil seeds and oleaginous fruits	71	37	54	0.5	425	428
23	Crude rubber (incl. synthetic and reclaimed)	1	1	1	—	13	10
24	Cork and wood	89	85	89	0.8	809	853
25	Pulp and waste paper	8	10	10	0.1	46	82
26	Textile fibres and their wastes (not manufactured into yarn or fabric)(b)	226	233	256	2.2	2 725	2 618
27	Crude fertilisers (excl. those of Division 56) and crude minerals (excl. coal, petroleum and precious stones)	40	42	50	0.4	349	386
28	Metalliferous ores and metal scrap(b)	1 232	1 651	1 883	16.5	11 526	15 100
29	Crude animal and vegetable materials, n.e.s.	22	22	23	0.2	195	242
	<i>Total crude materials, inedible, except fuels</i>	<i>1 741</i>	<i>2 132</i>	<i>2 424</i>	<i>21.3</i>	<i>16 608</i>	<i>20 282</i>
3	Mineral fuels, lubricants and related materials						
32	Coal, coke and briquettes	1 259	1 266	1 686	14.8	8 629	13 187
33	Petroleum, petroleum products and related materials	606	711	739	6.5	5 652	6 614
34	Gas, natural and manufactured	296	315	354	3.1	2 354	3 307
	<i>Total mineral fuels, lubricants and related materials</i>	<i>2 160</i>	<i>2 292</i>	<i>2 780</i>	<i>24.4</i>	<i>16 635</i>	<i>23 108</i>

— nil or rounded to zero (including null cells)

(a) Per cent of total merchandise exports is calculated for the most recent month.

(b) Excludes exports commodities subject to a confidentiality restriction. These are included in Division 98.

	Feb 2005	Mar 2005	Apr 2005	Per cent of total merchandise exports (a)	10 MONTHS ENDED APRIL	
					2004	2005
					\$m	\$m
SECTION AND DIVISION OF THE SITC						
4	Animal and vegetable oils, fats and waxes(b)					
41	18	20	14	0.1	205	177
42	4	5	8	0.1	42	51
43	Fats and oils (processed), waxes and inedible mixtures or preparations, of animal or vegetable origin, n.e.s.					
	5	5	5	—	46	53
	26	30	27	0.2	293	282
5	Chemicals and related products, n.e.s.(b)					
51	9	9	9	0.1	95	108
52	41	40	52	0.5	428	429
53	45	57	49	0.4	497	508
54	228	245	258	2.3	1 977	2 285
55	Essential oils and resinoids and perfume materials; toilet, polishing and cleansing preparations					
	31	40	41	0.4	348	356
56	8	4	27	0.2	134	147
57	28	27	26	0.2	163	225
58	25	27	24	0.2	210	245
59	48	47	50	0.4	483	507
	463	494	535	4.7	4 334	4 809
6	Manufactured goods classified chiefly by material(b)					
61	29	39	34	0.3	394	373
62	11	17	14	0.1	116	132
63	18	23	20	0.2	171	198
64	Paper, paperboard, and articles of paper pulp, of paper or of paperboard					
	65	61	67	0.6	608	605
65	31	38	34	0.3	378	360
66	80	65	53	0.5	686	710
67	47	49	67	0.6	738	586
68	573	675	797	7.0	5 483	6 643
69	60	72	75	0.7	609	691
	915	1 040	1 161	10.2	9 183	10 296
7	Machinery and transport equipment(b)					
71	82	85	88	0.8	690	832
72	85	112	112	1.0	937	1 007
73	12	15	9	0.1	121	126
74	General industrial machinery and equipment, n.e.s. and machine parts, n.e.s.(b)					
	103	118	129	1.1	990	1 175
75	87	100	97	0.9	1 013	946
76	Telecommunications and sound recording and reproducing apparatus and equipment					
	72	74	70	0.6	628	769
77	Electrical machinery, apparatus, appliances, parts (incl. non-electrical counterparts of electrical domestic equipment)					
	126	127	124	1.1	1 195	1 313
78	309	340	334	2.9	3 444	3 161
79	47	85	212	1.9	852	871
	922	1 056	1 175	10.3	9 870	10 199

— nil or rounded to zero (including null cells)

(a) Per cent of total merchandise exports is calculated for the most recent month.

(b) Excludes exports commodities subject to a confidentiality restriction. These are included in Division 98.

				Per cent of total merchandise exports (a)	10 MONTHS ENDED APRIL		
	Feb	Mar	Apr			
	2005	2005	2005		2004	2005	
	\$m	\$m	\$m	%	\$m	\$m	
SECTION AND DIVISION OF THE SITC							
8	Miscellaneous manufactured articles(b)						
81	Prefabricated buildings; sanitary, plumbing, heating and lighting fixtures and fittings, n.e.s.	9	11	11	0.1	78	91
82	Furniture, parts thereof; bedding, mattresses, mattress supports, cushions and similar stuffed furnishings	11	13	12	0.1	118	111
83	Travel goods, handbags and similar containers	2	2	2	—	18	19
84	Articles of apparel and clothing accessories	22	28	26	0.2	251	240
85	Footwear(b)	3	5	4	—	40	37
87	Professional, scientific and controlling instruments and apparatus, n.e.s.	115	119	127	1.1	992	1 140
88	Photographic apparatus, equipment and supplies and optical goods, n.e.s.; watches and clocks	26	30	30	0.3	463	394
89	Miscellaneous manufactured articles, n.e.s.	142	163	166	1.5	1 550	1 588
	<i>Total miscellaneous manufactured articles</i>	330	370	377	3.3	3 509	3 620
9	Commodities and transactions not classified elsewhere in the SITC(c)(d)						
93	Special transactions and commodities not classified according to kind	154	207	163	1.4	1 917	1 561
95	Gold coin whether or not legal tender, and other coin being legal tender	6	9	6	0.1	80	100
96	Coin (excl. gold coin), not being legal tender	—	—	—	—	—	1
97	Gold, non-monetary (excl. gold ores and concentrates)	447	368	433	3.8	4 850	4 644
98	Combined confidential items excl. some of SITC 280 (exports only) and some of SITCs 510 and 520 (imports only)(c)(d)	574	551	456	4.0	4 440	4 934
	<i>Total commodities and transactions not classified elsewhere in the SITC</i>	1 180	1 136	1 057	9.3	11 288	11 240
	Total Merchandise Exports	9 469	10 355	11 389	100.0	88 456	102 695
	Balance of Payments Adjustments	-59	25	39	..	317	565
	Goods Credits (exports) on a Balance of Payments Basis	9 410	10 380	11 428	..	88 773	103 260

.. not applicable

— nil or rounded to zero (including null cells)

(a) Per cent of total merchandise exports is calculated for the most recent month.

(b) Excludes exports commodities subject to a confidentiality restriction. These are included in Division 98.

(c) Includes exports commodities subject to a confidentiality restriction.

(d) Includes small value export entries which can not yet be allocated by commodity.

INTERNATIONAL MERCHANDISE IMPORTS, By commodity

				Per cent	10 MONTHS	
	Feb	Mar	Apr	of total	ENDED APRIL	
	2005	2005	2005	merchandise	2004	2005
	\$m	\$m	\$m	imports(a)	\$m	\$m
				%		
MAJOR COMMODITIES						
333 Crude petroleum oils	720	1 044	904	7.2	5 096	8 020
334 Refined petroleum oils	224	357	464	3.7	2 633	3 660
542 Medicaments	541	548	453	3.6	4 048	4 748
641 Paper and paperboard	162	176	169	1.3	1 704	1 749
752 Automatic data processing machines	382	531	499	4.0	4 003	4 590
759 Parts and accessories of office machines	149	180	174	1.4	1 753	1 757
764 Telecommunications equipment	359	423	400	3.2	3 431	4 183
781 Passenger motor vehicles	895	967	1 104	8.8	9 164	9 484
782 Motor vehicles for the transport of goods	280	343	356	2.8	2 477	3 252
784 Parts and accessories of motor vehicles	178	192	205	1.6	1 739	1 907
792 Aircraft and associated equipment	81	415	187	1.5	3 206	3 088
971 Gold, non-monetary	163	200	215	1.7	2 174	1 940

SECTION AND DIVISION OF THE SITC

0	Food and live animals					
00	Live animals other than fish, crustaceans, molluscs and aquatic invertebrates	25	10	5	—	58
01	Meat and meat preparations	30	39	41	0.3	210
02	Dairy products and birds' eggs	31	33	33	0.3	258
03	Fish (not marine mammals), crustaceans, molluscs and aquatic invertebrates, and preparations thereof	77	83	74	0.6	768
04	Cereals and cereal preparations	30	31	31	0.2	301
05	Vegetables and fruit	80	86	83	0.7	809
06	Sugars, sugar preparations and honey	13	15	13	0.1	147
07	Coffee, tea, cocoa, spices, and manufactures thereof	51	55	58	0.5	534
08	Feeding stuff for animals (excl. unmilled cereals)	13	29	23	0.2	227
09	Miscellaneous edible products and preparations	88	77	116	0.9	868
	<i>Total food and live animals</i>	438	458	476	3.8	4 179
1	Beverages and tobacco					
11	Beverages	51	69	56	0.4	626
12	Tobacco and tobacco manufactures	9	13	21	0.2	152
	<i>Total beverages and tobacco</i>	60	82	77	0.6	778
2	Crude materials, inedible, except fuels					
21	Hides, skins and furskins, raw	—	—	—	—	2
22	Oil seeds and oleaginous fruits	7	3	3	—	68
23	Crude rubber (incl. synthetic and reclaimed)	13	13	13	0.1	106
24	Cork and wood	46	54	55	0.4	501
25	Pulp and waste paper	19	19	25	0.2	191
26	Textile fibres and their wastes (not manufactured into yarn or fabric)	12	12	12	0.1	125
27	Crude fertilisers (excl. those of Division 56) and crude minerals (excl. coal, petroleum and precious stones)	10	17	17	0.1	163
28	Metalliferous ores and metal scrap	16	28	23	0.2	236
29	Crude animal and vegetable materials, n.e.s.	23	22	20	0.2	216
	<i>Total crude materials, inedible, except fuels</i>	148	168	167	1.3	1 608
3	Mineral fuels, lubricants and related materials(b)					
32	Coal, coke and briquettes	—	1	1	—	13
33	Petroleum, petroleum products and related materials(b)	986	1 436	1 397	11.1	7 966
34	Gas, natural and manufactured	21	—	—	—	128
	<i>Total mineral fuels, lubricants and related materials</i>	1 007	1 437	1 398	11.1	8 106

— nil or rounded to zero (including null cells)

(a) Per cent of total merchandise imports is calculated for the most recent month.

(b) Excludes imports commodities subject to a confidentiality restriction. These are included in Division 98.

				Per cent of total merchandise imports(a)	10 MONTHS ENDED APRIL		
	Feb	Mar	Apr		2004	2005	
	2005	2005	2005				
	\$m	\$m	\$m	%	\$m	\$m	
SECTION AND DIVISION OF THE SITC							
4	Animal and vegetable oils, fats and waxes						
41	Animal oils and fats	1	1	1	—	20	13
42	Fixed vegetable fats and oils, crude, refined or fractionated	16	34	24	0.2	248	262
43	Fats and oils (processed), waxes and inedible mixtures or preparations, of animal or vegetable origin, n.e.s.	4	5	4	—	35	39
	<i>Total animal and vegetable oils, fats and waxes</i>	22	40	29	0.2	304	315
5	Chemicals and related products, n.e.s.(b)						
51	Organic chemicals	247	284	239	1.9	1 919	2 284
52	Inorganic chemicals(b)	86	82	79	0.6	570	726
53	Dyeing, tanning and colouring materials	39	46	42	0.3	429	451
54	Medicinal and pharmaceutical products	612	669	538	4.3	4 893	5 744
55	Essential oils and resinoids and perfume materials; toilet, polishing and cleansing preparations	99	115	111	0.9	1 022	1 140
56	Fertilisers (excl. crude)	103	107	207	1.6	598	901
57	Plastics in primary forms	110	117	112	0.9	964	1 102
58	Plastics in non-primary forms	90	91	89	0.7	843	951
59	Chemical materials and products, n.e.s.	121	140	146	1.2	1 190	1 295
	<i>Total chemicals and related products, n.e.s.</i>	1 508	1 652	1 563	12.4	12 427	14 594
6	Manufactured goods classified chiefly by material(b)						
61	Leather, leather manufactures, and dressed furskins, n.e.s.	12	13	12	0.1	136	133
62	Rubber manufactures, n.e.s.(b)	144	165	174	1.4	1 428	1 573
63	Cork and wood manufactures (excl. furniture)	59	61	50	0.4	542	555
64	Paper, paperboard, and articles of paper pulp, of paper or of paperboard(b)	198	214	207	1.6	2 059	2 154
65	Textile yarn, fabrics, made-up articles n.e.s. and related products	186	178	187	1.5	2 037	2 051
66	Non-metallic mineral manufactures, n.e.s.	161	181	180	1.4	1 744	1 798
67	Iron and steel(b)	286	290	290	2.3	1 674	2 585
68	Non-ferrous metals(b)	74	119	78	0.6	818	842
69	Manufactures of metals, n.e.s.(b)	294	285	302	2.4	2 632	3 101
	<i>Total manufactured goods classified chiefly by material</i>	1 414	1 507	1 479	11.7	13 070	14 792
7	Machinery and transport equipment(b)						
71	Power generating machinery and equipment	269	345	332	2.6	2 474	2 903
72	Machinery specialised for particular industries	483	480	476	3.8	4 127	4 871
73	Metal working machinery	74	50	68	0.5	502	588
74	General industrial machinery and equipment, n.e.s. and machine parts, n.e.s.	580	657	603	4.8	5 800	6 875
75	Office machines and automatic data processing machines	572	757	717	5.7	6 128	6 840
76	Telecommunications and sound recording and reproducing apparatus and equipment	569	638	660	5.2	6 014	7 201
77	Electrical machinery, apparatus, appliances, parts (incl. non-electrical counterparts of electrical domestic equipment)(b)	569	630	604	4.8	5 706	6 443
78	Road vehicles (incl. air-cushion vehicles)	1 469	1 630	1 805	14.3	14 524	16 028
79	Transport equipment (excl. road vehicles)	117	452	235	1.9	3 896	3 648
	<i>Total machinery and transport equipment</i>	4 701	5 638	5 501	43.7	49 171	55 397

— nil or rounded to zero (including null cells)

(a) Per cent of total merchandise imports is calculated for the most recent month.

(b) Excludes imports commodities subject to a confidentiality restriction. These are included in Division 98.

INTERNATIONAL MERCHANDISE IMPORTS, By commodity *continued*

				Per cent of total merchandise imports(a)	10 MONTHS ENDED APRIL	
	Feb	Mar	Apr		
	2005	2005	2005		2004	2005
	\$m	\$m	\$m	%	\$m	\$m
SECTION AND DIVISION OF THE SITC						
8	Miscellaneous manufactured articles(b)					
81	Prefabricated buildings; sanitary, plumbing, heating and lighting fixtures and fittings, n.e.s.					
	39	37	45	0.4	386	440
82	Furniture, parts thereof; bedding, mattresses, mattress supports, cushions and similar stuffed furnishings					
	134	118	141	1.1	1 317	1 619
83	Travel goods, handbags and similar containers					
	43	32	39	0.3	404	478
84	Articles of apparel and clothing accessories					
	391	288	342	2.7	2 862	3 337
85	Footwear					
	109	74	65	0.5	774	899
87	Professional, scientific and controlling instruments and apparatus, n.e.s.					
	281	313	289	2.3	2 566	2 959
88	Photographic apparatus, equipment and supplies and optical goods, n.e.s.; watches and clocks(b)					
	110	101	104	0.8	1 099	1 151
89	Miscellaneous manufactured articles, n.e.s.					
	527	549	648	5.1	6 213	6 485
	<i>Total miscellaneous manufactured articles</i>					
	1 632	1 511	1 674	13.3	15 621	17 369
9	Commodities and transactions not classified elsewhere in the SITC(c)					
93	Special transactions and commodities not classified according to kind					
	2	4	3	—	23	28
95	Gold coin whether or not legal tender, and other coin being legal tender					
	1	—	—	—	6	5
96	Coin (excl. gold coin), not being legal tender					
	—	—	—	—	1	18
97	Gold, non-monetary (excl. gold ores and concentrates)					
	163	200	215	1.7	2 174	1 940
98	Combined confidential items excl. some of SITC 280 (exports only) and some of SITCs 510 and 520 (imports only)(c)					
	15	14	12	0.1	200	161
	<i>Total commodities and transactions not classified elsewhere in the SITC</i>					
	181	218	230	1.8	2 404	2 152
Total Merchandise Imports						
	11 111	12 712	12 596	100.0	107 669	123 893
	Balance of Payments Adjustment					
	163	-63	111	. .	1 463	1 037
	Goods Debits (imports) on a Balance of Payments Basis					
	11 274	12 649	12 707	. .	109 132	124 930

. . not applicable

— nil or rounded to zero (including null cells)

(a) Per cent of total merchandise imports is calculated for the most recent month.

(b) Excludes imports commodities subject to a confidentiality restriction. These are included in Division 98.

(c) Includes imports commodities subject to a confidentiality restriction.

	EXPORTS				IMPORTS				BALANCE OF MERCHANDISE TRADE	
	2003-04	April	10 months ended	10 months ended	2003-04	April	10 months ended	10 months ended	2003-04	10 months ended
		2005	April 2004	April 2005		2005	April 2004	April 2005		April 2005
	\$m	\$m	\$m	\$m	\$m	\$m	\$m	\$m	\$m	\$m
Belgium(b)	676	84	551	697	1 237	122	1 001	965	-561	-268
Brazil	512	75	399	488	494	55	419	512	18	-24
Canada	1 828	150	1 462	1 578	1 818	169	1 502	1 603	10	-25
China	9 935	1 298	7 828	10 129	15 338	1 599	12 628	16 591	-5 403	-6 462
Denmark	167	16	140	138	856	107	709	891	-690	-753
Egypt(c)	649	28	547	239	36	1	32	12	614	228
Fiji	430	34	359	335	210	15	172	182	220	152
Finland	575	45	482	460	651	71	526	674	-76	-215
France	939	89	763	814	3 816	282	3 093	3 795	-2 877	-2 981
Germany	1 309	107	1 056	1 111	7 985	718	6 663	7 138	-6 676	-6 027
Hong Kong (SAR of China)	2 754	247	2 271	2 241	1 202	92	982	1 018	1 552	1 223
India	4 865	597	3 993	4 623	1 000	106	838	1 038	3 865	3 585
Indonesia	2 984	255	2 316	2 789	3 765	243	3 178	2 894	-781	-105
Iran	125	9	118	123	43	2	38	19	82	104
Iraq	315	1	223	381	—	—	—	6	315	375
Ireland	172	12	137	158	1 686	136	1 342	1 562	-1 514	-1 404
Israel	160	21	145	139	470	55	385	492	-310	-353
Italy	1 375	109	1 133	1 239	4 215	321	3 389	3 778	-2 840	-2 539
Japan	19 821	2 315	15 871	19 922	16 101	1 416	13 259	14 263	3 721	5 659
Korea, Republic of	8 490	982	7 005	7 877	4 877	420	4 002	4 136	3 613	3 741
Kuwait	580	40	497	389	110	—	91	97	470	292
Malaysia	2 224	211	1 705	2 149	4 707	500	3 684	4 843	-2 483	-2 694
Mexico	341	83	296	604	603	70	489	635	-262	-31
Netherlands	1 368	162	1 130	1 412	1 197	100	994	1 064	171	348
New Zealand	8 094	739	6 753	7 690	5 056	440	4 206	4 430	3 038	3 260
Pakistan	438	74	381	502	161	12	134	126	277	376
Papua New Guinea	809	135	668	958	1 422	236	1 147	1 462	-613	-504
Philippines	938	70	733	748	762	72	643	589	175	159
Saudi Arabia	1 992	157	1 630	1 494	757	200	638	1 067	1 235	427
Singapore	3 061	262	2 425	2 682	5 112	738	4 054	5 740	-2 051	-3 058
South Africa	1 427	153	1 157	1 317	1 246	129	1 045	1 054	182	263
Spain	659	167	537	714	1 103	102	894	1 117	-444	-402
Sweden	228	25	177	199	1 739	182	1 447	1 600	-1 511	-1 401
Switzerland	181	14	147	195	1 190	151	984	1 255	-1 009	-1 060
Taiwan	3 705	496	2 993	3 937	3 396	298	2 771	3 031	308	907
Thailand	2 463	270	1 933	3 214	3 669	344	3 021	3 368	-1 206	-155
Turkey	277	6	257	232	262	35	208	313	16	-81
United Arab Emirates	1 185	95	989	1 073	742	10	663	748	443	326
United Kingdom	5 147	342	4 453	4 116	5 429	472	4 520	4 858	-282	-742
United States of America	9 481	765	7 622	7 662	19 929	1 844	16 342	17 634	-10 448	-9 972
Viet Nam	512	75	374	593	2 019	271	1 733	2 632	-1 506	-2 039
Other Countries(d)	5 858	576	4 800	5 333	4 587	458	3 801	4 661	1 271	673
Total	109 049	11 389	88 456	102 695	130 997	12 596	107 669	123 893	-21 947	-21 198
APEC	77 838	8 418	62 598	75 196	91 075	8 810	74 736	86 084	-13 237	-10 888
ASEAN	12 273	1 152	9 560	12 293	20 551	2 170	16 763	20 666	-8 278	-8 373
Developing Countries	52 823	5 704	42 596	50 377	52 071	5 380	42 748	52 694	752	-2 317
Least Developed Countries	1 183	111	935	1 254	213	14	172	185	970	1 069
European Union(e)	12 951	1 190	10 839	11 330	31 500	2 787	25 878	29 160	-18 549	-17 830
OECD	61 426	6 241	50 211	57 099	81 841	7 380	67 290	73 848	-20 415	-16 749

— nil or rounded to zero (including null cells)

(a) See AusStats for details of all countries.

(b) Prior to July 2003, Belgium and Luxembourg were combined. Belgium-Luxembourg is included in 'Other Countries' up to and including June 2003.

(c) Exports of Alumina to Egypt are excluded from its country total and included in the 'Other countries' category.

(d) Includes small value export entries which can not yet be allocated by country.

(e) From July 2004, European Union includes 25 member countries.

	10 MONTHS ENDED APRIL			
	2003-04	Apr 2005	2004	2005
	\$m	\$m	\$m	\$m
EXPORTS (a)				
New South Wales	19 091	1 971	15 102	18 837
Victoria	18 012	1 589	14 546	15 298
Queensland	20 128	2 409	15 998	20 660
South Australia	7 608	641	6 243	6 401
Western Australia	32 302	3 643	26 675	31 336
Tasmania	2 317	247	1 891	2 122
Northern Territory	1 883	185	1 557	1 815
Australian Capital Territory	1	—	1	—
State not available for publication(b)(c)	344	62	283	370
Re-exports	7 362	642	6 161	5 856
Total exports	109 049	11 389	88 456	102 695
IMPORTS				
New South Wales	53 763	5 006	44 087	49 903
Victoria	40 727	3 758	33 705	37 494
Queensland	18 079	1 992	14 642	18 009
South Australia	5 163	479	4 234	4 733
Western Australia	11 690	1 239	9 769	11 500
Tasmania	669	42	595	511
Northern Territory	899	81	633	1 719
Australian Capital Territory	7	—	4	24
Total imports	130 997	12 596	107 669	123 893

— nil or rounded to zero (including null cells)

(a) State in which the final stage of production or manufacture occurs.

(b) Includes exports which can not yet be allocated by state. These shipments will be appropriately classified as more details become available.

(c) Exports of Alumina to Bahrain, Egypt and Iceland are excluded from the state totals and included in 'State not available for publication' category.

PERIOD AVERAGE EXCHANGE RATES (a): Per Australian dollar

<i>Period</i>	<i>United States dollar</i>	<i>United Kingdom pound</i>	<i>euro</i>	<i>Japanese yen</i>	<i>Trade-weighted index of value of the \$A(b)</i>
FINANCIAL YEAR					
2001-02	0.5239	0.3632	0.5850	66.10	50.7
2002-03	0.5848	0.3685	0.5577	70.01	53.5
2003-04	0.7137	0.4102	0.5981	78.91	61.5
MONTHS					
2004					
February	0.7777	0.4165	0.6152	82.84	65.2
March	0.7498	0.4100	0.6110	81.45	63.6
April	0.7442	0.4121	0.6201	79.98	63.3
May	0.7054	0.3948	0.5874	79.01	60.9
June	0.6942	0.3794	0.5714	75.90	59.5
July	0.7164	0.3887	0.5835	78.29	61.1
August	0.7104	0.3903	0.5828	78.37	60.8
September	0.7013	0.3912	0.5743	77.20	59.9
October	0.7331	0.4057	0.5868	79.81	62.0
November	0.7689	0.4139	0.5925	80.61	63.7
December	0.7678	0.3981	0.5735	79.70	62.7
2005					
January	0.7647	0.4071	0.5830	78.98	62.7
February	0.7807	0.4139	0.5999	81.92	64.1
March	0.7859	0.4119	0.5948	82.62	64.2
April	0.7724	0.4078	0.5971	82.94	63.8

- (a) These exchange rates and the trade-weighted index are derived using rates provided by the Reserve Bank of Australia in respect of each trading day.
- (b) May 1970=100. The trade-weighted index is reweighted annually (on 1 October) and on special occasions if required.

EXPLANATORY NOTES

INTRODUCTION

1 This publication presents preliminary estimates of Australia's international trade in goods and services on a balance of payments basis and merchandise import and export statistics on a recorded trade basis.

2 Merchandise trade statistics on a recorded trade basis are compiled from information submitted by exporters and importers or their agents to the Australian Customs Service (ACS). Adjustments for coverage, timing and valuation are made to recorded trade data to convert them to a balance of payments basis. The main source for services data is the quarterly Survey of International Trade in Services.

3 More comprehensive quarterly estimates of Australia's trade in goods and services, together with comprehensive details of Australia's balance of payments are included in the quarterly publication, *Balance of Payments and International Investment Position, Australia* (cat. no. 5302.0). Detailed monthly statistics on merchandise trade are available on AusStats or by subscription to tailored services.

CONCEPTS, SOURCES AND METHODS

4 The conceptual framework used in compiling Australia's merchandise trade statistics can be found in *International Merchandise Trade, Australia: Concepts, Sources and Methods, 2001* (cat. no. 5489.0).

5 The conceptual framework used in compiling Australia's balance of payments statistics is based on the Fifth Edition of the International Monetary Fund's *Balance of Payments Manual* (BPM5,1993). Descriptions of the underlying concepts and structure of the balance of payments and the sources, methods and terms used in compiling the estimates are presented in *Balance of Payments and International Investment Position, Australia: Concepts, Sources and Methods, 1998* (cat. no. 5331.0). To bring merchandise trade statistics on a recorded trade basis to a balance of payments basis, timing adjustments are made to ensure that the transaction is recorded in the period in which ownership changed, rather than in the period in which the transaction was recorded by ACS. Adjustments are also made to imports to take account of distortions which arise when significant changes occur in the volume of import entries lodged but not yet processed by ACS in a given month. Chapter 6 of cat. no. 5331.0 provides more detail on the relationship between statistics on international merchandise trade on a recorded trade basis and on a balance of payments basis.

6 Both of the Concepts, Sources and Methods publications are available for free from the ABS web site, see <<http://www.abs.gov.au>> – select *About Statistics* then *Concepts & Classifications*.

SEASONAL ADJUSTMENT

7 Monthly original estimates are volatile, being subject to calendar-related and large irregular influences. Seasonally adjusted estimates are derived by estimating and removing systematic calendar related effects, such as seasonal and trading day influences, from the original series. Trading day effects are removed from the original estimates prior to the seasonal adjustment process. Seasonal adjustment does not aim to remove the irregular or non-seasonal influences which may be present in any particular month. These irregular influences may reflect both random economic events and difficulties of statistical recording. The estimates of international trade in goods and services on a balance of payments basis are seasonally adjusted. The merchandise exports and imports statistics on a recorded trade basis are not.

TREND ESTIMATES

8 The month-to-month movements of the seasonally adjusted estimates may not be reliable indicators of trend behaviour because they include irregular or non-seasonal movements. Trend estimates are derived by applying a 13-term Henderson moving average to the seasonally adjusted series. The use of a 13-term Henderson average can result in revisions to the estimates for the most recent six months as additional observations become available. Revisions can also occur because of changes in the original data and as a result of the annual re-estimation of the seasonal factors.

EXPLANATORY NOTES *continued*

SIGN CONVENTION

9 In keeping with balance of payments conventions, where statistics are on a balance of payments basis, credit entries (exports) are shown without sign and debit items (imports) are shown as negative entries. For statistics on a recorded trade basis, both imports and exports are shown without sign. The calculation of percentage changes on balance of payments debit items are made without regard to sign. References to balance of payments debit items in Key Figures, Key Points, and Analysis and Comments are also made without regard to sign.

COMMODITY BREAKDOWNS OF GOODS

10 For details of the classification used for goods exports on a balance of payments basis (credits), see table 6.6 in *Balance of Payments and International Investment Position, Australia: Concepts, Sources and Methods, 1998* (cat. no. 5331.0).

11 Details of the classification of goods imports on a balance of payments basis (debits) are provided in table 6.7 in cat. no. 5331.0. Most of the commodity groups shown in table 4 for goods debits are available for more detailed subgroups from AusStats.

12 The recorded trade statistics shown in tables 8 and 9 are classified by the Standard International Trade Classification 2 (SITC). The first section of tables 8 and 9 show the most significant commodities (by value) at the SITC 3 digit level.

COMMODITY BREAKDOWNS OF SERVICES

13 The quarterly detailed services data published in table 7 are consistent with the monthly aggregates shown in table 5. Services trade data by major partner countries and by Australian state of production/consumption are published on a financial year basis and a calendar year basis.

14 Monthly indicators for many of the services components that are only surveyed quarterly are not available. In particular, the Freight and Other transportation components of Total services credits are not available for publication on a monthly basis. The estimates for these items shown in table 5 are therefore derived by dividing the quarterly estimate by three. Where quarterly survey data are not available, freight debits are derived directly from imports data for the reference month as a difference between total merchandise cost, insurance and freight (CIFE) and free on board (FOB), adjusted to reflect timing and processing adjustments. For freight credits and other transportation credits and debits, estimates are derived by extrapolating the last month's data by an average of movements for the same month over the three previous years.

TOURISM RELATED SERVICES

15 The tourism related services memorandum items provide timely indicators of the movements in tourism related activities, not an absolute measure of the level of these activities. These series are not compiled on a Balance of Payments conceptual basis. However, they do provide a reasonable approximation of world tourism related activities.

16 The memorandum items have been derived by re-aggregating relevant components of the international trade in services series of the balance of payments accounts. The tourism related indicator has been derived by combining total travel services (business, education-related and other personal travel), passenger fares, and the air transport component of other transportation services which relates to agency fees and commission receipts.

SERVICES BY STATE AND BY PARTNER COUNTRY

17 Annual services data by state and by partner country are released twice yearly. Calendar year data are released with the March issue of this publication and financial year data are released with the November issue. The data are available from AusStats.

18 Services credits are classified by the state of provision, while services debits are classified by the state of consumption. The state allocations for transportation, travel and communication services are based on a number of indicators including merchandise trade statistics by state, overseas passenger arrivals and departures by state of clearance and data provided by the Department of Education, Science and Training. The allocation

EXPLANATORY NOTES *continued*

SERVICES BY STATE AND BY PARTNER COUNTRY *continued*

for other services (about 25% of all trade in services) is primarily based on the location of the business reporting the information, which serves as a proxy for the state of provision/consumption of that service. The data should be used with care but are considered suitable for analysis over time.

19 A comprehensive explanation of the data sources used and the methodology applied in the compilation of partner country statistics is provided in Chapter 17 of *Balance of Payments and International Investment Position, Australia - Concepts, Sources and Methods* (cat. no. 5331.0). Approximately 9% of total services credits and 5% of total services debits for 2003-4 are either confidential, or unable to be allocated to individual countries.

RELATED PRODUCTS OR SERVICES

20 More detailed balance of payments and recorded merchandise trade data, including forward seasonal factors, are available from AusStats. Very detailed merchandise trade data by commodity, country and state are available by contacting the National Information and Referral Service, as shown on the back of this publication.

21 Users may also wish to refer to the following publications which are available from ABS Bookshops and on the ABS web site:

- *Balance of Payments and International Investment Position, Australia* (cat. no. 5302.0) – issued quarterly
- *International Merchandise Imports, Australia* (cat. no. 5439.0) – issued monthly
- *International Trade Price Indexes, Australia* (cat. no. 6457.0) – issued quarterly
- *Balance of Payments and International Investment Position, Australia: Concepts, Sources and Methods* (cat. no. 5331.0)
- *Information Paper: Quality of Australian Balance of Payments Statistics* (cat. no. 5342.0)
- *International Merchandise Trade, Australia: Concepts, Sources and Methods* (cat. no. 5489.0)
- *A Guide to Australian Balance of Payments and International Investment Position Statistics* (cat. no. 5362.0.55.001).

22 The last four publications are available for free on the ABS web site <<http://www.abs.gov.au>> – select *About Statistics* then *Concepts & Classifications*.

CAUTIONARY NOTE

23 The tables in this publication are presented on two bases. Tables 1-7 contain estimates of Australia's international trade in goods and services which have been adjusted for coverage, valuation and timing to a balance of payments basis. Tables 8-11 contain estimates of merchandise exports and imports based on Australian Customs Service records. Paragraph 5 of the Explanatory Notes provides an explanation of the difference between these bases.

ABBREVIATIONS

\$b	billion (thousand million) dollars
\$m	million dollars
ABS	Australian Bureau of Statistics
APEC	Asia Pacific Economic Co-operation
ASEAN	Association of South-East Asian Nations
n.e.s.	not elsewhere specified
n.i.e.	not included elsewhere
OECD	Organisation for Economic Co-operation and Development
SAR	Special Administrative Region
SITC	Standard International Trade Classification

APPENDIX RELATED ARTICLES

<i>Article</i>	<i>Source</i>	<i>Issue</i>
Investment		
Kangaroo bonds	5302.0	Sep qtr 2004
Foreign ownership of equity	5302.0	Sep qtr 2004
Gross external debt	5302.0	Sep qtr 2003
Measuring Australia's foreign currency exposure	5302.0	Dec qtr 2001
Balance of payments		
International comparison of balance of payments statistics	5363.0	1999–2000
The Sydney Olympic Games Update	5368.0	Jul 2000
The Sydney Olympic Games	5302.0	Sep qtr 1999
Merchandise trade		
Australia's Importers, 2003–04	(a) web site	Nov 2004
Australia's Exporters, 2003–04	(a) web site	Oct 2004
Australia's Trade with the USA	(a) web site	Mar 2004
Australia's Exporters, 2002–03	(a) web site	Oct 2003
Australia's Importers, 2002–03	(a) web site	Nov 2003
Export and import currencies, 2003	(a) web site	May 2003
Australia's exporters and importers, 2001–02	5422.0	Dec qtr 2002
Trade through Australia's ports	5422.0	Sep qtr 2002
Australia's trade in wine	5422.0	Dec qtr 2001
Australia's export markets, 1991–92 to 2000–01	5422.0	Jun qtr 2001
Major commodities traded by Australia, 1991 to 2000	5422.0	Dec qtr 2000
Australia's trade in crude petroleum	5422.0	Mar qtr 2000
Australia's merchandise trade with the Republic of Korea	5422.0	Sep qtr 1999
Australia's merchandise trade with Japan	5422.0	Mar qtr 1999
Bilateral merchandise trade statistics reconciliation: Australia and the European Union, 1992 to 1997	5422.0	Sep qtr 1998
Trade in services		
International trade in services by partner country, 2003–04	(a) web site	Nov 2004
International trade in services by State, 2003–04	(a) web site	Nov 2004
International trade in services by partner country, 2003	(a) web site	Mar 2004
International trade in services by State, 2003	(a) web site	Mar 2004
International trade in services by partner country, 2002–03	(a) web site	Oct 2003
International trade in services by State, 2002–03	(a) web site	Oct 2003
Goods and services by region, 2001	5368.0	Feb 2002
International trade in education services	(a) web site	Oct 2002
Finance		
Recent trends in construction and first home buyers finance	5609.0	Mar 2002
Household sector data in the financial accounts	5232.0	Mar qtr 2002
Investment Managers	5655.0	Jun qtr 2000
Venture capital, 1999–2000	5611.0	2000–01
Impact of 2003–2004 farm season on Australian production	5611.0	1999–2000
Globalisation		
Foreign Ownership of Australian Exporters and Importers, 2002–03	5496.0.55.001	2002–03
Australian Outward Foreign Affiliates Trade, 2002–03	5495.0	2002–03
Economic Activity of Foreign Owned Businesses in Australia, 2000–01	5494.0	2000–01
Technical information		
Implementation of New Customs Systems	(a) web site	Aug 2004
Changes to country and port classifications	5368.0	May 2003
The effect of customs changes on export statistics	5422.0	Jun qtr 2002
Harmonized system changes	5422.0	Sep qtr 2001
International trade review: data quality and client queries	5422.0	Jun qtr 2000
Data confidentiality	5422.0	Dec qtr 1999

(a) International Trade Theme Page: Select Themes; Economy; International Trade; Topics of Interest.

FOR MORE INFORMATION . . .

- INTERNET* **www.abs.gov.au** the ABS web site is the best place to start for access to summary data from our latest publications, information about the ABS, advice about upcoming releases, our catalogue, and Australia Now—a statistical profile.
- LIBRARY* A range of ABS publications is available from public and tertiary libraries Australia-wide. Contact your nearest library to determine whether it has the ABS statistics you require, or visit our web site for a list of libraries.
- CPI INFOLINE* For current and historical Consumer Price Index data, call 1902 981 074 (call cost 77c per minute).
- DIAL-A-STATISTIC* This service now provides only current Consumer Price Index statistics call 1900 986 400 (call cost 77c per minute).

INFORMATION SERVICE

Data already published that can be provided within five minutes will be free of charge. Our information consultants can also help you to access the full range of ABS information—ABS user pays services can be tailored to your needs, time frame and budget. Publications may be purchased. Specialists are on hand to help you with analytical or methodological advice.

- PHONE* 1300 135 070
- EMAIL* client.services@abs.gov.au
- FAX* 1300 135 211
- POST* Client Services, ABS, GPO Box 796, Sydney NSW 2001

WHY NOT SUBSCRIBE?

ABS subscription services provide regular, convenient and prompt deliveries of selected ABS publications and products as they are released. Email delivery of monthly and quarterly publications is available.

- PHONE* 1300 366 323
- EMAIL* subscriptions@abs.gov.au
- FAX* (03) 9615 7848
- POST* Subscription Services, ABS, GPO Box 2796Y, Melbourne Vic 3001



2536800004057

ISSN 1328 2778

RRP \$23.00