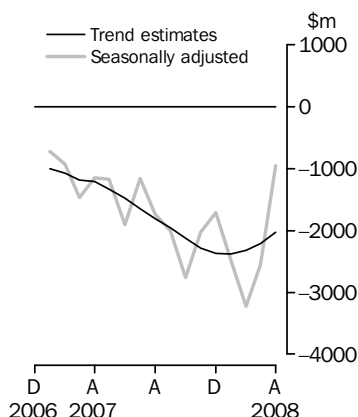


# INTERNATIONAL TRADE IN GOODS AND SERVICES

AUSTRALIA

EMBARGO: 11.30AM (CANBERRA TIME) THURS 5 JUN 2008

## Balance on Goods and Services



## KEY FIGURES

|  | February<br>2008 | March<br>2008 | April<br>2008 | Mar<br>08 to<br>Apr 08<br>% |
|--|------------------|---------------|---------------|-----------------------------|
|  | \$m              | \$m           | \$m           | change                      |
| <b>BALANCE ON GOODS AND SERVICES</b>             |                  |               |               |                             |
| Trend estimates                                  | -2 325           | -2 209        | -2 034        | 8                           |
| Seasonally adjusted                              | -3 221           | -2 548        | -957          | 62                          |
| <b>CREDITS (Exports of goods &amp; services)</b> |                  |               |               |                             |
| Trend estimates                                  | 19 126           | 19 455        | 19 759        | 2                           |
| Seasonally adjusted                              | 18 386           | 19 333        | 20 446        | 6                           |
| <b>DEBITS (Imports of goods &amp; services)</b>  |                  |               |               |                             |
| Trend estimates                                  | 21 451           | 21 664        | 21 792        | 1                           |
| Seasonally adjusted                              | 21 606           | 21 880        | 21 403        | -2                          |

## KEY POINTS

### BALANCE ON GOODS AND SERVICES

- The trend estimate of the *balance on goods and services* was a deficit of \$2,034m in April 2008, a decrease of \$175m (8%) on the revised deficit in March 2008.
- In seasonally adjusted terms, the *balance on goods and services* was a deficit of \$957m in April 2008, a decrease of \$1,591m (62%) on the revised deficit in March 2008.
- The decrease in the seasonally adjusted deficit was due to the rise in *goods and services credits*, mainly *non-rural and other goods*, and the fall in *goods and services debits*, mainly *capital goods and consumption goods*.

### CREDITS (EXPORTS OF GOODS & SERVICES)

- Seasonally adjusted, *goods and services credits* rose \$1,113m (6%) to \$20,446m. *Non-rural and other goods* rose \$955m (7%) and *rural goods* rose \$143m (6%). *Services credits* rose \$16m.
- The rise in *non-rural and other goods* was driven by *coal, coke and briquettes*, which rose \$418m (23%) and *non-monetary gold*, which rose \$285m (29%).

### DEBITS (IMPORTS OF GOODS & SERVICES)

- Seasonally adjusted, *goods and services debits* fell \$477m (2%) to \$21,403m. *Capital goods* fell \$435m (10%) and *consumption goods* fell \$323m (6%) while *intermediate and other goods* rose \$254m (3%). *Services debits* rose \$26m (1%).
- The fall in *capital goods* was driven by *civil aircraft*, which fell \$329m (77%), and *machinery and industrial equipment*, which fell \$154m (10%).

## INQUIRIES

For further information contact Selvi Sekhar on Canberra (02) 6252 5540 for goods, and Karen McGuigan on Canberra (02) 6252 5415 for services.

# NOTES

## FORTHCOMING ISSUES

| ISSUE          | RELEASE DATE     |
|----------------|------------------|
| May 2008       | 3 July 2008      |
| June 2008      | 31 July 2008     |
| July 2008      | 4 September 2008 |
| August 2008    | 2 October 2008   |
| September 2008 | 5 November 2008  |
| October 2008   | 4 December 2008  |



## REVISIONS

Revisions were made to the previous six months to incorporate the latest available merchandise trade data.

### *Possible future revisions - Iron ore prices*

The contract price of iron ore exports are normally set from 1 April each year but contracts for April 2008 are still being negotiated. In the past, the prices observed in the merchandise trade series have been revised once the contracts have been finalised. In 2006 contract negotiations also extended beyond April but were largely resolved prior to the release of May data. Consequently, an adjustment was included in the balance of payments series in anticipation of the final contract price. However, no adjustment has been included in the balance of payments series for April 2008 as the outcome of contract negotiations is not clear. It can be expected that there will be an upward revision to iron ore for April 2008 in subsequent months but the extent can not be determined at this stage.

In the merchandise trade series for April 2008, the value of iron ore and concentrates was up 3%, with volumes down 6% and prices up 10%.

## INFORMATION PAPER

An information paper *Impact of introducing Revision 4 of the Standard International Trade Classification* (cat. no. 5368.0.55.010) was released on 26 May 2008. The paper outlines statistical impacts resulting from changes to the classification of Australian import and export statistics. This information paper can be accessed on the ABS web site [www.abs.gov.au](http://www.abs.gov.au). The ABS will implement the changes to the classifications from the July 2008 reference month. This will impact on data released in this and related publications.

Brian Pink  
Australian Statistician

# CONTENTS

page

Time series data . . . . . 4

## ANALYSIS

Analysis and comments . . . . . 5

## TABLES

### INTERNATIONAL TRADE IN GOODS AND SERVICES – BALANCE OF PAYMENTS BASIS

|           |  |    |
|-----------|--|----|
| <b>1</b>  | Goods and services, summary, seasonally adjusted and trend estimates . . . . . | 9  |
| <b>2</b>  | Goods and services, summary, original . . . . .                                | 10 |
| <b>3</b>  | Goods credits, original . . . . .  | 11 |
| <b>4</b>  | Goods debits, original . . . . .   | 12 |
| <b>5</b>  | Goods credits, seasonally adjusted . . . . .                                   | 13 |
| <b>6</b>  | Goods debits, seasonally adjusted . . . . .                                    | 14 |
| <b>7</b>  | Goods credits, trend estimates . . . . .                                       | 15 |
| <b>8</b>  | Goods debits, trend estimates . . . . .  | 16 |
| <b>9</b>  | Services, summary, original . . . . .  | 17 |
| <b>10</b> | Services, summary, seasonally adjusted and trend estimates . . . . .           | 18 |
| <b>11</b> | Services, original, quarterly . . . . .  | 19 |

### INTERNATIONAL MERCHANDISE TRADE – RECORDED TRADE BASIS

|           |  |    |
|-----------|--|----|
| <b>12</b> | International merchandise exports, by commodity . . . . .                | 20 |
| <b>13</b> | International merchandise imports, by commodity . . . . .                | 23 |
| <b>14</b> | International merchandise trade, by country and country groups . . . . . | 26 |
| <b>15</b> | International merchandise trade, by state . . . . .                      | 27 |

### OTHER TABLES

|           |   |    |
|-----------|---|----|
| <b>16</b> | Period average exchange rates per Australian dollar . . . . . | 28 |
|-----------|---|----|

## OTHER INFORMATION

|                                       |    |
|---------------------------------------|----|
| Explanatory Notes . . . . .           | 29 |
| Appendix - Related articles . . . . . | 33 |

## TIME SERIES DATA

### TIME SERIES DATA

Data available free on the ABS web site <<http://www.abs.gov.au>> include longer time series of tables in this publication and additional spreadsheets and data cubes below:

31 Merchandise exports by Broad Economic Category (BEC)

32 Merchandise exports by industry of origin (ANZSIC)

33 Merchandise imports by Broad Economic Category (BEC)

34 Merchandise imports by Balance of Payments Broad Economic Category (BoPBEC)

35 Merchandise imports by industry of origin (ANZSIC)

36 Merchandise exports, state by country and country groups

37 Merchandise imports, state by country and country groups

91 Monthly seasonal adjustment factors and forward factors for 12 months.

Trade in Services data cubes are usually updated on an annual basis - with the March issue of 5368.0 for calendar year and with the September issue for financial year.

*Financial year (cat. no.  
5368.0.55.003)*

1 International trade in services, credits, state by financial year

2 International trade in services, credits, financial year by state

3 International trade in services, debits, state by financial year

4 International trade in services, debits, financial year by state

5 International trade in services, credits, financial year by country and service

6 International trade in services, credits, service by financial year and by country

7 International trade in services, debits, financial year by country and service

8 International trade in services, debits, service by financial year and by country

9 International trade in services, financial year by detailed service.

*Calendar year (cat. no.  
5368.0.55.004)*

1 International trade in services, credits, state by calendar year

2 International trade in services, credits, calendar year by state

3 International trade in services, debits, state by calendar year

4 International trade in services, debits, calendar year by state

5 International trade in services, credits, calendar year by country and service

6 International trade in services, credits, service by calendar year and by country

7 International trade in services, debits, calendar year by country and service

8 International trade in services, debits, service by calendar year and by country

9 International trade in services, calendar year by detailed service

10 International trade in services, credits, calendar year by country and travel service

11 International trade in services, debits, calendar year by country and travel service.

## ANALYSIS AND COMMENTS

### BALANCE ON GOODS AND SERVICES

The trend estimate of the balance on goods and services in April 2008 was a deficit of \$2,034m, a decrease of \$175m (8%) on the revised deficit in March 2008.

In seasonally adjusted terms, the balance on goods and services in April 2008 was a deficit of \$957m, a decrease of \$1,591m (62%) on the revised deficit in March 2008.

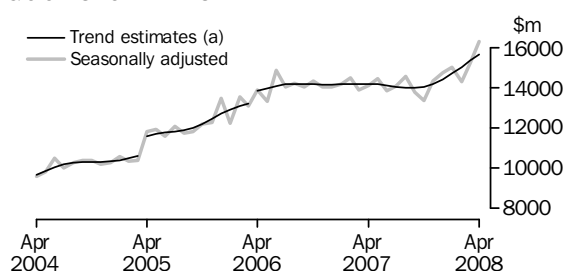
### EXPORTS OF GOODS AND SERVICES

The trend estimate of goods and services credits rose \$304m (2%) between March and April to \$19,759m.

In seasonally adjusted terms, goods and services credits rose \$1,113m (6%) to \$20,446m. Non-rural goods rose \$650m (6%), other goods rose \$305m (27%) and rural goods rose \$143m (6%). Services credits rose \$16m.

#### Exports of goods

### GOODS CREDITS



(a) Trend breaks of \$430m to April 2004, \$819m to April 2005 and \$500m to April 2006 have been applied.

### RURAL GOODS

The trend estimate of rural goods exports rose \$66m (3%) to \$2,349m.

In seasonally adjusted terms, exports of rural goods rose \$143m (6%) to \$2,427m.

The components contributing to the rise in the seasonally adjusted estimates were:

- meat and meat preparations, up \$61m (11%)
- other rural, up \$49m (5%)
- cereal grains and cereal preparations, up \$36m (7%).

In original terms, exports of rural goods rose \$54m (2%) to \$2,449m.

### NON-RURAL GOODS

In trend terms, non-rural goods rose \$206m (2%) to \$11,939m.

In seasonally adjusted terms, exports of non-rural goods rose \$650m (6%) to \$12,423m.

The main components contributing to the rise in the seasonally adjusted estimates were:

- coal, coke, and briquettes, up \$418m (23%)
- other manufactures, up \$132m (9%)
- metal ores and minerals, up \$78m (2%).

Partly offsetting these were:

- other mineral fuels, down \$73m (4%)
- metals (excluding non-monetary gold), down \$20m (2%).

## ANALYSIS AND COMMENTS *continued*

### Exports of goods *continued*

#### NON-RURAL GOODS *continued*

In original terms, non-rural goods rose \$370m (3%) to \$12,301m.

The main movements in the original series contributing to the rise in the seasonally adjusted series were:

- coal, coke and briquettes, up \$352m (19%), compared to an average 12% increase for the same month in the previous three years. Metallurgical coal was up \$343m (18%), with volumes up 3% and prices up 15%.
- other manufactures, up \$112m (8%), compared to an average 7% decrease for the same month in the previous three years, with medicinal and pharmaceutical products, up \$92m (29%).

The values for iron ore and coal are as based on information provided to the Australian Customs Service by exporters and their agents. This information may be revised in subsequent months as the contracts are finalised (see Revisions notes on page 2).

#### OTHER GOODS

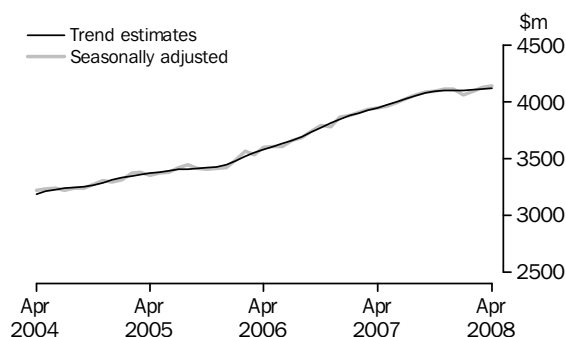
In trend terms, other goods rose \$23m (2%) to \$1,351m.

In seasonally adjusted terms, exports of other goods rose \$305m (27%) to \$1,455m with non-monetary gold, up \$285m (29%).

In original terms, exports of other goods rose \$303m (26%) to \$1,452m.

### Exports of Services

#### SERVICES CREDITS



In trend terms, services credits rose \$8m to \$4,119m.

In seasonally adjusted terms, services credits rose \$16m to \$4,141m.

The components contributing to the rise in the seasonally adjusted estimates were:

- other services, up \$15m (1%)
- transportation services, up \$14m (2%).

Partly offsetting these effects was the travel services component, down \$13m (1%).

In seasonally adjusted terms, tourism related services credits fell \$34m (1%) to \$2,575m.

This series is seasonally adjusted independently to the components in services credits.

## ANALYSIS AND COMMENTS *continued*

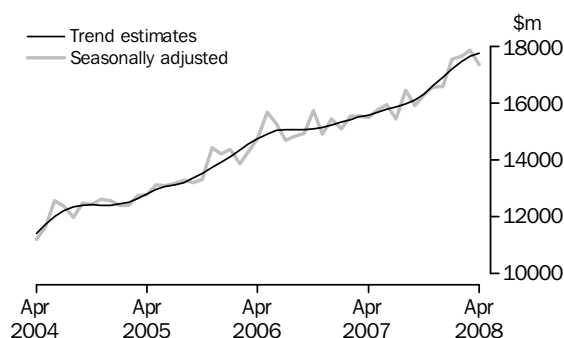
### IMPORTS OF GOODS AND SERVICES

The trend estimate of goods and services debits rose \$128m (1%) between March and April to \$21,792m.

In seasonally adjusted terms, goods and services debits fell \$477m (2%) to \$21,403m. Capital goods fell \$435m (10%) and consumption goods fell \$323m (6%) while other goods rose \$143m (19%) and intermediate and other merchandise goods rose \$111m (1%). Services debits rose \$26m (1%).

#### *Imports of goods*

#### GOODS DEBITS



#### CONSUMPTION GOODS

The trend estimate of imports of consumption goods rose \$3m to \$5,117m.

In seasonally adjusted terms, imports of consumption goods fell \$323m (6%) to \$4,920m.

The main components contributing to the fall in the seasonally adjusted estimates were:

- non-industrial transport equipment, down \$206m (13%)
- consumption goods n.e.s., down \$141m (9%).

Partly offsetting these were:

- food and beverages, mainly for consumption, up \$15m (2%)
- household electrical items, up \$11m (3%).

In original terms, imports of consumption goods rose \$355m (8%) to \$4,974m.

#### CAPITAL GOODS

The trend estimate of imports of capital goods rose \$28m (1%) to \$3,962m.

In seasonally adjusted terms, imports of capital goods fell \$435m (10%) to \$3,713m.

The main components contributing to the fall in the seasonally adjusted estimates were:

- civil aircraft, down \$329m (77%)
- machinery and industrial equipment, down \$154m (10%).

Partly offsetting these were:

- industrial transport equipment n.e.s., up \$38m (6%)
- ADP equipment, up \$32m (6%).

In original terms, imports of capital goods fell \$388m (10%) to \$3,674m.

## ANALYSIS AND COMMENTS *continued*

### *Imports of goods continued*

#### INTERMEDIATE AND OTHER MERCHANDISE GOODS

In trend terms, imports of intermediate and other merchandise goods rose \$68m (1%) to \$7,833m.

In seasonally adjusted terms, imports of intermediate and other merchandise goods rose \$111m (1%) to \$7,829m.

The main components contributing to the rise in the seasonally adjusted estimates were:

- other parts for capital goods, up \$78m (8%)
- parts for transport equipment, up \$52m (7%).

Partly offsetting these was the processed industrial supplies n.e.s., component, down \$81m (5%).

In original terms, imports of intermediate and other merchandise goods rose \$580m (8%) to \$8,141m.

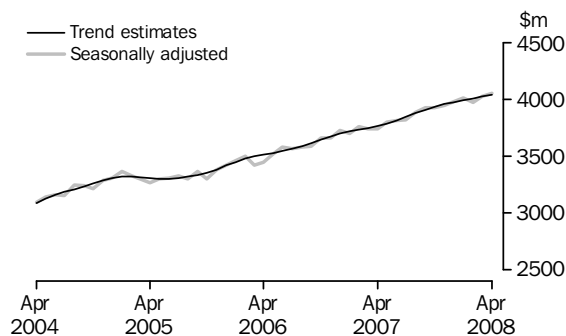
#### OTHER GOODS

The trend estimate of imports of other goods rose \$16m (2%) to \$844m.

In both original and seasonally adjusted terms, other goods debits rose \$143m (19%) to \$889m largely contributed by non-monetary gold, up \$123m (20%).

### *Imports of services*

#### SERVICES DEBITS



In trend terms, services debits rose \$14m to \$4,036m.

In seasonally adjusted terms, services debits rose \$26m (1%) to \$4,052m.

All components contributed to the rise in the seasonally adjusted estimates with:

- travel services, up \$11m (1%)
- other services, up \$9m (1%)
- transportation services, up \$6m.

In seasonally adjusted terms, tourism related services debits rose \$32m (2%) to \$2,121m. This series is seasonally adjusted independently to the components in services debits.



## GOODS AND SERVICES(a), Summary: Seasonally Adjusted and Trend Estimates

| Months              | BALANCE               | CREDITS                  |             |                |                              |                | DEBITS                   |             |                   |               |                              |                |
|---------------------|-----------------------|--------------------------|-------------|----------------|------------------------------|----------------|--------------------------|-------------|-------------------|---------------|------------------------------|----------------|
|                     | On goods and services | Total goods and services | Total goods | Rural goods(b) | Non-rural and other goods(b) | Total services | Total goods and services | Total goods | Consumption goods | Capital goods | Intermediate and other goods | Total services |
|                     | \$m                   | \$m                      | \$m         | \$m            | \$m                          | \$m            | \$m                      | \$m         | \$m               | \$m           | \$m                          | \$m            |
| SEASONALLY ADJUSTED |                       |                          |             |                |                              |                |                          |             |                   |               |                              |                |
| <b>2007</b>         |                       |                          |             |                |                              |                |                          |             |                   |               |                              |                |
| February            | -937                  | 18 377                   | 14 473      | 2 085          | 12 388                       | 3 904          | -19 314                  | -15 555     | -4 802            | -3 541        | -7 211                       | -3 759         |
| March               | -1 468                | 17 820                   | 13 890      | 2 027          | 11 863                       | 3 929          | -19 288                  | -15 548     | -4 588            | -3 465        | -7 495                       | -3 740         |
| April               | -1 149                | 18 070                   | 14 126      | 1 948          | 12 178                       | 3 944          | -19 219                  | -15 482     | -4 751            | -3 342        | -7 389                       | -3 737         |
| May                 | -1 179                | 18 387                   | 14 430      | 1 939          | 12 492                       | 3 957          | -19 566                  | -15 764     | -4 599            | -3 715        | -7 450                       | -3 802         |
| June                | -1 910                | 17 844                   | 13 851      | 1 866          | 11 986                       | 3 993          | -19 754                  | -15 940     | -4 603            | -3 550        | -7 787                       | -3 814         |
| July                | -1 169                | 18 095                   | 14 068      | 1 937          | 12 131                       | 4 026          | -19 264                  | -15 442     | -4 599            | -3 268        | -7 574                       | -3 822         |
| August              | -1 730                | 18 604                   | 14 546      | 1 870          | 12 676                       | 4 058          | -20 335                  | -16 447     | -4 743            | -3 696        | -8 009                       | -3 887         |
| September           | -2 008                | 17 838                   | 13 755      | 2 001          | 11 754                       | 4 083          | -19 845                  | -15 920     | -4 776            | -3 677        | -7 467                       | -3 926         |
| October             | -2 766                | 17 443                   | 13 354      | 1 889          | 11 465                       | 4 089          | -20 209                  | -16 281     | -4 742            | -3 483        | -8 056                       | -3 928         |
| November            | -2 023                | 18 463                   | 14 349      | 1 957          | 12 391                       | 4 114          | -20 486                  | -16 541     | -4 925            | -3 679        | -7 938                       | -3 945         |
| December            | -1 707                | 18 842                   | 14 732      | 2 149          | 12 583                       | 4 110          | -20 549                  | -16 567     | -4 983            | -3 828        | -7 756                       | -3 982         |
| <b>2008</b>         |                       |                          |             |                |                              |                |                          |             |                   |               |                              |                |
| January             | -2 477                | 19 082                   | 15 021      | 2 156          | 12 864                       | 4 061          | -21 559                  | -17 545     | -5 166            | -3 716        | -8 663                       | -4 014         |
| February            | -3 221                | 18 386                   | 14 296      | 2 146          | 12 150                       | 4 090          | -21 606                  | -17 633     | -5 072            | -4 004        | -8 556                       | -3 974         |
| March               | -2 548                | 19 333                   | 15 207      | 2 284          | 12 923                       | 4 125          | -21 880                  | -17 855     | -5 243            | -4 148        | -8 464                       | -4 026         |
| April               | -957                  | 20 446                   | 16 305      | 2 427          | 13 878                       | 4 141          | -21 403                  | -17 351     | -4 920            | -3 713        | -8 718                       | -4 052         |
| TREND ESTIMATES     |                       |                          |             |                |                              |                |                          |             |                   |               |                              |                |
| <b>2007</b>         |                       |                          |             |                |                              |                |                          |             |                   |               |                              |                |
| February            | -1 079                | 18 067                   | 14 166      | 2 041          | 12 125                       | 3 901          | -19 146                  | -15 412     | -4 675            | -3 504        | -7 233                       | -3 734         |
| March               | -1 182                | 18 089                   | 14 164      | 1 997          | 12 167                       | 3 924          | -19 270                  | -15 522     | -4 668            | -3 497        | -7 357                       | -3 748         |
| April               | -1 208                | 18 122                   | 14 175      | 1 961          | 12 214                       | 3 947          | -19 330                  | -15 566     | -4 656            | -3 494        | -7 416                       | -3 764         |
| May                 | -1 327                | 18 139                   | 14 169      | 1 934          | 12 235                       | 3 970          | -19 466                  | -15 681     | -4 644            | -3 500        | -7 537                       | -3 786         |
| June                | -1 478                | 18 114                   | 14 117      | 1 912          | 12 205                       | 3 997          | -19 592                  | -15 779     | -4 638            | -3 510        | -7 631                       | -3 813         |
| July                | -1 655                | 18 064                   | 14 038      | 1 899          | 12 139                       | 4 026          | -19 719                  | -15 875     | -4 648            | -3 530        | -7 696                       | -3 844         |
| August              | -1 809                | 18 041                   | 13 987      | 1 903          | 12 084                       | 4 054          | -19 850                  | -15 973     | -4 686            | -3 550        | -7 737                       | -3 877         |
| September           | -1 955                | 18 063                   | 13 986      | 1 925          | 12 061                       | 4 077          | -20 018                  | -16 111     | -4 747            | -3 576        | -7 788                       | -3 908         |
| October             | -2 129                | 18 124                   | 14 034      | 1 960          | 12 074                       | 4 090          | -20 253                  | -16 319     | -4 829            | -3 623        | -7 867                       | -3 934         |
| November            | -2 280                | 18 272                   | 14 177      | 2 009          | 12 168                       | 4 095          | -20 553                  | -16 597     | -4 920            | -3 693        | -7 984                       | -3 956         |
| December            | -2 376                | 18 504                   | 14 408      | 2 071          | 12 336                       | 4 097          | -20 880                  | -16 906     | -4 998            | -3 770        | -8 137                       | -3 974         |
| <b>2008</b>         |                       |                          |             |                |                              |                |                          |             |                   |               |                              |                |
| January             | -2 385                | 18 801                   | 14 702      | 2 142          | 12 560                       | 4 099          | -21 186                  | -17 195     | -5 057            | -3 836        | -8 302                       | -3 991         |
| February            | -2 325                | 19 126                   | 15 022      | 2 215          | 12 807                       | 4 104          | -21 451                  | -17 444     | -5 095            | -3 893        | -8 456                       | -4 007         |
| March               | -2 209                | 19 455                   | 15 344      | 2 283          | 13 061                       | 4 111          | -21 664                  | -17 642     | -5 114            | -3 934        | -8 594                       | -4 022         |
| April               | -2 034                | 19 759                   | 15 639      | 2 349          | 13 290                       | 4 119          | -21 792                  | -17 757     | -5 117            | -3 962        | -8 677                       | -4 036         |

(a) For sign conventions, see paragraph 11 of the Explanatory Notes.

(b) For all time periods, estimates for sugar, sugar preparations and honey are included in Non-rural and other goods.

## GOODS AND SERVICES(a), Summary: Original

|                              | BALANCE                      | CREDITS                         |                    |                       |                                     |                       | DEBITS                          |                    |                          |                      |                                     |                       |
|------------------------------|------------------------------|---------------------------------|--------------------|-----------------------|-------------------------------------|-----------------------|---------------------------------|--------------------|--------------------------|----------------------|-------------------------------------|-----------------------|
|                              | <i>On goods and services</i> | <i>Total goods and services</i> | <i>Total goods</i> | <i>Rural goods(b)</i> | <i>Non-rural and other goods(b)</i> | <i>Total services</i> | <i>Total goods and services</i> | <i>Total goods</i> | <i>Consumption goods</i> | <i>Capital goods</i> | <i>Intermediate and other goods</i> | <i>Total services</i> |
|                              | \$m                          | \$m                             | \$m                | \$m                   | \$m                                 | \$m                   | \$m                             | \$m                | \$m                      | \$m                  | \$m                                 | \$m                   |
| FINANCIAL YEAR               |                              |                                 |                    |                       |                                     |                       |                                 |                    |                          |                      |                                     |                       |
| <b>2004-05</b>               | <b>-22 626</b>               | 167 562                         | 127 867            | 25 687                | 102 180                             | 39 695                | -190 188                        | -150 873           | -47 143                  | -35 967              | -67 763                             | -39 315               |
| <b>2005-06</b>               | <b>-14 520</b>               | 196 274                         | 154 425            | 25 312                | 129 113                             | 41 849                | -210 794                        | -169 716           | -50 322                  | -39 996              | -79 398                             | -41 078               |
| <b>2006-07</b>               | <b>-12 214</b>               | 215 601                         | 169 535            | 25 135                | 144 400                             | 46 066                | -227 815                        | -183 500           | -54 998                  | -41 172              | -87 330                             | -44 315               |
| MONTHS                       |                              |                                 |                    |                       |                                     |                       |                                 |                    |                          |                      |                                     |                       |
| <b>2007</b>                  |                              |                                 |                    |                       |                                     |                       |                                 |                    |                          |                      |                                     |                       |
| February                     | <b>-266</b>                  | 17 295                          | 13 351             | 1 978                 | 11 373                              | 3 944                 | -17 561                         | -14 281            | -4 387                   | -3 026               | -6 868                              | -3 280                |
| March                        | <b>-1 054</b>                | 18 109                          | 14 035             | 2 155                 | 11 880                              | 4 074                 | -19 163                         | -15 539            | -4 413                   | -3 449               | -7 677                              | -3 624                |
| April                        | <b>-496</b>                  | 17 973                          | 13 976             | 1 928                 | 12 048                              | 3 997                 | -18 469                         | -14 818            | -4 329                   | -3 223               | -7 266                              | -3 651                |
| May                          | <b>-852</b>                  | 18 611                          | 14 830             | 2 084                 | 12 746                              | 3 781                 | -19 463                         | -15 845            | -4 415                   | -3 822               | -7 608                              | -3 618                |
| June                         | <b>-1 916</b>                | 17 665                          | 13 988             | 1 916                 | 12 072                              | 3 677                 | -19 581                         | -15 700            | -4 344                   | -3 746               | -7 610                              | -3 881                |
| July                         | <b>-899</b>                  | 18 502                          | 14 420             | 1 897                 | 12 523                              | 4 082                 | -19 401                         | -15 473            | -4 643                   | -3 255               | -7 575                              | -3 928                |
| August                       | <b>-2 000</b>                | 18 954                          | 14 806             | 1 866                 | 12 940                              | 4 148                 | -20 954                         | -17 100            | -5 065                   | -3 780               | -8 255                              | -3 854                |
| September                    | <b>-2 227</b>                | 17 787                          | 13 828             | 2 009                 | 11 819                              | 3 959                 | -20 014                         | -15 816            | -4 952                   | -3 581               | -7 283                              | -4 198                |
| October                      | <b>-3 791</b>                | 18 052                          | 13 814             | 1 949                 | 11 865                              | 4 238                 | -21 843                         | -17 724            | -5 559                   | -3 695               | -8 470                              | -4 119                |
| November                     | <b>-3 108</b>                | 18 374                          | 14 174             | 1 964                 | 12 210                              | 4 200                 | -21 482                         | -17 646            | -5 504                   | -4 067               | -8 075                              | -3 836                |
| December                     | <b>-278</b>                  | 19 790                          | 15 657             | 2 252                 | 13 405                              | 4 133                 | -20 068                         | -15 875            | -4 749                   | -3 777               | -7 349                              | -4 193                |
| <b>2008</b>                  |                              |                                 |                    |                       |                                     |                       |                                 |                    |                          |                      |                                     |                       |
| January                      | <b>-3 877</b>                | 17 406                          | 13 415             | 1 833                 | 11 582                              | 3 991                 | -21 283                         | -17 057            | -4 857                   | -3 484               | -8 716                              | -4 226                |
| February                     | <b>-2 613</b>                | 17 873                          | 13 654             | 2 141                 | 11 513                              | 4 219                 | -20 486                         | -16 910            | -4 829                   | -3 640               | -8 441                              | -3 576                |
| March                        | <b>-1 042</b>                | 19 763                          | 15 475             | 2 395                 | 13 080                              | 4 288                 | -20 805                         | -16 988            | -4 619                   | -4 062               | -8 307                              | -3 817                |
| April                        | <b>-1 292</b>                | 20 384                          | 16 202             | 2 449                 | 13 753                              | 4 182                 | -21 676                         | -17 678            | -4 974                   | -3 674               | -9 030                              | -3 998                |
| FINANCIAL YEAR TO DATE       |                              |                                 |                    |                       |                                     |                       |                                 |                    |                          |                      |                                     |                       |
| <b>10 months ended April</b> |                              |                                 |                    |                       |                                     |                       |                                 |                    |                          |                      |                                     |                       |
| 2007                         | <b>-9 446</b>                | 179 325                         | 140 717            | 21 135                | 119 582                             | 38 608                | -188 771                        | -151 955           | -46 239                  | -33 604              | -72 112                             | -36 816               |
| 2008                         | <b>-21 127</b>               | 186 885                         | 145 445            | 20 755                | 124 690                             | 41 440                | -208 012                        | -168 267           | -49 751                  | -37 015              | -81 501                             | -39 745               |

(a) For sign conventions, see paragraph 11 of the Explanatory Notes.

(b) For all time periods, estimates for sugar, sugar preparations and honey are included in Non-rural and other goods.

|   |                |                |                |               |               |               | 10 MONTHS<br>ENDED APRIL |                | Change<br>% |
|---|----------------|----------------|----------------|---------------|---------------|---------------|--------------------------|----------------|-------------|
|   | 2004-05        | 2005-06        | 2006-07        | Feb<br>2008   | Mar<br>2008   | Apr<br>2008   | 2007                     | 2008           |             |
|   | \$m            | \$m            | \$m            | \$m           | \$m           | \$m           | \$m                      | \$m            |             |
| <b>Total goods credits</b>                  | <b>127 867</b> | <b>154 425</b> | <b>169 535</b> | <b>13 654</b> | <b>15 475</b> | <b>16 202</b> | <b>140 717</b>           | <b>145 445</b> | <b>3.4</b>  |
| <i>Rural goods</i>                          | 25 687         | 25 312         | 25 135         | 2 141         | 2 395         | 2 449         | 21 135                   | 20 755         | -1.8        |
| Meat and meat preparations                  | 6 937          | 6 709          | 7 078          | 466           | 579           | 594           | 5 990                    | 5 352          | -10.7       |
| Cereal grains and cereal preparations       | 5 159          | 4 852          | 4 171          | 527           | 552           | 597           | 3 667                    | 3 745          | 2.1         |
| Wool and sheepskins                         | 2 838          | 2 544          | 3 065          | 247           | 291           | 234           | 2 477                    | 2 375          | -4.1        |
| Other rural(a)                              | 10 753         | 11 207         | 10 821         | 901           | 973           | 1 024         | 9 001                    | 9 283          | 3.1         |
| <i>Non-rural goods</i>                      | 94 328         | 118 164        | 131 775        | 10 163        | 11 931        | 12 301        | 109 468                  | 112 607        | 2.9         |
| Metal ores and minerals                     | 19 854         | 28 936         | 35 314         | 2 681         | 3 496         | 3 468         | 29 316                   | 31 820         | 8.5         |
| Coal, coke and briquettes                   | 17 236         | 24 353         | 21 928         | 1 416         | 1 861         | 2 213         | 18 492                   | 17 486         | -5.4        |
| Other mineral fuels                         | 11 151         | 13 220         | 15 642         | 1 617         | 1 539         | 1 539         | 13 227                   | 14 942         | 13.0        |
| Metals (excl. non-monetary gold)            | 8 668          | 11 278         | 14 825         | 1 065         | 1 288         | 1 142         | 12 307                   | 11 455         | -6.9        |
| Machinery                                   | 7 488          | 8 087          | 8 437          | 721           | 749           | 756           | 6 952                    | 7 387          | 6.3         |
| Transport equipment                         | 4 943          | 5 316          | 4 646          | 504           | 451           | 480           | 3 773                    | 4 624          | 22.6        |
| Other manufactures                          | 14 043         | 14 926         | 16 193         | 1 244         | 1 410         | 1 522         | 13 368                   | 14 038         | 5.0         |
| Other non-rural (incl. sugar and beverages) | 10 945         | 12 048         | 14 790         | 915           | 1 137         | 1 181         | 12 033                   | 10 855         | -9.8        |
| <i>Other goods</i>                          | 7 852          | 10 949         | 12 625         | 1 350         | 1 149         | 1 452         | 10 114                   | 12 083         | 19.5        |
| Goods for processing                        | 241            | 368            | 417            | 28            | 18            | 31            | 319                      | 231            | -27.6       |
| Repairs on goods                            | 67             | 74             | 90             | 11            | 7             | 11            | 69                       | 83             | 20.3        |
| Goods procured in ports by carriers         | 1 072          | 1 420          | 1 379          | 133           | 136           | 137           | 1 149                    | 1 262          | 9.8         |
| Non-monetary gold                           | 6 472          | 9 087          | 10 739         | 1 178         | 988           | 1 273         | 8 577                    | 10 507         | 22.5        |

(a) For all time periods, estimates for sugar, sugar preparations and honey are included in Other non-rural.

## GOODS DEBITS (a): Original

|   |                 |                 |                 |                |                |                | 10 MONTHS<br>ENDED APRIL |                 | Change      |
|---|-----------------|-----------------|-----------------|----------------|----------------|----------------|--------------------------|-----------------|-------------|
|   | 2004-05         | 2005-06         | 2006-07         | Feb<br>2008    | Mar<br>2008    | Apr<br>2008    | 2007                     | 2008            |             |
|   | \$m             | \$m             | \$m             | \$m            | \$m            | \$m            | \$m                      | \$m             |             |
| <b>Total goods debits</b>                       | <b>-150 873</b> | <b>-169 716</b> | <b>-183 500</b> | <b>-16 910</b> | <b>-16 988</b> | <b>-17 678</b> | <b>-151 955</b>          | <b>-168 267</b> | <b>10.7</b> |
| <i>Consumption goods</i>                        | -47 143         | -50 322         | -54 998         | -4 829         | -4 619         | -4 974         | -46 239                  | -49 751         | 7.6         |
| Food and beverages, mainly for consumption      | -5 767          | -6 170          | -7 181          | -643           | -615           | -643           | -6 120                   | -6 592          | 7.7         |
| Household electrical items                      | -4 024          | -4 291          | -4 610          | -386           | -337           | -400           | -3 880                   | -4 357          | 12.3        |
| Non-industrial transport equipment              | -13 003         | -13 589         | -14 889         | -1 320         | -1 501         | -1 493         | -12 435                  | -13 892         | 11.7        |
| Textiles, clothing and footwear                 | -5 811          | -6 365          | -6 805          | -729           | -484           | -586           | -5 849                   | -6 037          | 3.2         |
| Toys, books and leisure goods                   | -3 740          | -4 055          | -4 330          | -315           | -295           | -338           | -3 600                   | -3 768          | 4.7         |
| Consumption goods n.e.s.                        | -14 798         | -15 852         | -17 183         | -1 436         | -1 387         | -1 514         | -14 355                  | -15 105         | 5.2         |
| <i>Capital goods</i>                            | -35 967         | -39 996         | -41 172         | -3 640         | -4 062         | -3 674         | -33 604                  | -37 015         | 10.2        |
| Machinery and industrial equipment              | -13 409         | -14 328         | -15 306         | -1 241         | -1 469         | -1 356         | -12 877                  | -13 683         | 6.3         |
| ADP equipment                                   | -5 761          | -6 073          | -6 847          | -468           | -555           | -590           | -5 554                   | -5 578          | 0.4         |
| Telecommunications equipment                    | -4 568          | -5 334          | -5 333          | -404           | -475           | -448           | -4 365                   | -4 864          | 11.4        |
| Civil aircraft                                  | -2 496          | -2 967          | -1 667          | -453           | -428           | -99            | -994                     | -1 892          | 90.3        |
| Industrial transport equipment n.e.s.           | -4 981          | -5 495          | -6 431          | -588           | -649           | -660           | -5 192                   | -6 074          | 17.0        |
| Capital goods n.e.s.                            | -4 752          | -5 799          | -5 588          | -486           | -486           | -521           | -4 622                   | -4 924          | 6.5         |
| <i>Intermediate and other merchandise goods</i> | -63 730         | -72 722         | -79 908         | -7 577         | -7 561         | -8 141         | -66 091                  | -73 749         | 11.6        |
| Food and beverages, mainly for industry         | -659            | -651            | -819            | -82            | -62            | -80            | -676                     | -761            | 12.6        |
| Primary industrial supplies n.e.s.              | -1 052          | -1 193          | -1 555          | -93            | -111           | -111           | -1 354                   | -1 214          | -10.3       |
| Fuels and lubricants                            | -14 720         | -21 014         | -21 470         | -2 551         | -2 733         | -2 758         | -17 373                  | -23 554         | 35.6        |
| Parts for transport equipment                   | -7 008          | -7 314          | -8 355          | -743           | -716           | -767           | -6 965                   | -7 316          | 5.0         |
| Parts for ADP equipment                         | -1 787          | -1 857          | -1 620          | -77            | -87            | -88            | -1 378                   | -924            | -32.9       |
| Other parts for capital goods                   | -9 485          | -10 154         | -11 762         | -983           | -912           | -1 068         | -9 740                   | -9 890          | 1.5         |
| Organic and inorganic chemicals                 | -3 622          | -4 134          | -4 406          | -432           | -349           | -409           | -3 738                   | -3 840          | 2.7         |
| Paper and paperboard                            | -2 313          | -2 302          | -2 372          | -189           | -181           | -188           | -1 989                   | -1 977          | -0.6        |
| Textile yarn and fabrics                        | -1 452          | -1 361          | -1 365          | -104           | -97            | -113           | -1 140                   | -1 120          | -1.8        |
| Iron and steel                                  | -3 008          | -3 239          | -3 817          | -279           | -313           | -328           | -3 184                   | -2 981          | -6.4        |
| Plastics  | -2 428          | -2 517          | -2 957          | -234           | -237           | -258           | -2 459                   | -2 550          | 3.7         |
| Processed industrial supplies n.e.s.            | -15 142         | -15 856         | -17 791         | -1 599         | -1 648         | -1 879         | -14 766                  | -16 419         | 11.2        |
| Other merchandise goods                         | -1 054          | -1 130          | -1 619          | -211           | -115           | -94            | -1 329                   | -1 203          | -9.5        |
| <i>Other goods</i>                              | -4 033          | -6 676          | -7 422          | -864           | -746           | -889           | -6 021                   | -7 752          | 28.7        |
| Goods for processing                            | -243            | -445            | -507            | -49            | -1             | -14            | -501                     | -100            | -80.0       |
| Repairs on goods                                | -182            | -115            | -131            | -5             | -8             | -10            | -111                     | -95             | -14.4       |
| Goods procured in ports by carriers             | -1 049          | -1 406          | -1 468          | -131           | -131           | -136           | -1 237                   | -1 299          | 5.0         |
| Non-monetary gold                               | -2 559          | -4 710          | -5 316          | -679           | -606           | -729           | -4 172                   | -6 258          | 50.0        |

(a) For sign conventions, see paragraph 11 of the Explanatory Notes.

## GOODS CREDITS: Seasonally Adjusted

|   | Jul<br>2007   | Aug<br>2007   | Sep<br>2007   | Oct<br>2007   | Nov<br>2007   | Dec<br>2007   | Jan<br>2008   | Feb<br>2008   | Mar<br>2008   | Apr<br>2008   |
|---|---------------|---------------|---------------|---------------|---------------|---------------|---------------|---------------|---------------|---------------|
|   | \$m           | \$m           | \$m           | \$m           | \$m           | \$m           | \$m           | \$m           | \$m           | \$m           |
| <b>Total goods credits</b>                  | <b>14 068</b> | <b>14 546</b> | <b>13 755</b> | <b>13 354</b> | <b>14 349</b> | <b>14 732</b> | <b>15 021</b> | <b>14 296</b> | <b>15 207</b> | <b>16 305</b> |
| <i>Rural goods</i>                          | 1 937         | 1 870         | 2 001         | 1 889         | 1 957         | 2 149         | 2 156         | 2 146         | 2 284         | 2 427         |
| Meat and meat preparations                  | 523           | 534           | 543           | 505           | 560           | 579           | 526           | 485           | 534           | 595           |
| Cereal grains and cereal preparations       | 373           | 227           | 329           | 249           | 226           | 342           | 389           | 454           | 514           | 550           |
| Wool and sheepskins                         | 219           | 217           | 230           | 239           | 259           | 277           | 262           | 238           | 230           | 227           |
| Other rural(a)                              | 822           | 892           | 898           | 897           | 912           | 950           | 978           | 969           | 1 006         | 1 055         |
| <i>Non-rural goods</i>                      | 10 970        | 11 420        | 10 814        | 10 367        | 11 143        | 11 516        | 11 499        | 10 799        | 11 773        | 12 423        |
| Metal ores and minerals                     | 3 106         | 3 186         | 3 196         | 2 597         | 3 214         | 3 206         | 3 480         | 2 856         | 3 427         | 3 505         |
| Coal, coke and briquettes(b)                | 1 558         | 1 733         | 1 779         | 1 602         | 1 643         | 1 825         | 1 749         | 1 486         | 1 827         | 2 245         |
| Other mineral fuels                         | 1 146         | 1 571         | 1 035         | 1 578         | 1 490         | 1 482         | 1 607         | 1 662         | 1 634         | 1 561         |
| Metals (excl. non-monetary gold)            | 1 291         | 1 200         | 1 222         | 970           | 1 150         | 1 331         | 899           | 1 149         | 1 167         | 1 147         |
| Machinery                                   | 720           | 715           | 772           | 736           | 731           | 731           | 760           | 767           | 722           | 773           |
| Transport equipment                         | 471           | 439           | 456           | 457           | 470           | 470           | 503           | 518           | 455           | 475           |
| Other manufactures                          | 1 410         | 1 436         | 1 414         | 1 385         | 1 367         | 1 378         | 1 472         | 1 291         | 1 397         | 1 529         |
| Other non-rural (incl. sugar and beverages) | 1 268         | 1 140         | 939           | 1 041         | 1 080         | 1 094         | 1 029         | 1 071         | 1 145         | 1 188         |
| <i>Other goods</i>                          | 1 161         | 1 256         | 941           | 1 098         | 1 248         | 1 067         | 1 365         | 1 351         | 1 150         | 1 455         |
| Goods for processing(c)                     | 23            | 19            | 13            | 19            | 25            | 30            | 25            | 28            | 18            | 31            |
| Repairs on goods(c)                         | 8             | 8             | 9             | 8             | 8             | 7             | 6             | 11            | 7             | 11            |
| Goods procured in ports by carriers         | 115           | 112           | 109           | 112           | 132           | 145           | 135           | 134           | 137           | 140           |
| Non-monetary gold(c)                        | 1 015         | 1 117         | 810           | 959           | 1 083         | 885           | 1 199         | 1 178         | 988           | 1 273         |

(a) For all time periods, estimates for sugar, sugar preparations and honey are included in Other non-rural.

(b) Only a length-of-month effect has been applied to this component.

(c) This component is not seasonally adjusted.

## GOODS DEBITS(a): Seasonally Adjusted

|   | Jul<br>2007    | Aug<br>2007    | Sep<br>2007    | Oct<br>2007    | Nov<br>2007    | Dec<br>2007    | Jan<br>2008    | Feb<br>2008    | Mar<br>2008    | Apr<br>2008    |
|---|----------------|----------------|----------------|----------------|----------------|----------------|----------------|----------------|----------------|----------------|
|   | \$m            | \$m            | \$m            | \$m            | \$m            | \$m            | \$m            | \$m            | \$m            | \$m            |
| <b>Total goods debits</b>                       | <b>-15 442</b> | <b>-16 447</b> | <b>-15 920</b> | <b>-16 281</b> | <b>-16 541</b> | <b>-16 567</b> | <b>-17 545</b> | <b>-17 633</b> | <b>-17 855</b> | <b>-17 351</b> |
| <i>Consumption goods</i>                        | -4 599         | -4 743         | -4 776         | -4 742         | -4 925         | -4 983         | -5 166         | -5 072         | -5 243         | -4 920         |
| Food and beverages, mainly for consumption      | -627           | -668           | -649           | -589           | -634           | -624           | -663           | -677           | -659           | -674           |
| Household electrical items                      | -424           | -418           | -441           | -424           | -430           | -416           | -430           | -438           | -407           | -418           |
| Non-industrial transport equipment              | -1 178         | -1 283         | -1 296         | -1 344         | -1 424         | -1 443         | -1 563         | -1 454         | -1 607         | -1 401         |
| Textiles, clothing and footwear                 | -567           | -573           | -579           | -572           | -579           | -595           | -587           | -602           | -578           | -581           |
| Toys, books and leisure goods                   | -343           | -357           | -370           | -352           | -381           | -397           | -419           | -379           | -384           | -379           |
| Consumption goods n.e.s.                        | -1 460         | -1 443         | -1 439         | -1 460         | -1 477         | -1 509         | -1 504         | -1 522         | -1 607         | -1 466         |
| <i>Capital goods</i>                            | -3 268         | -3 696         | -3 677         | -3 483         | -3 679         | -3 828         | -3 716         | -4 004         | -4 148         | -3 713         |
| Machinery and industrial equipment              | -1 269         | -1 267         | -1 469         | -1 177         | -1 340         | -1 302         | -1 438         | -1 354         | -1 571         | -1 417         |
| ADP equipment                                   | -552           | -597           | -569           | -540           | -585           | -632           | -605           | -563           | -539           | -571           |
| Telecommunications equipment                    | -445           | -465           | -487           | -591           | -537           | -461           | -472           | -479           | -473           | -449           |
| Civil aircraft(b)                               | -10            | -296           | -71            | -115           | -64            | -307           | -49            | -453           | -428           | -99            |
| Industrial transport equipment n.e.s.           | -534           | -606           | -591           | -579           | -657           | -622           | -658           | -633           | -626           | -664           |
| Capital goods n.e.s.                            | -458           | -465           | -491           | -481           | -496           | -504           | -493           | -522           | -512           | -513           |
| <i>Intermediate and other merchandise goods</i> | -6 732         | -7 123         | -6 905         | -7 270         | -7 148         | -7 268         | -7 764         | -7 692         | -7 718         | -7 829         |
| Food and beverages, mainly for industry         | -69            | -72            | -67            | -92            | -71            | -77            | -81            | -84            | -65            | -78            |
| Primary industrial supplies n.e.s.(c)           | -149           | -105           | -114           | -147           | -109           | -123           | -131           | -111           | -103           | -103           |
| Fuels and lubricants(b)                         | -1 813         | -2 166         | -2 027         | -2 299         | -2 228         | -2 338         | -2 641         | -2 551         | -2 733         | -2 758         |
| Parts for transport equipment                   | -689           | -761           | -702           | -691           | -731           | -721           | -744           | -773           | -718           | -770           |
| Parts for ADP equipment                         | -101           | -104           | -99            | -91            | -92            | -95            | -93            | -87            | -88            | -89            |
| Other parts for capital goods                   | -977           | -987           | -978           | -986           | -966           | -983           | -945           | -1 051         | -953           | -1 031         |
| Organic and inorganic chemicals(c)              | -400           | -397           | -440           | -379           | -367           | -323           | -410           | -375           | -349           | -377           |
| Paper and paperboard                            | -212           | -208           | -194           | -193           | -184           | -190           | -180           | -194           | -208           | -187           |
| Textile yarn and fabrics                        | -107           | -108           | -117           | -113           | -113           | -117           | -113           | -112           | -114           | -109           |
| Iron and steel                                  | -332           | -301           | -293           | -284           | -290           | -272           | -303           | -265           | -303           | -331           |
| Plastics  | -251           | -255           | -261           | -255           | -257           | -251           | -244           | -244           | -246           | -259           |
| Processed industrial supplies n.e.s.            | -1 546         | -1 541         | -1 516         | -1 614         | -1 629         | -1 670         | -1 739         | -1 634         | -1 724         | -1 643         |
| Other merchandise goods(b)                      | -87            | -119           | -96            | -125           | -111           | -107           | -138           | -211           | -115           | -94            |
| <i>Other goods</i>                              | -842           | -886           | -562           | -786           | -790           | -488           | -899           | -864           | -746           | -889           |
| Goods for processing(b)                         | -1             | -7             | -1             | -1             | -14            | -1             | -11            | -49            | -1             | -14            |
| Repairs on goods(b)                             | -14            | -17            | -9             | -10            | -9             | -8             | -5             | -5             | -8             | -10            |
| Goods procured in ports by carriers(b)          | -119           | -119           | -119           | -138           | -138           | -137           | -131           | -131           | -131           | -136           |
| Non-monetary gold(d)                            | -708           | -743           | -433           | -637           | -629           | -342           | -752           | -679           | -606           | -729           |

(a) For sign conventions, see paragraph 11 of the Explanatory Notes.

(b) These components are not seasonally adjusted.

(c) In using these seasonally adjusted series, care should be exercised because of the difficulties associated with reliably estimating the seasonal pattern.

(d) From October 1995, this component is not seasonally adjusted.

|   | Jul<br>2007   | Aug<br>2007   | Sep<br>2007   | Oct<br>2007   | Nov<br>2007   | Dec<br>2007   | Jan<br>2008   | Feb<br>2008   | Mar<br>2008   | Apr<br>2008   |
|---|---------------|---------------|---------------|---------------|---------------|---------------|---------------|---------------|---------------|---------------|
|   | \$m           | \$m           | \$m           | \$m           | \$m           | \$m           | \$m           | \$m           | \$m           | \$m           |
| <b>Total goods credits</b>                  | <b>14 038</b> | <b>13 987</b> | <b>13 986</b> | <b>14 034</b> | <b>14 177</b> | <b>14 408</b> | <b>14 702</b> | <b>15 022</b> | <b>15 344</b> | <b>15 639</b> |
| <i>Rural goods</i>                          | 1 899         | 1 903         | 1 925         | 1 960         | 2 009         | 2 071         | 2 142         | 2 215         | 2 283         | 2 349         |
| Meat and meat preparations                  | 519           | 524           | 533           | 539           | 540           | 538           | 537           | 538           | 542           | 549           |
| Cereal grains and cereal preparations       | 280           | 275           | 271           | 275           | 295           | 334           | 386           | 441           | 491           | 539           |
| Wool and sheepskins                         | 240           | 234           | 236           | 243           | 251           | 256           | 254           | 248           | 240           | 233           |
| Other rural(a)                              | 860           | 869           | 885           | 904           | 923           | 944           | 965           | 988           | 1 009         | 1 029         |
| <i>Non-rural goods</i>                      | 10 963        | 10 932        | 10 930        | 10 948        | 11 019        | 11 142        | 11 316        | 11 520        | 11 733        | 11 939        |
| Metal ores and minerals                     | 3 049         | 3 056         | 3 060         | 3 065         | 3 091         | 3 139         | 3 203         | 3 272         | 3 337         | 3 413         |
| Coal, coke and briquettes                   | 1 675         | 1 674         | 1 681         | 1 681         | 1 680         | 1 690         | 1 721         | 1 779         | 1 854         | 1 942         |
| Other mineral fuels                         | 1 298         | 1 316         | 1 354         | 1 412         | 1 477         | 1 534         | 1 577         | 1 607         | 1 631         | 1 618         |
| Metals (excl. non-monetary gold)            | 1 204         | 1 179         | 1 158         | 1 140         | 1 127         | 1 118         | 1 118         | 1 123         | 1 128         | 1 143         |
| Machinery                                   | 729           | 731           | 735           | 739           | 742           | 744           | 746           | 749           | 752           | 757           |
| Transport equipment                         | 435           | 445           | 455           | 465           | 474           | 480           | 485           | 487           | 486           | 483           |
| Other manufactures                          | 1 389         | 1 400         | 1 406         | 1 401         | 1 389         | 1 385         | 1 389         | 1 401         | 1 418         | 1 438         |
| Other non-rural (incl. sugar and beverages) | 1 184         | 1 131         | 1 082         | 1 047         | 1 038         | 1 052         | 1 077         | 1 101         | 1 126         | 1 144         |
| <i>Other goods</i>                          | 1 176         | 1 152         | 1 131         | 1 126         | 1 149         | 1 194         | 1 244         | 1 288         | 1 328         | 1 351         |
| Goods for processing                        | 28            | 23            | 21            | 20            | 22            | 24            | 26            | 26            | 27            | 26            |
| Repairs on goods                            | 9             | 9             | 8             | 8             | 8             | 8             | 8             | 8             | 9             | 9             |
| Goods procured in ports by carriers         | 111           | 112           | 115           | 121           | 127           | 132           | 136           | 138           | 140           | 140           |
| Non-monetary gold                           | 1 029         | 1 008         | 987           | 977           | 993           | 1 030         | 1 074         | 1 115         | 1 153         | 1 176         |

(a) For all time periods, estimates for sugar, sugar preparations and honey are included in Other non-rural.

## GOODS DEBITS(a): Trend Estimates

|   | Jul<br>2007    | Aug<br>2007    | Sep<br>2007    | Oct<br>2007    | Nov<br>2007    | Dec<br>2007    | Jan<br>2008    | Feb<br>2008    | Mar<br>2008    | Apr<br>2008    |
|---|----------------|----------------|----------------|----------------|----------------|----------------|----------------|----------------|----------------|----------------|
|   | \$m            | \$m            | \$m            | \$m            | \$m            | \$m            | \$m            | \$m            | \$m            | \$m            |
| <b>Total goods debits</b>                       | <b>-15 875</b> | <b>-15 973</b> | <b>-16 111</b> | <b>-16 319</b> | <b>-16 597</b> | <b>-16 906</b> | <b>-17 195</b> | <b>-17 444</b> | <b>-17 642</b> | <b>-17 757</b> |
| <i>Consumption goods</i>                        | -4 648         | -4 686         | -4 747         | -4 829         | -4 920         | -4 998         | -5 057         | -5 095         | -5 114         | -5 117         |
| Food and beverages, mainly for consumption      | -616           | -622           | -628           | -632           | -635           | -640           | -649           | -659           | -669           | -678           |
| Household electrical items                      | -416           | -424           | -429           | -430           | -428           | -427           | -425           | -423           | -421           | -419           |
| Non-industrial transport equipment              | -1 223         | -1 249         | -1 295         | -1 355         | -1 415         | -1 458         | -1 488         | -1 505         | -1 513         | -1 511         |
| Textiles, clothing and footwear                 | -572           | -573           | -576           | -579           | -583           | -587           | -588           | -589           | -588           | -587           |
| Toys, books and leisure goods                   | -358           | -357           | -362           | -371           | -381           | -389           | -392           | -392           | -391           | -388           |
| Consumption goods n.e.s.                        | -1 463         | -1 460         | -1 457         | -1 462         | -1 478         | -1 498         | -1 515         | -1 527         | -1 533         | -1 535         |
| <i>Capital goods</i>                            | -3 530         | -3 550         | -3 576         | -3 623         | -3 693         | -3 770         | -3 836         | -3 893         | -3 934         | -3 962         |
| Machinery and industrial equipment              | -1 278         | -1 288         | -1 298         | -1 310         | -1 327         | -1 351         | -1 383         | -1 418         | -1 447         | -1 484         |
| ADP equipment                                   | -559           | -562           | -571           | -581           | -587           | -588           | -585           | -579           | -572           | -565           |
| Telecommunications equipment                    | -475           | -492           | -506           | -514           | -513           | -503           | -488           | -473           | -462           | -449           |
| Civil aircraft                                  | -191           | -163           | -131           | -123           | -150           | -196           | -237           | -271           | -293           | -299           |
| Industrial transport equipment n.e.s.           | -561           | -573           | -592           | -609           | -622           | -632           | -638           | -643           | -647           | -650           |
| Capital goods n.e.s.                            | -466           | -471           | -478           | -486           | -493           | -500           | -505           | -509           | -513           | -516           |
| <i>Intermediate and other merchandise goods</i> | -6 926         | -6 960         | -7 029         | -7 137         | -7 267         | -7 407         | -7 540         | -7 661         | -7 765         | -7 833         |
| Food and beverages, mainly for industry         | -71            | -73            | -75            | -77            | -79            | -79            | -78            | -77            | -76            | -74            |
| Primary industrial supplies n.e.s.              | -123           | -121           | -123           | -124           | -124           | -122           | -119           | -114           | -109           | -104           |
| Fuels and lubricants                            | -2 017         | -2 057         | -2 115         | -2 198         | -2 298         | -2 407         | -2 509         | -2 605         | -2 692         | -2 753         |
| Parts for transport equipment                   | -705           | -708           | -713           | -718           | -723           | -730           | -737           | -746           | -753           | -758           |
| Parts for ADP equipment                         | -103           | -100           | -97            | -95            | -94            | -92            | -91            | -90            | -89            | -88            |
| Other parts for capital goods                   | -987           | -980           | -976           | -975           | -976           | -979           | -984           | -991           | -999           | -1 006         |
| Organic and inorganic chemicals                 | -379           | -388           | -392           | -390           | -381           | -372           | -368           | -367           | -367           | -370           |
| Paper and paperboard                            | -204           | -201           | -197           | -192           | -189           | -188           | -190           | -192           | -194           | -195           |
| Textile yarn and fabrics                        | -110           | -110           | -112           | -113           | -114           | -114           | -114           | -113           | -112           | -112           |
| Iron and steel                                  | -314           | -306           | -298           | -290           | -284           | -283           | -287           | -293           | -300           | -307           |
| Plastics  | -255           | -256           | -256           | -255           | -253           | -251           | -249           | -248           | -248           | -250           |
| Processed industrial supplies n.e.s.            | -1 540         | -1 549         | -1 568         | -1 597         | -1 631         | -1 659         | -1 678         | -1 687         | -1 690         | -1 684         |
| Other merchandise goods                         | -119           | -110           | -108           | -113           | -120           | -130           | -137           | -139           | -137           | -132           |
| <i>Other goods</i>                              | -770           | -777           | -759           | -730           | -718           | -731           | -762           | -796           | -828           | -844           |
| Goods for processing                            | -5             | -3             | -3             | -5             | -8             | -12            | -15            | -17            | -19            | -19            |
| Repairs on goods                                | -12            | -12            | -12            | -10            | -9             | -7             | -7             | -7             | -7             | -8             |
| Goods procured in ports by carriers             | -118           | -122           | -126           | -131           | -133           | -134           | -134           | -134           | -133           | -132           |
| Non-monetary gold                               | -634           | -640           | -618           | -584           | -567           | -577           | -606           | -638           | -669           | -686           |

(a) For sign conventions, see paragraph 11 of the Explanatory Notes.



## SERVICES (a)(b), Summary: Original

|                                    |                |                |                |               |               |               | 10 MONTHS<br>ENDED APRIL |                | Change     |
|------------------------------------|----------------|----------------|----------------|---------------|---------------|---------------|--------------------------|----------------|------------|
|                                    | 2004-05        | 2005-06        | 2006-07        | Feb<br>2008   | Mar<br>2008   | Apr<br>2008   | 2007                     | 2008           |            |
|                                    | \$m            | \$m            | \$m            | \$m           | \$m           | \$m           | \$m                      | \$m            |            |
| <b>Services credits</b>            | <b>39 695</b>  | <b>41 849</b>  | <b>46 066</b>  | <b>4 219</b>  | <b>4 288</b>  | <b>4 182</b>  | <b>38 608</b>            | <b>41 440</b>  | <b>7.3</b> |
| <i>Transportation services</i>     | 8 002          | 8 208          | 8 617          | 743           | 746           | 715           | 7 316                    | 7 314          | —          |
| Freight                            | 704            | 608            | 609            | 52            | 50            | 56            | 513                      | 532            | 3.7        |
| Passenger and other                | 7 298          | 7 600          | 8 008          | 691           | 696           | 659           | 6 803                    | 6 782          | -0.3       |
| <i>Travel services</i>             | 21 440         | 22 624         | 25 076         | 2 374         | 2 444         | 2 291         | 21 081                   | 23 039         | 9.3        |
| <i>Other services</i>              | 10 253         | 11 017         | 12 373         | 1 102         | 1 098         | 1 176         | 10 211                   | 11 087         | 8.6        |
| <b>Services debits</b>             | <b>-39 315</b> | <b>-41 078</b> | <b>-44 315</b> | <b>-3 576</b> | <b>-3 817</b> | <b>-3 998</b> | <b>-36 816</b>           | <b>-39 745</b> | <b>8.0</b> |
| <i>Transportation services</i>     | -13 796        | -14 508        | -15 368        | -1 257        | -1 340        | -1 371        | -12 839                  | -13 433        | 4.6        |
| Freight                            | -7 500         | -7 776         | -8 044         | -709          | -702          | -746          | -6 774                   | -7 191         | 6.2        |
| Passenger and other                | -6 296         | -6 732         | -7 324         | -548          | -638          | -625          | -6 065                   | -6 242         | 2.9        |
| <i>Travel services</i>             | -14 507        | -15 090        | -15 968        | -1 193        | -1 347        | -1 481        | -13 287                  | -14 903        | 12.2       |
| <i>Other services</i>              | -11 012        | -11 480        | -12 979        | -1 126        | -1 130        | -1 146        | -10 690                  | -11 409        | 6.7        |
| <b>Memorandum items:</b>           |                |                |                |               |               |               |                          |                |            |
| Tourism related service credits(c) | 25 584         | 26 728         | 29 313         | 2 753         | 2 828         | 2 609         | 24 745                   | 26 570         | 7.4        |
| Tourism related service debits(c)  | -20 287        | -21 374        | -22 844        | -1 689        | -1 944        | -2 061        | -18 981                  | -20 730        | 9.2        |

— nil or rounded to zero (including null cells)

(a) For sign conventions, see paragraph 11 of the Explanatory Notes.

(b) For more detailed trade in services components, see table 11.

(c) For a more detailed explanation of tourism related services, see paragraphs 18 and 19 of the Explanatory Notes.

|                                    | Jul<br>2007   | Aug<br>2007   | Sep<br>2007   | Oct<br>2007   | Nov<br>2007   | Dec<br>2007   | Jan<br>2008   | Feb<br>2008   | Mar<br>2008   | Apr<br>2008   |
|------------------------------------|---------------|---------------|---------------|---------------|---------------|---------------|---------------|---------------|---------------|---------------|
|                                    | \$m           | \$m           | \$m           | \$m           | \$m           | \$m           | \$m           | \$m           | \$m           | \$m           |
| SEASONALLY ADJUSTED                |               |               |               |               |               |               |               |               |               |               |
| <b>Services credits</b>            | <b>4 026</b>  | <b>4 058</b>  | <b>4 083</b>  | <b>4 089</b>  | <b>4 114</b>  | <b>4 110</b>  | <b>4 061</b>  | <b>4 090</b>  | <b>4 125</b>  | <b>4 141</b>  |
| Transportation services            | 728           | 717           | 734           | 711           | 705           | 711           | 712           | 712           | 725           | 739           |
| Freight                            | 52            | 52            | 51            | 54            | 54            | 54            | 55            | 54            | 53            | 55            |
| Passenger and other                | 675           | 665           | 683           | 657           | 651           | 657           | 658           | 657           | 673           | 684           |
| Travel services                    | 2 231         | 2 263         | 2 267         | 2 280         | 2 306         | 2 290         | 2 216         | 2 238         | 2 257         | 2 244         |
| Other services(b)                  | 1 068         | 1 078         | 1 081         | 1 098         | 1 103         | 1 108         | 1 133         | 1 141         | 1 143         | 1 158         |
| <b>Services debits</b>             | <b>-3 822</b> | <b>-3 887</b> | <b>-3 926</b> | <b>-3 928</b> | <b>-3 945</b> | <b>-3 982</b> | <b>-4 014</b> | <b>-3 974</b> | <b>-4 026</b> | <b>-4 052</b> |
| Transportation services            | -1 269        | -1 303        | -1 321        | -1 327        | -1 320        | -1 345        | -1 393        | -1 344        | -1 378        | -1 384        |
| Freight                            | -669          | -678          | -696          | -702          | -689          | -709          | -761          | -723          | -738          | -735          |
| Passenger and other                | -600          | -625          | -625          | -625          | -630          | -636          | -632          | -621          | -639          | -649          |
| Travel services                    | -1 415        | -1 437        | -1 453        | -1 478        | -1 495        | -1 505        | -1 491        | -1 489        | -1 498        | -1 509        |
| Other services(b)                  | -1 138        | -1 147        | -1 152        | -1 123        | -1 130        | -1 131        | -1 131        | -1 141        | -1 150        | -1 159        |
| <b>Memorandum items:</b>           |               |               |               |               |               |               |               |               |               |               |
| Tourism related service credits(c) | 2 575         | 2 612         | 2 619         | 2 624         | 2 651         | 2 632         | 2 534         | 2 566         | 2 609         | 2 575         |
| Tourism related service debits(c)  | -1 964        | -2 020        | -2 035        | -2 048        | -2 096        | -2 103        | -2 085        | -2 023        | -2 089        | -2 121        |

|                                    |               |               |               |               |               |               |               |               |               |               |
|------------------------------------|---------------|---------------|---------------|---------------|---------------|---------------|---------------|---------------|---------------|---------------|
| TREND ESTIMATES                    |               |               |               |               |               |               |               |               |               |               |
| <b>Services credits</b>            | <b>4 026</b>  | <b>4 054</b>  | <b>4 077</b>  | <b>4 090</b>  | <b>4 095</b>  | <b>4 097</b>  | <b>4 099</b>  | <b>4 104</b>  | <b>4 111</b>  | <b>4 119</b>  |
| Transportation services            | 716           | 718           | 719           | 716           | 713           | 712           | 714           | 718           | 722           | 728           |
| Freight                            | 50            | 51            | 52            | 53            | 54            | 54            | 54            | 54            | 54            | 54            |
| Passenger and other                | 666           | 667           | 666           | 663           | 659           | 658           | 659           | 663           | 668           | 674           |
| Travel services                    | 2 236         | 2 258         | 2 274         | 2 281         | 2 278         | 2 269         | 2 259         | 2 250         | 2 243         | 2 237         |
| Other services                     | 1 074         | 1 079         | 1 085         | 1 093         | 1 104         | 1 116         | 1 127         | 1 137         | 1 146         | 1 154         |
| <b>Services debits</b>             | <b>-3 844</b> | <b>-3 877</b> | <b>-3 908</b> | <b>-3 934</b> | <b>-3 956</b> | <b>-3 974</b> | <b>-3 991</b> | <b>-4 007</b> | <b>-4 022</b> | <b>-4 036</b> |
| Transportation services            | -1 278        | -1 293        | -1 310        | -1 325        | -1 337        | -1 348        | -1 358        | -1 367        | -1 375        | -1 381        |
| Freight                            | -673          | -679          | -687          | -697          | -708          | -718          | -726          | -733          | -738          | -742          |
| Passenger and other                | -605          | -614          | -623          | -628          | -629          | -631          | -632          | -634          | -637          | -640          |
| Travel services                    | -1 419        | -1 439        | -1 458        | -1 475        | -1 486        | -1 493        | -1 497        | -1 499        | -1 501        | -1 502        |
| Other services                     | -1 147        | -1 145        | -1 140        | -1 135        | -1 132        | -1 133        | -1 136        | -1 141        | -1 146        | -1 153        |
| <b>Memorandum items:</b>           |               |               |               |               |               |               |               |               |               |               |
| Tourism related service credits(c) | 2 582         | 2 605         | 2 621         | 2 625         | 2 619         | 2 607         | 2 594         | 2 583         | 2 576         | 2 572         |
| Tourism related service debits(c)  | -1 987        | -2 011        | -2 037        | -2 059        | -2 072        | -2 078        | -2 080        | -2 082        | -2 086        | -2 089        |

(a) For sign conventions, see paragraph 11 of the Explanatory Notes.

(b) In using these seasonally adjusted series, care should be exercised because of the difficulties associated with reliably estimating the seasonal pattern.

(c) For a more detailed explanation of tourism related services, see paragraphs 18 and 19 of the Explanatory Notes.

|   | CREDITS        |                |                |                | DEBITS         |                |                |                |
|---|----------------|----------------|----------------|----------------|----------------|----------------|----------------|----------------|
|   | <i>Jun Qtr</i> | <i>Sep Qtr</i> | <i>Dec Qtr</i> | <i>Mar Qtr</i> | <i>Jun Qtr</i> | <i>Sep Qtr</i> | <i>Dec Qtr</i> | <i>Mar Qtr</i> |
|   | 2007           | 2007           | 2007           | 2008           | 2007           | 2007           | 2007           | 2008           |
|   | \$m            | \$m            | \$m            | \$m            | \$m            | \$m            | \$m            | \$m            |
| <b>Services</b>   | <b>11 455</b>  | <b>12 189</b>  | <b>12 571</b>  | <b>12 498</b>  | <b>-11 150</b> | <b>-11 980</b> | <b>-12 148</b> | <b>-11 619</b> |
| Transportation services                                       | 1 989          | 2 167          | 2 187          | 2 245          | -3 709         | -3 958         | -4 157         | -3 947         |
| Passenger(c)  | 1 845          | 2 013          | 2 019          | 2 091          | -1 604         | -1 758         | -1 678         | -1 537         |
| Freight   | 144            | 154            | 168            | 154            | -1 916         | -2 003         | -2 256         | -2 186         |
| Other(c)  | np             | np             | np             | np             | -189           | -197           | -223           | -224           |
| Travel services   | 6 221          | 6 848          | 6 949          | 6 951          | -4 032         | -4 635         | -4 490         | -4 297         |
| Business  | 619            | 674            | 644            | 711            | -664           | -675           | -633           | -723           |
| Personal  | 5 602          | 6 174          | 6 305          | 6 240          | -3 368         | -3 960         | -3 857         | -3 574         |
| Education-related   | 3 032          | 3 406          | 3 022          | 3 095          | -177           | -260           | -176           | -197           |
| Other   | 2 570          | 2 768          | 3 283          | 3 145          | -3 191         | -3 700         | -3 681         | -3 377         |
| Communication services(d)                                     | 168            | 169            | 186            | 190            | -214           | -187           | -183           | -168           |
| Construction services   | 33             | 30             | 40             | 37             | —              | —              | —              | —              |
| Insurance services  | 176            | 181            | 181            | 181            | -225           | -233           | -233           | -233           |
| Financial services  | 251            | 259            | 259            | 259            | -150           | -155           | -155           | -155           |
| Computer and information services                             | 368            | 384            | 409            | 369            | -382           | -343           | -414           | -366           |
| Royalties and license fees                                    | 244            | 184            | 189            | 172            | -826           | -877           | -878           | -790           |
| Other business services                                       | 1 636          | 1 622          | 1 811          | 1 690          | -1 111         | -1 132         | -1 185         | -1 109         |
| Merchanting and other trade-related                           | 211            | 183            | 249            | 271            | -50            | -57            | -69            | -61            |
| Operational leasing   | 13             | 14             | 10             | 9              | -199           | -220           | -203           | -206           |
| Miscellaneous business, professional and technical            | 1 412          | 1 425          | 1 552          | 1 410          | -862           | -855           | -913           | -842           |
| Legal, accounting, management consulting and public relations | 269            | 302            | 291            | 269            | -174           | -106           | -107           | -94            |
| Advertising, market research and public opinion polling       | 66             | 61             | 89             | 82             | -53            | -34            | -42            | -46            |
| Research and development                                      | 133            | 146            | 164            | 133            | -25            | -38            | -35            | -29            |
| Architectural, engineering and other technical services       | 374            | 353            | 394            | 413            | -147           | -202           | -170           | -169           |
| Agriculture, mining and on-site processing                    | 92             | 95             | 104            | 103            | -94            | -83            | -81            | -64            |
| Services between affiliated enterprises n.i.e.                | 331            | 322            | 335            | 250            | -218           | -222           | -269           | -213           |
| Other   | 147            | 146            | 175            | 160            | -151           | -170           | -209           | -227           |
| Personal, cultural, and recreational services                 | 152            | 131            | 159            | 188            | -261           | -268           | -240           | -351           |
| Audiovisual and related services                              | 43             | 33             | 54             | 83             | -236           | -244           | -205           | -285           |
| Personal, cultural and recreational services                  | 109            | 98             | 105            | 105            | -25            | -24            | -35            | -66            |
| Government services n.i.e.                                    | 217            | 214            | 201            | 216            | -240           | -192           | -213           | -203           |
| <b>Memorandum items:</b>                                      |                |                |                |                |                |                |                |                |
| Tourism related services(e)                                   | 7 117          | 7 850          | 8 005          | 8 106          | -5 710         | -6 476         | -6 271         | -5 922         |

— nil or rounded to zero (including null cells)

np not available for publication but included in totals where applicable, unless otherwise indicated

(a) For sign conventions, see paragraph 11 of the Explanatory Notes.

(b) For more information see paragraphs 15 and 16 of the Explanatory Notes.

(c) Passenger transportation credits include other transportation services credits.

(d) Communications services includes other services n.i.e.

(e) For a more detailed explanation of tourism related services, see paragraphs 18 and 19 of the Explanatory Notes.

|                                    |       |       |       | Per cent<br>of total<br>merchandise<br>exports(b) | 10 MONTHS<br>ENDED APRIL |        |
|------------------------------------|-------|-------|-------|---|--------------------------|--------|
|                                    | Feb   | Mar   | Apr   |   | .....                    |        |
|                                    | 2008  | 2008  | 2008  |   | 2007                     | 2008   |
|                                    | \$m   | \$m   | \$m   | %   | \$m                      | \$m    |
| MAJOR COMMODITIES                  |       |       |       |   |                          |        |
| 011 Meat of bovine animals         | 296   | 402   | 405   | 2.5   | 4 139                    | 3 559  |
| 041 Wheat                          | 275   | 280   | 378   | 2.4   | 2 410                    | 2 103  |
| 268 Wool and other animal hair     | 222   | 263   | 206   | 1.3   | 2 182                    | 2 119  |
| 281 Iron ore and concentrates      | 1 274 | 1 730 | 1 787 | 11.1  | 12 842                   | 15 258 |
| 285 Aluminium ore and concentrates | 388   | 493   | 444   | 2.8   | 5 255                    | 4 846  |
| 321 Coal, not agglomerated         | 1 367 | 1 863 | 2 205 | 13.7  | 18 426                   | 17 347 |
| 333 Crude petroleum oils           | 732   | 759   | 812   | 5.1   | 6 509                    | 7 541  |
| 334 Refined petroleum oils         | 336   | 357   | 298   | 1.9   | 2 462                    | 2 998  |
| 343 Natural gas                    | 553   | 531   | 474   | 3.0   | 4 447                    | 4 619  |
| 684 Aluminium                      | 485   | 547   | 398   | 2.5   | 5 128                    | 4 539  |
| 781 Passenger motor vehicles       | 320   | 279   | 267   | 1.7   | 2 202                    | 2 677  |
| 971 Gold, non-monetary             | 1 145 | 967   | 1 252 | 7.8   | 8 422                    | 10 299 |

## SECTION AND DIVISION OF THE SITC

|    |   |              |              |              |             |                      |
|----|---|--------------|--------------|--------------|-------------|----------------------|
| 0  | Food and live animals   |              |              |              |             |                      |
| 00 | Live animals other than fish, crustaceans, molluscs and aquatic invertebrates                                 | 84           | 84           | 92           | 0.6         | 778 797              |
| 01 | Meat and meat preparations  | 466          | 575          | 594          | 3.7         | 5 991 5 349          |
| 02 | Dairy products and birds' eggs  | 210          | 213          | 210          | 1.3         | 1 962 2 212          |
| 03 | Fish (not marine mammals), crustaceans, molluscs and aquatic invertebrates, and preparations thereof          | 82           | 80           | 87           | 0.5         | 983 901              |
| 04 | Cereals and cereal preparations   | 527          | 541          | 597          | 3.7         | 3 667 3 733          |
| 05 | Vegetables and fruit  | 99           | 115          | 145          | 0.9         | 1 160 1 096          |
| 06 | Sugars, sugar preparations and honey  | 18           | 15           | 21           | 0.1         | 227 189              |
| 07 | Coffee, tea, cocoa, spices, and manufactures thereof  | 23           | 18           | 21           | 0.1         | 198 217              |
| 08 | Feeding stuff for animals (excl. unmilled cereals)  | 74           | 66           | 82           | 0.5         | 666 658              |
| 09 | Miscellaneous edible products and preparations  | 42           | 45           | 49           | 0.3         | 367 394              |
|    | <i>Total Food and live animals</i>  | <i>1 625</i> | <i>1 752</i> | <i>1 898</i> | <i>11.8</i> | <i>16 000 15 546</i> |
| 1  | Beverages and tobacco   |              |              |              |             |                      |
| 11 | Beverages   | 185          | 230          | 211          | 1.3         | 2 493 2 399          |
| 12 | Tobacco and tobacco manufactures  | 5            | 11           | 10           | 0.1         | 122 111              |
|    | <i>Total Beverages and tobacco</i>  | <i>190</i>   | <i>241</i>   | <i>221</i>   | <i>1.4</i>  | <i>2 615 2 510</i>   |
| 2  | Crude materials, inedible, except fuels   |              |              |              |             |                      |
| 21 | Hides, skins and furskins, raw  | 51           | 61           | 60           | 0.4         | 599 577              |
| 22 | Oil seeds and oleaginous fruits   | 37           | 83           | 55           | 0.3         | 162 327              |
| 23 | Crude rubber (incl. synthetic and reclaimed)  | 1            | 1            | —            | —           | 3 6                  |
| 24 | Cork and wood   | 107          | 107          | 111          | 0.7         | 996 1 052            |
| 25 | Pulp and waste paper  | 22           | 24           | 24           | 0.1         | 153 217              |
| 26 | Textile fibres and their wastes (not manufactured into yarn or fabric)  | 245          | 288          | 231          | 1.4         | 2 897 2 523          |
| 27 | Crude fertilisers (excl. those of Division 56) and crude minerals (excl. coal, petroleum and precious stones) | 37           | 24           | 26           | 0.2         | 449 401              |
| 28 | Metalliferous ores and metal scrap  | 2 663        | 3 529        | 3 442        | 21.4        | 28 857 31 535        |
| 29 | Crude animal and vegetable materials, n.e.s.  | 14           | 17           | 23           | 0.1         | 173 165              |
|    | <i>Total Crude materials, inedible, except fuels</i>  | <i>3 177</i> | <i>4 132</i> | <i>3 972</i> | <i>24.7</i> | <i>34 288 36 804</i> |
| 3  | Mineral fuels, lubricants and related materials   |              |              |              |             |                      |
| 32 | Coal, coke and briquettes   | 1 405        | 1 868        | 2 213        | 13.8        | 18 491 17 477        |
| 33 | Petroleum, petroleum products and related materials   | 1 070        | 1 118        | 1 112        | 6.9         | 8 989 10 556         |
| 34 | Gas, natural and manufactured   | 679          | 606          | 556          | 3.5         | 5 315 5 624          |
|    | <i>Total Mineral fuels, lubricants and related materials</i>  | <i>3 153</i> | <i>3 592</i> | <i>3 881</i> | <i>24.2</i> | <i>32 796 33 658</i> |

— nil or rounded to zero (including null cells)

(b) Per cent of total merchandise is calculated for the most recent month.

(a) Some SITC sections and divisions exclude commodities subject to a confidentiality restriction. These are included in Division 98. For more information see paragraph 17 of the Explanatory Notes.

|                                  |   |       |       | Per cent<br>of total<br>merchandise<br>exports(b) | 10 MONTHS<br>ENDED APRIL |        |        |
|----------------------------------|---|-------|-------|---|--------------------------|--------|--------|
|                                  | Feb   | Mar   | Apr   |   | .....                    |        |        |
|                                  | 2008  | 2008  | 2008  |   | 2007                     | 2008   |        |
|                                  | \$m   | \$m   | \$m   | %   | \$m                      | \$m    |        |
| SECTION AND DIVISION OF THE SITC |   |       |       |   |                          |        |        |
| 4                                | Animal and vegetable oils, fats and waxes   |       |       |   |                          |        |        |
| 41                               | Animal oils and fats  | 36    | 28    | 43  | 0.3                      | 185    | 299    |
| 42                               | Fixed vegetable fats and oils, crude, refined or fractionated   | 14    | 16    | 12  | 0.1                      | 52     | 83     |
| 43                               | Fats and oils (processed), waxes and inedible mixtures or preparations, of animal or vegetable origin, n.e.s.       | 7     | 8     | 8   | —                        | 54     | 63     |
|                                  | <i>Total Animal and vegetable oils, fats and waxes</i>  | 56    | 52    | 63  | 0.4                      | 291    | 444    |
| 5                                | Chemicals and related products, n.e.s.  |       |       |   |                          |        |        |
| 51                               | Organic chemicals   | 8     | 9     | 6   | —                        | 95     | 94     |
| 52                               | Inorganic chemicals   | 73    | 80    | 85  | 0.5                      | 638    | 715    |
| 53                               | Dyeing, tanning and colouring materials   | 50    | 61    | 59  | 0.4                      | 509    | 514    |
| 54                               | Medicinal and pharmaceutical products   | 250   | 312   | 404   | 2.5                      | 3 084  | 3 298  |
| 55                               | Essential oils and resinoids and perfume materials; toilet, polishing and cleansing preparations                    | 43    | 48    | 48  | 0.3                      | 408    | 466    |
| 56                               | Fertilisers (excl. crude)   | 10    | 6     | 7   | —                        | 132    | 231    |
| 57                               | Plastics in primary forms   | 25    | 25    | 25  | 0.2                      | 279    | 295    |
| 58                               | Plastics in non-primary forms   | 23    | 22    | 31  | 0.2                      | 299    | 271    |
| 59                               | Chemical materials and products, n.e.s.   | 71    | 74    | 73  | 0.5                      | 658    | 731    |
|                                  | <i>Total Chemicals and related products, n.e.s.</i>   | 552   | 637   | 740   | 4.6                      | 6 103  | 6 613  |
| 6                                | Manufactured goods classified chiefly by material   |       |       |   |                          |        |        |
| 61                               | Leather, leather manufactures, and dressed furskins, n.e.s.   | 30    | 34    | 31  | 0.2                      | 338    | 314    |
| 62                               | Rubber manufactures, n.e.s.   | 20    | 23    | 24  | 0.2                      | 171    | 220    |
| 63                               | Cork and wood manufactures (excl. furniture)  | 16    | 13    | 14  | 0.1                      | 149    | 132    |
| 64                               | Paper, paperboard, and articles of paper pulp, of paper or of paperboard  | 52    | 69    | 74  | 0.5                      | 603    | 579    |
| 65                               | Textile yarn, fabrics, made-up articles, n.e.s., and related products   | 28    | 33    | 33  | 0.2                      | 339    | 331    |
| 66                               | Non-metallic mineral manufactures, n.e.s.   | 66    | 69    | 57  | 0.4                      | 727    | 646    |
| 67                               | Iron and steel  | 121   | 113   | 156   | 1.0                      | 883    | 1 141  |
| 68                               | Non-ferrous metals  | 944   | 1 193 | 986   | 6.1                      | 11 423 | 10 328 |
| 69                               | Manufactures of metals, n.e.s.  | 84    | 91    | 104   | 0.6                      | 848    | 886    |
|                                  | <i>Total Manufactured goods classified chiefly by material</i>  | 1 361 | 1 638 | 1 479   | 9.2                      | 15 482 | 14 576 |
| 7                                | Machinery and transport equipment   |       |       |   |                          |        |        |
| 71                               | Power generating machinery and equipment  | 120   | 86    | 97  | 0.6                      | 1 006  | 1 008  |
| 72                               | Machinery specialised for particular industries   | 145   | 140   | 156   | 1.0                      | 1 314  | 1 452  |
| 73                               | Metal working machinery   | 15    | 21    | 15  | 0.1                      | 142    | 176    |
| 74                               | General industrial machinery and equipment, n.e.s. and machine parts, n.e.s.  | 131   | 142   | 158   | 1.0                      | 1 310  | 1 413  |
| 75                               | Office machines and automatic data processing machines  | 102   | 107   | 109   | 0.7                      | 991    | 1 070  |
| 76                               | Telecommunications and sound recording and reproducing apparatus and equipment                                      | 54    | 72    | 64  | 0.4                      | 688    | 641    |
| 77                               | Electrical machinery, apparatus, appliances, parts (incl. non-electrical counterparts of electrical domestic equip) | 149   | 153   | 152   | 0.9                      | 1 455  | 1 562  |
| 78                               | Road vehicles (incl. air-cushion vehicles)  | 411   | 371   | 378   | 2.4                      | 3 037  | 3 700  |
| 79                               | Transport equipment (excl. road vehicles)   | 93    | 79    | 103   | 0.6                      | 737    | 923    |
|                                  | <i>Total Machinery and transport equipment</i>  | 1 220 | 1 170 | 1 232   | 7.7                      | 10 680 | 11 945 |

— nil or rounded to zero (including null cells)

(b) Per cent of total merchandise is calculated for the most recent month.

(a) Some SITC sections and divisions exclude commodities subject to a confidentiality restriction. These are included in Division 98. For more information see paragraph 17 of the Explanatory Notes.

|                                  |  |               |               | Per cent<br>of total<br>merchandise<br>exports(b) | 10 MONTHS<br>ENDED APRIL |                |                |
|----------------------------------|--|---------------|---------------|---|--------------------------|----------------|----------------|
|                                  | Feb  | Mar           | Apr           |   | .....                    |                |                |
|                                  | 2008   | 2008          | 2008          |   | 2007                     | 2008           |                |
|                                  | \$m  | \$m           | \$m           | %   | \$m                      | \$m            |                |
| SECTION AND DIVISION OF THE SITC |  |               |               |   |                          |                |                |
| 8                                | Miscellaneous manufactured articles  |               |               |   |                          |                |                |
| 81                               | Prefabricated buildings; sanitary, plumbing, heating and lighting fixtures and fittings, n.e.s.                |               |               |   |                          |                |                |
|                                  | 8  | 8             | 12            | 0.1   | 95                       | 113            |                |
| 82                               | Furniture, parts thereof; bedding, mattresses, mattress supports, cushions and similar stuffed furnishings     |               |               |   |                          |                |                |
|                                  | 6  | 8             | 9             | 0.1   | 107                      | 90             |                |
| 83                               | Travel goods, handbags and similar containers  |               |               |   |                          |                |                |
|                                  | 2  | 3             | 3             | —   | 25                       | 25             |                |
| 84                               | Articles of apparel and clothing accessories   |               |               |   |                          |                |                |
|                                  | 26   | 24            | 22            | 0.1   | 204                      | 217            |                |
| 85                               | Footwear   |               |               |   |                          |                |                |
|                                  | 4  | 4             | 3             | —   | 34                       | 38             |                |
| 87                               | Professional, scientific and controlling instruments and apparatus, n.e.s.                                     |               |               |   |                          |                |                |
|                                  | 149  | 160           | 161           | 1.0   | 1 413                    | 1 561          |                |
| 88                               | Photographic apparatus, equipment and supplies and optical goods, n.e.s.; watches and clocks                   |               |               |   |                          |                |                |
|                                  | 23   | 29            | 29            | 0.2   | 291                      | 270            |                |
| 89                               | Miscellaneous manufactured articles, n.e.s.  |               |               |   |                          |                |                |
|                                  | 175  | 189           | 202           | 1.3   | 1 893                    | 1 951          |                |
|                                  | <i>Total Miscellaneous manufactured articles</i>   | <i>394</i>    | <i>425</i>    | <i>440</i>  | <i>2.7</i>               | <i>4 061</i>   | <i>4 265</i>   |
| 9                                | Commodities and transactions not classified elsewhere in the SITC  |               |               |   |                          |                |                |
| 93                               | Special transactions and commodities not classified according to kind  |               |               |   |                          |                |                |
|                                  | 101  | 94            | 110           | 0.7   | 1 123                    | 1 015          |                |
| 95                               | Gold coin whether or not legal tender, and other coin being legal tender                                       |               |               |   |                          |                |                |
|                                  | 30   | 19            | 21            | 0.1   | 153                      | 206            |                |
| 96                               | Coin (excl. gold coin), not being legal tender   |               |               |   |                          |                |                |
|                                  | —  | —             | —             | —   | —                        | —              |                |
| 97                               | Gold, non-monetary (excl. gold ores and concentrates)  |               |               |   |                          |                |                |
|                                  | 1 145  | 967           | 1 252         | 7.8   | 8 422                    | 10 299         |                |
| 98                               | Combined confidential items excl. some of SITC 280 (exports only) and some of SITCs 510 and 520 (imports only) |               |               |   |                          |                |                |
|                                  | 536  | 641           | 746           | 4.6   | 7 522                    | 6 488          |                |
|                                  | <i>Total Commodities and transactions not classified elsewhere in the SITC</i>                                 | <i>1 812</i>  | <i>1 721</i>  | <i>2 129</i>                                      | <i>13.3</i>              | <i>17 221</i>  | <i>18 009</i>  |
|                                  | <b>Total merchandise exports</b>   | <b>13 539</b> | <b>15 359</b> | <b>16 055</b>                                     | <b>100.0</b>             | <b>139 538</b> | <b>144 370</b> |
|                                  | Balance of Payments Adjustments  | 115           | 116           | 147   | . .                      | 1 179          | 1 075          |
|                                  | Goods credits (exports) on a Balance of Payments Basis   | 13 654        | 15 475        | 16 202  | . .                      | 140 717        | 145 445        |

. . not applicable  
 — nil or rounded to zero (including null cells)

(a) Some SITC sections and divisions exclude commodities subject to a confidentiality restriction. These are included in Division 98. For more information see paragraph 17 of the Explanatory Notes.  
 (b) Per cent of total merchandise is calculated for the most recent month.

|   |       |       |       | Per cent<br>of total<br>merchandise<br>imports(b) | 10 MONTHS<br>ENDED APRIL |        |
|---|-------|-------|-------|---|--------------------------|--------|
|   | Feb   | Mar   | Apr   |   | 2007                     | 2008   |
|   | 2008  | 2008  | 2008  |   |                          |        |
|   | \$m   | \$m   | \$m   | %   | \$m                      | \$m    |
| MAJOR COMMODITIES                             |       |       |       |   |                          |        |
| 333 Crude petroleum oils                      | 1 285 | 1 411 | 1 471 | 8.4   | 10 618                   | 13 792 |
| 334 Refined petroleum oils                    | 1 196 | 1 293 | 1 169 | 6.7   | 6 093                    | 9 120  |
| 542 Medicaments                               | 520   | 562   | 602   | 3.4   | 5 272                    | 5 387  |
| 641 Paper and paperboard                      | 168   | 163   | 167   | 1.0   | 1 747                    | 1 721  |
| 752 Automatic data processing machines        | 463   | 549   | 586   | 3.4   | 5 505                    | 5 529  |
| 759 Parts and accessories of office machines  | 141   | 159   | 162   | 0.9   | 1 818                    | 1 681  |
| 764 Telecommunications equipment              | 419   | 487   | 459   | 2.6   | 4 852                    | 5 041  |
| 781 Passenger motor vehicles                  | 1 202 | 1 359 | 1 341 | 7.7   | 11 014                   | 12 356 |
| 782 Motor vehicles for the transport of goods | 514   | 560   | 569   | 3.3   | 4 268                    | 4 954  |
| 784 Parts and accessories of motor vehicles   | 213   | 199   | 237   | 1.4   | 2 121                    | 2 189  |
| 792 Aircraft and associated equipment         | 582   | 593   | 205   | 1.2   | 2 095                    | 3 123  |
| 971 Gold, non-monetary                        | 614   | 539   | 729   | 4.2   | 4 242                    | 5 935  |

## SECTION AND DIVISION OF THE SITC

|    |   |       |       |       |      |               |
|----|---|-------|-------|-------|------|---------------|
| 0  | Food and live animals   |       |       |       |      |               |
| 00 | Live animals other than fish, crustaceans, molluscs and aquatic invertebrates                                 | 27    | 10    | 15    | 0.1  | 115 99        |
| 01 | Meat and meat preparations  | 33    | 28    | 45    | 0.3  | 389 339       |
| 02 | Dairy products and birds' eggs  | 64    | 57    | 57    | 0.3  | 376 508       |
| 03 | Fish (not marine mammals), crustaceans, molluscs and aquatic invertebrates, and preparations thereof          | 87    | 84    | 88    | 0.5  | 1 027 958     |
| 04 | Cereals and cereal preparations   | 48    | 52    | 54    | 0.3  | 449 533       |
| 05 | Vegetables and fruit  | 131   | 121   | 126   | 0.7  | 1 135 1 283   |
| 06 | Sugars, sugar preparations and honey  | 18    | 14    | 17    | 0.1  | 168 194       |
| 07 | Coffee, tea, cocoa, spices, and manufactures thereof  | 68    | 76    | 81    | 0.5  | 725 807       |
| 08 | Feeding stuff for animals (excl. unmilled cereals)  | 46    | 21    | 35    | 0.2  | 391 399       |
| 09 | Miscellaneous edible products and preparations  | 118   | 116   | 116   | 0.7  | 1 094 1 175   |
|    | <i>Total food and live animals</i>  | 641   | 579   | 634   | 3.6  | 5 870 6 295   |
| 1  | Beverages and tobacco   |       |       |       |      |               |
| 11 | Beverages   | 105   | 102   | 99    | 0.6  | 985 1 124     |
| 12 | Tobacco and tobacco manufactures  | 10    | 10    | 17    | 0.1  | 195 152       |
|    | <i>Total beverages and tobacco</i>  | 115   | 111   | 116   | 0.7  | 1 181 1 276   |
| 2  | Crude materials, inedible, except fuels   |       |       |       |      |               |
| 21 | Hides, skins and furskins, raw  | —     | —     | —     | —    | 3 2           |
| 22 | Oil seeds and oleaginous fruits   | 3     | 4     | 5     | —    | 63 47         |
| 23 | Crude rubber (incl. synthetic and reclaimed)  | 15    | 18    | 20    | 0.1  | 154 151       |
| 24 | Cork and wood   | 57    | 56    | 57    | 0.3  | 496 551       |
| 25 | Pulp and waste paper  | 30    | 19    | 29    | 0.2  | 231 251       |
| 26 | Textile fibres and their wastes (not manufactured into yarn or fabric)  | 12    | 10    | 12    | 0.1  | 124 116       |
| 27 | Crude fertilisers (excl. those of Division 56) and crude minerals (excl. coal, petroleum and precious stones) | 13    | 30    | 28    | 0.2  | 131 202       |
| 28 | Metalliferous ores and metal scrap  | 26    | 26    | 20    | 0.1  | 617 472       |
| 29 | Crude animal and vegetable materials, n.e.s.  | 27    | 27    | 25    | 0.1  | 260 254       |
|    | <i>Total crude materials, inedible, except fuels</i>  | 182   | 190   | 196   | 1.1  | 2 080 2 047   |
| 3  | Mineral fuels, lubricants and related materials   |       |       |       |      |               |
| 32 | Coal, coke and briquettes   | 1     | 1     | 1     | —    | 18 12         |
| 33 | Petroleum, petroleum products and related materials   | 2 526 | 2 757 | 2 698 | 15.5 | 17 055 23 370 |
| 34 | Gas, natural and manufactured   | 118   | 75    | 144   | 0.8  | 895 969       |
|    | <i>Total mineral fuels, lubricants and related materials</i>  | 2 645 | 2 834 | 2 843 | 16.3 | 17 968 24 351 |

— nil or rounded to zero (including null cells)

(b) Per cent of total merchandise imports is calculated for the most recent month.

(a) Some SITC sections and divisions exclude commodities subject to a confidentiality restriction. These are included in Division 98. For more information see paragraph 17 of the Explanatory Notes.

|                                  |   |       |       | Per cent<br>of total<br>merchandise<br>imports(b) | 10 MONTHS<br>ENDED APRIL |        |        |
|----------------------------------|---|-------|-------|---|--------------------------|--------|--------|
|                                  | Feb   | Mar   | Apr   |   | 2007                     | 2008   |        |
|                                  | 2008  | 2008  | 2008  |   |                          |        |        |
|                                  | \$m   | \$m   | \$m   | %   | \$m                      | \$m    |        |
| SECTION AND DIVISION OF THE SITC |   |       |       |   |                          |        |        |
| 4                                | Animal and vegetable oils, fats and waxes   |       |       |   |                          |        |        |
| 41                               | Animal oils and fats  | 8     | 1     | 2   | —                        | 23     | 28     |
| 42                               | Fixed vegetable fats and oils, crude, refined or fractionated   | 46    | 19    | 31  | 0.2                      | 369    | 370    |
| 43                               | Fats and oils (processed), waxes and inedible mixtures or preparations, of animal or vegetable origin, n.e.s.           | 5     | 7     | 5   | —                        | 47     | 55     |
|                                  | <i>Total animal and vegetable oils, fats and waxes</i>  | 59    | 28    | 38  | 0.2                      | 439    | 452    |
| 5                                | Chemicals and related products, n.e.s.  |       |       |   |                          |        |        |
| 51                               | Organic chemicals   | 325   | 242   | 310   | 1.8                      | 2 843  | 2 865  |
| 52                               | Inorganic chemicals   | 108   | 108   | 99  | 0.6                      | 897    | 978    |
| 53                               | Dyeing, tanning and colouring materials   | 49    | 52    | 54  | 0.3                      | 500    | 529    |
| 54                               | Medicinal and pharmaceutical products   | 653   | 667   | 719   | 4.1                      | 6 391  | 6 611  |
| 55                               | Essential oils and resinoids and perfume materials; toilet, polishing and cleansing preparations                        | 129   | 126   | 142   | 0.8                      | 1 341  | 1 381  |
| 56                               | Fertilisers (excl. crude)   | 80    | 260   | 315   | 1.8                      | 574    | 1 149  |
| 57                               | Plastics in primary forms   | 132   | 138   | 146   | 0.8                      | 1 374  | 1 457  |
| 58                               | Plastics in non-primary forms   | 102   | 99    | 112   | 0.6                      | 1 087  | 1 093  |
| 59                               | Chemical materials and products, n.e.s.   | 155   | 164   | 183   | 1.0                      | 1 473  | 1 566  |
|                                  | <i>Total chemicals and related products, n.e.s.</i>   | 1 733 | 1 857 | 2 080   | 11.9                     | 16 480 | 17 628 |
| 6                                | Manufactured goods classified chiefly by material   |       |       |   |                          |        |        |
| 61                               | Leather, leather manufactures, and dressed furskins, n.e.s.   | 14    | 15    | 16  | 0.1                      | 125    | 151    |
| 62                               | Rubber manufactures, n.e.s.   | 199   | 203   | 221   | 1.3                      | 2 052  | 2 064  |
| 63                               | Cork and wood manufactures (excl. furniture)  | 67    | 62    | 53  | 0.3                      | 549    | 558    |
| 64                               | Paper, paperboard, and articles of paper pulp, of paper or of paperboard  | 216   | 212   | 220   | 1.3                      | 2 270  | 2 288  |
| 65                               | Textile yarn, fabrics, made-up articles n.e.s. and related products   | 210   | 182   | 208   | 1.2                      | 2 058  | 2 112  |
| 66                               | Non-metallic mineral manufactures, n.e.s.   | 212   | 194   | 221   | 1.3                      | 1 957  | 2 060  |
| 67                               | Iron and steel  | 279   | 313   | 328   | 1.9                      | 3 185  | 3 001  |
| 68                               | Non-ferrous metals  | 168   | 130   | 173   | 1.0                      | 1 540  | 1 704  |
| 69                               | Manufactures of metals, n.e.s.  | 410   | 332   | 391   | 2.2                      | 3 814  | 4 005  |
|                                  | <i>Total manufactured goods classified chiefly by material</i>  | 1 775 | 1 643 | 1 831   | 10.5                     | 17 550 | 17 944 |
| 7                                | Machinery and transport equipment   |       |       |   |                          |        |        |
| 71                               | Power generating machinery and equipment  | 370   | 366   | 409   | 2.3                      | 3 127  | 3 681  |
| 72                               | Machinery specialised for particular industries   | 592   | 760   | 668   | 3.8                      | 5 643  | 6 506  |
| 73                               | Metal working machinery   | 60    | 58    | 64  | 0.4                      | 621    | 646    |
| 74                               | General industrial machinery and equipment, n.e.s. and machine parts, n.e.s.  | 826   | 748   | 820   | 4.7                      | 8 642  | 8 176  |
| 75                               | Office machines and automatic data processing machines  | 654   | 758   | 797   | 4.6                      | 7 815  | 7 740  |
| 76                               | Telecommunications and sound recording and reproducing apparatus and equipment  | 710   | 753   | 762   | 4.4                      | 8 138  | 8 721  |
| 77                               | Electrical machinery, apparatus, appliances, parts (incl. non-electrical counterparts of electrical domestic equipment) | 696   | 737   | 784   | 4.5                      | 7 311  | 7 566  |
| 78                               | Road vehicles (incl. air-cushion vehicles)  | 2 093 | 2 281 | 2 322   | 13.3                     | 19 092 | 21 382 |
| 79                               | Transport equipment (excl. road vehicles)   | 627   | 682   | 294   | 1.7                      | 2 985  | 4 083  |
|                                  | <i>Total machinery and transport equipment</i>  | 6 626 | 7 143 | 6 922   | 39.6                     | 63 375 | 68 500 |

— nil or rounded to zero (including null cells)

(b) Per cent of total merchandise imports is calculated for the most recent month.

(a) Some SITC sections and divisions exclude commodities subject to a confidentiality restriction. These are included in Division 98. For more information see paragraph 17 of the Explanatory Notes.



|                                  |  |               |               | Per cent<br>of total<br>merchandise<br>imports(b) | 10 MONTHS<br>ENDED APRIL |                        |
|----------------------------------|--|---------------|---------------|---|--------------------------|------------------------|
|                                  | Feb<br>2008  | Mar<br>2008   | Apr<br>2008   |   | 2007                     | 2008                   |
|                                  | \$m  | \$m           | \$m           |   | \$m                      | \$m                    |
| SECTION AND DIVISION OF THE SITC |  |               |               |   |                          |                        |
| 8                                | Miscellaneous manufactured articles  |               |               |   |                          |                        |
| 81                               | Prefabricated buildings; sanitary, plumbing, heating and lighting fixtures and fittings, n.e.s.                | 57            | 47            | 59  | 0.3                      | 540 590                |
| 82                               | Furniture, parts thereof; bedding, mattresses, mattress supports, cushions and similar stuffed furnishings     | 206           | 160           | 205   | 1.2                      | 1 985 2 174            |
| 83                               | Travel goods, handbags and similar containers  | 58            | 37            | 47  | 0.3                      | 527 579                |
| 84                               | Articles of apparel and clothing accessories   | 488           | 308           | 392   | 2.2                      | 3 804 3 914            |
| 85                               | Footwear   | 125           | 81            | 89  | 0.5                      | 1 036 1 035            |
| 87                               | Professional, scientific and controlling instruments and apparatus, n.e.s.                                     | 359           | 376           | 389   | 2.2                      | 3 420 3 621            |
| 88                               | Photographic apparatus, equipment and supplies and optical goods, n.e.s.; watches and clocks                   | 100           | 107           | 104   | 0.6                      | 1 132 1 133            |
| 89                               | Miscellaneous manufactured articles, n.e.s.  | 815           | 675           | 742   | 4.2                      | 7 897 7 976            |
|                                  | <i>Total miscellaneous manufactured articles</i>   | 2 208         | 1 792         | 2 027   | 11.6                     | 20 340 21 024          |
| 9                                | Commodities and transactions not classified elsewhere in the SITC  |               |               |   |                          |                        |
| 93                               | Special transactions and commodities not classified according to kind  | 3             | 4             | 3   | —                        | 35 35                  |
| 95                               | Gold coin whether or not legal tender, and other coin being legal tender                                       | 1             | —             | —   | —                        | 4 4                    |
| 96                               | Coin (excl. gold coin), not being legal tender   | —             | —             | —   | —                        | 1 —                    |
| 97                               | Gold, non-monetary (excl. gold ores and concentrates)  | 614           | 539           | 729   | 4.2                      | 4 242 5 935            |
| 98                               | Combined confidential items excl. some of SITC 280 (exports only) and some of SITCs 510 and 520 (imports only) | 47            | 47            | 39  | 0.2                      | 189 445                |
|                                  | <i>Total commodities and transactions not classified elsewhere in the SITC</i>                                 | 665           | 590           | 772   | 4.4                      | 4 470 6 419            |
|                                  | <b>Total merchandise imports</b>   | <b>16 649</b> | <b>16 767</b> | <b>17 458</b>                                     | <b>100.0</b>             | <b>149 753 165 937</b> |
|                                  | Balance of Payments Adjustment   | 261           | 221           | 220   | . .                      | 2 202 2 330            |
|                                  | Goods Debits (imports) on a Balance of Payments Basis  | 16 910        | 16 988        | 17 678  | . .                      | 151 955 168 267        |

. . not applicable

— nil or rounded to zero (including null cells)

(a) Some SITC sections and divisions exclude commodities subject to a confidentiality restriction. These are included in Division 98. For more information see paragraph 17 of the Explanatory Notes.

(b) Per cent of total merchandise imports is calculated for the most recent month.

|                           | EXPORTS        |               |                 |                 | IMPORTS        |               |                 |                 | BALANCE OF MERCHANDISE TRADE |                 |
|---------------------------|----------------|---------------|-----------------|-----------------|----------------|---------------|-----------------|-----------------|------------------------------|-----------------|
|                           | 2006-07        | April         | 10 months ended | 10 months ended | 2006-07        | April         | 10 months ended | 10 months ended | 2006-07                      | 10 months ended |
|                           |                | 2008          | April 2007      | April 2008      |                | April 2008    | April 2007      | April 2008      |                              | April 2008      |
|                           | \$m            | \$m           | \$m             | \$m             | \$m            | \$m           | \$m             | \$m             |                              |                 |
| Belgium                   | 1 318          | 120           | 1 065           | 1 104           | 1 607          | 150           | 1 364           | 1 410           | -288                         | -306            |
| Brazil                    | 853            | 55            | 719             | 716             | 859            | 111           | 727             | 839             | -6                           | -123            |
| Canada                    | 1 768          | 139           | 1 418           | 1 350           | 2 077          | 167           | 1 738           | 1 814           | -309                         | -465            |
| China                     | 22 805         | 2 428         | 18 760          | 21 089          | 27 140         | 2 514         | 22 654          | 25 813          | -4 335                       | -4 724          |
| Denmark                   | 189            | 19            | 164             | 145             | 1 138          | 82            | 945             | 724             | -949                         | -579            |
| Egypt(b)                  | 337            | 16            | 273             | 248             | 17             | 1             | 14              | 15              | 320                          | 232             |
| Fiji                      | 383            | 30            | 325             | 311             | 148            | 10            | 129             | 100             | 235                          | 211             |
| Finland                   | 1 593          | 117           | 1 346           | 900             | 848            | 78            | 676             | 759             | 745                          | 141             |
| France                    | 1 364          | 76            | 1 099           | 1 090           | 3 910          | 375           | 3 110           | 4 006           | -2 546                       | -2 916          |
| Germany                   | 1 444          | 145           | 1 195           | 1 151           | 9 274          | 888           | 7 739           | 8 617           | -7 830                       | -7 466          |
| Hong Kong (Sar of China)  | 3 038          | 214           | 2 580           | 2 335           | 1 419          | 93            | 1 208           | 1 170           | 1 619                        | 1 166           |
| India                     | 10 103         | 954           | 8 049           | 7 549           | 1 314          | 150           | 1 113           | 1 336           | 8 789                        | 6 213           |
| Indonesia                 | 4 241          | 371           | 3 567           | 3 258           | 4 647          | 382           | 3 887           | 3 738           | -405                         | -481            |
| Iran                      | 208            | 6             | 155             | 141             | 41             | 5             | 36              | 35              | 167                          | 106             |
| Iraq                      | 96             | —             | 96              | 9               | 36             | —             | 36              | 23              | 61                           | -15             |
| Ireland                   | 209            | 14            | 176             | 194             | 2 120          | 153           | 1 713           | 1 643           | -1 911                       | -1 449          |
| Israel                    | 188            | 13            | 157             | 173             | 640            | 90            | 543             | 531             | -451                         | -358            |
| Italy                     | 1 742          | 150           | 1 488           | 1 229           | 4 869          | 416           | 4 126           | 4 082           | -3 127                       | -2 853          |
| Japan                     | 32 623         | 3 006         | 27 341          | 27 079          | 17 400         | 1 893         | 14 593          | 16 407          | 15 224                       | 10 671          |
| Korea, Republic of        | 13 086         | 1 206         | 11 008          | 11 350          | 6 014          | 522           | 5 061           | 5 149           | 7 071                        | 6 201           |
| Kuwait                    | 493            | 44            | 409             | 469             | 231            | 44            | 197             | 257             | 262                          | 212             |
| Malaysia                  | 3 103          | 271           | 2 520           | 2 739           | 6 603          | 677           | 5 257           | 6 809           | -3 501                       | -4 070          |
| Mexico                    | 837            | 44            | 732             | 454             | 1 102          | 108           | 915             | 985             | -266                         | -532            |
| Netherlands               | 2 976          | 230           | 2 486           | 2 207           | 1 494          | 172           | 1 241           | 1 287           | 1 482                        | 920             |
| New Zealand               | 9 435          | 748           | 7 821           | 7 819           | 5 615          | 592           | 4 593           | 5 773           | 3 821                        | 2 047           |
| Pakistan                  | 321            | 29            | 280             | 434             | 151            | 15            | 129             | 131             | 170                          | 302             |
| Papua New Guinea          | 1 524          | 100           | 1 269           | 1 268           | 2 215          | 233           | 1 885           | 2 289           | -692                         | -1 021          |
| Philippines               | 1 056          | 177           | 863             | 1 134           | 753            | 56            | 613             | 631             | 303                          | 503             |
| Saudi Arabia              | 2 025          | 211           | 1 710           | 1 862           | 946            | 136           | 806             | 816             | 1 079                        | 1 046           |
| Singapore                 | 4 637          | 701           | 3 927           | 4 259           | 10 126         | 1 240         | 8 437           | 10 307          | -5 489                       | -6 048          |
| South Africa              | 2 320          | 196           | 1 934           | 2 090           | 1 402          | 141           | 1 186           | 1 221           | 918                          | 869             |
| Spain                     | 1 254          | 109           | 1 062           | 717             | 1 625          | 199           | 1 296           | 1 636           | -371                         | -919            |
| Sweden                    | 351            | 30            | 292             | 306             | 2 287          | 226           | 1 881           | 2 037           | -1 936                       | -1 731          |
| Switzerland               | 1 130          | 31            | 844             | 840             | 1 916          | 216           | 1 603           | 1 760           | -786                         | -921            |
| Taiwan                    | 6 191          | 667           | 5 172           | 5 111           | 4 409          | 300           | 3 544           | 3 447           | 1 782                        | 1 665           |
| Thailand                  | 4 256          | 509           | 3 345           | 3 644           | 7 222          | 648           | 6 028           | 7 139           | -2 966                       | -3 495          |
| Turkey                    | 527            | 38            | 452             | 510             | 437            | 33            | 375             | 325             | 90                           | 185             |
| United Arab Emirates      | 2 393          | 338           | 1 858           | 2 534           | 1 747          | 247           | 1 348           | 2 047           | 647                          | 486             |
| United Kingdom            | 6 146          | 550           | 5 474           | 7 113           | 7 407          | 927           | 5 788           | 7 019           | -1 261                       | 94              |
| United States of America  | 9 803          | 852           | 7 990           | 8 527           | 24 908         | 1 987         | 20 547          | 20 079          | -15 105                      | -11 552         |
| Viet Nam                  | 1 629          | 207           | 1 370           | 1 598           | 4 504          | 286           | 3 964           | 4 148           | -2 875                       | -2 550          |
| Other Countries           | 8 105          | 894           | 6 745           | 7 317           | 8 186          | 897           | 6 706           | 7 581           | -81                          | -264            |
| <b>Total</b>              | <b>168 099</b> | <b>16 055</b> | <b>139 538</b>  | <b>144 370</b>  | <b>180 801</b> | <b>17 458</b> | <b>149 753</b>  | <b>165 937</b>  | <b>-12 703</b>               | <b>-21 567</b>  |
| APEC                      | 121 024        | 11 773        | 100 506         | 103 917         | 128 462        | 11 985        | 106 920         | 118 061         | -7 438                       | -14 145         |
| ASEAN                     | 19 051         | 2 247         | 15 694          | 16 740          | 34 969         | 3 375         | 29 155          | 33 775          | -15 918                      | -17 035         |
| Developing Countries      | 87 416         | 9 014         | 72 160          | 75 955          | 84 720         | 8 118         | 70 400          | 79 859          | 2 695                        | -3 905          |
| Least Developed Countries | 1 567          | 195           | 1 301           | 1 327           | 246            | 17            | 214             | 206             | 1 320                        | 1 121           |
| European Union(c)         | 19 144         | 1 602         | 16 295          | 16 674          | 39 018         | 3 887         | 31 909          | 35 410          | -19 874                      | -18 736         |
| OECD                      | 88 259         | 7 683         | 73 845          | 74 529          | 99 398         | 9 487         | 82 092          | 88 547          | -11 139                      | -14 018         |

— nil or rounded to zero (including null cells)

(a) See Time series spreadsheets for details of all countries.

(b) Exports of Alumina to Egypt are excluded from country total and included in the 'Other Countries' category.

(c) The European Union includes 27 member countries.

|  | 10 MONTHS<br>ENDED APRIL |               |                |                |
|--|--------------------------|---------------|----------------|----------------|
|  | 2006-07                  | April<br>2008 | 2007           | 2008           |
|  | \$m                      | \$m           | \$m            | \$m            |
| EXPORTS (a)                            |                          |               |                |                |
| New South Wales                        | 28 062                   | 2 711         | 23 436         | 24 409         |
| Victoria                               | 20 049                   | 1 765         | 16 679         | 16 939         |
| Queensland                             | 35 439                   | 3 073         | 29 636         | 27 066         |
| South Australia                        | 9 016                    | 793           | 7 376          | 8 242          |
| Western Australia                      | 60 509                   | 6 394         | 49 960         | 55 051         |
| Tasmania                               | 3 713                    | 321           | 3 127          | 2 926          |
| Northern Territory                     | 4 013                    | 325           | 3 335          | 3 458          |
| Australian Capital Territory           | 8                        | —             | 7              | 4              |
| State not available for publication(b) | 809                      | 70            | 677            | 712            |
| Re-exports                             | 6 479                    | 603           | 5 304          | 5 564          |
| <b>Total exports</b>                   | <b>168 099</b>           | <b>16 055</b> | <b>139 538</b> | <b>144 370</b> |
| IMPORTS                                |                          |               |                |                |
| New South Wales                        | 69 791                   | 6 511         | 58 130         | 63 001         |
| Victoria                               | 51 326                   | 4 616         | 42 395         | 45 994         |
| Queensland                             | 27 198                   | 2 875         | 22 392         | 26 327         |
| South Australia                        | 6 584                    | 715           | 5 462          | 6 053          |
| Western Australia                      | 22 125                   | 2 465         | 18 148         | 21 983         |
| Tasmania                               | 614                      | 57            | 525            | 549            |
| Northern Territory                     | 2 846                    | 219           | 2 385          | 2 021          |
| Australian Capital Territory           | 317                      | —             | 316            | 9              |
| <b>Total imports</b>                   | <b>180 801</b>           | <b>17 458</b> | <b>149 753</b> | <b>165 937</b> |

— nil or rounded to zero (including null cells)

(a) State in which the final stage of production or manufacture occurs.

(b) Exports of Alumina to Bahrain, Egypt and Iceland are excluded from the state totals and included in 'State not available for publication category'.

## PERIOD AVERAGE EXCHANGE RATES (a): Per Australian dollar

| <i>Period</i>  | <i>United States dollar</i> | <i>UK pound sterling</i> | <i>Euro</i> | <i>Japanese yen</i> | <i>Trade-weighted index of value of the A\$(b)</i> |
|----------------|-----------------------------|--------------------------|-------------|---------------------|--|
| FINANCIAL YEAR |                             |                          |             |                     |  |
| <b>2004-05</b> | 0.7529                      | 0.4052                   | 0.5918      | 80.45               | 62.7   |
| <b>2005-06</b> | 0.7474                      | 0.4205                   | 0.6143      | 85.90               | 63.3   |
| <b>2006-07</b> | 0.7863                      | 0.4066                   | 0.6018      | 93.21               | 64.8   |
| MONTHS         |                             |                          |             |                     |  |
| <b>2007</b>    |                             |                          |             |                     |  |
| February       | 0.7823                      | 0.3993                   | 0.5981      | 94.29               | 64.4   |
| March          | 0.7919                      | 0.4067                   | 0.5980      | 92.90               | 64.8   |
| April          | 0.8263                      | 0.4156                   | 0.6117      | 98.17               | 67.1   |
| May            | 0.8252                      | 0.4157                   | 0.6103      | 99.58               | 67.0   |
| June           | 0.8423                      | 0.4238                   | 0.6274      | 103.34              | 68.5   |
| July           | 0.8675                      | 0.4266                   | 0.6325      | 105.47              | 69.7   |
| August         | 0.8282                      | 0.4123                   | 0.6083      | 96.63               | 66.8   |
| September      | 0.8464                      | 0.4196                   | 0.6088      | 97.34               | 67.7   |
| October        | 0.8984                      | 0.4397                   | 0.6316      | 104.04              | 71.0   |
| November       | 0.8987                      | 0.4335                   | 0.6121      | 99.88               | 70.0   |
| December       | 0.8726                      | 0.4314                   | 0.5987      | 97.88               | 68.2   |
| <b>2008</b>    |                             |                          |             |                     |  |
| January        | 0.8815                      | 0.4479                   | 0.5993      | 95.16               | 68.2   |
| February       | 0.9128                      | 0.4647                   | 0.6192      | 97.84               | 70.2   |
| March          | 0.9260                      | 0.4622                   | 0.5964      | 93.36               | 69.8   |
| April          | 0.9298                      | 0.4695                   | 0.5899      | 95.30               | 70.0   |

- (a) These exchange rates and the trade-weighted index are derived using rates provided by the Reserve Bank of Australia in respect of each trading day.
- (b) May 1970 = 100. The Trade-weighted index is reweighted annually on 1 October and on special occasions as required.

## EXPLANATORY NOTES

### INTRODUCTION

**1** This publication presents preliminary estimates of Australia's international trade in goods and services on a balance of payments basis and merchandise import and export statistics on a recorded trade basis.

**2** Merchandise trade statistics on a recorded trade basis are compiled from information submitted by exporters and importers or their agents to the Australian Customs Service (ACS). Adjustments for coverage, timing and valuation are made to recorded trade data to convert them to a balance of payments basis. The main source for services data is the quarterly Survey of International Trade in Services.

**3** More comprehensive quarterly estimates of Australia's trade in goods and services, together with comprehensive details of Australia's balance of payments are included in the quarterly publication, *Balance of Payments and International Investment Position, Australia* (cat. no. 5302.0). Detailed monthly statistics on merchandise trade are available on Time Series Spreadsheets or by subscription to tailored services.

### CONCEPTS, SOURCES AND METHODS

**4** The conceptual framework used in compiling Australia's merchandise trade statistics can be found in *International Merchandise Trade, Australia: Concepts, Sources and Methods, 2001* (cat. no. 5489.0).

**5** The conceptual framework used in compiling Australia's balance of payments statistics is based on the Fifth Edition of the International Monetary Fund's *Balance of Payments Manual* (BPM5,1993). Descriptions of the underlying concepts and structure of the balance of payments and the sources, methods and terms used in compiling the estimates are presented in *Balance of Payments and International Investment Position, Australia: Concepts, Sources and Methods, 1998* (cat. no. 5331.0). To bring merchandise trade statistics on a recorded trade basis to a balance of payments basis, timing adjustments are made to ensure that the transaction is recorded in the period in which ownership changed, rather than in the period in which the transaction was recorded by ACS. Adjustments are also made to account for the change of ownership of goods not included in merchandise trade statistics. Chapter 6 of cat. no. 5331.0 provides more detail on the relationship between statistics on international merchandise trade on a recorded trade basis and on a balance of payments basis.

**6** Both of the Concepts, Sources and Methods publications are available to download for free from the ABS website. Select *Methods, Classifications, Concepts & Standards*, then choose *ABS concepts, classifications and statistical standards* and then the catalogue numbers as above.

### SEASONAL ADJUSTMENT

**7** The estimates of international trade in goods and services on a balance of payments basis are seasonally adjusted, however the merchandise exports and imports statistics on a recorded trade basis are not. Monthly original estimates are volatile, being subject to calendar-related and large irregular influences. Seasonally adjusted estimates are derived by estimating and removing from the original series systematic calendar related effects, such as seasonal, trading day, length of month and moving holiday influences. Seasonal adjustment does not aim to remove the irregular or non-seasonal influences which may be present in any particular month. These irregular influences may reflect both random economic events and difficulties of statistical recording.

**8** The seasonally adjusted statistics in this publication use the concurrent seasonal adjustment technique and Autoregressive Integrated Moving Average (ARIMA) Modelling to estimate factors for the current and previous months. Under concurrent seasonal adjustment, the estimates of seasonal factors are fine tuned as new original estimates become available each period. The seasonally adjusted estimates are subject to revisions at each reference month as the estimates of seasonal factors are improved. For more information on seasonal adjustment methods, see *Information Paper: An Introductory Course on Time Series Analysis, Jan 2005* (cat. no. 1346.0.55.001), *Time Series Analysis*

## EXPLANATORY NOTES *continued*

### SEASONAL ADJUSTMENT

*continued*

*Frequently Asked Questions, 2003* (cat. no. 1346.0.55.002), alternatively contact the Assistant Director, Time Series Analysis on (02) 6252 6345 or e-mail <time.series.analysis@abs.gov.au>.

### ARIMA MODELLING

**9** ARIMA modelling relies on the characteristics of the series being analysed to project future period data. ARIMA modelling is used on a case-by-case basis where it results in reduced revisions to seasonally adjusted series when subsequent data become available. The projected values are temporary, intermediate values, that are only used internally to improve the estimation of the seasonal factors. The projected data do not affect the original estimates and are discarded at the end of the seasonal adjustment process. The ARIMA model is assessed as part of the annual reanalysis and, following the 2007 annual re-analysis, 89% of trade in goods and services time series use an ARIMA model. For more information on the details of ARIMA modelling see *Feature article: Use of ARIMA modelling to reduce revisions* in the October 2004 issue of *Australian Economic Indicators* (cat. no. 1350.0).

### TREND ESTIMATES

**10** The month-to-month movements of the seasonally adjusted estimates may not be reliable indicators of trend behaviour because they include irregular or non-seasonal movements. Trend estimates are derived by applying a 13-term Henderson moving average to the seasonally adjusted series. The use of a 13-term Henderson average can result in revisions to the estimates for the most recent six months as additional observations become available. Revisions can also occur because of changes in the original data and as a result of the re-estimation of the seasonal factors. For more information on trend estimates methods, see *Information Paper: A Guide to Interpreting Time Series - Monitoring Trends* (cat. no. 1349.0), alternatively contact the Assistant Director, Time Series Analysis on (02) 6252 6345 or e-mail <time.series.analysis@abs.gov.au>.

### SIGN CONVENTION

**11** In keeping with balance of payments conventions, where statistics are on a balance of payments basis, credit entries (exports) are shown without sign and debit items (imports) are shown as negative entries. For statistics on a recorded trade basis, both imports and exports are shown without sign. The calculation of percentage changes on balance of payments debit items are made without regard to sign. References to balance of payments debit items in Key Figures, Key Points, and Analysis and Comments are also made without regard to sign.

### COMMODITY BREAKDOWNS OF GOODS

**12** For details of the classification used for goods exports on a balance of payments basis (credits), see table 6.6 in *Balance of Payments and International Investment Position, Australia: Concepts, Sources and Methods, 1998* (cat. no. 5331.0).

**13** Details of the classification of goods imports on a balance of payments basis (debits) are provided in table 6.7 in cat. no. 5331.0.

**14** The recorded trade statistics shown in tables 12 and 13 are classified by the Standard International Trade Classification (SITC). The first section of tables 12 and 13 show the most significant commodities (by value) at the SITC 3 digit level. Imports and exports of goods at a more detailed level are available from the Time Series spreadsheets.

### COMMODITY BREAKDOWNS OF SERVICES

**15** The quarterly detailed services data published in table 11 are consistent with the monthly aggregates shown in table 9.

**16** Monthly indicators for many of the services components that are only surveyed quarterly are not available. In particular, the Freight and Other transportation components of Total services credits are not available for publication on a monthly basis. The estimates for these items shown in table 9 are therefore derived by dividing the quarterly estimate by three. Where quarterly survey data are not available, freight debits

## EXPLANATORY NOTES *continued*

### COMMODITY BREAKDOWNS OF SERVICES *continued*

are derived directly from imports data for the reference month as a difference between total merchandise cost, insurance and freight (CIF) and free on board (FOB), adjusted to reflect timing and processing adjustments. For freight credits and other transportation credits and debits, estimates are derived by extrapolating the last month's data by an average of movements for the same month over the three previous years.

### CONFIDENTIALITY OF MERCHANDISE TRADE STATISTICS

**17** The release of statistics for certain merchandise trade commodities is restricted in order to prevent the identification of the activities of an individual business, where this is requested by the business concerned. These restrictions do not affect the total value of exports and imports, but they can affect statistics at the country, state and commodity levels. For information on the confidentiality restrictions applied to the merchandise trade statistics in this publication, refer to the current *International merchandise trade: Confidential Commodities List (CCL)* (cat. no. 5372.0.55.001) which can be accessed from ABS web site.

### TOURISM RELATED SERVICES

**18** The tourism related services memorandum items provide timely indicators of the movements in tourism related activities, not an absolute measure of the level of these activities. These series are not compiled on a balance of payments conceptual basis. However, they do provide a reasonable approximation of world tourism related activities.

**19** The memorandum items have been derived by re-aggregating relevant components of the international trade in services series of the balance of payments accounts. The tourism related indicator has been derived by combining total travel services (business, education-related and other personal travel), passenger fares, and the air transport component of other transportation services which relates to agency fees and commission receipts.

### SERVICES BY STATE AND BY PARTNER COUNTRY

**20** Annual services data by state and by partner country are released twice yearly. Calendar year data are usually released with the March issue of this publication and financial year data are released with the September issue. Refer to Time series data for details.

**21** Services credits are classified by the state of provision, while services debits are classified by the state of consumption. The state allocations for transportation, travel and communication services are based on a number of indicators including merchandise trade statistics by state, overseas passenger arrivals and departures by state of clearance and data provided by the Department of Education, Science and Training. The allocation for other services (about 25% of all trade in services) is primarily based on the location of the business reporting the information, which serves as a proxy for the state of provision/consumption of that service. The data should be used with care but are considered suitable for analysis over time.

**22** A comprehensive explanation of the data sources used and the methodology applied in the compilation of partner country statistics is provided in Chapter 17 of *Balance of Payments and International Investment Position, Australia - Concepts, Sources and Methods* (cat. no. 5331.0). Approximately 7% of total services credits and 5% of total services debits for 2006–07 are either confidential, or unable to be allocated to individual countries.

### ABS DATA AVAILABLE

**23** More detailed balance of payments and recorded merchandise trade data, including forward seasonal factors are available as time series spreadsheets or data cubes from the ABS website.

**24** More detailed merchandise trade data by commodity, country and state, and statistics included in this and related publications are available on request. Inquiries should be made to the National Information and Referral Service as shown on the back of this publication.

## EXPLANATORY NOTES *continued*

### RELATED PRODUCTS AND PUBLICATIONS

**25** Users may also wish to refer to the following publications which can be downloaded free of charge from the ABS web site:

- *Balance of Payments and International Investment Position, Australia* (cat. no. 5302.0) – issued quarterly
- *International Merchandise Imports, Australia* (cat. no. 5439.0) – issued monthly
- *International Trade Price Indexes, Australia* (cat. no. 6457.0) – issued quarterly
- *Balance of Payments and International Investment Position, Australia: Concepts, Sources and Methods* (cat. no. 5331.0)
- *Information Paper: Quality of Australian Balance of Payments Statistics* (cat. no. 5342.0)
- *International Merchandise Trade, Australia: Concepts, Sources and Methods* (cat. no. 5489.0)
- *A Guide to Australian Balance of Payments and International Investment Position Statistics* (cat. no. 5362.0.55.001).

**26** Current publications produced by the ABS are listed in the Catalogue of Publications and Products (cat. no. 1101.0). The Catalogue is available from any ABS office or from this site. The ABS also issues a daily Release Advice on the web site which details products to be released in the week ahead.

### CAUTIONARY NOTE

**27** The tables in this publication are presented on two bases. Tables 1–11 contain estimates of Australia's international trade in goods and services which have been adjusted for coverage, valuation and timing to a balance of payments basis. Tables 12–15 contain estimates of merchandise exports and imports based on Australian Customs Service records. Paragraph 5 of the Explanatory Notes provides an explanation of the difference between these bases.

### ROUNDING

**28** Where figures have been rounded, discrepancies may occur between sums of the component items and totals. Percentage movements are calculated from data at the level of precision presented in this publication (i.e. \$m) except for international merchandise trade tables.

### ABBREVIATIONS

|        |  |
|--------|--|
| \$b    | billion (thousand million) dollars                     |
| \$m    | million dollars  |
| ABS    | Australian Bureau of Statistics                        |
| APEC   | Asia Pacific Economic Co-operation                     |
| ASEAN  | Association of South-East Asian Nations                |
| n.e.s. | not elsewhere specified                                |
| n.i.e. | not included elsewhere                                 |
| OECD   | Organisation for Economic Co-operation and Development |
| SAR    | Special Administrative Region                          |
| SITC   | Standard International Trade Classification            |



## APPENDIX RELATED ARTICLES

| <i>Article</i>  | <i>Source(a)</i> | <i>Issue</i> |
|---|------------------|--------------|
| <b>Investment</b>   |                  |              |
| Foreign ownership of equity   | 5302.0           | Sep qtr 2007 |
| Kangaroo bonds  | 5302.0           | Sep qtr 2004 |
| Gross external debt   | 5302.0           | Sep qtr 2003 |
| Measuring Australia's foreign currency exposure   | 5302.0           | Dec qtr 2001 |
| <b>Balance of payments</b>  |                  |              |
| International comparison of balance of payments statistics  | (b) 5363.0       | 1999–2000    |
| The Sydney Olympic Games Update   | 5368.0           | Jul 2000     |
| The Sydney Olympic Games  | 5302.0           | Sep qtr 1999 |
| <b>Merchandise trade</b>  |                  |              |
| Number and characteristics of Australian exporters  | 5368.0.55.006    | 2006–2007    |
| Export and Import Invoice Currencies, 2006  | 5368.0           | Dec 2007     |
| 100 years of International Trade Statistics   | 5368.0           | Oct 2007     |
| New methodology for deriving counts of Australian exports   | 5368.0           | Feb 2006     |
| Australia's Importers, 2003–04  | 5368.0           | Nov 2004     |
| Australia's Exporters, 2003–04  | 5368.0           | Oct 2004     |
| Australia's Trade with the USA  | 5368.0           | Mar 2004     |
| Trade through Australia's ports   | 5422.0           | Sep qtr 2002 |
| Australia's trade in wine   | 5422.0           | Dec qtr 2001 |
| Australia's export markets, 1991–92 to 2000–01  | 5422.0           | Jun qtr 2001 |
| Major commodities traded by Australia, 1991 to 2000   | (b) 5422.0       | Dec qtr 2000 |
| Australia's trade in crude petroleum  | 5422.0           | Mar qtr 2000 |
| Australia's merchandise trade with the Republic of Korea  | 5422.0           | Sep qtr 1999 |
| Australia's merchandise trade with Japan  | 5422.0           | Mar qtr 1999 |
| Bilateral merchandise trade statistics reconciliation: Australia and the European Union, 1992 to 1997 | 5422.0           | Sep qtr 1998 |
| <b>Trade in services</b>  |                  |              |
| International trade in services by partner country, 2006, preliminary                                 | 5368.0           | Dec 2006     |
| Changes to International Trade in Services Statistics, August 2006                                    | 5368.0           | Aug 2006     |
| Changes to International trade in services travel statistics  | 5368.0           | Aug 2005     |
| International trade in education services   | 5302.0           | Sep 2001     |
| <b>Finance</b>  |                  |              |
| Impact of 2003–2004 farm season on Australian production  | 1350.0           | Oct 2003     |
| Recent trends in construction and first home buyers finance   | 5609.0           | Mar 2002     |
| Household sector data in the financial accounts   | 5232.0           | Mar qtr 2002 |
| Investment Managers   | 5655.0           | Jun qtr 2000 |
| Venture capital, 1999–2000  | 5611.0           | 2000–01      |
| <b>Technical information</b>  |                  |              |
| Impact of introducing Revision 4 of the Standard International Trade Classification                   | 5368.0.55.010    | 2008         |
| Changes to international trade statistics July 2008   | 5368.0.55.009    | 2007–2008    |
| Changes on 1 January 2007 to Statistical Codes in the AHECC and the Customs Tariff                    | 1233.0.55.001    | Nov 2006     |
| ABS implementation in January 2007 of revisions to international trade classifications, 2007          | 5368.0.55.005    | June 2006    |
| Revised Treatment of Goods for Processing in Merchandise Trade and Balance of Payments Statistics     | 5368.0           | May 2006     |
| Impact of Customs and ABS changes on import statistics from October 2005                              | 5439.0           | Oct 2005     |
| ABS Management of the Impact of the Implementation of the Imports Component of the New Customs System | 5439.0           | Aug 2005     |
| Changes to country and port classifications   | 5368.0           | May 2003     |
| Implementation of New Customs Systems   | 5368.0           | Aug 2004     |
| The effect of customs changes on export statistics  | 5422.0           | Jun qtr 2002 |
| Harmonized system changes   | 5422.0           | Sep qtr 2001 |
| International trade review: data quality and client queries   | 5422.0           | Jun qtr 2000 |
| Data confidentiality  | 5422.0           | Dec qtr 1999 |

(a) In the ABS web site home page, select Key Products; Papers & Articles; ABS Articles; Feature Articles by Catalogue Number.

(b) This article can be found in pdf format by referring to the Details page of the specified issue of this publication on the ABS web site and click on Download Now.





## FOR MORE INFORMATION . . .

*INTERNET*      **www.abs.gov.au** the ABS website is the best place for data from our publications and information about the ABS.

### INFORMATION AND REFERRAL SERVICE

Our consultants can help you access the full range of information published by the ABS that is available free of charge from our website. Information tailored to your needs can also be requested as a 'user pays' service. Specialists are on hand to help you with analytical or methodological advice.

*PHONE*                      1300 135 070

*EMAIL*                      [client.services@abs.gov.au](mailto:client.services@abs.gov.au)

*FAX*                              1300 135 211

*POST*                          Client Services, ABS, GPO Box 796, Sydney NSW 2001

## FREE ACCESS TO STATISTICS

All statistics on the ABS website can be downloaded free of charge.

*WEB ADDRESS*      [www.abs.gov.au](http://www.abs.gov.au)