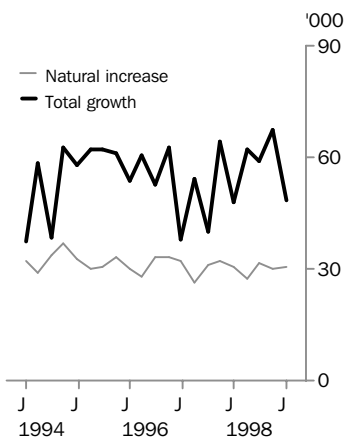


AUSTRALIAN DEMOGRAPHIC STATISTICS

EMBARGO: 11:30AM (CANBERRA TIME) WED 8 DEC 1999

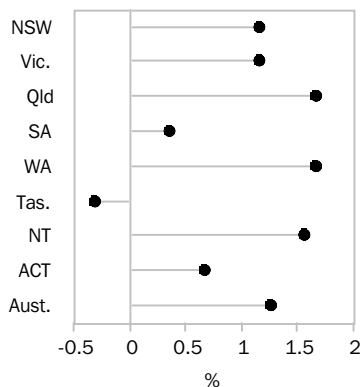
JUNE QTR KEY FIGURES

Population growth



Population growth rate

Year ended current quarter



PRELIMINARY DATA

	Population at end Jun Qtr 1999 '000	Change over previous year	
		'000	%
New South Wales	6 411.7	78.2	1.2
Victoria	4 712.2	57.2	1.2
Queensland	3 512.4	58.9	1.7
South Australia	1 493.1	6.7	0.4
Western Australia	1 861.0	31.9	1.7
Tasmania	470.3	-1.4	-0.3
Northern Territory	192.9	2.9	1.6
Australian Capital Territory	310.2	2.1	0.7
Australia	18 966.8	236.4	1.3

JUNE QTR KEY POINTS

ESTIMATED RESIDENT POPULATION

- Australia's preliminary estimated resident population at June 1999 was 18,966,800 persons.
- The population increased by 48,400 persons since March 1999 and 236,400 persons since June 1998.
- The national growth rate during the 12 months ended June 1999 was 1.3% compared with 1.1% for the preceding 12 months. Queensland and Western Australia had the highest growth rates (each 1.7%) while Tasmania had negative growth (-0.3%).

COMPONENTS OF POPULATION GROWTH

- Preliminary net overseas migration for the year ended June 1999 was 117,300 persons, an increase of 31,000 (36%) when compared with the previous 12 months. Permanent and long-term arrivals exceeded permanent and long-term departures by 96,500 persons while preliminary category jumping contributed a further 20,900 persons.

SPECIAL ARTICLES

- Australia's older population: past, present and future—The proportion of the Australian population aged 65 years and over increased from 4% in 1901 to 12% in 1998. By 2051 the proportion of older people in the population is projected to be between 24% and 26%. Of people aged 65 years and over, in 1996, 32% lived within five kilometres of the coast.
- Who'll be home alone in 2021?—In 1996 around 1.6 million people lived alone. It is projected that by 2021 the number would have grown to between 2.4 million and 3.4 million. This reflects projected changes in the size and age structure of the population by 2021, and changes in living arrangement trends over time.

- For further information about these and related statistics, contact Client Services in any ABS office as shown on the back cover of this publication, or Anne Ward on Canberra 02 6252 6296.

NOTES

FORTHCOMING ISSUES

ISSUE (Quarter)

RELEASE DATE

September 1999

21 March 2000

December 1999

8 June 2000

CHANGES IN THIS ISSUE

There are no changes in this issue.

FINAL DATA

All estimated resident population (ERP), natural increase, net overseas and net interstate migration and estimated resident household data prior to September Quarter 1996.

All overseas arrivals and departures data.

Marriages and divorces data prior to March Quarter 1999.

REVISED DATA

ERP, Major population centres, 30 June 1998 (Table 5).

PRELIMINARY DATA

All data from September Quarter 1998 are preliminary for ERP, natural increase, net overseas and net interstate migration.

Estimated resident household data are preliminary for 1998.

Marriages and divorces data are preliminary for all quarters in 1999.

DATA NOT YET AVAILABLE

ERP at 30 June 1999—

Major population centres (Table 5),

Marital status of persons aged 15 years and over (Table 8), and

Birthplace (Table 9).

Estimated resident households at 30 June 1999 (Tables 24 and 25).

These data are expected to be published in the September Quarter 1999 issue due for release on 21 March 2000.

Dennis Trewin

Acting Australian Statistician

C O N T E N T S

	page
	Notes 2
EDITORIAL	Analyses and Comments 4
	Special article: Australia's older population—past, present and future 6
	Special article: Who'll be home alone in 2021? 8
TABLES	
	<i>Population Change</i>
1	Population change, summary 10
2	Population change, components 11
3	Population change, rates 13
	<i>Estimated Resident Population</i>
4	Estimated resident population, States and Territories 14
5	Estimated resident population, major population centres—at 30 June 16
6	Estimated resident population, age groups: preliminary—at 30 June 17
7	Estimated resident population, age groups—at 30 June 19
8	Estimated resident population, marital status—at 30 June 21
9	Estimated resident population, birthplace—at 30 June 22
10	Experimental estimated and projected Australian Indigenous population 23
	<i>Births and Deaths</i>
11	Births and total fertility rates 24
12	Deaths and standardised death rates 25
13	Infant deaths and infant mortality rates 26
	<i>Marriages and Divorces</i>
14	Marriages and crude marriage rates 27
15	Divorces and crude divorce rates 28
	<i>Overseas Migration</i>
16	Components of net overseas migration 29
17	Categories of overseas arrivals 30
18	Categories of overseas departures 31
19	Permanent (settler) arrivals, birthplace 32
20	Permanent departures, birthplace 33
21	Net permanent and long-term overseas movement 34
22	Category jumping 35
	<i>Interstate Migration</i>
23	Interstate migration 36
	<i>Estimated Resident Households</i>
24	Estimated resident households, household size—at 30 June 41
25	Estimated resident households—at 30 June 42
FURTHER INFORMATION	Explanatory notes 43
	Glossary 47

ANALYSES AND COMMENTS

<p>COMPONENTS OF AUSTRALIA'S POPULATION CHANGE</p>	<p>The estimated resident population (ERP) of Australia at June 1999 was 18,966,800 persons an increase of 48,400 in the June quarter and 236,400 since June 1998. The national growth rate during the 12 months to June 1999 was 1.3% compared with 1.1% for the preceding 12 months.</p>
<p>STATES AND TERRITORIES</p>	<p>Preliminary net overseas migration increased by 36% (31,000 persons) from 86,400 in the year to June 1998 to 117,300 in the year to June 1999. In the year to June 1999 net overseas migration comprised 271,900 permanent and long-term arrivals, 175,500 permanent and long-term departures and a preliminary estimate of 20,900 category jumpers.</p> <p>Natural increase for the year to June 1999 was 119,100 persons. This was a decrease of less than 1%, from 119,900 in the year to June 1998. During this 12 month period both births and deaths decreased. The number of births decreased from 249,100 in the year to June 1998 to 247,700 for the year to June 1999. Over the same period the number of deaths decreased from 129,300 persons to 128,600 persons.</p> <p>Queensland and Western Australia recorded the highest growth rate among all States and Territories for the year to June 1999 (each 1.7%). The Northern Territory had the next highest (1.6%), followed by New South Wales and Victoria (each 1.2%), the Australian Capital Territory (0.7%) and South Australia (0.4%). Tasmania experienced negative growth at -0.3% (-1,400 persons). Tasmania's population growth has been negative from the December quarter 1996.</p> <p>The population of Australia's States and Territories at June 1999 was as follows: New South Wales 6,411,700, Victoria 4,712,200, Queensland 3,512,400, South Australia 1,493,100, Western Australia 1,861,000, Tasmania 470,300, Northern Territory 192,900 and the Australian Capital Territory 310,200.</p>
<p>Components of change</p>	<p>While Queensland and Western Australia had the highest growth rate for the period ending June 1999 (each 1.7%), the component of change that contributed most to the growth differed. Between June 1998 and June 1999, Queensland gained a total of 58,900 persons while Western Australia gained 31,900 persons. For Queensland natural increase contributed 24,500 persons while for Western Australia the largest contributor was net overseas migration at 15,900 persons.</p> <p>Queensland is currently receiving far less growth from net interstate migration than it did in the mid 1990s. On the other hand, net overseas migration has increased by around 62% when compared with 1994-95. As a result, in the year to June 1999 Queensland's population grew, almost equally, from net overseas migration (17,100 persons) and net interstate migration (17,200 persons).</p> <p>Tasmania lost a total of 1,400 persons (-0.3%) in the twelve months to June 1999. While natural increase was a positive contributor to population change (2,500 persons), losses from both net overseas migration (-200 persons) and net interstate migration (-3,700 persons) combined to produce overall negative growth.</p>
<p>Net overseas migration</p>	<p>For the year ended June 1999 net overseas migration resulted in Australia's population growing by 117,300 persons. New South Wales received by far the highest proportion of this number (45%). The other States to receive substantial gains were Victoria (23%), Queensland (15%) and Western Australia (14%). The highest rates of growth from net overseas migration during 1998-99 were in New South Wales and Western Australia.</p>
<p>Natural increase</p>	<p>Natural increase contributed 119,100 persons to Australia's population for the year ended June 1999. For most States and the Northern Territory natural increase was lower in the current year than it was for the year ended June 1998. However, for Western Australia, Tasmania and the Australian Capital Territory natural increase was</p>

STATES AND TERRITORIES

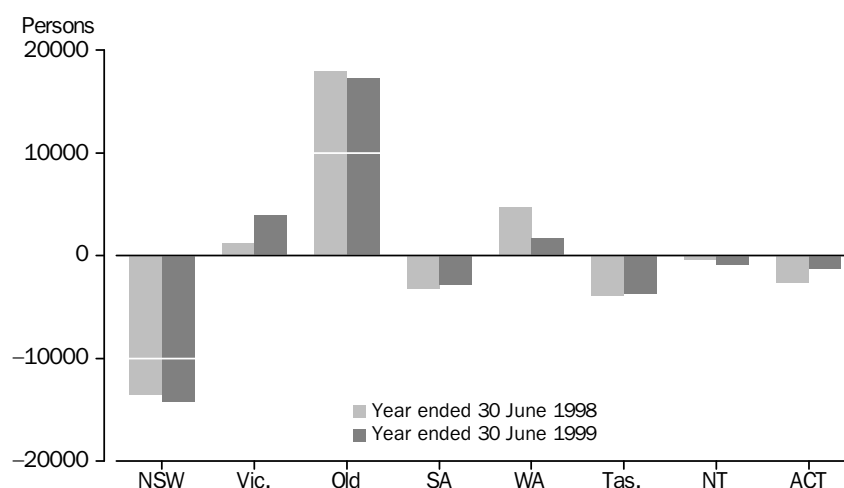
continued

Natural increase *continued* higher than for the previous period. The Northern Territory during 1998–99 had the highest rate of growth from natural increase of any State or Territory.

Net interstate migration Queensland gained the highest number of net interstate migrants during the 12 months ended June 1999 (17,200 persons). This number was 4% lower than the gain for the previous 12 months (18,000 persons). For the 12 months to June 1999, Victoria (4,000) and Western Australia (1,800) were the only other States or Territories to record net interstate migration gains. Current net interstate migration gains for Queensland and Western Australia continue long-term trends established by those States. For Victoria the net interstate migration gain has been evident over the past two financial years. For at least 25 years prior to this period, Victoria had experienced long-term losses.

Net interstate migration losses for the year ending June 1999 were experienced by New South Wales (–14,300), Tasmania (–3,700), South Australia (–2,900), the Australian Capital Territory (–1,200) and the Northern Territory (–900). This continues the long-term trend of net interstate migration losses for these States and Territories.

NET INTERSTATE MIGRATION, STATES AND TERRITORIES



HOUSEHOLDS AND FAMILIES

There were 7,055,600 households in Australia at June 1998, an increase of 1.4% since June 1997 (6,955,800) and 9.5% since June 1993 (6,445,900). At June 1998 the majority of Australian households (70%) had no children under 15 years of age (4,923,100). The most common household type contained only two persons 15 years or over, 31% of all households (2,186,200), followed by single person households 24% (1,682,600).

The ABS projects that by 2021 there will be between 9.4 million and 10.0 million households in Australia. Average household size is projected to decline from 2.6 persons per household in 1996 to between 2.2 and 2.3 in 2021. This decrease reflects the projected increase in the number of people who live alone, couple-only families and one-parent families.

The number of children of any age living in a two-parent family is projected to decline, from 4.8 million in 1996 to between 4.1 million and 4.7 million in 2021. This is associated with declining fertility and with the increasing tendency for children to live in one-parent families. Further information is available in the ABS publication *Household and Family Projections, Australia 1996 to 2021* (Cat. no. 3236.0).

SPECIAL ARTICLE

AUSTRALIA'S OLDER POPULATION—PAST, PRESENT AND FUTURE

POPULATION GROWTH

The proportion of the Australian population aged 65 years and over (the older population) has grown steadily during the 20th century and it is projected to grow further during the 21st century. The major contributors to ageing of the population have been declining fertility and increased life expectancy.

In 1901 there were 151 thousand people aged 65 years and over living in Australia, comprising 4% of the total Australian population. By 1998 this number increased to 2.3 million or 12% of the total population. It is projected that by 2051 the older population would have grown to between 6 million and 6.3 million or around one-quarter (24%–26%) of the projected total population of Australia.

During the first half of the 21st century the number of people aged 85 and over is projected to increase more than four-fold, reaching between 1.1 million and 1.2 million by 2051. The proportion of the population aged 85 years and over will also increase, from 1% to 5% of the total population.

AUSTRALIAN POPULATION

	Aged 65 and over		Aged 85 and over.....			Total population '000
	'000	% of total population	'000	% of 65 and over population	% of total population	
1901	150.8	4.0	4.2	2.8	0.1	3 788.1
1998	2 283.4	12.2	227.6	10.0	1.2	18 751.0
2051(a)	6 027.3	24.2	1 134.8	18.8	4.5	24 944.7

(a) Series II projections, *Population Projections, Australia 1997 to 2051* (ABS Cat. no. 3222.0).

Source: ABS, *Australian Demographic Statistics* (Cat. no. 3101.0)

INTERNATIONAL COMPARISON

Australia's population age-structure follows a similar pattern to that found throughout the developed world. Along with Canada, New Zealand and the United States, Australia has a lower level of ageing than many European countries. In 1995, 12% of Australians were aged 65 years and over compared with 18% in Sweden, 17% in Italy, and 16% in the United Kingdom and Greece. Other countries (especially many in the Asia/Pacific region) have lower proportions of older people than Australia.

GEOGRAPHIC DISTRIBUTION

The proportion of older people in the Australian population differs by State. In 1998, the State with the highest proportion of people aged 65 years and over was South Australia (14%), followed by Tasmania, New South Wales and Victoria (each 13%). Both the Territories have younger population structures, with older people comprising 3% of all people in the Northern Territory and 8% in the Australian Capital Territory.

Over the next 50 years the proportion of the older population is projected to increase in every State and Territory. Tasmania is projected to overtake South Australia as the State with the largest proportion of older people (30%–39% compared with 28%–32%). The proportion of older people in the Australian Capital Territory is projected to approach that in the other States. The Northern Territory, however, is projected to have a noticeably younger population, with 9%–11% of its population aged 65 years and over compared with 24%–26% of the total Australian population in 2051.

GEOGRAPHIC DISTRIBUTION
continued

The majority of Australians live within 50 kilometres of the coastline, but older people are likely to live closer to the coast. In 1996, 32% of people aged 65 years and over lived within five kilometres of the coast. In comparison, 25% of Australians aged 0–64 lived within five kilometres of the coast.

INDIGENOUS POPULATION

In 1996, 3% of Indigenous people were aged 65 years and over compared with 12% of the total Australian population. By 2006, the proportion of older Indigenous people is projected to remain at the same level (3%), while the proportion of older people in the total Australian population is expected to rise to 13%. The lower proportion of older Indigenous people reflects both their higher fertility and lower life expectancy.

AGE AND SEX

On average women live longer than men. In 1998, for example, there were more older women in the population than older men and the imbalance increased with age. For people aged 65–69, 51% were women. However, for those aged 95 years and over the proportion was 77%. In contrast, females comprised 49% of children (0–14 years).

AUSTRALIAN POPULATION, Age Groups—1998p

Age groups (years)	Males.....		Females.....		Persons.....		
	'000	%	'000	%	'000	%	% female
0–64	8 330.6	89.3	8 137.1	86.4	16 467.7	87.8	49.4
65–69	333.5	3.6	348.3	3.7	681.8	3.6	51.1
70–74	285.5	3.1	329.5	3.5	615.1	3.3	53.6
75–79	201.0	2.2	267.9	2.8	468.9	2.5	57.1
80–84	110.0	1.2	179.9	1.9	289.9	1.5	62.1
85–89	51.1	0.5	106.3	1.1	157.4	0.8	67.5
90–94	14.5	0.2	39.8	0.4	54.3	0.3	73.4
95 and over	3.7	—	12.2	0.1	16.0	0.1	76.7
Total	9 329.9	100.0	9 421.1	100.0	18 751.0	100.0	50.2

ADDITIONAL INFORMATION

Internal migration—Between 1991 and 1996, 22% of older people moved residence compared with 43% of the total population. Among older people mobility rates increased with age, but the distance moved declined.

Overseas migration—In 1998, two per 1,000 older people born overseas left Australia permanently compared with eight per 1,000 younger overseas-born. About three-quarters of overseas-born older residents who left Australia permanently were returning to their country of birth.

Country of birth—The age structure of different birthplace groups reflects changing immigration patterns over time. In 1998, 32% of people aged 65 years and over had been born overseas with the most common birthplace being the United Kingdom (36%). Birthplace groups with high proportions of older overseas-born were Poland, Italy, the Netherlands and Germany. For countries with continuous migration (New Zealand) or more recent migration (China, India, Viet Nam) the proportion of older people is much less (between 6% and 15%).

Additional analysis and data are available in the ABS publication *Older People, Australia: A Social Report, 1999* (Cat. no. 4109.0) due to be released on 15 December 1999.

SPECIAL ARTICLE

WHO'LL BE HOME ALONE IN 2021?

LIVING ALONE INCREASINGLY COMMON

Living alone is projected to be an increasingly common living arrangement in Australia. *ABS Household and Family Projections* (Cat. no. 3236.0) indicate that there could be as many as 2.4 million to 3.4 million people living alone by the year 2021, an increase of between 52% and 113%, from the 1996 level of 1.6 million. This large projected increase in the number of people living alone reflects projected changes in the size and age structure of the population by 2021, and changes in living arrangement trends over time.

PROJECTED NUMBER OF PEOPLE LIVING ALONE

	JUNE 1996.....		JUNE 2021.....					
	'000	%	'000	%	'000	%	'000	%
		<i>% of the population aged 15 years and over</i>	<i>Series A</i>	<i>% of the population aged 15 years and over</i>	<i>Series B</i>	<i>% of the population aged 15 years and over</i>	<i>Series C</i>	<i>% of the population aged 15 years and over</i>
Lone persons	'000	%	'000	%	'000	%	'000	%
Women	876.5	6.1	1 412.2	7.4	1 548.9	8.2	1 817.5	9.6
Men	711.7	4.9	995.7	5.2	1 183.9	6.2	1 557.6	8.2
Total	1 588.2	11.0	2 408.0	12.6	2 732.8	14.4	3 375.1	17.8

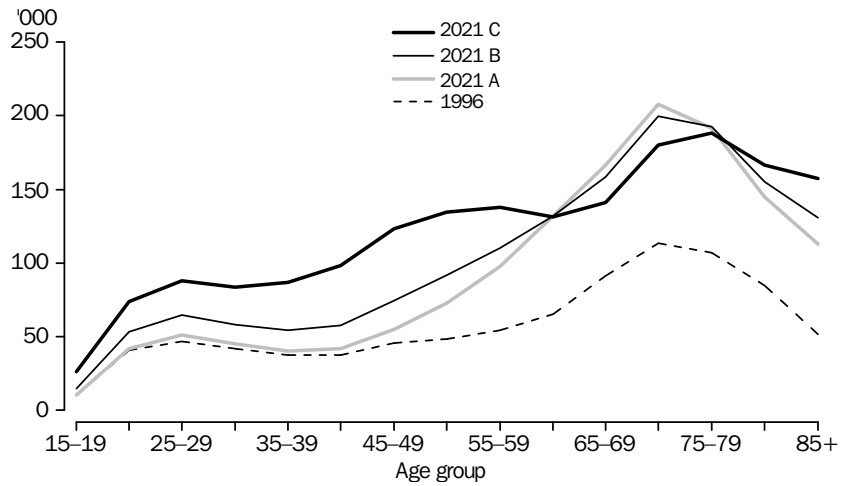
The number of people projected to live alone varies between each of the three projection series. The three series are based on varying assumptions about trends in living arrangements. In Series A the pattern of living arrangements of individuals is the same as in 1996. Thus any difference between the number of people living alone in 1996 and 2021 in Series A is solely a result of the change in the size and age structure of the projected population.

In Series B and C, recent trends in the patterns of living arrangements are incorporated into the projections. In Series B the average annual rate of change in living arrangements experienced between 1986 and 1996 is applied in reducing levels (in full between 1996 and 2001, in fractions to 2011, and is then held constant to 2021). In Series C the rate of change experienced between 1986 and 1996 is applied in full throughout the projection period.

LONE WOMEN GENERALLY OLDER

More women live alone than men although the age profile of lone women differs from that of lone men. For women, living alone peaks in the older age groups. In 1996, 51% of lone women were aged over 65 years. This proportion is projected to be 58% in Series A, 54% in Series B, and 46% in Series C. The three series also differ in terms of the proportion of younger women who live alone. Women aged 40–59 years are projected to represent 19% of women living alone in Series A, 22% in Series B, and 27% in Series C in 2021, compared with 21% in 1996.

WOMEN LIVING ALONE

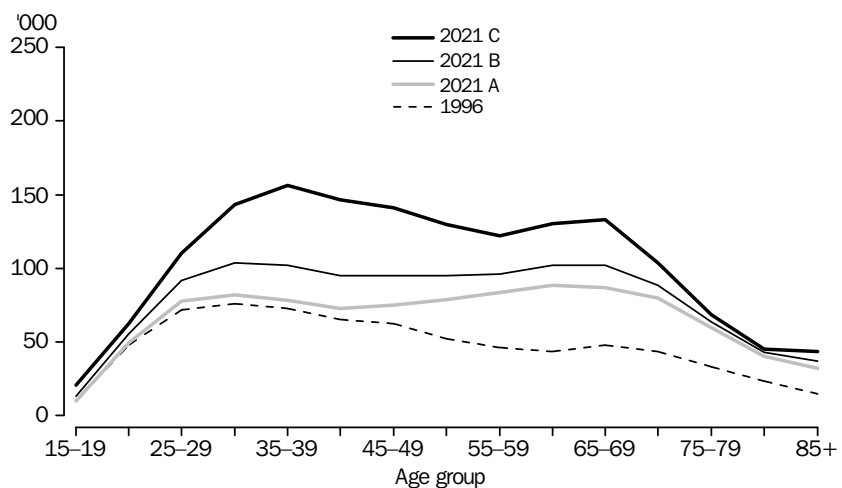


LONE MEN YOUNGER

Lone men tend to be much younger than lone women and outnumber women in the younger age groups (aged below 50 years). In 1996 the peak age group for lone men was 30–34 years with less than one-quarter (23%) aged over 65 years. In Series A, the ageing and increasing size of the projected population is likely to push the peak age group for lone men to between 60 and 64 years. In this series it is projected that almost one-third (30%) of lone men will be aged over 65 years.

Series B and C show an increasing trend for men to live alone in most age groups. Like Series A the largest increases are projected to occur in the older age groups, particularly among men aged 60–69. Series B and C project a further peak in the 35–39 year age group for men to live alone. Only one-quarter (25%) of lone men in Series C are projected to be over 65 years of age.

MEN LIVING ALONE



POPULATION CHANGE, Summary(a)

Period	COMPONENTS OF POPULATION CHANGE.....						POPULATION.....		
	Births '000	Deaths '000	Natural increase '000	Net permanent and long-term movement '000	Category jumping '000	Net overseas migration '000	At end of period '000	Growth on previous year '000	Growth on previous year %
1993-1994	258.3	123.5	134.8	67.4	-20.8	46.5	17 854.7	187.6	1.06
1994-1995	258.2	126.2	132.0	93.0	-12.9	80.1	18 071.8	217.1	1.22
1995-1996	250.4	126.4	124.0	109.7	-5.5	104.1	18 310.7	238.9	1.32
1996-1997	253.7	127.3	126.4	94.4	-7.3	87.1	18 524.2	213.4	1.17
1997-1998	249.1	129.3	119.9	79.2	7.2	86.4	18 730.4	206.2	1.11
1998-1999	247.7	128.6	119.1	96.5	20.9	117.3	18 966.8	236.4	1.26
1993	258.6	120.8	137.8	57.5	-22.7	34.8	17 760.0	178.7	1.02
1994	258.4	127.0	131.4	80.2	-24.7	55.5	17 951.5	191.5	1.08
1995	254.9	125.1	129.8	104.6	2.3	106.9	18 196.1	244.6	1.36
1996	252.9	128.2	124.7	103.1	-5.6	97.4	18 423.6	227.5	1.25
1997	251.1	128.8	122.3	83.7	-11.3	72.4	18 618.3	194.7	1.06
1998	250.1	128.8	121.3	88.8	22.8	111.6	18 851.2	232.9	1.25
1997									
September	64.4	38.0	26.4	22.9	5.1	28.0	18 578.5	207.5	1.13
December	61.9	31.0	30.9	14.0	-5.1	8.9	18 618.3	194.7	1.06
1998									
March	60.8	28.4	32.3	33.7	-2.0	31.7	18 682.4	196.3	1.06
June	62.1	31.8	30.3	8.5	9.2	17.7	18 730.4	206.2	1.11
September	64.4	37.2	27.2	26.5	8.2	34.8	18 792.4	213.8	1.15
December	62.9	31.5	31.4	20.1	7.4	27.4	18 851.2	232.9	1.25
1999									
March	58.7	28.6	30.1	35.1	2.0	37.1	18 918.4	236.0	1.26
June	61.7	31.3	30.4	14.8	3.2	18.0	18 966.8	236.4	1.26

(a) See Explanatory Notes for concepts used and the Glossary for definitions of terms used. Includes Other Territories from September quarter 1993—see paragraph 2 of the Explanatory Notes.

POPULATION CHANGE, Components

Period	New South Wales	Victoria	Queensland	South Australia	Western Australia	Tasmania	Northern Territory	Australian Capital Territory(a)	Australia(b)
no.	no.	no.	no.	no.	no.	no.	no.	no.	no.
NATURAL INCREASE									
1993-1994	44 232	32 576	26 180	8 006	14 499	3 116	2 880	3 290	134 818
1994-1995	42 687	31 346	26 047	7 953	14 794	2 976	2 882	3 250	131 978
1995-1996	40 352	28 497	25 290	7 500	13 953	2 521	2 829	3 062	124 038
1996-1997	42 740	28 662	25 580	6 951	14 158	2 444	2 733	3 043	126 362
1997-1998	39 374	27 720	24 639	6 602	13 715	2 104	2 825	2 834	119 850
1998-1999	39 084	26 247	24 544	6 593	14 220	2 458	2 824	3 106	119 094
1997									
September	8 366	6 093	5 747	1 407	2 970	433	684	646	26 356
December	10 843	7 446	5 753	1 650	3 253	547	648	711	30 862
1998									
March	10 307	7 408	6 632	2 074	3 761	625	755	765	32 334
June	9 858	6 773	6 507	1 471	3 731	499	738	712	30 298
September	8 204	6 419	6 184	1 188	3 348	512	651	735	27 244
December	12 098	6 579	5 451	1 775	3 375	716	640	752	31 389
1999									
March	9 125	6 874	6 707	1 917	3 442	557	722	733	30 083
June	9 657	6 375	6 202	1 713	4 055	673	811	886	30 378
NET OVERSEAS MIGRATION									
1993-1994	21 929	10 698	5 241	1 994	6 718	192	195	- 418	46 549
1994-1995	35 952	19 295	10 580	2 883	10 508	310	467	130	80 125
1995-1996	48 045	25 692	13 051	3 653	12 339	398	569	390	104 137
1996-1997	37 291	21 080	12 622	3 104	12 267	252	541	-76	87 079
1997-1998	34 899	20 801	13 800	3 390	12 834	84	644	-90	86 354
1998-1999	53 375	27 014	17 102	2 932	15 876	- 228	1 059	223	117 335
1997									
September	11 303	6 747	4 968	1 029	3 613	11	315	38	28 024
December	4 526	1 563	1 024	519	1 730	-32	-38	- 356	8 925
1998									
March	11 520	8 970	4 592	1 291	4 776	72	177	311	31 720
June	7 550	3 521	3 216	551	2 715	33	190	-83	17 685
September	16 162	7 744	5 195	778	4 520	-8	279	94	34 766
December	13 232	6 167	3 440	707	3 853	-48	232	- 144	27 429
1999									
March	15 128	9 833	5 349	1 149	5 210	-88	337	198	37 099
June	8 853	3 270	3 118	298	2 293	-84	211	75	18 041

(a) Excludes Jervis Bay Territory from September 1993.

(b) Includes Other Territories from September 1993—see paragraph 2 of the Explanatory Notes.

POPULATION CHANGE, Components *continued*

Period	New South Wales	Victoria	Queensland	South Australia	Western Australia	Tasmania	Northern Territory	Australian Capital Territory(a)	Australia(b)
	no.	no.	no.	no.	no.	no.	no.	no.	no.
NET INTERSTATE MIGRATION									
1993-1994	-12 180	-29 195	44 936	-3 978	3 825	-2 107	- 875	- 426	0
1994-1995	-13 478	-22 020	40 224	-7 069	5 101	-2 656	384	- 486	0
1995-1996	-14 770	-12 800	32 614	-6 192	4 066	-2 590	328	- 656	0
1996-1997	-11 975	-4 687	20 179	-4 628	6 189	-3 661	1 790	-3 207	0
1997-1998	-13 542	1 206	17 967	-3 254	4 726	-3 966	- 439	-2 698	0
1998-1999	-14 294	3 975	17 233	-2 869	1 775	-3 669	- 938	-1 213	0
1997									
September	-3 433	- 209	5 398	- 755	1 007	- 862	-54	-1 092	0
December	-3 919	549	5 152	-1 098	1 153	- 957	- 129	- 751	0
1998									
March	-2 746	476	3 054	- 591	1 686	-1 036	- 196	- 647	0
June	-3 444	390	4 363	- 810	880	-1 111	-60	- 208	0
September	-2 948	- 109	3 759	- 422	1 176	- 829	-46	- 581	0
December	-4 084	2 091	4 798	- 901	132	-1 104	- 372	- 560	0
1999									
March	-3 218	884	3 816	- 682	431	- 951	- 166	- 114	0
June	-4 044	1 109	4 860	- 864	36	- 785	- 354	42	0
TOTAL POPULATION GROWTH(c)									
1993-1994	55 310	15 183	77 325	5 464	25 340	1 280	2 641	2 184	187 645
1994-1995	66 791	29 817	77 996	3 291	30 778	734	4 177	3 319	217 020
1995-1996	77 747	42 768	73 581	4 824	31 469	770	4 291	3 446	238 956
1996-1997	68 056	45 055	58 381	5 427	32 614	- 965	5 064	- 240	213 441
1997-1998	60 731	49 727	56 406	6 738	31 275	-1 778	3 030	46	206 204
1998-1999	78 165	57 236	58 879	6 656	31 871	-1 439	2 945	2 116	236 429
1997									
September	16 236	12 631	16 113	1 681	7 590	- 418	945	- 408	54 380
December	11 450	9 558	11 929	1 071	6 136	- 442	481	- 396	39 787
1998									
March	19 081	16 854	14 278	2 774	10 223	- 339	736	429	64 054
June	13 964	10 684	14 086	1 212	7 326	- 579	868	421	47 983
September	21 418	14 054	15 138	1 544	9 044	- 325	884	248	62 010
December	21 246	14 837	13 689	1 581	7 360	- 436	500	48	58 818
1999									
March	21 035	17 591	15 872	2 384	9 083	- 482	893	817	67 182
June	14 466	10 754	14 180	1 147	6 384	- 196	668	1 003	48 419

(a) Excludes Jervis Bay Territory from September 1993.

(b) Includes Other Territories from September 1993—see paragraph 2 of the Explanatory Notes.

(c) Differences between total growth and the sum of natural increase and net migration arise from retrospective adjustments (which are made after each Census) to compensate for any intercensal discrepancy.

POPULATION CHANGE, Rates

Financial year	New South Wales	Victoria	Queensland	South Australia	Western Australia	Tasmania	Northern Territory	Australian Capital Territory(a)	Australia(b)
	%	%	%	%	%	%	%	%	%
NATURAL INCREASE									
1993-1994	0.73	0.73	0.82	0.55	0.85	0.66	1.66	1.09	0.76
1994-1995	0.70	0.69	0.80	0.54	0.85	0.63	1.62	1.07	0.73
1995-1996	0.65	0.62	0.76	0.51	0.79	0.53	1.56	0.99	0.68
1996-1997	0.68	0.62	0.75	0.47	0.79	0.52	1.46	0.99	0.68
1997-1998	0.62	0.60	0.71	0.44	0.75	0.45	1.49	0.92	0.64
1998-1999	0.61	0.56	0.70	0.44	0.76	0.52	1.46	1.00	0.63
NET OVERSEAS MIGRATION									
1993-1994	0.36	0.24	0.16	0.14	0.39	0.04	0.11	-0.14	0.26
1994-1995	0.59	0.43	0.32	0.20	0.61	0.07	0.26	0.04	0.44
1995-1996	0.77	0.56	0.39	0.25	0.70	0.08	0.31	0.13	0.57
1996-1997	0.59	0.46	0.37	0.21	0.68	0.05	0.29	-0.02	0.47
1997-1998	0.55	0.45	0.40	0.23	0.70	0.02	0.34	-0.03	0.46
1998-1999	0.83	0.57	0.49	0.20	0.85	-0.05	0.55	0.07	0.62
NET INTERSTATE MIGRATION									
1993-1994	-0.20	-0.65	1.41	-0.27	0.22	-0.45	-0.50	-0.14	0.00
1994-1995	-0.22	-0.49	1.23	-0.48	0.29	-0.56	0.22	-0.16	0.00
1995-1996	-0.24	-0.28	0.98	-0.42	0.23	-0.55	0.18	-0.21	0.00
1996-1997	-0.19	-0.10	0.59	-0.31	0.34	-0.77	0.96	-1.04	0.00
1997-1998	-0.21	0.03	0.52	-0.22	0.26	-0.84	-0.23	-0.88	0.00
1998-1999	-0.22	0.08	0.49	-0.19	0.10	-0.78	-0.49	-0.39	0.00
TOTAL POPULATION GROWTH(c)									
1993-1994	0.92	0.34	2.49	0.37	1.51	0.27	1.55	0.73	1.06
1994-1995	1.10	0.66	2.45	0.22	1.81	0.16	2.41	1.10	1.22
1995-1996	1.27	0.95	2.25	0.33	1.82	0.16	2.42	1.13	1.32
1996-1997	1.10	0.99	1.75	0.37	1.85	-0.20	2.78	-0.08	1.17
1997-1998	0.97	1.08	1.66	0.46	1.74	-0.38	1.62	0.01	1.11
1998-1999	1.23	1.23	1.70	0.45	1.74	-0.31	1.55	0.69	1.26

(a) Excludes Jervis Bay Territory.

(b) Includes Other Territories—see paragraph 2 of the Explanatory Notes.

(c) Differences between the total growth rate and the sum of natural increase and net migration rates arise from retrospective adjustments (which are made after each Census) to compensate for any intercensal discrepancy.

ESTIMATED RESIDENT POPULATION, States and Territories

At end of period	New South Wales	Victoria	Queensland	South Australia	Western Australia	Tasmania	Northern Territory	Australian Capital Territory(a)	Australia(b)
	no.	no.	no.	no.	no.	no.	no.	no.	no.
MALES									
1993–1994	3 012 102	2 220 054	1 597 029	725 999	856 492	233 862	90 992	149 979	8 888 066
1994–1995	3 044 428	2 233 428	1 636 329	727 064	871 963	234 048	93 264	151 454	8 993 604
1995–1996	3 081 044	2 252 649	1 673 040	729 149	887 577	234 302	95 668	152 953	9 108 055
1996–1997	3 114 709	2 275 172	1 701 396	731 842	904 382	233 661	98 384	152 970	9 214 210
1997–1998	3 146 345	2 301 029	1 728 948	735 056	920 549	232 604	100 257	153 402	9 319 897
1998–1999	3 186 917	2 330 109	1 758 083	738 325	937 021	231 715	102 001	154 625	9 440 498
1993	2 998 641	2 216 210	1 577 367	725 065	849 424	233 767	90 399	149 306	8 841 711
1994	3 026 780	2 225 627	1 615 056	726 344	863 240	233 955	91 851	150 326	8 934 770
1995	3 064 014	2 243 276	1 655 471	727 814	879 564	234 220	94 866	151 850	9 052 732
1996	3 098 883	2 263 984	1 687 647	730 098	896 075	234 117	97 183	153 292	9 162 964
1997	3 128 967	2 286 347	1 714 917	733 027	911 349	233 207	99 298	152 737	9 261 552
1998	3 168 331	2 315 275	1 743 167	736 530	928 961	232 143	101 033	153 600	9 380 747
1997									
September	3 123 363	2 281 857	1 709 293	732 537	908 227	233 422	99 053	152 940	9 242 394
December	3 128 967	2 286 347	1 714 917	733 027	911 349	233 207	99 298	152 737	9 261 552
1998									
March	3 139 127	2 295 308	1 722 141	734 496	916 718	232 970	99 705	153 121	9 295 296
June	3 146 345	2 301 029	1 728 948	735 056	920 549	232 604	100 257	153 402	9 319 897
September	3 157 320	2 308 187	1 736 393	735 811	925 267	232 442	100 774	153 624	9 351 530
December	3 168 331	2 315 275	1 743 167	736 530	928 961	232 143	101 033	153 600	9 380 747
1999									
March	3 179 040	2 324 584	1 751 176	737 660	933 768	231 888	101 558	154 152	9 415 521
June	3 186 917	2 330 109	1 758 083	738 325	937 021	231 715	102 001	154 625	9 440 498
FEMALES									
1993–1994	3 048 088	2 267 516	1 590 084	740 139	846 517	239 077	82 383	151 507	8 966 672
1994–1995	3 082 553	2 283 959	1 628 780	742 365	861 824	239 625	84 288	153 351	9 078 154
1995–1996	3 123 684	2 307 506	1 665 650	745 104	877 679	240 141	86 175	155 298	9 202 659
1996–1997	3 158 075	2 330 038	1 695 675	747 838	893 488	239 817	88 523	155 041	9 309 945
1997–1998	3 187 170	2 353 908	1 724 529	751 362	908 596	239 096	89 680	154 655	9 410 462
1998–1999	3 224 763	2 382 064	1 754 273	754 749	923 995	238 546	90 881	155 548	9 526 290
1993	3 034 139	2 262 625	1 570 705	738 570	839 583	238 774	81 931	150 627	8 918 288
1994	3 063 478	2 274 727	1 607 950	741 192	853 355	239 435	83 110	152 077	9 016 711
1995	3 104 806	2 296 520	1 647 881	743 431	869 755	239 916	85 613	153 972	9 143 322
1996	3 143 051	2 319 461	1 681 515	746 480	885 793	240 119	87 398	155 398	9 260 652
1997	3 171 503	2 341 052	1 710 196	749 405	900 247	239 411	89 035	154 470	9 356 770
1998	3 207 848	2 368 553	1 739 137	753 013	916 588	238 796	90 288	154 753	9 470 440
1997									
September	3 165 657	2 335 984	1 703 891	748 824	897 233	239 638	88 799	154 663	9 336 141
December	3 171 503	2 341 052	1 710 196	749 405	900 247	239 411	89 035	154 470	9 356 770
1998									
March	3 180 424	2 348 945	1 717 250	750 710	905 101	239 309	89 364	154 515	9 387 080
June	3 187 170	2 353 908	1 724 529	751 362	908 596	239 096	89 680	154 655	9 410 462
September	3 197 613	2 360 804	1 732 222	752 151	912 922	238 933	90 047	154 681	9 440 839
December	3 207 848	2 368 553	1 739 137	753 013	916 588	238 796	90 288	154 753	9 470 440
1999									
March	3 218 174	2 376 835	1 747 000	754 267	920 864	238 569	90 656	155 018	9 502 848
June	3 224 763	2 382 064	1 754 273	754 749	923 995	238 546	90 881	155 548	9 526 290

(a) Excludes Jervis Bay Territory from September 1993.

(b) Includes Other Territories from September 1993—see paragraph 2 of the Explanatory Notes.

ESTIMATED RESIDENT POPULATION, States and Territories *continued*

At end of period	New South Wales	Victoria	Queensland	South Australia	Western Australia	Tasmania	Northern Territory	Australian Capital Territory(a)	Australia(b)
no.	no.	no.	no.	no.	no.	no.	no.	no.	no.
PERSONS									
1993–1994	6 060 190	4 487 570	3 187 113	1 466 138	1 703 009	472 939	173 375	301 486	17 854 738
1994–1995	6 126 981	4 517 387	3 265 109	1 469 429	1 733 787	473 673	177 552	304 805	18 071 758
1995–1996	6 204 728	4 560 155	3 338 690	1 474 253	1 765 256	474 443	181 843	308 251	18 310 714
1996–1997	6 272 784	4 605 210	3 397 071	1 479 680	1 797 870	473 478	186 907	308 011	18 524 155
1997–1998	6 333 515	4 654 937	3 453 477	1 486 418	1 829 145	471 700	189 937	308 057	18 730 359
1998–1999	6 411 680	4 712 173	3 512 356	1 493 074	1 861 016	470 261	192 882	310 173	18 966 788
1993	6 032 780	4 478 835	3 148 072	1 463 635	1 689 007	472 541	172 330	299 933	17 759 999
1994	6 090 258	4 500 354	3 223 006	1 467 536	1 716 595	473 390	174 961	302 403	17 951 481
1995	6 168 820	4 539 796	3 303 352	1 471 245	1 749 319	474 136	180 479	305 822	18 196 054
1996	6 241 934	4 583 445	3 369 162	1 476 578	1 781 868	474 236	184 581	308 690	18 423 616
1997	6 300 470	4 627 399	3 425 113	1 482 432	1 811 596	472 618	188 333	307 207	18 618 322
1998	6 376 179	4 683 828	3 482 304	1 489 543	1 845 549	470 939	191 321	308 353	18 851 187
1997									
September	6 289 020	4 617 841	3 413 184	1 481 361	1 805 460	473 060	187 852	307 603	18 578 535
December	6 300 470	4 627 399	3 425 113	1 482 432	1 811 596	472 618	188 333	307 207	18 618 322
1998									
March	6 319 551	4 644 253	3 439 391	1 485 206	1 821 819	472 279	189 069	307 636	18 682 376
June	6 333 515	4 654 937	3 453 477	1 486 418	1 829 145	471 700	189 937	308 057	18 730 359
September	6 354 933	4 668 991	3 468 615	1 487 962	1 838 189	471 375	190 821	308 305	18 792 369
December	6 376 179	4 683 828	3 482 304	1 489 543	1 845 549	470 939	191 321	308 353	18 851 187
1999									
March	6 397 214	4 701 419	3 498 176	1 491 927	1 854 632	470 457	192 214	309 170	18 918 369
June	6 411 680	4 712 173	3 512 356	1 493 074	1 861 016	470 261	192 882	310 173	18 966 788

(a) Excludes Jervis Bay Territory from September 1993.

(b) Includes Other Territories from September 1993—see paragraph 2 of the Explanatory Notes.

ESTIMATED RESIDENT POPULATION, Major Population Centres(a)—at 30 June

	1993	1994	1995	1996	1997	1998
	<i>no.</i>	<i>no.</i>	<i>no.</i>	<i>no.</i>	<i>no.</i>	<i>no.</i>
CAPITAL CITY STATISTICAL DIVISIONS						
Sydney	3 734 809	3 769 641	3 821 233	3 881 136	3 933 724	3 981 641
Melbourne	3 197 927	3 213 021	3 243 707	3 283 278	3 321 788	3 367 005
Brisbane	1 422 783	1 455 195	1 486 730	1 519 991	1 546 244	1 573 304
Adelaide	1 068 616	1 071 672	1 074 679	1 078 437	1 082 439	1 087 710
Perth	1 225 552	1 246 266	1 271 738	1 295 092	1 318 781	1 340 261
Hobart	193 627	194 519	195 026	195 718	195 468	194 896
Darwin	78 640	79 012	80 385	82 232	84 591	86 550
Canberra	298 222	301 131	304 463	307 917	307 681	307 732

OTHER

Newcastle (b)	451 071	454 243	458 218	463 388	468 743	473 301
Gold Coast-Tweed (b)	306 370	321 860	340 725	354 110	367 299	378 892
Canberra-Queanbeyan (b)	333 832	337 404	341 207	345 061	345 354	345 761
Wollongong (b)	248 714	250 519	252 813	255 744	257 995	259 730
Sunshine Coast (b)	133 684	142 166	150 496	156 407	162 020	167 648
Geelong (b)	152 118	151 571	151 638	152 245	153 022	153 952
Townsville (b)	117 456	119 189	121 081	122 415	123 328	124 776
Cairns (b)	93 645	97 846	102 850	106 694	109 404	111 823
Launceston (b)	97 837	98 216	98 567	98 829	98 668	98 313
Albury-Wodonga (b)	90 180	91 098	92 024	92 668	93 235	94 104
Toowoomba City (c)	85 612	85 848	85 878	86 569	86 605	86 896
Ballarat (b)	78 650	78 531	78 529	79 109	79 605	80 228
Burnie-Devonport (b)	79 320	79 229	79 117	79 175	78 942	78 574
Bendigo (b)	73 128	73 631	73 759	74 192	74 959	75 761
La Trobe Valley (b)	78 057	77 266	76 322	75 467	75 372	75 060
Bathurst-Orange (b)	70 070	70 713	71 228	71 638	72 106	72 933
Rockhampton (b)	63 844	64 343	64 315	64 518	64 412	64 383
Mackay (b)	56 444	57 972	59 414	61 078	62 379	63 495
Hastings (d)	52 417	54 234	56 115	57 228	58 228	59 845
Coffs Harbour (d)	53 327	54 697	56 167	57 283	58 279	59 140
Wagga (d)	55 465	55 834	55 856	56 080	56 174	56 494
Bundaberg (b)	50 891	51 953	53 001	54 051	54 754	55 219
Greater Taree (d)	42 820	43 338	43 485	43 546	43 519	43 671
Lismore (d)	42 983	43 455	43 573	43 551	43 478	43 479
Mildura (b)	39 885	40 342	40 567	41 130	41 821	42 647
Shepparton (b)	40 453	40 729	41 112	41 139	41 444	41 857
Gladstone (b)	34 800	35 660	36 541	37 347	38 004	38 604
Dubbo (d)	35 046	35 594	36 113	36 533	36 717	36 983
Tamworth (d)	35 958	35 926	35 724	35 580	35 227	35 281
Kalgoorlie/Boulder (d)	27 025	27 774	28 768	29 587	30 483	31 352

(a) Based on 1998 Statistical Local Area boundaries.

(b) Statistical District boundaries.

(c) Statistical Subdivision.

(d) Statistical Local Area.

ESTIMATED RESIDENT POPULATION, Age Groups—Preliminary: at 30 June 1999

Age	New South Wales	Victoria	Queensland	South Australia	Western Australia	Tasmania	Northern Territory	Australian Capital Territory(a)	Australia(b)
MALES									
0-4	221 321	158 036	123 981	48 173	65 465	16 105	9 097	10 910	653 209
5-9	229 124	165 941	131 055	50 952	68 564	17 545	9 043	11 093	683 480
10-14	224 081	162 118	129 218	51 657	70 309	17 686	8 032	11 139	674 420
15-19	226 453	165 087	132 933	51 453	70 120	17 558	7 584	12 875	684 184
20-24	227 347	175 524	129 466	51 472	72 057	15 174	8 948	14 461	694 538
25-29	248 551	187 003	138 676	54 400	75 242	15 414	10 589	13 184	743 210
30-34	237 018	178 010	128 184	53 745	70 991	15 276	9 289	11 811	704 477
35-39	256 634	184 853	137 623	57 955	75 802	17 839	9 026	12 288	752 176
40-44	239 472	174 171	130 446	55 500	72 109	17 621	7 711	11 556	708 715
45-49	222 778	161 472	124 667	52 687	68 077	16 701	6 978	11 645	665 185
50-54	206 653	148 423	115 975	48 768	60 696	15 269	5 917	10 640	612 443
55-59	159 082	114 723	87 395	37 191	44 878	12 074	4 103	7 038	466 560
60-64	130 733	94 698	69 008	31 230	35 402	9 992	2 309	5 072	378 484
65-69	116 060	84 785	58 403	28 726	29 540	8 971	1 458	3 856	331 820
70-74	101 857	73 869	50 647	26 787	24 724	7 749	988	3 087	289 711
75-79	75 477	54 131	37 322	20 033	17 770	5 661	521	2 273	213 195
80-84	39 290	27 636	19 869	10 481	8 829	3 104	224	1 062	110 502
85 and over	24 986	19 629	13 215	7 115	6 446	1 976	184	635	74 189
All ages	3 186 917	2 330 109	1 758 083	738 325	937 021	231 715	102 001	154 625	9 440 498
FEMALES									
0-4	210 499	149 313	117 862	45 851	61 632	15 172	8 503	10 401	619 341
5-9	217 552	157 744	124 619	48 308	64 869	16 578	8 378	10 734	648 955
10-14	213 862	155 219	122 214	48 985	66 861	17 083	7 470	10 806	642 684
15-19	214 802	158 295	125 704	49 377	66 145	16 956	7 023	11 593	649 996
20-24	219 853	168 210	125 594	48 583	68 358	14 747	7 847	13 152	666 400
25-29	249 882	186 692	136 810	52 369	71 758	15 960	9 488	13 179	736 261
30-34	237 605	181 766	128 754	53 085	69 604	16 090	8 608	12 187	707 857
35-39	255 231	187 411	139 550	58 463	74 754	18 609	8 040	12 636	754 850
40-44	238 579	176 657	130 872	56 141	71 871	17 925	6 978	12 394	711 564
45-49	221 132	164 662	122 568	53 699	66 330	16 753	6 027	12 137	663 412
50-54	198 608	147 747	110 592	48 986	56 287	15 095	4 719	10 507	592 602
55-59	154 288	113 070	82 605	37 231	42 037	11 854	2 898	6 876	450 906
60-64	131 640	96 797	66 559	32 457	34 602	10 125	1 763	4 933	378 897
65-69	121 612	89 940	59 218	30 506	30 327	9 452	1 164	4 003	346 233
70-74	116 905	85 577	55 799	30 505	27 134	8 757	836	3 649	329 170
75-79	100 481	73 485	47 040	26 939	22 883	7 789	540	3 108	282 267
80-84	63 852	45 461	30 333	16 960	14 272	5 094	315	1 798	178 091
85 and over	58 380	44 018	27 580	16 304	14 271	4 507	284	1 455	166 804
All ages	3 224 763	2 382 064	1 754 273	754 749	923 995	238 546	90 881	155 548	9 526 290

(a) Excludes Jervis Bay Territory.

(b) Includes Other Territories—see paragraph 2 of the Explanatory Notes.

ESTIMATED RESIDENT POPULATION, Age Groups—Preliminary: at 30 June 1999 *continued*

Age	New South Wales	Victoria	Queensland	South Australia	Western Australia	Tasmania	Northern Territory	Australian Capital Territory(a)	Australia(b)
PERSONS									
0-4	431 820	307 349	241 843	94 024	127 097	31 277	17 600	21 311	1 272 550
5-9	446 676	323 685	255 674	99 260	133 433	34 123	17 421	21 827	1 332 435
10-14	437 943	317 337	251 432	100 642	137 170	34 769	15 502	21 945	1 317 104
15-19	441 255	323 382	258 637	100 830	136 265	34 514	14 607	24 468	1 334 180
20-24	447 200	343 734	255 060	100 055	140 415	29 921	16 795	27 613	1 360 938
25-29	498 433	373 695	275 486	106 769	147 000	31 374	20 077	26 363	1 479 471
30-34	474 623	359 776	256 938	106 830	140 595	31 366	17 897	23 998	1 412 334
35-39	511 865	372 264	277 173	116 418	150 556	36 448	17 066	24 924	1 507 026
40-44	478 051	350 828	261 318	111 641	143 980	35 546	14 689	23 950	1 420 279
45-49	443 910	326 134	247 235	106 386	134 407	33 454	13 005	23 782	1 328 597
50-54	405 261	296 170	226 567	97 754	116 983	30 364	10 636	21 147	1 205 045
55-59	313 370	227 793	170 000	74 422	86 915	23 928	7 001	13 914	917 466
60-64	262 373	191 495	135 567	63 687	70 004	20 117	4 072	10 005	757 381
65-69	237 672	174 725	117 621	59 232	59 867	18 423	2 622	7 859	678 053
70-74	218 762	159 446	106 446	57 292	51 858	16 506	1 824	6 736	618 881
75-79	175 958	127 616	84 362	46 972	40 653	13 450	1 061	5 381	495 462
80-84	103 142	73 097	50 202	27 441	23 101	8 198	539	2 860	288 593
85 and over	83 366	63 647	40 795	23 419	20 717	6 483	468	2 090	240 993
All ages	6 411 680	4 712 173	3 512 356	1 493 074	1 861 016	470 261	192 882	310 173	18 966 788

(a) Excludes Jervis Bay Territory.

(b) Includes Other Territories—see paragraph 2 of the Explanatory Notes.

ESTIMATED RESIDENT POPULATION(a), Age Groups—at 30 June

Age group (years)						PERCENTAGE OF TOTAL POPULATION.....				
	1995	1996	1997	1998	1999	1995	1996	1997	1998	1999
	no.	no.	no.	no.	no.	%	%	%	%	%
MALES										
0-4	666 703	665 611	663 326	658 557	653 209	3.69	3.64	3.58	3.52	3.44
5-9	662 592	669 251	674 264	679 115	683 480	3.67	3.65	3.64	3.63	3.60
10-14	664 089	670 227	671 797	671 916	674 420	3.67	3.66	3.63	3.59	3.56
15-19	650 877	655 345	663 680	674 294	684 184	3.60	3.58	3.58	3.60	3.61
20-24	725 107	708 906	697 074	691 414	694 538	4.01	3.87	3.76	3.69	3.66
25-29	691 428	710 454	727 726	737 171	743 210	3.83	3.88	3.93	3.94	3.92
30-34	730 523	720 725	710 389	703 307	704 477	4.04	3.94	3.83	3.75	3.71
35-39	710 843	726 660	737 306	745 555	752 176	3.93	3.97	3.98	3.98	3.97
40-44	665 597	676 137	688 428	698 248	708 715	3.68	3.69	3.72	3.73	3.74
45-49	635 263	654 234	649 590	654 875	665 185	3.52	3.57	3.51	3.50	3.51
50-54	496 254	517 520	557 455	591 213	612 443	2.75	2.83	3.01	3.16	3.23
55-59	406 724	419 859	432 830	446 092	466 560	2.25	2.29	2.34	2.38	2.46
60-64	353 505	353 827	360 382	368 937	378 484	1.96	1.93	1.95	1.97	2.00
65-69	335 187	337 445	336 529	334 283	331 820	1.85	1.84	1.82	1.78	1.75
70-74	270 031	276 105	281 090	286 022	289 711	1.49	1.51	1.52	1.53	1.53
75-79	169 506	179 593	189 861	200 522	213 195	0.94	0.98	1.02	1.07	1.12
80-84	102 606	105 855	108 495	110 080	110 502	0.57	0.58	0.59	0.59	0.58
85 and over	56 769	60 301	63 988	68 296	74 189	0.31	0.33	0.35	0.36	0.39
All ages	8 993 604	9 108 055	9 214 210	9 319 897	9 440 498	49.77	49.74	49.74	49.76	49.77
FEMALES										
0-4	632 821	631 438	628 962	624 234	619 341	3.50	3.45	3.40	3.33	3.27
5-9	630 089	636 798	640 884	645 215	648 955	3.49	3.48	3.46	3.44	3.42
10-14	631 824	637 990	640 312	640 736	642 684	3.50	3.48	3.46	3.42	3.39
15-19	618 363	623 774	630 243	639 297	649 996	3.42	3.41	3.40	3.41	3.43
20-24	704 414	687 960	674 613	665 691	666 400	3.90	3.76	3.64	3.55	3.51
25-29	687 335	707 561	724 812	733 145	736 261	3.80	3.86	3.91	3.91	3.88
30-34	731 083	723 796	714 205	706 925	707 857	4.05	3.95	3.86	3.77	3.73
35-39	712 394	729 327	740 902	748 913	754 850	3.94	3.98	4.00	4.00	3.98
40-44	667 664	678 946	692 235	702 629	711 564	3.69	3.71	3.74	3.75	3.75
45-49	616 566	639 704	640 059	649 539	663 412	3.41	3.49	3.46	3.47	3.50
50-54	475 987	497 412	536 230	570 287	592 602	2.63	2.72	2.89	3.04	3.12
55-59	395 514	407 540	419 785	431 183	450 906	2.19	2.23	2.27	2.30	2.38
60-64	356 786	356 656	362 859	370 123	378 897	1.97	1.95	1.96	1.98	2.00
65-69	354 188	354 740	351 722	348 707	346 233	1.96	1.94	1.90	1.86	1.83
70-74	322 964	327 017	328 316	329 909	329 170	1.79	1.79	1.77	1.76	1.74
75-79	233 400	243 799	255 728	267 923	282 267	1.29	1.33	1.38	1.43	1.49
80-84	172 430	176 603	178 966	180 000	178 091	0.95	0.96	0.97	0.96	0.94
85 and over	134 332	141 598	149 112	156 006	166 804	0.74	0.77	0.80	0.83	0.88
All ages	9 078 154	9 202 659	9 309 945	9 410 462	9 526 290	50.23	50.26	50.26	50.24	50.23

(a) Includes Other Territories from September 1993—see paragraph 2 of the Explanatory Notes.

ESTIMATED RESIDENT POPULATION(a), Age Groups—at 30 June *continued*

Age group (years)	PERSONS					PERCENTAGE OF TOTAL POPULATION.....				
	1995 no.	1996 no.	1997 no.	1998 no.	1999 no.	1995 %	1996 %	1997 %	1998 %	1999 %
0-4	1 299 524	1 297 049	1 292 288	1 282 791	1 272 550	7.19	7.08	6.98	6.85	6.71
5-9	1 292 681	1 306 049	1 315 148	1 324 330	1 332 435	7.15	7.13	7.10	7.07	7.03
10-14	1 295 913	1 308 217	1 312 109	1 312 652	1 317 104	7.17	7.14	7.08	7.01	6.94
15-19	1 269 240	1 279 119	1 293 923	1 313 591	1 334 180	7.02	6.99	6.99	7.01	7.03
20-24	1 429 521	1 396 866	1 371 687	1 357 105	1 360 938	7.91	7.63	7.40	7.25	7.18
25-29	1 378 763	1 418 015	1 452 538	1 470 316	1 479 471	7.63	7.74	7.84	7.85	7.80
30-34	1 461 606	1 444 521	1 424 594	1 410 232	1 412 334	8.09	7.89	7.69	7.53	7.45
35-39	1 423 237	1 455 987	1 478 208	1 494 468	1 507 026	7.88	7.95	7.98	7.98	7.95
40-44	1 333 261	1 355 083	1 380 663	1 400 877	1 420 279	7.38	7.40	7.45	7.48	7.49
45-49	1 251 829	1 293 938	1 289 649	1 304 414	1 328 597	6.93	7.07	6.96	6.96	7.00
50-54	972 241	1 014 932	1 093 685	1 161 500	1 205 045	5.38	5.54	5.90	6.20	6.35
55-59	802 238	827 399	852 615	877 275	917 466	4.44	4.52	4.60	4.68	4.84
60-64	710 291	710 483	723 241	739 060	757 381	3.93	3.88	3.90	3.95	3.99
65-69	689 375	692 185	688 251	682 990	678 053	3.81	3.78	3.72	3.65	3.57
70-74	592 995	603 122	609 406	615 931	618 881	3.28	3.29	3.29	3.29	3.26
75-79	402 906	423 392	445 589	468 445	495 462	2.23	2.31	2.41	2.50	2.61
80-84	275 036	282 458	287 461	290 080	288 593	1.52	1.54	1.55	1.55	1.52
85 and over	191 101	201 899	213 100	224 302	240 993	1.06	1.10	1.15	1.20	1.27
All ages	18 071 758	18 310 714	18 524 155	18 730 359	18 966 788	100.00	100.00	100.00	100.00	100.00

(a) Includes Other Territories from September 1993—see paragraph 2 of the Explanatory Notes.

ESTIMATED RESIDENT POPULATION(a), Marital Status of Persons 15 Years and Over

	<i>Never married</i>	<i>Married</i>	<i>Widowed</i>	<i>Divorced</i>	<i>Total</i>
<i>At 30 June</i>	<i>no.</i>	<i>no.</i>	<i>no.</i>	<i>no.</i>	<i>no.</i>
MALES					
1993	2 300 401	4 004 610	168 248	356 257	6 829 516
1994	2 335 455	4 029 037	170 035	374 014	6 908 541
1995	2 376 361	4 059 136	171 626	393 097	7 000 220
1996	2 426 008	4 088 018	173 546	415 394	7 102 966
1997	2 486 211	4 104 172	175 133	439 307	7 204 823
1998	2 549 714	4 123 807	176 696	460 092	7 310 309
FEMALES					
1993	1 843 489	4 005 575	707 415	443 572	7 000 051
1994	1 874 447	4 024 013	720 404	467 296	7 086 160
1995	1 910 194	4 048 275	732 725	492 226	7 183 420
1996	1 956 858	4 073 644	745 527	520 404	7 296 433
1997	2 013 074	4 089 977	748 598	548 138	7 399 787
1998	2 069 820	4 108 362	749 495	572 600	7 500 277
PERSONS					
1993	4 143 890	8 010 185	875 663	799 829	13 829 567
1994	4 209 902	8 053 050	890 439	841 310	13 994 701
1995	4 286 555	8 107 411	904 351	885 323	14 183 640
1996	4 382 866	8 161 662	919 073	935 798	14 399 399
1997	4 499 285	8 194 149	923 731	987 445	14 604 610
1998	4 619 534	8 232 169	926 191	1 032 692	14 810 586

(a) Includes Other Territories from September 1993—see paragraph 2 of the Explanatory Notes.

ESTIMATED RESIDENT POPULATION, Birthplace—at 30 June

	1993	1994	1995	1996	1997	1998
	<i>no.</i>	<i>no.</i>	<i>no.</i>	<i>no.</i>	<i>no.</i>	<i>no.</i>
MAJOR GROUPS						
Oceania and Antarctica	13 992 202	14 145 913	14 303 213	14 461 967	14 633 532	14 802 327
Europe and the former USSR	2 404 444	2 401 668	2 406 996	2 415 924	2 430 329	2 417 406
Middle East and North Africa	200 708	202 587	206 754	211 854	213 956	218 893
Southeast Asia	432 751	451 150	474 114	497 811	510 681	531 570
Northeast Asia	237 158	245 054	256 803	280 051	274 266	278 884
Southern Asia	133 736	139 729	149 041	159 643	170 270	177 663
The Americas	157 827	158 472	161 084	165 089	167 679	174 494
Africa (excluding North Africa)	108 267	110 165	113 753	118 375	123 442	129 122
Total	17 667 093	17 854 738	18 071 758	18 310 714	18 524 155	18 730 359

SELECTED COUNTRIES OF BIRTH

Australia	13 613 188	13 761 117	13 907 667	14 052 061	14 212 498	14 364 044
Canada	25 774	26 050	26 529	27 426	28 559	29 654
Chile	26 837	26 491	26 287	26 217	25 804	26 110
China	98 802	102 249	107 249	121 145	135 345	149 101
Egypt	37 917	37 751	37 685	37 639	37 955	37 396
Fiji	36 199	37 180	38 673	40 487	40 518	38 889
Former USSR and Baltic States	48 789	50 359	52 509	54 116	54 272	55 344
Former Yugoslav Republics(a)	174 792	179 426	186 061	193 775	198 080	203 488
Germany	119 918	119 914	120 144	120 753	121 214	122 690
Greece	144 567	143 407	142 332	141 750	141 962	140 955
Hong Kong & Macao	73 758	74 725	76 596	79 224	58 456	55 256
India	73 075	75 607	79 985	84 770	90 374	95 259
Indonesia	37 778	39 681	43 089	47 736	47 839	56 798
Ireland	n.a.	n.a.	n.a.	55 925	59 506	55 684
Italy	266 754	264 149	261 587	259 125	254 379	247 519
Lebanon	77 574	77 173	77 105	77 293	76 151	77 155
Malaysia	80 548	81 562	82 846	85 021	86 465	89 527
Malta	54 872	55 075	55 320	55 628	55 342	55 976
Netherlands	98 113	96 977	96 133	95 339	95 531	92 756
New Zealand	291 356	295 866	304 215	315 054	327 323	342 705
Philippines	88 637	93 176	98 289	102 675	109 879	114 304
Poland	70 422	70 515	70 807	70 891	71 156	70 639
Singapore	26 308	27 170	29 003	31 393	30 740	28 772
South Africa	56 025	56 991	58 843	61 371	65 095	68 406
Sri Lanka	44 821	46 597	49 111	51 960	54 115	55 240
Turkey	31 332	31 325	31 526	31 904	31 656	31 428
United Kingdom(b)	1 229 645	1 223 463	1 220 912	1 164 088	1 173 031	1 168 986
United States of America	49 522	50 156	51 870	54 296	56 385	62 126
Viet Nam	142 916	150 425	157 848	164 164	167 325	173 549

(a) See Former Yugoslav Republics in Glossary.

(b) Includes Ireland prior to 1996.

	New South Wales	Victoria	Queensland	South Australia	Western Australia	Tasmania	Northern Territory	Australian Capital Territory	Australia(b)
At 30 June	no.	no.	no.	no.	no.	no.	no.	no.	no.

EXPERIMENTAL ESTIMATES—Males

1991	48 099	9 982	45 851	9 748	25 125	6 801	23 282	1 281	170 267
1992	49 213	10 200	46 891	9 921	25 621	6 954	23 784	1 327	174 011
1993	50 389	10 422	47 990	10 123	26 128	7 115	24 276	1 375	177 920
1994	51 581	10 652	49 113	10 342	26 654	7 276	24 773	1 423	181 918
1995	52 802	10 894	50 274	10 572	27 219	7 444	25 291	1 472	186 075
1996	54 103	11 149	51 525	10 810	27 794	7 620	25 836	1 522	190 468

EXPERIMENTAL ESTIMATES—Females

1991	49 685	10 277	47 340	10 061	25 766	6 982	23 592	1 333	175 114
1992	50 814	10 478	48 450	10 283	26 238	7 104	24 066	1 372	178 886
1993	51 986	10 705	49 600	10 510	26 745	7 236	24 541	1 410	182 816
1994	53 218	10 934	50 771	10 741	27 256	7 378	25 015	1 449	186 847
1995	54 482	11 179	51 983	10 985	27 812	7 531	25 520	1 492	191 071
1996	55 822	11 449	53 292	11 241	28 411	7 702	26 040	1 536	195 581

EXPERIMENTAL ESTIMATES—Persons.

1991	97 784	20 259	93 191	19 809	50 891	13 783	46 874	2 614	345 381
1992	100 027	20 678	95 341	20 204	51 859	14 058	47 850	2 699	352 897
1993	102 375	21 127	97 590	20 633	52 873	14 351	48 817	2 785	360 736
1994	104 799	21 586	99 884	21 083	53 910	14 654	49 788	2 872	368 765
1995	107 284	22 073	102 257	21 557	55 031	14 975	50 811	2 964	377 146
1996	109 925	22 598	104 817	22 051	56 205	15 322	51 876	3 058	386 049

EXPERIMENTAL PROJECTIONS, Low Series—Persons

1997	112 167	23 002	107 558	22 503	57 263	15 581	52 782	3 161	394 214
1998	114 411	23 403	110 324	22 953	58 321	15 841	53 687	3 266	402 404
1999	116 652	23 801	113 111	23 405	59 382	16 106	54 587	3 372	410 615
2000	118 895	24 195	115 919	23 857	60 441	16 373	55 480	3 480	418 841
2001	121 142	24 586	118 749	24 313	61 505	16 644	56 364	3 589	427 094
2002	123 405	24 974	121 601	24 770	62 577	16 917	57 236	3 699	435 381
2003	125 692	25 363	124 473	25 229	63 658	17 193	58 096	3 809	443 715
2004	128 006	25 753	127 375	25 692	64 752	17 470	58 944	3 921	452 114
2005	130 348	26 145	130 311	26 161	65 857	17 747	59 780	4 034	460 583
2006	132 716	26 541	133 288	26 633	66 976	18 023	60 610	4 149	469 135

EXPERIMENTAL PROJECTIONS, High Series—Persons

1997	117 912	23 541	111 004	22 969	58 342	16 727	53 147	3 377	407 216
1998	126 402	24 507	117 454	23 907	60 522	18 257	54 416	3 723	429 386
1999	135 421	25 496	124 174	24 866	62 744	19 923	55 680	4 099	452 602
2000	144 994	26 507	131 169	25 848	65 005	21 739	56 928	4 508	476 899
2001	155 159	27 540	138 446	26 852	67 313	23 715	58 162	4 950	502 339
2002	165 958	28 595	146 010	27 878	69 669	25 863	59 377	5 428	528 981
2003	177 433	29 677	153 865	28 927	72 076	28 196	60 570	5 944	556 891
2004	189 629	30 784	162 029	29 999	74 534	30 731	61 738	6 504	586 151
2005	202 579	31 918	170 515	31 098	77 042	33 480	62 885	7 110	616 830
2006	216 323	33 079	179 338	32 220	79 600	36 465	64 015	7 766	649 009

(a) 1996 Census based. Estimates and the low projections series assume no change in the propensity to identify as Indigenous, as recorded on 1996 Census forms. The high projection series assume a change in propensity based on the 1991–1996 period.

(b) Includes Jervis Bay Territory.

BIRTHS AND TOTAL FERTILITY RATES

Period	New South Wales	Victoria	Queensland	South Australia	Western Australia	Tasmania	Northern Territory	Australian Capital Territory(a)	Australia(b)
NUMBER OF BIRTHS									
1993-1994	87 829	64 203	46 896	19 381	24 990	6 870	3 661	4 440	258 314
1994-1995	87 463	63 617	47 502	19 475	25 104	6 812	3 710	4 473	258 210
1995-1996	84 816	61 324	46 555	18 839	24 614	6 377	3 596	4 275	250 438
1996-1997	87 460	61 232	47 482	18 576	24 744	6 242	3 564	4 302	253 660
1997-1998	85 186	60 143	47 043	18 330	24 705	5 870	3 650	4 138	249 105
1998-1999	84 302	59 016	46 953	18 277	25 010	6 078	3 625	4 373	247 659
1993	88 142	64 137	46 898	19 608	24 933	6 816	3 647	4 420	258 626
1994	87 916	64 119	47 037	19 425	24 929	6 883	3 593	4 481	258 426
1995	86 390	62 584	47 166	19 219	24 817	6 560	3 726	4 424	254 942
1996	86 678	61 537	46 718	18 803	24 905	6 337	3 583	4 317	252 926
1997	86 357	60 610	47 482	18 411	24 514	5 974	3 582	4 151	251 129
1998	86 290	60 190	46 593	18 271	24 965	5 909	3 624	4 232	250 103
1997									
September	22 334	15 437	12 141	4 713	6 286	1 500	894	1 039	64 354
December	21 528	15 259	11 258	4 539	5 914	1 486	866	1 041	61 903
1998									
March	20 170	14 577	11 772	4 599	6 166	1 464	961	1 050	60 767
June	21 154	14 870	11 872	4 479	6 339	1 420	929	1 008	62 081
September	21 743	15 550	12 569	4 648	6 328	1 541	891	1 121	64 396
December	23 223	15 193	10 380	4 545	6 132	1 484	843	1 053	62 859
1999									
March	18 916	13 492	12 419	4 490	5 957	1 471	914	1 013	58 679
June	20 420	14 781	11 585	4 594	6 593	1 582	977	1 186	61 725
TOTAL FERTILITY RATES(c)									
1993	1.884	1.782	1.915	1.745	1.868	1.915	2.313	1.697	1.852
1994	1.877	1.793	1.885	1.747	1.859	1.958	2.281	1.717	1.848
1995	1.836	1.754	1.855	1.749	1.833	1.889	2.332	1.689	1.816
1996	1.829	1.718	1.810	1.733	1.820	1.854	2.214	1.640	1.791
1997	1.835	1.703	1.805	1.677	1.775	1.768	2.140	1.629	1.778
1998	1.772	1.631	1.789	1.702	1.764	1.809	2.194	1.555	1.735

(a) Excludes Jervis Bay Territory from September 1993.

(b) Includes Other Territories from September 1993—see paragraph 2 of the Explanatory Notes.

(c) For Total Fertility Rates based on year of registration data see *Births, Australia* (Cat. no. 3301.0).

DEATHS AND STANDARDISED DEATH RATES

Period	New South Wales	Victoria	Queensland	South Australia	Western Australia	Tasmania	Northern Territory	Australian Capital Territory(a)	Australia(b)
NUMBER OF DEATHS									
1993-1994	43 597	31 627	20 716	11 375	10 491	3 754	781	1 150	123 496
1994-1995	44 776	32 271	21 455	11 522	10 310	3 836	828	1 223	126 232
1995-1996	44 464	32 827	21 265	11 339	10 661	3 856	767	1 213	126 400
1996-1997	44 720	32 570	21 902	11 625	10 586	3 798	831	1 259	127 298
1997-1998	45 812	32 423	22 404	11 728	10 990	3 766	825	1 304	129 255
1998-1999	45 218	32 769	22 409	11 684	10 790	3 620	801	1 267	128 565
1993	42 507	31 122	20 060	11 326	10 289	3 632	750	1 115	120 804
1994	45 134	32 335	21 677	11 624	10 280	3 909	792	1 222	126 982
1995	44 432	32 393	20 887	11 288	10 403	3 749	799	1 146	125 105
1996	44 914	32 802	22 033	11 583	10 925	3 826	813	1 284	128 187
1997	45 451	32 760	22 087	11 631	10 839	3 837	838	1 340	128 788
1998	45 823	33 011	21 819	11 763	10 750	3 557	840	1 268	128 838
1997									
September	13 968	9 344	6 394	3 306	3 316	1 067	210	393	37 998
December	10 685	7 813	5 505	2 889	2 661	939	218	330	31 041
1998									
March	9 863	7 169	5 140	2 525	2 405	839	206	285	28 433
June	11 296	8 097	5 365	3 008	2 608	921	191	296	31 783
September	13 539	9 131	6 385	3 460	2 980	1 029	240	386	37 152
December	11 125	8 614	4 929	2 770	2 757	768	203	301	31 470
1999									
March	9 791	6 618	5 712	2 573	2 515	914	192	280	28 596
June	10 763	8 406	5 383	2 881	2 538	909	166	300	31 347
STANDARDISED DEATH RATES(c)(d)									
1993	6.7	6.5	6.5	6.8	6.6	7.2	10.1	5.9	6.6
1994	6.8	6.6	6.8	6.7	6.4	7.6	10.5	6.3	6.7
1995	6.6	6.4	6.3	6.3	6.2	7.1	9.9	5.4	6.4
1996	6.4	6.3	6.4	6.3	6.3	7.0	9.3	6.0	6.4
1997	6.4	6.1	6.1	6.1	6.1	6.8	9.8	5.8	6.3
1998	6.0	5.8	6.1	6.0	5.8	6.3	8.9	5.4	6.0

(a) Excludes Jervis Bay Territory from September 1993.

(b) Includes Other Territories from September 1993—see paragraph 2 of the Explanatory Notes.

(c) Based on the direct method.

(d) For Standardised Death Rates based on year of registration data see *Deaths, Australia* (Cat. no. 3302.0).

INFANT DEATHS AND INFANT MORTALITY RATES

Period	New South Wales	Victoria	Queensland	South Australia	Western Australia	Tasmania	Northern Territory	Australian Capital Territory(a)	Australia(b)
NUMBER OF INFANT DEATHS									
1993-1994	527	312	285	93	154	39	48	16	1 474
1994-1995	508	315	312	107	137	48	49	20	1 496
1995-1996	499	325	301	93	140	36	47	27	1 468
1996-1997	471	273	267	93	133	30	32	18	1 318
1997-1998	394	292	306	78	138	38	40	24	1 310
1998-1999	420	339	275	82	103	37	37	24	1 317
1993	547	313	331	105	145	35	50	20	1 546
1994	557	324	292	86	151	50	44	17	1 521
1995	486	315	283	110	133	38	43	24	1 432
1996	483	303	287	92	145	28	47	25	1 410
1997	453	292	290	87	136	43	37	20	1 359
1998	375	310	293	67	117	30	41	20	1 253
1997									
September	99	66	74	22	38	12	8	7	326
December	122	85	74	21	43	12	11	6	374
1998									
March	85	63	86	18	25	3	11	6	297
June	88	78	72	17	32	11	10	5	313
September	103	84	76	16	34	9	15	6	343
December	99	85	59	16	26	7	5	3	300
1999									
March	115	80	65	27	24	9	10	7	337
June	103	90	75	23	19	12	7	8	337
INFANT MORTALITY RATES(c)									
1993	6.2	4.9	7.1	5.4	5.8	5.1	13.7	4.5	6.0
1994	6.3	5.1	6.2	4.4	6.1	7.3	12.2	3.8	5.9
1995	5.6	5.0	6.0	5.7	5.4	5.8	11.5	5.4	5.6
1996	5.6	4.9	6.1	4.9	5.8	4.4	13.1	5.8	5.6
1997	5.2	4.8	6.1	4.7	5.5	7.2	10.3	4.8	5.4
1998	4.3	5.2	6.3	3.7	4.7	5.1	11.3	4.7	5.0

(a) Excludes Jervis Bay Territory from September 1993.

(b) Includes Other Territories from September 1993—see paragraph 2 of the Explanatory Notes.

(c) For Infant Mortality Rates based on year of registration data see *Deaths, Australia* (Cat. no. 3302.0).

MARRIAGES AND CRUDE MARRIAGE RATES

STATE OR TERRITORY OF REGISTRATION.....

<i>Period</i>	<i>New South Wales</i>	<i>Victoria</i>	<i>Queensland</i>	<i>South Australia</i>	<i>Western Australia</i>	<i>Tasmania</i>	<i>Northern Territory</i>	<i>Australian Capital Territory</i>	<i>Australia</i>
NUMBER OF MARRIAGES									
1993-1994	37 707	27 316	20 997	8 915	10 316	2 957	780	1 728	110 716
1994-1995	39 513	26 831	20 425	8 648	10 381	2 881	728	1 715	111 122
1995-1996	37 361	26 117	20 876	8 211	10 178	2 753	811	1 793	108 100
1996-1997	37 618	25 664	20 822	8 003	10 372	2 507	802	1 771	107 559
1997-1998	36 926	25 955	21 262	7 988	10 457	2 782	786	1 656	107 812
1998-1999	38 767	26 249	21 535	8 033	10 593	2 433	811	1 728	110 149
1993	39 993	27 418	20 704	9 114	10 382	3 055	806	1 783	113 255
1994	38 814	26 974	20 798	8 909	10 366	2 887	765	1 661	111 174
1995	37 828	26 607	20 610	8 547	10 404	2 840	797	1 753	109 386
1996	35 716	26 074	20 913	8 011	10 294	2 654	787	1 654	106 103
1997	36 679	25 456	20 868	7 945	10 456	2 672	786	1 873	106 735
1998	39 136	26 372	21 257	8 022	10 705	2 599	815	1 692	110 598
1997									
September	6 912	3 822	5 249	1 079	1 458	554	262	212	19 548
December	8 929	7 533	5 863	2 680	3 532	618	173	540	29 868
1998									
March	12 531	8 530	4 814	2 405	2 726	800	117	517	32 440
June	8 554	6 070	5 336	1 824	2 741	810	234	387	25 956
September	6 092	3 912	5 730	1 294	1 550	331	281	305	19 495
December	11 959	7 860	5 377	2 499	3 688	658	183	483	32 707
1999									
March	12 143	8 659	4 822	2 471	2 753	808	143	530	32 329
June	8 573	5 818	5 606	1 769	2 602	636	204	410	25 618
CRUDE MARRIAGE RATES									
1993	6.7	6.1	6.7	6.2	6.2	6.5	4.7	6.0	6.4
1994	6.4	6.0	6.5	6.1	6.1	6.1	4.4	5.5	6.2
1995	6.2	5.9	6.3	5.8	6.0	6.0	4.5	5.8	6.1
1996	5.8	5.7	6.3	5.4	5.8	5.6	4.3	5.4	5.8
1997	5.8	5.5	6.1	5.4	5.8	5.6	4.2	6.1	5.8
1998	6.2	5.7	6.2	5.4	5.8	5.5	4.3	5.5	5.9

DIVORCES AND CRUDE DIVORCE RATES

STATE OR TERRITORY OF REGISTRATION.....

Period	New South Wales	Victoria	Queensland	South Australia	Western Australia	Tasmania	Northern Territory	Australian Capital Territory	Australia
NUMBER OF DIVORCES									
1993-1994	14 198	10 914	9 717	4 134	4 934	1 454	403	2 049	47 803
1994-1995	14 147	11 602	10 061	4 252	4 930	1 443	433	1 990	48 858
1995-1996	15 974	12 002	10 837	4 236	5 195	1 568	444	1 623	51 879
1996-1997	15 667	13 046	11 161	4 362	4 931	1 351	473	1 670	52 661
1997-1998	14 117	11 916	11 092	4 113	5 112	1 303	420	1 470	49 543
1998-1999	14 936	12 614	11 692	4 201	5 328	1 365	438	1 593	52 167
1993	14 753	11 050	9 935	4 063	4 654	1 465	382	2 061	48 363
1994	13 999	11 320	9 762	4 192	5 024	1 544	400	2 071	48 312
1995	14 945	11 838	10 192	4 199	5 040	1 279	432	1 787	49 712
1996	15 984	12 491	10 996	4 358	4 959	1 582	486	1 610	52 466
1997	14 655	12 463	11 744	4 115	5 046	1 321	416	1 528	51 288
1998	14 987	12 307	11 349	4 159	5 268	1 322	457	1 521	51 370
1997									
September	3 636	3 164	3 248	1 034	1 360	330	109	385	13 266
December	3 692	3 181	2 960	1 058	1 320	338	99	352	13 000
1998									
March	3 183	2 663	2 376	1 016	1 219	286	115	330	11 188
June	3 606	2 908	2 508	1 005	1 213	349	97	403	12 089
September	4 237	3 188	3 082	1 053	1 463	395	118	359	13 895
December	3 961	3 548	3 383	1 085	1 373	292	127	429	14 198
1999									
March	3 352	2 774	2 534	929	1 207	372	101	385	11 654
June	3 386	3 104	2 693	1 134	1 285	306	92	420	12 420
CRUDE DIVORCE RATES									
1993	2.5	2.5	3.2	2.8	2.8	3.1	2.2	(a)	2.7
1994	2.3	2.5	3.1	2.9	3.0	3.3	2.3	(a)	2.7
1995	2.4	2.6	3.1	2.9	2.9	2.7	2.4	(a)	2.8
1996	2.6	2.7	3.3	3.0	2.8	3.3	2.7	(a)	2.9
1997	2.3	2.7	3.5	2.8	2.8	2.8	2.2	(a)	2.8
1998	2.4	2.6	3.3	2.8	2.9	2.8	2.4	(a)	2.7

(a) Many divorces registered in the Australian Capital Territory involve applicants normally resident in areas surrounding the Australian Capital Territory.

COMPONENTS OF NET OVERSEAS MIGRATION

Period	PERMANENT.....			LONG-TERM.....			Category jumping	Net overseas migration
	Arrivals	Departures	Net	Arrivals	Departures	Net		
1993-1994	69 768	27 280	42 488	137 600	112 707	24 893	-20 832	46 549
1994-1995	87 428	26 948	60 480	151 095	118 533	32 562	-12 917	80 125
1995-1996	99 139	28 670	70 469	163 578	124 386	39 192	-5 524	104 137
1996-1997	85 751	29 857	55 894	175 249	136 748	38 501	-7 317	87 079
1997-1998	77 327	31 985	45 342	188 114	154 294	33 820	7 192	86 354
1998-1999	84 143	35 181	48 962	187 802	140 281	47 521	20 852	117 335
1993	65 675	28 074	37 601	132 257	112 352	19 905	-22 684	34 822
1994	77 937	27 020	50 917	143 976	114 656	29 320	-24 731	55 506
1995	96 969	27 873	69 096	156 966	121 489	35 477	2 291	106 864
1996	92 502	28 479	64 023	168 830	129 784	39 046	-5 626	97 444
1997	78 229	30 343	47 886	181 988	146 220	35 768	-11 289	72 365
1998	81 065	33 433	47 632	187 318	146 169	41 149	22 819	111 600
1997								
September	19 226	7 338	11 888	45 889	34 835	11 054	5 082	28 024
December	18 922	7 199	11 723	43 943	41 622	2 321	-5 119	8 925
1998								
March	19 602	8 533	11 069	63 805	41 166	22 639	-1 988	31 720
June	19 577	8 915	10 662	34 477	36 671	-2 194	9 217	17 685
September	21 042	7 827	13 215	46 585	33 264	13 321	8 230	34 766
December	20 844	8 158	12 686	42 451	35 068	7 383	7 360	27 429
1999								
March	21 958	10 656	11 302	63 472	39 691	23 781	2 016	37 099
June	20 299	8 540	11 759	35 294	32 258	3 036	3 246	18 041

CATEGORIES OF OVERSEAS ARRIVALS

Period	LONG-TERM.....				SHORT-TERM.....		
	Permanent (settler) no.	Residents no.	Visitors no.	Total permanent and long-term no.	Residents no.	Visitors no.	Total no.
1993-1994	69 768	75 600	62 000	207 368	2 245 559	3 168 961	5 621 888
1994-1995	87 428	79 063	72 032	238 523	2 386 962	3 535 265	6 160 750
1995-1996	99 139	79 206	84 372	262 717	2 569 343	3 966 161	6 798 221
1996-1997	85 751	80 170	95 079	261 000	2 786 044	4 252 654	7 299 698
1997-1998	77 327	84 358	103 756	265 441	3 020 097	4 220 006	7 505 544
1998-1999	84 143	67 910	119 892	271 945	3 191 627	4 288 027	7 751 599
1993	65 675	73 428	58 829	197 932	2 215 152	2 996 214	5 409 298
1994	77 937	78 064	65 912	221 913	2 302 549	3 361 721	5 886 183
1995	96 969	78 794	78 172	253 935	2 470 835	3 725 825	6 450 596
1996	92 502	80 004	88 826	261 332	2 695 534	4 164 826	7 121 692
1997	78 229	81 797	100 191	260 217	2 897 197	4 317 869	7 475 283
1998	81 065	75 318	112 000	268 383	3 143 937	4 167 207	7 579 527
1997							
September	19 226	19 231	26 658	65 115	799 854	1 058 726	1 923 695
December	18 922	27 340	16 603	62 865	734 885	1 194 216	1 991 967
1998							
March	19 602	20 448	43 357	83 407	777 009	1 038 398	1 898 814
June	19 577	17 339	17 138	54 054	708 349	928 665	1 691 068
September	21 042	15 628	30 957	67 627	852 037	1 019 845	1 939 509
December	20 844	21 903	20 548	63 295	806 543	1 180 299	2 050 136
1999							
March	21 958	16 363	47 109	85 430	819 414	1 138 560	2 043 404
June	20 299	14 016	21 278	55 593	713 633	949 323	1 718 550

CATEGORIES OF OVERSEAS DEPARTURES

Period	PERMANENT.....			LONG-TERM.....		Total permanent and long-term	SHORT-TERM.....		Total
	Former settlers	Other residents	Total	Residents	Visitors		Residents	Visitors	
	no.	no.	no.	no.	no.	no.	no.	no.	no.
1993-1994	12 869	14 411	27 280	64 786	47 921	139 987	2 303 964	3 118 933	5 562 884
1994-1995	12 472	14 476	26 948	68 377	50 156	145 481	2 421 983	3 486 364	6 053 827
1995-1996	13 313	15 357	28 670	70 253	54 133	153 056	2 624 359	3 910 129	6 687 544
1996-1997	13 766	16 091	29 857	73 777	62 971	166 605	2 837 207	4 217 015	7 220 827
1997-1998	14 598	17 387	31 985	79 422	74 872	186 279	3 031 897	4 198 321	7 416 497
1998-1999	n.a.	n.a.	35 181	82 861	57 420	175 462	3 188 692	4 279 093	7 643 247
1993	13 278	14 796	28 074	64 301	48 051	140 426	2 267 073	2 931 009	5 338 508
1994	12 744	14 276	27 020	66 365	48 291	141 676	2 354 310	3 314 209	5 810 195
1995	12 833	15 040	27 873	69 083	52 406	149 362	2 518 625	3 676 843	6 344 830
1996	13 152	15 327	28 479	70 964	58 820	158 263	2 731 963	4 110 846	7 001 072
1997	14 027	16 316	30 343	77 181	69 039	176 563	2 932 754	4 281 172	7 390 489
1998	n.a.	n.a.	33 433	81 057	65 112	179 602	3 161 060	4 150 242	7 490 904
1997									
September	3 329	4 009	7 338	19 002	15 833	42 173	793 489	1 032 401	1 868 063
December	3 539	3 660	7 199	16 683	24 939	48 821	770 065	1 084 224	1 903 109
1998									
March	3 627	4 906	8 533	24 535	16 631	49 699	650 772	1 112 926	1 813 397
June	4 103	4 812	8 915	19 202	17 469	45 586	817 572	968 770	1 831 928
September	n.a.	n.a.	7 827	19 587	13 677	41 091	850 164	991 263	1 882 518
December	n.a.	n.a.	8 158	17 733	17 335	43 226	842 552	1 077 283	1 963 061
1999									
March	n.a.	n.a.	10 656	26 466	13 225	50 347	700 090	1 192 892	1 943 330
June	n.a.	n.a.	8 540	19 075	13 183	40 798	795 886	1 017 655	1 854 339

PERMANENT (SETTLER) ARRIVALS, Birthplace

Birthplace	QUARTER ENDED.....									
	1997-1998	1998-1999	1997	1998	Mar 1998	Jun 1998	Sep 1998	Dec 1998	Mar 1999	Jun 1999
	no.	no.	no.	no.	no.	no.	no.	no.	no.	no.
MAJOR GROUPS										
Oceania and Antarctica	17 792	22 501	17 362	19 952	5 041	4 557	4 937	5 417	6 445	5 702
Europe and the former USSR	19 501	19 609	19 249	20 338	4 960	4 791	5 151	5 436	4 971	4 051
Middle East and North Africa	5 790	5 195	5 815	5 748	1 394	1 491	1 500	1 363	942	1 390
Southeast Asia	9 700	10 934	10 083	9 817	2 267	2 532	2 404	2 614	2 981	2 935
Northeast Asia	10 214	10 869	11 839	10 480	2 392	2 579	3 090	2 419	2 801	2 559
Southern Asia	5 333	5 316	5 386	5 075	1 193	1 293	1 369	1 220	1 251	1 476
The Americas	2 716	2 397	2 975	2 529	636	592	669	632	583	513
Africa (excluding North Africa)	6 256	7 246	5 483	7 075	1 707	1 736	1 903	1 729	1 952	1 662
Other and not stated	25	76	37	51	12	6	19	14	32	11
Total	77 327	84 143	78 229	81 065	19 602	19 577	21 042	20 844	21 958	20 299
SELECTED COUNTRIES OF BIRTH										
Australia	349	274	339	346	85	96	94	71	48	61
Canada	775	581	813	667	193	146	191	137	138	115
Chile	139	186	114	185	32	50	41	62	47	36
China	4 338	6 133	5 308	5 094	938	1 121	1 619	1 416	1 557	1 541
Egypt	310	358	360	304	53	58	85	108	96	69
Fiji	1 070	1 561	1 363	1 303	237	285	359	422	377	403
Former USSR and Baltic States	994	898	1 324	948	236	195	242	275	187	194
Former Yugoslav Republics(a)	5 184	5 830	4 356	6 589	1 363	1 698	1 873	1 655	1 339	963
Germany	709	738	773	689	165	139	162	223	194	159
Greece	204	142	225	180	45	57	43	35	35	29
Hong Kong & Macao	3 251	1 974	3 541	2 631	766	795	630	440	516	388
India	2 786	2 557	2 771	2 444	654	625	592	573	640	752
Indonesia	1 917	2 491	1 725	1 837	509	497	374	457	803	857
Malaysia	931	1 296	996	1 045	227	221	263	334	379	320
Malta	39	40	28	41	3	18	12	8	10	10
Netherlands	364	344	366	339	98	71	88	82	87	87
New Zealand	14 723	18 677	13 954	16 498	4 271	3 818	3 969	4 440	5 462	4 806
Philippines	2 769	3 318	2 880	2 959	668	677	809	805	895	809
Poland	308	290	398	256	61	46	71	78	79	62
Singapore	694	650	765	650	180	162	107	201	148	194
South Africa	4 281	5 024	3 709	4 768	1 167	1 176	1 296	1 129	1 364	1 235
Sri Lanka	1 261	917	1 357	1 023	313	250	198	262	228	229
Turkey	635	521	742	557	151	103	163	140	100	118
United Kingdom	9 193	8 785	9 009	8 818	2 371	1 995	2 029	2 423	2 327	2 006
United States of America	1 264	1 040	1 365	1 116	287	280	279	270	250	241
Viet Nam	2 311	2 137	2 310	2 392	447	774	583	588	489	477

(a) See Former Yugoslav Republics in Glossary.

PERMANENT DEPARTURES, Birthplace

QUARTER ENDED.....

	1997-1998	1998-1999	1997	1998	Mar 1998	Jun 1998	Sep 1998	Dec 1998	Mar 1999	Jun 1999
	no.	no.	no.	no.	no.	no.	no.	no.	no.	no.
MAJOR GROUPS										
Oceania and Antarctica	19 076	21 570	18 149	20 138	5 277	5 232	4 671	4 958	6 783	5 158
Europe and the former USSR	6 704	5 931	6 300	6 439	1 690	2 079	1 375	1 295	1 745	1 516
Middle East and North Africa	602	618	610	613	140	170	166	137	170	145
Southeast Asia	1 252	1 628	1 181	1 359	322	315	314	408	465	441
Northeast Asia	2 603	3 673	2 443	3 094	668	611	886	929	979	879
Southern Asia	287	321	272	306	66	79	73	88	75	85
The Americas	1 208	1 114	1 121	1 206	296	370	279	261	323	251
Africa (excluding North Africa)	251	321	263	275	74	59	62	80	114	65
Other and not stated	2	5	4	3	0	0	1	2	2	0
Total	31 985	35 181	30 343	33 433	8 533	8 915	7 827	8 158	10 656	8 540

SELECTED COUNTRIES OF BIRTH

Australia	12 771	17 250	12 027	14 839	3 655	3 484	3 867	3 833	5 563	3 987
Canada	311	278	261	310	91	95	62	62	84	70
Chile	86	74	94	83	22	24	15	22	24	13
China	1 054	1 427	960	1 180	248	246	320	366	409	332
Egypt	65	58	60	65	14	21	11	19	22	6
Fiji	105	125	101	109	32	22	22	33	35	35
Former USSR and Baltic States	51	48	55	53	16	15	15	7	16	10
Former Yugoslav Republics(a)	527	311	494	445	145	156	72	72	101	66
Germany	203	187	174	206	46	78	45	37	50	55
Greece	223	242	227	224	52	74	65	33	78	66
Hong Kong & Macao	1 046	1 401	1 020	1 246	283	243	377	343	345	336
India	180	193	152	184	43	52	39	50	45	59
Indonesia	219	336	203	235	47	56	66	66	91	113
Malaysia	190	291	200	216	49	41	62	64	85	80
Malta	110	93	108	100	22	41	21	16	28	28
Netherlands	129	149	121	136	39	30	35	32	47	35
New Zealand	5 722	3 788	5 566	4 748	1 484	1 584	695	985	1 078	1 030
Philippines	197	183	219	179	42	48	44	45	41	53
Poland	95	111	104	100	16	34	22	28	31	30
Singapore	84	143	79	101	23	25	27	26	49	41
South Africa	139	153	139	131	38	30	29	34	61	29
Sri Lanka	51	75	56	64	15	15	15	19	20	21
Turkey	122	71	86	114	31	49	21	13	13	24
United Kingdom	3 971	3 487	3 733	3 761	1 014	1 196	775	776	1 036	900
United States of America	623	590	585	615	134	197	172	112	170	136
Viet Nam	374	455	327	403	107	89	70	137	140	108

(a) See Former Yugoslav Republics in Glossary.

NET PERMANENT AND LONG-TERM OVERSEAS MOVEMENT(a)

<i>Period</i>	<i>New South Wales</i>	<i>Victoria</i>	<i>Queensland</i>	<i>South Australia</i>	<i>Western Australia</i>	<i>Tasmania</i>	<i>Northern Territory</i>	<i>Australian Capital Territory</i>	<i>Not stated</i>	<i>Australia(b)</i>
<i>no.</i>	<i>no.</i>	<i>no.</i>	<i>no.</i>	<i>no.</i>	<i>no.</i>	<i>no.</i>	<i>no.</i>	<i>no.</i>	<i>no.</i>	<i>no.</i>
1993-1994	30 687	15 374	8 271	2 931	9 165	388	340	64	161	67 381
1994-1995	41 126	22 514	12 324	3 542	12 058	470	535	495	0	93 042
1995-1996	50 051	27 207	13 823	3 958	13 044	474	597	550	0	109 661
1996-1997	40 168	22 783	13 840	3 431	13 181	320	593	101	0	94 396
1997-1998	31 843	19 313	12 490	3 160	11 993	39	560	-242	0	79 162
1998-1999	43 928	22 452	13 906	2 247	13 477	-314	882	-77	0	96 483
1993	24 953	12 976	7 498	2 870	8 064	315	251	-78	657	57 506
1994	35 987	18 976	10 283	3 026	10 893	455	498	119	0	80 237
1995	46 909	25 859	13 315	3 855	12 833	422	639	777	0	104 573
1996	46 446	24 978	13 427	3 790	13 037	535	594	297	0	103 070
1997	34 220	19 832	13 661	3 333	12 153	91	501	-124	0	83 654
1998	38 201	21 556	12 821	2 574	13 195	-65	679	-175	0	88 781
1997										
September	9 222	5 593	4 116	813	3 021	-20	262	-79	0	22 942
December	6 668	2 683	1 831	758	2 355	9	-2	-247	0	14 044
1998										
March	12 292	9 464	4 901	1 382	5 019	88	191	360	0	33 708
June	3 661	1 573	1 642	207	1 598	-38	109	-276	0	8 468
September	12 409	5 947	3 939	523	3 581	-42	206	-29	0	26 536
December	9 839	4 572	2 339	462	2 997	-73	173	-230	0	20 069
1999										
March	14 286	9 341	5 043	1 069	4 975	-99	322	163	0	35 083
June	7 394	2 592	2 585	193	1 924	-100	181	19	0	14 795

(a) Excludes category jumping.

(b) Includes Other Territories from September 1993—see paragraph 2 of the Explanatory Notes.

CATEGORY JUMPING

<i>Period</i>	<i>Australian residents</i>	<i>Overseas visitors</i>	<i>Net</i>
<i>no.</i>	<i>no.</i>	<i>no.</i>	<i>no.</i>
1993-1994	41 178	20 346	-20 832
1994-1995	24 395	11 478	-12 917
1995-1996	19 820	14 296	-5 524
1996-1997	23 985	16 668	-7 317
1997-1998	18 878	26 070	7 192
1998-1999	-7 428	13 424	20 852
1993	51 301	28 617	-22 684
1994	41 663	16 932	-24 731
1995	18 359	20 650	2 291
1996	10 459	4 833	-5 626
1997	36 750	25 461	-11 289
1998	-1 073	21 746	22 819
1997			
September	6 891	11 973	5 082
December	7 378	2 259	-5 119
1998			
March	2 523	535	-1 988
June	2 086	11 303	9 217
September	- 682	7 548	8 230
December	-5 000	2 360	7 360
1999			
March	1 400	3 416	2 016
June	-3 146	100	3 246

INTERSTATE MIGRATION

STATE OR TERRITORY OF DEPARTURE.....

<i>Period</i>	<i>New South Wales</i>	<i>Victoria</i>	<i>Queensland</i>	<i>South Australia</i>	<i>Western Australia</i>	<i>Tasmania</i>	<i>Northern Territory</i>	<i>Australian Capital Territory</i>	<i>Total</i>
<i>no.</i>	<i>no.</i>	<i>no.</i>	<i>no.</i>	<i>no.</i>	<i>no.</i>	<i>no.</i>	<i>no.</i>	<i>no.</i>	<i>no.</i>
ARRIVALS IN NEW SOUTH WALES									
1993-1994	..	23 262	31 242	6 268	5 649	2 260	2 478	9 213	80 372
1994-1995	..	23 960	35 062	6 542	6 798	2 453	2 511	10 645	87 971
1995-1996	..	20 847	33 754	6 310	7 057	2 630	2 512	9 759	82 869
1996-1997	..	23 774	38 303	7 382	7 476	3 017	2 589	11 974	94 515
1997-1998	..	22 932	37 177	6 919	7 244	2 802	2 876	11 439	91 389
1998-1999	..	22 384	36 710	6 727	7 685	2 960	2 625	10 951	90 042
1997									
September	..	4 997	8 148	1 589	1 500	562	678	2 729	20 203
December	..	6 450	10 507	1 973	2 035	870	873	3 245	25 953
1998									
March	..	5 763	9 363	1 662	1 840	656	722	2 733	22 739
June	..	5 722	9 159	1 695	1 869	714	603	2 732	22 494
September	..	4 916	8 255	1 534	1 661	659	656	2 476	20 157
December	..	6 284	10 373	1 853	2 150	785	808	3 135	25 388
1999									
March	..	5 614	9 009	1 647	1 845	760	576	2 693	22 144
June	..	5 570	9 073	1 693	2 029	756	585	2 647	22 353
ARRIVALS IN VICTORIA									
1993-1994	17 254	..	12 080	6 248	4 953	2 846	1 879	1 710	46 970
1994-1995	19 817	..	15 188	6 968	5 279	3 182	2 061	2 292	54 787
1995-1996	19 321	..	16 149	7 851	5 560	3 323	2 050	2 011	56 265
1996-1997	23 728	..	18 104	9 065	6 785	3 906	2 293	2 628	66 509
1997-1998	24 503	..	18 279	9 212	7 136	4 231	2 365	2 716	68 442
1998-1999	24 322	..	18 098	8 925	7 488	4 410	2 353	2 488	68 084
1997									
September	5 297	..	4 142	2 082	1 539	874	539	612	15 085
December	6 976	..	5 191	2 605	2 027	1 198	733	861	19 591
1998									
March	6 037	..	4 540	2 286	1 786	1 042	499	606	16 796
June	6 193	..	4 406	2 239	1 784	1 117	594	637	16 970
September	5 194	..	3 929	1 878	1 647	913	438	525	14 524
December	6 882	..	5 358	2 536	2 216	1 338	778	786	19 894
1999									
March	6 067	..	4 391	2 212	1 762	1 169	595	558	16 754
June	6 179	..	4 420	2 299	1 863	990	542	619	16 912

INTERSTATE MIGRATION *continued*

STATE OR TERRITORY OF DEPARTURE.....

Period	New South Wales	Victoria	Queensland	South Australia	Western Australia	Tasmania	Northern Territory	Australian Capital Territory	Total
	no.	no.	no.	no.	no.	no.	no.	no.	no.
ARRIVALS IN QUEENSLAND									
1993-1994	48 392	30 142	..	8 199	7 318	3 656	5 620	3 733	107 060
1994-1995	52 123	30 005	..	8 818	7 397	4 066	6 001	3 851	112 261
1995-1996	49 190	25 944	..	8 684	7 916	3 971	5 512	4 645	105 862
1996-1997	49 931	23 401	..	7 094	6 865	4 179	5 205	3 827	100 502
1997-1998	48 624	21 025	..	6 341	6 931	4 040	5 324	3 536	95 821
1998-1999	48 244	19 232	..	6 544	7 240	4 183	5 105	3 429	93 977
1997									
September	11 371	5 104	..	1 564	1 703	905	1 290	804	22 741
December	13 826	5 947	..	1 822	1 867	1 035	1 560	1 117	27 174
1998									
March	11 545	4 750	..	1 392	1 626	1 061	1 221	884	22 479
June	11 882	5 224	..	1 563	1 735	1 039	1 253	731	23 427
September	10 709	4 546	..	1 397	1 563	912	1 127	759	21 013
December	13 583	5 330	..	1 942	2 019	1 222	1 570	1 103	26 769
1999									
March	11 610	4 719	..	1 542	1 755	1 016	1 179	750	22 571
June	12 342	4 637	..	1 663	1 903	1 033	1 229	817	23 624

ARRIVALS IN SOUTH AUSTRALIA

1993-1994	5 816	7 331	4 243	..	2 508	878	3 061	908	24 745
1994-1995	5 660	7 297	4 840	..	2 526	752	2 730	727	24 532
1995-1996	5 947	7 015	5 414	..	2 957	848	2 898	754	25 833
1996-1997	7 010	7 811	5 575	..	3 180	1 001	3 339	790	28 706
1997-1998	6 695	7 615	5 412	..	3 175	1 069	3 349	769	28 084
1998-1999	6 728	7 462	5 315	..	3 221	1 024	3 433	733	27 916
1997									
September	1 541	1 666	1 254	..	702	251	808	175	6 397
December	1 859	2 090	1 521	..	949	247	975	227	7 868
1998									
March	1 692	1 905	1 351	..	738	283	755	213	6 937
June	1 603	1 954	1 286	..	786	288	811	154	6 882
September	1 558	1 671	1 198	..	742	231	761	199	6 360
December	1 913	2 029	1 426	..	930	274	1 019	242	7 833
1999									
March	1 623	1 900	1 293	..	772	263	810	132	6 793
June	1 634	1 862	1 398	..	777	256	843	160	6 930

INTERSTATE MIGRATION *continued*

STATE OR TERRITORY OF DEPARTURE.....

Period	New South Wales	Victoria	Queensland	South Australia	Western Australia	Tasmania	Northern Territory	Australian Capital Territory	Total
	no.	no.	no.	no.	no.	no.	no.	no.	no.
ARRIVALS IN WESTERN AUSTRALIA									
1993-1994	7 107	7 035	5 927	3 360	..	1 371	2 661	1 005	28 466
1994-1995	7 712	7 399	6 779	3 813	..	1 632	3 551	1 018	31 904
1995-1996	8 517	7 297	7 610	4 073	..	1 652	2 728	951	32 828
1996-1997	9 263	8 366	7 774	4 133	..	2 014	2 907	1 145	35 602
1997-1998	9 154	7 880	7 411	3 904	..	1 922	2 954	1 024	34 249
1998-1999	8 355	7 258	6 842	3 702	..	2 075	2 892	1 035	32 159
1997									
September	1 966	1 807	1 636	770	..	427	697	233	7 536
December	2 579	2 195	2 022	1 149	..	510	799	347	9 601
1998									
March	2 400	2 050	1 918	1 044	..	489	695	244	8 840
June	2 209	1 828	1 835	941	..	496	763	200	8 272
September	1 915	1 767	1 689	844	..	560	742	243	7 760
December	2 351	1 936	1 867	1 048	..	499	801	282	8 784
1999									
March	2 047	1 752	1 649	847	..	505	685	225	7 710
June	2 042	1 803	1 637	963	..	511	664	285	7 905

ARRIVALS IN TASMANIA

1993-1994	2 307	2 956	2 070	738	935	..	321	220	9 547
1994-1995	2 283	2 670	2 269	1 035	1 175	..	448	316	10 196
1995-1996	2 090	2 828	2 624	967	1 460	..	327	235	10 531
1996-1997	2 595	2 844	2 852	947	1 415	..	324	271	11 248
1997-1998	2 392	2 913	2 568	868	1 530	..	350	269	10 890
1998-1999	2 811	3 085	2 867	880	1 644	..	260	286	11 833
1997									
September	521	599	512	196	344	..	67	63	2 302
December	670	855	745	246	452	..	91	87	3 146
1998									
March	581	724	626	225	387	..	106	57	2 706
June	620	735	685	201	347	..	86	62	2 736
September	649	747	662	182	297	..	53	52	2 642
December	695	827	878	227	439	..	90	83	3 239
1999									
March	704	758	705	241	441	..	51	73	2 973
June	763	753	622	230	467	..	66	78	2 979

INTERSTATE MIGRATION *continued*

STATE OR TERRITORY OF DEPARTURE.....

<i>Period</i>	<i>New South Wales</i>	<i>Victoria</i>	<i>Queensland</i>	<i>South Australia</i>	<i>Western Australia</i>	<i>Tasmania</i>	<i>Northern Territory</i>	<i>Australian Capital Territory</i>	<i>Total</i>
<i>no.</i>	<i>no.</i>	<i>no.</i>	<i>no.</i>	<i>no.</i>	<i>no.</i>	<i>no.</i>	<i>no.</i>	<i>no.</i>	<i>no.</i>
ARRIVALS IN NORTHERN TERRITORY									
1993-1994	2 453	3 052	4 253	2 957	2 201	271	..	425	15 612
1994-1995	3 493	2 931	4 986	3 290	2 650	450	..	609	18 409
1995-1996	2 896	2 846	4 546	3 116	2 692	296	..	558	16 950
1996-1997	3 225	2 864	5 187	3 836	2 890	381	..	513	18 896
1997-1998	3 034	2 715	4 549	3 244	2 743	423	..	510	17 218
1998-1999	3 203	2 379	4 358	3 086	2 300	439	..	458	16 223
1997									
September	729	666	1 163	790	599	89	..	104	4 140
December	844	799	1 269	889	874	129	..	208	5 012
1998									
March	735	618	1 029	761	581	99	..	73	3 896
June	726	632	1 088	804	689	106	..	125	4 170
September	809	534	986	768	519	93	..	115	3 824
December	1 017	742	1 329	878	636	97	..	156	4 855
1999									
March	693	577	1 083	768	521	103	..	87	3 832
June	684	526	960	672	624	146	..	100	3 712

ARRIVALS IN AUSTRALIAN CAPITAL TERRITORY

1993-1994	9 223	2 387	2 309	953	1 077	372	467	..	16 788
1994-1995	10 361	2 545	2 912	1 136	978	317	723	..	18 972
1995-1996	9 678	2 289	3 150	1 024	1 120	401	595	..	18 257
1996-1997	10 738	2 136	2 528	877	802	411	449	..	17 941
1997-1998	10 530	2 156	2 458	850	764	369	439	..	17 566
1998-1999	10 673	2 309	2 554	921	806	411	493	..	18 167
1997									
September	2 212	455	488	161	142	56	115	..	3 629
December	3 118	706	767	282	244	114	110	..	5 341
1998									
March	2 495	510	598	158	196	112	94	..	4 163
June	2 705	485	605	249	182	87	120	..	4 433
September	2 271	452	535	179	155	103	93	..	3 788
December	3 031	655	740	250	262	128	161	..	5 227
1999									
March	2 618	550	625	218	183	108	102	..	4 404
June	2 753	652	654	274	206	72	137	..	4 748

INTERSTATE MIGRATION *continued*

STATE OR TERRITORY OF DEPARTURE.....

<i>Period</i>	<i>New South Wales</i>	<i>Victoria</i>	<i>Queensland</i>	<i>South Australia</i>	<i>Western Australia</i>	<i>Tasmania</i>	<i>Northern Territory</i>	<i>Australian Capital Territory</i>	<i>Total</i>
<i>no.</i>	<i>no.</i>	<i>no.</i>	<i>no.</i>	<i>no.</i>	<i>no.</i>	<i>no.</i>	<i>no.</i>	<i>no.</i>	<i>no.</i>
TOTAL									
1993-1994	92 552	76 165	62 124	28 723	24 641	11 654	16 487	17 214	329 560
1994-1995	101 449	76 807	72 036	31 602	26 803	12 852	18 025	19 458	359 032
1995-1996	97 639	69 066	73 247	32 025	28 762	13 121	16 622	18 913	349 395
1996-1997	106 490	71 196	80 323	33 334	29 413	14 909	17 106	21 148	373 919
1997-1998	104 932	67 236	77 854	31 338	29 523	14 856	17 657	20 263	363 659
1998-1999	104 336	64 109	76 744	30 785	30 384	15 502	17 161	19 380	358 401
1997									
September	23 637	15 294	17 343	7 152	6 529	3 164	4 194	4 720	82 033
December	29 872	19 042	22 022	8 966	8 448	4 103	5 141	6 092	103 686
1998									
March	25 485	16 320	19 425	7 528	7 154	3 742	4 092	4 810	88 556
June	25 938	16 580	19 064	7 692	7 392	3 847	4 230	4 641	89 384
September	23 105	14 633	17 254	6 782	6 584	3 471	3 870	4 369	80 068
December	29 472	17 803	21 971	8 734	8 652	4 343	5 227	5 787	101 989
1999									
March	25 362	15 870	18 755	7 475	7 279	3 924	3 998	4 518	87 181
June	26 397	15 803	18 764	7 794	7 869	3 764	4 066	4 706	89 163

ESTIMATED RESIDENT HOUSEHOLDS, Household size—at 30 June

NUMBER OF PERSONS AGED 0–14 YEARS IN HOUSEHOLD.....

	<i>None</i>	<i>One</i>	<i>Two</i>	<i>Three or more</i>	Total
Persons aged 15 and older in household	no.	no.	no.	no.	no.
.....					
1993					
One	1 436 152	113 313	85 394	42 791	1 677 650
Two	1 962 381	423 179	572 829	320 618	3 279 007
Three	567 633	179 667	91 265	40 118	878 683
Four or more	428 815	116 544	45 429	19 817	610 605
Total	4 394 981	832 703	794 917	423 344	6 445 945
.....					
1994					
One	1 492 454	111 823	90 470	39 846	1 734 593
Two	2 028 360	422 129	582 685	321 931	3 355 105
Three	593 259	179 548	92 499	38 173	903 479
Four or more	402 331	115 669	52 599	15 031	585 630
Total	4 516 404	829 169	818 253	414 981	6 578 807
.....					
1995					
One	1 526 742	119 072	90 229	44 452	1 780 495
Two	2 064 333	444 328	592 702	309 064	3 410 427
Three	594 414	168 044	99 919	41 863	904 240
Four or more	408 908	123 701	48 455	14 081	595 145
Total	4 594 397	855 145	831 305	409 460	6 690 307
.....					
1996					
One	1 556 514	119 678	90 155	42 035	1 808 382
Two	2 079 536	432 581	592 758	327 407	3 432 282
Three	593 005	187 931	100 818	45 547	927 301
Four or more	410 482	118 671	46 028	18 969	594 150
Total	4 639 537	858 861	829 759	433 958	6 762 115
.....					
1997					
One	1 655 861	133 028	98 472	48 014	1 935 375
Two	2 136 381	442 799	591 903	310 041	3 481 124
Three	623 978	184 400	88 681	44 404	941 463
Four or more	416 110	121 106	44 021	16 587	597 824
Total	4 832 330	881 333	823 077	419 046	6 955 786
.....					
1998					
One	1 682 582	141 559	104 425	48 144	1 976 710
Two	2 186 217	449 101	577 196	304 178	3 516 692
Three	603 287	181 985	96 580	45 318	927 170
Four or more	451 002	113 925	53 159	16 922	635 008
Total	4 923 088	886 570	831 360	414 562	7 055 580
.....					

ESTIMATED RESIDENT HOUSEHOLDS—at 30 June

	1993	1994	1995	1996	1997	1998
	<i>no.</i>	<i>no.</i>	<i>no.</i>	<i>no.</i>	<i>no.</i>	<i>no.</i>
CAPITAL CITIES						
Sydney	1 339 786	1 362 752	1 382 367	1 395 131	1 443 960	1 435 686
Melbourne	1 142 563	1 164 500	1 184 030	1 199 271	1 224 180	1 245 368
Brisbane	515 433	528 144	546 472	558 210	569 958	597 930
Adelaide	413 572	425 771	434 476	427 632	439 063	448 444
Perth	457 379	466 206	483 019	486 458	508 104	515 620
Hobart	73 182	74 784	75 439	75 843	77 214	78 570
BALANCE OF STATE						
New South Wales	833 539	847 622	855 969	873 501	896 016	901 982
Victoria	474 854	478 494	482 970	477 922	489 666	489 325
Queensland	620 824	641 027	653 171	673 907	691 712	716 942
South Australia	150 943	149 271	149 536	152 233	153 836	157 184
Western Australia	159 980	166 756	166 308	166 528	173 947	178 334
Tasmania	104 811	106 529	106 892	106 857	110 105	107 205
TOTAL						
New South Wales	2 173 325	2 210 374	2 238 336	2 268 632	2 339 976	2 337 668
Victoria	1 617 417	1 642 994	1 667 000	1 677 193	1 713 846	1 734 693
Queensland	1 136 257	1 169 171	1 199 643	1 232 117	1 261 670	1 314 872
South Australia	564 515	575 042	584 012	579 865	592 899	605 628
Western Australia	617 359	632 962	649 327	652 986	682 051	693 954
Tasmania	177 993	181 313	182 331	182 700	187 319	185 775
Northern Territory	54 318	58 950	59 392	56 798	62 491	63 701
Australian Capital Territory	104 761	108 001	110 266	111 824	115 534	119 289
Australia(a)	6 445 945	6 578 807	6 690 307	6 762 115	6 955 786	7 055 580

EXPLANATORY NOTES

INTRODUCTION

1 This quarterly publication contains estimates of the resident populations (ERP) of Australia and the States and Territories based on the final results of the Census of Population and Housing held on 6 August 1996 (with various adjustments described in paragraph 4). The publication also contains estimates of the number of households by household size as well as the latest available statistics of births, deaths (including infant deaths), marriages, divorces and overseas and interstate migration. In addition, the publication includes estimates of the resident population by age, marital status and country of birth as well as experimental estimates of the Aboriginal and Torres Strait Islander population.

2 Following the 1992 amendments to the Acts Interpretation Act to include the Indian Ocean Territories of Christmas Island and the Cocos (Keeling) Islands as part of geographic Australia, population estimates commencing from September quarter 1993 include estimates for these two territories. To reflect this change, another category of the State and Territory level has been created, known as Other Territories. Other Territories include Jervis Bay Territory, previously included with the Australian Capital Territory, as well as Christmas Island and the Cocos (Keeling) Islands, previously excluded from population estimates for Australia. Data for Other Territories, while not detailed separately, are included in Australia totals commencing from September quarter 1993.

POPULATION AND COMPONENTS OF POPULATION CHANGE

3 Australia's population estimates for the period since 1971 are compiled according to the place of usual residence of the population. An explanation of the place of usual residence conceptual basis for population estimates is given in *Population Estimates: Concepts, Sources and Methods* (Cat. no. 3228.0).

METHOD OF ESTIMATION

4 The estimates of the population of Australia and the States and Territories at the date of the Census of Population and Housing are census counts based on place of usual residence adjusted for underenumeration and the number of Australian residents estimated to have been temporarily overseas at the time of the census.

5 Quarterly estimates of the Australian population are obtained by adding to the population at the beginning of each period components of natural increase (on a usual residence basis) and net overseas migration. For the States and Territories, account is also taken of estimated interstate movements involving a change of usual residence. After each census estimates are made for the preceding intercensal period by incorporating an additional quarterly adjustment (intercensal discrepancy) to ensure that the total intercensal increase agrees with the difference between the estimated resident population at the two respective census dates.

NATURAL INCREASE: BIRTHS AND DEATHS

6 In this publication births and deaths data are presented by State and Territory of usual residence. For preliminary estimates, births and deaths by quarter of registration are used as a proxy for quarter of occurrence. For revised estimates a factor has been applied to the number of occurrences to allow for those occurrences which are yet to be registered. For final estimates after 30 June 1991 year/quarter of occurrence data are used. The births and deaths data detailed in the *Components of population* section of this publication are shown by year of occurrence for revised and final data and year/quarter of registration for preliminary data which may affect analysis of relevant tables.

EXPLANATORY NOTES

- NET ESTIMATED OVERSEAS MIGRATION **7** Figures are based on net permanent and long-term overseas movements with State and Territory not stated allocated pro rata. Short-term movements are excluded. The estimates from July 1976 onwards include an adjustment for the net effect of category jumping. This adjustment is necessary because net permanent and long-term migration figures can be affected by changes in travel intentions from short-term to permanent/long-term or vice versa. For example, an Australian resident departing for a short-term visit overseas (stating that he/she intends to stay abroad for less than 12 months) in fact stays 12 or more months, thereby changing his/her travel category from short-term to long-term. Prior to December quarter 1989, adjustments for category jumping were only made to revised population estimates. These adjustments are now also included in preliminary estimates. For further details see *Population Estimates: Concepts, Sources and Methods* (Cat. no. 3228.0).
- NET ESTIMATED INTERSTATE MIGRATION **8** Estimates of interstate migration since June 1986 have been derived from latest census data on interstate movement in the preceding one year and unidentified information on interstate changes of address advised to the Health Insurance Commission in the process of administering Medicare.
- RATES OF POPULATION GROWTH **9** These express population change over a period as a proportion (%) of the population at the beginning of the period.
- EXPERIMENTAL ESTIMATES OF ABORIGINAL AND TORRES STRAIT ISLANDER POPULATION **10** Estimates of the Indigenous population are experimental in that the standard approach to population estimation is not possible because satisfactory data on births, deaths and internal migration are not generally available. Furthermore, there is significant intercensal volatility in census counts of the Indigenous population, thus adding to the problem of estimating the true Indigenous population. This volatility can in part be attributed to changes in the propensity of persons to identify as being of Indigenous origin. As a result, a method based on the use of life tables is used to produce time series data. For further details see *Experimental Estimates of the Aboriginal and Torres Strait Islander Population* (Cat. no. 3230.0).
- EXPERIMENTAL PROJECTIONS OF ABORIGINAL AND TORRES STRAIT ISLANDER POPULATION **11** Experimental estimates of the Indigenous population as at 30 June 1996 are used as the base population for projections of the Indigenous population to 30 June 2006. A low and a high projection series have been generated, and respectively imply a low and high overall growth rate of the Indigenous population. The low series uses a nil change in propensity to identify assumption based on the premise that the Indigenous population (as recorded in the 1996 Census) will only change as a result of natural increase. The high series uses a change in propensity to identify assumption based on the increase in the Indigenous population observed between the 1991 and 1996 Censuses which cannot be attributed to natural increase. For further details see *Experimental Projections of the Aboriginal and Torres Strait Islander Population* (Cat. no. 3231.0).
- ESTIMATED RESIDENT HOUSEHOLDS **12** Estimates of households are based on the estimated resident population series, to which propensities to form households are applied. These propensities were estimated from the Census of Population and Housing, and updated using the monthly Labour Force Survey. A detailed description of the method used to produce household estimates is contained in *Household Estimates 1986, 1991–94* (Cat. no. 3229.0).

EXPLANATORY NOTES

MARRIAGES AND DIVORCES	<p>13 All marriage and divorce data are shown by State or Territory of registration. While divorce data are presented by year/quarter of occurrence, marriage data are presented by year/quarter of registration.</p> <p>14 Divorce data for States and Territories are affected by persons applying to the nearest Family Court rather than the court in their State or Territory of usual residence. The Canberra registry of the Family Court of Australia is particularly affected as it serves, in addition to the Australian Capital Territory, a large area of south-eastern New South Wales and part of Victoria. Around 55% of divorces granted in the Australian Capital Territory are to applicants who are not usual residents of the Territory. The number of divorces granted and the crude divorce rate for the Australian Capital Territory therefore does not accurately reflect the incidence of divorce among Australian Capital Territory residents.</p>
OVERSEAS ARRIVALS AND DEPARTURES ESTIMATION METHOD	<p>15 Overseas arrival and departure statistics are derived from a combination of full enumeration and sampling. All permanent movements and all movements with a duration of stay of one year or more are fully enumerated and processed. All movements with a duration of stay of less than one year are sampled. Statistics relating to these movements are therefore estimates which may differ from statistics which would have been obtained if details of all these movements had been processed.</p>
COUNTRY OF BIRTH	<p>16 The classification of countries in this publication is the Australian Standard Classification of Countries for Social Statistics (ASCCSS). For more detailed information refer to the ABS publication <i>Australian Standard Classification of Countries for Social Statistics</i> (Cat. no. 1269.0).</p> <p>17 Political developments in Europe and the former USSR have resulted in a number of changes to the ASCCSS. These changes have affected some of the categories in this publication and are detailed in Revisions 1.01, 1.02 and 1.03 of the ASCCSS.</p> <p>18 Overseas migration statistics by country of birth have certain limitations. For instance, it is not possible to separately identify England, Scotland and Wales (United Kingdom).</p>
ROUNDING	<p>19 In this publication population estimates and their components have sometimes been rounded to the nearest hundred. Neither rounded figures nor unrounded figures should be assumed to be accurate to the last digit shown.</p> <p>20 Where figures have been rounded, discrepancies may occur between sums of component items and totals.</p>

EXPLANATORY NOTES

RELATED PUBLICATIONS

- 21** Other ABS publications which may be of interest to users include:
- *Australian Demographic Trends* (Cat. no. 3102.0)
 - *Births, Australia* (Cat. no. 3301.0)
 - *Deaths, Australia* (Cat. no. 3302.0)
 - *Demography* (Cat. no. 3311.1–8)—State and Territory specific publications
 - *Estimated Resident Population by Country of Birth, Age and Sex* (Cat. no. 3221.0)—issued annually to 1994
 - *Experimental Estimates of the Aboriginal and Torres Strait Islander Population* (Cat. no. 3230.0)
 - *Experimental Projections of the Aboriginal and Torres Strait Islander Population, 1996 to 2006* (Cat. no. 3231.0)
 - *Household Estimates, Australia* (Cat. no. 3229.0)
 - *Marriages and Divorces, Australia* (Cat. no. 3310.0)—includes data on the marital status of the estimated resident population of Australia
 - *Migration, Australia* (Cat. no. 3412.0)—includes data on the country of birth of the estimated resident population of Australia
 - *Overseas Arrivals and Departures, Australia* (Cat. no. 3401.0)—issued monthly
 - *Population by Age and Sex: Australian States and Territories* (Cat. no. 3201.0)
 - *Population Estimates: Concepts, Sources and Methods* (Cat. no. 3228.0)
 - *Population Projections* (Cat. no. 3222.0).

ADDITIONAL STATISTICS AVAILABLE

22 In most cases, the ABS can also provide information which is not published. This information may be made available in one or more of the following forms: microfiche, photocopy, data tape, floppy disk, computer printout or clerically extracted tabulation.

23 Current publications produced by the ABS are listed in the *Catalogue of Publications and Products, Australia* (Cat. no. 1101.0). The ABS also issues, on Tuesdays and Fridays, a *Release Advice* (Cat. no. 1105.0) which lists publications to be released in the next few days. Both are available from any ABS office.

24 Statistics of overseas arrivals and departures and related data are also published regularly by the Department of Immigration and Multicultural Affairs (see that Department's quarterly publication, *Immigration Update*) and by the Bureau of Tourism Research (on international travel and tourism).

SYMBOLS AND OTHER USAGES

ABS	Australian Bureau of Statistics
ACT	Australian Capital Territory
n.a.	not available
n.f.d.	not further defined
n.y.a.	not yet available
p	preliminary figure or series subject to revision
r	figures or series revised since previous issue
..	not applicable

GLOSSARY

.....

Age-specific fertility rates	Age-specific fertility rates are the number of live births (occurred or registered) during the calendar year, according to age of mother, per 1,000 of the female estimated resident population of the same age at 30 June. For calculating these rates, births to mothers under 15 are included in the 15–19 age group, and births to mothers aged 50 and over are included in the 45–49 age group. Pro rata adjustment is made in respect of births for which age of mother is not given.
Average household size	Average household size refers to the number of persons per household in private dwellings.
Birth	The delivery of a child, irrespective of the duration of pregnancy, who, after being born, breathes or shows any other evidence of life such as heartbeat.
Category jumping	Category jumping is the term used to describe changes in travel intentions from short-term to permanent/long-term or vice versa. Category jumping consists of two components—an Australian resident component and an overseas visitor component. The Australian resident component of category jumping for a reference quarter is estimated by comparing the number of residents departing short-term in that quarter with all residents who left in that quarter and return in the following 12 months, to obtain the net number of Australian residents who jump category. Similarly, the number of overseas visitors arriving short-term in a quarter is compared with all overseas visitors who arrived in that quarter and depart in the following 12 months, to obtain the net number of overseas visitors who jump category. Estimates of category jumping are derived by subtracting the Australian resident component from the overseas visitor component.
Category of movement	<p>Overseas arrivals and departures are classified according to length of stay (in Australia or overseas), recorded in months and days by travellers on passenger cards. There are three main categories of movement:</p> <ul style="list-style-type: none">▪ permanent movements;▪ long-term movements (one year or more); and▪ short-term movements (less than one year). <p>A significant number of travellers (i.e. overseas visitors to Australia on arrival and Australian residents going abroad) state exactly 12 months or one year as their intended period of stay. Many of them stay for less than that period and on their departure from, or return to, Australia are therefore classified as short-term. Accordingly, in an attempt to maintain consistency between arrivals and departures, movements of travellers who report their actual or intended period of stay as being one year exactly are randomly allocated to long-term or short-term in proportion to the number of movements of travellers who report their actual length of stay as up to one month more, or one month less, than one year.</p>
Crude divorce rate	The crude divorce rate is the number of decrees absolute granted during the calendar year, per 1,000 estimated resident population at 30 June. In the interpretation of this rate, it must be kept in mind that a large and varying proportion of the population used in the denominator is unmarried or is below the minimum age of marriage.
Crude marriage rate	The crude marriage rate is the number of marriages registered during the calendar year, per 1,000 estimated resident population at 30 June. In the interpretation of this rate, it must be kept in mind that a large and varying proportion of the population used in the denominator is below the minimum age of marriage or is already married.
Divorce	Decrees absolute of dissolution of marriage.

.....

GLOSSARY

Estimated resident population (ERP)	<p>Estimated resident population (ERP) are estimates of the Australian population obtained by adding to the estimated population at the beginning of each period the components of natural increase (on a usual residence basis) and net overseas migration. For the States and Territories, account is also taken of estimated interstate movements involving a change of usual residence. After each census, estimates for the preceding intercensal period are revised by incorporating an additional adjustment (intercensal discrepancy) to ensure that the total intercensal increase agrees with the difference between the ERPs at the two respective census dates.</p> <p>Estimates of the resident population are based on adjusted (for underenumeration) census counts by place of usual residence, to which are added the number of Australian residents estimated to have been temporarily overseas at the time of the Census. Overseas visitors in Australia are excluded from this calculation.</p> <p>The concept of ERP links people to a place of usual residence within Australia. Usual residence is that place where each person has lived or intends to live for six months or more from the reference date for data collection.</p>
Former Yugoslav Republics	<p>Consists of Bosnia-Herzegovina, Croatia, the former Yugoslav Republic of Macedonia, Slovenia, the former Yugoslav Republics of Serbia and Montenegro, and Yugoslavia n.f.d.</p>
Household	<p>A household is a group of two or more related or unrelated people who usually reside in the same dwelling, who regard themselves as a household and who make common provision for food or other essentials for living; or a person living in a dwelling who makes provision for his or her own food and other essentials for living, without combining with any other person. Households include group households of unrelated persons, same-sex couple households, single-parent households as well as one-person households.</p> <p>A household usually resides in a private dwelling (including caravans etc. in caravan parks). Persons usually resident in non-private dwellings, such as hotels, motels, boarding houses, jails and hospitals, are not included in household estimates.</p> <p>This definition of a household is consistent with the definition used in the Census. The number of households can be either based on count or estimated resident population.</p>
Household estimate	<p>Household estimate is a measure of the number of households of the usually resident population. It is based on the census count of households which is adjusted for missed households, households of overseas visitors, households of Australian residents where all members were temporarily overseas at the time of the Census and households of Australian residents where all members were not home on census night and spent census night in a non-private dwelling in Australia.</p>
Household population	<p>The household population is the estimated resident population (ERP) that usually lives in private dwellings. It is the ERP less the population that usually lives in non-private dwellings.</p>
Household size	<p>Household size refers to the number of persons in a household.</p>
Infant mortality rate	<p>The number of deaths of children under one year of age in a calendar year per 1,000 live births in the same calendar year.</p>

GLOSSARY



Intercensal discrepancy	Intercensal discrepancy is the difference between two estimates of a census year population, the first based on the latest census and the second arrived at by updating the previous census date estimate with intercensal components of population change which take account of information available from the latest census. It is caused by errors in the start and/or finish population estimates and/or in estimates of births, deaths or migration in the intervening period which cannot be attributed to a particular source.
Long-term arrivals	Long-term arrivals comprise: <ul style="list-style-type: none">▪ overseas visitors who intend to stay in Australia for 12 months or more (but not permanently); and▪ Australian residents returning after an absence of 12 months or more overseas.
Long-term departures	Long-term departures comprise: <ul style="list-style-type: none">▪ Australian residents who intend to stay abroad for 12 months or more (but not permanently); and▪ overseas visitors departing who stayed 12 months or more in Australia.
Marital status	Two separate concepts are measured by the Australian Bureau of Statistics. These are registered marital status and social marital status. They have different personal characteristics and are independent variables with separate classifications. Marital status relates to registered marital status which refers to formally registered marriages or divorces for which the partners hold a certificate. Four categories of marital status are identified: never married, married, widowed and divorced.
Marriage	Under the <i>Australian Marriage Act 1961</i> (Cwlth), a marriage may be celebrated by a minister of religion registered as an authorised celebrant, by a district registrar or by other persons authorised by the Attorney-General. Notice of the intended marriage must be given to the celebrant at least one calendar month but within six calendar months before the marriage. A celebrant must transmit an official certificate of the marriage for registration in the State or Territory in which the marriage took place.
Natural increase	Excess of births over deaths.
Net interstate migration	The difference between the number of persons who have changed their place of usual residence by moving into a given State or Territory and the number who have changed their place of usual residence by moving out of that State or Territory. This difference may be either positive or negative.
Net overseas migration	Net overseas migration is net permanent and long-term overseas migration plus an adjustment for the net effect of category jumping.
Net permanent and long-term overseas movement	The difference between the number of permanent (settler) and long-term overseas arrivals and the number of permanent and long-term overseas departures. Short-term movements are excluded.
Overseas arrivals and departures (OAD)	Overseas arrivals and departures (OAD) refer to the arrival or departure of persons, through Australian airports (or sea ports), which have been recorded. Statistics on OAD relate to the number of movements of travellers rather than the number of travellers (i.e. the multiple movements of individual persons during a given reference period are all counted).



GLOSSARY

Permanent arrivals (settlers)	<p>Permanent arrivals (settlers) comprise:</p> <ul style="list-style-type: none">▪ travellers who hold migrant visas (regardless of stated intended period of stay);▪ New Zealand citizens who indicate an intention to settle; and▪ those who are otherwise eligible to settle (e.g. overseas born children of Australian citizens). <p>This definition of settlers is used by the Department of Immigration and Multicultural Affairs (DIMA). Prior to 1985 the definition of settlers used by the Australian Bureau of Statistics (ABS) was the stated intention of the traveller only. Numerically the effect of the change in definition is insignificant. The change was made to avoid the confusion caused by minor differences between data on settlers published separately by the ABS and the DIMA.</p>
Permanent departures	<p>Permanent departures comprise movements of persons who on departure state that they do not intend to return to Australia.</p>
Population growth	<p>For Australia, population growth is the sum of natural increase and net overseas migration. For States and Territories, population growth also includes net interstate migration. After the Census, intercensal population growth also includes an allowance for intercensal discrepancy.</p>
Short-term arrivals	<p>Short-term arrivals comprise:</p> <ul style="list-style-type: none">▪ overseas visitors who intend to stay in Australia for less than 12 months; and▪ Australian residents returning after a stay of less than 12 months overseas.
Short-term departures	<p>Short-term departures comprise:</p> <ul style="list-style-type: none">▪ Australian residents who intend to stay abroad for less than 12 months; and▪ overseas visitors departing after a stay of less than 12 months in Australia.
Standardised death rate	<p>Standardised death rates enable the comparison of death rates between populations with different age structures by relating them to a standard population. The ABS standard populations relate to the years ending in 1 (eg 1991). The current standard population is all persons in the 1991 Australian population. They are expressed per 1,000 or 100,000 persons. There are two methods of calculating standardised death rates:</p> <ul style="list-style-type: none">▪ The <i>direct method</i>—this is used when the populations under study are large and the age-specific death rates are reliable. It is the overall death rate that would have prevailed in the standard population if it had experienced at each age the death rates of the population under study.▪ The <i>indirect method</i>—this is used when the populations under study are small and the age-specific death rates are unreliable or not known. It is an adjustment to the crude death rate of the standard population to account for the variation between the actual number of deaths in the population under study and the number of deaths which would have occurred if the population under study had experienced the age-specific death rates of the standard population. <p>Wherever used, the definition adopted is indicated.</p>
State or Territory of registration	<p>State or Territory of registration refers to the State or Territory where the marriage was registered or the divorce was granted.</p>

GLOSSARY

State or Territory and Statistical Local Area (SLA) of usual residence State or Territory and Statistical Local Area (SLA) of usual residence refers to the State or Territory and SLA of usual residence of:

- the population (estimated resident population);
- the mother (birth collection); or
- the deceased (death collection).

In the case of overseas movements, State or Territory of usual residence refers to the State or Territory regarded by the traveller as the one in which he/she lives or has lived. State or Territory of intended residence is derived from the intended address given by settlers, and by Australian residents returning after a journey abroad. Particularly in the case of the former, this information does not necessarily relate to the State or Territory in which the traveller will eventually establish a permanent residence.

Total fertility rate The sum of age-specific fertility rates (live births at each age of mother per female population of that age). It represents the number of children a woman would bear during her lifetime if she experienced current age-specific fertility rates at each age of her reproductive life.

SELF-HELP ACCESS TO STATISTICS

- CPI INFOLINE* For current and historical Consumer Price Index data, call 1902 981 074 (call cost 75c per minute).
- DIAL-A-STATISTIC* For the latest figures for National Accounts, Balance of Payments, Labour Force, Average Weekly Earnings, Estimated Resident Population and the Consumer Price Index call 1900 986 400 (call cost 75c per minute).
- INTERNET* www.abs.gov.au
- LIBRARY* A range of ABS publications is available from public and tertiary libraries Australia-wide. Contact your nearest library to determine whether it has the ABS statistics you require.

WHY NOT SUBSCRIBE?

- PHONE* +61 1300 366 323
- FAX* +61 03 9615 7848

CONSULTANCY SERVICES

ABS offers consultancy services on a user pays basis to help you access published and unpublished data. Data that is already published and can be provided within 5 minutes is free of charge. Statistical methodological services are also available. Please contact:

<i>INQUIRIES</i>	<i>City</i>	<i>By phone</i>	<i>By fax</i>
	Canberra	02 6252 6627	02 6207 0282
	Sydney	02 9268 4611	02 9268 4668
	Melbourne	03 9615 7755	03 9615 7798
	Brisbane	07 3222 6351	07 3222 6283
	Perth	08 9360 5140	08 9360 5955
	Adelaide	08 8237 7400	08 8237 7566
	Hobart	03 6222 5800	03 6222 5995
	Darwin	08 8943 2111	08 8981 1218

POST Client Services, ABS, PO Box 10, Belconnen ACT 2616

EMAIL client.services@abs.gov.au



2310100006993
ISSN 1031-055X

RRP \$19.50