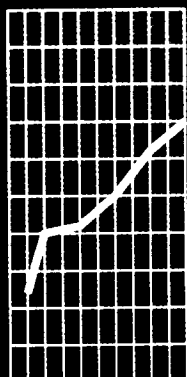




January 1998

EMBARGO: 11:30 AM (CANBERRA TIME) MON 12 JAN 1998

Tasmanian Statistical Indicators



ABS Catalogue No. 1303.6

**TASMANIAN STATISTICAL INDICATORS
JANUARY 1998**

**Denis W. Rogers
Regional Director, Tasmania**

CONTENTS

	Page
MAIN FEATURES	v
TABLES	
1 Population	1
2 Births, deaths and marriages registered	1
3 Labour force status	2
4 Labour force status by region, males	3
5 Labour force status by region, females	4
6 Labour force status by region, persons	5
7 Teenage labour market	6
8 All employed persons by occupation	7
9 Employed wage and salary earners, sector and industry	8
10 Average hours worked	8
11 Job vacancies	9
12 Industrial disputes	9
13 Average weekly earnings of employees	10
14 Weekly award rates of pay indexes, full-time adult employees	10
15 Summary of annual movements in wages and prices	11
16 House price index numbers, Hobart	11
17 Consumer price index, Hobart and eight capital cities combined	12
18 Price index of materials used in building other than house building, Hobart	13, 14
19 Production of selected commodities	15
20 Livestock slaughtering: original	16
21 Livestock slaughtering: seasonally adjusted and trend	16
22 Meat production	17
23 Principal mineral concentrates produced	17
24 Sawmills and plywood mills, logs delivered and timber produced	18
25 Chipping and grinding of wood	18
26 Logs delivered for milling or chipping	19
27 Building approvals	20

INQUIRIES

- *for further information about statistics in this publication and the availability of related unpublished statistics, contact the Hobart office of the ABS on (03) 6222 5800.*
- *for information about other ABS statistics and services, please refer to the back cover of this publication.*

	Page
28 Secured housing commitments	20
29 Banking statistics	21
30 Private new capital expenditure by type of asset	21
31 Passenger arrivals and departures, Tasmania	22
32 Total passenger arrivals by air and sea, Tasmania	22
33 Accommodation statistics	23
34 Registrations of new motor vehicles	24
35 Turnover of retail establishments at current prices	24
36 Major Statistical Indicators—Australia and State comparisons	25
EXPLANATORY NOTES	26

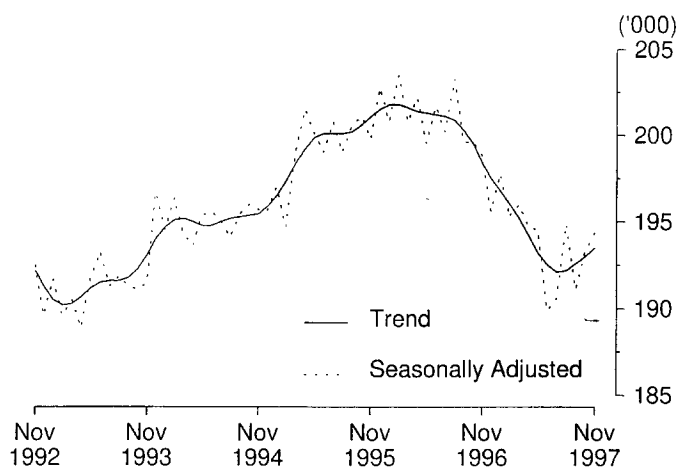
MAIN FEATURES

EMPLOYMENT

State comparisons
trend estimates

The Australian and State *trend* series comparisons are given on page 25. There was a decrease of 2.5% in Tasmania's employment over the year to November 1997. The largest percentage increase in employment was in Queensland (2.9%). Next followed Western Australia (2.5%), South Australia (0.8%) and Victoria (0.5%). New South Wales had no change in employment.

EMPLOYMENT, TASMANIA



Regional comparisons
original terms

In the Hobart and Southern Statistical Divisions the estimate of employment in *original* terms in September 1997 was 94,500, and compares with 100,100 in September 1996. The estimate of employment in the Northern Statistical Division in September 1997 was 53,700 and compares with 58,700 in September 1996. The estimate of employment in the Mersey-Lyell Statistical Division was 43,500 in September 1997, and compares with 41,300 in September 1996. (See tables 3-8, pages 2-7.)

THE LABOUR FORCE

Trend estimates

There were an estimated 218,200 persons (based on *trend* estimates) in the labour force in November 1997 and an estimated 369,800 civilian Tasmanians aged 15 years or more, yielding a labour force participation rate of 59.0%. This compares with 60.1% in November 1996.

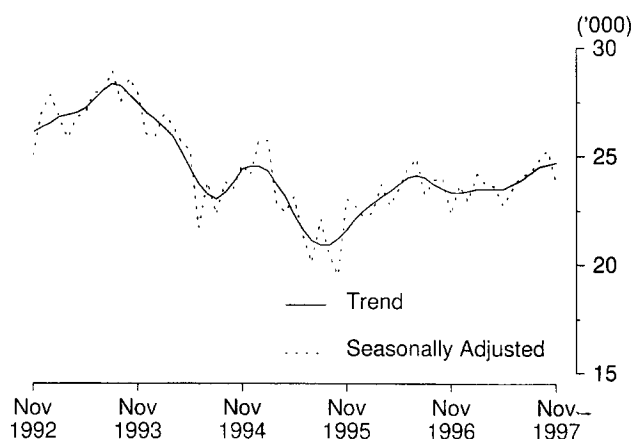
For males, the *trend* estimate of the participation rate was 70.1%, compared with 70.7% for November 1996. For females, the *trend* estimate of the participation rate was 48.3%, compared with 49.8% in November 1996.

(See table 3, page 2.)

UNEMPLOYMENT

Trend estimates The *trend* estimate of the number of unemployed persons in Tasmania for November 1997 was 24,700. This compares with 23,300 for November 1996. The *trend* estimate of the unemployment rate of 11.3% in November 1997 compares with 10.5% in November 1996. (See tables 3–8, pages 2–7.)

UNEMPLOYMENT, TASMANIA



AWARD RATES OF PAY INDEXES

Original terms The movement from June 1996 to June 1997 of weekly award rates of pay indexes for Tasmania was 1.1% for full-time adult females and 0.7% for full-time adult males, for a combined annual increase of 0.8%. For Australia, the figures were 1.9% for females and 1.2% for males, for a combined annual increase of 1.4%.

For full-time adult female employees in Tasmania, the largest industry increases over this 12 month period occurred in the Transport and storage industry (6.9%); and the Recreational, personal and other services industry (2.3%).

For the same period for full-time adult male employees in Tasmania, the largest industry increases occurred in the Recreation, personal and other services industry (1.9%); and the Transport and storage industry (1.6%).

The largest occupation increases over the same period for full-time adult female employees occurred in Para-professionals (2.6%), Tradespersons (1.2%) and Clerks (1.2%).

For full-time adult male employees the largest occupation increase over the period occurred in Clerks (0.9%); and Salespersons and personal service workers (0.9%).
(See table 15, page 11.)

HOUSE PRICE INDEXES

Original terms The price index for established houses (based on actual sales) in Hobart fell by 1.1% in the September quarter 1997, resulting in a decrease of 5.1% for the year ending September 1997. Canberra was the only other capital to record a decrease for the year with -1.7%. The largest increases in the index for the year ending September 1997 were recorded in Melbourne (8.5%) and Sydney (5.2%). The smallest increase for the same period was recorded in Brisbane (0.2%).

The weighted average for the eight capital cities increased by 1.8% for the September quarter 1997 and 4.3% for the year ending September 1997.

Project home prices remained steady in Hobart for the year ending September 1997. Capital cities recording increases in the index for the year ending September 1997 were Darwin (2.5%) Sydney (2.3%) Melbourne (1.0%) and Adelaide (0.5%). Decreases were recorded by Brisbane (-1.5%) Perth (-0.2%) and Canberra (-0.4%). The weighted average for the eight capital cities increased by 0.5% over the same period.

(Source: *House Price Indexes: Eight Capital Cities*, ABS catalogue number 6416.0)

LIVESTOCK SLAUGHTERING

Trend estimates In October 1997, the *trend* estimate for the slaughtering of cattle and calves in Tasmania was 0.6% higher than the previous month. Over the same period, the number of sheep and lambs slaughtered increased by 1.3% while the number of pigs slaughtered remained virtually unchanged.

In October 1997, the *trend* estimate of the number of cattle and calves slaughtered was 24,100 which was 15.8% above the number slaughtered in October 1996.

The *trend* estimate for the slaughtering of sheep and lambs was 76,900 in October 1997, which was 31.8% above the number slaughtered in October 1996. This was the fourteenth successive monthly increase in the number of sheep and lambs slaughtered in Tasmania, and 16.5% above the *trend* estimate for October 1995.

The *trend* estimate of 6,800 pigs slaughtered in October 1997 was 6.5% above the number slaughtered in October 1996, and 8.7% below the *trend* estimate for October 1995.

(See table 21, page 16)

BUILDING APPROVALS

Original terms There were 163 dwelling units approved in Tasmania during October 1997. This was 9.4% above the September 1997 figure of 149 and a decrease of 14.2% on the number recorded for October 1996 (190).

For the twelve months ended October 1997 there were 1,812 new dwelling units approved, 20.3% below the 2,273 units recorded for the twelve months ended October 1996.

The value of new residential buildings approved, at current prices, in October 1997 was \$13.9 million, slightly above the September 1997 figure and 19.8% below the October 1996 figure.

The value of all building approved, at current prices, in October 1997 was \$28.0 million, 7.0% below the September 1997 figure and 11.0% below the October 1996 figure.
(See table 27, page 20.)

HOUSING FINANCE

Trend estimates The trend estimate for the number of new secured housing finance commitments entered into in Tasmania in October 1997 was 799 dwellings, a slight increase on the previous month's figure of 795, but lower when compared to the October 1996 figure of 1,028.

The value of new commitments has risen steadily since March 1997 to the October 1997 figure of \$60.4 million. However, when compared to the October 1996 value of \$68.5 million, a fall of 11.8% is observed over the twelve month period.

Nationally, the total number of Australian dwelling commitments decreased slightly between September and October 1997, however the value of these commitments increased 0.8% over the same period. When examining the annual change in the number of housing commitments, an increase of 11.7% is observed.
(See table 28, page 20.)

NEW MOTOR VEHICLE REGISTRATIONS

Original Terms There were 1,387 new motor vehicles (excluding motorcycles) registered in Tasmania during October 1997. This was 7.7% below the 1,503 registered in September 1997 and 6.1% above the figure for October 1996 (1,307).

Of the new motor vehicles (excluding motorcycles) registered in October 1997 in Tasmania, 252 were vehicles registered by vehicle rental businesses compared with 547 registered by vehicle rental businesses in September 1997 and 213 in October 1996.
(See table 34, page 24.)

TAXATION

Original terms Taxes, fees and fines collected by Australian governments in the 1996-97 financial year totalled \$162,961 million. The Commonwealth Government collected \$124,638 million, or 76.5% of the total. State and local government collected \$38,323 million, or 23.5% of the total. The largest component of the Commonwealth taxes, fees and fines was income taxes levied on individuals of \$66,278 million, or 53.2% of the total Commonwealth taxes collected.

Tasmanian State and local taxes, fees and fines for the 1996-97 financial year were \$819 million, which is \$1,729 per head of population (based on mean population figures), an increase of 2.4% on the previous year's figure of \$1,689 per head. Tasmanians paid the second lowest amount of State and local taxes, fees and fines per head in 1996-97. In comparison, residents of New South Wales paid \$2,293 per head, the highest of all the States and Territories, while Queenslanders paid \$1,673 per head, the lowest of all States and Territories.

The average (all States and Territories) amount of State and local taxes, fees and fines paid per head in 1996–97 was \$2,073 per head of population, an increase of 6.6% on the 1995–96 figure of \$1,944 per head. Both the level of, and annual increase in Tasmanian State and local taxes, fees and fines per head, is below the national average (all States and Territories).

(Source: *Taxation Revenue: Australia*, ABS catalogue number 5506.0)

PRIVATE

NEW CAPITAL EXPENDITURE

Original terms Total private new capital expenditure in Tasmania for the September quarter 1997 was \$174 million. This was marginally below the \$175 million recorded in the June quarter 1997 and 15.2% above the September quarter 1996 figure of \$151 million.
(See table 30, page 21.)

SURVEY OF TOURIST ACCOMMODATION

Original terms The room occupancy rate for hotels, motels and guest houses in Tasmania for the September quarter 1997 was 39.5%, compared with 38.7% recorded in the September quarter 1996.

The unit occupancy rate for holiday flats, units and houses in Tasmania for the September quarter 1997 was 37.1%, compared with 35.5% recorded in the September quarter 1996.

The site occupancy rate for caravan parks in Tasmania for the September quarter 1997 was 29.4%, a slight increase on the 28.3% recorded in the September quarter 1996.
(See table 33, page 23.)

RETAIL

Original terms In *original* terms, the estimate of retail turnover for Australia in October 1997 was \$11,433.2 million, 5.7% above the figure recorded in October 1996.

In *original* terms, the estimate of retail turnover for Tasmania in October 1997 was \$278.1 million, 7.6% above the figure recorded for October 1996.

Trend estimates The *trend* estimate of retail turnover for Australia in October 1997 was \$11,210.5 million, 5.4% higher than for October 1996.

The *trend* estimate of retail turnover for Tasmania in October 1997 was \$274.5 million, 7.6% higher than the October 1996 figure.
(See table 35, page 24.)

1

POPULATION: Original

Year or quarter	Estimated resident population at end of period	Natural increase ¹	Net estimated migration gain	Total population growth	Annual growth rate ²
	'000	'000	'000	'000	%
Year ended 30 June					
1993	r 471.7	3.1	r - 1.4	1.8	r 0.39
1994	r 473.0	3.1	r - 1.9	1.3	r 0.27
1995	473.7	r 3.0	r - 2.3	r 0.7	r 0.16
1996	r 474.4	r 2.5	- 2.2	r 0.8	r 0.16
1997 p	473.5	2.4	- 3.4	- 0.9	- 0.20
Quarter					
1996					
March	r 474.2	r 0.7	r - 0.8	r 0.1	r 0.11
June	r 474.4	r 0.5	- 0.4	r 0.3	r 0.16
September p	474.5	0.6	- 0.5	r 0.0	r 0.10
December p	474.1	0.6	- 1.1	- 0.4	- 0.01
1997					
March p	473.6	0.7	- 1.1	- 0.5	- 0.13
June p	473.5	0.6	- 0.7	- 0.1	- 0.20

¹ Excess of live births registered over deaths registered (based on usual State of residence).

² Percentage growth from same quarter in previous year.

(Source: Australian Demographic Statistics, ABS catalogue number 3101.0)

2

BIRTHS, DEATHS AND MARRIAGES REGISTERED: Original

Year or quarter	Births		Deaths		Infant mortality ¹		Marriages	
	No.	Rate ²	No.	Rate ²	Deaths	Rate ³	No.	Rate ²
Year ended 31 December								
1992	6 956	14.8	3 722	7.9	43	6.2	3 081	6.5
1993	6 804	14.4	3 618	7.7	37	5.4	3 055	6.5
1994	6 836	14.4	3 909	8.3	46	6.7	2 887	6.1
1995	6 558	13.8	3 739	7.9	36	5.5	2 840	6.0
1996	r 6 431	r 13.6	r 3 878	r 8.2	r 27	r 4.2	2 654	5.6
Quarter								
1996								
March	r 1 767	..	979	..	10	5.7	858	..
June	1 524	..	969	..	6	3.9	789	..
September	r 1 607	..	r 1 028	..	8	5.0	349	..
December	r 1 533	..	902	..	r 3	r 2.0	658	..
1997								
March p	1 521	..	862	..	6	3.9	896	..
June p	1 543	..	973	..	8	5.2	600	..

¹ Registered deaths of children under one year of age.

² Rate per 1,000 of estimated mean population.

³ Rate per 1,000 live births.

(Source: Australian Demographic Statistics, ABS catalogue number 3101.0)

3

LABOUR FORCE STATUS¹: Seasonally adjusted and trend

Month	Seasonally adjusted series				Trend Series			
	Employed	Unemployed	Unemployment rate	Participation rate	Employed	Unemployed	Unemployment rate	Participation rate
	'000	'000	%	%	'000	'000	%	%
MALES								
1996								
November	114.8	12.8	10.1	70.3	114.4	13.9	10.8	70.7
December	113.0	14.7	11.5	70.3	113.7	14.0	10.9	70.3
1997								
January	113.4	13.6	10.7	69.9	113.1	14.1	11.1	70.1
February	112.1	14.7	11.6	69.8	112.7	14.2	11.2	69.9
March	113.4	14.0	11.0	70.1	112.3	14.3	11.3	69.7
April	111.5	15.4	12.1	69.8	111.9	14.3	11.4	69.5
May	112.3	13.4	10.6	69.2	111.6	14.3	11.3	69.3
June	110.6	13.7	11.0	68.4	111.6	14.2	11.3	69.2
July	110.4	15.4	12.2	69.3	111.7	14.2	11.3	69.3
August	113.1	14.0	11.0	69.9	111.9	14.3	11.4	69.5
September	112.9	13.4	10.6	69.5	112.2	14.5	11.5	69.7
October	112.5	15.6	12.2	70.4	112.4	14.7	11.6	69.9
November	119.5	15.1	11.9	69.8	112.5	15.0	11.7	70.1
FEMALES								
1996								
November	84.0	9.4	10.1	49.8	84.1	9.4	10.1	49.8
December	82.6	9.0	9.8	48.8	83.8	9.4	10.1	49.6
1997								
January	84.5	9.3	9.9	49.9	83.6	9.3	10.0	49.5
February	83.3	9.5	10.3	49.4	83.3	9.3	10.0	49.3
March	82.6	9.7	10.5	49.2	82.9	9.2	10.0	49.0
April	83.3	8.3	9.1	48.7	82.3	9.2	10.0	48.7
May	82.3	9.3	10.2	48.8	81.6	9.3	10.2	48.4
June	79.4	9.8	11.0	47.5	80.9	9.5	10.5	48.1
July	80.1	8.7	9.8	47.3	80.5	9.7	10.8	48.0
August	81.8	10.2	11.0	48.9	80.3	9.9	11.0	48.0
September	78.2	11.4	12.7	47.7	80.4	10.0	11.0	48.0
October	80.8	9.7	10.7	48.1	80.6	9.9	11.0	48.2
November	82.5	8.7	9.6	48.5	81.0	9.8	10.8	48.3
TOTAL								
1996								
November	198.8	22.3	10.1	59.9	198.4	23.3	10.5	60.1
December	195.6	23.7	10.8	59.4	197.5	23.3	10.6	59.8
1997								
January	197.8	22.9	10.4	59.8	196.8	23.4	10.6	59.6
February	195.4	24.2	11.0	59.5	196.0	23.5	10.7	59.4
March	196.0	23.7	10.8	59.5	195.2	23.5	10.7	59.2
April	194.7	23.6	10.8	59.1	194.2	23.5	10.8	58.9
May	194.5	22.7	10.4	58.8	193.2	23.5	10.9	58.7
June	189.9	23.5	11.0	57.8	192.5	23.7	11.0	58.5
July	190.6	24.1	11.2	58.1	192.1	23.9	11.1	58.5
August	194.9	24.2	11.0	59.2	192.2	24.2	11.2	58.5
September	191.1	24.8	11.5	58.4	192.6	24.5	11.3	58.7
October	193.3	25.3	11.6	59.1	193.0	24.6	11.3	58.8
November	194.4	23.8	10.9	59.0	193.5	24.7	11.3	59.0

¹ For explanation of terms and concepts, refer to *Labour Force, Australia*, ABS catalogue number 6203.0.
(Source: *Labour Force Australia*, ABS catalogue number 6203.0)

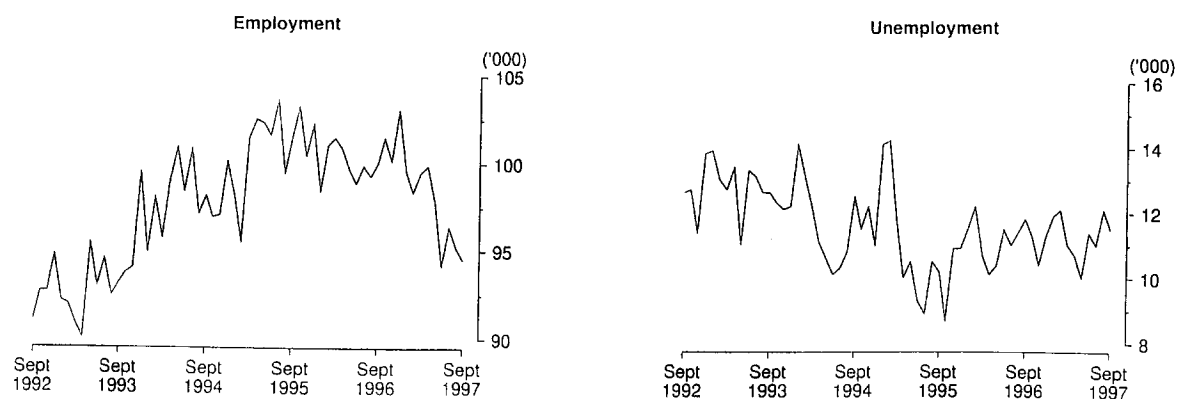
4

LABOUR FORCE STATUS BY REGION, MALES^{1, 2}: **Original**

Month		Total employed '000	Total unemployed '000	Unemployment rate %	Participation rate %
HOBART AND SOUTHERN STATISTICAL DIVISIONS					
1994	September	54.3	7.9	12.6	70.6
1996	September	56.2	6.7	10.7	70.7
1997	July	53.9	6.9	11.3	67.3
	August	53.2	7.2	11.9	67.4
	September	53.5	6.3	10.6	68.7
NORTHERN STATISTICAL DIVISION					
1994	September	31.9	4.4	12.2	71.5
1996	September	34.5	3.9	10.2	74.5
1997	July	31.7	4.2	11.6	70.1
	August	32.1	4.2	11.5	69.9
	September	33.0	4.4	11.7	69.2
MERSEY-LYELL STATISTICAL DIVISION					
1994	September	26.6	3.3	10.9	72.6
1996	September	24.5	3.9	13.6	69.5
1997	July	25.4	3.7	12.8	72.5
	August	25.3	2.5	9.1	69.4
	September	25.9	2.7	9.6	70.4
TASMANIA					
1994	September	112.8	15.5	12.1	71.3
1996	September	115.2	14.5	11.2	71.5
1997	July	111.1	14.2	11.7	69.2
	August	110.6	13.9	11.2	68.5
	September	112.5	13.4	10.7	69.3

¹ For explanation of terms and concepts, refer to *Labour Force, Australia*, ABS catalogue number 6203.0.

² Data in this table are original series, i.e. they are not part of a seasonally adjusted or a trend series. Accordingly, care should be exercised when using these data. New monthly data from each quarter (March, June, September and December) are published two months after the quarter. (Source: Labour Force Estimates—microfiche tables.)

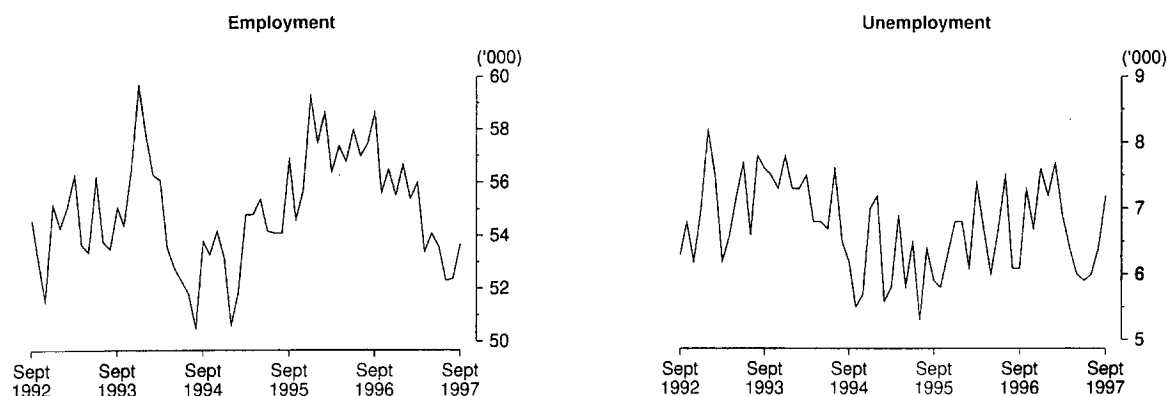
Hobart and Southern Statistical Divisions—Persons: **Original**

		Total employed	Total unemployed	Unemployment rate	Participation rate
Month		'000	'000	%	%
HOBART AND SOUTHERN STATISTICAL DIVISIONS					
1994	September	43.9	4.6	9.5	52.0
1996	September	44.0	5.0	10.3	52.1
1997	July	42.5	4.2	8.9	49.7
	August	41.9	4.9	10.5	50.2
	September	41.0	5.2	11.3	51.2
NORTHERN STATISTICAL DIVISION					
1994	September	21.9	1.7	7.3	45.5
1996	September	24.2	2.2	8.3	50.3
1997	July	20.6	1.8	8.2	42.9
	August	20.3	2.2	9.9	43.6
	September	20.6	2.8	12.0	43.6
MERSEY-LYELL STATISTICAL DIVISION					
1994	September	17.4	2.5	12.4	48.3
1996	September	16.8	2.0	10.9	45.9
1997	July	17.4	2.6	13.2	47.9
	August	18.0	2.5	12.2	48.0
	September	17.6	3.1	15.1	47.1
TASMANIA					
1994	September	83.2	8.8	9.6	49.4
1996	September	84.9	9.3	9.8	50.2
1997	July	80.5	8.6	9.7	47.4
	August	80.3	9.7	10.7	47.9
	September	79.2	11.2	12.3	48.1

¹ For explanation of terms and concepts, refer to *Labour Force, Australia*, ABS catalogue number 6203.0.

² Data in this table are original series, i.e. they are not part of a seasonally adjusted or a trend series. Accordingly, care should be exercised when using these data. New monthly data from each quarter (March, June, September and December) are published two months after the quarter. (Source: Labour Force Estimates—microfiche tables.)

Northern Statistical Division—Persons: **Original**



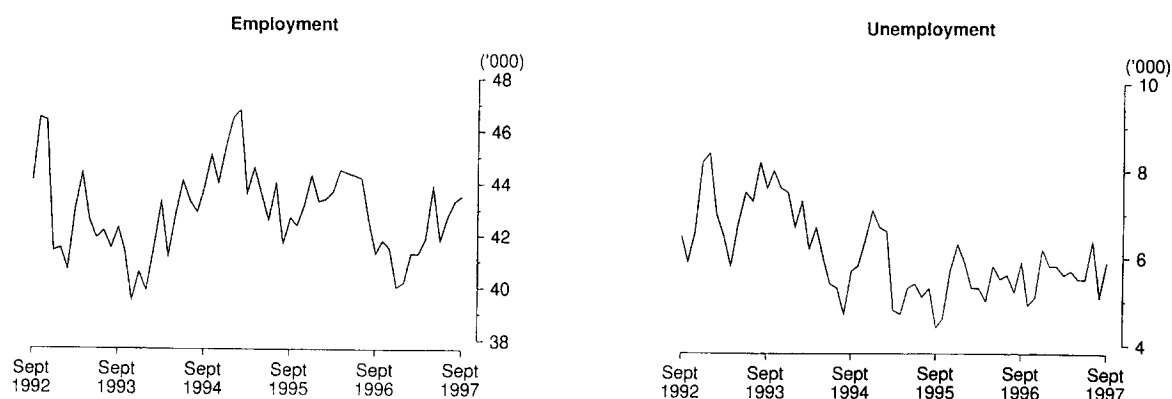
6

LABOUR FORCE STATUS BY REGION, PERSONS^{1, 2}: **Original**

Month		Total employed '000	Total unemployed '000	Unemployment rate %	Participation rate %
HOBART AND SOUTHERN STATISTICAL DIVISIONS					
1994	September	98.2	12.5	11.3	61.0
1996	September	100.1	11.8	10.5	61.1
1997	July	96.4	11.0	10.3	58.3
	August	95.2	12.1	11.3	58.6
	September	94.5	11.5	10.9	59.8
NORTHERN STATISTICAL DIVISION					
1994	September	53.8	6.2	10.3	58.4
1996	September	58.7	6.1	9.4	62.3
1997	July	52.3	6.0	10.3	56.4
	August	52.4	6.4	10.9	56.8
	September	53.7	7.2	11.8	56.5
MERSEY-LYELL STATISTICAL DIVISION					
1994	September	43.9	5.7	11.5	60.4
1996	September	41.3	5.9	12.5	57.6
1997	July	42.7	6.4	12.9	59.9
	August	43.3	5.1	10.5	58.3
	September	43.5	5.9	11.9	58.3
TASMANIA					
1994	September	196.0	24.3	11.0	60.2
1996	September	200.1	23.8	10.6	60.7
1997	July	191.5	23.4	10.9	58.1
	August	190.9	23.6	11.0	58.0
	September	191.7	24.6	11.4	58.5

¹ For explanation of terms and concepts, refer to *Labour Force, Australia*, ABS catalogue number 6203.0.

² Data in this table are original series, i.e. they are not part of a seasonally adjusted or a trend series. Accordingly, care should be exercised when using these data. New monthly data from each quarter (March, June, September and December) are published two months after the quarter. (Source: Labour Force Estimates—microfiche tables.)

Mersey-Lyell Statistical Division—Persons: **Original**

Month		Employed		Unemployed		Labour force	Not in labour force	Civilian population aged 15-19	Unemployment rate	Unemployment population ratio	Participation rate
		Full-time	Total	Looking for full-time work	Total						
		'000	'000	'000	'000	'000	'000	'000	%	%	%
ATTENDING NEITHER SCHOOL NOR A TERTIARY INSTITUTION FULL TIME											
1994	November	5.6	8.8	2.8	3.0	11.8	1.2	13.0	25.7	23.2	90.6
1996	November	6.8	9.0	2.1	2.3	11.4	1.5	12.9	20.6	18.2	88.5
1997	September	5.5	8.1	3.2	3.2	11.3	1.5	12.8	28.1	24.8	88.2
	October	5.7	7.9	2.6	2.8	10.7	1.4	12.2	26.4	23.3	88.2
	November	5.9	7.8	2.4	2.4	10.2	2.2	12.3	23.8	19.6	82.5
ATTENDING SCHOOL OR A TERTIARY INSTITUTION FULL TIME											
1994	November	—	5.6	0.7	1.6	7.2	13.9	21.1	22.0	7.5	34.1
1996	November	0.1	5.0	0.4	1.4	6.4	14.9	21.4	21.6	6.5	30.0
1997	September	—	5.4	0.9	1.9	7.3	14.4	21.7	26.2	8.8	33.8
	October	0.1	6.4	0.7	1.9	8.3	14.0	22.3	23.3	8.7	37.3
	November	0.1	6.4	0.4	1.7	8.0	14.1	22.1	20.8	7.5	36.2
TOTAL											
1994	November	5.6	14.4	3.5	4.6	19.0	15.1	34.1	24.3	13.5	55.7
1996	November	6.9	14.1	2.5	3.7	17.8	16.4	34.2	21.0	10.9	52.0
1997	September	5.5	13.5	4.0	5.1	18.6	15.9	34.5	27.3	14.8	54.0
	October	5.8	14.3	3.3	4.8	19.1	15.4	34.5	25.0	13.8	55.3
	November	6.0	14.1	2.9	4.1	18.2	16.3	34.5	22.5	11.9	52.8

¹ Persons aged 15-19 years.

² For explanation of terms and concepts, refer to *Labour Force, Australia*, ABS catalogue number 6203.0.
(Source: Labour Force Estimates—microfiche tables.)

Occupation	August 1996		August 1997		Proportion of total employed	
	Persons		Males	Females	Persons	
	'000		'000	'000	'000	
					%	%
Managers and administrators	12.1		7.5	2.4	9.9	6.1
Generalist managers	1.5		1.4	0.2	1.5	0.8
Specialist managers	4.7		2.0	1.0	2.9	2.4
Farmers and farm managers	5.9		4.2	1.2	5.4	3.0
Professionals	28.5		15.7	15.4	31.2	14.3
Science, building and engineering professionals	2.6		2.8	0.4	3.3	1.3
Business and information professionals	5.8		5.1	1.4	6.5	2.9
Health professionals	6.7		1.4	5.3	6.7	3.4
Education professionals	7.5		2.6	6.7	9.3	3.8
Social, arts and miscellaneous professionals	6.0		3.8	1.6	5.4	2.8
Associate professionals	17.4		12.0	5.4	17.4	8.7
Science, engineering and related associate professionals	2.5		1.8	0.5	2.3	1.3
Business and administration associate professionals	3.3		2.3	0.8	3.1	1.7
Managing supervisors (sales and service)	8.5		5.3	2.5	7.8	4.3
Other associate professionals	3.0		2.7	1.6	4.3	1.5
Tradespersons and related workers	27.2		25.6	2.5	28.1	13.6
Mechanical and fabrication engineering tradespersons	5.5		6.2	0.0	6.2	2.8
Automotive tradespersons	2.9		3.1	0.0	3.1	1.5
Electrical and electronics tradespersons	4.5		4.1	0.0	4.1	2.3
Construction Tradespersons	5.9		5.5	0.0	5.5	3.0
Other tradespersons and related workers	8.3		6.6	2.5	9.1	4.2
Advanced clerks and service workers	4.1		0.7	3.8	4.5	2.1
Secretaries and personal assistants	1.7		0.0	2.0	2.0	0.9
Other advanced clerical and service workers	2.4		0.7	1.8	2.5	1.2
Intermediate clerical, sales and service workers	39.9		11.7	27.1	38.8	20.0
Intermediate clerical workers	23.6		7.4	17.2	24.7	11.8
Intermediate sales and related workers	3.6		1.7	0.7	2.4	1.8
Intermediate service workers	12.7		2.6	9.2	11.8	6.4
Intermediate production and transport workers	21.5		17.1	1.4	18.5	10.8
Intermediate plant operators	6.8		5.6	0.0	5.6	3.4
Intermediate machine operators	3.0		1.0	0.7	1.7	1.5
Road and rail transport drivers	6.5		6.7	0.3	7.0	3.3
Other intermediate production and transport workers	5.2		3.9	0.3	4.2	2.6
Elementary clerical, sales and service workers	22.3		7.6	14.4	22.0	11.2
Elementary clerks	3.1		1.3	1.4	2.7	1.6
Elementary sales workers	17.4		5.2	12.4	17.6	8.7
Elementary service workers	1.8		1.1	0.7	1.8	0.9
Labourers and related workers	26.3		12.7	7.9	20.5	13.2
Cleaners	5.7		1.4	4.3	5.8	2.9
Factory labourers	5.4		3.5	1.1	4.6	2.7
Other labourers and related workers	15.1		7.7	2.5	10.2	7.6
Total employed	199.3		110.6	80.3	190.9	100.0

¹ From August 1997, revisions to the Australian Standard Classification of Occupations (ASCO) have resulted in changes to this table.

² For explanation of terms and concepts, refer to *Labour Force, Australia*, ABS catalogue number 6203.0.
(Source: Labour Force Estimates—unpublished data.)

9

EMPLOYED WAGE AND SALARY EARNERS, SECTOR AND INDUSTRY¹: **Original**

Industry	Employees, May 1997			Percentage distribution	
	Private No. ('000)	Public No. ('000)	Private and public No. ('000)	May 1995	May 1997
Agriculture, forestry, & fishing	n.a.	0.6	0.6	n.a.	0.4
Mining	2.2	—	2.2	1.6	1.3
Manufacturing	23.1	0.1	23.2	14.5	14.0
Electricity, gas & water, construction	6.4	2.4	8.8	6.3	5.3
Wholesale & retail trade	28.7	—	28.7	18.6	17.3
Accommodation, cafes & restaurants	11.6	—	11.6	6.7	7.0
Transport & storage	5.8	1.1	6.9	3.7	4.1
Communication services	0.5	2.2	2.7	1.5	1.6
Finance, insurance, property & business services	16.9	0.9	17.8	9.5	10.7
Education	3.7	14.8	18.4	11.2	11.1
Government administration and defence	—	9.3	9.3	6.9	5.6
Health and community services	14.0	9.4	23.4	14.3	14.1
Cultural, recreational, personal and other services	9.7	3.1	12.8	4.7	7.7
Total all industries	122.5	43.8	166.3	100.0	100.0

¹ For explanation of terms and concepts, refer to *Employed Wage and Salary Earners, Australia*, catalogue number 6248.0.
(Source: *Employed Wage and Salary Earners*, ABS catalogue number 6248.0.)

10

AVERAGE HOURS WORKED: **Original**

Month	Average weekly total hours worked, all employed persons ¹			Average weekly overtime hours ²		Percentage of employees working overtime
	Males	Females	Persons	Per employee	Per employee working overtime	
1994						
August	39.4	26.9	34.1	1.0	6.5	15.6
1996						
August	38.8	27.2	33.9	0.8	5.4	14.4
November	38.7	26.8	33.6	0.8	6.2	12.7
1997						
February	38.0	26.2	33.1	0.9	6.6	13.6
May	39.4	27.8	34.4	0.8	5.9	13.3
August	38.4	26.8	33.5	0.7	6.5	11.0

¹ For explanation of terms and concepts, refer to *Labour Force, Australia*, ABS catalogue number 6203.0.

² For explanation of terms and concepts, refer to *Job Vacancies and Overtime, Australia*, ABS catalogue number 6354.0.

11

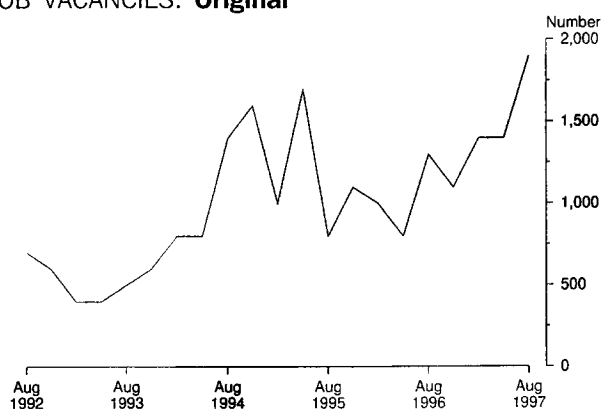
JOB VACANCIES¹: Original

Period	Number	Rate ² %
1994		
August	1 400	0.9
1996		
August	1 300	0.8
November	1 100	0.7
1997		
February	1 400	1.0
May	1 400	1.0
August	1 900	1.4

¹ For explanation of terms and concepts refer to *Job Vacancies and Overtime, Australia*, catalogue number 6354.0.

² Job vacancies are expressed as a percentage of the number of job vacancies divided by the number of employees plus job vacancies.

JOB VACANCIES: Original



12

INDUSTRIAL DISPUTES¹: Original

Month	Working days lost '000	Twelve months ending	Working days lost per thousand employees no.
1996		1996	
October	0.1	October	77
November	0.3	November	79
December	0.1	December	78
1997		1997	
January	0.0	January	73
February	0.0	February	73
March	0.0	March	73
April	0.0	April	73
May	1.4	May	81
June	0.0	June	79
July	3.7	July	75
August	0.0	August	43
September	0.3	September	36
Twelve months ended 1997			
September	5.9		

¹ For explanation of terms and concepts, refer to *Industrial Disputes, Australia*, ABS catalogue number 6321.0.

13

AVERAGE WEEKLY EARNINGS OF EMPLOYEES¹: Original and trend

Quarter	Survey reference period	Full-time adult males		All males	Full-time adult females		All females	Full-time adult persons		All employees
		Weekly ordinary time earnings	Weekly total earnings	Weekly total earnings	Weekly ordinary time earnings	Weekly total earnings	Weekly total earnings	Weekly ordinary time earnings	Weekly total earnings	Weekly total earnings
		\$	\$	\$	\$	\$	\$	\$	\$	\$
ORIGINAL										
1996										
June	17 May	663.40	702.80	621.90	570.10	583.20	389.30	631.90	662.40	503.30
September	16 August	666.90	699.20	624.30	556.30	567.40	387.70	629.10	654.10	506.50
December	15 November	688.50	728.50	643.00	574.20	584.90	393.70	649.90	680.00	517.70
1997										
March	21 February	705.80	742.10	658.80	584.30	594.80	407.80	664.40	691.90	533.10
June	16 May	707.30	744.60	652.70	576.30	586.20	397.00	662.30	690.20	524.20
September	15 August	717.60	753.90	636.40	583.90	592.20	400.70	671.10	697.80	519.40
TREND										
1996										
June	17 May	661.40	698.70	621.90	563.70	575.10	391.20	628.80	657.40	507.10
September	16 August	672.50	709.80	632.10	567.80	579.30	391.10	637.20	665.90	511.00
December	15 November	686.70	723.20	642.80	571.30	582.20	394.20	647.30	675.10	518.00
1997										
March	21 February	700.20	736.50	648.40	576.30	586.40	398.50	657.80	685.00	523.30
June	16 May	711.10	748.30	650.60	582.00	591.90	403.00	666.90	694.60	526.50
September	15 August	719.60	758.10	650.50	587.80	597.60	407.10	674.50	703.40	528.60

¹ For explanation of terms and concepts, refer to *Average Weekly Earnings, States and Australia*, ABS catalogue number 6302.0.
(Source: *Average Weekly Earnings, States and Australia*, ABS catalogue number 6302.0.)

14

WEEKLY AWARD RATES OF PAY INDEXES, FULL-TIME ADULT EMPLOYEES¹: Original (Base: June 1985 = 100.0)

Industry	1994	1996	1997		
	June	June	April	May	June
Mining	137.7	150.9	150.9	150.9	150.9
Manufacturing	146.9	152.4	153.6	154.2	154.5
Electricity, gas and water	133.4	137.7	137.7	137.9	137.9
Construction	142.6	149.3	149.5	150.2	150.2
Wholesale trade	139.9	146.7	148.4	148.4	148.4
Retail trade	139.6	143.7	144.1	144.2	144.2
Transport and storage	138.9	145.7	148.7	148.9	148.9
Communication	135.4	135.4	135.4	135.4	135.4
Finance, property and business services	137.8	140.5	140.6	140.7	140.7
Public administration and defence	148.3	157.9	158.6	158.6	158.6
Community services	140.8	148.4	149.1	149.5	149.5
Recreation, personal and other services	149.2	155.9	158.2	159.2	159.2
Total all industries	141.7	147.9	148.7	149.0	149.1

¹ For explanation of terms and concepts, refer to *Award Rates of Pay Indexes, Australia*, ABS catalogue number 6312.0.
(Source: *Award Rates of Pay Indexes, Australia*, ABS catalogue number 6312.0.)

15

SUMMARY OF ANNUAL MOVEMENTS IN WAGES AND PRICES¹: Original

Period	CPI. All groups Hobart	Price index of materials used in house building. All groups, Hobart ²	Price index of materials used in building other than house building. All groups, Hobart ²	Average weekly total earnings, full-time adult employees ³
PERCENTAGE CHANGE FROM PREVIOUS YEAR				
1994-95	3.1	4.0	1.9	2.7
1995-96	3.8	2.9	2.6	2.8
1996-97	1.5	-0.5	1.0	4.6
1995				
March	3.8	4.3	2.4	0.9
June	4.2	4.6	3.4	3.1
September	4.5	4.8	3.5	2.4
December	4.4	3.6	3.3	1.8
1996				
March	3.4	2.4	2.5	3.2
June	3.0	0.9	1.2	3.7
September	2.3	-0.2	0.9	3.0
December	1.8	-0.8	0.7	4.9
1997				
March	1.5	-0.5	1.1	6.2
June	0.6	-0.4	1.3	4.2
September	-0.4	-0.2	0.6	6.7

¹ Weekly award rates of pay collection has been discontinued from June 1997.

² Only quarterly data collected from June 1997. Earlier data has been re-compiled from monthly to quarterly.

³ March, June, September and December data relates to February, May, August and November survey dates as published in 6302.0.

(Sources: Consumer Price Index, ABS catalogue number 6401.0; Price Index of Materials Used in House Building, ABS catalogue number 6408.0, (quarterly from June 1997); Price Index of Materials Used in Other than House Building, ABS catalogue number 6407.0, (quarterly from June 1997); Average Weekly Earnings, States and Australia, ABS catalogue number 6302.0)

16

HOUSE PRICE INDEX NUMBERS¹, HOBART: Original (Base of each Index: 1989-90 = 100.0)

	Established house price index		Project home price index	
	Index	% change ²	Index	% change ²
1994-95	129.0	5.3	121.3	3.1
1995-96	129.8	0.6	123.4	1.7
1996-97	128.5	-1.0	123.3	-0.1
1995				
September	129.2	-0.7	123.5	0.3
December	129.1	-0.1	123.5	—
1996				
March	129.8	0.5	123.3	-0.2
June	131.2	1.1	123.3	—
September	130.2	-0.8	123.3	—
December	128.5	-1.3	123.3	—
1997				
March	130.4	1.5	123.3	—
June	124.9	-4.2	123.3	—
September	123.5	-1.1	123.3	—

¹ Used in calculating the mortgage interest charges component of the Consumer Price Index.

² Percentage change over previous period.

(Source: House Price Indexes: Eight Capital Cities, ABS catalogue number 6416.0)

CONSUMER PRICE INDEX, HOBART AND EIGHT CAPITAL CITIES COMBINED^{1, 2}: **Original**
(Base of each index: year 1989-90 = 100.0)

<i>Hobart</i>						
<i>Period</i>	<i>Food</i>	<i>Clothing</i>	<i>Housing</i>	<i>Household equipment and operation</i>	<i>Transportation</i>	<i>Tobacco and alcohol</i>
1995						
March	115.4	105.0	102.7	114.9	115.1	140.3
June	116.1	106.1	104.5	115.4	117.2	143.1
September	117.3	105.9	106.0	116.5	119.4	144.3
December	117.1	105.6	106.5	117.5	120.1	145.9
1996						
March	118.1	106.3	107.2	117.8	119.0	150.3
June	118.4	106.0	107.6	118.5	119.8	153.3
September	120.0	105.9	107.4	119.1	119.7	153.7
December	120.6	105.6	104.8	119.4	121.8	152.7
1997						
March	120.7	105.7	101.9	120.1	122.8	153.1
June	121.0	105.3	98.4	120.1	121.7	153.5
September	121.0	104.8	97.7	119.7	122.2	153.6
<i>Hobart</i>				<i>Weighted average of eight capital cities</i>		
<i>Period</i>	<i>Health and personal care</i>	<i>Recreation and education</i>	<i>Index, all groups</i>	<i>% change over previous period, all groups</i>	<i>Index</i>	<i>% change over previous period</i>
1995						
March	140.4	115.4	116.1	+1.7	114.7	+1.7
June	141.0	114.0	117.1	+0.9	116.2	+1.3
September	146.7	113.3	118.4	+1.1	117.6	+1.2
December	146.9	115.8	119.2	+0.7	118.5	+0.8
1996						
March	149.7	117.1	120.1	+0.8	119.0	+0.4
June	150.5	116.0	120.6	+0.4	119.8	+0.7
September	154.1	115.1	121.1	+0.4	120.1	+0.3
December	154.8	116.8	121.3	+0.2	120.3	+0.2
1997						
March	159.4	120.5	121.9	+0.5	120.5	+0.2
June	162.6	119.2	121.3	-0.5	120.2	-0.2
September	153.0	119.2	120.6	-0.6	119.7	-0.4

¹ Further information on construction of CPI indexes is contained in the bulletin *The Australian Consumer Price Index Concepts, Sources and Methods* (Catalogue No. 6461.0).

² The CPI is now published on a reference base of 1989-90 = 100.0.
(Source: *Consumer Price Index*, ABS catalogue number 6401.0.)

PRICE INDEX OF MATERIALS USED IN BUILDING OTHER THAN HOUSE BUILDING, HOBART: **Original**¹
(Base year: 1989-90 = 100.0)

<i>Index numbers for selected major building materials</i>						
<i>Period</i>	<i>Structural timber</i>	<i>Clay bricks</i>	<i>Ready mixed concrete</i>	<i>Precast concrete products</i>	<i>Steel decking, cladding etc.</i>	<i>Structural steel</i>
1994-95	124.5	116.8	117.8	122.2	107.7	116.4
1995-96	119.0	122.6	115.2	129.5	111.5	121.4
1996-97	110.3	125.3	116.2	132.2	115.0	126.2
1995						
March	124.6	118.0	117.0	122.5	107.8	116.0
June	125.8	118.0	117.8	122.5	107.4	117.5
September	123.0	119.8	116.9	130.3	110.8	119.6
December	120.0	123.2	116.0	130.3	111.0	121.2
1996						
March	118.0	123.4	115.3	129.1	111.8	121.9
June	115.0	124.0	112.7	128.4	112.3	123.0
September	113.3	124.5	114.8	132.6	112.3	125.3
December	109.9	125.2	116.0	132.6	112.2	126.0
1997						
March	109.2	125.7	116.7	132.2	116.5	126.7
June	108.9	125.7	117.4	131.2	118.8	126.8
September	107.5	127.9	114.9	131.2	118.9	126.9

<i>Index numbers for selected major building materials</i>							
<i>Period</i>	<i>Reinforcing steel bar, fabric and mesh</i>	<i>Aluminium windows</i>	<i>Fabricated steel products</i>	<i>Builders' hardware</i>	<i>Sand & aggregate</i>	<i>Paint & other coatings</i>	<i>Non-ferrous pipes & fittings</i>
1994-95	106.7	101.2	106.7	112.8	133.0	116.0	172.7
1995-96	108.9	104.5	108.9	118.3	133.1	120.1	172.9
1996-97	110.7	105.9	113.3	117.2	132.7	126.6	165.2
1995							
March	106.4	101.8	106.9	113.6	133.1	115.9	182.7
June	105.8	104.5	107.6	115.8	133.1	115.0	184.2
September	107.9	104.5	107.6	119.4	133.1	118.2	179.4
December	109.2	104.5	108.3	119.2	133.1	119.7	169.1
1996							
March	109.2	104.6	108.2	117.9	133.1	121.5	169.3
June	109.2	104.4	111.6	116.5	133.1	121.1	173.9
September	110.2	104.4	112.6	117.8	133.1	126.3	168.2
December	110.9	105.5	113.5	118.8	133.1	127.3	161.4
1997							
March	110.9	106.8	113.4	117.1	134.5	127.4	164.1
June	110.9	106.8	113.5	115.2	129.9	125.5	167.2
September	110.9	106.8	114.0	115.3	121.4	124.6	168.5

¹ Index numbers in this table have been recomputed to reflect the change to a quarterly collection basis from June 1997.
(Source: *Price Index of Materials Used in Other than House Building*, ABS catalogue number 6407.0.)

continued

PRICE INDEX OF MATERIALS USED IN BUILDING OTHER THAN HOUSE BUILDING, HOBART: **Original**—continued
(Base year: 1989–90 = 100.0)

Period	All electrical materials		All mechanical services		All plumbing materials	
	Index	% change over previous period	Index	% change over previous period	Index	% change over previous period
1994–95	110.8	+5.8	112.6	+2.7	124.6	+13.2
1995–96	118.6	+7.0	115.1	+2.2	127.7	+2.5
1996–97	117.4	–0.1	117.0	+1.7	122.8	–3.8
1995						
March	112.2	+3.1	113.2	+1.1	128.1	+3.5
June	115.5	+2.9	114.1	+0.8	128.9	+0.6
September	118.6	+2.7	113.8	–0.3	128.7	–0.2
December	118.6	—	114.9	+1.0	127.4	–1.0
1996						
March	118.1	–0.4	115.3	+0.3	127.6	+0.2
June	119.1	+0.8	116.2	+0.8	127.0	–0.5
September	115.7	–2.9	117.1	+0.8	126.3	–0.6
December	118.3	+2.2	116.8	–0.3	120.8	–4.4
1997						
March	118.1	–0.2	116.8	—	121.4	+0.5
June	117.5	–0.5	117.1	+0.3	122.5	+0.9
September	117.6	+0.1	116.6	–0.4	122.8	+0.2
Period	All groups excluding electrical materials and mechanical services		All groups			
	Index	% change over previous period	Index	% change over previous period		
1994–95	112.7	+1.5	112.2	+1.9		
1995–96	115.5	+2.5	115.1	+2.6		
1996–97	116.8	+1.1	116.3	+1.0		
1995						
March	112.7	+0.4	112.4	+0.7		
June	114.1	+1.2	113.8	+1.2		
September	115.3	+1.1	114.8	+0.9		
December	115.7	+0.3	115.3	+0.4		
1996						
March	115.6	–0.1	115.2	–0.1		
June	115.3	–0.3	115.2	—		
September	116.3	+0.9	115.8	+0.5		
December	116.5	+0.2	116.1	+0.3		
1997						
March	117.0	+0.4	116.5	+0.3		
June	117.3	+0.3	116.7	+0.2		
September	117.1	–0.2	116.5	–0.2		

¹ Index numbers in this table have been recomputed to reflect the change to a quarterly collection basis from June 1997.
(Source: Price Index of Materials Used in Other than House Building, ABS catalogue number 6407.0.)

Year or month	Dairy products ¹			Staff-hours worked	
	Whole milk ²	Factory butter ³	Factory cheese	Textile manufacturing ⁴	Vegetable preserving
	million litres	tonnes	tonnes	'000	'000
1994-95	436.5	8 105	20 529	1 527	1 838
1995-96	513.8	9 589	24 852	1 443	1 784
1996-97	529.4	10 869	25 398	1 349	1 534
1994					
August	19.7	363	454	149	149
1996					
August	21.6	392	1181	122	140
1997					
June	15.9	338	650	110	111
July	12.2	187	463	134	124
August	21.1	335	822	97	106
Year or month	Newsprint ⁵	Refined zinc	Metal ⁶ refin. index	Electricity	
	'000 tonnes	'000 tonnes		million kW.h	
1994-95	222.7	189.8	98.3	8 688	
1995-96	242.9	207.8	104.7	9 100	
1996-97	232.7	207.7	116.1	9 543	
1994					
August	16.9	15.8	98.7	797	
1996					
August	21.2	18.1	118.5	881	
1997					
June	17.6	17.7	117.8	848	
July	n.y.a.	18.0	117.6	n.y.a.	
August	n.y.a.	16.7	111.8	n.y.a.	

¹ Source: Australian Dairy Corporation.
² Includes the whole milk equivalent of farm cream intake.
³ Includes butter equivalent of butter oil.
⁴ Includes spinning, weaving and carpet making. Reported by establishments which manufacture textiles only, or manufacture clothing and textiles in the one plant.
⁵ Excludes production of directory newsprint and high grade specialty paper.
⁶ Metallurgical refining index (Base: 1979-80 = 100.0) Output from selected establishments covering the smelting and refining of ferro-alloys, zinc and aluminium. The weighting pattern is based on the establishments' value added as derived from the 1979-80 Manufacturing Census. For multi-product establishments, value added was apportioned to products on the basis of gross receipts from each product.
 (Source: ABS unpublished data.)

20

LIVESTOCK SLAUGHTERING: Original

Year or month	Cattle					
	Bulls, bullocks and steers	Cows and heifers	Calves	Sheep	Lambs	Pigs
	'000	'000	'000	'000	'000	'000
1994-95	111.2	96.7	28.8	569.3	477.2	92.9
1995-96	95.4	88.9	41.4	349.7	393.3	86.5
1996-97 p	110.1	98.3	43.7	397.9	374.4	79.2
1995						
October	6.7	6.6	5.2	23.7	27.7	6.6
1996						
September p	6.4	5.2	16.8	14.0	25.4	6.3
October p	7.6	6.4	6.1	19.8	25.2	5.9
November p	9.4	8.0	0.6	32.3	27.1	5.7
December p	12.3	8.9	0.2	42.0	28.2	7.0
1997						
January p	12.8	8.1	0.1	47.5	42.8	6.8
February p	10.6	8.8	0.1	47.4	35.6	6.2
March p	10.1	8.1	0.4	43.5	35.0	6.6
April p	10.3	11.0	1.6	47.6	35.2	6.8
May p	9.7	12.7	1.7	37.0	42.7	7.9
June p	7.5	10.7	1.0	32.1	30.7	6.3
July p	8.6	9.9	1.9	31.7	36.7	8.0
August p	7.2	6.8	14.8	23.6	22.9	6.0
September p	5.2	5.3	20.4	19.1	23.9	5.8
October p	6.6	8.7	14.3	32.8	33.3	7.2

(Source: Livestock Products, Australia, ABS catalogue number 7215.0.)

21

LIVESTOCK SLAUGHTERING: Seasonally adjusted and trend

Month	Seasonally adjusted			Trend		
	Cattle and calves	Sheep and lambs	Pigs	Cattle and calves	Sheep and lambs	Pigs
	'000	'000	'000	'000	'000	'000
1995						
October	19.9	68.9	7.6	19.6	66.0	7.4
1996						
September	22.1	57.1	6.8	20.6	56.9	6.4
October	20.2	55.6	6.2	20.9	58.3	6.3
November	20.4	60.5	5.8	21.2	60.9	6.3
December	22.8	62.7	6.2	21.7	64.2	6.5
1997						
January	21.6	71.3	7.1	22.2	67.1	6.6
February	22.8	71.6	7.0	22.6	68.7	6.8
March	22.2	64.8	6.7	23.0	69.6	6.9
April	25.1	75.7	7.0	23.4	r 69.9	6.9
May	23.4	68.0	7.0	r 23.5	70.3	6.9
June	22.0	61.4	6.2	r 23.6	r 71.1	6.8
July	24.4	78.6	7.3	r 23.7	r 72.6	6.7
August	25.8	83.3	6.5	r 23.8	r 74.3	r 6.7
September	r 20.0	64.3	6.2	r 24.0	r 75.9	r 6.7
October	26.7	82.7	7.4	24.1	76.9	6.8

(Source: ABS unpublished data)

22

MEAT PRODUCTION¹: Original

<i>Year or month</i>	<i>Beef</i> tonnes	<i>Veal</i> tonnes	<i>Mutton</i> tonnes	<i>Lamb</i> tonnes	<i>Pigmeat</i> ² tonnes	<i>Total</i> tonnes
1994-95	49 907	977	11 230	8 412	5 982	76 509
1995-96	45 377	875	7 414	7 407	5 634	66 707
1996-97 p	52 485	920	8 464	7 043	5 171	74 083
1995						
October	3 213	112	491	522	425	4 764
1996						
October p	3 434	125	409	474	386	4 827
November p	4 262	15	700	510	368	5 855
December p	5 559	7	928	528	456	7 479
1997						
January p	5 434	5	1 020	806	456	7 721
February p	4 976	6	1 019	670	413	7 083
March p	4 635	13	927	658	431	6 664
April p	5 394	38	1 014	663	445	7 553
May p	5 524	40	774	804	516	7 659
June p	4 479	22	669	578	409	6 157
July p	4 530	43	664	691	457	6 385
August p	3 614	303	477	429	382	5 204
September p	r 2 542	r 413	r 390	r 450	365	r 4 160
October p	3 846	291	663	628	450	5 878

¹ Carcass weight.

² Includes pork used for production of bacon and ham.

(Source: *Livestock Products, Australia*, ABS catalogue number 7215.0.)

23

PRINCIPAL MINERAL CONCENTRATES PRODUCED: Original

<i>Year or quarter</i>	<i>Copper</i>	<i>Iron</i> (pellets)	<i>Lead</i>	<i>Lead-zinc</i>	<i>Tin</i>	<i>Zinc</i>
<i>Year or quarter</i>	'000 tonnes	'000 tonnes	'000 tonnes	'000 tonnes	'000 tonnes	'000 tonnes
1994-95	59.4	1 483.8	97.4	45.3	14.3	350.6
1995-96	53.5	1 681.3	106.3	38.6	16.0	361.5
1996-97	99.7	809.4	101.4	38.0	16.3	356.9
1996						
June	21.5	475.4	24.1	9.2	4.3	85.0
September	26.0	439.3	30.6	10.3	3.9	88.6
December	25.6	366.7	24.9	11.0	4.0	89.5
1997						
March	24.0	3.3	22.9	10.2	3.9	85.6
June	24.2	—	23.0	6.4	4.6	93.3
September p	4.2	—	22.5	5.4	4.8	88.0

(Source: *Tasmania—Development and Resources*)

24

SAWMILLS AND PLYWOOD MILLS, LOGS DELIVERED AND TIMBER PRODUCED: Original

Year or quarter	Tasmanian-grown logs delivered					Sawn, peeled and sliced timber produced ¹				
	Eucalypts	Hardwoods, excluding eucalypts ²	Plant-ation ³	Native softwoods ⁴	Total	Eucalypts	Hardwoods, excluding eucalypts ²	Plant-ation ³	Native softwoods ⁴	Total
	'000 m ³	'000 m ³	'000 m ³	'000 m ³	'000 m ³	'000 m ³	'000 m ³	'000 m ³	'000 m ³	'000 m ³
1994-95	653.1	12.6	304.9	2.8	973.4	212.5	4.3	142.7	0.6	360.1
1995-96	602.8	13.0	343.7	1.4	960.9	192.4	4.4	152.0	0.5	349.3
1996-97	r 500.8	r 17.0	r 352.9	1.2	r 871.9	r 165.8	r 4.3	r 158.0	0.5	r 328.5
1995										
September	184.3	1.8	79.9	0.2	266.2	55.4	1.3	36.0	0.1	92.8
December	139.1	1.5	70.2	0.2	211.0	49.0	1.0	36.0	0.2	86.2
1996										
March	136.6	6.7	98.1	0.3	241.7	41.5	0.9	41.2	0.1	83.7
June	142.9	3.0	95.5	0.6	242.0	46.5	1.2	38.8	0.1	86.6
September	r 135.5	r 2.5	r 96.1	—	r 234.2	47.3	1.1	r 42.3	0.1	r 90.8
December	r 112.7	r 3.9	r 82.3	0.5	r 199.4	40.1	0.9	r 40.6	0.1	r 81.8
1997										
March	r 108.7	r 6.6	r 85.0	0.4	r 200.8	34.0	r 1.0	r 36.6	—	r 71.6
June	r 143.9	r 3.9	r 89.4	0.3	r 237.5	44.5	r 1.2	r 38.4	0.2	r 84.3
September	139.5	2.7	98.3	0.3	240.9	52.4	1.5	42.3	0.1	96.3

¹ Includes plywood, veneer and sliced timber production converted to an equivalent cubic measurement.

² Includes blackwood, myrtle, sassafras etc.

³ Radiata pine.

⁴ Includes Huon pine, celery top pine and King William pine.

(Source: ABS unpublished data.)

25

CHIPPING AND GRINDING OF WOOD¹: Original

Year or quarter	Producing locations ²	Materials used ³			Chipped and ground wood production (¹ 000 tonnes green weight)
		Logs delivered ⁴	Sawmill offcuts		
	no.	'000 m ³	'000 m ³		
1994-95	31	4 064.1	394.2		4 343.1
1995-96	31	3 510.0	457.9		3 820.1
1996-97	27	3 207.4	433.2		3 609.3
1995					
September	32	935.6	118.2		1 044.1
December	31	932.1	104.6		939.9
1996					
March	32	842.6	109.8		958.0
June	31	799.6	125.3		878.1
September	30	767.5	133.5		870.9
December	30	805.1	117.5		908.4
1997					
March	28	759.7	87.0		829.2
June	27	875.1	95.2		1 000.9
September	27	936.1	103.1		1 064.1

¹ Both hardwoods and softwoods, separate details are not available.

² Capable of producing at end of year or actually producing during quarter.

³ Data reported by weight, converted to cubic measure by the factor 0.95 m³ per tonne.

⁴ Includes log equivalent of limewood and billets.

(Source: ABS unpublished data.)

Year or quarter	Sawmilling and plywood milling			Chipping and grinding ¹			Total		
	Crown land ²	Private land	Total	Crown land ²	Private land	Total	Crown land ²	Private land	Total
	'000 m ³	'000 m ³	'000 m ³	'000 m ³	'000 m ³	'000 m ³	'000 m ³	'000 m ³	'000 m ³
1994-95	780.3	193.2	973.4	1 966.8	2 097.3	4 064.1	2 747.1	2 290.4	5 037.6
1995-96	773.5	187.4	960.9	1 579.6	1 930.4	3 510.0	2 353.1	2 117.8	4 470.9
1996-97	r 725.6	r 146.4	r 871.9	1 627.4	1 580.0	3 207.4	r 2 353.0	r 1 726.3	r 4 079.3
1995									
September	214.1	52.2	266.2	438.2	497.4	935.6	652.2	549.6	1 201.9
December	165.2	45.8	211.0	388.3	543.8	932.1	553.5	589.6	1 143.1
1996									
March	202.3	39.4	241.7	405.3	437.3	842.6	607.6	476.7	1 084.3
June	191.9	50.1	242.0	347.9	451.8	799.6	539.7	501.8	1 041.6
September	r 194.3	39.9	r 234.2	403.5	364.0	767.5	597.8	403.9	1 001.7
December	162.5	r 36.9	r 199.4	411.0	394.1	805.1	r 573.5	430.9	r 1 004.5
1997									
March	r 170.3	30.5	r 200.8	375.7	383.9	759.7	r 546.0	414.5	r 960.5
June	r 198.5	r 39.1	r 237.5	437.2	437.9	875.1	r 635.7	r 477.0	r 1 112.6
September	201.0	39.8	240.9	464.9	471.2	936.1	665.9	511.0	1 177.0

¹ Logs used are generally below sawmilling standard; includes log equivalent of limbwood and billets.

² Comprises all areas (including concession areas) from which royalties are payable to Forestry Tasmania.
(Source: ABS unpublished data.)

27

BUILDING APPROVALS: Original

Year or month	New residential building			Value					
	Houses	Other ¹	Conversions etc.	Total dwelling units	New dwelling units	Alterations and additions ² to residential building	Non-residential building ³		Total of all building
							Private	Total	
	no.	no.	no.	no.	\$'000	\$'000	\$'000	\$'000	\$'000
1994-95	2 576	596	14	3 176	244 623	39 963	117 984	161 567	446 152
1995-96	1 938	601	7	2 546	217 445	36 890	119 849	216 752	471 086
1996-97	1 593	251	17	1 861	157 428	35 323	121 490	158 970	351 720
1995									
October	175	49	1	225	18 151	3 212	13 183	16 512	37 875
1996									
October	154	33	3	190	17 314	3 530	9 585	10 647	31 491
1997									
May	121	25	1	147	12 768	2 723	16 913	18 091	33 582
June	104	13	1	118	9 464	2 523	13 294	13 619	25 606
July	109	56	—	165	14 289	3 695	5 761	7 807	25 790
August	121	14	1	136	10 987	3 481	4 944	6 444	20 913
September	131	18	—	149	13 803	2 845	3 806	13 474	30 122
October	128	35	—	163	13 878	3 413	8 584	10 722	28 014

¹ New individual dwelling units (e.g. flats, home units and villa units).

² Valued at \$10,000 and over.

³ Comprises non-residential building (new plus alterations and additions) valued at \$50,000 and over.
(Source: *Building Approvals, Tasmania*, ABS catalogue number 8731.6.)

28

SECURED HOUSING COMMITMENTS¹: Original, seasonally adjusted and trend

Month	Total number of dwellings ²			Total value of commitments ³		
	Original	Seasonally adjusted	Trend	Original	Seasonally adjusted	Trend
	no.	no.	no.	\$m	\$m	\$m
1996						
August	1 163	r 1 146	1 072	77.2	r 77.3	69.7
September	1 067	r 1 064	r 1 064	68.8	r 68.3	70.3
October	1 117	r 1 138	r 1 028	75.9	r 76.9	68.5
November	909	924	r 968	60.7	r 61.1	64.9
December	787	r 858	r 905	54.4	r 58.7	61.1
1997						
January	742	r 826	r 857	49.5	r 53.8	r 58.3
February	778	r 809	r 830	56.1	r 57.6	r 57.1
March	814	r 815	r 819	59.2	r 58.8	r 56.9
April	933	r 874	r 814	64.0	r 59.7	r 57.4
May	943	r 865	r 809	63.6	58.1	r 58.0
June	756	r 724	r 800	54.6	r 56.6	r 58.4
July	786	r 774	r 793	57.7	r 57.3	r 58.8
August	801	r 792	r 791	60.7	r 59.8	r 59.3
September	796	r 808	r 795	62.8	r 63.2	r 59.9
October	841	830	799	60.3	59.0	60.4

¹ New seasonal adjustment factors resulting from the annual seasonal reanalysis have been introduced in this month's issue.

² Includes new dwellings, established dwellings and refinancing. Excludes alterations and additions.

³ Commitment is a firm offer of housing finance. It either has been, or is normally expected to be, accepted. Includes commitments to provide housing finance to employees and commitments accepted and cancelled in the same month. Excludes alterations and additions. Includes refinancing.
(Source: *Housing Finance for Owner Occupation, Australia*, ABS catalogue 5609.0.)

Month	Deposits				
	Current bearing interest	Current – not bearing interest	Fixed	Investment savings accounts	Statement savings accounts
	\$m	\$m	\$m	\$m	\$m
1996					
October	699	238	1 787	559	168
November	692	237	1 791	560	169
December	699	244	1 771	570	188
1997					
January	662	246	1 763	583	235
February	695	241	1 764	605	229
March	692	252	1 780	606	231
April	687	250	1 791	600	231
May	695	249	1 760	600	230
June	685	249	1 750	600	219
July	710	242	1 750	602	220
August	712	239	1 751	608	227
September	714	236	1 706	608	232
October	736	234	1 679	608	234

Month	Deposits			Loans ²
	Passbook/School savings accounts	Other	Total	
	\$m	\$m	\$m	
1996				
October	147	129	3 728	4 545
November	140	132	3 722	4 513
December	134	133	3 739	4 533
1997				
January	127	129	3 745	4 466
February	123	103	3 759	4 493
March	122	103	3 786	4 694
April	121	102	3 781	4 412
May	119	101	3 754	4 423
June	117	100	3 719	4 500
July	114	94	3 733	4 559
August	114	98	3 748	4 590
September	112	95	3 704	4 547
October	110	95	3 696	4 530

¹ Details are the averages of weekly figures for each month. The figures are derived from returns submitted by banks authorised under the *Banking Act* together with similar returns voluntarily submitted by the State banks; they exclude the Reserve Bank.

² Excludes non-resident loans.

(Source: Reserve Bank of Australia.)

Year or quarter	New buildings and structures	Equipment, plant, and machinery	Total
	\$m	\$m	\$m
1994–95	143	546	689
1995–96	190	423	613
1996–97	129	559	688
1996			
December	35	157	192
1997			
March	30	140	169
June	30	144	175
September	37	136	174

¹ Estimates based on a sample survey and therefore subject to sampling variability. Covers selected industries only—mining, manufacturing, finance, property and other selected industries.

² Data revised back to June quarter 1987. See *Improvements to ABS Economic Statistics* (catalogue number 1357.0).

(Source: *State Estimates of Private New Capital Expenditure*, ABS catalogue number 5646.0.)

31

PASSENGER ARRIVALS AND DEPARTURES, TASMANIA¹: Original

Period	Arrivals				Departures Total	Cruise ships	
	By air— interstate	By air— international	By sea	Total		Arrivals	Departures
1993	694 244	5 144	115 381	814 769	814 835	2 033	2 033
1994	745 508	4 166	128 644	878 318	880 936	6 592	6 592
1995	811 784	3 982	116 869	932 635	931 278	6 199	6 199
1996	831 040	2 999	115 486	949 525	961 468	5 286	5 286
1996							
October	68956	352	10 073	79 381	79 774	—	—
1997							
January p	76 390	399	14 296	91 085	111 118	2 250	2 250
February p	69 018	383	11 718	81 119	76 323	2 350	2 350
March p	72 393	441	12 952	85 786	92 811	—	—
April p	66 932	331	11 820	79 083	86 079	—	—
May p	55 569	—	8 680	64 249	76 312	—	—
June p	58 491	—	10 223	68 714	67 235	—	—
July p	53 633	—	6 512	60 145	67 778	—	—
August p	57 543	—	10 346	67 889	70 256	—	—
September p	70 562	—	13 566	84 128	79 173	—	—
October p	69 626	—	12 548	82 174	80 690	—	—

¹ The following persons are not included in these statistics: passengers under three years of age accompanied by an adult; passengers travelling on chartered flights with minor carriers; passengers travelling on private or VIP flights; and passengers from or departing for overseas other than direct flights to New Zealand.
(Source: Tourism Tasmania.)

32

TOTAL PASSENGER ARRIVALS BY AIR AND SEA, TASMANIA: Original, seasonally adjusted and trend

Period	Original	Seasonally adjusted ¹	Trend
1996			
October	79 381	80 344	78 798
1997			
February p	81 119	76 488	76 431
March p	85 786	72 875	77 349
April p	79 083	84 263	78 473
May p	64 249	80 288	79 492
June p	68 714	80 569	80 073
July p	60 145	74 822	80 326
August p	67 889	86 108	80 533
September p	84 128	77 187	80 828
October p	82 174	82 924	80 706

¹ There is an annual recalculation of seasonal adjustment factors to include the most recent year's arrivals. This occurs at the end of each financial year and may cause revisions to previously published seasonally adjusted and trend figures. A full time series of seasonally adjusted and trend series from January 1971 is available on request, telephone (03) 6222 5912.
(Source: Tourism Tasmania. ABS unpublished data.)

HOTELS, MOTELS, ETC. WITH FACILITIES						
Period	Original		Room nights		Original	
	Establishments ¹ no.	Guest rooms ¹ no.	Seasonally adjusted ² no.	Trend estimates ² no.	Room occupancy rate %	Takings from accommodation \$'000
September quarter						
1995	179	5 452	n.a.	n.a.	42.1	15 501
1996	188	5 604			38.7	14 362
1997	212	5 763			39.5	16 727
1995						
July	n.a.	n.a.	91 808	90 213	39.2	4 866
August	n.a.	n.a.	91 467	90 691	38.6	4 687
September	179	5 452	89 747	90 973	48.7	5 948
1996						
July	n.a.	n.a.	86 313	86 485	36.6	4 671
August	n.a.	n.a.	92 046	87 011	36.4	4 491
September	188	5 604	80 485	87 376	43.2	5 200
1997						
July	n.a.	n.a.	84 811	86 469	35.2	4 962
August	n.a.	n.a.	96 081	88 159	37.4	5 323
September	212	5 763	88 330	89 835	46.1	6 442
HOLIDAY UNITS						
Period	Original		Unit nights		Original	
	Establishments ¹ no.	Units ¹ no.	Seasonally adjusted ² no.	Trend estimates ² no.	Unit occupancy rate %	Takings from accommodation \$'000
September quarter						
1995	54	821	n.a.	n.a.	38.3	1 933
1996	57	858			35.5	1 922
1997	62	916			37.1	2 087
1995						
July	n.a.	n.a.	12 300	12 301	33.1	558
August	n.a.	n.a.	12 069	12 417	30.2	485
September	54	821	13 096	12 605	51.9	890
1996						
July	n.a.	n.a.	12 325	12 234	31.1	567
August	n.a.	n.a.	12 152	12 376	28.9	528
September	57	858	12 305	12 632	46.8	827
1997						
July	n.a.	n.a.	12 937	13 244	30.5	584
August	n.a.	n.a.	15 224	13 451	33.8	630
September	62	916	13 278	13 651	47.3	873
CARAVAN PARKS						
Period	Original		Site nights		Original	
	Establishments ¹ no.	Sites and cabins ¹ no.	Seasonally adjusted ² no.	Trend estimates ² no.	Site occupancy rate %	Takings from accommodation \$'000
September quarter						
1995	72	6 417	n.a.	n.a.	27.7	1 111
1996	73	6 491			28.3	1 209
1997	73	6 475			29.4	1 413
1995						
July	n.a.	n.a.	64 642	65 015	26.7	310
August	n.a.	n.a.	63 601	64 862	26.8	321
September	72	6 417	66 257	64 881	29.5	480
1996						
July	n.a.	n.a.	67 008	66 683	27.3	347
August	n.a.	n.a.	67 818	66 882	27.9	361
September	73	6 491	66 661	66 878	29.9	501
1997						
July	n.a.	n.a.	68 295	69 432	28.2	381
August	n.a.	n.a.	69 455	69 620	28.6	407
September	73	6 475	71 939	69 852	31.6	625

¹ At end of quarter. ² Seasonally adjusted and trend estimates are revised annually because of yearly seasonal reanalysis.
(Source: Tourist Accommodation, Tasmania, ABS catalogue number 8635.6.)

34

REGISTRATIONS OF NEW MOTOR VEHICLES¹: Original

Year or month	Passenger vehicles	Other vehicles ²	Total (excl. motor cycles)	Vehicles registered by vehicle rental businesses ³	Motor cycles
	no.	no.	no.	no.	no.
1994	10 543	2 837	13 380	1 708	376
1995	10 919	2 874	13 793	1 952	393
1996	11 445	2 726	14 171	2 384	462
1995					
October	1072	208	1 280	301	35
1996					
September	1 171	177	1 348	448	38
October	1 042	265	1 307	213	35
November	1 072	195	1 267	370	50
December	1 491	246	1 737	823	48
1997					
January	756	179	935	4	49
February	746	152	898	3	34
March	738	220	958	3	39
April	815	232	1 047	1	46
May	941	270	1 211	6	36
June	861	267	1 128	22	28
July	1 217	259	1 476	366	46
August	1 094	220	1 314	270	44
September	1 339	164	1 503	547	44
October p	1 197	190	1 387	252	44

¹ Includes State and Commonwealth Government-owned motor vehicles other than those belonging to the defence services. Excludes tractors, plant and equipment, caravans and trailers.

² Comprises utilities, panel vans, rigid and articulated trucks and other truck-type vehicles (i.e. motor vehicles designed for purposes other than freight carrying, e.g. campervans, tow trucks, ambulances and hearses) and buses.

³ These figures are included in previous columns.

(Source: *Motor Vehicle Registrations Australia*, ABS catalogue number 9301.0. ABS unpublished data.)

35

TURNOVER OF RETAIL ESTABLISHMENTS AT CURRENT PRICES^{1, 2}: Original and trend

Period	Original \$m	Trend estimates	
		\$m	Change from corresponding month of previous year %
1995			
October	247.5	252.7	4.4
1996			
October	258.4	255.1	0.9
November	268.1	256.4	1.1
December	337.5	257.6	1.2
1997			
January	256.6	258.3	1.1
February	233.8	258.8	1.0
March	252.1	259.3	1.1
April	254.6	r 260.2	r 1.5
May	263.7	r 261.7	r 2.4
June	244.1	r 264.0	r 3.7
July	259.4	r 266.6	r 5.0
August	255.3	r 269.4	r 6.2
September	255.7	r 272.1	r 7.1
October	278.1	274.5	7.6

¹ Survey has been re-designed—see Information Paper (8511.0).

² Data revised back to 1982. See *Improvements to ABS Economic Statistics* (Catalogue number 1357.0). (Source: *Retail Trade, Australia*, ABS catalogue number 8501.0.)

	NSW	Vic.	Qld	SA	WA	Tas.	Aust. ¹
Population							
Estimated resident population, June 1997 ('000) p	6 274.4	4 605.1	3 401.2	1 479.8	1 798.1	473.5	18 532.2
Proportion of Australian population, June 1997 (%) p	33.9	24.8	18.4	8.0	9.7	2.6	100.0
Population growth rate, 12 months to June 1997 (%) p	1.1	1.0	1.9	0.4	1.9	-0.2	1.2
Labour Force							
Employment growth, 12 months to November 1997 (trend series) (%)							
Males	0.1	0.4	1.6	1.8	3.5	-1.7	1.0
Females	0.0	0.7	4.5	-0.5	1.3	-3.7	1.1
Persons	0.0	0.5	2.9	0.8	2.5	-2.5	1.0
Unemployment rate (trend series), November 1997 (%)	7.9	8.5	9.4	9.7	6.8	11.3	8.4
Unemployment growth, 12 months to November 1997 (trend series) (%)	0.6	-7.6	0.9	3.5	-10.1	6.0	-2.0
Participation rate (trend series), November 1997 (%)	61.5	63.0	65.0	61.9	66.0	59.0	63.2
Average weekly overtime worked per employee, August 1997 (hours)	1.0	1.2	0.9	1.0	1.1	0.7	1.0
Job vacancy rate, August 1997 (%)	0.9	1.0	1.4	0.9	1.0	1.4	1.0
Working days lost through industrial disputes, 12 months to September 1997 (days per '000 employees)	64	63	93	14	82	36	65
Wages and Prices							
Average weekly total earnings, full-time adult employees (trend series) August 1997 (\$)							
Males	834.3	806.0	762.9	759.0	832.3	758.1	807.9
Females	665.0	645.8	608.3	593.9	613.7	597.6	640.7
Persons	770.4	747.0	706.0	703.8	748.7	703.4	745.9
Average weekly total earnings, full-time adult employees, growth rate, 12 months to August 1997 (%)	1.8	4.5	5.9	3.8	2.5	5.6	3.4
Consumer price index, all groups, annual growth to September quarter 1997 (%) ²	-0.3	-0.1	0.1	-0.8	-0.7	-0.4	-0.3
Building							
% change in the number of new residential dwelling units approved in 12 months ended October 1997, over the same period previous year	15.8	22.9	6.9	13.0	4.2	-20.3	12.2
Finance and Retail Trade							
% change in private new capital expenditure, 12 months ended September 1997, over the same period previous year	4.3	7.8	25.3	23.4	-9.9	16.0	5.6
% change in trend estimates turnover of retail establishments, October 1997 (change from corresponding month of the previous year)	3.8	7.0	6.5	4.7	5.7	7.6	5.4
Transport							
% change in number of new motor vehicles (excluding motorcycles) registered 12 months ended October 1997, over the same period previous year	7.3	11.9	6.8	6.8	8.6	8.0	8.3
Agriculture							
% change in the number of livestock slaughtered 12 months ended October 1997 over the same period previous year							
Cattle and calves	6.7	12.0	18.5	8.5	5.9	19.6	11.1
Sheep and lambs	-0.6	11.6	17.9	10.2	2.7	14.6	5.7
Tourism							
Room occupancy rates for hotels, motels etc. with facilities, September quarter 1997(%)	57.5	53.2	64.5	52.2	57.9	39.5	58.0
Australian National and State Accounts							
% change in GSP (GDP), Average 1989-90 Prices Trend Series							
Mar. qtr 1997 to Jun. qtr 1997	0.3	1.3	0.9	-0.5	—	-0.8	0.6
Jun. qtr 1996 to Jun. qtr 1997	2.1	3.2	4.3	-0.2	1.4	-1.4	2.6

¹ Australian totals include the ACT and NT.² CPI applies to State capitals.

EXPLANATORY NOTES

INTRODUCTION

1 This publication contains latest figures for a comprehensive range of economic indicators. Statistics shown in this publication are the latest available at the date of preparation and may be subject to revision in subsequent issues. In a number of cases figures appearing in this publication are preliminary and are subject to revision in subsequent issues. Reference should therefore always be made to the latest issue or to the statistical publication on the specific subject.

SEASONAL ADJUSTMENT AND TREND ESTIMATION

2 Seasonal adjustment is a means of removing the estimated effects of normal seasonal variation from the series so that the effects of other influences on the series can be more clearly recognised. Seasonal adjustment does not aim to remove the irregular or non-seasonal influences which may be present in any particular month. This means that month-to-month movements of the seasonally adjusted estimates may not be reliable indicators of trend behaviour.

3 The smoothing of seasonally adjusted series reduces the impact of the irregular components of the seasonally adjusted series and creates trend estimates. These trend estimates are derived by applying a 13-term Henderson-weighted moving average to all months except the last six. The last six monthly trend estimates are obtained by applying surrogates of the Henderson average to the seasonally adjusted series. Trend series are used to analyse the underlying behaviour of the series over time.

4 While this smoothing technique enables estimates to be produced for the latest month, it does result in revisions to the most recent months as additional observations become available. Generally, subsequent revisions become smaller and after 3 months have a negligible impact on the series. Revisions also occur as a result of the annual review of seasonal factors.

5 Users may wish to refer to the ABS Publication *A Guide to Interpreting Time Series – Monitoring 'Trends' – An Overview* (1348.0) for more detailed information on smoothing seasonally adjusted time series data.

RELATED PUBLICATIONS

6 Current publications produced by the ABS are listed in the *Catalogue of Publications and Products* (1101.0). The ABS also issues, on Tuesdays and Fridays, the *Release Advice* (1105.0) which lists publications to be released in the next few days. The *Catalogue* and *Release Advice* are available from any ABS office.

UNPUBLISHED STATISTICS

7 As well as the statistics included in this and related publications, the ABS may have other relevant unpublished data available. Inquiries should be made to Information Inquiries on (03) 6222 5800 or to any ABS office.

EFFECTS OF ROUNDING

8 Some figures have been rounded and discrepancies may occur between totals and sums of the component items.

SYMBOLS AND OTHER USAGES

n.a.	not available
n.y.a.	not yet available
..	not applicable
—	nil or rounded to zero
p	preliminary—figure or series subject to revision
r	figure or series revised since previous issue

For more information . . .

The ABS publishes a wide range of statistics and other information on Australia's economic and social conditions. Details of what is available in various publications and other products can be found in the ABS Catalogue of Publications and Products available from all ABS Offices.

ABS Products and Services

Many standard products are available from ABS bookshops located in each State and Territory. In addition to these products, information tailored to the needs of clients can be obtained on a wide range of media by contacting your nearest ABS Office. The ABS also provides a Subscription Service for standard products and some tailored information services.

National Dial-a-Statistic Line

0055 86 400

Steadycom P/L: premium rate 25c/20 secs.

This number gives 24-hour access, 365 days a year, for a range of important economic statistics including the CPI.

Internet

<http://www.abs.gov.au>

A wide range of ABS information is available via the Internet, with basic statistics available for each State, Territory and Australia. We also have Key National Indicators, ABS product release details and other information of general interest.

Sales and Inquiries

client.services@abs.gov.au

National Mail Order Service	(02) 6252 5249
Subscription Service	1300 366 323

	Information Inquiries	Bookshop Sales
CANBERRA	(02) 6252 6627	(02) 6207 0326
SYDNEY	(02) 9268 4611	(02) 9268 4620
MELBOURNE	(03) 9615 7755	(03) 9615 7755
BRISBANE	(07) 3222 6351	(07) 3222 6350
PERTH	(08) 9360 5140	(08) 9360 5307
ADELAIDE	(08) 8237 7100	(08) 8237 7582
HOBART	(03) 6222 5800	(03) 6222 5800
DARWIN	(08) 8943 2111	(08) 8943 2111



Client Services, ABS, PO Box 10, Belconnen ACT 2616



2130360001985

ISSN 1034-1803