



**Australian
Bureau of
Statistics**

MARCH 1998

1307.1

ECONOMIC INDICATORS

NEW SOUTH WALES

EMBARGO: 11:30AM (CANBERRA TIME) TUES 17 MAR 1998

C O N T E N T S

	<i>page</i>
Notes	2
NSW Overview	3
Main features	4
List of tables and graphs	5
Population	6
Labour	7
Production	10
Building	11
Retail trade	12
New motor vehicle registrations	13
Tourism	14
Consumer and producer price indexes	15
Finance	16
State Government finance	17
Investment	18
Foreign trade	19

I N Q U I R I E S

- For further information about these and related statistics, contact Helen Gardiner on Sydney (02) 9268 4562 or e-mail at helen.gardiner@abs.gov.au or contact any ABS office. For information about other ABS statistics and services, refer to the back cover of this publication.

NOTES

GENERAL

This publication has been enhanced to incorporate relevant data from the now discontinued publication *Monthly Summary of Statistics, NSW* (Cat. no. 1305.1) (final edition December 1997).

This enhanced publication provides information on a wide range of economic indicators which are the latest available at the time of publication. In a number of cases, figures appearing in this summary are preliminary and are subject to revision in subsequent issues.

**SEASONAL
ADJUSTMENT
AND TREND
ESTIMATION**

Seasonal adjustment is a means of removing the estimated effects of normal seasonal variation from a series so that the effects of other variations on that series can be more clearly recognised. Seasonal adjustment does not aim to remove the irregular or non-seasonal influences which may be present. This means that movements of seasonally adjusted estimates may not be reliable indicators of trend behaviour. Smoothing seasonally adjusted series produces a measure of the underlying trend by reducing the impact of the irregular component of the series. This smoothing technique does result in revisions to the most recent estimates as additional observations become available. For an explanation of seasonal adjustment derivation, refer to the publication *Seasonally Adjusted Indicators* (Cat. no. 1308.0).

**STANDARD ERRORS
OF ESTIMATES**

One measure of the variability which occurs as a result of surveying only samples of the total business population is the standard error. There are about two chances in three that a survey estimate is within one standard error of the figure that would have been obtained if all businesses had been included, and about 19 chances in 20 that it is within two standard errors. The standard error can also be expressed as a percentage of the estimate and this is known as the relative standard error (RSE).

For detailed explanatory notes and definitions for the items shown in this publication, readers are referred to the specific ABS publications.

Current publications produced by the ABS are listed in the *Catalogue of Publications* (Cat. no. 1101.0). A *Release Advice* (Cat. no. 1105.0) is issued on Tuesdays and Fridays which lists publications to be released in the next few days. These publications are available from any ABS office.

**SYMBOLS AND
OTHER USAGES**

.....

kWh	kilowatt hour
teraJ	terajoule
n.a.	not available
n.p.	not available for publication but included in totals where applicable
n.y.a	not yet available
r	figure or series revised since previous issue
..	not applicable
—	nil or rounded to zero
—	break in continuity of series (where a line is drawn across a column between two consecutive figures)

Gregory W. Bray
Regional Director
New South Wales

NSW OVERVIEW

EMPLOYMENT

Seasonally adjusted employment rose by 0.1% in NSW in January 1998 to 2,845,500. There was no change in national employment over the same period.

UNEMPLOYMENT

NSW unemployment rose by 0.5% in January 1998 to a seasonally adjusted figure of 225,800. The unemployment rate rose very slightly to 7.4% in January 1998 in NSW while the national unemployment rate was 8.2%.

NEW MOTOR VEHICLE REGISTRATIONS

In seasonally adjusted terms, new motor vehicle registrations in NSW decreased by 0.8% from 21,507 in November 1997 to 21,335 in December 1997.

BUILDING APPROVALS

The seasonally adjusted number of new dwelling units approved in NSW in December 1997 was 4,822 an increase of 7.0% on the previous month and 21.9% higher than in December 1996.

RETAIL

In seasonally adjusted terms, total retail sales for NSW in December 1997 was \$3,996.3 million, an increase of 1.2% compared to the previous month and an increase of 3.5% compared to December 1996.

FINANCE

There was a 4.0% decline to \$1,700.5 million in the value of housing finance commitments for owner occupation for NSW in December 1997. However, this estimate is a 14.1% increase on \$1,491.0 million recorded twelve months earlier.

MAIN FEATURES

.....

BUILDING APPROVALS

In December 1997, the seasonally adjusted figure for total dwelling units approved in NSW (4,822) increased 7.0% on the previous month and 21.9% on December 1996. At the national level, the increases were 0.8% and 20.9% respectively over the same periods. Of the total dwelling units approved in NSW 2,795 (58%) were new houses while nationally new houses comprised 69% of the total.

In seasonally adjusted terms, the value of new residential building approved for December 1997 in NSW was \$562.3 million, up 11.3% on the previous month and 38.1% on December 1996. The figure for December was still 11.3% down on the August 1997 figure of \$633.6 million, which was the highest since August 1994.

In original terms, the value of non residential building approved in NSW for December 1997 was \$286.0 million, down 24.9% on the previous month and 43.8% on December 1996. The value of total building work approved for December was \$885.8 million, representing 35.3% of the national figure (\$2507.3 million).

LABOUR

Seasonally adjusted employment in NSW rose by 0.5% in the 12 months to January 1998 while national employment rose by 1.1% in the same period. The number of unemployed persons in NSW fell from a seasonally adjusted figure of 238,500 in January 1997 to 225,800 in January 1998, a fall of 5.3%. National unemployment fell by 4.4% over the same period.

Over the past year, the NSW unemployment rate has varied from a seasonally adjusted high of 8.5% in February 1997 to a low of 7.3% in December before reaching 7.4% in January 1998. The national unemployment rate fell from 8.6% in January 1997 to 8.2% in January 1998.

There were 22,800 job vacancies in NSW in November 1997, a rise of 18.1% over the past quarter but a fall of 10.7% over the past year.

LIST OF TABLES AND GRAPHS

	Page
POPULATION	
1	Estimated resident population, NSW 6
LABOUR	
2	Labour data, latest time period, NSW and Australia 7
3	Labour data, time series, NSW 7
4	Labour force status of the civilian population, NSW 8
5	Graph: Unemployment rates NSW and Australia 9
PRODUCTION	
6	Coal, electricity and gas production, latest time period, NSW and Australia . . 10
7	Coal, electricity and gas production, time series, NSW 10
BUILDING	
8	Building approvals, latest time period, NSW and Australia 11
9	Building approvals, time series, NSW 11
RETAIL TRADE	
10	Turnover of retail establishments, latest time period, NSW and Australia . . . 12
11	Turnover of retail establishments, time series, NSW 12
NEW MOTOR VEHICLE REGISTRATIONS	
12	New motor vehicle registrations, latest time period, NSW and Australia 13
13	New motor vehicle registrations, time series, NSW 13
TOURISM	
14	Licensed hotels, motels etc., latest time period, NSW and Australia 14
15	Licensed hotels, motels etc., time series, Sydney and NSW 14
16	Graph: Licensed hotels, motels etc., quarterly room nights occupied, Sydney and balance of NSW. 14
CONSUMER AND PRODUCER PRICE INDEXES	
17	Consumer and producer price indexes, latest time period, NSW and Australia 15
18	Consumer and producer price indexes, time series, NSW 15
19	Graph: Consumer Price Index, Sydney and average of 8 capital cities 15
HOUSING FINANCE	
20	Finance commitments, latest time period, NSW and Australia 16
21	Finance commitments, time series, NSW 16
STATE GOVERNMENT FINANCE	
22	Government finance, budget sector, time series, NSW 17
INVESTMENT	
23	Actual private new fixed capital expenditure, latest time period, NSW and Australia 18
24	Actual private new fixed capital expenditure, time series, NSW 18
25	Graph: Actual private new fixed capital expenditure, NSW 18
FOREIGN TRADE	
26	Imports and exports, latest time period, NSW and Australia 19
27	Imports and exports, time series, NSW 19

1

ESTIMATED RESIDENT POPULATION, NSW

Period	Estimated resident population at end of period			Increase during period			Mean estimated resident population for year ended	
	Males '000	Females '000	Persons '000	Natural increase(a) '000	Net estimated migration '000	Total increase(b) '000	30 June '000	31 December '000
1994	3 026.8	3 063.5	6 090.3	42.8	13.2	57.5	6 034.9	6 064.0
1995	3 064.0	3 104.8	6 168.8	42.0	33.7	78.6	6 093.2	6 128.0
1996	3 098.2	3 142.6	6 240.9	40.6	29.3	72.1	6 167.2	6 204.2
1996								
June qtr	3 081.0	3 123.7	6 204.7	9.8	7.5	18.3
September qtr	3 089.1	3 132.3	6 221.4	8.8	7.9	16.6
December qtr	3 098.2	3 142.6	6 240.9	11.1	8.4	19.5
1997								
March qtr	3 108.6	3 152.6	6 261.3	11.4	9.0	20.4
June qtr	3 115.3	3 159.0	6 274.4	11.0	2.1	13.1
September qtr	3 124.9	3 168.1	6 293.0	7.6	11.0	18.6

^a Excess of live births over deaths.

^b For dates prior to June 1996, differences between the total increase shown and the sum of the natural increase and net estimated migration arise from retrospective adjustments to population estimates (which are made after each Census) to compensate for any intercensal discrepancy. A description of intercensal discrepancy is contained in the ABS information paper Demographic Estimates: Concepts, Sources and Methods (Cat. no. 3228.0).

Source: Australian Demographic Statistics (Cat. no. 3101.0)

2

LABOUR, NSW AND AUSTRALIA

Indicator	Unit	Latest period	New South Wales			Australia		
			Latest figure	Change from prior period %	Change from same period prior year %	Latest figure	Change from prior period %	Change from same period prior year %
Employed persons (seasonally adjusted)	'000	Jan 98	2 845.5	0.1	0.5	8 517.6	0.0	1.1
Unemployed persons (seasonally adjusted)	'000	Jan 98	225.8	0.5	-5.3	756.1	0.4	-4.4
Labour force (seasonally adjusted)	'000	Jan 98	3 071.3	0.1	0.0	9 273.8	0.1	0.6
Participation rate (seasonally adjusted)	%	Jan 98	61.8	0.1	-1.2	63.2	0.0	-0.8
Unemployment rate (seasonally adjusted)	%	Jan 98	7.4	0.4	-5.4	8.2	0.3	-5.0
Industrial disputes—working days lost	'000	Nov 97	8.1	-71.1	-63.2	56.3	-38.5	22.4
Job vacancies	'000	Nov 97	22.8	18.1	-10.7	68.1	-1.7	9.3
Average weekly employee earnings—full-time adult ordinary time earnings (seasonally adjusted)	\$	Aug 97	732.4	1.5	2.5	708.7	1.9	4.4

Source: Labour Force, Australia, Preliminary (Cat. no. 6202.0), Job Vacancies and Overtime, Australia (Cat. no. 6354.0), Industrial Disputes, Australia (6321.0), Average Weekly Earnings, States and Australia (Cat. no. 6302.0)

3

LABOUR, NSW

Period	Seasonally adjusted						
	Employed persons '000	Unemployed persons '000	Labour force '000	Participation rate %	Unemployment rate %	Industrial disputes (working days lost) '000	Job vacancies '000
1996							
November	2 799.3	228.4	3 027.7	61.8	7.5	22.0	25.6
December	2 820.8	238.3	3 059.1	62.4	7.8	12.2	..
1997							
January	2 831.7	238.5	3 070.3	62.6	7.8	3.2	..
February	2 801.9	258.8	3 060.7	62.3	8.5	3.2	22.9
March	2 813.4	240.8	3 054.2	62.1	7.9	16.3	..
April	2 826.2	248.2	3 074.5	62.5	8.1	2.6	..
May	2 799.0	254.3	3 053.3	62.0	8.3	13.2	19.6
June	2 788.1	229.7	3 017.8	61.2	7.6	10.8	..
July	2 804.2	255.7	3 060.0	62.0	8.4	18.5	..
August	2 767.9	241.2	3 009.1	60.9	8.0	22.1	19.3
September	2 817.4	239.3	3 056.7	61.8	7.8	23.0	..
October	2 781.8	245.6	3 027.4	61.1	8.1	28.0	..
November	2 839.0	238.5	3 077.5	62.0	7.7	8.1	22.8
December	2 842.3	224.6	3 066.9	61.8	7.3	n.y.a.	..
1998							
January	2 845.5	225.8	3 071.3	61.8	7.4	n.y.a.	..

Source: Labour Force, Australia, Preliminary (Cat. no. 6202.0), Industrial Disputes, Australia (Cat. no. 6321.0)

4

LABOUR FORCE STATUS, NSW — ORIGINAL

Month	Employed		Unemployed		Labour force	Not in labour force	Civilian population aged 15 years and over	Unemployment rate(a)	Participation rate(b)
	Full-time workers	Total	Looking for full-time work	Total					
	'000	'000	'000	'000	'000	'000	'000	%	%
MALES									
January									
1994	1 338.3	1 475.7	179.3	199.2	1 675.0	644.4	2 319.4	11.9	72.2
1995	1 384.8	1 544.0	147.4	166.2	1 710.2	633.6	2 343.8	9.7	73.0
1996	1 431.1	1 574.0	137.0	157.9	1 731.8	642.3	2 374.1	9.1	72.9
1996									
November	1 416.6	1 589.1	117.7	134.0	1 723.1	681.4	2 404.6	7.8	71.7
December	1 451.3	1 625.7	121.3	142.1	1 767.8	639.5	2 407.3	8.0	73.4
1997									
January	1 437.6	1 605.6	133.2	151.6	1 757.3	651.9	2 409.2	8.6	72.9
February	1 419.3	1 588.4	142.7	161.6	1 750.0	661.1	2 411.1	9.2	72.6
March	1 434.1	1 603.9	126.3	147.2	1 751.1	661.9	2 413.0	8.4	72.6
April	1 421.2	1 610.1	120.9	139.1	1 749.3	666.3	2 415.6	8.0	72.4
May	1 408.0	1 597.3	127.6	143.3	1 740.7	677.4	2 418.1	8.2	72.0
June	1 416.4	1 598.9	116.8	129.1	1 728.1	692.7	2 420.7	7.5	71.4
July	1 422.3	1 600.4	130.3	145.4	1 745.8	677.8	2 423.6	8.3	72.0
August	1 390.3	1 567.6	120.3	135.2	1 702.8	723.7	2 426.5	7.9	70.2
September	1 434.3	1 613.3	126.1	147.6	1 760.9	668.5	2 429.3	8.4	72.5
October	1 428.1	1 595.3	121.3	138.9	1 734.2	698.1	2 432.3	8.0	71.3
November	1 431.3	1 615.2	119.0	138.1	1 753.3	681.9	2 435.2	7.9	72.0
December	1 456.8	1 637.6	116.8	135.1	1 772.7	665.4	2 438.1	7.6	72.7
1998									
January	1 441.8	1 616.3	127.1	141.7	1 758.0	682.3	2 440.3	8.1	72.0
FEMALES									
January									
1994	678.0	1 088.3	93.2	120.9	1 209.2	1 193.4	2 402.6	10.0	50.3
1995	692.7	1 126.2	74.8	108.1	1 234.3	1 194.3	2 428.6	8.8	50.8
1996	730.8	1 173.0	69.7	96.8	1 269.8	1 187.8	2 457.5	7.6	51.7
1996									
November	730.9	1 214.6	50.2	82.2	1 296.8	1 195.9	2 492.6	6.3	52.0
December	746.7	1 225.0	70.1	102.6	1 327.6	1 168.3	2 495.8	7.7	53.2
1997									
January	729.7	1 182.3	75.0	106.4	1 288.6	1 209.5	2 498.1	8.3	51.6
February	725.7	1 194.1	80.0	125.6	1 319.8	1 180.6	2 500.3	9.5	52.8
March	722.6	1 212.4	73.1	110.0	1 322.4	1 180.2	2 502.5	8.3	52.8
April	730.2	1 211.6	68.9	104.5	1 316.1	1 189.1	2 505.3	7.9	52.5
May	720.4	1 206.6	67.2	101.9	1 308.5	1 199.5	2 508.0	7.8	52.2
June	704.3	1 192.4	64.1	92.3	1 284.7	1 226.0	2 510.7	7.2	51.2
July	729.6	1 213.2	61.7	92.7	1 305.9	1 207.7	2 513.6	7.1	52.0
August	703.9	1 182.9	65.3	92.7	1 275.6	1 240.8	2 516.5	7.3	50.7
September	722.2	1 226.8	63.4	96.1	1 322.9	1 196.5	2 519.4	7.3	52.5
October	721.0	1 194.1	68.1	97.3	1 291.5	1 230.6	2 522.1	7.5	51.2
November	725.5	1 228.3	62.1	87.8	1 316.1	1 208.6	2 524.7	6.7	52.1
December	730.8	1 234.9	66.3	95.7	1 330.6	1 196.8	2 527.4	7.2	52.6
1998									
January	721.4	1 185.5	71.4	102.6	1 288.1	1 241.2	2 529.3	8.0	50.9

For footnotes see end of table.

4

LABOUR FORCE STATUS, NSW — ORIGINAL *continued*

Month	Employed		Unemployed		Labour force	Not in labour force	Civilian population aged 15 years and over	Unemployment rate(a)	Participation rate(b)
	Full-time workers	Total	Looking for full-time work	Total					
	'000	'000	'000	'000	'000	'000	'000	%	%
PERSONS									
January									
1994	2 016.3	2 564.0	272.4	320.1	2 884.1	1 837.8	4 722.0	11.1	61.1
1995	2 077.5	2 670.2	222.2	274.2	2 944.4	1 827.9	4 772.4	9.3	61.7
1996	2 161.9	2 746.9	206.7	254.7	3 001.6	1 830.1	4 831.6	8.5	62.1
1996									
November	2 147.5	2 803.7	167.9	216.2	3 019.9	1 877.3	4 897.2	7.2	61.7
December	2 197.9	2 850.6	191.4	244.7	3 095.4	1 807.8	4 903.1	7.9	63.1
1997									
January	2 167.3	2 787.9	208.1	258.0	3 045.9	1 861.4	4 907.3	8.5	62.1
February	2 145.0	2 782.5	222.7	287.2	3 069.7	1 841.7	4 911.4	9.4	62.5
March	2 156.7	2 816.3	199.4	257.1	3 073.4	1 842.1	4 915.5	8.4	62.5
April	2 151.5	2 821.7	189.8	243.6	3 065.4	1 855.5	4 920.8	7.9	62.3
May	2 128.4	2 804.0	194.9	245.3	3 049.2	1 876.9	4 926.1	8.0	61.9
June	2 120.8	2 791.3	181.0	221.4	3 012.8	1 918.7	4 931.4	7.3	61.1
July	2 151.9	2 813.6	192.1	238.1	3 051.7	1 885.5	4 937.2	7.8	61.8
August	2 094.3	2 750.5	185.6	228.0	2 978.4	1 964.5	4 942.9	7.7	60.3
September	2 156.5	2 840.0	189.5	243.7	3 083.8	1 865.0	4 948.7	7.9	62.3
October	2 149.1	2 789.4	189.3	236.2	3 025.7	1 928.7	4 954.3	7.8	61.1
November	2 156.7	2 843.5	181.1	225.9	3 069.4	1 890.5	4 959.9	7.4	61.9
December	2 187.6	2 872.6	183.1	230.8	3 103.3	1 862.2	4 965.6	7.4	62.5
1998									
January	2 163.2	2 801.8	198.5	244.3	3 046.1	1 923.5	4 969.5	8.0	61.3

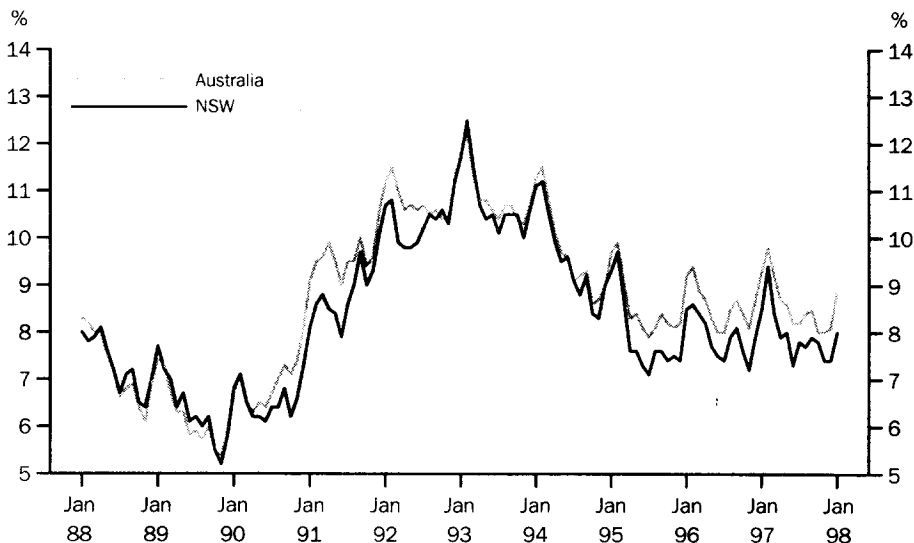
^a The number of unemployed in each group expressed as a percentage of the labour force in the same group.

^b The labour force in each group expressed as a percentage of the civilian population aged 15 and over in the same group.

Source: Labour Force, Australia, Preliminary (Cat. no. 6202.0)

5

UNEMPLOYMENT RATE — ORIGINAL



Source: Labour Force, Australia, Preliminary (Cat. no. 6202.0)

6

COAL, ELECTRICITY AND GAS PRODUCTION, NSW AND AUSTRALIA — ORIGINAL

Indicator	Unit	Latest period	New South Wales				Australia		
			Latest figure	Change from	Change from	Latest figure	Change from	Change from	
				prior period	same period		prior year	prior period	same period
%	%	%	%	%					
Raw coal won—									
Underground	'000 tonnes	Nov 97	4 246	1.6	-6.1	5 357	-3.3	-4.9	
Open cut	'000 tonnes	Nov 97	5 764	-10.4	10.8	14 487	-5.0	6.4	
Total	'000 tonnes	Nov 97	10 010	-5.7	2.9	19 844	-4.5	3.1	
Electricity	mill. kWh	Dec qtr 97	15 220	-8.4	1.1	43 461	-4.5	6.6	
Gas(a)	teraJ	Dec qtr 97	25 445	-25.4	4.3	151 337	-17.5	3.4	

^a Available for issue through mains. Includes ACT.

Source: Joint Coal Board, Manufacturing Production, Australia (Cat. no. 8301.0)

7

COAL, ELECTRICITY AND GAS PRODUCTION, NSW — ORIGINAL

Period	Raw coal won			Electricity mill. kWh	Gas(a) teraJ
	Underground	Open cut	Total		
	'000 tonnes	'000 tonnes	'000 tonnes		
1994-95	48 702	59 079	107 781	60 016	104 881
1995-96	54 314	58 775	113 089	62 047	104 141
1996-97	54 642	69 037	123 679	62 788	109 284
1996					
September	4 872	5 154	10 026	n.a.	n.a.
October	5 534	6 569	12 103	—	—
November	4 524	5 200	9 724	15 052	24 402
December	3 859	4 830	8 689	—	—
1997					
January	3 972	5 797	9 769	—	—
February	3 830	5 583	9 413	15 127	22 738
March	4 088	5 663	9 751	—	—
April	4 803	6 626	11 429	—	—
May	5 183	6 626	11 809	15 973	29 907
June	4 717	5 785	10 502	—	—
July	6 489	6 970	13 459	—	—
August	5 439	6 075	11 514	16 622	34 086
September	4 898	5 745	10 643	—	—
October	4 179	6 436	10 615	—	—
November	4 246	5 764	10 010	15 220	25 445
December	3 889	5 196	9 085	—	—

^a Available for issue through mains. Includes ACT.

Source: Joint Coal Board, Manufacturing Production, Australia (Cat. no. 8301.0)

Indicator	Unit	Latest period	Latest figure	New South Wales		Australia		
				Change from prior period %	Change from same period prior year %	Latest figure	Change from prior period %	Change from same period prior year %
Number of dwelling units(a) (seasonally adjusted)—								
New houses	No.	Dec 97	2 795	16.5	20.4	9 232	6.3	20.2
Total	No.	Dec 97	4 822	7	21.9	13 424	0.8	20.9
Value of new residential building (seasonally adjusted)	\$m	Dec 97	562.3	11.3	38.1	1 386.8	0.5	29.7
Value of alterations and additions to residential building(b) (seasonally adjusted)	\$m	Dec 97	122.2	13.1	36.8	228.5	2.8	11.0
Value of non-residential building(c) (original)	\$m	Dec 97	286.0	-24.9	43.8	1 028.9	3.7	6.3
Value of all building (original)	\$m	Dec 97	885.8	-13.8	-6.7	2 507.3	4.0	19.0

^a Includes dwelling units approved as part of the construction of non-residential building and alterations and additions to existing buildings (including conversions to dwelling units).

^b Valued at \$10,000 or more. Includes conversions of existing buildings into residential buildings.

^c Valued at \$50,000 or more.

Source: Building Approvals, Australia (Cat. no. 8731.0)

Period	Number of dwelling units(a), seasonally adjusted				Value of building approvals			
	New houses		Total		Seasonally adjusted		Original	
	Private sector	Total	Private sector	Total	New residential building	Alterations and additions to residential building(b)	Non-residential building(c)	All building
	no.	no.	no.	no.	\$m	\$m	\$m	\$m
1994-95	3 733.4	10 211.0
1995-96	3 650.2	9 168.6
1996-97	5 169.1	11 357.5
1996								
October	1 918	1 937	3 585	3 781	383.8	87.7	749.8	1 232.2
November	1 979	1 982	3 736	3 984	393.2	126.3	880.8	1 430.6
December	2 299	2 321	3 700	3 957	407.1	89.3	509.2	949.8
1997								
January	2 148	2 154	3 967	4 191	442.2	100.0	413.0	883.8
February	2 045	2 089	4 072	4 308	479.4	93.0	241.5	734.7
March	1 805	1 825	3 849	3 995	375.9	96.8	202.4	648.7
April	2 445	2 470	4 203	4 326	505.6	91.2	307.3	847.3
May	2 961	2 980	4 390	4 442	527.9	91.9	260.5	971.3
June	2 112	2 119	4 219	4 389	436.9	125.7	353.0	903.0
July	2 095	2 109	3 687	3 744	355.3	92.7	584.9	1 156.7
August	2 236	2 241	4 695	4 862	633.6	101.5	710.5	1 405.9
September	2 143	2 147	3 454	3 567	401.2	92.3	396.4	958.0
October	2 411	2 420	4 081	4 111	511.7	102.3	520.3	1 123.1
November	2 390	2 400	4 466	4 507	505.2	108.0	380.6	1 028.0
December	2 778	2 795	4 644	4 822	562.3	122.2	286.0	885.8

^a Includes dwelling units approved as part of the construction of non-residential building and alterations and additions to existing buildings (including conversions to dwelling units).

^b Valued at \$10,000 or more. Includes conversions of existing buildings into residential buildings.

^c Valued at \$50,000 or more.

Source: Building Approvals, Australia (Cat. no. 8731.0)

10

TURNOVER OF RETAIL ESTABLISHMENTS(a), NSW AND AUSTRALIA — SEASONALLY ADJUSTED

Indicator	Unit	New South Wales					Australia		
		Latest period	Latest figure	Change	Change	Latest figure	Change	Change	
				from prior period	from same period prior year		from prior period	from same period prior year	
%	%	%	%						
Food retailing	\$m	Dec 97	1 540.6	0.9	7.2	4 515.6	-0.3	5.8	
Department stores	\$m	Dec 97	337.4	-2.9	-0.6	984.5	-3.6	-1.1	
Clothing and soft good retailing	\$m	Dec 97	284.6	1.4	-1.2	736.8	-1.4	2	
Household good retailing	\$m	Dec 97	414.1	4	-8.4	1 295.6	-1	0.4	
Recreational good retailing	\$m	Dec 97	233.1	7.8	3.9	634.2	1.3	5.3	
Other retailing	\$m	Dec 97	415.6	0.2	10.3	1 132.7	0	8.9	
Hospitality and services	\$m	Dec 97	770.9	0.5	3.7	1 844.2	-0.9	4.1	
Total value of retail sales	\$m	Dec 97	3 996.3	1.2	3.5	11 143.7	-0.8	4.2	

^a The figures shown are derived from a monthly survey of retail establishments. Excludes motor vehicle, boat and caravan dealers, service stations, smash repairers, tyre and battery retailers, bread and milk vendors, footwear repairers and electrical appliance repairers n.e.c. Retail establishments which do not have employees are excluded from the survey. Turnover includes retail sales, wholesale sales, takings from repairs, meals and hiring of goods; and commissions from agency activity (e.g. commissions received from collecting dry cleaning, selling lottery tickets etc.)

Source: Retail Trade, Australia (Cat. no. 8501.0).

11

TURNOVER OF RETAIL ESTABLISHMENTS(a), NSW — SEASONALLY ADJUSTED

Period	Food retailing	Department stores	Clothing and soft good retailing	Household good retailing	Recreational good retailing	Other retailing	Hospitality and services	Total
	\$m	\$m	\$m	\$m	\$m	\$m	\$m	\$m
1996								
October	1 442.7	321.2	279.9	456.9	212.2	381.4	742.2	3 836.4
November	1 455.3	337.5	277.8	441.3	215.0	374.8	731.6	3 833.3
December	1 437.5	339.6	288.1	452.2	224.4	376.7	743.4	3 861.8
1997								
January	1 450.0	334.7	285.5	439.8	220.1	371.2	735.1	3 836.4
February	1 458.0	342.2	277.9	474.6	219.2	374.2	739.9	3 885.9
March	1 487.8	329.5	267.4	445.2	214.8	378.0	732.7	3 855.4
April	1 455.1	314.7	271.6	440.6	219.6	378.3	727.8	3 807.8
May	1 481.5	327.9	283.2	452.9	221.2	384.7	741.0	3 892.4
June	1 464.5	314.2	274.8	455.6	223.7	389.0	765.4	3 887.2
July	1 512.4	364.6	279.9	479.1	214.1	400.8	748.4	3 999.2
August	1 505.0	328.0	276.3	477.3	211.4	385.4	763.9	3 947.3
September	1 537.5	358.4	275.1	464.8	229.6	382.0	765.1	4 012.4
October	1 516.8	336.6	272.7	438.1	225.2	403.7	760.3	3 953.4
November	1 526.5	347.3	280.8	398.3	216.2	414.8	766.7	3 950.6
December	1 540.6	337.4	284.6	414.1	233.1	415.6	770.9	3 996.3

^a The figures shown are derived from a monthly survey of retail establishments. Excludes motor vehicle, boat and caravan dealers, service stations, smash repairers, tyre and battery retailers, bread and milk vendors, footwear repairers and electrical appliance repairers n.e.c. Retail establishments which do not have employees are excluded from the survey. Turnover includes retail sales, wholesale sales, takings from repairs, meals and hiring of goods; and commissions from agency activity (e.g. commissions received from collecting dry cleaning, selling lottery tickets etc.)

Source: Retail Trade, Australia (Cat. no. 8501.0).

12

NEW MOTOR VEHICLE REGISTRATIONS(a), NSW AND AUSTRALIA — SEASONALLY ADJUSTED

Indicator	Unit	Latest period	Latest figure	New South Wales		Latest figure	Australia	
				Change from prior period %	Change from same period prior year %		Change from prior period %	Change from same period prior year %
Passenger vehicles	no.	Dec 97	18 315	-3.6	20.7	55 013	0.5	23.0
Other vehicles (excluding motor cycles)	no.	Dec 97	3 020	20.2	16.0	9 839	13.1	13.2
Total registrations (excluding motor cycles)	no.	Dec 97	21 335	-0.8	20.0	64 852	2.3	21.4

^a Includes vehicles (other than those of the defence forces) owned by Government departments and authorities. Excludes mobile plant and equipment, tractors, trailers and non-motorised caravans.

Source: New Motor Vehicle Registrations, Australia, Preliminary (Cat. no. 9301.0).

13

NEW MOTOR VEHICLE REGISTRATIONS(a), NSW — SEASONALLY ADJUSTED

Period	Passenger vehicles	Other vehicles (excluding motor cycles)	Total (excluding motor cycles)
	no.	no.	no.
1996			
September	15 171	2 685	17 856
October	16 042	2 590	18 632
November	15 759	2 529	18 288
December	15 169	2 604	17 773
1997			
January	17 239	2 656	19 895
February	16 927	2 894	19 820
March	16 761	2 837	19 598
April	17 194	2 637	19 831
May	16 924	2 770	19 694
June	17 978	2 728	20 706
July	17 377	2 763	20 141
August	16 977	2 732	19 709
September	18 454	2 711	21 165
October	18 920	2 729	21 650
November	18 995	2 513	21 507
December	18 315	3 020	21 335

^a Includes vehicles (other than those of the defence forces) owned by Government departments and authorities. Excludes mobile plant and equipment, tractors, trailers and non-motorised caravans.

Source: New Motor Vehicle Registrations, Australia, Preliminary (Cat. no. 9301.0).

14

LICENSED HOTELS, MOTELS ETC., NSW AND AUSTRALIA — ORIGINAL

Indicator	Unit	Latest period	New South Wales				Australia		
			Latest figure	Change from	Change from	Latest figure	Change from	Change from	
				prior period	same period		prior period	same period	
%	%	%	%	%					
Room nights	'000	Sept qtr	3 113.8	5.7	-0.3	9 521.2	9.4	2.4	
Room occupancy rate	%	Sept qtr	57.5	2.7	-2.7	58.0	6.2	-1.4	
Takings	\$'000	Sept qtr	325 246	6.4	3.5	949 679	11.3	5.9	

Source: Tourist Accommodation, Australia (Cat. no. 8635.0)

15

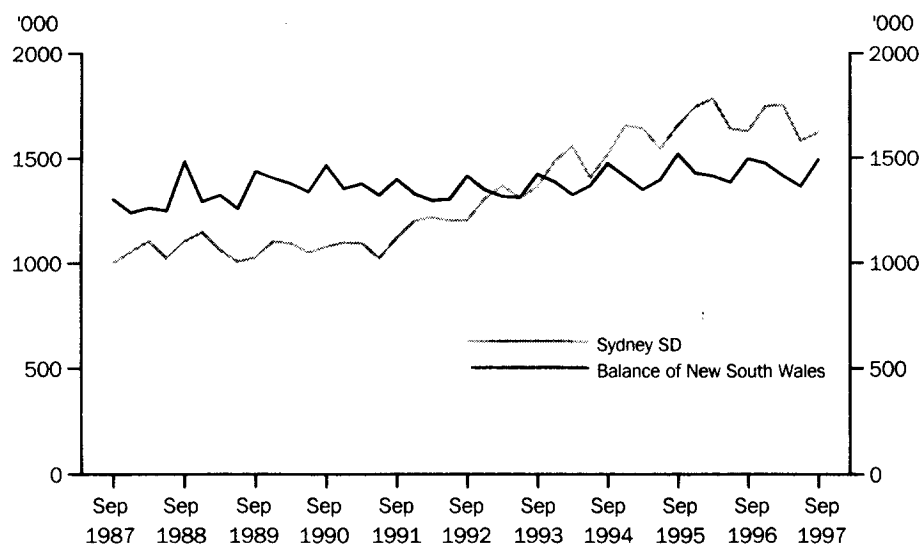
LICENSED HOTELS, MOTELS ETC., SYDNEY AND NSW — ORIGINAL

Period	Sydney			New South Wales		
	Room nights	Room occupancy rate	Takings	Room nights	Room occupancy rate	Takings
	'000	%	\$'000	'000	%	\$'000
1996						
March qtr	1 783.9	76.2	221 746	3 198.4	61.1	316 626
June qtr	1 640.4	69.5	205 884	3 024.3	57.4	296 797
September qtr	1 627.4	69.4	205 409	3 123.4	59.1	314 270
December qtr	1 747.3	74.7	232 355	3 221.7	60.9	333 494
1997						
March qtr	1 753.1	76.2	236 756	3 168.7	60.9	337 189
June qtr	1 581.0	67.9	214 116	2 945.2	56.0	305 726
September qtr	1 622.8	67.2	214 412	3 113.8	57.5	325 246

Source: Tourist Accommodation, NSW (Cat. no. 8635.1)

16

LICENSED HOTELS, MOTELS ETC., QUARTERLY ROOM NIGHTS OCCUPIED — ORIGINAL



Source: Tourist Accommodation, NSW (Cat. no. 8635.1)

17

CONSUMER AND PRODUCER PRICE INDEXES, NSW AND AUSTRALIA

Indicator	Unit	Latest period	New South Wales			Australia(a)		
			Latest figure	Change from prior period %	Change from same period prior year %	Latest figure	Change from prior period %	Change from same period prior year %
Consumer Price Index (all groups)	1989-90 =100.0	Dec qtr 97	120.1	0.3	-0.2	120.0	0.3	-0.2
Price index of materials used in house building (all groups)	1989-90 =100.0	Dec qtr 97	119.4	1.4	3.1	117.9	0.5	1.8
Price index of materials used in building other than house building (all groups)	1989-90 =100.0	Dec qtr 97	114.2	0.0	1.4	114.0	0.0	1.1

^a For the Consumer Price Index this is the weighted average of eight capital cities and for the other two indexes, the weighted average of the six State capital cities.

Source: Consumer Price Index (Cat. no. 6401.0), Price Index of Materials Used in Building Other Than House Building, Six State Capital Cities (Cat. no. 6407.0), Price Index of Materials Used in House Building, Six State Capital Cities (Cat. no. 6408.0)

18

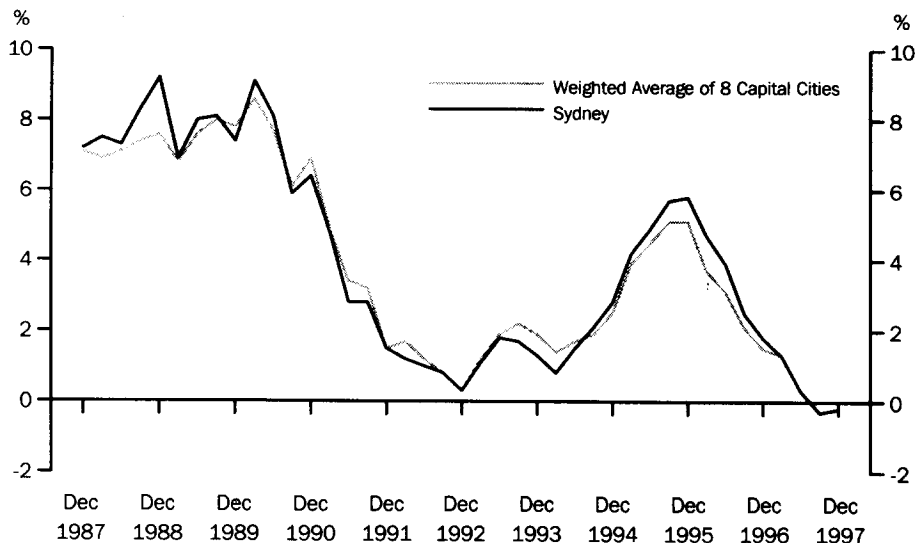
CONSUMER AND PRODUCER PRICE INDEXES, NSW

Period	Consumer Price Index, all groups	Price Index of materials used in house building, all groups	Price Index of materials used in building other than house building, all groups
	1989-90 = 100.0	1989-90 = 100.0	1989-90 = 100.0
1996			
June qtr	119.9	116.2	112.5
September qtr	120.2	115.9	112.5
December qtr	120.4	115.8	112.6
1997			
March qtr	120.6	116.0	113.2
June qtr	120.2	117.3	113.9
September qtr	119.8	117.8	114.2
December qtr	120.1	119.4	114.2

Source: Consumer Price Index (Cat. no. 6401.0), Price index of Materials Used in Building Other Than House Building, Six State Capital Cities (Cat. no. 6407.0), Price Index of Materials Used in House Building, Six State Capital Cities (Cat. no. 6408.0).

19

CONSUMER PRICE INDEX, ANNUAL RATE OF CHANGE



Source: Consumer Price Index (Cat. no. 6401.0)

Indicator	Unit	Latest period	Latest figure	New South Wales		Australia		
				Change from prior period %	Change from same period prior year %	Latest figure	Change from prior period %	Change from same period prior year %
Lending commitments for the construction or purchase of dwellings—								
Construction of dwellings	\$m	Dec 97	204.7	1.8	43.5	674.3	3.0	41.1
Purchase of newly erected dwellings	\$m	Dec 97	111.7	1.6	37.1	261.4	7.7	37.2
Purchase of established dwellings(a)	\$m	Dec 97	1 138.7	-5.0	13.8	3 522.9	-0.8	10.6
Refinancing of existing dwellings	\$m	Dec 97	245.5	-6.2	-7.6	719.3	-2.7	1.1
Lending commitments for alterations and additions	\$m	Dec 97	90.9	-7.2	8.0	222.8	-5.0	4.7
Total lending commitments to individuals for housing(b)	\$m	Dec 97	1 700.5	-4.0	14.1	4 458.6	0.2	15.7
Total lending commitments to individuals for housing (seasonally adjusted)(b)	\$m	Dec 97	1 789.9	-0.8	7.5	4 680.1	3.3	10.7

^a Excludes refinancing.

^b Excludes alterations and additions.

Source: *Housing Finance for Owner Occupation, Australia (Cat. no. 5609.0)*

Period	Lending commitments for the construction or purchase of dwellings					Total lending commitments to individuals for housing(b)	
	Construction of dwellings \$m	Purchase of newly erected dwellings \$m	Purchase of established dwellings(a) \$m	Refinancing of existing dwellings \$m	Lending commitments for alterations and additions \$m	Original \$m	Seasonally adjusted \$m
1993-94	2 151.4	838.5	10 911.6	2 337.2	1 078.2	16 238.7	..
1994-95	2 162.6	819.8	9 952.4	2 381.9	1 242.0	15 316.7	..
1995-96	1 894.7	897.9	10 145.3	2 929.8	1 261.8	15 867.7	..
1996							
October	163.2	97.3	995.2	312.2	112.3	1 567.9	1 575.1
November	167.2	103.7	1 060.5	283.6	89.1	1 615.0	1 594.9
December	142.7	81.5	1 000.9	265.8	84.2	1 491.0	1 665.3
1997							
January	147.8	93.8	948.0	304.9	83.9	1 494.5	1 940.2
February	175.6	100.1	981.9	297.5	92.9	1 555.1	1 591.4
March	187.5	106.3	1 121.1	328.4	103.8	1 743.3	1 715.8
April	212.2	116.6	1 231.9	371.7	108.5	1 932.3	1 792.4
May	221.3	121.3	1 282.3	316.2	99.7	1 941.1	1 778.7
June	193.0	120.8	1 122.6	327.5	89.9	1 764.0	1 735.7
July	220.8	116.8	1 218.6	321.5	93.1	1 877.8	1 707.7
August	213.6	114.8	1 154.9	310.7	90.3	1 794.1	1 824.0
September	236.2	116.0	1 210.2	322.4	102.7	1 884.7	1 856.1
October	224.0	110.9	1 253.3	302.3	110.1	1 890.5	1 884.3
November	201.1	110.0	1 198.4	261.8	97.9	1 771.4	1 804.5
December	204.7	111.7	1 138.7	245.5	90.9	1 700.5	1 789.9

^a Excludes refinancing.

^b Excludes alterations and additions.

Source: *Housing Finance for Owner Occupation, Australia (Cat. no. 5609.0)*

Item	Actual 1995-96 \$m	Actual 1996-97 \$m	Estimates 1997-98 \$m	July-November	
				1996-97 \$m	1997-98 \$m
RECEIPTS					
Current receipts					
Taxes, fees and fines					
Stamp duties	2 630	3 193	3 373	1 270	1 604
Payroll tax	2 876	3 161	3 338	1 260	1 408
Land tax	575	641	786	70	83
Motor vehicle tax	937	903	930	373	390
Gaming and betting	1 179	1 209	1 392	412	487
Licences	1 729	1 850	1 979	637	130
Other	943	1 000	1 114	373	759
Land transactions and royalties	246	243	238	96	109
Income from Non Budget Sector Enterprises	1 290	1 436	1 341	808	553
Commonwealth General Purpose Recurrent Grants	4 517	4 673	4 900	1 987	2 017
less—State Fiscal Contribution	—	210	216	89	90
Commonwealth Specific Purpose Recurrent Grants	2 757	2 944	2 962	1 170	1 224
Other	729	599	626	198	184
<i>Total current receipts</i>	20 408	21 642	22 763	8 565	8 858
Capital receipts					
Commonwealth General Purpose Capital Grants	—	—	—	—	—
Commonwealth Specific Purpose Capital Grants	867	854	854	277	276
Other	11	17	228	2	102
<i>Total capital receipts</i>	877	872	1 081	279	378
Total current and capital receipts	21 285	22 514	23 844	8 844	9 236
EXPENDITURE					
Current expenditure					
Departmental payments					
Services					
Health	5 116	5 381	5 585	2 304	2 462
Education(a)	4 641	4 928	5 174	1 969	2 077
Law and order(b)	1 247	1 679	1 711	679	722
Community Services	989	1 113	1 155	465	490
Other	3 944	4 057	4 192	1 505	1 701
Redundancies	17	22	38	3	14
Subsidies to Non Budget agencies					
Services	726	1 073	866	273	408
Redundancies	66	33	63	30	36
Interest payments	1 683	1 399	1 527	510	515
Superannuation	1 077	1 402	1 451	529	594
Treasurer's advance(c)	—	—	100	—	—
less—User charges	1 286	1 349	1 347	501	526
<i>Total current expenditure</i>	18 220	19 739	20 516	7 766	8 493
Capital expenditure					
Capital works	1 940	2 315	2 665	639	782
Capital grants	1 483	1 109	1 240	508	425
Advances made	65	69	15	28	6
less—Advances repaid	1 877	657	215	-7	9
less—Asset sales	160	247	322	49	67
<i>Total capital expenditure</i>	1 449	2 589	3 383	1 134	1 136
Total current and capital expenditure	19 669	22 328	23 899	8 900	9 629
SURPLUS OR DEFICIT (-)					
Current account	2 188	1 903	2 246	799	365
Capital account	-572	-1 717	-2 302	-855	-758
<i>Total result surplus/deficit</i>	1 617	186	-56	-56	-394

^a Includes Department of Training and Education Co-ordination, Department of School Education, Office of the Board of Studies and TAFE.

^b Includes Attorney Generals Department, Department of Corrective Services and Police Services.

^c Expenditure from the Treasurer's Advance is included in the relevant current payments figures.

Source: Financial Statement released by NSW Treasury. Figures may differ from data published in annual ABS publications.

ACTUAL PRIVATE NEW FIXED CAPITAL EXPENDITURE, NSW AND AUSTRALIA — TREND ESTIMATES

Indicator	Unit	Latest period	New South Wales			Australia		
			Latest figure	Change from prior period %	Change from same period prior year %	Latest figure	Change from prior period %	Change from same period prior year %
Type of asset—								
New buildings and structures	\$m	Sept qtr	985	-6.8	-7.1	3 178	-8.5	-12.2
Equipment, plant and machinery	\$m	Sept qtr	2 440	3.1	1.8	7 953	3.3	8.7
Total	\$m	Sept qtr	3 425	0.0	-0.9	11 132	-0.4	1.8

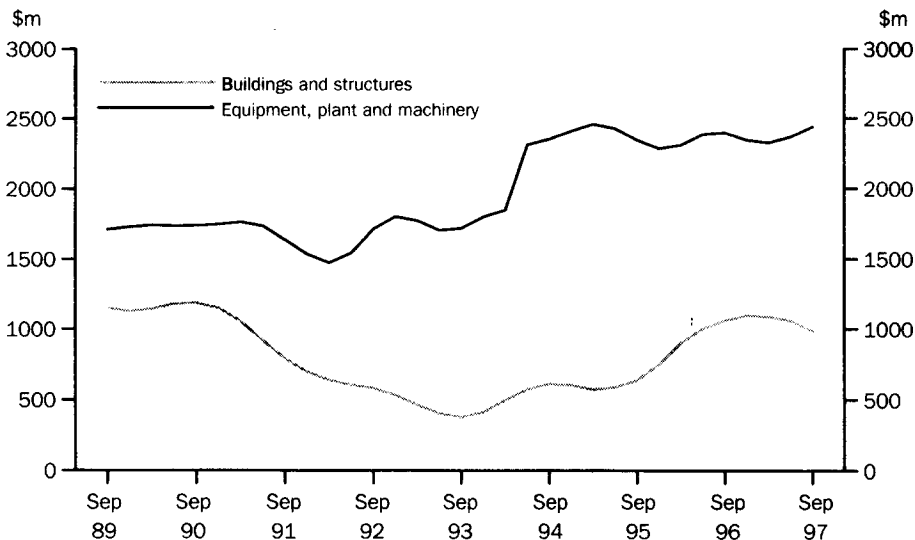
Source: State Estimates of Private New Capital Expenditure (Cat. no. 5646.0)

ACTUAL PRIVATE NEW FIXED CAPITAL EXPENDITURE, NSW — TREND ESTIMATES

Period	Type of asset		
	New buildings and structures \$m	Equipment, plant and machinery \$m	Total \$m
1996			
June qtr	1 002	2 386	3 388
September qtr	1 060	2 397	3 457
December qtr	1 095	2 344	3 438
1997			
March qtr	1 087	2 326	3 412
June qtr	1 057	2 367	3 424
September qtr	985	2 440	3 425

Source: State Estimates of New Capital Expenditure (Cat. no. 5646.0)

ACTUAL PRIVATE NEW FIXED CAPITAL EXPENDITURE — TREND ESTIMATES, NSW



Indicator	New South Wales						Australia	
	Unit	Latest period	Latest figure	Change	Change	Latest figure	Change	Change
				from prior period	from same period prior year		from prior period	from same period prior year
%	%	%	%	%				
Overseas imports into NSW	\$m	Dec 97	3 421	10.3	22.3	7 917	10.2	18.3
Total overseas exports(b)	\$m	Dec 97	1 797	2.7	20.3	7 480	2.3	15.8
Exports of—								
Meat and meat preparations	\$m	Dec 97	85	-3.9	34.3	334	1.4	38.2
Cereals and cereal preparations	\$m	Dec 97	165	10.9	31.5	549	25.1	-4.4
Wool and other animal hair	\$m	Dec 97	110	-15.0	28.5	380	-4.7	13.2
Coke, coal and briquettes	\$m	Dec 97	385	17.7	38.2	883	12.8	34.1
Iron and steel	\$m	Dec 97	88	-10.1	36.2	143	-7.9	4.2
Aluminium	\$m	Dec 97	99	-2.9	28.2	288	-9.2	88.4
Office machines and parts	\$m	Dec 97	55	9.6	0.5	107	36.5	31.6

^a Figures shown are Free On Board (FOB) values.

^b Excludes re-exported goods. State of origin is defined as the State in which the final stage of production or manufacture occurs.

Source: International Trade, Australia: FASTTRACCS Service (Cat. no. 5466.0).

Period	Overseas exports of selected commodities(b)								
	Overseas imports into NSW	Total overseas exports(b)	Meat and meat preparations	Cereals and cereal preparations	Wool and other animal hair	Coke, coal and briquettes	Iron and steel	Aluminium	Office machines and parts
	\$m	\$m	\$m	\$m	\$m	\$m	\$m	\$m	\$m
1994-95	33 280	15 201	885	458	1 035	2 801	913	1 018	829
1995-96	34 891	16 684	794	822	720	3 338	1 037	1 111	638
1996-97	34 204	17 726	784	1 540	859	3 426	968	993	535
1996									
October	3 025	1 406	64	63	82	292	66	75	47
November	2 879	1 474	77	68	87	289	77	74	56
December	2 798	1 494	63	125	86	279	65	77	55
1997									
January	2 631	1 326	54	120	64	343	87	81	35
February	2 549	1 383	65	163	59	277	81	86	41
March	2 649	1 527	70	149	100	261	80	95	50
April	2 939	1 445	76	137	62	286	92	88	31
May	2 788	1 717	75	197	73	289	112	99	40
June	3 182	1 552	68	204	61	270	57	73	41
July	r3 221	r1 748	74	145	104	r335	65	97	45
August	r3 002	r1 762	71	185	79	r318	93	116	44
September	r3 217	r1 665	76	157	102	350	59	73	48
October	3 388	r1 689	r78	95	119	302	123	98	45
November	r3 101	r1 749	r88	148	r129	r328	r98	r102	r50
December	3 421	1 797	85	165	110	385	88	99	55

^a Figures shown are Free On Board (FOB) values.

^b Excludes re-exported goods. State of origin is defined as the State in which the final stage of production or manufacture occurs.

Source: International Trade, Australia: FASTTRACCS Service (Cat. no. 5466.0).

FOR MORE INFORMATION . . .

The ABS publishes a wide range of statistics and other information on Australia's economic and social conditions. Details of what is available in various publications and other products can be found in the ABS Catalogue of Publications and Products available from all ABS Offices.

ABS Products and Services

Many standard products are available from ABS bookshops located in each State and Territory. In addition to these products, information tailored to the needs of clients can be obtained on a wide range of media by contacting your nearest ABS Office. The ABS also provides a Subscription Service for standard products and some tailored information services.

National Dial-a-Statistic Line
0055 86 400

Steadycom P/L: premium rate 25c/20 secs.

This number gives 24-hour access, 365 days a year, for a range of important economic statistics including the CPI.

Internet

<http://www.abs.gov.au>

A wide range of ABS information is available via the Internet, with basic statistics available for each State, Territory and Australia. We also have Key National Indicators, ABS product release details and other information of general interest.

Sales and Inquiries
client.services@abs.gov.au

National Mail Order Service (02) 6252 5249
Subscription Service 1300 366 323

	Information Inquiries	Bookshop Sales
SYDNEY	(02) 9268 4611	(02) 9268 4620
CANBERRA	(02) 6252 6627	(02) 6252 0326
MELBOURNE	(03) 9615 7755	(03) 9615 7755
BRISBANE	(07) 3222 6351	(07) 3222 6350
PERTH	(08) 9360 5140	(08) 9360 5307
ADELAIDE	(08) 8237 7100	(08) 8237 7582
HOBART	(03) 6222 5800	(03) 6222 5800
DARWIN	(08) 8943 2111	(08) 8943 2111



Client Services, ABS, PO Box 10, Belconnen ACT 2616



2130710003980
ISSN 1031-8534

RRP \$16.00