

ECONOMIC INDICATORS

NEW SOUTH WALES

EMBARGO: 11:30AM (CANBERRA TIME) TUES 14 APR 1998

C O N T E N T S

	<i>page</i>
Notes	2
NSW Overview	3
Main features	4
List of tables and graphs	5
Population	6
Labour	7
Production	10
Building	11
Retail trade	12
New motor vehicle registrations	13
Tourism	14
Consumer and producer price indexes	15
Finance	16
State Government finance	17
Investment	18
Foreign trade	19

I N Q U I R I E S

- For further information about these and related statistics, contact Helen Gardiner on Sydney (02) 9268 4562 or e-mail at helen.gardiner@abs.gov.au or contact any ABS office.
- For information about other ABS statistics and services, refer to the back cover of this publication.

NOTES

GENERAL

This publication has been enhanced to incorporate relevant data from the now discontinued publication *Monthly Summary of Statistics, NSW* (Cat. no. 1305.1) (final edition December 1997).

This enhanced publication provides information on a wide range of economic indicators which are the latest available at the time of publication. In a number of cases, figures appearing in this summary are preliminary and are subject to revision in subsequent issues.

**SEASONAL
ADJUSTMENT
AND TREND
ESTIMATION**

Seasonal adjustment is a means of removing the estimated effects of normal seasonal variation from a series so that the effects of other variations on that series can be more clearly recognised. Seasonal adjustment does not aim to remove the irregular or non-seasonal influences which may be present. This means that movements of seasonally adjusted estimates may not be reliable indicators of trend behaviour. Smoothing seasonally adjusted series produces a measure of the underlying trend by reducing the impact of the irregular component of the series. This smoothing technique does result in revisions to the most recent estimates as additional observations become available. For an explanation of seasonal adjustment derivation, refer to the publication *Seasonally Adjusted Indicators* (Cat. no. 1308.0).

**STANDARD ERRORS
OF ESTIMATES**

One measure of the variability which occurs as a result of surveying only samples of the total business population is the standard error. There are about two chances in three that a survey estimate is within one standard error of the figure that would have been obtained if all businesses had been included, and about 19 chances in 20 that it is within two standard errors. The standard error can also be expressed as a percentage of the estimate and this is known as the relative standard error (RSE).

For detailed explanatory notes and definitions for the items shown in this publication, readers are referred to the specific ABS publications.

Current publications produced by the ABS are listed in the *Catalogue of Publications* (Cat. no. 1101.0). A *Release Advice* (Cat. no. 1105.0) is issued on Tuesdays and Fridays which lists publications to be released in the next few days. These publications are available from any ABS office.

.....

**SYMBOLS AND
OTHER USAGES**

kWh	kilowatt hour
teraJ	terajoule
n.a.	not available
n.p.	not available for publication but included in totals where applicable
n.y.a	not yet available
r	figure or series revised since previous issue
..	not applicable
—	nil or rounded to zero
—	break in continuity of series (where a line is drawn across a column between two consecutive figures)

Gregory W. Bray
Regional Director
New South Wales

NSW OVERVIEW

.....

EMPLOYMENT

The seasonally adjusted number of employed persons fell by 1.3% in NSW in February 1998 to 2,805,400. This follows three consecutive months of rising employment. Nationally, employment rose marginally in February.

UNEMPLOYMENT

The seasonally adjusted number of unemployed persons in NSW increased by 3.3% in February 1998 to 234,500. The unemployment rate rose to 7.7% in February 1998 in NSW while the national unemployment rate was steady at 8.1%.

BUILDING APPROVALS

The seasonally adjusted number of new dwelling units approved in NSW in January 1998 was 4,350, a decrease of 9.8% on the previous month's figure but still 3.8% higher than January 1997.

RETAIL

In seasonally adjusted terms, total retail sales for NSW in January 1998 was \$4,043.9 million, an increase of 1.5% on the figure for December, 1997.

NEW MOTOR VEHICLE REGISTRATIONS

In seasonally adjusted terms, new motor vehicle registrations in NSW increased by 3.5% from 21,335 in December 1997 to 22,083 in January 1998.

TOURISM

In NSW the room occupancy rate for the December quarter 1997 fell by 1.9 percentage points to 59% compared with the previous December quarter. There was an increase of 1.5 percentage points compared with the September quarter 1997.

FINANCE

The value of housing finance commitments for owner occupation fell 17.6% to \$1,400.9 million in January 1998. This also represents a 6.3% decline from January 1997.

MAIN FEATURES

.....

TOURIST ACCOMMODATION

In NSW the number of rooms available in hotels, motels and guests hotels increased by 3.6% in the December quarter 1997 compared with the December quarter 1996, while the demand in terms of room nights occupied was almost unchanged. Compared to the previous December quarter, the room occupancy rate for the December quarter 1997 fell by 1.9 percentage points to 59%. Compared to the September quarter 1997, the December quarter figure showed a rise of 1.5 percentage points. Takings from accommodation rose by 3.7% compared to the December quarter 1996 and at \$345.7 million represented average takings per room night occupied of \$107.

In the Sydney Statistical Division (SD) the room occupancy rate for hotels, motels and guest houses for the December quarter 1997 was 70.6%. This represented a rise of 3.4 percentage points compared with the September quarter but a fall of 4.1 percentage points compared with the December quarter 1996. Takings from accommodation in the Sydney SD for the December quarter 1997 were \$240.7 million which was 69.6% of takings for total NSW and represented average takings per room night occupied of \$139.

For Australia, the room occupancy rate for hotels, motels and guest houses for December quarter 1997 was 58.2%. While this was an increase of 0.2 percentage points compared with the September quarter 1997, it was a decrease of 1.7 percentage points compared with the December quarter 1996. Average takings per room night occupied for Australia were \$102.

INVESTMENT

The December quarter 1997 trend estimate of total private new capital expenditure (at current prices) for NSW was \$3,705 million. This represented a rise of \$166 million (4.7%) over the previous quarter. The NSW figure compared with an increase of \$143 million (1.3%) for total private new capital expenditure for Australia (\$11,479 million) in the December quarter 1997.

The trend estimates for expenditure on buildings and structures for NSW rose slightly to \$1,021 million in the December quarter 1997. This reversed a downward trend which had been evident since the March quarter 1997. The trend estimates for expenditure on equipment, plant and machinery for NSW rose by \$162 million (6.4%) to \$2,684 million, continuing an upward trend which has been evident throughout 1997.

LIST OF TABLES AND GRAPHS

Page

POPULATION

1	Estimated resident population, NSW	6
----------	--	---

LABOUR

2	Labour data, latest time period, NSW and Australia	7
3	Labour data, time series, NSW	7
4	Labour force status of the civilian population, NSW	8
5	Graph: Unemployment rates, NSW and Australia	9

PRODUCTION

6	Coal, electricity and gas production, latest time period, NSW and Australia ..	10
7	Coal, electricity and gas production, time series, NSW	10

BUILDING

8	Building approvals, latest time period, NSW and Australia	11
9	Building approvals, time series, NSW	11

RETAIL TRADE

10	Turnover of retail establishments, latest time period, NSW and Australia	12
11	Turnover of retail establishments, time series, NSW	12

NEW MOTOR VEHICLE REGISTRATIONS

12	New motor vehicle registrations, latest time period, NSW and Australia	13
13	New motor vehicle registrations, time series, NSW	13

TOURISM

14	Licensed hotels, motels etc., latest time period, NSW and Australia	14
15	Licensed hotels, motels etc., time series, Sydney and NSW	14
16	Graph: Licensed hotels, motels etc., quarterly room nights occupied, Sydney and balance of NSW	14

CONSUMER AND PRODUCER PRICE INDEXES

17	Consumer and producer price indexes, latest time period, NSW and Australia	15
18	Consumer and producer price indexes, time series, NSW	15
19	Graph: Consumer Price Index, Sydney and average of 8 capital cities	15

HOUSING FINANCE

20	Finance commitments, latest time period, NSW and Australia	16
21	Finance commitments, time series, NSW	16

STATE GOVERNMENT FINANCE

22	Government finance, budget sector, time series, NSW	17
-----------	---	----

INVESTMENT

23	Actual private new fixed capital expenditure, latest time period, NSW and Australia	18
24	Actual private new fixed capital expenditure, time series, NSW	18
25	Graph: Actual private new fixed capital expenditure, NSW	18

FOREIGN TRADE

26	Imports and exports, latest time period, NSW and Australia	19
27	Imports and exports, time series, NSW	19

1

ESTIMATED RESIDENT POPULATION, NSW

Period	Estimated resident population at end of period			Increase during period			Mean estimated resident population for year ended	
	Males	Females	Persons	Natural increase(a)	Net estimated migration	Total increase(b)	30 June	31 December
	'000	'000	'000	'000	'000	'000	'000	'000
1994	3 026.8	3 063.5	6 090.3	42.8	13.2	57.5	6 034.9	6 064.0
1995	3 064.0	3 104.8	6 168.8	42.0	33.7	78.6	6 093.2	6 128.0
1996	3 098.2	3 142.6	6 240.9	40.6	29.3	72.1	6 167.2	6 204.2
1996								
June qtr	3 081.0	3 123.7	6 204.7	9.8	7.5	18.3
September qtr	3 089.1	3 132.3	6 221.4	8.8	7.9	16.6
December qtr	3 098.2	3 142.6	6 240.9	11.1	8.4	19.5
1997								
March qtr	3 108.6	3 152.6	6 261.3	11.4	9.0	20.4
June qtr	3 115.3	3 159.0	6 274.4	11.0	2.1	13.1
September qtr	3 124.9	3 168.1	6 293.0	7.6	11.0	18.6

^a Excess of live births over deaths.

^b For dates prior to June 1996, differences between the total increase shown and the sum of the natural increase and net estimated migration arise from retrospective adjustments to population estimates (which are made after each Census) to compensate for any intercensal discrepancy. A description of intercensal discrepancy is contained in the ABS information paper Demographic Estimates: Concepts, Sources and Methods (Cat. no. 3228.0).

Source: Australian Demographic Statistics (Cat. no. 3101.0)

2

LABOUR, NSW AND AUSTRALIA

Indicator	Unit	Latest period	New South Wales			Australia		
			Latest figure	Change from prior period %	Change from same period prior year %	Latest figure	Change from prior period %	Change from same period prior year %
Employed persons (seasonally adjusted)	'000	Feb 98	2 805.4	-1.3	0.2	8 529.4	0.2	1.3
Unemployed persons (seasonally adjusted)	'000	Feb 98	234.5	3.3	-8.5	751.0	-0.5	-7.0
Labour force (seasonally adjusted)	'000	Feb 98	3 039.9	-1.0	-0.5	9 280.3	0.1	0.6
Participation rate (seasonally adjusted)	%	Feb 98	61.1	-1.1	-1.7	63.2	0.0	-0.8
Unemployment rate (seasonally adjusted)	%	Feb 98	7.7	4.3	-8.1	8.1	-0.6	-7.6
Industrial disputes—working days lost	'000	Dec 97	4.8	-40.7	-60.6	22.5	-60.5	-2.2
Job vacancies	'000	Nov 97	22.8	18.1	-10.7	68.1	-1.7	9.3
Average weekly employee earnings—full-time adult ordinary time earnings (seasonally adjusted)	\$	Nov 97	740.2	1.1	3.2	711.6	0.4	3.7

Source: Labour Force, Australia, Preliminary (Cat. no. 6202.0), Job Vacancies and Overtime, Australia (Cat. no. 6354.0), Industrial Disputes, Australia (6321.0), Average Weekly Earnings, States and Australia (Cat. no. 6302.0)

3

LABOUR, NSW

Period	Seasonally adjusted						
	Employed persons '000	Unemployed persons '000	Labour force '000	Participation rate %	Unemployment rate %	Industrial disputes (working days lost) '000	Job vacancies '000
1996							
December	2 816.3	241.4	3 057.6	62.4	7.9	12.2	..
1997							
January	2 829.7	239.8	3 069.5	62.6	7.8	3.2	..
February	2 798.9	256.4	3 055.3	62.2	8.4	3.2	22.9
March	2 815.4	241.3	3 056.8	62.2	7.9	16.3	..
April	2 822.9	245.5	3 068.3	62.4	8.0	2.6	..
May	2 803.3	250.6	3 054.0	62.0	8.2	13.2	19.6
June	2 790.4	232.6	3 023.0	61.3	7.7	10.8	..
July	2 805.7	255.4	3 061.1	62.0	8.3	18.5	..
August	2 774.4	242.2	3 016.6	61.0	8.0	22.1	19.3
September	2 815.2	240.2	3 055.5	61.7	7.9	23.0	..
October	2 787.7	244.1	3 031.7	61.2	8.1	28.0	..
November	2 831.9	238.7	3 070.6	61.9	7.8	8.1	22.8
December	2 836.6	228.0	3 064.7	61.7	7.4	4.8	..
1998							
January	2 843.3	227.1	3 070.4	61.8	7.4	n.y.a.	..
February	2 805.4	234.5	3 039.9	61.1	7.7	n.y.a.	n.y.a.

Source: Labour Force, Australia, Preliminary (Cat. no. 6202.0), Industrial Disputes, Australia (Cat. no. 6321.0)

4

LABOUR FORCE STATUS, NSW — ORIGINAL

Month	Employed		Unemployed		Labour force	Not in labour force	Civilian population aged 15 years and over	Unemployment rate(a)	Participation rate(b)
	Full-time workers	Total	Looking for full-time work	Total					
	'000	'000	'000	'000	'000	'000	'000	%	%
MALES									
February									
1994	1 344.2	1 492.6	179.8	196.7	1 689.3	631.8	2 321.1	11.6	72.8
1995	1 408.7	1 564.4	137.8	157.6	1 722.0	624.5	2 346.5	9.2	73.4
1996	1 421.5	1 588.4	133.6	150.5	1 739.0	638.1	2 377.1	8.7	73.2
1996									
December	1 451.3	1 625.7	121.3	142.1	1 767.8	639.5	2 407.3	8.0	73.4
1997									
January	1 437.6	1 605.6	133.2	151.6	1 757.3	651.9	2 409.2	8.6	72.9
February	1 419.3	1 588.4	142.7	161.6	1 750.0	661.1	2 411.1	9.2	72.6
March	1 434.1	1 603.9	126.3	147.2	1 751.1	661.9	2 413.0	8.4	72.6
April	1 421.2	1 610.1	120.9	139.1	1 749.3	666.3	2 415.6	8.0	72.4
May	1 408.0	1 597.3	127.6	143.3	1 740.7	677.4	2 418.1	8.2	72.0
June	1 416.4	1 598.9	116.8	129.1	1 728.1	692.7	2 420.7	7.5	71.4
July	1 422.3	1 600.4	130.3	145.4	1 745.8	677.8	2 423.6	8.3	72.0
August	1 390.3	1 567.6	120.3	135.2	1 702.8	723.7	2 426.5	7.9	70.2
September	1 434.3	1 613.3	126.1	147.6	1 760.9	668.5	2 429.3	8.4	72.5
October	1 428.1	1 595.3	121.3	138.9	1 734.2	698.1	2 432.3	8.0	71.3
November	1 431.3	1 615.2	119.0	138.1	1 753.3	681.9	2 435.2	7.9	72.0
December	1 456.8	1 637.6	116.8	135.1	1 772.7	665.4	2 438.1	7.6	72.7
1998									
January	1 441.8	1 616.3	127.1	141.7	1 758.0	682.3	2 440.3	8.1	72.0
February	1 431.8	1 599.2	129.3	150.7	1 749.9	692.5	2 442.4	8.6	71.6
FEMALES									
February									
1994	687.5	1 107.9	95.3	129.8	1 237.7	1 166.8	2 404.5	10.5	51.5
1995	690.3	1 135.4	89.3	132.0	1 267.4	1 163.4	2 430.9	10.4	52.1
1996	717.9	1 183.2	77.2	109.8	1 293.0	1 167.7	2 460.7	8.5	52.5
1996									
December	746.7	1 225.0	70.1	102.6	1 327.6	1 168.3	2 495.8	7.7	53.2
1997									
January	729.7	1 182.3	75.0	106.4	1 288.6	1 209.5	2 498.1	8.3	51.6
February	725.7	1 194.1	80.0	125.6	1 319.8	1 180.6	2 500.3	9.5	52.8
March	722.6	1 212.4	73.1	110.0	1 322.4	1 180.2	2 502.5	8.3	52.8
April	730.2	1 211.6	68.9	104.5	1 316.1	1 189.1	2 505.3	7.9	52.5
May	720.4	1 206.6	67.2	101.9	1 308.5	1 199.5	2 508.0	7.8	52.2
June	704.3	1 192.4	64.1	92.3	1 284.7	1 226.0	2 510.7	7.2	51.2
July	729.6	1 213.2	61.7	92.7	1 305.9	1 207.7	2 513.6	7.1	52.0
August	703.9	1 182.9	65.3	92.7	1 275.6	1 240.8	2 516.5	7.3	50.7
September	722.2	1 226.8	63.4	96.1	1 322.9	1 196.5	2 519.4	7.3	52.5
October	721.0	1 194.1	68.1	97.3	1 291.5	1 230.6	2 522.1	7.5	51.2
November	725.5	1 228.3	62.1	87.8	1 316.1	1 208.6	2 524.7	6.7	52.1
December	730.8	1 234.9	66.3	95.7	1 330.6	1 196.8	2 527.4	7.2	52.6
1998									
January	721.4	1 185.5	71.4	102.6	1 288.1	1 241.2	2 529.3	8.0	50.9
February	707.1	1 189.9	72.1	111.7	1 301.7	1 229.5	2 531.1	8.6	51.4

For footnotes see end of table.

4

LABOUR FORCE STATUS, NSW — ORIGINAL *continued*

Month	Employed		Unemployed		Labour force	Not in labour force	Civilian population aged 15 years and over	Unemployment rate(a)	Participation rate(b)
	Full-time workers	Total	Looking for full-time work	Total					
	'000	'000	'000	'000	'000	'000	'000	%	%
PERSONS									
February									
1994	2 031.7	2 600.5	275.1	326.5	2 927.0	1 798.6	4 725.6	11.2	61.9
1995	2 099.1	2 699.8	227.2	289.7	2 989.4	1 787.9	4 777.4	9.7	62.6
1996	2 139.4	2 771.6	210.8	260.4	3 032.0	1 805.8	4 837.7	8.6	62.7
1996									
December	2 197.9	2 850.6	191.4	244.7	3 095.4	1 807.8	4 903.1	7.9	63.1
1997									
January	2 167.3	2 787.9	208.1	258.0	3 045.9	1 861.4	4 907.3	8.5	62.1
February	2 145.0	2 782.5	222.7	287.2	3 069.7	1 841.7	4 911.4	9.4	62.5
March	2 156.7	2 816.3	199.4	257.1	3 073.4	1 842.1	4 915.5	8.4	62.5
April	2 151.5	2 821.7	189.8	243.6	3 065.4	1 855.5	4 920.8	7.9	62.3
May	2 128.4	2 804.0	194.9	245.3	3 049.2	1 876.9	4 926.1	8.0	61.9
June	2 120.8	2 791.3	181.0	221.4	3 012.8	1 918.7	4 931.4	7.3	61.1
July	2 151.9	2 813.6	192.1	238.1	3 051.7	1 885.5	4 937.2	7.8	61.8
August	2 094.3	2 750.5	185.6	228.0	2 978.4	1 964.5	4 942.9	7.7	60.3
September	2 156.5	2 840.0	189.5	243.7	3 083.8	1 865.0	4 948.7	7.9	62.3
October	2 149.1	2 789.4	189.3	236.2	3 025.7	1 928.7	4 954.3	7.8	61.1
November	2 156.7	2 843.5	181.1	225.9	3 069.4	1 890.5	4 959.9	7.4	61.9
December	2 187.6	2 872.6	183.1	230.8	3 103.3	1 862.2	4 965.6	7.4	62.5
1998									
January	2 163.2	2 801.8	198.5	244.3	3 046.1	1 923.5	4 969.5	8.0	61.3
February	2 138.9	2 789.1	201.4	262.4	3 051.5	1 922.0	4 973.5	8.6	61.4

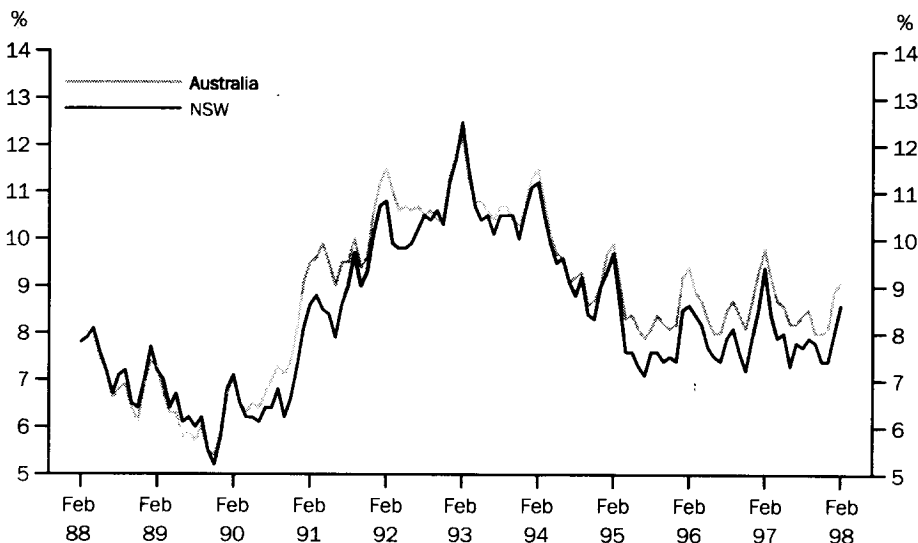
^a The number of unemployed in each group expressed as a percentage of the labour force in the same group.

^b The labour force in each group expressed as a percentage of the civilian population aged 15 and over in the same group.

Source: Labour Force, Australia, Preliminary (Cat. no. 6202.0)

5

UNEMPLOYMENT RATE — ORIGINAL



Source: Labour Force, Australia, Preliminary (Cat. no. 6202.0).

6

COAL, ELECTRICITY AND GAS PRODUCTION, NSW AND AUSTRALIA — ORIGINAL

Indicator	Unit	Latest period	New South Wales				Australia		
			Latest figure	Change from	Change from	Latest figure	Change from	Change from	
				prior period	same period		prior period	prior period	same period
%	%	%	%						
Raw coal won—									
Underground	'000 tonnes	Dec 97	3 889	-8.4	0.8	4 787	-10.6	-2.4	
Open cut	'000 tonnes	Dec 97	5 196	-9.9	7.6	12 767	-11.9	5.9	
Total	'000 tonnes	Dec 97	9 085	-9.2	4.6	17 554	-11.5	3.5	
Electricity	mill. kWh	Dec qtr 97	15 220	-8.4	1.1	43 461	-4.5	6.6	
Gas(a)	teraJ	Dec qtr 97	25 445	-25.4	4.3	151 337	-17.5	3.4	

^a Available for issue through mains. Includes ACT.

Source: Joint Coal Board, Manufacturing Production, Australia (Cat. no. 8301.0)

7

COAL, ELECTRICITY AND GAS PRODUCTION, NSW — ORIGINAL

Period	Raw coal won			Electricity	Gas(a)
	Underground	Open cut	Total		
	'000 tonnes	'000 tonnes	'000 tonnes		
1994-95	48 702	59 079	107 781	60 016	104 881
1995-96	54 314	58 775	113 089	62 047	104 141
1996-97	54 642	69 037	123 679	62 788	109 284
1996					
September	4 872	5 154	10 026	n.a.	n.a.
October	5 534	6 569	12 103	} 15 052	—
November	4 524	5 200	9 724		24 402
December	3 859	4 830	8 689		—
1997					
January	3 972	5 797	9 769	} 15 127	—
February	3 830	5 583	9 413		22 738
March	4 088	5 663	9 751		—
April	4 803	6 626	11 429		—
May	5 183	6 626	11 809	} 15 973	29 907
June	4 717	5 785	10 502		—
July	6 489	6 970	13 459		—
August	5 439	6 075	11 514		} 16 622
September	4 898	5 745	10 643	—	
October	4 179	6 436	10 615	—	
November	4 246	5 764	10 010	} 15 220	
December	3 889	5 196	9 085		—

^a Available for issue through mains. Includes ACT.

Source: Joint Coal Board, Manufacturing Production, Australia (Cat. no. 8301.0)

Indicator	Unit	Latest period	Latest figure	New South Wales		Australia		
				Change from prior period %	Change from same period prior year %	Latest figure	Change from prior period %	Change from same period prior year %
Number of dwelling units(a) (seasonally adjusted)—								
New houses	No.	Jan 98	2 642	-5.5	22.7	9 103	6.3	17.9
Total	No.	Jan 98	4 350	-9.8	3.8	13 421	-1.5	15.3
Value of new residential building (seasonally adjusted)	\$m	Jan 98	436.4	-22.4	-1.3	1 425.9	2	22.5
Value of alterations and additions to residential building(b) (seasonally adjusted)	\$m	Jan 98	149.9	22.7	49.9	287.4	18.3	30.2
Value of non-residential building(c) (original)	\$m	Jan 98	477.0	66.8	15.5	1 035.1	-2.3	0.7
Value of all building (original)	\$m	Jan 98	984.0	11.1	11.3	2 455.5	-4.1	11.0

^a Includes dwelling units approved as part of the construction of non-residential building and alterations and additions to existing buildings (including conversions to dwelling units).

^b Valued at \$10,000 or more. Includes conversions of existing buildings into residential buildings.

^c Valued at \$50,000 or more.

Source: Building Approvals, Australia (Cat. no. 8731.0)

Period	Number of dwelling units(a), seasonally adjusted				Value of building approvals			
	New houses		Total		Seasonally adjusted		Original	
	Private sector	Total	Private sector	Total	New residential building	Alterations and additions to residential building(b)	Non-residential building(c)	All building
	no.	no.	no.	no.	\$m	\$m	\$m	\$m
1994-95	3 733.4	10 211.0
1995-96	3 650.2	9 168.6
1996-97	5 169.1	11 357.5
1996								
December	2 299	2 321	3 700	3 957	407.1	89.3	509.2	949.8
1997								
January	2 148	2 154	3 967	4 191	442.2	100.0	413.0	883.8
February	2 045	2 089	4 072	4 308	479.4	93.0	241.5	734.7
March	1 805	1 825	3 849	3 995	375.9	96.8	202.4	648.7
April	2 445	2 470	4 203	4 326	505.6	91.2	307.3	847.3
May	2 961	2 980	4 390	4 442	527.9	91.9	260.5	971.3
June	2 112	2 119	4 219	4 389	436.9	125.7	353.0	903.0
July	2 095	2 109	3 687	3 744	355.3	92.7	584.9	1 156.7
August	2 236	2 241	4 695	4 862	633.6	101.5	710.5	1 405.9
September	2 143	2 147	3 454	3 567	401.2	92.3	396.4	958.0
October	2 411	2 420	4 081	4 111	511.7	102.3	520.3	1 123.1
November	2 390	2 400	4 466	4 507	505.2	108.0	380.6	1 028.0
December	2 778	2 795	4 644	4 822	562.3	122.2	286.0	885.8
1998								
January	2 607	2 642	4 235	4 350	436.4	149.9	477.0	984.0

^a Includes dwelling units approved as part of the construction of non-residential building and alterations and additions to existing buildings (including conversions to dwelling units).

^b Valued at \$10,000 or more. Includes conversions of existing buildings into residential buildings.

^c Valued at \$50,000 or more.

Source: Building Approvals, Australia (Cat. no. 8731.0)

10

TURNOVER OF RETAIL ESTABLISHMENTS(a), NSW AND AUSTRALIA — SEASONALLY ADJUSTED

Indicator	Unit	Latest period	New South Wales				Australia		
			Latest figure	Change from prior period	Change from same period prior year	Latest figure	Change from prior period	Change from same period prior year	
				%	%		%	%	
Food retailing	\$m	Jan 98	1 568.6	1.9	8.2	4 654.7	3.1	6.3	
Department stores	\$m	Jan 98	366.8	8.8	9.6	1 045.7	6.3	6.7	
Clothing and soft good retailing	\$m	Jan 98	267.6	-5.9	-6.3	726.0	-1.4	2.5	
Household good retailing	\$m	Jan 98	444.6	7.4	1.1	1 302.1	0.5	1.8	
Recreational good retailing	\$m	Jan 98	238.7	2.5	8.5	648.0	2.2	8.3	
Other retailing	\$m	Jan 98	396.4	-2.5	6.8	1 159.8	3.2	9.7	
Hospitality and services	\$m	Jan 98	761.3	-1.2	3.6	1 836.4	-0.5	2	
Total value of retail sales	\$m	Jan 98	4 043.9	1.5	5.4	11 372.7	2.1	5.3	

^a The figures shown are derived from a monthly survey of retail establishments. Excludes motor vehicle, boat and caravan dealers, service stations, smash repairers, tyre and battery retailers, bread and milk vendors, footwear repairers and electrical appliance repairers n.e.c. Retail establishments which do not have employees are excluded from the survey. Turnover includes retail sales, wholesale sales, takings from repairs, meals and hiring of goods; and commissions from agency activity (e.g. commissions received from collecting dry cleaning, selling lottery tickets etc.)

Source: Retail Trade, Australia (Cat. no. 8501.0).

11

TURNOVER OF RETAIL ESTABLISHMENTS(a), NSW — SEASONALLY ADJUSTED

Period	Food retailing		Clothing and soft good retailing	Household good retailing	Recreational good retailing	Other retailing	Hospitality and services	Total
	\$m	\$m	\$m	\$m	\$m	\$m	\$m	\$m
1996								
November	1 455.3	337.5	277.8	441.3	215.0	374.8	731.6	3 833.3
December	1 437.5	339.6	288.1	452.2	224.4	376.7	743.4	3 861.8
1997								
January	1 450.0	334.7	285.5	439.8	220.1	371.2	735.1	3 836.4
February	1 458.0	342.2	277.9	474.6	219.2	374.2	739.9	3 885.9
March	1 487.8	329.5	267.4	445.2	214.8	378.0	732.7	3 855.4
April	1 455.1	314.7	271.6	440.6	219.6	378.3	727.8	3 807.8
May	1 481.5	327.9	283.2	452.9	221.2	384.7	741.0	3 892.4
June	1 464.5	314.2	274.8	455.6	223.7	389.0	765.4	3 887.2
July	1 512.4	364.6	279.9	479.1	214.1	400.8	748.4	3 999.2
August	1 505.0	328.0	276.3	477.3	211.4	385.4	763.9	3 947.3
September	1 537.8	358.4	275.1	465.3	229.9	375.0	765.6	4 007.3
October	1 516.9	336.6	272.7	438.2	225.2	398.2	760.5	3 948.3
November	1 526.7	347.2	280.8	398.4	216.2	410.6	767.4	3 947.3
December	1 539.3	337.0	284.4	413.9	232.9	406.5	770.9	3 984.7
1998								
January	1 568.6	366.8	267.6	444.6	238.7	396.4	761.3	4 043.9

^a The figures shown are derived from a monthly survey of retail establishments. Excludes motor vehicle, boat and caravan dealers, service stations, smash repairers, tyre and battery retailers, bread and milk vendors, footwear repairers and electrical appliance repairers n.e.c. Retail establishments which do not have employees are excluded from the survey. Turnover includes retail sales, wholesale sales, takings from repairs, meals and hiring of goods; and commissions from agency activity (e.g. commissions received from collecting dry cleaning, selling lottery tickets etc.)

Source: Retail Trade, Australia (Cat. no. 8501.0).

12

NEW MOTOR VEHICLE REGISTRATIONS(a), NSW AND AUSTRALIA — SEASONALLY ADJUSTED

Indicator	Unit	Latest period	Latest figure	New South Wales		Latest figure	Australia	
				Change from prior period %	Change from same period prior year %		Change from prior period %	Change from same period prior year %
Passenger vehicles	no.	Jan 98	19 116	4.4	10.9	54 762	-0.5	14.1
Other vehicles (excluding motor cycles)	no.	Jan 98	2 967	-1.8	11.7	9 504	-3.4	10.2
Total registrations (excluding motor cycles)	no.	Jan 98	22 083	3.5	11.0	64 267	-0.9	13.5

^a Includes vehicles (other than those of the defence forces) owned by Government departments and authorities. Excludes mobile plant and equipment, tractors, trailers and non-motorised caravans.

Source: *New Motor Vehicle Registrations, Australia, Preliminary (Cat. no. 9301.0)*.

13

NEW MOTOR VEHICLE REGISTRATIONS(a), NSW — SEASONALLY ADJUSTED

Period	Passenger vehicles	Other vehicles	Total
	no.	(excluding motor cycles) no.	(excluding motor cycles) no.
1996			
November	15 759	2 529	18 288
December	15 169	2 604	17 773
1997			
January	17 239	2 656	19 895
February	16 927	2 894	19 820
March	16 761	2 837	19 598
April	17 194	2 637	19 831
May	16 924	2 770	19 694
June	17 978	2 728	20 706
July	17 377	2 763	20 141
August	16 977	2 732	19 709
September	18 454	2 711	21 165
October	18 920	2 729	21 650
November	18 995	2 513	21 507
December	18 315	3 020	21 335
1998			
January	19 116	2 967	22 083

^a Includes vehicles (other than those of the defence forces) owned by Government departments and authorities. Excludes mobile plant and equipment, tractors, trailers and non-motorised caravans.

Source: *New Motor Vehicle Registrations, Australia, Preliminary (Cat. no. 9301.0)*.

14

LICENSED HOTELS, MOTELS ETC., NSW AND AUSTRALIA — ORIGINAL

Indicator	Unit	Latest period	New South Wales				Australia		
			Latest figure	Change from	Change from	Latest figure	Change from	Change from	
				prior period	same period		prior year	prior period	same period
				%	%		%	%	
Room nights	'000	Dec Qtr	3 220.2	3.4	0	9 640.8	1.3	0.9	
Room occupancy rate	%	Dec Qtr	59.0	2.6	-3.1	58.2	0.3	-2.9	
Takings	\$'000	Dec Qtr	345 737	6.3	3.7	979 184	3.1	3.5	

Source: Tourist Accommodation, Australia (Cat. no. 8635.0)

15

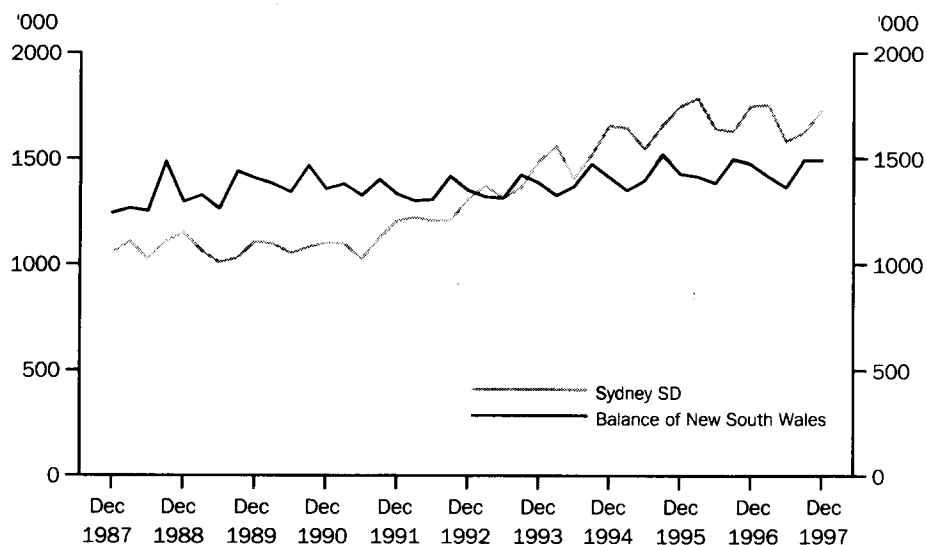
LICENSED HOTELS, MOTELS ETC., SYDNEY AND NSW — ORIGINAL

Period	Sydney			New South Wales		
	Room nights	Room occupancy rate	Takings	Room nights	Room occupancy rate	Takings
	'000	%	\$'000	'000	%	\$'000
1996						
June qtr	1 640.4	69.5	205 884	3 024.3	57.4	296 797
September qtr	1 627.4	69.4	205 409	3 123.4	59.1	314 270
December qtr	1 747.3	74.7	232 355	3 221.7	60.9	333 494
1997						
March qtr	1 753.1	76.2	236 756	3 168.7	60.9	337 189
June qtr	1 581.0	67.9	214 116	2 945.2	56.0	305 726
September qtr	1 622.8	67.2	214 412	3 113.8	57.5	325 246
December qtr	1 728.1	70.6	240 678	3 220.2	59.0	345 737

Source: Tourist Accommodation, NSW (Cat. no. 8635.1)

16

LICENSED HOTELS, MOTELS ETC., QUARTERLY ROOM NIGHTS OCCUPIED — ORIGINAL



Source: Tourist Accommodation, NSW (Cat. no. 8635.1)

17

CONSUMER AND PRODUCER PRICE INDEXES, NSW AND AUSTRALIA

Indicator	Unit	Latest period	New South Wales			Australia(a)		
			Latest figure	Change from prior period %	Change from same period prior year %	Latest figure	Change from prior period %	Change from same period prior year %
Consumer Price Index (all groups)	1989-90 =100.0	Dec qtr 97	120.1	0.3	-0.2	120.0	0.3	-0.2
Price index of materials used in house building (all groups)	1989-90 =100.0	Dec qtr 97	119.4	1.4	3.1	117.9	0.5	1.8
Price index of materials used in building other than house building (all groups)	1989-90 =100.0	Dec qtr 97	114.2	0.0	1.4	114.0	0.0	1.1

^a For the Consumer Price Index this is the weighted average of eight capital cities and for the other two indexes, the weighted average of the six State capital cities.

Source: Consumer Price Index (Cat. no. 6401.0), Price Index of Materials Used in Building Other Than House Building, Six State Capital Cities (Cat. no. 6407.0), Price Index of Materials Used in House Building, Six State Capital Cities (Cat. no. 6408.0)

18

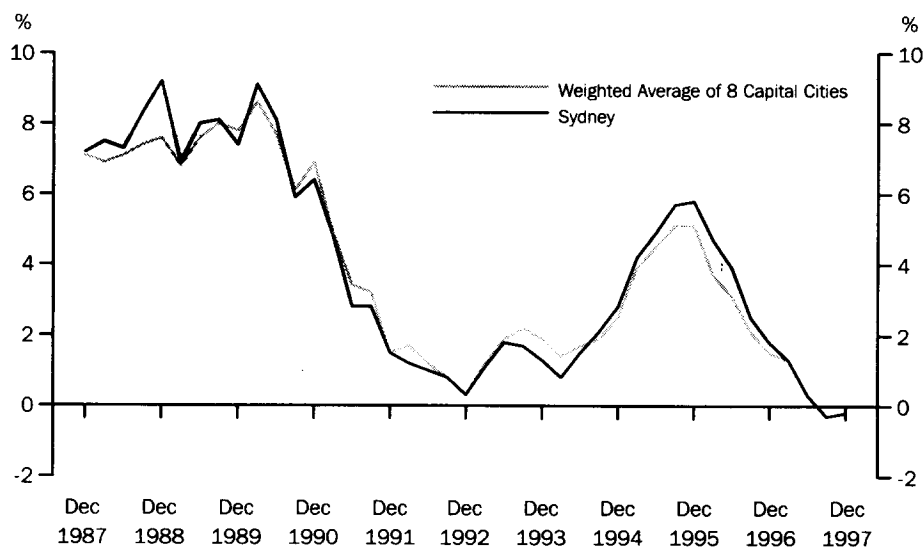
CONSUMER AND PRODUCER PRICE INDEXES, NSW

Period	Consumer Price Index, all groups	Price Index of materials used in house building, all groups	Price Index of materials used in building other than house building, all groups
	1989-90 = 100.0	1989-90 = 100.0	1989-90 = 100.0
1996			
June qtr	119.9	116.2	112.5
September qtr	120.2	115.9	112.5
December qtr	120.4	115.8	112.6
1997			
March qtr	120.6	116.0	113.2
June qtr	120.2	117.3	113.9
September qtr	119.8	117.8	114.2
December qtr	120.1	119.4	114.2

Source: Consumer Price Index (Cat. no. 6401.0), Price Index of Materials Used in Building Other Than House Building, Six State Capital Cities (Cat. no. 6407.0), Price Index of Materials Used in House Building, Six State Capital Cities (Cat. no. 6408.0).

19

CONSUMER PRICE INDEX, ANNUAL RATE OF CHANGE



Source: Consumer Price Index (Cat. no. 6401.0)

Indicator	Unit	Latest period	Latest figure	New South Wales		Australia		
				Change from prior period %	Change from same period prior year %	Latest figure	Change from prior period %	Change from same period prior year %
Lending commitments for the construction or purchase of dwellings—								
Construction of dwellings	\$m	Jan 98	169.1	-17.1	14.4	556.8	-17.3	17.5
Purchase of newly erected dwellings	\$m	Jan 98	74.2	-33.6	-20.9	193.4	-26.0	-5.0
Purchase of established dwellings(a)	\$m	Jan 98	922.1	-18.9	-2.7	2 946.9	-16.4	-4.4
Refinancing of existing dwellings	\$m	Jan 98	235.6	-4.5	-22.7	629.9	-12.6	-15.5
Lending commitments for alterations and additions	\$m	Jan 98	80.8	-10.8	-3.7	191.9	-13.7	-12.4
Total lending commitments to individuals for housing(b)	\$m	Jan 98	1 400.9	-17.6	-6.3	3 697.0	-17.1	-1.6
Total lending commitments to individuals for housing (seasonally adjusted)(b)	\$m	Jan 98	1 931.6	8.0	-0.4	4 634.8	-1.0	2.9

^a Excludes refinancing.

^b Excludes alterations and additions.

Source: Housing Finance for Owner Occupation, Australia (Cat. no. 5609.0)

Period	Lending commitments for the construction or purchase of dwellings					Total lending commitments to individuals for housing(b)	
	Construction of dwellings \$m	Purchase of newly erected dwellings \$m	Purchase of established dwellings(a) \$m	Refinancing of existing dwellings \$m	Lending commitments for alterations and additions \$m	Original \$m	Seasonally adjusted \$m
1993-94	2 151.4	838.5	10 911.6	2 337.2	1 078.2	16 238.7	..
1994-95	2 162.6	819.8	9 952.4	2 381.9	1 242.0	15 316.7	..
1995-96	1 894.7	897.9	10 145.3	2 929.8	1 261.8	15 867.7	..
1996							
November	167.2	103.7	1 060.5	283.6	89.1	1 615.0	1 594.9
December	142.7	81.5	1 000.9	265.8	84.2	1 491.0	1 665.3
1997							
January	147.8	93.8	948.0	304.9	83.9	1 494.5	1 940.2
February	175.6	100.1	981.9	297.5	92.9	1 555.1	1 591.4
March	187.5	106.3	1 121.1	328.4	103.8	1 743.3	1 715.8
April	212.2	116.6	1 231.9	371.7	108.5	1 932.3	1 792.4
May	221.3	121.3	1 282.3	316.2	99.7	1 941.1	1 778.7
June	193.0	120.8	1 122.6	327.5	89.9	1 764.0	1 735.7
July	220.8	116.8	1 218.6	321.5	93.1	1 877.8	1 707.7
August	213.6	114.8	1 154.9	310.7	90.3	1 794.1	1 824.0
September	236.2	116.0	1 210.2	322.4	102.7	1 884.7	1 856.1
October	224.0	110.9	1 253.3	302.3	110.1	1 890.5	1 884.3
November	201.1	110.0	1 198.4	261.8	97.9	1 771.4	1 804.5
December	204.7	111.7	1 138.7	245.5	90.9	1 700.5	1 789.9
1998							
January	169.1	74.2	922.1	235.6	80.8	1 400.9	1 931.6

^a Excludes refinancing.

^b Excludes alterations and additions.

Source: Housing Finance for Owner Occupation, Australia (Cat. no. 5609.0)

Item	Actual 1995-96 \$m	Actual 1996-97 \$m	Estimates 1997-98 \$m	July-December	
				1996-97 \$m	1997-98 \$m
RECEIPTS					
Current receipts					
Taxes, fees and fines					
Stamp duties	2 630	3 193	3 373	1 568	1 927
Payroll tax	2 876	3 161	3 338	1 540	1 685
Land tax	575	641	786	80	99
Motor vehicle tax	937	903	930	440	465
Gaming and betting	1 179	1 209	1 392	625	680
Licences	1 729	1 850	1 979	741	140
Commonwealth Safety Net Taxes	—	—	—	—	578
Other	943	1 000	1 114	490	399
Land transactions and royalties	246	243	238	114	126
Income from Non Budget Sector Enterprises	1 290	1 436	1 341	1 071	1 061
Commonwealth General Purpose Recurrent Grants less—State Fiscal Contribution	4 517	4 673	4 900	2 436	2 462
Commonwealth Specific Purpose Recurrent Grants	2 757	2 944	2 962	1 404	1 437
Other	729	599	626	272	239
<i>Total current receipts</i>	20 408	21 642	22 763	10 672	11 188
Capital receipts					
Commonwealth General Purpose Capital Grants	—	—	—	—	—
Commonwealth Specific Purpose Capital Grants	867	854	854	350	344
Other	11	17	228	2	101
<i>Total capital receipts</i>	877	872	1 081	352	446
Total current and capital receipts	21 285	22 514	23 844	11 024	11 634
EXPENDITURE					
Current expenditure					
Departmental payments					
Services					
Health	5 116	5 381	5 585	2 755	2 907
Education(a)	4 641	4 928	5 174	2 437	2 501
Law and order(b)	1 247	1 679	1 711	798	866
Community Services	989	1 113	1 155	573	632
Other	3 944	4 057	4 192	1 882	2 060
Redundancies	17	22	38	4	19
Subsidies to Non Budget agencies					
Services					
Redundancies	726	1 073	866	323	509
Interest payments	66	33	63	35	40
Superannuation	1 683	1 399	1 527	659	703
Treasurer's advance(c)	1 077	1 402	1 451	620	724
less—User charges	—	—	100	—	—
<i>Total current expenditure</i>	18 220	19 739	20 516	9 426	10 359
Capital expenditure					
Capital works	1 940	2 315	2 665	816	964
Capital grants	1 483	1 109	1 240	689	530
Advances made	65	69	15	30	3
less—Advances repaid	1 877	657	215	-4	47
less—Asset sales	160	247	322	52	120
<i>Total capital expenditure</i>	1 449	2 589	3 383	1 487	1 330
Total current and capital expenditure	19 669	22 328	23 899	10 913	11 689
SURPLUS OR DEFICIT (-)					
Current account	2 188	1 903	2 246	1246	829
Capital account	-572	-1 717	-2 302	-1 135	-885
<i>Total result surplus/deficit</i>	1 617	186	-56	111	-55

^a Includes Department of Training and Education Co-ordination, Department of School Education, Office of the Board of Studies and TAFE.

^b Includes Attorney Generals Department, Department of Corrective Services and Police Services.

^c Expenditure from the Treasurer's Advance is included in the relevant current payments figures.

Source: Financial Statement released by NSW Treasury. Figures may differ from data published in annual ABS publications.

23

ACTUAL PRIVATE NEW FIXED CAPITAL EXPENDITURE, NSW AND AUSTRALIA — TREND ESTIMATES

Indicator	Unit	Latest period	New South Wales			Australia		
			Latest figure	Change from prior period %	Change from same period prior year %	Latest figure	Change from prior period %	Change from same period prior year %
Type of asset—								
New buildings and structures	\$m	Dec qtr	1 021	0.4	-7.2	3 164	-4.1	-14.2
Equipment, plant and machinery	\$m	Dec qtr	2 684	6.4	14.5	8 315	3.5	15.5
Total	\$m	Dec qtr	3 705	4.7	7.6	11 479	1.3	5.3

Source: State Estimates of Private New Capital Expenditure (Cat. no. 5646.0)

24

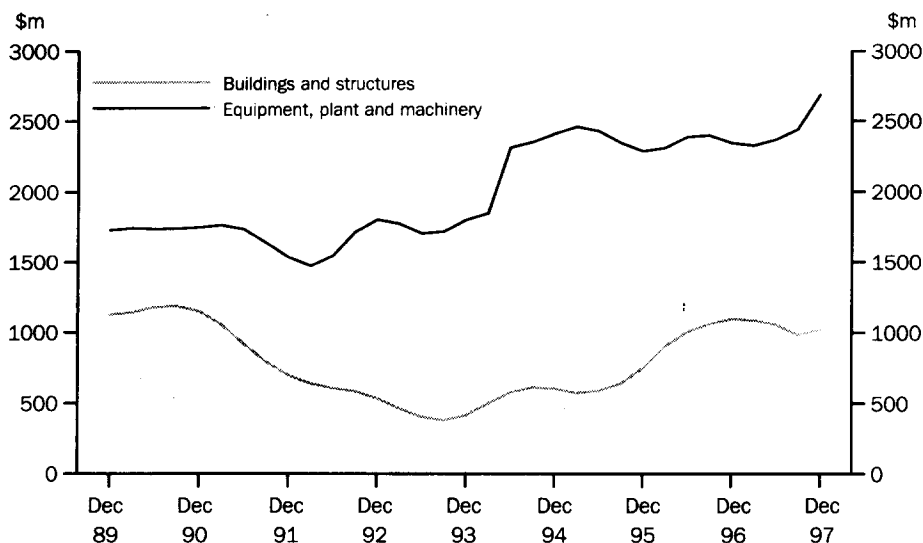
ACTUAL PRIVATE NEW FIXED CAPITAL EXPENDITURE, NSW — TREND ESTIMATES

Period	Type of asset		
	New buildings and structures \$m	Equipment, plant and machinery \$m	Total \$m
1996			
September qtr	r1 059	2 397	r3 456
December qtr	r1 100	2 344	r3 444
1997			
March qtr	r1 074	r2 307	r3 381
June qtr	r1 043	r2 374	r3 417
September qtr	r1 017	r2 522	r3 539
December qtr	1 021	2 684	3 705

Source: State Estimates of New Capital Expenditure (Cat. no. 5646.0)

25

ACTUAL PRIVATE NEW FIXED CAPITAL EXPENDITURE — TREND ESTIMATES, NSW



Source: State Estimates of New Capital Expenditure (5646.0)

Indicator	Unit	Latest period	New South Wales				Australia		
			Latest figure	Change from	Change from	Latest figure	Change from	Change from	
				prior period	same period		prior period	same period	
%	%	%	%	%					
Overseas imports into NSW	\$m	Jan 98	2 945	-13.9	11.9	7 110	-10.2	10.8	
Total overseas exports(b)	\$m	Jan 98	1 413	-22.6	6.5	6 017	-19.5	4.3	
Exports of—									
Meat and meat preparations	\$m	Jan 98	64	-26.2	19.4	217	-36.3	16.5	
Cereals and cereal preparations	\$m	Jan 98	131	-20.4	9.2	516	-6.0	-21.4	
Wool and other animal hair	\$m	Jan 98	71	-38.1	11.4	264	-32.8	4.9	
Coke, coal and briquettes	\$m	Jan 98	353	-7.8	3.2	866	-1.4	13.6	
Iron and steel	\$m	Jan 98	115	29.4	31.4	169	18.0	44.1	
Aluminium	\$m	Jan 98	118	19.8	46.9	283	-1.9	17.8	
Office machines and parts	\$m	Jan 98	36	-38.2	3.5	51	-54.5	6.4	

^a Figures shown are Free On Board (FOB) values.

^b Excludes re-exported goods. State of origin is defined as the State in which the final stage of production or manufacture occurs.

Source: *International Trade, Australia: FASTTRACCS Service (Cat. no. 5466.0)*.

Period	Overseas exports of selected commodities(b)								
	Overseas imports into NSW	Total overseas exports(b)	Meat and meat preparations	Cereals and cereal preparations	Wool and other animal hair	Coke, coal and briquettes	Iron and steel	Aluminium	Office machines and parts
	\$m	\$m	\$m	\$m	\$m	\$m	\$m	\$m	\$m
1994-95	33 280	15 201	885	458	1 035	2 801	913	1 018	829
1995-96	34 891	16 684	794	822	720	3 338	1 037	1 111	638
1996-97	34 204	17 726	784	1 540	859	3 426	968	993	535
1996									
November	2 879	1 474	77	68	87	289	77	74	56
December	2 798	1 494	63	125	86	279	65	77	55
1997									
January	2 631	1 326	54	120	64	343	87	81	35
February	2 549	1 383	65	163	59	277	81	86	41
March	2 649	1 527	70	149	100	261	80	95	50
April	2 939	1 445	76	137	62	286	92	88	31
May	2 788	1 717	75	197	r74	289	112	99	40
June	3 182	1 552	68	204	61	270	57	73	41
July	3 221	r1 750	74	145	104	335	65	97	45
August	3 002	r1 763	71	185	79	318	93	116	44
September	3 217	r1 667	76	157	102	350	59	73	48
October	3 388	r1 693	78	95	119	302	123	98	45
November	r3 102	r1 758	r89	148	r130	328	98	102	r51
December	3 421	r1 826	r87	165	r115	r384	r89	99	r58
1998									
January	2 945	1 413	64	131	71	353	115	118	36

^a Figures shown are Free On Board (FOB) values.

^b Excludes re-exported goods. State of origin is defined as the State in which the final stage of production or manufacture occurs.

Source: *International Trade, Australia: FASTTRACCS Service (Cat. no. 5466.0)*.

FOR MORE INFORMATION . . .

The ABS publishes a wide range of statistics and other information on Australia's economic and social conditions. Details of what is available in various publications and other products can be found in the ABS Catalogue of Publications and Products available from all ABS Offices.

ABS Products and Services

Many standard products are available from ABS bookshops located in each State and Territory. In addition to these products, information tailored to the needs of clients can be obtained on a wide range of media by contacting your nearest ABS Office. The ABS also provides a Subscription Service for standard products and some tailored information services.

National Dial-a-Statistic Line

0055 86 400

Steadycom P/L: premium rate 25c/20 secs.

This number gives 24-hour access, 365 days a year, for a range of important economic statistics including the CPI.

Internet

<http://www.abs.gov.au>

A wide range of ABS information is available via the Internet, with basic statistics available for each State, Territory and Australia. We also have Key National Indicators, ABS product release details and other information of general interest.

Sales and Inquiries

client.services@abs.gov.au

National Mail Order Service	(02) 6252 5249
Subscription Service	1300 366 323

	Information Inquiries	Bookshop Sales
SYDNEY	(02) 9268 4611	(02) 9268 4620
CANBERRA	(02) 6252 6627	(02) 6252 0326
MELBOURNE	(03) 9615 7755	(03) 9615 7755
BRISBANE	(07) 3222 6351	(07) 3222 6350
PERTH	(08) 9360 5140	(08) 9360 5307
ADELAIDE	(08) 8237 7100	(08) 8237 7582
HOBART	(03) 6222 5800	(03) 6222 5800
DARWIN	(08) 8943 2111	(08) 8943 2111



Client Services, ABS, PO Box 10, Belconnen ACT 2616



2130710004987

ISSN 1031-8534

RRP \$16.00