

SOUTH AUSTRALIAN ECONOMIC INDICATORS

EMBARGO: 11:30AM (CANBERRA TIME) MON 4 MAY 1998

C O N T E N T S

	<i>page</i>
Notes.....	2
 REVIEW	
South Australian overview	3
State accounts	3
International accounts	5
Consumption and investment	6
Production	8
Prices.....	10
Labour force and demography	13
Incomes	16
Financial markets	17
Forward outlook	19
 TABLES	
List of tables	22
 ADDITIONAL INFORMATION	
Publications source index	46

- For further information about these and related statistics, contact Mark Parham on Adelaide 08 8237 7645, or any ABS office shown on the back cover of this publication.

NOTES

FORTHCOMING ISSUES

ISSUE	RELEASE DATE
June 1998	1 June 1998
July 1998	1 July 1998
August 1998	31 July 1998

ABOUT THIS PUBLICATION

South Australian Economic Indicators is a monthly publication which contains the latest available data at the time of preparation for a range of statistical series that have been identified as indicators of economic activity in this State. In a number of cases the figures presented are preliminary and subject to revision in subsequent issues.

CHANGES IN THIS ISSUE

This publication contains the first quarterly movements of the new statistical series, the *Wage Cost Index, Australia* (Cat. no. 6345.0). See the Statistical Summary on page 24.

There has also been significant changes to the Forward Outlook section where more detailed State data is available for a number of indicator items in the section Australian business expectations.

SYMBOLS AND OTHER USAGES

n.a.	not available
n.y.a.	not yet available
*	subject to sampling variability too high for most practical purposes
..	not applicable
0, 0.0	nil or rounded to zero

ROUNDING

Where figures have been rounded, discrepancies may occur between sums of the component items and totals.

INFORMATION

More detailed information on each series, including explanatory and technical notes, can be obtained from other Australian Bureau of Statistics publications or alternative data sources. To assist those seeking further information a source publication for each of the series has been documented in the statistical summary.

P. M. Gardner
Regional Director
South Australia

REVIEW

SOUTH AUSTRALIAN OVERVIEW

- The value of merchandise exports, where the final stage of production was in South Australia, was \$362.1m in February 1998 whilst the value of merchandise imports released from Customs control in South Australia was \$300.0m in February 1998.
- The trend estimate for retail turnover has been influenced by the strong seasonally adjusted result in January 1998, due to the shift in timing of some post-Christmas sales.
- The trend for new motor vehicle registrations fell by 0.1% in February 1998 after eight consecutive months of increase.
- The trend for the total number of dwelling units approved rose by 4.4% in February 1998 and now has increased for five consecutive months.
- For the December quarter 1997, the trend for the total number of dwelling units commenced rose by 5.8% and was 24.8% above the level of a year earlier.
- The total value of building work done during the December quarter 1997 rose by 6.9% to \$384.1m compared with a 5.2% increase nationally.
- The value of engineering construction work done for the December quarter 1997 rose by 18.5% to \$299.4m.
- The Price Index of Materials Used in House Building rose 0.7% in March quarter 1998 and the Price Index of Materials Used in Building Other Than House Building decreased by 0.1%.
- In January 1998 there were 7,582 short-term overseas visitor arrivals and 9,452 short-term resident departures from South Australia.
- The trend unemployment rate has risen over the past twelve months; up from 9.5% in March 1997 to 10.0% in March 1998.
- In January 1998 a total of 300 working days were lost through industrial disputation.
- The index of total hourly rates of pay (excluding bonuses) increased by 0.8% between September 1997 and December 1997.
- Total housing finance commitments (original figures including alterations and additions) increased 22.6% to \$265.4m in February 1998.

STATE ACCOUNTS

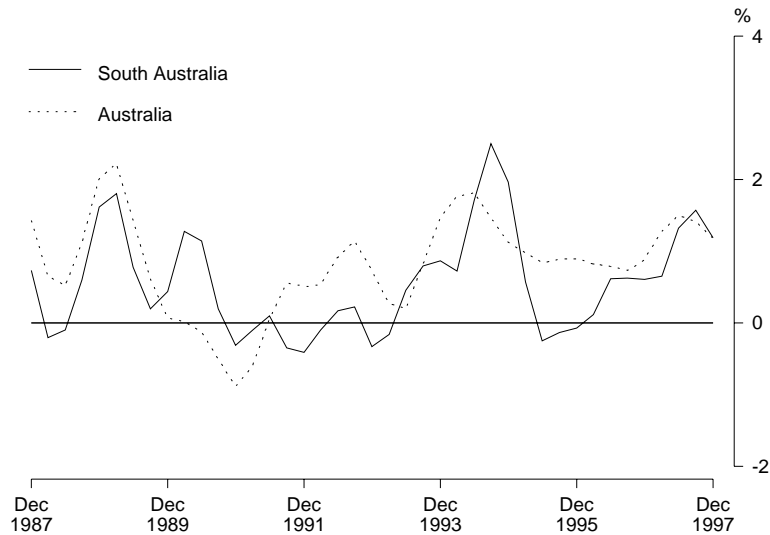
NOTE: The ABS no longer compiles quarterly State Account estimates. However, some of the information previously included in *Australian National Accounts: State Accounts* (Cat. No.5242.0) is now provided in a new Standard Data Service entitled *Australian National Accounts: Quarterly State Details* (Cat. No.5206.0.40.001). This information will be available quarterly, usually within one week of the release of the quarterly Australian National Accounts.

Trend (Constant prices)

State final demand (SFD) increased by 1.2% in the December quarter with the rate of increase down from the peak of 1.6% in the September quarter 1997. The national rate was also 1.2%. Growth through the year to December quarter 1997 was 4.8% compared with the national rate of 5.5%. Contributing to the slowing in the growth of SFD was a decline in the growth rate of private gross fixed capital expenditure from 3.1% in the September quarter to 1.0% in the December quarter, the lowest rate of increase for approximately 2 years.

Private final consumption expenditure rose 1.4% (the national rate was 1.5%). The rate of increase in final consumption expenditure has been fairly constant for the past three quarters. Growth through the year to December quarter was 4.6% compared with the national rate of 5.0%.

State final demand: Trend (Constant prices)(a)

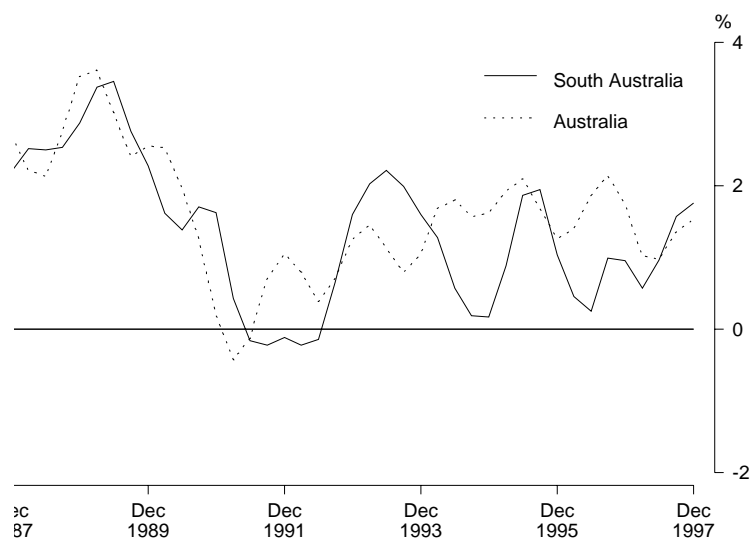


(a) Quarterly changes

Trend (Current prices)

Wages, salaries and supplements grew by 1.8% in the December quarter and has, for the past two quarters, grown at a slightly faster rate than the national rate, reversing a previous trend evident from the December quarter 1995. Growth through the year to the December quarter was 5.0%, the same as the national rate.

Wages, salaries and supplements: Trend (Current prices)(a)



(a) Quarterly changes

INTERNATIONAL ACCOUNTS

Merchandise exports

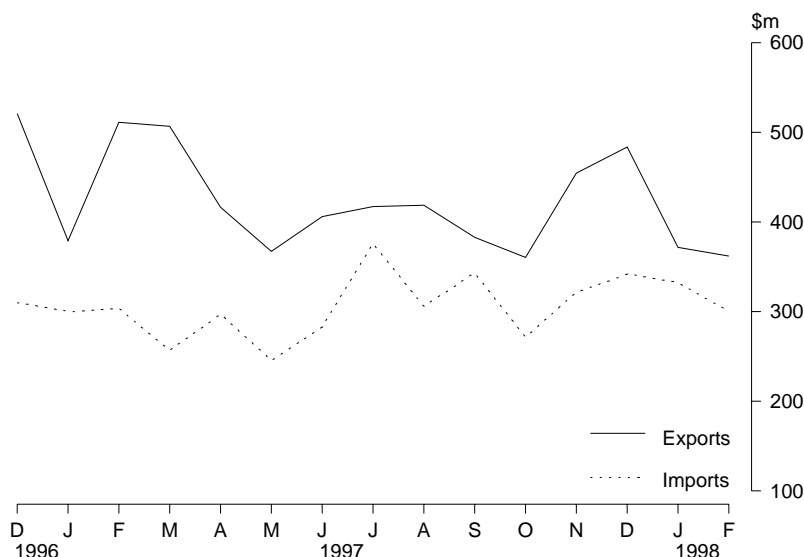
The value of merchandise exports, where the final stage of production was in South Australia, was \$362.1m in February 1998. This was a fall of \$9.7m from the previous month and \$149.1m from February 1997. Although the major commodity group exported in February 1998 was cereals and cereal preparations (\$45.3m), this commodity was also responsible for the the large difference from February 1997, a fall of \$79.6m. Wine was the second largest commodity exported, with a sales of \$43.3m, up \$17.5m from January 1997. Road vehicles, parts and accessories have also diminished significantly when compared with last year down from \$58.2m to \$19.1m.

The major destinations of South Australian exports in February 1998 were China (\$36.9m) and Japan (\$36.7m). The fall of exports to the Middle East region was a result of the fall in cereal exports to that area. There was an increase in exports to the United States of America (\$33.2m) and to the European Community (\$69.3m) and New Zealand (\$29.4m).

Merchandise imports

The value of merchandise imports released from Customs control in South Australia fell to \$300.0m in February 1998. This represents a 9.8% decrease from January 1998 and a 1.3% decrease when compared with the same time last year. The reduction in imports was largely the result of a \$26.8m fall (27.3%) in machinery imports and a \$12.9m decrease in chemical imports, which was partially offset by a \$10.1m increase in the imports of petroleum and petroleum products.

Merchandise exports and imports



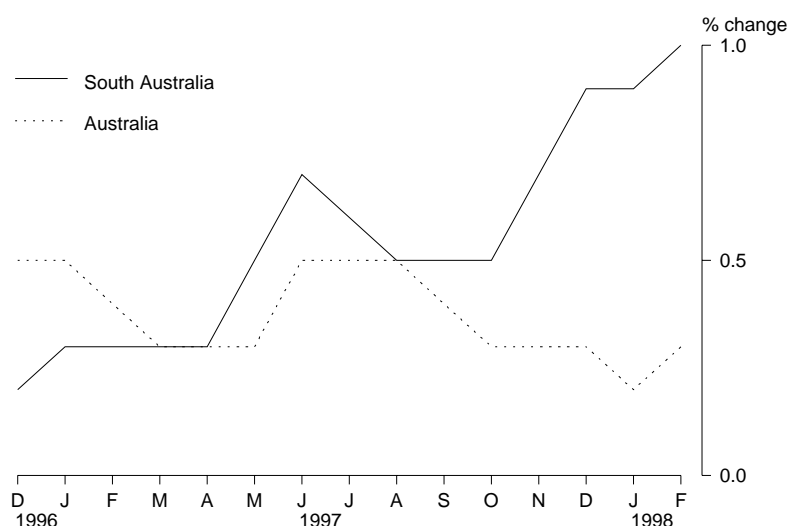
CONSUMPTION AND INVESTMENT

Retail turnover

The trend estimate for retail turnover has shown strong growth over the past four months and has increased 1.0% between January 1998 and February 1998 but care should be used in interpreting these movements due to the influence of the strong seasonally adjusted result in January 1998 as a consequence of the shift in timing of some post-Christmas sales.

Over the three months to February 1998 the trend estimate for retail turnover has increased \$23.6m, with the main contributors being food retailing (\$14.0m) and department stores (\$6.4m). The hospitality and services trend estimate partially offset these increases with a fall of \$7.1m.

Retail turnover: Trend



In original terms, South Australian retail turnover was \$741.5m, a fall of 13.4% from January 1998 and a decrease of 6.8% from February 1997. Australian turnover was \$9,945.5m, a 11.5% decrease and 3.2% increase for the corresponding periods. South Australia's share of the Australian total was 7.5%.

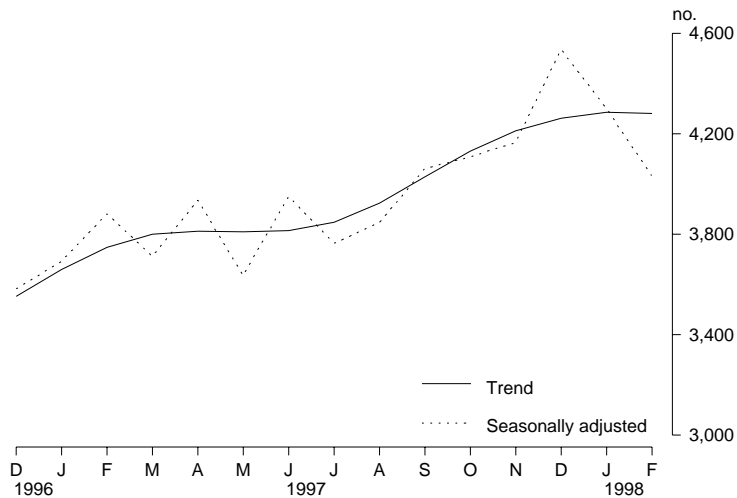
New motor vehicle registrations

The trend for new motor vehicle registrations fell by 0.1% in February 1998 after eight consecutive months of increase. The Australian trend has increased 0.1% when compared with January 1998 and 14.2% with last year.

In original terms, new motor vehicle registrations were 3,980 in February 1998, up from 3,366 (18.2%) in January 1998. The leading makers of vehicles registered in South Australia for February 1998 were Holden (812 vehicles), Mitsubishi (585), Toyota (475), Ford (411), and Hyundai (195).

Australian total new vehicle registrations (original) increased 17.3% from January 1998 to 60,217 in February 1998.

New motor vehicle registrations

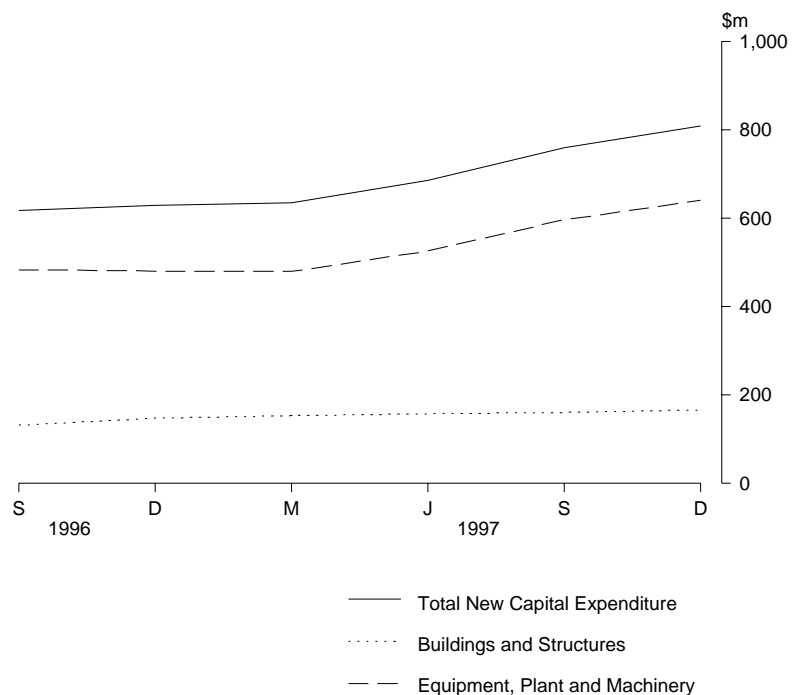


Private new capital expenditure

The trend estimate at current prices for private new capital expenditure for the December quarter 1997 increased 6.6% from the previous quarter to \$810m. Expenditure on both buildings and equipment increased, up 3.7% and 7.4% respectively. Over the same period the Australian total also increased, up 0.7%.

In original terms, private new capital expenditure for the December quarter 1997 was \$927m, an increase of 29.5% on the previous quarter and 34.7% on the December quarter 1996. Equipment, plant and machinery accounted for \$735m and buildings and structures \$192m.

Private new capital expenditure, type of asset: **Trend**



Tourist accommodation

The number of rooms available in hotels, motels and guesthouses in South Australia for December quarter 1997 fell by 54 (0.5%) from December quarter 1996 to 10,897. The room occupancy rate increased to 58.3%, the highest December quarter rate recorded since the commencement of the Survey in 1975. Takings for all accommodation types increased when compared to December quarter 1996, with holiday flats, units and houses having the largest percentage increase, up 24.6%. Average takings per room night occupied rose to \$82 for hotels, motels and guesthouses.

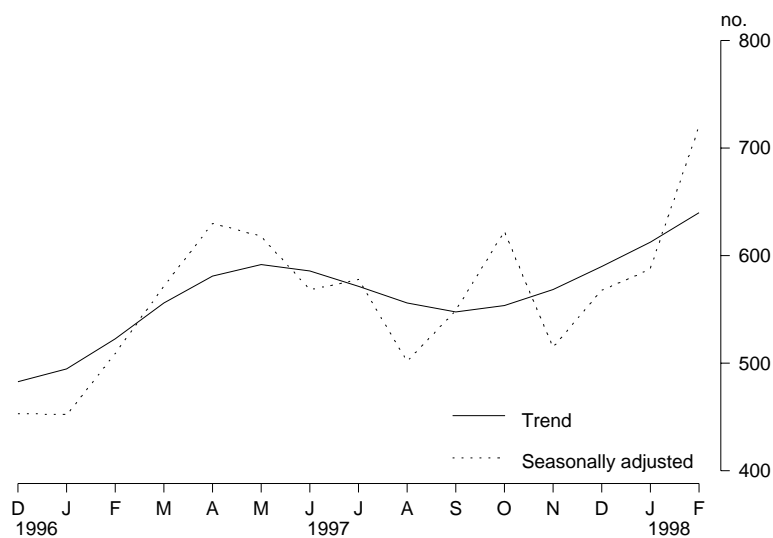
PRODUCTION

Building approvals

The trend for the total number of dwelling units approved rose by 4.4% in February 1998 and now has increased for five consecutive months to be 22.4% above the level of a year ago. In original terms, the total number of dwellings approved for February was 666, the highest since August 1995. This is an increase of 54.5% on the previous month and 41.1% on a year earlier. The conversion of a non-residential building in the CBD to 69 units contributed to the February increase.

For Australia, the trend for total dwelling units approved has flattened after three months of slowing rates of growth. It is now 11.0% above the level of a year ago. In original terms, South Australia accounted for 5.8% of all dwellings approved in Australia during February 1998, compared with 4.6% for the 1997 calendar year.

Dwelling units approved

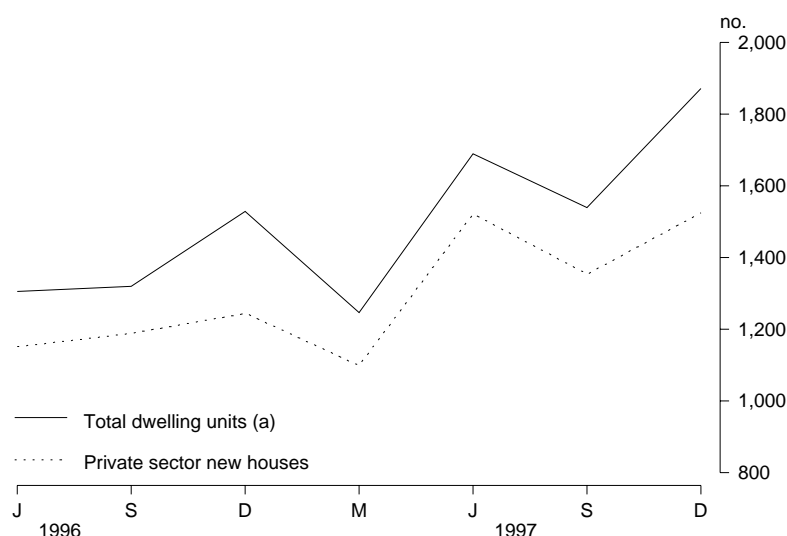


The total value of building approved in South Australia during February 1998 was \$114.5m. Approvals for new residential building totalled \$57.0m, the highest since March 1995, while approvals for alterations and additions to residential building totalled \$15.6m, the highest ever recorded. The value of non-residential approvals was \$41.9m and was 3.6% of the national total.

Building activity

For the December quarter 1997, the trend for the total number of dwelling units commenced in South Australia rose by 5.8% and was 24.8% above the level of a year earlier. Corresponding figures for Australia were 4.3% and 16.3%. In original terms, 1,872 dwellings were commenced in the State during the December quarter, an increase of 331 or 21.5% from the previous quarter. The December quarter level represents 4.9% of all dwelling units commenced in Australia, compared with 4.4% for the September quarter 1997.

Dwelling units commenced



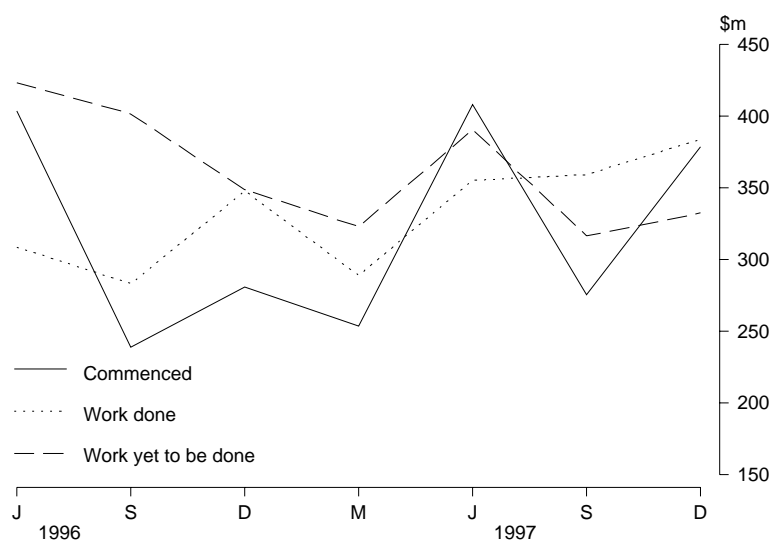
(a) Includes conversions.

The total value of building work commenced in South Australia during the December quarter 1997 rose by 37.3% to \$378.7m. While the value of new residential building increased by 33.7%, non-residential building increased by 49.9%, with the main increases occurring in Shops, Offices and Educational categories.

The total value of building work done during the December quarter 1997 rose by 6.9% to \$384.1m compared with a 5.2% increase nationally. However, compared with the December quarter 1996, South Australia recorded a 10.4% increase in total building work done while the increase nationally was 11.8%.

The total value of building work yet to be done at the end of December 1997 was \$332.7m. Although this was an increase of 5.0% on the figure at the end of September, it remained at an unchanged 2.7% of the corresponding national figure.

Value of building activity



Engineering construction

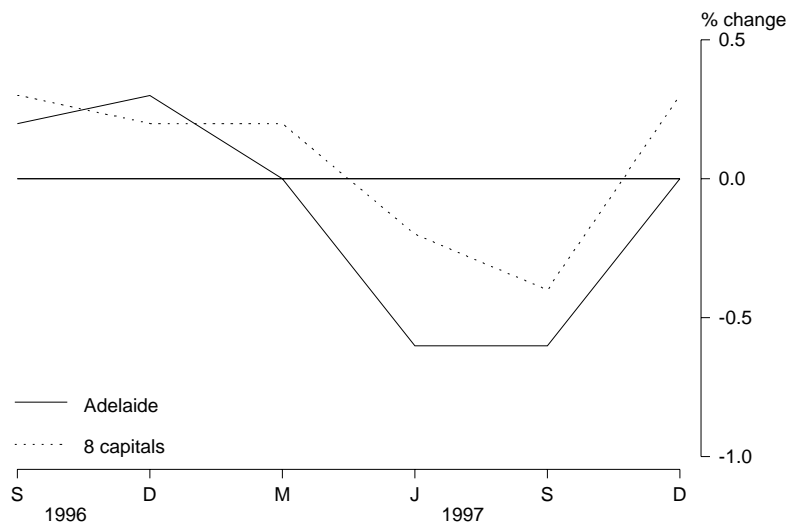
The value of engineering construction work done for the December quarter 1997 rose by 18.5% to \$299.4m, compared with a national increase of 14.8%. The December quarter level represents 7.2% of the national figure, compared with 7.0% for the September quarter. In South Australia, work commenced during the December quarter fell by 49.4% to \$206.7m, compared with a national fall of 18.8%. As a result, the State's proportion of the national total of commencements fell from 8.4% for the September quarter 1997 to 5.2% for the December quarter.

PRICES

Consumer Price Index

The Consumer Price Index (all groups) in Adelaide showed no change between the September 1997 and December 1997 quarters and a decrease of 1.1% between December 1996 and December 1997 quarters. Movements in groups between September and December 1997 included falls in housing and transportation, down 2.2% and 0.7% respectively and increases in health and personal care, up 3.5% and tobacco and alcohol, up 1.0%.

Consumer price index

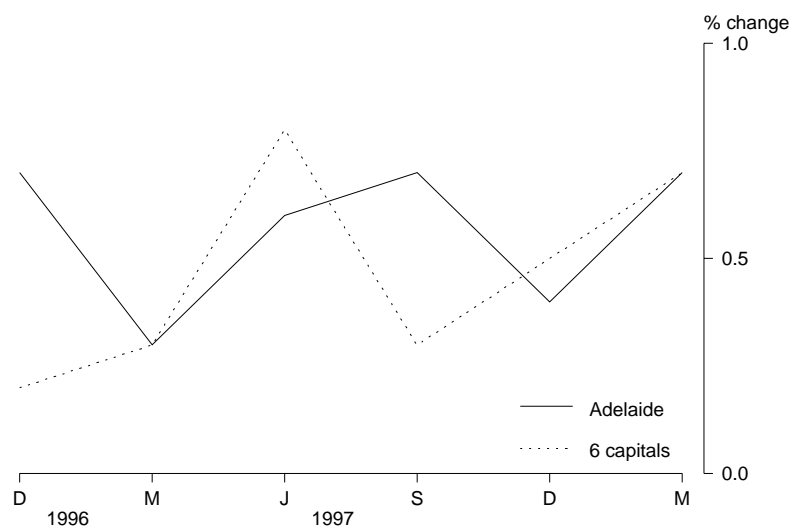


House building materials index

The Price Index of Materials used in House Building rose by 0.7% for the March quarter 1998 in Adelaide. Increases in softwood and aluminium windows were the main contributors to the rise, being off-set with decreases in ready-mixed concrete. The weighted average of the six State capitals recorded a 0.7% increase in the same period.

Adelaide recorded a rise of 2.4% in the Index for the 12 months to March quarter, with the weighted average of the six State capitals recording a 2.2% increase.

Materials used in house building

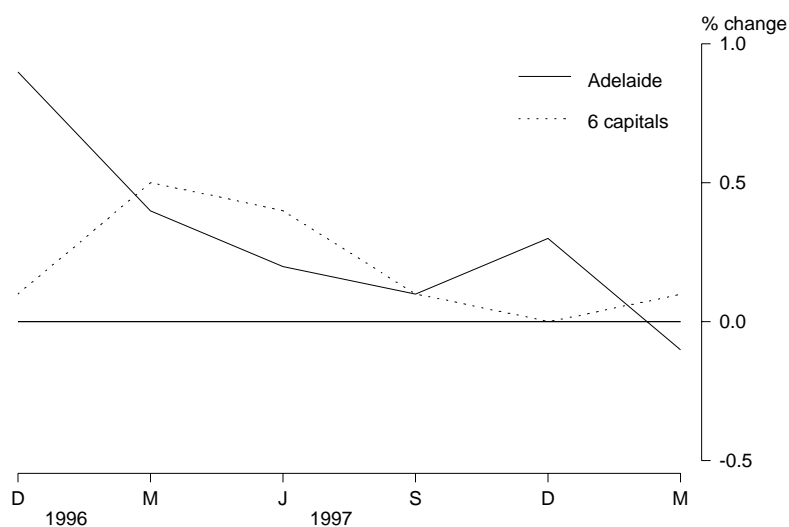


Non-house building materials index

A decrease of 0.1% was recorded in the Price Index of Materials used in Building other than House Building for the March quarter for Adelaide. Materials to record decreases were ready-mixed concrete, paint and some plumbing items, while structural timber, pre-cast concrete products and aluminium windows recorded increases. For the same period, the weighted average of the six State capitals rose 0.1%.

For the 12 months to the March quarter, Adelaide recorded a rise of 0.4% in the Index, while the weighted average of the six State capitals showed a 0.6% increase in the same period.

Materials used in building other than house building



House prices indexes

During the December quarter 1997 the Price Index of Established Houses in Adelaide rose by 0.9%, while over the year to the December quarter the index increased 3.8%. Over the corresponding periods, the weighted average of the eight capital cities index increased 1.9% and 6.0% respectively.

The Project Home Price Index increased by 0.5% during the December quarter 1997 and 4.8% when compared to the same time the previous year. Nationally, the index rose 0.1% from the September quarter and 0.8% from the December quarter 1996.

Passenger transport cost index

The Passenger Transport Cost Index measures changes in the costs of operating a public transport passenger bus service in Adelaide. Costs covered include labour costs, leasing charges, registration and insurance, repairs and maintenance, fuel and overheads. The index has been compiled on a quarterly basis from September 1995 with a base of 100.0 in 1993-94. The December quarter 1997 index was 108.3, a marginal increase from the September quarter 1997 (108.2). The index showed a 0.5% increase in the 12 months to December 1997.

LABOUR FORCE AND DEMOGRAPHY

Population

At 30 September 1997 the estimated resident population of South Australia was 1,481,599. This was an increase of 1,792 persons from the June quarter and was due to a natural increase of 1,322 persons and a net migration gain of 470 persons.

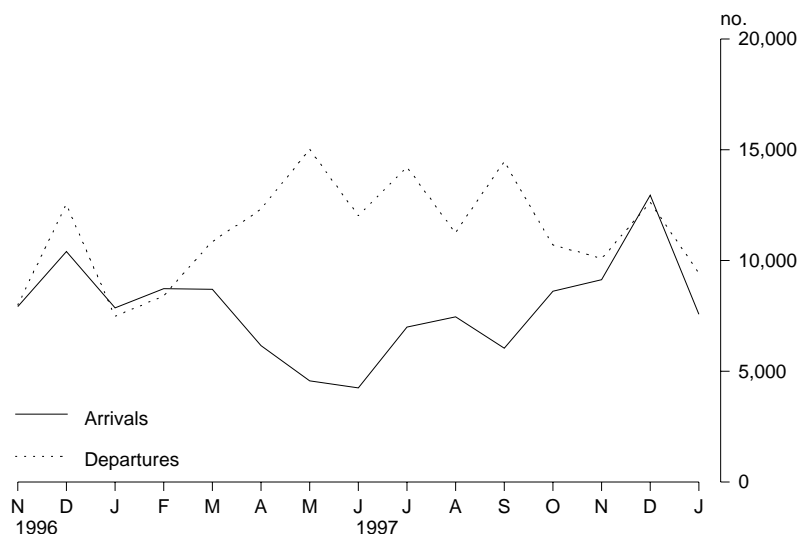
Short-term overseas visitor arrivals

In January 1997 there were 7,582 short-term overseas visitor arrivals to South Australia. The number of visitors decreased dramatically from the previous month when there were 12,967 visitors. A comparison with the same period last year shows that there was a fall of 3.7%. There was a similar decrease in the Australian data where there was a 22.8% reduction from the previous month but a 1.0% on last year. The proportion of short-term visitors to South Australia was 2.2%

Short-term resident departures

There were 9,452 short-term resident departures in January 1998. This represents a fall of 25.3% from last month but a comparison with January 1997 shows a 26.1% increase in departures. The Australian data for the same periods were a 31.1% decrease and a 6.6% increase. South Australia accounted for 4.6% of short-term resident departures.

Short-term arrivals and departures

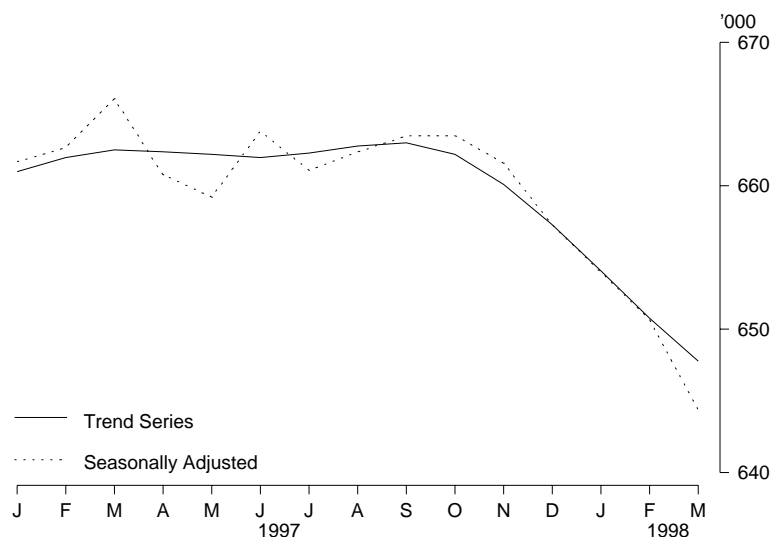


Employment

The trend estimate of employed persons in South Australia was 647,800 in March 1998. This was 2.2% lower than the level of 12 months ago (662,500). Most of this decrease can be attributed to a decline in female part-time employment of 7.8% (or 10,300).

The trend estimate of the labour force participation rate in South Australia was 60.5% in March 1998, down from 62.0% in March 1997.

Employed persons

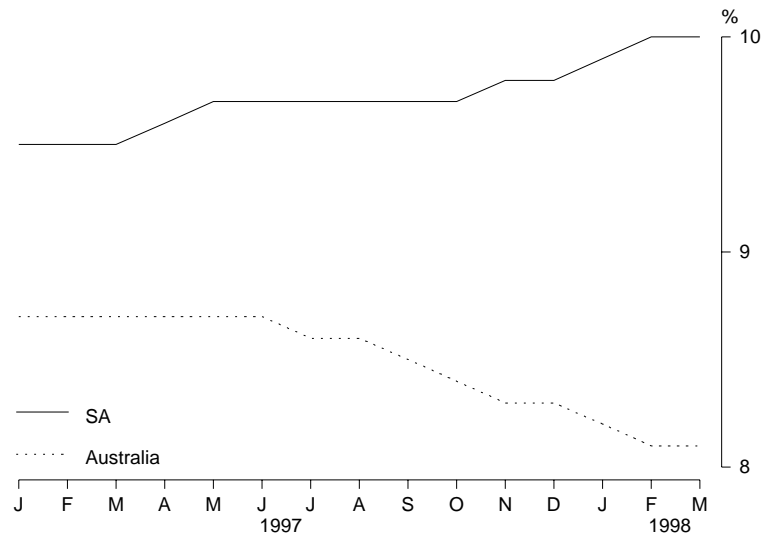


Unemployment

The trend unemployment rate for South Australia has generally risen over the past 12 months; up from 9.5% in March 1997 to 10.0% in March 1998. The latest estimate was the highest recorded on the mainland. In contrast, the trend estimate of the unemployment rate for Australia has decreased from 8.7% in March 1997, to 8.1% in March 1998.

In original terms, the teenage full-time unemployment rate in South Australia was 37.6% in March 1998, up from the 34.4% recorded in the previous month.

Unemployment rates: **Trend**

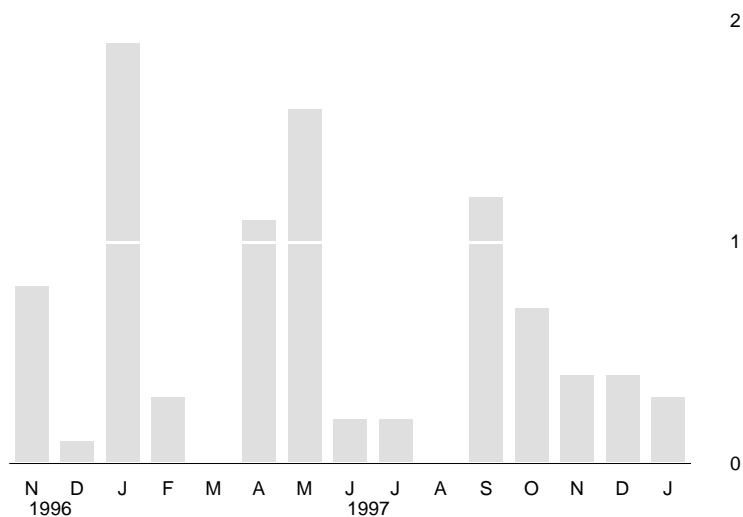


Industrial disputes

In January 1998 a total of 300 working days were lost through industrial disputation, a decrease of 100 from December 1997 (400). South Australia had a low level of industrial disputation, contributing only 3.5% to the national level of 8,600 working days lost.

The number of working days lost in South Australia in the 12 months to January 1998 was 6,400, much lower than the 43,200 days lost in the 12 months to January 1997.

Working Days Lost



Overtime

In original terms, the proportion of employees who worked overtime in South Australia in February 1998 was 16.2%, compared with 15.7% in February 1997.

In February 1998, employees who worked overtime in South Australia recorded an average of 5.4 overtime hours per week. This was lower than the 6.6 overtime hours recorded 12 months earlier.

INCOMES

Average weekly earnings

The trend estimate of average weekly ordinary time earnings of full-time adult male employees in South Australia has decreased slightly (0.1%), from \$696.10 in August 1997 to \$695.50 in November 1997. In contrast, earnings for females increased from \$586.90 in August 1997 to \$593.10 in November 1997.

Between August 1997 and November 1997, the trend estimate of average weekly total earnings of all employees (including part-time workers) in South Australia rose by 0.6% to \$545.50. Over the same period, the national level increased by 1.0% to \$593.70.

Note: Since it is an average of earnings across all employees, changes in average weekly earnings may occur through changes in employment as well as changes in pay levels.

Wage cost Index

The ABS has recently released its first wage cost index. The index measures quarterly changes in wage and salary costs for employee jobs. Hourly rates of pay are collected on both an ordinary time and total time basis, with or without bonuses. The first reference period is the quarter to December 1997. This new measure replaces the discontinued award rates of pay index.

In South Australia, the index of total hourly rates of pay (excluding bonuses) increased by 0.8% between September 1997 and December 1997. Nationally, the corresponding increase was also 8.0%.

In South Australia, the index of ordinary time hourly rates of pay (excluding bonuses) rose by 0.8% in the quarter to December 1997. An identical increase was observed for Australia.

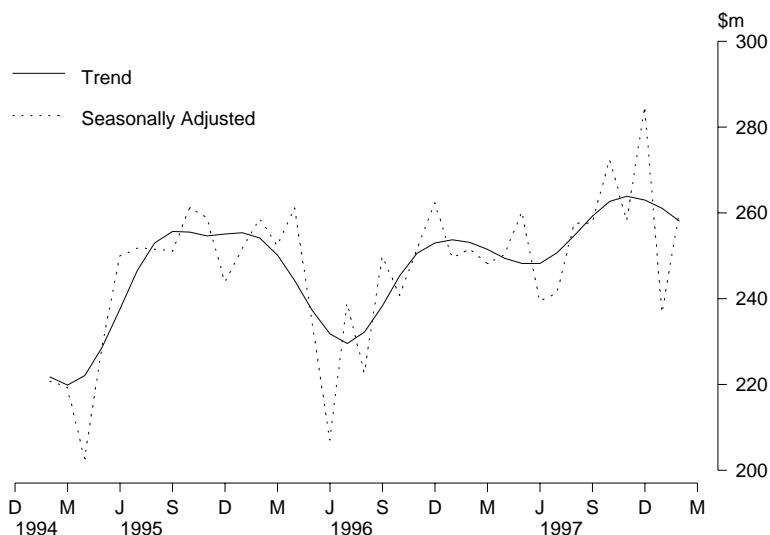
FINANCIAL MARKETS

Housing finance

The trend estimate for the value of commitments decreased 1.1% during February to \$258.2m, the third consecutive monthly fall but 2.0% above the previous February. In seasonally adjusted terms commitments rose 9.9% to \$260.2m. Nationally the trend was marginally down for the month, but 7.3% above the previous February.

Total housing finance commitments (original figures including alterations and additions) increased 22.6% to \$265.4m, to be 0.9% above the previous February. Nationally new lending commitments were also up 20.1% for the month, 9.8% for the year. The number of dwellings financed in South Australia increased 23.9% to 3,128 with a decrease in the average value to \$81,600, down for the second consecutive month.

Secured housing finance commitments(a)



(a) Excludes alterations and additions. Includes refinancing.

The major contributing factor in the increase in total housing financial commitments was the 18.6% increase in commitments for the purchase of established dwellings which reached \$156.4m, although still 3.7% below February 1997. Construction of dwellings increased 43.3% to \$34.7m, 13.0% above the previous February. South Australia's proportion of the nation's construction of dwellings increased to 5.0%. Commitments for newly erected dwellings rose 22.7% to \$8.0m.

Refinancing (the second largest category) increased 24.6% to \$56.2m, 21.5% above February 1997. Nationally refinancing rose 21.3% for the month with South Australia's proportion being 7.3% of the national total. Alterations and additions increased 14.7% to \$10.1m, 38.4% below the previous February.

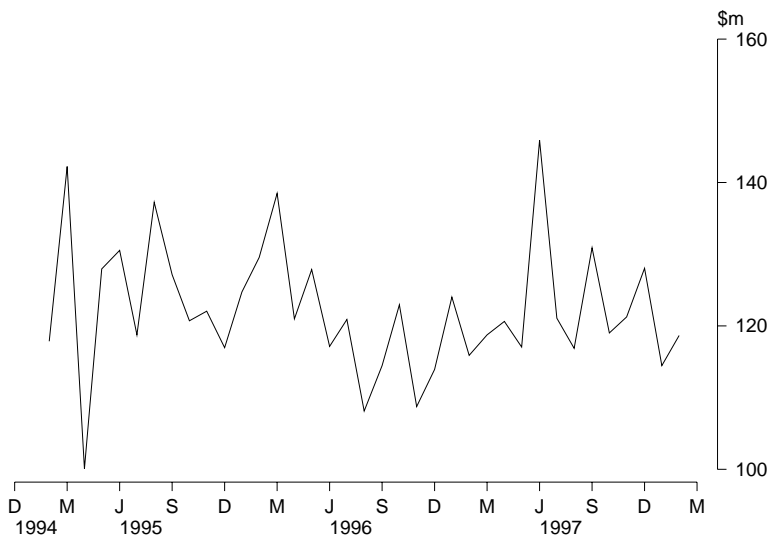
Personal finance

Total personal finance commitments for South Australia increased 6.6% to \$209.6m, 2.9% above February 1997. Nationally the increase for the month was 5.3% in original terms, 13.8% above the previous February. In seasonally adjusted terms the national total represents a fall for the month of 1.3%.

The main group to increase was total revolving credit facilities which was up 10.9% to \$90.9m, 3.7% above February 1997. Secured revolving credit facilities had the largest increase with a rise of 16.7% to \$49.6m while unsecured increased 4.7% to \$41.3m.

Fixed loan commitments for South Australia increased 3.6% to \$118.7 m which was 2.4% above the previous February. The main increase was debt consolidation up 33.3% to \$10.4 m, though 11.8% below February 1997. Individual residential blocks of land increased 47.3% to \$6.4m, the highest month since May 1994. The main decrease was for boats, caravans and trailers down 48.3% to \$1.4 m following four high months. Both new and used motor cars and station wagons were down, with new down 7.1% to \$14.0m, and used down 2.7% to \$36.2m. Both these categories are still significantly above the previous February.

Fixed loan commitments, all lenders

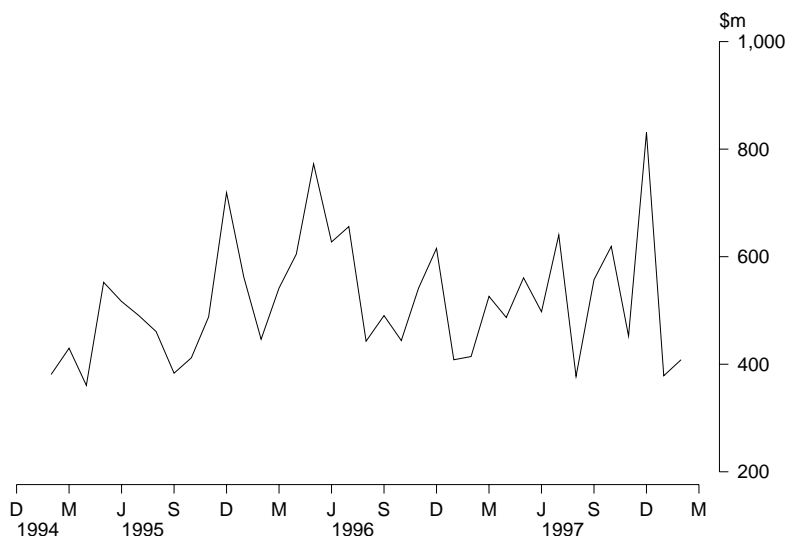


Commercial finance

Total commercial finance commitments recovered a small part of the major fall in the previous month with a rise of 7.9% to \$409.1m. Nationally the increase was 31.1% for the month, 22.4% above February 1997. South Australia's proportion of the national total dropped further to 3.1%.

Commitments under fixed loan facilities increased 14.0% to \$281.0m, 4.0% above the previous February. Construction was up \$7.6m to \$13.6m and wholesale trade rose \$7.4m to \$42.9m following significant falls for both categories in the previous month. Only two categories fell with the main decrease occurring for property and business services, down \$10.8 m to \$24.2m.

Commercial finance commitments, all lenders



Revolving credit facilities decreased 3.4% to \$128.1m, 11.6% below the previous February. The main decrease was for manufacturing, down 67.5% to \$9.0m, continuing the decline from the peak in October 1997. Property and business services also fell, down 45.1% to \$9.1m. The main increases were for agriculture, forestry, fishing and hunting, up \$16.0m to \$46.5m and wholesale trade which was up \$12.0m to \$18.5m. Both categories had dropped substantially in the previous month.

Lease finance

New finance lease commitments rose 21.6% to \$18.6m in February 1998, 21.7% above the previous February. Nationally the increase for the month was 15.9% in original figures, representing a drop of 7.2% when seasonally adjusted. South Australia's proportion of the national total was 2.8%.

Large increases were reported for manufacturing equipment and office machines with manufacturing equipment up \$2.2m to \$2.5m following two low months and office machines up \$2.0m to \$3.5m. The main decrease was for electronic data equipment, down 55.2% to \$0.8m. New motor cars and station wagons not subject to depreciation, the largest category, was down 16.2% to \$4.1m, the second consecutive monthly fall from the December peak. Nationally this category increased 4.9% in February to be 20.1% above the previous February. South Australia represented 2.2% of the national total for lease finance for new motor cars and station wagons not subject to depreciation.

FORWARD OUTLOOK

Composite leading indicator for Australia

The Composite Leading Indicator (CLI) is a single time series produced by aggregating eight individual economic indicators, and has been developed by the ABS as an experimental series to supplement existing forms of economic analysis and modelling.

The CLI summarises the early signals contained in a selection of economic indicators and is designed to assist the detection of turning points between successive expansions and slow downs of economic activity as measured by constant price GDP(A). It does not attempt to forecast the level of economic activity.

Composite leading indicator for Australia

In the December quarter 1997 :

- the experimental CLI fell 0.08%, following rises of 0.13% and 0.04% in the June quarter and the September quarter respectively and this fall is the first since the September quarter 1995 and gives a provisional peak in the CLI in the September quarter 1997.

The quarterly data are released in more detail in the *Australian Economic Indicators* (Cat. no. 1350.0). The CLI was the topic of the Focus article in the September 1993 edition of *South Australian Economic Indicators* (Cat. no. 1307.4). A review of the performance of the CLI and its components was published in the July 1997 issue of Cat. no. 1350.0.

Business expectations

Surveys of business expectations have been available to decision makers for a number of years from several sources. These surveys provided *qualitative* indicators in the form of the net proportion of businesses expecting a rise or fall in future business conditions. Since the December quarter 1993, the ABS has been compiling a *quantitative* indicator of business expectations in the form of an expected weighted aggregate change in a range of economic variables. These data are available on a quarterly basis in *Australian Business Expectations* (Cat. no. 5250.0).

South Australia, Short-term outlook expected aggregate change

.....

	EXPECTED AGGREGATE CHANGE OVER THE PREVIOUS QUARTER.....				
	Jun qtr 1997	Sep qtr 1997	Dec qtr 1997	Mar qtr 1998	Jun qtr 1998
<i>Business performance indicators</i>	%	%	%	%	%
.....					
Trading performance					
Operating income	2.8	0.0	5.1	0.2	1.9
Selling prices	1.1	0.3	0.3	0.2	0.5
Profit	14.2	-3.9	26.5	3.0	2.9
Investment					
Capital expenditure	1.0	5.4	9.5	1.5	9.8
Stocks	-0.5	-0.4	0.6	1.9	0.2
Employment					
Full time equivalent	-0.4	-0.4	1.0	0.1	-0.1
.....					

Short term—South Australian businesses expect an increase of 1.9% in operating income in the June quarter 1998 compared with the March quarter 1998 whilst the Australian rate was 1.7%. The investment component for South Australia was expected to be 9.8% increase in capital expenditure compared with 3.8% for Australia whilst full-time employment levels were expected to fall by 0.1% for both South Australia and Australia.

South Australia, Medium-term outlook expected aggregate change

EXPECTED AGGREGATE CHANGE
OVER THE PREVIOUS YEAR.....

	Mar qtr 1998	Jun qtr 1998	Sep qtr 1998	Dec qtr 1998	Mar qtr 1999
<i>Business performance indicators</i>	%	%	%	%	%
Trading performance					
Operating income	4.0	3.4	4.8	4.3	2.7
Selling prices	1.9	0.9	0.8	0.8	0.7
Profit	16.8	11.2	25.3	18.1	22.7
Investment					
Capital expenditure	1.9	-0.8	3.0	2.3	-2.0
Stocks	0.2	0.3	1.1	2.0	0.2
Employment					
Full time equivalent	0.2	0.0	-0.3	-1.5	-1.3

Medium term—Businesses in South Australia expect operating income in the March quarter 1999 to be 2.7% above March quarter 1998. Capital expenditure and employment indicators are showing negative change in the medium term whilst the Australian data shows a 2.0% increase in capital expenditure and a 0.1% increase in employment levels.

LIST OF TABLES

Page

TABLES

1	Statistical summary	23
	Time series	
2	State accounts—current prices	25
3	State accounts—average 1989–90 prices	26
4	Merchandise exports by selected commodity group	27
5	Merchandise exports by selected countries	28
6	Merchandise exports by industry of origin	29
7	Merchandise imports by selected commodity group	30
8	Turnover of retail establishments by industry	31
9	New motor vehicle registrations by type of vehicle	32
10	Actual private new capital expenditure by selected industry and type of asset	33
11	Tourist accommodation	34
12	Building approvals	35
13	Building commencements	36
14	Value of building work done during period	37
15	Production, livestock products and selected commodities	38
16	Consumer price index, by group—Adelaide	39
17	Average retail prices of selected consumer items—Adelaide	40
18	Estimated resident population and components of population change ...	41
19	Civilian labour force status	42
20	Civilian labour force, unemployment and participation rates	43
21	Average weekly earnings of employees	44
22	Finance commitments	45

SOUTH AUSTRALIA.....

AUSTRALIA.....

Indicator	Unit	Period	% change from			% change from			SA as a % of Aust.	Source index
			Number	Same period previous year		Number	Same period previous year			
				Previous period	Year		Previous period	Year		
State accounts										
Domestic final demand										
Current prices trend	\$m	Dec qtr 97	9 477	1.4	5.7	129 371	1.7	6.3	7.3	(1)
1989-90 prices trend	\$m	Dec qtr 97	8 145	1.2	4.8	116 996	1.2	5.5	7.0	(1)
Private final consumption expenditure										
Current prices trend	\$m	Dec qtr 97	6 110	1.5	5.1	84 091	1.8	6.2	7.3	(1)
1989-90 prices trend	\$m	Dec qtr 97	5 164	1.4	4.6	70 594	1.5	5.0	7.3	(1)
Private gross fixed capital expenditure										
Current prices trend	\$m	Dec qtr 97	1 319	1.3	10.9	22 911	2.1	9.0	5.8	(1)
1989-90 prices trend	\$m	Dec qtr 97	1 264	1.0	9.0	23 019	1.8	11.5	5.5	(1)
Wages, salaries and supplements										
Current prices trend	\$m	Dec qtr 97	4 729	1.8	5.0	67 478	1.5	5.0	7.0	(1)
International accounts										
Exports	\$m	Feb 98	362.1	-2.6	-29.2	6 396.0	6.7	4.4	5.7	2.0
Imports	\$m	Feb 98	300.0	-9.8	-1.3	6 948.7	-2.3	14.4	4.3	2.0
Consumption and investment										
Retail turnover										
Current prices original	\$m	Feb 98	741.5	-13.4	6.8	9 945.5	-11.5	3.2	7.5	(3)
Current prices trend	\$m	Feb 98	849.7	1.0	7.8	11 276.4	0.3	4.3	7.5	(3)
1989-90 prices original	\$m	Dec qtr 97	2 304.0	17.8	4.8	31 290.0	15.9	4.3	7.4	(3)
New motor vehicle registrations										
Original	no.	Feb 98	3 980	18.2	4.0	60 217	17.3	9.7	6.6	(4)
Trend	no.	Feb 98	4 282	-0.1	14.2	64 456	0.1	14.2	6.6	(4)
Private new capital expenditure										
Current prices original	\$m	Dec qtr 97	927	29.5	34.7	12 590	19.2	7.6	7.4	(5)
Current prices trend	\$m	Dec qtr 97	810	6.6	28.8	11 350	0.7	3.7	7.1	(5)
1996-97	\$m	1996-97	2 580	..	37.7	43 837	..	8.3	5.9	(5)
Takings, licensed hotels, motels and guesthouses with facilities	\$m	Dec qtr 97	48.1	15.2	11.1	979.2	3.1	3.5	4.9	(6)
Production										
Dwelling unit approvals										
Original	no.	Feb 98	666	54.5	41.1	11 570	3.9	3.9	5.8	(7)
Trend	no.	Feb 98	640	4.4	22.4	13 191	-0.1	11.0	4.9	(7)
New dwelling units commenced	no.	Dec qtr 97	1 872	21.5	22.4	38 269	8.4	19.8	4.9	(8a)
Value of non-residential building approvals	\$m	Feb 98	41.9	160.2	-21.1	1 165.9	12.6	21.4	3.6	(7)
Value of total building activity										
Commenced	\$m	Dec qtr 97	378.7	37.3	34.8	8 387.3	2.3	15.7	4.5	(8)
Work done	\$m	Dec qtr 97	384.1	6.9	10.4	8 198.5	5.2	11.8	4.7	(8)
Work yet to be done	\$m	Dec qtr 97	332.7	5.0	-4.6	12 161.9	6.1	26.9	2.7	(8)
Value of engineering construction work done	\$m	Dec qtr 97	299.4	18.5	61.1	4 149.7	14.8	11.1	7.2	(9)
Manufacturing production										
Red meat	tonnes	Feb 98	20 773	19.0	11.6	249 621	14.7	6.2	8.3	(11)
Mineral exploration expenditure (other than for petroleum)	\$m	Dec qtr 97	11.4	-8.8	42.5	282.0	-6.6	-3.3	4.0	(12)

Indicator	Unit	Period	SOUTH AUSTRALIA.....			AUSTRALIA.....			SA as a % of Aust.	Source index
			Number	% change from....		Number	% change from			
				Previous period	Same period previous year		Previous period	Same period previous year		
Prices										
CPI – All groups	1989–90=100	Dec qtr 97	121.2	0.0	-1.1	120.0	0.3	-0.2	..	(13)
Price index of materials used in house building	1989–90=100	Mar qtr 98	123.7	0.7	2.4	118.7	0.7	2.2	..	(14)
Price index of materials used in building other than houses	1989–90=100	Mar qtr 98	115.0	-0.1	0.4	114.1	0.1	0.6	..	(15)
Price index of established houses	1989–90=100	Dec qtr 97	110.8	0.9	3.8	121.2	1.9	6.0	..	(16)
Price index of project homes	1989–90=100	Dec qtr 97	112.5	0.5	4.8	110.0	0.1	0.8	..	(16)
Labour force and demography										
Population (resident at end qtr)	'000	Sep qtr 97	1 481.6	0.1	0.4	18 588.6	0.3	1.2	8.0	(17)
Short-term overseas visitor arrivals	no.	Jan 98	7 582	-41.5	-3.7	346 231	-22.8	1.0	2.2	(21)
Short-term resident departures	no.	Jan 98	9 452	-25.3	26.1	207 343	-31.1	6.6	4.6	(21)
Labour force										
Original	'000	Mar 98	719.5	-0.8	-2.6	9 322.4	0.2	0.9	7.7	(18)
Trend	'000	Mar 98	719.8	-0.4	-1.7	9 281.6	0.0	0.8	7.8	(18)
Employed persons										
Original	'000	Mar 98	645.8	-0.4	-3.3	8 462.1	0.0	1.3	7.6	(18)
Trend	'000	Mar 98	647.8	-0.5	-2.2	8 528.7	0.0	1.5	7.6	(18)
Participation rate										
Original(a)	%	Mar 98	60.5	-0.5	-2.0	63.4	0.1	-0.3	..	(18)
Trend(a)	%	Mar 98	60.5	-0.3	-1.5	63.1	-0.1	-0.3	..	(18)
Unemployment rate										
Original(a)	%	Mar 98	10.2	-0.4	0.6	8.6	-0.5	-0.6	..	(18)
Trend(a)	%	Mar 98	10.0	0.0	0.5	8.1	0.0	-0.6	..	(18)
Job vacancies	'000	Feb 98	3.3	6.5	-10.8	75.5	10.9	20.6	4.4	(19)
Average weekly overtime per employee working overtime	hours '000 working	Feb 98	5.4	-17.6	-18.4	6.7	-4.1	-5.1	..	(19)
Industrial disputes	days lost	Jan 98	0.3	-25.0	-84.2	8.6	-64.6	-63.4	3.5	(20)
Incomes										
Average weekly earnings (full-time adults; ordinary time)										
Original	\$	Nov 97	655.0	-1.3	2.4	711.2	0.7	3.7	..	(22)
Trend	\$	Nov 97	659.8	0.1	3.0	712.7	1.0	4.0	..	(22)
Wage cost index (Total hourly rate excluding bonuses)										
	Sep 1997=100	Dec 97	100.8	0.8	..	100.8	0.8	(23)
Financial markets										
Secured housing finance	\$m	Feb 98	265.4	21.3	0.9	4 683.2	20.1	9.8	5.7	(24)
Finance commitments										
Personal	\$m	Feb 98	209.6	6.6	2.9	3 274.0	5.3	13.8	6.4	(25)
Commercial	\$m	Feb 98	409.1	7.9	-1.5	13 359.5	31.1	22.4	3.1	(25)
Lease	\$m	Feb 98	18.6	21.6	21.7	666.0	15.9	23.0	2.8	(25)
Interest rates										
Banks new housing loans(a)	%	Mar 98	6.70	0.0	0.9	..	(26)
Banks business loans(a)										
Small, medium sized business										
	%	Mar 98	8.75	0.0	-1.0	..	(26)
Large business	%	Mar 98	8.45	0.0	-0.9	..	(26)

(a) Change is shown in terms of percentage points.

Period	FINAL CONSUMPTION EXPENDITURE....		GROSS FIXED CAPITAL EXPENDITURE....		State final demand	Gross State product (I)	Wages, salaries and supplements
	Private	Government	Private	Government			
ANNUAL (\$m)							
1991-92	18 958	5 812	4 021	1 429	30 220	28 719	14 718
1992-93	19 493	5 969	3 980	1 372	30 814	29 989	15 131
1993-94	20 596	6 628	4 019	1 182	32 426	32 057	16 370
1994-95	21 778	6 704	4 888	1 250	34 630	33 437	16 712
1995-96	23 004	6 750	4 510	1 010	35 274	35 457	17 556
1996-97	23 337	6 842	4 847	1 117	36 143	36 023	18 009
PERCENTAGE CHANGE FROM PREVIOUS YEAR							
1991-92	4.6	6.1	-5.0	-6.5	2.9	1.0	-0.2
1992-93	2.8	2.7	-1.0	-4.0	2.0	4.4	2.8
1993-94	5.7	11.0	1.0	-13.8	5.2	6.9	8.2
1994-95	5.7	1.1	21.6	5.8	6.8	4.3	2.1
1995-96	5.6	0.7	-7.7	-19.2	1.9	6.0	5.1
1996-97	1.4	1.4	7.5	10.6	2.5	1.6	2.6
QUARTERLY, ORIGINAL (\$m)							
1996-97							
September	5 770	1 640	1 207	222	8 839	8 534	4 435
December	6 119	1 721	1 276	264	9 380	9 849	4 624
March	5 604	1 584	1 024	315	8 528	8 634	4 404
June	5 844	1 897	1 340	315	9 396	9 006	4 546
1997-98							
September	6 003	1 747	1 273	219	9 242	n.a.	4 692
December	6 454	1 677	1 439	333	9 903	n.a.	4 820
QUARTERLY, TREND (\$m)							
1996-97							
September	5 790	1 667	1 157	288	8 901	8 909	4 462
December	5 813	1 689	1 174	293	8 969	8 976	4 505
March	5 847	1 723	1 204	278	9 053	9 049	4 531
June	5 926	1 736	1 257	273	9 192	9 116	4 575
1997-98							
September	6 017	1 738	1 302	291	9 348	n.a.	4 647
December	6 110	1 728	1 319	320	9 477	n.a.	4 729
PERCENTAGE CHANGE FROM PREVIOUS QUARTER, TREND							
1996-97							
September	0.3	-0.4	0.5	7.1	0.4	0.2	1.0
December	0.4	1.3	1.5	1.7	0.8	0.8	1.0
March	0.6	2.0	2.6	-5.1	0.9	0.8	0.6
June	1.4	0.8	4.4	-1.8	1.5	0.7	1.0
1997-98							
September	1.5	0.1	3.6	6.6	1.7	..	1.6
December	1.5	-0.6	1.3	10.0	1.4	..	1.8

Period	FINAL CONSUMPTION EXPENDITURE....		GROSS FIXED CAPITAL EXPENDITURE....		State final demand	Gross State product (I)
	Private	Government	Private	Government		
ANNUAL (\$m)						
1991–92	17 447	5 328	3 849	1 364	27 988	27 023
1992–93	17 491	5 358	3 696	1 292	27 837	28 077
1993–94	18 150	5 646	3 655	1 118	28 568	29 004
1994–95	19 020	5 765	4 448	1 175	30 408	29 226
1995–96	19 732	5 713	4 094	948	30 487	30 465
1996–97	19 811	5 711	4 718	1 038	31 278	30 868
PERCENTAGE CHANGE FROM PREVIOUS YEAR						
1991–92	1.6	2.3	-6.0	-7.8	1.4	-2.4
1992–93	0.3	0.6	-4.0	-5.3	-0.5	3.9
1993–94	3.8	5.4	-1.1	-13.5	2.6	3.3
1994–95	4.8	2.1	21.7	5.1	6.4	0.8
1995–96	3.7	-0.9	-8.0	-19.3	0.3	4.2
1996–97	0.4	0.0	15.2	9.5	2.6	1.3
QUARTERLY, ORIGINAL (\$m)						
1996–97						
September	4 921	1 381	1 188	208	7 698	7 363
December	5 198	1 424	1 262	245	8 128	8 701
March	4 739	1 329	988	291	7 346	7 280
June	4 953	1 577	1 280	295	8 105	7 524
1997–98						
September	5 070	1 434	1 242	189	7 935	n.a.
December	5 463	1 398	1 370	302	8 533	n.a.
QUARTERLY, TREND (\$m)						
1996–97						
September	4 937	1 394	1 124	267	7 722	7 706
December	4 937	1 410	1 149	273	7 769	7 717
March	4 951	1 438	1 172	258	7 820	7 701
June	5 015	1 446	1 214	249	7 924	7 662
1997–98						
September	5 092	1 443	1 252	262	8 049	n.a.
December	5 164	1 431	1 264	286	8 145	n.a.
PERCENTAGE CHANGE FROM PREVIOUS QUARTER, TREND						
1996–97						
September	0.0	-0.6	3.6	6.4	0.6	0.4
December	0.0	1.1	2.2	2.2	0.6	0.1
March	0.3	2.0	2.0	-5.5	0.7	-0.2
June	1.3	0.6	3.6	-3.5	1.3	-0.5
1997–98						
September	1.5	-0.2	3.1	5.2	1.6	..
December	1.4	-0.8	1.0	9.2	1.2	..

4

MERCHANDISE EXPORTS, By Selected Commodity Group(a)

<i>Period</i>	<i>Meat and meat preparations</i>	<i>Cereals and cereal preparations</i>	<i>Wine</i>	<i>Wool and sheepskins</i>	<i>Machinery</i>	<i>Metals and metal manu- factures</i>	<i>Fish and crustaceans</i>	<i>Road vehicles, parts and accessories</i>	<i>Petroleum and petroleum products</i>	<i>Total</i>
	\$'000	\$'000	\$'000	\$'000	\$'000	\$'000	\$'000	\$'000	\$'000	\$'000
ANNUAL										
1991-92	270 237	565 582	165 914	351 096	176 536	489 030	147 532	137 091	341 477	3 431 139
1992-93	282 181	573 375	192 255	318 989	211 426	490 594	154 608	338 359	372 445	3 760 602
1993-94	324 796	436 517	238 366	290 963	223 760	462 355	186 861	351 229	276 473	3 889 783
1994-95	307 785	261 052	250 527	301 645	285 309	571 094	191 386	332 321	285 310	3 829 336
1995-96	244 508	713 092	318 534	240 148	340 205	610 899	196 629	249 237	220 915	4 498 532
1996-97	182 478	745 241	397 949	260 974	378 923	542 204	191 093	655 895	286 458	5 013 449
MONTHLY										
1996-97										
December	21 065	85 128	34 865	30 635	45 346	60 849	16 009	70 076	17 719	521 428
January	13 701	108 010	21 366	18 392	17 653	33 405	20 477	46 808	4 275	379 289
February	17 065	124 924	30 844	22 350	27 097	39 512	20 942	58 234	46 498	511 223
March	17 492	118 000	34 185	22 682	39 619	46 802	23 664	58 579	25 712	507 198
April	17 415	61 511	34 047	25 234	31 992	39 508	19 935	45 176	26 197	416 470
May	16 003	16 145	36 804	26 233	35 384	55 444	15 449	39 711	15 488	367 828
June	15 421	18 998	30 160	23 847	29 641	47 560	11 051	57 089	36 706	406 373
1997-98										
July	12 693	18 848	38 625	31 249	41 558	47 372	16 678	53 496	14 509	417 371
August	11 641	18 718	44 669	17 560	31 082	43 635	18 826	60 483	39 320	419 434
September	15 556	27 719	62 570	24 139	38 751	50 905	18 769	18 938	26 927	383 291
October	17 450	10 488	62 258	23 438	26 461	37 876	23 608	39 342	10 935	360 808
November	21 312	8 739	33 344	29 856	41 032	61 844	18 039	84 083	18 110	455 181
December	22 697	67 164	36 065	35 565	38 310	40 932	13 680	72 253	33 679	483 719
January	15 260	92 909	25 735	19 786	21 783	56 613	24 420	15 137	12 427	371 824
February	20 712	45 347	43 279	17 388	27 466	41 095	18 152	19 051	19 195	362 102

(a) Final stage of production in South Australia.

5

MERCHANDISE EXPORTS, By Selected Countries(a)

Period	EUROPEAN COMMUNITY.....				EAST ASIA.....					
	United States of America	Middle East	United Kingdom	Total European Community	New Zealand	Japan	China	Hong Kong	ASEAN	Total East Asia
	\$'000	\$'000	\$'000	\$'000	\$'000	\$'000	\$'000	\$'000	\$'000	\$'000
ANNUAL										
1991-92	300 139	381 761	220 048	550 258	214 522	647 674	148 308	108 583	437 670	1 627 108
1992-93	352 764	314 049	237 520	594 701	288 421	649 684	208 135	171 803	487 174	1 820 065
1993-94	393 611	280 499	263 092	571 047	311 999	625 481	220 211	165 163	533 977	1 898 975
1994-95	329 878	184 342	246 118	553 051	376 262	682 937	177 875	193 014	551 433	2 004 013
1995-96	279 555	525 348	287 727	691 996	376 628	672 885	293 360	202 307	572 529	2 057 945
1996-97	707 871	563 409	304 649	641 314	382 105	612 115	244 917	234 547	615 018	2 034 488
MONTHLY										
1996-97										
December	71 258	81 329	28 905	65 684	27 378	59 114	29 176	21 721	47 761	186 464
January	47 334	83 789	13 228	29 012	32 659	31 483	17 714	16 327	28 376	119 338
February	57 587	66 413	22 843	49 748	29 728	56 641	27 861	23 395	75 021	209 483
March	69 002	96 254	26 863	67 132	28 321	59 413	22 364	26 579	39 860	182 126
April	59 320	49 119	26 023	52 789	22 885	51 075	33 261	18 598	61 197	185 838
May	49 537	30 815	26 606	63 289	21 142	47 286	17 553	16 373	50 567	166 869
June	83 248	19 843	21 783	60 136	21 859	56 675	15 479	17 994	59 211	180 155
1997-98										
July	75 629	33 014	27 348	60 442	25 538	52 568	31 626	15 779	55 728	188 841
August	80 052	22 224	43 757	72 636	22 840	51 224	21 497	16 567	56 418	175 292
September	25 569	14 786	43 947	79 167	31 036	64 737	22 139	22 409	53 528	182 763
October	26 279	10 465	55 190	89 955	41 159	52 529	27 453	10 146	41 821	149 676
November	92 791	20 278	26 755	56 937	26 466	65 589	33 375	28 165	65 241	224 744
December	80 347	41 977	27 798	60 769	17 402	54 759	33 218	25 304	51 143	196 359
January	19 633	50 488	16 597	37 113	23 869	38 594	24 511	27 162	34 059	154 395
February	33 191	32 590	28 031	69 339	29 406	36 739	36 887	23 146	19 795	137 492

(a) Final stage of production in South Australia.

MANUFACTURING.....

Period	Agriculture, forestry and fishing	Mining	Food, beverages and tobacco	Petroleum, coal, chemical associated product	Metal product	Machinery and equipment	Other manu- facturing	Other industries/ confidential	Total
	\$'000	\$'000	\$'000	\$'000	\$'000	\$'000	\$'000	\$'000	\$'000
ANNUAL									
1991-92	882 011	248 846	702 148	201 681	541 522	381 737	178 485	294 709	3 431 139
1992-93	883 725	294 586	766 518	195 387	509 303	641 930	178 726	290 427	3 760 602
1993-94	733 014	245 247	884 737	180 147	475 060	665 066	208 573	497 938	3 889 783
1994-95	592 129	268 537	886 337	186 661	584 838	711 529	243 314	355 991	3 829 336
1995-96	1 014 521	226 309	978 332	172 285	639 267	674 131	226 496	567 191	4 498 532
1996-97	1 067 867	205 433	981 918	290 382	569 729	1 140 115	229 503	528 502	5 013 449
MONTHLY									
1996-97									
December	119 518	25 589	87 427	25 499	63 810	122 815	22 225	54 544	521 428
January	133 106	1 294	72 585	10 035	33 508	69 654	15 632	43 473	379 289
February	151 003	39 505	86 482	33 856	43 376	93 004	18 510	45 485	511 223
March	140 271	734	97 840	33 514	50 176	106 476	18 821	59 366	507 198
April	88 768	30 741	86 093	17 247	40 321	96 254	19 110	37 936	416 470
May	42 278	991	85 038	27 168	59 594	85 062	20 725	46 969	367 826
June	54 021	32 623	75 807	27 832	51 123	92 575	17 531	54 860	406 373
1997-98									
July	79 999	30 787	83 465	14 727	48 601	105 308	24 710	29 775	417 371
August	51 751	11 810	93 512	37 889	48 749	99 482	24 132	52 109	419 434
September	55 954	22 149	115 722	24 156	55 582	65 691	21 983	22 055	383 291
October	43 738	1 722	119 482	18 070	39 146	73 859	19 047	45 743	360 808
November	45 830	16 715	89 421	25 488	68 063	134 173	22 046	53 446	455 181
December	102 787	28 936	88 043	27 219	45 353	121 933	21 832	47 616	483 719
January	120 805	6 762	76 673	17 938	58 344	43 235	17 950	30 117	371 824
February	76 981	796	90 526	26 874	42 619	55 395	18 940	49 972	362 102

(a) Final stage of production in South Australia.

7

MERCHANDISE IMPORTS, By Selected Commodity Group(a)

<i>Period</i>	<i>Food, beverages and tobacco</i>	<i>Petroleum and petroleum products</i>	<i>Chemicals</i>	<i>Textiles</i>	<i>Metals and metal manufactures</i>	<i>Machinery</i>	<i>Road, vehicles, parts and accessories</i>	<i>Other manufactured goods</i>	<i>Total</i>
	\$'000	\$'000	\$'000	\$'000	\$'000	\$'000	\$'000	\$'000	\$'000
ANNUAL									
1991-92	82 095	362 777	153 574	62 884	151 165	523 848	435 121	513 012	2 396 954
1992-93	91 756	570 334	186 001	57 434	255 924	609 212	661 714	521 723	3 068 122
1993-94	99 177	404 626	200 225	60 172	160 937	595 238	663 617	484 590	2 803 446
1994-95	115 930	330 430	220 536	64 524	214 432	695 038	749 658	563 368	3 099 510
1995-96	118 237	346 397	254 102	76 847	213 487	675 869	546 445	728 096	3 114 309
1996-97	136 695	505 633	225 187	79 708	223 259	868 346	538 690	695 238	3 413 043
MONTHLY									
1996-97									
December	13 786	47 488	25 644	5 443	12 397	75 884	33 169	82 398	310 393
January	9 935	24 997	24 943	8 035	20 890	107 391	42 244	52 370	300 286
February	9 788	52 619	16 510	6 087	20 531	96 667	45 732	46 861	303 870
March	8 356	50 383	28 119	5 065	14 786	50 785	44 387	46 896	257 380
April	10 428	58 416	18 075	7 691	19 477	62 146	55 134	50 015	297 599
May	11 588	45 354	19 293	6 467	15 123	54 510	35 983	48 198	246 008
June	9 424	39 315	20 252	7 109	20 569	66 474	54 586	48 670	283 146
1997-98									
July	10 522	66 543	14 283	6 781	22 112	107 428	83 398	56 474	376 173
August	12 208	29 929	13 882	6 401	24 929	75 139	81 995	53 136	305 788
September	13 380	61 141	13 489	7 031	21 941	79 680	57 850	81 327	344 007
October	15 074	2 052	12 983	8 211	22 587	76 608	67 994	56 729	271 660
November	14 009	67 061	16 241	7 528	21 298	75 921	55 373	51 329	321 909
December	13 857	32 306	22 907	6 632	21 526	115 605	58 610	58 115	342 253
January	13 497	29 721	39 181	8 118	24 947	96 713	54 033	55 512	332 470
February	10 516	39 824	26 283	8 157	27 719	69 886	53 601	55 614	300 015

(a) Goods released from Customs control in South Australia.

Period	Food retailing	Department stores	Clothing and soft good retailing	Household good retailing	Recreational good retailing	Other retailing	Hospitality and services	Total
ANNUAL (\$m)								
1991-92	3 223.7	1 087.4	472.4	833.1	289.6	537.7	1 198.4	7 642.5
1992-93	3 081.8	1 101.5	440.4	829.9	324.5	645.0	1 181.8	7 604.9
1993-94	3 253.3	1 107.8	479.0	917.8	378.1	684.0	1 338.8	8 158.8
1994-95	3 477.3	1 128.8	538.0	959.6	383.8	793.5	1 654.4	8 935.4
1995-96	3 786.5	1 138.5	546.7	1 025.6	431.2	902.8	1 762.0	9 593.2
1996-97	4 065.0	1 121.0	467.0	937.0	425.0	792.8	1 648.1	9 455.8
MONTHLY, ORIGINAL (\$m)								
1996-97								
December	382.2	170.4	51.9	101.8	56.6	91.1	178.7	1 032.7
January	351.1	79.3	37.1	70.3	33.4	60.5	142.1	774.0
February	317.3	69.7	28.1	67.0	28.7	56.5	127.1	694.5
March	350.0	82.7	34.9	70.1	32.0	60.7	131.9	762.4
April	331.2	86.2	45.3	73.3	32.6	65.0	128.4	762.1
May	344.6	96.2	45.3	77.2	32.0	71.3	132.4	798.9
June	320.2	80.0	40.7	74.9	29.6	63.9	132.5	741.8
1997-98								
July	355.0	97.9	45.8	83.1	31.6	67.5	123.7	804.6
August	349.6	80.5	38.7	83.5	32.0	66.0	127.4	777.6
September	348.9	84.8	38.8	84.5	33.2	65.8	121.1	777.2
October	370.4	92.0	46.3	94.3	34.6	76.1	126.6	840.2
November	365.4	105.6	45.6	95.5	36.6	79.2	129.0	856.9
December	418.2	106.5	58.3	121.3	52.5	107.7	148.4	1 066.8
January	396.1	93.8	45.3	94.2	33.4	77.0	116.1	856.0
February	344.9	76.0	33.0	81.9	29.1	69.3	107.4	741.5
MONTHLY, TREND (\$m)								
1996-97								
December	341.0	94.1	37.0	76.0	35.3	62.9	135.7	784.2
January	343.2	94.0	37.5	75.4	34.4	63.7	136.1	786.4
February	344.4	93.7	38.3	75.5	33.8	64.9	136.6	788.5
March	344.5	93.3	39.4	75.9	33.4	66.3	137.3	790.6
April	344.5	93.1	40.6	76.6	33.4	67.4	137.8	793.3
May	345.3	93.3	41.8	77.8	33.6	67.9	137.7	797.1
June	347.6	93.8	42.9	79.8	34.0	68.0	136.8	802.6
1997-98								
July	350.5	94.0	43.7	82.3	34.4	68.1	134.8	807.8
August	353.8	93.8	44.1	85.0	34.6	68.9	131.7	811.9
September	357.2	93.6	44.2	87.8	34.6	70.7	127.7	815.8
October	360.6	93.8	44.1	90.3	34.5	73.3	123.7	820.2
November	364.6	94.8	44.0	92.3	34.2	76.0	120.3	826.1
December	369.3	96.6	43.9	94.0	33.8	78.4	117.5	833.4
January	374.1	98.6	43.8	95.3	33.5	80.3	115.1	841.0
February	378.6	101.2	43.9	96.3	33.0	81.7	113.2	849.7
PERCENTAGE CHANGE FROM PREVIOUS MONTH, TREND								
1996-97								
November	0.7	0.1	-0.8	-1.9	-1.9	-1.1	-0.4	-0.1
December	0.8	0.2	0.5	-1.4	-2.5	0.3	0.1	0.2
January	0.6	-0.1	1.4	-0.8	-2.5	1.3	0.3	0.3
February	0.3	-0.3	2.1	0.1	-1.7	1.9	0.4	0.3
March	0.0	-0.4	2.9	0.5	-1.2	2.2	0.5	0.3
April	0.0	-0.2	3.0	0.9	0.0	1.7	0.4	0.3
May	0.2	0.2	3.0	1.6	0.6	0.7	-0.1	0.5
June	0.7	0.5	2.6	2.6	1.2	0.1	-0.7	0.7
1997-98								
July	0.8	0.2	1.9	3.1	1.2	0.1	-1.5	0.6
August	0.9	-0.2	0.9	3.3	0.6	1.2	-2.3	0.5
September	1.0	-0.2	0.2	3.3	0.0	2.6	-3.0	0.5
November	1.1	1.1	-0.2	2.2	-0.9	3.7	-2.7	0.7
October	1.0	0.2	-0.2	2.8	-0.3	3.7	-3.1	0.5
December	1.3	1.9	-0.2	1.8	-1.2	3.2	-2.3	0.9
January	1.3	2.1	-0.2	1.4	-0.9	2.4	-2.0	0.9
February	1.2	2.6	0.2	1.0	-1.5	1.7	-1.7	1.0

Period	ORIGINAL.....			SEASONALLY ADJUSTED.....			TREND ESTIMATE.....		
	Passenger vehicles	Other vehicles	Total	Passenger vehicles	Other vehicles	Total	Passenger vehicles	Other vehicles	Total
ANNUAL									
1991-92	32 351	5 333	37 684
1992-93	32 894	5 577	38 471
1993-94	32 806	5 781	38 587
1994-95	35 830	6 736	42 566
1995-96	36 067	6 828	42 895
1996-97	36 146	6 970	43 116
PERCENTAGE CHANGE FROM PREVIOUS YEAR									
1991-92	-6.9	-19.4	-8.9
1992-93	1.7	4.6	2.1
1993-94	-0.3	3.7	0.3
1994-95	9.2	16.5	10.3
1995-96	0.7	1.4	0.8
1996-97	0.2	2.1	0.5
MONTHLY									
1996-97									
December	2 997	585	3 582	3 003	581	3 584	2 990	564	3 553
January	2 493	449	2 942	3 118	576	3 694	3 079	581	3 660
February	3 302	525	3 827	3 307	574	3 881	3 152	598	3 749
March	3 034	593	3 627	3 091	622	3 713	3 193	608	3 801
April	3 015	701	3 716	3 263	673	3 936	3 205	608	3 813
May	3 028	612	3 640	3 075	562	3 637	3 211	599	3 810
June	3 659	780	4 439	3 357	593	3 951	3 230	585	3 815
1997-98									
July	3 351	545	3 896	3 227	539	3 766	3 277	571	3 848
August	3 368	508	3 876	3 274	574	3 848	3 362	563	3 925
September	3 619	555	4 174	3 487	577	4 064	3 462	567	4 029
October	3 775	560	4 335	3 537	573	4 110	3 549	583	4 132
November	3 662	537	4 199	3 604	563	4 167	3 608	604	4 212
December	3 781	702	4 483	3 877	661	4 537	3 635	627	4 262
January	2 883	483	3 366	3 657	643	4 300	3 636	651	4 287
February	3 341	639	3 980	3 333	699	4 033	3 611	671	4 282
PERCENTAGE CHANGE FROM PREVIOUS MONTH									
1996-97									
December	0.7	8.5	1.9	2.8	9.0	3.8	3.1	1.8	2.9
January	-16.8	-23.2	-17.9	3.8	-0.9	3.1	3.0	3.0	3.0
February	32.5	16.9	30.1	6.1	-0.3	5.1	2.4	2.9	2.4
March	-8.1	13.0	-5.2	-6.5	8.4	-4.3	1.3	1.7	1.4
April	-0.6	18.2	2.5	5.6	8.2	6.0	0.4	0.0	0.3
May	0.4	-12.7	-2.0	-5.8	-16.5	-7.6	0.2	-1.5	-0.1
June	20.8	27.5	22.0	9.2	5.5	8.6	0.6	-2.3	0.1
1997-98									
July	-8.4	-30.1	-12.2	-3.9	-9.1	-4.7	1.5	-2.4	0.9
August	0.5	-6.8	-0.5	1.5	6.5	2.2	2.6	-1.4	2.0
September	7.5	9.3	7.7	6.5	0.5	5.6	3.0	0.7	2.6
October	4.3	0.9	3.9	1.4	-0.7	1.1	2.5	2.8	2.6
November	-3.0	-4.1	-3.1	1.9	-1.7	1.4	1.7	3.6	1.9
December	3.2	30.7	6.8	7.6	17.4	8.9	0.7	3.8	1.2
January	-23.8	-31.2	-24.9	-5.7	-2.7	-5.2	0.0	3.8	0.6
February	15.9	32.3	18.2	-8.9	8.7	-6.2	-0.7	3.1	-0.1

Period	INDUSTRY.....			Total	TYPE OF ASSET.....	
	Mining	Manu- facturing	Other selected industries		New buildings and structures	Equipment, plant and machinery
ANNUAL (\$m)						
1991-92	193	763	668	1 625	392	1 233
1992-93	218	564	739	1 522	416	1 105
1993-94	97	613	773	1 484	356	1 128
1994-95	115	829	1 162	2 106	351	1 755
1995-96	196	756	921	1 873	358	1 515
1996-97	489	840	1 251	2 580	594	1 985
PERCENTAGE CHANGE FROM PREVIOUS YEAR						
1991-92	58.4	2.9	-32.3	-12.2	-37.5	0.8
1992-93	12.8	-26.1	10.6	-6.4	6.1	-10.4
1993-94	-55.5	8.7	4.6	-2.5	-14.5	2.0
1994-95	18.3	35.2	50.3	41.9	-1.4	55.6
1995-96	70.4	-8.8	-20.7	-11.1	2.0	-13.7
1996-97	149.5	11.1	35.8	37.7	65.9	31.0
QUARTERLY, ORIGINAL (\$m)						
1996-97						
September	61	187	399	647	133	514
December	82	234	373	688	172	517
March	79	198	245	521	130	391
June	267	221	234	720	160	563
1997-98						
September	345	170	201	716	159	557
December	447	264	217	927	192	735
PERCENTAGE CHANGE FROM PREVIOUS QUARTER, ORIGINAL						
1996-97						
September	3.4	-11.0	44.6	18.7	13.7	20.1
December	34.4	25.1	-6.5	6.3	29.3	0.6
March	-3.7	-15.4	-34.3	-24.3	-24.4	-24.4
June	238.0	11.6	-4.5	38.2	23.1	44.0
1997-98						
September	29.2	-23.1	-14.1	-0.6	-0.6	-1.1
December	29.6	55.3	8.0	29.5	20.8	32.0
QUARTERLY, TREND (\$m)						
1996-97						
September	n.a.	n.a.	n.a.	618	133	484
December	n.a.	n.a.	n.a.	629	148	481
March	n.a.	n.a.	n.a.	635	154	480
June	n.a.	n.a.	n.a.	686	159	527
1997-98						
September	n.a.	n.a.	n.a.	760	162	598
December	n.a.	n.a.	n.a.	810	168	642
PERCENTAGE CHANGE FROM PREVIOUS QUARTER, TREND						
1996-97						
September	9.2	13.7	7.8
December	1.8	11.3	-0.6
March	1.0	4.1	-0.2
June	8.0	3.2	9.8
1997-98						
September	10.8	1.9	13.5
December	6.6	3.7	7.4

Period	HOTELS, MOTELS AND GUESTHOUSES WITH FACILITIES.....			HOLIDAY FLATS, UNITS AND HOUSES.....			SHORT-TERM CARAVAN PARKS.....		
	Guest rooms	Room occupancy	Takings	Flats, units and houses	Unit occupancy	Takings	Sites	Site occupancy	Takings
	no.	%	\$'000	no.	%	\$'000	no.	%	\$'000
ANNUAL									
1991-92	10 745	46.6	130 578	1 302	40.4	10 492	20 601	17.1	19 111
1992-93	10 632	46.5	129 882	1 338	40.2	10 740	20 038	22.3	20 113
1993-94	10 597	48.6	138 782	1 338	40.9	11 700	19 591	23.7	20 790
1994-95	10 594	51.3	149 698	1 342	40.0	11 644	20 175	24.5	22 537
1995-96	10 772	52.4	161 136	1 356	41.5	12 844	20 187	24.9	23 578
1996-97	10 895	52.6	164 227	1 467	42.2	14 615	20 248	25.2	24 336
PERCENTAGE CHANGE FROM PREVIOUS YEAR									
1991-92	2.9	..	1.5	7.6	..	1.5	4.1	..	5.6
1992-93	-1.1	..	-0.5	2.8	..	2.4	-2.7	..	5.2
1993-94	-0.3	..	6.9	0.0	..	8.9	-2.2	..	3.4
1994-95	0.0	..	7.9	0.3	..	-0.5	3.0	..	8.4
1995-96	1.7	..	7.6	1.0	..	10.3	0.1	..	4.6
1996-97	1.1	..	1.9	8.1	..	13.8	0.3	..	3.2
QUARTERLY									
1996-97									
September	10 879	48.9	37 567	1 426	35.1	2 885	20 247	21.0	4 735
December	10 951	54.9	43 266	1 470	40.7	3 651	20 260	25.2	6 340
March	10 909	55.4	43 033	1 493	54.1	4 895	20 251	30.4	7 742
June	10 842	51.1	40 361	1 477	38.8	3 184	20 233	24.3	5 519
1997-98									
September	10 885	52.2	41 722	1 465	35.1	2 964	20 844	22.3	5 273
December	10 897	58.3	48 075	1 615	44.0	4 550	20 735	26.9	6 865
PERCENTAGE CHANGE FROM PREVIOUS QUARTER									
1996-97									
September	0.1	..	-4.0	-1.7	..	-1.9	0.6	..	-17.5
December	0.7	..	15.2	3.1	..	26.6	0.1	..	33.9
March	-0.4	..	-0.5	1.6	..	34.1	0.0	..	22.1
June	-0.6	..	-6.2	-1.1	..	-35.0	-0.1	..	-28.7
1997-98									
September	0.4	..	3.4	-0.8	..	-6.9	3.0	..	-4.5
December	0.1	..	15.2	10.2	..	53.5	-0.5	..	30.2

Period	NEW HOUSES....		TOTAL DWELLING UNITS.....		New residential building	Alterations and additions to residential building	Non-residential building	Total building
	Private sector	Total	Private sector	Total				
	no.	no.	no.	no.				
					\$m	\$m	\$m	\$m
ANNUAL								
1991-92	8 613	8 931	10 254	11 290	756	124	627	1 506
1992-93	9 710	10 087	11 548	12 341	841	133	418	1 392
1993-94	9 470	9 901	11 046	11 777	839	122	375	1 336
1994-95	7 757	8 147	9 208	9 762	740	120	493	1 353
1995-96	4 930	5 109	5 760	5 968	469	119	566	1 155
1996-97	5 508	5 604	6 148	6 264	516	117	581	1 213
MONTHLY, ORIGINAL								
1996-97								
January	340	340	351	351	29.6	8.6	38.1	76.3
February	429	434	467	472	39.7	9.8	53.1	102.6
March	486	501	526	543	41.8	8.9	35.4	86.1
April	559	568	615	628	52.6	10.9	39.2	102.8
May	537	551	599	620	52.5	9.9	64.7	127.1
June	518	540	571	597	49.5	9.2	92.0	150.7
1997-98								
July	571	583	622	634	51.1	10.8	125.1	187.0
August	513	529	552	568	49.3	10.1	63.8	123.2
September	505	527	570	600	51.9	10.7	58.6	121.1
October	523	538	584	599	51.2	12.0	34.1	97.4
November	482	490	544	552	51.2	11.1	64.5	126.7
December	475	482	506	513	48.1	10.6	35.1	93.7
January	364	372	420	431	37.4	7.3	16.1	60.8
February	541	544	663	666	57.0	15.6	41.9	114.5
MONTHLY, TREND								
1996-97								
January	457	461	490	495	n.a.	n.a.	n.a.	n.a.
February	484	489	516	523	n.a.	n.a.	n.a.	n.a.
March	508	514	547	556	n.a.	n.a.	n.a.	n.a.
April	521	530	570	581	n.a.	n.a.	n.a.	n.a.
May	522	533	578	592	n.a.	n.a.	n.a.	n.a.
June	511	525	570	586	n.a.	n.a.	n.a.	n.a.
1997-98								
July	497	514	554	572	n.a.	n.a.	n.a.	n.a.
August	485	503	535	556	n.a.	n.a.	n.a.	n.a.
September	480	501	526	548	n.a.	n.a.	n.a.	n.a.
October	486	507	532	554	n.a.	n.a.	n.a.	n.a.
November	497	516	549	569	n.a.	n.a.	n.a.	n.a.
December	510	526	572	590	n.a.	n.a.	n.a.	n.a.
January	525	537	599	613	n.a.	n.a.	n.a.	n.a.
February	541	551	629	640	n.a.	n.a.	n.a.	n.a.
PERCENTAGE CHANGE FROM PREVIOUS MONTH, TREND								
1996-97								
February	5.9	6.1	5.3	5.7
March	5.0	5.1	6.0	6.3
April	2.6	3.1	4.2	4.5
May	0.2	0.6	1.4	1.9
June	-2.1	-1.5	-1.4	-1.0
1997-98								
July	-2.7	-2.1	-2.8	-2.4
August	-2.4	-2.1	-3.4	-2.8
September	-1	-0.4	-1.7	-1.4
October	1.3	1.2	1.1	1.1
November	2.3	1.8	3.2	2.7
December	2.6	1.9	4.2	3.7
January	2.9	2.1	4.7	3.9
February	3.0	2.6	5.0	4.4

13

BUILDING COMMENCEMENTS

Period	NEW HOUSES.....		TOTAL DWELLING UNITS(a).....				NON-RESIDENTIAL BUILDING.....		
	Private sector	Total	Private sector	Total	New residential building	Alterations and additions to residential building	Private sector	Total	Total building
	no.	no.	no.	no.	\$m	\$m	\$m	\$m	\$m
ANNUAL									
1991-92	8 036	8 344	9 635	10 700	727.2	125.1	344.5	607.8	1 460.1
1992-93	9 122	9 416	10 889	11 646	816.2	122.4	205.5	458.7	1 397.2
1993-94	9 159	9 590	10 712	11 501	845.3	126.5	209.9	373.0	1 344.8
1994-95	7 745	8 210	9 132	9 796	765.5	125.3	251.7	518.5	1 409.3
1995-96	4 836	5 070	5 691	5 960	496.5	121.7	452.8	631.8	1 250.0
1996-97	5 057	5 113	5 704	5 790	496.3	116.9	423.4	568.8	1 181.9
QUARTERLY									
1995-96									
March	1 044	1 089	1 237	1 295	109.2	29.4	80.1	139.9	278.4
June	1 153	1 183	1 273	1 307	111.0	28.8	217.7	264.0	403.9
1996-97									
September	1 191	1 207	1 302	1 321	108.7	26.2	67.9	104.2	239.1
December	1 245	1 262	1 513	1 530	133.8	33.8	85.3	113.2	280.8
March	1 099	1 102	1 242	1 247	106.3	26.2	76.6	121.2	253.6
June	1 522	1 541	1 655	1 691	147.5	30.7	193.5	230.2	408.4
1997-98									
September	1 331	1 376	1 451	1 509	131.9	31.6	70.8	112.3	257.7
December	1 525	1 582	1 801	1 872	176.4	34.0	133.7	168.3	378.7

(a) Includes conversions.

Period	NEW HOUSES...		NEW RESIDENTIAL BUILDING.....		Alterations and additions to residential building	NON-RESIDENTIAL BUILDING.....		TOTAL BUILDING...	
	Private sector	Total	Private sector	Total		Private sector	Total	Private sector	Total
	\$m	\$m	\$m	\$m		\$m	\$m	\$m	\$m
ANNUAL									
1991-92	591.5	607.5	693.4	748.5	125.1	310.3	484.1	1 127.5	1 357.6
1992-93	647.2	660.9	743.8	780.6	127.1	297.9	570.9	1 166.3	1 478.6
1993-94	719.1	746.4	828.9	876.3	132.0	217.7	462.1	1 177.2	1 470.4
1994-95	659.6	693.6	766.1	816.4	129.4	271.6	476.9	1 164.3	1 422.7
1995-96	441.4	460.5	512.9	534.8	130.6	311.4	542.1	953.2	1 207.5
1996-97	433.9	438.9	485.2	490.4	122.2	444.2	663.3	1 049.8	1 275.9
QUARTERLY									
1995-96									
June	102.6	105.0	117.6	120.3	32.6	88.1	155.6	238.3	308.5
1996-97									
September	97.3	99.3	109.4	111.3	28.0	83.4	143.8	219.4	283.1
December	109.1	110.6	121.3	122.8	35.4	119.6	189.8	276.0	348.0
March	99.9	100.3	114.1	114.6	26.8	100.8	147.8	241.6	289.2
June	127.6	128.7	140.5	141.7	32.0	140.4	181.9	312.8	355.6
1997-98									
September	122.5	125.8	136.3	139.9	32.9	149.8	186.7	318.5	359.4
December	134.0	137.7	151.2	156.0	36.2	152.8	192.0	339.2	384.1

Period	Pigmeat	Beef	Mutton	Lamb	Gas	Coal	Sawn timber(a)
	tonnes	tonnes	tonnes	tonnes	m MJ	tonnes	m ³
ANNUAL							
1991-92	34 538	90 661	72 578	29 941	78 210	2 819 880	271 603
1992-93	38 153	96 338	65 689	39 334	83 000	2 753 610	317 096
1993-94	38 394	94 395	71 354	45 199	89 382	2 643 000	364 961
1994-95	32 063	99 108	66 759	36 147	86 123	2 554 560	392 349
1995-96	31 695	89 704	55 600	37 735	76 074	2 409 120	413 545
1996-97	29 842	85 478	51 778	34 890	76 495	2 633 820	333 691

PERCENTAGE CHANGE FROM PREVIOUS YEAR							
1991-92	-10.6	4.2	10.9	-6.5	6.7	15.5	13.1
1992-93	10.5	6.3	-9.5	31.4	6.1	-2.4	16.7
1993-94	0.6	-2.0	8.6	14.9	7.7	-4.0	15.1
1994-95	-16.5	5.0	-6.4	-20.0	-3.6	-3.3	7.5
1995-96	-1.1	-9.5	-16.7	4.4	-11.7	-5.7	5.4
1996-97	-5.8	-4.7	-6.9	-7.5	0.6	9.3	-19.3

MONTHLY/QUARTERLY							
1996-97							
December	1 999	6 691	4 075	2 558	17 673	550 380	86 509
January	2 135	7 343	5 390	3 231
February	2 569	7 234	5 633	3 138
March	2 201	6 855	4 972	2 883	17 945	684 780	68 403
April	2 507	8 366	5 207	3 485
May	2 827	7 616	3 638	3 453
June	2 532	7 178	2 958	3 288	19 777	720 300	82 913
1997-98							
July	2 446	6 820	1 466	1 448
August	2 665	6 042	4 335	2 380
September	2 320	5 842	5 089	2 766	21 942	752 868	90 631
October	2 263	7 881	5 338	3 846
November	2 273	7 870	5 826	3 226
December	1 765	6 574	5 605	2 846	18 997	610 208	83 126
January	2 018	5 790	6 457	3 159
February	2 592	7 898	6 678	3 564

PERCENTAGE CHANGE FROM PREVIOUS MONTH/QUARTER							
1996-97							
December	-23.9	-25.2	-41.2	-13.8	-16.2	-18.9	-9.0
January	6.8	9.7	32.3	26.3
February	20.3	-1.5	4.5	-2.9
March	-14.3	-5.2	-11.7	-8.1	1.5	24.4	-20.9
April	13.9	22.0	4.7	20.9
May	12.8	-9.0	-30.1	-0.9
June	-10.4	-5.8	-18.7	-4.8	10.2	5.2	22.4
1997-98							
July	-3.4	-5.0	-50.4	-56.0
August	9.0	-11.4	195.7	64.4
September	-12.9	-3.3	17.4	16.2	10.9	4.5	9.3
October	-2.5	34.9	4.9	39.0
November	0.4	-0.1	9.1	-16.1
December	-22.3	-16.5	-3.8	-11.8	-13.4	-18.9	-8.3
January	14.3	-11.9	15.2	11.0
February	28.4	36.4	3.4	13.3

(a) From Australian softwood logs only

<i>Period</i>	<i>Food</i>	<i>Clothing</i>	<i>Housing</i>	<i>Household equipment and operation</i>	<i>Transport- ation</i>	<i>Tobacco and alcohol</i>	<i>Health and personal care</i>	<i>Recreation and education</i>	<i>All groups</i>
ANNUAL AVERAGE (1989-90 = 100)									
1991-92	106.0	105.3	100.4	107.5	110.5	118.6	127.8	107.7	108.9
1992-93	109.3	107.0	94.3	107.6	115.0	131.2	134.9	110.7	111.2
1993-94	111.7	106.6	92.1	108.0	117.8	141.5	142.7	113.7	113.4
1994-95	115.1	104.9	97.8	109.2	120.2	148.9	151.3	116.3	116.9
1995-96	118.2	105.1	103.6	112.1	124.5	160.1	158.9	118.0	121.2
1996-97	120.8	105.5	98.9	113.4	124.6	165.3	165.4	121.1	122.3
PERCENTAGE CHANGE FROM PREVIOUS YEAR, ANNUAL AVERAGE									
1991-92	2.1	1.6	-3.6	2.0	3.3	5.9	12.7	2.8	2.5
1992-93	3.1	1.6	-6.1	0.1	4.1	10.6	5.6	2.8	2.1
1993-94	2.2	-0.4	-2.3	0.4	2.4	7.9	5.8	2.7	2.0
1994-95	3.0	-1.6	6.2	1.1	2.0	5.2	6.0	2.2	3.1
1995-96	2.7	0.2	5.9	2.7	3.6	7.6	5.0	1.5	3.7
1996-97	2.2	0.3	-4.5	1.2	0.0	3.3	4.1	2.6	0.9
QUARTERLY (1989-90 = 100.0)									
1996-97									
September	119.2	105.5	103.5	113.0	124.4	164.7	160.9	119.2	122.2
December	120.7	106.0	100.5	113.8	125.5	164.9	164.9	119.8	122.6
March	121.2	105.1	97.5	113.3	125.6	165.2	167.7	122.3	122.6
June	121.9	105.2	94.1	113.6	122.7	166.5	168.0	122.9	121.9
1997-98									
September	122.0	105.4	92.2	113.6	123.2	167.2	158.6	123.7	121.2
December	122.0	106.2	90.2	113.6	122.3	168.8	164.1	123.6	121.2
PERCENTAGE CHANGE FROM SAME QUARTER OF PREVIOUS YEAR									
1996-97									
September	1.2	0.7	0.8	1.3	0.0	6.4	3.5	2.3	1.7
December	2.1	0.8	-3.2	1.6	1.0	3.3	3.9	2.1	1.2
March	2.5	0.2	-6.2	0.8	1.4	1.8	4.2	2.9	0.8
June	3.0	-0.3	-9.4	1.2	-2.1	1.8	4.6	3.1	-0.1
1997-98									
September	2.3	-0.1	-10.9	0.5	-1.0	1.5	-1.4	3.8	-0.8
December	1.1	0.2	-10.2	-0.2	-2.5	2.4	-0.5	3.2	-1.1
PERCENTAGE CHANGE FROM PREVIOUS QUARTER									
1996-97									
September	0.7	0.0	-0.4	0.6	-0.7	0.7	0.2	0.0	0.2
December	1.3	0.5	-2.9	0.7	0.9	0.1	2.5	0.5	0.3
March	0.4	-0.8	-3.0	-0.4	0.1	0.2	1.7	2.1	0.0
June	0.6	0.1	-3.5	0.3	-2.3	0.8	0.2	0.5	-0.6
1997-98									
September	0.1	0.2	-2.0	0.0	0.4	0.4	-5.6	0.7	-0.6
December	0.0	0.8	-2.2	0.0	-0.7	1.0	3.5	-0.1	0.0

		QUARTER.....				
		Dec	Mar	June	Sep	Dec
		1996	1997	1997	1997	1997
Item	Unit	cents	cents	cents	cents	cents
Milk, carton, supermarket sales	1 L	116	116	122	122	124
Cheese, processed, sliced, wrapped	500 g	318	318	320	323	322
Butter	500 g	172	167	161	164	167
Bread, white loaf, sliced, supermarket sales	680 g	157	153	160	161	163
Self-raising flour	2 kg	227	240	235	239	236
Beef						
Rump steak	1 kg	1 061	1 157	1 141	1 135	1 098
Corned silverside	1 kg	625	597	602	626	590
Lamb						
Leg	1 kg	563	572	574	565	535
Loin chops	1 kg	778	799	792	794	796
Forequarter chops	1 kg	528	568	547	534	575
Pork						
Leg	1 kg	617	616	574	622	618
Loin chops	1 kg	793	799	792	802	788
Chicken, frozen	1 kg	375	351	370	362	351
Bacon, middle rashers	250 g pkt	317	325	295	321	295
Sausages	1 kg	351	359	360	360	351
Potatoes	1 kg	73	78	108	111	104
Onions	1 kg	128	134	114	127	165
Peaches, canned	825 g	190	182	185	188	185
Eggs, 55g	doz.	248	246	246	239	235
Sugar, white	2 kg	182	183	182	185	183
Tea	250 g	172	169	175	182	183
Coffee, instant, jar	150 g	513	500	539	573	592
Margarine, polyunsaturated	500 g	143	141	133	144	142
Petrol						
Leaded	1 L	76.1	77.5	75.4	74.5	75.0
Unleaded	1 L	73.7	75.2	73.0	72.2	72.6

NET MIGRATION...

<i>Period</i>	<i>Live births(a)</i>	<i>Deaths(a)</i>	<i>Natural increase</i>	<i>Interstate</i>	<i>Overseas(b)</i>	<i>Total increase</i>	<i>Population at end of period(c)</i>
ANNUAL							
1991-92	19 530	11 035	8 532	- 133	2 897	11 296	1 456 523
1992-93	19 686	11 163	8 403	-4 650	1 546	5 299	1 460 730
1993-94	20 036	11 743	7 949	-3 466	1 994	6 477	1 466 127
1994-95	19 569	11 501	7 902	-6 529	2 883	4 256	1 469 411
1995-96	18 959	11 294	7 645	-6 238	4 119	5 526	1 474 253
1996-97	18 945	11 683	7 258	-5 185	3 480	5 553	1 479 806

MONTHLY/QUARTERLY

1996-97							
July	1 732	1 102
August	1 662	1 207
September	1 464	977	1 575	-1 746	902	731	1 474 984
October	1 779	1 196
November	1 536	835
December	1 424	920	1 780	-1 565	1 003	1 218	1 476 202
January	1 582	911
February	1 498	827
March	1 301	758	1 880	-1 368	1 228	1 740	1 477 942
April	1 674	935
May	1 806	1 080
June	1 492	959	2 023	-506	347	1 864	1 479 806
1997-98							
July	1 624	1 099
August	1 449	1 067
September	1 484	1 068	1 322	-654	1 124	1 792	1 481 599

(a) Registrations.

(b) Includes category jumping.

Period	EMPLOYED FULL-TIME.....		EMPLOYED PART-TIME.....		TOTAL EMPLOYED.....		UNEMPLOYED.		LABOUR FORCE.....	
	Males	Females	Males	Females	Males	Females	Males	Females	Males	Females
ANNUAL AVERAGE ('000)										
1991-92	323.3	145.7	37.5	121.6	360.8	267.3	50.0	29.3	410.8	296.6
1992-93	322.2	143.2	39.2	126.8	361.4	270.0	51.9	29.9	413.3	299.9
1993-94	322.0	146.3	40.0	127.0	362.0	273.3	47.3	29.9	409.3	303.2
1994-95	323.1	151.5	42.6	131.3	365.7	282.8	44.6	28.7	410.3	311.5
1995-96	325.2	150.0	45.5	136.7	370.7	286.7	42.6	26.0	413.2	312.7
1996-97	320.8	150.5	48.6	140.7	369.4	291.2	42.1	27.5	411.5	318.7
MONTHLY, ORIGINAL ('000)										
1996-97										
March	318.6	148.6	54.9	145.6	373.5	294.1	41.6	29.5	415.1	323.6
April	319.9	148.2	49.3	143.2	369.2	291.5	43.8	27.4	413.0	318.8
May	318.3	149.2	51.6	140.2	369.9	289.4	44.0	25.7	413.9	315.1
June	324.9	151.1	49.1	141.6	374.0	292.7	41.4	26.8	415.4	319.5
1997-98										
July	325.9	149.3	47.5	140.1	373.4	289.4	40.9	27.0	414.3	316.5
August	323.3	143.1	50.0	142.9	373.3	290.4	42.1	25.6	415.3	311.6
September	325.0	144.7	50.4	145.2	375.3	286.1	44.5	27.7	419.9	317.5
October	324.1	145.2	49.6	143.6	373.7	289.9	43.2	26.6	416.9	315.4
November	324.0	147.8	49.2	142.4	373.2	290.3	42.5	26.7	415.8	317.0
December	329.8	151.7	47.1	135.8	376.9	287.5	42.8	28.3	419.7	315.8
January	325.1	147.6	43.3	127.3	368.4	274.9	46.1	32.8	414.5	307.7
February	318.2	148.2	50.0	132.1	368.2	280.2	45.8	31.1	414.0	311.3
March	317.2	148.7	50.4	129.6	367.6	278.2	41.7	31.9	409.3	310.2
MONTHLY, TREND ('000)										
1996-97										
March	321.2	150.5	49.0	141.8	370.2	292.3	42.6	27.2	412.8	319.5
April	321.6	150.7	49.3	140.8	370.9	291.5	43.0	27.4	413.9	318.9
May	322.3	150.3	49.6	140.0	371.9	290.3	43.3	27.5	415.2	317.8
June	323.3	149.4	49.7	139.7	373.0	289.1	43.4	27.6	416.4	316.7
1997-98										
July	324.1	148.3	49.8	140.1	373.9	288.4	43.4	27.7	417.3	316.1
August	324.6	147.1	49.9	141.2	374.5	288.3	43.4	27.8	417.9	316.1
September	324.8	146.2	49.9	142.1	374.7	288.3	43.4	27.8	418.1	316.1
October	324.6	145.9	49.5	142.1	374.1	288.0	43.4	27.9	417.5	315.9
November	324.0	146.1	49.1	140.9	373.1	287.0	43.3	28.0	416.4	315.0
December	323.2	146.7	48.6	138.8	371.8	285.5	43.2	28.4	415.0	313.9
January	322.4	147.4	48.0	136.2	370.4	283.6	43.0	28.8	413.4	312.4
February	321.4	148.0	47.7	133.8	369.1	281.8	42.8	29.2	411.9	311.0
March	320.6	148.5	47.3	131.5	367.9	280.0	42.5	29.5	410.4	309.5
PERCENTAGE CHANGE FROM PREVIOUS MONTH, TREND										
1996-97										
March	0.0	0.2	1.4	-0.4	0.2	-0.1	1.2	0.0	0.3	-0.1
April	0.1	0.1	0.6	-0.7	0.2	-0.3	0.9	0.7	0.3	-0.2
May	0.2	-0.3	0.6	-0.6	0.3	-0.4	0.7	0.4	0.3	-0.3
June	0.3	-0.6	0.2	-0.2	0.3	-0.4	0.2	0.4	0.3	-0.3
1997-98										
July	0.2	-0.7	0.2	0.3	0.2	-0.2	0.0	0.4	0.2	-0.2
August	0.2	-0.8	0.2	0.8	0.2	0.0	0.0	0.4	0.1	0.0
September	0.1	-0.6	0.0	0.6	0.1	0.0	0.0	0.0	0.0	0.0
October	-0.1	-0.2	-0.8	0.0	-0.2	-0.1	0.0	0.4	-0.1	-0.1
November	-0.2	0.1	-0.8	-0.8	-0.3	-0.3	-0.2	0.4	-0.3	-0.3
December	-0.2	0.4	-1.0	-1.5	-0.3	-0.5	-0.2	1.4	-0.3	-0.3
January	-0.2	0.5	-1.2	-1.9	-0.4	-0.7	-0.5	1.4	-0.4	-0.5
February	-0.3	0.4	-0.6	-1.8	-0.4	-0.6	-0.5	1.4	-0.4	-0.4
March	-0.2	0.3	-0.8	-1.7	-0.3	-0.6	-0.7	1.0	-0.4	-0.5

(a) Population aged 15 and over.

Period	CIVILIAN POPULATION....		UNEMPLOYMENT RATE.....				PARTICIPATION RATE..		
	Males aged 15 and over	Females aged 15 and over	Persons aged 15-19	Males all ages	Females all ages	Persons all ages	Males	Females	Persons
	'000	'000	%	%	%	%	%	%	%
ANNUAL AVERAGE									
1991-92	563.9	585.4	25.0	12.1	9.9	11.2	72.9	50.7	61.6
1992-93	567.4	588.9	26.6	12.6	10.0	11.5	72.8	51.0	61.7
1993-94	570.6	592.0	28.3	11.5	9.8	10.8	71.7	51.2	61.3
1994-95	573.7	594.7	25.2	10.9	9.2	10.2	71.5	52.4	61.8
1995-96	576.2	597.1	27.2	10.3	8.3	9.5	71.7	52.4	61.9
1996-97	579.8	600.6	23.7	10.2	8.6	9.5	71.0	53.1	61.9
PERCENTAGE CHANGE FROM PREVIOUS YEAR									
1991-92	1.0	1.0
1992-93	0.6	0.6
1993-94	0.6	0.6
1994-95	0.6	0.5
1995-96	0.4	0.5
1996-97	0.6	0.4
MONTHLY, ORIGINAL									
1996-97									
January	580.0	600.7	22.9	10.9	9.2	10.2	70.9	52.2	61.4
February	580.3	601.0	23.5	10.7	9.4	10.1	71.1	53.7	62.2
March	580.5	601.2	22.7	10.0	9.1	9.6	71.5	53.8	62.5
April	580.8	601.5	26.7	10.6	8.6	9.7	71.1	53.0	61.9
May	581.1	601.8	23.7	10.6	8.2	9.6	71.2	52.4	61.6
June	581.5	602.2	24.3	10.0	8.4	9.3	71.4	53.1	62.1
1997-98									
July	581.9	602.6	21.6	9.9	8.5	9.3	71.2	52.5	61.7
August	582.3	602.9	21.2	10.1	8.2	9.3	71.3	51.7	61.3
September	582.7	603.3	23.2	10.6	8.7	9.8	72.1	52.6	62.2
October	583.1	603.7	22.5	10.4	8.4	9.5	71.5	52.2	61.7
November	583.6	604.1	20.9	10.2	8.4	9.5	71.3	52.5	61.7
December	584.0	604.5	23.3	10.2	8.9	9.7	71.9	52.2	61.9
January	584.3	604.8	26.5	11.1	10.7	10.9	70.9	50.9	60.7
February	584.5	605.1	24.8	11.1	10.0	10.6	70.8	51.5	61.0
March	584.8	605.3	26.1	10.2	10.3	10.2	70.0	51.2	60.5
MONTHLY, TREND									
1996-97									
January	n.a.	n.a.	n.a.	10.2	8.5	9.5	70.8	53.2	61.8
February	n.a.	n.a.	n.a.	10.2	8.5	9.5	70.9	53.2	61.9
March	n.a.	n.a.	n.a.	10.3	8.5	9.5	71.1	53.2	62.0
April	n.a.	n.a.	n.a.	10.4	8.6	9.6	71.3	53.0	62.0
May	n.a.	n.a.	n.a.	10.4	8.7	9.7	71.4	52.8	62.0
June	n.a.	n.a.	n.a.	10.4	8.7	9.7	71.6	52.6	61.9
1997-98									
July	n.a.	n.a.	n.a.	10.4	8.8	9.7	71.7	52.5	61.9
August	n.a.	n.a.	n.a.	10.4	8.8	9.7	71.8	52.4	61.9
September	n.a.	n.a.	n.a.	10.4	8.8	9.7	71.7	52.4	61.9
October	n.a.	n.a.	n.a.	10.4	8.8	9.7	71.6	52.3	61.8
November	n.a.	n.a.	n.a.	10.4	8.9	9.8	71.4	52.2	61.6
December	n.a.	n.a.	n.a.	10.4	9.0	9.8	71.1	51.9	61.3
January	n.a.	n.a.	n.a.	10.4	9.2	9.9	70.8	51.7	61.0
February	n.a.	n.a.	n.a.	10.4	9.4	10.0	70.5	51.4	60.8
March	n.a.	n.a.	n.a.	10.4	9.5	10.0	70.2	51.1	60.5

(a) Population aged 15 and over.

Period	FULL-TIME ADULTS.....						ALL EMPLOYEES.....		
	Ordinary time earnings.....			Total earnings.....			Total earnings.....		
	Males	Females	Persons	Males	Females	Persons	Males	Females	Persons
ANNUAL AVERAGE (\$ per week)									
1991-92	588.40	524.10	567.80	624.90	534.00	595.80	564.80	386.90	483.70
1992-93	610.10	534.90	585.40	646.40	546.80	613.70	560.00	382.60	477.40
1993-94	625.10	547.60	600.00	667.50	560.10	632.70	595.10	396.60	503.30
1994-95	632.70	559.10	608.20	681.70	572.50	645.30	599.90	411.90	513.40
1995-96	653.80	555.90	622.80	703.20	568.50	660.10	620.10	403.90	520.70
1996-97	678.20	575.10	644.30	735.10	589.40	687.20	636.90	408.70	529.80
PERCENTAGE CHANGE FROM PREVIOUS YEAR									
1991-92	4.8	7.8	5.6	4.3	7.6	5.1	3.3	8.0	4.7
1992-93	3.7	2.1	3.1	3.4	2.4	3.0	-0.8	-1.1	-1.3
1993-94	2.5	2.4	2.5	3.3	2.4	3.1	6.3	3.7	5.4
1994-95	1.2	2.1	1.4	2.1	2.2	2.0	0.8	3.9	2.0
1995-96	3.3	-0.6	2.4	3.1	-0.7	2.3	3.4	-1.9	1.4
1996-97	3.7	3.5	3.5	4.5	3.7	4.1	2.7	1.2	1.8
QUARTERLY (\$ per week)									
1996-97									
16 August	666.70	562.40	632.40	720.10	574.40	672.30	628.50	403.60	523.60
15 November	669.60	575.30	639.50	728.30	591.80	684.80	626.80	402.30	522.20
21 February	685.60	578.20	649.70	741.90	594.00	692.40	639.80	409.50	530.80
16 May	690.90	584.50	655.70	750.00	597.20	699.30	652.30	419.50	542.50
1997-98									
15 August	703.90	583.70	663.40	756.20	593.50	701.40	651.00	420.00	542.50
21 November	689.70	594.20	655.00	739.90	607.40	691.80	631.70	433.90	533.90
PERCENTAGE CHANGE FROM CORRESPONDING REFERENCE DATE IN PREVIOUS YEAR									
1996-97									
16 August	4.2	0.4	3.0	5.2	0.5	3.8	4.6	-1.2	2.6
15 November	3.4	4.8	3.8	5.1	5.5	5.2	3.2	1.5	2.3
21 February	4.1	3.8	3.7	4.0	4.3	3.8	1.3	1.8	0.7
16 May	3.3	4.9	3.5	4.0	4.4	3.7	1.8	2.7	1.5
1997-98									
15 August	5.6	3.8	4.9	5.0	3.3	4.3	3.6	4.1	3.6
21 November	3.0	3.3	2.4	1.6	2.6	1.0	0.8	7.9	2.2
PERCENTAGE CHANGE FROM PREVIOUS REFERENCE DATE									
1996-97									
16 August	-0.3	1.0	-0.2	-0.2	0.5	-0.3	-1.9	-1.2	-2.1
15 November	0.4	2.3	1.1	1.1	3.0	1.9	-0.3	-0.3	-0.3
21 February	2.4	0.5	1.6	1.9	0.4	1.1	2.1	1.8	1.6
16 May	0.8	1.1	0.9	1.1	0.5	1.0	2.0	2.4	2.2
1997-98									
15 August	1.9	-0.1	1.2	0.8	-0.6	0.3	-0.2	0.1	0.0
21 November	-2.0	1.8	-1.3	-2.2	2.3	-1.4	-3.0	3.3	-1.6

SECURED HOUSING
FINANCE COMMITMENTS ..

Period	Dwelling units	Value	Alterations and additions	Personal finance commitments	Commercial finance commitments	Lease finance commitments
	no.	\$m	\$m	\$m	\$m	\$m
ANNUAL						
1991-92	31 765	2 083.8	88.8	1 456.7	6 667.9	256.2
1992-93	36 960	2 569.5	102.8	1 656.9	5 122.5	249.5
1993-94	45 725	3 387.9	221.8	1 840.3	5 467.2	250.6
1994-95	36 429	2 879.7	242.2	2 152.2	5 405.6	271.4
1995-96	38 707	2 982.2	240.7	2 211.5	6 516.2	265.4
1996-97	36 680	2 956.1	188.1	2 612.0	6 092.4	232.0

PERCENTAGE CHANGE FROM PREVIOUS YEAR

1991-92	10.7	20.4	51.0	-3.1	6.6	-20.7
1992-93	16.4	23.3	15.8	13.7	-23.2	-2.6
1993-94	23.7	31.9	115.7	11.1	6.7	0.5
1994-95	-20.3	-15.0	9.2	16.9	-1.1	8.3
1995-96	6.3	3.6	-0.6	2.8	20.5	-2.2
1996-97	-5.2	-0.9	-21.9	18.1	-6.5	-12.6

MONTHLY

1996-97						
December	2 995	251.5	13.1	220.7	615.6	19.2
January	2 885	231.3	15.3	221.0	409.1	13.7
February	3 013	246.6	16.4	214.4	415.3	15.3
March	3 117	251.4	12.9	241.7	526.5	13.9
April	3 318	270.4	15.5	251.6	487.5	21.6
May	3 228	264.5	14.8	251.7	561.6	20.7
June	3 172	253.3	11.9	249.8	497.9	30.6
1997-98						
July	3 004	243.4	10.8	278.3	640.2	29.8
August	3 085	251.1	10.4	204.6	377.0	21.8
September	3 033	252.6	9.9	218.5	556.2	21.7
October	3 138	265.4	13.2	221.1	619.2	21.6
November	2 996	255.5	11.5	219.7	452.4	17.8
December	3 200	274.7	10.1	233.3	831.4	20.0
January	2 563	210.9	8.9	196.5	379.1	15.3
February	3 128	255.3	10.1	209.6	409.1	18.6

PERCENTAGE CHANGE FROM PREVIOUS MONTH

1996-97						
December	-3.9	1.4	-8.4	16.9	13.6	7.7
January	-3.7	-8.0	17.5	0.1	-33.5	-28.6
February	4.4	6.6	7.0	-3.0	1.5	11.5
March	3.5	2.0	-21.3	12.8	26.8	-8.7
April	6.4	7.5	19.6	4.1	-7.4	55.3
May	-2.7	-2.2	-4.3	0.0	15.2	-4.2
June	-1.7	-4.2	-19.8	-0.7	-11.3	47.6
1997-98						
July	-5.3	-3.9	-9.0	11.4	28.6	-2.7
August	2.7	3.1	-3.9	-26.5	-41.1	-27.0
September	-1.7	0.6	-4.3	7.6	47.9	-0.4
October	3.5	5.1	33.2	0.4	11.1	-0.5
November	-4.5	-3.7	-12.8	-0.6	-26.9	-17.7
December	6.8	7.5	-12.0	6.2	83.8	12.4
January	-19.9	-23.2	-12.1	-15.8	-54.4	-23.5
February	23.9	22.9	13.4	6.6	7.9	21.6

PUBLICATIONS SOURCE INDEX

- (1) *Australian National Accounts, Quarterly State Details* (Cat. no. 5206.0.40.001)
- (2) *International Merchandise Trade, Australia* (Cat. no. 5422.0) Quarterly
- (3) *Retail Trade, Australia* (Cat. no. 8501.0) Monthly
- (4) *New Motor Vehicles Registrations, Australia, Preliminary* (Cat. no. 9301.0)
Monthly
- (5) *State Estimates of Private New Capital Expenditure* (Cat. no. 5646.0) Quarterly
- (6) *Tourist Accommodation, Australia* (Cat. no. 8635.0) Quarterly
- (7) *Building Approvals, Australia* (Cat. no. 8731.0) Monthly
- (8) *Building Activity, Australia* (Cat. no. 8752.0) Quarterly
- (8a) *Building Activity, Australia, Dwelling Unit Commencements, Preliminary* (Cat. no. 8750.0) Quarterly
- (9) *Engineering Construction Activity, Australia* (Cat. no. 8762.0) Quarterly
- (10) *Manufacturing Production, Australia, Preliminary* (Cat. no. 8301.0)
Monthly
- (11) *Livestock Products, Australia* (Cat. no. 7215.0) Monthly
- (12) *Actual and Expected Private Mineral Exploration, Australia* (Cat. no. 8412.0)
Quarterly
- (13) *Consumer Price Index* (Cat. no. 6401.0) Quarterly
- (14) *Price Index of Materials Used in House Building, Six State Capital Cities and Canberra* (Cat. no. 6408.0) Monthly
- (15) *Price Index of Materials Used in Building Other Than House Building, Six State Capital Cities and Canberra* (Cat. no. 6407.0) Monthly
- (16) *House Price Indexes: Eight Capital Cities* (Cat. no. 6416.0) Quarterly
- (17) *Australian Demographic Statistics* (Cat. no. 3101.0) Quarterly
- (18) *Labour Force, Australia, Preliminary* (Cat. no. 6202.0) Monthly
- (19) *Job Vacancies and Overtime, Australia* (Cat. no. 6354.0) Quarterly
- (20) *Industrial Disputes, Australia* (Cat. no. 6321.0) Monthly
- (21) Unpublished overseas arrival and departure statistics on microfiche
- (22) *Average Weekly Earnings, States and Australia* (Cat. no. 6302.0) Quarterly
- (23) *Wage Cost Index, Australia* (Cat. no. 6345.0) Quarterly
- (24) *Housing Finance for Owner Occupation, Australia* (Cat. no. 5609.0) Monthly
- (25) Unpublished statistics available from PC AUSSTATS
- (26) *Reserve Bank of Australia Bulletin*

The ABS publishes a wide range of statistics and other information on Australia's economic and social conditions. Details of what is available in various publications and other products can be found in the ABS Catalogue of Publications and Products available from all ABS Offices.

ABS Products and Services

Many standard products are available from ABS bookshops located in each State and Territory. In addition to these products, information tailored to the needs of clients can be obtained on a wide range of media by contacting your nearest ABS Office. The ABS also provides a Subscription Service for standard products and some tailored information services.

National *Dial-a-Statistic* Line

0055 86 400

Steadycom P/L: premium rate 25c/20 secs.

This number gives 24-hour access, 365 days a year, for a range of important economic statistics including the CPI.

Internet

<http://www.abs.gov.au>

A wide range of ABS information is available via the Internet, with basic statistics available for each State, Territory and Australia. We also have Key National Indicators, ABS product release details and other information of general interest.

Sales and Inquiries

client.services@abs.gov.au

National Mail Order Service	(06) 252 5249
Subscription Service	1300 366 323

Information Inquiries Bookshop Sales

CANBERRA	(02) 6252 6627	(02) 6207 0326
SYDNEY	(02) 9268 4611	(02) 9268 4620
MELBOURNE	(03) 9615 7755	(03) 9615 7755
BRISBANE	(07) 3222 6351	(07) 3222 6350
PERTH	(08) 9360 5140	(08) 9360 5307
ADELAIDE	(08) 8237 7400	(08) 8237 7582
HOBART	(03) 6222 5800	(03) 6222 5800
DARWIN	(08) 8943 2111	(08) 8943 2111



Client Services, ABS, PO Box 10, Belconnen ACT 2616



2130740005985

ISSN 1039-8880

RRP \$19.50

© Commonwealth of Australia 1998

Produced by the Australian Bureau of Statistics