

**BUSINESS INDICATORS**AUSTRALIAN  
CAPITAL  
TERRITORY

EMBARGO: 11.30AM (CANBERRA TIME) MON 23 MAR 1998

**C O N T E N T S**

	<i>page</i>
Notes . . . . .	2
Summary of findings . . . . .	3
Selected business indicators . . . . .	5
FEATURE ARTICLE	
Characteristics of small business . . . . .	8
TABLES	
<b>1</b> Business expectations: Sales, March quarter 1998/December quarter 1998, expected aggregate change. . . . .	10
<b>2</b> Business indicators, March 1998 . . . . .	11
<b>3</b> ACT in relation to the rest of Australia . . . . .	14
<b>4</b> ACT in relation to the rest of Australia — percentage changes . . . .	15

- For information about other ABS statistics and services, please refer to the back page of this publication.

- For further information about these statistics, contact Conrad Bulenda on Canberra (02) 6207 0286.

## NOTES

### FORTHCOMING ISSUES

<i>ISSUE</i>	<i>RELEASE DATE</i>
April 1998	20 April 1998
May 1998	18 May 1998

### SYMBOLS AND OTHER USAGES

ACT	Australian Capital Territory
n.a.	not available
n.p.	not available for publication
p	preliminary
*	Represents data with a standard error of greater than 25%. Caution should be exercised when using this data.
—	nil or rounded to zero

Dalma Jacobs  
Regional Director

## SUMMARY OF FINDINGS

### UPDATED SERIES

Series updated since the February 1998 issue are: population; state final demand; labour force; housing finance; industrial disputes; housing and construction; retail turnover; motor vehicle registrations; average weekly earnings; house price indexes and tourist accommodation. A feature article on Characteristics of small business is included on pages 8 and 9.

### NOTABLE MOVEMENTS

- Population The estimated resident population of the ACT at 30 September 1997 was 309,200, a decrease of 600 since the June quarter 1997 and an increase of 400 since the September quarter 1996. The growth rate to the year to September 1997 was 0.1%. Although the ACT's population increased slightly in the 12 months to 30 September 1997, there were minor decreases in both the June and September quarters of 1997. Nationally, the estimated resident population increased by 0.3% over the year to September 1997.
- State final demand Trend Final Demand at average 1989–90 prices for the ACT increased 1.1%, from \$2,929 million in the September quarter 1997 to \$2,962 million in the December quarter 1997. Final Consumption Expenditure in the ACT recorded a 1.7% increase while Gross Fixed Capital Expenditure recorded a 3.5% decrease during the quarter. Nationally, Trend Final Demand at 1989–90 prices increased by 1.2% from the corresponding quarter, with Final Consumption Expenditure and Gross Fixed Capital Expenditure increasing by 1.3% and 0.9%.
- Labour force The February 1998 trend unemployment rate for the ACT fell by 0.3 percentage points from January to a level of 7.5% after peaking at 8.1% in September–November 1997. Trend employment increased marginally (up 0.2% to 155,700 persons) in February 1998. Part-time employed increased by 600 and full-time employed decreased by 300, and the participation rate fell from 71.4% to 71.3%. Nationally, trend employment grew slightly (0.1%) while the trend unemployment fell marginally, from 8.2% to 8.1%.
- Housing finance The trend number of dwelling units financed (including refinancing) in the ACT during January 1998 increased to 748 dwellings, a rise of 0.1%. The trend estimate for the value of commitments in the ACT was \$65.4 million, a decrease of 20.7% on the previous month. Refinancing of existing dwellings comprised 21.3% of the total number of dwelling units financed in January 1998, which was down 1.1 percentage points on the previous month. Nationally, the trend number of dwelling units financed (including refinancing) during January 1998 remained steady and the trend estimate for the value of commitments increased by 0.5%.
- Industrial disputes For the 12 months ended November 1997 there were 15 working days lost per thousand employees in the ACT, compared to a figure of 74 days nationally. This represented a decrease of 28.6% on the previous month in the ACT, while nationally it was an increase of 1.4%.

Housing and construction The trend number of dwelling units approved in the ACT decreased by 2.3% to 129 dwelling units in January 1998, the second consecutive monthly decrease. Nationally the total number of dwelling units approved increased by 1.8% in January 1998. The trend number of dwelling units approved in Australia has increased for each of the last seven months.

The value of non-residential building approvals in the ACT was \$20.6 million in January 1998, a decrease of \$22.2 million (down 51.9%) from the previous month and \$42.2 million (67.2%) lower than January 1997. Nationally, the value of non-residential building approvals decreased by 2.3% from the previous month but was 0.7% higher than January 1997.

Retail turnover The trend estimate for retail turnover in the ACT for January 1998 was \$215.7 million, up 0.1% on the previous month's figure and up 6.0% on twelve months ago. The trend estimate for retail turnover has increased each month for the last ten months. The national trend retail turnover recorded an increase of 0.2% on the previous month and 4.7% on a year ago.

Motor vehicle registrations The trend estimate for ACT new motor vehicle registrations in January 1998 was 1,492, up 1.7% on the previous month, and up 62.7% on January 1997. The series has now recorded fifteen consecutive months of increase. Nationally, the trend for total new registrations in January 1998 recorded a 0.8% increase, the sixteenth consecutive monthly increase.

Average weekly earnings The trend average weekly earnings for the November 1997 quarter in the ACT was \$689.90, an increase of 1.5% from the August quarter 1997 and 4.0% from the November quarter 1996. Nationally, the trend average weekly earnings increased by 1.0% from the August quarter 1997 and 3.3% from the November quarter 1996.

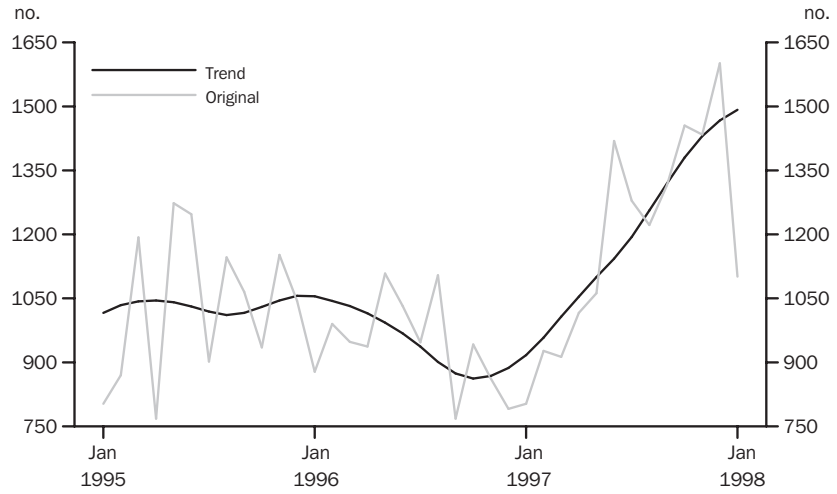
House prices The quarterly established house price index for Canberra rose by 0.9% in the December quarter 1997, although the index recorded a decline of 0.3% for the year. The weighted average of the eight capital cities increased by 1.9% in the December quarter 1997, and 6.0% since the same period last year.

Tourist accommodation The room occupancy rate for ACT hotels, motels and guest houses in the December quarter 1997 was 63.3%, up 7.0 percentage points on the previous quarter and 0.2 percentage points on twelve months ago.

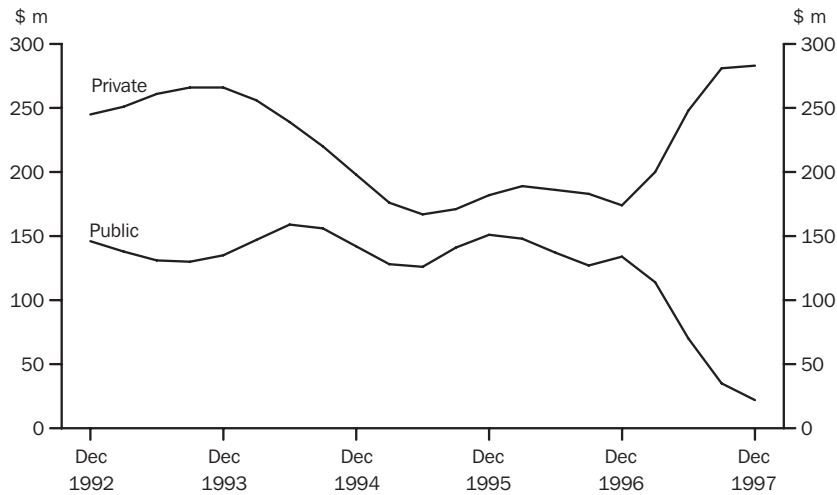
Trend takings from accommodation at average 1989-90 prices were \$15.7 million for the September quarter 1997 in the ACT, down 1.3% from the previous quarter and 2.5% from the corresponding quarter of the previous year.

## SELECTED BUSINESS INDICATORS

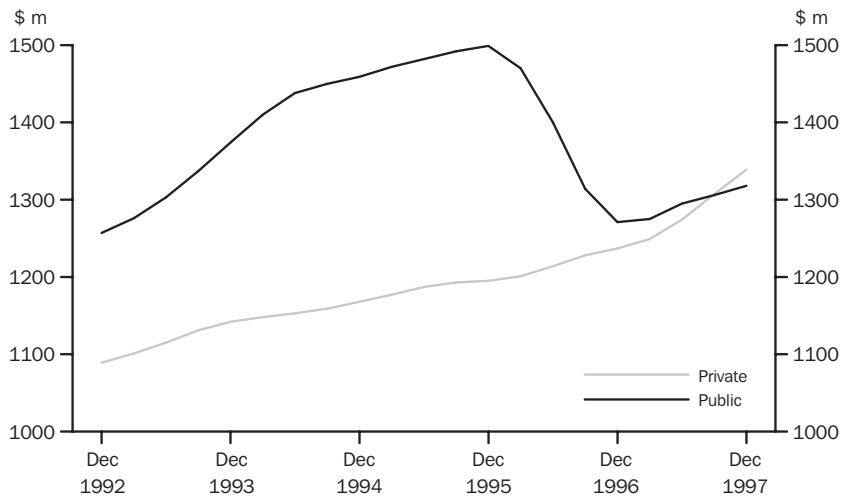
NEW MOTOR VEHICLE REGISTRATIONS



ACT GROSS FIXED CAPITAL EXPENDITURE, TREND

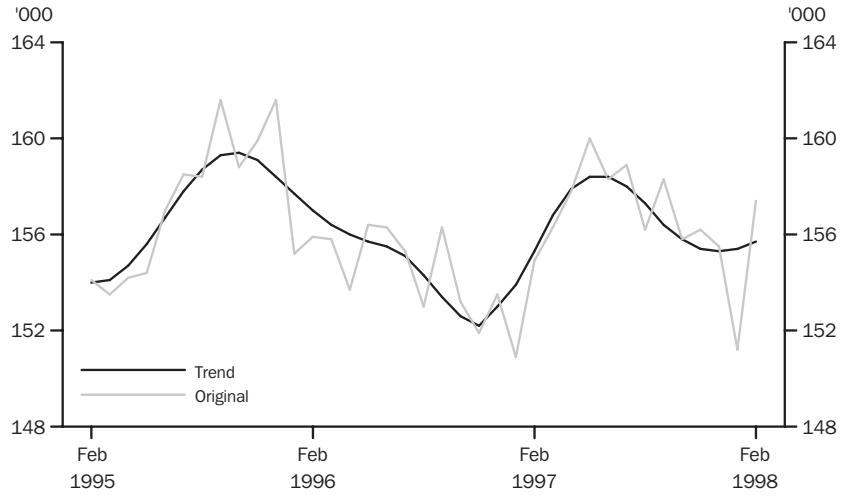


ACT CONSUMPTION EXPENDITURE, TREND

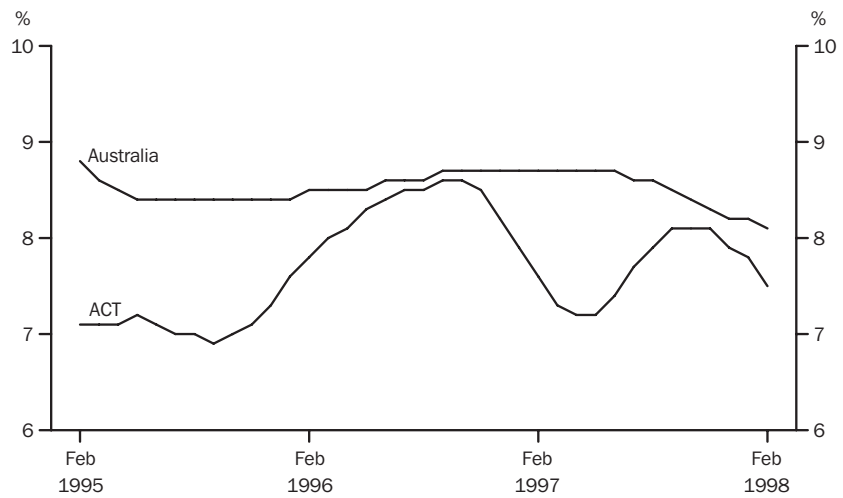


## SELECTED BUSINESS INDICATORS *continued*

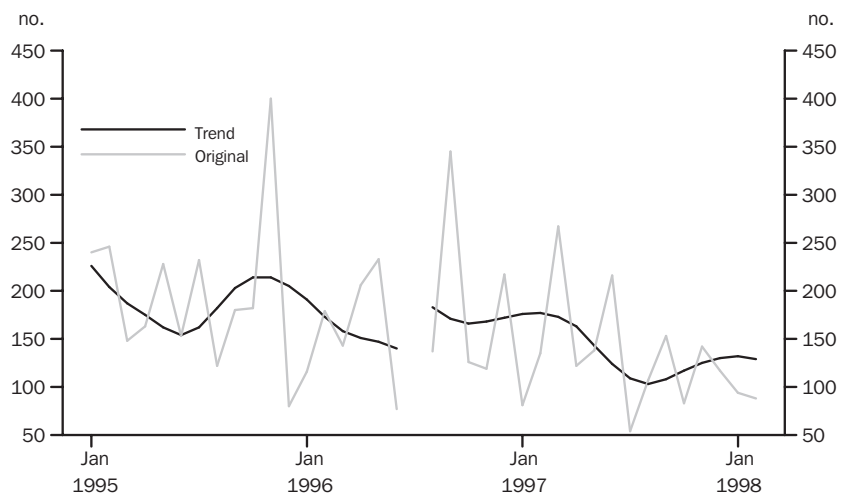
LABOUR FORCE —  
EMPLOYMENT



LABOUR FORCE — TREND  
UNEMPLOYMENT RATE



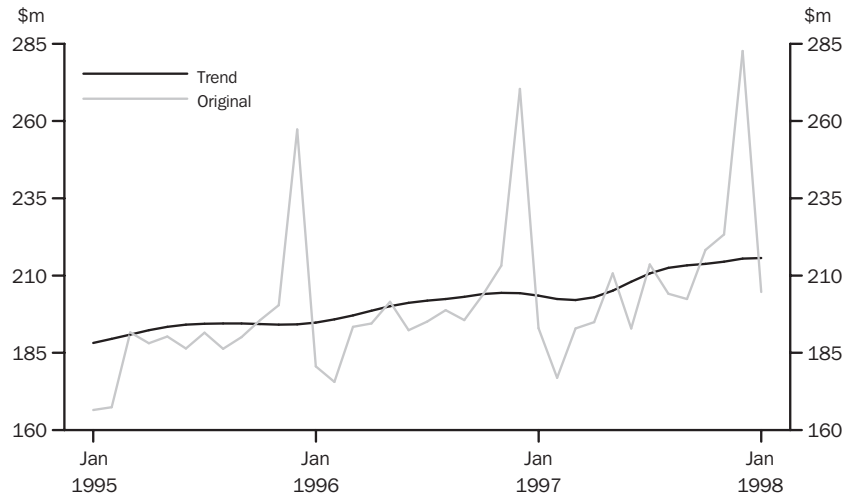
BUILDING APPROVAL



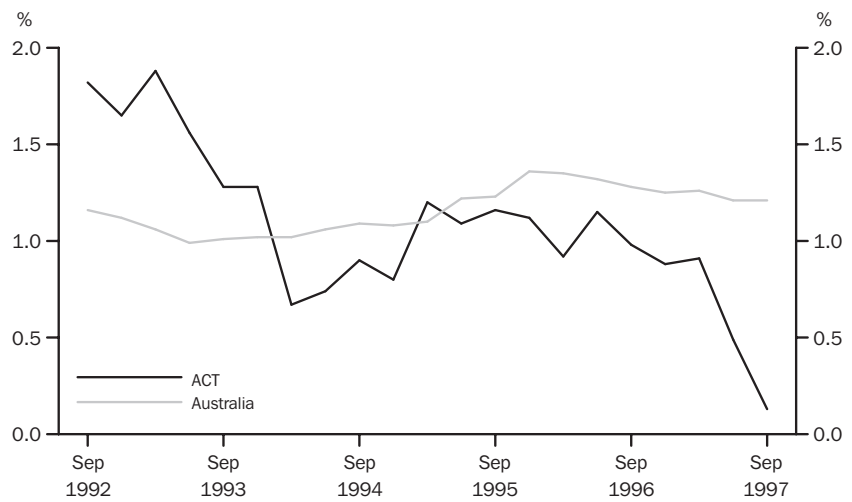
(a) For the period July to December 1996, 165 dwelling units and total building work of \$40.5 million (16%) had been incorrectly omitted from data reported to ABS. All series for the ACT have been revised from July 1996. As further information is received and analysed, the series prior to that are likely to be revised. A trend break has been included in the graph.

**SELECTED BUSINESS INDICATORS** *continued*

RETAIL TURNOVER



POPULATION GROWTH,  
ANNUAL(%)



These results on Characteristics of Small Business are from a survey which was conducted in February 1997 as a supplementary topic in the ABS monthly Labour Force Survey. The survey, which is a survey of households, addressed a number of aspects of the operations of small business as well as the characteristics of small business operators. A similar survey was conducted two years earlier, in February 1995.

In 1997 the ACT was home to 19,200 small business operators and 12,400 small businesses. For the purpose of the ABS survey a small business was defined as one that employed fewer than 20 persons and was not agriculturally based. Small business operators were identified as proprietors of a sole business, the partners in a partnership and the working directors of an incorporated company.

Since 1995 there has been a decrease in the numbers of small business operators in the ACT, from 19,900 to 19,200 in 1997 (down 3.5%). This was the largest fall of any of the States or Territories and compares with a national rise of 4.8%. Of the operators, 12,500 (65%) were male and 6,700 (35%) were female, these proportions were similar at the national level.

The majority (11,700 or 61%) of ACT small business operators were aged 30 to 50 years of age. Over the 2 years since the last survey there has been a fall of 12.0% (1,600) in numbers of operators in this age group however this has been partially offset by a rise of 25% (600) in the under 30 age group and a 7.1% (300) rise in the 50 and over age group. Nationally there has been a fall only in the under 30 years age group of 11.5% (16,700).

Over one third (6,600 or 35%) of operators in the ACT had a degree or diploma, which was the highest rate in the country and compares to the Australian figure of 27%. A further 5,500 (29%) had basic or skilled vocational qualifications.

The 19,200 small business operators in the ACT in 1997 worked in 12,400 small businesses, a fall in business numbers of 900 (or 6.8%) the largest decline for any of the States or Territories and comparable to a national growth rate of 6.5%. The only other State to experience a decline in numbers was Tasmania, down 600 or 3.1%.

The employee size of an average small business in the ACT was most likely to be in the range 1 to 4 employees with 5,600 operations (45%) falling into this category. This category experienced a growth of 2,400 (75.0%) since 1995 while non-employed businesses, previously the largest category, fell by 3,000 (38.5%).

The length of operation of an ACT small business was likely to be 1 to less than 5 years, with 4,800 businesses (39%) falling into this category. Businesses operating under the current owner for less than 1 year were the only businesses that increased in number since 1995, a 5.6% increase to 1,900, while all other categories fell in number. For Australia as a whole, the opposite was true, with increases occurring in businesses than had been operating for longer than 1 year.



Of the 12,400 small businesses in the ACT, 4,800 (39%) had at least one operator with small business management qualifications or training. This figure was 33.3% higher than 2 years previously and contrasts with a fall of 1.1% for Australia as a whole. The ACT also had the highest proportion of operators with management qualifications or training of all the States and Territories.

Just over one quarter of small businesses in the ACT (3,200) had a written business plan, with 84% (2,700) actually operating under that plan. There was a 14.3% increase in businesses with a written business plan since 1995, a trend which was also evident nationally where there was an increase of 18.8%.

Almost 22% (or 2,700) of all small businesses in the ACT were rated as 'highly successful' by their operators. Although this is lower than the figure in 1995 (25% or 3,300), it still compares favourably with the national proportion of 17%. Overall, in 1997 the vast majority (11,100 or 90%) of businesses in the ACT were rated as 'highly successful' or 'moderately successful'.

Home based businesses made up a large proportion of small businesses in the ACT. In 1997, 7,700 small businesses (62%) were operated from home, that is, where the business has no other premises other than the home of the operator. For Australia as a whole 55% of small businesses were operated from home.

#### CHARACTERISTICS OF SMALL BUSINESS

	<i>Australian Capital Territory</i>		<i>Australia</i>	
	<i>Feb 1995</i>	<i>Feb 1997</i>	<i>Feb 1995</i>	<i>Feb 1997</i>
Small business operators				
Male	12.7	12.5	827.8	849.6
Female	7.2	6.7	424.3	462.3
Total	19.9	19.2	1 252.1	1 311.9
Aged less than 30	2.4	3	145.3	128.6
Aged 30-50	13.3	11.7	816	841.8
Aged greater than 50	4.2	4.5	290.8	341.5
With secondary school qualifications	7.5	6.5	514.4	469.1
With a basic or vocational skilled qualification	5.3	5.5	416.8	452.2
With degree or diploma	6.9	6.6	310.5	344.2
Who worked full time in the business				
Male	11.1	9.9	708.5	711.4
Female	2.9	2.3	186.5	194.6
Total	14	12.2	895	906
Who were born overseas	6.7	6.5	347.4	392.2
Small businesses				
Total	13.3	12.4	794.7	846.3
That employed 1-4 employees	3.2	5.6	269.3	323.1
5-19 employees	2.3	2	141.1	130.5
were non-employers	7.8	4.8	384.2	392.7
Operated by the current owner				
For less than one year	1.8	1.9	102.4	86.2
From 1 to 5 years	5.4	4.8	272.1	283.6
From 5 to less than 10 years	2.9	2.6	183.5	193.3
For more than 10 years	3.3	3.1	236.7	283.3
That had				
One operator per business	6.3	5	326	287.6
Two operators per business	6.2	6.5	407.1	488
That had a written business plan	2.8	3.2	146.3	173.8
That operated under that plan	2.6	2.7	130.9	157.4
Rated by their owners as highly successful	3.3	2.7	157.4	146.4

**1****BUSINESS EXPECTATIONS: SALES, MARCH QUARTER  
1998/DECEMBER QUARTER 1998, EXPECTED AGGREGATE CHANGE**

	<i>ACT</i>	<i>Aust.</i>
<i>Period</i>	%	%
<b>Short-term</b>		
Jun qtr 1996–Sep qtr 1996	0.4	1.6
Sep qtr 1996–Dec qtr 1996	–0.3	1.6
Dec qtr 1996–Mar qtr 1997	–1.1	0.4
Mar qtr 1997–Jun qtr 1997	1.3	1.6
Jun qtr 1997–Sep qtr 1997	–1.7	0.7
Sep qtr 1997–Dec qtr 1997	0.5	3.0
Dec qtr 1997–Mar qtr 1998	–1.2	–0.3
<b>Medium-term</b>		
Jun qtr 1996–Jun qtr 1997	1.4	3.6
Sep qtr 1996–Sep qtr 1997	1.5	3.1
Dec qtr 1996–Dec qtr 1997	2.2	3.1
Mar qtr 1997–Mar qtr 1998	1.7	2.9
Jun qtr 1997–Jun qtr 1998	2.0	2.4
Sep qtr 1997–Sep qtr 1998	1.2	3.9
Dec qtr 1997–Dec qtr 1998	2.7	2.9

Indicator	Unit	Australian Capital Territory			Australia		
		Latest figure	Previous period	Change from Same period previous year	Latest figure	Previous period	Change From Same period previous year
<b>POPULATION, VITAL AND LABOUR</b>							
POPULATION Sep qtr 97	'000	309.2	-0.2	0.1	18 588.6	0.3	1.2
Natural increase	no.	506	-40.4	-32.3	26 045	-21.0	-6.5
Net migration	no.	-1 072	-2.7	-444.2	30 355	164.3	7.6
Total increase	no.	-566	-190.3	..	56 400	26.9	0.6
<b>LABOUR FORCE, Feb 98</b>							
Original Series							
Employed	'000	157.4	4.1	1.6	8 462.1	0.9	1.3
Unemployed	'000	14.7	3.5	-4.5	842.5	3.1	-7.0
Unemployment rate	%	8.5	-0.1	-0.5	9.1	0.2	-0.7
Participation rate	%	72.9	2.8	0.3	63.3	0.6	-0.6
Long-term unemployed, Jan 98	no.	3 193	-15.5	-6.7	238 256	-4.7	2.7
Long-term unemployed as percentage of total unemployed, Jan 98	—	22.5	-5.5	—	29.2	-3.5	2.1
Trend series, Feb 98							
Employed	'000	155.7	0.2	0.3	8 534.6	0.1	1.5
Unemployed	'000	12.7	-3.1	—	752.1	-0.7	-5.9
Unemployment rate	%	7.5	-0.3	-0.1	8.1	-0.1	-0.6
Participation rate	%	71.3	-0.1	-0.4	63.2	—	-0.3
<b>WAGE AND SALARY EARNERS, Sep 97</b>							
Trend series							
Public sector	'000	69.0	2.4	-4.0	1 476.4	0.3	-1.9
Private sector	'000	71.0	-4.7	6.3	5 378.7	0.5	1.4
Total	'000	140.0	-1.3	0.9	6 855.1	0.4	0.6
JOB VACANCIES, Nov 97	'000	1.0	—	-28.6	68.1	-1.7	9.3
<b>INDUSTRIAL DISPUTES IN PROGRESS, Nov 97</b>							
Working days lost	'000	0.0	-100.0	-100.0	56.3	-38.5	22.4
Days lost per '000 employees (year ended Nov 97)	no.	15.0	-28.6	-89.9	74.0	1.4	-43.1
<b>BUILDING AND CONSTRUCTION</b>							
<b>HOUSING FINANCE, Jan 98</b>							
Secured commitments to individuals for							
Original Series							
Construction of dwellings	\$m	4.1	-38.8	10.8	556.8	-17.3	17.5
Purchase of new dwellings	\$m	3.1	-39.2	-29.5	193.4	-26.0	-5.0
Purchase of established dwellings	\$m	45.4	-17.5	-4.2	2 317.0	-17.4	-0.8
Refinancing	\$m	11.7	-25.5	-47.1	629.9	-12.6	-15.5
Total housing commitments	\$m	65.4	-20.7	-15.8	3 697.0	-17.1	-1.6
Seasonally adjusted series							
Total housing commitments	\$m	81.4	-2.4	-12.6	4 634.8	-1.0	2.9
Trend series							
Dwelling units financed	no.	748	0.1	-8.1	40 275	—	-0.1
Total housing commitments	\$m	84.3	0.5	-0.4	4 668.1	0.5	10.0
<b>BUILDING APPROVALS, Jan 98</b>							
Original series							
Dwelling units	no.	88	-6.4	-34.8	11 141	-10.5	10.7
Value of new residential	\$m	10.2	-5.6	-32.5	1 181.8	-8.3	18.4
Value of residential alterations and additions	\$m	3.8	58.3	-7.3	238.6	12.9	27.5
Value of non-residential	\$m	20.6	-51.9	-67.2	1 035.1	-2.3	0.7
Value of total building	\$m	34.6	-38.2	-57.8	2 455.5	-4.1	11.0
Trend series							
Dwelling units	no.	129	-2.3	-27.1	13 520	1.8	15.6

Indicator	Unit	Australian Capital Territory			Australia		
		Latest figure	Previous period	Change from Same period previous year	Latest figure	Previous period	Change from Same period previous year
<b>BUILDING AND CONSTRUCTION continued</b>							
BUILDING COMMENCEMENTS, Sept qtr 97							
New houses	no.	229	-23.9	-19.1	23 465	1.3	13.0
Value of houses commenced	\$m	24.5	-27.5	-27.7	2 659.1	3.8	19.1
Value of non-residential building commenced	\$m	54.3	18.6	-50.3	3 391.8	10.4	19.5
Value of total commencements	\$m	95.6	-25.2	-43.3	7 819.1	6.2	20.0
PRICE INDEXES							
Established house price index, Dec qtr 97	—	126.2	0.9	-0.3	121.2	1.9	6.0
<b>ENGINEERING CONSTRUCTION (Sep Qtr 97)</b>							
Private sector							
Value of work commenced	\$m	20.9	129.7	90.0	2 823.5	-2.9	31.8
Value of work done	\$m	13.0	-7.8	-20.2	2 483.5	5.1	9.6
Value of work yet to be done	\$m	31.5	34.0	-10.3	6 294.1	3.6	21.5
Value of work done by public sector	\$m	15.7	-35.1	-19.9	1 271.5	-33.3	-12.6
<b>PRICES, WAGES AND CONSUMER SPENDING</b>							
CONSUMER PRICE INDEX, Dec qtr 97							
Food	(a)	124.9	1.6	2.4	121.1	0.2	1.4
Housing	(a)	93.7	-3.4	-13.2	94.2	-1.8	-8.7
Transportation	(a)	129.0	-1.2	-0.9	124.0	-0.3	-0.4
All groups	(a)	119.8	—	-1.3	120.0	0.3	-0.2
<b>AVERAGE WEEKLY EARNINGS, Nov 97</b>							
Original series							
Males	\$	789.1	1.2	2.5	709.1	2.2	4.3
Females	\$	589.8	2.2	5.0	466.1	1.3	4.2
Persons	\$	692.1	2.1	4.2	592.6	1.8	4.0
Trend series							
Males	\$	789.1	1.3	2.7	705.6	1.2	3.7
Females	\$	590.3	1.9	4.9	467.2	1.1	3.8
Persons	\$	689.9	1.5	4.0	591.4	1.0	3.3
<b>RETAIL TURNOVER, Jan 98</b>							
Original series							
Food retailing	\$m	80.2	-10.9	5.9	4 765.6	-7.7	6.9
Department stores	\$m	23.0	-47.7	14.4	917.4	-51.2	9.1
Hospitality and services	\$m	30.0	-12.0	0.7	1 899.7	-12.6	3.0
All other retailing	\$m	71.5	-37.6	6.1	3 680.0	-31.4	4.4
Total	\$m	204.7	-27.6	6.1	11 262.7	-22.7	5.6
Trend Series							
Food retailing	'000	81.2	0.2	6.4	4 592.3	0.7	5.9
Department stores	\$m	24.9	0.4	3.8	1 014.0	-0.2	3.4
Hospitality and services	\$m	32.6	-0.3	3.2	1 842.5	-0.3	2.9
All other retailing	%	77.0	—	7.5	3 816.5	—	4.4
Total	'000	215.7	0.1	6.0	11 265.3	0.2	4.7

(a) Base year: 1989-90=100.0.

<i>Indicator</i>	<i>Unit</i>	<i>Australian Capital Territory</i>			<i>Australia</i>		
		<i>Latest figure</i>	<i>Change from</i>		<i>Latest figure</i>	<i>Change from</i>	
			<i>Previous period</i>	<i>Same period previous year</i>		<i>Previous period</i>	<i>Same period previous year</i>
<b>TOURISM AND TRANSPORT</b>							
HOTELS, MOTELS AND GUEST HOUSE ACCOMMODATION, Dec qtr 97							
Original series							
Room nights	'000	200.8	4.6	1.6	9 521.2	9.4	2.4
Takings at current prices	\$m	19.0	3.8	4.4	949.7	11.3	5.9
Takings at 1989–90 prices	\$m	15.9	4.6	6.0	791.9	11.7	6.1
Room occupancy rate (Sept qtr 97)	%	63.3	7.0	0.2	58.0	3.4	–0.8
Seasonally adjusted series							
Room nights	'000	201.6	3.0	1.7	9 293.1	2.1	2.5
Takings at current prices	\$m	19.2	3.8	4.9	933.5	2.5	6.2
Takings at 1989–90 prices	\$m	16.0	3.9	6.0	778.5	2.9	6.5
Trend series							
Room nights	'000	198.8	–1.9	–5.0	9 205.2	–0.2	0.2
Takings at current prices	\$m	18.8	–2.1	–3.6	926.8	0.4	3.7
Takings at 1989–90 prices	\$m	15.7	–1.3	–2.5	771.5	0.6	3.8
NEW MOTOR VEHICLE REGISTRATIONS, Jan 98							
Motor vehicles	no.	1 101	–31.2	37.1	51 335	–24.4	11.2
Seasonally adjusted motor vehicles	no.	1 342	–15.1	45.2	64 274	–0.9	13.5
Trend motor vehicles	no.	1 492	1.7	62.7	64 939	0.8	16.6
<b>AGGREGATE INDICATORS</b>							
STATE ACCOUNTS, Dec qtr 97(a)							
Trend series (at average 1989–90 prices)							
Private final consumption expenditure	\$m	1 339	2.4	8.2	70 594	1.5	5.0
Government final consumption expenditure	\$m	1 318	0.9	3.7	18 557	0.5	2.1
Private gross fixed capital expenditure	\$m	283	0.7	62.6	23 019	1.8	11.5
Government gross fixed capital expenditure	\$m	22	–37.1	–83.6	4 826	–3.0	–1.0
Final demand	\$m	2 962	1.1	5.2	116 996	1.2	5.5

(a) State estimates are not comparable to national estimates from the June quarter 1995 due to revised methodology used in *Australian National Accounts, State Accounts* (Cat. no. 5242.0).

Source: ABS Catalogue nos: 3101.0, 5242.0, 5609.0, 6202.0, 6203.0, 6302.0, 6321.0, 6354.0, 6401.0, 6408.0, 6416.0, 8501.0, 8634.0, 8635.8, 8731.0, 8752.0, 9214.0, 9301.0.

<i>Indicator</i>	<i>Unit</i>	<i>Latest period</i>	<i>NSW</i>	<i>Vic.</i>	<i>Qld</i>	<i>SA</i>	<i>WA</i>	<i>Tas.</i>	<i>NT</i>	<i>ACT</i>	<i>Aust.</i>
<b>POPULATION</b>	'000	Sep qtr 97	6 293.0	4 617.4	3 417.4	1 481.6	1 805.4	472.7	188.7	309.2	18 588.6
<b>LABOUR FORCE</b>											
Employed persons (trend)	'000	Feb 98	2 831.6	2 128.5	1 605.1	653.1	870.9	195.2	87.9	155.7	8 534.6
Unemployment rate (trend)	%	Feb 98	7.5	8.1	8.9	9.9	7.0	10.8	4.7	7.5	8.1
<b>WAGE AND SALARY EARNERS</b>											
Public sector (trend)	'000	Sep 97	469.9	322.1	285.0	119.3	146.1	42.0	23.1	69.0	1 476.4
Private sector (trend)	'000	Sep 97	1 913.5	1 410.3	911.8	379.6	523.2	120.8	48.5	71.0	5 378.7
Total (trend)	'000	Sep 97	2 383.5	1 732.4	1 196.8	498.9	669.2	162.9	71.6	140.0	6 855.1
<b>STATE ACCOUNTS(a)</b>											
State final demand at 1989-90 prices (trend)	\$m	Dec qtr 97	40 180	28 784	20 841	8 145	12 158	2 496	1 234	2 962	116 996
State final demand at current prices (trend)	\$m	Dec qtr 97	46 236	32 688	24 035	9 477	13 849	2 950	1 456	3 478	134 457
<b>BUILDING APPROVALS</b>											
Dwelling units approved	no.	Jan 98	3 753	2 439	2 935	431	1 155	133	207	88	11 141
Dwelling units approved (trend)	no.	Jan 98	4 543	3 028	3 339	573	1 476	141	238	129	13 520
Value of non-residential buildings approved	\$m	Jan 98	477.0	234.1	200.1	16.1	57.6	13.1	16.4	20.6	1 035.1
Value of all buildings approved	\$m	Jan 98	984.0	572.6	529.4	60.8	193.7	27.9	52.4	34.6	2 455.5
<b>ENGINEERING CONSTRUCTION</b>											
Value of engineering construction work done	\$m	Sep qtr 97	1 019.3	657.7	896.1	255.5	803.9	46.8	47.0	28.7	3 755.0
<b>AVERAGE WEEKLY EARNINGS</b>											
Full-time adult ordinary time (trend)	\$	Nov 97	739.5	711.7	671.2	659.8	716.9	681.2	706.3	821.5	712.7
<b>RETAIL TRADE</b>											
Retail turnover (trend)	\$m	Jan 98	3 998.6	2 613.8	2 072.1	841.8	1 135.3	267.8	118.9	215.7	11 265.3
<b>HOTELS, MOTELS &amp; GUEST HOUSE ACCOMMODATION</b>											
Room nights occupied (trend)	'000	Dec qtr 97	3,064.6	1 562.6	2 467.2	531.7	831.6	257.3	291.4	198.8	9 205.2
Room occupancy rate (original)	%	Sep qtr 97	57.5	53.2	64.5	52.2	57.9	39.5	66.7	63.3	58.0
<b>NEW MOTOR VEHICLE REGISTRATIONS</b>											
Trend	no.	Jan 98	21 932	16 198	12 180	4 400	6 708	1 276	753	1 492	64 939
	<i>Unit</i>	<i>Latest period</i>	<i>Syd.</i>	<i>Melb.</i>	<i>Bris.</i>	<i>Adel.</i>	<i>Perth</i>	<i>Hob.</i>	<i>Dar.</i>	<i>Canb.</i>	<i>Aust.</i>
<b>CONSUMER PRICE INDEX</b>											
Food	(b)	Dec qtr 97	121.6	119.7	121.2	122.0	122.0	121.7	122.3	124.9	121.1
Housing	(b)	Dec qtr 97	100.1	86.9	100.2	90.2	88.8	95.5	111.3	93.7	94.2
Transportation	(b)	Dec qtr 97	124.7	124.4	124.0	122.3	121.5	122.1	122.4	129.0	124.0
All groups	(b)	Dec qtr 97	120.1	119.8	121.4	121.2	117.6	121.2	120.8	119.8	120.0
Average retail prices (cents)											
Milk, carton, supermarket sales	1 litre	Dec qtr 97	116	133	118	124	135	125	122	115	n.a.
Bread, white loaf, sliced, supermarket sales	680 g	Dec qtr 97	200	188	195	163	187	189	196	198	n.a.
Beef, rump steak	1 kg	Dec qtr 97	1226	1050	1086	1098	1052	976	1211	1123	n.a.
Chicken, frozen	1 kg	Dec qtr 97	363	357	359	351	368	394	386	348	n.a.
Potatoes	1 kg	Dec qtr 97	122	142	114	104	120	83	141	125	n.a.
Coffee, instant (jar)	150 g	Dec qtr 97	635	633	656	592	656	697	640	642	n.a.
Scotch nip, public bar	30 ml	Dec qtr 97	334	299	256	354	366	259	325	289	n.a.
Private motoring petrol, leaded	1 litre	Dec qtr 97	75.4	74.9	68.1	75	75.8	81.3	82.6	75.6	n.a.
Private motoring petrol, unleaded	1 litre	Dec qtr 97	73.2	72.8	65.9	72.6	73.7	79.3	80.6	73.4	n.a.

(a) State estimates are not comparable to national estimates from the June quarter 1995 due to revised methodology used in *Australian National Accounts, State Accounts* (Cat. no. 5242.0).

(b) Base year: 1989-90=100.0.

## 4

## ACT IN RELATION TO THE REST OF AUSTRALIA — PERCENTAGE CHANGES

<i>Indicator</i>	<i>Latest Period</i>	<i>NSW</i>	<i>Vic.</i>	<i>Qld</i>	<i>SA</i>	<i>WA</i>	<i>Tas.</i>	<i>NT</i>	<i>ACT</i>	<i>Aust.</i>
<b>POPULATION</b>	Sep qtr 97	0.3	0.3	0.5	0.1	0.4	-0.2	0.9	-0.2	0.3
<b>LABOUR FORCE</b>										
Employed persons (trend)	Feb 98	0.1	0.2	0.3	-0.4	0.1	0.3	0.1	0.2	0.1
Unemployment rate (trend)	Feb 98	-0.1	-0.1	-0.1	—	—	-0.2	0.2	-0.3	-0.1
<b>WAGE AND SALARY EARNERS</b>										
Public sector (trend)	Sep 97	-0.3	-0.3	1.1	2.5	-0.1	-1.6	1.8	2.4	0.3
Private sector (trend)	Sep 97	0.2	—	3.4	-0.1	-0.8	0.1	-3.2	-4.7	0.5
Total public and private sector (trend)	Sep 97	0.2	-0.1	2.9	0.5	-0.7	-0.4	-1.6	-1.3	0.4
<b>STATE ACCOUNTS(a)</b>										
State final demand at 1989–90 prices (trend)	Dec qtr 97	1.4	—	1.4	1.2	2.1	0.2	1.1	1.1	1.2
State final demand at current prices (trend)	Dec qtr 97	1.5	0.7	1.7	1.4	2.2	0.3	1.6	1.8	1.6
<b>BUILDING APPROVALS</b>										
Dwelling units approved	Jan 98	-14.3	-13.8	4.3	-16.0	-18.2	-14.2	-19.5	-6.4	-10.5
Dwelling units approved (trend)	Jan 98	2.2	0.7	3.2	0.9	-0.3	-1.4	13.9	-2.3	1.8
Value of non-residential building approved	Jan 98	66.8	-50.2	72.1	-54.1	-18.1	3.1	-37.2	-51.9	-2.3
Value of all buildings approved	Jan 98	11.1	-30.8	35.9	-35.1	-12.6	-3.5	-8.6	-38.2	-4.1
<b>ENGINEERING CONSTRUCTION</b>										
Value of engineering construction work done	Sep qtr 97	-24.5	-14.9	-9.2	-16.9	12.8	-26.9	34.3	-25.1	-12.0
<b>AVERAGE WEEKLY EARNINGS</b>										
Full-time adult ordinary time (trend)	Nov 97	1.1	1.0	0.8	0.1	1.3	1.1	-0.1	1.8	1.0
<b>RETAIL TRADE</b>										
Retail turnover (trend)	Jan 98	0.2	—	0.4	0.9	0.2	-0.9	-0.1	0.1	0.2
<b>HOTELS, MOTELS &amp; GUEST HOUSE ACCOMMODATION</b>										
Room nights occupied (trend)	Dec qtr 97	-1.0	1.3	0.3	-0.1	-0.6	0.7	-3.3	-1.9	-0.2
Room occupancy rate (original)	Sep qtr 97	1.5	-0.1	8.1	1.1	4.1	-4.2	14.0	7.0	3.4
<b>NEW MOTOR VEHICLE REGISTRATIONS</b>										
Trend	Jan 98	1.2	0.1	1.0	1.9	0.2	0.2	3.7	1.7	0.8
	<i>Latest period</i>	<i>Syd.</i>	<i>Melb.</i>	<i>Bris.</i>	<i>Adel.</i>	<i>Perth</i>	<i>Hob.</i>	<i>Dar.</i>	<i>Canb.</i>	<i>Aust.</i>
<b>CONSUMER PRICE INDEX</b>										
Food	Dec qtr 97	0.2	-0.1	2.1	—	-0.3	0.6	0.4	1.6	0.2
Housing	Dec qtr 97	-1.2	-2.0	-2.1	-2.2	-1.8	-2.3	-2.0	-3.4	-1.8
Transportation	Dec qtr 97	-0.4	-0.2	0.2	-0.7	-0.2	-0.1	—	-1.2	-0.3
All groups	Dec qtr 97	0.3	0.3	0.6	—	0.1	0.5	-0.2	0.0	0.3
Average retail prices (cents)										
Milk, carton, supermarket sales	Dec qtr 97	—	2.3	0.9	1.6	1.5	—	0.8	0.9	n.a.
Bread, white loaf, sliced, supermarket sales	Dec qtr 97	-1.5	-5.5	2.1	1.2	2.7	3.3	—	4.2	n.a.
Beef, rump steak	Dec qtr 97	4.6	-2.1	-0.2	-3.3	2.7	-1.6	-0.6	9.2	n.a.
Chicken, frozen	Dec qtr 97	-0.5	-10.3	1.4	-3.0	1.1	-3.0	-12.3	-6.5	n.a.
Potatoes	Dec qtr 97	—	4.4	-2.6	-6.3	4.3	18.6	6.8	10.6	n.a.
Coffee, instant (jar)	Dec qtr 97	0.8	-0.8	4.3	3.3	-4.2	5.1	4.9	4.6	n.a.
Scotch nip, public bar	Dec qtr 97	1.5	3.1	0.4	1.7	3.1	2.4	1.2	-1.0	n.a.
Private motoring petrol leaded	Dec qtr 97	1.1	0.5	3.5	0.7	1.6	2.0	2.1	-2.2	n.a.
Private motoring petrol unleaded	Dec qtr 97	1.1	0.7	3.6	0.6	1.7	2.1	2.2	-2.3	n.a.

(a) State estimates are not comparable to national estimates from the June quarter 1995 due to revised methodology used in *Australian National Accounts, State Accounts* (Cat. no. 5242.0).



## SELF-HELP ACCESS TO STATISTICS

*PHONE* Call 1900 986 400 for the latest statistics on CPI, Labour Force, Earnings, National Accounts, Balance of Payments and other topics. (Call cost is 75c per minute)

*INTERNET* <http://www.abs.gov.au>

*LIBRARY* A range of ABS publications is available from public and tertiary libraries Australia wide. Contact your nearest library to determine whether it has the ABS statistics you require.

## WHY NOT SUBSCRIBE?

*PHONE* +61 1300 366 323

*FAX* +61 3 9615 7848

## CONTACTING THE ABS

ABS provides a range of services, including: a telephone inquiry service; information consultancy tailored to your needs; survey, sample and questionnaire design; survey evaluation and methodological reviews; and statistical training.

<i>INQUIRIES</i>	<i>By phone</i>	<i>By fax</i>
Canberra	02 6252 6627	02 6253 1404
Sydney	02 9268 4611	02 9268 4668
Melbourne	03 9615 7755	03 9615 7798
Brisbane	07 3222 6351	07 3222 6283
Perth	08 9360 5140	08 9360 5955
Adelaide	08 8237 7400	08 8237 7566
Hobart	03 6222 5800	03 6222 5995
Darwin	08 8943 2111	08 8981 1218

*POST* Client Services, ABS, PO Box 10, Belconnen, ACT 2616

*EMAIL* [client.services@abs.gov.au](mailto:client.services@abs.gov.au)



2130380003983

ISSN 1320-808X

RRP \$15.50

ABS Catalogue no. 1303.8

Business Indicators, Australian Capital Territory

March 1998