



# LIVESTOCK PRODUCTS AUSTRALIA

EMBARGO: 11:30AM (CANBERRA TIME) THURS 19 NOV 1998

## SEPTEMBER QTR KEY FIGURES

### TREND ESTIMATES

	Sep Qtr 1997 '000	Jun Qtr 1998 '000	Sep Qtr 1998 '000
<b>Number slaughtered</b>			
Cattle	2 010.2	2 009.6	2 012.4
Calves	327.8	303.5	289.6
Sheep	4 054.7	3 922.0	3 686.2
Lambs	3 768.5	3 837.0	3 942.3
Pigs	1 188.5	1 244.2	1 261.4
Chickens	90 375.1	92 812.3	93 141.4

	Sep Qtr 1997 tonnes	Jun Qtr 1998 tonnes	Sep Qtr 1998 tonnes
<b>Meat produced</b>			
Beef	483 245	478 786	483 799
Veal	10 857	10 859	10 403
Mutton	83 160	80 283	76 124
Lamb	70 759	73 374	76 219
Pig meat	83 819	88 301	89 906
Chicken meat	132 698	140 126	141 028

Wool receivals	169 585	156 230	153 354
----------------	---------	---------	---------

	Jun Qtr 1997 ML	Mar Qtr 1998 ML	Jun Qtr 1998 ML
Whole milk intake by factories	2 320	2 357	2 368

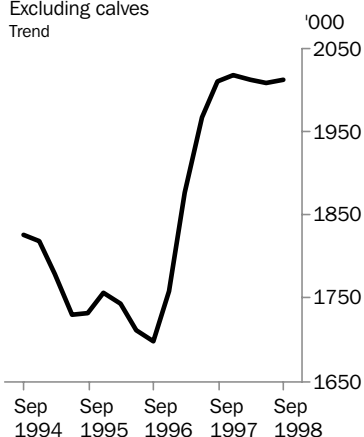
## SEPTEMBER QTR KEY POINTS

### TREND ESTIMATES

- The trend estimate for the number of cattle slaughtered in September quarter 1998 was 2.0 million, a slight rise on the June quarter 1998 estimate.
- The trend estimate for the number of sheep slaughtered in September quarter 1998 was 3.7 million, a fall of 6% on the June quarter 1998 estimate.
- The trend estimate for lamb meat produced rose 4% to 76,000 tonnes in September quarter 1998. This was above the quarterly trend estimate for mutton production for the first time since September quarter 1989.

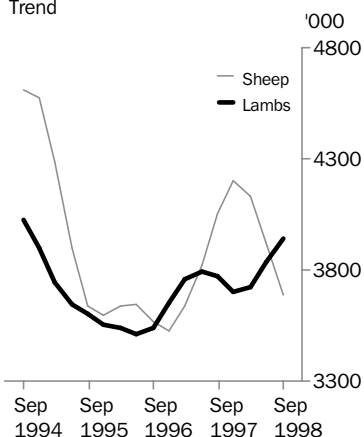
### Cattle slaughtering

Excluding calves  
Trend



### Sheep and lambs slaughtering

Trend



- For further information about these and related statistics, contact Nigel Gibson on Hobart 03 6222 5939, or any ABS office shown on the back cover of this publication.

# NOTES

## FORTHCOMING ISSUES

ISSUE (Quarter)	RELEASE DATE
December 1998	10 February 1999
March 1999	12 May 1999
June 1999	11 August 1999



## CHANGES IN THIS ISSUE

This issue (September quarter 1998) is the first issue of the new quarterly publication *Livestock Products, Australia* (Catalogue Number 7215.0). The key figures for all commodities are listed on the front page, followed by individual graphs which are accompanied by commentary.

- Table 1 contains the last six quarters of original, seasonally adjusted and trend series estimates at the Australia level for numbers of livestock slaughtered for each animal category.
- Table 2 contains the last six quarters of original, seasonally adjusted and trend series estimates at the Australia level for the types of meat produced, Whole Milk Intake by Factories and Brokers and Dealers Receipts of Taxable Wool.
- Tables 3 to 10 contain original, seasonally adjusted and trend series estimates at the State level for the number of livestock slaughtered for each animal category.
- Table 11 contains the original series data for the number of livestock slaughtering for each animal category by State, for the last three financial years.
- Tables 12 to 18 contain the original, seasonally adjusted and trend estimates for the types of meat produced, at the State level.
- Table 19 contains the original series data for each type of meat produced by State for the last three financial years.
- Tables 20, 21 and 22 contain the original data series for Stocks of Frozen Meat, Exports of Fresh, Frozen and Processed Meat and Exports of Live Sheep and Cattle.
- Table 23 and 24 contain the original, seasonally adjusted and trend series estimates at the State level for Whole Milk Intake by Factories and Market Milk Sales by Factories, respectively.
- Table 25 contains original, seasonally adjusted and trend series estimates at the State level for Brokers and Dealers Receipts of Taxable Wool.
- Table 26 contains the original series for Whole Milk Intake by Factories, Market Milk Sales by Factories and Brokers and Dealers Receipts of Taxable Wool for the last three financial years.

Sensitivity analysis of each of the trend series for Red Meat, Chicken Meat, Whole Milk Intake by Factories and Wool Receipts is included in pages 33 and 34. Explanatory Notes follow on pages 35 to 37.

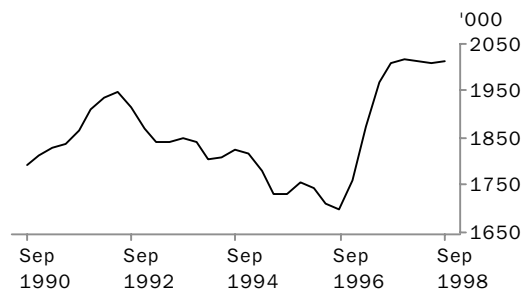


W. McLennan  
Australian Statistician



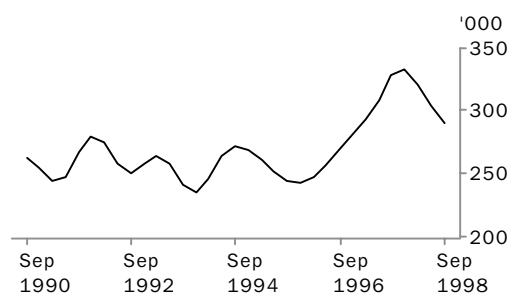
# LIVESTOCK SLAUGHTERED: Trend

## CATTLE (EXCLUDING CALVES)



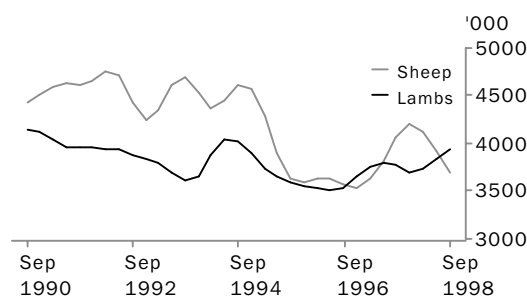
The trend estimate for cattle slaughterings was little changed in September quarter 1998 at 2.0 million. Continuing high slaughter rates, particularly in Queensland, have coincided with a slow down in live cattle exports to Asian destinations.

## CALVES



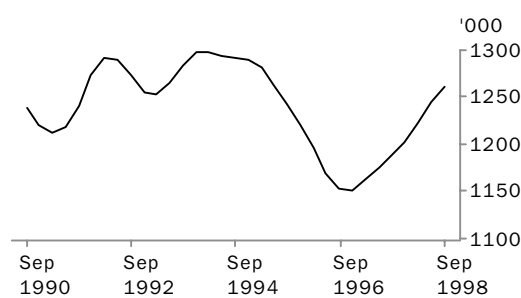
The trend estimate for calf slaughterings fell 5% to 290,000, the third consecutive quarterly decrease. Poor pasture conditions in New South Wales and Victoria in early 1998 have led to lower breeding, calving and calf survival rates.

## SHEEP AND LAMBS



The trend estimate for sheep slaughterings fell 6% to 3.7 million. The trend estimate for lamb slaughterings rose 3% to 3.9 million. Recent falls in sheep slaughtering rates reflect continuing falls in flock numbers. Lamb slaughterings have been influenced by favourable prices and a consequent shift to cross breeds to produce prime lamb.

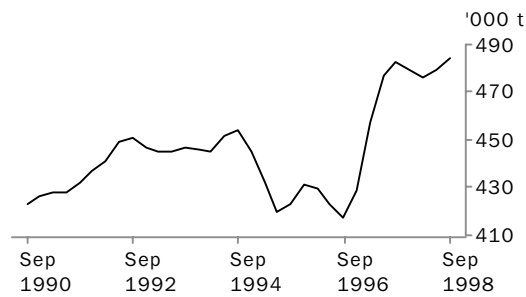
## PIGS



The trend estimate for pig slaughterings rose marginally in September quarter 1998 to almost 1.3 million, the seventh consecutive quarterly rise. Exports of fresh, chilled or frozen pork increased by 84% during 1997-98, following an 18% increase during 1996-97.

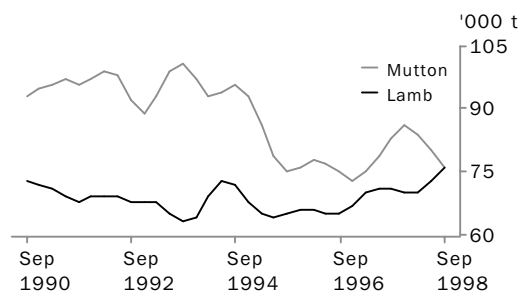
# MEAT PRODUCTION: Trend

## BEEF



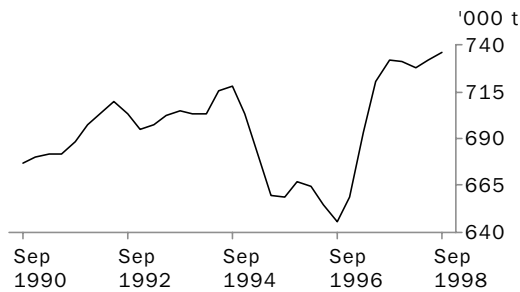
The trend estimate for beef production rose 1% in September quarter 1998 to 484,000 tonnes. Increases in beef production in 1998 have coincided with improved export volumes to Japan, particularly for frozen beef. Recent levels have also been influenced by a better season, some reduction in the proportion of cows slaughtered and an increase in feedlot turnover.

## MUTTON AND LAMB



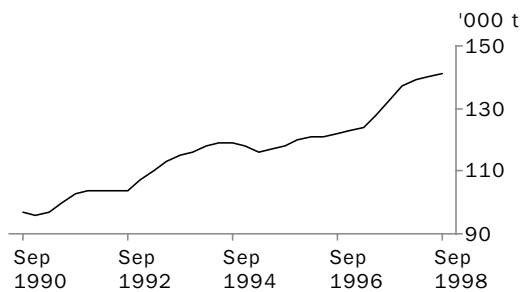
The trend estimate for mutton production fell 5% to 76,000 tonnes, the third consecutive quarterly decrease; the trend estimate for lamb production rose 4% to 76,000 tonnes, the third consecutive quarterly increase.

## TOTAL RED MEAT



The trend estimate for total red meat production rose just under 1% to a record level of 736,000 tonnes in September quarter 1998. Beef, lamb and pig meat production rose in the period, while falls were recorded for veal and mutton.

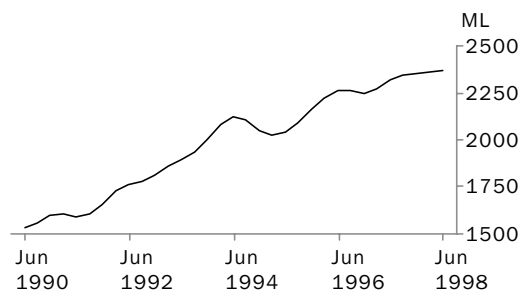
## CHICKEN MEAT



The trend estimate for chicken meat production rose marginally to 141,000 tonnes, the fourteenth consecutive quarterly rise. This figure is 21% above the last trough in March quarter 1995.

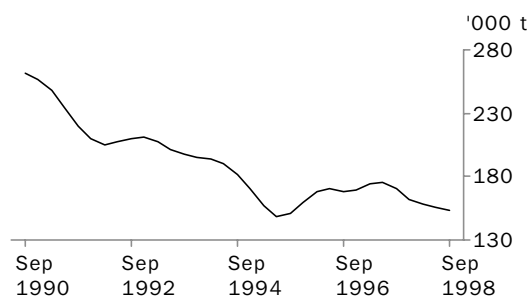
# LIVESTOCK PRODUCTS: Trend

WHOLE MILK INTAKE BY FACTORIES



The trend estimate for whole milk intake by factories rose marginally in June quarter 1998 to 2.4 billion litres, the sixth consecutive quarterly increase.

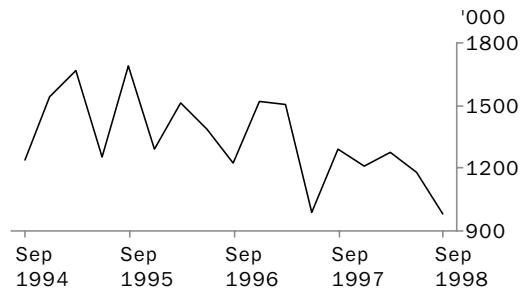
BROKERS AND DEALERS RECEIVALS OF TAXABLE WOOL



The trend estimate for wool receivals by brokers and dealers fell by 2% in September quarter 1998 to 153,000 tonnes, the fifth consecutive quarterly decrease. These decreases have coincided with a fall in the Australian wool price due, in part, to the Asian economic crisis and a build-up of stocks in Western Europe.

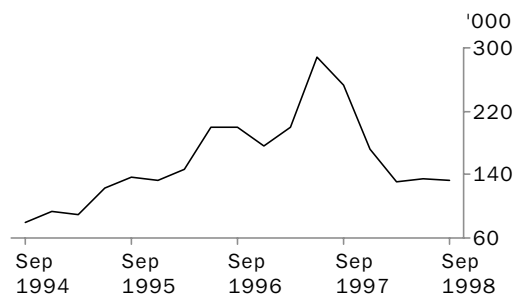
# LIVESTOCK EXPORTS: Original

EXPORTS OF LIVE SHEEP



In September quarter 1998 live sheep exports fell by 17% to 979,000. The unit value (\$36.45) fell by 11% and the gross value (\$35.7 million) fell by 26%.

EXPORTS OF LIVE CATTLE



In September quarter 1998 live cattle exports fell by 2% to 132,000. The unit value (\$443.57) rose by 2% and the gross value was little changed at \$58.5 million. The total number of live cattle exported during 1997–98 was 691,000, a 20% decline on 1996–97. The economic crisis in Asia, notably Indonesia, was the cause of the decline.

## LIVESTOCK SLAUGHTERED, Australia(a): All Series

Quarter	Bulls, bullocks and steers	Cows and heifers	Total cattle (excluding calves)	Calves	Sheep	Lambs	Pigs	Chickens
'000	'000	'000	'000	'000	'000	'000	'000	'000
ORIGINAL								
<b>1997</b>								
June	1 043.2	1 046.9	2 090.1	292.4	3 503.2	3 858.9	1 225.1	86 042.0
September	1 070.8	986.0	2 056.7	622.8	3 437.4	3 622.9	1 203.5	91 621.8
December	1 015.0	926.1	1 941.1	231.7	4 598.6	3 954.0	1 194.4	93 639.2
<b>1998</b>								
March	960.8	984.5	1 945.3	151.5	4 960.0	3 616.6	1 178.3	91 895.7
June	949.0	1 158.9	2 107.9	265.5	3 392.9	3 662.5	1 279.5	91 495.4
September	977.3	1 067.1	2 044.4	575.0	3 143.3	4 049.8	1 267.9	92 744.7
SEASONALLY ADJUSTED								
<b>1997</b>								
June	1 038.8	941.9	1 980.7	307.4	3 837.0	3 929.5	1 189.2	87 980.5
September	1 045.1	975.1	2 020.2	326.4	4 033.4	3 668.5	1 187.4	91 584.2
December	1 012.2	983.6	1 995.8	336.4	4 149.1	3 730.7	1 187.2	91 668.2
<b>1998</b>								
March	991.9	1 037.9	2 029.8	334.5	4 402.2	3 727.7	1 235.2	91 825.9
June	944.0	1 053.4	1 997.4	280.5	3 714.4	3 724.6	1 242.2	93 712.0
September	954.9	1 056.8	2 011.7	301.0	3 690.2	4 102.3	1 259.8	92 589.1
TREND ESTIMATES								
<b>1997</b>								
June	1 041.4	926.7	1 968.1	309.3	3 822.7	3 796.3	1 176.2	88 390.2
September	1 038.9	971.3	2 010.2	327.8	4 054.7	3 768.5	1 188.5	90 375.1
December	1 016.0	1 001.9	2 017.9	332.5	4 203.5	3 701.7	1 202.0	91 897.1
<b>1998</b>								
March	985.3	1 026.5	2 011.9	320.5	4 128.8	3 724.8	1 222.4	92 442.9
June	960.4	1 049.1	2 009.6	303.5	3 922.0	3 837.0	1 244.2	92 812.3
September	947.5	1 064.9	2 012.4	289.6	3 686.2	3 942.3	1 261.4	93 141.4

(a) For more information refer to paragraphs 5 to 9 of the Explanatory Notes.

## LIVESTOCK PRODUCTS, Australia(a): All Series

## RED MEAT.....

Quarter	Beef	Veal	Mutton	Lamb	Pig meat	Total red meat	Chicken meat	Whole milk intake by factories	Brokers and dealers receipts of taxable wool
	tonnes	tonnes	tonnes	tonnes	tonnes	tonnes	tonnes	ML	tonnes
ORIGINAL									
<b>1997</b>									
June	500 936	10 113	70 289	72 574	87 891	741 802	125 162	1 532	127 618
September	491 677	16 696	70 354	67 526	85 369	731 623	134 893	2 199	192 470
December	466 695	8 782	96 327	74 376	83 259	729 439	138 837	3 354	204 374
<b>1998</b>									
March	462 312	7 854	101 013	68 563	82 201	721 943	137 919	2 280	135 738
June	490 294	10 884	67 080	70 092	92 325	730 676	138 812	1 606	107 886
September	495 103	15 602	65 816	78 174	91 488	746 182	140 269	n.a.	181 827
SEASONALLY ADJUSTED									
<b>1997</b>									
June	484 750	10 201	78 657	73 666	83 644	730 918	127 454	2 306	189 355
September	484 965	10 859	82 651	68 866	84 047	731 387	134 740	2 380	159 262
December	473 590	11 372	85 395	70 307	83 786	724 450	136 234	2 362	165 437
<b>1998</b>									
March	477 993	11 227	89 531	70 245	87 480	736 475	138 134	2 306	155 170
June	473 724	11 019	75 159	71 048	87 834	718 783	141 652	2 410	159 442
September	489 106	10 131	77 306	79 794	90 121	746 459	139 943	n.a.	151 195
TREND									
<b>1997</b>									
June	477 472	10 285	78 538	71 092	82 721	720 108	127 998	2 320	175 386
September	483 245	10 857	83 160	70 759	83 819	731 840	132 698	2 347	169 585
December	479 045	11 256	85 919	69 614	84 984	730 819	136 769	2 354	162 312
<b>1998</b>									
March	475 993	11 208	84 225	70 483	86 494	728 402	138 796	2 357	157 954
June	478 786	10 859	80 283	73 374	88 301	731 602	140 126	2 368	156 230
September	483 799	10 403	76 124	76 219	89 906	736 452	141 028	n.a.	153 354

(a) For more information refer to paragraphs 5 to 9 and 14 to 16 of the Explanatory Notes.



## NUMBER OF LIVESTOCK SLAUGHTERED(a), Bulls, Bullocks and Steers: All Series

	<i>New South Wales</i>	<i>Victoria</i>	<i>Queensland</i>	<i>South Australia</i>	<i>Western Australia</i>	<i>Tasmania</i>	<i>Australia</i>
<i>Quarter</i>	'000	'000	'000	'000	'000	'000	'000
ORIGINAL							
<b>1997</b>							
June	272.8	215.1	433.0	46.5	39.9	27.4	1 043.2
September	259.2	213.5	486.2	36.1	46.0	21.1	1 070.8
December	248.4	226.8	403.7	51.4	58.7	23.1	1 015.0
<b>1998</b>							
March	234.5	248.6	356.9	46.7	48.5	25.4	960.8
June	214.4	212.0	414.1	35.5	45.3	23.8	949.0
September	211.3	188.1	473.1	29.6	45.1	20.8	977.3
SEASONALLY ADJUSTED							
<b>1997</b>							
June	268.2	219.2	414.1	52.3	45.8	25.2	1 038.8
September	259.4	239.8	421.0	45.3	51.2	28.8	1 045.1
December	248.7	221.8	424.1	42.6	47.9	22.9	1 012.2
<b>1998</b>							
March	232.8	226.0	421.1	42.1	48.3	21.7	991.9
June	215.3	216.0	395.0	40.0	52.0	22.0	944.0
September	211.8	211.7	410.0	37.3	50.2	28.6	954.9
TREND ESTIMATES							
<b>1997</b>							
June	268.7	224.1	418.2	47.1	48.6	27.5	1 041.4
September	259.9	228.7	424.8	46.8	48.5	26.0	1 038.9
December	247.1	228.6	421.3	44.0	48.9	23.7	1 016.0
<b>1998</b>							
March	232.5	222.9	415.0	41.3	49.5	22.6	985.3
June	219.4	216.9	407.5	39.7	50.2	23.5	960.4
September	210.2	213.4	402.9	38.2	51.1	26.0	947.5

(a) For more information refer to paragraph 6 of the Explanatory Notes.

## NUMBER OF LIVESTOCK SLAUGHTERED(a), Cows and Heifers: All Series

	<i>New South Wales</i>	<i>Victoria</i>	<i>Queensland</i>	<i>South Australia</i>	<i>Western Australia</i>	<i>Tasmania</i>	<i>Australia</i>
<i>Quarter</i>	'000	'000	'000	'000	'000	'000	'000
ORIGINAL							
<b>1997</b>							
June	295.7	244.6	348.1	57.2	47.9	33.2	1 046.9
September	283.0	196.5	359.4	53.6	55.0	20.7	986.0
December	276.0	225.1	278.2	47.1	64.1	29.1	926.1
<b>1998</b>							
March	285.2	235.5	306.1	49.0	74.0	33.4	984.5
June	338.0	239.3	409.9	53.1	56.4	40.3	1 158.9
September	279.9	234.0	401.4	40.3	60.7	23.9	1 067.1
SEASONALLY ADJUSTED							
<b>1997</b>							
June	277.1	231.8	298.0	54.5	58.1	26.6	941.9
September	286.3	218.4	314.5	59.1	59.2	29.6	975.1
December	286.5	220.4	341.6	48.9	57.4	30.1	983.6
<b>1998</b>							
March	286.7	229.9	350.3	45.4	65.6	30.9	1 037.9
June	316.0	226.6	350.3	50.5	68.2	32.2	1 053.4
September	291.0	260.5	351.4	44.7	65.3	34.2	1 056.8
TREND ESTIMATES							
<b>1997</b>							
June	271.6	217.1	291.6	53.6	57.2	26.2	926.7
September	283.3	223.9	319.6	53.9	58.2	28.7	971.3
December	289.7	222.8	338.4	51.8	60.7	30.4	1 001.9
<b>1998</b>							
March	294.9	226.2	347.6	48.2	63.8	31.2	1 026.5
June	299.9	237.2	351.8	46.8	66.4	32.4	1 049.1
September	302.2	249.0	352.3	46.7	67.4	33.7	1 064.9

(a) For more information refer to paragraph 6 of the Explanatory Notes.

## NUMBER OF LIVESTOCK SLAUGHTERED(a), Total Cattle (excluding Calves): All Series

	New South Wales	Victoria	Queensland	South Australia	Western Australia	Tasmania	Australia
Quarter	'000	'000	'000	'000	'000	'000	'000
ORIGINAL							
<b>1997</b>							
June	568.5	459.7	781.1	103.7	87.8	60.6	2 090.1
September	542.2	410.0	845.6	89.6	101.0	41.8	2 056.7
December	524.4	451.9	681.9	98.5	122.9	52.3	1 941.1
<b>1998</b>							
March	519.7	484.1	663.0	95.8	122.5	58.9	1 945.3
June	552.4	451.3	824.0	88.5	101.7	64.1	2 107.9
September	491.2	422.1	874.5	69.9	105.8	44.7	2 044.4
SEASONALLY ADJUSTED							
<b>1997</b>							
June	545.3	451.0	712.0	106.9	103.9	51.8	1 980.7
September	545.7	458.2	735.5	104.4	110.4	58.5	2 020.2
December	535.2	442.2	765.7	91.4	105.3	53.0	1 995.8
<b>1998</b>							
March	519.5	455.9	771.4	87.5	113.9	52.5	2 029.8
June	531.4	442.6	745.4	90.5	120.2	54.2	1 997.4
September	502.8	472.1	761.4	82.0	115.5	62.7	2 011.7
TREND ESTIMATES							
<b>1997</b>							
June	540.2	441.2	709.8	100.7	105.8	53.7	1 968.1
September	543.2	452.5	744.4	100.7	106.6	54.7	2 010.2
December	536.8	451.4	759.7	95.8	109.6	54.0	2 017.9
<b>1998</b>							
March	527.4	449.1	762.6	89.5	113.4	53.8	2 011.9
June	519.3	454.1	759.3	86.6	116.6	55.8	2 009.6
September	512.4	462.4	755.2	84.9	118.5	59.7	2 012.4

(a) For more information refer to paragraph 6 of the Explanatory Notes.

## NUMBER OF LIVESTOCK SLAUGHTERED(a), Calves: All Series

	<i>New South Wales</i>	<i>Victoria</i>	<i>Queensland</i>	<i>South Australia</i>	<i>Western Australia</i>	<i>Tasmania</i>	<i>Australia</i>
<i>Quarter</i>	'000	'000	'000	'000	'000	'000	'000
ORIGINAL							
<b>1997</b>							
June	73.5	173.3	33.3	6.2	1.4	4.2	292.4
September	78.6	469.2	30.6	5.9	1.3	37.1	622.8
December	69.5	120.1	26.3	3.5	1.3	10.8	231.7
<b>1998</b>							
March	74.0	40.6	30.3	3.8	1.7	0.9	151.5
June	84.2	140.0	27.8	7.0	1.3	5.1	265.5
September	64.8	429.8	26.3	5.5	1.3	47.0	575.0
SEASONALLY ADJUSTED							
<b>1997</b>							
June	70.4	185.1	32.2	5.2	1.4	15.1	307.4
September	74.1	199.2	29.5	4.7	1.1	12.3	326.4
December	77.9	216.0	28.8	4.5	1.3	16.7	336.4
<b>1998</b>							
March	73.8	264.2	29.6	4.9	1.7	18.8	334.5
June	80.5	150.8	27.1	5.8	1.5	17.8	280.5
September	61.1	182.5	25.4	4.5	1.1	15.7	301.0
TREND ESTIMATES							
<b>1997</b>							
June	70.8	190.8	30.9	4.6	1.3	13.3	309.3
September	74.3	207.8	30.0	4.8	1.3	14.5	327.8
December	76.9	222.6	29.5	4.8	1.4	16.3	332.5
<b>1998</b>							
March	76.7	217.1	28.5	5.0	1.5	17.6	320.5
June	73.2	194.9	27.3	5.1	1.5	17.7	303.5
September	67.8	171.8	25.9	5.0	1.3	16.7	289.6

(a) For more information refer to paragraph 6 of the Explanatory notes.

## NUMBER OF LIVESTOCK SLAUGHTERED(a), Sheep: All Series

	<i>New South Wales</i>	<i>Victoria</i>	<i>Queensland</i>	<i>South Australia</i>	<i>Western Australia</i>	<i>Tasmania</i>	<i>Australia</i>
<i>Quarter</i>	'000	'000	'000	'000	'000	'000	'000
ORIGINAL							
<b>1997</b>							
June	1 364.1	664.9	228.4	544.7	570.1	113.3	3 503.2
September	1 310.3	622.6	293.2	508.4	631.8	71.0	3 437.4
December	1 596.6	973.4	328.5	749.9	820.7	129.5	4 598.6
<b>1998</b>							
March	1 669.3	1 124.4	366.1	900.3	738.6	161.3	4 960.0
June	1 326.5	655.3	289.2	496.5	526.3	99.1	3 392.9
September	1 317.1	627.9	352.3	425.2	369.0	51.8	3 143.3
SEASONALLY ADJUSTED							
<b>1997</b>							
June	1 414.2	828.5	244.5	654.6	654.0	107.0	3 837.0
September	1 439.2	811.2	283.8	683.5	704.3	124.9	4 033.4
December	1 535.7	816.9	333.9	636.5	699.5	124.1	4 149.1
<b>1998</b>							
March	1 537.9	907.6	348.5	719.3	699.1	121.2	4 402.2
June	1 373.2	819.5	310.7	601.6	601.8	93.9	3 714.4
September	1 449.8	814.9	341.1	575.6	410.2	91.5	3 690.2
TREND ESTIMATES							
<b>1997</b>							
June	1 389.3	780.5	255.1	648.2	652.7	111.2	3 822.7
September	1 472.5	825.5	287.8	669.0	690.8	121.8	4 054.7
December	1 509.9	849.8	322.0	679.6	714.6	124.0	4 203.5
<b>1998</b>							
March	1 489.9	852.7	334.0	661.1	669.2	114.8	4 128.8
June	1 450.5	844.3	333.2	627.1	577.5	101.6	3 922.0
September	1 411.3	823.7	330.0	588.5	469.8	91.6	3 686.2

(a) For more information refer to paragraph 6 of the Explanatory notes.

## NUMBER OF LIVESTOCK SLAUGHTERED(a), Lambs: All Series

	<i>New South Wales</i>	<i>Victoria</i>	<i>Queensland</i>	<i>South Australia</i>	<i>Western Australia</i>	<i>Tasmania</i>	<i>Australia</i>
<i>Quarter</i>	'000	'000	'000	'000	'000	'000	'000
ORIGINAL							
<b>1997</b>							
June	874.7	1 553.9	199.3	506.1	565.0	106.0	3 858.9
September	924.1	1 530.8	217.4	341.6	528.0	81.0	3 622.9
December	939.8	1 730.9	173.5	487.7	527.2	94.8	3 954.0
<b>1998</b>							
March	907.6	1 519.2	190.1	504.6	377.3	117.7	3 616.6
June	885.4	1 506.9	184.8	531.8	423.9	129.8	3 662.5
September	1 013.2	1 742.5	198.3	528.9	453.2	113.7	4 049.8
SEASONALLY ADJUSTED							
<b>1997</b>							
June	886.8	1 593.4	196.4	481.0	557.0	94.8	3 929.5
September	883.1	1 571.7	197.8	388.2	513.9	98.7	3 668.5
December	953.0	1 573.3	189.1	457.8	474.1	102.6	3 730.7
<b>1998</b>							
March	924.6	1 570.4	195.6	504.0	445.2	103.4	3 727.7
June	899.4	1 571.1	183.0	503.8	418.9	116.0	3 724.6
September	967.1	1 790.9	180.3	601.9	441.1	138.8	4 102.3
TREND ESTIMATES							
<b>1997</b>							
June	877.8	1 577.5	200.7	443.9	547.7	96.7	3 796.3
September	902.9	1 581.7	195.3	437.6	522.1	98.8	3 768.5
December	921.7	1 562.4	193.3	446.9	475.3	100.2	3 701.7
<b>1998</b>							
March	926.2	1 575.5	190.1	486.3	445.6	107.5	3 724.8
June	930.3	1 633.4	185.6	534.5	431.6	118.8	3 837.0
September	937.0	1 709.4	181.6	571.7	429.6	130.3	3 942.3

(a) For more information refer to paragraph 6 of the Explanatory notes.

## NUMBER OF LIVESTOCK SLAUGHTERED(a), Pigs: All Series

	New South Wales	Victoria	Queensland	South Australia	Western Australia	Tasmania	Australia
Quarter	'000	'000	'000	'000	'000	'000	'000
ORIGINAL							
<b>1997</b>							
June	335.4	330.1	269.4	110.8	146.6	19.9	1 225.1
September	344.1	331.0	266.7	104.4	136.8	18.8	1 203.5
December	358.0	322.5	270.2	93.2	128.8	20.0	1 194.4
<b>1998</b>							
March	324.2	327.4	271.9	98.8	136.4	17.9	1 178.3
June	365.7	383.6	274.0	85.0	147.9	21.4	1 279.5
September	330.7	391.7	295.2	80.3	146.6	21.2	1 267.9
SEASONALLY ADJUSTED							
<b>1997</b>							
June	328.1	317.8	261.9	111.4	138.6	19.0	1 189.2
September	341.0	324.4	266.8	97.1	136.9	19.5	1 187.4
December	341.6	321.5	274.9	95.1	134.3	19.5	1 187.2
<b>1998</b>							
March	349.4	345.3	276.2	104.0	140.1	18.7	1 235.2
June	357.7	369.0	266.4	85.4	139.7	20.4	1 242.2
September	329.0	392.1	296.0	75.0	145.3	21.9	1 259.8
TREND ESTIMATES							
<b>1997</b>							
June	329.2	314.2	260.5	104.4	138.5	19.3	1 176.2
September	336.4	320.7	268.9	102.0	136.8	19.3	1 188.5
December	345.7	328.9	271.7	99.3	136.3	19.2	1 202.0
<b>1998</b>							
March	349.2	345.4	273.6	95.0	138.3	19.5	1 222.4
June	346.9	367.6	278.2	88.0	141.2	20.3	1 244.2
September	340.6	390.8	285.5	78.6	144.5	21.5	1 261.4

(a) For more information refer to paragraph 6 of the Explanatory notes.

## NUMBER OF CHICKENS SLAUGHTERED(a): All Series

	<i>New South Wales</i>	<i>Victoria</i>	<i>Queensland</i>	<i>South Australia</i>	<i>Western Australia</i>	<i>Australia</i>
<i>Quarter</i>	'000	'000	'000	'000	'000	'000
ORIGINAL						
<b>1997</b>						
June	33 559.8	20 804.2	15 798.5	7 110.3	8 769.1	86 042.0
September	34 925.6	22 962.1	16 887.4	n.p.	n.p.	91 621.8
December	34 979.3	23 871.1	16 950.5	n.p.	n.p.	93 639.2
<b>1998</b>						
March	33 186.1	23 934.4	16 818.3	n.p.	n.p.	91 895.7
June	33 926.9	23 738.6	16 313.2	n.p.	n.p.	91 495.4
September	34 268.9	24 966.3	16 762.9	n.p.	n.p.	92 744.7
SEASONALLY ADJUSTED						
<b>1997</b>						
June	34 026.4	21 348.1	16 369.0	7 216.0	9 021.1	87 980.5
September	34 774.3	23 087.8	16 772.6	n.p.	n.p.	91 584.2
December	34 539.9	23 228.2	16 556.3	n.p.	n.p.	91 668.2
<b>1998</b>						
March	33 284.2	23 848.1	16 737.4	n.p.	n.p.	91 825.9
June	34 427.8	24 411.1	16 933.3	n.p.	n.p.	93 712.0
September	34 068.9	25 053.9	16 619.6	n.p.	n.p.	92 589.1
TREND ESTIMATES						
<b>1997</b>						
June	34 087.2	21 725.6	16 256.3	7 341.6	8 979.5	88 390.2
September	34 445.2	22 498.2	16 592.7	n.p.	n.p.	90 375.1
December	34 303.2	23 354.8	16 747.2	n.p.	n.p.	91 897.1
<b>1998</b>						
March	34 037.8	23 897.5	16 752.3	n.p.	n.p.	92 442.9
June	33 981.2	24 415.8	16 770.6	n.p.	n.p.	92 812.3
September	34 087.3	24 964.5	16 770.7	n.p.	n.p.	93 141.4

(a) For more information refer to paragraphs 8 and 9 of the Explanatory Notes.



## NUMBER OF LIVESTOCK SLAUGHTERED(a): Original

	<i>New South Wales</i>	<i>Victoria</i>	<i>Queensland</i>	<i>South Australia</i>	<i>Western Australia</i>	<i>Tasmania</i>	<i>Australia</i>
<i>Quarter</i>	'000	'000	'000	'000	'000	'000	'000
<b>BULLS, BULLOCKS AND STEERS</b>							
<b>1995-96</b>	1 024.0	946.9	1 505.8	180.4	218.0	95.4	<b>3 988.2</b>
<b>1996-97</b>	1 073.3	898.7	1 509.3	171.1	192.3	110.2	<b>3 977.6</b>
<b>1997-98</b>	956.5	900.9	1 660.9	169.6	198.5	93.4	<b>3 995.6</b>
<b>COWS AND HEIFERS</b>							
<b>1995-96</b>	939.1	576.7	901.2	194.1	181.9	88.9	<b>2 961.5</b>
<b>1996-97</b>	966.9	777.2	1 008.5	197.6	214.5	93.4	<b>3 322.0</b>
<b>1997-98</b>	1 182.2	896.3	1 353.7	202.8	249.6	123.6	<b>4 055.5</b>
<b>TOTAL CATTLE (excluding calves)</b>							
<b>1995-96</b>	1 963.1	1 523.6	2 406.9	374.5	399.9	184.2	<b>6 949.7</b>
<b>1996-97</b>	2 040.2	1 675.9	2 517.9	368.7	406.8	203.6	<b>7 299.7</b>
<b>1997-98</b>	2 138.7	1 797.2	3 014.6	372.4	448.1	217.0	<b>8 051.0</b>
<b>CALVES</b>							
<b>1995-96</b>	244.2	589.8	91.2	12.6	3.2	41.4	<b>984.6</b>
<b>1996-97</b>	257.4	697.3	120.9	15.7	5.6	43.6	<b>1 141.9</b>
<b>1997-98</b>	306.3	769.9	114.9	20.2	5.6	53.9	<b>1 271.4</b>
<b>SHEEP</b>							
<b>1995-96</b>	5 680.4	2 488.0	727.5	2 370.5	2 833.3	349.7	<b>14 581.1</b>
<b>1996-97</b>	5 241.3	2 806.6	977.3	2 311.8	2 635.2	384.4	<b>14 451.2</b>
<b>1997-98</b>	5 902.7	3 375.7	1 277.1	2 655.0	2 717.4	461.0	<b>16 388.9</b>
<b>LAMBS</b>							
<b>1995-96</b>	3 417.3	5 897.7	695.3	1 905.2	1 594.0	393.3	<b>14 223.1</b>
<b>1996-97</b>	3 621.4	5 978.9	785.1	1 754.0	2 081.2	364.0	<b>14 837.2</b>
<b>1997-98</b>	3 656.9	6 287.9	765.7	1 865.8	1 856.5	423.3	<b>14 856.0</b>
<b>PIGS</b>							
<b>1995-96</b>	1 408.0	1 142.1	1 080.0	466.8	562.8	86.5	<b>4 823.5</b>
<b>1996-97</b>	1 338.4	1 197.3	1 002.3	427.4	550.2	74.9	<b>4 653.9</b>
<b>1997-98</b>	1 392.0	1 364.6	1 082.7	381.4	550.0	78.1	<b>4 855.8</b>
<b>CHICKENS</b>							
<b>1995-96</b>	133 756.6	85 410.9	55 333.1	26 948.2	34 931.2	n.p.	<b>336 380.0</b>
<b>1996-97</b>	133 363.7	86 732.6	61 088.9	28 008.1	36 360.2	n.p.	<b>345 553.5</b>
<b>1997-98</b>	137 017.9	94 506.2	66 969.4	n.p.	n.p.	n.p.	<b>368 652.1</b>

(a) For more information refer to paragraphs 5 to 9 of the Explanatory Notes.

## RED MEAT PRODUCED(a), Beef: All Series

	<i>New South Wales</i>	<i>Victoria</i>	<i>Queensland</i>	<i>South Australia</i>	<i>Western Australia</i>	<i>Tasmania</i>	<i>Australia</i>
<i>Quarter</i>	<i>tonnes</i>	<i>tonnes</i>	<i>tonnes</i>	<i>tonnes</i>	<i>tonnes</i>	<i>tonnes</i>	<i>tonnes</i>
ORIGINAL							
<b>1997</b>							
June	126 223	100 303	211 111	23 160	19 497	15 207	500 936
September	118 739	88 269	227 124	18 704	23 388	10 496	491 677
December	119 363	98 558	182 530	22 324	28 991	13 255	466 695
<b>1998</b>							
March	117 286	106 419	175 238	21 110	27 546	14 438	462 312
June	118 412	95 712	214 887	18 786	22 557	14 875	490 294
September	109 627	93 616	234 416	15 147	25 001	10 585	495 103
SEASONALLY ADJUSTED							
<b>1997</b>							
June	120 293	100 881	195 462	23 887	23 190	13 397	484 750
September	120 782	98 236	199 158	23 213	25 047	14 571	484 965
December	120 401	95 160	200 145	20 279	24 784	13 231	473 590
<b>1998</b>							
March	116 689	99 333	201 909	18 779	25 437	12 619	477 993
June	115 925	96 228	198 741	19 379	26 802	13 146	473 724
September	111 806	104 078	205 606	18 852	27 905	14 683	489 106
TREND ESTIMATES							
<b>1997</b>							
June	121 806	97 156	193 968	22 395	23 893	13 720	477 472
September	120 777	98 353	200 042	22 366	24 415	13 795	483 245
December	119 547	97 368	200 585	21 013	24 956	13 379	479 045
<b>1998</b>							
March	117 560	97 269	200 714	19 424	25 739	13 078	475 993
June	115 027	99 208	201 685	18 915	26 672	13 363	478 786
September	112 811	101 419	203 245	18 926	27 645	14 060	483 799

(a) For more information refer to paragraph 6 of the Explanatory Notes.

## RED MEAT PRODUCED(a), Veal: All Series

	<i>New South Wales</i>	<i>Victoria</i>	<i>Queensland</i>	<i>South Australia</i>	<i>Western Australia</i>	<i>Tasmania</i>	<i>Australia</i>
<i>Quarter</i>	<i>tonnes</i>	<i>tonnes</i>	<i>tonnes</i>	<i>tonnes</i>	<i>tonnes</i>	<i>tonnes</i>	<i>tonnes</i>
ORIGINAL							
<b>1997</b>							
June	4 690	3 435	1 556	217	84	97	10 113
September	4 985	9 283	1 354	231	76	756	16 696
December	4 544	2 543	1 210	147	74	250	8 782
<b>1998</b>							
March	5 155	940	1 508	122	89	28	7 854
June	6 137	2 862	1 449	235	73	115	10 884
September	4 615	8 437	1 355	170	78	934	15 602
SEASONALLY ADJUSTED							
<b>1997</b>							
June	4 424	3 647	1 509	183	96	279	10 201
September	4 701	4 170	1 314	197	66	272	10 859
December	5 317	4 167	1 313	176	69	322	11 372
<b>1998</b>							
March	5 021	4 255	1 482	153	99	301	11 227
June	5 803	3 067	1 405	195	84	324	11 019
September	4 355	3 770	1 317	145	67	338	10 131
TREND ESTIMATES							
<b>1997</b>							
June	4 500	3 693	1 438	170	73	257	10 285
September	4 786	4 069	1 369	186	71	289	10 857
December	5 139	4 173	1 374	182	78	304	11 256
<b>1998</b>							
March	5 305	3 919	1 397	172	84	313	11 208
June	5 185	3 631	1 401	167	84	324	10 859
September	4 873	3 483	1 367	163	77	331	10 403

(a) For more information refer to paragraph 6 of the Explanatory Notes.

## RED MEAT PRODUCED(a), Mutton: All Series

	<i>New South Wales</i>	<i>Victoria</i>	<i>Queensland</i>	<i>South Australia</i>	<i>Western Australia</i>	<i>Tasmania</i>	<i>Australia</i>
<i>Quarter</i>	<i>tonnes</i>	<i>tonnes</i>	<i>tonnes</i>	<i>tonnes</i>	<i>tonnes</i>	<i>tonnes</i>	<i>tonnes</i>
ORIGINAL							
<b>1997</b>							
June	27 270	12 794	4 434	11 802	11 278	2 383	70 289
September	26 800	12 168	5 774	10 889	13 267	1 457	70 354
December	33 512	19 571	6 450	16 769	17 362	2 663	96 327
<b>1998</b>							
March	33 802	21 693	7 059	20 144	15 029	3 286	101 013
June	25 595	12 245	5 269	10 752	10 785	2 434	67 080
September	27 768	12 523	6 786	10 342	7 399	998	65 816
SEASONALLY ADJUSTED							
<b>1997</b>							
June	28 902	16 059	4 892	14 501	12 967	2 232	78 657
September	29 431	15 873	5 604	14 620	14 860	2 591	82 651
December	31 756	16 126	6 457	13 793	14 717	2 513	85 395
<b>1998</b>							
March	30 960	17 714	6 616	16 368	14 234	2 509	89 531
June	27 143	15 463	5 844	13 312	12 351	2 278	75 159
September	30 561	16 258	6 589	13 974	8 260	1 783	77 306
TREND ESTIMATES							
<b>1997</b>							
June	28 624	15 253	5 107	14 146	13 222	2 342	78 538
September	30 217	16 170	5 663	14 516	14 306	2 496	83 160
December	30 737	16 605	6 214	14 834	14 912	2 566	85 919
<b>1998</b>							
March	30 146	16 568	6 370	14 716	13 828	2 448	84 225
June	29 417	16 372	6 333	14 364	11 770	2 204	80 283
September	28 969	16 054	6 299	13 924	9 623	1 971	76 124

(a) For more information refer to paragraph 6 of the Explanatory Notes.

## RED MEAT PRODUCED(a), Lamb: All Series

	<i>New South Wales</i>	<i>Victoria</i>	<i>Queensland</i>	<i>South Australia</i>	<i>Western Australia</i>	<i>Tasmania</i>	<b>Australia</b>
<i>Quarter</i>	<i>tonnes</i>	<i>tonnes</i>	<i>tonnes</i>	<i>tonnes</i>	<i>tonnes</i>	<i>tonnes</i>	<i>tonnes</i>
ORIGINAL							
<b>1997</b>							
June	16 205	29 551	3 640	10 225	9 915	2 004	<b>72 574</b>
September	17 382	28 612	4 024	6 594	9 387	1 528	<b>67 526</b>
December	17 621	32 318	3 188	9 963	9 513	1 773	<b>74 376</b>
<b>1998</b>							
March	17 188	28 236	3 451	10 561	6 868	2 259	<b>68 563</b>
June	16 903	28 471	3 286	11 106	7 814	2 512	<b>70 092</b>
September	19 751	33 455	3 715	10 733	8 346	2 173	<b>78 174</b>
SEASONALLY ADJUSTED							
<b>1997</b>							
June	16 324	30 470	3 709	9 558	9 682	1 780	<b>73 666</b>
September	16 599	29 832	3 689	7 734	9 040	1 863	<b>68 866</b>
December	18 043	29 389	3 470	9 394	8 738	1 903	<b>70 307</b>
<b>1998</b>							
March	17 468	29 085	3 460	10 392	8 066	2 010	<b>70 245</b>
June	17 065	29 302	3 371	10 352	7 657	2 234	<b>71 048</b>
September	18 837	34 934	3 357	12 614	8 036	2 651	<b>79 794</b>
TREND ESTIMATES							
<b>1997</b>							
June	16 311	29 814	3 727	8 876	9 530	1 823	<b>71 092</b>
September	16 882	29 926	3 626	8 797	9 263	1 855	<b>70 759</b>
December	17 369	29 224	3 535	9 095	8 604	1 893	<b>69 614</b>
<b>1998</b>							
March	17 553	29 366	3 441	10 013	8 141	2 056	<b>70 483</b>
June	17 773	30 826	3 384	11 078	7 885	2 285	<b>73 374</b>
September	18 076	32 610	3 357	11 842	7 807	2 505	<b>76 219</b>

(a) For more information refer to paragraph 6 of the Explanatory Notes.

## RED MEAT PRODUCED(a), Pig Meat: All Series

	<i>New South Wales</i>	<i>Victoria</i>	<i>Queensland</i>	<i>South Australia</i>	<i>Western Australia</i>	<i>Tasmania</i>	<i>Australia</i>
<i>Quarter</i>	<i>tonnes</i>	<i>tonnes</i>	<i>tonnes</i>	<i>tonnes</i>	<i>tonnes</i>	<i>tonnes</i>	<i>tonnes</i>
ORIGINAL							
<b>1997</b>							
June	22 923	23 921	20 137	7 866	10 761	1 310	87 891
September	23 417	24 133	20 146	7 431	9 025	1 144	85 369
December	24 109	23 314	20 031	6 301	8 189	1 239	83 259
<b>1998</b>							
March	22 150	23 672	19 999	6 731	8 433	1 138	82 201
June	25 884	28 185	20 996	5 921	9 852	1 394	92 325
September	23 193	28 838	22 668	5 606	9 703	1 377	91 488
SEASONALLY ADJUSTED							
<b>1997</b>							
June	21 708	22 896	19 372	7 670	10 034	1 228	83 644
September	23 096	23 863	19 790	6 926	9 017	1 192	84 047
December	23 812	23 063	20 487	6 537	8 558	1 211	83 786
<b>1998</b>							
March	24 157	25 386	20 717	7 179	8 696	1 199	87 480
June	24 501	26 937	20 212	5 772	9 170	1 307	87 834
September	22 873	28 533	22 266	5 222	9 705	1 435	90 121
TREND ESTIMATES							
<b>1997</b>							
June	21 870	22 599	19 254	7 293	9 863	1 232	82 721
September	22 776	23 254	19 949	7 129	9 188	1 212	83 819
December	23 839	23 984	20 273	6 890	8 686	1 189	84 984
<b>1998</b>							
March	24 152	25 198	20 543	6 535	8 771	1 235	86 494
June	23 963	26 834	20 980	6 021	9 150	1 311	88 301
September	23 518	28 440	21 547	5 444	9 599	1 386	89 906

(a) For more information refer to paragraph 6 of the Explanatory Notes.

## TOTAL RED MEAT PRODUCED(a): All Series

	<i>New South Wales</i>	<i>Victoria</i>	<i>Queensland</i>	<i>South Australia</i>	<i>Western Australia</i>	<i>Tasmania</i>	<i>Australia</i>
<i>Quarter</i>	<i>tonnes</i>	<i>tonnes</i>	<i>tonnes</i>	<i>tonnes</i>	<i>tonnes</i>	<i>tonnes</i>	<i>tonnes</i>
ORIGINAL							
<b>1997</b>							
June	197 311	170 003	240 878	53 270	51 535	21 001	<b>741 802</b>
September	191 322	162 465	258 421	43 849	55 143	15 381	<b>731 623</b>
December	199 150	176 304	213 409	55 505	64 129	19 180	<b>729 439</b>
<b>1998</b>							
March	195 581	180 959	207 256	58 667	57 965	21 149	<b>721 943</b>
June	192 931	167 476	245 887	46 800	51 080	21 331	<b>730 676</b>
September	184 954	176 868	268 940	41 999	50 527	16 067	<b>746 182</b>
SEASONALLY ADJUSTED							
<b>1997</b>							
June	191 651	173 952	224 944	55 799	55 970	18 916	<b>730 918</b>
September	194 608	171 973	229 556	52 690	58 030	20 488	<b>731 387</b>
December	199 330	167 906	231 872	50 179	56 867	19 180	<b>724 450</b>
<b>1998</b>							
March	194 295	175 773	234 185	52 870	56 532	18 639	<b>736 475</b>
June	190 438	170 997	229 574	49 011	56 064	19 288	<b>718 783</b>
September	188 432	187 572	239 134	50 809	53 974	20 889	<b>746 459</b>
TREND ESTIMATES							
<b>1997</b>							
June	193 112	168 514	223 494	52 881	56 583	19 374	<b>720 108</b>
September	195 438	171 773	230 649	52 993	57 243	19 647	<b>731 840</b>
December	196 631	171 354	231 980	52 013	57 235	19 332	<b>730 819</b>
<b>1998</b>							
March	194 717	172 320	232 466	50 859	56 564	19 130	<b>728 402</b>
June	191 365	176 870	233 784	50 545	55 560	19 487	<b>731 602</b>
September	188 246	182 006	235 815	50 299	54 750	20 252	<b>736 452</b>

(a) For more information refer to paragraph 6 of the Explanatory Notes.

## CHICKEN MEAT PRODUCED(a): All Series

Quarter	New South Wales tonnes	Victoria tonnes	Queensland tonnes	South Australia tonnes	Western Australia tonnes	Australia tonnes
ORIGINAL						
<b>1997</b>						
June	51 823	30 622	21 397	10 269	11 052	<b>125 162</b>
September	54 333	35 791	22 252	n.p.	n.p.	<b>134 893</b>
December	53 847	38 193	22 657	n.p.	n.p.	<b>138 837</b>
<b>1998</b>						
March	51 361	38 887	22 588	n.p.	n.p.	<b>137 919</b>
June	54 016	38 458	21 962	n.p.	n.p.	<b>138 812</b>
September	55 143	39 643	22 193	n.p.	n.p.	<b>140 269</b>
SEASONALLY ADJUSTED						
<b>1997</b>						
June	52 405	31 509	22 001	10 196	11 342	<b>127 454</b>
September	54 051	35 808	22 070	n.p.	n.p.	<b>134 740</b>
December	53 485	37 064	22 071	n.p.	n.p.	<b>136 234</b>
<b>1998</b>						
March	51 423	38 899	22 735	n.p.	n.p.	<b>138 134</b>
June	54 609	39 766	22 625	n.p.	n.p.	<b>141 652</b>
September	54 782	39 578	21 968	n.p.	n.p.	<b>139 943</b>
TREND ESTIMATES						
<b>1997</b>						
June	52 030	32 649	21 658	10 375	11 285	<b>127 998</b>
September	53 207	34 725	22 114	n.p.	n.p.	<b>132 698</b>
December	53 228	37 252	22 385	n.p.	n.p.	<b>136 769</b>
<b>1998</b>						
March	53 075	38 728	22 484	n.p.	n.p.	<b>138 796</b>
June	53 677	39 480	22 463	n.p.	n.p.	<b>140 126</b>
September	54 645	39 926	22 289	n.p.	n.p.	<b>141 028</b>

(a) For more information refer to paragraphs 8 and 9 of the Explanatory Notes.



## MEAT PRODUCED(a): Original

<i>Financial year</i>	<i>New South Wales</i> tonnes	<i>Victoria</i> tonnes	<i>Queensland</i> tonnes	<i>South Australia</i> tonnes	<i>Western Australia</i> tonnes	<i>Tasmania</i> tonnes	<i>Australia</i> tonnes
BEEF							
<b>1995-96</b>	458 209	348 649	655 664	89 704	94 859	45 377	<b>1 710 922</b>
<b>1996-97</b>	471 231	373 818	687 802	85 478	91 369	51 723	<b>1 777 702</b>
<b>1997-98</b>	473 801	388 958	799 779	80 924	102 482	53 064	<b>1 910 978</b>
VEAL							
<b>1995-96</b>	16 273	12 009	3 854	396	213	875	<b>33 774</b>
<b>1996-97</b>	16 444	14 293	5 579	514	319	907	<b>38 140</b>
<b>1997-98</b>	20 821	15 627	5 520	734	312	1 149	<b>44 216</b>
MUTTON							
<b>1995-96</b>	121 376	50 910	14 161	55 600	57 428	7 414	<b>309 577</b>
<b>1996-97</b>	109 198	55 545	19 646	51 778	52 164	8 170	<b>298 473</b>
<b>1997-98</b>	119 709	65 677	24 552	58 554	56 442	9 841	<b>334 774</b>
LAMB							
<b>1995-96</b>	62 648	110 172	12 584	37 735	28 139	7 407	<b>264 721</b>
<b>1996-97</b>	67 174	111 403	14 348	34 890	35 701	6 876	<b>275 054</b>
<b>1997-98</b>	69 094	117 637	13 949	38 224	33 581	8 072	<b>280 557</b>
PIG MEAT							
<b>1995-96</b>	95 788	83 052	77 696	31 695	35 341	5 634	<b>333 967</b>
<b>1996-97</b>	88 753	85 872	73 809	29 842	38 837	4 934	<b>325 914</b>
<b>1997-98</b>	95 559	99 304	81 172	26 384	35 499	4 916	<b>343 155</b>
TOTAL RED MEAT							
<b>1995-96</b>	754 293	604 792	763 960	215 131	215 979	66 707	<b>2 652 960</b>
<b>1996-97</b>	752 800	640 931	801 184	202 501	218 390	72 610	<b>2 715 283</b>
<b>1997-98</b>	778 984	687 203	924 972	204 821	228 317	77 041	<b>2 913 680</b>
CHICKEN MEAT							
<b>1995-96</b>	199 152	127 736	71 607	37 691	44 358	n.p.	<b>480 544</b>
<b>1996-97</b>	200 277	129 930	80 485	38 932	46 789	n.p.	<b>496 414</b>
<b>1997-98</b>	213 557	151 329	89 460	n.p.	n.p.	n.p.	<b>550 461</b>

(a) For more information refer to paragraphs 5 to 9 of the Explanatory Notes.

## STOCKS OF FROZEN MEAT, Australia(a): Original

<i>At last Saturday of quarter</i>	<i>Beef and Veal</i>	<i>Mutton</i>	<i>Lamb</i>	<i>Pork</i>	<i>Goat</i>	<i>Offal</i>	<i>Total</i>
	<i>tonnes</i>	<i>tonnes</i>	<i>tonnes</i>	<i>tonnes</i>	<i>tonnes</i>	<i>tonnes</i>	<i>tonnes</i>
<b>1997</b>							
March	22 353	3 952	3 327	1 646	14	5 777	37 069
June	24 732	3 839	3 348	1 758	28	5 760	39 465
September	24 215	4 057	3 726	2 692	58	4 475	39 222
December	22 887	4 695	3 196	1 958	116	4 190	37 042
<b>1998</b>							
March	23 875	5 392	2 556	2 257	379	4 605	39 064
June	23 333	4 459	1 924	3 803	730	4 255	38 504

(a) For more information refer to paragraph 10 of the Explanatory Notes.

Source: Department of Agriculture, Fisheries and Forestry (formerly Primary Industries and Energy).

## EXPORTS OF FRESH FROZEN AND PROCESSED MEAT, Australia(a): Original

Period	FRESH, CHILLED OR FROZEN MEAT.....									MEAT.....	
	<i>Beef bone -in</i>	<i>Beef bone -out</i>	<i>Veal bone -in</i>	<i>Veal bone -out</i>	<i>Mutton bone -in</i>	<i>Mutton bone -out</i>	<i>Lamb bone -in</i>	<i>Lamb bone -out</i>	<i>Pork</i>	<i>Bacon and ham</i>	<i>Canned meat</i>
	tonnes	tonnes	tonnes	tonnes	tonnes	tonnes	tonnes	tonnes	tonnes	tonnes	tonnes
<b>1995-96</b>	50 729	702 633	1 697	5 348	80 980	64 266	46 291	7 756	5 656	359	9 086
<b>1996-97</b>	48 603	692 105	1 172	3 761	92 744	50 834	53 533	8 350	6 674	320	11 728
<b>1997-98</b>	46 934	795 925	1 800	5 547	107 824	59 090	62 163	8 750	12 261	149	12 897
<b>1997</b>											
June	8 256	203 868	303	994	23 714	12 184	16 204	2 057	2 340	53	3 041
September	17 405	198 029	436	1 767	19 375	13 887	13 330	1 883	3 177	24	3 489
December	18 447	202 639	413	1 485	29 862	19 795	17 391	2 326	2 783	52	3 692
<b>1998</b>											
March	4 744	183 450	342	851	32 587	14 054	14 847	2 274	2 595	48	2 796
June	6 338	211 807	609	1 444	26 000	11 354	16 595	2 267	3 706	25	2 920
September	7 919	220 342	397	2 123	20 610	11 473	15 914	2 253	3 143	104	3 650

(a) For more information refer to paragraph 11 and 12 of the Explanatory Notes.

## EXPORTS OF LIVE SHEEP AND CATTLE, Australia(a): Original

	<i>Number</i>	<i>Gross weight</i>	<i>Gross value</i>	<i>Unit value</i>
<i>Period</i>	'000	'000 tonnes	\$'000	\$
SHEEP				
<b>1995-96</b>	5 879.9	296.9	226 913	38.59
<b>1996-97</b>	5 237.2	269.8	189 944	36.27
<b>1997-98</b>	4 961.1	256.0	193 266	38.96
<b>1997</b>				
June	986.9	48.3	37 443	37.94
September	1 287.3	65.6	49 344	38.33
December	1 213.1	64.7	47 093	38.82
<b>1998</b>				
March	1 278.1	66.4	48 611	38.03
June	1 182.5	59.4	48 219	40.78
September	978.8	50.3	35 680	36.45
CATTLE				
<b>1995-96</b>	615.9	219.0	343 699	558.07
<b>1996-97</b>	863.8	313.9	427 721	495.19
<b>1997-98</b>	691.0	254.0	332 742	481.54
<b>1997</b>				
June	288.4	106.6	145 760	505.44
September	253.2	92.4	126 078	497.92
December	172.3	62.5	83 474	484.52
<b>1998</b>				
March	130.6	51.2	64 819	496.16
June	134.9	47.9	58 372	432.80
September	131.9	47.0	58 498	443.57

(a) For more information refer to paragraph 13 of the Explanatory Notes.

## WHOLE MILK INTAKE, By Factories(a): All Series

	<i>New South Wales</i>	<i>Victoria</i>	<i>Queensland</i>	<i>South Australia</i>	<i>Western Australia</i>	<i>Tasmania</i>	<i>Australia</i>
<i>Quarter</i>	<i>ML</i>	<i>ML</i>	<i>ML</i>	<i>ML</i>	<i>ML</i>	<i>ML</i>	<i>ML</i>
ORIGINAL							
<b>1997</b>							
March	294	1 388	199	126	82	152	2 241
June	271	791	187	114	88	81	1 532
September	313	1 344	213	142	101	86	2 199
December	355	2 268	221	176	96	238	3 354
<b>1998</b>							
March	296	1 417	197	134	89	146	2 280
June	278	837	191	128	100	73	1 606
SEASONALLY ADJUSTED							
<b>1997</b>							
March	300	1 397	199	139	89	134	2 259
June	303	1 431	205	137	90	140	2 306
September	312	1 490	210	137	92	139	2 380
December	316	1 460	206	144	95	142	2 362
<b>1998</b>							
March	302	1 430	198	149	97	130	2 306
June	310	1 510	209	153	103	125	2 410
TREND ESTIMATES							
<b>1997</b>							
March	301	1 407	201	136	89	133	2 267
June	306	1 442	205	137	91	138	2 320
September	310	1 458	207	139	92	141	2 347
December	311	1 463	205	143	95	138	2 354
<b>1998</b>							
March	309	1 465	204	148	98	132	2 357
June	307	1 475	204	153	101	127	2 368

(a) For more information refer to paragraph 14 of the Explanatory Notes.

Source: Original series data from Australian Dairy Corporation.

## MARKET MILK SALES, By Factories(a): All Series

	New South Wales	Victoria	Queensland	South Australia	Western Australia	Tasmania	Australia
Quarter	ML	ML	ML	ML	ML	ML	ML
ORIGINAL							
<b>1997</b>							
March	141	108	92	42	48	12	443
June	144	114	94	45	48	13	459
September	154	112	97	44	47	12	467
December	149	111	94	46	47	12	459
<b>1998</b>							
March	141	107	93	45	47	12	445
June	146	112	96	47	48	12	461
SEASONALLY ADJUSTED							
<b>1997</b>							
March	144	111	93	42	48	12	451
June	142	112	94	45	48	12	454
September	153	111	95	45	47	12	463
December	150	111	94	45	48	12	460
<b>1998</b>							
March	144	110	94	45	47	12	453
June	144	110	96	47	48	12	456
TREND ESTIMATES							
<b>1997</b>							
March	143	112	94	44	48	12	453
June	146	112	94	44	48	12	456
September	149	111	94	45	47	12	459
December	149	111	94	45	47	12	459
<b>1998</b>							
March	146	110	95	46	47	12	457
June	143	110	95	46	48	12	455

(a) For more information refer to paragraph 14 of the Explanatory Notes.

Source: Original series data from Australian Dairy Corporation.

## BROKERS AND DEALERS RECEIVALS OF TAXABLE WOOL(a): All Series

Quarter	New South Wales	Victoria	Queensland	South Australia	Western Australia	Tasmania	Australia	% of total received by brokers
	tonnes	tonnes	tonnes	tonnes	tonnes	tonnes	tonnes	tonnes
ORIGINAL								
<b>1997</b>								
June	40 603	24 944	14 702	17 073	26 626	3 671	<b>127 618</b>	80.5
September	57 952	42 188	15 272	27 233	45 291	4 533	<b>192 470</b>	82.1
December	54 215	62 062	8 143	28 876	44 340	6 737	<b>204 374</b>	81.0
<b>1998</b>								
March	36 840	27 400	10 342	17 196	41 001	2 959	<b>135 738</b>	83.8
June	34 226	20 757	12 147	14 468	23 253	3 035	<b>107 886</b>	80.5
September	55 834	39 374	13 999	28 651	39 754	4 215	<b>181 827</b>	80.3
SEASONALLY ADJUSTED								
<b>1997</b>								
June	54 900	45 937	13 256	26 742	43 684	4 836	<b>189 355</b>	..
September	46 765	39 377	11 487	21 351	35 785	4 498	<b>159 262</b>	..
December	46 207	38 834	11 969	22 730	41 185	4 512	<b>165 437</b>	..
<b>1998</b>								
March	43 529	35 342	11 744	21 275	39 173	4 107	<b>155 170</b>	..
June	46 198	38 314	10 955	22 564	37 423	3 988	<b>159 442</b>	..
September	45 215	36 802	10 538	22 857	31 617	4 166	<b>151 195</b>	..
TREND ESTIMATES								
<b>1997</b>								
June	50 562	43 565	12 093	24 132	40 420	4 613	<b>175 386</b>	..
September	48 799	40 955	12 183	23 248	39 811	4 589	<b>169 585</b>	..
December	46 073	38 199	11 924	22 136	39 574	4 406	<b>162 312</b>	..
<b>1998</b>								
March	44 772	36 984	11 490	21 835	38 688	4 185	<b>157 954</b>	..
June	45 107	36 991	11 107	22 341	36 603	4 081	<b>156 230</b>	..
September	45 355	37 080	10 627	22 616	33 624	4 052	<b>153 354</b>	..

(a) For more information refer to paragraphs 15 and 16 of the Explanatory Notes.

## LIVESTOCK PRODUCTS: Original

Financial year	New South Wales	Victoria	Queensland	South Australia	Western Australia	Tasmania	Australia
WHOLE MILK INTAKE BY FACTORIES (ML)(a)							
<b>1995-96</b>	1 115	5 482	751	513	342	514	<b>8 716</b>
<b>1996-97</b>	1 192	5 622	797	535	349	529	<b>9 024</b>
<b>1997-98</b>	1 242	5 866	822	580	386	543	<b>9 438</b>
MARKET MILK SALES BY FACTORIES (ML)(a)							
<b>1995-96</b>	611	456	372	163	187	50	<b>1 840</b>
<b>1996-97</b>	576	452	376	173	193	50	<b>1 820</b>
<b>1997-98</b>	591	442	379	182	190	49	<b>1 833</b>
BROKERS AND DEALERS RECEIVALS OF TAXABLE WOOL (Tonnes)(a)							
<b>1995-96</b>	170 306	161 388	44 639	87 764	165 979	15 997	<b>646 073</b>
<b>1996-97</b>	196 032	174 978	45 850	89 590	160 021	18 877	<b>685 347</b>
<b>1997-98</b>	183 233	152 407	45 905	87 774	153 884	17 264	<b>640 468</b>

(a) For more information refer to paragraphs 14 to 16 of the Explanatory Notes.

Source: Original series data from Australian Dairy Corporation.



# WHAT IF...? REVISIONS TO TREND ESTIMATES

## EFFECT OF NEW SEASONALLY ADJUSTED ESTIMATES ON TREND ESTIMATES

Each time new seasonally adjusted estimates become available, trend estimates are revised (see paragraph 21 of the Explanatory Notes).

### TREND REVISIONS

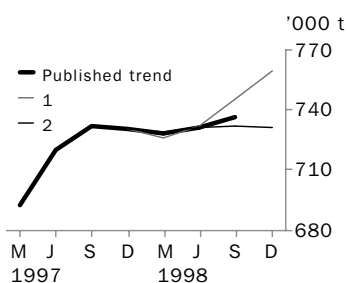
The graphs and tables which follow present the effect of two possible new seasonally adjusted estimates on the previous trend estimates:

**1** The December Quarter 1998 seasonally adjusted estimate is higher than the September Quarter 1998 estimate by the percentage shown.

**2** The December Quarter 1998 seasonally adjusted estimate is lower than the September Quarter 1998 estimate by the percentage shown.

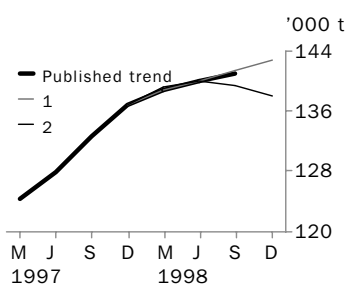
These percentages were chosen because they represent the average absolute quarterly percentage change for these series over the last ten years.

### RED MEAT PRODUCTION



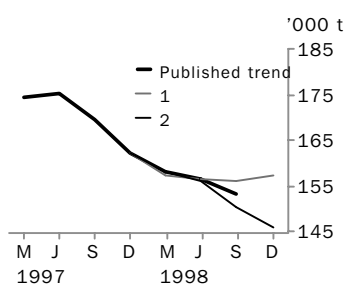
	TREND AS PUBLISHED		WHAT IF NEXT QUARTER'S SEASONALLY ADJUSTED ESTIMATE:			
	number	% change	<b>1</b> <i>rises by 3% on Sep Qtr 1998</i>		<b>2</b> <i>falls by 3% on Sep Qtr 1998</i>	
	number	% change	number	% change	number	% change
Sep Qtr 1997	731 840	1.6	731 840	1.6	731 840	1.6
Dec Qtr 1997	730 819	-0.1	730 819	-0.1	730 819	-0.1
Mar Qtr 1998	728 402	-0.3	726 459	-0.6	729 090	-0.2
Jun Qtr 1998	731 602	0.4	732 287	0.8	731 274	0.3
Sep Qtr 1998	736 452	0.7	745 131	1.8	732 414	0.2
Dec Qtr 1998	—	—	759 551	1.9	731 310	-0.2

### CHICKEN MEAT PRODUCTION



	TREND AS PUBLISHED		WHAT IF NEXT QUARTER'S SEASONALLY ADJUSTED ESTIMATE:			
	number	% change	<b>1</b> <i>rises by 4% on Sep Qtr 1998</i>		<b>2</b> <i>falls by 4% on Sep Qtr 1998</i>	
	number	% change	number	% change	number	% change
Sep Qtr 1997	132 698	3.7	132 698	3.7	132 698	3.7
Dec Qtr 1997	136 769	3.1	136 769	3.1	136 769	3.1
Mar Qtr 1998	138 796	1.5	138 832	1.5	139 243	1.8
Jun Qtr 1998	140 126	1.0	140 132	0.9	139 989	0.5
Sep Qtr 1998	141 028	0.6	141 493	1.0	139 516	-0.3
Dec Qtr 1998	—	—	142 715	0.9	138 026	-1.1

### WOOL RECEIVALS



	TREND AS PUBLISHED		WHAT IF NEXT QUARTER'S SEASONALLY ADJUSTED ESTIMATE:			
	number	% change	<b>1</b> <i>rises by 9% on Sep Qtr 1998</i>		<b>2</b> <i>falls by 9% on Sep Qtr 1998</i>	
	number	% change	number	% change	number	% change
Sep Qtr 1997	169 585	-3.3	169 585	-3.3	169 585	-3.3
Dec Qtr 1997	162 312	-4.3	162 312	-4.3	162 312	-4.3
Mar Qtr 1998	157 954	-2.7	157 113	-3.2	158 232	-2.5
Jun Qtr 1998	156 230	-1.1	156 401	-0.5	155 913	-1.5
Sep Qtr 1998	153 354	-1.8	155 866	-0.3	150 425	-3.5
Dec Qtr 1998	—	—	157 271	0.9	145 985	-3.0

# WHAT IF...? REVISIONS TO TREND ESTIMATES

## EFFECT OF NEW SEASONALLY ADJUSTED ESTIMATES ON TREND ESTIMATES

Readers should exercise care when interpreting trend estimates. The last three trend estimates, in particular, are likely to be revised when new seasonally adjusted estimates become available.

### TREND REVISIONS

The graph and table which follow present the effect of two possible scenarios on the previous trend estimates:

**1** The September Quarter 1998 seasonally adjusted estimate is higher than the June Quarter 1998 estimate by:

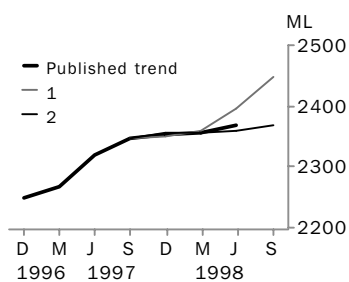
- +2% for whole milk intake by factories.

**2** The September Quarter 1998 seasonally adjusted estimate is lower than the June Quarter 1998 estimate by:

- 2% for whole milk intake by factories.

These percentages were chosen because they represent the average absolute quarterly percentage change for these series over the last ten years.

### WHOLE MILK INTAKE BY FACTORIES



	TREND AS PUBLISHED		WHAT IF NEXT QUARTER'S SEASONALLY ADJUSTED ESTIMATE:			
	number	% change	<b>1</b> <i>rises by 2% on Jun Qtr 1998</i>		<b>2</b> <i>falls by 2% on Jun Qtr 1998</i>	
	number	% change	number	% change	number	% change
Jun Qtr 1997	2 320	2.3	2 320	2.3	2 320	2.3
Sep Qtr 1997	2 347	1.2	2 347	1.2	2 347	1.2
Dec Qtr 1997	2 354	0.3	2 350	0.1	2 357	0.5
Mar Qtr 1998	2 357	0.1	2 359	0.4	2 356	-0.1
Jun Qtr 1998	2 368	0.5	2 396	1.6	2 360	0.2
Sep Qtr 1998	—	—	2 449	2.2	2 367	0.3

## EXPLANATORY NOTES

### INTRODUCTION

- 1** This publication contains information on livestock slaughterings, meat production, stocks of frozen meat, exports of live sheep and live cattle, exports of fresh, frozen and processed meat, and whole milk intake by factories, market milk sales by factories and receipts of taxable wool by wool brokers and dealers.
- 2** The figures shown in this publication have been revised where necessary and as a consequence may not agree with similar data shown in previous publications.
- 3** Where figures have been rounded, discrepancies may occur between sums of the component items and totals.
- 4** Unless indicated otherwise, Australian totals include data for all States and both Territories.

### LIVESTOCK SLAUGHTERINGS AND MEAT PRODUCTION

- 5** The statistics on slaughterings and meat production (apart from poultry) are based on a monthly collection from abattoirs and other major slaughtering establishments and include estimates of animals slaughtered on farms and by country butchers and other small slaughtering establishments.
- 6** Cattle slaughterings in the Australian Capital Territory and the Northern Territory (including domesticated buffaloes) and the respective meat produced, are included in the Australian totals in tables 1–9 and 11. Red meat is shown in carcass weight and excludes offal.
- 7** Care should be taken when using this information as the figures only relate to slaughterings for human consumption and do not include animals condemned or those killed for boiling down.
- 8** Poultry slaughterings and meat produced statistics have been compiled from quarterly returns supplied by commercial poultry slaughtering establishments and comprise boilers, fryers and roasters. Many small producers are excluded from the collection; however, the statistics represent a high level of coverage. Tasmanian data are excluded from the Australian total.
- 9** Chicken meat is shown in dressed weight of whole birds, pieces and giblets. Some slaughterings and meat production statistics for ‘Ducks and Drakes’ and ‘Other Fowls and Turkeys’ are available by contacting the ABS on Hobart 03 6222 5844 or by writing to GPO Box 66a, Hobart TAS 7001 (Attention: Agriculture Section).

### STOCKS OF FROZEN MEAT

- 10** Table 20 shows stocks of frozen meat held in cold stores registered to handle meat for export and includes meat passed for export, canning and other purposes. It also includes boneless and carcass meat. Buffalo meat is included in beef (Source: Department of Agriculture, Fisheries and Forestry (formerly Primary Industries and Energy)).

### EXPORTS OF FRESH, FROZEN AND PROCESSED MEAT

- 11** Table 21 shows exports of fresh, frozen and processed meat, excluding offal. Factors can be applied to beef, veal, mutton and lamb bone-out figures to derive bone-in carcass weight which, when added to bone-in figures, shows total exports in carcass weight. The factor for beef and veal is 1.5 and for mutton and lamb, 2.0 (Source: Department of Agriculture, Fisheries and Forestry (formerly Primary Industries and Energy)).
- 12** Beef also includes buffalo meat. Bacon and ham shown is the cured carcass weight of smoked or cooked bacon and ham. It also includes the stated net weight of packs of canned bacon and ham. Canned meat is shown as the canned weight and excludes canned bacon and ham.

## EXPLANATORY NOTES

- LIVE SHEEP AND CATTLE EXPORTS **13** These tables contain statistics of the number of live sheep and cattle exported, the gross weight, gross value and unit value. The unit value is obtained by dividing the gross value by the number of animals exported. Sheep and cattle exported for breeding are excluded.
- MILK **14** Tables 2, 23, 24 and 26 contain statistics collected by the Australian Dairy Corporation (ADC). Whole milk intake by factories includes the whole milk equivalent of farm cream intake. Market milk sales includes white, flavoured, high and low fat milk and uht milk.
- WOOL RECEIVALS **15** The statistics in Tables 25 and 26 show the amount of taxable wool received by brokers and purchased by dealers from wool producers. It excludes wool received by brokers on which tax has already been paid by other dealers (private buyers) or brokers.
- 16** The information shown is on the basis of the State in which wool has actually been received and does not necessarily reflect the production of wool in that State.
- SEASONAL ADJUSTMENT **17** Seasonal adjustment is a means of removing the estimated effects of normal seasonal variation from the series so that the effects of other influences can be more clearly recognised.
- 18** In the seasonal adjustment of the livestock estimates, account has been taken of both normal seasonal factors and 'trading-day' effects, where significant, (arising from the varying length of each quarter and the varying numbers of Sundays, Mondays, Tuesdays etc. in the quarter). Adjustments are also made for the effects of change in the date of Easter holidays, again, where significant. Seasonal adjustment does not remove from the series the effect of irregular influences (e.g. abnormal weather, industrial disputes).
- 19** The State component series have been seasonally adjusted independently. Therefore, the adjusted components may not add to the Australian Group totals.
- 20** As happens with all seasonally adjusted series, the seasonal factors are reviewed annually to take account of each additional year's data.
- TREND ESTIMATES **21** A trend estimate is obtained by reducing the irregular component from the seasonally adjusted series. In this publication trend estimates are generally derived by applying a seven term Henderson moving average to the seasonally adjusted series. The seven term Henderson, (like all Henderson averages) is symmetric, but as the end of a time series is approached, asymmetric forms of the average are applied. Unlike the weights of the standard seven term Henderson moving average, the weights employed here have been tailored to suit the particular characteristics of individual series. While the asymmetric weights enable the trend to be calculated for recent quarters, it does result in revisions to the estimates for the most recent three quarters as additional observations become available. Revisions of trend estimates will also occur with revisions to the original data and re-estimation of seasonal factors.
- 22** Sensitivity analysis indicates the potential magnitude and direction of revisions created to the last three estimates. It aims to show how a specified movement in the seasonally adjusted data in the next period will affect the trend path of the time series. By showing how sensitive the trend estimates are to the addition of new data, the analysis provides information which can be used in the assessment of the trend's stability.

## EXPLANATORY NOTES

---

**23** For further information, see *A Guide to Interpreting Time Series – Monitoring ‘Trends’, an Overview* (Cat. no. 1348.0) or contact the Assistant Director, Time Series Analysis on 02 6252 6345.

### RELATED PUBLICATIONS

**24** Current publications produced by the ABS are listed in the Catalogue of Publications and Products, Australia (Cat. no. 1101.0). The ABS also issues, on Tuesdays and Fridays, a Release Advice (Cat. no. 1105.0) which lists publications to be released in the next few days. The Catalogue and Release Advice are available from any ABS office.

### SYMBOLS AND OTHER USAGES

billion thousand million  
ML million litres  
n.a. not available  
n.p. not published  
p preliminary  
t tonnes  
. . not applicable





## SELF-HELP ACCESS TO STATISTICS

*PHONE* Call 1900 986 400 for the latest statistics on CPI, Labour Force, Earnings, National Accounts, Balance of Payments and other topics (call cost is 75c per minute).

*INTERNET* <http://www.abs.gov.au>

*LIBRARY* A range of ABS publications is available from public and tertiary libraries Australia wide. Contact your nearest library to determine whether it has the ABS statistics you require.

## WHY NOT SUBSCRIBE?

*PHONE* +61 1300 366 323

*FAX* +61 03 9615 7848

## CONTACTING THE ABS

ABS provides a range of services, including: a telephone inquiry service; information consultancy tailored to your needs; survey, sample and questionnaire design; survey evaluation and methodological reviews; and statistical training.

<i>INQUIRIES</i>	<i>By phone</i>	<i>By fax</i>
Canberra	02 6252 6627	02 6253 1404
Sydney	02 9268 4611	02 9268 4668
Melbourne	03 9615 7755	03 9615 7798
Brisbane	07 3222 6351	07 3222 6283
Perth	08 9360 5140	08 9360 5955
Adelaide	08 8237 7100	08 8237 7566
Hobart	03 6222 5800	03 6222 5995
Darwin	08 8943 2111	08 8981 1218

*POST* Client Services, ABS, PO Box 10, Belconnen, ACT 2616

*EMAIL* [client.services@abs.gov.au](mailto:client.services@abs.gov.au)



2721500009987

ISSN 0728-4047

RRP \$18.50

© Commonwealth of Australia 1998

Produced by the Australian Bureau of Statistics