



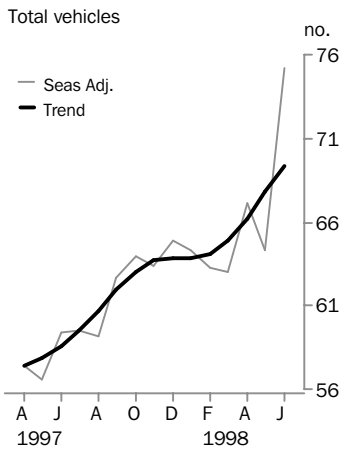
# NEW MOTOR VEHICLE REGISTRATIONS

AUSTRALIA  
PRELIMINARY

EMBARGO: 11:30AM (CANBERRA TIME) FRI 31 JUL 1998

## JUNE KEY FIGURES

### New vehicle registrations



### TREND ESTIMATES

	Jun 98	monthly % change	annual % change
Total new motor vehicle registrations	69 352	2.3	18.5
Passenger vehicles	58 719	2.6	18.7
Other vehicles	10 634	1.0	17.7

### SEASONALLY ADJUSTED

	Jun 98	monthly % change	annual % change
Total new motor vehicle registrations	75 175	16.9	26.5
Passenger vehicles	64 108	17.9	28.0
Other vehicles	11 067	11.3	18.8

### ORIGINAL ESTIMATES

	Jun 98	monthly % change	annual % change
Total new motor vehicle registrations	88 065	35.4	30.1
Passenger vehicles	73 184	35.1	31.7
Other vehicles	14 881	36.9	22.7

## JUNE KEY POINTS

### TREND ESTIMATES

- The trend for total new motor vehicle registrations has risen this month by 2.3%. Registrations of passenger vehicles in June 1998 rose by 2.6% and other vehicles rose by 1.0% compared with last month.

**TAKE CARE!**  
Trend estimates are revised as new monthly data become available.

### SEASONALLY ADJUSTED ESTIMATES

- Seasonally adjusted total new motor vehicle registrations for June 1998 increased by 16.9% compared with last month. Passenger vehicle registrations increased by 17.9% to reach the highest level ever.

### ORIGINAL ESTIMATES

- Total registrations of new motor vehicles for June 1998 increased by 35.4% compared with May 1998. June 1998 registrations are the highest level ever reported. Passenger vehicles rose by 35.1% and other vehicles rose by 36.9%. High registrations in June can be mainly attributed to sales promotions and end of financial year discounting.

- For further information about these and related statistics, contact Clare O'Loughlin on 07 3222 6180, or any ABS Office.

# NOTES

## FORTHCOMING ISSUES

ISSUE	RELEASE DATE
July 1998	28 August 1998
August 1998	25 September 1998
September 1998	30 October 1998



## CHANGES IN THIS ISSUE

Table 4 now presents the top 7 passenger vehicle makes in order of total registrations. Within each make the top 3 models are shown.



## TREND REVISIONS

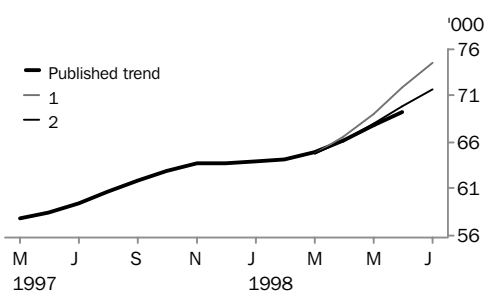
The most recent trend estimates are likely to be revised when new seasonally adjusted estimates become available.

The graph below presents the effect of two possible scenarios on the previous trend estimates:

- 1** The July seasonally adjusted estimate for total vehicle registrations is higher than the June seasonally adjusted estimate by 4.5%.
- 2** The July seasonally adjusted estimate for total vehicle registrations is lower than the June seasonally adjusted estimate by -4.5%.

The percentage change of 4.5% was chosen because the average absolute percentage change, based on the last 11 years, has been 4.5%.

**TAKE CARE!**  
Trend estimates are revised as new monthly data become available.



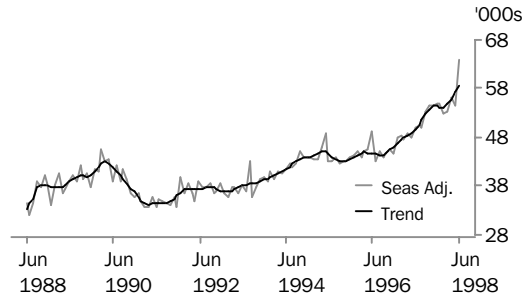
W. McLennan  
Australian Statistician

# VEHICLE REGISTRATIONS BY TYPE(a)

## SEASONALLY ADJUSTED AND TREND

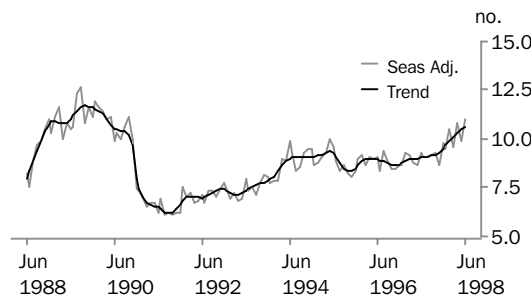
### PASSENGER VEHICLES

The trend has risen consecutively over the past 5 months. It is now 8.4% above the January 1998 low and 35.6% above the low recorded in October 1995.



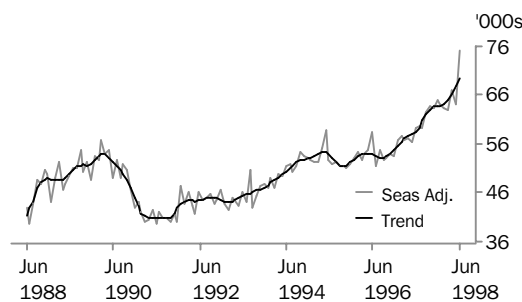
### OTHER VEHICLES

Since the November 1996 low, the trend for other motor vehicle registrations has risen consecutively over the past 19 months. The current trend is still 9.2% below the October 1989 high despite the recent rise.



### TOTAL VEHICLES (EXCLUDING MOTOR CYCLES)

The trend for total new motor vehicle registrations has risen consecutively over the past 21 months. The current trend level is the highest ever reported.



(a) A break in series occurred in December 1990—see paragraph 2 of Explanatory Notes.

## NEW MOTOR VEHICLES, Registrations By Type: All series(a)

<i>Month</i>	<i>Passenger vehicles</i>	<i>Other vehicles</i>	<i>Total</i>
ORIGINAL			
<b>1997</b>			
April	47 959	9 162	57 121
May	48 932	9 689	58 621
June	55 551	12 126	67 677
July	52 302	9 800	62 102
August	49 235	8 348	57 583
September	53 726	8 789	62 515
October	57 471	9 180	66 651
November	52 945	8 521	61 466
December	58 252	9 675	67 927
<b>1998</b>			
January	44 164	7 163	51 327
February	50 794	9 424	60 218
March	57 735	10 567	68 302
April	50 735	9 912	60 647
May	54 185	10 868	65 053
June	73 184	14 881	88 065
SEASONALLY ADJUSTED			
<b>1997</b>			
April	48 656	8 738	57 394
May	47 915	8 685	56 600
June	50 096	9 319	59 415
July	50 414	9 094	59 508
August	50 076	9 082	59 158
September	53 465	9 230	62 695
October	54 573	9 328	63 901
November	54 708	8 700	63 408
December	55 012	9 839	64 852
<b>1998</b>			
January	54 762	9 503	64 265
February	52 813	10 492	63 305
March	53 351	9 617	62 968
April	56 294	10 828	67 123
May	54 372	9 940	64 312
June	64 108	11 067	75 175
TREND ESTIMATES			
<b>1997</b>			
April	48 475	8 983	57 459
May	48 879	9 013	57 892
June	49 486	9 038	58 525
July	50 400	9 068	59 468
August	51 614	9 092	60 706
September	52 855	9 139	61 994
October	53 807	9 200	63 007
November	54 364	9 317	63 681
December	54 359	9 494	63 853
<b>1998</b>			
January	54 148	9 713	63 861
February	54 160	9 938	64 098
March	54 739	10 153	64 891
April	55 841	10 345	66 186
May	57 237	10 524	67 760
June	58 719	10 634	69 352

(a) Trend estimates for December 1997 to May 1998 have been revised.

## NEW MOTOR VEHICLES, Registrations By Type: Original

Month	Passenger vehicles	Light commercial vehicles	Rigid trucks	Articulated trucks	Non-freight carrying trucks	Buses	Total (excludes motor cycles)	Motor cycles
<b>1997</b>								
April	47 959	7 567	886	298	58	353	57 121	1 868
May	48 932	8 067	897	276	96	353	58 621	2 111
June	55 551	10 474	914	302	68	368	67 677	1 745
July	52 302	8 091	978	355	88	288	62 102	1 914
August	49 235	6 672	935	306	131	304	57 583	2 021
September	53 726	7 172	881	308	140	288	62 515	2 101
October	57 471	7 311	952	425	151	341	66 651	2 850
November	52 945	6 927	891	328	120	255	61 466	2 452
December	58 252	7 926	1 019	351	103	276	67 927	2 549
<b>1998</b>								
January	44 164	6 068	562	197	42	294	51 327	2 181
February	50 794	7 909	859	270	77	309	60 218	2 231
March	57 735	8 800	994	354	85	334	68 302	2 123
April	50 735	8 153	1 003	341	105	310	60 647	2 185
May	54 185	9 031	1 038	353	101	345	65 053	2 013
June	73 184	12 685	1 273	418	102	403	88 065	2 171

## NEW MOTOR VEHICLES, Registrations By State: All series(a)

Month	New South Wales	Victoria	Queensland	South Australia	Western Australia	Tasmania	Northern Territory	Australian Capital Territory	Australia
ORIGINAL									
<b>1997</b>									
April	19 916	14 167	10 521	3 716	5 886	1 047	852	1 016	57 121
May	20 717	14 508	10 546	3 640	6 164	1 211	773	1 062	58 621
June	24 181	14 948	13 961	4 439	6 728	1 128	873	1 419	67 677
July	20 470	15 483	12 345	3 896	6 489	1 476	664	1 279	62 102
August	18 647	15 249	10 749	3 876	5 937	1 314	589	1 222	57 583
September	21 330	15 552	11 712	4 174	6 297	1 503	632	1 315	62 515
October	21 813	17 462	11 998	4 335	7 489	1 387	712	1 455	66 651
November	21 056	15 252	11 265	4 199	6 533	1 108	619	1 434	61 466
December	21 879	17 038	13 152	4 483	6 977	2 153	644	1 601	67 927
<b>1998</b>									
January	17 342	12 273	9 884	3 366	5 862	925	574	1 101	51 327
February	20 840	14 996	11 176	3 980	6 290	1 007	641	1 288	60 218
March	23 659	17 029	12 646	4 348	6 959	1 224	873	1 564	68 302
April	20 571	14 962	11 760	4 063	6 190	1 033	750	1 318	60 647
May	22 357	16 074	11 489	4 379	7 456	1 242	784	1 272	65 053
June	29 143	21 014	18 552	5 762	8 976	1 600	1 212	1 806	88 065
SEASONALLY ADJUSTED									
<b>1997</b>									
April	19 831	13 926	10 348	3 936	6 178	1 265	829	1 081	57 394
May	19 694	13 977	10 362	3 637	5 961	1 260	660	1 049	56 600
June	20 706	13 556	11 910	3 951	6 203	1 200	674	1 216	59 415
July	20 141	14 622	11 372	3 766	6 379	1 381	635	1 211	59 508
August	19 709	15 390	11 039	3 848	6 128	1 237	619	1 187	59 158
September	21 165	15 757	11 991	4 064	6 500	1 265	677	1 276	62 695
October	21 650	16 108	11 775	4 110	6 935	1 268	668	1 387	63 901
November	21 507	15 996	11 873	4 167	6 563	1 144	650	1 507	63 408
December	21 335	16 179	12 332	4 537	6 726	1 400	762	1 581	64 852
<b>1998</b>									
January	22 083	15 915	12 002	4 300	6 569	1 268	787	1 342	64 265
February	21 760	15 503	12 190	4 033	6 464	1 206	758	1 390	63 305
March	20 725	15 604	12 342	3 961	6 667	1 338	788	1 542	62 968
April	22 791	16 465	12 740	4 597	6 895	1 448	762	1 425	67 123
May	21 923	16 210	11 064	4 472	7 355	1 276	669	1 343	64 312
June	24 021	18 626	15 415	5 019	8 052	1 590	911	1 540	75 175
TREND ESTIMATES									
<b>1997</b>									
April	19 897	14 081	10 702	3 813	5 987	1 219	705	1 054	57 459
May	19 992	14 118	10 870	3 810	6 058	1 247	696	1 100	57 892
June	20 094	14 297	11 082	3 815	6 149	1 267	677	1 143	58 525
July	20 276	14 637	11 310	3 848	6 271	1 274	657	1 194	59 468
August	20 558	15 108	11 532	3 925	6 406	1 273	646	1 258	60 706
September	20 897	15 586	11 711	4 036	6 526	1 265	649	1 324	61 994
October	21 206	15 912	11 837	4 138	6 602	1 258	670	1 384	63 007
November	21 448	16 030	11 973	4 207	6 632	1 257	702	1 433	63 681
December	21 567	15 954	12 049	4 226	6 608	1 260	730	1 460	63 853
<b>1998</b>									
January	21 617	15 838	12 096	4 226	6 597	1 274	749	1 464	63 861
February	21 682	15 853	12 160	4 240	6 654	1 298	760	1 451	64 098
March	21 876	16 043	12 324	4 302	6 807	1 331	768	1 440	64 891
April	22 184	16 380	12 593	4 409	7 037	1 370	775	1 438	66 186
May	22 548	16 797	12 935	4 542	7 298	1 413	786	1 441	67 760
June	22 917	17 228	13 301	4 670	7 547	1 446	794	1 448	69 352

(a) Trend estimates for December 1997 to May 1998 have been revised.

NEW PASSENGER VEHICLES, Selected Make/models: **Original**—June 1998

<i>Make/Model</i>	<i>New South Wales</i>	<i>Victoria</i>	<i>Queensland</i>	<i>South Australia</i>	<i>Western Australia</i>	<i>Tasmania</i>	<i>Northern Territory</i>	<i>Australian Capital Territory</i>	<b>Australia</b>
<b>Toyota</b>									
Camry/Vienta	1 814	1 520	1 085	208	454	91	82	105	5 359
Corolla	949	555	550	162	241	54	67	64	2 642
Starlet	934	463	418	143	124	17	76	35	2 210
Other	1 379	880	1 117	259	493	63	119	57	4 367
Total	5 076	3 418	3 170	772	1 312	225	344	261	14 578
<b>Holden</b>									
Commodore/Calais	2 594	2 104	1 795	670	690	122	102	275	8 352
Barina	303	162	158	58	83	7	2	12	785
Vectra	242	174	129	40	65	14	2	9	675
Other	403	434	297	96	175	16	3	19	1 443
Total	3 542	2 874	2 379	864	1 013	159	109	315	11 255
<b>Ford</b>									
Falcon/Fairmont	1 667	1 532	1 069	315	580	79	67	189	5 498
Festiva	1 055	665	670	321	343	36	26	48	3 164
Laser	289	274	186	43	69	14	5	22	902
Other	359	315	174	56	126	20	7	37	1 094
Total	3 370	2 786	2 099	735	1 118	149	105	296	10 658
<b>Hyundai</b>									
Excel	2 796	2 071	1 669	603	1 275	237	83	190	8 924
Lantra	229	155	126	30	102	21	12	17	692
Sonata	120	98	63	14	52	6	4	3	360
Other	41	10	19	7	15	1	1		94
Total	3 186	2 334	1 877	654	1 444	265	100	210	10 070
<b>Mitsubishi</b>									
Magna	938	815	680	507	266	57	31	112	3 406
Lancer	583	446	397	131	166	24	32	46	1 825
Mirage	454	125	99	33	26	6	6	24	773
Other	415	260	219	97	99	19	19	21	1 149
Total	2 390	1 646	1 395	768	557	106	88	203	7 153
<b>Nissan</b>									
Pulsar	571	448	467	87	125	52	22	61	1 833
Patrol	281	183	340	58	150	13	40	17	1 082
Maxima	63	86	79	15	21	2	1	5	272
Other	114	66	71	16	36	3	3	6	315
Total	1 029	783	957	176	332	70	66	89	3 502
<b>Honda</b>									
Civic	343	233	126	34	60	18	3	8	825
CRV	298	185	119	21	73	16	6	8	726
Accord	131	139	80	14	55	5	2	10	436
Other	161	106	51	15	36	1		4	374
Total	933	663	376	84	224	40	11	30	2 361

## EXPLANATORY NOTES

### INTRODUCTION

- 1** This publication presents monthly data for registrations of new motor vehicles.
- 2** The statistics in this publication use the Vehicle Identification Number (VIN), adopted by the State and Territory motor vehicle registration authorities. The information contained in the VIN allows more accurate classification of vehicles. In the case of some States, data processed using the VIN system are not strictly comparable with data processed prior to December 1990.

### SCOPE AND COVERAGE

- 3** Motor vehicle registration statistics are obtained from State and Territory motor vehicle registration authorities. The statistics reflect information recorded in registration documents. With the exception of Queensland, the statistics do not depart significantly from actual registrations during the period. In the case of Queensland, a number of registrations processed in a month actually relate to vehicles registered prior to that month.
- 4** New motor vehicle registrations are obtained from New South Wales, Victoria, Queensland and Western Australia registration authorities on a weekly basis. Other registries provide data for each calendar month. The ABS processes the weekly registration data provided for the above-mentioned States and includes data for the relevant month in this publication. Data referring to the next month are withheld and included in the next month's publication. In some months, the ABS processes five weeks of data for the above States, while other months include four weeks of data. In months where five weeks of data are processed and depending on the actual pattern of registration processing, it is possible that there will be a greater number of registrations recorded because the carry forward from the previous month is likely to be greater than the carry over to the next month.
- 5** The scope of the statistics:
  - includes:
    - passenger vehicles
    - light commercial vehicles
    - trucks
    - buses
    - motorcycles (note: not included in totals)
    - vehicles with diplomatic and consular plates
    - State and Commonwealth owned vehicles
  - excludes:
    - vehicles belonging to the defence forces
    - recreation vehicles such as trail bikes and sand dune buggies (in those States where registration is required).

### SEASONAL ADJUSTMENT

- 6** Seasonal adjustment is a means of removing the estimated effects of normal seasonal variation from the series so that the effects of other influences can be more clearly recognised.
- 7** Seasonal adjustment does not remove from the series the effect of irregular or non-seasonal influences (e.g. the introduction of new models, processing delays, industrial disputes).



## EXPLANATORY NOTES

### SEASONAL ADJUSTMENT *continued*

**8** Irregular influences that are highly volatile can make it difficult to interpret the series even after adjustment for seasonal variation.

**9** Extreme care should be exercised in using the seasonally adjusted series for new motor vehicle registrations in Tasmania, the Northern Territory and the Australian Capital Territory. The small numbers and volatile nature of these data makes reliable estimation of the seasonal pattern very difficult.

**10** Seasonally adjusted series are calculated for the 'Passenger vehicles', 'Other vehicles' and 'Total vehicles' series for each State and Territory and are aggregated to obtain the total for Australia.

**11** Seasonal adjustment factors are analysed and revised as necessary annually.

### TREND ESTIMATES

**12** The smoothing of seasonally adjusted series to create trend estimates reduces the impact of the irregular component of the seasonally adjusted series. The trend estimates are derived by applying a 13-term Henderson-weighted moving average to the respective seasonally adjusted series. These trend series are used to analyse the underlying behaviour of the series over time.

**13** While this smoothing technique enables trend estimates to be produced for the latest month, it does result in revisions to the trend estimates for the most recent months as data for subsequent months become available. Generally subsequent revisions become smaller and after three months, usually have a negligible impact on the series. Changes in the original data and re-estimation of seasonal factors may also lead to revisions to the trend. For more information, see *A Guide to Interpreting Time Series—Monitoring 'Trends'—An Overview* (1348.0) or contact the Assistant Director, Time Series Analysis on (02) 6252 6345.

### RELATED PUBLICATIONS

**14** For a more detailed break-up of the monthly figures presented here, enquiries should be made to Clare O'Loughlin on 07 3222 6180 or to any ABS office. Data on total vehicle registrations, both new and re-registrations, is available in *Motor Vehicle Census, Australia, 31 October 1996* (9309.0).

### SYMBOLS AND OTHER USAGES

n.p. not available for publication, but included in totals.

## GLOSSARY

---

<b>Articulated trucks</b>	Vehicles constructed primarily for load carrying consisting of a prime mover having no significant load carrying area but with a turn table device which can be linked to a trailer. With or without a trailer the gross combination mass will be 3.5 tonnes or more.
<b>Buses</b>	Vehicles constructed for the carriage of passengers. Included are all passenger vehicles with 10 seats or more, including the driver's seat.
<b>Light commercial vehicles</b>	Describes goods carrying vehicles less than 3.5 tonnes gross vehicle mass. Included are utilities, panel vans, cab-chassis and forward control vehicles (whether four-wheel drive or not).
<b>Motor cycles</b>	Includes 2 and 3 wheeled mopeds, scooters, motor tricycles and motor cycles with side cars.
<b>Non-freight carrying trucks</b>	Includes specialist vehicles such as ambulances, mobile cranes or vehicles fitted with special purpose equipment and having no goods carrying capacity.
<b>Passenger vehicles</b>	Includes cars, station wagons, four-wheel drive passenger vehicles and forward control passenger vehicles with up to nine seats (including the driver).
<b>Registrations</b>	This includes all registrations processed by the motor vehicle registration authorities in the States and Territories during the relevant period.
<b>Rigid trucks</b>	Vehicles constructed primarily for load carrying with a gross vehicle mass of 3.5 tonnes or more.
<b>VIN</b>	The Vehicle Identification Number (VIN) uniquely identifies each vehicle. Embedded in the number are details of make and model together with other relevant information about the vehicle. The VIN is collected by the motor vehicle registration authorities at the time of registration.



## SELF-HELP ACCESS TO STATISTICS

*PHONE* Call 1900 986 400 for the latest statistics on CPI, Labour Force, Earnings, National Accounts, Balance of Payments and other topics (call cost is 75c per minute).

*INTERNET* <http://www.abs.gov.au>

*LIBRARY* A range of ABS publications is available from public and tertiary libraries Australia wide. Contact your nearest library to determine whether it has the ABS statistics you require.

## WHY NOT SUBSCRIBE?

*PHONE* +61 1300 366 323

*FAX* +61 03 9615 7848

## CONTACTING THE ABS

ABS provides a range of services, including: a telephone inquiry service; information consultancy tailored to your needs; survey, sample and questionnaire design; survey evaluation and methodological reviews; and statistical training.

<i>INQUIRIES</i>	<i>By phone</i>	<i>By fax</i>
Canberra	02 6252 6627	02 6253 1404
Sydney	02 9268 4611	02 9268 4668
Melbourne	03 9615 7755	03 9615 7798
Brisbane	07 3222 6351	07 3222 8283
Perth	08 9360 5140	08 9360 5955
Adelaide	08 8237 7400	08 8237 7566
Hobart	03 6222 5800	03 6222 5995
Darwin	08 8943 2111	08 8981 1218

*POST* Client Services, ABS, PO Box 10, Belconnen, ACT 2616



2930100006986

ISSN 1323-4528

RRP \$15.00