



# MONTHLY SUMMARY OF STATISTICS

VICTORIA

EMBARGO: 11:30AM (CANBERRA TIME) FRI 18 SEP 1998

## CONTENTS

	<i>page</i>
Notes . . . . .	2
Selected features . . . . .	3
TABLES	
List of tables . . . . .	4
Demography . . . . .	5
Labour . . . . .	6
Wages . . . . .	9
Prices . . . . .	10
Meat production . . . . .	11
Building . . . . .	12
Finance . . . . .	15
Retail . . . . .	16
Trade . . . . .	17
Tourism . . . . .	18

- For more information about these and related statistics, contact Information Services on 03 9615 7755 or refer to the back cover of this publication.

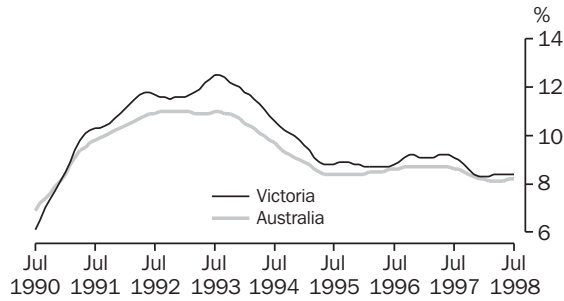
## NOTES

FORTHCOMING ISSUES	<table border="0" style="width: 100%;"> <thead> <tr> <th style="text-align: left; padding-right: 20px;"><i>ISSUE</i></th> <th style="text-align: left;"><i>RELEASE DATE</i></th> </tr> </thead> <tbody> <tr> <td>September 1998</td> <td>20 October 1998</td> </tr> <tr> <td>October 1998</td> <td>20 November 1998</td> </tr> <tr> <td>November 1998</td> <td>18 December 1998</td> </tr> <tr> <td>December 1998</td> <td>20 January 1999</td> </tr> <tr> <td>January 1999</td> <td>22 February 1999</td> </tr> <tr> <td>February 1999</td> <td>22 March 1999</td> </tr> </tbody> </table>	<i>ISSUE</i>	<i>RELEASE DATE</i>	September 1998	20 October 1998	October 1998	20 November 1998	November 1998	18 December 1998	December 1998	20 January 1999	January 1999	22 February 1999	February 1999	22 March 1999
<i>ISSUE</i>	<i>RELEASE DATE</i>														
September 1998	20 October 1998														
October 1998	20 November 1998														
November 1998	18 December 1998														
December 1998	20 January 1999														
January 1999	22 February 1999														
February 1999	22 March 1999														
ABOUT THIS PUBLICATION	<p>The aim of this publication is to provide a range of the latest statistics available at the end of each month of issue. Consequently, the dates and periods shown are not always the same for each table, but are in each case the latest figures available at that time.</p>														
SEASONAL ADJUSTMENT	<p>Seasonal adjustment is a means of removing the estimated effects of normal seasonal variations from economic time series so that the effects of other influences are obvious. Seasonal variations are the systematic (though not necessarily regular) intra-year movements of economic time series. These are often the result of non-economic phenomena, such as climatic changes and regular religious festivals e.g. Christmas and Easter.</p>														
TREND ESTIMATE	<p>Smoothing seasonally adjusted series produces a measure of trend by removing the impact of the irregular component of the series. The trend estimates are derived by applying a 13-term Henderson weighted moving average to the respective seasonally adjusted series. Readers are reminded that trend estimates are subject to revision as subsequent months' data become available.</p>														
SYMBOLS AND OTHER USAGES	<p>n.a. not available  n.e.c. not elsewhere classified  n.p. not available for publication but included in totals where applicable  n.y.a. not yet available  p preliminary—figure or series subject to revision  r figure or series revised since previous issue  * estimate has a relative standard error greater than 25% and is therefore subject to sampling variability too high for most practical uses  . . not applicable  — nil or rounded to zero</p>														

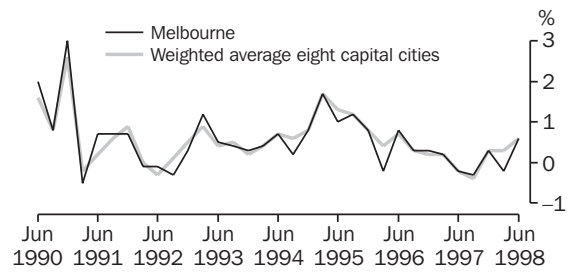
Zia Abbasi  
Regional Director

## SELECTED FEATURES

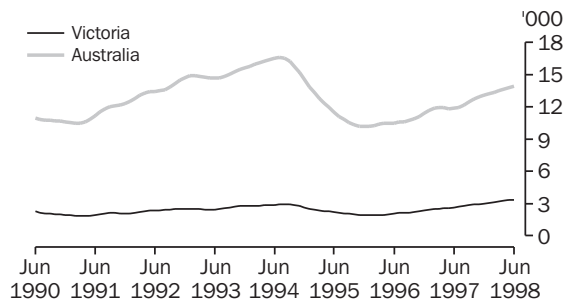
UNEMPLOYMENT RATE, Trend—Monthly



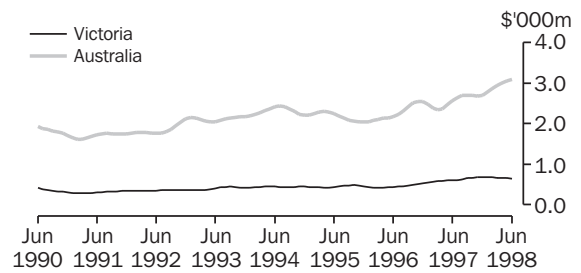
CONSUMER PRICE INDEX, Change from previous quarter



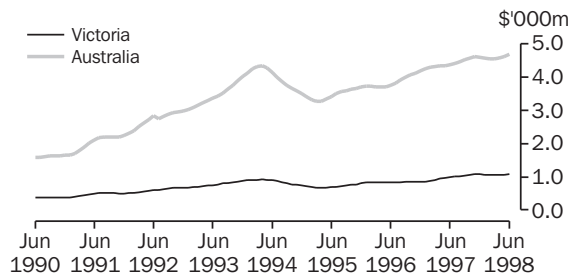
NEW DWELLING UNITS APPROVED, Trend—Monthly



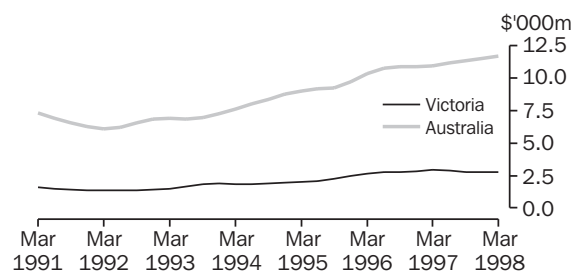
VALUE OF ALL BUILDINGS APPROVED, Trend—Monthly



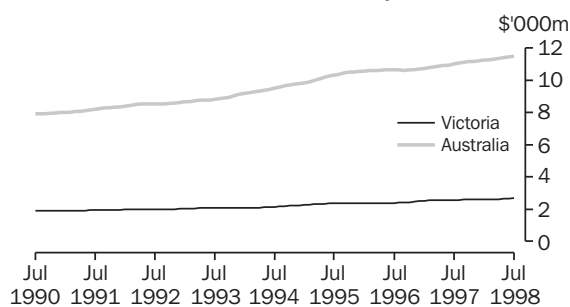
TOTAL VALUE OF SECURED HOUSING FINANCE COMMITMENTS TO INDIVIDUALS, Trend—Monthly



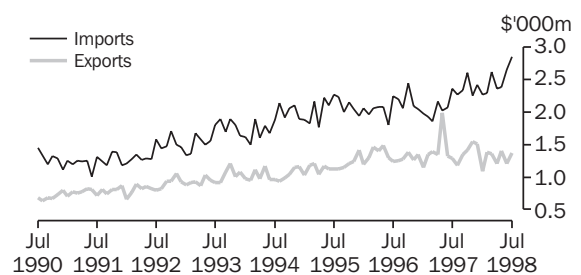
PRIVATE NEW CAPITAL EXPENDITURE, Trend—Quarterly



RETAIL TURNOVER, Trend—Monthly



MERCHANDISE IMPORTS AND EXPORTS, Original—Monthly



## LIST OF TABLES

		Page
DEMOGRAPHY	<b>1</b> Estimated resident population	5
	<b>2</b> Births, deaths, marriages and divorces	5
LABOUR	<b>3</b> Labour force status of the civilian population aged 15 years and over	6
	<b>4</b> Employed persons, by industry	7
	<b>5</b> Job vacancies	8
	<b>6</b> Industrial disputes causing stoppage of work	8
WAGES	<b>7</b> Average weekly earnings of employees	9
PRICES	<b>8</b> Consumer Price Index—Melbourne	10
	<b>9</b> Price Index of Materials Used in Building—Melbourne	10
MEAT PRODUCTION	<b>10</b> Livestock slaughterings	11
	<b>11</b> Meat production	11
BUILDING	<b>12</b> Building approvals—Melbourne and Victoria	12
	<b>13</b> New houses and other residential buildings, number of dwelling units	13
	<b>14</b> Value of building	14
FINANCE	<b>15</b> Private new capital expenditure, by selected industries and type of asset	15
	<b>16</b> Commercial finance commitments	15
	<b>17</b> Secured housing finance commitments, dwelling units	16
RETAIL	<b>18</b> Retail turnover, by industry (excluding motor vehicles, parts, petrol, etc.)	16
TRADE	<b>19</b> Exports and imports, by sections of the Australian Export and Import Classifications	17
	<b>20</b> Overseas trade, major trading partners	17
	<b>21</b> Value of overseas trade—Victoria and Australia	18
TOURISM	<b>22</b> Tourist accommodation	18

# 1

## ESTIMATED RESIDENT POPULATION

Period	At end of period			Increase during period		Melbourne Statistical Division at 30 June(a)
	Males	Females	Persons	Natural	Total	
	'000	'000	'000	'000	'000	'000
<b>1994-95</b>	2 233.4	2 284.0	4 517.4	31.3	28.6	3 243.7
<b>1995-96</b>	2 252.6	2 307.5	4 560.2	28.5	42.8	3 283.3
<b>1996-97 p</b>	2 274.3	2 330.9	4 605.1	28.3	45.0	3 321.7
<b>1996</b>						
September qtr p	2 257.8	2 313.2	4 571.0	6.3	10.9	..
December qtr p	2 262.5	2 318.8	4 581.3	7.1	10.2	..
<b>1997</b>						
March qtr p	2 269.9	2 326.2	4 596.1	7.6	14.8	..
June qtr p	2 274.3	2 330.9	4 605.1	7.3	9.1	..
September qtr p	2 280.4	2 337.0	4 617.4	6.4	12.3	..
December qtr p	2 284.9	2 342.4	4 627.3	7.7	9.8	..

(a) Based on the 1996 Statistical Local Area boundaries.

Source: Australian Demographic Statistics (Cat. no. 3101.0) (quarterly).

# 2

## BIRTHS, DEATHS, MARRIAGES AND DIVORCES

Period	Registrations				Annual rate per 1,000 of mean estimated resident population				
	Births	Deaths (including infant deaths)	Marriages	Divorces	Births	Deaths	Marriages	Divorces	Infant deaths per 1,000 live births
	no.	no.	no.	no.	rate	rate	rate	rate	rate
<b>1994-95</b>	63 617	32 271	26 831	11 602	14.14	7.17	5.96	2.58	4.95
<b>1995-96</b>	61 324	32 827	26 117	12 002	13.51	7.23	5.75	2.64	5.30
<b>1996-97 p</b>	61 187	32 876	25 664	13 045	13.36	7.18	5.60	2.85	4.53
<b>1996</b>									
September qtr	15 545	9 214	3 840	3 530	..	..	..	..	..
December qtr	14 987	7 852	7 723	3 398	..	..	..	..	..
Year—1996	60 751	32 901	26 074	12 491	13.32	7.21	5.72	2.74	5.20
<b>1997</b>									
March qtr p	15 012	7 434	8 102	2 809	..	..	..	..	..
June qtr p	15 643	8 376	5 999	3 308	..	..	..	..	..
September qtr p	15 671	9 225	3 814	3 164	..	..	..	..	..
December qtr p	15 595	7 908	7 538	3 182	..	..	..	..	..
Year—1997	61 921	32 943	25 453	12 463	13.45	7.15	5.53	2.71	4.88

Source: Demography, Victoria (Cat. no. 3311.2) (annual). Australian Demographic Statistics (Cat. no. 3101.0) (quarterly).

## 3

## LABOUR FORCE STATUS OF THE CIVILIAN POPULATION AGED 15 YEARS AND OVER

Month	Employed		Unemployed looking for work			Labour force	Not in labour force	Civilian population 15 years and over	Unemployment rate	Participation rate
	Full-time Total	Total	Full-time	Part-time	Total					
	'000	'000	'000	'000	'000	'000	'000	'000	%	%
MALES										
<b>1997</b>										
May	1 040.9	1 183.3	101.9	13.8	115.7	1 299.0	477.7	1 776.7	8.9	73.1
June	1 033.1	1 182.8	104.0	15.8	119.8	1 302.6	476.0	1 778.6	9.2	73.2
July	1 039.7	1 185.2	98.3	14.0	112.3	1 297.5	483.0	1 780.6	8.7	72.9
August	1 022.4	1 168.7	100.2	15.2	115.4	1 284.0	498.5	1 782.5	9.0	72.0
September	1 037.0	1 189.1	100.8	22.6	123.5	1 312.6	471.9	1 784.5	9.4	73.6
October	1 043.0	1 195.9	85.9	15.2	101.1	1 297.0	489.5	1 786.5	7.8	72.6
November	1 048.8	1 194.0	89.5	15.4	104.8	1 298.8	489.6	1 788.4	8.1	72.6
December	1 064.4	1 220.2	86.4	23.1	109.5	1 329.7	460.7	1 790.4	8.2	74.3
<b>1998</b>										
January	1 054.8	1 185.7	102.0	20.4	122.4	1 308.1	484.2	1 792.2	9.4	73.0
February	1 065.0	1 202.5	96.1	20.6	116.7	1 319.2	474.8	1 794.0	8.8	73.5
March	1 055.8	1 206.2	97.6	19.3	116.9	1 323.1	472.7	1 795.8	8.8	73.7
April	1 060.8	1 212.6	90.2	18.4	108.5	1 321.1	476.8	1 798.0	8.2	73.5
May	1 060.1	1 217.7	93.7	16.0	109.7	1 327.4	472.7	1 800.1	8.3	73.7
June	1 048.7	1 213.3	92.3	12.4	104.7	1 318.0	484.2	1 802.2	7.9	73.1
July	1 055.8	1 212.5	89.2	13.5	102.7	1 315.2	488.8	1 804.1	7.8	72.9
FEMALES										
<b>1997</b>										
May	503.7	907.5	61.9	30.8	92.7	1 000.2	854.9	1 855.1	9.3	53.9
June	512.1	921.1	60.6	27.0	87.6	1 008.8	848.3	1 857.1	8.7	54.3
July	523.1	917.8	56.3	25.7	82.0	999.8	859.3	1 859.0	8.2	53.8
August	498.5	891.5	57.8	29.0	86.7	978.2	882.7	1 861.0	8.9	52.6
September	520.4	932.9	59.1	29.0	88.1	1 021.0	841.9	1 862.9	8.6	54.8
October	511.9	916.1	55.4	27.3	82.8	998.8	866.0	1 864.8	8.3	53.6
November	505.6	922.1	53.2	26.5	79.7	1 001.8	865.0	1 866.8	8.0	53.7
December	530.2	934.8	55.9	26.3	82.2	1 016.9	851.8	1 868.7	8.1	54.4
<b>1998</b>										
January	513.3	893.6	60.9	28.5	89.4	983.0	887.4	1 870.5	9.1	52.6
February	526.6	387.3	62.9	27.9	90.8	1 004.6	867.5	1 872.2	9.0	53.7
March	520.0	925.3	61.0	32.6	93.5	1 018.9	855.0	1 873.9	9.2	54.4
April	531.2	937.5	57.4	29.0	86.3	1 023.8	852.4	1 867.2	8.4	54.6
May	522.7	935.1	55.3	24.4	79.6	1 014.7	863.7	1 878.4	7.8	54.0
June	523.2	941.4	52.9	30.8	83.6	1 025.1	855.6	1 880.7	8.2	54.5
July	535.5	940.4	53.8	28.9	82.8	1 023.2	859.4	1 882.6	8.1	54.4
PERSONS										
<b>1997</b>										
May	1 544.6	2 090.8	163.8	44.7	208.4	2 299.2	1 332.6	3 631.8	9.1	63.3
June	1 545.2	2 103.9	164.6	42.9	207.5	2 311.4	1 324.4	3 635.7	9.0	63.6
July	1 562.8	2 103.0	154.6	39.7	194.3	2 297.3	1 342.3	3 639.6	8.5	63.1
August	1 520.9	2 060.2	157.9	44.2	202.1	2 262.3	1 381.2	3 643.5	8.9	62.1
September	1 557.5	2 122.1	159.9	51.7	211.6	2 333.6	1 313.8	3 647.4	9.1	64.0
October	1 554.8	2 111.9	141.1	42.5	183.9	2 295.8	1 355.5	3 651.3	8.0	62.9
November	1 554.4	2 116.1	142.7	41.8	184.5	2 300.6	1 354.6	3 655.2	8.0	62.9
December	1 594.6	2 155.0	142.3	49.3	191.7	2 346.7	1 312.5	3 659.2	8.2	64.1
<b>1998</b>										
January	1 568.1	2 079.3	162.8	48.9	211.8	2 291.1	1 371.6	3 662.7	9.2	62.6
February	1 591.6	2 116.3	159.0	48.5	207.5	2 323.8	1 342.4	3 666.2	8.9	63.4
March	1 575.8	2 131.6	158.5	51.9	210.4	2 342.0	1 327.7	3 669.7	9.0	63.8
April	1 592.0	2 150.0	147.6	47.3	194.9	2 344.9	1 329.2	3 674.1	8.3	63.8
May	1 582.8	2 152.8	149.0	40.3	189.3	2 342.1	1 336.4	3 678.5	8.1	63.7
June	1 571.9	2 154.8	145.2	43.2	188.3	2 343.1	1 339.8	3 682.9	8.0	63.6
July	1 591.3	2 152.9	143.1	42.5	185.5	2 338.4	1 348.2	3 686.7	7.9	63.4

Source: Labour Force, Victoria (Cat. no. 6202.2) (quarterly).

## 4

## EMPLOYED PERSONS, BY INDUSTRY

	Feb 1997	May 1997	Aug 1997	Nov 1997	Feb 1998	May 1998
<i>Industry division</i>	'000	'000	'000	'000	'000	'000
MALES						
Agriculture, forestry and fishing	79.0	70.2	58.7	55.9	68.0	62.1
Mining	*3.3	*3.0	*2.5	*3.2	*3.1	*3.6
Manufacturing	255.3	253.0	249.8	250.3	247.5	242.5
Electricity, gas and water supply	10.4	12.4	13.4	9.9	11.6	12.6
Construction	106.7	104.9	110.9	115.9	121.6	128.6
Wholesale trade	84.9	92.4	—	88.0	92.1	104.6
Retail trade	158.2	157.5	150.6	158.4	159.7	150.7
Accommodation, cafes and restaurants	32.0	35.2	37.0	37.6	31.9	39.4
Transport and storage	73.9	78.4	74.8	73.5	82.9	79.0
Communication services	25.8	25.2	24.5	22.4	22.1	22.2
Finance and insurance	36.2	43.3	42.8	46.3	42.3	40.0
Property and business services	117.8	121.3	130.8	130.7	130.1	134.8
Government administration and defence	39.0	33.4	29.2	38.4	37.4	36.1
Education	47.8	47.6	48.4	52.9	49.1	49.9
Health and community services	38.5	35.6	37.5	39.7	36.4	40.1
Cultural and recreational services	26.5	21.5	25.8	28.3	28.2	26.3
Personal and other services	45.6	48.4	47.0	42.5	38.3	45.5
<b>Total</b>	<b>1 180.9</b>	<b>1 183.3</b>	<b>1 168.7</b>	<b>1 194.0</b>	<b>1 202.5</b>	<b>1 217.7</b>
FEMALES						
Agriculture, forestry and fishing	34.1	35.2	28.0	30.8	35.4	31.8
Mining	*0.5	*0.0	*0.0	*0.3	*0.3	*0.3
Manufacturing	97.5	95.7	93.7	107.4	95.2	97.9
Electricity, gas and water supply	*2.9	*2.1	*1.8	*1.9	*2.6	*2.9
Construction	14.6	14.1	15.0	15.8	16.5	13.6
Wholesale trade	38.5	41.4	38.1	41.5	39.5	40.6
Retail trade	156.3	151.3	150.0	157.8	160.5	156.5
Accommodation, cafes and restaurants	45.6	49.9	49.0	47.9	46.3	49.3
Transport and storage	25.1	23.9	18.1	18.7	19.8	18.2
Communication services	17.4	14.0	16.8	15.9	14.2	12.4
Finance and insurance	44.6	49.8	47.8	42.2	40.5	48.1
Property and business services	91.4	94.6	107.6	101.5	105.3	108.3
Government administration and defence	44.3	41.7	39.3	41.9	34.1	35.9
Education	84.7	89.2	90.7	89.0	85.9	95.5
Health and community services	147.0	145.1	144.7	148.9	158.2	160.6
Cultural and recreational services	23.2	21.9	19.4	25.3	21.8	26.0
Personal and other services	35.4	39.6	31.4	35.0	37.9	37.1
<b>Total</b>	<b>903.0</b>	<b>907.5</b>	<b>891.5</b>	<b>922.1</b>	<b>913.8</b>	<b>935.1</b>
PERSONS						
Agriculture, forestry and fishing	113.1	103.4	86.8	86.7	103.4	93.9
Mining	*3.8	*3.0	*2.5	*3.6	*3.4	*3.9
Manufacturing	352.7	348.7	343.5	357.7	342.6	340.4
Electricity, gas and water supply	13.3	14.5	15.2	11.9	14.2	15.6
Construction	121.4	119.0	125.9	131.7	138.1	142.2
Wholesale trade	123.4	133.8	123.1	129.5	131.6	145.2
Retail trade	314.5	308.8	300.5	316.2	320.2	307.2
Accommodation, cafes and restaurants	77.6	85.1	86.0	85.5	78.1	88.7
Transport and storage	99.0	102.3	92.9	92.2	102.8	97.2
Communication services	43.2	39.1	41.3	38.3	36.3	34.6
Finance and insurance	80.8	93.1	90.6	88.5	82.8	88.1
Property and business services	209.1	215.9	238.5	232.2	235.4	243.0
Government administration and defence	83.3	75.1	68.5	80.3	71.5	72.0
Education	132.5	136.8	139.0	142.0	135.0	145.4
Health and community services	185.5	180.7	182.2	188.6	194.6	200.7
Cultural and recreational services	49.7	43.4	45.2	53.6	50.0	52.3
Personal and other services	81.0	88.0	78.4	77.6	76.2	82.6
<b>Total</b>	<b>2 084.0</b>	<b>2 090.8</b>	<b>2 060.2</b>	<b>2 116.1</b>	<b>2 116.3</b>	<b>2 152.8</b>

Source: Labour Force, Victoria (Cat. no. 6202.2) (quarterly).

## 5

## JOB VACANCIES

Month	Vacancies all persons '000	Industry		Sector		Job vacancy rate %
		Manufacturing '000	Other '000	Public '000	Private '000	
<b>1997</b>						
February	12.8	*3.3	9.5	1.7	*11.1	0.75
May	11.5	*2.1	9.4	1.9	9.6	0.66
August	17.4	1.5	15.8	2.4	*14.9	0.97
November	*17.9	1.1	*16.8	2.3	*15.6	*0.97
<b>1998</b>						
February	24.0	*2.5	21.5	1.8	*22.1	1.20
May	20.2	2.2	18.0	1.5	18.7	1.00

Source: Job Vacancies and Overtime, Australia (Cat. no. 6354.0) (quarterly). Quarterly Survey of Job Vacancies and Overtime (Unpublished data).

## 6

## INDUSTRIAL DISPUTES CAUSING STOPPAGE OF WORK

Month	Disputes		Employees involved		Manufacturing '000	Construction '000	Education, health, community services '000	Working days lost	
	Beginning in period no.	Total no.	Beginning in period '000	Total '000				Other industries '000	Total '000
<b>1997</b>									
March	8	8	8.8	8.8	0.5	2.3	—	5.3	8.1
April	11	12	4.7	5.1	9.2	1.5	—	0.5	11.2
May	16	19	7.6	9.8	11.6	0.6	0.4	3.9	16.5
June	7	13	2.0	5.1	3.5	0.2	1.2	2.5	7.4
July	11	14	9.0	9.4	2.3	0.5	—	7.2	10.0
August	11	14	1.9	4.0	0.2	0.9	0.3	4.0	5.4
September	14	18	4.8	7.3	11.2	1.0	0.1	6.0	18.3
October	10	12	52.8	53.7	33.7	18.6	1.2	6.6	60.1
November	8	13	22.1	46.6	18.9	10.4	14.8	2.0	46.0
December	6	11	4.0	17.2	9.4	3.7	—	4.2	17.3
<b>1998</b>									
January	5	7	0.5	1.1	0.9	0.3	0.0	0.3	1.5
February	8	10	17.2	17.6	7.8	1.3	14.3	4.0	27.4
March	6	11	5.7	14.1	5.4	14.7	4.4	0.5	25.0
April	11	17	6.3	9.1	2.6	4.0	0.5	0.7	7.8
May	5	7	42.1	55.7	15.1	23.1	13.9	1.3	53.4

Source: Industrial Disputes, Australia (Cat. no. 6321.0) (monthly).



## 7

## AVERAGE WEEKLY EARNINGS OF EMPLOYEES

Month	Males			Females			Persons		
	Full-time adult ordinary time earnings	Full-time adult total earnings	All males total earnings	Full-time adult ordinary time earnings	Full-time adult total earnings	All females total earnings	Full-time adult ordinary time earnings	Full-time adult total earnings	All employees total earnings
	\$	\$	\$	\$	\$	\$	\$	\$	\$
<b>1997</b>									
February	726.60	782.50	687.70	611.90	625.90	462.40	687.70	729.40	590.00
May	736.90	789.10	676.20	618.50	636.70	453.90	693.90	733.80	572.70
August	754.20	812.70	695.20	625.80	643.40	460.40	708.10	751.90	587.20
November	748.50	807.60	714.90	632.90	653.10	463.60	708.10	753.60	600.60
<b>1998</b>									
February	762.20	823.10	722.00	634.90	650.70	477.70	716.80	761.60	610.40
May	767.60	825.30	701.50	646.30	660.40	470.40	724.80	767.00	596.30

Source: Average Weekly Earnings, States and Australia (Cat. no. 6302.0) (quarterly).

## 8

## CONSUMER PRICE INDEX—MELBOURNE

Melbourne										
<i>Period</i>	<i>Food</i>	<i>Clothing</i>	<i>Housing</i>	<i>Household equipment and operation</i>	<i>Transportation</i>	<i>Tobacco and alcohol</i>	<i>Health and personal care</i>	<i>Recreation and education</i>	<i>All groups</i>	<i>Weighted average of eight capital cities—All groups</i>
<b>1994–95</b>	110.1	107.4	97.5	111.1	118.8	137.3	142.4	116.7	114.1	113.9
<b>1995–96</b>	114.1	108.0	101.4	113.0	122.6	154.2	148.7	120.3	118.4	118.7
<b>1996–97</b>	118.6	108.4	95.0	114.7	124.0	158.5	157.1	123.3	119.9	120.3
<b>1996</b>										
December qtr	118.4	108.4	96.7	114.9	124.1	158.0	155.3	122.0	119.9	120.3
<b>1997</b>										
March qtr	118.8	108.1	93.5	114.6	125.1	158.4	158.4	125.2	120.1	120.5
June qtr	119.6	108.4	90.1	115.0	123.8	159.4	162.7	124.8	119.9	120.2
September qtr	119.8	108.5	88.7	114.6	124.6	158.6	157.3	126.0	119.5	119.7
December qtr	119.7	109.2	86.9	115.4	124.4	161.2	162.2	126.2	119.8	120.0
<b>1998</b>										
March qtr	120.7	109.0	84.1	115.1	122.1	162.0	163.6	129.4	119.6	120.3
June qtr	121.6	108.9	86.2	115.1	122.0	163.9	165.8	128.8	120.3	121.0

Note: Base of each group: year 1989–90=100.0

Source: Consumer Price Index (Cat. no. 6401.0) (quarterly).

## 9

## PRICE INDEX OF MATERIALS USED IN BUILDING—MELBOURNE

<i>Group</i>				1997			1998			
	1995–96	1996–97	1997–98	Dec qtr	Mar qtr	Jun qtr	Weighted average of six state capital cities—Jun qtr 1998			
House building										
All groups	115.4	115.3	117.1	116.6	117.6	118.0	119.0			
Other than house building										
Structural timber	116.1	110.1	115.6	115.3	115.8	116.8	124.1			
Clay bricks	112.1	113.1	117.9	116.1	119.6	119.7	117.3			
Ready mix concrete	118.6	111.5	111.4	111.4	111.5	111.3	107.0			
Precast concrete products	108.1	110.3	115.7	112.4	115.0	123.5	123.4			
Steel decking and cladding	109.9	109.2	109.4	110.5	108.3	108.3	114.3			
Structural steel	100.9	104.2	104.9	105.1	104.7	104.8	112.8			
Reinforcing steel bar, mesh, etc.	102.7	100.7	100.8	100.8	100.8	100.8	112.1			
Aluminium windows	100.8	100.6	100.0	100.7	99.2	99.7	109.8			
Fabricated steel products	113.1	116.7	120.0	119.5	120.6	120.6	116.1			
Builders' hardware	114.5	116.5	119.6	119.5	119.8	120.3	121.5			
Sand and aggregate	114.6	115.9	116.3	116.4	116.0	116.4	120.7			
Carpet	101.6	101.6	102.6	102.9	102.9	101.5	103.0			
Paint and other coatings	141.2	145.8	144.7	143.5	143.5	148.3	137.7			
Non-ferrous pipes and fittings	112.2	111.5	113.0	118.7	110.2	109.4	134.6			
All groups excluding electrical materials and mechanical services	109.7	110.0	111.0	110.9	110.9	111.5	114.4			
All electrical materials	119.4	112.0	109.8	109.8	110.3	108.6	115.5			
All mechanical services	114.1	115.0	114.9	114.8	114.6	115.2	116.0			
All plumbing materials	118.9	120.1	122.8	124.3	122.8	122.3	128.2			
All groups	111.1	110.9	111.4	111.3	111.4	111.8	114.5			

Note: Base of each index: year 1989–90=100.0.

Source: Price Index of Materials Used in Building Other Than House Building, Six State Capital Cities (Cat. no. 6407.0) (quarterly). Price Index of Materials Used in House Building, Six State Capital Cities (Cat. no. 6408.0) (quarterly).

# 10

## LIVESTOCK SLAUGHTERINGS

Period	Cattle	Calves	Sheep	Lambs	Pigs	Chickens
	'000	'000	'000	'000	'000	'000
<b>1994-95</b>	1 467.3	635.6	3 229.6	6 303.2	1 196.9	77 193.1
<b>1995-96</b>	1 523.6	589.8	2 488.0	5 897.7	1 142.1	85 410.9
<b>1996-97 p</b>	1 675.9	697.3	2 806.6	5 978.9	1 197.3	86 732.6
<b>1997 p</b>						
April	165.4	42.4	262.4	559.6	111.2	7 244.5
May	155.0	55.8	226.7	519.1	113.5	6 867.5
June	139.3	75.1	175.8	475.1	105.4	6 692.3
July	148.3	105.2	192.3	541.0	118.8	8 263.5
August	132.2	185.5	195.8	452.2	104.2	7 152.4
September	129.4	178.5	234.5	537.6	108.1	7 546.2
October	147.3	80.0	322.7	582.7	107.9	8 442.6
November	140.6	28.3	310.1	565.1	98.9	7 187.8
December	163.9	11.8	340.5	583.1	115.7	8 240.7
<b>1998 p</b>						
January	165.3	11.1	339.3	539.2	104.7	8 063.1
February	159.4	8.3	419.6	473.3	102.4	7 695.9
March	158.9	21.3	365.5	506.8	120.4	8 175.4
April	163.2	33.7	268.6	547.4	120.8	8 538.9
May	141.2	41.9	183.5	478.4	128.3	7 596.2
June	147.1	57.8	202.6	480.1	134.4	7 239.7

Source: Livestock Products, Australia (Cat. no. 7215.0) (monthly).

# 11

## MEAT PRODUCTION

Period	Meat (carcass weight)					Dressed weight of chickens
	Beef	Veal	Mutton	Lamb	Pigmeat	
	tonnes	tonnes	tonnes	tonnes	tonnes	
<b>1994-95</b>	335 059	14 428	64 440	111 202	84 728	109 515
<b>1995-96</b>	348 649	12 009	50 910	110 172	83 052	127 736
<b>1996-97 p</b>	373 818	14 293	55 545	111 403	85 872	129 930
<b>1997 p</b>						
April	36 393	891	5 005	10 666	7 982	10 256
May	33 598	1 102	4 315	9 849	8 245	10 367
June	30 312	1 442	3 474	9 036	7 694	9 999
July	31 773	2 060	3 733	10 112	8 594	13 039
August	28 256	3 658	3 773	8 498	7 596	10 842
September	28 241	3 565	4 663	10 001	7 943	11 910
October	31 971	1 618	6 521	10 759	8 003	13 479
November	30 971	638	6 189	10 558	7 211	11 500
December	35 616	286	6 861	11 001	8 100	13 215
<b>1998 p</b>						
January	35 728	281	6 505	10 135	7 577	13 076
February	35 579	205	8 193	8 753	7 393	12 372
March	35 013	454	6 917	9 248	8 702	13 438
April	34 408	705	4 872	10 294	8 840	13 519
May	30 084	839	3 500	9 114	9 310	12 491
June	31 321	1 146	3 864	9 047	10 012	11 548

Source: Livestock Products, Australia (Cat. no. 7215.0) (monthly).

Period	New dwelling units(a)						Conversions etc.(d)	Alterations and additions to residential buildings	Non-residential building(b)		
	Private sector		Public sector		Total(c)				Private sector	Total	Total all building
	no.	\$m	no.	\$m	no.	\$m			\$m	\$m	\$m
MELBOURNE STATISTICAL DIVISION											
<b>1995-96</b>	15 676	1 624.3	1 068	86.5	16 744	1 710.8	617	467.2	1 352.5	1 934.5	4 112.5
<b>1996-97</b>	19 670	2 185.2	447	35.7	20 117	2 221.0	1 189	592.3	1 527.1	2 303.0	5 116.2
<b>1997-98</b>	26 500	3 027.1	723	56.0	27 223	3 083.1	1 029	701.2	2 168.2	2 593.0	6 377.3
<b>1997</b>											
April	1 823	199.4	56	5.8	1 879	205.2	76	51.8	129.6	156.8	413.9
May	1 963	241.9	23	1.2	1 986	243.2	70	49.0	106.4	136.6	428.8
June	1 746	214.7	4	0.2	1 750	214.9	300	74.2	103.0	351.4	640.4
July	2 010	218.1	38	1.9	2 048	220.0	25	51.1	132.1	176.2	447.3
August	2 490	256.0	78	7.4	2 568	263.4	55	54.2	122.8	142.0	459.7
September	2 174	241.9	61	4.2	2 235	246.1	222	68.5	173.5	192.1	506.7
October	1 807	203.9	77	7.0	1 884	210.9	64	69.0	180.0	238.3	518.2
November	2 451	291.8	71	4.9	2 522	296.7	52	49.1	195.8	213.6	559.5
December	2 072	232.1	71	6.1	2 143	238.2	60	43.6	440.7	450.6	732.3
<b>1998</b>											
January	1 858	230.9	23	1.5	1 881	232.4	74	44.2	174.2	203.1	479.7
February	2 034	219.8	25	2.0	2 059	221.8	65	56.1	137.7	165.8	443.6
March	2 633	288.4	11	0.7	2 644	289.1	77	69.3	104.0	117.6	476.0
April	2 487	297.1	55	3.7	2 542	300.7	47	66.1	172.9	254.2	621.0
May	2 247	267.8	122	9.3	2 369	277.1	224	72.9	223.9	265.6	615.5
June	2 237	279.3	91	7.4	2 328	286.7	64	57.1	110.6	173.9	517.7
TOTAL VICTORIA											
<b>1995-96</b>	21 643	2 171.1	1 401	108.7	23 044	2 279.7	663	590.1	1 721.6	2 452.4	5 322.3
<b>1996-97</b>	26 014	2 793.3	596	46.7	26 610	2 839.9	1 240	728.5	1 879.7	2 839.8	6 408.2
<b>1997-98</b>	34 178	3 811.3	1 171	88.6	35 349	3 899.8	1 089	858.5	2 476.9	3 064.5	7 822.8
<b>1997</b>											
April	2 380	254.5	77	7.3	2 457	261.8	80	63.5	202.0	237.0	562.3
May	2 565	298.9	37	2.2	2 602	301.1	74	62.5	135.6	178.3	541.9
June	2 255	264.5	11	0.6	2 266	265.0	302	84.6	120.3	382.1	731.8
July	2 563	275.5	42	2.3	2 605	277.8	27	62.9	161.8	227.9	568.6
August	3 084	316.0	79	7.7	3 163	323.7	57	65.7	159.5	184.5	573.9
September	2 824	307.6	113	7.2	2 937	314.8	225	83.6	209.9	242.2	640.6
October	2 505	273.8	112	9.2	2 617	283.0	64	84.4	204.8	279.2	646.7
November	3 083	354.6	110	7.5	3 193	362.1	54	60.1	213.5	247.3	669.5
December	2 675	293.5	90	7.9	2 765	301.4	65	55.6	456.7	470.2	827.2
<b>1998</b>											
January	2 305	278.0	57	3.7	2 362	281.7	77	56.7	201.7	234.1	572.6
February	2 620	278.5	71	6.0	2 691	284.5	66	67.3	158.3	222.6	574.5
March	3 413	369.6	49	3.4	3 462	373.0	84	83.1	129.9	148.5	604.6
April	3 154	363.8	110	7.2	3 264	371.0	49	77.8	201.2	302.7	751.5
May	2 942	341.0	159	12.6	3 101	353.6	255	89.9	243.4	292.3	735.7
June	3 010	359.2	179	13.8	3 189	373.0	66	71.3	136.4	213.0	657.3

(a) Valued at \$10,000 and over.

(b) Valued at \$50,000 and over.

(c) Excludes dwelling units created as a result of conversions or construction of non-residential buildings.

(d) Dwelling units created as a result of conversions or construction of non-residential buildings.

Source: Building Approvals, Victoria (Cat. no. 8731.2) (monthly).

## NEW HOUSES AND OTHER RESIDENTIAL BUILDINGS, NUMBER OF DWELLING UNITS

Period	New houses				New other residential buildings			
	Approved	Commenced	Under Construction	Completed	Approved	Commenced	Under Construction	Completed
	no.	no.	no.	no.	no.	no.	no.	no.
<b>1994-95</b>	25 885	25 846	10 668	27 380	4 033	3 612	2 765	2 892
<b>1995-96</b>	18 889	19 399	8 066	21 883	4 155	4 276	3 906	3 086
<b>1996-97</b>	19 805	18 652	8 937	17 613	6 805	6 047	4 151	5 727
<b>1996</b>								
December qtr	4 456	4 139	7 624	5 081	1 524	1 238	4 046	1 294
<b>1997</b>								
March qtr	4 924	4 597	8 176	3 997	1 874	1 560	4 046	1 553
June qtr	5 794	5 463	8 937	4 687	1 531	1 527	4 151	1 400
September qtr	6 732	5 717	9 537	5 102	1 973	1 822	3 874	2 036
December qtr	6 821	r 7 088	r 10 720	r 5 842	1 754	r 1 958	r 4 104	r 1 725
<b>1998</b>								
March qtr	6 577	5 992	11 595	5 117	1 938	1 722	4 666	1 160

Source: *Building Activity, Victoria* (Cat. no. 8752.2) (quarterly).

Period	Residential buildings		Non-residential buildings						Total
	New	Alterations and additions	Shops	Factories	Offices	Education	Health	Other	
COMMENCED									
<b>1994-95</b>	2 907.7	678.6	323.4	211.4	384.2	293.3	140.8	583.8	5 523.2
<b>1995-96</b>	2 486.2	679.7	444.3	249.2	393.5	330	108.4	953.5	5 644.8
<b>1996-97</b>	2 692.2	761	348.2	343.8	508.5	410.3	303.6	1 003.3	6 371.1
<b>1996</b>									
December qtr	587.6	184.3	72.3	80.4	111.1	66.2	49.8	275.6	1 427.3
<b>1997</b>									
March qtr	666.8	188.9	88.3	93.2	114	59.4	48.5	228.4	1 487.5
June qtr	789.7	235	97.2	74.4	104.3	214.1	103.4	369.6	1 987.6
September qtr	845.8	228.4	80.4	58.3	123.8	55.2	46.1	245.8	1 683.7
December qtr r	1 050.3	223.9	124.6	84.3	93.8	70.6	93.9	601.3	2 342.4
<b>1988</b>									
March qtr	845.0	186.2	48.7	53.9	91.6	63.8	42.0	272.4	1 603.5
UNDER CONSTRUCTION AT END OF PERIOD									
<b>1994-95</b>	1 450.8	354.3	480.6	142.9	241.9	217.3	251.0	1 092.6	4 231.4
<b>1995-96</b>	1 472.5	339.4	235.5	141.4	139.2	248.1	123.9	1 390.9	4 091.0
<b>1996-97</b>	1 582.3	358.5	284.6	214.9	233.4	310.0	236.2	1 741.7	4 961.6
<b>1996</b>									
December qtr	1 402.4	284.5	249.8	183.6	201.8	224.3	157.9	1 594.5	4 298.8
<b>1997</b>									
March qtr	1 456.0	309.3	237.7	227.1	228.6	188.1	172.5	1 801.3	4 620.4
June qtr	1 582.3	358.5	284.6	214.9	233.4	310.0	236.2	1 741.7	4 961.6
September qtr	1 669.2	388.8	175.4	167.4	193.9	343.2	245.6	920.7	4 104.1
December qtr r	1 836.8	399.4	185.5	160.1	195.5	365.7	303.5	1 304.1	4 750.6
<b>1988</b>									
March qtr	2 030.4	374.4	125.4	161.0	215.8	305.6	250.4	1 393.7	4 856.7
COMPLETED									
<b>1994-95</b>	2 882.5	709.8	313.6	253.1	290.7	228.8	387.3	521.5	5 587.3
<b>1995-96</b>	2 489.6	689.0	715.1	249.9	514.1	302.2	234.7	844.4	6 038.9
<b>1996-97</b>	2 617.6	768.5	364.8	295.6	404.0	342.0	194.6	1 106.7	6 093.8
<b>1996</b>									
December qtr	710.6	200.5	106.0	110.8	79.2	103.1	39.0	220.4	1 569.5
<b>1997</b>									
March qtr	616.3	168.6	121.2	56.9	100.5	88.1	34.8	271.0	1 457.4
June qtr	684.7	195.3	52.0	86.5	104.6	95.0	41.5	439.9	1 699.5
September qtr	775.5	202.9	193.1	114.5	169.9	30.8	39.6	1 101.1	2 627.5
December qtr r	886.3	219.3	114.6	94.8	102.1	53.7	39.3	236.9	1 747.1
<b>1988</b>									
March qtr	666.3	219.9	99.4	59.0	78.6	131.0	96.2	195.0	1 545.4

Source: Building Activity, Victoria (Cat. no. 8752.2) (quarterly).

# 15

## PRIVATE NEW CAPITAL EXPENDITURE, BY SELECTED INDUSTRIES AND TYPE OF ASSET

Period	Selected industries				Type of asset	
	Mining	Manufacturing	Other selected industries	Total	New buildings and structures	Equipment, plant and machinery
	\$m	\$m	\$m	\$m	\$m	\$m
ACTUAL						
<b>1995-96</b>	590	3 544	6 160	10 294	3 126	7 168
<b>1996-97</b>	758	3 447	7 290	11 496	3 379	8 117
<b>1996</b>						
December qtr	301	987	1 862	3 150	1 039	2 110
<b>1997</b>						
March qtr	162	772	1 613	2 547	789	1 758
June qtr	170	880	2 176	3 226	761	2 465
September qtr	164	775	1 563	2 502	694	1 807
December qtr r	295	906	1 898	3 099	784	2 314
<b>1998</b>						
March qtr	163	756	1 554	2 472	642	1 830
EXPECTED						
<b>1997-98</b>	1 265	3 244	6 263	10 772	2 997	7 775
<b>1998-99</b>	872	2 400	5 644	8 915	3 038	5 877

Source: State Estimates of Private New Capital Expenditure (Cat. no. 5646.0) (quarterly).

# 16

## COMMERCIAL FINANCE COMMITMENTS

Month	Fixed loan facilities							Type of lender		
	Construction	Purchase of real property	Purchase of plant and equipment	Wholesale	Other	Total	Revolving credit facilities	Total commitments	Banks	All other lenders
	\$m	\$m	\$m	\$m	\$m	\$m	\$m	\$m	\$m	\$m
<b>1997</b>										
March	92.8	369.0	183.2	84.8	707.3	1 437.2	1 113.6	2 550.8	2 203.7	347.1
April	76.8	355.2	166.4	79.3	443.5	1 121.3	2 092.8	3 214.1	2 862.2	387.9
May	78.7	738.2	154.5	90.2	863.5	1 925.1	2 425.8	4 350.9	3 738.8	612.1
June	75.4	408.9	172.8	120.2	824.8	1 602.2	2 232.2	3 834.4	2 929.6	904.8
July	134.1	439.1	178.7	148.9	1 162.2	2 063.0	2 470.0	4 533.0	3 757.0	776.0
August	98.8	411.9	168.5	93.7	692.8	1 465.7	2 193.6	3 659.3	2 827.0	832.3
September	153.7	500.3	179.2	124.4	583.9	1 541.6	2 560.3	4 101.9	3 545.9	556.0
October	93.0	549.4	279.7	222.0	471.8	1 615.9	2 512.8	4 128.7	3 180.7	948.0
November	77.4	463.8	138.3	81.2	525.1	1 285.9	1 475.9	2 761.9	2 279.0	482.9
December	167.1	539.6	164.7	123.8	1 729.9	2 725.0	1 862.3	4 587.3	3 996.0	591.3
<b>1998</b>										
January	76.8	483.4	121.9	83.1	372.6	1 137.8	1 359.6	2 497.4	2 154.8	342.6
February	116.4	425.5	119.7	118.4	722.3	1 502.3	2 150.7	3 653.0	2 757.5	895.5
March	220.0	r 446.7	r 161.1	91.2	r 505.5	r 1 424.6	r 1 773.0	r 3 197.7	r 2 508.1	r 689.6
April	75.1	r 418.3	121.4	90.5	744.2	r 1 449.5	2 033.0	r 3 482.6	2 496.7	r 985.9
May	124.6	490.1	117.5	157.3	1 263.4	2 152.8	1 592.5	3 745.3	3 129.8	615.5

Source: Housing Finance for Owner Occupation, Australia (Cat. no. 5609.0) (monthly).

# 17

## SECURED HOUSING FINANCE COMMITMENTS, DWELLING UNITS

Month	Original series		Seasonally adjusted		Trend estimates	
	no.	\$m	no.	\$m	no.	\$m
<b>1997</b>						
April	10 637	1 031	9 778	954	9 510	936
May	10 302	1 018	9 796	972	9 635	960
June	10 081	1 022	9 784	992	9 733	982
July	10 199	1 039	9 564	955	9 803	1 003
August	9 890	1 031	9 777	1 040	9 858	1 022
September	10 063	1 060	10 138	1 047	9 926	1 041
October	10 529	1 109	9 927	1 051	10 025	1 059
November	9 583	1 019	10 074	1 091	10 124	1 071
December	10 192	1 090	10 086	1 054	r 10 157	r 1 072
<b>1998</b>						
January	8 187	878	10 393	1 089	r 10 123	r 1 066
February	9 961	1 028	10 242	1 076	r 10 060	r 1 058
March r	10 197	1 080	9 872	1 027	10 014	1 056
April	r 9 780	1 011	r 9 687	1 017	r 9 999	r 1 058
May r	9 986	1 063	9 709	1 070	10 021	1 064
June	11 116	1 182	10 695	1 124	10 070	1 075

Source: *Housing Finance for Owner Occupation, Australia (Cat. no. 5609.0) (monthly)*.

# 18

## RETAIL TURNOVER, BY INDUSTRY (EXCLUDING MOTOR VEHICLES, PARTS, PETROL, ETC.)

Month	Food retailing	Department stores	Clothing and soft good retailing	Household good retailing	Recreational good retailing	Other retailing	Hospitality and services	Total
	\$m	\$m	\$m	\$m	\$m	\$m	\$m	\$m
<b>1997</b>								
May	1 104.6	241.0	169.8	327.6	141.1	254.6	304.8	2 543.5
June	1 028.5	200.4	147.1	333.1	134.8	235.7	288.4	2 367.9
July	1 069.4	226.3	164.2	331.4	139.6	254.6	305.0	2 490.5
August	1 069.6	198.2	148.1	336.7	144.1	268.8	307.6	2 473.0
September	1 047.4	226.6	154.5	325.1	151.6	272.7	304.8	2 482.6
October	1 124.7	232.6	168.7	372.2	162.6	271.5	328.4	2 660.7
November	1 101.1	272.3	178.6	373.3	169.4	264.6	320.6	2 679.9
December	1 256.5	465.3	245.5	482.2	250.5	383.6	371.9	3 455.3
<b>1998</b>								
January	1 128.9	214.2	155.6	320.1	158.6	254.7	339.4	2 571.5
February	1 022.6	174.2	134.6	280.6	142.7	236.5	297.0	2 288.3
March	1 085.9	208.9	163.8	300.6	150.8	272.9	339.1	2 522.0
April	1 079.1	246.6	189.2	288.6	139.6	281.7	340.2	2 565.1
May	1 093.9	238.9	198.6	304.9	137.6	271.5	344.5	2 589.8
June	1 054.9	211.7	183.6	298.0	135.8	264.8	324.3	2 473.1
July	1 144.1	255.2	200.4	312.9	151.8	284.7	348.5	2 697.6

Source: *Retail Trade, Australia (Cat. no. 8501.0) (monthly)*.



## 19

## EXPORTS AND IMPORTS, BY SECTIONS OF THE AUSTRALIAN EXPORT AND IMPORT CLASSIFICATIONS

Section	1997/98		Month of July 1998	
	Imports	Exports	Imports	Exports
	\$m	\$m	\$m	\$m
0 Food and live animals chiefly for food	1 171	r 3 604	104	297
1 Beverages and tobacco	127	159	12	13
2 Crude materials, inedible (except fuels)	566	r 1 865	60	115
3 Mineral fuels, lubricants, and related materials	774	r 938	87	42
4 Animal and vegetable oils, fats and waxes	92	111	8	12
5 Chemicals and related products, n.e.c.	r 2 958	914	276	73
6 Manufacturing goods classified chiefly by material	r 4 317	r 2 367	412	241
7 Machinery and transport equipment	12 437	r 2 939	1 198	209
8 Miscellaneous manufactured articles	5 007	r 1 008	514	88
9 Commodities and transactions of merchandise trade, n.e.c.	r 1 391	r 2 026	175	284
<b>Total</b>	<b>r 28 840</b>	<b>r 15 931</b>	<b>2 847</b>	<b>1 374</b>

Source: Foreign Trade Australia: Fasttraccs Database.

## 20

## OVERSEAS TRADE, MAJOR TRADING PARTNERS(a)

Country	1996/97		1997/98		1 month to July 1998	
	Imports	Exports	Imports	Exports	Imports	Exports
	\$m	\$m	\$m	\$m	\$m	\$m
Belgium-Luxembourg	242	66	243	91	20	18
Brazil	125	81	134	r 76	8	8
Canada	394	123	390	r 122	40	11
China	1 755	658	2 154	624	237	38
Fiji	119	236	133	r 245	15	19
Finland	169	8	193	12	15	1
France	711	162	631	r 168	58	8
Germany	1 923	280	2 116	268	183	35
Hong Kong	267	812	r 338	1 073	32	92
India	231	239	256	188	26	16
Indonesia	507	428	637	325	165	11
Italy	832	320	963	r 396	106	17
Japan	3 097	1 523	3 847	r 1 684	395	144
Korea, Republic of	671	2 098	878	1 039	95	57
Malaysia	508	669	668	517	69	26
Mexico	64	52	80	r 77	9	5
Netherlands	237	39	254	81	22	7
New Zealand	1 247	2 140	1 311	1 552	107	110
Pakistan	75	55	97	87	8	5
Papua New Guinea	232	269	163	235	4	17
Philippines	108	372	135	388	14	29
Saudi Arabia	203	168	106	210	7	12
Singapore	468	893	490	989	44	49
South Africa	100	292	147	272	9	20
Sweden	502	65	585	41	34	2
Switzerland	241	66	277	24	32	2
Taiwan	792	696	852	656	82	73
Thailand	335	412	399	341	40	25
United Kingdom	1 635	416	1 694	454	203	232
United States of America	5 944	958	r 7 024	r 1 602	614	115
Other and unknown	1 359	r 1 710	1 645	r 2 094	154	170
<b>Total</b>	<b>25 093</b>	<b>r 16 306</b>	<b>r 28 840</b>	<b>r 15 931</b>	<b>2 847</b>	<b>1 374</b>

(a) The list of countries in this table reflects the volume of trade with Victoria. Information about Victoria's trade with other countries is available on request.

Source: Overseas Trade: Fasttraccs Database.

# 21

## VALUE OF OVERSEAS TRADE—VICTORIA AND AUSTRALIA

Period	Victoria			Australia		
	Imports	Exports	Excess of exports	Imports	Exports (including re-exports)	Excess of exports
	\$m	\$m	\$m	\$m	\$m	\$m
<b>1995/96</b>	24 663	15 410	-9 253	77 792	76 004	-1 788
<b>1996/97</b>	25 093	r 16 306	r -8 787	78 998	r 78 932	r -66
<b>1997/98 r</b>	28 840	15 931	-12 909	90 680	87 766	-2 914
<b>1997</b>						
May	2 025	1 992	-33	6 448	r 7 629	r 1 181
June	2 064	1 322	-742	6 876	r 6 837	r -39
July	2 361	1 286	-1 075	7 419	r 7 131	r -288
August	2 264	1 184	-1 080	7 048	r 7 186	r 138
September	2 338	1 344	-994	7 355	7 205	-150
October	2 604	1 420	-1 184	7 944	7 628	-316
November	2 263	r 1 541	r -722	7 184	7 635	451
December	2 425	1 509	-916	7 915	7 821	-94
<b>1998</b>						
January	r 2 268	1 093	r -1 175	7 109	6 304	-805
February	2 294	1 377	-917	r 6 957	6 669	r -288
March	2 618	1 356	-1 262	8 188	r 7 310	r -878
April	2 363	1 212	-1 151	7 438	r 7 196	r -242
May r	2 387	1 403	-984	7 659	7 950	291
June r	2 655	1 206	-1 449	8 465	7 732	-733
July	2 847	1 374	-1 473	8 951	7 485	-1 466

Source: Overseas Trade: Fasttraccs Database.

# 22

## TOURIST ACCOMMODATION

Quarter ended	Hotels, motels, guest houses and serviced apartments(a)						
	Establishments	Guest rooms	Bed spaces	Room nights occupied	Room occupancy rate	Persons employed	Takings from accommodation
	no.	no.	no.	'000	%	no.	\$'000
<b>1997</b>							
March	647	26 667	73 512	1 494.3	62.3	14 842	165 101
June	650	27 170	75 353	1 365.9	55.7	22 630	145 443
September	663	27 476	76 123	1 410.1	55.8	22 746	160 195
December	661	27 616	76 010	1 484.0	58.4	21 478	164 141
<b>1998</b>							
March	668	28 603	77 836	1 534.1	60.1	21 322	175 596

(a) Comprising establishments with 15 or more rooms or units.

Source: Tourist Accommodation, Australia (Cat. no. 8635.0).

## SELF-HELP ACCESS TO STATISTICS

*PHONE* Call 1900 986 400 for the latest statistics on CPI, Labour Force, Earnings, National Accounts, Balance of Payments and other topics. (Call cost is 75c per minute)

*INTERNET* <http://www.abs.gov.au>

*LIBRARY* A range of ABS publications is available from public and tertiary libraries Australia wide. Contact your nearest library to determine whether it has the ABS statistics you require.

## WHY NOT SUBSCRIBE?

*PHONE* +61 1300 366 323

*FAX* +61 3 9615 7848

## CONTACTING THE ABS

ABS provides a range of services, including: a telephone inquiry service; information consultancy tailored to your needs; survey, sample and questionnaire design; survey evaluation and methodological reviews; and statistical training.

<i>INQUIRIES</i>	<i>By phone</i>	<i>By fax</i>
Canberra	02 6252 6627	02 6253 1404
Sydney	02 9268 4611	02 9268 4668
Melbourne	03 9615 7755	03 9615 7798
Brisbane	07 3222 6351	07 3222 6283
Perth	08 9360 5140	08 9360 5955
Adelaide	08 8237 7400	08 8237 7566
Hobart	03 6222 5800	03 6222 5995
Darwin	08 8943 2111	08 8981 1218

*POST* Client Services, ABS, PO Box 10, Belconnen, ACT 2616

*EMAIL* [client.services@abs.gov.au](mailto:client.services@abs.gov.au)



2130320008986  
ISSN 0158-202X

RRP \$16.00