

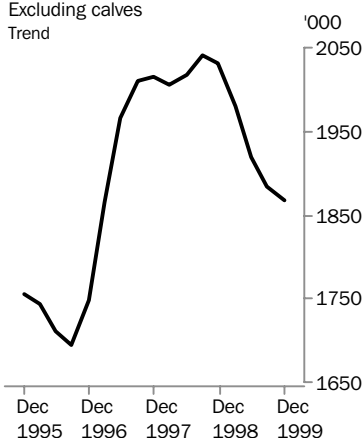


# LIVESTOCK PRODUCTS

AUSTRALIA

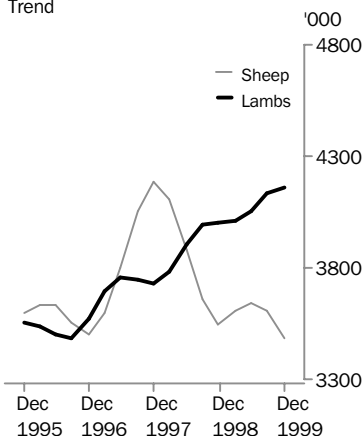
EMBARGO: 11:30AM (CANBERRA TIME) THURS 10 FEB 2000

## Cattle slaughterings

Excluding calves  
Trend

## Sheep and lamb slaughterings

Trend



## DECEMBER QTR KEY FIGURES

### TREND ESTIMATES

	Dec Qtr 1998 '000	Sep Qtr 1999 '000	Dec Qtr 1999 '000
Number slaughtered			
Cattle	2 031.1	1 883.3	1 868.3
Calves	282.9	274.5	272.8
Sheep	3 545.0	3 603.3	3 484.0
Lambs	4 003.7	4 131.8	4 161.8
Pigs	1 306.3	1 247.2	1 226.6
Chickens	93 596.2	95 467.0	96 816.5

	Dec Qtr 1998 tonnes	Sep Qtr 1999 tonnes	Dec Qtr 1999 tonnes
Meat produced			
Beef	498 857	485 022	484 919
Veal	9 498	8 875	8 959
Mutton	74 300	76 250	74 376
Lamb	77 471	80 874	81 481
Pig meat	93 012	89 713	88 678
Chicken meat	140 902	143 181	145 235
Wool receivals	160 099	160 886	156 457

	Sep Qtr 1998 ML	Jun Qtr 1999 ML	Sep Qtr 1999 ML
Whole milk intake by factories	2 446	2 691	2 758

## DECEMBER QTR KEY POINTS

### TREND ESTIMATES

- For further information about these and related statistics, contact Nadine Cole on Hobart 03 6222 5939, or Client Services in any ABS office as shown on the back cover of this publication.
- The trend estimate for the number of lambs slaughtered in December quarter 1999 was 4.2 million, slightly higher than the September quarter estimate. This was the highest quarterly figure since December quarter 1989.
- The trend estimate for the number of pigs slaughtered was 1.2 million in December quarter 1999, a fall of 2% on September quarter 1999. This was the fifth consecutive quarterly decrease.
- The trend estimate for chicken meat production rose 1% to a record level of 145,000 tonnes in December quarter 1999.

# NOTES

## FORTHCOMING ISSUES

*ISSUE (Quarter)*

*RELEASE DATE*

March 2000

12 May 2000

June 2000

10 August 2000



## CHANGES IN THIS ISSUE

There are no changes in this issue.

## FORTHCOMING CHANGES

There are no forthcoming changes.

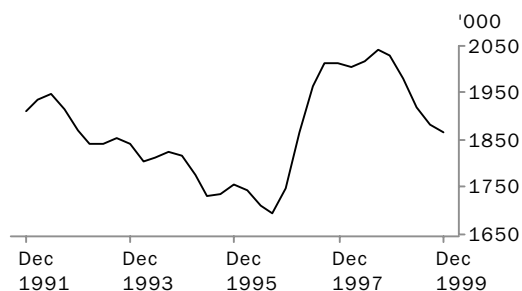


Dennis Trewin

Acting Australian Statistician

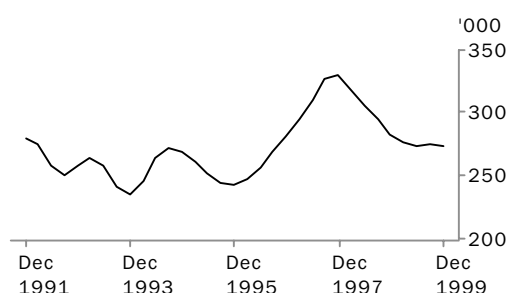
# LIVESTOCK SLAUGHTERED: Trend

## CATTLE (EXCLUDING CALVES)



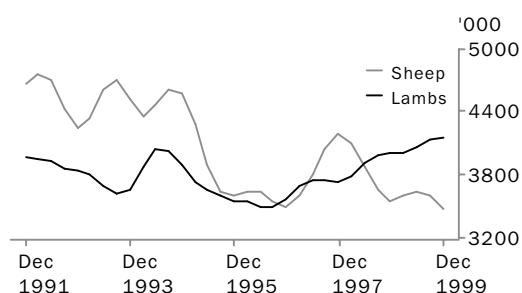
The trend estimate for cattle slaughterings remained steady in December quarter 1999 at 1.9 million. This reflects continued herd rebuilding activities which have kept beef supplies tight, especially for cows and heifers.

## CALVES



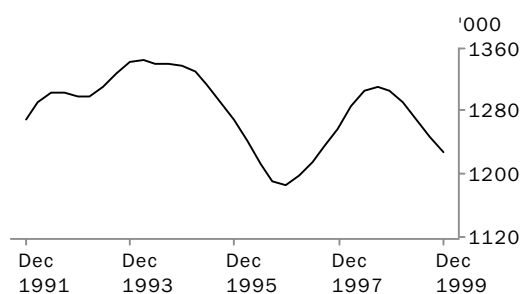
The trend estimate for calf slaughterings fell slightly to 273,000 in December quarter 1999.

## SHEEP AND LAMBS



The trend estimate for sheep slaughterings fell by 3% in December quarter 1999 to 3.5 million due to weakened domestic demand. There was a continued rise in the trend estimate for lamb slaughterings, up slightly to 4.2 million with strong demand for lamb in both domestic and export markets.

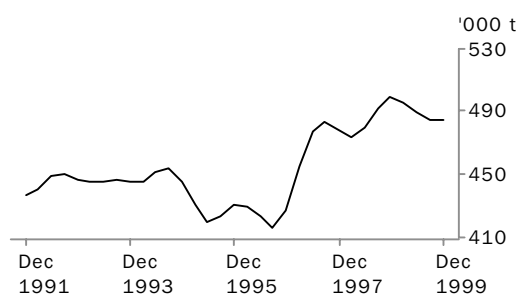
## PIGS



The trend estimate for pig slaughterings fell 2% in December quarter 1999 to 1.2 million, with sow numbers remaining low. This was the fifth consecutive quarterly decrease.

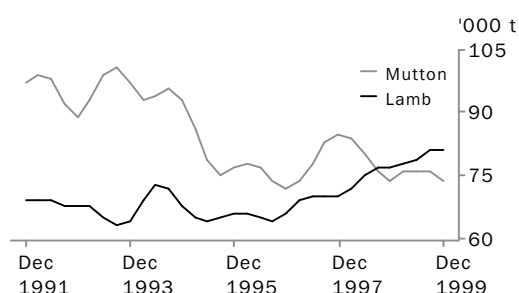
# MEAT PRODUCTION: Trend

## BEEF



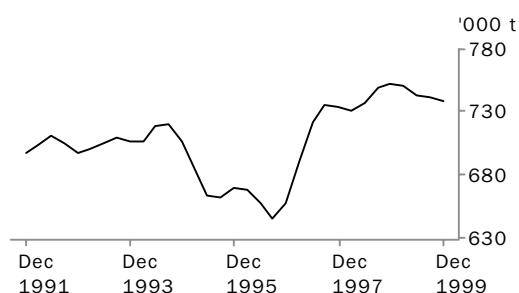
The trend estimate for beef production remained steady at 485,000 tonnes in December quarter 1999 as supply remained tight due to herd rebuilding.

## MUTTON AND LAMB



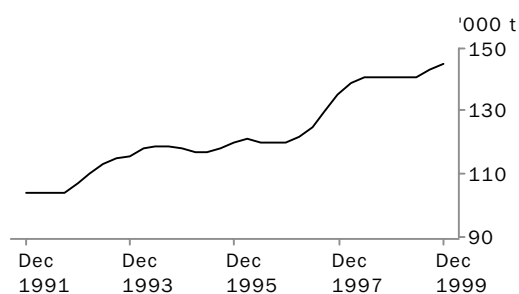
The trend estimate for mutton production fell by 2% in December quarter 1999 to 74,400 tonnes. The trend estimate for lamb production increased slightly to 81,500 tonnes in December quarter 1999, the highest quarterly lamb production on record.

## TOTAL RED MEAT



The trend estimate for total red meat production fell slightly to 738,000 tonnes in December quarter 1999.

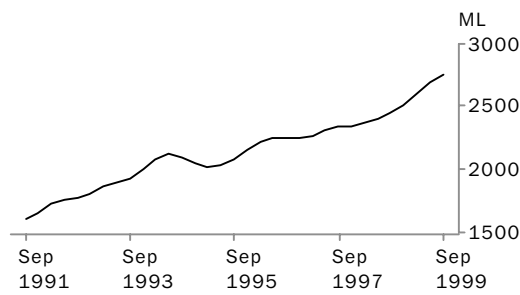
## CHICKEN MEAT



The trend estimate for chicken meat production rose 1% in December quarter 1999 to 145,000 tonnes. Production remained high due to low feed costs.

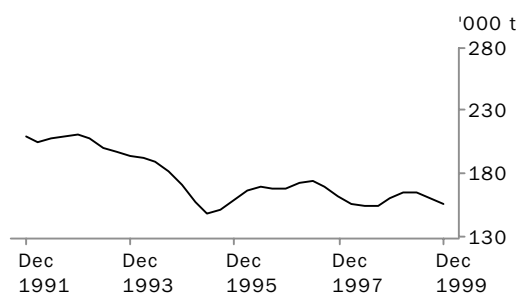
# LIVESTOCK PRODUCTS: Trend

WHOLE MILK INTAKE BY FACTORIES



The trend estimate for whole milk intake by factories rose by 2% in September quarter 1999 to 2.8 billion litres.

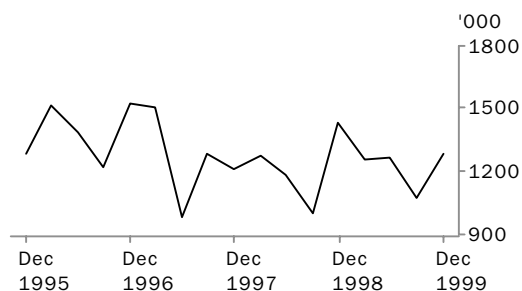
BROKERS AND DEALERS RECEIVALS OF TAXABLE WOOL



The trend estimate for wool receivals by brokers and dealers for September quarter 1999 was revised upwards by 4%. The December quarter 1999 trend estimate of 156,000 tonnes was 3% below the September quarter 1999 revised figure.

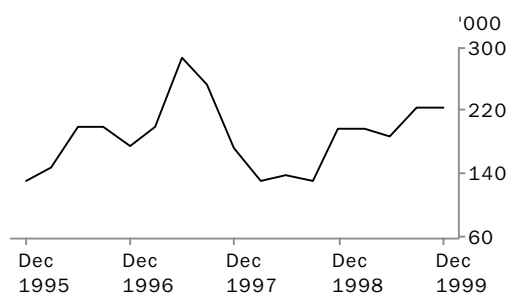
# LIVESTOCK EXPORTS: Original

## EXPORTS OF LIVE SHEEP



Live sheep exports rose 20% in December quarter 1999 to 1.3 million with strengthened demand from the Middle East. Although the unit value (\$36.53) fell 5% from the previous quarter the increased quantity saw the gross value rise 14% to \$47.1 million.

## EXPORTS OF LIVE CATTLE



Live cattle exports remained steady in December quarter 1999 at 225,000. The unit value (\$511.95) rose 8% over the previous quarter. With numbers remaining constant the gross value (\$115.1 million) also rose 8%.

## LIVESTOCK SLAUGHTERED, Australia(a): All Series

Quarter	Bulls, bullocks and steers '000	Cows and heifers '000	Total cattle (excluding calves) '000	Calves '000	Sheep '000	Lambs '000	Pigs '000	Chickens '000
ORIGINAL								
<b>1998</b>								
September	979.2	1 071.7	2 050.9	582.8	3 134.9	4 105.7	1 325.4	92 959.9
December	994.4	1 006.2	2 000.6	205.1	3 918.6	4 203.2	1 301.4	95 390.8
<b>1999</b>								
March	965.5	977.7	1 943.3	116.6	3 999.8	3 871.9	1 238.0	94 466.7
June	929.2	1 017.4	1 946.5	253.6	3 339.4	3 898.7	1 311.4	92 162.1
September	1 009.2	909.7	1 918.9	565.4	3 239.1	4 221.3	1 253.6	94 143.4
December	1 016.0	821.7	1 837.7	177.9	3 582.2	4 355.3	1 233.8	100 146.8
SEASONALLY ADJUSTED								
<b>1998</b>								
September	964.9	1 064.2	2 029.1	303.8	3 714.0	4 119.8	1 310.7	93 386.9
December	989.1	1 068.2	2 057.2	294.9	3 551.4	3 969.6	1 292.4	93 294.2
<b>1999</b>								
March	983.9	1 019.8	2 003.8	258.5	3 538.1	3 982.0	1 307.5	94 493.5
June	931.1	932.1	1 863.2	272.0	3 619.7	4 005.7	1 270.4	93 484.1
September	995.7	903.9	1 899.7	294.1	3 842.6	4 237.9	1 231.8	95 206.3
December	1 010.7	872.3	1 883.0	255.8	3 247.9	4 113.2	1 239.1	97 744.4
TREND ESTIMATES								
<b>1998</b>								
September	968.9	1 072.3	2 041.1	294.4	3 660.1	3 989.0	1 312.2	93 280.5
December	974.9	1 056.2	2 031.1	282.9	3 545.0	4 003.7	1 306.3	93 596.2
<b>1999</b>								
March	969.9	1 010.3	1 980.3	276.5	3 602.9	4 010.6	1 291.3	93 735.4
June	967.9	952.2	1 920.1	273.9	3 639.4	4 057.1	1 270.0	94 322.4
September	980.6	902.8	1 883.3	274.5	3 603.3	4 131.8	1 247.2	95 467.0
December	1 000.3	868.0	1 868.3	272.8	3 484.0	4 161.8	1 226.6	96 816.5

(a) For more information refer to paragraphs 5 to 9 of the Explanatory Notes.

## LIVESTOCK PRODUCTS, Australia(a): All Series

## RED MEAT.....

Quarter	Beef	Veal	Mutton	Lamb	Pig meat	Total red meat	Chicken meat	Whole milk intake by factories	Brokers and dealers receipts of taxable wool
	tonnes	tonnes	tonnes	tonnes	tonnes	tonnes	tonnes	ML	tonnes
ORIGINAL									
<b>1998</b>									
September	496 205	15 743	65 772	79 119	95 075	751 913	142 747	2 332	178 048
December	495 768	7 683	84 583	81 115	91 314	760 463	141 603	3 501	195 422
<b>1999</b>									
March	491 120	5 693	83 013	75 243	86 948	742 016	140 851	2 529	144 929
June	489 576	9 001	68 253	76 596	96 526	739 951	139 070	1 814	121 375
September	492 782	14 040	68 835	82 346	90 382	748 384	141 684	2 551	180 276
December	479 855	6 698	78 440	84 669	88 334	737 996	151 052	n.a.	195 032
SEASONALLY ADJUSTED									
<b>1998</b>									
September	492 365	10 226	77 870	80 021	93 025	753 507	141 765	2 488	151 430
December	502 580	9 949	74 846	76 681	92 284	756 340	138 833	2 471	159 435
<b>1999</b>									
March	502 013	8 196	73 820	76 963	93 026	754 018	142 569	2 583	165 371
June	476 579	9 069	75 740	78 367	91 573	731 328	141 155	2 754	173 349
September	489 517	9 110	81 588	83 360	88 404	751 979	140 906	2 725	154 001
December	486 522	8 671	69 411	80 013	89 369	733 986	147 944	n.a.	157 080
TREND									
<b>1998</b>									
September	492 362	10 298	76 030	76 930	93 001	748 621	140 871	2 446	154 137
December	498 857	9 498	74 300	77 471	93 012	753 138	140 902	2 515	160 099
<b>1999</b>									
March	495 791	8 950	75 600	77 918	92 341	750 600	140 698	2 602	165 378
June	488 646	8 829	76 467	79 171	91 079	744 192	141 471	2 691	165 343
September	485 022	8 875	76 250	80 874	89 713	740 734	143 181	2 758	160 886
December	484 919	8 959	74 376	81 481	88 678	738 413	145 235	n.a.	156 457

(a) For more information refer to paragraphs 5 to 9 and 14 to 16 of the Explanatory Notes.



NUMBER OF LIVESTOCK SLAUGHTERED(a), Bulls, Bullocks and Steers: All Series

	<i>New South Wales</i>	<i>Victoria</i>	<i>Queensland</i>	<i>South Australia</i>	<i>Western Australia</i>	<i>Tasmania</i>	<i>Australia</i>
<i>Quarter</i>	'000	'000	'000	'000	'000	'000	'000
ORIGINAL							
<b>1998</b>							
September	209.7	192.0	472.5	29.7	45.1	20.9	979.2
December	198.0	229.6	440.3	35.4	66.6	22.4	994.4
<b>1999</b>							
March	200.5	236.2	431.7	27.9	45.9	23.0	965.5
June	172.8	191.9	463.1	30.1	40.3	28.5	929.2
September	187.3	173.6	536.7	37.1	42.2	26.5	1 009.2
December	196.7	194.6	498.2	44.4	55.8	24.9	1 016.0
SEASONALLY ADJUSTED							
<b>1998</b>							
September	211.8	217.3	415.5	37.1	51.8	25.9	964.9
December	197.8	222.3	463.4	29.8	53.1	22.5	989.1
<b>1999</b>							
March	196.0	213.6	491.2	26.1	46.9	19.8	983.9
June	175.4	198.0	448.4	31.9	45.0	27.6	931.1
September	189.5	196.6	473.0	46.4	48.5	32.7	995.7
December	196.4	189.3	524.6	37.4	44.3	25.0	1 010.7
TREND ESTIMATES							
<b>1998</b>							
September	209.3	220.5	426.5	34.8	51.9	23.5	968.9
December	199.8	218.0	455.5	29.7	50.9	22.5	974.9
<b>1999</b>							
March	189.8	211.9	468.4	29.4	48.4	23.5	969.9
June	185.5	202.7	471.4	33.9	46.7	26.4	967.9
September	187.3	194.8	482.1	39.1	45.9	28.7	980.6
December	191.9	189.9	501.1	41.8	45.8	29.1	1 000.3

(a) For more information refer to paragraph 6 of the Explanatory Notes.

## NUMBER OF LIVESTOCK SLAUGHTERED(a), Cows and Heifers: All Series

	<i>New South Wales</i>	<i>Victoria</i>	<i>Queensland</i>	<i>South Australia</i>	<i>Western Australia</i>	<i>Tasmania</i>	<i>Australia</i>
<i>Quarter</i>	'000	'000	'000	'000	'000	'000	'000
ORIGINAL							
<b>1998</b>							
September	284.1	229.0	407.0	40.3	60.6	23.9	1 071.7
December	274.3	251.9	339.0	41.4	65.6	28.0	1 006.2
<b>1999</b>							
March	282.2	226.9	337.5	38.2	61.0	30.9	977.7
June	273.0	196.9	415.2	34.7	53.6	33.5	1 017.4
September	250.7	181.1	355.4	34.9	54.0	21.4	909.7
December	228.0	191.0	285.7	30.6	56.2	27.2	821.7
SEASONALLY ADJUSTED							
<b>1998</b>							
September	295.3	251.4	361.2	44.7	65.2	33.7	1 064.2
December	285.5	244.1	407.0	41.8	59.7	29.2	1 068.2
<b>1999</b>							
March	283.8	220.1	382.4	36.4	54.1	28.5	1 019.8
June	254.6	192.1	359.0	32.8	63.4	26.8	932.1
September	258.7	198.8	315.8	38.7	58.1	30.1	903.9
December	236.7	185.0	342.7	30.8	51.2	28.4	872.3
TREND ESTIMATES							
<b>1998</b>							
September	299.9	246.1	374.6	45.6	64.1	32.1	1 072.3
December	289.5	239.1	389.2	40.9	59.9	30.2	1 056.2
<b>1999</b>							
March	275.8	220.8	381.6	37.0	58.8	28.4	1 010.3
June	264.1	202.7	356.9	35.4	58.7	28.1	952.2
September	251.6	192.0	336.0	34.4	57.4	28.6	902.8
December	240.3	186.8	326.6	33.6	54.8	29.0	868.0

(a) For more information refer to paragraph 6 of the Explanatory Notes.

## NUMBER OF LIVESTOCK SLAUGHTERED(a), Total Cattle (excluding Calves): All Series

	<i>New South Wales</i>	<i>Victoria</i>	<i>Queensland</i>	<i>South Australia</i>	<i>Western Australia</i>	<i>Tasmania</i>	<i>Australia</i>
<i>Quarter</i>	'000	'000	'000	'000	'000	'000	'000
ORIGINAL							
<b>1998</b>							
September	493.7	421.0	879.5	70.0	105.7	44.8	2 050.9
December	472.4	481.4	779.3	76.9	132.3	50.4	2 000.6
<b>1999</b>							
March	482.7	463.1	769.2	66.1	106.9	53.9	1 943.3
June	445.7	388.7	878.2	64.9	93.9	62.0	1 946.5
September	438.0	354.6	892.1	72.0	96.1	47.8	1 918.9
December	424.6	385.6	783.9	75.0	112.0	52.1	1 837.7
SEASONALLY ADJUSTED							
<b>1998</b>							
September	507.1	468.7	776.7	81.7	117.0	59.6	2 029.1
December	483.4	466.4	870.4	71.6	112.8	51.7	2 057.2
<b>1999</b>							
March	479.8	433.7	873.5	62.4	100.9	48.3	2 003.8
June	430.0	390.1	807.4	64.7	108.4	54.4	1 863.2
September	448.2	395.4	788.8	85.1	106.6	62.8	1 899.7
December	433.1	374.3	867.3	68.2	95.6	53.4	1 883.0
TREND ESTIMATES							
<b>1998</b>							
September	509.2	466.6	801.1	80.5	116.1	55.6	2 041.1
December	489.3	457.0	844.7	70.6	110.8	52.7	2 031.1
<b>1999</b>							
March	465.6	432.7	850.0	66.4	107.2	51.9	1 980.3
June	449.7	405.4	828.4	69.3	105.4	54.5	1 920.1
September	438.9	386.8	818.0	73.5	103.3	57.3	1 883.3
December	432.2	376.7	827.7	75.4	100.6	58.0	1 868.3

(a) For more information refer to paragraph 6 of the Explanatory Notes.

## NUMBER OF LIVESTOCK SLAUGHTERED(a), Calves: All Series

	<i>New South Wales</i>	<i>Victoria</i>	<i>Queensland</i>	<i>South Australia</i>	<i>Western Australia</i>	<i>Tasmania</i>	<i>Australia</i>
<i>Quarter</i>	'000	'000	'000	'000	'000	'000	'000
ORIGINAL							
<b>1998</b>							
September	64.7	436.3	27.6	5.5	1.5	47.0	582.8
December	60.9	104.3	25.7	3.8	1.6	8.7	205.1
<b>1999</b>							
March	56.1	26.9	26.2	4.9	1.6	0.8	116.6
June	61.0	146.9	33.4	5.8	1.8	4.5	253.6
September	51.3	415.9	33.4	6.2	2.3	56.1	565.4
December	48.3	81.0	33.3	3.2	3.0	8.8	177.9
SEASONALLY ADJUSTED							
<b>1998</b>							
September	61.0	185.6	26.7	4.6	1.3	15.9	303.8
December	69.0	179.3	27.4	5.1	1.5	13.0	294.9
<b>1999</b>							
March	56.2	172.7	26.8	6.4	1.6	15.0	258.5
June	57.5	162.3	31.6	4.4	2.0	13.9	272.0
September	48.3	176.5	32.3	5.2	2.1	19.1	294.1
December	54.8	139.3	35.5	4.4	2.9	12.9	255.8
TREND ESTIMATES							
<b>1998</b>							
September	68.4	177.2	26.7	5.1	1.4	15.2	294.4
December	63.7	173.2	26.7	5.3	1.5	14.0	282.9
<b>1999</b>							
March	58.9	175.7	28.2	5.4	1.7	14.4	276.5
June	55.2	168.7	30.4	5.2	1.9	15.4	273.9
September	52.4	161.4	32.9	4.8	2.3	15.9	274.5
December	52.1	152.3	35.3	4.4	2.7	15.3	272.8

(a) For more information refer to paragraph 6 of the Explanatory Notes.

## NUMBER OF LIVESTOCK SLAUGHTERED(a), Sheep: All Series

	<i>New South Wales</i>	<i>Victoria</i>	<i>Queensland</i>	<i>South Australia</i>	<i>Western Australia</i>	<i>Tasmania</i>	<i>Australia</i>
<i>Quarter</i>	'000	'000	'000	'000	'000	'000	'000
ORIGINAL							
<b>1998</b>							
September	1 317.4	627.2	319.8	425.4	390.1	55.0	3 134.9
December	1 506.8	828.4	317.7	642.4	505.2	118.0	3 918.6
<b>1999</b>							
March	1 445.7	867.2	358.2	591.9	580.7	156.3	3 999.8
June	1 313.3	756.9	338.1	358.6	462.0	110.5	3 339.4
September	1 320.5	767.6	419.4	239.3	407.0	85.4	3 239.1
December	1 336.8	887.6	328.7	359.8	522.4	146.9	3 582.2
SEASONALLY ADJUSTED							
<b>1998</b>							
September	1 465.1	796.8	314.3	584.4	446.4	99.4	3 714.0
December	1 436.7	706.1	319.5	542.2	440.4	112.8	3 551.4
<b>1999</b>							
March	1 328.6	718.9	338.0	466.8	540.1	113.4	3 538.1
June	1 362.5	906.9	365.2	438.4	510.1	108.8	3 619.7
September	1 471.5	971.3	413.1	329.8	466.2	154.7	3 842.6
December	1 274.3	758.5	329.5	303.7	456.3	140.4	3 247.9
TREND ESTIMATES							
<b>1998</b>							
September	1 429.2	758.4	314.0	584.1	485.1	102.3	3 660.1
December	1 397.4	728.7	318.5	532.4	467.9	105.1	3 545.0
<b>1999</b>							
March	1 387.1	783.4	345.6	481.0	494.6	112.9	3 602.9
June	1 380.6	857.9	368.4	415.0	503.9	123.8	3 639.4
September	1 376.2	888.8	375.1	352.6	482.2	136.6	3 603.3
December	1 356.2	865.8	366.3	304.7	452.0	147.2	3 484.0

(a) For more information refer to paragraph 6 of the Explanatory Notes.

## NUMBER OF LIVESTOCK SLAUGHTERED(a), Lambs: All Series

	<i>New South Wales</i>	<i>Victoria</i>	<i>Queensland</i>	<i>South Australia</i>	<i>Western Australia</i>	<i>Tasmania</i>	<i>Australia</i>
<i>Quarter</i>	'000	'000	'000	'000	'000	'000	'000
ORIGINAL							
<b>1998</b>							
September	1 039.7	1 744.9	200.0	529.1	477.8	114.1	4 105.7
December	983.6	1 786.2	184.1	531.6	614.4	103.3	4 203.2
<b>1999</b>							
March	909.5	1 667.2	187.2	494.4	478.7	134.9	3 871.9
June	980.4	1 501.0	185.4	598.4	505.5	127.9	3 898.7
September	1 047.0	1 714.5	227.3	568.8	553.4	110.4	4 221.3
December	985.8	1 827.0	205.3	576.1	659.5	101.6	4 355.3
SEASONALLY ADJUSTED							
<b>1998</b>							
September	988.2	1 786.9	184.9	585.1	461.5	141.2	4 119.8
December	981.2	1 635.8	194.9	501.4	551.6	113.1	3 969.6
<b>1999</b>							
March	941.6	1 689.7	189.5	501.2	557.1	116.6	3 982.0
June	1 001.7	1 589.7	188.4	569.0	510.1	113.9	4 005.7
September	994.4	1 758.0	209.9	630.5	533.3	137.0	4 237.9
December	981.8	1 672.8	217.7	542.9	593.4	111.4	4 113.2
TREND ESTIMATES							
<b>1998</b>							
September	969.3	1 695.6	189.1	536.7	478.8	113.4	3 989.0
December	972.4	1 683.6	188.8	522.2	524.6	113.2	4 003.7
<b>1999</b>							
March	974.2	1 660.7	190.2	530.9	540.2	116.1	4 010.6
June	981.2	1 660.2	195.7	560.2	536.7	120.9	4 057.1
September	990.3	1 686.0	205.2	585.7	544.2	122.8	4 131.8
December	992.5	1 698.2	215.6	586.9	565.3	121.5	4 161.8

(a) For more information refer to paragraph 6 of the Explanatory Notes.

## NUMBER OF LIVESTOCK SLAUGHTERED(a), Pigs: All Series

	<i>New South Wales</i>	<i>Victoria</i>	<i>Queensland</i>	<i>South Australia</i>	<i>Western Australia</i>	<i>Tasmania</i>	<i>Australia</i>
<i>Quarter</i>	'000	'000	'000	'000	'000	'000	'000
ORIGINAL							
<b>1998</b>							
September	331.0	427.2	298.0	101.2	144.6	21.2	1 325.4
December	349.2	404.0	281.0	110.4	135.1	19.5	1 301.4
<b>1999</b>							
March	331.5	346.7	263.7	126.0	150.3	18.4	1 238.0
June	335.5	394.9	289.6	128.3	138.8	22.1	1 311.4
September	331.1	376.3	268.2	111.8	143.6	20.0	1 253.6
December	340.7	364.8	272.0	109.3	128.1	16.5	1 233.8
SEASONALLY ADJUSTED							
<b>1998</b>							
September	328.2	421.6	298.7	96.1	142.8	21.8	1 310.7
December	338.4	393.1	283.7	116.3	142.4	18.8	1 292.4
<b>1999</b>							
March	351.1	380.2	271.8	129.5	152.4	19.7	1 307.5
June	329.6	379.8	280.0	125.4	131.7	21.0	1 270.4
September	331.6	362.7	266.7	106.5	142.8	20.1	1 231.8
December	328.8	363.6	276.9	114.5	134.4	16.2	1 239.1
TREND ESTIMATES							
<b>1998</b>							
September	341.8	413.5	284.1	107.8	143.4	20.4	1 312.2
December	339.7	399.8	284.6	116.0	144.9	20.1	1 306.3
<b>1999</b>							
March	339.4	384.0	279.1	122.9	144.0	20.1	1 291.3
June	337.0	374.2	273.5	121.9	141.0	20.1	1 270.0
September	331.2	367.7	273.0	115.3	137.8	19.3	1 247.2
December	326.3	361.6	273.6	110.1	134.5	17.7	1 226.6

(a) For more information refer to paragraph 6 of the Explanatory Notes.

## NUMBER OF CHICKENS SLAUGHTERED(a): All Series

	<i>New South Wales</i>	<i>Victoria</i>	<i>Queensland</i>	<i>South Australia</i>	<i>Western Australia</i>	<i>Australia</i>
<i>Quarter</i>	'000	'000	'000	'000	'000	'000
ORIGINAL						
<b>1998</b>						
September	36 538.9	23 062.6	15 975.5	n.p.	n.p.	92 959.9
December	35 911.0	24 402.2	16 882.5	n.p.	n.p.	95 390.8
<b>1999</b>						
March	35 774.0	23 560.8	16 760.1	n.p.	n.p.	94 466.7
June	32 570.1	24 517.7	16 371.5	n.p.	n.p.	92 162.1
September	32 171.0	25 289.5	16 449.0	n.p.	n.p.	94 143.4
December	35 764.0	26 951.9	18 232.3	n.p.	n.p.	100 146.8
SEASONALLY ADJUSTED						
<b>1998</b>						
September	35 857.6	23 904.9	16 004.8	n.p.	n.p.	93 386.9
December	35 563.6	23 632.8	16 412.6	n.p.	n.p.	93 294.2
<b>1999</b>						
March	35 809.3	23 562.6	16 756.5	n.p.	n.p.	94 493.5
June	33 210.7	24 457.0	16 813.9	n.p.	n.p.	93 484.1
September	31 985.5	26 182.7	16 478.7	n.p.	n.p.	95 206.3
December	35 296.4	26 094.2	17 716.6	n.p.	n.p.	97 744.4
TREND ESTIMATES						
<b>1998</b>						
September	35 488.0	23 752.4	16 359.8	n.p.	n.p.	93 280.5
December	35 840.8	23 578.1	16 412.0	n.p.	n.p.	93 596.2
<b>1999</b>						
March	34 860.8	23 864.1	16 555.3	n.p.	n.p.	93 735.4
June	33 728.6	24 663.1	16 733.8	n.p.	n.p.	94 322.4
September	33 356.6	25 606.0	16 948.6	n.p.	n.p.	95 467.0
December	33 643.0	26 386.6	17 268.9	n.p.	n.p.	96 816.5

(a) For more information refer to paragraphs 8 and 9 of the Explanatory Notes.



## NUMBER OF LIVESTOCK SLAUGHTERED(a): Original

	New South Wales	Victoria	Queensland	South Australia	Western Australia	Tasmania	Australia
Quarter	'000	'000	'000	'000	'000	'000	'000
<b>BULLS, BULLOCKS AND STEERS</b>							
<b>1996-1997</b>	1 073.3	898.7	1 509.3	171.1	192.3	109.4	<b>3 967.7</b>
<b>1997-1998</b>	956.5	901.4	1 660.9	169.6	196.0	93.4	<b>3 993.6</b>
<b>1998-1999</b>	780.9	849.7	1 807.6	123.1	197.9	94.8	<b>3 868.3</b>
<b>COWS AND HEIFERS</b>							
<b>1996-1997</b>	966.9	777.2	1 008.5	197.6	214.5	93.2	<b>3 302.8</b>
<b>1997-1998</b>	1 182.1	896.6	1 353.7	202.8	252.1	123.6	<b>4 058.1</b>
<b>1998-1999</b>	1 113.6	904.6	1 498.7	154.7	240.8	116.3	<b>4 073.1</b>
<b>TOTAL CATTLE (excluding calves)</b>							
<b>1996-1997</b>	2 040.2	1 675.9	2 517.9	368.7	406.8	202.6	<b>7 270.5</b>
<b>1997-1998</b>	2 138.6	1 798.0	3 014.6	372.4	448.1	217.0	<b>8 051.7</b>
<b>1998-1999</b>	1 894.5	1 754.3	3 306.3	277.8	438.7	211.1	<b>7 941.3</b>
<b>CALVES</b>							
<b>1996-1997</b>	257.4	697.3	120.9	15.7	5.6	43.5	<b>1 141.2</b>
<b>1997-1998</b>	306.2	767.2	114.9	20.2	5.6	53.9	<b>1 268.7</b>
<b>1998-1999</b>	242.6	714.4	112.8	20.0	6.4	61.0	<b>1 158.0</b>
<b>SHEEP</b>							
<b>1996-1997</b>	5 241.3	2 806.6	977.3	2 311.8	2 635.2	367.7	<b>14 339.9</b>
<b>1997-1998</b>	5 902.7	3 285.6	1 277.1	2 655.0	2 717.4	461.0	<b>16 298.8</b>
<b>1998-1999</b>	5 583.2	3 079.6	1 333.8	2 018.3	1 938.0	439.9	<b>14 392.7</b>
<b>LAMBS</b>							
<b>1996-1997</b>	3 621.4	5 978.9	785.1	1 754.0	2 081.2	358.2	<b>14 578.7</b>
<b>1997-1998</b>	3 695.2	6 385.7	765.7	1 865.8	1 856.5	423.3	<b>14 992.1</b>
<b>1998-1999</b>	3 913.2	6 699.4	756.7	2 153.5	2 076.4	480.1	<b>16 079.4</b>
<b>PIGS</b>							
<b>1996-1997</b>	1 338.4	1 397.2	1 002.3	427.4	550.2	73.3	<b>4 795.6</b>
<b>1997-1998</b>	1 392.0	1 567.7	1 082.7	413.8	550.0	78.1	<b>5 091.3</b>
<b>1998-1999</b>	1 347.1	1 572.8	1 132.4	465.8	568.7	81.2	<b>5 176.3</b>
<b>CHICKENS</b>							
<b>1996-1997</b>	133 363.7	82 086.9	61 088.9	28 008.1	36 360.2	n.p.	<b>340 907.8</b>
<b>1997-1998</b>	135 651.5	92 935.0	66 129.8	32 712.8	36 804.6	n.p.	<b>364 233.7</b>
<b>1998-1999</b>	140 794.0	95 543.3	65 989.7	33 536.7	39 115.8	n.p.	<b>374 979.5</b>

(a) For more information refer to paragraphs 5 to 9 of the Explanatory Notes.

## RED MEAT PRODUCED(a), Beef: All Series

	<i>New South Wales</i>	<i>Victoria</i>	<i>Queensland</i>	<i>South Australia</i>	<i>Western Australia</i>	<i>Tasmania</i>	<i>Australia</i>
<i>Quarter</i>	<i>tonnes</i>	<i>tonnes</i>	<i>tonnes</i>	<i>tonnes</i>	<i>tonnes</i>	<i>tonnes</i>	<i>tonnes</i>
ORIGINAL							
<b>1998</b>							
September	110 004	93 581	235 415	15 160	24 727	10 607	496 205
December	108 087	109 256	213 671	17 609	32 820	12 894	495 768
<b>1999</b>							
March	114 408	107 026	215 072	14 780	25 840	13 699	491 120
June	105 271	88 812	240 345	14 717	21 592	16 072	489 576
September	105 945	80 139	250 573	17 107	22 568	12 889	492 782
December	107 148	90 256	221 594	18 395	27 780	13 797	479 855
SEASONALLY ADJUSTED							
<b>1998</b>							
September	112 983	103 299	208 744	18 509	27 626	14 203	492 365
December	109 039	104 914	234 048	15 956	28 018	12 876	502 580
<b>1999</b>							
March	112 156	99 094	241 744	13 745	23 882	12 185	502 013
June	103 770	91 397	224 771	14 660	25 638	14 264	476 579
September	109 018	88 377	222 423	20 871	25 261	17 205	489 517
December	108 059	86 704	242 958	16 665	23 803	13 767	486 522
TREND ESTIMATES							
<b>1998</b>							
September	113 034	103 044	214 677	17 754	27 432	13 371	492 362
December	110 870	102 897	229 169	15 650	26 784	12 914	498 857
<b>1999</b>							
March	108 630	98 925	233 772	14 892	25 749	13 259	495 791
June	107 652	93 040	230 708	16 031	25 058	14 353	488 646
September	107 403	88 641	229 604	17 647	24 735	15 258	485 022
December	107 565	86 453	233 069	18 432	24 553	15 442	484 919

(a) For more information refer to paragraph 6 of the Explanatory Notes.

## RED MEAT PRODUCED(a), Veal: All Series

	<i>New South Wales</i>	<i>Victoria</i>	<i>Queensland</i>	<i>South Australia</i>	<i>Western Australia</i>	<i>Tasmania</i>	<i>Australia</i>
<i>Quarter</i>	<i>tonnes</i>	<i>tonnes</i>	<i>tonnes</i>	<i>tonnes</i>	<i>tonnes</i>	<i>tonnes</i>	<i>tonnes</i>
ORIGINAL							
<b>1998</b>							
September	4 610	8 519	1 407	170	91	934	15 743
December	3 775	2 177	1 308	127	104	181	7 683
<b>1999</b>							
March	3 416	635	1 344	153	108	25	5 693
June	3 830	2 895	1 869	161	133	101	9 001
September	3 086	8 088	1 422	160	180	1 090	14 040
December	2 983	1 689	1 492	92	249	180	6 698
SEASONALLY ADJUSTED							
<b>1998</b>							
September	4 377	3 780	1 387	145	80	332	10 226
December	4 378	3 477	1 406	158	98	249	9 949
<b>1999</b>							
March	3 431	3 037	1 337	188	119	269	8 196
June	3 509	3 209	1 777	132	148	269	9 069
September	2 933	3 575	1 406	136	160	389	9 110
December	3 460	2 698	1 601	115	235	247	8 671
TREND ESTIMATES							
<b>1998</b>							
September	4 738	3 503	1 376	165	85	299	10 298
December	4 161	3 354	1 395	166	98	273	9 498
<b>1999</b>							
March	3 627	3 305	1 476	161	116	273	8 950
June	3 353	3 238	1 538	150	144	297	8 829
September	3 214	3 188	1 566	131	178	313	8 875
December	3 245	3 065	1 574	116	214	305	8 959

(a) For more information refer to paragraph 6 of the Explanatory Notes.

## RED MEAT PRODUCED(a), Mutton: All Series

	<i>New South Wales</i>	<i>Victoria</i>	<i>Queensland</i>	<i>South Australia</i>	<i>Western Australia</i>	<i>Tasmania</i>	<i>Australia</i>
<i>Quarter</i>	<i>tonnes</i>	<i>tonnes</i>	<i>tonnes</i>	<i>tonnes</i>	<i>tonnes</i>	<i>tonnes</i>	<i>tonnes</i>
ORIGINAL							
<b>1998</b>							
September	27 774	12 512	6 268	10 348	7 812	1 058	65 772
December	32 325	17 063	6 416	15 737	10 731	2 311	84 583
<b>1999</b>							
March	29 705	17 232	6 957	14 029	11 938	3 152	83 013
June	27 612	14 840	6 399	7 915	9 285	2 203	68 253
September	29 431	15 813	8 038	5 654	8 209	1 690	68 835
December	30 511	18 700	6 708	8 713	10 863	2 945	78 440
SEASONALLY ADJUSTED							
<b>1998</b>							
September	30 951	15 814	6 163	13 973	9 029	1 976	77 870
December	30 150	14 139	6 292	12 944	9 325	2 215	74 846
<b>1999</b>							
March	27 516	14 548	6 523	11 174	11 023	2 312	73 820
June	29 019	18 140	7 158	10 059	10 293	2 090	75 740
September	32 871	19 902	7 918	7 653	9 502	3 170	81 588
December	28 439	15 526	6 555	7 166	9 449	2 826	69 411
TREND ESTIMATES							
<b>1998</b>							
September	29 443	14 892	6 089	13 762	9 956	2 144	76 030
December	29 126	14 565	6 233	12 720	9 670	2 102	74 300
<b>1999</b>							
March	29 228	15 787	6 740	11 417	10 140	2 220	75 600
June	29 596	17 349	7 151	9 693	10 264	2 475	76 467
September	30 273	18 080	7 299	8 186	9 825	2 748	76 250
December	30 494	17 722	7 176	7 091	9 338	2 956	74 376

(a) For more information refer to paragraph 6 of the Explanatory Notes.

## RED MEAT PRODUCED(a), Lamb: All Series

	<i>New South Wales</i>	<i>Victoria</i>	<i>Queensland</i>	<i>South Australia</i>	<i>Western Australia</i>	<i>Tasmania</i>	<i>Australia</i>
<i>Quarter</i>	<i>tonnes</i>	<i>tonnes</i>	<i>tonnes</i>	<i>tonnes</i>	<i>tonnes</i>	<i>tonnes</i>	<i>tonnes</i>
ORIGINAL							
<b>1998</b>							
September	20 136	33 503	3 748	10 738	8 813	2 181	<b>79 119</b>
December	19 338	33 649	3 526	10 997	11 643	1 962	<b>81 115</b>
<b>1999</b>							
March	18 021	32 019	3 429	10 101	9 100	2 573	<b>75 243</b>
June	19 643	29 209	3 436	12 337	9 465	2 507	<b>76 596</b>
September	20 539	33 468	4 286	11 492	10 388	2 173	<b>82 346</b>
December	19 297	35 239	3 904	11 941	12 343	1 946	<b>84 669</b>
SEASONALLY ADJUSTED							
<b>1998</b>							
September	19 142	35 210	3 433	12 421	8 531	2 593	<b>80 021</b>
December	19 323	30 877	3 731	10 330	10 542	2 136	<b>76 681</b>
<b>1999</b>							
March	18 676	32 196	3 450	10 072	10 519	2 258	<b>76 963</b>
June	20 020	30 257	3 553	11 524	9 488	2 278	<b>78 367</b>
September	19 514	35 247	3 953	13 340	10 043	2 584	<b>83 360</b>
December	19 233	32 319	3 977	11 196	11 183	2 122	<b>80 013</b>
TREND ESTIMATES							
<b>1998</b>							
September	18 770	32 461	3 508	11 196	8 938	2 369	<b>76 930</b>
December	19 122	32 179	3 531	10 756	9 904	2 305	<b>77 471</b>
<b>1999</b>							
March	19 347	31 741	3 564	10 818	10 197	2 273	<b>77 918</b>
June	19 471	32 032	3 657	11 470	10 085	2 328	<b>79 171</b>
September	19 539	32 975	3 821	12 140	10 210	2 364	<b>80 874</b>
December	19 480	33 310	4 000	12 226	10 636	2 310	<b>81 481</b>

(a) For more information refer to paragraph 6 of the Explanatory Notes.

## RED MEAT PRODUCED(a), Pig Meat: All Series

	<i>New South Wales</i>	<i>Victoria</i>	<i>Queensland</i>	<i>South Australia</i>	<i>Western Australia</i>	<i>Tasmania</i>	<i>Australia</i>
<i>Quarter</i>	<i>tonnes</i>	<i>tonnes</i>	<i>tonnes</i>	<i>tonnes</i>	<i>tonnes</i>	<i>tonnes</i>	<i>tonnes</i>
ORIGINAL							
<b>1998</b>							
September	23 207	31 215	22 816	6 782	9 571	1 379	<b>95 075</b>
December	25 143	28 732	20 283	7 269	8 563	1 223	<b>91 314</b>
<b>1999</b>							
March	23 541	25 120	19 246	8 031	9 752	1 184	<b>86 948</b>
June	25 293	29 514	21 720	8 782	9 649	1 456	<b>96 526</b>
September	24 337	27 998	19 910	7 294	9 457	1 274	<b>90 382</b>
December	24 785	26 900	19 681	7 504	8 371	992	<b>88 334</b>
SEASONALLY ADJUSTED							
<b>1998</b>							
September	22 910	30 355	22 374	6 372	9 516	1 394	<b>93 025</b>
December	24 715	28 436	20 803	7 737	9 087	1 237	<b>92 284</b>
<b>1999</b>							
March	25 770	27 621	20 071	8 392	9 971	1 250	<b>93 026</b>
June	23 961	28 038	20 753	8 432	8 976	1 353	<b>91 573</b>
September	24 014	27 222	19 524	6 854	9 412	1 286	<b>88 404</b>
December	24 348	26 660	20 196	8 008	8 894	1 006	<b>89 369</b>
TREND ESTIMATES							
<b>1998</b>							
September	24 053	29 802	21 215	7 168	9 346	1 311	<b>93 001</b>
December	24 510	28 874	21 075	7 649	9 479	1 296	<b>93 012</b>
<b>1999</b>							
March	24 814	28 035	20 582	8 070	9 470	1 298	<b>92 341</b>
June	24 600	27 601	20 152	8 030	9 364	1 288	<b>91 079</b>
September	24 172	27 270	20 049	7 700	9 189	1 226	<b>89 713</b>
December	23 963	26 859	19 974	7 515	8 939	1 125	<b>88 678</b>

(a) For more information refer to paragraph 6 of the Explanatory Notes.

## TOTAL RED MEAT PRODUCED(a): All Series

	<i>New South Wales</i>	<i>Victoria</i>	<i>Queensland</i>	<i>South Australia</i>	<i>Western Australia</i>	<i>Tasmania</i>	<i>Australia</i>
<i>Quarter</i>	<i>tonnes</i>	<i>tonnes</i>	<i>tonnes</i>	<i>tonnes</i>	<i>tonnes</i>	<i>tonnes</i>	<i>tonnes</i>
ORIGINAL							
<b>1998</b>							
September	185 731	179 330	269 654	43 198	51 014	16 158	<b>751 913</b>
December	188 668	190 877	245 203	51 739	63 861	18 570	<b>760 463</b>
<b>1999</b>							
March	189 091	182 031	246 049	47 094	56 737	20 634	<b>742 016</b>
June	181 648	165 270	273 769	43 912	50 124	22 339	<b>739 951</b>
September	183 338	165 506	284 230	41 707	50 802	19 117	<b>748 384</b>
December	184 724	172 785	253 378	46 644	59 605	19 860	<b>737 996</b>
SEASONALLY ADJUSTED							
<b>1998</b>							
September	190 363	188 458	242 101	51 420	54 782	20 498	<b>753 507</b>
December	187 605	181 843	266 280	47 125	57 070	18 713	<b>756 340</b>
<b>1999</b>							
March	187 549	176 496	273 125	43 571	55 514	18 274	<b>754 018</b>
June	180 279	171 041	258 012	44 807	54 543	20 254	<b>731 328</b>
September	188 350	174 323	255 224	48 854	54 378	24 634	<b>751 979</b>
December	183 539	163 907	275 287	43 150	53 564	19 968	<b>733 986</b>
TREND ESTIMATES							
<b>1998</b>							
September	190 038	183 702	246 865	50 045	55 757	19 494	<b>748 621</b>
December	187 789	181 869	261 403	46 941	55 935	18 890	<b>753 138</b>
<b>1999</b>							
March	185 646	177 793	266 134	45 358	55 672	19 323	<b>750 600</b>
June	184 672	173 260	263 206	45 374	54 915	20 741	<b>744 192</b>
September	184 601	170 154	262 339	45 804	54 137	21 909	<b>740 734</b>
December	184 747	167 409	265 793	45 380	53 680	22 138	<b>738 413</b>

(a) For more information refer to paragraph 6 of the Explanatory Notes.

## CHICKEN MEAT PRODUCED(a): All Series

	<i>New South Wales</i>	<i>Victoria</i>	<i>Queensland</i>	<i>South Australia</i>	<i>Western Australia</i>	<i>Australia</i>
<i>Quarter</i>	<i>tonnes</i>	<i>tonnes</i>	<i>tonnes</i>	<i>tonnes</i>	<i>tonnes</i>	<i>tonnes</i>
ORIGINAL						
<b>1998</b>						
September	59 616	37 750	21 043	n.p.	n.p.	<b>142 747</b>
December	55 381	39 256	22 151	n.p.	n.p.	<b>141 603</b>
<b>1999</b>						
March	56 024	38 033	22 248	n.p.	n.p.	<b>140 851</b>
June	52 201	38 562	22 645	n.p.	n.p.	<b>139 070</b>
September	50 735	39 708	23 269	n.p.	n.p.	<b>141 684</b>
December	56 035	43 557	25 382	n.p.	n.p.	<b>151 052</b>
SEASONALLY ADJUSTED						
<b>1998</b>						
September	58 216	37 676	21 113	n.p.	n.p.	<b>141 765</b>
December	55 201	37 879	21 600	n.p.	n.p.	<b>138 833</b>
<b>1999</b>						
March	57 184	38 313	22 408	n.p.	n.p.	<b>142 569</b>
June	52 509	39 837	22 959	n.p.	n.p.	<b>141 155</b>
September	49 488	39 553	23 354	n.p.	n.p.	<b>140 906</b>
December	55 838	41 999	24 756	n.p.	n.p.	<b>147 944</b>
TREND ESTIMATES						
<b>1998</b>						
September	56 362	38 366	21 607	n.p.	n.p.	<b>140 871</b>
December	56 970	37 998	21 644	n.p.	n.p.	<b>140 902</b>
<b>1999</b>						
March	55 086	38 371	22 181	n.p.	n.p.	<b>140 698</b>
June	53 068	39 333	22 930	n.p.	n.p.	<b>141 471</b>
September	52 391	40 334	23 659	n.p.	n.p.	<b>143 181</b>
December	52 698	41 280	24 379	n.p.	n.p.	<b>145 235</b>

(a) For more information refer to paragraphs 8 and 9 of the Explanatory Notes.



## MEAT PRODUCED(a): Original

<i>Financial year</i>	<i>New South Wales</i> tonnes	<i>Victoria</i> tonnes	<i>Queensland</i> tonnes	<i>South Australia</i> tonnes	<i>Western Australia</i> tonnes	<i>Tasmania</i> tonnes	<i>Australia</i> tonnes
<b>BEEF</b>							
<b>1996-1997</b>	471 231	373 818	687 802	85 478	91 369	51 504	<b>1 772 197</b>
<b>1997-1998</b>	473 784	389 086	799 779	80 924	102 482	53 064	<b>1 911 089</b>
<b>1998-1999</b>	437 769	398 675	904 504	62 266	104 979	53 271	<b>1 972 669</b>
<b>VEAL</b>							
<b>1996-1997</b>	16 444	14 293	5 579	514	319	905	<b>38 103</b>
<b>1997-1998</b>	20 818	15 579	5 520	734	312	1 149	<b>44 164</b>
<b>1998-1999</b>	15 630	14 225	5 928	611	436	1 241	<b>38 120</b>
<b>MUTTON</b>							
<b>1996-1997</b>	109 198	55 545	19 646	51 778	52 164	7 820	<b>296 151</b>
<b>1997-1998</b>	119 709	63 470	24 552	58 554	56 442	9 841	<b>332 568</b>
<b>1998-1999</b>	117 416	61 646	26 040	48 029	39 766	8 724	<b>301 621</b>
<b>LAMB</b>							
<b>1996-1997</b>	67 174	111 403	14 348	34 890	35 701	6 765	<b>270 280</b>
<b>1997-1998</b>	69 822	119 973	13 949	38 224	33 581	8 072	<b>283 621</b>
<b>1998-1999</b>	77 138	128 380	14 138	44 172	39 021	9 222	<b>312 072</b>
<b>PIG MEAT</b>							
<b>1996-1997</b>	88 753	99 225	73 809	29 842	38 837	4 832	<b>335 597</b>
<b>1997-1998</b>	95 590	112 504	81 172	28 489	35 499	4 916	<b>358 489</b>
<b>1998-1999</b>	97 185	114 582	84 065	30 864	37 534	5 242	<b>369 862</b>
<b>TOTAL RED MEAT</b>							
<b>1996-1997</b>	752 800	654 284	801 184	202 501	218 389	71 826	<b>2 712 328</b>
<b>1997-1998</b>	779 722	700 612	924 972	206 925	228 317	77 041	<b>2 929 932</b>
<b>1998-1999</b>	745 138	717 507	1 034 675	185 943	221 736	77 700	<b>2 994 344</b>
<b>CHICKEN MEAT</b>							
<b>1996-1997</b>	200 277	121 445	80 485	38 932	46 789	n.p.	<b>487 929</b>
<b>1997-1998</b>	211 603	148 288	88 690	48 192	47 030	n.p.	<b>543 804</b>
<b>1998-1999</b>	223 222	153 601	88 086	49 125	50 237	n.p.	<b>564 270</b>

(a) For more information refer to paragraphs 5 to 9 of the Explanatory Notes.

## STOCKS OF FROZEN MEAT, Australia(a): Original

<i>At last Saturday of quarter</i>	<i>Beef and Veal</i>	<i>Mutton</i>	<i>Lamb</i>	<i>Pork</i>	<i>Goat</i>	<i>Offal</i>	<i>Total</i>
	<i>tonnes</i>	<i>tonnes</i>	<i>tonnes</i>	<i>tonnes</i>	<i>tonnes</i>	<i>tonnes</i>	<i>tonnes</i>
<b>1998</b>							
June	23 333	4 459	1 924	3 803	730	4 255	<b>38 504</b>
September	23 495	3 499	2 683	3 084	124	4 298	<b>37 183</b>
December	21 480	4 153	3 803	1 748	77	3 829	<b>35 090</b>
<b>1999</b>							
March	19 811	5 459	2 459	1 550	39	3 525	<b>32 843</b>
June	n.a.	n.a.	n.a.	n.a.	n.a.	n.a.	<b>n.a.</b>
September	n.a.	n.a.	n.a.	n.a.	n.a.	n.a.	<b>n.a.</b>

(a) For more information refer to paragraph 10 of the Explanatory Notes.

Source: Department of Agriculture, Fisheries and Forestry (formerly Primary Industries and Energy).

## EXPORTS OF FRESH, FROZEN AND PROCESSED MEAT, Australia(a): Original

Period	FRESH, CHILLED OR FROZEN MEAT.....									PROCESSED MEAT	
	<i>Beef bone -in</i>	<i>Beef bone -out</i>	<i>Veal bone -in</i>	<i>Veal bone -out</i>	<i>Mutton bone -in</i>	<i>Mutton bone -out</i>	<i>Lamb bone -in</i>	<i>Lamb bone -out</i>	<i>Pork</i>	<i>Bacon and ham</i>	<i>Canned meat</i>
	tonnes	tonnes	tonnes	tonnes	tonnes	tonnes	tonnes	tonnes	tonnes	tonnes	tonnes
<b>1996-1997</b>	48 603	692 105	1 172	3 761	92 744	50 834	53 533	8 350	6 674	320	11 728
<b>1997-1998</b>	46 933	795 942	1 800	5 548	107 839	59 130	62 168	8 750	12 276	149	12 900
<b>1998-1999</b>	60 981	836 592	1 614	6 143	114 773	51 398	71 593	9 337	16 510	168	13 056
<b>1998</b>											
September	7 993	223 403	397	2 103	20 880	11 531	15 988	2 322	3 143	104	3 744
December	13 857	223 043	339	1 816	31 351	15 842	20 502	2 302	4 019	27	3 117
<b>1999</b>											
March	20 008	186 650	273	844	32 544	11 489	17 453	2 061	3 355	7	3 337
June	19 122	203 496	606	1 380	29 999	12 536	17 650	2 653	5 992	31	2 857
September	13 049	208 266	356	2 550	21 314	13 653	18 126	2 450	10 354	49	3 080
December	8 977	215 515	601	2 163	34 476	15 097	22 059	2 838	10 122	14	3 311

(a) For more information refer to paragraph 11 and 12 of the Explanatory Notes.

## EXPORTS OF LIVE SHEEP AND CATTLE, Australia(a): Original

<i>Period</i>	<i>Number</i> '000	<i>Gross weight</i> '000 tonnes	<i>Gross value</i> \$'000	<i>Unit value</i> \$
SHEEP				
<b>1996-1997</b>	5 237.2	269.8	189 944	36.27
<b>1997-1998</b>	4 961.1	256.0	193 266	38.96
<b>1998-1999</b>	4 958.7	254.9	181 671	36.64
<b>1998</b>				
September	1 005.5	51.6	38 696	38.48
December	1 429.0	75.0	53 106	37.16
<b>1999</b>				
March	1 259.3	64.4	45 473	36.11
June	1 264.9	63.9	44 396	35.10
September	1 074.8	55.0	41 216	38.35
December	1 287.7	64.6	47 047	36.53
CATTLE				
<b>1996-1997</b>	863.8	313.9	427 721	495.19
<b>1997-1998</b>	694.0	255.4	334 058	481.34
<b>1998-1999</b>	713.0	264.7	342 667	480.57
<b>1998</b>				
September	131.1	46.8	58 907	449.33
December	197.4	74.7	96 865	490.71
<b>1999</b>				
March	196.7	75.9	99 569	506.09
June	187.8	67.2	87 326	464.98
September	224.4	83.7	106 678	475.49
December	224.8	85.3	115 074	511.95

(a) For more information refer to paragraph 13 of the Explanatory Notes.

## WHOLE MILK INTAKE, By Factories(a): All Series

	<i>New South Wales</i>	<i>Victoria</i>	<i>Queensland</i>	<i>South Australia</i>	<i>Western Australia</i>	<i>Tasmania</i>	<i>Australia</i>
<i>Quarter</i>	<i>ML</i>	<i>ML</i>	<i>ML</i>	<i>ML</i>	<i>ML</i>	<i>ML</i>	<i>ML</i>
ORIGINAL							
<b>1998</b>							
June	278	837	191	128	100	73	1 606
September	324	1 430	221	155	109	93	2 332
December	359	2 382	222	195	103	240	3 501
<b>1999</b>							
March	310	1 605	198	150	95	171	2 529
June	293	997	185	143	97	99	1 814
September	346	1 606	219	171	109	100	2 551
SEASONALLY ADJUSTED							
<b>1998</b>							
June	311	1 501	209	152	103	125	2 401
September	321	1 555	215	150	100	147	2 488
December	318	1 543	206	160	101	143	2 471
<b>1999</b>							
March	320	1 641	202	165	102	153	2 583
June	328	1 783	203	170	100	170	2 754
September	343	1 745	213	166	100	158	2 725
TREND ESTIMATES							
<b>1998</b>							
June	312	1 495	208	150	100	133	2 398
September	316	1 526	210	154	102	138	2 446
December	319	1 581	207	159	101	148	2 515
<b>1999</b>							
March	323	1 653	204	165	101	156	2 602
June	330	1 726	205	168	101	161	2 691
September	338	1 778	209	169	100	164	2 758

(a) For more information refer to paragraph 14 of the Explanatory Notes.

Source: Original series data from Australian Dairy Corporation.

## MARKET MILK SALES, By Factories(a): All Series

	<i>New South Wales</i>	<i>Victoria</i>	<i>Queensland</i>	<i>South Australia</i>	<i>Western Australia</i>	<i>Tasmania</i>	<i>Australia</i>
<i>Quarter</i>	<i>ML</i>	<i>ML</i>	<i>ML</i>	<i>ML</i>	<i>ML</i>	<i>ML</i>	<i>ML</i>
ORIGINAL							
<b>1998</b>							
June	146	112	96	47	48	12	461
September	149	115	97	47	48	12	468
December	145	109	96	47	48	12	457
<b>1999</b>							
March	140	105	94	45	47	12	444
June	144	113	95	46	48	12	458
September	144	110	98	47	47	12	459
SEASONALLY ADJUSTED							
<b>1998</b>							
June	145	110	96	47	48	12	457
September	147	113	95	47	48	12	463
December	145	109	96	46	48	12	457
<b>1999</b>							
March	144	109	96	46	47	12	454
June	143	110	95	46	48	12	454
September	141	109	96	47	48	12	453
TREND ESTIMATES							
<b>1998</b>							
June	145	111	95	47	48	12	458
September	145	111	96	47	48	12	459
December	145	110	96	46	48	12	458
<b>1999</b>							
March	144	110	96	46	48	12	455
June	143	109	96	46	48	12	453
September	142	109	96	47	48	12	453

(a) For more information refer to paragraph 14 of the Explanatory Notes.

Source: Original series data from Australian Dairy Corporation.

## BROKERS AND DEALERS RECEIVALS OF TAXABLE WOOL(a): All Series

Quarter	New South Wales	Victoria	Queensland	South Australia	Western Australia	Tasmania	Australia	% of total received by brokers
	tonnes	tonnes	tonnes	tonnes	tonnes	tonnes	tonnes	tonnes
ORIGINAL								
<b>1998</b>								
September	50 873	40 952	14 396	27 864	39 784	4 180	<b>178 048</b>	82.8
December	53 349	57 028	11 526	26 251	41 572	5 697	<b>195 422</b>	83.0
<b>1999</b>								
March	41 405	30 486	10 564	19 198	40 321	2 955	<b>144 929</b>	83.9
June	35 964	26 647	15 388	16 138	23 838	3 400	<b>121 375</b>	78.8
September	54 347	40 052	16 198	26 667	37 784	5 228	<b>180 276</b>	83.4
December	56 974	54 173	7 246	25 291	44 670	6 679	<b>195 032</b>	82.0
SEASONALLY ADJUSTED								
<b>1998</b>								
September	42 024	38 309	10 969	22 784	33 271	4 072	<b>151 430</b>	..
December	45 269	35 724	16 298	20 525	37 804	3 815	<b>159 435</b>	..
<b>1999</b>								
March	48 402	39 658	12 082	23 503	37 558	4 170	<b>165 371</b>	..
June	47 430	46 720	13 950	23 583	37 234	4 433	<b>173 349</b>	..
September	44 940	37 613	12 343	22 121	31 897	5 088	<b>154 001</b>	..
December	48 279	34 038	10 167	19 517	40 491	4 589	<b>157 080</b>	..
TREND ESTIMATES								
<b>1998</b>								
September	43 962	36 634	12 452	21 716	35 422	3 952	<b>154 137</b>	..
December	45 553	38 277	13 543	22 212	36 588	3 928	<b>160 099</b>	..
<b>1999</b>								
March	46 778	40 845	13 994	22 860	36 846	4 055	<b>165 378</b>	..
June	47 159	41 589	13 171	22 897	36 179	4 348	<b>165 343</b>	..
September	46 825	39 492	11 987	21 970	35 975	4 636	<b>160 886</b>	..
December	46 824	36 018	11 140	20 667	37 006	4 801	<b>156 457</b>	..

(a) For more information refer to paragraphs 15 and 16 of the Explanatory Notes.

## LIVESTOCK PRODUCTS: Original

<i>Financial year</i>	<i>New South Wales</i>	<i>Victoria</i>	<i>Queensland</i>	<i>South Australia</i>	<i>Western Australia</i>	<i>Tasmania</i>	<i>Australia</i>
.....							
WHOLE MILK INTAKE BY FACTORIES (ML)(a)							
<b>1996-1997</b>	1 192	5 622	797	535	349	529	<b>9 024</b>
<b>1997-1998</b>	1 242	5 866	822	580	386	543	<b>9 438</b>
<b>1998-1999</b>	1 286	6 414	827	643	403	603	<b>10 175</b>
.....							
MARKET MILK SALES BY FACTORIES (ML)(a)							
<b>1996-1997</b>	576	452	376	173	193	50	<b>1 820</b>
<b>1997-1998</b>	591	442	379	182	190	49	<b>1 833</b>
<b>1998-1999</b>	578	442	382	185	191	48	<b>1 827</b>
.....							
BROKERS AND DEALERS RECEIVALS OF TAXABLE WOOL (Tonnes)(a)							
<b>1996-1997</b>	195 481	175 209	45 850	89 579	160 022	18 876	<b>685 018</b>
<b>1997-1998</b>	183 156	152 600	45 906	87 910	153 882	17 264	<b>640 717</b>
<b>1998-1999</b>	181 592	155 113	51 873	89 450	145 515	16 232	<b>639 774</b>

(a) For more information refer to paragraphs 14 to 16 of the Explanatory Notes.

Source: Original series data from Australian Dairy Corporation.



# WHAT IF...? REVISIONS TO TREND ESTIMATES

## EFFECT OF NEW SEASONALLY ADJUSTED ESTIMATES ON TREND ESTIMATES

Each time new seasonally adjusted estimates become available, trend estimates are revised (see paragraph 21 of the Explanatory Notes).

### TREND REVISIONS

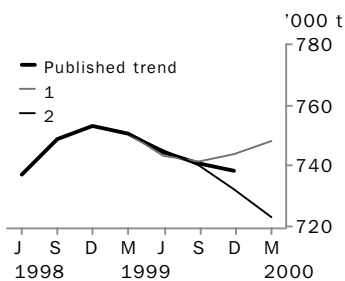
The graphs and tables which follow present the effect of two possible new seasonally adjusted estimates on the previous trend estimates:

**1** The March Quarter 2000 seasonally adjusted estimate is higher than the December Quarter 1999 estimate by the percentage shown.

**2** The March Quarter 2000 seasonally adjusted estimate is lower than the December Quarter 1999 estimate by the percentage shown.

These percentages were chosen because they represent the average absolute quarterly percentage change for these series over the last ten years.

### RED MEAT PRODUCTION



Dec Qtr 1998  
Mar Qtr 1999  
Jun Qtr 1999  
Sep Qtr 1999  
Dec Qtr 1999  
Mar Qtr 2000

TREND AS  
PUBLISHED  
number % change

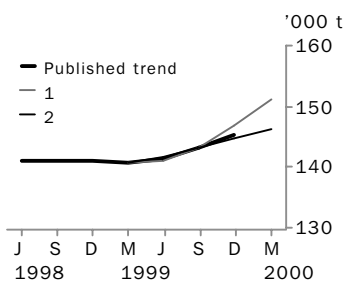
WHAT IF NEXT QUARTER'S SEASONALLY  
ADJUSTED ESTIMATE:

**1**  
*rises by 3% on  
Dec Qtr 1999*  
number % change

**2**  
*falls by 3% on  
Dec Qtr 1999*  
number % change

753 138	0.6	753 139	0.6	753 139	0.6
750 600	-0.3	750 600	-0.3	750 600	-0.3
744 192	-0.9	743 060	-1.0	745 388	-0.7
740 734	-0.5	741 172	-0.3	740 276	-0.7
738 413	-0.3	743 747	0.3	732 494	-1.1
—	—	748 338	0.6	723 346	-1.2

### CHICKEN MEAT PRODUCTION



Dec Qtr 1998  
Mar Qtr 1999  
Jun Qtr 1999  
Sep Qtr 1999  
Dec Qtr 1999  
Mar Qtr 2000

TREND AS  
PUBLISHED  
number % change

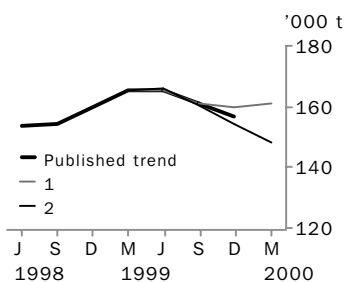
WHAT IF NEXT QUARTER'S SEASONALLY  
ADJUSTED ESTIMATE:

**1**  
*rises by 4% on  
Dec Qtr 1999*  
number % change

**2**  
*falls by 4% on  
Dec Qtr 1999*  
number % change

140 902	0.0	140 902	0.0	140 902	0.0
140 698	-0.1	140 699	-0.1	140 699	-0.1
141 471	0.5	141 108	0.3	141 542	0.6
143 181	1.2	143 268	1.5	143 117	1.1
145 235	1.4	146 741	2.4	144 651	1.1
—	—	151 075	3.0	146 118	1.0

### WOOL RECEIVALS



Dec Qtr 1998  
Mar Qtr 1999  
Jun Qtr 1999  
Sep Qtr 1999  
Dec Qtr 1999  
Mar Qtr 2000

TREND AS  
PUBLISHED  
number % change

WHAT IF NEXT QUARTER'S SEASONALLY  
ADJUSTED ESTIMATE:

**1**  
*rises by 9% on  
Dec Qtr 1999*  
number % change

**2**  
*falls by 9% on  
Dec Qtr 1999*  
number % change

160 099	3.9	160 100	3.9	160 100	3.9
165 378	3.3	165 378	3.3	165 378	3.3
165 343	0.0	165 040	-0.2	166 203	0.5
160 886	-2.7	161 103	-2.4	160 680	-3.3
156 457	-2.8	159 593	-0.9	153 989	-4.2
—	—	160 901	0.8	148 010	-3.9

# WHAT IF...? REVISIONS TO TREND ESTIMATES

## EFFECT OF NEW SEASONALLY ADJUSTED ESTIMATES ON TREND ESTIMATES

Readers should exercise care when interpreting trend estimates. The last three trend estimates, in particular, are likely to be revised when new seasonally adjusted estimates become available.

### TREND REVISIONS

The graph and tables which follow present the effect of two possible scenarios on the previous trend estimates:

**1** The December Quarter 1999 seasonally adjusted estimate is higher than the September Quarter 1999 estimate by:

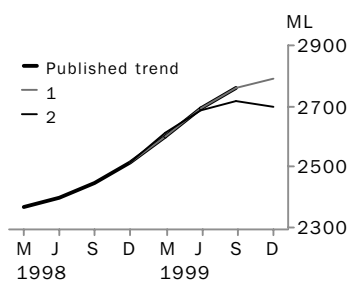
- +2% for whole milk intake by factories.

**2** The December Quarter 1999 seasonally adjusted estimate is lower than the September Quarter 1999 estimate by:

- 2% for whole milk intake by factories.

These percentages were chosen because they represent the average absolute quarterly percentage change for these series over the last ten years.

### WHOLE MILK INTAKE BY FACTORIES



	TREND AS PUBLISHED		WHAT IF NEXT QUARTER'S SEASONALLY ADJUSTED ESTIMATE:			
	number	% change	<b>1</b> <i>rises by 2% on Sep Qtr 1999</i>		<b>2</b> <i>falls by 2% on Sep Qtr 1999</i>	
	number	% change	number	% change	number	% change
Sep Qtr 1998	2 446	2.0	2 445	1.9	2 445	1.9
Dec Qtr 1998	2 515	2.8	2 515	2.9	2 515	2.9
Mar Qtr 1999	2 602	3.5	2 601	3.4	2 610	3.8
Jun Qtr 1999	2 691	3.4	2 691	3.5	2 687	3.0
Sep Qtr 1999	2 758	2.5	2 758	2.5	2 716	1.1
Dec Qtr 1999	—	—	2 792	1.2	2 699	-0.6

## EXPLANATORY NOTES

### INTRODUCTION

- 1** This publication contains information on livestock slaughterings, meat production, stocks of frozen meat, exports of live sheep and live cattle, exports of fresh, frozen and processed meat, and whole milk intake by factories, market milk sales by factories and receipts of taxable wool by wool brokers and dealers.
- 2** The figures shown in this publication have been revised where necessary and as a consequence may not agree with similar data shown in previous publications.
- 3** Where figures have been rounded, discrepancies may occur between sums of the component items and totals.
- 4** Unless indicated otherwise, Australian totals include data for all States and both Territories.

### LIVESTOCK SLAUGHTERINGS AND MEAT PRODUCTION

- 5** The statistics on slaughterings and meat production are based on a monthly collection from abattoirs and other major slaughtering establishments and include estimates of animals slaughtered on farms and by country butchers and other small slaughtering establishments.
- 6** Cattle slaughterings in the Australian Capital Territory and the Northern Territory (including domesticated buffaloes) and the respective meat produced, are included in the Australian totals in tables 1–9 and 11–17. Red meat is shown in carcass weight and excludes offal.
- 7** Care should be taken when using this information as the figures only relate to slaughterings for human consumption and do not include animals condemned or those killed for boiling down.
- 8** Poultry slaughterings and meat produced statistics have been compiled from returns supplied by commercial poultry slaughtering establishments and comprise boilers, fryers and roasters. Many small producers are excluded from the collection; however, the statistics represent a high level of coverage. Tasmanian data are excluded from the Australian total.
- 9** Chicken meat is shown in dressed weight of whole birds, pieces and giblets. Some slaughterings and meat production statistics for ‘Ducks and Drakes’ and ‘Other Fowls and Turkeys’ are available by contacting the ABS on Hobart 03 6222 5939 or by writing to GPO Box 66a, Hobart TAS 7001 (Attention: Agriculture Section).

### STOCKS OF FROZEN MEAT

- 10** Table 20 shows stocks of frozen meat held in cold stores registered to handle meat for export and includes meat passed for export, canning and other purposes. It also includes boneless and carcass meat. Buffalo meat is included in beef (Source: Department of Agriculture, Fisheries and Forestry (formerly Primary Industries and Energy)).

### EXPORTS OF FRESH, FROZEN AND PROCESSED MEAT

- 11** Table 21 shows exports of fresh, frozen and processed meat, excluding offal. Factors can be applied to beef, veal, mutton and lamb bone-out figures to derive bone-in carcass weight which, when added to bone-in figures, shows total exports in carcass weight. The factor for beef and veal is 1.5 and for mutton and lamb, 2.0 (Source: Department of Agriculture, Fisheries and Forestry (formerly Primary Industries and Energy)).
- 12** Beef also includes buffalo meat. Bacon and ham shown is the cured carcass weight of smoked or cooked bacon and ham. It also includes the stated net weight of packs of canned bacon and ham. Canned meat is shown as the canned weight and excludes canned bacon and ham.

## EXPLANATORY NOTES

- LIVE SHEEP AND CATTLE EXPORTS** **13** Table 22 contains statistics of the number of live sheep and cattle exported, the gross weight, gross value and unit value. The unit value is obtained by dividing the gross value by the number of animals exported. Sheep and cattle exported for breeding are excluded.
- MILK** **14** Tables 2, 23, 24 and 26 contain statistics collected by the Australian Dairy Corporation (ADC). Whole milk intake by factories includes the whole milk equivalent of farm cream intake. Market milk sales includes white, flavoured, high and low fat milk and uht milk.
- WOOL RECEIVALS** **15** The statistics in Tables 25 and 26 show the amount of taxable wool received by brokers and purchased by dealers from wool producers. It excludes wool received by brokers on which tax has already been paid by other dealers (private buyers) or brokers.
- 16** The information shown is on the basis of the State in which wool has actually been received and does not necessarily reflect the production of wool in that State.
- SEASONAL ADJUSTMENT** **17** Seasonal adjustment is a means of removing the estimated effects of normal seasonal variation from the series so that the effects of other influences can be more clearly recognised.
- 18** In the seasonal adjustment of the livestock estimates, account has been taken of both normal seasonal factors and 'trading-day' effects, where significant, (arising from the varying length of each quarter and the varying numbers of Sundays, Mondays, Tuesdays etc. in the quarter). Adjustments are also made for the effects of change in the date of Easter holidays, again, where significant. Seasonal adjustment does not remove from the series the effect of irregular influences (e.g. abnormal weather, industrial disputes).
- 19** The State component series have been seasonally adjusted independently. Therefore, the adjusted components may not add to the Australian Group totals.
- 20** As happens with all seasonally adjusted series, the seasonal factors are reviewed annually to take account of each additional year's data.
- TREND ESTIMATES** **21** A trend estimate is obtained by reducing the irregular component from the seasonally adjusted series. In this publication trend estimates are generally derived by applying a seven term Henderson moving average to the seasonally adjusted series. The seven term Henderson, (like all Henderson averages) is symmetric, but as the end of a time series is approached, asymmetric forms of the average are applied. Unlike the weights of the standard seven term Henderson moving average, the weights employed here have been tailored to suit the particular characteristics of individual series. While the asymmetric weights enable the trend to be calculated for recent quarters, it does result in revisions to the estimates for the most recent three quarters as additional observations become available. Revisions of trend estimates will also occur with revisions to the original data and re-estimation of seasonal factors.
- 22** Sensitivity analysis indicates the potential magnitude and direction of revisions created to the last three estimates. It aims to show how a specified movement in the seasonally adjusted data in the next period will affect the trend path of the time series. By showing how sensitive the trend estimates are to the addition of new data, the analysis provides information which can be used in the assessment of the trend's stability.

## EXPLANATORY NOTES

---

**23** For further information, see *A Guide to Interpreting Time Series—Monitoring 'Trends', an Overview* (Cat. no. 1348.0) or contact the Assistant Director, Time Series Analysis on 02 6252 6345.

### RELATED PUBLICATIONS

**24** Current publications produced by the ABS are listed in the Catalogue of Publications and Products, Australia (Cat. no. 1101.0). The ABS also issues, on Tuesdays and Fridays, a Release Advice (Cat. no. 1105.0) which lists publications to be released in the next few days. The Catalogue and Release Advice are available from any ABS office.

### SYMBOLS AND OTHER USAGES

billion	thousand million
M	million
ML	million litres
n.a.	not available
n.p.	not published
p	preliminary
t	tonnes
..	not applicable





## SELF-HELP ACCESS TO STATISTICS

- CPI INFOLDING* For current and historical Consumer Price Index data, call 1902 981 074 (call cost 75c per minute).
- DIAL-A-STATISTIC* For the latest figures for National Accounts, Balance of Payments, Labour Force, Average Weekly Earnings, Estimated Resident Population and the Consumer Price Index call 1900 986 400 (call cost 75c per minute).
- INTERNET* [www.abs.gov.au](http://www.abs.gov.au)
- LIBRARY* A range of ABS publications is available from public and tertiary libraries Australia-wide. Contact your nearest library to determine whether it has the ABS statistics you require.

## WHY NOT SUBSCRIBE?

- PHONE* +61 1300 366 323
- FAX* +61 3 9615 7848

## CONSULTANCY SERVICES

ABS offers consultancy services on a user pays basis to help you access published and unpublished data. Data that is already published and can be provided within 5 minutes is free of charge. Statistical methodological services are also available. Please contact:

<i>INQUIRIES</i>	<i>City</i>	<i>By phone</i>	<i>By fax</i>
	Canberra	02 6252 6627	02 6207 0282
	Sydney	02 9268 4611	02 9268 4668
	Melbourne	03 9615 7755	03 9615 7798
	Brisbane	07 3222 6351	07 3222 6283
	Perth	08 9360 5140	08 9360 5955
	Adelaide	08 8237 7400	08 8237 7566
	Hobart	03 6222 5800	03 6222 5995
	Darwin	08 8943 2111	08 8981 1218

*POST* Client Services, ABS, PO Box 10, Belconnen ACT 2616

*EMAIL* [client.services@abs.gov.au](mailto:client.services@abs.gov.au)



2721500012994  
ISSN 0728-4047

RRP \$17.50