



BUSINESS INDICATORS

**AUSTRALIAN
CAPITAL
TERRITORY**

EMBARGO: 11:30AM (CANBERRA TIME) TUES 21 DEC 1999

C O N T E N T S

	<i>page</i>
Notes	2
Summary of findings	3
Selected business indicators	5
FEATURE ARTICLES	
Structure of the ACT economy	6
Participation in sport and physical activities	7
TABLES	
1 Business expectations: Sales, September quarter 1999/ June quarter 2000, expected aggregate change	9
2 Business indicators	10
3 ACT in relation to the rest of Australia	13
4 ACT in relation to the rest of Australia—percentage changes	14

- For further information about these and related statistics, contact Lenya Redfern on Canberra 02 6207 0446 or Will Blythe on Canberra 02 6207 0311, or Client Services in any ABS office as shown on the back cover of this publication.

NOTES

FORTHCOMING ISSUES

<i>ISSUE</i>	<i>RELEASE DATE</i>
January 2000	25 January 2000
February 2000	22 February 2000
March 2000	20 March 2000
April 2000	27 April 2000
May 2000	22 May 2000
June 2000	23 June 2000

SYMBOLS AND OTHER USAGES

ACT	Australian Capital Territory
n.a.	not available
no.	number
n.p.	not available for publication
p	preliminary
*	Represents data with a standard error of greater than 25%. Caution should be exercised when using this data.
—	nil or rounded to zero

John Connor
Acting Regional Director, Australian Capital Territory

SUMMARY OF FINDINGS

UPDATED SERIES

Series updated since the November 1999 issue are: population, building approvals, motor vehicle registrations, labour force, industrial disputes, retail turnover, housing finance, house price index, average weekly earnings, state final demand, wage and salary earners. There are two feature articles. The first beginning on page 6 is on the Structure of the ACT economy. The second covers Participation in sport and physical activities.

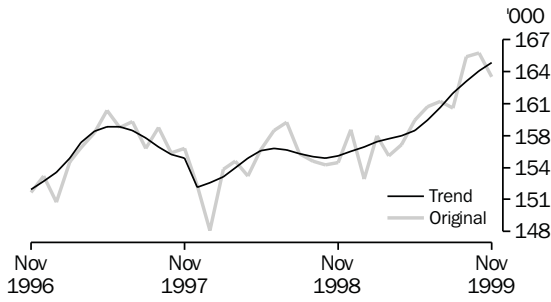
NOTABLE MOVEMENTS

- Population** The estimated resident population of the ACT in June quarter 1999 was 310,200, an increase of 1,000 persons since the March quarter 1999 and an increase of 2,100 persons since the June quarter 1998. The population for the 12 months to June 1999 in the ACT showed an increase of 0.7%, while Australia's population grew by 1.3%. For the June quarter 1999, net migration showed a gain of 33 residents, with both net overseas migration and net interstate migration from the ACT being positive. This is the first quarter net interstate migration has been positive since September quarter 1996.
- Average weekly earnings** Trend full-time adult ordinary time earnings in the ACT were \$845.60 in the August quarter 1999, an increase of \$3.50 (0.4%) since the May quarter 1999. There is a downward trend in total average earnings from \$678.60 in the May quarter to \$662.20 in the August quarter (down 2.4%). The original series data indicate that private sector full-time average ordinary time earnings are falling (down 6.7% from August quarter 1998 to \$725.60 in August quarter 1999), while public sector full-time average ordinary time earnings are rising (up 2.6% from the previous year to \$942.80, August quarter 1999). Total private sector earnings fell by 15.3% while public sector earnings rose by 4.9% suggesting a persistent downward trend in part-time earnings in the private sector.
- Comparable national full-time adult ordinary time earnings were \$751.80 in the August quarter 1999, up \$1.00 (0.1%) since the May quarter 1999.
- Gross State Product** In the ACT, Gross State Product (GSP) (chain volume measure) increased by 2.6% to \$11,822 million in 1998-99 compared to \$11,527 million in 1997-98. Nationally, Gross Domestic Product (GDP) (chain volume measure) grew by 4.5% to \$591,546 million in 1998-99 compared to \$565,881 in 1997-98.
- Retail turnover** The trend estimate for retail turnover in the ACT for October 1999 was \$227.6 million, an increase of 0.7% from the previous month and was up 8.1% compared to October 1998. The national trend retail turnover recorded an increase of 0.9% from the previous month and was up 7.6% compared to the previous year.

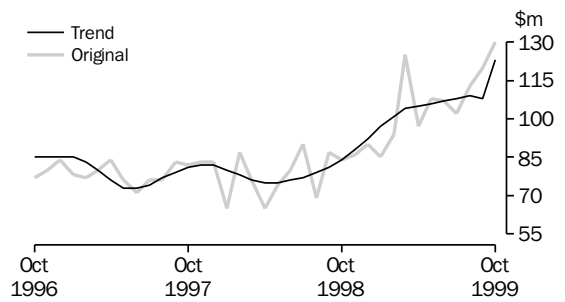
Building approvals	<p>The trend number of dwelling units approved in the ACT increased by 7.9% to 232 dwelling units in October 1999. Nationally, the trend number of dwelling units approved increased by 1.4% to 14,516 dwelling units in October 1999.</p> <p>The value of non-residential building approvals in the ACT was \$13.4 million in October 1999, an increase of \$9.4 million from the previous month. There was also an increase of \$9.6 million (up 253%) compared to October 1998. Nationally, the value of non-residential building approvals increased by 3.2% from the previous month and was down 24.0% from October 1998.</p>
Motor vehicle registration	<p>The trend estimate for ACT new motor vehicle registrations in October 1999 was 1,020, down 2.8% from the previous month, and down 19.7% compared to October 1998. Nationally, the trend for total new motor vehicle registrations in October 1999 decreased 1.5% compared to September 1999, and was down 11.1% compared to October 1998.</p>
Labour force	<p>In November 1999, the trend unemployment rate for the ACT remained stable at 5.8% compared to the previous month, but decreased 0.5 percentage points compared to November 1998. Compared to the previous month trend employment increased by 0.5% (to 164,700 persons). Nationally, trend employment increased by 0.2% from the previous month, while the trend unemployment decreased by 0.7% for November 1999. The trend participation rate in the ACT increased by 0.4% percentage points to 73.5% compared to the previous month, while nationally the trend participation rate remained steady at 63.3%.</p>
Industrial disputes	<p>For the 12 months ended August 1999 there were 34 working days lost per thousand employees in the ACT compared to 69 days nationally. In comparison with the 12 months ended August 1998, there was an increase of 3.0% for the ACT and a decrease of 16.9% nationally in the number of working days lost per thousand employees.</p>
Housing finance	<p>The trend number of dwelling units financed (including refinancing) in the ACT in October 1999 was 975, an increase of 3.5% from the previous month. The trend estimate for the value of commitments in the ACT increased to \$123 million a rise of 4.2% compared to the previous month (\$118 million). Refinancing of existing dwellings comprised 12.3% of the total value of dwelling units financed in October 1999, an increase of 2.3% from the previous month. Nationally, the trend number of dwelling units financed (including refinancing) during October 1999 was 47,605, an increase of 2.0% from the previous month, while the trend estimate for the value of commitments increased to \$6,475 million (up 2.9%) from the previous month.</p>
House price index	<p>The established house price annual index for the ACT during the September quarter 1999 increased by 0.2% from the previous quarter and was up by 2.4% compared to September quarter 1998. Nationally, the established house price index increased by 1.9% from the previous quarter and was up by 7.8% compared to the September quarter 1998.</p>

SELECTED BUSINESS INDICATORS

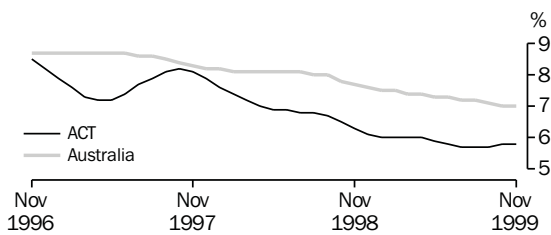
LABOUR FORCE, Employment



HOUSING FINANCE

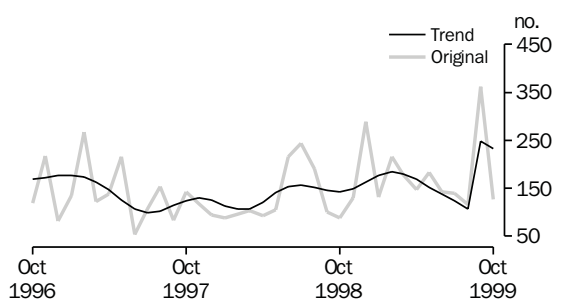


LABOUR FORCE—TREND UNEMPLOYMENT RATE

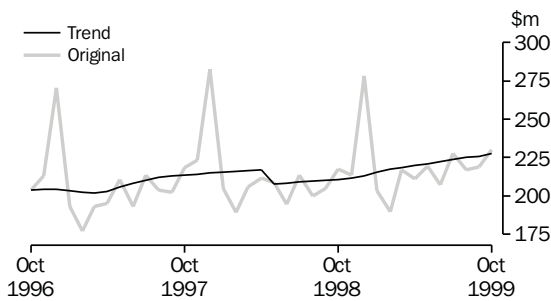


Note: Trend estimates for March 1999 to August 1999 have been revised.

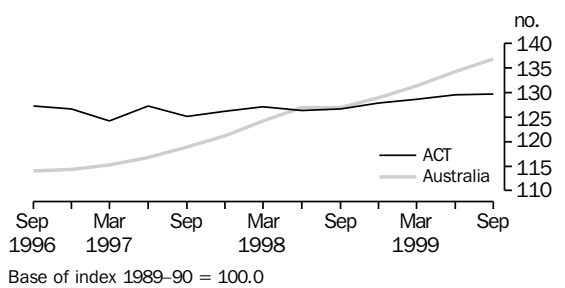
BUILDING APPROVAL—DWELLING UNITS APPROVED



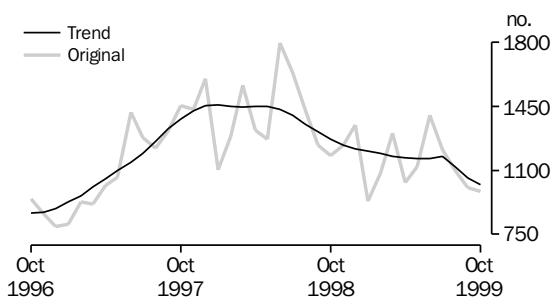
RETAIL TURNOVER



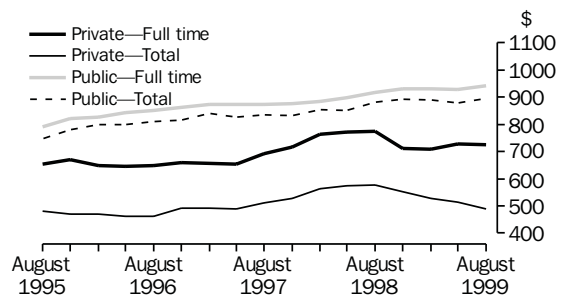
ESTABLISHED HOUSE PRICE ANNUAL INDEX



NEW MOTOR VEHICLE REGISTRATIONS



AVERAGE WEEKLY EARNINGS: Original



STRUCTURE OF THE ACT ECONOMY RELATIVE TO AUSTRALIA, STATES AND THE NORTHERN TERRITORY

An examination of the ACT economy shows one major difference between ACT and the rest of the country: the size of the Government sector relative to the size of the local economy. If one examines the industry contribution to total factor income, Government administration and defence accounts for 35 per cent of total ACT factor income compared to just 6 per cent of total factor income nationally. However, this needs to be kept in perspective: Government contribution to total factor income was \$3.9 billion in the ACT and \$32.2 billion nationally.

Nationally, where the rest of the country has agriculture, mining and manufacturing (20% of total factor income) the ACT has a government sector (35%). Nationally, agriculture, mining, manufacturing and government account for 33% of total factor income: in the ACT they account for 37%.

Outside of these areas the composition of the ACT economy is not very different from the structure of the national economy: utilities, construction, retail, the hospitality sector, communications, property and business services, education, health and home ownership all account for much the same proportion of total factor income in the ACT as they do nationally. Where there are differences between the ACT and the national economy it is that the ACT has a smaller wholesale, transport and storage, and finance and insurance sectors.

INDUSTRY CONTRIBUTION TO TOTAL FACTOR INCOME—1998–99(a)

	NSW	Vic.	Qld	SA	WA	Tas.	NT	ACT	Aust.
	%	%	%	%	%	%	%	%	%
Agriculture, forestry and fishing	3	3	4	6	4	6	4	—	3
Mining	2	2	5	2	17	2	14	—	4
Manufacturing	13	17	11	17	10	15	4	2	13
Electricity, gas & water	2	2	3	3	3	5	2	2	3
Construction	7	6	7	6	8	5	7	6	7
Wholesale trade	6	6	6	5	5	4	3	2	6
Retail trade	6	6	7	6	6	7	6	5	6
Accommodation, cafes & restaurants	3	2	3	2	2	3	3	2	2
Transport & storage	5	5	6	5	5	5	6	3	5
Communication	3	3	3	3	3	3	3	3	3
Finance & insurance	8	8	5	5	4	5	3	3	6
Property & business services	13	12	9	9	9	5	9	11	11
Government administration & defence	3	3	4	3	3	6	8	30	4
Education	4	5	5	5	4	5	6	6	5
Health & community services	6	6	6	8	6	9	7	6	6
Culture & recreational services	2	2	2	2	2	2	3	3	2
Personal & other services	2	2	3	3	2	3	3	4	2
Ownership of dwellings	11	8	9	9	7	9	6	8	9
General government(b)	2	2	2	2	2	3	3	5	2
Total	—	100	100	100	100	100	100	100	100

(a) Industries may not add to total due to rounding differences.

(b) State details for general government gross operating surplus by industry are not available.

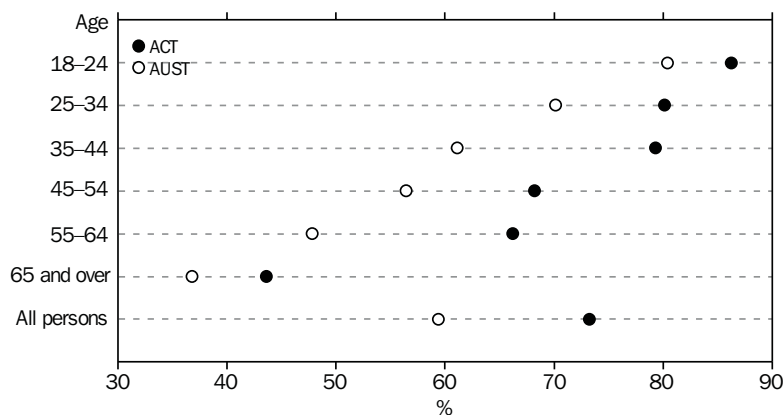
This article presents a summary on the participation by Australians in selected sport and physical activities. Data have been obtained from information collected during 1998–99 in the Population Survey Monitor (PSM). The term ‘participant’ is defined as a player or a person who physically undertakes the activity. It excludes coaches, instructors, umpires and committee members.

The ACT was the most active State or Territory overall, with 73.2% of persons involved in sport or physical activities, and this was true of all age groups. The least active State was South Australia with a participation rate of 56.9%. Nationally, the participation rate was 59.4%.

Organised Sport Participation rates in organised sport and physical activity have increased nationally and in the ACT over the last three years. In 1996–97, participation rates in the ACT increased from 32.0% to 36.3% in 1998–99. The majority of this change is due to the increase in participation rate of females in organised sport and physical activity increasing from 26.7% in 1996–97 to 33.7% in 1997–98.

Participation rate by age Age was a key factor in determining whether people undertook sport or physical activity. In the ACT participation rates declined from 86.2% for the 18–24 year age group to 43.6% for those 65 years and over. The ACT showed a highest participation rate in all age groups compared with all states.

PARTICIPATION IN SPORT AND PHYSICAL ACTIVITIES



Types of sport The top two participation activities both in the ACT and nationally were walking (32.2% and 22.7%) and swimming (21.5% and 15.3%). The sports with the lowest participation rates in the ACT were outdoor hockey, darts and scuba diving, (1.2%).

SPORTS AND PHYSICAL ACTIVITIES WITH MOST PARTICIPANTS IN ACT(a)

	<i>Persons</i>	<i>Participation rate(b)</i>	<i>Australia participation rate(b)</i>
	'000	%	%
Walking	70.1	32.2	22.7
Swimming	46.8	21.5	15.3
Aerobics/fitness	41.4	19.0	11.1
Cycling	26.4	12.1	5.9
Golf	21.8	10.0	9.8
Tennis	17.5	8.1	7.7
Running	15.0	6.9	4.8
Fishing	14.3	6.6	6.7
Billiards/snooker/pool	10.8	4.9	3.0
Ice/snow sports	9.9	4.6	1.8
Tenpin bowling	10.0	4.6	2.7
Netball	8.7	4.0	3.2

(a) Relates to participation by persons aged 18 years and over during a 12-month period prior to interview in 1998-99.

(b) Percentage of the civilian population aged 18 years and over.

1

BUSINESS EXPECTATIONS: SALES

	<i>ACT</i>	<i>Aust.</i>
<i>Period</i>	%	%
Short-term		
Dec qtr 1997–Mar qtr 1998	-1.1	-0.3
Mar qtr 1998–Jun qtr 1998	-0.1	1.7
Jun qtr 1998–Sep qtr 1998	2.7	1.1
Sep qtr 1998–Dec qtr 1998	3.5	1.6
Dec qtr 1998–Mar qtr 1999	-2.7	-0.9
Mar qtr 1999–Jun qtr 1999	0.4	1.8
Jun qtr 1999–Sep qtr 1999	1.4	1.8
Sep qtr 1999–Dec qtr 1999	1.9	2.4
Medium-term		
Dec qtr 1997–Dec qtr 1998	2.9	3.0
Mar qtr 1998–Mar qtr 1999	2.6	2.6
Jun qtr 1998–Jun qtr 1999	6.9	2.7
Sep qtr 1998–Sep qtr 1999	7.5	2.9
Dec qtr 1998–Dec qtr 1999	2.6	2.7
Mar qtr 1999–Mar qtr 2000	1.7	2.3
Jun qtr 1999–Jun qtr 2000	5.7	3.3
Sep qtr 1999–Sep qtr 2000	2.8	2.7

Indicator	Unit	ACT			Aust.		
		Latest figure	% change from		Latest figure	% change from	
			Previous period	Same period previous year		Previous period	Same period previous year
POPULATION, VITAL AND LABOUR							
POPULATION, June qtr 99	'000	310.2	0.3	0.7	18 966.8	0.3	1.3
Natural increase	no.	886	20.9	24.4	30 378	1.0	0.3
Net migration	no.	117	-44.6	54.5	18 041	-51.4	2.0
Total increase	no.	1 003	22.8	150.0	48 419	-27.9	0.9
LABOUR FORCE, Nov 99							
Original series							
Employed	'000	163.3	-1.4	5.5	8 892.8	—	2.8
Unemployed	'000	9.8	5.4	-1.0	609.9	-5.1	-13.7
Unemployment rate	%	5.6	0.3	-0.4	6.4	-0.3	-1.2
Participation rate	%	72.7	-0.9	2.6	63.0	-0.3	—
Long-term unemployed, Oct 99	no.	2 025	-27.6	-32.7	196 109	-7.4	-14.8
Long-term unemployed as percentage of total unemployed		21.8	-5.8	-9.4	30.5	0.8	-3.3
Trend series							
Employed	'000	164.7	0.5	5.9	8 877.8	0.2	2.4
Unemployed	'000	10.2	2.0	-1.9	665.2	-0.7	-8.2
Unemployment rate	%	5.8	—	-0.5	7.1	—	-0.7
Participation rate	%	73.5	0.4	2.9	63.3	—	0.1
WAGE AND SALARY EARNERS							
Number employed—Trend series, May qtr 99							
Public sector	'000	66.8	1.1	-2.9	1 447.7	0.2	-1.2
Private sector	'000	84.7	6.7	22.0	5 749.4	0.5	6.2
Total	'000	151.5	4.2	9.6	7 197.1	0.4	4.6
Gross earnings—Original series, June qtr 99							
Public sector	\$m	782.0	-10.7	-14.2	14 712.9	0.5	-1.1
Private sector	\$m	690.2	19.2	46.1	46 279.8	2.8	9.7
Total	\$m	1 472.2	1.2	6.4	60 992.8	2.2	6.9
JOB VACANCIES, Aug qtr 99	'000	3.5	59.1	94.4	88.0	23.8	20.5
INDUSTRIAL DISPUTES IN PROGRESS, Aug 99							
Working days lost	'000	3.6	3 500.0	1 100.0	129.4	172.4	131.5
Days lost per '000 employees (year ended Jun 99)	no.	34.0	209.1	3.0	69.0	16.9	-16.9
BUILDING AND CONSTRUCTION							
HOUSING FINANCE, Oct 99							
Secured commitments to individuals for							
Original series							
Construction of dwellings	\$m	13.0	—	160.0	1 002.0	0.8	39.0
Purchase of new dwellings	\$m	3.0	—	-25.0	268.0	9.8	16.5
Purchase of established dwellings	\$m	92.0	9.5	-37.0	5 330.0	4.5	47.1
Re-financing	\$m	16.0	33.3	-18.8	985.0	3.6	37.0
Total housing commitments	\$m	130.0	8.3	-35.4	6 600.0	4.1	44.3
Seasonally adjusted series							
Total housing commitments	\$m	139.0	24.1	58.0	7 034.0	15.8	51.7
Trend series							
Dwelling units financed	no.	975	3.5	34.1	47 605	2.0	25.0
Total housing commitments	\$m	123.0	4.2	48.2	6 475.0	2.9	38.7
BUILDING APPROVALS, Oct 99							
Original series							
Dwelling units	no.	127	-64.8	44.3	13 826	-6.7	11.6
Value of new residential	\$m	16.2	-64.7	36.1	1 649.6	-6.6	17.9
Value of residential alterations and additions	\$m	5.8	—	-12.1	287.5	-1.7	20.2
Value of non-residential	\$m	13.4	235.0	252.6	854.8	3.2	-24.0
Value of total building	\$m	35.4	-36.8	58.7	2 791.9	-3.3	1.0
Trend series							
Dwelling units	no.	232	7.9	63.4	14 516	1.4	13.7

Indicator	Unit	ACT			Aust.		
		% change from			% change from		
		Latest figure	Previous period	Same period previous year	Latest figure	Previous period	Same period previous year
BUILDING AND CONSTRUCTION continued							
BUILDING COMMENCEMENTS, Jun qtr 99							
New houses	no.	373	30.9	57.4	26 747	17.0	2.1
Value of houses commenced	\$m	48.9	26.7	61.9	3 314.9	18.1	9.2
Value of non-residential building commenced	\$m	68.1	-53.0	-22.4	2 511.6	-15.5	-22.6
Value of total commencements	\$m	149.0	-34.6	9.6	7 650.3	-0.2	-7.2
PRICE INDEXES							
Established house price index, Mar qtr 99		129.7	0.2	2.4	136.8	1.9	7.8
ENGINEERING CONSTRUCTION (Jun qtr 99)							
Private sector							
Value of work commenced	\$m	12.4	-73.8	-10.8	2 879.4	3.9	12.5
Value of work done	\$m	18.2	44.4	44.4	2 902.5	10.5	—
Value of work yet to be done	\$m	37.0	-14.5	203.3	5 470.8	-0.4	-15.2
Value of work done by public sector	\$m	28.9	-1.7	-4.6	2 104.7	26.4	6.2
PRICES, WAGES AND CONSUMER SPENDING							
CONSUMER PRICE INDEX, Sept qtr 99							
Food(a)		127.7	-0.5	0.1	128.5	0.5	3.0
Housing(a)		96.0	1.4	2.3	98.1	1.6	3.5
Transportation(a)		131.6	2.7	2.8	126.9	3.3	3.8
All groups(a)		122.4	0.7	0.9	123.4	0.9	1.7
AVERAGE WEEKLY EARNINGS, Aug qtr 99							
Original series							
Males	\$	899.4	1.5	-2.7	796.2	-0.3	1.5
Females	\$	783.7	1.0	1.2	675.7	0.9	3.5
Persons	\$	851.7	1.2	-1.1	751.8	0.1	2.1
Trend series							
Males	\$	890.5	0.4	-2.1	798.6	0.5	2.0
Females	\$	785.0	0.8	1.5	675.9	0.7	3.3
Persons	\$	845.6	0.4	-0.9	753.7	0.6	2.5
WAGE COST INDEX, June qtr 99							
Public sector(b)		104.5	0.1	3.2	106.2	0.3	3.9
Private sector(b)		104.3	0.6	2.7	105.1	0.6	2.9
Total(b)		104.4	0.3	3.0	105.4	0.6	3.2
RETAIL TURNOVER , Oct 99							
Original series							
Food retailing	\$m	84.2	3.3	3.3	4 935.1	4.5	2.6
Department stores	\$m	24.0	8.1	0.4	1 043.9	4.1	2.2
Hospitality and services	\$m	34.3	-0.6	-5.8	2 087.2	3.4	7.7
All other retailing	\$m	87.6	8.4	16.0	4 122.4	3.9	8.5
Total	\$m	230.1	5.1	5.9	12 188.6	4.1	5.4
Trend series							
Food retailing	\$m	82.6	0.6	4.6	4 833.2	0.7	5.1
Department stores	\$m	25.3	1.6	1.6	1 086.6	1.3	5.0
Hospitality and services	\$m	33.2	-0.6	-1.8	2 037.1	0.4	10.1
All other retailing	\$m	86.5	1.1	18.8	4 085.6	1.2	10.3
Total	\$m	227.6	0.7	8.1	12 042.5	0.9	7.6

(a) Base year: 1989-90 = 100.0.

(b) Base of each index: September quarter 1997 = 100.0.

Indicator	Unit	ACT			Aust.		
		Latest figure	% change from		Latest figure	% change from	
			Previous period	Same period previous year		Previous period	Same period previous year
TOURISM AND TRANSPORT							
HOTELS, MOTELS AND GUEST HOUSE ACCOMMODATION, Jun qtr 99							
Original series							
Room nights	'000	259.7	7.7	17.4	9 427.3	-1.7	8.1
Takings at current prices	\$m	25.4	7.2	13.9	946.4	-5.7	7.4
Guest arrivals	'000	189.0	5.0	6.8	7 518.2	-1.0	5.2
Guest nights	'000	416.2	3.4	14.4	16 412.0	-4.1	8.2
Room occupancy rate	%	60.9	3.3	1.8	56.2	-1.9	1.6
NEW MOTOR VEHICLE REGISTRATIONS, Oct 99							
Motor vehicles	no.	983	-2.3	-16.7	56 885	-3.9	-12.0
Seasonally adjusted motor vehicles	no.	1 025	2.2	-16.9	59 002	-0.3	-7.6
Trend motor vehicles	no.	1 020	-2.8	-19.7	58 974	-1.5	-11.1
AGGREGATE INDICATORS							
STATE ACCOUNTS, Jun qtr 99(a)							
Original series (chain volume measures)(b)							
Household final consumption expenditure	\$m	1 585	4.5	4.5	87 576	3.6	5.3
General government final consumption expenditure	\$m	2 745	23.3	12.7	27 968	12.1	4.2
Private gross fixed capital formation	\$m	444	-15.2	8.8	30 174	-11.1	-6.5
Public gross fixed capital formation	\$m	-47	-11.5	-20.0	7 763	-8.9	78.9
State final demand	\$m	4 726	14.4	8.4	153 481	8.4	4.5
Gross state product	\$m	11 822	2.6	n.a.	591 546	4.5	n.a.
STATE ACCOUNTS, Jun qtr 99(a)							
Original series (at current prices)							
Household final consumption expenditure	\$m	1 612	4.7	6.1	88 978	3.9	7.0
General government final consumption expenditure	\$m	2 803	23.6	14.3	28 670	11.9	6.2
Private gross fixed capital formation	\$m	443	58.2	7.6	30 431	13.4	-5.5
Public gross fixed capital formation	\$m	-33	-132.7	-16.7	7 910	-9.2	83.7
State final demand	\$m	4 826	15.2	9.9	155 990	8.4	5.7
Gross state product	\$m	12 040	4.5	n.a.	593 311	4.8	n.a.
PRIVATE NEW CAPITAL EXPENDITURE, Jun qtr 99							
Original series (at current prices)							
Buildings and structures	\$m	23	64.3	-36.1	2 805	-8.6	-23.5
Equipment, plant and machinery	\$m	49	-18.3	-9.3	7 887	7.1	-11.1
Total	\$m	72	-2.7	-20.0	10 691	2.5	-14.7
Trend series (at current prices)							
Buildings and structures	\$m	19	-5.0	-20.8	2 965	-11.4	-18.3
Equipment, plant and machinery	\$m	54	-20.6	28.6	7 573	-2.8	-8.5
Total	\$m	73	-17.0	10.6	10 478	-5.4	-11.5

(a) Quarterly state final demand details are released as a special data service (Product no. 5206.0.40.001).

(b) Reference year for chain volume measures is 1996-97.

Source: ABS publications: Australian Demographic Statistics (Cat. no. 3101.0), Australian National Accounts: State Accounts (Cat. no. 5242.0), Building Activity, Australia (Cat. no. 8752.0), Building Approvals, Australia (Cat. no. 8731.0), Consumer Price Index (Cat. no. 6401.0), Housing Finance for Owner Occupation, Australia (Cat. no. 5609.0), House Price Indexes: Eight Capital Cities (Cat. no. 6416.0), Industrial Disputes, Australia (Cat. no. 6321.0), Job Vacancies and Overtime, Australia (Cat. no. 6354.0), Labour Force, Australia, Preliminary (Cat. no. 6202.0), Labour Force, Australia (Cat. no. 6203.0), New Motor Vehicle Registration, Australia (Cat. no. 9301.0), Price Index of Materials Used in Housing Building (Cat. no. 6408.0), Private New Capital Expenditure, State Estimates (Cat. no. 5646.0), Retail Trade, Australia (Cat. no. 8501.0), Tourism Indicators, Australia (Cat. no. 8634.0), Tourism Accommodation, ACT (Cat. no. 8635.8).

Indicator	Unit	Latest period	NSW	Vic.	Qld	SA	WA	Tas.	NT	ACT	Aust.
POPULATION	'000	June qtr 99	6 411.7	4 712.2	3 512.4	1 493.1	1 861.0	470.3	192.9	310.2	18 966.8
LABOUR FORCE (trend)											
Employed persons	'000	Nov 99	2 963.2	2 214.3	1 650.5	668.2	922.2	197.3	93.5	164.7	8 860.9
Unemployment rate	%	Nov 99	6.1	6.9	8.2	8.3	6.9	9.4	3.8	5.8	7.1
WAGE AND SALARY EARNERS (trend)											
Public sector	'000	June qtr 99	461.9	305.3	289.1	113.3	148.2	41.1	22.2	66.8	1 447.7
Private sector	'000	June qtr 99	1 996.6	1 499.1	1 017.5	403.5	577.7	117.9	52.4	84.7	5 749.4
Total public and private sector (trend)	'000	June qtr 99	2 458.5	1 804.4	1 306.6	516.8	725.9	159.0	74.6	151.5	7 197.1
STATE ACCOUNTS(a) (original)											
Gross state product (chain volume measures)	\$m	1998-99	209 937	151 213	96 000	40 493	63 198	11 059	6 460	11 822	591 546
Gross state product (current prices)	\$m	1998-99	212 635	151 306	95 935	40 573	63 226	11 115	6 481	12 040	593 311
PRIVATE NEW CAPITAL EXPENDITURE (trend)	\$m	Jun qtr 99	3 484	2 758	1 835	503	1 439	112	166	73	10 478
BUILDING APPROVALS											
Dwelling units approved (original)	no.	Oct 99	4 207	3 839	2 790	794	1 819	140	110	361	13 826
Dwelling units approved (trend)	no.	Oct 99	4 555	4 020	2 598	807	2 026	124	108	232	14 516
Value of non-residential building approved (original)	\$m	Oct 99	265.9	236.8	151.6	31.6	135.3	9.4	10.8	4.0	854.8
Value of all buildings approved (original)	\$m	Oct 99	895.8	816.2	504.3	125.2	360.4	26.8	27.8	35.4	2 791.9
ENGINEERING CONSTRUCTION											
Value of engineering construction work done	\$m	Jun qtr 99	1 654.0	854.2	1 262.0	255.6	794.0	67.4	72.7	47.1	5 007.2
AVERAGE WEEKLY EARNINGS (trend)											
Full-time adult ordinary time	\$	Aug qtr 99	792.5	743.1	705.1	700.8	760.0	704.4	766.2	845.6	753.7
RETAIL TRADE (trend)											
Retail turnover	\$m	Oct 99	4 190.9	2 946.4	2 214.3	883.4	1 171.0	273.2	127.6	227.6	12 042.5
HOTELS, MOTELS & GUEST HOUSE ACCOMMODATION											
Room nights occupied	'000	Jun qtr 99	3 099.8	1 545.6	2 586.2	505.3	861.7	238.6	330.5	241.1	9 585.8
Room occupancy rate	%	Jun qtr 99	57.9	55.4	56.1	54.6	53.3	47.6	59.3	57.6	58.4
NEW MOTOR VEHICLE REGISTRATIONS (trend)	no.	Oct 99	21 398	15 971	9 405	3 726	5 625	1 182	647	1 020	58 974
	Unit	Latest period	Syd.	Melb.	Bris.	Adel.	Perth	Hob.	Dar.	Canb.	Aust.
CONSUMER PRICE INDEX											
Food(d)		Sep qtr 99	129.4	127.8	127.0	129.7	129.4	126.3	124.3	127.7	128.5
Housing(d)		Sep qtr 99	105.8	88.8	102.8	95.0	93.1	96.9	117.4	96.0	98.1
Transportation(d)		Sep qtr 99	127.9	125.9	125.5	127.8	127.4	123.1	122.6	131.6	126.9
All Groups(d)		Sep qtr 99	124.1	122.7	124.0	125.1	121.9	123.3	122.9	122.4	123.4
Average retail prices (cents)											
Milk, carton, supermarket sales	1 litre	Sep qtr 99	122	140	126	140	146	130	141	115	n.a.
Bread, white loaf, sliced, supermarket sales	680 g	Sep qtr 99	228	238	211	213	218	226	219	230	n.a.
Beef, rump steak	1 kg	Sep qtr 99	1 197	1 093	1 067	1 206	1 172	983	1 122	1 202	n.a.
Chicken, frozen	1 kg	Sep qtr 99	362	355	312	362	369	373	421	366	n.a.
Potatoes	1 kg	Sep qtr 99	127	153	132	80	154	80	128	140	n.a.
Coffee, instant (jar)	150 g	Sep qtr 99	610	640	636	568	671	604	561	493	n.a.
Scotch nip, public bar	30 ml	Sep qtr 99	334	322	273	363	389	264	332	270	n.a.
Private motoring petrol											
Leaded	1 litre	Sep qtr 99	78.4	76.4	69.9	78.0	78.4	82.8	83.1	80.6	n.a.
Unleaded	1 litre	Sep qtr 99	75.8	74.0	67.5	75.6	76.0	80.8	81.0	78.2	n.a.

(a) State estimates are not comparable to national estimates from the June quarter 1995 due to revised methodology used in *Australian National Accounts, State Accounts* (Cat. no. 5242.0).

(b) Experimental series. Users are cautioned these estimates are derived indirectly by calculating a deflator from the expenditure components of the state series concerned. Therefore, in general, the sum of the state estimates does not equal the estimates for Australia.

(c) Reference year for chain volume measures is 1996-97.

(d) Base year: 1989-90 = 100.0.

Indicator	Latest									
	period	NSW	Vic.	Qld	SA	WA	Tas.	NT	ACT	Aust.
POPULATION	June qtr 99	0.2	0.2	0.4	0.1	0.3	—	0.4	0.3	0.3
LABOUR FORCE (trend)										
Employed persons	Nov 99	0.2	0.1	0.2	0.2	0.5	0.1	-0.3	0.5	0.2
Unemployment rate	Nov 99	-0.1	-0.1	—	—	0.1	0.1	—	—	0.1
WAGE AND SALARY EARNERS (trend)										
Pubic sector	June qtr 99	-0.8	—	1.1	0.4	1.6	-0.7	1.4	1.1	0.2
Private sector	June qtr 99	-0.7	—	3.3	-0.8	0.4	2.3	4.8	6.7	0.5
Total public and private sector	June qtr 99	-0.7	—	2.8	-0.6	0.6	1.4	3.8	4.2	0.4
STATE ACCOUNTS(a) (original)										
Gross state product (chain volume measures)(b)(c)	1998-99	4.1	6.2	4.5	2.1	2.1	2.5	7.6	2.6	4.5
Gross state product (current prices)	1998-99	5.4	6.2	4.4	2.3	2.1	3.0	8.0	4.5	4.8
PRIVATE NEW CAPITAL EXPENDITURE (trend)										
Total (at current prices)	Mar qtr 99	-3.5	-2.4	-5.8	-7.5	-9.5	-0.9	-32.5	-17.0	-5.4
BUILDING APPROVALS										
Dwelling units approved (original)	Oct 99	-1.4	-6.5	-3.5	-12.5	-11.8	20.7	-5.2	211.2	-6.7
Dwelling units approved (trend)	Oct 99	-0.1	0.6	3.9	2.8	-0.2	—	-9.2	7.9	1.4
Value of non-residential building approved (original)	Oct 99	3.1	-1.6	31.3	-35.8	1.5	-55.9	68.8	235.0	3.2
Value of all buildings approved (original)	Oct 99	-1.9	-4.9	7.8	-18.4	-4.5	-26.2	13.9	-36.8	-3.3
ENGINEERING CONSTRUCTION										
Value of engineering construction work done	Jun qtr 99	28.4	-1.7	20.2	18.0	14.1	7.8	8.5	12.1	16.7
AVERAGE WEEKLY EARNINGS (trend)										
Full-time adult ordinary time	Aug qtr 99	0.5	0.8	0.4	0.1	1.0	0.6	1.1	0.4	0.6
RETAIL TRADE (trend)										
Retail turnover	Oct 99	0.8	0.8	0.8	1.6	0.6	0.6	0.4	0.7	0.9
HOTELS, MOTELS & GUEST HOUSE ACCOMMODATION										
Room nights occupied	Jun qtr 99	-3.5	-8.0	3.9	-3.7	-2.0	-27.2	43.8	-0.7	-3.2
Room occupancy rate	Jun qtr 99	-2.7	-6.6	1.2	-3.4	-2.5	-18.5	17.1	-1.3	-1.0
NEW MOTOR VEHICLE REGISTRATIONS (trend)	Oct 99	-1.3	-1.5	-2.3	-1.2	-1.5	-1.1	-0.6	-2.8	-1.5
	Latest									
	period	Syd.	Melb.	Bris.	Adel.	Perth	Hob.	Dar.	Canb.	Aust.
CONSUMER PRICE INDEX										
Food(d)	Sep qtr 99	0.5	0.9	0.6	0.7	-0.2	-0.4	120.6	-0.5	0.5
Housing(d)	Sep qtr 99	1.4	1.5	0.8	2.4	2.0	1.0	0.4	1.4	1.6
Transportation(d)	Sep qtr 99	3.0	3.5	3.0	4.4	3.4	2.2	2.8	2.7	3.3
All Groups(d)	Sep qtr 99	0.9	1.0	0.7	1.2	0.9	0.7	0.2	0.7	0.9
Average retail prices (cents)										
Milk, carton, supermarket sales	Sep qtr 99	—	—	—	2.9	3.5	—	4.4	0.0	n.a.
Bread, white loaf, sliced, supermarket sales	Sep qtr 99	8.1	2.1	5.5	30.7	7.4	11.3	-0.5	8.5	n.a.
Beef, rump steak	Sep qtr 99	-4.2	0.3	3.3	0.4	3.0	-9.1	-7.0	-1.0	n.a.
Chicken, frozen	Sep qtr 99	2.5	0.3	-10.3	2.5	1.9	-3.6	-1.4	8.9	n.a.
Potatoes	Sep qtr 99	-2.3	-1.3	-2.9	-1.2	12.4	-2.4	-19.5	-1.4	n.a.
Coffee, instant (jar)	Sep qtr 99	-6.9	8.1	0.5	-3.1	9.1	-5.0	-0.5	-5.2	n.a.
Scotch nip, public bar	Sep qtr 99	0.9	0.3	0.7	—	0.5	—	-0.3	-1.1	n.a.
Private motoring petrol										
Leaded	Sep qtr 99	8.0	8.8	10.4	9.6	7.4	6.3	5.6	8.0	n.a.
Unleaded	Sep qtr 99	8.1	9.1	10.8	9.9	7.5	6.5	5.6	8.2	n.a.

(a) State estimates are not comparable to national estimates from the June quarter 1995 due to revised methodology used in *Australian National Accounts, State Accounts* (Cat. no. 5242.0).

(b) Experimental series. Users are cautioned these estimates are derived indirectly by calculating a deflator from the expenditure components of the state series concerned. Therefore, in general, the sum of the state estimates does not equal the estimates for Australia.

(c) Reference year for chain volume measures is 1996-97.

(d) Base year: 1989-90 = 100.0.

SELF-HELP ACCESS TO STATISTICS

- CPI INFOLINE* For current and historical Consumer Price Index data, call 1902 981 074 (call cost 75c per minute).
- DIAL-A-STATISTIC* For the latest figures for National Accounts, Balance of Payments, Labour Force, Average Weekly Earnings, Estimated Resident Population and the Consumer Price Index call 1900 986 400 (call cost 75c per minute).
- INTERNET* www.abs.gov.au
- LIBRARY* A range of ABS publications is available from public and tertiary libraries Australia-wide. Contact your nearest library to determine whether it has the ABS statistics you require.

WHY NOT SUBSCRIBE?

- PHONE* +61 1300 366 323
- FAX* +61 03 9615 7848

CONSULTANCY SERVICES

ABS offers consultancy services on a user pays basis to help you access published and unpublished data. Data that is already published and can be provided within 5 minutes is free of charge. Statistical methodological services are also available. Please contact:

<i>INQUIRIES</i>	<i>City</i>	<i>By phone</i>	<i>By fax</i>
	Canberra	02 6252 6627	02 6207 0282
	Sydney	02 9268 4611	02 9268 4668
	Melbourne	03 9615 7755	03 9615 7798
	Brisbane	07 3222 6351	07 3222 6283
	Perth	08 9360 5140	08 9360 5955
	Adelaide	08 8237 7400	08 8237 7566
	Hobart	03 6222 5800	03 6222 5995
	Darwin	08 8943 2111	08 8981 1218

POST Client Services, ABS, PO Box 10, Belconnen ACT 2616

EMAIL client.services@abs.gov.au



2130380012992
ISSN 1320-808X

RRP \$15.50