



# ***ECONOMIC INDICATORS***

**NEW SOUTH WALES**

EMBARGO: 11:30AM (CANBERRA TIME) TUES 14 DEC 1999

## **C O N T E N T S**

	<i>page</i>
Notes . . . . .	2
NSW overview. . . . .	3
Main features . . . . .	4
List of tables and graphs . . . . .	5
Population . . . . .	6
Labour . . . . .	7
Production . . . . .	10
Building . . . . .	11
Retail trade . . . . .	12
New motor vehicle registrations . . . . .	13
Tourism . . . . .	14
Consumer and producer price indexes. . . . .	15
Finance . . . . .	16
State Government finance . . . . .	17
Investment. . . . .	18
International trade. . . . .	19

- For further information about these and related statistics, contact Bill Markham on Sydney 02 9268 4376 or email [bill.markham@abs.gov.au](mailto:bill.markham@abs.gov.au) or Client Services in any ABS office as shown on the back cover of this publication.

## NOTES

### FORTHCOMING ISSUES

<i>ISSUE</i>	<i>ISSUE DATE</i>
January 2000	17 January 2000
February 2000	15 February 2000
March 2000	15 March 2000
April 2000	17 April 2000
May 2000	15 May 2000
June 2000	15 June 2000

### GENERAL

This publication provides information on a wide range of economic indicators which are the latest available at the time of publication. In a number of cases, figures appearing in this summary are preliminary and are subject to revision in subsequent issues.

### SEASONAL ADJUSTMENT AND TREND ESTIMATION

Seasonal adjustment is a means of removing the estimated effects of normal seasonal variation from a series so that the effects of other variations on that series can be more clearly recognised. Seasonal adjustment does not aim to remove the irregular or non-seasonal influences which may be present. This means that movements of seasonally adjusted estimates may not be reliable indicators of trend behaviour. Smoothing seasonally adjusted series produces a measure of the underlying trend by reducing the impact of the irregular component of the series. This smoothing technique does result in revisions to the most recent estimates as additional observations become available. For an explanation of seasonal adjustment derivation, refer to the publication *Seasonally Adjusted Indicators* (Cat. no. 1308.0).

### STANDARD ERRORS OF ESTIMATES

One measure of the variability which occurs as a result of surveying only samples of the total business population is the standard error. There are about two chances in three that a survey estimate is within one standard error of the figure that would have been obtained if all businesses had been included, and about 19 chances in 20 that it is within two standard errors. The standard error can also be expressed as a percentage of the estimate and this is known as the relative standard error (RSE).

Current publications produced by the ABS are listed in the *Catalogue of Publications* (Cat. no. 1101.0). A *Release Advice* (Cat. no. 1105.0) is issued on Tuesdays and Fridays which lists publications to be released in the next few days. These publications are available from any ABS office.

### SYMBOLS AND OTHER USAGES

kWh	kilowatt hour
teraJ	terajoule
n.a.	not available
n.p.	not available for publication but included in totals where applicable
n.y.a	not yet available
r	figure or series revised since previous issue
. .	not applicable

Gregory W. Bray  
Regional Director  
New South Wales

## NSW OVERVIEW

EMPLOYMENT	Employment in NSW increased by 23,500 in October 1999 to 2,974,400 in seasonally adjusted terms. National employment in October 1999 was 8,878,800.
UNEMPLOYMENT	Unemployment in NSW fell by 13.9% to a seasonally adjusted figure of 188,300 in October 1999. The unemployment rate fell from 6.9% in September 1999 to 6.0% in October 1999, the lowest rate since December 1989 (5.8%). The national unemployment rate was 7.1% in October 1999.
INDUSTRIAL DISPUTES	In NSW in August 1999 there were 32,000 working days lost due to industrial disputes which accounted for almost a quarter of the working days lost nationally.
BUILDING APPROVALS	The seasonally adjusted number of new dwelling units approved for NSW in September 1999 decreased by 20.0% from the previous month to 3,997.
RETAIL	In seasonally adjusted terms, total retail sales for NSW in September 1999 were \$4,209.2 million. For August 1999, the figure was \$4,127.4 million.
NEW MOTOR VEHICLE REGISTRATIONS	New motor vehicle registrations for NSW in seasonally adjusted terms in September 1999 fell 0.4% from the previous month to 21,221.
FINANCE	The seasonally adjusted value of housing finance commitments for owner occupation in NSW in September 1999 was \$2,486 million, down 2.6% on the previous month but an overall increase of 41.7% since September 1998.
STATE GOVERNMENT FINANCE	The General Government activities of the NSW Government for the two months ended 31 August 1999 is a surplus of \$373 million. This represents an increase of 29.1% over the first two months ended 31 August 1998.

## MAIN FEATURES

### BUILDING APPROVALS

In seasonally adjusted terms, the number of new dwelling units approved in NSW for September 1999 was 3,997 (including 2,303 houses). This represented a decrease of 20.0% on the previous month and was the largest monthly decrease since August 1998 (22.0%). Compared to September 1998, the number of new dwellings approved increased by 2.4%. Nationally, the figure was 13,753 (including 10,014 houses), a fall of 4.4% on August 1999 but 12.2% higher than the figure a year ago.

The seasonally adjusted value of new residential building for NSW in September 1999 was \$489.9 million, a fall of 24.1% over August 1999, the largest monthly decline since August 1998 (20.2%). Nationally, there was a fall of 10.3% on the previous month but an increase of 19.3% compared to September 1998.

In original terms, the value of total building in NSW was \$913.6 million, a fall of 27.8% from August 1999 but 5.3% higher than the figure a year ago. Nationally, the figure (\$2,887.4 million) showed a decrease of 10.8% and an increase of 9.7% over the same periods.

The growth in the trend for total dwelling units approved in NSW has been halted with a small decrease (-0.4%) in September 1999.

### RETAIL TRADE

In seasonally adjusted terms, total retail sales for NSW in September 1999 were \$4,209.2 million. For all retail industry groups, there were no significant movements from the previous month. Compared to September 1998, significant movements occurred for the Household good retailing (up 17.2% to \$456.1 million) and Hospitality and services (up 15.1% to \$869.9 million) industry groups and total retail sales (up 8.6%).

Nationally, total retail sales in September 1999 was \$11,989.0 million. As with NSW, there were no significant movements compared to August 1999. However, compared to September 1998, there were significant increases for most industry groups with Food retailing increasing by 4.7% to \$4,793.7 million, Department stores up 4.3% to \$1,073.2 million, Clothing and soft good retailing up 8.6% to \$812.4 million, Household good retailing up 13.1% to \$1,387.8 million, Other retailing up 9.9% to \$1,241.5 million and Hospitality and services up 13.1% to \$2,061.7 million. Total retail sales increased by 7.7% over the same period.

The growth rate for the trend estimates of total retail sales in NSW, while still relatively strong, eased slightly to 0.6%. The major contributor to this growth was the Household good retailing group with the Hospitality and services group in decline.

## LIST OF TABLES AND GRAPHS

		page
POPULATION	<b>1</b> Estimated resident population, NSW	6
LABOUR	<b>2</b> Labour data, latest time period, NSW and Australia	7
	<b>3</b> Labour data, time series, NSW	7
	<b>4</b> Labour force status of the civilian population, NSW	8
	<b>5</b> Graph: Unemployment rates, NSW and Australia	9
	<b>6</b> Coal, electricity and gas production, latest time period, NSW and Australia	10
PRODUCTION	<b>7</b> Coal, electricity and gas production, time series, NSW	10
BUILDING	<b>8</b> Building approvals, latest time period, NSW and Australia	11
	<b>9</b> Building approvals, time series, NSW	11
RETAIL TRADE	<b>10</b> Turnover of retail establishments, latest time period, NSW and Australia	12
	<b>11</b> Turnover of retail establishments, seasonally adjusted, time series, NSW	12
NEW MOTOR VEHICLE REGISTRATIONS	<b>12</b> New motor vehicle registrations, latest time period, NSW and Australia	13
	<b>13</b> New motor vehicle registrations, seasonally adjusted, time series, NSW	13
TOURISM	<b>14</b> Accommodation establishment, latest time period, NSW and Australia	14
	<b>15</b> Accommodation establishment, time series, Sydney and NSW	14
	<b>16</b> Graph: Hotels, motels, etc., monthly room occupancy rates, Sydney Tourism Region and NSW	14
CONSUMER AND PRODUCER PRICE INDEXES	<b>17</b> Consumer and producer price indexes, latest time period, NSW and Australia	15
	<b>18</b> Consumer and producer price indexes, time series, NSW	15
	<b>19</b> Graph: Consumer Price Index, Sydney and weighted average of eight capital cities	15
FINANCE	<b>20</b> Finance commitments, latest time period, NSW and Australia	16
	<b>21</b> Finance commitments, time series, NSW	16
STATE GOVERNMENT FINANCE	<b>22</b> Government finance, budget sector, time series, NSW	17
INVESTMENT	<b>23</b> Actual private new fixed capital expenditure, latest time period, NSW and Australia	18
	<b>24</b> Actual private new fixed capital expenditure, time series, NSW	18
	<b>25</b> Graph: Actual private new fixed capital expenditure by type of asset, trend estimate, NSW	18
INTERNATIONAL TRADE	<b>26</b> Imports and exports, latest time period, NSW and Australia	19
	<b>27</b> Imports and exports, time series, NSW	19

1 ESTIMATED RESIDENT POPULATION—NSW

Period	Estimated resident population at end of period			Increase during period			Mean estimated resident population for year ended	
	Males	Females	Persons	Natural increase(a)	Net estimated migration	Total increase(b)	30 June	31 December
	'000	'000	'000	'000	'000	'000	'000	'000
<b>1996</b>	3 098.9	3 143.1	6 241.9	41.8	31.3	73.1	6 167.2	6 204.2
<b>1997</b>	3 128.9	3 171.5	6 300.5	40.9	17.6	58.5	6 240.9	6 276.1
<b>1998</b>	3 168.3	3 207.8	6 376.2	40.5	35.2	75.7	6 307.1	6 344.3
<b>1997</b>								
December qtr	3 128.9	3 171.5	6 300.5	10.8	0.6	11.5	..	..
<b>1998</b>								
March qtr	3 139.1	3 180.4	6 319.6	10.3	8.8	19.1	..	..
June qtr	3 146.3	3 187.2	6 333.5	9.9	4.1	14.0	..	..
September qtr	3 157.3	3 197.6	6 354.9	8.2	13.2	21.4	..	..
December qtr	3 168.3	3 207.8	6 376.2	12.1	9.1	21.2	..	..
<b>1999</b>								
March qtr	3 179.0	3 218.2	6 397.2	9.1	11.9	21.0	..	..

(a) Excess of live births over deaths.

(b) For dates prior to June 1996, differences between the total increase shown and the sum of the natural increase and net estimated migration arise from retrospective adjustments to population estimates (which are made after each Census) to compensate for any intercensal discrepancy. A description of intercensal discrepancy is contained in the ABS *Information Paper: Demographic Estimates—Concepts, Sources and Methods* (Cat. no. 3228.0).

Source: Australian Demographic Statistics (Cat. no. 3101.0).

## 2 LABOUR—NSW AND AUSTRALIA

Indicator	Unit	New South Wales				Australia		
		Latest period	Latest figure	Change from prior period	Change from same period prior year	Latest figure	Change from prior period	Change from same period prior year
				%	%	no.	%	%
Employed persons (seasonally adjusted)	'000	Oct 99	2 974.4	0.8	2.4	8 878.8	0.5	2.3
Unemployed persons (seasonally adjusted)	'000	Oct 99	188.3	-13.9	-9.1	673.6	-4.2	-5.9
Labour force (seasonally adjusted)	'000	Oct 99	3 162.7	-0.2	1.6	9 552.4	0.2	1.7
Participation rate (seasonally adjusted)	%	Oct 99	62.0	-0.5	0.2	63.4	0.0	0.0
Unemployment rate (seasonally adjusted)	%	Oct 99	6.0	-13.0	-10.4	7.1	-4.1	-6.6
Industrial disputes—working days lost	'000	Aug 99	32.0	39.1	53.8	129.4	172.4	131.5
Job vacancies	'000	Aug 99	36.3	22.2	37.5	88.0	23.6	20.5
Average weekly employee earnings—full-time adult ordinary time earnings (seasonally adjusted)	\$	Aug 99	788.0	-0.5	3.7	753.2	0.3	2.1

Source: *Average Weekly Earnings, States and Australia* (Cat. no. 6302.0), *Industrial Disputes, Australia* (Cat. no. 6321.0), *Job Vacancies and Overtime, Australia* (Cat. no. 6354.0), *Labour Force, Australia, Preliminary* (Cat. no. 6202.0).

## 3 LABOUR—NEW SOUTH WALES

Period	Seasonally adjusted						
	Employed persons '000	Unemployed persons '000	Labour force '000	Participation rate %	Unemployment rate %	Industrial disputes (working days lost) '000	Job vacancies '000
<b>1998</b>							
August	2 851.9	230.8	3 082.7	61.5	7.5	20.8	26.4
September	2 895.0	227.3	3 122.3	62.2	7.3	7.6	..
October	2 904.6	207.2	3 111.8	61.9	6.7	8.9	..
November	2 859.4	238.2	3 097.6	61.6	7.7	10.6	24.1
December	2 891.5	211.5	3 103.0	61.6	6.8	28.8	..
<b>1999</b>							
January	2 884.6	215.2	3 099.8	61.5	6.9	2.7	..
February	2 906.0	208.7	3 114.7	61.7	6.7	40.3	24.4
March	2 903.5	219.8	3 123.3	61.8	7.0	7.8	..
April	2 901.0	216.1	3 117.1	61.6	6.9	2.1	..
May	2 918.7	203.5	3 122.2	61.6	6.5	3.1	29.7
June	2 929.1	200.0	3 129.1	61.7	6.4	3.9	..
July	2 942.5	191.3	3 133.8	61.7	6.1	23.0	..
August	2 933.2	212.8	3 146.0	61.9	6.8	32.0	36.3
September	2 950.9	218.6	3 169.5	62.3	6.9	n.y.a.	..
October	2 974.4	188.3	3 162.7	62.0	6.0	n.y.a.	..

Source: *Industrial Disputes, Australia* (Cat. no. 6321.0), *Job Vacancies and Overtime, Australia* (Cat. no. 6354.0), *Labour Force, Australia, Preliminary* (Cat. no. 6202.0).

4 LABOUR FORCE STATUS, NSW—ORIGINAL

Month	Employed		Unemployed		Labour force	Not in labour force	Civilian population aged 15 years and over	Unemployment rate(a)	Participation rate(b)
	Full-time workers	Total	Looking for full-time work	Total					
	'000	'000	'000	'000	'000	'000	'000	%	%
MALES									
<b>October</b>									
1995	1 406.9	1 581.6	118.9	133.8	1 715.4	653.7	2 369.1	7.8	72.4
1996	1 421.5	1 602.4	115.5	133.9	1 736.3	665.4	2 401.8	7.7	72.3
1997	1 427.9	1 594.9	119.2	136.9	1 731.7	701.9	2 433.7	7.9	71.2
<b>1998</b>									
August	1 424.3	1 599.4	115.5	134.6	1 734.1	728.4	2 462.4	7.8	70.4
September	1 466.6	1 649.3	117.0	134.2	1 783.4	681.8	2 465.2	7.5	72.3
October	1 460.5	1 648.9	96.8	110.5	1 759.4	709.0	2 468.4	6.3	71.3
November	1 441.2	1 633.0	112.0	129.4	1 762.4	709.1	2 471.5	7.3	71.3
December	1 467.6	1 658.3	107.6	121.5	1 779.8	695.0	2 474.7	6.8	71.9
<b>1999</b>									
January	1 447.1	1 633.0	124.6	140.8	1 773.8	703.8	2 477.5	7.9	71.6
February	1 453.4	1 644.9	113.5	133.1	1 778.0	702.4	2 480.3	7.5	71.7
March	1 454.3	1 661.9	102.9	126.1	1 788.0	695.2	2 483.1	7.1	72.0
April	1 456.1	1 657.8	95.6	115.5	1 773.3	713.3	2 486.6	6.5	71.3
May	1 460.0	1 662.7	93.3	110.1	1 772.8	717.2	2 490.0	6.2	71.2
June	1 459.4	1 668.1	91.6	108.0	1 776.1	717.3	2 493.4	6.1	71.2
July	1 491.8	1 687.4	83.2	101.3	1 788.7	707.7	2 496.4	5.7	71.7
August	1 464.1	1 662.6	95.9	115.3	1 777.8	721.6	2 499.4	6.5	71.1
September	1 502.7	1 696.2	97.6	124.8	1 820.9	681.5	2 502.4	6.9	72.8
October	1 504.7	1 688.4	87.4	105.5	1 793.9	712.6	2 506.4	5.9	71.6
FEMALES									
<b>October</b>									
1995	734.8	1 216.1	58.8	87.5	1 303.6	1 153.2	2 456.8	6.7	53.1
1996	737.9	1 216.6	62.5	97.1	1 313.7	1 179.7	2 493.4	7.4	52.7
1997	723.1	1 195.5	67.2	96.5	1 292.1	1 232.7	2 524.8	7.5	51.2
<b>1998</b>									
August	724.7	1 220.6	62.4	85.0	1 305.5	1 245.5	2 551.1	6.5	51.2
September	756.9	1 276.0	61.7	97.1	1 373.1	1 180.6	2 553.7	7.1	53.8
October	751.4	1 258.7	54.8	90.3	1 349.0	1 207.6	2 556.6	6.7	52.8
November	733.3	1 235.5	61.0	96.8	1 332.3	1 227.2	2 559.6	7.3	52.1
December	762.7	1 276.6	57.4	86.6	1 363.3	1 199.2	2 562.5	6.4	53.2
<b>1999</b>									
January	739.5	1 218.0	62.6	90.1	1 308.0	1 257.1	2 565.1	6.9	51.0
February	738.4	1 236.4	67.4	104.5	1 340.9	1 226.8	2 567.7	7.8	52.2
March	728.8	1 238.3	64.3	108.7	1 347.0	1 223.3	2 570.2	8.1	52.4
April	726.0	1 242.6	62.5	98.5	1 341.2	1 232.0	2 573.2	7.3	52.1
May	729.5	1 250.2	56.8	90.0	1 340.3	1 235.9	2 576.1	6.7	52.0
June	746.9	1 264.6	52.3	81.5	1 346.2	1 232.9	2 579.1	6.1	52.2
July	754.9	1 265.7	53.2	76.5	1 342.2	1 239.8	2 582.0	5.7	52.0
August	723.4	1 237.1	54.9	86.7	1 323.8	1 261.2	2 584.9	6.5	51.2
September	749.9	1 285.6	61.3	97.6	1 383.2	1 204.7	2 587.9	7.1	53.4
October	767.2	1 289.1	51.3	77.1	1 366.2	1 225.1	2 591.3	5.6	52.7

For footnotes see end of table.



4 LABOUR FORCE STATUS, NSW—ORIGINAL—continued

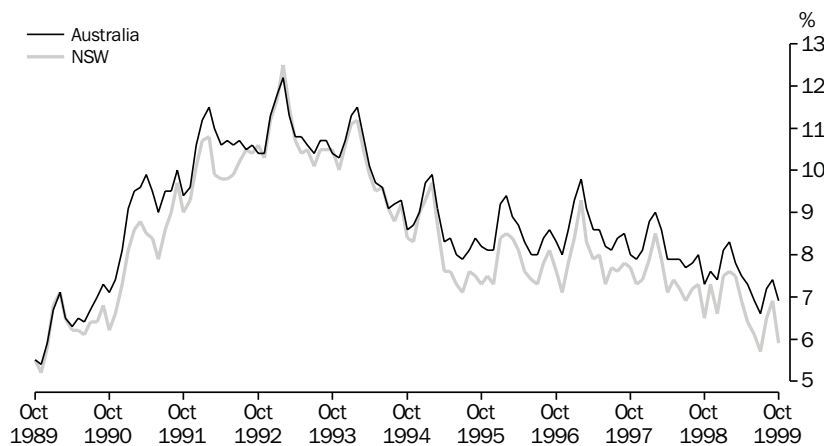
Month	Employed		Unemployed		Labour force	Not in labour force	Civilian population aged 15 years and over	Unemployment rate(a)	Participation rate(b)
	Full-time workers	Total	Looking for full-time work	Total					
	'000	'000	'000	'000	'000	'000	'000	%	%
PERSONS									
<b>October</b>									
1995	2 141.7	2 797.8	177.7	221.2	3 019.0	1 806.9	4 825.9	7.3	62.6
1996	2 159.3	2 819.0	177.9	231.0	3 050.0	1 845.2	4 895.2	7.6	62.3
1997	2 150.9	2 790.4	186.3	233.4	3 023.8	1 934.6	4 958.4	7.7	61.0
<b>1998</b>									
August	2 149.1	2 820.0	177.9	219.6	3 039.6	1 973.9	5 013.5	7.2	60.6
September	2 223.5	2 925.2	178.7	231.3	3 156.5	1 862.4	5 018.9	7.3	62.9
October	2 211.9	2 907.6	151.6	200.8	3 108.4	1 916.6	5 025.0	6.5	61.9
November	2 174.5	2 868.5	173.0	226.3	3 094.7	1 936.4	5 031.1	7.3	61.5
December	2 230.2	2 934.9	165.0	208.1	3 143.1	1 894.2	5 037.2	6.6	62.4
<b>1999</b>									
January	2 186.6	2 850.9	187.1	230.9	3 081.8	1 960.9	5 042.6	7.5	61.1
February	2 191.8	2 881.3	180.9	237.5	3 118.8	1 929.2	5 048.0	7.6	61.8
March	2 183.2	2 900.2	167.2	234.8	3 134.9	1 918.4	5 053.4	7.5	62.0
April	2 182.1	2 900.4	158.1	214.0	3 114.5	1 945.3	5 059.8	6.9	61.6
May	2 189.6	2 912.9	150.2	200.1	3 113.1	1 953.1	5 066.1	6.4	61.4
June	2 206.3	2 932.7	143.9	189.6	3 122.3	1 950.3	5 072.5	6.1	61.6
July	2 246.7	2 953.2	136.4	177.8	3 131.0	1 947.5	5 078.5	5.7	61.7
August	2 187.6	2 899.6	150.8	202.0	3 101.6	1 982.8	5 084.4	6.5	61.0
September	2 252.6	2 981.8	158.9	222.4	3 204.2	1 868.2	5 090.3	6.9	62.9
October	2 271.8	2 977.5	138.6	182.6	3 160.1	1 937.7	5 097.8	5.8	62.0

(a) The number of unemployed in each group expressed as a percentage of the labour force in the same group.

(b) The labour force in each group expressed as a percentage of the civilian population aged 15 years and over in the same group.

Source: Labour Force, Australia, Preliminary (Cat. no. 6202.0).

5 UNEMPLOYMENT RATE—ORIGINAL



Source: Labour Force, Australia, Preliminary (Cat. no. 6202.0).

6 COAL, ELECTRICITY AND GAS PRODUCTION, NSW AND AUSTRALIA—ORIGINAL

Indicator	Unit	Latest period	New South Wales				Australia		
			Latest figure	Change from prior period	Change from same period prior year	Latest figure	Change from prior period	Change from same period prior year	
				%	%		%	%	
Raw coal won—									
Underground	'000 tonnes	Aug 99	3 820	-7.7	0.8	7 171	-4.5	41.4	
Open cut	'000 tonnes	Aug 99	6 306	0.6	12.3	17 666	0.0	28.5	
Total	'000 tonnes	Aug 99	10 126	-2.7	7.7	24 837	-1.3	32.0	
Electricity	mill. kWh	Jun qtr 99	16 365	4.8	5.2	45 227	0.3	2.1	
Gas(a)	teraJ	Jun qtr 99	30 428	36.0	2.8	181 952	25.5	4.3	

(a) Available for issue through mains. Includes ACT.

Source: Joint Coal Board for NSW and Australia from ABS unpublished statistics, Manufacturing Production, Australia (Cat. no. 8301.0).

7 COAL, ELECTRICITY AND GAS PRODUCTION, NSW—ORIGINAL

Period	Raw coal won			Electricity mill. kWh	Gas(a) teraJ
	Underground	Open cut	Total		
	'000 tonnes	'000 tonnes	'000 tonnes		
<b>1996-97</b>	54 642	69 036	123 678	62 788	109 284
<b>1997-98</b>	58 299	75 710	134 009	61 804	111 665
<b>1998-99</b>	51 158	80 209	131 367	63 743	110 092
<b>1998</b>					
June	4 842	6 811	11 653	n.a.	n.a.
July	5 130	7 241	12 371	16 543	32 258
August	3 788	5 616	9 404		
September	4 734	6 372	11 106		
October	4 732	7 131	11 863	15 227	25 039
November	3 988	6 931	10 919		
December	3 346	6 500	9 846		
<b>1999</b>					
January	3 273	6 159	9 432	15 609	22 367
February	3 848	6 913	10 761		
March	4 921	7 827	12 748		
April	3 525	5 768	9 293	16 365	30 428
May	4 664	6 303	10 967		
June	5 209	7 448	12 657		
July	4 137	6 270	10 407	n.a.	n.a.
August	3 820	6 306	10 126		

(a) Available for issue through mains. Includes ACT.

Source: Joint Coal Board, Manufacturing Production, Australia (Cat. no. 8301.0).

## 8 BUILDING APPROVALS—NSW AND AUSTRALIA

Indicator	Unit	Latest period	Latest figure	New South Wales		Australia		
				Change from prior period %	Change from same period prior year %	Change from prior period %	Change from same period prior year %	
Number of dwelling units(a) (seasonally adjusted)—								
New houses	no.	Sep 99	2 303	-8.5	11.1	10 014	4.7	17.7
Total	no.	Sep 99	3 997	-20.0	2.4	13 753	-4.4	12.2
Value of new residential building (seasonally adjusted)	\$m	Sep 99	489.9	-24.1	15.8	1 594.3	-10.3	19.3
Value of alterations and additions to residential building(b) (seasonally adjusted)	\$m	Sep 99	112.2	-4.6	10.5	271.8	-12.4	14.5
Value of non-residential building(c) (original)	\$m	Sep 99	257.8	-49.0	-20.2	828.2	-24.4	-12.8
Value of all building (original)	\$m	Sep 99	913.6	-27.8	5.3	2 887.4	-10.8	9.7

(a) Includes dwelling units approved as part of the construction of non-residential building and alterations and additions to existing buildings (including conversions to dwelling units).

(b) Valued at \$10,000 or more. Includes conversions of existing buildings into residential buildings.

(c) Valued at \$50,000 or more.

Source: *Building Approvals, Australia (Cat. no. 8731.0)*.

## 9 BUILDING APPROVALS—NSW

Period	Number of dwelling units(a), seasonally adjusted				Value of building approvals			
	New houses		Total		Seasonally adjusted		Original	
	Private sector	Total	Private sector	Total	New residential building	Alterations and additions to residential building(b)	Non-residential building(c)	All building
	no.	no.	no.	no.	\$m	\$m	\$m	\$m
<b>1996-97</b>	..	..	..	..	..	..	5 169.2	11 356.6
<b>1997-98</b>	..	..	..	..	..	..	5 910.9	13 348.6
<b>1998-99</b>	..	..	..	..	..	..	4 534.9	11 872.4
<b>1998</b>								
July	2 305	2 492	4 628	4 954	569.0	127.0	329.9	1 103.2
August	1 999	2 017	3 696	3 866	453.9	94.1	612.0	1 158.0
September	2 051	2 073	3 810	3 904	423.1	101.5	322.9	867.3
October	2 336	2 346	4 062	4 225	488.4	88.7	313.5	862.1
November	2 272	2 337	4 109	4 420	535.4	92.9	461.5	1 180.1
December	2 333	2 358	4 274	4 451	530.7	91.9	234.8	840.5
<b>1999</b>								
January	2 237	2 262	4 182	4 286	503.7	92.5	297.4	757.2
February	2 413	2 428	4 052	4 126	508.7	104.8	432.0	996.2
March	2 459	2 476	4 141	4 277	497.8	90.0	395.5	1 013.6
April	2 266	2 275	4 194	4 265	482.8	89.1	207.3	781.6
May	2 582	2 610	4 174	4 252	527.0	108.5	424.4	1 141.4
June	2 452	2 464	4 478	4 548	605.4	91.1	503.7	1 171.2
July r	2 718	2 730	4 408	4 572	604.4	105.1	523.1	1 257.6
August r	2 514	2 516	4 923	4 998	645.6	117.6	505.7	1 265.7
September	2 260	2 303	3 935	3 997	489.9	112.2	257.8	913.6

(a) Includes dwelling units approved as part of the construction of non-residential building and alterations and additions to existing buildings (including conversions to dwelling units).

(b) Valued at \$10,000 or more. Includes conversions of existing buildings into residential buildings.

(c) Valued at \$50,000 or more.

Source: *Building Approvals, Australia (Cat. no. 8731.0)*.

10 TURNOVER OF RETAIL ESTABLISHMENTS(a), NSW AND AUSTRALIA—SEASONALLY ADJUSTED

Indicator	Latest period	New South Wales			Australia		
		Latest figure	Change from prior period	Change from same period prior year	Latest figure	Change from prior period	Change from same period prior year
		\$m	%	%	\$m	%	%
Food retailing	Sep 99	1 582.3	1.6	5.8	4 793.7	-0.6	4.7
Department stores	Sep 99	364.8	-1.5	3.1	1 073.2	1.0	4.3
Clothing and soft good retailing	Sep 99	298.2	-1.6	3.3	812.4	0.6	8.6
Household good retailing	Sep 99	456.1	4.4	17.2	1 387.8	2.0	13.1
Recreational good retailing	Sep 99	211.6	2.0	11.0	618.5	0.0	3.7
Other retailing	Sep 99	426.3	0.0	6.2	1 241.5	-0.8	9.9
Hospitality and services	Sep 99	869.9	5.3	15.1	2 061.7	3.6	13.1
<b>Total value of retail sales</b>	<b>Sep 99</b>	<b>4 209.2</b>	<b>2.0</b>	<b>8.6</b>	<b>11 989.0</b>	<b>0.6</b>	<b>7.7</b>

(a) The figures shown are derived from a monthly survey of retail establishments. Excludes motor vehicle, boat and caravan dealers, service stations, smash repairers, tyre and battery retailers, bread and milk vendors, footwear repairers and electrical appliance repairers n.e.c. Retail establishments which do not have employees are excluded from the survey. Turnover includes retail sales, wholesale sales, takings from repairs, meals and hiring of goods; and commissions from agency activity (e.g. commissions received from collecting dry cleaning, selling lottery tickets etc.).

Source: Retail Trade, Australia (Cat. no. 8501.0).

11 TURNOVER OF RETAIL ESTABLISHMENTS(a), NSW—SEASONALLY ADJUSTED

Period	Food retailing	Department stores	Clothing and soft good retailing	Household good retailing	Recreational good retailing	Other retailing	Hospitality and services	Total
	\$m	\$m	\$m	\$m	\$m	\$m	\$m	\$m
<b>1998</b>								
July	1 488.4	374.6	273.3	400.4	194.2	396.5	748.2	3 875.7
August	1 471.0	341.2	280.2	401.9	186.5	390.3	743.5	3 814.6
September	1 495.8	353.8	288.7	389.3	190.6	401.5	755.8	3 875.7
October	1 527.1	348.7	302.1	384.8	196.0	379.7	768.7	3 907.1
November	1 512.0	365.1	289.7	382.5	195.1	381.9	793.8	3 920.0
December	1 503.3	344.4	284.2	371.5	192.8	386.6	769.6	3 852.5
<b>1999</b>								
January	1 548.1	387.7	291.7	408.0	202.3	399.5	840.3	4 077.2
February	1 527.5	355.9	283.2	380.6	196.4	401.0	867.2	4 011.9
March	1 568.7	364.2	287.5	375.8	210.3	390.0	880.6	4 077.0
April	1 518.6	360.1	296.9	389.6	208.5	417.6	876.6	4 068.0
May	1 526.4	353.6	282.2	387.3	198.4	425.8	884.0	4 057.7
June	1 537.4	343.3	285.2	390.3	203.0	409.0	875.1	4 043.3
July	1 536.0	364.4	278.6	406.0	216.3	410.0	846.0	4 057.4
August	1 557.1	370.3	303.0	436.7	207.5	426.2	826.5	4 127.4
September	1 582.3	364.8	298.2	456.1	211.6	426.3	869.9	4 209.2

(a) The figures shown are derived from a monthly survey of retail establishments. Excludes motor vehicle, boat and caravan dealers, service stations, smash repairers, tyre and battery retailers, bread and milk vendors, footwear repairers and electrical appliance repairers n.e.c. Retail establishments which do not have employees are excluded from the survey. Turnover includes retail sales, wholesale sales, takings from repairs, meals and hiring of goods; and commissions from agency activity (e.g. commissions received from collecting dry cleaning, selling lottery tickets etc.).

Source: Retail Trade, Australia (Cat. no. 8501.0).

12 NEW MOTOR VEHICLE REGISTRATIONS(a), NSW AND AUSTRALIA—SEASONALLY ADJUSTED

Indicator	Latest period	New South Wales			Australia		
		Latest figure	Change from prior period	Change from same period prior year	Latest figure	Change from prior period	Change from same period prior year
		no.	%	%	no.	%	%
Passenger vehicles	Sep 99	17 773	-0.4	-11.1	48 734	-1.1	-12.0
Other vehicles (excluding motor cycles)	Sep 99	3 448	-0.5	7.3	10 458	-5	2.0
Total registrations (excluding motor cycles)	Sep 99	21 221	-0.4	-8.6	59 192	-1.8	-9.8

(a) Includes vehicles (other than those of the defence forces) owned by Government departments and authorities. Excludes mobile plant and equipment, tractors, trailers and non-motorised caravans.

Source: *New Motor Vehicle Registrations, Australia, Preliminary (Cat. no. 9301.0)*.

13 NEW MOTOR VEHICLE REGISTRATIONS(a), NSW—SEASONALLY ADJUSTED

Period	Passenger vehicles	Other vehicles	Total
	no.	(excluding motor cycles) no.	(excluding motor cycles) no.
<b>1998</b>			
July	21 482	3 315	24 796
August	19 089	3 266	22 355
September	20 003	3 214	23 217
October	18 356	3 375	21 731
November	19 815	3 398	23 212
December	19 616	3 501	23 116
<b>1999</b>			
January	18 567	3 610	22 177
February	18 151	3 353	21 504
March	19 978	3 623	23 601
April	19 041	3 369	22 410
May	18 801	3 126	21 927
June	20 137	3 295	23 432
July	19 603	3 883	23 486
August	17 842	3 464	21 306
September	17 773	3 448	21 221

(a) Includes vehicles (other than those of the defence forces) owned by Government departments and authorities. Excludes mobile plant and equipment, tractors, trailers and non-motorised caravans.

Source: *New Motor Vehicle Registrations, Australia, Preliminary (Cat. no. 9301.0)*.

14 ACCOMMODATION ESTABLISHMENTS(a) NSW AND AUSTRALIA—ORIGINAL

Indicator	Unit	New South Wales				Australia		
		Latest period	Latest figure	Change from prior period	Change from same period prior year	Latest figure	Change from prior period	Change from same period prior year
				%	%		%	%
Room nights	'000	Jun qtr 99	3 099.9	-3.5	7.3	9 427.3	-1.7	8.1
Room occupancy rate	%	Jun qtr 99	57.9	-4.5	2.8	56.2	-3.3	2.9
Takings	\$'000	Jun qtr 99	332 669	-7.8	5.0	946 366	-5.7	7.4

(a) Licensed hotels with facilities, motels and guest houses and serviced apartments with 15 or more rooms or units.

Source: Tourist Accommodation, Australia (Cat. no. 8635.0).

15 ACCOMMODATION ESTABLISHMENTS(a) SYDNEY AND NSW—ORIGINAL

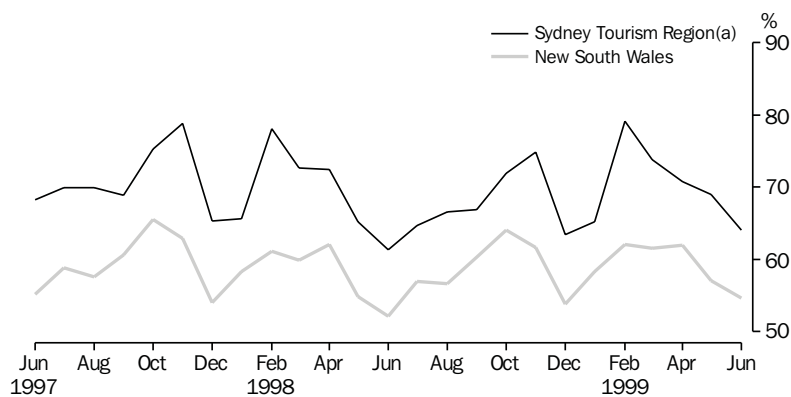
Period	Sydney Tourism Region(b)			New South Wales		
	Room nights	Room occupancy rate	Takings	Room nights	Room occupancy rate	Takings
	'000	%	\$'000	'000	%	\$'000
<b>1998</b>						
March qtr	1 664.9	71.9	235 516	3 017.3	59.8	343 248
June qtr	1 568.3	66.3	216 500	2 890.3	56.3	316 721
September qtr	1 640.0	66.1	222 944	3 077.3	57.9	342 102
December qtr	1 777.0	70.0	246 125	3 210.5	59.8	359 172
<b>1999</b>						
March qtr	1 828.8	72.5	248 997	3 213.2	60.6	360 674
June qtr	1 731.3	68.0	226 273	3 099.9	57.9	332 669

(a) Licensed hotels with facilities, motels and guest houses and serviced apartments with 15 or more rooms or units.

(b) Excludes Gosford, Wyong and Blue Mountains Statistical Local Areas.

Source: Tourist Accommodation, Small Area Data, NSW (Prod. no. 8635.1.40.001).

16 ACCOMMODATION ESTABLISHMENTS,  
MONTHLY ROOM OCCUPANCY RATE—ORIGINAL



(a) Excludes Gosford, Wyong and Blue Mountains Statistical Local Areas.

Source: Tourist Accommodation, Small Area Data, NSW (Prod. no. 8635.1.40.001).

17 CONSUMER AND PRODUCER PRICE INDEXES—NSW AND AUSTRALIA

Indicator	Unit	Latest period	New South Wales(a)			Australia(b)		
			Latest figure	Change from prior period %	Change from same period prior year %	Latest figure	Change from prior period %	Change from same period prior year %
Consumer Price Index (all groups)	1989-90 =100.0	Sep qtr 99	124.1	0.9	1.8	123.4	0.9	1.7
Price index of materials used in house building (all groups)	1989-90 =100.0	Sep qtr 99	123.7	1.6	2.4	120.5	1.1	0.9
Price index of materials used in building other than house building (all groups)	1989-90 =100.0	Sep qtr 99	115.1	-0.3	0.1	115.2	-0.2	0.3

(a) Refers to State capital city—Sydney.

(b) For the Consumer Price Index this is the weighted average of eight capital cities and for the other two indexes, the weighted average of the six State capital cities.

Source: Consumer Price Index, Australia (Cat. no. 6401.0), Price Index of Materials Used in Building Other Than House Building, Six State Capital Cities (Cat. no. 6407.0), Price Index of Materials Used in House Building, Six State Capital Cities (Cat. no. 6408.0).

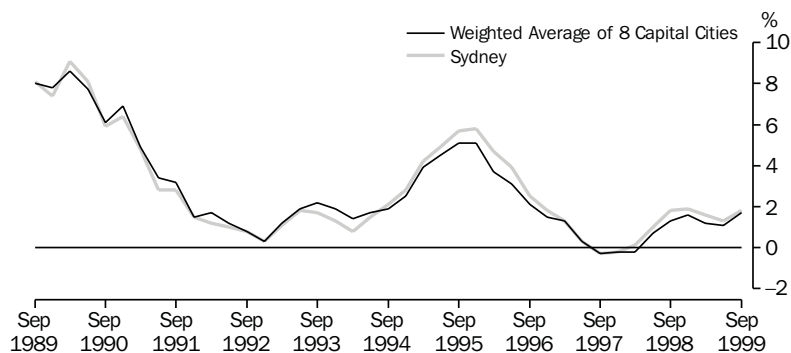
18 CONSUMER AND PRODUCER PRICE INDEXES—NSW(a)

Period	Consumer Price Index, all groups	Price Index of materials used in house building, all groups	Price Index of materials used in building other than house building, all groups
	1989-90 = 100.0	1989-90 = 100.0	1989-90 = 100.0
<b>1998</b>			
June qtr	121.4	120.7	114.8
September qtr	121.9	120.8	115.0
December qtr	122.4	121.8	115.1
<b>1999</b>			
March qtr	122.6	122.0	115.2
June qtr	123.0	121.8	115.4
September qtr	124.1	123.7	115.1

(a) Refers to State capital city—Sydney.

Source: Consumer Price Index, Australia (Cat. no. 6401.0), Price Index of Materials Used in Building Other Than House Building, Six State Capital Cities (Cat. no. 6407.0), Price Index of Materials Used in House Building, Six State Capital Cities (Cat. no. 6408.0).

19 CONSUMER PRICE INDEX, ANNUAL RATE OF CHANGE



Source: Consumer Price Index (Cat. no. 6401.0).

20 SECURED HOUSING FINANCE COMMITMENTS TO INDIVIDUALS FOR OWNER OCCUPATION—NSW AND AUSTRALIA

Indicator	Latest period	New South Wales			Australia		
		Latest figure	Change from prior period	Change from same period prior year	Latest figure	Change from prior period	Change from same period prior year
Lending commitments for the construction or purchase of dwellings—							
Construction of dwellings	Sep 99	313	9.4	29.3	998	5	32
Purchase of newly erected dwellings	Sep 99	103	14.3	-1.4	245	9.7	4.5
Purchase of established dwellings(a)	Sep 99	1 839	2.2	58.8	4 146	4.8	49.2
Refinancing of existing dwellings	Sep 99	396	0	21.5	950	0.7	27.5
Lending commitments for alterations and additions	Sep 99	105	9.8	22.2	282	9.3	38.7
Total lending commitments to individuals for housing(b)	Sep 99	2 651	3.1	44.8	6 338	4.4	40.4
Total lending commitments to individuals for housing (seasonally adjusted)(b)	Sep 99	2 486	-2.6	41.7	6 063	1.1	37.3

(a) Excludes refinancing.

(b) Excludes alterations and additions.

Source: *Housing Finance for Owner Occupation, Australia (Cat. no. 5609.0)*.

21 SECURED HOUSING FINANCE COMMITMENTS TO INDIVIDUALS FOR OWNER OCCUPATION—NSW

Period	Lending commitments for the construction or purchase of dwellings					Total lending commitments to individuals for housing(b)	
	Construction of dwellings	Purchase of newly erected dwellings	Purchase of established dwellings(a)	Refinancing of existing dwellings	Lending commitments for alterations and additions	Original	Seasonally adjusted
<b>1996-97</b>	2 117	1 234	12 566	4 062	1 221	19 979	..
<b>1997-98</b>	2 625	1 280	14 445	3 573	1 174	21 923	..
<b>1998-99</b>	2 990	1 147	16 761	4 026	1 126	24 925	..
<b>1998</b>							
July	263	123	1 284	376	97	2 045	1 827
August	224	93	1 171	307	85	1 796	1 796
September	242	105	1 158	326	86	1 831	1 755
October	222	95	1 220	302	85	1 838	1 902
November	229	100	1 357	337	91	2 024	2 004
December	235	96	1 343	295	82	1 970	2 095
<b>1999</b>							
January	176	63	1 025	249	74	1 512	2 094
February	239	75	1 223	312	89	1 849	1 907
March	341	106	1 741	407	126	2 595	2 207
April	242	79	1 600	333	97	2 255	2 293
May	276	96	1 787	364	110	2 524	2 408
June	300	116	1 851	418	105	2 686	2 548
July	271	96	1 786	335	93	2 489	2 435
August	r 286	90	r 1800	r 396	96	r 2572	r 2552
September	313	103	1 839	396	105	2 651	2 486

(a) Excludes refinancing.

(b) Excludes alterations and additions.

Source: *Housing Finance for Owner Occupation, Australia (Cat. no. 5609.0)*.



## 22 NSW GOVERNMENT FINANCE, GENERAL GOVERNMENT SECTOR

<i>Item</i>	<i>July–August</i>			
	<i>Preliminary Actual</i>		<i>Estimates</i>	
	1998–99	1999–2000	1998–99	1999–2000
	\$m	\$m	\$m	\$m
<b>Current receipts—</b>				
Stamp duties	3 947	3 747	679	720
Payroll tax	3 617	3 637	591	661
Land tax	958	859	55	60
Motor vehicle taxes	1 055	977	176	172
Gaming and betting	1 419	1 558	151	176
Commonwealth safety net taxes	1 975	1 989	309	320
Other taxes	1 251	1 245	185	168
Commonwealth general purpose grants	4 687	5 162	752	908
Commonwealth specific purpose grants	3 464	3 449	528	576
Dividends/tax equivalents	1 280	1 173	328	92
Other current receipts	1 316	1 256	195	196
<i>Total current receipts</i>	24 969	25 052	3 949	4 049
<b>Current payments—</b>				
Interest payments	1 393	1 124	206	66
Superannuation	1 499	1 640	216	245
Subsidies to non-budget sector—				
Redundancies	n.a.	86	14	12
Services	n.a.	840	162	167
Total	990	926	176	179
Departmental payments—				
Redundancies	n.a.	98	18	5
Health	n.a.	5 949	1 070	995
Education(a)	n.a.	5 440	831	956
Law and order(b)	n.a.	1 862	332	320
Community services	n.a.	1 253	231	222
Other	n.a.	6 105	1 215	704
Total	20 406	20 707	3 697	3 202
Treasurer's advances(c)	..	160	..	..
Less User charges	-2 092	-2 110	-786	-366
<i>Total current outlays</i>	22 196	22 447	3 509	3 326
<b>Current result surplus/deficit(-)</b>	<b>2 773</b>	<b>2 605</b>	<b>440</b>	<b>723</b>
<b>Capital receipts—</b>				
Commonwealth specific purpose grants	831	784	127	40
Other capital receipts	437	151	..	1
<i>Total capital receipts</i>	1 268	935	127	41
<b>Capital outlays—</b>				
Gross fixed capital payments	2 946	2 798	336	410
Capital grants	1 102	1 104	84	87
Less Asset sales	-597	-576	-142	-106
<i>Total capital outlays</i>	3 451	3 326	278	391
<b>Capital result surplus/deficit(-)</b>	<b>-2 183</b>	<b>-2 391</b>	<b>-151</b>	<b>-350</b>
<b>Government Finance Statistics result surplus/deficit(-)</b>	<b>590</b>	<b>214</b>	<b>289</b>	<b>373</b>

(a) Includes Department of Training and Education Co-ordination, Department of School Education, Office of the Board of Studies and TAFE.

(b) Includes Attorney Generals Department, Department of Corrective Services and Police Services.

(c) Expenditure from the Treasurer's Advance is included in the relevant current payments figures.

Source: Financial Statement released by NSW Treasury. Figures may differ from data published in annual ABS publications.

23 ACTUAL PRIVATE NEW FIXED CAPITAL EXPENDITURE, CURRENT PRICES, NSW AND AUSTRALIA—TREND

Indicator	Latest period	New South Wales			Australia		
		Latest figure	Change from prior period	Change from same period prior year	Latest figure	Change from prior period	Change from same period prior year
		\$m	%	%	\$m	%	%
Type of asset—							
New buildings and structures	Jun qtr	933	-8.3	-16.6	2 965	-11.4	-18.3
Equipment, plant and machinery	Jun qtr	2 551	-1.7	-2.3	7 513	-2.8	-8.5
<b>Total</b>	<b>Jun qtr</b>	<b>3 484</b>	<b>-3.5</b>	<b>-6.6</b>	<b>10 478</b>	<b>-5.4</b>	<b>-11.5</b>

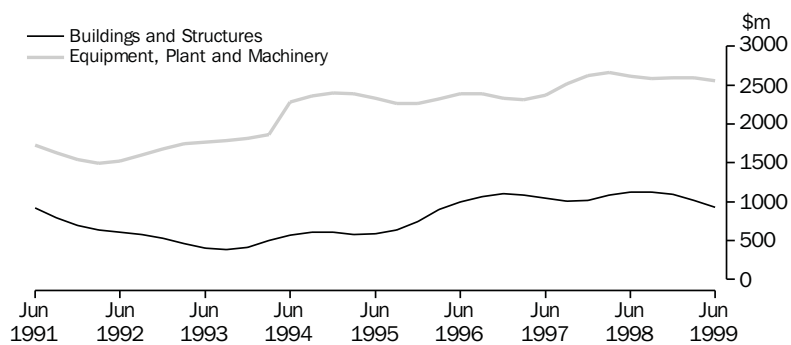
Source: State Estimates of Private New Capital Expenditure (Cat. no. 5646.0).

24 ACTUAL PRIVATE NEW FIXED CAPITAL EXPENDITURE, CURRENT PRICES, NSW—TREND

Period	Type of asset		
	New buildings and structures	Equipment, plant and machinery	Total
	\$m	\$m	\$m
<b>1998</b>			
March qtr	1 081	2 660	3 741
June qtr	1 119	2 610	3 729
September qtr	1 126	2 587	3 713
December qtr	1 092	2 598	3 690
<b>1999</b>			
March qtr	1 017	2 595	3 612
June qtr	933	2 551	3 484

Source: State Estimates of New Capital Expenditure (Cat. no. 5646.0).

25 ACTUAL PRIVATE NEW FIXED CAPITAL EXPENDITURE, CURRENT PRICES, NSW—TREND



Source: State Estimates of New Capital Expenditure (Cat. no. 5646.0).

26 INTERNATIONAL TRADE, IMPORTS(a) AND EXPORTS(b)—NSW AND AUSTRALIA

	Latest period	New South Wales			Australia		
		Latest figure	Change from prior period	Change from same period prior year	Latest figure	Change from prior period	Change from same period prior year
		\$m	%	%	\$m	%	%
Overseas imports into NSW	Sep 99	4 147	8.9	16.8	9 024	1.7	5.6
Total overseas exports(c)	Sep 99	1 546	0.8	-5.5	7 064	1.3	-2.1
Export commodities and SITC(d) code—							
Meat and meat preparations (01)	Sep 99	79	-5.8	-10.4	354	2.1	-3.0
Cereals and cereal preparations (04)	Sep 99	93	-12.0	-24.5	392	5.1	-8.6
Wool and other animal hair (268)	Sep 99	68	35.6	13.4	200	8.4	-12.8
Coal, coke and briquettes (32)	Sep 99	253	-9.2	-22.9	691	-4.5	-22.3
Iron and steel (67)	Sep 99	59	21.8	-38.0	98	-3.2	-30.7
Aluminium (684)	Sep 99	103	9.9	-6.8	273	-13.7	-8.6
Office machines and automatic data processing machines (75)	Sep 99	30	-22.2	-8.8	67	4.4	1.1

(a) Figures shown are Customs value.

(b) Figures shown are Free On Board (FOB) values.

(c) Excludes re-exported goods.

(d) Standard International Trade Classification Revision 3.

Source: International Trade database.

27 INTERNATIONAL TRADE, IMPORTS(a) AND EXPORTS(b)—NSW

Period	Overseas exports of SITC(d) commodities								
	Overseas imports into NSW	Total overseas exports(c)	Meat and meat preparations (01)	Cereals and cereal preparations (04)	Wool and other animal hair (268)	Coal, coke and briquettes (32)	Iron and steel (67)	Aluminium (684)	Office machines and automatic data processing machines (75)
	\$m	\$m	\$m	\$m	\$m	\$m	\$m	\$m	\$m
<b>1996-97</b>	34 229	17 730	784	1 540	859	3 426	968	993	535
<b>1997-98</b>	38 481	19 680	923	1 588	1 061	4 048	1 168	1 226	522
<b>1998-99</b>	r 42 143	r 18 006	948	r 1 202	r 684	3 765	958	1 158	360
<b>1998</b>									
July	3 770	1 610	79	101	65	342	112	104	41
August	3 473	1 600	69	98	43	356	93	99	32
September	3 551	1 635	88	118	60	328	95	111	33
October	3 680	1 527	77	59	74	354	68	106	28
November	3 746	1 519	85	78	73	332	81	91	26
December	3 466	1 691	84	139	67	363	70	91	24
<b>1999</b>									
January	3 020	r 1 340	70	101	42	337	68	104	18
February	3 093	1 329	79	99	61	272	70	78	25
March	3 761	1 494	91	112	55	305	83	107	29
April	3 386	1 295	74	95	41	234	56	80	29
May	3 603	1 513	75	83	57	283	103	92	42
June	3 594	1 453	76	111	46	260	59	94	33
July	r 3 498	r 1 517	r 83	108	54	r 298	45	r 104	35
August r	3 807	1 534	84	106	50	279	48	94	38
September	4 147	1 546	79	93	68	253	59	103	30

(a) Figures shown are Customs value.

(b) Figures shown are Free On Board (FOB) values.

(c) Excludes re-exported goods.

(d) Standard International Trade Classification Revision 3.

Source: International Trade database.

## SELF-HELP ACCESS TO STATISTICS

- CPI INFOLINE* For current and historical Consumer Price Index data, call 1902 981 074 (call cost 75c per minute).
- DIAL-A-STATISTIC* For the latest figures for National Accounts, Balance of Payments, Labour Force, Average Weekly Earnings, Estimated Resident Population and the Consumer Price Index call 1900 986 400 (call cost 75c per minute).
- INTERNET* [www.abs.gov.au](http://www.abs.gov.au)
- LIBRARY* A range of ABS publications is available from public and tertiary libraries Australia-wide. Contact your nearest library to determine whether it has the ABS statistics you require.

## WHY NOT SUBSCRIBE?

- PHONE* +61 1300 366 323
- FAX* +61 03 9615 7848

## CONSULTANCY SERVICES

ABS offers consultancy services on a user pays basis to help you access published and unpublished data. Data that is already published and can be provided within 5 minutes is free of charge. Statistical methodological services are also available. Please contact:

<i>INQUIRIES</i>	<i>City</i>	<i>By phone</i>	<i>By fax</i>
	Canberra	02 6252 6627	02 6207 0282
	Sydney	02 9268 4611	02 9268 4668
	Melbourne	03 9615 7755	03 9615 7798
	Brisbane	07 3222 6351	07 3222 6283
	Perth	08 9360 5140	08 9360 5955
	Adelaide	08 8237 7400	08 8237 7566
	Hobart	03 6222 5800	03 6222 5995
	Darwin	08 8943 2111	08 8981 1218

*POST* Client Services, ABS, PO Box 10, Belconnen ACT 2616

*EMAIL* [client.services@abs.gov.au](mailto:client.services@abs.gov.au)



2130710012999  
ISSN 1031-8534

RRP \$16.00