



BUSINESS INDICATORS

**AUSTRALIAN
CAPITAL
TERRITORY**

EMBARGO: 11:30AM (CANBERRA TIME) TUE 23 NOV 1999

C O N T E N T S

	<i>page</i>
Notes	2
Summary of findings	3
Selected business indicators	5
FEATURE ARTICLES	
Crime and Safety in the ACT.....	6
TABLES	
1 Business expectations: Sales, September quarter 1999/ June quarter 2000, expected aggregate change	9
2 Business indicators	10
3 ACT in relation to the rest of Australia	13
4 ACT in relation to the rest of Australia—percentage changes	14

- For further information about these and related statistics, contact Lenya Redfern on Canberra 02 6207 0446 or Will Blythe on Canberra 02 6207 0311, or Client Services in any ABS office as shown on the back cover of this publication.

NOTES

FORTHCOMING ISSUES

<i>ISSUE</i>	<i>RELEASE DATE</i>
December 1999	21 December 1999
January 2000	25 January 2000
February 2000	22 February 2000
March 2000	20 March 2000
April 2000	27 April 2000
May 2000	22 May 2000

SYMBOLS AND OTHER USAGES

ACT	Australian Capital Territory
n.a.	not available
no.	number
n.p.	not available for publication
p	preliminary
*	Represents data with a standard error of greater than 25%. Caution should be exercised when using this data.
—	nil or rounded to zero

Dalma Jacobs
Regional Director, Australian Capital Territory

SUMMARY OF FINDINGS

UPDATED SERIES

Series updated since the October 1999 issue are: building approvals, motor vehicle registrations, labour force, industrial disputes, engineering construction activity, wage and salary earners, building commencements, consumer price index, retail turnover, housing finance. The feature article beginning on page 6 is on Crime and Safety in the ACT.

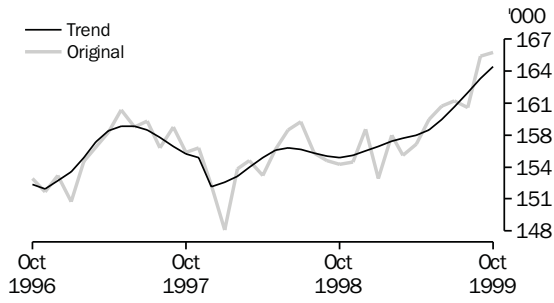
NOTABLE MOVEMENTS

- Building approvals** The trend number of dwelling units approved in the ACT increased by 17.5% to 248 dwelling units in September 1999. Nationally, the trend number of dwelling units approved increased by 1.5% to 14,170 dwelling units in September 1999.
- The value of non-residential building approvals in the ACT was \$4.0 million in September 1999, a decrease of \$8.1 million from the previous month. There was also a decrease of \$19.9 million (down 83.3%) compared to September 1998. Nationally, the value of non-residential building approvals decreased by 24.4% from the previous month and was down 12.8% from September 1998.
- Motor vehicle registration** The trend estimate for ACT new motor vehicle registrations in September 1999 was 1,057, down 2.8% from the previous month, and down 19.3% compared to September 1998. Nationally, the trend for total new motor vehicle registrations in September 1999 decreased 2.3% compared to August 1999, and was down 10.7% compared to September 1998.
- Labour force** In October 1999, the trend unemployment rate for the ACT remained steady at 5.6% compared to the previous month, but decreased 0.9 percentage points compared to October 1998. Compared to the previous month trend employment increased by 0.7% (to 164,300 persons). Nationally, trend employment increased by 0.2% from the previous month, while the trend unemployment decreased by 0.1% for October 1999. The trend participation rate in the ACT increased by 0.5% percentage points to 73.2% compared to the previous month, while nationally the trend participation rate increased by 0.1% percentage points to 63.4%.
- Industrial disputes** For the 12 months ended July 1999 there were 11 working days lost per thousand employees in the ACT compared to 59 days nationally. In comparison with the 12 months ended July 1998, there was an decrease of 64.5% for the ACT and a decrease of 26.2% nationally in the number of working days lost per thousand employees.
- Wage and salary earners** The trend number of wage and salary earners from the public and private sectors in the ACT grew by 6,100 persons (or 4.2%) to 151,500 in the period February 1999 to May 1999. This compares to a national increase of 30,700 persons. The proportion of private sector wage and salary earners in the ACT sits at around 56%. These figures exclude self-employed persons in jobs located in the private sector.

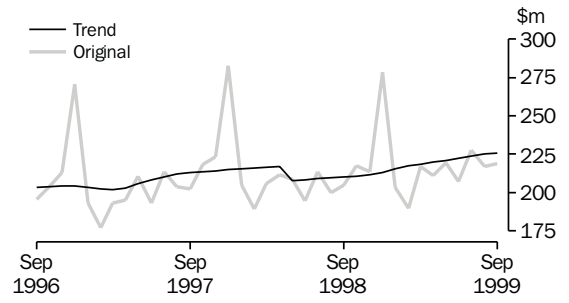
Engineering construction activity	<p>The value of construction work done by the public sector in the ACT during the June quarter 1999 decreased by 1.7% or \$0.5 million from the previous quarter, and decreased \$1.4 million or 4.5% from the June quarter 1998. Nationally, the value of public sector work done increased 26.4% from the previous quarter, and increased 6.2% from the June quarter 1998.</p> <p>The value of engineering construction work done by the private sector in the ACT during the June quarter 1999 increased by 44.4% to \$18.2 million from the previous quarter, and increased 44.4% or \$5.6 million from the June quarter 1998. Nationally, the value of private sector engineering construction work done increased by 10.5% from the previous quarter, and increased by \$1.4 million from the June quarter 1998.</p>
Building commencements	<p>The value of new houses commenced in the ACT in the June quarter 1999 was \$48.9 million, up 26.7% from the previous quarter and up 61.9% from the June quarter 1998. Nationally, the value of new houses commenced in the June quarter 1999 recorded a 18.1% increase from the previous quarter and a 9.2% increase on a year ago.</p>
Consumer price index	<p>The ACT experienced an increase of 0.1% in the All Groups CPI for the September quarter 1999. This was close to the national figure of a 0.9% increase. The ACT annual CPI rate to September quarter 1999 recorded an increase of 0.9%, while the annual CPI for the weighted average of the eight capital cities recorded an increase of 1.7%.</p>
Retail turnover	<p>The trend estimate for retail turnover in the ACT for September 1999 was \$225.9 million, an increase of 0.5% from the previous month and was up 7.5% compared to September 1998. The national trend retail turnover recorded an increase of 0.6% from the previous month and was up 6.9% compared to the previous year.</p>
Housing finance	<p>The trend number of dwelling units financed (including refinancing) in the ACT in September 1999 was 892, an increase of 1.2% from the previous month. The trend estimate for the value of commitments in the ACT remained the same as the previous month (\$108 million), in September 1999. Refinancing of existing dwellings comprised 10% of the total value of dwelling units financed in September 1999, a decrease of 5.9% from the previous month. Nationally, the trend number of dwelling units financed (including refinancing) during September 1999 was 44,686, a decrease of 0.2% from the previous month, while the trend estimate for the value of commitments increased to \$5,979 million (up 0.4%) from the previous month.</p>

SELECTED BUSINESS INDICATORS

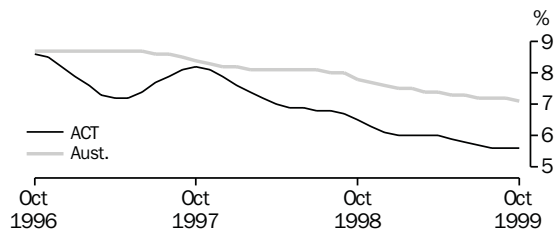
LABOUR FORCE, Employment



RETAIL TURNOVER

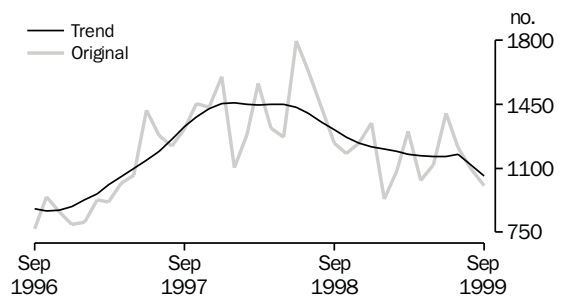


LABOUR FORCE—TREND UNEMPLOYMENT RATE

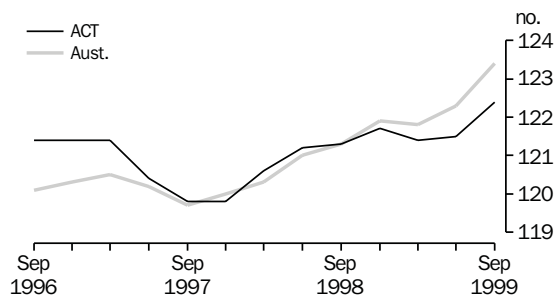


Note: Trend estimates for March 1999 to August 1999 have been revised.

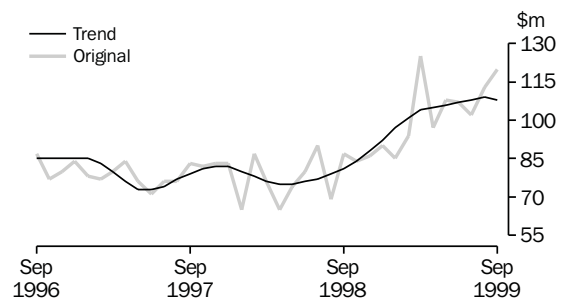
NEW MOTOR VEHICLE REGISTRATIONS



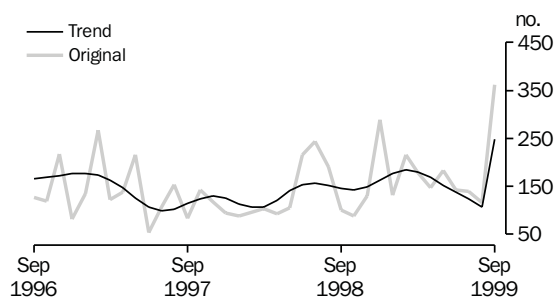
CONSUMER PRICE INDEX



HOUSING FINANCE



BUILDING APPROVAL—DWELLING UNITS APPROVED



The 1998 Crime and Safety Survey was conducted principally to obtain information on the level of victimisation in the community for selected offences. Information was collected from individuals and households about their experience of selected crimes, whether these crimes were reported to police and crime-related risk factors. The characteristics of offences that are included in this publication refer to the most recent incident experienced by the victim.

For household crimes, information was collected on households that had experienced a break-in to their dwelling, had found signs of an attempted break-in, and had any motor vehicles stolen in the 12 months prior to the survey.

For personal crimes, information was collected on individuals who had experienced being physically attacked or threatened with violence when someone stole or tried to steal property from them (robbery), and on individuals who had force or violence used, attempted, or threatened against them (assault) in the 12 months prior to the survey. For females aged 18 years and over, information was also collected on sexual assaults experienced in the 12 months prior to the survey.

**MEASURES OF CRIME
VICTIMISATION**

The level of victimisation can be measured in more than one way. The most common measure derived from crime victims surveys is prevalence, that is, the number of the relevant population that have been a victim of a given offence at least once in the reference period.

Another measure that can be used is incidence. This is the total number of incidents of the offence that occurred in the reference period. As some victims experience repeated incidents of victimisation, incidence numbers are typically higher than prevalence numbers.

Where rates of prevalence and incidents are used these are expressed as a percentage of the total relevant population. Prevalence rates are also given as a rate per 1,000 households/persons.

A further measure of victimisation levels is the average number of incidents per victim for a particular offence. This gives an indication of the concentration of victimisation—the higher the average number of incidents per victim, the higher the level of repeat victimisation for that offence category.

HOW MANY VICTIMS OF CRIME ARE THERE?

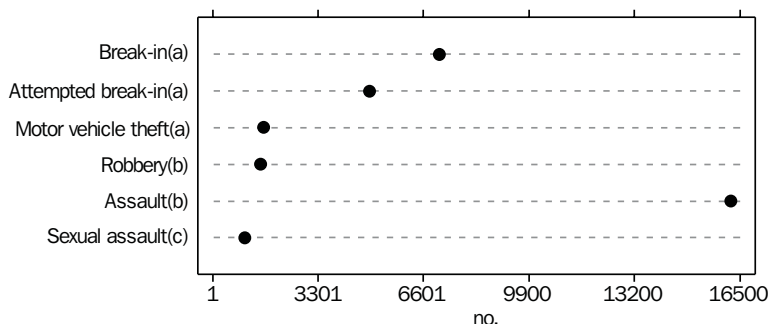
Households and individuals in the ACT experience a diverse range of crimes, some of which were covered by the 1998 Crime and Safety Survey.

In the 12 months prior to the 1998 Crime and Safety Survey, it is estimated that there were 7,100 households in the ACT that had at least one break-in to their home, garage or shed. There were 4,900 households in the ACT that found signs of at least one attempted break-in and overall 11,100 households that were victims of either a break-in or an attempted break-in in the 12 months prior to the survey.

About *1,600 households had at least one motor vehicle stolen in the 12 months prior to the survey.

There were an estimated *1,500 persons aged 15 years and over who were victims of robbery and 16,200 persons aged 15 years and over who were victims of assault in the 12 months prior to the survey. About *1,000 females aged 18 years and over were estimated to be victims of sexual assault in the same time period.

HOUSEHOLD/PERSON VICTIMS



(a) Households.
 (b) Persons aged 15 years and over.
 (c) Females aged 18 years and over.

HAS THE LEVEL OF CRIME INCREASED?

A previous Crime and Safety Survey was conducted by the Australian Bureau of Statistics in 1993 and shows that, where data can be compared, the prevalence of victimisation for offences were similar for 1993 and 1998.

The 1998 prevalence rate for household break-in was slightly higher than the rate in 1993, while the 1998 prevalence rate for household attempted break-in was slightly lower than the rate in 1993.

It is not possible to compare the personal crimes of robbery and assault between the 1993 and 1998 surveys due to changes in the questions used in the survey.

HOW MUCH OF THIS CRIME IS REPORTED TO POLICE?

Crime is not always reported to police and many factors influence whether or not a crime is reported. In particular, rates of reporting to police vary depending on the type of offence.

About 76% of household victims of break-ins told the police about the most recent incident, 56% of the victims of robbery told the police about the most recent incident, while only 20% of assault victims told the police about the most recent incident.

WHY VICTIMS OF ASSAULT DID NOT REPORT TO THE POLICE

Common reasons for not telling police about the most recent assault included a percentage of victims who thought it to be 'too trivial/unimportant' (32%), others considered it a 'personal matter' that they would take care of (30%), and some thought there was nothing the police could do (12%). The remaining victims attributed not reporting due to 'other' reasons.

HOW LIKELY AM I TO BE THE VICTIM OF A CRIME?

In the 12 months prior to the survey, 58 in 1,000 households in the ACT were victims of at least one break-in, 40 in 1,000 were victims of at least one attempted break-in and 91 in 1,000 households were victims of a break-in/attempted break-in. There were 13 in 1,000 households that were victims of motor vehicle theft in the 12 months prior to the 1998 survey.

For persons aged 15–24 years, males were much more likely to be victims of robbery, while for persons aged 25 years and over, females were more likely to be victims.

WHAT CONCERNS DO PEOPLE HAVE ABOUT CRIME AND OTHER PUBLIC NUISANCE PROBLEMS IN THEIR NEIGHBOURHOOD?

Overall, 26% of persons aged 15 years and over did not perceive that there were problems with any crime or public nuisance issues in their neighbourhood.

The most commonly perceived problem was the category 'housebreaking/burglaries/theft from homes', with 41% of persons perceiving this as a problem. Other commonly perceived problems were 'dangerous/noisy driving' (36% of all persons) and 'vandalism/graffiti/damage to property' (31%).

Persons aged 65 years and over were more likely to perceive that there were no crime or public nuisance problems in their neighbourhood. For many of the issues, proportionally more people aged 15–19 years perceived these as problems.

For further information on this survey, please refer to *Crime and Safety, Supplementary National and Standard Tables, Australia, 1998* (Cat. no. 4509.0.40.001) and *Crime and Safety Australia, April 1998* (Cat. no. 4509.0).

1

BUSINESS EXPECTATIONS: SALES

<i>Period</i>	<i>ACT</i>	<i>Aust.</i>
	%	%
Short-term		
Dec qtr 1997–Mar qtr 1998	-1.1	-0.3
Mar qtr 1998–Jun qtr 1998	-0.1	1.7
Jun qtr 1998–Sep qtr 1998	2.7	1.1
Sep qtr 1998–Dec qtr 1998	3.5	1.6
Dec qtr 1998–Mar qtr 1999	-2.7	-0.9
Mar qtr 1999–Jun qtr 1999	0.4	1.8
Jun qtr 1999–Sep qtr 1999	1.4	1.8
Sep qtr 1999–Dec qtr 1999	1.9	2.4
Medium-term		
Dec qtr 1997–Dec qtr 1998	2.9	3.0
Mar qtr 1998–Mar qtr 1999	2.6	2.6
Jun qtr 1998–Jun qtr 1999	6.9	2.7
Sep qtr 1998–Sep qtr 1999	7.5	2.9
Dec qtr 1998–Dec qtr 1999	2.6	2.7
Mar qtr 1999–Mar qtr 2000	1.7	2.3
Jun qtr 1999–Jun qtr 2000	5.7	3.3
Sep qtr 1999–Sep qtr 2000	2.8	2.7

Indicator	Unit	ACT			Aust.		
		Latest figure	% change from		Latest figure	% change from	
			Previous period	Same period previous year		Previous period	Same period previous year
POPULATION, VITAL AND LABOUR							
POPULATION, Mar qtr 99	'000	309.2	0.3	0.5	18 918.4	0.4	1.3
Natural increase	no.	733	-2.5	-4.2	30 083	-4.2	-7.0
Net migration	no.	84	-44.6	54.5	37 099	35.3	17.0
Total increase	no.	817	947.4	150.0	67 182	14.2	4.9
LABOUR FORCE, Oct 99							
Original series							
Employed	'000	165.7	0.2	7.2	8 889.2	-0.2	2.3
Unemployed	'000	9.3	-2.1	-9.7	643.0	-9.9	-5.8
Unemployment rate	%	5.3	-0.2	-0.9	6.7	-0.7	-0.6
Participation rate	%	73.6	—	3.4	63.3	-0.7	0.1
Long-term unemployed, Sept 99	no.	2 798	-6.1	-21.6	211 758	10.5	-17.8
Long-term unemployed as percentage of total unemployed		29.6	-5.8	-9.4	29.7	0.3	-3.9
Trend series							
Employed	'000	164.3	0.7	5.8	8 860.9	0.2	2.4
Unemployed	'000	9.7	—	-9.3	680.0	-0.1	-7.7
Unemployment rate	%	5.6	—	-0.9	7.1	—	-0.7
Participation rate	%	73.2	0.5	2.5	63.4	0.1	0.1
WAGE AND SALARY EARNERS							
Number employed—Trend series, May qtr 99							
Public sector	'000	66.8	1.1	-2.9	1 447.7	0.2	-1.2
Private sector	'000	84.7	6.7	22.0	5 749.4	0.5	6.2
Total	'000	151.5	4.2	9.6	7 197.1	0.4	4.6
Gross earnings—Original series, June qtr 99							
Public sector	\$m	782.0	-10.7	-14.2	14 712.9	0.5	-1.1
Private sector	\$m	690.2	19.2	46.1	46 279.8	2.8	9.7
Total	\$m	1 472.2	1.2	6.4	60 992.8	2.2	6.9
JOB VACANCIES, Aug qtr 99	'000	3.5	59.1	94.4	88.0	23.8	20.5
INDUSTRIAL DISPUTES IN PROGRESS, July 99							
Working days lost	'000	0.1	-50.0	—	47.5	66.1	112.1
Days lost per '000 employees (year ended Jun 99)	no.	11.0	10.0	-64.5	59.0	5.4	-26.3
BUILDING AND CONSTRUCTION							
HOUSING FINANCE, Sept 99							
Secured commitments to individuals for							
Original series							
Construction of dwellings	\$m	13.0	30.0	44.4	998.0	5.1	32.0
Purchase of new dwellings	\$m	3.0	50.0	50.0	245.0	9.9	4.7
Purchase of established dwellings	\$m	84.0	5.0	52.7	5 096.0	4.0	44.6
Re-financing	\$m	12.0	-33.3	-14.3	950.0	0.6	27.5
Total housing commitments	\$m	120.0	6.2	37.9	6 338.0	4.4	40.4
Seasonally adjusted series							
Total housing commitments	\$m	106.0	-9.4	30.9	6 063.0	1.1	37.3
Trend series							
Dwelling units financed	no.	892	1.2	24.2	44 686	-0.2	17.8
Total housing commitments	\$m	108.0	—	33.3	5 979.0	0.4	30.4
BUILDING APPROVALS, Sept 99							
Original series							
Dwelling units	no.	361	211.2	257.4	14 826	-2.4	13.4
Value of new residential	\$m	45.9	192.4	270.2	1 766.8	-3.7	24.4
Value of residential alterations and additions	\$m	6.1	-39.0	22.0	292.4	-4.9	10.9
Value of non-residential	\$m	4.0	-66.9	-83.3	828.2	-24.4	-12.8
Value of total building	\$m	56.0	47.8	35.3	2 887.4	-10.8	9.7
Trend series							
Dwelling units	no.	248	17.5	71.0	14 170	1.5	11.3

Indicator	Unit	ACT			Aust.		
		% change from			% change from		
		Latest figure	Previous period	Same period previous year	Latest figure	Previous period	Same period previous year
BUILDING AND CONSTRUCTION continued							
BUILDING COMMENCEMENTS, Jun qtr 99							
New houses	no.	373	30.9	57.4	26 747	17.0	2.1
Value of houses commenced	\$m	48.9	26.7	61.9	3 314.9	18.1	9.2
Value of non-residential building commenced	\$m	68.1	-53.0	-22.4	2 511.6	-15.5	-22.6
Value of total commencements	\$m	149.0	-34.6	9.6	7 650.3	-0.2	-7.2
PRICE INDEXES							
Established house price index, Mar qtr 99		129.5	0.7	2.5	134.3	2.3	5.8
ENGINEERING CONSTRUCTION (Jun qtr 99)							
Private sector							
Value of work commenced	\$m	12.4	-73.8	-10.8	2 879.4	3.9	12.5
Value of work done	\$m	18.2	44.4	44.4	2 902.5	10.5	—
Value of work yet to be done	\$m	37.0	-14.5	203.3	5 470.8	-0.4	-15.2
Value of work done by public sector	\$m	28.9	-1.7	-4.6	2 104.7	26.4	6.2
PRICES, WAGES AND CONSUMER SPENDING							
CONSUMER PRICE INDEX, Sept qtr 99							
Food(a)		127.7	-0.5	0.1	128.5	0.5	3.0
Housing(a)		96.0	1.4	2.3	98.1	1.6	3.5
Transportation(a)		131.6	2.7	2.8	126.9	3.3	3.8
All groups(a)		122.4	0.7	0.9	123.4	0.9	1.7
AVERAGE WEEKLY EARNINGS, May qtr 99							
Original series							
Males	\$	886.5	0.4	-2.0	798.4	1.2	3.3
Females	\$	776.3	-0.3	1.5	669.6	0.2	3.5
Persons	\$	841.4	0.1	-0.7	750.8	0.8	3.3
Trend series							
Males	\$	881.4	-0.8	-3.0	796.0	0.6	2.6
Females	\$	775.3	-0.1	0.9	670.6	0.7	3.6
Persons	\$	836.8	-0.7	-1.5	749.4	0.6	2.9
WAGE COST INDEX, June qtr 99							
Public sector(b)		104.5	0.1	3.2	106.2	0.3	3.9
Private sector(b)		104.3	0.6	2.7	105.1	0.6	2.9
Total(b)		104.4	0.3	3.0	105.4	0.6	3.2
RETAIL TURNOVER, Sept 99							
Original series							
Food retailing	\$m	81.5	1.1	4.8	4 724.2	1.5	5.9
Department stores	\$m	22.2	9.4	3.3	1 002.5	11.4	6.7
Hospitality and services	\$m	34.5	-0.3	1.5	2 017.8	3.7	13.3
All other retailing	\$m	80.8	-0.6	13.0	3 966.4	3.5	9.7
Total	\$m	219.0	1.0	6.9	11 710.9	3.3	8.5
Trend series							
Food retailing	\$m	82.1	0.4	4.1	4 785.9	0.3	4.5
Department stores	\$m	24.8	1.2	—	1 061.9	0.8	3.2
Hospitality and services	\$m	33.6	—	0.6	2 031.5	0.5	10.5
All other retailing	\$m	85.4	0.7	17.0	4 025.8	0.9	9.1
Total	\$m	225.9	0.5	7.5	11 905.1	0.6	6.9

(a) Base year: 1989-90 = 100.0.

(b) Base of each index: September quarter 1997 = 100.0.

Indicator	Unit	ACT			Aust.		
		Latest figure	Previous period	Same period previous year	% change from		Same period previous year
					Latest figure	Previous period	
TOURISM AND TRANSPORT							
HOTELS, MOTELS AND GUEST HOUSE ACCOMMODATION, Jun qtr 99							
Original series							
Room nights	'000	259.7	7.7	17.4	9 427.3	-1.7	8.1
Takings at current prices	\$m	25.4	7.2	13.9	946.4	-5.7	7.4
Guest arrivals	'000	189.0	5.0	6.8	7 518.2	-1.0	5.2
Guest nights	'000	416.2	3.4	14.4	16 412.0	-4.1	8.2
Room occupancy rate	%	60.9	3.3	1.8	56.2	-1.9	1.6
NEW MOTOR VEHICLE REGISTRATIONS, Sept 99							
Motor vehicles	no.	1 006	-8.5	-18.7	59 214	-1.1	-9.2
Seasonally adjusted motor vehicles	no.	1 003	-2.5	-18.1	59 190	-1.8	-9.8
Trend motor vehicles	no.	1 057	-2.8	-19.3	59 982	-2.3	-10.7
AGGREGATE INDICATORS							
STATE ACCOUNTS, Jun qtr 99(a)							
Original series (chain volume measures)(b)							
Household final consumption expenditure	\$m	1 585	4.5	4.5	87 576	3.6	5.3
General government final consumption expenditure	\$m	2 745	23.3	12.7	27 968	12.1	4.2
Private gross fixed capital formation	\$m	444	-15.2	8.8	30 174	-11.1	-6.5
Public gross fixed capital formation	\$m	-47	-11.5	-20.0	7 763	-8.9	78.9
State final demand	\$m	4 726	14.4	8.4	153 481	8.4	4.5
Gross state product	\$m	11 943	4.3	n.a.	555 689	4.6	n.a.
STATE ACCOUNTS, Jun qtr 99(a)							
Original series (at current prices)							
Household final consumption expenditure	\$m	1 612	4.7	6.1	88 978	3.9	7.0
General government final consumption expenditure	\$m	2 803	23.6	14.3	28 670	11.9	6.2
Private gross fixed capital formation	\$m	443	58.2	7.6	30 431	13.4	-5.5
Public gross fixed capital formation	\$m	-33	-132.7	-16.7	7 910	-9.2	83.7
State final demand	\$m	4 826	15.2	9.9	155 990	8.4	5.7
Gross state product	\$m	12 111	5.8	n.a.	563 517	6.1	n.a.
PRIVATE NEW CAPITAL EXPENDITURE, Jun qtr 99							
Original series (at current prices)							
Buildings and structures	\$m	23	64.3	-36.1	2 805	-8.6	-23.5
Equipment, plant and machinery	\$m	49	-18.3	-9.3	7 887	7.1	-11.1
Total	\$m	72	-2.7	-20.0	10 691	2.5	-14.7
Trend series (at current prices)							
Buildings and structures	\$m	19	-5.0	-20.8	2 965	-11.4	-18.3
Equipment, plant and machinery	\$m	54	-20.6	28.6	7 573	-2.8	-8.5
Total	\$m	73	-17.0	10.6	10 478	-5.4	-11.5

(a) Quarterly state final demand details are released as a special data service (Product no. 5206.0.40.001).

(b) Reference year for chain volume measures is 1996-97.

Source: ABS publications: Australia Demographic Statistics (Cat. no. 3101.0), Australian National Accounts: State Accounts (Cat. no. 5242.0), Building Activity, Australia (Cat. no. 8752.0), Building Approvals, Australia (Cat. no. 8731.0), Consumer Price Index (Cat. no. 6401.0), Housing Finance for Owner Occupation, Australia (Cat. no. 5609.0), House Price Indexes: Eight Capital Cities (Cat. no. 6416.0), Industrial Disputes, Australia (Cat. no. 6321.0), Job Vacancies and Overtime, Australia (Cat. no. 6354.0), Labour Force, Australia, Preliminary (Cat. no. 6202.0), Labour Force, Australia (Cat. no. 6203.0), New Motor Vehicle Registration, Australia (Cat. no. 9301.0), Price Index of Materials Used in Housing Building (Cat. no. 6408.0), Private New Capital Expenditure, State Estimates (Cat. no. 5646.0), Retail Trade, Australia (Cat. no. 8501.0), Tourism Indicators, Australia (Cat. no. 8634.0), Tourism Accommodation, ACT (Cat. no. 8635.8).

Indicator	Unit	Latest period	NSW	Vic.	Qld	SA	WA	Tas.	NT	ACT	Aust.
POPULATION	'000	Mar qtr 99	6 397.2	4 701.4	3 498.2	1 491.9	1 854.6	470.5	192.2	309.2	18 918.4
LABOUR FORCE (trend)											
Employed persons	'000	Oct 99	2 961.7	2 217.8	1 641.9	665.7	914.2	196.8	94.4	164.3	8 860.9
Unemployment rate	%	Oct 99	6.4	7.0	8.3	8.5	6.8	9.0	3.9	5.6	7.1
WAGE AND SALARY EARNERS (trend)											
Public sector	'000	Jun qtr 99	461.9	305.3	289.1	113.3	148.2	41.1	22.2	66.8	1 447.7
Private sector	'000	Jun qtr 99	1 996.6	1 499.1	1 017.5	403.5	577.7	117.9	52.4	84.7	5 749.4
Total public and private sector (trend)	'000	Jun qtr 99	2 458.5	1 804.4	1 306.6	516.8	725.9	159.0	74.6	151.5	7 197.1
STATE ACCOUNTS(a) (original)											
Gross state product (chain volume measures)	\$m	1997-98	196 676	141 219	90 188	38 092	60 695	11 095	5 779	11 943	555 689
Gross state product (current prices)	\$m	1997-98	199 448	143 209	91 459	38 629	61 550	11 251	5 860	12 111	563 517
PRIVATE NEW CAPITAL EXPENDITURE (trend)	\$m	Jun qtr 99	3 484	2 758	1 835	503	1 439	112	166	73	10 478
BUILDING APPROVALS											
Dwelling units approved (original)	no.	Sep 99	4 266	4 105	2 892	907	2 063	116	116	361	14 826
Dwelling units approved (trend)	no.	Sep 99	4 518	4 094	2 375	774	2 095	123	129	248	14 170
Value of non-residential building approved (original)	\$m	Sep 99	257.8	240.6	115.5	49.2	133.3	21.3	6.4	4.0	828.2
Value of all buildings approved (original)	\$m	Sep 99	913.6	858.5	467.9	153.5	377.3	36.3	24.4	56.0	2 887.4
ENGINEERING CONSTRUCTION											
Value of engineering construction work done	\$m	Jun qtr 99	1 654.0	854.2	1 262.0	255.6	794.0	67.4	72.7	47.1	5 007.2
AVERAGE WEEKLY EARNINGS (trend)											
Full-time adult ordinary time	\$	May qtr 99	792.7	734.9	703.6	699.4	750.9	696.3	752.3	836.8	749.4
RETAIL TRADE (trend)											
Retail turnover	\$m	Sep 99	4 146.5	2 918.7	2 191.3	862.9	1 154.4	271.7	127.0	225.9	11 905.1
HOTELS, MOTELS & GUEST HOUSE ACCOMMODATION											
Room nights occupied	'000	Jun qtr 99	3 099.8	1 545.6	2 586.2	505.3	861.7	238.6	330.5	241.1	9 585.8
Room occupancy rate	%	Jun qtr 99	57.9	55.4	56.1	54.6	53.3	47.6	59.3	57.6	58.4
NEW MOTOR VEHICLE REGISTRATIONS (trend)	no.	Sep 99	21 788	16 144	9 772	3 699	5 647	1 220	655	1 057	59 982
	Unit	Latest period	Syd.	Melb.	Bris.	Adel.	Perth	Hob.	Dar.	Canb.	Aust.
CONSUMER PRICE INDEX											
Food(d)		Sep qtr 99	129.4	127.8	127.0	129.7	129.4	126.3	124.3	127.7	128.5
Housing(d)		Sep qtr 99	105.8	88.8	102.8	95.0	93.1	96.9	117.4	96.0	98.1
Transportation(d)		Sep qtr 99	127.9	125.9	125.5	127.8	127.4	123.1	122.6	131.6	126.9
All Groups(d)		Sep qtr 99	124.1	122.7	124.0	125.1	121.9	123.3	122.9	122.4	123.4
Average retail prices (cents)											
Milk, carton, supermarket sales	1 litre	Sep qtr 99	122	140	126	140	146	130	141	115	n.a.
Bread, white loaf, sliced, supermarket sales	680 g	Sep qtr 99	228	238	211	213	218	226	219	230	n.a.
Beef, rump steak	1 kg	Sep qtr 99	1 197	1 093	1 067	1 206	1 172	983	1 122	1 202	n.a.
Chicken, frozen	1 kg	Sep qtr 99	362	355	312	362	369	373	421	366	n.a.
Potatoes	1 kg	Sep qtr 99	127	153	132	80	154	80	128	140	n.a.
Coffee, instant (jar)	150 g	Sep qtr 99	610	640	636	568	671	604	561	493	n.a.
Scotch nip, public bar	30 ml	Sep qtr 99	334	322	273	363	389	264	332	270	n.a.
Private motoring petrol											
Leaded	1 litre	Sep qtr 99	78.4	76.4	69.9	78.0	78.4	82.8	83.1	80.6	n.a.
Unleaded	1 litre	Sep qtr 99	75.8	74.0	67.5	75.6	76.0	80.8	81.0	78.2	n.a.

(a) State estimates are not comparable to national estimates from the June quarter 1995 due to revised methodology used in *Australian National Accounts, State Accounts* (Cat. no. 5242.0).

(b) Experimental series. Users are cautioned these estimates are derived indirectly by calculating a deflator from the expenditure components of the state series concerned. Therefore, in general, the sum of the state estimates does not equal the estimates for Australia.

(c) Reference year for chain volume measures is 1996-97.

(d) Base year: 1989-90 = 100.0.

Indicator	Latest period	State									Aust.
		NSW	Vic.	Qld	SA	WA	Tas.	NT	ACT		
POPULATION	Mar qtr 99	0.3	0.4	0.5	0.2	0.5	-0.1	0.5	0.3	0.4	
LABOUR FORCE (trend)											
Employed persons	Oct 99	0.3	0.3	-0.1	0.1	0.4	-0.1	—	0.7	0.2	
Unemployment rate	Oct 99	—	-0.2	0.1	0.1	0.1	—	0.1	—	—	
WAGE AND SALARY EARNERS (trend)											
Pubic sector	Jun qtr 99	-0.8	—	1.1	0.4	1.6	-0.7	1.4	1.1	0.2	
Private sector	Jun qtr 99	-0.7	—	3.3	-0.8	0.4	2.3	4.8	6.7	0.5	
Total public and private sector	Jun qtr 99	-0.7	—	2.8	-0.6	0.6	1.4	3.8	4.2	0.4	
STATE ACCOUNTS(a) (original)											
Gross state product (chain volume measures)(b)(c)	Jun qtr 99	4.6	3.8	4.9	4.6	6.5	4.0	5.1	4.3	4.6	
Gross state product (current prices)	Jun qtr 99	6.0	5.3	6.4	6.1	8.0	5.5	6.5	5.8	6.1	
PRIVATE NEW CAPITAL EXPENDITURE (trend)											
Total (at current prices)	Jun qtr 99	-3.5	-2.4	-5.8	-7.5	-9.5	-0.9	-32.5	-17.0	-5.4	
BUILDING APPROVALS											
Dwelling units approved (original)	Sep 99	-12.2	-13.9	22.3	17.6	-0.2	-1.7	-5.7	211.2	-2.4	
Dwelling units approved (trend)	Sep 99	-0.4	3.3	1.2	2.4	1.8	—	-3.7	17.5	1.5	
Value of non-residential building approved (original)	Sep 99	-49.0	-14.9	-4.1	31.2	18.2	108.8	-54.3	-66.9	-24.4	
Value of all buildings approved (original)	Sep 99	-27.8	-12.3	13.1	18.6	6.4	40.7	-25.6	47.8	-10.8	
ENGINEERING CONSTRUCTION											
Value of engineering construction work done	Jun qtr 99	28.4	-1.7	20.2	18.0	14.1	7.8	8.5	12.1	16.7	
AVERAGE WEEKLY EARNINGS (trend)											
Full-time adult ordinary time	May qtr 99	1.3	0.2	0.5	-0.2	0.4	-0.2	0.1	-0.7	0.6	
RETAIL TRADE (trend)											
Retail turnover	Sep 99	0.6	0.7	0.4	0.9	-0.2	0.4	0.3	0.5	0.6	
HOTELS, MOTELS & GUEST HOUSE ACCOMMODATION											
Room nights occupied	Jun qtr 99	-3.5	-8.0	3.9	-3.7	-2.0	-27.2	43.8	-0.7	-3.2	
Room occupancy rate	Jun qtr 99	-2.7	-6.6	1.2	-3.4	-2.5	-18.5	17.1	-1.3	-1.0	
NEW MOTOR VEHICLE REGISTRATIONS (trend)	Sep 99	-1.7	-2.3	-3.0	-3.1	-3.6	-0.5	-0.5	-2.8	-2.3	
	Latest period										
CONSUMER PRICE INDEX											
Food(d)	Sep qtr 99	0.5	0.9	0.6	0.7	-0.2	-0.4	120.6	-0.5	0.5	
Housing(d)	Sep qtr 99	1.4	1.5	0.8	2.4	2.0	1.0	0.4	1.4	1.6	
Transportation(d)	Sep qtr 99	3.0	3.5	3.0	4.4	3.4	2.2	2.8	2.7	3.3	
All Groups(d)	Sep qtr 99	0.9	1.0	0.7	1.2	0.9	0.7	0.2	0.7	0.9	
Average retail prices (cents)											
Milk, carton, supermarket sales	Sep qtr 99	—	—	—	2.9	3.5	—	4.4	0.0	n.a.	
Bread, white loaf, sliced, supermarket sales	Sep qtr 99	8.1	2.1	5.5	30.7	7.4	11.3	-0.5	8.5	n.a.	
Beef, rump steak	Sep qtr 99	-4.2	0.3	3.3	0.4	3.0	-9.1	-7.0	-1.0	n.a.	
Chicken, frozen	Sep qtr 99	2.5	0.3	-10.3	2.5	1.9	-3.6	-1.4	8.9	n.a.	
Potatoes	Sep qtr 99	-2.3	-1.3	-2.9	-1.2	12.4	-2.4	-19.5	-1.4	n.a.	
Coffee, instant (jar)	Sep qtr 99	-6.9	8.1	0.5	-3.1	9.1	-5.0	-0.5	-5.2	n.a.	
Scotch nip, public bar	Sep qtr 99	0.9	0.3	0.7	—	0.5	—	-0.3	-1.1	n.a.	
Private motoring petrol											
Leaded	Sep qtr 99	8.0	8.8	10.4	9.6	7.4	6.3	5.6	8.0	n.a.	
Unleaded	Sep qtr 99	8.1	9.1	10.8	9.9	7.5	6.5	5.6	8.2	n.a.	

(a) State estimates are not comparable to national estimates from the June quarter 1995 due to revised methodology used in *Australian National Accounts, State Accounts* (Cat. no. 5242.0).

(b) Experimental series. Users are cautioned these estimates are derived indirectly by calculating a deflator from the expenditure components of the state series concerned. Therefore, in general, the sum of the state estimates does not equal the estimates for Australia.

(c) Reference year for chain volume measures is 1996-97.

(d) Base year: 1989-90 = 100.0.

SELF-HELP ACCESS TO STATISTICS

- CPI INFOLINE* For current and historical Consumer Price Index data, call 1902 981 074 (call cost 75c per minute).
- DIAL-A-STATISTIC* For the latest figures for National Accounts, Balance of Payments, Labour Force, Average Weekly Earnings, Estimated Resident Population and the Consumer Price Index call 1900 986 400 (call cost 75c per minute).
- INTERNET* www.abs.gov.au
- LIBRARY* A range of ABS publications is available from public and tertiary libraries Australia-wide. Contact your nearest library to determine whether it has the ABS statistics you require.

WHY NOT SUBSCRIBE?

- PHONE* +61 1300 366 323
- FAX* +61 03 9615 7848

CONSULTANCY SERVICES

ABS offers consultancy services on a user pays basis to help you access published and unpublished data. Data that is already published and can be provided within 5 minutes is free of charge. Statistical methodological services are also available. Please contact:

<i>INQUIRIES</i>	<i>City</i>	<i>By phone</i>	<i>By fax</i>
	Canberra	02 6252 6627	02 6207 0282
	Sydney	02 9268 4611	02 9268 4668
	Melbourne	03 9615 7755	03 9615 7798
	Brisbane	07 3222 6351	07 3222 6283
	Perth	08 9360 5140	08 9360 5955
	Adelaide	08 8237 7400	08 8237 7566
	Hobart	03 6222 5800	03 6222 5995
	Darwin	08 8943 2111	08 8981 1218

POST Client Services, ABS, PO Box 10, Belconnen ACT 2616

EMAIL client.services@abs.gov.au



2130380011995
ISSN 1320-808X

RRP \$15.50