



2006-07

New
Issue

4229.0

ADULT LEARNING

AUSTRALIA

EMBARGO: 11.30AM (CANBERRA TIME) FRI 21 DEC 2007

CONTENTS

	<i>page</i>
Notes	2
Summary of Findings	3

TABLES

List of tables	7
Participation	9
Most recent learning	16
Job-related learning	22
Non-participation	24
Difficulties	25
Internet access	26
Populations	27

ADDITIONAL INFORMATION

Explanatory Notes	28
Appendix 1: Populations and data items list	37
Appendix 2: Data comparison	40
Technical note: Data quality	42
Glossary	46

INQUIRIES

For further information about these and related statistics, contact the National Information and Referral Service on 1300 135 070.

ABOUT THIS PUBLICATION This publication presents information about the recent learning experiences of persons aged 25 to 64 years. Statistics in this publication were collected in the Adult Learning topic included in the 2006-07 Multi-Purpose Household Survey (MPHS).

Details on participation in formal, non-formal and informal learning in the 12 months prior to interview are presented together with the socio-demographic characteristics of participants and non-participants.

Information on the concepts and methods used in the survey, reliability of the results and definitions and interpretation are included in the Explanatory Notes (pg. 28), Technical Note (pg. 42), and Glossary (pg. 46).

Unless otherwise specified, differences between data items highlighted in the Summary of Findings are statistically significant. See Technical Note (paragraph 16-18) for further details.

ABOUT THE 2006-07 MPHS The MPHS was conducted throughout Australia as a supplement to the Australian Bureau of Statistics (ABS) monthly Labour Force Survey (LFS). As well as information concerning adult learning, information was collected about the following topics:

Barriers and Incentives to Labour Force Participation (cat. no. 6239.0)

Retirement and Retirement Intentions (cat. no. 6238.0)

Family Characteristics and Transitions (cat. no. 4442.0)

Household Use of Information Technology (cat. no. 8146.0).

ROUNDING Where figures have been rounded, discrepancies may occur between the sum of component items and the published total.



ABBREVIATIONS

- ABS Australian Bureau of Statistics
- ABSCQ Australian Bureau of Statistics Classification of Qualifications
- ANZSCO Australian and New Zealand Standard Classification of Occupations
- ANZSIC Australian and New Zealand Standard Industrial Classification
- AQF Australian Qualifications Framework
- ASCED Australian Standard Classification of Education
- CAI computer assisted interviewing
- CURF confidentialised unit record file
- LFS Labour Force Survey
- MPHS Multi-Purpose Household Survey
- n.f.d. not further defined
- RSE relative standard error
- SACC Standard Australian Classification of Countries
- SE standard error

Brian Pink
Australian Statistician

SUMMARY OF FINDINGS

INTRODUCTION

This publication presents data on aspects of adult learning. There is continuing interest in the concept of lifelong learning and the importance of 'continuing education and training' as a measure of human capital. The concept for adult learning is taken from an international survey which focusses on measuring three categories of learning: formal learning, non-formal learning and informal learning.

Formal learning is structured, taught learning in institutions and organisations, which leads to a recognised qualification. A learning activity is formal if it leads to a learning achievement that is possible to position within the Australian Qualifications Framework (AQF) and includes workplace training if such training results in a qualification.

Non-formal learning also refers to structured, taught learning, but differs from formal learning in that it does not lead to a qualification within the AQF.

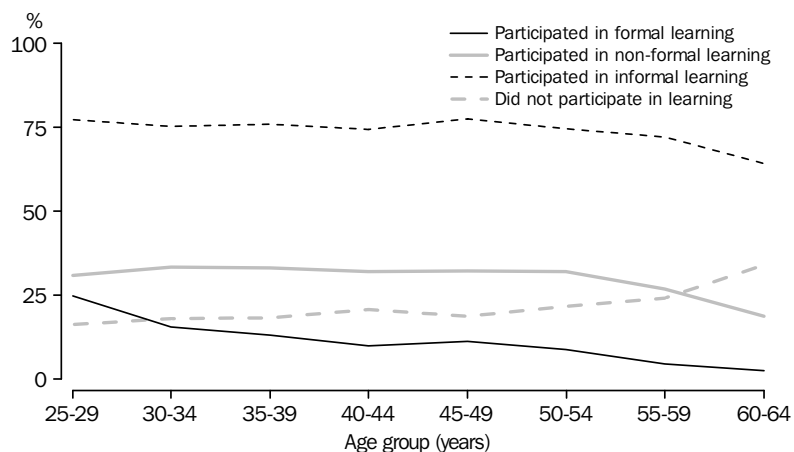
Informal learning refers to unstructured, non-institutionalised learning activities that are related to work, family, community or leisure. Activities may occur on a self-directed basis, but are excluded from scope if there is no specific intention to learn.

One in eight (12% or 1.3 million) Australians aged 25 to 64 years participated in some form of formal learning in the 12 months prior to interview in 2006-07. Almost one-third (30% or 3.3 million persons) participated in non-formal learning and approximately three-quarters (74% or 8.1 million persons) participated in some form of informal learning. (Table 1)

AGE AND SEX

Younger people were more likely to participate in formal learning than older people, with those aged 25-29 years reporting the highest formal learning participation rate (25%) and those aged 60-64 years the lowest (3%). There was little variation across age groups in participation in non-formal and informal learning, except for those aged 60-64 years who had slightly lower participation rates for all forms of learning. (Table 1)

PARTICIPATION IN LEARNING, By age groups (years)



While a slightly higher proportion of females than males participated in formal learning (13% compared to 11%), a higher proportion of males than females participated in non-formal learning (32% compared to 29%) and informal learning (76% compared to 73%). (Table 1)

SUMMARY OF FINDINGS *continued*

COUNTRY OF BIRTH	<p>Equal proportions of persons born in Australia and overseas participated in formal learning (12%), however persons born in Australia had a somewhat higher participation rate in non-formal learning (32% for Australian born and 27% for overseas born) and in informal learning (75% for Australian born and 72% for overseas born). (Table 1)</p>
EDUCATIONAL ATTAINMENT	<p>Persons with a higher educational qualification had higher participation rates in formal or non-formal learning. Of those whose highest qualification was a Bachelor degree or higher, 55% had participated in formal or non-formal learning compared to those who had an Advanced diploma or below at 42%. Of those who did not hold a non-school qualification, 24% participated in formal or non-formal learning. (Table 1)</p> <p>Of those whose highest qualification was a Bachelor degree or higher, 89% had participated in informal learning compared to 79% of those who had an Advanced diploma or below. Of those who did not hold a non-school qualification, 62% participated in informal learning. (Table 1)</p>
LABOUR FORCE	<p>Those employed full-time were more likely to have participated in some form of learning than persons not in the labour force (84% compared to 62%). Unemployed persons had lower participation in non-formal (25% compared to 38%) and informal learning compared to persons employed full-time (71% compared to 79%). (Table 1)</p> <p>Of the 3.6 million employed persons who participated in formal or non-formal learning, 29% were professionals, 15% were clerical and administrative workers and 14% were managers. Of the employed persons who participated in formal or non-formal learning 15% were employed in the health care and social assistance industry, 11% in education and training and 9% in public administration and safety. (Table 6)</p>
INCOME	<p>Persons in the highest equivalised weekly household income quintile were more likely to participate in all forms of learning than persons in the lowest quintile. This difference was greatest for persons participating in non-formal and informal learning with almost half (46%) of the persons in the highest quintile participating in non-formal learning and 84% participating in informal learning, compared to 15% who participated in non-formal learning and 60% who participated in informal learning in the lowest quintile. This result may be influenced by the number of full-time students who are involved in formal learning. (Table 1)</p>
PARTICIPATION IN FORMAL LEARNING	<p>Of those who participated in formal learning, over one-quarter (26%) undertook a Certificate III or IV. This was followed by Bachelor degree (18%) and Postgraduate degree, Graduate diploma or Graduate certificate (17%). (Table 7)</p> <p>Management and commerce was the most popular field of education with 28% of persons who participated in formal learning in the previous 12 months participating in this field. This was followed by Society and culture (21%) and Health (12%). (Table 7)</p>
PARTICIPATION IN NON-FORMAL LEARNING	<p>Of the 3.3 million persons who participated in non-formal learning in the previous 12 months, the most common type of most recent non-formal learning was a work-related course (78% or 2.6 million) followed by Arts, crafts or recreational learning (12%). (Table 8)</p>

SUMMARY OF FINDINGS *continued*

PARTICIPATION IN NON-FORMAL LEARNING *continued*

The main fields of the most recent non-formal learning were Management and commerce (25%) and Health (22%). (Table 8)

MAIN REASONS FOR PARTICIPATION

The main reasons for participating in the most recent formal learning were 'to get a better job or promotion' (28%), 'wanted extra skills for job' (21%), and 'was a requirement of job' (14%). (Table 7)

The main reasons for participating in the most recent non-formal learning were because 'it was a requirement of job' (36%), 'wanted extra skills for job' (25%) and for 'personal interest' (16%). (Table 8)

PARTICIPATION IN INFORMAL LEARNING

Informal learning was participated in by 8.1 million Australians, with 76% of males and 73% of females participating in the previous 12 months. (Table 1)

The most common type of informal learning was reading manuals, reference books, journals or other written materials (75%), this was followed by using computers or the Internet (71%). (Table 10)

PERSONS WHO DID NOT PARTICIPATE IN LEARNING

More than one-fifth of Australians did not participate in any form of learning (21%). Non-participation occurred at higher rates in older age groups with 34% of those aged 60-64 years not participating in learning, compared to 16% of those aged 25-29 years. (Table 1)

Non-participants were more likely to not be in the labour force than those employed full-time or unemployed (38% compared to 16% and 24%). (Table 1)

Of persons who did not participate in any learning in the last 12 months, labourer was the most common occupation (18%). The most common industry for those who did not participate in any learning was the manufacturing industry (14%) followed by persons employed in the retail trade industry (11%). (Table 6)

Those with lower educational attainment were more likely to have not participated in any learning. About one in seven (15%) persons who held an Advanced Diploma or below did not participate in learning in the last 12 months compared to 7% of those who held a Bachelor degree or higher. Of those who did not hold a non-school qualification, 34% did not participate in learning in the previous 12 months. (Table 1)

Non-participation was more likely for persons in lower equivalised weekly income quintiles. Of persons who did not participate in learning a higher proportion were in the lowest equivalised weekly household income quintile (16%) than in the highest quintile (10%). (Table 1)

Of those who did not participate in formal or non-formal learning but wanted to participate, the main reasons for not participating were 'too busy at home, work or with leisure activities' (44%) and 'training too expensive/could not afford it' (18%). (Table 15)

INTERNATIONAL SURVEY

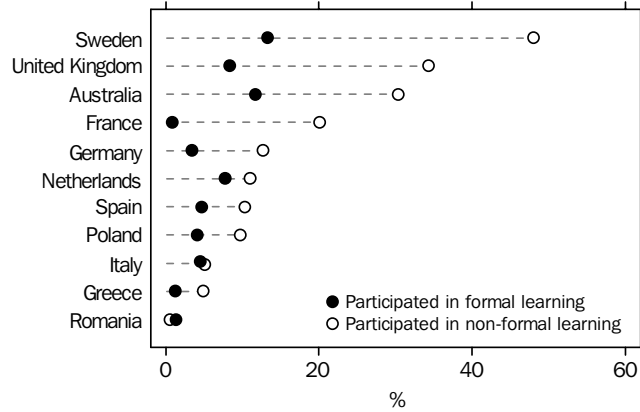
A similar survey on life long learning was conducted in a number of European countries in 2003. The highest reported participation rate from the survey for formal learning was for Sweden at 13%. The highest reported participation rates in non-formal learning were for Sweden at 48% and the United Kingdom at 35%. (Table 4)

SUMMARY OF FINDINGS *continued*

INTERNATIONAL SURVEY *continued*

International comparisons are affected by different response rates in the respective participating countries and for this reason such comparisons should be treated with caution (see Explanatory Notes, paragraph 54).

PARTICIPATION IN FORMAL OR NON-FORMAL LEARNING, Selected European countries and Australia



LIST OF TABLES

page

PARTICIPATION

- 1** All persons, Participation in learning by selected characteristics 9
- 2** Persons who participated in formal or non-formal learning, State or Territory of usual residence by selected characteristics 11
- 3** Persons who participated in informal learning, State or Territory of usual residence by selected characteristics 12
- 4** Persons who participated in formal or non-formal learning, Participation in selected European countries and Australia 13
- 5** All persons, Participation in learning by age and sex 14
- 6** Employed persons, Participation in learning by Occupation and Industry of current job 15

MOST RECENT LEARNING

- 7** Persons who participated in formal learning, Selected characteristics of most recent formal learning 16
- 8** Persons who participated in non-formal learning, Selected characteristics of most recent non-formal learning 17
- 9** Persons who participated in non-formal learning, Type of non-formal learning by age and sex 18
- 10** Persons who participated in informal learning, Type of informal learning by age and sex 19
- 11** All persons, Whether sought information concerning learning opportunities by age 20
- 12** Persons who participated in formal or non-formal learning, Type of provider of most recent formal or non-formal learning by level of highest education 21

JOB-RELATED LEARNING

- 13** Persons who participated in formal learning, Most recent formal learning was for a job-related reason by selected characteristics 22
- 14** Persons who participated in non-formal learning, Most recent non-formal learning was for a job-related reason by selected characteristics 23

NON-PARTICIPATION

- 15** Persons who did not participate in formal or non-formal learning, Wanted to participate, all and main reasons for not participating 24

DIFFICULTIES

- 16** Persons who participated in formal or non-formal learning, Main difficulty participating in formal or non-formal learning by selected characteristics 25

INTERNET ACCESS

- 17** All persons, Participation in learning by age and Internet access 26

LIST OF TABLES *continued*

page

POPULATIONS

18 Populations 27

ALL PERSONS, Participation in learning by selected characteristics

	Participated in formal learning	Participated in non-formal learning	Total participated in formal or non-formal learning	Participated in informal learning	Did not participate in learning	All persons aged 25 to 64
NUMBER ('000)						
Sex						
Males	595.8	1 722.4	2 106.0	4 110.5	1 055.8	5 426.4
Females	684.8	1 601.2	2 053.3	4 010.4	1 237.1	5 499.9
Age group (years)						
25–29	344.0	426.9	669.2	1 069.2	226.0	1 383.4
30–34	223.1	477.4	619.8	1 071.6	256.7	1 425.3
35–39	197.2	501.0	629.9	1 148.1	275.9	1 509.4
40–44	146.3	475.2	565.8	1 103.4	309.1	1 484.3
45–49	167.9	479.6	584.0	1 154.5	278.4	1 488.2
50–54	118.3	430.6	507.1	1 002.6	292.1	1 343.5
55–59	57.5	340.6	374.7	911.5	305.9	1 264.8
60–64	26.3	192.1	208.9	660.0	348.8	1 027.3
Country of birth						
Born in Australia	893.4	2 458.2	3 023.3	5 796.4	1 523.7	7 708.6
Born overseas	387.2	865.4	1 136.0	2 322.8	767.4	3 214.3
Area of usual residence						
State capital cities	801.9	2 074.4	2 605.1	5 152.7	1 417.0	6 877.6
Rest of Australia	478.6	1 249.2	1 554.2	2 968.2	875.9	4 048.7
Labour force status						
Employed full-time	783.0	2 381.7	2 853.6	4 958.6	975.8	6 266.5
Employed part-time	268.4	609.6	785.7	1 591.4	375.1	2 068.2
Unemployed	45.3	69.5	104.5	200.7	66.9	283.4
Not in the labour force	183.9	262.8	415.6	1 370.3	875.0	2 308.1
Level of highest non-school qualification						
Postgraduate degree, Graduate diploma or Graduate certificate	132.0	341.4	420.0	687.5	36.1	744.7
Bachelor degree	328.8	788.9	1 001.2	1 615.8	157.1	1 832.0
Advanced diploma or diploma	172.8	393.2	506.1	862.6	112.6	1 038.5
Certificate III or IV	270.7	612.9	782.3	1 514.5	327.2	1 954.8
Certificate I or II	70.6	214.3	258.5	531.8	117.2	691.8
Certificate n.f.d.	27.7	57.8	77.1	110.1	*23.2	147.5
No non-school qualification	258.4	867.5	1 053.4	2 703.8	1 502.0	4 396.3
Highest year of school completed						
Year 12 or equivalent	837.8	2 038.3	2 567.8	4 397.1	735.3	5 385.7
Year 11 or equivalent	129.9	373.8	470.9	963.5	270.7	1 290.8
Year 10 or equivalent	243.5	724.3	880.5	2 061.1	720.4	2 930.2
Year 9 or equivalent	51.4	133.0	169.0	422.4	273.4	730.6
Year 8 or below	*16.7	54.2	70.0	274.4	278.7	572.2
Equivalent weekly household income - quintiles						
Lowest quintile	116.6	149.2	240.0	605.6	370.7	1 015.2
Second quintile	141.9	291.9	395.0	921.2	443.4	1 424.3
Third quintile	220.0	546.5	690.4	1 452.8	380.8	1 918.6
Fourth quintile	259.6	721.4	869.1	1 627.7	353.5	2 079.1
Highest quintile	296.2	994.2	1 164.6	1 822.5	220.6	2 160.1
Not known or not stated	246.3	620.4	800.1	1 691.1	523.8	2 329.0
Total(a)(b)	1 280.6	3 323.6	4 159.3	8 120.9	2 292.9	10 926.3

* estimate has a relative standard error of 25% to 50% and should be used with caution

(a) Includes persons whose country of birth could not be determined.

(b) Includes persons whose level of highest non-school qualification could not be determined and persons who have never attended school.

	Participated in formal learning	Participated in non-formal learning	Total participated in formal or non-formal learning	Participated in informal learning	Did not participate in learning	All persons aged 25 to 64
PROPORTION (%)						
Sex						
Males	11.0	31.7	38.8	75.8	19.5	100.0
Females	12.5	29.1	37.3	72.9	22.5	100.0
Age group (years)						
25–29	24.9	30.9	48.4	77.3	16.3	100.0
30–34	15.7	33.5	43.5	75.2	18.0	100.0
35–39	13.1	33.2	41.7	76.1	18.3	100.0
40–44	9.9	32.0	38.1	74.3	20.8	100.0
45–49	11.3	32.2	39.2	77.6	18.7	100.0
50–54	8.8	32.1	37.7	74.6	21.7	100.0
55–59	4.5	26.9	29.6	72.1	24.2	100.0
60–64	2.6	18.7	20.3	64.2	34.0	100.0
Country of birth						
Born in Australia	11.6	31.9	39.2	75.2	19.8	100.0
Born overseas	12.0	26.9	35.3	72.3	23.9	100.0
Area of usual residence						
State capital cities	11.7	30.2	37.9	74.9	20.6	100.0
Rest of Australia	11.8	30.9	38.4	73.3	21.6	100.0
Labour force status						
Employed full-time	12.5	38.0	45.5	79.1	15.6	100.0
Employed part-time	13.0	29.5	38.0	76.9	18.1	100.0
Unemployed	16.0	24.5	36.9	70.8	23.6	100.0
Not in the labour force	8.0	11.4	18.0	59.4	37.9	100.0
Level of highest non-school qualification						
Postgraduate degree, Graduate diploma or Graduate certificate	17.7	45.8	56.4	92.3	4.8	100.0
Bachelor degree	17.9	43.1	54.7	88.2	8.6	100.0
Advanced diploma or diploma	16.6	37.9	48.7	83.1	10.8	100.0
Certificate III or IV	13.8	31.4	40.0	77.5	16.7	100.0
Certificate I or II	10.2	31.0	37.4	76.9	16.9	100.0
Certificate n.f.d.	18.8	39.2	52.3	74.7	15.7	100.0
No non-school qualification	5.9	19.7	24.0	61.5	34.2	100.0
Highest year of school completed						
Year 12 or equivalent	15.6	37.8	47.7	81.6	13.7	100.0
Year 11 or equivalent	10.1	29.0	36.5	74.6	21.0	100.0
Year 10 or equivalent	8.3	24.7	30.0	70.3	24.6	100.0
Year 9 or equivalent	7.0	18.2	23.1	57.8	37.4	100.0
Year 8 or below	*2.9	9.5	12.2	48.0	48.7	100.0
Equivalent weekly household income - quintiles						
Lowest quintile	11.5	14.7	23.6	59.6	36.5	100.0
Second quintile	10.0	20.5	27.7	64.7	31.1	100.0
Third quintile	11.5	28.5	36.0	75.7	19.8	100.0
Fourth quintile	12.5	34.7	41.8	78.3	17.0	100.0
Highest quintile	13.7	46.0	53.9	84.4	10.2	100.0
Not known or not stated	10.6	26.6	34.4	72.6	22.5	100.0
Total(a)(b)	11.7	30.4	38.1	74.3	21.0	100.0

* estimate has a relative standard error of 25% to 50% and should be used with caution

(a) Includes persons whose country of birth could not be determined.

(b) Includes persons whose level of highest non-school qualification could not be determined and persons who have never attended school.

PERSONS WHO PARTICIPATED IN FORMAL OR NON-FORMAL LEARNING, State or territory
of usual residence by selected characteristics

	NSW	Vic.	Qld	SA	WA	Tas.	NT	ACT	Australia
NUMBER ('000)									
Sex									
Males	725.4	471.6	415.2	136.4	247.7	44.1	22.6	43.0	2 106.0
Females	680.3	501.8	395.1	160.8	197.7	49.7	20.9	47.0	2 053.3
Age group (years)									
25-29	243.4	143.3	134.1	46.0	68.4	9.7	6.4	18.0	669.2
30-34	227.9	141.8	118.7	36.6	66.8	12.0	*5.2	10.7	619.8
35-39	208.5	154.1	122.8	46.8	65.9	11.9	*5.4	14.6	629.9
40-44	170.0	142.0	113.8	43.2	61.9	14.9	7.8	12.3	565.8
45-49	208.8	147.6	103.8	33.3	62.7	12.3	*5.5	10.0	584.0
50-54	157.2	127.2	89.2	41.1	54.8	17.9	7.6	12.2	507.1
55-64	189.8	117.4	128.0	50.2	65.0	15.1	*5.8	12.3	583.5
Area of usual residence									
State capital cities	919.7	701.1	372.0	229.1	342.2	41.0	2 605.1
Balance of state/territory	486.0	272.2	438.3	68.0	103.3	52.8	43.5	90.0	1 554.2
Labour force status									
Employed full-time	972.5	669.0	572.8	183.9	294.5	59.5	30.6	70.7	2 853.6
Employed part-time	254.2	196.1	130.9	71.9	94.3	18.3	*6.4	13.6	785.7
Unemployed	38.9	*24.3	*12.4	8.5	13.5	*3.0	**2.9	**1.0	104.5
Not in the labour force	140.0	83.9	94.3	32.9	43.2	13.0	*3.6	*4.7	415.6
Weekly personal income - quintiles									
Lowest quintile	105.2	83.7	67.6	20.3	39.4	*6.7	**3.1	*4.0	330.0
Second quintile	77.8	63.0	59.2	22.3	27.5	11.5	**2.2	*2.2	265.7
Third quintile	198.4	147.9	134.7	57.9	58.1	16.2	*5.8	7.3	626.4
Fourth quintile	329.4	252.0	210.4	73.9	98.5	23.7	9.5	16.6	1 013.9
Highest quintile	525.1	303.7	256.6	93.8	162.7	29.6	18.1	49.4	1 439.0
Not known or not stated	169.7	123.1	81.9	28.8	59.3	*6.2	*4.8	*10.5	484.4
Total	1 405.7	973.4	810.3	297.1	445.5	93.8	43.5	90.0	4 159.3

	NSW	Vic.	Qld	SA	WA	Tas.	NT	ACT	Australia
PROPORTION (%)									
Sex									
Males	40.2	34.8	39.0	33.3	45.8	35.5	52.1	49.2	38.8
Females	37.3	36.1	36.8	39.4	36.5	38.6	50.2	51.2	37.3
Age group (years)									
25-29	52.8	40.2	50.0	46.4	50.9	35.7	56.5	69.5	48.4
30-34	47.2	38.9	42.5	38.0	48.4	42.9	*43.1	44.2	43.5
35-39	42.1	39.6	41.5	43.2	43.7	36.2	*41.1	60.4	41.7
40-44	34.8	38.1	39.0	38.8	41.2	43.9	64.1	51.9	38.1
45-49	42.4	40.1	35.7	29.1	41.8	33.4	*47.1	42.1	39.2
50-54	35.4	38.3	34.2	39.3	40.2	52.3	74.7	55.4	37.7
55-64	24.9	20.9	28.3	27.3	29.1	25.0	*39.2	34.3	25.5
Area of usual residence									
State capital cities	39.4	34.8	37.2	38.0	41.7	38.2	37.9
Balance of state/territory	37.6	37.4	38.5	31.6	39.2	36.2	51.2	50.2	38.4
Labour force status									
Employed full-time	46.7	43.1	45.1	41.6	48.4	44.5	54.7	57.4	45.5
Employed part-time	37.6	36.5	35.8	40.4	42.0	39.5	57.4	48.3	38.0
Unemployed	37.4	*33.3	*29.5	39.6	47.2	35.0	79.6	*41.3	36.9
Not in the labour force	18.3	14.4	20.5	18.6	19.5	20.1	*25.3	*18.5	18.0
Weekly personal income - quintiles									
Lowest quintile	25.9	22.2	25.4	25.8	24.8	*20.4	*32.6	*31.3	24.6
Second quintile	17.5	18.8	23.7	21.3	27.4	26.9	*47.2	*20.8	20.6
Third quintile	35.3	32.0	35.6	34.9	36.6	29.7	49.2	38.9	34.6
Fourth quintile	43.0	44.7	40.6	41.3	46.7	41.9	41.7	52.5	43.2
Highest quintile	54.5	49.2	54.8	52.1	56.5	62.9	72.3	60.1	53.9
Not known or not stated	35.0	31.7	31.8	26.5	35.7	*31.1	*42.9	45.1	33.2
Total	38.8	35.5	37.9	36.3	41.1	37.0	51.2	50.2	38.1

* estimate has a relative standard error of 25% to 50% and should be used with caution

** estimate has a relative standard error greater than 50% and is considered too unreliable for general use

.. not applicable

PERSONS WHO PARTICIPATED IN INFORMAL LEARNING, State or territory of usual residence by selected characteristics

	NSW	Vic.	Qld	SA	WA	Tas.	NT	ACT	Australia
NUMBER ('000)									
Sex									
Males	1 361.6	968.4	825.6	310.9	441.0	97.0	34.7	71.3	4 110.5
Females	1 269.5	1 038.8	773.9	311.6	410.1	99.7	27.8	78.9	4 010.4
Age group (years)									
25-29	337.2	270.3	217.4	84.1	108.5	22.7	7.7	21.3	1 069.2
30-34	366.0	257.2	214.4	71.8	112.9	20.0	8.7	20.5	1 071.6
35-39	367.3	292.0	227.6	81.7	126.2	24.7	9.8	18.7	1 148.1
40-44	353.4	281.9	209.8	82.7	119.0	27.9	8.5	20.3	1 103.4
45-49	374.8	281.1	239.3	85.7	112.7	29.6	9.2	22.1	1 154.5
50-54	332.1	254.0	175.5	80.4	105.6	27.0	9.1	18.8	1 002.6
55-64	500.3	370.6	315.3	136.1	166.3	44.7	9.4	28.7	1 571.5
Area of usual residence									
State capital cities	1 698.4	1 502.4	753.5	464.3	643.1	90.9	5 152.7
Balance of state/territory	932.6	504.8	846.0	158.2	208.0	105.9	62.5	150.3	2 968.2
Labour force status									
Employed full-time	1 639.6	1 211.9	1 004.3	348.4	494.7	108.2	43.6	108.0	4 958.6
Employed part-time	508.6	393.5	290.6	142.7	183.1	40.3	*8.8	23.8	1 591.4
Unemployed	67.0	53.3	26.9	17.7	22.8	7.7	**2.8	*2.4	200.7
Not in the labour force	415.9	348.5	277.5	113.6	150.6	40.6	*7.4	16.1	1 370.3
Weekly personal income - quintiles									
Lowest quintile	256.7	259.7	176.4	56.6	117.7	24.8	**4.1	9.1	905.1
Second quintile	226.9	205.2	146.7	66.2	69.4	30.3	*4.4	6.5	755.6
Third quintile	394.8	321.9	276.1	119.2	122.3	42.1	*9.3	12.6	1 298.3
Fourth quintile	585.2	441.3	400.3	137.7	169.5	43.4	16.0	25.9	1 819.3
Highest quintile	828.2	519.6	394.9	157.7	247.8	41.7	20.7	75.5	2 286.0
Not known or not stated	339.2	259.5	205.0	85.0	124.6	*14.4	*8.0	20.7	1 056.6
Total	2 631.1	2 007.2	1 599.5	622.5	851.2	196.7	62.5	150.3	8 120.9

	NSW	Vic.	Qld	SA	WA	Tas.	NT	ACT	Australia
PROPORTION (%)									
Sex									
Males	75.5	71.5	77.6	75.9	81.5	78.0	79.8	81.5	75.8
Females	69.6	74.8	72.0	76.3	75.7	77.3	66.8	85.9	72.9
Age group (years)									
25-29	73.1	75.9	81.2	84.8	80.8	83.6	68.3	82.2	77.3
30-34	75.7	70.6	76.8	74.5	81.8	71.3	72.4	84.5	75.2
35-39	74.1	75.1	76.9	75.5	83.7	75.4	75.1	77.2	76.1
40-44	72.3	75.7	72.0	74.3	79.1	82.1	70.2	85.8	74.3
45-49	76.1	76.4	82.2	75.0	75.2	80.5	78.3	93.1	77.6
50-54	74.9	76.5	67.4	76.8	77.4	79.1	90.3	85.3	74.6
55-64	65.7	66.1	69.8	74.0	74.5	74.3	64.1	80.2	68.6
Area of usual residence									
State capital cities	72.8	74.6	75.3	77.1	78.4	84.7	74.9
Balance of state/territory	72.1	69.3	74.4	73.5	79.1	72.5	73.5	83.8	73.3
Labour force status									
Employed full-time	78.8	78.1	79.0	78.9	81.2	80.9	77.8	87.6	79.1
Employed part-time	75.2	73.2	79.5	80.1	81.5	87.0	78.7	84.6	76.9
Unemployed	64.5	73.1	64.3	82.9	80.0	89.6	*75.3	100.0	70.8
Not in the labour force	54.4	59.9	60.4	64.3	68.1	62.8	*51.8	62.7	59.4
Weekly personal income - quintiles									
Lowest quintile	63.1	68.8	66.4	71.7	74.0	75.9	*43.0	70.6	67.4
Second quintile	51.1	61.4	58.6	63.1	69.2	71.1	94.6	60.8	58.5
Third quintile	70.2	69.7	73.1	71.8	77.0	77.4	79.1	66.7	71.7
Fourth quintile	76.5	78.3	77.3	77.0	80.3	76.8	70.0	82.0	77.5
Highest quintile	86.0	84.1	84.3	87.5	86.0	88.5	82.6	91.9	85.6
Not known or not stated	69.9	66.9	79.5	78.1	75.1	72.4	*71.1	88.8	72.3
Total	72.6	73.2	74.8	76.1	78.6	77.7	73.5	83.8	74.3

* estimate has a relative standard error of 25% to 50% and should be used with caution

** estimate has a relative standard error greater than 50% and is considered too unreliable for general use

.. not applicable

4

PERSONS WHO PARTICIPATED IN FORMAL OR NON-FORMAL LEARNING(a), Participation in selected European countries and Australia

	<i>Participated in formal learning</i>	<i>Participated in non-formal learning</i>
	%	%
Australia	11.7	30.4
Austria	3.0	25.3
Belgium	4.0	19.5
Czech Republic	1.4	12.9
France	0.9	20.1
Germany (including ex-GDR from 1991)	3.4	12.7
Greece	1.3	4.9
Hungary	2.9	4.8
Italy	4.5	5.1
Netherlands	7.8	11.0
Poland	4.1	9.8
Portugal	4.0	9.3
Romania	1.4	0.6
Spain	4.7	10.3
Sweden	13.3	48.0
United Kingdom	8.4	34.5

(a) European data collected in 2003 Life Long Learning Survey. For more information see paragraph 54 of the Explanatory Notes.

ALL PERSONS, Participation in learning by age and sex

	<i>Participated in formal learning</i>	<i>Participated in non-formal learning</i>	<i>Participated in formal or non-formal learning</i>	<i>Participated in informal learning</i>	<i>Did not participate in learning</i>	<i>All persons aged 25 to 64</i>
	'000	'000	'000	'000	'000	'000
MALES						
Age group (years)						
25-29	161.5	229.3	344.9	538.8	119.3	697.5
30-34	112.1	265.7	334.0	534.3	106.6	706.4
35-39	91.0	268.6	325.2	586.6	116.7	744.6
40-44	63.2	240.3	280.8	567.6	132.4	734.6
45-49	67.1	240.4	273.0	561.4	154.8	736.4
50-54	64.0	217.0	261.0	501.6	138.1	663.8
55-59	24.9	168.8	186.4	474.2	127.9	627.7
60-64	*12.0	92.3	100.7	345.9	160.1	515.3
Total	595.8	1 722.4	2 106.0	4 110.5	1 055.8	5 426.4
FEMALES						
Age group (years)						
25-29	182.5	197.6	324.3	530.4	106.7	685.9
30-34	111.0	211.8	285.8	537.3	150.2	718.9
35-39	106.2	232.5	304.7	561.4	159.2	764.8
40-44	83.1	234.9	285.0	535.8	176.7	749.7
45-49	100.8	239.3	311.0	593.0	123.6	751.7
50-54	54.4	213.6	246.1	501.0	154.0	679.7
55-59	32.6	171.8	188.3	437.2	178.0	637.1
60-64	*14.3	99.8	108.2	314.2	188.8	512.0
Total	684.8	1 601.2	2 053.3	4 010.4	1 237.1	5 499.9
PERSONS						
Age group (years)						
25-29	344.0	426.9	669.2	1 069.2	226.0	1 383.4
30-34	223.1	477.4	619.8	1 071.6	256.7	1 425.3
35-39	197.2	501.0	629.9	1 148.1	275.9	1 509.4
40-44	146.3	475.2	565.8	1 103.4	309.1	1 484.3
45-49	167.9	479.6	584.0	1 154.5	278.4	1 488.2
50-54	118.3	430.6	507.1	1 002.6	292.1	1 343.5
55-59	57.5	340.6	374.7	911.5	305.9	1 264.8
60-64	26.3	192.1	208.9	660.0	348.8	1 027.3
Total	1 280.6	3 323.6	4 159.3	8 120.9	2 292.9	10 926.3

* estimate has a relative standard error of 25% to 50% and should be used with caution

EMPLOYED PERSONS, Participation in learning by Occupation and Industry of current job

	<i>Participated in formal learning</i>	<i>Participated in non-formal learning</i>	<i>Participated in formal or non-formal learning</i>	<i>Participated in informal learning</i>	<i>Did not participate in learning</i>	<i>All persons aged 25 to 64</i>
	'000	'000	'000	'000	'000	'000
Occupation						
Managers	119.4	435.2	492.6	995.5	126.4	1 156.8
Professionals	283.3	880.3	1 040.0	1 572.0	116.6	1 749.5
Technicians and Trades Workers	115.6	324.8	394.7	820.4	194.8	1 083.2
Community and Personal Service Workers	136.1	259.7	331.8	468.6	86.8	598.1
Clerical and Administrative Workers	140.5	438.6	539.5	1 015.0	187.7	1 270.7
Sales Workers	41.3	141.4	166.5	398.7	113.9	533.6
Machinery Operators and Drivers	41.1	126.0	157.9	330.8	162.6	525.0
Labourers	62.0	173.5	223.5	466.7	249.7	777.4
Industry						
Agriculture, forestry and fishing	*15.5	52.5	60.8	171.4	52.0	230.1
Mining	*8.0	38.2	42.5	57.0	*12.6	78.7
Manufacturing	65.5	196.6	239.5	486.5	184.6	720.5
Electricity, gas, water and waste services	*11.9	44.0	52.9	67.0	*12.8	88.2
Construction	52.5	177.6	217.3	497.9	136.6	668.7
Wholesale trade	*26.9	96.6	113.3	230.7	67.2	317.4
Retail trade	66.9	192.9	231.6	579.3	144.0	743.5
Accommodation and food services	31.1	64.7	89.3	209.0	96.9	321.4
Transport, postal and warehousing	44.4	123.6	155.3	307.4	98.0	427.3
Information media and telecommunications	*21.7	63.3	78.3	136.8	*22.0	169.1
Financial and insurance services	58.6	139.2	180.6	295.0	*23.5	330.6
Rental, hiring and real estate services	*16.7	52.9	63.8	104.0	*22.5	137.6
Professional, scientific and technical services	75.3	239.5	279.2	511.7	45.0	580.1
Administrative and support services	31.0	100.1	119.7	234.9	51.5	311.3
Public administration and safety	84.4	278.8	322.4	458.7	47.5	539.9
Education and training	105.3	336.9	393.4	578.6	*32.8	636.1
Health care and social assistance	175.9	443.1	539.3	767.6	106.5	921.0
Arts and recreation services	14.9	46.7	54.9	97.0	*18.4	122.4
Other services	33.0	92.5	112.4	277.3	64.0	350.5
Total(a)(b)	1 051.4	2 991.3	3 639.2	6 549.9	1 351.0	8 334.7

* estimate has a relative standard error of 25% to 50% and should be used with caution

(a) Includes persons whose Occupation was not stated.

(b) Includes persons whose Industry was not stated.

PERSONS WHO PARTICIPATED IN FORMAL LEARNING, Selected characteristics of most recent formal learning

	AGE GROUP (YEARS)				Participated in formal learning	Participated in formal learning
	25-44	25-44	45-64	45-64		
	'000	%	'000	%		
Level of most recent formal learning						
Postgraduate degree, Graduate diploma or Graduate certificate	162.7	17.9	55.4	15.0	218.1	17.0
Bachelor Degree	196.8	21.6	39.7	10.7	236.5	18.5
Advanced Diploma or Diploma	142.9	15.7	51.9	14.0	194.8	15.2
Certificate III or IV	218.7	24.0	114.2	30.9	332.8	26.0
Certificate I or II	40.8	4.5	35.3	9.5	76.1	5.9
Certificate n.f.d.	103.7	11.4	57.6	15.6	161.3	12.6
Main field of education of most recent formal learning						
Natural and physical sciences	26.3	2.9	**2.0	**0.6	28.3	2.2
Information technology	50.4	5.5	*17.0	*4.6	67.4	5.3
Engineering and related technologies	84.9	9.3	37.3	10.1	122.2	9.5
Architecture and building	37.0	4.1	*3.7	*1.0	40.6	3.2
Agriculture, environmental and related studies	26.7	2.9	**6.4	**1.7	33.1	2.6
Health	102.6	11.3	52.3	14.2	154.9	12.1
Education	61.0	6.7	*14.7	*4.0	75.8	5.9
Management and commerce	256.3	28.1	105.6	28.6	361.9	28.3
Society and culture	180.2	19.8	89.2	24.1	269.4	21.0
Creative arts	*29.9	*3.3	*16.9	*4.6	46.8	3.7
Food, hospitality and personal services	34.9	3.8	*10.1	*2.7	44.9	3.5
Main reason for participating in most recent formal learning						
To get into another course of study	*19.7	*2.2	**8.4	**2.3	*28.1	*2.2
To get a job	131.6	14.5	37.3	10.1	168.9	13.2
To get a better job or promotion	295.9	32.5	63.1	17.1	359.0	28.0
Was a requirement of job	116.5	12.8	64.0	17.3	180.5	14.1
Wanted extra skills for the job	172.4	18.9	96.4	26.1	268.8	21.0
To start own business	*15.4	*1.7	**3.3	**0.9	18.8	1.5
To develop existing business	16.8	1.8	*7.2	*1.9	24.0	1.9
To try for a different career	52.6	5.8	23.3	6.3	75.8	5.9
For personal interest	39.9	4.4	30.5	8.2	70.4	5.5
For self-development	40.4	4.4	29.0	7.8	69.4	5.4
Other	*9.4	*1.0	*7.5	*2.0	*16.9	*1.3
Total(a)(b)	910.6	100.0	369.9	100.0	1 280.6	100.0

* estimate has a relative standard error of 25% to 50% and should be used with caution

** estimate has a relative standard error greater than 50% and is considered too unreliable for general use

(a) Includes persons whose level of most recent formal learning was at a Year 12 or equivalent level and persons whose level could not be determined.

(b) Includes persons whose main field of education of most recent formal learning was a mixed field programme or persons whose field could not be determined.

PERSONS WHO PARTICIPATED IN NON-FORMAL LEARNING, Selected characteristics of most recent non-formal learning

	AGE GROUP (YEARS)				Participated in non-formal learning '000	Participated in non-formal learning '000
	25-44	25-44	45-64	45-64		
	'000	%	'000	%		
Type of most recent non-formal learning						
Work-related course	1 510.6	80.3	1 073.2	74.4	2 583.8	77.7
Bridging course	20.0	1.1	*26.6	*1.8	46.6	1.4
Private lesson	79.5	4.2	37.5	2.6	117.0	3.5
Arts, craft or recreational course	166.8	8.9	213.9	14.8	380.8	11.5
Other non-formal education and training course	103.6	5.5	91.8	6.4	195.4	5.9
Main field of education of most recent non-formal learning						
Natural and physical sciences	*26.2	*1.4	*11.6	*0.8	37.8	1.1
Information technology	72.5	3.9	55.0	3.8	127.5	3.8
Engineering and related technologies	209.3	11.1	108.2	7.5	317.5	9.6
Architecture and building	22.8	1.2	23.0	1.6	45.8	1.4
Agriculture, environmental and related studies	38.5	2.0	*27.0	*1.9	65.6	2.0
Health	411.5	21.9	331.9	23.0	743.4	22.4
Education	39.8	2.1	47.4	3.3	87.2	2.6
Management and commerce	478.1	25.4	347.3	24.1	825.4	24.8
Society and culture	239.3	12.7	207.0	14.3	446.4	13.4
Creative arts	157.3	8.4	180.0	12.5	337.3	10.1
Food, hospitality and personal services	60.7	3.2	*25.6	*1.8	86.4	2.6
Main reason for participating in most recent non-formal learning						
To get into another course of study	*11.9	*0.6	*7.7	*0.5	*19.5	*0.6
To get a job	57.9	3.1	41.3	2.9	99.2	3.0
To get a better job or promotion	151.4	8.1	54.4	3.8	205.8	6.2
Was a requirement of job	713.2	37.9	493.1	34.2	1 206.3	36.3
Wanted extra skills for job	473.0	25.2	365.6	25.3	838.6	25.2
To start own business	*14.0	*0.7	**9.8	**0.7	*23.8	*0.7
To develop existing business	35.8	1.9	26.0	1.8	61.9	1.9
To try for a different career	*15.5	*0.8	**1.9	**0.1	*17.5	*0.5
For personal interest	243.5	12.9	280.8	19.5	524.3	15.8
For self-development	112.6	6.0	111.7	7.7	224.2	6.7
Other	51.7	2.7	50.9	3.5	102.6	3.1
Total(a)	1 880.6	100.0	1 443.0	100.0	3 323.6	100.0

* estimate has a relative standard error of 25% to 50% and should be used with caution

** estimate has a relative standard error greater than 50% and is considered too unreliable for general use

(a) Includes persons whose main field of education of most recent non-formal learning was a mixed field programme or persons whose field could not be determined.

	AGE GROUP (YEARS)				<i>Participated in non-formal learning</i>
	25-34	35-44	45-54	55-64	
	'000	'000	'000	'000	'000
MALES					
Type of non-formal learning					
Work-related course	431.5	433.3	403.9	196.1	1 464.8
Bridging course	*16.6	30.6	30.7	*19.6	97.6
Private lesson	35.3	61.4	18.1	24.8	139.6
Arts, craft or recreational course	39.8	51.5	63.3	38.4	192.9
Other non-formal learning	77.3	87.0	67.6	55.9	287.8
Total	495.0	508.9	457.4	261.1	1 722.4
FEMALES					
Type of non-formal learning					
Work-related course	328.6	368.8	345.3	166.7	1 209.4
Bridging course	*14.8	20.3	*20.0	*10.0	65.0
Private lesson	41.0	37.8	52.4	24.2	155.3
Arts, craft or recreational course	88.5	105.5	98.9	92.8	385.6
Other non-formal learning	81.6	90.4	79.4	57.3	308.7
Total	409.4	467.3	452.9	271.6	1 601.2
PERSONS					
Type of non-formal learning					
Work-related course	760.1	802.1	749.2	362.8	2 674.3
Bridging course	31.3	51.0	50.7	29.6	162.6
Private lesson	76.3	99.2	70.5	49.0	295.0
Arts, craft or recreational course	128.2	157.0	162.1	131.2	578.6
Other non-formal learning	158.9	177.4	147.0	113.2	596.5
Total	904.4	976.2	910.3	532.7	3 323.6

* estimate has a relative standard error of 25% to 50% and should be used with caution

Type of informal learning	AGE GROUP (YEARS)				Participated in informal learning '000
	25-34	35-44	45-54	55-64	
	'000	'000	'000	'000	
MALES					
Type of informal learning					
Learning from a family member, friend or colleague	692.4	680.3	585.4	368.7	2 326.7
Reading manuals, reference books, journals or other written materials	808.9	907.8	844.8	628.3	3 189.8
Using computers or the Internet	816.0	849.2	768.0	502.4	2 935.7
Using television, radio, video or DVD	395.3	413.0	412.1	327.3	1 547.6
Going on guided tours at a museum, art gallery or other location	126.7	153.5	154.4	124.3	558.9
Taking part in learning groups	101.7	91.3	82.8	63.9	339.7
Visiting a library	235.3	243.5	238.4	205.2	922.4
Other	100.6	93.6	97.0	71.3	362.5
Total	1 073.0	1 154.3	1 063.1	820.1	4 110.5
FEMALES					
Type of informal learning					
Learning from a family member, friend or colleague	712.1	658.5	644.3	383.3	2 398.1
Reading manuals, reference books, journals or other written materials	770.5	784.8	789.4	540.1	2 884.9
Using computers or the Internet	806.7	858.2	749.6	447.5	2 862.1
Using television, radio, video or DVD	385.0	406.8	400.0	306.1	1 497.9
Going on guided tours at a museum, art gallery or other location	195.8	215.3	242.5	184.3	837.9
Taking part in learning groups	229.9	246.5	164.3	110.5	751.2
Visiting a library	339.8	387.6	359.6	219.8	1 306.9
Other	85.4	95.2	115.9	81.2	377.7
Total	1 067.7	1 097.2	1 094.0	751.4	4 010.4
PERSONS					
Type of informal learning					
Learning from a family member, friend or colleague	1 404.5	1 338.8	1 229.7	752.0	4 724.9
Reading manuals, reference books, journals or other written materials	1 579.4	1 692.6	1 634.2	1 168.4	6 074.7
Using computers or the Internet	1 622.8	1 707.4	1 517.7	950.0	5 797.8
Using television, radio, video or DVD	780.3	819.8	812.1	633.3	3 045.5
Going on guided tours at a museum, art gallery or other location	322.6	368.7	396.9	308.6	1 396.8
Taking part in learning groups	331.6	337.8	247.1	174.3	1 090.9
Visiting a library	575.2	631.1	598.1	424.9	2 229.3
Other	186.0	188.7	212.9	152.6	740.2
Total	2 140.8	2 251.5	2 157.1	1 571.5	8 120.9

ALL PERSONS, Whether sought information concerning learning opportunities by age

	AGE GROUP (YEARS)				<i>All persons aged 25 to 64</i>
	25-34	35-44	45-54	55-64	
	'000	'000	'000	'000	'000
Sought information concerning learning opportunities	1 123.0	1 042.2	857.6	461.5	3 484.2
Found information concerning learning opportunities	1 049.2	969.7	759.6	413.9	3 192.5
Sources of learning information found					
Family member or friend	308.6	228.5	201.5	116.2	854.7
Work colleague	382.6	344.6	289.2	104.3	1 120.8
Employer	364.4	322.9	249.5	113.1	1 049.9
Career guidance provider	68.8	69.7	46.0	*21.7	206.2
An education or training institution	458.7	430.2	342.0	167.0	1 398.0
Media	255.5	277.6	283.1	155.7	971.9
Books	320.2	317.5	275.5	172.6	1 085.8
The Internet	764.0	666.4	480.4	226.0	2 136.8
Other	78.3	121.2	96.8	65.6	361.9
Did not seek information concerning learning opportunities	1 685.8	1 951.5	1 974.1	1 830.7	7 442.1
Total	2 808.8	2 993.7	2 831.7	2 292.1	10 926.3

* estimate has a relative standard error of 25% to 50% and should be used with caution

LEVEL OF HIGHEST EDUCATION							All persons aged 25 to 64(a)
Bachelor degree or above	Advanced diploma or diploma	Certificate III or IV	Certificate I or II	Year 12 or equivalent	Year 11 or below		
'000	'000	'000	'000	'000	'000		

TYPE OF PROVIDER OF MOST RECENT FORMAL LEARNING

University or other higher education	290.8	46.1	42.2	**0.5	56.9	19.7	464.7
TAFE	58.5	57.9	125.0	**4.3	75.5	63.6	391.8
Community based adult education provider	*7.5	*3.7	*3.3	—	**1.2	*8.2	25.9
Other(b)	104.0	65.2	100.3	*5.3	49.7	66.8	398.2
Total participated in formal learning	460.8	172.8	270.7	*10.1	183.3	158.2	(c)1 280.6

TYPE OF PROVIDER OF MOST RECENT NON-FORMAL LEARNING

University or other higher education	98.7	22.1	*7.7	**1.2	*15.9	*10.1	158.1
TAFE	50.5	45.9	86.2	**2.7	30.2	76.0	297.7
Community based adult education provider	51.8	25.3	20.1	**2.8	36.6	54.2	193.2
Professional or industry association	322.6	93.6	173.3	**3.2	122.3	130.7	860.6
Other(d)	606.6	206.2	325.6	*14.7	263.2	371.4	1 814.0
Total participated in non-formal learning	1 130.3	393.2	612.9	24.6	468.3	642.3	(e)3 323.6

* estimate has a relative standard error of 25% to 50% and should be used with caution

** estimate has a relative standard error greater than 50% and is considered too unreliable for general use

— nil or rounded to zero (including null cells)

(a) Includes persons whose level of highest educational attainment could not be determined.

(b) Includes persons whose type of provider of their most recent formal or non-formal course was a Secondary school, a Business college, a Professional or industry association, an Equipment and/or product manufacturer or supplier, Other private organisation and Other government organisation.

(c) Includes 5,100 persons who participated in formal learning whose highest level of educational attainment was a Certificate n.f.d..

(d) Includes persons whose type of provider of their most recent formal or non-formal course was a Secondary school, a Business college, an Equipment and/or product manufacturer or supplier, Other private organisation and Other government organisation.

(e) Includes 4,500 persons who participated in non-formal learning whose level of highest educational attainment was a Certificate n.f.d..

	<i>Most recent formal learning was for a job-related reason</i>	<i>Participated in formal learning</i>
	'000	'000
.....		
Sex		
Males	519.0	595.8
Females	576.8	684.8
Age group (years)		
25-34	496.4	567.1
35-44	304.8	343.5
45-54	237.6	286.2
55-64	57.0	83.7
Labour force status		
Employed full-time	686.6	783.0
Employed part-time	229.9	268.4
Unemployed	37.9	45.3
Not in the labour force	141.4	183.9
Occupation		
Managers	91.2	119.4
Professionals	241.5	283.3
Technicians and Trades Workers	108.6	115.6
Community and Personal Service Workers	121.0	136.1
Clerical and Administrative Workers	132.6	140.5
Sales Workers	31.4	41.3
Machinery Operators and Drivers	39.4	41.1
Labourers	54.5	62.0
Industry		
Agriculture, forestry and fishing	*13.3	*15.5
Mining	*7.1	*8.0
Manufacturing	59.3	65.5
Electricity, gas, water and waste services	*9.5	*11.9
Construction	47.7	52.5
Wholesale trade	*22.3	*26.9
Retail trade	54.3	66.9
Accommodation and food services	22.1	31.1
Transport, postal and warehousing	42.1	44.4
Information media and telecommunications	*19.8	*21.7
Financial and insurance services	51.2	58.6
Rental, hiring and real estate services	*10.3	*16.7
Professional, scientific and technical services	69.9	75.3
Administrative and support services	26.0	*31.0
Public administration and safety	78.3	84.4
Education and training	81.2	105.3
Health care and social assistance	164.7	175.9
Arts and recreation services	*10.8	14.9
Other services	30.0	33.0
Total(a)(b)	1 095.8	1 280.6

* estimate has a relative standard error of 25% to 50% and should be used with caution

(a) Includes where Occupation was not stated or where persons were unemployed or not in the labour force.

(b) Includes where Industry was not stated or where persons were unemployed or not in the labour force.

	<i>Most recent non-formal learning was for a job-related reason</i>	<i>Participated in non-formal learning</i>
	'000	'000
.....		
Sex		
Males	1 360.7	1 722.4
Females	1 092.3	1 601.2
Age group (years)		
25-34	719.0	904.4
35-44	742.0	976.2
45-54	660.9	910.3
55-64	331.1	532.7
Labour force status		
Employed full-time	1 891.6	2 381.7
Employed part-time	430.8	609.6
Unemployed	46.3	69.5
Not in the labour force	84.3	262.8
Occupation		
Managers	322.4	435.2
Professionals	651.2	880.3
Technicians and Trades Workers	275.5	324.8
Community and Personal Service Workers	209.7	259.7
Clerical and Administrative Workers	322.0	438.6
Sales Workers	111.1	141.4
Machinery Operators and Drivers	114.0	126.0
Labourers	145.3	173.5
Industry		
Agriculture, forestry and fishing	36.9	52.5
Mining	35.7	38.2
Manufacturing	157.9	196.6
Electricity, gas, water and waste services	40.0	44.0
Construction	152.7	177.6
Wholesale trade	77.3	96.6
Retail trade	151.5	192.9
Accommodation and food services	48.6	64.7
Transport, postal and warehousing	101.1	123.6
Information media and telecommunications	43.7	63.3
Financial and insurance services	113.7	139.2
Rental, hiring and real estate services	37.9	52.9
Professional, scientific and technical services	161.6	239.5
Administrative and support services	68.6	100.1
Public administration and safety	222.6	278.8
Education and training	249.1	336.9
Health care and social assistance	343.2	443.1
Arts and recreation services	36.5	46.7
Other services	72.6	92.5
Total(a)(b)	2 453.0	3 323.6

-
- (a) Includes where Occupation was not stated or where persons were unemployed or not in the labour force.
- (b) Includes where Industry was not stated or where persons were unemployed or not in the labour force.

PERSONS WHO DID NOT PARTICIPATE IN FORMAL OR NON-FORMAL LEARNING, Wanted to participate, all and main reasons for not participating

	AGE GROUP (YEARS)		SEX		<i>Did not participate but wanted to participate in formal or non-formal learning</i>
	25-44	45-64	Males	Females	
	'000	'000	'000	'000	
.....					
All reasons did not participate in formal or non-formal learning					
Conflict with work schedule	100.4	39.8	77.2	63.0	140.2
Training too expensive/could not afford it	171.0	74.0	108.1	136.8	244.9
Lack of employer's support	*20.2	*12.7	*17.2	*15.7	32.9
Too busy at work/home or with leisure activities	349.5	171.8	216.2	305.2	521.3
Could not find the training wanted	21.4	25.8	*27.3	19.8	47.2
Health or age	18.4	54.9	*25.5	47.8	73.3
Other(a)	127.8	88.7	77.0	139.5	216.5
Total	625.6	378.7	433.8	570.5	1 004.3
Main reason did not participate in formal or non-formal learning					
Conflict with work schedule	69.4	31.0	57.5	42.9	100.4
Training too expensive/could not afford it	121.3	56.2	77.4	100.1	177.5
Lack of employer's support	*12.5	*7.2	*9.9	*9.8	*19.8
Too busy at work/home or with leisure activities	291.1	147.3	176.4	262.0	438.4
Could not find the training wanted	*16.9	*16.7	*21.2	*12.4	33.6
Health or age	*10.7	45.6	*20.4	35.9	56.3
Other(a)	103.7	74.5	70.9	107.4	178.3
Total	625.6	378.7	433.8	570.5	1 004.3

* estimate has a relative standard error of 25% to 50% and should be used with caution

(a) Includes the reasons 'Did not have the prerequisites', 'No need for further training' and 'Not confident in going back to study'.

	MAIN DIFFICULTY PARTICIPATING IN FORMAL OR NON-FORMAL LEARNING					Had difficulties undertaking formal or non-formal learning	Did not have difficulties undertaking formal or non-formal learning	Participated in formal or non-formal learning
	Too busy at home	Too busy at work	Course offered at inconvenient time	Cost of the course	Other(a)			
	'000	'000	'000	'000	'000	'000	'000	'000
Sex								
Males	26.2	160.0	35.0	27.5	115.1	363.7	1 742.3	2 106.0
Females	127.4	96.8	30.4	29.0	163.2	446.8	1 606.5	2 053.3
Age group (years)								
25-44	115.4	158.5	31.6	33.6	162.5	501.7	1 983.0	2 484.7
45-64	38.3	98.2	*33.8	22.9	115.7	308.9	1 365.7	1 674.6
Country of birth								
Born in Australia	112.8	186.9	58.6	43.9	213.1	615.3	2 408.0	3 023.3
Born overseas	40.9	69.9	*6.8	*12.6	65.1	195.3	940.8	1 136.0
Area of usual residence								
State capital cities	100.0	171.8	44.7	*27.8	127.7	471.9	2 133.2	2 605.1
Rest of Australia	53.7	85.0	20.7	28.7	150.5	338.7	1 215.6	1 554.2
Labour force status								
Employed full-time	62.3	229.4	41.5	31.2	139.7	504.2	2 349.4	2 853.6
Employed part-time	55.6	*21.9	*18.7	*15.1	61.0	172.4	613.3	785.7
Unemployed	*5.0	**1.9	**0.4	**1.2	*11.3	*19.9	84.6	104.5
Not in the labour force	30.6	**3.5	**4.7	*9.0	66.1	114.0	301.5	415.6
Total	153.6	256.8	65.4	56.5	278.2	810.6	3 348.8	4 159.3

* estimate has a relative standard error of 25% to 50% and should be used with caution

** estimate has a relative standard error greater than 50% and is considered too unreliable for general use

(a) Includes the difficulties 'Lack of employer's support' and 'Experience difficulty in finding what was wanted'.

	AGE GROUP (YEARS)				<i>All persons aged 25 to 64</i>
	25-34	35-44	45-54	55-64	
	'000	'000	'000	'000	'000
.....					
ACCESSED INTERNET AT HOME					
Participated in formal learning	464.3	295.1	231.4	65.4	1 056.2
Participated in non-formal learning	704.1	807.8	734.7	391.9	2 638.6
Participated in formal or non-formal learning	1 020.2	991.7	871.4	431.4	3 314.7
Participated in informal learning	1 643.1	1 779.3	1 595.0	983.3	6 000.7
Did not participate in learning	254.6	283.4	220.1	168.1	926.2
<i>Total</i>	2 016.4	2 174.4	1 883.7	1 187.9	7 262.4
.....					
ACCESSED INTERNET AT WORK					
Participated in formal learning	311.5	166.0	160.1	39.2	676.7
Participated in non-formal learning	568.4	573.9	545.1	273.1	1 960.6
Participated in formal or non-formal learning	753.8	659.5	639.8	293.9	2 346.9
Participated in informal learning	1 166.8	1 103.1	1 031.6	535.0	3 836.5
Did not participate in learning	102.4	98.0	86.9	60.3	347.6
<i>Total</i>	1 338.4	1 254.1	1 151.3	611.1	4 354.9
.....					
ACCESSED INTERNET					
Participated in formal learning	541.9	315.9	254.9	73.6	1 186.3
Participated in non-formal learning	828.0	899.1	810.0	442.2	2 979.2
Participated in formal or non-formal learning	1 192.6	1 096.8	966.2	486.2	3 741.8
Participated in informal learning	1 947.5	1 965.1	1 758.2	1 106.4	6 777.2
Did not participate in learning	297.7	313.0	251.6	180.5	1 042.9
<i>Total</i>	2 391.7	2 405.2	2 081.9	1 326.7	8 205.5
.....					
DID NOT ACCESS INTERNET					
Participated in formal learning	*3.0	*7.9	**1.4	—	*12.4
Participated in non-formal learning	*22.1	*14.3	*23.8	14.5	74.8
Participated in formal or non-formal learning	*23.7	19.8	*25.2	14.5	83.3
Participated in informal learning	47.5	66.6	81.0	92.1	287.2
Did not participate in learning	53.4	87.2	62.3	74.4	277.3
<i>Total</i>	110.8	159.4	148.2	172.3	590.7

* estimate has a relative standard error of 25% to 50% and should be used with caution

** estimate has a relative standard error greater than 50% and is considered too unreliable for general use

— nil or rounded to zero (including null cells)

	SEX		
	Males	Females	Persons
	'000	'000	'000
Population 1 All persons aged 25 to 64 years	5 426.4	5 499.9	10 926.3
Population 2 Persons aged 25 to 64 years who participated in formal learning in last 12 months	595.8	684.8	1 280.6
Population 3 Persons aged 25 to 64 years who participated in non-formal learning in last 12 months	1 722.4	1 601.2	3 323.6
Population 4 Persons aged 25 to 64 years who participated in formal or non-formal learning in last 12 months	2 106.0	2 053.3	4 159.3
Population 5 Persons aged 25 to 64 years who participated in informal learning in last 12 months	4 110.5	4 010.4	8 120.9
Population 6 Persons aged 25 to 64 years whose most recent formal learning was for a job-related reason	519.0	576.8	1 095.8
Population 7 Persons aged 25 to 64 years whose most recent non-formal learning was for a job-related reason	1 360.7	1 092.3	2 453.0
Population 8 Persons aged 25 to 64 years who did not participate in formal or non-formal learning in last 12 months but wanted to	433.8	570.5	1 004.3
Population 9 Employed persons aged 25 to 64 years	4 599.4	3 735.3	8 334.7
Population 10 Persons aged 25 to 64 years who did not participate in learning in last 12 months	1 055.8	1 237.1	2 292.9

EXPLANATORY NOTES

INTRODUCTION

1 This publication presents results on Adult Learning from the 2006-07 Multi-Purpose Household Survey (MPHS). The MPHS is conducted throughout Australia as a supplement to the Labour Force Survey (LFS). The MPHS is usually conducted each month but in 2006-07 the survey was not conducted in August and September due to problems identified with the collection of another topic which required rectification. Adjustments were made to the sample in the subsequent months to achieve the target sample size. This is not expected to have an impact on the Adult Learning data.

2 The MPHS is designed to provide statistics annually for a small number of self-contained labour, social and economic topics. In 2006-07 the topics were:

- Adult Learning
- Barriers and Incentives to Labour Force Participation
- Retirement and Retirement Intentions
- Household Use of Information Technology
- Family Characteristics and Transitions

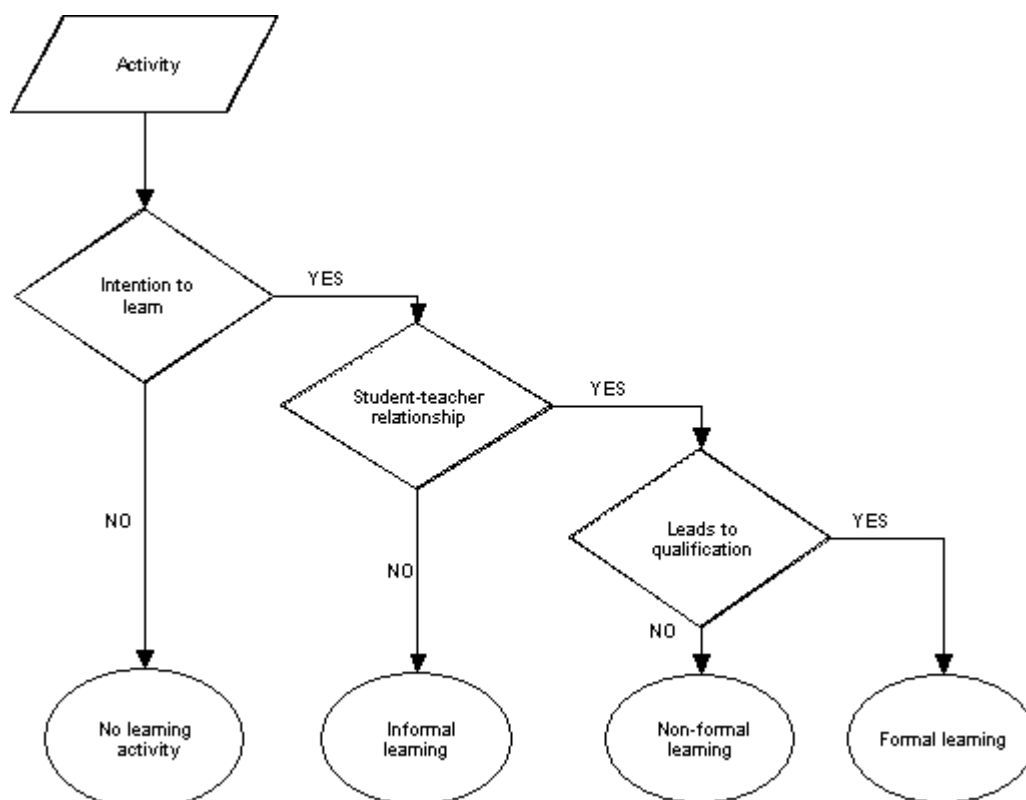
3 The MPHS also collected other socio-demographic information such as educational qualifications, labour force status and personal and household income.

4 Data from other MPHS topics collected in 2006-07 will be released in separate publications.

5 The MPHS collected data on Adult Learning for persons aged 25 to 64 years. The topic focused on measuring three categories of learning: formal learning, non-formal learning and informal learning, as well as access to and opportunities for learning.

6 The Classification of Learning Activities developed by Eurostat (see < http://epp.eurostat.ec.europa.eu/cache/ITY_OFFPUB/KS-BF-06-002/EN/KS-BF-06-002-EN.PDF> has been used to define these three categories of learning. The classification aims to operationalise the concept of learning by proposing simple, clear and understandable criteria which should be used when taking a decision on the allocation of education and learning activities according to the 3 categories. The relevant decision making flow chart is presented in Figure 1.

Figure 1: Classification of learning



7 Formal learning is structured, taught learning in institutions and organisations, which leads to a recognised qualification issued by a relevant body, in recognition that a person has achieved learning outcomes or competencies relevant to identified individual, professional, industry or community needs. A learning activity is formal if it leads to a learning achievement that is possible to position within the Australian Qualifications Framework (AQF) and includes workplace training if such training results in a qualification.

8 Non-formal learning also refers to structured, taught learning, but differs from formal learning in that it does not lead to a qualification within the AQF. It includes non-accredited workplace training, that is, training that does not lead to a recognised qualification.

9 Informal learning refers to unstructured, non-institutionalised learning activities that are related to work, family, community or leisure. Activities may occur on a self-directed basis, but are excluded from scope if there is no specific intention to learn.

10 Formal and non-formal learning can be referred to as organised or 'course-based' forms of learning which together encompass what the OECD refers to as 'continuing education and training'.

11 The Adult Learning topic on the MPHS was based on an international survey, the Adult Education Survey, which was developed by Eurostat and conducted in European countries in 2006. The Adult Education Survey questions were adapted to suit an Australian sample. The Task Force report on the Adult Education Survey contains more information about the development and contents of the Adult Education Survey and is available on the Eurostat website at

<http://epp.eurostat.ec.eu.int/cache/ITY_OFFPUB/KS-CC-05-005/EN/KS-CC-05-005-EN.PDF>.

EXPLANATORY NOTES *continued*

INTRODUCTION *continued*

12 The proposed core target population of the European Adult Education Survey was adults aged 25 to 64 years, which is designed to exclude people who are in the initial stages of education. Since the ABS Adult Learning is based on the European Adult Education Survey, the same population was chosen.

13 Selected questions from a previous ABS survey, the Adult Education and Training topic on the May 1995 Population Survey Monitor, were also included. See Population Survey Monitor, May 1995 (Cat. no. 4103.0) for more information about the Adult Education and Training topic from the May 1995 Population Survey Monitor.

DATA COLLECTION

MPHS

14 The MPHS is conducted as a supplement to the monthly Labour Force Survey (LFS). One third of the dwellings in the outgoing rotation group (one eighth of the LFS sample is rotated out each month) are selected for the MPHS. In these dwellings, after LFS has been fully completed for each person in scope and coverage, a person (usual resident) aged 15 years and over is selected at random (based on a computer algorithm) and asked the additional MPHS questions in a personal interview. Data are collected using Computer Assisted Interviewing (CAI), whereby responses are recorded directly onto an electronic questionnaire in a notebook computer generally during a telephone interview.

15 The sample was accumulated during July 2006 to June 2007.

SCOPE

LFS and MPHS

16 The scope of the LFS is restricted to people aged 15 years and over and excludes the following persons:

- members of the permanent defence forces
- certain diplomatic personnel of overseas governments, customarily excluded from census and estimated populations
- overseas residents in Australia
- members of non-Australian defence forces (and their dependants).

17 In addition, the 2006-07 MPHS excluded the following:

- people living in private dwellings in very remote parts of Australia
- people living in non-private dwellings such as hotels, university residences, students at boarding schools, patients in hospitals, residents of homes (e.g. retirement homes, homes for persons with disabilities), and inmates of prisons.

18 The 2006-07 MPHS was conducted in both urban and rural areas in all states and territories, but excluded people living in very remote parts of Australia. The exclusion of these people is expected to have only a minor impact on any aggregate estimates that are produced for individual states and territories, except in the Northern Territory where such people account for around 23% of the population.

COVERAGE

19 In the LFS, coverage rules are applied which aim to ensure that each person is associated with only one dwelling and hence has only one chance of selection in the survey. See *Labour Force, Australia* (cat. no. 6202.0) for more details.

SAMPLE SIZE

20 The initial sample for the 2006-07 MPHS consisted of approximately 19,800 private dwelling households. Of the 17,040 private dwelling households that remained in the survey after sample loss (for example, households selected in the survey which had no residents in scope for the LFS, vacant or derelict dwellings and dwellings under construction), approximately 14,190 or 83.3% fully responded to the MPHS.

WEIGHTING, BENCHMARKING AND ESTIMATION

21 Weighting is the process of adjusting results from a sample survey to infer results for the total in scope population. To do this, a 'weight' is allocated to each sample unit, which, for the MPHS can be either a person or a household. The weight is a value which indicates how many population units are represented by the sample unit. The first step in calculating weights for each unit is to assign an initial weight, which is the inverse of the probability of being selected in the survey. The initial weights are then calibrated to

EXPLANATORY NOTES *continued*

WEIGHTING, BENCHMARKING AND ESTIMATION *continued*

align with independent estimates of the population of interest, referred to as 'benchmarks'. Weights are calibrated against population benchmarks to ensure that the survey estimates conform to the independently estimated distribution of the population rather than the distribution within the sample itself.

Benchmarking

22 The estimation process for these surveys ensures that estimates of persons calibrate exactly to independently produced population totals at broad levels. The known population totals, commonly referred to as 'benchmarks', are produced according to the scope of the survey.

23 The survey was benchmarked to the estimated civilian population aged 25 to 64 years living in private dwellings in each state and territory, excluding persons out of scope (see Explanatory Notes 16 to 18). The process of weighting ensures that the survey estimates conform to person benchmarks by state, part of state, age and sex, and to household benchmarks by state, part of state and household composition. These benchmarks are produced from estimates of the resident population derived independently of the survey.

Estimation

24 Survey estimates of counts of persons or households are obtained by summing the weights of persons or households with the characteristic of interest.

IMPUTATION FOR NON RESPONSE

25 Approximately 36% of occupation and industry data for employed persons aged 25 to 64 years have been imputed from information collected in a previous month of the Labour Force Survey, because some persons were not asked their occupation and industry in some months of the survey. The following criteria were applied before imputation occurred:

- full-time or part-time status of employment was the same,
- status in employment (employee, employer, own account worker, contributing family worker) was the same, and
- hours usually worked in all jobs was different by no more than 10 hours.

26 Certain data items such as estimates of income had significant non-response for 2006-07 MPHS. The ABS has not applied any imputation methodology for estimation of values for non-responses, other than that outlined above.

INCOME LESS THAN ZERO

27 Some households reported negative income in the survey. This is possible if they incur losses in their unincorporated businesses or have negative returns from their investments. Studies of income and expenditure from the 1998-99 Household Expenditure Survey (HES) have shown that such households in the bottom income decile and with negative gross incomes tend to have expenditure levels that are comparable to those of households with higher income levels (and slightly above the average expenditures recorded for the fifth decile), indicating that these households have access to economic resources, such as wealth, or that the instance of low or negative income is temporary, perhaps reflecting business or investment start-up.

EQUIVALISED GROSS HOUSEHOLD INCOME QUINTILES

28 Quintiles are groupings of 20% of the total population when ranked in ascending order according to equivalised gross household income. The population used for this purpose includes all people living in private dwellings, including children and other persons under the age of 15 years. As the scope of this publication is restricted to only those persons aged 25 to 64 years, the distribution of this smaller population across the quintiles is not necessarily the same as it is for persons of all ages, i.e. the percentage of persons aged 25 to 64 years in each of these quintiles may be larger or smaller than 20%.

29 Equivalence scales are used to adjust the actual incomes of households in a way that enables the analysis of the relative wellbeing of people living in households of different size and composition. For example, it would be expected that a household comprising two people would normally need more income than a lone person

EXPLANATORY NOTES *continued*

EQUIVALISED GROSS HOUSEHOLD INCOME QUINTILES *continued*

household if all the people in the two households are to enjoy the same material standards of living. Adopting a per capita analysis would address one aspect of household size difference, but would address neither compositional difference (i.e. the number of adults compared with the number of children) nor the economies derived from living together.

30 When household income is adjusted according to an equivalence scale, the equivalised income can be viewed as an indicator of the economic resources available to a standardised household. For a lone person household, it is equal to income received. For a household comprising more than one person, equivalised income is an indicator of the household income that would be required by a lone person household in order to enjoy the same level of economic wellbeing as the household in question.

31 The equivalence scale used in this publication was developed for the Organisation for Economic Co-operation and Development and is referred to as the "modified OECD" equivalence scale. It is widely accepted among Australian analysts of income distribution.

32 The scale allocates 1.0 point for the first adult (aged 15 years or older) in a household; 0.5 for each additional adult; and 0.3 for each child. Equivalised household income is derived by dividing total household income by the sum of the equivalence points allocated to household members. For example, if a household received combined gross income of \$2,100 per week and comprised two adults and two children (combined household equivalence points of 2.1), the equivalised gross household income would be calculated as \$1,000 per week.

33 For more information on the use of equivalence scales, see *Household Income and Income Distribution, Australia, 2005-06* (cat. no. 6523.0).

RELIABILITY OF ESTIMATES

34 The estimates provided in this publication are subject to sampling and non-sampling error.

Sampling error

35 Sampling error is the difference between the published estimates, derived from a sample of persons, and the value that would have been produced if all persons in scope of the survey had been included. For more information refer to the Technical Note.

Non-sampling error

36 Non-sampling error may occur in any collection, whether it is based on a sample or a full count such as a census. Sources of non-sample error include non-response, errors in reporting by respondents or recording of answers by interviewers, and errors in coding and processing data. Every effort is made to reduce the non-sampling error to a minimum by careful design of questionnaires, intensive training and supervision of interviewers and effective processing procedures.

CLASSIFICATIONS

Occupation

37 Occupation data are classified according to the *ANZSCO - Australian and New Zealand Standard Classification of Occupations, First Edition, 2006* (cat. no. 1220.0).

Industry

38 Industry data are classified according to the *Australian and New Zealand Standard Industrial Classification (ANZSIC), 2006* (cat. no. 1292.0).

Country of Birth

39 Country of birth data are classified according to the *Standard Australian Classification of Countries (SACC), 1998* (cat. no. 1269.0).

Education

40 Level of Education and Field of Education are classified according to the *Australian Standard Classification of Education (ASCED), 2001* (cat. no. 1272.0). The ASCED is a national standard classification which can be applied to all sectors of the Australian education system including schools, vocational education and training and higher education. ASCED replaces a number of classifications previously used in administrative and statistical systems, including the *ABS Classification of Qualifications (ABSCQ)*,

EXPLANATORY NOTES *continued*

Education continued

1993(cat. no. 1262.0). The ASCED comprises two classifications: Level of Education and Field of Education.

41 Level of Education is defined as a function of the quality and quantity of learning involved in an educational activity. There are nine broad levels, 15 narrow levels and 64 detailed levels. For definitions of these levels see the *Australian Standard Classification of Education (ASCED), 2001* (cat. no. 1272.0).

42 The relationship between categories in the Level of Education classification should be essentially ordinal. In other words, educational activities at Broad Level 1 - Postgraduate Degree should be at a higher level than those at Broad Level 2 - Graduate Diploma and Graduate Certificate, and so on. However, when this is applied to educational provision in Australia, it is not always possible to assert that an ordinal relationship exists among the various levels of education.

43 Field of Education is defined as the subject matter of an educational activity. Fields of education are related to each other through the similarity of subject matter, through the broad purpose for which the education is undertaken, and through the theoretical content which underpins the subject matter.

44 There are 12 broad fields, 71 narrow fields and 356 detailed fields. For definitions of these fields see the *Australian Standard Classification of Education (ASCED), 2001* (cat. no. 1272.0).

Level of highest educational attainment

45 Level of Highest Educational Attainment is derived from information on Highest Year of School Completed and Level of Highest Non-school Qualification. The derivation process determines which of the 'non-school' or 'school' attainments will be regarded as the highest. Usually the higher ranking attainment will be self-evident, but in some cases some Secondary Education is regarded, for the purposes of obtaining a single measure, as higher than some Certificate level attainments.

46 The following decision table is used to determine which of the responses to questions on Highest Year of School Completed (coded to ASCED Broad Level 6) and Level of Highest Non-school Qualification (coded to ASCED Broad Level 5) will be regarded as the highest. It is emphasised that this table was designed for the purpose of obtaining a single value for the output variable Level of Highest Educational Attainment and is not intended to convey any other ordinality.

EXPLANATORY NOTES *continued*

Decision Table: Level of Highest Educational Attainment							
ASCED LEVEL OF EDUCATION CODES	Certificate n.f.d. (500)	Certificate III or IV n.f.d. (510)	Certificate IV (511)	Certificate III (514)	Certificate I or II n.f.d. (520)	Certificate II (521)	Certificate I (524)
Secondary Education n.f.d. (600)	Certificate n.f.d.	Certificate III or IV n.f.d.	Certificate IV	Certificate III	Certificate I or II n.f.d.	Certificate II	Certificate I
Senior Secondary Education n.f.d. (610)	Senior Secondary n.f.d.	Certificate III or IV n.f.d.	Certificate IV	Certificate III	Senior Secondary n.f.d.	Senior Secondary n.f.d.	Senior Secondary n.f.d.
Year 12 (611)	Year 12	Certificate III or IV n.f.d.	Certificate IV	Certificate III	Year 12	Year 12	Year 12
Year 11 (613)	Year 11	Certificate III or IV n.f.d.	Certificate IV	Certificate III	Year 11	Year 11	Year 11
Junior Secondary Education n.f.d. (620)	Certificate n.f.d.	Certificate III or IV n.f.d.	Certificate IV	Certificate III	Certificate I or II n.f.d.	Certificate II	Certificate I
Year 10 (621)	Year 10	Certificate III or IV n.f.d.	Certificate IV	Certificate III	Year 10	Certificate II	Year 10
Year 9 (622)	Certificate n.f.d.	Certificate III or IV n.f.d.	Certificate IV	Certificate III	Certificate I or II n.f.d.	Certificate II	Certificate I
Year 8 (623)	Certificate n.f.d.	Certificate III or IV n.f.d.	Certificate IV	Certificate III	Certificate I or II n.f.d.	Certificate II	Certificate I
Year 7 (624)	Certificate n.f.d.	Certificate III or IV n.f.d.	Certificate IV	Certificate III	Certificate I or II n.f.d.	Certificate II	Certificate I

Level of highest educational attainment continued

47 The decision table is used to rank the information provided in a survey about the qualifications and attainments of a single individual. It does not represent any basis for comparison between differing qualifications. For example, a person whose Highest Year of School Completed was Year 12, and whose Level of Highest Non-school Qualification was a Certificate III, would have those responses crosschecked on the decision table and as a result their Level of Highest Educational Attainment would be output as Certificate III. However, if the same person answered 'Certificate' to the highest non-school qualification question, without offering any further detail, it would be crosschecked against Year 12 on the decision table as 'Certificate not further defined'. The output would then be 'Year 12'. The decision table, therefore, does not necessarily imply that one qualification is 'higher' than the other.

CONFIDENTIALISED UNIT RECORD FILE

48 Confidentialised Unit Record Files (CURF) release confidentialised microdata from surveys, thereby facilitating interrogation and analysis of data. For all MPHS topics covered in the 2006-07 survey, an expanded CURF will be available in 2008. For more information on expanded CURFs refer to the ABS information paper *Multi-Purpose Household Survey, Expanded Confidentialised Unit Record File, Technical Note, 2005-06* (cat. no. 4100.0).

DATA COMPARISON

49 Since the MPHS is conducted as a supplement to the LFS, data items collected in the LFS are also available. However, there are some important differences between the two surveys. The MPHS sample is a small subset of the LFS sample collated over 12 months and the MPHS had a response rate of 83% which is lower than the average LFS response rate of around 96% during the same period. Due to these differences between the MPHS and LFS samples, the MPHS data are weighted as a separate process to the weighting of LFS data (see Paragraph 20 of these Explanatory Notes for further information on weighting). Differences may therefore be found in the estimates

EXPLANATORY NOTES *continued*

DATA COMPARISON *continued*

collected in the LFS and published as part of the MPHS, when compared with estimates published in *Labour Force, Australia* (cat. no. 6202.0).

50 As well as collecting information about Adult Learning and the other topics mentioned in Paragraph 2 of these Explanatory Notes, the MPHS collected other socio-demographic information that has been included in this publication, such as level of highest non-school qualification, highest year of school completed, occupation of current job and industry of current job. Standard ABS questions have been used to collect these data items to ensure comparability with other ABS collections. However, estimates resulting from the MPHS may differ from the estimates produced from other ABS collections, for several reasons. The MPHS is a sample survey and its results are subject to sampling error, as are the results from other sample surveys. Users should take account of the RSEs on MPHS estimates and those of other survey estimates where comparisons are made.

51 Differences may also exist in the scope and/or coverage of the MPHS compared to other surveys. Furthermore, the MPHS was collected over the period July 2006 to June 2007. Differences in MPHS data, when compared to the estimates of other surveys, may result from different reference periods reflecting seasonal variations, non-seasonal events that may have impacted on one period but not another, or because of underlying trends in the phenomena being measured.

52 Finally, differences can occur as a result of using different collection methodologies. This is often evident in comparisons of similar data items reported from different ABS collections where, after taking account of definition and scope differences and sampling error, residual differences remain. These differences are often the result of the mode of the collections, such as whether data is collected by an interviewer or self-enumerated by the respondent, whether the data is collected from the person themselves or from a proxy respondent, and the level of experience of the interviewers. Differences may also result from the context in which questions are asked, i.e. where in the interview the questions are asked and the nature of preceding questions. The impacts on data of different collection methodologies are difficult to quantify. As a result, every effort is made to minimise such differences.

53 Appendix 2 contains a table, Comparison of Data from the 2006-07 MPHS and Other ABS Sources, which presents comparisons between a number of key MPHS data items and similar data items from other ABS sources. The comparison shows that, the 2006-07 MPHS data is broadly consistent with other ABS sources.

COMPARISON WITH OTHER COUNTRIES

54 The international data presented in Table 4 is from a Life Long Learning survey that was conducted as an ad-hoc module to the European Union Labour Force Survey in selected European countries in 2003. While survey methodology varied from country to country, the aim of the survey was the same in each country; to measure the participation and volume of lifelong learning in persons aged 25 to 64. Detailed information on the survey methodology is available at the following website: <http://circa.europa.eu/Public/irc/dsis/edtc/library?l=/public/education_labour/lfs_2003_ahm_III>. For RSEs of estimates provided in Table 4 and response rates, please contact the representative for the relevant country as listed on the United Nations Statistics Division website at <http://unstats.un.org/unsd/methods/inter-natlinks/sd_natstat.asp>.

FUTURE SURVEYS

55 The ABS will conduct the MPHS again during the 2007-08 financial year. The topics included in the 2007-08 MPHS are:

- Household Use of Information Technology
- Attitudes Towards the Environment
- Personal Fraud

EXPLANATORY NOTES *continued*

ACKNOWLEDGEMENT

56 ABS publications draw extensively on information provided freely by individuals, businesses, governments and other organisations. Their continued cooperation is very much appreciated. Without it, the wide range of statistics published by the ABS would not be available. Information received by the ABS is treated in strict confidence as required by the *Census and Statistics Act 1905*.

RELATED PUBLICATIONS

57 Other ABS publications which may be of interest include:

- *A Directory of Education and Training Statistics (cat. no. 1136.0)*
- *Aspects of Literacy: Assessed Skill Levels, Australia (cat. no. 4228.0)*
- *Aspects of Literacy: Profiles and Perceptions, Australia (cat. no. 4226.0)*
- *Education and Training Experience, Australia (cat. no. 6278.0)*
- *Education and Training Indicators, Australia (cat. no. 4230.0)*
- *Education and Work, Australia (formerly Transition from Education to Work, Australia) (cat. no. 6227.0)*
- *Employer Training Expenditure and Practices, Australia (cat. no. 6362.0)*
- *General Social Survey: Summary Results, Australia (cat. no. 4159.0)*
- *Information Paper: Measuring Learning in Australia - A Framework for Education and Training Statistics (cat. no. 4213.0)*
- *Information Paper: Measuring Learning in Australia - Dictionary of Standards for Education and Training Statistics (cat. no. 4232.0.55.001)*
- *Information Paper: Measuring Learning in Australia - Plan to improve the Quality, Coverage and Use of Education and Training Statistics (cat. no. 4231.0)*
- *Labour Force, Australia (cat. no. 6202.0)*
- *Schools, Australia (cat. no. 4221.0)*
- *Adult Literacy and Life Skills Survey, Summary Results, Australia, 2006 (cat. no. 4228.0)*

58 Current publications and other products are available from the ABS website <<http://www.abs.gov.au>>. The ABS issues a daily release advice on the website which details products to be released in the week ahead.

APPENDIX 1 POPULATIONS AND DATA ITEMS LIST

DATA AVAILABLE ON REQUEST

The ABS has a range of data available on request from the Adult Learning topic collected in the Multi-Purpose Household Survey (MPHS). More detailed breakdowns of some data items may also be available on request.

The population(s) refer to the persons in the survey to whom the data item relates.

For information about ABS data available on request, contact the National Information and Referral Service on 1300 135 070.

POPULATIONS

Population 1 All persons aged 25 to 64 years

Population 2 Persons aged 25 to 64 years who participated in formal learning in last 12 months

Population 3 Persons aged 25 to 64 years who participated in non-formal learning in last 12 months

Population 4 Persons aged 25 to 64 years who participated in formal or non-formal learning in last 12 months

Population 5 Persons aged 25 to 64 years who participated in informal learning in last 12 months

Population 6 Persons aged 25 to 64 years whose most recent formal learning was for a job-related reason

Population 7 Persons aged 25 to 64 years whose most recent non-formal learning was for a job-related reason

Population 8 Persons aged 25 to 64 years who did not participate in formal or non-formal learning in last 12 months but wanted to

Population 9 Employed persons aged 25 to 64 years

Population 10 Persons aged 25 to 64 years who did not participate in learning in last 12 months

DATA ITEMS

CHARACTERISTICS

Sex

Age (in single years)

Country of birth and year of arrival

State or territory of usual residence

Area of usual residence

Region of usual residence

Indigenous identifier

Marital status

Relationship in household

LABOUR FORCE

Full-time/Part-time employment

Labour force status

Multiple job holder

Hours usually worked

Occupation

Industry

EDUCATIONAL ATTAINMENT

Level of highest educational attainment

Field of highest educational attainment

Level of highest non-school qualification

APPENDIX 1 POPULATIONS AND DATA ITEMS LIST *continued*

EDUCATIONAL ATTAINMENT

continued

Field of highest non-school qualification

Highest year of school completed

INCOME

Total gross weekly household income - all sources

Total gross weekly household income - all sources - quintiles

Equivalised weekly household income - quintiles

Partners weekly income - all sources

Partners sources of income

Partners main source of income

Partners types of government pensions/allowances received

Weekly personal income - all sources

Weekly personal income - all sources - quintiles

All sources of personal income

Main source of personal income

Personal types of government pensions/allowances received

ADULT LEARNING

Whether participated in formal learning

Number of formal courses participated in previous 12 months

Level of most recent formal course

Field of most recent formal course

Institution or organisation at which participated in most recent formal course

Main reason for participating in most recent formal course

Whether currently studying for most recent formal course

Whether participated in non-formal learning

Number of non-formal courses participated in previous 12 months

Type of most recent non-formal course

Main field of most recent non-formal course

Institution or organisation at which participated in most recent non-formal course

Whether most recent non-formal course participated in as distance or correspondence

Whether currently studying for most recent non-formal course

Whether participated in most recent non-formal course for a job-related reason

Main reason for participating in most recent non-formal course

Whether participated in informal learning

Type of informal learning participated in

Whether wanted to participate in formal or non-formal learning

All reasons for not participating in formal or non-formal learning

Main reason for not participating in formal or non-formal learning

Whether wanted to participate in more formal or non-formal learning

All reasons for not participating in more formal or non-formal learning

Main reason for not participating in more formal or non-formal learning

All reasons for not wanting to participate in formal or non-formal learning

Main reason for not wanting to participate in formal or non-formal learning

APPENDIX 1 POPULATIONS AND DATA ITEMS LIST *continued*

ADULT LEARNING continued

Difficulties undertaking formal or non-formal learning
Whether looked for learning opportunities
All sources of learning opportunities found

HOUSEHOLD USE OF INFORMATION TECHNOLOGY

Whether has access to computer at home
Whether has access to Internet at home
Whether used Internet in last 12 months
Main purpose of Internet access
Whether accessed Internet at home
Whether accessed Internet at work
Whether accessed Internet at any other place

APPENDIX 2 DATA COMPARISON

COMPARISON OF DATA FROM MPHS 2006-07 AND OTHER ABS SOURCES

	<i>Other ABS source of comparison</i>	<i>MPHS 2006-07</i>
	%	%
LABOUR FORCE SURVEY - MARCH 2007		
Labour force status		
Employed full-time	56.7	57.4
Employed part-time	18.3	18.9
Unemployed	2.7	2.6
Not in the labour force	22.3	21.1
Country of birth		
Australia	69.6	70.6
Overseas	30.4	29.4
ADULT LITERACY AND LIFE SKILLS SURVEY - JULY 2006, SEPTEMBER 2006 - JANUARY 2007		
Level of highest non-school qualification		
Postgraduate degree, Graduate diploma or Graduate certificate	7.6	6.8
Bachelor degree	16.5	16.8
Advanced diploma or diploma	10.2	9.5
Certificate III or IV	17.6	17.9
Certificate I or II	7.7	6.3
Certificate n.f.d.	1.3	1.3
No non-school qualification	37.4	40.2
Highest year of school completed		
Year 12 or equivalent	49.3	49.3
Year 11 or equivalent	11.1	11.8
Year 10 or equivalent	25.3	26.8
Year 9 or equivalent	7.5	6.7
Year 8 or below	6.7	5.2
SURVEY OF EDUCATION AND WORK - MAY 2007		
Level of highest non-school qualification		
Postgraduate degree, Graduate diploma or Graduate certificate	7.2	6.8
Bachelor degree	16.8	16.8
Advanced diploma or diploma	9.6	9.5
Certificate III or IV	17.8	17.9
Certificate I or II	5.7	6.3
Certificate n.f.d.	1.4	1.3
No non-school qualification	41.4	40.2
Highest year of school completed		
Year 12 or equivalent	51.8	49.3
Year 11 or equivalent	10.4	11.8
Year 10 or equivalent	26.7	26.8
Year 9 or equivalent	6.2	6.7
Year 8 or below	4.7	5.2
Occupation		
Managers	14.2	13.9
Professional	22.9	21.0
Technicians and Trades Workers	14.7	13.0
Community and Personal Service Workers	8.2	7.2
Clerical and Administrative Workers	16.6	15.2
Sales Workers	6.5	6.4
Machinery Operators and Drivers	7.2	6.3
Labourers	9.7	9.3
Not stated	—	7.7

— nil or rounded to zero (including null cells)

APPENDIX 2 DATA COMPARISON *continued*

COMPARISON OF DATA FROM MPHS 2006-07 AND OTHER ABS SOURCES *continued*

	<i>Other ABS source of comparison</i>	<i>MPHS 2006-07</i>
	%	%
SURVEY OF EDUCATION AND WORK - MAY 2007 <i>cont.</i>		
Industry		
Agriculture, forestry and fishing	3.0	2.8
Mining	1.4	0.9
Manufacturing	10.5	8.6
Electricity, gas, water and waste service	1.1	1.1
Construction	8.8	8.0
Wholesale trade	4.3	3.8
retail trade	8.9	8.9
Accommodation and food service	4.5	3.9
Transport, postal and warehousing	5.8	5.1
Information media and telecommunications	2.5	2.0
Financial and insurance services	4.2	4.0
Rental, hiring and real estate services	1.9	1.7
Professional, scientific and technical services	7.4	7.0
Administrative and support services	3.6	3.7
Public administration and safety	6.8	6.5
Education and training	8.4	7.6
Health care and social assistance	11.4	11.1
Arts and recreation services	1.6	1.5
Other services	4.1	4.2
Not stated	—	7.7

— nil or rounded to zero (including null cells)

TECHNICAL NOTE DATA QUALITY

RELIABILITY OF THE ESTIMATES

1 Since the estimates in this publication are based on information obtained from occupants of a sample of dwellings, they are subject to sampling variability. That is, they may differ from those estimates that would have been produced if all occupants of all dwellings had been included in the survey. One measure of the likely difference is given by the standard error (SE), which indicates the extent to which an estimate might have varied by chance because only a sample of dwellings (or occupants) was included. There are about two chances in three (67%) that a sample estimate will differ by less than one SE from the number that would have been obtained if all dwellings had been included, and about 19 chances in 20 (95%) that the difference will be less than two SEs.

2 Another measure of the likely difference is the relative standard error (RSE), which is obtained by expressing the SE as a percentage of the estimate:

$$RSE\% = \left(\frac{SE}{estimate} \right) \times 100$$

3 RSEs for estimates from 2006-07 MPHS are published for the first time in 'direct' form. Previously a statistical model was produced that relates the size of estimates to their corresponding RSEs, and this information was displayed via an 'SE table'. From this point onwards, RSEs for MPHS estimates have now been calculated for each separate estimate and published individually. The Jackknife method of variance estimation is used for this process, which involves the calculation of 30 'replicate' estimates based on 30 different subsamples of the original sample. The variability of estimates obtained from these subsamples is used to estimate the sample variability surrounding the main estimate.

4 Limited publication space does not allow for the separate indication of the SEs and/or RSEs of all the estimates in this publication, only those for Table 1 have been included at the end of these Technical Notes. However, RSEs for all these estimates are available free-of-charge on the ABS web site <www.abs.gov.au>, released in spreadsheet format as an attachment to this publication, Adult Learning, Australia, 2006-07 (cat. no. 4229.0).

5 In the tables in this publication, only estimates (numbers, percentages, means and medians) with RSEs less than 25% are considered sufficiently reliable for most purposes. However, estimates with larger RSEs have been included and are preceded by an asterisk (e.g. *3.4) to indicate they are subject to high SEs and should be used with caution. Estimates with RSEs greater than 50% are preceded by a double asterisk (e.g. **2.1) to indicate that they are considered too unreliable for general use.

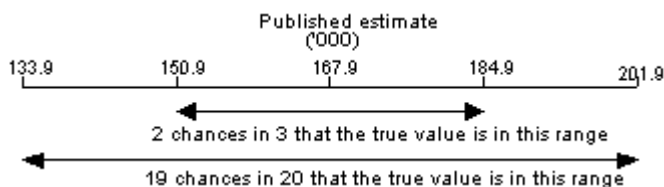
CALCULATION OF STANDARD ERROR

6 SEs can be calculated using the estimates (counts or means) and the corresponding RSEs. For example Table 1 shows that the estimated number of persons aged 45-49 years who had participated in formal learning in the last 12 months is 167,900. In the corresponding RSE table (on page 45), the RSE for this estimate is shown to be 10.1%. The SE is:

$$\begin{aligned} SE \text{ of estimate} &= \left(\frac{RSE}{100} \right) \times estimate \\ &= 0.101 * 167,900 \\ &= 17,000 \text{ (rounded to nearest 1,000)} \end{aligned}$$

7 Therefore there are about two chances in three that the value that would have been produced if all dwellings had been included in the survey will fall within the range 150,900 to 184,900 and about 19 chances in 20 that the value will fall within the range 133,900 to 201,900. This example is illustrated overleaf.

CALCULATION OF STANDARD ERROR *continued*



PROPORTIONS AND PERCENTAGES

8 Proportions and percentages formed from the ratio of two estimates are also subject to sampling errors. The size of the error depends on the accuracy of both the numerator and the denominator. A formula to approximate the RSE of a proportion is given below. This formula is only valid when x is a subset of y.

$$RSE\left(\frac{x}{y}\right) = \sqrt{[RSE(x)]^2 - [RSE(y)]^2}$$

9 For example in Table 1 the estimate for the total number of persons aged 25 to 64 years employed full-time is 6,266,500. The estimated number of persons aged 25 to 64 years employed full-time that participated in formal or non-formal learning in the previous 12 months is 2,853,600, so the proportion of persons employed full-time who participated in formal or non-formal learning is 2,853,600/6,266,500 or 45.5%.

10 From the RSE table on page 45 the RSE of the total number of persons aged 25 to 64 years employed full-time is 0.9% and the RSE of the total number of persons aged 25 to 64 years employed full-time that participated in formal or non-formal learning in the previous 12 months is 2.0%.

11 Applying the above formula, the RSE of the proportion is:

$$RSE = \sqrt{(2.0)^2 - (0.9)^2} = 1.8\%$$

12 This then gives an SE of the percentage (45.5%) of $(1.8/100) \times 45.5 = 0.8$ percentage points.

13 Therefore there are about two chances in three that the proportion of persons aged 25 to 64 years employed full-time that participated in formal or non-formal learning is between 44.7% and 46.3% and 19 chances in 20 that the proportion is within the ranges 43.9% and 47.1%.

DIFFERENCES

14 Published estimates may also be used to calculate the difference between two survey estimates (of numbers or percentages). Such an estimate is subject to sampling error. The sampling error of the difference between two estimates depends on their SEs and the relationship (correlation) between them. An approximate SE of the difference between two estimates (x-y) may be calculated by the following formula:

$$SE(x-y) = \sqrt{[SE(x)]^2 + [SE(y)]^2}$$

15 While this formula will only be exact for differences between separate and uncorrelated characteristics or subpopulations, it is expected to provide a good approximation for all differences likely to be of interest in this publication.

SIGNIFICANCE TESTING

16 The statistical significance test for any of the comparisons between estimates was performed to determine whether it is likely that there is a difference between the corresponding population characteristics. The standard error of the difference between two corresponding estimates (x and y) can be calculated using the formula in paragraph 14. This standard error is then used to calculate the following test statistic:

$$\left(\frac{x-y}{SE(x-y)} \right)$$

SIGNIFICANCE TESTING
continued

17 If the value of this test statistic is greater than 1.96 then we may say there is good evidence of a real difference in the two populations with respect to that characteristic. Otherwise, it cannot be stated with confidence that there is a real difference between the populations.

18 The imprecision due to sampling variability, which is measured by the SE, should not be confused with inaccuracies that may occur because of imperfections in reporting by respondents and recording by interviewers, and errors made in coding and processing data. Inaccuracies of this kind are referred to as non-sampling error, and they occur in any enumeration, whether it be a full count or sample. Every effort is made to reduce non-sampling error to a minimum by careful design of questionnaires, intensive training and supervision of interviewers, and efficient operating procedures.

RELATIVE STANDARD ERROR

19 Relative Standard Errors for Table 1 are included overleaf. However, RSEs for all tables are available free-of-charge on the ABS website <www.abs.gov.au>, released in spreadsheet format as an attachment to this publication, Adult Learning, Australia 2006-07 (cat. no. 4229.0).

TECHNICAL NOTE DATA QUALITY *continued*

ALL PERSONS, Participation in learning by selected characteristics, RSEs

	Participated in formal learning	Participated in non-formal learning	Total participated in formal or non-formal learning	Participated in informal learning	Did not participate in learning	All persons aged 25 to 64
	%	%	%	%	%	%
Sex						
Males	5.1	2.5	2.0	0.6	2.2	0.1
Females	2.8	2.4	1.9	1.2	3.9	—
Age group (years)						
25–29	6.8	4.8	3.8	2.1	8.8	0.2
30–34	7.3	3.9	2.9	1.8	6.3	—
35–39	8.0	3.8	3.2	2.6	10.4	—
40–44	8.8	5.4	4.1	2.1	7.4	—
45–49	10.1	4.8	4.2	1.8	6.5	—
50–54	12.2	6.2	5.7	2.2	7.0	—
55–59	14.7	6.8	5.9	2.5	7.3	0.1
60–64	19.5	5.7	5.8	2.5	4.4	0.1
Country of birth						
Born in Australia	4.0	2.0	1.7	1.2	3.9	0.7
Born overseas	7.5	3.3	2.8	2.3	4.7	1.7
Area of usual residence						
State capital cities	3.6	2.1	1.7	0.9	2.7	—
Rest of Australia	5.1	2.7	2.2	1.4	4.5	0.1
Labour force status						
Employed full-time	4.4	2.1	2.0	1.1	2.6	0.9
Employed part-time	7.8	5.0	3.8	2.9	6.3	2.7
Unemployed	17.1	16.4	13.3	8.4	15.3	7.0
Not in the labour force	8.9	8.0	6.6	3.2	5.2	2.5
Level of highest non-school qualification						
Postgraduate degree, Graduate diploma or Graduate certificate	9.8	7.3	6.2	4.6	19.5	4.2
Bachelor degree	5.8	3.2	2.9	2.9	10.0	2.7
Advanced diploma or diploma	7.7	5.7	4.8	4.0	14.6	3.2
Certificate III or IV	7.2	5.3	4.1	2.9	6.7	2.4
Certificate I or II	17.0	8.8	7.2	5.7	10.4	5.3
Certificate n.f.d.	20.3	15.5	13.3	10.4	26.0	8.8
No non-school qualification	7.0	5.5	4.0	1.7	2.5	1.2
Highest year of school completed						
Year 12 or equivalent	3.7	2.2	1.9	1.5	4.1	1.3
Year 11 or equivalent	9.2	5.5	4.6	2.9	8.4	3.0
Year 10 or equivalent	6.3	4.2	3.8	2.8	4.1	2.3
Year 9 or equivalent	17.1	10.0	9.0	6.7	7.0	4.2
Year 8 or below	35.8	17.6	14.5	7.3	8.3	4.7
Equivalent weekly household income - quintiles						
Lowest quintile	11.7	8.4	7.4	4.3	5.3	2.5
Second quintile	8.9	7.2	5.9	4.1	5.9	3.0
Third quintile	8.1	5.5	5.0	3.5	6.3	3.1
Fourth quintile	5.6	3.3	3.2	3.1	5.4	2.2
Highest quintile	6.4	3.7	3.5	2.5	8.6	2.6
Not known or not stated	11.5	5.2	5.5	3.6	6.4	3.2
Total (a) (b)	2.8	1.8	1.4	0.8	2.4	—

— nil or rounded to zero (including null cells)

(a) Includes persons whose country of birth could not be determined.

(b) Includes persons whose level of highest non-school qualification could not be determined and persons who have never attended school.

GLOSSARY

Arts, craft or recreational course	<p>This includes:</p> <ul style="list-style-type: none">■ Courses run through an Adult and Community Education Centre.■ Hobby courses.■ Recreational courses run by or at a TAFE.■ YWCA/YMCA courses.
Australian Standard Classification of Education (ASCED)	<p>The ASCED is a national standard classification which includes all sectors of the Australian education system: that is, schools, vocational education and training, and higher education. From 2001, ASCED replaced a number of classifications used in administrative and statistical systems, including the Australian Bureau of Statistics Classification of Qualifications (ABSCQ). The ASCED comprises two classifications: Level of Education and Field of Education. See <i>Australian Standard Classification of Education (ASCED), 2001 (cat. no. 1272.0)</i>.</p>
Bridging course	<p>Bridging and 'enabling' courses provide specific background to allow further study for students who do not have the prerequisite subject matter knowledge or who have not studied for some time.</p>
Certificate not further defined	<p>Survey responses are coded to Certificate not further defined (n.f.d.) when there is not enough information to code them to Certificate I, II, III or IV in the <i>Australian Standard Classification of Education (ASCED), 2001 (cat. no. 1272.0)</i>, Level of Education classification.</p>
Country of birth	<p>Country of birth has been classified according to the <i>Standard Australian Classification of Countries (SACC), 1998 (cat. no. 1269.0)</i>.</p>
Educational institution	<p>Any institution whose primary role is education. Included are schools, higher education establishments, colleges of technical and further education, public and private colleges, etc. Excluded are institutions whose primary role is not education, for example, hospitals.</p>
Employed	<p>Persons who during the reference week:</p> <ul style="list-style-type: none">■ worked for one hour or more for pay, profit, commission or payment in kind in a job or business, or on a farm (comprising employees, employers and own account workers); or■ worked for one hour or more without pay in a family business or on a farm (i.e. contributing family workers); or■ were employees who had a job but were not at work and were:<ul style="list-style-type: none">■ away from work for less than four weeks up to the end of the reference week; or■ away from work for more than four weeks up to the end of the reference week and received pay for some or all of the four week period to the end of the reference week; or■ away from work as a standard work or shift arrangement; or■ on a strike or locked out; or■ on workers' compensation and expected to return to their job; or■ were employers or own account worker who had a job, business or farm, but were not at work.
Employed full-time	<p>Employed persons who usually worked 35 hours or more a week (in all jobs) and those who, although usually working less than 35 hours a week, worked 35 hours or more during the reference week.</p>
Employed part-time	<p>Employed persons who usually worked less than 35 hours a week (in all jobs) and either did so during the reference week, or were not at work in the reference week.</p>
Equivalent household income	<p>Equivalent adjusts actual income to take account of the different needs of households of different size and composition. There are economic advantages associated with living with others, because household resources, especially housing, can be shared. The equivalence scale used to obtain equivalent incomes is that used in studies by the Organisation for Economic Co-operation and Development (OECD) and is referred to as</p>

GLOSSARY *continued*

Equivalised household income <i>continued</i>	the 'modified OECD scale'. The scale gives a weight of 1.0 to the first adult in the household, a weight of 0.5 for each additional adult (persons aged 15 years and over), and a weight of 0.3 for each child. For each household, the weights for household members are added together to form the household weight. Total household income is then divided by the household weight to give an income that a lone person household would need for a similar standard of living. Equivalised weekly household income can be viewed as an indicator of the economic resources available to each member of the household.
Field of education	Field of Education is defined as the subject matter of an educational activity. It is categorised according to the <i>Australian Standard Classification of Education (ASCED), 2001 (cat. no. 1272.0)</i> Field of Education classification. The ASCED comprises two classifications: Level of Education and Field of Education. See <i>Australian Standard Classification of Education (ASCED), 2001 (cat. no. 1272.0)</i> .
Formal learning	Refers to learning which is structured, taught learning in institutions and organisations and leads to a recognised qualification issued by a relevant body, in recognition that a person has achieved learning outcomes or competencies relevant to identified individual, professional, industry or community needs. A learning activity is formal if it leads to a learning achievement that is possible to position within the Australian Qualifications Framework (AQF) and includes workplace training if such training results in a qualification.
Industry	From 2006, Industry has been classified according to the <i>Australian and New Zealand Standard Industrial Classification (ANZSIC), 2006 (cat. no. 1292.0)</i> .
Job-related reason	Formal or non-formal learning was classified as being for a 'job-related reason' if the main purpose for participating in the learning was one of the following: <ul style="list-style-type: none">■ to get a job■ to get a better job or promotion■ it was a requirement for job■ wanted extra skills for job■ to start own business■ to develop existing business■ to try for a different career
Informal learning	Refers to unstructured, non-institutionalised learning activities that are related to work, family, community or leisure. Activities may occur on a self-directed basis, but are excluded from scope if there is no specific intention to learn.
Learning opportunities	Are ways an individual can improve their knowledge, skills or competence.
Level of education	Level of education is a function of the quality and quantity of learning involved in an educational activity. It is categorised according to the <i>Australian Standard Classification of Education (ASCED), 2001 (cat. no. 1272.0)</i> , Level of Education classification.
Level of highest non-school qualification	Level of highest non-school qualification identifies the highest achievement a person has attained in any area of study, outside of their school achievements. See also level of highest educational attainment.
Level of highest educational attainment	Level of highest educational attainment identifies the highest achievement a person has attained in any area of study. It is not a measurement of the relative importance of different fields of study but a ranking of qualifications and other educational attainments regardless of the particular area of study or the type of institution in which the study was undertaken. See paragraphs 45-47 of the Explanatory Notes for how highest level is derived.
Level not determined	Level not determined includes inadequately described responses and cases where no response was given.

GLOSSARY *continued*

Non-formal learning	Non-formal learning refers to structured, taught learning, but differs from formal learning in that it does not lead to a qualification within the AQF. It includes non-accredited workplace training, that is, training that does not lead to a recognised qualification.
Non-school qualification	Non-school qualifications are awarded for educational attainments other than those of pre-primary, primary or secondary education. They include qualifications at the Postgraduate Degree level, Master Degree level, Graduate Diploma and Graduate Certificate level, Bachelor Degree level, Advanced Diploma and Diploma level, and Certificates I, II, III and IV levels. Non-school qualifications may be attained concurrently with school qualifications.
Not in the labour force	Persons who are not in the categories 'employed' or 'unemployed' as defined.
Occupation	Classified according to the ANZSCO - <i>Australian New Zealand Standard Classification of Occupations, First Edition 2006 (cat. no. 1220.0)</i> .
Participation	Participation relates to formal, non-formal or informal learning undertaken in the last 12 months.
Private lessons	Private lessons are a planned series of learning experiences given by experts or people acting as experts. The role of the teacher/tutor is to increase the knowledge or skills of the participant. The lessons are usually undertaken by one or very few learners at any one time.
TAFE	A Technical and Further Education institution. In Victoria this may also be interpreted as Training and Further Education.
Unemployed	Persons aged 15 years and over who were not employed during the reference week, and: <ul style="list-style-type: none">■ had actively looked for full-time or part-time work at any time in the four weeks up to the end of the reference week and were available for work in the reference week; or■ were waiting to start a new job within four weeks from the end of the reference week and could have started in the reference week if the job had been available then.
Work-related course	Learning activities which are primarily undertaken to obtain, maintain or improve employment-related skills or competencies, improve job/career opportunities and generally to improve opportunities for advancement and promotion.

FOR MORE INFORMATION . . .

INTERNET **www.abs.gov.au** the ABS website is the best place for data from our publications and information about the ABS.

LIBRARY A range of ABS publications are available from public and tertiary libraries Australia wide. Contact your nearest library to determine whether it has the ABS statistics you require, or visit our website for a list of libraries.

INFORMATION AND REFERRAL SERVICE

Our consultants can help you access the full range of information published by the ABS that is available free of charge from our website, or purchase a hard copy publication. Information tailored to your needs can also be requested as a 'user pays' service. Specialists are on hand to help you with analytical or methodological advice.

PHONE 1300 135 070

EMAIL client.services@abs.gov.au

FAX 1300 135 211

POST Client Services, ABS, GPO Box 796, Sydney NSW 2001

FREE ACCESS TO STATISTICS

All statistics on the ABS website can be downloaded free of charge.

WEB ADDRESS www.abs.gov.au



2422900001068

ISBN 9780642482884

RRP \$28.00