

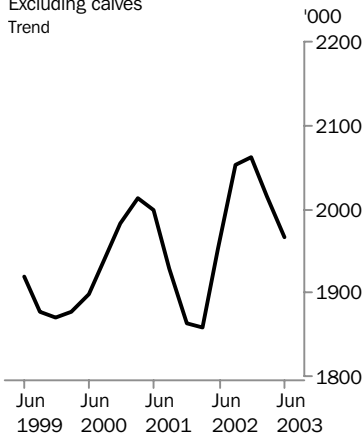
LIVESTOCK PRODUCTS

AUSTRALIA

EMBARGO: 11:30AM (CANBERRA TIME) MON 11 AUG 2003

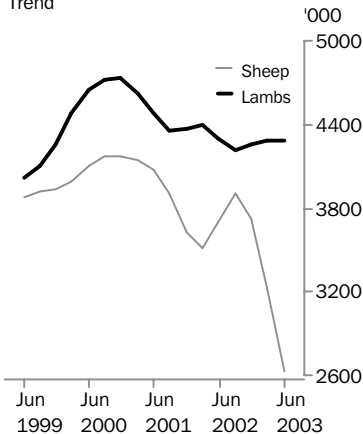
Cattle slaughtering

Excluding calves
Trend



Sheep and lamb slaughtering

Trend



JUNE QTR KEY FIGURES

TREND ESTIMATES

	Jun Qtr 2002 '000	Mar Qtr 2003 '000	Jun Qtr 2003 '000
Number slaughtered			
Cattle	1 952.1	2 015.9	1 966.4
Calves	257.3	308.8	307.2
Sheep	3 698.3	3 225.5	2 630.1
Lambs	4 294.3	4 290.4	4 281.4
Pigs	1 397.6	1 442.9	1 455.1
Chickens	108 063.8	104 073.6	103 037.0

	Jun Qtr 2002 tonnes	Mar Qtr 2003 tonnes	Jun Qtr 2003 tonnes
Meat produced			
Beef	508 387	502 903	488 176
Veal	8 534	9 871	10 114
Mutton	74 560	63 041	51 600
Lamb	86 139	83 947	85 456
Pig meat	101 358	105 632	106 461
Chicken meat	175 886	171 154	167 299
Wool receivals	138 913	119 371	107 409

	Mar Qtr 2002 ML	Dec Qtr 2002 ML	Mar Qtr 2003 ML
Whole milk intake by factories	2 895	2 594	2 433

JUNE QTR KEY POINTS

TREND ESTIMATES

- The trend estimate for the number of cattle slaughtered in June quarter 2003 fell by 2% to 2.0 million. For the third successive quarter, the number of female cattle slaughtered was higher than the number of male cattle slaughtered.
- In June quarter 2003, the trend estimate for the number of sheep slaughtered fell by 18% to 2.6 million, the lowest quarterly trend estimate since December quarter 1984. The estimate for the number of lambs slaughtered remained steady at 4.3 million.
- The trend estimate for the number of pigs slaughtered in June quarter increased for the tenth consecutive quarter to a record 1.5 million.
- The trend estimate for chicken meat production in June quarter 2003 fell by 2% to 167,000 tonnes. This was the third consecutive quarterly decrease after the record production levels reached in 2002.

INQUIRIES

- For further information about these and related statistics, contact Frank Costin on Hobart 03 6222 5838, or the National Information and Referral Service on 1300 135 070.

NOTES

FORTHCOMING ISSUES

ISSUE (Quarter)

RELEASE DATE

September 2003

11 November 2003

December 2003

12 February 2004



CHANGES IN THIS ISSUE

There are no changes in this issue.

FORTHCOMING CHANGES

There are no forthcoming changes.

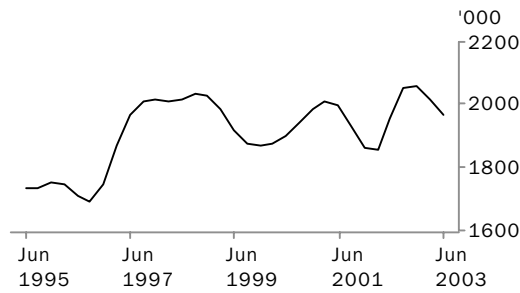


R.W. Edwards

Acting Australian Statistician

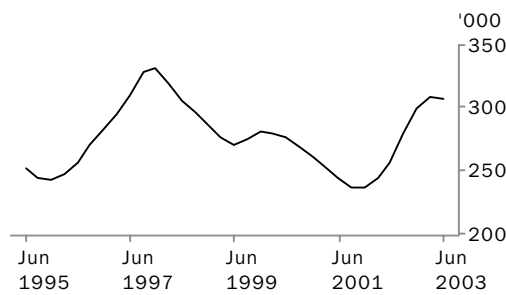
LIVESTOCK SLAUGHTERED: Trend

CATTLE (EXCLUDING CALVES)



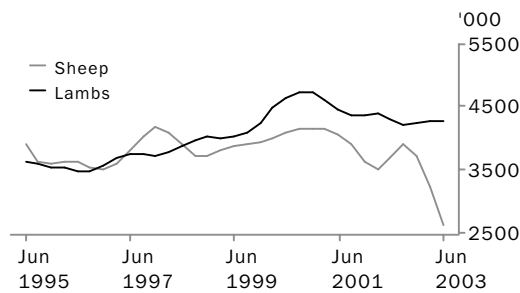
The trend estimate for the number of cattle slaughtered in June quarter 2003 fell by 2% to 2.0 million. The continued effects of dry conditions were identified as holding back available supplies.

CALVES



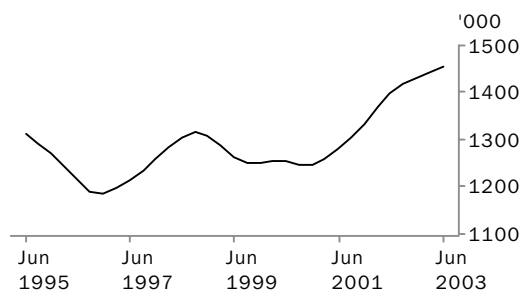
The trend estimate for the number of calves slaughtered in June quarter 2003 fell by 1% to 307,000.

SHEEP AND LAMBS



In June quarter 2003, the trend estimate for the number of sheep slaughtered fell by 18% to 2.6 million. Flock rebuilding saw slaughter numbers at their lowest level since December quarter 1984. The trend estimate for the number of lambs slaughtered was steady at 4.3 million.

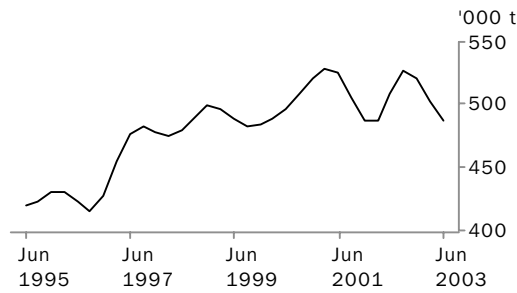
PIGS



The trend estimate for the number of pigs slaughtered in June quarter 2003 increased for the tenth consecutive quarter to a record 1.5 million. Continued pressure from feed costs saw slaughter numbers remain at high levels.

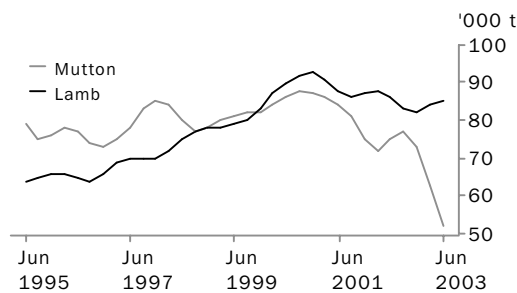
MEAT PRODUCTION: Trend

BEEF



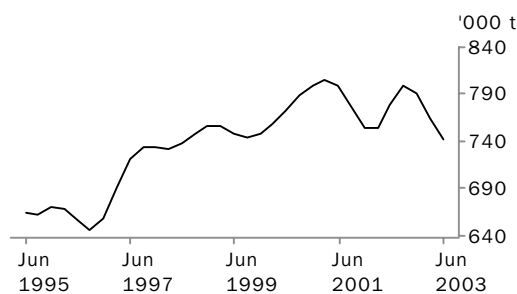
The trend estimate for beef production fell by 3% to 488,000 tonnes in June quarter 2003. Average slaughter weights have declined over the past year due to drought and the increasing numbers of female cattle slaughtered.

MUTTON AND LAMB



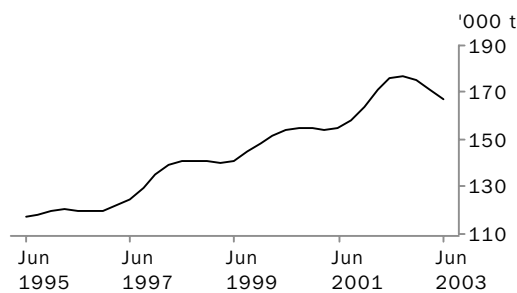
The trend estimate for mutton production fell by 18% to 51,600 tonnes in June quarter 2003, as sheep slaughterings reached their lowest level in 18 years. The trend estimate for lamb production rose by 2% to 85,500 tonnes.

TOTAL RED MEAT



The trend estimate for total red meat production fell by 3% to 742,000 tonnes in June quarter 2003, due to falls in beef and mutton production.

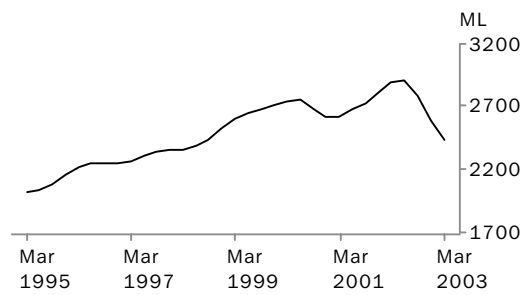
CHICKEN MEAT



The trend estimate for chicken meat production in June quarter 2003 fell by 2% to 167,000 tonnes. High feed grain costs continued to impact on production levels.

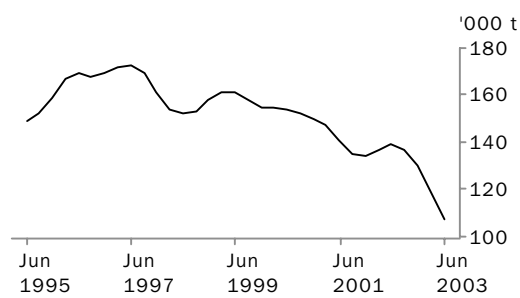
LIVESTOCK PRODUCTS: Trend

WHOLE MILK INTAKE BY FACTORIES



The trend estimate for whole milk intake by factories fell by 6% to 2.4 billion litres in March quarter 2003, as drought conditions continued to reduce milk production levels.

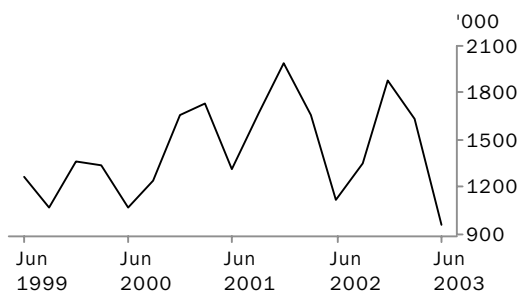
BROKERS AND DEALERS RECEIVALS OF TAXABLE WOOL



The trend estimate for wool receivals by brokers and dealers fell by 10% in June quarter 2003, to 107,000 tonnes. Although wool prices have recovered a little since last year, the downward trend in wool production has continued.

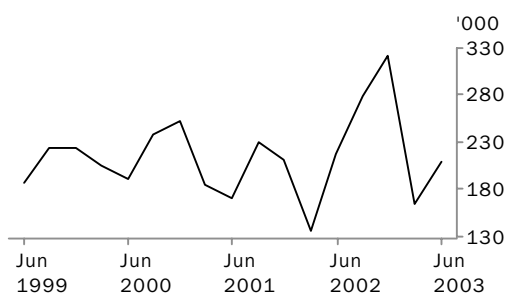
LIVESTOCK EXPORTS: Original

EXPORTS OF LIVE SHEEP



Live sheep exports fell by 41% to 965,000 in June quarter 2003, due mainly to reduced demand from Middle Eastern markets and tight local supplies. Gross value of live sheep exports fell to \$68.5 million. Unit value increased slightly to \$71.06.

EXPORTS OF LIVE CATTLE



Increased demand from Asian markets saw live cattle exports increase in June quarter 2003, up by 27% to 210,000. Gross value of live cattle exports increased by 17% to \$117 million. Unit value fell by 8% to \$557.26.

LIVESTOCK SLAUGHTERED, Australia(a): All Series

Quarter	Bulls, bullocks and steers	Cows and heifers	Total cattle (excluding calves)	Calves	Sheep	Lambs	Pigs	Chickens
	'000	'000	'000	'000	'000	'000	'000	'000
ORIGINAL								
2002								
March	884.8	836.0	1 720.9	117.7	3 867.6	4 257.1	1 307.6	106 854.7
June	1 038.0	1 049.9	2 087.9	236.4	3 234.1	4 349.9	1 462.0	107 212.4
September	1 056.0	1 021.6	2 077.7	538.1	3 692.6	4 040.0	1 439.5	105 278.6
December	1 065.2	1 017.1	2 082.3	189.1	4 078.8	4 438.8	1 393.7	108 860.1
2003								
March	941.4	950.5	1 891.9	157.6	3 614.5	4 307.7	1 408.4	103 360.2
June	943.7	1 087.2	2 030.9	261.0	2 271.4	4 083.3	1 500.1	101 682.1
SEASONALLY ADJUSTED								
2002								
March	929.5	869.7	1 799.2	250.5	3 427.0	4 405.7	1 359.4	107 501.3
June	1 048.5	958.1	2 006.6	256.3	3 519.9	4 390.2	1 407.7	108 811.9
September	1 017.4	1 009.6	2 027.0	272.9	4 154.8	3 982.0	1 433.4	106 737.7
December	1 043.1	1 091.9	2 134.9	297.2	3 830.4	4 309.7	1 396.2	105 336.0
2003								
March	990.1	982.5	1 972.6	334.7	3 204.5	4 459.5	1 472.9	103 929.7
June	953.0	998.2	1 951.2	282.6	2 468.1	4 114.1	1 444.5	103 161.7
TREND ESTIMATES								
2002								
March	972.6	887.0	1 859.6	245.1	3 515.5	4 391.3	1 370.1	106 146.5
June	1 002.2	950.0	1 952.1	257.3	3 698.3	4 294.3	1 397.6	108 063.8
September	1 034.2	1 018.3	2 052.5	279.2	3 904.9	4 210.6	1 418.2	107 348.7
December	1 024.5	1 037.2	2 061.7	299.1	3 724.0	4 251.0	1 430.6	105 465.0
2003								
March	993.9	1 022.0	2 015.9	308.8	3 225.5	4 290.4	1 442.9	104 073.6
June	969.3	997.1	1 966.4	307.2	2 630.1	4 281.4	1 455.1	103 037.0

(a) For more information refer to paragraphs 5 to 9 of the Explanatory Notes.

LIVESTOCK PRODUCTS, Australia(a): All Series

RED MEAT.....

Quarter	Beef	Veal	Mutton	Lamb	Pig meat	Total red meat	Chicken meat	Whole milk intake by factories	Brokers and dealers receipts of taxable wool
	tonnes	tonnes	tonnes	tonnes	tonnes	tonnes	tonnes	ML	tonnes
ORIGINAL									
2002									
March	450 941	5 977	78 455	85 996	94 360	715 729	169 187	2 829	137 669
June	541 710	8 336	63 379	88 842	107 563	809 830	176 257	2 072	97 519
September	534 915	15 146	73 819	77 861	105 343	807 084	175 634	2 582	154 817
December	527 190	5 526	81 076	84 944	100 008	798 744	178 450	3 613	160 987
2003									
March	473 184	8 594	69 589	85 222	102 714	739 303	171 463	2 343	112 590
June	499 323	8 953	43 734	81 381	111 490	744 881	164 280	n.y.a.	72 452
SEASONALLY ADJUSTED									
2002									
March	467 906	8 414	70 194	88 078	99 441	734 033	171 851	2 897	151 061
June	528 266	8 453	70 922	90 916	101 593	800 150	176 994	3 058	131 229
September	521 406	9 761	83 213	76 134	104 116	794 630	178 091	2 687	136 456
December	534 785	7 359	73 538	82 937	102 043	800 662	172 837	2 623	135 334
2003									
March	491 375	12 081	63 086	87 266	108 203	762 011	173 925	2 402	120 577
June	486 703	9 083	48 866	83 194	105 312	733 158	164 845	n.y.a.	99 480
TREND									
2002									
March	486 656	8 213	72 217	88 399	99 860	755 345	170 674	2 895	137 137
June	508 387	8 534	74 560	86 139	101 358	778 978	175 886	2 916	138 913
September	527 166	8 914	77 295	82 595	103 060	799 030	177 392	2 784	137 225
December	520 589	9 382	72 983	82 418	104 437	789 809	174 791	2 594	129 891
2003									
March	502 903	9 871	63 041	83 947	105 632	765 394	171 154	2 433	119 371
June	488 176	10 114	51 600	85 456	106 461	741 807	167 299	n.y.a.	107 409

(a) For more information refer to paragraphs 5 to 9 and 13 to 15 of the Explanatory Notes.

NUMBER OF LIVESTOCK SLAUGHTERED(a), Bulls, Bullocks and Steers: All Series

	<i>New South Wales</i>	<i>Victoria</i>	<i>Queensland</i>	<i>South Australia</i>	<i>Western Australia</i>	<i>Tasmania</i>	<i>Australia</i>
<i>Quarter</i>	'000	'000	'000	'000	'000	'000	'000
ORIGINAL							
2002							
March	206.4	171.1	397.7	51.6	34.6	23.2	884.8
June	216.5	150.1	566.0	47.4	36.9	20.9	1 038.0
September	233.1	135.2	591.1	38.1	39.0	19.2	1 056.0
December	261.8	168.4	517.5	42.9	55.5	18.9	1 065.2
2003							
March	247.8	172.1	408.4	46.6	43.0	23.2	941.4
June	218.9	154.3	476.8	38.9	36.0	18.6	943.7
SEASONALLY ADJUSTED							
2002							
March	204.9	153.9	465.8	48.0	37.2	20.3	929.5
June	220.1	159.2	553.2	50.6	40.0	20.0	1 048.5
September	227.1	152.7	528.0	42.8	42.2	22.1	1 017.4
December	266.5	159.2	515.2	39.2	44.3	20.0	1 043.1
2003							
March	243.3	156.4	479.0	43.3	47.6	20.4	990.1
June	224.9	163.8	465.9	41.5	38.9	17.8	953.0
TREND ESTIMATES							
2002							
March	203.7	157.9	508.3	47.0	34.7	20.4	972.6
June	218.5	156.4	518.1	47.3	39.3	20.7	1 002.2
September	238.4	155.6	529.1	44.5	43.2	21.0	1 034.2
December	247.5	156.9	512.6	41.7	44.5	20.6	1 024.5
2003							
March	245.0	159.0	485.4	41.2	44.2	19.7	993.9
June	235.6	161.8	467.4	41.9	42.5	18.5	969.3

(a) For more information refer to paragraph 4 of the Explanatory Notes.

NUMBER OF LIVESTOCK SLAUGHTERED(a), Cows and Heifers: All Series

	<i>New South Wales</i>	<i>Victoria</i>	<i>Queensland</i>	<i>South Australia</i>	<i>Western Australia</i>	<i>Tasmania</i>	<i>Australia</i>
<i>Quarter</i>	'000	'000	'000	'000	'000	'000	'000
ORIGINAL							
2002							
March	240.6	195.8	282.3	38.9	60.9	16.4	836.0
June	281.0	216.9	424.9	41.6	53.9	30.4	1 049.9
September	246.6	249.0	412.6	41.9	56.7	13.8	1 021.6
December	249.1	267.4	352.0	50.5	68.8	28.3	1 017.1
2003							
March	238.2	247.7	308.9	49.2	71.5	33.9	950.5
June	235.1	256.4	448.0	50.9	58.9	36.8	1 087.2
SEASONALLY ADJUSTED							
2002							
March	240.3	191.2	320.9	36.8	59.3	15.0	869.7
June	262.7	212.4	361.8	39.3	58.3	24.0	958.1
September	255.0	264.7	381.7	44.3	57.7	18.6	1 009.6
December	255.0	263.3	407.1	53.8	64.5	31.5	1 091.9
2003							
March	245.2	242.0	351.3	46.5	69.8	31.0	982.5
June	219.6	250.9	381.3	48.3	63.5	29.1	998.2
TREND ESTIMATES							
2002							
March	248.1	197.0	327.8	37.4	56.2	18.1	887.0
June	255.0	221.9	355.3	40.5	57.4	19.8	950.0
September	258.2	248.4	382.6	45.5	60.7	23.8	1 018.3
December	252.7	257.4	384.8	48.8	63.7	27.8	1 037.2
2003							
March	240.6	253.7	377.6	49.4	66.2	30.1	1 022.0
June	227.8	246.5	370.6	48.5	66.8	31.6	997.1

(a) For more information refer to paragraph 4 of the Explanatory Notes.

NUMBER OF LIVESTOCK SLAUGHTERED(a), Total Cattle (excluding Calves): All Series

	<i>New South Wales</i>	<i>Victoria</i>	<i>Queensland</i>	<i>South Australia</i>	<i>Western Australia</i>	<i>Tasmania</i>	<i>Australia</i>
<i>Quarter</i>	'000	'000	'000	'000	'000	'000	'000
ORIGINAL							
2002							
March	447.0	367.0	680.0	90.4	95.5	39.6	1 720.9
June	497.5	367.0	990.9	88.9	90.8	51.3	2 087.9
September	479.7	384.2	1 003.7	80.1	95.7	32.9	2 077.7
December	510.9	435.7	869.5	93.4	124.3	47.2	2 082.3
2003							
March	486.0	419.8	717.3	95.8	114.5	57.2	1 891.9
June	453.9	410.7	924.8	89.8	94.8	55.5	2 030.9
SEASONALLY ADJUSTED							
2002							
March	445.2	345.2	786.7	84.7	96.5	35.3	1 799.2
June	482.8	371.7	915.0	89.9	98.2	44.1	2 006.6
September	482.1	417.4	909.7	87.1	99.9	40.7	2 027.0
December	521.5	422.5	922.3	92.9	108.8	51.5	2 134.9
2003							
March	488.5	398.4	830.3	89.8	117.3	51.3	1 972.6
June	444.6	414.7	847.2	89.8	102.4	46.9	1 951.2
TREND ESTIMATES							
2002							
March	451.8	354.9	836.1	84.4	90.9	38.5	1 859.6
June	473.5	378.3	873.4	87.8	96.7	40.5	1 952.1
September	496.5	404.0	911.7	90.0	103.9	44.8	2 052.5
December	500.2	414.4	897.5	90.5	108.2	48.4	2 061.7
2003							
March	485.6	412.6	863.0	90.5	110.4	49.8	2 015.9
June	463.4	408.2	838.0	90.4	109.3	50.1	1 966.4

(a) For more information refer to paragraph 4 of the Explanatory Notes.

NUMBER OF LIVESTOCK SLAUGHTERED(a), Calves: All Series

	<i>New South Wales</i>	<i>Victoria</i>	<i>Queensland</i>	<i>South Australia</i>	<i>Western Australia</i>	<i>Tasmania</i>	<i>Australia</i>
<i>Quarter</i>	'000	'000	'000	'000	'000	'000	'000
ORIGINAL							
2002							
March	57.1	31.1	25.5	2.2	1.3	0.5	117.7
June	63.2	139.6	27.5	2.8	1.2	1.9	236.4
September	66.2	413.4	23.2	3.3	1.3	30.4	538.1
December	30.1	127.1	21.1	2.4	1.4	6.8	189.1
2003							
March	83.4	44.5	24.7	2.4	1.3	1.1	157.6
June	66.4	164.2	23.0	2.9	1.3	2.9	261.0
SEASONALLY ADJUSTED							
2002							
March	54.5	174.5	26.2	2.4	1.4	7.0	250.5
June	57.4	160.4	25.6	2.5	1.2	6.9	256.3
September	68.3	168.5	22.7	2.6	1.3	9.8	272.9
December	34.4	255.1	22.7	3.4	1.3	12.1	297.2
2003							
March	79.4	248.3	25.4	2.7	1.3	16.7	334.7
June	60.3	188.8	21.4	2.6	1.4	10.6	282.6
TREND ESTIMATES							
2002							
March	54.2	159.9	24.5	2.4	1.4	8.2	245.1
June	57.0	168.2	24.6	2.5	1.3	7.5	257.3
September	56.8	196.1	24.0	2.8	1.3	9.8	279.2
December	57.5	224.0	23.4	2.9	1.3	12.6	299.1
2003							
March	61.1	232.6	23.3	2.9	1.3	13.7	308.8
June	65.2	221.7	23.0	2.7	1.3	13.3	307.2

(a) For more information refer to paragraph 4 of the Explanatory Notes.

NUMBER OF LIVESTOCK SLAUGHTERED(a), Sheep: All Series

	<i>New South Wales</i>	<i>Victoria</i>	<i>Queensland</i>	<i>South Australia</i>	<i>Western Australia</i>	<i>Tasmania</i>	<i>Australia</i>
<i>Quarter</i>	'000	'000	'000	'000	'000	'000	'000
ORIGINAL							
2002							
March	1 450.1	1 074.1	334.3	396.7	538.4	74.0	3 867.6
June	1 323.0	814.5	366.5	333.8	317.7	78.6	3 234.1
September	1 594.5	876.7	345.0	429.2	394.3	53.0	3 692.6
December	1 636.0	1 111.9	300.7	463.5	496.3	70.4	4 078.8
2003							
March	1 236.8	1 009.9	269.3	359.2	590.8	148.6	3 614.5
June	814.9	642.7	227.0	180.0	290.5	116.3	2 271.4
SEASONALLY ADJUSTED							
2002							
March	1 365.3	930.9	327.6	328.9	458.2	54.1	3 427.0
June	1 384.8	908.1	384.6	355.5	404.9	75.6	3 519.9
September	1 661.3	1 044.4	322.4	583.1	452.7	90.5	4 154.8
December	1 597.1	1 000.5	313.6	412.9	425.4	69.7	3 830.4
2003							
March	1 165.3	876.1	264.3	298.9	501.7	108.7	3 204.5
June	852.0	714.7	237.5	190.5	372.5	111.6	2 468.1
TREND ESTIMATES							
2002							
March	1 400.2	929.3	336.0	336.2	454.4	67.7	3 515.5
June	1 482.7	959.5	353.1	417.5	422.5	70.8	3 698.3
September	1 574.2	998.6	340.3	474.2	436.5	78.7	3 904.9
December	1 479.9	970.6	305.4	426.6	449.9	88.2	3 724.0
2003							
March	1 224.6	876.2	269.1	317.2	444.2	98.5	3 225.5
June	919.8	755.2	241.9	194.3	419.0	109.6	2 630.1

(a) For more information refer to paragraph 4 of the Explanatory Notes.

NUMBER OF LIVESTOCK SLAUGHTERED(a), Lambs: All Series

	<i>New South Wales</i>	<i>Victoria</i>	<i>Queensland</i>	<i>South Australia</i>	<i>Western Australia</i>	<i>Tasmania</i>	<i>Australia</i>
<i>Quarter</i>	'000	'000	'000	'000	'000	'000	'000
ORIGINAL							
2002							
March	1 170.2	1 688.6	113.0	767.8	420.6	97.0	4 257.1
June	1 163.2	1 717.2	104.8	775.4	478.6	110.6	4 349.9
September	1 145.0	1 688.3	111.9	558.9	437.1	98.9	4 040.0
December	1 103.8	1 891.1	71.2	734.6	547.2	91.0	4 438.8
2003							
March	1 102.5	1 685.8	81.8	820.1	521.8	95.7	4 307.7
June	1 037.5	1 639.6	75.3	727.6	514.9	88.4	4 083.3
SEASONALLY ADJUSTED							
2002							
March	1 227.0	1 734.4	116.3	792.9	459.0	87.0	4 405.7
June	1 162.7	1 783.8	104.4	721.0	479.4	109.4	4 390.2
September	1 084.8	1 695.0	101.3	583.0	456.1	104.0	3 982.0
December	1 114.1	1 771.1	77.4	734.6	485.9	98.5	4 309.7
2003							
March	1 155.6	1 715.9	84.3	847.7	568.6	85.9	4 459.5
June	1 036.3	1 717.1	74.9	675.2	515.3	87.8	4 114.1
TREND ESTIMATES							
2002							
March	1 183.1	1 742.4	126.6	766.0	469.2	102.2	4 391.3
June	1 163.6	1 752.8	102.5	708.3	465.1	101.0	4 294.3
September	1 127.8	1 739.9	92.9	676.5	473.3	102.5	4 210.6
December	1 112.8	1 735.4	86.2	716.4	501.0	97.6	4 251.0
2003							
March	1 104.5	1 727.8	79.7	754.8	526.4	90.1	4 290.4
June	1 087.4	1 724.0	75.6	763.8	540.9	86.2	4 281.4

(a) For more information refer to paragraph 4 of the Explanatory Notes.

NUMBER OF LIVESTOCK SLAUGHTERED(a), Pigs: All Series

	<i>New South Wales</i>	<i>Victoria</i>	<i>Queensland</i>	<i>South Australia</i>	<i>Western Australia</i>	<i>Tasmania</i>	<i>Australia</i>
<i>Quarter</i>	'000	'000	'000	'000	'000	'000	'000
ORIGINAL							
2002							
March	452.9	242.0	275.5	180.8	143.6	11.4	1 307.6
June	492.3	252.0	313.3	224.5	164.7	13.3	1 462.0
September	473.0	258.3	307.0	220.6	166.3	12.1	1 439.5
December	470.5	261.2	280.5	208.0	158.4	13.0	1 393.7
2003							
March	441.5	244.4	317.8	220.3	171.3	11.1	1 408.4
June	475.7	269.4	329.5	235.2	176.4	11.6	1 500.1
SEASONALLY ADJUSTED							
2002							
March	472.9	252.0	287.2	173.9	147.2	12.1	1 359.4
June	487.0	242.4	297.8	208.7	154.7	12.2	1 407.7
September	459.8	258.7	310.8	229.8	167.4	12.0	1 433.4
December	466.2	258.2	281.6	225.5	165.1	13.8	1 396.2
2003							
March	463.4	257.8	328.7	213.7	174.7	11.6	1 472.9
June	470.6	259.4	313.1	218.6	165.6	10.6	1 444.5
TREND ESTIMATES							
2002							
March	474.4	258.7	289.6	178.7	149.5	13.0	1 370.1
June	474.8	250.8	296.1	205.6	155.8	12.3	1 397.6
September	469.8	252.0	299.9	223.3	163.6	12.4	1 418.2
December	464.8	257.5	304.2	224.5	168.4	12.6	1 430.6
2003							
March	464.9	259.2	310.8	219.8	169.8	12.0	1 442.9
June	468.9	258.8	317.6	215.4	169.2	11.0	1 455.1

(a) For more information refer to paragraph 4 of the Explanatory Notes.

NUMBER OF CHICKENS SLAUGHTERED(a): All Series

	<i>New South Wales</i>	<i>Victoria</i>	<i>Queensland</i>	<i>South Australia</i>	<i>Western Australia</i>	<i>Australia</i>
<i>Quarter</i>	'000	'000	'000	'000	'000	'000
ORIGINAL						
2002						
March	40 074.3	27 640.6	18 063.0	n.p.	n.p.	106 854.7
June	39 955.7	29 041.4	18 676.1	n.p.	n.p.	107 212.4
September	39 172.0	28 625.5	18 477.3	n.p.	n.p.	105 278.6
December	38 943.3	30 632.3	19 686.2	n.p.	n.p.	108 860.1
2003						
March	36 188.5	29 496.2	18 703.4	n.p.	n.p.	103 360.2
June	35 613.2	29 138.0	18 282.3	n.p.	n.p.	101 682.1
SEASONALLY ADJUSTED						
2002						
March	40 163.3	28 131.2	18 007.0	n.p.	n.p.	107 501.3
June	40 464.5	29 182.8	18 945.5	n.p.	n.p.	108 811.9
September	39 398.0	29 196.9	19 087.8	n.p.	n.p.	106 737.7
December	38 434.4	29 215.1	18 867.7	n.p.	n.p.	105 336.0
2003						
March	36 073.1	30 125.1	18 654.0	n.p.	n.p.	103 929.7
June	36 050.7	29 270.1	18 538.9	n.p.	n.p.	103 161.7
TREND ESTIMATES						
2002						
March	39 747.9	28 036.4	18 117.2	n.p.	n.p.	106 146.5
June	40 222.2	28 904.0	18 770.5	n.p.	n.p.	108 063.8
September	39 538.3	29 330.1	19 024.9	n.p.	n.p.	107 348.7
December	38 099.9	29 496.6	18 907.6	n.p.	n.p.	105 465.0
2003						
March	36 765.3	29 601.7	18 697.9	n.p.	n.p.	104 073.6
June	35 661.8	29 637.9	18 530.2	n.p.	n.p.	103 037.0

(a) For more information refer to paragraphs 8 and 9 of the Explanatory Notes.

NUMBER OF LIVESTOCK SLAUGHTERED(a): Original

Financial year	New South Wales '000	Victoria '000	Queensland '000	South Australia '000	Western Australia '000	Tasmania '000	Australia '000
BULLS, BULLOCKS AND STEERS							
2000-01	767.1	632.0	2 266.6	179.7	187.0	90.2	4 126.9
2001-02	820.5	630.6	2 150.0	182.0	137.7	80.6	4 002.4
2002-03	961.6	630.0	1 993.7	166.6	173.4	79.9	4 006.3
COWS AND HEIFERS							
2000-01	1 060.8	891.9	1 390.1	137.0	228.4	94.2	3 813.8
2001-02	992.1	800.6	1 364.2	150.6	230.6	79.4	3 621.7
2002-03	968.9	1 020.5	1 521.6	192.5	255.9	112.9	4 076.4
TOTAL CATTLE (excluding calves)							
2000-01	1 827.9	1 523.9	3 656.6	316.7	415.4	184.4	7 940.7
2001-02	1 812.6	1 431.1	3 514.1	332.6	368.3	160.0	7 624.1
2002-03	1 930.5	1 650.4	3 515.2	359.1	429.3	192.8	8 082.7
CALVES							
2000-01	226.0	608.9	135.1	11.6	5.6	49.7	1 037.5
2001-02	205.7	597.0	99.7	9.6	6.0	44.6	963.3
2002-03	246.1	749.3	92.1	11.0	5.3	41.2	1 145.8
SHEEP							
2000-01	5 857.6	4 193.3	1 489.2	1 488.2	3 235.0	364.7	16 628.0
2001-02	5 712.7	3 819.5	1 334.0	1 337.7	1 961.3	275.8	14 441.0
2002-03	5 282.2	3 641.2	1 142.0	1 431.8	1 771.8	388.3	13 657.3
LAMBS							
2000-01	4 203.2	8 090.0	1 024.1	2 875.1	2 020.0	416.1	18 628.5
2001-02	4 558.8	6 997.4	627.6	2 933.4	1 856.6	426.4	17 400.2
2002-03	4 388.8	6 904.8	340.3	2 841.1	2 021.0	374.0	16 869.8
PIGS							
2000-01	1 739.5	1 065.6	1 078.4	525.7	542.6	57.6	5 016.3
2001-02	1 885.0	1 042.1	1 133.7	690.0	591.4	53.1	5 402.4
2002-03	1 860.6	1 033.2	1 234.8	884.1	672.3	47.7	5 741.7
CHICKENS							
2000-01	151 686.8	104 080.0	68 002.0	n.p.	n.p.	n.p.	398 868.6
2001-02	156 682.0	109 311.2	70 940.6	n.p.	n.p.	n.p.	415 555.6
2002-03	149 917.0	117 892.0	75 149.3	n.p.	n.p.	n.p.	419 181.0

(a) For more information refer to paragraphs 4, 5 and 7 to 9 of the Explanatory Notes.

RED MEAT PRODUCED(a), Beef: All Series

	<i>New South Wales</i>	<i>Victoria</i>	<i>Queensland</i>	<i>South Australia</i>	<i>Western Australia</i>	<i>Tasmania</i>	<i>Australia</i>
<i>Quarter</i>	<i>tonnes</i>	<i>tonnes</i>	<i>tonnes</i>	<i>tonnes</i>	<i>tonnes</i>	<i>tonnes</i>	<i>tonnes</i>
ORIGINAL							
2002							
March	114 423	88 827	189 243	23 748	23 160	11 260	450 941
June	126 511	86 931	269 953	22 539	21 774	13 706	541 710
September	121 725	87 609	274 019	19 663	23 061	8 553	534 915
December	125 017	98 065	236 320	23 357	31 301	12 850	527 190
2003							
March	116 215	94 683	194 376	23 930	28 061	15 644	473 184
June	108 541	89 867	242 235	21 413	22 650	14 328	499 323
SEASONALLY ADJUSTED							
2002							
March	114 407	82 959	216 424	21 958	23 552	10 277	467 906
June	121 909	89 966	253 435	23 144	24 268	11 896	528 266
September	123 360	95 619	246 821	22 037	24 599	10 917	521 406
December	128 160	93 558	248 505	22 212	25 601	13 264	534 785
2003							
March	114 594	88 511	222 547	22 091	29 766	14 273	491 375
June	106 005	92 964	227 350	22 007	25 174	12 420	486 703
TREND ESTIMATES							
2002							
March	115 112	85 432	231 167	21 840	22 093	10 725	486 656
June	120 839	89 700	240 056	22 460	23 650	11 047	508 387
September	125 029	93 040	248 175	22 520	25 351	11 983	527 166
December	122 809	93 014	242 262	22 194	26 418	12 874	520 589
2003							
March	116 339	91 638	231 597	22 047	27 179	13 354	502 903
June	109 179	90 907	224 021	22 057	27 192	13 456	488 176

(a) For more information refer to paragraphs 4 to 6 of the Explanatory Notes.

RED MEAT PRODUCED(a), Veal: All Series

	<i>New South Wales</i>	<i>Victoria</i>	<i>Queensland</i>	<i>South Australia</i>	<i>Western Australia</i>	<i>Tasmania</i>	<i>Australia</i>
<i>Quarter</i>	<i>tonnes</i>	<i>tonnes</i>	<i>tonnes</i>	<i>tonnes</i>	<i>tonnes</i>	<i>tonnes</i>	<i>tonnes</i>
ORIGINAL							
2002							
March	3 610	899	1 289	69	82	16	5 977
June	4 072	2 742	1 315	77	71	46	8 336
September	4 228	9 076	1 063	92	84	590	15 146
December	1 749	2 590	893	76	69	138	5 526
2003							
March	6 233	1 003	1 160	85	71	30	8 594
June	4 283	3 339	1 087	88	77	67	8 953
SEASONALLY ADJUSTED							
2002							
March	3 485	4 203	1 262	72	84	164	8 414
June	3 633	3 183	1 251	70	75	151	8 453
September	4 392	3 766	1 085	78	83	196	9 761
December	1 999	5 004	941	100	64	239	7 359
2003							
March	5 994	4 682	1 137	89	73	306	12 081
June	3 832	3 873	1 033	80	82	221	9 083
TREND ESTIMATES							
2002							
March	3 448	3 555	1 207	71	89	177	8 213
June	3 571	3 703	1 179	74	79	164	8 534
September	3 633	4 060	1 111	83	74	197	8 914
December	3 845	4 451	1 044	89	72	242	9 382
2003							
March	4 220	4 563	1 041	90	73	263	9 871
June	4 519	4 318	1 062	86	76	261	10 114

(a) For more information refer to paragraphs 4 to 6 of the Explanatory Notes.

RED MEAT PRODUCED(a), Mutton: All Series

	<i>New South Wales</i>	<i>Victoria</i>	<i>Queensland</i>	<i>South Australia</i>	<i>Western Australia</i>	<i>Tasmania</i>	<i>Australia</i>
<i>Quarter</i>	<i>tonnes</i>	<i>tonnes</i>	<i>tonnes</i>	<i>tonnes</i>	<i>tonnes</i>	<i>tonnes</i>	<i>tonnes</i>
ORIGINAL							
2002							
March	30 252	20 596	6 458	8 895	10 796	1 459	78 455
June	26 557	15 324	6 800	6 936	6 255	1 505	63 379
September	33 082	16 277	6 185	9 351	7 912	1 011	73 819
December	32 791	21 198	5 662	10 073	9 981	1 371	81 076
2003							
March	24 143	18 676	4 623	7 521	11 740	2 885	69 589
June	16 090	11 400	4 271	3 948	5 797	2 227	43 734
SEASONALLY ADJUSTED							
2002							
March	28 931	18 162	6 258	7 467	9 247	1 088	70 194
June	28 655	17 366	7 394	7 823	8 063	1 382	70 922
September	33 779	19 000	5 759	12 420	9 034	1 800	83 213
December	31 228	18 777	5 802	8 578	8 474	1 359	73 538
2003							
March	23 109	16 488	4 485	6 343	10 033	2 153	63 086
June	17 342	12 869	4 630	4 424	7 520	2 042	48 866
TREND ESTIMATES							
2002							
March	29 815	18 055	6 331	7 593	9 125	1 329	72 217
June	30 696	18 182	6 682	9 121	8 447	1 359	74 560
September	31 690	18 609	6 268	10 082	8 700	1 531	77 295
December	29 424	18 036	5 494	9 000	8 973	1 730	72 983
2003							
March	24 276	16 254	4 852	6 774	8 894	1 904	63 041
June	18 372	13 930	4 522	4 350	8 447	2 052	51 600

(a) For more information refer to paragraphs 4 to 6 of the Explanatory Notes.

RED MEAT PRODUCED(a), Lamb: All Series

	<i>New South Wales</i>	<i>Victoria</i>	<i>Queensland</i>	<i>South Australia</i>	<i>Western Australia</i>	<i>Tasmania</i>	<i>Australia</i>
<i>Quarter</i>	<i>tonnes</i>	<i>tonnes</i>	<i>tonnes</i>	<i>tonnes</i>	<i>tonnes</i>	<i>tonnes</i>	<i>tonnes</i>
ORIGINAL							
2002							
March	23 506	33 065	2 093	17 232	8 178	1 922	85 996
June	23 514	33 997	2 024	17 732	9 366	2 209	88 842
September	22 126	31 844	2 076	11 493	8 326	1 996	77 861
December	21 230	35 157	1 294	14 864	10 581	1 817	84 944
2003							
March	21 559	32 005	1 474	17 947	10 365	1 871	85 222
June	20 389	31 693	1 439	15 809	10 296	1 755	81 381
SEASONALLY ADJUSTED							
2002							
March	24 616	33 740	2 204	17 485	8 907	1 753	88 078
June	23 496	35 339	2 024	16 239	9 282	2 150	90 916
September	20 947	31 578	1 846	12 240	8 763	2 049	76 134
December	21 483	33 405	1 413	15 063	9 431	2 013	82 937
2003							
March	22 568	32 709	1 531	18 232	11 271	1 708	87 266
June	20 362	32 848	1 435	14 455	10 191	1 715	83 194
TREND ESTIMATES							
2002							
March	23 758	34 053	2 394	16 959	9 074	2 041	88 399
June	23 150	33 962	1 941	15 559	8 991	2 008	86 139
September	22 083	33 142	1 725	14 445	9 150	2 042	82 595
December	21 585	32 782	1 576	15 055	9 765	1 954	82 418
2003							
March	21 473	32 749	1 465	15 946	10 364	1 799	83 947
June	21 301	32 962	1 420	16 296	10 720	1 703	85 456

(a) For more information refer to paragraphs 4 to 6 of the Explanatory Notes.

RED MEAT PRODUCED(a), Pig Meat: All Series

	<i>New South Wales</i>	<i>Victoria</i>	<i>Queensland</i>	<i>South Australia</i>	<i>Western Australia</i>	<i>Tasmania</i>	<i>Australia</i>
<i>Quarter</i>	<i>tonnes</i>	<i>tonnes</i>	<i>tonnes</i>	<i>tonnes</i>	<i>tonnes</i>	<i>tonnes</i>	<i>tonnes</i>
ORIGINAL							
2002							
March	33 973	17 016	20 384	12 583	9 670	674	94 360
June	37 888	17 630	24 194	15 718	11 267	773	107 563
September	35 465	18 302	23 922	15 531	11 311	701	105 343
December	35 048	17 961	20 743	14 865	10 557	730	100 008
2003							
March	33 017	16 819	24 247	16 345	11 563	626	102 714
June	36 716	19 023	25 522	17 405	12 058	659	111 490
SEASONALLY ADJUSTED							
2002							
March	35 635	17 751	21 510	12 455	10 119	722	99 441
June	36 785	16 877	22 554	14 355	10 642	693	101 593
September	34 750	18 392	23 946	15 805	11 001	692	104 116
December	35 216	17 826	21 152	16 344	11 112	778	102 043
2003							
March	34 617	17 902	25 597	16 153	12 027	669	108 203
June	35 640	18 233	23 776	15 901	11 387	590	105 312
TREND ESTIMATES							
2002							
March	35 945	18 146	21 993	12 519	10 130	765	99 860
June	35 833	17 588	22 433	14 251	10 536	713	101 358
September	35 439	17 647	22 841	15 655	10 994	710	103 060
December	35 016	17 959	23 287	16 162	11 340	717	104 437
2003							
March	34 987	18 054	23 819	16 203	11 578	679	105 632
June	35 310	18 036	24 290	16 055	11 694	629	106 461

(a) For more information refer to paragraphs 4 to 6 of the Explanatory Notes.

TOTAL RED MEAT PRODUCED(a): All Series

	<i>New South Wales</i>	<i>Victoria</i>	<i>Queensland</i>	<i>South Australia</i>	<i>Western Australia</i>	<i>Tasmania</i>	<i>Australia</i>
<i>Quarter</i>	<i>tonnes</i>	<i>tonnes</i>	<i>tonnes</i>	<i>tonnes</i>	<i>tonnes</i>	<i>tonnes</i>	<i>tonnes</i>
ORIGINAL							
2002							
March	205 765	160 402	219 466	62 526	51 885	15 331	715 729
June	218 544	156 625	304 287	63 002	48 733	18 239	809 830
September	216 626	163 108	307 264	56 131	50 694	12 852	807 084
December	215 835	174 970	264 912	63 235	62 490	16 905	798 744
2003							
March	201 167	163 185	225 880	65 829	61 801	21 057	739 303
June	186 019	155 321	274 554	58 663	50 878	19 037	744 881
SEASONALLY ADJUSTED							
2002							
March	207 074	156 815	247 658	59 437	51 909	14 004	734 033
June	214 478	162 731	286 658	61 631	52 330	16 272	800 150
September	217 228	168 355	279 457	62 580	53 480	15 654	794 630
December	218 086	168 570	277 813	62 297	54 682	17 653	800 662
2003							
March	200 882	160 292	255 297	62 908	63 170	19 109	762 011
June	183 181	160 787	258 224	56 867	54 354	16 988	733 158
TREND ESTIMATES							
2002							
March	208 078	159 241	263 092	58 982	50 511	15 037	755 345
June	214 089	163 135	272 291	61 465	51 703	15 291	778 978
September	217 874	166 498	280 120	62 785	54 269	16 463	799 030
December	212 679	166 242	273 663	62 500	56 568	17 517	789 809
2003							
March	201 295	163 258	262 774	61 060	58 088	17 999	765 394
June	188 681	160 153	255 315	58 844	58 129	18 101	741 807

(a) For more information refer to paragraphs 4 to 6 of the Explanatory Notes.

CHICKEN MEAT PRODUCED(a): All Series

	<i>New South Wales</i>	<i>Victoria</i>	<i>Queensland</i>	<i>South Australia</i>	<i>Western Australia</i>	<i>Australia</i>
<i>Quarter</i>	<i>tonnes</i>	<i>tonnes</i>	<i>tonnes</i>	<i>tonnes</i>	<i>tonnes</i>	<i>tonnes</i>
ORIGINAL						
2002						
March	69 398	45 410	24 890	n.p.	n.p.	169 187
June	71 110	49 116	26 886	n.p.	n.p.	176 257
September	69 583	49 518	28 299	n.p.	n.p.	175 634
December	65 052	54 613	29 584	n.p.	n.p.	178 450
2003						
March	62 927	51 239	28 540	n.p.	n.p.	171 463
June	58 882	49 071	27 904	n.p.	n.p.	164 280
SEASONALLY ADJUSTED						
2002						
March	69 870	46 202	25 271	n.p.	n.p.	171 851
June	71 459	48 788	27 057	n.p.	n.p.	176 994
September	70 067	51 235	29 088	n.p.	n.p.	178 091
December	64 016	52 263	28 191	n.p.	n.p.	172 837
2003						
March	63 214	52 187	29 009	n.p.	n.p.	173 925
June	59 152	48 674	28 065	n.p.	n.p.	164 845
TREND ESTIMATES						
2002						
March	69 670	46 005	25 549	n.p.	n.p.	170 674
June	70 575	48 799	27 171	n.p.	n.p.	175 886
September	69 170	51 191	28 343	n.p.	n.p.	177 392
December	65 697	51 889	28 712	n.p.	n.p.	174 791
2003						
March	62 341	51 317	28 601	n.p.	n.p.	171 154
June	59 598	50 048	28 319	n.p.	n.p.	167 299

(a) For more information refer to paragraphs 8 and 9 of the Explanatory Notes.

MEAT PRODUCED(a): Original

<i>Financial year</i>	<i>New South Wales</i> tonnes	<i>Victoria</i> tonnes	<i>Queensland</i> tonnes	<i>South Australia</i> tonnes	<i>Western Australia</i> tonnes	<i>Tasmania</i> tonnes	<i>Australia</i> tonnes
BEEF							
2000-01	461 380	354 819	1 034 624	82 533	100 524	48 771	2 085 952
2001-02	460 964	342 898	972 749	85 882	88 593	43 923	1 996 167
2002-03	471 498	370 223	946 950	88 362	105 074	51 376	2 034 613
VEAL							
2000-01	14 214	11 842	5 684	307	382	996	33 474
2001-02	12 992	11 998	4 852	278	377	899	31 446
2002-03	16 493	16 007	4 202	341	300	826	38 220
MUTTON							
2000-01	126 838	84 016	28 401	36 103	64 936	7 232	347 526
2001-02	121 844	74 425	24 801	30 342	39 481	5 416	296 308
2002-03	106 106	67 552	20 741	30 893	35 431	7 495	268 218
LAMB							
2000-01	82 907	157 898	19 648	61 893	37 070	8 014	367 430
2001-02	91 401	136 325	11 851	64 285	35 618	8 466	347 947
2002-03	85 304	130 699	6 284	60 114	39 568	7 439	329 407
PIG MEAT							
2000-01	130 371	78 954	78 500	36 679	36 781	3 583	365 168
2001-02	144 146	73 652	85 940	48 329	39 996	3 159	395 534
2002-03	140 247	72 105	94 434	64 147	45 490	2 715	419 555
TOTAL RED MEAT							
2000-01	815 710	687 529	1 166 857	217 514	239 693	68 596	3 199 550
2001-02	831 347	639 298	1 100 193	229 116	204 065	61 863	3 067 401
2002-03	819 648	656 586	1 072 611	243 857	225 863	69 851	3 090 013
CHICKEN MEAT							
2000-01	244 302	175 773	93 863	n.p.	n.p.	n.p.	619 406
2001-02	273 445	180 993	99 316	n.p.	n.p.	n.p.	667 471
2002-03	256 445	204 440	114 327	n.p.	n.p.	n.p.	689 826

(a) For more information refer to paragraphs 4 to 9 of the Explanatory Notes.

EXPORTS OF FRESH, FROZEN AND PROCESSED MEAT, Australia(a): Original

Period	FRESH, CHILLED OR FROZEN MEAT.....								PROCESSED MEAT.		
	<i>Beef bone -in</i>	<i>Beef bone -out</i>	<i>Veal bone -in</i>	<i>Veal bone -out</i>	<i>Mutton bone -in</i>	<i>Mutton bone -out</i>	<i>Lamb bone -in</i>	<i>Lamb bone -out</i>	<i>Pork</i>	<i>Bacon and ham</i>	<i>Canned meat</i>
	tonnes	tonnes	tonnes	tonnes	tonnes	tonnes	tonnes	tonnes	tonnes	tonnes	tonnes
2000-01	42 000	940 312	2 078	6 440	127 841	63 754	103 652	12 328	43 939	280	14 884
2001-02	34 126	892 317	2 424	7 119	113 894	52 072	104 565	13 794	58 964	122	15 724
2002-03	37 372	893 334	3 610	6 517	109 146	52 210	87 665	14 330	62 789	351	17 087
2002											
March	8 683	173 928	576	777	30 606	11 812	25 134	3 827	14 586	32	3 736
June	8 954	244 051	628	1 431	22 736	13 239	26 213	3 624	15 135	17	3 993
September	10 707	233 039	971	2 254	25 439	14 136	21 865	2 989	15 779	48	4 146
December	11 134	254 434	1 145	2 211	37 952	16 754	21 787	2 789	16 321	128	3 849
2003											
March	7 523	193 069	673	859	29 655	12 603	21 605	4 051	15 490	53	3 518
June	8 008	212 793	821	1 193	16 099	8 717	22 409	4 500	15 198	121	5 575

(a) For more information refer to paragraphs 10 and 11 of the Explanatory Notes.

EXPORTS OF LIVE SHEEP AND CATTLE, Australia(a): Original

	<i>Number</i>	<i>Gross weight</i>	<i>Gross value</i>	<i>Unit value</i>
<i>Period</i>	'000	'000 tonnes	\$'000	\$
SHEEP				
2000-01	5 936.0	283.6	257 661	43.41
2001-02	6 443.2	318.0	391 705	60.79
2002-03	5 839.4	272.7	407 068	69.71
2002				
March	1 660.7	85.5	103 425	62.28
June	1 120.7	59.0	75 591	67.45
September	1 357.8	64.8	97 537	71.84
December	1 884.9	91.5	125 645	66.66
2003				
March	1 632.0	72.1	115 340	70.67
June	964.7	44.2	68 547	71.06
CATTLE				
2000-01	845.8	314.3	481 827	569.66
2001-02	797.0	293.5	525 535	659.41
2002-03	975.0	362.0	569 013	583.62
2002				
March	136.6	58.2	95 678	700.34
June	217.8	75.5	135 875	623.90
September	278.4	100.5	160 046	574.88
December	322.3	114.5	191 991	595.78
2003				
March	164.7	57.8	100 131	608.14
June	209.7	89.2	116 845	557.26

(a) For more information refer to paragraph 12 of the Explanatory Notes.

WHOLE MILK INTAKE, By Factories(a): All Series

	New South Wales(b)	Victoria	Queensland	South Australia	Western Australia	Tasmania	Australia(c)
Quarter	ML	ML	ML	ML	ML	ML	ML
ORIGINAL							
2001							
December	378	2 617	202	214	104	261	3 775
2002							
March	317	1 873	178	173	93	195	2 829
June	313	1 226	174	157	97	106	2 072
September	340	1 666	197	171	108	100	2 582
December	365	2 489	186	220	109	245	3 613
2003							
March	299	1 457	170	178	86	154	2 343
SEASONALLY ADJUSTED							
2001							
December	334	1 771	190	177	101	161	2 734
2002							
March	332	1 923	181	184	100	177	2 897
June	351	2 060	191	181	100	175	3 058
September	332	1 744	190	172	101	148	2 687
December	324	1 687	173	183	105	151	2 623
2003							
March	311	1 495	175	190	91	140	2 402
TREND ESTIMATES							
2001							
December	332	1 848	185	179	98	170	2 812
2002							
March	339	1 918	187	180	100	171	2 895
June	341	1 938	188	179	102	168	2 916
September	335	1 825	185	179	102	158	2 784
December	324	1 662	179	182	100	147	2 594
2003							
March	312	1 522	173	187	97	142	2 433

(a) For more information refer to paragraph 13 of the Explanatory Notes.

(b) New South Wales total includes Australian Capital Territory.

(c) Australian total excludes Northern Territory.

Source: Original series data from Australian Dairy Corporation.

MARKET MILK SALES, By Factories(a): All Series

Quarter	New South Wales(b)	Victoria	Queensland	South Australia	Western Australia	Tasmania	Australia(c)
	ML	ML	ML	ML	ML	ML	ML
ORIGINAL							
2001							
December	151	116	100	45	48	12	471
2002							
March	155	112	100	45	48	12	472
June	161	114	100	45	48	13	481
September	156	119	102	47	50	13	486
December	153	119	99	45	49	13	478
2003							
March	152	114	98	44	49	13	469
SEASONALLY ADJUSTED							
2001							
December	151	116	99	44	48	12	471
2002							
March	158	116	102	46	49	12	483
June	162	113	100	46	48	13	482
September	152	116	100	46	50	13	476
December	153	119	98	45	49	13	477
2003							
March	155	117	100	44	50	13	479
TREND ESTIMATES							
2001							
December	153	115	101	46	48	12	476
2002							
March	157	115	101	45	48	12	479
June	158	115	100	46	49	13	480
September	156	116	100	46	49	13	479
December	153	117	99	45	50	13	477
2003							
March	153	118	99	45	50	13	477

(a) For more information refer to paragraph 13 of the Explanatory Notes.

(b) New South Wales total includes Australian Capital Territory.

(c) Australian total excludes Northern Territory.

Source: Original series data from Australian Dairy Corporation.

BROKERS AND DEALERS RECEIVALS OF TAXABLE WOOL(a): All Series

	New South Wales	Victoria	Queensland	South Australia	Western Australia	Tasmania	Australia	% of total received by brokers
Quarter	tonnes	tonnes	tonnes	tonnes	tonnes	tonnes	tonnes	%
ORIGINAL								
2002								
March	36 307	35 103	6 450	22 041	34 034	3 736	137 669	81.4
June	31 557	24 921	8 145	13 927	15 661	3 306	97 519	82.1
September	59 470	36 439	5 156	21 858	27 502	4 393	154 817	79.1
December	52 261	45 632	3 906	22 074	32 206	4 908	160 987	74.8
2003								
March	33 602	27 076	3 367	12 382	33 489	2 673	112 590	76.6
June	22 901	19 032	4 350	8 259	15 519	2 391	72 452	81.8
SEASONALLY ADJUSTED								
2002								
March	40 842	42 761	7 443	25 344	29 185	5 488	151 061	..
June	40 084	38 120	6 854	17 903	23 885	4 382	131 229	..
September	50 741	34 311	4 008	18 435	25 047	3 913	136 456	..
December	45 417	31 702	5 963	19 100	29 703	3 450	135 334	..
2003								
March	37 940	32 584	3 886	13 723	28 655	3 790	120 577	..
June	29 067	28 948	3 655	10 851	23 779	3 181	99 480	..
TREND ESTIMATES								
2002								
March	40 317	38 079	7 032	21 578	25 924	4 207	137 137	..
June	43 596	38 140	6 261	20 650	25 861	4 405	138 913	..
September	46 682	35 545	5 433	18 909	26 631	4 025	137 225	..
December	44 409	32 557	4 783	16 887	27 584	3 669	129 891	..
2003								
March	38 312	31 124	4 292	14 566	27 584	3 493	119 371	..
June	31 795	30 054	3 899	12 110	26 169	3 382	107 409	..

(a) For more information refer to paragraphs 14 and 15 of the Explanatory Notes.

LIVESTOCK PRODUCTS(a): Original

Financial year	New South Wales	Victoria	Queensland	South Australia	Western Australia	Tasmania	Australia
----------------	-----------------	----------	------------	-----------------	-------------------	----------	-----------

WHOLE MILK INTAKE BY FACTORIES (ML)(b)

1999-2000	1 395	6 870	848	714	412	609	10 847
2000-01	1 326	6 777	760	699	393	590	10 545
2001-02	1 343	7 405	744	715	393	672	11 271

MARKET MILK SALES BY FACTORIES (ML)(b)(c)

1999-2000	597	440	383	185	190	48	1 842
2000-01	630	455	393	199	192	50	1 920
2001-02	622	459	402	184	192	50	1 909

BROKERS AND DEALERS RECEIVALS OF TAXABLE WOOL (Tonnes)

2000-01	182 882	148 333	40 723	89 739	115 475	12 709	589 861
2001-02	163 926	142 338	30 188	83 144	103 028	14 268	536 891
2002-03	168 234	128 179	16 778	64 573	108 716	14 365	500 846

(a) For more information refer to paragraph 13 to 15 of the Explanatory Notes.

(b) New South Wales includes Australian Capital Territory. Australian total excludes Northern Territory.

(c) Prior to 2000-01, interstate transfers of UHT milk were excluded from these figures. From 2000-01 onwards, interstate transfers of UHT milk have been included in their state of destination.

Source: Original series data from Australian Dairy Corporation.

WHAT IF...? REVISIONS TO TREND ESTIMATES

EFFECT OF NEW SEASONALLY ADJUSTED ESTIMATES ON TREND ESTIMATES

Each time new seasonally adjusted estimates become available, trend estimates are revised (see paragraphs 20 and 21 of the Explanatory Notes).

TREND REVISIONS

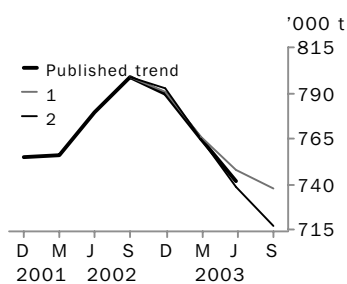
The graphs and tables which follow present the effect of two possible new seasonally adjusted estimates on the previous trend estimates:

1 The September Quarter 2003 seasonally adjusted estimate is higher than the June Quarter 2003 estimate by the percentage shown.

2 The September Quarter 2003 seasonally adjusted estimate is lower than the June Quarter 2003 estimate by the percentage shown.

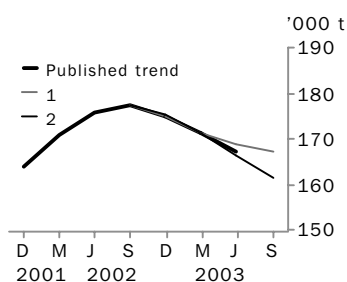
These percentages were chosen because they represent the average absolute quarterly percentage change for these series over the last ten years.

RED MEAT PRODUCTION



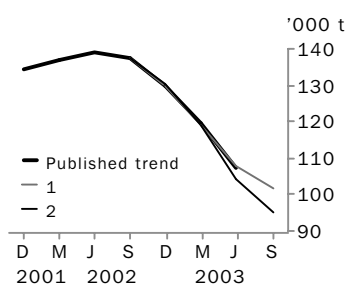
	TREND AS PUBLISHED		WHAT IF NEXT QUARTER'S SEASONALLY ADJUSTED ESTIMATE:			
	number	% change	1 <i>rises by 3% on Jun Qtr 2003</i>	% change	2 <i>falls by 3% on Jun Qtr 2003</i>	% change
Jun Qtr 2002	778 978	3.1	778 979	3.1	778 979	3.1
Sep Qtr 2002	799 030	2.6	799 030	2.6	799 030	2.6
Dec Qtr 2002	789 809	-1.2	790 475	-1.1	792 370	-0.8
Mar Qtr 2003	765 394	-3.1	765 668	-3.1	764 939	-3.5
Jun Qtr 2003	741 807	-3.1	747 498	-2.4	738 339	-3.5
Sep Qtr 2003	—	—	736 986	-1.4	716 645	-2.9

CHICKEN MEAT PRODUCTION



	TREND AS PUBLISHED		WHAT IF NEXT QUARTER'S SEASONALLY ADJUSTED ESTIMATE:			
	number	% change	1 <i>rises by 4% on Jun Qtr 2003</i>	% change	2 <i>falls by 4% on Jun Qtr 2003</i>	% change
Jun Qtr 2002	175 886	3.1	175 885	3.1	175 885	3.1
Sep Qtr 2002	177 392	0.9	177 393	0.9	177 393	0.9
Dec Qtr 2002	174 791	-1.5	174 750	-1.5	175 254	-1.2
Mar Qtr 2003	171 154	-2.1	171 242	-2.0	171 067	-2.4
Jun Qtr 2003	167 299	-2.3	168 607	-1.5	166 185	-2.9
Sep Qtr 2003	—	—	167 006	-0.9	161 261	-3.0

WOOL RECEIVALS



	TREND AS PUBLISHED		WHAT IF NEXT QUARTER'S SEASONALLY ADJUSTED ESTIMATE:			
	number	% change	1 <i>rises by 9% on Jun Qtr 2003</i>	% change	2 <i>falls by 9% on Jun Qtr 2003</i>	% change
Jun Qtr 2002	138 913	1.3	138 913	1.3	138 913	1.3
Sep Qtr 2002	137 225	-1.2	137 225	-1.2	137 225	-1.2
Dec Qtr 2002	129 891	-5.3	129 882	-5.4	130 536	-4.9
Mar Qtr 2003	119 371	-8.1	119 262	-8.2	118 976	-8.9
Jun Qtr 2003	107 409	-10.0	107 646	-9.7	104 463	-12.2
Sep Qtr 2003	—	—	101 532	-5.7	94 932	-9.1

WHAT IF...? REVISIONS TO TREND ESTIMATES

EFFECT OF NEW SEASONALLY ADJUSTED ESTIMATES ON TREND ESTIMATES

Readers should exercise care when interpreting trend estimates. The last three trend estimates, in particular, are likely to be revised when new seasonally adjusted estimates become available.

TREND REVISIONS

The graph and tables which follow present the effect of two possible scenarios on the previous trend estimates:

1 The June Quarter 2003 seasonally adjusted estimate is higher than the March Quarter 2003 estimate by:

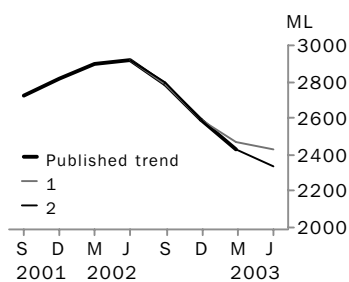
- +2% for whole milk intake by factories.

2 The June Quarter 2003 seasonally adjusted estimate is lower than the March Quarter 2003 estimate by:

- 2% for whole milk intake by factories.

These percentages were chosen because they represent the average absolute quarterly percentage change for these series over the last ten years.

WHOLE MILK INTAKE BY FACTORIES



WHAT IF NEXT QUARTER'S SEASONALLY ADJUSTED ESTIMATE:

1 rises by 2% on Mar Qtr 2003
2 falls by 2% on Mar Qtr 2003

	TREND AS PUBLISHED		1		2	
	number	% change	number	% change	number	% change
Mar Qtr 2002	2 895	3.0	2 895	3.0	2 895	3.0
Jun Qtr 2002	2 916	0.7	2 916	0.7	2 916	0.7
Sep Qtr 2002	2 784	-4.5	2 783	-4.6	2 791	-4.3
Dec Qtr 2002	2 594	-6.8	2 595	-6.8	2 592	-7.1
Mar Qtr 2003	2 433	-6.2	2 473	-4.7	2 433	-6.1
Jun Qtr 2003	—	—	2 427	-1.9	2 340	-3.8

EXPLANATORY NOTES

INTRODUCTION

- 1** This publication contains information on livestock slaughterings, meat production, exports of live sheep and live cattle, exports of fresh, frozen and processed meat, and whole milk intake by factories, market milk sales by factories and receivals of taxable wool by wool brokers and dealers.
- 2** The figures shown in this publication have been revised where necessary and as a consequence may not agree with similar data shown in previous publications.
- 3** Where figures have been rounded, discrepancies may occur between sums of the component items and totals.
- 4** Unless indicated otherwise, Australian totals include data for all states and both territories.

LIVESTOCK SLAUGHTERINGS AND MEAT PRODUCTION

- 5** The statistics on slaughterings for red meat production are based on a monthly collection from abattoirs and other major slaughtering establishments and include estimates of animals slaughtered on farms and by country butchers and other small slaughtering establishments.
- 6** Red meat is shown in carcass weight and excludes offal.
- 7** Care should be taken when using this information as the figures only relate to slaughterings for human consumption and do not include animals condemned, slaughtered for pet food or those killed for boiling down.
- 8** Poultry slaughterings and meat produced statistics have been compiled from returns supplied by commercial poultry slaughtering establishments and comprise boilers, fryers and roasters. Many small producers are excluded from the collection; however, the statistics represent a high level of coverage. Tasmanian, Northern Territory and Australian Capital Territory data are excluded from the Australian total.
- 9** Chicken meat is shown in dressed weight of whole birds, pieces and giblets. Some slaughterings and meat production statistics for 'Ducks and Drakes' and 'Other Fowls and Turkeys' are available by contacting the ABS on Hobart 03 6222 5974 or by writing to GPO Box 66, Hobart Tasmania 7001 (Attention: Agriculture Section).

EXPORTS OF FRESH, FROZEN AND PROCESSED MEAT

- 10** Table 20 shows exports of fresh, frozen and processed meat, excluding offal. International trade statistics are compiled by the ABS from information submitted by exporters and importers or their agents to the Australian Customs Service. Factors can be applied to beef, veal, mutton and lamb bone-out figures to derive bone-in carcass weight which, when added to bone-in figures, shows total exports in carcass weight. The factor for beef and veal is 1.5 and for mutton and lamb, 2.0. This information is sourced from Department of Agriculture, Fisheries and Forestry—Australia.
- 11** Beef also includes buffalo meat. Bacon and ham shown is the cured carcass weight of smoked or cooked bacon and ham. It also includes the stated net weight of packs of canned bacon and ham. Canned meat is shown as the canned weight and excludes canned bacon and ham.

LIVE SHEEP AND CATTLE EXPORTS

- 12** Table 21 contains statistics of the number of live sheep and cattle exported, the gross weight, gross value and unit value. The unit value is obtained by dividing the gross value by the number of animals exported. Sheep and cattle exported for breeding are excluded.

EXPLANATORY NOTES

MILK	<p>13 Tables 2, 22, 23 and 25 contain statistics collected by the Australian Dairy Corporation (ADC). Whole milk intake by factories includes the whole milk equivalent of farm cream intake. Market milk sales includes white, flavoured, high and low fat milk and UHT milk.</p>
WOOL RECEIVALS	<p>14 The statistics in tables 2, 24 and 25 show the amount of taxable wool received by brokers and purchased by dealers from wool producers. It excludes wool received by brokers on which tax has already been paid by other dealers (private buyers) or brokers.</p> <p>15 The information shown is on the basis of the state in which wool has actually been received and does not necessarily reflect the production of wool in that state.</p>
SEASONAL ADJUSTMENT	<p>16 Seasonal adjustment is a means of removing the estimated effects of normal seasonal variation from the series so that the effects of other influences can be more clearly recognised.</p> <p>17 In the seasonal adjustment of the livestock estimates, account has been taken of both normal seasonal factors and 'trading-day' effects, where significant, (arising from the varying length of each quarter and the varying numbers of Sundays, Mondays, Tuesdays etc. in the quarter). Adjustments are also made for the effects of change in the date of Easter holidays, again, where significant. Seasonal adjustment does not remove from the series the effect of irregular influences (e.g. abnormal weather, industrial disputes).</p> <p>18 The state component series have been seasonally adjusted independently. Therefore, the adjusted components may not add to the Australian Group totals.</p> <p>19 As happens with all seasonally adjusted series, the seasonal factors are reviewed annually to take account of each additional year's data.</p>
TREND ESTIMATES	<p>20 A trend estimate is obtained by reducing the irregular component from the seasonally adjusted series. In this publication trend estimates are generally derived by applying a seven term Henderson moving average to the seasonally adjusted series. The seven term Henderson, (like all Henderson averages) is symmetric, but as the end of a time series is approached, asymmetric forms of the average are applied. Unlike the weights of the standard seven term Henderson moving average, the weights employed here have been tailored to suit the particular characteristics of individual series. While the asymmetric weights enable the trend to be calculated for recent quarters, it does result in revisions to the estimates for the most recent three quarters as additional observations become available. Revisions of trend estimates will also occur with revisions to the original data and re-estimation of seasonal factors.</p> <p>21 Sensitivity analysis indicates the potential magnitude and direction of revisions created to the last three estimates. It aims to show how a specified movement in the seasonally adjusted data in the next period will affect the trend path of the time series. By showing how sensitive the trend estimates are to the addition of new data, the analysis provides information which can be used in the assessment of the trend's stability.</p> <p>22 For further information, see <i>Information Paper: A Guide to Interpreting Time Series — Monitoring 'Trends', an Overview</i> (cat. no. 1348.0) or contact the Assistant Director, Time Series Analysis on Canberra 02 6252 6345.</p>

EXPLANATORY NOTES

RELATED PUBLICATIONS

23 Current publications and other products released by the ABS are listed in the *Catalogue of Publications and Products* (cat. no. 1101.0). The Catalogue is available from any ABS office or the ABS web site <<http://www.abs.gov.au>>. The ABS also issues a daily Release Advice on the web site which details products to be released in the week ahead.

GENERAL ACKNOWLEDGMENT

ABS publications draw extensively on information provided freely by individuals, businesses, governments and other organisations. Their continued cooperation is very much appreciated. Without it, the wide range of statistics published by the ABS would not be available. Information received by the ABS is treated in strict confidence as required by the *Census and Statistics Act 1905*.

SYMBOLS AND OTHER USAGES

billion	thousand million
ML	million litres
n.y.a.	not yet available
n.p.	not published
t	tonnes
..	not applicable

FOR MORE INFORMATION...

- INTERNET* **www.abs.gov.au** the ABS web site is the best place to start for access to summary data from our latest publications, information about the ABS, advice about upcoming releases, our catalogue, and Australia Now—a statistical profile.
- LIBRARY* A range of ABS publications is available from public and tertiary libraries Australia-wide. Contact your nearest library to determine whether it has the ABS statistics you require, or visit our web site for a list of libraries.
- CPI INFOLINE* For current and historical Consumer Price Index data, call 1902 981 074 (call cost 77c per minute).
- DIAL-A-STATISTIC* For the latest figures for National Accounts, Balance of Payments, Labour Force, Average Weekly Earnings, Estimated Resident Population and the Consumer Price Index call 1900 986 400 (call cost 77c per minute).

INFORMATION SERVICE

Data which have been published and can be provided within five minutes are free of charge. Our information consultants can also help you to access the full range of ABS information—ABS user-pays services can be tailored to your needs, time frame and budget. Publications may be purchased. Specialists are on hand to help you with analytical or methodological advice.

- PHONE* **1300 135 070**
- EMAIL* **client.services@abs.gov.au**
- FAX* 1300 135 211
- POST* Client Services, ABS, GPO Box 796, Sydney 2001

WHY NOT SUBSCRIBE?

ABS subscription services provide regular, convenient and prompt deliveries of ABS publications and products as they are released. Email delivery of monthly and quarterly publications is available.

- PHONE* 1300 366 323
- EMAIL* subscriptions@abs.gov.au
- FAX* 03 9615 7848
- POST* Subscription Services, ABS, GPO Box 2796Y, Melbourne 3001



2721500006030
ISSN 0728-4047

RRP \$22.00