



Forward Work Program

2013–14 to 2016–17

ABS Cat. No. 1006.0

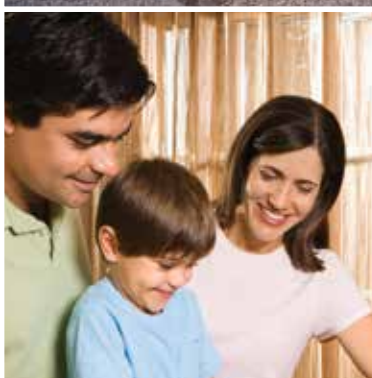


Table of Contents

Preface	1
Notes to this publication	2
General Information	
Overview of the ABS	4
ABS goals, strategies and key projects	5
How the ABS operates	8
How the ABS work program is determined	9
Governance framework	11
The ABS's commitment to reconciliation and diversity	14
Products and services	15
Dissemination policy	17
The ABS leadership team	18
Organisational structure	20
Statistical Leadership	
National Statistical Service Leadership	24
State and Territory Statistical Services	25
Statistical Capability Development	26
International Relations	27
Statistical Data Integration Leadership	28
Statistical Programs	
National Accounts	30
International Accounts	31
Financial Statistics	32
Prices	33
Public Sector Accounts	34
Business Indicators	35
Innovation and Technology Statistics	36
Business Demographics	37
Industry Statistics	38
Agriculture Statistics	39
Transport Statistics	40
Tourism Statistics	41
Environment Statistics	42
Demography	43
Labour Statistics	44
Economic Analysis and Reporting	45
Regional Statistics	46
Census of Population and Housing	47
Health and Disability Statistics	48
Education and Training Statistics	49
Crime and Justice Statistics	50
Aboriginal and Torres Strait Islander Statistics	51
Social Conditions Statistics	52
Culture and Recreation Statistics	53
Migrant Statistics	54
Social and Progress Reporting	55
Analytical Services	56
Statistical Infrastructure and Corporate Support Programs	
Geography	58
Data Standards and Methods	59
ABS 2017 Program Management Office	60
ABS 2017 Information Infrastructure	61
Data Acquisition and Collection	62
ABS Centre for Data Integration	63
Customer Services	64
Statistical Services	65
Corporate Services	66
Technology Services	67
Appendices	
Statistical and topic advisory groups	70
Contacts	72

Preface



The Australian Bureau of Statistics (ABS) is Australia's national statistical agency. By providing trusted statistics and statistical leadership, the ABS supports public debate and helps Australians to make informed decisions. The need for official statistics to provide an independent evidence-base for government and the community continues to grow, and the ABS has an excellent track record in informing Australians.

In a dynamic and crowded information market, it is our ability to objectively and comprehensively measure the issues that are most important to Australians that sets the ABS apart. The ABS has built trust with Australians. We value and protect privacy, and we employ transparent, professional practices to ensure the accuracy and integrity of our statistics. This value base is one aspect of the ABS that will not change into the future. It is reinforced by the legislation that governs us, and is ingrained in our organisational culture.

Along with other providers and users of statistical information, the phenomenon of big data has captured our imagination. Administrative, transactional, sensor, satellite and opinion data can provide new insights into society. As with any opportunity, big data also poses threats. Ensuring that datasets are used to inform important issues without threatening privacy or providing misinformation is a continuing focus for the ABS. A key initiative in this space is data integration, which involves bringing together two or more datasets to create a new, bigger and more informative dataset. The ABS provides leadership in data integration in order to achieve a safe and effective environment for statistical data integration involving Commonwealth data.

As the information market in which the ABS operates changes, so does the environment we aim to reflect in our statistics. Measuring emerging issues and providing insight into the connected elements of Australia's society, economy and environment is increasingly complex. In this context, innovation, collaboration and robust statistical systems are essential to our continued ability to provide high-quality statistical information.

To increase our ability to provide timely, relevant statistical information from any source, the ABS has commenced a strategic transformation program. The first multi-modal, primarily digital Census of Population and Housing, to be undertaken in 2016, will demonstrate the impact of the transformation program. The 2016 Census will improve efficiency, effectiveness, and data quality - and pave the way for increasingly dynamic data collection into the future. The lead up to the 2016 Census will also establish the tools, techniques and technology to enable the ABS to capitalise on the breadth of existing information in the Commonwealth and broader statistical system.

By transforming how we collect, collate, manage, use, reuse and release statistical information, our business model will better support standardisation, integration and improved information management. This will make the ABS more resilient to change. The foundations we establish over the next four years will enable emerging statisticians to produce data with optimum currency and relevance, with the continued values of integrity, professionalism and trust.

The intelligence of our response to the environment in which we operate, and our ability to continue to meet the changing expectations of our stakeholders, will be the measure of our success, as will our ability to continue to produce high-quality, trusted official statistics to inform decision-making, research and discussion. The programs for delivery presented in the ABS Forward Work Program describe how the ABS will respond to our environment to ensure we continue to provide a world-class statistical service for the benefit of all Australians.

Brian Pink

Australian Statistician

June 2013

Notes to this publication

Resources

Resource costs presented in this publication reflect estimates for the four years 2013–14 to 2016–17. These costs present a broad indication of the resources currently allocated to each program but should not be taken as an accurate basis for estimating future allocations. Changes in the composition and budget of programs in the ABS Forward Work Program are made from year to year. Therefore it is not possible to compare the projections attributed to programs between different ABS Forward Work Program publications.

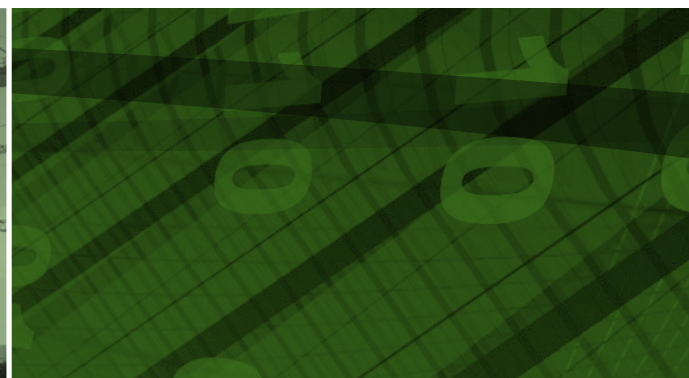
The 2013–14 figures are full-year projections based on the agreed budget for the year. Projections for 2014–15, 2015–16 and 2016–17 are subject to change as priorities are reviewed and new budgets are agreed. The projections for all four years reflect all expenditure attributable to the programs presented in this publication.

More information

More information about the ABS can be found at the ABS website <http://www.abs.gov.au>.



General Information



Overview of the ABS

The ABS is Australia's official national statistical agency. It was established as the Commonwealth Bureau of Census and Statistics following enactment of the *Census and Statistics Act 1905*. The agency became the Australian Bureau of Statistics in 1975 with the passing of the *Australian Bureau of Statistics Act 1975*. This Act also established the role of the Australian Statistician and defined the functions of the ABS.

The role of the ABS

The ABS provides statistics on a wide range of economic, social, population and environmental matters for government, business and the community. It also has a legislated role to coordinate the statistical operations of official bodies and liaise with international organisations.

ABS mission

We assist and encourage informed decision making, research and discussion within governments and the community, by leading a high quality, objective and responsive national statistical service.

ABS values

The ABS and its staff uphold the Australian Public Service (APS) Values and Code of Conduct. ABS values, which are congruent with the APS values, are critical to the ABS's role as an independent provider of statistical information for Australia. The ABS values are:

- ▶ Integrity
- ▶ Trust of providers
- ▶ Relevance
- ▶ Professionalism
- ▶ Access for all
- ▶ Service.

The ABS values are described in detail in the ABS Corporate Plan.

Census and Statistics Act 1905

- ▶ Provides the legislative authority to undertake the Census of Population and Housing and other statistical collections
- ▶ Provides the Australian Statistician with the power to direct a person to supply information
- ▶ Requires the ABS to publish the results of its collections
- ▶ Imposes strict secrecy provisions on officers of the ABS.

Australian Bureau of Statistics Act 1975

- ▶ Establishes and ensures the independence of both the ABS and the Australian Statistician
- ▶ Describes the functions of the ABS
- ▶ Requires ABS to advise Parliament of proposals for new collections
- ▶ Establishes the Australian Statistics Advisory Council (ASAC)
- ▶ Requires ABS and ASAC to report to Parliament each year.

ABS functions

- ▶ To constitute the central statistical authority for the Australian Government and, by arrangements with the governments of the states and territories, provide statistical services for those governments
- ▶ To collect, compile, analyse and disseminate statistics and related information on a wide range of economic and social matters
- ▶ To formulate, and ensure compliance with, statistical standards
- ▶ To ensure coordination of the statistical operations of official bodies
- ▶ To provide advice and assistance to official bodies in relation to statistics
- ▶ To liaise with statistical agencies of other countries and international organisations.

Australian Statistics Advisory Council

Advises the Minister and the Australian Statistician on:

- ▶ the improvement, extension and coordination of statistical services provided for public purposes in Australia
- ▶ annual and longer-term priorities and programs of work that should be undertaken by the ABS
- ▶ any other matters relating to those statistical services.

ABS goals, strategies and key projects

The ABS establishes its work program in response to current and emerging statistical priorities, and in the context of the ABS mission and corporate plan. To help in prioritising and shaping its forward work program, the ABS has identified four overarching goals in its corporate plan. The strategies to achieve each goal underpin the forward work program and the organisation's planning mechanisms.

ABS goals

GOAL: INFORMED AND BETTER USE OF AUSTRALIA'S STATISTICAL ASSETS

Strategies:

- ▶ deliver high quality, objective and flexible official statistics
- ▶ improve the accessibility, timeliness and relevance of Australia's statistical information
- ▶ improve the management and informed use of official statistical information.

Outcome: *Timely high quality statistical information that is readily accessible.*

GOAL: CONTINUED TRUST AND SUPPORT OF PROVIDERS

Strategies:

- ▶ effective engagement with providers
- ▶ develop solutions that maintain confidentiality but unlock the value of information.

Outcome: *Engaged, responsive and supportive providers who trust the ABS.*

GOAL: LONG-TERM ORGANISATIONAL SUSTAINABILITY

Strategies:

- ▶ better prepare our people for the future
- ▶ transform our business systems and processes
- ▶ foster our ability to innovate.

Outcome: *A capable, innovative and productive organisation.*

GOAL: RESPECTED LEADER IN THE NATIONAL AND INTERNATIONAL STATISTICAL COMMUNITIES

Strategies:

- ▶ enhance the coordination of, and investment in, the National Statistical Service
- ▶ build strong statistical capacity and capability domestically and within Asia and the Pacific region
- ▶ shape and influence national and international discussions regarding statistical frameworks and policies.

Outcome: *The ABS is influential and sought after for independent information, advice and expertise.*

Key projects delivering these goals and strategies

Transforming the way we collect, manage and deliver information: the ABS 2017 Program

The ABS commenced planning its business and information management transformation program in 2010. This program, which will be undertaken in a number of phases, represents the most strategic initiative to update statistical business processes and information management infrastructure within the ABS since the 1970s. In early 2012, the ABS 2017 Group was formed to lead the transformation of the way that the ABS collects, collates, manages, uses, and disseminates statistical information.

This transformation will provide our stakeholders with access to statistical information that is easy to find and use, reliable and comparable. The ABS will achieve this by upgrading infrastructure, refining the ways data is acquired, and modernising the ways it documents, processes and disseminates statistical information to clients.

To improve the management of the statistical information which the ABS currently delivers, the ABS is developing a coherent and integrated environment for the life-cycle management of statistical data, which will be significantly more responsive and adaptable than current approaches and systems allow. This includes the harmonisation of statistical processes, methods, information management approaches and supporting ICT applications, followed by training in the new approaches, and the migration of processes and data from the existing to the new environment.

Australia is not alone in facing demands for better managed statistical information. Many other countries face the same challenges. The harmonisation of statistical production and information management approaches needed within the ABS are also needed by many other National Statistical Offices (NSOs). The ABS is collaborating with other NSOs to develop the next generation of statistical infrastructure. Four collaborative projects are currently underway (business architecture; administrative data; platforms for collection; and innovation in dissemination).

Delivering a successful predominantly digital Census in 2016

Australia's seventeenth national Census of Population and Housing, to be held in August 2016, will be significantly different from the previous Censuses. The 2016 Census will be the first Census with a majority of responses received online, with a target of six and a half million households utilising the eCensus, and the first Census that the majority of households are contacted via mail rather than by a Census collector. These major changes are necessary to ensure the long term sustainability of the Census program and to establish a foundation for future development and innovation that takes full advantage of the technology that is available and eagerly adopted within Australia.

The key goals for the 2016 Census are to:

- ▶ maintain and make targeted improvements to the coverage of the population overall, including at the small area level and for specific population groups
- ▶ maximise the value of the Census by improving data quality (relevance, timeliness, accuracy, coherence, interpretability, accessibility)
- ▶ increase the efficiency of operations throughout the end-to-end Census process
- ▶ contribute to the sustainability of the ABS and the Census program
- ▶ protect the privacy of all Australians.

A review of all topics is a priority for the 2016 Census to ensure the continuing relevance of the Census in contemporary Australia. The demand for new topics in the 2016 Census will be high, however increases to the Census form need to be balanced against the load that this would create on every Australian and the costs of increases. After a public consultation process in 2012-13, the ABS will formulate recommendations on the topics for inclusion in the 2016 Census later in 2013 for consideration by the Australian Statistics Advisory Council and the government.

In order to support the significant change in Census operations in 2016 the ABS needs to develop new capabilities in relation to field force management and coordination, mechanisms and systems to engage most citizens online, an up-to-date and accurate national residential address list, real-time monitoring of Census operations and a smarter online form (the eCensus). This capability development will be supported with an annual field testing program that will allow new processes, systems and methodologies to be tested in the real world and refined before they are required for operation in 2016.

Demands for data integration for statistical and research purposes

Data integration is a major priority for the Commonwealth Government, the ABS and for the wider National Statistical System as demand increases for analyses of integrated social, economic and environmental datasets for statistical and research purposes.

There is a strong need for consistent governance, methods, policies and protocols around data integration to:

- ▶ maximise benefits from the use of data, in a controlled and secure manner
- ▶ minimise risks associated with data integration activities on datasets of national significance such as the Census of Population and Housing
- ▶ maintain the trust of the broader community in the collection and use by the Australian Government of personal and business data.

A Cross Portfolio Data Integration Oversight Board (the Board) was established in late 2010 to oversee the application of high level principles for the integration of Commonwealth data. The Australian Statistician chairs the Board and membership includes the ABS and Secretaries of the Department of Health and Ageing, the Department of Human Services, and the Department of Families, Housing, Community Services and Indigenous Affairs.

Commonwealth Portfolio Secretaries also agreed to fund a small Secretariat, housed in the ABS, to support the Board and implement other elements of an agreed set of governance and institutional arrangements including best practice guidelines and a public register and complaints mechanism for data integration projects involving Commonwealth data.

The ABS also undertakes data integration for statistical and research purposes directly as an accredited Integrating Authority. The ABS program of data linkage projects continues to grow. Outcomes from a range of 2011 Census Data Enhancement projects will be released over the next few years, including the second wave of a 5% Statistical Longitudinal Census Dataset in December 2013.

Essential Statistical Assets for Australia

In November 2010, the Australian Statistics Advisory Council (ASAC) endorsed the ABS to “identify in a highly consultative way a preliminary list of *Essential Statistical Assets (ESA) for Australia* regardless of the organisations that produce them”. The ABS recognises that it is not the only producer of highly important official statistical information for policy formulation and evaluation, the effective delivery of community services and to more generally inform Australian society. ESA has been developed over the last two years as part of the ABS strategy to support the National Statistical Service (NSS).

The aim of the ESA for Australia initiative is to allow for effective prioritisation of investment, focus and effort within the NSS, by identifying those essential statistical assets which are critical to decision-making in a complex and sometimes fragmented information environment across Australia.

There are four phases in the overall initiative:

- ▶ phase 1 – developing the 2013 list of ESA for Australia
- ▶ phase 2 – assessing the quality of the assets present on the list of ESA for Australia
- ▶ phase 3 – developing a list of Essential Statistical Infrastructure
- ▶ phase 4 – identifying and pursuing future investment priorities.

The purpose of the list is to separate the core set of essential statistical assets from the number of other official statistics generated by governments and use it to prioritise investment in statistical assets. This broader set of statistics is still important and will continue to be produced, managed and invested in when needed. Distinguishing those statistical assets that are “essential” aims to identify where ongoing investment will yield the greatest benefit.

Phase one of the initiative, the 2013 list of *Essential Statistical Assets for Australia* (ABS cat. no. 1395.0) was launched at the NatStats 2013 conference and has received strong support from the statistical community. The focus over the next two years will be progressing phase two (quality assessment and gap analysis of the ESA for Australia list) and phase three (identifying Australia’s essential statistical infrastructure).

Measures of Australia’s Progress

Measuring progress is one of the most important tasks a national statistical agency undertakes. *Measures of Australia’s Progress (MAP)* brings together statistics about society, the economy and the environment to provide insight into national progress. MAP assists Australians to answer the question, ‘Is life in Australia getting better?’

The ABS keeps MAP relevant and at the forefront of measuring progress both nationally and internationally. A recent major initiative is the extensive MAP consultation undertaken in 2011-12, which asked people about their aspirations for national progress. This process also allowed us to check, a decade on from the first MAP release, that we are still measuring what is most important to Australians for progress. The outcomes of this consultation were reported in *Measures of Australia’s progress - Aspirations for our nation: a conversation with Australians about progress* (cat. no. 1370.0.00.002). A summary of the process was presented to the fourth OECD World Forum on the Progress of Societies in New Delhi, India in October 2012.

The results of the consultation process will be used as the basis for a refreshed MAP product. The addition of a fourth domain ‘Governance’, a significantly expanded Environment domain and an enlarged dashboard reflect the changing attitudes of Australians about what aspects of life are important to them. Themes such as equity and sustainability also emerged strongly, as did ideas of subjective well-being, such as ‘Enriched lives’. The 2013 release of MAP will put measures against as many of the newly emerging ideas as is feasible.

The major milestones for MAP in 2013 will be the release of an Information Paper in late June to expose the list of proposed indicators. Feedback from this process will be taken on board for the upcoming and subsequent releases of MAP. The second key milestone will be the release of the refreshed product in November 2013.

How the ABS operates

To meet its responsibilities, the ABS delivers high-quality statistical programs, provides statistical leadership within Australia and internationally, and works with other National Statistical Offices to develop and maintain statistical infrastructure.

The ABS has a central office in Canberra and regional offices located in the eight state and territory capitals. Regional offices are responsible for the delivery of statistical services to their state or territory. All regional offices, apart from the ACT office, also have some responsibilities for national operations for particular statistical activities.

Producing official statistics

The ABS produces and disseminates statistics under the following broad programs:

- ▶ Economic and Environment Statistics
- ▶ Population, Labour and Social Statistics.

The Economic and Environment Statistics Group and the Population, Labour and Social Statistics Group lead and deliver high-quality statistical programs to inform governments, researchers and the Australian community. Both groups work across the entire statistical process, with the support of other areas within the ABS, and ensure that their statistics fit within internationally accepted conceptual frameworks, accurately reflect the real world, and adapt to changing user needs.

The statistical production process involves nine phases, from developing specifications for statistics based on user information needs, through to the delivery of statistical information in formats that best suit clients. Statistical production is enabled by several overarching processes, including the management of datasets, metadata, and statistical frameworks. The process is presented in *Diagram 1*.

To undertake their roles effectively, the statistical groups in the ABS draw on the services and expertise of the Methodology and Data Management Division, the Data Acquisition and Collection Branch, and the Customer Services Branch. These expert areas ensure that ABS statistics are produced to world-class standards with optimum efficiency.

The Methodology and Data Management Division reports directly to the Australian Statistician, providing oversight of the statistical program to ensure professionalism, confidentiality, and objectivity in all ABS products and services. ABS methodologists also provide advice to the statistical groups and the ABS 2017 Group on issues relating to metadata management, survey design, data collection methodology, analysis, and data quality management. Methodologists also undertake research on statistical methods to improve the efficiency and accuracy of ABS work, and provide leadership and support in the development, review and application of statistical classifications.

The ABS 2017 Group was established in 2012 to assist the ABS to achieve strategic business transformation over the next four years. The ABS 2017 Group centralises key statistical acquisition and dissemination services, the 2016 Census program, and information infrastructure and design. The Group is focussed on developing the fundamental statistical infrastructure required for increased efficiency and versatility; building enterprise-level eCollection capability for business and household surveys; transforming the 2016 Census business model; and transforming the way the ABS receives and processes data from all sources.

ABS corporate and technology services assist the ABS to achieve its strategic directions. These programs provide enabling technologies and lead the ABS in the areas of culture, legislation, legal compliance, capability development, brand and reputation management, and resource management.

The organisational structure of the ABS ensures it is able to continue to develop and maintain expertise in key statistical topics, and to nurture expertise across the statistical cycle.

Diagram 1 presents a broad overview of the statistical production process, as described in the Generic Statistical Business Process Model.



How the ABS work program is determined

The Australian Statistician is responsible for determining the ABS work program. The work program must align with the ABS's mission, its legislative mandate and its values. The ABS seeks to provide an appropriate level of service across all its legislated functions within the funding available to it.

How the ABS balances its work program

The ABS does not have the resources to undertake all of the activities that fall within its mandate and which users would ideally require.

In balancing the ABS's program of collection and other activities, the Australian Statistician seeks to ensure that the ABS's resources are used to the maximum benefit of governments and the broader community. In assessing this, the ABS takes account of the value of the information being sought, the extent to which undertaking the activity is consistent with the ABS's legislated mandate and with community expectations, and the costs that the activity would impose upon the ABS, providers, and the broader community.

In assessing the value of the information, the ABS takes account of:

- ▶ the importance of the issue from a public policy and/or community interest perspective
- ▶ the views of Australian, state and territory government agencies
- ▶ the depth and breadth of user interest in the wider community
- ▶ the opinions of recognised experts in the field
- ▶ the extent to which the information would impact on decision making (as judged from history or from understanding the decision-making processes), and any international reporting obligations.

In assessing whether any proposed activity undertaken by the ABS would be consistent with its legislative mandate and community expectations, the ABS takes account of:

- ▶ any specific legislative obligations on the ABS to undertake the activity
- ▶ the statistical measurability of the issue, including the ability to provide information that is 'fit for purpose'
- ▶ the extent to which other available sources of information, both ABS and non-ABS, could be used to inform decision making
- ▶ the extent to which the ABS's independent authority and the ABS's power to collect information is required
- ▶ the extent to which meaningful information can be provided in the necessary time-frames
- ▶ the level of community support to provide the required information
- ▶ whether the activity will help build strong statistical capacity and capability domestically and within the Asia and Pacific region and beyond.

In assessing the cost of the activity, the ABS takes account of:

- ▶ the full cost to the ABS of undertaking the collection activity
- ▶ the capacity and capability of the ABS to undertake the collection activity
- ▶ the workload and other costs imposed on providers
- ▶ the sensitivity of the information and the ABS's requirement to maintain the trust of providers.

How the ABS understands client needs

The ABS determines future priorities by consulting and planning with users of statistics. These consultations are a key input to decisions on the scope, content and frequency of official statistics.

Consultation takes place through the ABS organised statistics user groups; direct discussion with Australian, state, territory and local government agencies, academics, industry bodies, non-government and community organisations, social media; and the release of information or discussion papers inviting comment. A list of user groups is provided in the appendix.

Consultations cover both the need for data on new or emerging topics, and the need for changes to existing data collections including discontinuing some series. Contact with consulted groups continues throughout the statistical cycle to keep them informed on progress and as a check that developments towards statistical outputs remain on track to meet survey objectives.

The overall shape of the proposed work program and estimates of resources required to deliver it are considered by the Australian Statistics Advisory Council.

User-funded activities

The ABS work program can be extended through user-funded activities. The ABS undertakes user-funded work where:

- ▶ the work is consistent with the ABS's mission, legislative mandate and values
- ▶ the work itself, or the related funding arrangements, does not compromise the ABS's core work program or public support for it
- ▶ there is demonstrable value in the activity
- ▶ any burden imposed on providers is acceptable
- ▶ the ABS has the capability and capacity to undertake the work
- ▶ the work is fully cost-recovered
- ▶ the ABS has full control over all aspects of the work, including ownership of statistics created from it.

Governance framework

The ABS governance framework has two broad components:

- ▶ External governance, which includes the governance arrangements that establish the ABS as a statutory authority, provide the ABS and the Australian Statistician (Statistician) with appropriate direction and powers, and hold the ABS and the Statistician to account.
- ▶ Internal governance, which includes the mechanisms set up by the ABS to ensure that the organisation operates efficiently and effectively, within the constraints of the direction and powers provided externally.

External governance

The ABS provides the information required to maintain a fair electoral system and inform other important aspects of Australia's democracy. The external governance arrangements balance the need for independence to allow the ABS to effectively deliver on these responsibilities, while also ensuring the ABS operates responsibly and meets the needs of governments.

The Statistician is accountable to the Australian Parliament and the Minister responsible for the ABS. The Australian Statistics Advisory Council (ASAC) provides advice to both the Australian Statistician and the Minister in relation to:

- (a) the improvement, extension and coordination of statistical services provided for public purposes in Australia;
- (b) annual and longer-term priorities and programs of work that should be adopted in relation to major aspects of the provision of those statistical services; and
- (c) any other matters relating generally to those statistical services.

All state and territory governments are represented on ASAC. Other Council members are appointed to ensure representation across a broad cross-section of perspectives covering government, business, academic and community interests.

Along with the legislation governing all statutory authorities, the *Australian Bureau of Statistics Act, 1975* (ABS Act) and the *Census and Statistics Act, 1905* (C&S Act) govern the ABS. The functions of the ABS are summarised in the ABS Act:

- (a) to constitute the central statistical authority for the Australian government and, by arrangements with the governments of the states, provide statistical services for those governments
- (b) to collect, compile, analyse and disseminate statistics and related information
- (c) to ensure coordination of the operations of official bodies in the collection, compilation and dissemination of statistics and related information, with particular regard to:
 - (i) the avoidance of duplication in the collection by official bodies of information for statistical purposes;
 - (ii) the attainment of compatibility between, and the integration of, statistics compiled by official bodies; and
 - (iii) the maximum possible utilisation, for statistical purposes, of information, and means of collection of information, available to official bodies.
- (d) to formulate, and ensure compliance with, standards for the carrying out by official bodies of operations for statistical purposes
- (e) to provide advice and assistance to official bodies in relation to statistics, and
- (f) to provide liaison between Australia, on the one hand, and other countries and international organisations, on the other hand, in relation to statistical matters.

The C&S Act provides the Statistician with the authority to conduct statistical collections and, when necessary, to direct a person to provide statistical information. It also imposes obligations to publish and disseminate compilations and analyses of statistical information, and to maintain the confidentiality of information collected under the C&S Act.

The Statistician and the ABS are held to account through Australian Government accountability mechanisms including Senate Estimates and annual reporting processes.

Internal governance

ABS internal governance mechanisms include planning, control, and risk management frameworks that together ensure the ABS remains relevant and responsive and continues to meet the requirements and expectations of its stakeholders. Internal governance forums deliver and oversee key elements of the ABS's planning cycles, control mechanisms and risk management. The audit and review program provides advice to the Statistician regarding controls, risks and operations.

Planning

The ABS is underpinned by the foundations of its legislated role and functions, and its enduring mission statement and values (presented on page 4 of this publication). To ensure the ABS continues to meet its responsibilities as its operating environment changes, periodic strategy reviews and planning processes are undertaken.

The ABS Corporate Plan presents the future directions of the ABS and is developed in close consultation with staff. The ABS Corporate Plan has a 5-10 year horizon and is reviewed approximately every four years.

To complement this longer-term view, ABS senior managers undertake an annual strategy review process. This incorporates environmental scanning, risk identification and direction setting with a four year horizon. This enables the review of resource allocation and a definitive prioritisation of the work program. The ABS-level strategy review interacts with divisional strategy through business planning processes and consultation programs.

Controls

Controls ensure that ABS staff are able to undertake their responsibilities effectively, within the constraints of the law and ABS values, in a way that meets community expectations of public accountability, probity and openness. Mechanisms include policies, delegations, fraud prevention and identification, role statements and procedures.

Risk management

The ABS reviews and identifies strategic risks that have the potential to significantly impact on the organisation. The management of these enterprise risks is fundamental to the long term viability of the ABS. Reflecting their importance, these risks are assessed and managed by the ABS Executive.

There continues to be a strong focus on the integration of risk identification and prioritisation within the ABS business planning cycle. In developing business plans, managers at all levels identify key risks to their work programs. Significant risks identified at section level are elevated or integrated into business plans at the Branch and Division levels to provide a more comprehensive and consistent picture of the ABS risk profile.

Internal governance forums

The ABS has a number of corporate governance forums to develop policies and strategies, identify ABS priorities, assess and respond to risks and opportunities, and monitor ABS performance. These include:

► ABS Management Meetings

ABS Management Meetings are the key forum for determining ABS strategic directions, priorities and resource allocations. Meetings are chaired by the Statistician and attended by the Deputy Australian Statisticians, First Assistant Statisticians, Regional Directors, the Chief Financial Officer, and the Assistant Statisticians of the Office of the Statistician and External Engagement, and the Human Resources Branch.

► Executive Leadership Group Meetings

The Executive Leadership Group (ELG) provides strategic oversight of the ABS and determines ABS policy. ELG is chaired by the Statistician and membership includes the Deputy Australian Statisticians. The Assistant Statistician of the Office of the Statistician and External Engagement provides secretariat support. ELG provides high-level focus to the National Statistical Service and strategic client engagement.

► Strategic Finance and Investment Committee

The Strategic Finance and Investment Committee (SFIC) ensures that the ABS's major investments are aligned with the key goals of the ABS and are appropriately funded. SFIC is responsible for the development of the ABS Strategic Investment Plan which is approved by the ABS Management Meeting. SFIC is chaired by the Chief Operating Officer and membership includes the Deputy Australian Statistician responsible for the ABS 2017 Group, two First Assistant Statisticians, a Regional Director, the Chief Financial Officer, and the Assistant Statisticians of the Program Management Office and the Office of the Statistician and External Engagement.

► Senior Management Group Meetings

The Senior Management Group (SMG) focuses on cross-cutting issues to ensure effective delivery of the work program, including ensuring that the work program is delivered on time, within budget and to an appropriate quality. SMG meetings are chaired by the Chief Operating Officer and attended by all First Assistant Statisticians, two Regional Directors, the Chief Financial Officer, and the Assistant Statisticians of the Office of the Statistician and External Engagement, and the Human Resources Branch. ELG and SMG jointly meet periodically to discuss strategic issues and to review organisational performance.

► **Protective Security Management Committee**

The Protective Security Management Committee oversees the ABS's comprehensive security framework, ensuring that both protective and IT security are maintained. The committee is a key means of ensuring that the ABS meets its legal requirement not to divulge identifiable information and to make sure that there is policy to meet the security and privacy related requirements of legislation including the *Financial Management and Accountability Act 1997*, *Census and Statistics Act 1905*, *Australian Bureau of Statistics Act 1975*, *Privacy Act 1988* and *Crimes Act 1914*.

Audit and review

ABS's internal audit and review programs provide independent assessment, objective assurance and advisory services to the Statistician and senior management.

These services assure the Statistician that controls are adequate and meet public accountability requirements and other better practice guidelines; and assist the Australian Statistician and senior management to improve operations and reduce risks.

The audit and review programs are overseen by the Audit Committee, established in accordance with section 46 of the *Financial Management and Accountability Act 1997* and the *Financial Management and Accountability Regulations 1997* 22C(1) and 22C (2).

The objectives of the Audit Committee are to provide assurance to the Statistician that the ABS has in place a comprehensive control framework for its business systems, including those used to support: statistical activities; risk management processes/activities; external accountability responsibilities; and legislative obligations. The Committee also provides assurance that the control framework is working effectively. The Committee may also identify significant issues of concern or non-compliance for the attention of the Statistician.

The ABS's commitment to reconciliation and diversity

ABS Reconciliation Action Plan

The ABS is committed to reconciliation. In line with the ABS mission, the ABS assists and encourages informed decision making, research and discussion among Aboriginal and Torres Strait Islander peoples, their communities and organisations, and within governments and the wider community. It does this by leading and coordinating statistical activity involving and relating to Aboriginal and Torres Strait Islander peoples.

The ABS Reconciliation Action Plan (RAP) sets out actions the ABS will take to:

- ▶ increase the recruitment, retention and development opportunities for Aboriginal and Torres Strait Islander peoples in the ABS
- ▶ build the capability of ABS employees to respond effectively to Aboriginal and Torres Strait Islander peoples and communities through respect and understanding of Aboriginal and Torres Strait Islander peoples and culture
- ▶ ensure that ABS policies, programs and services effectively respond to Aboriginal and Torres Strait Islander peoples and communities
- ▶ develop the statistical literacy skills of Aboriginal and Torres Strait Islander peoples and communities to enable them to make informed decisions about themselves, their families and their communities.

Over the next four years, the ABS's commitment to reconciliation will focus on four key areas: building local connections, building cultural competency, and increasing Aboriginal and Torres Strait Islander employment and statistical literacy.

To support continuous improvement and monitoring of the RAP, an Aboriginal and Torres Strait Islander Reference Group has been established. The reference group contributed to the development of the RAP and will continue to provide periodic reviews and feedback on the progress of the RAP during the life of this plan. The reference group will also assist with the continued development and positive promotion of the RAP into the future. For more information, including the detailed action plan, please refer to the *ABS Reconciliation Action Plan, 2013-16* (ABS cat. no. 1011.0), available at www.abs.gov.au.

ABS Workplace Diversity Action Plan

The ABS supports all forms of diversity, such as differences in gender, age, language, ethnicity, cultural background, disability, religious beliefs, sexual orientation, family responsibilities, differences between individuals in educational level, life experience, work experience, socio-economic background and personality.

Workplace diversity is about creating a respectful and inclusive work environment that values and utilises the contributions of all employees, as well as addressing disadvantage or discrimination experienced by particular diversity groups within the workplace. The ABS Workplace Diversity Action Plan is built on the principle that a diverse workforce is innovative, productive and improves services. The ABS seeks to be representative of the Australian community and to make the fullest possible use of the range of diverse backgrounds, perspectives and talents of all our staff.

The ABS has identified four overarching strategies to achieve positive outcomes from increased workplace diversity:

1. Strengthen a respectful and inclusive work environment and culture
2. Improve our ability to attract, recruit and retain people of diverse backgrounds and targeted under-represented diversity groups
3. Improve our understanding of workplace diversity issues and increase the analysis and utilisation of workplace diversity metrics
4. As a statistical services provider, ensure accessible services, products and data collection practices are provided for people with disability and people from culturally and linguistically diverse backgrounds.

Progress on the deliverables of the ABS Workplace Diversity Action Plan will be regularly reviewed and reported on annually. The deliverables will be modified where necessary to ensure actions and targets remain relevant over the life of the plan. For more information, including the detailed action plan, please refer to the *ABS Workforce Diversity Action Plan, 2013-17* (ABS cat. no. 1010.0), available at www.abs.gov.au.

Products and services

In order to inform decision-making, research and discussion within governments and the community, the ABS provides a range of statistical products and services.

Statistical publications

To meet the needs of clients, the ABS seeks to utilise leading-edge communication and dissemination technology and aspires to showcase 'best practice' communication of official statistics.

Each year the ABS produces over 800 official statistical publications, as well as a range of research, analysis and data products, to describe the population, economy, the environment, and society. The full range of official statistical publications is available through the ABS website, together with information to assist researchers, government, and the community to better understand ABS statistics and how they are produced. The ABS also publishes information papers regarding any important changes to ABS topics, concepts, sources or methods.

The ABS provides a range of information solutions for customers:

- ▶ online dissemination services including the ABS website, Facebook and Twitter
- ▶ output database products such as Table Builder, ABS.Stat and ABS DataAnalyser, which provide large volumes of detailed statistical macro and micro data (confidentialised)
- ▶ Confidentialised Unit Record Files (CURFs) available on CD-ROM, via the Remote Access Data Laboratory or ABS Data Laboratory for analysis by researchers
- ▶ access to a defined set of key data through an iPhone/iPad Application 'ABS Stats'.

National Information and Referral Service

The National Information and Referral Service (NIRS) is the main entry point to the ABS for basic telephone, email and online enquiries from clients. NIRS also provide a referral service to clients, referring inquiries that cannot be met by NIRS or self-help facilities to other parts of the ABS for servicing. Contact details for NIRS are listed on page 72.

Information and statistical consultancy services

More detailed statistics than those initially released on the website or in database products are available on request. Requests for additional statistical data or analysis/enhanced data presentation are met through the Information Consultancy Service which is provided on a cost recovery basis.

The Statistical Consultancy Service provides assistance to government departments and statutory authorities in areas such as survey design, questionnaire design, sampling techniques and data analysis.

Data integration services

The ABS provides a wide range of data integration and analytical services for statistical and research purposes, including complex services such as probabilistic linkage, longitudinal and small area analysis. The ABS is accredited as an Integrating Authority under the interim arrangements for the integration of Commonwealth Government data. This allows the ABS to undertake high risk data integration projects involving Commonwealth data. The ABS undertakes these projects under the strong privacy provisions of the *Census and Statistics Act 1905*. The ABS already has a wide variety of existing datasets in population, social, economic and environmental spheres, and has access to a range of others that could be used in data integration. The ABS uses these to examine the characteristics of groups and the relationships that may exist between variables, such as social, economic and environmental conditions, behaviours and outcomes, to enable both within and cross-disciplinary approaches to improve Australia's understanding of its societal progress and economic development. The ABS has invested in developing staff with the skills and capabilities to undertake the different data integration services offered by the ABS and in developing tools to make microdata available to users whilst protecting privacy.

Statistical capability services

Statistical capability services provide activities to improve the statistical skills and knowledge of key target groups within the community, including: school students; tertiary students; teachers/lecturers; opinion leaders (including journalists); decision makers (including members of parliaments and staff from agencies in all levels of government); and the general community (including small business owners and community groups). Key services include the Census@School program, a suite of web based resources on the ABS website, standard and customised statistical training, and international development programs to build the statistical capability of governments in Asia and the Pacific region.

Outposted officers

ABS employees are outposted to key Australian Government and state and territory government agencies to support strategic engagement and statistical initiatives between the ABS and those agencies. Statistical initiatives can include: facilitating access to statistics; enhancing statistical capability; providing data quality advice; and strengthening statistical coordination within host agencies. While many outposting arrangements are ongoing and cover a wide range of strategic issues, others are for short periods to assist with specific technical projects.

User-funded statistics

The ABS produces statistics funded by clients where the work is consistent with its role as a national statistical agency, and aligns to the functions stipulated in the *Australian Bureau of Statistics Act 1975*. All user-funded statistics are publicly disseminated as part of the full range of official statistics. This applies to statistics that are co-funded by the ABS or fully funded by the client. User-funding enables the ABS to expand the information available to Australians by providing a responsive statistical service.

Dissemination policy

Policy and principles

The Australian Government Cost Recovery Guidelines stipulate that a basic set of information products and services, funded by the taxpayer, should be provided to the community free of charge as 'public goods' and other information, products and services beyond the basic information set should be cost recovered. Consistent with this policy, the ABS dissemination principles ensure that:

- ▶ all users, including the general community, have free and easy access to a basic set of official statistics - mainly through the ABS website
- ▶ where it is cost effective to do so, the costs of producing and providing information products and services that are additional to the basic set of official statistics are recovered from the users of these additional products.

Objectives

The objectives of the ABS charging policy are to:

- ▶ reduce the need for the general taxpayer to bear those elements of the cost of the statistical service which have a specific and identifiable value to particular users
- ▶ rationalise use of ABS products and services
- ▶ enable the demand for ABS products and services to be used as an indicator of how ABS resources should be used.

Community service obligation

The ABS fulfils the community service obligation for statistics by:

- ▶ including all published ABS information in the basic set, available on the ABS website free of charge
- ▶ providing a range of self service tools for generating statistical tables from a variety of data sources including the 2011 Census of Population and Housing
- ▶ providing a range of self-service statistical literacy resources via the ABS website free of charge
- ▶ offering a National Information and Referral Service which provides free data and information over the phone for straightforward enquiries.

Approaches to cost recovery

Products in the basic set may be provided in alternative formats on request by the user. Pricing is based on the marginal costs incurred in producing them in these formats.

For products beyond the basic set, such as customised extraction of data, pricing is based on incremental (or avoidable) costs. The ABS may also price a limited range of products on a commercial basis. This occurs where such products and services compete, or may compete, with similar products provided by others.

Most of the ABS's free, subscription and customised data outputs (except CURFs) are covered by Creative Commons licensing. This licence empowers users to use or re-purpose ABS data without seeking the ABS's permission, provided that the ABS is attributed as the source for that information.

The ABS leadership team

Australian Statistician



Brian Pink

Deputy Australian Statisticians



Peter Harper
Population, Labour &
Social Statistics Group



Ian Ewing
Economic & Environment
Statistics Group



Trevor Sutton
ABS 2017 Group



Jonathan Palmer
Strategies, Services &
Technology Group

First Assistant Statisticians



Paul Jelfs
Social, Health &
Labour Division



Gemma Van Halderen
Population, Education &
Data Integration Division



Michael Davies
Macroeconomic
Statistics Division



Bruce Hockman
Business, Industry &
Environment Statistics
Division



Frank Yu
Program Management &
Infrastructure Division



Jenine Borowik
Program Delivery
Division



Patrick Hadley
Technology Services
Division



Siu-Ming Tam
Methodology & Data
Management Division

Regional Directors



Tom Joseph
Victoria



AJ Lanyon
Queensland



Jacky Hodges
Western Australia



Andrew Henderson
Tasmania



Paul Williams
New South Wales



Celia Moss
Northern Territory



Dean Bowley
South Australia



Mariette O'Connell
(A/g) Australian
Capital Territory

Assistant Statisticians



David Zago
Social Conditions
Branch



Michelle Marquardt
(A/g) Health & Disability
Branch



Bernard Williams
Labour Branch



Lane Masterton
Technology Engagement
& Design Branch



Paul Schubert
Statistical Services
Branch



Christine Williams
Education and Data
Integration Branch



Graeme Brown
Demography, Regional
& Social Analysis
Branch



Michael Beahan
Industry & Productivity
Statistics Branch



Michael Smedes
National Accounts
Branch



Judy Henson
International &
Government Finance
Accounts Branch



Marcel van Kints
(A/g) Prices Branch



Adrian Bugg
Data Acquisition &
Collection Branch



Bill Allen
Environment Statistics
& Integration Branch



Greg Amie-Fong
Program Management
Office



Merry Branson
Customer Services
Branch



Lewis Conn
Office of the Statistician
& External Engagement



Duncan Young
2016 Population Census
Branch



Mark Sawade
Technology Applications
Delivery Branch



Jamie Macgregor
Technology Infrastructure
Delivery Branch



Chris Duffy
Data Standards &
Methods Branch



Gillian Nicoll
Information
Infrastructure Branch



Chris Libreri
Human Resources Branch



Debra Foggin
Financial Management
Branch



Ric Clarke
(A/g) Analytical Services
Branch

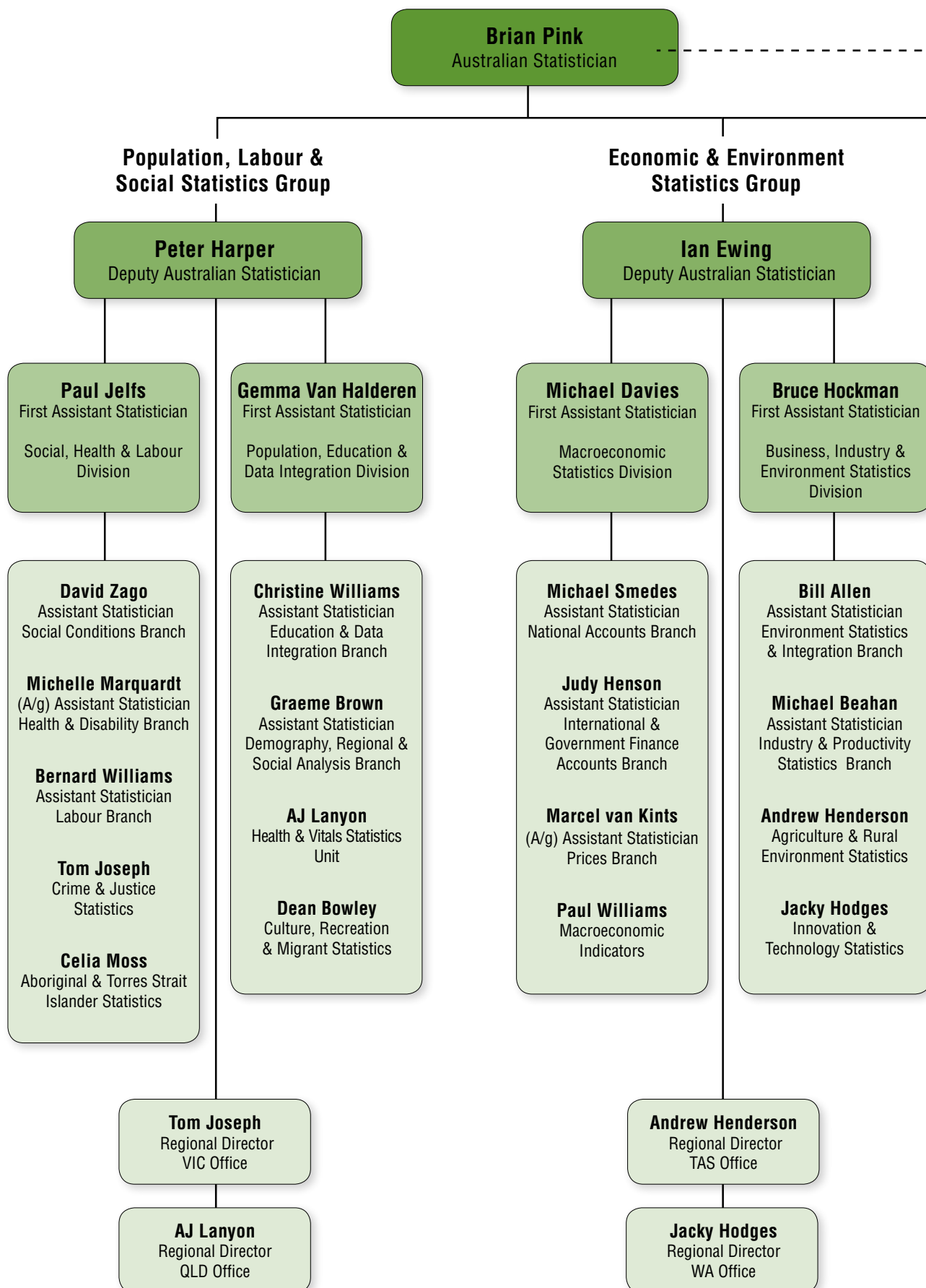


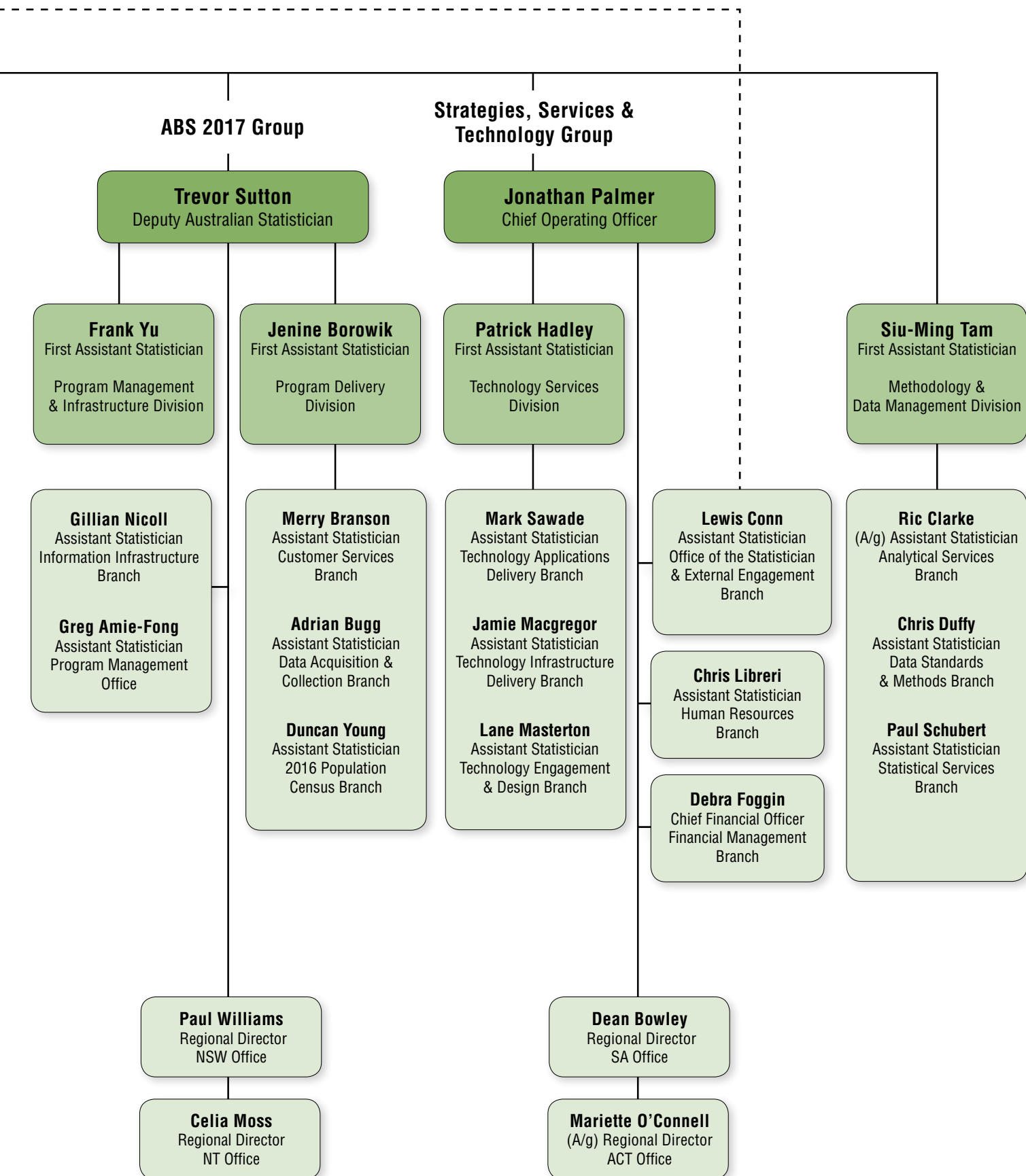
Paul Lowe
(On extended leave)



Paul Mahoney
(On extended leave)

Organisational structure







Statistical Leadership



National Statistical Service Leadership

Program Manager

Lewis Conn
Assistant Statistician
Office of the Statistician
& External Engagement
Branch

Resources

Program Costs	\$m
2013-2014	1.3
2014-2015	1.4
2015-2016	1.4
2016-2017	1.4

Objectives

The National Statistical Service Leadership program provides a focus within the ABS for strategies aimed at strengthening and extending the National Statistical Service (NSS), the community of government agencies working together to build a rich statistical picture for a better informed Australia. Consistent with the ABS's legislated responsibilities as Australia's central statistical authority, the program identifies opportunities for the ABS to partner with other organisations to improve the quality and value of their statistical resources. Targeted outcomes of this program are: optimising and improving Australia's essential statistical assets for evidence-based policy development, evaluation and research; improved and more effective statistical infrastructure and services; and increased statistical capability of producers and users of statistics.

The program has a key role in developing policy and strategies to support the NSS, and serves as a catalyst and evaluator of NSS activities, particularly those which cut across ABS program areas or involve cross-jurisdictional developments. Externally, the program is a focus for statistical coordination and provides leadership to policy and research professionals by disseminating resources and policies to support their statistical activities.

Outputs

Outputs of the program are:

- ▶ policy and strategies for ongoing development and advancement of the NSS
- ▶ support to the NSS Board and the following external statistical governance forums to advance NSS priorities and the use of statistical information:
 - ▶ the Australian Statistics Advisory Council
 - ▶ the State Statistical Forum
 - ▶ the Australian Government Statistical Forum
- ▶ resources for collection, compilation, analysis and dissemination of survey and administrative data
- ▶ strategic engagement with stakeholders to advance information sharing across government agencies
- ▶ participation in initiatives to improve the quality and use of official statistics e.g. Gov 2.0, data.gov.au, GovHack
- ▶ support for the Council of Australian Governments (COAG) Reform Council's reporting process through promotion of Data Quality Online.

Developments

Stakeholder engagement for 2013-14 will focus on the following key strategic priorities for advancing the NSS:

- ▶ the transformation of Information Management infrastructure to establish an environment in which Australian governments and the community can easily find, access, and combine statistical information
- ▶ unlocking the potential of key administrative data holdings held by governments for statistical data integration and research, and enhancing the official statistics evidence base for decision-making purposes
- ▶ progressing, in a highly consultative way, the *Essential Statistical Assets (ESA) for Australia* initiative to protect and prioritise government investment in official statistics
- ▶ enabling statistical information to be integrated with location information
- ▶ enhancing the level of statistical capability across government agencies to support improved use of statistical information in policy formulation and evaluation.

The main medium-term developments of the program are to:

- ▶ complete an ESA for Australia quality pilot and develop a preliminary list of *Essential Statistical Infrastructure* considered critical for the nation – due December 2013
- ▶ lead the ABS's participation in the 2013 International Year of Statistics to raise the profile and commitment to developing national statistics – due December 2013
- ▶ strategically position external statistical governance fora to focus on NSS priority areas and provide opportunity for engagement on key policy issues – ongoing
- ▶ consult with key external stakeholders on issues related to improved statistical governance potentially via a national statistical policy – due December 2014
- ▶ enhance strategic engagement to strengthen relationships between key official data producers and policy makers to invest and value high quality statistics as a strategic asset and statistical capability – ongoing.

State and Territory Statistical Services

Program Manager

Regional Directors

Resources

Program Costs	\$m
2013-2014	9.2
2014-2015	9.1
2015-2016	9.0
2016-2017	9.0

Objectives

The ABS contributes to the development of well-informed policy and decision making in the states and territories through statistical leadership, representation and promotion. This role is set out in ABS legislation and is supported by formal agreements with state and territory governments. The State and Territory Statistical Services (STSS) Program supports the ABS objective of an expanded and improved National Statistical Service (NSS) within each state and territory through collaboration on statistical priorities and emerging issues.

The role of the STSS is to work with the state and territory governments and communities, and to support other areas of the ABS who are engaging with these stakeholders, to:

- ▶ progress the National Statistical Service
- ▶ advocate for state and territory statistical priorities
- ▶ develop statistical capability and infrastructure
- ▶ improve the quality, visibility, utility and use of administrative data
- ▶ coordinate jurisdictional activities for ABS programs, such as Demography, Census and community engagement.

Outputs

The main outputs of the STSS program are:

- ▶ advancement of National Statistical Service objectives in each state and territory
- ▶ to progress key statistical initiatives in collaboration with state and territory governments, based on priorities determined by the State Statistical Forum
- ▶ provision of advice and intelligence to ABS national programs on relevant state and territory statistical priorities and emerging issues including where states and territories are key data providers
- ▶ collaboration on statistical projects designed to meet high priority needs of individual state and territory governments
- ▶ intelligence about emerging state and territory demographic issues
- ▶ promotion of the importance of the Census, and input into planning for operations of the Census in intercensal years
- ▶ coordination of the Indigenous Community Engagement Strategy leading to improved statistical literacy and statistical outcomes
- ▶ support for external statistical governance and data development forums.

Developments

The main medium-term developments in the program are to:

- ▶ progress the statistical priorities endorsed by the State Statistical Forum in collaboration with state and territory governments – ongoing
- ▶ work with state and territory data custodians and users to determine quality measures for the underlying datasets which have been identified in the *Essential Statistical Assets for Australia* initiative – due 2013-14
- ▶ develop statistical infrastructure and the capability of state and territory governments – ongoing
- ▶ support the widest possible use by governments and the community of 2011 Census data and assist in ABS preparation for the upcoming 2016 Census – ongoing until 2016.

Statistical Capability Development

Program Manager

Lewis Conn
Assistant Statistician
Office of the Statistician
& External Engagement

Resources

Program Costs	\$m
2013-2014	1.7
2014-2015	1.3
2015-2016	1.3
2016-2017	1.3

Objectives

The Statistical Capability Development program takes a lead role in building statistical capability across the National Statistical Service (NSS), the Australian community and the regional and global statistical systems. The program supports the ABS key goal of informed and better use of Australia's statistical assets by developing and delivering quality products and services. These include key partnerships with external organisations as well as leading the ABS in its efforts to improve statistical capability and promote the informed and increased use of statistics within Australian governments and the broader community.

The objectives of the Statistical Capability Development program are to:

- ▶ develop and build stakeholder support for a rigorous framework to underpin ABS statistical capability initiatives
- ▶ provide national leadership for an ABS-wide, coordinated statistical capability program
- ▶ develop specific statistical capability strategies and high quality products and services for key client groups
- ▶ collaborate with business partners across the ABS (such as National Statistical Service Leadership, State and Territory Statistical Services, and statistical programs) to deliver strong statistical capability outcomes
- ▶ partner with a range of key external stakeholders, and build collaborations which support ABS statistical capability initiatives.

Outputs

The main outputs of the program are the provision of a range of ABS products, services and specialist advice and assistance aimed at supporting statistical capability development, which include:

- ▶ the development and implementation of an Integrated Statistical Capability Development Plan
- ▶ a national external statistical training program
- ▶ the ABS Education Services and CensusAtSchool-Australia websites - primary vehicles for providing online education resources
- ▶ the annual CensusAtSchool statistical collection program
- ▶ statistical literacy resources hosted on the Understanding Statistics web pages
- ▶ the ABS Statistical Literacy Assistant.

Developments

Consistent with the Statistical Capability Development program's national leadership role, the main medium-term developments in the program are to:

- ▶ develop and implement the ABS's Integrated Statistical Capability Development Plan 2014-19 – due 2013-14
- ▶ gain support for the adoption of the Integrated Statistical Capability Development Framework across the NSS – due 2013-14
- ▶ organise a round table to address the decline in Australia's statistical education and capability – due 2013-14
- ▶ evaluate the available open on-line course offerings relating to building statistical capability – due 2013-14
- ▶ provide customised training, both national and international including eLearning and blended learning initiatives – ongoing
- ▶ develop new teacher and student resources aligned to the new Australian Curriculum – ongoing
- ▶ deliver an enhanced Statistical Literacy Assistant and Understanding Statistics web pages to support statistical literacy development – due 2013-14
- ▶ contribute to international work focussed on building statistical capability in the global and specifically the Asia-Pacific region – ongoing.

International Relations

Program Manager

Lewis Conn
Assistant Statistician
Office of the Statistician
& External Engagement

Resources

Program Costs	\$m
2013-2014	3.6
2014-2015	3.6
2015-2016	2.7
2016-2017	2.7

Objectives

The ABS engages internationally for three distinct purposes:

- ▶ to shape, influence and lead international statistical standards, frameworks, strategies and policies
- ▶ to collaborate with others to develop a shared set of infrastructure, tools, methods and systems
- ▶ to assist developing countries with a particular focus on Asia and the Pacific to improve statistical information for decision-making.

The key objectives of the ABS's International Relations program are to:

- ▶ review and refresh the international relations strategy to ensure ABS maintains a high profile and outstanding reputation as an engaged and active statistical leader
- ▶ shape and influence national and international discussions regarding statistical frameworks, strategies and policies
- ▶ build strong statistical capacity and capability domestically and within Asia and the Pacific Region
- ▶ contribute to Australia's foreign policy objectives and aid development strategies
- ▶ ensure the ABS is managing and mitigating against risks to the organisation
- ▶ monitor performance and compliance across the various components of the program by undertaking audit and review of the program.

Outputs

The main outputs of the international relations program are:

- ▶ to seek high level collaboration to increase the pool of expertise, and reduce the cost of redevelopment, in order to harmonise statistical methods, systems and capabilities to achieve mutual benefits across all participating National Statistical Offices (NSOs)
- ▶ to refresh the current International Relations strategy (2010) taking account of current government priorities described in the *Australia in the Asian Century* white paper
- ▶ to support the growing importance of comparable international data in the global economy by meeting the increasing demand to produce high quality, timely and consistent statistics
- ▶ shifting the focus towards Asia and the Pacific, with a model of engagement that supports a proactive voice from this region
- ▶ high quality delivery of statistical improvement initiatives in Asia and the Pacific funded by AusAID
- ▶ to develop an integrated statistical capability framework that supports developing NSOs in meeting international standards in compiling and producing statistics.

Developments

The ABS International Relations program medium-term developments are:

- ▶ a refreshed International Relations Strategy 2013-2017, including the implementation of a new governance arrangement to manage the growing program – due 2013-14
- ▶ four collaborative projects with other NSOs, including new dissemination and collections systems, processes for collecting administrative data, and common metadata frameworks – due 2015-16
- ▶ working with the United Nations Economic Commission for Europe on the modernisation of statistical infrastructure – ongoing
- ▶ with the support of AusAID, deliver a range of improved outcomes for statistical improvement initiatives in Indonesia, the Pacific region and Timor-Leste – ongoing
- ▶ through targeted collaboration, enhance the ABS's engagement with key countries in Asia such as China, India and South Korea. Collaboration provides an opportunity to increase the pool of expertise, and reduce the cost of re-development via co-designed and co-developed projects – due 2016-17
- ▶ providing strategic support to support ABS Executive engagement in key international statistical fora such as the Economic and Social Commission for Asia Pacific, United Nations Statistical Commission, and the United Nations Statistical Institute for Asia and Pacific – ongoing.

Statistical Data Integration Leadership

Program Manager

Christine Williams
Assistant Statistician
Education & Data
Integration Branch

References

More information can be found in:

'Data integration involving Commonwealth data for statistical and research purposes: governance and institutional arrangements'
<http://www.nss.gov.au/dataintegration>

Resources

Program Costs	\$m
2013-2014	0.8
2014-2015	0.7
2015-2016	0.7
2016-2017	0.7

Objectives

The Statistical Data Integration Leadership program provides support to the Cross Portfolio Data Integration Oversight Board. This Board provides strong and consistent governance, methods, policies and protocols around data integration involving Commonwealth data for statistical and research purposes.

Data integration is the joining of data from different sources to develop new datasets. Data integration is a major priority for the Commonwealth Government and for the wider National Statistical System as demand increases for analyses of integrated population, social, economic and environmental datasets for statistical and research purposes. There is a strong need for consistent governance, methods, policies and protocols around data integration to:

- ▶ maximise benefits from the use of data, in a controlled and secure manner
- ▶ minimise risks associated with data integration activities on datasets of national significance such as the Census of Population and Housing
- ▶ maintain the trust of the broader community in the collection and use by the Australian Government of personal and business data.

The principal stakeholders involved are data custodians, integrating authorities and users, which include Australian, state, territory and local government organisations, researchers and the community. The key outcome is to provide a safe and effective environment for data integration for statistical and research purposes within Australia.

Outputs

The initiative has the following outputs:

- ▶ secretariat services to the Cross Portfolio Data Integration Oversight Board, which is chaired by the Australian Statistician, and includes Portfolio Secretaries from Health and Ageing, Human Services, and Families, Housing, Community Services and Indigenous Affairs
- ▶ assessments of applications for accredited Integrating Authority status
- ▶ policies and strategies for data integration activities involving Commonwealth data for statistical and research purposes
- ▶ best practice materials and tools for data integration activities involving Commonwealth data for statistical and research purposes
- ▶ maintenance of the public register of data integration projects and a comments and complaints mechanism
- ▶ communications about data integration, including: seminars and presentations; participation in relevant conferences (particularly those that relate to information sharing across governments, the research sector and the community); and participation in meetings (particularly those across portfolios within governments).

Developments

The main medium-term developments will be to:

- ▶ work with agencies to implement a safe and effective environment for data integration involving Commonwealth data, including developing best practice guidelines – timing dependent on consultation with stakeholders
- ▶ maintain a register of data integration projects conducted for statistical and research purposes involving Commonwealth data – the register was launched in December 2012, and the full set of data integration project details will be available by October 2013
- ▶ engage with the states and territories to encourage a safe and effective environment for data integration for statistical and research purposes across all jurisdictions – ongoing
- ▶ stay abreast of international best practice for statistical integration activities in order to influence Australian deliberations – ongoing
- ▶ engage with the custodians of key datasets to identify opportunities for their use in statistical data integration projects – ongoing
- ▶ support confidentialising data and providing safe access to microdata to support statistical and research outputs – ongoing
- ▶ improve the understanding of issues around different levels of data linking accuracy – ongoing.



Statistical Programs



National Accounts

Program Manager

Michael Smedes
Assistant Statistician
National Accounts Branch

References

Topics @ a Glance page
www.abs.gov.au

Under Topics @ a Glance
select Economy, then
National Accounts

Under National Statistics
select National Accounts

Other references

*Australian National
Accounts: Concepts, Sources
and Methods*
(ABS cat. no. 5216.0)

Resources

Program Costs	\$m
2013-2014	10.1
2014-2015	10.6
2015-2016	10.7
2016-2017	11.5

Objectives

The National Accounts Program provides quarterly and annual data about the level of economic activity, the pattern of economic growth and the structure of the Australian and State economies within a coherent system of concepts and classifications.

The main clients of the program are: Australian government agencies (in particular the Treasury); the Reserve Bank of Australia; state and territory government agencies (in particular state and territory Treasuries); international organisations such as the International Monetary Fund and the Organisation for Economic Cooperation and Development; economic analysts in the private sector; the media; and academics.

National accounts information is used to: formulate and assess government macro-economic policies, both fiscal and monetary; assist in allocating Australian government funds to state governments; formulate industry development policies; undertake financial and business planning; and facilitate international economic comparisons.

Outputs

The main outputs of the program are the quarterly publications *Australian National Accounts: National Income, Expenditure and Product* (ABS cat. no. 5206.0) and *Australian National Accounts: Financial Accounts* (ABS cat. no. 5232.0); and the annual publication *Australian System of National Accounts* (ABS cat. no. 5204.0). Together these publications provide comprehensive measures of Australia's macro-economic performance and economic structure.

The key series relate to current price and volume measures of Australia's Gross Domestic Product broken down into its components. In the quarterly publication, most data are published in seasonally adjusted and trend terms. The publications also show estimates for the national income and capital accounts, and sector accounts such as for households and general government. Data on financial transactions, flow of funds and financial balance sheet positions are provided quarterly and complete balance sheets for sectors and the nation are compiled annually. The annual publication also includes a range of economic data by industry as well as capital stock and productivity estimates.

Annual estimates of economic growth for each state and territory are published separately in *Australian National Accounts: State Accounts* (ABS cat. no. 5220.0). The annual release of Input-Output tables in *Australian National Accounts: Input-Output Tables – Electronic Publication* (ABS cat. no. 5209.0) tables provide a detailed articulation of the structure of economic production by detailing the flows of products into and between industries and their use for consumption, investment or export.

The program provides seminars, training courses and other information to assist economic analysts in understanding and using National Accounts statistics.

Developments

The main medium-term developments in the program are to:

- ▶ produce distributional analysis of Household income, expenditure, savings and wealth in the National Accounts framework – due September 2013
- ▶ produce a household balance sheet on a quarterly basis – due December 2013
- ▶ produce income and capital accounts for all sectors on a quarterly basis – due December 2014
- ▶ contribute to international research of topics identified as needing further work during the update of the System of National Accounts, with an emphasis on the concept of income and of capital services – ongoing
- ▶ improve the coverage of services industries by increasing the scope of input collections and investigating additional data sources – ongoing
- ▶ improve inputs into productivity estimates, taking on board insights gained from the compilation of these estimates – ongoing.

International Accounts

Program Manager

Judy Henson
Assistant Statistician
International and
Government Finance
Accounts Branch

Resources

Program Costs	\$m
2013-2014	6.9
2014-2015	6.7
2015-2016	6.8
2016-2017	7.0

Objectives

The International Accounts Program provides statistics on Australia's Balance of Payments, International Investment Position, Merchandise Trade and International Trade in Services. The statistics are compiled from a range of surveys and administrative data sources with merchandise trade statistics derived from records lodged with the Australian Customs and Border Protection Service.

The main users of the International Accounts data are economic and industry analysts and policy advisers in Australian government agencies (in particular, the Treasury, the Reserve Bank of Australia, the Productivity Commission, Austrade and the Departments of: Foreign Affairs and Trade; Prime Minister and Cabinet; and Resources, Energy and Tourism), private sector economic analysts and dealers, academics, the media and international organisations.

The statistics are used to: analyse Australia's external performance; formulate and evaluate macroeconomic policy (including trade policy, trade treaties and foreign investment policy); analyse trends in income, capital flows and patterns of investment into and out of the economy; and undertake international comparisons. The international accounts are inputs to the Australian National Accounts, providing the external transactions accounts and the external assets and liabilities components of the national balance sheet.

Outputs

The program produces a range of statistical publications, classifications and methodological information. The key statistical publication is the quarterly *Balance of Payments and International Investment Position, Australia* (ABS cat. no. 5302.0) which presents a comprehensive set of international accounts statistics including chain volume measures for trade in goods and services and seasonally adjusted data for the current account.

Monthly information on exports and imports of goods and services, on a balance of payments basis, is released in *International Trade in Goods and Services, Australia* (ABS cat. no. 5368.0). The publication includes a selection of tables showing merchandise exports and imports data on a recorded trade basis. The program also produces the *Australian Harmonised Export Commodity Classification* (ABS cat. no. 1233.0). Updates to the classification, if required, are scheduled for release six monthly.

International Merchandise Imports, Australia (ABS cat. no. 5439.0) provides summary information on Australia's merchandise imports for the latest reference month, on a recorded trade basis. Very detailed merchandise trade export and import statistics classified by commodity, country of trading partner, state, industry of origin and broad economic category can be obtained from ABS Information Consultancy Services.

International trade in services data by partner country and state are released annually, on a calendar year basis, in *International Trade in Services by Country, by State and by Detailed Services Category, Calendar Year* (ABS cat. no. 5368.0.55.004) and on a financial year basis in *International Trade in Services by Country, by State and by Detailed Services Category, Financial Year* (ABS cat. no. 5368.0.55.003). Calendar year international investment position, financial account and primary income data by partner country, and international investment position and financial account data by industry for direct investment are released annually in *International Investment Position Australia: Supplementary Statistics* (ABS cat. no. 5352.0).

Developments

The main medium-term developments in the program are to:

- ▶ improve the processes and data sources used to maintain survey coverage for the Survey of International Trade in Services (SITS) – due December 2013
- ▶ conduct and release the results from a Survey of Foreign Currency Exposure (Hedging) in respect of March 2013 – due December 2013
- ▶ improve the processes and data sources used to maintain survey coverage for the Survey of International Investment (SII) – due September 2014
- ▶ review sources, methodology, and content of *Characteristics of Australian Exporters* (cat. no. 5368.0.55.006) – due May 2015
- ▶ implement the final Extended Balance of Payments Services Classification contained in the Manual on Statistics of International Trade in Services – due December 2015.

Financial Statistics

Program Manager

Paul Williams
Assistant Statistician
Macroeconomic Indicators

References

Topics @ a Glance page
www.abs.gov.au
Under Topics @ a Glance
select Economy

Resources

Program Costs	\$m
2013-2014	2.6
2014-2015	2.6
2015-2016	2.6
2016-2017	2.6

Objectives

The Financial Statistics Program compiles statistics on the financial assets, liabilities, borrowing and lending of financial institutions; and on the stocks and flows of finance for the sectors of the economy. The statistics are sourced from several ABS statistical surveys and other data sources including the Australian Prudential Regulation Authority (APRA) and the Australian Taxation Office.

The main users of the program include the main financial policy agencies (including the Treasury and the Reserve Bank of Australia), and financial institutions. Industry associations, analysts and State and Territory Treasuries are also extensive users of the lending statistics.

The statistics are used for analysis of monetary policy outcomes, for monitoring the flows in the financial system, and for assessing the financial performance of the economic sectors or institutional classes. Housing finance commitment statistics are used as one of the indicators of consumer sentiment and, together with personal, commercial and lease finance commitment statistics, are used as forward indicators of demand in the economy.

Financial statistics are important inputs to the Australian National Accounts, predominantly the financial accounts, and accordingly, the ABS National Accounts Program is a key client of the Financial Statistics Program.

Outputs

The program produces the quarterly publication *Managed Funds, Australia* (ABS cat. no. 5655.0), which includes statistics for cash management trusts, superannuation funds, life insurance corporations, public unit trusts, common funds, and friendly societies. Information on securitisation trusts is released quarterly in the publication *Assets and Liabilities of Australian Securitizers* (ABS cat. no. 5232.0.55.001).

The monthly publication *Housing Finance, Australia* (ABS cat. no. 5609.0) includes information on finance commitments for owner occupation and investment housing, as well as balances outstanding on housing finance loans. Finance commitments by banks and other financial institutions are covered, including whether the loans are at fixed or variable rates. The monthly publication *Lending Finance, Australia* (ABS cat. no. 5671.0) provides statistics on commercial, personal and lease finance commitments.

The program also compiles the source data for the quarterly publication *Australian National Accounts: Financial Accounts* (ABS cat. no. 5232.0), which is a component of the Australian National Accounts.

Developments

The main medium-term developments in the program are to:

- ▶ participate in the review by APRA of their suite of statistical reporting forms for authorised deposit-taking institutions – due December 2013
- ▶ review the frequency and timing of the *Lending Finance, Australia* publication – due 2013-14
- ▶ Further medium-term developments will be determined as recommendations arising from the review of financial statistics are costed and prioritised.

Prices

Program Manager

Marcel van Kints
(A/g) Assistant Statistician
Prices Branch

References

Topics @ a Glance page
www.abs.gov.au
Select Economy, then Prices

Resources

Program Costs	\$m
2013-2014	13.5
2014-2015	13.7
2015-2016	13.7
2016-2017	13.7

Objectives

The Prices Program compiles a number of main economic indicators: the Consumer Price Index (CPI); the House Price Index (HPI); the Wage Price Index (WPI); and a range of Producer and International Trade Price Indexes (PPIs and ITPIs). The program also produces Selected Living Cost Indexes (SLCIs) which are inclusive of the Pensioner and Beneficiary Living Costs Index (PBLCI) and Analytical Living Cost Indexes (ALCIs) for selected Australian households. In addition, the program uses information papers, seminars and other means to promote a greater understanding of the concepts, sources and methods of price indexes within the local, national and international communities.

The main clients for the program's outputs are the Reserve Bank of Australia, the Treasury, the Australian Government Departments of: Education, Employment and Workplace Relations; and Families, Housing, Community Services and Indigenous Affairs. Australian, state and territory government agencies whose payments are indexed, economic analysts, and the general business community are also clients of the Prices program.

The main uses of the key prices indicators are listed below.

- ▶ CPI is a general measure of price inflation for the household sector. It is used to produce volume estimates for components of the Australian National Accounts; as a basis for indexing pensions, superannuation payments and government taxes and charges; as an input into salary and wage negotiations; and for indexation of government bonds and business contracts
- ▶ HPI is a measure of price changes for established houses and for project homes. It is used for analysis of trends in the housing market and of changes in the value of the housing stock
- ▶ WPI is a measure of wage inflation. It is used as an input into wage setting negotiations; to produce volume estimates for components of the Australian National Accounts; and for indexation of business contracts
- ▶ PPIs and ITPIs are used to produce volume estimates for components of the Australian National Accounts and Balance of Payments; as a guide to future inflationary trends; and for indexation of business contracts
- ▶ SLCIs are analytical series used to measure the impact of price changes on the out-of-pocket living costs experienced by employee households, age pensioner households, other government benefit recipient households and self-funded retiree households. Specifically, the PBLCI is used as a basis for indexing pensions and other payments to government benefit recipients.

Outputs

The main program outputs are the following quarterly publications:

Consumer Price Index, Australia (ABS cat. no. 6401.0)

House Price Indexes: Eight Capital Cities (ABS cat. no. 6416.0)

Wage Price Index, Australia (ABS cat. no. 6345.0)

Producer Price Indexes, Australia (ABS cat. no. 6427.0) and *International Trade Price Indexes, Australia* (ABS cat. no. 6457.0)

Selected Living Cost Indexes, Australia (ABS cat. no. 6467.0).

Developments

The main medium-term developments in the program are to:

- ▶ conduct research to identify potential uses of administrative and transactional data in the Consumer Price Index – due December 2013
- ▶ produce updated Concepts, Sources and Methods publications for the CPI, PPIs and ITPIs – due December 2013
- ▶ produce a retail trade margins price index – due December 2013
- ▶ review and re-weight the HPI based on 2011 Census of Population and Housing data – due December 2013
- ▶ implement the outcomes of the Review of the Producer and International Trade Price Indexes 2012, including: updated presentation structure; incorporate international trade in services price indexes into the suite of PPIs and ITPIs; implement a program of improvements to the coverage of the services industries for PPIs – due 2016.

Public Sector Accounts

Program Manager

Judy Henson
Assistant Statistician
International and
Government Finance
Accounts Branch

Resources

Program Costs	\$m
2013-2014	3.3
2014-2015	3.3
2015-2016	3.3
2016-2017	3.3

Objectives

The Public Sector Accounts Program provides Government Finance Statistics (GFS) in respect of the Australian, state and territory governments, their public financial and non-financial corporations, universities and local governments. The statistics are compiled predominantly from government accounting systems.

The main users of the program include various Australian Government agencies (in particular the Treasury, the Commonwealth Grants Commission, the Productivity Commission, and the Departments of: Finance and Deregulation; Education; Employment and Workplace Relations; Health and Ageing), state and territory government agencies (in particular state Treasuries), financial market analysts and international agencies.

GFS are used to monitor the financial performance of governments and to inform on the economic impact of government activities. They are also used to assist in the distribution of Australian government grants to state governments.

GFS are an important input to the Australian National Accounts, providing income and expenditure estimates for the public sector.

Outputs

The program produces a number of GFS publications each year, compiled in accordance with the International Monetary Fund's Government Finance Statistics Manual 2001.

The annual publication *Government Finance Statistics, Australia* (ABS cat. no. 5512.0) provides an operating statement, balance sheet and cash flow statement for the most recent year for each of the Australian, state, territory and local governments for the general government, and public non-financial and financial corporations. Key GFS accruals measures such as the net operating balance, net lending/borrowing, and net worth are provided. A cash-based surplus/deficit is also produced.

Other annual publications include:

- ▶ *Government Financial Estimates, Australia* (ABS cat. no. 5501.0.55.001), which provides initial budget forecasts compiled by each jurisdiction on a GFS basis
- ▶ *Taxation Revenue, Australia* (ABS cat. no. 5506.0), which provides revenue from taxation of the Australian Government, the state and territory governments and local government authorities in Australia
- ▶ *Government Finance Statistics, Education, Australia* (ABS cat. no. 5518.0.55.001), which provides statistics on government expenditure in the field of education.

The quarterly publication, *Government Finance Statistics, Australia* (ABS cat. no. 5519.0.55.001), provides operating statements for general government and public non-financial corporations sector aggregates.

Developments

The main medium-term developments in the program are to:

- ▶ secure ongoing provision of local government finance data to the ABS – due January 2014
- ▶ complete the assessment of the availability, quality and feasibility of compiling quarterly balance sheet data for the local government and public corporations sectors – due June 2014
- ▶ compile experimental quarterly GFS balance sheets for the Commonwealth and State general government sector – due December 2014
- ▶ implement revised international GFS standards in ABS statistics – due July 2016
- ▶ develop an implementation strategy for introducing Australia's revised institutional sector classification for the Public Sector Accounts (Standard Economic Sector Classifications of Australia 2008) – due July 2016
- ▶ provide GFS technical assistance to Pacific Islands countries – ongoing
- ▶ assist the Treasury and/or the Department of Finance in each jurisdiction with implementation and interpretative issues associated with the adoption of the GFS-GAAP (Generally Accepted Accounting Principles) harmonised financial reporting basis represented by the new accounting standard AASB 1049 (Whole of Government and General Government Sector Financial Reporting by Governments) – ongoing.

Business Indicators

Program Manager

Paul Williams
Assistant Statistician
Macroeconomic Indicators

References

Topics @ a Glance page
www.abs.gov.au
Under Topics @ a Glance
select Economy

Resources

Program Costs	\$m
2013-2014	3.7
2014-2015	3.1
2015-2016	3.2
2016-2017	3.2

Objectives

The Business Indicators Program is responsible for the provision of a range of sub-annual main economic indicators.

The indicators include:

- ▶ monthly statistics of turnover by selected retail industries and the takeaway food services industry
- ▶ quarterly statistics of company profits, inventories, sales and labour costs
- ▶ quarterly statistics of actual and expected new capital expenditure
- ▶ quarterly statistics of actual and expected mineral and petroleum exploration
- ▶ biannual statistics of expected mineral and petroleum expenditure.

These data are essential inputs to the compilation of quarterly and annual National Accounts.

The main clients of the program include the Treasury, the Reserve Bank of Australia, various state and territory departments, banks, industry associations, and other financial analysts and commentators. These clients use the statistics as partial indicators of the National Accounts and as important indicators of economic activity in their own right.

Outputs

The key statistical outputs of the program are:

- ▶ *Retail Trade, Australia* (ABS cat. no. 8501.0) - monthly
- ▶ *Private New Capital Expenditure and Expected Expenditure, Australia* (ABS cat. no. 5625.0) - quarterly
- ▶ *Mineral and Petroleum Exploration, Australia* (ABS cat. no. 8412.0) - quarterly
- ▶ *Business Indicators, Australia* (ABS cat. no. 5676.0) - quarterly.

Each publication contains both national and state level data and estimates in original, seasonally adjusted and trend terms. *Business Indicators, Australia* provides information on sales, labour costs, company profits and inventories. All of these publications except *Mineral and Petroleum Exploration, Australia* present current price data by industry. Where appropriate, estimates are presented as chain volume measures.

The program produces detailed datasets that are available in spreadsheet form via the ABS website.

Developments

The main medium-term developments in the program are to:

- ▶ extend Retail Trade's coverage to include service industries, particularly those which have become more significant in household consumption expenditures, and investigate the appropriateness of an activity-based collection versus an industry-based approach – ongoing
- ▶ review Finance sector in Quarterly Business Indicator Survey (QBIS) – due 2013-14
- ▶ investigate expanding the scope of QBIS to include Public Corporations – due 2013-14.

Innovation and Technology Statistics

Program Manager

Jacky Hodges
Assistant Statistician
Innovation and Technology

Resources

Program Costs	\$m
2013-2014	2.8
2014-2015	2.7
2015-2016	2.8
2016-2017	2.5

Objectives

The Innovation and Technology Program provides data to assist understanding of the impact of research and experimental development, innovation and new technologies on economic and social outcomes. It provides:

- ▶ measures of the penetration and use of selected new technologies, particularly information and communication technology (ICT), within Australia, for both businesses and households
- ▶ measures of research and experimental development undertaken by businesses, governments, higher education institutions and private not for profit organisations
- ▶ measures of innovation for Australian businesses
- ▶ the Business Longitudinal Database, which is a tool for understanding business activity and possible links to business performance and productivity.

Clients of the program include:

- ▶ Australian government agencies including the Departments of: Broadband, Communications and the Digital Economy; Industry, Innovation, Science, Research and Tertiary Education; Climate Change and Energy Efficiency; and Agriculture, Fisheries and Forestry as well as the Reserve Bank of Australia, Productivity Commission and Australian Communications and Media Authority
- ▶ state and territory government departments
- ▶ industry associations, research organisations, universities and businesses.

Statistics for expenditure on research and experimental development are important inputs to the Australian National Accounts, and accordingly, the ABS National Accounts Program is a key client of the Innovation and Technology Program.

Outputs

The program produces a range of statistical outputs, showing:

- ▶ use of ICT by Australian businesses and households
- ▶ internet activity conducted through the Australian Internet Service Provider industry
- ▶ innovation activities undertaken within the Australian economy
- ▶ research and experimental development undertaken by businesses, government, universities and private non-profit organisations
- ▶ selected business characteristics data.

The program is responsible for the collection and publication of Venture Capital and Later Stage Private Equity statistics on an annual basis. This work is user funded.

The program is also responsible for the production of the Business Longitudinal Database Confidentialised Unit Record File (BLD CURF). A new BLD CURF is released as each panel of businesses completes five years of reporting. The program undertakes analytical work using the BLD in the subject field of innovation and technology.

The program contributes to the work of national and international agencies, through input to the review and development of relevant statistical standards and frameworks. Related research papers and discussion papers are made available via the ABS website.

Developments

The main medium-term developments in the program are to:

- ▶ develop a 10 year plan for Innovation and Technology Statistics to provide a clear understanding of relevant policies as well as related statistical requirements to ensure the ABS is providing the most relevant information for the funding available – due February 2014
- ▶ in response to user feedback, examine options for enhancing the outputs of the Research and Development (R&D) Statistics program – ongoing
- ▶ contribute to the review of the Organisation for Economic Cooperation and Development (OECD): Frascati Manual 2002: Proposed Standard Practice for Surveys on Research and Experimental Development which is being undertaken by the Working Party of National Experts on Science and Technology Indicators (NESTI) – due 2015
- ▶ establish the Business Longitudinal Database as the pre-eminent source of data for firm level studies including productivity analysis by working closely with users to improve usability of the current Confidentialised Unit Record Files and examining options to increase access to ABS firm level unit record data holdings – ongoing.

Business Demographics

Program Manager

Bill Allen
Assistant Statistician
Environment Statistics &
Integration Branch

References

Topics @ a Glance page
Under Topics @ a Glance
select Economy, then
Business Demography
www.abs.gov.au

Resources

Program Costs	\$m
2013-2014	2.3
2014-2015	2.3
2015-2016	2.3
2016-2017	2.3

Objectives

The Business Demography Program is responsible for providing a range of information about the structure, characteristics and performance of businesses in the Australian economy. The program supports the development of robust business definitions and classifications to ensure the production of a consistent framework for all ABS business statistics.

Key external clients of the program are Australian and state government agencies and industry associations.

Government policy analysts and researchers make extensive use of ABS business statistics. Business and business operator counts produced by the program are important for users in understanding the likely impact of particular policies or events. The data are used mainly to monitor the structure and performance of the business sector; and to assess the need for, and effectiveness of, policies relating to the business sector.

In times of disaster (natural or otherwise), information relating to business location, counts, industry and size becomes particularly important in understanding the potential impact of an event and the support required to assist recovery.

Outputs

The program releases an annual publication *Counts of Australian Businesses, including Entries and Exits* (ABS cat. no. 8165.0) which provides data relevant to users interested in understanding businesses that actively trade in goods or services.

The publication *Counts of Australian Business Operators* (ABS cat. no. 8175.0), first released in 2008, sources data from the Census of Population and Housing (Census) and the Forms of Employment Survey. The next release is due in 2013, using data collected in the 2011 Census and Forms of Employment Survey.

These outputs, together with a range of relevant information, are available on the Business Demography Topics @ a Glance page on the ABS website.

Developments

The main medium term developments in the program are to:

- ▶ investigate user-driven data access options to better support diverse user demand for business demography data – due June 2014
- ▶ review the range of business demography information produced and disseminated to better meet user requirements – due June 2015
- ▶ work with the Australian Business Register to promote coherence between their outputs and ABS business demography statistics – ongoing
- ▶ investigate opportunities to improve regional business demographics through leveraging off work undertaken by the Australian Business Register – due December 2014.

Industry Statistics

Program Manager

Michael Beahan
Assistant Statistician
Industry & Productivity
Statistics Branch

References

Topics @ a Glance page
www.abs.gov.au
Under Topics @ a Glance
Select Industry

Resources

Program Costs	\$m
2013-2014	10.8
2014-2015	9.2
2015-2016	9.4
2016-2017	9.5

Objectives

The Industry Statistics Program provides information about the structure, financial operations, performance and production of Australian industries and construction activity. The information is used to monitor the economy and the business cycle, and support the compilation of the Australian National Accounts and Environmental Economic Accounts.

The program consists of:

- ▶ annual economy wide financial statistics, from a collection program composed of core and flexible elements that cover the entire economy over a ten year period (in response to specifically identified needs), modelling and analytical work.
- ▶ construction statistics on activity levels in residential building, non-residential building and engineering construction.

The main clients include: the Treasury; the Reserve Bank of Australia; the Productivity Commission; the Australian Government Departments of: Resources, Energy and Tourism; Industry, Innovation, Science, Research and Tertiary Education; Sustainability, Environment, Water, Population and Communities; as well as Geoscience Australia; the Australian Bureau of Agricultural and Resource Economics and Sciences; the Bureau of Meteorology; state and territory agencies; industry organisations and associations; and financial and academic institutions.

As the program outputs are a key input to the Australian National Accounts and Environmental Economic Accounts, they are widely used for economic monitoring and forecasting.

Construction statistics are used for construction industry, finance and investment sector analysis; and in understanding population change, an essential input to regional planning.

Outputs

The main outputs of the program are:

- ▶ the monthly publication *Building Approvals, Australia* (ABS cat. no. 8731.0) – provides building approvals statistics which are a leading indicator of future building activity.
- ▶ the annual publication *Australian Industry* (ABS cat. no. 8155.0) – provides national estimates of income, expenses, wages and salaries, operating profit before tax, industry value added, operating businesses, employment, and selected business performance measures at industry division and subdivision levels.

Other outputs include statistical data releases for Australian industry such as:

- ▶ information about Australia's mineral production based on data from state and territory authorities
- ▶ additional detail on the industries covered in the 2012–13 survey program – manufacturing, retail and wholesale (ABS cat. no. 8622.0).

Quarterly releases are:

- ▶ *Construction Work Done, Australia, Preliminary* (ABS cat. no. 8755.0)
- ▶ *Building Activity, Australia* (ABS cat. no. 8752.0)
- ▶ *Engineering Construction Activity, Australia* (ABS cat. no. 8762.0).

Specific user requirements (e.g. more detail for industry and/or data items) may be available by request.

Developments

The main medium-term developments in the program are to:

- ▶ release Australian Industry outputs for 2012–13 – due May 2014
- ▶ compile the 2012-13 Non-profit institutions Satellite Account – due June 2014
- ▶ extend the depth and quality of industry statistics through business taxation and other administrative data, synthetic estimation and/or modelling techniques – ongoing.

Agriculture Statistics

Program Manager

Andrew Henderson
Assistant Statistician
Rural Environment and
Agriculture Statistics Branch

References

Topics@ A Glance:
Agriculture page
www.abs.gov.au

Resources

Program Costs	\$m
2013-2014	4.4
2014-2015	4.4
2015-2016	5.1
2016-2017	6.9

Objectives

The Rural Environment and Agriculture Statistics Program provides reliable, relevant and timely information on the social, economic and environmental characteristics of agriculture including: the natural resource and land management practices undertaken on farms including water use and management; the agricultural commodities produced on farms and their value; farm management information; farmer demographics; and structural information about the industry including the number, size and industry of farm businesses, and the level of foreign ownership of agricultural businesses, land and water assets.

Information from the program supports informed decision-making by Australian and state and territory governments, industry organisations, financial and academic institutions and the private sector on issues important for agricultural and environmental policy determination at the national, regional, and international levels. These issues include: food security; climate change; and the social, economic and environmental sustainability of the agriculture industry. Data from the program directly supports the ABS National Accounts and Water Account.

The ABS engages broadly across government, industry and the wider rural community to ensure the continued relevance of the Rural Environment and Agriculture Statistics Program in the face of a rapidly changing policy environment. Through this engagement the ABS aims to build collaborative partnerships to achieve innovative statistical solutions for identified information needs. The ABS has also been actively involved in the development and implementation of the *Global Strategy to Improve Agricultural and Rural Statistics* (an initiative of the United Nations Food and Agriculture Organisation) and the associated Asia-Pacific Regional Action Plan (RAP), which the Program aligns with.

Outputs

The main outputs from the program are:

- ▶ Preliminary and final data on agricultural commodities produced, their value, and water are released annually. This data is available in *Principal Agricultural Commodities, Australia, Preliminary* (ABS cat. no. 7111.0); *Value of Principal Agricultural Commodities Produced, Australia, Preliminary* (ABS cat. no. 7501.0); *Agricultural Commodities, Australia* (ABS cat. no. 7121.0); *Value of Agricultural Commodities Produced, Australia* (ABS cat. no. 7503.0); *Water Use on Australian Farms* (ABS cat. no. 4618.0); and *Gross Value of Irrigated Agricultural Production* (ABS cat. no. 4610.0.55.008)
- ▶ *Land Management and Farming in Australia* (ABS cat. no. 4627.0) provides annual data on land management practices with an expanded suite of land management practices data released biennially in *Agricultural Resource Management Practices* (ABS cat. no. 4630.0) from June 2013
- ▶ *Agricultural Land and Water Ownership* (ABS cat. no. 7127.0) provides data on the foreign ownership of agricultural businesses, land and water entitlements (next release due April 2014)
- ▶ *Livestock and Meat, Australia* (ABS cat. no. 7218.0.55.001) provides monthly data on livestock slaughterings for human consumption including meat produced, and quarterly data on other livestock products including poultry, meat and wool is available in *Livestock Products, Australia* (ABS cat. no. 7215.0).

Developments

The main medium-term developments in the program are to:

- ▶ embed ongoing consultation and review processes into the work program, following the completion of phase one of the Rural Environment and Agriculture Survey Program Review, to help develop the 2016-22 statistical program – ongoing
- ▶ identify opportunities to build partnerships with stakeholders across government and industry to meet data gaps – such as those identified through the *Essential Statistical Assets for Australia* process – ongoing
- ▶ extend the program's engagement internationally, including through the implementation of the Asia-Pacific RAP of the Global Strategy and related initiatives – ongoing
- ▶ continue to influence corporate improvements to data capture and data delivery systems through: increased use of webforms; expanded use of administrative data (particularly geospatial data); and improvements in dissemination systems and data visualisation – ongoing over 2013-16
- ▶ investigate innovative ways of acquiring data to meet user requirements beyond direct survey collection, such as through exploring the use of satellite imagery – ongoing.

Transport Statistics

Program Manager

Michael Beahan
Assistant Statistician
Industry & Productivity
Statistics Branch

Resources

Program Costs	\$m
2013-2014	2.2
2014-2015	1.7
2015-2016	1.3
2016-2017	1.1

Objectives

The Transport Program is responsible for producing statistics on transport and transport related activities and undertakes a coordination and liaison role between producers and users of transport data.

The main clients of the program include various Australian government agencies, in particular: the Department of Infrastructure and Transport; the Bureau of Infrastructure, Transport and Regional Economics; the Commonwealth Grants Commission; the Treasury; as well as state and territory government agencies; the National Road Transport Commission; and industry and academic organisations.

Statistics from the transport collections are used to assist in policy and planning deliberations by governments and transport organisations, particularly in the areas of long term planning, the regulation of road transport operators, and for accident exposure and fuel use analysis. Information about the vehicle fleet provides a measure of the stock of vehicles registered for road use at a point in time and supports the study of links between demographic change and vehicle ownership and use. Statistics on new motor vehicle sales provide an economic indicator of consumer confidence.

Outputs

The outputs of the program are the monthly publication of *Sales of New Motor Vehicles, Australia* (ABS cat. no. 9314.0), a major economic indicator; biennial publication of the *Survey of Motor Vehicle Use, Australia* (ABS cat. no. 9208.0); and annual publication of *Motor Vehicle Census, Australia* (ABS cat. no. 9309.0).

Developments

The main medium-term developments in the program are to:

- ▶ expand the Survey of Motor Vehicle Use 2014 to enable collection of road freight data – due August 2015
- ▶ continue to pursue the development of nationally consistent road freight statistics sourced from administrative records – ongoing
- ▶ support the other activities of the Australian Transport Data Action Network as it progresses the Data Action Plan for the Standing Council on Transport and Infrastructure, including options for further developing a Transport Satellite Account – ongoing
- ▶ provide administrative support for the maintenance of the Transport Metadata Portal – ongoing.

Tourism Statistics

Program Manager

Michael Beahan
Assistant Statistician
Industry & Productivity
Statistics Branch

References

Topics @ a Glance page
www.abs.gov.au
Under Topics @ a Glance
select Industry, then Tourism

Resources

Program Costs	\$m
2013-2014	0.4
2014-2015	0.4
2015-2016	0.5
2016-2017	0.3

Objectives

The Tourism Program is responsible for producing regular and coherent data on tourism activities. It also undertakes a coordination and liaison role between tourism statistics users and other areas of the ABS that produce tourism related statistics. The program conducts the Survey of Tourist Accommodation (STA) and compiles the Australian Tourism Satellite Account (TSA). The Tourism Program is also responsible for the development and maintenance of tourism frameworks, standards and concepts. Tourism related data produced by other areas of the ABS includes Overseas Arrivals and Departures data, tourism related exports and imports indicators and data collected under the Industry Statistics program.

The main clients of the program are: the Department of Resources, Energy and Tourism; state and territory tourism departments; tourism industry associations; academic and research groups; and marketing and consultancy bodies.

Tourism statistics are used to assist in economic analysis and policy formation relating to tourism, to measure the size and structure of the tourism industry and related industries, to allocate state and territory government funding to regional areas, and for local government planning and investment. The STA data are an input into the policy and planning activities of government and industry, particularly in relation to tourism activity in regional areas. The TSA, funded by the Department of Resources, Energy and Tourism, shows the contribution of tourism to major economic aggregates such as gross domestic product. This data supports policy development related to the Tourism 2020 goals.

Outputs

The key outputs of the program include *Tourist Accommodation, Australia* (ABS cat. no. 8635.0) and the *Australian National Accounts: Tourism Satellite Account* (ABS cat. no. 5249.0). *Tourist Accommodation, Australia* provides detailed demand and supply data relating to hotels, motels and guest houses with 15 or more rooms, and serviced apartments with 15 or more units. One of the most valuable aspects of this data is the fine level of geographic detail for which estimates are available. Other outputs of the program relate to research and development work in such areas as tourism statistics frameworks and classifications.

The program also actively assists in user education relating to *Australian National Accounts: Tourism Satellite Account* (ABS cat. no. 5249.0), *Overseas Arrivals and Departures, Australia* (ABS cat. no. 3401.0), tourism related services exports and imports indicators in *International Trade in Goods and Services, Australia* (ABS cat. no. 5368.0) and *Balance of Payments and International Investment Position, Australia* (ABS cat. no. 5302.0), and the tourism related outputs issued by the Industry Statistics program.

Developments

The main medium-term developments in the program are to:

- ▶ work with users to deliver a revised Survey of Tourist Accommodation that best meets user needs within existing constraints – due December 2015
- ▶ continue the research program for improving Tourism Satellite Account estimates – ongoing
- ▶ contribute to the United Nations World Tourism Organisation and other international bodies as they examine statistical standards and classifications – ongoing.

Environment Statistics

Program Manager

Bill Allen
Assistant Statistician
Environment Statistics &
Integration Branch

Resources

Program Costs	\$m
2013-2014	1.7
2014-2015	1.9
2015-2016	1.4
2016-2017	1.8

Objectives

The Environment Statistics Program contributes to meeting the demand for comprehensive and coordinated information about Australia's environment, focusing on key themes such as water, energy, land and waste management. The complex inter-relationships between the environment, society and the economy require integrated information, which is a key focus of the program.

The program actively engages with partners to understand information needs and coordinate the development of statistics from the wide range of data available in this field.

Use of environment statistics is varied and includes the formulation of policies, economic analysis, research, forecasting and meeting international reporting obligations. Clients of the program include:

- ▶ Australian Government Departments of: Sustainability, Environment, Water, Population and Communities; Agriculture, Fisheries and Forestry; Resources, Energy and Tourism; Innovation, Climate Change, Science, Research and Tertiary Education; and the Treasury
- ▶ Australian Government agencies such as the Australian Bureau of Agricultural and Resource Economics and Sciences; the Murray Darling Basin Authority; the Bureau of Meteorology; and Geoscience Australia
- ▶ state and territory government departments with environment or energy responsibilities
- ▶ academic and research organisations, environmental groups, businesses and individuals.

Outputs

The main outputs of the program are:

- ▶ continued collaboration for development of the remaining volumes of the United Nations' System of Environmental Economic Accounts (SEEA), which brings environmental and economic information together within a common framework
- ▶ production of annual environmental economic accounts according to the SEEA framework: *Energy Account, Australia* (ABS cat. no. 4604.0); and *Water Account, Australia* (ABS cat. no. 4610.0)
- ▶ production of data on energy, water and environment statistics with the triennial release of *Energy, Water and Environment Management* (ABS cat. no. 4660.0)
- ▶ production of annual household behaviour and practice statistics relating to: energy use and conservation (*Environmental issues: Energy Use and Conservation* (ABS cat. no. 4602.0.55.001); water use and conservation (*Environmental issues: Water Use and Conservation* (ABS cat. no. 4602.0.55.003); and waste management and transport (*Environmental issues: Waste Management and Transport Use* (ABS cat. no. 4602.0.55.002))
- ▶ production of 4 yearly household views and behaviours relating to attitudes to the environment - *Environmental Views and Behaviour, 2011-12* (ABS cat. no. 4626.0.55.001)
- ▶ production of 4 yearly *Community Engagement with Nature Conservation, Australia, 2011-12* (ABS cat. no. 4602.0.00.002) (user funded).

Developments

The main medium-term developments in the program are to:

- ▶ release information collected by the Business Survey of Residential Electricity Distribution via the *Household Energy Consumption Survey* (ABS cat. no. 4670.0) (user funded) – due September 2013
- ▶ release the first *Australian Environmental-Economic Accounts* based on the SEEA – due December 2013
- ▶ improve the quality and depth of detail of existing water and energy accounts (including energy monetary accounts) – ongoing
- ▶ work with key stakeholders to demonstrate applications of SEEA and promote its use as a framework for integration of socio-economic and environmental information to inform policy development and decision making – ongoing
- ▶ investigate further expansion of the environmental accounting program that could encompass regular land, waste, environmental expenditure, environmental goods and services and environment industry accounts – ongoing
- ▶ collaborate with other government agencies around environmental information initiatives such as: the National Plan for Environmental Information; the National Greenhouse and Energy Reporting system; the Bureau of Meteorology National Water Account; and the three yearly National Waste Report – ongoing
- ▶ provide statistical support and training to Asia and the Pacific region on the implementation of the SEEA – ongoing.

Demography

Program Managers

Graeme Brown
Assistant Statistician
Demography, Regional and
Social Analysis Branch

AJ Lanyon
Regional Director
Health and Vitals Statistics
Unit

Resources

Program Costs	\$m
2013-2014	2.6
2014-2015	2.4
2015-2016	2.5
2016-2017	2.4

Objectives

The key objective of the Demography Program is to produce estimates of the recent and projected population; and analysis of the components of population change (births, deaths, and migration) and related demographic trends. These data are provided at the national, state, territory, and regional level, as well as for the Australian Aboriginal and Torres Strait Islander population.

These statistics are produced to:

- ▶ meet a range of legislative requirements that make reference to population estimates
- ▶ assist in the formulation and monitoring of government policies, and in the planning and administration of government programs
- ▶ enable planning and market analyses by businesses and community organisations
- ▶ enable research and analyses by governments, businesses, academic institutions and others into the causes and consequences of population change.

Reflecting the use of population estimates for electoral and funding purposes, the main clients of the program are: Australian and state/territory-level electoral commissions, treasuries, and grants commissions. Within the ABS, demographic estimates and projections are the basis for population survey benchmarks. Other clients include agencies concerned with issues associated with migration and multicultural affairs, local area planning, health, education, the Australian Aboriginal and Torres Strait Islander peoples, family and community services, the environment and international tourism. The program also works to build capacity of government agencies to understand and use demographic data and statistics, and supports the development of civil registration systems in Asia and the Pacific region.

Outputs

The program's key outputs are population estimates published in *Australian Demographic Statistics* (ABS cat. no. 3101.0). The program produces estimates of the total population by age, sex, country of birth and geographical distribution; estimates of the Aboriginal and Torres Strait Islander population; and estimates of families and households.

Regular statistics are also produced on births, fertility rates, deaths, mortality rates, life expectancy, international migration as well as interstate and internal migration. Projections of population, families and households according to specified demographic assumptions are published on a regular basis. Population benchmarks are provided for use in the ABS and other population surveys. Regular statistics based on the movements of overseas arrivals and departures are also produced.

Major publications include:

- ▶ *Australian Demographic Statistics* (ABS cat. no. 3101.0)
- ▶ *Births, Australia* (ABS cat. no. 3301.0)
- ▶ *Deaths, Australia* (ABS cat. no. 3302.0)
- ▶ *Regional Population Growth, Australia* (ABS cat. no. 3218.0)
- ▶ *Population Projections, Australia* (ABS cat. no. 3222.0)
- ▶ *Household and Family Projections, Australia* (ABS cat. no. 3236.0)
- ▶ *Estimates and Projections, Aboriginal and Torres Strait Islander Australians* (ABS cat. no. 3238.0)
- ▶ *Australian Historical Population Statistics* (ABS cat. no. 3105.0.65.001).

Developments

The main medium-term developments in the program are to:

- ▶ finalise the rebasing of all population estimates and projections series using the results of the 2011 Census of Population and Housing, including on the new Australian Statistical Geography Standard (ASGS) for sub-state estimates – due 2013-14
- ▶ release population projections based on the results of the 2011 Census – due December 2013
- ▶ complete the implementation of methods and systems to enhance data quality of preliminary estimation of net overseas migration – due December 2013
- ▶ in consultation with stakeholders, consolidate an enhanced method for estimating mortality and life expectancy of Australian Aboriginal and Torres Strait Islander peoples using the 2011 Census results and death registrations – progressive releases to June 2014
- ▶ begin development of the 2016 Post Enumeration Survey (PES) – due June 2014
- ▶ review and recommend changes to the demographic content of the 2016 Census – due late 2014
- ▶ strengthen engagement and collaboration with State and Territory Registrars of Births, Deaths and Marriages to identify and implement initiatives to improve the coverage and quality of birth and death registration information – ongoing.

Labour Statistics

Program Manager

Bernard Williams
Assistant Statistician
Labour Branch

References

Labour Topics @ a glance
page
www.abs.gov.au

Resources

Program Costs	\$m
2013-2014	6.2
2014-2015	6.5
2015-2016	6.8
2016-2017	7.5

Objectives

The Labour Statistics Program provides evidence to support labour market, economic and social analysis through the provision of high quality labour statistics in a timely, efficient and effective manner. The program provides information about the structure and performance of the labour market, including statistics on labour supply (such as labour force participation, employment, hours worked, unemployment and labour underutilisation); labour demand (job vacancies); employment conditions and working arrangements; employee earnings and labour costs; and workplace relations.

Labour statistics are used extensively in the analysis, evaluation, and monitoring of the economy; the labour market; and a wide range of government policies and programs (such as those relating to employment, income support, workplace relations). Statistics on labour costs are also used in compiling the Australian National Accounts.

The main clients of the program are Australian government agencies (including the Treasury, the Reserve Bank of Australia, Fair Work Commission, the Productivity Commission, the Commonwealth Grants Commission and the Departments of: Education, Employment and Workplace Relations; and Families, Housing, Community Services and Indigenous Affairs), state and territory government agencies, industry associations, trade unions and academic researchers.

Outputs

Key statistics on labour supply, including labour force participation, employment, unemployment, underutilisation and hours worked are published either monthly in *Labour Force, Australia* (ABS cat. no. 6202.0) and *Labour Force, Australia detailed electronic delivery* (ABS cat. no. 6291.0.55.001), or quarterly in *Labour Force, Australia, detailed quarterly* (ABS cat. no. 6291.0.55.003). Statistics on particular aspects of labour supply, such as labour mobility, underemployment, job search experience, retirement and retirement intentions, barriers and incentives to labour force participation, and marginal attachment to the labour force, are published periodically.

Statistics on job vacancies, i.e. unmet demand for labour, are released quarterly in *Job Vacancies, Australia* (ABS cat. no. 6354.0). Statistics on characteristics of employees' working arrangements, working time arrangements, forms of employment, independent contracting, and labour hire are also published periodically. Statistics about industrial relations include trade union membership annually, industrial disputes quarterly, and award and agreement coverage every two years.

Statistics on average weekly earnings of employees are released biannually in *Average Weekly Earnings, Australia* (ABS cat. no. 6302.0). Employee earnings data are available annually together with employment and demographic characteristics. Earnings and employment data for the public sector are available annually. Distributional data on employee earnings and hours, and occupational earnings are available every two years. Data on major labour costs are produced on an infrequent basis.

The publication *Australian Labour Market Statistics* (ABS cat. no. 6105.0) is produced on an irregular basis and supports the release of analytical data series, such as volume measures of labour underutilisation, and feature articles on current labour market issues.

Developments

The main medium-term developments in the program are to:

- ▶ introduce flexibility for respondents through the development and implementation of an online household and business questionnaires – due 2013-14
- ▶ implement new population benchmarks for the Labour Force Survey and make historical revisions to series, based on revised population estimates following the 2011 Census – due February 2014
- ▶ implement quarterly rebenchmarking for the Labour Force Survey to reflect the most up-to-date information on the population – from February 2014
- ▶ review the concepts and content of the Industrial Disputes collection – due June 2014
- ▶ review the concepts and content of the Employee Earnings and Hours collection – due June 2014
- ▶ implement the recommendations from a review of the content of the labour household survey program – progressively from July 2014
- ▶ contribute to the revision of the International Labour Organisation standards for work and labour force statistics, and determine the implications for the Labour Force Survey – by July 2015
- ▶ develop conceptual frameworks for a number of areas of labour market statistics including workplace relations, non-standard working arrangements and marginal attachment – by December 2015.

Economic Analysis and Reporting

Program Manager

Michael Beahan
Assistant Statistician
Industry & Productivity
Statistics Branch

Resources

Program Costs	\$m
2013-2014	1.4
2014-2015	1.4
2015-2016	1.4
2016-2017	1.4

Objectives

The Economic Analysis and Reporting Program encompasses macroeconomic statistics research, quality improvements, development of new products, economic analysis and reporting and economic integration and advisory functions. This set of functions is designed to improve the ABS's capability to produce high quality macroeconomic statistics in the longer term, while addressing emerging priorities in the short term. Analytical activities in the program range from research projects to improve the accuracy and coherence of existing economic statistics and develop new statistical products, through to operational efforts to increase the efficiency of statistical operations.

The program compiles and publishes aggregate market sector and industry level multifactor productivity statistics and conducts research into the measurement and interpretation of these statistics.

Outputs

Regular publications of the program include:

- ▶ annual productivity statistics presented in *Australian System of National Accounts* (ABS cat. no. 5204.0)
- ▶ *Experimental Estimates of Industry Multifactor Productivity* (ABS cat. no. 5260.0.55.002), an annual release that presents a range of productivity estimates at the industry level.

Additionally, the program produces research or information papers on the following areas:

- ▶ productivity measurement
- ▶ economic analysis using the Business Longitudinal Database and other microdata sets
- ▶ human capital measurement
- ▶ periodic reviews and standards upgrades for macroeconomic statistics.

Developments

The main medium term development in the program are to:

- ▶ Improve productivity estimates by:
 - ▶ releasing a research paper on the industry sources of Australia's productivity slowdown – due November 2013
 - ▶ releasing a research paper on the measurement of natural resources input for Australia's Mining industry – due November 2013
 - ▶ implementing new measures of industry level quality adjusted labour input for the ABS industry multifactor productivity datacube – due end 2013
- ▶ Undertake periodic reviews and standards upgrades for macroeconomic statistics including:
 - ▶ exploring the suitability of administrative data in compiling official economic statistics including implementing estimates of cross border electronic trade – ongoing
 - ▶ undertaking research into aspects of the quality of macroeconomic and financial statistics arising from various reviews – ongoing
 - ▶ researching statistical treatments and gathering data for inclusion of emissions trading and carbon credits schemes in economic accounts as they evolve – ongoing.
- ▶ Update measures of human capital by:
 - ▶ releasing a research paper on updated measures of human capital stock and flows – due mid 2014
 - ▶ releasing a research paper on updated measures of rates of returns to education – due mid 2014.

Regional Statistics

Program Manager

Graeme Brown
Assistant Statistician
Demography, Regional &
Social Analysis Branch

References

Under Topics @ a Glance,
select Regional

Under Regional Statistics
select Regional Profiles or
Regional Releases

Other References

Information Paper:
*Regional Research in
Australia – the Statistical
Dimension: an Information
Development Plan for Rural
and Regional Statistics* (ABS
cat. no.1362.0)

*National Regional
Profile* (ABS cat. no.
1379.0.55.001)

Resources

Program Costs	\$m
2013-2014	1.4
2014-2015	1.3
2015-2016	1.4
2016-2017	1.4

Objectives

The Regional Statistics Program aims to understand and support high priority emerging needs for regional statistics through providing relevant analyses, products and services. Regional data may include data relating to cities, urban, rural or remote areas. Activities undertaken under the program include improving access to, and dissemination of, ABS data and data from other sources and developing new indicators.

The activities of the Regional Statistics Program are led by the Rural and Regional Statistics National Centre, and are delivered through collaboration with many areas of the ABS which contribute regional data or analysis on a wide range of topics across economic, environment and social statistics. The program assists policy analysts and researchers to understand the characteristics of regions and change in regions across Australia, with current issues centring on regional population sustainability, local economic development, and service or infrastructure access in regions. All three tiers of government require regional data so ABS actively engages with the Australian Government and state and local governments to understand and support regional data needs. One key focal point for engagement is with the regional development and local government policy portfolio within the Australian Government. The ABS also engages with a wide range of data users to provide professional advice to help them undertake regional data analysis and to understand statistical issues that may arise in regional analyses (e.g. time series or data quality issues).

Over the next four years, a particular focus of this program will be on improving access to regional data through the use of administrative data maintained by Australian, state and territory government agencies with the potential to improve availability of regional data. The centre will continue to support users in the transition to the new ABS standard geography, Australian Statistical Geography Standard (ASGS), and in making the best use of the 2011 Census of Population and Housing and other regional data sets to support regional policy analysis.

Outputs

The main outputs of the program are:

- ▶ the *National Regional Profile* (ABS cat. no. 1379.0.55.001), a web-based suite of statistics for regions containing data spanning five years and updated at least annually
- ▶ estimates and indicators from administrative data, such as the Australian Taxation Office personal income tax data, and data on customers of Centrelink and other agencies
- ▶ *Perspectives on Regional Australia* (ABS catalogue numbers: 1380.0.55.001, 1380.0.55.002, and subsequent), a series of publications analysing, at varying geographic levels, a range of topics with a particular focus on regions in Australia
- ▶ *Estimates of Personal Income for Small Areas* (ABS cat. no. 6524.0.55.002) and *Wage and Salary Earner Statistics for Small Areas* (ABS cat. no. 5673.0.55.003) provide annual regional statistics on personal income.

Developments

The main medium-term developments in the program are to:

- ▶ actively engage with key data users to understand emerging priority data needs for regional statistics, with key priorities for the medium term being: regional economic data needs; service access in regions; and information requirements for regions undergoing significant population change and/or flows (e.g. internal migration, long distance commuting such as fly-in-fly-out workers, and tourism) – ongoing
- ▶ build collaborative working arrangements with users and producers of regional statistics – ongoing
- ▶ improve ABS dissemination of information about regional data access and availability through the Regional Topics @ a Glance page on the ABS website, Perspectives on Regions articles, and other appropriate avenues, such as through client networks, conferences, seminars and workshops – ongoing
- ▶ deliver an improved National Regional Profile product by progressively building in more flexibility for users to more easily access and use whatever data is available for the regions they are interested in – ongoing
- ▶ provide analysis and guidance to demonstrate how the new ASGS can be applied to a range of different regional analysis – such as analysis of local economies, social conditions or service access – ongoing.

Census of Population and Housing

Program Manager

Duncan Young
Assistant Statistician
Census of Population and Housing

References

All Census data, Census products and a range of information on the Census is available from the ABS website at www.abs.gov.au/census

Resources

Program Costs	\$m
2013-2014	26.4
2014-2015	38.4
2015-2016	91.9
2016-2017	226.5

Objectives

The Census program conducts a five-yearly Census of Population and Housing. The program aims to accurately and efficiently measure the number and key characteristics of people in Australia on Census night. This provides a reliable basis to estimate the population of each state, territory and local government area, primarily for electoral purposes (including determining the number of seats allocated to each state and territory in the House of Representatives) and for distribution of government funds (Goods and Services Tax revenue) to each state and territory.

The Census of Population and Housing is the only source of detailed statistics of the numbers and characteristics of the population and its housing within small geographic areas and for small population groups, covering the whole of Australia. This information supports the planning, administration, policy development and evaluation activities of government, business and others. Preparation for Census 2016 has commenced with a public submission process for a review of content and procedures.

Outputs

Online Products

Census of Population and Housing data can be accessed via a range of online tools found on the ABS website. These include products such as:

- ▶ QuickStats and Community Profiles in which Census data are displayed based upon selected location and topic of interest, and can be viewed in different formats including thematic maps or tables
- ▶ TableBuilder Basic and Pro: users can construct their own tables via an interactive web interface on a range of topics such as age, education, housing, income, transport, religion, ethnicity and occupation. All Census geographies are available and output can be made available in tabular, graphical or map based format.
- ▶ A number of analytical articles have been released that present commentary and social analysis using 2011 Census data including articles on the mining boom, older Australians, education, doctors and nurses and looking back to understand how Australia has changed.

Other Products

Census data packs are available at Statistical Area 1 (SA1) level for download from the ABS website.

- ▶ Four Socio-Economic Indexes For Areas (SEIFA) have been produced that provide summary measures of different aspects of the socio-economic conditions of people in a specific geographic area.
- ▶ The Census sample files will be comprehensive 1% (Basic) and 5% (Expanded) Confidentialised Unit Record Files. These files will contain Census characteristics for a random sample of respondents on a person, family, household and dwelling basis.
- ▶ A 5% Statistical Longitudinal Census Dataset will be produced that brings together data from the 2006 and 2011 Census to build a picture of how society has changed in this period.

Customised Data Services

Where specialised information needs cannot be met by standard products, customised data services are available through ABS Information Consultancy.

Developments

The main medium-term developments in the program are to:

- ▶ release 1% and 5% Census 2011 Confidentialised Unit Record Files – due September 2013
- ▶ release 5% Statistical Longitudinal Census Dataset – due December 2013
- ▶ commence review of Census 2011 data and products, including seeking input from data users, in order to shape the release strategy for the 2016 Census – due 2013-14
- ▶ test proposed changes to Census procedures and topics through a minor test of 20,000 dwellings in August 2013 and a major test of 100,000 dwellings in August 2014
- ▶ consider public submissions received during 2012-13 and make recommendations to government on Census 2016 Content – due 2014
- ▶ re-engineer the Census enumeration model to improve the efficiency, effectiveness, data quality and sustainability of the Census – due progressively to March 2016
- ▶ develop enabling infrastructure and processes to support the re-engineered Census enumeration model for 2016, including a comprehensive register of residential addresses to support the use of mail as a contact mechanism for the majority of Australian homes – due progressively to March 2016
- ▶ as part of ABS 2017 Program Delivery Division, develop the foundational components of a range of corporate capabilities that support more efficient and effective data collection – due progressively to March 2016.

Health and Disability Statistics

Program Managers

Michelle Marquardt
(A/g) Assistant Statistician
Health and Disability Branch

AJ Lanyon
Health and Vitals Unit

Resources

Program Costs	\$m
2013-2014	14.2
2014-2015	7.8
2015-2016	8.8
2016-2017	6.5

Objectives

The Health and Disability Program provides information about aspects of the health of Australia's population, and about health related services. This includes statistics relating to health status (including causes of death), patient experiences, disability, health risk factors and impacts on sub-groups within the population.

Statistics on health and disability describe an important aspect of wellbeing, which can impact on people's capacity to participate in the labour force, and more broadly in the community. Changes in the levels of health measures, such as health conditions, risk factors, and disability, can inform both the development of interventions for prevention and care, and the need for related services over time. These statistics support the policy development, program delivery and evaluation of key government and non-government agencies involved in health, community and family services. They provide information on the impacts of programs and service provision, and can be used to assess areas of unmet need. They are widely used in research related to health and community issues.

Clients of the program include Australian government agencies including the Departments of: Health and Ageing; and Families, Housing, Community Services and Indigenous Affairs; the Australian Institute of Health and Welfare, state and territory government agencies, academic and research institutions, social welfare organisations providing health and disability services and the general public.

Outputs

The program produces a range of outputs including: frameworks and standards; statistics, microdata and associated metadata; information/ technical papers; guides; and analytical articles.

Specifically, the outputs of the program include:

- ▶ information on the health status of the population which focus on particular conditions, risk factors outcomes and population groups
- ▶ information on causes of death based on the International Classification of Diseases – Version 10 (ICD-10) published annually in *Causes of Death, Australia* (ABS cat. no. 3303.0)
- ▶ information on the interaction of health services and their clients through the Patient Experience Surveys, *Patient Experiences in Australia* (ABS. cat. no. 4839.0)
- ▶ information on the structure and operations of the Private Hospital Sector through the Private Hospitals Expenditure Collection
- ▶ information on the nature and extent of disability and associated needs for care and support, as well as the circumstances of carers
- ▶ provision of expertise, advice and data in supporting performance monitoring for a range of government activities – Council of Australian Governments (COAG) National Healthcare and Disability Agreements, Report on Government Services, National Health Performance Framework
- ▶ advice and contributions to key government advisory groups on health and disability information.

Developments

The main medium-term developments in the program are to:

- ▶ analyse the results from the 2012-13 Patient Experience Survey – due November 2013
- ▶ extend the 2013-14 Patient Experience survey to improve reporting of data at the Medicare Local level – due 2013-14
- ▶ undertake a review of long term health data needs with key clients – due 2013-14
- ▶ analyse and release results from the 2012 Survey of Disability, Ageing and Carers – due late 2013
- ▶ redevelop and undertake the 2015 Survey of Disability, Ageing and Carers – results due late 2016
- ▶ release results from the biomedical, physical activity and nutrition components of the Australian Health Survey – due 2013-14
- ▶ finalise and release results from the Australian Health Survey, Aboriginal and Torres Strait Islander wave – due 2013-14
- ▶ contribute to the development and implementation of the World Health Organisations' International Classification of Diseases – Version 11, for use in mortality and morbidity coding in Australia – ongoing
- ▶ support the development of, and report on, performance indicators for the COAG health and disability agreements, the National Health Performance Authority, the Australian National Health Prevention Agency and the National Mental Health Commission – ongoing
- ▶ contribute to international initiatives to improve the comparability of disability statistics – ongoing
- ▶ facilitate the publication of causes of death information in consultation with the Australian Coordinating Registrar and State and Territory Registrars of Births, Deaths and Marriage – ongoing.

Education and Training Statistics

Program Manager

Christine Williams
Assistant Statistician
Education and Data
Integration Branch

Resources

Program Costs	\$m
2013-2014	4.5
2014-2015	2.7
2015-2016	2.4
2016-2017	3.2

Objectives

The Education and Training Program covers the activities of the National Centre for Education and Training Statistics (NCETS), which includes the development and compilation of statistics from national administrative collections and the conduct of a number of surveys relevant to learning in Australia.

Key elements of the statistical program include the annual National Schools Statistics Collection, the National Early Childhood Education and Care Collection, and regular household surveys related to child care, education, training and work. The ABS is leading national discussions, undertaking feasibility testing and developing strategies to transform the information base for education and training policy through the integration of administrative and population data. In partnership with other relevant government agencies, NCETS promotes greater comparability of information across the education and training sectors and addresses issues such as data standards, collaboration, efficiency and resource use. In addition to these activities, the ABS analyses data and provides feedback and advice to stakeholders on relevant topics and emerging issues.

NCETS is closely involved in supporting the information needs of the Council of Australian Governments (COAG) and other national reporting processes.

The main clients of the program are: the Standing Councils responsible for early childhood development, education, skills and employment; the Department of Education, Employment and Workplace Relations; the Department of Industry, Innovation, Science, Research and Tertiary Education; the Productivity Commission; the Australian Curriculum Assessment and Reporting Authority; state and territory government departments responsible for education, training and early childhood development; the National Centre for Vocational Education Research; and academic and research institutions. NCETS also provides the Secretariat for the Strategic Cross-sectoral Data Committee, which promotes data sharing and integration across early childhood education, schooling, vocational education and higher education.

Outputs

The main outputs of the program are:

- ▶ statistics from the National Schools Statistics Collection and the National Early Childhood Education and Care Collection
- ▶ summary publications, Confidentialised Unit Record Files and datacubes from regular household surveys such as the Survey of Education and Work, the Survey of Learning and Work and the Childhood Education and Care Survey
- ▶ analytical and comparative analysis of data for the indicators relevant to COAG National Agreements
- ▶ a statistical information and dissemination service for education and training statistics; and periodic snapshots on thematic issues
- ▶ statistical leadership, including engaging with clients through committee representation, state liaison officers, and occasional research papers.

Developments

The main medium-term developments in the program are to:

- ▶ publish final Australian results from the 2011 Programme for the International Assessment of Adult Competencies – due 2013
- ▶ complete 2011 Census Data Quality Studies designed to test linkage between Census and data from the education sector – due 2013
- ▶ conduct and publish results from a new survey of work-related training and adult learning – due 2015
- ▶ develop, conduct and publish results from the survey of learning and work, which examines people's qualification history and employment outcomes – due 2016
- ▶ increase the amount of student level enrolment information collected through the National Schools Statistics Collection – ongoing
- ▶ expand and enhance education and training collections, through a collaborative program of work to facilitate the development of flexible data linkage systems – ongoing.

Crime and Justice Statistics

Program Manager

Tom Joseph
Regional Director
Crime and Justice Statistics

References

<http://www.abs.gov.au/websitedbs/c311215.nsf/web/National+Centre+for+Crime+and+Justice+Statistics>

Resources

Program Costs	\$m
2013-2014	1.6
2014-2015	1.6
2015-2016	1.6
2016-2017	2.0

Objectives

The Crime and Justice Statistics Program leads national statistical activity aimed at developing and improving information in this field. The program covers the activities of the National Centre for Crime and Justice Statistics comprising three separate user-funded statistical units: the National Crime Statistics Unit; the National Criminal Courts Statistics Unit; and the National Corrective Services Statistics Unit. These units compile and publish national statistics on recorded crime, courts and corrections, and work to improve the quality of these collections in cooperation with statistical practitioners in the jurisdictions.

The ABS also undertakes a survey program in the field of crime and justice statistics. This includes special purpose surveys aimed at producing rates of victimisation for personal and household crimes, and information on the experience and consequences of crime; as well as more general surveys aimed at understanding the experience of crime within a broader social context.

The main clients of this program are the Australian Government Attorney-General's Department, state and territory agencies responsible for police services, courts administration and corrective services, and organisations undertaking criminal justice research.

Outputs

The main outputs of the program are:

- ▶ indicators of the level and nature of recorded crime victimisation in Australia presented annually in *Recorded Crime – Victims, Australia* (ABS cat. no. 4510.0)
- ▶ annual survey-based victimisation information for selected personal and household offences, and information on feelings of personal safety, presented in *Crime Victimisation, Australia* (ABS cat. no. 4530.0)
- ▶ characteristics of alleged offenders who have been proceeded against by police, including offence information, available annually from 2007–08 in *Recorded Crime – Offenders, Australia* (ABS cat. no. 4519.0)
- ▶ characteristics of defendants, including information on their offences and sentences, available annually in *Criminal Courts, Australia* (ABS cat. no. 4513.0) and characteristics of federal defendants available annually in *Federal Defendants, Australia* (ABS cat. no. 4515.0)
- ▶ information from the National Prisoner Census on people held in adult prisons, including their characteristics, sentence lengths and offences for which they are imprisoned, published annually in *Prisoners in Australia* (ABS cat. no. 4517.0)
- ▶ quarterly *Corrective Services, Australia* (ABS cat. no. 4512.0), which presents information on numbers and rates of people in custody and those serving community-based corrections orders
- ▶ outputs to promote national standards for crime and justice statistics; recent examples include revised classifications such as the Australian and New Zealand Standard Offence Classification and the National Offence Index, the development of a national crime recording standard for police statistics, and the family and domestic violence conceptual framework
- ▶ outputs to explore different ways of looking at crime and justice statistics, through publication of short articles in the *Crime and Justice In Focus series* (ABS cat. no. 4524.0)
- ▶ outputs to promote the effective use of crime and justice statistics, such as the *Directory of Family Violence Statistics* (ABS cat. no. 4533.0) and the *Information Paper: Measuring Victims of Crime: A Guide to Using Administrative and Survey data* (ABS cat. no. 4500.0.55.001).

Developments

The main medium-term developments in the program are to:

- ▶ develop a reappearance indicator for the criminal courts – due 2013-14
- ▶ undertake topic development for the annual crime victimisation survey program – ongoing
- ▶ in collaboration with data providers, improve the range, quality and availability of data collected through administrative systems in police, courts and corrective services sectors with a focus on improving Indigenous identification – ongoing
- ▶ support evidence base development projects across crime and justice areas through assistance and advice to related agencies in key areas of statistical need such as family and domestic violence and the civil justice system – ongoing
- ▶ support efforts to improve information on substance use, sub-state geography and mental health in relation to crime, justice and recidivism – ongoing

Aboriginal and Torres Strait Islander Statistics

Program Manager

Celia Moss
Regional Director
Aboriginal & Torres Strait
Islander Statistics

Resources

Program Costs	\$m
2013-2014	4.0
2014-2015	2.9
2015-2016	2.8
2016-2017	3.4

Objectives

The Aboriginal and Torres Strait Islander Statistics Program provides governments and the community with reliable statistical information to support policy development and evaluation for the Aboriginal and Torres Strait Islander population. The program produces a range of statistics which contribute to an understanding of the overall wellbeing of Aboriginal and Torres Strait Islander peoples, including information on labour force participation, education, and health.

The program aims to improve the quality, timeliness and relevance of social, demographic and economic information on the Aboriginal and Torres Strait Islander population. Key elements include: assessing and improving the quality of statistics available from the Census, surveys and administrative data sources; broad consultation and engagement with government and non-government stakeholders, as well as at the community level; analysis and reporting to explain and enhance understanding of data; and development of strategies to maximise the effectiveness and efficiency of data collection and reduce respondent burden on the Aboriginal and Torres Strait Islander population.

Outputs

The program produces a wide range of outputs including: statistics; information and technical papers; analytical reports and guides; and frameworks, standards and metadata to support effective use of information on the Aboriginal and Torres Strait Islander population.

Specifically, the outputs of the program include:

- ▶ the National Aboriginal and Torres Strait Islander Social Survey
- ▶ the National Aboriginal and Torres Strait Islander Health Survey
- ▶ statistics on health and wellbeing from other ABS surveys, such as the Survey of Disability and Carers
- ▶ Aboriginal and Torres Strait Islander population estimates and associated life-expectancy estimates
- ▶ Census of Population and Housing counts and characteristics, available to a small area level
- ▶ Indigenous Community Engagement Strategy
- ▶ provision of expertise, advice and data in supporting performance monitoring, including: Council of Australian Governments (COAG) reform initiatives, the Report on Government Services, Overcoming Indigenous Disadvantage, and the Aboriginal and Torres Strait Islander Health Performance Framework
- ▶ statistical leadership to improve Aboriginal and Torres Strait Islander statistics on population, mortality, health, housing, community services, education, employment, and law and justice
- ▶ analytical reports and information papers to enhance understanding and use of Aboriginal and Torres Strait Islander statistics
- ▶ coordination and promotion of improvements in Aboriginal and Torres Strait Islander statistics from administrative collections.

Developments

The main medium-term developments in the program are to:

- ▶ deliver data quality improvements as agreed in the COAG's National Indigenous Reform Agreement (Schedule F) – due December 2013
- ▶ disseminate results from the 2011-2013 National Aboriginal and Torres Strait Islander Health Survey – due 2013-14
- ▶ develop and conduct the 2014 National Aboriginal and Torres Strait Islander Social Survey and disseminate results – ongoing to 2016
- ▶ update population estimates, projections and life expectancy following the 2011 Census – due 2013-14
- ▶ identify and implement strategies to improve frequency and relevance of Aboriginal and Torres Strait Islander statistics (e.g. through data pooling, linking and modelling) – ongoing
- ▶ work with clients to ensure informed use of ABS Aboriginal and Torres Strait Islander statistics – ongoing
- ▶ build stronger relationships with Aboriginal and Torres Strait Islander communities and organisations through the Indigenous Community Engagement Strategy, to increase data quality, statistical capability and to manage provider load – ongoing.

Social Conditions Statistics

Program Manager

David Zago
Assistant Statistician
Social Conditions Branch

Resources

Program Costs	\$m
2013-2014	9.0
2014-2015	9.2
2015-2016	11.7
2016-2017	12.2

Objectives

The Social Conditions Program provides statistical leadership, standards development and information for a broad picture of the economic and social wellbeing of the Australian population. It provides statistics covering a range of topics including income, expenditure, wealth, housing, superannuation, families, time use, volunteering, homelessness and social capital.

The program provides design, development, data collection and processing services to support the Growing up in Australia Study (Longitudinal Study of Australian Children), in partnership with the Department of Families, Housing, Community Services and Indigenous Affairs and the Australian Institute of Family Studies.

The program's statistics are used to support policy development, program delivery and program evaluation of key government agencies involved in social security, taxation, housing, homelessness, community and family services, and issues related to older people, children, youth, men and women.

Outputs

The program produces a range of outputs including: frameworks and standards; information development plans; statistical products; information/ technical papers; guides and analytical articles.

The main outputs of the program are:

- ▶ from the Survey of Income and Housing, and the Household Expenditure Survey: *Household Income and Income Distribution, Australia* (ABS cat. no. 6523.0); *Household Expenditure Survey, Australia: Summary of Results* (ABS cat. no. 6530.0); *Household Wealth and Wealth Distribution, Australia* (ABS cat. no. 6554.0); *Housing Occupancy and Costs, Australia* (ABS cat. no. 4130.0); *Housing Mobility and Conditions, Australia* (ABS cat. no. 4130.0.55.002); and *Government Benefits, Taxes and Household Income* (ABS cat. no. 6537.0)
- ▶ from the General Social Survey: a profile of the socio-economic characteristics of Australia's adult population with data on a range of social dimensions of the community, published in *General Social Survey: Summary Results, Australia* (ABS cat. no. 4159.0); and *Voluntary Work, Australia, 2010* (cat. no. 4441.0)
- ▶ from the Survey of Disability, Ageing and Carers: *Caring in the Community, Australia, 2009* (cat. no. 4436.0)
- ▶ the six monthly *Gender Indicators, Australia* (cat. no. 4125.0)
- ▶ from monthly population survey components: *Family Characteristics and Transitions, Australia* (ABS cat. no. 4442.0), and *Pregnancy and Employment Transitions, Australia* (ABS cat. no. 4913.0)
- ▶ from the Census of Population and Housing: *Estimating Homelessness, 2011* (cat. no. 2049.0)
- ▶ publication of the *OECD Guidelines for Micro Statistics on Household Wealth* and the *OECD Guidelines for Statistics on the Distribution of Household Income, Consumption and Wealth*, led by the Australian Bureau of Statistics, being published in 2013
- ▶ publication of *UNECE Guidelines for Harmonising Time Use Surveys*, led by the Australian Bureau of Statistics, to be published in 2013; and
- ▶ annual information on registered marriages and divorces granted in *Marriages and Divorces, Australia* (ABS cat. no. 3310.0).

Developments

The main medium-term developments in the program are to:

- ▶ publish an Information Paper on *Perspectives on Aboriginal and Torres Strait Islander Homelessness* to complement the statistical definition work published by the ABS in the *Information Paper: A Statistical Definition of Homelessness* (ABS cat. no. 4922.0) – due November 2013
- ▶ develop new standards for use in the 2016 Census of Population and Housing for families, income and housing – due mid 2014
- ▶ develop, and publish results from: the 2012 Personal Safety Survey (due end 2013); 2012 Household Energy Consumption Survey (due September 2013); the 2011–12 and 2013–14 cycles of Survey of Income and Housing (due mid 2013 and April 2015 respectively); the 2012 Survey of Disability, Ageing and Carers, *Caring in the Community* results (due end 2013); the 2014 General Social Survey (due April 2015); and develop the 2015–16 Household Income and Expenditure Surveys.

Culture and Recreation Statistics

Program Manager

Dean Bowley
Regional Director
South Australia

References

Topics @ a Glance page
www.abs.gov.au
Under Topics @ a Glance
select People, then
Culture or Sport and
Physical Recreation

Resources

Program Costs	\$m
2013-2014	0.8
2014-2015	0.9
2015-2016	1.0
2016-2017	1.0

Objectives

The Culture and Recreation Program covers the activities of the ABS National Centre for Culture and Recreation Statistics (NCCRS). NCCRS has responsibility for the leadership and coordination of national statistical activity in the fields of culture, sport and leisure. It also provides expertise within the ABS regarding the collection of relevant data, as well as informing governments and the community about culture, sport and leisure statistics, relevant classifications and standards, and appropriate data analysis.

Statistics on culture and sport and physical recreation describe an important aspect of wellbeing, which can impact on people's health, their capacity to participate in education, the labour force and more broadly in the community. These statistics support policy development and program delivery by key government and non-government agencies.

The main clients of the program are the Department of Regional Australia, Local Government, Arts and Sport, through both the Office for the Arts and the Office for Sport, other Australian government agencies (including the Australia Council, Screen Australia, and the Australian Sports Commission), the Committee of Australian Sport and Recreation Officials and the Culture Statistics Working Group. In addition, the client group extends to state and territory government departments responsible for culture and sport, as well as relevant industry bodies. These clients provide ongoing support for both the Culture and Recreation programs through a matched funding arrangement.

Outputs

The main outputs of the program are:

- ▶ statistical activities that develop and promote national standards, frameworks, classifications and definitions for culture and recreation statistics. Recently this included a feasibility study for a culture satellite account
- ▶ the development, coordination and specification of statistical data needs as articulated in the *Arts and Cultural Heritage Information Development Plan* (ABS cat. no. 4915.0.55.002), and ongoing liaison with data users regarding their needs
- ▶ a statistical information and dissemination service for culture, sport and leisure data, including: the provision of reports and compendium publications that use data from ABS collections; Topics @ a Glance pages for both Culture and Sport and Physical Recreation on the ABS website; and a regular newsletter
- ▶ a statistical service responsible for developing data collections, analysing data and releasing data on: government funding for cultural activities; children's participation in cultural and leisure activities; participation in sport and physical recreation; attendance at culture and sport venues; cultural participation
- ▶ the provision of advice to clients, including inter-agency statistical working groups involved in the culture and sport and physical recreation sectors.

Developments

The main medium-term developments in the program are to:

- ▶ strategically review data needs for sport and physical recreation data, focussing on the collection of high priority sport participation and exercise data utilising the discussion paper *Defining Sport and Exercise, a Conceptual Model* (ABS cat. no. 4149.0) to inform the development of a robust multi-year collection cycle – due December 2013
- ▶ disseminate analytical articles of priority interest to users making use of culture and sport data from various ABS household surveys, including: the General Social Survey; Children's Participation in Culture and Leisure Activities; Cultural Participation; Participation in Sports and Physical Recreation; the National Health Survey; and the National Aboriginal and Torres Strait Islander Social Survey – ongoing
- ▶ increase the standardisation of culture and sport statistical sources by leading the development and adoption of relevant standards – ongoing
- ▶ advance the understanding of cultural activity within the economy through the development of a culture satellite account – due June 2014.

Migrant Statistics

Program Manager

Dean Bowley
Regional Director
South Australia

References

Topics @ a Glance page

www.abs.gov.au

Under Topics @ a Glance
select People, then
Migrant & Ethnicity

Resources

Program Costs	\$m
2013-2014	0.7
2014-2015	0.7
2015-2016	0.8
2016-2017	1.0

Objectives

The Migrant Statistics Program covers the activities of the ABS National Migrant Statistics Unit, which has a focus on permanent and temporary migrant settlement within Australia. The unit develops and compiles a range of survey and administrative data outputs relevant to migrants. Activities include understanding current and emerging policy issues and debates, and determining appropriate statistics to inform decision making relevant to migrants and diverse ethnic groups. The program also provides expertise more broadly within the ABS regarding the collection of data, as well as informing governments and the community about migrant and ethnicity statistics, relevant classifications and standards, and appropriate data analysis.

Key elements of the ABS work program include the triennial Characteristics of Recent Migrants Survey and, more recently, the data integration projects that use statistical techniques to link the Department of Immigration and Citizenship's Settlement Database to firstly the 2011 Census of Population and Housing and secondly, to the Australian Taxation Office's Personal Income Tax records. These two separate data integration projects will potentially provide users with new perspectives on the settlement outcomes of permanent migrants in the context of their entry conditions (e.g. visa class, whether a primary or secondary applicant) while providing the ABS with efficiencies in terms of data collection.

The major stakeholders of the program are the Department of Immigration and Citizenship (DIAC), and the various Australian, state and territory government agencies providing services to migrant and ethnic groups. DIAC provides ongoing support for this program through a matched funding arrangement.

Outputs

The main outputs of the program are:

- ▶ the *Guide to Migrant Statistical Sources* (ABS cat no. 3414.0), which contains information about ABS and non-ABS statistical data
- ▶ the *Migrant Data Matrices* (ABS cat. no. 3415.0), which compiles a range of ABS data relevant to migrants in one location
- ▶ the *Perspectives on Migrants* (ABS cat. no. 3416.0) series, which provides an analysis of data from the ABS and other sources to provide a more comprehensive picture of migrants
- ▶ a statistical study analysing output from the ABS 2011 Census Data Enhancement project that links Census data to migrant settlement records (ABS cat. no. 3417.0 - forthcoming)
- ▶ the triennial *Characteristics of Recent Migrants, Australia* (ABS cat. no. 6250.0)
- ▶ Migrant and Ethnicity Topics @ a Glance page on the ABS website
- ▶ statistical activities aimed at promoting and developing national standards such as frameworks, classifications and definitions (e.g. *Standards for Statistics on Cultural and Language Diversity* (ABS cat. no. 1289.0))
- ▶ the coordination and specification of statistical data needs through consultation with data users and, where appropriate, undertaking development work to meet those needs
- ▶ the coordination of ABS activity to ensure that issues relevant to migrants are taken into account in statistical development activities.

Developments

The main medium-term developments in the program are to:

- ▶ undertake the ABS 2011 Census Data Enhancement project to link Census data to migrant settlement records, including subsequent quality assessment, analysis and dissemination of data from the project – due December 2013
- ▶ undertake a pilot project to link Australian Taxation Office data to migrant settlement records, including subsequent quality assessment and analysis of data from the project – due December 2013
- ▶ explore, assess and utilise the administrative data holdings of the Department of Immigration and Citizenship and undertake collaborative projects focussed on statistical development – ongoing
- ▶ influence the content of ABS collections which are of most interest and highest priority to migrant statistics stakeholders (e.g. the General Social Survey) – ongoing
- ▶ review migrant related standards and increase the standardisation of migrant statistical sources through the development and adoption of relevant standards – ongoing
- ▶ investigate options for synthetic modelling using the Population Census as a benchmark to generate small area/regional estimates from sample surveys such as the Characteristics of Recent Migrants and the General Social Survey (which includes a visa module) – due mid 2014.

Social and Progress Reporting

Program Manager

Graeme Brown
Assistant Statistician
Demography, Regional and
Social Analysis Branch

Resources

Program Costs	\$m
2013-2014	2.1
2014-2015	1.7
2015-2016	1.7
2016-2017	2.0

Objectives

The Social and Progress Reporting Program informs government and the community about wellbeing and progress in Australia. It draws together data and analysis both from within the ABS and from a range of other sources, and produces reports covering a wide range of social and other issues. The reports include analysis of current circumstances, how circumstances have changed over time, how different groups of people have been affected, and how various factors may have accounted for observed trends. The reports provide information on the well-being of the population, the extent of need and disadvantage in society, contemporary social issues, the interrelationships between economic, social and environmental aspects of life, and whether life in Australia is getting better.

The program is also responsible for providing leadership and coordination relating to the conceptual organisation of social statistics including the overall social statistics framework and related conceptual models. The framework's two primary dimensions, areas of social concern and population groups, are central to ABS social statistics collection and reporting activity.

Outputs

The main outputs of the program are reports that take a cross-cutting approach and bring together information on the situation of Australians across a range of areas of concern and for a variety of population groups of interest. The reports describe key aspects of Australian life and how these are changing over time.

The key outputs are:

- ▶ *Australian Social Trends* (ABS cat. no. 4102.0), a flagship publication released three times a year that contains articles on contemporary social issues covering major areas of social concern (such as health, education, work, and family and community)
- ▶ *Measures of Australia's Progress (MAP)* (ABS cat. no. 1370.0), an annual web-based product that presents a national summary of economic, social and environmental progress through indicators, descriptive text and, from 2010, a dashboard display of key indicators to help readers assess, at a glance, whether life in Australia is getting better.

Other output includes:

- ▶ short audio podcasts of *Australian Social Trends (AST)* articles, extending the reach of AST through a multi-channel or modal approach.

Developments

The main medium-term developments in the program are to:

- ▶ work with a Governance Working Group, and the oversight of the MAP Expert Reference Group, to develop the new domain of Governance – due 2013
- ▶ work with subject matter experts and the MAP Expert Reference Group to determine appropriate indicators to measure the concepts agreed through the consultation process undertaken in 2011-12 – due 2013
- ▶ work with the MAP Expert Reference Group to develop the next generation of MAP that incorporates the outcomes of the consultation process and includes the development of a new, user friendly web interface – due November 2013
- ▶ continue involvement in national developments of measures of progress, sharing the expertise gained in developing MAP – ongoing
- ▶ continue the publication of *Australian Social Trends* (ABS cat. no. 4102.0), ensuring that the articles reflect current and emerging social concerns and that the delivery of the publication through the web is kept up to date and is engaging for stakeholders – ongoing
- ▶ further strengthen the analytical value of rich ABS data holdings, through research and development papers and working collaboratively with a range of internal and external stakeholders – ongoing
- ▶ engage and influence international developments associated with the measurement of progress, well-being, sustainable development, and the post-2015 development agenda – ongoing.

Analytical Services

Program Manager

Ric Clarke
(A/g) Assistant Statistician
Analytical Services Branch

Resources

Program Costs	\$m
2013-2014	4.3
2014-2015	3.7
2015-2016	3.5
2016-2017	3.5

Objectives

The Analytical Services Program develops new analytical products and provides analysis services to producers and users of social and economic data. Its major areas of focus are time series analysis (including seasonal adjustment); the construction and interpretation of socio-economic indexes; the construction of small domain estimates; the development of data integration methods; the development of data confidentialisation methodology; and general modelling and analysis of data from statistical and administrative collections. The program also provides a statistical consultancy service to other government agencies.

By providing new and innovative analytical products, the program contributes to improving the ABS's statistical outputs and helps to inform evidence based decision making. Data confidentialisation methods, especially when applied to microdata files, allow researchers outside the ABS to construct analytical outputs of their own choice.

Time series in seasonally adjusted and trend form are an important input to policy formation, decision making and research in government, academia and the private sector. Government users include Australian government economic policy agencies (especially the Treasury and the Reserve Bank of Australia), State Treasuries, the Australian Government, state and territory governments, and local government service delivery agencies.

Outputs

The main outputs of the Analytical Services Program include the ongoing seasonal adjustment of more than 2,300 time series, specialist analytical support for improving existing ABS methodology, and the development of new analytical products for potential dissemination to data users and others in the National Statistical Service. The program develops a range of analytical products including analytical frameworks, databases and models to measure socio-economic concepts. The program undertakes ongoing methodological development work to enhance data integration activities, to industrialise the generation of small domain estimates and to improve user access to information in microdata files and tabular outputs while protecting the confidentiality of individual providers. The program also develops a range of software applications for seasonal adjustment and confidentialising ABS publication tables.

The research outputs of this work are disseminated via a series of *Research Papers* (ABS cat. no. 1351.0). These papers may contain analytical work in preliminary stages, in order to stimulate discussion and feedback. Time series products and analyses appear in many ABS publications on a regular basis.

Developments

The main medium-term developments in the program are to:

- ▶ develop a methodology for linkage of multiple datasets – due June 2014
- ▶ undertake analyses that demonstrate the power of longitudinal datasets held by the ABS – due June 2014
- ▶ develop a methodology to analyse integrated data and dynamic confidentiality routines to support the dissemination of integrated data – due June 2015
- ▶ undertake analyses that demonstrate the power of big data held by the ABS, including administrative data and transactional data – due June 2015
- ▶ develop a methodology for confidentialising geospatial data – due June 2015
- ▶ develop methods to industrialise the generation of small domain estimates – due June 2015
- ▶ develop methods to produce error bounds for seasonally adjusted and trend estimates – due June 2016.



Statistical Infrastructure and Corporate Support Programs



Geography

Program Manager

Graeme Brown
Assistant Statistician
Demography, Regional and
Social Analysis Branch

Resources

Program Costs	\$m
2013-2014	1.2
2014-2015	0.8
2015-2016	0.8
2016-2017	0.8

Objectives

The key objectives of the Geography Program are to provide leadership in the development and use of a Statistical Spatial Framework, including standard geographies as well as providing geospatial capability, standards and procedures used in the production of spatial statistics. Together these activities underpin the development of the "Statistical Spatial Framework" which will provide a common approach for all data producers and users to connect information to a location and improve the accessibility and usability of this information.

The specific objectives for the program are to:

- ▶ lead the development and implementation of the Statistical Spatial Framework within ABS, the National Statistical System, and internationally
- ▶ provide advice within the ABS and to other agencies on statistical geography, geospatial technology and techniques and the Statistical Spatial Framework
- ▶ develop and apply geospatial capability, standards and processes to improve the collection, production, dissemination and integration of spatial statistics
- ▶ provide geospatial data management, infrastructure, geographic analysis, mapping and geospatial services both corporately and through specifically funded work such as the Land Account, Carbon Farming Initiative and the Population Census.

Outputs

The program's key outputs relate to the core elements of the Statistical Spatial Framework or the development and application of geospatial capability in the ABS. These include:

- ▶ documentation and supporting material for the Statistical Spatial Framework, which is published on the National Statistical Service website (www.nss.gov.au)
- ▶ the publication of a statistical geography standard, known as the Australian Statistical Geography Standard (ASGS), that consists of five volumes and supporting material, including the geographic boundaries
- ▶ a statistical geography web portal (www.abs.gov.au/geography) that provides information on geographic classifications and supporting information
- ▶ maintenance of the ABS Master Spatial Database, including incorporation of Public Sector Mapping Agencies (PSMA) data, including Geocoded National Address File (G-NAF), and additional new sources of data
- ▶ implementation of enterprise geospatial capability, including network analysis, geospatial visualisation and corporate solutions for address coding and validation
- ▶ geospatial capability and support services for the execution of statistical programs including the Census of Population and Housing, Carbon Farming Initiative support, the production of environmental accounts and data acquisition and collection.

Developments

The main medium-term developments in the program are to:

- ▶ further develop and promote the Statistical Spatial Framework within the Australian government, nationally and internationally – ongoing
- ▶ implement a new ABS geospatial policy and further develop supporting material to guide both the implementation of the Statistical Spatial Framework within ABS statistical operations and the development of ABS enterprise architecture – throughout 2013-14
- ▶ develop new workload design and mapping systems to support the 2016 Census of Population and Housing – from August 2013 to June 2014
- ▶ continue to develop new geospatial techniques and data sources to support the ABS involvement in the Carbon Farming Initiative, including development of an Agriculture land parcel frame – ongoing
- ▶ continue to develop new geospatial techniques and data sources to produce environmental accounts – ongoing
- ▶ reviewing the scope and effectiveness of the 2011 ASGS and revising it for 2016 – ongoing
- ▶ develop and extend ABS geospatial capability for the collection, production, dissemination and integration of statistics – ongoing.

Data Standards and Methods

Program Manager

Chris Duffy
Assistant Statistician
Data Standards and
Methods Branch

Resources

Program Costs	\$m
2013-2014	3.0
2014-2015	3.0
2015-2016	3.0
2016-2017	3.0

Objectives

The Data Standards and Methods Program provides conceptual and infrastructure support that underpins the ABS mission. The program is responsible for facilitating the comparability, integration, coherence and quality of ABS statistics, through the use of standard concepts, definitions, classifications, collection methods and procedures. The program aims to support the statistical collection process, mitigate statistical risk, enhance capability, and provide statistical information management leadership to the statistical community.

The program seeks to achieve this by:

- ▶ setting and reviewing ABS policies and principles for key statistical collection methods, standards and classifications
- ▶ providing leadership and expertise in the development of statistical and data management standards, practices and procedures within the ABS and National Statistical Service (NSS)
- ▶ building capability in standards, data management, concepts and classifications within the ABS and NSS
- ▶ leading the organisation in the preparation of statistical metadata in readiness for the new statistical infrastructure that aims to improve statistical outcomes.

Outputs

Key outputs from the program cover the following areas:

- ▶ development and maintenance of key national standards on statistical units, concepts, definitions, questions and classifications that underpin population, social, economic and environmental statistics
- ▶ provide standards and guidelines on, and reviews of, the design and evaluation of collection methods
- ▶ implement the Statistical Information Transformation Program to improve statistical outcomes and prepare statistical areas for new ABS 2017 infrastructure
- ▶ build capability in subject matter areas in the use and/or development of statistical collection methods, standards and associated tools for their implementation
- ▶ provide support for the ABS Information Warehouse.

Developments

The main medium-term developments in the program are to:

- ▶ review the Standard Economic Sector Classification of Australia to ensure that it remains relevant for the publishing of national accounts and related statistics – due June 2014
- ▶ develop and implement improvements in the management and governance of statistical metadata content leading to improved statistical outcomes – due June 2014
- ▶ develop, in partnership with methodology and statistical areas, the ABS's future coding strategy – due June 2014
- ▶ prepare priority statistical metadata content for use by ABS2017 infrastructure – due June 2015
- ▶ review the Income, Family, Household and Language related Demographic Standards in the lead up to the 2016 Census – due June 2016
- ▶ lead the transformation of statistical metadata content with statistical areas progressively – due December 2016
- ▶ promulgate and increase awareness for relevant standards for population, social, economic and environmental statistics on the ABS intranet and the ABS website – ongoing
- ▶ develop and implement best practices and standards for collecting survey data by web-forms and other electronic modes – ongoing.

ABS 2017 Program Management Office

Program Manager

Greg Amie-Fong
Assistant Statistician
Program Management
Office

Objectives

The Program Management Office (PMO) is responsible for providing centralised and coordinated support to the ABS 2017 Group to ensure successful delivery of business process and information management transformation objectives.

The PMO promotes and facilitates excellence in the areas of project management and business process analysis and re-engineering as well as providing program support in resource management and change management. These four functions will service the various ABS divisions and specifically the ABS 2017 change program with the critical skills and support required to achieve their outcomes by ensuring:

- ▶ alignment between strategies, programs and projects
- ▶ future designs for business, information management, technology and applications are aligned to an enterprise architecture
- ▶ change governance
- ▶ visibility of program management information, including tracking realisation of the business benefits
- ▶ consistent application of methodologies, standards, frameworks, processes and tools
- ▶ robust business analysis and process re-design
- ▶ coordinated delivery of change across the organisation
- ▶ efficient use of allocated resources.

Outputs

The main outputs will be:

- ▶ building project management capability, compliant with the Portfolio, Programme, Project Management Maturity Model (P3M3) standard
- ▶ to establish Business Process Management capability across the ABS to support investment decision making and performance reporting
- ▶ business analysis and process re-engineering services, delivering optimised business processes to the ABS
- ▶ standardised program reports and a project management service (including leadership in concepts, processes and templates) to support the program board and the ABS 2017 program dossier
- ▶ an ABS 2017 Program Plan, including agreed governance model, objectives, outcomes and outputs
- ▶ an integrated program schedule (e.g. outputs, deliverables, and timeframes) and visual roadmap
- ▶ a high level change management plan including communication and stakeholder engagement components that will be delivered in phases over the duration of the ABS 2017 program
- ▶ an enterprise architecture that underpins the future design.

Developments

The main medium-term developments are to:

- ▶ operationalise the new ABS 2017 Program governance model and review its fitness for purpose in six months – ongoing
- ▶ design and implement Program support strategies to:
 1. optimise the ABS 2017 ongoing monthly reporting to the ABS 2017 and strategic investment program board – by end December 2014
 2. prepare an integrated schedule of the program dossier (e.g. outputs, deliverables, and timeframes) – due August 2014
 3. conduct robust costs and savings analysis, identifying dependencies to inform ABS 2017 Program Board decisions – ongoing
 4. devise and operationalise communication and engagement plans, opening new channels for communicating ABS 2017 developments – ongoing
 5. build capability in the key enabling areas of business process analysis and re-engineering, project management and change management, providing training where appropriate (eg through XPL, Diploma in Project Management) – ongoing
 6. improve rigour, processes and tools, compliance to standards and embed 'best practice' particularly in relation to business process analysis and re-engineering and project management – ongoing (first draft due end August 2014)
- ▶ design the enterprise architecture, especially the definition of future business and capabilities, information model and technology design to achieve outcomes of future transformation – ongoing.

ABS 2017 Information Infrastructure

Program Manager

Gillian Nicoll
Assistant Statistician
Information Infrastructure
Branch

Objectives

The program is responsible for designing and developing the next generation of statistical information infrastructure which, once implemented across ABS collections, will allow the ABS to transform the way its business is undertaken. The program will deliver a coherent and integrated environment for the life cycle management of ABS data and metadata.

The objective of the program is to lead the design, development and implementation of:

- ▶ information management governance, infrastructure and standards
- ▶ metadata driven processes that encompass the life-cycle management of data and metadata assets.

This infrastructure will lay the platform for ABS business processes to be metadata driven from end to end, within a common data management framework. The application of standards based statistical information, in conjunction with the re-engineering of business processes, will greatly increase re-use and automation of end-to-end statistical processes. This will reduce the number of labour intensive manual tasks, which have resulted from incompatibilities between systems and processes.

This program will provide a platform for ABS to increase efficiency of statistical processes and develop new statistical products more rapidly.

Outputs

The program has the following main outputs:

- ▶ the statistical workflow management system
- ▶ information management frameworks, standards and governance
- ▶ core infrastructure for the management of data and metadata.

Developments

The main medium term developments are to:

- ▶ develop and implement a Metadata Registry and Repository to provide end-to-end management, registration, storage and re-use of ABS metadata – due 2013-2014 to 2014-15
- ▶ develop and implement an Enterprise Data Warehouse to provide life-cycle management of statistical data – due 2013-2014 to 2014-15
- ▶ develop and implement a statistical workflow management system to facilitate the design, creation and orchestration of statistical processes – due 2013-14 to 2014-15
- ▶ develop and implement a framework for managing and re-using metadata – due 2013-14 to 2014-15
- ▶ collaborate with international organisations on the development and refinement of international metadata models, including the Data Documentation Initiative and Generic Statistical Information Model – due 2013-2014.

Data Acquisition and Collection

Program Manager

Adrian Bugg
Assistant Statistician
Data Acquisition &
Collection Branch

Resources

Program Costs	\$m
2013-2014	40.0
2014-2015	43.3
2015-2016	48.8
2016-2017	44.9

Objectives

The Data Acquisition and Collection program provides a comprehensive statistical data collection and dissemination service for the ABS that also encompasses administrative data acquisition. The Data Acquisition and Collection Branch is leading the Acquire@ABS program to transform collection operations through introduction of an online reporting capability that will include the first digital Census of Population and Housing in 2016. In doing so, it supports the ABS corporate mission and objectives by providing a high quality, timely and cost effective service while maintaining the trust and cooperation of providers through a range of measures, including:

- ▶ efficient and effective data collection operations
- ▶ developing and maintaining a skilled and committed home and office-based interviewer workforce
- ▶ upholding the confidentiality of information provided to the ABS
- ▶ continually improving the processes and instruments to improve ABS interaction with providers.

Outputs

The main outputs of the Data Acquisition and Collection program are:

- ▶ data collection and capture including the capabilities, systems, procedures and instruments for all ABS collections
- ▶ provision of the central administrative data acquisition service for the ABS
- ▶ advice to subject matter areas on data acquisition strategies encompassing online forms and other modes
- ▶ sample management for ABS household surveys
- ▶ an active provider engagement strategy to ensure a continued high level of public trust and provider cooperation.

Developments

The main medium-term developments in the program are focused around the first phase of the transformation of collection processes and facilities. Key aspects of this modernisation include:

- ▶ implementing an online reporting capability for the monthly household surveys – ongoing
- ▶ further expansion of online reporting capability for business collections – ongoing
- ▶ complete adoption of a new household survey sampling system – due August 2013
- ▶ achieving benefits from transformation of household and business collection through introduction of online forms – ongoing
- ▶ establishing requirements for enterprise capabilities to meet data acquisition functions – ongoing
- ▶ preparing for the next digital Census in 2016 and providing an online reporting capability – ongoing
- ▶ establishing the case for further investment in transformation of data acquisition systems and processes – due mid 2014
- ▶ commencing integration of online reporting capabilities with foundation infrastructure – ongoing.

ABS Centre for Data Integration

Program Manager

Christine Williams
Assistant Statistician
Education & Data
Integration Branch

Resources

Program Costs	\$m
2013-2014	1.3
2014-2015	1.7
2015-2016	2.1
2016-2017	0.7

Objectives

Data integration is the joining of data from different sources to develop new datasets. The ABS undertakes data integration for statistical and research purposes. The potential value to the National Statistical System to combine high value data sources, previously used in isolation, to generate an expanded range of statistics for policy formulation and to pursue new research opportunities is immense. This is particularly the case in areas with a multi portfolio focus where new statistics can support national policy development in areas such as society wellbeing, economic resources, social inclusion and healthy environments. For this reason, data integration is an area of significant growth across the ABS.

The ABS Centre for Data Integration has been established within the ABS Population, Labour and Social Statistics Group to develop and undertake data integration projects and families of projects managed by the ABS in consultation with custodians of datasets and potential users. It supports best practice in the conduct of data integration projects across the ABS through the development of internal infrastructure, resources and tools. Acknowledging that data linkage is also a very sensitive activity that requires the establishment and maintenance of a high level of community trust, the ABS Centre for Data Integration is also responsible for internal policy and governance arrangements to support the safe conduct of ABS statistical data integration activities. This ensures that the ABS meets its requirements as an accredited Integrating Authority, able to undertake high risk integration projects, including ones involving the linkage of sensitive data.

The key objective of the ABS Centre for Data Integration is to advance the quality and range of statistical data integration activities undertaken by the ABS.

Outputs

The Centre has the following outputs:

- ▶ secretariat services to the ABS Data Integration Steering Committee, which is responsible for approving and monitoring all ABS data integration projects (projects deemed high risk are also approved by the Australian Statistician)
- ▶ managing and maintaining ABS data integration policy and communications, which include papers, seminars and presentations as well as the provision of support to various communities of practice to ensure compliance with the Commonwealth principles, and governance and institutional arrangements, and to advance ABS best practice
- ▶ developing and maintaining tools and infrastructure to support high quality, safe and efficient data integration activities including the design of integration projects and families of projects, cleaning of data for integration, establishing the linkage environment and dissemination of analyses and integrated data
- ▶ leveraging access to significant datasets by building relationships with custodians of datasets and, consistent with legislative frameworks, negotiating arrangements to access these datasets for integration and the production of statistics and research.

Developments

The main medium-term developments are to:

- ▶ build and implement safe and effective arrangements for data integration within the ABS – ongoing
- ▶ ensure all ABS data linkage projects are conducted in accordance with the *High Level Principles for Data Integration Involving Commonwealth Data for Statistical and Research Purposes* – ongoing
- ▶ create a data integration portal on the ABS website to inform potential clients and the public of the ABS' work in data integration including establishment of a register of ABS statistical data integration projects involving Commonwealth data – due October 2013
- ▶ engage with the custodians of key datasets to identify and enable their use in statistical data integration projects – ongoing
- ▶ undertake research and development to enhance ABS data integration arrangements particularly in the areas of confidentialising data, data linkage accuracy and data linkage quality measures – ongoing.

Customer Services

Program Manager

Merry Branson
Assistant Statistician
Customer Services Branch

Resources

Program Costs	\$m
2013-2014	8.4
2014-2015	7.5
2015-2016	7.4
2016-2017	7.3

Objectives

The Customer Services Program provides leadership and expertise in dissemination, partnering with subject matter areas to effectively communicate official statistics through a wide range of high quality information products, services and communication channels.

Customer Services is in the business of maximising the informed use of our data by clients. The program aims to optimise the mix of dissemination channels and improve the efficiency and effectiveness of statistical communication. The program seeks to use leading edge communication and dissemination technology and aspires to showcase 'best practice' communication of official statistics. The Branch provides a range of information solutions for customers – from a telephone information and referral service, through user-pays consultancies, to supporting the complex needs of clients through improved access to, and use of, aggregated and micro data.

The Branch supports the informed use of ABS statistics through the ongoing simplification of licensing. We encourage use of ABS information in other products and services and ask others to attribute ABS material so customers can always find the original source and supporting information.

The Branch partners with ABS subject matter areas to provide many of the services and processes by which statistical releases are prepared. The program helps them produce web and database content efficiently and effectively and provides the tools, training and processes to help achieve this. In addition, the program ensures that the presentation and usability of ABS products are enhanced by the use of relevant standards developed using objective research of customer behaviour and needs.

Outputs

The main output of the program is the provision of a range of ABS product and service delivery options to customers, which include:

- ▶ online dissemination services including the ABS website (www.abs.gov.au), Facebook and Twitter
- ▶ output database products, which provide large volumes of detailed statistical macro and micro data (confidentialised), such as Table Builder, ABS.Stat and ABS DataAnalyser
- ▶ cost recovered information consultancies, providing data tailored to customers' needs
- ▶ cost recovered subscription services, providing customised data on a regular basis
- ▶ Confidentialised Unit Record Files (CURFs)
- ▶ telephone/e-mail/fax information and referral services
- ▶ improved access and discoverability of historical ABS content via the History Portal
- ▶ access to a defined set of key data through an iPhone Application 'ABS Stats'.

Developments

The main medium-term developments in the program are to:

- ▶ continue to take a leading role in an international collaborative project to develop and utilise a multi-dimensional publishing facility (.Stat) with the ability to view data as dynamic tables, graphs, maps and the functionality to provide machine-to-machine web services – ongoing
- ▶ further development of the User Registration facility for ABS online products to include ABS DataAnalyser, CURFs and ABS.Stat – due 2013-14
- ▶ continuously expand the ABS's content and services to allow users to create information tailored to their own needs – ongoing
- ▶ develop and implement a new ABS homepage and a new set of enterprise wide content types – due 2013-14
- ▶ develop improved search and analytics capabilities to support the ABS online presence – due 2013-14
- ▶ implement innovative and flexible tools for safe and effective statistical modelling of microdata – due 2013-14
- ▶ enable customer focussed views of ABS information utilising the new dynamic tools, such as by region (spatial), by theme, view indicators – due 2015-16
- ▶ update dissemination infrastructure and systems to meet the needs of users in a rapidly changing digital environment, including facilitating re-use of ABS data by external clients and third party portals while ensuring visibility of the ABS brand – due 2015-16
- ▶ progressively implement Web Content Accessibility Guidelines 2.0 compliance and engage in APS networks on accessibility – ongoing
- ▶ take a leading role in an international collaborative project for shared microdata access infrastructure and increase use of ABS microdata by researchers – ongoing
- ▶ capture, understand and report evidence about information consumption needs and behaviours of the Australian community – ongoing
- ▶ lead the update of licensing ABS data from Creative Commons 2.5 to Creative Commons 3.0 – ongoing.

Statistical Services

Program Manager

Paul Schubert
Assistant Statistician
Statistical Services Branch

Resources

Program Costs	\$m
2013-2014	6.5
2014-2015	5.8
2015-2016	6.0
2016-2017	5.7

Objectives

The Statistical Services Program provides specialist services to meet new and ongoing demands in statistics. Much of the work has the goal of ensuring the methods underlying ABS outputs are based on sound, defensible statistical principles and are cost effective.

The program has specific responsibilities for supporting the statistical collection and production processes. It provides advice on, and methods for, the most efficient and effective ways of meeting information needs through all the stages of the survey cycle. This includes advice on quality. The program also undertakes research on statistical and operational research methods to improve the efficiency and reliability of ABS work. The program provides leadership in developing the future methodological infrastructure of the ABS.

The program also aims to minimise the load on data providers through efficient sample designs and techniques to control sample overlap between surveys and, in the case of Australian business surveys, through the review and approval process for the Australian Government Statistical Clearing House, which is managed by the program.

Outputs

The program's main internal products include reports and advice on

- ▶ methods for making use of, and quality assuring, administrative data for statistical purposes
- ▶ sample design, estimation and other survey-related methodological issues
- ▶ research into new methods to meet future statistical needs
- ▶ issues affecting the quality of ABS's statistical products.

The program also supports the development and delivery of training on mathematical, statistical and other methodological issues for all ABS staff.

Externally, in conjunction with Analytical Services, the program produces and publishes a series of *Methodology Advisory Committee Papers* (ABS cat. nos. 1352.0.55.001-1352.0.55.120), which present the results of current research or analysis, often of an experimental nature, to facilitate expert discussion and comment. In addition, guidelines on current best practices of statistical methodology are also produced (ABS cat. 1500 series).

The Statistical Clearing House produces an annual report of all surveys directed to 50 or more businesses conducted by Commonwealth agencies during each fiscal year. It also promulgates and promotes survey best practices in agencies conducting business surveys.

Developments

The main medium-term developments are to:

- ▶ research new methods and review suitable tools for future ABS statistical needs – due June 2014
- ▶ improve survey data collection efficiency by using para-data for more dynamic and adaptive survey data operations – due June 2014
- ▶ develop editing methods and assess tools to support increased utilisation of administrative datasets in statistical production – due June 2014
- ▶ develop methods for dealing with missing data for more complex statistical products (derived from linked data, administrative data) – due June 2014
- ▶ develop methodologies for supporting multi-modal data collection for conduct and processing of the Census of Population and Housing and household surveys – due June 2014
- ▶ develop the sampling framework and procedures to support list-based sampling, harness administrative data and utilise address information in delivering more efficient designs and more efficient identification of subpopulations of interest for household surveys – due December 2014
- ▶ assist the implementation of new methods and tools that are part of the methodological architecture to support future ABS statistical collections and products – due June 2017.

Corporate Services

Program Managers

Chris Libreri
Assistant Statistician
Human Resources Branch

Debra Foggin
Chief Financial Officer
Financial Management
Branch

Lewis Conn
Assistant Statistician
Office of the Statistician
and External Engagement

Resources

Program Costs	\$m
2013-2014	114.7
2014-2015	128.0
2015-2016	132.7
2016-2017	136.5

Objectives

Corporate Services provides leadership and support to assist the ABS in achieving its strategic directions. It does this through partnering with business areas in the ABS by:

- ▶ providing timely, relevant, high quality and best practice corporate services with a customer and business focus to meet the changing needs of internal and external clients
- ▶ engaging and influencing stakeholders to ensure the ABS's interests are considered and accommodated, including in whole of government initiatives
- ▶ positioning the ABS to meet its current and future workforce needs
- ▶ provision of high quality corporate infrastructure, and timely and comprehensive management information
- ▶ leading the ABS in the areas of culture, legislation, legal compliance, leadership capability development, promoting and protecting the ABS brand and reputation, and financial and people management.

Outputs

Outputs for corporate services fall into the following categories: services that are delivered to ABS employees; policy advice; framework development; internal consultancy; and external communications. These are provided through three organisational groups: Financial Management Branch, Human Resources Branch and the Office of the Statistician and External Engagement. Each branch operates on a national basis and provides services to all ABS offices. A number of national business lines are delivered from locations other than, or in conjunction with central office.

The main outputs of the corporate services program are:

- ▶ a full range of integrated and coordinated services to support the Human Resources life cycle, from recruitment through to retirement
- ▶ leadership, support and guidance (including building capability) to ensure the ABS is maximising individual employees' potential
- ▶ a full range of services to support the physical working environment, including implementing changes associated with the strategic use of property and space management
- ▶ leadership and consultancy on workforce and business planning, budgeting, business continuity, financial reporting, legislation, legal compliance, policies and risk management
- ▶ maintenance and development of corporate support systems and services
- ▶ a high quality communication service for the ABS and the Australian Statistician.

Developments

The main medium-term developments in the program are to:

- ▶ optimise, upgrade and integrate Financial Systems and associated management information – development of an ABS Financial Management System will commence in 2013-14
- ▶ provide leadership and support to deliver ABS Future Organisational Sustainability successfully, including the transition of work program across all ABS – ongoing
- ▶ implement changed employment arrangements resulting from the new Enterprise Agreements for ABS employees and prepare for the next Enterprise Agreement – ongoing
- ▶ embed the new national corporate services delivery model and continue to enhance client service capability and culture – ongoing
- ▶ implement the key 'ABS people plan' strategies (including those related to workforce planning, people and performance management, learning and development, leadership and general capability enhancement and cultural renewal) – ongoing
- ▶ implement the new ABS People Capability Framework to enhance our People and Workforce Planning – ongoing
- ▶ provide leadership in identifying innovative ways to deliver more efficient and effective procurement and travel services – ongoing
- ▶ support the business outputs of the ABS by ensuring the ongoing development and maintenance of statistical capability, leadership and business skills in the workforce – ongoing
- ▶ update policy and legislation, and provide advice and education to ensure ABS understanding and compliance with legislation – ongoing
- ▶ measure and manage media attribution of ABS business – ongoing.

Technology Services

Program Manager

Patrick Hadley
First Assistant Statistician
Technology Services
Division

Resources

Program Costs	\$m
2013-2014	53.5
2014-2015	49.1
2015-2016	43.0
2016-2017	47.1

Objectives

The key objectives for the Technology Services Program (TSD) are to:

- ▶ ensure the ABS leverages information technology strategically to support its mission and enable transformation
- ▶ ensure the ABS has effective security policies, practices and procedures
- ▶ represent the ABS and build strategic relationships in the broader Information and Communication Technology (ICT) industry, government and international statistical communities in relation to ICT and security matters
- ▶ ensure sustainability of ICT investments and services through building and maintaining a highly capable and motivated ICT workforce.

Behind the key objectives of the Technology Services Program are five business drivers:

- ▶ a focus on information management that positions the ABS to flexibly respond to a range of future statistical needs in an enterprise wide and timely manner
- ▶ increased use of the internet as a means to collaborate with others, and to collect and disseminate data and information
- ▶ ensuring our people are productive in the use of their ICT facilities
- ▶ providing strong leadership in innovation through new approaches and application of ICT to ABS business
- ▶ optimising ICT services through the adoption of frameworks, standards and good practices to improve services, lower unit costs and benchmark well with other agencies.

Outputs

The main outputs of the program are:

- ▶ delivery of enterprise wide technology solutions to support statistical and business processes for the ABS
- ▶ delivery of consistent and measurable services for business and application analysis, design, programming, acquisition and commissioning services to assist in improving ABS business processes
- ▶ provision of reliable, cost effective and secure technology infrastructure, library and knowledge management services
- ▶ updates to the ABS ICT Strategy, applications architecture and infrastructure architecture to support ABS Enterprise Architecture
- ▶ implementation of the ABS ICT Workforce Plan to grow capability to meet new business and leverage new technologies.

Developments

The main medium-term developments in the program are to:

- ▶ provide a secure solution for the remote execution environment for microdata (REEM) and begin integration into existing and future processes – due September 2013
- ▶ produce an efficient and effective mechanism to prioritise and provide ICT support for business applications – due December 2013
- ▶ work collaboratively to update the ABS Enterprise Architecture, through the development of application and infrastructure architecture – due December 2013
- ▶ implement and migrate business processes onto the Metadata Registry and Repository (MRR) and Business Process Management system (inSPIRE) – due July 2014
- ▶ improve productivity of ABS staff through enhanced desktop, video conferencing and mobile capabilities – due July 2014
- ▶ improve the quality of metadata classification across the ABS via the metadata authoring environment project – due July 2014
- ▶ source or design/build new tools to support a Statistical Enterprise Data Warehouse – due July 2015
- ▶ provide ICT services and systems for the 2016 Census of Population and Housing and continued development for dissemination products – due July 2017
- ▶ provide technology solutions to support ABS transformation and the ABS 2017 program of work – due July 2017
- ▶ develop enterprise wide approaches to ICT systems and services in the ABS – ongoing
- ▶ undertake security programs improvements to meet new business requirements, ICT services and government compliance – ongoing
- ▶ lead and support ABS innovation initiatives – ongoing
- ▶ strengthen internal processes and approaches through the adoption of industry standards – ongoing.



Appendices



Statistical and topic advisory groups

National groups

Aboriginal and Torres Strait Islander Demographic Statistics Expert Advisory Group
Aboriginal and Torres Strait Islander Reference Group (advising on reconciliation)
Advisory Group on Aboriginal and Torres Strait Islander Statistics
Analytical Community Reference Group
Australasian Mortality Data Interest Group
Australia and New Zealand Population Workshop
Australian Government Energy Data Forum
Australian Government Statistical Forum
Australian Health Survey Reference Group and related advisory groups
Australian Statistics Advisory Council
Australian Transport Data Action Network
Census – Indigenous Enumeration Strategy Working Group
Committee of Australian Sport and Recreation Officials Research Group
Culture Statistics Working Group
Data and Performance Measurement Principal Committee
Demography Statistics Advisory Group
Early Childhood Data Subgroup
Economic Statistics User Group
Disability Policy and Research Working Group
Gender Statistics Advisory Group
General Social Survey Reference Group
Health Statistics Advisory Group
Household Income and Expenditure Statistics User Advisory Group
Housing Statistics User Advisory Group
Information and Communication Technology Statistics Reference Group
Innovation (incl. R&D) Statistics Reference Group
Input-Output Statistics User Group
International Trade in Services User Group
Labour Statistics Advisory Group
Longitudinal Studies Advisory Group
Measures of Australia's Progress Expert Reference Group
Measures of Australia's Progress Social Topic Advisory Panel
Measures of Australia's Progress Economic Topic Advisory Panel
Measures of Australia's Progress Environment Topic Advisory Panel
Measures of Australia's Progress Governance Topic Advisory Panel
Mental Health Information Strategy Standing Committee
Methodology Advisory Committee
Migrant Statistics Management Board
Migrant Statistics Reference Group
Mortality Statistics Advisory Group
National Advisory Group on Aboriginal and Torres Strait Islander Health Information and Data
National Community Services Information Management Group
National Corrective Services Statistics Advisory Group
National Crime Statistics Advisory Group
National Criminal Courts Statistics Advisory Group

National Health Information Standards and Statistics Committee
 National Housing and Homelessness Information Management Group
 National Housing Supply Data Sub-group
 Patient Experience Survey Reference Group
 Personal Safety Survey Advisory Group
 Population Estimates Technical Workshop
 Private Hospital Statistics User Group
 Productivity Measurement Reference Group
 Programme for Assessment of Adult Competencies Reference Group
 Rural Environment and Agriculture Statistics User Forum
 Schools Data Subgroup
 Standard Business Reporting Taxonomy Approval Committee
 State Accounts User Group
 Statistical Clearing House Advisory Forum
 Steering Committee for the Review of Government Service Provision
 Strategic Cross-sectoral Data Committee for Early Childhood, Education and Training
 Structural Issues in the Workforce Sub-Committee, Workforce Profile Working Group (Community and Disability Services Ministers' Advisory Council (CDSMAC) Sub-Committee)
 Survey of Disability, Ageing and Carers Reference Group
 Tourism Research Advisory Board

State and Territory Government groups

ACT Information Development Working Group
 Government Agencies Statistical Committee (South Australia)
 Northern Territory Statistical Liaison Committee
 Queensland Statistical Table
 Social Statistics Consultative Groups (Western Australia)
 State Statistical Forum (all states and territories)
 Statistical Coordination and User Forum (New South Wales)
 Statistical Policy Committee (Tasmania)
 Statistical Policy Committee (Western Australia)
 Tasmanian Statistical Advisory Committee
 Victorian Statistics Advisory Forum

Contacts

For information about the Forward Work Program

Linda Fardell
Director, Planning and Governance
Telephone: 02 6252 7614
Email: linda.fardell@abs.gov.au
Mail: Locked Bag 10
Belconnen ACT 2616

For information about the Australian Statistics Advisory Council (ASAC)

Lewis Conn
Secretariat
Telephone: 02 6252 5448
Email: lewis.conn@abs.gov.au
Mail: Locked Bag 10
Belconnen ACT 2616

For statistical information

National Information and Referral Service
Telephone: 1300 135 070
Facsimile: 1300 135 211
Email: client.services@abs.gov.au
Mail: Client Services,
ABS GPO Box 796
Sydney NSW 2001

For general information

Central Office, Canberra

Telephone: 02 6252 5000
Facsimile: 02 6252 5566
Mail: Locked Bag 10
Belconnen ACT 2616
Counter: ABS House
45 Benjamin Way,
Belconnen

New South Wales Office

Mail: GPO Box 796
Sydney NSW 2001
Counter: Level 10,
44 Market Street, Sydney

Victorian Office

Mail: GPO Box 2796Y
Melbourne Vic. 3001
Counter: South Tower,
485 LaTrobe Street, Melbourne

Queensland Office

Mail: GPO Box 9817
Brisbane Qld 4001
Counter: 639 Wickham Street,
Fortitude Valley, Brisbane

South Australian Office

Mail: GPO Box 2272
Adelaide SA 5001
Counter: 9th Floor, ANZ House
11 Waymouth Street, Adelaide

Western Australian Office

Mail: GPO Box K881
Perth WA 6842
Counter: Level 15,
Exchange Plaza
2 Sherwood Court, Perth

Tasmanian Office

Mail: GPO Box 66
Hobart Tas. 7001
Counter: Ground Floor
200 Collins Street, Hobart

Northern Territory Office

Mail: GPO Box 3796
Darwin NT 0801
Counter: 3rd Floor, Civitas Building,
22 Harry Chan Avenue, Darwin

Australian Capital Territory Office

Mail: Locked Bag 10
Belconnen ACT 2616
Counter: ABS House 45
Benjamin Way, Belconnen

