



BUSINESS INDICATORS

**AUSTRALIAN
CAPITAL
TERRITORY**

EMBARGO: 11:30AM (CANBERRA TIME) TUES 22 FEB 2000

C O N T E N T S

	<i>page</i>
Notes	2
Summary of findings	3
Selected business indicators	5
FEATURE ARTICLE	
Job Search Experience of Unemployed Persons	6
TABLES	
1 Business expectations: Sales, March quarter 2000/ December quarter 2000, expected aggregate change	8
2 Business indicators	9
3 ACT in relation to the rest of Australia	12
4 ACT in relation to the rest of Australia—percentage changes	13

- For further information about these and related statistics, contact Lenya Redfern on Canberra 02 6207 0446 or Will Blythe on Canberra 02 6207 0311, or Client Services in any ABS office as shown on the back cover of this publication.

NOTES

FORTHCOMING ISSUES

<i>ISSUE</i>	<i>RELEASE DATE</i>
March 2000	21 March 2000
April 2000	27 April 2000
May 2000	22 May 2000
June 2000	23 June 2000
July 2000	28 July 2000
August 2000	25 August 2000

SYMBOLS AND OTHER USAGES

ACT	Australian Capital Territory
n.a.	not available
no.	number
n.p.	not available for publication
p	preliminary
*	Represents data with a standard error of greater than 25%. Caution should be exercised when using this data.
—	nil or rounded to zero

Dalma Jacobs
Regional Director, Australian Capital Territory

SUMMARY OF FINDINGS

UPDATED SERIES

Series updated since the January 1999 issue are: building approvals, building commencements, motor vehicle registrations, labour force, engineering construction activity, industrial disputes, retail turnover, housing finance, consumer price index, wage and salary earners. The feature article, beginning on page 6 is on Job Search Experience of Unemployed Persons.

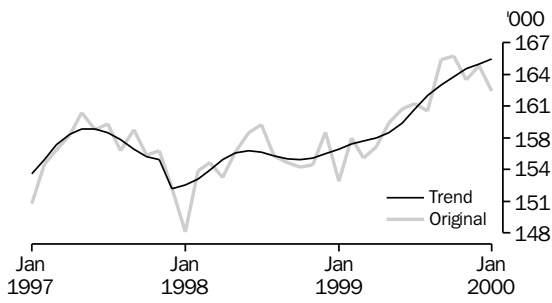
NOTABLE MOVEMENTS

- Building approvals** The trend number of dwelling units approved in the ACT decreased by 2.8% to 208 dwelling units in December 1999. Nationally, the trend number of dwelling units approved increased by 0.8% to 14,984 dwelling units in December 1999.
- The value of non-residential building approvals in the ACT was \$8.8 million in December 1999, a decrease of \$42.3 million from the previous month. There was also a decrease of \$22.3 million compared to December 1998. Nationally, the value of non-residential building approvals decreased by 16.4% from the previous month and was down 11.7% from December 1998.
- Building commencements** The value of new houses commenced in the ACT in the September quarter 1999 was \$38.8 million, down 22% from the previous quarter and down 23% from the September quarter 1998. Nationally, the value of new houses commenced in the September quarter 1999 recorded a 7% increase from the previous quarter and a 15% increase from a year ago.
- Motor vehicle registration** The trend estimate for ACT new motor vehicle registrations in December 1999 was 1,096, up 0.9% from the previous month, and down 10% compared to December 1998. Nationally, the trend for total new motor vehicle registrations in December 1999 increased by 0.8% to 62,230 since November 1999, and was down 6% compared to December 1998.
- Labour force** In January 2000, the trend unemployment rate for the ACT decreased 0.1 percentage points to 9,600 persons (5.5%) compared to the previous month, and decreased 0.5 percentage points compared to January 1999. Compared with the previous month, trend employment increased by 0.3% (to 165,400 persons). Nationally, trend employment increased by 0.1% (to 8,914,900 persons) from the previous month, while the trend unemployment decreased by 0.7% (to 656,200 persons) for January 2000. The national trend unemployment rate remained steady at 6.9%. The trend participation rate in the ACT decreased by 0.1 percentage points to 73.2% compared to the previous month, while nationally the trend participation rate remained steady at 63.3%.

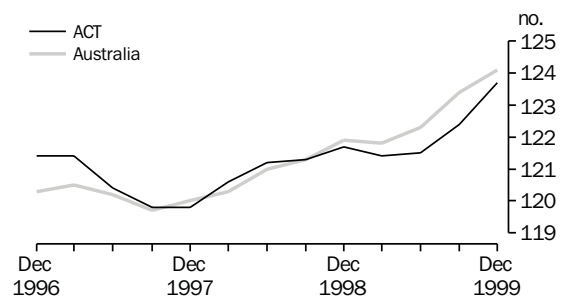
Engineering construction activity	The value of construction work done by the public sector in the ACT during the September quarter 1999 increased by 0.7% or \$0.2 million from the previous quarter, and decreased by 40.6% or \$8.4 million from the September quarter 1998. Nationally, the value of public sector work done decreased by 26% from the previous quarter, and increased 16% from the September quarter 1998.
Industrial disputes	For the 12 months ended October 1999 there were 34 working days lost per thousand employees in the ACT compared to 73 days nationally. In comparison with the 12 months ended October 1998, there was an increase of 6% for the ACT and an increase of 3% nationally in the number of working days lost per thousand employees.
Retail turnover	The trend estimate for retail turnover in the ACT for December 1999 was \$230.3 million, an increase of 0.5% from the previous month and was up 8.0% compared to December 1998. The national trend retail turnover recorded an increase of 0.5% from the previous month and was up 7.0% compared to the previous year.
Housing finance	The trend number of dwelling units financed (including refinancing) in the ACT in November 1999 was 1,051 an increase of 4.3% from the previous month. The trend estimate for the value of commitments in the ACT increased by 4.8% (to \$132 million) compared with the previous month. Refinancing of existing dwellings comprised 12% of the total value of dwelling units financed in November 1999, the same value recorded for October 1999. Nationally, the trend number of dwelling units financed (including refinancing) during November 1999 was 49,527, an increase of 2.4% from the previous month, while the trend estimate for the value of commitments increased to \$6,789 million (up 3.2%) from previous month.
Consumer price index	The ACT experienced an increase of 0.6% in the All Groups for CPI for the December quarter 1999, which is the same as the national increase. The ACT annual CPI rate to December quarter 1999 recorded an increase of 1.6%, while the annual CPI for the weighted average of the eight capital cities increased by 1.8%.
Wage and salary earners	The trend number of wage and salary earners from the public and private sectors in the ACT declined 0.7% (1,100) to 149,500 in the September quarter 1999. This compares to a national increase of 0.4% (28,900). The ACT had the largest annual increase (14.2%) of all states and territories. The proportion of private sector wage and salary earners in the ACT sits at around 55%. These figures exclude self-employed persons in jobs located in the private sector.

SELECTED BUSINESS INDICATORS

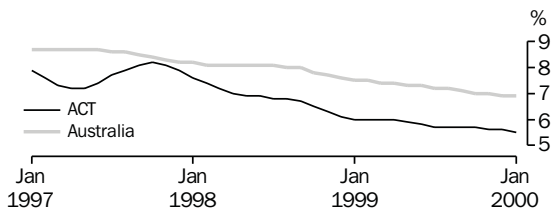
LABOUR FORCE, Employment



CONSUMER PRICE INDEX

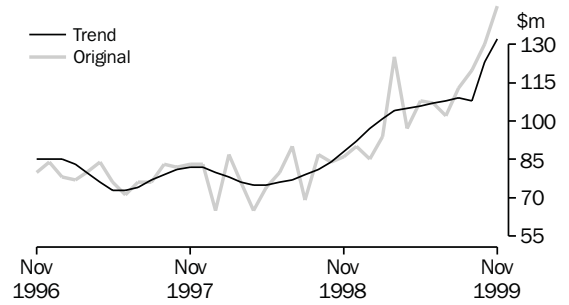


LABOUR FORCE, Unemployment Rate: Trend

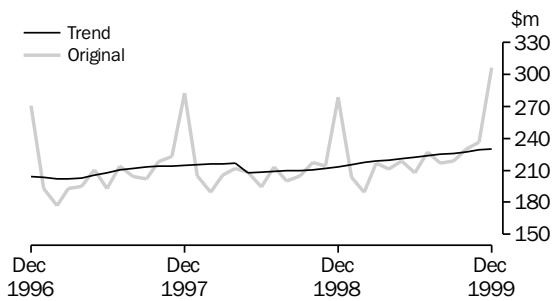


Notes: Trend estimates for March 1999 to August 1999 have been revised.

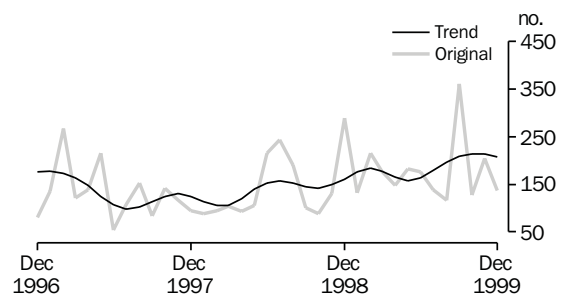
HOUSING FINANCE



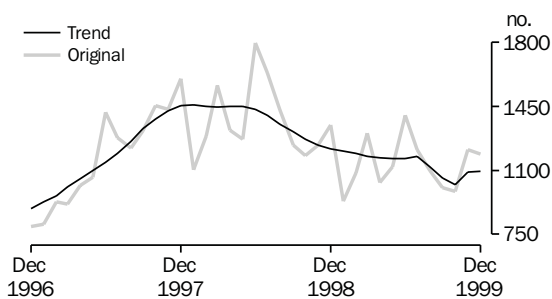
RETAIL TURNOVER



BUILDING APPROVAL, Dwelling Units Approved



NEW MOTOR VEHICLE REGISTRATIONS



FEATURE ARTICLE

JOB SEARCH EXPERIENCE OF UNEMPLOYED PERSONS

UNEMPLOYED PERSONS

In July 1999, there were 8,100 unemployed persons in the ACT, excluding those persons who were stood down. Of these 8,100 unemployed persons, there were 5,500 (68%) males and 2,600 (32%) females. Six out of ten unemployed persons (64% or 5,200) were looking for full-time work, a decrease from the 76% looking for full-time work in July 1997.

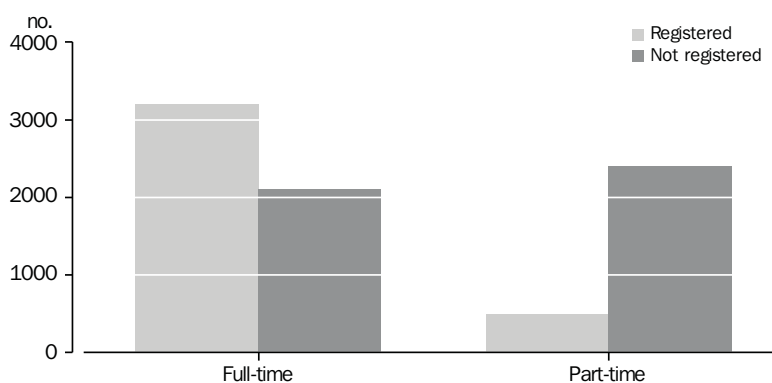
JOB SEARCH EXPERIENCE

In July 1999, 46% (3,700) of unemployed persons were registered with Centrelink, a decrease from the 67% registered with CES (Commonwealth Employment Service) in July 1997. This is a decrease of 21 percentage points in the two years since July 1997 and is consistent with a decline in the use of government provided employment services nationally.

Some 42% (3,400) of unemployed persons were registered with Centrelink and had contacted prospective employers. A further 53% (4,300) had contacted prospective employers but were not registered with Centrelink. By comparison nationally, 63% of unemployed persons were registered with Centrelink and had contacted prospective employers and 32% contacted prospective employers but were not registered with Centrelink.

Unemployed persons looking for full-time work were more likely to be registered with Centrelink than those looking for part-time work. Of those looking for full-time work, 3,200 (62%) were registered with Centrelink. The most common active step taken by those looking for part-time work was contacting prospective employers without having registered with Centrelink (79% or 2,300 persons).

CENTRELINK REGISTRATION WHETHER LOOKING FOR FULL-TIME OR PART-TIME WORK



JOB SEARCH EXPERIENCE

continued

The five most commonly reported difficulties in finding work were:

- considered too young or too old by employers (15%);
- insufficient work experience (12%);
- too many applicants for available jobs (11%);
- lacked necessary skills/education (10%); and
- no vacancies in line of work (10%).

Nationally, the most commonly reported difficulties for all persons were: considered too young or too old by employers (15%) and too many applicants for available jobs (12%).

THE LONG-TERM UNEMPLOYED

In July 1999, 30% (2,400) persons were considered long-term unemployed, i.e. they have been unemployed for a duration of one year and over. Persons unemployed for a duration of one year and over consisted of 75% males and 25% females. For those 5,700 persons who were unemployed for under one year, 65% were males and 35% were females.

EDUCATIONAL ATTAINMENT

In July 1999, 56% (4,500) of unemployed persons did not have post-school qualifications. Of this group 53% (2,400) had not completed the highest level of secondary school available, compared with 72% nationally. Almost 30% (2,400) of unemployed persons had completed post-school qualifications which is slightly lower than the national figure of 32%. Most of this group (54%) had a skilled or basic vocational qualification, another 25% had bachelor degree or higher and a further 21% had an undergraduate or associate diploma.

1

BUSINESS EXPECTATIONS: SALES

<i>Period</i>	<i>ACT</i>	<i>Aust.</i>
	<i>%</i>	<i>%</i>
Short-term		
Dec qtr 1997–Mar qtr 1998	-1.1	-0.3
Mar qtr 1998–Jun qtr 1998	-0.1	1.7
Jun qtr 1998–Sep qtr 1998	2.7	1.1
Sep qtr 1998–Dec qtr 1998	3.5	1.6
Dec qtr 1998–Mar qtr 1999	-2.7	-0.9
Mar qtr 1999–Jun qtr 1999	0.4	1.8
Jun qtr 1999–Sep qtr 1999	1.4	1.8
Sep qtr 1999–Dec qtr 1999	1.9	2.4
Dec qtr 1999–Mar qtr 2000	-5.4	-0.7
Medium-term		
Dec qtr 1997–Dec qtr 1998	2.9	3.0
Mar qtr 1998–Mar qtr 1999	2.6	2.6
Jun qtr 1998–Jun qtr 1999	6.9	2.7
Sep qtr 1998–Sep qtr 1999	7.5	2.9
Dec qtr 1998–Dec qtr 1999	2.6	2.7
Mar qtr 1999–Mar qtr 2000	1.7	2.3
Jun qtr 1999–Jun qtr 2000	5.7	3.3
Sep qtr 1999–Sep qtr 2000	2.8	2.7
Dec qtr 1999–Dec qtr 2000	0.1	1.8

Indicator	Unit	ACT			Aust.		
		% change from			% change from		
		Latest figure	Previous period	Same period previous year	Latest figure	Previous period	Same period previous year
POPULATION, VITAL AND LABOUR							
POPULATION, June qtr 99	'000	310.2	0.3	0.7	18 966.8	0.3	1.3
Natural increase	no.	886	20.9	24.4	30 378	1.0	0.3
Net migration	no.	117	-44.6	54.5	18 041	-51.4	2.0
Total increase	no.	1 003	22.8	150.0	48 419	-27.9	0.9
LABOUR FORCE, Jan 00							
Original series							
Employed	'000	162.2	-1.5	5.9	8 773.9	-3.0	2.6
Unemployed	'000	10.5	16.7	-2.8	696.3	4.4	-7.7
Unemployment rate	%	6.1	0.9	-0.5	7.4	0.5	-0.7
Participation rate	%	72.3	-0.6	2.7	62.6	-1.7	0.1
Long-term unemployed, Dec 99	no.	1 757	-38.3	-26.2	189 815	0.7	-15.9
Long-term unemployed as percentage of total unemployed		19.6	-5.8	-9.4	28.4	-2.5	-3.6
Trend series							
Employed	'000	165.4	0.3	5.8	8 914.9	0.1	2.7
Unemployed	'000	9.6	-1.0	-4.0	656.2	-0.7	-7.3
Unemployment rate	%	5.5	-0.1	-0.5	6.9	—	-0.6
Participation rate	%	73.2	-0.1	2.6	63.3	—	0.2
WAGE AND SALARY EARNERS							
Number employed—Trend series, Sep qtr 99							
Public sector	'000	67.4	0.7	-0.7	1 450.8	0.2	-0.2
Private sector	'000	82.1	-1.9	14.2	5 774.3	0.5	3.5
Total	'000	149.5	-0.7	-0.7	7 225.1	0.4	2.7
Gross earnings—Original series, Sep qtr 99							
Public sector	\$m	911.5	16.6	-0.4	15 724.8	6.9	6.9
Private sector	\$m	602.6	-12.7	14.7	47 801.4	3.3	7.0
Total	\$m	1 514.1	2.8	4.8	63 526.2	4.2	4.2
JOB VACANCIES, Nov qtr 99	'000	3.8	15.2	137.5	103.2	-6.2	6.2
INDUSTRIAL DISPUTES IN PROGRESS, Oct 99							
Working days lost	'000	0.1	—	—	39.7	-38.8	92.7
Days lost per '000 employees (year ended Oct 99)	no.	34.0	3.0	6.3	73.0	2.8	2.8
BUILDING AND CONSTRUCTION							
HOUSING FINANCE, Nov 99							
Secured commitments to individuals for							
Original series							
Construction of dwellings	\$m	15.0	15.4	87.5	1 094.0	9.2	53.7
Purchase of new dwellings	\$m	3.0	-25.0	50.0	259.0	-3.4	5.3
Purchase of established dwellings	\$m	101.0	11.0	80.4	5 848.0	9.9	45.9
Re-financing	\$m	18.0	12.5	20.0	1 112.0	12.9	40.1
Total housing commitments	\$m	145.0	12.4	68.6	7 202.0	9.3	45.0
Seasonally adjusted series							
Total housing commitments	\$m	137.0	—	63.1	6 927.0	-1.4	42.2
Trend series							
Dwelling units financed	no.	1 051	4.3	41.8	49 527	2.4	28.7
Total housing commitments	\$m	132.0	4.8	51.7	6 789.0	3.2	41.5
BUILDING APPROVALS, Dec 99							
Original series							
Dwelling units	no.	137	-33.2	-52.6	14 272	-9.2	12.5
Value of new residential	\$m	16.1	-32.1	-6.4	1 778.2	-6.7	27.9
Value of residential alterations and additions	\$m	4.1	-26.8	-8.9	257.9	-8.2	17.8
Value of non-residential	\$m	8.8	-82.8	-71.7	826.9	-16.5	11.7
Value of total building	\$m	29.2	-63.7	-53.4	2 863.0	-9.9	21.9
Trend series							
Dwelling units	no.	208	-2.8	29.2	14 984	0.8	15.2

Indicator	Unit	ACT			Aust.		
		Latest figure	% change from		Latest figure	% change from	
			Previous period	Same period previous year		Previous period	Same period previous year
BUILDING AND CONSTRUCTION <i>continued</i>							
BUILDING COMMENCEMENTS, Sep qtr 99							
New houses	no.	264	-30.3	-37.6	28 290	3.2	4.2
Value of houses commenced	\$m	38.8	-22.1	-22.6	3 633.4	7.3	14.6
Value of non-residential building commenced	\$m	32.9	-51.7	-39.1	2 879.3	1.8	-2.6
Value of total commencements	\$m	125.7	-17.0	-1.6	9 204.4	13.9	13.3
PRICE INDEXES							
Established house price index, Dec qtr 99		129.7	0.2	2.4	136.8	1.9	7.8
ENGINEERING CONSTRUCTION (Jun qtr 99)							
Private sector							
Value of work commenced	\$m	11.7	-5.6	23.2	2 656.2	-7.5	18.4
Value of work done	\$m	22.3	22.5	106.5	2 805.0	-2.6	-5.9
Value of work yet to be done	\$m	25.2	-31.9	82.6	5 291.9	-3.2	-10.4
Value of work done by public sector	\$m	29.1	0.7	40.6	1 563.5	-26.0	16.0
PRICES, WAGES AND CONSUMER SPENDING							
CONSUMER PRICE INDEX, Dec qtr 99							
Food(a)		130.9	2.5	1.4	128.9	0.3	2.3
Housing(a)		97.2	1.2	3.5	99.6	1.5	4.3
Transportation(a)		131.4	-0.2	3.5	126.4	-0.4	3.7
All groups(a)		123.7	1.1	1.6	124.1	0.6	1.8
AVERAGE WEEKLY EARNINGS, Aug qtr 99							
Original series							
Males	\$	899.4	1.5	-2.7	796.2	-0.3	1.5
Females	\$	783.7	1.0	1.2	675.7	0.9	3.5
Persons	\$	851.7	1.2	-1.1	751.8	0.1	2.1
Trend series							
Males	\$	890.5	0.4	-2.1	798.6	0.5	2.0
Females	\$	785.0	0.8	1.5	675.9	0.7	3.3
Persons	\$	845.6	0.4	-0.9	753.7	0.6	2.5
WAGE COST INDEX, June qtr 99							
Public sector(b)		104.5	0.1	3.2	106.2	0.3	3.9
Private sector(b)		104.3	0.6	2.7	105.1	0.6	2.9
Total(b)		104.4	0.3	3.0	105.4	0.6	3.2
RETAIL TURNOVER, Dec 99							
Original series							
Food retailing	\$m	96.7	16.9	8.7	5 764.2	19.6	8.6
Department stores	\$m	49.9	79.5	6.6	2 070.1	71.4	4.8
Hospitality and services	\$m	35.6	2.9	-3.8	2 432.7	17.1	14.4
All other retailing	\$m	124.0	36.1	17.5	5 676.0	32.9	9.2
Total	\$m	306.2	29.6	10.0	15 943.0	28.8	9.2
Trend series							
Food retailing	\$m	83.6	0.5	4.9	4 897.7	0.6	5.1
Department stores	\$m	26.4	1.5	5.2	1 095.2	0.5	4.9
Hospitality and services	\$m	33.3	—	-4.0	2 068.2	0.4	9.4
All other retailing	\$m	87.0	0.3	17.9	4 086.8	0.3	8.8
Total	\$m	230.3	0.5	8.0	12 147.9	0.5	7.0

(a) Base year: 1989-90 = 100.0.

(b) Base of each index: September quarter 1997 = 100.0.

Indicator	Unit	ACT			Aust.		
		Latest figure	% change from		Latest figure	% change from	
			Previous period	Same period previous year		Previous period	Same period previous year
TOURISM AND TRANSPORT							
HOTELS, MOTELS AND GUEST HOUSE ACCOMMODATION, Jun qtr 99							
Original series							
Room nights	'000	284.9	7.7	26.1	10 395.6	10.3	7.8
Takings at current prices	\$m	25.4	7.2	13.9	946.4	-5.7	7.4
Guest arrivals	'000	226.9	5.0	6.8	8 306.6	-1.0	5.2
Guest nights	'000	482.0	3.4	14.4	18 622.5	-4.1	8.2
Room occupancy rate	%	66.4	3.3	1.8	60.8	-1.9	1.6
NEW MOTOR VEHICLE REGISTRATIONS, Dec 99							
Motor vehicles	no.	1 187	-2.0	-12.0	66 631	1.2	-6.3
Seasonally adjusted motor vehicles	no.	1 071	-11.1	-14.0	64 451	2.8	-5.2
Trend motor vehicles	no.	1 096	0.9	-10.0	62 230	0.8	-6.2
AGGREGATE INDICATORS							
STATE ACCOUNTS, Jun qtr 99(a)							
Original series (chain volume measures)(b)							
Household final consumption expenditure	\$m	1 637	3.6	4.5	87 576	3.6	5.3
General government final consumption expenditure	\$m	2 702	-4.4	12.7	27 968	12.1	4.2
Private gross fixed capital formation	\$m	354	-15.2	8.8	30 174	-11.1	-6.5
Public gross fixed capital formation	\$m	91	-11.5	-20.0	7 763	-8.9	78.9
State final demand	\$m	4 784	-1.2	8.4	153 481	8.4	4.5
Gross state product	\$m	11 943	4.3	n.a.	555 689	4.6	n.a.
STATE ACCOUNTS, Jun qtr 99(a)							
Original series (at current prices)							
Household final consumption expenditure	\$m	1 671	4.0	6.1	88 978	3.9	7.0
General government final consumption expenditure	\$m	2 779	-3.2	14.3	28 670	11.9	6.2
Private gross fixed capital formation	\$m	351	-23.4	7.6	30 431	13.4	-5.5
Public gross fixed capital formation	\$m	89	-378.1	-16.7	7 910	-9.2	83.7
State final demand	\$m	4 890	-0.3	9.9	155 990	8.4	5.7
Gross state product	\$m	12 040	4.5	n.a.	593 311	4.8	n.a.
PRIVATE NEW CAPITAL EXPENDITURE, Sep qtr 99							
Original series (at current prices)							
Buildings and structures	\$m	23	64.3	-36.1	2 805	-8.6	-23.5
Equipment, plant and machinery	\$m	49	-18.3	-9.3	7 887	7.1	-11.1
Total	\$m	72	-2.7	-20.0	10 691	2.5	-14.7
Trend series (at current prices)							
Buildings and structures	\$m	19	-5.0	-20.8	2 965	-11.4	-18.3
Equipment, plant and machinery	\$m	54	-20.6	28.6	7 573	-2.8	-8.5
Total	\$m	73	-17.0	10.6	10 478	-5.4	-11.5

(a) Quarterly state final demand details are released as a special data service (Product no. 5206.0.40.001).

(b) Reference year for chain volume measures is 1996-97.

Source: ABS publications: Australia Demographic Statistics (Cat. no. 3101.0), Australian National Accounts: State Accounts (Cat. no. 5242.0), Building Activity, Australia (Cat. no. 8752.0), Building Approvals, Australia (Cat. no. 8731.0), Consumer Price Index (Cat. no. 6401.0), Housing Finance for Owner Occupation, Australia (Cat. no. 5609.0), House Price Indexes: Eight Capital Cities (Cat. no. 6416.0), Industrial Disputes, Australia (Cat. no. 6321.0), Job Vacancies and Overtime, Australia (Cat. no. 6354.0), Labour Force, Australia, Preliminary (Cat. no. 6202.0), Labour Force, Australia (Cat. no. 6203.0), New Motor Vehicle Registration, Australia (Cat. no. 9301.0), Price Index of Materials Used in Housing Building (Cat. no. 6408.0), Private New Capital Expenditure, State Estimates (Cat. no. 5646.0), Retail Trade, Australia (Cat. no. 8501.0), Tourism Indicators, Australia (Cat. no. 8634.0), Tourism Accommodation, ACT (Cat. no. 8635.8).

<i>Indicator</i>	<i>Unit</i>	<i>Latest period</i>	<i>NSW</i>	<i>Vic.</i>	<i>Qld</i>	<i>SA</i>	<i>WA</i>	<i>Tas.</i>	<i>NT</i>	<i>ACT</i>	<i>Aust.</i>
POPULATION	'000	June qtr 99	6 411.7	4 712.2	3 512.4	1 493.1	1 861.0	470.3	192.9	310.2	18 966.8
LABOUR FORCE (trend)											
Employed persons	'000	Jan 00	2 973.1	2 215.9	1 662.8	678.3	928.7	199.2	91.1	165.4	8 914.9
Unemployment rate	%	Jan 00	5.9	6.7	8.2	7.9	6.6	9.2	4.8	5.5	6.9
WAGE AND SALARY EARNERS (trend)											
Public sector	'000	Sep qtr 99	467.2	300.0	288.6	113.9	150.6	40.9	22.0	67.4	1 450.8
Private sector	'000	Sep qtr 99	1 995.9	1 504.4	1 037.3	409.6	569.2	123.6	52.2	82.1	5 774.3
Total public and private sector (trend)	'000	Sep qtr 99	2 463.2	1 804.4	1 325.9	523.5	719.8	164.5	74.2	149.5	7 225.1
STATE ACCOUNTS(a) (original)											
Gross state product (chain volume measures)	\$m	1997-98	209 937	151 213	96 000	40 493	63 198	11 059	6 460	11 822	591 546
Gross state product (current prices)	\$m	1997-98	212 635	151 306	95 935	40 573	63 226	11 115	6 481	12 040	593 311
PRIVATE NEW CAPITAL EXPENDITURE (trend)	\$m	Jun qtr 99	3 579	2 824	1 701	627	1 517	108	259	61	10 639
BUILDING APPROVALS											
Dwelling units approved (original)	no.	Dec 99	4 150	4 019	2 812	842	1 976	180	156	137	14 272
Dwelling units approved (trend)	no.	Dec 99	4 189	4 103	3 074	927	2 084	172	144	208	14 984
Value of non-residential building approved (original)	\$m	Dec 99	277.1	261.9	70.8	129.5	61.3	13.1	4.4	8.8	826.9
Value of all buildings approved (original)	\$m	Dec 99	936.4	873.7	437.1	228.8	298.5	34.1	25.2	29.2	2 863.0
ENGINEERING CONSTRUCTION											
Value of engineering construction work done	\$m	Sep qtr 99	1 408.6	635.9	1 184.9	364.0	614.9	41.2	67.7	51.4	4 368.5
AVERAGE WEEKLY EARNINGS (trend)											
Full-time adult ordinary time	\$	Aug qtr 99	792.5	743.1	705.1	700.8	760.0	704.4	766.2	845.6	753.7
RETAIL TRADE (trend)											
Retail turnover	\$m	Dec 99	4 220.5	2 945.9	2 265.5	883.4	1 196.1	271.0	131.2	230.3	12 147.9
HOTELS, MOTELS & GUEST HOUSE ACCOMMODATION											
Room nights occupied	'000	Sep qtr 99	3 345.0	1 589.5	3 055.9	510.4	961.4	205.5	443.0	241.1	9 585.8
Room occupancy rate	%	Sep qtr 99	61.1	56.0	65.0	54.5	58.8	40.7	77.7	57.6	58.4
NEW MOTOR VEHICLE REGISTRATIONS (trend)	no.	Dec 99	22 692	16 574	10 075	4 020	5 846	1 221	706	1 096	62 230
	<i>Unit</i>	<i>Latest period</i>	<i>Syd.</i>	<i>Melb.</i>	<i>Bris.</i>	<i>Adel.</i>	<i>Perth</i>	<i>Hob.</i>	<i>Dar.</i>	<i>Canb.</i>	<i>Aust.</i>
CONSUMER PRICE INDEX											
Food(d)		Dec qtr 99	129.6	128.6	126.4	130.4	129.3	127.5	125.9	130.9	128.9
Housing(d)		Dec qtr 99	107.3	90.4	103.9	96.9	95.1	97.4	117.8	97.2	99.6
Transportation(d)		Dec qtr 99	127.3	125.2	124.8	127.4	127.0	123.8	123.2	131.4	126.4
All Groups(d)		Dec qtr 99	124.7	123.5	124.1	125.7	122.7	124.0	123.6	123.7	124.1
Average retail prices (cents)											
Milk, carton, supermarket sales	1 litre	Sep qtr 99	129	142	130	141	146	130	142	119	n.a.
Bread, white loaf, sliced, supermarket sales	680 g	Sep qtr 99	232	239	213	219	220	239	219	230	n.a.
Beef, rump steak	1 kg	Dec qtr 99	1 249	1 087	1 086	1 140	1 191	1 024	1 189	1 246	n.a.
Chicken, frozen	1 kg	Dec qtr 99	363	367	327	375	353	371	414	360	n.a.
Potatoes	1 kg	Dec qtr 99	127	170	119	105	152	93	137	141	n.a.
Coffee, instant (jar)	150 g	Dec qtr 99	582	603	604	568	644	693	632	570	n.a.
Scotch nip, public bar	30 ml	Dec qtr 99	337	328	277	368	393	264	332	275	n.a.
Private motoring petrol											
Leaded	1 litre	Dec qtr 99	79.6	76.2	69.9	78.4	79.0	84.7	86.5	83.1	n.a.
Unleaded	1 litre	Dec qtr 99	76.9	73.8	67.3	75.8	76.4	82.7	84.5	80.5	n.a.

(a) State estimates are not comparable to national estimates from the June quarter 1995 due to revised methodology used in Australian National Accounts, State Accounts (Cat. no. 5242.0).

(b) Experimental series. Users are cautioned these estimates are derived indirectly by calculating a deflator from the expenditure components of the state series concerned. Therefore, in general, the sum of the state estimates does not equal the estimates for Australia.

(c) Reference year for chain volume measures is 1996-97.

(d) Base year: 1989-90 = 100.0.

<i>Indicator</i>	<i>Latest period</i>	<i>NSW</i>	<i>Vic.</i>	<i>Qld</i>	<i>SA</i>	<i>WA</i>	<i>Tas.</i>	<i>NT</i>	<i>ACT</i>	<i>Aust.</i>
POPULATION	June qtr 99	0.2	0.2	0.4	0.1	0.3	—	0.4	0.3	0.3
LABOUR FORCE (trend)										
Employed persons	Jan 00	0.1	—	0.2	0.4	0.3	0.3	-0.9	0.3	0.1
Unemployment rate	Jan 00	-0.1	-0.1	—	-0.2	—	—	0.3	-0.1	—
WAGE AND SALARY EARNERS (trend)										
Pubic sector	Sep qtr 99	0.8	-1.4	0.1	0.5	1.3	-0.5	-0.5	0.7	0.2
Private sector	Sep qtr 99	—	0.4	1.8	1.2	-1.2	4.0	—	-1.9	0.5
Total public and private sector	Sep qtr 99	0.1	0.1	1.5	1.0	-0.7	2.9	-0.1	-0.7	0.4
STATE ACCOUNTS(a) (original)										
Gross state product (chain volume measures)(b)(c)	1998-99	4.1	6.2	4.5	2.1	2.1	2.5	7.6	2.6	4.5
Gross state product (current prices)	1998-99	5.4	6.2	4.4	2.3	2.1	3.0	8.0	4.5	4.8
PRIVATE NEW CAPITAL EXPENDITURE (trend)										
Total (at current prices)	Mar qtr 99	0.4	0.5	-6.6	9.6	0.7	-0.9	13.6	-18.7	-0.8
BUILDING APPROVALS										
Dwelling units approved (original)	Dec 99	-7.4	-4.8	-7.9	-15.2	-17.3	-1.6	-18.8	-33.2	-9.2
Dwelling units approved (trend)	Dec 99	-2.2	0.8	3.7	4.4	0.3	5.5	2.9	-2.8	0.8
Value of non-residential building approved (original)	Dec 99	5.4	17.8	-75.5	257.7	-35.5	111.3	-83.6	-82.8	-16.5
Value of all buildings approved (original)	Dec 99	-3.0	4.7	-35.0	49.4	-23.5	32.2	-53.8	-63.7	-9.9
ENGINEERING CONSTRUCTION										
Value of engineering construction work done	Sep qtr 99	-13.8	-26.0	-6.8	42.4	-23.1	-38.9	12.6	9.1	-12.5
AVERAGE WEEKLY EARNINGS (trend)										
Full-time adult ordinary time	Aug qtr 99	0.5	0.8	0.4	0.1	1.0	0.6	1.1	0.4	0.6
RETAIL TRADE (trend)										
Retail turnover	Dec 99	0.5	0.2	0.7	0.3	0.6	—	1.0	0.5	0.5
HOTELS, MOTELS & GUEST HOUSE ACCOMMODATION										
Room nights occupied	Sep qtr 99	7.9	2.8	18.2	1.0	11.6	-13.9	34.0	-0.7	-3.2
Room occupancy rate	Sep qtr 99	3.2	0.6	8.9	-0.1	5.5	-6.9	18.4	-1.3	-1.0
NEW MOTOR VEHICLE REGISTRATIONS (trend)	Dec 99	1.2	—	0.9	1.9	0.3	0.4	1.0	0.9	0.8
	<i>Latest period</i>	<i>Syd.</i>	<i>Melb.</i>	<i>Bris.</i>	<i>Adel.</i>	<i>Perth</i>	<i>Hob.</i>	<i>Dar.</i>	<i>Canb.</i>	<i>Aust.</i>
CONSUMER PRICE INDEX										
Food(d)	Dec qtr 99	0.2	0.6	-0.5	0.5	-0.1	1.0	1.3	2.5	0.3
Housing(d)	Dec qtr 99	1.4	1.8	1.1	2.0	2.1	0.5	0.3	1.2	1.5
Transportation(d)	Dec qtr 99	-0.5	-0.6	-0.6	-0.3	-0.3	0.6	0.5	-0.2	-0.4
All Groups(d)	Dec qtr 99	0.5	0.7	0.1	0.5	0.7	0.6	0.6	1.1	0.6
Average retail prices (cents)										
Milk, carton, supermarket sales	Dec qtr 99	5.7	1.4	3.2	0.7	—	—	0.7	3.5	n.a.
Bread, white loaf, sliced, supermarket sales	Dec qtr 99	1.8	0.4	0.9	2.8	0.9	5.8	—	0.0	n.a.
Beef, rump steak	Dec qtr 99	4.3	-0.5	1.8	11.1	1.6	4.2	6.0	3.7	n.a.
Chicken, frozen	Dec qtr 99	0.3	3.4	4.8	3.6	-4.3	-0.5	-1.7	-1.6	n.a.
Potatoes	Dec qtr 99	—	11.1	-9.8	31.3	-1.3	16.3	7.0	0.7	n.a.
Coffee, instant (jar)	Dec qtr 99	-4.6	-5.8	-5.0	—	-4.0	14.7	12.7	15.6	n.a.
Scotch nip, public bar	Dec qtr 99	0.9	1.9	1.5	1.4	1.0	—	—	1.9	n.a.
Private motoring petrol										
Leaded	Dec qtr 99	1.5	-0.3	—	0.5	0.8	2.3	4.1	3.1	n.a.
Unleaded	Dec qtr 99	1.5	-0.3	-0.3	0.3	0.5	2.4	4.3	2.9	n.a.

(a) State estimates are not comparable to national estimates from the June quarter 1995 due to revised methodology used in Australian National Accounts, State Accounts (Cat. no. 5242.0).

(b) Experimental series. Users are cautioned these estimates are derived indirectly by calculating a deflator from the expenditure components of the state series concerned. Therefore, in general, the sum of the state estimates does not equal the estimates for Australia.

(c) Reference year for chain volume measures is 1996-97.

(d) Base year: 1989-90 = 100.0.

SELF-HELP ACCESS TO STATISTICS

- CPI INFOLINE* For current and historical Consumer Price Index data, call 1902 981 074 (call cost 75c per minute).
- DIAL-A-STATISTIC* For the latest figures for National Accounts, Balance of Payments, Labour Force, Average Weekly Earnings, Estimated Resident Population and the Consumer Price Index call 1900 986 400 (call cost 75c per minute).
- INTERNET* www.abs.gov.au
- LIBRARY* A range of ABS publications is available from public and tertiary libraries Australia-wide. Contact your nearest library to determine whether it has the ABS statistics you require.

WHY NOT SUBSCRIBE?

- PHONE* +61 1300 366 323
- FAX* +61 3 9615 7848

CONSULTANCY SERVICES

ABS offers consultancy services on a user pays basis to help you access published and unpublished data. Data that is already published and can be provided within 5 minutes is free of charge. Statistical methodological services are also available. Please contact:

<i>INQUIRIES</i>	<i>City</i>	<i>By phone</i>	<i>By fax</i>
	Canberra	02 6252 6627	02 6207 0282
	Sydney	02 9268 4611	02 9268 4668
	Melbourne	03 9615 7755	03 9615 7798
	Brisbane	07 3222 6351	07 3222 6283
	Perth	08 9360 5140	08 9360 5955
	Adelaide	08 8237 7400	08 8237 7566
	Hobart	03 6222 5800	03 6222 5995
	Darwin	08 8943 2111	08 8981 1218

POST Client Services, ABS, PO Box 10, Belconnen ACT 2616

EMAIL client.services@abs.gov.au



2130380002009
ISSN 1320-808X

RRP \$15.50