

**CORRECTIVE SERVICES**

AUSTRALIA

EMBARGO: 11.30AM (CANBERRA TIME) WED 27 MAR 2013

C O N T E N T S

	<i>page</i>
Notes	2
Summary of findings	3

T A B L E S

1 Persons in corrective services, summary	10
2 Persons in full-time custody	12
3 Imprisonment rates	13
4 Persons in full-time custody, by sex	14
5 Imprisonment rates, by sex	15
6 Persons in full-time custody, by type of custody	16
7 Imprisonment rates, by type of custody	17
8 Persons in full-time custody, by legal status	18
9 Imprisonment rates, by legal status	19
10 Sentenced prisoner receptions into full-time custody	20
11 Persons in periodic detention, by sex	21
12 Federal sentenced persons in full-time custody, by sex	22
13 Aboriginal and Torres Strait Islander persons in full-time custody, by sex ..	23
14 Aboriginal and Torres Strait Islander imprisonment rates, by sex	24
15 Aboriginal and Torres Strait Islander persons in full-time custody, by legal status	25
16 Aboriginal and Torres Strait Islander imprisonment rates, by legal status ..	26
17 Persons in community-based corrections, by sex	27
18 Community-based corrections rates, by sex	28
19 Persons in community-based corrections, by type of order	29
20 Persons in community-based corrections, by Aboriginal and Torres Strait Islander status	31
21 Proportion of persons in community-based corrections, by Aboriginal and Torres Strait Islander status	33

A D D I T I O N A L I N F O R M A T I O N

Explanatory Notes	34
Glossary	41

I N Q U I R I E S

For further information about these and related statistics, contact the National Information and Referral Service on 1300 135 070.

NOTES

FORTHCOMING ISSUES

<i>ISSUE (Quarter)</i>	<i>RELEASE DATE</i>
March 2013	13 June 2013
June 2013	12 September 2013



ABOUT THIS PUBLICATION

This publication presents information on persons in custody and persons serving community-based corrections orders under the authority of corrective services agencies. The statistics are derived from information provided to the Australian Bureau of Statistics (ABS) from administrative records held by corrective services agencies in each state and territory, and from the Australian Government Attorney-General's Department for details on federal prisoners. Details are provided for each state and territory on: prisoner numbers and imprisonment rates by type of custody; prisoner numbers by legal status for all prisoners and for Aboriginal and Torres Strait Islander prisoners; the number of sentenced receptions into custody; the number of federal prisoners; the numbers and rates of persons serving community-based corrections orders; and data on the Aboriginal and Torres Strait Islander status of persons in community-based corrections.

The ABS acknowledges the valuable contribution of the Board of Management and the Advisory Group of the National Corrective Services Statistics Unit as well as the staff of the various agencies that provide the statistics that are presented in this publication.

FURTHER INFORMATION

More information about ABS activities in the field of crime and justice statistics is available from the Crime and Justice theme page on the ABS website <www.abs.gov.au>. Details of other ABS publications relating to Crime and Justice statistics can be found in paragraphs 38–40 of the Explanatory Notes.



ABBREVIATIONS

ABS	Australian Bureau of Statistics
ACT	Australian Capital Territory
Aust.	Australia
ERP	estimated resident population
NCCJS	National Centre for Crime and Justice Statistics, Australian Bureau of Statistics
NSW	New South Wales
NT	Northern Territory
Qld	Queensland
SA	South Australia
Tas.	Tasmania
Vic.	Victoria
WA	Western Australia

Brian Pink
Australian Statistician

SUMMARY OF FINDINGS

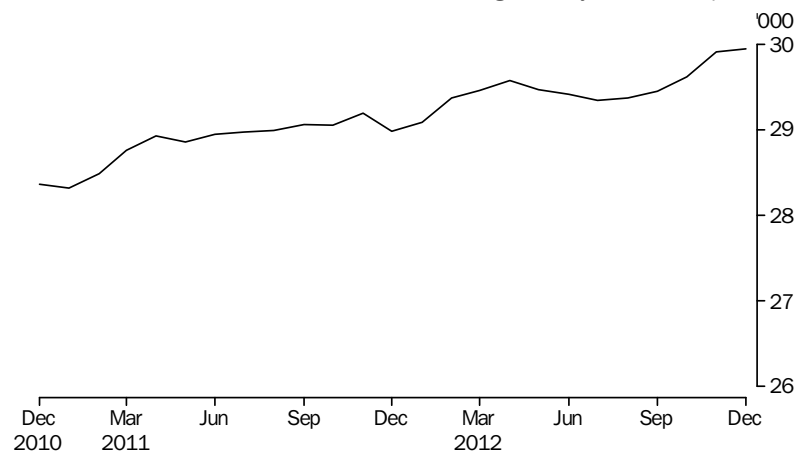
PERSONS IN CORRECTIVE SERVICES

Based on first day of the month averages, for the December quarter 2012 there were 29,788 persons in full-time custody and 54,132 persons in community-based corrections. This comprises an increase of 600 persons (2%) in full-time custody from the December quarter 2011, and a decrease of 479 persons (1%) in community-based corrections for the same period.

Number of prisoners

During the December quarter 2012, the average daily number of full-time prisoners in Australia was 29,821 persons. This was an increase of 436 persons (1%) from the September quarter 2012.

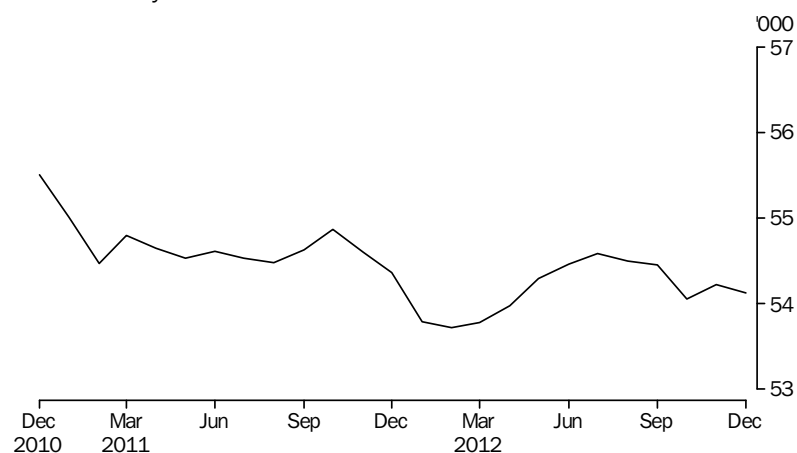
PERSONS IN PRISON CUSTODY, Average daily number per month



Number of persons in community-based corrections

Community-based corrections orders are non-custodial orders served under the authority of adult corrective services agencies and include restricted movement, reparations (fine options and community service) and supervision orders (parole, bail, and sentenced probation). In the December quarter 2012, there were 54,132 persons in community-based corrections in Australia based on first day of the month averages, a decrease of 379 persons (1%) from the September quarter 2012.

PERSONS IN COMMUNITY-BASED CORRECTIONS, Average number on the first day of the month



SUMMARY OF FINDINGS *continued*

PERSONS IN CUSTODY

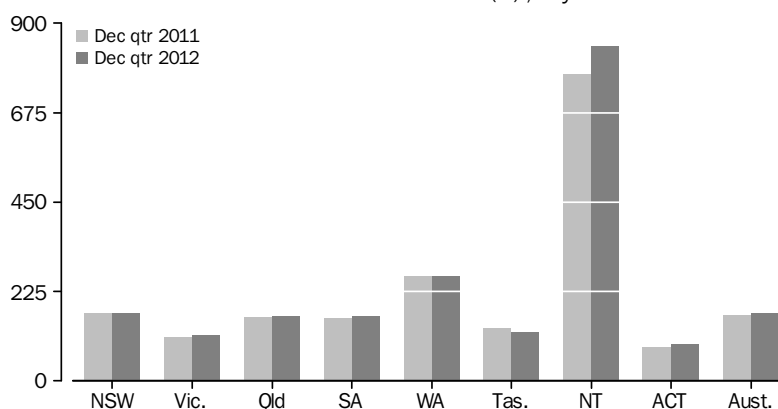
Rates per 100,000 adults

Nationally, the December quarter 2012 average daily imprisonment rate was 169 prisoners per 100,000 adult population, an increase of 2% from the December quarter 2011. The Northern Territory had the highest imprisonment rate (843 prisoners per 100,000 adult population), followed by Western Australia (263) and New South Wales (172).

The Australian Capital Territory and Victoria had the lowest imprisonment rates (91 and 115 prisoners per 100,000 adult population respectively).

The Northern Territory and the Australian Capital Territory recorded the largest proportional increases in imprisonment rates from the December quarter 2011 (9% and 6% respectively). The only proportional decrease over the same period was recorded in Tasmania (8%).

AVERAGE DAILY IMPRISONMENT RATE (a), By states and territories



(a) Rate per 100,000 adult population.

Sex

The average daily number of full-time prisoners in Australia in the December quarter 2012 was 29,821, comprising 27,601 (93%) males and 2,220 (7%) females. This represents an increase in the average daily number of males in custody of 2% (547) and females 10% (199) from the December quarter 2011. The average daily imprisonment rate for males was 318 prisoners per 100,000 adult male population; more than 12 times the rate for females (25 female prisoners per 100,000 adult female population).

Type of full-time custody

The average daily number of prisoners in secure prison custody in the December quarter 2012 was 23,312 (78% of prisoners in full-time custody). Open prison custody comprised 6,508 prisoners (22%).

Following Tasmania, which does not have any open security prisons, the Australian Capital Territory had the highest proportion of prisoners in secure custody (96%), followed by Queensland (92%) and South Australia (90%).

Legal status

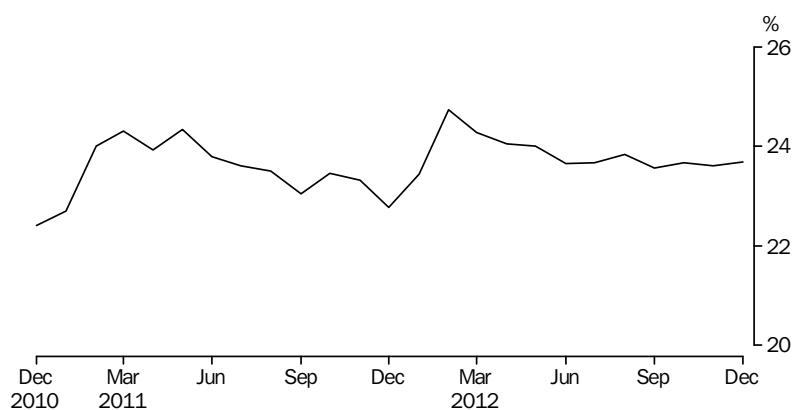
The average number of prisoners in full-time custody on the first day of each month in the December quarter 2012 was 29,788, comprising an average of 22,741 (76%) sentenced and 7,046 (24%) unsentenced prisoners. Sentenced prisoners increased by 1% from both the previous quarter and from the December quarter 2011.

SUMMARY OF FINDINGS *continued*

Legal status continued

Unsentenced prisoners increased by 1% (85) from the September quarter 2012 and increased by 4% (280) from the December quarter 2011. The Australian Capital Territory and South Australia had the highest proportions of unsentenced prisoners (33% and 32% respectively). The lowest proportions of unsentenced prisoners were recorded in Tasmania (19%), Western Australia and Victoria (both 20%).

PROPORTION OF UNSENTENCED PERSONS IN PRISON CUSTODY (a), Per month



(a) Based on average number on the first day of the month

Sentenced prisoner receptions

There were 8,708 sentenced prisoner receptions into full-time custody in Australia in the December quarter 2012; an increase of 4% (370) from the September quarter 2012 and an increase of 7% (602) from the December quarter 2011.

Periodic detention

Periodic detention is a form of custody or order where a sentenced prisoner is required to be held in custody on a part-time basis. This type of custody order is currently only used in New South Wales and the Australian Capital Territory. This sentencing option has been discontinued in New South Wales from October 2010, but some prisoners are still undertaking pre-existing sentences.

During the December quarter 2012 there was an average daily number of 13 persons in New South Wales and 67 persons in the Australian Capital Territory held in periodic detention. The rate of imprisonment for periodic detainees decreased by 33% in New South Wales from the September quarter 2012 (from 0.3 to 0.2 per 100,000 adult population), and increased by 8% in the Australian Capital Territory (from 21 to 23 per 100,000 adult population).

Federal prisoners

In the December quarter 2012, there were 967 federal sentenced prisoners in Australia based on first day of the month figures, an increase of 2% from the December quarter 2011 and an increase of 1% from the September quarter 2012. Just under half (468) of the federal prisoners were sentenced in New South Wales.

The two states with the largest increase in numbers over the twelve months to the December quarter 2012 were New South Wales 35 persons (8%) and Victoria 9 persons (7%). The largest decrease in numbers over the same period was recorded in Western Australia (33 persons or 17%).

SUMMARY OF FINDINGS *continued*

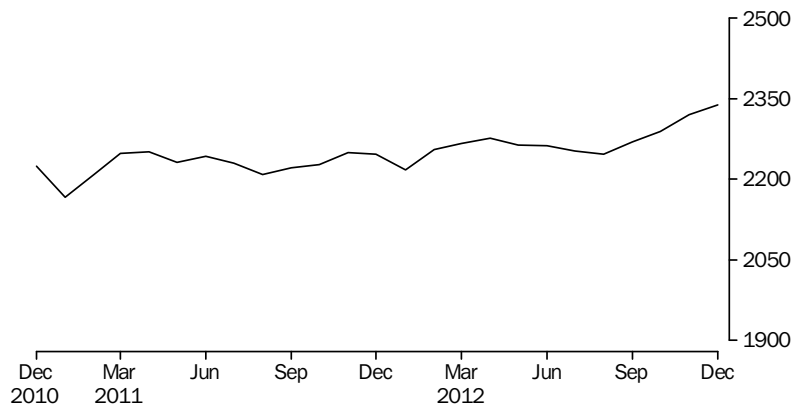
Aboriginal and Torres Strait Islander prisoners

The average daily number of full-time Aboriginal and Torres Strait Islander adult prisoners in Australia in the December quarter 2012 was 8,115, comprising 7,369 (91%) males and 747 (9%) females. Aboriginal and Torres Strait Islander males in custody increased 5% (371 persons) and females 20% (126 persons) from the December quarter 2011. Aboriginal and Torres Strait Islander prisoners represented 27% of the total full-time prisoner population in the December quarter 2012, the same proportion as for the September quarter 2012. The total Aboriginal and Torres Strait Islander population aged 18 years and over at 30 June 2011 was 2% of the Australian population.

Three states accounted for approximately 73% of the total Aboriginal and Torres Strait Islander prisoner population: New South Wales (2,208), Western Australia (1,975) and Queensland (1,761).

The national average daily Aboriginal and Torres Strait Islander imprisonment rate in the December quarter 2012 was 2,316 per 100,000 adult Aboriginal and Torres Strait Islander population, an increase of 3% from both the previous quarter and from the December quarter 2011.

AVERAGE DAILY ABORIGINAL AND TORRES STRAIT ISLANDER IMPRISONMENT RATE (a), Per month



(a) Rate per 100,000 adult Aboriginal and Torres Strait Islander population.

The imprisonment rate for males increased from the December quarter 2011 by 2% to 4,296 per 100,000 adult male Aboriginal and Torres Strait Islander population. The imprisonment rate for females increased 17% to 418 females per 100,000 adult female Aboriginal and Torres Strait Islander population over the same period. The imprisonment rate for males is more than 10 times the rate for females.

Different age profiles of the Aboriginal and Torres Strait Islander and non-Indigenous population can affect imprisonment rate numbers. While this quarterly statistical collection is unable to take age into account, data from the Prisoner Census collection can provide this level of detail.

The national age standardised Aboriginal and Torres Strait Islander imprisonment rate from the annual Prisoner Census conducted at June 2012 was 15 times higher (1,914 per 100,000 adult Aboriginal and Torres Strait Islander population) than the rate for non-Indigenous persons (129 per 100,000 adult non-Indigenous population). Further information on the comparison of imprisonment rates between Aboriginal and Torres

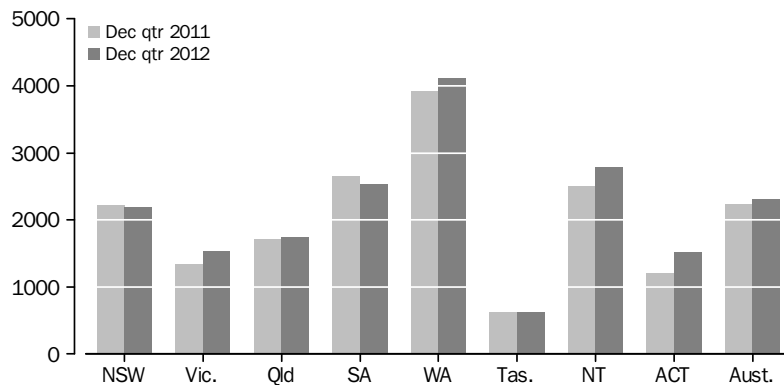
SUMMARY OF FINDINGS *continued*

Aboriginal and Torres Strait Islander prisoners *continued*

Strait Islander and non-Indigenous populations can be found in *Prisoners in Australia, 2012* (cat. no. 4517.0).

The highest Aboriginal and Torres Strait Islander imprisonment rate for the December quarter 2012 was recorded in Western Australia (4,126 Aboriginal and Torres Strait Islander prisoners per 100,000 adult Aboriginal and Torres Strait Islander population), followed by the Northern Territory (2,794) and South Australia (2,534). The lowest Aboriginal and Torres Strait Islander imprisonment rate was recorded in Tasmania (624), followed by the Australian Capital Territory (1,518).

AVERAGE DAILY ABORIGINAL AND TORRES STRAIT ISLANDER IMPRISONMENT RATE(a), By states and territories



(a) Rate per 100,000 adult Aboriginal and Torres Strait Islander population.

The largest proportional increase in the Aboriginal and Torres Strait Islander imprisonment rate from the December quarter 2011 was recorded in the Australian Capital Territory (25%), followed by Victoria (15%). The largest proportional decreases over the same period were recorded in South Australia (5%), New South Wales and Tasmania (both 1%).

Of the full-time Aboriginal and Torres Strait Islander prisoner population 77% (6,190) were sentenced and 23% (1,900) unsentenced in the December quarter 2012.

Unsentenced Aboriginal and Torres Strait Islander prisoners increased 1% (24) from the September quarter 2012, and increased 5% (98) from the December quarter 2011.

Sentenced Aboriginal and Torres Strait Islander prisoners increased 3% (160) from the September quarter 2012, and 7% (387) from the December quarter 2011.

PERSONS IN COMMUNITY-BASED CORRECTIONS

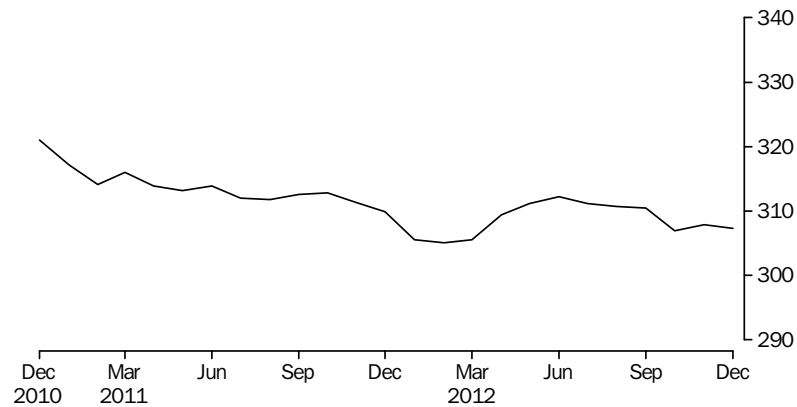
Rates per 100,000 adults

Nationally, the rate of persons in community-based corrections was 307 persons per 100,000 adult population for the December quarter 2012 based on first day of the month figures. This was a decrease of 1% from the December quarter 2011 (311 persons per 100,000 adults). The largest decreases from the December quarter 2011 were recorded in Western Australia (10%) and the Australian Capital Territory (9%), whilst the largest increases were recorded in Tasmania (6%) and the Northern Territory (5%).

SUMMARY OF FINDINGS *continued*

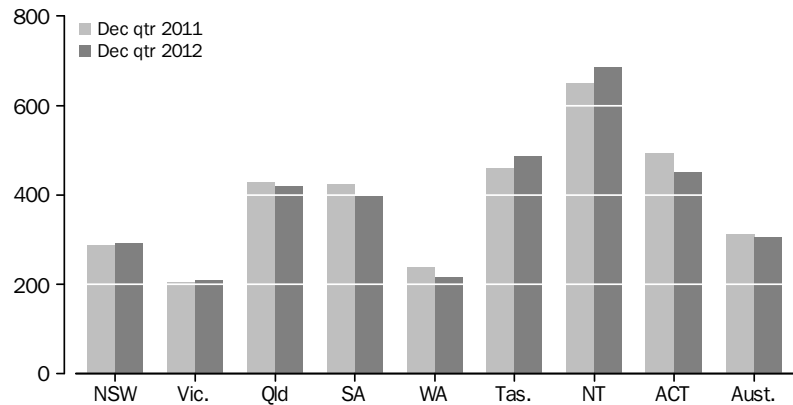
Rates per 100,000 adults
continued

COMMUNITY-BASED CORRECTIONS RATE(a), Per month



(a) Rate per 100,000 adult population, based on average number on the first day of the month

COMMUNITY-BASED CORRECTIONS RATE(a), By states and territories



(a) Rate per 100,000 adult population, based on average number on the first day of the month

Sex

Based on first day of the month averages, there were 54,132 persons in community-based corrections in Australia in the December quarter 2012, of these 44,421 (82%) were male and 9,676 (18%) were female.

In the December quarter 2012, the rate of community-based corrections for males was 512 per 100,000 adult male population compared to 108 females per 100,000 adult female population. The community-based corrections rate for males was more than four times that of females.

Type of orders

In the December quarter 2012 there were 8,211 persons serving community service orders, a decrease of 677 persons (8%) from the December quarter 2011. The largest decreases in numbers over this period were recorded in Queensland (269 persons or 14%), New South Wales (219 persons or 8%) and South Australia (141 persons or 13%). The largest increase was recorded in Tasmania (142 persons or 13%).

There were 12,689 persons on parole in the December quarter 2012, an increase of 362 persons (3%) from the December quarter 2011. The largest increases in numbers over this period were recorded in Queensland (182 persons or 4%), New South Wales (87 persons or 2%) and Western Australia (65 persons or 16%). Queensland, New South Wales and Victoria accounted for approximately 87% of persons serving parole orders.

SUMMARY OF FINDINGS *continued*

Type of orders continued

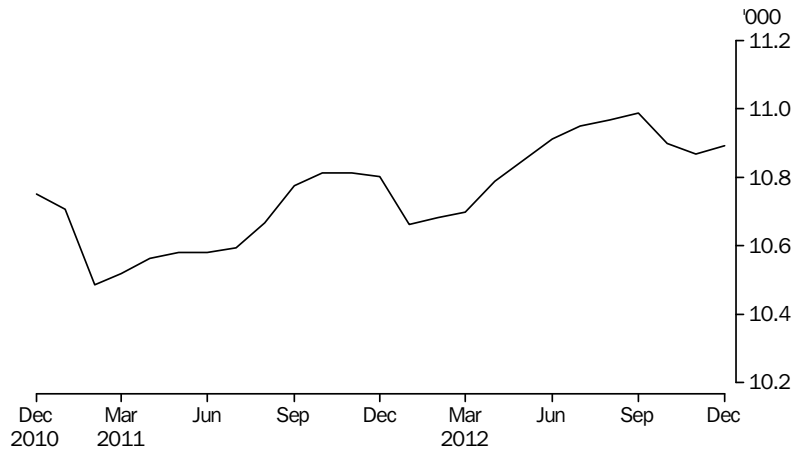
The only decrease in parole orders from the December quarter 2011 was recorded in South Australia (73 persons or 8%).

Aboriginal and Torres Strait Islanders in community-based corrections

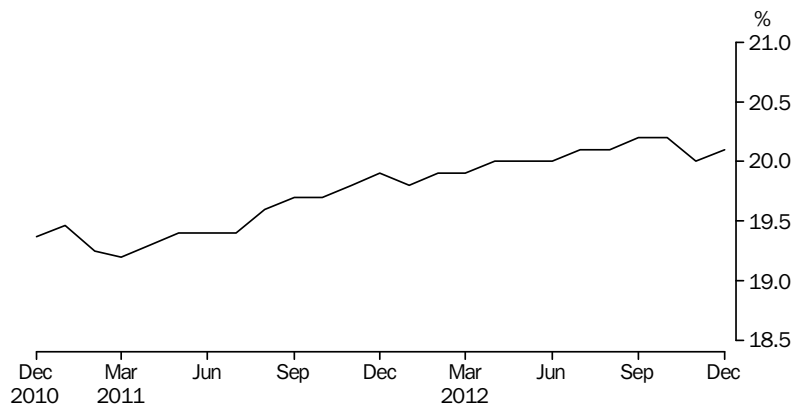
Based on first day of the month averages, the number of Aboriginal and Torres Strait Islanders in community-based corrections for the December quarter was 10,886; a decrease of 1% (82 persons) from the previous quarter. The largest proportional increase in the number of Aboriginal and Torres Strait Islanders in community-based corrections from the September quarter was recorded in Victoria (3% or 16 persons) followed by Western Australia (1% or 19 persons). The largest proportional decreases were in South Australia (4% or 39 persons) and Tasmania (4% and 12 persons). Aboriginal and Torres Strait Islanders represented 20% of the total number of persons in community-based corrections in the December quarter 2012.

Approximately 75% of the total Aboriginal and Torres Strait Islander community-based corrections population was located in three states: New South Wales (3,437), Queensland (3,311) and Western Australia (1,417).

ABORIGINAL AND TORRES STRAIT ISLANDERS IN COMMUNITY-BASED CORRECTIONS, Number on first day of month



ABORIGINAL AND TORRES STRAIT ISLANDERS, PROPORTION OF PERSONS IN COMMUNITY-BASED CORRECTIONS (a), Per month



(a) Based on average number on the first day of the month

PERSONS IN CORRECTIVE SERVICES, Summary(a)

	NSW	Vic.	Qld	SA	WA	Tas.	NT	ACT	Aust.
AVERAGE DAILY NUMBER									
Males in full-time custody									
Dec Qtr 11	9 063	4 507	5 239	1 920	4 366	486	1 236	237	27 054
Sep Qtr 12	8 940	4 609	5 179	1 952	4 494	443	1 321	261	27 200
Dec Qtr 12	9 051	4 702	5 297	2 007	4 485	442	1 363	253	27 601
Females in full-time custody									
Dec Qtr 11	649	329	441	130	368	39	58	8	2 021
Sep Qtr 12	664	338	477	132	429	46	83	16	2 185
Dec Qtr 12	669	336	483	137	444	48	89	15	2 220
Persons in full-time custody									
Dec Qtr 11	9 712	4 836	5 680	2 051	4 734	524	1 294	245	29 074
Sep Qtr 12	9 604	4 947	5 656	2 084	4 924	489	1 404	277	29 385
Dec Qtr 12	9 720	5 037	5 780	2 144	4 930	489	1 452	268	29 821
Aboriginal & Torres Strait Islander persons in full-time custody									
Dec Qtr 11	2 164	299	1 667	487	1 825	77	1 065	35	7 619
Sep Qtr 12	2 164	361	1 669	474	1 942	75	1 170	49	7 904
Dec Qtr 12	2 208	356	1 761	478	1 975	79	1 213	45	8 115
AVERAGE NUMBER ON FIRST DAY OF MONTH									
Unsentenced persons in full-time custody									
Dec Qtr 11	2 704	907	1 184	621	896	101	275	77	6 766
Sep Qtr 12	2 587	1 020	1 218	647	978	85	332	95	6 961
Dec Qtr 12	2 712	989	1 196	689	971	93	305	91	7 046
Sentenced persons in full-time custody									
Dec Qtr 11	7 103	3 939	4 531	1 428	3 829	428	1 006	158	22 422
Sep Qtr 12	7 052	3 906	4 416	1 431	3 962	407	1 077	179	22 430
Dec Qtr 12	7 008	4 051	4 547	1 467	3 946	402	1 140	182	22 741
Persons in full-time custody									
Dec Qtr 11	9 807	4 846	5 715	2 050	4 725	529	1 281	235	29 188
Sep Qtr 12	9 638	4 926	5 634	2 078	4 940	493	1 409	273	29 392
Dec Qtr 12	9 720	5 040	5 743	2 156	4 916	495	1 445	272	29 788
Males in community-based corrections(b)									
Dec Qtr 11	13 835	7 310	12 204	4 490	3 361	1 423	918	1 195	44 736
Sep Qtr 12	14 065	7 447	12 051	4 304	3 151	1 542	1 014	1 102	44 676
Dec Qtr 12	13 992	7 551	11 880	4 235	3 124	1 521	997	1 120	44 421
Females in community-based corrections(b)									
Dec Qtr 11	2 449	1 668	3 001	1 023	939	373	170	214	9 837
Sep Qtr 12	2 505	1 599	3 042	934	916	414	185	196	9 791
Dec Qtr 12	2 456	1 594	3 001	908	925	408	183	199	9 676
Persons in community-based corrections(b)(c)									
Dec Qtr 11	16 320	8 978	15 205	5 514	4 300	1 796	1 089	1 409	54 611
Sep Qtr 12	16 611	9 048	15 093	5 239	4 067	1 955	1 199	1 298	54 511
Dec Qtr 12	16 481	9 145	14 881	5 147	4 049	1 930	1 180	1 319	54 132

(a) For the calculation of quarterly figures – see Explanatory Notes, paragraph 5.

(b) Figures include persons with breached or suspended orders, with the exception of Vic. and Tas.

(c) Includes persons whose sex is unknown.

	NSW	Vic.	Qld	SA	WA	Tas.	NT	ACT	Aust.
PERCENTAGE CHANGE (AVERAGE DAILY NUMBER)									
Males in full-time custody									
Dec Qtr 11 to Dec Qtr 12	-0.1	4.3	1.1	4.5	2.7	-9.1	10.3	6.8	2.0
Sep Qtr 12 to Dec Qtr 12	1.2	2.0	2.3	2.8	-0.2	-0.2	3.2	-3.1	1.5
Females in full-time custody									
Dec Qtr 11 to Dec Qtr 12	3.1	2.1	9.5	5.4	20.7	23.1	53.4	87.5	9.8
Sep Qtr 12 to Dec Qtr 12	0.8	-0.6	1.3	3.8	3.5	4.3	7.2	-6.3	1.6
Persons in full-time custody									
Dec Qtr 11 to Dec Qtr 12	0.1	4.2	1.8	4.5	4.1	-6.7	12.2	9.4	2.6
Sep Qtr 12 to Dec Qtr 12	1.2	1.8	2.2	2.9	0.1	—	3.4	-3.2	1.5
Aboriginal & Torres Strait Islander persons in full-time custody									
Dec Qtr 11 to Dec Qtr 12	2.0	19.1	5.6	-1.8	8.2	2.6	13.9	28.6	6.5
Sep Qtr 12 to Dec Qtr 12	2.0	-1.4	5.5	0.8	1.7	5.3	3.7	-8.2	2.7

PERCENTAGE CHANGE (AVERAGE NUMBER ON FIRST DAY OF MONTH)

Unsentenced persons in full-time custody									
Dec Qtr 11 to Dec Qtr 12	0.3	9.0	1.0	11.0	8.4	-7.9	10.9	18.2	4.1
Sep Qtr 12 to Dec Qtr 12	4.8	-3.0	-1.8	6.5	-0.7	9.4	-8.1	-4.2	1.2
Sentenced persons in full-time custody									
Dec Qtr 11 to Dec Qtr 12	-1.3	2.8	0.4	2.7	3.1	-6.1	13.3	15.2	1.4
Sep Qtr 12 to Dec Qtr 12	-0.6	3.7	3.0	2.5	-0.4	-1.2	5.8	1.7	1.4
Persons in full-time custody									
Dec Qtr 11 to Dec Qtr 12	-0.9	4.0	0.5	5.2	4.0	-6.4	12.8	15.7	2.1
Sep Qtr 12 to Dec Qtr 12	0.9	2.3	1.9	3.8	-0.5	0.4	2.6	-0.4	1.3
Males in community-based corrections(b)									
Dec Qtr 11 to Dec Qtr 12	1.1	3.3	-2.7	-5.7	-7.1	6.9	8.6	-6.3	-0.7
Sep Qtr 12 to Dec Qtr 12	-0.5	1.4	-1.4	-1.6	-0.9	-1.4	-1.7	1.6	-0.6
Females in community-based corrections(b)									
Dec Qtr 11 to Dec Qtr 12	0.3	-4.4	—	-11.2	-1.5	9.4	7.6	-7.0	-1.6
Sep Qtr 12 to Dec Qtr 12	-2.0	-0.3	-1.3	-2.8	1.0	-1.4	-1.1	1.5	-1.2
Persons in community-based corrections(b)(c)									
Dec Qtr 11 to Dec Qtr 12	1.0	1.9	-2.1	-6.7	-5.8	7.5	8.4	-6.4	-0.9
Sep Qtr 12 to Dec Qtr 12	-0.8	1.1	-1.4	-1.8	-0.4	-1.3	-1.6	1.6	-0.7

— nil or rounded to zero (including null cells)

(a) For the calculation of quarterly figures – see Explanatory Notes, paragraph 5.

(b) Figures include persons with breached or suspended orders, with the exception of Vic. and Tas.

(c) Includes persons whose sex is unknown.

PERSONS IN FULL-TIME CUSTODY

	NSW	Vic.	Qld	SA	WA	Tas.	NT	ACT	Aust.
AVERAGE DAILY NUMBER									
2010	10 255	4 553	5 624	1 961	4 734	480	1 113	212	28 932
2011	9 926	4 698	5 584	2 021	4 663	498	1 250	240	28 881
2012	9 675	4 926	5 681	2 111	4 916	499	1 415	275	29 498
2011									
Dec Qtr	9 712	4 836	5 680	2 051	4 734	524	1 294	245	29 074
2012									
Mar Qtr	9 693	4 824	5 649	2 109	4 862	507	1 382	276	29 303
Jun Qtr	9 683	4 896	5 637	2 107	4 950	509	1 422	278	29 482
Sep Qtr	9 604	4 947	5 656	2 084	4 924	489	1 404	277	29 385
Dec Qtr	9 720	5 037	5 780	2 144	4 930	489	1 452	268	29 821
2011									
Oct	9 772	4 839	5 676	2 023	4 709	539	1 264	232	29 053
Nov	9 765	4 858	5 717	2 056	4 746	517	1 290	246	29 193
Dec	9 601	4 812	5 647	2 073	4 747	517	1 327	256	28 981
2012									
Jan	9 707	4 782	5 597	2 092	4 781	510	1 349	272	29 090
Feb	9 726	4 808	5 656	2 114	4 881	507	1 393	279	29 365
Mar	9 648	4 881	5 695	2 122	4 925	504	1 406	277	29 459
Apr	9 691	4 936	5 657	2 121	4 953	512	1 427	275	29 573
May	9 675	4 885	5 639	2 108	4 939	512	1 429	277	29 463
Jun	9 683	4 867	5 616	2 093	4 957	503	1 410	282	29 411
Jul	9 632	4 921	5 607	2 084	4 948	488	1 385	277	29 341
Aug	9 585	4 951	5 663	2 082	4 921	492	1 406	273	29 372
Sep	9 595	4 968	5 699	2 086	4 902	488	1 422	282	29 444
Oct	9 671	5 029	5 701	2 109	4 911	489	1 428	280	29 617
Nov	9 775	5 029	5 791	2 147	4 946	500	1 450	268	29 907
Dec	9 716	5 053	5 849	2 176	4 933	479	1 479	256	29 940

IMPRISONMENT RATES (a)

	NSW	Vic.	Qld	SA	WA	Tas.	NT	ACT	Aust.
RATE PER 100,000 ADULT POPULATION									
2010	184.2	106.3	162.4	153.0	271.8	123.9	673.2	76.5	168.5
2011	176.0	107.8	158.4	156.0	261.7	127.5	747.3	85.0	165.6
2012	171.5	112.5	161.0	162.6	266.4	126.1	830.3	94.7	168.1
2011									
Dec Qtr	171.4	110.3	160.1	157.7	263.1	133.7	771.8	86.0	165.7
2012									
Mar Qtr	170.7	109.7	158.6	161.9	267.7	129.2	821.1	96.5	166.4
Jun Qtr	172.6	112.5	161.2	163.0	269.3	128.6	835.4	95.8	169.0
Sep Qtr	170.5	113.1	160.7	160.7	265.2	123.5	821.5	95.0	167.5
Dec Qtr	172.1	114.7	163.4	164.8	263.3	123.4	843.3	91.3	169.3
2011									
Oct	172.5	110.4	160.0	155.6	261.7	137.4	754.0	81.6	165.6
Nov	172.4	110.8	161.1	158.1	263.8	131.8	769.5	86.3	166.4
Dec	169.5	109.8	159.2	159.4	263.8	132.0	791.8	90.1	165.2
2012									
Jan	170.9	108.7	157.1	160.6	263.2	129.8	801.3	95.2	165.2
Feb	171.3	109.3	158.7	162.3	268.7	129.2	827.4	97.6	166.8
Mar	169.9	111.0	159.8	162.9	271.2	128.5	835.0	97.0	167.3
Apr	172.8	113.5	161.7	164.1	269.5	129.4	838.1	94.9	169.5
May	172.5	112.3	161.2	163.1	268.7	129.2	839.5	95.6	168.9
Jun	172.6	111.9	160.6	161.9	269.7	127.0	828.4	97.1	168.6
Jul	171.0	112.5	159.3	160.7	266.5	123.2	810.1	94.8	167.3
Aug	170.2	113.2	160.9	160.5	265.0	124.0	822.7	93.5	167.5
Sep	170.4	113.6	162.0	160.8	264.0	123.2	831.9	96.8	167.9
Oct	171.2	114.5	161.2	162.1	262.3	123.4	829.1	95.4	168.2
Nov	173.1	114.5	163.7	165.1	264.1	126.1	842.1	91.5	169.8
Dec	172.0	115.1	165.3	167.3	263.5	120.8	858.5	87.2	170.0

(a) Imprisonment rates are based on Estimated Resident Population counts – see Explanatory Notes, paragraphs 17–21.

PERSONS IN FULL-TIME CUSTODY(a), By sex

	NSW	Vic.	Qld	SA	WA	Tas.	NT	ACT	Aust.
MALES (AVERAGE DAILY NUMBER)									
2010	9 491	4 238	5 194	1 835	4 342	446	1 064	197	26 807
2011	9 240	4 377	5 158	1 895	4 303	461	1 192	228	26 852
2012	9 014	4 595	5 213	1 978	4 493	457	1 333	261	27 344
2011									
Dec Qtr	9 063	4 507	5 239	1 920	4 366	486	1 236	237	27 054
2012									
Mar Qtr	9 037	4 504	5 203	1 979	4 469	472	1 312	264	27 240
Jun Qtr	9 028	4 563	5 173	1 973	4 524	472	1 336	267	27 336
Sep Qtr	8 940	4 609	5 179	1 952	4 494	443	1 321	261	27 200
Dec Qtr	9 051	4 702	5 297	2 007	4 485	442	1 363	253	27 601
Oct	9 016	4 689	5 235	1 975	4 480	439	1 339	262	27 435
Nov	9 099	4 693	5 300	2 008	4 501	450	1 363	254	27 669
Dec	9 040	4 724	5 355	2 037	4 476	436	1 388	244	27 700
FEMALES (AVERAGE DAILY NUMBER)									
2010	764	315	431	125	392	34	49	15	2 125
2011	686	321	427	127	360	37	58	13	2 029
2012	661	332	468	133	423	42	82	13	2 154
2011									
Dec Qtr	649	329	441	130	368	39	58	8	2 021
2012									
Mar Qtr	655	320	446	131	393	35	70	12	2 063
Jun Qtr	655	333	464	134	426	37	86	11	2 146
Sep Qtr	664	338	477	132	429	46	83	16	2 185
Dec Qtr	669	336	483	137	444	48	89	15	2 220
Oct	655	341	465	134	431	50	89	18	2 182
Nov	676	336	490	139	445	50	87	14	2 238
Dec	676	329	493	139	458	43	91	12	2 241
PERSONS (AVERAGE DAILY NUMBER)									
2010	10 255	4 553	5 624	1 961	4 734	480	1 113	212	28 932
2011	9 926	4 698	5 584	2 021	4 663	498	1 250	240	28 881
2012	9 675	4 926	5 681	2 111	4 916	499	1 415	275	29 498
2011									
Dec Qtr	9 712	4 836	5 680	2 051	4 734	524	1 294	245	29 074
2012									
Mar Qtr	9 693	4 824	5 649	2 109	4 862	507	1 382	276	29 303
Jun Qtr	9 683	4 896	5 637	2 107	4 950	509	1 422	278	29 482
Sep Qtr	9 604	4 947	5 656	2 084	4 924	489	1 404	277	29 385
Dec Qtr	9 720	5 037	5 780	2 144	4 930	489	1 452	268	29 821
Oct	9 671	5 029	5 701	2 109	4 911	489	1 428	280	29 617
Nov	9 775	5 029	5 791	2 147	4 946	500	1 450	268	29 907
Dec	9 716	5 053	5 849	2 176	4 933	479	1 479	256	29 940

(a) For the calculation of annual and quarterly figures – see Explanatory Notes, paragraph 5.

IMPRISONMENT RATES(a), By sex

	NSW	Vic.	Qld	SA	WA	Tas.	NT	ACT	Aust.
MALES (RATE PER 100,000 ADULT POPULATION)									
2010	347.2	201.3	302.5	292.6	494.2	236.4	1 239.4	144.3	316.4
2011	333.8	204.6	295.1	298.6	478.4	242.1	1 373.4	163.1	312.0
2012	325.5	214.4	298.7	310.8	484.3	235.5	1 491.2	182.6	316.1
2011									
Dec Qtr	326.0	209.5	297.8	301.5	480.4	254.5	1 423.2	168.6	312.6
2012									
Mar Qtr	324.3	208.7	294.6	310.2	486.7	246.7	1 505.2	187.2	313.6
Jun Qtr	327.8	214.4	299.3	311.4	491.1	242.1	1 489.7	186.6	318.1
Sep Qtr	323.3	215.4	297.8	307.0	482.5	227.2	1 467.7	181.6	314.8
Dec Qtr	326.5	218.9	303.0	314.6	477.1	226.2	1 502.3	175.1	318.1
Oct	325.2	218.3	299.4	309.7	476.5	225.1	1 475.5	181.1	316.2
Nov	328.2	218.5	303.1	314.8	478.7	230.6	1 502.2	175.7	318.9
Dec	326.1	219.9	306.3	319.4	476.1	223.2	1 529.1	168.6	319.2
FEMALES (RATE PER 100,000 ADULT POPULATION)									
2010	27.0	14.5	24.7	19.2	45.4	17.2	61.1	10.5	24.4
2011	23.9	14.5	24.0	19.2	40.8	18.7	71.8	8.8	23.0
2012	23.0	14.8	26.2	20.2	46.1	20.7	101.5	9.1	24.2
2011									
Dec Qtr	22.5	14.7	24.6	19.6	41.3	19.2	71.4	5.3	22.7
2012									
Mar Qtr	22.7	14.3	24.8	19.7	43.8	17.6	86.8	8.0	23.1
Jun Qtr	22.9	15.0	26.2	20.3	46.4	18.6	106.9	7.7	24.2
Sep Qtr	23.2	15.1	26.8	19.9	46.4	23.0	102.9	10.9	24.6
Dec Qtr	23.3	15.0	27.0	20.7	47.7	23.6	109.1	9.9	24.9
Oct	22.8	15.2	26.0	20.2	46.2	24.8	109.0	12.1	24.4
Nov	23.5	15.0	27.4	21.0	47.7	24.7	106.9	9.7	25.1
Dec	23.5	14.7	27.6	21.0	49.1	21.5	111.5	7.9	25.1
PERSONS (RATE PER 100,000 ADULT POPULATION)									
2010	184.2	106.3	162.4	153.0	271.8	123.9	673.2	76.5	168.5
2011	176.0	107.8	158.4	156.0	261.7	127.5	747.3	85.0	165.6
2012	171.5	112.5	161.0	162.6	266.4	126.1	830.3	94.7	168.1
2011									
Dec Qtr	171.4	110.3	160.1	157.7	263.1	133.7	771.8	86.0	165.7
2012									
Mar Qtr	170.7	109.7	158.6	161.9	267.7	129.2	821.1	96.5	166.4
Jun Qtr	172.6	112.5	161.2	163.0	269.3	128.6	835.4	95.8	169.0
Sep Qtr	170.5	113.1	160.7	160.7	265.2	123.5	821.5	95.0	167.5
Dec Qtr	172.1	114.7	163.4	164.8	263.3	123.4	843.3	91.3	169.3
Oct	171.2	114.5	161.2	162.1	262.3	123.4	829.1	95.4	168.2
Nov	173.1	114.5	163.7	165.1	264.1	126.1	842.1	91.5	169.8
Dec	172.0	115.1	165.3	167.3	263.5	120.8	858.5	87.2	170.0

(a) Imprisonment rates are based on Estimated Resident Population counts – see Explanatory Notes, paragraphs 17–21.

PERSONS IN FULL-TIME CUSTODY(a), By type of custody

	NSW	Vic.	Qld	SA	WA	Tas.	NT	ACT	Aust.
PERSONS IN SECURE CUSTODY (AVERAGE DAILY NUMBER)									
2010	6 596	4 063	5 039	1 761	3 427	432	771	136	22 224
2011	6 328	4 155	5 090	1 809	3 668	450	830	238	22 568
2012	6 100	4 309	5 185	1 895	3 855	476	922	265	23 008
2011									
Dec Qtr	6 157	4 260	5 173	1 835	3 726	479	848	237	22 715
2012									
Mar Qtr	6 121	4 259	5 163	1 890	3 849	469	898	266	22 915
Jun Qtr	6 089	4 314	5 080	1 889	3 874	474	927	268	22 917
Sep Qtr	6 032	4 309	5 182	1 871	3 839	472	911	269	22 886
Dec Qtr	6 159	4 353	5 313	1 930	3 858	489	952	257	23 312
Oct	6 106	4 353	5 249	1 893	3 832	489	930	269	23 121
Nov	6 214	4 343	5 327	1 935	3 866	500	953	257	23 395
Dec	6 158	4 364	5 364	1 962	3 877	479	974	245	23 423
PERSONS IN OPEN CUSTODY (AVERAGE DAILY NUMBER)									
2010	3 658	490	585	200	1 307	49	342	77	6 708
2011	3 598	543	494	212	994	48	420	2	6 312
2012	3 574	617	496	216	1 061	22	493	10	6 490
2011									
Dec Qtr	3 555	576	507	215	1 008	45	445	8	6 359
2012									
Mar Qtr	3 571	566	486	219	1 014	38	485	10	6 389
Jun Qtr	3 594	582	557	218	1 075	35	495	9	6 566
Sep Qtr	3 572	637	474	213	1 085	17	493	8	6 499
Dec Qtr	3 561	684	467	214	1 071	..	500	11	6 508
Oct	3 565	676	452	216	1 078	..	498	11	6 496
Nov	3 561	686	464	212	1 080	..	497	12	6 512
Dec	3 558	690	485	214	1 057	..	504	10	6 517
PERSONS IN CUSTODY (AVERAGE DAILY NUMBER)									
2010	10 255	4 553	5 624	1 961	4 734	480	1 113	212	28 932
2011	9 926	4 698	5 584	2 021	4 663	498	1 250	240	28 881
2012	9 675	4 926	5 681	2 111	4 916	499	1 415	275	29 498
2011									
Dec Qtr	9 712	4 836	5 680	2 051	4 734	524	1 294	245	29 074
2012									
Mar Qtr	9 693	4 824	5 649	2 109	4 862	507	1 382	276	29 303
Jun Qtr	9 683	4 896	5 637	2 107	4 950	509	1 422	278	29 482
Sep Qtr	9 604	4 947	5 656	2 084	4 924	489	1 404	277	29 385
Dec Qtr	9 720	5 037	5 780	2 144	4 930	489	1 452	268	29 821
Oct	9 671	5 029	5 701	2 109	4 911	489	1 428	280	29 617
Nov	9 775	5 029	5 791	2 147	4 946	500	1 450	268	29 907
Dec	9 716	5 053	5 849	2 176	4 933	479	1 479	256	29 940
..	not applicable								
(a)	For the calculation of annual and quarterly figures – see Explanatory Notes, paragraph 5.								

IMPRISONMENT RATES(a), By type of custody

	NSW	Vic.	Qld	SA	WA	Tas.	NT	ACT	Aust.
PERSONS IN SECURE CUSTODY (RATE PER 100,000 ADULT POPULATION)									
2010	118.5	94.8	145.5	137.4	196.6	111.4	466.4	48.8	129.4
2011	112.2	95.3	144.4	139.6	205.9	115.1	496.0	84.3	129.4
2012	108.1	98.4	146.9	146.0	208.9	120.5	540.9	91.3	131.1
2011									
Dec Qtr	108.7	97.2	145.8	141.1	207.1	122.3	506.1	83.2	129.5
2012									
Mar Qtr	107.8	96.8	144.9	145.1	211.9	119.6	533.3	93.1	130.2
Jun Qtr	108.5	99.2	145.2	146.2	210.8	119.7	544.4	92.6	131.4
Sep Qtr	107.1	98.5	147.3	144.3	206.7	119.1	532.8	92.1	130.5
Dec Qtr	109.0	99.1	150.2	148.4	206.1	123.4	553.0	87.6	132.4
Oct	108.1	99.1	148.4	145.5	204.7	123.4	539.9	91.8	131.3
Nov	110.0	98.9	150.6	148.8	206.5	126.1	553.4	87.5	132.8
Dec	109.0	99.4	151.6	150.8	207.0	120.8	565.8	83.6	133.0
PERSONS IN OPEN CUSTODY (RATE PER 100,000 ADULT POPULATION)									
2010	65.7	11.4	16.9	15.6	75.2	12.5	206.9	27.8	39.1
2011	63.8	12.5	14.0	16.4	55.8	12.4	251.3	0.7	36.2
2012	63.4	14.1	14.1	16.6	57.5	5.7	289.4	3.3	37.0
2011									
Dec Qtr	62.8	13.1	14.3	16.6	56.0	11.5	265.7	2.7	36.3
2012									
Mar Qtr	62.9	12.9	13.7	16.8	55.8	9.6	287.8	3.5	36.3
Jun Qtr	64.1	13.4	15.9	16.9	58.5	8.8	290.9	3.3	37.6
Sep Qtr	63.4	14.6	13.5	16.4	58.4	4.3	288.6	2.9	37.1
Dec Qtr	63.1	15.6	13.2	16.5	57.2	..	290.2	3.7	37.0
Oct	63.1	15.4	12.8	16.6	57.6	..	289.2	3.6	36.9
Nov	63.1	15.6	13.1	16.3	57.7	..	288.8	4.0	37.0
Dec	63.0	15.7	13.7	16.5	56.4	..	292.7	3.5	37.0
PERSONS IN CUSTODY (RATE PER 100,000 ADULT POPULATION)									
2010	184.2	106.3	162.4	153.0	271.8	123.9	673.2	76.5	168.5
2011	176.0	107.8	158.4	156.0	261.7	127.5	747.3	85.0	165.6
2012	171.5	112.5	161.0	162.6	266.4	126.1	830.3	94.7	168.1
2011									
Dec Qtr	171.4	110.3	160.1	157.7	263.1	133.7	771.8	86.0	165.7
2012									
Mar Qtr	170.7	109.7	158.6	161.9	267.7	129.2	821.1	96.5	166.4
Jun Qtr	172.6	112.5	161.2	163.0	269.3	128.6	835.4	95.8	169.0
Sep Qtr	170.5	113.1	160.7	160.7	265.2	123.5	821.5	95.0	167.5
Dec Qtr	172.1	114.7	163.4	164.8	263.3	123.4	843.3	91.3	169.3
Oct	171.2	114.5	161.2	162.1	262.3	123.4	829.1	95.4	168.2
Nov	173.1	114.5	163.7	165.1	264.1	126.1	842.1	91.5	169.8
Dec	172.0	115.1	165.3	167.3	263.5	120.8	858.5	87.2	170.0

.. not applicable

(a) Imprisonment rates are based on Estimated Resident Population counts – see Explanatory Notes, paragraphs 17–21.

PERSONS IN FULL-TIME CUSTODY(a), By legal status

	NSW	Vic.	Qld	SA	WA	Tas.	NT	ACT	Aust.
UNSENTENCED (NUMBER ON FIRST DAY OF MONTH)									
2010	2 657	834	1 186	678	770	98	249	85	6 557
2011	2 774	886	1 187	638	856	95	290	85	6 810
2012	2 672	980	1 217	675	974	99	322	95	7 032
2011									
Dec Qtr	2 704	907	1 184	621	896	101	275	77	6 766
2012									
Mar Qtr	2 730	929	1 223	679	964	115	318	98	7 057
Jun Qtr	2 657	980	1 233	684	983	101	331	95	7 064
Sep Qtr	2 587	1 020	1 218	647	978	85	332	95	6 961
Dec Qtr	2 712	989	1 196	689	971	93	305	91	7 046
SENTENCED (NUMBER ON FIRST DAY OF MONTH)									
2010	7 604	3 719	4 439	1 288	3 973	380	862	126	22 391
2011	7 200	3 805	4 394	1 387	3 798	401	952	151	22 089
2012	7 028	3 934	4 445	1 443	3 938	403	1 092	177	22 458
2011									
Dec Qtr	7 103	3 939	4 531	1 428	3 829	428	1 006	158	22 422
2012									
Mar Qtr	6 987	3 863	4 401	1 429	3 872	391	1 058	168	22 169
Jun Qtr	7 064	3 914	4 413	1 447	3 972	411	1 092	180	22 493
Sep Qtr	7 052	3 906	4 416	1 431	3 962	407	1 077	179	22 430
Dec Qtr	7 008	4 051	4 547	1 467	3 946	402	1 140	182	22 741
TOTAL (NUMBER ON FIRST DAY OF MONTH)									
2010	10 261	4 553	5 625	1 966	4 743	478	1 112	211	28 948
2011	9 974	4 692	5 581	2 024	4 654	496	1 242	236	28 899
2012	9 699	4 913	5 662	2 118	4 912	502	1 413	272	29 491
2011									
Dec Qtr	9 807	4 846	5 715	2 050	4 725	529	1 281	235	29 188
2012									
Mar Qtr	9 717	4 793	5 625	2 108	4 836	506	1 375	266	29 226
Jun Qtr	9 721	4 894	5 646	2 131	4 955	512	1 423	276	29 557
Sep Qtr	9 638	4 926	5 634	2 078	4 940	493	1 409	273	29 392
Dec Qtr	9 720	5 040	5 743	2 156	4 916	495	1 445	272	29 788
Oct	9 620	5 021	5 652	2 080	4 908	483	1 424	282	29 470
Nov	9 732	5 042	5 741	2 185	4 908	498	1 430	273	29 809
Dec	9 808	5 058	5 837	2 202	4 933	504	1 480	262	30 084

(a) Figures for the quarter and year for first day of month counts are calculated as a simple average – see Explanatory Notes, paragraph 5.

IMPRISONMENT RATES(a), By legal status

	NSW	Vic.	Qld	SA	WA	Tas.	NT	ACT	Aust.
UNSENTENCED (RATE PER 100,000 ADULT POPULATION)									
2010	47.7	19.5	34.2	52.9	44.2	25.3	150.9	30.6	38.2
2011	49.2	20.3	33.7	49.2	48.0	24.4	173.3	30.1	39.0
2012	47.3	22.4	34.5	52.0	52.8	25.0	188.7	32.7	40.1
2011									
Dec Qtr	47.7	20.7	33.4	47.8	49.8	25.8	163.9	27.2	38.6
2012									
Mar Qtr	48.1	21.1	34.3	52.1	53.1	29.4	188.7	34.4	40.1
Jun Qtr	47.4	22.5	35.2	52.9	53.5	25.6	194.6	32.9	40.5
Sep Qtr	45.9	23.3	34.6	49.9	52.7	21.5	194.2	32.4	39.7
Dec Qtr	48.0	22.5	33.8	53.0	51.8	23.5	177.1	30.9	40.0
SENTENCED (RATE PER 100,000 ADULT POPULATION)									
2010	136.6	86.8	128.2	100.5	228.1	98.0	521.8	45.4	130.4
2011	127.7	87.3	124.6	107.0	213.2	102.4	569.5	53.6	126.6
2012	124.6	89.8	125.9	111.2	213.4	101.8	640.4	61.0	128.0
2011									
Dec Qtr	125.4	89.8	127.7	109.8	212.8	109.1	600.4	55.4	127.8
2012									
Mar Qtr	123.0	87.8	123.5	109.7	213.2	99.5	628.3	58.8	125.9
Jun Qtr	125.9	90.0	126.2	111.9	216.1	103.8	641.3	62.2	128.9
Sep Qtr	125.2	89.3	125.5	110.3	213.4	102.7	630.3	61.2	127.9
Dec Qtr	124.1	92.3	128.6	112.8	210.7	101.3	661.7	62.0	129.1
TOTAL (RATE PER 100,000 ADULT POPULATION)									
2010	184.3	106.3	162.4	153.4	272.3	123.3	672.7	76.0	168.6
2011	176.8	107.6	158.3	156.2	261.2	126.8	742.7	83.7	165.7
2012	171.9	112.2	160.4	163.1	266.1	126.8	829.1	93.7	168.0
2011									
Dec Qtr	173.1	110.5	161.1	157.6	262.6	134.9	764.3	82.6	166.4
2012									
Mar Qtr	171.1	109.0	157.9	161.8	266.3	128.9	817.0	93.2	166.0
Jun Qtr	173.3	112.5	161.4	164.8	269.6	129.4	835.9	95.1	169.4
Sep Qtr	171.1	112.6	160.1	160.2	266.1	124.3	824.6	93.6	167.6
Dec Qtr	172.1	114.8	162.4	165.7	262.6	124.8	838.8	92.9	169.1
Oct	170.3	114.4	159.8	159.9	262.1	121.8	826.8	96.2	167.3
Nov	172.3	114.8	162.3	168.0	262.1	125.6	830.3	93.1	169.3
Dec	173.7	115.2	165.0	169.3	263.4	127.1	859.3	89.4	170.8

(a) Imprisonment rates are based on Estimated Resident Population counts – see Explanatory Notes, paragraphs 17–21.

SENTENCED PRISONER RECEPTIONS INTO FULL-TIME CUSTODY(a)

	NSW	Vic.	Qld	SA	WA	Tas.	NT	ACT	Aust.
NUMBER									
2010	8 175	4 230	7 711	1 613	5 551	546	2 041	182	30 049
2011	7 627	4 295	8 733	1 685	5 208	610	2 360	219	30 737
2012	8 619	4 589	9 497	1 579	5 791	585	2 415	212	33 287
2011									
Dec Qtr	1 960	1 082	2 394	421	1 455	131	603	60	8 106
2012									
Mar Qtr	2 074	982	2 325	386	1 494	148	618	55	8 082
Jun Qtr	2 248	1 090	2 300	413	1 358	132	563	55	8 159
Sep Qtr	2 051	1 175	2 514	402	1 415	143	581	57	8 338
Dec Qtr	2 246	1 342	2 358	378	1 524	162	653	45	8 708

(a) The count of sentenced prisoner receptions is an addition of the total number for each month within the reference period – see Explanatory Notes, paragraphs 2–5.

	NSW		ACT	
	no.(c)	rate(d)	no.(c)	rate(d)
MALES				
2010	636	23.3	47	34.6
2011	136	4.9	57	40.9
2012	23	0.8	58	40.3
2011				
Dec Qtr	56	2.0	62	43.7
2012				
Mar Qtr	45	1.6	58	40.8
Jun Qtr	20	0.7	51	35.4
Sep Qtr	17	0.6	r58	r40.3
Dec Qtr	12	0.4	64	44.5
Oct	13	0.5	64	43.9
Nov	12	0.4	63	43.8
Dec	10	0.4	66	45.8
FEMALES				
2010	53	1.9	7	4.7
2011	15	0.5	6	4.1
2012	3	0.1	3	1.9
2011				
Dec Qtr	7	0.2	6	3.8
2012				
Mar Qtr	6	0.2	4	2.5
Jun Qtr	2	0.1	1	0.9
Sep Qtr	2	0.1	r4	r2.5
Dec Qtr	1	—	2	1.6
Oct	2	0.1	2	1.3
Nov	1	—	2	1.5
Dec	1	—	3	2.0
PERSONS				
2010	689	12.4	54	19.4
2011	151	2.7	63	22.3
2012	26	0.5	60	20.8
2011				
Dec Qtr	64	1.1	67	23.6
2012				
Mar Qtr	51	0.9	61	21.4
Jun Qtr	22	0.4	52	17.9
Sep Qtr	19	0.3	r62	r21.1
Dec Qtr	13	0.2	67	22.8
Oct	15	0.3	66	22.3
Nov	13	0.2	66	22.3
Dec	11	0.2	69	23.6

— nil or rounded to zero (including null cells)

r revised

(a) Periodic detention is a form of custody only used in NSW and the ACT. This order type has ceased from October 2010 in New South Wales.

(b) Imprisonment rates are based on Estimated Resident Population counts – see Explanatory Notes, paragraphs 17–21.

(c) Average daily number.

(d) Rate per 100,000 adult population.

	NSW	Vic.	Qld	SA	WA	Tas.	NT	ACT	Aust.
MALES (NUMBER ON FIRST DAY OF MONTH)									
2010	343	102	91	18	80	4	15	1	653
2011	355	100	92	14	155	4	35	1	756
2012	393	106	117	16	152	5	41	1	831
2011									
Dec Qtr	365	105	111	14	169	6	40	2	812
2012									
Mar Qtr	369	98	121	13	164	6	41	1	814
Jun Qtr	390	101	123	14	164	5	41	1	838
Sep Qtr	403	107	111	15	145	5	42	1	830
Dec Qtr	412	117	111	19	135	4	42	1	841
FEMALES (NUMBER ON FIRST DAY OF MONTH)									
2010	68	27	26	3	15	2	2	—	142
2011	65	27	22	2	17	1	1	—	135
2012	59	22	18	4	21	2	3	—	129
2011									
Dec Qtr	68	25	19	1	20	3	2	—	138
2012									
Mar Qtr	66	22	18	2	21	2	2	—	134
Jun Qtr	59	22	18	5	20	1	3	—	129
Sep Qtr	55	23	18	5	20	—	4	—	126
Dec Qtr	56	21	17	3	21	3	4	—	126
PERSONS (NUMBER ON FIRST DAY OF MONTH)									
2010	411	128	117	20	94	7	17	1	795
2011	419	127	113	16	173	5	37	1	891
2012	453	128	135	19	173	7	45	1	960
2011									
Dec Qtr	433	129	130	15	189	9	42	2	950
2012									
Mar Qtr	435	120	139	15	185	8	43	1	948
Jun Qtr	449	124	141	19	183	6	44	1	967
Sep Qtr	458	131	130	20	165	5	46	1	956
Dec Qtr	468	138	128	23	156	7	46	1	967
Oct	471	136	127	23	166	np	47	np	976
Nov	469	140	128	24	158	np	47	np	976
Dec	463	138	129	21	145	np	43	np	949

— nil or rounded to zero (including null cells)

np not available for publication but included in totals where applicable, unless otherwise indicated

- (a) Counts reflect the state or territory in which a prisoner was sentenced, not where they were held in custody.
- (b) Figures for the quarter and year for the first day of the month counts are calculated as a simple average – see Explanatory Notes, paragraph 5.

sex

	NSW	Vic.	Qld	SA	WA	Tas.	NT	ACT	Aust.
MALES (AVERAGE DAILY NUMBER)									
2010	2 049	257	1 527	426	1 668	62	871	33	6 892
2011	2 027	270	1 511	441	1 627	63	978	33	6 949
2012	1 991	319	1 533	435	1 747	65	1 110	45	7 244
2011									
Dec Qtr	1 980	276	1 520	438	1 664	69	1 018	34	6 998
2012									
Mar Qtr	2 005	298	1 519	441	1 724	74	1 087	45	7 194
Jun Qtr	1 985	320	1 504	434	1 758	60	1 115	46	7 223
Sep Qtr	1 971	331	1 506	431	1 742	62	1 099	46	7 189
Dec Qtr	2 002	324	1 601	434	1 765	64	1 136	42	7 369
Oct	1 980	330	1 578	430	1 761	66	1 112	43	7 300
Nov	2 003	322	1 595	430	1 779	67	1 137	43	7 375
Dec	2 022	320	1 630	442	1 754	60	1 160	41	7 430
FEMALES (AVERAGE DAILY NUMBER)									
2010	210	26	136	34	187	7	41	2	643
2011	192	24	152	39	158	8	49	3	625
2012	194	30	161	46	201	11	71	2	716
2011									
Dec Qtr	184	23	147	49	161	8	47	1	621
2012									
Mar Qtr	189	27	158	49	186	8	61	2	679
Jun Qtr	187	31	163	50	207	8	75	2	723
Sep Qtr	193	30	163	43	199	13	71	3	715
Dec Qtr	206	32	160	44	210	15	77	3	747
Oct	197	32	150	44	202	14	77	4	720
Nov	209	33	162	44	214	16	75	3	755
Dec	213	32	168	43	215	14	79	2	766
PERSONS (AVERAGE DAILY NUMBER)									
2010	2 258	284	1 663	460	1 855	68	912	35	7 534
2011	2 219	294	1 663	479	1 784	72	1 027	36	7 574
2012	2 185	349	1 694	481	1 948	76	1 181	47	7 960
2011									
Dec Qtr	2 164	299	1 667	487	1 825	77	1 065	35	7 619
2012									
Mar Qtr	2 194	325	1 676	489	1 910	82	1 148	47	7 873
Jun Qtr	2 172	351	1 668	484	1 965	68	1 190	48	7 946
Sep Qtr	2 164	361	1 669	474	1 942	75	1 170	49	7 904
Dec Qtr	2 208	356	1 761	478	1 975	79	1 213	45	8 115
Oct	2 177	362	1 728	474	1 963	80	1 189	47	8 020
Nov	2 212	355	1 756	474	1 992	83	1 212	46	8 130
Dec	2 235	352	1 799	485	1 969	74	1 239	43	8 196

(a) Excludes persons whose Aboriginal and Torres Strait Islander status is unknown – see Explanatory Notes, paragraph 28.

(b) For the calculation of quarterly figures – see Explanatory Notes, paragraph 5.

	NSW	Vic.	Qld	SA	WA	Tas.	NT	ACT	Aust.
MALES (RATE PER 100,000 ADULT ABORIGINAL AND TORRES STRAIT ISLANDER POPULATION)									
2010	4 430.0	2 428.0	3 311.4	4 958.7	7 428.0	1 056.3	4 383.3	2 393.7	4 279.2
2011	4 249.3	2 455.4	3 160.3	4 980.5	7 032.8	1 050.5	4 793.5	2 287.5	4 177.3
2012	4 052.8	2 797.7	3 097.8	4 774.7	7 332.1	1 044.1	5 311.1	3 005.7	4 222.9
2011									
Dec Qtr	4 149.5	2 509.3	3 180.3	4 944.3	7 193.0	1 147.8	4 990.3	2 367.5	4 206.7
2012									
Mar Qtr	4 082.3	2 620.7	3 069.4	4 839.5	7 234.6	1 187.0	5 204.7	3 041.0	4 193.8
Jun Qtr	4 041.1	2 813.5	3 040.4	4 762.5	7 377.7	965.2	5 338.6	3 060.5	4 210.7
Sep Qtr	4 012.6	2 909.6	3 044.1	4 730.2	7 310.9	996.5	5 261.7	3 079.5	4 190.9
Dec Qtr	4 075.4	2 845.2	3 236.4	4 767.1	7 404.6	1 028.3	5 438.4	2 842.8	4 295.7
Oct	4 031.4	2 897.1	3 190.0	4 722.7	7 389.5	1 057.5	5 321.6	2 894.8	4 256.0
Nov	4 078.1	2 829.2	3 223.0	4 722.7	7 464.2	1 070.8	5 440.0	2 888.8	4 299.6
Dec	4 116.9	2 808.8	3 295.6	4 854.5	7 362.1	958.1	5 553.7	2 746.1	4 331.6
FEMALES (RATE PER 100,000 ADULT ABORIGINAL AND TORRES STRAIT ISLANDER POPULATION)									
2010	434.1	239.4	281.9	366.0	821.7	112.8	191.1	148.8	381.6
2011	385.1	212.6	305.2	406.2	674.7	130.5	222.5	202.9	359.8
2012	377.1	256.7	312.6	476.2	834.7	171.0	314.5	165.1	400.5
2011									
Dec Qtr	369.5	200.0	295.1	516.4	690.3	121.9	215.9	69.3	357.5
2012									
Mar Qtr	367.5	228.6	306.2	499.5	775.2	124.9	270.3	123.4	379.8
Jun Qtr	364.5	266.5	317.1	513.1	859.3	123.7	331.3	162.6	404.5
Sep Qtr	375.0	253.7	317.2	444.7	829.8	203.7	314.4	186.4	400.0
Dec Qtr	401.1	277.8	310.1	448.0	874.2	230.8	341.6	187.7	417.6
Oct	382.3	274.9	290.2	451.5	841.7	224.8	341.2	273.0	402.5
Nov	406.9	282.7	313.7	451.5	888.9	248.3	333.3	183.6	422.3
Dec	414.4	275.8	326.5	441.2	892.5	219.8	349.9	106.3	428.1
PERSONS (RATE PER 100,000 ADULT ABORIGINAL AND TORRES STRAIT ISLANDER POPULATION)									
2010	2 387.8	1 314.2	1 762.3	2 581.0	4 104.6	578.0	2 204.0	1 265.6	2 286.9
2011	2 274.3	1 316.8	1 702.4	2 614.0	3 836.3	584.9	2 421.7	1 244.1	2 227.9
2012	2 173.3	1 510.0	1 676.7	2 552.3	4 069.6	601.1	2 719.1	1 588.3	2 271.8
2011									
Dec Qtr	2 217.5	1 336.9	1 706.9	2 653.6	3 923.8	628.6	2 512.9	1 217.2	2 241.1
2012									
Mar Qtr	2 182.8	1 408.5	1 659.5	2 595.7	3 991.2	648.1	2 645.0	1 585.2	2 247.0
Jun Qtr	2 161.1	1 522.8	1 650.9	2 565.6	4 104.7	538.3	2 741.1	1 614.4	2 267.9
Sep Qtr	2 152.6	1 563.7	1 652.7	2 514.6	4 056.6	594.3	2 695.3	1 635.9	2 255.9
Dec Qtr	2 196.7	1 544.1	1 743.3	2 534.1	4 125.6	623.7	2 794.4	1 517.9	2 316.2
Oct	2 165.5	1 568.3	1 710.4	2 514.5	4 101.7	635.0	2 738.0	1 586.6	2 289.0
Nov	2 200.9	1 538.7	1 738.6	2 514.5	4 162.6	653.5	2 790.9	1 538.9	2 320.5
Dec	2 223.7	1 525.2	1 780.7	2 572.8	4 113.6	583.5	2 854.2	1 428.9	2 339.1

(a) Rates are based on Aboriginal and Torres Strait Islander adult population estimates and projections for 30 June of the relevant calendar year – see Explanatory Notes, paragraphs 22–25.

(b) Excludes persons whose Aboriginal and Torres Strait Islander status is unknown – see Explanatory Notes, paragraph 28.

	NSW	Vic.	Qld	SA	WA	Tas.	NT	ACT	Aust.
UNSENTENCED (NUMBER ON FIRST DAY OF MONTH)									
2010	529	55	339	197	313	18	209	19	1 678
2011	569	61	335	191	374	14	241	17	1 803
2012	567	76	340	191	433	15	277	18	1 917
2011									
Dec Qtr	567	66	319	190	405	15	226	15	1 802
2012									
Mar Qtr	586	73	331	189	438	20	276	20	1 932
Jun Qtr	561	80	341	204	454	10	291	17	1 958
Sep Qtr	527	82	343	183	423	14	283	20	1 876
Dec Qtr	591	68	344	188	418	17	258	16	1 900
SENTENCED (NUMBER ON FIRST DAY OF MONTH)									
2010	1 744	228	1 322	265	1 549	50	701	16	5 874
2011	1 653	233	1 324	292	1 406	57	780	18	5 763
2012	1 614	270	1 346	295	1 510	62	905	29	6 031
2011									
Dec Qtr	1 615	231	1 349	297	1 413	59	822	17	5 803
2012									
Mar Qtr	1 599	244	1 336	297	1 455	64	870	25	5 890
Jun Qtr	1 608	268	1 330	293	1 516	60	906	30	6 012
Sep Qtr	1 637	277	1 320	292	1 522	60	893	28	6 030
Dec Qtr	1 612	289	1 399	297	1 547	63	951	31	6 190
TOTAL (NUMBER ON FIRST DAY OF MONTH)									
2010	2 273	283	1 661	462	1 862	67	910	35	7 552
2011	2 223	294	1 659	482	1 781	70	1 022	35	7 566
2012	2 181	345	1 686	486	1 944	77	1 182	47	7 947
2011									
Dec Qtr	2 181	297	1 667	487	1 818	74	1 048	32	7 605
2012									
Mar Qtr	2 185	317	1 667	485	1 893	83	1 146	45	7 822
Jun Qtr	2 169	348	1 671	497	1 970	70	1 198	47	7 970
Sep Qtr	2 165	360	1 663	475	1 946	74	1 176	48	7 906
Dec Qtr	2 203	357	1 743	486	1 965	80	1 210	47	8 090

(a) Figures for the quarter and year for first day of the month counts are calculated as a simple average – see Explanatory Notes, paragraph 5.

(b) Excludes persons whose Aboriginal and Torres Strait Islander status is unknown – see Explanatory Notes, paragraph 28.

ABORIGINAL AND TORRES STRAIT ISLANDER IMPRISONMENT RATES, BY LEGAL STATUS(a)(b)(c), By legal status

	NSW	Vic.	Qld	SA	WA	Tas.	NT	ACT	Aust.
UNSENTENCED (RATE PER 100,000 ADULT ABORIGINAL AND TORRES STRAIT ISLANDER POPULATION)									
2010	558.8	254.2	359.8	1 103.8	692.5	148.8	505.7	666.4	509.2
2011	583.5	273.1	343.2	1 038.8	804.3	111.1	569.4	597.9	530.2
2012	563.5	327.5	336.1	1 013.2	905.1	120.6	638.4	615.2	547.0
2011									
Dec Qtr	580.7	297.0	326.2	1 037.9	870.8	122.7	532.3	508.4	530.2
2012									
Mar Qtr	582.9	314.8	327.7	1 000.8	915.1	155.5	635.7	682.3	551.5
Jun Qtr	558.4	345.1	337.2	1 080.4	948.5	79.1	671.0	570.5	558.7
Sep Qtr	524.6	356.7	339.2	972.5	884.4	110.7	651.8	671.1	535.4
Dec Qtr	588.2	293.2	340.2	999.1	872.6	137.1	595.0	536.9	542.4
SENTENCED (RATE PER 100,000 ADULT ABORIGINAL AND TORRES STRAIT ISLANDER POPULATION)									
2010	1 843.9	1 057.3	1 400.9	1 488.9	3 426.2	421.8	1 694.5	582.4	1 783.1
2011	1 694.2	1 044.3	1 355.0	1 589.6	3 023.8	463.4	1 840.5	629.7	1 695.2
2012	1 605.7	1 168.3	1 332.8	1 563.6	3 155.2	488.4	2 084.7	962.0	1 721.2
2011									
Dec Qtr	1 654.7	1 034.2	1 380.6	1 617.8	3 038.7	485.2	1 938.8	600.8	1 707.0
2012									
Mar Qtr	1 591.0	1 058.5	1 322.6	1 573.7	3 040.5	503.5	2 003.1	838.9	1 681.0
Jun Qtr	1 599.6	1 161.1	1 316.6	1 556.1	3 167.9	474.5	2 087.6	1 017.9	1 716.0
Sep Qtr	1 628.8	1 201.5	1 306.7	1 547.2	3 180.5	477.2	2 056.8	950.8	1 721.1
Dec Qtr	1 603.6	1 252.1	1 385.3	1 577.3	3 232.0	498.3	2 191.2	1 040.3	1 766.7
TOTAL (RATE PER 100,000 ADULT ABORIGINAL AND TORRES STRAIT ISLANDER POPULATION)									
2010	2 402.8	1 311.4	1 760.7	2 592.8	4 118.7	570.6	2 200.2	1 248.8	2 292.3
2011	2 277.7	1 317.4	1 698.2	2 628.4	3 828.1	574.5	2 410.0	1 227.6	2 225.4
2012	2 169.3	1 495.8	1 668.9	2 576.8	4 060.4	609.0	2 723.1	1 577.2	2 268.2
2011									
Dec Qtr	2 235.5	1 331.2	1 706.9	2 655.7	3 909.5	607.9	2 471.1	1 109.2	2 237.1
2012									
Mar Qtr	2 173.9	1 373.4	1 650.2	2 574.6	3 955.6	659.1	2 638.8	1 521.3	2 232.5
Jun Qtr	2 158.0	1 506.2	1 653.9	2 636.5	4 116.4	553.6	2 758.6	1 588.4	2 274.7
Sep Qtr	2 153.3	1 558.2	1 646.0	2 519.8	4 064.9	587.9	2 708.7	1 621.9	2 256.5
Dec Qtr	2 191.8	1 545.2	1 725.5	2 576.3	4 104.6	635.3	2 786.2	1 577.2	2 309.0

- (a) Rates are based on the Aboriginal and Torres Strait Islander adult population estimates and projections for 30 June of the relevant calendar year – see Explanatory Notes, paragraphs 22–25.
- (b) Figures for the quarter and year for first day of the month counts are calculated as a simple average – see Explanatory Notes, paragraph 5.
- (c) Excludes persons whose Aboriginal and Torres Strait Islander status is unknown – see Explanatory Notes, paragraph 28.

PERSONS IN COMMUNITY-BASED CORRECTIONS(a)(b), By sex

	NSW	Vic.	Qld	SA	WA(c)	Tas.	NT	ACT	Aust.(d)
MALES (NUMBER ON FIRST DAY OF MONTH)									
2010	14 175	7 573	12 338	4 627	3 882	1 208	983	1 213	46 000
2011	13 689	7 333	12 051	4 551	3 437	1 369	900	1 200	44 682
2012	13 985	7 285	12 029	4 323	3 156	1 503	965	1 118	44 363
2011									
Dec Qtr	13 835	7 310	12 204	4 490	3 361	1 423	918	1 195	44 736
2012									
Mar Qtr	13 813	6 985	12 061	4 406	3 184	1 447	911	1 153	43 960
Jun Qtr	14 070	7 154	12 123	4 347	3 164	1 502	939	1 096	44 396
Sep Qtr	14 065	7 447	12 051	4 304	3 151	1 542	1 014	1 102	44 676
Dec Qtr	13 992	7 551	11 880	4 235	3 124	1 521	997	1 120	44 421
Oct	13 973	7 492	11 888	4 206	3 128	1 537	995	1 108	44 327
Nov	13 995	7 561	11 915	4 249	3 165	1 523	997	1 120	44 525
Dec	14 009	7 600	11 838	4 251	3 078	1 504	998	1 132	44 410
FEMALES (NUMBER ON FIRST DAY OF MONTH)									
2010	2 617	1 671	3 113	1 097	1 180	301	154	229	10 363
2011	2 454	1 671	3 035	1 039	977	357	159	213	9 906
2012	2 488	1 593	3 017	962	922	403	175	198	9 757
2011									
Dec Qtr	2 449	1 668	3 001	1 023	939	373	170	214	9 837
2012									
Mar Qtr	2 484	1 594	3 003	1 017	911	386	166	200	9 761
Jun Qtr	2 506	1 584	3 023	988	937	405	164	195	9 802
Sep Qtr	2 505	1 599	3 042	934	916	414	185	196	9 791
Dec Qtr	2 456	1 594	3 001	908	925	408	183	199	9 676
Oct	2 477	1 592	3 008	907	919	410	177	199	9 689
Nov	2 451	1 585	2 997	910	929	408	184	198	9 662
Dec	2 440	1 606	2 998	908	928	407	189	201	9 677
PERSONS (NUMBER ON FIRST DAY OF MONTH) (e)									
2010	16 851	9 248	15 451	5 725	5 063	1 510	1 138	1 442	56 426
2011	16 182	9 005	15 240	5 592	4 414	1 726	1 059	1 413	54 630
2012	16 512	8 879	15 046	5 287	4 078	1 906	1 140	1 315	54 163
2011									
Dec Qtr	16 320	8 978	15 205	5 514	4 300	1 796	1 089	1 409	54 611
2012									
Mar Qtr	16 335	8 581	15 064	5 424	4 096	1 833	1 077	1 353	53 763
Jun Qtr	16 621	8 739	15 146	5 336	4 100	1 907	1 103	1 291	54 244
Sep Qtr	16 611	9 048	15 093	5 239	4 067	1 955	1 199	1 298	54 511
Dec Qtr	16 481	9 145	14 881	5 147	4 049	1 930	1 180	1 319	54 132
Oct	16 485	9 084	14 896	5 116	4 047	1 947	1 172	1 307	54 054
Nov	16 478	9 146	14 912	5 162	4 094	1 931	1 181	1 318	54 222
Dec	16 479	9 206	14 836	5 163	4 006	1 911	1 187	1 333	54 121

(a) Figures include persons with breached or suspended orders, with the exception of Vic. and Tas.

(b) Figures for the quarter and year for first day of the month counts are calculated as a simple average – see Explanatory Notes, paragraph 5.

(c) Data are subject to processing delays of 4 to 6 weeks – see Explanatory Notes, paragraph 30.

(d) See footnote c.

(e) Includes persons whose sex is unknown.

COMMUNITY-BASED CORRECTIONS RATES, By sex(a)

	NSW	Vic.	Qld	SA	WA	Tas.	NT	ACT	Aust.
MALES (RATE PER 100,000 ADULT POPULATION)									
2010	518.7	359.8	718.5	737.6	441.9	640.3	1 145.6	887.0	543.0
2011	494.5	342.8	698.3	717.3	382.2	718.9	1 036.4	860.5	519.2
2012	505.0	339.9	689.1	679.4	340.2	774.3	1 079.6	781.3	512.9
2011									
Dec Qtr	497.6	339.8	693.8	705.1	369.8	745.7	1 057.5	849.8	516.9
2012									
Mar Qtr	495.7	323.7	682.8	690.6	346.7	757.0	1 045.6	816.6	506.1
Jun Qtr	510.9	336.2	701.4	686.1	343.4	771.0	1 047.4	767.2	516.7
Sep Qtr	508.7	348.0	692.9	676.8	338.3	790.3	1 127.2	766.1	517.1
Dec Qtr	504.7	351.5	679.5	664.1	332.3	779.1	1 098.2	775.0	511.9
Oct	504.0	348.8	679.9	659.5	332.7	787.1	1 096.4	766.7	510.8
Nov	504.8	352.0	681.5	666.2	336.6	779.9	1 098.6	775.0	513.1
Dec	505.3	353.8	677.1	666.5	327.4	770.2	1 099.7	783.4	511.8
FEMALES (RATE PER 100,000 ADULT POPULATION)									
2010	92.3	76.6	178.2	167.6	136.7	151.5	194.3	163.4	119.2
2011	85.4	75.3	170.8	157.2	110.7	177.9	198.1	148.8	112.1
2012	86.6	71.3	169.2	145.3	100.5	200.3	215.3	134.3	109.6
2011									
Dec Qtr	84.9	74.7	167.8	154.2	105.4	185.5	210.9	148.7	110.7
2012									
Mar Qtr	85.9	71.1	167.2	153.0	101.5	191.7	204.5	138.1	109.4
Jun Qtr	87.8	71.3	170.8	150.0	102.2	201.5	203.2	132.3	110.7
Sep Qtr	87.3	71.6	170.9	141.2	99.0	205.4	228.6	132.6	110.0
Dec Qtr	85.4	71.1	167.8	137.0	99.3	202.8	225.0	134.1	108.3
Oct	86.1	71.0	168.2	136.8	98.6	203.6	217.3	133.8	108.5
Nov	85.2	70.7	167.5	137.3	99.6	202.6	225.8	133.2	108.2
Dec	84.9	71.6	167.6	137.0	99.5	202.1	232.0	135.2	108.3
PERSONS (RATE PER 100,000 ADULT POPULATION) (b)									
2010	302.7	215.8	446.1	446.7	290.7	389.5	688.5	520.4	328.7
2011	286.9	206.6	432.3	431.6	247.8	441.3	633.2	500.4	313.2
2012	292.7	202.8	426.4	407.2	221.0	482.1	668.7	453.3	308.6
2011									
Dec Qtr	288.1	204.8	428.6	424.1	238.9	458.3	649.6	495.1	311.3
2012									
Mar Qtr	287.7	195.1	422.8	416.3	225.5	467.0	640.0	473.4	305.4
Jun Qtr	296.3	200.9	433.0	412.8	223.1	481.6	647.9	445.1	311.0
Sep Qtr	294.9	206.9	428.9	403.9	219.0	493.2	701.7	444.7	310.8
Dec Qtr	291.8	208.3	420.7	395.7	216.2	486.5	685.1	450.0	307.4
Oct	291.9	206.9	421.1	393.3	216.1	490.9	680.5	445.8	306.9
Nov	291.8	208.3	421.6	396.9	218.6	486.8	685.7	449.5	307.9
Dec	291.8	209.7	419.4	396.9	213.9	481.8	689.2	454.7	307.3

(a) With the exception of Vic. and Tas., the number of persons in community-based corrections includes those persons with breached or suspended orders.

(b) Includes persons whose sex is unknown.

	NSW	Vic.	Qld	SA	WA(d)	Tas.	NT(e)	ACT	Aust.(f)
.....									
RESTRICTED MOVEMENT (NUMBER ON FIRST DAY OF MONTH)									
2010	136	38	..	415	1	..	28	..	618
2011	110	37	..	398	—	..	32	..	576
2012	90	12	..	431	6	..	29	..	569
2011									
Dec Qtr	92	44	..	414	—	..	40	..	589
2012									
Mar Qtr	92	34	..	435	—	..	34	..	595
Jun Qtr	86	10	..	446	—	..	35	..	577
Sep Qtr	90	1	..	419	10	..	31	..	551
Dec Qtr	94	1	..	424	15	..	18	..	551
Oct	91	np	..	410	np	..	17	..	535
Nov	97	np	..	423	np	..	17	..	553
Dec	93	np	..	438	np	..	19	..	564

.....									
REPARATION-FINE OPTION (NUMBER ON FIRST DAY OF MONTH)									
2010	11	2 274	780	489	304	15	3 874
2011	2	1 917	824	582	289	11	3 625
2012	2	1 582	909	662	184	28	3 367
2011									
Dec Qtr	2	1 828	848	658	332	10	3 677
2012									
Mar Qtr	2	1 598	902	641	196	15	3 353
Jun Qtr	2	1 556	920	659	216	26	3 380
Sep Qtr	2	1 579	901	678	188	34	3 382
Dec Qtr	2	1 594	912	671	135	39	3 354
Oct	np	1 610	876	682	157	np	3 366
Nov	np	1 572	920	669	146	np	3 349
Dec	np	1 601	940	663	103	np	3 346

.....									
REPARATION-COMMUNITY SERVICE (NUMBER ON FIRST DAY OF MONTH)									
2010	3 836	686	2 236	1 113	1 330	752	124	204	10 280
2011	3 050	623	1 977	1 129	1 085	970	138	206	9 177
2012	2 726	613	1 712	956	976	1 178	153	150	8 461
2011									
Dec Qtr	2 831	629	1 867	1 085	1 048	1 078	147	203	8 888
2012									
Mar Qtr	2 769	560	1 805	1 006	1 021	1 124	151	193	8 629
Jun Qtr	2 785	583	1 776	947	983	1 166	156	181	8 578
Sep Qtr	2 736	679	1 668	925	955	1 200	152	112	8 427
Dec Qtr	2 612	630	1 598	944	943	1 220	151	113	8 211
Oct	2 670	622	1 590	930	933	1 214	150	89	8 198
Nov	2 596	627	1 609	961	961	1 220	155	111	8 240
Dec	2 571	641	1 596	942	934	1 225	148	139	8 196

.. not applicable

— nil or rounded to zero (including null cells)

np not available for publication but included in totals where applicable, unless otherwise indicated

(a) If a person has more than one type of order, they are counted against each order in this table. If a person has more than one order of the same order type, they are counted only once in the order type.

(b) Figures for the quarter and year for first day of the month counts are calculated as a simple average – see Explanatory Notes, paragraph 5.

(c) Figures include persons with breached or suspended orders, with the exception of Vic. and Tas.

(d) Data are subject to processing delays of 4 to 6 weeks – see Explanatory Notes, paragraph 30.

(e) Caution should be exercised as a new processing system was introduced by the NT in September 2009 resulting in significant changes to some community-based order counts. – see Explanatory Notes, paragraph 34.

(f) See footnotes d–e.

	NSW	Vic.	Qld	SA	WA(d)	Tas.	NT(e)	ACT	Aust.(f)
SUPERVISION (COMPLIANCE)–PAROLE (NUMBER ON FIRST DAY OF MONTH)									
2010	4 304	1 533	4 256	990	592	117	98	108	11 998
2011	4 366	1 650	4 441	942	445	102	82	106	12 134
2012	4 485	1 741	4 695	897	417	114	93	99	12 542
2011									
Dec Qtr	4 471	1 693	4 552	938	396	94	85	98	12 327
2012									
Mar Qtr	4 458	1 704	4 569	928	390	105	85	96	12 335
Jun Qtr	4 416	1 743	4 707	902	390	117	89	96	12 461
Sep Qtr	4 509	1 763	4 771	894	428	120	97	103	12 684
Dec Qtr	4 558	1 756	4 734	865	461	115	100	101	12 689
Oct	4 527	1 771	4 754	851	454	117	99	101	12 674
Nov	4 530	1 753	4 753	872	466	114	100	102	12 690
Dec	4 618	1 743	4 694	872	462	113	100	101	12 703

	NSW	Vic.	Qld	SA	WA(d)	Tas.	NT(e)	ACT	Aust.(f)
SUPERVISION (COMPLIANCE)–BAIL (NUMBER ON FIRST DAY OF MONTH)									
2010	199	738	304	..	24	251	1 516
2011	191	607	357	..	12	269	1 436
2012	154	620	385	5	14	282	1 460
2011									
Dec Qtr	186	557	388	..	7	270	1 409
2012									
Mar Qtr	171	587	374	4	14	270	1 420
Jun Qtr	149	652	403	4	15	271	1 493
Sep Qtr	145	617	376	6	13	289	1 446
Dec Qtr	151	625	387	5	12	300	1 481
Oct	145	608	376	5	10	289	1 433
Nov	144	633	390	5	13	297	1 482
Dec	164	634	396	5	14	314	1 527

	NSW	Vic.	Qld	SA	WA(d)	Tas.	NT(e)	ACT	Aust.(f)
SUPERVISION (COMPLIANCE)–SENTENCED PROBATION (NUMBER ON FIRST DAY OF MONTH)									
2010	9 923	5 032	9 512	3 027	3 620	915	926	1 154	34 108
2011	9 524	5 083	9 265	2 875	3 167	1 021	839	1 086	32 860
2012	9 712	5 267	8 941	2 534	2 922	1 029	893	997	32 295
2011									
Dec Qtr	9 605	5 112	9 185	2 798	3 031	1 025	853	1 086	32 695
2012									
Mar Qtr	9 624	5 006	9 060	2 675	2 965	1 005	841	1 043	32 220
Jun Qtr	9 855	5 167	9 016	2 570	2 927	1 063	856	982	32 436
Sep Qtr	9 758	5 384	8 920	2 496	2 911	1 051	938	977	32 434
Dec Qtr	9 611	5 512	8 766	2 395	2 883	999	940	985	32 090
Oct	9 600	5 457	8 788	2 381	2 898	1 028	932	988	32 072
Nov	9 641	5 534	8 764	2 406	2 898	999	937	984	32 163
Dec	9 592	5 545	8 746	2 399	2 852	969	950	982	32 035

.. not applicable

- (a) If a person has more than one type of order, they are counted against each order in this table. If a person has more than one order of the same order type, they are counted only once in the order type.
- (b) Figures for the quarter and year for first day of the month counts are calculated as a simple average – see Explanatory Notes, paragraph 5.

- (c) Figures include persons with breached or suspended orders, with the exception of Vic. and Tas.
- (d) Data are subject to processing delays of 4 to 6 weeks – see Explanatory Notes, paragraph 30.
- (e) Caution should be exercised as a new processing system was introduced by the NT in September 2009 resulting in significant changes to some community-based order counts. – see Explanatory Notes, paragraph 34.
- (f) See footnotes d–e.

PERSONS IN COMMUNITY-BASED CORRECTIONS(a)(b), By Aboriginal and Torres Strait Islander status

	NSW	Vic.	Qld	SA	WA(c)(d)	Tas.	NT	ACT	Aust. (e)
ABORIGINAL AND TORRES STRAIT ISLANDER (NUMBER ON FIRST DAY OF MONTH)									
2010	3 112	512	3 242	1 026	1 687	192	819	149	10 740
2011	3 165	519	3 349	953	1 486	227	797	162	10 658
2012	3 367	523	3 373	885	1 405	258	882	153	10 846
2011									
Dec Qtr	3 261	523	3 363	946	1 489	240	812	175	10 809
2012									
Mar Qtr	3 277	506	3 355	934	1 397	236	808	168	10 681
Jun Qtr	3 329	516	3 434	904	1 408	261	841	158	10 850
Sep Qtr	3 425	528	3 393	870	1 398	273	938	143	10 968
Dec Qtr	3 437	544	3 311	831	1 417	261	942	143	10 886
Oct	3 453	531	3 313	831	1 418	267	945	141	10 899
Nov	3 392	532	3 320	829	1 452	258	939	146	10 868
Dec	3 467	568	3 300	833	1 381	259	941	143	10 892
NON-INDIGENOUS (NUMBER ON FIRST DAY OF MONTH)									
2010	12 235	8 295	12 208	4 651	3 366	1 275	319	1 174	43 523
2011	12 347	8 222	11 891	4 579	2 922	1 469	262	1 227	42 918
2012	12 495	8 091	11 673	4 347	2 669	1 619	258	1 125	42 276
2011									
Dec Qtr	12 469	8 206	11 842	4 504	2 804	1 529	276	1 213	42 843
2012									
Mar Qtr	12 447	7 826	11 710	4 437	2 694	1 566	270	1 149	42 099
Jun Qtr	12 570	7 944	11 712	4 370	2 689	1 620	262	1 115	42 283
Sep Qtr	12 512	8 271	11 700	4 323	2 665	1 653	262	1 102	42 487
Dec Qtr	12 451	8 322	11 570	4 258	2 628	1 636	238	1 134	42 236
Oct	12 466	8 274	11 583	4 232	2 625	1 650	227	1 133	42 190
Nov	12 491	8 339	11 592	4 275	2 637	1 641	242	1 131	42 348
Dec	12 395	8 353	11 536	4 266	2 621	1 617	246	1 137	42 171
UNKNOWN (NUMBER ON FIRST DAY OF MONTH)									
2010	1 504	441	—	47	10	43	—	119	2 164
2011	670	264	—	60	6	30	—	23	1 054
2012	650	264	—	55	4	30	—	37	1 040
2011									
Dec Qtr	590	249	—	65	7	27	—	21	959
2012									
Mar Qtr	611	249	—	53	5	31	—	36	984
Jun Qtr	722	279	—	63	4	26	—	18	1 112
Sep Qtr	674	249	—	47	3	30	—	53	1 056
Dec Qtr	593	280	—	58	4	32	—	42	1 010
Oct	566	279	—	53	4	30	—	33	965
Nov	595	275	—	58	5	32	—	41	1 006
Dec	617	285	—	64	4	35	—	53	1 058

— nil or rounded to zero (including null cells)

- (a) Figures include persons with breached or suspended orders, with the exception of Vic. and Tas.
 (b) Figures for the quarter and year for first day of the month counts are calculated as a simple average – see Explanatory Notes, paragraph 5.
 (c) Data is subject to processing delays of 4 to 6 weeks – see Explanatory Notes, paragraph 30.

(d) Aboriginal and Torres Strait Islander status is determined using a combination of self-identification, previously collected information and judgement by the recording officer – see Explanatory Notes, paragraphs 26–28.

(e) See footnotes c–d.

	NSW	Vic.	Qld	SA	WA(c)(d)	Tas.	NT	ACT	Aust.(e)
PERSONS (NUMBER ON FIRST DAY OF MONTH)									
2010	16 851	9 248	15 451	5 725	5 063	1 510	1 138	1 442	56 426
2011	16 182	9 005	15 240	5 592	4 414	1 726	1 059	1 413	54 630
2012	16 512	8 879	15 046	5 287	4 078	1 906	1 140	1 315	54 163
2011									
Dec Qtr	16 320	8 978	15 205	5 514	4 300	1 796	1 089	1 409	54 611
2012									
Mar Qtr	16 335	8 581	15 064	5 424	4 096	1 833	1 077	1 353	53 763
Jun Qtr	16 621	8 739	15 146	5 336	4 100	1 907	1 103	1 291	54 244
Sep Qtr	16 611	9 048	15 093	5 239	4 067	1 955	1 199	1 298	54 511
Dec Qtr	16 481	9 145	14 881	5 147	4 049	1 930	1 180	1 319	54 132
Oct	16 485	9 084	14 896	5 116	4 047	1 947	1 172	1 307	54 054
Nov	16 478	9 146	14 912	5 162	4 094	1 931	1 181	1 318	54 222
Dec	16 479	9 206	14 836	5 163	4 006	1 911	1 187	1 333	54 121

- (a) Figures include persons with breached or suspended orders, with the exception of Vic. and Tas.
- (b) Figures for the quarter and year for first day of the month counts are calculated as a simple average – see Explanatory Notes, paragraph 5.
- (c) Data is subject to processing delays of 4 to 6 weeks – see Explanatory Notes, paragraph 30.

- (d) Aboriginal and Torres Strait Islander status is determined using a combination of self-identification, previously collected information and judgement by the recording officer – see Explanatory Notes, paragraphs 26–28.
- (e) See footnotes c–d.

PROPORTION OF PERSONS IN COMMUNITY-BASED CORRECTIONS (a)(b), By Aboriginal and Torres Strait Islander status

	NSW	Vic.	Qld	SA	WA(c)(d)	Tas.	NT	ACT	Aust.(e)
ABORIGINAL AND TORRES STRAIT ISLANDER (%)									
2010	18.5	5.5	21.0	17.9	33.3	12.7	72.0	10.3	19.0
2011	19.6	5.8	22.0	17.0	33.7	13.1	75.2	11.5	19.5
2012	20.4	5.9	22.4	16.7	34.5	13.5	77.4	11.6	20.0
2011									
Dec Qtr	20.0	5.8	22.1	17.1	34.6	13.4	74.6	12.4	19.8
2012									
Mar Qtr	20.1	5.9	22.3	17.2	34.1	12.9	75.0	12.4	19.9
Jun Qtr	20.0	5.9	22.7	16.9	34.3	13.7	76.2	12.2	20.0
Sep Qtr	20.6	5.8	22.5	16.6	34.4	14.0	78.2	11.0	20.1
Dec Qtr	20.9	5.9	22.2	16.1	35.0	13.5	79.8	10.9	20.1
Oct	20.9	5.8	22.2	16.2	35.0	13.7	80.6	10.8	20.2
Nov	20.6	5.8	22.3	16.1	35.5	13.4	79.5	11.1	20.0
Dec	21.0	6.2	22.2	16.1	34.5	13.6	79.3	10.7	20.1
NON-INDIGENOUS (%)									
2010	72.6	89.7	79.0	81.3	66.5	84.4	28.0	81.4	77.1
2011	76.3	91.3	78.0	81.9	66.2	85.1	24.8	86.9	78.6
2012	75.7	91.1	77.6	82.2	65.4	84.9	22.6	85.5	78.1
2011									
Dec Qtr	76.4	91.4	77.9	81.7	65.2	85.1	25.4	86.1	78.5
2012									
Mar Qtr	76.2	91.2	77.7	81.8	65.8	85.5	25.0	84.9	78.3
Jun Qtr	75.6	90.9	77.3	81.9	65.6	85.0	23.8	86.4	77.9
Sep Qtr	75.3	91.4	77.5	82.5	65.5	84.5	21.8	84.9	77.9
Dec Qtr	75.5	91.0	77.8	82.7	64.9	84.8	20.2	85.9	78.0
Oct	75.6	91.1	77.8	82.7	64.9	84.7	19.4	86.7	78.1
Nov	75.8	91.2	77.7	82.8	64.4	85.0	20.5	85.8	78.1
Dec	75.2	90.7	77.8	82.6	65.4	84.6	20.7	85.3	77.9
UNKNOWN (%)									
2010	8.9	4.8	—	0.8	0.2	2.9	—	8.2	3.8
2011	4.1	2.9	—	1.1	0.1	1.8	—	1.7	1.9
2012	3.9	3.0	—	1.0	0.1	1.6	—	2.8	1.9
2011									
Dec Qtr	3.6	2.8	—	1.2	0.2	1.5	—	1.5	1.8
2012									
Mar Qtr	3.7	2.9	—	1.0	0.1	1.7	—	2.7	1.8
Jun Qtr	4.3	3.2	—	1.2	0.1	1.4	—	1.4	2.0
Sep Qtr	4.1	2.8	—	0.9	0.1	1.5	—	4.1	1.9
Dec Qtr	3.6	3.1	—	1.1	0.1	1.7	—	3.2	1.9
Oct	3.4	3.1	—	1.0	0.1	1.5	—	2.5	1.8
Nov	3.6	3.0	—	1.1	0.1	1.7	—	3.1	1.9
Dec	3.7	3.1	—	1.2	0.1	1.8	—	4.0	2.0

— nil or rounded to zero (including null cells)

(a) With the exception of Vic. and Tas., includes persons with breached or suspended orders.

(b) Figures for the quarter and year for first day of the month counts are calculated as a simple average – see Explanatory Notes, paragraph 5.

(c) Data is subject to processing delays of 4 to 6 weeks – see Explanatory Notes, paragraph 30.

(d) Aboriginal and Torres Strait Islander status is determined using a combination of self-identification, previously collected information and judgement by the recording officer – see Explanatory Notes, paragraphs 26–28.

(e) See footnotes c–d.

EXPLANATORY NOTES

INTRODUCTION

1 This publication presents statistical series about persons either held in adult corrective services custody or who are serving adult community-based orders in Australia. It contains data on the number of persons in custody by sex, Aboriginal and Torres Strait Islander status, type of custody, legal status and sentence type; the number of sentenced persons received into corrective services custody each month; the number of federal prisoners; and data about the number of persons in community-based corrections by sex, Aboriginal and Torres Strait Islander status and type of order.

2 Statistics presented in this publication are compiled in three ways:

- Average daily prisoner population: Counts taken on each day of the month are summed and divided by the number of days in that month to determine the average daily prisoner population for that month. The average daily periodic detainee population is a count of persons on periodic detention on each day a centre is open, divided by the number of days a centre is open.
- Sentenced prisoner reception figures: Counts are provided each month on the number of receptions where a prisoner is received as a sentenced prisoner. This includes prisoners with a change of legal status from unsentenced to sentenced.
- First day of the month prisoner population: Counts of prisoners and persons serving community-based corrections orders, taken on or near the first day of the month (see paragraphs 4 and 5).

3 Although national standards and classifications are used in the compilation of these statistics, some discrepancies remain between the states and territories. These are due to legislative and procedural differences between jurisdictions and the way that these differences are reflected in agencies' administrative data systems. As part of its quality assurance strategy, the ABS is working with corrective services agencies to minimise the effect of these differences.

REFERENCE PERIOD

4 The reference period for average daily prisoner population statistics and sentenced reception counts is the complete reference month. The reference date for all other figures is the first day of the reference month. However, not all states and territories report strictly according to this 'first day of the month' rule:

- The Western Australian population is counted as at midnight on the last day of the month. The figures provided are taken to represent the prison population at the beginning of the following month.

5 Calculation of figures for the entire quarter and entire year varies depending on the counting unit and method of counting prisoners:

- Average daily figures: Figures are calculated by weighting the average according to the number of days in each month, quarter or year.
- First day of the month: Figures are simple averages. For quarterly figures, the sum of the monthly data is divided by three; for yearly figures, the figures for each month are added and the total divided by twelve.
- Sentenced receptions: Figures are totals of each month.
- These figures may be subject to rounding.

SCOPE

6 The scope of the statistics in this publication includes all persons remanded or sentenced to adult custodial facilities (including Work Camps and Community Custody Centres in Queensland), or who are serving adult community-based orders in each state and territory in Australia.

EXPLANATORY NOTES *continued*

SCOPE *continued*

7 Counts of prisoners in the following custodial facilities are included in the collection:

- gazetted prisons in all jurisdictions;
- periodic detention centres in New South Wales and the Australian Capital Territory;
- community custody centres and work camps in Queensland;
- cells in court complexes administered by corrective services in New South Wales;
- transitional centres in New South Wales; and
- lock-ups in Western Australia operated by the police but designated as a prison by the Chief Executive Officer of Corrective Services.

8 The prisons and community-based corrections collection excludes the following custodial facilities:

- police lockups, police prisons and cells in court complexes not administered and controlled by corrective services;
- gazetted police prisons in the Northern Territory;
- juvenile detention centres, including those under the authority of adult corrective services;
- immigration detention centres; and
- military prisons.

9 This collection includes counts of persons remanded or sentenced to adult custody facilities, or directed to serve community-based orders administered by adult corrective services agencies. In all states and territories except Queensland, persons are considered adults if aged 18 years and over. In Queensland persons are considered adults if aged 17 years and over. The vast majority of persons counted in the collection are adults. However, juveniles may be included in exceptional circumstances.

10 Since December 2004, the Kariong Juvenile Correctional Centre in New South Wales has operated under the authority of adult corrective services. The population at Kariong Juvenile Correctional Centre may include adult persons as well as juveniles. New South Wales includes juveniles based in Kariong in this collection, however, this facility accounts for less than 0.5% of the New South Wales prisoner population.

11 Federal prisoners include those persons charged and sentenced under a Commonwealth statute, and those persons who are charged and sentenced under the laws of another country but transferred to an Australian prison to serve their sentence under the *International Transfer of Prisoners Act 1997* (Cwlth). To give practical effect to this legislation in Australia, the framework was introduced in January 2003. For the purposes of this publication, federal sentenced prisoners are those persons who are recognised by the Criminal Law Division of the Australian Government Attorney-General's Department as having been charged and sentenced under a Commonwealth statute, or transferred from another country to serve their sentence in Australia.

12 With the exception of Victoria and Tasmania, community-based corrections includes those persons with breached or suspended orders.

DATA SOURCE

13 Statistics in this publication are derived from information provided to the ABS from administrative records held by corrective services agencies within each state and territory. Statistics on federal prisoners are derived from records kept by the Criminal Law Division of the Australian Government Attorney-General's Department.

COUNTING RULES

14 Statistics for persons held in custody are presented by the state or territory in which they were held, however, this may not be the same as the original sentencing jurisdiction. The only exception to this are data for federal sentenced prisoners. These are presented by the state or territory in which they were sentenced, not where they were held in custody.

EXPLANATORY NOTES *continued*

COUNTING RULES *continued*

15 Sentenced prisoners who have other offences that are unsentenced are counted as sentenced. Prisoners may be unsentenced because they are awaiting the outcome of their trial, convicted but awaiting sentence, or awaiting deportation.

16 If an offender has two or more different types of community-based orders operating simultaneously, then each order will be counted. If two or more community-based orders are of the same type, the person will only be counted once in each order category.

RATES

17 Imprisonment and community-based corrections rates enable comparisons of prisoner numbers to be made across states and territories. Prisoner and community-based corrections rates are expressed per 100,000 adult population. Imprisonment rates are calculated based on two different counting concepts (average daily and first day of the month), as a result there may be variations in imprisonment rates presented in this publication.

18 In this publication the population figures used in the calculation of rates are for persons aged 18 years and over for all states and territories except Queensland where the population is persons aged 17 years and over (see paragraph 9).

19 Rates for the total adult prisoner population and persons in community-based corrections are calculated using the estimated resident population (ERP) for each of the states and territories. All estimates for the Australian Capital Territory exclude Jervis Bay Territory. All estimates for Australia exclude the external territories of Christmas Island and the Cocos (Keeling) Island. As the population changes over time the denominator used for the calculation of rates varies, depending on the reference period. The most current ERP data available at the time of publication are used to calculate rates as follows:

- for the March quarter, ERP is from the previous September quarter;
- for the June quarter, ERP is from the previous December quarter;
- for the September quarter, ERP is from the previous March quarter;
- for the December quarter, ERP is from the previous June quarter; and
- annual rates are an average of the rates of the contributing quarters.

20 The ERP series are revised every five years to incorporate additional information available from the latest Census of Population and Housing. The rates per 100,000 adult persons presented in this issue have been calculated using different ERP counts as follows:

- Rates from the June 2007 quarter (excluding Aboriginal and Torres Strait Islander rates) are calculated using rebased data from the intercensal period (2001-2006) sourced from the 2006 Census of Population and Housing;
- All other rates (excluding Aboriginal and Torres Strait Islander rates) are calculated using ERP data based on the 2001 Census of Population and Housing.

21 For population estimates and information on the methodology used to produce the ERP, see *Australian Demographic Statistics* (cat. no. 3101.0).

Aboriginal and Torres Strait Islander imprisonment rates

22 Rates for the Aboriginal and Torres Strait Islander adult population are calculated using rebased estimates (for the period 1986 - 2006) and projections (2007 - 2021) of the Aboriginal and Torres Strait Islander population. These data are based on data from the 2006 Census of Population and Housing and use assumptions about future fertility, paternity, life expectancy at birth and migration. For more information see *Experimental Estimates and Projections, Aboriginal and Torres Strait Islander Australians, 1991 to 2021* (cat. no. 3238.0).

EXPLANATORY NOTES *continued*

*Aboriginal and Torres Strait
Islander imprisonment rates
continued*

23 The projections used in this publication are based on Series B projections for 30 June of the relevant calendar year. Series B is one of two main projection series (Series A and B) that have been published for the years 2007 to 2021. Both of these series assume an annual decline of 0.5% in fertility rates; an annual increase of 1% in paternity rates; constant interstate migration at levels observed in the 2006 Census; and zero net overseas migration with no arrivals and no departures. Further, two different assumptions were made about future Aboriginal and Torres Strait Islander life expectancy at birth for Australia:

- In Series A, Aboriginal and Torres Strait Islander life expectancy at birth will remain constant; and
- In Series B, Aboriginal and Torres Strait Islander life expectancy at birth will increase by 0.3 years per year for both males and females.

24 The impact of re-basing Aboriginal and Torres Strait Islander imprisonment rate data using Series B projections, instead of the previous "low series" of projections, is minimal at the national level. Differences of no greater than 5% are seen in the state and territory data, and generally the result has been a decrease in the imprisonment rate. This is because the assumptions used by Series B result in higher population estimates and projections than those through the use of the previous "low series".

25 The decision to use Series B as the denominator in the calculation of Aboriginal and Torres Strait Islander imprisonment rates followed consultation with the National Corrective Services Statistics Advisory Group and other stakeholders.

ABORIGINAL AND TORRES
STRAIT ISLANDER
IDENTIFICATION

26 The ABS conducts an ongoing programme of quality assurance to monitor and improve the quality of Aboriginal and Torres Strait Islander Status data in Corrective Services agencies (both custodial and community-based corrections). Whilst the ABS has published Aboriginal and Torres Strait Islander status data in Corrective Services collections for a number of years, ongoing quality assurance enables better understanding of accuracy over time.

27 The quality of the Aboriginal and Torres Strait Islander status information collected and recorded in Corrective Service agencies is assessed against the ABS Standard Indigenous Question (SIQ). The SIQ is based upon self-identification by the individual who comes into contact with Corrective Service agencies. In 2010, the ABS conducted a comprehensive quality assurance review across all jurisdictions and sectors of the criminal justice system to confirm our understanding of the processes involved in recording Aboriginal and Torres Strait Islander status and the barriers to producing quality statistics. The results of the review concluded that corrective services data are of acceptable quality and comparability for all states and territories, with the exception of Western Australia. In Western Australia, Aboriginal and Torres Strait Islander status is determined by asking two questions rather than asking the ABS SIQ at the first meeting. This is at the discretion of the case manager and in some instances Aboriginal and Torres Strait Islander status may be recorded from information previously collected or otherwise determined by the case manager. For this reason, caution should be exercised when comparing Aboriginal and Torres Strait Islander data from Western Australia to other states and territories.

28 Some persons in custody are recorded with an unknown Aboriginal and Torres Strait Islander status on the information systems of corrective services agencies as their status has not been able to be obtained or recorded. Persons with Aboriginal and Torres Strait Islander status unknown are excluded from tables 13–16. Counts of persons with an unknown Aboriginal and Torres Strait Islander status are included in all other tables. Unknowns account for approximately 1% of all records.

EXPLANATORY NOTES *continued*

SIGNIFICANT EVENTS

Victoria

29 Home detention was abolished in Victoria on 16 January 2012. On this date the *Sentencing Legislation Amendment (Abolition of Home Detention) Act 2011* came into effect. As a result, home detention is no longer a sentencing option and can also no longer be given as a pre-parole option by the Adult Parole Board, as was the case previously. Any existing home detention orders issued before 16 January 2012 will continue to run until completed.

Western Australia

30 Data for community-based correction orders extracted from the Western Australian information system are subject to data processing time lags of 4-6 weeks. Fine option orders are most likely to be impacted by the lag, with approximately 10% of each month's data entry delayed.

Tasmania

31 Orders under the Court Mandated Diversion for Drug Offenders (CMD) returned to Community Corrections supervision in July 2010 and have been included in the electronic data from January 2012 onwards. Drug Treatment Orders are counted under Sentenced Probation, and CMD Bail Orders under Bail.

32 Hayes Prison Farm, Tasmania's only open security prison, closed on 3 September 2012.

33 Tasmania introduced Monetary Penalty Community Service Orders in 2011. These orders are counted as Reparation - Fine option and are included in the data from the March quarter 2012.

Northern Territory

34 In September 2009 a new offender management system was implemented - the Integrated Offender Management System (IOMS). The transition to the new system resulted in a number of data impacts. The impacts included:

- significantly increased counts, and potential over counting, for sentenced receptions and some community-based orders following the introduction of the system, and
- overstated community-based orders for the period from December quarter 2009 to September quarter 2010 (due to difficulties in identifying persons who have been in breach for 3 years or more).

35 In March 2012 the Northern Territory introduced two new sentencing options, the Community Custody Order for non-violent and non-sexual offenders facing an imprisonment period of less than 12 months, and the Community-based Order for non-violent offenders and non-sexual offenders not facing an imprisonment period. These orders are both counted under Sentenced Probation and are included in the data from the June quarter 2012.

Australian Capital Territory

36 In July 2012 an audit was conducted by ACT Corrective Services of Reparation - Community Service files. As a result a number of breached orders were identified and actioned. The persons on these orders have returned to court and the original order has either been revoked or reactivated, depending on the Court outcome.

REVISIONS

37 The ACT has revised the number of males, females and persons in periodic detention for the September quarter 2012. These changes impact both the numbers and rates figures in Table 11.

RELATED PUBLICATIONS

ABS Publications

38 Other ABS publications that may be of interest include:

- Australian Demographic Statistics* (cat. no. 3101.0) – issued quarterly
- Australian Social Trends* (cat. no. 4102.0) – issued quarterly
- Australian and New Zealand Standard Offence Classification (third edition)* (cat. no. 1234.0) – released 2 June 2011
- Crime Victimisation, Australia* (cat. no. 4530.0) – issued annually
- Criminal Courts, Australia* (cat. no. 4513.0) – issued annually

EXPLANATORY NOTES *continued*

ABS Publications *continued*

Defining the Data Challenge for Family, Domestic and Sexual Violence, 2013 (cat. no. 4529.0) – released 7 February 2013

Directory of Family and Domestic Violence Statistics, 2011 (cat. no. 4533.0) – released 22 November 2011

Experimental Estimates and Projections, Aboriginal and Torres Strait Islander Australians, 1991 to 2021 (cat. no. 3238.0) – released 8 September 2009

Federal Defendants, Selected States and Territories, (cat. no. 4515.0) – issued annually

General Social Survey: Summary Results, Australia (cat. no. 4159.0) – irregular

In Focus: Crime and Justice Statistics (cat. no. 4524.0) – irregular

Information Paper: Measuring Crime Victimization, Australia: The Impact of Different Collection Methodologies (cat. no. 4522.0.55.001) – single issue

Information Paper: National Criminal Justice Statistical Framework (cat. no. 4525.0) – single issue

Information Paper: National Information Development Plan for Crime and Justice Statistics 2005 (cat. no. 4520.0) – single issue

Measures of Australia's Progress (cat. no. 1370.0) – released 15 September 2010

Measuring Victims of Crime: A Guide to using Administrative and Survey data (cat. no. 4500.0.55.001) – single issue

Personal Fraud Survey (cat. no. 4528.0) – released 19 April 2012

Personal Safety Survey (cat. no. 4906.0) – released 21 August 2006

Prisoners in Australia (cat. no. 4517.0) – issued annually

Recorded Crime – Victims, Australia (cat. no. 4510.0) – issued annually

Recorded Crime – Offenders, Selected states and territories (cat. no. 4519.0) – issued annually

Sexual Assault in Australia: A Statistical Overview (cat. no. 4523.0) – single issue

39 Current publications and other products released by the ABS are available from the ABS website <<http://www.abs.gov.au>>. The ABS also issues a daily Release Advice on the website that details products to be released in the week ahead. The National Centre for Crime and Justice Statistics releases *Crime and Justice News* (cat. no. 4500.0), an annual newsletter that is published on the ABS website. The Centre can be contacted by email through <crime.justice@abs.gov.au>.

Non-ABS Publications

40 Non-ABS sources that may be of interest include:

Australian Institute of Criminology, *List of Publications* – irregular
<<http://www.aic.gov.au>>

Crime Research Centre, University of Western Australia, *Crime and Justice Statistics for Western Australia* – issued annually
<<http://www.crc.law.uwa.edu.au>>

Department of Corrective Services, New South Wales, *NSW Inmate Census* – irregular
<<http://www.dcs.nsw.gov.au>>

Department of Justice, Northern Territory, *Northern Territory Quarterly Crime and Justice Statistics* – issued quarterly
<<http://www.nt.gov.au/justice/>>

Department of Justice, Victoria, *Statistical Profile of the Victorian Prison System* – issued annually
<<http://www.justice.vic.gov.au>>

NSW Bureau of Crime Statistics and Research, *New South Wales Criminal Courts Statistics* – issued annually
<<http://www.lawlink.nsw.gov.au>>

Office of Crime Statistics and Research, *South Australia, Crime and Justice in South Australia* – issued annually

EXPLANATORY NOTES *continued*

Non-ABS Publications
continued

<<http://www.ocsar.sa.gov.au>>
Steering Committee for the Review of Commonwealth/State Service Provision,
Report on Government Services – issued annually
<<http://www.pc.gov.au>>

GLOSSARY

Aboriginal and Torres Strait Islander prisoner	A prisoner who self-identifies as being of Aboriginal or Torres Strait Islander origin, or both.
Bail	This is generally a pre-sentence option where a person is released into the community for a period before they appear in court for trial or final sentencing. Bail orders can require a financial surety to be lodged with the court, and a number of conditions including supervision and residential requirements designed to ensure the re-appearance of the person at court. Bail counts are available only in states and territories where bail orders are supervised by corrective services. Bail is a sub-category of Supervision where the person is under the supervision of corrective services (<i>see</i> Supervision).
Community-based corrections	This refers to the community-based management of court-ordered sanctions, post-prison administrative arrangements and fine conversions, which principally involve the provision of one or more of the following activities: supervision, programs or community work.
Community service	This category of community-based corrections orders includes sentencing options requiring offenders to undertake a specified number of hours of unpaid, supervised work to benefit the community on an approved project. Community service is a sub-category of Reparation (<i>see</i> Reparation).
Corrective services custody	Confinement in a place intended primarily for the purpose of confining prisoners, such as a prison, prison farm, Periodic Detention Centre or Community Custody Centre.
Federal sentenced prisoner	Persons charged and sentenced under a Commonwealth statute or transferred from another country to serve their sentence in Australia.
Fine option	A community-based sentence type where the offender is serving a sentence for default of a fine. In most jurisdictions this order type requires an offender to complete community service as a reparatory act. Fine option is a sub-category of Reparation (<i>see</i> Reparation).
Full-time prison custody	A type of custody where a prisoner is required to be held in custody on a full-time basis. This includes prisons, Queensland Community Custody Centres and work outreach camps. Full-time prison custody excludes periodic detention (<i>see</i> Periodic detention).
Home detention	(<i>see</i> Restricted movement)
Legal status	A person may be either sentenced or unsentenced depending on the warrant(s) or court order(s) that provide the legal basis for the administration of the person through the criminal justice system.
Non-Indigenous	A prisoner who does not identify as being of Aboriginal and/or Torres Strait Islander origin.
Open custody	Refers to prisoners housed in minimum security custodial facilities that do not require them to be confined by a secure perimeter physical barrier, irrespective of whether a physical barrier exists.
Parole	A parole order is made following a period of imprisonment and requires an offender to be subject to supervision in the community. Additional conditions may also be applied such as programs, counselling or drug testing. Parole is a sub-category of Supervision (<i>see</i> Supervision).
Periodic detention	A type of custody or order where a sentenced prisoner is required to be held in custody on a part-time basis. Currently this consists of two consecutive days in a one-week period, while remaining at liberty during the rest of the week.
Prisoner	A person held in custody. For the purposes of this collection, prisoners are those whose confinement is the responsibility of a corrective services agency.
Remand	(<i>see</i> Unsentenced)

GLOSSARY *continued*

Reparation	Reparation refers to all offenders with an order that requires them to undertake unpaid, justice agency-approved community service work.
Restricted movement	This refers to persons who are subject to a system of restricted movement, including supervision and/or electronic monitoring. This category includes home detention that may restrict residence to a nominated place. Restricted movement can be either a pre-sentence or post-sentence order.
Secure custody	Refers to prisoners housed in medium or maximum security custodial facilities requiring them to be confined by a secure physical barrier.
Sentenced	A legal status indicating that a person has received a custodial or community-based order from a court in response to a conviction for an offence.
Sentenced prisoner reception	Refers to entry into corrective services custody from the community, having received a sentence of imprisonment as an outcome of a court proceeding; or persons who are sentenced to custody while in custody on remand (i.e. changed status from a remand to a sentenced prisoner); or persons entering custody as a result of defaulting on the payment of a fine. Sentenced prisoners in custody who receive a further sentence of imprisonment are not counted as sentenced receptions.
Sentenced probation	A supervision order made following an original sentence handed down in court following conviction. A probation order generally requires 'good behaviour' and compliance with the directions of supervisors. The order may also require compliance with conditions such as program attendance and residential requirements.
Supervision (compliance)	This includes community-based orders other than those categorised as restricted movement or reparation (e.g. parole, bail and sentenced probation).
Unsentenced	A legal status indicating that a person is confined to custody or supervision while awaiting the outcome of their trial.

FOR MORE INFORMATION . . .

INTERNET

www.abs.gov.au the ABS website is the best place for data from our publications and information about the ABS.

INFORMATION AND REFERRAL SERVICE

Our consultants can help you access the full range of information published by the ABS that is available free of charge from our website. Information tailored to your needs can also be requested as a 'user pays' service. Specialists are on hand to help you with analytical or methodological advice.

PHONE

1300 135 070

EMAIL

client.services@abs.gov.au

FAX

1300 135 211

POST

Client Services, ABS, GPO Box 796, Sydney NSW 2001

FREE ACCESS TO STATISTICS

All statistics on the ABS website can be downloaded free of charge.

WEB ADDRESS

www.abs.gov.au