



# LIVESTOCK PRODUCTS AUSTRALIA

EMBARGO: 11:30AM (CANBERRA TIME) MON 12 AUG 2002

## JUNE QTR KEY FIGURES

### TREND ESTIMATES

	Jun Qtr 2001 '000	Mar Qtr 2002 '000	Jun Qtr 2002 '000
Number slaughtered			
Cattle	2 003.1	1 868.5	1 911.1
Calves	245.8	246.0	260.3
Sheep	4 095.2	3 510.6	3 458.5
Lambs	4 497.0	4 425.9	4 494.6
Pigs	1 279.9	1 365.8	1 395.2
Chickens	98 069.9	105 942.7	109 437.6

### TREND ESTIMATES

	Jun Qtr 2001 tonnes	Mar Qtr 2002 tonnes	Jun Qtr 2002 tonnes
Meat produced			
Beef	527 077	487 766	499 745
Veal	7 787	8 082	8 554
Mutton	84 704	71 946	69 789
Lamb	88 270	88 959	91 378
Pig meat	93 554	99 642	101 011
Chicken meat	155 168	169 630	176 551

Wool receivals	141 975	139 099	141 757
----------------	---------	---------	---------

### TREND ESTIMATES

Whole milk intake by factories	2 632	2 778	2 808
--------------------------------	-------	-------	-------

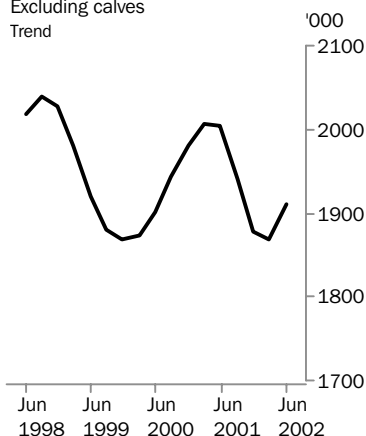
## JUNE QTR KEY POINTS

### TREND ESTIMATES

- The trend estimate for the number of sheep slaughtered fell to 3.5 million in June quarter 2002. This was the lowest quarterly estimate since June quarter 1989.
- The trend estimate for the number of pigs slaughtered in June quarter 2002 was a record 1.4 million. This was up by 2% on the previous quarter and up by 9% on the June quarter last year.
- The trend estimate for chicken meat production in June quarter 2002 increased by 4% to 177,000 tonnes, the highest quarterly estimate on record.

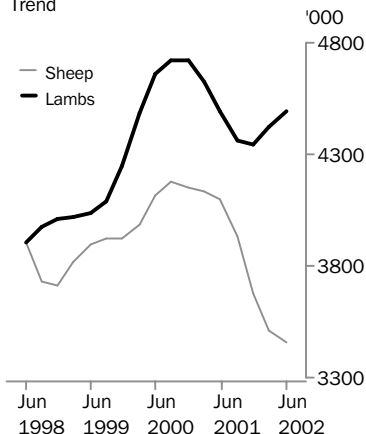
### Cattle slaughterings

Excluding calves  
Trend



### Sheep and lamb slaughterings

Trend



- For further information about these and related statistics, contact Gordon Cameron on Hobart 03 6222 5939, or the National Information and Referral Service on 1300 135 070.

# NOTES

## FORTHCOMING ISSUES

*ISSUE (Quarter)*

*RELEASE DATE*

September 2002

12 November 2002

December 2002

12 February 2003



## CHANGES IN THIS ISSUE

There are no changes in this issue.

## FORTHCOMING CHANGES

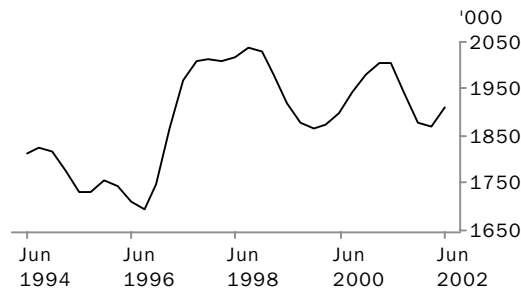
There are no forthcoming changes.



Dennis Trewin  
Australian Statistician

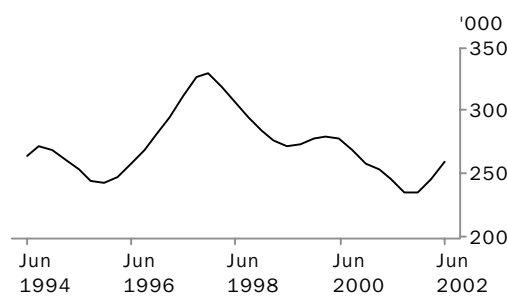
# LIVESTOCK SLAUGHTERED: Trend

## CATTLE (EXCLUDING CALVES)



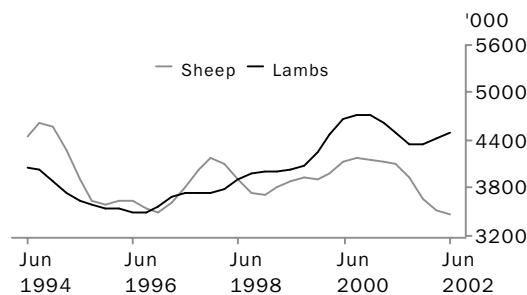
Continuing dry conditions saw the trend estimate for the number of cattle slaughtered in June quarter 2002 increase by 2% to 1.9 million.

## CALVES



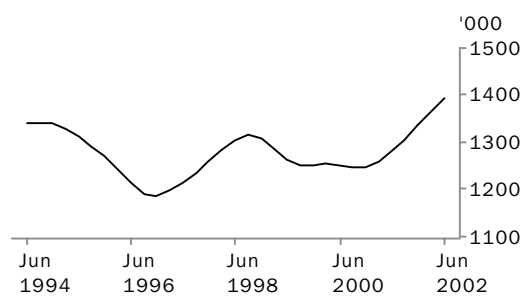
The trend estimate for the number of calves slaughtered in June quarter 2002 was 260,000, up by 6% on the March quarter 2002 estimate.

## SHEEP AND LAMBS



The trend estimate for the number of sheep slaughtered in June quarter 2002 dropped by 1% to 3.5 million, with depleted flocks and competing demands having an impact on slaughter numbers. The trend estimate for the number of lambs slaughtered increased by 2% to 4.5 million.

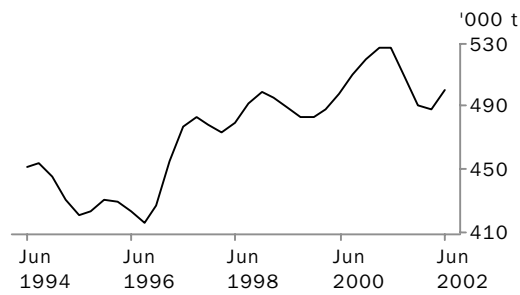
## PIGS



The trend estimate for the number of pigs slaughtered in June quarter 2002 increased by 2% to a record 1.4 million, with demand for pig meat remaining strong in domestic and foreign markets.

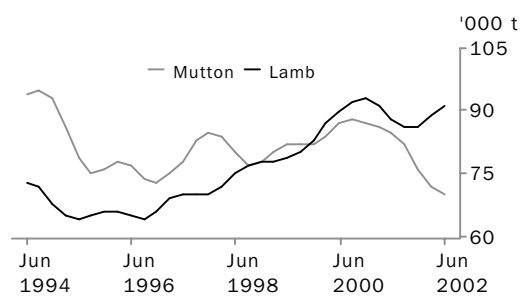
# MEAT PRODUCTION: Trend

## BEEF



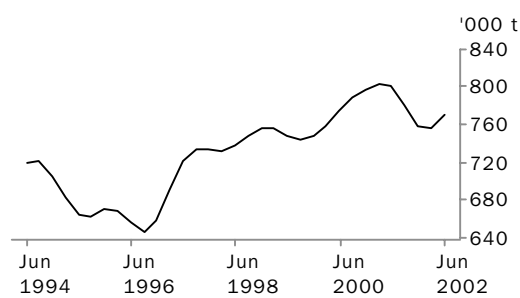
High drought-induced supply saw the trend estimate for beef production increase by 2% to 500,000 tonnes in June quarter 2002.

## MUTTON AND LAMB



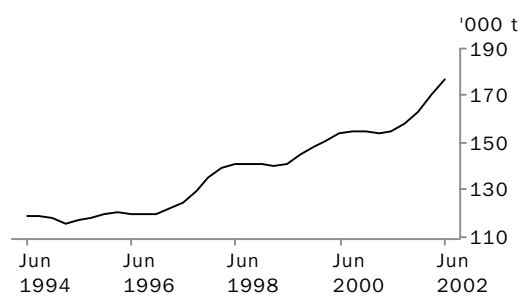
The trend estimate for mutton production fell by 3% to 69,800 tonnes in June quarter 2002. The trend estimate for lamb production increased by 3% to 91,400 tonnes.

## TOTAL RED MEAT



The trend estimate for total red meat production increased by 2% to 770,000 tonnes in June quarter 2002. Increased beef production accounted for 85% of this increase.

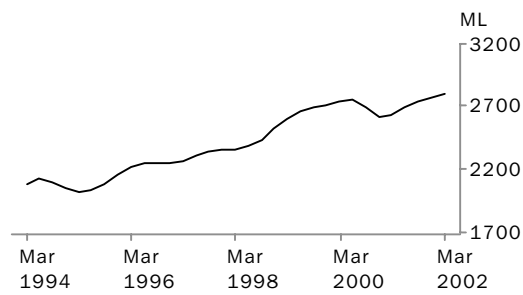
## CHICKEN MEAT



The trend estimate for chicken meat production in June quarter 2002 increased by 4% to a record 177,000 tonnes.

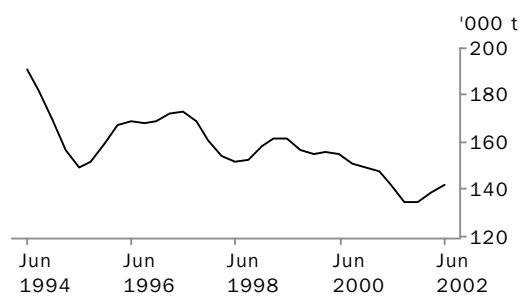
# LIVESTOCK PRODUCTS: Trend

WHOLE MILK INTAKE BY FACTORIES



The trend estimate for whole milk intake by factories increased slightly to 2.8 billion litres in March quarter 2002.

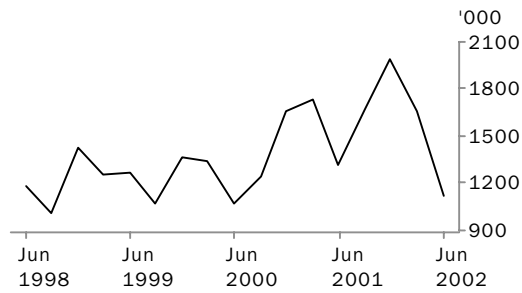
BROKERS AND DEALERS RECEIVALS OF TAXABLE WOOL



The trend estimate for wool receivals by brokers and dealers increased by 2% in June quarter 2002, to 142,000 tonnes. Despite this increase, wool supplies remain at a low level due to the low national flock size.

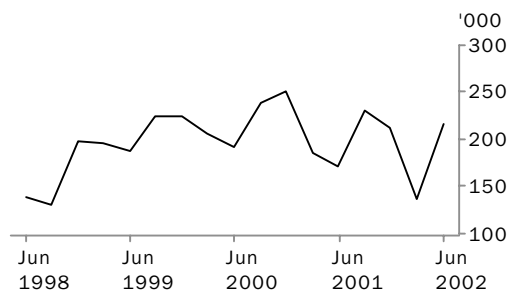
# LIVESTOCK EXPORTS: Original

## EXPORTS OF LIVE SHEEP



Live sheep exports fell by 32% in June quarter 2002 to 1.1 million. Continuing tight supply and strong demand from wool producers, live exporters and processors saw the unit value increase to a record \$66.77. However reduced numbers exported saw the gross value drop to \$74.9 million.

## EXPORTS OF LIVE CATTLE



Live cattle exports increased by 58% in June quarter 2002 to 217,000. Low cattle prices saw strong demand from Asian markets. Although unit value dropped by 10% to \$628.83, the increased volume saw gross value increase to \$136 million.

## LIVESTOCK SLAUGHTERED, Australia(a): All Series

Quarter	Bulls, bullocks and steers	Cows and heifers	Total cattle (excluding calves)	Calves	Sheep	Lambs	Pigs	Chickens
	'000	'000	'000	'000	'000	'000	'000	'000
ORIGINAL								
<b>2001</b>								
March	987.9	925.1	1 913.0	119.7	4 629.1	4 598.0	1 217.9	99 139.6
June	1 055.0	1 025.0	2 079.9	226.9	3 820.8	4 505.4	1 320.8	96 609.7
September	1 098.4	937.0	2 035.4	459.8	3 488.8	4 120.4	1 311.2	96 828.0
December	989.6	806.2	1 795.8	149.3	3 886.2	4 699.0	1 321.6	104 660.4
<b>2002</b>								
March	888.4	837.6	1 726.0	117.7	3 878.2	4 267.7	1 307.6	106 857.7
June	1 046.2	1 048.6	2 094.8	236.4	3 238.6	4 357.0	1 459.8	107 212.4
SEASONALLY ADJUSTED								
<b>2001</b>								
March	1 022.2	954.2	1 976.4	258.4	4 053.3	4 723.7	1 260.5	99 019.9
June	1 068.7	943.3	2 012.0	252.1	4 244.4	4 654.8	1 269.5	98 317.8
September	1 071.9	931.4	2 003.3	234.0	3 959.5	4 030.1	1 314.8	98 093.1
December	967.7	860.5	1 828.2	222.4	3 609.4	4 534.0	1 331.3	101 722.0
<b>2002</b>								
March	919.9	868.5	1 788.4	253.9	3 395.0	4 383.7	1 361.7	107 103.5
June	1 060.0	960.1	2 020.1	262.8	3 597.7	4 502.8	1 403.0	109 135.9
TREND ESTIMATES								
<b>2001</b>								
March	1 046.1	960.9	2 007.0	253.7	4 136.0	4 624.4	1 259.5	99 006.1
June	1 059.6	943.5	2 003.1	245.8	4 095.2	4 497.0	1 279.9	98 069.9
September	1 031.9	907.9	1 939.8	235.8	3 931.0	4 361.8	1 304.2	99 025.6
December	991.2	886.9	1 878.1	235.5	3 676.6	4 345.8	1 334.8	102 152.6
<b>2002</b>								
March	976.0	892.5	1 868.5	246.0	3 510.6	4 425.9	1 365.8	105 942.7
June	993.1	918.1	1 911.1	260.3	3 458.5	4 494.6	1 395.2	109 437.6

(a) For more information refer to paragraphs 5 to 9 of the Explanatory Notes.

## LIVESTOCK PRODUCTS, Australia(a): All Series

## RED MEAT.....

Quarter	Beef	Veal	Mutton	Lamb	Pig meat	Total red meat	Chicken meat	Whole milk intake by factories	Brokers and dealers receipts of taxable wool
	tonnes	tonnes	tonnes	tonnes	tonnes	tonnes	tonnes	ML	tonnes
ORIGINAL									
<b>2001</b>									
March	502 131	5 743	94 132	90 867	87 319	780 192	150 536	2 443	138 105
June	542 621	7 757	76 889	88 667	97 600	813 535	154 777	1 898	107 515
September	535 941	11 658	72 540	80 854	98 210	799 203	155 611	2 592	150 713
December	471 226	5 475	82 646	92 755	95 401	747 503	166 416	3 767	150 990
<b>2002</b>									
March	452 182	5 977	78 667	86 197	94 360	717 384	168 366	2 823	137 669
June	543 200	8 336	63 470	88 977	107 455	811 438	176 257	n.y.a.	97 519
SEASONALLY ADJUSTED									
<b>2001</b>									
March	516 000	8 203	83 195	92 724	92 303	792 425	150 767	2 513	155 897
June	531 138	7 898	87 545	91 716	92 096	810 393	156 803	2 832	144 803
September	528 427	7 512	82 620	79 040	97 010	794 609	158 451	2 723	131 634
December	475 558	7 152	75 205	89 968	97 240	745 123	161 174	2 697	123 350
<b>2002</b>									
March	464 606	8 535	69 532	87 961	99 674	730 308	169 725	2 894	156 533
June	532 017	8 492	72 281	92 020	101 400	806 210	178 612	n.y.a.	132 991
TREND									
<b>2001</b>									
March	527 160	8 230	85 786	91 238	91 849	804 263	154 402	2 632	148 436
June	527 077	7 787	84 704	88 270	93 554	801 392	155 168	2 689	141 975
September	509 262	7 502	81 634	85 873	95 597	779 868	157 848	2 744	135 210
December	491 080	7 660	76 253	86 311	97 778	759 082	163 185	2 778	134 861
<b>2002</b>									
March	487 766	8 082	71 946	88 959	99 642	756 395	169 630	2 808	139 099
June	499 745	8 554	69 789	91 378	101 011	770 477	176 551	n.y.a.	141 757

(a) For more information refer to paragraphs 5 to 9 and 13 to 15 of the Explanatory Notes.



## NUMBER OF LIVESTOCK SLAUGHTERED(a), Bulls, Bullocks and Steers: All Series

	<i>New South Wales</i>	<i>Victoria</i>	<i>Queensland</i>	<i>South Australia</i>	<i>Western Australia</i>	<i>Tasmania</i>	<i>Australia</i>
<i>Quarter</i>	'000	'000	'000	'000	'000	'000	'000
ORIGINAL							
<b>2001</b>							
March	197.3	170.3	501.0	50.4	39.8	28.9	987.9
June	195.7	145.0	610.8	41.0	42.1	20.1	1 055.0
September	207.6	138.6	663.2	37.0	34.3	17.2	1 098.4
December	189.9	170.7	523.1	46.0	40.3	19.3	989.6
<b>2002</b>							
March	206.4	171.1	397.7	51.6	38.2	23.2	888.4
June	216.5	153.0	566.0	47.4	42.1	20.9	1 046.2
SEASONALLY ADJUSTED							
<b>2001</b>							
March	192.5	154.3	578.1	47.4	42.9	25.7	1 022.2
June	200.9	153.5	602.9	44.4	47.4	19.2	1 068.7
September	206.7	154.8	592.7	42.7	37.7	19.5	1 071.9
December	190.7	164.3	521.6	40.2	31.8	20.2	967.7
<b>2002</b>							
March	203.5	152.9	459.4	48.4	41.4	20.7	919.9
June	220.0	162.2	558.9	51.3	47.3	20.0	1 060.0
TREND ESTIMATES							
<b>2001</b>							
March	193.2	155.0	588.0	45.5	46.0	22.8	1 046.1
June	198.8	154.6	598.7	44.2	42.5	21.3	1 059.6
September	200.0	156.4	569.6	42.5	38.2	19.8	1 031.9
December	200.0	158.2	529.2	43.4	37.0	19.8	991.2
<b>2002</b>							
March	204.7	159.0	507.4	46.7	39.7	20.3	976.0
June	212.8	159.5	510.1	50.1	44.8	20.4	993.1

(a) For more information refer to paragraph 4 of the Explanatory Notes.

## NUMBER OF LIVESTOCK SLAUGHTERED(a), Cows and Heifers: All Series

	<i>New South Wales</i>	<i>Victoria</i>	<i>Queensland</i>	<i>South Australia</i>	<i>Western Australia</i>	<i>Tasmania</i>	<i>Australia</i>
<i>Quarter</i>	'000	'000	'000	'000	'000	'000	'000
ORIGINAL							
<b>2001</b>							
March	266.1	239.2	294.7	37.5	58.8	27.7	925.1
June	289.2	217.1	398.0	34.5	55.6	29.4	1 025.0
September	232.7	194.1	394.9	35.2	64.6	14.6	937.0
December	237.8	193.8	262.0	35.0	58.6	17.9	806.2
<b>2002</b>							
March	240.6	195.8	282.3	38.9	62.5	16.4	837.6
June	281.0	214.0	424.9	41.6	55.6	30.4	1 048.6
SEASONALLY ADJUSTED							
<b>2001</b>							
March	262.0	231.1	332.0	35.7	56.5	25.4	954.2
June	273.4	215.5	342.1	32.2	60.6	23.9	943.3
September	239.8	208.1	365.5	37.4	66.7	19.4	931.4
December	252.7	189.1	302.0	37.4	54.4	19.4	860.5
<b>2002</b>							
March	236.2	189.2	318.2	36.9	60.1	15.0	868.5
June	266.0	212.6	365.3	38.9	60.4	24.8	960.1
TREND ESTIMATES							
<b>2001</b>							
March	267.4	224.8	348.1	34.2	58.1	24.5	960.9
June	261.7	217.7	345.4	34.8	60.8	23.2	943.5
September	251.4	203.9	335.5	35.8	61.4	20.2	907.9
December	245.8	195.1	327.5	37.1	60.0	18.4	886.9
<b>2002</b>							
March	247.9	195.7	328.7	37.9	58.9	18.9	892.5
June	256.3	201.5	340.5	38.1	59.0	21.0	918.1

(a) For more information refer to paragraph 4 of the Explanatory Notes.

## NUMBER OF LIVESTOCK SLAUGHTERED(a), Total Cattle (excluding Calves): All Series

	<i>New South Wales</i>	<i>Victoria</i>	<i>Queensland</i>	<i>South Australia</i>	<i>Western Australia</i>	<i>Tasmania</i>	<i>Australia</i>
<i>Quarter</i>	'000	'000	'000	'000	'000	'000	'000
ORIGINAL							
<b>2001</b>							
March	463.3	409.5	795.7	87.9	98.6	56.6	1 913.0
June	485.0	362.1	1 008.8	75.5	97.7	49.5	2 079.9
September	440.3	332.7	1 058.1	72.2	98.9	31.8	2 035.4
December	427.7	364.5	785.1	81.0	98.8	37.2	1 795.8
<b>2002</b>							
March	447.0	367.0	680.0	90.4	100.7	39.6	1 726.0
June	497.5	367.0	990.9	88.9	97.7	51.3	2 094.8
SEASONALLY ADJUSTED							
<b>2001</b>							
March	454.4	385.5	910.1	83.0	99.4	51.1	1 976.4
June	474.3	368.9	944.9	76.7	108.0	43.1	2 012.0
September	446.5	362.9	958.2	80.1	104.4	39.0	2 003.3
December	443.4	353.4	823.6	77.6	86.2	39.7	1 828.2
<b>2002</b>							
March	439.8	342.1	777.6	85.4	101.5	35.6	1 788.4
June	486.0	374.7	924.2	90.2	107.7	44.8	2 020.1
TREND ESTIMATES							
<b>2001</b>							
March	460.6	379.8	936.1	79.7	104.1	47.3	2 007.0
June	460.5	372.3	944.2	79.0	103.2	44.5	2 003.1
September	451.4	360.3	905.1	78.3	99.6	40.1	1 939.8
December	445.8	353.3	856.7	80.4	96.9	38.2	1 878.1
<b>2002</b>							
March	452.7	354.7	836.0	84.6	98.6	39.3	1 868.5
June	469.1	360.9	850.6	88.2	103.8	41.4	1 911.1

(a) For more information refer to paragraph 4 of the Explanatory Notes.

## NUMBER OF LIVESTOCK SLAUGHTERED(a), Calves: All Series

	<i>New South Wales</i>	<i>Victoria</i>	<i>Queensland</i>	<i>South Australia</i>	<i>Western Australia</i>	<i>Tasmania</i>	<i>Australia</i>
<i>Quarter</i>	'000	'000	'000	'000	'000	'000	'000
ORIGINAL							
<b>2001</b>							
March	60.1	25.1	29.6	2.6	1.2	0.8	119.7
June	60.1	127.9	32.0	2.5	1.4	2.8	226.9
September	45.6	347.3	26.2	2.9	1.8	35.8	459.8
December	39.7	78.9	20.5	1.8	1.8	6.4	149.3
<b>2002</b>							
March	57.1	31.1	25.5	2.2	1.3	0.5	117.7
June	63.2	139.6	27.5	2.8	1.2	1.9	236.4
SEASONALLY ADJUSTED							
<b>2001</b>							
March	59.7	146.3	30.7	3.0	1.2	12.5	258.4
June	55.6	145.9	30.4	2.2	1.4	9.9	252.1
September	45.8	143.1	25.6	2.3	1.9	11.7	234.0
December	43.4	149.9	21.4	2.6	1.7	11.1	222.4
<b>2002</b>							
March	56.7	180.7	26.4	2.4	1.4	6.9	253.9
June	58.5	159.4	26.1	2.4	1.1	6.7	262.8
TREND ESTIMATES							
<b>2001</b>							
March	57.8	141.8	32.6	2.7	1.3	11.4	253.7
June	53.3	142.0	28.7	2.4	1.5	11.3	245.8
September	48.1	147.8	25.4	2.4	1.7	11.0	235.8
December	48.1	156.3	24.3	2.4	1.6	9.9	235.5
<b>2002</b>							
March	52.6	164.9	24.6	2.5	1.4	8.2	246.0
June	58.5	169.6	26.0	2.5	1.2	6.6	260.3

(a) For more information refer to paragraph 4 of the Explanatory Notes.

## NUMBER OF LIVESTOCK SLAUGHTERED(a), Sheep: All Series

	<i>New South Wales</i>	<i>Victoria</i>	<i>Queensland</i>	<i>South Australia</i>	<i>Western Australia</i>	<i>Tasmania</i>	<i>Australia</i>
<i>Quarter</i>	'000	'000	'000	'000	'000	'000	'000
ORIGINAL							
<b>2001</b>							
March	1 626.5	1 231.5	367.3	419.6	840.5	143.7	4 629.1
June	1 466.9	1 043.4	385.5	376.6	467.0	81.4	3 820.8
September	1 443.5	850.3	328.3	268.7	549.4	48.5	3 488.8
December	1 496.0	1 080.6	305.0	338.4	591.5	74.8	3 886.2
<b>2002</b>							
March	1 450.1	1 074.1	334.3	396.7	549.0	74.0	3 878.2
June	1 323.0	814.5	366.5	333.8	322.2	78.6	3 238.6
SEASONALLY ADJUSTED							
<b>2001</b>							
March	1 511.4	1 060.0	350.4	340.4	729.1	101.7	4 053.3
June	1 548.7	1 171.3	421.3	432.4	562.5	84.1	4 244.4
September	1 521.0	1 032.0	310.8	364.0	640.8	83.6	3 959.5
December	1 454.4	960.7	310.8	291.7	511.3	72.1	3 609.4
<b>2002</b>							
March	1 348.0	925.8	318.9	322.5	474.7	52.2	3 395.0
June	1 397.3	911.6	400.4	381.7	389.9	81.5	3 597.7
TREND ESTIMATES							
<b>2001</b>							
March	1 482.8	1 105.8	375.3	375.3	757.4	86.8	4 136.0
June	1 529.8	1 099.5	367.5	377.5	634.8	88.8	4 095.2
September	1 516.2	1 051.7	337.8	360.3	572.1	80.1	3 931.0
December	1 447.9	980.7	320.5	330.0	530.8	69.9	3 676.6
<b>2002</b>							
March	1 394.6	927.0	334.1	327.6	467.8	66.8	3 510.6
June	1 362.2	903.3	372.6	352.4	397.3	68.3	3 458.5

(a) For more information refer to paragraph 4 of the Explanatory Notes.

## NUMBER OF LIVESTOCK SLAUGHTERED(a), Lambs: All Series

	<i>New South Wales</i>	<i>Victoria</i>	<i>Queensland</i>	<i>South Australia</i>	<i>Western Australia</i>	<i>Tasmania</i>	<i>Australia</i>
<i>Quarter</i>	'000	'000	'000	'000	'000	'000	'000
ORIGINAL							
<b>2001</b>							
March	1 010.3	2 030.1	249.9	680.8	524.0	103.1	4 598.0
June	1 044.5	1 913.0	265.8	728.9	457.3	95.9	4 505.4
September	1 083.6	1 674.6	257.8	567.9	418.5	118.0	4 120.4
December	1 141.8	1 917.0	151.9	822.4	565.2	100.9	4 699.0
<b>2002</b>							
March	1 170.2	1 688.6	113.0	767.8	431.2	97.0	4 267.7
June	1 163.3	1 717.2	104.8	775.4	485.6	110.6	4 357.0
SEASONALLY ADJUSTED							
<b>2001</b>							
March	1 072.2	2 061.1	251.6	700.9	583.3	92.0	4 723.7
June	1 045.4	2 040.8	271.0	675.9	460.0	85.7	4 654.8
September	1 018.3	1 676.0	237.2	587.8	425.6	139.7	4 030.1
December	1 147.6	1 780.0	161.8	835.2	503.1	110.2	4 534.0
<b>2002</b>							
March	1 242.8	1 727.3	113.8	790.7	479.7	86.6	4 383.7
June	1 163.6	1 818.1	106.9	717.9	488.8	98.9	4 502.8
TREND ESTIMATES							
<b>2001</b>							
March	1 032.9	2 036.5	261.4	688.9	508.6	100.1	4 624.4
June	1 034.1	1 944.3	258.1	658.2	487.1	103.6	4 497.0
September	1 073.5	1 811.3	225.4	688.6	463.4	113.2	4 361.8
December	1 133.4	1 741.1	172.8	744.4	467.8	111.3	4 345.8
<b>2002</b>							
March	1 188.1	1 749.8	126.1	775.8	486.7	100.4	4 425.9
June	1 207.2	1 793.1	97.4	774.9	493.3	90.4	4 494.6

(a) For more information refer to paragraph 4 of the Explanatory Notes.

## NUMBER OF LIVESTOCK SLAUGHTERED(a), Pigs: All Series

	<i>New South Wales</i>	<i>Victoria</i>	<i>Queensland</i>	<i>South Australia</i>	<i>Western Australia</i>	<i>Tasmania</i>	<i>Australia</i>
<i>Quarter</i>	'000	'000	'000	'000	'000	'000	'000
ORIGINAL							
<b>2001</b>							
March	429.6	258.8	239.9	139.9	134.4	13.7	1 217.9
June	464.1	268.1	275.2	147.6	148.5	15.8	1 320.8
September	474.0	267.1	267.0	145.4	142.3	13.7	1 311.2
December	465.8	281.0	277.9	139.4	140.9	14.7	1 321.6
<b>2002</b>							
March	452.9	242.0	275.5	180.8	143.6	11.4	1 307.6
June	492.3	249.7	313.3	224.5	164.7	13.3	1 459.8
SEASONALLY ADJUSTED							
<b>2001</b>							
March	443.7	268.9	247.9	137.8	135.0	14.5	1 260.5
June	460.0	255.1	262.3	138.3	140.1	14.5	1 269.5
September	470.8	268.1	270.7	149.0	142.7	13.6	1 314.8
December	459.0	285.1	277.8	149.9	149.1	15.4	1 331.3
<b>2002</b>							
March	473.7	253.0	286.7	174.4	145.9	12.2	1 361.7
June	488.4	237.6	298.4	210.4	155.4	12.2	1 403.0
TREND ESTIMATES							
<b>2001</b>							
March	443.3	260.4	265.6	134.8	137.5	14.2	1 259.5
June	457.2	264.2	261.6	140.0	140.4	14.4	1 279.9
September	464.9	270.3	266.7	144.7	143.0	14.4	1 304.2
December	467.7	269.3	278.8	157.2	146.5	13.9	1 334.8
<b>2002</b>							
March	474.0	259.0	287.5	177.5	149.6	13.1	1 365.8
June	482.6	242.4	296.0	199.8	153.0	12.2	1 395.2

(a) For more information refer to paragraph 4 of the Explanatory Notes.

## NUMBER OF CHICKENS SLAUGHTERED(a): All Series

	<i>New South Wales</i>	<i>Victoria</i>	<i>Queensland</i>	<i>South Australia</i>	<i>Western Australia</i>	<i>Australia</i>
<i>Quarter</i>	'000	'000	'000	'000	'000	'000
ORIGINAL						
<b>2001</b>						
March	37 889.6	26 067.6	16 975.5	n.p.	n.p.	<b>99 139.6</b>
June	37 723.3	25 135.4	16 257.9	n.p.	n.p.	<b>96 609.7</b>
September	37 628.1	24 681.4	16 076.3	n.p.	n.p.	<b>96 828.0</b>
December	39 023.9	27 947.8	18 125.2	n.p.	n.p.	<b>104 660.4</b>
<b>2002</b>						
March	40 026.8	27 691.0	18 063.0	n.p.	n.p.	<b>106 857.7</b>
June	39 955.7	29 041.4	18 676.1	n.p.	n.p.	<b>107 212.4</b>
SEASONALLY ADJUSTED						
<b>2001</b>						
March	37 781.6	26 075.4	16 898.3	n.p.	n.p.	<b>99 019.9</b>
June	38 479.0	25 441.9	16 579.0	n.p.	n.p.	<b>98 317.8</b>
September	37 689.9	25 251.5	16 527.6	n.p.	n.p.	<b>98 093.1</b>
December	38 403.0	26 919.0	17 402.9	n.p.	n.p.	<b>101 722.0</b>
<b>2002</b>						
March	40 037.9	27 931.5	17 978.3	n.p.	n.p.	<b>107 103.5</b>
June	40 770.7	29 409.9	19 047.0	n.p.	n.p.	<b>109 135.9</b>
TREND ESTIMATES						
<b>2001</b>						
March	38 061.9	25 709.1	16 825.7	n.p.	n.p.	<b>99 006.1</b>
June	37 976.5	25 445.1	16 611.1	n.p.	n.p.	<b>98 069.9</b>
September	38 069.4	25 725.4	16 722.1	n.p.	n.p.	<b>99 025.6</b>
December	38 710.8	26 698.1	17 305.2	n.p.	n.p.	<b>102 152.6</b>
<b>2002</b>						
March	39 687.8	28 001.1	18 086.5	n.p.	n.p.	<b>105 942.7</b>
June	40 811.2	29 219.9	18 848.5	n.p.	n.p.	<b>109 437.6</b>

(a) For more information refer to paragraphs 8 and 9 of the Explanatory Notes.



## NUMBER OF LIVESTOCK SLAUGHTERED(a): Original

Financial year	New South Wales '000	Victoria '000	Queensland '000	South Australia '000	Western Australia '000	Tasmania '000	Australia '000
<b>BULLS, BULLOCKS AND STEERS</b>							
<b>1999-2000</b>	755.4	710.0	1 958.2	169.5	181.5	109.0	<b>3 892.7</b>
<b>2000-01</b>	767.1	632.0	2 266.6	179.7	187.0	90.2	<b>4 126.9</b>
<b>2001-02</b>	820.5	633.5	2 150.0	182.0	154.9	80.6	<b>4 022.6</b>
<b>COWS AND HEIFERS</b>							
<b>1999-2000</b>	969.4	813.8	1 354.2	145.2	212.4	108.9	<b>3 627.3</b>
<b>2000-01</b>	1 060.8	891.9	1 390.1	137.0	228.4	94.2	<b>3 813.8</b>
<b>2001-02</b>	992.1	797.6	1 364.2	150.6	241.2	79.4	<b>3 629.4</b>
<b>TOTAL CATTLE (excluding calves)</b>							
<b>1999-2000</b>	1 724.8	1 523.8	3 312.5	314.7	393.9	217.9	<b>7 520.0</b>
<b>2000-01</b>	1 827.9	1 523.9	3 656.6	316.7	415.4	184.4	<b>7 940.7</b>
<b>2001-02</b>	1 812.6	1 431.1	3 514.1	332.6	396.1	160.0	<b>7 652.0</b>
<b>CALVES</b>							
<b>1999-2000</b>	211.0	678.5	141.7	17.6	10.5	62.1	<b>1 122.1</b>
<b>2000-01</b>	226.0	608.9	135.1	11.6	5.6	49.7	<b>1 037.5</b>
<b>2001-02</b>	205.7	597.0	99.7	9.6	6.0	44.6	<b>963.3</b>
<b>SHEEP</b>							
<b>1999-2000</b>	5 385.6	3 816.0	1 423.9	1 223.8	3 418.1	589.9	<b>15 857.2</b>
<b>2000-01</b>	5 857.6	4 193.3	1 489.2	1 488.2	3 235.0	364.7	<b>16 628.0</b>
<b>2001-02</b>	5 712.6	3 819.5	1 334.0	1 337.7	2 012.0	275.8	<b>14 491.7</b>
<b>LAMBS</b>							
<b>1999-2000</b>	4 059.0	7 144.5	917.6	2 634.7	2 345.0	456.3	<b>17 557.1</b>
<b>2000-01</b>	4 203.2	8 090.0	1 024.1	2 875.1	2 020.0	416.1	<b>18 628.5</b>
<b>2001-02</b>	4 558.9	6 997.4	627.6	2 933.4	1 900.5	426.4	<b>17 444.1</b>
<b>PIGS</b>							
<b>1999-2000</b>	1 408.2	1 443.7	1 111.2	469.2	513.9	70.1	<b>5 024.7</b>
<b>2000-01</b>	1 739.5	1 065.6	1 078.4	525.7	542.6	57.6	<b>5 016.3</b>
<b>2001-02</b>	1 885.0	1 039.8	1 133.7	690.0	591.4	53.1	<b>5 400.2</b>
<b>CHICKENS</b>							
<b>1999-2000</b>	139 966.7	105 889.3	68 922.0	n.p.	n.p.	n.p.	<b>393 991.8</b>
<b>2000-01</b>	151 686.8	104 080.0	68 002.0	n.p.	n.p.	n.p.	<b>398 868.6</b>
<b>2001-02</b>	156 634.5	109 361.6	70 940.6	n.p.	n.p.	n.p.	<b>415 558.5</b>

(a) For more information refer to paragraphs 4, 5 and 7 to 9 of the Explanatory Notes.

## RED MEAT PRODUCED(a), Beef: All Series

	<i>New South Wales</i>	<i>Victoria</i>	<i>Queensland</i>	<i>South Australia</i>	<i>Western Australia</i>	<i>Tasmania</i>	<i>Australia</i>
<i>Quarter</i>	<i>tonnes</i>	<i>tonnes</i>	<i>tonnes</i>	<i>tonnes</i>	<i>tonnes</i>	<i>tonnes</i>	<i>tonnes</i>
ORIGINAL							
<b>2001</b>							
March	116 980	95 564	227 336	23 367	23 555	15 040	502 131
June	120 894	83 022	283 398	19 172	23 401	12 450	542 621
September	111 329	79 315	295 051	18 271	23 022	8 662	535 941
December	108 701	87 825	218 502	21 325	24 289	10 295	471 226
<b>2002</b>							
March	114 423	88 827	189 243	23 748	24 400	11 260	452 182
June	126 515	86 732	269 953	22 539	23 459	13 706	543 200
SEASONALLY ADJUSTED							
<b>2001</b>							
March	114 254	88 314	256 928	21 912	23 687	13 549	516 000
June	120 070	86 042	266 800	19 619	26 813	10 938	531 138
September	113 092	87 166	267 089	20 918	24 828	11 124	528 427
December	110 467	84 292	230 304	19 729	20 189	10 570	475 558
<b>2002</b>							
March	113 205	82 031	213 989	22 236	24 655	10 143	464 606
June	124 039	90 021	254 253	23 107	26 801	12 034	532 017
TREND ESTIMATES							
<b>2001</b>							
March	116 111	88 278	264 977	20 806	25 202	12 424	527 160
June	116 047	87 068	266 025	20 505	24 975	11 845	527 077
September	113 828	85 454	253 352	20 231	23 870	10 852	509 262
December	112 729	84 588	238 401	20 726	23 159	10 547	491 080
<b>2002</b>							
March	115 133	85 096	231 036	21 795	23 858	10 829	487 766
June	119 821	86 550	233 474	22 685	25 611	11 244	499 745

(a) For more information refer to paragraphs 4 to 6 of the Explanatory Notes.

## RED MEAT PRODUCED(a), Veal: All Series

	<i>New South Wales</i>	<i>Victoria</i>	<i>Queensland</i>	<i>South Australia</i>	<i>Western Australia</i>	<i>Tasmania</i>	<i>Australia</i>
<i>Quarter</i>	<i>tonnes</i>	<i>tonnes</i>	<i>tonnes</i>	<i>tonnes</i>	<i>tonnes</i>	<i>tonnes</i>	<i>tonnes</i>
ORIGINAL							
<b>2001</b>							
March	3 728	536	1 290	70	82	26	5 743
June	3 799	2 462	1 265	67	86	65	7 757
September	2 839	6 645	1 265	75	118	704	11 658
December	2 471	1 713	983	57	106	133	5 475
<b>2002</b>							
March	3 610	899	1 289	69	82	16	5 977
June	4 072	2 742	1 315	77	71	46	8 336
SEASONALLY ADJUSTED							
<b>2001</b>							
March	3 725	2 595	1 259	75	84	266	8 203
June	3 421	2 843	1 193	60	90	210	7 898
September	2 899	2 788	1 313	62	115	235	7 512
December	2 716	3 135	1 033	76	101	221	7 152
<b>2002</b>							
March	3 612	4 356	1 258	74	84	167	8 535
June	3 666	3 165	1 240	70	74	149	8 492
TREND ESTIMATES							
<b>2001</b>							
March	3 622	2 622	1 373	70	84	239	8 230
June	3 308	2 648	1 239	64	96	235	7 787
September	3 004	2 978	1 172	66	104	227	7 502
December	3 034	3 369	1 180	70	100	206	7 660
<b>2002</b>							
March	3 328	3 635	1 194	73	88	180	8 082
June	3 685	3 690	1 221	73	74	151	8 554

(a) For more information refer to paragraphs 4 to 6 of the Explanatory Notes.

## RED MEAT PRODUCED(a), Mutton: All Series

	<i>New South Wales</i>	<i>Victoria</i>	<i>Queensland</i>	<i>South Australia</i>	<i>Western Australia</i>	<i>Tasmania</i>	<i>Australia</i>
<i>Quarter</i>	<i>tonnes</i>	<i>tonnes</i>	<i>tonnes</i>	<i>tonnes</i>	<i>tonnes</i>	<i>tonnes</i>	<i>tonnes</i>
ORIGINAL							
<b>2001</b>							
March	34 102	23 590	7 073	9 885	16 610	2 873	<b>94 132</b>
June	30 666	19 857	7 101	8 321	9 341	1 603	<b>76 889</b>
September	31 491	16 829	5 823	6 290	11 154	952	<b>72 540</b>
December	33 543	21 675	5 720	8 221	11 988	1 500	<b>82 646</b>
<b>2002</b>							
March	30 252	20 596	6 458	8 895	11 008	1 459	<b>78 667</b>
June	26 557	15 324	6 800	6 936	6 346	1 505	<b>63 470</b>
SEASONALLY ADJUSTED							
<b>2001</b>							
March	32 099	20 675	6 778	8 045	14 469	2 073	<b>83 195</b>
June	33 316	23 014	7 987	10 257	11 498	1 529	<b>87 545</b>
September	32 594	19 930	5 459	8 281	12 877	1 733	<b>82 620</b>
December	31 864	18 791	5 706	6 838	10 241	1 481	<b>75 205</b>
<b>2002</b>							
March	28 501	18 079	6 194	7 249	9 556	1 050	<b>69 532</b>
June	28 854	17 704	7 643	8 534	7 848	1 438	<b>72 281</b>
TREND ESTIMATES							
<b>2001</b>							
March	31 876	20 979	7 128	9 019	15 138	1 740	<b>85 786</b>
June	32 803	21 254	6 849	8 857	12 773	1 745	<b>84 704</b>
September	32 715	20 633	6 189	8 355	11 541	1 605	<b>81 634</b>
December	31 197	19 107	5 912	7 576	10 668	1 414	<b>76 253</b>
<b>2002</b>							
March	29 619	18 063	6 328	7 413	9 388	1 306	<b>71 946</b>
June	28 374	17 611	7 162	7 899	8 105	1 251	<b>69 789</b>

(a) For more information refer to paragraphs 4 to 6 of the Explanatory Notes.

## RED MEAT PRODUCED(a), Lamb: All Series

	<i>New South Wales</i>	<i>Victoria</i>	<i>Queensland</i>	<i>South Australia</i>	<i>Western Australia</i>	<i>Tasmania</i>	<i>Australia</i>
<i>Quarter</i>	<i>tonnes</i>	<i>tonnes</i>	<i>tonnes</i>	<i>tonnes</i>	<i>tonnes</i>	<i>tonnes</i>	<i>tonnes</i>
ORIGINAL							
<b>2001</b>							
March	20 013	39 496	4 674	14 968	9 745	1 971	<b>90 867</b>
June	20 487	37 252	5 095	15 451	8 533	1 850	<b>88 667</b>
September	21 724	32 479	4 857	11 694	7 745	2 355	<b>80 854</b>
December	22 656	36 784	2 878	17 627	10 828	1 981	<b>92 755</b>
<b>2002</b>							
March	23 506	33 065	2 093	17 232	8 380	1 922	<b>86 197</b>
June	23 517	33 997	2 024	17 732	9 498	2 209	<b>88 977</b>
SEASONALLY ADJUSTED							
<b>2001</b>							
March	21 303	39 804	4 714	15 086	10 825	1 769	<b>92 724</b>
June	20 443	39 782	5 257	14 031	8 508	1 687	<b>91 716</b>
September	20 432	32 007	4 458	12 480	7 932	2 557	<b>79 040</b>
December	22 746	34 810	3 027	18 169	9 673	2 278	<b>89 968</b>
<b>2002</b>							
March	25 045	33 302	2 145	17 385	9 304	1 727	<b>87 961</b>
June	23 447	36 335	2 088	16 092	9 475	2 016	<b>92 020</b>
TREND ESTIMATES							
<b>2001</b>							
March	20 344	39 566	5 005	14 743	9 316	1 937	<b>91 238</b>
June	20 422	37 636	4 912	13 888	9 024	1 993	<b>88 270</b>
September	21 320	34 950	4 267	14 620	8 719	2 172	<b>85 873</b>
December	22 628	33 721	3 256	16 135	8 941	2 188	<b>86 311</b>
<b>2002</b>							
March	23 852	34 202	2 383	17 104	9 414	2 025	<b>88 959</b>
June	24 367	35 364	1 883	17 205	9 593	1 862	<b>91 378</b>

(a) For more information refer to paragraphs 4 to 6 of the Explanatory Notes.

## RED MEAT PRODUCED(a), Pig Meat: All Series

	<i>New South Wales</i>	<i>Victoria</i>	<i>Queensland</i>	<i>South Australia</i>	<i>Western Australia</i>	<i>Tasmania</i>	<i>Australia</i>
<i>Quarter</i>	<i>tonnes</i>	<i>tonnes</i>	<i>tonnes</i>	<i>tonnes</i>	<i>tonnes</i>	<i>tonnes</i>	<i>tonnes</i>
ORIGINAL							
<b>2001</b>							
March	31 924	18 734	16 892	9 785	9 074	837	<b>87 319</b>
June	36 107	19 554	20 211	10 524	10 150	982	<b>97 600</b>
September	37 022	19 581	20 563	10 274	9 848	844	<b>98 210</b>
December	35 263	19 425	20 798	9 754	9 212	868	<b>95 401</b>
<b>2002</b>							
March	33 973	17 016	20 384	12 583	9 670	674	<b>94 360</b>
June	37 889	17 522	24 194	15 718	11 267	773	<b>107 455</b>
SEASONALLY ADJUSTED							
<b>2001</b>							
March	33 520	19 991	17 579	9 827	9 295	898	<b>92 303</b>
June	35 156	18 401	18 873	9 771	9 529	886	<b>92 096</b>
September	36 818	19 300	20 622	10 188	9 783	826	<b>97 010</b>
December	34 760	20 006	21 418	10 647	9 708	925	<b>97 240</b>
<b>2002</b>							
March	35 657	17 948	21 217	12 611	10 022	723	<b>99 674</b>
June	36 875	16 488	22 569	14 596	10 583	697	<b>101 400</b>
TREND ESTIMATES							
<b>2001</b>							
March	33 326	19 281	17 442	9 500	9 374	881	<b>91 849</b>
June	35 026	19 223	19 110	9 839	9 567	883	<b>93 554</b>
September	35 854	19 327	20 351	10 140	9 649	875	<b>95 597</b>
December	35 717	19 075	21 157	11 108	9 837	835	<b>97 778</b>
<b>2002</b>							
March	35 837	18 206	21 737	12 583	10 097	773	<b>99 642</b>
June	36 206	16 886	22 164	14 012	10 399	714	<b>101 011</b>

(a) For more information refer to paragraphs 4 to 6 of the Explanatory Notes.

## TOTAL RED MEAT PRODUCED(a): All Series

	<i>New South Wales</i>	<i>Victoria</i>	<i>Queensland</i>	<i>South Australia</i>	<i>Western Australia</i>	<i>Tasmania</i>	<i>Australia</i>
<i>Quarter</i>	<i>tonnes</i>	<i>tonnes</i>	<i>tonnes</i>	<i>tonnes</i>	<i>tonnes</i>	<i>tonnes</i>	<i>tonnes</i>
ORIGINAL							
<b>2001</b>							
March	206 747	177 919	257 264	58 074	59 065	20 746	<b>780 192</b>
June	211 953	162 149	317 069	53 535	51 512	16 950	<b>813 535</b>
September	204 406	154 849	327 560	46 604	51 887	13 516	<b>799 203</b>
December	202 632	167 422	248 880	56 984	56 424	14 777	<b>747 503</b>
<b>2002</b>							
March	205 765	160 402	219 466	62 526	53 540	15 331	<b>717 384</b>
June	218 550	156 318	304 287	63 002	50 642	18 239	<b>811 438</b>
SEASONALLY ADJUSTED							
<b>2001</b>							
March	204 901	171 379	287 258	54 945	58 360	18 555	<b>792 425</b>
June	212 406	170 082	300 110	53 738	56 438	15 250	<b>810 393</b>
September	205 835	161 191	298 941	51 929	55 535	16 475	<b>794 609</b>
December	202 553	161 034	261 488	55 459	49 912	15 475	<b>745 123</b>
<b>2002</b>							
March	206 020	155 716	244 803	59 555	53 621	13 810	<b>730 308</b>
June	216 881	163 713	287 793	62 399	54 781	16 334	<b>806 210</b>
TREND ESTIMATES							
<b>2001</b>							
March	205 279	170 726	295 925	54 138	59 114	17 221	<b>804 263</b>
June	207 606	167 829	298 135	53 153	56 435	16 701	<b>801 392</b>
September	206 721	163 342	285 331	53 412	53 883	15 731	<b>779 868</b>
December	205 305	159 860	269 906	55 615	52 705	15 190	<b>759 082</b>
<b>2002</b>							
March	207 769	159 202	262 678	58 968	52 845	15 113	<b>756 395</b>
June	212 453	160 101	265 904	61 874	53 782	15 222	<b>770 477</b>

(a) For more information refer to paragraphs 4 to 6 of the Explanatory Notes.

## CHICKEN MEAT PRODUCED(a): All Series

	<i>New South Wales</i>	<i>Victoria</i>	<i>Queensland</i>	<i>South Australia</i>	<i>Western Australia</i>	<i>Australia</i>
<i>Quarter</i>	<i>tonnes</i>	<i>tonnes</i>	<i>tonnes</i>	<i>tonnes</i>	<i>tonnes</i>	<i>tonnes</i>
ORIGINAL						
<b>2001</b>						
March	60 610	42 335	22 984	n.p.	n.p.	<b>150 536</b>
June	64 036	43 788	22 552	n.p.	n.p.	<b>154 777</b>
September	65 833	41 170	22 114	n.p.	n.p.	<b>155 611</b>
December	67 103	45 297	25 427	n.p.	n.p.	<b>166 416</b>
<b>2002</b>						
March	68 514	45 473	24 890	n.p.	n.p.	<b>168 366</b>
June	71 110	49 116	26 886	n.p.	n.p.	<b>176 257</b>
SEASONALLY ADJUSTED						
<b>2001</b>						
March	60 577	42 469	23 152	n.p.	n.p.	<b>150 767</b>
June	64 682	44 517	22 826	n.p.	n.p.	<b>156 803</b>
September	67 187	42 037	22 580	n.p.	n.p.	<b>158 451</b>
December	65 189	43 544	24 459	n.p.	n.p.	<b>161 174</b>
<b>2002</b>						
March	69 085	45 610	25 076	n.p.	n.p.	<b>169 725</b>
June	71 853	49 951	27 216	n.p.	n.p.	<b>178 612</b>
TREND ESTIMATES						
<b>2001</b>						
March	62 156	43 703	23 146	n.p.	n.p.	<b>154 402</b>
June	64 168	43 150	22 794	n.p.	n.p.	<b>155 168</b>
September	65 659	42 798	23 042	n.p.	n.p.	<b>157 848</b>
December	67 107	43 905	24 086	n.p.	n.p.	<b>163 185</b>
<b>2002</b>						
March	68 815	46 056	25 449	n.p.	n.p.	<b>169 630</b>
June	70 873	48 816	26 798	n.p.	n.p.	<b>176 551</b>

(a) For more information refer to paragraphs 8 and 9 of the Explanatory Notes.



## MEAT PRODUCED(a): Original

<i>Financial year</i>	<i>New South Wales</i> tonnes	<i>Victoria</i> tonnes	<i>Queensland</i> tonnes	<i>South Australia</i> tonnes	<i>Western Australia</i> tonnes	<i>Tasmania</i> tonnes	<i>Australia</i> tonnes
BEEF							
<b>1999-2000</b>	431 983	351 273	932 053	78 001	94 973	57 557	<b>1 952 321</b>
<b>2000-01</b>	461 380	354 819	1 034 624	82 533	100 524	48 771	<b>2 085 952</b>
<b>2001-02</b>	460 968	342 699	972 749	85 882	95 171	43 923	<b>2 002 549</b>
VEAL							
<b>1999-2000</b>	13 044	13 370	6 550	471	859	1 236	<b>35 581</b>
<b>2000-01</b>	14 214	11 842	5 684	307	382	996	<b>33 474</b>
<b>2001-02</b>	12 992	11 998	4 852	278	377	899	<b>31 446</b>
MUTTON							
<b>1999-2000</b>	118 947	76 719	27 704	28 969	69 077	11 796	<b>333 212</b>
<b>2000-01</b>	126 838	84 016	28 401	36 103	64 936	7 232	<b>347 526</b>
<b>2001-02</b>	121 843	74 425	24 801	30 342	40 496	5 416	<b>297 323</b>
LAMB							
<b>1999-2000</b>	80 016	140 215	17 456	56 667	44 136	8 833	<b>347 323</b>
<b>2000-01</b>	82 907	157 898	19 648	61 893	37 070	8 014	<b>367 430</b>
<b>2001-02</b>	91 404	136 325	11 851	64 285	36 452	8 466	<b>348 783</b>
PIG MEAT							
<b>1999-2000</b>	103 234	106 690	82 037	31 927	34 201	4 403	<b>362 855</b>
<b>2000-01</b>	130 371	78 954	78 500	36 679	36 781	3 583	<b>365 168</b>
<b>2001-02</b>	144 146	73 544	85 940	48 329	39 996	3 159	<b>395 426</b>
TOTAL RED MEAT							
<b>1999-2000</b>	747 224	688 266	1 065 801	196 036	243 247	83 825	<b>3 031 291</b>
<b>2000-01</b>	815 710	687 529	1 166 857	217 514	239 693	68 596	<b>3 199 550</b>
<b>2001-02</b>	831 353	638 991	1 100 193	229 116	212 492	61 863	<b>3 075 527</b>
CHICKEN MEAT							
<b>1999-2000</b>	221 245	170 123	95 387	n.p.	n.p.	n.p.	<b>597 680</b>
<b>2000-01</b>	244 302	175 773	93 863	n.p.	n.p.	n.p.	<b>619 406</b>
<b>2001-02</b>	272 561	181 056	99 316	n.p.	n.p.	n.p.	<b>666 650</b>

(a) For more information refer to paragraphs 4 to 9 of the Explanatory Notes.

## EXPORTS OF FRESH, FROZEN AND PROCESSED MEAT, Australia(a): Original

Period	FRESH, CHILLED OR FROZEN MEAT.....								PROCESSED MEAT..		
	Beef bone -in tonnes	Beef bone -out tonnes	Veal bone -in tonnes	Veal bone -out tonnes	Mutton bone -in tonnes	Mutton bone -out tonnes	Lamb bone -in tonnes	Lamb bone -out tonnes	Pork tonnes	Bacon and ham tonnes	Canned meat tonnes
<b>1999-2000</b>	45 508	818 667	1 555	7 395	120 946	55 499	86 551	11 064	39 227	88	13 867
<b>2000-01</b>	42 000	940 312	2 078	6 440	127 841	63 754	103 652	12 328	43 939	280	14 884
<b>2001-02</b>	34 028	889 112	2 407	7 108	113 728	52 029	104 393	13 780	58 880	123	15 722
<b>2001</b>											
March	8 498	207 854	370	561	35 284	14 852	23 211	2 906	10 539	67	3 558
June	7 395	252 829	601	1 238	33 081	13 442	24 723	3 235	13 125	70	4 110
September	7 088	256 607	579	3 313	26 461	12 849	22 738	2 904	15 056	14	4 175
December	9 400	217 731	640	1 598	34 090	14 171	30 480	3 439	14 188	59	3 820
<b>2002</b>											
March	8 683	173 899	576	777	30 508	11 811	25 128	3 827	14 586	32	3 736
June	8 856	240 874	611	1 420	22 669	13 197	26 047	3 609	15 051	18	3 991

(a) For more information refer to paragraphs 10 and 11 of the Explanatory Notes.

## EXPORTS OF LIVE SHEEP AND CATTLE, Australia(a): Original

	<i>Number</i>	<i>Gross weight</i>	<i>Gross value</i>	<i>Unit value</i>
<i>Period</i>	<i>'000</i>	<i>'000 tonnes</i>	<i>\$'000</i>	<i>\$</i>
SHEEP				
<b>1999-2000</b>	4 858.6	243.3	180 345	37.12
<b>2000-01</b>	5 936.0	283.6	257 661	43.41
<b>2001-02</b>	6 443.8	317.9	390 986	60.68
<b>2001</b>				
March	1 726.6	82.0	77 523	44.90
June	1 310.7	63.1	64 460	49.18
September	1 666.6	78.2	93 117	55.87
December	1 995.2	95.4	119 573	59.93
<b>2002</b>				
March	1 660.7	85.5	103 425	62.28
June	1 121.3	58.8	74 872	66.77
CATTLE				
<b>1999-2000</b>	845.7	317.1	432 645	511.60
<b>2000-01</b>	845.8	314.3	481 827	569.66
<b>2001-02</b>	795.6	293.4	525 649	660.70
<b>2001</b>				
March	184.9	71.3	115 546	624.93
June	170.4	63.8	104 916	615.59
September	231.0	82.3	141 626	613.16
December	211.6	77.6	152 357	720.01
<b>2002</b>				
March	136.6	58.2	95 544	699.70
June	216.5	75.3	136 123	628.83

(a) For more information refer to paragraph 12 of the Explanatory Notes.

## WHOLE MILK INTAKE, By Factories(a): All Series

Quarter	New South Wales(b)	Victoria	Queensland	South Australia	Western Australia	Tasmania	Australia(c)
	ML	ML	ML	ML	ML	ML	ML
ORIGINAL							
<b>2000</b>							
December	385	2 465	204	207	105	228	3 594
<b>2001</b>							
March	300	1 553	183	161	90	156	2 443
June	287	1 090	170	157	89	105	1 898
September	335	1 689	189	172	98	110	2 592
December	378	2 617	200	214	99	261	3 767
<b>2002</b>							
March	317	1 873	178	173	88	195	2 823
SEASONALLY ADJUSTED							
<b>2000</b>							
December	340	1 643	187	171	103	137	2 581
<b>2001</b>							
March	315	1 594	190	175	96	143	2 513
June	322	1 872	187	182	92	177	2 832
September	328	1 785	180	172	91	167	2 723
December	334	1 747	187	176	96	157	2 697
<b>2002</b>							
March	331	1 922	181	187	94	179	2 894
TREND ESTIMATES							
<b>2000</b>							
December	340	1 672	191	173	100	144	2 620
<b>2001</b>							
March	330	1 692	187	175	96	152	2 632
June	325	1 747	186	176	93	162	2 689
September	327	1 797	184	176	93	167	2 744
December	331	1 824	183	178	94	168	2 778
<b>2002</b>							
March	334	1 845	183	182	95	169	2 808

(a) For more information refer to paragraph 13 of the Explanatory Notes.

(b) New South Wales total includes Australian Capital Territory.

(c) Australian total excludes Northern Territory.

Source: Original series data from Australian Dairy Corporation.

## MARKET MILK SALES, By Factories(a): All Series

Quarter	New South Wales(b)	Victoria	Queensland	South Australia	Western Australia	Tasmania	Australia(c)
	ML	ML	ML	ML	ML	ML	ML
ORIGINAL							
<b>2000</b>							
December	161	112	99	49	48	12	481
<b>2001</b>							
March	155	113	96	49	47	12	472
June	152	115	99	51	49	12	478
September	156	118	102	49	48	12	484
December	147	114	96	44	48	12	462
<b>2002</b>							
March	150	111	96	44	48	12	462
SEASONALLY ADJUSTED							
<b>2000</b>							
December	160	112	99	48	48	12	480
<b>2001</b>							
March	159	116	98	50	47	13	482
June	153	115	100	51	48	12	480
September	151	114	100	49	48	12	474
December	146	115	96	43	48	12	460
<b>2002</b>							
March	154	115	98	45	49	13	474
TREND ESTIMATES							
<b>2000</b>							
December	159	113	98	48	48	12	479
<b>2001</b>							
March	158	115	99	50	48	12	482
June	154	115	99	50	48	12	478
September	151	115	99	48	48	12	472
December	150	115	98	46	48	12	468
<b>2002</b>							
March	151	115	97	44	48	12	467

(a) For more information refer to paragraph 13 of the Explanatory Notes.

(b) New South Wales total includes Australian Capital Territory.

(c) Australian total excludes Northern Territory.

Source: Original series data from Australian Dairy Corporation.

## BROKERS AND DEALERS RECEIVALS OF TAXABLE WOOL(a): All Series

	New South Wales	Victoria	Queensland	South Australia	Western Australia	Tasmania	Australia	% of total received by brokers
Quarter	tonnes	tonnes	tonnes	tonnes	tonnes	tonnes	tonnes	%
ORIGINAL								
<b>2001</b>								
March	41 236	32 811	8 243	20 375	33 581	1 859	<b>138 105</b>	82.3
June	34 951	23 763	12 112	17 366	16 697	2 627	<b>107 515</b>	81.3
September	51 757	36 536	10 740	22 732	26 658	2 290	<b>150 713</b>	83.0
December	44 304	45 778	4 852	24 445	26 675	4 937	<b>150 990</b>	79.4
<b>2002</b>								
March	36 307	35 103	6 450	22 041	34 034	3 736	<b>137 669</b>	81.4
June	31 557	24 921	8 145	13 927	15 661	3 306	<b>97 519</b>	82.1
SEASONALLY ADJUSTED								
<b>2001</b>								
March	47 476	42 292	9 647	24 362	29 611	2 509	<b>155 897</b>	..
June	44 396	37 405	10 301	23 502	25 845	3 354	<b>144 803</b>	..
September	44 044	34 134	8 310	18 905	24 100	2 142	<b>131 634</b>	..
December	38 070	30 433	7 159	20 127	24 129	3 434	<b>123 350</b>	..
<b>2002</b>								
March	41 736	45 009	7 552	26 647	29 956	5 632	<b>156 533</b>	..
June	40 212	38 988	6 912	18 542	24 063	4 274	<b>132 991</b>	..
TREND ESTIMATES								
<b>2001</b>								
March	45 791	38 746	9 974	23 100	27 979	2 847	<b>148 436</b>	..
June	44 846	36 993	9 465	22 039	26 024	2 608	<b>141 975</b>	..
September	42 666	34 774	8 578	21 252	25 019	2 920	<b>135 210</b>	..
December	40 827	35 555	7 690	21 515	25 557	3 718	<b>134 861</b>	..
<b>2002</b>								
March	40 239	38 704	7 168	22 090	26 402	4 496	<b>139 099</b>	..
June	40 220	41 221	7 017	21 925	26 474	4 901	<b>141 757</b>	..

(a) For more information refer to paragraphs 14 and 15 of the Explanatory Notes.

## LIVESTOCK PRODUCTS(a): Original

Financial year	New South Wales	Victoria	Queensland	South Australia	Western Australia	Tasmania	Australia
----------------	-----------------	----------	------------	-----------------	-------------------	----------	-----------

## WHOLE MILK INTAKE BY FACTORIES (ML)(b)

<b>1998-99</b>	1 286	6 414	827	646	403	603	<b>10 178</b>
<b>1999-2000</b>	1 395	6 870	848	714	412	609	<b>10 847</b>
<b>2000-01</b>	1 326	6 777	760	699	393	590	<b>10 545</b>

## MARKET MILK SALES BY FACTORIES (ML)(b)(c)

<b>1998-99</b>	609	442	382	185	192	49	<b>1 859</b>
<b>1999-2000</b>	597	440	383	185	190	48	<b>1 842</b>
<b>2000-01</b>	630	455	393	199	192	50	<b>1 920</b>

## BROKERS AND DEALERS RECEIVALS OF TAXABLE WOOL (Tonnes)

<b>1999-2000</b>	190 398	152 890	45 661	91 795	143 445	17 331	<b>641 520</b>
<b>2000-01</b>	182 882	148 333	40 723	89 739	115 475	12 709	<b>589 861</b>
<b>2001-02</b>	163 926	142 338	30 188	83 144	103 028	14 268	<b>536 891</b>

(a) For more information refer to paragraph 13 to 15 of the Explanatory Notes.

(b) New South Wales includes Australian Capital Territory. Australian total excludes Northern Territory.

(c) Prior to 2000-01, interstate transfers of UHT milk were excluded from these figures. From 2000-01 onwards, interstate transfers of UHT milk have been included in their State of destination.

Source: Original series data from Australian Dairy Corporation.

# WHAT IF...? REVISIONS TO TREND ESTIMATES

## EFFECT OF NEW SEASONALLY ADJUSTED ESTIMATES ON TREND ESTIMATES

Each time new seasonally adjusted estimates become available, trend estimates are revised (see paragraphs 20 and 21 of the Explanatory Notes).

### TREND REVISIONS

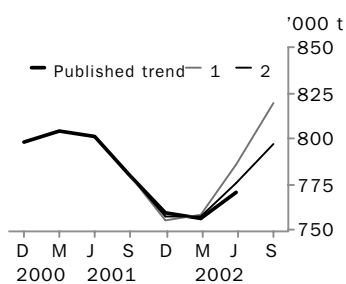
The graphs and tables which follow present the effect of two possible new seasonally adjusted estimates on the previous trend estimates:

**1** The September Quarter 2002 seasonally adjusted estimate is higher than the June Quarter 2002 estimate by the percentage shown.

**2** The September Quarter 2002 seasonally adjusted estimate is lower than the June Quarter 2002 estimate by the percentage shown.

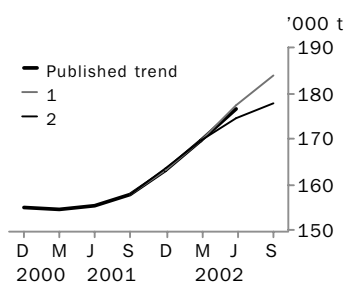
These percentages were chosen because they represent the average absolute quarterly percentage change for these series over the last ten years.

### RED MEAT PRODUCTION



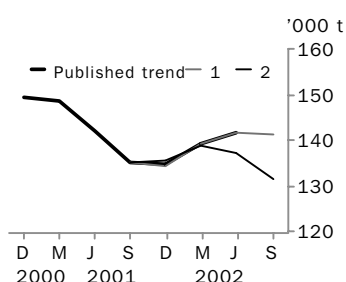
	TREND AS PUBLISHED		WHAT IF NEXT QUARTER'S SEASONALLY ADJUSTED ESTIMATE:			
	number	% change	<b>1</b> <i>rises by 3% on Jun Qtr 2002</i>	% change	<b>2</b> <i>falls by 3% on Jun Qtr 2002</i>	% change
Jun Qtr 2001	801 392	-0.4	801 392	-0.4	801 392	-0.4
Sep Qtr 2001	779 868	-2.7	779 868	-2.7	779 868	-2.7
Dec Qtr 2001	759 082	-2.7	755 320	-3.1	757 403	-2.9
Mar Qtr 2002	756 395	-0.4	757 845	0.3	757 043	0.0
Jun Qtr 2002	770 477	1.9	785 634	3.7	775 562	2.4
Sep Qtr 2002	—	—	818 951	4.2	796 583	2.7

### CHICKEN MEAT PRODUCTION



	TREND AS PUBLISHED		WHAT IF NEXT QUARTER'S SEASONALLY ADJUSTED ESTIMATE:			
	number	% change	<b>1</b> <i>rises by 4% on Jun Qtr 2002</i>	% change	<b>2</b> <i>falls by 4% on Jun Qtr 2002</i>	% change
Jun Qtr 2001	155 168	0.5	155 168	0.5	155 168	0.5
Sep Qtr 2001	157 848	1.7	157 849	1.7	157 849	1.7
Dec Qtr 2001	163 185	3.4	162 967	3.2	163 513	3.6
Mar Qtr 2002	169 630	3.9	169 667	4.1	169 478	3.6
Jun Qtr 2002	176 551	4.1	177 151	4.4	174 527	3.0
Sep Qtr 2002	—	—	184 050	3.9	177 826	1.9

### WOOL RECEIVALS



	TREND AS PUBLISHED		WHAT IF NEXT QUARTER'S SEASONALLY ADJUSTED ESTIMATE:			
	number	% change	<b>1</b> <i>rises by 9% on Jun Qtr 2002</i>	% change	<b>2</b> <i>falls by 9% on Jun Qtr 2002</i>	% change
Jun Qtr 2001	141 975	-4.4	141 976	-4.4	141 976	-4.4
Sep Qtr 2001	135 210	-4.8	135 209	-4.8	135 209	-4.8
Dec Qtr 2001	134 861	-0.3	134 440	-0.6	135 315	0.1
Mar Qtr 2002	139 099	3.1	139 140	3.5	138 822	2.6
Jun Qtr 2002	141 757	1.9	141 462	1.7	137 245	-1.1
Sep Qtr 2002	—	—	141 108	-0.3	131 407	-4.3



# WHAT IF...? REVISIONS TO TREND ESTIMATES

## EFFECT OF NEW SEASONALLY ADJUSTED ESTIMATES ON TREND ESTIMATES

Readers should exercise care when interpreting trend estimates. The last three trend estimates, in particular, are likely to be revised when new seasonally adjusted estimates become available.

### TREND REVISIONS

The graph and tables which follow present the effect of two possible scenarios on the previous trend estimates:

**1** The June Quarter 2002 seasonally adjusted estimate is higher than the March Quarter 2002 estimate by:

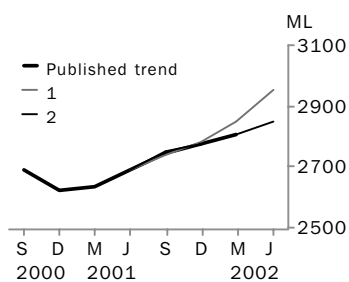
- +2% for whole milk intake by factories.

**2** The June Quarter 2002 seasonally adjusted estimate is lower than the March Quarter 2002 estimate by:

- 2% for whole milk intake by factories.

These percentages were chosen because they represent the average absolute quarterly percentage change for these series over the last ten years.

### WHOLE MILK INTAKE BY FACTORIES



	TREND AS PUBLISHED		WHAT IF NEXT QUARTER'S SEASONALLY ADJUSTED ESTIMATE:			
	number	% change	<b>1</b> <i>rises by 2% on Mar Qtr 2002</i>	% change	<b>2</b> <i>falls by 2% on Mar Qtr 2002</i>	% change
Mar Qtr 2001	2 632	0.5	2 633	0.5	2 633	0.5
Jun Qtr 2001	2 689	2.2	2 690	2.2	2 690	2.2
Sep Qtr 2001	2 744	2.0	2 739	1.8	2 749	2.2
Dec Qtr 2001	2 778	1.2	2 780	1.5	2 776	1.0
Mar Qtr 2002	2 808	1.1	2 852	2.6	2 804	1.0
Jun Qtr 2002	—	—	2 953	3.5	2 847	1.5

## EXPLANATORY NOTES

### INTRODUCTION

- 1** This publication contains information on livestock slaughterings, meat production, exports of live sheep and live cattle, exports of fresh, frozen and processed meat, and whole milk intake by factories, market milk sales by factories and receivals of taxable wool by wool brokers and dealers.
- 2** The figures shown in this publication have been revised where necessary and as a consequence may not agree with similar data shown in previous publications.
- 3** Where figures have been rounded, discrepancies may occur between sums of the component items and totals.
- 4** Unless indicated otherwise, Australian totals include data for all States and both Territories.

### LIVESTOCK SLAUGHTERINGS AND MEAT PRODUCTION

- 5** The statistics on slaughterings for red meat production are based on a monthly collection from abattoirs and other major slaughtering establishments and include estimates of animals slaughtered on farms and by country butchers and other small slaughtering establishments.
- 6** Red meat is shown in carcass weight and excludes offal.
- 7** Care should be taken when using this information as the figures only relate to slaughterings for human consumption and do not include animals condemned, slaughtered for pet food or those killed for boiling down.
- 8** Poultry slaughterings and meat produced statistics have been compiled from returns supplied by commercial poultry slaughtering establishments and comprise boilers, fryers and roasters. Many small producers are excluded from the collection; however, the statistics represent a high level of coverage. Tasmanian and Northern Territory data are excluded from the Australian total.
- 9** Chicken meat is shown in dressed weight of whole birds, pieces and giblets. Some slaughterings and meat production statistics for 'Ducks and Drakes' and 'Other Fowls and Turkeys' are available by contacting the ABS on Hobart 03 6222 5974 or by writing to GPO Box 66a, Hobart Tasmania 7001 (Attention: Agriculture Section).

### EXPORTS OF FRESH, FROZEN AND PROCESSED MEAT

- 10** Table 20 shows exports of fresh, frozen and processed meat, excluding offal. International trade statistics are compiled by the ABS from information submitted by exporters and importers or their agents to the Australian Customs Service. Factors can be applied to beef, veal, mutton and lamb bone-out figures to derive bone-in carcass weight which, when added to bone-in figures, shows total exports in carcass weight. The factor for beef and veal is 1.5 and for mutton and lamb, 2.0. This information is sourced from Department of Agriculture, Fisheries and Forestry—Australia.
- 11** Beef also includes buffalo meat. Bacon and ham shown is the cured carcass weight of smoked or cooked bacon and ham. It also includes the stated net weight of packs of canned bacon and ham. Canned meat is shown as the canned weight and excludes canned bacon and ham.

### LIVE SHEEP AND CATTLE EXPORTS

- 12** Table 21 contains statistics of the number of live sheep and cattle exported, the gross weight, gross value and unit value. The unit value is obtained by dividing the gross value by the number of animals exported. Sheep and cattle exported for breeding are excluded.

## EXPLANATORY NOTES

MILK	<p><b>13</b> Tables 2, 22, 23 and 25 contain statistics collected by the Australian Dairy Corporation (ADC). Whole milk intake by factories includes the whole milk equivalent of farm cream intake. Market milk sales includes white, flavoured, high and low fat milk and UHT milk.</p>
WOOL RECEIVALS	<p><b>14</b> The statistics in tables 2, 24 and 25 show the amount of taxable wool received by brokers and purchased by dealers from wool producers. It excludes wool received by brokers on which tax has already been paid by other dealers (private buyers) or brokers.</p> <p><b>15</b> The information shown is on the basis of the State in which wool has actually been received and does not necessarily reflect the production of wool in that State.</p>
SEASONAL ADJUSTMENT	<p><b>16</b> Seasonal adjustment is a means of removing the estimated effects of normal seasonal variation from the series so that the effects of other influences can be more clearly recognised.</p> <p><b>17</b> In the seasonal adjustment of the livestock estimates, account has been taken of both normal seasonal factors and 'trading-day' effects, where significant, (arising from the varying length of each quarter and the varying numbers of Sundays, Mondays, Tuesdays etc. in the quarter). Adjustments are also made for the effects of change in the date of Easter holidays, again, where significant. Seasonal adjustment does not remove from the series the effect of irregular influences (e.g. abnormal weather, industrial disputes).</p> <p><b>18</b> The State component series have been seasonally adjusted independently. Therefore, the adjusted components may not add to the Australian Group totals.</p> <p><b>19</b> As happens with all seasonally adjusted series, the seasonal factors are reviewed annually to take account of each additional year's data.</p>
TREND ESTIMATES	<p><b>20</b> A trend estimate is obtained by reducing the irregular component from the seasonally adjusted series. In this publication trend estimates are generally derived by applying a seven term Henderson moving average to the seasonally adjusted series. The seven term Henderson, (like all Henderson averages) is symmetric, but as the end of a time series is approached, asymmetric forms of the average are applied. Unlike the weights of the standard seven term Henderson moving average, the weights employed here have been tailored to suit the particular characteristics of individual series. While the asymmetric weights enable the trend to be calculated for recent quarters, it does result in revisions to the estimates for the most recent three quarters as additional observations become available. Revisions of trend estimates will also occur with revisions to the original data and re-estimation of seasonal factors.</p> <p><b>21</b> Sensitivity analysis indicates the potential magnitude and direction of revisions created to the last three estimates. It aims to show how a specified movement in the seasonally adjusted data in the next period will affect the trend path of the time series. By showing how sensitive the trend estimates are to the addition of new data, the analysis provides information which can be used in the assessment of the trend's stability.</p> <p><b>22</b> For further information, see <i>Information Paper: A Guide to Interpreting Time Series — Monitoring 'Trends', an Overview</i> (Cat. no. 1348.0) or contact the Assistant Director, Time Series Analysis on Canberra 02 6252 6345.</p>

## EXPLANATORY NOTES

---

### RELATED PUBLICATIONS

**23** Current publications and other products released by the ABS are listed in the *Catalogue of Publications and Products* (cat. no. 1101.0). The Catalogue is available from any ABS office or the ABS web site <<http://www.abs.gov.au>>. The ABS also issues a daily Release Advice on the web site which details products to be released in the week ahead.

### GENERAL ACKNOWLEDGMENT

ABS publications draw extensively on information provided freely by individuals, businesses, governments and other organisations. Their continued cooperation is very much appreciated. Without it, the wide range of statistics published by the ABS would not be available. Information received by the ABS is treated in strict confidence as required by the *Census and Statistics Act 1905*.

### SYMBOLS AND OTHER USAGES

billion	thousand million
ML	million litres
n.y.a.	not yet available
n.p.	not published
t	tonnes
..	not applicable







## FOR MORE INFORMATION...

- INTERNET* **www.abs.gov.au** the ABS web site is the best place to start for access to summary data from our latest publications, information about the ABS, advice about upcoming releases, our catalogue, and Australia Now—a statistical profile.
- LIBRARY* A range of ABS publications is available from public and tertiary libraries Australia-wide. Contact your nearest library to determine whether it has the ABS statistics you require, or visit our web site for a list of libraries.
- CPI INFOLINE* For current and historical Consumer Price Index data, call 1902 981 074 (call cost 77c per minute).
- DIAL-A-STATISTIC* For the latest figures for National Accounts, Balance of Payments, Labour Force, Average Weekly Earnings, Estimated Resident Population and the Consumer Price Index call 1900 986 400 (call cost 77c per minute).

**INFORMATION SERVICE**

Data which have been published and can be provided within five minutes are free of charge. Our information consultants can also help you to access the full range of ABS information—ABS user-pays services can be tailored to your needs, time frame and budget. Publications may be purchased. Specialists are on hand to help you with analytical or methodological advice.

- PHONE* **1300 135 070**
- EMAIL* **client.services@abs.gov.au**
- FAX* 1300 135 211
- POST* Client Services, ABS, GPO Box 796, Sydney 1041

## WHY NOT SUBSCRIBE?

ABS subscription services provide regular, convenient and prompt deliveries of ABS publications and products as they are released. Email delivery of monthly and quarterly publications is available.

- PHONE* 1300 366 323
- EMAIL* subscriptions@abs.gov.au
- FAX* 03 9615 7848
- POST* Subscription Services, ABS, GPO Box 2796Y, Melbourne 3001



2721500006023  
ISSN 0728-4047

RRP \$22.00