



SOUTH AUSTRALIAN ECONOMIC INDICATORS

EMBARGO: 11:30AM (CANBERRA TIME) FRI 1 SEPT 2000

C O N T E N T S

	<i>page</i>
Notes	2
REVIEW	
South Australian overview	3
Selected features	4
TABLES	
List of tables	5
Statistical summary	6
State summary	8
State accounts	9
International trade	10
Consumption and investment	14
Production	16
Consumer price index	20
Labour force and demography	21
Average weekly earnings	24
Financial markets	25
ADDITIONAL INFORMATION	
Publications source index	26

- For further information about these and related statistics, contact Rachel Smith on Adelaide 08 8237 7395, or the National Information Service on 1300 135 070.

NOTES

FORTHCOMING ISSUES

<i>ISSUE</i>	<i>RELEASE DATE</i>
October 2000	3 October 2000
November 2000	1 November 2000
December 2000	1 December 2000
January 2001	22 December 2000
February 2001	1 February 2001
March 2001	1 March 2001

ABOUT THIS PUBLICATION

South Australian Economic Indicators is a monthly publication which contains the latest available data at the time of preparation for a range of statistical series that have been identified as indicators of economic activity in this State. In a number of cases the figures presented are preliminary and subject to revision in subsequent issues.

CHANGES IN THIS ISSUE

In table 5, Merchandise Exports by Selected Commodity Group, data on Cereals and cereal preparations has been replaced by Wheat. For data on Cereals and cereal preparations, contact Rachel Smith on Adelaide (08) 8237 7395.

SYMBOLS AND OTHER USAGES

n.a.	not available
n.y.a.	not yet available
*	subject to sampling variability too high for most practical purposes
..	not applicable
0, 0.0	nil, or rounded to zero

ROUNDING

Where figures have been rounded, discrepancies may occur between sums of the component items and totals.

INFORMATION

All data are original, unless otherwise stated. More detailed information on each series, including explanatory and technical notes, can be obtained from other Australian Bureau of Statistics publications or alternative data sources. To assist those seeking further information, the series presented in the statistical and state summaries provides a reference to the Publication Source Index which is at the end of this publication.

I. Crettenden
Regional Director
South Australia

OVERVIEW

The most recent economic indicator data for South Australia are provided below. Unless otherwise stated the data in the analysis are presented in trend terms.

INTERNATIONAL TRADE

The value of South Australian merchandise exports in original terms for the month of June was \$559.4m. This is an increase of 14.8% over the value for May and an increase of 16.8% over June 1999. For the year 1999–00 the value of SA merchandise exports was \$6,179.5m, an increase of 15.9% over 1998–99. Substantial increases were recorded for the value of wine, metals, seafood and motor vehicles exports in the year 1999–00.

The value of merchandise imports released from Customs control in original terms for South Australia was \$437.1m in June. This is an increase of 16.1% over the value for May and an increase of 45.1% on June 1999. For the year 1999–00 the value of SA merchandise imports was \$4,319.4m, an increase of 16.2% over 1998–99. Substantial increases were recorded for the value of petroleum and machinery imports in the year 1999–00.

CONSUMPTION AND INVESTMENT

Retail turnover increased slightly in June (0.4%) to \$903.3m and is 4.8% higher than the level recorded 12 months previously.

New motor vehicle registrations fell 3.7% in June, the sixth consecutive monthly fall. Passenger vehicle registrations fell (5.0%) while Other vehicle registrations rose (2.1%). Over the 12 months to June registrations have fallen 17.4%. In original terms there were 3,663 new motor vehicle registrations for the month.

Private new capital expenditure increased 5.8% in the March quarter to \$621.0m and is 11.9% higher than the March quarter 1999. Expenditure rose on buildings (16.4%) and equipment (2.6%) on the previous quarter.

PRODUCTION

The number of private sector houses approved continued to decline, falling 11.1% to 526 dwellings in June. This is 8.4% lower than the June 1999 estimate. The decline for total dwelling units approved has continued over the last five months. Since the recent high in January 2000 of 986 dwellings, total dwelling units approved declined by 11.8% to 632 dwellings in June.

CONSUMER PRICE INDEX

The Consumer Price Index (all groups) in Adelaide increased by 0.6% to 127.6 in the June quarter of 2000, and by 3.2% over the level recorded twelve months previously. The main contributors to the recent quarterly growth were Clothing (up 2.1%) and Transportation (up 1.2%).

LABOUR FORCE AND DEMOGRAPHY

The number of employed persons in South Australia for July (676,500) is 2.1% higher than the level of twelve months ago (662,500).

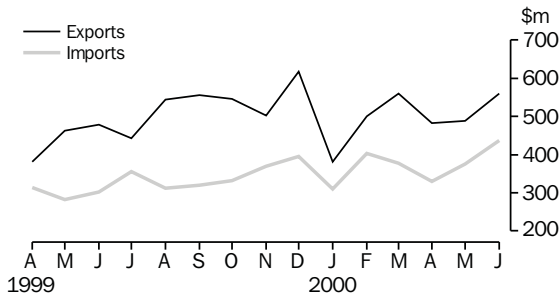
The unemployment rate for South Australia was 8.1% in July, lower than the 8.4% recorded in July 1999.

FINANCIAL MARKETS

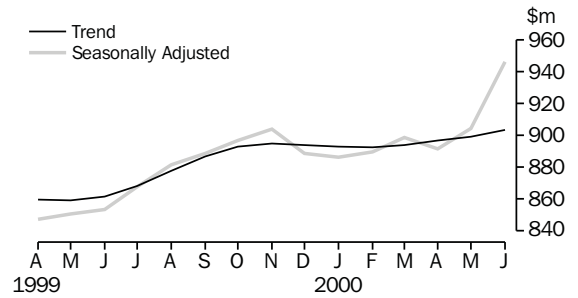
The value of secured housing finance commitments (excluding alterations and additions) decreased for the sixth consecutive month, down 1.1% to \$344.0m but 8.2% above the previous June.

SELECTED FEATURES

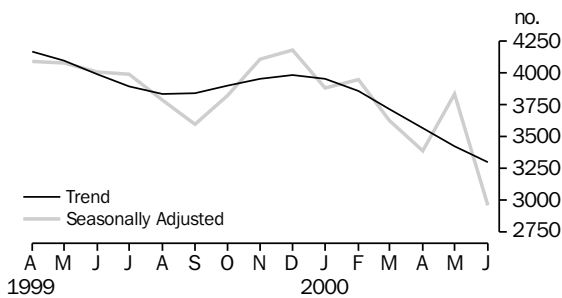
MERCHANDISE EXPORTS AND IMPORTS



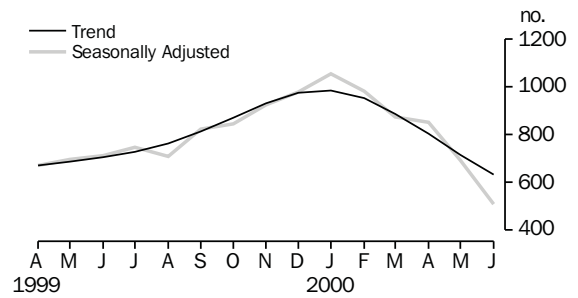
RETAIL TURNOVER



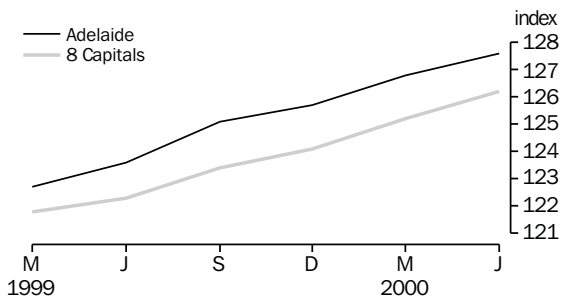
MOTOR VEHICLE REGISTRATIONS



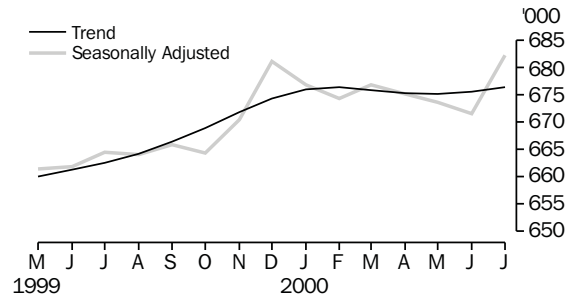
DWELLING UNITS APPROVED



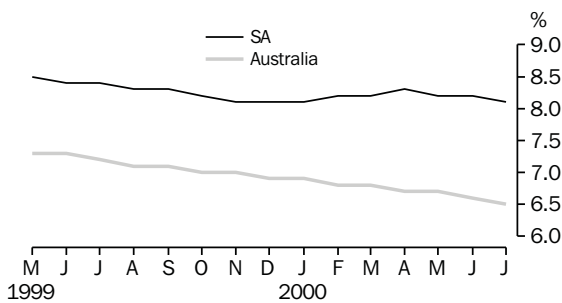
CONSUMER PRICE INDEX



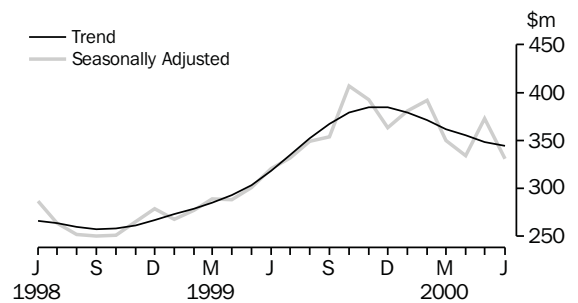
EMPLOYED PERSONS



UNEMPLOYMENT RATE: Trend



SECURED HOUSING FINANCE COMMITMENTS(a)



(a) Excludes alterations and additions. Includes refinancing.

LIST OF TABLES

			Page
STATISTICAL SUMMARY	1	Statistical summary	6
	2	State summary	8
STATE ACCOUNTS	3	State accounts at current prices	9
	4	State accounts at chain volume measures	9
INTERNATIONAL TRADE	5	Merchandise exports, by selected commodity group	10
	6	Merchandise exports, by selected countries	11
	7	Merchandise exports, by industry of origin	12
	8	Merchandise imports, by selected commodity group	13
CONSUMPTION AND INVESTMENT	9	Turnover of retail establishments, by industry—trend	14
	10	New motor vehicle registrations, by type of vehicle	14
	11	Actual private new capital expenditure, by selected industry and type of asset	15
	12	Tourist accommodation	15
PRODUCTION	13	Building approvals	16
	14	Building commencements	17
	15	Value of building work done and completed during period	18
	16	Production, livestock products and selected commodities	19
CONSUMER PRICE INDEX	17	Consumer price index, by group—Adelaide	20
LABOUR FORCE AND DEMOGRAPHY	18	Estimated resident population and components of population change	21
	19	Births, deaths, marriages and divorces	21
	20	Civilian labour force status	22
	21	Civilian labour force, unemployment and participation rates	23
AVERAGE WEEKLY EARNINGS	22	Average weekly earnings of employees	24
FINANCIAL MARKETS	23	Secured housing finance commitments	25
	24	Finance commitments	25

Indicator	Period	South Australia			Australia			SA as a % of Aust.	Source index
		Number	% change from		Number	% change from			
			Previous period	Same period previous year		Previous period	Same period previous year		
State accounts									
Domestic final demand									
Current prices trend (\$m)	Mar qtr 00	11 208	2.2	8.6	161 863	1.9	6.4	6.9	(1)
Chain volume measures trend (\$m)	Mar qtr 00	10 872	1.5	7.0	158 303	1.5	5.7	6.9	(1)
Private final consumption expenditure									
Current prices trend (\$m)	Mar qtr 00	6 673	1.7	5.5	93 382	1.5	5.7	7.1	(1)
Chain volume measures trend (\$m)	Mar qtr 00	6 479	1.3	3.9	91 069	1.1	4.5	7.1	(1)
Private gross fixed capital formation									
Current prices trend (\$m)	Mar qtr 00	1 776	2.2	13.7	31 084	2.4	5.5	5.7	(1)
Chain volume measures trend (\$m)	Mar qtr 00	1 738	1.9	13.4	30 844	2.2	6.3	5.6	(1)
Compensation of employees									
Current prices trend (\$m)	Mar qtr 00	5 038	0.6	3.3	77 055	1.9	6.1	6.5	(1)
International accounts									
Exports (\$m)	Jun 00	559.4	14.8	16.8	8 614.6	-0.8	32.6	6.5	(2)
Imports (\$m)	Jun 00	437.1	16.1	45.1	10 493.0	1.4	28.9	4.2	(2)
Consumption and investment									
Retail turnover									
Current prices original (\$m)	Jun 00	904.5	3.2	12.9	12 547.9	4.9	11.7	7.2	(3)
Current prices trend (\$m)	Jun 00	903.3	0.4	4.8	12 257.5	0.3	2.5	7.4	(3)
1997-98 chain volume measures (\$m)	Jun 00	2 580.7	2.4	5.8	35 402.0	2.9	4.2	7.3	(3)
New motor vehicle registrations									
Original (no.)	Jun 00	3 663	-6.0	-22.0	60 880	-5.1	-23.4	6.0	(4)
Trend (no.)	Jun 00	3 299	-3.7	-17.4	54 968	-3.9	-13.6	6.0	(4)
Private new capital expenditure									
Current prices original (\$m)	Mar qtr 00	602	13.6	19.2	9 690	-9.7	-7.1	6.2	(5)
Current prices trend (\$m)	Mar qtr 00	621	5.8	11.9	10 725	2.0	-3.4	5.8	(5)
Private new capital expenditure (\$m)	1998-99	2 277	-28.7	-28.7	44 607	-3.5	-3.5	5.1	(5)
Takings, licensed hotels, motels, guest houses and apartments with facilities (\$m)	Mar qtr 00	50.4	-1.2	10.8	1 088.6	-2.1	8.5	4.6	(6)
Production									
Dwelling unit approvals									
Original (no.)	Jun 00	598	-21.7	-29.2	10 872	-25.6	-25.1	5.5	(7)
Trend (no.)	Jun 00	632	-11.8	-10.5	11 914	-6.8	-13.5	5.3	(7)
Dwelling units commenced (no.)	Mar qtr 00	2 403	3.3	46.1	42 122	-0.9	22.4	5.7	(8a)
Value of non-residential building approvals (\$m)	Jun 00	24.3	-63.2	-23.3	990.0	-7.2	0.2	2.5	(7)
Value of total building activity									
Commenced (\$m)	Mar qtr 00	496.2	15.9	12.8	8 924.9	-2.0	16.4	5.6	(8)
Work done (\$m)	Mar qtr 00	426.5	-0.4	26.6	9 157.2	-7.2	12.7	4.7	(8)
Work yet to be done (\$m)	Mar qtr 00	516.6	18.3	16.2	12 767.5	1.4	-1.8	4.0	(8)
Value of engineering construction work done (\$m)	Mar qtr 00	316.5	8.9	42.7	4 419.3	-8.6	-0.5	7.2	(9)
Manufacturing production									
Red meat (tonnes)	Jun qtr 99	54 303	1.7	23.7	772 534	5.0	4.4	7.0	(11)
Mineral exploration expenditure (other than for petroleum) (\$m)	Mar qtr 00	3.8	-43.3	-50.0	136.7	-22.7	-18.3	2.8	(12)

Indicator	Period	South Australia			Australia			SA as a % of Aust.	Source index
		Number	% change from		Number	% change from			
			Previous period	Same period previous year		Previous period	Same period previous year		
Prices(a)									
CPI—All groups (index no.)	Jun qtr 00	127.6	0.6	3.2	126.2	0.8	3.2	..	(13)
Price index of materials used in house building (index no.)	Jun qtr 00	129.7	1.7	3.6	125.5	1.4	5.3	..	(14)
Price index of materials used in building other than houses (index no.)	Jun qtr 00	117.6	1.1	1.7	117.4	0.9	1.7	..	(15)
Price index of established houses (index no.)	Mar qtr 00	123.6	1.3	8.7	143.9	1.8	9.6	..	(16)
Price index of project homes (index no.)	Mar qtr 00	130.0	2.6	10.3	122.4	1.5	7.6	..	(16)
Labour force and demography									
Population (resident at end qtr) ('000)	Dec qtr 99	1 495.8	0.1	0.4	19 080.8	0.3	1.2	7.8	(17)
Short-term overseas visitor arrivals (no.)	May 00	6 560	-44.0	-1.6	319 350	-21.3	7.1	2.1	(21)
Short-term resident departures (no.)	May 00	16 140	4.6	12.6	284 940	-7.4	8.6	5.7	(21)
Labour force									
Original ('000)	Jul 00	734.8	0.8	2.4	9 731.1	0.7	3.0	7.6	(18)
Trend ('000)	Jul 00	736.2	0.1	1.8	9 713.0	0.2	2.6	7.6	(18)
Employed persons									
Original ('000)	Jul 00	681.1	1.2	2.7	9 154.6	1.1	3.7	7.4	(18)
Trend ('000)	Jul 00	676.5	0.1	2.1	9 081.1	0.3	3.3	7.4	(18)
Participation rate									
Original(b) (%)	Jul 00	61.0	0.5	1.1	63.9	0.3	0.9	..	(18)
Trend(b) (%)	Jul 00	61.1	0.0	0.7	63.8	0.0	0.7	..	(18)
Unemployment rate									
Original(b) (%)	Jul 00	7.3	-0.4	-0.3	5.9	-0.4	-0.7	..	(18)
Trend(b) (%)	Jul 00	8.1	-0.1	-0.3	6.5	-0.1	-0.7	..	(18)
Job vacancies ('000)	May 00	5.0	-11.9	14.3	106.8	-5.2	20.2	4.7	(19)
Industrial disputes ('000 working days lost)	May 00	1.0	-63.0	11.1	66.0	56.4	286.0	1.5	(20)
Income									
Average weekly earnings (full-time adults; ordinary time)									
Original (\$)	May 00	726.80	0.5	3.9	782.60	1.0	4.3	..	(22)
Trend (\$)	May 00	728.40	1.4	4.1	783.70	1.4	4.6	..	(22)
Wage cost index (total hourly rate excluding bonuses)(c) (index no.)	Mar 00	107.4	0.6	2.7	107.7	0.7	2.8	..	(23)
Financial markets									
Secured housing finance(d) (\$m)	Jun 00	355.0	-11.5	3.8	5 581.0	-16.0	-11.2	6.4	(24)
Finance commitments									
Personal (\$m)	Jun 00	301.0	1.8	9.2	4 999.3	-0.5	11.3	6.0	(25)
Commercial (\$m)	Jun 00	1 131.7	94.3	53.2	22 075.9	43.9	24.2	5.1	(25)
Lease (\$m)	Jun 00	17.3	3.6	-57.4	959.4	76.1	-19.2	1.8	(25)
Interest rates(b)									
Banks new housing loans (%)	Jun 00	7.80	0.00	1.30	..	(26)
Bank loans—small, medium business(e) (%)	Jun 00	8.85	0.00	1.40	..	(26)
Bank loans—large business (%)	Jun 00	9.30	0.00	1.35	..	(26)

(a) Base year of each index 1989-90=100.

(b) Change is shown in terms of percentage points.

(c) Base year of index Sep 1997=100.

(d) Excludes alterations and additions. Includes refinancing.

(e) Rate for business loans over \$50,000.

Indicator	Period	NSW	Vic.	Qld	SA	WA	Tas.	NT	ACT	Source index
SELECTED INDICATORS										
CPI—All groups(a) (index no.)	Jun qtr 00	127.0	125.6	126.4	127.6	124.0	126.5	125.7	125.9	(13)
Participation rate trend (%)	Jul 00	62.9	63.7	65.4	61.1	66.2	59.2	67.6	72.4	(18)
Unemployment rate trend (%)	Jul 00	5.6	6.5	7.7	8.1	6.1	9.2	5.4	5.2	(18)
Average weekly earnings (full-time adults; ordinary time) trend (\$)	May 00	824.90	765.80	724.90	728.40	804.10	736.60	797.40	914.00	(22)

SELECTED INDICATORS PER HEAD OF POPULATION(b)

State final demand										
Chain volume measures trend (\$'000)	Mar qtr 00	8.5	8.2	7.8	7.3	8.2	6.7	10.0	15.9	(1)
Retail turnover										
Current prices original (\$)	Jun 00	675.7	633.9	657.0	604.7	683.0	563.5	730.3	855.1	(3)
Current prices trend (\$)	Jun 00	654.9	616.5	643.5	603.9	682.2	570.8	694.8	795.3	(3)
New motor vehicle registrations trend (no. per '000 population)	Jun 00	3.0	2.9	3.2	2.2	2.6	2.4	3.2	3.2	(4)
Private new capital expenditure										
Current prices trend (\$)	Mar qtr 99	597.5	577.5	583.4	415.2	633.5	210.7	772.0	356.7	(5)
Dwelling unit approvals										
Original (no. per '000 population)	Jun 00	0.683	0.746	1.001	0.511	0.966	0.496	0.566	0.652	(7)
Trend (no. per '000 population)	Jun 00	0.562	0.786	0.779	0.479	0.832	0.349	0.530	0.566	(7)
Secured housing finance(c) (\$)	Jun 00	366.7	263.6	224.9	237.3	326.6	151.1	159.5	324.6	(24)

PERCENTAGE CHANGE FROM PREVIOUS PERIOD

State final demand										
Chain volume measures trend (%)	Mar qtr 00	1.0	1.0	2.2	1.5	0.0	0.3	-1.8	2.2	(1)
Retail turnover										
Current prices original (%)	Jun 00	4.8	5.0	6.5	3.2	3.1	2.6	5.4	8.2	(3)
Current prices trend (%)	Jun 00	0.4	0.2	0.1	0.4	0.4	-0.2	0.5	1.2	(3)
New motor vehicle registrations trend (%)	Jun 00	-4.0	-5.7	-1.1	-3.7	-5.1	-3.1	0.8	-3.5	(4)
Private new capital expenditure										
Current prices trend (%)	Mar qtr 99	6.3	-1.5	10.3	5.8	-9.0	-4.8	-23.9	20.7	(5)
Dwelling unit approvals										
Original (%)	Jun 00	-35.4	-7.3	-43.7	-21.7	-5.1	-60.9	28.2	0.5	(7)
Trend (%)	Jun 00	-5.7	-7.4	-7.4	-11.8	-4.0	-2.2	-1.4	-4.6	(7)
CPI—All groups (%)	Jun qtr 00	1.0	0.7	0.7	0.6	0.7	1.0	1.0	0.8	(13)
Participation rate trend(d) (%)	Jul 00	0.1	0.2	0.1	0.0	-0.2	0.1	-0.3	-0.1	(18)
Unemployment rate trend(d) (%)	Jul 00	0.0	-0.1	-0.1	-0.1	-0.2	0.0	0.1	-0.1	(18)
Average weekly earnings (full-time adults; ordinary time) trend (%)	May 00	1.5	1.0	1.1	1.4	2.0	1.7	1.3	1.6	(22)
Secured housing finance (%)	Jun 00	-14.6	-22.9	-8.9	-11.5	-15.7	-18.4	-29.5	-14.4	(24)

(a) Base year of index 1989-90 = 100.

(b) The latest quarterly estimate of Australian resident population has been used to calculate ratios for subsequent periods.

(c) Excludes alterations and additions. Includes refinancing.

(d) Change is shown in terms of percentage points.

3

STATE ACCOUNTS AT CURRENT PRICES

Period	Final consumption expenditure			Gross fixed capital formation		State final demand	Gross State product	Compensation of employees
	Households	General government	Private	Public	Public			
ANNUAL (\$m)								
1996-97	22 996	7 439	5 755	1 444		37 634	36 967	18 139
1997-98	24 390	7 907	6 705	1 310		40 312	39 652	18 905
1998-99	25 534	8 017	6 173	1 374		41 098	40 573	19 284
QUARTERLY, TREND (\$m)								
1998-99								
December	6 306	2 114	1 512	345		10 278	n.a.	4 797
March	6 327	2 116	1 528	355		10 325	n.a.	4 875
June	6 369	2 125	1 588	383		10 465	n.a.	4 943
1999-00								
September	6 456	2 177	1 670	406		10 705	n.a.	4 980
December	6 562	2 253	1 737	415		10 965	n.a.	5 006
March	6 673	2 315	1 776	410		11 208	n.a.	5 038

Source: Australian National Accounts: Quarterly State Details (Cat. no. 5206.0.40.001), and Australian National Accounts: State Accounts (Cat. no. 5220.0).

4

STATE ACCOUNTS AT CHAIN VOLUME MEASURES(a)

Period	Final consumption expenditure			Gross fixed capital formation		State final demand	Gross State product
	Households	General government	Private	Public	Public		
ANNUAL (\$m)							
1996-97	23 248	7 513	5 824	1 439		38 020	37 264
1997-98	24 390	7 907	6 714	1 309		40 320	39 652
1998-99	25 200	7 841	6 066	1 386		40 493	40 493
QUARTERLY, TREND (\$m)							
1998-99							
December	6 237	2 070	1 477	348		10 132	n.a.
March	6 236	2 061	1 503	361		10 161	n.a.
June	6 255	2 064	1 571	394		10 283	n.a.
1999-00							
September	6 316	2 109	1 649	422		10 492	n.a.
December	6 397	2 173	1 705	435		10 708	n.a.
March	6 479	2 209	1 738	432		10 872	n.a.

(a) Reference year for chain volume measures is 1996-97.

Source: Australian National Accounts: Quarterly State Details (Cat. no. 5206.0.40.001), and Australian National Accounts: State Accounts (Cat. no. 5220.0).

5

MERCHANDISE EXPORTS, BY SELECTED COMMODITY GROUP(a)

<i>Period</i>	<i>Meat and meat preparations</i>	<i>Wheat(b)</i>	<i>Wine</i>	<i>Wool and sheepskins (excl. wool tops)</i>	<i>Machinery</i>	<i>Metals and metal manufactures</i>	<i>Fish and crustaceans</i>	<i>Road vehicles, parts and accessories</i>	<i>Petroleum and petroleum products</i>	<i>Total</i>
	\$'000	\$'000	\$'000	\$'000	\$'000	\$'000	\$'000	\$'000	\$'000	\$'000
1997-98	218 252	446 839	564 093	287 824	401 749	574 407	236 353	479 396	237 824	4 986 705
1998-99	198 541	567 812	693 733	212 226	384 702	543 675	252 592	651 949	154 425	5 332 300
1999-00	159 879	473 086	898 370	178 919	353 080	804 221	393 591	883 853	218 466	6 179 549
1998-99										
January	12 512	90 494	39 131	10 991	20 692	32 232	20 641	17 334	3 544	376 770
February	19 308	41 388	50 984	18 309	29 475	47 209	20 912	23 346	8 932	410 680
March	17 378	66 757	66 841	16 754	29 501	58 757	18 415	102 037	11 714	553 792
April	12 617	34 910	56 286	10 319	41 314	39 915	20 369	26 728	4 080	382 320
May	16 087	37 891	69 509	20 656	34 714	57 271	20 328	28 067	19 003	461 901
June	13 274	44 468	77 522	13 202	29 477	50 927	17 824	90 638	14 832	478 816
1999-00										
July	11 764	27 968	60 499	10 288	29 602	53 204	30 310	41 016	16 088	441 950
August	7 777	34 802	81 661	12 680	27 056	61 903	81 050	97 193	2 428	543 384
September	10 284	52 367	100 662	15 114	37 219	57 003	57 030	59 781	17 842	556 471
October	12 408	50 939	96 166	16 327	29 940	69 728	28 318	65 627	28 792	546 911
November	13 487	7 829	54 034	16 631	31 130	70 076	26 161	141 478	3 439	502 796
December	12 091	73 023	50 412	13 568	26 925	71 545	21 104	179 287	19 102	618 059
January	11 676	42 774	46 018	9 949	20 727	49 340	24 759	24 514	17 151	381 475
February	15 413	42 027	61 518	14 350	26 925	77 412	19 371	44 842	26 572	499 382
March	16 201	37 670	81 909	15 355	31 158	74 430	21 515	80 430	26 155	558 928
April	15 688	48 190	81 640	13 592	26 261	69 225	28 337	21 432	27 316	483 345
May	16 902	31 684	93 763	19 980	33 444	69 203	26 958	64 966	3 473	487 468
June	16 187	23 814	90 088	21 086	32 693	81 152	28 679	63 286	30 107	559 378

(a) Restrictions are placed on the release of statistics for certain commodities for reasons of confidentiality. These restrictions do not affect total export and import figures, but they can affect some items within commodity, industry and country tables. See *International Trade* (Cat. no. 5422.0), Explanatory Notes, paragraph 30, for more details.

(b) For data on Cereals and cereal preparations see page 2, Changes in this issue.

Source: Unpublished data, *International Merchandise Trade*.

6

MERCHANDISE EXPORTS, BY SELECTED COUNTRIES

Period	European Union						East Asia			
	United States of America	Middle East	United Kingdom	Total European Union	New Zealand	Japan	China	Hong Kong	ASEAN	Total East Asia
	\$'000	\$'000	\$'000	\$'000	\$'000	\$'000	\$'000	\$'000	\$'000	\$'000
1997-98	632 203	389 766	424 251	849 932	354 698	612 475	331 489	239 652	491 573	2 023 385
1998-99	705 166	640 412	476 340	928 468	385 513	625 530	302 776	219 536	432 730	1 898 837
1999-00	953 509	724 675	624 888	1 071 729	445 832	785 918	314 533	255 554	490 493	2 293 849
1998-99										
January	25 730	91 222	27 983	62 250	20 709	26 002	31 133	16 119	19 791	114 037
February	33 065	39 031	32 558	78 213	29 340	52 745	20 986	21 834	35 769	157 442
March	83 983	87 010	48 802	96 079	33 812	62 499	29 294	17 954	47 444	189 083
April	45 095	34 532	36 364	73 442	29 851	33 779	17 751	15 279	41 873	133 758
May	50 172	41 235	44 124	95 851	31 605	73 576	29 447	16 125	35 990	189 921
June	98 299	38 031	49 708	80 488	47 036	54 060	22 775	13 782	47 319	159 292
1999-00										
July	54 593	31 570	39 127	80 383	39 266	72 253	16 859	15 394	27 998	162 944
August	87 288	50 910	58 622	101 012	46 379	104 035	18 156	13 326	36 480	202 395
September	57 055	41 511	73 174	112 056	44 181	94 402	31 426	22 587	43 854	214 622
October	46 383	80 029	78 330	117 681	49 572	62 459	32 529	25 385	40 020	203 079
November	102 334	82 481	33 828	67 501	40 223	36 313	31 053	22 591	46 641	169 668
December	147 939	130 968	36 575	76 383	37 356	40 148	14 457	27 195	40 711	171 092
January	39 773	53 129	30 102	63 379	22 005	37 506	20 084	29 260	25 167	142 744
February	55 875	71 510	42 617	73 030	44 832	48 221	41 265	20 241	38 645	206 500
March	131 296	24 442	53 269	85 668	37 877	65 468	43 237	26 342	41 680	215 768
April	68 378	66 614	58 962	99 714	19 532	62 614	20 958	20 398	39 863	186 745
May	101 094	30 147	64 252	101 195	23 024	53 548	19 215	14 037	48 854	172 911
June	61 501	61 365	56 030	93 725	41 585	108 950	25 295	18 799	60 580	245 383

Source: Unpublished data, International Merchandise Trade.

7

MERCHANDISE EXPORTS, BY INDUSTRY OF ORIGIN(a)

Period	Manufacturing								Total
	Agriculture, forestry and fishing(b)	Mining	Food, beverages and tobacco	Petroleum, coal, chemical associated product	Metal product	Machinery and equipment	Other manufacturing	Other industries/confidential	
	\$'000	\$'000	\$'000	\$'000	\$'000	\$'000	\$'000	\$'000	\$'000
1997-98	1 188 938	137 851	1 205 265	292 175	615 344	994 597	262 815	289 719	4 986 705
1998-99	1 352 378	73 125	1 282 013	285 053	581 372	1 172 362	264 973	321 024	5 332 300
1999-00	896 509	135 347	1 516 055	369 107	835 718	1 412 333	256 108	758 372	6 179 549
1998-99									
January	164 950	1 112	78 750	13 057	33 004	46 323	18 209	21 366	376 770
February	121 576	9 484	102 252	19 255	49 565	63 070	21 822	23 655	410 680
March	151 531	511	114 334	23 276	63 539	145 427	30 604	24 571	553 792
April	84 375	7 741	105 733	14 469	41 171	79 437	26 041	23 354	382 320
May	110 159	8 781	122 596	30 879	61 320	72 831	24 787	30 548	461 901
June	89 505	3 320	122 939	26 617	54 826	132 292	19 834	29 484	478 816
1999-00									
July	63 729	7 380	120 642	26 813	54 441	84 369	19 700	64 876	441 950
August	67 671	9 096	118 366	14 845	63 726	139 131	23 206	107 342	543 384
September	74 415	1 155	168 993	30 754	60 553	115 282	20 174	85 146	556 471
October	85 540	19 297	143 971	40 142	71 232	110 813	24 368	51 548	546 911
November	41 532	7 771	97 497	16 152	72 647	185 987	22 701	58 511	502 796
December	102 230	23 130	87 043	34 314	75 511	220 588	20 718	54 524	618 059
January	81 352	1 897	92 059	26 226	50 560	54 575	17 884	56 923	381 475
February	69 556	20 910	110 718	39 201	81 114	87 688	21 193	69 001	499 382
March	91 256	1 155	136 226	40 093	77 206	127 314	23 185	62 493	558 928
April	77 625	20 118	140 515	40 372	71 716	62 379	19 803	50 816	483 345
May	73 731	1 208	148 529	16 473	72 947	114 006	20 384	40 190	487 468
June	67 871	22 230	151 497	43 722	84 065	110 201	22 791	57 003	559 378

(a) Restrictions are placed on the release of statistics for certain commodities for reasons of confidentiality. These restrictions do not affect total export and import figures, but they can affect some items within commodity, industry and country tables. See *International Trade* (Cat. no. 5422.0), Explanatory Notes, paragraph 30, for more details.

(b) The latest 12 months of bulk barley exports data—as included in the Agriculture, forestry and fishing group—are confidential. Bulk barley details are only included in the data for earlier periods.

Source: Unpublished data, *International Merchandise Trade*.

8

MERCHANDISE IMPORTS, BY SELECTED COMMODITY GROUP(a)

<i>Period</i>	<i>Food, beverages and tobacco</i>	<i>Petroleum and petroleum products</i>	<i>Chemicals</i>	<i>Textiles</i>	<i>Metals and metal manufactures</i>	<i>Machinery</i>	<i>Road vehicle parts and accessories</i>	<i>Other manufactured goods</i>	<i>Total</i>
	\$'000	\$'000	\$'000	\$'000	\$'000	\$'000	\$'000	\$'000	\$'000
1997-98	148 771	445 218	274 741	93 815	280 562	1 061 260	772 203	739 266	3 940 198
1998-99	162 784	271 492	281 097	96 052	264 732	917 879	812 096	765 643	3 716 152
1999-00	163 508	515 475	263 959	97 084	262 769	1 164 741	834 845	845 993	4 319 351
1998-99									
January	12 745	17 413	35 290	6 819	21 549	79 714	58 788	59 244	306 685
February	11 547	31 555	29 787	7 365	19 645	64 860	68 686	56 383	302 155
March	16 139	26 963	29 953	7 757	23 301	71 981	77 956	79 638	348 969
April	12 634	25 605	34 572	8 490	22 564	67 602	73 535	57 729	314 900
May	9 387	27 892	24 936	8 295	18 148	75 202	49 320	55 967	283 113
June	12 748	22 304	15 461	7 490	19 168	72 618	67 354	71 583	301 272
1999-00									
July	14 835	58 324	16 552	8 454	19 097	82 015	78 647	64 793	355 421
August	12 100	27 827	14 014	8 245	19 964	80 979	72 125	65 350	311 678
September	15 546	92	17 923	8 064	20 812	104 051	68 466	73 988	320 308
October	16 262	42 269	14 472	7 989	19 249	81 573	71 316	69 205	332 726
November	19 706	81 584	18 593	7 803	20 635	75 748	59 410	73 473	369 548
December	15 031	73 789	25 809	6 376	22 494	120 636	49 107	69 831	395 215
January	11 042	40 216	27 862	6 948	20 703	71 575	56 419	61 667	309 362
February	13 633	36 561	17 170	7 363	22 138	149 008	62 560	74 495	403 840
March	10 534	23 846	36 835	8 792	24 635	100 622	77 585	73 811	376 984
April	8 677	48 856	23 130	9 829	23 748	78 912	63 183	59 870	330 647
May	12 970	150	26 399	8 815	25 248	103 119	93 658	89 480	376 536
June	13 173	81 962	25 199	8 406	24 045	116 504	82 369	70 030	437 086

(a) Restrictions are placed on the release of statistics for certain commodities for reasons of confidentiality. These restrictions do not affect total export and import figures, but they can affect some items within commodity, industry and country tables. See *International Trade* (Cat. no. 5422.0), Explanatory Notes, paragraph 30, for more details.

Source: *Unpublished data, International Merchandise Trade.*

9

TURNOVER OF RETAIL ESTABLISHMENTS, BY INDUSTRY—TREND

Period	Food retailing	Department stores	Clothing and soft good retailing	Household good retailing	Recreational good retailing	Other retailing	Hospitality and services	Total
	\$m	\$m	\$m	\$m	\$m	\$m	\$m	\$m
1998-99								
April	375.2	91.6	50.2	83.2	29.9	83.3	142.9	859.9
May	374.1	91.3	50.9	83.8	30.0	83.9	143.9	859.3
June	373.8	91.3	51.5	85.3	30.0	84.8	144.8	861.7
1999-00								
July	375.1	91.6	52.2	87.4	30.3	86.2	145.9	868.2
August	377.2	92.2	52.9	89.6	30.8	87.9	147.5	877.6
September	378.8	92.8	53.5	91.1	31.3	89.7	149.8	886.8
October	378.9	93.0	53.5	92.0	31.5	91.3	152.7	893.0
November	377.7	92.7	52.8	92.2	31.5	92.4	155.5	894.8
December	376.7	92.2	51.5	92.1	31.1	93.0	157.6	894.1
January	377.2	91.8	50.1	92.2	30.4	93.1	158.1	892.8
February	379.8	91.9	48.8	92.7	29.5	92.9	157.1	892.6
March	383.7	92.6	48.0	93.7	28.5	92.3	155.2	894.1
April	388.1	93.8	47.6	94.8	27.6	91.7	153.1	896.7
May	392.1	95.1	47.5	95.7	26.7	91.1	151.0	899.4
June	(a)395.7	(a)96.5	(a)47.5	(a)96.8	26.0	(a)90.6	(a)149.2	903.3

(a) Spending prior to the introduction of the GST resulted in unusually high June 2000 estimates for some industries. As this increase in spending is one-off rather than part of the underlying behaviour of the series, an adjustment for these unusually high estimates has been applied in calculating the trend estimates. For more information see *Retail Trade, Australia, June 2000* (Cat. no. 8501.0).

Source: *Retail Trade, Australia* (Cat. no. 8501.0).

10

NEW MOTOR VEHICLE REGISTRATIONS, BY TYPE OF VEHICLE

Period	Original			Seasonally adjusted			Trend estimate		
	Passenger vehicles	Other vehicles	Total	Passenger vehicles	Other vehicles	Total	Passenger vehicles	Other vehicles	Total
1998-99									
April	3 256	559	3 815	3 488	601	4 089	3 564	603	4 167
May	3 294	672	3 966	3 459	619	4 078	3 476	620	4 096
June	3 838	856	4 694	3 386	621	4 007	3 347	646	3 993
1999-00									
July	3 429	689	4 118	3 274	718	3 992	3 222	671	3 893
August	3 149	702	3 851	3 047	741	3 788	3 148	689	3 837
September	3 120	531	3 651	3 039	559	3 598	3 149	695	3 844
October	2 983	676	3 659	3 027	797	3 824	3 210	690	3 900
November	3 656	679	4 335	3 423	684	4 107	3 276	676	3 952
December	3 729	694	4 423	3 553	627	4 180	3 327	655	3 982
January	2 462	464	2 926	3 265	617	3 882	3 320	634	3 954
February	3 269	599	3 868	3 315	635	3 950	3 237	620	3 857
March	3 289	705	3 994	3 007	622	3 629	3 102	614	3 716
April	2 400	500	2 900	2 825	564	3 389	2 951	617	3 568
May	3 171	725	3 896	3 210	625	3 835	2 798	627	3 425
June	2 721	942	3 663	2 262	697	2 959	2 659	640	3 299

Source: *New Motor Vehicle Registrations, Australia, Preliminary* (Cat. no. 9301.0) and unpublished data.

11

ACTUAL PRIVATE NEW CAPITAL EXPENDITURE, BY SELECTED INDUSTRY AND TYPE OF ASSET

Period	Industry			Total	Type of asset	
	Mining	Manufacturing	Other selected industries		New buildings and structures	Equipment, plant and machinery
ANNUAL (\$m)						
1996-97	489	840	1 251	2 580	595	1 985
1997-98	1 366	820	1 006	3 192	792	2 400
1998-99	508	776	992	2 277	529	1 747
QUARTERLY, ORIGINAL (\$m)						
1998-99						
December	150	248	266	664	171	493
March	98	187	220	505	97	407
June	136	188	180	504	103	401
1999-00						
September	71	163	391	625	125	500
December	50	232	249	530	117	413
March	55	208	340	602	157	445
QUARTERLY, TREND (\$m)						
1998-99						
December	n.a.	n.a.	n.a.	584	144	440
March	n.a.	n.a.	n.a.	555	117	438
June	n.a.	n.a.	n.a.	551	106	445
1999-00						
September	n.a.	n.a.	n.a.	565	113	452
December	n.a.	n.a.	n.a.	587	134	453
March	n.a.	n.a.	n.a.	621	156	465

Source: State Estimates of Private New Capital Expenditure (Cat. no. 5646.0).

12

TOURIST ACCOMMODATION

Period	Hotels with facilities				Motels and guesthouses				Serviced apartments			
	Estab-lish-ments	Guest rooms	Room occu-pancy	Takings	Estab-lish-ments	Guest rooms	Room occu-pancy	Takings	Estab-lish-ments	Guest rooms	Room occu-pancy	Takings
	no.	no.	%	\$'000	no.	no.	%	\$'000	no.	no.	%	\$'000
1997-98												
March	59	3 808	60.1	20 851	149	5 181	57.4	19 247	19	726	67.6	3 913
June	61	4 048	53.6	19 048	147	5 136	52.8	17 773	19	750	59.4	3 551
1998-99												
September	61	4 048	57.2	21 068	146	5 112	51.7	17 805	19	740	56.3	3 667
December	61	4 053	63.0	24 954	146	5 135	58.1	19 990	22	888	66.0	4 884
March	61	4 053	59.6	22 181	145	5 119	55.3	18 793	22	888	65.8	4 516
June	62	4 095	58.6	22 362	146	5 189	51.5	18 140	22	889	54.1	3 947
1999-00												
September	62	3 988	58.0	20 959	146	5 175	50.7	17 812	23	1 084	60.2	5 265
December	62	4 090	61.6	24 619	146	5 166	55.1	19 928	26	1 207	61.5	6 462
March	62	4 065	60.1	23 738	146	5 168	55.3	19 956	26	1 213	62.6	6 739

Source: Tourist Accommodation, Australia (Cat. no. 8635.0).

Period	Houses		Total dwelling units		New residential building \$m	Alterations and additions to residential building \$m	Total residential building \$m	Non-residential building \$m	Total building \$m
	Private sector	Total	Private sector	Total					
	no.	no.	no.	no.					
ANNUAL									
1997-98	6 187	6 380	6 997	7 215	630.2	127.8	758.0	602.2	1 360.1
1998-99	6 568	6 777	7 697	7 928	775.6	144.0	919.6	670.9	1 590.5
1999-00	8 290	8 392	9 804	9 913	1 016.8	174.9	1 191.7	585.7	1 777.4
MONTHLY, ORIGINAL									
1998-99									
June	652	673	814	845	72.3	16.5	88.8	31.7	120.5
1999-00									
July	615	620	837	842	101.8	14.1	115.9	31.7	147.6
August	663	669	765	771	76.4	15.5	91.9	37.5	129.4
September	731	772	866	907	88.5	15.9	104.3	49.2	153.5
October	667	681	777	794	79.6	14.0	93.7	31.6	125.2
November	892	904	981	993	101.4	15.5	116.9	36.2	153.1
December	736	736	842	842	85.8	13.4	99.2	129.5	228.8
January	649	649	712	712	69.7	11.4	81.1	18.5	99.6
February	836	838	1 071	1 073	111.8	18.7	130.5	43.3	173.9
March	807	809	972	974	99.7	15.8	115.5	59.0	174.5
April	561	565	635	643	64.9	11.8	76.7	58.7	135.3
May	616	625	755	764	73.4	17.3	90.7	66.1	156.8
June	517	524	591	598	63.9	11.5	75.4	24.3	99.7
MONTHLY, TREND									
1998-99									
June	574	593	685	706	71.5	13.9	85.4	35.1	120.5
1999-00									
July	595	613	710	730	74.3	14.1	88.5	35.5	123.9
August	630	648	744	764	77.6	14.1	91.8	37.1	128.8
September	683	700	795	813	81.8	14.1	95.9	37.7	133.6
October	746	761	856	872	86.8	14.1	100.9	37.5	138.4
November	804	815	920	931	92.1	14.4	106.5	36.8	143.3
December	842	849	970	977	96.8	14.8	111.6	37.6	149.2
January	841	844	983	986	98.6	15.3	113.9	39.9	153.8
February	802	804	950	953	96.4	15.5	112.0	43.2	155.2
March	738	741	882	886	90.7	15.5	106.2	46.9	153.0
April	665	669	798	803	83.2	15.1	98.3	49.5	147.8
May	592	598	709	716	74.9	14.6	89.5	50.6	140.2
June	526	533	624	632	66.9	14.1	81.0	50.4	131.4

Source: Building Approvals, South Australia (Cat. no. 8731.4); Unpublished data, Building Approvals.

14

BUILDING COMMENCEMENTS

Period	New houses		Total dwelling units(a)		New residential building \$m	Alterations and additions to residential building \$m	Non-residential building		
	Private sector	Total	Private sector	Total			Private sector	Total	Total building
	no.	no.	no.	no.			\$m	\$m	\$m
1996-97	5 057	5 112	5 727	5 789	496.3	116.9	423.4	568.7	1 181.9
1997-98	5 628	5 823	6 437	6 653	614.7	134.5	426.4	550.7	1 299.9
1998-98	6 091	6 296	7 186	7 416	771.3	139.7	400.1	623.7	1 534.7
1997-98									
March	1 409	1 436	1 617	1 648	150.1	38.7	68.1	95.2	284.0
June	1 334	1 397	1 490	1 558	152.9	30.4	134.5	169.1	352.4
1998-99									
September	1 563	1 610	1 927	1 980	184.7	35.0	89.5	131.1	350.7
December	1 644	1 699	1 891	1 965	231.1	34.3	94.6	134.8	400.2
March	1 293	1 326	1 612	1 645	171.6	32.7	145.6	235.5	439.8
June	1 591	1 661	1 756	1 826	183.9	37.8	71.0	122.9	344.6
1999-00									
September	1 752	1 792	2 116	2 166	251.2	42.6	84.1	109.3	403.1
December	1 947	2 007	2 264	2 327	250.9	45.2	92.7	132.2	428.3
March	2 044	2 054	2 393	2 403	269.8	47.4	67.1	179.1	496.2

(a) Includes conversions.

Source: *Building Activity, South Australia* (Cat. no. 8752.4).

VALUE OF BUILDING WORK DONE AND COMPLETED DURING PERIOD

Period	New houses		New residential building			Non-residential building		Total building		
	Private sector	Total	Private sector	Total	Alterations and additions to residential building	Total residential building	Private sector	Total	Private sector	Total
	\$m	\$m	\$m	\$m	\$m	\$m	\$m	\$m	\$m	\$m
VALUE OF BUILDING WORK DONE										
1996-97	433.9	438.9	485.2	490.4	122.3	612.7	444.2	663.3	1 049.8	1 275.9
1997-98	522.9	535.7	590.4	605.4	131.6	737.0	538.9	685.0	1 259.3	1 422.0
1998-99	599.4	614.6	720.8	737.7	147.7	885.4	417.1	571.6	1 283.8	1 457.0
1997-98										
March	130.5	132.8	147.4	149.9	31.4	181.3	119.1	149.2	297.7	330.4
June	135.9	139.4	154.5	158.5	31.2	189.7	112.3	151.5	297.9	341.1
1998-99										
September	150.9	155.8	175.8	180.9	39.8	220.7	135.5	162.9	350.5	383.6
December	151.4	155.1	185.6	189.9	40.3	230.1	121.5	160.4	347.0	390.6
March	142.4	144.9	169.5	172.5	33.2	205.7	87.5	131.1	290.1	336.8
June	154.7	158.9	189.9	194.4	34.4	228.9	72.6	117.2	296.2	346.1
1999-00										
September	166.8	171.9	212.6	218.4	41.3	259.8	116.7	171.5	369.4	431.3
December	187.5	192.0	227.3	232.1	46.8	278.9	101.0	149.2	374.3	428.1
March	193.3	196.4	235.6	238.7	45.4	284.1	85.6	142.3	366.1	426.5
VALUE OF BUILDING WORK COMPLETED										
1996-97	408.9	414.1	461.8	467.1	123.6	590.7	328.2	584.3	911.8	1 175.0
1997-98	504.1	514.7	561.8	574.7	125.0	699.7	571.2	744.0	1 256.3	1 443.7
1998-99	600.6	614.8	700.0	715.2	153.2	868.4	505.3	639.4	1 356.8	1 507.8
1997-98										
March	112.2	114.5	126.4	129.3	26.9	156.3	81.7	124.3	235.0	280.5
June	125.3	128.1	136.0	139.8	24.6	164.4	110.1	148.0	270.6	312.5
1998-99										
September	148.1	152.4	161.1	165.8	36.1	201.9	68.2	106.7	264.9	308.6
December	168.4	174.1	190.2	196.1	49.3	245.4	174.9	203.3	414.1	448.7
March	145.1	147.6	180.1	183.0	36.7	219.7	161.3	207.4	377.8	427.1
June	139.0	140.7	168.6	170.3	31.0	201.4	101.0	122.0	300.0	323.3
1999-00										
September	148.9	154.7	170.2	177.7	38.5	216.2	67.9	104.1	275.4	320.2
December	190.6	195.1	221.7	226.5	45.5	272.0	124.7	161.8	391.3	433.8
March	153.5	157.6	175.2	179.3	42.0	221.3	92.8	138.5	309.1	359.7

Source: Building Activity, South Australia (Cat. no. 8752.4).

<i>Period</i>	<i>Pigmeat</i>	<i>Beef</i>	<i>Mutton</i>	<i>Lamb</i>	<i>Gas</i>	<i>Coal(a)</i>	<i>Sawn timber(b)</i>
	<i>tonnes</i>	<i>tonnes</i>	<i>tonnes</i>	<i>tonnes</i>	<i>m MJ</i>	<i>tonnes</i>	<i>m³</i>
1997-98	28 489	80 924	58 554	38 224	78 441	2 815 870	361 257
1998-99	30 864	62 266	48 029	44 173	86 228	2 686 069	374 590
1999-00	31 927	78 001	28 970	56 668	87 442	2 920 944	425 549
1997-98							
June	7 923	18 786	10 752	11 106	19 404	733 804	96 223
1998-99							
September	6 782	15 160	10 348	10 738	23 573	748 575	95 339
December	7 269	17 609	15 737	10 997	19 718	671 040	94 578
March	8 031	14 780	14 029	10 101	19 343	826 095	88 282
June	8 782	14 717	7 915	12 337	23 594	440 359	96 391
1999-00							
September	7 294	17 107	5 654	11 492	22 162	783 227	111 075
December	7 504	18 401	8 714	11 944	20 992	684 296	93 802
March	8 245	21 743	8 810	14 475	21 790	747 472	112 949
June	8 884	20 750	5 792	18 757	22 498	705 949	107 723

(a) Data supplied by Flinders Power Pty Ltd.

(b) From Australian softwood logs only.

Source: *Livestock Products, Australia (Cat. no. 7215.0); Unpublished data, Manufacturing Production.*

17

CONSUMER PRICE INDEX, BY GROUP—ADELAIDE

<i>Period</i>	<i>Food</i>	<i>Clothing</i>	<i>Housing</i>	<i>Household equipment and operation</i>	<i>Transport- ation</i>	<i>Tobacco and alcohol</i>	<i>Health and personal care</i>	<i>Recreation and education</i>	<i>All groups</i>
ANNUAL AVERAGE (1989-90 = 100.0)									
1997-98	122.7	105.7	90.7	113.7	122.1	169.3	165.4	124.7	121.6
1998-99	127.7	105.0	92.0	113.3	121.6	171.8	164.2	127.5	123.2
1999-00	130.8	103.3	97.0	112.9	129.4	179.1	158.7	129.6	126.3
QUARTERLY (1989-90 = 100.0)									
1998-99									
March	128.0	103.7	92.2	112.3	120.9	171.8	156.6	128.6	122.7
June	128.8	105.7	92.8	113.2	122.4	173.3	157.5	128.9	123.6
1999-00									
September	129.7	104.8	95.0	112.5	127.8	174.4	157.6	129.8	125.1
December	130.4	102.5	96.9	112.7	127.4	177.8	157.1	129.8	125.7
March	131.2	101.9	97.9	112.9	130.4	181.6	159.6	129.4	126.8
June	131.9	104.0	98.3	113.4	131.9	182.5	160.4	129.5	127.6
PERCENTAGE CHANGE FROM SAME QUARTER OF PREVIOUS YEAR									
1998-99									
March	4.1	-1.3	2.6	-1.2	-0.2	0.6	-6.7	2.5	0.8
June	4.1	-0.2	2.8	-0.6	0.5	1.6	-7.9	2.2	1.0
1999-00									
September	3.0	-0.5	4.2	-1.1	4.9	2.2	-8.3	3.1	1.7
December	1.7	-2.8	5.4	-1.1	5.0	3.7	-8.1	2.6	1.7
March	2.5	-1.7	6.2	0.5	7.9	5.7	1.9	0.6	3.3
June	2.4	-1.6	5.9	0.2	7.8	5.3	1.8	0.5	3.2
PERCENTAGE CHANGE FROM PREVIOUS QUARTER									
1998-99									
March	-0.2	-1.6	0.3	-1.4	-0.3	0.2	-8.4	1.7	-0.7
June	0.6	1.9	0.7	0.8	1.2	0.9	0.6	0.2	0.7
1999-00									
September	0.7	-0.9	2.4	-0.6	4.4	0.6	0.1	0.7	1.2
December	0.5	-2.2	2.0	0.2	-0.3	1.9	-0.3	0.0	0.5
March	0.6	-0.6	1.0	0.2	2.4	2.1	1.6	-0.3	0.9
June	0.5	2.1	0.4	0.4	1.2	0.5	0.5	0.1	0.6

Source: Consumer Price Index (Cat. no. 6401.0).

18

ESTIMATED RESIDENT POPULATION AND COMPONENTS OF POPULATION CHANGE

Period	Net migration			Total increase	Population at end of period
	Natural increase	Interstate	Overseas(a)		
1996-97	6 951	-4 628	3 104	5 427	1 479 680
1997-98	6 602	-3 254	3 390	7 638	1 486 418
1998-99	6 593	-2 869	2 932	6 656	1 493 074
March	2 074	-591	1 291	2 744	1 485 206
June	1 471	-810	551	1 212	1 486 418
1998-99					
September	1 188	-422	778	1 544	1 487 962
December	1 775	-901	707	1 581	1 489 543
March	1 917	-682	1 149	2 384	1 491 927
June	1 713	-864	298	1 147	1 493 074
1999-00					
September	1 515	-600	784	1 699	1 494 773
December	1 540	-1 291	808	1 057	1 495 830

(a) Includes category jumping.

Source: Australian Demographic Statistics (Cat. no. 3101.0).

19

BIRTHS, DEATHS, MARRIAGES AND DIVORCES

Period	Registrations			
	Births	Deaths	Marriages	Divorces
1996-97	18 576	11 625	8 003	4 362
1997-98	18 330	11 728	7 988	4 113
1998-99	18 277	11 684	8 033	4 201
1997-98				
March	4 599	2 525	2 405	1 016
June	4 479	3 008	1 824	1 005
1998-99				
September	4 648	3 460	1 294	1 053
December	4 545	2 770	2 499	1 085
March	4 490	2 573	2 471	929
June	4 594	2 881	1 769	1 134
1999-00				
September	4 722	3 207	1 259	1 058
December	4 139	2 599	2 737	1 190

Source: Australian Demographic Statistics (Cat. no. 3101.0).

CIVILIAN LABOUR FORCE STATUS(a)

Period	Employed full-time		Employed part-time		Total employed		Unemployed		Labour force	
	Males	Females	Males	Females	Males	Females	Males	Females	Males	Females
ANNUAL AVERAGE ('000)										
1997-98	317.5	145.9	48.8	136.4	366.3	282.3	42.1	28.8	408.4	311.0
1998-99	319.4	148.1	49.2	136.2	368.6	284.3	40.2	26.6	408.8	310.9
1999-00	321.9	152.4	55.9	141.4	377.8	293.9	35.3	25.0	413.0	318.9
MONTHLY, ORIGINAL ('000)										
1998-99										
May	318.6	152.9	53.7	132.8	372.3	285.7	36.6	27.2	408.9	312.9
June	319.3	146.3	55.9	141.8	375.3	288.1	31.0	25.0	406.3	313.1
1999-00										
July	320.3	152.1	53.7	137.4	374.0	289.5	30.7	23.6	404.7	313.1
August	315.4	151.1	56.0	137.4	371.3	288.5	36.5	24.5	407.9	313.0
September	317.6	150.9	56.6	144.0	374.2	294.9	34.1	26.4	408.3	321.3
October	313.7	153.7	59.4	138.8	373.1	292.5	37.4	25.0	410.5	317.5
November	317.5	153.7	55.0	146.7	372.5	300.4	34.4	21.5	406.8	321.9
December	326.8	160.3	59.7	145.3	386.6	305.6	35.0	24.2	421.6	329.8
January	317.4	147.6	56.7	144.4	374.1	292.1	36.8	24.9	410.9	317.0
February	328.4	154.9	52.6	136.7	381.0	291.5	38.1	30.4	419.2	322.0
March	327.6	152.5	55.8	141.7	383.4	294.2	33.0	26.8	416.3	321.0
April	325.6	149.9	56.9	143.9	382.5	293.9	35.2	25.4	417.7	319.3
May	323.3	148.0	55.8	142.8	379.1	290.9	38.3	24.9	417.4	315.8
June	328.9	154.6	52.1	137.6	380.9	292.2	33.5	22.3	414.5	314.6
2000-01										
July	332.2	155.9	52.2	140.8	384.4	296.7	31.3	22.3	415.7	319.0
MONTHLY, TREND ('000)										
1998-99										
May	320.9	150.8	51.5	136.8	372.4	287.6	35.5	25.8	407.9	313.4
June	319.7	151.3	53.2	137.0	372.9	288.3	34.9	25.8	407.8	314.1
1999-00										
July	318.2	151.8	55.0	137.5	373.2	289.3	34.6	25.8	407.8	315.1
August	316.8	152.3	56.5	138.6	373.3	290.9	34.7	25.7	408.0	316.6
September	315.8	152.6	57.7	140.2	373.5	292.8	34.9	25.3	408.4	318.1
October	315.8	152.8	58.3	142.1	374.1	294.9	35.1	24.9	409.2	319.8
November	316.9	152.9	58.5	143.5	375.4	296.4	35.0	24.6	410.4	321.0
December	319.2	152.6	58.1	144.6	377.3	297.2	34.8	24.6	412.1	321.8
January	322.1	152.1	57.1	144.7	379.2	296.8	34.7	24.9	413.9	321.7
February	324.9	151.7	55.8	144.0	380.7	295.7	34.9	25.1	415.6	320.8
March	327.0	151.6	54.6	142.7	381.6	294.3	35.3	25.3	416.9	319.6
April	328.3	152.0	53.7	141.3	382.0	293.3	35.7	25.1	417.7	318.4
May	329.1	152.8	53.1	140.2	382.2	293.0	35.9	24.7	418.1	317.7
June	329.6	153.6	52.7	139.6	382.3	293.2	36.0	24.2	418.3	317.4
2000-01										
July	329.9	154.9	52.7	138.9	382.6	293.8	35.9	23.8	418.5	317.6

(a) Population aged 15 and over.

Source: Labour Force, Australia, Preliminary (Cat. no. 6202.0).

21

CIVILIAN LABOUR FORCE, UNEMPLOYMENT AND PARTICIPATION RATES(a)

Period	Civilian population			Unemployment rate			Participation rate		
	Males aged 15 and over	Females aged 15 and over	Persons aged 15-19	Males all ages	Females all ages	Persons all ages	Males	Females	Persons
	'000	'000	%	%	%	%	%	%	%
ANNUAL AVERAGE									
1997-98	583.9	604.5	23.2	10.3	9.2	9.8	70.8	51.5	61.0
1998-99	583.2	609.8	21.7	9.8	8.6	9.3	70.1	51.0	60.3
1999-00	636.8	665.1	22.1	9.2	8.4	8.9	76.2	56.3	65.0
MONTHLY, ORIGINAL									
1998-99									
May	585.0	611.6	24.8	8.9	8.7	8.8	69.9	51.2	60.3
June	585.3	611.9	21.6	7.6	8.0	7.8	69.4	51.2	60.1
1999-00									
July	585.7	612.3	21.4	7.6	7.5	7.6	69.1	51.1	59.9
August	586.0	612.6	22.1	9.0	7.8	8.5	69.6	51.1	60.1
September	586.4	613.0	20.6	8.4	8.2	8.3	69.6	52.4	60.8
October	586.8	613.3	21.1	9.1	7.9	8.6	70.0	51.8	60.7
November	587.1	613.6	22.1	8.5	6.7	7.7	69.3	52.5	60.7
December	587.5	613.8	20.0	8.3	7.3	7.9	71.8	53.7	62.5
January	587.8	614.0	21.8	9.0	7.8	8.5	69.9	51.6	60.6
February	588.1	614.2	23.3	9.1	9.5	9.3	71.3	52.4	61.6
March	588.4	614.4	22.0	7.9	8.4	8.1	70.8	52.3	61.3
April	588.8	614.7	19.3	8.4	8.0	8.2	70.9	51.9	61.2
May	589.2	614.9	19.4	9.2	7.9	8.6	70.8	51.4	60.9
June	589.6	615.2	17.5	8.1	7.1	7.7	70.3	51.1	60.5
2000-01									
July	590.0	615.5	15.1	7.5	7.0	7.3	70.5	51.8	61.0
MONTHLY, TREND									
1998-99									
May	n.a.	n.a.	n.a.	8.7	8.2	8.5	69.7	51.2	60.3
June	n.a.	n.a.	n.a.	8.5	8.2	8.4	69.7	51.3	60.3
1999-00									
July	n.a.	n.a.	n.a.	8.5	8.2	8.4	69.6	51.5	60.4
August	n.a.	n.a.	n.a.	8.5	8.1	8.3	69.6	51.7	60.4
September	n.a.	n.a.	n.a.	8.5	8.0	8.3	69.7	51.9	60.6
October	n.a.	n.a.	n.a.	8.6	7.8	8.2	69.7	52.1	60.7
November	n.a.	n.a.	n.a.	8.5	7.7	8.1	69.9	52.3	60.9
December	n.a.	n.a.	n.a.	8.4	7.7	8.1	70.1	52.4	61.1
January	n.a.	n.a.	n.a.	8.4	7.7	8.1	70.4	52.4	61.2
February	n.a.	n.a.	n.a.	8.4	7.8	8.2	70.7	52.2	61.2
March	n.a.	n.a.	n.a.	8.5	7.9	8.2	70.8	52.0	61.2
April	n.a.	n.a.	n.a.	8.5	7.9	8.3	70.9	51.8	61.2
May	n.a.	n.a.	n.a.	8.6	7.8	8.2	71.0	51.7	61.1
June	n.a.	n.a.	n.a.	8.6	7.6	8.2	71.0	51.6	61.1
2000-01									
July	n.a.	n.a.	n.a.	8.6	7.5	8.1	71.0	51.6	61.1

(a) Population aged 15 and over.

Source: Labour Force, Australia, Preliminary (Cat. no. 6202.0).

AVERAGE WEEKLY EARNINGS OF EMPLOYEES

Period	Males			Females			Persons		
	Full-time adult ordinary time earnings	Full-time adult total earnings	All males total earnings	Full-time adult ordinary time earnings	Full-time adult total earnings	All females total earnings	Full-time adult ordinary time earnings	Full-time adult total earnings	All employees total earnings
ANNUAL AVERAGE (\$ per week)									
1996-97	678.20	735.10	636.90	575.10	589.40	408.70	644.30	687.20	529.80
1997-98	705.60	755.05	646.28	606.05	619.33	438.50	670.53	707.20	545.70
1998-99	741.20	797.55	678.28	627.93	647.28	464.35	699.13	741.70	575.23
QUARTERLY, ORIGINAL (\$ per week)									
1998-99									
19 February	739.90	796.20	677.40	632.00	651.90	466.50	699.60	742.30	574.90
21 May	742.20	796.80	686.30	624.70	648.00	457.30	699.70	742.90	576.10
1999-00									
20 August	742.70	792.00	669.30	631.20	655.70	451.20	702.00	742.20	560.40
19 November	745.30	805.60	697.40	638.70	663.40	453.80	705.70	752.70	572.80
18 February	768.60	821.20	708.30	645.30	656.80	461.30	723.00	760.30	584.50
19 May	77.40	831.30	705.00	651.40	677.20	462.60	726.80	774.80	585.90
QUARTERLY, TREND (\$ per week)									
1998-99									
19 February	743.30	801.00	679.30	628.60	649.60	465.30	701.00	745.00	576.40
21 May	740.70	796.50	677.30	629.00	653.20	458.10	699.90	743.80	570.10
1999-00									
20 August	742.70	796.50	694.00	632.00	655.70	453.80	702.10	744.80	569.00
19 November	751.40	805.40	702.00	637.80	658.80	455.20	709.40	751.50	574.00
18 February	762.10	817.80	707.60	644.00	663.10	458.40	718.60	760.90	579.70
19 May	773.40	831.90	707.60	650.00	669.20	461.70	728.40	772.10	585.10

Source: Average Weekly Earnings, States and Australia (Cat. no. 6302.0).

23

SECURED HOUSING FINANCE COMMITMENTS(a)

Period	Original		Seasonally adjusted		Trend	
	Dwelling units	Value	Dwelling units	Value	Dwelling units	Value
	no.	\$m	no.	\$m	no.	\$m
1998-99						
April	3 162	290	3 138	288	3 166	293
May	3 237	301	3 226	301	3 238	303
June	3 592	342	3 335	321	3 341	318
1999-00						
July	3 397	319	3 502	332	3 474	335
August	3 419	331	3 561	349	3 616	352
September	3 545	349	3 573	354	3 753	367
October	3 708	370	4 106	407	3 863	379
November	4 310	422	4 038	393	3 916	385
December	3 924	390	3 786	363	3 911	385
January	3 154	313	3 806	381	3 847	379
February	3 976	398	3 904	392	3 748	371
March	4 236	417	3 572	350	3 641	362
April	3 099	309	3 368	334	3 546	355
May	4 003	401	3 713	373	3 460	348
June	3 522	355	3 215	331	3 392	344

(a) Excludes alterations and additions. Includes refinancing.

Source: *Housing Finance for Owner Occupation, Australia (Cat. no. 5609.0)*.

24

FINANCE COMMITMENTS

Period	Commercial finance commitments			Personal finance commitments			Total lease finance commitments
	Fixed loan facilities	Revolving credit facilities	Total commercial finance commitments	Fixed loan facilities	Revolving credit facilities	Total personal finance commitments	
	\$m	\$m	\$m	\$m	\$m	\$m	
1998-99							
April	268.6	459.1	727.7	113.0	138.9	251.9	32.8
May	272.4	202.3	474.7	120.9	131.5	252.5	39.3
June	356.6	382.2	738.9	135.0	140.7	275.7	40.6
1999-00							
July	253.4	261.8	515.2	122.6	132.1	254.7	23.4
August	412.9	255.3	668.3	124.3	127.6	251.9	26.6
September	265.9	206.5	472.4	126.6	140.0	266.6	19.8
October	325.5	209.8	535.3	125.0	128.0	253.0	14.7
November	289.4	221.8	511.2	128.9	151.3	280.2	12.7
December	380.7	296.0	676.8	124.7	143.8	268.5	13.4
January	272.3	134.7	407.1	122.6	94.8	217.4	10.2
February	301.4	201.0	502.4	138.4	120.8	259.2	18.0
March	423.5	240.7	664.2	155.3	159.3	314.7	12.3
April	394.7	176.4	571.1	108.2	135.6	243.7	17.7
May	332.5	249.9	582.4	139.5	156.1	295.6	16.7
June	789.6	342.0	1 131.7	153.9	147.0	301.0	17.3

Source: *Unpublished data, PC Ausstats*.

PUBLICATIONS SOURCE INDEX

- (1) *Australian National Accounts, Quarterly State Details*
(Cat. no. 5206.0.40.001)
- (2) *International Merchandise Trade, Australia*
(Cat. no. 5422.0) Quarterly
- (3) *Retail Trade, Australia* (Cat. no. 8501.0) Monthly
- (4) *New Motor Vehicles Registrations, Australia, Preliminary*
(Cat. no. 9301.0) Monthly
- (5) *State Estimates of Private New Capital Expenditure*
(Cat. no. 5646.0) Quarterly
- (6) *Tourist Accommodation, Australia* (Cat. no. 8635.0) Quarterly
- (7) *Building Approvals, Australia* (Cat. no. 8731.0) Monthly
- (8) *Building Activity, Australia* (Cat. no. 8752.0) Quarterly
- (8a) *Building Activity, Australia, Dwelling Unit Commencements, Preliminary* (Cat. no. 8750.0) Quarterly
- (9) *Engineering Construction Activity, Australia*
(Cat. no. 8762.0) Quarterly
- (10) *Manufacturing Production, Australia, Preliminary*
(Cat. no. 8301.0) Quarterly
- (11) *Livestock Products, Australia* (Cat. no. 7215.0) Quarterly
- (12) *Actual and Expected Private Mineral Exploration, Australia*
(Cat. no. 8412.0) Quarterly
- (13) *Consumer Price Index* (Cat. no. 6401.0) Quarterly
- (14) *Price Index of Materials Used in House Building, Six State Capital Cities and Canberra* (Cat. no. 6408.0) Quarterly
- (15) *Price Index of Materials Used in Building Other Than House Building, Six State Capital Cities and Canberra*
(Cat. no. 6407.0) Quarterly
- (16) *House Price Indexes: Eight Capital Cities*
(Cat. no. 6416.0) Quarterly
- (17) *Australian Demographic Statistics* (Cat. no. 3101.0) Quarterly
- (18) *Labour Force, Australia, Preliminary* (Cat. no. 6202.0) Monthly
- (19) *Job Vacancies, Australia* (Cat. no. 6354.0) Quarterly
- (20) *Industrial Disputes, Australia* (Cat. no. 6321.0) Monthly
- (21) Unpublished overseas arrival and departure statistics
- (22) *Average Weekly Earnings, States and Australia*
(Cat. no. 6302.0) Quarterly
- (23) *Wage Cost Index, Australia* (Cat. no. 6345.0) Quarterly
- (24) *Housing Finance for Owner Occupation, Australia*
(Cat. no. 5609.0) Monthly
- (25) Unpublished statistics available from PC AUSSTATS
- (26) *Reserve Bank of Australia Bulletin*

FOR MORE INFORMATION...

- INTERNET* **www.abs.gov.au** the ABS web site is the best place to start for access to summary data from our latest publications, information about the ABS, advice about upcoming releases, our catalogue, and Australia Now—a statistical profile.
- LIBRARY* A range of ABS publications is available from public and tertiary libraries Australia-wide. Contact your nearest library to determine whether it has the ABS statistics you require, or visit our web site for a list of libraries.
- CPI INFOLINE* For current and historical Consumer Price Index data, call 1902 981 074 (call cost 77c per minute).
- DIAL-A-STATISTIC* For the latest figures for National Accounts, Balance of Payments, Labour Force, Average Weekly Earnings, Estimated Resident Population and the Consumer Price Index call 1900 986 400 (call cost 77c per minute).

INFORMATION SERVICE

Data which have been published and can be provided within five minutes are free of charge. Our information consultants can also help you to access the full range of ABS information—ABS user-pays services can be tailored to your needs, time frame and budget. Publications may be purchased. Specialists are on hand to help you with analytical or methodological advice.

- PHONE* **1300 135 070**
- EMAIL* **client.services@abs.gov.au**
- FAX* 1300 135 211
- POST* Client Services, ABS, GPO Box 796, Sydney 1041

WHY NOT SUBSCRIBE?

ABS subscription services provide regular, convenient and prompt deliveries of ABS publications and products as they are released. Email delivery of monthly and quarterly publications is available.

- PHONE* 1300 366 323
- EMAIL* subscriptions@abs.gov.au
- FAX* 03 9615 7848
- POST* Subscription Services, ABS, GPO Box 2796Y, Melbourne 3001



2130740009006
ISSN 1039-8880

RRP \$18.50