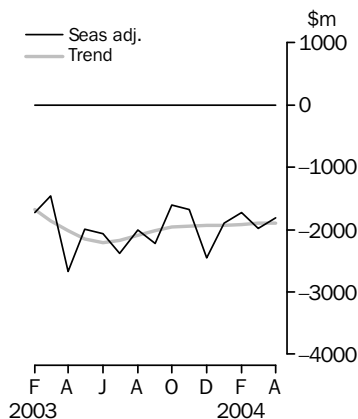


INTERNATIONAL TRADE IN GOODS AND SERVICES

AUSTRALIA

EMBARGO: 11.30AM (CANBERRA TIME) MON 31 MAY 2004

Balance on goods and services



KEY FIGURES

	February 2004	March 2004	April 2004	Mar 04 to Apr 04
	\$m	\$m	\$m	% change
TREND				
Balance on goods & services	-1 921	-1 898	-1 895	..
Credits (exports of goods & services)	11 886	11 987	12 082	1
Debits (imports of goods & services)	13 807	13 885	13 977	1
SEASONALLY ADJUSTED				
Balance on goods & services	-1 728	-1 986	-1 808	..
Credits (exports of goods & services)	11 683	11 767	12 446	6
Debits (imports of goods & services)	13 411	13 753	14 254	4

.. not applicable

KEY POINTS

TREND ESTIMATES

- The provisional trend estimate of the balance on goods and services was a deficit of \$1,895m in April 2004, a decrease of \$3m on the deficit in March.
- Goods and services credits rose \$95m (1%) to \$12,082m. Goods and services debits rose \$92m (1%) to \$13,977m.

SEASONALLY ADJUSTED ESTIMATES

- In seasonally adjusted terms, the balance on goods and services was a deficit of \$1,808m in April, a decrease of \$178m on the deficit in March.
- Goods and services credits rose \$679m (6%) to \$12,446m, with goods credits up \$685m (8%) and services credits down \$6m. Non-rural and other goods rose \$428m (6%) and rural goods rose \$257m (13%).
- Goods and services debits rose \$501m (4%) to \$14,254m, with goods debits up \$515m (5%) and services debits down \$14m. Intermediate and other goods rose \$221m (5%), consumption goods rose \$192m (5%) and capital goods rose \$102m (4%).

ORIGINAL ESTIMATES

- In original terms, the April balance on goods and services was a deficit of \$1,817m, a decrease of \$432m on the deficit in March. Goods and services debits fell \$585m (4%), while goods and services credits fell \$153m (1%).
- In the ten months to April, exports of non-rural and other goods were down \$6.7b (9%) and rural goods were down \$2.6b (12%) on the corresponding period in 2002-03.

INQUIRIES

- For further information about these and related statistics, contact the National Information and Referral Service on 1300 135 070 or Artur Andrysiak on Canberra (02) 6252 6792.

NOTES

FORTHCOMING ISSUES

<i>ISSUE</i>	<i>RELEASE DATE</i>
May 2004	29 June 2004
June 2004	29 July 2004
July 2004	31 August 2004
August 2004	29 September 2004
September 2004	1 November 2004
October 2004	2 December 2004



CHANGES TO FORTHCOMING ISSUES

The May 2004 issue of this publication will contain an additional table which will provide the seasonally adjusted and trend estimates for services credits and debits. The additional table will be inserted as Table 6, which will result in the existing table numbers (Tables 6 through to 11) in this publication and in the electronic release of this publication to be re-numbered as Tables 7 through to 12.

A prototype of the new table is available on the ABS web site <<http://www.abs.gov.au>>.

To access this table on the web site select:

Main Features then *5368.0* then *April 2004*

CAUTIONARY NOTE

The tables in this publication are presented on two bases. Tables 1-6 contain estimates of Australia's international trade in goods and services which have been adjusted for coverage, valuation and timing to a balance of payments basis. Tables 7-10 contain estimates of merchandise exports and imports based on Australian Customs Service records. Paragraph 5 of the Explanatory Notes provides an explanation of the difference between these bases.

Dennis Trewin
Australian Statistician

CONTENTS

page

Tables on AusStats	4
--------------------	---

ANALYSIS

Analysis and comments	5
-----------------------	---

TABLES

INTERNATIONAL TRADE IN GOODS AND SERVICES - BALANCE OF PAYMENTS BASIS

1 Goods and services, summary, seasonally adjusted and trend	9
2 Goods and services, summary, original	10
3 Goods credits, original	11
4 Goods debits, original	12
5 Services, summary, original	13
6 Services, original, quarterly	14

INTERNATIONAL MERCHANDISE TRADE - RECORDED TRADE BASIS

7 International merchandise exports, by commodity	15
8 International merchandise imports, by commodity	18
9 International merchandise trade, by country and country groups	21
10 International merchandise trade, by state	22

OTHER TABLES

11 Period average exchange rates per Australian Dollar	23
---	----

OTHER INFORMATION

Explanatory notes	24
Appendix – Related articles	27

TABLES ON AUSSTATS

TABLES AVAILABLE ON AUSSTATS

Data available on the ABS web site <<http://www.abs.gov.au>> includes:

- longer time series of all tables contained in this publication
- additional tables listed below:

12 Merchandise exports by Broad Economic Category (BEC)

13 Merchandise exports by industry of origin (ANZSIC)

14 Merchandise imports by Broad Economic Category (BEC)

15 Merchandise imports by Balance of Payments Broad Economic Category (BoPBEC)

16 Merchandise imports by industry of origin (ANZSIC)

17 Merchandise exports, state by country and country groups

18 Merchandise imports, state by country and country groups

19 Monthly forward seasonal adjustment factors

ANALYSIS AND COMMENTS

BALANCE ON GOODS AND SERVICES

The trend estimate of the balance on goods and services in April 2004 was a deficit of \$1,895m, a decrease of \$3m on the deficit in March.

In seasonally adjusted terms, the balance on goods and services in April 2004 was a deficit of \$1,808m, a decrease of \$178m on the deficit in March.

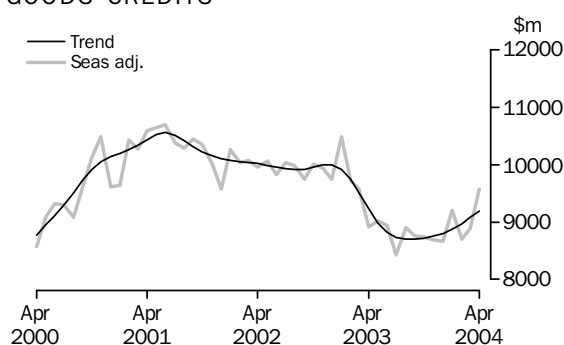
EXPORTS OF GOODS AND SERVICES

The trend estimate of goods and services credits rose \$95m (1%) in April to \$12,082m.

In seasonally adjusted terms, goods and services credits rose \$679m (6%) in April to \$12,446m. Non-rural and other goods rose \$428m (6%), rural goods rose \$257m (13%), while services credits fell \$6m.

Exports of goods

GOODS CREDITS



RURAL GOODS

The trend estimate of rural goods exports rose \$52m (2%) to \$2,168m.

In seasonally adjusted terms, rural goods rose \$257m (13%) to \$2,253m.

Rural goods in original terms rose \$52m (2%) to \$2,180m.

Movements in the original series contributing to the rise in seasonally adjusted terms were:

- cereal grains and cereal preparations, up \$136m (30%), largely due to increased wheat volumes, compared with an average March to April rise of 5% over the previous three years
- wool and sheepskins, down \$22m (8%), compared with an average March to April fall of 29% over the previous three years
- other rural, down \$29m (3%), compared with an average March to April fall of 7% over the previous three years
- meat and meat preparations, down \$33m (6%), compared with an average March to April fall of 10% over the previous three years.

NON-RURAL AND OTHER GOODS

The trend estimate of non-rural and other goods exports rose \$57m (1%) to \$7,023m.

Seasonally adjusted, non-rural and other goods rose \$428m (6%) to \$7,317m.

In original terms, non-rural and other goods fell \$14m to \$7,107m.

Movements in the original series contributing to the rise in seasonally adjusted terms were:

ANALYSIS AND COMMENTS *continued*

Exports of goods *continued*

NON-RURAL AND OTHER GOODS *continued*

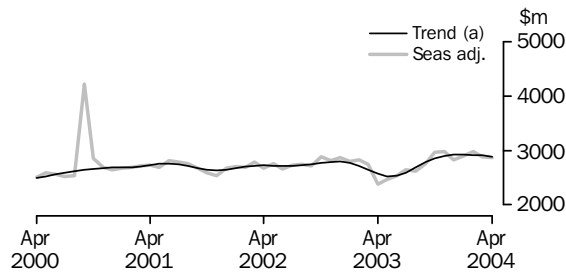
- other goods, up \$225m (43%), due to increased exports of gold, in contrast to an average March to April fall of 14% over the previous three years
- coal, coke and briquettes, up \$172m (20%), mainly due to increased coal volumes, in contrast to an average March to April fall of 1% over the previous three years
- transport equipment, down \$60m (13%), compared with an average March to April fall of 26% over the previous three years
- other manufactures, down \$90m (8%), compared with an average March to April fall of 11% over the previous three years
- metals (excluding gold), down \$43m (6%), compared with an average March to April fall of 11% over the previous three years.

Partly offsetting these effects were:

- metal ores and minerals, down \$118m (9%), in contrast to an average March to April rise of 2% over the previous three years
- other mineral fuels, down \$77m (11%), compared with an average March to April fall of 2% over the previous three years.

Exports of services

SERVICES CREDITS



(a) Trend estimates exclude the impact of the Olympics in September and October 2000.

In trend terms, services credits fell \$14m to \$2,891m.

Seasonally adjusted, services credits fell marginally to \$2,876m.

IMPORTS OF GOODS AND SERVICES

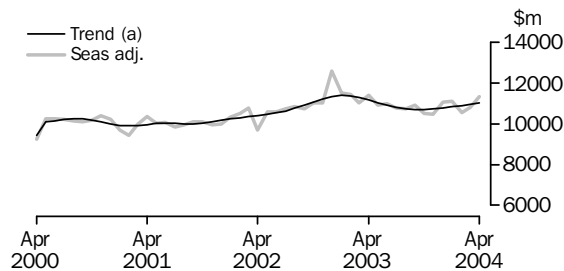
The trend estimate of goods and services debits rose \$92m (1%) in April to \$13,977m.

In seasonally adjusted terms, goods and services debits rose \$501m (4%) to \$14,254m.

Intermediate and other goods rose \$221m (5%), consumption goods rose \$192m (5%) and capital goods rose \$102m (4%), while services debits fell \$14m.

Imports of goods

GOODS DEBITS



(a) A trend break of \$500m has been applied to May 2000. Trend estimates exclude abnormal imports of aircraft in December 2002.

ANALYSIS AND COMMENTS *continued*

Imports of goods continued

CONSUMPTION GOODS

The trend estimate of imports of consumption goods rose \$27m (1%) to \$3,604m.

In seasonally adjusted terms, imports of consumption goods rose \$192m (5%) to \$3,717m.

Imports of consumption goods, in original terms, fell \$198m (5%) to \$3,487m.

Contributing to the rise in the seasonally adjusted series were:

- an adjustment made as part of the regular seasonal adjustment process to take into account different trading day patterns in March and April, which contributed about 5 percentage points to the rise
- non-industrial transport equipment, down \$46m (4%), compared with stronger March to April falls in recent years.

Offsetting these effects were consumption goods n.e.s., down \$51m (5%), in contrast to an average March to April rise of 7% over the previous three years.

CAPITAL GOODS

The trend estimate of imports of capital goods fell \$3m to \$2,572m.

In seasonally adjusted terms, imports of capital goods rose \$102m (4%) to \$2,648m.

Imports of capital goods, in original terms, fell \$189m (7%) to \$2,481m.

Contributing to the rise in the seasonally adjusted series were:

- an adjustment made as part of the regular seasonal adjustment process to take into account different trading day patterns in March and April, which contributed about 9 percentage points to the rise
- civil aircraft, down \$3m (3%), compared with an average March to April fall of 38% over the previous three years.

Offsetting these effects were:

- telecommunications equipment, down \$79m (18%), in contrast to an average March to April rise of 2% over the previous three years
- capital goods n.e.s., down \$46m (12%), in contrast to an average March to April rise of 5% over the previous three years.

INTERMEDIATE AND OTHER GOODS

The trend estimate of imports of intermediate and other goods rose \$59m (1%) to \$4,875m.

In seasonally adjusted terms, intermediate and other goods imports rose \$221m (5%) to \$4,961m.

Imports of intermediate and other goods, in original terms, fell \$213m (4%) to \$4,975m.

Contributing to the rise in the seasonally adjusted series were:

- fuels and lubricants, up \$38m (4%), in contrast to an average March to April fall of 12% over the previous three years
- iron and steel, up \$40m (25%), in contrast to an average March to April fall of 1% over the previous three years

ANALYSIS AND COMMENTS *continued*

Imports of goods continued

INTERMEDIATE AND OTHER GOODS *continued*

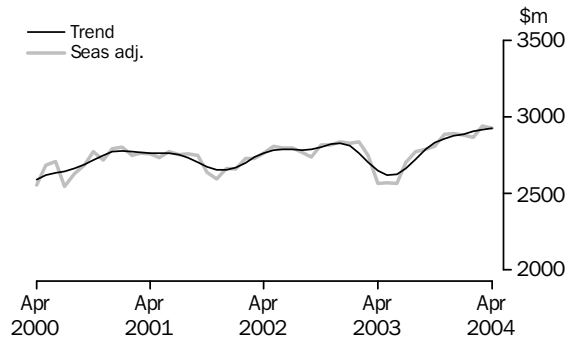
- primary industrial supplies n.e.s., up \$16m (18%), in contrast to an average March to April fall of 19% over the previous three years.

Offsetting these effects were:

- other goods, down \$90m (19%), in contrast to an average March to April rise of 8% over the previous three years
- processed industrial supplies n.e.s., down \$30m (3%), in contrast to an average March to April rise of 8% over the previous three years.

Imports of services

SERVICES DEBITS



In trend terms, services debits rose \$9m to \$2,926m.

Seasonally adjusted, services debits fell \$14m to \$2,928m.

GOODS AND SERVICES(a), Summary: **Seasonally adjusted and trend**

Months	BALANCE	CREDITS					DEBITS					
	On goods and services	Total goods and services	Total goods	Rural goods(b)	Non-rural and other goods(b)	Total services	Total goods and services	Total goods	Consumption goods	Capital goods	Intermediate and other goods	Total services
	\$m	\$m	\$m	\$m	\$m	\$m	\$m	\$m	\$m	\$m	\$m	\$m
SEASONALLY ADJUSTED												
2003												
February	-1 728	12 554	9 723	2 027	7 696	2 831	-14 282	-11 443	-3 436	-2 758	-5 249	-2 839
March	-1 455	12 315	9 570	2 004	7 566	2 745	-13 770	-11 022	-3 203	-2 528	-5 291	-2 748
April	-2 677	11 294	8 915	1 870	7 045	2 379	-13 971	-11 407	-3 583	-2 671	-5 153	-2 564
May	-1 996	11 479	9 015	1 787	7 228	2 464	-13 475	-10 906	-3 523	-2 442	-4 941	-2 569
June	-2 070	11 476	8 943	1 772	7 171	2 533	-13 546	-10 979	-3 441	-2 730	-4 808	-2 567
July	-2 387	11 074	8 423	1 755	6 668	2 651	-13 461	-10 758	-3 320	-2 637	-4 801	-2 703
August	-2 002	11 517	8 896	1 697	7 199	2 621	-13 519	-10 744	-3 329	-2 635	-4 780	-2 775
September	-2 219	11 514	8 753	1 858	6 895	2 761	-13 733	-10 942	-3 600	-2 568	-4 774	-2 791
October	-1 603	11 703	8 738	1 878	6 860	2 965	-13 306	-10 499	-3 458	-2 433	-4 608	-2 807
November	-1 679	11 674	8 691	1 774	6 917	2 983	-13 353	-10 463	-3 415	-2 617	-4 431	-2 890
December	-2 456	11 500	8 669	1 854	6 815	2 831	-13 956	-11 065	-3 545	-2 768	-4 752	-2 891
2004												
January	-1 896	12 112	9 211	2 118	7 093	2 901	-14 008	-11 123	-3 768	-2 663	-4 692	-2 885
February	-1 728	11 683	8 705	2 106	6 599	2 978	-13 411	-10 543	-3 347	-2 384	-4 812	-2 868
March	-1 986	11 767	8 885	1 996	6 889	2 882	-13 753	-10 811	-3 525	-2 546	-4 740	-2 942
April	-1 808	12 446	9 570	2 253	7 317	2 876	-14 254	-11 326	-3 717	-2 648	-4 961	-2 928
TREND ESTIMATES												
2003												
February	-1 681	12 468	9 752	2 017	7 735	2 716	-14 149	-11 382	-3 458	-2 549	-5 375	-2 767
March	-1 853	12 147	9 505	1 944	7 561	2 642	-14 000	-11 297	-3 449	-2 566	-5 282	-2 703
April	-2 021	11 799	9 228	1 875	7 353	2 571	-13 820	-11 171	-3 437	-2 592	-5 142	-2 649
May	-2 154	11 513	8 987	1 819	7 168	2 526	-13 667	-11 048	-3 429	-2 615	-5 004	-2 619
June	-2 206	11 351	8 819	1 780	7 039	2 532	-13 557	-10 932	-3 426	-2 620	-4 886	-2 625
July	-2 173	11 320	8 727	1 758	6 969	2 593	-13 493	-10 827	-3 422	-2 608	-4 797	-2 666
August	-2 090	11 388	8 702	1 758	6 944	2 686	-13 478	-10 752	-3 428	-2 596	-4 728	-2 726
September	-2 011	11 493	8 709	1 782	6 927	2 784	-13 504	-10 717	-3 446	-2 598	-4 673	-2 787
October	-1 961	11 582	8 723	1 821	6 902	2 859	-13 543	-10 710	-3 473	-2 597	-4 640	-2 833
November	-1 940	11 654	8 751	1 872	6 879	2 903	-13 594	-10 734	-3 506	-2 595	-4 633	-2 860
December	-1 931	11 725	8 804	1 932	6 872	2 921	-13 656	-10 778	-3 529	-2 594	-4 655	-2 878
2004												
January	-1 930	11 796	8 875	1 996	6 879	2 921	-13 726	-10 836	-3 544	-2 591	-4 701	-2 890
February	-1 921	11 886	8 971	2 059	6 912	2 915	-13 807	-10 902	-3 560	-2 583	-4 759	-2 905
March	-1 898	11 987	9 082	2 116	6 966	2 905	-13 885	-10 968	-3 577	-2 575	-4 816	-2 917
April	-1 895	12 082	9 191	2 168	7 023	2 891	-13 977	-11 051	-3 604	-2 572	-4 875	-2 926

(a) For sign conventions, see paragraph 9 of the Explanatory Notes.

(b) For all time periods, estimates for sugar, sugar preparations and honey are included in Non-rural and other goods.

GOODS AND SERVICES (a), Summary: Original

	BALANCE	CREDITS					DEBITS					
	<i>On goods and services</i>	<i>Total goods and services</i>	<i>Total goods</i>	<i>Rural goods (b)</i>	<i>Non-rural and other goods (b)</i>	<i>Total services</i>	<i>Total goods and services</i>	<i>Total goods</i>	<i>Consumption goods</i>	<i>Capital goods</i>	<i>Intermediate and other goods</i>	<i>Total services</i>
	\$m	\$m	\$m	\$m	\$m	\$m	\$m	\$m	\$m	\$m	\$m	\$m
FINANCIAL YEAR												
2000-01	649	153 854	120 307	29 164	91 143	33 547	-153 205	-120 524	-35 775	-25 739	-59 010	-32 681
2001-02	-1 233	153 340	121 090	30 085	91 005	32 250	-154 573	-121 942	-37 422	-27 208	-57 312	-32 631
2002-03	-18 639	148 530	115 961	25 484	90 477	32 569	-167 169	-134 278	-41 228	-31 554	-61 496	-32 891
MONTHS												
2003												
February	-432	12 418	9 021	1 948	7 073	3 397	-12 850	-10 352	-3 165	-2 331	-4 856	-2 498
March	-898	12 619	9 902	2 111	7 791	2 717	-13 517	-10 906	-3 127	-2 435	-5 344	-2 611
April	-2 618	10 966	8 680	1 851	6 829	2 286	-13 584	-11 085	-3 364	-2 573	-5 148	-2 499
May	-1 851	11 201	9 060	1 836	7 224	2 141	-13 052	-10 587	-3 188	-2 450	-4 949	-2 465
June	-2 235	11 154	8 856	1 665	7 191	2 298	-13 389	-10 837	-3 187	-3 007	-4 643	-2 552
July	-2 279	11 672	8 554	1 704	6 850	3 118	-13 951	-11 107	-3 577	-2 822	-4 708	-2 844
August	-1 790	11 710	9 204	1 705	7 499	2 506	-13 500	-10 669	-3 444	-2 509	-4 716	-2 831
September	-3 158	11 487	9 030	1 836	7 194	2 457	-14 645	-11 606	-3 982	-2 675	-4 949	-3 039
October	-3 103	11 938	9 098	1 945	7 153	2 840	-15 041	-12 020	-4 120	-2 743	-5 157	-3 021
November	-1 533	11 614	8 724	1 829	6 895	2 890	-13 147	-10 359	-3 540	-2 546	-4 273	-2 788
December	-1 952	12 071	9 272	2 083	7 189	2 799	-14 023	-11 149	-3 517	-2 830	-4 802	-2 874
2004												
January	-1 815	11 257	7 990	1 849	6 141	3 267	-13 072	-10 094	-3 223	-2 390	-4 481	-2 978
February	-101	12 085	8 338	2 079	6 259	3 747	-12 186	-9 590	-3 095	-2 029	-4 466	-2 596
March	-2 249	12 119	9 249	2 128	7 121	2 870	-14 368	-11 543	-3 685	-2 670	-5 188	-2 825
April	-1 817	11 966	9 287	2 180	7 107	2 679	-13 783	-10 943	-3 487	-2 481	-4 975	-2 840
FINANCIAL YEAR TO DATE												
10 months ended April												
2003	-14 553	126 175	98 045	21 983	76 062	28 130	-140 728	-112 854	-34 853	-26 097	-51 904	-27 874
2004	-19 797	117 919	88 746	19 338	69 408	29 173	-137 716	-109 080	-35 670	-25 695	-47 715	-28 636

(a) For sign conventions, see paragraph 9 of the Explanatory Notes.

(b) For all time periods, estimates for sugar, sugar preparations and honey are included in Non-rural and other goods.

GOODS CREDITS: Original

							10 MONTHS ENDED APRIL		Change %
	2000-01	2001-02	2002-03	Feb 2004	Mar 2004	Apr 2004	2003	2004	
	\$m	\$m	\$m	\$m	\$m	\$m	\$m	\$m	
Total goods credits	120 307	121 090	115 961	8 338	9 249	9 287	98 045	88 746	-9.5
Rural goods									
Meat and meat preparations	5 796	6 246	5 655	463	511	478	4 796	4 526	-5.6
Cereal grains and cereal preparations	5 937	6 481	4 487	605	457	593	3 909	3 927	0.5
Wool and sheepskins	3 897	3 687	3 545	221	278	256	3 209	2 248	-29.9
Other rural	13 534	13 671	11 797	790	882	853	10 069	8 637	-14.2
<i>Total rural goods(a)</i>	<i>29 164</i>	<i>30 085</i>	<i>25 484</i>	<i>2 079</i>	<i>2 128</i>	<i>2 180</i>	<i>21 983</i>	<i>19 338</i>	<i>-12.0</i>
Non-rural goods									
Metal ores and minerals	15 205	14 774	14 523	1 008	1 303	1 185	12 085	11 785	-2.5
Coal, coke and briquettes	10 844	13 430	11 987	765	840	1 012	10 161	8 597	-15.4
Other mineral fuels	13 464	10 940	11 049	628	731	654	9 507	7 423	-21.9
Metals (excl. gold)	10 146	9 650	8 711	587	743	700	7 401	6 226	-15.9
Machinery	8 797	7 999	7 362	517	567	550	6 157	5 595	-9.1
Transport equipment	5 041	5 686	6 273	457	460	400	5 293	4 358	-17.7
Other manufactures	13 530	13 758	13 485	1 052	1 168	1 078	11 182	10 927	-2.3
Other non-rural(a)	6 706	7 149	8 395	628	788	782	6 976	7 676	10.0
<i>Total non-rural goods(a)</i>	<i>83 733</i>	<i>83 386</i>	<i>81 785</i>	<i>5 642</i>	<i>6 600</i>	<i>6 361</i>	<i>68 762</i>	<i>62 587</i>	<i>-9.0</i>
Other goods									
<i>Total other goods(b)</i>	<i>7 410</i>	<i>7 619</i>	<i>8 692</i>	<i>617</i>	<i>521</i>	<i>746</i>	<i>7 300</i>	<i>6 821</i>	<i>-6.6</i>

(a) For all time periods, estimates for sugar, sugar preparations and honey are included in Other non-rural.

(b) Includes non-monetary gold.

GOODS DEBITS(a): Original

	10 MONTHS ENDED APRIL								
	2000-01	2001-02	2002-03	Feb 2004	Mar 2004	Apr 2004	2003	2004	Change
	\$m	\$m	\$m	\$m	\$m	\$m	\$m	\$m	%
Total goods debits	-120 524	-121 942	-134 278	-9 590	-11 543	-10 943	-112 854	-109 080	-3.3
Consumption goods									
Food and beverages, mainly for consumption	-4 483	-4 687	-5 067	-368	-436	-409	-4 272	-4 311	0.9
Household electrical items	-3 000	-3 166	-3 657	-264	-317	-311	-3 113	-3 172	1.9
Non-industrial transport equipment	-9 627	-9 930	-11 302	-921	-1 060	-1 014	-9 342	-10 091	8.0
Textiles, clothing and footwear	-4 811	-4 849	-5 237	-375	-481	-429	-4 528	-4 314	-4.7
Toys, books and leisure goods	-3 359	-3 494	-3 740	-218	-263	-247	-3 190	-2 995	-6.1
Consumption goods n.e.s.	-10 495	-11 296	-12 225	-949	-1 128	-1 077	-10 408	-10 787	3.6
<i>Total consumption goods</i>	<i>-35 775</i>	<i>-37 422</i>	<i>-41 228</i>	<i>-3 095</i>	<i>-3 685</i>	<i>-3 487</i>	<i>-34 853</i>	<i>-35 670</i>	<i>2.3</i>
Capital goods									
Machinery and industrial equipment	-8 876	-9 502	-11 007	-776	-897	-863	-9 291	-9 053	-2.6
ADP equipment	-5 260	-5 055	-4 908	-332	-482	-456	-3 961	-4 024	1.6
Telecommunications equipment	-4 379	-3 643	-3 619	-271	-434	-355	-2 919	-3 272	12.1
Civil aircraft	-609	-1 513	-3 887	-20	-107	-104	-3 241	-2 371	-26.8
Industrial transport equipment n.e.s.	-2 940	-3 613	-3 881	-284	-350	-349	-3 134	-3 217	2.6
Capital goods n.e.s.	-3 675	-3 882	-4 252	-346	-400	-354	-3 551	-3 758	5.8
<i>Total capital goods</i>	<i>-25 739</i>	<i>-27 208</i>	<i>-31 554</i>	<i>-2 029</i>	<i>-2 670</i>	<i>-2 481</i>	<i>-26 097</i>	<i>-25 695</i>	<i>-1.5</i>
Intermediate and other merchandise goods									
Food and beverages, mainly for industry	-592	-577	-736	-42	-57	-48	-617	-521	-15.6
Primary industrial supplies n.e.s.	-1 133	-1 117	-1 220	-75	-91	-107	-1 055	-917	-13.1
Fuels and lubricants	-10 358	-8 823	-10 393	-874	-938	-976	-8 841	-7 947	-10.1
Parts for transport equipment	-7 089	-6 827	-7 258	-468	-574	-530	-6 081	-5 469	-10.1
Parts for ADP equipment	-2 255	-2 159	-2 011	-132	-163	-129	-1 688	-1 470	-12.9
Other parts for capital goods	-9 072	-8 216	-8 605	-622	-744	-660	-7 198	-6 979	-3.0
Organic and inorganic chemicals	-3 777	-3 447	-3 089	-218	-273	-278	-2 503	-2 486	-0.7
Paper and paperboard	-2 311	-2 225	-2 326	-173	-195	-176	-1 977	-1 887	-4.6
Textile yarn and fabrics	-1 863	-1 830	-1 839	-108	-126	-122	-1 542	-1 304	-15.4
Iron and steel	-1 437	-1 765	-1 960	-155	-161	-201	-1 603	-1 674	4.4
Plastics	-2 193	-2 182	-2 478	-164	-193	-183	-2 100	-1 807	-14.0
Processed industrial supplies n.e.s.	-11 251	-11 441	-12 238	-879	-1 114	-1 084	-10 352	-9 912	-4.3
Other merchandise goods	-1 320	-1 563	-1 710	-215	-80	-92	-1 539	-1 071	-30.4
<i>Total intermediate and other merchandise goods</i>	<i>-54 651</i>	<i>-52 172</i>	<i>-55 863</i>	<i>-4 125</i>	<i>-4 709</i>	<i>-4 586</i>	<i>-47 096</i>	<i>-43 444</i>	<i>-7.8</i>
Other goods									
<i>Total other goods(b)</i>	<i>-4 359</i>	<i>-5 140</i>	<i>-5 633</i>	<i>-341</i>	<i>-479</i>	<i>-389</i>	<i>-4 808</i>	<i>-4 271</i>	<i>-11.2</i>

(a) For sign conventions, see paragraph 9 of the Explanatory Notes.

(b) Includes non-monetary gold.

SERVICES (a)(b), Summary: Original

							10 MONTHS ENDED APRIL		Change
	2000-01	2001-02	2002-03	Feb 2004	Mar 2004	Apr 2004	2003	2004	
	\$m	\$m	\$m	\$m	\$m	\$m	\$m	\$m	
Credits									
Freight	1 038	1 001	920	68	67	67	774	690	-10.9
Other transportation	7 024	6 664	6 547	600	599	527	5 627	5 652	0.4
Travel	15 507	15 645	15 452	2 320	1 436	1 288	13 679	15 032	9.9
Other services	9 978	8 940	9 650	759	768	797	8 050	7 799	-3.1
<i>Total services credits</i>	<i>33 547</i>	<i>32 250</i>	<i>32 569</i>	<i>3 747</i>	<i>2 870</i>	<i>2 679</i>	<i>28 130</i>	<i>29 173</i>	<i>3.7</i>
Debits									
Freight	-5 991	-5 626	-5 808	-431	-545	-533	-4 855	-4 956	2.1
Other transportation	-5 361	-5 150	-5 152	-408	-452	-442	-4 423	-4 547	2.8
Travel	-11 072	-10 918	-11 012	-874	-939	-975	-9 429	-10 092	7.0
Other services	-10 257	-10 937	-10 919	-883	-889	-890	-9 167	-9 041	-1.4
<i>Total services debits</i>	<i>-32 681</i>	<i>-32 631</i>	<i>-32 891</i>	<i>-2 596</i>	<i>-2 825</i>	<i>-2 840</i>	<i>-27 874</i>	<i>-28 636</i>	<i>2.7</i>

(a) For more detailed trade in services by commodity, see Table 6.

(b) For sign conventions, see paragraph 9 of the Explanatory Notes.

	CREDITS				DEBITS			
	<i>Jun Qtr</i>	<i>Sep Qtr</i>	<i>Dec Qtr</i>	<i>Mar Qtr</i>	<i>Jun Qtr</i>	<i>Sep Qtr</i>	<i>Dec Qtr</i>	<i>Mar Qtr</i>
	2003	2003	2003	2004	2003	2003	2003	2004
	\$m	\$m	\$m	\$m	\$m	\$m	\$m	\$m
Services	6 725	8 081	8 529	9 884	-7 516	-8 714	-8 683	-8 399
Transportation services								
Passenger	1 379	1 575	1 751	1 799	-894	-1 237	-1 144	-1 150
Freight	218	209	211	203	-1 469	-1 479	-1 524	-1 420
Other	np	np	np	np	-190	-202	-187	-185
<i>Total transportation services</i>	<i>1 597</i>	<i>1 784</i>	<i>1 962</i>	<i>2 002</i>	<i>-2 553</i>	<i>-2 918</i>	<i>-2 855</i>	<i>-2 755</i>
Travel services								
Business	257	302	319	354	-566	-747	-709	-770
Personal								
Education-related	607	1 489	730	2 648	-140	-246	-142	-169
Other	1 884	2 203	3 110	2 589	-1 653	-2 154	-2 139	-2 041
Total personal	2 491	3 692	3 840	5 237	-1 793	-2 400	-2 281	-2 210
<i>Total travel services</i>	<i>2 748</i>	<i>3 994</i>	<i>4 159</i>	<i>5 591</i>	<i>-2 359</i>	<i>-3 147</i>	<i>-2 990</i>	<i>-2 980</i>
Communication services	234	245	240	241	-287	-258	-243	-306
Construction services	20	16	23	18	—	—	—	—
Insurance services	166	171	171	171	-214	-218	-218	-218
Financial services	246	251	251	251	-147	-144	-144	-144
Computer and information services	289	259	300	249	-264	-255	-289	-177
Royalties and license fees	165	150	156	144	-438	-479	-571	-485
Other business services								
Merchanting and other trade-related	136	154	99	93	-64	-46	-65	-89
Operational leasing	8	7	4	4	-232	-255	-241	-258
Miscellaneous business, professional and technical								
Legal, accounting, management consulting and public relations	173	161	144	130	-84	-93	-80	-102
Advertising, market research and public opinion polling	39	16	29	47	-51	-26	-34	-34
Research and development	63	87	93	65	-29	-34	-70	-26
Architectural, engineering and other technical services	122	126	160	135	-97	-96	-101	-58
Agriculture, mining and on-site processing	26	25	27	19	-58	-41	-39	-33
Services between affiliated enterprises n.i.e.	260	250	283	244	-160	-197	-267	-179
Other	80	81	93	83	-92	-114	-103	-129
Total miscellaneous business, professional and technical	763	746	829	723	-571	-601	-694	-561
<i>Total other business services</i>	<i>907</i>	<i>907</i>	<i>932</i>	<i>820</i>	<i>-867</i>	<i>-902</i>	<i>-1 000</i>	<i>-908</i>
Personal, cultural, and recreational services								
Audiovisual and related services	25	36	38	63	-156	-192	-152	-183
Other personal, cultural and recreational services	95	88	99	111	-29	-40	-30	-49
<i>Total personal, cultural, and recreational services</i>	<i>120</i>	<i>124</i>	<i>137</i>	<i>174</i>	<i>-185</i>	<i>-232</i>	<i>-182</i>	<i>-232</i>
Government services n.i.e.	233	180	198	223	-202	-161	-191	-194

— nil or rounded to zero (including null cells)

np not available for publication but included in totals where applicable, unless otherwise indicated

(a) For sign conventions, see paragraph 9 of the Explanatory Notes.

(b) For more information see paragraph 13 and 14 of the Explanatory Notes.

	Feb 2004	Mar 2004	Apr 2004	Percent of total merchandise exports(a)	10 MONTHS ENDED APRIL	
					2003	2004
					\$m	\$m
MAJOR COMMODITIES						
011 Meat of bovine animals	308	334	316	3.4	3 315	3 039
041 Wheat	401	319	406	4.4	2 617	2 600
268 Wool and other animal hair	199	241	217	2.3	3 003	1 993
281 Iron ore and concentrates	392	378	407	4.4	4 469	4 161
285 Aluminium ore and concentrates	233	375	318	3.4	3 005	2 998
321 Coal, not agglomerated	751	838	996	10.8	10 129	8 522
333 Crude petroleum oils	367	429	308	3.3	5 153	3 947
334 Refined petroleum oils	131	139	169	1.8	2 081	1 650
343 Natural gas	149	173	181	2.0	2 193	1 837
684 Aluminium	320	381	328	3.5	3 457	3 111
781 Passenger motor vehicles	279	268	232	2.5	2 380	2 414
971 Gold, non-monetary	453	347	579	6.3	4 569	4 847

SECTION AND DIVISION OF THE SITC

0	Food and live animals(b)					
00	Live animals other than fish, crustaceans, molluscs and aquatic invertebrates	45	55	57	0.6	1 016 685
01	Meat and meat preparations	461	507	463	5.0	4 797 4 504
02	Dairy products and birds' eggs	171	189	198	2.1	2 060 1 747
03	Fish (not marine mammals), crustaceans, molluscs and aquatic invertebrates, and preparations thereof(b)	72	91	110	1.2	1 279 1 099
04	Cereals and cereal preparations(b)	606	459	593	6.4	3 909 3 929
05	Vegetables and fruit	92	107	89	1.0	1 155 992
06	Sugars, sugar preparations and honey(b)	17	18	14	0.2	165 151
07	Coffee, tea, cocoa, spices, and manufactures thereof	21	20	19	0.2	260 234
08	Feeding stuff for animals (excl. unmilled cereals)(b)	59	65	63	0.7	757 650
09	Miscellaneous edible products and preparations	32	39	35	0.4	390 380
	<i>Total food and live animals</i>	<i>1 575</i>	<i>1 550</i>	<i>1 641</i>	<i>17.7</i>	<i>15 785 14 371</i>
1	Beverages and tobacco					
11	Beverages	209	236	218	2.4	2 151 2 120
12	Tobacco and tobacco manufactures	7	7	4	—	111 66
	<i>Total beverages and tobacco</i>	<i>216</i>	<i>243</i>	<i>223</i>	<i>2.4</i>	<i>2 262 2 186</i>
2	Crude materials, inedible, except fuels(b)					
21	Hides, skins and furskins, raw(b)	47	58	53	0.6	601 519
22	Oil seeds and oleaginous fruits	72	53	41	0.4	322 425
23	Crude rubber (incl. synthetic and reclaimed)	1	2	2	—	13 13
24	Cork and wood	75	92	88	0.9	830 809
25	Pulp and waste paper	4	5	4	—	43 46
26	Textile fibres and their wastes (not manufactured into yarn or fabric)(b)	265	301	262	2.8	4 021 2 718
27	Crude fertilisers (excl. those of Division 56) and crude minerals (excl. coal, petroleum and precious stones)	26	32	30	0.3	411 349
28	Metalliferous ores and metal scrap(b)	988	1 261	1 156	12.5	11 680 11 454
29	Crude animal and vegetable materials, n.e.s.	17	19	22	0.2	234 193
	<i>Total crude materials, inedible, except fuels</i>	<i>1 496</i>	<i>1 822</i>	<i>1 658</i>	<i>17.9</i>	<i>18 156 16 525</i>
3	Mineral fuels, lubricants and related materials					
32	Coal, coke and briquettes	765	842	1 012	10.9	10 162 8 584
33	Petroleum, petroleum products and related materials	498	569	478	5.2	7 249 5 605
34	Gas, natural and manufactured	188	221	228	2.5	2 922 2 384
	<i>Total mineral fuels, lubricants and related materials</i>	<i>1 451</i>	<i>1 632</i>	<i>1 718</i>	<i>18.6</i>	<i>20 333 16 574</i>

— nil or rounded to zero (including null cells)

(b) Excludes exports commodities subject to a confidentiality restriction. These are included in Division 98.

(a) Percent of total merchandise exports is calculated for the most recent month.

				Percent of total merchandise exports(a)	10 MONTHS ENDED APRIL	
	Feb 2004	Mar 2004	Apr 2004		2003	2004
	\$m	\$m	\$m		\$m	\$m
SECTION AND DIVISION OF THE SITC						
4	Animal and vegetable oils, fats and waxes(b)					
41	Animal oils and fats	17	31	20	0.2	190 203
42	Fixed vegetable fats and oils, crude, refined or fractionated(b)	5	5	5	—	43 42
43	Fats and oils (processed), waxes and inedible mixtures or preparations, of animal or vegetable origin, n.e.s.	4	6	5	0.1	45 46
	<i>Total animal and vegetable oils, fats and waxes</i>	26	42	30	0.3	278 291
5	Chemicals and related products, n.e.s.(b)					
51	Organic chemicals(b)	10	8	10	0.1	125 94
52	Inorganic chemicals(b)	44	40	34	0.4	454 422
53	Dyeing, tanning and colouring materials	48	54	54	0.6	544 497
54	Medicinal and pharmaceutical products	185	220	202	2.2	1 620 1 974
55	Essential oils and resinoids and perfume materials; toilet, polishing and cleansing preparations	32	36	34	0.4	396 347
56	Fertilisers (excl. crude)	10	3	6	0.1	109 133
57	Plastics in primary forms(b)	15	14	15	0.2	177 162
58	Plastics in non-primary forms	23	22	20	0.2	213 208
59	Chemical materials and products, n.e.s.	44	51	45	0.5	556 481
	<i>Total chemicals and related products, n.e.s.</i>	411	448	420	4.5	4 194 4 319
6	Manufactured goods classified chiefly by material(b)					
61	Leather, leather manufactures, and dressed furskins, n.e.s.	34	42	35	0.4	525 394
62	Rubber manufactures, n.e.s.	10	13	11	0.1	111 116
63	Cork and wood manufactures (excl. furniture)(b)	14	20	18	0.2	169 170
64	Paper, paperboard, and articles of paper pulp, of paper or of paperboard	62	74	66	0.7	627 606
65	Textile yarn, fabrics, made-up articles, n.e.s., and related products	32	43	36	0.4	414 377
66	Non-metallic mineral manufactures, n.e.s.(b)	82	53	47	0.5	757 683
67	Iron and steel(b)	59	89	57	0.6	642 736
68	Non-ferrous metals	523	649	634	6.8	6 756 5 474
69	Manufactures of metals, n.e.s.	51	64	55	0.6	675 605
	<i>Total manufactured goods classified chiefly by material</i>	867	1 047	960	10.4	10 676 9 161
7	Machinery and transport equipment(b)					
71	Power generating machinery and equipment	66	73	63	0.7	541 687
72	Machinery specialised for particular industries	82	89	105	1.1	1 070 935
73	Metal working machinery	9	12	13	0.1	108 122
74	General industrial machinery and equipment, n.e.s. and machine parts, n.e.s.(b)	98	103	105	1.1	1 078 987
75	Office machines and automatic data processing machines	78	98	87	0.9	1 251 1 002
76	Telecommunications and sound recording and reproducing apparatus and equipment	73	65	58	0.6	677 624
77	Electrical machinery, apparatus, appliances, parts (incl. non-elec. counterparts of electrical domestic equip)	107	122	100	1.1	1 411 1 188
78	Road vehicles (incl. air-cushion vehicles)	367	374	316	3.4	3 539 3 444
79	Transport equipment (excl. road vehicles)	63	63	73	0.8	1 732 852
	<i>Total machinery and transport equipment</i>	943	998	919	9.9	11 408 9 839

— nil or rounded to zero (including null cells)

(a) Percent of total merchandise exports is calculated for the most recent month.

(b) Excludes exports commodities subject to a confidentiality restriction. These are included in Division 98.

				Percent of total merchandise exports(a)	10 MONTHS ENDED APRIL	
	Feb 2004	Mar 2004	Apr 2004		2003	2004
	\$m	\$m	\$m		\$m	\$m
SECTION AND DIVISION OF THE SITC						
8	Miscellaneous manufactured articles(b)					
81	Prefabricated buildings; sanitary, plumbing, heating and lighting fixtures and fittings, n.e.s.	7	10	6	0.1	101 77
82	Furniture, parts thereof; bedding, mattresses, mattress supports, cushions and similar stuffed furnishings	11	12	11	0.1	147 118
83	Travel goods, handbags and similar containers	1	2	2	—	14 18
84	Articles of apparel and clothing accessories	22	24	24	0.3	266 249
85	Footwear(b)	3	4	4	—	46 39
87	Professional, scientific and controlling instruments and apparatus, n.e.s.	96	103	96	1.0	1 023 985
88	Photographic apparatus, equipment and supplies and optical goods, n.e.s.; watches and clocks	48	47	47	0.5	568 462
89	Miscellaneous manufactured articles, n.e.s.	152	170	145	1.6	1 480 1 548
	<i>Total miscellaneous manufactured articles</i>	340	371	335	3.6	3 644 3 496
9	Commodities and transactions not classified elsewhere in the SITC(c)(d)					
93	Special transactions and commodities not classified according to kind	162	176	163	1.8	2 509 1 912
95	Gold coin whether or not legal tender, and other coin being legal tender	6	8	8	0.1	73 80
96	Coin (excl. gold coin), not being legal tender	—	—	—	—	— —
97	Gold, non-monetary (excl. gold ores and concentrates)	453	347	579	6.3	4 569 4 847
98	Combined confidential items excl some of SITC 280 (exports only) and some of SITCs 510 and 520 (imports only)(c)(d)	442	520	601	6.5	3 798 4 731
	<i>Total commodities and transactions not classified elsewhere in the SITC</i>	1 063	1 051	1 351	14.6	10 949 11 571
	Total Merchandise Exports	8 388	9 204	9 254	100.0	97 686 88 332
	Balance of Payments Adjustments	-50	45	33	..	359 414
	Goods Credits (exports) on a Balance of Payments Basis	8 338	9 249	9 287	..	98 045 88 746

.. not applicable

— nil or rounded to zero (including null cells)

(a) Percent of total merchandise exports is calculated for the most recent month.

(b) Excludes exports commodities subject to a confidentiality restriction. These are included in Division 98.

(c) Includes exports commodities subject to a confidentiality restriction.

(d) Includes small value export entries which can not yet be allocated by commodity.

					Percent of total merchandise imports (a)	10 MONTHS ENDED APRIL	
		Feb	Mar	Apr		
		2004	2004	2004		2003	2004
	\$m	\$m	\$m	%	\$m	\$m	
MAJOR COMMODITIES							
333	Crude petroleum oils	578	639	619	5.7	6 762	5 073
334	Refined petroleum oils	286	272	344	3.2	1 923	2 621
542	Medicaments	435	468	452	4.2	3 560	4 049
641	Paper and paperboard	161	180	161	1.5	1 761	1 704
752	Automatic data processing machines	330	478	457	4.2	3 929	4 004
759	Parts and accessories of office machines	156	192	152	1.4	1 997	1 752
764	Telecommunications equipment	309	472	356	3.3	3 475	3 433
781	Passenger motor vehicles	845	966	925	8.5	8 458	9 165
782	Motor vehicles for the transport of goods	223	288	275	2.5	2 380	2 476
784	Parts and accessories of motor vehicles	152	179	174	1.6	1 924	1 742
792	Aircraft and associated equipment	109	188	178	1.6	4 648	3 204
971	Gold, non-monetary	179	224	205	1.9	2 539	2 167

SECTION AND DIVISION OF THE SITC

0	Food and live animals						
00	Live animals other than fish, crustaceans, molluscs and aquatic invertebrates	7	4	4	—	85	58
01	Meat and meat preparations	24	23	20	0.2	165	210
02	Dairy products and birds' eggs	27	34	28	0.3	269	258
03	Fish (not marine mammals), crustaceans, molluscs and aquatic invertebrates, and preparations thereof	58	79	75	0.7	804	768
04	Cereals and cereal preparations	24	27	28	0.3	333	301
05	Vegetables and fruit	72	77	76	0.7	778	810
06	Sugars, sugar preparations and honey	12	14	12	0.1	150	147
07	Coffee, tea, cocoa, spices, and manufactures thereof	45	55	48	0.4	591	534
08	Feeding stuff for animals (excl. unmilled cereals)	13	25	24	0.2	297	226
09	Miscellaneous edible products and preparations	71	89	83	0.8	839	868
	<i>Total food and live animals</i>	353	428	398	3.7	4 312	4 180
1	Beverages and tobacco						
11	Beverages	52	58	57	0.5	631	625
12	Tobacco and tobacco manufactures	9	13	18	0.2	289	152
	<i>Total beverages and tobacco</i>	61	71	75	0.7	919	778
2	Crude materials, inedible, except fuels						
21	Hides, skins and furskins, raw	—	—	—	—	2	2
22	Oil seeds and oleaginous fruits	3	3	9	0.1	50	68
23	Crude rubber (incl. synthetic and reclaimed)	11	12	12	0.1	113	106
24	Cork and wood	42	50	52	0.5	497	501
25	Pulp and waste paper	16	26	17	0.2	221	191
26	Textile fibres and their wastes (not manufactured into yarn or fabric)	11	12	14	0.1	142	126
27	Crude fertilisers (excl. those of Division 56) and crude minerals (excl. coal, petroleum and precious stones)	9	14	14	0.1	165	163
28	Metalliferous ores and metal scrap	20	20	18	0.2	209	236
29	Crude animal and vegetable materials, n.e.s.	20	24	19	0.2	253	216
	<i>Total crude materials, inedible, except fuels</i>	132	161	154	1.4	1 652	1 608
3	Mineral fuels, lubricants and related materials(b)						
32	Coal, coke and briquettes	1	2	1	—	18	13
33	Petroleum, petroleum products and related materials(b)	884	940	994	9.2	8 934	7 931
34	Gas, natural and manufactured	—	15	—	—	77	130
	<i>Total mineral fuels, lubricants and related materials</i>	885	958	995	9.2	9 028	8 074

— nil or rounded to zero (including null cells)

(b) Excludes imports commodities subject to a confidentiality restriction. These are included in Division 98.

(a) Percent of total merchandise imports is calculated for the most recent month.

				Percent of total merchandise imports(a)	10 MONTHS ENDED APRIL		
	Feb	Mar	Apr		2003	2004	
	2004	2004	2004				
	\$m	\$m	\$m	%	\$m	\$m	
SECTION AND DIVISION OF THE SITC							
4	Animal and vegetable oils, fats and waxes						
41	Animal oils and fats	2	1	1	—	17	20
42	Fixed vegetable fats and oils, crude, refined or fractionated	19	34	26	0.2	259	249
43	Fats and oils (processed), waxes and inedible mixtures or preparations, of animal or vegetable origin, n.e.s.	3	3	3	—	34	34
	<i>Total animal and vegetable oils, fats and waxes</i>	<i>24</i>	<i>38</i>	<i>29</i>	<i>0.3</i>	<i>310</i>	<i>303</i>
5	Chemicals and related products, n.e.s.(b)						
51	Organic chemicals	168	225	216	2.0	1 957	1 918
52	Inorganic chemicals(b)	50	49	63	0.6	546	570
53	Dyeing, tanning and colouring materials	38	47	44	0.4	479	429
54	Medicinal and pharmaceutical products	529	540	517	4.8	4 440	4 893
55	Essential oils and resinoids and perfume materials; toilet, polishing and cleansing preparations	85	103	103	1.0	1 104	1 022
56	Fertilisers (excl. crude)	54	131	130	1.2	647	612
57	Plastics in primary forms	92	110	100	0.9	1 193	964
58	Plastics in non-primary forms	72	82	83	0.8	908	843
59	Chemical materials and products, n.e.s.	111	127	138	1.3	1 275	1 192
	<i>Total chemicals and related products, n.e.s.</i>	<i>1 198</i>	<i>1 415</i>	<i>1 394</i>	<i>12.9</i>	<i>12 549</i>	<i>12 443</i>
6	Manufactured goods classified chiefly by material(b)						
61	Leather, leather manufactures, and dressed furskins, n.e.s.	11	16	13	0.1	166	136
62	Rubber manufactures, n.e.s.(b)	121	153	143	1.3	1 455	1 428
63	Cork and wood manufactures (excl. furniture)	56	68	53	0.5	585	542
64	Paper, paperboard, and articles of paper pulp, of paper or of paperboard(b)	187	209	192	1.8	2 121	2 059
65	Textile yarn, fabrics, made-up articles n.e.s. and related products	170	197	198	1.8	2 287	2 037
66	Non-metallic mineral manufactures, n.e.s.	151	188	202	1.9	1 789	1 745
67	Iron and steel(b)	155	161	201	1.9	1 603	1 674
68	Non-ferrous metals(b)	65	85	80	0.7	872	826
69	Manufactures of metals, n.e.s.(b)	218	274	265	2.5	2 652	2 633
	<i>Total manufactured goods classified chiefly by material</i>	<i>1 134</i>	<i>1 352</i>	<i>1 348</i>	<i>12.5</i>	<i>13 532</i>	<i>13 080</i>
7	Machinery and transport equipment(b)						
71	Power generating machinery and equipment	208	249	236	2.2	2 714	2 476
72	Machinery specialised for particular industries	399	431	392	3.6	3 852	4 130
73	Metal working machinery	47	46	39	0.4	690	503
74	General industrial machinery and equipment, n.e.s. and machine parts, n.e.s.	469	546	537	5.0	5 971	5 800
75	Office machines and automatic data processing machines	512	706	645	6.0	6 334	6 128
76	Telecommunications and sound recording and reproducing apparatus and equipment	499	713	603	5.6	5 810	6 016
77	Electrical machinery, apparatus, appliances, parts (incl. non-elec. counterparts of electrical domestic equip)(b)	486	617	588	5.4	5 828	5 706
78	Road vehicles (incl. air-cushion vehicles)	1 320	1 556	1 485	13.7	13 891	14 528
79	Transport equipment (excl. road vehicles)	139	318	238	2.2	5 555	3 894
	<i>Total machinery and transport equipment</i>	<i>4 078</i>	<i>5 183</i>	<i>4 762</i>	<i>44.0</i>	<i>50 645</i>	<i>49 181</i>

— nil or rounded to zero (including null cells)

(a) Percent of total merchandise imports is calculated for the most recent month.

(b) Excludes imports commodities subject to a confidentiality restriction. These are included in Division 98.

INTERNATIONAL MERCHANDISE IMPORTS, By commodity *continued*

				Percent of total merchandise imports(a)	10 MONTHS ENDED APRIL	
	Feb 2004	Mar 2004	Apr 2004		2003	2004
	\$m	\$m	\$m		\$m	\$m
SECTION AND DIVISION OF THE SITC						
8	Miscellaneous manufactured articles(b)					
81	Prefabricated buildings; sanitary, plumbing, heating and lighting fixtures and fittings, n.e.s.	28	40	38	0.4	380 386
82	Furniture, parts thereof; bedding, mattresses, mattress supports, cushions and similar stuffed furnishings	91	114	120	1.1	1 266 1 316
83	Travel goods, handbags and similar containers	27	34	35	0.3	423 404
84	Articles of apparel and clothing accessories	245	331	296	2.7	2 951 2 864
85	Footwear	71	84	64	0.6	901 775
87	Professional, scientific and controlling instruments and apparatus, n.e.s.	247	280	262	2.4	2 527 2 565
88	Photographic apparatus, equipment and supplies and optical goods, n.e.s.; watches and clocks(b)	89	105	98	0.9	1 311 1 099
89	Miscellaneous manufactured articles, n.e.s.	599	584	535	4.9	6 235 6 213
	<i>Total miscellaneous manufactured articles</i>	<i>1 397</i>	<i>1 571</i>	<i>1 446</i>	<i>13.4</i>	<i>15 992 15 621</i>
9	Commodities and transactions not classified elsewhere in the SITC(c)					
93	Special transactions and commodities not classified according to kind	2	2	2	—	30 23
95	Gold coin whether or not legal tender, and other coin being legal tender	—	—	1	—	4 6
96	Coin (excl. gold coin), not being legal tender	—	—	—	—	— 1
97	Gold, non-monetary (excl. gold ores and concentrates)	179	224	205	1.9	2 539 2 167
98	Combined confidential items excl some of SITC 280 (exports only) and some of SITCs 510 and 520 (imports only)(c)	15	16	15	0.1	528 200
	<i>Total commodities and transactions not classified elsewhere in the SITC</i>	<i>196</i>	<i>242</i>	<i>224</i>	<i>2.1</i>	<i>3 101 2 396</i>
	Total Merchandise Imports	9 459	11 418	10 824	100.0	112 040 107 663
	Balance of Payments Adjustment	131	125	119	. .	814 1 417
	Goods Debits (imports) on a Balance of Payments Basis	9 590	11 543	10 943	. .	112 854 109 080

. . not applicable

— nil or rounded to zero (including null cells)

(a) Percent of total merchandise imports is calculated for the most recent month.

(b) Excludes imports commodities subject to a confidentiality restriction. These are included in Division 98.

(c) Includes imports commodities subject to a confidentiality restriction.

INTERNATIONAL MERCHANDISE TRADE, By country and country groups(a)

	EXPORTS				IMPORTS				BALANCE OF MERCHANDISE TRADE	
	2002-03	April 2004	10	10	2002-03	April 2004	10	10	2002-03	2004
			months ended April 2003	months ended April 2004			months ended April 2003	months ended April 2004		
	\$m	\$m	\$m	\$m	\$m	\$m	\$m	\$m	\$m	
Belgium(b)	—	37	—	547	—	108	—	1 002	—	-455
Brazil	413	44	326	399	490	36	418	419	-77	-20
Canada	1 837	164	1 529	1 457	1 755	160	1 435	1 502	82	-45
China	8 803	782	7 415	7 790	13 789	1 254	11 703	12 629	-4 986	-4 839
Denmark	125	11	104	139	770	72	647	709	-645	-570
Egypt(c)	370	126	342	547	20	2	18	32	350	515
Fiji	543	29	458	356	222	17	189	172	321	184
Finland	457	48	358	478	680	55	569	526	-222	-48
France	1 172	80	1 036	755	3 781	237	3 312	3 093	-2 609	-2 338
Germany	1 585	106	1 356	1 054	7 952	643	6 583	6 665	-6 366	-5 611
Hong Kong (Sar of China)	3 214	186	2 790	2 268	1 234	92	1 016	982	1 981	1 286
India	2 576	578	1 997	3 985	979	88	836	838	1 597	3 147
Indonesia	2 911	264	2 481	2 311	4 600	310	3 971	3 181	-1 689	-869
Iran	407	9	334	118	40	3	34	38	368	80
Iraq	360	14	283	223	37	—	37	—	324	223
Ireland	183	10	156	136	1 607	129	1 335	1 342	-1 425	-1 206
Israel	195	12	178	145	481	37	417	385	-286	-240
Italy	1 861	88	1 587	1 130	4 148	324	3 508	3 392	-2 287	-2 262
Japan	21 727	1 694	18 511	15 820	16 337	1 307	13 602	13 261	5 390	2 559
Korea, Republic of	9 116	680	7 878	6 987	4 753	389	4 048	3 990	4 363	2 997
Kuwait	518	50	438	496	184	17	166	91	334	405
Malaysia	2 146	172	1 787	1 701	4 261	424	3 574	3 686	-2 115	-1 985
Mexico	430	15	340	297	572	48	459	489	-142	-192
Netherlands	1 364	118	1 157	1 132	1 283	108	1 073	994	81	138
New Zealand	8 127	672	6 720	6 711	5 019	416	4 226	4 207	3 108	2 505
Pakistan	285	17	235	381	192	13	166	134	93	247
Papua New Guinea	950	69	796	668	1 502	123	1 235	1 145	-552	-477
Philippines	1 091	69	893	726	839	46	727	643	252	83
Saudi Arabia	1 991	175	1 709	1 623	1 284	58	1 080	629	708	994
Singapore	4 658	260	4 077	2 420	4 370	428	3 656	4 052	289	-1 632
South Africa	1 314	168	1 106	1 158	1 060	120	873	1 045	254	112
Spain	668	56	507	530	1 047	88	870	894	-380	-363
Sweden	211	29	159	172	1 810	164	1 494	1 447	-1 598	-1 275
Switzerland	378	14	343	146	1 230	98	1 033	984	-852	-839
Taiwan	4 310	311	3 727	2 982	3 376	287	2 822	2 772	934	210
Thailand	2 479	205	2 113	1 925	3 471	301	2 934	3 017	-992	-1 092
Turkey	298	42	236	257	223	23	187	208	75	49
United Arab Emirates	1 234	96	1 083	987	755	101	585	662	479	325
United Kingdom	7 234	378	5 861	4 445	5 769	480	4 868	4 521	1 464	-77
United States of America	10 365	754	8 865	7 603	22 494	1 605	18 858	16 354	-12 129	-8 751
Viet Nam	472	44	405	371	2 505	181	2 215	1 720	-2 033	-1 348
Other Countries(d)	7 102	577	6 013	4 954	6 211	433	5 265	3 811	891	1 143
Total	115 479	9 254	97 686	88 332	133 129	10 824	112 040	107 663	-17 650	-19 331
APEC	83 022	6 388	70 654	62 378	92 245	7 518	77 665	74 721	-9 223	-12 343
ASEAN	13 855	1 022	11 840	9 529	20 749	1 781	17 694	16 746	-6 894	-7 218
Developing Countries	52 960	4 456	45 067	42 448	51 216	4 385	43 432	42 723	1 744	-275
Least Developed Countries	1 231	75	1 062	934	227	16	189	172	1 004	763
European Union	15 864	975	13 144	10 652	31 397	2 498	26 415	25 497	-15 533	-14 845
OECD	68 360	5 017	57 735	50 034	84 750	6 620	71 084	67 298	-16 390	-17 264

— nil or rounded to zero (including null cells)

(a) See AusStats for details of all countries.

(b) Prior to July 2003, Belgium and Luxembourg were combined.

Belgium-Luxembourg is included in 'Other Countries' up to and including June 2003.

(c) Exports of Alumina to Egypt are excluded from its country total and included in the 'Other Countries' category.

(d) Includes small value export entries which can not yet be allocated by country.

	2002-03	Apr 2004	10 MONTHS ENDED APRIL	
			2003	2004
	\$m	\$m	\$m	\$m
EXPORTS (a)				
New South Wales	20 234	1 558	17 181	15 026
Victoria	18 904	1 539	16 104	14 487
Queensland	21 381	1 717	17 991	15 937
South Australia	8 365	628	7 129	6 222
Western Australia	32 439	2 759	27 120	26 616
Tasmania	2 453	203	2 060	1 885
Northern Territory	2 608	125	2 275	1 550
Australian Capital Territory	4	3	4	4
State not available for publication(b) (c)	429	162	357	469
Re-exports	8 662	560	7 465	6 137
Total exports	115 479	9 254	97 686	88 332
IMPORTS				
New South Wales	55 250	4 423	46 318	44 095
Victoria	42 129	3 396	35 640	33 713
Queensland	16 358	1 446	13 612	14 625
South Australia	5 724	397	4 830	4 234
Western Australia	11 755	1 031	9 896	9 764
Tasmania	763	38	697	595
Northern Territory	934	91	831	633
Australian Capital Territory	217	—	216	4
Total imports	133 129	10 824	112 040	107 663

— nil or rounded to zero (including null cells)

(a) State in which the final stage of production or manufacture occurs.

(b) Includes exports which cannot yet be allocated by state. These shipments will be appropriately classified as more details become available.

(c) Exports of Alumina to Bahrain, Egypt and Iceland are excluded from the state totals and included in 'State not available for publication' category.

PERIOD AVERAGE EXCHANGE RATES(a): Per Australian Dollar

<i>Period</i>	<i>United States dollar</i>	<i>United Kingdom pound</i>	<i>euro</i>	<i>Japanese yen</i>	<i>Trade-weighted index of value of the \$A(b)</i>
FINANCIAL YEAR					
2000-01	0.5379	0.3704	0.6023	61.49	50.3
2001-02	0.5239	0.3632	0.5850	66.10	50.7
2002-03	0.5848	0.3685	0.5577	70.01	53.5
MONTHS					
2003					
February	0.5947	0.3691	0.5520	71.00	53.9
March	0.6023	0.3804	0.5577	71.43	54.6
April	0.6090	0.3869	0.5610	72.92	55.3
May	0.6470	0.3989	0.5601	75.91	57.4
June	0.6643	0.4000	0.5689	78.58	58.8
July	0.6621	0.4074	0.5820	78.57	58.9
August	0.6512	0.4086	0.5843	77.32	58.2
September	0.6614	0.4107	0.5891	76.11	58.5
October	0.6941	0.4138	0.5928	75.98	60.1
November	0.7159	0.4238	0.6118	78.19	61.9
December	0.7383	0.4223	0.6018	79.62	63.0
2004					
January	0.7695	0.4227	0.6101	81.89	64.8
February	0.7777	0.4165	0.6152	82.84	65.2
March	0.7498	0.4100	0.6110	81.45	63.6
April	0.7442	0.4121	0.6201	79.98	63.3

- (a) These exchange rates and the trade-weighted index are derived using rates provided by the Reserve Bank of Australia in respect of each trading day.
- (b) May 1970=100. The trade-weighted index is reweighted annually (on 1 October) and on special occasions if required.

EXPLANATORY NOTES

INTRODUCTION

1 This publication presents preliminary estimates of Australia's international trade in goods and services on a balance of payments basis and merchandise import and export statistics on a recorded trade basis.

2 Merchandise trade statistics on a recorded trade basis are compiled from information submitted by exporters and importers or their agents to the Australian Customs Service (ACS). Adjustments for coverage, timing and valuation are made to recorded trade data to convert them to a balance of payments basis. The main source for services data is the quarterly Survey of International Trade in Services.

3 More comprehensive quarterly estimates of Australia's trade in goods and services, together with comprehensive details of Australia's balance of payments are included in the quarterly publication, *Balance of Payments and International Investment Position, Australia* (cat.no.5302.0). Detailed monthly statistics on merchandise trade are available on AusStats or by subscription to tailored services.

CONCEPTS, SOURCES AND METHODS

4 The conceptual framework used in compiling Australia's merchandise trade statistics can be found in *International Merchandise Trade, Australia: Concepts, Sources and Methods, 2001* (cat.no.5489.0).

5 The conceptual framework used in compiling Australia's balance of payments statistics is based on the Fifth Edition of the International Monetary Fund's *Balance of Payments Manual* (BPM5,1993). Descriptions of the underlying concepts and structure of the balance of payments and the sources, methods and terms used in compiling the estimates are presented in *Balance of Payments and International Investment Position, Australia: Concepts, Sources and Methods, 1998* (cat.no.5331.0). To bring merchandise trade statistics on a recorded trade basis to a balance of payment basis, timing adjustments are made to ensure that the transaction is recorded in the period in which ownership changed, rather than in the period in which the transaction was recorded by ACS. Adjustments are also made to imports to take account of distortions which arise when significant changes occur in the volume of import entries lodged but not yet processed by ACS in a given month. Chapter 6 of cat. no. 5331.0 provides more detail on the relationship between statistics on international merchandise trade on a recorded trade basis and on a balance of payments basis.

6 Both of the Concepts, Sources and Methods publications are available for free from the ABS web site, see <<<http://www.abs.gov.au>>> - select *About Statistics* then *Concepts & Classifications*.

SEASONAL ADJUSTMENT

7 Monthly original estimates are volatile, being subject to calendar-related and large irregular influences. Seasonally adjusted estimates are derived by estimating and removing systematic calendar related effects, such as seasonal and trading day influences, from the original series. Seasonal adjustment does not aim to remove the irregular or non-seasonal influences which may be present in any particular month. These irregular influences may reflect both random economic events and difficulties of statistical recording. The international trade in goods and services on a balance of payments basis estimates are seasonally adjusted. The merchandise exports and imports statistics on a recorded trade basis are not.

TREND ESTIMATES

8 The month-to-month movements of the seasonally adjusted estimates may not be reliable indicators of trend behaviour because they include irregular or non-seasonal movements. Trend estimates are derived by applying a 13-term Henderson moving average to the seasonally adjusted series. The use of a 13-term Henderson average can result in revisions to the estimates for the most recent six months as additional observations become available. Revisions can also occur because of changes in the original data and as a result of the annual re-estimation of the seasonal factors.

EXPLANATORY NOTES *continued*

SIGN CONVENTION

9 In keeping with balance of payments conventions, where statistics are on a balance of payments basis, credit entries (exports) are shown without sign and debit items (imports) are shown as negative entries. For statistics on a recorded trade basis, both imports and exports are shown without sign. The calculation of percentage changes on balance of payments debit items are made without regard to sign. References to balance of payments debit items in Key Figures, Key Points, and Analysis and Comments are also made without regard to sign.

COMMODITY BREAKDOWNS OF GOODS

10 For details of the classification used for goods exports on a balance of payments basis (credits), see table 6.6 in *Balance of Payments and International Investment Position, Australia: Concepts, Sources and Methods, 1998* (cat.no.5331.0).

11 Details of the classification of goods imports on a balance of payments basis (debits) are provided in table 6.7 in cat. no. 5331.0. Most of the commodity groups shown in table 4 for goods debits are available for more detailed sub-groups from AusStats.

12 The recorded trade statistics shown in tables 7 and 8 are classified by the Standard International Trade Classification 2 (SITC). The first section of tables 7 and 8 show the most significant commodities (by value) at the SITC 3 digit level.

COMMODITY BREAKDOWNS OF SERVICES

13 The quarterly detailed services data published in table 6 are consistent with the monthly aggregates shown in table 5. Services trade data by major partner countries and by Australian state of production/consumption are published on a financial year basis and a calendar year basis.

14 Monthly indicators for many of the services components that are only surveyed quarterly are not available. In particular, the Freight and Other transportation components of Total services credits are not available for publication on a monthly basis. The estimates for these items shown in table 5 are therefore derived by dividing the quarterly estimate by three. Where quarterly survey data are not available, freight debits are derived directly from imports data for the reference month as a difference between total merchandise CIFE and FOB, adjusted to reflect timing and processing adjustments. For freight credits and other transportation credits and debits, estimates are derived by extrapolating the last month's data by an average of movements for the same month over the three previous years.

RELATED PRODUCTS OR SERVICES

15 More detailed balance of payments and recorded merchandise trade data, including forward seasonal factors, are available from AusStats. Very detailed merchandise trade data by commodity, country and state are available by contacting the National Information and Referral Service, as shown on the back of this publication.

16 Users may also wish to refer to the following publications which are available from ABS Bookshops and on the ABS web site:

- *Balance of Payments and International Investment Position, Australia* (cat.no.5302.0) - issued quarterly
- *International Merchandise Imports, Australia* (cat.no.5439.0) - issued monthly
- *International Trade Price Indexes, Australia* (cat.no.6457.0) - issued quarterly
- *Balance of Payments and International Investment Position, Australia: Concepts, Sources and Methods* (cat.no.5331.0)
- *Information Paper: Quality of Australian Balance of Payments Statistics* (cat.no.5342.0)
- *International Merchandise Trade, Australia: Concepts, Sources and Methods* (cat.no.5489.0)
- *A Guide to Australian Balance of Payments and International Investment Position Statistics* (cat.no.5362.0.55.001).

EXPLANATORY NOTES *continued*

RELATED PRODUCTS OR
SERVICES *continued*

17 The last four publications are available for free on the ABS web site
<<http://www.abs.gov.au>> - select *About Statistics* then *Concepts & Classifications*.

ABBREVIATIONS

ABS Australian Bureau of Statistics
ACS Australian Customs Service
APEC Asia Pacific Economic Co-operation
ASEAN Association of South-East Asian Nations
n.e.s. not elsewhere specified
n.i.e. not included elsewhere
OECD Organisation for Economic Co-operation and Development
SAR Special Administrative Region
SITC Standard International Trade Classification

APPENDIX RELATED ARTICLES

<i>Article</i>	<i>Source</i>	<i>Issue</i>
Investment		
Gross external debt	5302.0	Sep qtr 2003
Foreign ownership of equity	5302.0	Sep qtr 2003
Measuring Australia's foreign currency exposure	5302.0	Dec qtr 2001
Balance of payments		
International comparison of balance of payments statistics	5363.0	1999–2000
The Sydney Olympic Games	5302.0	Sep qtr 1999
The Sydney Olympic Games Update	5368.0	Jul 2000
Merchandise trade		
Australia's Trade with the USA	web site	Mar 2004
Australia's Exporters, 2002–03	web site	Dec 2003
Australia's Importers, 2002–03	web site	Dec 2003
Export and import currencies, 2003	web site	May 2003
Australia's exporters and importers, 2001–02	5422.0	Dec qtr 2002
Trade through Australia's ports	5422.0	Sep qtr 2002
Australia's trade in wine	5422.0	Dec qtr 2001
Australia's export markets, 1991–92 to 2000–01	5422.0	Jun qtr 2001
Major commodities traded by Australia, 1991 to 2000	5422.0	Dec qtr 2000
Australia's trade in crude petroleum	5422.0	Mar qtr 2000
Australia's merchandise trade with the Republic of Korea	5422.0	Sep qtr 1999
Australia's merchandise trade with Japan	5422.0	Mar qtr 1999
Bilateral merchandise trade statistics reconciliation: Australia and the European Union, 1992 to 1997	5422.0	Sep qtr 1998
Trade in services		
International trade in services by partner country, 2003	web site	Mar 2004
International trade in services by State, 2003	web site	Mar 2004
International trade in services by partner country, 2002–03	web site	Oct 2003
International trade in services by State, 2002–03	web site	Oct 2003
Goods and services by region, 2001	5368.0	Feb 2002
International trade in education services	web site	Oct 2002
Finance		
Recent trends in construction and first home buyers finance	5609.0	Mar 2002
Household sector data in the financial accounts	5232.0	Mar qtr 2002
Investment Managers	5655.0	Jun qtr 2000
Venture capital, 1999–2000	5611.0	2000–2001
Impact of 2003–2004 farm season on Australian production	5611.0	1999–2000
Technical information		
Changes to country and port classifications	5368.0	May 2003
The effect of customs changes on export statistics	5422.0	Jun qtr 2002
Harmonized system changes	5422.0	Sep qtr 2001
International trade review: data quality and client queries	5422.0	Jun qtr 2000
Data confidentiality	5422.0	Dec qtr 1999

FOR MORE INFORMATION . . .

- INTERNET* **www.abs.gov.au** the ABS web site is the best place to start for access to summary data from our latest publications, information about the ABS, advice about upcoming releases, our catalogue, and Australia Now—a statistical profile.
- LIBRARY* A range of ABS publications is available from public and tertiary libraries Australia-wide. Contact your nearest library to determine whether it has the ABS statistics you require, or visit our web site for a list of libraries.
- CPI INFOLINE* For current and historical Consumer Price Index data, call 1902 981 074 (call cost 77c per minute).
- DIAL-A-STATISTIC* For the latest figures for National Accounts, Balance of Payments, Labour Force, Average Weekly Earnings, Estimated Resident Population and the Consumer Price Index call 1900 986 400 (call cost 77c per minute).

INFORMATION SERVICE

Data already published that can be provided within five minutes will be free of charge. Our information consultants can also help you to access the full range of ABS information—ABS user pays services can be tailored to your needs, time frame and budget. Publications may be purchased. Specialists are on hand to help you with analytical or methodological advice.

- PHONE* 1300 135 070
- EMAIL* client.services@abs.gov.au
- FAX* 1300 135 211
- POST* Client Services, ABS, GPO Box 796, Sydney NSW 2001

WHY NOT SUBSCRIBE?

ABS subscription services provide regular, convenient and prompt deliveries of ABS publications and products as they are released. Email delivery of monthly and quarterly publications is available.

- PHONE* 1300 366 323
- EMAIL* subscriptions@abs.gov.au
- FAX* (03) 9615 7848
- POST* Subscription Services, ABS, GPO Box 2796Y, Melbourne Vic 3001



2536800004040

ISSN 1328 2778

RRP \$20.00