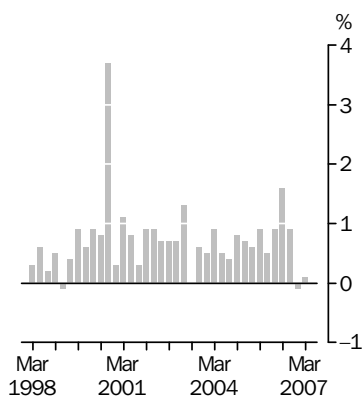


CONSUMER PRICE INDEX

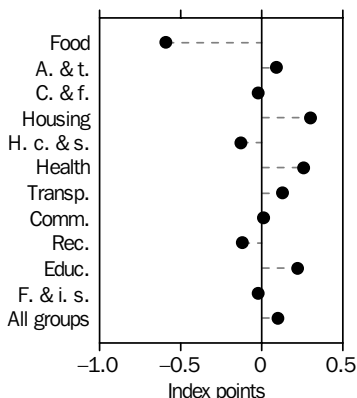
AUSTRALIA

EMBARGO: 11.30AM (CANBERRA TIME) TUES 24 APR 2007

All Groups
Quarterly change



Contribution to quarterly change
March quarter 2007



KEY FIGURES

**WEIGHTED AVERAGE OF EIGHT
CAPITAL CITIES**

	<i>Dec Qtr 2006 to Mar Qtr 2007</i>	<i>Mar Qtr 2006 to Mar Qtr 2007</i>
	<i>% change</i>	<i>% change</i>
Food	-2.3	4.6
Alcohol and tobacco	0.9	3.1
Clothing and footwear	-0.4	0.2
Housing	1.0	3.5
Household contents and services	-0.9	1.4
Health	3.5	4.4
Transportation	0.7	0.5
Communication	0.2	1.4
Recreation	-0.7	1.1
Education	5.0	4.2
Financial and insurance services	-0.2	1.8
All groups	0.1	2.4

All groups excluding Housing and Financial and insurance services

-0.1 2.3

KEY POINTS

THE ALL GROUPS CPI

- rose 0.1% in the March quarter 2007, a slight increase from the fall of 0.1% in the December quarter.
- rose 2.4% through the year to March quarter 2007.

OVERVIEW OF CPI MOVEMENTS

- The most significant price rises this quarter were for pharmaceuticals (+12.8%), house purchase (+1.0%), secondary education fees (+7.1%) and rents (+1.4%).
- The most significant offsetting price decreases were fruit (-33.8%), with banana prices returning to the levels of March quarter 2006, furniture (-3.3%), overseas holiday travel and accommodation (-2.2%) and audio, visual and computing equipment (-2.4%).

INQUIRIES

For further information about these and related statistics, contact Lee Taylor on Canberra (02) 6252 6251 or the National Information and Referral Service on 1300 135 070.

NOTES

FORTHCOMING ISSUES

<i>ISSUE (Quarter)</i>	<i>RELEASE DATE</i>
June 2007	25 July 2007
September 2007	24 October 2007



ROUNDING

Any discrepancies between totals and sums of components in this publication are due to rounding.

CHANGES IN THIS ISSUE

Change to New Zealand CPI series in the International Comparisons in tables 11 and 12.

In September quarter 2006, Statistics New Zealand released a revised CPI series with reference base of June quarter 2006. This followed a major review involving changes to their representative basket of goods and services as well as changes to expenditure weights. The revised series is presented in tables 11 and 12. For details on these changes, please contact Statistics New Zealand through their website <<http://www.stats.govt.nz>>.

FORTHCOMING CHANGES

ABS to publish the RBA's consumer price measures.

The Australian Bureau of Statistics and the Reserve Bank of Australia have agreed that the ABS will publish on behalf of the RBA its trimmed mean and weighted median consumer price measures.

Publication of the measures by the ABS will commence in the June Quarter 2007 issue of *Consumer Price Index, Australia* (cat. no. 6401.0) which will be released on 25 July 2007.

The measures will appear in tables 9 and 10, along with other analytical price series. The ABS will publish an information paper on 11 July 2007 that will show how the series will appear in the publication.

For more information see the media release on the ABS website <<http://www.abs.gov.au>> under News and Media Releases, All Media Releases, April 2007.

ABBREVIATIONS

ABS Australian Bureau of Statistics

CPI Consumer Price Index

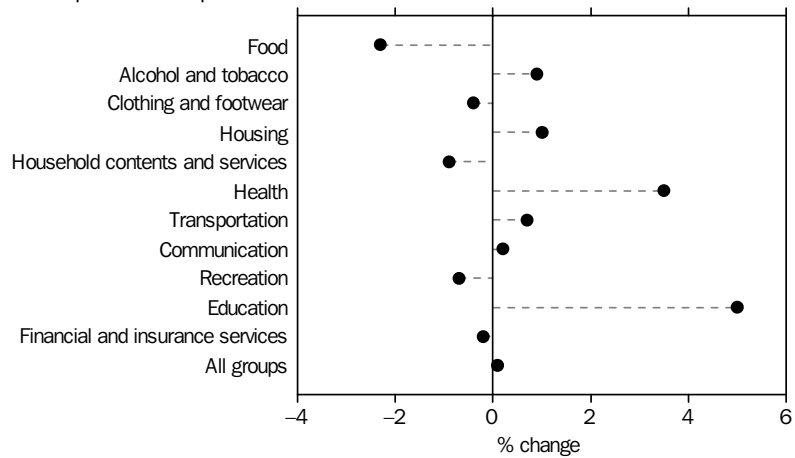
Brian Pink
Australian Statistician

ANALYSES AND COMMENTS

MAIN CONTRIBUTORS TO CHANGE

CPI GROUPS

WEIGHTED AVERAGE OF EIGHT CAPITAL CITIES, Percentage change from previous quarter



The discussion of the CPI groups below is ordered in terms of their absolute significance to the change in All groups index points (see tables 6 and 7).

FOOD (-2.3%)

The fall in food prices was mainly due to fruit (-33.8%), with minor contributions from breakfast cereals (-5.0%), lamb and mutton (-3.1%) and beef and veal (-1.0%). These falls were partially offset by rises in all other food items, ranging from tea, coffee and food drinks (+0.1%) to take away and fast foods (+1.6%).

The fall in fruit prices was again largely due to the lower quarterly average price of bananas. Banana prices rose 406% over the June and September quarters 2006, fell 19% in December quarter 2006 and a further 73% in March quarter 2007. Banana prices are now at levels similar to those of March quarter 2006. Prices of most other fruit also fell throughout the quarter, with a small number of offsetting price rises, notably in apples (+4.8%) and citrus fruit (+3.6%).

Over the twelve months to March quarter 2007, food prices rose 4.6%, mainly due to increases in fruit (+14.9%) and take away and fast foods (+4.0%). The only significant offsetting annual fall was in beef and veal (-2.3%).

HOUSING (+1.0%)

The rise in housing this quarter was mainly due to house purchase (+1.0%) and rents (+1.4%).

Increases in house purchase prices were recorded in all capital cities except Adelaide, which was unchanged. Rises in other cities ranged from 0.4% in Sydney to 3.3% in Brisbane. Average rents rose in all capital cities, ranging from 0.9% in Adelaide to 2.6% in Perth.

Through the year to March quarter 2007, the housing group rose 3.5%. This rise was mainly attributable to rents (+4.4%), house purchase (+2.9%), and property rates and charges (+5.6%). Annually, housing increases were led by rises in Darwin (+8.5%) and Perth (+6.9%).

ANALYSES AND COMMENTS *continued*

HEALTH (+3.5%)

The rise in health costs was due to pharmaceuticals (+12.8%), hospital and medical services (+1.0%) and dental services (+1.1%).

Pharmaceuticals prices rose as a result of the cyclical reduction in the proportion of consumers who qualify for subsidised medications under the Pharmaceuticals Benefit Scheme at the start of each calendar year. The rise in hospital and medical services reflects increases in gross fees for most medical practitioners' services, combined with a cyclical reduction in the proportion of consumers who qualify for subsidies for out-of-hospital medical expenses under the Medicare Plus safety net at the start of each calendar year. This was partly offset by a small increase in the overall bulk billing ratio for medical services.

Through the year to March quarter 2007, the health group rose 4.4%, mainly due to an increase in net hospital and medical services (+5.9%).

EDUCATION (+5.0%)

Fees for all levels of education rose in the March quarter, with the commencement of the new school year. Secondary education rose 7.1%, preschool and primary education rose 6.6% and tertiary education rose 2.6%.

Secondary education was the major contributor, with wide-spread fee increases at private and most government schools. Preschool and primary education fees rose to cover increases in wages and other operating costs.

The rise in tertiary education was due to rises in all tertiary education fees. Increases in TAFE and HECS fees were the main contributors to this movement.

Through the year to March quarter 2007, the education group rose 4.2%.

TRANSPORTATION (+0.7%)

The main contributor to the 0.7% increase in transportation costs this quarter was a small rise in the price of automotive fuel (+1.4%). All other categories in transportation also rose, with motor vehicle parts and accessories (+1.2%) and other motoring charges (+1.2%) being the most significant.

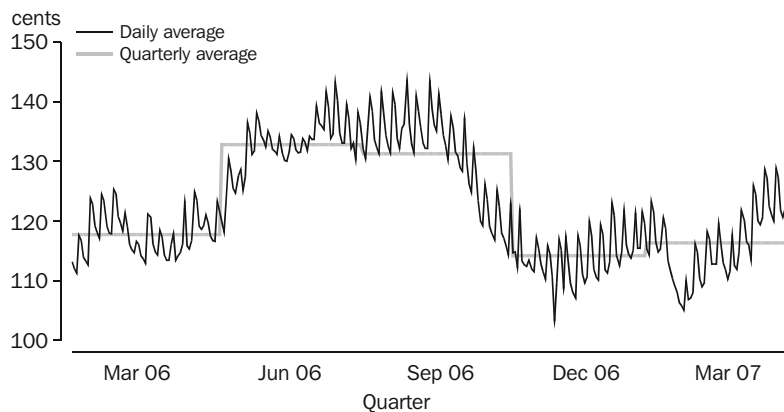
Automotive fuel prices fell in October (-6.3%) and November (-1.9%), rose in December (+2.8%), fell in January (-3.0%) then rose in February (+1.1%) and March (+7.6%). The automotive fuel expenditure class contributed 0.09 index points to the increase in the All Groups CPI in March quarter 2007 and -0.14 index points to the through the year change.

The following graph shows the pattern of the average daily prices for unleaded petrol for the eight capital cities over the last fifteen months.

ANALYSES AND COMMENTS *continued*

TRANSPORTATION (+0.7%) *continued*

AVERAGE PRICE OF ULP, cents per litre



Through the year to March quarter 2007, the transportation group rose 0.5%, with the main contributors being other motoring charges (+4.9%), motor vehicle repair and servicing (+2.6%), motor vehicle parts and accessories (+3.8%) and urban transport fares (+3.0%). A fall in automotive fuel (-2.3%) provided the only offset.

HOUSEHOLD CONTENTS AND SERVICES (-0.9%)

The fall in household contents and services prices was mainly due to furniture (-3.3%), towels and linen (-4.9%) and glassware, tableware and household utensils (-2.2%). The strongest offsetting movement was a rise in child care (+5.4%).

The rise in the net price of child care was mainly due to increases in gross fees, with many providers reviewing fees at the start of a new year to cover increases in wages and other running costs. Increases in the number of families exceeding thresholds for the Child Care Benefit, as family income levels rose, meant that the net benefit of subsidies was reduced. This had the effect of a small increase in out-of-pocket expenses.

Through the year to March quarter 2007, the household contents and services group rose 1.4%.

RECREATION (-0.7%)

The fall in recreation was due mainly to overseas holiday travel and accommodation (-2.2%), audio, visual and computing equipment (-2.4%) and domestic holiday travel and accommodation (-1.3%). The major offsetting price rise was in other recreational activities (+1.1%).

Annually, Recreation rose 1.1% with the strongest rises in domestic holiday travel and accommodation (+5.2%) and other recreational activities (4.9%).

ALCOHOL AND TOBACCO (+0.9%)

All four components in the alcohol and tobacco group rose this quarter with the most significant being contributions from tobacco (+1.4%), beer (+0.7%), and spirits (+1.1%).

The rises in tobacco, beer, and spirit prices are attributed to the effects of the increase in Federal excise and customs duty from 1 February and to some discontinuation of specials. There was a small increase in wine prices (+0.1%).

Through the year to March quarter 2007, the alcohol and tobacco group rose 3.1%, with rises in all categories except wine, which fell 0.6% over the year.

ANALYSES AND COMMENTS *continued*

TRADABLES AND NON-TRADABLES

The non-tradables component (see table 8) of the CPI rose 0.9% in the March quarter. This component includes goods and services whose prices are largely determined by domestic price pressures and represents approximately 58% of the CPI. Within non-tradables, the services component rose 0.7%, mainly due to secondary education fees and rents. The major offset was provided by deposit and loan facilities. The non-tradable goods component rose 1.3% mainly due to house purchase.

The tradables component of the All groups CPI fell 1.0%. This component includes goods and services whose prices are largely determined on the world market and represents approximately 42% of the weight of the CPI. The main contributor to the decrease was fruit. The most significant offsets were rises in pharmaceuticals and automotive fuel.

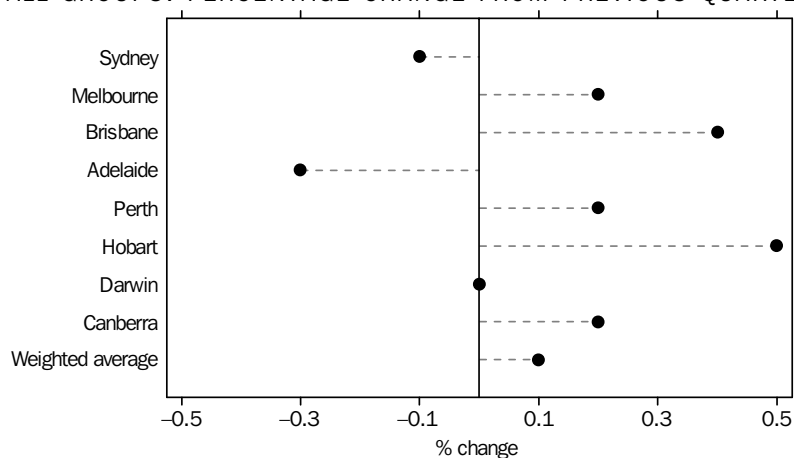
Through the year to March quarter 2007, non-tradables rose 3.5% and tradables rose 1.0%. This compares with rises of 3.5% and 2.9%, respectively, for these components through the year to December quarter 2006.

ANALYSES AND COMMENTS *continued*

CAPITAL CITIES COMPARISON

ALL GROUPS

ALL GROUPS: PERCENTAGE CHANGE FROM PREVIOUS QUARTER



At the All groups level, the CPI rose in Hobart (+0.5%), Brisbane (+0.4%), Melbourne (+0.2%), Canberra (+0.2%), and Perth (+0.2%), showed no overall movement in Darwin (0.0%) and fell in Adelaide (-0.3%), Sydney (-0.1%).

Significant falls in fruit prices were recorded in all cities, due mainly to the fall in banana prices. In Hobart the impact of price rises in automotive fuel, pharmaceuticals and electricity more than offset this impact. In Adelaide, rises in electricity, pharmaceuticals and automotive fuel were not sufficient to offset the falls in fruit and overseas holiday travel and accommodation.

Through the year to March quarter 2007, the All groups CPI rose in all capital cities with the increases ranging from 1.8% in Adelaide to 4.0% in Darwin. The higher result for Darwin was largely due to an 8.5% rise in Housing, more than double the 3.5% increase for the weighted average of eight capital cities. Perth also recorded a strong rise for Housing (+6.9%) that was almost double the national average.

CPI, All groups index numbers and percentage changes

	INDEX	PERCENTAGE CHANGE	
	NUMBER(a)	Dec Qtr 2006 to Mar Qtr 2007	Mar Qtr 2006 to Mar Qtr 2007
	<i>Mar Qtr 2007</i>		
Sydney	155.6	-0.1	2.2
Melbourne	153.8	0.2	2.2
Brisbane	158.0	0.4	2.9
Adelaide	158.4	-0.3	1.8
Perth	155.8	0.2	3.5
Hobart	155.4	0.5	2.1
Darwin	152.6	0.0	4.0
Canberra	155.9	0.2	2.4
Weighted average of eight capital cities	155.6	0.1	2.4

(a) Base of each index: 1989-90 = 100.0.

ALL GROUPS, Index numbers(a)

<i>Period</i>	<i>Sydney</i>	<i>Melbourne</i>	<i>Brisbane</i>	<i>Adelaide</i>	<i>Perth</i>	<i>Hobart</i>	<i>Darwin</i>	<i>Canberra</i>	<i>Weighted average of eight capital cities</i>
2002-03	141.1	139.7	140.7	142.7	136.8	139.1	136.8	139.7	140.2
2003-04	144.1	142.8	144.8	147.0	139.6	142.6	138.7	143.4	143.5
2004-05	147.7	145.7	148.5	150.4	144.0	147.1	141.8	146.7	147.0
2005-06	152.1	150.2	153.2	155.2	150.1	151.8	146.5	151.9	151.7
2003									
March	142.1	140.9	141.8	144.6	137.4	140.0	137.5	140.7	141.3
June	142.2	140.9	141.8	144.3	137.4	140.8	137.9	140.7	141.3
September	142.4	141.8	143.3	145.4	138.6	141.1	137.8	141.9	142.1
December	143.6	142.1	144.2	146.2	139.2	142.0	138.5	142.9	142.8
2004									
March	145.0	143.5	145.4	147.7	139.6	143.0	139.0	143.9	144.1
June	145.5	143.9	146.3	148.6	141.0	144.3	139.6	144.8	144.8
September	146.2	144.2	146.8	149.0	142.0	145.0	140.8	145.5	145.4
December	147.3	145.3	148.0	150.0	143.3	146.7	141.1	146.3	146.5
2005									
March	148.2	146.4	149.2	150.9	144.4	148.0	141.9	147.0	147.5
June	149.0	146.9	150.0	151.8	146.3	148.8	143.2	147.8	148.4
September	150.5	148.6	150.9	153.4	147.8	150.1	144.7	149.7	149.8
December	151.0	149.2	152.1	154.1	149.0	151.0	145.4	150.9	150.6
2006									
March	152.2	150.5	153.5	155.6	150.5	152.2	146.7	152.2	151.9
June	154.7	152.6	156.2	157.6	153.2	154.0	149.2	154.9	154.3
September	156.1	153.7	157.5	159.3	154.9	155.1	151.8	156.0	155.7
December	155.8	153.5	157.3	158.8	155.5	154.7	152.6	155.6	155.5
2007									
March	155.6	153.8	158.0	158.4	155.8	155.4	152.6	155.9	155.6

(a) Base of each index: 1989-90 = 100.0.

ALL GROUPS, Percentage changes

<i>Period</i>	<i>Sydney</i>	<i>Melbourne</i>	<i>Brisbane</i>	<i>Adelaide</i>	<i>Perth</i>	<i>Hobart</i>	<i>Darwin</i>	<i>Canberra</i>	<i>Weighted average of eight capital cities</i>
PERCENTAGE CHANGE (from previous financial year)									
2002-03	2.8	3.3	3.2	4.0	2.8	3.3	2.3	3.3	3.1
2003-04	2.1	2.2	2.9	3.0	2.0	2.5	1.4	2.6	2.4
2004-05	2.5	2.0	2.6	2.3	3.2	3.2	2.2	2.3	2.4
2005-06	3.0	3.1	3.2	3.2	4.2	3.2	3.3	3.5	3.2
PERCENTAGE CHANGE (from corresponding quarter of previous year)									
2003									
March	3.0	3.6	3.4	5.0	2.8	3.6	2.8	3.8	3.4
June	2.4	2.9	2.7	3.7	2.1	2.8	2.1	2.6	2.7
September	2.0	2.9	2.9	3.6	2.1	2.6	1.8	2.8	2.6
December	2.3	2.2	3.1	3.3	2.1	2.9	1.7	2.7	2.4
2004									
March	2.0	1.8	2.5	2.1	1.6	2.1	1.1	2.3	2.0
June	2.3	2.1	3.2	3.0	2.6	2.5	1.2	2.9	2.5
September	2.7	1.7	2.4	2.5	2.5	2.8	2.2	2.5	2.3
December	2.6	2.3	2.6	2.6	2.9	3.3	1.9	2.4	2.6
2005									
March	2.2	2.0	2.6	2.2	3.4	3.5	2.1	2.2	2.4
June	2.4	2.1	2.5	2.2	3.8	3.1	2.6	2.1	2.5
September	2.9	3.1	2.8	3.0	4.1	3.5	2.8	2.9	3.0
December	2.5	2.7	2.8	2.7	4.0	2.9	3.0	3.1	2.8
2006									
March	2.7	2.8	2.9	3.1	4.2	2.8	3.4	3.5	3.0
June	3.8	3.9	4.1	3.8	4.7	3.5	4.2	4.8	4.0
September	3.7	3.4	4.4	3.8	4.8	3.3	4.9	4.2	3.9
December	3.2	2.9	3.4	3.0	4.4	2.5	5.0	3.1	3.3
2007									
March	2.2	2.2	2.9	1.8	3.5	2.1	4.0	2.4	2.4
PERCENTAGE CHANGE (from previous quarter)									
2003									
March	1.2	1.4	1.4	2.2	0.7	1.4	1.0	1.1	1.3
June	0.1	0.0	0.0	-0.2	0.0	0.6	0.3	0.0	0.0
September	0.1	0.6	1.1	0.8	0.9	0.2	-0.1	0.9	0.6
December	0.8	0.2	0.6	0.6	0.4	0.6	0.5	0.7	0.5
2004									
March	1.0	1.0	0.8	1.0	0.3	0.7	0.4	0.7	0.9
June	0.3	0.3	0.6	0.6	1.0	0.9	0.4	0.6	0.5
September	0.5	0.2	0.3	0.3	0.7	0.5	0.9	0.5	0.4
December	0.8	0.8	0.8	0.7	0.9	1.2	0.2	0.5	0.8
2005									
March	0.6	0.8	0.8	0.6	0.8	0.9	0.6	0.5	0.7
June	0.5	0.3	0.5	0.6	1.3	0.5	0.9	0.5	0.6
September	1.0	1.2	0.6	1.1	1.0	0.9	1.0	1.3	0.9
December	0.3	0.4	0.8	0.5	0.8	0.6	0.5	0.8	0.5
2006									
March	0.8	0.9	0.9	1.0	1.0	0.8	0.9	0.9	0.9
June	1.6	1.4	1.8	1.3	1.8	1.2	1.7	1.8	1.6
September	0.9	0.7	0.8	1.1	1.1	0.7	1.7	0.7	0.9
December	-0.2	-0.1	-0.1	-0.3	0.4	-0.3	0.5	-0.3	-0.1
2007									
March	-0.1	0.2	0.4	-0.3	0.2	0.5	0.0	0.2	0.1

3

CPI GROUPS, Weighted average of eight capital cities—Index numbers(a)

<i>Period</i>	<i>Food</i>	<i>Alcohol and tobacco</i>	<i>Clothing and footwear</i>	<i>Housing</i>	<i>Household contents and services</i>	<i>Health</i>
2002-03	147.9	208.9	113.3	115.1	121.0	181.5
2003-04	152.3	217.8	112.7	120.2	121.1	193.9
2004-05	154.8	225.4	110.8	124.8	120.7	204.3
2005-06	162.3	233.1	109.2	129.3	122.2	213.5
2003						
March	149.8	209.9	112.4	115.7	120.4	183.5
June	149.8	211.2	113.7	116.8	121.4	189.1
September	149.3	215.2	113.3	118.9	121.5	189.1
December	152.0	216.5	113.1	119.6	121.4	189.4
2004						
March	154.7	218.8	111.5	120.7	120.7	195.5
June	153.3	220.5	112.7	121.5	120.7	201.6
September	152.4	222.5	112.5	123.2	120.6	200.1
December	154.6	224.0	110.9	124.3	121.3	198.8
2005						
March	156.0	226.9	109.4	125.5	119.7	206.7
June	156.2	228.1	110.3	126.2	121.2	211.6
September	157.4	230.3	110.5	128.0	121.6	209.3
December	160.2	231.4	110.3	128.8	122.4	207.1
2006						
March	162.5	234.3	107.5	129.6	121.9	216.2
June	169.1	236.4	108.4	130.6	122.9	221.4
September	173.0	237.7	108.5	132.2	124.5	219.8
December	173.9	239.5	108.1	132.9	124.7	218.0
2007						
March	169.9	241.6	107.7	134.2	123.6	225.7

(a) Unless otherwise specified, base of each index: 1989-90 = 100.0.

CPI GROUPS, Weighted average of eight capital cities—Index numbers(a) *continued*

<i>Period</i>	<i>Transportation</i>	<i>Communication</i>	<i>Recreation</i>	<i>Education</i>	<i>Financial and insurance services(b)</i>	<i>All groups</i>
2002-03	140.6	108.5	131.9	210.0	..	140.2
2003-04	142.0	110.0	130.0	223.3	..	143.5
2004-05	146.8	111.1	130.7	238.7	..	147.0
2005-06	155.5	109.5	132.0	253.2	101.2	151.7
2003						
March	143.7	108.8	132.4	214.7	..	141.3
June	139.4	108.9	131.5	214.8	..	141.3
September	141.3	109.7	130.0	215.1	..	142.1
December	140.7	109.9	131.1	215.1	..	142.8
2004						
March	141.7	110.0	129.7	231.4	..	144.1
June	144.1	110.4	129.3	231.5	..	144.8
September	145.2	110.9	129.9	231.5	..	145.4
December	147.2	111.2	130.9	231.7	..	146.5
2005						
March	145.8	111.6	131.8	245.7	..	147.5
June	148.8	110.6	130.1	245.9	100.0	148.4
September	153.7	109.8	131.7	246.0	100.1	149.8
December	153.0	109.0	131.7	246.3	101.6	150.6
2006						
March	155.0	109.5	132.5	260.1	101.0	151.9
June	160.2	109.6	132.0	260.2	102.2	154.3
September	160.8	110.3	133.0	258.0	102.5	155.7
December	154.7	110.8	134.8	258.0	103.0	155.5
2007						
March	155.8	111.0	133.9	270.9	102.8	155.6

.. not applicable

(b) Base: June quarter 2005 = 100.0.

(a) Unless otherwise specified, base of each index: 1989-90 = 100.0.

CPI GROUPS, Weighted average of eight capital cities—Percentage changes

<i>Period</i>	<i>Food</i>	<i>Alcohol and tobacco</i>	<i>Clothing and footwear</i>	<i>Housing</i>	<i>Household contents and services</i>	<i>Health</i>
---------------	-------------	----------------------------	------------------------------	----------------	--	---------------

PERCENTAGE CHANGE (from previous financial year)

2002-03	3.6	2.9	0.8	3.6	1.1	6.8
2003-04	3.0	4.3	-0.5	4.4	0.1	6.8
2004-05	1.6	3.5	-1.7	3.8	-0.3	5.4
2005-06	4.8	3.4	-1.4	3.6	1.2	4.5

PERCENTAGE CHANGE (from corresponding quarter of previous year)

2003						
March	3.9	2.9	0.2	3.8	0.8	7.2
June	4.4	3.0	0.0	4.1	0.9	7.5
September	3.0	3.8	0.3	4.6	0.8	7.2
December	3.4	4.4	-0.8	4.7	-0.2	6.9
2004						
March	3.3	4.2	-0.8	4.3	0.2	6.5
June	2.3	4.4	-0.9	4.0	-0.6	6.6
September	2.1	3.4	-0.7	3.6	-0.7	5.8
December	1.7	3.5	-1.9	3.9	-0.1	5.0
2005						
March	0.8	3.7	-1.9	4.0	-0.8	5.7
June	1.9	3.4	-2.1	3.9	0.4	5.0
September	3.3	3.5	-1.8	3.9	0.8	4.6
December	3.6	3.3	-0.5	3.6	0.9	4.2
2006						
March	4.2	3.3	-1.7	3.3	1.8	4.6
June	8.3	3.6	-1.7	3.5	1.4	4.6
September	9.9	3.2	-1.8	3.3	2.4	5.0
December	8.6	3.5	-2.0	3.2	1.9	5.3
2007						
March	4.6	3.1	0.2	3.5	1.4	4.4

PERCENTAGE CHANGE (from previous quarter)

2003						
March	1.9	1.3	-1.4	1.3	-1.0	3.6
June	0.0	0.6	1.2	1.0	0.8	3.1
September	-0.3	1.9	-0.4	1.8	0.1	0.0
December	1.8	0.6	-0.2	0.6	-0.1	0.2
2004						
March	1.8	1.1	-1.4	0.9	-0.6	3.2
June	-0.9	0.8	1.1	0.7	0.0	3.1
September	-0.6	0.9	-0.2	1.4	-0.1	-0.7
December	1.4	0.7	-1.4	0.9	0.6	-0.6
2005						
March	0.9	1.3	-1.4	1.0	-1.3	4.0
June	0.1	0.5	0.8	0.6	1.3	2.4
September	0.8	1.0	0.2	1.4	0.3	-1.1
December	1.8	0.5	-0.2	0.6	0.7	-1.1
2006						
March	1.4	1.3	-2.5	0.6	-0.4	4.4
June	4.1	0.9	0.8	0.8	0.8	2.4
September	2.3	0.5	0.1	1.2	1.3	-0.7
December	0.5	0.8	-0.4	0.5	0.2	-0.8
2007						
March	-2.3	0.9	-0.4	1.0	-0.9	3.5

<i>Period</i>	<i>Transportation</i>	<i>Communication</i>	<i>Recreation</i>	<i>Education</i>	<i>Financial and insurance services</i>	<i>All groups</i>
PERCENTAGE CHANGE (from previous financial year)						
2002-03	2.4	3.1	2.6	5.0	..	3.1
2003-04	1.0	1.4	-1.4	6.3	..	2.4
2004-05	3.4	1.0	0.5	6.9	..	2.4
2005-06	5.9	-1.4	1.0	6.1	..	3.2
PERCENTAGE CHANGE (from corresponding quarter of previous year)						
2003						
March	5.0	3.1	1.5	4.9	..	3.4
June	0.1	2.4	0.3	5.0	..	2.7
September	1.8	1.7	-1.4	4.9	..	2.6
December	0.3	1.4	-0.6	4.8	..	2.4
2004						
March	-1.4	1.1	-2.0	7.8	..	2.0
June	3.4	1.4	-1.7	7.8	..	2.5
September	2.8	1.1	-0.1	7.6	..	2.3
December	4.6	1.2	-0.2	7.7	..	2.6
2005						
March	2.9	1.5	1.6	6.2	..	2.4
June	3.3	0.2	0.6	6.2	..	2.5
September	5.9	-1.0	1.4	6.3	..	3.0
December	3.9	-2.0	0.6	6.3	..	2.8
2006						
March	6.3	-1.9	0.5	5.9	..	3.0
June	7.7	-0.9	1.5	5.8	2.2	4.0
September	4.6	0.5	1.0	4.9	2.4	3.9
December	1.1	1.7	2.4	4.8	1.4	3.3
2007						
March	0.5	1.4	1.1	4.2	1.8	2.4
PERCENTAGE CHANGE (from previous quarter)						
2003						
March	2.4	0.4	0.4	4.6	..	1.3
June	-3.0	0.1	-0.7	0.0	..	0.0
September	1.4	0.7	-1.1	0.1	..	0.6
December	-0.4	0.2	0.8	0.0	..	0.5
2004						
March	0.7	0.1	-1.1	7.6	..	0.9
June	1.7	0.4	-0.3	0.0	..	0.5
September	0.8	0.5	0.5	0.0	..	0.4
December	1.4	0.3	0.8	0.1	..	0.8
2005						
March	-1.0	0.4	0.7	6.0	..	0.7
June	2.1	-0.9	-1.3	0.1	..	0.6
September	3.3	-0.7	1.2	0.0	0.1	0.9
December	-0.5	-0.7	0.0	0.1	1.5	0.5
2006						
March	1.3	0.5	0.6	5.6	-0.6	0.9
June	3.4	0.1	-0.4	0.0	1.2	1.6
September	0.4	0.6	0.8	-0.8	0.3	0.9
December	-3.8	0.5	1.4	0.0	0.5	-0.1
2007						
March	0.7	0.2	-0.7	5.0	-0.2	0.1

.. not applicable

CPI GROUPS, Index numbers(a)

Quarters	Sydney	Melbourne	Brisbane	Adelaide	Perth	Hobart	Darwin	Canberra	Weighted average of eight capital cities
FOOD									
2005									
March	156.9	154.1	157.5	159.9	154.4	152.9	151.9	160.0	156.0
June	156.4	154.5	157.4	160.3	156.5	153.1	151.4	159.6	156.2
September	158.0	156.0	157.2	161.9	157.4	153.4	152.4	159.4	157.4
December	161.0	158.1	160.8	165.5	159.7	156.1	154.4	164.3	160.2
2006									
March	163.1	160.6	164.7	167.7	160.9	157.8	158.4	165.8	162.5
June	170.3	167.0	171.1	174.7	166.4	161.9	162.3	173.0	169.1
September	174.8	170.7	175.1	179.3	169.3	165.1	165.5	174.0	173.0
December	175.5	171.7	176.1	179.3	170.4	167.6	167.3	175.3	173.9
2007									
March	170.5	168.2	171.5	175.6	168.0	165.2	164.1	172.1	169.9
ALCOHOL AND TOBACCO									
2005									
March	234.5	226.5	222.7	232.1	212.2	215.9	216.4	212.5	226.9
June	235.0	227.5	224.5	234.4	214.1	217.5	218.9	213.6	228.1
September	237.7	230.1	225.5	237.7	215.2	217.7	222.7	215.2	230.3
December	238.0	231.5	227.8	238.7	215.9	220.5	224.3	217.3	231.4
2006									
March	240.2	235.3	230.1	241.9	219.1	221.8	226.1	219.9	234.3
June	243.5	237.3	231.1	243.4	220.3	222.6	227.3	221.7	236.4
September	244.2	238.2	232.1	245.7	223.5	224.4	230.7	223.7	237.7
December	245.9	241.2	233.4	245.9	224.3	225.4	231.6	224.8	239.5
2007									
March	247.2	243.4	236.2	250.2	225.7	226.5	233.5	227.7	241.6
CLOTHING AND FOOTWEAR									
2005									
March	112.6	110.3	102.1	109.5	104.1	103.5	103.4	112.4	109.4
June	112.5	111.7	104.1	111.1	105.6	104.1	103.6	112.7	110.3
September	113.2	110.9	105.0	111.0	105.4	105.5	103.6	113.9	110.5
December	112.5	111.8	104.6	110.5	104.5	105.0	104.9	113.3	110.3
2006									
March	110.8	108.8	98.9	109.1	100.5	103.5	102.8	113.0	107.5
June	111.5	109.5	101.0	109.3	101.7	104.3	104.1	113.4	108.4
September	111.5	109.0	103.1	109.3	101.6	104.2	105.1	113.1	108.5
December	111.1	109.0	102.0	108.1	102.8	102.3	104.0	110.2	108.1
2007									
March	110.8	108.4	103.8	105.6	101.7	102.2	103.6	110.4	107.7
HOUSING									
2005									
March	131.1	114.0	135.7	126.8	121.6	128.5	138.6	130.0	125.5
June	132.0	113.9	136.6	126.2	124.1	129.4	140.5	131.1	126.2
September	133.6	115.5	138.3	127.3	126.9	130.9	142.0	133.5	128.0
December	134.4	115.6	139.7	127.9	129.7	131.4	143.7	134.4	128.8
2006									
March	134.7	115.9	140.6	129.4	132.2	133.6	146.5	135.2	129.6
June	135.4	116.1	142.2	129.4	135.2	134.8	149.6	136.7	130.6
September	137.2	116.4	143.9	131.2	138.7	135.8	153.8	140.2	132.2
December	137.5	117.4	144.8	131.4	139.7	135.7	157.4	140.9	132.9
2007									
March	138.3	118.6	147.4	132.5	141.3	137.4	158.9	141.8	134.2

(a) Unless otherwise specified, base of each index: 1989-90 = 100.0.

<i>Quarters</i>	<i>Sydney</i>	<i>Melbourne</i>	<i>Brisbane</i>	<i>Adelaide</i>	<i>Perth</i>	<i>Hobart</i>	<i>Darwin</i>	<i>Canberra</i>	<i>Weighted average of eight capital cities</i>
HOUSEHOLD CONTENTS AND SERVICES									
2005									
March	118.7	120.9	123.3	118.2	114.7	129.2	111.5	124.1	119.7
June	120.0	121.4	124.2	120.7	118.3	129.8	113.0	126.7	121.2
September	120.3	122.3	123.5	121.6	119.0	130.7	113.1	127.8	121.6
December	120.9	123.3	124.8	121.9	119.3	131.5	114.3	129.3	122.4
2006									
March	120.4	122.7	124.5	122.1	118.5	130.9	114.3	129.7	121.9
June	121.2	123.5	126.0	122.7	119.4	131.4	115.0	131.5	122.9
September	122.6	125.6	127.4	124.9	120.9	131.8	115.6	131.7	124.5
December	122.5	125.6	128.0	124.1	122.4	132.0	117.3	132.3	124.7
2007									
March	121.5	124.8	127.3	122.6	120.6	132.2	117.2	130.4	123.6
HEALTH									
2005									
March	192.1	220.5	209.1	211.3	197.7	226.8	191.6	205.5	206.7
June	197.7	224.4	214.4	218.2	200.5	234.2	196.2	209.1	211.6
September	195.3	221.9	211.2	215.5	199.3	230.8	194.8	208.9	209.3
December	193.0	219.8	207.5	214.4	198.7	228.2	193.6	205.7	207.1
2006									
March	201.9	229.2	219.7	221.7	204.8	238.2	199.2	216.2	216.2
June	206.8	233.7	225.9	228.6	210.4	245.0	205.0	219.7	221.4
September	206.1	231.4	223.1	226.4	209.6	241.3	202.9	217.3	219.8
December	203.2	230.9	220.6	225.8	208.7	239.2	204.8	214.5	218.0
2007									
March	209.9	239.0	230.9	231.9	216.0	247.0	213.2	224.3	225.7
TRANSPORTATION									
2005									
March	147.5	145.4	144.3	147.8	144.6	142.3	139.5	143.4	145.8
June	150.7	148.3	147.2	151.5	147.3	145.1	141.6	145.8	148.8
September	154.7	153.9	152.0	157.4	152.1	150.0	144.3	151.6	153.7
December	153.6	153.1	151.4	156.5	152.1	150.1	146.7	152.1	153.0
2006									
March	155.6	155.5	153.3	158.1	154.0	150.2	148.2	153.2	155.0
June	160.9	160.8	158.6	163.2	158.9	155.0	152.2	159.5	160.2
September	161.3	161.3	159.5	163.9	159.8	154.7	153.6	159.3	160.8
December	155.2	154.9	154.0	157.6	154.7	146.9	148.4	152.1	154.7
2007									
March	156.3	155.8	154.9	158.4	156.0	149.4	148.4	152.7	155.8
COMMUNICATION									
2005									
March	111.1	111.4	115.1	113.0	109.9	112.5	103.2	110.2	111.6
June	110.1	110.4	114.1	112.0	108.9	111.5	102.3	109.2	110.6
September	109.3	109.6	113.3	111.2	108.1	110.8	101.6	108.5	109.8
December	108.5	108.8	112.4	110.4	107.3	110.0	100.8	107.7	109.0
2006									
March	109.0	109.3	112.9	110.9	107.8	110.4	101.3	108.2	109.5
June	109.1	109.4	113.0	111.0	107.9	110.5	101.4	108.3	109.6
September	109.8	110.0	113.8	111.7	108.6	111.3	102.0	108.9	110.3
December	110.4	110.3	114.4	112.2	109.2	111.8	102.5	109.5	110.8
2007									
March	110.6	110.5	114.7	112.4	109.4	112.0	102.7	109.7	111.0

(a) Unless otherwise specified, base of each index: 1989-90 = 100.0.

Quarters	Sydney	Melbourne	Brisbane	Adelaide	Perth	Hobart	Darwin	Canberra	Weighted average of eight capital cities
RECREATION									
2005									
March	134.5	132.7	128.1	132.0	127.9	129.5	106.6	128.9	131.8
June	133.3	130.4	125.7	130.7	127.1	126.9	107.3	127.2	130.1
September	134.7	132.0	126.7	132.1	129.0	128.7	111.1	129.5	131.7
December	134.7	132.0	127.6	132.1	129.2	129.1	108.3	128.9	131.7
2006									
March	135.2	133.3	128.7	132.5	130.3	130.2	106.7	129.8	132.5
June	134.8	132.2	128.4	131.7	130.3	129.1	108.6	130.1	132.0
September	135.7	133.3	129.1	133.2	130.6	132.4	112.9	131.4	133.0
December	137.5	134.3	130.1	135.7	134.3	134.0	113.1	133.1	134.8
2007									
March	136.5	134.6	129.2	133.1	132.2	133.6	110.7	132.2	133.9
EDUCATION									
2005									
March	254.5	234.4	265.8	282.9	227.9	249.9	173.9	227.1	245.7
June	254.7	234.7	265.9	283.0	227.9	250.0	174.1	227.2	245.9
September	254.6	234.8	266.6	283.2	227.9	250.0	174.3	227.2	246.0
December	254.7	235.3	266.7	283.4	227.9	250.4	174.3	227.6	246.3
2006									
March	271.8	246.4	279.5	299.9	241.6	259.7	180.8	241.7	260.1
June	272.0	246.4	279.8	300.1	241.6	259.7	180.8	241.8	260.2
September	270.9	245.7	270.9	295.9	241.2	254.0	174.8	234.1	258.0
December	271.0	245.8	271.0	296.0	241.2	254.0	174.8	234.2	258.0
2007									
March	284.2	255.2	288.5	308.8	260.5	263.6	184.8	249.1	270.9
FINANCIAL AND INSURANCE SERVICES (b)									
2005									
March
June	100.0	100.0	100.0	100.0	100.0	100.0	100.0	100.0	100.0
September	100.8	100.2	99.4	99.3	98.7	99.9	98.9	100.1	100.1
December	101.9	102.2	100.9	100.5	100.5	101.4	99.4	102.2	101.6
2006									
March	101.2	101.5	100.4	100.3	100.3	100.3	98.4	101.3	101.0
June	102.4	102.8	101.4	100.8	102.1	100.7	99.3	102.4	102.2
September	102.8	103.5	101.5	101.3	101.8	100.8	99.5	102.8	102.5
December	103.5	103.3	102.0	101.5	102.6	102.2	100.1	103.6	103.0
2007									
March	103.1	103.3	102.0	101.4	102.3	102.4	101.2	103.4	102.8

.. not applicable

(b) Base: June quarter 2005 = 100.0.

(a) Unless otherwise specified, base of each index: 1989-90 = 100.0.

<i>Group, sub-group and expenditure class</i>	<i>Sydney</i>	<i>Melbourne</i>	<i>Brisbane</i>	<i>Adelaide</i>	<i>Perth</i>	<i>Hobart</i>	<i>Darwin</i>	<i>Canberra</i>	<i>Weighted average of eight capital cities</i>
Food	-0.74	-0.51	-0.66	-0.54	-0.34	-0.37	-0.47	-0.43	-0.59
Dairy and related products	0.02	0.02	0.02	0.04	0.02	0.02	0.01	0.01	0.02
Milk	0.01	0.01	0.01	0.01	0.01	0.02	0.02	0.01	0.00
Cheese	0.01	0.02	0.01	0.02	0.00	0.01	0.00	0.01	0.01
Ice cream and other dairy products	0.00	0.00	0.01	0.01	0.01	-0.01	-0.01	0.00	0.00
Bread and cereal products	0.06	0.03	0.04	0.01	0.04	0.05	0.00	0.05	0.04
Bread	0.06	0.02	0.04	0.02	0.03	0.05	0.01	0.02	0.04
Cakes and biscuits	0.02	0.02	0.02	0.00	0.01	0.00	0.00	0.02	0.01
Breakfast cereals	-0.02	-0.01	-0.03	-0.01	-0.01	-0.01	0.00	0.00	-0.02
Other cereal products	0.01	0.00	0.00	0.00	0.01	0.01	0.00	0.00	0.00
Meat and seafoods	0.07	0.02	-0.03	0.05	0.02	-0.02	0.01	-0.01	0.03
Beef and veal	-0.01	-0.02	0.00	0.01	-0.02	0.02	-0.01	0.00	-0.01
Lamb and mutton	-0.02	-0.01	-0.01	0.01	-0.01	-0.02	0.00	-0.01	-0.01
Pork	0.01	0.01	-0.01	0.00	0.01	0.02	0.00	0.01	0.00
Poultry	0.02	0.02	-0.02	-0.01	0.03	0.00	0.02	0.00	0.01
Bacon and ham	0.00	0.01	0.00	0.03	0.00	0.01	0.01	-0.02	0.01
Other fresh and processed meat	0.00	0.00	0.00	0.02	0.00	-0.01	-0.02	0.00	0.00
Fish and other seafood	0.04	0.01	0.02	0.00	0.01	-0.02	0.01	0.00	0.02
Fruit and vegetables	-1.02	-0.79	-0.90	-0.83	-0.60	-0.69	-0.65	-0.65	-0.86
Fruit	-1.08	-0.80	-1.00	-0.83	-0.64	-0.69	-0.66	-0.61	-0.89
Vegetables	0.06	0.02	0.09	0.00	0.04	-0.01	0.01	-0.05	0.04
Non-alcoholic drinks and snack food	0.03	0.06	0.06	0.04	0.04	0.02	0.09	0.03	0.05
Soft drinks, waters and juices	0.00	0.02	0.04	0.03	0.04	0.01	0.02	0.02	0.02
Snacks and confectionery	0.04	0.04	0.03	0.01	0.00	0.00	0.08	0.01	0.03
Meals out and take away foods	0.07	0.11	0.08	0.11	0.10	0.22	0.07	0.14	0.09
Restaurant meals	0.01	0.05	0.01	0.04	0.01	0.12	0.00	0.04	0.03
Take away and fast foods	0.05	0.07	0.07	0.07	0.09	0.10	0.06	0.10	0.07
Other food	0.03	0.03	0.06	0.03	0.03	0.04	0.00	0.00	0.03
Eggs	0.01	0.01	0.01	0.00	0.01	0.01	0.00	0.01	0.00
Jams, honey and sandwich spreads	0.01	0.00	0.01	0.00	0.00	0.01	0.00	0.00	0.00
Tea, coffee and food drinks	0.00	0.00	0.01	0.00	0.00	0.00	0.00	-0.01	0.00
Food additives and condiments	0.01	0.01	0.01	0.00	0.01	0.01	0.01	0.00	0.01
Fats and oils	0.00	0.01	0.01	0.01	0.00	0.01	0.01	0.00	0.01
Food n.e.c.	0.01	0.02	0.02	0.02	0.02	0.01	0.00	-0.01	0.01
Alcohol and tobacco	0.05	0.10	0.13	0.21	0.07	0.06	0.11	0.12	0.09
Alcoholic drinks	0.02	0.04	0.06	0.13	0.02	0.01	0.05	0.06	0.03
Beer	-0.01	0.02	0.05	0.10	0.01	0.03	0.06	0.03	0.02
Wine	0.01	0.01	-0.01	0.02	-0.02	-0.02	-0.03	0.02	0.00
Spirits	0.02	0.02	0.02	0.01	0.02	0.00	0.02	0.01	0.01
Tobacco	0.03	0.06	0.07	0.09	0.05	0.05	0.07	0.06	0.06
Clothing and footwear	-0.02	-0.03	0.10	-0.15	-0.05	-0.01	-0.02	0.02	-0.02
Men's clothing	-0.01	-0.02	-0.01	-0.03	-0.03	0.00	-0.02	-0.02	-0.02
Men's outerwear	-0.02	-0.02	-0.01	-0.03	-0.03	-0.01	-0.01	-0.01	-0.02
Men's underwear, nightwear and socks	0.00	0.00	0.01	0.00	0.01	0.00	0.00	-0.01	-0.01
Women's clothing	0.03	-0.02	0.03	0.02	0.02	0.02	-0.01	0.04	0.01
Women's outerwear	0.03	-0.01	0.01	0.02	0.01	0.01	0.01	0.04	0.02
Women's underwear, nightwear and hosiery	0.00	-0.02	0.02	0.00	0.00	0.00	-0.02	0.00	0.00
Children's and infants' clothing	0.00	-0.01	0.05	-0.02	-0.01	0.01	-0.01	-0.01	0.00
Footwear	0.02	0.02	0.03	-0.01	0.00	0.00	0.02	0.04	0.01
Men's footwear	0.01	0.02	0.02	-0.01	0.00	0.00	0.01	0.03	0.01
Women's footwear	0.01	-0.01	0.01	0.01	0.00	0.00	0.01	0.01	0.01
Children's footwear	0.00	0.01	0.00	-0.01	0.00	0.00	0.00	0.00	0.00
Accessories and clothing services	-0.04	0.01	0.00	-0.11	-0.04	-0.02	0.00	-0.03	-0.02
Accessories	-0.04	0.01	-0.01	-0.10	-0.04	-0.02	0.01	-0.05	-0.02
Clothing services and shoe repair	0.00	0.00	0.00	0.00	0.01	0.00	0.00	0.00	0.00

(a) All groups index points.

Group, sub-group and expenditure class									Weighted average of eight capital cities
	Sydney	Melbourne	Brisbane	Adelaide	Perth	Hobart	Darwin	Canberra	
Housing	0.18	0.30	0.59	0.24	0.37	0.36	0.33	0.22	0.30
Rents	0.11	0.08	0.19	0.06	0.17	0.11	0.13	0.16	0.11
Utilities	0.00	0.17	0.00	0.22	0.00	0.17	-0.01	0.00	0.07
Electricity	0.00	0.10	0.00	0.22	0.00	0.17	0.00	0.00	0.05
Gas and other household fuels	0.00	0.07	0.00	0.00	0.01	0.00	0.00	0.00	0.01
Water and sewerage	0.00	0.00	0.00	0.00	0.00	0.00	0.00	0.00	0.00
Other housing	0.06	0.06	0.39	-0.04	0.20	0.07	0.22	0.06	0.12
House purchase	0.04	0.09	0.44	0.00	0.18	0.09	0.22	0.07	0.12
Property rates and charges	0.00	0.00	0.00	0.00	0.00	0.00	0.00	0.00	0.00
House repairs and maintenance	0.02	-0.03	-0.04	-0.04	0.03	-0.01	0.00	-0.01	-0.01
Household contents and services	-0.11	-0.08	-0.09	-0.20	-0.23	0.02	-0.02	-0.22	-0.13
Furniture and furnishings	-0.13	-0.07	-0.11	-0.19	-0.22	-0.09	-0.01	-0.26	-0.13
Furniture	-0.11	-0.07	-0.07	-0.12	-0.17	-0.01	0.03	-0.20	-0.10
Floor and window coverings	0.01	0.00	0.00	-0.02	-0.02	0.00	-0.01	0.00	0.00
Towels and linen	-0.03	-0.01	-0.03	-0.04	-0.03	-0.07	-0.03	-0.06	-0.03
Household appliances, utensils and tools	-0.01	-0.01	-0.02	-0.03	-0.06	-0.01	0.00	-0.03	-0.02
Major household appliances	0.00	-0.01	0.00	0.00	-0.02	-0.01	0.00	0.01	0.00
Small electric household appliances	0.00	0.00	0.00	0.00	-0.01	0.01	-0.01	0.01	0.00
Glassware, tableware and household utensils	-0.01	-0.01	-0.03	-0.02	-0.04	-0.02	0.01	-0.04	-0.02
Tools	0.00	0.00	0.01	0.00	0.00	0.00	0.01	0.00	0.00
Household supplies	-0.05	-0.02	-0.03	-0.03	-0.02	0.00	-0.04	-0.06	-0.03
Household cleaning agents	0.00	0.00	-0.01	0.00	-0.01	0.00	0.00	0.00	-0.01
Toiletries and personal care products	0.00	0.00	0.01	-0.02	0.00	-0.01	-0.01	-0.03	0.00
Other household supplies	-0.03	-0.02	-0.04	0.00	-0.01	0.01	-0.04	-0.03	-0.02
Household services	0.07	0.03	0.06	0.04	0.08	0.12	0.03	0.13	0.06
Child care	0.05	0.03	0.06	0.02	0.05	0.08	0.02	0.08	0.04
Hairdressing and personal care services	0.00	0.01	0.00	0.01	0.01	0.00	0.00	0.00	0.01
Other household services	0.01	-0.01	0.01	0.00	0.02	0.04	0.00	0.05	0.01
Health	0.25	0.25	0.29	0.19	0.26	0.23	0.22	0.35	0.26
Health services	0.04	0.06	0.06	0.01	0.09	0.02	0.10	0.12	0.06
Hospital and medical services	0.04	0.05	0.06	0.00	0.04	-0.01	0.07	0.11	0.04
Optical services	0.00	0.00	0.00	-0.01	0.00	0.00	0.00	0.00	0.00
Dental services	0.00	0.01	0.00	0.01	0.05	0.03	0.04	0.02	0.02
Pharmaceuticals	0.21	0.19	0.23	0.18	0.18	0.21	0.12	0.23	0.20
Transportation	0.14	0.12	0.13	0.10	0.18	0.34	-0.01	0.07	0.13
Private motoring	0.13	0.12	0.13	0.10	0.18	0.33	-0.01	0.08	0.12
Motor vehicles	-0.01	0.04	0.02	-0.02	-0.04	0.04	-0.01	0.00	0.00
Automotive fuel	0.06	0.05	0.12	0.12	0.17	0.22	0.00	0.02	0.09
Motor vehicle repair and servicing	0.01	0.00	-0.02	-0.01	-0.03	0.04	0.00	0.00	0.00
Motor vehicle parts and accessories	0.02	0.02	0.00	0.00	0.01	0.02	0.00	0.02	0.02
Other motoring charges	0.02	0.01	0.01	0.00	0.06	0.02	0.00	0.03	0.02
Urban transport fares	0.01	0.00	0.00	0.00	0.00	0.02	0.00	0.00	0.00
Communication	0.01	0.00	0.01	0.01	0.01	0.01	0.01	0.01	0.01
Postal	0.00	0.01	0.00	0.00	0.00	0.00	0.01	0.00	0.00
Telecommunication	0.00	0.01	0.01	0.01	0.01	0.01	0.01	0.01	0.00

(a) All groups index points.

Group, sub-group and expenditure class									Weighted
	Sydney	Melbourne	Brisbane	Adelaide	Perth	Hobart	Darwin	Canberra	average of eight capital cities
Recreation	-0.13	0.04	-0.11	-0.37	-0.27	-0.05	-0.42	-0.12	-0.12
Audio, visual and computing	-0.05	-0.03	-0.04	-0.05	-0.07	-0.03	-0.06	-0.03	-0.04
Audio, visual and computing equipment	-0.06	-0.03	-0.05	-0.06	-0.07	-0.05	-0.08	-0.05	-0.05
Audio, visual and computing media and services	0.01	0.02	0.01	0.01	0.00	0.01	0.02	0.02	0.01
Books, newspapers and magazines	0.01	0.00	0.00	0.01	0.01	0.01	0.00	0.01	0.01
Books	0.00	0.00	0.01	0.01	0.00	0.00	0.00	0.01	0.00
Newspapers and magazines	0.01	0.00	0.01	0.00	0.01	0.01	0.00	0.00	0.01
Sport and other recreation	0.01	0.03	0.04	0.02	0.07	-0.01	0.04	0.06	0.03
Sports and recreational equipment	0.00	-0.01	-0.01	-0.01	-0.01	0.00	0.00	0.00	-0.01
Toys, games and hobbies	0.00	-0.02	0.01	-0.01	0.00	0.00	0.01	0.00	0.00
Sports participation	0.00	0.00	0.01	0.00	0.01	0.00	0.01	0.01	0.00
Pets, pet foods and supplies	0.00	0.01	0.01	0.00	0.00	-0.04	-0.02	0.01	0.01
Pet services including veterinary	0.00	0.00	0.00	0.01	0.04	0.01	0.01	0.01	0.01
Other recreational activities	0.01	0.02	0.02	0.03	0.02	0.01	0.04	0.02	0.02
Holiday travel and accommodation	-0.10	0.02	-0.12	-0.35	-0.28	-0.02	-0.40	-0.16	-0.11
Domestic holiday travel and accommodation	-0.06	0.03	-0.08	-0.09	-0.14	0.02	-0.28	-0.02	-0.04
Overseas holiday travel and accommodation	-0.04	-0.01	-0.04	-0.26	-0.13	-0.03	-0.12	-0.14	-0.06
Education	0.21	0.18	0.25	0.17	0.27	0.15	0.12	0.25	0.22
Preschool and primary education	0.05	0.04	0.04	0.06	0.13	0.03	0.02	0.04	0.06
Secondary education	0.13	0.11	0.09	0.07	0.08	0.09	0.04	0.12	0.11
Tertiary education	0.03	0.04	0.13	0.03	0.06	0.02	0.06	0.08	0.05
Financial and insurance services	-0.06	0.00	0.00	-0.02	-0.03	0.02	0.11	-0.02	-0.02
Financial services	-0.04	0.01	-0.03	0.00	-0.04	0.03	0.03	-0.05	-0.02
Deposit and loan facilities	-0.05	-0.03	-0.03	-0.03	-0.03	-0.02	-0.03	-0.04	-0.04
Other financial services	0.01	0.04	0.01	0.03	-0.01	0.05	0.06	-0.02	0.02
Insurance services	-0.01	-0.01	0.02	-0.02	0.01	-0.02	0.07	0.03	-0.01
All groups	-0.2	0.3	0.7	-0.4	0.3	0.7	0.0	0.3	0.1

(a) All groups index points.

Group, sub-group and expenditure class	INDEX NUMBERS (a)			PERCENTAGE CHANGE		CONTRIBUTION TO TOTAL CPI (ALL GROUPS INDEX POINTS)		CHANGE IN POINTS CONTRIBUTION
	Mar Qtr	Dec Qtr	Mar Qtr	Dec Qtr 2006 to	Mar Qtr 2006 to	Dec Qtr	Mar Qtr	Dec Qtr 2006 to
	2006	2006	2007	Mar Qtr 2007	Mar Qtr 2007	2006	2007	Mar Qtr 2007
Food	162.5	173.9	169.9	-2.3	4.6	25.50	24.91	-0.59
Dairy and related products	173.4	178.7	180.6	1.1	4.2	1.87	1.89	0.02
Milk	188.4	193.9	195.9	1.0	4.0	0.87	0.87	0.00
Cheese	152.3	156.1	159.3	2.0	4.6	0.51	0.52	0.01
Ice cream and other dairy products	163.5	169.8	170.2	0.2	4.1	0.49	0.49	0.00
Bread and cereal products	171.4	178.6	181.3	1.5	5.8	2.77	2.81	0.04
Bread	196.3	205.2	213.1	3.8	8.6	1.05	1.09	0.04
Cakes and biscuits	160.2	165.5	167.8	1.4	4.7	1.13	1.14	0.01
Breakfast cereals	145.8	154.9	147.2	-5.0	1.0	0.32	0.30	-0.02
Other cereal products	139.5	145.2	146.2	0.7	4.8	0.27	0.27	0.00
Meat and seafoods	146.8	148.0	149.4	0.9	1.8	3.67	3.70	0.03
Beef and veal	164.6	162.4	160.8	-1.0	-2.3	0.75	0.74	-0.01
Lamb and mutton	210.3	214.7	208.0	-3.1	-1.1	0.41	0.40	-0.01
Pork	168.9	169.7	174.2	2.7	3.1	0.25	0.25	0.00
Poultry	96.6	94.8	96.8	2.1	0.2	0.67	0.68	0.01
Bacon and ham	136.9	143.5	145.9	1.7	6.6	0.36	0.37	0.01
Other fresh and processed meat	153.5	159.2	160.4	0.8	4.5	0.59	0.59	0.00
Fish and other seafood	130.9	132.2	136.6	3.3	4.4	0.65	0.67	0.02
Fruit and vegetables	154.4	203.0	165.1	-18.7	6.9	4.60	3.74	-0.86
Fruit	160.2	278.1	184.1	-33.8	14.9	2.65	1.76	-0.89
Vegetables	152.3	150.4	153.3	1.9	0.7	1.95	1.99	0.04
Non-alcoholic drinks and snack food	165.2	171.5	174.2	1.6	5.4	3.10	3.15	0.05
Soft drinks, waters and juices	147.3	154.4	156.2	1.2	6.0	1.45	1.47	0.02
Snacks and confectionery	187.9	193.5	197.1	1.9	4.9	1.65	1.68	0.03
Meals out and take away foods	169.6	173.6	175.9	1.3	3.7	7.11	7.20	0.09
Restaurant meals	174.4	178.4	180.0	0.9	3.2	3.13	3.16	0.03
Take away and fast foods	167.9	171.8	174.6	1.6	4.0	3.98	4.05	0.07
Other food	150.6	156.7	159.0	1.5	5.6	2.39	2.42	0.03
Eggs	175.2	193.5	200.6	3.7	14.5	0.17	0.17	0.00
Jams, honey and sandwich spreads	186.1	190.6	192.6	1.0	3.5	0.24	0.24	0.00
Tea, coffee and food drinks	140.3	146.6	146.7	0.1	4.6	0.39	0.39	0.00
Food additives and condiments	131.2	137.8	139.7	1.4	6.5	0.43	0.44	0.01
Fats and oils	154.1	168.1	170.7	1.5	10.8	0.31	0.32	0.01
Food n.e.c.	151.7	153.0	155.7	1.8	2.6	0.85	0.86	0.01
Alcohol and tobacco	234.3	239.5	241.6	0.9	3.1	10.58	10.67	0.09
Alcoholic drinks	171.9	174.8	175.8	0.6	2.3	6.78	6.81	0.03
Beer	187.6	193.0	194.4	0.7	3.6	3.07	3.09	0.02
Wine	149.2	148.1	148.3	0.1	-0.6	2.33	2.33	0.00
Spirits	169.9	175.4	177.3	1.1	4.4	1.38	1.39	0.01
Tobacco	407.6	420.5	426.3	1.4	4.6	3.80	3.86	0.06
Clothing and footwear	107.5	108.1	107.7	-0.4	0.2	5.69	5.67	-0.02
Men's clothing	104.4	106.9	104.8	-2.0	0.4	1.09	1.07	-0.02
Men's outerwear	102.1	104.1	101.8	-2.2	-0.3	0.93	0.91	-0.02
Men's underwear, nightwear and socks	117.5	122.4	121.7	-0.6	3.6	0.17	0.16	-0.01
Women's clothing	110.3	107.9	108.5	0.6	-1.6	2.00	2.01	0.01
Women's outerwear	104.1	100.6	101.5	0.9	-2.5	1.59	1.61	0.02
Women's underwear, nightwear and hosiery	134.8	138.9	137.8	-0.8	2.2	0.40	0.40	0.00
Children's and infants' clothing	112.1	115.5	116.0	0.4	3.5	0.59	0.59	0.00
Footwear	94.9	96.8	98.3	1.5	3.6	0.95	0.96	0.01
Men's footwear	90.1	89.6	93.0	3.8	3.2	0.26	0.27	0.01
Women's footwear	99.2	102.2	103.3	1.1	4.1	0.51	0.52	0.01
Children's footwear	94.4	97.2	97.0	-0.2	2.8	0.18	0.18	0.00
Accessories and clothing services(b)	104.9	106.2	103.7	-2.4	-1.1	1.06	1.04	-0.02
Accessories(b)	89.0	89.9	86.9	-3.3	-2.4	0.81	0.79	-0.02
Clothing services and shoe repair	180.1	183.9	185.5	0.9	3.0	0.25	0.25	0.00

(a) Unless otherwise specified, base of each index: 1989-90 = 100.0.

(b) Base: June quarter 1998 = 100.0.

continued

Group, sub-group and expenditure class	INDEX NUMBERS (a)			PERCENTAGE CHANGE		CONTRIBUTION TO TOTAL CPI (ALL GROUPS INDEX POINTS)		CHANGE IN POINTS CONTRIBUTION
	Mar Qtr 2006	Dec Qtr 2006	Mar Qtr 2007	Dec Qtr 2006 to Mar Qtr 2007	Mar Qtr 2006 to Mar Qtr 2007	Dec Qtr 2006	Mar Qtr 2007	Dec Qtr 2006 to Mar Qtr 2007
Housing	129.6	132.9	134.2	1.0	3.5	30.50	30.80	0.30
Rents	146.2	150.5	152.6	1.4	4.4	8.13	8.24	0.11
Utilities	163.6	167.8	170.0	1.3	3.9	4.93	5.00	0.07
Electricity	155.9	158.3	161.2	1.8	3.4	2.55	2.60	0.05
Gas and other household fuels	183.3	187.4	190.3	1.5	3.8	1.11	1.12	0.01
Water and sewerage(b)	133.4	140.2	140.2	0.0	5.1	1.28	1.28	0.00
Other housing	124.0	126.8	127.7	0.7	3.0	17.44	17.56	0.12
House purchase(b)	149.7	152.4	154.0	1.0	2.9	12.18	12.30	0.12
Property rates and charges(b)	147.9	156.2	156.2	0.0	5.6	1.91	1.91	0.00
House repairs and maintenance	160.5	163.7	163.5	-0.1	1.9	3.36	3.35	-0.01
Household contents and services	121.9	124.7	123.6	-0.9	1.4	14.67	14.54	-0.13
Furniture and furnishings	126.8	130.4	126.8	-2.8	0.0	4.71	4.58	-0.13
Furniture	126.5	131.0	126.7	-3.3	0.2	2.95	2.85	-0.10
Floor and window coverings	142.4	145.4	145.1	-0.2	1.9	1.19	1.19	0.00
Towels and linen	105.1	105.6	100.4	-4.9	-4.5	0.57	0.54	-0.03
Household appliances, utensils and tools	102.9	102.7	101.9	-0.8	-1.0	2.56	2.54	-0.02
Major household appliances	109.0	106.7	106.2	-0.5	-2.6	0.97	0.97	0.00
Small electric household appliances	93.1	92.9	92.7	-0.2	-0.4	0.38	0.38	0.00
Glassware, tableware and household utensils	93.5	95.0	92.9	-2.2	-0.6	0.69	0.67	-0.02
Tools	109.6	110.7	111.0	0.3	1.3	0.52	0.52	0.00
Household supplies	136.0	138.2	137.3	-0.7	1.0	4.46	4.43	-0.03
Household cleaning agents	127.2	131.3	130.3	-0.8	2.4	0.51	0.50	-0.01
Toiletries and personal care products	145.5	145.0	144.8	-0.1	-0.5	1.78	1.78	0.00
Other household supplies	139.9	144.0	142.4	-1.1	1.8	2.17	2.15	-0.02
Household services	218.1	227.8	232.2	1.9	6.5	2.93	2.99	0.06
Child care	222.5	238.5	251.3	5.4	12.9	0.79	0.83	0.04
Hairdressing and personal care services	181.4	186.0	186.8	0.4	3.0	1.18	1.19	0.01
Other household services	213.7	223.4	225.3	0.9	5.4	0.96	0.97	0.01
Health	216.2	218.0	225.7	3.5	4.4	7.18	7.44	0.26
Health services	228.8	238.9	241.2	1.0	5.4	5.61	5.67	0.06
Hospital and medical services	238.5	250.2	252.6	1.0	5.9	4.36	4.40	0.04
Optical services	146.0	146.6	147.2	0.4	0.8	0.18	0.18	0.00
Dental services	219.9	227.3	229.7	1.1	4.5	1.07	1.09	0.02
Pharmaceuticals	164.4	147.7	166.6	12.8	1.3	1.57	1.77	0.20
Transportation	155.0	154.7	155.8	0.7	0.5	20.22	20.35	0.13
Private motoring	151.7	151.2	152.2	0.7	0.3	19.08	19.20	0.12
Motor vehicles	99.3	99.4	99.5	0.1	0.2	7.29	7.29	0.00
Automotive fuel	204.7	197.2	199.9	1.4	-2.3	6.06	6.15	0.09
Motor vehicle repair and servicing	147.5	151.3	151.4	0.1	2.6	3.07	3.07	0.00
Motor vehicle parts and accessories	118.5	121.6	123.0	1.2	3.8	1.06	1.08	0.02
Other motoring charges	204.2	211.8	214.3	1.2	4.9	1.60	1.62	0.02
Urban transport fares	212.1	217.5	218.4	0.4	3.0	1.14	1.14	0.00
Communication	109.5	110.8	111.0	0.2	1.4	4.92	4.93	0.01
Postal	136.3	138.3	139.5	0.9	2.3	0.17	0.17	0.00
Telecommunication	107.2	108.4	108.6	0.2	1.3	4.76	4.76	0.00

(a) Unless otherwise specified, base of each index: 1989-90 = 100.0.

(b) Base: June quarter 1998 = 100.0.

continued

Group, sub-group and expenditure class	INDEX NUMBERS(a)			PERCENTAGE CHANGE		CONTRIBUTION TO TOTAL CPI (ALL GROUPS INDEX POINTS)		CHANGE IN POINTS CONTRIBUTION
	Mar Qtr 2006	Dec Qtr 2006	Mar Qtr 2007	Dec Qtr 2006 to Mar Qtr 2007	Mar Qtr 2006 to Mar Qtr 2007	Dec Qtr 2006	Mar Qtr 2007	Dec Qtr 2006 to Mar Qtr 2007
Recreation	132.5	134.8	133.9	-0.7	1.1	17.76	17.64	-0.12
Audio, visual and computing	51.5	49.4	48.9	-1.0	-5.0	4.01	3.97	-0.04
Audio, visual and computing equipment	27.0	25.2	24.6	-2.4	-8.9	1.99	1.94	-0.05
Audio, visual and computing media and services	98.0	96.5	96.9	0.4	-1.1	2.02	2.03	0.01
Books, newspapers and magazines	208.0	211.9	213.1	0.6	2.5	1.30	1.31	0.01
Books(b)	125.0	125.9	126.4	0.4	1.1	0.67	0.67	0.00
Newspapers and magazines(b)	139.3	143.6	144.6	0.7	3.8	0.63	0.64	0.01
Sport and other recreation	166.0	169.3	170.2	0.5	2.5	5.78	5.81	0.03
Sports and recreational equipment(b)	87.4	86.5	86.1	-0.5	-1.5	0.80	0.79	-0.01
Toys, games and hobbies(b)	96.2	94.6	94.5	-0.1	-1.8	0.74	0.74	0.00
Sports participation(b)	150.2	154.1	154.6	0.3	2.9	1.15	1.15	0.00
Pets, pet foods and supplies	147.6	154.6	155.1	0.3	5.1	0.66	0.67	0.01
Pet services including veterinary	204.0	208.5	211.2	1.3	3.5	0.70	0.71	0.01
Other recreational activities(b)	141.5	146.8	148.4	1.1	4.9	1.74	1.76	0.02
Holiday travel and accommodation	137.8	144.9	142.5	-1.7	3.4	6.67	6.56	-0.11
Domestic holiday travel and accommodation	147.5	157.1	155.1	-1.3	5.2	3.87	3.83	-0.04
Overseas holiday travel and accommodation	126.0	130.1	127.2	-2.2	1.0	2.80	2.74	-0.06
Education	260.1	258.0	270.9	5.0	4.2	4.25	4.47	0.22
Preschool and primary education(c)	146.1	147.8	157.6	6.6	7.9	0.84	0.90	0.06
Secondary education(c)	147.8	147.8	158.3	7.1	7.1	1.50	1.61	0.11
Tertiary education(c)	129.8	126.9	130.2	2.6	0.3	1.91	1.96	0.05
Financial and insurance services(d)	101.0	103.0	102.8	-0.2	1.8	14.21	14.19	-0.02
Financial services(d)	100.6	102.5	102.3	-0.2	1.7	11.87	11.85	-0.02
Deposit and loan facilities(d)	99.5	100.9	100.3	-0.6	0.8	6.69	6.65	-0.04
Other financial services(d)	102.0	104.6	105.0	0.4	2.9	5.18	5.20	0.02
Insurance services	255.6	262.0	261.7	-0.1	2.4	2.35	2.34	-0.01
All groups	151.9	155.5	155.6	0.1	2.4	155.5	155.6	0.1

(a) Unless otherwise specified, base of each index: 1989-90 = 100.0.

(b) Base: June quarter 1998 = 100.0.

(c) Base: June quarter 2000 = 100.0.

(d) Base: June quarter 2005 = 100.0.

	INDEX NUMBERS (b)			PERCENTAGE CHANGE		CONTRIBUTION TO TOTAL CPI (ALL GROUPS INDEX POINTS)		CHANGE IN POINTS CONTRIBUTION
	<i>Mar Qtr</i>	<i>Dec Qtr</i>	<i>Mar Qtr</i>	<i>Dec Qtr 2006 to</i>	<i>Mar Qtr 2006 to</i>	<i>Dec Qtr</i>	<i>Mar Qtr</i>	<i>Dec Qtr 2006 to</i>
	<i>2006</i>	<i>2006</i>	<i>2007</i>	<i>Mar Qtr 2007</i>	<i>Mar Qtr 2007</i>	<i>2006</i>	<i>2007</i>	<i>Mar Qtr 2007</i>
All groups	151.90	155.5	155.6	0.1	2.4	155.5	155.6	0.1
Selected components								
Goods component	150.7	153.9	153.5	-0.3	1.9	90.72	90.46	-0.26
Services component	154.8	159.1	160.1	0.6	3.4	64.77	65.17	0.40
Tradables component(c)	115.7	118.1	116.9	-1.0	1.0	64.57	63.88	-0.69
Non-tradables component(c)	134.5	138.0	139.2	0.9	3.5	90.92	91.74	0.82
All groups excluding								
Food	149.7	152.0	152.8	0.5	2.1	129.99	130.71	0.72
Alcohol and tobacco	146.1	149.6	149.6	0.0	2.4	144.91	144.95	0.04
Clothing and footwear	154.8	158.6	158.8	0.1	2.6	149.80	149.95	0.15
Housing	155.0	158.7	158.4	-0.2	2.2	124.99	124.82	-0.17
Household contents and services	156.4	160.2	160.4	0.1	2.6	140.83	141.08	0.25
Health	148.8	152.5	152.3	-0.1	2.4	148.31	148.19	-0.12
Transportation	151.5	155.7	155.7	0.0	2.8	135.28	135.28	0.00
Communication	152.8	156.5	156.6	0.1	2.5	150.57	150.69	0.12
Recreation	154.7	158.5	158.8	0.2	2.7	137.74	137.98	0.24
Education	150.5	154.2	154.1	-0.1	2.4	151.24	151.16	-0.08
Financial and insurance services	158.5	162.3	162.5	0.1	2.5	141.28	141.43	0.15
Housing and Financial and insurance services	155.4	159.2	159.0	-0.1	2.3	110.78	110.63	-0.15
Hospital and medical services	149.6	153.0	153.1	0.1	2.3	151.13	151.22	0.09

(a) Refer to paragraph 12 of the Explanatory Notes for a description of these series.

(b) Unless otherwise specified, base of each index: 1989-90 = 100.0.

(c) Base: June quarter 1998 = 100.0.

ANALYTICAL SERIES, Index numbers(a)(b)

Period	All groups	All groups excluding Housing and Financial and insurance services	All groups excluding 'volatile items'	MARKET GOODS AND SERVICES EXCLUDING 'VOLATILE ITEMS'.....				
				Goods	Services	Total	Tradables(c)	Non-tradables(c)
2002-03	140.2	144.6	147.4	139.6	154.7	143.8	111.3	120.0
2003-04	143.5	147.3	150.8	141.6	157.7	146.1	111.5	125.1
2004-05	147.0	150.3	154.0	143.2	161.5	148.4	112.6	129.6
2005-06	151.7	155.2	157.6	145.6	165.2	151.2	116.0	133.9
2003								
March	141.3	145.9	148.0	139.9	155.2	144.2	112.4	120.8
June	141.3	145.5	148.9	140.8	155.6	144.9	111.4	121.7
September	142.1	145.9	149.8	141.3	156.2	145.5	111.1	123.3
December	142.8	146.6	150.3	141.4	157.9	146.1	111.1	124.4
2004								
March	144.1	147.9	151.1	141.5	158.0	146.1	111.8	125.8
June	144.8	148.6	151.8	142.0	158.6	146.7	112.0	126.7
September	145.4	148.8	152.5	142.2	159.9	147.2	111.9	127.8
December	146.5	149.9	153.4	143.1	161.2	148.2	112.6	128.8
2005								
March	147.5	150.8	154.7	143.4	162.5	148.8	112.5	130.5
June	148.4	151.7	155.3	144.2	162.4	149.3	113.4	131.1
September	149.8	153.2	156.2	144.9	163.4	150.2	114.8	132.2
December	150.6	153.7	156.9	145.3	164.8	150.9	114.8	133.3
2006								
March	151.9	155.4	158.1	145.7	165.6	151.4	115.7	134.5
June	154.3	158.4	159.1	146.4	166.8	152.3	118.8	135.6
September	155.7	159.7	160.3	147.3	168.2	153.4	119.8	136.9
December	155.5	159.2	161.1	147.8	170.1	154.4	118.1	138.0
2007								
March	155.6	159.0	162.1	148.3	170.3	154.8	116.9	139.2

(a) Unless otherwise specified, base of each index: 1989-90 = 100.0.

(c) Base: June quarter 1998 = 100.0.

(b) Refer to paragraph 12 of the Explanatory Notes for a description of these series.

Period	All groups excluding Housing and Financial and insurance services			MARKET GOODS AND SERVICES EXCLUDING 'VOLATILE ITEMS'				
	All groups		All groups excluding 'volatile items'	Goods	Services	Total	Tradables	Non-tradables
PERCENTAGE CHANGE (from previous financial year)								
2002-03	3.1	3.0	2.9	1.8	3.6	2.3	2.0	3.9
2003-04	2.4	1.9	2.3	1.4	1.9	1.6	0.2	4.3
2004-05	2.4	2.0	2.1	1.1	2.4	1.6	1.0	3.6
2005-06	3.2	3.3	2.3	1.7	2.3	1.9	3.0	3.3
PERCENTAGE CHANGE (from corresponding quarter of previous year)								
2003								
March	3.4	3.4	2.7	1.7	3.1	2.1	2.7	4.0
June	2.7	2.3	2.7	1.9	2.5	2.0	1.0	4.1
September	2.6	2.2	2.6	2.1	1.8	2.0	0.7	4.1
December	2.4	1.8	2.4	1.6	2.2	1.8	0.0	4.4
2004								
March	2.0	1.4	2.1	1.1	1.8	1.3	-0.5	4.1
June	2.5	2.1	1.9	0.9	1.9	1.2	0.5	4.1
September	2.3	2.0	1.8	0.6	2.4	1.2	0.7	3.6
December	2.6	2.3	2.1	1.2	2.1	1.4	1.4	3.5
2005								
March	2.4	2.0	2.4	1.3	2.8	1.8	0.6	3.7
June	2.5	2.1	2.3	1.5	2.4	1.8	1.3	3.5
September	3.0	3.0	2.4	1.9	2.2	2.0	2.6	3.4
December	2.8	2.5	2.3	1.5	2.2	1.8	2.0	3.5
2006								
March	3.0	3.1	2.2	1.6	1.9	1.7	2.8	3.1
June	4.0	4.4	2.4	1.5	2.7	2.0	4.8	3.4
September	3.9	4.2	2.6	1.7	2.9	2.1	4.4	3.6
December	3.3	3.6	2.7	1.7	3.2	2.3	2.9	3.5
2007								
March	2.4	2.3	2.5	1.8	2.8	2.2	1.0	3.5
PERCENTAGE CHANGE (from previous quarter)								
2003								
March	1.3	1.3	0.8	0.5	0.5	0.5	1.2	1.3
June	0.0	-0.3	0.6	0.6	0.3	0.5	-0.9	0.7
September	0.6	0.3	0.6	0.4	0.4	0.4	-0.3	1.3
December	0.5	0.5	0.3	0.1	1.1	0.4	0.0	0.9
2004								
March	0.9	0.9	0.5	0.1	0.1	0.0	0.6	1.1
June	0.5	0.5	0.5	0.4	0.4	0.4	0.2	0.7
September	0.4	0.1	0.5	0.1	0.8	0.3	-0.1	0.9
December	0.8	0.7	0.6	0.6	0.8	0.7	0.6	0.8
2005								
March	0.7	0.6	0.8	0.2	0.8	0.4	-0.1	1.3
June	0.6	0.6	0.4	0.6	-0.1	0.3	0.8	0.5
September	0.9	1.0	0.6	0.5	0.6	0.6	1.2	0.8
December	0.5	0.3	0.4	0.3	0.9	0.5	0.0	0.8
2006								
March	0.9	1.1	0.8	0.3	0.5	0.3	0.8	0.9
June	1.6	1.9	0.6	0.5	0.7	0.6	2.7	0.8
September	0.9	0.8	0.8	0.6	0.8	0.7	0.8	1.0
December	-0.1	-0.3	0.5	0.3	1.1	0.7	-1.4	0.8
2007								
March	0.1	-0.1	0.6	0.3	0.1	0.3	-1.0	0.9

(a) Refer to paragraph 12 of the Explanatory Notes for a description of these series.

Period	Australia	New Zealand(b)	Hong Kong	Indonesia	Japan	Korea, Republic of	Singapore	Taiwan	Canada	United States of America	Germany	United Kingdom
2002-03	144.6	130.1	159.0	495.8	106.4	190.9	122.4	130.5	135.2	138.9	127.4	145.8
2003-04	147.3	130.5	158.5	524.4	106.1	197.4	124.2	131.1	136.9	141.8	128.9	147.9
2004-05	150.3	132.9	161.2	560.2	106.2	204.9	125.6	134.7	139.3	146.2	131.1	149.7
2005-06	155.2	136.1	162.6	646.6	106.1	210.4	126.9	138.2	142.2	152.6	133.1	152.8
2003												
March	145.9	130.6	158.4	500.9	106.0	192.7	122.7	130.1	136.2	139.7	127.9	146.0
June	145.5	130.0	157.7	503.3	106.5	193.7	122.4	130.3	135.8	140.1	127.7	147.1
September	145.9	129.9	156.9	509.8	106.3	194.0	123.0	129.4	136.2	140.6	128.1	147.1
December	146.6	130.3	158.2	523.2	106.1	195.8	123.3	131.1	136.0	140.6	128.1	147.7
2004												
March	147.9	130.6	159.0	526.4	105.8	199.1	125.1	131.2	136.9	141.8	129.2	147.9
June	148.6	131.3	160.0	538.3	106.2	200.5	125.3	132.6	138.6	144.0	130.2	148.9
September	148.8	131.8	160.0	539.1	106.2	203.2	125.7	134.5	138.5	144.3	130.6	148.6
December	149.9	132.8	161.6	553.0	106.8	203.0	125.6	134.2	138.9	145.7	130.6	149.5
2005												
March	150.8	133.1	161.4	571.4	105.6	206.0	125.4	133.9	139.2	146.2	131.2	149.7
June	151.7	133.9	161.9	577.1	106.1	207.3	125.6	136.2	140.6	148.6	131.8	151.1
September	153.2	133.9	162.1	589.5	105.8	208.7	126.3	139.8	141.9	150.9	132.8	151.4
December	153.7	135.3	162.6	655.1	106.1	208.8	127.1	138.5	141.5	152.0	132.9	152.3
2006												
March	155.4	136.1	162.2	668.6	r105.9	211.4	127.2	136.0	141.9	152.4	132.8	152.5
June	158.4	138.9	163.4	673.3	r106.5	212.5	127.1	138.6	143.6	155.2	133.7	154.9
September	159.7	139.5	164.0	681.5	106.8	214.3	127.3	138.5	143.3	155.7	134.2	156.0
December	159.2	138.8	164.3	nya	106.5	213.6	127.9	137.7	142.2	r153.4	134.2	157.1
2007												
March	159.0	137.0	nya	nya	nya	215.7	nya	137.2	nya	154.8	135.1	nya

nya not yet available
r revised

(a) Base of each index: 1989-90 = 100.0.

(b) Series revised, see Changes in this Issue on page 2.

Period	Australia	New Zealand(a)	Hong Kong	Indonesia	Japan	Korea, Republic of	Singapore	Taiwan	Canada	United States of America	Germany	United Kingdom
PERCENTAGE CHANGE (from previous financial year)												
2002-03	3.0	1.9	-2.0	8.2	-1.2	3.2	0.4	-0.1	3.8	1.8	1.1	1.6
2003-04	1.9	0.3	-0.3	5.8	-0.3	3.4	1.5	0.5	1.3	2.1	1.2	1.4
2004-05	2.0	1.8	1.7	6.8	0.1	3.8	1.1	2.7	1.8	3.1	1.7	1.2
2005-06	3.3	2.4	0.9	15.4	-0.1	2.7	1.0	2.6	2.1	4.4	1.5	2.1

PERCENTAGE CHANGE (from corresponding quarter of previous year)

2003												
March	3.4	2.2	-1.7	6.6	-0.9	4.1	1.0	0.0	4.8	2.9	1.0	1.8
June	2.3	0.6	-2.1	6.2	-0.3	3.2	0.3	-0.1	2.5	2.0	0.7	1.7
September	2.2	0.3	-2.0	6.1	-0.3	3.1	0.7	-0.8	1.6	2.1	0.8	1.8
December	1.8	0.0	-1.0	4.9	-0.4	3.5	0.9	0.0	1.1	1.7	1.0	1.6
2004												
March	1.4	0.0	0.4	5.1	-0.2	3.3	2.0	0.8	0.5	1.5	1.0	1.3
June	2.1	1.0	1.5	7.0	-0.3	3.5	2.4	1.8	2.1	2.8	2.0	1.2
September	2.0	1.5	2.0	5.7	-0.1	4.7	2.2	3.9	1.7	2.6	2.0	1.0
December	2.3	1.9	2.1	5.7	0.7	3.7	1.9	2.4	2.1	3.6	2.0	1.2
2005												
March	2.0	1.9	1.5	8.5	-0.2	3.5	0.2	2.1	1.7	3.1	1.5	1.2
June	2.1	2.0	1.2	7.2	-0.1	3.4	0.2	2.7	1.4	3.2	1.2	1.5
September	3.0	1.6	1.3	9.3	-0.4	2.7	0.5	3.9	2.5	4.6	1.7	1.9
December	2.5	1.9	0.6	18.5	-0.7	2.9	1.2	3.2	1.9	4.3	1.8	1.9
2006												
March	3.1	2.3	0.5	17.0	r0.3	2.6	1.4	1.6	1.9	4.2	1.2	1.9
June	4.4	3.7	0.9	16.7	r0.4	2.5	1.2	1.8	2.1	4.4	1.4	2.5
September	4.2	4.1	1.2	15.6	1.0	2.7	0.8	-0.9	1.0	3.2	1.1	3.0
December	3.6	2.6	1.0	nya	0.4	2.3	0.6	-0.6	0.5	r0.9	1.0	3.2
2007												
March	2.3	0.6	nya	nya	nya	2.0	nya	0.9	nya	1.6	1.7	nya

PERCENTAGE CHANGE (from previous quarter)

2003												
March	1.3	0.2	-0.9	0.5	-0.5	1.9	0.4	-0.8	1.3	1.1	0.9	0.4
June	-0.3	-0.4	-0.4	0.5	0.5	0.5	-0.2	0.2	-0.3	0.3	-0.2	0.8
September	0.3	-0.1	-0.5	1.3	-0.2	0.2	0.5	-0.7	0.3	0.4	0.3	0.0
December	0.5	0.3	0.8	2.6	-0.2	0.9	0.2	1.3	-0.1	0.0	0.0	0.4
2004												
March	0.9	0.2	0.5	0.6	-0.3	1.7	1.5	0.1	0.7	0.9	0.9	0.1
June	0.5	0.5	0.6	2.3	0.4	0.7	0.2	1.1	1.2	1.6	0.8	0.7
September	0.1	0.4	0.0	0.1	0.0	1.3	0.3	1.4	-0.1	0.2	0.3	-0.2
December	0.7	0.7	1.0	2.6	0.6	-0.1	-0.1	-0.2	0.3	1.0	0.0	0.6
2005												
March	0.6	0.2	-0.1	3.3	-1.1	1.5	-0.2	-0.2	0.2	0.3	0.5	0.1
June	0.6	0.6	0.3	1.0	0.5	0.6	0.2	1.7	1.0	1.6	0.5	0.9
September	1.0	0.0	0.1	2.1	-0.3	0.7	0.6	2.6	0.9	1.5	0.8	0.2
December	0.3	1.0	0.3	11.1	0.3	0.0	0.6	-0.9	-0.3	0.7	0.1	0.6
2006												
March	1.1	0.6	-0.2	2.1	r-0.2	1.2	0.1	-1.8	0.3	0.3	-0.1	0.1
June	1.9	2.0	0.7	0.7	r0.6	0.5	-0.1	1.9	1.2	1.8	0.7	1.6
September	0.8	0.4	0.4	1.2	0.3	0.8	0.2	-0.1	-0.2	0.3	0.4	0.7
December	-0.3	-0.5	0.2	nya	-0.3	-0.3	0.5	-0.6	-0.8	r-1.5	0.0	0.7
2007												
March	-0.1	-1.3	nya	nya	nya	1.0	nya	-0.4	nya	0.9	0.7	nya

nya not yet available
r revised

(a) Series revised, see Changes in this Issue on page 2.

EXPLANATORY NOTES

BRIEF DESCRIPTION OF THE CPI

1 The Consumer Price Index (CPI) measures quarterly changes in the price of a 'basket' of goods and services which account for a high proportion of expenditure by the CPI population group (i.e. metropolitan households). This 'basket' covers a wide range of goods and services, arranged in the following eleven groups:

food
alcohol and tobacco
clothing and footwear
housing
household contents and services
health
transportation
communication
recreation
education
financial and insurance services.

2 The capital city indexes measure price movements over time in each city individually. They do not measure differences in retail price levels between cities.

3 Further information about the CPI is contained in *Australian Consumer Price Index: Concepts, Sources and Methods, 2005* (cat. no. 6461.0) which is available on the ABS web site <<http://www.abs.gov.au>>.

PRICES

4 The frequency of price collection by item varies as necessary to obtain reliable price measures. Prices of some items are volatile (i.e. their prices may vary many times each quarter) and for these items frequent price observations are necessary to obtain a reliable measure of the average price for the quarter. Each month prices are collected at regular intervals for goods such as milk, bread, fresh meat and seafood, fresh fruit and vegetables, alcohol, tobacco, women's outerwear, project homes, motor vehicles, petrol and holiday travel and accommodation. For most other items, price volatility is not a problem and prices are collected once a quarter. There are a few items where prices are changed at infrequent intervals, for example education fees where prices are set once a year. In these cases, the frequency of price collection is modified accordingly.

5 In order to facilitate a more even spread of field collection workload, the number of items for which prices are collected quarterly is distributed roughly equally across each month of each quarter. In all cases, however, individual items are priced in the same month of each quarter. For example, items for which prices are collected in the first month of the September quarter, July, are also priced in the first month of subsequent quarters, namely October, January and April.

WEIGHTING PATTERN

6 There are 90 expenditure classes (that is, groupings of like items) in the fifteenth series CPI and each expenditure class has its own weight, or measure of relative importance. In calculating the index, price changes for the various expenditure classes are combined using these weights.

7 Changes in the weighting pattern have been made at approximately five-yearly intervals to take account of changes in household spending patterns. The CPI now comprises fifteen series of price indexes which have been linked to form a continuous series. The current weighting pattern for the CPI for the weighted average of the eight capital cities is published in *A Guide to the Consumer Price Index, 15th Series* (cat. no. 6440.0). The 15th series weighting pattern for the weighted average of eight capital cities and for each of the eight capital cities, as well as each city's percentage contribution to the weighted average, are also published in the *Consumer Price Index: 15th Series Weighting Pattern (Reissue)* (cat. no. 6430.0) (electronic publication). Both publications are available on the ABS web site <<http://www.abs.gov.au>>.

EXPLANATORY NOTES *continued*

ANALYSIS OF CPI CHANGES

8 Movements in indexes from one period to another can be expressed either as changes in index points or as percentage changes. The following example illustrates the method of calculating changes in index points and percentage changes between any two periods:

All groups CPI: Weighted average of eight capital cities.

	Index numbers:
Mar Quarter 2007	155.6 (see table 1)
less Dec Quarter 2006	155.5 (see table 1)
Change in index points	0.1
Percentage change	$0.1/155.5 \times 100 = 0.1\%$

9 Percentage changes are calculated to illustrate three different kinds of movements in index numbers:

- movements between consecutive financial years (where the index numbers for financial years are simple averages of the quarterly index numbers)
- movements between corresponding quarters of consecutive years
- movements between consecutive quarters.

10 Table 7 provides a detailed analysis, for the weighted average of eight capital cities, of movements in the CPI since the previous quarter, including information on movements for groups, sub-groups and expenditure classes. It also shows the contribution which each makes to the total CPI. For instance, the dairy and related products sub-group contributed 0.02 index points to the total All groups index number of 155.6 for March Quarter 2007. The final column shows contributions to the change in All Groups index points by each group, sub-group and expenditure class.

SPECIAL SERIES

11 Various series are presented in tables 8, 9 and 10 in this publication which are helpful for analytical purposes. These series are compiled by taking subsets of the CPI basket. (A complete list of CPI groups, sub-groups and expenditure classes is contained in tables 6 and 7.)

12 Some of the compiled series are self explanatory, such as 'All groups excluding Food'. Other series and their composition are described below:

- *All groups excluding Financial and insurance services*: Reflecting the changing composition of the CPI, from September quarter 1989 to June quarter 1998, comprises the All groups CPI excluding house insurance, house contents insurance, vehicle insurance and mortgage interest charges and consumer credit charges; from September quarter 1998 to June quarter 2000 comprises the All groups CPI excluding house insurance, house contents insurance and vehicle insurance; from September quarter 2000 to June quarter 2005 comprises the All groups CPI excluding insurance services; from September quarter 2005 comprises the All groups CPI excluding Financial and insurance services.
- *All groups excluding Housing and Financial and insurance services*: Reflecting the changing composition of the CPI, from September quarter 1989 to June quarter 1998, comprises the All groups CPI excluding Housing, house contents insurance, vehicle insurance and consumer credit charges; from September quarter 1998 to June quarter 2000 comprises the All groups CPI excluding Housing, house insurance, house contents insurance and vehicle insurance; from September quarter 2000 to June quarter 2005 comprises the All groups CPI excluding Housing and insurance services; from September quarter 2005 comprises the All groups CPI excluding Housing and Financial and insurance services.

EXPLANATORY NOTES *continued*

SPECIAL SERIES *continued*

- *All groups, goods component*: comprises the Food group (except Restaurant meals expenditure class), Alcohol and tobacco group, Clothing and footwear group (except Clothing services and shoe repair expenditure class) and Household contents and services group (except Household services sub-group); the Utilities, Audio, visual and computing and Books, newspapers and magazines sub-groups; and the House purchase, Pharmaceuticals, Motor vehicles, Automotive fuel, Motor vehicle parts and accessories, Sports and recreational equipment, Toys, games and hobbies and Pets, pet foods and supplies expenditure classes.
- *All groups, services component*: comprises all items not included in the 'All groups, goods component'.
- *All groups, tradables component*: comprises all items whose prices are largely determined on the world market.
- *All groups, non-tradables component*: comprises all items not included in the 'All groups, tradables component'.
- *All groups excluding 'volatile items'*: comprises the All groups CPI excluding Fruit and vegetables and Automotive fuel.

13 Market goods and services excluding 'volatile items': in addition to the items excluded from the series 'All groups excluding 'volatile items'', also excludes: Utilities, Property rates and charges, Child care, Health, Other motoring charges, Urban transport fares, Postal, and Education. A detailed description of the special and analytical series was published in Appendix 1 to the September quarter 2005 issue of *Consumer Price Index, Australia* (cat. no. 6401.0).

14 The ABS is grateful for the assistance of the Reserve Bank of Australia for specifying the items included in the 'All groups excluding 'volatile items'' and 'Market goods and services excluding 'volatile items''. The Reserve Bank of Australia does not accord any special policy status to these series.

ROUNDING

15 The CPI uses a hierarchy of rounding procedures to ensure consistency between published index numbers and percentage changes. However, rounding differences can arise in the "points contributions" published in tables 6, 7 and 8 because of the different levels of precision required in those data.

INTERNATIONAL COMPARISONS

16 In analysing price movements in Australia, an important consideration is Australia's performance relative to other countries. However, a simple comparison of All groups (or headline) CPIs is often inappropriate because of the different measurement approaches used by countries for certain products, particularly housing and financial and insurance services. To provide a better basis for international comparisons, the Seventeenth International Conference of Labour Statisticians adopted a resolution which called for countries to 'if possible, compile and provide for dissemination to the international community an index that excludes housing and financial services' in addition to the all-items index.

17 Table 11 aims to present indexes for selected countries on a basis consistent with the above resolution and comparable to the Australian series 'All groups excluding Housing and Financial services' (see paragraph 13). However, other than Australia and New Zealand, the countries represented in this table are yet to develop indexes on this basis, so the indexes presented here are consistent with the series previously published for All groups excluding Housing. To facilitate comparisons all indexes in this table have been converted, where necessary, to a quarterly basis and re-referenced to a base of 1989–90 = 100.0.

18 In producing table 11, the ABS is grateful for the assistance of the relevant national statistical agencies which have either directly supplied indexes for all items excluding housing and financial services or data to enable their derivation.

EXPLANATORY NOTES *continued*

RELATED PUBLICATIONS

19 Current publications and other products released by the ABS are listed in the *Catalogue of Publications and Products* (cat. no. 1101.0). The Catalogue is available from any ABS office or the ABS web site <<http://www.abs.gov.au>>. The ABS also issues a daily Release Advice on the web site which details products to be released in the week ahead.

20 Users may also wish to refer to the following publications and other data products that are available free of charge from the ABS web site:

- *Average Retail Prices of Selected Items, Eight Capital Cities* (cat. no. 6403.0.55.001)
- *Information Paper: Experimental Price Indexes for Financial Services* (cat. no. 6413.0)
- *House Price Indexes: Eight Capital Cities* (cat. no. 6416.0)
- *Consumer Price Index: 15th Series Weighting Pattern (Reissue)* (cat. no. 6430.0)
- *A Guide to the Consumer Price Index, 15th Series* (cat. no. 6440.0)
- *Consumer Price Index: Concordance with Household Expenditure Classification, Australia* (cat. no. 6446.0.55.001)
- *Consumer Price Index Standard Data Report: Capital Cities Index Numbers by Expenditure Class* (cat. no. 6455.0.55.001)
- *Information Paper: The Introduction of Hedonic Price Indexes for Personal Computers* (cat. no. 6458.0)
- *Australian Consumer Price Index: Concepts, Sources and Methods, 2005* (cat. no. 6461.0)
- *Information Paper: Introduction of the 15th Series Australian Consumer Price Index 2005 (Reissue)* (cat. no. 6462.0).

ABS DATA AVAILABLE ON REQUEST

21 As well as the statistics included in this and related publications, the ABS may have other relevant data available on request. Inquiries should be made to Lee Taylor on (02) 6252 6251 or to the National Information and Referral Service on 1300 135 070.

FOR MORE INFORMATION . . .

- INTERNET* **www.abs.gov.au** the ABS web site is the best place for data from our publications and information about the ABS.
- LIBRARY* A range of ABS publications are available from public and tertiary libraries Australia wide. Contact your nearest library to determine whether it has the ABS statistics you require, or visit our web site for a list of libraries.

INFORMATION AND REFERRAL SERVICE

Our consultants can help you access the full range of information published by the ABS that is available free of charge from our web site, or purchase a hard copy publication. Information tailored to your needs can also be requested as a 'user pays' service. Specialists are on hand to help you with analytical or methodological advice.

- PHONE* 1300 135 070
- EMAIL* client.services@abs.gov.au
- FAX* 1300 135 211
- POST* Client Services, ABS, GPO Box 796, Sydney NSW 2001

FREE ACCESS TO STATISTICS

All statistics on the ABS web site can be downloaded free of charge.

- WEB ADDRESS* www.abs.gov.au



2640100003075

ISSN 1442 3987

RRP \$25.00