

LINKED EMPLOYER-EMPLOYEE DATASET (LEED)

FACT SHEET 7

A LEED enables simultaneous analysis of met supply and demand in the Australian labour market.

A LEED can provide supplementary labour statistics and facilitate labour market research. A LEED can help us study micro-labour markets; examine how specific events (such as a natural disaster) impact employees and employers; and understand structural changes in the labour market.

A LEED associates information about a person with information about their employing business. This is done by establishing the existence of a job. An employed person can have one or more jobs, and a job can be created by the personal enterprise of the individual (e.g. an owner manager).

The 2018 LEED Project

Time periods: 2011-12 to 2015-16

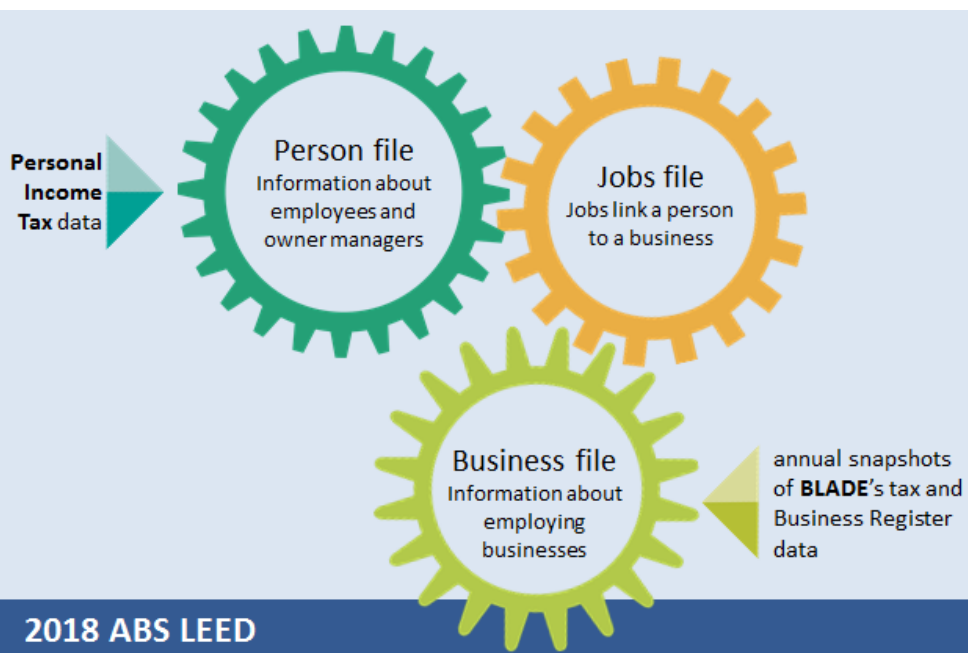
Data sources: Personal income tax data and Business Longitudinal Analytical Data Environment (BLADE) tax and Business Register data

Improvements from prototype LEED:

1. Refined integration methodology
2. Greater scope
3. Better data accessibility

Outputs:

1. Summary publication, *Jobs in Australia* (cat. no. 6160.0)
2. Table builder product
3. Labour Account inputs



What's in the 2018 LEED?

Cross-sectional information relating to employees and owner managers of unincorporated enterprises

- employment income
- residency status
- region of residence (at SA4, SA3, and SA2 levels)
- age
- sex
- detailed occupation
- other sources of income

Information relating to employing businesses (and unincorporated businesses with no employees that can be associated with an owner manager)

- business demographics including detailed industry, and
- financial information.

Jobs in Australia (cat. no. 6160.0) provides aggregate LEED data for five cross-sections:

- 2011-12 financial year (update)
- 2012-13 financial year (new)
- 2013-14 financial year (new)
- 2014-15 financial year (new)
- 2015-16 financial year (new)

Data quality and confidentiality requirements mean that not all cross-classifications will be supported, please discuss your needs with us and we can help you find the best solution.

For more information on the development of the Linked Employer-Employee Dataset (LEED) please contact: Bjorn Jarvis, Program Manager of the Labour Statistics Branch, on (02) 6252 7708 or bjorn.jarvis@abs.gov.au