



Review of 2021 Census topics

Households and Families

The ABS is consulting to seek views on the information to be collected in the next Census and this topic brief provides detail about what has been previously included on households and families.

The opportunity to participate in the consultation will be available from 3 April to 30 June 2018 via consult.abs.gov.au

What was included in the 2016 Census?

Household and family topics on the Census included:

- household and family relationships
- marital status
- persons temporarily absent on Census night.

How is this information used?

Information about the people in a household and their relationships to each other provides a national picture of the composition of Australian families. This is used for planning support services and infrastructure, such as educational institutions, hospitals and social services. It is also useful for understanding the adequacy and availability of housing.

Information about household and family relationships, and marital status, help establish whether there is a family unit living in a household and the structure of that family unit (for example, a couple family with dependent children or a single parent family). We can also identify whether there are a number of unrelated individuals living in the household (a group household) or where there is more than one family living in the dwelling. This provides insight into the different service needs of extended family structures or shared houses.

Not everyone who usually lives in a household will be there on Census night. To generate accurate estimates of the usual population in an area, questions are asked about people who are temporarily away. This allows for better planning of support services for local communities.

The questions asked on the 2016 Census

- What is the person's relationship to person 1/person 2?
- What is the person's present marital status?
- Were there any people away on the night of Tuesday, 9 August 2016 who usually live in this dwelling?

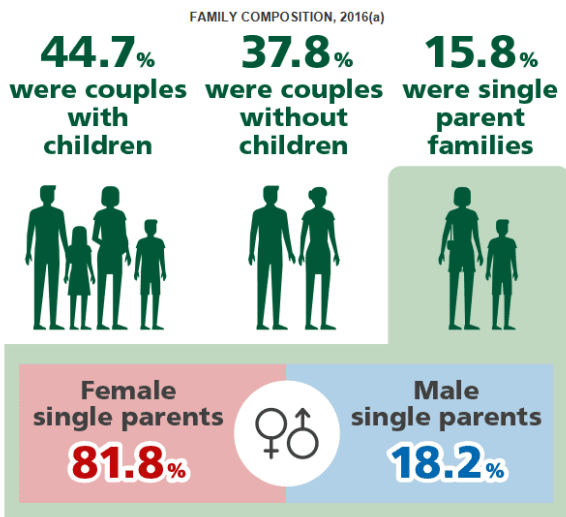
Data produced from the 2016 Census

Questions about households and families provide data on:

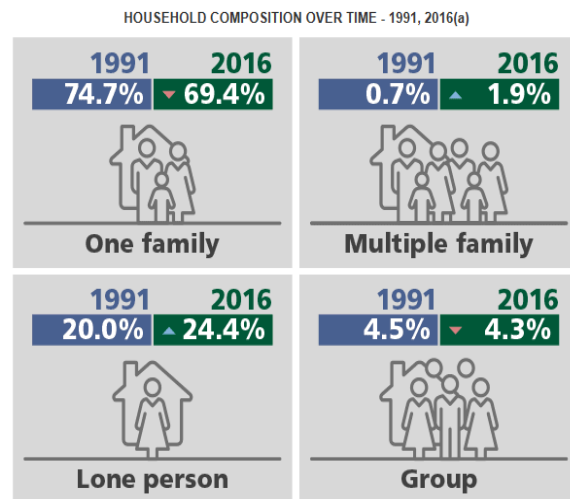
- Relationships in households including family connections, grandparent relationships, social marital status, same-sex couples etc. ([FRLE](#), [RLCP](#), [RLGP](#), [RLHP](#), [MDCP](#), [SSCF](#))
- Counts of persons, families and children ([NPRD](#), [FNOF](#), [CACE](#), [CDCE](#), [CNDCE](#), [CPRF](#))
- Family and household composition and roles ([FMCF](#), [HHCD](#), [FMGF](#), [FBLF](#), [HCFMD](#), [HCFMF](#), [RPIP](#), [SLPP](#), [CTGP](#), [CTPP](#))
- Registered marital status ([MSTP](#), [IFMSTP](#))
- Person temporarily absent ([CPAD](#), [CPAF](#), [SPLF](#), [CDCAF](#), [CDSAF](#), [CNDAF](#))

For more information view [2901.0 – Census Dictionary](#)

Highlights from the 2016 Census on households and families



(a) Includes households in occupied private dwellings only. Excludes visitor only and non-classifiable households.
Source: Census of Population and Housing 2016



(a) Includes households in occupied private dwellings only. Excludes visitor only and non-classifiable households.
Source: Census of Population and Housing 1991, 2016

Standards

The ABS uses the standard below to classify statistics relating to households and families.

[1286.0 - Family, Household and Income Unit Variables, 2014](#)

For more information go to www.abs.gov.au/census