

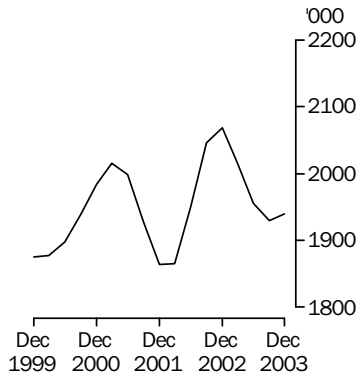
LIVESTOCK PRODUCTS

AUSTRALIA

EMBARGO: 11.30AM (CANBERRA TIME) THURS 12 FEB 2004

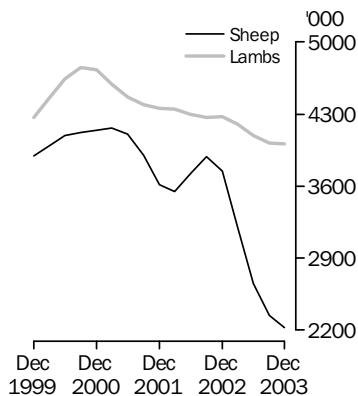
Cattle slaughtering

Excluding calves
Trend



Sheep and lamb slaughtering

Trend



KEY FIGURES

TREND ESTIMATES

	Dec Qtr 2002 '000	Sep Qtr 2003 '000	Dec Qtr 2003 '000
Number slaughtered			
Cattle	2 069.1	1 929.3	1 939.4
Calves	299.9	278.9	282.0
Sheep	3 745.3	2 340.6	2 226.8
Lambs	4 276.3	4 016.0	4 012.0
Pigs	1 435.0	1 423.0	1 394.5
Chickens	105 308.4	105 062.4	105 595.3

	Dec Qtr 2002 tonnes	Sep Qtr 2003 tonnes	Dec Qtr 2003 tonnes
Meat produced			
Beef	520 338	485 447	489 106
Veal	9 413	9 414	9 230
Mutton	72 944	48 352	47 760
Lamb	82 905	81 436	82 506
Pig meat	104 716	103 854	101 158
Chicken meat	174 545	169 709	170 450
Wool receivals	129 587	106 411	109 803

	Sep Qtr 2002 ML	Jun Qtr 2003 ML	Sep Qtr 2003 ML
Whole milk intake by factories	2 764	2 473	2 459

KEY POINTS

TREND ESTIMATES

- The trend estimate for beef production for December quarter 2003 increased marginally to 489,000 tonnes, the first quarterly increase after four consecutive decreases.
- In December quarter 2003, the trend estimate for the number of sheep slaughtered fell by 5% to 2.2 million, the fifth consecutive quarterly decrease.
- The trend estimate for mutton produced in December quarter 2003 fell marginally to 47,800 tonnes, the lowest quarterly estimate since June quarter 1984.
- The trend estimate for the number of pigs slaughtered for December quarter 2003 fell by 2% to 1.4 million, the third consecutive quarterly decrease after a long period of sustained growth.

INQUIRIES

- For further information about these and related statistics, contact Frank Costin on Hobart (03) 6222 5838 or the National Information and Referral Service on 1300 135 070.

NOTES

FORTHCOMING ISSUES

ISSUE (Quarter)

RELEASE DATE

March 2004

13 May 2004

June 2004

12 August 2004

.....

CHANGES IN THIS ISSUE

There are no changes in this issue.

FORTHCOMING CHANGES

There are no forthcoming changes.

.....

ABBREVIATIONS

ML megalitre

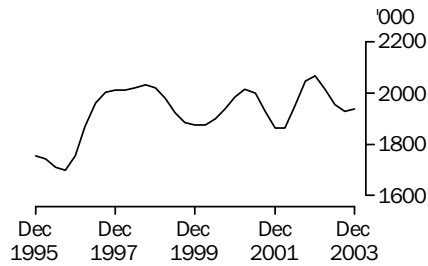
t tonne

Dennis Trewin

Australian Statistician

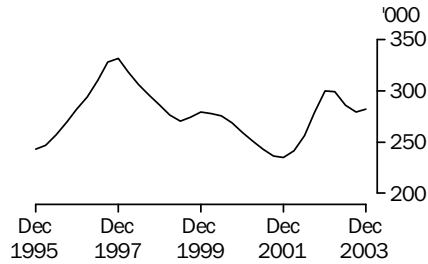
LIVESTOCK SLAUGHTERED TREND

CATTLE (EXCLUDING CALVES)



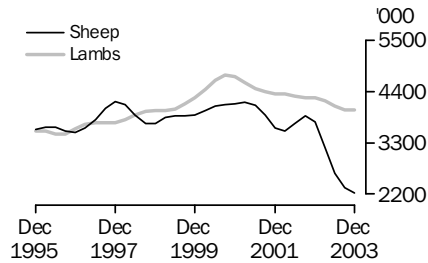
The trend estimate for the number of cattle slaughtered in December quarter 2003 rose by 1% to 1.9 million due mainly to increased turnoff in Queensland where conditions remained dry.

CALVES



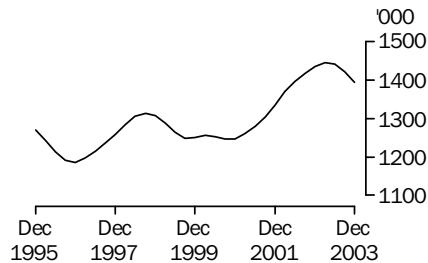
The trend estimate for the number of calves slaughtered in December quarter 2003 rose by 1% to 282,000.

SHEEP AND LAMBS



The trend estimate for sheep slaughtered in December quarter 2003 fell by 5% to 2.2 million reflecting the national shortage of sheep and improved grazing conditions in some areas. The number of lambs slaughtered remained steady at 4.0 million.

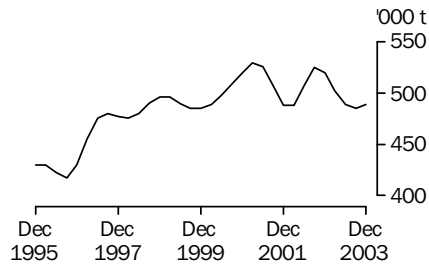
PIGS



The trend estimate for the number of pigs slaughtered fell by 2% to 1.4 million in December quarter 2003, with high levels of imports competing for the domestic market.

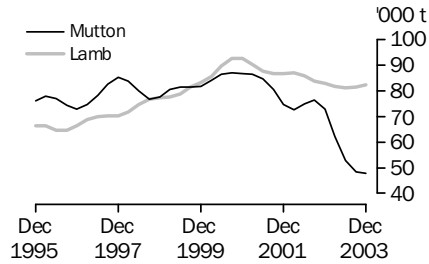
MEAT PRODUCTION TREND

BEEF



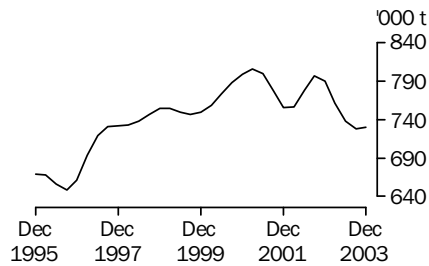
The trend estimate for beef production rose by 1% to 489,000 tonnes in December quarter 2003, in line with the increase in slaughter numbers.

MUTTON AND LAMB



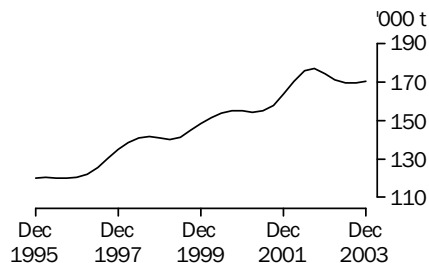
The trend estimate for mutton production in December quarter 2003 fell by 1% to 47,800 tonnes. The trend estimate for lamb production rose by 1% to 82,500 tonnes. The easing of drought conditions saw heavier slaughter weights for both sheep and lambs.

TOTAL RED MEAT



The trend estimate for red meat production remained steady at 730,000 tonnes in December quarter 2003. Increases in beef and lamb production were offset by falls in pig meat and mutton production.

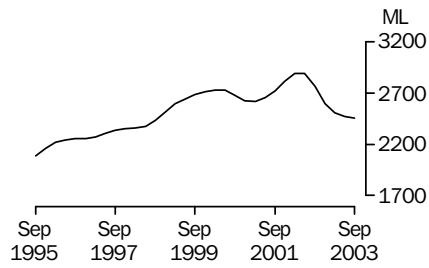
CHICKEN MEAT



The trend estimate for chicken meat production in December quarter 2003 increased slightly to 170,000 tonnes.

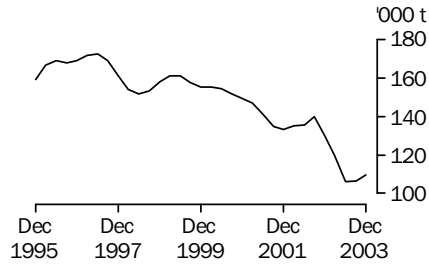
LIVESTOCK PRODUCTS TREND

WHOLE MILK INTAKE BY FACTORIES



The trend estimate for whole milk intake by factories fell by 1% to 2.5 billion litres in September quarter 2003 as the effects of the drought continued.

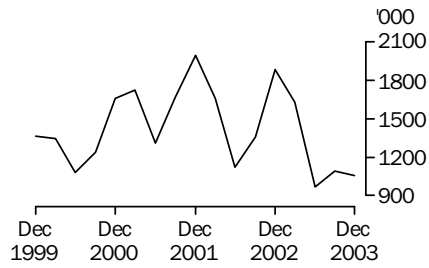
BROKERS AND DEALERS RECEIVALS OF TAXABLE WOOL



The trend estimate for wool receivals by brokers and dealers for December quarter 2003 fell by 3% to 110,000 tonnes.

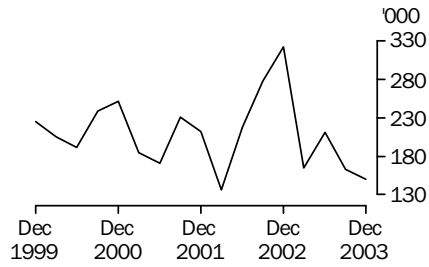
LIVESTOCK EXPORTS ORIGINAL

EXPORTS OF LIVE SHEEP



Live sheep exports fell by 4% to 1.1 million in December quarter 2003. Gross value of live sheep exports fell by 8% to \$73.2 million. Unit value fell by 4% to \$69.51. The strengthening Australian dollar has seen Australia's competitiveness reduced in this market.

EXPORTS OF LIVE CATTLE



Live cattle exports fell by 8% to 150,000 in December quarter 2003. An 11% increase in unit value (to \$553.46) saw gross value increase by 2% to \$83.1 million. The strengthening Australian dollar saw demand fall in key Asian markets.

LIVESTOCK SLAUGHTERED, Australia(a): All Series

Quarter	Bulls, bullocks and steers	Cows and heifers	Total cattle (excluding calves)	Calves	Sheep	Lambs	Pigs	Chickens
	'000	'000	'000	'000	'000	'000	'000	'000
ORIGINAL								
2002								
September	1 056.0	1 021.6	2 077.7	538.1	3 692.6	4 040.0	1 439.5	105 278.6
December	1 065.2	1 017.1	2 082.3	189.1	4 078.8	4 438.8	1 393.7	108 860.1
2003								
March	941.4	950.5	1 891.9	157.6	3 614.5	4 307.7	1 408.4	103 360.2
June	943.7	1 087.2	2 030.9	261.0	2 271.4	4 083.3	1 500.1	101 682.1
September	951.2	997.9	1 949.1	480.1	1 899.9	3 667.9	1 437.9	105 746.9
December	1 026.6	916.1	1 942.6	201.5	2 736.3	4 371.5	1 376.9	107 480.2
SEASONALLY ADJUSTED								
2002								
September	1 018.9	1 003.1	2 022.1	276.2	4 071.0	4 249.4	1 428.4	106 831.9
December	1 032.6	1 091.6	2 124.2	294.5	3 748.9	4 223.8	1 401.4	105 702.4
2003								
March	1 004.6	991.7	1 996.4	320.6	3 279.6	4 341.6	1 474.5	103 669.6
June	948.1	996.7	1 944.8	283.6	2 560.0	4 046.1	1 442.6	102 940.5
September	918.0	979.0	1 897.0	246.8	2 066.6	3 887.3	1 417.7	107 453.3
December	995.0	983.3	1 978.3	313.6	2 534.6	4 135.3	1 394.8	104 244.9
TREND								
2002								
September	1 030.8	1 015.9	2 046.7	278.7	3 883.1	4 268.5	1 417.3	107 332.9
December	1 027.2	1 041.9	2 069.1	299.9	3 745.3	4 276.3	1 435.0	105 308.4
2003								
March	990.7	1 025.1	2 015.8	299.3	3 204.0	4 201.6	1 446.3	104 138.4
June	959.8	996.2	1 956.0	286.1	2 651.8	4 092.2	1 442.1	104 410.8
September	948.5	980.8	1 929.3	278.9	2 340.6	4 016.0	1 423.0	105 062.4
December	958.2	981.2	1 939.4	282.0	2 226.8	4 012.0	1 394.5	105 595.3

(a) For more information refer to paragraphs 5 to 9 of the Explanatory Notes.

LIVESTOCK PRODUCTS, Australia(a): All Series

Quarter	RED MEAT						Chicken meat tonnes	Whole milk intake by factories ML	Brokers and dealers receipts of taxable wool tonnes
	Beef tonnes	Veal tonnes	Mutton tonnes	Lamb tonnes	Pig meat tonnes	Total red meat tonnes			
ORIGINAL									
2002									
September	534 915	15 146	73 819	77 861	105 343	807 084	175 634	2 582	156 296
December	527 190	5 526	81 076	84 944	100 008	798 744	178 450	3 615	161 385
2003									
March	473 184	8 594	69 589	85 222	102 714	739 303	171 463	2 349	113 419
June	499 323	8 953	43 734	81 381	111 490	744 881	164 280	1 781	71 921
September	489 378	12 683	39 847	73 146	106 120	721 174	169 979	2 370	121 566
December	500 384	7 945	60 488	90 068	98 551	757 437	175 765	nya	135 829
SEASONALLY ADJUSTED									
2002									
September	525 026	10 006	80 506	82 990	103 483	802 011	177 111	2 695	138 248
December	525 175	7 226	72 439	81 291	101 998	788 129	173 854	2 628	134 285
2003									
March	500 853	11 719	64 098	84 391	108 690	769 751	172 752	2 451	120 171
June	483 494	9 037	50 679	80 509	105 932	729 651	165 983	2 489	100 134
September	480 537	8 403	42 870	78 587	103 477	713 874	171 732	2 476	107 334
December	497 916	10 365	54 363	85 788	100 831	749 263	170 681	nya	113 501
TREND									
2002									
September	525 038	8 938	76 617	83 888	102 909	797 390	177 285	2 764	139 801
December	520 338	9 413	72 944	82 905	104 716	790 316	174 545	2 598	129 587
2003									
March	502 245	9 590	62 354	81 649	106 147	761 985	171 111	2 506	119 474
June	488 994	9 514	52 758	81 183	105 807	738 256	169 640	2 473	106 286
September	485 447	9 414	48 352	81 436	103 854	728 503	169 709	2 459	106 411
December	489 106	9 230	47 760	82 506	101 158	729 760	170 450	nya	109 803

nya not yet available

(a) For more information refer to paragraphs 5 to 9 and 13 to 15 of the Explanatory Notes.

NUMBER OF LIVESTOCK SLAUGHTERED (a), Bulls, Bullocks and Steers: All Series

Quarter	New South Wales	Victoria	Queensland	South Australia	Western Australia	Tasmania	Australia
	'000	'000	'000	'000	'000	'000	'000
ORIGINAL							
2002							
September	233.1	135.2	591.1	38.1	39.0	19.2	1 056.0
December	261.8	168.4	517.5	42.9	55.5	18.9	1 065.2
2003							
March	247.8	172.1	408.4	46.6	43.0	23.2	941.4
June	218.9	154.3	476.8	38.9	36.0	18.6	943.7
September	180.7	137.5	547.3	31.8	40.6	13.1	951.2
December	201.5	144.9	535.9	46.6	63.3	34.1	1 026.6
SEASONALLY ADJUSTED							
2002							
September	230.5	153.7	523.2	44.6	43.1	22.2	1 018.9
December	262.4	158.4	510.3	40.1	44.2	19.6	1 032.6
2003							
March	243.2	157.8	486.2	42.0	45.4	19.6	1 004.6
June	225.0	161.8	469.7	40.1	40.2	19.0	948.1
September	178.9	154.9	483.5	37.4	43.6	15.1	918.0
December	202.1	136.5	528.7	43.6	52.1	35.2	995.0
TREND							
2002							
September	238.3	155.6	527.7	44.9	43.6	21.1	1 030.8
December	250.8	157.4	511.2	42.3	44.4	20.7	1 027.2
2003							
March	242.8	160.0	483.8	40.3	43.1	18.3	990.7
June	219.6	158.4	479.9	39.8	43.0	18.4	959.8
September	199.1	151.7	491.2	40.1	45.1	22.0	948.5
December	187.8	143.5	510.5	40.9	48.4	27.5	958.2

(a) For more information refer to paragraph 4 of the Explanatory Notes.

NUMBER OF LIVESTOCK SLAUGHTERED (a), Cows and Heifers: All Series

Quarter	New South Wales	Victoria	Queensland	South Australia	Western Australia	Tasmania	Australia
	'000	'000	'000	'000	'000	'000	'000
ORIGINAL							
2002							
September	246.6	249.0	412.6	41.9	56.7	13.8	1 021.6
December	249.1	267.4	352.0	50.5	68.8	28.3	1 017.1
2003							
March	238.2	247.7	308.9	49.2	71.5	33.9	950.5
June	235.1	256.4	448.0	50.9	58.9	36.8	1 087.2
September	219.2	220.4	437.5	32.5	61.7	25.6	997.9
December	217.9	233.8	342.6	35.1	62.2	23.5	916.1
SEASONALLY ADJUSTED							
2002							
September	257.8	258.5	376.9	45.5	58.1	18.4	1 003.1
December	251.7	263.0	399.5	51.8	65.5	29.9	1 091.6
2003							
March	246.0	243.0	361.1	47.0	68.2	31.5	991.7
June	219.1	256.6	383.7	48.1	63.5	30.0	996.7
September	223.6	228.3	399.2	35.5	63.3	34.3	979.0
December	225.2	230.1	388.5	35.8	59.3	24.7	983.3
TREND							
2002							
September	258.6	246.8	380.3	45.5	61.0	23.5	1 015.9
December	252.9	258.9	382.8	49.4	64.1	27.3	1 041.9
2003							
March	239.3	255.2	380.4	49.1	66.3	30.8	1 025.1
June	228.7	244.8	382.7	44.5	65.1	32.0	996.2
September	222.8	236.3	389.2	39.2	62.4	30.3	980.8
December	220.9	229.9	396.8	35.5	60.3	28.1	981.2

(a) For more information refer to paragraph 4 of the Explanatory Notes.

NUMBER OF LIVESTOCK SLAUGHTERED(a), Total Cattle (excluding Calves): All Series

Quarter	New South Wales	Victoria	Queensland	South Australia	Western Australia	Tasmania	Australia
	'000	'000	'000	'000	'000	'000	'000
ORIGINAL							
2002							
September	479.7	384.2	1 003.7	80.1	95.7	32.9	2 077.7
December	510.9	435.7	869.5	93.4	124.3	47.2	2 082.3
2003							
March	486.0	419.8	717.3	95.8	114.5	57.2	1 891.9
June	453.9	410.7	924.8	89.8	94.8	55.5	2 030.9
September	399.8	357.8	984.8	64.3	102.2	38.7	1 949.1
December	419.4	378.6	878.5	81.7	125.5	57.6	1 942.6
SEASONALLY ADJUSTED							
2002							
September	488.3	412.2	900.1	90.1	101.2	40.5	2 022.1
December	514.1	421.4	909.8	91.9	109.7	49.5	2 124.2
2003							
March	489.2	400.8	847.3	89.0	113.7	51.1	1 996.4
June	444.0	418.4	853.5	88.3	103.7	49.1	1 944.8
September	402.4	383.2	882.7	72.8	106.9	49.4	1 897.0
December	427.2	366.6	917.2	79.4	111.4	59.9	1 978.3
TREND							
2002							
September	496.9	402.4	908.0	90.4	104.6	44.6	2 046.7
December	503.6	416.3	894.0	91.7	108.5	48.0	2 069.1
2003							
March	482.2	415.2	864.2	89.4	109.4	49.1	2 015.8
June	448.4	403.2	862.6	84.3	108.1	50.4	1 956.0
September	421.8	388.1	880.3	79.3	107.5	52.4	1 929.3
December	408.7	373.4	907.3	76.5	108.8	55.6	1 939.4

(a) For more information refer to paragraph 4 of the Explanatory Notes.

NUMBER OF LIVESTOCK SLAUGHTERED (a), Calves: All Series

Quarter	New South Wales	Victoria	Queensland	South Australia	Western Australia	Tasmania	Australia
	'000	'000	'000	'000	'000	'000	'000
ORIGINAL							
2002							
September	66.2	413.4	23.2	3.3	1.3	30.4	538.1
December	30.1	127.1	21.1	2.4	1.4	6.8	189.1
2003							
March	83.4	44.5	24.7	2.4	1.3	1.1	157.6
June	66.4	164.2	23.0	2.9	1.3	2.9	261.0
September	56.4	362.9	23.4	2.2	1.3	33.7	480.1
December	53.7	115.3	21.4	1.1	1.1	8.7	201.5
SEASONALLY ADJUSTED							
2002							
September	69.5	174.7	23.2	2.7	1.3	9.9	276.2
December	35.1	228.0	23.4	3.2	1.3	11.3	294.5
2003							
March	77.4	225.2	24.2	2.8	1.3	16.0	320.6
June	59.6	186.2	21.5	2.5	1.4	11.6	283.6
September	59.4	153.9	23.3	1.8	1.2	11.0	246.8
December	62.7	204.2	23.8	1.5	1.0	14.3	313.6
TREND							
2002							
September	57.1	188.9	24.3	2.8	1.2	9.6	278.7
December	57.8	213.3	23.5	3.0	1.3	12.3	299.9
2003							
March	60.3	212.6	23.0	2.9	1.4	13.3	299.3
June	62.7	192.4	22.8	2.4	1.3	12.8	286.1
September	62.7	178.6	23.0	1.9	1.2	12.4	278.9
December	58.9	179.1	23.4	1.5	1.1	12.5	282.0

(a) For more information refer to paragraph 4 of the Explanatory Notes.

NUMBER OF LIVESTOCK SLAUGHTERED (a), Sheep: All Series

Quarter	New South Wales	Victoria	Queensland	South Australia	Western Australia	Tasmania	Australia
	'000	'000	'000	'000	'000	'000	'000
ORIGINAL							
2002							
September	1 594.5	876.7	345.0	429.2	394.3	53.0	3 692.6
December	1 636.0	1 111.9	300.7	463.5	496.3	70.4	4 078.8
2003							
March	1 236.8	1 009.9	269.3	359.2	590.8	148.6	3 614.5
June	814.9	642.7	227.0	180.0	290.5	116.3	2 271.4
September	611.0	541.6	216.2	185.2	274.7	71.3	1 899.9
December	790.2	808.7	240.0	282.4	514.3	100.8	2 736.3
SEASONALLY ADJUSTED							
2002							
September	1 626.7	1 041.2	346.2	500.7	432.3	85.7	4 071.0
December	1 538.5	985.9	311.4	404.7	430.8	77.1	3 748.9
2003							
March	1 191.2	878.0	269.8	304.2	494.5	103.5	3 279.6
June	890.0	730.6	218.3	221.8	394.4	112.7	2 560.0
September	622.4	644.3	217.0	213.7	299.2	114.8	2 066.6
December	739.9	713.8	248.4	247.4	447.2	111.3	2 534.6
TREND							
2002							
September	1 562.1	997.4	341.9	452.9	433.5	77.5	3 883.1
December	1 480.8	975.0	310.5	408.3	454.0	88.4	3 745.3
2003							
March	1 208.9	869.2	264.7	312.9	438.0	99.4	3 204.0
June	914.8	753.8	234.4	244.6	399.8	109.4	2 651.8
September	726.6	687.8	225.1	222.2	375.2	114.3	2 340.6
December	633.9	661.0	229.6	222.6	373.5	113.9	2 226.8

(a) For more information refer to paragraph 4 of the Explanatory Notes.

NUMBER OF LIVESTOCK SLAUGHTERED (a), Lambs: All Series

Quarter	New South Wales	Victoria	Queensland	South Australia	Western Australia	Tasmania	Australia
	'000	'000	'000	'000	'000	'000	'000
ORIGINAL							
2002							
September	1 145.0	1 688.3	111.9	558.9	437.1	98.9	4 040.0
December	1 103.8	1 891.1	71.2	734.6	547.2	91.0	4 438.8
2003							
March	1 102.5	1 685.8	81.8	820.1	521.8	95.7	4 307.7
June	1 037.5	1 639.6	75.3	727.6	514.9	88.4	4 083.3
September	912.8	1 478.3	96.1	574.2	501.0	105.5	3 667.9
December	1 056.0	1 747.7	143.3	700.0	629.0	95.5	4 371.5
SEASONALLY ADJUSTED							
2002							
September	1 137.2	1 727.8	97.8	631.2	485.2	92.8	4 249.4
December	1 119.8	1 756.6	77.8	718.0	496.7	94.2	4 223.8
2003							
March	1 101.5	1 719.6	85.3	810.4	525.3	94.0	4 341.6
June	1 030.4	1 694.4	76.9	671.8	512.7	93.1	4 046.1
September	907.3	1 516.7	83.7	654.9	556.4	98.9	3 887.3
December	1 070.6	1 622.3	156.8	678.8	570.7	98.9	4 135.3
TREND							
2002							
September	1 140.2	1 746.8	92.3	686.7	482.4	99.6	4 268.5
December	1 124.8	1 749.7	84.9	717.9	502.2	94.7	4 276.3
2003							
March	1 075.9	1 714.5	75.8	736.2	512.9	92.4	4 201.6
June	1 019.5	1 654.7	82.1	712.2	529.7	95.1	4 092.2
September	991.5	1 599.8	102.9	673.5	548.7	97.1	4 016.0
December	998.1	1 575.0	129.0	651.2	564.6	98.9	4 012.0

(a) For more information refer to paragraph 4 of the Explanatory Notes.

NUMBER OF LIVESTOCK SLAUGHTERED (a), Pigs: All Series

Quarter	New South Wales	Victoria	Queensland	South Australia	Western Australia	Tasmania	Australia
	'000	'000	'000	'000	'000	'000	'000
ORIGINAL							
2002							
September	473.0	258.3	307.0	220.6	166.3	12.1	1 439.5
December	470.5	261.2	280.5	208.0	158.4	13.0	1 393.7
2003							
March	441.5	244.4	317.8	220.3	171.3	11.1	1 408.4
June	475.7	269.4	329.5	235.2	176.4	11.6	1 500.1
September	453.9	248.0	335.7	215.8	170.6	11.6	1 437.9
December	439.4	243.7	326.1	191.3	162.3	11.7	1 376.9
SEASONALLY ADJUSTED							
2002							
September	462.7	259.6	309.3	224.3	165.6	12.2	1 428.4
December	469.4	256.8	282.3	227.4	165.5	13.0	1 401.4
2003							
March	464.6	256.3	327.8	216.7	173.9	11.8	1 474.5
June	462.9	261.4	314.9	219.1	168.0	10.9	1 442.6
September	442.0	245.8	340.1	216.9	170.5	11.8	1 417.7
December	440.4	244.3	329.6	210.8	168.0	11.6	1 394.8
TREND							
2002							
September	470.4	252.1	299.7	221.4	163.3	12.4	1 417.3
December	467.6	258.0	302.9	225.2	168.4	12.4	1 435.0
2003							
March	464.6	259.0	311.9	222.0	170.4	11.9	1 446.3
June	457.8	255.2	323.8	218.0	170.3	11.5	1 442.1
September	447.8	250.1	331.7	215.3	169.6	11.4	1 423.0
December	439.1	244.1	333.2	213.1	168.1	11.6	1 394.5

(a) For more information refer to paragraph 4 of the Explanatory Notes.

NUMBER OF CHICKENS SLAUGHTERED(a): All Series

Quarter	New South Wales	Victoria	Queensland	South Australia	Western Australia	Australia
	'000	'000	'000	'000	'000	'000
ORIGINAL						
2002						
September	39 172.0	28 625.5	18 477.3	np	np	105 278.6
December	38 943.3	30 632.3	19 686.2	np	np	108 860.1
2003						
March	36 188.5	29 496.2	18 703.4	np	np	103 360.2
June	35 613.2	29 138.0	18 282.3	np	np	101 682.1
September	38 377.1	29 312.9	19 209.3	np	np	105 746.9
December	36 797.4	31 092.4	20 288.0	np	np	107 480.2
SEASONALLY ADJUSTED						
2002						
September	39 344.6	29 291.8	19 047.7	np	np	106 831.9
December	38 439.2	29 311.3	18 859.3	np	np	105 702.4
2003						
March	36 201.2	29 828.5	18 692.7	np	np	103 669.6
June	35 987.5	29 377.6	18 548.0	np	np	102 940.5
September	38 728.7	29 920.2	19 808.2	np	np	107 453.3
December	35 796.5	30 191.2	19 428.9	np	np	104 244.9
TREND						
2002						
September	39 518.3	29 381.1	19 012.8	np	np	107 332.9
December	37 893.5	29 507.3	18 845.9	np	np	105 308.4
2003						
March	36 906.0	29 529.2	18 726.7	np	np	104 138.4
June	36 804.6	29 669.7	18 945.6	np	np	104 410.8
September	36 946.3	29 861.0	19 305.0	np	np	105 062.4
December	36 997.9	30 068.7	19 632.0	np	np	105 595.3

np not available for publication but included in totals where applicable, unless otherwise indicated

(a) For more information refer to paragraphs 8 and 9 of the Explanatory Notes.

NUMBER OF LIVESTOCK SLAUGHTERED (a): Original

Financial year	New South Wales '000	Victoria '000	Queensland '000	South Australia '000	Western Australia '000	Tasmania '000	Australia '000
BULLS, BULLOCKS AND STEERS							
2000-01	767.1	632.0	2 266.6	179.7	187.0	90.2	4 126.9
2001-02	820.5	630.6	2 150.0	182.0	137.7	80.6	4 002.4
2002-03	961.6	630.0	1 993.7	166.6	173.4	79.9	4 006.3
COWS AND HEIFERS							
2000-01	1 060.8	891.9	1 390.1	137.0	228.4	94.2	3 813.8
2001-02	992.1	800.6	1 364.2	150.6	230.6	79.4	3 621.7
2002-03	968.9	1 020.5	1 521.6	192.5	255.9	112.9	4 076.4
TOTAL CATTLE (excluding calves)							
2000-01	1 827.9	1 523.9	3 656.6	316.7	415.4	184.4	7 940.7
2001-02	1 812.6	1 431.1	3 514.1	332.6	368.3	160.0	7 624.1
2002-03	1 930.5	1 650.4	3 515.2	359.1	429.3	192.8	8 082.7
CALVES							
2000-01	226.0	608.9	135.1	11.6	5.6	49.7	1 037.5
2001-02	205.7	597.0	99.7	9.6	6.0	44.6	963.3
2002-03	246.1	749.3	92.1	11.0	5.3	41.2	1 145.8
SHEEP							
2000-01	5 857.6	4 193.3	1 489.2	1 488.2	3 235.0	364.7	16 628.0
2001-02	5 712.7	3 819.5	1 334.0	1 337.7	1 961.3	275.8	14 441.0
2002-03	5 282.2	3 641.2	1 142.0	1 431.8	1 771.8	388.3	13 657.3
LAMBS							
2000-01	4 203.2	8 090.0	1 024.1	2 875.1	2 020.0	416.1	18 628.5
2001-02	4 558.8	6 997.4	627.6	2 933.4	1 856.6	426.4	17 400.2
2002-03	4 388.8	6 904.8	340.3	2 841.1	2 021.0	374.0	16 869.8
PIGS							
2000-01	1 739.5	1 065.6	1 078.4	525.7	542.6	57.6	5 016.3
2001-02	1 885.0	1 042.1	1 133.7	690.0	591.4	53.1	5 402.4
2002-03	1 860.6	1 033.2	1 234.8	884.1	672.3	47.7	5 741.7
CHICKENS							
2000-01	151 686.8	104 080.0	68 002.0	np	np	np	398 868.6
2001-02	156 682.0	109 311.2	70 940.6	np	np	np	415 555.6
2002-03	149 917.0	117 892.0	75 149.3	np	np	np	419 181.0

np not available for publication but included in totals where applicable, unless otherwise indicated

(a) For more information refer to paragraphs 4, 5 and 7 to 9 of the Explanatory Notes.

Quarter	New South Wales	Victoria	Queensland	South Australia	Western Australia	Tasmania	Australia
	tonnes	tonnes	tonnes	tonnes	tonnes	tonnes	tonnes
ORIGINAL							
2002							
September	121 725	87 609	274 019	19 663	23 061	8 553	534 915
December	125 017	98 065	236 320	23 357	31 301	12 850	527 190
2003							
March	116 215	94 683	194 376	23 930	28 061	15 644	473 184
June	108 541	89 867	242 235	21 413	22 650	14 328	499 323
September	95 483	80 324	262 870	15 611	24 687	10 120	489 378
December	102 846	87 972	239 249	21 514	32 363	16 165	500 384
SEASONALLY ADJUSTED							
2002							
September	125 227	94 262	244 977	22 627	24 882	11 578	525 026
December	126 079	94 097	244 407	22 352	26 207	12 878	525 175
2003							
March	115 294	89 054	230 063	21 824	28 683	13 656	500 853
June	105 472	93 173	226 632	21 610	25 169	12 814	483 494
September	98 361	86 293	234 721	18 013	25 683	13 759	480 537
December	103 588	84 478	247 421	20 564	28 256	16 111	497 916
TREND							
2002							
September	125 109	92 717	247 088	22 671	25 514	12 162	525 038
December	123 407	93 459	241 652	22 546	26 599	12 806	520 338
2003							
March	115 523	92 094	232 062	21 760	26 810	13 005	502 245
June	106 864	89 935	230 645	20 682	26 472	13 442	488 994
September	101 654	87 583	235 176	19 821	26 428	14 186	485 447
December	100 055	85 506	243 070	19 478	26 873	15 176	489 106

(a) For more information refer to paragraphs 4 to 6 of the Explanatory Notes.

RED MEAT PRODUCED(a), Veal: All Series

Quarter	New South Wales	Victoria	Queensland	South Australia	Western Australia	Tasmania	Australia
	tonnes	tonnes	tonnes	tonnes	tonnes	tonnes	tonnes
ORIGINAL							
2002							
September	4 228	9 076	1 063	92	84	590	15 146
December	1 749	2 590	893	76	69	138	5 526
2003							
March	6 233	1 003	1 160	85	71	30	8 594
June	4 283	3 339	1 087	88	77	67	8 953
September	3 621	7 079	1 168	69	80	653	12 683
December	3 464	3 120	1 072	41	60	176	7 945
SEASONALLY ADJUSTED							
2002							
September	4 490	3 850	1 066	80	76	197	10 006
December	2 040	4 554	1 010	95	69	225	7 226
2003							
March	5 747	4 394	1 084	90	74	284	11 719
June	3 829	3 935	1 039	80	82	235	9 037
September	3 853	3 012	1 166	60	71	218	8 403
December	4 056	5 429	1 222	52	61	284	10 365
TREND							
2002							
September	3 662	3 957	1 113	82	72	193	8 938
December	3 863	4 311	1 043	90	73	236	9 413
2003							
March	4 133	4 200	1 035	90	76	251	9 590
June	4 251	3 898	1 087	78	76	247	9 514
September	4 112	3 982	1 147	64	72	246	9 414
December	3 698	4 419	1 205	52	65	253	9 230

(a) For more information refer to paragraphs 4 to 6 of the Explanatory Notes.

RED MEAT PRODUCED(a), Mutton: All Series

Quarter	<i>New South Wales</i>	<i>Victoria</i>	<i>Queensland</i>	<i>South Australia</i>	<i>Western Australia</i>	<i>Tasmania</i>	Australia
	tonnes	tonnes	tonnes	tonnes	tonnes	tonnes	tonnes
ORIGINAL							
2002							
September	33 082	16 277	6 185	9 351	7 912	1 011	73 819
December	32 791	21 198	5 662	10 073	9 981	1 371	81 076
2003							
March	24 143	18 676	4 623	7 521	11 740	2 885	69 589
June	16 090	11 400	4 271	3 948	5 797	2 227	43 734
September	13 318	10 475	4 526	4 527	5 619	1 382	39 847
December	18 674	16 829	5 246	7 251	10 456	2 031	60 488
SEASONALLY ADJUSTED							
2002							
September	33 064	18 914	6 332	10 694	8 652	1 662	80 506
December	30 179	18 129	5 720	8 437	8 627	1 493	72 439
2003							
March	23 649	16 620	4 639	6 505	9 796	1 992	64 098
June	18 090	13 478	4 119	5 123	7 992	2 174	50 679
September	13 295	12 183	4 639	5 125	6 101	2 258	42 870
December	17 107	14 344	5 289	6 090	9 067	2 231	54 363
TREND							
2002							
September	31 476	18 603	6 289	9 650	8 658	1 500	76 617
December	29 400	17 979	5 556	8 610	9 057	1 707	72 944
2003							
March	23 906	16 063	4 753	6 711	8 757	1 914	62 354
June	18 575	14 142	4 445	5 533	8 044	2 124	52 758
September	15 632	13 173	4 618	5 326	7 610	2 247	48 352
December	14 588	13 022	5 005	5 546	7 650	2 263	47 760

(a) For more information refer to paragraphs 4 to 6 of the Explanatory Notes.

Quarter	New South Wales	Victoria	Queensland	South Australia	Western Australia	Tasmania	Australia
	tonnes	tonnes	tonnes	tonnes	tonnes	tonnes	tonnes
ORIGINAL							
2002							
September	22 126	31 844	2 076	11 493	8 326	1 996	77 861
December	21 230	35 157	1 294	14 864	10 581	1 817	84 944
2003							
March	21 559	32 005	1 474	17 947	10 365	1 871	85 222
June	20 389	31 693	1 439	15 809	10 296	1 755	81 381
September	17 990	28 863	1 843	12 379	9 935	2 136	73 146
December	21 589	35 527	2 757	15 861	12 439	1 894	90 068
SEASONALLY ADJUSTED							
2002							
September	21 960	33 027	1 788	13 448	9 330	1 883	82 990
December	21 661	33 038	1 438	14 646	9 657	1 881	81 291
2003							
March	21 556	32 499	1 551	17 521	10 430	1 841	84 391
June	20 140	32 004	1 450	14 245	10 107	1 838	80 509
September	17 862	30 111	1 610	14 643	11 145	2 006	78 587
December	22 029	33 293	3 028	15 487	11 348	1 964	85 788
TREND							
2002							
September	22 319	33 358	1 713	14 694	9 328	1 997	83 888
December	21 815	33 011	1 554	15 061	9 782	1 884	82 905
2003							
March	20 861	32 255	1 390	15 517	10 105	1 830	81 649
June	20 000	31 688	1 543	15 389	10 515	1 888	81 183
September	19 762	31 577	1 971	14 948	10 927	1 941	81 436
December	20 207	31 960	2 499	14 806	11 253	1 983	82 506

(a) For more information refer to paragraphs 4 to 6 of the Explanatory Notes.

RED MEAT PRODUCED(a), Pig Meat: All Series

Quarter	New South Wales	Victoria	Queensland	South Australia	Western Australia	Tasmania	Australia
	tonnes	tonnes	tonnes	tonnes	tonnes	tonnes	tonnes
ORIGINAL							
2002							
September	35 465	18 302	23 922	15 531	11 311	701	105 343
December	35 048	17 961	20 743	14 865	10 557	730	100 008
2003							
March	33 017	16 819	24 247	16 345	11 563	626	102 714
June	36 716	19 023	25 522	17 405	12 058	659	111 490
September	34 471	17 848	26 157	15 415	11 465	656	106 120
December	32 041	17 311	24 551	13 211	10 691	642	98 551
SEASONALLY ADJUSTED							
2002							
September	34 557	18 439	23 643	15 716	11 008	702	103 483
December	35 456	17 684	21 276	16 497	11 188	733	101 998
2003							
March	35 233	17 834	25 329	16 055	11 913	673	108 690
June	35 081	18 391	24 109	16 090	11 413	610	105 932
September	33 273	17 595	26 080	15 467	11 238	668	103 477
December	32 593	17 188	25 186	14 764	11 166	643	100 831
TREND							
2002							
September	35 333	17 647	22 808	15 612	11 013	711	102 909
December	35 256	17 955	23 123	16 275	11 398	702	104 716
2003							
March	35 193	18 063	23 881	16 322	11 576	673	106 147
June	34 634	17 944	24 851	15 925	11 507	649	105 807
September	33 632	17 725	25 435	15 438	11 315	641	103 854
December	32 674	17 338	25 448	15 000	11 103	647	101 158

(a) For more information refer to paragraphs 4 to 6 of the Explanatory Notes.

TOTAL RED MEAT PRODUCED(a): All Series

Quarter	New South Wales	Victoria	Queensland	South Australia	Western Australia	Tasmania	Australia
	tonnes	tonnes	tonnes	tonnes	tonnes	tonnes	tonnes
ORIGINAL							
2002							
September	216 626	163 108	307 264	56 131	50 694	12 852	807 084
December	215 835	174 970	264 912	63 235	62 490	16 905	798 744
2003							
March	201 167	163 185	225 880	65 829	61 801	21 057	739 303
June	186 019	155 321	274 554	58 663	50 878	19 037	744 881
September	164 883	144 589	296 565	48 001	51 786	14 947	721 174
December	178 616	160 759	272 876	57 879	66 010	20 907	757 437
SEASONALLY ADJUSTED							
2002							
September	219 298	168 492	277 806	62 565	53 948	16 022	802 011
December	215 415	167 502	273 851	62 027	55 748	17 210	788 129
2003							
March	201 479	160 401	262 666	61 995	60 896	18 446	769 751
June	182 612	160 981	257 349	57 148	54 763	17 671	729 651
September	166 644	149 194	268 216	53 308	54 238	18 909	713 874
December	179 373	154 732	282 146	56 957	59 898	21 233	749 263
TREND							
2002							
September	217 899	166 282	279 011	62 709	54 585	16 563	797 390
December	213 741	166 715	272 928	62 582	56 909	17 335	790 316
2003							
March	199 616	162 675	263 121	60 400	57 324	17 673	761 985
June	184 324	157 607	262 571	57 607	56 614	18 350	738 256
September	174 792	154 040	268 347	55 597	56 352	19 261	728 503
December	171 222	152 245	277 227	54 882	56 944	20 322	729 760

(a) For more information refer to paragraphs 4 to 6 of the Explanatory Notes.

CHICKEN MEAT PRODUCED(a): All Series

Quarter	<i>New South Wales</i>	<i>Victoria</i>	<i>Queensland</i>	<i>South Australia</i>	<i>Western Australia</i>	Australia
	tonnes	tonnes	tonnes	tonnes	tonnes	tonnes
ORIGINAL						
2002						
September	69 583	49 518	28 299	np	np	175 634
December	65 052	54 613	29 584	np	np	178 450
2003						
March	62 927	51 239	28 540	np	np	171 463
June	58 882	49 071	27 904	np	np	164 280
September	62 524	49 055	29 003	np	np	169 979
December	63 467	51 857	30 409	np	np	175 765
SEASONALLY ADJUSTED						
2002						
September	69 456	51 117	28 643	np	np	177 111
December	64 829	52 225	28 365	np	np	173 854
2003						
March	62 403	52 025	28 961	np	np	172 752
June	59 750	49 018	28 385	np	np	165 983
September	62 433	50 646	29 326	np	np	171 732
December	62 676	49 626	29 180	np	np	170 681
TREND						
2002						
September	69 085	51 195	28 263	np	np	177 285
December	65 457	51 924	28 690	np	np	174 545
2003						
March	62 188	51 378	28 702	np	np	171 111
June	61 233	50 461	28 808	np	np	169 640
September	61 597	49 891	29 031	np	np	169 709
December	62 389	49 648	29 213	np	np	170 450

np not available for publication but included in totals where applicable, unless otherwise indicated

(a) For more information refer to paragraphs 8 and 9 of the Explanatory Notes.

MEAT PRODUCED(a): Original

<i>Financial year</i>	<i>New South Wales</i> tonnes	<i>Victoria</i> tonnes	<i>Queensland</i> tonnes	<i>South Australia</i> tonnes	<i>Western Australia</i> tonnes	<i>Tasmania</i> tonnes	<i>Australia</i> tonnes
BEEF							
2000-01	461 380	354 819	1 034 624	82 533	100 524	48 771	2 085 952
2001-02	460 964	342 898	972 749	85 882	88 593	43 923	1 996 167
2002-03	471 498	370 223	946 950	88 362	105 074	51 376	2 034 613
VEAL							
2000-01	14 214	11 842	5 684	307	382	996	33 474
2001-02	12 992	11 998	4 852	278	377	899	31 446
2002-03	16 493	16 007	4 202	341	300	826	38 220
MUTTON							
2000-01	126 838	84 016	28 401	36 103	64 936	7 232	347 526
2001-02	121 844	74 425	24 801	30 342	39 481	5 416	296 308
2002-03	106 106	67 552	20 741	30 893	35 431	7 495	268 218
LAMB							
2000-01	82 907	157 898	19 648	61 893	37 070	8 014	367 430
2001-02	91 401	136 325	11 851	64 285	35 618	8 466	347 947
2002-03	85 304	130 699	6 284	60 114	39 568	7 439	329 407
PIG MEAT							
2000-01	130 371	78 954	78 500	36 679	36 781	3 583	365 168
2001-02	144 146	73 652	85 940	48 329	39 996	3 159	395 534
2002-03	140 247	72 105	94 434	64 147	45 490	2 715	419 555
TOTAL RED MEAT							
2000-01	815 710	687 529	1 166 857	217 514	239 693	68 596	3 199 550
2001-02	831 347	639 298	1 100 193	229 116	204 065	61 863	3 067 401
2002-03	819 648	656 586	1 072 611	243 857	225 863	69 851	3 090 013
CHICKEN MEAT							
2000-01	244 302	175 773	93 863	np	np	np	619 406
2001-02	273 445	180 993	99 316	np	np	np	667 471
2002-03	256 445	204 440	114 327	np	np	np	689 826

np not available for publication but included in totals where applicable, unless otherwise indicated

(a) For more information refer to paragraphs 4 to 9 in the Explanatory Notes.

Period	FRESH, CHILLED OR FROZEN MEAT									PROCESSED MEAT	
	<i>Beef bone-in</i>	<i>Beef bone-out</i>	<i>Veal bone-in</i>	<i>Veal bone-out</i>	<i>Mutton bone-in</i>	<i>Mutton bone-out</i>	<i>Lamb bone-in</i>	<i>Lamb bone-out</i>	<i>Pork</i>	<i>Bacon and ham</i>	<i>Canned meat</i>
	tonnes	tonnes	tonnes	tonnes	tonnes	tonnes	tonnes	tonnes	tonnes	tonnes	tonnes
2000-01	42 000	940 312	2 078	6 440	127 841	63 754	103 652	12 328	43 939	280	14 884
2001-02	34 126	892 317	2 424	7 119	113 894	52 072	104 565	13 794	58 964	122	15 724
2002-03	37 467	894 430	3 675	6 458	109 345	52 275	87 907	14 082	62 927	351	17 048
2002											
September	10 707	233 039	971	2 254	25 439	14 136	21 865	2 989	15 779	48	4 146
December	11 134	254 434	1 145	2 211	37 952	16 754	21 787	2 789	16 321	128	3 849
2003											
March	7 554	193 089	685	837	29 679	12 567	21 552	4 003	15 492	53	3 518
June	8 072	213 868	873	1 157	16 275	8 819	22 703	4 301	15 335	121	5 536
September	8 074	206 206	1 055	1 933	13 956	6 791	18 861	3 702	15 199	117	6 714
December	8 285	220 722	720	1 917	24 829	10 680	29 972	4 564	11 890	168	6 209

(a) For more information refer to paragraphs 10 and 11 of the Explanatory Notes.

<i>Period</i>	<i>Number</i>	<i>Gross weight</i>	<i>Gross value</i>	<i>Unit value</i>
	'000	'000 tonnes	\$'000	\$
.....				
SHEEP				
2000-01	5 936.0	283.6	257 661	43.41
2001-02	6 443.2	318.0	391 705	60.79
2002-03	5 843.2	273.0	408 235	69.86
2002				
September	1 357.8	64.8	97 537	71.83
December	1 884.9	91.5	125 645	66.66
2003				
March	1 632.0	72.1	115 340	70.67
June	968.4	44.6	69 714	71.99
September	1 091.2	52.2	79 320	72.69
December	1 052.9	53.5	73 184	69.51
.....				
CATTLE				
2000-01	845.8	314.3	481 827	569.67
2001-02	797.0	293.5	525 535	659.39
2002-03	976.6	362.5	569 288	582.93
2002				
September	278.4	100.5	160 046	574.88
December	322.3	114.5	191 991	595.69
2003				
March	164.7	57.8	100 131	607.96
June	211.3	89.7	117 120	554.28
September	163.4	51.8	81 667	499.80
December	150.2	49.8	83 130	553.46

(a) For more information refer to paragraph 12 of the Explanatory Notes.

WHOLE MILK INTAKE, By Factories(a): All Series

	<i>New South Wales(b)</i>	<i>Victoria</i>	<i>Queensland</i>	<i>South Australia</i>	<i>Western Australia</i>	<i>Tasmania</i>	Australia(c)
<i>Quarter</i>	ML	ML	ML	ML	ML	ML	ML
ORIGINAL							
2002							
June	313	1 226	174	157	97	106	2 072
September	340	1 666	197	171	108	100	2 582
December	365	2 490	186	221	109	245	3 615
2003							
March	299	1 458	171	178	89	154	2 349
June	297	971	166	163	97	87	1 781
September	328	1 492	185	163	107	95	2 370
SEASONALLY ADJUSTED							
2002							
June	347	1 978	189	180	100	170	2 964
September	333	1 745	189	177	102	149	2 695
December	324	1 690	175	183	104	152	2 628
2003							
March	314	1 535	176	188	96	142	2 451
June	329	1 558	180	184	101	137	2 489
September	323	1 564	177	169	101	142	2 476
TREND							
2002							
June	340	1 916	187	179	102	166	2 890
September	334	1 807	184	180	102	157	2 764
December	325	1 661	180	184	101	147	2 598
2003							
March	321	1 581	177	185	100	142	2 506
June	323	1 552	177	181	100	140	2 473
September	324	1 543	178	175	100	139	2 459

(a) For more information refer to paragraph 13 of the Explanatory Notes.

(b) New South Wales total includes Australian Capital Territory.

(c) Australian total excludes Northern Territory.

Source: Original series data from Dairy Australia.

MARKET MILK SALES, By Factories(a): All Series

	<i>New South Wales(b)</i>	<i>Victoria</i>	<i>Queensland</i>	<i>South Australia</i>	<i>Western Australia</i>	<i>Tasmania</i>	<i>Australia(c)</i>
<i>Quarter</i>	ML	ML	ML	ML	ML	ML	ML
ORIGINAL							
2002							
June	161	114	100	45	48	13	481
September	156	119	103	47	50	13	488
December	153	119	101	45	49	13	480
2003							
March	152	114	99	44	49	13	470
June	155	121	100	46	52	13	486
September	159	124	104	46	51	13	497
SEASONALLY ADJUSTED							
2002							
June	160	113	101	45	47	12	480
September	155	116	101	46	50	13	480
December	153	119	100	45	49	13	479
2003							
March	154	117	101	45	50	13	480
June	155	121	101	46	51	13	486
September	157	121	101	46	51	13	489
TREND							
2002							
June	158	115	101	45	49	13	480
September	156	116	101	45	49	13	480
December	154	117	101	45	50	13	479
2003							
March	154	119	101	45	50	13	481
June	155	120	101	45	51	13	485
September	157	121	101	46	51	13	488

(a) For more information refer to paragraph 13 of the Explanatory Notes.

(b) New South Wales total includes Australian Capital Territory.

(c) Australian total excludes Northern Territory.

Source: Original series data from Dairy Australia.

BROKERS AND DEALERS RECEIVALS OF TAXABLE WOOL(a): All Series

Quarter	New South Wales	Victoria	Queensland	South Australia	Western Australia	Tasmania	Australia	% of total received by brokers
	tonnes	tonnes	tonnes	tonnes	tonnes	tonnes	tonnes	%
ORIGINAL								
2002								
September	59 456	36 459	6 618	21 866	27 506	4 392	156 296	79.3
December	52 242	45 598	3 895	22 519	32 221	4 910	161 385	74.8
2003								
March	33 604	27 060	3 418	13 169	33 493	2 674	113 419	76.8
June	22 836	19 327	4 357	7 500	15 519	2 381	71 921	81.8
September	40 255	27 518	6 017	18 119	26 996	2 661	121 566	84.2
December	37 540	38 988	3 360	20 980	30 151	4 811	135 829	82.4
SEASONALLY ADJUSTED								
2002								
September	49 245	34 949	5 149	19 008	25 696	4 200	138 248	..
December	45 393	32 139	5 911	18 434	29 011	3 399	134 285	..
2003								
March	38 541	31 301	4 006	14 617	27 995	3 712	120 171	..
June	29 763	28 666	3 610	10 293	24 784	3 018	100 134	..
September	32 443	26 378	4 685	15 737	25 497	2 594	107 334	..
December	33 312	27 472	5 161	17 101	27 158	3 298	113 501	..
TREND								
2002								
September	48 739	35 445	5 885	19 388	26 271	4 072	139 801	..
December	44 214	32 604	5 019	16 817	27 209	3 724	129 587	..
2003								
March	39 838	30 585	4 325	14 388	26 963	3 375	119 474	..
June	30 918	28 736	4 131	13 303	26 116	3 080	106 286	..
September	31 550	27 389	4 401	14 321	25 803	2 949	106 411	..
December	32 903	26 673	4 983	16 121	26 172	2 950	109 803	..

.. not applicable

(a) For more information refer to paragraphs 14 and 15 of the Explanatory Notes.

<i>Financial year</i>	<i>New South Wales</i>	<i>Victoria</i>	<i>Queensland</i>	<i>South Australia</i>	<i>Western Australia</i>	<i>Tasmania</i>	<i>Australia</i>
.....							
WHOLE MILK INTAKE BY FACTORIES (b) (ML)							
2000-01	1 326	6 777	760	699	393	590	10 545
2001-02	1 343	7 405	744	715	393	672	11 271
2002-03	1 301	6 584	719	733	404	585	10 326
.....							
MARKET MILK SALES BY FACTORIES (b) (ML)							
2000-01	630	455	393	199	192	50	1 920
2001-02	622	459	402	184	192	50	1 909
2002-03	616	473	403	181	200	51	1 925
.....							
BROKERS AND DEALERS RECEIVALS OF TAXABLE WOOL (Tonnes)							
2000-01	182 882	148 333	40 723	89 739	115 475	12 709	589 861
2001-02	163 926	142 338	30 188	83 144	103 028	14 268	536 891
2002-03	168 138	128 444	18 287	65 054	108 739	14 357	503 020
.....							

(a) For more information refer to paragraphs 13 to 15 of the Explanatory Notes.

(b) New South Wales total includes Australian Capital Territory. Australian total excludes Northern Territory.

Source: Original series data from Dairy Australia

WHAT IF...? REVISIONS TO TREND ESTIMATES

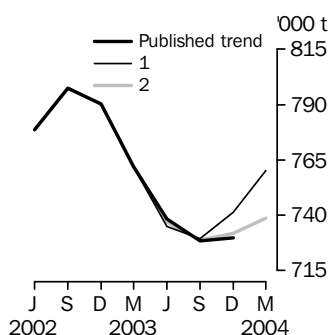
EFFECT OF NEW SEASONALLY ADJUSTED ESTIMATES ON TREND ESTIMATES

TREND REVISIONS

Recent seasonally adjusted and trend estimates are likely to be revised when original estimates for subsequent quarters become available. The approximate effects of possible scenarios on trend estimates are presented below. These illustrate the impact on trend estimates if next quarter's seasonally adjusted estimate either rises or falls by a certain percentage (based on the historical average of movements in seasonally adjusted estimates).

For further information, see paragraphs 20 and 21 of the Explanatory Notes.

RED MEAT PRODUCTION

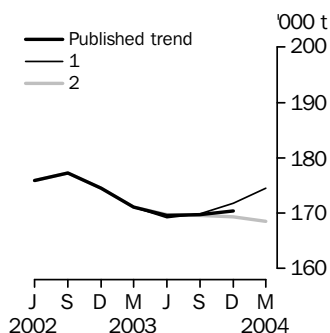


WHAT IF NEXT QUARTER'S SEASONALLY ADJUSTED ESTIMATE:

	<u>Trend as published</u>		<u>(1) rises by 3% on Dec Qtr 2003</u>		<u>(2) falls by 3% on Dec Qtr 2003</u>	
	number	% change	number	% change	number	% change
Dec Qtr 2002	790 316	-0.9	790 316	-0.9	790 316	-0.9
Mar Qtr 2003	761 985	-3.6	761 985	-3.6	761 985	-3.6
Jun Qtr 2003	738 256	-3.1	735 011	-3.5	736 948	-3.3
Sep Qtr 2003	728 503	-1.3	729 630	-0.7	728 926	-1.1
Dec Qtr 2003	729 760	0.2	741 294	1.6	731 959	0.4
Mar Qtr 2004	760 224	2.6	738 753	0.9

.. not applicable

CHICKEN MEAT PRODUCTION

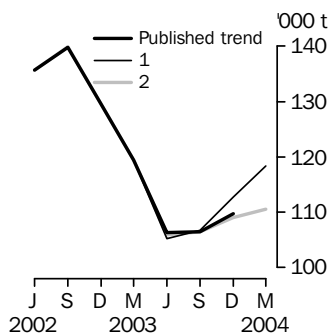


WHAT IF NEXT QUARTER'S SEASONALLY ADJUSTED ESTIMATE:

	<u>Trend as published</u>		<u>(1) rises by 4% on Dec Qtr 2003</u>		<u>(2) falls by 4% on Dec Qtr 2003</u>	
	number	% change	number	% change	number	% change
Dec Qtr 2002	174 545	-1.5	174 544	-1.5	174 544	-1.5
Mar Qtr 2003	171 111	-2.0	171 110	-2.0	171 110	-2.0
Jun Qtr 2003	169 640	-0.9	169 208	-1.1	169 729	-0.8
Sep Qtr 2003	169 709	0.0	169 838	0.4	169 657	0.0
Dec Qtr 2003	170 450	0.4	171 843	1.2	169 335	-0.2
Mar Qtr 2004	174 525	1.6	168 578	-0.4

.. not applicable

WOOL RECEIVALS



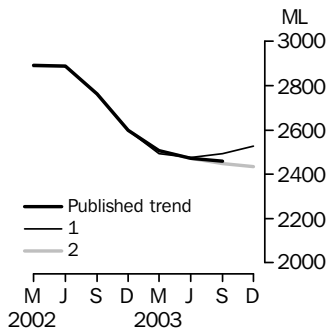
WHAT IF NEXT QUARTER'S SEASONALLY ADJUSTED ESTIMATE:

	<u>Trend as published</u>		<u>(1) rises by 9% on Dec Qtr 2003</u>		<u>(2) falls by 9% on Dec Qtr 2003</u>	
	number	% change	number	% change	number	% change
Dec Qtr 2002	129 587	-7.3	129 597	-7.4	129 597	-7.4
Mar Qtr 2003	119 474	-7.8	119 465	-7.8	119 465	-7.8
Jun Qtr 2003	106 286	-11.0	105 226	-11.9	105 972	-11.3
Sep Qtr 2003	106 411	0.1	106 790	1.5	106 485	0.5
Dec Qtr 2003	109 803	3.2	112 704	5.5	109 084	2.4
Mar Qtr 2004	118 289	5.0	110 529	1.3

.. not applicable

WHAT IF...? REVISIONS TO TREND ESTIMATES *continued*

WHOLE MILK INTAKE BY FACTORIES



WHAT IF NEXT QUARTER'S SEASONALLY ADJUSTED ESTIMATE:

	<i>Trend as published</i>		<i>(1) rises by 2% on Sep Qtr 2003</i>		<i>(2) falls by 2% on Sep Qtr 2003</i>	
	number	% change	number	% change	number	% change
Sep Qtr 2002	2 764	-4.4	2 764	-4.4	2 764	-4.4
Dec Qtr 2002	2 598	-6.0	2 598	-6.0	2 598	-6.0
Mar Qtr 2003	2 506	-3.5	2 494	-4.0	2 503	-3.7
Jun Qtr 2003	2 473	-1.3	2 476	-0.7	2 473	-1.2
Sep Qtr 2003	2 459	-0.6	2 491	0.6	2 450	-0.9
Dec Qtr 2003	2 526	1.4	2 435	-0.6

.. not applicable

EXPLANATORY NOTES

INTRODUCTION

1 This publication contains information on livestock slaughterings, meat production, exports of live sheep and live cattle, exports of fresh, frozen and processed meat, and whole milk intake by factories, market milk sales by factories and receivals of taxable wool by wool brokers and dealers.

2 The figures shown in this publication have been revised where necessary and as a consequence may not agree with similar data shown in previous publications.

3 Where figures have been rounded, discrepancies may occur between sums of the component items and totals.

4 Unless indicated otherwise, Australian totals include data for all states and both territories.

LIVESTOCK SLAUGHTERINGS AND MEAT PRODUCTION

5 The statistics on slaughterings for red meat production are based on a monthly collection from abattoirs and other major slaughtering establishments and include estimates of animals slaughtered on farms and by country butchers and other small slaughtering establishments.

6 Red meat is shown in carcass weight and excludes offal.

7 Care should be taken when using this information as the figures only relate to slaughterings for human consumption and do not include animals condemned, slaughtered for pet food or those killed for boiling down.

8 Poultry slaughterings and meat produced statistics have been compiled from quarterly returns supplied by commercial poultry slaughtering establishments and comprise boilers, fryers and roasters. Many small producers are excluded from the collection; however, the statistics represent a high level of coverage. Tasmanian, Northern Territory and Australian Capital Territory data are excluded from the Australian total.

9 Chicken meat is shown in dressed weight of whole birds, pieces and giblets. Some slaughterings and meat production statistics for 'Ducks and Drakes' and 'Other Fowls and Turkeys' are available by contacting the ABS on Hobart 03 6222 5974 or by writing to GPO Box 66, Hobart Tasmania 7001 (Attention: Agriculture Section).

EXPORTS OF FRESH, FROZEN AND PROCESSED MEAT

10 Table 20 shows exports of fresh, frozen and processed meat, excluding offal. International trade statistics are compiled by the ABS from information submitted by exporters and importers or their agents to the Australian Customs Service. Factors can be applied to beef, veal, mutton and lamb bone-out figures to derive bone-in carcass weight which, when added to bone-in figures, shows total exports in carcass weight. The factor for beef and veal is 1.5 and for mutton and lamb, 2.0. This information is sourced from Department of Agriculture, Fisheries and Forestry—Australia.

11 Beef also includes buffalo meat. Bacon and ham shown is the cured carcass weight of smoked or cooked bacon and ham. It also includes the stated net weight of packs of canned bacon and ham. Canned meat is shown as the canned weight and excludes canned bacon and ham.

LIVE SHEEP AND CATTLE EXPORTS

12 Table 21 contains statistics of the number of live sheep and cattle exported, the gross weight, gross value and unit value. The unit value is obtained by dividing the gross value by the number of animals exported. Sheep and cattle exported for breeding are excluded.

MILK

13 Tables 2, 22, 23 and 25 contain statistics collected by Dairy Australia. Whole milk intake by factories includes the whole milk equivalent of farm cream intake. Market milk sales includes white, flavoured, high and low fat milk and UHT milk. Interstate transfers of UHT milk have been included in their state of destination.

EXPLANATORY NOTES *continued*

WOOL RECEIVALS

14 The statistics in tables 2, 24 and 25 show the amount of taxable wool received by brokers and purchased by dealers from wool producers. It excludes wool received by brokers on which tax has already been paid by other dealers (private buyers) or brokers.

15 The information shown is on the basis of the state in which wool has actually been received and does not necessarily reflect the production of wool in that state.

SEASONAL ADJUSTMENT

16 Seasonal adjustment is a means of removing the estimated effects of normal seasonal variation from the series so that the effects of other influences can be more clearly recognised.

17 In the seasonal adjustment of the livestock estimates, account has been taken of both normal seasonal factors and 'trading-day' effects, where significant, (arising from the varying length of each quarter and the varying numbers of Sundays, Mondays, Tuesdays etc. in the quarter). Adjustments are also made for the effects of change in the date of Easter holidays, again, where significant. Seasonal adjustment does not remove from the series the effect of irregular influences (e.g. abnormal weather, industrial disputes).

18 The state component series have been seasonally adjusted independently. Therefore, the adjusted components may not add to the Australian group totals.

19 As happens with all seasonally adjusted series, the seasonal factors are reviewed annually to take account of each additional year's data.

TREND ESTIMATES

20 A trend estimate is obtained by reducing the irregular component from the seasonally adjusted series. In this publication trend estimates are generally derived by applying a seven term Henderson moving average to the seasonally adjusted series. The seven term Henderson, (like all Henderson averages) is symmetric, but as the end of a time series is approached, asymmetric forms of the average are applied. Unlike the weights of the standard seven term Henderson moving average, the weights employed here have been tailored to suit the particular characteristics of individual series. While the asymmetric weights enable the trend to be calculated for recent quarters, it does result in revisions to the estimates for the most recent three quarters as additional observations become available. Revisions of trend estimates will also occur with revisions to the original data and re-estimation of seasonal factors.

21 Sensitivity analysis indicates the potential magnitude and direction of revisions created to the last three estimates. It aims to show how a specified movement in the seasonally adjusted data in the next period will affect the trend path of the time series. By showing how sensitive the trend estimates are to the addition of new data, the analysis provides information which can be used in the assessment of the trend's stability.

22 For further information, see *Information Paper: A Guide to Interpreting Time Series — Monitoring 'Trends', an Overview* (cat. no. 1348.0) or contact the Assistant Director, Time Series Analysis on Canberra 02 6252 6345.

RELATED PUBLICATIONS

23 Current publications and other products released by the ABS are listed in the *Catalogue of Publications and Products* (cat. no. 1101.0). The Catalogue is available from any ABS office or the ABS web site <<http://www.abs.gov.au>>. The ABS also issues a daily Release Advice on the web site which details products to be released in the week ahead.

GENERAL ACKNOWLEDGMENT

24 ABS publications draw extensively on information provided freely by individuals, businesses, governments and other organisations. Their continued cooperation is very much appreciated. Without it, the wide range of statistics published by the ABS would not be available. Information received by the ABS is treated in strict confidence as required by the *Census and Statistics Act 1905*.

FOR MORE INFORMATION . . .

- INTERNET* **www.abs.gov.au** the ABS web site is the best place to start for access to summary data from our latest publications, information about the ABS, advice about upcoming releases, our catalogue, and Australia Now—a statistical profile.
- LIBRARY* A range of ABS publications is available from public and tertiary libraries Australia-wide. Contact your nearest library to determine whether it has the ABS statistics you require, or visit our web site for a list of libraries.
- CPI INFOLINE* For current and historical Consumer Price Index data, call 1902 981 074 (call cost 77c per minute).
- DIAL-A-STATISTIC* For the latest figures for National Accounts, Balance of Payments, Labour Force, Average Weekly Earnings, Estimated Resident Population and the Consumer Price Index call 1900 986 400 (call cost 77c per minute).

INFORMATION SERVICE

Data already published that can be provided within five minutes will be free of charge. Our information consultants can also help you to access the full range of ABS information—ABS user pays services can be tailored to your needs, time frame and budget. Publications may be purchased. Specialists are on hand to help you with analytical or methodological advice.

- PHONE* 1300 135 070
- EMAIL* client.services@abs.gov.au
- FAX* 1300 135 211
- POST* Client Services, ABS, GPO Box 796, Sydney NSW 2001

WHY NOT SUBSCRIBE?

ABS subscription services provide regular, convenient and prompt deliveries of ABS publications and products as they are released. Email delivery of monthly and quarterly publications is available.

- PHONE* 1300 366 323
- EMAIL* subscriptions@abs.gov.au
- FAX* 03 9615 7848
- POST* Subscription Services, ABS, GPO Box 2796Y, Melbourne Vic 3001



2721500012031

ISSN 0728 4047

RRP \$23.00