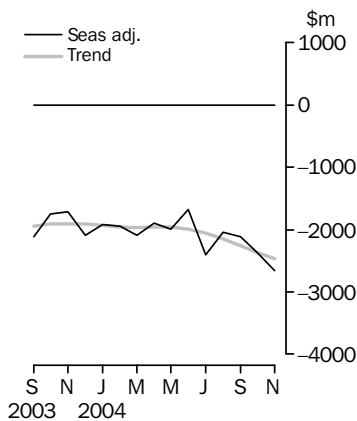


# INTERNATIONAL TRADE IN GOODS AND SERVICES

AUSTRALIA

EMBARGO: 11.30AM (CANBERRA TIME) TUES 11 JAN 2005

## Balance on goods and services



## KEY FIGURES

	September 2004 \$m	October 2004 \$m	November 2004 \$m	Oct 04 to Nov 04 % change
<b>TREND</b>				
Balance on goods & services	-2 254	-2 364	-2 464	..
Credits (exports of goods & services)	13 053	13 000	12 943	—
Debits (imports of goods & services)	15 307	15 364	15 407	—
<b>SEASONALLY ADJUSTED</b>				
Balance on goods & services	-2 110	-2 374	-2 661	..
Credits (exports of goods & services)	13 159	12 925	12 875	—
Debits (imports of goods & services)	15 269	15 299	15 536	2

.....  
 .. not applicable  
 — nil or rounded to zero (including null cells)

## KEY POINTS

### TREND ESTIMATES

- The provisional trend estimate of the balance on goods and services was a deficit of \$2,464m in November 2004, an increase of \$100m on the deficit in October.
- Goods and services credits fell \$57m to \$12,943m. Rural goods fell \$79m (4%), while non-rural and other goods rose \$43m (1%). Services credits fell \$21m (1%).
- Goods and services debits rose \$43m to \$15,407m. Intermediate and other goods rose \$54m (1%), while capital goods fell \$15m (1%) and consumption goods fell \$8m. Services debits rose \$12m.

### SEASONALLY ADJUSTED ESTIMATES

- In seasonally adjusted terms, the balance on goods and services was a deficit of \$2,661m in November, an increase of \$287m on the deficit in October.
- Goods and services credits fell \$50m to \$12,875m. Rural goods fell \$41m (2%) and non-rural and other goods fell \$11m. Services credits rose \$2m.
- Goods and services debits rose \$237m (2%) to \$15,536m. Intermediate and other goods rose \$299m (5%) and consumption goods rose \$34m (1%), while capital goods fell \$139m (5%). Services debits rose \$43m (1%).

### ORIGINAL ESTIMATES

- In original terms, the November balance on goods and services was a deficit of \$3,487m, an increase of \$832m on the deficit in October. Goods and services credits fell \$623m (5%), while goods and services debits rose \$209m (1%).
- In the five months to November, exports of non-rural and other goods were up \$5.1b (14%) and rural goods were up \$2.3b (26%) on the corresponding period in 2003–04.

## INQUIRIES

- For further information about these and related statistics, contact the National Information and Referral Service on 1300 135 070 or Artur Andrysiak on Canberra (02) 6252 6792.

# NOTES

## FORTHCOMING ISSUES

ISSUE	RELEASE DATE
December 2004	1 February 2005
January 2005	28 February 2005
February 2005	5 April 2005
March 2005	5 May 2005
April 2005	2 June 2005
May 2005	4 July 2005



## REVISIONS

Revisions were made to incorporate the latest available data relating to merchandise trade and the quarterly Survey of International Trade in Services. In original terms, these revisions have:

- increased the deficit on goods and services for the four months to October 2004 by \$341m
- increased the deficit on goods and services for 2003–04 by \$72m.

## SEASONAL ADJUSTMENT

As part of ongoing improvements to the Australian Bureau of Statistics (ABS) seasonal adjustment methodology, the ABS has introduced an improved method for removing trading day effects from seasonally adjusted estimates. Corrections for trading day effects are now applied as prior corrections to the original estimates, rather than being applied within the seasonal adjustment process. This is now consistent with the treatment of other types of corrections such as those for extremes, changes in level, changes in seasonal pattern, Easter and other effects. This change in methodology has resulted in revisions to seasonally adjusted and trend estimates.

## SEASONAL FACTORS

The seasonally adjusted and trend estimates of the current account have been revised as a result of the concurrent seasonal analysis. Revised historical and new concurrent seasonal factors are available in the electronic version of this publication (see 5368.0, table 20, for monthly seasonal factors).

## FEATURE ARTICLE

A feature article on Australia's Importers, 2003–04 has been released on the ABS web site <<http://www.abs.gov.au>> concurrently with the release of this publication. The article is the sixth in a series analysing the characteristics and international trading activities of Australia's exporters and importers, based on the Australian Business Number (ABN).

To access this article on the web site select: *Themes* then *Economy* then *International Trade* then *Topics of Interest*

Susan Linacre  
Acting Australian Statistician

# CONTENTS

page

Tables on AusStats	4
--------------------	---

## ANALYSIS

Analysis and comments	5
-----------------------	---

## TABLES

### INTERNATIONAL TRADE IN GOODS AND SERVICES – BALANCE OF PAYMENTS BASIS

<b>1</b> Goods and services, summary, seasonally adjusted and trend estimates	10
<b>2</b> Goods and services, summary, original	11
<b>3</b> Goods credits, original	12
<b>4</b> Goods debits, original	13
<b>5</b> Services, summary, original	14
<b>6</b> Services, summary, seasonally adjusted and trend estimates	15
<b>7</b> Services, original, quarterly	16

### INTERNATIONAL MERCHANDISE TRADE – RECORDED TRADE BASIS

<b>8</b> International merchandise exports, by commodity	17
<b>9</b> International merchandise imports, by commodity	20
<b>10</b> International merchandise trade, by country and country groups	23
<b>11</b> International merchandise trade, by state	24

### OTHER TABLES

<b>12</b> Period average exchange rates per Australian Dollar	25
---	----

## OTHER INFORMATION

Explanatory Notes	26
Appendix – Related articles	29

## TABLES ON AUSSTATS

---

### TABLES AVAILABLE ON AUSSTATS

Data available on the ABS web site <<http://www.abs.gov.au>> include:

- longer time series of all tables contained in this publication
- additional tables listed below:

13 Merchandise exports by Broad Economic Category (BEC)

14 Merchandise exports by industry of origin (ANZSIC)

15 Merchandise imports by Broad Economic Category (BEC)

16 Merchandise imports by Balance of Payments Broad Economic Category (BoPBEC)

17 Merchandise imports by industry of origin (ANZSIC)

18 Merchandise exports, state by country and country groups

19 Merchandise imports, state by country and country groups

20 Monthly forward seasonal adjustment factors.

## ANALYSIS AND COMMENTS

### BALANCE ON GOODS AND SERVICES

The trend estimate of the balance on goods and services in November 2004 was a deficit of \$2,464m, an increase of \$100m on the deficit in October.

In seasonally adjusted terms, the balance on goods and services in November 2004 was a deficit of \$2,661m, an increase of \$287m on the deficit in October.

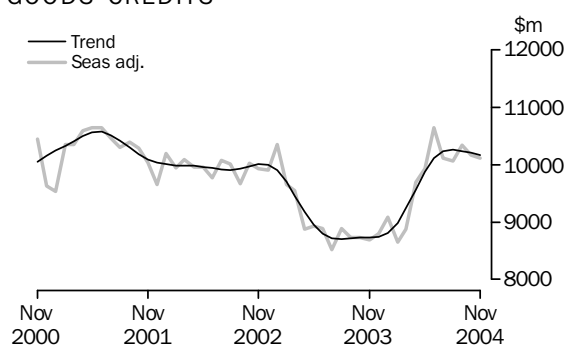
### EXPORTS OF GOODS AND SERVICES

The trend estimate of goods and services credits fell \$57m in November to \$12,943m.

In seasonally adjusted terms, goods and services credits fell \$50m in November to \$12,875m. Rural goods fell \$41m (2%) and non-rural and other goods fell \$11m, while services credits rose \$2m.

#### *Exports of goods*

### GOODS CREDITS



### RURAL GOODS

The trend estimate of rural goods exports fell \$79m (4%) to \$2,140m.

In seasonally adjusted terms, exports of rural goods fell \$41m (2%) to \$2,108m.

In original terms, exports of rural goods fell \$111m (5%) to \$2,138m.

Movements in the original series contributing to the fall in seasonally adjusted terms were:

- other rural, down \$69m (8%), compared with an average October to November fall of 5% over the previous three years
- wool and sheepskins, down \$22m (8%), compared with an average October to November fall of 5% over the previous three years.

Partly offsetting these effects were:

- meat and meat preparations, down \$21m (3%), compared with an average October to November fall of 8% over the previous three years
- cereal grains and cereal preparations, up marginally, in contrast to an average October to November fall of 6% over the previous three years.

## ANALYSIS AND COMMENTS *continued*

### Exports of goods *continued*

#### NON-RURAL AND OTHER GOODS

The trend estimate of non-rural and other goods exports rose \$43m (1%) to \$8,030m.

In seasonally adjusted terms, exports of non-rural and other goods fell \$11m to \$8,008m.

In original terms, exports of non-rural and other goods fell \$437m (5%) to \$8,036m.

Movements in the original series contributing to the fall in seasonally adjusted terms were:

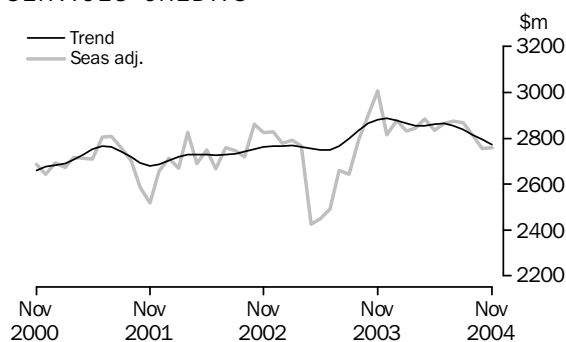
- other manufactures, down \$55m (4%), compared with an average October to November fall of less than 1% over the previous three years
- coal, coke and briquettes, down \$128m (10%), compared with an average October to November fall of 6% over the previous three years
- transport equipment, down \$100m (22%), compared with an average October to November fall of 12% over the previous three years
- other non-rural, down \$161m (16%), compared with an average October to November fall of 13% over the previous three years.

Mostly offsetting these effects were:

- metal ores and minerals, down \$59m (4%), compared with an average October to November fall of 12% over the previous three years
- other goods, up marginally, in contrast to an average October to November fall of 8% over the previous three years
- machinery, up \$19m (3%), in contrast to an average October to November fall of less than 1% over the previous three years.

### Exports of services

#### SERVICES CREDITS



In trend terms, services credits fell \$21m (1%) to \$2,773m.

Seasonally adjusted, services credits rose \$2m to \$2,759m.

This rise was driven by travel services, up \$15m (1%).

Partly offsetting these effects were:

- other services, down \$10m (1%)
- freight services, down \$2m (3%).

Seasonally adjusted, tourism related services credits rose \$36m (2%) to \$1,706m.

## ANALYSIS AND COMMENTS *continued*

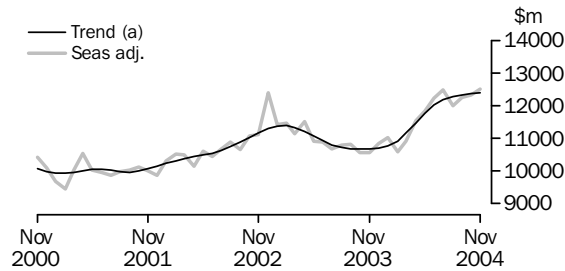
### IMPORTS OF GOODS AND SERVICES

The trend estimate of goods and services debits rose \$43m in November to \$15,407m.

In seasonally adjusted terms, goods and services debits rose \$237m (2%) to \$15,536m. Intermediate and other goods rose \$299m (5%), services debits rose \$43m (1%) and consumption goods rose \$34m (1%), while capital goods fell \$139m (5%).

#### *Imports of goods*

#### GOODS DEBITS



(a) Trend estimates exclude abnormal imports of aircraft in December 2002.

#### CONSUMPTION GOODS

The trend estimate of imports of consumption goods fell \$8m to \$3,820m.

In seasonally adjusted terms, imports of consumption goods rose \$34m (1%) to \$3,842m.

In original terms, imports of consumption goods rose \$74m (2%) to \$4,279m.

Movements in the original series contributing to the rise in seasonally adjusted terms were:

- consumption goods n.e.s., up \$29m (2%), in contrast to an average October to November fall of 12% over the previous three years
- non-industrial transport equipment, up \$25m (2%), in contrast to an average October to November fall of 4% over the previous three years
- household electrical items, up \$38m (9%), in contrast to an average October to November fall of 6% over the previous three years
- toys, books and leisure goods, down \$16m (4%), compared with an average October to November fall of 18% over the previous three years.

Offsetting these effects by about 3 percentage points was an adjustment made as part of the regular seasonal adjustment process to take into account different trading day patterns in October and November.

## ANALYSIS AND COMMENTS *continued*

### *Imports of goods continued*

#### CAPITAL GOODS

The trend estimate of imports of capital goods fell \$15m (1%) to \$2,973m.

In seasonally adjusted terms, imports of capital goods fell \$139m (5%) to \$2,938m.

In original terms, imports of capital goods rose \$44m (1%) to \$3,130m.

Movements in the original series contributing to the fall in seasonally adjusted terms were:

- civil aircraft, down \$226m (67%), in contrast to an average October to November rise of 30% over the previous three years.
- an adjustment made as part of the regular seasonal adjustment process to take into account different trading day patterns in October and November, which contributed about 7 percentage points towards the overall fall.

Partly offsetting these effects were:

- machinery and industrial equipment, up \$122m (11%), in contrast to an average October to November fall of 8% over the previous three years
- automatic data processing equipment, up \$33m (8%), in contrast to an average October to November fall of 11% over the previous three years
- industrial transport equipment n.e.s., up \$48m (12%), in contrast to an average October to November fall of 6% over the previous three years
- capital goods n.e.s., up \$34m (8%), in contrast to an average October to November fall of 8% over the previous three years.

#### INTERMEDIATE AND OTHER GOODS

The trend estimate of imports of intermediate and other goods rose \$54m (1%) to \$5,610m.

In seasonally adjusted terms, intermediate and other goods imports rose \$299m (5%) to \$5,738m.

In original terms, imports of intermediate and other goods rose \$277m (5%) to \$5,899m.

Movements in the original series contributing to the rise in seasonally adjusted terms were:

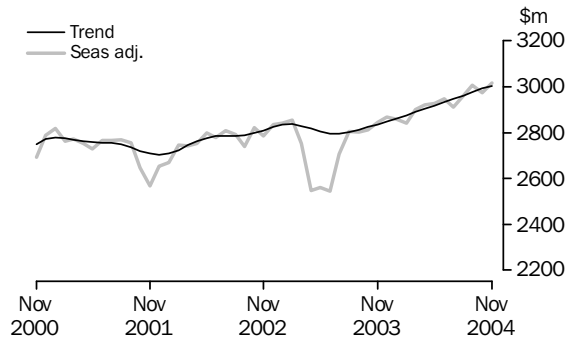
- fuels and lubricants, up \$71m (6%), in contrast to an average October to November fall of 20% over the previous three years
- other parts for capital goods, up \$99m (13%), in contrast to an average October to November fall of 8% over the previous three years
- parts for transport equipment, up \$43m (7%), in contrast to an average October to November fall of 13% over the previous three years
- processed industrial supplies n.e.s., up \$56m (5%), in contrast to an average October to November fall of 3% over the previous three years
- other goods, up marginally, in contrast to an average October to November fall of 20% over the previous three years.

Offsetting these effects by about 3 percentage points was an adjustment made as part of the regular seasonal adjustment process to take into account different trading day patterns in October and November.



Imports of services

SERVICES DEBITS



In trend terms, services debits rose \$12m to \$3,004m.

Seasonally adjusted, services debits rose \$43m (1%) to \$3,018m.

Movements in the seasonally adjusted components contributing to this rise were:

- freight services, up \$37m (6%)
- travel services, up \$18m (2%).

Partly offsetting these effects were other services, down \$11m (1%).

Seasonally adjusted, tourism related services debits fell \$2m to \$1,533m.

GOODS AND SERVICES(a), Summary: **Seasonally Adjusted and Trend Estimates**

Months	BALANCE	CREDITS					DEBITS					
	<i>On goods and services</i>	<i>Total goods and services</i>	<i>Total goods</i>	<i>Rural goods(b)</i>	<i>Non-rural and other goods(b)</i>	<i>Total services</i>	<i>Total goods and services</i>	<i>Total goods</i>	<i>Con-sumption goods</i>	<i>Capital goods</i>	<i>Inter-mediate and other goods</i>	<i>Total services</i>
	\$m	\$m	\$m	\$m	\$m	\$m	\$m	\$m	\$m	\$m	\$m	\$m
<b>SEASONALLY ADJUSTED</b>												
<b>2003</b>												
September	-2 107	11 523	8 727	1 830	6 897	2 796	-13 630	-10 828	-3 528	-2 578	-4 722	-2 802
October	-1 755	11 623	8 726	1 855	6 871	2 897	-13 378	-10 567	-3 463	-2 461	-4 643	-2 811
November	-1 719	11 694	8 687	1 837	6 850	3 007	-13 413	-10 567	-3 444	-2 610	-4 513	-2 846
December	-2 094	11 619	8 804	1 950	6 854	2 815	-13 713	-10 846	-3 489	-2 661	-4 696	-2 867
<b>2004</b>												
January	-1 921	11 972	9 093	2 098	6 995	2 879	-13 893	-11 035	-3 724	-2 644	-4 667	-2 858
February	-1 950	11 488	8 655	2 126	6 529	2 833	-13 438	-10 596	-3 353	-2 488	-4 755	-2 842
March	-2 087	11 723	8 877	1 987	6 890	2 846	-13 810	-10 910	-3 554	-2 591	-4 765	-2 900
April	-1 893	12 580	9 695	2 252	7 443	2 885	-14 473	-11 552	-3 795	-2 691	-5 066	-2 921
May	-1 997	12 768	9 932	2 420	7 512	2 836	-14 765	-11 839	-3 862	-2 814	-5 163	-2 926
June	-1 679	13 511	10 647	2 671	7 976	2 864	-15 190	-12 244	-3 937	-3 052	-5 255	-2 946
July	-2 409	12 994	10 119	2 438	7 681	2 875	-15 403	-12 492	-3 852	-3 170	-5 470	-2 911
August	-2 036	12 931	10 063	2 346	7 717	2 868	-14 967	-12 007	-3 764	-2 899	-5 344	-2 960
September	-2 110	13 159	10 343	2 298	8 045	2 816	-15 269	-12 261	-3 871	-2 867	-5 523	-3 008
October	-2 374	12 925	10 168	2 149	8 019	2 757	-15 299	-12 324	-3 808	-3 077	-5 439	-2 975
November	-2 661	12 875	10 116	2 108	8 008	2 759	-15 536	-12 518	-3 842	-2 938	-5 738	-3 018
<b>TREND ESTIMATES</b>												
<b>2003</b>												
September	-1 948	11 555	8 721	1 792	6 929	2 834	-13 503	-10 692	-3 441	-2 581	-4 670	-2 811
October	-1 909	11 596	8 732	1 842	6 890	2 864	-13 505	-10 680	-3 462	-2 578	-4 640	-2 825
November	-1 902	11 616	8 734	1 895	6 839	2 882	-13 518	-10 683	-3 484	-2 576	-4 623	-2 835
December	-1 914	11 633	8 746	1 946	6 800	2 887	-13 547	-10 700	-3 499	-2 571	-4 630	-2 847
<b>2004</b>												
January	-1 936	11 692	8 814	2 006	6 808	2 878	-13 628	-10 768	-3 524	-2 573	-4 671	-2 860
February	-1 953	11 847	8 983	2 086	6 897	2 864	-13 800	-10 924	-3 573	-2 596	-4 755	-2 876
March	-1 962	12 102	9 249	2 187	7 062	2 853	-14 064	-11 174	-3 645	-2 656	-4 873	-2 890
April	-1 960	12 420	9 565	2 296	7 269	2 855	-14 380	-11 476	-3 726	-2 742	-5 008	-2 904
May	-1 958	12 739	9 877	2 391	7 486	2 862	-14 697	-11 778	-3 797	-2 841	-5 140	-2 919
June	-1 988	12 976	10 112	2 440	7 672	2 864	-14 964	-12 029	-3 844	-2 929	-5 256	-2 935
July	-2 053	13 089	10 235	2 434	7 801	2 854	-15 142	-12 195	-3 861	-2 983	-5 351	-2 947
August	-2 144	13 095	10 257	2 380	7 877	2 838	-15 239	-12 278	-3 852	-2 999	-5 427	-2 961
September	-2 254	13 053	10 237	2 301	7 936	2 816	-15 307	-12 330	-3 839	-2 996	-5 495	-2 977
October	-2 364	13 000	10 206	2 219	7 987	2 794	-15 364	-12 372	-3 828	-2 988	-5 556	-2 992
November	-2 464	12 943	10 170	2 140	8 030	2 773	-15 407	-12 403	-3 820	-2 973	-5 610	-3 004

(a) For sign conventions, see paragraph 9 of the Explanatory Notes.

(b) For all time periods, estimates for sugar, sugar preparations and honey are included in Non-rural and other goods.

## GOODS AND SERVICES(a), Summary: Original

	BALANCE	CREDITS					DEBITS					
	On goods and services	Total goods and services	Total goods	Rural goods(b)	Non-rural and other goods(b)	Total services	Total goods and services	Total goods	Con- sumption goods	Capital and other goods	Inter- mediate and other goods	Total services
FINANCIAL YEAR												
<b>2001-02</b>	<b>-1 373</b>	153 200	120 950	30 085	90 865	32 250	-154 573	-121 942	-37 422	-27 208	-57 312	-32 631
<b>2002-03</b>	<b>-18 876</b>	148 293	115 800	25 484	90 316	32 493	-167 169	-134 278	-41 228	-31 554	-61 496	-32 891
<b>2003-04</b>	<b>-23 801</b>	143 433	109 478	24 537	84 941	33 955	-167 234	-132 961	-42 916	-32 053	-57 992	-34 273
MONTHS												
<b>2003</b>												
September	<b>-3 179</b>	11 462	9 016	1 836	7 180	2 446	-14 641	-11 606	-3 982	-2 675	-4 949	-3 035
October	<b>-3 120</b>	11 923	9 097	1 948	7 149	2 826	-15 043	-12 023	-4 121	-2 743	-5 159	-3 020
November	<b>-1 564</b>	11 588	8 713	1 845	6 868	2 875	-13 152	-10 365	-3 540	-2 545	-4 280	-2 787
December	<b>-1 930</b>	12 074	9 284	2 097	7 187	2 790	-14 004	-11 143	-3 517	-2 836	-4 790	-2 861
<b>2004</b>												
January	<b>-1 790</b>	11 242	7 968	1 868	6 100	3 274	-13 032	-10 102	-3 223	-2 404	-4 475	-2 930
February	<b>-201</b>	11 944	8 315	2 090	6 225	3 629	-12 145	-9 589	-3 092	-2 041	-4 456	-2 556
March	<b>-2 293</b>	12 014	9 238	2 139	7 099	2 776	-14 307	-11 529	-3 684	-2 681	-5 164	-2 778
April	<b>-1 736</b>	12 110	9 396	2 202	7 194	2 714	-13 846	-10 986	-3 486	-2 484	-5 016	-2 860
May	<b>-1 389</b>	12 586	10 151	2 519	7 632	2 435	-13 975	-11 166	-3 459	-2 704	-5 003	-2 809
June	<b>-2 491</b>	13 155	10 571	2 584	7 987	2 584	-15 646	-12 676	-3 791	-3 609	-5 276	-2 970
July	<b>-1 959</b>	13 557	10 130	2 379	7 751	3 427	-15 516	-12 466	-3 993	-3 237	-5 236	-3 050
August	<b>-2 248</b>	13 095	10 411	2 295	8 116	2 684	-15 343	-12 342	-3 939	-2 949	-5 454	-3 001
September	<b>-3 406</b>	12 993	10 529	2 291	8 238	2 464	-16 399	-13 144	-4 376	-3 027	-5 741	-3 255
October	<b>-2 655</b>	13 429	10 722	2 249	8 473	2 707	-16 084	-12 913	-4 205	-3 086	-5 622	-3 171
November	<b>-3 487</b>	12 806	10 174	2 138	8 036	2 632	-16 293	-13 308	-4 279	-3 130	-5 899	-2 985
FINANCIAL YEAR TO DATE												
<b>5 months ended November</b>												
2003	<b>-11 971</b>	58 308	44 555	9 038	35 517	13 753	-70 279	-55 770	-18 664	-13 294	-23 812	-14 509
2004	<b>-13 755</b>	65 880	51 966	11 352	40 614	13 914	-79 635	-64 173	-20 792	-15 429	-27 952	-15 462

(a) For sign conventions, see paragraph 9 of the Explanatory Notes.

(b) For all time periods, estimates for sugar, sugar preparations and honey are included in Non-rural and other goods.

## GOODS CREDITS: Original

							5 MONTHS ENDED		Change
							NOVEMBER		
	2001-02	2002-03	2003-04	Sep 2004	Oct 2004	Nov 2004	2003	2004	
	\$m	\$m	\$m	\$m	\$m	\$m	\$m	%	
<b>Total goods credits</b>	<b>120 950</b>	<b>115 800</b>	<b>109 478</b>	<b>10 529</b>	<b>10 722</b>	<b>10 174</b>	<b>44 555</b>	<b>51 966</b>	<b>16.6</b>
<b>Rural goods</b>									
Meat and meat preparations	6 246	5 655	5 758	600	623	602	2 251	2 928	30.1
Cereal grains and cereal preparations	6 481	4 487	5 094	512	441	442	1 337	2 497	86.8
Wool and sheepskins	3 687	3 545	2 778	268	266	244	1 106	1 206	9.0
Other rural	13 671	11 797	10 907	911	919	850	4 344	4 721	8.7
<i>Total rural goods(a)</i>	<i>30 085</i>	<i>25 484</i>	<i>24 537</i>	<i>2 291</i>	<i>2 249</i>	<i>2 138</i>	<i>9 038</i>	<i>11 352</i>	<i>25.6</i>
<b>Non-rural goods</b>									
Metal ores and minerals	14 774	14 523	14 880	1 482	1 518	1 459	5 961	7 401	24.2
Coal, coke and briquettes	13 430	11 987	11 001	1 203	1 308	1 180	4 330	6 236	44.0
Other mineral fuels	10 940	11 049	8 766	948	994	1 043	3 951	4 757	20.4
Metals (excl. gold)	9 650	8 711	7 759	727	712	708	2 997	3 537	18.0
Machinery	7 999	7 362	6 837	648	625	644	2 993	3 163	5.7
Transport equipment	5 686	6 273	5 155	414	461	361	2 319	2 016	-13.1
Other manufactures	13 758	13 485	13 276	1 224	1 234	1 179	5 741	5 930	3.3
Other non-rural(a)	7 009	8 234	9 308	923	989	828	3 831	4 437	15.8
<i>Total non-rural goods(a)</i>	<i>83 246</i>	<i>81 624</i>	<i>76 982</i>	<i>7 569</i>	<i>7 841</i>	<i>7 402</i>	<i>32 123</i>	<i>37 477</i>	<i>16.7</i>
<b>Other goods</b>									
<i>Total other goods(b)</i>	<i>7 619</i>	<i>8 692</i>	<i>7 959</i>	<i>669</i>	<i>632</i>	<i>634</i>	<i>3 394</i>	<i>3 137</i>	<i>-7.6</i>

(a) For all time periods, estimates for sugar, sugar preparations and honey are included in Other non-rural.

(b) Includes non-monetary gold.

## GOODS DEBITS(a): Original

							5 MONTHS ENDED		Change
							NOVEMBER		
	2001-02	2002-03	2003-04	Sep 2004	Oct 2004	Nov 2004	2003	2004	
	\$m	\$m	\$m	\$m	\$m	\$m	\$m	\$m	%
<b>Total goods debits</b>	<b>-121 942</b>	<b>-134 278</b>	<b>-132 961</b>	<b>-13 144</b>	<b>-12 913</b>	<b>-13 308</b>	<b>-55 770</b>	<b>-64 173</b>	<b>15.1</b>
Consumption goods									
Food and beverages, mainly for consumption	-4 687	-5 067	-5 167	-490	-530	-535	-2 211	-2 479	12.1
Household electrical items	-3 166	-3 657	-3 793	-391	-413	-451	-1 700	-1 988	16.9
Non-industrial transport equipment	-9 930	-11 302	-12 326	-1 126	-1 032	-1 057	-5 156	-5 194	0.7
Textiles, clothing and footwear	-4 849	-5 237	-5 078	-531	-494	-487	-2 207	-2 590	17.4
Toys, books and leisure goods	-3 494	-3 740	-3 593	-396	-418	-402	-1 779	-1 865	4.8
Consumption goods n.e.s.	-11 296	-12 225	-12 959	-1 442	-1 318	-1 347	-5 611	-6 676	19.0
<i>Total consumption goods</i>	<i>-37 422</i>	<i>-41 228</i>	<i>-42 916</i>	<i>-4 376</i>	<i>-4 205</i>	<i>-4 279</i>	<i>-18 664</i>	<i>-20 792</i>	<i>11.4</i>
Capital goods									
Machinery and industrial equipment	-9 502	-11 007	-11 064	-1 183	-1 114	-1 236	-4 612	-5 723	24.1
ADP equipment	-5 055	-4 908	-5 138	-498	-435	-468	-2 027	-2 318	14.4
Telecommunications equipment	-3 643	-3 619	-4 105	-409	-399	-432	-1 657	-2 092	26.3
Civil aircraft	-1 513	-3 887	-3 061	-104	-336	-110	-1 471	-1 132	-23.0
Industrial transport equipment n.e.s.	-3 613	-3 881	-4 079	-443	-394	-442	-1 594	-2 108	32.2
Capital goods n.e.s.	-3 882	-4 252	-4 606	-390	-408	-442	-1 933	-2 056	6.4
<i>Total capital goods</i>	<i>-27 208</i>	<i>-31 554</i>	<i>-32 053</i>	<i>-3 027</i>	<i>-3 086</i>	<i>-3 130</i>	<i>-13 294</i>	<i>-15 429</i>	<i>16.1</i>
Intermediate and other merchandise goods									
Food and beverages, mainly for industry	-577	-736	-625	-59	-52	-56	-261	-274	5.0
Primary industrial supplies n.e.s.	-1 117	-1 220	-1 079	-99	-76	-84	-470	-425	-9.6
Fuels and lubricants	-8 823	-10 393	-9 917	-1 213	-1 248	-1 319	-3 579	-5 826	62.8
Parts for transport equipment	-6 827	-7 258	-6 548	-604	-575	-618	-2 896	-2 945	1.7
Parts for ADP equipment	-2 159	-2 011	-1 812	-162	-138	-149	-778	-770	-1.0
Other parts for capital goods	-8 216	-8 605	-8 553	-853	-787	-886	-3 595	-4 123	14.7
Organic and inorganic chemicals	-3 447	-3 089	-3 048	-275	-298	-259	-1 223	-1 388	13.5
Paper and paperboard	-2 225	-2 326	-2 242	-200	-219	-212	-989	-1 029	4.0
Textile yarn and fabrics	-1 830	-1 839	-1 576	-133	-128	-132	-711	-682	-4.1
Iron and steel	-1 765	-1 960	-2 026	-197	-218	-223	-836	-1 043	24.8
Plastics	-2 182	-2 478	-2 177	-206	-209	-228	-918	-1 022	11.3
Processed industrial supplies n.e.s.	-11 441	-12 238	-12 029	-1 145	-1 171	-1 227	-4 907	-5 798	18.2
Other merchandise goods	-1 563	-1 710	-1 234	-136	-87	-88	-535	-464	-13.3
<i>Total intermediate and other merchandise goods</i>	<i>-52 172</i>	<i>-55 863</i>	<i>-52 866</i>	<i>-5 282</i>	<i>-5 206</i>	<i>-5 481</i>	<i>-21 698</i>	<i>-25 789</i>	<i>18.9</i>
Other goods									
<i>Total other goods(b)</i>	<i>-5 140</i>	<i>-5 633</i>	<i>-5 126</i>	<i>-459</i>	<i>-416</i>	<i>-418</i>	<i>-2 114</i>	<i>-2 163</i>	<i>2.3</i>

(a) For sign conventions, see paragraph 9 of the Explanatory Notes.

(b) Includes non-monetary gold.

SERVICES(a)(b), Summary: **Original**

							5 MONTHS ENDED		Change
							NOVEMBER		
	2001-02	2002-03	2003-04	Sep 2004	Oct 2004	Nov 2004	2003	2004	
	\$m	\$m	\$m	\$m	\$m	\$m	\$m	%	
<b>Credits</b>									
Freight	1 001	920	830	70	74	74	349	358	2.6
Other transportation	6 664	6 538	6 783	564	582	586	2 728	2 946	8.0
Travel	15 645	15 452	17 108	1 095	1 289	1 212	6 813	6 893	1.2
Other services	8 940	9 583	9 234	735	762	760	3 863	3 717	-3.8
<b>Total services credits</b>	<b>32 250</b>	<b>32 493</b>	<b>33 955</b>	<b>2 464</b>	<b>2 707</b>	<b>2 632</b>	<b>13 753</b>	<b>13 914</b>	<b>1.2</b>
<b>Debits</b>									
Freight	-5 626	-5 808	-6 056	-653	-633	-696	-2 478	-3 148	27.0
Other transportation	-5 150	-5 152	-5 578	-541	-496	-460	-2 291	-2 468	7.7
Travel	-10 918	-11 012	-12 136	-1 233	-1 211	-999	-5 202	-5 676	9.1
Other services	-10 937	-10 919	-10 503	-828	-831	-830	-4 538	-4 170	-8.1
<b>Total services debits</b>	<b>-32 631</b>	<b>-32 891</b>	<b>-34 273</b>	<b>-3 255</b>	<b>-3 171</b>	<b>-2 985</b>	<b>-14 509</b>	<b>-15 462</b>	<b>6.6</b>
<b>Memorandum items:</b>									
Tourism related service credits(c)	19 800	19 503	21 081	1 404	1 620	1 574	8 441	8 599	1.9
Tourism related service debits(c)	-15 577	-15 691	-17 258	-1 733	-1 667	-1 419	-7 309	-7 935	8.6

(a) For sign conventions, see paragraph 9 of the Explanatory Notes.

(b) For more detailed trade in services by commodity, see table 7.

(c) For a more detailed explanation of tourism related services, see paragraphs 15 and 16 of the Explanatory Notes.

SERVICES (a), Summary: **Seasonally Adjusted and Trend Estimates**

	Feb 2004	Mar 2004	Apr 2004	May 2004	Jun 2004	Jul 2004	Aug 2004	Sep 2004	Oct 2004	Nov 2004
	\$m	\$m	\$m	\$m	\$m	\$m	\$m	\$m	\$m	\$m

## SEASONALLY ADJUSTED

**Credits**

Freight	64	64	74	73	74	71	70	71	72	70
Other transportation	531	572	613	588	601	602	603	580	576	575
Travel	1 477	1 439	1 421	1 405	1 433	1 457	1 454	1 422	1 370	1 385
Other services	761	771	777	770	756	745	741	743	739	729
<b>Total services credits</b>	<b>2 833</b>	<b>2 846</b>	<b>2 885</b>	<b>2 836</b>	<b>2 864</b>	<b>2 875</b>	<b>2 868</b>	<b>2 816</b>	<b>2 757</b>	<b>2 759</b>

**Debits**

Freight	-484	-506	-520	-551	-579	-584	-561	-617	-614	-651
Other transportation	-473	-484	-495	-483	-483	-446	-470	-490	-495	-494
Travel	-1 021	-1 027	-1 058	-1 049	-1 047	-1 057	-1 050	-1 082	-1 074	-1 092
Other services	-864	-883	-848	-843	-837	-824	-879	-819	-792	-781
<b>Total services debits</b>	<b>-2 842</b>	<b>-2 900</b>	<b>-2 921</b>	<b>-2 926</b>	<b>-2 946</b>	<b>-2 911</b>	<b>-2 960</b>	<b>-3 008</b>	<b>-2 975</b>	<b>-3 018</b>

**Memorandum items:**

Tourism related service credits(b)	1 818	1 763	1 750	1 737	1 775	1 806	1 789	1 747	1 670	1 706
Tourism related service debits(b)	-1 469	-1 477	-1 521	-1 479	-1 490	-1 435	-1 479	-1 537	-1 535	-1 533

## TREND ESTIMATES

**Credits**

Freight	67	68	70	71	72	72	72	71	71	70
Other transportation	572	578	586	594	599	598	593	587	582	578
Travel	1 455	1 437	1 431	1 433	1 435	1 433	1 428	1 418	1 406	1 393
Other services	770	770	768	764	758	751	745	740	735	732
<b>Total services credits</b>	<b>2 864</b>	<b>2 853</b>	<b>2 855</b>	<b>2 862</b>	<b>2 864</b>	<b>2 854</b>	<b>2 838</b>	<b>2 816</b>	<b>2 794</b>	<b>2 773</b>

**Debits**

Freight	-500	-511	-526	-543	-561	-577	-591	-606	-620	-631
Other transportation	-477	-482	-482	-479	-476	-474	-476	-480	-486	-492
Travel	-1 026	-1 034	-1 041	-1 047	-1 052	-1 057	-1 063	-1 070	-1 077	-1 084
Other services	-873	-863	-855	-850	-846	-839	-831	-821	-809	-797
<b>Total services debits</b>	<b>-2 876</b>	<b>-2 890</b>	<b>-2 904</b>	<b>-2 919</b>	<b>-2 935</b>	<b>-2 947</b>	<b>-2 961</b>	<b>-2 977</b>	<b>-2 992</b>	<b>-3 004</b>

**Memorandum items:**

Tourism related service credits(b)	1 799	1 777	1 766	1 768	1 771	1 769	1 760	1 744	1 725	1 708
Tourism related service debits(b)	-1 471	-1 481	-1 484	-1 482	-1 481	-1 484	-1 493	-1 506	-1 520	-1 534

(a) For sign conventions, see paragraph 9 of the Explanatory Notes.

(b) For a more detailed explanation of tourism related services, see paragraphs 15 and 16 of the Explanatory Notes.

	CREDITS				DEBITS			
	Dec Qtr	Mar Qtr	Jun Qtr	Sep Qtr	Dec Qtr	Mar Qtr	Jun Qtr	Sep Qtr
	2003	2004	2004	2004	2003	2004	2004	2004
	\$m	\$m	\$m	\$m	\$m	\$m	\$m	\$m
<b>Services</b>	<b>8 491</b>	<b>9 679</b>	<b>7 733</b>	<b>8 575</b>	<b>-8 668</b>	<b>-8 264</b>	<b>-8 639</b>	<b>-9 306</b>
Transportation services								
Passenger	1 751	1 767	1 690	1 778	-1 144	-1 112	-1 297	-1 293
Freight	211	189	221	210	-1 524	-1 431	-1 622	-1 819
Other	np	np	np	np	-187	-193	-206	-219
<i>Total transportation services</i>	<i>1 962</i>	<i>1 956</i>	<i>1 911</i>	<i>1 988</i>	<i>-2 855</i>	<i>-2 736</i>	<i>-3 125</i>	<i>-3 331</i>
Travel services								
Business	315	347	302	302	-709	-752	-700	-763
Personal								
Education-related	730	2 523	885	1 614	-142	-168	-142	-234
Other	3 110	2 613	2 293	2 476	-2 139	-2 047	-2 190	-2 469
Total personal	3 840	5 136	3 178	4 090	-2 281	-2 215	-2 332	-2 703
<i>Total travel services</i>	<i>4 155</i>	<i>5 483</i>	<i>3 480</i>	<i>4 392</i>	<i>-2 990</i>	<i>-2 967</i>	<i>-3 032</i>	<i>-3 466</i>
Communication services	227	190	183	208	-227	-189	-206	-186
Construction services	23	18	27	21	—	—	—	—
Insurance services	171	171	173	171	-218	-218	-220	-218
Financial services	249	249	248	251	-147	-147	-146	-146
Computer and information services	300	269	297	289	-289	-209	-256	-266
Royalties and license fees	145	142	166	134	-569	-519	-455	-488
Other business services								
Merchandising and other trade-related	101	161	201	150	-51	-45	-55	-57
Operational leasing	6	3	6	5	-241	-228	-192	-182
Miscellaneous business, professional and technical								
Legal, accounting, management consulting and public relations	122	91	128	117	-80	-72	-76	-84
Advertising, market research and public opinion polling	21	15	22	23	-34	-29	-53	-26
Research and development	95	81	88	77	-70	-48	-42	-37
Architectural, engineering and other technical services	162	129	127	95	-104	-70	-97	-97
Agriculture, mining and on-site processing	27	25	31	30	-39	-25	-21	-24
Services between affiliated enterprises n.i.e.	285	244	245	223	-269	-207	-205	-178
Other	93	84	71	97	-100	-84	-71	-74
Total miscellaneous business, professional and technical	805	669	712	662	-696	-535	-565	-520
<i>Total other business services</i>	<i>912</i>	<i>833</i>	<i>919</i>	<i>817</i>	<i>-988</i>	<i>-808</i>	<i>-812</i>	<i>-759</i>
Personal, cultural and recreational services								
Audiovisual and related services	40	60	26	27	-164	-206	-152	-247
Other personal, cultural and recreational services	109	82	72	69	-30	-71	-25	-25
<i>Total other personal, cultural and recreational services</i>	<i>149</i>	<i>142</i>	<i>98</i>	<i>96</i>	<i>-194</i>	<i>-277</i>	<i>-177</i>	<i>-272</i>
Government services n.i.e.	198	226	231	208	-191	-194	-210	-174
<b>Memorandum items:</b>								
Tourism related services(c)	5 234	6 558	4 376	5 405	-4 215	-4 161	-4 408	-4 849

— nil or rounded to zero (including null cells)

np not available for publication but included in totals where applicable, unless otherwise indicated

(a) For sign conventions, see paragraph 9 of Explanatory Notes.

(b) For more information see paragraphs 13 and 14 of the Explanatory Notes.

(c) For a more detailed explanation of tourism related services, see paragraphs 15 and 16 of the Explanatory Notes.



	Sep	Oct	Nov	Per cent	5 MONTHS	
	2004	2004	2004	of total	ENDED	
	\$m	\$m	\$m	merchandise	NOVEMBER	
				exports(a)	2003	2004
				%	\$m	\$m
MAJOR COMMODITIES						
011 Meat of bovine animals	448	451	420	4.2	1 541	2 140
041 Wheat	352	303	302	3.0	890	1 703
268 Wool and other animal hair	237	237	213	2.1	989	1 067
281 Iron ore and concentrates	564	561	529	5.2	2 148	2 792
285 Aluminium ore and concentrates	380	356	319	3.2	1 470	1 747
321 Coal, not agglomerated	1 199	1 306	1 177	11.6	4 315	6 218
333 Crude petroleum oils	490	490	501	5.0	2 114	2 482
334 Refined petroleum oils	207	211	229	2.3	853	982
343 Natural gas	257	296	326	3.2	977	1 326
684 Aluminium	370	330	317	3.1	1 552	1 699
781 Passenger motor vehicles	249	280	208	2.1	1 214	1 141
971 Gold, non-monetary	508	451	497	4.9	2 333	2 323

## SECTION AND DIVISION OF THE SITC

0	Food and live animals(b)					
00	Live animals other than fish, crustaceans, molluscs and aquatic invertebrates	83	68	68	0.7	373 347
01	Meat and meat preparations	600	624	602	6.0	2 251 2 928
02	Dairy products and birds' eggs	185	225	235	2.3	824 1 000
03	Fish (not marine mammals), crustaceans, molluscs and aquatic invertebrates, and preparations thereof(b)	86	77	81	0.8	611 511
04	Cereals and cereal preparations(b)	512	441	442	4.4	1 336 2 498
05	Vegetables and fruit	124	101	79	0.8	537 572
06	Sugars, sugar preparations and honey(b)	22	23	13	0.1	81 97
07	Coffee, tea, cocoa, spices, and manufactures thereof	27	27	25	0.2	129 131
08	Feeding stuff for animals (excl. unmilled cereals)(b)	67	74	71	0.7	358 369
09	Miscellaneous edible products and preparations	45	48	41	0.4	207 214
	<i>Total food and live animals</i>	<i>1 751</i>	<i>1 708</i>	<i>1 657</i>	<i>16.4</i>	<i>6 706 8 666</i>
1	Beverages and tobacco					
11	Beverages	274	277	224	2.2	1 087 1 254
12	Tobacco and tobacco manufactures	8	21	12	0.1	34 60
	<i>Total beverages and tobacco</i>	<i>282</i>	<i>298</i>	<i>235</i>	<i>2.3</i>	<i>1 121 1 314</i>
2	Crude materials, inedible, except fuels(b)					
21	Hides, skins and furskins, raw(b)	67	61	57	0.6	264 302
22	Oil seeds and oleaginous fruits	22	36	13	0.1	94 185
23	Crude rubber (incl. synthetic and reclaimed)	2	1	1	—	6 7
24	Cork and wood	76	105	86	0.9	402 435
25	Pulp and waste paper	5	8	10	0.1	23 34
26	Textile fibres and their wastes (not manufactured into yarn or fabric)(b)	331	293	260	2.6	1 364 1 498
27	Crude fertilisers (excl. those of Division 56) and crude minerals (excl. coal, petroleum and precious stones)	36	36	35	0.3	190 176
28	Metalliferous ores and metal scrap(b)	1 448	1 482	1 424	14.1	5 768 7 222
29	Crude animal and vegetable materials, n.e.s.	24	27	27	0.3	105 134
	<i>Total crude materials, inedible, except fuels</i>	<i>2 011</i>	<i>2 049</i>	<i>1 915</i>	<i>18.9</i>	<i>8 219 9 991</i>
3	Mineral fuels, lubricants and related materials					
32	Coal, coke and briquettes	1 203	1 308	1 181	11.7	4 331 6 238
33	Petroleum, petroleum products and related materials	698	703	730	7.2	2 971 3 469
34	Gas, natural and manufactured	332	369	391	3.9	1 271 1 672
	<i>Total mineral fuels, lubricants and related materials</i>	<i>2 233</i>	<i>2 379</i>	<i>2 302</i>	<i>22.8</i>	<i>8 573 11 379</i>

— nil or rounded to zero (including null cells)

(b) Excludes exports commodities subject to a confidentiality restriction. These are included in Division 98.

(a) Per cent of total merchandise exports is calculated for the most recent month.

				Per cent of total merchandise exports(a)	5 MONTHS ENDED NOVEMBER		
	Sep	Oct	Nov		2003	2004	
	2004	2004	2004				
\$m	\$m	\$m	%	\$m	\$m		
SECTION AND DIVISION OF THE SITC							
4	Animal and vegetable oils, fats and waxes(b)						
41	Animal oils and fats	20	12	18	0.2	101	100
42	Fixed vegetable fats and oils, crude, refined or fractionated(b)	5	4	7	0.1	20	24
43	Fats and oils (processed), waxes and inedible mixtures or preparations, of animal or vegetable origin, n.e.s.	6	5	6	0.1	22	27
	<i>Total animal and vegetable oils, fats and waxes</i>	30	21	31	0.3	142	152
5	Chemicals and related products, n.e.s.(b)						
51	Organic chemicals(b)	19	11	9	0.1	49	59
52	Inorganic chemicals(b)	47	50	49	0.5	225	216
53	Dyeing, tanning and colouring materials	57	52	48	0.5	247	264
54	Medicinal and pharmaceutical products	201	239	219	2.2	1 028	1 139
55	Essential oils and resinoids and perfume materials; toilet, polishing and cleansing preparations	37	39	38	0.4	184	180
56	Fertilisers (excl. crude)	20	27	5	0.1	95	78
57	Plastics in primary forms(b)	22	19	21	0.2	87	99
58	Plastics in non-primary forms	23	26	24	0.2	108	124
59	Chemical materials and products, n.e.s.	47	60	54	0.5	256	259
	<i>Total chemicals and related products, n.e.s.</i>	473	524	467	4.6	2 281	2 418
6	Manufactured goods classified chiefly by material(b)						
61	Leather, leather manufactures, and dressed furskins, n.e.s.	45	41	34	0.3	214	205
62	Rubber manufactures, n.e.s.	15	12	12	0.1	61	64
63	Cork and wood manufactures (excl. furniture)(b)	20	19	18	0.2	85	99
64	Paper, paperboard, and articles of paper pulp, of paper or of paperboard	63	58	56	0.6	292	303
65	Textile yarn, fabrics, made-up articles, n.e.s., and related products	40	37	36	0.4	206	197
66	Non-metallic mineral manufactures, n.e.s.(b)	107	84	99	1.0	405	400
67	Iron and steel(b)	48	67	79	0.8	356	302
68	Non-ferrous metals	679	646	630	6.2	2 641	3 236
69	Manufactures of metals, n.e.s.	71	71	67	0.7	331	350
	<i>Total manufactured goods classified chiefly by material</i>	1 088	1 036	1 031	10.2	4 592	5 155
7	Machinery and transport equipment(b)						
71	Power generating machinery and equipment	89	82	94	0.9	372	431
72	Machinery specialised for particular industries	109	104	83	0.8	484	506
73	Metal working machinery	12	13	13	0.1	68	63
74	General industrial machinery and equipment, n.e.s. and machine parts, n.e.s.(b)	128	120	122	1.2	508	598
75	Office machines and automatic data processing machines	94	97	107	1.1	573	479
76	Telecommunications and sound recording and reproducing apparatus and equipment	78	83	100	1.0	321	406
77	Electrical machinery, apparatus, appliances, parts (incl. non-electrical counterparts of electrical domestic equipment)	135	132	127	1.3	651	679
78	Road vehicles (incl. air-cushion vehicles)	342	392	298	2.9	1 795	1 643
79	Transport equipment (excl. road vehicles)	72	71	64	0.6	524	375
	<i>Total machinery and transport equipment</i>	1 059	1 094	1 008	10.0	5 296	5 181

(a) Per cent of total merchandise exports is calculated for the most recent month.

(b) Excludes exports commodities subject to a confidentiality restriction. These are included in Division 98.

					5 MONTHS ENDED NOVEMBER	
	Sep 2004	Oct 2004	Nov 2004	Per cent of total merchandise exports(a)	2003	2004
	\$m	\$m	\$m	%	\$m	\$m
SECTION AND DIVISION OF THE SITC						
8	Miscellaneous manufactured articles(b)					
81	Prefabricated buildings; sanitary, plumbing, heating and lighting fixtures and fittings, n.e.s.	8	10	12	0.1	41 45
82	Furniture, parts thereof; bedding, mattresses, mattress supports, cushions and similar stuffed furnishings	11	12	10	0.1	64 56
83	Travel goods, handbags and similar containers	2	3	2	—	10 10
84	Articles of apparel and clothing accessories	27	24	21	0.2	149 131
85	Footwear(b)	5	5	4	—	23 21
87	Professional, scientific and controlling instruments and apparatus, n.e.s.	110	119	104	1.0	495 546
88	Photographic apparatus, equipment and supplies and optical goods, n.e.s.; watches and clocks	52	51	45	0.4	236 253
89	Miscellaneous manufactured articles, n.e.s.	170	168	188	1.9	810 820
	<i>Total miscellaneous manufactured articles</i>	385	391	386	3.8	1 829 1 882
9	Commodities and transactions not classified elsewhere in the SITC(c)(d)					
93	Special transactions and commodities not classified according to kind	127	134	113	1.1	1 007 692
95	Gold coin whether or not legal tender, and other coin being legal tender	20	8	11	0.1	40 46
96	Coin (excl. gold coin), not being legal tender	—	—	—	—	— —
97	Gold, non-monetary (excl. gold ores and concentrates)	508	451	497	4.9	2 333 2 323
98	Combined confidential items excl. some of SITC 280 (exports only) and some of SITCs 510 and 520 (imports only)(c)(d)	469	561	458	4.5	2 240 2 455
	<i>Total commodities and transactions not classified elsewhere in the SITC</i>	1 124	1 154	1 079	10.7	5 620 5 516
	<b>Total Merchandise Exports</b>	<b>10 436</b>	<b>10 654</b>	<b>10 110</b>	<b>100.0</b>	<b>44 379 51 653</b>
	Balance of Payments Adjustments	93	68	64	..	176 313
	Goods Credits (exports) on a Balance of Payments Basis	10 529	10 722	10 174	..	44 555 51 966

.. not applicable

— nil or rounded to zero (including null cells)

(a) Per cent of total merchandise exports is calculated for the most recent month.

(b) Excludes exports commodities subject to a confidentiality restriction. These are included in Division 98.

(c) Includes exports commodities subject to a confidentiality restriction.

(d) Includes small value export entries which can not yet be allocated by commodity.

## INTERNATIONAL MERCHANDISE IMPORTS, By commodity

	Sep 2004	Oct 2004	Nov 2004	Per cent of total merchandise imports(a)	5 MONTHS ENDED NOVEMBER	
					.....	
					2003	2004
	\$m	\$m	\$m	%	\$m	\$m
333 Crude petroleum oils	757	894	900	6.8	2 291	3 950
334 Refined petroleum oils	422	368	410	3.1	1 150	1 790
542 Medicaments	551	442	466	3.5	1 953	2 402
641 Paper and paperboard	176	192	188	1.4	880	907
752 Automatic data processing machines	500	438	470	3.6	2 015	2 328
759 Parts and accessories of office machines	193	173	182	1.4	934	925
764 Telecommunications equipment	450	409	453	3.4	1 695	2 227
781 Passenger motor vehicles	1 015	880	906	6.9	4 681	4 582
782 Motor vehicles for the transport of goods	363	322	337	2.6	1 195	1 657
784 Parts and accessories of motor vehicles	193	195	208	1.6	915	985
792 Aircraft and associated equipment	195	423	251	1.9	1 908	1 876
971 Gold, non-monetary	272	170	166	1.3	1 008	963

## MAJOR COMMODITIES

## SECTION AND DIVISION OF THE SITC

0	Food and live animals					
00	Live animals other than fish, crustaceans, molluscs and aquatic invertebrates	4	2	5	—	23 24
01	Meat and meat preparations	23	26	23	0.2	95 126
02	Dairy products and birds' eggs	31	29	31	0.2	115 148
03	Fish (not marine mammals), crustaceans, molluscs and aquatic invertebrates, and preparations thereof	82	92	95	0.7	403 419
04	Cereals and cereal preparations	37	38	36	0.3	166 187
05	Vegetables and fruit	84	96	106	0.8	386 469
06	Sugars, sugar preparations and honey	16	17	18	0.1	80 81
07	Coffee, tea, cocoa, spices, and manufactures thereof	65	63	61	0.5	282 312
08	Feeding stuff for animals (excl. unmilled cereals)	28	17	27	0.2	115 121
09	Miscellaneous edible products and preparations	96	107	99	0.7	451 472
	<i>Total food and live animals</i>	465	488	501	3.8	2 117 2 358
1	Beverages and tobacco					
11	Beverages	80	85	89	0.7	343 378
12	Tobacco and tobacco manufactures	8	16	14	0.1	88 69
	<i>Total beverages and tobacco</i>	88	100	103	0.8	430 447
2	Crude materials, inedible, except fuels					
21	Hides, skins and furskins, raw	—	—	—	—	1 1
22	Oil seeds and oleaginous fruits	3	2	7	0.1	30 17
23	Crude rubber (incl. synthetic and reclaimed)	12	11	13	0.1	51 60
24	Cork and wood	51	49	62	0.5	266 273
25	Pulp and waste paper	18	18	29	0.2	93 105
26	Textile fibres and their wastes (not manufactured into yarn or fabric)	14	15	14	0.1	68 69
27	Crude fertilisers (excl. those of Division 56) and crude minerals (excl. coal, petroleum and precious stones)	12	20	17	0.1	87 78
28	Metalliferous ores and metal scrap	35	13	16	0.1	127 114
29	Crude animal and vegetable materials, n.e.s.	21	23	25	0.2	103 109
	<i>Total crude materials, inedible, except fuels</i>	168	151	184	1.4	826 828
3	Mineral fuels, lubricants and related materials(b)					
32	Coal, coke and briquettes	1	4	1	—	5 10
33	Petroleum, petroleum products and related materials(b)	1 206	1 294	1 348	10.2	3 536 5 909
34	Gas, natural and manufactured	21	1	1	—	92 62
	<i>Total mineral fuels, lubricants and related materials</i>	1 227	1 299	1 350	10.2	3 633 5 981

— nil or rounded to zero (including null cells)

(b) Excludes imports commodities subject to a confidentiality restriction. These are included in Division 98.

(a) Per cent of total merchandise imports is calculated for the most recent month.

	Sep 2004	Oct 2004	Nov 2004	Per cent of total merchandise imports(a)	5 MONTHS ENDED NOVEMBER	
					2003	2004
					\$m	\$m
SECTION AND DIVISION OF THE SITC						
4	Animal and vegetable oils, fats and waxes					
41	1	2	1	—	14	7
42	38	21	26	0.2	123	145
43	4	4	3	—	18	19
	<i>Total animal and vegetable oils, fats and waxes</i>					
	43	27	29	0.2	155	171
5	Chemicals and related products, n.e.s.(b)					
51	213	224	200	1.5	929	1 058
52	62	73	60	0.5	292	332
53	48	48	45	0.3	217	234
54	625	582	581	4.4	2 451	2 929
55	141	110	104	0.8	547	591
56	68	50	52	0.4	177	289
57	110	110	126	1.0	480	539
58	96	100	102	0.8	437	483
59	136	124	121	0.9	576	635
	<i>Total chemicals and related products, n.e.s.</i>					
	1 498	1 422	1 391	10.5	6 104	7 089
6	Manufactured goods classified chiefly by material(b)					
61	14	12	15	0.1	73	70
62	151	149	167	1.3	727	770
63	57	52	58	0.4	259	280
64	222	239	232	1.8	1 085	1 128
65	228	216	223	1.7	1 098	1 131
66	195	197	187	1.4	883	941
67	246	248	256	1.9	836	1 174
68	81	90	83	0.6	432	413
69	315	313	356	2.7	1 356	1 622
	<i>Total manufactured goods classified chiefly by material</i>					
	1 509	1 515	1 577	12.0	6 748	7 528
7	Machinery and transport equipment(b)					
71	343	285	317	2.4	1 342	1 484
72	503	449	460	3.5	2 040	2 384
73	49	60	67	0.5	269	281
74	731	708	806	6.1	3 025	3 654
75	746	675	705	5.3	3 156	3 525
76	814	828	895	6.8	3 163	4 107
77	669	657	765	5.8	2 921	3 351
78	1 713	1 551	1 601	12.1	7 379	7 936
79	236	477	325	2.5	2 252	2 155
	<i>Total machinery and transport equipment</i>					
	5 805	5 690	5 941	45.0	25 547	28 876

— nil or rounded to zero (including null cells)

(a) Per cent of total merchandise imports is calculated for the most recent month.

(b) Excludes imports commodities subject to a confidentiality restriction. These are included in Division 98.

	Sep 2004	Oct 2004	Nov 2004	Per cent of total merchandise imports(a)	5 MONTHS ENDED NOVEMBER	
					.....	
					2003	2004
	\$m	\$m	\$m	%	\$m	\$m
SECTION AND DIVISION OF THE SITC						
8	Miscellaneous manufactured articles(b)					
81	Prefabricated buildings; sanitary, plumbing, heating and lighting fixtures and fittings, n.e.s.					
	53	51	49	0.4	205	237
82	Furniture, parts thereof; bedding, mattresses, mattress supports, cushions and similar stuffed furnishings					
	191	186	197	1.5	732	915
83	Travel goods, handbags and similar containers					
	56	60	60	0.5	229	279
84	Articles of apparel and clothing accessories					
	346	327	316	2.4	1 442	1 700
85	Footwear					
	97	84	85	0.6	406	470
87	Professional, scientific and controlling instruments and apparatus, n.e.s.					
	301	289	300	2.3	1 314	1 528
88	Photographic apparatus, equipment and supplies and optical goods, n.e.s.; watches and clocks(b)					
	131	128	128	1.0	595	634
89	Miscellaneous manufactured articles, n.e.s.					
	807	792	771	5.8	3 428	3 674
	<i>Total miscellaneous manufactured articles</i>					
	1 981	1 916	1 907	14.5	8 352	9 436
9	Commodities and transactions not classified elsewhere in the SITC(c)					
93	Special transactions and commodities not classified according to kind					
	3	3	3	—	13	13
95	Gold coin whether or not legal tender, and other coin being legal tender					
	1	—	1	—	3	3
96	Coin (excl. gold coin), not being legal tender					
	—	—	17	0.1	1	17
97	Gold, non-monetary (excl. gold ores and concentrates)					
	272	170	166	1.3	1 008	963
98	Combined confidential items excl. some of SITC 280 (exports only) and some of SITCs 510 and 520 (imports only)(c)					
	14	21	19	0.1	120	90
	<i>Total commodities and transactions not classified elsewhere in the SITC</i>					
	290	193	206	1.6	1 144	1 087
<b>Total Merchandise Imports</b>	<b>13 074</b>	<b>12 801</b>	<b>13 190</b>	<b>100.0</b>	<b>55 056</b>	<b>63 801</b>
Balance of Payments Adjustment	70	112	118	..	714	372
Goods Debits (imports) on a Balance of Payments Basis	13 144	12 913	13 308	..	55 770	64 173

.. not applicable

— nil or rounded to zero (including null cells)

(a) Per cent of total merchandise imports is calculated for the most recent month.

(b) Excludes imports commodities subject to a confidentiality restriction. These are included in Division 98.

(c) Includes imports commodities subject to a confidentiality restriction.

	EXPORTS				IMPORTS				BALANCE OF MERCHANDISE TRADE	
	2003-04	November 2004	5 months ended November 2003	5 months ended November 2004	2003-04	November 2004	5 months ended November 2003	5 months ended November 2004	2003-04	5 months ended November 2004
	\$m	\$m	\$m	\$m	\$m	\$m	\$m	\$m	\$m	\$m
Belgium(b)	676	85	269	320	1 237	83	495	461	-561	-141
Brazil	512	45	212	235	494	54	201	261	18	-25
Canada	1 822	190	698	815	1 818	191	769	780	4	36
China	9 932	950	3 852	4 750	15 338	2 019	6 642	8 884	-5 405	-4 134
Denmark	167	13	65	70	856	100	341	464	-690	-394
Egypt(c)	649	40	100	148	36	1	8	7	614	141
Fiji	430	38	200	177	210	21	90	102	220	75
Finland	575	51	248	255	651	70	268	329	-76	-74
France	939	79	410	417	3 816	304	1 437	1 995	-2 877	-1 578
Germany	1 309	101	523	553	7 985	756	3 434	3 614	-6 676	-3 061
Hong Kong (Sar of China)	2 753	215	1 157	1 135	1 202	118	511	582	1 551	553
India	4 865	455	1 642	2 075	1 000	104	425	538	3 865	1 537
Indonesia	2 984	213	1 240	1 484	3 765	322	1 503	1 452	-781	32
Iran	125	25	59	87	43	2	22	8	82	79
Iraq	315	53	52	194	—	—	—	6	315	188
Ireland	172	19	67	101	1 686	149	715	784	-1 514	-683
Israel	160	9	109	70	470	41	186	217	-310	-147
Italy	1 375	99	566	597	4 215	343	1 756	1 872	-2 840	-1 276
Japan	19 821	1 922	8 024	10 096	16 101	1 474	6 919	7 448	3 721	2 648
Korea, Republic of	8 490	764	3 361	3 958	4 877	448	2 070	2 190	3 613	1 768
Kuwait	580	30	260	210	110	21	40	60	470	150
Malaysia	2 224	194	900	1 113	4 707	558	1 835	2 579	-2 483	-1 465
Mexico	341	58	192	236	603	69	253	310	-262	-74
Netherlands	1 368	128	589	669	1 197	96	499	545	171	124
New Zealand	8 094	843	3 624	4 078	5 056	522	2 177	2 287	3 038	1 791
Pakistan	438	44	161	227	161	14	66	65	277	162
Papua New Guinea	809	119	340	427	1 422	137	493	663	-613	-235
Philippines	938	95	373	407	762	68	355	337	175	70
Saudi Arabia	1 992	126	747	740	757	67	226	460	1 235	280
Singapore	3 061	254	1 209	1 363	5 112	611	1 919	2 853	-2 051	-1 490
South Africa	1 427	107	530	676	1 246	105	504	520	182	156
Spain	659	54	286	300	1 103	105	446	586	-444	-286
Sweden	228	13	100	112	1 739	158	709	758	-1 511	-646
Switzerland	181	28	82	115	1 190	106	474	631	-1 009	-516
Taiwan	3 705	365	1 475	1 777	3 396	318	1 426	1 565	308	212
Thailand	2 463	334	958	1 300	3 674	370	1 590	1 744	-1 212	-444
Turkey	277	13	100	91	262	31	96	159	16	-68
United Arab Emirates	1 185	103	434	593	742	94	326	503	443	90
United Kingdom	5 147	394	2 585	2 591	5 429	549	2 306	2 569	-282	22
United States of America	9 481	897	4 062	4 133	19 930	1 800	8 614	8 963	-10 448	-4 830
Viet Nam	512	51	165	302	2 019	306	949	1 279	-1 506	-977
Other Countries(d)	5 858	494	2 352	2 656	4 588	487	1 964	2 371	1 270	285
<b>Total</b>	<b>109 040</b>	<b>10 110</b>	<b>44 379</b>	<b>51 653</b>	<b>131 003</b>	<b>13 190</b>	<b>55 056</b>	<b>63 801</b>	<b>-21 963</b>	<b>-12 148</b>
APEC	77 829	7 497	31 783	37 574	91 081	9 472	38 566	44 567	-13 251	-6 993
ASEAN	12 273	1 151	4 880	6 026	20 556	2 299	8 348	10 577	-8 283	-4 552
Developing Countries	52 820	4 765	20 541	24 381	52 077	5 894	21 748	27 474	743	-3 093
Least Developed Countries	1 183	106	468	613	213	15	95	106	970	507
European Union(e)	12 951	1 061	5 833	6 122	31 501	2 897	13 092	14 820	-18 550	-8 698
OECD	61 420	5 776	25 960	29 637	81 842	7 603	34 680	37 840	-20 422	-8 203

— nil or rounded to zero (including null cells)

(a) See AusStats for details of all countries.

(b) Prior to July 2003, Belgium and Luxembourg were combined. Belgium-Luxembourg is included in 'Other Countries' up to and including June 2003.

(c) Exports of Alumina to Egypt are excluded from its country total and included in the 'Other countries' category.

(d) Includes small value export entries which can not yet be allocated by country.

(e) From July 2004, European Union includes 25 member countries.

	2003-04	Nov 2004	5 MONTHS ENDED NOVEMBER	
			2003	2004
			\$m	\$m
EXPORTS (a)				
New South Wales	19 091	1 786	7 519	9 320
Victoria	18 012	1 582	7 247	8 046
Queensland	20 126	1 912	8 319	10 541
South Australia	7 608	607	3 051	3 286
Western Australia	32 296	3 174	13 069	15 342
Tasmania	2 317	264	979	1 057
Northern Territory	1 883	204	825	984
Australian Capital Territory	1	—	1	1
State not available for publication(b)(c)	344	44	128	175
Re-exports	7 362	537	3 242	2 899
<b>Total exports</b>	<b>109 040</b>	<b>10 110</b>	<b>44 379</b>	<b>51 653</b>
IMPORTS				
New South Wales	53 766	5 408	23 020	25 946
Victoria	40 729	3 917	17 066	19 367
Queensland	18 081	2 014	7 471	9 247
South Australia	5 163	510	2 159	2 483
Western Australia	11 690	1 153	4 750	5 609
Tasmania	669	50	311	234
Northern Territory	899	137	277	913
Australian Capital Territory	7	—	3	2
<b>Total imports</b>	<b>131 003</b>	<b>13 190</b>	<b>55 056</b>	<b>63 801</b>

— nil or rounded to zero (including null cells)

(a) State in which the final stage of production or manufacture occurs.

(b) Includes exports which can not yet be allocated by state. These shipments will be appropriately classified as more details become available.

(c) Exports of Alumina to Bahrain, Egypt and Iceland are excluded from the state totals and included in 'State not available for publication' category.



## PERIOD AVERAGE EXCHANGE RATES(a): Per Australian Dollar

<i>Period</i>	<i>United States dollar</i>	<i>United Kingdom pound</i>	<i>euro</i>	<i>Japanese yen</i>	<i>Trade-weighted index of value of the \$A(b)</i>
FINANCIAL YEAR					
<b>2001-02</b>	0.5239	0.3632	0.5850	66.10	50.7
<b>2002-03</b>	0.5848	0.3685	0.5577	70.01	53.5
<b>2003-04</b>	0.7137	0.4102	0.5981	78.91	61.5
MONTHS					
<b>2003</b>					
September	0.6614	0.4107	0.5891	76.11	58.5
October	0.6941	0.4138	0.5928	75.98	60.1
November	0.7159	0.4238	0.6118	78.19	61.9
December	0.7383	0.4223	0.6018	79.62	63.0
<b>2004</b>					
January	0.7695	0.4227	0.6101	81.89	64.8
February	0.7777	0.4165	0.6152	82.84	65.2
March	0.7498	0.4100	0.6110	81.45	63.6
April	0.7442	0.4121	0.6201	79.98	63.3
May	0.7054	0.3948	0.5874	79.01	60.9
June	0.6942	0.3794	0.5714	75.90	59.5
July	0.7164	0.3887	0.5835	78.29	61.1
August	0.7104	0.3903	0.5828	78.37	60.8
September	0.7013	0.3912	0.5743	77.20	59.9
October	0.7331	0.4057	0.5868	79.81	62.0
November	0.7689	0.4139	0.5925	80.61	63.7

- (a) These exchange rates and the trade-weighted index are derived using rates provided by the Reserve Bank of Australia in respect of each trading day.
- (b) May 1970=100. The trade-weighted index is reweighted annually (on 1 October) and on special occasions if required.

## EXPLANATORY NOTES

### INTRODUCTION

**1** This publication presents preliminary estimates of Australia's international trade in goods and services on a balance of payments basis and merchandise import and export statistics on a recorded trade basis.

**2** Merchandise trade statistics on a recorded trade basis are compiled from information submitted by exporters and importers or their agents to the Australian Customs Service (ACS). Adjustments for coverage, timing and valuation are made to recorded trade data to convert them to a balance of payments basis. The main source for services data is the quarterly Survey of International Trade in Services.

**3** More comprehensive quarterly estimates of Australia's trade in goods and services, together with comprehensive details of Australia's balance of payments are included in the quarterly publication, *Balance of Payments and International Investment Position, Australia* (cat. no. 5302.0). Detailed monthly statistics on merchandise trade are available on AusStats or by subscription to tailored services.

### CONCEPTS, SOURCES AND METHODS

**4** The conceptual framework used in compiling Australia's merchandise trade statistics can be found in *International Merchandise Trade, Australia: Concepts, Sources and Methods, 2001* (cat. no. 5489.0).

**5** The conceptual framework used in compiling Australia's balance of payments statistics is based on the Fifth Edition of the International Monetary Fund's *Balance of Payments Manual* (BPM5,1993). Descriptions of the underlying concepts and structure of the balance of payments and the sources, methods and terms used in compiling the estimates are presented in *Balance of Payments and International Investment Position, Australia: Concepts, Sources and Methods, 1998* (cat. no. 5331.0). To bring merchandise trade statistics on a recorded trade basis to a balance of payment basis, timing adjustments are made to ensure that the transaction is recorded in the period in which ownership changed, rather than in the period in which the transaction was recorded by ACS. Adjustments are also made to imports to take account of distortions which arise when significant changes occur in the volume of import entries lodged but not yet processed by ACS in a given month. Chapter 6 of cat. no. 5331.0 provides more detail on the relationship between statistics on international merchandise trade on a recorded trade basis and on a balance of payments basis.

**6** Both of the Concepts, Sources and Methods publications are available for free from the ABS web site, see <<http://www.abs.gov.au>> – select *About Statistics* then *Concepts & Classifications*.

### SEASONAL ADJUSTMENT

**7** Monthly original estimates are volatile, being subject to calendar-related and large irregular influences. Seasonally adjusted estimates are derived by estimating and removing systematic calendar related effects, such as seasonal and trading day influences, from the original series. Trading day effects are removed from the original estimates prior to the seasonal adjustment process. Seasonal adjustment does not aim to remove the irregular or non-seasonal influences which may be present in any particular month. These irregular influences may reflect both random economic events and difficulties of statistical recording. The estimates of international trade in goods and services on a balance of payments basis are seasonally adjusted. The merchandise exports and imports statistics on a recorded trade basis are not.

### TREND ESTIMATES

**8** The month-to-month movements of the seasonally adjusted estimates may not be reliable indicators of trend behaviour because they include irregular or non-seasonal movements. Trend estimates are derived by applying a 13-term Henderson moving average to the seasonally adjusted series. The use of a 13-term Henderson average can result in revisions to the estimates for the most recent six months as additional observations become available. Revisions can also occur because of changes in the original data and as a result of the annual re-estimation of the seasonal factors.

## EXPLANATORY NOTES *continued*

### SIGN CONVENTION

**9** In keeping with balance of payments conventions, where statistics are on a balance of payments basis, credit entries (exports) are shown without sign and debit items (imports) are shown as negative entries. For statistics on a recorded trade basis, both imports and exports are shown without sign. The calculation of percentage changes on balance of payments debit items are made without regard to sign. References to balance of payments debit items in Key Figures, Key Points, and Analysis and Comments are also made without regard to sign.

### COMMODITY BREAKDOWNS OF GOODS

**10** For details of the classification used for goods exports on a balance of payments basis (credits), see table 6.6 in *Balance of Payments and International Investment Position, Australia: Concepts, Sources and Methods, 1998* (cat. no. 5331.0).

**11** Details of the classification of goods imports on a balance of payments basis (debits) are provided in table 6.7 in cat. no. 5331.0. Most of the commodity groups shown in table 4 for goods debits are available for more detailed subgroups from AusStats.

**12** The recorded trade statistics shown in tables 8 and 9 are classified by the Standard International Trade Classification 2 (SITC). The first section of tables 8 and 9 show the most significant commodities (by value) at the SITC 3 digit level.

### COMMODITY BREAKDOWNS OF SERVICES

**13** The quarterly detailed services data published in table 7 are consistent with the monthly aggregates shown in table 5. Services trade data by major partner countries and by Australian state of production/consumption are published on a financial year basis and a calendar year basis.

**14** Monthly indicators for many of the services components that are only surveyed quarterly are not available. In particular, the Freight and Other transportation components of Total services credits are not available for publication on a monthly basis. The estimates for these items shown in table 5 are therefore derived by dividing the quarterly estimate by three. Where quarterly survey data are not available, freight debits are derived directly from imports data for the reference month as a difference between total merchandise cost, insurance and freight (CIFE) and free on board (FOB), adjusted to reflect timing and processing adjustments. For freight credits and other transportation credits and debits, estimates are derived by extrapolating the last month's data by an average of movements for the same month over the three previous years.

### TOURISM RELATED SERVICES

**15** The tourism related services memorandum items provide timely indicators of the movements in tourism related activities, not an absolute measure of the level of these activities. These series are not compiled on a Balance of Payments conceptual basis. However, they do provide a reasonable approximation of world tourism related activities.

**16** The memorandum items have been derived by re-aggregating relevant components of the international trade in services series of the balance of payments accounts. The tourism related indicator has been derived by combining total travel services (business, education-related and other personal travel), passenger fares, and the air transport component of other transportation services which relates to agency fees and commission receipts.

### RELATED PRODUCTS OR SERVICES

**17** More detailed balance of payments and recorded merchandise trade data, including forward seasonal factors, are available from AusStats. Very detailed merchandise trade data by commodity, country and state are available by contacting the National Information and Referral Service, as shown on the back of this publication.

**18** Users may also wish to refer to the following publications which are available from ABS Bookshops and on the ABS web site:

- *Balance of Payments and International Investment Position, Australia* (cat. no. 5302.0) – issued quarterly

## EXPLANATORY NOTES *continued*

### RELATED PRODUCTS OR SERVICES *continued*

- *International Merchandise Imports, Australia* (cat. no. 5439.0) – issued monthly
- *International Trade Price Indexes, Australia* (cat. no. 6457.0) – issued quarterly
- *Balance of Payments and International Investment Position, Australia: Concepts, Sources and Methods* (cat. no. 5331.0)
- *Information Paper: Quality of Australian Balance of Payments Statistics* (cat. no. 5342.0)
- *International Merchandise Trade, Australia: Concepts, Sources and Methods* (cat. no. 5489.0)
- *A Guide to Australian Balance of Payments and International Investment Position Statistics* (cat. no. 5362.0.55.001).

**19** The last four publications are available for free on the ABS web site <<http://www.abs.gov.au>> – select *About Statistics* then *Concepts & Classifications*.

### CAUTIONARY NOTE

**20** The tables in this publication are presented on two bases. Tables 1–7 contain estimates of Australia's international trade in goods and services which have been adjusted for coverage, valuation and timing to a balance of payments basis. Tables 8–11 contain estimates of merchandise exports and imports based on Australian Customs Service records. Paragraph 5 of the Explanatory Notes provides an explanation of the difference between these bases.

### ABBREVIATIONS

\$b	billion (thousand million) dollars
\$m	million dollars
ABN	Australian Business Number
ABS	Australian Bureau of Statistics
ACS	Australian Customs Service
APEC	Asia Pacific Economic Co-operation
ASEAN	Association of South-East Asian Nations
ATSI	Aboriginal and Torres Strait Islander
n.e.s.	not elsewhere specified
n.i.e.	not included elsewhere
OECD	Organisation for Economic Co-operation and Development
SAR	Special Administrative Region
SITC	Standard International Trade Classification

## APPENDIX RELATED ARTICLES

<i>Article</i>	<i>Source</i>	<i>Issue</i>
<b>Investment</b>		
Kangaroo bonds	5302.0	Sep qtr 2004
Foreign ownership of equity	5302.0	Sep qtr 2004
Gross external debt	5302.0	Sep qtr 2003
Measuring Australia's foreign currency exposure	5302.0	Dec qtr 2001
<b>Balance of payments</b>		
International comparison of balance of payments statistics	5363.0	1999–2000
The Sydney Olympic Games Update	5368.0	Jul 2000
The Sydney Olympic Games	5302.0	Sep qtr 1999
<b>Merchandise trade</b>		
Australia's Importers, 2003–04	(a) web site	Nov 2004
Australia's Exporters, 2003–04	(a) web site	Oct 2004
Australia's Trade with the USA	(a) web site	Mar 2004
Australia's Exporters, 2002–03	(a) web site	Oct 2003
Australia's Importers, 2002–03	(a) web site	Nov 2003
Export and import currencies, 2003	(a) web site	May 2003
Australia's exporters and importers, 2001–02	5422.0	Dec qtr 2002
Trade through Australia's ports	5422.0	Sep qtr 2002
Australia's trade in wine	5422.0	Dec qtr 2001
Australia's export markets, 1991–92 to 2000–01	5422.0	Jun qtr 2001
Major commodities traded by Australia, 1991 to 2000	5422.0	Dec qtr 2000
Australia's trade in crude petroleum	5422.0	Mar qtr 2000
Australia's merchandise trade with the Republic of Korea	5422.0	Sep qtr 1999
Australia's merchandise trade with Japan	5422.0	Mar qtr 1999
Bilateral merchandise trade statistics reconciliation: Australia and the European Union, 1992 to 1997	5422.0	Sep qtr 1998
<b>Trade in services</b>		
International trade in services by partner country, 2003–04	(a) web site	Nov 2004
International trade in services by State, 2003–04	(a) web site	Nov 2004
International trade in services by partner country, 2003	(a) web site	Mar 2004
International trade in services by State, 2003	(a) web site	Mar 2004
International trade in services by partner country, 2002–03	(a) web site	Oct 2003
International trade in services by State, 2002–03	(a) web site	Oct 2003
Goods and services by region, 2001	5368.0	Feb 2002
International trade in education services	(a) web site	Oct 2002
<b>Finance</b>		
Recent trends in construction and first home buyers finance	5609.0	Mar 2002
Household sector data in the financial accounts	5232.0	Mar qtr 2002
Investment Managers	5655.0	Jun qtr 2000
Venture capital, 1999–2000	5611.0	2000–01
Impact of 2003–2004 farm season on Australian production	5611.0	1999–2000
<b>Globalisation</b>		
Foreign Ownership of Australian Exporters and Importers, 2002–03	5496.0.55.001	2002–03
Australian Outward Foreign Affiliates Trade, 2002–03	5495.0	2002–03
Economic Activity of Foreign Owned Businesses in Australia, 2000–01	5494.0	2000–01
<b>Technical information</b>		
Implementation of New Customs Systems	(a) web site	Aug 2004
Changes to country and port classifications	5368.0	May 2003
The effect of customs changes on export statistics	5422.0	Jun qtr 2002
Harmonized system changes	5422.0	Sep qtr 2001
International trade review: data quality and client queries	5422.0	Jun qtr 2000
Data confidentiality	5422.0	Dec qtr 1999

(a) International Trade Theme Page: Select Themes; Economy; International Trade; Topics of Interest.





## FOR MORE INFORMATION . . .

- INTERNET* **www.abs.gov.au** the ABS web site is the best place to start for access to summary data from our latest publications, information about the ABS, advice about upcoming releases, our catalogue, and Australia Now—a statistical profile.
- LIBRARY* A range of ABS publications is available from public and tertiary libraries Australia-wide. Contact your nearest library to determine whether it has the ABS statistics you require, or visit our web site for a list of libraries.
- CPI INFOLINE* For current and historical Consumer Price Index data, call 1902 981 074 (call cost 77c per minute).
- DIAL-A-STATISTIC* This service now provides only current Consumer Price Index statistics call 1900 986 400 (call cost 77c per minute).

## INFORMATION SERVICE

Data already published that can be provided within five minutes will be free of charge. Our information consultants can also help you to access the full range of ABS information—ABS user pays services can be tailored to your needs, time frame and budget. Publications may be purchased. Specialists are on hand to help you with analytical or methodological advice.

- PHONE* 1300 135 070
- EMAIL* [client.services@abs.gov.au](mailto:client.services@abs.gov.au)
- FAX* 1300 135 211
- POST* Client Services, ABS, GPO Box 796, Sydney NSW 2001

## WHY NOT SUBSCRIBE?

ABS subscription services provide regular, convenient and prompt deliveries of selected ABS publications and products as they are released. Email delivery of monthly and quarterly publications is available.

- PHONE* 1300 366 323
- EMAIL* [subscriptions@abs.gov.au](mailto:subscriptions@abs.gov.au)
- FAX* (03) 9615 7848
- POST* Subscription Services, ABS, GPO Box 2796Y, Melbourne Vic 3001



2536800011048

ISSN 1328 2778

RRP \$21.00