



# **SOUTH AUSTRALIAN ECONOMIC INDICATORS**

EMBARGO: 11:30AM (CANBERRA TIME) FRI 1 FEB 2002

## **C O N T E N T S**

	<i>page</i>
Notes .....	2
REVIEW	
Overview .....	3
Selected features .....	4
TABLES	
List of tables .....	5
Statistical summary .....	6
State summary .....	8
State accounts .....	9
International trade .....	10
Consumption and investment .....	13
Production .....	15
Consumer price index .....	19
Labour force and demography .....	20
Average weekly earnings .....	23
Financial markets .....	24
ADDITIONAL INFORMATION	
Publications source index .....	25

- For further information about these and related statistics, contact Kirsten Hastwell on Adelaide 08 8237 7369, or the National Information and Referral Service on 1300 135 070.

## NOTES

### FORTHCOMING ISSUES

<i>ISSUE</i>	<i>RELEASE DATE</i>
March 2002	1 March 2002
April 2002	2 April 2002
May 2002	1 May 2002
June 2002	3 June 2002
July 2002	1 July 2002
August 2002	1 August 2002

### ABOUT THIS PUBLICATION

*South Australian Economic Indicators* is a monthly publication which contains the latest available data at the time of preparation for a range of statistical series that have been identified as indicators of economic activity in this State. In a number of cases the figures presented are preliminary and subject to revision in subsequent issues.

### CHANGES IN THIS ISSUE

For this and subsequent issues of *South Australian Economic Indicators*, the table 'Merchandise Exports by Industry of Origin' (formerly table 7) will be discontinued. Feedback from some users indicated that the data may have had the potential to be misleading. Users who wish to obtain a copy of this discontinued table should contact Kirsten Hastwell on 08 8237 7369. As a consequence of discontinuing this table, each of the former tables 8 to 24 have been renumbered 7 to 23.

Delays in the provision of final overseas arrivals and departure data by the Department of Immigration and Multicultural and Indigenous Affairs (DIMIA) due to the introduction of new passenger card processing arrangements from August 2000 has resulted in the withdrawal of these data from table 1. They will be reintroduced when figures are available.

### SYMBOLS AND OTHER USAGES

n.a.	not available
n.y.a.	not yet available
*	subject to sampling variability too high for most practical purposes
..	not applicable
0, 0.0	nil, or rounded to zero

### ROUNDING

Where figures have been rounded, discrepancies may occur between sums of the component items and totals.

### INFORMATION

All data are original, unless otherwise stated. More detailed information on each series, including explanatory and technical notes, can be obtained from other Australian Bureau of Statistics publications or alternative data sources. To assist those seeking further information, the series presented in the statistical and State summaries provides a reference to the Publication Source Index which is at the end of this publication.

Steve Crabb  
Regional Director  
South Australia

## OVERVIEW

The data in this Overview are presented in trend terms, unless otherwise stated.

### INTERNATIONAL TRADE

The value of South Australian merchandise exports in original terms for the month of November 2001 was \$712.2m. This was a decrease of 15.8% from the value for October and an increase of 17.1% on November 2000.

The value of South Australian merchandise imports in original terms for the month of November 2001 was \$407.0m. This was a decrease of 18.2% from the value for October and a decrease of 26.3% from November 2000.

### CONSUMPTION AND INVESTMENT

South Australia's retail turnover increased by 10.5% over the 12 months to November 2001. Retail turnover for November was \$1,041.7m.

There were 4,284 new motor vehicle registrations in November 2001, a decline of 0.5% on November last year.

Private new capital expenditure in the September quarter 2001 was \$570m, a decline of 21.2% on September quarter 2000.

### HOUSING

The number of dwelling units approved in November 2001 was 930, a rise of 74.8% on November last year.

### CONSUMER PRICE INDEX

The Consumer Price Index (All Groups) for Adelaide increased by 1.0% to 136.6 in the December quarter 2001, and by 3.1% over the level recorded twelve months previously. The annual change is no longer affected by the direct or first round effects of The New Tax System, particularly the introduction of the goods and services tax.

### LABOUR FORCE AND DEMOGRAPHY

The estimate of employed persons in South Australia rose to 681,600 in December 2001 and is 0.9% higher than the level of twelve months ago (675,700).

The unemployment rate for South Australia fell to 6.9% in December 2001 (from 7.0% in November). In December 2000 the unemployment rate was 7.1%.

### FINANCIAL MARKETS

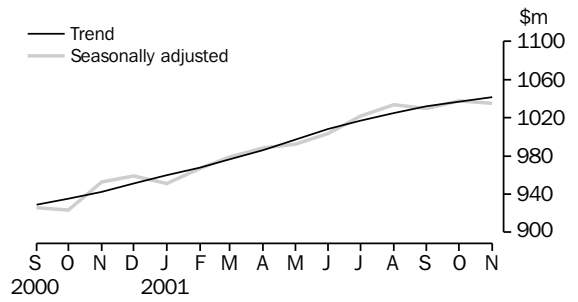
The value of secured housing finance commitments (excluding alterations and additions) was \$473m in November 2001. This was a 26.5% increase on November 2000.

## SELECTED FEATURES

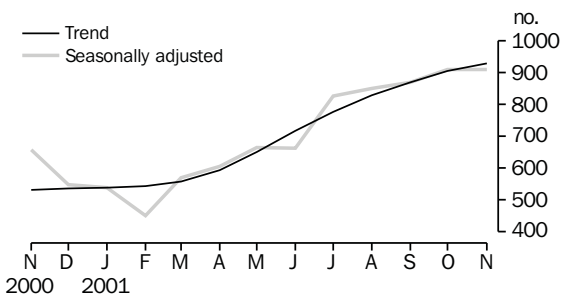
MERCHANDISE EXPORTS AND IMPORTS



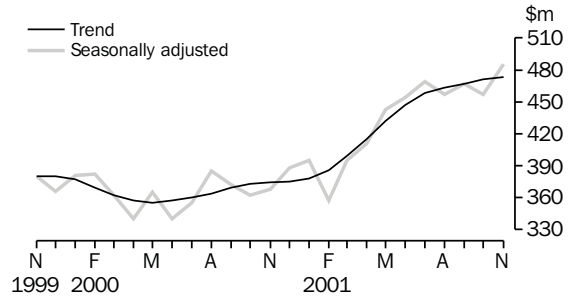
RETAIL TURNOVER



DWELLING UNITS APPROVED

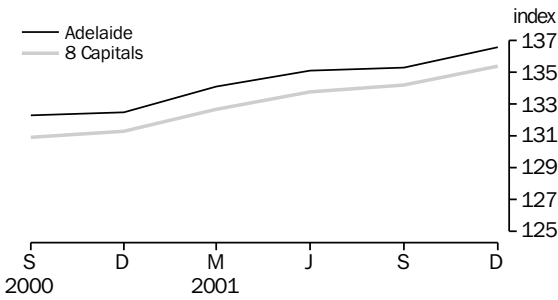


SECURED HOUSING FINANCE COMMITMENTS(a)

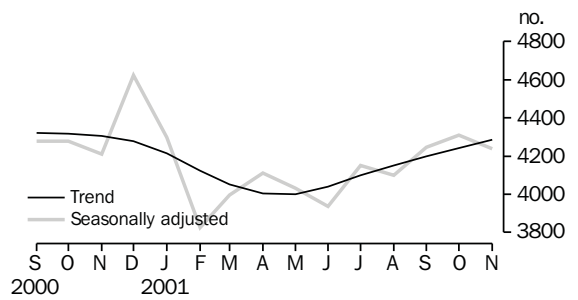


(a) Excludes alterations and additions. Includes refinancing.

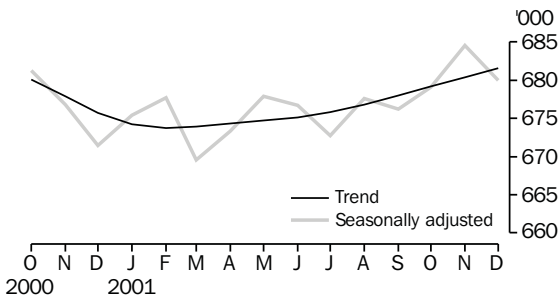
CONSUMER PRICE INDEX



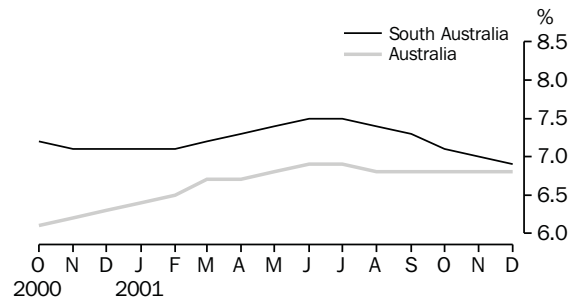
NEW MOTOR VEHICLE REGISTRATIONS



EMPLOYED PERSONS



UNEMPLOYMENT RATE—TREND



## LIST OF TABLES

			Page
STATISTICAL SUMMARY	<b>1</b>	Statistical summary	6
	<b>2</b>	State summary	8
STATE ACCOUNTS	<b>3</b>	State accounts at current prices	9
	<b>4</b>	State accounts at chain volume measures	9
INTERNATIONAL TRADE	<b>5</b>	Merchandise exports, by selected commodity group	10
	<b>6</b>	Merchandise exports, by selected countries and country groups	11
	<b>7</b>	Merchandise imports, by selected commodity group	12
CONSUMPTION AND INVESTMENT	<b>8</b>	Turnover of retail establishments, by industry—trend	13
	<b>9</b>	New motor vehicle registrations, by type of vehicle	13
	<b>10</b>	Actual private new capital expenditure, by selected industry and type of asset	14
	<b>11</b>	Tourist accommodation	14
PRODUCTION	<b>12</b>	Building approvals	15
	<b>13</b>	Building commencements	16
	<b>14</b>	Value of building work done and completed during period	17
	<b>15</b>	Production, livestock products and selected commodities	18
	<b>16</b>	Consumer price index, by group—Adelaide	19
LABOUR FORCE AND DEMOGRAPHY	<b>17</b>	Estimated resident population and components of population change	20
	<b>18</b>	Births, deaths, marriages and divorces	20
	<b>19</b>	Civilian labour force status	21
	<b>20</b>	Civilian labour force, unemployment and participation rates	22
AVERAGE WEEKLY EARNINGS	<b>21</b>	Average weekly earnings of employees	23
FINANCIAL MARKETS	<b>22</b>	Secured housing finance commitments	24
	<b>23</b>	Finance commitments	24

Indicator	Period	South Australia			Australia			SA as a % of Aust.	Source index
		Number	% change from		Number	% change from			
			Previous period	Same period previous year		Previous period	Same period previous year		
<b>State accounts</b>									
Domestic final demand									
Current prices trend (\$m)	Sep qtr 01	11 958	1.3	5.4	172 117	1.3	4.4	6.9	(1)
Chain volume measures trend (\$m)	Sep qtr 01	11 351	0.8	2.4	163 494	1.1	1.9	6.9	(1)
Private final consumption expenditure									
Current prices trend (\$m)	Sep qtr 01	7 520	1.7	8.1	104 456	1.5	7.0	7.2	(1)
Chain volume measures trend (\$m)	Sep qtr 01	7 086	1.2	4.9	98 431	1.0	3.8	7.2	(1)
Private gross fixed capital formation									
Current prices trend (\$m)	Sep qtr 01	1 797	0.7	1.4	29 187	1.9	-1.1	6.2	(1)
Chain volume measures trend (\$m)	Sep qtr 01	1 706	-0.6	-0.2	28 121	2.7	-2.1	6.1	(1)
Compensation of employees									
Current prices trend (\$m)	Sep qtr 01	5 254	0.1	2.5	82 152	1.2	5.8	6.4	(1)
<b>International accounts</b>									
Exports (\$m)	Nov 01	712.2	-15.8	17.1	9 516.5	-7.4	-3.8	7.5	(2)
Imports (\$m)	Nov 01	407.0	-18.2	-26.3	10 485.0	-9.1	-4.7	3.9	(2)
<b>Consumption and investment</b>									
Retail turnover									
Current prices original (\$m)	Nov 01	1 102.0	5.6	10.2	14 473.1	3.9	9.8	7.6	(3)
Current prices trend (\$m)	Nov 01	1 041.7	0.4	10.5	13 834.8	0.5	8.3	7.5	(3)
Chain volume measures original (\$m)	Sep qtr 01	2 807.2	4.1	9.7	37 217.1	2.7	5.8	7.5	(3)
New motor vehicle registrations									
Original (no.)	Nov 01	4 667	7.0	2.9	70 184	5.2	-1.7	6.6	(4)
Trend (no.)	Nov 01	4 284	0.9	-0.5	66 344	1.0	-3.1	6.5	(4)
Private new capital expenditure									
Current prices original (\$m)	Sep qtr 01	567	1.1	-12.6	9 419	-7.7	-4.9	6.0	(5)
Current prices trend (\$m)	Sep qtr 01	570	-4.8	-21.2	9 625	-0.3	-4.9	5.9	(5)
Private new capital expenditure (\$m)	2000-01	2 654	8.3	8.3	39 491	-7	-7.0	6.7	(5)
Takings from accommodation—hotels, motels, guesthouses and serviced apartments	Sep qtr 01	50.4	-3.2	0.7	1 226.5	10.4	-7.8	4.1	(6)
<b>Production</b>									
Dwelling unit approvals									
Original (no.)	Nov 01	931	3.0	40.8	14 929	-4.7	36.2	6.2	(7)
Trend (no.)	Nov 01	930	2.6	74.8	15 035	0.0	57.2	6.2	(7)
Dwelling units commenced (no.)	Sep qtr 01	2 401	47.5	32.0	40 830	35.7	38.8	5.9	(8)
Value of non-residential building approvals—trend (\$m)	Nov 01	70.5	2.0	48.7	1 036.5	4.9	0.8	6.8	(7)
Value of total building activity									
Commenced (\$m)	Sep qtr 01	548.3	0.7	30.3	10 089.3	16.4	29.9	5.4	(8)
Work done (\$m)	Sep qtr 01	450.4	9.2	12.7	9 347.0	10.5	3.2	4.8	(8)
Work yet to be done (\$m)	Sep qtr 01	695.3	15.9	31.6	13 455.6	9.5	15.3	5.2	(8)
Value of engineering construction work done (\$m)	Sep qtr 01	296.6	-19.2	16.0	4 419.5	-13.6	-2.3	6.7	(9)
Manufacturing production									
Red meat (tonnes)	Sep qtr 01	46 604	-12.9	-7.2	778 861	-1.6	-1.5	6.0	(11)
Mineral exploration expenditure (other than for petroleum)(a) (\$m)	Sep qtr 01	6.9	-44.4	25.5	167.4	-8.4	-1.4	4.1	(12)

(a) From July 2000 value data no longer contains Wholesale Sales Tax.

Indicator	Period	South Australia			Australia			SA as a % of Aust.	Source index
		Number	% change from		Number	% change from			
			Previous period	Same period previous year		Previous period	Same period previous year		
<b>Prices(a)</b>									
CPI—All groups (index no.)	Dec qtr 01	136.6	1.0	3.1	135.4	0.9	3.1	..	(13)
Price index of materials used in house building (index no.)	Sep qtr 01	128.4	-0.8	-1.1	124.7	0.2	0.2	..	(14)
Price index of materials used in building other than houses (index no.)	Sep qtr 01	117.2	-0.2	1.0	117.5	0.3	1.7	..	(14)
Price index of established houses (index no.)	Sep qtr 01	140.7	3.1	10.3	167.7	5.2	14.0	..	(16)
Price index of project homes (index no.)	Sep qtr 01	144.9	1	2.3	136.4	0.7	1.6	..	(16)
<b>Labour force and demography</b>									
Population (resident at end qtr) ('000)	Jun qtr 01	1 502.4	0.1	0.3	19 386.7	0.3	1.2	7.7	(17)
Labour force									
Original ('000)	Dec 01	743.9	1.1	1.2	9 975.8	1.6	1.2	7.5	(18)
Trend ('000)	Dec 01	732.4	0.1	0.7	9 852.4	0.0	1.3	7.4	(18)
Employed persons									
Original ('000)	Dec 01	691.7	0.7	1.3	9 314.4	1.3	0.8	7.4	(18)
Trend ('000)	Dec 01	681.6	0.2	0.9	9 186.2	0.0	0.8	7.4	(18)
Participation rate									
Original(b) (%)	Dec 01	61.2	0.6	0.4	64.3	0.9	-0.1	..	(18)
Trend(b) (%)	Dec 01	60.3	0.1	0.1	63.5	-0.1	0.0	..	(18)
Unemployment rate									
Original(b) (%)	Dec 01	7.0	0.3	-0.1	6.6	0.2	0.3	..	(18)
Trend(b) (%)	Dec 01	6.9	-0.1	-0.2	6.8	0.0	0.5	..	(18)
Job vacancies ('000)	Nov 01	6.3	1.6	16.7	83.5	-9.9	-23.1	7.5	(19)
Industrial disputes ('000 working days lost)	Sep 01	1.2	-85.2	-7.7	22.0	-45.9	-29.3	5.5	(20)
<b>Income</b>									
Average weekly earnings (full-time adults; ordinary time)									
Original (\$)	Aug 01	791.70	1.4	6.2	838.50	1.7	5.1	..	(21)
Trend (\$)	Aug 01	791.60	1.2	6.0	837.60	1.6	5.4	..	(21)
Wage cost index (total hourly rate excluding bonuses)(c) (index no.)	Sep qtr 01	112.6	0.9	3.2	113.6	1.1	3.6	..	(22)
<b>Financial markets</b>									
Secured housing finance(d) (\$m)	Oct 01	473.0	14.3	34.8	8 346.0	14.3	56.2	5.7	(23)
Finance commitments									
Personal (\$m)	Sep 01	263.7	-14.6	4.4	4 276.0	-11.1	6.4	6.2	(24)
Commercial (\$m)	Sep 01	515.5	-13.3	2.1	14 647.0	-11.1	0.3	3.5	(24)
Lease (\$m)	Sep 01	13.5	-13.5	-14.6	593.0	4.2	28.6	2.3	(24)
Interest rates(b)									
Banks new housing loans (%)	Nov 01	..	..	..	6.30	0.00	-1.75	..	(25)
Bank loans—small, medium business(e) (%)	Nov 01	..	..	..	7.60	-0.05	-1.60	..	(25)
Bank loans—large business (%)	Nov 01	..	..	..	8.05	0.00	-1.70	..	(25)
(a) Base year of each index 1989-90 = 100.									
(b) Change is shown in terms of percentage points.									
(c) Base year of index Sep 1997 = 100.									
(d) Excludes alterations and additions. Includes refinancing.									
(e) Rate for business loans over \$50,000.									

## 2

## STATE SUMMARY

<i>Indicator</i>	<i>Period</i>	<i>NSW</i>	<i>Vic.</i>	<i>Qld</i>	<b>SA</b>	<i>WA</i>	<i>Tas.</i>	<i>NT</i>	<i>ACT</i>	<i>Source index</i>
SELECTED INDICATORS										
CPI—All groups(a) (index no.)	Dec qtr 01	136.6	134.8	135.8	<b>136.6</b>	132.6	133.9	133.5	134.9	(13)
Participation rate trend (%)	Dec 01	62.3	63.7	64.9	<b>60.3</b>	66.3	58.8	73.4	71.4	(18)
Unemployment rate trend (%)	Dec 01	6.4	6.6	7.9	<b>6.9</b>	6.2	8.7	8.4	4.0	(18)
Average weekly earnings (full-time adults; ordinary time) trend (\$)	Aug 01	889.10	815.60	779.30	<b>791.60</b>	841.10	764.60	824.70	951.00	(22)
SELECTED INDICATORS PER HEAD OF POPULATION(b)										
State final demand										
Chain volume measures trend (\$'000)	Sep qtr 01	8.6	8.4	8.0	<b>7.6</b>	8.5	7.1	9.9	16.2	(1)
Retail turnover										
Current prices original (\$)	Nov 01	757.7	729.8	731.7	<b>733.5</b>	774.3	660.7	751.1	969.2	(3)
Current prices, trend	Nov 01	729.3	691.8	704.9	<b>693.4</b>	731.9	620.5	733.3	931.7	(3)
New motor vehicle registrations trend (no. per '000 population)	Nov 01	3.4	3.7	3.6	<b>2.9</b>	3.1	2.7	3.0	3.5	(4)
Private new capital expenditure										
Current prices trend (\$)	Sep qtr 01	472.0	499.7	411.5	<b>379.4</b>	761.4	316.8	1 417.1	410.6	(5)
Dwelling unit approvals										
Original (no. per '000 population)	Nov 01	0.698	0.778	0.844	<b>0.620</b>	1.058	0.361	0.253	1.206	(7)
Trend (no. per '000 population)	Nov 01	0.729	0.868	0.781	<b>0.619</b>	0.950	0.347	0.390	0.904	(7)
Secured housing finance(c) (\$)	Nov 01	542.1	403.4	389.5	<b>349.4</b>	450.3	210.5	202.4	391.5	(24)
PERCENTAGE CHANGE FROM PREVIOUS PERIOD										
State final demand										
Chain volume measures trend (%)	Sep qtr 01	0.7	1.3	1.5	<b>0.8</b>	2.1	1.3	-0.6	0.9	(1)
Retail turnover										
Current prices original (%)	Nov 01	3.7	4.0	2.6	<b>5.6</b>	4.8	7.0	-0.9	4.8	(3)
Current prices, trend	Nov 01	0.4	0.3	0.2	<b>0.4</b>	1.2	0.3	1.0	0.8	(3)
New motor vehicle registrations trend (%)	Nov 01	0.8	0.9	1.6	<b>0.9</b>	0.7	3.1	2.2	1.1	(4)
Private new capital expenditure										
Current prices trend (%)	Sep qtr 01	-3.6	-1.5	4.1	<b>-4.8</b>	1.3	10.4	6.9	-4.4	(5)
Dwelling unit approvals										
Original (%)	Nov 01	-14.2	-10.3	8.5	<b>3.0</b>	15.3	0.0	-51.5	-7.8	(7)
Trend (%)	Nov 01	3.9	-2.5	-0.4	<b>2.6</b>	0.2	-1.2	22.2	-12.3	(7)
CPI—All groups (%)	Dec qtr 01	0.9	0.9	1.2	<b>1.0</b>	0.8	0.8	0.8	1.3	(13)
Participation rate trend(d) (%)	Dec 01	-0.1	0.0	0.0	<b>0.1</b>	-0.1	0.0	-0.3	0.1	(18)
Unemployment rate trend(d) (%)	Dec 01	0.1	0.1	0.0	<b>-0.1</b>	-0.2	-0.2	0.2	-0.2	(18)
Average weekly earnings (full-time adults; ordinary time) trend (%)	Aug 01	2.3	1.7	1.2	<b>1.2</b>	0.8	1.3	0.4	0.9	(22)
Secured housing finance (%)	Nov 01	4.0	-4.1	2.0	<b>-8.4</b>	8.3	8.8	-2.4	-3.1	(24)
(a) Base year of index 1989-90 = 100.										
(b) The latest quarterly estimate of Australian resident population has been used to calculate ratios for subsequent periods.										
(c) Excludes alterations and additions. Includes refinancing.										
(d) Change is shown in terms of percentage points.										



## 3

## STATE ACCOUNTS AT CURRENT PRICES

Period	Final consumption expenditure		Gross fixed capital formation			State final demand	Gross State product	Compensation of employees
	Households	General government	Private	Public				
ANNUAL (\$m)								
<b>1998-99</b>	25 427	7 946	5 965	1 353	40 691	39 529	19 103	
<b>1999-00</b>	26 549	8 885	(a)10 012	(a)-1 437	44 009	41 340	19 956	
<b>2000-01</b>	28 782	9 111	8 216	147	46 257	43 194	20 899	
QUARTERLY, TREND (\$m)								
<b>1999-00</b>								
June	6 792	2 263	1 758	383	11 196	n.a.	5 067	
<b>2000-01</b>								
September	6 958	2 250	1 760	377	11 344	n.a.	5 127	
December	7 134	2 256	1 736	348	11 474	n.a.	5 186	
March	7 274	2 282	1 754	321	11 632	n.a.	5 229	
June	7 393	2 293	1 784	331	11 800	n.a.	5 249	
<b>2001-02</b>								
September	7 520	2 275	1 797	359	11 958	n.a.	5 254	

(a) The negative figure for Public gross fixed capital formation and the larger than usual positive figure for Private gross fixed capital formation are the result of the sale of the South Australian electrical transmission network in December quarter 1999. For more information see *National Income, Expenditure and Product, Australian National Accounts, June 2000* (Cat. no. 5206.0).

Source: *Australian National Accounts: Quarterly State Details* (Cat. no. 5206.0.40.001), and *Australian National Accounts: State Accounts* (Cat. no. 5220.0).

## 4

## STATE ACCOUNTS AT CHAIN VOLUME MEASURES(a)

Period	Final consumption expenditure		Gross fixed capital formation			State final demand	Gross State product
	Households	General government	Private	Public			
ANNUAL (\$m)							
<b>1998-99</b>	25 816	8 331	6 127	1 338	41 729	40 931	
<b>1999-00</b>	26 549	8 885	(b)10 011	(b)-1437	44 009	41 340	
<b>2000-01</b>	27 512	8 946	7,976	127	44 562	41 617	
QUARTERLY, TREND (\$m)							
<b>1999-00</b>							
June	6 691	2 241	1 746	374	11 058	n.a.	
<b>2000-01</b>							
September	6 755	2 228	1 719	376	11 089	n.a.	
December	6 842	2 218	1 690	343	11 088	n.a.	
March	6 926	2 219	1 699	317	11 158	n.a.	
June	7 005	2 219	1 716	324	11 262	n.a.	
<b>2001-02</b>							
September	7 086	2 211	1 706	358	11 351	n.a.	

(a) Reference year for chain volume measures is 1999-2000.

(b) The negative figure for Public gross fixed capital formation and the larger than usual positive figure for Private gross fixed capital formation are the result of the sale of the South Australian electrical transmission network in December quarter 1999. For more information see *National Income, Expenditure and Product, Australian National Accounts, June 2000* (Cat. no. 5206.0).

Source: *Australian National Accounts: Quarterly State Details* (Cat. no. 5206.0.40.001), and *Australian National Accounts: State Accounts* (Cat. no. 5220.0).

## 5

## MERCHANDISE EXPORTS, BY SELECTED COMMODITY GROUP(a)

<i>Period</i>	<i>Meat and meat preparations</i>	<i>Wheat</i>	<i>Wine</i>	<i>Wool and sheepskins (excl. wool tops)</i>	<i>Machinery</i>	<i>Metals and metal manufactures</i>	<i>Fish and crustaceans</i>	<i>Road vehicles, parts and accessories</i>	<i>Petroleum and petroleum products</i>	<i>Total(b)</i>
	\$'000	\$'000	\$'000	\$'000	\$'000	\$'000	\$'000	\$'000	\$'000	\$'000
<b>1998-99</b>	198 541	567 812	693 733	212 226	384 702	543 675	252 592	651 949	154 425	5 332 300
<b>1999-00</b>	160 483	473 086	899 348	179 716	353 205	805 744	394 375	883 792	218 466	6 188 231
<b>2000-01</b>	262 565	767 524	1 081 628	236 034	381 785	1 019 926	451 841	1 399 489	355 781	8 286 812
<b>1999-00</b>										
June	16 704	23 814	90 533	21 491	32 751	81 301	28 968	63 329	30 107	564 152
<b>2000-01</b>										
July	17 198	19 207	91 473	18 494	31 670	66 877	37 243	113 052	28 523	569 048
August	12 891	34 504	91 522	13 905	32 251	54 225	117 255	119 957	12 106	643 760
September	21 175	66 366	110 883	17 429	29 031	96 525	66 255	137 895	49 737	761 874
October	22 718	31 594	104 142	26 188	29 363	93 449	17 387	66 730	12 239	557 546
November	21 086	34 320	66 654	24 868	39 987	92 385	25 144	99 097	37 355	608 459
December	23 003	55 592	74 430	17 779	35 714	95 601	23 853	197 310	34 021	786 954
January	15 352	42 141	56 686	12 389	19 399	71 312	27 610	36 155	11 715	465 417
February	23 730	80 599	78 767	19 868	27 828	89 603	16 885	109 181	36 380	703 077
March	27 691	112 562	92 701	22 506	32 623	99 791	21 216	148 177	17 124	816 155
April	26 339	93 911	121 497	19 887	32 164	89 887	23 097	155 998	52 960	848 280
May	27 404	152 550	99 062	22 367	33 559	79 393	28 980	115 827	33 738	821 839
June	23 977	44 178	93 811	20 353	38 196	90 878	46 917	100 111	29 883	704 402
<b>2001-02</b>										
July	18 743	84 671	90 195	15 060	31 740	80 081	105 885	85 602	4 227	695 069
August	16 523	104 764	111 886	12 339	23 892	65 167	109 720	87 611	28 997	758 293
September	26 566	50 769	145 762	14 797	23 561	83 381	18 330	157 753	26 830	747 484
October	29 647	74 206	134 321	23 871	25 202	80 605	16 992	217 312	18 093	845 767
November	28 352	95 781	78 713	24 658	22 671	88 591	22 710	135 617	32 996	712 238

(a) Restrictions are placed on the release of statistics for certain commodities for reasons of confidentiality. These restrictions do not affect total export and import figures, but they can affect some items within commodity, industry and country tables. See *International Trade* (Cat. no. 5422.0), Explanatory Notes, paragraph 30, for more details.

(b) Includes other commodity groups not listed.

Source: ABS data available on request.

## 6

## MERCHANDISE EXPORTS, BY SELECTED COUNTRIES AND COUNTRY GROUPS

Period	European Union					South-East and North-East Asia				
	United States of America	Middle East	United Kingdom	Total European Union	New Zealand	Japan	China	Hong Kong	ASEAN	Total
	\$'000	\$'000	\$'000	\$'000	\$'000	\$'000	\$'000	\$'000	\$'000	\$'000
<b>1998-99</b>	705 166	640 412	476 340	928 468	385 513	625 530	302 776	219 536	432 730	1 898 837
<b>1999-00</b>	954 681	724 871	625 154	1 073 928	446 026	787 295	315 199	255 679	492 304	2 297 913
<b>2000-01</b>	1 354 789	1 335 811	713 525	1 232 563	480 887	963 481	437 939	298 939	682 671	2 882 839
<b>1999-00</b>										
June	62 092	61 433	56 258	94 338	41 788	109 779	25 500	18 924	61 779	247 770
<b>2000-01</b>										
July	100 224	65 100	55 658	85 089	34 853	85 633	24 427	23 112	51 101	216 245
August	128 909	59 559	66 643	101 217	32 894	157 189	22 980	12 572	45 170	262 062
September	96 183	108 823	86 988	136 672	39 384	142 299	23 256	24 806	66 988	292 464
October	57 168	61 372	84 703	128 689	42 321	39 822	42 670	18 484	59 867	197 515
November	141 743	53 997	30 339	59 478	54 206	55 931	54 946	36 927	54 355	249 513
December	161 458	158 267	37 513	74 503	29 610	81 125	17 245	31 419	61 396	245 174
January	55 623	90 284	32 418	59 100	21 446	37 119	24 316	31 873	51 910	172 995
February	100 916	145 190	51 056	109 310	37 641	54 585	61 981	29 821	59 017	239 767
March	115 814	178 076	59 618	120 294	47 460	37 205	55 989	28 698	51 248	224 428
April	115 986	183 447	98 255	158 996	47 291	80 941	43 900	15 196	65 386	268 384
May	141 133	160 104	55 667	102 367	45 043	105 667	21 910	22 827	53 850	253 674
June	139 632	71 593	54 666	96 847	48 740	85 966	44 319	23 205	62 383	260 621
<b>2001-02</b>										
July	116 056	121 291	53 283	86 715	49 197	141 618	18 061	12 359	54 577	250 375
August	131 947	134 855	67 350	98 416	53 138	146 655	19 006	16 589	44 614	258 447
September	149 041	114 226	93 891	150 182	53 962	74 359	49 290	9 474	51 316	211 015
October	137 734	183 114	92 358	159 312	53 606	45 027	39 113	21 324	47 733	216 670
November	139 594	120 295	44 445	89 162	52 921	84 431	47 051	24 778	47 539	242 873

Source: ABS data available on request.

## 7

## MERCHANDISE IMPORTS, BY SELECTED COMMODITY GROUP(a)

<i>Period</i>	<i>Food, beverages and tobacco</i>	<i>Petroleum and petroleum products</i>	<i>Chemicals</i>	<i>Textiles</i>	<i>Metals and metal manufactures</i>	<i>Machinery</i>	<i>Road vehicle parts and accessories</i>	<i>Other manufactured goods</i>	<i>Total(b)</i>
	\$'000	\$'000	\$'000	\$'000	\$'000	\$'000	\$'000	\$'000	\$'000
<b>1998-99</b>	162 784	271 492	281 097	96 052	264 732	917 879	812 096	765 643	3 716 152
<b>1999-00</b>	163 509	515 641	263 959	97 100	262 737	1 164 672	834 842	845 913	4 319 348
<b>2000-01</b>	183 196	968 428	284 227	97 281	315 907	1 205 016	854 759	926 825	5 045 141
<b>1999-00</b>									
June	13 173	81 962	25 199	8 426	24 025	116 514	82 365	70 038	437 101
<b>2000-01</b>									
July	12 672	12 429	15 366	7 477	27 313	81 141	88 021	64 441	323 578
August	15 478	105 525	18 815	10 427	31 299	84 295	85 147	100 451	466 221
September	14 607	112 111	16 617	7 996	26 072	92 650	69 757	74 871	426 734
October	19 561	20	16 312	9 911	29 337	100 090	77 594	76 202	343 395
November	19 530	186 246	16 133	7 366	30 389	107 265	79 920	84 173	552 576
December	13 166	42 077	15 344	6 399	20 145	102 436	58 572	62 099	333 906
January	12 558	16 440	24 436	6 950	27 734	97 647	47 013	71 387	321 682
February	11 456	123 599	22 811	8 947	22 891	89 394	59 947	78 042	438 399
March	14 957	82 612	36 950	6 792	24 140	110 739	77 516	87 106	462 244
April	15 533	99 678	57 548	7 239	25 625	104 946	71 621	75 171	478 988
May	16 160	77 698	29 168	9 156	23 837	117 562	67 744	73 174	435 103
June	17 518	109 994	14 728	8 622	27 124	116 851	71 909	79 708	462 314
<b>2001-02</b>									
July	14 737	27 393	19 654	7 571	28 991	99 212	74 738	89 614	378 468
August	19 403	140 536	19 498	10 687	29 850	139 734	98 097	111 202	585 213
September	17 922	177 219	19 524	7 687	25 943	104 454	68 422	92 551	527 790
October	23 691	64 019	19 978	9 093	33 610	159 511	82 349	91 477	497 572
November	25 179	14 300	20 973	10 967	25 374	130 017	66 454	95 211	407 009

(a) Restrictions are placed on the release of statistics for certain commodities for reasons of confidentiality. These restrictions do not affect total export and import figures, but they can affect some items within commodity, industry and country tables. See *International Trade* (Cat. no. 5422.0), Explanatory Notes, paragraph 30, for more details.

(b) Includes other commodity groups not listed.

Source: ABS data available on request.

## 8

## TURNOVER OF RETAIL ESTABLISHMENTS, BY INDUSTRY—TREND

Period	Food retailing	Department stores	Clothing and soft good retailing	Household good retailing	Recreational good retailing	Other retailing	Hospitality and services	Total
	\$m	\$m	\$m	\$m	\$m	\$m	\$m	\$m
<b>2000-01</b>								
September	385.3	94.0	48.7	97.6	25.6	106.8	169.4	928.8
October	385.8	93.5	49.4	97.3	25.4	109.9	172.1	935.0
November	388.4	93.5	50.0	97.0	25.2	112.0	174.7	942.5
December	392.1	93.9	50.5	97.2	25.0	113.7	177.1	951.1
January	395.8	94.6	50.7	98.2	25.0	115.5	178.5	959.8
February	399.4	95.3	50.7	100.3	25.1	117.6	178.4	968.1
March	403.1	95.7	50.5	103.0	25.3	119.9	177.7	976.7
April	407.1	95.6	50.3	105.9	28.1	122.3	177.5	986.2
May	411.5	95.0	50.1	108.4	28.3	124.7	178.8	996.9
June	416.4	94.3	50.2	110.2	28.3	126.9	181.2	1 007.9
<b>2001-02</b>								
July	421.2	93.9	50.2	110.9	28.0	128.6	184.1	1 017.3
August	425.9	93.8	50.3	111.2	27.5	130.0	186.4	1 025.1
September	430.2	94.1	50.4	111.5	27.0	131.1	187.5	1 031.8
October	433.7	94.8	50.5	111.9	26.5	131.7	187.6	1 037.2
November	436.4	95.5	50.5	112.3	26.1	132.1	187.2	1 041.7

Source: Retail Trade, Australia (Cat. no. 8501.0).

## 9

## NEW MOTOR VEHICLE REGISTRATIONS, BY TYPE OF VEHICLE

Period	Original			Seasonally adjusted			Trend estimate		
	Passenger vehicles	Other vehicles	Total	Passenger vehicles	Other vehicles	Total	Passenger vehicles	Other vehicles	Total
<b>2000-01</b>									
September	3 547	591	4 138	3 656	623	4 279	3 734	586	4 320
October	3 747	494	4 241	3 733	545	4 278	3 724	592	4 316
November	3 997	537	4 534	3 649	562	4 211	3 698	607	4 305
December	3 991	658	4 649	4 001	623	4 624	3 653	624	4 277
January	2 857	579	3 436	3 546	752	4 298	3 578	635	4 213
February	3 069	568	3 637	3 219	607	3 826	3 487	637	4 124
March	3 509	660	4 169	3 386	612	3 998	3 415	635	4 050
April	3 121	547	3 668	3 491	618	4 109	3 371	632	4 003
May	3 488	680	4 168	3 404	627	4 031	3 368	631	3 999
June	3 729	856	4 585	3 313	622	3 935	3 400	641	4 041
<b>2001-02</b>									
July	3 549	724	4 273	3 439	714	4 153	3 439	661	4 100
August	3 645	660	4 305	3 443	656	4 099	3 468	682	4 150
September	3 254	611	3 865	3 556	692	4 248	3 496	703	4 199
October	3 701	659	4 360	3 599	711	4 310	3 520	724	4 244
November	3 889	778	4 667	3 456	782	4 238	3 542	742	4 284

Source: New Motor Vehicle Registrations, Australia, Preliminary (Cat. no. 9301.0) and ABS data available on request.

## 10

## ACTUAL PRIVATE NEW CAPITAL EXPENDITURE, BY SELECTED INDUSTRY AND TYPE OF ASSET

Period	Industry			Total	Type of asset	
	Mining	Manufacturing	Other selected industries		New buildings and structures	Equipment, plant and machinery
ANNUAL (\$m)						
<b>1998-99</b>	508	776	993	2 277	529	1 748
<b>1999-00</b>	242	853	1 355	2 451	619	1 832
<b>2000-01</b>	419	816	1 415	2 650	656	1 994
QUARTERLY, ORIGINAL (\$m)						
<b>1999-00</b>						
June	67	251	375	692	220	472
<b>2000-01</b>						
September	126	208	316	649	180	469
December	183	221	445	849	264	585
March	48	187	355	590	105	485
June	62	201	299	561	107	455
<b>2000-02</b>						
September	75	185	308	567	125	442
QUARTERLY, TREND (\$m)						
<b>1999-00</b>						
June	n.a.	n.a.	n.a.	671	199	472
<b>2000-01</b>						
September	n.a.	n.a.	n.a.	723	215	508
December	n.a.	n.a.	n.a.	701	189	512
March	n.a.	n.a.	n.a.	651	149	502
June	n.a.	n.a.	n.a.	599	119	480
<b>2001-02</b>						
September	n.a.	n.a.	n.a.	570	108	462

Source: State Estimates of Private New Capital Expenditure (Cat. no. 5646.0).

## 11

## TOURIST ACCOMMODATION

Period	Licensed hotels with facilities				Motels and guesthouses				Serviced apartments			
	Estab-lish-ments	Guest rooms	Room occu-pancy	Takings	Estab-lish-ments	Guest rooms	Room occu-pancy	Takings	Estab-lish-ments	Guest rooms	Room occu-pancy	Takings
	no.	no.	%	\$'000	no.	no.	%	\$'000	no.	no.	%	\$'000
<b>1999-00</b>												
September	62	3 988	58.0	20 959	146	5 175	50.7	17 812	23	1 084	60.2	5 265
December	62	4 090	61.6	24 619	146	5 166	55.1	19 928	26	1 207	61.5	6 462
March	62	4 065	60.1	23 739	146	5 168	55.3	19 956	26	1 213	62.6	6 739
June	60	4 037	58.7	23 033	147	5 212	53.1	19 309	26	1 208	62.7	6 912
<b>2000-01</b>												
September	60	4 070	56.3	23 960	147	5 218	50.6	19 898	26	1 211	56.9	6 252
December	62	4 128	58.2	26 070	146	5 204	54.4	21 557	26	1 220	62.4	7 232
March	62	3 905	59.9	25 686	146	5 217	55.2	21 889	27	1 280	67.1	7 955
June	61	4 066	55.9	23 849	146	5 230	50.5	20 289	27	1 300	63.2	7 959
<b>2001-02</b>												
September	61	4 078	56.3	23 498	146	5 231	49.7	19 926	27	1 293	60.1	7 019

Source: Tourist Accommodation, Australia (Cat. no. 8635.0).

Period	Houses		Total dwelling units		New residential building \$m	Alterations and additions to residential building \$m	Total residential building \$m	Non-residential building \$m	Total building \$m
	Private sector	Total	Private sector	Total					
	no.	no.	no.	no.					
ANNUAL									
<b>1998-99</b>	6568	6777	7697	7928	775.6	144.0	919.6	670.9	1590.5
<b>1999-00</b>	8290	8392	9915	10024	1022.9	188.9	1211.8	585.7	1797.5
<b>2000-01</b>	5550	5639	6654	6770	735.6	157.3	892.9	728.5	1621.4
MONTHLY, ORIGINAL									
<b>2000-01</b>									
August	450	465	507	522	57.8	11.9	69.7	89.6	159.3
September	353	353	409	409	42.1	12.6	54.7	29.4	84.1
October	434	434	510	514	55.6	13.1	68.7	45.3	114.0
November	458	462	650	661	63.4	15.0	78.3	49.6	127.9
December	381	398	439	458	49.4	12.1	61.4	52.6	114.1
January	364	364	423	432	46.5	13.5	60.0	35.2	95.3
February	380	385	464	469	50.4	13.8	64.2	36.6	100.8
March	516	522	629	635	67.2	14.0	81.2	141.9	223.2
April	475	492	496	515	56.3	10.8	67.1	40.5	107.6
May	655	659	705	709	79.3	16.9	96.1	95.7	191.8
June	641	644	733	736	84.2	14.3	98.5	51.5	150.0
<b>2001-02</b>									
July	765	771	966	975	98.3	15.9	114.2	45.9	160.1
August	734	741	808	825	86.3	17.0	103.3	118.4	221.7
September	712	731	840	863	95.9	14.5	110.3	48.3	158.6
October	778	797	877	904	98.0	19.6	117.7	81.9	199.6
November	764	810	881	931	100.4	16.1	116.5	57.3	173.8
MONTHLY, TREND									
<b>2000-01</b>									
August	422	431	519	529	55.9	11.4	67.3	49.6	116.9
September	409	417	510	520	54.5	11.6	66.1	49.2	115.2
October	406	412	516	525	54.4	12.2	66.6	48.8	115.4
November	409	414	523	532	54.9	13.1	68.0	47.4	115.4
December	414	419	528	537	55.6	13.7	69.3	45.2	114.5
January	423	429	528	538	56.9	14.0	70.9	44.5	115.3
February	442	449	533	543	59.0	14.1	73.2	45.4	118.5
March	475	482	549	557	61.9	14.3	76.2	48.1	124.4
April	525	532	585	593	66.0	14.5	80.5	51.7	132.2
May	586	592	644	651	71.7	14.8	86.5	56.1	142.6
June	644	650	710	718	78.0	15.0	93.1	60.2	153.2
<b>2001-02</b>									
July	689	697	766	778	83.9	15.3	99.2	63.4	162.6
August	717	729	812	829	88.6	15.5	104.1	65.4	169.5
September	734	752	847	871	92.6	15.6	108.2	67.2	175.4
October	744	768	876	906	95.8	15.7	111.5	69.1	180.6
November	746	777	892	930	97.7	15.7	113.4	70.5	183.9

Source: Building Approvals, Australia (Cat. no. 8731.0) and ABS data available on request.

## 13

## BUILDING COMMENCEMENTS

Period	New houses		Total dwelling units(a)		New residential building \$m	Alterations and additions to residential building \$m	Non-residential building		
	Private sector	Total	Private sector	Total			Private sector	Total	Total building
	no.	no.	no.	no.			\$m	\$m	\$m
<b>1998-99</b>	6,092	6,297	7,186	7,416	771.3	139.7	400.7	624.3	1535.3
<b>1999-00</b>	7,729	7,856	9,266	9,410	1044.8	198.8	351.2	576.8	1820.5
<b>2000-01</b>	5,303	5,390	6,442	6,556	779.2	161.3	390.5	729.6	1670.1
<b>1999-00</b>									
September	1,752	1,792	2,116	2,166	251.2	42.6	84.1	109.3	403.1
December	1,947	2,007	2,264	2,327	250.9	45.2	92.7	132.2	428.3
March	2,054	2,064	2,534	2,544	284.9	52.1	70.8	182.9	519.9
June	1,977	1,994	2,353	2,374	257.8	58.9	103.6	152.5	469.2
<b>2000-01</b>									
September	1,380	1,419	1,777	1,819	228.9	25.6	104.8	166.3	420.8
December	1,345	1,350	1,498	1,512	167.8	44.3	122.8	151.4	363.5
March	1,157	1,179	1,562	1,597	186.5	43.6	70.9	111.2	341.2
June	1,422	1,443	1,605	1,628	196.0	47.9	91.9	300.7	544.6
<b>2001-02</b>									
September	1,829	1,851	2,366	2,401	316.4	44.7	143.1	187.2	548.3

(a) Includes conversions.

Source: Building Activity, Australia (Cat. no. 8752.0).



## VALUE OF BUILDING WORK DONE AND COMPLETED DURING PERIOD

Period	New houses		New residential building		Alterations and additions to residential building	Total residential building	Non-residential building		Total building	
	Private sector	Total	Private sector	Total			Private sector	Total	Private sector	Total
	\$m	\$m	\$m	\$m	\$m	\$m	\$m	\$m	\$m	\$m
VALUE OF BUILDING WORK DONE										
<b>1998-99</b>	599.4	614.6	720.8	737.7	147.7	885.4	417.1	571.6	1283.8	1457.0
<b>1999-00</b>	798.1	812.2	984.5	999.9	195.5	1195.4	409.9	629.4	1585.1	1824.8
<b>2000-01</b>	679.7	686.9	835.5	845.0	161.9	1006.8	395.0	624.0	1385.4	1630.9
<b>1999-00</b>										
September	166.8	171.9	212.6	218.4	41.3	259.8	116.7	171.6	369.4	431.3
December	187.5	192.0	227.3	232.1	46.8	278.9	101.0	149.2	374.3	428.1
March	193.0	196.1	239.4	242.6	47.2	289.9	86.3	145.3	372.4	435.2
June	250.8	252.2	305.1	306.8	60.1	366.9	105.9	163.3	469.1	530.2
<b>2000-01</b>										
September	175.9	178.2	228.3	230.7	30.9	261.5	84.0	138.2	341.8	399.7
December	179.6	180.9	216.0	218.3	42.1	260.4	116.6	176.1	372.9	436.5
March	162.6	164.0	193.8	195.7	40.7	236.4	97.2	145.7	330.1	382.1
June	161.6	163.8	197.3	200.3	48.2	248.6	97.2	163.9	340.6	412.5
<b>2001-02</b>										
September	185.0	188.0	228.4	231.9	48.6	280.5	110.9	169.9	385.7	450.4
VALUE OF BUILDING WORK COMPLETED										
<b>1998-99</b>	600.6	614.8	700.0	715.2	153.2	868.4	505.3	639.4	1356.8	1507.8
<b>1999-00</b>	713.5	730.1	867.6	886.2	191.9	1078.1	362.9	538.4	1419.4	1616.4
<b>2000-01</b>	758.7	763.6	942.8	949.0	154.4	1103.4	436.3	591.5	1526.5	1694.9
<b>1999-00</b>										
September	148.9	154.7	170.2	177.7	38.5	216.2	67.9	104.1	275.4	320.2
December	190.6	195.1	221.7	226.5	45.5	272.0	124.7	161.8	391.3	433.8
March	156.0	160.2	177.8	182.0	42.2	224.2	100.8	150.4	320.0	374.6
June	217.9	220.1	297.9	300.1	65.7	365.8	69.6	122.0	432.8	487.8
<b>2000-01</b>										
September	175.5	176.2	199.0	199.9	31.4	231.4	133.2	180.5	362.5	411.9
December	222.2	224.8	313.7	317.3	35.8	353.1	82.8	107.7	430.7	460.8
March	173.0	174.3	216.4	217.9	34.9	252.8	82.4	138.5	330.9	391.2
June	188.0	188.3	213.7	213.9	52.2	266.1	137.9	164.9	402.4	431.0
<b>2001-02</b>										
September	149.9	153.2	173.1	177.6	54.5	232.1	74.3	119.7	298.8	351.8

Source: Building Activity, Australia (Cat. no. 8752.0).

<i>Period</i>	<i>Pigmeat</i>	<i>Beef</i>	<i>Mutton</i>	<i>Lamb</i>	<i>Sawn timber(a)</i>
	<i>tonnes</i>	<i>tonnes</i>	<i>tonnes</i>	<i>tonnes</i>	<i>m<sup>3</sup></i>
<b>1998-99</b>	30 864	62 266	48 029	44 173	374 590
<b>1999-00</b>	31 927	78 001	28 970	56 668	425 549
<b>2000-01</b>	36 679	82 532	36 104	61 893	389 417
<b>1999-00</b>					
September	7 294	17 107	5 654	11 492	111 075
December	7 504	18 401	8 714	11 944	93 802
March	8 245	21 743	8 810	14 475	112 949
June	8 884	20 750	5 792	18 757	107 723
<b>2000-01</b>					
September	8 227	18 011	8 072	15 785	126 440
December	8 143	21 982	9 826	15 689	89 486
March	9 785	23 367	9 885	14 968	75 558
June	10 524	19 172	8 321	15 451	97 933
<b>2001-02</b>					
September	10 274	18 271	6 290	11 694	103 774

(a) From Australian softwood logs only.

Source: *Livestock Products, Australia* (Cat. no. 7215.0) and ABS data available on request.

<i>Period</i>	<i>Food</i>	<i>Alcohol and tobacco</i>	<i>Clothing and footwear</i>	<i>Housing</i>	<i>House furnishings, supplies and services</i>	<i>Health</i>	<i>Transportation</i>	<i>Communication</i>	<i>Recreation</i>	<i>Education</i>	<i>Miscellaneous</i>	<i>All groups</i>
ANNUAL AVERAGE (1989-90 = 100.0)												
<b>1998-99</b>	127.7	171.8	105.0	92.0	113.3	176.0	121.6	101.9	117.9	204.8	142.7	123.2
<b>1999-00</b>	130.8	179.1	103.3	97.0	112.9	165.7	129.4	97.7	119.1	215.8	148.8	126.3
<b>2000-01</b>	136.7	198.3	111.9	104.3	117.1	169.5	138.0	104.7	122.9	225.9	159.3	133.5
QUARTERLY (1989-90 = 100.0)												
<b>2000-01</b>												
September	133.8	193.4	113.6	103.9	116.0	168.5	136.8	105.5	122.7	220.9	157.8	132.3
December	134.2	196.0	111.2	103.9	115.8	167.6	137.6	105.0	123.4	220.9	158.3	132.5
March	139.4	200.5	110.5	104.4	117.4	170.7	137.0	104.3	123.0	230.9	159.9	134.1
June	139.4	203.3	112.3	104.9	119.3	171.3	140.4	103.9	122.5	230.9	161.2	135.1
<b>2001-02</b>												
September	140.5	205.9	108.4	106.8	120.6	170.9	136.4	103.6	123.1	231.0	163.5	135.3
December	143.8	205.5	112.2	107.9	120.9	169.3	134.4	106.0	125.6	231.1	163.8	136.6
PERCENTAGE CHANGE FROM SAME QUARTER OF PREVIOUS YEAR												
<b>2000-01</b>												
September	3.2	10.9	8.4	9.4	3.1	2.4	7.4	8.0	2.5	4.8	10.2	5.8
December	2.9	10.2	8.5	7.2	2.8	2.4	8.0	8.0	3.1	4.8	7.4	5.4
March	6.3	10.4	8.4	6.6	4.0	2.4	5.1	7.5	3.8	4.6	6.2	5.8
June	5.7	11.4	8.0	6.7	5.2	2.0	6.4	5.3	3.3	4.6	4.7	5.9
<b>2001-02</b>												
September	5.0	6.5	-4.6	2.8	4.0	1.4	-0.3	1.8	0.3	4.6	3.6	2.3
December	7.2	4.8	0.9	3.8	4.4	1.0	-2.3	1.0	1.8	4.6	3.5	3.1
PERCENTAGE CHANGE FROM PREVIOUS QUARTER												
<b>2000-01</b>												
September	1.4	6.0	9.2	5.7	2.3	0.4	3.7	6.9	3.5	0.1	2.5	3.7
December	0.3	1.3	-2.1	0.0	-0.2	-0.5	0.6	-0.5	0.6	0.0	0.3	0.2
March	3.9	2.3	-0.6	0.5	1.4	1.8	-0.4	-0.7	-0.3	4.5	1.0	1.2
June	0.0	0.9	1.6	0.5	1.6	0.4	2.5	-0.4	-0.4	0.0	0.8	0.7
<b>2001-02</b>												
September	0.8	1.3	-3.4	1.8	1.1	-0.2	-2.8	-0.3	0.5	0.0	1.4	0.1
December	2.3	-0.2	3.5	1.0	0.2	-0.9	-1.5	2.3	2.0	0.0	0.2	1.0

Source: Consumer Price Index (Cat. no. 6401.0).

# 17

## ESTIMATED RESIDENT POPULATION AND COMPONENTS OF POPULATION CHANGE

Period	Net migration			Total increase	Population at end of period
	Natural increase	Interstate	Overseas(a)		
<b>1998-99</b>	6 751	-2 869	2 108	5 990	1 492 408
<b>1999-00</b>	6 306	-4 773	3 453	4 986	1 497 394
<b>2000-01</b>	5 635	-4 234	3 602	5 003	1 502 397
<b>1999-00</b>					
September	1 419	-600	992	1 811	1 494 219
December	1 611	-1 291	1 643	1 963	1 496 182
March	1 828	-1 735	662	755	1 496 937
June	1 448	-1 147	156	457	1 497 394
<b>2000-01</b>					
September	1 121	-1 030	924	1 015	1 498 409
December	1 490	-1 308	1 660	1 842	1 500 251
March	1 740	-1 264	655	1 131	1 501 382
June	1 284	-632	363	1 015	1 502 397

(a) Includes category jumping.

Source: Australian Demographic Statistics (Cat. no. 3101.0).

# 18

## BIRTHS, DEATHS, MARRIAGES AND DIVORCES

Period	Registrations			
	Births	Deaths	Marriages	Divorces
<b>1998-99</b>	18 399	11 648	8 034	4 191
<b>1999-00</b>	17 896	11 590	8 428	4 197
<b>2000-01</b>	17 449	11 814	7 689	4 072
<b>1999-00</b>				
September	4 600	3 181	1 259	1 058
December	4 371	2 760	2 737	1 190
March	4 476	2 648	2 436	965
June	4 449	3 001	1 996	984
<b>2000-01</b>				
September	4 360	3 239	1 092	1 056
December	4 319	2 829	2 703	1 031
March	4 549	2 809	2 175	824
June	4 221	2 937	1 719	1 161

Source: Australian Demographic Statistics (Cat. no. 3101.0).

## 19

## CIVILIAN LABOUR FORCE STATUS(a)

Period	Employed full-time		Employed part-time		Total employed		Unemployed		Labour force	
	Males	Females	Males	Females	Males	Females	Males	Females	Males	Females
ANNUAL AVERAGE ('000)										
<b>1998-99</b>	319.7	148.2	49.6	137.2	369.3	285.4	39.3	25.3	408.6	310.6
<b>1999-00</b>	322.1	152.5	56.1	142.3	378.2	294.9	34.6	23.9	412.8	318.7
<b>2000-01</b>	322.6	156.7	54.8	143.5	377.4	300.2	32.6	20.2	410.0	320.4
MONTHLY, ORIGINAL ('000)										
<b>2000-01</b>										
October	327.9	157.4	54.7	142.3	382.6	299.6	31.2	19.3	413.8	318.9
November	327.3	157.1	52.2	142.5	379.5	299.6	31.8	20.4	411.3	320.0
December	328.8	159.5	51.1	143.3	380.0	302.8	32.3	20.0	412.2	322.8
January	320.5	157.3	55.0	134.0	375.4	291.3	34.7	20.8	410.1	312.1
February	321.0	157.4	54.3	143.4	375.3	300.8	34.8	20.4	410.1	321.2
March	311.6	156.0	57.5	145.9	369.1	301.8	32.6	18.3	401.7	320.2
April	314.3	151.8	57.1	150.6	371.4	302.5	34.2	19.4	405.6	321.9
May	316.3	154.8	55.1	146.2	371.3	301.0	35.5	20.5	406.9	321.4
June	313.5	152.7	58.6	150.1	372.1	302.8	30.5	20.9	402.6	323.7
<b>2001-02</b>										
July	316.2	156.5	54.8	144.8	371.0	301.3	33.2	19.4	404.2	320.7
August	317.2	150.9	56.2	149.4	373.4	300.3	31.9	20.5	405.3	320.7
September	318.2	158.3	57.3	147.4	375.5	305.7	32.2	20.5	407.6	326.2
October	317.7	154.6	56.9	150.9	374.6	305.5	32.4	18.6	407.1	324.1
November	319.4	159.8	56.2	151.6	375.6	311.4	32.1	16.9	407.6	328.3
December	322.1	158.8	59.6	151.1	381.7	309.9	32.0	20.2	413.8	330.1
MONTHLY, TREND ('000)										
<b>2000-01</b>										
October	327.8	158.4	54.1	139.8	381.9	298.2	31.6	20.9	413.5	319.1
November	326.1	157.5	54.1	140.2	380.2	297.7	31.5	20.4	411.7	318.1
December	324.0	156.6	54.0	141.1	378.0	297.7	31.8	19.7	409.8	317.4
January	321.6	155.9	54.2	142.5	375.8	298.4	32.2	19.1	408.0	317.5
February	319.3	155.6	54.6	144.2	373.9	299.8	32.7	18.8	406.6	318.6
March	317.4	155.5	55.0	146.0	372.4	301.5	33.4	18.8	405.8	320.3
April	316.1	155.5	55.4	147.3	371.5	302.8	34.0	19.3	405.5	322.1
May	315.4	155.3	55.8	148.1	371.2	303.4	34.3	20.0	405.5	323.4
June	315.4	155.2	56.1	148.4	371.5	303.6	34.3	20.6	405.8	324.2
<b>2001-02</b>										
July	315.9	155.3	56.4	148.1	372.3	303.4	33.9	21.0	406.2	324.4
August	316.5	155.5	56.9	147.9	373.4	303.4	33.3	20.8	406.7	324.2
September	317.0	155.7	57.4	147.9	374.4	303.6	32.7	20.4	407.1	324.0
October	317.5	155.9	57.8	148.0	375.3	303.9	32.3	19.9	407.6	323.8
November	317.9	156.2	58.2	148.1	376.1	304.3	31.9	19.5	408.0	323.8
December	318.4	156.4	58.5	148.3	376.9	304.7	31.7	19.1	408.6	323.8

(a) Population aged 15 years and over.

Source: Labour Force, Australia, Preliminary (Cat. no. 6202.0).

Period	Civilian population			Unemployment rate			Participation rate		
	Males aged 15 and over	Females aged 15 and over	Persons aged 15-19	Males all ages	Females all ages	Persons all ages	Males	Females	Persons
	'000	'000	%	%	%	%	%	%	%
ANNUAL AVERAGE									
<b>1998-99</b>	583.2	609.8	21.7	9.6	8.1	9.0	70.1	50.9	60.3
<b>1999-00</b>	587.6	613.8	20.9	8.4	7.5	8.0	70.3	51.9	60.9
<b>2000-01</b>	591.6	616.9	18.5	8.0	6.3	7.2	69.3	51.9	60.4
MONTHLY, ORIGINAL									
<b>2000-01</b>									
October	591.0	616.3	16.9	7.5	6.0	6.9	70.0	51.7	60.7
November	591.3	616.6	18.2	7.7	6.4	7.1	69.6	51.9	60.5
December	591.5	616.9	20.7	7.8	6.2	7.1	69.7	52.3	60.8
January	591.8	617.0	20.6	8.5	6.7	7.7	69.3	50.6	59.7
February	592.0	617.2	18.8	8.5	6.4	7.5	69.3	52.0	60.5
March	592.3	617.4	17.7	8.1	5.7	7.1	67.8	51.9	59.7
April	592.6	617.6	17.8	8.4	6.0	7.4	68.5	52.1	60.1
May	592.9	617.9	21.1	8.7	6.4	7.7	68.6	52.0	60.2
June	593.1	618.2	17.1	7.6	6.4	7.1	67.9	52.4	60.0
<b>2001-02</b>									
July	593.5	618.6	17.6	8.2	6.1	7.3	68.1	51.9	59.8
August	593.9	619.0	17.9	7.9	6.4	7.2	68.2	51.8	59.9
September	594.3	619.4	17.0	7.9	6.3	7.2	68.6	52.7	60.5
October	594.5	619.6	18.9	8.0	5.7	7.0	68.5	52.3	60.2
November	594.8	619.9	16.5	7.9	5.2	6.7	68.5	53.0	60.6
December	595.1	620.1	20.9	7.7	6.1	7.0	69.5	53.2	61.2
MONTHLY, TREND									
<b>2000-01</b>									
October	n.a.	n.a.	n.a.	7.6	6.6	7.2	70.0	51.8	60.7
November	n.a.	n.a.	n.a.	7.7	6.4	7.1	69.6	51.6	60.4
December	n.a.	n.a.	n.a.	7.8	6.2	7.1	69.3	51.5	60.2
January	n.a.	n.a.	n.a.	7.9	6.0	7.1	68.9	51.5	60.0
February	n.a.	n.a.	n.a.	8.1	5.9	7.1	68.7	51.6	60.0
March	n.a.	n.a.	n.a.	8.2	5.9	7.2	68.5	51.9	60.0
April	n.a.	n.a.	n.a.	8.4	6.0	7.3	68.4	52.1	60.1
May	n.a.	n.a.	n.a.	8.5	6.2	7.4	68.4	52.3	60.2
June	n.a.	n.a.	n.a.	8.4	6.4	7.5	68.4	52.4	60.3
<b>2001-02</b>									
July	n.a.	n.a.	n.a.	8.3	6.5	7.5	68.4	52.4	60.3
August	n.a.	n.a.	n.a.	8.2	6.4	7.4	68.5	52.4	60.3
September	n.a.	n.a.	n.a.	8.0	6.3	7.3	68.5	52.3	60.2
October	n.a.	n.a.	n.a.	7.9	6.2	7.1	68.5	52.3	60.2
November	n.a.	n.a.	n.a.	7.8	6.0	7.0	68.6	52.2	60.2
December	n.a.	n.a.	n.a.	7.7	5.9	6.9	68.7	52.2	60.3

(a) Population aged 15 years and over.

Source: Labour Force, Australia, Preliminary (Cat. no. 6202.0).

Period	Males			Females			Persons		
	Full-time adult ordinary time earnings	Full-time adult total earnings	All males total earnings	Full-time adult ordinary time earnings	Full-time adult total earnings	All females total earnings	Full-time adult ordinary time earnings	Full-time adult total earnings	All employees total earnings
ANNUAL AVERAGE (\$ per week)									
<b>1998-99</b>	741.20	797.60	678.30	627.90	647.30	464.40	699.10	741.70	575.20
<b>1999-00</b>	756.80	812.50	695.00	641.70	663.30	457.20	714.40	757.50	575.90
<b>2000-01</b>	811.30	864.40	746.80	685.20	703.90	491.20	765.70	806.40	619.70
QUARTERLY, ORIGINAL (\$ per week)									
<b>1999-00</b>									
May	770.40	831.30	705.00	651.40	677.20	462.60	726.80	774.80	585.90
<b>2000-01</b>									
August	791.60	846.00	724.80	667.70	692.60	484.00	745.50	788.90	603.60
November	814.90	866.00	748.30	681.40	698.00	488.30	766.40	805.00	618.50
February	813.80	870.60	754.70	693.60	710.60	499.30	770.10	812.40	627.70
May	824.80	875.00	759.10	698.00	714.20	493.00	780.90	819.30	628.90
<b>2001-02</b>									
August	832.60	875.90	771.20	714.50	727.10	513.00	791.70	824.30	644.50
QUARTERLY, TREND (\$ per week)									
<b>1999-00</b>									
May	776.70	834.20	713.10	654.70	676.20	468.20	731.60	775.50	590.70
<b>2000-01</b>									
August	793.00	848.50	727.40	667.90	689.70	480.20	746.70	789.90	604.20
November	807.10	860.80	742.10	679.80	699.60	488.90	760.50	802.10	616.10
February	817.30	869.80	752.80	690.60	707.50	494.60	772.00	811.70	624.80
May	824.90	876.10	762.10	702.30	717.80	500.80	782.00	820.20	633.20
<b>2001-02</b>									
August	831.40	880.60	771.90	715.20	729.60	509.20	791.60	828.20	642.80

Source: Average Weekly Earnings, States and Australia (Cat. no. 6302.0).

## 22

## SECURED HOUSING FINANCE COMMITMENTS(a)

Period	Original		Seasonally adjusted		Trend	
	Dwelling units	Value	Dwelling units	Value	Dwelling units	Value
	no.	\$m	no.	\$m	no.	\$m
<b>2000-01</b>						
September	3 704	347	3 944	372	3 890	369
October	3 717	351	3 810	362	3 924	373
November	4 163	406	3 836	368	3 903	374
December	3 921	395	3 985	388	3 855	375
January	3 511	356	3 909	395	3 815	378
February	3 565	351	3 623	357	3 820	386
March	4 119	423	3 814	395	3 870	399
April	3 645	382	3 895	411	3 957	415
May	4 522	479	4 205	443	4 068	432
June	4 321	458	4 165	454	4 176	447
<b>2001-02</b>						
July	4 290	462	4 308	469	4 254	458
August	4 324	455	4 326	457	4 292	463
September	3 849	414	4 324	467	4 310	467
October	4 334	473	4 216	457	4 320	471
November	4 703	525	4 246	485	4 315	473

(a) Excludes alterations and additions. Includes refinancing.

Source: Housing Finance for Owner Occupation, Australia (Cat. no. 5609.0).

## 23

## FINANCE COMMITMENTS

Period	Commercial finance commitments			Personal finance commitments			
	Fixed loan facilities	Revolving credit facilities	Total commercial finance commitments	Fixed loan facilities	Revolving credit facilities	Total personal finance commitments	Total lease finance commitments
	\$m	\$m	\$m	\$m	\$m	\$m	\$m
<b>2000-01</b>							
July	339.5	256.5	596.0	112.8	147.0	259.8	9.8
August	249.2	163.0	412.3	141.9	162.6	304.5	10.1
September	235.4	269.6	505.0	131.6	121.0	252.6	15.8
October	247.0	150.7	397.7	126.0	122.6	248.6	9.4
November	287.3	254.6	541.9	149.5	163.5	312.9	13.6
December	329.6	394.5	724.1	138.0	148.1	286.0	14.4
January	234.2	164.6	398.9	136.1	129.1	265.2	7.7
February	284.4	292.7	577.1	137.5	111.5	249.0	15.2
March	321.3	278.2	599.5	164.8	147.1	311.9	13.7
April	262.6	295.6	558.2	133.7	108.6	242.4	11.2
May	376.4	186.8	563.2	162.5	144.9	307.4	7.7
June	524.6	375.8	900.5	165.3	168.5	333.8	19.1
<b>2001-02</b>							
July	373.9	260.2	634.1	150.7	169.7	320.4	28.7
August	374.2	220.1	594.3	165.4	143.6	308.9	15.6
September	293.2	222.3	515.5	136.5	127.2	263.7	13.5

Source: ABS data available on request.



## PUBLICATIONS SOURCE INDEX

- (1) *Australian National Accounts, Quarterly State Details*  
(Cat. no. 5206.0.40.001)
- (2) International Merchandise Trade, ABS data available on request
- (3) *Retail Trade, Australia* (Cat. no. 8501.0) Monthly
- (4) *New Motor Vehicles Registrations, Australia, Preliminary*  
(Cat. no. 9301.0) Monthly
- (5) *State Estimates of Private New Capital Expenditure*  
(Cat. no. 5646.0) Quarterly
- (6) *Tourist Accommodation, Australia* (Cat. no. 8635.0) Quarterly
- (7) *Building Approvals, Australia* (Cat. no. 8731.0) Monthly
- (8) *Building Activity, Australia* (Cat. no. 8752.0) Quarterly
- (9) *Engineering Construction Activity, Australia*  
(Cat. no. 8762.0) Quarterly
- (10) *Manufacturing Production, Australia, Preliminary*  
(Cat. no. 8301.0) Quarterly
- (11) *Livestock Products, Australia* (Cat. no. 7215.0) Quarterly
- (12) *Actual and Expected Private Mineral Exploration, Australia*  
(Cat. no. 8412.0) Quarterly
- (13) *Consumer Price Index* (Cat. no. 6401.0) Quarterly
- (14) *Producer Price Indexes* (Cat. no. 6427.0) Quarterly
- (16) *House Price Indexes: Eight Capital Cities*  
(Cat. no. 6416.0) Quarterly
- (17) *Australian Demographic Statistics* (Cat. no. 3101.0) Quarterly
- (18) *Labour Force, Australia, Preliminary* (Cat. no. 6202.0) Monthly
- (19) *Job Vacancies, Australia* (Cat. no. 6354.0) Quarterly
- (20) *Industrial Disputes, Australia* (Cat. no. 6321.0) Monthly
- (21) *Average Weekly Earnings, States and Australia*  
(Cat. no. 6302.0) Quarterly
- (22) *Wage Cost Index, Australia* (Cat. no. 6345.0) Quarterly
- (23) *Housing Finance for Owner Occupation, Australia*  
(Cat. no. 5609.0) Monthly
- (24) *Lending Finance, Australia* (Cat. no. 5671.0) Monthly—and ABS  
data available on request
- (25) *Reserve Bank of Australia Bulletin*





## FOR MORE INFORMATION...

- INTERNET* **www.abs.gov.au** the ABS web site is the best place to start for access to summary data from our latest publications, information about the ABS, advice about upcoming releases, our catalogue, and Australia Now—a statistical profile.
- LIBRARY* A range of ABS publications is available from public and tertiary libraries Australia-wide. Contact your nearest library to determine whether it has the ABS statistics you require, or visit our web site for a list of libraries.
- CPI INFOLINE* For current and historical Consumer Price Index data, call 1902 981 074 (call cost 77c per minute).
- DIAL-A-STATISTIC* For the latest figures for National Accounts, Balance of Payments, Labour Force, Average Weekly Earnings, Estimated Resident Population and the Consumer Price Index call 1900 986 400 (call cost 77c per minute).

## INFORMATION SERVICE

Data which have been published and can be provided within five minutes are free of charge. Our information consultants can also help you to access the full range of ABS information—ABS user-pays services can be tailored to your needs, time frame and budget. Publications may be purchased. Specialists are on hand to help you with analytical or methodological advice.

- PHONE* **1300 135 070**
- EMAIL* **client.services@abs.gov.au**
- FAX* 1300 135 211
- POST* Client Services, ABS, GPO Box 796, Sydney 1041

## WHY NOT SUBSCRIBE?

ABS subscription services provide regular, convenient and prompt deliveries of ABS publications and products as they are released. Email delivery of monthly and quarterly publications is available.

- PHONE* 1300 366 323
- EMAIL* subscriptions@abs.gov.au
- FAX* 03 9615 7848
- POST* Subscription Services, ABS, GPO Box 2796Y, Melbourne 3001



2130740002021  
ISSN 1039-8880

RRP \$20.00