



# **SOUTH AUSTRALIAN ECONOMIC INDICATORS**

EMBARGO: 11:30AM (CANBERRA TIME) MON 3 JUN 2002

## **C O N T E N T S**

	<i>page</i>
Notes.....	2
REVIEW	
Overview .....	3
Selected features .....	4
TABLES	
List of tables .....	5
Statistical summary .....	6
State summary .....	8
State accounts .....	9
International trade .....	10
Consumption and investment .....	13
Production .....	15
Consumer price index .....	19
Labour force and demography .....	20
Average weekly earnings .....	23
Financial markets .....	24
ADDITIONAL INFORMATION	
Publications source index .....	25

- For further information about these and related statistics, contact Kirsten Hastwell on Adelaide 08 8237 7369, or the National Information and Referral Service on 1300 135 070.

## NOTES

### FORTHCOMING ISSUES

<i>ISSUE</i>	<i>RELEASE DATE</i>
July 2002	1 July 2002
August 2002	1 August 2002
September 2002	2 September 2002
October 2002	1 October 2002
November 2002	1 November 2002
December 2002	2 December 2002

### ABOUT THIS PUBLICATION

*South Australian Economic Indicators* is a monthly publication which contains the latest available data at the time of preparation for a range of statistical series that have been identified as indicators of economic activity in this State. In a number of cases the figures presented are preliminary and subject to revision in subsequent issues.

### SYMBOLS AND OTHER USAGES

n.a.	not available
n.y.a.	not yet available
*	subject to sampling variability too high for most practical purposes
..	not applicable
0, 0.0	nil, or rounded to zero

### ROUNDING

Where figures have been rounded, discrepancies may occur between sums of the component items and totals.

### INFORMATION

All data are original, unless otherwise stated. More detailed information on each series, including explanatory and technical notes, can be obtained from other Australian Bureau of Statistics publications or alternative data sources. To assist those seeking further information, the series presented in the statistical and State summaries provides a reference to the Publication Source Index which is at the end of this publication.

Steve Crabb  
Regional Director  
South Australia

## OVERVIEW

The data in this Overview are presented in trend terms, unless otherwise stated.

### INTERNATIONAL TRADE

The value of South Australian merchandise exports in original terms for the month of March 2002 was \$862.6m. This was an increase of 16.0% from the value for February 2002 and an increase of 5.7% on March 2001.

The value of South Australian merchandise imports in original terms for the month of March 2002 was \$396.2m. This was a decrease of 19.3% from the value for February 2002 and a decrease of 14.3% from March 2001.

### CONSUMPTION AND INVESTMENT

South Australia's retail turnover increased by 12.4% over the 12 months to March 2002. Retail turnover for March 2002 was \$1,097.6m.

There were 4,466 new motor vehicle sales in March 2002, an increase of 12.4% on March last year.

Private new capital expenditure in the December Quarter 2001 was \$675m, a decline of 4.0% on December Quarter 2000.

### HOUSING

The number of dwelling units approved in March 2002 was 935, a rise of 67.9 on March last year.

### CONSUMER PRICE INDEX

The Consumer Price Index (All Groups) for Adelaide increased by 0.8% to 137.7 in the March Quarter 2002, and by 2.7% over the level recorded twelve months previously. The annual change is no longer affected by the direct or first round effects of The New Tax System, particularly the introduction of the goods and services tax.

### LABOUR FORCE AND DEMOGRAPHY

The estimate of employed persons in South Australia continued to rise for the fourteenth consecutive month to 691,900 in April 2002 and is 2.6% higher than the level of twelve months ago (674,600).

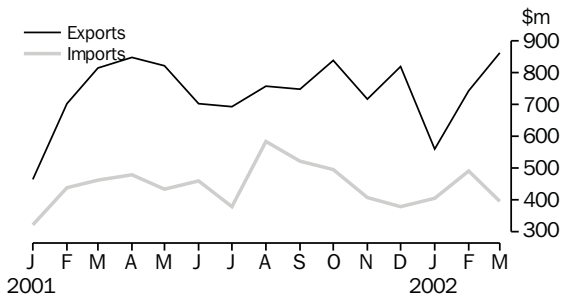
The unemployment rate for South Australia decreased slightly to 6.7% in April 2002 and was lower than the rate in April 2001 (7.3%).

### FINANCIAL MARKETS

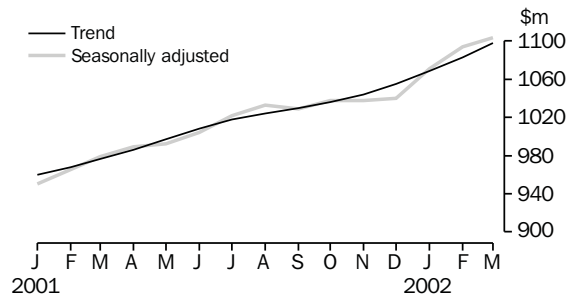
The value of secured housing finance commitments (excluding alterations and additions) was \$483m in March 2002. This was a 0.4% decrease on February 2002 but 21.1% higher than March 2001.

## SELECTED FEATURES

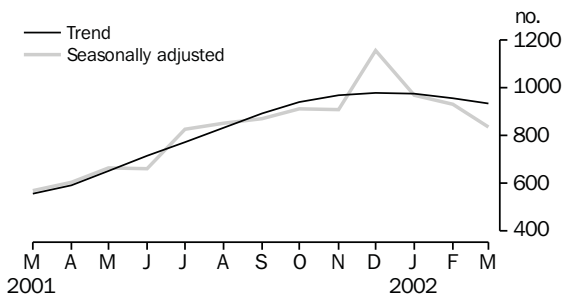
MERCHANDISE EXPORTS AND IMPORTS



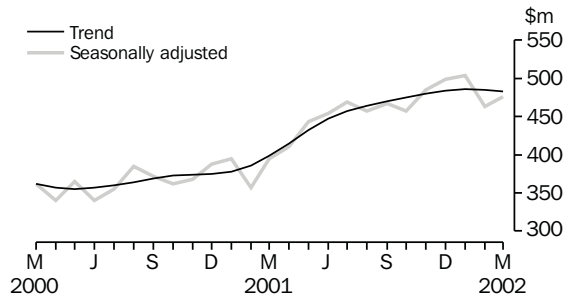
RETAIL TURNOVER



DWELLING UNITS APPROVED

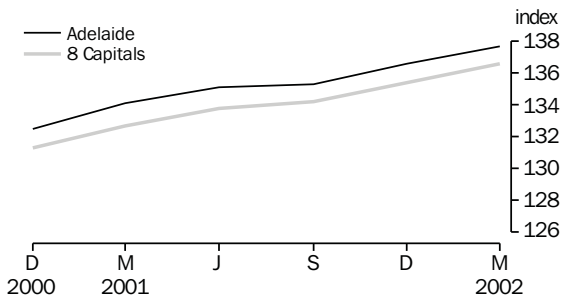


SECURED HOUSING FINANCE COMMITMENTS(a)

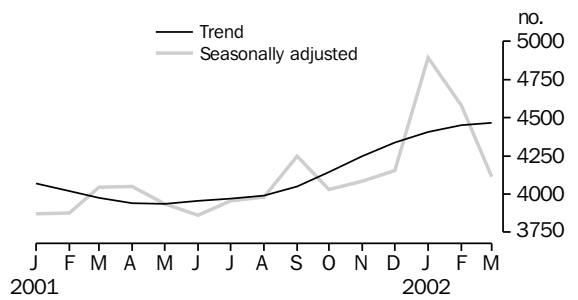


(a) Excludes alterations and additions. Includes refinancing.

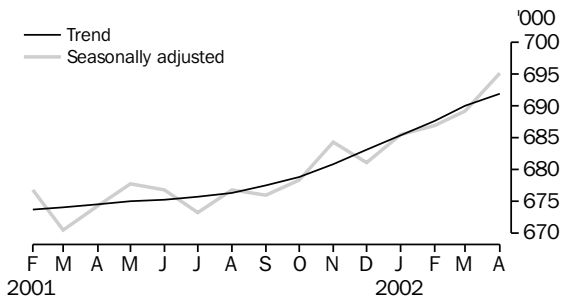
CONSUMER PRICE INDEX



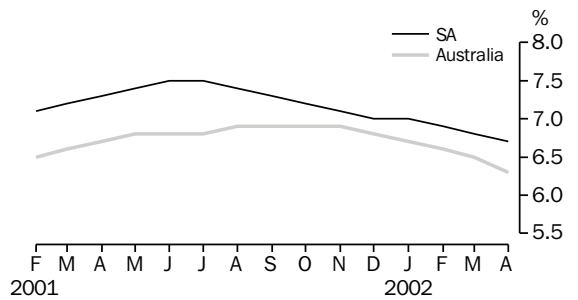
NEW MOTOR VEHICLE SALES



EMPLOYED PERSONS



UNEMPLOYMENT RATE—TREND



## LIST OF TABLES

			Page
STATISTICAL SUMMARY	<b>1</b>	Statistical summary	6
	<b>2</b>	State summary	8
STATE ACCOUNTS	<b>3</b>	State accounts at current prices	9
	<b>4</b>	State accounts at chain volume measures	9
INTERNATIONAL TRADE	<b>5</b>	Merchandise exports, by selected commodity group	10
	<b>6</b>	Merchandise exports, by selected countries and country groups	11
	<b>7</b>	Merchandise imports, by selected commodity group	12
CONSUMPTION AND INVESTMENT	<b>8</b>	Turnover of retail establishments, by industry—trend	13
	<b>9</b>	New motor vehicle sales, by type of vehicle	13
	<b>10</b>	Actual private new capital expenditure, by selected industry and type of asset	14
	<b>11</b>	Tourist accommodation	14
PRODUCTION	<b>12</b>	Building approvals	15
	<b>13</b>	Building commencements	16
	<b>14</b>	Value of building work done and completed during period	17
	<b>15</b>	Production, livestock products and selected commodities	18
	<b>16</b>	Consumer price index, by group—Adelaide	19
LABOUR FORCE AND DEMOGRAPHY	<b>17</b>	Estimated resident population and components of population change	20
	<b>18</b>	Births, deaths, marriages and divorces	20
	<b>19</b>	Civilian labour force status	21
	<b>20</b>	Civilian labour force, unemployment and participation rates	22
AVERAGE WEEKLY EARNINGS	<b>21</b>	Average weekly earnings of employees	23
FINANCIAL MARKETS	<b>22</b>	Secured housing finance commitments	24
	<b>23</b>	Finance commitments	24

Indicator	Period	South Australia			Australia			SA as a % of Aust.	Source index
		Number	% change from		Number	% change from			
			Previous period	Same period previous year		Previous period	Same period previous year		
<b>State accounts</b>									
Domestic final demand									
Current prices trend (\$m)	Dec qtr 01	12 280	2.4	7.2	175 203	1.7	5.6	7.0	(1)
Chain volume measures trend (\$m)	Dec qtr 01	11 628	1.8	5.0	166 191	1.5	4.1	7.0	(1)
Private final consumption expenditure									
Current prices trend (\$m)	Dec qtr 01	7 588	1.4	6.5	105 056	1.1	5.5	7.2	(1)
Chain volume measures trend (\$m)	Dec qtr 01	7 134	1.0	4.4	98 811	0.9	3.6	7.2	(1)
Private gross fixed capital formation									
Current prices trend (\$m)	Dec qtr 01	1 927	4.9	5.8	30 771	3.9	8.2	6.3	(1)
Chain volume measures trend (\$m)	Dec qtr 01	1 852	7.9	-0.2	29 434	3.7	7.0	6.3	(1)
Compensation of employees									
Current prices trend (\$m)	Dec qtr 01	5 337	0.9	2.9	83 072	0.6	3.6	6.4	(1)
<b>International accounts</b>									
Exports (\$m)	Mar 02	862.6	16.0	5.7	10 492.0	12.5	-0.8	8.2	(2)
Imports (\$m)	Mar 02	396.2	-19.3	-14.3	9 621.0	0.0	-3.1	4.1	(2)
<b>Consumption and investment</b>									
Retail turnover									
Current prices original (\$m)	Mar 02	1 096.6	14.6	11.6	13 925.6	11.5	6.1	7.9	(3)
Current prices trend (\$m)	Mar 02	1 097.6	1.4	12.4	14 212.3	0.6	7.4	7.7	(3)
Chain volume measures original (\$m)	Mar qtr 02	2 885.8	-11.1	10.9	37 297.6	-13.3	5.1	7.7	(3)
New motor vehicle sales									
Original (no.)	Mar 02	4 224	1.3	-2.1	67 824	4.7	-1.6	6.2	(4)
Trend (no.)	Mar 02	4 466	0.3	12.4	69 140	-0.1	8.2	6.5	(4)
Private new capital expenditure									
Current prices original (\$m)	Dec qtr 01	842	54.8	-0.8	10 970	16.9	4.8	7.7	(6)
Current prices trend (\$m)	Dec qtr 01	675	9.8	-4.0	10 119	2.7	4.7	6.7	(6)
Private new capital expenditure (\$m)	2000-01	2 649	8.1	16.3	39 358	-7.3	-11.9	6.7	(6)
Takings from accommodation—hotels, motels, guesthouses and serviced apartments									
	Dec qtr 01	55.8	10.7	1.6	1 209.6	-1.4	-4.5	4.6	(6)
<b>Production</b>									
Dwelling unit approvals									
Original (no.)	Mar 02	904	-6.9	42.4	13 201	0.7	34.3	6.8	(7)
Trend (no.)	Mar 02	935	-2.4	67.9	13 065	-1.1	34.2	7.2	(7)
Dwelling units commenced (no.)	Dec qtr 01	2 600	8.3	72.0	42 790	5.7	48.5	6.1	(8)
Value of non-residential building approvals—trend (\$m)									
	Mar 02	67.3	-0.4	42.3	1 211.5	-0.5	10.4	5.6	(7)
Value of total building activity									
Commenced (\$m)	Dec qtr 01	527.8	-5.4	45.2	10 494.9	4.6	36.4	5.0	(8)
Work done (\$m)	Dec qtr 01	512.1	13.7	17.3	9 991.8	7.4	18.6	5.1	(8)
Work yet to be done (\$m)	Dec qtr 01	715.1	1.9	51.3	14 362.9	6.8	27.7	5.0	(8)
Value of engineering construction work done (\$m)									
	Dec qtr 01	355.3	16.0	35.0	4 815.9	8.0	9.7	7.4	(9)
Manufacturing production									
Red meat (tonnes)	Mar qtr 02	57 747	4.0	6.7	723 602	-3.4	-9.1	8.0	(11)
Mineral exploration expenditure (other than for petroleum)(a) (\$m)									
	Dec qtr 01	8.0	15.9	17.6	170.7	2.0	-8.8	4.7	(12)

(a) From July 2000 value data no longer contains Wholesale Sales Tax.

Indicator	Period	South Australia			Australia			SA as a % of Aust.	Source index
		Number	% change from		Number	% change from			
			Previous period	Same period previous year		Previous period	Same period previous year		
<b>Prices(a)</b>									
CPI—All groups (index no.)	Mar qtr 02	137.7	0.8	2.7	136.6	0.9	2.9	..	(13)
Price index of materials used in house building (index no.)	Mar qtr 02	130.9	0.6	1.2	126.1	0.7	1.5	..	(14)
Price index of materials used in building other than houses (index no.)	Mar qtr 02	119.0	0.6	1.9	118.4	0.3	1.5	..	(14)
Price index of established houses (index no.)	Dec qtr 01	146.5	4.1	15.2	174.0	3.8	15.5	..	(16)
Price index of project homes (index no.)	Dec qtr 01	147.5	1.8	4.9	137.6	0.9	2.1	..	(16)
<b>Labour force and demography</b>									
Population (resident at end qtr) ('000)	Sep qtr 01	1 503.7	0.1	0.4	19 442.3	0.3	1.2	7.7	(17)
Labour force									
Original ('000)	Apr 02	743.1	0.5	2.2	9889.2	-0.4	0.7	7.5	(18)
Trend ('000)	Apr 02	741.9	0.2	2.0	9921.5	-0.0	1.3	7.5	(18)
Employed persons									
Original ('000)	Apr 02	694.5	0.7	3.1	9259.1	-0.1	1.1	7.5	(18)
Trend ('000)	Apr 02	691.9	0.3	2.6	9292.6	0.1	1.7	7.4	(18)
Participation rate									
Original(b) (%)	Apr 02	61.0	0.4	1.5	63.5	-0.5	-0.7	..	(18)
Trend(b) (%)	Apr 02	60.9	0.1	1.3	63.7	-0.1	-0.1	..	(18)
Unemployment rate									
Original(b) (%)	Apr 02	6.5	-3.3	-11.3	6.4	-4.4	-6.5	..	(18)
Trend(b) (%)	Apr 02	6.7	-1.3	-7.4	6.3	-1.9	-5.4	..	(18)
Job vacancies ('000)	Feb 02	6.8	7.9	7.9	87.9	5.3	-8.0	7.7	(19)
Industrial disputes ('000 working days lost)	Feb 02	0.7	-12.5	75.0	21.6	323.5	-8.5	3.2	(20)
<b>Income</b>									
Average weekly earnings (full-time adults; ordinary time)									
Original (\$)	Feb 02	801.50	0.7	4.1	860.50	1.4	6.2	..	(21)
Trend (\$)	Feb 02	800.70	0.6	3.6	860.10	1.3	5.9	..	(21)
Wage cost index (total hourly rate excluding bonuses)(c) (index no.)	Mar qtr 02	114.8	0.8	3.3	115.2	0.7	3.1	..	(22)
<b>Financial markets</b>									
Secured housing finance(d) (\$m)	Mar 02	478.0	5.1	13.0	7 955.1	5.9	11.5	6.0	(23)
Finance commitments									
Personal (\$m)	Mar 02	322.4	3.7	3.4	4 869.4	8.3	3.4	6.6	(24)
Commercial (\$m)	Mar 02	773.8	8.8	29.1	16 497.8	6.8	10.8	4.7	(24)
Lease (\$m)	Mar 02	14.0	0.7	2.2	523.2	12.2	4.4	2.7	(24)
Interest rates(b)									
Banks new housing loans (%)	Apr 02	..	..	..	6.05	0.00	-11.0	..	(25)
Bank loans—small, medium business(e) (%)	Apr 02	..	..	..	7.50	0.00	-9.1	..	(25)
Bank loans—large business (%)	Apr 02	..	..	..	7.85	0.00	-9.2	..	(25)

(a) Base year of each index 1989-90 = 100.

(b) Change is shown in terms of percentage points.

(c) Base year of index Sep 1997 = 100.

(d) Excludes alterations and additions. Includes refinancing.

(e) Rate for business loans over \$50,000.

## 2

## STATE SUMMARY

<i>Indicator</i>	<i>Period</i>	<i>NSW</i>	<i>Vic.</i>	<i>Qld</i>	<b>SA</b>	<i>WA</i>	<i>Tas.</i>	<i>NT</i>	<i>ACT</i>	<i>Source index</i>
SELECTED INDICATORS										
CPI—All groups(a) (index no.)	Mar qtr 02	137.9	136.0	137.1	<b>137.7</b>	133.7	135.2	133.8	135.6	(13)
Participation rate trend (%)	Apr 02	62.5	63.5	65.1	<b>60.9</b>	66.4	57.5	75.0	71.5	(18)
Unemployment rate trend (%)	Apr 02	5.9	5.9	7.7	<b>6.7</b>	6.1	8.2	6.2	4.3	(18)
Average weekly earnings (full-time adults; ordinary time) trend (\$)	Feb 02	905.20	854.70	801.10	<b>800.70</b>	860.90	785.10	832.10	949.10	(22)
SELECTED INDICATORS PER HEAD OF POPULATION(b)										
State final demand										
Chain volume measures trend (\$'000)	Dec qtr 01	8.7	8.6	8.0	<b>7.7</b>	8.5	7.0	10.8	16.5	(1)
Retail turnover										
Current prices original (\$)	Mar 02	716.3	703.8	704.6	<b>729.3</b>	741.6	656.2	704.0	929.1	(3)
Current prices, trend	Mar 02	734.2	714.9	722.4	<b>729.9</b>	757.8	644.9	749.5	953.9	(3)
New motor vehicle Sales trend (no. per '000 population)	Mar 02	3.7	3.9	3.5	<b>3.0</b>	3.2	2.7	5.9	3.9	(4)
Private new capital expenditure										
Current prices trend (\$)	Dec qtr 01	470.3	523.7	468.6	<b>449.3</b>	735.2	372.1	2 075.0	372.4	(5)
Dwelling unit approvals										
Original (no. per '000 population)	Mar 02	0.547	0.722	0.932	<b>0.601</b>	0.715	0.355	0.596	0.532	(7)
Trend (no. per '000 population)	Mar 02	0.540	0.710	0.883	<b>0.622</b>	0.819	0.394	0.495	0.452	(7)
Secured housing finance(c) (\$)	Mar 02	510.3	350.7	377.5	<b>317.9</b>	422.6	197.8	176.8	388.3	(24)
PERCENTAGE CHANGE FROM PREVIOUS PERIOD										
State final demand										
Chain volume measures trend (%)	Dec qtr 01	1.2	1.6	0.7	<b>1.8</b>	1.6	0.9	3.8	1.2	(1)
Retail turnover										
Current prices original (%)	Mar 02	10.4	12.3	12.1	<b>14.6</b>	10.0	11.3	13.2	10.9	(3)
Current prices, trend	Mar 02	0.3	0.7	0.6	<b>1.4</b>	0.8	0.5	0.7	0.6	(3)
New motor vehicle sales trend (%)	Mar 02	0.4	-0.4	0.4	<b>0.1</b>	-1.1	-2.3	0.2	0.8	(4)
Private new capital expenditure										
Current prices trend (%)	Dec qtr 01	-1.9	1.4	8.2	<b>9.8</b>	-0.6	12.2	21.7	-7.1	(5)
Dwelling unit approvals										
Original (%)	Mar 02	9.9	-8.5	6.5	<b>-6.9</b>	-11.4	10.6	57.3	72.2	(7)
Trend (%)	Mar 02	-5.3	-3.0	4.8	<b>-2.4</b>	-2.3	0.0	14.0	-16.5	(7)
CPI—All groups (%)	Mar qtr 02	1.0	0.9	1.0	<b>0.8</b>	0.8	1.0	0.2	0.5	(13)
Participation rate trend(d) (%)	Apr 02	0.0	-0.1	0.0	<b>0.1</b>	0.0	-0.2	0.1	0.1	(18)
Unemployment rate trend(d) (%)	Apr 02	-0.1	-0.2	-0.1	<b>-0.1</b>	-0.1	-0.1	-0.4	0.0	(18)
Average weekly earnings (full-time adults; ordinary time) trend (%)	Feb 02	0.7	2.5	1.3	<b>0.6</b>	1.0	1.3	0.6	0.1	(22)
Secured housing finance (%)	Mar 02	13.3	-0.6	3.6	<b>5.1</b>	-2.2	-1.1	-16.7	11.9	(24)

(a) Base year of index 1989-90 = 100.

(b) The latest quarterly estimate of Australian resident population has been used to calculate ratios for subsequent periods.

(c) Excludes alterations and additions. Includes refinancing.

(d) Change is shown in terms of percentage points.



## 3

## STATE ACCOUNTS AT CURRENT PRICES

Period	Final consumption expenditure		Gross fixed capital formation			State final demand	Gross State product	Compensation of employees
	Households	General government	Private	Public				
ANNUAL (\$m)								
<b>1998-99</b>	25 427	7 946	5 965	1 353	40 691	39 529	19 103	
<b>1999-00</b>	26 549	8 885	(a)10 012	(a)-1 437	44 009	41 340	19 956	
<b>2000-01</b>	28 782	9 111	8 216	147	46 257	43 194	20 787	
QUARTERLY, TREND (\$m)								
<b>2000-01</b>								
September	6 954	2 250	1 765	375	11 343	n.a.	5 127	
December	7 126	2 252	1 737	347	11 453	n.a.	5 186	
March	7 266	2 278	1 723	317	11 566	n.a.	5 225	
June	7 373	2 313	1 762	333	11 748	n.a.	5 252	
<b>2001-02</b>								
September	7 485	2 340	1 837	378	11 995	n.a.	5 287	
December	7 588	2 369	1 927	401	12 280	n.a.	5 337	

(a) The negative figure for Public gross fixed capital formation and the larger than usual positive figure for Private gross fixed capital formation are the result of the sale of the South Australian electrical transmission network in December quarter 1999. For more information see *National Income, Expenditure and Product, Australian National Accounts, June 2000* (Cat. no. 5206.0).

Source: *Australian National Accounts: Quarterly State Details* (Cat. no. 5206.0), and *Australian National Accounts: State Accounts* (Cat. no. 5220.0).

## 4

## STATE ACCOUNTS AT CHAIN VOLUME MEASURES(a)

Period	Final consumption expenditure		Gross fixed capital formation			State final demand	Gross State product
	Households	General government	Private	Public			
ANNUAL (\$m)							
<b>1998-99</b>	25 817	8 331	6 128	1 332	41 726	40 931	
<b>1999-00</b>	26 550	8 885	(b)10011	(b)-1437	44 010	41 340	
<b>2000-01</b>	27 490	8 861	7,965	133	44 448	41 617	
QUARTERLY, TREND (\$m)							
<b>2000-01</b>							
September	6 752	2 228	1 735	369	11 089	n.a.	
December	6 834	2 216	1 688	340	11 078	n.a.	
March	6 914	2 218	1 663	310	11 105	n.a.	
June	6 986	2 228	1 692	325	11 232	n.a.	
<b>2001-02</b>							
September	7 062	2 237	1 761	368	11 428	n.a.	
December	7 134	2 246	1 852	390	11 628	n.a.	

(a) Reference year for chain volume measures is 1999-2000.

(b) The negative figure for Public gross fixed capital formation and the larger than usual positive figure for Private gross fixed capital formation are the result of the sale of the South Australian electrical transmission network in December quarter 1999. For more information see *National Income, Expenditure and Product, Australian National Accounts, June 2000* (Cat. no. 5206.0).

Source: *Australian National Accounts: Quarterly State Details* (Cat. no. 5206.0), and *Australian National Accounts: State Accounts* (Cat. no. 5220.0).

## 5

## MERCHANDISE EXPORTS, BY SELECTED COMMODITY GROUP(a)

<i>Period</i>	<i>Meat and meat preparations</i>	<i>Wheat</i>	<i>Wine</i>	<i>Wool and sheepskins (excl. wool tops)</i>	<i>Machinery</i>	<i>Metals and metal manufactures</i>	<i>Fish and crustaceans</i>	<i>Road vehicles, parts and accessories</i>	<i>Petroleum and petroleum products</i>	<i>Total(b)</i>
	\$'000	\$'000	\$'000	\$'000	\$'000	\$'000	\$'000	\$'000	\$'000	\$'000
<b>1998-99</b>	198 541	567 812	693 733	212 226	384 702	543 675	252 592	651 949	154 425	5 332 300
<b>1999-00</b>	160 483	473 086	899 348	179 716	353 205	805 744	394 375	883 792	218 466	6 188 231
<b>2000-01</b>	262 565	767 524	1 081 599	236 034	381 785	1 019 926	451 841	1 399 489	355 781	8 286 782
<b>2000-01</b>										
October	22 718	31 594	104 142	26 188	29 363	93 449	17 387	66 730	12 239	557 546
November	21 086	34 320	66 654	24 868	39 987	92 385	25 144	99 097	37 355	608 459
December	23 003	55 592	74 430	17 779	35 714	95 601	23 853	197 310	34 021	786 954
January	15 352	42 141	56 686	12 389	19 399	71 312	27 610	36 155	11 715	465 417
February	23 730	80 599	78 767	19 868	27 828	89 603	16 885	109 181	36 380	703 077
March	27 691	112 562	92 701	22 506	32 623	99 791	21 216	148 177	17 124	816 155
April	26 339	93 911	121 497	19 887	32 164	89 887	23 097	155 998	52 960	848 280
May	27 404	152 550	99 062	22 367	33 559	79 393	28 980	115 827	33 738	821 839
June	23 977	44 178	93 781	20 353	38 196	90 878	46 917	100 111	29 883	704 372
<b>2001-02</b>										
July	18 743	84 671	90 064	15 060	31 470	80 081	105 885	85 602	4 227	694 672
August	16 578	104 764	111 866	12 339	23 309	65 167	109 720	87 611	28 997	757 774
September	26 569	50 769	145 952	14 797	23 338	83 420	18 330	157 753	26 830	747 526
October	29 804	74 206	134 368	23 871	24 161	80 651	16 992	217 406	17 879	839 374
November	30 056	95 995	81 272	24 908	21 862	89 069	23 757	135 759	30 543	716 786
December	32 122	93 070	105 237	17 789	23 070	62 905	31 216	207 778	20 094	820 280
January	22 502	136 558	61 169	15 357	19 868	63 089	35 652	25 652	16 755	561 344
February	31 144	86 109	83 823	22 410	25 430	81 861	26 043	122 727	2 608	743 412
March	31 129	124 726	120 915	32 593	34 122	87 975	21 878	170 843	38 584	862 624

(a) Restrictions are placed on the release of statistics for certain commodities for reasons of confidentiality. These restrictions do not affect total export and import figures, but they can affect some items within commodity, industry and country tables. See *International Trade* (Cat. no. 5422.0), Explanatory Notes, paragraph 30, for more details.

(b) Includes other commodity groups not listed.

Source: ABS data available on request.

## 6

## MERCHANDISE EXPORTS, BY SELECTED COUNTRIES AND COUNTRY GROUPS

Period	European Union					South-East and North-East Asia				
	United States of America	Middle East	United Kingdom	Total European Union	New Zealand	Japan	China	Hong Kong	ASEAN	Total
	\$'000	\$'000	\$'000	\$'000	\$'000	\$'000	\$'000	\$'000	\$'000	\$'000
<b>1998-99</b>	705 166	640 412	476 340	928 469	385 513	625 530	302 776	219 536	432 730	1 898 836
<b>1999-00</b>	954 681	724 871	625 154	1 073 928	446 026	787 295	315 199	255 679	492 304	2 297 913
<b>2000-01</b>	1 354 759	1 335 811	713 525	1 232 563	480 887	963 481	437 939	298 939	682 671	2 882 839
<b>2000-01</b>										
October	57 168	61 372	84 703	128 689	42 321	39 822	42 670	18 484	59 867	197 515
November	141 743	53 997	30 339	59 477	54 206	55 931	54 946	36 927	54 355	249 513
December	161 458	158 267	37 513	74 504	29 610	81 125	17 245	31 419	61 396	245 174
January	55 623	90 284	32 418	59 100	21 446	37 119	24 316	31 873	51 910	172 994
February	100 916	145 190	51 056	109 310	37 641	54 585	61 981	29 821	59 017	239 767
March	115 814	178 076	59 618	120 294	47 460	37 205	55 989	28 698	51 248	224 427
April	115 986	183 447	98 255	158 995	47 291	80 941	43 900	15 196	65 386	268 384
May	141 133	160 104	55 667	102 367	45 043	105 667	21 910	22 827	53 850	253 674
June	139 602	71 593	54 666	96 847	48 740	85 966	44 319	23 205	62 383	260 621
<b>2001-02</b>										
July	115 848	121 291	53 283	86 715	48 927	141 618	18 061	12 359	54 577	250 375
August	131 917	134 855	67 349	98 428	52 532	146 655	19 060	16 613	44 614	258 525
September	149 121	114 225	93 941	150 232	53 822	74 367	49 322	9 474	51 316	211 055
October	137 817	183 472	92 365	159 319	52 409	45 629	39 129	21 422	47 777	213 989
November	142 528	120 739	46 215	92 135	50 254	85 470	44 104	25 897	48 034	242 844
December	187 716	172 462	54 885	108 553	52 684	71 888	35 796	24 363	41 232	200 706
January	44 129	156 335	34 605	75 930	21 074	39 476	17 643	31 392	54 120	169 262
February	96 124	159 628	48 331	93 223	39 680	61 224	20 825	25 013	54 015	190 715
March	146 194	193 987	69 315	129 959	53 263	55 169	63 839	24 296	53 449	238 195

Source: ABS data available on request.

## 7

## MERCHANDISE IMPORTS, BY SELECTED COMMODITY GROUP(a)

<i>Period</i>	<i>Food, beverages and tobacco</i>	<i>Petroleum and petroleum products</i>	<i>Chemicals</i>	<i>Textiles</i>	<i>Metals and metal manufactures</i>	<i>Machinery</i>	<i>Road vehicle parts and accessories</i>	<i>Other manufactured goods</i>	<i>Total(b)</i>
	\$'000	\$'000	\$'000	\$'000	\$'000	\$'000	\$'000	\$'000	\$'000
<b>1998-99</b>	162 784	271 492	281 097	96 052	264 732	917 879	812 096	765 643	3 716 152
<b>1999-00</b>	163 509	515 641	263 959	97 100	262 737	1 164 672	834 842	845 913	4 319 348
<b>2000-01</b>	183 196	968 428	284 227	97 281	315 327	1 205 016	854 759	926 817	5 044 553
<b>2000-01</b>									
October	19 561	20	16 312	9 911	29 337	100 090	77 594	76 202	343 395
November	19 530	186 246	16 133	7 366	30 389	107 265	79 920	84 173	552 576
December	13 166	42 077	15 344	6 399	20 145	102 436	58 572	62 099	333 906
January	12 558	16 440	24 436	6 950	27 734	97 647	47 013	71 387	321 682
February	11 456	123 599	22 811	8 947	22 891	89 394	59 947	78 042	438 399
March	14 957	82 612	36 950	6 792	24 140	110 739	77 516	87 106	462 244
April	15 533	99 678	57 548	7 239	25 625	104 946	71 621	75 171	478 988
May	16 160	77 698	29 168	9 156	23 837	117 562	67 744	73 174	435 103
June	17 518	109 994	14 728	8 622	26 545	116 851	71 909	79 700	461 726
<b>2001-02</b>									
July	14 737	27 393	19 654	7 571	28 988	99 212	74 725	89 592	378 430
August	19 403	139 722	19 498	10 687	29 850	139 726	98 097	111 202	584 391
September	17 922	172 850	19 594	7 687	25 943	104 533	68 422	92 551	523 420
October	23 648	63 832	19 978	9 154	33 610	159 511	82 349	91 386	497 311
November	25 109	14 300	21 453	10 959	25 354	130 071	66 386	95 254	407 492
December	17 232	79 472	18 247	6 219	22 978	99 633	52 322	70 152	380 325
January	16 625	1 347	26 023	9 135	33 252	136 423	63 948	94 211	406 540
February	16 447	127 123	19 898	8 556	24 880	109 054	73 572	91 145	491 007
March	12 504	45 325	35 354	8 338	26 531	95 177	72 474	78 984	396 156

(a) Restrictions are placed on the release of statistics for certain commodities for reasons of confidentiality. These restrictions do not affect total export and import figures, but they can affect some items within commodity, industry and country tables. See *International Trade* (Cat. no. 5422.0), Explanatory Notes, paragraph 30, for more details.

(b) Includes other commodity groups not listed.

Source: ABS data available on request.

## 8

## TURNOVER OF RETAIL ESTABLISHMENTS, BY INDUSTRY—TREND

Period	Food retailing	Department stores	Clothing and soft good retailing	Household good retailing	Recreational good retailing	Other retailing	Hospitality and services	Total
	\$m	\$m	\$m	\$m	\$m	\$m	\$m	\$m
<b>2000-01</b>								
January	395.7	94.4	50.6	98.6	25.0	115.6	178.2	959.5
February	399.4	95.0	50.6	100.5	25.1	117.8	178.0	967.8
March	403.2	95.5	50.5	103.1	25.3	120.1	177.3	976.5
April	407.3	95.6	50.3	105.8	28.1	122.4	177.2	986.2
May	411.8	95.2	50.2	108.2	28.3	124.8	178.6	997.1
June	416.7	94.5	50.2	109.8	28.2	127.1	181.2	1 008.2
<b>2001-02</b>								
July	421.6	94.1	50.2	110.6	27.8	129.0	183.8	1 017.6
August	426.3	94.1	50.2	110.6	27.3	130.2	185.5	1 024.4
September	430.4	94.7	50.3	110.6	27.0	130.4	186.4	1 029.9
October	433.6	95.8	50.8	111.5	27.0	129.8	187.5	1 035.9
November	436.0	97.1	51.7	113.4	27.6	128.8	189.6	1 044.0
December	438.2	98.4	53.0	116.1	28.4	127.8	193.4	1 055.1
January	440.5	99.4	54.4	118.9	29.3	127.3	198.7	1 068.5
February	442.6	100.2	55.8	121.6	30.2	127.2	204.3	1 082.7
March	444.5	100.8	57.1	124.0	31.0	127.2	209.7	1 097.6

Source: Retail Trade, Australia (Cat. no. 8501.0).

## 9

## NEW MOTOR VEHICLE SALES, BY TYPE OF VEHICLE

Period	Original			Seasonally adjusted			Trend estimate		
	Passenger vehicles	Other vehicles	Total	Passenger vehicles	Other vehicles	Total	Passenger vehicles	Other vehicles	Total
<b>2000-01</b>									
January	2139	838	2977	2753	1118	3871	2965	1104	4069
February	2600	946	3546	2797	1080	3877	2900	1119	4019
March	3072	1243	4315	2901	1144	4045	2854	1119	3973
April	2558	999	3557	2888	1160	4048	2830	1112	3942
May	2956	1197	4153	2839	1099	3938	2829	1108	3937
June	3239	1438	4677	2803	1056	3859	2840	1116	3956
<b>2001-02</b>									
July	2865	1113	3978	2825	1130	3955	2838	1134	3972
August	2995	1176	4171	2869	1113	3982	2830	1160	3990
September	2580	1090	3670	2899	1350	4249	2850	1199	4049
October	2995	1153	4148	2874	1158	4032	2897	1246	4143
November	3176	1339	4515	2803	1283	4086	2957	1289	4246
December	2989	1390	4379	2882	1270	4152	3014	1323	4337
January	2681	1046	3727	3461	1433	4894	3059	1349	4408
February	2892	1276	4168	3121	1461	4582	3086	1367	4453
March	2889	1335	4224	2859	1254	4113	3096	1370	4466

Source: Sales of New Motor Vehicles, Australia (Cat. no. 9314.0.55.001).

## 10

## ACTUAL PRIVATE NEW CAPITAL EXPENDITURE, BY SELECTED INDUSTRY AND TYPE OF ASSET

Period	Industry			Total	Type of asset	
	Mining	Manufacturing	Other selected industries		New buildings and structures	Equipment, plant and machinery
ANNUAL (\$m)						
<b>1998-99</b>	509	776	993	2 277	529	1 747
<b>1999-00</b>	243	854	1 356	2 450	619	1 831
<b>2000-01</b>	419	817	1 415	2 649	656	1 994
QUARTERLY, ORIGINAL (\$m)						
<b>2000-01</b>						
September	126	208	316	649	180	469
December	183	221	445	849	264	585
March	48	187	355	590	105	485
June	62	201	299	561	107	455
<b>2000-02</b>						
September	75	182	287	544	125	420
December	98	243	500	842	176	666
QUARTERLY, TREND (\$m)						
<b>2000-01</b>						
September	n.a.	n.a.	n.a.	723	215	508
December	n.a.	n.a.	n.a.	703	189	514
March	n.a.	n.a.	n.a.	640	146	494
June	n.a.	n.a.	n.a.	598	121	477
<b>2001-02</b>						
September	n.a.	n.a.	n.a.	615	124	491
December	n.a.	n.a.	n.a.	675	146	529

Source: Private New Capital Expenditure, Australia (Cat. no. 5625.0) and ABS data available on request.

## 11

## TOURIST ACCOMMODATION

Period	Licensed hotels with facilities				Motels and guesthouses				Serviced apartments			
	Estab-lish-ments	Guest rooms	Room occu-pancy	Takings	Estab-lish-ments	Guest rooms	Room occu-pancy	Takings	Estab-lish-ments	Guest rooms	Room occu-pancy	Takings
	no.	no.	%	\$'000	no.	no.	%	\$'000	no.	no.	%	\$'000
<b>1999-00</b>												
December	62	4 090	61.6	24 619	146	5 166	55.1	19 928	26	1 207	61.5	6 462
March	62	4 065	60.1	23 739	146	5 168	55.3	19 956	26	1 213	62.6	6 739
June	60	4 037	58.7	23 033	147	5 212	53.1	19 309	26	1 208	62.7	6 912
<b>2000-01</b>												
September	60	4 070	56.3	23 960	147	5 218	50.6	19 898	26	1 211	56.9	6 252
December	62	4 128	58.2	26 070	146	5 204	54.4	21 557	26	1 220	62.4	7 232
March	62	3 905	59.9	25 686	146	5 217	55.2	21 889	27	1 280	67.1	7 955
June	61	4 066	55.9	23 849	146	5 230	50.5	20 289	27	1 300	63.2	7 959
<b>2001-02</b>												
September	61	4 078	56.3	23 498	146	5 231	49.7	19 926	27	1 293	60.1	7 019
December	61	4 083	61.0	26 556	144	5 170	51.9	21 044	27	1 283	67.0	8 218

Source: Tourist Accommodation, Australia (Cat. no. 8635.0).

Period	Houses		Total dwelling units		New residential building \$m	Alterations and additions to residential building \$m	Total residential building \$m	Non-residential building \$m	Total building \$m
	Private sector	Total	Private sector	Total					
	no.	no.	no.	no.					
ANNUAL									
<b>1998-99</b>	6568	6777	7697	7928	775.6	144.0	919.6	670.9	1590.5
<b>1999-00</b>	8290	8392	9915	10024	1022.9	188.9	1211.8	585.7	1797.5
<b>2000-01</b>	5550	5639	6654	6770	735.6	157.3	892.9	717.8	1610.7
MONTHLY, ORIGINAL									
<b>2000-01</b>									
December	381	398	439	458	49.4	12.1	61.4	52.6	114.1
January	364	364	423	432	46.5	13.5	60.0	35.2	95.3
February	380	385	464	469	50.4	13.8	64.2	36.6	100.9
March	516	522	629	635	67.2	14.0	81.2	141.9	223.2
April	475	492	496	515	56.3	10.8	67.1	40.5	107.6
May	655	659	705	709	79.3	16.9	96.1	95.7	191.8
June	641	644	733	736	84.2	14.3	98.5	40.8	139.3
<b>2001-02</b>									
July	765	771	966	975	98.3	15.9	114.2	45.9	160.1
August	734	741	808	825	86.3	17.0	103.3	118.4	221.7
September	712	731	840	863	95.9	14.5	110.3	48.3	158.6
October	778	797	877	904	98.0	19.6	117.7	81.9	199.6
November	764	810	881	931	100.4	16.1	116.5	57.3	173.8
December	698	744	922	968	107.9	13.0	120.9	42.9	163.7
January	667	688	741	764	86.7	13.2	99.8	73.0	172.9
February	770	839	899	971	104.8	17.7	122.6	59.6	182.2
March	756	774	886	904	97.0	14.3	111.3	63.9	175.2
MONTHLY, TREND									
<b>2000-01</b>									
December	414	419	528	537	55.6	13.7	69.3	45.5	114.8
January	423	429	528	538	56.9	14.0	70.9	44.8	115.7
February	442	449	533	543	59.0	14.1	73.2	45.4	118.5
March	475	482	549	557	61.9	14.3	76.2	47.3	123.6
April	525	532	585	593	66.0	14.5	80.5	50.0	130.5
May	586	592	644	651	71.7	14.8	86.5	53.5	140.0
June	644	650	706	714	77.6	15.0	92.7	57.9	150.6
<b>2001-02</b>									
July	690	698	762	774	83.2	15.3	98.5	61.3	159.8
August	720	731	817	833	88.7	15.5	104.2	63.5	167.7
September	740	758	868	892	94.5	15.5	110.0	65.4	175.4
October	754	780	909	940	100.1	15.6	115.7	67.3	183.0
November	763	796	933	970	104.4	15.6	120.1	69.0	189.1
December	769	807	938	979	106.9	15.6	122.5	69.5	192.1
January	771	811	933	975	107.5	15.5	123.1	69.0	192.0
February	770	811	916	958	106.7	15.4	122.1	67.6	189.8
March	764	804	894	935	105.0	15.3	120.3	67.3	187.6

Source: Building Approvals, Australia (Cat. no. 8731.0) and ABS data available on request.

## 13

## BUILDING COMMENCEMENTS

Period	New houses		Total dwelling units(a)		New residential building \$m	Alterations and additions to residential building \$m	Non-residential building		
	Private sector	Total	Private sector	Total			Private sector	Total	Total building
	no.	no.	no.	no.			\$m	\$m	\$m
<b>1998-99</b>	6,092	6,297	7,186	7,416	771.3	139.7	400.7	624.3	1535.3
<b>1999-00</b>	7,729	7,856	9,266	9,410	1044.8	198.8	351.2	576.8	1820.5
<b>2000-01</b>	5,303	5,390	6,442	6,556	779.2	161.3	390.5	729.6	1670.1
<b>1999-00</b>									
December	1,947	2,007	2,264	2,327	250.9	45.2	92.7	132.2	428.3
March	2,054	2,064	2,534	2,544	284.9	52.1	70.8	182.9	519.9
June	1,977	1,994	2,353	2,374	257.8	58.9	103.6	152.5	469.2
<b>2000-01</b>									
September	1,380	1,419	1,777	1,819	228.9	25.6	104.8	166.3	420.8
December	1,345	1,350	1,498	1,512	167.8	44.3	122.8	151.4	363.5
March	1,157	1,179	1,562	1,597	186.5	43.6	70.9	111.2	341.2
June	1,422	1,443	1,605	1,628	196.0	47.9	91.9	300.7	544.6
<b>2001-02</b>									
September	1,835	1,857	2,365	2,400	324.0	45.1	145.3	188.7	557.9
December	2,206	2,262	2,529	2,600	308.3	53.0	135.4	166.5	527.8

(a) Includes conversions.

Source: Building Activity, Australia (Cat. no. 8752.0).



Period	New houses		New residential building		Alterations and additions to residential building	Total residential building	Non-residential building		Total building	
	Private sector	Total	Private sector	Total			Private sector	Total	Private sector	Total
	\$m	\$m	\$m	\$m	\$m	\$m	\$m	\$m	\$m	\$m
VALUE OF BUILDING WORK DONE										
<b>1998-99</b>	599.4	614.6	720.8	737.7	147.7	885.4	417.1	571.6	1283.8	1457.0
<b>1999-00</b>	798.1	812.2	984.5	999.9	195.5	1195.4	409.9	629.4	1585.1	1824.8
<b>2000-01</b>	679.7	686.9	835.5	845.0	161.9	1006.8	395.0	624.0	1385.4	1630.9
<b>1999-00</b>										
December	187.5	192.0	227.3	232.1	46.8	278.9	101.0	149.2	374.3	428.1
March	193.0	196.1	239.4	242.6	47.2	289.9	86.3	145.3	372.4	435.2
June	250.8	252.2	305.1	306.8	60.1	366.9	105.9	163.3	469.1	530.2
<b>2000-01</b>										
September	175.9	178.2	228.3	230.7	30.9	261.5	84.0	138.2	341.8	399.7
December	179.6	180.9	216.0	218.3	42.1	260.4	116.6	176.1	372.9	436.5
March	162.6	164.0	193.8	195.7	40.7	236.4	97.2	145.7	330.1	382.1
June	161.6	163.8	197.3	200.3	48.2	248.6	97.2	163.9	340.6	412.5
<b>2001-02</b>										
September	184.2	187.2	227.7	231.2	48.7	279.9	112.7	170.6	386.9	450.5
December	221.5	224.7	263.9	267.5	48.3	315.8	131.3	196.3	442.5	512.1
VALUE OF BUILDING WORK COMPLETED										
<b>1998-99</b>	600.6	614.8	700.0	715.2	153.2	868.4	505.3	639.4	1356.8	1507.8
<b>1999-00</b>	713.5	730.1	867.6	886.2	191.9	1078.1	362.9	538.4	1419.4	1616.4
<b>2000-01</b>	758.7	763.6	942.8	949.0	154.4	1103.4	436.3	591.5	1526.5	1694.9
<b>1999-00</b>										
December	190.6	195.1	221.7	226.5	45.5	272.0	124.7	161.8	391.3	433.8
March	156.0	160.2	177.8	182.0	42.2	224.2	100.8	150.4	320.0	374.6
June	217.9	220.1	297.9	300.1	65.7	365.8	69.6	122.0	432.8	487.8
<b>2000-01</b>										
September	175.5	176.2	199.0	199.9	31.4	231.4	133.2	180.5	362.5	411.9
December	222.2	224.8	313.7	317.3	35.8	353.1	82.8	107.7	430.7	460.8
March	173.0	174.3	216.4	217.9	34.9	252.8	82.4	138.5	330.9	391.2
June	188.0	188.3	213.7	213.9	52.2	266.1	137.9	164.9	402.4	431.0
<b>2001-02</b>										
September	149.9	153.2	173.1	177.6	55.0	232.6	75.5	121.0	300.5	353.7
December	191.8	195.1	217.8	221.7	38.1	259.7	128.4	256.2	382.6	515.9

Source: Building Activity, Australia (Cat. no. 8752.0).

<i>Period</i>	<i>Pigmeat</i> <i>tonnes</i>	<i>Beef</i> <i>tonnes</i>	<i>Mutton</i> <i>tonnes</i>	<i>Lamb</i> <i>tonnes</i>	<i>Sawn timber(a)</i> <i>m<sup>3</sup></i>
<b>1998-99</b>	30 864	62 266	48 029	44 173	374 590
<b>1999-00</b>	31 927	78 001	28 970	56 668	425 549
<b>2000-01</b>	36 679	82 532	36 104	61 893	389 417
<b>1999-00</b>					
March	8 245	21 743	8 810	14 475	112 949
June	8 884	20 750	5 792	18 757	107 723
<b>2000-01</b>					
September	8 227	18 011	8 072	15 785	126 440
December	8 143	21 982	9 826	15 689	89 486
March	9 785	23 367	9 885	14 968	75 558
June	10 524	19 172	8 321	15 451	97 933
<b>2001-02</b>					
September	10 274	18 271	6 290	11 694	103 774
December	9 754	21 325	8 221	17 627	111 797
March	12 583	23 748	8 895	17 232	111 697

(a) From Australian softwood logs only.

Source: *Livestock Products, Australia* (Cat. no. 7215.0) and ABS data available on request.

<i>Period</i>	<i>Food</i>	<i>Alcohol and tobacco</i>	<i>Clothing and footwear</i>	<i>Housing</i>	<i>House furnishings, supplies and services</i>	<i>Health</i>	<i>Transportation</i>	<i>Communication</i>	<i>Recreation</i>	<i>Education</i>	<i>Miscellaneous</i>	<i>All groups</i>
ANNUAL AVERAGE (1989-90 = 100.0)												
<b>1998-99</b>	127.7	171.8	105.0	92.0	113.3	176.0	121.6	101.9	117.9	204.8	142.7	123.2
<b>1999-00</b>	130.8	179.1	103.3	97.0	112.9	165.7	129.4	97.7	119.1	215.8	148.8	126.3
<b>2000-01</b>	136.7	198.3	111.9	104.3	117.1	169.5	138.0	104.7	122.9	225.9	159.3	133.5
QUARTERLY (1989-90 = 100.0)												
<b>2000-01</b>												
December	134.2	196.0	111.2	103.9	115.8	167.6	137.6	105.0	123.4	220.9	158.3	132.5
March	139.4	200.5	110.5	104.4	117.4	170.7	137.0	104.3	123.0	230.9	159.9	134.1
June	139.4	203.3	112.3	104.9	119.3	171.3	140.4	103.9	122.5	230.9	161.2	135.1
<b>2001-02</b>												
September	140.5	205.9	108.4	106.8	120.6	170.9	136.4	103.6	123.1	231.0	163.5	135.3
December	143.8	205.5	112.2	107.9	120.9	169.3	134.4	106.0	125.6	231.1	163.8	136.6
March	144.6	207.8	110.6	108.6	120.0	173.7	133.9	106.2	129.0	240.6	166.0	137.7
PERCENTAGE CHANGE FROM SAME QUARTER OF PREVIOUS YEAR												
<b>2000-01</b>												
December	2.9	10.2	8.5	7.2	2.8	2.4	8.0	8.0	3.1	4.8	7.4	5.4
March	6.3	10.4	8.4	6.6	4.0	2.4	5.1	7.5	3.8	4.6	6.2	5.8
June	5.7	11.4	8.0	6.7	5.2	2.0	6.4	5.3	3.3	4.6	4.7	5.9
<b>2001-02</b>												
September	5.0	6.5	-4.6	2.8	4.0	1.4	-0.3	1.8	0.3	4.6	3.6	2.3
December	7.2	4.8	0.9	3.8	4.4	1.0	-2.3	1.0	1.8	4.6	3.5	3.1
March	3.7	3.6	0.1	4.0	2.2	1.8	-2.3	1.8	4.9	4.2	3.8	2.7
PERCENTAGE CHANGE FROM PREVIOUS QUARTER												
<b>2000-01</b>												
December	0.3	1.3	-2.1	0.0	-0.2	-0.5	0.6	-0.5	0.6	0.0	0.3	0.2
March	3.9	2.3	-0.6	0.5	1.4	1.8	-0.4	-0.7	-0.3	4.5	1.0	1.2
June	0.0	0.9	1.6	0.5	1.6	0.4	2.5	-0.4	-0.4	0.0	0.8	0.7
<b>2001-02</b>												
September	0.8	1.3	-3.4	1.8	1.1	-0.2	-2.8	-0.3	0.5	0.0	1.4	0.1
December	2.3	-0.2	3.5	1.0	0.2	-0.9	-1.5	2.3	2.0	0.0	0.2	1.0
March	0.6	1.1	-1.4	0.6	-0.7	2.6	-0.4	0.2	2.7	4.1	1.3	0.8

Source: Consumer Price Index (Cat. no. 6401.0).

# 17

## ESTIMATED RESIDENT POPULATION AND COMPONENTS OF POPULATION CHANGE

Period	Net migration			Total increase	Population at end of period
	Natural increase	Interstate	Overseas(a)		
<b>1998-99</b>	6 751	-2 869	2 108	5 990	1 492 408
<b>1999-00</b>	6 306	-4 773	3 453	4 986	1 497 394
<b>2000-01</b>	5 635	-4 234	3 602	5 003	1 502 397
<b>1999-00</b>					
December	1 611	-1 291	1 643	1 963	1 496 182
March	1 828	-1 735	662	755	1 496 937
June	1 448	-1 147	156	457	1 497 394
<b>2000-01</b>					
September	1 121	-1 030	924	1 015	1 498 409
December	1 490	-1 308	1 660	1 842	1 500 251
March	1 740	-1 264	655	1 131	1 501 382
June	1 284	-632	363	1 015	1 502 397
<b>2001-02</b>					
September	1 244	-632	711	1 323	1 503 720

(a) Includes category jumping.

Source: Australian Demographic Statistics (Cat. no. 3101.0).

# 18

## BIRTHS, DEATHS, MARRIAGES AND DIVORCES

Period	Registrations			
	Births	Deaths	Marriages	Divorces
<b>1998-99</b>	18 399	11 648	8 034	4 191
<b>1999-00</b>	17 896	11 590	8 428	4 197
<b>2000-01</b>	17 449	11 814	7 689	4 072
<b>1999-00</b>				
December	4 371	2 760	2 737	1 190
March	4 476	2 648	2 436	965
June	4 449	3 001	1 996	984
<b>2000-01</b>				
September	4 360	3 239	1 092	1 056
December	4 319	2 829	2 703	1 031
March	4 549	2 809	2 175	824
June	4 221	2 937	1 719	1 161
<b>2001-02</b>				
September	4 398	3 154	1 096	1 387

Source: Australian Demographic Statistics (Cat. no. 3101.0).

## 19

## CIVILIAN LABOUR FORCE STATUS(a)

Period	Employed full-time		Employed part-time		Total employed		Unemployed		Labour force	
	Males	Females	Males	Females	Males	Females	Males	Females	Males	Females
ANNUAL AVERAGE ('000)										
<b>1998-99</b>	319.7	148.2	49.6	137.2	369.3	285.4	39.3	25.3	408.6	310.6
<b>1999-00</b>	322.1	152.5	56.1	142.3	378.2	294.9	34.6	23.9	412.8	318.7
<b>2000-01</b>	322.6	156.7	54.8	143.5	377.4	300.2	32.6	20.2	410.0	320.4
MONTHLY, ORIGINAL ('000)										
<b>2000-01</b>										
February	321.0	157.4	54.3	143.4	375.3	300.8	34.8	20.4	410.1	321.2
March	311.6	156.0	57.5	145.9	369.1	301.8	32.6	18.3	401.7	320.2
April	314.3	151.8	57.1	150.6	371.4	302.5	34.2	19.4	405.6	321.9
May	316.3	154.8	55.1	146.2	371.3	301.0	35.5	20.5	406.9	321.4
June	313.5	152.7	58.6	150.1	372.1	302.8	30.5	20.9	402.6	323.7
<b>2001-02</b>										
July	316.2	156.5	54.8	144.8	371.0	301.3	33.2	19.4	404.2	320.7
August	317.2	150.9	56.2	149.4	373.4	300.3	31.9	20.5	405.3	320.7
September	318.2	158.3	57.3	147.4	375.5	305.7	32.2	20.5	407.6	326.2
October	317.7	154.6	56.9	150.9	374.6	305.5	32.4	18.6	407.1	324.1
November	319.4	159.8	56.2	151.6	375.6	311.4	32.1	16.9	407.6	328.3
December	322.1	158.8	59.6	151.1	381.7	309.9	32.0	20.2	413.8	330.1
January	322.1	151.4	56.9	147.3	379.0	298.8	33.4	22.8	412.4	321.6
February	318.9	152.6	62.4	152.3	381.3	304.9	34.7	22.2	416.0	327.1
March	320.4	147.7	64.0	157.6	384.4	305.3	28.7	21.3	413.1	326.6
April	319.4	147.9	63.5	163.8	382.9	311.6	30.1	18.5	413.0	330.1
MONTHLY, TREND ('000)										
<b>2000-01</b>										
February	318.9	156.0	54.9	144.0	373.8	300.0	32.8	18.9	406.6	318.9
March	317.2	155.9	55.3	145.7	372.5	301.6	33.3	18.9	405.8	320.4
April	316.1	155.8	55.7	147.0	371.8	302.8	33.8	19.2	405.6	322.0
May	315.7	155.5	55.9	147.9	371.6	303.4	34.1	19.8	405.7	323.2
June	315.8	155.2	56.0	148.2	371.8	303.4	34.1	20.4	405.9	323.8
<b>2001-02</b>										
July	316.1	155.1	56.3	148.2	372.4	303.3	33.8	20.6	406.2	323.9
August	316.6	155.3	56.5	147.9	373.1	303.2	33.3	20.6	406.5	323.8
September	317.2	155.5	56.8	147.9	374.0	303.4	32.8	20.3	406.9	323.8
October	317.8	155.6	57.3	148.2	375.1	303.8	32.4	20.1	407.5	323.9
November	318.6	155.2	58.0	149.1	376.6	304.3	32.0	20.1	408.6	324.3
December	319.2	154.3	59.0	150.6	378.2	304.9	31.7	20.1	409.9	325.0
January	319.7	153.0	60.1	152.6	379.8	305.6	31.4	20.1	411.2	325.7
February	320.2	151.5	61.2	154.8	381.4	306.3	31.0	20.1	412.4	326.4
March	320.7	150.2	62.1	157.0	382.8	307.2	30.6	19.9	413.4	327.1
April	321.1	149.2	62.8	158.8	383.9	308.0	30.2	19.8	414.1	327.8

(a) Population aged 15 years and over.

Source: Labour Force, Australia, Preliminary (Cat. no. 6202.0).

Period	Civilian population			Unemployment rate			Participation rate		
	Males aged 15 and over	Females aged 15 and over	Persons aged 15-19	Males all ages	Females all ages	Persons all ages	Males	Females	Persons
	'000	'000	%	%	%	%	%	%	%
ANNUAL AVERAGE									
<b>1998-99</b>	583.2	609.8	21.7	9.6	8.1	9.0	70.1	50.9	60.3
<b>1999-00</b>	587.6	613.8	20.9	8.4	7.5	8.0	70.3	51.9	60.9
<b>2000-01</b>	591.6	616.9	18.5	8.0	6.3	7.2	69.3	51.9	60.4
MONTHLY, ORIGINAL									
<b>2000-01</b>									
February	592.0	617.2	18.8	8.5	6.4	7.5	69.3	52.0	60.5
March	592.3	617.4	17.7	8.1	5.7	7.1	67.8	51.9	59.7
April	592.6	617.6	17.8	8.4	6.0	7.4	68.5	52.1	60.1
May	592.9	617.9	21.1	8.7	6.4	7.7	68.6	52.0	60.2
June	593.1	618.2	17.1	7.6	6.4	7.1	67.9	52.4	60.0
<b>2001-02</b>									
July	593.5	618.6	17.6	8.2	6.1	7.3	68.1	51.9	59.8
August	593.9	619.0	17.9	7.9	6.4	7.2	68.2	51.8	59.9
September	594.3	619.4	17.0	7.9	6.3	7.2	68.6	52.7	60.5
October	594.5	619.6	18.9	8.0	5.7	7.0	68.5	52.3	60.2
November	594.8	619.9	16.5	7.9	5.2	6.7	68.5	53.0	60.6
December	595.1	620.1	20.9	7.7	6.1	7.0	69.5	53.2	61.2
January	595.5	620.5	24.4	8.1	7.1	7.7	69.3	51.8	60.4
February	595.9	620.9	19.1	8.3	6.8	7.7	69.8	52.7	61.1
March	596.2	621.3	18.3	6.9	6.5	6.8	69.3	52.6	60.8
April	596.6	621.7	16.3	7.3	5.6	6.5	69.2	53.1	61.0
MONTHLY, TREND									
<b>2000-01</b>									
February	n.a.	n.a.	n.a.	8.1	5.9	7.1	68.7	51.7	60.0
March	n.a.	n.a.	n.a.	8.2	5.9	7.2	68.5	51.9	60.0
April	n.a.	n.a.	n.a.	8.3	6.0	7.3	68.4	52.1	60.1
May	n.a.	n.a.	n.a.	8.4	6.1	7.4	68.4	52.3	60.2
June	n.a.	n.a.	n.a.	8.4	6.3	7.5	68.4	52.4	60.2
<b>2001-02</b>									
July	n.a.	n.a.	n.a.	8.3	6.4	7.5	68.4	52.4	60.2
August	n.a.	n.a.	n.a.	8.2	6.4	7.4	68.4	52.3	60.2
September	n.a.	n.a.	n.a.	8.1	6.3	7.3	68.5	52.3	60.2
October	n.a.	n.a.	n.a.	8.0	6.2	7.2	68.5	52.3	60.2
November	n.a.	n.a.	n.a.	7.8	6.2	7.1	68.7	52.3	60.3
December	n.a.	n.a.	n.a.	7.7	6.2	7.0	68.9	52.4	60.5
January	n.a.	n.a.	n.a.	7.6	6.2	7.0	69.1	52.5	60.6
February	n.a.	n.a.	n.a.	7.5	6.2	6.9	69.2	52.6	60.7
March	n.a.	n.a.	n.a.	7.4	6.1	6.8	69.3	52.7	60.8
April	n.a.	n.a.	n.a.	7.3	6.0	6.7	69.4	52.7	60.9

(a) Population aged 15 years and over.

Source: Labour Force, Australia, Preliminary (Cat. no. 6202.0).

## AVERAGE WEEKLY EARNINGS OF EMPLOYEES

Period	Males			Females			Persons		
	Full-time adult ordinary time earnings	Full-time adult total earnings	All males total earnings	Full-time adult ordinary time earnings	Full-time adult total earnings	All females total earnings	Full-time adult ordinary time earnings	Full-time adult total earnings	All employees total earnings
ANNUAL AVERAGE (\$ per week)									
<b>1998-99</b>	741.20	797.60	678.30	627.90	647.30	464.40	699.10	741.70	575.20
<b>1999-00</b>	756.80	812.50	695.00	641.70	663.30	457.20	714.40	757.50	575.90
<b>2000-01</b>	811.30	864.40	746.80	685.20	703.90	491.20	765.70	806.40	619.70
QUARTERLY, ORIGINAL (\$ per week)									
<b>2000-01</b>									
November	814.90	866.00	748.30	681.40	698.00	488.30	766.40	805.00	618.50
February	813.80	870.60	754.70	693.60	710.60	499.30	770.10	812.40	627.70
May	824.80	875.00	759.10	698.00	714.20	493.00	780.90	819.30	628.90
<b>2001-02</b>									
August	832.60	875.90	771.20	714.50	727.10	513.00	791.70	824.30	644.50
November	827.80	884.90	772.10	733.00	745.80	506.00	796.10	838.40	641.40
February	831.00	900.50	773.20	741.80	754.60	497.90	801.50	852.20	639.20
QUARTERLY, TREND (\$ per week)									
<b>2000-01</b>									
November	807.00	860.80	741.50	679.50	699.70	488.80	760.40	802.10	615.70
February	819.00	870.60	754.50	690.50	707.30	495.50	773.00	812.10	625.90
May	825.60	875.30	763.70	702.90	717.70	502.10	782.40	819.70	634.70
<b>2001-02</b>									
August	828.50	879.20	768.80	716.10	729.70	505.60	789.60	827.50	639.80
November	829.90	885.50	771.00	728.40	741.40	504.50	795.80	837.30	641.00
February	829.50	894.00	770.80	739.80	753.20	500.60	800.70	848.80	639.20

Source: Average Weekly Earnings, States and Australia (Cat. no. 6302.0).

## 22

### SECURED HOUSING FINANCE COMMITMENTS(a)

Period	Original		Seasonally adjusted		Trend	
	Dwelling units	Value	Dwelling units	Value	Dwelling units	Value
	no.	\$m	no.	\$m	no.	\$m
<b>2000-01</b>						
January	3 511	356	3 909	395	3 815	378
February	3 565	351	3 623	357	3 820	386
March	4 119	423	3 814	395	3 870	399
April	3 645	382	3 895	411	3 957	415
May	4 522	479	4 205	443	4 068	432
June	4 321	458	4 165	454	4 175	447
<b>2001-02</b>						
July	4 290	462	4 308	469	4 255	457
August	4 324	455	4 326	457	4 305	464
September	3 849	414	4 324	467	4 331	470
October	4 334	473	4 216	457	4 334	475
November	4 695	525	4 338	485	4 345	480
December	4 423	508	4 482	499	4 335	484
January	3 887	442	4 432	504	4 313	486
February	4 008	455	4 074	463	4 283	485
March	4 246	478	4 240	476	4 252	483

(a) Excludes alterations and additions. Includes refinancing.

Source: *Housing Finance for Owner Occupation, Australia (Cat. no. 5609.0)*.

## 23

### FINANCE COMMITMENTS

Period	Commercial finance commitments			Personal finance commitments			
	Fixed loan facilities	Revolving credit facilities	Total commercial finance commitments	Fixed loan facilities	Revolving credit facilities	Total personal finance commitments	Total lease finance commitments
	\$m	\$m	\$m	\$m	\$m	\$m	\$m
<b>2000-01</b>							
January	234.2	164.6	398.9	136.1	129.1	265.2	7.7
February	284.4	292.7	577.1	137.5	111.5	249.0	15.2
March	321.3	278.2	599.5	164.8	147.1	311.9	13.7
April	262.6	295.6	558.2	133.7	108.6	242.4	11.2
May	376.4	186.8	563.2	162.5	144.9	307.4	7.7
June	524.6	375.8	900.5	165.3	168.5	333.8	19.1
<b>2001-02</b>							
July	373.9	260.2	634.1	150.7	169.7	320.4	28.7
August	374.2	220.1	594.3	165.4	143.6	308.9	15.6
September	293.2	222.3	515.5	136.5	127.2	263.7	13.5
October	412.6	295.7	708.3	162.4	145.4	307.8	14.9
November	551.8	295.1	846.9	180.6	178.5	359.1	25.6
December	611.8	290.5	902.3	165.9	147.2	313.0	16.2
January	338.8	228.3	567.1	164.2	120.0	284.1	10.9
February	422.8	288.2	711.0	176.3	134.7	311.0	13.9
March	538.4	235.5	773.8	176.4	145.9	322.4	14.0

Source: ABS data available on request.



## PUBLICATIONS SOURCE INDEX

- (1) *Australian National Accounts, Quarterly State Details*  
(Cat. no. 5206.0.40.001)
- (2) International Merchandise Trade, ABS data available on request
- (3) *Retail Trade, Australia* (Cat. no. 8501.0) Monthly
- (4) *Sales of New Motor Vehicles, Australia* (Cat. no. 9314.0.55.001)  
Monthly
- (5) *State Estimates of Private New Capital Expenditure*  
(Cat. no. 5646.0) Quarterly
- (6) *Tourist Accommodation, Australia* (Cat. no. 8635.0) Quarterly
- (7) *Building Approvals, Australia* (Cat. no. 8731.0) Monthly
- (8) *Building Activity, Australia* (Cat. no. 8752.0) Quarterly
- (9) *Engineering Construction Activity, Australia*  
(Cat. no. 8762.0) Quarterly
- (10) *Manufacturing Production, Australia, Preliminary*  
(Cat. no. 8301.0) Quarterly
- (11) *Livestock Products, Australia* (Cat. no. 7215.0) Quarterly
- (12) *Actual and Expected Private Mineral Exploration, Australia*  
(Cat. no. 8412.0) Quarterly
- (13) *Consumer Price Index* (Cat. no. 6401.0) Quarterly
- (14) *Producer Price Indexes* (Cat. no. 6427.0) Quarterly
- (16) *House Price Indexes: Eight Capital Cities*  
(Cat. no. 6416.0) Quarterly
- (17) *Australian Demographic Statistics* (Cat. no. 3101.0) Quarterly
- (18) *Labour Force, Australia, Preliminary* (Cat. no. 6202.0) Monthly
- (19) *Job Vacancies, Australia* (Cat. no. 6354.0) Quarterly
- (20) *Industrial Disputes, Australia* (Cat. no. 6321.0) Monthly
- (21) *Average Weekly Earnings, States and Australia*  
(Cat. no. 6302.0) Quarterly
- (22) *Wage Cost Index, Australia* (Cat. no. 6345.0) Quarterly
- (23) *Housing Finance for Owner Occupation, Australia*  
(Cat. no. 5609.0) Monthly
- (24) *Lending Finance, Australia* (Cat. no. 5671.0) Monthly—and ABS  
data available on request
- (25) *Reserve Bank of Australia Bulletin*





## FOR MORE INFORMATION...

- INTERNET* **www.abs.gov.au** the ABS web site is the best place to start for access to summary data from our latest publications, information about the ABS, advice about upcoming releases, our catalogue, and Australia Now—a statistical profile.
- LIBRARY* A range of ABS publications is available from public and tertiary libraries Australia-wide. Contact your nearest library to determine whether it has the ABS statistics you require, or visit our web site for a list of libraries.
- CPI INFOLINE* For current and historical Consumer Price Index data, call 1902 981 074 (call cost 77c per minute).
- DIAL-A-STATISTIC* For the latest figures for National Accounts, Balance of Payments, Labour Force, Average Weekly Earnings, Estimated Resident Population and the Consumer Price Index call 1900 986 400 (call cost 77c per minute).

## INFORMATION SERVICE

Data which have been published and can be provided within five minutes are free of charge. Our information consultants can also help you to access the full range of ABS information—ABS user-pays services can be tailored to your needs, time frame and budget. Publications may be purchased. Specialists are on hand to help you with analytical or methodological advice.

- PHONE* **1300 135 070**
- EMAIL* **client.services@abs.gov.au**
- FAX* 1300 135 211
- POST* Client Services, ABS, GPO Box 796, Sydney 1041

## WHY NOT SUBSCRIBE?

ABS subscription services provide regular, convenient and prompt deliveries of ABS publications and products as they are released. Email delivery of monthly and quarterly publications is available.

- PHONE* 1300 366 323
- EMAIL* subscriptions@abs.gov.au
- FAX* 03 9615 7848
- POST* Subscription Services, ABS, GPO Box 2796Y, Melbourne 3001



2130740006029  
ISSN 1039-8880

RRP \$20.00