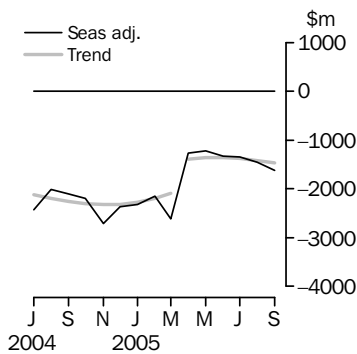


INTERNATIONAL TRADE IN GOODS AND SERVICES

AUSTRALIA

EMBARGO: 11.30AM (CANBERRA TIME) THURS 3 NOV 2005

Balance on goods and services



(a) A trend break of \$600m has been applied to April 2005.

KEY FIGURES

	July 2005	August 2005	September 2005	Aug 05 to Sep 05
	\$m	\$m	\$m	% change
TREND				
Balance on goods & services	-1 377	-1 415	-1 459	..
Credits (exports of goods & services)	14 915	14 906	14 870	-
Debits (imports of goods & services)	16 292	16 321	16 329	-
SEASONALLY ADJUSTED				
Balance on goods & services	-1 342	-1 458	-1 615	..
Credits (exports of goods & services)	15 143	14 777	14 669	-1
Debits (imports of goods & services)	16 485	16 235	16 284	-

.. not applicable

- nil or rounded to zero (including null cells)

KEY POINTS

TREND ESTIMATES

- The provisional trend estimate of the balance on goods and services was a deficit of \$1,459m in September 2005, an increase of \$44m on the revised deficit in August.
- Goods and services credits fell \$36m to \$14,870m. Goods and services debits rose \$8m to \$16,329m.

SEASONALLY ADJUSTED ESTIMATES

- In seasonally adjusted terms, the balance on goods and services was a deficit of \$1,615m in September, an increase of \$157m on the revised deficit in August.
- Goods and services credits fell \$108m (1%) to \$14,669m. Non-rural and other goods fell \$90m (1%), and rural goods fell \$26m (1%). Services credits rose \$8m.
- Goods and services debits rose \$49m to \$16,284m. Capital goods rose \$80m (3%), intermediate and other goods rose \$5m while consumption goods fell \$50m (1%). Services debits rose \$14m.

ORIGINAL ESTIMATES

- In original terms, the September balance on goods and services was a deficit of \$2,512m, an increase of \$534m on the revised deficit in August. Goods and services credits fell \$370m (2%) and goods and services debits rose \$164m (1%).
- In the three months to September, exports of non-rural and other goods were up \$5.9b (24%) while rural goods were down \$0.8b (11%) on the corresponding period in 2004-05.

INQUIRIES

For further information about these and related statistics, contact the National Information and Referral Service on 1300 135 070 or Tom Jebbink on Canberra (02) 6252 5540.

NOTES

FORTHCOMING ISSUES

ISSUE	RELEASE DATE
October 2005	6 December 2005
November 2005	10 January 2006
December 2005	3 February 2006
January 2006	3 March 2006
February 2006	3 April 2006
March 2006	5 May 2006



REVISIONS

Revisions were made to incorporate the latest available data relating to merchandise trade and trade in services.

In original terms, these revisions have:

- decreased the deficit on goods and services for August 2005 by \$123m
- decreased the deficit on goods and services for 2004–05 by \$204m.

CHANGES TO THIS ISSUE

Annual seasonal re-analysis

Seasonally adjusted and trend estimates of the balance on goods and services have been revised as a result of the annual seasonal re-analysis, which reviews the seasonal and trading day factors in more detail than possible in the monthly processing cycle.

Preliminary goods debits chain volume measures and price outcomes

Details of preliminary goods debits chain volume measures and price outcomes could not be provided in time for the release of this issue. These details will be available from the ABS web site on 24 November 2005 as information paper 5368.0.55.001.

AVAILABILITY OF DETAILED SERVICES DATA

International Trade in Services by partner country

AusStats table numbers 21 to 36 containing detailed time series data of Australia's international trade in services by partner country and international trade in services by state, by financial year and by calendar year, have been updated concurrently with this issue to incorporate revisions (including the revisions to travel and tourism related services released in the August issue). In addition, financial year data for 2004–05 have been included.

FEATURE ARTICLE AND CHANGES TO FORTHCOMING ISSUES

Details of a feature article on the *ABS Management of the Impact of the Implementation of the Imports Component of the New Customs System* and forthcoming changes to seasonal adjustment processes are provided on page four of this publication.

Dennis Trewin
Australian Statistician

CONTENTS

page

Feature article and changes to forthcoming issues	4
Tables on AusStats	5

ANALYSIS

Analysis and comments	6
-----------------------	---

TABLES

INTERNATIONAL TRADE IN GOODS AND SERVICES – BALANCE OF PAYMENTS BASIS

1 Goods and services, summary, seasonally adjusted and trend estimates	11
2 Goods and services, summary, original	12
3 Goods credits, original	13
4 Goods debits, original	14
5 Services, summary, original	15
6 Services, summary, seasonally adjusted and trend estimates	16
7 Services, original, quarterly	17

INTERNATIONAL MERCHANDISE TRADE – RECORDED TRADE BASIS

8 International merchandise exports, by commodity	18
9 International merchandise imports, by commodity	21
10 International merchandise trade, by country and country groups	24
11 International merchandise trade, by state	25

OTHER TABLES

12 Period average exchange rates per Australian dollar	26
---	----

OTHER INFORMATION

Explanatory Notes	27
Appendix – Related articles	30

FEATURE ARTICLE AND CHANGES TO FORTHCOMING ISSUES

FEATURE ARTICLE

Introduction of new customs system

Custom's Integrated Cargo System was introduced in October 2005. A feature article, *ABS Management of the Impact of the Implementation of the Imports Component of the New Customs System*, which provides more information, was released on the ABS web site on 16 September 2005 with the August 2005 release of *International Merchandise Imports, Australia* (cat. no. 5439.0).

To access this article select: *Themes* then *International Trade* then *Topics of Interest*.

CHANGES TO FORTHCOMING ISSUES

Detailed monthly seasonal adjustment

Currently, monthly goods series are only seasonally adjusted at the broad levels shown in Table 1, while quarterly goods series are seasonally adjusted at a more detailed level in *Balance of Payments and International Investment Position, Australia* (cat. no. 5302.0). From the October 2005 issue of this publication, the monthly goods series will be seasonally adjusted at the same level as the quarterly series, except that other non-rural credits will not be split between beverages, sugar and other in the monthly series.

This change should result in greater alignment between the monthly and quarterly series. However, introducing seasonal adjustment at the more detailed level will result in revisions to the current seasonally adjusted and trend series.

Changes to table formats, table numbering and AusStats tables

The changes to detailed monthly seasonal adjustment will result in the October issue containing four additional tables, consequential table renumbering, some reformatting of table presentations, and corresponding changes to AusStats table presentations. Details of these changes, along with prototypes of all table changes, will be available from the ABS web site on 24 November 2005 as information paper 5368.0.55.002.

TABLES ON AUSSTATS

TABLES AVAILABLE ON AUSSTATS

Data available on the ABS web site <<http://www.abs.gov.au>> include:

- longer time series of all tables contained in this publication
- additional tables listed below:

Tables 21 to 36 inclusive are normally updated on an annual basis - with the March issue for calendar year and with the September issue for financial year. However, calendar year series are being updated with this issue to incorporate the revisions to travel and tourism related services released in the August issue. Tables 21 to 36 can be downloaded free of charge from the web site.

13 Merchandise exports by Broad Economic Category (BEC)

14 Merchandise exports by industry of origin (ANZSIC)

15 Merchandise imports by Broad Economic Category (BEC)

16 Merchandise imports by Balance of Payments Broad Economic Category (BoPBEC)

17 Merchandise imports by industry of origin (ANZSIC)

18 Merchandise exports, state by country and country groups

19 Merchandise imports, state by country and country groups

20 Monthly forward seasonal adjustment factors

21 International trade in services, credits, state by financial year

22 International trade in services, credits, financial year by state

23 International trade in services, debits, state by financial year

24 International trade in services, debits, financial year by state

25 International trade in services, credits, state by calendar year

26 International trade in services, credits, calendar year by state

27 International trade in services, debits, state by calendar year

28 International trade in services, debits, calendar year by state

29 International trade in services, credits, financial year by country and service

30 International trade in services, credits, service by financial year and by country

31 International trade in services, credits, calendar year by country and service

32 International trade in services, credits, service by calendar year and by country

33 International trade in services, debits, financial year by country and service

34 International trade in services, debits, service by financial year and by country

35 International trade in services, debits, calendar year by country and service

36 International trade in services, debits, service by calendar year and by country.

ANALYSIS AND COMMENTS

BALANCE ON GOODS AND SERVICES

The trend estimate of the balance on goods and services in September 2005 was a deficit of \$1,459m, an increase of \$44m on the deficit in August.

In seasonally adjusted terms, the balance on goods and services in September 2005 was a deficit of \$1,615m, an increase of \$157m on the deficit in August.

The sum of the seasonally adjusted balances for the three months to September 2005 was a deficit of \$4,415m, an increase of \$595m on the deficit of \$3,820m for the three months to June 2005. While the annual seasonal re-analysis of quarterly Balance of Payments series has yet to be undertaken, if the more detailed seasonal factors used in compiling the quarterly data are applied, the September quarter 2005 provisional deficit was \$4,502m, an increase of \$147m on the revised June quarter 2005 deficit of \$4,355m.

EXPORTS OF GOODS AND SERVICES

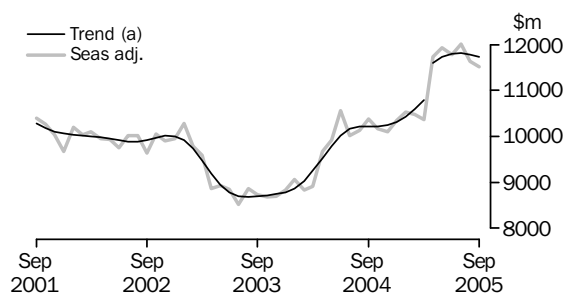
The trend estimate of goods and services credits fell \$36m between August and September to \$14,870m.

In seasonally adjusted terms, goods and services credits fell \$108m (1%) to \$14,669m. Non-rural and other goods fell \$90m (1%), rural goods fell \$26m (1%) while services credits rose \$8m.

The value of goods credits in original terms is influenced by the number and composition of trading days in September 2005 compared with August 2005. To account for this difference, upward adjustments of about 3% for rural goods and about 5% for non-rural goods have been applied prior to deriving the seasonally adjusted series.

Exports of goods

GOODS CREDITS



(a) A trend break of \$600m has been applied to April 2005.

RURAL GOODS

The trend estimate of rural goods exports fell \$18m (1%) to \$2,062m.

In seasonally adjusted terms, exports of rural goods fell \$26m (1%) to \$2,028m.

In original terms, exports of rural goods rose \$16m (1%) to \$2,052m.

Rural commodity groups had the following deviations from their three year average movement:

- meat and meat preparations, down \$8m (2%), in contrast to an average August to September rise of 7% over the three previous years
- cereal grains and cereal preparations, down \$29m (8%), in contrast to an average August to September rise of around 1% over the previous three years
- other rural, down \$11m (1%), compared with an average August to September fall of 10% over the previous three years

ANALYSIS AND COMMENTS *continued*

Exports of goods *continued*

RURAL GOODS *continued*

- wool and sheepskins, up \$64m (43%), compared with an average August to September rise of 33% over the previous three years.

NON-RURAL AND OTHER GOODS

The trend estimate of non-rural and other goods exports fell \$36m to \$9,671m.

In seasonally adjusted terms, exports of non-rural and other goods fell \$90m (1%) to \$9,491m.

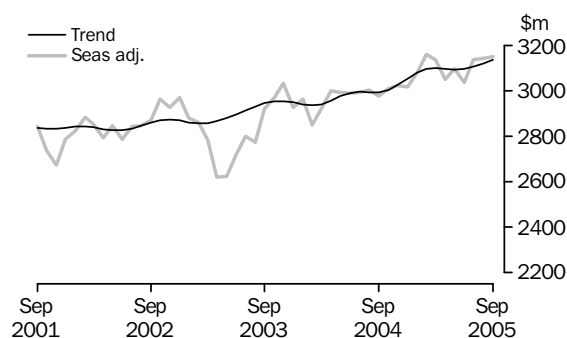
In original terms, exports of non-rural and other goods fell \$227m (2%) to \$9,763m.

The following commodity groups had the largest deviations from their three year average movement:

- metal ores and minerals, down \$246m (12%), compared with an average August to September fall of less than 1% over the previous three years
- other mineral fuels, down \$77m (7%), in contrast to an average August to September rise of 2% over the previous three years
- other manufactures, up \$12m (1%), compared with an average August to September rise of 6% over the previous three years
- machinery, down \$48m (7%), in contrast to an average August to September rise of 1% over the previous three years
- coal, coke and briquettes, up \$89m (4%), in contrast to an average August to September fall of 6% over the previous three years
- other non-rural, up \$118m (13%), compared with an average August to September rise of 4% over the previous three years.

Exports of services

SERVICES CREDITS



In trend terms, services credits rose \$18m (1%) to \$3,137m.

Seasonally adjusted, services credits rose \$8m to \$3,150m.

Travel services, up \$14m (1%), was the main contributor to the rise in the seasonally adjusted series but was partly offset by other services, down \$5m (1%).

Seasonally adjusted, tourism related services credits rose \$7m to \$2,028m.

ANALYSIS AND COMMENTS *continued*

IMPORTS OF GOODS AND SERVICES

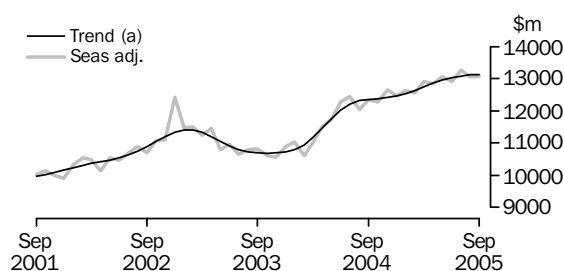
The trend estimate of goods and services debits rose \$8m between August and September to \$16,329m.

In seasonally adjusted terms, goods and services debits rose \$49m to \$16,284m. Capital goods rose \$80m (3%), services rose \$14m, intermediate and other goods rose \$5m while consumption goods fell \$50m (1%).

The value of goods debits in original terms is influenced by the number and composition of trading days in September 2005 compared with August 2005. To account for this difference, upward adjustments of about 9% for capital goods, about 6% for consumption goods, and about 5% for intermediate and other goods have been applied prior to deriving the seasonally adjusted series.

Imports of goods

GOODS DEBITS



(a) Trend estimates exclude abnormal imports of aircraft in December 2002.

CONSUMPTION GOODS

The trend estimate of imports of consumption goods rose \$14m to \$4,066m.

In seasonally adjusted terms, imports of consumption goods fell \$50m (1%) to \$4,048m.

In original terms, imports of consumption goods rose \$53m (1%) to \$4,542m.

The following commodity groups had the largest deviations from their three year average movement:

- consumption goods n.e.s., down \$58m (4%), in contrast to an average August to September rise of 8% over the previous three years
- non-industrial transport equipment, up \$72m (6%), compared with an average August to September rise of 22% over the previous three years
- food and beverages, up \$11m (2%), compared with an average August to September rise of 8% over the previous three years

CAPITAL GOODS

The trend estimate of imports of capital goods remained steady at \$2,968m.

In seasonally adjusted terms, imports of capital goods rose \$80m (3%) to \$3,013m.

In original terms, imports of capital goods fell \$89m (3%) to \$3,069m.

The following commodity groups had the largest deviations from their three year average movement:

- telecommunications equipment, up \$21m (5%), in contrast to an average August to September fall of 2% over the previous three years
- civil aircraft, up \$89m (109%)

ANALYSIS AND COMMENTS *continued*

Imports of goods continued

CAPITAL GOODS *continued*

- industrial transport equipment n.e.s., down \$51m (11%), in contrast to an average August to September rise of 10% over the previous three years
- machinery and industrial equipment, down \$142m (11%), compared with an average August to September fall of 5% over the previous three years
- ADP equipment, up \$18m (4%), compared with an average August to September rise of 11% over the previous three years.

INTERMEDIATE AND OTHER GOODS

The trend estimate of imports of intermediate and other goods fell \$5m to \$6,089m.

In seasonally adjusted terms, intermediate and other goods imports rose \$5m to \$6,022m.

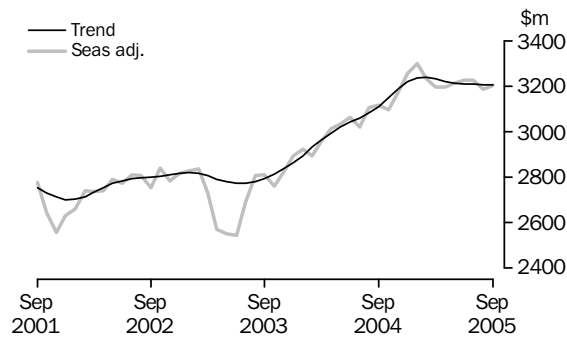
In original terms, imports of intermediate and other goods fell \$76m (1%) to \$6,246m.

The following commodity groups had the largest deviations from their three year average movement:

- fuels and lubricants, up \$122m (9%), compared with an average August to September rise of 1% over the previous three years (with volumes of crude oil down and prices up)
- paper and paperboard, up \$22m (11%), compared with an average August to September rise of 1% over the previous three years
- primary industrial supplies n.e.s., up \$18m (17%), compared with an average August to September rise of 5% over the previous three years
- parts for transport equipment, up \$13m (2%), compared with a marginal average August to September rise over the previous three years
- other goods, down \$171m (27%), in contrast to an average August to September rise of 10% over the previous three years
- iron and steel, down \$68m (20%), compared with an average August to September fall of 4% over the previous three years
- organic and inorganic chemicals, down \$58m (17%), compared with an average August to September fall of 5% over the previous three years.

Imports of services

SERVICES DEBITS



In trend terms, services debits fell \$1m to \$3,206m.

Seasonally adjusted, services debits rose \$14m to \$3,201m.

The movements in the seasonally adjusted components contributing to this rise were:

- other services, up \$5m (1%)
- travel services, up \$5m
- transportation services, up \$4m.

Seasonally adjusted, tourism related services debits rose \$39m (2%) to \$1,702m.

GOODS AND SERVICES(a), Summary: Seasonally Adjusted and Trend Estimates

Months	BALANCE	CREDITS					DEBITS					
	On goods and services	Total goods and services	Total goods	Rural goods(b)	Non-rural and other goods(b)	Total services	Total goods and services	Total goods	Consumption goods	Capital goods	Intermediate and other goods	Total services
	\$m	\$m	\$m	\$m	\$m	\$m	\$m	\$m	\$m	\$m	\$m	\$m
SEASONALLY ADJUSTED												
2004												
July	-2 432	13 014	10 022	2 387	7 635	2 992	-15 446	-12 427	-3 866	-3 169	-5 392	-3 019
August	-2 001	13 134	10 130	2 336	7 794	3 004	-15 135	-12 029	-3 769	-2 917	-5 343	-3 106
September	-2 104	13 352	10 376	2 286	8 090	2 976	-15 456	-12 341	-3 873	-2 876	-5 592	-3 115
October	-2 195	13 173	10 165	2 153	8 012	3 008	-15 368	-12 272	-3 812	-3 055	-5 405	-3 096
November	-2 700	13 127	10 106	2 098	8 008	3 021	-15 827	-12 658	-3 866	-3 120	-5 672	-3 169
December	-2 359	13 358	10 343	2 062	8 281	3 015	-15 717	-12 461	-3 867	-3 019	-5 575	-3 256
2005												
January	-2 315	13 612	10 532	2 050	8 482	3 080	-15 927	-12 629	-4 253	-2 818	-5 558	-3 298
February	-2 145	13 640	10 480	2 095	8 385	3 160	-15 785	-12 551	-3 997	-3 031	-5 523	-3 234
March	-2 606	13 497	10 362	1 862	8 500	3 135	-16 103	-12 907	-3 980	-2 858	-6 069	-3 196
April	-1 263	14 772	11 723	2 114	9 609	3 049	-16 035	-12 840	-3 996	-3 124	-5 720	-3 195
May	-1 225	15 031	11 936	2 140	9 796	3 095	-16 256	-13 042	-3 985	-3 083	-5 974	-3 214
June	-1 332	14 812	11 777	2 124	9 653	3 035	-16 144	-12 918	-4 010	-2 896	-6 012	-3 226
July	-1 342	15 143	12 007	2 125	9 882	3 136	-16 485	-13 259	-4 035	-2 965	-6 259	-3 226
August	-1 458	14 777	11 635	2 054	9 581	3 142	-16 235	-13 048	-4 098	-2 933	-6 017	-3 187
September	-1 615	14 669	11 519	2 028	9 491	3 150	-16 284	-13 083	-4 048	-3 013	-6 022	-3 201
TREND ESTIMATES												
2004												
July	-2 112	13 152	10 156	2 369	7 787	2 996	-15 264	-12 203	-3 862	-2 993	-5 348	-3 061
August	-2 190	13 206	10 212	2 331	7 881	2 994	-15 396	-12 314	-3 857	-3 029	-5 428	-3 082
September	-2 252	13 212	10 218	2 261	7 957	2 994	-15 464	-12 354	-3 842	-3 033	-5 479	-3 110
October	-2 301	13 224	10 220	2 184	8 036	3 004	-15 525	-12 377	-3 844	-3 017	-5 516	-3 148
November	-2 320	13 273	10 247	2 123	8 124	3 026	-15 593	-12 406	-3 864	-2 993	-5 549	-3 187
December	-2 314	13 366	10 313	2 084	8 229	3 053	-15 680	-12 461	-3 897	-2 979	-5 585	-3 219
2005												
January	-2 270	13 506	10 427	2 069	8 358	3 079	-15 776	-12 541	-3 933	-2 978	-5 630	-3 235
February	-2 187	13 687	10 592	2 077	8 515	3 095	-15 874	-12 636	-3 961	-2 980	-5 695	-3 238
March	-2 084	13 892	10 792	2 097	8 695	3 100	-15 976	-12 744	-3 981	-2 981	-5 782	-3 232
April(c)	-1 392	14 690	11 594	2 114	9 480	3 096	-16 082	-12 862	-3 996	-2 988	-5 878	-3 220
May	-1 356	14 822	11 729	2 120	9 609	3 093	-16 178	-12 966	-4 008	-2 995	-5 963	-3 212
June	-1 355	14 892	11 797	2 113	9 684	3 095	-16 247	-13 038	-4 021	-2 990	-6 027	-3 209
July	-1 377	14 915	11 810	2 098	9 712	3 105	-16 292	-13 084	-4 037	-2 979	-6 068	-3 208
August	-1 415	14 906	11 787	2 080	9 707	3 119	-16 321	-13 114	-4 052	-2 968	-6 094	-3 207
September	-1 459	14 870	11 733	2 062	9 671	3 137	-16 329	-13 123	-4 066	-2 968	-6 089	-3 206

(a) For sign conventions, see paragraph 9 of the Explanatory Notes.

(b) For all time periods, estimates for sugar, sugar preparations and honey are included in Non-rural and other goods.

(c) A trend break of \$600m has been applied to Non-rural and other goods credits in April 2005.

GOODS AND SERVICES (a), Summary: Original

	BALANCE	CREDITS					DEBITS					
	<i>On goods and services</i>	<i>Total goods and services</i>	<i>Total goods</i>	<i>Rural goods(b)</i>	<i>Non-rural and other goods(b)</i>	<i>Total services</i>	<i>Total goods and services</i>	<i>Total goods</i>	<i>Con-sumption goods</i>	<i>Capital goods</i>	<i>Inter-mediate and other goods</i>	<i>Total services</i>
	\$m	\$m	\$m	\$m	\$m	\$m	\$m	\$m	\$m	\$m	\$m	\$m
FINANCIAL YEAR												
2002-03	-17 479	149 691	115 800	25 484	90 316	33 891	-167 170	-134 278	-41 228	-31 554	-61 496	-32 892
2003-04	-23 030	144 676	109 504	24 560	84 944	35 172	-167 706	-133 026	-42 916	-32 118	-57 992	-34 680
2004-05	-24 821	164 128	127 610	25 670	101 940	36 518	-188 949	-150 876	-47 140	-35 960	-67 776	-38 073
MONTHS												
2004												
July	-2 541	13 115	10 129	2 379	7 750	2 986	-15 656	-12 462	-3 991	-3 237	-5 234	-3 194
August	-2 000	13 449	10 413	2 300	8 113	3 036	-15 449	-12 345	-3 940	-2 949	-5 456	-3 104
September	-3 094	13 422	10 567	2 293	8 274	2 855	-16 516	-13 121	-4 369	-3 023	-5 729	-3 395
October	-2 272	13 914	10 794	2 269	8 525	3 120	-16 186	-12 918	-4 188	-3 087	-5 643	-3 268
November	-3 344	13 231	10 115	2 137	7 978	3 116	-16 575	-13 506	-4 278	-3 373	-5 855	-3 069
December	-2 116	13 901	10 804	2 158	8 646	3 097	-16 017	-12 628	-3 805	-3 175	-5 648	-3 389
2005												
January	-2 264	12 381	9 319	1 720	7 599	3 062	-14 645	-11 267	-3 716	-2 413	-5 138	-3 378
February	-1 447	12 626	9 489	2 022	7 467	3 137	-14 073	-11 279	-3 713	-2 478	-5 088	-2 794
March	-1 896	13 731	10 531	2 024	8 507	3 200	-15 627	-12 595	-3 699	-2 850	-6 046	-3 032
April	-1 099	14 719	11 617	2 096	9 521	3 102	-15 818	-12 676	-3 881	-2 829	-5 966	-3 142
May	-864	15 115	12 171	2 200	9 971	2 944	-15 979	-12 929	-3 680	-3 199	-6 050	-3 050
June	-1 884	14 524	11 661	2 072	9 589	2 863	-16 408	-13 150	-3 880	-3 347	-5 923	-3 258
July	-861	15 479	12 340	2 090	10 250	3 139	-16 340	-12 926	-4 021	-2 960	-5 945	-3 414
August	-1 978	15 201	12 026	2 036	9 990	3 175	-17 179	-13 969	-4 489	-3 158	-6 322	-3 210
September	-2 512	14 831	11 815	2 052	9 763	3 016	-17 343	-13 857	-4 542	-3 069	-6 246	-3 486
FINANCIAL YEAR TO DATE												
3 months ended September												
2004	-7 635	39 986	31 109	6 972	24 137	8 877	-47 621	-37 928	-12 300	-9 209	-16 419	-9 693
2005	-5 351	45 511	36 181	6 178	30 003	9 330	-50 862	-40 752	-13 052	-9 187	-18 513	-10 110

(a) For sign conventions, see paragraph 9 of the Explanatory Notes.

(b) For all time periods, estimates for sugar, sugar preparations and honey are included in Non-rural and other goods.

GOODS CREDITS: Original

	3 MONTHS ENDED								
	SEPTEMBER								
	2002-03	2003-04	2004-05	Jul 2005	Aug 2005	Sep 2005	2004	2005	Change
	\$m	\$m	\$m	\$m	\$m	\$m	\$m	\$m	%
Total goods credits	115 800	109 504	127 610	12 340	12 026	11 815	31 109	36 181	16.3
Rural goods									
Meat and meat preparations	5 655	5 758	6 938	618	533	525	1 703	1 676	-1.6
Cereal grains and cereal preparations	4 487	5 094	5 159	324	361	332	1 614	1 017	-37.0
Wool and sheepskins	3 545	2 778	2 838	220	148	212	696	580	-16.7
Other rural	11 797	10 930	10 735	928	994	983	2 959	2 905	-1.8
<i>Total rural goods(a)</i>	<i>25 484</i>	<i>24 560</i>	<i>25 670</i>	<i>2 090</i>	<i>2 036</i>	<i>2 052</i>	<i>6 972</i>	<i>6 178</i>	<i>-11.4</i>
Non-rural goods									
Metal ores and minerals	14 523	14 888	19 826	2 047	2 086	1 840	4 435	5 973	34.7
Coal, coke and briquettes	11 987	11 001	17 236	2 053	1 987	2 076	3 748	6 116	63.2
Other mineral fuels	11 049	8 766	11 151	1 365	1 115	1 038	2 733	3 518	28.7
Metals (excl. gold)	8 711	7 759	8 669	742	725	746	2 143	2 213	3.3
Machinery	7 362	6 839	7 488	661	733	685	1 894	2 079	9.8
Transport equipment	6 273	5 155	4 943	455	455	465	1 194	1 375	15.2
Other manufactures	13 485	13 276	14 044	1 289	1 254	1 266	3 517	3 809	8.3
Other non-rural(a)	8 234	9 286	10 731	976	906	1 024	2 616	2 906	11.1
<i>Total non-rural goods(a)</i>	<i>81 624</i>	<i>76 970</i>	<i>94 088</i>	<i>9 588</i>	<i>9 261</i>	<i>9 140</i>	<i>22 280</i>	<i>27 989</i>	<i>25.6</i>
Other goods									
<i>Total other goods(b)</i>	<i>8 692</i>	<i>7 974</i>	<i>7 852</i>	<i>662</i>	<i>729</i>	<i>623</i>	<i>1 857</i>	<i>2 014</i>	<i>8.5</i>

(a) For all time periods, estimates for sugar, sugar preparations and honey are included in Other non-rural.

(b) Includes non-monetary gold.

GOODS DEBITS(a): Original

	3 MONTHS ENDED								
	SEPTEMBER								
	2002-03	2003-04	2004-05	Jul 2005	Aug 2005	Sep 2005	2004	2005	Change
	\$m	\$m	\$m	\$m	\$m	\$m	\$m	\$m	%
Total goods debits	-134 278	-133 026	-150 876	-12 926	-13 969	-13 857	-37 928	-40 752	7.4
Consumption goods									
Food and beverages, mainly for consumption	-5 067	-5 167	-5 767	-441	-534	-545	-1 413	-1 520	7.6
Household electrical items	-3 657	-3 793	-4 021	-315	-373	-400	-1 126	-1 088	-3.4
Non-industrial transport equipment	-11 302	-12 326	-13 003	-1 178	-1 140	-1 212	-3 095	-3 530	14.1
Textiles, clothing and footwear	-5 237	-5 078	-5 812	-518	-585	-554	-1 610	-1 657	2.9
Toys, books and leisure goods	-3 740	-3 593	-3 740	-307	-395	-427	-1 045	-1 129	8.0
Consumption goods n.e.s.	-12 225	-12 959	-14 797	-1 262	-1 462	-1 404	-4 011	-4 128	2.9
<i>Total consumption goods</i>	<i>-41 228</i>	<i>-42 916</i>	<i>-47 140</i>	<i>-4 021</i>	<i>-4 489</i>	<i>-4 542</i>	<i>-12 300</i>	<i>-13 052</i>	<i>6.1</i>
Capital goods									
Machinery and industrial equipment	-11 007	-11 064	-13 406	-1 176	-1 296	-1 154	-3 381	-3 626	7.2
ADP equipment	-4 908	-5 138	-5 761	-499	-485	-503	-1 415	-1 487	5.1
Telecommunications equipment	-3 619	-4 105	-4 567	-345	-415	-436	-1 260	-1 196	-5.1
Civil aircraft	-3 887	-3 061	-2 496	-97	-82	-171	-686	-350	-49.0
Industrial transport equipment n.e.s.	-3 881	-4 144	-4 977	-461	-453	-402	-1 265	-1 316	4.0
Capital goods n.e.s.	-4 252	-4 606	-4 753	-382	-427	-403	-1 202	-1 212	0.8
<i>Total capital goods</i>	<i>-31 554</i>	<i>-32 118</i>	<i>-35 960</i>	<i>-2 960</i>	<i>-3 158</i>	<i>-3 069</i>	<i>-9 209</i>	<i>-9 187</i>	<i>-0.2</i>
Intermediate and other merchandise goods									
Food and beverages, mainly for industry	-736	-625	-659	-60	-51	-56	-166	-167	0.6
Primary industrial supplies n.e.s.	-1 220	-1 079	-1 052	-70	-103	-121	-271	-294	8.5
Fuels and lubricants	-10 393	-9 917	-14 727	-1 528	-1 350	-1 472	-3 258	-4 350	33.5
Parts for transport equipment	-7 258	-6 548	-7 008	-565	-616	-629	-1 740	-1 810	4.0
Parts for ADP equipment	-2 011	-1 812	-1 787	-153	-147	-145	-483	-445	-7.9
Other parts for capital goods	-8 605	-8 553	-9 490	-809	-856	-863	-2 440	-2 528	3.6
Organic and inorganic chemicals	-3 089	-3 048	-3 622	-316	-351	-293	-832	-960	15.4
Paper and paperboard	-2 326	-2 242	-2 313	-177	-199	-221	-598	-597	-0.2
Textile yarn and fabrics	-1 839	-1 576	-1 453	-115	-121	-115	-422	-351	-16.8
Iron and steel	-1 960	-2 026	-3 008	-287	-342	-274	-603	-903	49.8
Plastics	-2 478	-2 177	-2 428	-189	-209	-213	-585	-611	4.4
Processed industrial supplies n.e.s.	-12 238	-12 029	-14 041	-1 191	-1 265	-1 289	-3 383	-3 745	10.7
Other merchandise goods	-1 710	-1 234	-1 054	-68	-68	-82	-289	-218	-24.6
<i>Total intermediate and other merchandise goods</i>	<i>-55 863</i>	<i>-52 866</i>	<i>-62 642</i>	<i>-5 528</i>	<i>-5 678</i>	<i>-5 773</i>	<i>-15 070</i>	<i>-16 979</i>	<i>12.7</i>
Other goods									
<i>Total other goods(b)</i>	<i>-5 633</i>	<i>-5 126</i>	<i>-5 134</i>	<i>-417</i>	<i>-644</i>	<i>-473</i>	<i>-1 349</i>	<i>-1 534</i>	<i>13.7</i>

(a) For sign conventions, see paragraph 9 of the Explanatory Notes.

(b) Includes non-monetary gold.

SERVICES (a)(b), Summary: **Original**

							3 MONTHS ENDED		Change
							SEPTEMBER		
	2002-03	2003-04	2004-05	Jul 2005	Aug 2005	Sep 2005	2004	2005	
	\$m	\$m	\$m	\$m	\$m	\$m	\$m	\$m	%
Credits									
Freight	920	830	776	59	59	61	210	179	-14.8
Other transportation	6 538	6 772	7 308	628	626	609	1 768	1 863	5.4
Travel	16 850	18 300	19 068	1 687	1 730	1 581	4 673	4 998	7.0
Other services	9 583	9 270	9 366	765	760	765	2 226	2 290	2.9
Total services credits	33 891	35 172	36 518	3 139	3 175	3 016	8 877	9 330	5.1
Debits									
Freight	-5 808	-6 056	-7 514	-589	-644	-651	-1 834	-1 884	2.7
Other transportation	-5 152	-5 578	-5 728	-537	-466	-521	-1 510	-1 524	0.9
Travel	-11 013	-12 581	-14 620	-1 442	-1 246	-1 451	-3 827	-4 139	8.2
Other services	-10 919	-10 465	-10 211	-846	-854	-863	-2 522	-2 563	1.6
Total services debits	-32 892	-34 680	-38 073	-3 414	-3 210	-3 486	-9 693	-10 110	4.3
Memorandum items:									
Tourism related service credits(c)	20 901	22 273	23 217	2 031	2 072	1 905	5 686	6 008	5.7
Tourism related service debits(c)	-15 692	-17 703	-19 832	-1 935	-1 668	-1 929	-5 210	-5 532	6.2

(a) For sign conventions, see paragraph 9 of the Explanatory Notes.

(b) For more detailed trade in services by commodity, see table 7.

(c) For a more detailed explanation of tourism related services, see paragraphs 15 and 16 of the Explanatory Notes.

SERVICES (a), Summary: **Seasonally Adjusted and Trend Estimates**

	Dec 2004	Jan 2005	Feb 2005	Mar 2005	Apr 2005	May 2005	Jun 2005	Jul 2005	Aug 2005	Sep 2005
	\$m	\$m	\$m	\$m	\$m	\$m	\$m	\$m	\$m	\$m

SEASONALLY ADJUSTED

Credits

Freight	66	63	63	63	61	59	59	60	58	60
Other transportation	617	613	606	621	630	615	622	616	633	630
Travel	1 536	1 621	1 696	1 654	1 586	1 637	1 571	1 672	1 669	1 683
Other services	796	783	795	797	772	784	783	788	782	777
Total services credits	3 015	3 080	3 160	3 135	3 049	3 095	3 035	3 136	3 142	3 150

Debits

Freight	-663	-708	-646	-591	-628	-613	-618	-623	-598	-600
Other transportation	-497	-479	-496	-481	-490	-481	-471	-475	-463	-465
Travel	-1 264	-1 248	-1 215	-1 248	-1 209	-1 250	-1 276	-1 259	-1 263	-1 268
Other services	-832	-863	-877	-876	-868	-870	-861	-869	-863	-868
Total services debits	-3 256	-3 298	-3 234	-3 196	-3 195	-3 214	-3 226	-3 226	-3 187	-3 201

Memorandum items:

Tourism related service credits(b)	1 897	1 949	2 006	2 002	1 964	1 976	1 938	2 011	2 021	2 028
Tourism related service debits(b)	-1 746	-1 666	-1 659	-1 687	-1 686	-1 675	-1 704	-1 694	-1 663	-1 702

TREND ESTIMATES

Credits

Freight	65	64	63	62	61	60	60	59	59	59
Other transportation	609	613	616	618	619	621	622	624	626	627
Travel	1 588	1 610	1 626	1 632	1 630	1 628	1 630	1 640	1 653	1 670
Other services	791	792	790	788	786	784	783	782	781	781
Total services credits	3 053	3 079	3 095	3 100	3 096	3 093	3 095	3 105	3 119	3 137

Debits

Freight	-660	-658	-649	-636	-624	-616	-612	-610	-608	-606
Other transportation	-486	-488	-488	-487	-484	-480	-476	-471	-467	-465
Travel	-1 232	-1 237	-1 238	-1 238	-1 240	-1 246	-1 254	-1 261	-1 267	-1 270
Other services	-841	-852	-863	-871	-872	-870	-867	-866	-865	-865
Total services debits	-3 219	-3 235	-3 238	-3 232	-3 220	-3 212	-3 209	-3 208	-3 207	-3 206

Memorandum items:

Tourism related service credits(b)	1 926	1 948	1 966	1 976	1 979	1 980	1 984	1 993	2 004	2 016
Tourism related service debits(b)	-1 677	-1 685	-1 687	-1 685	-1 683	-1 684	-1 687	-1 689	-1 689	-1 688

(a) For sign conventions, see paragraph 9 of the Explanatory Notes.

(b) For a more detailed explanation of tourism related services, see paragraphs 15 and 16 of the Explanatory Notes.

	CREDITS				DEBITS			
	Dec Qtr	Mar Qtr	Jun Qtr	Sep Qtr	Dec Qtr	Mar Qtr	Jun Qtr	Sep Qtr
	2004	2005	2005	2005	2004	2005	2005	2005
	\$m	\$m	\$m	\$m	\$m	\$m	\$m	\$m
Services	9 333	9 399	8 909	9 330	-9 726	-9 204	-9 450	-10 110
Transportation services								
Passenger(c)	1 896	1 884	1 760	1 863	-1 190	-1 090	-1 279	-1 304
Freight	204	183	179	179	-2 020	-1 820	-1 840	-1 884
Other(c)	np	np	np	np	-223	-234	-202	-220
<i>Total transportation services</i>	<i>2 100</i>	<i>2 067</i>	<i>1 939</i>	<i>2 042</i>	<i>-3 433</i>	<i>-3 144</i>	<i>-3 321</i>	<i>-3 408</i>
Travel services								
Business	301	338	350	371	-526	-567	-578	-586
Personal								
Education-related	1 500	1 710	1 871	2 059	-152	-172	-144	-244
Other	2 962	3 012	2 351	2 568	-3 019	-2 784	-2 851	-3 309
Total personal	4 462	4 722	4 222	4 627	-3 171	-2 956	-2 995	-3 553
<i>Total travel services</i>	<i>4 763</i>	<i>5 060</i>	<i>4 572</i>	<i>4 998</i>	<i>-3 697</i>	<i>-3 523</i>	<i>-3 573</i>	<i>-4 139</i>
Communication services(d)	188	195	186	205	-176	-160	-171	-172
Construction services	20	16	27	21	—	—	—	—
Insurance services	171	171	171	176	-218	-218	-218	-225
Financial services	251	251	251	251	-146	-146	-146	-150
Computer and information services	320	270	270	275	-286	-239	-240	-249
Royalties and license fees	183	138	176	142	-535	-498	-488	-532
Other business services								
Merchanting and other trade-related	182	145	172	165	-58	-58	-46	-62
Operational leasing	4	4	6	5	-178	-169	-164	-177
Miscellaneous business, professional and technical								
Legal, accounting, management consulting and public relations	113	114	138	135	-79	-65	-96	-93
Advertising, market research and public opinion polling	30	26	26	23	-27	-38	-68	-27
Research and development	104	81	98	81	-41	-34	-49	-41
Architectural, engineering and other technical services	119	151	151	125	-91	-108	-95	-115
Agriculture, mining and on-site processing	30	27	33	32	-23	-14	-29	-26
Services between affiliated enterprises n.i.e.	340	239	274	245	-250	-219	-231	-200
Other	105	101	95	90	-81	-82	-102	-82
Total miscellaneous business, professional and technical	841	739	815	731	-592	-560	-670	-584
<i>Total other business services</i>	<i>1 027</i>	<i>888</i>	<i>993</i>	<i>901</i>	<i>-828</i>	<i>-787</i>	<i>-880</i>	<i>-823</i>
Personal, cultural and recreational services								
Audiovisual and related services	25	44	17	27	-160	-225	-164	-196
Other personal, cultural and recreational services	78	79	78	78	-57	-81	-36	-34
<i>Total other personal, cultural and recreational services</i>	<i>103</i>	<i>123</i>	<i>95</i>	<i>105</i>	<i>-217</i>	<i>-306</i>	<i>-200</i>	<i>-230</i>
Government services n.i.e.	207	220	229	214	-190	-183	-213	-182
Memorandum items:								
Tourism related services(e)	5 868	6 161	5 502	6 008	-4 981	-4 714	-4 927	-5 532

— nil or rounded to zero (including null cells)

np not available for publication but included in totals where applicable, unless otherwise indicated

(a) For sign conventions, see paragraph 9 of Explanatory Notes.

(b) For more information see paragraphs 13 and 14 of the Explanatory Notes.

(c) Passenger transportation credits include other transportation services credits.

(d) Communications services includes other services n.i.e..

(e) For a more detailed explanation of tourism related services, see paragraphs 15 and 16 of the Explanatory Notes.

				Per cent of total merchandise exports(a)	3 MONTHS ENDED SEPTEMBER		
	Jul	Aug	Sep		2004	2005	
	2005	2005	2005				
	\$m	\$m	\$m	%	\$m	\$m	
MAJOR COMMODITIES							
011	Meat of bovine animals	435	375	352	3.0	1 268	1 162
041	Wheat	253	254	249	2.1	1 098	757
268	Wool and other animal hair	196	129	197	1.7	616	522
281	Iron ore and concentrates	1 023	1 006	945	8.1	1 717	2 974
285	Aluminium ore and concentrates	384	414	364	3.1	1 071	1 163
321	Coal, not agglomerated	2 052	1 936	2 052	17.5	3 735	6 041
333	Crude petroleum oils	711	549	526	4.5	1 498	1 786
334	Refined petroleum oils	253	262	266	2.3	550	781
343	Natural gas	383	340	260	2.2	701	983
684	Aluminium	372	302	422	3.6	1 070	1 096
781	Passenger motor vehicles	276	280	278	2.4	653	835
971	Gold, non-monetary	504	562	407	3.5	1 366	1 473

SECTION AND DIVISION OF THE SITC

0	Food and live animals(b)						
00	Live animals other than fish, crustaceans, molluscs and aquatic invertebrates	61	73	81	0.7	210	215
01	Meat and meat preparations	618	533	525	4.5	1 702	1 676
02	Dairy products and birds' eggs	187	178	208	1.8	539	572
03	Fish (not marine mammals), crustaceans, molluscs and aquatic invertebrates, and preparations thereof(b)	104	138	117	1.0	352	359
04	Cereals and cereal preparations(b)	324	361	332	2.8	1 615	1 017
05	Vegetables and fruit	122	145	133	1.1	392	399
06	Sugars, sugar preparations and honey(b)	22	18	27	0.2	62	67
07	Coffee, tea, cocoa, spices, and manufactures thereof	22	22	23	0.2	79	66
08	Feeding stuff for animals (excl. unmilled cereals)(b)	57	57	63	0.5	236	177
09	Miscellaneous edible products and preparations	39	35	38	0.3	125	112
	<i>Total food and live animals</i>	<i>1 554</i>	<i>1 560</i>	<i>1 546</i>	<i>13.2</i>	<i>5 313</i>	<i>4 660</i>
1	Beverages and tobacco						
11	Beverages	249	248	287	2.5	753	785
12	Tobacco and tobacco manufactures	9	8	7	0.1	27	24
	<i>Total beverages and tobacco</i>	<i>258</i>	<i>257</i>	<i>294</i>	<i>2.5</i>	<i>780</i>	<i>809</i>
2	Crude materials, inedible, except fuels(b)						
21	Hides, skins and furskins, raw(b)	52	48	43	0.4	184	143
22	Oil seeds and oleaginous fruits	10	51	10	0.1	136	71
23	Crude rubber (incl. synthetic and reclaimed)	1	1	—	—	5	2
24	Cork and wood	90	69	77	0.7	243	237
25	Pulp and waste paper	10	10	13	0.1	15	32
26	Textile fibres and their wastes (not manufactured into yarn or fabric)(b)	332	270	321	2.7	945	923
27	Crude fertilisers (excl. those of Division 56) and crude minerals (excl. coal, petroleum and precious stones)	42	42	35	0.3	107	119
28	Metalliferous ores and metal scrap(b)	2 005	2 044	1 805	15.4	4 326	5 855
29	Crude animal and vegetable materials, n.e.s.	21	21	27	0.2	79	69
	<i>Total crude materials, inedible, except fuels</i>	<i>2 564</i>	<i>2 555</i>	<i>2 332</i>	<i>19.9</i>	<i>6 040</i>	<i>7 451</i>
3	Mineral fuels, lubricants and related materials						
32	Coal, coke and briquettes	2 053	1 937	2 056	17.6	3 749	6 046
33	Petroleum, petroleum products and related materials	965	813	794	6.8	2 051	2 571
34	Gas, natural and manufactured	502	416	351	3.0	910	1 270
	<i>Total mineral fuels, lubricants and related materials</i>	<i>3 520</i>	<i>3 166</i>	<i>3 201</i>	<i>27.4</i>	<i>6 710</i>	<i>9 887</i>

— nil or rounded to zero (including null cells)

(b) Excludes exports commodities subject to a confidentiality restriction. These are included in Division 98.

(a) Per cent of total merchandise exports is calculated for the most recent month.

				Per cent of total merchandise exports(a)	3 MONTHS ENDED SEPTEMBER.....		
	Jul	Aug	Sep		2004	2005	
	2005	2005	2005				
	\$m	\$m	\$m	%	\$m	\$m	
SECTION AND DIVISION OF THE SITC							
4	Animal and vegetable oils, fats and waxes(b)						
41	Animal oils and fats	23	11	26	0.2	70	60
42	Fixed vegetable fats and oils, crude, refined or fractionated(b)	5	4	6	—	13	14
43	Fats and oils (processed), waxes and inedible mixtures or preparations, of animal or vegetable origin, n.e.s.	5	4	5	—	17	14
	<i>Total animal and vegetable oils, fats and waxes</i>	33	19	36	0.3	100	88
5	Chemicals and related products, n.e.s.(b)						
51	Organic chemicals(b)	9	8	9	0.1	39	27
52	Inorganic chemicals(b)	52	42	40	0.3	117	134
53	Dyeing, tanning and colouring materials	50	50	50	0.4	165	149
54	Medicinal and pharmaceutical products	299	306	260	2.2	681	865
55	Essential oils and resinoids and perfume materials; toilet, polishing and cleansing preparations	45	37	43	0.4	104	124
56	Fertilisers (excl. crude)	15	28	20	0.2	45	63
57	Plastics in primary forms(b)	32	28	28	0.2	59	88
58	Plastics in non-primary forms	32	27	28	0.2	74	87
59	Chemical materials and products, n.e.s.	57	61	53	0.5	145	171
	<i>Total chemicals and related products, n.e.s.</i>	591	586	530	4.5	1 427	1 708
6	Manufactured goods classified chiefly by material(b)						
61	Leather, leather manufactures, and dressed furskins, n.e.s.	33	32	33	0.3	129	97
62	Rubber manufactures, n.e.s.	14	14	13	0.1	40	42
63	Cork and wood manufactures (excl. furniture)(b)	20	19	17	0.1	63	56
64	Paper, paperboard, and articles of paper pulp, of paper or of paperboard	57	57	53	0.5	189	167
65	Textile yarn, fabrics, made-up articles, n.e.s., and related products	43	37	42	0.4	123	122
66	Non-metallic mineral manufactures, n.e.s.(b)	62	49	113	1.0	217	223
67	Iron and steel(b)	55	73	61	0.5	156	189
68	Non-ferrous metals	687	652	685	5.9	1 987	2 024
69	Manufactures of metals, n.e.s.	76	68	78	0.7	211	221
	<i>Total manufactured goods classified chiefly by material</i>	1 047	1 001	1 093	9.3	3 115	3 142
7	Machinery and transport equipment(b)						
71	Power generating machinery and equipment	99	103	115	1.0	255	317
72	Machinery specialised for particular industries	117	192	107	0.9	319	415
73	Metal working machinery	13	13	21	0.2	38	47
74	General industrial machinery and equipment, n.e.s. and machine parts, n.e.s.(b)	126	136	131	1.1	357	393
75	Office machines and automatic data processing machines	99	98	97	0.8	274	294
76	Telecommunications and sound recording and reproducing apparatus and equipment	70	58	72	0.6	224	200
77	Electrical machinery, apparatus, appliances, parts (incl. non-electrical counterparts of electrical domestic equipment)	134	129	138	1.2	420	401
78	Road vehicles (incl. air-cushion vehicles)	367	374	379	3.2	954	1 120
79	Transport equipment (excl. road vehicles)	88	81	86	0.7	240	255
	<i>Total machinery and transport equipment</i>	1 112	1 184	1 146	9.8	3 080	3 442

— nil or rounded to zero (including null cells)

(a) Per cent of total merchandise exports is calculated for the most recent month.

(b) Excludes exports commodities subject to a confidentiality restriction. These are included in Division 98.

				Per cent of total merchandise exports(a)	3 MONTHS ENDED SEPTEMBER		
	Jul	Aug	Sep			
	2005	2005	2005		2004	2005	
	\$m	\$m	\$m	%	\$m	\$m	
SECTION AND DIVISION OF THE SITC							
8	Miscellaneous manufactured articles(b)						
81	Prefabricated buildings; sanitary, plumbing, heating and lighting fixtures and fittings, n.e.s.	11	9	8	0.1	23	28
82	Furniture, parts thereof; bedding, mattresses, mattress supports, cushions and similar stuffed furnishings	14	10	10	0.1	34	34
83	Travel goods, handbags and similar containers	2	2	3	—	5	6
84	Articles of apparel and clothing accessories	23	28	25	0.2	86	76
85	Footwear(b)	4	4	4	—	12	12
87	Professional, scientific and controlling instruments and apparatus, n.e.s.	128	133	118	1.0	323	379
88	Photographic apparatus, equipment and supplies and optical goods, n.e.s.; watches and clocks	27	29	28	0.2	157	84
89	Miscellaneous manufactured articles, n.e.s.	179	171	185	1.6	464	536
	<i>Total miscellaneous manufactured articles</i>	388	385	381	3.3	1 106	1 155
9	Commodities and transactions not classified elsewhere in the SITC(c)(d)						
93	Special transactions and commodities not classified according to kind	123	119	158	1.3	446	401
95	Gold coin whether or not legal tender, and other coin being legal tender	4	2	21	0.2	27	26
96	Coin (excl. gold coin), not being legal tender	—	—	—	—	—	—
97	Gold, non-monetary (excl. gold ores and concentrates)	504	562	407	3.5	1 366	1 473
98	Combined confidential items excl. some of SITC 280 (exports only) and some of SITCs 510 and 520 (imports only)(c)(d)	555	484	551	4.7	1 424	1 590
	<i>Total commodities and transactions not classified elsewhere in the SITC</i>	1 186	1 168	1 136	9.7	3 263	3 490
	Total Merchandise Exports	12 254	11 882	11 697	100.0	30 934	35 833
	Balance of Payments Adjustments	86	144	118	. .	175	348
	Goods Credits (exports) on a Balance of Payments Basis	12 340	12 026	11 815	. .	31 109	36 181

. . not applicable

— nil or rounded to zero (including null cells)

(a) Per cent of total merchandise exports is calculated for the most recent month.

(b) Excludes exports commodities subject to a confidentiality restriction. These are included in Division 98.

(c) Includes exports commodities subject to a confidentiality restriction.

(d) Includes small value export entries which can not yet be allocated by commodity.

				Per cent of total merchandise imports(a)	3 MONTHS ENDED SEPTEMBER	
	Jul	Aug	Sep		
	2005	2005	2005		2004	2005
	\$m	\$m	\$m	%	\$m	\$m
MAJOR COMMODITIES						
333 Crude petroleum oils	1 033	825	863	6.3	2 159	2 722
334 Refined petroleum oils	526	517	600	4.4	1 013	1 643
542 Medicaments	508	550	493	3.6	1 495	1 551
641 Paper and paperboard	158	172	195	1.4	527	525
752 Automatic data processing machines	502	487	504	3.7	1 420	1 493
759 Parts and accessories of office machines	184	185	182	1.3	571	551
764 Telecommunications equipment	407	454	475	3.5	1 366	1 337
781 Passenger motor vehicles	1 066	997	1 063	7.7	2 785	3 126
782 Motor vehicles for the transport of goods	356	338	322	2.3	990	1 015
784 Parts and accessories of motor vehicles	183	210	195	1.4	582	588
792 Aircraft and associated equipment	342	161	236	1.7	1 202	738
971 Gold, non-monetary	176	352	238	1.7	628	766

SECTION AND DIVISION OF THE SITC

0	Food and live animals						
00	Live animals other than fish, crustaceans, molluscs and aquatic invertebrates	3	12	3	—	17	18
01	Meat and meat preparations	15	23	25	0.2	77	63
02	Dairy products and birds' eggs	32	31	34	0.2	87	97
03	Fish (not marine mammals), crustaceans, molluscs and aquatic invertebrates, and preparations thereof	66	83	85	0.6	231	234
04	Cereals and cereal preparations	35	46	44	0.3	113	125
05	Vegetables and fruit	92	94	94	0.7	267	280
06	Sugars, sugar preparations and honey	15	19	19	0.1	45	53
07	Coffee, tea, cocoa, spices, and manufactures thereof	63	74	72	0.5	188	208
08	Feeding stuff for animals (excl. unmilled cereals)	29	31	17	0.1	77	77
09	Miscellaneous edible products and preparations	91	101	108	0.8	267	300
	<i>Total food and live animals</i>	441	514	502	3.6	1 369	1 456
1	Beverages and tobacco						
11	Beverages	57	85	88	0.6	204	230
12	Tobacco and tobacco manufactures	18	13	14	0.1	40	44
	<i>Total beverages and tobacco</i>	75	97	102	0.7	244	275
2	Crude materials, inedible, except fuels						
21	Hides, skins and furskins, raw	—	—	—	—	1	—
22	Oil seeds and oleaginous fruits	8	3	4	—	8	15
23	Crude rubber (incl. synthetic and reclaimed)	11	13	11	0.1	36	36
24	Cork and wood	46	48	48	0.3	161	142
25	Pulp and waste paper	24	12	32	0.2	58	68
26	Textile fibres and their wastes (not manufactured into yarn or fabric)	12	12	12	0.1	41	36
27	Crude fertilisers (excl. those of Division 56) and crude minerals (excl. coal, petroleum and precious stones)	11	16	14	0.1	42	41
28	Metalliferous ores and metal scrap	18	46	46	0.3	85	110
29	Crude animal and vegetable materials, n.e.s.	18	18	20	0.1	61	56
	<i>Total crude materials, inedible, except fuels</i>	147	169	188	1.4	492	504
3	Mineral fuels, lubricants and related materials(b)						
32	Coal, coke and briquettes	1	3	1	—	5	4
33	Petroleum, petroleum products and related materials(b)	1 594	1 370	1 488	10.8	3 270	4 453
34	Gas, natural and manufactured	—	—	3	—	62	4
	<i>Total mineral fuels, lubricants and related materials</i>	1 595	1 374	1 492	10.8	3 337	4 461

— nil or rounded to zero (including null cells)

(a) Per cent of total merchandise imports is calculated for the most recent month.

(b) Excludes imports commodities subject to a confidentiality restriction. These are included in Division 98.

				Per cent of total merchandise imports(a)	3 MONTHS ENDED SEPTEMBER	
	Jul	Aug	Sep		2004	2005
	2005	2005	2005			
	\$m	\$m	\$m	%	\$m	\$m
SECTION AND DIVISION OF THE SITC						
4	Animal and vegetable oils, fats and waxes					
41	Animal oils and fats	1	2	1	—	5 4
42	Fixed vegetable fats and oils, crude, refined or fractionated	25	23	28	0.2	98 76
43	Fats and oils (processed), waxes and inedible mixtures or preparations, of animal or vegetable origin, n.e.s.	3	6	3	—	12 12
	<i>Total animal and vegetable oils, fats and waxes</i>	29	31	32	0.2	114 92
5	Chemicals and related products, n.e.s.(b)					
51	Organic chemicals	209	246	220	1.6	633 674
52	Inorganic chemicals(b)	107	105	73	0.5	200 285
53	Dyeing, tanning and colouring materials	45	47	49	0.4	140 141
54	Medicinal and pharmaceutical products	640	647	628	4.6	1 766 1 915
55	Essential oils and resinoids and perfume materials; toilet, polishing and cleansing preparations	120	139	141	1.0	377 400
56	Fertilisers (excl. crude)	43	69	67	0.5	184 179
57	Plastics in primary forms	104	113	114	0.8	303 332
58	Plastics in non-primary forms	85	96	99	0.7	281 281
59	Chemical materials and products, n.e.s.	125	152	141	1.0	389 418
	<i>Total chemicals and related products, n.e.s.</i>	1 477	1 613	1 533	11.2	4 273 4 624
6	Manufactured goods classified chiefly by material(b)					
61	Leather, leather manufactures, and dressed furskins, n.e.s.	12	14	12	0.1	43 38
62	Rubber manufactures, n.e.s.(b)	161	164	164	1.2	454 489
63	Cork and wood manufactures (excl. furniture)	42	49	49	0.4	170 140
64	Paper, paperboard, and articles of paper pulp, of paper or of paperboard(b)	200	223	248	1.8	657 670
65	Textile yarn, fabrics, made-up articles n.e.s. and related products	185	212	204	1.5	693 601
66	Non-metallic mineral manufactures, n.e.s.	180	187	205	1.5	557 572
67	Iron and steel(b)	287	342	274	2.0	670 904
68	Non-ferrous metals(b)	108	94	97	0.7	240 298
69	Manufactures of metals, n.e.s.(b)	324	362	336	2.4	958 1 021
	<i>Total manufactured goods classified chiefly by material</i>	1 500	1 646	1 588	11.6	4 441 4 734
7	Machinery and transport equipment(b)					
71	Power generating machinery and equipment	284	295	319	2.3	873 898
72	Machinery specialised for particular industries	546	623	459	3.3	1 473 1 628
73	Metal working machinery	64	84	111	0.8	155 259
74	General industrial machinery and equipment, n.e.s. and machine parts, n.e.s.	673	745	737	5.4	2 137 2 155
75	Office machines and automatic data processing machines	729	725	738	5.4	2 145 2 192
76	Telecommunications and sound recording and reproducing apparatus and equipment	685	783	850	6.2	2 384 2 317
77	Electrical machinery, apparatus, appliances, parts (incl. non-electrical counterparts of electrical domestic equipment)(b)	635	695	699	5.1	1 931 2 028
78	Road vehicles (incl. air-cushion vehicles)	1 746	1 724	1 733	12.6	4 764 5 204
79	Transport equipment (excl. road vehicles)	413	237	388	2.8	1 353 1 037
	<i>Total machinery and transport equipment</i>	5 774	5 910	6 034	43.9	17 214 17 718

— nil or rounded to zero (including null cells)

(a) Per cent of total merchandise imports is calculated for the most recent month.

(b) Excludes imports commodities subject to a confidentiality restriction. These are included in Division 98.

				Per cent of total merchandise imports(a)	3 MONTHS ENDED SEPTEMBER	
	Jul	Aug	Sep		
	2005	2005	2005		2004	2005
	\$m	\$m	\$m	%	\$m	\$m
SECTION AND DIVISION OF THE SITC						
8	Miscellaneous manufactured articles(b)					
81	Prefabricated buildings; sanitary, plumbing, heating and lighting fixtures and fittings, n.e.s.					
	39	45	51	0.4	137	135
82	Furniture, parts thereof; bedding, mattresses, mattress supports, cushions and similar stuffed furnishings					
	157	191	203	1.5	532	551
83	Travel goods, handbags and similar containers					
	46	53	59	0.4	160	158
84	Articles of apparel and clothing accessories					
	355	390	378	2.7	1 057	1 124
85	Footwear					
	100	110	93	0.7	300	303
87	Professional, scientific and controlling instruments and apparatus, n.e.s.					
	297	317	308	2.2	936	921
88	Photographic apparatus, equipment and supplies and optical goods, n.e.s.; watches and clocks(b)					
	107	125	125	0.9	376	357
89	Miscellaneous manufactured articles, n.e.s.					
	643	795	810	5.9	2 111	2 248
	<i>Total miscellaneous manufactured articles</i>					
	1 743	2 027	2 026	14.7	5 610	5 796
9	Commodities and transactions not classified elsewhere in the SITC(c)					
93	Special transactions and commodities not classified according to kind					
	3	3	2	—	8	9
95	Gold coin whether or not legal tender, and other coin being legal tender					
	—	—	—	—	2	1
96	Coin (excl. gold coin), not being legal tender					
	—	—	—	—	—	—
97	Gold, non-monetary (excl. gold ores and concentrates)					
	176	352	238	1.7	628	766
98	Combined confidential items excl. some of SITC 280 (exports only) and some of SITCs 510 and 520 (imports only)(c)					
	11	7	11	0.1	50	29
	<i>Total commodities and transactions not classified elsewhere in the SITC</i>					
	190	362	252	1.8	687	805
Total Merchandise Imports						
	12 972	13 742	13 750	100.0	37 782	40 465
Balance of Payments Adjustment						
	-46	227	107	. .	146	287
Goods Debits (imports) on a Balance of Payments Basis						
	12 926	13 969	13 857	. .	37 928	40 752

. . not applicable

— nil or rounded to zero (including null cells)

(a) Per cent of total merchandise imports is calculated for the most recent month.

(b) Excludes imports commodities subject to a confidentiality restriction. These are included in Division 98.

(c) Includes imports commodities subject to a confidentiality restriction.

	EXPORTS				IMPORTS				BALANCE OF MERCHANDISE TRADE	
	2004-05	September	3 months ended September	3 months ended September	2004-05	September	3 months ended September	3 months ended September	2004-05	3 months ended September
		2005	2004	2005		2005	2004	2005		2005
	\$m	\$m	\$m	\$m	\$m	\$m	\$m	\$m	\$m	\$m
Belgium(b)	883	92	194	255	1 179	137	288	376	-295	-122
Brazil	635	95	141	280	643	46	162	188	-8	91
Canada	1 896	142	482	419	1 905	163	460	426	-9	-7
China	13 000	1 325	2 784	4 140	19 812	2 075	5 040	5 798	-6 812	-1 658
Denmark	170	29	42	60	1 044	70	243	223	-874	-163
Egypt(c)	286	34	99	107	14	2	4	4	272	103
Fiji	394	50	102	118	211	20	63	54	183	64
Finland	572	20	145	101	815	84	180	206	-242	-105
France	1 009	120	267	284	4 437	428	1 235	1 087	-3 427	-803
Germany	1 315	118	346	388	8 646	755	2 135	2 261	-7 330	-1 874
Hong Kong (Sar of China)	2 709	248	682	672	1 210	126	349	356	1 499	316
India	6 052	587	1 194	1 953	1 220	108	326	316	4 832	1 637
Indonesia	3 407	360	946	1 009	3 311	325	797	1 066	95	-56
Iran	171	28	44	71	24	4	5	8	147	64
Iraq	383	28	140	28	6	—	6	—	377	28
Ireland	179	17	60	42	1 917	174	488	484	-1 738	-442
Israel	173	23	43	43	584	49	139	137	-411	-93
Italy	1 544	130	375	321	4 494	354	1 133	1 138	-2 951	-817
Japan	24 934	2 298	6 155	7 409	17 162	1 595	4 421	4 399	7 772	3 010
Korea, Republic of	9 714	875	2 462	2 824	5 006	494	1 327	1 314	4 708	1 510
Kuwait	462	37	120	126	160	28	39	64	302	62
Malaysia	2 582	197	664	590	5 920	543	1 462	1 539	-3 338	-949
Mexico	687	104	117	228	776	71	180	220	-89	8
Netherlands	1 791	190	413	570	1 261	102	330	323	530	247
New Zealand	9 163	765	2 379	2 333	5 337	498	1 328	1 399	3 825	934
Pakistan	587	14	90	70	146	10	38	32	441	39
Papua New Guinea	1 196	119	247	340	1 737	160	361	573	-540	-233
Philippines	869	95	231	221	699	86	197	196	169	25
Saudi Arabia	1 808	148	427	436	1 407	19	326	105	402	331
Singapore	3 362	347	827	1 035	7 250	873	1 620	2 283	-3 888	-1 248
South Africa	1 652	149	377	526	1 328	154	306	464	324	63
Spain	914	64	174	214	1 327	107	392	380	-413	-167
Sweden	280	76	67	155	1 963	123	448	478	-1 683	-323
Switzerland	222	23	70	73	1 481	133	401	372	-1 258	-299
Taiwan	4 886	465	1 041	1 406	3 612	292	915	931	1 273	475
Thailand	3 900	379	676	1 052	4 202	428	976	1 244	-302	-193
Turkey	279	22	52	117	365	29	96	90	-85	27
United Arab Emirates	1 274	79	389	335	820	10	360	102	454	233
United Kingdom	4 820	421	1 643	1 194	5 935	494	1 510	1 736	-1 115	-542
United States of America	9 462	756	2 411	2 228	21 270	1 686	5 584	5 486	-11 809	-3 259
Viet Nam	708	47	196	169	3 096	325	726	918	-2 388	-749
Other Countries(d)	6 470	582	1 620	1 890	5 744	573	1 389	1 689	726	201
Total	126 802	11 697	30 934	35 833	149 475	13 750	37 782	40 465	-22 673	-4 632
APEC	93 014	8 576	22 436	26 230	103 723	9 936	26 101	28 653	-10 710	-2 423
ASEAN	14 968	1 438	3 570	4 111	25 157	2 692	5 960	7 512	-10 189	-3 401
Developing Countries	62 350	5 891	14 535	18 119	63 751	6 281	15 928	17 865	-1 401	254
Least Developed Countries	1 487	103	401	391	223	14	53	52	1 265	339
European Union(e)	13 813	1 301	3 813	3 721	35 086	3 012	8 871	9 272	-21 273	-5 551
OECD	70 167	6 285	17 936	19 349	88 898	7 735	22 811	23 108	-18 731	-3 759

— nil or rounded to zero (including null cells)

(a) See AusStats for details of all countries.

(b) Prior to July 2003, Belgium and Luxembourg were combined.

Belgium-Luxembourg is included in 'Other Countries' up to and including June 2003.

(c) Exports of Alumina to Egypt are excluded from its country total and included in the 'Other Countries' category.

(d) Includes small value exports entries which can not yet be allocated by country.

(e) From July 2004, European Union includes 25 member countries.

	3 MONTHS ENDED SEPTEMBER			
	September		
	2004-05	2005	2004	2005
	\$m	\$m	\$m	\$m
.....				
EXPORTS (a)				
New South Wales	22 994	2 135	5 605	6 292
Victoria	18 516	1 672	4 774	4 596
Queensland	26 365	2 808	6 431	8 536
South Australia	7 640	797	2 014	2 256
Western Australia	38 837	3 306	9 057	11 069
Tasmania	2 638	186	580	627
Northern Territory	2 222	148	582	563
Australian Capital Territory	—	—	—	10
State not available for publication(b)(c)	479	68	93	170
Re-exports	7 111	576	1 799	1 714
Total exports	126 802	11 697	30 934	35 833
.....				
IMPORTS				
New South Wales	60 108	5 496	15 478	16 226
Victoria	45 135	4 181	11 589	12 110
Queensland	21 733	1 964	5 381	5 968
South Australia	5 711	559	1 430	1 639
Western Australia	14 168	1 184	3 328	3 757
Tasmania	600	51	137	140
Northern Territory	1 992	315	438	622
Australian Capital Territory	28	2	2	2
Total imports	149 475	13 750	37 782	40 465

— nil or rounded to zero (including null cells)

(a) State in which the final stage of production or manufacture occurs.

(b) Includes exports which can not yet be allocated by state. These shipments will be appropriately classified as more details become available.

(c) Exports of Alumina to Bahrain, Egypt and Iceland are excluded from the state totals and included in 'State not available for publication' category.

PERIOD AVERAGE EXCHANGE RATES (a): Per Australian dollar

<i>Period</i>	<i>United States dollar</i>	<i>UK pound sterling</i>	<i>Euro</i>	<i>Japanese yen</i>	<i>Trade-weighted index of value of the \$A(b)</i>
FINANCIAL YEAR					
2002-03	0.5848	0.3685	0.5577	70.01	53.5
2003-04	0.7137	0.4102	0.5981	78.91	61.5
2004-05	0.7529	0.4052	0.5918	80.45	62.7
MONTHS					
2004					
July	0.7164	0.3887	0.5835	78.29	61.1
August	0.7104	0.3903	0.5828	78.37	60.8
September	0.7013	0.3912	0.5743	77.20	59.9
October	0.7331	0.4057	0.5868	79.81	62.0
November	0.7689	0.4139	0.5925	80.61	63.7
December	0.7678	0.3981	0.5735	79.70	62.7
January	0.7647	0.4071	0.5830	78.98	62.7
2005					
February	0.7807	0.4139	0.5999	81.92	64.1
March	0.7859	0.4119	0.5948	82.62	64.2
April	0.7724	0.4078	0.5971	82.94	63.8
May	0.7662	0.4125	0.6033	81.68	63.4
June	0.7667	0.4213	0.6300	83.28	64.4
July	0.7524	0.4294	0.6247	84.24	64.0
August	0.7613	0.4244	0.6193	84.25	64.0
September	0.7653	0.4230	0.6244	85.01	64.5

- (a) These exchange rates and the trade-weighted index are derived using rates provided by the Reserve Bank of Australia in respect of each trading day.
- (b) May 1970=100. The trade-weighted index is reweighted annually on 1 October and on special occasions if required.

EXPLANATORY NOTES

INTRODUCTION

1 This publication presents preliminary estimates of Australia's international trade in goods and services on a balance of payments basis and merchandise import and export statistics on a recorded trade basis.

2 Merchandise trade statistics on a recorded trade basis are compiled from information submitted by exporters and importers or their agents to the Australian Customs Service (ACS). Adjustments for coverage, timing and valuation are made to recorded trade data to convert them to a balance of payments basis. The main source for services data is the quarterly Survey of International Trade in Services.

3 More comprehensive quarterly estimates of Australia's trade in goods and services, together with comprehensive details of Australia's balance of payments are included in the quarterly publication, *Balance of Payments and International Investment Position, Australia* (cat. no. 5302.0). Detailed monthly statistics on merchandise trade are available on AusStats or by subscription to tailored services.

CONCEPTS, SOURCES AND METHODS

4 The conceptual framework used in compiling Australia's merchandise trade statistics can be found in *International Merchandise Trade, Australia: Concepts, Sources and Methods, 2001* (cat. no. 5489.0).

5 The conceptual framework used in compiling Australia's balance of payments statistics is based on the Fifth Edition of the International Monetary Fund's *Balance of Payments Manual* (BPM5, 1993). Descriptions of the underlying concepts and structure of the balance of payments and the sources, methods and terms used in compiling the estimates are presented in *Balance of Payments and International Investment Position, Australia: Concepts, Sources and Methods, 1998* (cat. no. 5331.0). To bring merchandise trade statistics on a recorded trade basis to a balance of payments basis, timing adjustments are made to ensure that the transaction is recorded in the period in which ownership changed, rather than in the period in which the transaction was recorded by ACS. Adjustments are also made to imports to take account of distortions which arise when significant changes occur in the volume of import entries lodged but not yet processed by ACS in a given month. Chapter 6 of cat. no. 5331.0 provides more detail on the relationship between statistics on international merchandise trade on a recorded trade basis and on a balance of payments basis.

6 Both of the Concepts, Sources and Methods publications are available for free from the ABS web site, see <<http://www.abs.gov.au>> – select *About Statistics* then *Concepts & Classifications*.

SEASONAL ADJUSTMENT

7 Monthly original estimates are volatile, being subject to calendar-related and large irregular influences. Seasonally adjusted estimates are derived by estimating and removing systematic calendar related effects, such as seasonal and trading day influences, from the original series. Trading day effects are removed from the original estimates prior to the seasonal adjustment process. Seasonal adjustment does not aim to remove the irregular or non-seasonal influences which may be present in any particular month. These irregular influences may reflect both random economic events and difficulties of statistical recording. The estimates of international trade in goods and services on a balance of payments basis are seasonally adjusted. The merchandise exports and imports statistics on a recorded trade basis are not.

TREND ESTIMATES

8 The month-to-month movements of the seasonally adjusted estimates may not be reliable indicators of trend behaviour because they include irregular or non-seasonal movements. Trend estimates are derived by applying a 13-term Henderson moving average to the seasonally adjusted series. The use of a 13-term Henderson average can result in revisions to the estimates for the most recent six months as additional observations become available. Revisions can also occur because of changes in the original data and as a result of the annual re-estimation of the seasonal factors.

EXPLANATORY NOTES *continued*

SIGN CONVENTION

9 In keeping with balance of payments conventions, where statistics are on a balance of payments basis, credit entries (exports) are shown without sign and debit items (imports) are shown as negative entries. For statistics on a recorded trade basis, both imports and exports are shown without sign. The calculation of percentage changes on balance of payments debit items are made without regard to sign. References to balance of payments debit items in Key Figures, Key Points, and Analysis and Comments are also made without regard to sign.

COMMODITY BREAKDOWNS OF GOODS

10 For details of the classification used for goods exports on a balance of payments basis (credits), see table 6.6 in *Balance of Payments and International Investment Position, Australia: Concepts, Sources and Methods, 1998* (cat. no. 5331.0).

11 Details of the classification of goods imports on a balance of payments basis (debits) are provided in table 6.7 in cat. no. 5331.0. Most of the commodity groups shown in table 4 for goods debits are available for more detailed subgroups from AusStats.

12 The recorded trade statistics shown in tables 8 and 9 are classified by the Standard International Trade Classification 2 (SITC). The first section of tables 8 and 9 show the most significant commodities (by value) at the SITC 3 digit level.

COMMODITY BREAKDOWNS OF SERVICES

13 The quarterly detailed services data published in table 7 are consistent with the monthly aggregates shown in table 5. Services trade data by major partner countries and by Australian state of production/consumption are published on a financial year basis and a calendar year basis.

14 Monthly indicators for many of the services components that are only surveyed quarterly are not available. In particular, the Freight and Other transportation components of Total services credits are not available for publication on a monthly basis. The estimates for these items shown in table 5 are therefore derived by dividing the quarterly estimate by three. Where quarterly survey data are not available, freight debits are derived directly from imports data for the reference month as a difference between total merchandise cost, insurance and freight (CIFE) and free on board (FOB), adjusted to reflect timing and processing adjustments. For freight credits and other transportation credits and debits, estimates are derived by extrapolating the last month's data by an average of movements for the same month over the three previous years.

TOURISM RELATED SERVICES

15 The tourism related services memorandum items provide timely indicators of the movements in tourism related activities, not an absolute measure of the level of these activities. These series are not compiled on a Balance of Payments conceptual basis. However, they do provide a reasonable approximation of world tourism related activities.

16 The memorandum items have been derived by re-aggregating relevant components of the international trade in services series of the balance of payments accounts. The tourism related indicator has been derived by combining total travel services (business, education-related and other personal travel), passenger fares, and the air transport component of other transportation services which relates to agency fees and commission receipts.

SERVICES BY STATE AND BY PARTNER COUNTRY

17 Annual services data by state and by partner country are released twice yearly. Calendar year data are released with the March issue of this publication and financial year data are released with the September issue. The data are available from AusStats.

18 Services credits are classified by the state of provision, while services debits are classified by the state of consumption. The state allocations for transportation, travel and communication services are based on a number of indicators including merchandise trade statistics by state, overseas passenger arrivals and departures by state of clearance and data provided by the Department of Education, Science and Training. The allocation

EXPLANATORY NOTES *continued*

SERVICES BY STATE AND BY PARTNER COUNTRY *continued*

for other services (about 25% of all trade in services) is primarily based on the location of the business reporting the information, which serves as a proxy for the state of provision/consumption of that service. The data should be used with care but are considered suitable for analysis over time.

19 A comprehensive explanation of the data sources used and the methodology applied in the compilation of partner country statistics is provided in Chapter 17 of *Balance of Payments and International Investment Position, Australia - Concepts, Sources and Methods* (cat. no. 5331.0). Approximately 9% of total services credits and 5% of total services debits for 2003–04 are either confidential, or unable to be allocated to individual countries.

RELATED PRODUCTS OR SERVICES

20 More detailed balance of payments and recorded merchandise trade data, including forward seasonal factors, are available from AusStats. Very detailed merchandise trade data by commodity, country and state are available by contacting the National Information and Referral Service, as shown on the back of this publication.

21 Users may also wish to refer to the following publications which can be downloaded free of charge from the ABS web site:

- *Balance of Payments and International Investment Position, Australia* (cat. no. 5302.0) – issued quarterly
- *International Merchandise Imports, Australia* (cat. no. 5439.0) – issued monthly
- *International Trade Price Indexes, Australia* (cat. no. 6457.0) – issued quarterly
- *Balance of Payments and International Investment Position, Australia: Concepts, Sources and Methods* (cat. no. 5331.0)
- *Information Paper: Quality of Australian Balance of Payments Statistics* (cat. no. 5342.0)
- *International Merchandise Trade, Australia: Concepts, Sources and Methods* (cat. no. 5489.0)
- *A Guide to Australian Balance of Payments and International Investment Position Statistics* (cat. no. 5362.0.55.001).

CAUTIONARY NOTE

22 The tables in this publication are presented on two bases. Tables 1–7 contain estimates of Australia's international trade in goods and services which have been adjusted for coverage, valuation and timing to a balance of payments basis. Tables 8–11 contain estimates of merchandise exports and imports based on Australian Customs Service records. Paragraph 5 of the Explanatory Notes provides an explanation of the difference between these bases.

ABBREVIATIONS

\$b	billion (thousand million) dollars
\$m	million dollars
ABS	Australian Bureau of Statistics
APEC	Asia Pacific Economic Co-operation
ASEAN	Association of South-East Asian Nations
n.e.s.	not elsewhere specified
n.i.e.	not included elsewhere
OECD	Organisation for Economic Co-operation and Development
SAR	Special Administrative Region
SITC	Standard International Trade Classification

APPENDIX RELATED ARTICLES

<i>Article</i>	<i>Source</i>	<i>Issue</i>
Investment		
Kangaroo bonds	5302.0	Sep qtr 2004
Foreign ownership of equity	5302.0	Sep qtr 2004
Gross external debt	5302.0	Sep qtr 2003
Measuring Australia's foreign currency exposure	5302.0	Dec qtr 2001
Balance of payments		
International comparison of balance of payments statistics	5363.0	1999–2000
The Sydney Olympic Games Update	5368.0	Jul 2000
The Sydney Olympic Games	5302.0	Sep qtr 1999
Merchandise trade		
Export and Import currencies, 2005	(a) web site	Aug 2005
Australia's Importers, 2003–04	(a) web site	Nov 2004
Australia's Exporters, 2003–04	(a) web site	Oct 2004
Australia's Trade with the USA	(a) web site	Mar 2004
Australia's Exporters, 2002–03	(a) web site	Oct 2003
Australia's Importers, 2002–03	(a) web site	Nov 2003
Export and import currencies, 2003	(a) web site	May 2003
Australia's exporters and importers, 2001–02	5422.0	Dec qtr 2002
Trade through Australia's ports	5422.0	Sep qtr 2002
Australia's trade in wine	5422.0	Dec qtr 2001
Australia's export markets, 1991–92 to 2000–01	5422.0	Jun qtr 2001
Major commodities traded by Australia, 1991 to 2000	5422.0	Dec qtr 2000
Australia's trade in crude petroleum	5422.0	Mar qtr 2000
Australia's merchandise trade with the Republic of Korea	5422.0	Sep qtr 1999
Australia's merchandise trade with Japan	5422.0	Mar qtr 1999
Bilateral merchandise trade statistics reconciliation: Australia and the European Union, 1992 to 1997	5422.0	Sep qtr 1998
Trade in services		
International trade in services travel statistics	(a) web site	Oct 2005
Goods and services by region, 2001	5368.0	Feb 2002
International trade in education services	(a) web site	Oct 2002
Finance		
Recent trends in construction and first home buyers finance	5609.0	Mar 2002
Household sector data in the financial accounts	5232.0	Mar qtr 2002
Investment Managers	5655.0	Jun qtr 2000
Venture capital, 1999–2000	5611.0	2000–01
Impact of 2003–2004 farm season on Australian production	5611.0	1999–2000
Globalisation		
Foreign Ownership of Australian Exporters and Importers, 2002–03	5496.0.55.001	2002–03
Australian Outward Foreign Affiliates Trade, 2002–03	5495.0	2002–03
Economic Activity of Foreign Owned Businesses in Australia, 2000–01	5494.0	2000–01
Technical information		
ABS Management of the Impact of the Implementation of the Imports Component of the New Customs System	(a) web site	Sep 2005
Implementation of New Customs Systems	(a) web site	Aug 2004
Changes to country and port classifications	5368.0	May 2003
The effect of customs changes on export statistics	5422.0	Jun qtr 2002
Harmonized system changes	5422.0	Sep qtr 2001
International trade review: data quality and client queries	5422.0	Jun qtr 2000
Data confidentiality	5422.0	Dec qtr 1999

(a) International Trade Theme Page: Select Themes; Economy; International Trade; Topics of Interest.

FOR MORE INFORMATION . . .

- INTERNET* **www.abs.gov.au** the ABS web site is the best place to start for access to summary data from our latest publications, information about the ABS, advice about upcoming releases, our catalogue, and Australia Now—a statistical profile.
- LIBRARY* A range of ABS publications is available from public and tertiary libraries Australia-wide. Contact your nearest library to determine whether it has the ABS statistics you require, or visit our web site for a list of libraries.
- CPI INFOLINE* For current and historical Consumer Price Index data, call 1902 981 074 (call cost 77c per minute).
- DIAL-A-STATISTIC* This service now provides only current Consumer Price Index statistics call 1900 986 400 (call cost 77c per minute).

INFORMATION SERVICE

Data already published that can be provided within five minutes will be free of charge. Our information consultants can also help you to access the full range of ABS information—ABS user pays services can be tailored to your needs, time frame and budget. Publications may be purchased. Specialists are on hand to help you with analytical or methodological advice.

- PHONE* 1300 135 070
- EMAIL* client.services@abs.gov.au
- FAX* 1300 135 211
- POST* Client Services, ABS, GPO Box 796, Sydney NSW 2001

FREE ACCESS TO PUBLICATIONS

All ABS publications can be downloaded free of charge from the ABS web site.

- WEB ADDRESS* www.abs.gov.au



2536800009052

ISSN 1328 2778

RRP \$21.00