



# MONTHLY SUMMARY OF STATISTICS

VICTORIA

EMBARGO: 11:30AM (CANBERRA TIME) TUES 21 NOV 2000

## CONTENTS

	<i>page</i>
Notes .....	2
Selected features .....	3
TABLES	
List of tables.....	4
Demography.....	5
Labour.....	6
Wages.....	9
Prices.....	10
Meat production.....	11
Building.....	12
Finance.....	15
Retail.....	16
Trade.....	17
Tourism.....	18
APPENDIX	
Impact of The New Tax System (TNTS) on data series in this publication .....	19

- For further information about these and related statistics, contact the National Information Service on 1300 135 070, or James Darragh on Melbourne 03 9615 7476.

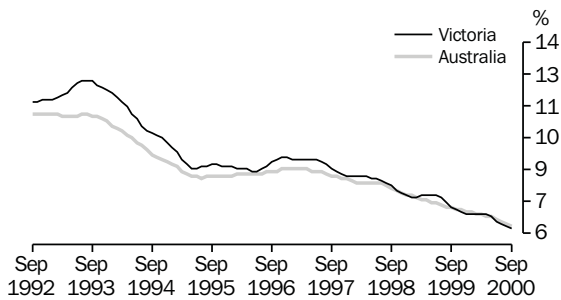
## NOTES

FORTHCOMING ISSUES	<table border="0"> <thead> <tr> <th style="text-align: left;"><i>ISSUE</i></th> <th style="text-align: left;"><i>RELEASE DATE</i></th> </tr> </thead> <tbody> <tr> <td>November 2000</td> <td>19 December 2000</td> </tr> <tr> <td>December 2000</td> <td>23 January 2001</td> </tr> <tr> <td>January 2001</td> <td>20 February 2001</td> </tr> <tr> <td>February 2001</td> <td>20 March 2001</td> </tr> <tr> <td>March 2000</td> <td>17 April 2001</td> </tr> <tr> <td>April 2001</td> <td>22 May 2001</td> </tr> </tbody> </table>	<i>ISSUE</i>	<i>RELEASE DATE</i>	November 2000	19 December 2000	December 2000	23 January 2001	January 2001	20 February 2001	February 2001	20 March 2001	March 2000	17 April 2001	April 2001	22 May 2001				
<i>ISSUE</i>	<i>RELEASE DATE</i>																		
November 2000	19 December 2000																		
December 2000	23 January 2001																		
January 2001	20 February 2001																		
February 2001	20 March 2001																		
March 2000	17 April 2001																		
April 2001	22 May 2001																		
IMPACT OF THE NEW TAX SYSTEM	<p>ABS statistical series are being impacted to varying degrees as a result of The New Tax System (TNTS), introduced in Australia from 1 July 2000. TNTS includes the removal of Wholesale Sales Tax and the introduction of a Goods and Services Tax (GST), and as a result, a number of ABS data series will reflect significant immediate and subsequent impacts (see Appendix on page 19 for further details).</p>																		
SEASONAL ADJUSTMENT	<p>Seasonal adjustment is a means of removing the estimated effects of normal seasonal variations from economic time series so that the effects of other influences are obvious. Seasonal variations are the systematic (though not necessarily regular) intra-year movements of economic time series. These are often the result of non-economic phenomena, such as climatic changes and regular religious festivals, e.g. Christmas and Easter.</p>																		
TREND ESTIMATE	<p>Smoothing seasonally adjusted series produces a measure of trend by removing the impact of the irregular component of the series. The trend estimates are derived by applying a 13-term Henderson weighted moving average to the respective seasonally adjusted series. Readers are reminded that trend estimates are subject to revision as subsequent months' data become available.</p>																		
CHANGES IN THIS ISSUE	<p>This issue introduces the 14th Series Australian Consumer Price Index (CPI) which, among other things, incorporates an updated commodity classification and weighting pattern. As a result, table 8 has been expanded to 13 columns. For more details of changes resulting from the introduction of the 14th Series CPI, refer to Information Paper: Introduction of the 14th Series Australian Consumer Price Index (Cat. no. 6456.0), which was released on 29 September 2000. Consequently the order of table 12 and table 13 have been reversed.</p>																		
SYMBOLS AND OTHER USAGES	<table border="0"> <tr> <td>n.a.</td> <td>not available</td> </tr> <tr> <td>n.e.c.</td> <td>not elsewhere classified</td> </tr> <tr> <td>n.p.</td> <td>not available for publication but included in totals where applicable</td> </tr> <tr> <td>n.y.a.</td> <td>not yet available</td> </tr> <tr> <td>p</td> <td>preliminary—figure or series subject to revision</td> </tr> <tr> <td>r</td> <td>figure or series revised since previous issue</td> </tr> <tr> <td>*</td> <td>estimate has a relative standard error greater than 25% and is therefore subject to sampling variability too high for most practical uses</td> </tr> <tr> <td>. .</td> <td>not applicable</td> </tr> <tr> <td>—</td> <td>nil or rounded to zero</td> </tr> </table>	n.a.	not available	n.e.c.	not elsewhere classified	n.p.	not available for publication but included in totals where applicable	n.y.a.	not yet available	p	preliminary—figure or series subject to revision	r	figure or series revised since previous issue	*	estimate has a relative standard error greater than 25% and is therefore subject to sampling variability too high for most practical uses	. .	not applicable	—	nil or rounded to zero
n.a.	not available																		
n.e.c.	not elsewhere classified																		
n.p.	not available for publication but included in totals where applicable																		
n.y.a.	not yet available																		
p	preliminary—figure or series subject to revision																		
r	figure or series revised since previous issue																		
*	estimate has a relative standard error greater than 25% and is therefore subject to sampling variability too high for most practical uses																		
. .	not applicable																		
—	nil or rounded to zero																		

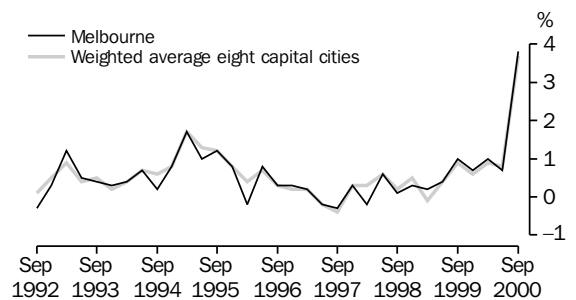
Zia ABBASI,  
Regional Director, Victoria

# SELECTED FEATURES

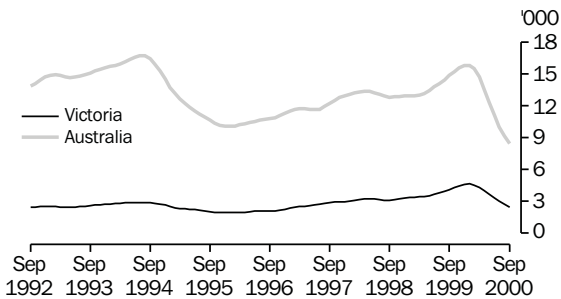
UNEMPLOYMENT RATE, Trend—Monthly



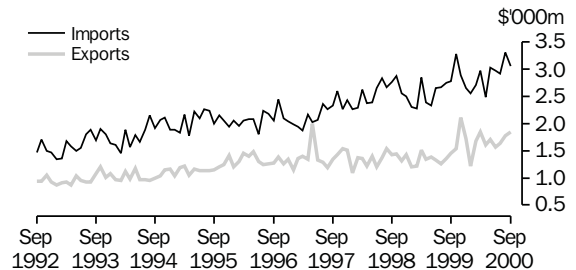
CONSUMER PRICE INDEX, Change from previous quarter



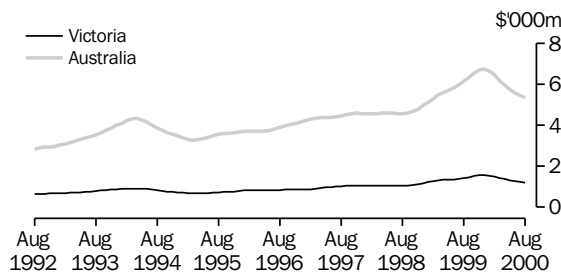
NEW DWELLING UNITS APPROVED, Trend—Monthly



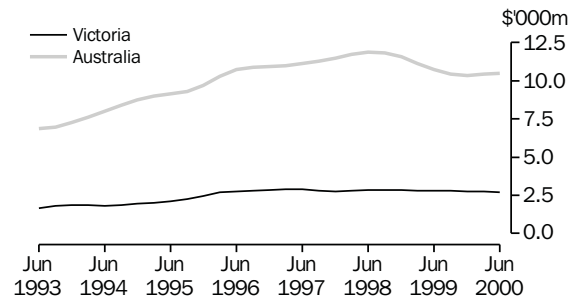
MERCHANDISE IMPORTS AND EXPORTS, Original—Monthly



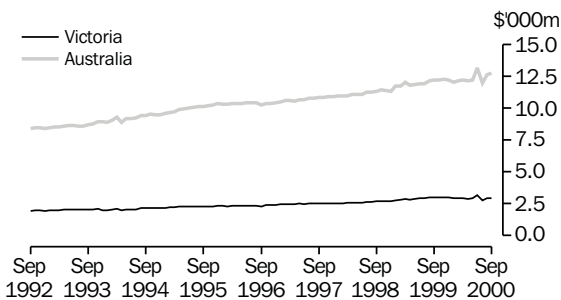
TOTAL VALUE OF SECURED HOUSING FINANCE COMMITMENTS TO INDIVIDUALS, Trend—Monthly



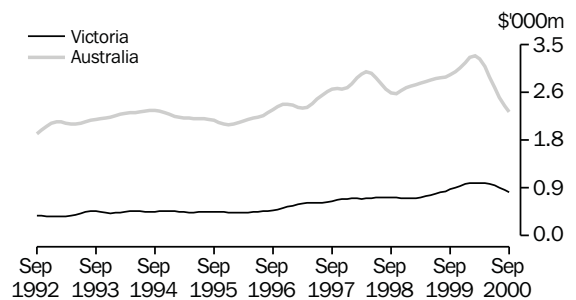
PRIVATE NEW CAPITAL EXPENDITURE, Trend—Quarterly



RETAIL TURNOVER, Seasonally Adjusted—Monthly



VALUE OF ALL BUILDINGS APPROVED, Trend—Monthly



## LIST OF TABLES

			Page
DEMOGRAPHY	<b>1</b>	Estimated resident population	5
	<b>2</b>	Births, deaths, marriages and divorces	5
LABOUR	<b>3</b>	Labour force status of the civilian population aged 15 years and over	6
	<b>4</b>	Employed persons, by industry	7
	<b>5</b>	Job vacancies	8
	<b>6</b>	Industrial disputes causing stoppage of work	8
	<b>7</b>	Average weekly earnings of employees	9
	<b>8</b>	Consumer price index—Melbourne	10
	<b>9</b>	Price index of materials used in building—Melbourne	11
MEAT PRODUCTION	<b>10</b>	Livestock slaughterings	11
	<b>11</b>	Meat production	12
BUILDING	<b>12</b>	New houses and other residential buildings, number of dwelling units	12
	<b>13</b>	Building approvals—Melbourne and Victoria	13
	<b>14</b>	Value of building	14
FINANCE	<b>15</b>	Private new capital expenditure, by selected industries and type of asset	15
	<b>16</b>	Commercial finance commitments	15
	<b>17</b>	Secured housing finance commitments, dwelling units	16
RETAIL	<b>18</b>	Retail turnover, by industry (excluding motor vehicles, parts, petrol, etc.)	16
TRADE	<b>19</b>	Exports and imports, by sections of the Australian export and import classifications	17
	<b>20</b>	Overseas trade, major trading partners	17
	<b>21</b>	Value of overseas trade—Victoria and Australia	18
TOURISM	<b>22</b>	Tourist accommodation	18

# 1

## ESTIMATED RESIDENT POPULATION

Period	At end of period			Increase during period		Melbourne Statistical Division at 30 June(a)
	Males	Females	Persons	Natural	Total	
	'000	'000	'000	'000	'000	'000
<b>1996–1997</b>	2 275.2	2 330.0	4 605.2	28.7	45.1	3 321.8
<b>1997–1998</b>	2 301.0	2 353.9	4 654.9	27.7	49.7	3 367.0
<b>1998–1999</b>	2 330.1	2 382.1	4 712.2	26.2	57.2	3 417.2
<b>1997</b>						
December qtr	2 286.3	2 341.1	4 627.4	7.4	9.6	..
<b>1998</b>						
March qtr	2 295.3	2 348.9	4 644.3	7.4	16.9	..
June qtr	2 301.0	2 353.9	4 654.9	6.8	10.7	..
September qtr p	2 308.2	2 360.8	4 669.0	6.4	14.1	..
December qtr p	2 315.3	2 368.6	4 683.8	6.6	14.8	..
<b>1999</b>						
March qtr p	2 324.6	2 376.8	4 701.4	6.9	17.6	..
June qtr p	2 330.1	2 382.1	4 712.2	6.4	10.8	..
September qtr p	2 337.8	2 388.9	4 726.6	6.2	14.4	..
December qtr p	2 345.1	2 396.3	4 741.5	6.3	14.9	..
<b>2000</b>						
March qtr p	2 352.3	2 401.6	4 753.9	7.2	17.0	..

(a) Based on the 1998 Statistical Division boundaries.

Source: Australian Demographic Statistics (Cat. no. 3101.0) (quarterly).

# 2

## BIRTHS, DEATHS, MARRIAGES AND DIVORCES

Period	Registrations				Annual rate per 1,000 of mean estimated resident population				Infant deaths per 1,000 live births
	Births	Deaths (including infant deaths)	Marriages	Divorces	Births	Deaths	Marriages	Divorces	
	no.	no.	no.	no.	rate	rate	rate	rate	
<b>1996–97</b>	61 232	32 570	25 664	13 046	13.36	7.11	5.60	2.85	4.46
<b>1997–98</b>	60 143	32 423	25 955	11 916	13.00	7.01	5.61	2.58	4.86
<b>1998–99</b>	59 374	32 298	26 351	12 579	12.68	6.90	5.63	2.69	5.36
<b>1997</b>									
December qtr	15 259	7 813	7 533	3 181	..	..	..	..	..
Year—1997	60 610	32 760	25 456	12 463	13.16	7.11	5.53	2.71	4.82
<b>1998</b>									
March qtr	14 577	7 169	8 530	2 663	..	..	..	..	..
June qtr	14 870	8 097	6 070	2 908	..	..	..	..	..
September qtr	15 197	8 984	3 912	3 188	..	..	..	..	..
December qtr	14 648	7 850	7 860	3 548	..	..	..	..	..
Year—1998	59 292	32 100	26 372	12 307	12.74	6.90	5.67	2.64	4.82
<b>1999</b>									
March qtr	14 939	7 259	8 657	2 738	..	..	..	..	..
June qtr	14 590	8 205	5 922	3 105	..	..	..	..	..
September qtr	p 14 965	p 8 747	4 211	3 461	..	..	..	..	..
December qtr	p 14 554	p 8 220	8 462	3 438	..	..	..	..	..
Year—1999	p 59 048	p 32 431	27 252	12 742	12.53	6.88	5.78	2.70	5.62
<b>2000</b>									
March qtr p	14 191	6 978	8 678	2 733	..	..	..	..	..

Source: Demography, Victoria (Cat. no. 3311.2) (annual); Australian Demographic Statistics (Cat. no. 3101.0) (quarterly).

## LABOUR FORCE STATUS OF THE CIVILIAN POPULATION AGED 15 YEARS AND OVER

	<i>Employed</i>		<i>Unemployed looking for work</i>			<i>Labour force</i>	<i>Not in labour force</i>	<i>Civilian population 15 years and over</i>	<i>Unemployment rate</i>	<i>Participation rate</i>
	<i>Full-time</i>	<i>Total</i>	<i>Full-time</i>	<i>Part-time</i>	<i>Total</i>					
	'000	'000	'000	'000	'000					
MALES										
<b>1999</b>										
July	1 082.6	1 243.2	80.7	14.8	95.5	1 338.7	501.3	1 840.0	7.1	72.8
August	1 072.4	1 225.7	80.3	18.1	98.4	1 324.2	518.2	1 842.3	7.4	71.9
September	1 079.6	1 243.7	82.8	17.7	100.5	1 344.2	500.5	1 844.7	7.5	72.9
October	1 077.2	1 242.2	71.5	15.9	87.4	1 329.6	518.0	1 847.6	6.6	72.0
November	1 068.9	1 228.3	74.6	14.4	89.0	1 317.4	533.2	1 850.5	6.8	71.2
December	1 097.1	1 262.9	74.8	20.1	95.0	1 357.9	495.6	1 853.5	7.0	73.3
<b>2000</b>										
January	1 077.8	1 232.6	78.0	13.5	91.4	1 324.0	531.6	1 855.6	6.9	71.4
February	1 102.6	1 254.6	71.9	18.8	90.7	1 345.3	512.6	1 857.8	6.7	72.4
March	1 084.4	1 249.8	71.7	21.1	92.8	1 342.5	517.5	1 860.0	6.9	72.2
April	1 084.6	1 255.0	69.1	21.0	90.1	1 345.1	517.1	1 862.2	6.7	72.2
May	1 091.6	1 254.7	75.4	17.0	92.4	1 347.2	517.1	1 864.3	6.9	72.3
June	1 088.9	1 259.4	66.3	16.9	83.2	1 342.6	523.9	1 866.5	6.2	71.9
July	1 114.2	1 282.7	61.0	14.9	75.9	1 358.5	510.5	1 869.0	5.6	72.7
August	1 092.4	1 265.9	66.1	18.3	84.5	1 350.4	521.2	1 871.5	6.3	72.2
September	1 115.9	1 285.8	71.0	17.7	88.7	1 374.4	499.7	1 874.1	6.5	73.3
FEMALES										
<b>1999</b>										
July	542.5	963.3	38.6	35.3	73.9	1 037.2	883.4	1 920.6	7.1	54.0
August	527.8	953.3	38.4	29.0	67.4	1 020.6	902.3	1 922.9	6.6	53.1
September	539.5	981.9	45.5	33.9	79.3	1 061.2	864.1	1 925.3	7.5	55.1
October	536.0	975.8	42.3	25.8	68.1	1 043.9	884.1	1 928.0	6.5	54.1
November	533.8	975.3	38.5	27.7	66.3	1 041.6	889.1	1 930.7	6.4	54.0
December	568.0	997.4	43.5	26.8	70.4	1 067.8	865.6	1 933.4	6.6	55.2
<b>2000</b>										
January	547.3	943.2	43.4	33.8	77.3	1 020.5	915.0	1 935.4	7.6	52.7
February	546.2	965.8	49.9	34.2	84.1	1 049.9	887.6	1 937.5	8.0	54.2
March	546.9	981.2	47.6	33.3	80.9	1 062.1	877.4	1 939.5	7.6	54.8
April	541.5	978.8	44.0	30.3	74.3	1 053.1	888.3	1 941.5	7.1	54.2
May	544.2	990.4	45.5	25.6	71.1	1 061.6	881.8	1 943.4	6.7	54.6
June	562.8	1 009.7	42.2	25.0	67.2	1 076.8	868.5	1 945.3	6.2	55.4
July	575.0	1 016.8	39.8	28.6	68.4	1 085.2	862.6	1 947.8	6.3	55.7
August	550.1	1 001.3	39.7	22.0	61.6	1 063.0	887.3	1 950.3	5.8	54.5
September	568.1	1 018.5	42.5	30.6	73.1	1 091.6	861.2	1 952.8	6.7	55.9
PERSONS										
<b>1999</b>										
July	1 625.1	2 206.5	119.4	50.1	169.4	2 375.9	1 384.6	3 760.6	7.1	63.2
August	1 600.2	2 179.0	118.7	47.1	165.8	2 344.8	1 420.5	3 765.3	7.1	62.3
September	1 619.1	2 225.5	128.3	51.6	179.9	2 405.4	1 364.5	3 770.0	7.5	63.8
October	1 613.2	2 218.0	113.7	41.8	155.5	2 373.5	1 402.1	3 775.6	6.6	62.9
November	1 602.7	2 203.7	113.2	42.1	155.3	2 359.0	1 422.2	3 781.2	6.6	62.4
December	1 665.1	2 260.3	118.3	47.0	165.3	2 425.7	1 361.2	3 786.8	6.8	64.1
<b>2000</b>										
January	1 625.1	2 175.8	121.4	47.3	168.7	2 344.5	1 446.6	3 791.1	7.2	61.8
February	1 648.7	2 220.4	121.8	53.0	174.8	2 395.2	1 400.1	3 795.3	7.3	63.1
March	1 631.3	2 230.9	119.3	54.4	173.7	2 404.6	1 394.9	3 799.6	7.2	63.3
April	1 626.1	2 233.8	113.1	51.3	164.4	2 398.2	1 405.4	3 803.6	6.9	63.1
May	1 635.8	2 245.2	120.9	42.7	163.6	2 408.8	1 399.0	3 807.7	6.8	63.3
June	1 651.7	2 269.0	108.5	41.9	150.4	2 419.4	1 392.4	3 811.8	6.2	63.5
July	1 689.2	2 299.5	100.8	43.5	144.3	2 443.8	1 373.1	3 816.8	5.9	64.0
August	1 642.4	2 267.2	105.8	40.3	146.1	2 413.3	1 408.5	3 821.8	6.1	63.1
September	1 684.0	2 304.2	113.5	48.3	161.8	2 466.0	1 360.8	3 826.8	6.6	64.4

Source: Labour Force, Victoria (Cat. no. 6202.2) (quarterly).

## 4

## EMPLOYED PERSONS, BY INDUSTRY

	May 1999	Aug 1999	Nov 1999	Feb 2000	May 2000	Aug 2000
Industry division	'000	'000	'000	'000	'000	'000
MALES						
Agriculture, forestry and fishing	58.6	56.3	56.1	56.6	63.2	62.3
Mining	*3.1	*2.9	*3.6	5.1	7.4	5.4
Manufacturing	241.9	236.6	244.6	255.5	256.0	264.3
Electricity, gas and water supply	14.4	13.9	10.6	11.1	14.2	12.2
Construction	130.1	133.8	137.0	136.3	140.5	140.4
Wholesale trade	81.6	88.6	90.4	77.6	76.9	71.9
Retail trade	166.0	161.7	163.9	166.0	163.8	149.4
Accommodation, cafes and restaurants	41.7	40.0	41.2	46.2	46.0	41.8
Transport and storage	72.0	75.5	70.8	71.8	72.8	72.7
Communication services	27.8	27.9	29.6	35.7	38.2	37.8
Finance and insurance	43.4	36.8	38.9	42.7	38.7	42.2
Property and business services	154.3	162.2	148.7	144.5	143.6	157.8
Government administration and defence	28.8	27.7	35.2	34.3	29.3	31.6
Education	45.4	46.4	50.2	48.0	44.2	47.5
Health and community services	42.3	39.5	36.4	41.5	44.0	50.9
Cultural and recreational services	27.3	32.3	30.4	31.7	32.4	35.5
Personal and other services	41.5	43.4	40.8	50.0	43.6	42.2
<b>Total</b>	<b>1 220.4</b>	<b>1 225.7</b>	<b>1 228.3</b>	<b>1 254.6</b>	<b>1 254.7</b>	<b>1 265.9</b>
FEMALES						
Agriculture, forestry and fishing	26.8	26.4	29.1	25.8	29.2	30.1
Mining	*0.3	*0.6	*0.8	*1.4	*2.0	*2.0
Manufacturing	98.1	94.5	98.9	101.6	108.1	105.9
Electricity, gas and water supply	*3.9	*3.0	*2.4	*2.4	*2.8	*1.7
Construction	17.2	17.3	18.5	21.0	17.4	19.2
Wholesale trade	42.8	46.1	50.0	34.5	37.2	35.8
Retail trade	168.5	174.9	172.2	173.7	170.7	167.0
Accommodation, cafes and restaurants	44.6	47.0	48.9	48.3	56.9	54.7
Transport and storage	22.2	20.8	22.7	20.9	23.7	25.7
Communication services	14.0	14.1	17.3	19.5	17.5	18.2
Finance and insurance	37.3	39.7	45.7	49.4	48.1	48.5
Property and business services	108.9	123.6	114.5	116.8	118.4	129.4
Government administration and defence	38.7	38.6	40.7	34.2	34.8	39.3
Education	101.1	105.1	97.1	93.6	99.8	108.3
Health and community services	144.3	137.6	149.6	156.8	158.7	161.1
Cultural and recreational services	32.6	26.2	26.4	24.9	28.4	28.0
Personal and other services	38.7	37.6	40.4	41.0	36.9	26.4
<b>Total</b>	<b>940.0</b>	<b>953.3</b>	<b>975.3</b>	<b>965.8</b>	<b>990.4</b>	<b>1 001.3</b>
PERSONS						
Agriculture, forestry and fishing	85.3	82.7	85.2	82.4	92.4	92.3
Mining	*3.4	*3.5	*4.4	6.5	9.3	7.4
Manufacturing	340.0	331.2	343.5	357.1	364.1	370.1
Electricity, gas and water supply	18.3	16.9	13.0	13.5	17.0	13.9
Construction	147.3	151.1	155.6	157.3	157.9	159.7
Wholesale trade	124.4	134.7	140.4	112.1	114.1	107.6
Retail trade	334.5	336.7	336.0	339.7	334.5	316.4
Accommodation, cafes and restaurants	86.3	87.1	90.0	94.5	102.9	96.5
Transport and storage	94.2	96.4	93.5	92.7	96.5	98.5
Communication services	41.9	42.0	46.9	55.1	55.7	56.0
Finance and insurance	80.7	76.5	84.7	92.1	86.8	90.8
Property and business services	263.3	285.8	263.2	261.3	262.0	287.1
Government administration and defence	67.5	66.3	75.8	68.5	64.1	71.0
Education	146.5	151.5	147.3	141.6	144.0	155.8
Health and community services	186.6	177.1	186.0	198.3	202.7	212.0
Cultural and recreational services	60.0	58.5	56.8	56.6	60.8	63.5
Personal and other services	80.2	80.9	81.2	91.0	80.5	68.6
<b>Total</b>	<b>2 160.3</b>	<b>2 179.0</b>	<b>2 203.7</b>	<b>2 220.4</b>	<b>2 245.2</b>	<b>2 267.2</b>

Source: Labour Force, Victoria (Cat. no. 6202.2) (quarterly).

## 5

## JOB VACANCIES

Month	Vacancies all persons '000	Sector		Job vacancy rate %
		Public '000	Private '000	
<b>1999</b>				
May	22.1	2.5	19.6	1.05
August	29.3	3.0	26.4	1.39
November	31.0	3.8	27.1	1.49
<b>2000</b>				
February	27.0	4.4	22.5	1.33
May	30.9	6.7	24.2	1.50
August	48.3	4.1	*44.2	2.29

Source: Job Vacancies and Overtime, Australia (Cat. no. 6354.0) (quarterly).

## 6

## INDUSTRIAL DISPUTES CAUSING STOPPAGE OF WORK

	Disputes		Employees involved		Working days lost				
	Beginning in period	Total	Beginning in period	Total	Manufacturing	Construction	Education, health, community services	Other industries	Total
	no.	no.	'000	'000	'000	'000	'000	'000	'000
<b>1999</b>									
March	29	32	3.6	4.2	7.3	1.0	—	1.3	9.6
April	15	21	13.9	14.8	7.1	13.0	—	1.8	21.9
May	23	25	3.6	3.9	7.5	0.1	0.1	1.2	8.8
June	23	25	10.9	11.3	13.1	1.2	0.1	1.2	15.6
July	16	23	10.3	11.0	11.5	6.6	1.1	0.5	19.6
August	29	34	75.9	76.5	42.7	8.5	10.6	6.1	67.9
September	13	14	14.0	14.1	19.2	4.6	—	0.2	24.0
October	21	23	8.2	8.4	1.6	5.1	0.7	0.6	8.0
November	17	21	17.8	17.9	5.2	19.6	—	0.6	25.4
December	29	34	5.6	6.5	6.2	1.7	—	0.5	8.4
<b>2000</b>									
January	19	24	2.7	2.9	3.9	2.4	—	0.8	7.1
February	18	24	7.8	8.5	6.4	12.8	—	1.5	20.7
March	17	21	4.9	8.1	4.9	10.4	2.0	2.4	19.7
April	8	15	1.7	4.2	4.0	4.0	0.5	1.4	9.9
May	22	26	8.7	8.9	1.9	7.0	0.0	0.5	9.4
June	19	23	6.2	6.6	6.8	0.3	0.0	2.4	9.5
July	18	23	6.9	9.5	1.0	3.6	2.0	0.0	6.6

Source: Industrial Disputes, Australia (Cat. no. 6321.0) (monthly).



## 7

## AVERAGE WEEKLY EARNINGS OF EMPLOYEES

Month	Males			Females			Persons		
	Full-time adult ordinary time earnings	Full-time adult total earnings	All males total earnings	Full-time adult ordinary time earnings	Full-time adult total earnings	All females total earnings	Full-time adult ordinary time earnings	Full-time adult total earnings	All employees total earnings
	\$	\$	\$	\$	\$	\$	\$	\$	\$
<b>1999</b>									
February	769.20	823.70	710.90	658.10	673.20	474.40	729.00	769.20	600.30
May	783.00	835.00	717.60	666.20	679.80	486.50	740.60	778.60	608.00
August	772.30	821.00	705.70	685.20	700.80	488.40	740.80	777.60	601.60
November	780.80	838.80	726.90	695.40	712.40	488.80	750.10	793.40	610.80
<b>2000</b>									
February	797.80	843.70	732.30	696.70	710.00	492.60	761.30	795.40	616.20
May	799.10	850.10	739.60	706.00	722.60	504.80	765.90	804.70	626.30

Source: Average Weekly Earnings, States and Australia (Cat. no. 6302.0) (quarterly).

<i>Period</i>	<i>Food</i>	<i>Alcohol and tobacco</i>	<i>Clothing and footwear</i>	<i>Housing</i>	<i>Household furnishings, supplies and services</i>	<i>Health</i>
<b>1997–1998</b>	120.5	161.4	108.9	86.5	115.1	178.1
<b>1998–1999</b>	125.1	166.9	108.1	86.7	115.1	174.2
<b>1999–2000</b>	128.7	174.2	107.1	90.7	114.7	168.3
<b>1998</b>						
June qtr	121.6	163.9	108.9	86.2	115.1	183.1
September qtr	123.6	165.0	108.9	85.3	115.3	183.8
December qtr	124.3	166.0	108.2	86.6	115.3	181.8
<b>1999</b>						
March qtr	125.8	167.6	107.5	87.3	114.7	165.2
June qtr	126.7	169.1	107.8	87.5	115.1	166.0
September qtr	127.8	169.4	107.5	88.8	114.3	166.0
December qtr	128.6	173.7	107.1	90.4	114.4	165.9
<b>2000</b>						
March qtr	128.3	176.5	106.9	91.7	114.3	170.2
June qtr	130.1	177.3	106.9	91.7	115.7	170.9
September qtr	131.6	187.6	116.2	97.8	117.9	171.9

<i>Period</i>	<i>Transport- ation</i>	<i>Communica- tion</i>	<i>Recreation</i>	<i>Education</i>	<i>Miscellan- eous</i>	<i>All groups</i>	<i>Weighted average of eight capital cities—All groups</i>
<b>1997–1998</b>	123.3	106.3	120.9	160.1	131.7	119.8	120.3
<b>1998–1999</b>	120.8	102.8	121.7	167.9	135.6	120.9	121.8
<b>1999–2000</b>	127.9	97.6	122.5	175.5	146.1	124.1	124.7
<b>1998</b>							
June qtr	122.0	105.9	121.5	164.2	132.7	120.3	121.0
September qtr	121.0	105.0	120.9	164.2	134.1	120.4	121.3
December qtr	120.6	103.7	121.6	164.2	134.6	120.8	121.9
<b>1999</b>							
March qtr	119.9	101.3	122.8	171.5	136.3	121.0	121.8
June qtr	121.6	101.0	121.3	171.5	137.4	121.5	122.3
September qtr	125.9	97.5	122.3	171.5	139.7	122.7	123.4
December qtr	125.2	97.1	122.6	171.5	143.3	123.5	124.1
<b>2000</b>							
March qtr	129.2	97.2	122.7	179.4	147.8	124.7	125.2
June qtr	131.2	98.5	122.4	179.4	153.4	125.6	126.2
September qtr	134.5	105.4	127.8	179.7	159.3	130.4	130.9

Base of each group: year 1989–90=100.0.

Source: Consumer Price Index, Australia (Cat. no. 6401.0) (quarterly).

## 9

## PRICE INDEX OF MATERIALS USED IN BUILDING—MELBOURNE

Group	1999–2000						Weighted average of six state capital cities—Sept qtr 2000
	1997–98	1998–99	1999–2000	Mar qtr	Jun qtr	Sept qtr	
House building							
All groups	117.1	118.0	121.7	122.9	124.2	123.2	124.5
Other than house building							
Structural timber	115.6	116.2	118.5	119.9	123.2	126.2	138.6
Clay bricks	117.9	119.6	123.8	126.3	130.3	130.2	128.0
Ready mix concrete	111.4	112.9	110.8	110.3	110.1	108.6	101.1
Precast concrete products	115.7	123.9	130.9	133.6	135.8	138.2	131.0
Steel decking and cladding	109.4	108.0	109.3	108.0	113.0	113.2	118.0
Structural steel	104.9	104.9	101.3	100.8	101.0	101.2	113.0
Reinforcing steel bar, mesh, etc.	100.8	99.5	93.8	94.7	94.0	89.3	102.1
Aluminium windows	100.0	100.4	105.1	104.9	110.0	111.5	119.3
Fabricated steel products	120.0	124.7	125.6	125.6	126.1	124.1	117.6
Builders' hardware	119.6	122.7	127.6	126.0	133.6	135.2	134.9
Sand and aggregate	116.3	120.5	120.6	120.2	120.6	118.3	122.3
Carpet	102.6	100.1	98.9	98.0	98.7	93.5	95.5
Paint and other coatings	144.7	153.8	162.4	164.3	164.1	165.3	151.2
Non-ferrous pipes and fittings	113.0	111.2	116.6	117.6	118.2	120.8	135.0
All groups excluding electrical materials and mechanical services	111.0	112.3	113.0	112.9	114.7	114.1	116.0
All electrical materials	109.8	112.4	116.8	117.2	117.4	112.8	118.2
All mechanical services	114.9	118.2	120.6	120.9	121.6	115.4	113.9
All plumbing materials	122.8	122.8	127.7	128.2	130.6	128.4	130.1
All groups	111.4	113.2	114.4	114.5	116.0	114.0	115.5

Base of each index: year 1989–90 = 100.0.

Source: Price Index of Materials Used in Building Other Than House Building, Six State Capital Cities (Cat. no. 6407.0) (quarterly); Price Index of Materials Used in House Building, Six State Capital Cities (Cat. no. 6408.0) (quarterly).

## 10

## LIVESTOCK SLAUGHTERINGS

	Cattle	Calves	Sheep	Lambs	Pigs
	'000	'000	'000	'000	'000
<b>1997–1998</b>	1 798.0	767.2	3 285.6	6 385.7	1 567.7
<b>1998–1999</b>	1 751.3	714.4	3 079.6	6 699.4	1 572.8
<b>1999–2000</b>	1 524.2	678.5	3 815.7	7 144.0	1 443.7
<b>1999</b>					
June	126.2	78.5	230.4	524.4	133.1
July	124.9	90.6	246.1	554.1	127.0
August	117.4	182.8	238.9	535.4	123.0
September	112.3	142.5	282.6	625.0	126.3
October	123.3	50.2	329.1	605.3	116.2
November	132.5	20.7	344.2	639.7	117.3
December	133.5	9.0	339.1	610.6	131.2
<b>2000</b>					
January	124.0	7.2	341.0	530.8	109.9
February	136.1	8.1	398.8	590.6	117.6
March	140.8	16.9	392.6	627.4	131.2
April	106.9	26.4	273.0	515.7	110.1
May	140.7	50.1	341.0	655.0	126.7
June	131.3	74.0	289.6	654.9	107.2
July	108.6	82.8	272.2	620.1	93.8
August r	127.6	189.8	304.9	704.1	103.4
September	115.3	114.1	290.0	624.7	80.4

Source: Unpublished data, Monthly Livestock Collection.

# 11

## MEAT PRODUCTION

	<i>Meat (carcass weight)</i>				
	<i>Beef</i>	<i>Veal</i>	<i>Mutton</i>	<i>Lamb</i>	<i>Pigmeat</i>
	<i>tonnes</i>	<i>tonnes</i>	<i>tonnes</i>	<i>tonnes</i>	<i>tonnes</i>
<b>1997-1998</b>	389 087	15 578	63 470	119 972	112 504
<b>1998-1999</b>	398 815	14 225	61 647	128 379	114 581
<b>1999-2000</b>	351 371	13 371	76 713	140 205	106 691
<b>1999</b>					
June	28 023	1 520	4 615	10 337	9 824
July	28 011	1 729	4 976	11 002	9 358
August	26 379	3 563	4 894	10 232	9 197
September	25 749	2 797	5 943	12 233	9 442
October	28 673	1 010	7 278	11 770	8 698
November	31 629	425	7 038	12 338	8 796
December	31 062	208	6 897	11 709	9 403
<b>2000</b>					
January	29 030	177	6 749	10 608	8 029
February	31 668	198	7 647	11 693	8 499
March	32 739	364	7 598	12 316	9 595
April	24 523	533	5 268	10 200	7 866
May	32 077	970	6 634	13 158	9 689
June	29 732	1 397	5 797	12 955	8 119
July	25 181	1 534	5 791	12 311	7 077
August r	29 353	3 638	6 555	14 079	7 875
September	27 079	2 316	6 014	12 324	6 075

Source: Unpublished data, Monthly Livestock Collection.

# 12

## NEW HOUSES AND OTHER RESIDENTIAL BUILDINGS, NUMBER OF DWELLING UNITS

<i>Period</i>	<i>New houses</i>				<i>New other residential buildings</i>			
	<i>Approved</i>	<i>Commenced</i>	<i>Under construction(a)</i>	<i>Completed</i>	<i>Approved</i>	<i>Commenced</i>	<i>Under construction(a)</i>	<i>Completed</i>
	<i>no.</i>	<i>no.</i>	<i>no.</i>	<i>no.</i>	<i>no.</i>	<i>no.</i>	<i>no.</i>	<i>no.</i>
<b>1997-1998</b>	27 937	26 004	12 368	22 425	7 412	7 598	5 148	6 542
<b>1998-1999</b>	29 227	29 165	14 455	26 926	8 861	8 307	6 198	7 029
<b>1999-2000</b>	36 175	34 603	17 957	31 035	12 009	11 554	9 698	7 954
<b>1999</b>								
March qtr	7 071	6 494	13 846	5 699	2 461	2 159	5 752	1 559
June qtr	7 757	7 910	14 455	7 281	2 319	2 466	6 198	1 864
September qtr	r 9 293	8 155	15 667	6 939	r 3 184	3 354	7 844	1 702
December qtr	r 9 671	8 817	15 741	8 719	r 2 558	2 680	8 910	1 566
<b>2000</b>								
March qtr r	9 663	8 975	18 128	6 569	3 883	2 856	9 509	2 220
June qtr	7 548	8 656	17 957	8 808	2 384	2 664	9 698	2 466

(a) Under construction at the end of the period.

Source: Building Activity, Victoria (Cat. no. 8752.2) (quarterly); Building Approvals, Victoria (Cat. no. 8731.2) (quarterly).

	New dwelling units(a)						Alterations, additions and conversions(d)	Non-residential building(c)		Total all building
	Private sector		Public sector		Total(b)			Private sector	Total	
	no.	\$m	no.	\$m	no.	\$m		\$m	\$m	
MELBOURNE STATISTICAL DIVISION										
<b>1997–1998</b>	27 490	3 026.5	752	56.0	28 242	3 082.6	701.2	2 168.2	2 593.0	6 376.8
<b>1998–1999</b>	28 615	3 550.4	666	49.6	29 276	3 600.0	800.3	1 918.6	2 642.3	7 042.6
<b>1999–2000</b>	36 843	5 058.7	611	51.1	37 454	5 109.8	1 019.0	2 226.9	2 654.3	8 783.1
<b>1999</b>										
June	2 450	320.9	46	4.0	2 495	324.9	69.2	108.4	125.1	519.2
July	2 755	353.0	88	6.3	2 843	359.3	92.2	183.6	208.6	660.2
August	3 775	494.7	39	4.3	3 814	499.0	86.1	159.3	226.3	811.5
September	3 046	406.8	72	5.9	3 118	412.7	76.9	203.3	218.9	708.6
October	2 817	372.2	93	8.0	2 910	380.2	84.7	158.2	201.6	666.5
November	3 213	417.2	59	4.6	3 272	421.8	93.0	167.5	194.5	709.3
December	3 122	443.9	65	6.4	3 187	450.3	72.0	148.6	213.2	735.5
<b>2000</b>										
January	3 250	535.7	19	1.6	3 269	537.3	66.9	171.6	188.6	792.8
February	3 474	457.3	54	4.1	3 528	461.4	87.5	208.2	262.5	811.5
March	3 809	533.3	9	0.8	3 818	534.1	84.9	153.0	171.1	790.1
April	2 548	336.3	30	2.3	2 578	338.6	97.8	232.1	289.9	726.3
May	2 524	357.7	40	3.5	2 564	361.2	83.7	158.1	173.4	618.3
June	2 434	344.8	43	3.3	2 477	348.1	93.3	283.3	305.5	747.0
July	2 316	395.3	36	3.0	2 352	398.3	114.9	155.3	523.0	1 036.2
August	1 949	291.2	32	3.1	1 981	294.3	88.8	193.0	227.8	610.9
September	1 819	258.5	32	3.3	1 851	261.7	56.5	178.4	215.1	533.4
TOTAL VICTORIA										
<b>1997–1998</b>	34 178	3 811.3	1 171	88.6	35 349	3 899.8	858.5	2 476.9	3 064.5	7 822.8
<b>1998–1999</b>	37 194	4 482.6	894	67.2	38 088	4 549.9	951.2	2 262.5	3 125.7	8 626.8
<b>1999–2000</b>	47 474	6 318.8	787	65.1	48 261	6 383.9	1 210.7	2 622.3	3 215.2	10 809.8
<b>1999</b>										
June	3 214	408.5	51	4.6	3 265	413.2	83.4	156.3	183.2	679.8
July	3 574	445.9	134	9.2	3 708	455.1	105.2	212.7	249.0	809.4
August	4 626	588.8	66	6.4	4 692	594.4	101.9	204.6	282.9	979.3
September	3 972	514.7	105	8.6	4 077	523.3	95.7	222.1	245.6	864.6
October	3 788	488.4	98	8.4	3 886	496.8	99.5	186.1	240.9	837.2
November	4 161	529.3	68	5.4	4 229	534.7	107.3	198.0	235.7	877.8
December	4 047	555.1	67	6.6	4 114	561.7	88.1	186.6	266.2	916.0
<b>2000</b>										
January	4 046	630.6	27	2.3	4 073	633.0	80.3	196.5	235.1	948.3
February	4 597	592.8	73	5.9	4 670	598.7	101.2	235.1	325.5	1 025.5
March	4 791	653.1	12	1.1	4 803	654.2	103.3	185.8	215.8	973.4
April	3 334	433.0	39	3.0	3 373	436.0	112.8	257.2	327.3	876.1
May	3 335	456.0	49	4.2	3 384	460.3	103.5	213.2	240.2	804.0
June	3 126	425.9	49	3.8	3 175	429.7	111.7	324.3	350.9	892.2
July	2 851	462.1	38	3.1	2 889	465.2	125.7	180.8	562.6	1 153.5
August	2 512	364.7	59	5.3	2 571	370.0	104.9	219.0	267.7	742.7
September	2 396	327.5	32	3.3	2 428	330.7	72.4	226.0	291.8	694.9

(a) Valued at \$10,000 and over.

(b) Excludes dwelling units created as a result of conversions or construction of non-residential buildings.

(c) Valued at \$50,000 and over.

(d) Includes alterations and additions creating dwellings, alterations and additions not creating dwellings and conversions.

Source: Building Approvals, Victoria (Cat. no. 8731.2) (quarterly).

	Residential buildings		Non-residential buildings						Total
	New	Alterations and additions	Shops	Factories	Offices	Education	Health	Other	
	\$m	\$m	\$m	\$m	\$m	\$m	\$m	\$m	
COMMENCED									
<b>1997-1998</b>	3 850.5	891.1	598.5	241.8	428.6	270.9	250.2	1 399.8	7 931.4
<b>1998-1999</b>	4 496.3	987.2	444.1	263.6	428.1	485.0	239.9	1 186.0	8 530.2
<b>1999-2000</b>	6 319.0	1 282.9	556.1	384.3	482.6	383.2	315.9	925.2	10 649.2
<b>1999</b>									
March qtr	1 046.8	223.8	75.3	64.4	98.3	98.2	41.1	190.0	1 837.9
June qtr	1 257.1	250.4	119.8	64.3	91.1	78.7	76.9	341.1	2 279.4
September qtr	1 540.9	305.2	119.0	69.5	83.6	86.0	71.7	242.1	2 518.0
December qtr	1 544.5	278.8	110.4	65.8	176.6	83.2	75.9	188.1	2 523.2
<b>2000</b>									
March qtr r	1 652.2	327.1	119.9	90.0	115.1	124.2	103.4	251.7	2 783.6
June qtr	1 581.4	371.8	206.7	159.1	107.4	89.8	65.0	243.3	2 824.4
UNDER CONSTRUCTION AT END OF PERIOD									
<b>1997-1998</b>	2 274.1	412.4	406.6	141.9	241.6	320.2	279.8	1 466.0	5 542.6
<b>1998-1999</b>	2 745.1	451.3	420.8	120.9	190.2	485.8	243.5	1 611.2	6 268.8
<b>1999-2000</b>	4 209.7	605.9	474.4	223.4	218.4	516.6	291.8	1 044.0	7 584.2
<b>1999</b>									
March qtr	2 644.3	471.4	402.8	138.2	203.8	522.4	243.7	1 461.3	6 087.9
June qtr	2 745.1	451.3	420.8	120.9	190.2	485.8	243.5	1 611.2	6 268.8
September qtr	3 229.8	531.2	440.2	117.8	129.6	527.3	237.1	1 503.3	6 716.2
December qtr	3 493.2	561.2	305.7	110.0	206.0	491.7	219.6	1 433.6	6 821.0
<b>2000</b>									
March qtr r	4 063.0	654.0	367.9	136.6	229.7	504.9	283.1	1 104.6	7 343.8
June qtr	4 209.7	605.9	474.4	223.4	218.4	516.6	291.8	1 044.0	7 584.2
COMPLETED									
<b>1997-1998</b>	3 213.6	866.6	474.7	338.4	449.4	283.2	208.2	1 738.4	7 572.4
<b>1998-1999</b>	4 068.1	992.4	487.3	294.3	524.9	328.5	305.1	1 110.3	8 111.0
<b>1999-2000</b>	5 009.5	1 179.1	570.8	291.7	461.6	398.2	283.6	1 602.0	9 796.5
<b>1999</b>									
March qtr	855.2	215.9	100.6	64.1	155.6	69.2	56.6	312.4	1 829.5
June qtr	1 134.9	280.2	118.0	83.1	121.3	118.8	93.2	210.2	2 159.7
September qtr	1 075.3	235.3	116.3	76.1	147.0	50.2	81.2	375.3	2 156.7
December qtr	1 319.3	260.9	277.4	75.1	101.6	124.1	94.0	265.3	2 517.6
<b>2000</b>									
March qtr r	1 114.1	247.4	69.9	65.5	91.9	119.6	40.6	605.8	2 354.8
June qtr	1 500.8	435.5	107.2	75.0	121.2	104.3	67.8	355.6	2 767.3

Source: Building Activity, Victoria (Cat. no. 8752.2) (quarterly).

## 15

## PRIVATE NEW CAPITAL EXPENDITURE, BY SELECTED INDUSTRIES AND TYPE OF ASSET

Period	Selected industries				Type of asset	
	Mining	Manufacturing	Other selected industries	Total	New buildings and structures	Equipment, plant and machinery
	\$m	\$m	\$m	\$m	\$m	\$m
ACTUAL						
<b>1998-1999</b>	1 234	2 954	7 180	11 368	3 211	8 157
<b>1999-2000</b>	616	3 379	7 022	11 017	2 776	8 240
<b>1999</b>						
March qtr	321	652	1 665	2 639	862	1 777
June qtr	306	803	1 758	2 868	668	2 200
September qtr	205	918	1 709	2 832	799	2 033
December qtr	194	928	1 849	2 970	711	2 260
<b>2000</b>						
March qtr	66	721	1 622	2 409	595	1 814
June qtr	151	812	1 842	2 806	672	2 134
EXPECTED						
<b>1999-2000</b>	813	3 513	6 547	10 872	2 664	8 208
<b>2000-2001</b>	704	3 824	5 501	10 029	2 086	7 943

Source: State Estimates of Private New Capital Expenditure (Cat. no. 5646.0) (quarterly).

## 16

## COMMERCIAL FINANCE COMMITMENTS

	Fixed loan facilities						Revolving credit facilities	Total commitments
	Construction	Purchase of real property	Purchase of plant and equipment	Wholesale	Other	Total		
	\$m	\$m	\$m	\$m	\$m	\$m		
<b>1999</b>								
June	171.3	623.3	211.8	88.4	2 189.9	3 284.7	1 748.3	5 033.0
July	137.8	521.0	159.0	14.9	684.6	1 517.2	1 977.9	3 495.1
August	234.0	555.5	169.2	25.2	755.8	1 739.7	1 214.0	2 953.7
September	147.8	546.9	205.8	33.8	719.7	1 654.1	1 372.4	3 026.5
October	266.0	610.1	195.8	25.0	1 128.8	2 225.7	1 544.8	3 770.5
November	235.6	633.8	214.3	65.0	502.9	1 651.7	1 288.5	2 940.2
December	155.9	689.9	254.2	77.7	572.1	1 749.9	1 853.3	3 603.2
<b>2000</b>								
January	194.5	527.0	154.1	60.5	406.0	1 342.1	1 153.7	2 495.9
February	118.6	657.5	201.3	57.5	523.4	1 558.3	1 523.2	3 081.5
March	123.0	672.2	211.1	92.0	683.5	1 781.7	2 013.8	3 795.5
April	137.3	536.1	185.9	218.3	536.2	1 613.9	1 396.7	3 010.5
May	149.4	706.6	217.7	91.5	579.4	1 744.5	2 580.0	4 324.5
June	186.8	775.7	351.5	207.6	1 979.7	3 501.3	1 642.0	5 143.2
July	234.7	549.3	178.6	254.3	719.1	1 936.1	1 486.8	3 422.9
August	176.5	544.3	226.7	342.1	828.3	2 117.9	1 100.8	3 218.7

Source: AusStats (Cat. no. 1405.0.55.001).

## 17

## SECURED HOUSING FINANCE COMMITMENTS, DWELLING UNITS

Month	Original series		Seasonally adjusted		Trend estimates	
	no.	\$m	no.	\$m	no.	\$m
<b>1999</b>						
June	11 305	1 445	10 420	1 346	10 642	1 348
July	10 518	1 334	10 355	1 323	10 686	1 369
August	10 855	1 397	10 668	1 370	10 875	1 409
September	11 377	1 475	11 069	1 408	11 179	1 466
October	11 386	1 534	11 740	1 600	11 509	1 526
November	12 231	1 639	12 127	1 628	11 662	1 565
December	11 652	1 592	11 617	1 568	11 616	1 573
<b>2000</b>						
January	8 962	1 242	11 342	1 521	11 376	1 550
February	11 184	1 498	11 051	1 554	r 10 993	1 498
March	11 558	1 554	10 526	1 389	r 10 575	r 1 431
April	8 681	1 172	9 349	1 298	r 10 227	r 1 367
May	12 592	1 622	11 429	1 462	r 9 978	r 1 314
June	9 352	1 250	8 630	1 152	r 9 802	r 1 271
July r	9 319	1 169	9 640	1 182	9 684	1 237
August	10 876	1 372	10 131	1 300	9 630	1 213

Source: Housing Finance for Owner Occupation, Australia (Cat. no. 5609.0) (monthly).

## 18

## RETAIL TURNOVER, BY INDUSTRY (EXCLUDING MOTOR VEHICLES, PARTS, PETROL, ETC.)

	Food retailing	Department stores	Clothing and soft good retailing	Household good retailing	Recreational good retailing	Other retailing	Hospitality and services	Total
	\$m	\$m	\$m	\$m	\$m	\$m	\$m	\$m
<b>1999</b>								
July	1 210.5	263.2	219.0	336.4	136.5	322.8	438.8	2 927.2
August	1 177.9	221.3	209.5	337.6	139.8	315.1	422.3	2 823.5
September	1 186.2	248.5	222.6	347.8	149.5	324.5	438.8	2 917.9
October	1 242.0	259.3	234.5	379.3	148.5	324.2	448.9	3 036.6
November	1 231.9	304.1	243.3	392.3	157.8	338.4	441.7	3 109.6
December	1 463.8	528.1	339.8	498.2	233.8	439.8	526.4	4 030.0
<b>2000</b>								
January	1 219.9	228.0	221.5	358.1	138.2	267.6	412.3	2 845.5
February	1 155.2	195.9	181.7	326.1	120.7	268.1	406.6	2 654.2
March	1 244.7	224.2	217.4	342.8	132.1	292.6	451.7	2 905.5
April	1 163.1	260.6	224.2	309.6	117.4	291.9	388.4	2 755.3
May	1 180.1	265.3	248.2	349.8	118.9	305.2	393.8	2 861.3
June	1 173.5	298.6	279.7	416.3	124.1	313.6	399.9	3 005.8
July	1 211.9	202.4	173.1	316.4	115.5	294.2	394.1	2 707.6
August	1 236.0	234.6	189.4	340.4	124.0	315.0	414.1	2 853.6
September	1 216.2	245.9	193.9	341.3	130.7	311.2	408.4	2 847.6

Source: Retail Trade, Australia (Cat. no. 8501.0) (monthly).



# 19

## EXPORTS AND IMPORTS, BY SECTIONS OF THE AUSTRALIAN EXPORT AND IMPORT CLASSIFICATIONS(a)

	1999-2000		Three months ending Sep 2000	
	Imports	Exports	Imports	Exports
	\$m	\$m	\$m	\$m
0 Food and live animals chiefly for food(b)(c)	1 358	4 425	356	1 232
1 Beverages and tobacco(b)(c)	141	187	60	58
2 Crude materials, inedible (except fuels)(b)(c)	625	1 580	177	436
3 Mineral fuels, lubricants, and related materials(c)	1 763	1 222	539	398
4 Animal and vegetable oils, fats and waxes(b)(c)	93	113	27	27
5 Chemicals and related products, n.e.c.(b)(c)	3 352	1 024	885	290
6 Manufacturing goods classified chiefly by material(b)(c)	4 684	2 681	1 293	687
7 Machinery and transport equipment(b)(c)	14 769	3 963	3 951	972
8 Miscellaneous manufactured articles(b)(c)	5 835	1 162	1 714	358
9 Commodities and transactions of merchandise trade, n.e.c.(d)	1 133	2 677	281	799
<b>Total</b>	<b>33 754</b>	<b>19 033</b>	<b>9 283</b>	<b>5 257</b>

(a) Any discrepancies between sums of the component items and totals are due to rounding.

(b) Excludes export commodities subject to a confidentiality restriction. These are included in Division 9.

(c) Excludes imports commodities subject to a confidentiality restriction. These are included in Division 9.

(d) Includes export and import commodities subject to a confidentiality restriction.

Source: Overseas Trade: Fasttraccs Database.

# 20

## OVERSEAS TRADE, MAJOR TRADING PARTNERS(a)

Country	1998-99		1999-2000		Three months ending September 2000	
	Imports	Exports	Imports	Exports	Imports	Exports
	\$m	\$m	\$m	\$m	\$m	\$m
Belgium-Luxembourg	239	102	258	110	70	22
Brazil	118	48	105	46	36	21
Canada	392	125	445	135	108	40
China	2 537	669	3 030	1 124	1 043	320
Fiji	180	242	194	286	32	87
Finland	188	9	187	9	58	2
France	619	131	622	136	172	37
Germany	2 341	407	2 402	397	618	105
Hong Kong (SAR of China)	431	900	403	945	127	268
India	261	192	262	193	88	55
Indonesia	1 078	226	893	295	230	85
Italy	1 038	288	1 036	332	259	97
Japan	4 133	1 676	4 416	1 860	1 310	540
Korea, Republic of	847	862	870	1 236	245	425
Malaysia	873	431	1 118	514	268	103
Mexico	103	90	111	74	34	33
Netherlands	292	109	318	105	65	27
New Zealand	1 333	1 635	1 491	2 297	389	511
Pakistan	87	43	85	156	29	24
Papua New Guinea	64	188	67	139	10	30
Philippines	157	387	163	385	56	111
Saudi Arabia	107	511	221	704	47	184
Singapore	510	1 080	632	1 475	141	397
South Africa	125	217	166	229	46	64
Sweden	598	25	607	29	121	5
Switzerland	335	34	319	40	83	9
Taiwan	905	920	922	835	262	194
Thailand	523	343	673	439	234	93
United Kingdom	1 839	1 169	1 793	694	445	121
United States of America	6 891	1 469	7 701	1 630	1 837	529
Other and unknown	1 870	1 956	2 244	2 284	820	718
<b>Total</b>	<b>31 014</b>	<b>16 484</b>	<b>33 754</b>	<b>19 033</b>	<b>9 283</b>	<b>5 257</b>

(a) The list of countries in this table reflects the volume of trade with Victoria. Information about Victoria's trade with other countries is available on request.

Source: Overseas Trade: Fasttraccs Database.

## 21

## VALUE OF OVERSEAS TRADE—VICTORIA AND AUSTRALIA

Period	Victoria		Australia		
	Imports	Exports	Imports	Exports	Excess of exports
	\$m	\$m	\$m	(including re-exports) \$m	\$m
<b>1998–1999</b>	31 014	16 484	97 611	85 992	-11 619
<b>1999–2000</b>	33 754	19 033	r 110 132	r 97 275	-12 857
<b>1999</b>					
July	2 663	1 256	8 181	7 156	-1 025
August	2 748	1 352	8 871	7 347	-1 524
September	2 777	1 460	8 965	7 393	-1 572
October	3 282	1 536	10 216	7 984	-2 232
November	2 892	2 105	9 701	8 473	-1 228
December	2 653	1 716	8 922	8 375	-547
<b>2000</b>					
January	2 556	r 1 218	8 110	6 831	-1 279
February	2 702	r 1 679	8 654	8 233	-421
March	2 979	1 840	9 648	r 8 812	-836
April	2 490	r 1 602	8 004	8 271	267
May	3 035	r 1 705	r 10 414	9 214	-1 200
June r	2 977	1 564	10 446	9 186	-1 260
July r	2 911	1 640	9 772	9 365	-407
August r	3 319	1 770	10 749	9 352	-1 397
September	3 053	1 847	9 885	9 783	-102

Source: Overseas Trade: Fasttraccs Database.

## 22

## TOURIST ACCOMMODATION

Quarter ended	Hotels, motels, guest houses and serviced apartments(a)						
	Establishments	Guest rooms	Bed spaces	Room nights occupied	Room occupancy rate	Persons employed	Takings from accommodation
	no.	no.	no.	'000	%	no.	\$'000
<b>1998</b>							
December	682	29 717	81 976	1 602.6	58.7	20 813	182 207
<b>1999</b>							
March	686	30 160	83 420	1 680.8	62.0	21 129	195 573
June	698	30 766	85 247	1 545.6	55.4	21 725	170 130
September	698	30 934	85 483	1 589.5	56.0	21 780	184 105
December	705	31 317	86 058	1 672.7	58.1	21 633	191 644
<b>2000</b>							
March	707	31 332	86 134	1 773.4	62.3	21 498	213 272
June	705	31 384	86 372	1 628.9	57.1	21 586	185 332

(a) Comprising establishments with 15 or more rooms or units.

Source: Tourist Accommodation, Australia (Cat. no. 8635.0) (quarterly).

## APPENDIX

## IMPACT OF THE NEW TAX SYSTEM (TNTS) ON DATA SERIES IN THIS PUBLICATION

### CPI

As the CPI (table 8) measures final transaction prices inclusive of indirect taxes, the introduction of The New Tax System (TNTS) has had a direct impact on the CPI. The September quarter 2000 CPI estimates have been particularly affected by the introduction of the goods and services tax and the removal of wholesale sales taxes and some state and territory taxes. For more information regarding the impact of TNTS on the CPI, refer to *Information Paper: Price Indexes and The New Tax System* (Cat. no. 6425.0), which was released on 3 May 2000.

The ABS is unable to measure the full impact (covering first and subsequent round effects) of TNTS on consumer prices. However, to assist users in making an assessment of the impact of TNTS on the CPI, the ABS will compile an experimental constant tax rate measure. There are significant qualifications attached to such a measure and it will only abstract from the direct or first round effects of tax changes on the prices of goods and services. It will be published in the December 2000 issue of *Australian Economic Indicators* (Cat. no. 1350.0), which is due for release on 30 November 2000.

### PRICE INDEX OF MATERIALS USED IN BUILDING

Users of price index of materials used in building data (table 9) should exercise caution when analysing movements in the series over time. The GST is excluded from all prices used in compiling the Price Index of Materials Used in House Building. The removal of wholesale sales taxes from 1 July 2000 has had a downward influence on the September quarter's index.

## FOR MORE INFORMATION...

- INTERNET* **www.abs.gov.au** the ABS web site is the best place to start for access to summary data from our latest publications, information about the ABS, advice about upcoming releases, our catalogue, and Australia Now—a statistical profile.
- LIBRARY* A range of ABS publications is available from public and tertiary libraries Australia-wide. Contact your nearest library to determine whether it has the ABS statistics you require, or visit our web site for a list of libraries.
- CPI INFOLINE* For current and historical Consumer Price Index data, call 1902 981 074 (call cost 77c per minute).
- DIAL-A-STATISTIC* For the latest figures for National Accounts, Balance of Payments, Labour Force, Average Weekly Earnings, Estimated Resident Population and the Consumer Price Index call 1900 986 400 (call cost 77c per minute).

**INFORMATION SERVICE**

Data which have been published and can be provided within five minutes are free of charge. Our information consultants can also help you to access the full range of ABS information—ABS user-pays services can be tailored to your needs, time frame and budget. Publications may be purchased. Specialists are on hand to help you with analytical or methodological advice.

- PHONE* **1300 135 070**
- EMAIL* **client.services@abs.gov.au**
- FAX* 1300 135 211
- POST* Client Services, ABS, GPO Box 796, Sydney 1041

## WHY NOT SUBSCRIBE?

ABS subscription services provide regular, convenient and prompt deliveries of ABS publications and products as they are released. Email delivery of monthly and quarterly publications is available.

- PHONE* 1300 366 323
- EMAIL* subscriptions@abs.gov.au
- FAX* 03 9615 7848
- POST* Subscription Services, ABS, GPO Box 2796Y, Melbourne 3001



2130320010002  
ISSN 0158-202X

RRP \$17.50

© Commonwealth of Australia 2000