



# **SOUTH AUSTRALIAN ECONOMIC INDICATORS**

EMBARGO: 11:30AM (CANBERRA TIME) MON 2 SEP 2002

## **C O N T E N T S**

	<i>page</i>
Notes.....	2
REVIEW	
Overview .....	3
Selected features .....	4
TABLES	
List of tables .....	5
Statistical summary .....	6
State summary .....	8
State accounts .....	9
International trade .....	10
Consumption and investment .....	13
Production .....	15
Consumer price index .....	19
Labour force and demography .....	20
Average weekly earnings .....	23
Financial markets .....	24
ADDITIONAL INFORMATION	
Publications source index .....	25

- For further information about these and related statistics, contact Kirsten Hastwell on Adelaide 08 8237 7369, or the National Information and Referral Service on 1300 135 070.

## NOTES

### FORTHCOMING ISSUES

<i>ISSUE</i>	<i>RELEASE DATE</i>
October 2002	1 October 2002
November 2002	1 November 2002
December 2002	2 December 2002
January 2003	20 December 2002
February 2003	3 February 2003
March 2003	3 March 2003

### ABOUT THIS PUBLICATION

*South Australian Economic Indicators* is a monthly publication which contains the latest available data at the time of preparation for a range of statistical series that have been identified as indicators of economic activity in this State. In a number of cases the figures presented are preliminary and subject to revision in subsequent issues.

### SYMBOLS AND OTHER USAGES

n.a.	not available
n.y.a.	not yet available
*	subject to sampling variability too high for most practical purposes
..	not applicable
0, 0.0	nil, or rounded to zero

### ROUNDING

Where figures have been rounded, discrepancies may occur between sums of the component items and totals.

### INFORMATION

All data are original, unless otherwise stated. More detailed information on each series, including explanatory and technical notes, can be obtained from other Australian Bureau of Statistics publications or alternative data sources. To assist those seeking further information, the series presented in the statistical and state summaries provides a reference to the Publication Source Index which is at the end of this publication.

Steve Crabb  
Regional Director  
South Australia

## OVERVIEW

The data in this Overview are presented in trend terms, unless otherwise stated.

### INTERNATIONAL TRADE

The value of South Australian merchandise exports in original terms for the month of June 2002 was \$787.7m. This was a decrease of 0.3% from the value for May 2002 and an increase of 11.8% on June 2001.

The value of South Australian merchandise imports in original terms for the month of June 2002 was \$393.2m. This was a decrease of 11.5% from the value for May 2002 and a decrease of 14.8% over June 2001.

### CONSUMPTION AND INVESTMENT

South Australia's retail turnover increased by 11.7% over the 12 months to June 2002. Retail turnover for June 2002 was \$1,126.4m.

There were 4,291 new motor vehicle sales in July 2002, an increase of 8.0% on July last year.

Private new capital expenditure in the March Quarter 2002 was \$739m, an increase of 15.6% on the March Quarter 2001.

### HOUSING

The number of dwelling units approved in June 2002 was 893, a rise of 23.9% on June last year.

### CONSUMER PRICE INDEX

The Consumer Price Index (All Groups) for Adelaide increased by 1.0% to 139.1% in the June Quarter 2002, and by 3.0% over the level recorded twelve months previously.

### LABOUR FORCE AND DEMOGRAPHY

The trend estimate of employed persons in South Australia registered a small drop to 693,300 in July 2002, but remains 17,600 higher than the level of twelve months ago (675,700). The total number of persons employed full-time in South Australia rose from 471,200 in July 2001 to 472,900 in July 2002.

In July 2002, the trend estimate of the unemployment rate for South Australia was the same as the previous month at 6.6% and was lower than the rate in July 2001 (7.5%).

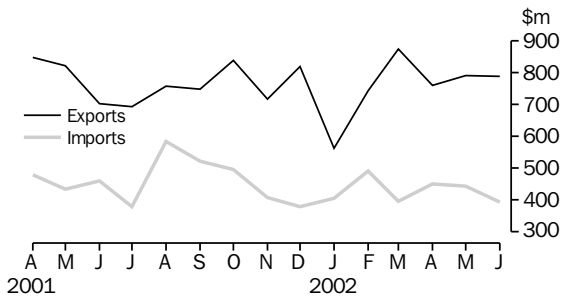
The trend estimate of the participation rate in South Australia rose from 60.2% in July 2001 to 60.8% in July 2002.

### FINANCIAL MARKETS

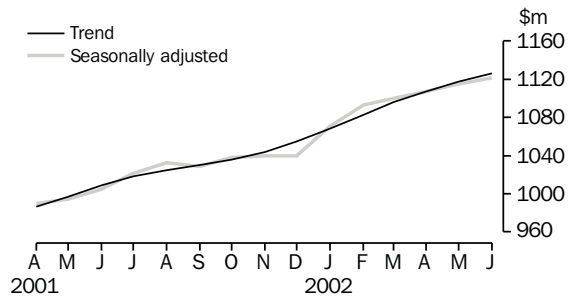
The value of secured housing finance commitments (excluding alterations and additions) was \$487m in June 2002. This was a 1.2% increase on May 2002 and 8.9% higher than June 2001.

## SELECTED FEATURES

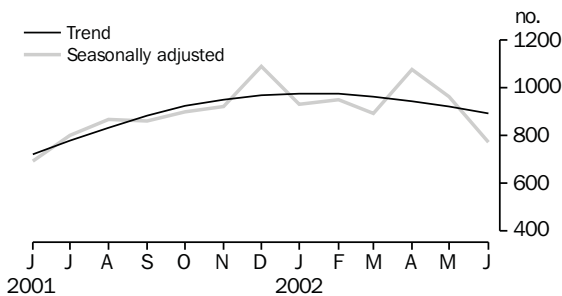
MERCHANDISE EXPORTS AND IMPORTS



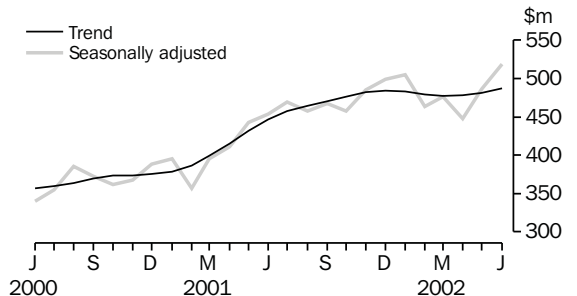
RETAIL TURNOVER



DWELLING UNITS APPROVED

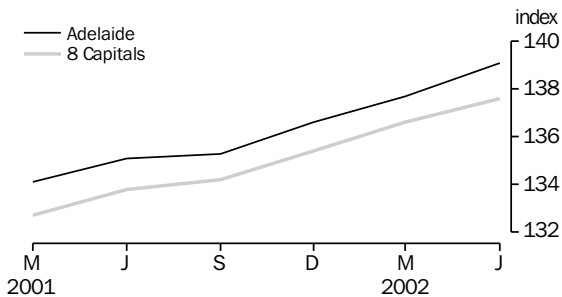


SECURED HOUSING FINANCE COMMITMENTS(a)

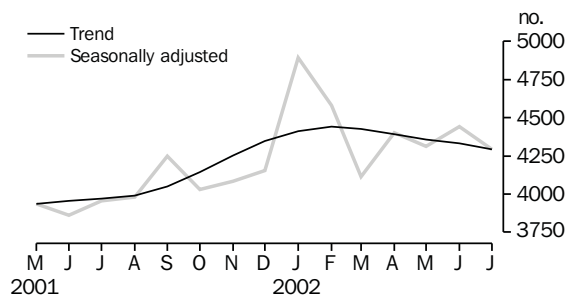


(a) Excludes alterations and additions. Includes refinancing.

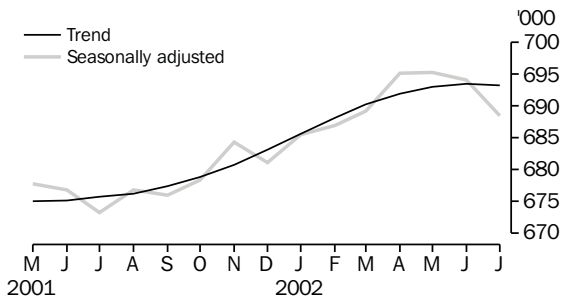
CONSUMER PRICE INDEX



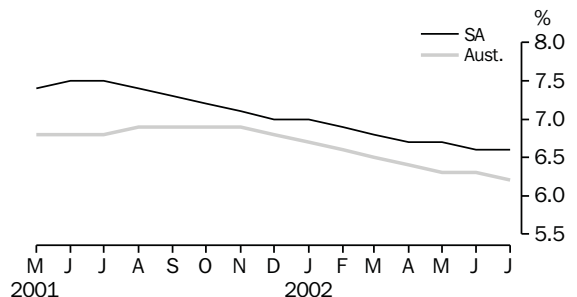
NEW MOTOR VEHICLE SALES



EMPLOYED PERSONS



UNEMPLOYMENT RATES—TREND



## LIST OF TABLES

			Page
STATISTICAL SUMMARY	<b>1</b>	Statistical summary	6
	<b>2</b>	State summary	8
STATE ACCOUNTS	<b>3</b>	State accounts at current prices	9
	<b>4</b>	State accounts at chain volume measures	9
INTERNATIONAL TRADE	<b>5</b>	Merchandise exports, by selected commodity group	10
	<b>6</b>	Merchandise exports, by selected countries and country groups	11
	<b>7</b>	Merchandise imports, by selected commodity group	12
CONSUMPTION AND INVESTMENT	<b>8</b>	Turnover of retail establishments, by industry—trend	13
	<b>9</b>	New motor vehicle sales, by type of vehicle	13
	<b>10</b>	Actual private new capital expenditure, by selected industry and type of asset	14
	<b>11</b>	Tourist accommodation	14
PRODUCTION	<b>12</b>	Building approvals	15
	<b>13</b>	Building commencements	16
	<b>14</b>	Value of building work done and completed during period	17
	<b>15</b>	Production, livestock products and selected commodities	18
	<b>16</b>	Consumer price index, by group—Adelaide	19
LABOUR FORCE AND DEMOGRAPHY	<b>17</b>	Estimated resident population and components of population change	20
	<b>18</b>	Births, deaths, marriages and divorces	20
	<b>19</b>	Civilian labour force status	21
	<b>20</b>	Civilian labour force, unemployment and participation rates	22
AVERAGE WEEKLY EARNINGS	<b>21</b>	Average weekly earnings of employees	23
FINANCIAL MARKETS	<b>22</b>	Secured housing finance commitments	24
	<b>23</b>	Finance commitments	24

Indicator	Period	South Australia			Australia			SA as a % of Aust.	Source index
		Number	% change from		Number	% change from			
			Previous period	Same period previous year		Previous period	Same period previous year		
<b>State accounts</b>									
Domestic final demand									
Current prices trend (\$m)	Mar qtr 02	12 617	2.4	8.7	178 922	1.9	6.9	7.1	(1)
Chain volume measures trend (\$m)	Mar qtr 02	11 791	1.4	5.9	168 322	1.3	5.3	7.0	(1)
Private final consumption expenditure									
Current prices trend (\$m)	Mar qtr 02	7 808	2.2	7.4	107 407	1.8	6.1	7.3	(1)
Chain volume measures trend (\$m)	Mar qtr 02	7 302	1.7	5.5	100 221	1.2	4.1	7.3	(1)
Private gross fixed capital formation									
Current prices trend (\$m)	Mar qtr 02	2 043	4.2	18.5	32 172	4.1	15.2	6.4	(1)
Chain volume measures trend (\$m)	Mar qtr 02	1 938	3.6	16.5	30 608	3.5	14.1	6.3	(1)
Compensation of employees									
Current prices trend (\$m)	Mar qtr 02	5 562	2.2	6.7	84 600	1.0	4.4	6.6	(1)
<b>International accounts</b>									
Exports (\$m)	June 02	787.7	-0.3	11.8	9 782.4	-2.5	-7.9	8.1	(2)
Imports (\$m)	June 02	393.2	-11.5	-14.8	9 631.0	-5.1	1.3	4.1	(2)
<b>Consumption and investment</b>									
Retail turnover									
Current prices original (\$m)	June 02	1 043.6	-5.3	10.4	13 705.7	-4.9	6.9	7.6	(3)
Current prices trend (\$m)	June 02	1 126.4	0.8	11.7	14 622.2	0.8	8.3	7.7	(3)
Chain volume measures original (\$m)	Jun qtr 02	3 211.8	2.3	14.0	41 758.4	1.7	8.8	7.7	(3)
New motor vehicle sales									
Original (no.)	July 02	4 457	-13.3	12.0	69 782	-11.4	5.4	6.4	(4)
Trend (no.)	July 02	4 291	-0.9	8.0	67 495	-0.7	6.3	6.4	(4)
Private new capital expenditure									
Current prices original (\$m)	Mar qtr 02	647	-24.0	9.7	9 159	-15.5	4.4	7.1	(6)
Current prices trend (\$m)	Mar qtr 02	739	8.2	15.6	10 122	1.1	5.1	7.3	(6)
Private new capital expenditure (\$m)	2000-01	2 649	8.1	16.3	39 358	-7.3	-11.9	6.7	(6)
Takings from accommodation—hotels, motels, guesthouses and serviced apartments									
	Mar qtr 02	58.2	4.3	4.9	1 214.0	0.4	-0.3	4.8	(6)
<b>Production</b>									
Dwelling unit approvals									
Original (no.)	June 02	804	-18.0	9.2	13 664	-14.9	12.3	5.9	(7)
Trend (no.)	June 02	893	-3.1	23.9	14 742	1.4	15.9	6.1	(7)
Dwelling units commenced (no.)	Mar qtr 02	2 334	-10.7	46.1	38 693	-9.4	45.4	6.0	(8)
Value of non-residential building approvals—trend (\$m)									
	June 02	58.3	-2.1	-0.5	1 050.5	-3.4	5.7	5.5	(7)
Value of total building activity									
Commenced (\$m)	Mar qtr 02	503.3	-10.1	47.5	10 567.3	-2.3	36.1	4.8	(8)
Work done (\$m)	Mar qtr 02	499.6	-5.3	30.7	9 432.2	-5.9	22.4	5.3	(8)
Work yet to be done (\$m)	Mar qtr 02	750.5	4.0	65.7	16 215.6	11.5	37.9	4.6	(8)
Value of engineering construction work done (\$m)									
	Mar qtr 02	369.8	3.9	51.7	4 406.7	-7.8	7.2	8.4	(9)
Manufacturing production									
Red meat trend (tonnes)	Jun qtr 02	61 874	4.9	16.4	770 477	1.9	-3.9	8.0	(11)
Mineral exploration expenditure (other than for petroleum)(a) (\$m)									
	Mar qtr 02	7.3	-8.8	49.0	129.5	-24.1	-9.8	5.6	(12)

(a) From July 2000 value data no longer contains Wholesale Sales Tax.

Indicator	Period	South Australia			Australia			SA as a % of Aust.	Source index
		Number	% change from		Number	% change from			
			Previous period	Same period previous year		Previous period	Same period previous year		
<b>Prices(a)</b>									
CPI—All groups (index no.)	June qtr 02	139.1	1.0	3.0	137.6	0.7	2.8	..	(13)
Price index of materials used in house building (index no.)	June qtr 02	133.1	1.7	2.8	127.8	1.3	2.7	..	(14)
Price index of materials used in building other than houses (index no.)	June qtr 02	120.7	1.4	2.8	120.3	1.6	2.6	..	(14)
Price index of established houses (index no.)	Mar qtr 02	153.4	4.7	15.3	180.6	3.8	17.3	..	(16)
Price index of project homes (index no.)	Mar qtr 02	149.3	1.2	5.3	138.3	0.5	2.4	..	(16)
<b>Labour force and demography</b>									
Population (resident at end qtr) ('000)	Dec qtr 01	1 518.9	0.2	0.5	19 603.5	0.3	1.2	7.7	(17)
Labour force									
Original ('000)	July 02	731.9	-1.3	1.0	9 905.8	-0.6	1.0	7.4	(18)
Trend ('000)	July 02	742.3	-0.1	1.7	9 919.1	-0.0	0.9	7.5	(18)
Employed persons									
Original ('000)	July 02	687.4	-0.7	2.3	9 348.0	0.1	1.7	7.4	(18)
Trend ('000)	July 02	693.3	-0.0	2.6	9 302.9	0.0	1.6	7.5	(18)
Participation rate									
Original(b) (%)	July 02	59.9	-1.4	0.2	63.3	-0.7	-0.5	..	(18)
Trend(b) (%)	July 02	60.8	-0.1	1.0	63.4	0.0	-0.5	..	(18)
Unemployment rate									
Original(b) (%)	July 02	6.1	-0.6	-1.2	5.6	-0.7	-0.7	..	(18)
Trend(b) (%)	July 02	6.6	0.0	-0.9	6.2	-0.1	-0.6	..	(18)
Job vacancies ('000)	May 02	7.0	2.9	27.2	88.8	1.0	6.5	7.9	(19)
Industrial disputes ('000 working days lost)	May 02	1.0	-41.2	100.0	29.2	79.1	-9.9	3.4	(20)
<b>Income</b>									
Average weekly earnings (full-time adults; ordinary time)									
Original (\$)	May 02	799.40	-0.3	2.4	866.80	0.1	5.2	..	(21)
Trend (\$)	May 02	803.00	0.4	2.6	868.50	1.1	5.4	..	(21)
Wage cost index (total hourly rate excluding bonuses)(c) (index no.)	June qtr 02	115.2	0.3	2.9	115.9	0.6	3.1	..	(22)
<b>Financial markets</b>									
Secured housing finance(d) (\$m)	June 02	497.7	-5.2	8.7	8 108	-13.3	5.3	6.1	(23)
Finance commitments									
Personal (\$m)	June 02	376.2	6.7	12.7	5 588.8	0.7	4.5	6.7	(24)
Commercial (\$m)	June 02	1 053.2	50.7	17.0	24 947.6	27.6	21.9	4.2	(24)
Lease (\$m)	June 02	17.1	5.9	-10.5	691.6	25.0	-5.1	2.5	(24)
Interest rates(b)									
Banks new housing loans (%)	June 02	..	..	..	6.55	0.00	-0.25	..	(25)
Bank loans—small, medium business(e) (%)	June 02	..	..	..	8.00	0.00	0.00	..	(25)
Bank loans—large business (%)	June 02	..	..	..	8.35	0.00	-0.15	..	(25)
(a) Base year of each index 1989-90 = 100.									
(b) Change is shown in terms of percentage points.									
(c) Base year of index Sep 1997 = 100.									
(d) Excludes alterations and additions. Includes refinancing.									
(e) Rate for business loans over \$50,000.									

## 2

## STATE SUMMARY

<i>Indicator</i>	<i>Period</i>	<i>NSW</i>	<i>Vic.</i>	<i>Qld</i>	<b>SA</b>	<i>WA</i>	<i>Tas.</i>	<i>NT</i>	<i>ACT</i>	<i>Source index</i>
SELECTED INDICATORS										
CPI—All groups(a) (index no.)	June qtr 02	138.8	136.9	138.1	<b>139.1</b>	134.6	137.0	135.0	137.2	(13)
Participation rate trend (%)	July 02	62.7	63.2	64.7	<b>60.8</b>	66.3	57.9	73.9	72.6	(18)
Unemployment rate trend (%)	July 02	6.2	5.6	7.3	<b>6.6</b>	5.9	8.8	4.2	4.2	(18)
Average weekly earnings (full-time adults; ordinary time) trend (\$)	May 02	901.00	876.20	803.90	<b>803.00</b>	812.60	745.30	805.10	916.80	(22)
SELECTED INDICATORS PER HEAD OF POPULATION(b)										
State final demand										
Chain volume measures trend (\$'000)	Mar qtr 02	8.7	8.6	8.0	<b>7.8</b>	8.5	7.2	11.1	16.1	(1)
Retail turnover										
Current prices original (\$)	June 02	697.5	687.6	703.3	<b>687.1</b>	715.9	614.0	775.5	900.4	(3)
Current prices, trend	June 02	745.9	733.9	741.5	<b>741.6</b>	769.6	660.7	772.0	942.2	(3)
New motor vehicle Sales trend (no. per '000 population)	July 02	3.5	3.7	3.5	<b>2.8</b>	3.1	2.6	3.0	3.5	(4)
Private new capital expenditure										
Current prices trend (\$)	Mar qtr 02	455.2	512.1	466.2	<b>486.5</b>	677.0	494.5	2 671.8	458.7	(5)
Dwelling unit approvals										
Original (no. per '000 population)	June 02	0.551	0.823	0.848	<b>0.529</b>	0.887	0.363	0.610	0.294	(7)
Trend (no. per '000 population)	June 02	0.668	0.879	0.822	<b>0.588</b>	0.844	0.397	0.395	0.487	(7)
Secured housing finance(c) (\$)	June 02	508.7	378.4	361.3	<b>327.9</b>	420.6	185.9	180.1	427.7	(24)
PERCENTAGE CHANGE FROM PREVIOUS PERIOD										
State final demand										
Chain volume measures trend (%)	Mar qtr 02	1.0	1.3	1.0	<b>1.4</b>	0.5	1.7	3.3	0.8	(1)
Retail turnover										
Current prices original (%)	June 02	-6.0	-4.4	-3.5	<b>-5.3</b>	-6.0	-6.2	0.4	-3.8	(3)
Current prices, trend	June 02	0.8	0.7	0.9	<b>0.8</b>	0.0	0.0	0.0	0.0	(3)
New motor vehicle sales trend (%)	July 02	-1.1	-0.6	0.3	<b>-0.9</b>	-0.4	-1.2	-2.0	-3.1	(4)
Private new capital expenditure										
Current prices trend (%)	Mar qtr 02	-1.8	-0.4	3.7	<b>8.2</b>	-4.1	17.6	22.8	11.3	(5)
Dwelling unit approvals										
Original (%)	June 02	-28.3	-10.6	0.2	<b>-18.0</b>	-10.9	4.2	149.0	-61.8	(7)
Trend (%)	June 02	1.4	2.3	-0.8	<b>-3.1</b>	-0.6	2.2	-2.5	2.6	(7)
CPI—All groups (%)	June qtr 02	0.7	0.7	0.7	<b>1.0</b>	0.7	1.3	0.9	1.2	(13)
Participation rate trend(d) (%)	July 02	0.1	-0.2	-0.1	<b>-0.1</b>	0.0	0.1	-0.3	0.3	(18)
Unemployment rate trend(d) (%)	July 02	0.0	-0.1	-0.1	<b>0.0</b>	-0.1	0.1	-0.4	-0.1	(18)
Average weekly earnings (full-time adults; ordinary time) trend (%)	May 02	-0.4	2.5	0.6	<b>0.4</b>	1.0	1.4	1.1	0.8	(22)
Secured housing finance (%)	June 02	-13.5	-14.0	-13.2	<b>-5.2</b>	-14.5	-18.5	-16.3	-15.3	(24)
(a) Base year of index 1989-90 = 100.										
(b) The latest quarterly estimate of Australian resident population has been used to calculate ratios for subsequent periods.										
(c) Excludes alterations and additions. Includes refinancing.										
(d) Change is shown in terms of percentage points.										



## 3

## STATE ACCOUNTS AT CURRENT PRICES

Period	Final consumption expenditure		Gross fixed capital formation		State final demand	Gross State product	Compensation of employees
	Households	General government	Private	Public			
ANNUAL (\$m)							
<b>1998-99</b>	25 426	7 947	5 965	1 353	40 690	39 529	19 103
<b>1999-00</b>	26 549	8 884	10 013	-1 437	44 010	41 340	19 956
<b>2000-01</b>	28 771	9 059	8 202	147	46 181	43 194	20 770
QUARTERLY, TREND (\$m)							
<b>2000-01</b>							
December	7 129	2 250	1 736	350	11 465	n.a.	5 175
March	7 270	2 278	1 723	334	11 606	n.a.	5 212
June	7 368	2 323	1 760	333	11 784	n.a.	5 249
<b>2001-02</b>							
September	7 491	2 357	1 847	338	12 029	n.a.	5 325
December	7 639	2 388	1 960	336	12 322	n.a.	5 440
March	7 808	2 404	2 043	326	12 617	n.a.	5 562

(a) The negative figure for Public gross fixed capital formation and the larger than usual positive figure for Private gross fixed capital formation are the result of the sale of the South Australian electrical transmission network in December quarter 1999. For more information see *National Income, Expenditure and Product, Australian National Accounts, June 2000* (cat. no. 5206.0).

Source: *Australian National Accounts: Quarterly State Details* (cat. no. 5206.0), and *Australian National Accounts: State Accounts* (cat. no. 5220.0).

## 4

## STATE ACCOUNTS AT CHAIN VOLUME MEASURES(a)

Period	Final consumption expenditure		Gross fixed capital formation		State final demand	Gross State product
	Households	General government	Private	Public		
ANNUAL (\$m)						
<b>1998-99</b>	25 817	8 331	6 128	1 332	41 726	40 931
<b>1999-00</b>	26 550	8 885	(b)10 011	(b)-1 437	44 010	41 340
<b>2000-01</b>	27 500	8 861	7 964	133	44 458	41 617
QUARTERLY, TREND (\$m)						
<b>2000-01</b>						
December	6 837	2 215	1 687	343	11 082	n.a.
March	6 919	2 218	1 663	327	11 126	n.a.
June	6 981	2 233	1 693	326	11 232	n.a.
<b>2001-02</b>						
September	7 067	2 243	1 770	330	11 413	n.a.
December	7 179	2 252	1 870	328	11 630	n.a.
March	7 302	2 253	1 938	318	11 791	n.a.

(a) Reference year for chain volume measures is 1999-2000.

(b) The negative figure for Public gross fixed capital formation and the larger than usual positive figure for Private gross fixed capital formation are the result of the sale of the South Australian electrical transmission network in December quarter 1999. For more information see *National Income, Expenditure and Product, Australian National Accounts, June 2000* (cat. no. 5206.0).

Source: *Australian National Accounts: Quarterly State Details* (cat. no. 5206.0), and *Australian National Accounts: State Accounts* (cat. no. 5220.0).

## 5

## MERCHANDISE EXPORTS, BY SELECTED COMMODITY GROUP(a)

Period	Meat and meat preparations	Wheat	Wine	Wool and sheepskins (excl. wool tops)	Machinery	Metals and metal manufactures	Fish and crustaceans	Road vehicles, parts and accessories	Petroleum and petroleum products	Total(b)
	\$'000	\$'000	\$'000	\$'000	\$'000	\$'000	\$'000	\$'000	\$'000	\$'000
<b>1999-00</b>	160 483	473 086	899 348	179 716	353 205	805 744	394 375	883 792	218 466	6 188 231
<b>2000-01</b>	262 565	767 524	1 081 599	236 034	381 785	1 019 926	451 841	1 399 489	355 781	8 286 782
<b>2001-02</b>	315 904	1 154 933	1 356 868	256 329	319 485	913 405	475 992	1 618 301	248 689	9 098 446
<b>2000-01</b>										
January	15 352	42 141	56 686	12 389	19 399	71 312	27 610	36 155	11 715	465 417
February	23 730	80 599	78 767	19 868	27 828	89 603	16 885	109 181	36 380	703 077
March	27 691	112 562	92 701	22 506	32 623	99 791	21 216	148 177	17 124	816 155
April	26 339	93 911	121 497	19 887	32 164	89 887	23 097	155 998	52 960	848 280
May	27 404	152 550	99 062	22 367	33 559	79 393	28 980	115 827	33 738	821 839
June	23 977	44 178	93 781	20 353	38 196	90 878	46 917	100 111	29 883	704 372
<b>2001-02</b>										
July	18 743	84 671	90 064	15 060	31 470	80 081	105 885	85 602	4 227	694 672
August	16 578	104 764	111 866	12 339	23 309	65 167	109 720	87 611	28 997	757 774
September	26 569	50 769	145 952	14 797	23 338	83 420	18 330	157 731	26 830	747 539
October	29 804	74 206	134 368	23 871	24 161	80 651	16 992	217 406	17 879	839 374
November	30 056	95 995	81 272	24 908	21 862	89 069	23 757	135 759	30 543	716 786
December	32 136	93 070	105 237	17 789	23 070	62 905	31 363	207 778	20 094	820 447
January	22 604	136 558	61 255	15 357	19 868	63 089	35 902	25 652	16 755	561 794
February	31 151	86 109	83 896	23 540	25 522	82 009	26 139	122 727	2 328	744 680
March	34 036	119 775	127 143	32 960	35 653	88 156	22 365	170 972	44 166	875 811
April	23 972	102 777	122 946	22 720	32 376	74 900	25 363	139 114	8 900	761 547
May	26 117	114 535	147 098	34 095	32 857	84 990	22 957	84 964	32 443	790 329
June	24 137	91 704	145 770	18 893	25 999	58 968	37 218	182 984	15 526	787 695

(a) Restrictions are placed on the release of statistics for certain commodities for reasons of confidentiality. These restrictions do not affect total export and import figures, but they can affect some items within commodity, industry and country tables. See *International Trade* (cat. no. 5422.0), Explanatory Notes, paragraph 30, for more details.

(b) Includes other commodity groups not listed.

Source: ABS data available on request.

## 6

## MERCHANDISE EXPORTS, BY SELECTED COUNTRIES AND COUNTRY GROUPS

Period	European Union					South-East and North-East Asia				
	United States of America	Middle East	United Kingdom	Total European Union	New Zealand	Japan	China	Hong Kong	ASEAN	Total
	\$'000	\$'000	\$'000	\$'000	\$'000	\$'000	\$'000	\$'000	\$'000	\$'000
<b>1999-00</b>	954 681	724 871	625 154	1 073 928	446 026	787 295	315 199	255 679	492 304	2 297 913
<b>2000-01</b>	1 354 759	1 335 811	713 525	1 232 563	480 887	963 481	437 939	298 939	682 671	2 882 839
<b>2001-02</b>	1 596 526	1 824 824	782 948	1 335 750	566 590	937 240	405 988	239 536	595 692	2 591 942
<b>2000-01</b>										
January	55 623	90 284	32 418	59 100	21 446	37 119	24 316	31 873	51 910	172 994
February	100 916	145 190	51 056	109 310	37 641	54 585	61 981	29 821	59 017	239 767
March	115 814	178 076	59 618	120 294	47 460	37 205	55 989	28 698	51 248	224 427
April	115 986	183 447	98 255	158 995	47 291	80 941	43 900	15 196	65 386	268 384
May	141 133	160 104	55 667	102 367	45 043	105 667	21 910	22 827	53 850	253 674
June	139 602	71 593	54 666	96 847	48 740	85 966	44 319	23 205	62 383	260 621
<b>2001-02</b>										
July	115 848	121 291	53 283	86 715	48 927	141 618	18 061	12 359	54 577	250 375
August	131 917	134 855	67 349	98 428	52 532	146 655	19 060	16 613	44 614	258 525
September	149 121	114 225	93 941	150 232	53 822	74 345	49 322	9 474	51 316	211 033
October	137 817	183 472	92 365	159 319	52 409	45 629	39 129	21 422	47 777	213 989
November	142 528	120 739	46 215	92 135	50 254	85 470	44 104	25 897	48 034	242 844
December	187 722	172 462	54 885	108 541	52 684	71 934	35 887	24 400	41 232	200 880
January	44 318	156 335	34 647	75 972	21 074	39 434	17 643	31 661	54 114	169 483
February	96 390	159 711	48 505	93 817	39 749	61 201	20 726	25 099	54 476	191 162
March	151 254	187 690	70 971	134 794	54 231	59 062	63 338	27 514	53 463	245 443
April	131 669	191 309	64 701	96 862	61 832	74 637	33 934	12 153	41 478	195 959
May	130 662	132 927	79 277	116 424	35 146	53 409	37 209	19 133	51 441	206 063
June	177 279	149 807	76 809	122 511	43 929	83 845	27 574	13 812	53 170	206 186

Source: ABS data available on request.

## 7

## MERCHANDISE IMPORTS, BY SELECTED COMMODITY GROUP(a)

<i>Period</i>	<i>Food, beverages and tobacco</i>	<i>Petroleum and petroleum products</i>	<i>Chemicals</i>	<i>Textiles</i>	<i>Metals and metal manufactures</i>	<i>Machinery</i>	<i>Road vehicle parts and accessories</i>	<i>Other manufactured goods</i>	<i>Total(b)</i>
	\$'000	\$'000	\$'000	\$'000	\$'000	\$'000	\$'000	\$'000	\$'000
<b>1999-00</b>	163 509	515 641	263 959	97 100	262 737	1 164 672	834 842	845 913	4 319 348
<b>2000-01</b>	183 196	968 428	284 227	97 281	315 327	1 205 016	854 759	926 817	5 044 553
<b>2001-02</b>	205 311	873 357	266 149	106 526	332 727	1 399 877	887 719	1 058 239	5 351 172
<b>2000-01</b>									
January	12 558	16 440	24 436	6 950	27 734	97 647	47 013	71 387	321 682
February	11 456	123 599	22 811	8 947	22 891	89 394	59 947	78 042	438 399
March	14 957	82 612	36 950	6 792	24 140	110 739	77 516	87 106	462 244
April	15 533	99 678	57 548	7 239	25 625	104 946	71 621	75 171	478 988
May	16 160	77 698	29 168	9 156	23 837	117 562	67 744	73 174	435 103
June	17 518	109 994	14 728	8 622	26 545	116 851	71 909	79 700	461 726
<b>2001-02</b>									
July	14 737	27 393	19 654	7 571	28 988	99 212	74 725	89 592	378 430
August	19 403	139 722	19 498	10 687	29 850	139 726	98 097	111 202	584 391
September	17 922	172 850	19 594	7 687	25 943	104 533	68 422	92 551	523 420
October	23 648	63 528	19 978	9 154	33 610	159 511	82 343	91 382	496 998
November	25 109	13 766	21 446	10 959	25 354	130 063	66 386	95 258	406 947
December	17 232	78 949	18 247	6 218	23 108	99 669	52 322	70 152	379 968
January	16 611	1 347	26 023	9 135	33 252	136 134	63 910	94 199	406 188
February	16 447	127 019	19 898	8 556	24 880	109 125	73 572	91 120	490 891
March	12 504	45 325	35 457	8 338	26 536	95 217	72 474	79 034	396 158
April	11 993	77 536	24 886	9 947	28 077	113 165	81 301	79 398	450 062
May	14 597	61 253	26 793	9 842	27 092	117 225	80 639	86 689	444 493
June	15 108	64 669	14 675	8 432	26 037	96 297	73 528	77 662	393 226

(a) Restrictions are placed on the release of statistics for certain commodities for reasons of confidentiality. These restrictions do not affect total export and import figures, but they can affect some items within commodity, industry and country tables. See *International Trade* (cat. no. 5422.0), Explanatory Notes, paragraph 30, for more details.

(b) Includes other commodity groups not listed.

Source: ABS data available on request.

## 8

## TURNOVER OF RETAIL ESTABLISHMENTS, BY INDUSTRY—TREND

Period	Food retailing	Department stores	Clothing and soft good retailing	Household good retailing	Recreational good retailing	Other retailing	Hospitality and services	Total
	\$m	\$m	\$m	\$m	\$m	\$m	\$m	\$m
<b>2000-01</b>								
April	407.3	95.7	50.3	105.9	28.1	122.5	177.1	986.3
May	411.7	95.2	50.2	108.2	28.3	124.9	178.6	997.2
June	416.6	94.5	50.3	109.9	28.2	127.2	181.3	1 008.4
<b>2001-02</b>								
July	421.7	94.0	50.3	110.4	27.9	129.1	184.0	1 017.9
August	426.3	93.9	50.2	110.5	27.4	130.2	185.8	1 024.7
September	430.4	94.5	50.3	110.6	27.1	130.3	186.8	1 030.1
October	433.5	95.6	50.8	111.5	27.2	129.5	187.8	1 035.8
November	435.9	97.0	51.7	113.4	27.7	128.2	189.8	1 043.7
December	438.2	98.2	52.8	115.9	28.5	127.4	193.5	1 054.6
January	440.7	99.1	54.0	118.9	29.3	127.6	198.7	1 068.2
February	443.4	99.7	55.0	121.9	29.6	129.1	204.2	1 082.7
March	446.1	100.1	55.8	124.9	29.3	131.6	208.4	1 096.0
April	448.7	100.8	56.3	127.6	28.8	134.3	210.9	1 107.4
May	450.9	101.6	56.8	130.0	28.2	136.8	212.4	1 117.5
June	452.6	102.4	57.1	132.1	27.4	138.9	212.9	1 126.4

Source: Retail Trade, Australia (cat. no. 8501.0).

## 9

## NEW MOTOR VEHICLE SALES, BY TYPE OF VEHICLE

Period	Original			Seasonally adjusted			Trend estimate		
	Passenger vehicles	Other vehicles	Total	Passenger vehicles	Other vehicles	Total	Passenger vehicles	Other vehicles	Total
<b>2000-01</b>									
May	2 956	1 197	4 153	2 839	1 099	3 938	2 829	1 108	3 937
June	3 239	1 438	4 677	2 803	1 056	3 859	2 840	1 116	3 956
<b>2001-02</b>									
July	2 865	1 113	3 978	2 825	1 130	3 955	2 838	1 134	3 972
August	2 995	1 176	4 171	2 869	1 113	3 982	2 830	1 160	3 990
September	2 580	1 090	3 670	2 899	1 350	4 249	2 850	1 199	4 049
October	2 995	1 153	4 148	2 874	1 158	4 032	2 899	1 246	4 145
November	3 176	1 339	4 515	2 803	1 283	4 086	2 966	1 288	4 254
December	2 989	1 390	4 379	2 882	1 270	4 152	3 026	1 322	4 348
January	2 681	1 046	3 727	3 461	1 433	4 894	3 061	1 952	4 413
February	2 892	1 276	4 168	3 121	1 461	4 582	3 060	1 379	4 439
March	2 889	1 335	4 224	2 859	1 254	4 113	3 028	1 400	4 428
April	2 727	1 258	3 985	2 996	1 405	4 401	2 979	1 412	4 391
May	2 945	1 703	4 648	2 783	1 530	4 313	2 936	1 419	4 355
June	3 342	1 801	5 143	3 030	1 414	4 444	2 907	1 423	4 330
<b>2002-03</b>									
July	3 049	1 408	4 457	2 922	1 373	4 295	2 873	1 418	4 291

Source: Sales of New Motor Vehicles, Australia (cat. no. 9314.0.55.001).

## 10

## ACTUAL PRIVATE NEW CAPITAL EXPENDITURE, BY SELECTED INDUSTRY AND TYPE OF ASSET

Period	Industry			Total	Type of asset	
	Mining	Manufacturing	Other selected industries		New buildings and structures	Equipment, plant and machinery
ANNUAL (\$m)						
<b>1998-99</b>	509	776	993	2 277	529	1 747
<b>1999-00</b>	243	854	1 356	2 450	619	1 831
<b>2000-01</b>	419	817	1 415	2 649	656	1 994
QUARTERLY, ORIGINAL (\$m)						
<b>2000-01</b>						
December	183	221	445	849	264	585
March	48	187	355	590	105	485
June	62	201	299	561	107	455
<b>2001-02</b>						
September	75	182	287	544	125	420
December	98	242	511	851	178	674
March	72	175	400	647	123	525
QUARTERLY, TREND (\$m)						
<b>2000-01</b>						
December	n.a.	n.a.	n.a.	703	189	514
March	n.a.	n.a.	n.a.	639	146	493
June	n.a.	n.a.	n.a.	593	119	474
<b>2001-02</b>						
September	n.a.	n.a.	n.a.	619	125	494
December	n.a.	n.a.	n.a.	683	145	538
March	n.a.	n.a.	n.a.	739	153	586

Source: Private New Capital Expenditure, Australia (cat. no. 5625.0) and ABS data available on request.

## 11

## TOURIST ACCOMMODATION

Period	Licensed hotels with facilities				Motels and guesthouses				Serviced apartments			
	Estab-lish-ments	Guest rooms	Room occu-pancy	Takings	Estab-lish-ments	Guest rooms	Room occu-pancy	Takings	Estab-lish-ments	Guest rooms	Room occu-pancy	Takings
	no.	no.	%	\$'000	no.	no.	%	\$'000	no.	no.	%	\$'000
<b>1999-00</b>												
March	62	4 065	60.1	23 739	146	5 168	55.3	19 956	26	1 213	62.6	6 739
June	60	4 037	58.7	23 033	147	5 212	53.1	19 309	26	1 208	62.7	6 912
<b>2000-01</b>												
September	60	4 070	56.3	23 960	147	5 218	50.6	19 898	26	1 211	56.9	6 252
December	62	4 128	58.2	26 070	146	5 204	54.4	21 557	26	1 220	62.4	7 232
March	62	3 905	59.9	25 686	146	5 217	55.2	21 889	27	1 280	67.1	7 955
June	61	4 066	55.9	23 849	146	5 230	50.5	20 289	27	1 300	63.2	7 959
<b>2001-02</b>												
September	61	4 078	56.3	23 498	146	5 231	49.7	19 926	27	1 293	60.1	7 019
December	61	4 083	61.0	26 556	144	5 170	51.9	21 044	27	1 283	67.0	8 218
March	62	4 091	61.6	27 321	145	5 196	55.6	22 467	27	1 293	70.5	8 454

Source: Tourist Accommodation, Australia (cat. no. 8635.0).

Period	Houses		Total dwelling units		New residential building \$m	Alterations and additions to residential building \$m	Total residential building \$m	Non-residential building \$m	Total building \$m
	Private sector	Total	Private sector	Total					
	no.	no.	no.	no.					
ANNUAL									
<b>1999-00</b>	8 290	8 392	9 915	10 024	1 022.9	188.9	1 211.8	585.7	1 797.5
<b>2000-01</b>	5 555	5 644	6 659	6 775	735.6	157.3	892.9	718.2	1 611.1
<b>2001-02</b>	8 863	9 177	10 527	10 881	1 201.0	191.6	1 392.6	769.5	2 162.1
MONTHLY, ORIGINAL									
<b>2000-01</b>									
March	517	523	630	636	67.2	14.0	81.2	141.9	223.2
April	477	494	498	517	56.3	10.8	67.1	40.5	107.6
May	655	659	705	709	79.3	16.9	96.1	95.7	191.8
June	641	644	733	736	84.2	14.3	98.5	40.8	139.3
<b>2001-02</b>									
July	765	771	966	975	98.3	15.9	114.2	45.9	160.1
August	736	743	810	827	86.3	17.0	103.3	118.4	221.7
September	712	731	840	863	95.9	14.5	110.3	48.3	158.6
October	778	797	877	904	98.0	19.6	117.7	81.9	199.6
November	764	810	881	931	100.4	16.1	116.5	57.3	173.8
December	699	745	924	970	107.9	13.0	120.9	42.9	163.7
January	667	688	741	764	86.7	13.2	99.8	73.0	172.9
February	770	839	899	971	104.8	17.7	122.6	59.6	182.2
March	756	774	886	904	97.0	14.3	111.3	74.9	186.2
April	701	714	970	987	111.3	16.2	127.5	53.1	180.6
May	799	823	957	981	119.3	16.5	135.9	53.1	189.0
June	716	742	776	804	94.9	17.6	112.6	61.1	173.6
MONTHLY, TREND									
<b>2000-01</b>									
March	467	474	554	562	60.7	14.2	74.9	49.7	124.6
April	510	517	592	600	64.4	14.4	78.8	51.7	130.5
May	566	572	652	659	69.8	14.6	84.3	54.8	139.1
June	624	630	713	721	75.6	14.8	90.4	58.6	149.0
<b>2001-02</b>									
July	673	681	767	779	81.3	15.2	96.5	61.5	158.0
August	709	720	818	834	87.0	15.4	102.4	63.5	166.0
September	733	751	861	885	92.8	15.6	108.4	65.2	173.6
October	748	775	892	924	98.3	15.6	113.9	66.7	180.6
November	756	791	911	950	102.6	15.6	118.3	68.0	186.3
December	760	799	926	968	106.4	15.7	122.0	68.4	190.5
January	763	803	935	977	109.1	15.7	124.8	67.5	192.3
February	762	798	938	976	110.4	15.9	126.4	65.9	192.3
March	757	788	931	964	110.8	16.3	127.1	63.6	190.7
April	751	777	917	945	110.3	16.7	127.1	61.3	188.3
May	745	768	897	922	109.3	17.2	126.5	59.6	186.1
June	736	756	871	893	107.2	17.7	124.8	58.3	183.2

Source: Building Approvals, Australia (cat. no. 8731.0) and ABS data available on request.

## 13

## BUILDING COMMENCEMENTS

Period	New houses		Total dwelling units(a)		New residential building \$m	Alterations and additions to residential building \$m	Non-residential building		
	Private sector	Total	Private sector	Total			Private sector	Total	Total building
	no.	no.	no.	no.			\$m	\$m	\$m
<b>1998-99</b>	6 092	6 297	7 186	7 416	771.3	139.7	400.7	624.3	1 535.3
<b>1999-00</b>	7 729	7 856	9 266	9 410	1 044.8	198.8	351.2	576.8	1 820.5
<b>2000-01</b>	5 303	5 390	6 442	6 556	779.2	161.3	390.5	729.6	1 670.1
<b>1999-00</b>									
March	2 054	2 064	2 534	2 544	284.9	52.1	70.8	182.9	519.9
June	1 977	1 994	2 353	2 374	257.8	58.9	103.6	152.5	469.2
<b>2000-01</b>									
September	1 380	1 419	1 777	1 819	228.9	25.6	104.8	166.3	420.8
December	1 345	1 350	1 498	1 512	167.8	44.3	122.8	151.4	363.5
March	1 157	1 179	1 562	1 597	186.5	43.6	70.9	111.2	341.2
June	1 422	1 443	1 605	1 628	196.0	47.9	91.9	300.7	544.6
<b>2001-02</b>									
September	1 835	1 857	2 365	2 400	324.0	45.1	145.3	188.7	557.9
December	2 217	2 273	2 543	2 613	307.8	52.7	167.2	199.4	559.9
March	1 848	1 947	2 228	2 334	282.3	51.8	118.7	169.2	503.3

(a) Includes conversions.

Source: Building Activity, Australia (cat. no. 8752.0).



Period	New houses		New residential building		Alterations and additions to residential building	Total residential building	Non-residential building		Total building	
	Private sector	Total	Private sector	Total			Private sector	Total	Private sector	Total
	\$m	\$m	\$m	\$m	\$m	\$m	\$m	\$m	\$m	\$m
VALUE OF BUILDING WORK DONE										
<b>1998-99</b>	599.4	614.6	720.8	737.7	147.7	885.4	417.1	571.6	1 283.8	1 457.0
<b>1999-00</b>	798.1	812.2	984.5	999.9	195.5	1 195.4	409.9	629.4	1 585.1	1 824.8
<b>2000-01</b>	679.7	686.9	835.5	845.0	161.9	1 006.8	395.0	624.0	1 385.4	1 630.9
<b>1999-00</b>										
March	193.0	196.1	239.4	242.6	47.2	289.9	86.3	145.3	372.4	435.2
June	250.8	252.2	305.1	306.8	60.1	366.9	105.9	163.3	469.1	530.2
<b>2000-01</b>										
September	175.9	178.2	228.3	230.7	30.9	261.5	84.0	138.2	341.8	399.7
December	179.6	180.9	216.0	218.3	42.1	260.4	116.6	176.1	372.9	436.5
March	162.6	164.0	193.8	195.7	40.7	236.4	97.2	145.7	330.1	382.1
June	161.6	163.8	197.3	200.3	48.2	248.6	97.2	163.9	340.6	412.5
<b>2001-02</b>										
September	184.2	187.2	227.7	231.2	48.7	279.9	112.7	170.6	386.9	450.5
December	219.4	222.6	261.9	265.5	48.4	314.0	146.8	213.8	456.3	527.7
March	217.8	222.7	264.6	270.7	47.5	318.2	129.3	181.3	440.5	499.6
VALUE OF BUILDING WORK COMPLETED										
<b>1998-99</b>	600.6	614.8	700.0	715.2	153.2	868.4	505.3	639.4	1 356.8	1 507.8
<b>1999-00</b>	713.5	730.1	867.6	886.2	191.9	1 078.1	362.9	538.4	1 419.4	1 616.4
<b>2000-01</b>	758.7	763.6	942.8	949.0	154.4	1 103.4	436.3	591.5	1 526.5	1 694.9
<b>1999-00</b>										
March	156.0	160.2	177.8	182.0	42.2	224.2	100.8	150.4	320.0	374.6
June	217.9	220.1	297.9	300.1	65.7	365.8	69.6	122.0	432.8	487.8
<b>2000-01</b>										
September	175.5	176.2	199.0	199.9	31.4	231.4	133.2	180.5	362.5	411.9
December	222.2	224.8	313.7	317.3	35.8	353.1	82.8	107.7	430.7	460.8
March	173.0	174.3	216.4	217.9	34.9	252.8	82.4	138.5	330.9	391.2
June	188.0	188.3	213.7	213.9	52.2	266.1	137.9	164.9	402.4	431.0
<b>2001-02</b>										
September	149.9	153.2	173.1	177.6	55.0	232.6	75.5	121.0	300.5	353.7
December	194.3	197.6	220.5	224.4	38.1	262.5	129.3	259.9	386.3	522.4
March	174.8	177.2	231.9	234.8	39.1	273.9	82.0	125.5	351.6	399.4

Source: Building Activity, Australia (cat. no. 8752.0).

<i>Period</i>	<i>Pigmeat</i> <i>tonnes</i>	<i>Beef</i> <i>tonnes</i>	<i>Mutton</i> <i>tonnes</i>	<i>Lamb</i> <i>tonnes</i>	<i>Sawn timber(a)</i> <i>m<sup>3</sup></i>
<b>1999-00</b>	31 927	78 001	28 969	56 667	425 549
<b>2000-01</b>	36 679	82 533	36 103	61 893	389 417
<b>2001-02</b>	48 329	85 882	30 342	64 285	434 577
<b>1999-00</b>					
June	8 884	20 750	5 792	18 757	107 723
<b>2000-01</b>					
September	8 227	18 011	8 072	15 785	126 440
December	8 143	21 982	9 826	15 689	89 486
March	9 785	23 367	9 885	14 968	75 558
June	10 524	19 172	8 321	15 451	97 933
<b>2001-02</b>					
September	10 274	18 271	6 290	11 694	103 774
December	9 754	21 325	8 221	17 627	111 797
March	12 583	23 748	8 895	17 232	111 697
June	15 718	22 539	6 936	17 732	107 309

(a) From Australian softwood logs only.

Source: *Livestock Products, Australia (cat. no. 7215.0)* and ABS data available on request.

<i>Period</i>	<i>Food</i>	<i>Alcohol and tobacco</i>	<i>Clothing and footwear</i>	<i>Housing</i>	<i>House furnishings, supplies and services</i>	<i>Health</i>	<i>Transportation</i>	<i>Communication</i>	<i>Recreation</i>	<i>Education</i>	<i>Miscellaneous</i>	<i>All groups</i>
ANNUAL AVERAGE (1989-90 = 100.0)												
<b>1999-00</b>	130.8	179.1	103.3	97.0	112.9	165.7	129.4	97.7	119.1	215.8	148.8	126.3
<b>2000-01</b>	136.7	198.3	111.9	104.3	117.1	169.5	138.0	104.7	122.9	225.9	159.3	133.5
<b>2001-02</b>	143.1	207.3	111.1	108.2	120.6	173.0	135.8	105.8	126.9	235.8	165.1	137.2
QUARTERLY (1989-90 = 100.0)												
<b>2000-01</b>												
March	139.4	200.5	110.5	104.4	117.4	170.7	137.0	104.3	123.0	230.9	159.9	134.1
June	139.4	203.3	112.3	104.9	119.3	171.3	140.4	103.9	122.5	230.9	161.2	135.1
<b>2001-02</b>												
September	140.5	205.9	108.4	106.8	120.6	170.9	136.4	103.6	123.1	231.0	163.5	135.3
December	143.8	205.5	112.2	107.9	120.9	169.3	134.4	106.0	125.6	231.1	163.8	136.6
March	144.6	207.8	110.6	108.6	120.0	173.7	133.9	106.2	129.0	240.6	166.0	137.7
June	143.6	210.0	113.0	109.5	120.9	178.0	138.4	107.3	129.9	240.6	167.0	139.1
PERCENTAGE CHANGE FROM SAME QUARTER OF PREVIOUS YEAR												
<b>2000-01</b>												
March	6.3	10.4	8.4	6.6	4.0	2.4	5.1	7.5	3.8	4.6	6.2	5.8
June	5.7	11.4	8.0	6.7	5.2	2.0	6.4	5.3	3.3	4.6	4.7	5.9
<b>2001-02</b>												
September	5.0	6.5	-4.6	2.8	4.0	1.4	-0.3	1.8	0.3	4.6	3.6	2.3
December	7.2	4.8	0.9	3.8	4.4	1.0	-2.3	1.0	1.8	4.6	3.5	3.1
March	3.7	3.6	0.1	4.0	2.2	1.8	-2.3	1.8	4.9	4.2	3.8	2.7
June	3.0	3.3	0.6	4.4	1.3	3.9	-1.4	3.3	6.0	4.2	3.6	3.0
PERCENTAGE CHANGE FROM PREVIOUS QUARTER												
<b>2000-01</b>												
March	3.9	2.3	-0.6	0.5	1.4	1.8	-0.4	-0.7	-0.3	4.5	1.0	1.2
June	0.0	0.9	1.6	0.5	1.6	0.4	2.5	-0.4	-0.4	0.0	0.8	0.7
<b>2001-02</b>												
September	0.8	1.3	-3.4	1.8	1.1	-0.2	-2.8	-0.3	0.5	0.0	1.4	0.1
December	2.3	-0.2	3.5	1.0	0.2	-0.9	-1.5	2.3	2.0	0.0	0.2	1.0
March	0.6	1.1	-1.4	0.6	-0.7	2.6	-0.4	0.2	2.7	4.1	1.3	0.8
June	-0.7	1.1	2.2	0.8	0.8	2.5	3.4	1.0	0.7	0.0	0.6	1.0

Source: Consumer Price Index (cat. no. 6401.0).

# 17

## ESTIMATED RESIDENT POPULATION AND COMPONENTS OF POPULATION CHANGE(a)

Period	Net migration			Total increase	Population at end of period
	Natural increase	Interstate	Overseas(b)		
<b>1998-99</b>	6 751	-2 869	2 108	8 375	1 499 204
<b>1999-00</b>	6 306	-4 773	3 453	7 598	1 506 802
<b>2000-01</b>	5 635	-4 234	3 602	8 052	1 514 854
<b>1999-00</b>					
March	1 828	-1 735	662	1 406	1 497 587
June	1 448	-1 147	156	1 110	1 506 802
<b>2000-01</b>					
September	1 121	-1 030	924	1 778	1 508 580
December	1 490	-1 308	1 660	2 603	1 511 183
March	1 740	-1 264	655	1 894	1 513 077
June	1 284	-632	363	1 777	1 514 854
<b>2001-02</b>					
September	1 244	-632	1 130	1 742	1 516 596
December	1 264	-171	1 185	2 278	1 518 874

(a) These figures take into account the results of the 2001 Census of Population and Housing and differences between total population growth and the sum of natural increase and net migration during 1996-2001 are due to preliminary intercensal discrepancy.

(b) Includes category jumping.

Source: Australian Demographic Statistics (cat. no. 3101.0).

# 18

## BIRTHS, DEATHS, MARRIAGES AND DIVORCES

Period	Registrations			
	Births	Deaths	Marriages	Divorces
<b>1998-99</b>	18 399	11 648	8 034	4 191
<b>1999-00</b>	17 896	11 590	8 428	4 197
<b>2000-01</b>	17 449	11 814	7 689	4 072
<b>1999-00</b>				
March	4 476	2 648	2 436	965
June	4 449	3 001	1 996	984
<b>2000-01</b>				
September	4 360	3 239	1 092	1 056
December	4 319	2 829	2 703	1 031
March	4 549	2 809	2 175	824
June	4 221	2 937	1 719	1 161
<b>2001-02</b>				
September	4 398	3 154	1 096	1 387
December	4 109	2 845	2 444	1 173

Source: Australian Demographic Statistics (cat. no. 3101.0).

## CIVILIAN LABOUR FORCE STATUS(a)

Period	Employed full-time		Employed part-time		Total employed		Unemployed		Labour force	
	Males	Females	Males	Females	Males	Females	Males	Females	Males	Females
ANNUAL AVERAGE ('000)										
<b>1999-00</b>	322.1	152.5	56.1	142.3	378.2	294.9	34.6	23.9	412.8	318.7
<b>2000-01</b>	322.6	156.7	54.8	143.5	377.4	300.2	32.6	20.2	410.0	320.4
<b>2001-02</b>	319.2	153.2	59.1	153.1	378.4	306.3	31.8	20.0	410.2	326.2
MONTHLY, ORIGINAL ('000)										
<b>2000-01</b>										
May	316.3	154.8	55.1	146.2	371.3	301.0	35.5	20.5	406.9	321.4
June	313.5	152.7	58.6	150.1	372.1	302.8	30.5	20.9	402.6	323.7
<b>2001-02</b>										
July	316.2	156.5	54.8	144.8	371.0	301.3	33.2	19.4	404.2	320.7
August	317.2	150.9	56.2	149.4	373.4	300.3	31.9	20.5	405.3	320.7
September	318.2	158.3	57.3	147.4	375.5	305.7	32.2	20.5	407.6	326.2
October	317.7	154.6	56.9	150.9	374.6	305.5	32.4	18.6	407.1	324.1
November	319.4	159.8	56.2	151.6	375.6	311.4	32.1	16.9	407.6	328.3
December	322.1	158.8	59.6	151.1	381.7	309.9	32.0	20.2	413.8	330.1
January	322.1	151.4	56.9	147.3	379.0	298.8	33.4	22.8	412.4	321.6
February	318.9	152.6	62.4	152.3	381.3	304.9	34.7	22.2	416.0	327.1
March	320.4	147.7	64.0	157.6	384.4	305.3	28.7	21.3	413.1	326.6
April	319.4	147.9	63.5	163.8	382.9	311.6	30.1	18.5	413.0	330.1
May	321.0	152.4	59.8	156.5	380.8	308.9	31.2	19.3	412.0	328.2
June	318.3	147.0	61.9	164.7	380.2	311.7	29.9	19.5	410.1	331.2
<b>2002-03</b>										
July	325.3	149.7	56.8	155.6	382.1	305.3	26.0	18.5	408.1	323.8
MONTHLY, TREND ('000)										
<b>2000-01</b>										
May	315.7	155.5	55.9	147.9	371.6	303.4	34.1	19.8	405.7	323.2
June	315.8	155.2	56.0	148.2	371.8	303.4	34.1	20.4	405.9	323.8
<b>2001-02</b>										
July	316.1	155.1	56.3	147.9	372.4	303.3	33.8	20.6	406.2	323.9
August	316.6	155.3	56.5	148.2	373.1	303.2	33.3	20.6	406.5	323.8
September	317.2	155.5	56.8	147.9	374.0	303.4	32.8	20.3	406.9	323.8
October	317.8	155.6	57.3	148.2	375.1	303.8	32.4	20.1	407.5	323.9
November	318.5	155.1	58.1	149.1	376.6	304.2	32.0	20.1	408.7	324.3
December	319.2	154.2	59.2	150.5	378.4	304.7	31.6	20.1	410.0	324.8
January	319.8	152.9	60.3	158.8	380.1	305.5	31.3	20.1	411.4	325.6
February	320.4	151.7	61.1	159.9	381.5	306.6	31.0	20.0	412.5	326.6
March	320.9	150.8	61.5	160.6	382.4	307.9	30.7	19.8	413.1	327.8
April	321.5	150.5	61.2	160.8	382.7	309.3	30.4	19.6	413.1	328.9
May	321.9	150.5	60.7	310.4	382.6	310.4	30.2	19.4	412.9	329.8
June	322.3	150.5	60.1	311.1	382.4	311.1	30.0	19.2	412.4	330.3
<b>2002-03</b>										
July	322.4	150.6	59.5	160.8	381.9	311.4	29.8	19.2	411.8	330.5

(a) Population aged 15 years and over.

Source: Labour Force, Australia, Preliminary (cat. no. 6202.0).

Period	Civilian population			Unemployment rate			Participation rate		
	Males aged 15 and over	Females aged 15 and over	Persons aged 15-19	Males all ages	Females all ages	Persons all ages	Males	Females	Persons
	'000	'000	%	%	%	%	%	%	%
ANNUAL AVERAGE									
<b>1999-00</b>	587.6	613.8	20.0	8.4	7.5	8.0	70.3	51.9	60.9
<b>2000-01</b>	591.6	616.9	17.9	8.0	6.3	7.2	69.3	51.9	60.4
<b>2001-02</b>	595.4	620.5	18.5	7.8	6.1	7.1	68.9	52.6	60.6
MONTHLY, ORIGINAL									
<b>2000-01</b>									
May	592.9	617.9	21.1	8.7	6.4	7.7	68.6	52.0	60.2
June	593.1	618.2	17.1	7.6	6.4	7.1	67.9	52.4	60.0
<b>2001-02</b>									
July	593.5	618.6	17.6	8.2	6.1	7.3	68.1	51.9	59.8
August	593.9	619.0	17.9	7.9	6.4	7.2	68.2	51.8	59.9
September	594.3	619.4	17.0	7.9	6.3	7.2	68.6	52.7	60.5
October	594.5	619.6	18.9	8.0	5.7	7.0	68.5	52.3	60.2
November	594.8	619.9	16.5	7.9	5.2	6.7	68.5	53.0	60.6
December	595.1	620.1	20.9	7.7	6.1	7.0	69.5	53.2	61.2
January	595.5	620.5	24.4	8.1	7.1	7.7	69.3	51.8	60.4
February	595.9	620.9	19.1	8.3	6.8	7.7	69.8	52.7	61.1
March	596.2	621.3	18.3	6.9	6.5	6.8	69.3	52.6	60.8
April	596.6	621.7	16.3	7.3	5.6	6.5	69.2	53.1	61.0
May	597.0	622.1	17.9	7.6	5.9	6.8	69.0	52.8	60.7
June	597.4	622.5	17.5	7.3	5.9	6.7	68.6	53.2	60.8
<b>2002-03</b>									
July	597.9	623.0	13.0	6.4	5.7	6.1	68.3	52.0	59.9
MONTHLY, TREND									
<b>2000-01</b>									
May	n.a.	n.a.	n.a.	8.4	6.1	7.4	68.4	52.3	60.2
June	n.a.	n.a.	n.a.	8.4	6.3	7.5	68.4	52.4	60.2
<b>2001-02</b>									
July	n.a.	n.a.	n.a.	8.3	6.4	7.5	68.4	52.4	60.2
August	n.a.	n.a.	n.a.	8.2	6.4	7.4	68.4	52.3	60.2
September	n.a.	n.a.	n.a.	8.1	6.3	7.3	68.5	52.3	60.2
October	n.a.	n.a.	n.a.	8.0	6.2	7.2	68.5	52.3	60.2
November	n.a.	n.a.	n.a.	7.8	6.2	7.1	68.7	52.3	60.3
December	n.a.	n.a.	n.a.	7.7	6.2	7.0	68.9	52.4	60.5
January	n.a.	n.a.	n.a.	7.6	6.2	7.0	69.1	52.5	60.6
February	n.a.	n.a.	n.a.	7.5	6.1	6.9	69.2	52.6	60.8
March	n.a.	n.a.	n.a.	7.4	6.0	6.8	69.3	52.8	60.9
April	n.a.	n.a.	n.a.	7.4	5.9	6.7	69.2	52.9	60.9
May	n.a.	n.a.	n.a.	7.3	5.9	6.7	69.2	53.0	60.9
June	n.a.	n.a.	n.a.	7.3	5.8	6.6	69.0	53.1	60.9
<b>2002-03</b>									
July	n.a.	n.a.	n.a.	7.2	5.8	6.6	68.9	53.1	60.8

(a) Population aged 15 years and over.

Source: Labour Force, Australia, Preliminary (cat. no. 6202.0).

## AVERAGE WEEKLY EARNINGS OF EMPLOYEES

Period	Males			Females			Persons		
	Full-time adult ordinary time earnings	Full-time adult total earnings	All males total earnings	Full-time adult ordinary time earnings	Full-time adult total earnings	All females total earnings	Full-time adult ordinary time earnings	Full-time adult total earnings	All employees total earnings
ANNUAL AVERAGE (\$ per week)									
<b>1999-00</b>	756.80	812.50	695.00	641.70	663.30	457.20	714.40	757.50	575.90
<b>2000-01</b>	811.30	864.40	746.80	685.20	703.90	491.20	765.70	806.40	619.70
<b>2001-02</b>	830.20	890.18	775.00	731.10	744.33	505.18	797.18	841.68	643.75
QUARTERLY, ORIGINAL (\$ per week)									
<b>2000-01</b>									
February	813.80	870.60	754.70	693.60	710.60	499.30	770.10	812.40	627.70
May	824.80	875.00	759.10	698.00	714.20	493.00	780.90	819.30	628.90
<b>2001-02</b>									
August	832.60	875.90	771.20	714.50	727.10	513.00	791.70	824.30	644.50
November	827.80	884.90	772.10	733.00	745.80	506.00	796.10	838.40	641.40
February	831.00	900.50	773.20	741.80	754.60	497.90	801.50	852.20	639.20
May	829.40	899.40	783.50	735.10	749.80	503.80	799.40	851.80	649.90
QUARTERLY, TREND (\$ per week)									
<b>2000-01</b>									
February	819.00	870.60	754.50	690.50	707.30	495.50	773.00	812.10	625.90
May	825.60	875.30	763.70	702.90	717.70	502.10	782.40	819.70	634.70
<b>2001-02</b>									
August	828.70	879.10	768.40	716.90	730.30	505.50	790.10	827.80	639.50
November	829.80	885.60	771.20	728.20	741.20	504.60	795.70	837.20	641.20
February	830.10	894.50	775.00	736.50	750.00	502.90	799.50	847.20	642.80
May	831.10	903.80	780.70	742.60	756.80	501.70	803.00	856.70	645.60

Source: Average Weekly Earnings, States and Australia (cat. no. 6302.0).

## 22

### SECURED HOUSING FINANCE COMMITMENTS(a)

Period	Original		Seasonally adjusted		Trend	
	Dwelling units	Value	Dwelling units	Value	Dwelling units	Value
	no.	\$m	no.	\$m	no.	\$m
<b>2000-01</b>						
April	3 645	382	3 895	411	3 957	415
May	4 522	479	4 205	443	4 068	432
June	4 321	458	4 165	454	4 175	447
<b>2001-02</b>						
July	4 290	462	4 308	469	4 255	457
August	4 324	455	4 326	457	4 304	464
September	3 849	414	4 324	467	4 331	470
October	4 334	473	4 216	457	4 351	476
November	4 695	525	4 338	485	4 350	482
December	4 423	508	4 482	499	4 321	484
January	3 892	444	4 438	505	4 280	483
February	4 008	455	4 074	463	4 256	479
March	4 246	478	4 240	476	4 263	477
April	4 112	458	4 013	448	4 308	478
May	4 880	525	4 507	486	4 381	481
June	4 681	498	4 768	519	4 466	487

(a) Excludes alterations and additions. Includes refinancing.

Source: Housing Finance for Owner Occupation, Australia (cat. no. 5609.0).

## 23

### FINANCE COMMITMENTS

Period	Commercial finance commitments			Personal finance commitments			
	Fixed loan facilities	Revolving credit facilities	Total commercial finance commitments	Fixed loan facilities	Revolving credit facilities	Total personal finance commitments	Total lease finance commitments
	\$m	\$m	\$m	\$m	\$m	\$m	\$m
<b>2000-01</b>							
April	262.6	295.6	558.2	133.7	108.6	242.4	11.2
May	376.4	186.8	563.2	162.5	144.9	307.4	7.7
June	524.6	375.8	900.5	165.3	168.5	333.8	19.1
<b>2001-02</b>							
July	373.9	260.2	634.1	150.7	169.7	320.4	28.7
August	374.2	220.1	594.3	165.4	143.6	308.9	15.6
September	293.2	222.3	515.5	136.5	127.2	263.7	13.5
October	412.6	295.7	708.3	162.4	145.4	307.8	14.9
November	551.8	295.1	846.9	180.6	178.5	359.1	25.6
December	611.8	290.5	902.3	165.9	147.2	313.0	16.2
January	338.8	228.3	567.1	164.2	120.0	284.1	10.9
February	422.8	288.2	711.0	176.3	134.7	310.9	13.9
March	545.5	235.5	781.0	176.3	145.9	322.3	14.6
April	470.0	225.8	695.4	169.8	151.7	321.5	13.3
May	463.8	235.1	699.0	193.8	158.7	352.5	16.3
June	579.5	473.7	1 053.2	188.7	187.4	376.2	17.1

Source: ABS data available on request.



## PUBLICATIONS SOURCE INDEX

- (1) *Australian National Accounts, Quarterly State Details*, cat. no. 5206.0.40.001
- (2) International Merchandise Trade, ABS data available on request
- (3) *Retail Trade, Australia*, cat. no. 8501.0, Monthly
- (4) *Sales of New Motor Vehicles, Australia*, cat. no. 9314.0.55.001  
Monthly
- (5) *Private New Capital Expenditure*, cat. no. 5625.0, Quarterly—and Ausstats data
- (6) *Tourist Accommodation, Australia*, cat. no. 8635.0, Quarterly
- (7) *Building Approvals, Australia*, cat. no. 8731.0, Monthly
- (8) *Building Activity, Australia*, cat. no. 8752.0, Quarterly
- (9) *Engineering Construction Activity, Australia*, cat. no. 8762.0, Quarterly
- (10) *Manufacturing Production, Australia, Preliminary*, cat. no. 8301.0, Quarterly
- (11) *Livestock Products, Australia*, cat. no. 7215.0, Quarterly—and ABS data available on request
- (12) *Actual and Expected Private Mineral Exploration, Australia*, cat. no. 8412.0, Quarterly
- (13) *Consumer Price Index*, cat. no. 6401.0, Quarterly
- (14) *Producer Price Indexes, Australia*, cat. no. 6427.0, Quarterly
- (16) *House Price Indexes: Eight Capital Cities*, cat. no. 6416.0, Quarterly
- (17) *Australian Demographic Statistics*, cat. no. 3101.0, Quarterly
- (18) *Labour Force, Australia, Preliminary*, cat. no. 6202.0, Monthly
- (19) *Job Vacancies, Australia*, cat. no. 6354.0, Quarterly
- (20) *Industrial Disputes, Australia*, cat. no. 6321.0, Monthly
- (21) Overseas arrival and departure statistics
- (22) *Average Weekly Earnings, States and Australia*, cat. no. 6302.0, Quarterly
- (23) *Wage Cost Index, Australia*, cat. no. 6345.0, Quarterly
- (24) *Housing Finance for Owner Occupation, Australia*, cat. no. 5609.0, Monthly
- (25) *Lending Finance, Australia*, cat. no. 5671.0, Monthly—and ABS data available on request
- (26) *Reserve Bank of Australia Bulletin*





## FOR MORE INFORMATION...

- INTERNET* **www.abs.gov.au** the ABS web site is the best place to start for access to summary data from our latest publications, information about the ABS, advice about upcoming releases, our catalogue, and Australia Now—a statistical profile.
- LIBRARY* A range of ABS publications is available from public and tertiary libraries Australia-wide. Contact your nearest library to determine whether it has the ABS statistics you require, or visit our web site for a list of libraries.
- CPI INFOLINE* For current and historical Consumer Price Index data, call 1902 981 074 (call cost 77c per minute).
- DIAL-A-STATISTIC* For the latest figures for National Accounts, Balance of Payments, Labour Force, Average Weekly Earnings, Estimated Resident Population and the Consumer Price Index call 1900 986 400 (call cost 77c per minute).

**INFORMATION SERVICE**

Data which have been published and can be provided within five minutes are free of charge. Our information consultants can also help you to access the full range of ABS information—ABS user-pays services can be tailored to your needs, time frame and budget. Publications may be purchased. Specialists are on hand to help you with analytical or methodological advice.

- PHONE* **1300 135 070**
- EMAIL* **client.services@abs.gov.au**
- FAX* 1300 135 211
- POST* Client Services, ABS, GPO Box 796, Sydney 1041

## WHY NOT SUBSCRIBE?

ABS subscription services provide regular, convenient and prompt deliveries of ABS publications and products as they are released. Email delivery of monthly and quarterly publications is available.

- PHONE* 1300 366 323
- EMAIL* subscriptions@abs.gov.au
- FAX* 03 9615 7848
- POST* Subscription Services, ABS, GPO Box 2796Y, Melbourne 3001



2130740009020  
ISSN 1039-8880

RRP \$20.00