



Dear Subscriber

Contained in this package is the first release of the ABS publication: *International Trade Price Indexes, Australia* (Cat. no. 6457.0) for the June quarter 2001. This replaces the previous publications: *Export Price Index, Australia* (Cat. no. 6405.0); and *Import Price Index, Australia* (Cat. no. 6414.0).

This new publication contains the key series from the previous publications, and includes new tables on a balance of payments classification basis. Some tables from the former publications are not included in the new publication. However, these are contained in the attached publication supplement. To locate the tables you require, please see the attached concordance which lists where all tables from the previous publications can be found in either the new publication or supplement.

Commencing with the release of the December quarter 2001 publication in January 2002, it is expected that adhoc and regular access to ABS electronic products will be available via the ABS Website <[www.abs.gov.au](http://www.abs.gov.au)> at low cost. Users will then be expected to access from this new Internet based service, any tables no longer published which they still require. Information on accessing this service and the costs involved will be provided to 2001 subscribers with their September quarter 2001 issue of *International Trade Price Indexes, Australia* (Cat. no. 6457.0).

A special telephone service has been set up to assist users with this transition. If you have any queries or requests for data, please contact Lee Taylor on 1800 155 106.

Richard McKenzie  
Director  
Producer Price Indexes  
Australian Bureau of Statistics  
20/7/2001

# CONCORDANCE : OLD TO NEW PUBLICATIONS

## INTERNATIONAL TRADE PRICE INDEXES, AUSTRALIA (CAT.NO.6457)

<i>New publication table number</i>	<i>Table name</i>	<i>Old catalogue and table number</i>
<b>Cat. no. 6457.0</b>	<b>Import Price Index, Australia</b>	<b>Cat no. 6414.0</b>
6457.0 - table 1	Import Price Index, Index Numbers and Percentage Changes	6414.0 - table 1
6457.0 - table 2	Import Price Index, SITC Contribution to All Groups Index	6414.0 - table 2
6457.0 - table 3	Import Price Index SITC Section	6414.0 - table 3
6457.0 - table 4	Import Price Index, BEC End Use Class, Broad BOP Categories, Consumption Goods	new table(a)
6457.0 - table 5	Import Price Index, BEC End Use Class, Broad BOP Categories, Capital Goods	new table(b)
6457.0 - table 6	Import Price Index, BEC End Use Class, Broad BOP Categories, Intermediate and Other Merchandise Goods	new table (c)
	<b>Export Price Index, Australia</b>	<b>Cat no. 6405.0</b>
6457.0 - table 7	Export Price Index, All Groups, Index Numbers and Percentage Changes	6405.0 - table 1
6457.0 - table 8	Export Price Index, SITC Contribution to All Groups Index	new table
6457.0 - table 9	Export Price Index, Selected SITC Section	6405.0 - table 4
6457.0 - table 10	Export Price Index, Balance of Payments Groups, Rural Goods	new table
6457.0 - table 11	Export Price Index, Balance of Payments Groups, Non-Rural Goods	new table

(a) Includes column 3 of 6414.0 table 9.

(b) Includes column 1 of 6414.0 table 9.

(c) Includes column 2 of 6414.0 table 9.

# CONCORDANCE : OLD PUBLICATION TO SUPPLEMENT

## INTERNATIONAL TRADE PRICE INDEXES, AUSTRALIA (CAT.NO.6457)

<i>Supplement table number</i>	<i>Table name</i>	<i>Old catalogue and table number</i>
<b>Cat no. 6457.0</b>	<b>Import Price Index, Australia</b>	<b>Cat no. 6414.0</b>
6457.0 - table 12	Import Price Index, By Selected SITC Division	6414.0 - table 4
6457.0 - table 13	Import Price Index, By Selected HTISC Section	6414.0 - table 5
6457.0 - table 14	Import Price Index, By Selected ANZSIC Industry of Origin Division	6414.0 - table 6
6457.0 - table 15	Import Price Index, By Selected ANZSIC Industry of Origin Subdivision	6414.0 - table 7
6457.0 - table 16	Import Price Index, By BEC Category	6414.0 - table 8
	<b>Export Price Index, Australia</b>	<b>Cat no. 6405.0</b>
6457.0 - table 17	Export Price Index, AHECC and ANZSIC Contribution to All Groups Index	6405.0 - table 2
6457.0 - table 18	Export Price Index, By Selected AHECC Section	6405.0 - table 3
6457.0 - table 19	Export Price Index, By Selected ANZSIC Industry of Origin Division and Subdivision	6405.0 - table 5

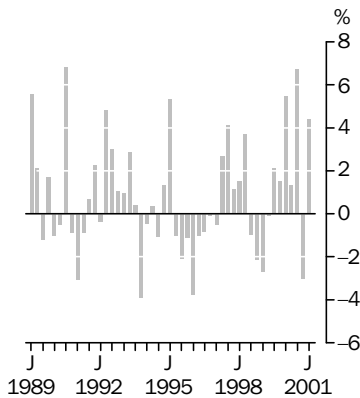
**INTERNATIONAL TRADE  
PRICE INDEXES**

AUSTRALIA

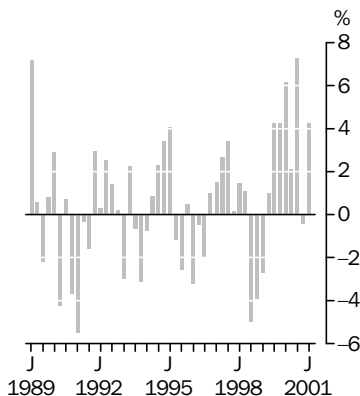
EMBARGO: 11.30AM (CANBERRA TIME) FRI 20 JULY 2001

**Import price index: all groups**

Quarterly % change

**Export price index: all groups**

Quarterly % change

**JUNE KEY FIGURES**

	<b>% change Mar Qtr 2001 to Jun Qtr 2001</b>	<b>% change Jun Qtr 2000 to Jun Qtr 2001</b>
<b>Import Price Index all groups</b>	<b>4.4</b>	<b>9.5</b>
Food and live animals	2.4	4.7
Beverages and tobacco	1.8	2.7
Crude materials	-3.3	-2.4
Mineral fuels, etc.	9.8	16.2
Animal and vegetable oils, etc.	2.2	-7.8
Chemicals and related products	6.5	14.0
Manufactured goods by material	3.7	8.5
Machinery and transport equipment	3.4	7.9
Miscellaneous manufactured articles	4.6	10.8
Commodities and transactions n.e.s.	1.7	6.4
<b>Export Price Index all groups</b>	<b>4.3</b>	<b>13.8</b>
Food and live animals	5.6	16.7
Crude materials	6.3	16.0
Mineral fuels, etc.	8.5	24.1
Chemicals and related products	0.7	6.7
Manufactured goods by material	1.7	5.1
Machinery and transport equipment	1.1	3.5
Miscellaneous manufactured articles	1.6	3.9

**JUNE KEY POINTS****IMPORT PRICE INDEX**

- A decline in the value of the Australian dollar against the major currencies, particularly the US dollar, in the June quarter resulted in price rises for a range of items. World price rises for inorganic chemicals, crude oil (affecting the prices of petroleum and related products) and, to a lesser extent motor vehicles and parts, were also major contributors to the 4.4% increase in the import price index for the June quarter.

**EXPORT PRICE INDEX**

- A large increase in the price of coal, due to the signing of new contracts during the June quarter primarily for the Japanese market, and higher world prices for beef, crude oil, wool and iron ore were the main contributors to the 4.3% increase in the export price index for the June quarter. The decline in the value of the Australian dollar in the June quarter also had a slight upward impact on Australian export prices in general.

- For further information about these and related statistics, contact Glyn Prichard on Canberra 02 6252 6257 or the National Information Service on 1300 135 070.

# NOTES

## FORTHCOMING ISSUES

<i>ISSUE (Quarter)</i>	<i>RELEASE DATE</i>
September 2001	19 October 2001
December 2001	18 January 2002

.....

## NEW ISSUE

This is the first issue of this quarterly publication, which replaces the *Export Price Index, Australia* (Cat no. 6405.0) and *Import Price Index, Australia* (Cat no. 6414.0) publications. Classifications for the import and export price indexes have been standardised, and tables for both indexes are also presented using ABS balance of payments classifications. Not all tables from the previous catalogues are produced in this issue; however they are available on AusStats or can be obtained by contacting the National Information Service on 1300 135 070. A concordance between tables in the old and new publications is also available with these services.

For other enquiries specifically related to this new publication and those it has replaced, please contact Glyn Prichard on 1800 155 106.

## RELATED STATISTICS

For more information about statistics in this publication and about other 'ABS data available on request', contact Glyn Prichard on (02) 6252 6257, or email <[glyn.prichard@abs.gov.au](mailto:glyn.prichard@abs.gov.au)>.

.....

## ABBREVIATIONS

ABS	Australian Bureau of Statistics
ADP	Automatic Data Processing
BEC	Broad Economic Category
c.i.f.	cost, insurance and freight
f.o.b.	free on board
HTISC	Harmonised Tariff Item Statistical Classification
n.e.c.	not elsewhere classified
n.e.s.	not elsewhere specified
SITC	Standard International Trade Classification

Dennis Trewin  
Australian Statistician

## LIST OF TABLES

page

### INTERNATIONAL TRADE PRICE INDEXES

<b>1</b>	Import price index, index numbers and percentage changes . . . . .	4
<b>2</b>	Import price index, SITC contribution to all groups index . . . . .	5
<b>3</b>	Import price index, SITC section . . . . .	6
<b>4</b>	Import price index, BEC end use class, broad balance of payments categories, consumption goods . . . . .	7
<b>5</b>	Import price index, BEC end use class, broad balance of payments categories, capital goods . . . . .	8
<b>6</b>	Import price index, BEC end use class, broad balance of payments categories, intermediate and other merchandise goods . . . . .	9
<b>7</b>	Export price index, all groups, index numbers and percentage changes . .	11
<b>8</b>	Export price index, SITC contribution to all groups index . . . . .	12
<b>9</b>	Export price index, selected SITC section . . . . .	13
<b>10</b>	Export price index, balance of payments groups, rural goods . . . . .	14
<b>11</b>	Export price index, balance of payments groups, non-rural goods . . . . .	15

### ADDITIONAL TABLES AVAILABLE ON AUSSTATS

<b>12</b>	Import price index, by selected SITC division	
<b>13</b>	Import price index by selected HTISC section	
<b>14</b>	Import price index, by selected ANZSIC industry of origin division	
<b>15</b>	Import price index, by selected ANZSIC industry of origin subdivision	
<b>16</b>	Import price index, by BEC category	
<b>17</b>	Export price index, AHECC and ANZSIC contribution to all groups index	
<b>18</b>	Export price index, by selected AHECC section	
<b>19</b>	Export price index, by selected ANZSIC industry of origin division and subdivision	

## IMPORT PRICE INDEX(a): Index numbers &amp; percentage changes

<i>Period</i>	<i>Index numbers</i>	<i>% change from corresponding quarter of previous year</i>	<i>% change from previous period</i>
<b>1997-98</b>	115.4	..	6.3
<b>1998-99</b>	119.9	..	3.9
<b>1999-2000</b>	120.2	..	0.3
<b>2000-01</b>	134.3	..	11.7
<b>1996</b>			
September	109.4	-7.8	-1.0
December	108.5	-6.5	-0.8
<b>1997</b>			
March	108.4	-5.6	-0.1
June	107.9	-2.4	-0.5
September	110.8	1.3	2.7
December	115.4	6.4	4.2
<b>1998</b>			
March	116.7	7.7	1.1
June	118.5	9.8	1.5
September	122.9	10.9	3.7
December	121.7	5.5	-1.0
<b>1999</b>			
March	119.1	2.1	-2.1
June	115.9	-2.2	-2.7
September	115.8	-5.8	-0.1
December	118.3	-2.8	2.2
<b>2000</b>			
March	120.1	0.8	1.5
June	126.7	9.3	5.5
September	128.4	10.9	1.3
December	137.0	15.8	6.7
<b>2001</b>			
March	132.9	10.7	-3.0
June	138.7	9.5	4.4

.. not applicable

(a) Reference base of each index: 1989-90 = 100.0.

## IMPORT PRICE INDEX(a): SITC contribution to all groups index

Category	Mar Qtr 2001	Jun Qtr 2001	Change	
ALL GROUPS				
All groups	132.9	138.7	5.8	
SITC SECTIONS— Contribution to All Groups (index points)				
0	Food and live animals chiefly for food	4.60	4.71	0.11
1	Beverages and tobacco	0.79	0.80	0.01
2	Crude materials, inedible, except fuels	2.30	2.23	-0.07
3	Mineral fuels, lubricants and other related materials	10.91	11.97	1.06
4	Animal and vegetable oils, fats and waxes	0.26	0.27	0.01
5	Chemicals and related products n.e.s.	16.18	17.23	1.05
6	Manufactured goods classified chiefly by material	16.34	16.95	0.61
7	Machinery and transport equipment	61.76	63.89	2.13
8	Miscellaneous manufactured articles	19.08	19.95	0.87
9	Commodities and transactions n.e.c.	0.64	0.65	0.01

## SELECTED SITC DIVISIONS— Contribution to All Groups (index points)

03	Fish, crustaceans and molluscs and preparations thereof	1.18	1.23	0.05
24	Cork and wood	1.01	0.98	-0.03
33	Petroleum, petroleum products and related materials	10.91	11.97	1.06
51	Organic chemicals	3.83	3.99	0.16
52	Inorganic chemicals	1.02	1.65	0.63
59	Chemical materials and products n.e.s.	1.63	1.65	0.02
64	Paper, paperboard and articles made of paper	2.87	2.99	0.12
65	Textile yarn, fabrics, and related products	3.05	3.21	0.16
69	Manufactures of metals n.e.s.	3.00	3.10	0.10
71	Power generating machinery and equipment	3.35	3.55	0.20
72	Machinery specialised for particular industries	5.15	5.40	0.25
74	General industrial machinery, equipment and parts	6.72	6.98	0.26
75	Office machines and ADP machines	8.81	8.88	0.07
76	Telecommunications and sound recording equipment	7.82	7.91	0.09
77	Electrical machinery, etc. and parts thereof	7.58	7.70	0.12
78	Road vehicles	15.33	16.06	0.73
79	Other transport equipment	7.01	7.40	0.39
87	Professional, scientific and controlling instruments and apparatus n.e.s.	3.15	3.30	0.15
89	Miscellaneous manufactured articles n.e.s.	7.37	7.68	0.31

(a) Reference base of each index: 1989-90 = 100.0.



## IMPORT PRICE INDEX(a): SITC section

<i>Period</i>	<i>Food and live animals chiefly for food (0)</i>	<i>Beverages and tobacco (1)</i>	<i>Crude materials, inedible, except fuels (2)</i>	<i>Mineral fuels, lubricants and other related materials (3)</i>	<i>Animal and vegetable oils, fats and waxes (4)</i>	<i>Chemicals and related products n.e.s. (5)</i>	<i>Manufactured goods classified chiefly by material (6)</i>	<i>Machinery and transport equipment (7)</i>	<i>Miscellaneous manufactured articles (8)</i>	<i>Commodities and transactions n.e.c. (9)</i>
<b>1997-98</b>	129.0	126.0	119.1	93.4	156.4	112.9	116.7	115.5	120.3	90.5
<b>1998-99</b>	125.1	130.5	119.8	84.9	178.2	114.2	122.6	121.9	127.9	91.9
<b>1999-2000</b>	116.9	127.0	124.9	135.4	138.5	111.0	120.2	119.4	126.1	89.8
<b>2000-01</b>	121.4	128.5	139.9	188.0	122.6	128.1	131.3	129.7	140.0	99.6
<b>1996</b>										
September	112.2	109.8	112.2	92.2	167.2	109.2	110.2	110.1	111.9	98.0
December	110.9	112.5	108.2	101.0	166.8	107.5	109.5	108.5	110.7	95.7
<b>1997</b>										
March	112.3	115.7	110.0	103.9	155.6	107.1	109.5	107.9	110.9	90.9
June	115.8	119.2	110.4	95.3	145.4	106.3	109.3	107.6	111.4	89.6
September	125.4	122.0	114.7	94.2	141.7	108.3	111.9	110.8	114.3	87.6
December	129.4	125.0	118.4	104.3	151.8	112.0	116.1	114.9	119.8	89.0
<b>1998</b>										
March	129.8	127.4	120.9	88.4	154.8	113.7	118.3	117.6	122.3	89.3
June	131.5	129.6	122.5	86.5	177.1	117.7	120.3	118.8	124.9	96.1
September	130.6	132.0	127.6	86.1	180.6	120.8	125.6	123.7	130.9	97.1
December	126.3	130.3	119.3	85.1	185.8	116.4	124.9	123.9	129.1	94.9
<b>1999</b>										
March	123.1	130.0	117.2	75.4	179.7	112.2	122.2	122.4	127.5	91.2
June	120.5	129.8	114.9	93.0	166.5	107.4	117.6	117.6	123.9	84.2
September	116.6	126.3	115.8	111.3	148.9	105.7	117.2	116.5	122.9	79.9
December	116.0	126.6	120.2	128.4	147.9	106.6	118.4	118.6	123.9	92.1
<b>2000</b>										
March	116.3	127.7	127.0	143.7	126.8	111.4	119.7	118.4	125.5	92.2
June	118.7	127.5	136.6	158.3	130.3	120.3	125.4	124.2	132.0	95.0
September	117.8	125.1	140.5	184.2	126.6	120.5	125.1	123.8	133.5	96.5
December	121.9	129.2	147.8	216.5	126.1	125.9	132.8	131.3	140.6	101.5
<b>2001</b>										
March	121.4	128.7	137.8	167.5	117.5	128.7	131.3	129.6	139.8	99.4
June	124.3	131.0	133.3	183.9	120.1	137.1	136.1	134.0	146.2	101.1

(a) Reference base of each index: 1989-90 = 100.0.

## IMPORT PRICE INDEX(a): Consumption goods

## BEC END USE CLASS &amp; BROAD BALANCE OF PAYMENTS CATEGORIES . . . . .

<i>Period</i>	<b>Consumption goods total</b>	<i>Food and beverages mainly for consumption</i>	<i>Household electrical items</i>	<i>Non-industrial transport equipment</i>	<i>Textiles, clothing and footwear</i>	<i>Toys, books and leisure goods</i>	<i>Consumption goods n.e.s.</i>
<b>1997-98</b>	<b>123.2</b>	125.9	107.0	145.2	109.5	125.1	118.1
<b>1998-99</b>	<b>129.3</b>	126.8	111.5	151.6	117.6	137.3	124.4
<b>1999-2000</b>	<b>126.9</b>	122.0	109.9	152.9	117.1	136.8	120.4
<b>2000-01</b>	<b>137.3</b>	128.0	119.3	162.3	133.1	142.9	132.1
<b>1996</b>							
September	<b>116.0</b>	115.5	98.4	142.7	99.6	112.7	113.0
December	<b>115.1</b>	115.0	98.3	141.1	98.5	112.4	111.9
<b>1997</b>							
March	<b>114.9</b>	114.9	98.8	140.4	99.1	113.9	111.0
June	<b>114.9</b>	116.5	98.3	138.8	100.2	114.5	110.6
September	<b>117.9</b>	120.3	101.7	142.7	103.7	118.3	112.6
December	<b>122.7</b>	125.5	106.4	145.4	108.6	123.1	118.0
<b>1998</b>							
March	<b>124.7</b>	127.5	109.6	144.9	111.2	128.1	119.6
June	<b>127.3</b>	130.1	110.2	147.8	114.3	131.0	122.1
September	<b>131.7</b>	130.5	114.0	151.0	118.8	138.9	127.9
December	<b>130.9</b>	127.4	112.3	153.9	118.4	138.0	126.6
<b>1999</b>							
March	<b>128.8</b>	125.2	111.5	152.0	118.8	137.4	123.3
June	<b>125.8</b>	124.1	108.0	149.5	114.5	134.8	119.6
September	<b>124.5</b>	121.0	107.5	149.4	113.8	134.3	118.1
December	<b>125.9</b>	121.5	108.8	153.2	116.2	137.2	118.1
<b>2000</b>							
March	<b>126.2</b>	121.0	109.1	153.6	114.4	135.9	119.6
June	<b>131.1</b>	124.6	114.0	155.2	124.0	139.9	125.7
September	<b>132.0</b>	123.7	115.0	156.3	124.9	138.6	127.5
December	<b>137.7</b>	127.8	121.0	160.7	133.7	144.4	132.5
<b>2001</b>							
March	<b>137.1</b>	128.9	119.7	162.0	132.9	143.1	131.4
June	<b>142.4</b>	131.4	121.5	170.3	140.8	145.5	137.1

(a) Reference base of each index: 1989-90 = 100.0.

## IMPORT PRICE INDEX(a): Capital goods

BEC END USE CLASS &amp; BROAD BALANCE OF PAYMENTS CATEGORIES . . . . .

<i>Period</i>	<b>Capital goods total</b>	<i>Machinery and industrial equipment</i>	<i>ADP equipment</i>	<i>Telecommuni- cations equipment</i>	<i>Civil aircraft</i>	<i>Industrial transport equipment n.e.s.</i>	<i>Capital goods n.e.s.</i>
<b>1997-98</b>	<b>113.7</b>	129.3	63.1	74.5	121.9	153.3	128.0
<b>1998-99</b>	<b>119.4</b>	140.8	58.2	71.5	133.5	161.7	135.3
<b>1999-2000</b>	<b>116.9</b>	138.3	50.3	67.0	132.3	163.6	137.3
<b>2000-01</b>	<b>126.9</b>	152.8	51.7	68.1	161.8	173.6	151.9
<b>1996</b>							
September	<b>109.2</b>	119.1	67.4	81.7	107.9	147.6	121.1
December	<b>107.8</b>	118.0	65.6	78.0	107.4	146.6	119.6
<b>1997</b>							
March	<b>107.0</b>	117.2	63.2	76.6	109.8	146.1	119.9
June	<b>106.7</b>	118.9	61.5	74.1	110.1	144.7	119.9
September	<b>109.3</b>	122.5	61.8	74.3	113.1	150.5	122.4
December	<b>113.2</b>	128.8	63.1	74.3	120.1	152.5	128.8
<b>1998</b>							
March	<b>115.6</b>	132.2	63.5	75.1	125.2	155.3	129.1
June	<b>116.7</b>	133.8	64.1	74.3	129.1	155.0	131.7
September	<b>121.3</b>	142.1	63.8	72.8	137.0	159.0	138.5
December	<b>121.3</b>	143.0	59.8	70.5	135.2	165.4	136.1
<b>1999</b>							
March	<b>119.9</b>	142.4	56.2	70.9	132.9	165.2	134.4
June	<b>115.2</b>	135.7	52.8	71.7	128.8	157.3	132.0
September	<b>114.2</b>	133.7	51.4	70.0	127.6	157.7	134.3
December	<b>115.8</b>	136.5	50.3	65.2	128.8	165.4	133.7
<b>2000</b>							
March	<b>115.7</b>	137.1	48.5	64.9	130.4	163.3	137.0
June	<b>122.0</b>	145.8	50.9	67.8	142.3	167.8	144.3
September	<b>121.3</b>	145.0	49.9	67.0	145.8	167.4	143.8
December	<b>128.4</b>	154.5	53.2	68.6	162.8	174.9	152.9
<b>2001</b>							
March	<b>126.8</b>	152.8	51.7	67.9	162.7	172.6	151.7
June	<b>131.2</b>	158.7	52.1	68.9	175.7	179.4	159.0

(a) Reference base of each index: 1989-90 = 100.0.

## IMPORT PRICE INDEX(a): Intermediate &amp; other merchandise goods

BEC END USE CLASS &amp; BROAD BALANCE OF PAYMENTS CATEGORIES

<i>Period</i>	<b>Intermediate and other merchandise goods total</b>	<i>Intermediate and other merchandise goods total excluding non- monetary gold</i>	<i>Food and beverages, mainly for industry</i>	<i>Primary industrial supplies n.e.s.</i>	<i>Fuels and lubricants</i>	<i>Parts for transport equipment</i>	<i>Parts for ADP equipment</i>	<i>Other parts for capital goods</i>	<i>Organic and inorganic chemicals</i>
<b>1997-98</b>	<b>109.1</b>	109.4	179.1	122.4	102.0	123.4	60.4	116.4	107.8
<b>1998-99</b>	<b>111.1</b>	111.4	161.0	125.3	91.2	134.7	51.0	122.2	109.4
<b>1999-2000</b>	<b>113.4</b>	113.7	123.8	114.4	156.3	135.7	41.7	115.7	107.1
<b>2000-01</b>	<b>130.8</b>	131.2	105.5	127.8	219.2	149.1	43.0	127.4	124.6
<b>1996</b>									
September	<b>103.0</b>	103.1	125.2	117.4	101.3	116.3	57.3	108.5	103.5
December	<b>102.4</b>	102.6	121.0	109.0	112.7	115.1	53.8	107.8	101.6
<b>1997</b>									
March	<b>102.6</b>	102.8	127.8	111.5	116.3	114.5	54.0	107.4	101.3
June	<b>101.9</b>	102.1	143.8	113.3	105.5	114.5	54.8	106.6	100.1
September	<b>104.9</b>	105.2	184.8	118.1	103.5	118.5	58.2	109.1	103.4
December	<b>109.4</b>	109.7	182.3	122.6	115.7	122.4	61.1	115.5	106.1
<b>1998</b>									
March	<b>110.1</b>	110.4	173.8	125.9	95.8	125.3	63.4	118.9	108.5
June	<b>111.8</b>	112.1	175.4	123.1	93.0	127.5	58.9	122.0	113.2
September	<b>115.2</b>	115.5	168.8	132.3	91.9	134.0	56.5	127.7	116.4
December	<b>112.9</b>	113.2	169.5	125.8	90.9	136.5	53.3	125.7	111.4
<b>1999</b>									
March	<b>109.4</b>	109.7	160.1	123.1	79.9	136.4	48.9	121.9	106.5
June	<b>106.9</b>	107.2	145.4	119.8	102.2	131.8	45.2	113.5	103.4
September	<b>107.5</b>	107.9	132.0	116.3	125.9	131.3	43.2	111.9	100.6
December	<b>110.7</b>	111.0	122.7	110.5	148.1	134.7	41.9	114.2	102.5
<b>2000</b>									
March	<b>114.0</b>	114.4	123.3	111.0	166.3	135.5	39.5	115.0	108.2
June	<b>121.2</b>	121.6	117.3	119.7	184.7	141.2	42.3	121.6	116.9
September	<b>124.9</b>	125.3	112.2	120.5	214.9	141.2	41.5	120.8	116.8
December	<b>135.6</b>	136.1	113.4	128.2	253.4	151.3	44.2	129.2	121.9
<b>2001</b>									
March	<b>128.1</b>	128.4	95.6	128.6	194.6	148.8	43.0	127.6	124.6
June	<b>134.7</b>	135.1	100.6	133.7	213.7	154.9	43.4	132.0	135.2

(a) Reference base of each index: 1989-90 = 100.0.

## BEC END USE CLASS &amp; BROAD BALANCE OF PAYMENTS CATEGORIES CONT. . .

<i>Period</i>	<i>Paper and paperboard</i>	<i>Textile yarn and fabrics</i>	<i>Iron and steel</i>	<i>Plastics</i>	<i>Processed industrial supplies n.e.s.</i>	<i>Non- monetary gold</i>
<b>1997-98</b>	101.3	112.0	105.0	116.9	118.7	90.6
<b>1998-99</b>	109.5	116.0	107.2	115.2	124.5	92.0
<b>1999-2000</b>	107.7	111.7	105.9	114.6	124.5	89.9
<b>2000-01</b>	121.4	125.5	116.0	136.6	136.7	99.8
<b>1996</b>						
September	101.4	101.6	102.1	108.9	111.0	98.1
December	97.3	100.8	102.5	108.2	110.6	95.8
<b>1997</b>						
March	95.2	102.6	100.2	108.8	111.0	91.0
June	94.5	103.1	99.0	110.0	111.2	89.7
September	96.1	106.6	101.7	110.3	114.4	87.7
December	100.2	111.8	105.2	114.1	118.3	89.1
<b>1998</b>						
March	103.4	114.9	105.7	119.2	119.7	89.4
June	105.4	114.6	107.2	123.9	122.5	96.2
September	111.1	120.0	110.3	123.0	128.4	97.2
December	109.4	118.0	110.0	115.8	126.3	95.0
<b>1999</b>						
March	109.7	115.7	106.0	115.1	123.7	91.3
June	107.7	110.1	102.6	106.9	119.7	84.3
September	107.2	108.1	101.9	106.1	120.6	80.0
December	106.0	109.2	102.7	110.8	123.0	92.1
<b>2000</b>						
March	105.9	111.0	106.1	115.8	125.0	92.3
June	111.6	118.5	112.9	125.7	129.3	95.1
September	116.9	113.2	111.7	129.0	130.4	96.6
December	121.3	129.7	118.3	138.1	137.5	101.6
<b>2001</b>						
March	121.2	126.7	115.7	136.5	137.9	99.5
June	126.1	132.3	118.3	142.6	141.0	101.3

(a) Reference base of each index: 1989-90 = 100.0.

## EXPORT PRICE INDEX(a): All groups index numbers &amp; percentage changes

<i>Period</i>	<i>Index numbers</i>	<i>% change from corresponding quarter of previous year</i>	<i>% change from previous period</i>
<b>1997-98</b>	98.9	..	7.0
<b>1998-99</b>	95.7	..	-3.2
<b>1999-2000</b>	98.0	..	2.5
<b>2000-01</b>	114.8	..	17.1
<b>1996</b>			
September	93.0	-5.6	-0.4
December	91.1	-5.1	-2.0
<b>1997</b>			
March	92.0	-4.7	1.0
June	93.4	—	1.5
September	95.9	3.1	2.7
December	99.2	8.9	3.4
<b>1998</b>			
March	99.4	8.0	0.2
June	100.9	8.0	1.5
September	102.0	6.4	1.1
December	96.9	-2.3	-5.0
<b>1999</b>			
March	93.1	-6.3	-3.9
June	90.6	-10.2	-2.7
September	91.5	-10.3	1.0
December	95.4	-1.5	4.3
<b>2000</b>			
March	99.5	6.9	4.3
June	105.7	16.7	6.2
September	107.9	17.9	2.1
December	115.8	21.4	7.3
<b>2001</b>			
March	115.3	15.9	-0.4
June	120.3	13.8	4.3

.. not applicable

— nil or rounded to zero (including null cells)

(a) Reference base of each index: 1989-90 = 100.0.

## EXPORT PRICE INDEX(a): SITC contribution to all groups index

Category	Mar Qtr 2001	Jun Qtr 2001	Change
----------	-----------------	-----------------	--------

All groups	115.3	120.3	5.0
------------	-------	-------	-----

SELECTED SITC SECTIONS—Contribution to All Groups  
(index points)

0	Food and live animals	22.05	23.29	1.24
1	Beverages and tobacco	1.76	1.77	0.01
2	Crude materials	19.86	21.11	1.25
3	Mineral fuels	22.84	24.79	1.95
5	Chemicals and related products	9.55	9.61	0.06
6	Manufactured goods by material	15.46	15.72	0.26
7	Machinery and transport equipment	13.06	13.20	0.14
8	Miscellaneous manufactured articles	3.23	3.28	0.05

SELECTED SITC DIVISIONS—Contribution to All Groups  
(index points)

00	Live animals	0.81	0.89	0.08
01	Meat and meat preparations	5.54	6.25	0.71
02	Dairy products and eggs	2.99	3.26	0.27
03	Fish, crustaceans and molluscs and preparations thereof	2.03	1.81	-0.22
04	Cereals and cereal preparations	6.78	7.09	0.31
05	Vegetables and fruit	1.51	1.53	0.02
11	Beverages	1.76	1.77	0.01
21	Hides, skins and furskins, raw	0.74	0.81	0.07
26	Textiles	6.59	7.12	0.53
28	Metalliferous ores and metal scrap	9.12	9.64	0.52
32	Coal, coke and briquettes	10.06	11.45	1.39
33	Petroleum, petroleum products and related materials	8.49	9.02	0.53
52	Inorganic chemicals	5.17	5.16	-0.01
54	Medical and pharmaceutical products	1.54	1.55	0.01
61	Leather, leather manufactures, n.e.s.	0.62	0.71	0.09
67	Iron and steel	2.46	2.49	0.03
68	Non-ferrous metals	10.22	10.38	0.16
71-75	Power generating machinery and equipment	5.02	5.01	-0.01
76-77	Telecommunications and electrical machinery n.e.s.	2.92	2.92	—
78	Road vehicles (including air-cushion vehicles)	3.16	3.24	0.08
79	Other transport equipment	1.96	2.02	0.06
89	Miscellaneous manufactured articles n.e.s.	0.55	0.56	0.01

— nil or rounded to zero (including null cells)

(a) Reference base of each index: 1989-90 = 100.0.

## EXPORT PRICE INDEX(a): Selected SITC section

<i>Period</i>	<i>Food and live animals (0)</i>	<i>Beverages and tobacco (1)</i>	<i>Crude materials (2)</i>	<i>Mineral fuels (3)</i>	<i>Chemicals and related products (5)</i>	<i>Manufactured goods by material (6)</i>	<i>Machinery and transport equipment (7)</i>	<i>Miscellaneous manufactured articles (8)</i>
<b>1997-98</b>	99.6	120.2	90.3	121.8	96.0	93.7	95.9	108.2
<b>1998-99</b>	96.6	128.3	84.0	119.7	96.2	86.8	97.7	111.7
<b>1999-2000</b>	95.7	131.5	82.6	127.1	102.5	101.0	98.8	112.5
<b>2000-01</b>	109.6	137.8	95.7	162.7	119.9	116.7	104.1	118.4
<b>1996</b>								
September	99.5	111.1	80.9	108.2	90.7	85.5	95.9	103.2
December	95.0	111.1	80.0	110.0	88.5	81.6	93.1	103.1
<b>1997</b>								
March	93.5	113.3	81.8	112.3	86.8	88.3	92.0	103.4
June	94.5	113.8	84.5	112.7	88.5	90.6	92.6	102.9
September	95.2	115.1	89.1	115.1	90.0	95.1	93.5	104.5
December	99.5	119.6	90.3	123.1	95.0	96.2	96.0	108.5
<b>1998</b>								
March	101.4	121.4	90.2	123.4	98.2	92.3	96.5	109.1
June	102.1	124.5	91.4	125.6	100.7	91.2	97.6	110.7
September	102.8	128.4	90.9	128.6	101.0	93.9	99.4	114.1
December	96.9	128.0	84.4	123.8	99.4	87.2	97.7	109.6
<b>1999</b>								
March	95.3	129.2	81.7	113.8	93.8	82.3	97.7	112.7
June	91.3	127.7	79.1	112.5	90.4	83.7	96.1	110.2
September	91.5	129.4	79.2	114.5	93.5	88.6	96.3	110.0
December	94.8	130.8	81.2	121.2	97.2	95.7	98.2	111.5
<b>2000</b>								
March	95.9	131.1	81.8	131.9	105.3	106.6	98.6	112.0
June	100.7	134.7	88.3	140.8	114.1	113.0	102.2	116.6
September	101.4	135.0	89.2	148.3	114.8	111.6	100.8	113.1
December	108.3	137.4	94.7	166.7	122.1	119.5	105.1	120.3
<b>2001</b>								
March	111.3	138.8	96.3	161.1	120.9	116.8	104.7	119.2
June	117.5	140.1	102.4	174.8	121.7	118.8	105.8	121.1

(a) Reference base of each index: 1989-90 = 100.0.



## BALANCE OF PAYMENTS GROUPS . . . . .

<i>Period</i>	<b>Rural goods total</b>	<i>Meat and meat preparations</i>	<i>Cereal grains and cereal preparations</i>	<i>Wool and sheepskins</i>	<i>Other rural</i>
<b>1997-98</b>	<b>91.3</b>	85.5	95.3	72.3	117.7
<b>1998-99</b>	<b>83.9</b>	89.5	88.8	54.3	116.7
<b>1999-2000</b>	<b>83.8</b>	99.2	82.5	54.6	114.9
<b>2000-01</b>	<b>98.7</b>	115.4	98.6	66.4	133.2
<b>1996</b>					
September	<b>88.3</b>	73.0	111.5	64.0	112.1
December	<b>85.1</b>	76.4	97.2	62.3	112.0
<b>1997</b>					
March	<b>84.8</b>	77.8	92.4	63.3	112.5
June	<b>87.1</b>	80.4	92.3	68.6	112.4
September	<b>89.5</b>	80.2	91.4	75.5	113.2
December	<b>91.9</b>	83.7	94.2	74.1	119.5
<b>1998</b>					
March	<b>92.3</b>	89.8	96.3	72.2	117.9
June	<b>91.5</b>	88.1	99.4	67.4	120.1
September	<b>90.3</b>	91.1	99.0	61.7	121.8
December	<b>83.7</b>	89.2	88.0	52.6	119.3
<b>1999</b>					
March	<b>81.4</b>	88.8	86.0	50.5	115.3
June	<b>80.0</b>	89.0	82.1	52.2	110.3
September	<b>80.4</b>	95.0	79.2	52.8	110.0
December	<b>82.6</b>	95.7	82.7	54.2	112.8
<b>2000</b>					
March	<b>82.8</b>	98.4	81.8	52.4	115.3
June	<b>89.3</b>	107.7	86.4	59.1	121.4
September	<b>91.5</b>	104.8	90.3	61.7	124.8
December	<b>96.9</b>	110.4	97.5	62.6	133.3
<b>2001</b>					
March	<b>100.3</b>	115.9	100.9	67.0	135.7
June	<b>106.2</b>	130.6	105.6	74.1	138.8

(a) Reference base of each index: 1989-90 = 100.0.

## BALANCE OF PAYMENTS GROUPS

<i>Period</i>	<b>Non-rural goods total (excluding non- monetary gold)</b>	<i>Metal ores and minerals</i>	<i>Coal, coke and briquettes</i>	<i>Other minerals</i>	<i>Metals (excluding non- monetary gold)</i>	<i>Machinery</i>	<i>Transport equipment</i>	<i>Other manufactures</i>	<i>Other non- rural</i>	<i>Non- monetary gold</i>
<b>1997-98</b>	<b>104.4</b>	100.3	116.8	133.3	94.1	89.1	109.9	98.5	104.3	90.7
<b>1998-99</b>	<b>103.1</b>	103.5	116.3	127.5	85.6	90.4	112.8	102.6	95.8	92.8
<b>1999-2000</b>	<b>107.5</b>	102.2	102.1	186.1	99.3	91.0	113.1	107.9	84.0	91.1
<b>2000-01</b>	<b>126.2</b>	119.5	117.3	267.1	113.9	94.3	126.9	125.0	88.4	101.2
<b>1996</b>										
September	<b>95.4</b>	90.7	102.8	121.0	84.5	92.0	103.9	96.0	94.2	98.0
December	<b>94.3</b>	89.5	101.4	130.2	80.6	88.3	103.0	94.3	94.0	95.6
<b>1997</b>										
March	<b>96.6</b>	90.8	102.9	134.6	88.2	86.7	102.9	94.3	93.2	90.9
June	<b>97.8</b>	92.4	104.2	132.5	90.8	87.0	104.1	93.8	92.8	89.7
September	<b>100.7</b>	95.2	108.0	131.7	96.0	87.6	105.7	95.0	97.9	87.8
December	<b>104.9</b>	98.6	116.9	137.5	96.8	89.8	108.9	99.1	103.9	89.1
<b>1998</b>										
March	<b>104.9</b>	101.1	119.2	132.9	92.7	89.4	111.2	98.4	106.6	89.6
June	<b>107.1</b>	106.2	123.2	130.9	91.0	89.7	113.7	101.3	108.8	96.3
September	<b>109.6</b>	109.6	128.7	128.1	93.3	90.9	116.9	104.7	103.6	97.7
December	<b>105.1</b>	106.2	122.3	127.1	86.1	90.4	112.7	101.7	97.4	95.8
<b>1999</b>										
March	<b>100.2</b>	101.8	110.8	120.7	80.6	91.0	111.5	102.8	97.3	92.4
June	<b>97.6</b>	96.2	103.3	133.9	82.3	89.4	110.1	101.2	84.9	85.2
September	<b>99.5</b>	97.1	99.4	150.1	87.3	89.4	110.4	102.1	83.7	80.8
December	<b>103.4</b>	98.9	100.5	169.8	94.1	90.5	111.4	103.7	84.8	93.2
<b>2000</b>										
March	<b>110.3</b>	103.6	102.4	201.5	105.5	90.8	112.3	106.4	85.3	94.0
June	<b>116.6</b>	109.3	106.0	222.8	110.3	93.2	118.3	119.5	82.0	96.4
September	<b>118.9</b>	112.3	106.9	243.3	109.1	92.3	120.8	120.2	83.8	97.9
December	<b>128.5</b>	121.2	115.6	281.8	116.9	95.3	127.9	126.7	88.4	103.1
<b>2001</b>										
March	<b>126.2</b>	120.0	115.3	265.8	114.0	94.8	127.6	125.3	89.0	100.9
June	<b>131.3</b>	124.4	131.2	277.5	115.7	94.8	131.2	127.6	92.4	102.8

(a) Reference base of each index: 1989-90 = 100.0.

## EXPLANATORY NOTES

### INTRODUCTION

**1** This publication contains indexes measuring changes in the prices of imports of merchandise that are landed in Australia each quarter—the import price index (tables 1–6), and exports of merchandise that are shipped from Australia each quarter—the export price index (tables 7–11).

**2** The indexes are calculated on the reference base 1989–90 = 100.0.

### SCOPE

**3** The import price index excludes the following items (representing approximately 5% of the value of merchandise imported during the weighting period) because of the inherent difficulties in pricing the items to constant quality (see paragraph 15 below):

- live animals (not for food)
- jewellery and other articles of precious metal n.e.s.
- military equipment
- commodities not classified according to kind
- works of art, collectors' pieces, antiques
- ships of various types.

**4** The export price index includes re-exports of merchandise (i.e. goods which are imported into Australia and exported at a later date without physical transformation).

### CLASSIFICATIONS

**5** Index numbers for selected sections of the Standard International Trade Classification (SITC) are provided in table 3 (import price index) and table 9 (export price index).

**6** The import price index is also presented by End Use Class of the United Nations' Classification by Broad Economic Categories (BEC) in tables 4–6. These have been disaggregated into balance of payments groupings.

**7** The export price index is also presented by balance of payments export groupings in tables 10 and 11.

### ITEMS AND WEIGHTS

**8** The import price index and export price index are annually reweighted chained Laspeyres indexes. This method of weighting was introduced in the September quarter 2000 and replaces the "fixed-base" method of weighting in which the weighting patterns are updated infrequently (generally once every 5 or 10 years).

**9** The annual reweighting and chaining process involves a number of steps in order to provide new weights each year. The current weighting basis for the import price index was derived from the average value of import items during 1999–2000. This differs slightly from the export price index which has used the average value of export items during 1998–99 and 1999–2000, due to the greater volatility associated with the value of export items. These weights were then revalued to reflect link period (June quarter 2000) price levels. Indexes derived by using the new weights for the September quarter 2000 were then linked to the already published June quarter 2000 (link period) levels which were derived using the previous series weights. Using this chain linking methodology, long-term chain linked series can be constructed over time on a consistent reference base for continuity and user convenience, but using annually refreshed weights. The reference base for each index series continues to be 1989–90 = 100 even though the weights are being updated each year. The current series weighting patterns (in link period prices) are shown in the September 2000 issues of the former publications *Import Price Index, Australia* (Cat. no. 6414.0) and *Export Price Index, Australia* (Cat. no 6405.0).

## EXPLANATORY NOTES *continued*

### ITEMS AND WEIGHTS *continued*

**10** The commodities directly represented in each index (the index items) were selected on the basis of the significance of their import and export values in the weighting period (i.e. 1999–2000 for imports, 1998–1999 and 1999–2000 for exports). All significant commodities were selected for pricing. The weights for minor commodities which are not directly priced are included with those of comparable directly priced items whose prices are likely to move in a similar way.

### PRICE MEASUREMENT

**11** In general, prices of individual shipments are obtained from major importers and exporters of the selected items and relate to the quarter in which the imported goods physically arrive in Australia and the exported goods physically leave Australia.

**12** Imports are priced on a 'free on board' (f.o.b), country of origin basis. Freight and insurance charges involved in shipping goods from foreign to Australian ports are therefore excluded from the prices used in the index, as are Australian import duties and taxes. Similarly, exports are priced on a f.o.b basis at the main Australian ports of export. Exports are exempt from taxes on products.

**13** As the prices used in the indexes are expressed in Australian currency, changes in the relative value of the Australian dollar and overseas currencies can have a direct impact on price movements for the many commodities that are bought and sold in currencies other than Australian dollars. Prices reported in a foreign currency are converted to Australian dollars using relevant exchange rates. Where imports or exports are transacted in prices expressed in terms of a foreign currency and forward exchange cover is used, the prices in the indexes exclude the forward exchange cover.

**14** The main pricing methodology used is specification pricing, under which a manageable sample of precisely specified products is selected, in consultation with each reporting business, for repeat pricing. In specifying the products, care is taken to ensure that they are fully defined in terms of all the characteristics which influence their transaction prices. As such, all the relevant technical characteristics need to be described (e.g. make, model, features) along with the unit of sale, type of packaging, conditions of sale (e.g. delivered, payment within 30 days), etc. The goods are also specified by country and market in order to lessen the impact of price variations attributable solely to changes over time in the mix of countries, or markets.

**15** When the quality or specifications of an item being priced change over time, adjustments are made to the reported prices so that the index captures only pure price change. That is, any element of price change attributable to a change in quality is removed. If there is an increase (decrease) in the quality of an item, then the price index is adjusted downwards (upwards) to reflect the 'worth' of the quality change. This technique is known as *pricing to constant quality*.

**16** Wherever possible, prices from volume selling products being traded with predominant countries, or markets, are obtained to ensure specifications have a good chance of being re-priced over time and index series are representative of overall price movements. Individual product weights and weights between markets and countries are regularly reviewed to keep the indexes up to date.

### INDEX NUMBERS

**17** Index numbers for financial years are simple averages of the relevant quarterly index numbers.

### ANALYSIS OF INDEX CHANGES

**18** Care should be exercised when interpreting quarter-to-quarter movements in the indexes as short-term movements do not necessarily indicate changes in trend.

## EXPLANATORY NOTES *continued*

### ANALYSIS OF INDEX CHANGES *continued*

**19** Movements in indexes from one period to another can be expressed either as changes in 'index points' or as percentage changes. The following example illustrates the method of calculating index points changes and percentage changes between any two periods:

Import price index, All groups index number:

June quarter 2001	138.7 (see table 1)
less March quarter 2000	132.9 (see table 1)
Change in index points	5.8
Percentage change	$5.8/132.9 \times 100 = 4.4$

**20** Tables 2 and 8 provide analyses of the contribution which SITC sections and divisions make to the All groups import price index and export price index, respectively. For example, mineral fuels, etc. contributed 11.97 index points to the All groups import price index number of 138.7 for June quarter 2001 and 1.06 index points to the net change of 5.8 index points between March and June quarters 2001.

### FURTHER INFORMATION

**21** Further information on recent price index developments in the ABS is presented in the following publications:

*An Analytical Framework for Price Indexes in Australia* (Cat. no. 6421.0)

*Producer Price Index Developments* (Cat. no. 6422.0)

*Review of the Import Price Index and Export Price Index, Australia*  
(Cat. no. 6424.0)

*Price Indexes and The New Tax System* (Cat. no. 6425.0)

### RELATED PUBLICATIONS

**22** Users may also wish to refer to the following related publications, which are available from ABS bookshops:

*Producer Price Indexes, Australia* (Cat. no. 6427.0)

*Consumer Price Index, Australia* (Cat. no. 6401.0)

*Wage Cost Index, Australia* (Cat. no. 6345.0)

*Australian National Accounts, Input-Output Tables* (Cat. no. 5209.0)

*Balance of Payments and International Investment Position, Australia*  
(Cat. no. 5302.0)

**23** Current publications produced by the ABS are listed in the *Catalogue of Publications and Products, Australia* (Cat no. 1101.0). The ABS also issues, on Tuesdays and Fridays, a *Release Advice* (Cat no. 1105.0) which lists publications to be released in the next few days. The Catalogue and Release Advice are available from any ABS office.

### ABS DATA AVAILABLE ON REQUEST

**24** As well as the statistics included in this and related publications, the ABS has other international trade price index series (many at detailed commodity levels) which are available on request. Inquiries should be made to Glyn Prichard on 02 6252 6257.



**FOR MORE INFORMATION . . .**

- INTERNET*      **www.abs.gov.au** the ABS web site is the best place to start for access to summary data from our latest publications, information about the ABS, advice about upcoming releases, our catalogue, and Australia Now—a statistical profile.
- LIBRARY*      A range of ABS publications is available from public and tertiary libraries Australia-wide. Contact your nearest library to determine whether it has the ABS statistics you require, or visit our web site for a list of libraries.
- CPI INFOLINE*      For current and historical Consumer Price Index data, call 1902 981 074 (call cost 77c per minute).
- DIAL-A-STATISTIC*      For the latest figures for National Accounts, Balance of Payments, Labour Force, Average Weekly Earnings, Estimated Resident Population and the Consumer Price Index call 1900 986 400 (call cost 77c per minute).

**INFORMATION SERVICE**

Data that is already published and can be provided within five minutes is free of charge. Our information consultants can also help you to access the full range of ABS information—ABS user pays services can be tailored to your needs, time frame and budget. Publications may be purchased. Specialists are on hand to help you with analytical or methodological advice.

- PHONE*      **1300 135 070**
- EMAIL*      **client.services@abs.gov.au**
- FAX*      1300 135 211
- POST*      Client Services, ABS, GPO BOX 796, Sydney NSW 1041

**WHY NOT SUBSCRIBE ?**

ABS subscription services provide regular, convenient and prompt deliveries of ABS publications and products as they are released. Email delivery of monthly and quarterly publications is available.

- PHONE*      1300 366 323
- EMAIL*      subscriptions@abs.gov.au
- FAX*      03 9615 7848
- POST*      Subscription Services, ABS, GPO BOX 2796Y, Melbourne Vic 3001



2645700006013  
ISSN 1445 2588

**RRP \$18.00**



## SUPPLEMENT

**INTERNATIONAL TRADE  
PRICE INDEXES**

AUSTRALIA

EMBARGO: 11:30AM (CANBERRA TIME) FRI 20 JUL 2001

**C O N T E N T S**

	<i>page</i>
Notes .....	2
TABLES	
List of Tables .....	3
6414.0 Import Price Index, Australia .....	4
6405.0 Export Price Index, Australia .....	11

- For further information about this supplement, contact Lee Taylor on Canberra 1800 155 166.



## NOTES

### IMPORTANT NOTE

This document has been provided exclusively to 2001 subscribers of the former publications: *Export Price Index, Australia* (Cat. no. 6405.0) and *Import Price Index, Australia* (Cat. no. 6414.0); in conjunction with the new compendium publication, *International Trade Price Indexes, Australia* (Cat. no. 6457.0). It contains tables from these former publications which have not been included in the new publication, to ensure 2001 subscribers continue to receive all data previously published. This document is not intended for separate sale or distribution, and will be discontinued in 2002 when the tables contained within become available at low cost through accessing the ABS website <[www.abs.gov.au](http://www.abs.gov.au)>.

A special telephone service has been set up to assist users with this transition. If you have any queries or requests for data, please contact Lee Taylor on 1800 155 106.

.....

Dennis Trewin  
Australian Statistician

## LIST OF TABLES

	page
IMPORT PRICE INDEX, AUSTRALIA (6414.0)	
<b>12</b> Import price index, by selected SITC division .....	4
<b>13</b> Import price index, by selected HTISC section .....	6
<b>14</b> Import price index, by selected ANZSIC industry of origin division .....	7
<b>15</b> Import price index, by selected ANZSIC industry of origin subdivision .....	8
<b>16</b> Import price index, by BEC category .....	10
EXPORT PRICE INDEX, AUSTRALIA (6405.0)	
<b>17</b> Export price index, AHECC and ANZSIC contribution to all groups index .....	11
<b>18</b> Export price index, by selected AHECC section .....	12
<b>19</b> Export price index, by selected ANZSIC industry of origin division and subdivision .....	13

Table 4—6414.0: Import Price Index, Australia

## IMPORT PRICE INDEX(a), By Selected SITC Division

Period	Petroleum, petroleum products and related materials (33)	Organic chemicals (51)	Paper, paperboard and articles made of paper (64)	Textile yarn, fabrics, and related products (65)	Power generating machinery and equipment (71)	Machinery specialised for particular industries (72)
<b>1997-1998</b>	93.4	111.5	104.8	117.6	131.8	126.1
<b>1998-1999</b>	84.9	105.1	113.4	120.6	143.7	134.2
<b>1999-2000</b>	135.4	110.6	111.3	115.6	144.3	131.2
<b>2000-2001</b>	188.0	130.9	125.6	125.8	167.9	144.1
<b>1997</b>						
June	95.3	104.0	97.5	109.6	119.9	116.3
September	94.2	110.1	99.3	112.7	125.2	119.3
December	104.3	111.2	103.7	117.2	130.9	126.2
<b>1998</b>						
March	88.4	112.9	107.0	120.2	133.7	129.3
June	86.5	111.8	109.2	120.3	137.2	129.7
September	86.1	115.9	115.1	125.6	144.9	136.4
December	85.1	106.8	113.5	124.1	145.1	137.5
<b>1999</b>						
March	75.4	98.9	113.6	118.8	143.3	135.7
June	93.0	98.6	111.4	113.9	141.5	127.3
September	111.3	97.1	110.7	112.3	139.9	126.4
December	128.4	104.6	109.6	113.3	141.8	129.3
<b>2000</b>						
March	143.7	113.4	109.4	114.8	143.1	130.3
June	158.3	127.4	115.4	122.1	152.3	138.8
September	184.2	125.0	121.0	115.5	156.0	135.4
December	216.5	132.2	125.5	129.3	170.6	145.7
<b>2001</b>						
March	167.5	130.5	125.4	125.9	167.3	144.0
June	183.9	135.8	130.4	132.4	177.7	151.2

(a) Base of each index: 1989-90 = 100.0

Table 4—6414.0: Import Price Index, Australia

IMPORT PRICE INDEX(a), By Selected SITC Division *continued*

Period	General industrial machinery, equipment and parts (74)	Office machines and ADP machines (75)	Telecommunications and sound recording equipment (76)	Electrical machinery, etc. and parts thereof (77)	Road vehicles (78)	Other transport equipment (79)
<b>1997-1998</b>	131.4	60.5	85.2	104.4	142.3	127.9
<b>1998-1999</b>	145.9	53.9	84.4	109.7	150.1	142.9
<b>1999-2000</b>	144.0	45.6	81.4	105.0	152.1	141.2
<b>2000-2001</b>	160.3	47.0	83.5	113.0	162.4	164.6
<b>1997</b>						
June	119.2	58.1	82.3	98.9	134.2	114.9
September	123.6	58.9	83.5	99.6	139.4	118.7
December	129.9	60.8	85.0	103.9	141.6	126.0
<b>1998</b>						
March	134.3	61.8	86.4	106.2	143.6	131.2
June	137.7	60.5	86.0	107.8	144.4	135.7
September	147.2	59.5	85.8	113.1	148.0	147.0
December	147.6	55.7	84.1	111.2	152.9	144.6
<b>1999</b>						
March	147.0	51.8	84.1	110.2	152.5	142.0
June	141.9	48.5	83.6	104.4	146.8	138.0
September	139.3	46.9	82.6	103.1	147.3	136.3
December	142.5	45.7	80.0	104.3	153.3	137.9
<b>2000</b>						
March	142.5	43.7	80.0	103.6	152.2	140.5
June	151.8	46.2	82.8	108.9	155.6	150.2
September	151.9	45.3	82.2	108.7	155.5	152.6
December	162.7	48.3	84.2	115.0	163.2	164.9
<b>2001</b>						
March	160.3	47.0	83.3	113.3	161.5	165.7
June	166.4	47.3	84.3	115.1	169.2	175.1

(a) Base of each index: 1989-90 = 100.0

Table 5—6414.0: Import Price Index, Australia

## IMPORT PRICE INDEX(a), By Selected HTISC Section

Period	Prepared foodstuffs, beverages and tobacco (4)	Mineral products (5)	Chemical industry products (6)	Plastics and rubber, and articles thereof (7)	Wood pulp, paper and paper products (10)	Textiles and textile articles (11)	Base metals and articles thereof (15)	Machinery and electrical equipment (16)	Transport equipment (17)	Instruments, clocks and watches, optical and photographic apparatus (18)
<b>1997-1998</b>	126.5	103.1	106.9	120.9	108.4	112.7	114.1	99.2	138.7	125.3
<b>1998-1999</b>	131.2	96.9	109.0	120.1	118.0	115.3	120.1	102.4	148.7	133.6
<b>1999-2000</b>	122.7	146.6	104.0	118.3	117.8	111.7	118.5	97.5	149.9	135.2
<b>2000-2001</b>	126.9	201.5	116.8	135.6	129.2	124.0	128.6	105.6	164.1	148.0
<b>1997</b>										
June	115.2	103.5	100.6	114.9	98.9	104.9	106.8	92.3	129.3	117.9
September	120.0	103.0	102.9	115.8	102.2	108.1	110.0	94.6	134.1	120.1
December	125.6	113.8	106.2	119.6	107.0	112.4	113.6	98.8	137.8	125.8
<b>1998</b>										
March	128.6	98.4	107.2	123.3	110.8	115.1	115.4	101.2	140.6	126.5
June	131.8	97.1	111.1	124.9	113.7	115.3	117.4	102.0	142.4	128.8
September	134.3	98.5	114.3	124.7	120.6	119.6	123.2	106.1	148.1	135.0
December	133.1	97.2	111.4	121.7	118.1	117.2	122.5	104.0	151.3	135.0
<b>1999</b>										
March	130.1	87.2	106.9	120.5	117.7	114.2	119.7	101.9	150.4	133.8
June	127.3	104.5	103.3	113.5	115.5	110.2	115.0	97.6	145.0	130.7
September	123.3	122.7	101.1	112.9	115.3	108.3	115.1	96.0	144.8	131.7
December	121.9	139.4	100.4	114.9	116.3	110.1	116.7	96.2	149.9	132.9
<b>2000</b>										
March	120.7	154.3	103.8	118.3	117.1	110.9	118.4	95.9	149.8	135.1
June	124.7	170.1	110.8	127.0	122.5	117.5	123.7	101.7	155.0	140.9
September	123.0	197.2	110.3	128.8	126.5	115.3	123.9	101.0	155.7	140.4
December	128.1	231.3	114.2	137.0	131.0	126.1	129.5	107.3	165.0	149.0
<b>2001</b>										
March	127.1	180.0	117.4	135.5	128.6	123.6	128.8	105.6	163.7	148.0
June	129.2	197.4	125.1	141.2	130.8	130.8	132.1	108.5	171.8	154.5

(a) Base of each index: 1989-90 = 100.0

## IMPORT PRICE INDEX(a), By Selected ANZSIC Industry of Origin Division

Period	Agriculture, forestry and fishing (A)	Mining (B)	Manufacturing (C)
<b>1997-1998</b>	154.9	110.0	113.5
<b>1998-1999</b>	136.9	105.5	118.1
<b>1999-2000</b>	120.0	169.7	116.5
<b>2000-2001</b>	120.4	233.6	128.5
<b>1997</b>			
June	136.4	111.0	106.1
September	158.4	110.7	108.8
December	158.7	122.9	113.1
<b>1998</b>			
March	154.1	103.7	115.1
June	148.2	102.6	117.0
September	145.1	105.2	121.2
December	140.8	104.3	120.0
<b>1999</b>			
March	134.0	93.1	117.7
June	127.7	119.5	113.6
September	122.1	139.5	112.8
December	116.7	158.8	115.0
<b>2000</b>			
March	121.0	179.4	116.0
June	120.2	201.0	122.0
September	118.2	230.0	122.6
December	122.4	271.0	129.7
<b>2001</b>			
March	117.7	208.8	128.1
June	123.3	224.4	133.4

(a) Base of each index: 1989-90 = 100.0

Table 7—6414.0: Import Price Index, Australia

## IMPORT PRICE INDEX(a), By Selected ANZSIC Industry of Origin Subdivision

Period	Agriculture (1)	Oil and gas extraction (12)	Food, beverages and tobacco (21)	Textiles (221-222)	Clothing, footwear and leather (223-226)	Wood and paper products (23)	Printing, publishing and recorded media (241-243)
<b>1997-1998</b>	154.7	107.9	125.4	116.7	110.5	112.9	128.4
<b>1998-1999</b>	136.7	98.1	127.5	119.0	117.4	117.5	141.8
<b>1999-2000</b>	119.9	177.3	120.1	114.9	116.1	122.4	137.5
<b>2000-2001</b>	120.3	249.0	124.7	126.4	130.7	136.5	146.3
<b>1997</b>							
June	136.2	112.5	115.5	109.0	101.7	105.9	115.3
September	158.2	110.6	118.9	112.0	105.1	108.3	120.8
December	158.5	123.9	124.5	116.3	109.8	112.0	126.2
<b>1998</b>							
March	153.9	99.8	127.3	119.3	112.1	114.1	131.6
June	148.0	97.2	131.0	119.2	114.8	117.1	135.1
September	144.9	96.6	131.3	124.0	118.6	121.9	144.7
December	140.6	96.1	128.4	121.9	117.9	116.8	142.6
<b>1999</b>							
March	133.8	83.7	126.4	117.4	118.4	116.0	141.6
June	127.5	116.1	124.0	112.8	114.5	115.3	138.2
September	121.9	140.8	119.6	111.3	113.0	117.0	138.0
December	116.6	164.8	120.1	112.1	115.3	120.4	135.8
<b>2000</b>							
March	120.9	190.0	118.5	114.6	113.8	122.7	135.8
June	120.1	213.7	122.3	121.4	122.3	129.3	140.2
September	118.0	245.6	121.2	116.6	122.8	134.6	139.5
December	122.2	290.1	125.1	129.7	131.2	140.0	147.5
<b>2001</b>							
March	117.6	221.7	125.1	126.7	130.6	135.1	146.0
June	123.2	238.5	127.2	132.6	138.1	136.1	152.3

(a) Base of each index: 1989-90 = 100.0

Table 7—6414.0: Import Price Index, Australia

IMPORT PRICE INDEX(a), By Selected ANZSIC Industry of Origin Subdivision *continued*

Period	Petroleum, coal, chemical and associated products (25)	Non-metallic mineral products (26)	Basic metal products (271-273)	Fabricated metal products (274-276)	Transport equipment (281-282)	Other machinery and equipment (283-286)	Other manufacturing (29)
<b>1997-1998</b>	109.0	125.5	104.2	119.5	135.8	100.1	119.1
<b>1998-1999</b>	108.2	138.1	105.7	130.8	145.7	103.1	129.5
<b>1999-2000</b>	111.9	130.4	107.6	127.1	146.7	98.6	126.7
<b>2000-2001</b>	130.9	139.8	119.4	137.8	161.3	106.4	145.5
<b>1997</b>							
June	103.9	114.9	99.0	111.1	126.3	93.6	110.4
September	105.2	117.4	101.3	113.5	131.0	95.7	112.4
December	109.6	124.7	103.4	119.0	134.9	99.9	118.1
<b>1998</b>							
March	109.4	126.7	104.7	121.4	137.7	101.9	121.1
June	111.7	133.1	107.3	124.0	139.7	102.7	124.8
September	112.8	141.0	109.0	133.6	145.6	106.5	132.7
December	110.4	142.8	108.2	132.5	148.1	104.8	131.2
<b>1999</b>							
March	106.1	138.4	104.9	130.8	147.0	102.8	128.8
June	103.5	130.2	100.7	126.4	142.2	98.2	125.3
September	105.1	128.3	99.6	125.3	141.9	96.8	121.1
December	108.5	130.8	105.5	126.8	146.4	97.4	123.3
<b>2000</b>							
March	113.0	128.4	109.9	125.7	146.4	97.3	127.6
June	121.0	134.0	115.4	130.5	151.9	102.8	134.8
September	123.9	132.5	115.4	131.3	152.7	102.0	140.7
December	131.0	141.1	120.6	138.9	162.2	108.0	145.2
<b>2001</b>							
March	129.5	139.7	119.7	137.8	161.0	106.4	144.5
June	139.0	145.7	121.9	143.1	169.2	109.0	151.4

(a) Base of each index: 1989-90 = 100.0



Table 8—6414.0: Import Price Index, Australia

## IMPORT PRICE INDEX(a), By BEC Category

<i>Period</i>	<i>Food and beverages</i>	<i>Industrial supplies n.e.s.</i>	<i>Fuels and lubricants</i>	<i>Capital goods, and parts and accessories thereof</i>	<i>Transport equipment, and parts and accessories thereof</i>	<i>Consumer goods n.e.s.</i>
<b>1997-1998</b>	132.6	112.8	90.2	100.7	135.1	118.4
<b>1998-1999</b>	130.8	116.2	79.8	103.1	144.5	126.2
<b>1999-2000</b>	121.5	114.9	134.9	98.8	146.1	123.8
<b>2000-2001</b>	124.3	130.2	181.9	108.1	159.7	133.5
<b>1997</b>						
June	119.1	105.3	96.0	94.0	126.2	109.7
September	128.7	108.0	94.3	96.2	130.4	112.5
December	132.7	111.7	101.0	100.5	134.2	117.6
<b>1998</b>						
March	133.1	114.2	83.8	102.7	136.9	120.6
June	135.7	117.2	81.8	103.2	139.0	123.0
September	135.0	121.4	80.7	106.7	144.3	128.9
December	132.7	117.8	79.4	105.1	146.8	127.9
<b>1999</b>						
March	129.4	114.9	69.8	102.8	145.8	125.9
June	126.1	110.7	89.2	97.8	141.2	121.9
September	121.3	109.4	109.0	96.2	140.9	120.6
December	121.1	112.2	127.5	97.9	145.9	122.7
<b>2000</b>						
March	120.7	115.5	144.1	97.7	145.9	122.7
June	122.8	122.6	159.0	103.5	151.5	129.1
September	121.3	123.1	178.4	103.7	151.4	128.2
December	125.0	130.3	210.5	109.8	160.7	134.2
<b>2001</b>						
March	124.1	130.6	161.5	107.9	159.5	133.2
June	126.8	136.8	177.0	110.8	167.2	138.5

(a) Base of each index: 1989-90 = 100.0

## EXPORT PRICE INDEX, AHECC and ANZSIC Contribution to All Groups Index

Category	March Qtr 2001	June Qtr 2001	Change
All groups index	115.3	120.3	5.0
SELECTED AHECC SECTIONS: Contribution to All Groups Index (index points)			
01 Live animals, animal products	11.10	11.95	0.85
02 Vegetable products	9.60	9.99	0.39
04 Prepared foodstuffs	4.86	4.96	0.10
05 Mineral products	32.53	35.03	2.50
06 Products of chemical or allied industries	9.29	9.36	0.07
11 Wool and cotton fibres	6.59	7.12	0.53
14 Gold, diamonds and coin	8.55	8.73	0.18
15 Base metals and articles of base metals	12.52	12.71	0.19
16 Machinery and mechanical appliances	7.94	7.94	0.00
17 Motor vehicles, aircraft and vessels	5.12	5.26	0.14
SELECTED ANZSIC SUBDIVISIONS: Contribution to All Groups Index (index points)			
01 Agriculture	17.55	18.27	0.72
11 Coal mining	10.06	11.45	1.39
13 Metal ore mining	9.12	9.64	0.52
21 Food, beverages and tobacco	14.18	15.23	1.05
25 Petroleum, coal, chemical and associated products	12.49	12.67	0.18
27 Metal products	12.52	12.71	0.19
28 Machinery and equipment	5.12	5.26	0.14

Table 3—6405.0: Export Price Index, Australia

## EXPORT PRICE INDEX(a), By Selected AHECC Section

Period	Live animals, animal products (01)	Vegetable products (02)	Prepared foodstuffs (04)	Mineral products (05)	Products of chemical or allied industries (06)	Wool and cotton fibres (11)	Gold, diamonds and coin (14)	Base metals and articles of base metals (15)	Machinery and mechanical appliances (16)	Motor vehicles, aircraft and vessels (17)
<b>1997-1998</b>	100.0	96.3	109.7	113.7	94.9	75.8	89.8	94.1	89.1	110.0
<b>1998-1999</b>	100.7	90.9	102.8	114.6	95.6	61.4	93.1	85.6	90.3	113.0
<b>1999-2000</b>	107.8	83.9	94.9	117.0	101.5	62.5	93.5	99.3	90.9	113.2
<b>2000-2001</b>	126.4	99.8	102.1	144.8	120.1	74.3	106.0	113.9	94.2	127.0
<b>1997</b>										
June	95.6	92.6	99.9	105.1	86.5	70.9	88.4	90.8	87.0	104.2
September	96.3	91.7	104.1	107.9	88.4	77.8	86.7	96.0	87.6	105.8
December	100.9	95.2	110.1	113.7	93.5	77.2	88.5	96.8	89.7	109.0
<b>1998</b>										
March	102.2	97.2	112.0	114.5	97.6	75.9	88.5	92.7	89.3	111.4
June	100.5	101.0	112.7	118.5	100.0	72.3	95.4	91.0	89.7	113.9
September	103.7	100.2	109.5	122.4	100.7	67.6	98.0	93.3	90.8	117.1
December	100.9	90.9	104.4	117.8	98.5	59.2	95.8	86.1	90.3	112.9
<b>1999</b>										
March	99.6	88.6	103.3	110.8	93.5	58.8	92.5	80.6	90.9	111.6
June	98.5	83.9	94.0	107.4	89.8	60.0	86.2	82.3	89.3	110.2
September	102.7	80.8	93.1	108.3	93.2	60.5	83.1	87.3	89.3	110.5
December	105.0	83.4	95.3	112.6	96.3	62.1	94.4	94.0	90.5	111.5
<b>2000</b>										
March	107.8	83.1	95.9	119.9	104.2	60.2	96.0	105.5	90.7	112.4
June	115.6	88.1	95.4	127.3	112.4	67.3	100.5	110.3	93.1	118.4
September	116.6	90.9	97.9	133.1	114.9	69.6	102.1	109.0	92.2	121.0
December	124.1	98.4	102.3	147.7	122.5	71.9	107.9	116.9	95.3	128.0
<b>2001</b>										
March	127.5	102.9	103.1	143.6	121.0	74.8	105.9	114.0	94.7	127.8
June	137.2	107.1	105.2	154.7	121.9	80.8	108.1	115.8	94.7	131.3

(a) Base of each index: 1989-90 = 100.0

Table 5—6405.0: Export Price Index, Australia

## EXPORT PRICE INDEX(a), By Selected ANZSIC Industry of Origin Division and Subdivision

Period	Agriculture, forestry and fishing (A)	Coal mining (11)	Metallic ore mining (13)	Mining (B)	Food, beverages and tobacco (21)	Petroleum, coal, chemical and associated products (25)	Manufacturing (C)
<b>1997-1998</b>	84.8	116.9	105.2	112.7	98.7	114.0	97.7
<b>1998-1999</b>	73.8	116.4	110.4	114.4	98.3	112.6	95.6
<b>1999-2000</b>	72.6	102.2	105.7	113.1	98.2	129.0	102.2
<b>2000-2001</b>	86.3	117.4	122.0	136.8	111.3	157.6	116.1
<b>1997</b>							
June	80.8	104.3	97.3	103.6	91.6	106.6	93.2
September	84.7	108.1	100.8	106.7	92.9	108.5	94.9
December	86.0	117.0	103.4	112.1	97.8	114.7	98.0
<b>1998</b>							
March	84.5	119.3	104.8	113.8	102.3	115.1	98.3
June	83.8	123.3	111.8	118.1	101.9	117.8	99.4
September	81.3	128.8	116.8	122.9	102.0	117.1	100.4
December	72.6	122.4	112.4	117.5	99.3	115.9	97.2
<b>1999</b>							
March	71.3	110.9	109.5	111.0	98.1	109.0	93.4
June	70.0	103.4	103.0	106.2	93.9	108.5	91.5
September	69.6	99.5	102.3	105.7	95.7	115.2	93.8
December	72.3	100.6	103.4	110.0	96.4	120.4	98.8
<b>2000</b>							
March	71.4	102.5	105.8	115.1	97.7	134.1	104.9
June	77.2	106.0	111.4	121.4	103.0	146.1	111.1
September	80.3	107.0	114.6	125.3	103.2	151.3	110.6
December	85.6	115.7	123.3	138.8	108.9	163.1	117.3
<b>2001</b>							
March	87.8	115.4	121.5	136.2	112.4	156.9	116.6
June	91.3	131.3	128.5	146.9	120.7	159.2	120.0

(a) Base of each index: 1989-90 = 100.0

## FOR MORE INFORMATION...

- INTERNET* **www.abs.gov.au** the ABS web site is the best place to start for access to summary data from our latest publications, information about the ABS, advice about upcoming releases, our catalogue, and Australia Now—a statistical profile.
- LIBRARY* A range of ABS publications is available from public and tertiary libraries Australia-wide. Contact your nearest library to determine whether it has the ABS statistics you require, or visit our web site for a list of libraries.
- CPI INFOLINE* For current and historical Consumer Price Index data, call 1902 981 074 (call cost 77c per minute).
- DIAL-A-STATISTIC* For the latest figures for National Accounts, Balance of Payments, Labour Force, Average Weekly Earnings, Estimated Resident Population and the Consumer Price Index call 1900 986 400 (call cost 77c per minute).

### INFORMATION SERVICE

Data which have been published and can be provided within five minutes are free of charge. Our information consultants can also help you to access the full range of ABS information—ABS user-pays services can be tailored to your needs, time frame and budget. Publications may be purchased. Specialists are on hand to help you with analytical or methodological advice.

- PHONE* **1300 135 070**
- EMAIL* **client.services@abs.gov.au**
- FAX* 1300 135 211
- POST* Client Services, ABS, GPO Box 796, Sydney 1041

## WHY NOT SUBSCRIBE?

ABS subscription services provide regular, convenient and prompt deliveries of ABS publications and products as they are released. Email delivery of monthly and quarterly publications is available.

- PHONE* 1300 366 323
- EMAIL* subscriptions@abs.gov.au
- FAX* 03 9615 7848
- POST* Subscription Services, ABS, GPO Box 2796Y, Melbourne 3001