



# MONTHLY SUMMARY OF STATISTICS

VICTORIA

EMBARGO: 11:30AM (CANBERRA TIME) TUES 19 SEPT 2000

## CONTENTS

	<i>page</i>
Notes .....	2
Selected features .....	3
TABLES	
List of tables.....	4
Demography.....	5
Labour.....	6
Wages.....	9
Prices.....	10
Meat production.....	11
Building.....	12
Finance.....	15
Retail.....	16
Trade.....	17
Tourism.....	18
APPENDIX	
Impact of The New Tax System (TNTS) on data series in this publication .....	19

- For further information about these and related statistics, contact the National Information Service on 1300 135 070, or Robert Letheby on Melbourne 03 9615 7643.

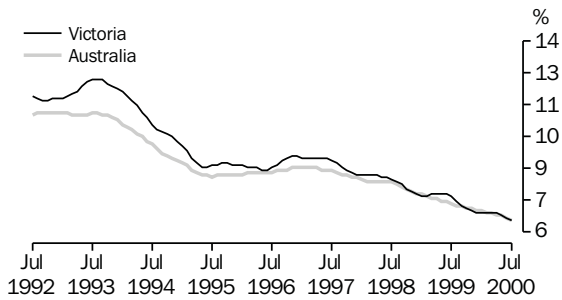
## NOTES

FORTHCOMING ISSUES	<table border="0"> <thead> <tr> <th style="text-align: left;"><i>ISSUE</i></th> <th style="text-align: left;"><i>RELEASE DATE</i></th> </tr> </thead> <tbody> <tr> <td>September 2000</td> <td>17 October 2000</td> </tr> <tr> <td>October 2000</td> <td>21 November 2000</td> </tr> <tr> <td>November 2000</td> <td>19 December 2000</td> </tr> <tr> <td>December 2000</td> <td>23 January 2001</td> </tr> <tr> <td>January 2001</td> <td>20 February 2001</td> </tr> <tr> <td>February 2001</td> <td>20 March 2001</td> </tr> </tbody> </table>	<i>ISSUE</i>	<i>RELEASE DATE</i>	September 2000	17 October 2000	October 2000	21 November 2000	November 2000	19 December 2000	December 2000	23 January 2001	January 2001	20 February 2001	February 2001	20 March 2001				
<i>ISSUE</i>	<i>RELEASE DATE</i>																		
September 2000	17 October 2000																		
October 2000	21 November 2000																		
November 2000	19 December 2000																		
December 2000	23 January 2001																		
January 2001	20 February 2001																		
February 2001	20 March 2001																		
IMPACT OF THE NEW TAX SYSTEM	<p>ABS statistical series are being impacted to varying degrees as a result of The New Tax System (TNTS), introduced in Australia from 1 July 2000. TNTS includes the removal of Wholesale Sales Tax and the introduction of a Goods and Services Tax (GST), and as a result, a number of ABS data series will reflect significant immediate and subsequent impacts (see Appendix on page 19 for further detail).</p>																		
SEASONAL ADJUSTMENT	<p>Seasonal adjustment is a means of removing the estimated effects of normal seasonal variations from economic time series so that the effects of other influences are obvious. Seasonal variations are the systematic (though not necessarily regular) intra-year movements of economic time series. These are often the result of non-economic phenomena, such as climatic changes and regular religious festivals, e.g. Christmas and Easter.</p>																		
TREND ESTIMATE	<p>Smoothing seasonally adjusted series produces a measure of trend by removing the impact of the irregular component of the series. The trend estimates are derived by applying a 13-term Henderson weighted moving average to the respective seasonally adjusted series. Readers are reminded that trend estimates are subject to revision as subsequent months' data become available.</p>																		
CHANGES IN THIS ISSUE	<p>Due to the Retail trend series being suspended (see Appendix on page 19 for further details), the Retail Turnover graph on page 3 is now based on seasonally adjusted data, rather than trend data.</p>																		
SYMBOLS AND OTHER USAGES	<table border="0"> <tr> <td>n.a.</td> <td>not available</td> </tr> <tr> <td>n.e.c.</td> <td>not elsewhere classified</td> </tr> <tr> <td>n.p.</td> <td>not available for publication but included in totals where applicable</td> </tr> <tr> <td>n.y.a.</td> <td>not yet available</td> </tr> <tr> <td>p</td> <td>preliminary—figure or series subject to revision</td> </tr> <tr> <td>r</td> <td>figure or series revised since previous issue</td> </tr> <tr> <td>*</td> <td>estimate has a relative standard error greater than 25% and is therefore subject to sampling variability too high for most practical uses</td> </tr> <tr> <td>. .</td> <td>not applicable</td> </tr> <tr> <td>—</td> <td>nil or rounded to zero</td> </tr> </table>	n.a.	not available	n.e.c.	not elsewhere classified	n.p.	not available for publication but included in totals where applicable	n.y.a.	not yet available	p	preliminary—figure or series subject to revision	r	figure or series revised since previous issue	*	estimate has a relative standard error greater than 25% and is therefore subject to sampling variability too high for most practical uses	. .	not applicable	—	nil or rounded to zero
n.a.	not available																		
n.e.c.	not elsewhere classified																		
n.p.	not available for publication but included in totals where applicable																		
n.y.a.	not yet available																		
p	preliminary—figure or series subject to revision																		
r	figure or series revised since previous issue																		
*	estimate has a relative standard error greater than 25% and is therefore subject to sampling variability too high for most practical uses																		
. .	not applicable																		
—	nil or rounded to zero																		

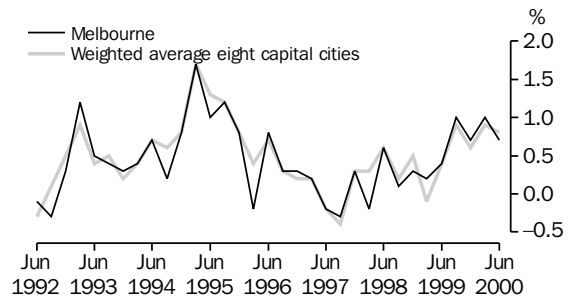
Zia ABBASI,  
Regional Director, Victoria

# SELECTED FEATURES

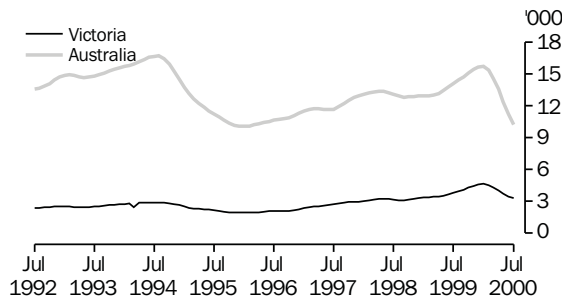
UNEMPLOYMENT RATE, Trend—Monthly



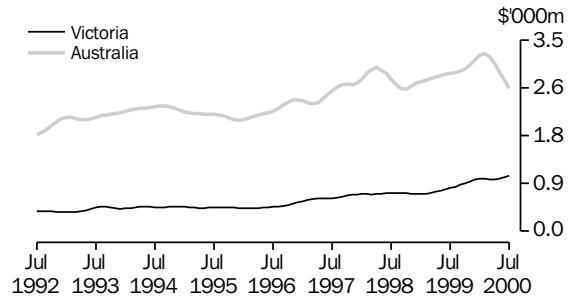
CONSUMER PRICE INDEX, Change from previous quarter



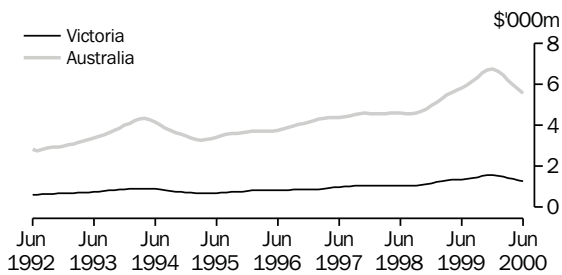
NEW DWELLING UNITS APPROVED, Trend—Monthly



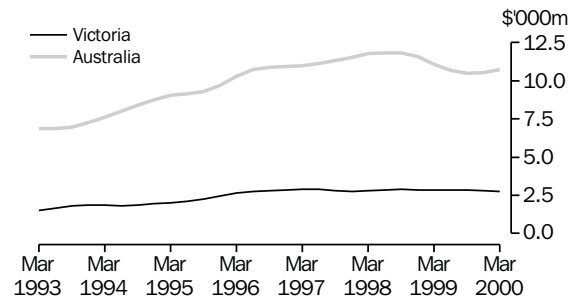
VALUE OF ALL BUILDINGS APPROVED, Trend—Monthly



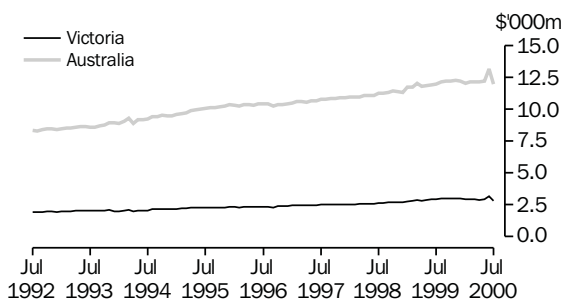
TOTAL VALUE OF SECURED HOUSING FINANCE COMMITMENTS TO INDIVIDUALS, Trend—Monthly



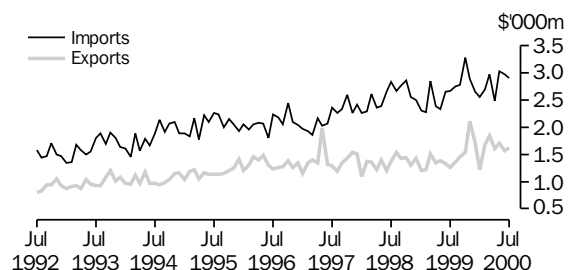
PRIVATE NEW CAPITAL EXPENDITURE, Trend—Quarterly



RETAIL TURNOVER, Seasonally Adjusted—Monthly



MERCHANDISE IMPORTS AND EXPORTS, Original—Monthly



## LIST OF TABLES

			Page
DEMOGRAPHY	<b>1</b>	Estimated resident population	5
	<b>2</b>	Births, deaths, marriages and divorces	5
LABOUR	<b>3</b>	Labour force status of the civilian population aged 15 years and over	6
	<b>4</b>	Employed persons, by industry	7
	<b>5</b>	Job vacancies	8
	<b>6</b>	Industrial disputes causing stoppage of work	8
	<b>7</b>	Average weekly earnings of employees	9
	<b>8</b>	Consumer price index—Melbourne	10
	<b>9</b>	Price index of materials used in building—Melbourne	10
MEAT PRODUCTION	<b>10</b>	Livestock slaughterings	11
	<b>11</b>	Meat production	11
BUILDING	<b>12</b>	Building approvals—Melbourne and Victoria	12
	<b>13</b>	New houses and other residential buildings, number of dwelling units	13
	<b>14</b>	Value of building	14
FINANCE	<b>15</b>	Private new capital expenditure, by selected industries and type of asset	15
	<b>16</b>	Commercial finance commitments	15
	<b>17</b>	Secured housing finance commitments, dwelling units	16
RETAIL	<b>18</b>	Retail turnover, by industry (excluding motor vehicles, parts, petrol, etc.)	16
TRADE	<b>19</b>	Exports and imports, by sections of the Australian export and import classifications	17
	<b>20</b>	Overseas trade, major trading partners	17
	<b>21</b>	Value of overseas trade—Victoria and Australia	18
TOURISM	<b>22</b>	Tourist accommodation	18

# 1

## ESTIMATED RESIDENT POPULATION

	<i>At end of period</i>			<i>Increase during period</i>		<i>Melbourne Statistical Division at 30 June(a)</i>
	<i>Males</i>	<i>Females</i>	<i>Persons</i>	<i>Natural</i>	<i>Total</i>	
	<i>'000</i>	<i>'000</i>	<i>'000</i>	<i>'000</i>	<i>'000</i>	
<b>1996-97</b>	2 275.2	2 330.0	4 605.2	28.7	45.1	3 321.8
<b>1997-98</b>	2 301.0	2 353.9	4 654.9	27.7	49.7	3 367.0
<b>1998-99</b>	2 330.1	2 382.1	4 712.2	26.2	57.2	3 417.2
<b>1997</b>						
September qtr	2 281.9	2 336.0	4 617.8	6.1	12.6	..
December qtr	2 286.3	2 341.1	4 627.4	7.4	9.6	..
<b>1998</b>						
March qtr	2 295.3	2 348.9	4 644.3	7.4	16.9	..
June qtr	2 301.0	2 353.9	4 654.9	6.8	10.7	..
September qtr p	2 308.2	2 360.8	4 669.0	6.4	14.1	..
December qtr p	2 315.3	2 368.6	4 683.8	6.6	14.8	..
<b>1999</b>						
March qtr p	2 324.6	2 376.8	4 701.4	6.9	17.6	..
June qtr p	2 330.1	2 382.1	4 712.2	6.4	10.8	..
September qtr p	2 337.8	2 388.9	4 726.6	6.2	14.4	..
December qtr p	2 345.1	2 396.3	4 741.5	6.3	14.9	..

(a) Based on the 1998 Statistical Division boundaries.

Source: Australian Demographic Statistics (Cat. no. 3101.0) (quarterly).

# 2

## BIRTHS, DEATHS, MARRIAGES AND DIVORCES

	<i>Registrations</i>				<i>Annual rate per 1,000 of mean estimated resident population</i>				
	<i>Births</i>	<i>Deaths (including infant deaths)</i>	<i>Marriages</i>	<i>Divorces</i>	<i>Births</i>	<i>Deaths</i>	<i>Marriages</i>	<i>Divorces</i>	<i>Infant deaths per 1,000 live births</i>
	<i>no.</i>	<i>no.</i>	<i>no.</i>	<i>no.</i>	<i>rate</i>	<i>rate</i>	<i>rate</i>	<i>rate</i>	<i>rate</i>
<b>1996-97</b>	61 232	32 570	25 664	13 046	13.36	7.11	5.60	2.85	4.46
<b>1997-98</b>	60 143	32 423	25 955	11 916	13.00	7.01	5.61	2.58	4.86
<b>1998-99 p</b>	59 016	32 769	26 249	12 614	12.60	7.00	5.60	2.69	5.74
<b>1997</b>									
September qtr	15 437	9 344	3 822	3 164	..	..	..	..	..
December qtr	15 259	7 813	7 533	3 181	..	..	..	..	..
Year—1997	60 610	32 760	25 456	12 463	13.16	7.11	5.53	2.71	4.82
<b>1998</b>									
March qtr	14 577	7 169	8 530	2 663	..	..	..	..	..
June qtr	14 870	8 097	6 070	2 908	..	..	..	..	..
September qtr p	p 15 550	p 9 131	3 912	3 188	..	..	..	..	..
December qtr p	p 15 193	p 8 614	7 860	3 548	..	..	..	..	..
Year—1998	p 60 190	p 33 011	26 372	12 307	12.93	7.09	5.67	2.64	5.15
<b>1999</b>									
March qtr p	13 492	6 618	8 659	2 774	..	..	..	..	..
June qtr p	14 781	8 406	5 818	3 104	..	..	..	..	..
September qtr p	14 965	8 747	4 210	3 461	..	..	..	..	..
December qtr p	14 554	8 220	8 462	3 438	..	..	..	..	..
Year—1999 p	57 792	31 991	27 149	12 777	12.26	6.79	5.76	2.71	5.69

Source: Demography, Victoria (Cat. no. 3311.2) (annual); Australian Demographic Statistics (Cat. no. 3101.0) (quarterly).

## LABOUR FORCE STATUS OF THE CIVILIAN POPULATION AGED 15 YEARS AND OVER

	<i>Employed</i>		<i>Unemployed looking for work</i>			<i>Labour force</i>	<i>Not in labour force</i>	<i>Civilian population 15 years and over</i>	<i>Unemployment rate</i>	<i>Participation rate</i>
	<i>Full-time</i>	<i>Total</i>	<i>Full-time</i>	<i>Part-time</i>	<i>Total</i>					
	'000	'000	'000	'000	'000					
MALES										
<b>1999</b>										
May	1 065.2	1 220.4	88.8	21.9	110.7	1 331.1	504.2	1 835.3	8.3	72.5
June	1 072.6	1 248.4	87.4	11.5	98.8	1 347.2	490.4	1 837.7	7.3	73.3
July	1 082.6	1 243.2	80.7	14.8	95.5	1 338.7	501.3	1 840.0	7.1	72.8
August	1 072.4	1 225.7	80.3	18.1	98.4	1 324.2	518.2	1 842.3	7.4	71.9
September	1 079.6	1 243.7	82.8	17.7	100.5	1 344.2	500.5	1 844.7	7.5	72.9
October	1 077.2	1 242.2	71.5	15.9	87.4	1 329.6	518.0	1 847.6	6.6	72.0
November	1 068.9	1 228.3	74.6	14.4	89.0	1 317.4	533.2	1 850.5	6.8	71.2
December	1 097.1	1 262.9	74.8	20.1	95.0	1 357.9	495.6	1 853.5	7.0	73.3
<b>2000</b>										
January	1 077.8	1 232.6	78.0	13.5	91.4	1 324.0	531.6	1 855.6	6.9	71.4
February	1 102.6	1 254.6	71.9	18.8	90.7	1 345.3	512.6	1 857.8	6.7	72.4
March	1 084.4	1 249.8	71.7	21.1	92.8	1 342.5	517.5	1 860.0	6.9	72.2
April	1 084.6	1 255.0	69.1	21.0	90.1	1 345.1	517.1	1 862.2	6.7	72.2
May	1 091.6	1 254.7	75.4	17.0	92.4	1 347.2	517.1	1 864.3	6.9	72.3
June	1 088.9	1 259.4	66.3	16.9	83.2	1 342.6	523.9	1 866.5	6.2	71.9
July	1 114.2	1 282.7	61.0	14.9	75.9	1 358.5	510.5	1 869.0	5.6	72.7
FEMALES										
<b>1999</b>										
May	520.3	940.0	43.5	28.0	71.5	1 011.5	904.4	1 915.9	7.1	52.8
June	523.6	951.8	44.5	25.1	69.6	1 021.4	896.8	1 918.2	6.8	53.2
July	542.5	963.3	38.6	35.3	73.9	1 037.2	883.4	1 920.6	7.1	54.0
August	527.8	953.3	38.4	29.0	67.4	1 020.6	902.3	1 922.9	6.6	53.1
September	539.5	981.9	45.5	33.9	79.3	1 061.2	864.1	1 925.3	7.5	55.1
October	536.0	975.8	42.3	25.8	68.1	1 043.9	884.1	1 928.0	6.5	54.1
November	533.8	975.3	38.5	27.7	66.3	1 041.6	889.1	1 930.7	6.4	54.0
December	568.0	997.4	43.5	26.8	70.4	1 067.8	865.6	1 933.4	6.6	55.2
<b>2000</b>										
January	547.3	943.2	43.4	33.8	77.3	1 020.5	915.0	1 935.4	7.6	52.7
February	546.2	965.8	49.9	34.2	84.1	1 049.9	887.6	1 937.5	8.0	54.2
March	546.9	981.2	47.6	33.3	80.9	1 062.1	877.4	1 939.5	7.6	54.8
April	541.5	978.8	44.0	30.3	74.3	1 053.1	888.3	1 941.5	7.1	54.2
May	544.2	990.4	45.5	25.6	71.1	1 061.6	881.8	1 943.4	6.7	54.6
June	562.8	1 009.7	42.2	25.0	67.2	1 076.8	868.5	1 945.3	6.2	55.4
July	575.0	1 016.8	39.8	28.6	68.4	1 085.2	862.6	1 947.8	6.3	55.7
PERSONS										
<b>1999</b>										
May	1 582.8	2 160.3	132.3	49.9	182.2	2 342.6	1 408.6	3 751.2	7.8	62.4
June	1 596.2	2 200.2	131.9	36.6	168.4	2 368.6	1 387.3	3 755.9	7.1	63.1
July	1 625.1	2 206.5	119.4	50.1	169.4	2 375.9	1 384.6	3 760.6	7.1	63.2
August	1 600.2	2 179.0	118.7	47.1	165.8	2 344.8	1 420.5	3 765.3	7.1	62.3
September	1 619.1	2 225.5	128.3	51.6	179.9	2 405.4	1 364.5	3 770.0	7.5	63.8
October	1 613.2	2 218.0	113.7	41.8	155.5	2 373.5	1 402.1	3 775.6	6.6	62.9
November	1 602.7	2 203.7	113.2	42.1	155.3	2 359.0	1 422.2	3 781.2	6.6	62.4
December	1 665.1	2 260.3	118.3	47.0	165.3	2 425.7	1 361.2	3 786.8	6.8	64.1
<b>2000</b>										
January	1 625.1	2 175.8	121.4	47.3	168.7	2 344.5	1 446.6	3 791.1	7.2	61.8
February	1 648.7	2 220.4	121.8	53.0	174.8	2 395.2	1 400.1	3 795.3	7.3	63.1
March	1 631.3	2 230.9	119.3	54.4	173.7	2 404.6	1 394.9	3 799.6	7.2	63.3
April	1 626.1	2 233.8	113.1	51.3	164.4	2 398.2	1 405.4	3 803.6	6.9	63.1
May	1 635.8	2 245.2	120.9	42.7	163.6	2 408.8	1 399.0	3 807.7	6.8	63.3
June	1 651.7	2 269.0	108.5	41.9	150.4	2 419.4	1 392.4	3 811.8	6.2	63.5
July	1 689.2	2 299.5	100.8	43.5	144.3	2 443.8	1 373.1	3 816.8	5.9	64.0

Source: Labour Force, Victoria (Cat. no. 6202.2) (quarterly).

## 4

## EMPLOYED PERSONS, BY INDUSTRY

Industry division	Feb 1999	May 1999	Aug 1999	Nov 1999	Feb 2000	May 2000
	'000	'000	'000	'000	'000	'000
MALES						
Agriculture, forestry and fishing	57.9	58.6	56.3	56.1	56.6	63.2
Mining	*3.8	*3.1	*2.9	*3.6	5.1	7.4
Manufacturing	259.0	241.9	236.6	244.6	255.5	256.0
Electricity, gas and water supply	13.4	14.4	13.9	10.6	11.1	14.2
Construction	125.7	130.1	133.8	137.0	136.3	140.5
Wholesale trade	86.5	81.6	88.6	90.4	77.6	76.9
Retail trade	170.1	166.0	161.7	163.9	166.0	163.8
Accommodation, cafes and restaurants	42.4	41.7	40.0	41.2	46.2	46.0
Transport and storage	78.5	72.0	75.5	70.8	71.8	72.8
Communication services	28.5	27.8	27.9	29.6	35.7	38.2
Finance and insurance	45.4	43.4	36.8	38.9	42.7	38.7
Property and business services	138.3	154.3	162.2	148.7	144.5	143.6
Government administration and defence	28.6	28.8	27.7	35.2	34.3	29.3
Education	40.4	45.4	46.4	50.2	48.0	44.2
Health and community services	46.6	42.3	39.5	36.4	41.5	44.0
Cultural and recreational services	25.1	27.3	32.3	30.4	31.7	32.4
Personal and other services	41.2	41.5	43.4	40.8	50.0	43.6
<b>Total</b>	<b>1 231.2</b>	<b>1 220.4</b>	<b>1 225.7</b>	<b>1 228.3</b>	<b>1 254.6</b>	<b>1 254.7</b>
FEMALES						
Agriculture, forestry and fishing	28.8	26.8	26.4	29.1	25.8	29.2
Mining	*0.0	*0.3	*0.6	*0.8	*1.4	*2.0
Manufacturing	98.3	98.1	94.5	98.9	101.6	108.1
Electricity, gas and water supply	*2.7	*3.9	*3.0	*2.4	*2.4	*2.8
Construction	16.5	17.2	17.3	18.5	21.0	17.4
Wholesale trade	40.2	42.8	46.1	50.0	34.5	37.2
Retail trade	167.6	168.5	174.9	172.2	173.7	170.7
Accommodation, cafes and restaurants	43.8	44.6	47.0	48.9	48.3	56.9
Transport and storage	22.1	22.2	20.8	22.7	20.9	23.7
Communication services	10.9	14.0	14.1	17.3	19.5	17.5
Finance and insurance	45.1	37.3	39.7	45.7	49.4	48.1
Property and business services	108.0	108.9	123.6	114.5	116.8	118.4
Government administration and defence	38.2	38.7	38.6	40.7	34.2	34.8
Education	84.0	101.1	105.1	97.1	93.6	99.8
Health and community services	155.4	144.3	137.6	149.6	156.8	158.7
Cultural and recreational services	26.2	32.6	26.2	26.4	24.9	28.4
Personal and other services	41.5	38.7	37.6	40.4	41.0	36.9
<b>Total</b>	<b>929.5</b>	<b>940.0</b>	<b>953.3</b>	<b>975.3</b>	<b>965.8</b>	<b>990.4</b>
PERSONS						
Agriculture, forestry and fishing	86.6	85.3	82.7	85.2	82.4	92.4
Mining	*3.8	*3.4	*3.5	*4.4	6.5	9.3
Manufacturing	357.4	340.0	331.2	343.5	357.1	364.1
Electricity, gas and water supply	16.2	18.3	16.9	13.0	13.5	17.0
Construction	142.2	147.3	151.1	155.6	157.3	157.9
Wholesale trade	126.7	124.4	134.7	140.4	112.1	114.1
Retail trade	337.6	334.5	336.7	336.0	339.7	334.5
Accommodation, cafes and restaurants	86.3	86.3	87.1	90.0	94.5	102.9
Transport and storage	100.6	94.2	96.4	93.5	92.7	96.5
Communication services	39.4	41.9	42.0	46.9	55.1	55.7
Finance and insurance	90.5	80.7	76.5	84.7	92.1	86.8
Property and business services	246.3	263.3	285.8	263.2	261.3	262.0
Government administration and defence	66.8	67.5	66.3	75.8	68.5	64.1
Education	124.4	146.5	151.5	147.3	141.6	144.0
Health and community services	202.0	186.6	177.1	186.0	198.3	202.7
Cultural and recreational services	51.4	60.0	58.5	56.8	56.6	60.8
Personal and other services	82.8	80.2	80.9	81.2	91.0	80.5
<b>Total</b>	<b>2 160.8</b>	<b>2 160.3</b>	<b>2 179.0</b>	<b>2 203.7</b>	<b>2 220.4</b>	<b>2 245.2</b>

Source: Labour Force, Victoria (Cat. no. 6202.2) (quarterly).

## 5

## JOB VACANCIES

	Vacancies all persons '000	Sector		Job vacancy rate %
		Public	Private	
		'000	'000	
<b>1998</b>				
November	34.4	1.9	32.5	1.58
<b>1999</b>				
February	15.6	*2.4	13.3	0.73
May	22.1	2.5	19.6	1.05
August	29.3	3.0	26.4	1.39
November	31.0	3.8	27.1	1.49
<b>2000</b>				
February	27.0	4.4	22.5	1.33
May	30.9	6.7	24.2	1.50

Source: Job Vacancies and Overtime, Australia (Cat. no. 6354.0) (quarterly).

## 6

## INDUSTRIAL DISPUTES CAUSING STOPPAGE OF WORK

	Disputes		Employees involved		Working days lost				
	Beginning in period	Total	Beginning in period	Total	Manufacturing	Construction	Education, health, community services	Other industries	Total
	no.	no.	'000	'000	'000	'000	'000	'000	'000
<b>1999</b>									
March	29	32	3.6	4.2	7.3	1.0	—	1.3	9.6
April	15	21	13.9	14.8	7.1	13.0	—	1.8	21.9
May	23	25	3.6	3.9	7.5	0.1	0.1	1.2	8.8
June	23	25	10.9	11.3	13.1	1.2	0.1	1.2	15.6
July	16	23	10.3	11.0	11.5	6.6	1.1	0.5	19.6
August	29	34	75.9	76.5	42.7	8.5	10.6	6.1	67.9
September	13	14	14.0	14.1	19.2	4.6	—	0.2	24.0
October	21	23	8.2	8.4	1.6	5.1	0.7	0.6	8.0
November	17	21	17.8	17.9	5.2	19.6	—	0.6	25.4
December	29	34	5.6	6.5	6.2	1.7	—	0.5	8.4
<b>2000</b>									
January	19	24	2.7	2.9	3.9	2.4	—	0.8	7.1
February	18	24	7.8	8.5	6.4	12.8	—	1.5	20.7
March	17	21	4.9	8.1	4.9	10.4	2.0	2.4	19.7
April r	8	15	1.7	4.2	4.0	4.0	0.5	1.4	9.9
May	22	26	8.7	8.9	1.9	7.0	0.0	0.5	9.4

Source: Industrial Disputes, Australia (Cat. no. 6321.0) (monthly).



## 7

## AVERAGE WEEKLY EARNINGS OF EMPLOYEES

	Males			Females			Persons		
	Full-time adult ordinary time earnings	Full-time adult total earnings	All males total earnings	Full-time adult ordinary time earnings	Full-time adult total earnings	All females total earnings	Full-time adult ordinary time earnings	Full-time adult total earnings	All employees total earnings
	\$	\$	\$	\$	\$	\$	\$	\$	\$
<b>1999</b>									
February	769.20	823.70	710.90	658.10	673.20	474.40	729.00	769.20	600.30
May	783.00	835.00	717.60	666.20	679.80	486.50	740.60	778.60	608.00
August	772.30	821.00	705.70	685.20	700.80	488.40	740.80	777.60	601.60
November	780.80	838.80	726.90	695.40	712.40	488.80	750.10	793.40	610.80
<b>2000</b>									
February	797.80	843.70	732.30	696.70	710.00	492.60	761.30	795.40	616.20
May	799.10	850.10	739.60	706.00	722.60	504.80	765.90	804.70	626.30

Source: Average Weekly Earnings, States and Australia (Cat. no. 6302.0) (quarterly).

## 8

## CONSUMER PRICE INDEX—MELBOURNE

	Food	Clothing	Housing	Household equipment and operation	Transport- ation	Tobacco and alcohol	Health and personal care	Recreation and education	All groups	Weighted average of eight capital cities—All groups
<b>1997-98</b>	120.5	108.9	86.5	115.0	123.3	161.4	162.2	127.6	119.8	120.3
<b>1998-99</b>	125.1	108.1	86.7	115.1	120.8	166.9	161.1	129.6	120.9	121.8
<b>1999-2000</b>	128.7	107.1	90.7	114.7	127.9	174.2	158.9	131.5	124.1	124.7
<b>1998</b>										
March qtr	120.7	109.0	84.1	115.1	122.1	162.0	163.6	129.4	119.6	120.3
June qtr	121.6	108.9	86.2	115.1	122.0	163.9	165.8	128.8	120.3	121.0
September qtr	123.6	108.9	85.3	115.3	121.0	165.0	166.7	128.4	120.4	121.3
December qtr	124.3	108.2	86.6	115.3	120.6	166.0	165.3	129.0	120.8	121.9
<b>1999</b>										
March qtr	125.8	107.5	87.3	114.7	119.9	167.6	155.7	131.0	121.0	121.8
June qtr	126.7	107.8	87.5	115.1	121.6	169.1	156.6	129.8	121.5	122.3
September qtr	127.8	107.5	88.8	114.3	125.9	169.4	157.0	130.7	122.7	123.4
December qtr	128.6	107.1	90.4	114.4	125.2	173.7	157.0	131.0	123.5	124.1
<b>2000</b>										
March qtr	128.3	106.9	91.7	114.3	129.2	176.5	160.5	132.2	124.7	125.2
June qtr	130.0	106.9	91.7	115.7	131.2	177.3	161.0	131.9	125.6	126.2

Base of each group: year 1989-90 = 100.0.

Source: Consumer Price Index, Australia (Cat. no. 6401.0) (quarterly).

## 9

## PRICE INDEX OF MATERIALS USED IN BUILDING—MELBOURNE

Group	1999-2000						Weighted average of six state capital cities—Jun qtr 2000
	1997-98	1998-99	1999-2000	Dec qtr	Mar qtr	Jun qtr	
House building							
All groups	117.1	118.0	121.7	120.5	122.9	124.2	125.5
Other than house building							
Structural timber	115.6	116.2	118.5	117.6	119.9	123.2	137.8
Clay bricks	117.9	119.6	123.8	119.3	126.3	130.3	127.0
Ready mix concrete	111.4	112.9	110.8	111.3	110.3	110.1	102.4
Precast concrete products	115.7	123.9	130.9	127.5	133.6	135.8	130.1
Steel decking and cladding	109.4	108.0	109.3	108.5	108.0	113.0	118.2
Structural steel	104.9	104.9	101.3	102.0	100.8	101.0	112.3
Reinforcing steel bar, mesh, etc.	100.8	99.5	93.8	92.6	94.7	94.0	104.5
Aluminium windows	100.0	100.4	105.1	103.6	104.9	110.0	118.3
Fabricated steel products	120.0	124.7	125.6	125.5	125.6	126.1	118.0
Builders' hardware	119.6	122.7	127.6	125.7	126.0	133.6	133.1
Sand and aggregate	116.3	120.5	120.6	120.2	120.2	120.6	123.3
Carpet	102.6	100.1	98.9	99.3	98.0	98.7	102.4
Paint and other coatings	144.7	153.8	162.4	163.0	164.3	164.1	150.7
Non-ferrous pipes and fittings	113.0	111.2	116.6	117.6	117.6	118.2	132.1
All groups excluding electrical materials and mechanical services	111.0	112.3	113.0	112.3	112.9	114.7	116.5
All electrical materials	109.8	112.4	116.8	116.6	117.2	117.4	122.7
All mechanical services	114.9	118.2	120.6	120.1	120.9	121.6	119.8
All plumbing materials	122.8	122.8	127.7	126.1	128.2	130.6	132.5
All groups	111.4	113.2	114.4	113.8	114.5	116.0	117.4

Base of each index: year 1989-90 = 100.0.

Source: Price Index of Materials Used in Building Other Than House Building, Six State Capital Cities (Cat. no. 6407.0) (quarterly); Price Index of Materials Used in House Building, Six State Capital Cities (Cat. no. 6408.0) (quarterly).

# 10

## LIVESTOCK SLAUGHTERINGS

	Cattle	Calves	Sheep	Lambs	Pigs
	'000	'000	'000	'000	'000
<b>1997-98</b>	1 798.0	767.2	3 285.6	6 385.7	1 567.7
<b>1998-99</b>	1 751.3	714.4	3 079.6	6 699.4	1 572.8
<b>1999-2000</b>	1 524.2	678.5	3 815.7	7 144.0	1 443.7
<b>1999</b>					
April	128.3	24.5	263.9	510.4	126.6
May	134.3	43.8	262.6	466.2	135.2
June	126.2	78.5	230.4	524.4	133.1
July	124.9	90.6	246.1	554.1	127.0
August	117.4	182.8	238.9	535.4	123.0
September	112.3	142.5	282.6	625.0	126.3
October	123.3	50.2	329.1	605.3	116.2
November	132.5	20.7	344.2	639.7	117.3
December	133.5	9.0	339.1	610.6	131.2
<b>2000</b>					
January	124.0	7.2	341.0	530.8	109.9
February	136.1	8.1	398.8	590.6	117.6
March	140.8	16.9	392.6	627.4	131.2
April	106.9	26.4	273.0	515.7	110.1
May	140.7	50.1	341.0	655.0	126.7
June r	131.3	74.0	289.6	654.9	107.2
July	108.6	82.8	272.2	620.1	93.8

Source: Unpublished data, Monthly Livestock Collection.

# 11

## MEAT PRODUCTION

	Meat (carcass weight)				
	Beef	Veal	Mutton	Lamb	Pigmeat
	tonnes	tonnes	tonnes	tonnes	tonnes
<b>1997-98</b>	389 087	15 578	63 470	119 972	112 504
<b>1998-99</b>	398 815	14 225	61 647	128 379	114 581
<b>1999-2000</b>	351 371	13 371	76 713	140 205	106 691
<b>1999</b>					
April	30 360	497	5 104	9 786	9 527
May	30 429	878	5 121	9 085	10 164
June	28 023	1 520	4 615	10 337	9 824
July	28 011	1 729	4 976	11 002	9 358
August	26 379	3 563	4 894	10 232	9 197
September	25 749	2 797	5 943	12 233	9 442
October	28 673	1 010	7 278	11 770	8 698
November	31 629	425	7 038	12 338	8 796
December	31 062	208	6 897	11 709	9 403
<b>2000</b>					
January	29 030	177	6 749	10 608	8 029
February	31 668	198	7 647	11 693	8 499
March	32 739	364	7 598	12 316	9 595
April	24 523	533	5 268	10 200	7 866
May	32 077	970	6 634	13 158	9 689
June r	29 732	1 397	5 797	12 955	8 119
July	25 181	1 534	5 791	12 311	7 077

Source: Unpublished data, Monthly Livestock Collection.

	New dwelling units(a)						Alterations, additions and conversions(d)	Non-residential building(c)		Total all building
	Private sector		Public sector		Total(b)			Private sector	Total	
	no.	\$m	no.	\$m	no.	\$m		\$m	\$m	
MELBOURNE STATISTICAL DIVISION										
<b>1997-98</b>	27 490	3 026.5	752	56.0	28 242	3 082.6	701.2	2 168.2	2 593.0	6 376.8
<b>1998-99</b>	28 615	3 550.4	666	49.6	29 276	3 600.0	800.3	1 918.6	2 642.3	7 042.6
<b>1999-2000</b>	36 843	5 058.7	611	51.1	37 454	5 109.8	1 019.0	2 226.9	2 654.3	8 783.1
<b>1999</b>										
April	2 446	281.8	52	3.4	2 498	285.1	72.3	126.7	157.4	515.0
May	2 642	337.1	37	2.4	2 679	339.5	63.0	174.4	202.0	604.5
June	2 450	320.9	46	4.0	2 495	324.9	69.2	108.4	125.1	519.2
July	2 755	353.0	88	6.3	2 843	359.3	92.2	183.6	208.6	660.2
August	3 775	494.7	39	4.3	3 814	499.0	86.1	159.3	226.3	811.5
September	3 046	406.8	72	5.9	3 118	412.7	76.9	203.3	218.9	708.6
October	2 817	372.2	93	8.0	2 910	380.2	84.7	158.2	201.6	666.5
November	3 213	417.2	59	4.6	3 272	421.2	93.0	167.5	194.5	709.3
December	3 122	443.9	65	6.4	3 187	450.1	72.0	148.6	213.2	735.5
<b>2000</b>										
January	3 250	535.7	19	1.6	3 269	537.3	66.9	171.6	188.6	792.8
February	3 474	457.3	54	4.1	3 528	461.4	87.5	208.2	262.5	811.5
March	3 809	533.3	9	0.8	3 818	534.0	84.9	153.0	171.1	790.1
April	2 548	336.3	30	2.3	2 578	338.6	97.8	232.1	289.9	726.3
May	2 600	363.4	40	3.5	2 640	367.0	83.7	158.1	173.4	624.1
June	2 434	344.8	43	3.3	2 477	348.1	93.3	283.3	305.5	747.0
July	2 316	395.3	36	3.0	2 352	398.3	90.8	151.9	519.5	1 008.6
TOTAL VICTORIA										
<b>1997-98</b>	34 178	3 811.3	1 171	88.6	35 349	3 899.8	858.5	2 476.9	3 064.5	7 822.8
<b>1998-99</b>	37 194	4 482.6	894	67.2	38 088	4 549.9	951.2	2 262.5	3 125.7	8 626.8
<b>1999-2000</b>	47 474	6 318.8	787	65.1	48 261	6 383.9	1 210.7	2 622.3	3 215.2	10 809.8
<b>1999</b>										
April	3 196	365.7	57	3.8	3 253	369.5	85.7	146.3	183.9	639.0
May	3 516	436.2	42	3.1	3 558	439.3	74.4	202.3	241.6	755.4
June	3 214	408.5	51	4.6	3 265	413.2	83.4	156.3	183.2	679.8
July	3 574	445.9	134	9.2	3 708	457.1	105.2	212.7	249.0	809.4
August	4 626	587.9	66	6.4	4 692	596.0	101.9	204.6	282.9	979.3
September	3 972	514.7	105	8.6	4 077	521.3	95.7	222.1	245.6	864.6
October	3 788	488.4	98	8.4	3 886	497.2	99.5	186.1	240.9	837.2
November	4 161	529.3	68	5.4	4 229	535.6	107.3	198.0	235.7	877.8
December	4 047	555.1	67	6.6	4 114	565.8	88.1	186.6	266.2	916.0
<b>2000</b>										
January	4 046	630.6	27	2.3	4 073	638.4	80.3	196.5	235.1	948.3
February	4 597	592.8	73	5.9	4 670	598.2	101.2	235.1	325.5	1 025.5
March	4 791	653.1	12	1.1	4 803	656.1	103.3	185.8	215.8	973.4
April	3 334	433.0	39	3.0	3 373	437.0	112.8	257.2	327.3	876.1
May	3 412	462.0	49	4.2	3 461	467.4	103.5	213.2	240.2	810.0
June	3 126	425.9	49	3.8	3 175	431.6	111.7	324.3	350.9	892.2
July	2 851	462.1	38	3.1	2 889	465.2	125.7	174.3	559.2	1 150.1

(a) Valued at \$10,000 and over.

(b) Excludes dwelling units created as a result of conversions or construction of non-residential buildings.

(c) Valued at \$50,000 and over.

(d) Includes alterations and additions creating dwellings, alterations and additions not creating dwellings and conversions.

Source: *Building Approvals, Victoria (Cat. no. 8731.2) (quarterly)*.

## NEW HOUSES AND OTHER RESIDENTIAL BUILDINGS, NUMBER OF DWELLING UNITS

	<i>New houses</i>				<i>New other residential buildings</i>			
	<i>Approved</i>	<i>Commenced</i>	<i>Under construction(a)</i>	<i>Completed</i>	<i>Approved</i>	<i>Commenced</i>	<i>Under construction(a)</i>	<i>Completed</i>
	<i>no.</i>	<i>no.</i>	<i>no.</i>	<i>no.</i>	<i>no.</i>	<i>no.</i>	<i>no.</i>	<i>no.</i>
<b>1996-97</b>	19 805	18 652	8 937	17 613	6 805	6 047	4 151	5 727
<b>1997-98</b>	27 937	26 004	12 368	22 425	7 412	7 598	5 148	6 542
<b>1998-99</b>	29 227	29 165	14 455	26 926	8 861	8 307	6 198	7 029
<b>1998</b>								
December qtr	6 873	7 399	13 127	6 995	2 375	1 682	5 175	1 906
<b>1999</b>								
March qtr	7 071	6 494	13 846	5 699	2 461	2 159	5 752	1 559
June qtr	7 757	7 910	14 455	7 281	2 319	2 466	6 198	1 864
September qtr	9 280	8 155	15 667	6 939	3 173	3 354	7 844	1 702
December qtr r	9 412	8 817	15 741	8 719	2 373	2 680	8 910	1 566
<b>2000</b>								
March qtr	9 417	8 860	18 261	6 340	3 435	2 458	9 118	2 211

(a) Under construction at the end of the period.

Source: *Building Activity, Victoria* (Cat. no. 8752.2) (quarterly); *Building Approvals, Victoria* (Cat. no. 8731.2) (quarterly).

	Residential buildings		Non-residential buildings						Total
	New	Alterations and additions	Shops	Factories	Offices	Education	Health	Other	
	\$m	\$m	\$m	\$m	\$m	\$m	\$m	\$m	
COMMENCED									
<b>1996-97</b>	2 692.2	761.0	348.2	343.8	508.5	410.3	303.6	1 003.3	6 371.1
<b>1997-98</b>	3 850.5	891.1	598.5	241.8	428.6	270.9	250.2	1 399.8	7 931.4
<b>1998-99</b>	4 496.3	987.2	444.1	263.6	428.1	485.0	239.9	1 186.0	8 530.2
<b>1998</b>									
December qtr	1 066.4	291.0	137.8	79.9	136.2	175.6	95.1	429.7	2 411.7
<b>1999</b>									
March qtr	1 046.8	223.8	75.3	64.4	98.3	98.2	41.1	190.0	1 837.9
June qtr	1 257.1	250.4	119.8	64.3	91.1	78.7	76.9	341.1	2 279.4
September qtr	1 540.9	305.2	119.0	69.5	83.6	86.0	71.7	242.1	2 518.0
December qtr r	1 544.5	278.8	110.4	65.8	176.6	83.2	75.9	188.1	2 523.2
<b>2000</b>									
March qtr	1 483.2	303.1	110.3	89.0	108.4	122.6	103.4	149.3	2 569.3
UNDER CONSTRUCTION AT END OF PERIOD									
<b>1996-97</b>	1 582.3	358.5	284.6	214.9	233.4	310.0	236.2	1 741.7	4 961.6
<b>1997-98</b>	2 274.1	412.4	406.6	141.9	241.6	320.2	279.8	1 466.0	5 542.6
<b>1998-99</b>	2 745.1	451.3	420.8	120.9	190.2	485.8	243.5	1 611.2	6 268.8
<b>1998</b>									
December qtr	2 430.6	450.5	427.2	134.7	253.1	489.2	257.4	1 566.8	6 009.6
<b>1999</b>									
March qtr	2 644.3	471.4	402.8	138.2	203.8	522.4	243.7	1 461.3	6 087.9
June qtr	2 745.1	451.3	420.8	120.9	190.2	485.8	243.5	1 611.2	6 268.8
September qtr	3 229.8	531.2	440.2	117.8	129.6	527.3	237.1	1 503.3	6 716.2
December qtr r	3 493.2	561.2	305.7	110.0	206.0	491.7	219.6	1 433.6	6 821.0
<b>2000</b>									
March qtr	3 923.4	642.0	361.2	137.0	228.2	504.2	283.6	1 480.8	7 560.4
COMPLETED									
<b>1996-97</b>	2 617.6	768.5	364.8	295.6	404.0	342.0	194.6	1 106.7	6 093.8
<b>1997-98</b>	3 213.6	866.6	474.7	338.4	449.4	283.2	208.2	1 738.4	7 572.4
<b>1998-99</b>	4 068.1	992.4	487.3	294.3	524.9	328.5	305.1	1 110.3	8 111.0
<b>1998</b>									
December qtr	1 080.2	259.6	179.9	70.0	139.6	107.3	51.6	340.7	2 229.1
<b>1999</b>									
March qtr	855.2	215.9	100.6	64.1	155.6	69.2	56.6	312.4	1 829.5
June qtr	1 134.9	280.2	118.0	83.1	121.3	118.8	93.2	210.2	2 159.7
September qtr	1 075.3	235.3	116.3	76.1	147.0	50.2	81.2	375.3	2 156.7
December qtr r	1 319.3	260.9	277.4	75.1	101.6	110.3	94.0	279.1	2 517.6
<b>2000</b>									
March qtr	1 088.9	238.3	67.2	63.7	86.7	109.1	40.2	327.8	1 935.3

Source: Building Activity, Victoria (Cat. no. 8752.2) (quarterly).

# 15

## PRIVATE NEW CAPITAL EXPENDITURE, BY SELECTED INDUSTRIES AND TYPE OF ASSET

	Selected industries				Type of asset	
	Mining	Manufacturing	Other selected industries	Total	New buildings and structures	Equipment, plant and machinery
	\$m	\$m	\$m	\$m	\$m	\$m
ACTUAL						
<b>1997-98</b>	833	3 401	6 809	11 044	2 858	8 185
<b>1998-99</b>	1 234	2 951	7 166	11 352	3 210	8 141
<b>1998</b>						
December qtr	288	780	1 900	2 968	819	2 149
<b>1999</b>						
March qtr	321	652	1 665	2 639	862	1 776
June qtr	306	803	1 758	2 868	668	2 200
September qtr	205	918	1 709	2 832	799	2 034
December qtr r	194	928	1 849	2 970	710	2 260
<b>2000</b>						
March qtr	66	720	1 615	2 400	595	1 805
EXPECTED						
<b>1999-2000</b>	813	3 513	6 547	10 872	2 664	8 208
<b>2000-01</b>	704	3 824	5 501	10 029	2 086	7 943

Source: State Estimates of Private New Capital Expenditure (Cat. no. 5646.0) (quarterly).

# 16

## COMMERCIAL FINANCE COMMITMENTS

	Fixed loan facilities						Type of lender			
	Construction	Purchase of real property	Purchase of plant and equipment	Wholesale	Other	Total	Revolving credit facilities	Total commitments	Banks	All other lenders
	\$m	\$m	\$m	\$m	\$m	\$m	\$m	\$m	\$m	\$m
<b>1999</b>										
April	82.5	469.2	170.8	79.0	501.9	1 303.4	1 361.5	2 664.9	2 104.1	560.8
May	183.6	508.8	157.4	39.4	771.1	1 660.2	1 569.8	3 230.1	2 837.0	393.1
June	171.3	623.3	211.8	88.4	2 189.9	3 284.7	1 748.3	5 033.0	4 695.6	337.4
July	137.8	521.0	159.0	14.9	684.6	1 517.2	1 977.9	3 495.1	3 074.9	420.2
August	234.0	555.5	169.2	25.2	755.8	1 739.7	1 214.0	2 953.7	2 759.9	193.8
September	147.8	546.9	205.8	33.8	719.7	1 654.1	1 372.4	3 026.5	2 632.9	393.6
October	266.0	610.1	195.8	25.0	1 128.8	2 225.7	1 544.8	3 770.5	3 329.0	441.5
November	235.6	633.8	214.3	65.0	502.9	1 651.7	1 288.5	2 940.2	2 572.5	367.7
December	155.9	689.3	250.1	77.7	571.2	1 744.2	1 853.3	3 597.5	3 231.8	365.6
<b>2000</b>										
January	194.5	527.0	151.5	60.5	407.3	1 340.7	1 144.8	2 485.6	2 196.5	289.1
February	118.6	657.0	194.6	57.5	520.9	1 548.6	1 515.8	3 064.4	2 799.4	265.0
March	123.0	671.6	204.7	92.0	684.3	1 775.6	2 010.7	3 786.4	3 202.4	584.0
April	129.1	528.3	178.5	218.3	531.7	1 586.0	1 386.8	2 972.8	2 630.6	342.2
May	147.6	706.5	205.9	91.5	575.7	1 727.1	2 555.2	4 282.3	3 994.5	287.9
June	175.5	768.2	333.1	173.5	2 014.7	3 464.9	1 624.5	5 089.4	4 454.9	634.5

Source: AusStats (Cat. no. 1405.0.55.001).

## 17

## SECURED HOUSING FINANCE COMMITMENTS, DWELLING UNITS

	Original series		Seasonally adjusted		Trend estimates	
	no.	\$m	no.	\$m	no.	\$m
<b>1999</b>						
April	11 014	1 348	10 942	1 374	10 743	1 334
May	10 896	1 389	10 752	1 344	10 694	1 341
June	11 305	1 445	10 420	1 346	10 642	1 348
July	10 518	1 334	10 355	1 323	10 686	1 369
August	10 855	1 397	10 668	1 370	10 875	1 409
September	11 377	1 475	11 069	1 408	11 179	1 466
October	11 386	1 534	11 740	1 600	11 509	1 526
November	12 231	1 639	12 127	1 628	r 11 662	1 565
December	11 652	1 592	11 617	1 568	r 11 617	r 1 573
<b>2000</b>						
January	8 962	1 242	11 342	1 521	r 11 368	r 1 546
February	11 184	1 498	11 051	1 554	r 10 994	r 1 493
March	11 558	1 554	10 526	1 389	r 10 597	r 1 431
April r	8 680	1 172	9 348	1 297	10 228	1 372
May r	12 591	1 622	11 428	1 462	9 885	1 317
June	9 317	1 250	8 597	1 152	9 604	1 271

Source: *Housing Finance for Owner Occupation, Australia (Cat. no. 5609.0) (monthly)*.

## 18

## RETAIL TURNOVER, BY INDUSTRY (EXCLUDING MOTOR VEHICLES, PARTS, PETROL, ETC.)

	Food	Department	Clothing	Household	Recreational	Other	Hospitality	Total
	retailing	stores	and soft good retailing	good retailing	good retailing	retailing	and services	
	\$m	\$m	\$m	\$m	\$m	\$m	\$m	\$m
<b>1999</b>								
May	1 167.0	253.5	215.8	338.6	140.1	291.6	398.7	2 805.4
June	1 126.2	220.4	217.2	333.9	143.7	303.8	392.7	2 737.7
July	1 210.5	263.2	219.0	336.4	136.5	322.8	438.8	2 927.2
August	1 177.9	221.3	209.5	337.6	139.8	315.1	422.3	2 823.5
September	1 186.2	248.5	222.6	347.8	149.5	324.5	438.8	2 917.9
October	1 242.0	259.3	234.5	379.3	148.5	324.2	448.9	3 036.6
November	1 231.9	304.1	243.3	392.3	157.8	338.4	441.7	3 109.6
December	1 463.8	528.1	339.8	498.2	233.8	439.8	526.4	4 030.0
<b>2000</b>								
January	1 219.9	228.0	221.5	358.1	138.2	267.6	412.3	2 845.5
February	1 155.2	195.9	181.7	326.1	120.7	268.1	406.6	2 654.2
March	1 244.7	224.2	217.4	342.8	132.1	292.6	451.7	2 905.5
April	1 163.1	260.6	224.2	309.6	117.4	291.9	388.4	2 755.3
May	1 180.1	265.3	248.2	349.8	118.9	305.2	393.8	2 861.3
June	1 173.5	298.6	279.7	416.3	124.1	313.6	399.9	3 005.8
July	1 232.0	202.4	173.1	316.4	115.5	294.2	394.1	2 727.7

Source: *Retail Trade, Australia (Cat. no. 8501.0) (monthly)*.



## 19

## EXPORTS AND IMPORTS, BY SECTIONS OF THE AUSTRALIAN EXPORT AND IMPORT CLASSIFICATIONS(a)

	1999–2000		July 2000	
	Imports	Exports	Imports	Exports
	\$m	\$m r	\$m	\$m
0 Food and live animals chiefly for food(b)(c)	1 358	4 425	114	397
1 Beverages and tobacco(b)(c)	141	187	21	21
2 Crude materials, inedible (except fuels)(b)(c)	625	1 580	53	143
3 Mineral fuels, lubricants, and related materials(c)	1 763	1 222	140	105
4 Animal and vegetable oils, fats and waxes(b)(c)	93	113	9	10
5 Chemicals and related products, n.e.c.(b)(c)	3 352	1 024	284	99
6 Manufacturing goods classified chiefly by material(b)(c)	4 684	2 681	402	195
7 Machinery and transport equipment(b)(c)	14 769	3 963	1 278	310
8 Miscellaneous manufactured articles(b)(c)	5 835	1 162	523	108
9 Commodities and transactions of merchandise trade, n.e.c.(d)	r 1 133	2 677	88	239
<b>Total</b>	<b>r 33 754</b>	<b>19 033</b>	<b>2 911</b>	<b>1 627</b>

(a) Any discrepancies between sums of the component items and totals are due to rounding.

(b) Excludes export commodities subject to a confidentiality restriction. These are included in Division 9.

(c) Excludes imports commodities subject to a confidentiality restriction. These are included in Division 9.

(d) Includes export and import commodities subject to a confidentiality restriction.

Source: Overseas Trade: Fasttraccs Database.

## 20

## OVERSEAS TRADE, MAJOR TRADING PARTNERS(a)

Country	1998–99		1999–2000		July 2000	
	Imports	Exports	Imports	Exports	Imports	Exports
	\$m	\$m	\$m	\$m	\$m	\$m
Belgium-Luxembourg	239	102	258	110	23	5
Brazil	118	48	105	46	13	6
Canada	392	125	445	r 135	30	11
China	2 537	669	3 030	r 1 124	301	63
Fiji	180	242	194	286	6	23
Finland	188	9	187	9	18	1
France	619	131	622	136	56	10
Germany	2 341	407	2 402	397	198	37
Hong Kong (SAR of China)	431	900	403	r 945	43	87
India	261	192	262	193	27	20
Indonesia	1 078	226	893	r 295	101	27
Italy	1 038	288	r 1036	332	83	34
Japan	4 133	1 676	4 416	r 1 860	448	160
Korea, Republic of	847	862	870	r 1 236	82	135
Malaysia	873	431	1 118	r 514	83	35
Mexico	103	90	111	74	11	11
Netherlands	292	109	318	105	19	8
New Zealand	1 333	1 635	1 491	2 298	113	161
Pakistan	87	43	85	55	9	8
Papua New Guinea	64	188	67	139	3	10
Philippines	157	387	163	385	17	34
Saudi Arabia	107	511	221	704	18	48
Singapore	510	1 080	632	r 1 475	41	119
South Africa	125	217	166	229	14	27
Sweden	598	25	r 607	29	45	2
Switzerland	335	34	319	40	26	3
Taiwan	905	920	922	835	82	50
Thailand	523	343	673	439	59	32
United Kingdom	1 839	1 169	1 793	r 694	130	46
United States of America	6 891	1 469	r 7 701	1 630	596	187
Other and unknown	1 870	1 956	r 2 244	2 284	216	227
<b>Total</b>	<b>31 014</b>	<b>16 484</b>	<b>r 33 754</b>	<b>r 19 033</b>	<b>2 911</b>	<b>1 627</b>

(a) The list of countries in this table reflects the volume of trade with Victoria. Information about Victoria's trade with other countries is available on request.

Source: Overseas Trade: Fasttraccs Database.

## 21

## VALUE OF OVERSEAS TRADE—VICTORIA AND AUSTRALIA

	Victoria		Australia		
	Imports	Exports	Imports	Exports (including re-exports)	Excess of exports
	\$m	\$m	\$m	\$m	\$m
<b>1998-99</b>	31 014	16 484	97 611	85 992	-11 619
<b>1999-2000 r</b>	33 754	19 033	110 234	97 262	-12 972
<b>1999</b>					
May	2 331	1 381	7 746	6 967	-779
June	2 652	1 332	8 142	6 893	-1 249
July	2 663	1 256	8 181	7 158	-1 023
August	2 748	1 352	8 871	7 347	-1 524
September	2 777	1 460	8 965	7 392	-1 573
October	3 282	1 536	10 216	7 987	-2 229
November	2 892	2 105	9 701	8 470	-1 231
December r	2 653	1 716	8 922	8 369	-553
<b>2000</b>					
January r	2 556	1 220	8 110	6 829	-1 281
February	2 702	1 678	8 659	8 231	-428
March	2 979	1 840	9 653	8 813	-840
April r	2 490	1 603	8 013	8 272	259
May r	3 035	1 704	10 452	9 203	-1 249
June r	2 977	1 563	10 490	9 190	-1 300
July	2 911	1 627	9 814	9 369	-445

Source: Overseas Trade: Fastraccs Database.

## 22

## TOURIST ACCOMMODATION

Quarter ended	Hotels, motels, guest houses and serviced apartments(a)						
	Establishments	Guest rooms	Bed spaces	Room nights occupied	Room occupancy rate	Persons employed	Takings from accommodation
	no.	no.	no.	'000	%	no.	\$'000
<b>1998</b>							
September	676	29 404	80 902	1 464.3	54.4	20 776	169 966
December	682	29 717	81 976	1 602.6	58.7	20 813	182 207
<b>1999</b>							
March	686	30 160	83 420	1 680.8	62.0	21 129	195 573
June	698	30 766	85 247	1 545.6	55.4	21 725	170 130
September	698	30 934	85 483	1 589.5	56.0	21 780	184 105
December	705	31 317	86 058	1 672.7	58.1	21 633	191 644
<b>2000</b>							
March	707	31 332	86 134	1 773.4	62.3	21 498	213 272

(a) Comprising establishments with 15 or more rooms or units.

Source: Tourist Accommodation, Australia (Cat. no. 8635.0) (quarterly).

## APPENDIX

## IMPACT OF THE NEW TAX SYSTEM (TNTS) ON DATA SERIES IN THIS PUBLICATION

### BUILDING APPROVALS

Users of Building Approvals data (table 12) should exercise caution when analysing movements in the value series over the next few months as they have been affected by TNTS in a number of ways, including:

- changing patterns in demand and price changes brought about by the "bringing forward" of building activity prior to 1 July 2000;
- the introduction of the Goods and Services Tax (GST) and the abolition of the Wholesale Sales Tax; and
- the uncertainty as to whether approval values reported prior to July 2000 included or excluded the GST component.

### CAPITAL EXPENDITURE

Users of Capital Expenditure data (table 15) should exercise caution when analysing estimates of expected expenditure for 2000–01 financial year. Businesses in the Survey of New Capital Expenditure have been asked to report expected expenditure for 2000–01 financial year based on the cost to them under TNTS. That is, they should deduct the WST, where it is currently paid on capital items, but not add on the 10% GST, where this amount can be returned to the business as tax credit. Therefore, if they reported on the correct basis, expenditure in current price terms on the same volume of capital would be lower than if the changes in tax arrangements had not taken place. The basis for businesses reporting expenditure for periods prior to 30 June 2000 is unchanged.

Investigations have shown that the majority of businesses have been unable to report expected expenditure on the requested basis because their capital expenditure budgets are not sufficiently detailed at this stage to take account of expected price changes.

### RETAIL

Users of Retail data (table 18) should exercise caution when analysing movements in the series over time. Estimates of retail turnover in both original and seasonally adjusted terms reflect unusually large spending ahead of the GST. The trend series may be adversely affected by an unusual influence in the original and seasonally adjusted data. As pre-GST original and seasonally adjusted estimates include spending that is one-off rather than part of the underlying behaviour of the series, this impact has, as far as practicable, been estimated and excluded from the retail trend series.

It is expected that recent changes in spending behaviour associated with the TNTS may occur for several more months before regular shopping patterns are re-established. In addition, from July 2000 the retail series records turnover inclusive of GST (but excluding embedded wholesale taxes) where applicable, which means that there is a change in the valuation basis for the series. It will not be possible for the ABS to reliably estimate the impact of these post 30 June valuation and behaviour changes for some months. Therefore, the retail trend series has been suspended as at June 2000 until the underlying behaviour of the series stabilises. Original and seasonally adjusted series (which include the irregular component of the series) will continue to be published.

## FOR MORE INFORMATION...

- INTERNET* **www.abs.gov.au** the ABS web site is the best place to start for access to summary data from our latest publications, information about the ABS, advice about upcoming releases, our catalogue, and Australia Now—a statistical profile.
- LIBRARY* A range of ABS publications is available from public and tertiary libraries Australia-wide. Contact your nearest library to determine whether it has the ABS statistics you require, or visit our web site for a list of libraries.
- CPI INFOLINE* For current and historical Consumer Price Index data, call 1902 981 074 (call cost 77c per minute).
- DIAL-A-STATISTIC* For the latest figures for National Accounts, Balance of Payments, Labour Force, Average Weekly Earnings, Estimated Resident Population and the Consumer Price Index call 1900 986 400 (call cost 77c per minute).

**INFORMATION SERVICE**

Data which have been published and can be provided within five minutes are free of charge. Our information consultants can also help you to access the full range of ABS information—ABS user-pays services can be tailored to your needs, time frame and budget. Publications may be purchased. Specialists are on hand to help you with analytical or methodological advice.

- PHONE* **1300 135 070**
- EMAIL* **client.services@abs.gov.au**
- FAX* 1300 135 211
- POST* Client Services, ABS, GPO Box 796, Sydney 1041

## WHY NOT SUBSCRIBE?

ABS subscription services provide regular, convenient and prompt deliveries of ABS publications and products as they are released. Email delivery of monthly and quarterly publications is available.

- PHONE* 1300 366 323
- EMAIL* subscriptions@abs.gov.au
- FAX* 03 9615 7848
- POST* Subscription Services, ABS, GPO Box 2796Y, Melbourne 3001



2130320008009  
ISSN 0158-202X

RRP \$17.50

© Commonwealth of Australia 2000