

## Bass

This Commonwealth Electoral Division profile has been produced using information from 2017 Estimated Resident Population and the 2016 Census of Population and Housing.

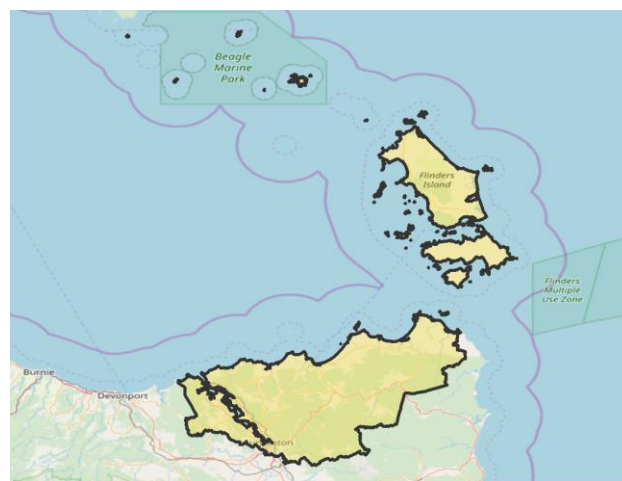
POPULATION	Electorate	Australia
<i>2017 Estimated Resident Population</i>		
Population	104,784	24,597,528

AGE GROUPS	Electorate	Australia
<i>2017 Estimated Resident Population</i>		
0 to 17 years old	21.4%	22.4%
18 to 34 years old	21.5%	24.5%
35 to 49 years old	18.0%	20.0%
50 to 64 years old	20.0%	17.8%
65 to 79 years old	14.5%	11.5%
80 years old and over	4.6%	3.9%

FAMILIES	Electorate	Australia
<i>2016 Census, families in occupied private dwellings</i>		
Couple families without children	42.7%	37.8%
Couple families with children	37.8%	44.7%
One parent families	17.8%	15.8%

HOUSING	Electorate	Australia
<i>2016 Census, occupied private dwellings</i>		
Owned outright	34.7%	31.0%
Owned with mortgage	31.8%	34.5%
Rented	29.9%	30.9%
Median household income (\$/week)	\$1,033	\$1,438
Median rent (\$/week)	\$220	\$335
Median mortgage repayments (\$/month)	\$1,257	\$1,755

CULTURAL DIVERSITY	Electorate	Australia
<i>2016 Census, all usual residents</i>		
Aboriginal and Torres Strait Islander peoples	3.4%	2.8%
Born overseas	12.3%	26.3%
Recent migrants (arrived 2006-2016)	4.1%	9.9%
Language other than English spoken at home	5.7%	20.8%



Sources: ASGS, 2018. © OpenStreetMap (and) contributors, CC-BY-SA.

ENGAGEMENT	Electorate	Australia
<i>2016 Census, people aged 18 to 64</i>		
Fully engaged in work or study	46.4%	53.1%
Partially engaged in work or study	20.7%	17.6%
At least partially engaged	3.7%	3.3%
Not engaged	22.3%	19.1%

OCCUPATION	Electorate	Australia
<i>2016 Census, employed people aged 15 and over</i>		
Managers	11.7%	13.0%
Professionals	19.2%	22.2%
Technicians & trade workers	13.7%	13.5%
Community & personal service workers	12.2%	10.8%
Clerical & administrative workers	12.0%	13.6%
Sales workers	10.8%	9.4%
Machinery operators & drivers	7.1%	6.3%
Labourers	11.7%	9.5%

EDUCATION	Electorate	Australia
<i>2016 Census, all usual residents</i>		
Year 12 or equivalent completion (people aged 20 to 24)	60.4%	73.7%
Certificate III or higher qualification (people aged 15 and over)	39.8%	46.6%

## Braddon

This Commonwealth Electoral Division profile has been produced using information from 2017 Estimated Resident Population and the 2016 Census of Population and Housing.

### POPULATION

	Electorate	Australia
<i>2017 Estimated Resident Population</i>		
Population	104,992	24,597,528

### AGE GROUPS

	Electorate	Australia
<i>2017 Estimated Resident Population</i>		
0 to 17 years old	21.8%	22.4%
18 to 34 years old	18.7%	24.5%
35 to 49 years old	17.6%	20.0%
50 to 64 years old	21.3%	17.8%
65 to 79 years old	15.8%	11.5%
80 years old and over	4.9%	3.9%

### FAMILIES

	Electorate	Australia
<i>2016 Census, families in occupied private dwellings</i>		
Couple families without children	44.9%	37.8%
Couple families with children	36.5%	44.7%
One parent families	17.5%	15.8%

### HOUSING

	Electorate	Australia
<i>2016 Census, occupied private dwellings</i>		
Owned outright	36.8%	31.0%
Owned with mortgage	31.4%	34.5%
Rented	28.1%	30.9%
Median household income (\$/week)	\$990	\$1,438
Median rent (\$/week)	\$200	\$335
Median mortgage repayments (\$/month)	\$1,170	\$1,755

### CULTURAL DIVERSITY

	Electorate	Australia
<i>2016 Census, all usual residents</i>		
Aboriginal and Torres Strait Islander peoples	7.3%	2.8%
Born overseas	8.6%	26.3%
Recent migrants (arrived 2006-2016)	1.6%	9.9%
Language other than English spoken at home	2.4%	20.8%



Sources: ASGS, 2018. © OpenStreetMap (and) contributors, CC-BY-SA.

### ENGAGEMENT

	Electorate	Australia
<i>2016 Census, people aged 18 to 64</i>		
Fully engaged in work or study	42.9%	53.1%
Partially engaged in work or study	20.9%	17.6%
At least partially engaged	4.2%	3.3%
Not engaged	25.8%	19.1%

### OCCUPATION

	Electorate	Australia
<i>2016 Census, employed people aged 15 and over</i>		
Managers	12.2%	13.0%
Professionals	13.7%	22.2%
Technicians & trade workers	15.0%	13.5%
Community & personal service workers	12.0%	10.8%
Clerical & administrative workers	11.3%	13.6%
Sales workers	10.3%	9.4%
Machinery operators & drivers	8.5%	6.3%
Labourers	15.1%	9.5%

### EDUCATION

	Electorate	Australia
<i>2016 Census, all usual residents</i>		
Year 12 or equivalent completion (people aged 20 to 24)	48.6%	73.7%
Certificate III or higher qualification (people aged 15 and over)	36.7%	46.6%

## Clark

This Commonwealth Electoral Division profile has been produced using information from 2017 Estimated Resident Population and the 2016 Census of Population and Housing.

### POPULATION

	Electorate	Australia
<i>2017 Estimated Resident Population</i>		
Population	106,121	24,597,528

### AGE GROUPS

	Electorate	Australia
<i>2017 Estimated Resident Population</i>		
0 to 17 years old	20.0%	22.4%
18 to 34 years old	25.1%	24.5%
35 to 49 years old	18.6%	20.0%
50 to 64 years old	19.0%	17.8%
65 to 79 years old	12.5%	11.5%
80 years old and over	4.8%	3.9%

### FAMILIES

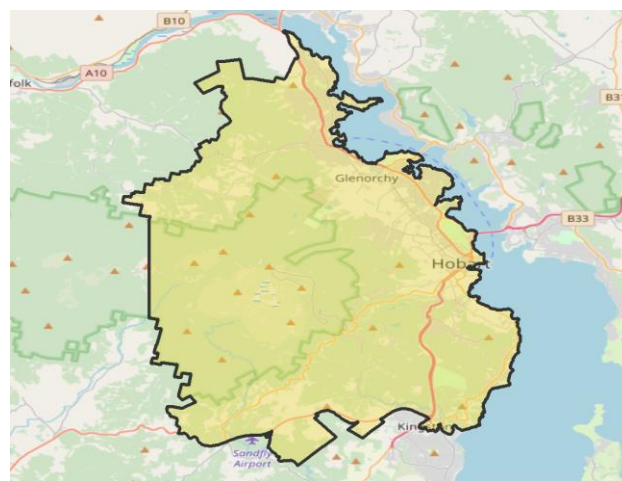
	Electorate	Australia
<i>2016 Census, families in occupied private dwellings</i>		
Couple families without children	40.6%	37.8%
Couple families with children	38.8%	44.7%
One parent families	18.6%	15.8%

### HOUSING

	Electorate	Australia
<i>2016 Census, occupied private dwellings</i>		
Owned outright	31.8%	31.0%
Owned with mortgage	31.1%	34.5%
Rented	33.6%	30.9%
Median household income (\$/week)	\$1,224	\$1,438
Median rent (\$/week)	\$265	\$335
Median mortgage repayments (\$/month)	\$1,408	\$1,755

### CULTURAL DIVERSITY

	Electorate	Australia
<i>2016 Census, all usual residents</i>		
Aboriginal and Torres Strait Islander peoples	3.0%	2.8%
Born overseas	18.0%	26.3%
Recent migrants (arrived 2006-2016)	7.5%	9.9%
Language other than English spoken at home	12.1%	20.8%



Sources: ASGS, 2018. © OpenStreetMap (and) contributors, CC-BY-SA.

### ENGAGEMENT

	Electorate	Australia
<i>2016 Census, people aged 18 to 64</i>		
Fully engaged in work or study	51.9%	53.1%
Partially engaged in work or study	20.0%	17.6%
At least partially engaged	3.2%	3.3%
Not engaged	18.7%	19.1%

### OCCUPATION

	Electorate	Australia
<i>2016 Census, employed people aged 15 and over</i>		
Managers	11.3%	13.0%
Professionals	27.0%	22.2%
Technicians & trade workers	11.7%	13.5%
Community & personal service workers	12.8%	10.8%
Clerical & administrative workers	13.9%	13.6%
Sales workers	9.2%	9.4%
Machinery operators & drivers	4.0%	6.3%
Labourers	8.4%	9.5%

### EDUCATION

	Electorate	Australia
<i>2016 Census, all usual residents</i>		
Year 12 or equivalent completion (people aged 20 to 24)	74.8%	73.7%
Certificate III or higher qualification (people aged 15 and over)	48.1%	46.6%

## Franklin

This Commonwealth Electoral Division profile has been produced using information from 2017 Estimated Resident Population and the 2016 Census of Population and Housing.

POPULATION	Electorate	Australia
<i>2017 Estimated Resident Population</i>		
Population	102,079	24,597,528

AGE GROUPS	Electorate	Australia
<i>2017 Estimated Resident Population</i>		
0 to 17 years old	22.5%	22.4%
18 to 34 years old	18.6%	24.5%
35 to 49 years old	19.0%	20.0%
50 to 64 years old	20.4%	17.8%
65 to 79 years old	14.8%	11.5%
80 years old and over	4.7%	3.9%

FAMILIES	Electorate	Australia
<i>2016 Census, families in occupied private dwellings</i>		
Couple families without children	42.2%	37.8%
Couple families with children	40.1%	44.7%
One parent families	16.6%	15.8%

HOUSING	Electorate	Australia
<i>2016 Census, occupied private dwellings</i>		
Owned outright	37.3%	31.0%
Owned with mortgage	37.7%	34.5%
Rented	21.7%	30.9%
Median household income (\$/week)	\$1,251	\$1,438
Median rent (\$/week)	\$270	\$335
Median mortgage repayments (\$/month)	\$1,439	\$1,755

CULTURAL DIVERSITY	Electorate	Australia
<i>2016 Census, all usual residents</i>		
Aboriginal and Torres Strait Islander peoples	4.6%	2.8%
Born overseas	12.7%	26.3%
Recent migrants (arrived 2006-2016)	2.6%	9.9%
Language other than English spoken at home	4.6%	20.8%



Sources: ASGS, 2018. © OpenStreetMap (and) contributors, CC-BY-SA.

ENGAGEMENT	Electorate	Australia
<i>2016 Census, people aged 18 to 64</i>		
Fully engaged in work or study	47.9%	53.1%
Partially engaged in work or study	22.2%	17.6%
At least partially engaged	3.7%	3.3%
Not engaged	20.5%	19.1%

OCCUPATION	Electorate	Australia
<i>2016 Census, employed people aged 15 and over</i>		
Managers	12.4%	13.0%
Professionals	21.5%	22.2%
Technicians & trade workers	14.0%	13.5%
Community & personal service workers	12.2%	10.8%
Clerical & administrative workers	15.4%	13.6%
Sales workers	9.4%	9.4%
Machinery operators & drivers	4.1%	6.3%
Labourers	9.4%	9.5%

EDUCATION	Electorate	Australia
<i>2016 Census, all usual residents</i>		
Year 12 or equivalent completion (people aged 20 to 24)	64.7%	73.7%
Certificate III or higher qualification (people aged 15 and over)	46.5%	46.6%

## Lyons

This Commonwealth Electoral Division profile has been produced using information from 2017 Estimated Resident Population and the 2016 Census of Population and Housing.

### POPULATION

	Electorate	Australia
<i>2017 Estimated Resident Population</i>		
Population	104,176	24,597,528

### AGE GROUPS

	Electorate	Australia
<i>2017 Estimated Resident Population</i>		
0 to 17 years old	22.0%	22.4%
18 to 34 years old	17.7%	24.5%
35 to 49 years old	17.9%	20.0%
50 to 64 years old	22.4%	17.8%
65 to 79 years old	16.0%	11.5%
80 years old and over	3.9%	3.9%

### FAMILIES

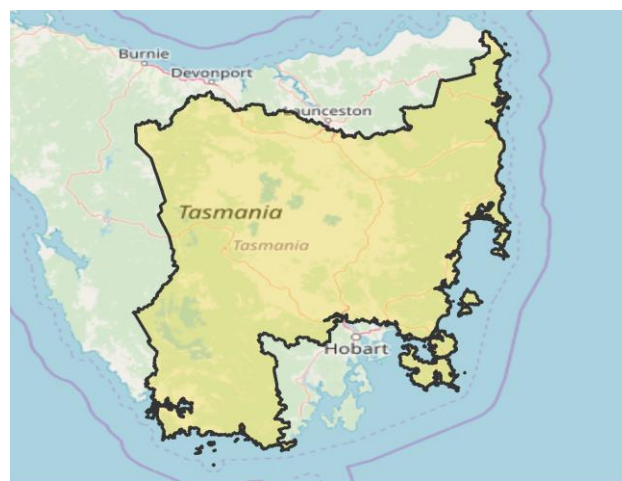
	Electorate	Australia
<i>2016 Census, families in occupied private dwellings</i>		
Couple families without children	44.6%	37.8%
Couple families with children	37.8%	44.7%
One parent families	16.6%	15.8%

### HOUSING

	Electorate	Australia
<i>2016 Census, occupied private dwellings</i>		
Owned outright	37.8%	31.0%
Owned with mortgage	35.9%	34.5%
Rented	22.9%	30.9%
Median household income (\$/week)	\$1,014	\$1,438
Median rent (\$/week)	\$210	\$335
Median mortgage repayments (\$/month)	\$1,248	\$1,755

### CULTURAL DIVERSITY

	Electorate	Australia
<i>2016 Census, all usual residents</i>		
Aboriginal and Torres Strait Islander peoples	4.8%	2.8%
Born overseas	8.4%	26.3%
Recent migrants (arrived 2006-2016)	1.1%	9.9%
Language other than English spoken at home	2.1%	20.8%



Sources: ASGS, 2018. © OpenStreetMap (and) contributors, CC-BY-SA.

### ENGAGEMENT

	Electorate	Australia
<i>2016 Census, people aged 18 to 64</i>		
Fully engaged in work or study	41.8%	53.1%
Partially engaged in work or study	21.0%	17.6%
At least partially engaged	4.4%	3.3%
Not engaged	25.8%	19.1%

### OCCUPATION

	Electorate	Australia
<i>2016 Census, employed people aged 15 and over</i>		
Managers	13.7%	13.0%
Professionals	11.8%	22.2%
Technicians & trade workers	15.6%	13.5%
Community & personal service workers	12.6%	10.8%
Clerical & administrative workers	12.3%	13.6%
Sales workers	9.8%	9.4%
Machinery operators & drivers	8.5%	6.3%
Labourers	13.9%	9.5%

### EDUCATION

	Electorate	Australia
<i>2016 Census, all usual residents</i>		
Year 12 or equivalent completion (people aged 20 to 24)	48.2%	73.7%
Certificate III or higher qualification (people aged 15 and over)	35.9%	46.6%