

# **SOUTH AUSTRALIAN ECONOMIC INDICATORS**

EMBARGO: 11:30AM (CANBERRA TIME) TUES 1 MAY 2001

## **C O N T E N T S**

	<i>page</i>
Notes .....	2
REVIEW	
Overview .....	3
Selected features .....	4
TABLES	
List of tables .....	5
Statistical summary .....	6
State summary .....	8
State accounts .....	9
International trade .....	10
Consumption and investment .....	14
Production .....	16
Consumer price index .....	20
Labour force and demography .....	21
Average weekly earnings .....	24
Financial markets .....	25
ADDITIONAL INFORMATION	
Publications source index .....	26

- For further information about these and related statistics, contact Treva Richards on Adelaide 08 8237 7338, or the National Information Service on 1300 135 070.

## NOTES

### FORTHCOMING ISSUES

<i>ISSUE</i>	<i>RELEASE DATE</i>
June 2001	1 June 2001
July 2001	2 July 2001
August 2001	1 August 2001
September 2001	3 September 2001
October 2001	2 October 2001
November 2001	1 November 2001

### ABOUT THIS PUBLICATION

*South Australian Economic Indicators* is a monthly publication which contains the latest available data at the time of preparation for a range of statistical series that have been identified as indicators of economic activity in this State. In a number of cases the figures presented are preliminary and subject to revision in subsequent issues.

### SYMBOLS AND OTHER USAGES

n.a.	not available
n.y.a.	not yet available
*	subject to sampling variability too high for most practical purposes
..	not applicable
0, 0.0	nil, or rounded to zero

### ROUNDING

Where figures have been rounded, discrepancies may occur between sums of the component items and totals.

### INFORMATION

All data are original, unless otherwise stated. More detailed information on each series, including explanatory and technical notes, can be obtained from other Australian Bureau of Statistics publications or alternative data sources. To assist those seeking further information, the series presented in the statistical and state summaries provides a reference to the Publication Source Index which is at the end of this publication.

I. Crettenden  
Regional Director  
South Australia

## OVERVIEW

Data in the tables are generally expressed in original terms, while the data in this Overview are presented in trend terms, unless otherwise stated.

### INTERNATIONAL TRADE

The value of South Australian merchandise exports in original terms for the month of February was \$699.8m. This is an increase of 50.7% over the value for January and an increase of 40.1% on February 2000.

The value of South Australian merchandise imports in original terms was \$438.0m in February. This is an increase of 36.0% over the value for January and an increase of 8.5% on February 2000.

### CONSUMPTION AND INVESTMENT

South Australia's retail turnover has increased by 4.6% over the seven months to February. Retail turnover for February was \$960.5m.

New motor vehicle registrations for February have recorded a decline. Compared with January 2001 new registrations have decreased by 2.1% to 4,167.

Private new capital expenditure increased 2.2% in the December quarter to \$728m which was 24.9% higher than the December quarter 1999. In original terms private new capital expenditure for the quarter was \$846m.

### HOUSING

The total number of dwelling units approved in February 2001 rose to 559 dwellings, a 1.5% increase on January 2001. However it is still 43.2% lower than that of a year ago.

### CONSUMER PRICE INDEX

The Consumer Price Index (All Groups) for Adelaide increased by 0.2% to 132.5 in the December quarter of 2000, and by 5.4% over the level recorded twelve months previously.

### LABOUR FORCE AND DEMOGRAPHY

The estimate of employed persons in South Australia has declined since August 2000, reaching 670,700 in March 2001. The latest estimate is slightly lower than the level of twelve months ago (675,800).

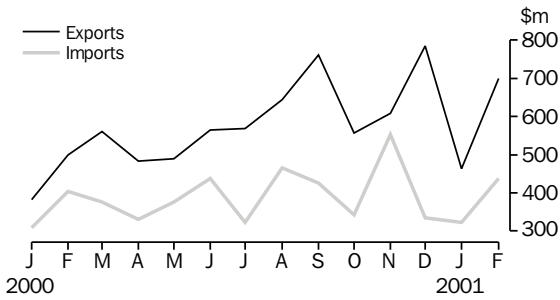
The trend estimate of the unemployment rate for South Australia continues to decline, reaching 7.3% in March 2001. A year earlier, the rate was higher at 8.2%.

### FINANCIAL MARKETS

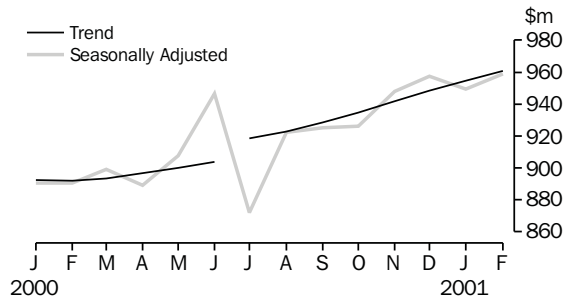
Total secured housing finance commitments (excluding alterations and additions) decreased marginally in February to \$377.0m. This was broadly similar to the level of a year ago.

# SELECTED FEATURES

MERCHANDISE EXPORTS AND IMPORTS

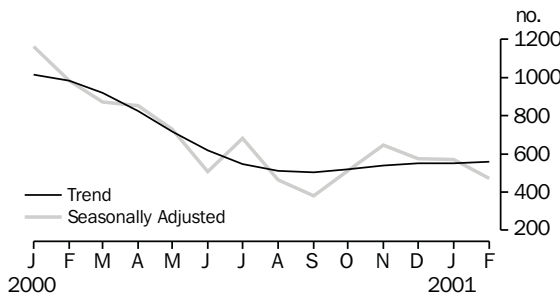


RETAIL TURNOVER(a)

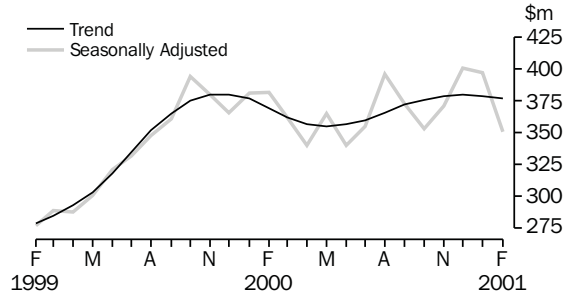


(a) A break in the trend series occurred between June and July 2000 because of the impact of The New Tax System on Retail turnover.

DWELLING UNITS APPROVED

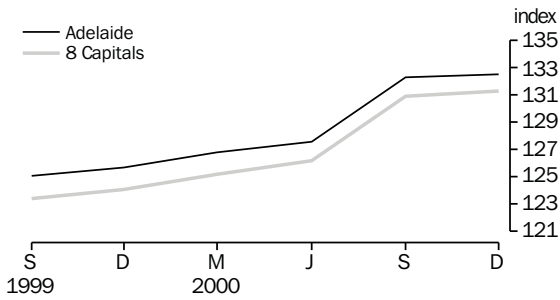


SECURED HOUSING FINANCE COMMITMENTS (a)

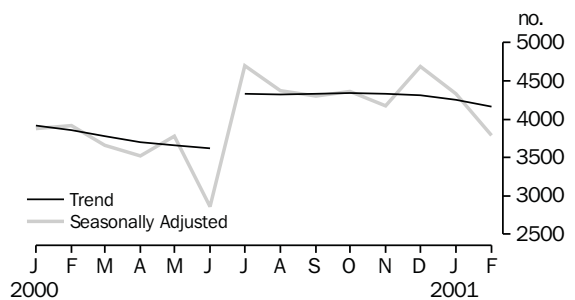


(a) Excludes alterations and additions. Includes refinancing.

CONSUMER PRICE INDEX

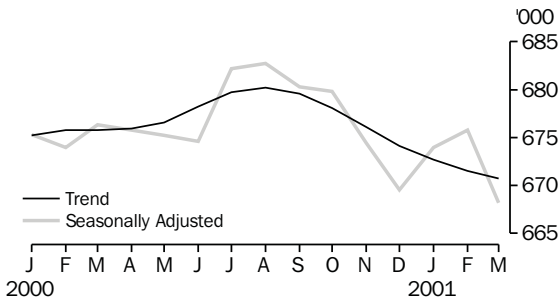


MOTOR VEHICLE REGISTRATIONS(a)

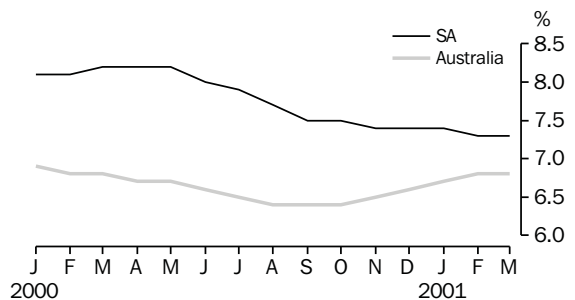


(a) A break in the series occurred between June and July 2000 because of the impact of The New Tax System.

EMPLOYED PERSONS



UNEMPLOYMENT RATE—TREND



## LIST OF TABLES

			Page
STATISTICAL SUMMARY	<b>1</b>	Statistical summary	6
	<b>2</b>	State summary	8
STATE ACCOUNTS	<b>3</b>	State accounts at current prices	9
	<b>4</b>	State accounts at chain volume measures	9
INTERNATIONAL TRADE	<b>5</b>	Merchandise exports, by selected commodity group	10
	<b>6</b>	Merchandise exports, by selected countries and country groups	11
	<b>7</b>	Merchandise exports, by industry of origin	12
	<b>8</b>	Merchandise imports, by selected commodity group	13
CONSUMPTION AND INVESTMENT	<b>9</b>	Turnover of retail establishments, by industry—trend	14
	<b>10</b>	New motor vehicle registrations, by type of vehicle	14
	<b>11</b>	Actual private new capital expenditure, by selected industry and type of asset	15
	<b>12</b>	Tourist accommodation	15
PRODUCTION	<b>13</b>	Building approvals	16
	<b>14</b>	Building commencements	17
	<b>15</b>	Value of building work done and completed during period	18
	<b>16</b>	Production, livestock products and selected commodities	19
CONSUMER PRICE INDEX	<b>17</b>	Consumer price index, by group—Adelaide	20
LABOUR FORCE AND DEMOGRAPHY	<b>18</b>	Estimated resident population and components of population change	21
	<b>19</b>	Births, deaths, marriages and divorces	21
	<b>20</b>	Civilian labour force status	22
	<b>21</b>	Civilian labour force, unemployment and participation rates	23
AVERAGE WEEKLY EARNINGS	<b>22</b>	Average weekly earnings of employees	24
FINANCIAL MARKETS	<b>23</b>	Secured housing finance commitments	25
	<b>24</b>	Finance commitments	25

Indicator	Period	South Australia			Australia			SA as a % of Aust.	Source index
		Number	% change from		Number	% change from			
			Previous period	Same period previous year		Previous period	Same period previous year		
<b>State accounts</b>									
Domestic final demand									
Current prices trend (\$m)	Dec qtr 00	11 328	0.8	5.4	165 425	0.3	4.0	6.8	(1)
Chain volume measures trend (\$m)	Dec qtr 00	10 855	-0.2	2.0	158 953	-0.7	0.5	6.8	(1)
Private final consumption expenditure									
Current prices trend (\$m)	Dec qtr 00	7 093	2.4	8.0	99 261	1.9	8.5	7.1	(1)
Chain volume measures trend (\$m)	Dec qtr 00	6 767	1.1	3.9	94 635	0.5	2.8	7.2	(1)
Private gross fixed capital formation									
Current prices trend (\$m)	Dec qtr 00	1 732	-3.2	2.6	29 162	-4.7	-4.5	5.9	(1)
Chain volume measures trend (\$m)	Dec qtr 00	1 648	-4.5	1.6	28 485	-5.4	-7.2	5.8	(1)
Compensation of employees									
Current prices trend (\$m)	Dec qtr 00	5 182	0.4	4.4	80 074	1.1	6.7	6.5	(1)
<b>International accounts</b>									
Exports (\$m)	Feb 01	699.8	50.7	40.1	8 793.3	10.1	11.8	8.0	(2)
Imports (\$m)	Feb 01	438.0	36.0	8.5	8 331.1	-9.8	-3.7	5.3	(2)
<b>Consumption and investment</b>									
Retail turnover									
Current prices original (\$m)	Feb 01	838.3	-8.8	3.7	11 589.7	-8.8	4.5	7.2	(3)
Current prices trend (\$m)	Feb 01	960.5	0.6	7.7	13 012.4	0.7	7.0	7.4	(3)
Chain volume measures original (\$m)	Dec qtr 00	3 047.1	20.7	1.7	40 592.2	16.7	-0.6	7.5	(3)
New motor vehicle registrations									
Original (no.)	Feb 01	3 637	5.8	-6.0	58 623	6.3	-5.8	6.2	(4)
Trend (no.)	Feb 01	4 167	-2.1	8.1	66 241	-1.9	7.1	6.3	(4)
Private new capital expenditure									
Current prices original (\$m)	Dec qtr 00	846	30.4	59.6	10 577	6.8	-1.4	8.0	(5)
Current prices trend (\$m)	Dec qtr 00	728	2.2	24.9	10 089	-2.4	-2.5	7.2	(5)
Private new capital expenditure (\$m)	1999-00	2 451	7.6	7.6	42 447	-5	-5.0	5.8	(5)
Takings from accommodation—hotels, motels, guesthouses and serviced apartments									
	Dec qtr 00	53.2	9.5	4.3	1 239.9	-4.8	11.5	4.3	(6)
<b>Production</b>									
Dwelling unit approvals									
Original (no.)	Feb 01	469	8.6	-56.3	8 742	-1.0	-46.0	5.4	(7)
Trend (no.)	Feb 01	559	1.5	-43.2	9 796	-0.6	-37.4	5.7	(7)
Dwelling units commenced (no.)	Dec qtr 00	1 542	-15.2	-33.7	29 038	-1.3	-31.7	5.3	(8)
Value of non-residential building approvals-trend (\$m)									
	Feb 01	44.6	-6.5	4.0	1 072.8	2.4	1.3	4.2	(7)
Value of total building activity									
Commenced (\$m)	Dec qtr 00	357.7	-15.0	-16.5	7 543.1	-2.9	-17.2	4.7	(8)
Work done (\$m)	Dec qtr 00	434.5	8.7	1.5	8 410.6	-7.2	-14.8	5.2	(8)
Work yet to be done (\$m)	Dec qtr 00	469.5	-11.1	7.5	11 117.0	-4.7	-11.7	4.2	(8)
Value of engineering construction work done (\$m)									
	Dec qtr 00	263.8	3.8	-19.6	4 347.7	-2.7	-16.4	6.1	(9)
Manufacturing production									
Red meat (tonnes)	Dec qtr 00	55 698	10.9	19.4	785 066	-0.9	4.4	7.1	(11)
Mineral exploration expenditure (other than for petroleum)(a) (\$m)									
	Dec qtr 00	6.8	23.6	1.5	187.2	10.2	5.8	3.6	(12)

(a) From July 2000 value data no longer contains Wholesale Sales Tax.

Indicator	Period	South Australia			Australia			SA as a % of Aust.	Source index
		Number	% change from		Number	% change from			
			Previous period	Same period previous year		Previous period	Same period previous year		
<b>Prices(a)</b>									
CPI—All groups (index no.)	Dec qtr 00	132.5	0.2	5.4	131.3	0.3	5.8	..	(13)
Price index of materials used in house building (index no.)	Dec qtr 00	129.7	-0.1	2.9	124.4	-0.1	2.4	..	(14)
Price index of materials used in building other than houses (index no.)	Dec qtr 00	116.8	0.7	1.2	116.3	0.7	1.0	..	(15)
Price index of established houses (index no.)	Dec qtr 00	127.2	-0.3	4.3	150.6	2.4	6.6	..	(16)
Price index of project homes (index no.)	Dec qtr 00	140.6	-0.8	11.0	134.8	0.4	11.8	..	(16)
<b>Labour force and demography</b>									
Population (resident at end qtr) ('000)	Jun qtr 00	1 497.6	0.0	0.3	19 157.0	0.3	1.2	7.8	(17)
Short-term overseas visitor arrivals (no.)	Jul 00	10 230	12.0	19.7	429 030	23.3	10.4	2.4	(21)
Short-term resident departures (no.)	Jul 00	18 630	28.6	6.1	296 940	-2.2	3.6	6.3	(21)
Labour force									
Original ('000)	Mar 01	722.4	-1.3	-2.0	9 769.7	-0.3	1.2	7.4	(18)
Trend ('000)	Mar 01	723.3	-0.2	-1.8	9 758.1	0.1	1.3	7.4	(18)
Employed persons									
Original ('000)	Mar 01	669.5	-0.7	-1.2	9 065.2	0.2	1.3	7.4	(18)
Trend ('000)	Mar 01	670.7	-0.1	-0.8	9 090.9	0.0	1.3	7.4	(18)
Participation rate									
Original(b) (%)	Mar 01	59.7	-0.8	-1.6	63.6	-0.3	-0.1	..	(18)
Trend(b) (%)	Mar 01	59.8	-0.1	-1.4	63.6	0.1	0.1	..	(18)
Unemployment rate									
Original(b) (%)	Mar 01	7.3	-0.5	-0.8	7.2	-0.4	-0.1	..	(18)
Trend(b) (%)	Mar 01	7.3	0.0	-0.9	6.8	0.0	0.0	..	(18)
Job vacancies ('000)	Feb 01	6.3	16.7	12.5	95.5	-12.1	-15.3	6.6	(19)
Industrial disputes ('000 working days lost)	Jan 01	0.2	-66.7	-66.7	11.1	-5.9	-56.6	1.8	(20)
<b>Income</b>									
Average weekly earnings (full-time adults; ordinary time)									
Original (\$)	Nov 00	766.40	2.8	8.6	802.50	0.6	5.1	..	(22)
Trend (\$)	Nov 00	762.80	2.2	7.7	804.70	1.2	5.5	..	(22)
Wage cost index (total hourly rate excluding bonuses)(c) (index no.)	Dec qtr 00	110.1	0.9	3.1	110.6	0.8	3.4	..	(23)
<b>Financial markets</b>									
Secured housing finance(d) (\$m)	Feb 01	351.0	-1.4	-11.8	5 666.0	6.9	-15.0	6.2	(24)
Finance commitments									
Personal (\$m)	Feb 01	250.5	-5.5	-3.4	3 890.0	0.2	-5.0	6.4	(25)
Commercial (\$m)	Feb 01	576.5	44.5	14.7	12 501.0	-0.4	-3.5	4.6	(25)
Lease (\$m)	Feb 01	15.2	97.4	-15.6	425.0	-0.5	-9.6	3.6	(25)
Interest rates(b)									
Banks new housing loans (%)	Mar 01	..	..	..	7.30	-0.25	0.00	..	(26)
Bank loans—small, medium business(e) (%)	Mar 01	..	..	..	8.50	-0.45	0.25	..	(26)
Bank loans—large business (%)	Mar 01	..	..	..	9.00	-0.50	0.25	..	(26)
(a) Base year of each index 1989-90 = 100.									
(b) Change is shown in terms of percentage points.									
(c) Base year of index Sep 1997 = 100.									
(d) Excludes alterations and additions. Includes refinancing.									
(e) Rate for business loans over \$50,000.									

## 2

### STATE SUMMARY

<i>Indicator</i>	<i>Period</i>	<i>NSW</i>	<i>Vic.</i>	<i>Qld</i>	<b>SA</b>	<i>WA</i>	<i>Tas.</i>	<i>NT</i>	<i>ACT</i>	<i>Source index</i>
SELECTED INDICATORS										
CPI—All groups(a) (index no.)	Dec qtr 00	132.2	130.8	131.6	<b>132.5</b>	128.8	131.2	130.6	131.1	(13)
Participation rate trend (%)	Mar 01	62.0	64.0	65.0	<b>59.8</b>	67.2	59.2	69.7	72.4	(18)
Unemployment rate trend (%)	Mar 01	6.0	6.4	8.8	<b>7.3</b>	6.9	8.9	5.4	4.8	(18)
Average weekly earnings (full-time adults; ordinary time) trend (\$)	Nov 00	845.20	779.60	755.30	<b>762.80</b>	821.10	743.20	810.00	937.30	(22)
SELECTED INDICATORS PER HEAD OF POPULATION(b)										
State final demand										
Chain volume measures trend (\$'000)	Dec qtr 00	8.6	8.4	7.9	<b>7.2</b>	8.0	6.7	9.9	15.1	(1)
Retail turnover										
Current prices original (\$)	Feb 01	622.7	582.1	614.4	<b>559.7</b>	609.5	559.3	583.2	758.9	(3)
Current prices, trend	Feb 01	695.6	655.8	691.3	<b>641.3</b>	670.6	609.3	691.7	867.7	(3)
New motor vehicle registrations trend (no. per '000 population)	Feb 01	3.5	3.9	3.4	<b>2.8</b>	3.1	2.8	2.9	3.8	(4)
Private new capital expenditure										
Current prices trend (\$)	Dec qtr 00	568.6	528.3	455.1	<b>486.1</b>	600.4	301.9	521.8	353.9	(5)
Dwelling unit approvals										
Original (no. per '000 population)	Feb 01	0.365	0.674	0.405	<b>0.313</b>	0.534	0.210	0.143	0.592	(7)
Trend (no. per '000 population)	Feb 01	0.437	0.689	0.519	<b>0.373</b>	0.602	0.189	0.174	0.421	(7)
Secured housing finance(c) (\$)	Feb 01	359.4	258.1	261.3	<b>234.4</b>	340.3	138.2	158.6	299.2	(24)
PERCENTAGE CHANGE FROM PREVIOUS PERIOD										
State final demand										
Chain volume measures trend (%)	Dec qtr 00	-0.9	-0.1	-0.2	<b>-0.2</b>	-1.1	-1.2	-1.8	-2.0	(1)
Retail turnover										
Current prices original (%)	Feb 01	-9.3	-7.8	-10.3	<b>-8.8</b>	-7.7	-6.6	-5.2	-5.9	(3)
Current prices, trend	Feb 01	0.5	1.0	0.8	<b>0.6</b>	-0.2	0.7	0.1	1.0	(3)
New motor vehicle registrations trend (%)	Feb 01	-1.2	-1.9	-3.0	<b>-2.1</b>	-2.3	-1.0	-4.9	-1.0	(4)
Private new capital expenditure										
Current prices trend (%)	Dec qtr 00	-3.6	-3.3	-4.9	<b>2.2</b>	-0.9	1.4	-5.6	6.8	(5)
Dwelling unit approvals										
Original (%)	Feb 01	-12.5	23.2	-16.1	<b>8.6</b>	-4.3	6.5	-36.4	-33.2	(7)
Trend (%)	Feb 01	-4.1	5.4	-2.4	<b>1.5</b>	-1.5	-2.2	-12.8	-9.0	(7)
CPI—All groups (%)	Dec qtr 00	0.5	0.3	0.2	<b>0.2</b>	0.2	-0.1	0.5	0.3	(13)
Participation rate trend(d) (%)	Mar 01	0.0	0.1	0.1	<b>-0.1</b>	0.2	-0.1	-0.1	-0.2	(18)
Unemployment rate trend(d) (%)	Mar 01	0.0	0.0	0.2	<b>0.0</b>	0.3	0.0	-0.3	0.0	(18)
Average weekly earnings (full-time adults; ordinary time) trend (%)	Nov 00	1.2	0.4	1.5	<b>2.2</b>	1.1	0.4	0.8	1.7	(22)
Secured housing finance (%)	Feb 01	8.5	-0.1	16.8	<b>-1.4</b>	5.3	12.1	3.3	16.3	(24)

(a) Base year of index 1989-90 = 100.

(b) The latest quarterly estimate of Australian resident population has been used to calculate ratios for subsequent periods.

(c) Excludes alterations and additions. Includes refinancing.

(d) Change is shown in terms of percentage points.



## 3

## STATE ACCOUNTS AT CURRENT PRICES

Period	<i>Final consumption expenditure</i>		<i>Gross fixed capital formation</i>			State final demand	Gross State product	Compensation of employees
	Households	General government	Private	Public				
ANNUAL (\$m)								
<b>1997-98</b>	24 424	7 808	6 684	1 306	40 222	39 290	18 760	
<b>1998-99</b>	25 341	7 969	6 036	1 335	40 682	39 966	19 153	
<b>1999-00</b>	26 503	8 360	(a)10 237	(a)-1 547	43 553	42 282	19 951	
QUARTERLY, TREND (\$m)								
<b>1999-00</b>								
September	6 474	2 021	1 650	378	10 523	n.a.	4 927	
December	6 569	2 058	1 743	380	10 750	n.a.	4 962	
March	6 666	2 110	1 800	369	10 945	n.a.	5 033	
June	6 782	2 156	1 806	348	11 093	n.a.	5 113	
<b>2000-01</b>								
September	6 930	2 189	1 789	328	11 237	n.a.	5 161	
December	7 093	2 201	1 732	321	11 328	n.a.	5 182	

(a) The negative figure for Public gross fixed capital formation and the larger than usual positive figure for Private gross fixed capital formation are the result of the sale of the South Australian electrical transmission network in December quarter 1999. For more information see *National Income, Expenditure and Product, Australian National Accounts, June 2000* (Cat. no. 5206.0).

Source: *Australian National Accounts: Quarterly State Details* (Cat. no. 5206.0.40.001), and *Australian National Accounts: State Accounts* (Cat. no. 5220.0).

## 4

## STATE ACCOUNTS AT CHAIN VOLUME MEASURES(a)

Period	<i>Final consumption expenditure</i>		<i>Gross fixed capital formation</i>			State final demand	Gross State product
	Households	General government	Private	Public			
ANNUAL (\$m)							
<b>1997-98</b>	24 572	7 991	6 773	1 303	40 637	39 087	
<b>1998-99</b>	25 341	7 969	6 036	1 336	40 682	39 966	
<b>1999-00</b>	26 218	8 224	(b)10 013	(b)-1 456	42 999	41 381	
QUARTERLY, TREND (\$m)							
<b>1999-00</b>							
September	6 430	2 001	1 625	398	10 454	n.a.	
December	6 516	2 028	1 698	404	10 646	n.a.	
March	6 582	2 068	1 744	391	10 784	n.a.	
June	6 628	2 099	1 750	365	10 841	n.a.	
<b>2000-01</b>							
September	6 691	2 113	1 726	342	10 873	n.a.	
December	6 767	2 109	1 648	335	10 855	n.a.	

(a) Reference year for chain volume measures is 1996-97.

(b) The negative figure for Public gross fixed capital formation and the larger than usual positive figure for Private gross fixed capital formation are the result of the sale of the South Australian electrical transmission network in December quarter 1999. For more information see *National Income, Expenditure and Product, Australian National Accounts, June 2000* (Cat. no. 5206.0).

Source: *Australian National Accounts: Quarterly State Details* (Cat. no. 5206.0.40.001), and *Australian National Accounts: State Accounts* (Cat. no. 5220.0).

## 5

## MERCHANDISE EXPORTS, BY SELECTED COMMODITY GROUP(a)

<i>Period</i>	<i>Meat and meat preparations</i>	<i>Wheat</i>	<i>Wine</i>	<i>Wool and sheepskins (excl. wool tops)</i>	<i>Machinery</i>	<i>Metals and metal manufactures</i>	<i>Fish and crustaceans</i>	<i>Road vehicles, parts and accessories</i>	<i>Petroleum and petroleum products</i>	<i>Total(b)</i>
	\$'000	\$'000	\$'000	\$'000	\$'000	\$'000	\$'000	\$'000	\$'000	\$'000
<b>1997-98</b>	218 252	446 839	564 093	287 824	401 749	574 407	236 353	479 396	237 824	4 986 705
<b>1998-99</b>	198 541	567 812	693 733	212 226	384 702	543 675	252 592	651 949	154 425	5 332 300
<b>1999-00</b>	160 483	473 086	899 348	179 716	353 205	805 744	394 375	883 792	218 466	6 188 231
<b>1999-00</b>										
September	10 284	52 367	100 662	15 114	37 219	57 003	57 030	59 781	17 842	556 471
October	12 408	50 939	96 166	16 327	29 940	69 728	28 318	65 627	28 792	546 911
November	13 487	7 829	54 034	16 631	31 130	70 076	26 161	141 478	3 439	502 798
December	12 091	73 023	50 412	13 568	26 925	71 545	21 104	179 287	19 102	618 005
January	11 676	42 774	46 507	9 949	20 727	49 340	24 759	24 514	17 151	381 964
February	15 413	42 027	61 522	14 350	26 925	77 412	19 371	44 842	26 572	499 394
March	16 203	37 670	81 909	15 355	31 158	75 803	21 515	80 430	26 155	560 304
April	15 688	48 190	81 644	13 701	26 242	69 225	28 678	21 432	27 316	484 156
May	16 988	31 684	93 800	20 262	33 529	69 203	27 111	64 861	3 473	488 743
June	16 704	23 814	90 533	21 491	32 751	81 301	28 968	63 329	30 107	564 152
<b>2000-01</b>										
July	17 198	19 207	91 473	18 494	31 670	66 877	37 243	113 052	28 523	569 048
August	12 891	34 504	91 522	13 905	32 251	54 225	117 255	119 957	12 106	643 760
September	21 175	66 366	110 883	17 429	29 031	96 525	66 255	137 895	49 737	761 900
October	22 643	31 594	104 142	26 188	29 363	93 449	17 387	66 730	12 221	557 468
November	20 950	34 320	66 654	24 868	40 103	92 366	25 144	99 097	37 355	608 319
December	23 003	55 592	74 433	17 779	35 702	95 557	23 853	197 310	34 021	785 764
January	15 360	41 870	56 684	11 843	19 451	71 308	27 610	36 155	11 699	464 291
February	23 299	80 599	79 309	19 548	27 871	89 236	16 891	109 181	31 051	699 765

(a) Restrictions are placed on the release of statistics for certain commodities for reasons of confidentiality. These restrictions do not affect total export and import figures, but they can affect some items within commodity, industry and country tables. See *International Trade* (Cat. no. 5422.0), Explanatory Notes, paragraph 30, for more details.

(b) Includes other commodity groups not listed.

Source: ABS data available on request.

## 6

## MERCHANDISE EXPORTS, BY SELECTED COUNTRIES AND COUNTRY GROUPS

Period	European Union					South-East and North-East Asia				
	United States of America	Middle East	United Kingdom	Total European Union	New Zealand	Japan	China	Hong Kong	ASEAN	Total
	\$'000	\$'000	\$'000	\$'000	\$'000	\$'000	\$'000	\$'000	\$'000	\$'000
<b>1997-98</b>	632 203	389 766	424 251	849 932	354 698	612 475	331 489	239 652	491 573	2 023 385
<b>1998-99</b>	705 166	640 412	476 340	928 468	385 513	625 530	302 776	219 536	432 730	1 898 837
<b>1999-00</b>	954 681	724 871	625 154	1 073 928	446 026	787 295	315 199	255 679	492 304	2 297 913
<b>1999-00</b>										
September	57 055	41 511	73 174	112 056	44 181	94 402	31 426	22 587	43 853	214 621
October	46 383	80 029	78 330	117 681	49 572	62 459	32 529	25 385	40 020	203 079
November	102 334	82 481	33 828	67 501	40 223	36 313	31 053	22 591	46 641	169 668
December	147 939	130 984	36 575	76 383	37 356	40 148	14 457	27 195	40 711	171 092
January	40 261	53 129	30 102	63 379	22 005	37 506	20 084	29 260	25 167	142 744
February	55 875	71 510	42 617	73 030	44 832	48 221	41 265	20 241	38 646	206 501
March	131 298	24 442	53 267	87 039	37 877	65 469	43 237	26 342	41 680	215 769
April	68 381	66 629	58 962	99 714	19 524	63 008	21 328	20 398	39 863	187 566
May	101 180	30 245	64 293	101 411	23 024	53 701	19 306	14 037	49 465	173 766
June	62 092	61 433	56 258	94 338	41 788	109 779	25 500	18 924	61 779	247 770
<b>2000-01</b>										
July	100 224	65 100	55 658	85 089	34 853	85 633	24 427	23 112	51 101	216 245
August	128 909	59 559	66 643	101 217	32 894	157 189	22 980	12 572	45 170	262 062
September	96 199	108 823	86 998	136 682	39 383	142 299	23 256	24 806	66 988	292 464
October	57 172	61 372	84 628	128 614	42 331	39 822	42 670	18 484	59 849	197 497
November	141 740	53 990	30 339	59 351	54 203	55 931	54 946	36 927	54 344	249 512
December	161 449	158 258	37 513	74 511	29 605	81 125	17 245	31 396	60 236	243 991
January	55 518	90 195	32 418	58 760	21 407	37 028	24 316	31 773	51 878	172 156
February	100 575	148 199	51 009	108 535	35 607	50 722	63 007	29 802	58 991	235 641

Source: ABS data available on request.

## 7

## MERCHANDISE EXPORTS, BY INDUSTRY OF ORIGIN(a)

Period	Manufacturing								Total
	Agriculture, forestry and fishing(b)	Mining	Food, beverages and tobacco	Petroleum, coal, chemical associated product	Metal product	Machinery and equipment	Other manu- facturing	Other industries/ confidential	
	\$'000	\$'000	\$'000	\$'000	\$'000	\$'000	\$'000	\$'000	\$'000
<b>1997-98</b>	1 188 938	137 851	1 205 265	292 175	615 344	994 597	262 815	289 719	4 986 705
<b>1998-99</b>	1 352 378	73 125	1 282 013	285 053	581 372	1 172 362	264 973	321 024	5 332 300
<b>1999-00</b>	934 944	135 461	1 517 721	369 480	837 235	1 412 721	256 771	723 899	6 188 231
<b>1999-00</b>									
September	74 415	1 155	168 993	30 754	60 553	115 282	20 174	85 146	556 471
October	85 540	19 297	143 971	40 142	71 232	110 813	24 368	51 548	546 911
November	41 532	7 772	97 497	16 152	72 647	185 987	22 701	58 511	502 798
December	102 230	23 130	86 989	34 314	75 511	220 588	20 718	54 524	618 005
January	81 352	1 897	92 547	26 226	50 560	54 575	17 884	56 923	381 964
February	69 558	20 910	110 729	39 201	81 114	87 688	21 193	69 001	499 394
March	91 256	1 157	136 228	40 091	78 579	127 314	23 185	62 493	560 304
April	77 966	20 118	140 525	40 372	71 716	62 360	19 912	51 186	484 156
May	73 998	1 208	148 640	16 480	72 947	113 986	20 553	40 930	488 743
June	68 317	22 340	152 594	44 089	84 209	110 627	23 176	58 799	564 152
<b>2000-01</b>									
July	65 147	6 159	162 950	42 580	71 223	160 082	22 674	38 234	569 048
August	71 380	3 238	171 659	25 645	59 116	168 763	21 156	122 802	643 760
September	93 636	28 341	192 961	64 838	98 056	183 475	20 763	79 830	761 900
October	73 874	9 037	155 408	23 942	96 272	114 445	23 560	60 931	557 468
November	75 775	1 018	122 783	49 627	96 412	155 830	20 740	86 134	608 319
December	96 938	29 670	141 397	48 476	99 064	252 007	21 430	96 782	785 764
January	78 275	8 163	116 043	22 477	75 112	64 587	20 674	78 959	464 291
February	111 583	28 060	154 243	44 591	94 855	152 335	18 799	95 300	699 765

(a) Restrictions are placed on the release of statistics for certain commodities for reasons of confidentiality. These restrictions do not affect total export and import figures, but they can affect some items within commodity, industry and country tables. See *International Trade* (Cat. no. 5422.0), Explanatory Notes, paragraph 30, for more details.

(b) Bulk barley details are only included in this item for periods prior to September 1999. Due to confidentiality restrictions bulk barley is included in 'Other industries/confidential' from September 1999 onwards.

Source: ABS data available on request.

## 8

## MERCHANDISE IMPORTS, BY SELECTED COMMODITY GROUP(a)

<i>Period</i>	<i>Food, beverages and tobacco</i>	<i>Petroleum and petroleum products</i>	<i>Chemicals</i>	<i>Textiles</i>	<i>Metals and metal manufactures</i>	<i>Machinery</i>	<i>Road vehicle parts and accessories</i>	<i>Other manufactured goods</i>	<i>Total(b)</i>
	\$'000	\$'000	\$'000	\$'000	\$'000	\$'000	\$'000	\$'000	\$'000
<b>1997-98</b>	148 771	445 218	274 741	93 815	280 562	1 061 260	772 203	739 266	3 940 198
<b>1998-99</b>	162 784	271 492	281 097	96 052	264 732	917 879	812 096	765 643	3 716 152
<b>1999-00</b>	163 509	515 641	263 959	97 100	262 737	1 164 672	834 842	845 913	4 319 348
<b>1999-00</b>									
September	15 546	92	17 923	8 064	20 812	104 051	68 466	73 988	320 308
October	16 262	42 269	14 472	7 989	19 249	81 573	71 316	69 205	332 726
November	19 706	81 584	18 593	7 803	20 635	75 748	59 410	73 473	369 548
December	15 031	73 789	25 809	6 376	22 494	120 636	49 107	69 831	395 215
January	11 042	40 216	27 862	6 948	20 703	71 575	56 419	61 667	309 362
February	13 633	36 561	17 170	7 363	22 138	149 008	62 560	74 495	403 840
March	10 534	23 846	36 835	8 774	24 635	100 622	77 585	73 811	376 965
April	8 677	49 022	23 130	9 829	23 748	78 906	63 183	59 870	330 807
May	12 970	150	26 399	8 829	25 235	103 045	93 658	89 393	376 376
June	13 173	81 962	25 199	8 426	24 025	116 514	82 365	70 038	437 101
<b>2000-01</b>									
July	12 672	12 429	15 366	7 477	27 313	81 141	88 021	64 441	323 578
August	15 478	105 525	18 815	10 427	31 299	84 295	85 147	100 451	466 221
September	14 607	112 111	16 617	7 996	26 072	92 650	69 757	74 871	426 734
October	19 561	20	16 312	9 911	29 337	100 090	77 594	76 202	343 395
November	19 530	186 246	16 133	7 366	30 389	107 265	79 920	84 173	552 576
December	13 166	42 077	15 344	6 399	20 165	102 499	58 572	62 099	333 990
January	12 558	16 440	24 471	6 950	27 723	97 727	47 132	71 541	322 059
February	11 456	123 599	22 385	8 995	22 922	89 474	59 832	78 041	438 016

(a) Restrictions are placed on the release of statistics for certain commodities for reasons of confidentiality. These restrictions do not affect total export and import figures, but they can affect some items within commodity, industry and country tables. See *International Trade* (Cat. no. 5422.0), Explanatory Notes, paragraph 30, for more details.

(b) Includes other commodity groups not listed.

Source: ABS data available on request.

## 9

## TURNOVER OF RETAIL ESTABLISHMENTS, BY INDUSTRY—TREND(a)

Period	Food retailing	Department stores	Clothing and soft good retailing	Household good retailing	Recreational good retailing	Other retailing	Hospitality and services	Total
	\$m	\$m	\$m	\$m	\$m	\$m	\$m	\$m
<b>1999-00</b>								
December	377.0	92.5	51.4	92.1	30.2	92.4	155.3	893.6
January	376.9	92.2	50.0	92.3	29.7	92.5	155.3	892.3
February	378.2	92.3	48.8	92.8	29.0	92.3	154.3	892.0
March	379.9	93.0	47.9	93.6	28.3	92.0	153.0	893.5
April	390.6	94.0	47.5	94.8	27.8	92.3	152.3	896.5
May	389.8	95.0	47.6	95.7	27.4	93.6	152.2	900.2
June	387.2	95.3	48.0	96.4	27.1	96.4	152.9	903.6
<b>2000-01</b>								
July	390.4	95.1	47.3	97.9	26.0	98.1	163.9	918.3
August	387.0	94.4	48.1	98.3	25.8	102.5	166.4	922.9
September	385.5	93.6	49.1	98.5	25.6	106.7	169.3	928.5
October	386.1	93.1	49.9	98.6	25.4	109.9	171.8	934.8
November	388.0	93.1	50.8	98.6	25.2	112.0	174.0	941.6
December	390.3	93.4	51.4	98.6	25.0	113.5	176.2	948.4
January	392.6	93.8	51.8	98.5	24.9	114.6	178.1	954.6
February	394.3	94.3	52.1	98.4	24.9	115.3	179.6	960.5

(a) A break in the trend series occurred between June and July 2000 because of the impact of the The New Tax System on Retail turnover.

Source: Retail Trade, Australia (Cat. no. 8501.0).

## 10

## NEW MOTOR VEHICLE REGISTRATIONS, BY TYPE OF VEHICLE

Period	Original			Seasonally adjusted			Trend estimate(a)		
	Passenger vehicles	Other vehicles	Total	Passenger vehicles	Other vehicles	Total	Passenger vehicles	Other vehicles	Total
<b>1999-00</b>									
December	3 729	694	4 423	3 474	625	4 099	3 283	657	3 940
January	2 462	464	2 926	3 252	628	3 880	3 270	643	3 913
February	3 269	599	3 868	3 280	640	3 920	3 221	632	3 853
March	3 289	705	3 994	3 039	623	3 662	3 151	624	3 775
April	2 400	500	2 900	2 920	598	3 518	3 083	620	3 703
May	3 171	725	3 896	3 142	637	3 779	3 034	621	3 655
June	2 720	943	3 663	2 200	658	2 858	3 001	616	3 617
<b>2000-01</b>									
July	4 078	538	4 616	4 128	569	4 697	3 729	604	4 333
August	3 956	582	4 538	3 790	580	4 370	3 731	593	4 324
September	3 547	591	4 138	3 665	638	4 303	3 742	589	4 331
October	3 747	494	4 241	3 787	571	4 358	3 742	595	4 337
November	3 997	537	4 534	3 657	519	4 176	3 726	610	4 336
December	3 991	658	4 649	4 025	663	4 688	3 680	628	4 308
January	2 857	579	3 436	3 586	747	4 333	3 611	646	4 257
February	3 069	568	3 637	3 177	607	3 784	3 508	659	4 167

(a) A break in the trend series occurred between June and July 2000 because of the impact of The New Tax System.

Source: New Motor Vehicle Registrations, Australia, Preliminary (Cat. no. 9301.0) and ABS data available on request.

# 11

## ACTUAL PRIVATE NEW CAPITAL EXPENDITURE, BY SELECTED INDUSTRY AND TYPE OF ASSET

Period	Industry			Total	Type of asset	
	Mining	Manufacturing	Other selected industries		New buildings and structures	Equipment, plant and machinery
ANNUAL (\$m)						
<b>1997-98</b>	1 366	820	1 006	3 192	792	2 400
<b>1998-99</b>	508	776	993	2 277	529	1 748
<b>1999-00</b>	242	853	1 355	2 451	619	1 832
QUARTERLY, ORIGINAL (\$m)						
<b>1999-00</b>						
September	71	163	391	625	125	500
December	50	232	249	530	117	413
March	55	208	341	603	157	446
June	67	251	375	692	220	472
<b>2000-01</b>						
September	126	208	316	649	180	469
December	183	219	444	846	264	582
QUARTERLY, TREND (\$m)						
<b>1999-00</b>						
September	n.a.	n.a.	n.a.	558	109	449
December	n.a.	n.a.	n.a.	583	135	448
March	n.a.	n.a.	n.a.	619	165	454
June	n.a.	n.a.	n.a.	666	192	474
<b>2000-01</b>						
September	n.a.	n.a.	n.a.	712	212	500
December	n.a.	n.a.	n.a.	728	222	506

Source: State Estimates of Private New Capital Expenditure (Cat. no. 5646.0).

# 12

## TOURIST ACCOMMODATION

Period	Hotels with facilities				Motels and guesthouses				Serviced apartments			
	Estab-lish-ments	Guest rooms	Room occu-pancy	Takings	Estab-lish-ments	Guest rooms	Room occu-pancy	Takings	Estab-lish-ments	Guest rooms	Room occu-pancy	Takings
	no.	no.	%	\$'000	no.	no.	%	\$'000	no.	no.	%	\$'000
<b>1998-99</b>												
December	61	4 053	63.0	24 954	146	5 135	58.1	19 990	22	888	66.0	4 884
March	61	4 053	59.6	22 181	145	5 119	55.3	18 793	22	888	65.8	4 516
June	62	4 095	58.6	22 362	146	5 189	51.5	18 140	22	889	54.1	3 947
<b>1999-00</b>												
September	62	3 988	58.0	20 959	146	5 175	50.7	17 812	23	1 084	60.2	5 265
December	62	4 090	61.6	24 619	146	5 166	55.1	19 928	26	1 207	61.5	6 462
March	62	4 065	60.1	23 738	146	5 168	55.3	19 956	26	1 213	62.6	6 739
June	60	4 037	58.7	23 033	147	5 212	53.1	19 309	26	1 208	62.7	6 912
<b>2000-01</b>												
September	60	4 070	56.3	22 888	147	5 218	50.6	19 548	26	1 211	56.9	6 156
December	62	4 128	58.2	24 907	146	5 204	54.4	21 189	26	1 207	62.4	7 109

Source: Tourist Accommodation, Australia (Cat. no. 8635.0).

Period	Houses		Total dwelling units		New residential building \$m	Alterations and additions to residential building \$m	Total residential building \$m	Non-residential building \$m	Total building \$m
	Private sector	Total	Private sector	Total					
	no.	no.	no.	no.					
ANNUAL									
<b>1997-98</b>	6,187	6,380	6,997	7,215	630.2	127.7	758.0	602.2	1,360.1
<b>1998-99</b>	6,567	6,776	7,696	7,927	775.5	144.0	919.5	670.9	1,590.4
<b>1999-00</b>	8,290	8,392	9,915	10,024	1,022.9	188.9	1,211.8	585.7	1,797.5
MONTHLY, ORIGINAL									
<b>1999-00</b>									
December	736	736	842	842	85.8	13.4	99.2	129.5	228.8
January	649	649	783	783	69.7	25.4	95.1	18.5	113.6
February	836	838	1,071	1,073	111.8	18.7	130.5	43.3	173.9
March	807	809	972	974	99.7	15.8	115.5	59.0	174.5
April	561	565	635	643	64.9	11.8	76.7	58.7	135.3
May	616	625	795	804	79.5	17.3	96.8	66.1	162.9
June	517	524	591	598	63.9	11.5	75.4	24.3	99.7
<b>2000-01</b>									
July	443	461	689	710	83.5	9.3	92.8	60.6	153.4
August	450	465	507	522	57.8	11.9	69.7	89.6	159.3
September	353	353	409	409	42.1	12.6	54.7	29.4	84.1
October	434	434	510	514	55.6	13.1	68.7	45.3	114.0
November	458	462	650	661	63.4	15.0	78.3	48.2	126.6
December	381	398	439	458	49.4	12.1	61.4	52.6	114.1
January	364	364	423	432	46.5	13.5	60.0	35.2	95.3
February	380	385	464	469	50.4	13.8	64.2	36.6	100.8
MONTHLY, TREND									
<b>1999-00</b>									
December	842	849	991	998	96.6	18.8	115.5	37.9	153.3
January	846	849	1,011	1,014	98.8	19.9	118.6	40.2	158.8
February	812	813	983	985	97.4	19.8	117.2	42.9	160.1
March	747	749	916	919	92.7	18.4	111.1	46.4	157.6
April	659	664	820	826	85.4	16.1	101.5	50.0	151.5
May	567	575	709	718	76.2	13.7	89.9	52.6	142.5
June	487	497	609	620	67.1	11.9	79.0	53.3	132.3
<b>2000-01</b>									
July	430	440	537	548	59.5	11.2	70.7	52.4	123.1
August	402	411	500	510	55.0	11.1	66.1	51.6	117.7
September	399	407	494	504	53.6	11.4	65.0	51.7	116.7
October	413	419	510	519	54.3	12.1	66.4	52.0	118.4
November	429	434	528	537	55.6	13.0	68.6	51.5	120.1
December	440	445	540	549	56.6	13.8	70.5	49.9	120.4
January	446	451	541	551	57.1	14.5	71.6	47.7	119.3
February	449	454	549	559	58.3	15.0	73.3	44.6	117.8

Source: Building Approvals, Australia (Cat. no. 8731.0) and ABS data available on request.



## 14

## BUILDING COMMENCEMENTS

Period	New houses		Total dwelling units(a)		New residential building \$m	Alterations and additions to residential building \$m	Non-residential building		
	Private sector no.	Total no.	Private sector no.	Total no.			Private sector \$m	Total \$m	Total building \$m
<b>1997-98</b>	5,628	5,823	6,429	6,645	614.7	134.5	426.4	550.7	1299.9
<b>1998-99</b>	6,092	6,297	7,183	7,413	771.3	139.7	400.7	624.3	1535.3
<b>1999-00</b>	7,729	7,856	9,260	9,404	1044.8	198.8	351.2	576.8	1820.5
<b>1998-99</b>									
December	1,644	1,699	1,891	1,965	231.1	34.3	94.6	134.8	400.2
March	1,293	1,326	1,611	1,644	171.6	32.7	145.6	235.5	439.8
June	1,591	1,661	1,756	1,826	183.9	37.8	71.0	122.9	344.6
<b>1999-00</b>									
September	1,752	1,792	2,114	2,164	251.2	42.6	84.1	109.3	403.1
December	1,947	2,007	2,262	2,325	250.9	45.2	92.7	132.2	428.3
March	2,054	2,064	2,533	2,543	284.9	52.1	70.8	182.9	519.9
June	1,977	1,994	2,352	2,373	257.8	58.9	103.6	152.5	469.2
<b>2000-01</b>									
September	1,380	1,419	1,773	1,815	228.9	25.6	104.8	166.3	420.8
December	1,359	1,364	1,528	1,542	170.9	43.7	114.8	143.1	357.7

(a) Includes conversions.

Source: *Building Activity, Australia* (Cat. no. 8752.0).

## VALUE OF BUILDING WORK DONE AND COMPLETED DURING PERIOD

Period	New houses		New residential building			Non-residential building		Total building		
	Private sector	Total	Private sector	Total	Alterations and additions to residential building	Total residential building	Private sector	Total	Private sector	Total
	\$m	\$m	\$m	\$m	\$m	\$m	\$m	\$m	\$m	\$m
VALUE OF BUILDING WORK DONE										
<b>1997-98</b>	522.9	535.7	590.4	605.4	131.6	737.0	538.9	685.0	1,259.3	1,422.0
<b>1998-99</b>	599.4	614.6	720.8	737.7	147.7	885.4	417.1	571.6	1,283.8	1,457.0
<b>1999-00</b>	798.1	812.2	984.5	999.9	195.5	1,195.4	409.9	629.4	1,585.1	1,824.8
<b>1998-99</b>										
December	151.4	155.1	185.6	189.9	40.3	230.1	121.5	160.4	347.0	390.6
March	142.4	144.9	169.5	172.5	33.2	205.7	87.5	131.1	290.1	336.8
June	154.7	158.9	189.9	194.4	34.4	228.9	72.6	117.2	296.2	346.1
<b>1999-00</b>										
September	166.8	171.9	212.6	218.4	41.3	259.8	116.7	171.6	369.4	431.3
December	187.5	192.0	227.3	232.1	46.8	278.9	101.0	149.2	374.3	428.1
March	193.0	196.1	239.4	242.6	47.2	289.9	86.3	145.3	372.4	435.2
June	250.8	252.2	305.1	306.8	60.1	366.9	105.9	163.3	469.1	530.2
<b>2000-01</b>										
September	175.9	178.2	228.3	230.7	30.9	261.5	84.0	138.2	341.8	399.7
December	180.8	182.2	216.3	218.5	41.7	260.2	114.9	174.3	371.0	434.5
VALUE OF BUILDING WORK COMPLETED										
<b>1997-98</b>	504.1	514.7	561.8	574.7	125.0	699.7	571.2	744.0	1,256.3	1,443.7
<b>1998-99</b>	600.6	614.8	700.0	715.2	153.2	868.4	505.3	639.4	1,356.8	1,507.8
<b>1999-00</b>	713.5	730.1	867.6	886.2	191.9	1,078.1	362.9	538.4	1,419.4	1,616.4
<b>1998-99</b>										
December	168.4	174.1	190.2	196.1	49.3	245.4	174.9	203.3	414.1	448.7
March	145.1	147.6	180.1	183.0	36.7	219.7	161.2	207.4	377.8	427.1
June	139.0	140.7	168.6	170.3	31.0	201.4	101.0	122.0	300.0	323.3
<b>1999-00</b>										
September	148.9	154.7	170.2	177.7	38.5	216.2	67.9	104.1	275.4	320.2
December	190.6	195.1	221.7	226.5	45.5	272.0	124.7	161.8	391.3	433.8
March	156.0	160.2	177.8	182.0	42.2	224.2	100.8	150.4	320.0	374.6
June	217.9	220.1	297.9	300.1	65.7	365.8	69.6	122.0	432.8	487.8
<b>2000-01</b>										
September	175.5	176.2	199.0	199.9	31.4	231.4	133.2	180.5	362.5	411.9
December	218.4	221.0	309.2	312.8	35.5	348.3	82.5	107.5	425.7	455.7

Source: Building Activity, Australia (Cat. no. 8752.0).

<i>Period</i>	<i>Pigmeat</i>	<i>Beef</i>	<i>Mutton</i>	<i>Lamb</i>	<i>Gas</i>	<i>Sawn timber(a)</i>
	<i>tonnes</i>	<i>tonnes</i>	<i>tonnes</i>	<i>tonnes</i>	<i>m MJ</i>	<i>m<sup>3</sup></i>
<b>1997-98</b>	28 489	80 924	58 554	38 224	78 441	361 257
<b>1998-99</b>	30 864	62 266	48 029	44 173	86 228	374 590
<b>1999-00</b>	31 927	78 001	28 970	56 668	87 442	425 549
<b>1998-99</b>						
December	7 269	17 609	15 737	10 997	19 718	94 578
March	8 031	14 780	14 029	10 101	19 343	88 282
June	8 782	14 717	7 915	12 337	23 594	96 391
<b>1999-00</b>						
September	7 294	17 107	5 654	11 492	22 162	111 075
December	7 504	18 401	8 714	11 944	20 992	93 802
March	8 245	21 743	8 810	14 475	21 790	112 949
June	8 884	20 750	5 792	18 757	22 498	107 723
<b>2000-01</b>						
September	8 227	18 011	8 072	15 785	24 437	126 440
December	8 143	21 982	9 826	15 689	n.y.a.	89 486

(a) From Australian softwood logs only.

Source: *Livestock Products, Australia* (Cat. no. 7215.0) and ABS data available on request.

<i>Period</i>	<i>Food</i>	<i>Alcohol and tobacco</i>	<i>Clothing and footwear(a)</i>	<i>Housing (b)</i>	<i>House furnishings, supplies and services(b)</i>	<i>Health (c)</i>	<i>Transportation(b)</i>	<i>Communication(a)</i>	<i>Recreation(c)</i>	<i>Education(b)</i>	<i>Miscellaneous(c)</i>	<i>All groups</i>
ANNUAL AVERAGE (1989–90 = 100.0)												
<b>1997–98</b>	n.a.	n.a.	n.a.	n.a.	n.a.	n.a.	n.a.	n.a.	n.a.	n.a.	n.a.	121.6
<b>1998–99</b>	127.7	171.8	105.0	92.0	113.3	176.0	121.6	101.9	117.9	204.8	142.7	123.2
<b>1999–00</b>	130.8	179.1	103.3	97.0	112.9	165.7	129.4	97.7	119.1	215.8	148.8	126.3
QUARTERLY (1989–90 = 100.0)												
<b>1999–00</b>												
September	129.7	174.4	104.8	95.0	112.5	164.5	127.8	97.7	119.7	210.8	143.2	125.1
December	130.4	177.8	102.5	96.9	112.7	163.7	127.4	97.2	119.7	210.8	147.4	125.7
March	131.2	181.6	101.9	97.9	112.9	166.7	130.4	97.0	118.5	220.7	150.6	126.8
June	131.9	182.5	104.0	98.3	113.4	167.9	131.9	98.7	118.6	220.7	153.9	127.6
<b>2000–01</b>												
September	133.8	193.4	113.6	103.9	116.0	168.5	136.8	105.5	122.7	220.9	157.8	132.3
December	134.2	196.0	111.2	103.9	115.8	167.6	137.6	105.0	123.4	220.9	158.3	132.5
PERCENTAGE CHANGE FROM SAME QUARTER OF PREVIOUS YEAR												
<b>1999–00</b>												
September	3.0	2.2	-0.5	4.2	-1.1	-12.6	4.6	-6.1	2.6	6.0	1.0	1.7
December	1.7	3.7	-2.8	5.4	-1.1	-12.6	5.0	-5.9	2.0	6.0	2.8	1.7
March	2.5	5.7	-1.7	6.2	0.5	1.7	7.9	-3.2	-0.1	4.7	5.2	3.3
June	2.4	5.3	-1.6	5.9	0.2	2.1	7.8	-1.3	-0.3	4.7	7.9	3.2
<b>2000–01</b>												
September	3.2	10.9	8.4	9.4	3.1	2.4	7.4	8.0	2.5	4.8	10.2	5.8
December	2.9	10.2	8.5	7.2	2.8	2.4	8.0	8.0	3.1	4.8	7.4	5.4
PERCENTAGE CHANGE FROM PREVIOUS QUARTER												
<b>1999–00</b>												
September	0.7	0.6	-0.9	2.4	-0.6	0.0	4.1	-2.3	0.7	0.0	0.4	1.2
December	0.5	1.9	-2.2	2.0	0.2	-0.5	-0.3	-0.5	0.0	0.0	2.9	0.5
March	0.6	2.1	-0.6	1.0	0.2	1.8	2.4	-0.2	-1.0	4.7	2.2	0.9
June	0.5	0.5	2.1	0.4	0.4	0.7	1.2	1.8	0.1	0.0	2.2	0.6
<b>2000–01</b>												
September	1.4	6.0	9.2	5.7	2.3	0.4	3.7	6.9	3.5	0.1	2.5	3.7
December	0.3	1.3	-2.1	0.0	-0.2	-0.5	0.6	-0.5	0.6	0.0	0.3	0.2

(a) Series renamed only (linked to the 13th series equivalent). See Appendix A2 of *Consumer Price Index* (Cat. no. 6401.0) for more details.

(b) Minor change to composition and in some cases series renamed (linked to the 13th series equivalent). See Appendix A2 of *Consumer Price Index* (Cat. no. 6401.0) for more details.

(c) New series, part or combination of previously published series. See Appendix A2 of *Consumer Price Index* (Cat. no. 6401.0) for more details.

Source: *Consumer Price Index* (Cat. no. 6401.0).

# 18

## ESTIMATED RESIDENT POPULATION AND COMPONENTS OF POPULATION CHANGE

Period	Net migration			Total increase	Population at end of period
	Natural increase	Interstate	Overseas(a)		
<b>1997-98</b>	6 602	-3 254	3 390	6 728	1 486 418
<b>1998-99</b>	6 751	-2 869	2 108	5 990	1 492 408
<b>1999-00</b>	6 546	-4 773	3 453	5 226	1 497 634
<b>1998-99</b>					
September	1 188	-422	778	1 544	1 487 661
December	1 775	-901	707	1 581	1 489 906
March	1 917	-682	1 149	2 384	1 491 391
June	1 713	-864	298	1 147	1 492 408
<b>1999-00</b>					
September	1 515	-600	784	1 699	1 494 315
December	1 540	-1 291	808	1 057	1 496 207
March	1 998	-1 735	662	925	1 497 132
June	1 493	-1 147	156	502	1 497 634
<b>2000-01</b>					
September	1 121	-1 030	(b)	(b)	(b)

(a) Includes category jumping.

(b) Overseas migration data for September quarter 2000 and, as a consequence, estimates of the resident population at September 2000 are not yet available.

Source: Australian Demographic Statistics (Cat. no. 3101.0).

# 19

## BIRTHS, DEATHS, MARRIAGES AND DIVORCES

Period	Registrations			
	Births	Deaths	Marriages	Divorces
<b>1997-98</b>	18 330	11 728	7 988	4 113
<b>1998-99</b>	18 399	11 648	8 034	4 191
<b>1999-00</b>	18 035	11 489	8 428	4 179
<b>1998-99</b>				
September	4 722	3 443	1 294	1 053
December	4 524	2 804	2 499	1 085
March	4 594	2 494	2 472	919
June	4 559	2 907	1 769	1 134
<b>1999-00</b>				
September	4 722	3 207	1 259	1 058
December	4 139	2 599	2 737	1 190
March	4 759	2 761	2 436	965
June	4 415	2 922	1 996	984
<b>2000-01</b>				
September	4 360	3 239	1 092	1 056

Source: Australian Demographic Statistics (Cat. no. 3101.0).

Period	Employed full-time		Employed part-time		Total employed		Unemployed		Labour force	
	Males	Females	Males	Females	Males	Females	Males	Females	Males	Females
ANNUAL AVERAGE ('000)										
<b>1997-98</b>	317.5	145.9	48.8	136.4	366.3	282.3	42.1	28.8	408.4	311.0
<b>1998-99</b>	319.4	148.1	49.2	136.2	368.6	284.3	40.2	26.6	408.8	310.9
<b>1999-00</b>	321.9	152.4	55.9	141.4	377.8	293.9	35.3	25.0	413.0	318.9
MONTHLY, ORIGINAL ('000)										
<b>1999-00</b>										
January	317.4	147.6	56.7	144.4	374.1	292.1	36.8	24.9	410.9	317.0
February	328.4	154.9	52.6	136.7	381.0	291.5	38.1	30.4	419.2	322.0
March	327.6	152.5	55.8	141.7	383.4	294.2	33.0	26.8	416.3	321.0
April	325.6	149.9	56.9	143.9	382.5	293.9	35.2	25.4	417.7	319.3
May	323.3	148.0	55.8	142.8	379.1	290.9	38.3	24.9	417.4	315.8
June	328.9	154.6	52.1	137.6	380.9	292.2	33.5	22.3	414.5	314.6
<b>2000-01</b>										
July	332.2	155.9	52.2	140.8	384.4	296.7	31.3	22.3	415.7	319.0
August	327.7	158.2	54.5	138.4	382.2	296.6	31.9	22.9	414.1	319.5
September	329.1	162.1	53.2	139.8	382.4	301.9	33.8	22.4	416.2	324.3
October	327.7	157.4	54.4	142.0	382.1	299.3	31.7	19.7	413.8	319.1
November	326.9	157.1	51.8	141.5	378.7	298.6	32.5	21.4	411.3	320.0
December	328.7	159.3	50.6	142.6	379.2	301.9	33.2	21.0	412.4	322.9
January	319.8	157.0	54.5	133.7	374.2	290.7	36.2	21.7	410.4	304.6
February	321.0	157.4	53.7	142.3	374.7	299.7	35.7	21.7	410.4	321.3
March	311.3	156.0	57.0	145.3	368.3	301.2	33.8	19.1	402.1	320.3
MONTHLY, TREND ('000)										
<b>1999-00</b>										
January	322.6	152.0	56.6	144.0	379.2	296.0	34.7	24.9	413.9	320.9
February	325.1	151.5	55.5	143.8	380.6	295.3	34.8	25.1	415.4	320.4
March	326.9	151.4	54.5	143.0	381.4	294.4	35.2	25.2	416.6	319.6
April	328.0	152.0	53.9	142.0	381.9	294.0	35.5	25.1	417.4	319.1
May	328.5	153.4	53.7	141.0	382.2	294.4	35.6	24.7	417.8	319.1
June	328.8	155.3	53.7	140.3	382.5	295.6	35.2	24.0	417.7	319.6
<b>2000-01</b>										
July	328.9	157.1	53.9	139.8	382.8	296.9	34.5	23.4	417.3	320.3
August	328.7	158.3	53.9	139.2	382.6	297.5	33.6	23.0	416.2	320.5
September	328.4	158.7	53.7	138.8	382.1	297.5	32.9	22.6	415.0	320.1
October	327.5	158.3	53.5	138.8	381.0	297.1	32.5	22.2	413.3	319.3
November	325.8	157.3	53.5	139.5	379.3	296.8	32.6	21.7	411.9	318.5
December	323.8	156.5	53.4	140.4	377.2	296.9	32.9	21.0	410.1	317.9
January	321.5	155.9	53.6	141.6	375.1	297.5	33.1	20.3	408.2	317.8
February	319.1	155.5	54.0	142.9	373.1	298.4	33.4	19.6	406.5	318.0
March	316.9	155.2	54.4	144.2	371.3	299.4	33.6	19.0	404.9	318.4

(a) Population aged 15 and over.

Source: Labour Force, Australia, Preliminary (Cat. no. 6202.0).

## 21

## CIVILIAN LABOUR FORCE, UNEMPLOYMENT AND PARTICIPATION RATES(a)

Period	Civilian population			Unemployment rate			Participation rate		
	Males aged 15 and over	Females aged 15 and over	Persons aged 15-19	Males all ages	Females all ages	Persons all ages	Males	Females	Persons
	'000	'000	%	%	%	%	%	%	%
ANNUAL AVERAGE									
<b>1997-98</b>	583.9	604.5	23.2	10.3	9.2	9.8	70.8	51.5	61.0
<b>1998-99</b>	583.2	609.8	21.7	9.8	8.6	9.3	70.1	51.0	60.3
<b>1999-00</b>	587.6	613.8	20.9	8.6	7.8	8.3	70.3	51.9	60.9
MONTHLY, ORIGINAL									
<b>1999-00</b>									
January	587.8	614.0	21.8	9.0	7.8	8.5	69.9	51.6	60.6
February	588.1	614.2	23.3	9.1	9.5	9.3	71.3	52.4	61.6
March	588.4	614.4	22.0	7.9	8.4	8.1	70.8	52.3	61.3
April	588.8	614.7	19.3	8.4	8.0	8.2	70.9	51.9	61.2
May	589.2	614.9	19.4	9.2	7.9	8.6	70.8	51.4	60.9
June	589.6	615.2	17.5	8.1	7.1	7.7	70.3	51.1	60.5
<b>2000-01</b>									
July	590.0	615.5	15.1	7.5	7.0	7.3	70.5	51.8	61.0
August	590.4	615.8	20.5	7.7	7.2	7.5	70.1	51.9	60.8
September	590.7	616.0	17.6	8.1	6.9	7.6	70.4	52.6	61.4
October	591.0	616.3	16.9	7.7	6.2	7.0	70.0	51.8	60.7
November	591.3	616.6	18.2	7.9	6.7	7.4	69.6	51.9	60.5
December	591.5	616.9	20.7	8.0	6.5	7.4	69.7	52.4	60.9
January	591.8	617.0	20.6	8.8	7.0	8.0	69.4	50.6	59.8
February	592.0	617.2	18.8	8.7	6.7	7.8	69.3	52.1	60.5
March	592.3	617.4	17.7	8.4	6.0	7.3	67.9	51.9	59.7
MONTHLY, TREND									
<b>1999-00</b>									
January	n.a.	n.a.	n.a.	8.4	7.8	8.1	70.4	52.3	61.1
February	n.a.	n.a.	n.a.	8.4	7.8	8.1	70.6	52.2	61.2
March	n.a.	n.a.	n.a.	8.4	7.9	8.2	70.8	52.0	61.2
April	n.a.	n.a.	n.a.	8.5	7.9	8.2	70.9	51.9	61.2
May	n.a.	n.a.	n.a.	8.5	7.7	8.2	70.9	51.9	61.2
June	n.a.	n.a.	n.a.	8.4	7.5	8.0	70.8	52.0	61.2
<b>2000-01</b>									
July	n.a.	n.a.	n.a.	8.3	7.3	7.9	70.7	52.0	61.2
August	n.a.	n.a.	n.a.	8.1	7.2	7.7	70.5	52.0	61.1
September	n.a.	n.a.	n.a.	7.9	7.1	7.5	70.3	52.0	60.9
October	n.a.	n.a.	n.a.	7.9	7.0	7.5	70.0	51.8	60.7
November	n.a.	n.a.	n.a.	7.9	6.8	7.4	69.7	51.7	60.5
December	n.a.	n.a.	n.a.	8.0	6.6	7.4	69.3	51.5	60.3
January	n.a.	n.a.	n.a.	8.1	6.4	7.4	69.0	51.5	60.1
February	n.a.	n.a.	n.a.	8.2	6.2	7.3	68.7	51.5	59.9
March	n.a.	n.a.	n.a.	8.3	6.0	7.3	68.4	51.6	59.8

(a) Population aged 15 and over.

Source: Labour Force, Australia, Preliminary (Cat. no. 6202.0).

## AVERAGE WEEKLY EARNINGS OF EMPLOYEES

Period	Males			Females			Persons		
	Full-time adult ordinary time earnings	Full-time adult total earnings	All males total earnings	Full-time adult ordinary time earnings	Full-time adult total earnings	All females total earnings	Full-time adult ordinary time earnings	Full-time adult total earnings	All employees total earnings
ANNUAL AVERAGE (\$ per week)									
<b>1997-98</b>	705.60	755.05	646.28	606.05	619.33	438.50	670.53	707.20	545.70
<b>1998-99</b>	741.20	797.55	678.28	627.93	647.28	464.35	699.13	741.70	575.23
<b>1999-00</b>	756.75	812.53	695.00	641.65	663.28	457.23	714.38	757.50	575.90
QUARTERLY, ORIGINAL (\$ per week)									
<b>1999-00</b>									
August	742.70	792.00	669.30	631.20	655.70	451.20	702.00	742.20	560.40
November	745.30	805.60	697.40	638.70	663.40	453.80	705.70	752.70	572.80
February	768.60	821.20	708.30	645.30	656.80	461.30	723.00	760.30	584.50
May	770.40	831.30	705.00	651.40	677.20	462.60	726.80	774.80	585.90
<b>2000-01</b>									
August	791.60	846.00	724.80	667.70	692.60	484.00	745.50	788.90	603.60
November	814.90	866.00	748.30	681.40	698.00	488.30	766.40	805.00	618.50
QUARTERLY, TREND (\$ per week)									
<b>1999-00</b>									
August	742.70	796.50	683.60	632.00	655.70	453.80	702.10	744.80	569.00
November	750.50	804.50	693.10	636.80	657.40	453.50	708.50	750.50	572.60
February	760.90	817.50	700.90	643.80	663.60	458.40	717.80	760.80	579.10
May	775.70	833.70	711.50	654.50	676.10	468.10	731.10	775.30	580.00
<b>2000-01</b>									
August	792.70	848.60	726.80	667.80	690.20	479.40	746.50	789.90	603.60
November	810.90	861.90	746.80	681.60	702.90	490.20	762.80	803.60	618.90

Source: Average Weekly Earnings, States and Australia (Cat. no. 6302.0).



## 23

## SECURED HOUSING FINANCE COMMITMENTS(a)

Period	Original		Seasonally adjusted		Trend	
	Dwelling units	Value	Dwelling units	Value	Dwelling units	Value
	no.	\$m	no.	\$m	no.	\$m
<b>1999-00</b>						
December	3 924	390	3 764	366	3 878	380
January	3 154	313	3 840	381	3 825	377
February	3 976	398	3 836	382	3 727	369
March	4 236	417	3 671	362	3 621	362
April	3 099	309	3 367	340	3 558	357
May	4 003	401	3 707	365	3 562	355
June	3 510	354	3 239	340	3 621	357
<b>2000-01</b>						
July	3 537	332	3 747	355	3 719	360
August	4 079	383	4 176	396	3 834	366
September	3 704	347	3 968	373	3 922	372
October	3 717	351	3 812	353	3 953	376
November	4 163	406	3 847	371	3 939	379
December	3 921	395	4 071	401	3 899	380
January	3 511	356	3 960	397	3 845	379
February	3 565	351	3 558	351	3 782	377

(a) Excludes alterations and additions. Includes refinancing.

Source: Housing Finance for Owner Occupation, Australia (Cat. no. 5609.0).

## 24

## FINANCE COMMITMENTS

Period	Commercial finance commitments			Personal finance commitments			
	Fixed loan facilities	Revolving credit facilities	Total commercial finance commitments	Fixed loan facilities	Revolving credit facilities	Total personal finance commitments	Total lease finance commitments
	\$m	\$m	\$m	\$m	\$m	\$m	\$m
<b>1999-00</b>							
December	380.7	296.0	676.8	124.7	143.8	268.5	13.4
January	272.3	134.8	407.1	122.6	94.8	217.4	10.2
February	301.4	201.0	502.4	138.4	120.8	259.2	18.0
March	403.7	240.8	644.5	155.3	159.3	314.7	12.3
April	370.5	176.4	546.9	108.2	135.6	243.7	17.7
May	309.5	249.9	559.4	139.5	156.1	295.6	16.7
June	758.9	392.6	1 151.4	154.0	147.9	301.9	18.4
<b>2000-01</b>							
July	339.5	256.5	596.0	112.8	147.0	259.8	9.8
August	249.2	163.0	412.3	141.9	162.6	304.5	10.1
September	235.4	269.6	505.0	131.6	121.0	252.6	15.8
October	247.0	150.7	397.7	126.0	122.6	248.6	9.4
November	287.3	254.6	541.9	149.5	163.5	312.9	13.6
December	329.6	394.5	724.1	138.0	148.1	286.0	14.4
January	234.2	164.6	398.9	136.1	129.1	265.2	7.7
February	284.4	292.0	576.5	137.5	113.0	250.5	15.2

Source: ABS data available on request.

## PUBLICATIONS SOURCE INDEX

- (1) *Australian National Accounts, Quarterly State Details*  
(Cat. no. 5206.0.40.001)
- (2) International Merchandise Trade, ABS data available on request
- (3) *Retail Trade, Australia* (Cat. no. 8501.0) Monthly
- (4) *New Motor Vehicles Registrations, Australia, Preliminary*  
(Cat. no. 9301.0) Monthly
- (5) *State Estimates of Private New Capital Expenditure*  
(Cat. no. 5646.0) Quarterly
- (6) *Tourist Accommodation, Australia* (Cat. no. 8635.0) Quarterly
- (7) *Building Approvals, Australia* (Cat. no. 8731.0) Monthly
- (8) *Building Activity, Australia* (Cat. no. 8752.0) Quarterly
- (9) *Engineering Construction Activity, Australia*  
(Cat. no. 8762.0) Quarterly
- (10) *Manufacturing Production, Australia, Preliminary*  
(Cat. no. 8301.0) Quarterly
- (11) *Livestock Products, Australia* (Cat. no. 7215.0) Quarterly
- (12) *Actual and Expected Private Mineral Exploration, Australia*  
(Cat. no. 8412.0) Quarterly
- (13) *Consumer Price Index* (Cat. no. 6401.0) Quarterly
- (14) *Price Index of Materials Used in House Building, Six State  
Capital Cities and Canberra* (Cat. no. 6408.0) Quarterly
- (15) *Price Index of Materials Used in Building Other Than House  
Building, Six State Capital Cities and Canberra*  
(Cat. no. 6407.0) Quarterly
- (16) *House Price Indexes: Eight Capital Cities*  
(Cat. no. 6416.0) Quarterly
- (17) *Australian Demographic Statistics* (Cat. no. 3101.0) Quarterly
- (18) *Labour Force, Australia, Preliminary* (Cat. no. 6202.0) Monthly
- (19) *Job Vacancies, Australia* (Cat. no. 6354.0) Quarterly
- (20) *Industrial Disputes, Australia* (Cat. no. 6321.0) Monthly
- (21) Overseas arrival and departure statistics
- (22) *Average Weekly Earnings, States and Australia*  
(Cat. no. 6302.0) Quarterly
- (23) *Wage Cost Index, Australia* (Cat. no. 6345.0) Quarterly
- (24) *Housing Finance for Owner Occupation, Australia*  
(Cat. no. 5609.0) Monthly
- (25) *Lending Finance, Australia* (Cat. no. 5671.0) Monthly—and ABS  
data available on request
- (26) *Reserve Bank of Australia Bulletin*



## FOR MORE INFORMATION...

- INTERNET* **www.abs.gov.au** the ABS web site is the best place to start for access to summary data from our latest publications, information about the ABS, advice about upcoming releases, our catalogue, and Australia Now—a statistical profile.
- LIBRARY* A range of ABS publications is available from public and tertiary libraries Australia-wide. Contact your nearest library to determine whether it has the ABS statistics you require, or visit our web site for a list of libraries.
- CPI INFOLINE* For current and historical Consumer Price Index data, call 1902 981 074 (call cost 77c per minute).
- DIAL-A-STATISTIC* For the latest figures for National Accounts, Balance of Payments, Labour Force, Average Weekly Earnings, Estimated Resident Population and the Consumer Price Index call 1900 986 400 (call cost 77c per minute).

**INFORMATION SERVICE**

Data which have been published and can be provided within five minutes are free of charge. Our information consultants can also help you to access the full range of ABS information—ABS user-pays services can be tailored to your needs, time frame and budget. Publications may be purchased. Specialists are on hand to help you with analytical or methodological advice.

- PHONE* **1300 135 070**
- EMAIL* **client.services@abs.gov.au**
- FAX* 1300 135 211
- POST* Client Services, ABS, GPO Box 796, Sydney 1041

## WHY NOT SUBSCRIBE?

ABS subscription services provide regular, convenient and prompt deliveries of ABS publications and products as they are released. Email delivery of monthly and quarterly publications is available.

- PHONE* 1300 366 323
- EMAIL* subscriptions@abs.gov.au
- FAX* 03 9615 7848
- POST* Subscription Services, ABS, GPO Box 2796Y, Melbourne 3001



2130740005015  
ISSN 1039-8880

RRP \$19.00