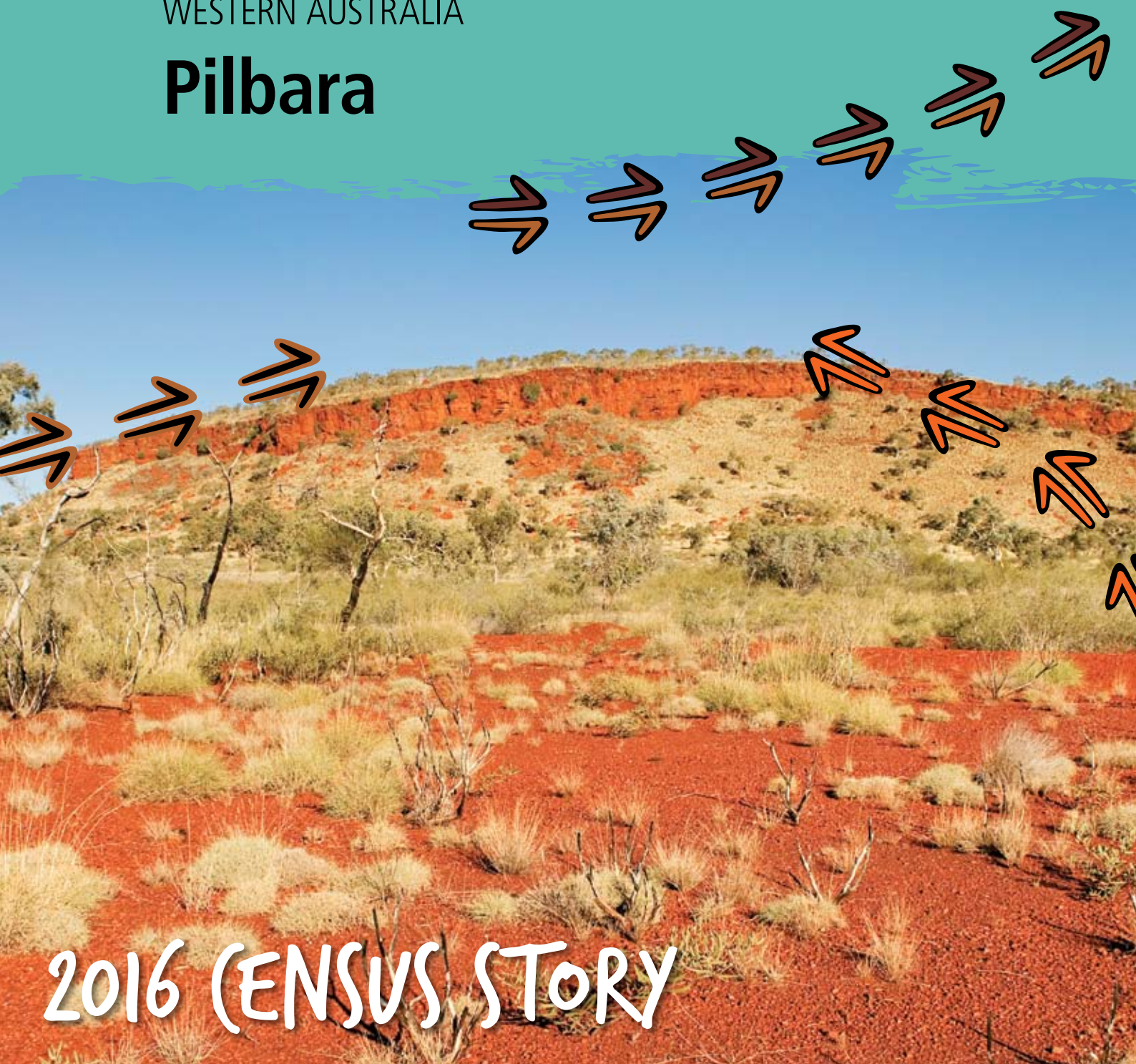


WESTERN AUSTRALIA

Pilbara



2016 (CENSUS STORY

WESTERN AUSTRALIA

Pilbara



2016 CENSUS STORY

Glossary

Caring for Children	People who spent time caring for a child/children (under 15 years) without pay in the two weeks prior to Census night.
Children	Are people aged under 15 years of age.
Completed Year 12	Includes people aged 15 years and over who are no longer attending primary or secondary school.
Families	Includes couple families with and without children, single parents, and other families.
Houses	Includes private dwellings, occupied and unoccupied. A dwelling is a structure which is intended to have people live in it, and which was habitable on Census night, for example houses, flats, caravans and humpies.
Language	Top Australian Indigenous language spoken at home.
People	Total population figures are based on place of 'usual residence' or where that person usually lives.
Students	Includes everyone who said they were attending a school, university or technical institution.
Weekly Income	Includes people aged 15 years and over and is the middle value (median) of total weekly personal income.
Working	Includes everyone who said they were working full-time or part-time, or were away from work. This does not include people involved in the Community Development Program (CDP).

Contents

Glossary	2
Artwork	4
The ABS says thanks	5
Western Australia	7
Pilbara Region	8
Cheeditha - Mingullatharndo	10
Injudunna	12
Jigalong	14
Kiwirrkurra	16
Kunawarritji	18
Mugarinya (Yandeyarra)	20
Nullagine	22
Onslow	24
Parnngurr	26
Punmu	28
Roebourne	30
Warralong	32
Know more	36



Artwork

The artwork in this story book was commissioned by the Centre of Excellence for Aboriginal and Torres Strait Islander Statistics to embody what the centre represents. The work incorporates Larrakia Artist Shaun Lee's (AKA Gwarkabah's) diverse heritage, through contemporary and traditional hand-created designs. Using spray-paint medium on hardwood, the work features and combines various traditional stories and symbols from local areas and across Australia. Together, the artwork tells the story of the Centre of Excellence and its people. The designs were digitalised by Dreamtime Creative.



Traditional stories and symbol break down



Star shape: National courage – representing navigation, called the 'Guiding Star'.

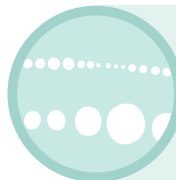
Core centre design: Black represents the earth and the soil; the pattern symbolises an 'ageless recognition' used through Northern Australia, and perhaps wider Australia. An 'ageless recognition' is the closest translation into English. It's derived from a number of terms that describe an instant identification of a particular established symbol of connection or linkage.



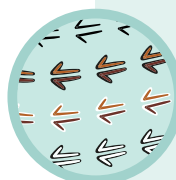
Message sticks: Representing unique messages; signifies that a story is being told and needs to be received.

Is a connection to and from Larrakia Country, and between other Indigenous cultures.

- **Top message stick:** Country and regions across Australia
- **Middle message stick:** Coming together and meeting
- **Bottom message stick:** Two half-moons facing inwards represents the people; and the two lines on either side identifies that the message is inclusive of both male and female.



Dots: Symbolises the link between people, organisations, States and Territories, representing the importance of strong linkage and communication. A dot in a dot in a dot: Traditional Larrakia design colours represent the artist's own diversity – his Northern Larrakia, Wardaman, Karrijarri heritage, and his acknowledgement of all of these people.



Kangaroo tracks: Acknowledge the journey and pathways that have been taken; and symbolises moving forward, as the kangaroo is known for not moving backwards.

Track colours: Represent diversity and the differences between people. The kangaroo is an iconic Australian animal, representing our uniqueness, and recognition Nationally.



Paperbark vessel: Carrying safely all the gathered information and knowledge

THE ABS SAYS THANKS



The Australian Bureau of Statistics would like to thank the Aboriginal and Torres Strait Islander communities who helped to make the 2016 Census a success.

Pilbara, your numbers are in.

The results of our latest national Census reveal who we are, where we live, what we do, and where we're headed.

The information we've gathered will inform planning and decision-making for our future, like where we build schools, roads and hospitals. Census data helps us decide where we need funding and services across every community in Australia – this means your community, too!

So here is the story for Pilbara – a living biography updated every five years.

Future surveys

The ABS also has other surveys. We thank you in advance for your help in completing these. They may include questions about your health, employment or other details. You can see how this information helps your community at www.abs.gov.au/participant-info.



Photos by the Australian Bureau of Statistics, taken from the Jabiru township.

Australia



23.4
million

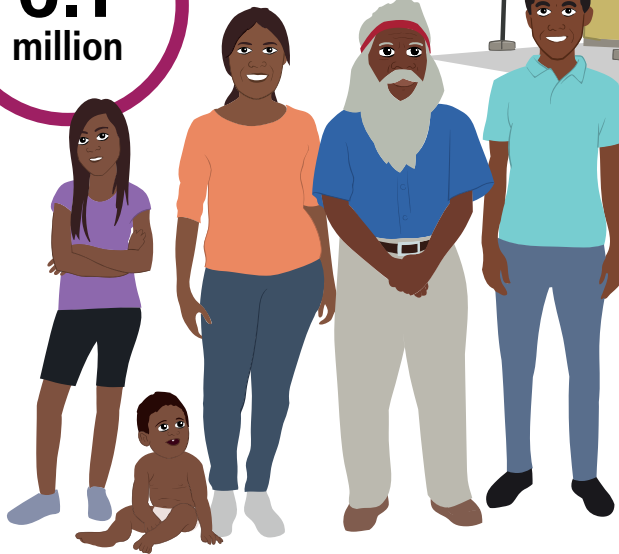
People

649 168

Aboriginal and/or
Torres Strait
Islander people

FAMILIES

6.1
million



9.9
million

HOUSES

11.9 million
Females



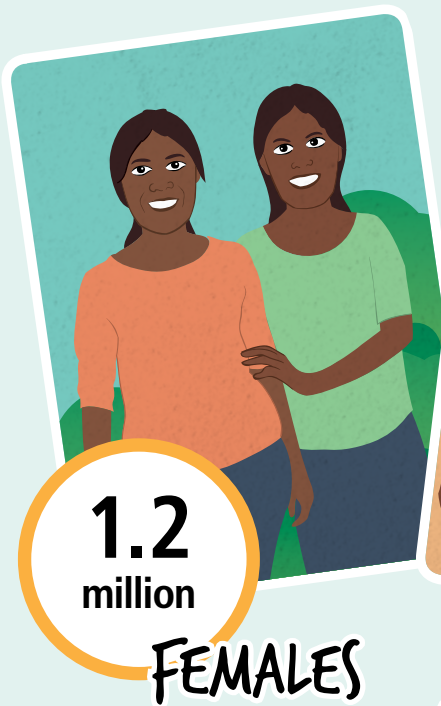
11.5 million
Males



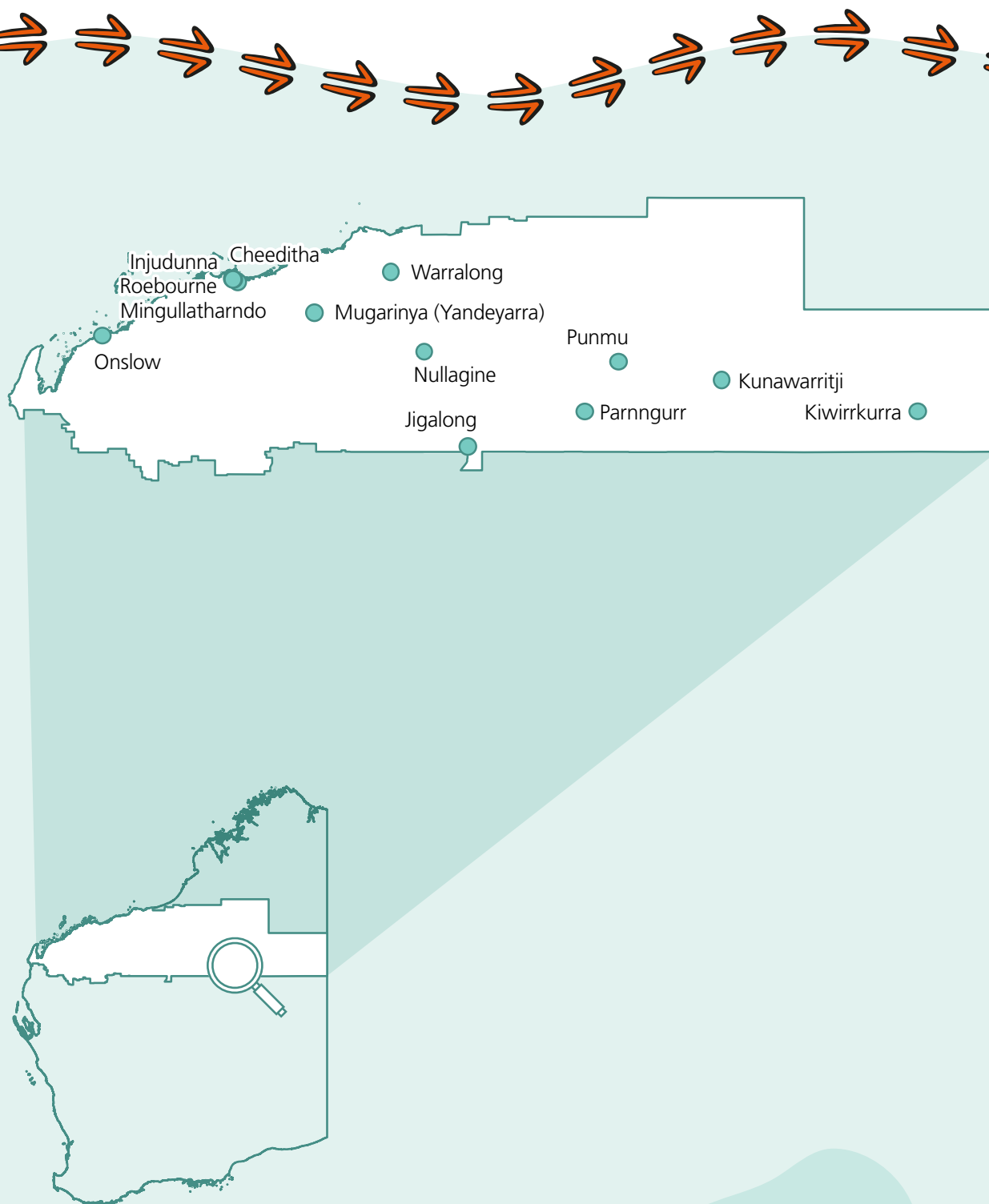
4.4 million
Children



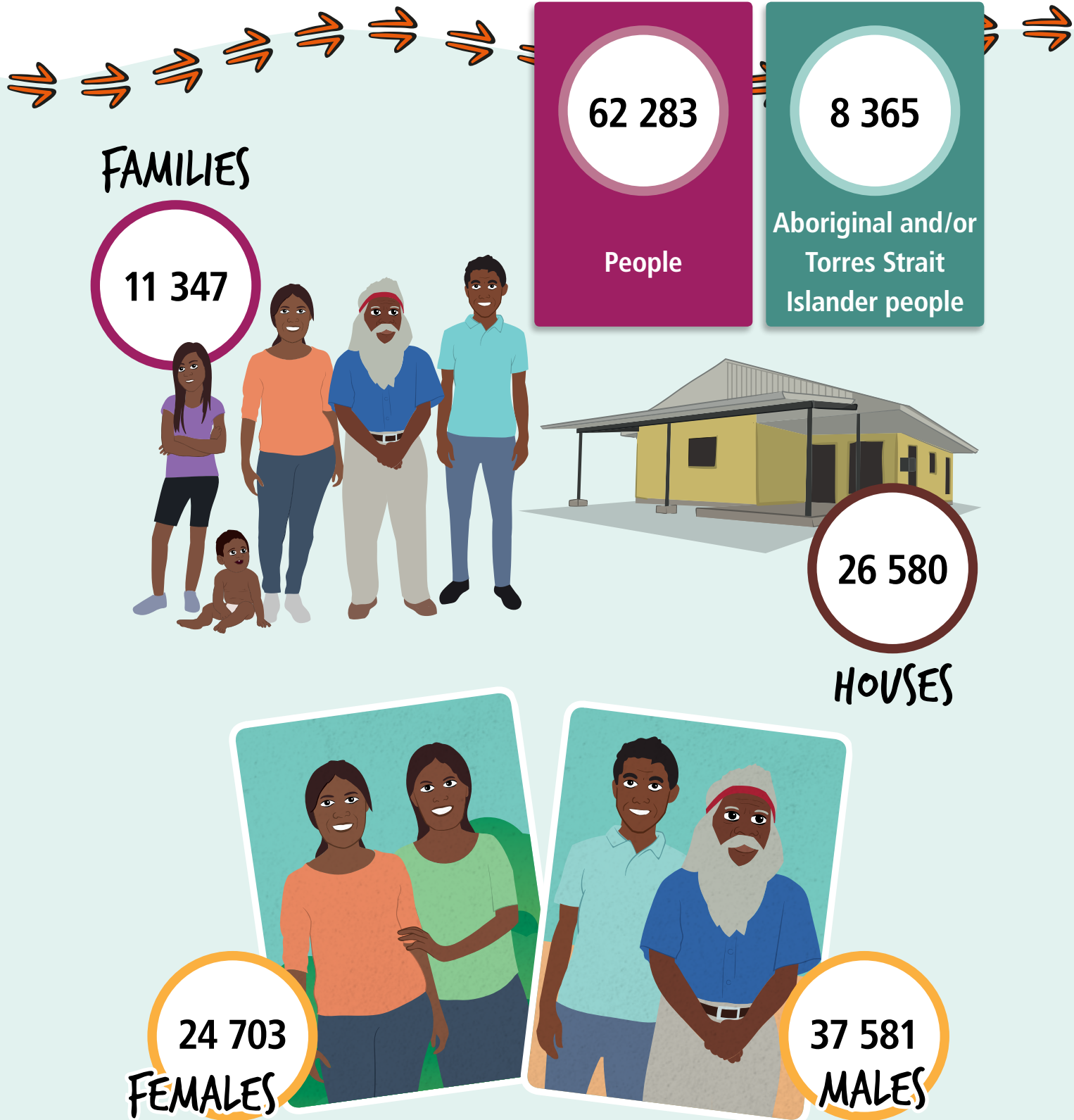
Western Australia



Pilbara Region



Pilbara Region



Geography: South Hedland IREG

Cheeditha - Mingullatharndo

LANGUAGE SPOKEN
Yindjibarndi

1 312

People

414

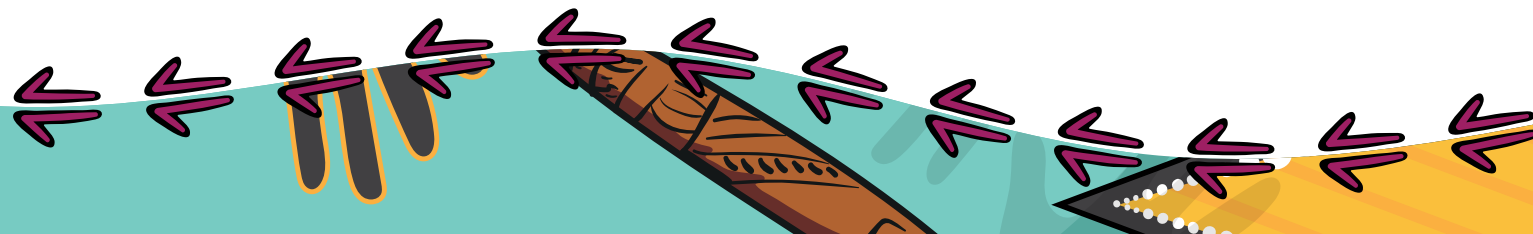
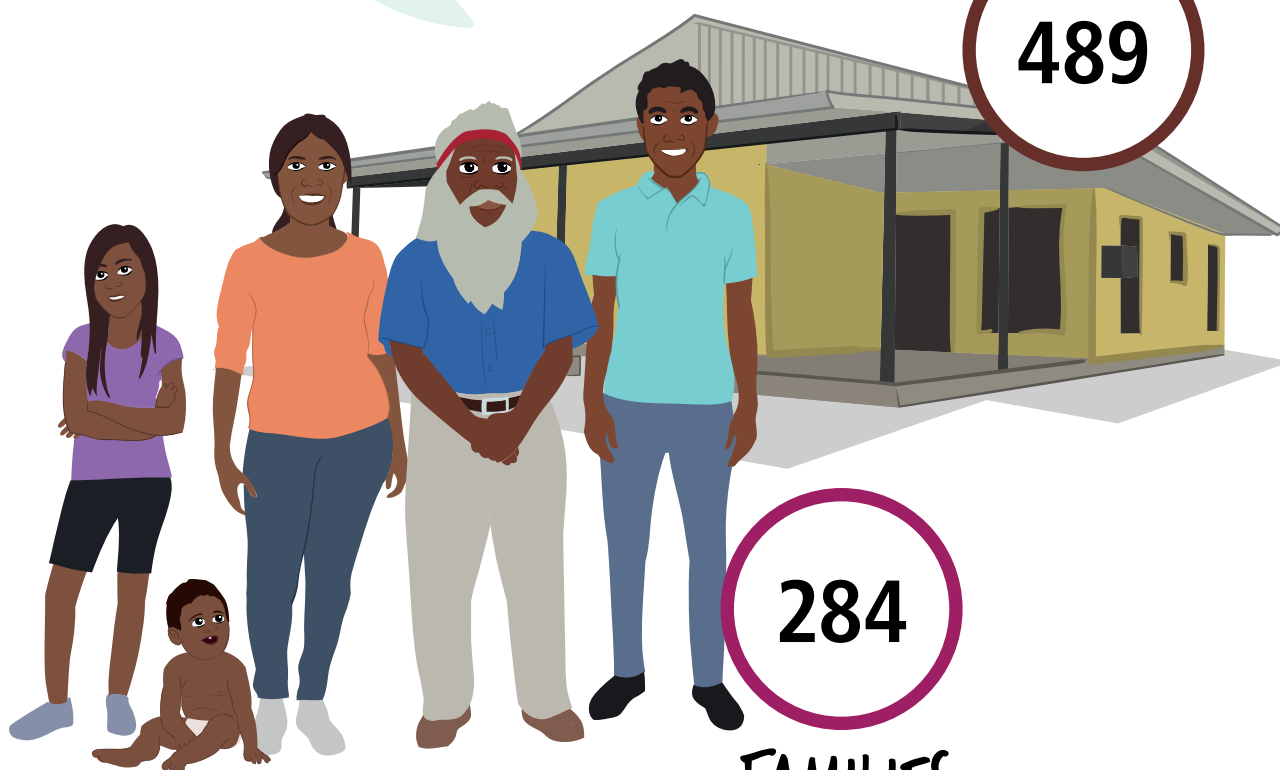
Aboriginal and/or
Torres Strait
Islander people

HOUSES

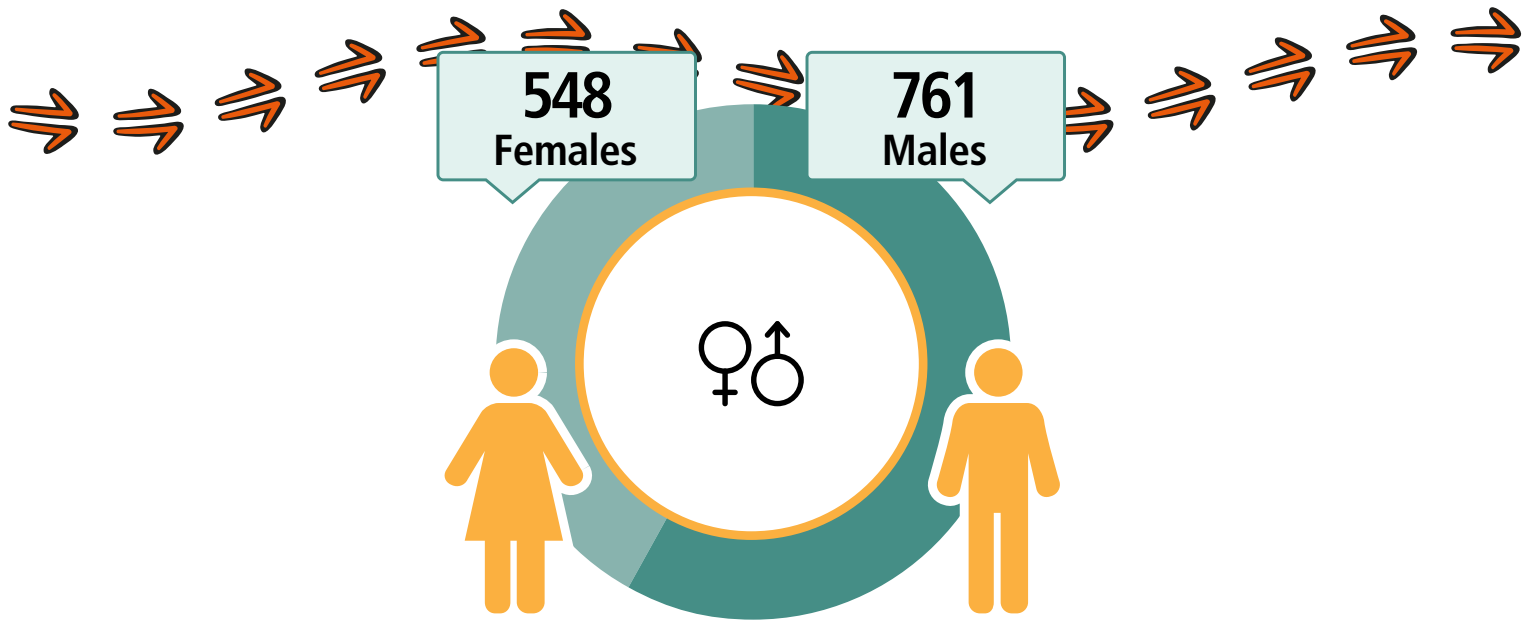
489

284

FAMILIES



Cheeditha - Mingullatharndo



CARED FOR CHILDREN



39%

499
Working



\$1 114
Weekly Income



536
Students



308
Completed
Year 12



Geography: Cheeditha - Mingullatharndo ILOC

Injudunna

LANGUAGE SPOKEN
Yindjibarndi

117

People

78

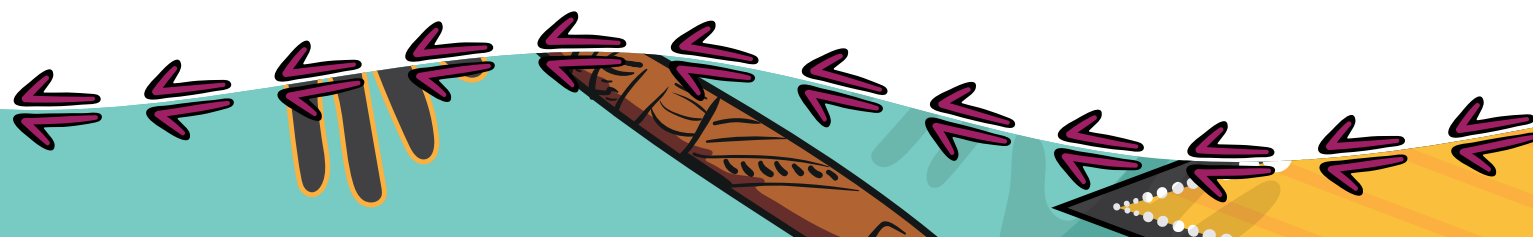
Aboriginal and/or
Torres Strait
Islander people

HOUSES

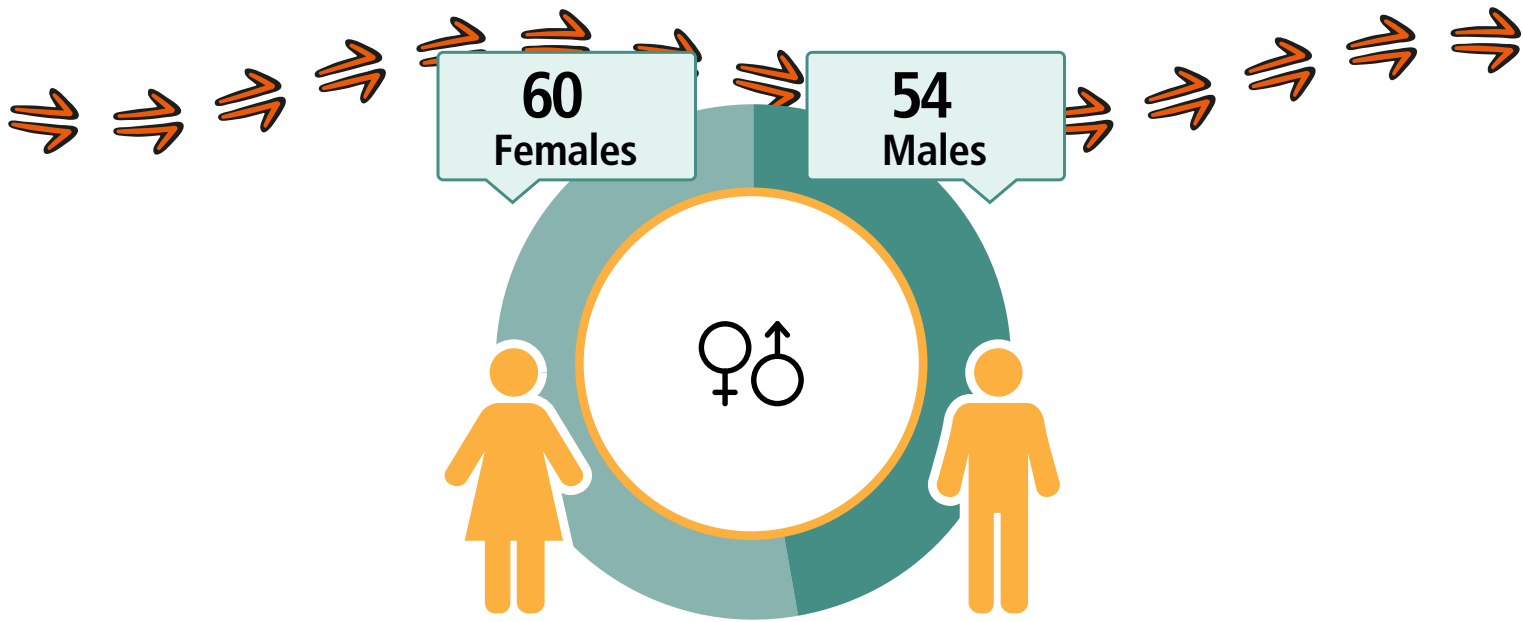
49

22

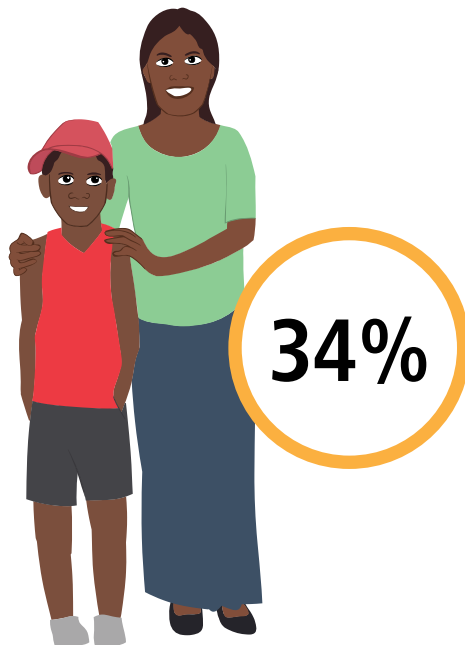
FAMILIES



Injudunna



CARED FOR CHILDREN



26
Working



\$483
Weekly Income



61
Students



14
Completed
Year 12



Geography: Injudunna ILOC

A decorative border at the bottom of the page featuring stylized Aboriginal art. It includes a yellow and black pattern on the left, a teal and black pattern in the center, and a brown and black pattern on the right, all with white dots and arrows.

Jigalong

LANGUAGE SPOKEN
Martu Wangka

333

People

304

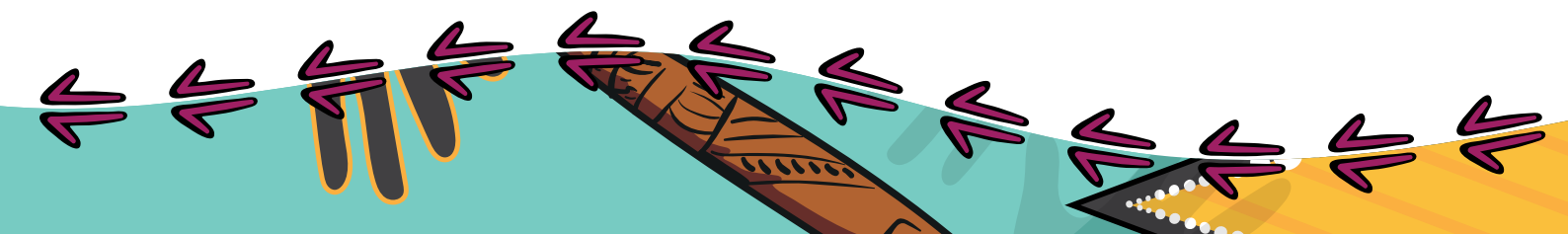
Aboriginal and/or
Torres Strait
Islander people

HOUSES

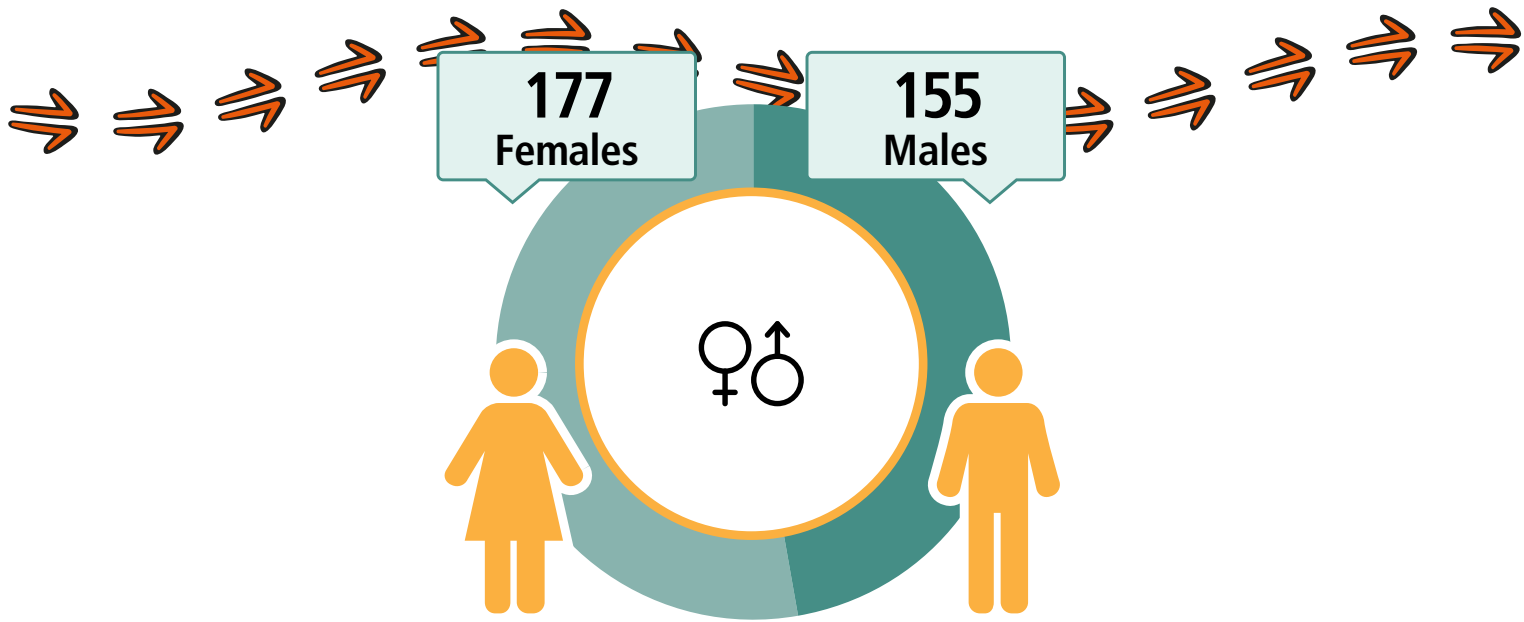
93

73

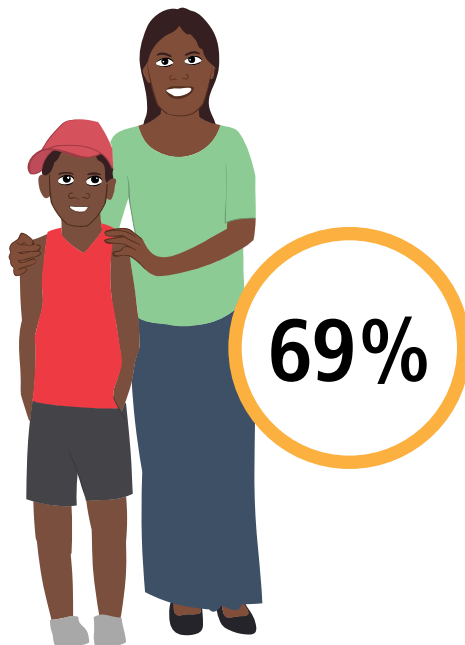
FAMILIES



Jigalong



CARED FOR CHILDREN



45
Working



\$273
Weekly Income



118
Students



42
Completed
Year 12



Geography: Jigalong ILOC

A decorative border at the bottom of the page featuring a stylized Aboriginal art pattern. It includes a yellow and orange geometric design on the left, transitioning into a teal and black pattern with white dots and arrows on the right.

Kiwirrkurra

LANGUAGE SPOKEN
Pintupi

165

People

151

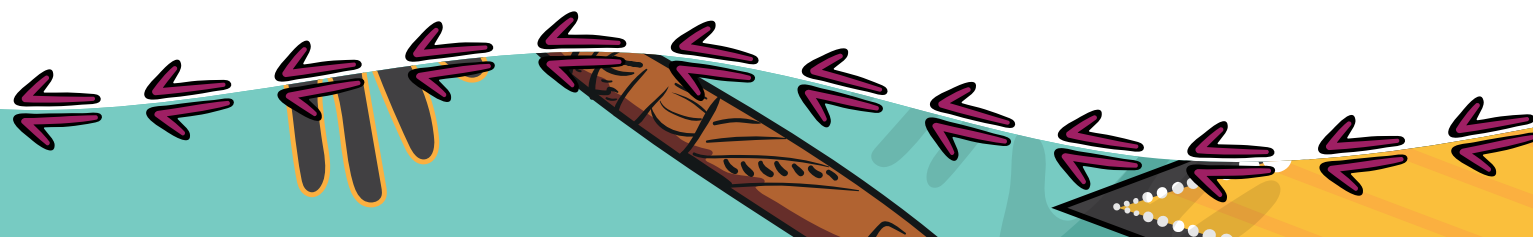
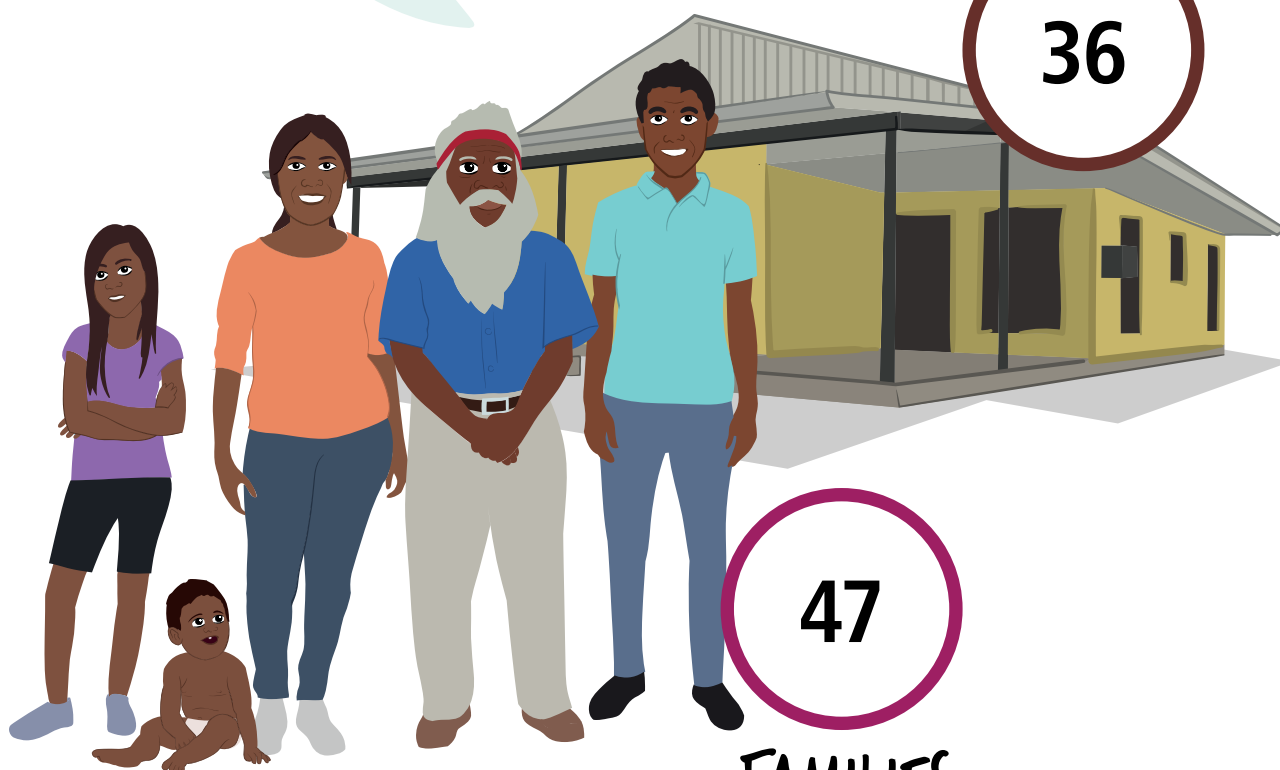
Aboriginal and/or
Torres Strait
Islander people

HOUSES

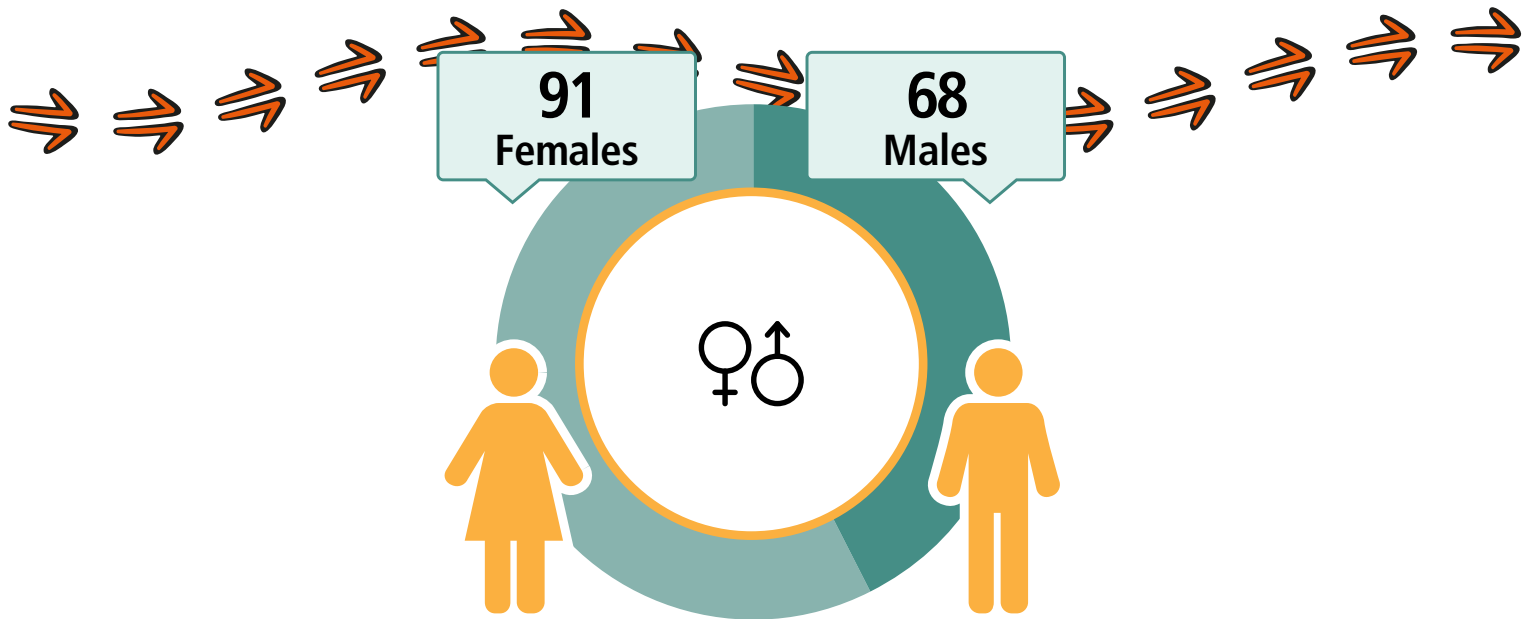
36

47

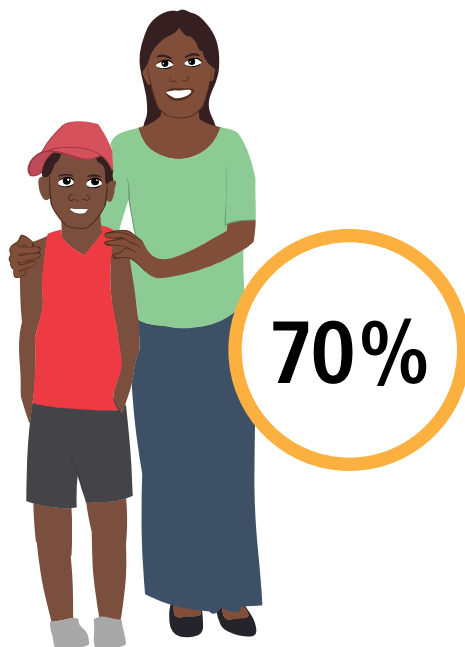
FAMILIES



Kiwirrkurra



CARED FOR (CHILDREN



19
Working



\$231
Weekly Income



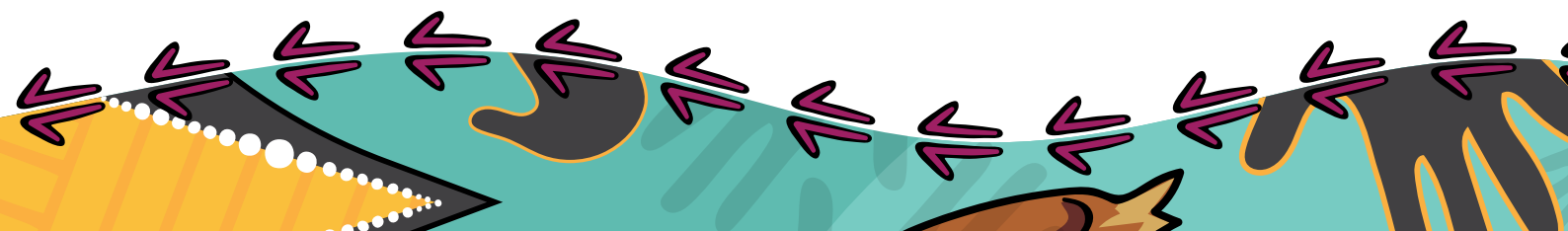
41
Students



16
Completed
Year 12



Geography: Kiwirrkurra ILOC



Kunawarritji

LANGUAGE SPOKEN
Manyjilyjarra

83

People

74

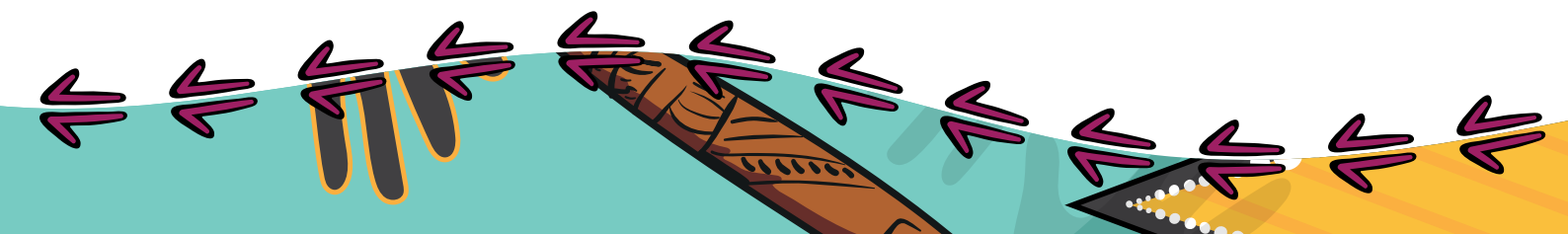
Aboriginal and/or
Torres Strait
Islander people

HOUSES

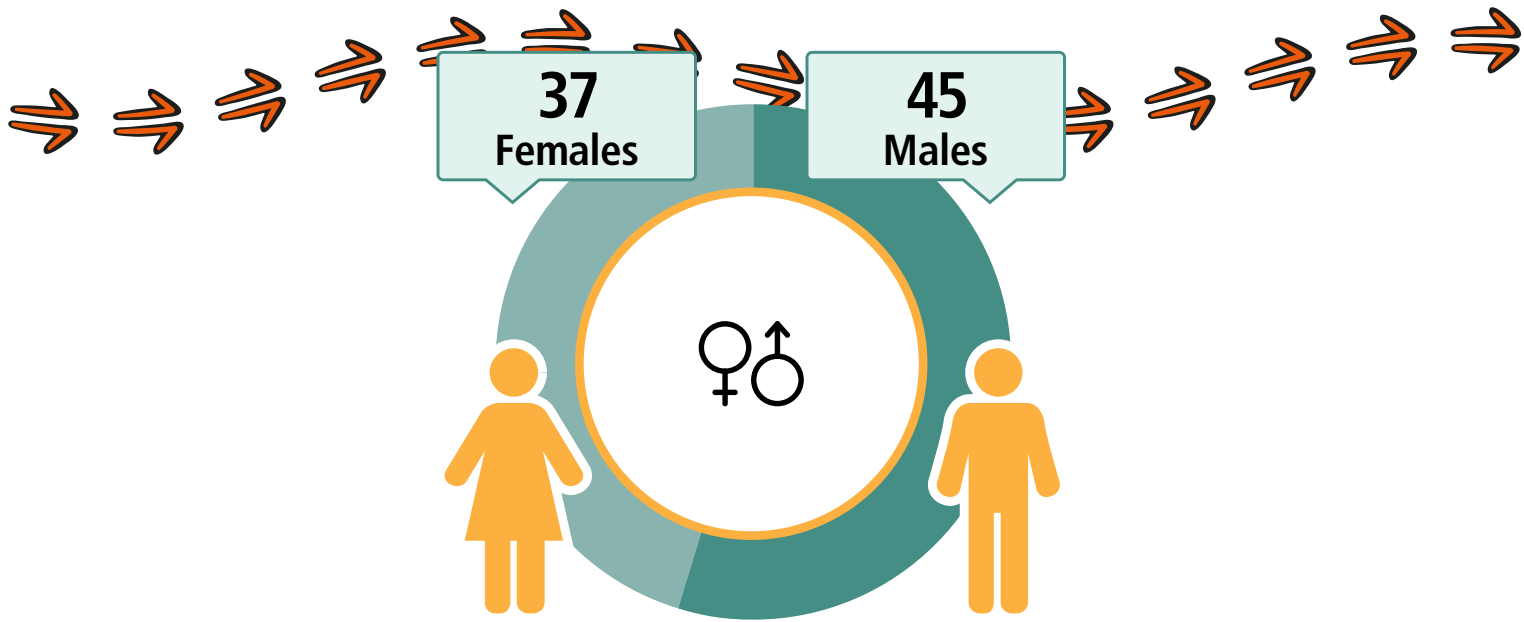
30

17

FAMILIES



Kunawarritji



CARED FOR CHILDREN



54%

18
Working



\$234
Weekly Income



17
Students



13
Completed
Year 12



Geography: Kunawarritji ILOC

Mugarinya (Yandeyarra)

LANGUAGE SPOKEN
Nyangumarta

126

People

118

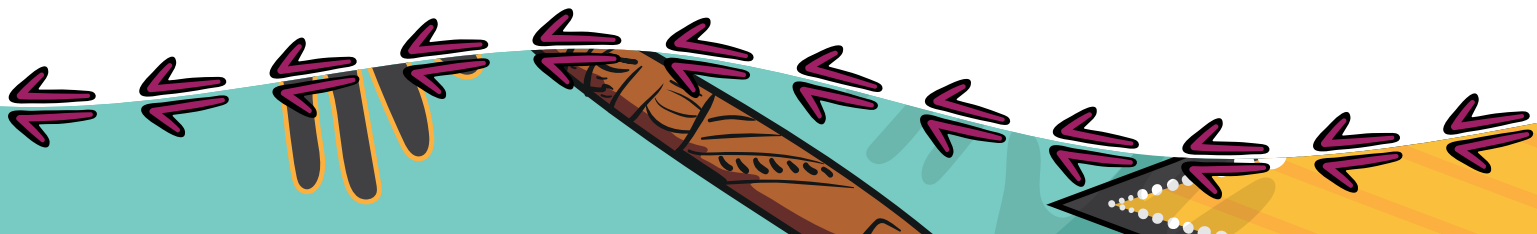
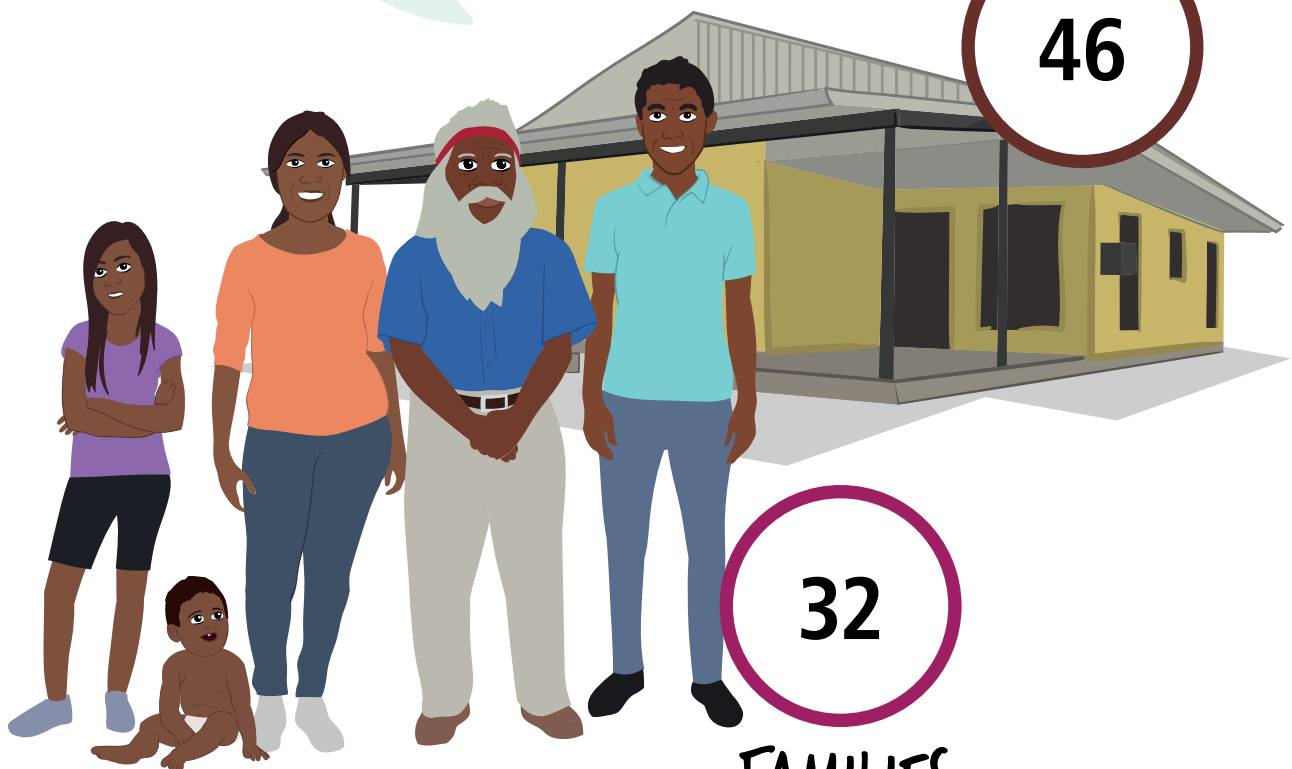
Aboriginal and/or
Torres Strait
Islander people

HOUSES

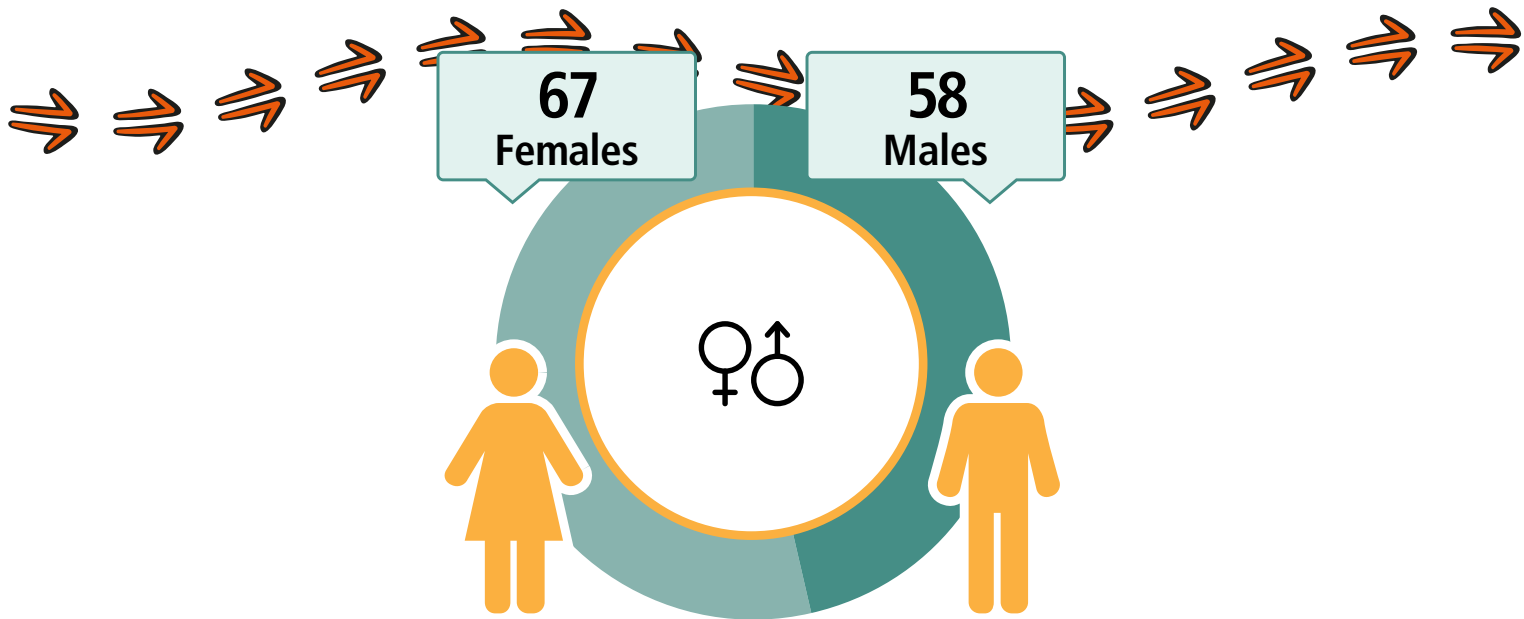
46

32

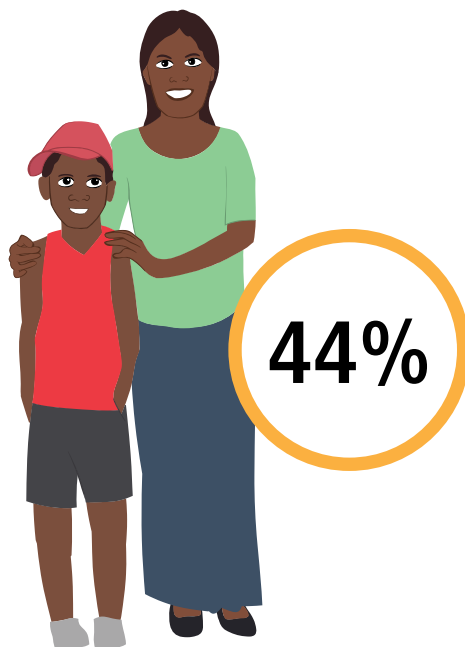
FAMILIES



Mugarinya (Yandeyarra)



CARED FOR CHILDREN



32
Working



\$383
Weekly Income



58
Students



24
Completed
Year 12



Geography: Mugarinya (Yandeyarra) ILOC

Nullagine

LANGUAGE SPOKEN
Martu Wangka

194

People

103

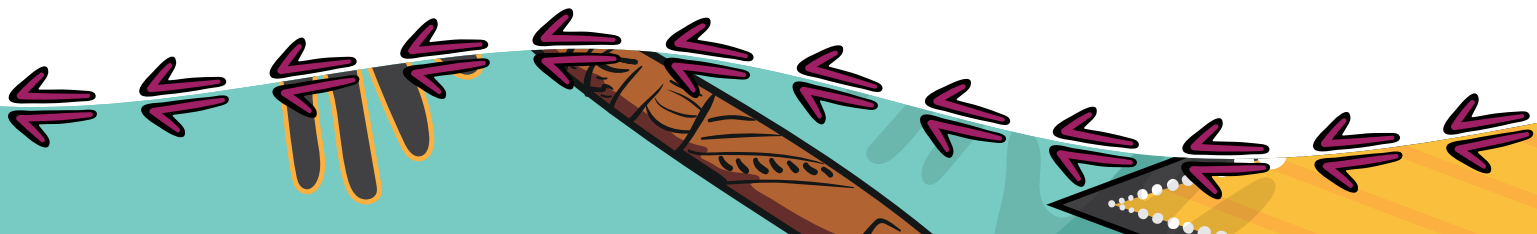
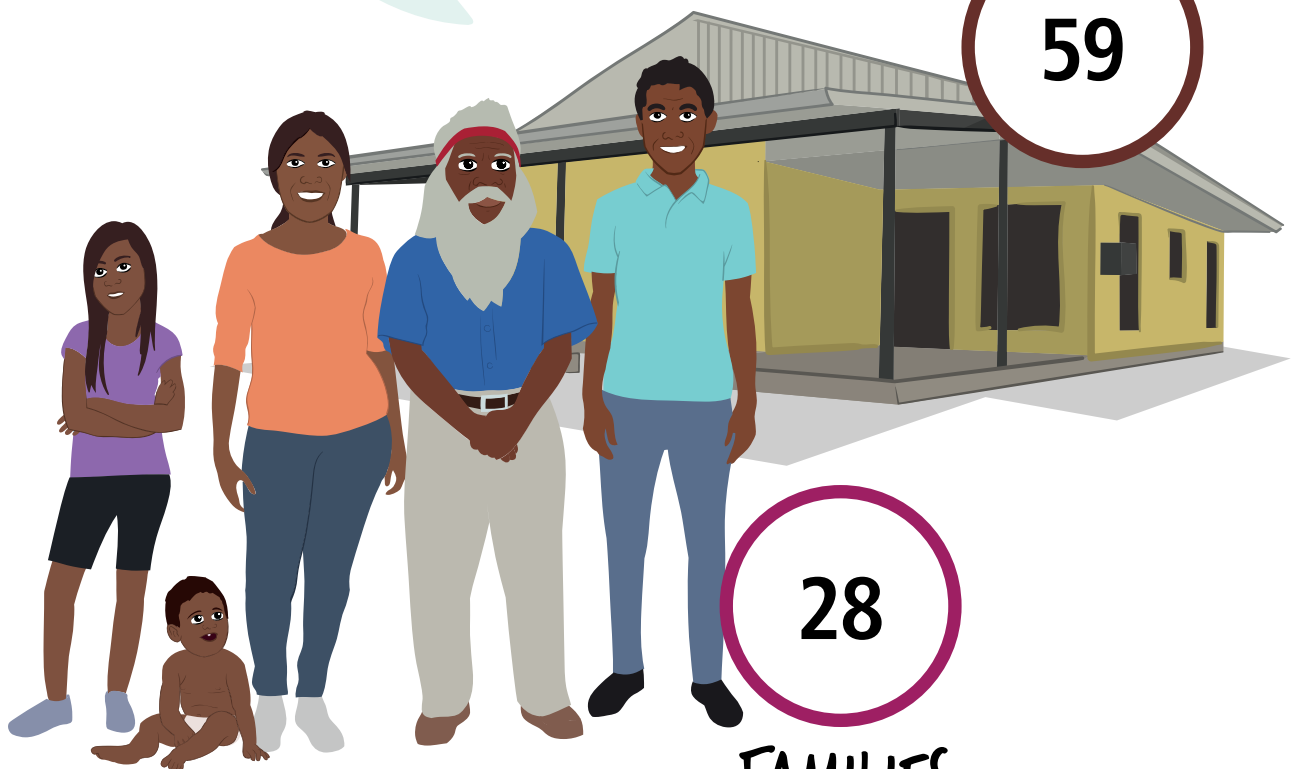
Aboriginal and/or
Torres Strait
Islander people

HOUSES

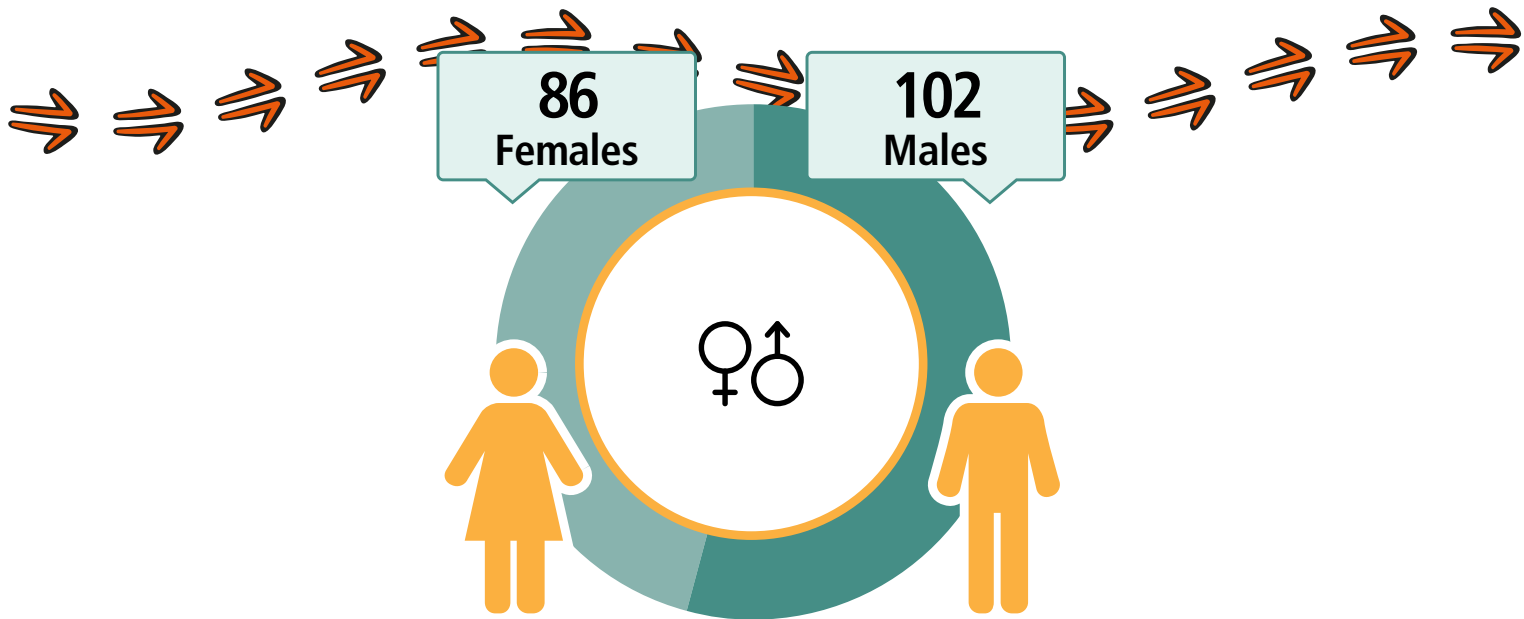
59

28

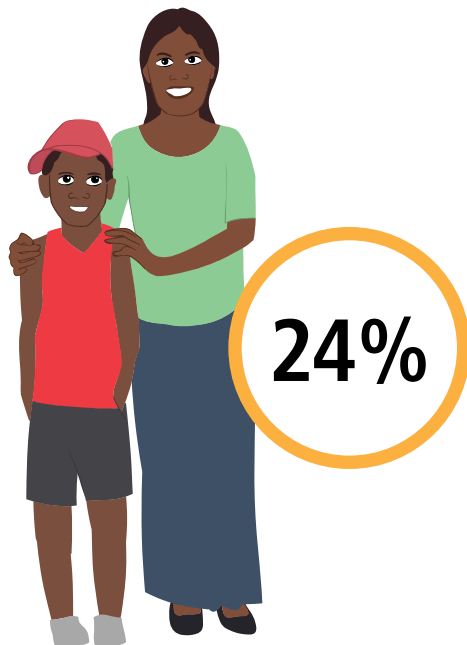
FAMILIES



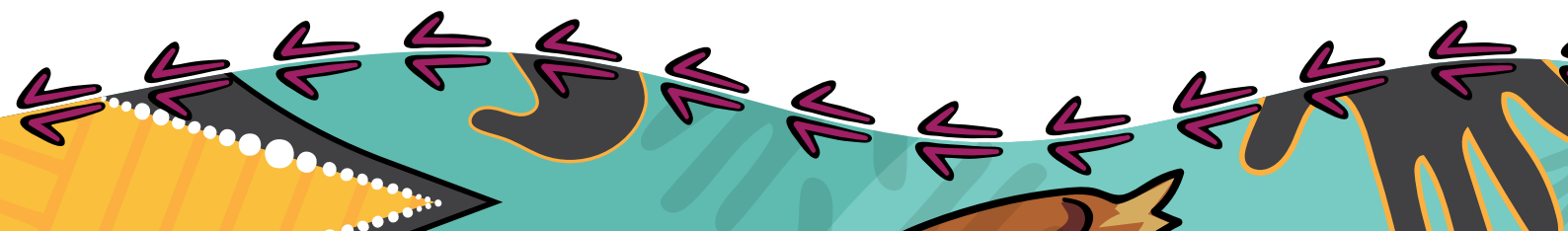
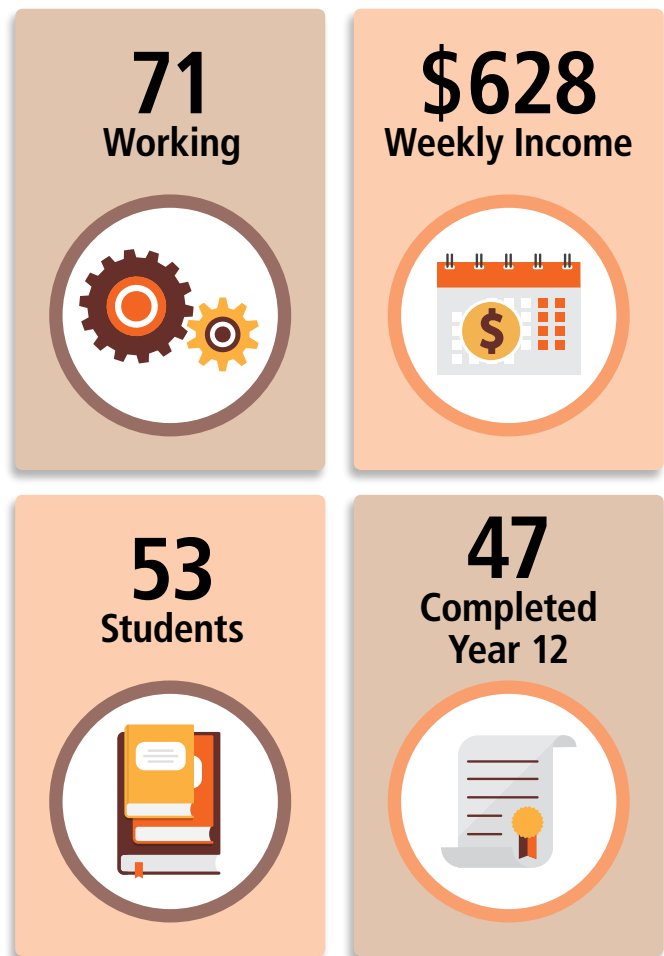
Nullagine



CARED FOR CHILDREN



Geography: Nullagine ILOC



Onslow

LANGUAGE SPOKEN
Banyjima

848

People

179

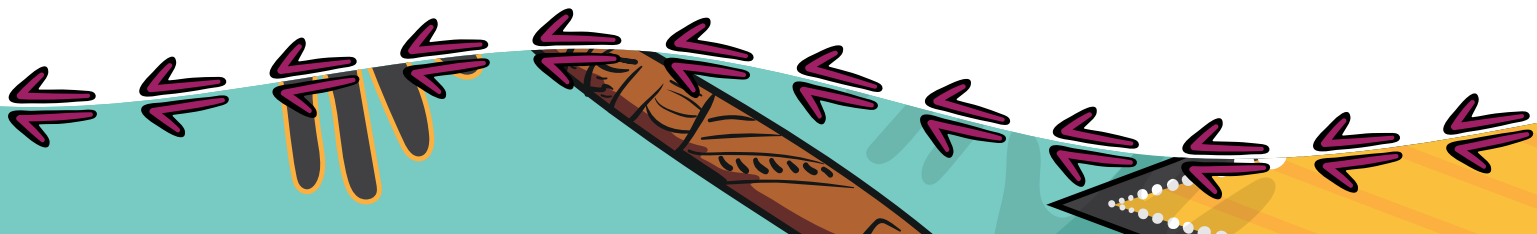
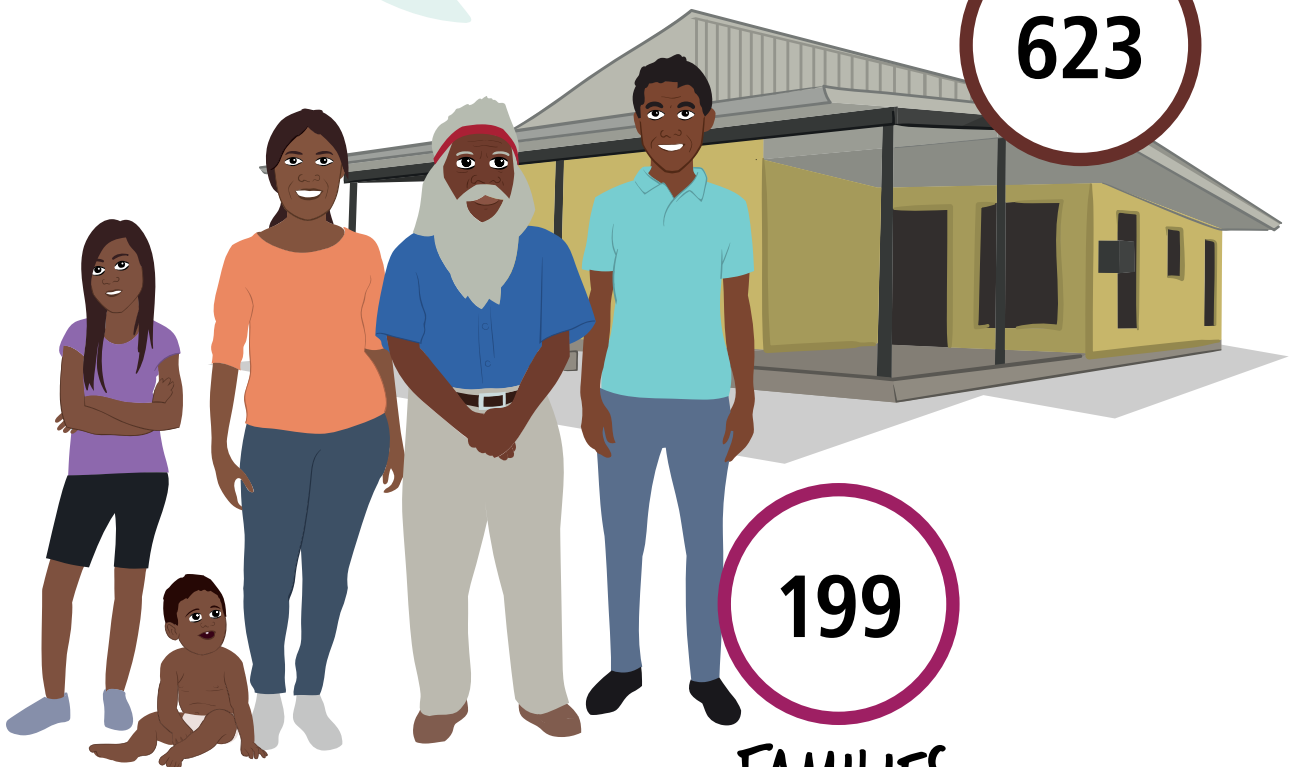
Aboriginal and/or
Torres Strait
Islander people

HOUSES

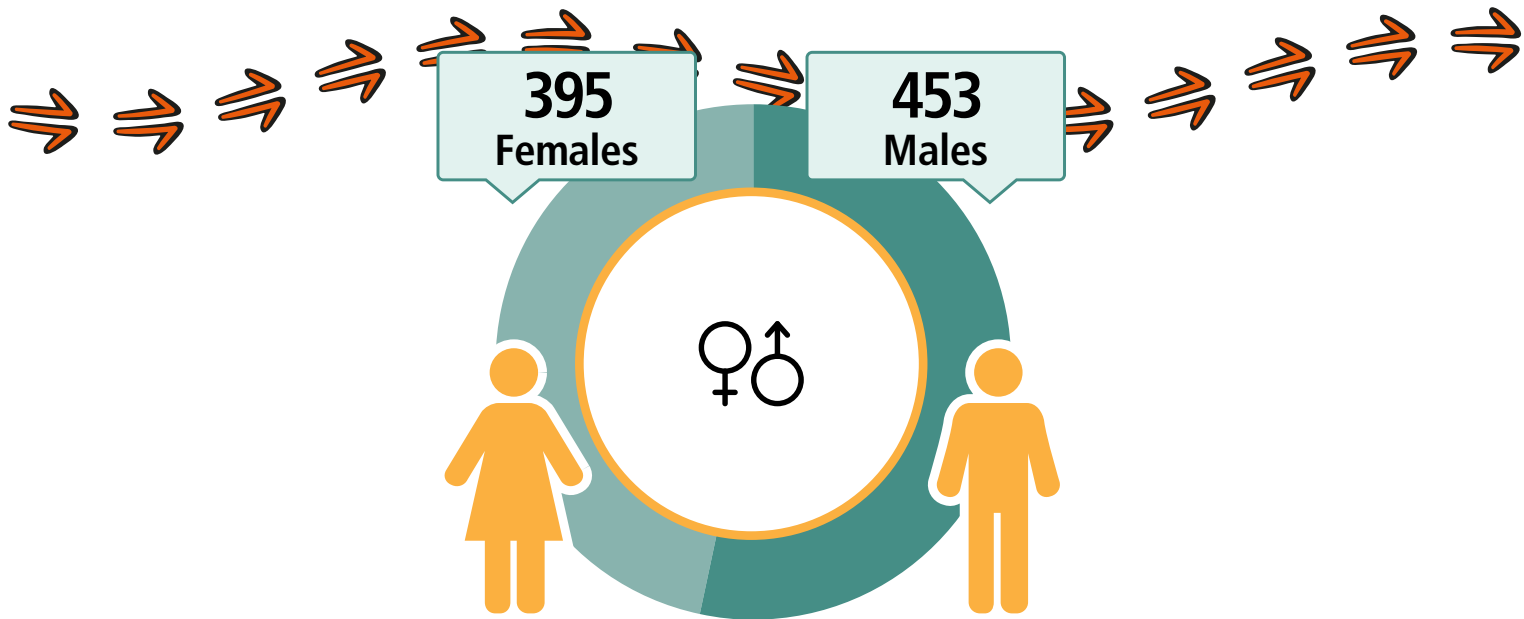
623

199

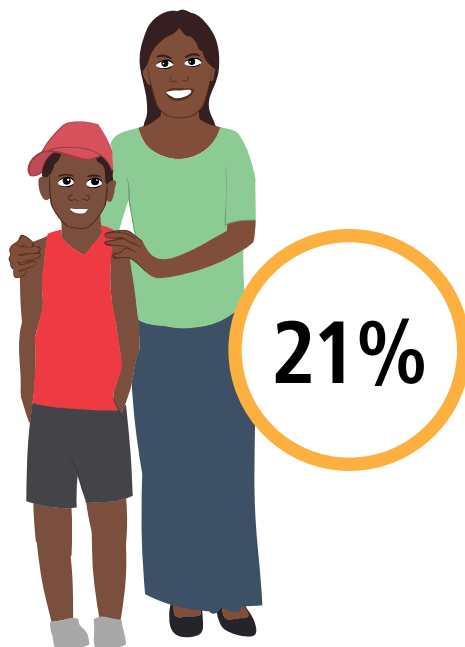
FAMILIES



Onslow



CARED FOR CHILDREN



437
Working



\$1 232
Weekly Income



249
Students



241
Completed
Year 12



Geography: Onslow ILOC

Parnngurr

LANGUAGE SPOKEN
Manyjilyjarra

153

People

122

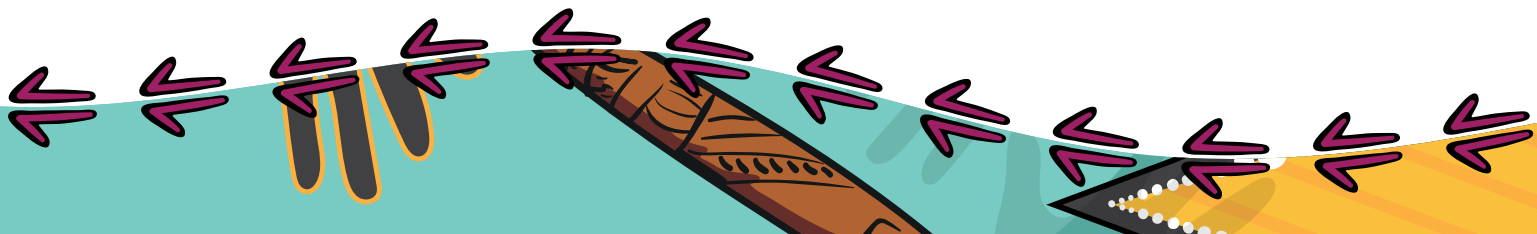
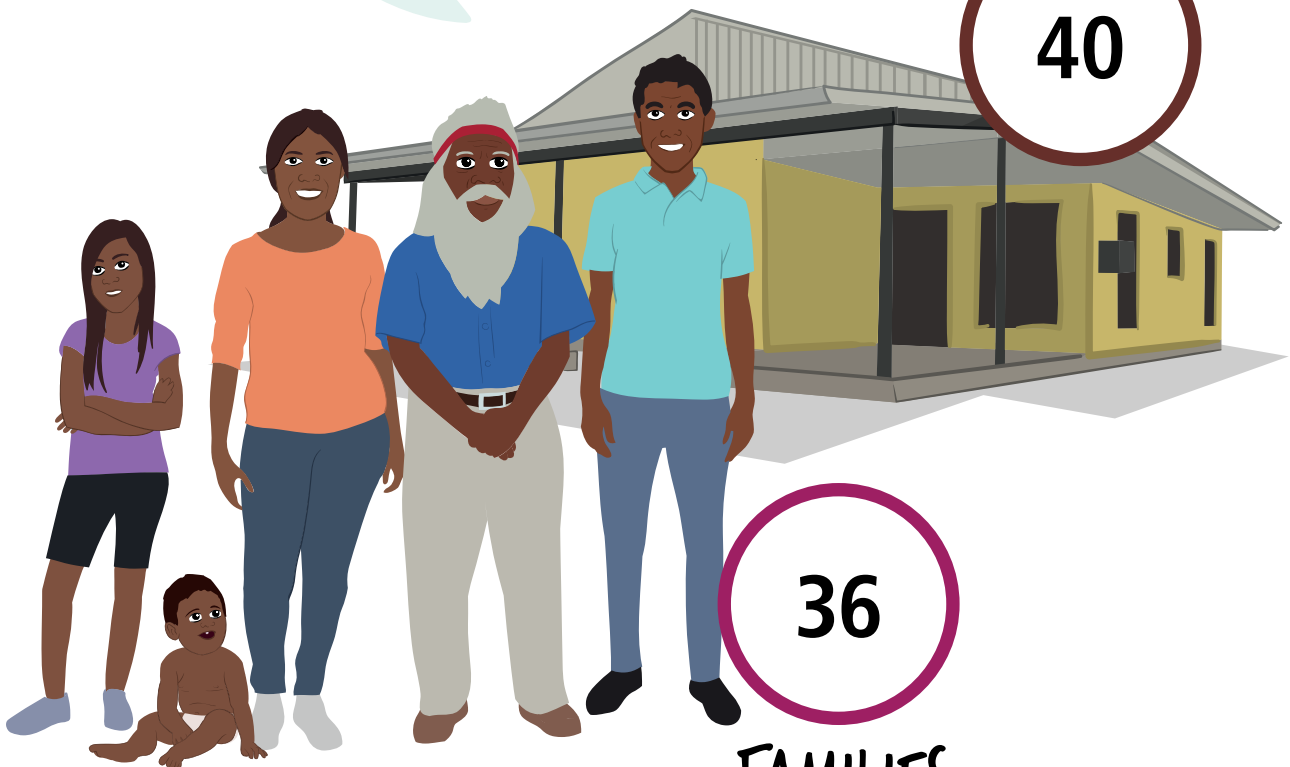
Aboriginal and/or
Torres Strait
Islander people

HOUSES

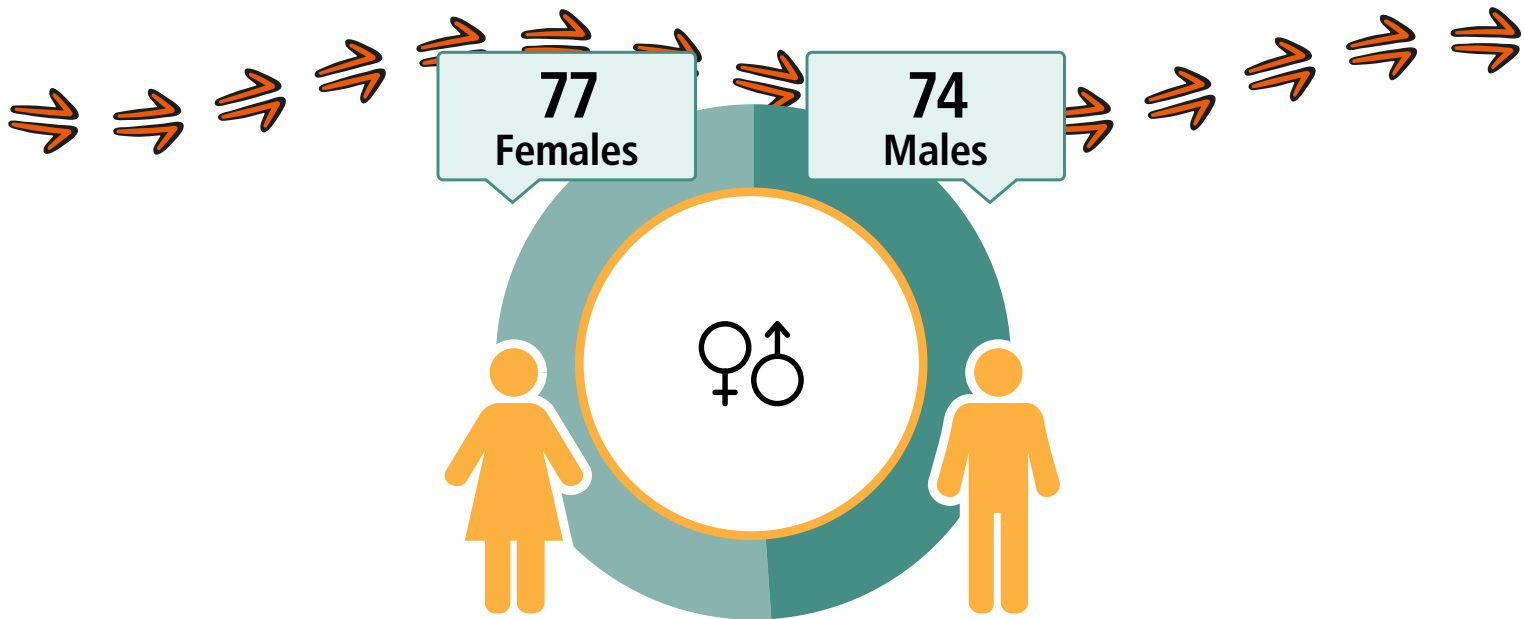
40

36

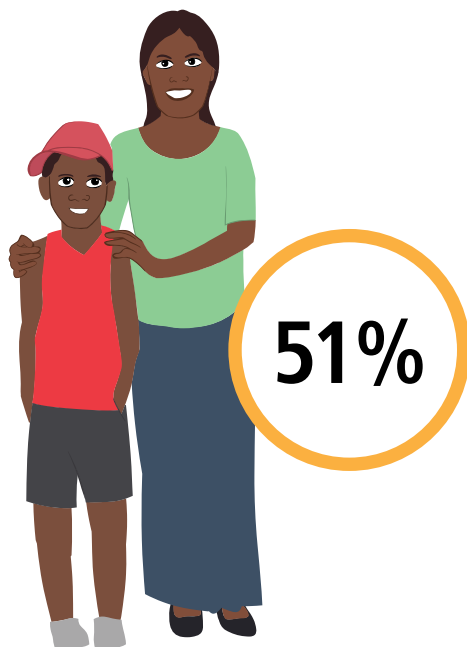
FAMILIES



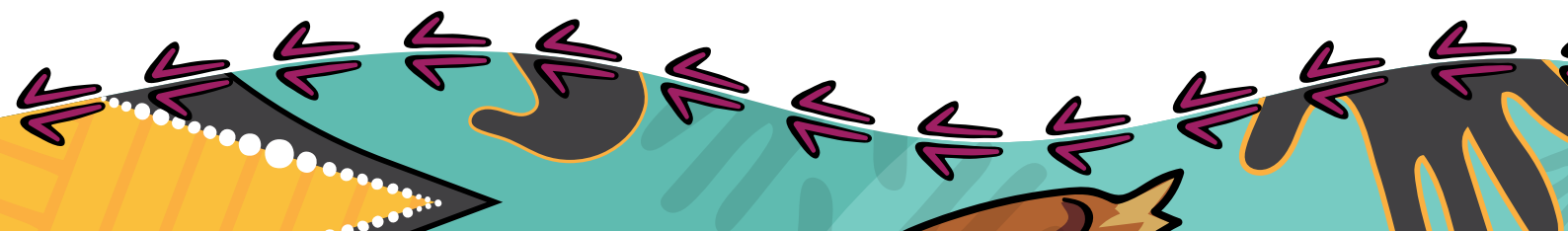
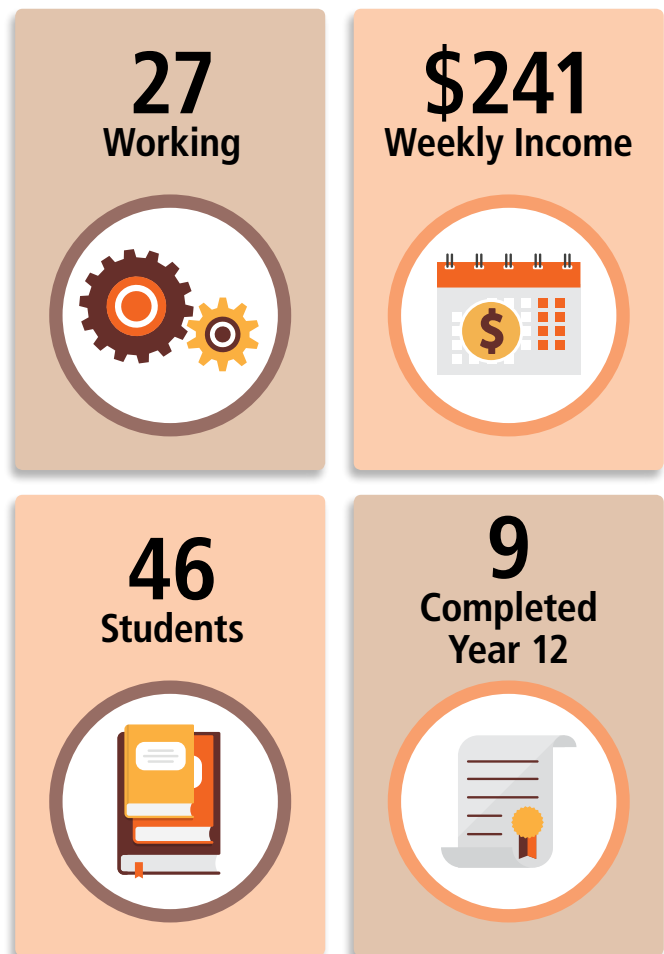
Parnngurr



CARED FOR CHILDREN



Geography: Parnngurr ILOC



Punmu

LANGUAGE SPOKEN
Manyjilyjarra

145

People

142

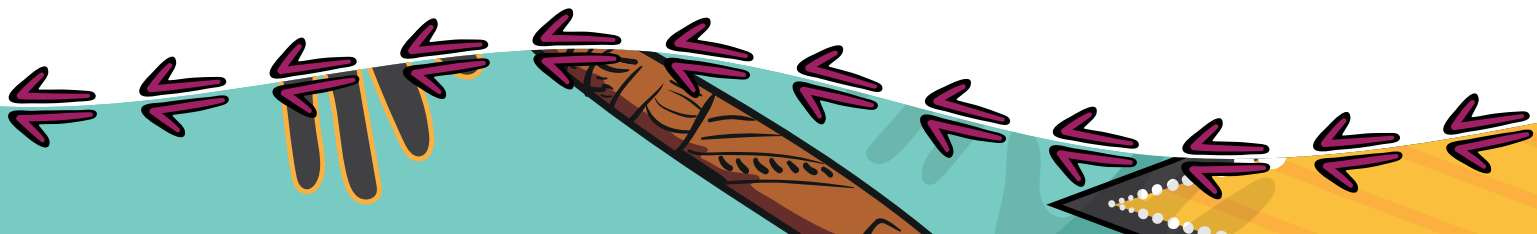
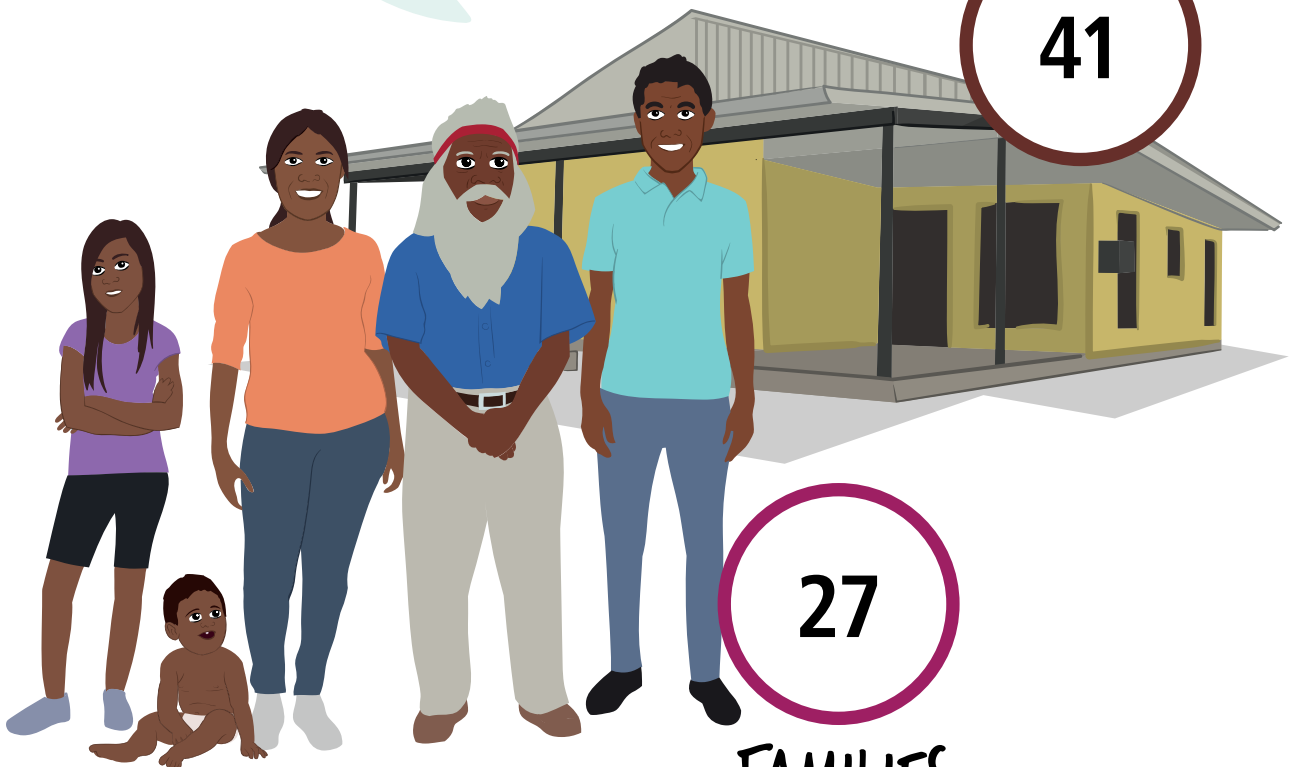
Aboriginal and/or
Torres Strait
Islander people

HOUSES

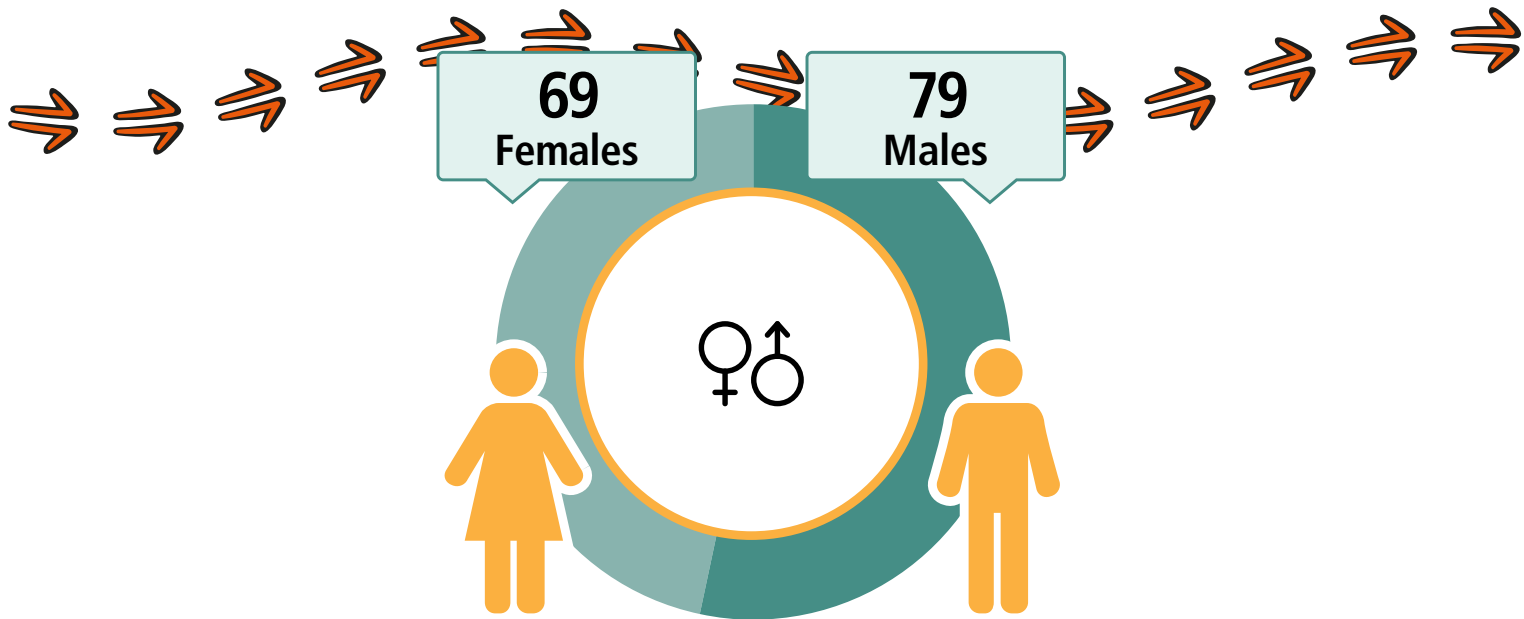
41

27

FAMILIES



Punmu



CARED FOR CHILDREN



59%

37
Working



\$266
Weekly Income



42
Students



27
Completed
Year 12



Geography: Punmu ILOC

A decorative border at the bottom of the page featuring stylized Aboriginal art. It includes a yellow and orange pattern on the left, a teal and black pattern in the center, and a black and white pattern on the right, all with purple arrows pointing in various directions.

Roebourne

LANGUAGE SPOKEN
Yindjibarndi

511

People

353

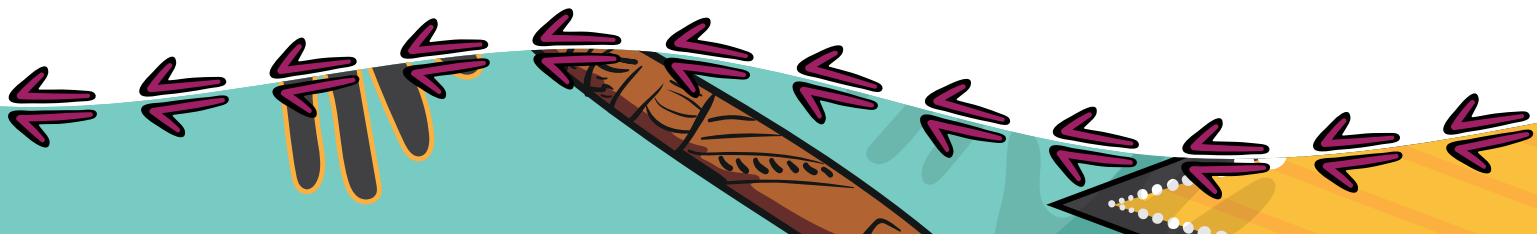
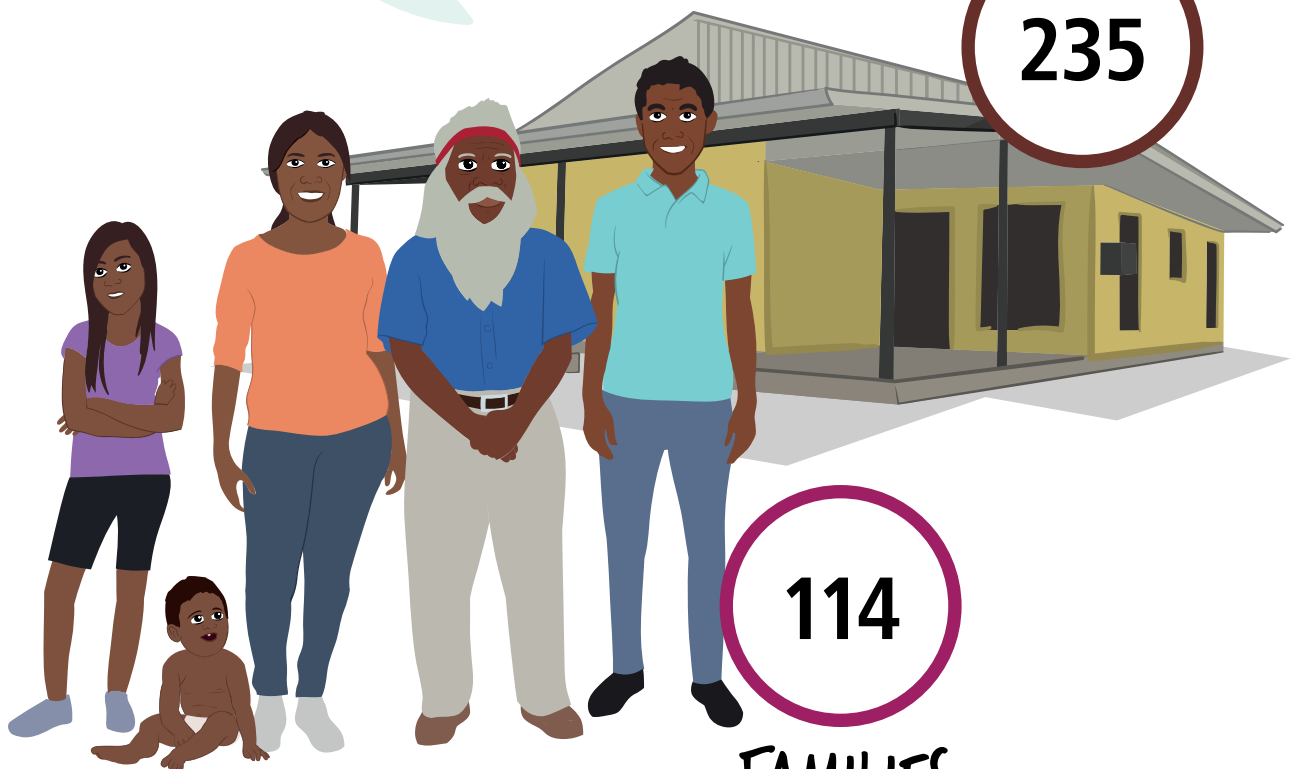
Aboriginal and/or
Torres Strait
Islander people

HOUSES

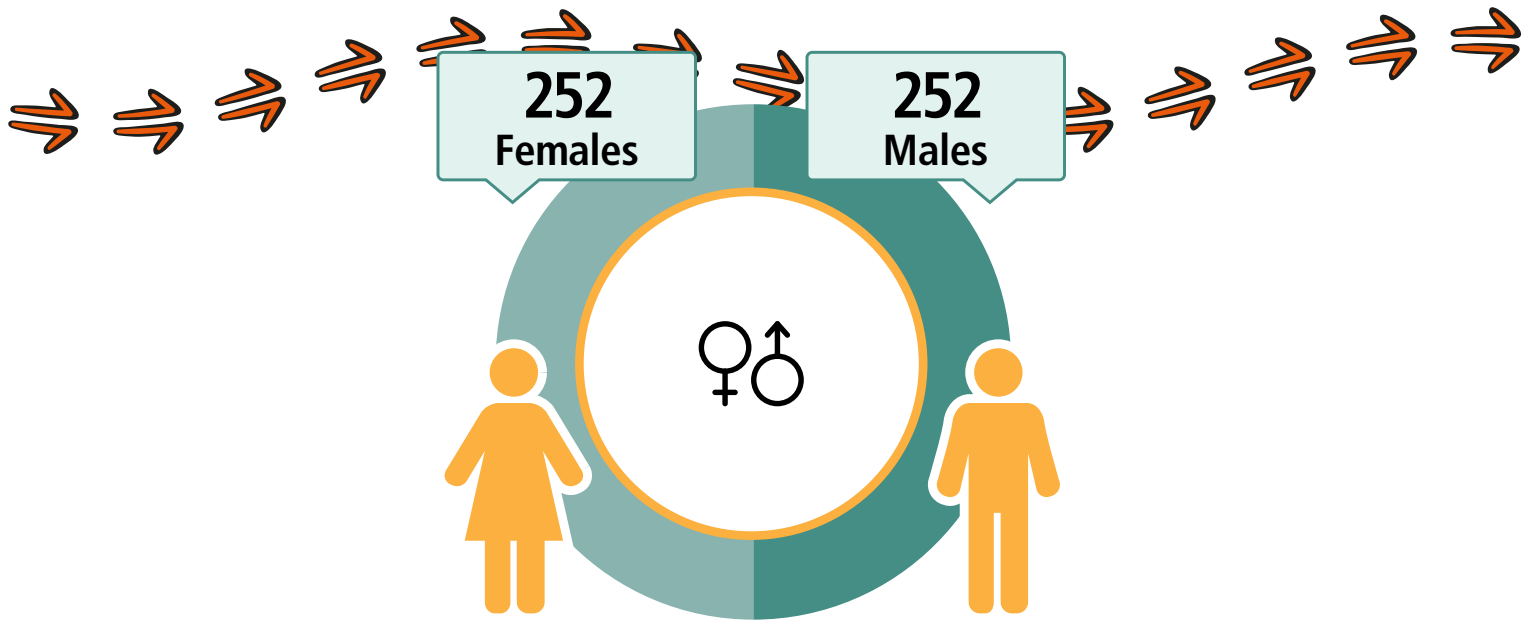
235

114

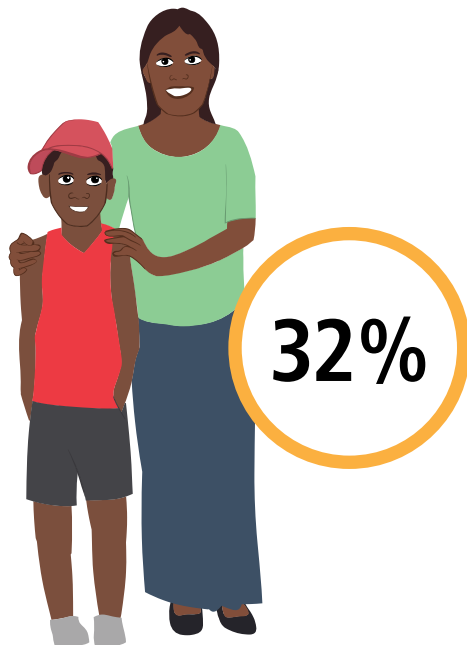
FAMILIES



Roebourne



CARED FOR CHILDREN



123
Working



\$403
Weekly Income



147
Students



66
Completed
Year 12



Geography: Roebourne ILOC

A decorative Aboriginal artwork at the bottom of the page, featuring stylized hands in purple, pink, and yellow, with a central figure in a blue and black body, set against a background of orange and yellow stripes.

Warralong

LANGUAGE SPOKEN
Nyangumarta

113

People

99

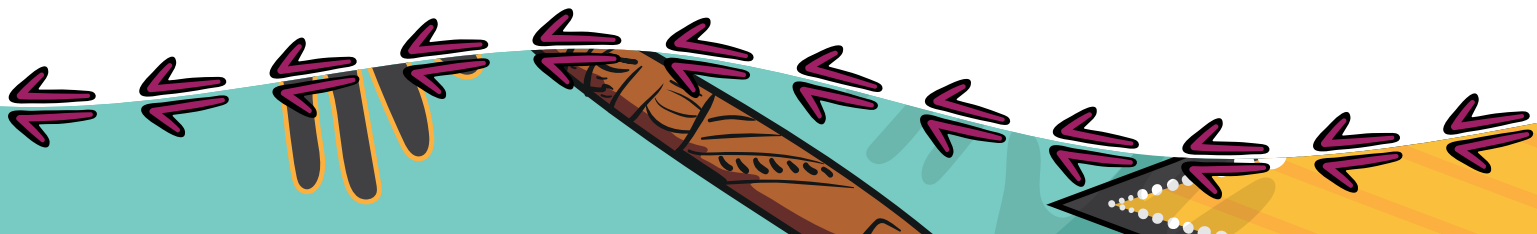
Aboriginal and/or
Torres Strait
Islander people

HOUSES

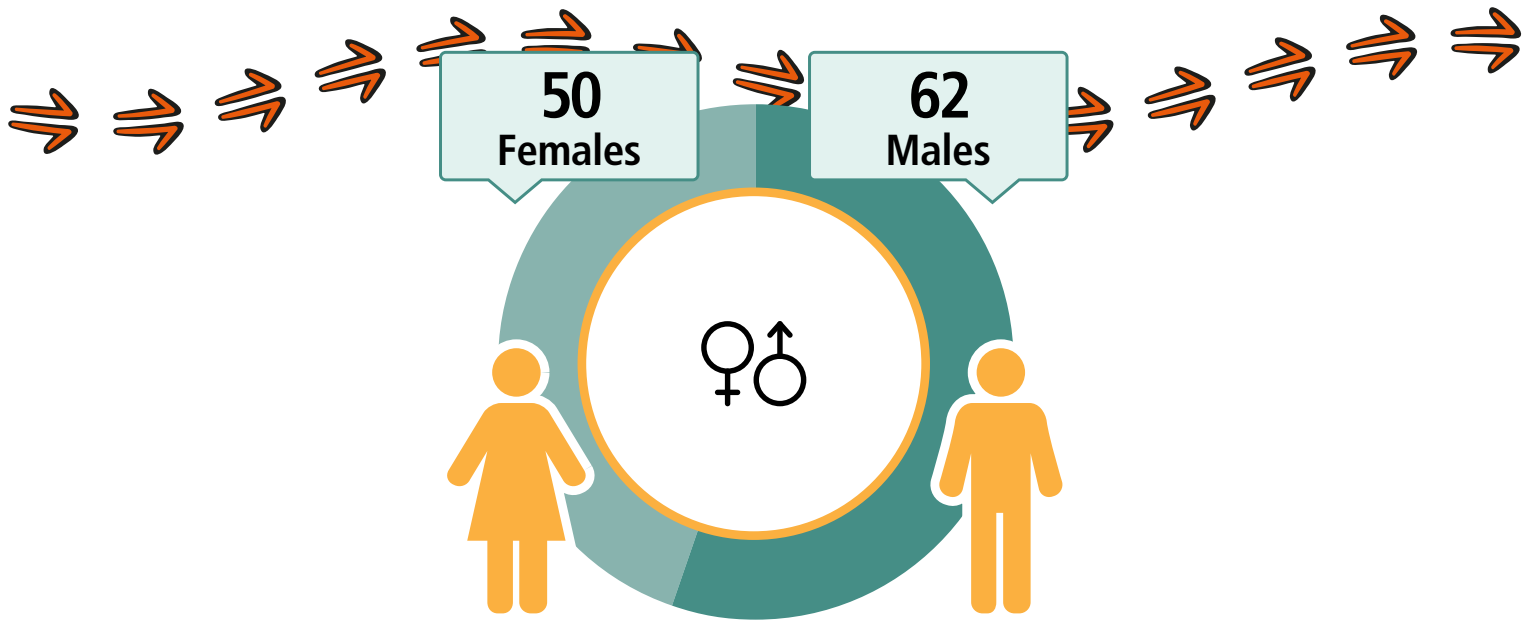
16

20

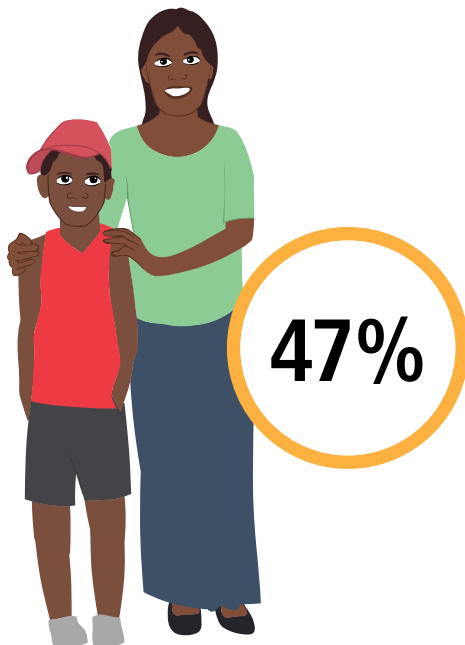
FAMILIES



Warralong



CARED FOR CHILDREN



27
Working



\$240
Weekly Income



38
Students



25
Completed
Year 12



Geography: Warralong ILOC

A decorative border at the bottom of the page featuring stylized Aboriginal art. It includes a yellow and orange pattern on the left, a teal and black pattern in the middle, and a black and white pattern on the right, all with various arrows pointing in different directions.







Know more

You can find more information on your region for free at www.abs.gov.au/census using these data products.



Contact the Centre of Excellence for Aboriginal and Torres Strait Islander Statistics

Phone: 1300 135 070

Email: CoEATSIS@abs.gov.au

Disclaimer

The data displayed for the purposes of this publication may slightly differ to other Census products available on the ABS website.

All data in this publication is based on Total People, Total Dwellings and Total Families for each area.

Community names are generally based upon a commonly identified name or combination of names for the area/community. It is acknowledged that some communities may have an alternative name or different spelling.

Confidentiality

By law, your personal information is kept private and will not be shared with anyone. The ABS makes sure that no one can be identified by the information in this book.

