



ECONOMIC INDICATORS

NEW SOUTH WALES

EMBARGO: 11:30AM (CANBERRA TIME) MON 16 OCT 2000

C O N T E N T S

	<i>Page</i>
Notes	2
NSW overview.....	3
Main features.....	4
List of tables and graphs	5
Population	6
Labour.....	7
Production	10
Building.....	11
Retail trade	12
New motor vehicle registrations	13
Tourism	14
Consumer and producer price indexes.....	15
Finance	16
State Government finance	17
Investment.....	18
International trade.....	19

PLEASE NOTE:
Some of the figures
in this publication
will be affected by the GST.
See Data Notes on page 2.

- For further information about these and related statistics, contact Jill Tomlinson on Sydney 02 9268 4123, or the National Information Service on 1300 135 070.

NOTES

FORTHCOMING ISSUES

<i>ISSUE</i>	<i>ISSUE DATE</i>
November 2000	15 November 2000
December 2000	15 December 2000
January 2001	15 January 2001
February 2001	15 February 2001
March 2001	15 March 2001
April 2001	17 April 2001

DATA NOTES

ABS statistical series are being impacted to varying degrees as a result of The New Tax System (TNTS), introduced in Australia from 1 July 2000. TNTS included the removal of Wholesale Sales Tax and the introduction of a Goods and Services Tax (GST), and as a result, a wide range of ABS data series will reflect significant immediate and subsequent impacts. For further information see *Australian Economic Indicators*, July 2000 (Cat. no. 1350.0).

GENERAL

This publication provides information on a wide range of economic indicators which are the latest available at the time of publication. In a number of cases, figures appearing in this summary are preliminary and are subject to revision in subsequent issues.

SEASONAL ADJUSTMENT AND TREND ESTIMATION

Seasonal adjustment is a means of removing the estimated effects of normal seasonal variation from a series so that the effects of other variations on that series can be more clearly recognised. This means that movements of seasonally adjusted estimates may not be reliable indicators of trend behaviour. Smoothing seasonally adjusted series produces a measure of the underlying trend by reducing the impact of the irregular component of the series. For an explanation of seasonal adjustment derivation, refer to the publication *Seasonally Adjusted Indicators* (Cat. no. 1308.0).

SYMBOLS AND OTHER USAGES

kWh	kilowatt hour
teraJ	terajoule
n.a.	not available
n.p.	not available for publication but included in totals where applicable
n.y.a	not yet available
p	preliminary
r	figure or series revised since previous issue
. .	not applicable
—	nil or rounded to zero
—	break in continuity of series (where a line is drawn across a column between two consecutive figures)

Geoff Smith
Acting Regional Director
New South Wales

NSW OVERVIEW

POPULATION	The March quarter 2000 estimated resident population in NSW was 6,448,800 people, an increase of 12,100 people or 0.2% on the previous quarter.
EMPLOYMENT	Employment in NSW in August 2000 was a seasonally adjusted figure of 3,070,300. National employment in August 2000 was 9,141,800.
UNEMPLOYMENT	Unemployment in NSW increased slightly by 3.0% to a seasonally adjusted figure of 178,600 in August 2000. The unemployment rate increased to 5.5% in August 2000. The national unemployment rate was 6.4% in August 2000.
JOB VACANCIES	There were 43,900 job vacancies in NSW in August 2000, an increase of 5.0% on the previous period. Nationally there were 127,700 vacancies.
INDUSTRIAL DISPUTES	In NSW in June 2000 there were 16,500 working days lost due to industrial disputes, a decrease of 65% on the working days lost in the previous month. Nationally there were 61,200 working days lost due to industrial disputes in June 2000.
PRODUCTION	Coal production for June 2000 was 10,237,000 tonnes, a decrease of 28% from the previous month. Nationally, there were 25,120,000 tonnes of coal produced.
BUILDING APPROVALS	The seasonally adjusted number of new dwelling units approved for NSW in July 2000 decreased 36% from the previous month to 1,967 dwelling units. This was a decrease of 54.9% on the corresponding month of the previous year. Nationally, there were 9,195 new dwelling units, a decrease of 14% from the previous month.
RETAIL	In seasonally adjusted terms, total retail sales for NSW in July 2000 was \$4,155.1 million. For June 2000, the figure was \$4,564.0 million. Data from July 2000 reference month onwards are recorded inclusive of GST. The figures reflect unusually large spending ahead of the GST which commenced on 1 July.
NEW MOTOR VEHICLE REGISTRATIONS	New motor vehicle registrations for NSW in seasonally adjusted terms in July 2000 increased by 48.9% on the previous month to 26,234 registrations.
FINANCE	The seasonally adjusted value of housing finance commitments for owner occupation in NSW in July 2000 was \$2,100 million, an decrease of 5.4% on the previous month and an overall decrease of 12.9% on July 1999.
INVESTMENT	The total actual private fixed capital expenditure, current prices (trend) for NSW in the June quarter 2000 was \$3,863 million, an increase of 2.7% from the March quarter 2000 and an increase of 10.3% from the corresponding quarter of the previous year.
IMPORTS AND EXPORTS	The customs value of imports into NSW during July 2000 was \$4,549 million, a decrease of 7.3% on June 2000. The value of exports (FOB) from NSW in July 2000 was \$1,758 million, a small drop of 0.1% over the same period.

MAIN FEATURES

BUILDING APPROVALS

There has been a continuing decline in the number of new houses approved this month. The number of new houses (seasonally adjusted) was 1,365, a decrease of 27.9% on the previous month and a decrease of 49.5% from the corresponding period of the previous year. The number of new dwelling units (seasonally adjusted) for NSW in July 2000 was 1,967 a decrease of 54.9% from the corresponding period of the previous year. Nationally, the number of new dwelling units was 9,195 a decrease of 14% from June 2000 and a decrease of 34.9% from July 1999.

From July 2000, value data for both residential and non-residential building approved is on a GST inclusive basis.

The seasonally adjusted value of new residential building for NSW in July 2000 was 292.3 million, a decrease of 27.7% from June 2000 and a decrease of 51.4% from July 1999.

The value of all building (in original terms) in NSW was \$670.9 million, a decrease of 16.9% from June 2000. Nationally, the value of all building was \$2,609.2 million which represented a slight increase of 1.1% on June 2000 but a decrease of 20.6% on the corresponding period the previous year.

RETAIL

After five months of increases for the total value of retail sales (seasonally adjusted) a fall of 9% was recorded for July 2000 in NSW to \$4,155.1 million. Nationally, the total retail sales figure of \$12,010.7 million represented a fall of 8.7%.

Seasonally adjusted estimates for many of the industry groups were influenced by pre-GST spending in June 2000. Falls in spending in NSW for July 2000 were recorded for Department stores which decreased 33.8% to \$303,100 million, Clothing and soft good retailing which decreased 26.5% to \$274.2 million, Household good retailing which decreased 24.0% to \$439.9 million and Other retailing which decreased 17.5% to \$396.1 million. Comparing July 2000 with July 1999, there were large decreases for Department stores (down 16.5%) and Clothing and soft good retailing (down 10%). However, Recreational good retailing increased by 11.2% to \$216.6 million.

Nationally, as with NSW, between June 2000 and July 2000 there were significant movements for Department stores (down 30.4% to \$886.2 million, Clothing and soft good retailing (down 27.5% to \$722.2 million) and Household good retailing (down 22.4% to 1,390.4 million). Compared to July 1999, Department stores decreased 16.6% and Clothing and soft good retailing decreased 10.0%.

LIST OF TABLES AND GRAPHS

page

POPULATION	1 Estimated Resident Population, NSW	6
LABOUR	2 Labour data, latest time period, NSW and Australia	7
	3 Labour data, time series, NSW	7
	4 Labour force status of the civilian population, NSW	8
	5 Graph: Unemployment rates, NSW and Australia	9
	6 Coal, electricity and gas production, latest time period, NSW and Australia	10
PRODUCTION	7 Coal, electricity and gas production, time series, NSW	10
BUILDING	8 Building approvals, latest time period, NSW and Australia	11
	9 Building approvals, time series, NSW	11
RETAIL TRADE	10 Turnover of retail establishments, latest time period, NSW and Australia	12
	11 Turnover of retail establishments, seasonally adjusted, time series, NSW	12
NEW MOTOR VEHICLE REGISTRATIONS	12 New motor vehicle registrations, latest time period, NSW and Australia	13
	13 New motor vehicle registrations, seasonally adjusted, time series, NSW	13
TOURISM	14 Accommodation Establishments, latest time period, NSW and Australia	14
	15 Accommodation Establishments, time series, Sydney and NSW	14
	16 Graph: Hotels, motels etc., monthly room occupancy rates, Sydney Tourism Region and NSW	14
CONSUMER AND PRODUCER PRICE INDEXES	17 Consumer and producer price indexes, latest time period, NSW and Australia	15
	18 Consumer and producer price indexes, time series, NSW	15
	19 Graph: Consumer Price Index, Sydney and average of 8 capital cities	15
FINANCE	20 Finance commitments, latest time period, NSW and Australia	16
	21 Finance commitments, time series, NSW	16
STATE GOVERNMENT FINANCE	22 Government finance, budget sector, time series, NSW	17
INVESTMENT	23 Actual private new fixed capital expenditure, latest time period, NSW and Australia	18
	24 Actual private new fixed capital expenditure, time series, NSW	18
	25 Graph: Actual private new fixed capital expenditure by type of asset, trend estimate, NSW	18
INTERNATIONAL TRADE	26 Imports and exports, latest time period, NSW and Australia	19
	27 Imports and exports, time series, NSW	19

	<i>Estimated resident population at end of period</i>			<i>Increase during period</i>			<i>Mean estimated resident population for year ended</i>	
	<i>Males</i>	<i>Females</i>	<i>Persons</i>	<i>Natural increase(a)</i>	<i>Net estimated migration</i>	<i>Total increase(b)</i>	<i>30 June</i>	<i>31 December</i>
	<i>'000</i>	<i>'000</i>	<i>'000</i>	<i>'000</i>	<i>'000</i>	<i>'000</i>	<i>'000</i>	<i>'000</i>
1997	3 129.0	3 171.5	6 300.5	40.9	17.6	58.5	6 240.9	6 276.1
1998	r 3 164.5	r 3 204.0	r 6 368.5	r 39.9	r 28.1	r 68.1	r 6 303.5	r 6 335.7
1999	r 3 199.8	r 3 236.9	r 6 436.7	r 42.3	r 25.8	r 68.2	r 6 367.3	r 6 398.3
1998								
December qtr	r 3 164.5	r 3 204.0	r 6 368.5	r 10.8	r 4.2	r 15.0
1999								
March qtr	r 3 171.0	r 3 210.5	r 6 381.5	r 10.7	r 2.3	r 13.0
June qtr	r 3 179.2	r 3 217.5	r 6 396.7	r 10.1	r 5.1	r 15.2
September qtr	r 3 188.3	r 3 225.5	r 6 413.7	8.1	8.9	17.0
December qtr	r 3 199.8	r 3 236.9	r 6 436.7	13.4	9.5	22.9
2000								
March qtr	3 206.4	3 242.4	6 448.8	7.6	4.5	12.1	—	—

(a) Excess of live births over deaths.

(b) For dates prior to June 1996, differences between the total increase shown and the sum of the natural increase and net estimated migration arise from retrospective adjustments to population estimates (which are made after each Census) to compensate for any intercensal discrepancy. A description of intercensal discrepancy is contained in the ABS Information Paper: Demographic Estimates—Concepts, Sources and Methods (Cat. no. 3228.0).

Source: Australian Demographic Statistics (Cat. no. 3101.0).

	Unit	Latest period	Latest figure	New South Wales		Australia		
				Change from prior period	Change from same period prior year	Latest figure	Change from prior period	Change from same period prior year
Employed persons (seasonally adjusted)	'000	August 2000	3 070.3	0.3	4.6	9 141.8	0.3	3.6
Unemployed persons (seasonally adjusted)	'000	August 2000	178.6	3.0	-14.2	623.7	2.3	-7.9
Labour force (seasonally adjusted)	'000	August 2000	3 248.9	0.5	3.3	9 765.5	0.4	2.8
Participation rate (seasonally adjusted)	%	August 2000	63.0	0.5	1.9	64.1	0.3	1.4
Unemployment rate (seasonally adjusted)	%	August 2000	5.5	1.9	-16.7	6.4	1.6	-9.9
Industrial disputes—working days lost	'000	June 2000	16.5	-65.0	323.1	61.2	-7.3	113.2
Job vacancies	'000	August 2000	43.9	5.0	-9.1	127.7	19.5	16.1
Average weekly employee earnings—full-time adult ordinary time earnings (seasonally adjusted)	\$	May 2000	825.4	1.7	4.2	783.4	1.2	4.3

Source: Average Weekly Earnings, States and Australia (Cat. no. 6302.0); Industrial Disputes, Australia (Cat. no. 6321.0); Job Vacancies, Australia (Cat. no. 6354.0); Labour Force, Australia, Preliminary (Cat. no. 6202.0).

	Seasonally adjusted						
	Employed persons	Unemployed persons	Labour force	Participation rate	Unemployment rate	Industrial disputes (working days lost)	Job vacancies
	'000	'000	'000	%	%	'000	'000
1999							
June	2 926.9	201.6	3 128.5	61.7	6.4	3.9	..
July	2 938.2	192.1	3 130.3	61.6	6.1	23.4	..
August	2 936.1	208.2	3 144.3	61.8	6.6	32.2	48.3
September	2 948.9	217.8	3 166.7	62.2	6.9	33.8	..
October	2 967.0	190.0	3 157.0	61.9	6.0	16.7	..
November	2 960.5	176.9	3 137.4	61.5	5.6	121.4	36.9
December	2 971.5	199.9	3 171.4	62.0	6.3	29.1	..
2000							
January	2 974.0	189.5	3 163.5	61.8	6.0	7.5	..
February	3 004.5	186.4	3 190.9	62.3	5.8	20.1	46.4
March	3 013.9	193.3	3 207.2	62.5	6.0	11.8	..
April	3 038.2	181.8	3 220.0	62.7	5.6	20.0	..
May	3 053.4	185.1	3 238.5	63.0	5.7	47.1	41.8
June	3 038.4	187.9	3 226.3	62.7	5.8	16.5	..
July	3 060.2	173.4	3 233.6	62.7	5.4	n.y.a.	..
August	3 070.3	178.6	3 248.9	63.0	5.5	n.y.a.	43.9

Source: Industrial Disputes, Australia (Cat. no. 6321.0); Job Vacancies, Australia (Cat. no. 6354.0); Labour Force, Australia, Preliminary (Cat. no. 6202.0).

4.1 LABOUR FORCE STATUS, NSW—ORIGINAL

	<i>Employed</i>		<i>Unemployed</i>		<i>Labour force</i>	<i>Not in labour force</i>	<i>Civilian population aged 15 years and over</i>	<i>Unemployment rate(a)</i>	<i>Participation rate(b)</i>
	<i>Full-time workers</i>	<i>Total</i>	<i>Looking for full-time work</i>	<i>Total</i>					
	'000	'000	'000	'000					
MALES									
August									
1996	1 401.1	1 586.0	127.6	146.7	1 732.7	663.3	2 396.0	8.5	72.3
1997	1 390.1	1 567.2	118.7	133.6	1 700.7	727.2	2 428.0	7.9	70.0
1998	1 424.3	1 599.4	115.5	134.6	1 734.1	728.4	2 462.4	7.8	70.4
1999									
June	1 459.4	1 668.1	91.6	108.0	1 776.1	717.3	2 493.4	6.1	71.2
July	1 491.8	1 687.4	83.2	101.3	1 788.7	707.7	2 496.4	5.7	71.7
August	1 464.1	1 662.6	95.9	115.3	1 777.8	721.6	2 499.4	6.5	71.1
September	1 502.7	1 696.2	97.6	124.8	1 820.9	681.5	2 502.4	6.9	72.8
October	1 504.7	1 688.4	87.4	105.5	1 793.9	712.6	2 506.4	5.9	71.6
November	1 498.9	1 681.8	81.4	95.1	1 777.0	733.5	2 510.5	5.4	70.8
December	1 530.2	1 711.0	95.2	116.1	1 827.0	687.5	2 514.5	6.4	72.7
2000									
January	1 497.6	1 680.2	104.8	119.9	1 800.1	717.6	2 517.7	6.7	71.5
February	1 503.6	1 694.0	95.8	113.8	1 807.8	713.1	2 520.9	6.3	71.7
March	1 494.2	1 701.8	93.5	114.1	1 815.9	708.2	2 524.0	6.3	71.9
April	1 504.7	1 716.6	81.8	100.5	1 817.1	710.5	2 527.6	5.5	71.9
May	1 504.2	1 719.5	79.7	98.2	1 817.7	713.5	2 531.1	5.4	71.8
June	1 517.3	1 718.7	86.3	100.5	1 819.2	715.5	2 534.7	5.5	71.8
July	1 528.2	1 732.5	81.4	99.6	1 832.1	705.5	2 537.6	5.4	72.2
August	1 492.5	1 701.7	87.1	101.2	1 802.8	737.7	2 540.5	5.6	71.0
FEMALES									
August									
1996	722.5	1 195.2	59.4	89.5	1 284.7	1 202.6	2 487.4	7.0	51.6
1997	705.2	1 184.5	64.5	92.0	1 276.5	1 242.8	2 519.3	7.2	50.7
1998	724.7	1 220.6	62.4	85.0	1 305.5	1 245.5	2 551.1	6.5	51.2
1999									
June	746.9	1 264.6	52.3	81.5	1 346.2	1 232.9	2 579.1	6.1	52.2
July	754.9	1 265.7	53.2	76.5	1 342.2	1 239.8	2 582.0	5.7	52.0
August	723.4	1 237.1	54.9	86.7	1 323.8	1 261.2	2 584.9	6.5	51.2
September	749.9	1 285.6	61.3	97.6	1 383.2	1 204.7	2 587.9	7.1	53.4
October	767.2	1 289.1	51.3	77.1	1 366.2	1 225.1	2 591.3	5.6	52.7
November	756.5	1 283.3	50.5	71.8	1 355.1	1 239.7	2 594.8	5.3	52.2
December	788.4	1 307.0	54.7	80.9	1 387.9	1 210.4	2 598.3	5.8	53.4
2000									
January	776.9	1 257.2	55.3	80.7	1 337.9	1 262.8	2 600.7	6.0	51.4
February	755.7	1 282.3	57.0	98.2	1 380.5	1 222.7	2 603.2	7.1	53.0
March	771.1	1 307.8	57.0	92.4	1 400.2	1 205.4	2 605.6	6.6	53.7
April	791.3	1 318.7	52.1	82.4	1 401.1	1 207.3	2 608.4	5.9	53.7
May	784.9	1 324.9	53.2	83.7	1 408.7	1 202.5	2 611.2	5.9	53.9
June	783.4	1 326.0	39.8	76.1	1 402.2	1 211.8	2 614.0	5.4	53.6
July	812.3	1 344.0	36.0	60.9	1 404.8	1 211.8	2 616.7	4.3	53.7
August	787.2	1 329.4	40.1	72.3	1 401.7	1 217.6	2 619.3	5.2	53.5

(a) For footnotes see end of table.

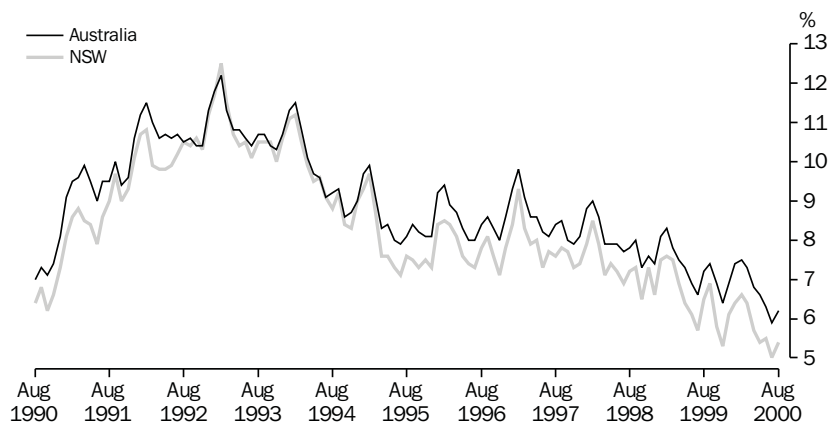
	<u>Employed</u>		<u>Unemployed</u>		Labour force	Not in labour force	Civilian population aged 15 years and over	Unemployment rate(a)	Participation rate(b)
	Full-time workers	Total	Looking for full-time work	Total					
	'000	'000	'000	'000					
PERSONS									
August									
1996	2 123.6	2 781.2	187.0	236.2	3 017.4	1 865.9	4 883.3	7.8	61.8
1997	2 095.3	2 751.7	183.2	225.6	2 977.2	1 970.0	4 947.2	7.6	60.2
1998	2 149.1	2 820.0	177.9	219.6	3 039.6	1 973.9	5 013.5	7.2	60.6
1999									
June	2 206.3	2 932.7	143.9	189.6	3 122.3	1 950.3	5 072.5	6.1	61.6
July	2 246.7	2 953.2	136.4	177.8	3 131.0	1 947.5	5 078.5	5.7	61.7
August	2 187.6	2 899.6	150.8	202.0	3 101.6	1 982.8	5 084.4	6.5	61.0
September	2 252.6	2 981.8	158.9	222.4	3 204.2	1 886.2	5 090.3	6.9	62.9
October	2 271.8	2 977.5	138.6	182.6	3 160.1	1 937.7	5 097.8	5.8	62.0
November	2 255.4	2 965.1	131.9	167.0	3 132.1	1 973.2	5 105.3	5.3	61.3
December	2 318.6	3 017.9	149.9	197.0	3 214.9	1 897.9	5 112.8	6.1	62.9
2000									
January	2 274.5	2 937.4	160.1	200.6	3 138.0	1 980.4	5 118.4	6.4	61.3
February	2 259.3	2 976.3	152.8	212.0	3 188.3	1 935.7	5 124.0	6.6	62.2
March	2 265.4	3 009.6	150.4	206.5	3 216.1	1 913.6	5 129.7	6.4	62.7
April	2 296.0	3 035.3	133.9	182.9	3 218.2	1 917.8	5 136.0	5.7	62.7
May	2 289.1	3 044.4	132.8	181.9	3 226.3	1 916.0	5 142.3	5.6	62.7
June	2 300.6	3 044.7	126.0	176.6	3 221.3	1 927.3	5 148.6	5.5	62.6
July	2 340.5	3 076.5	117.4	160.5	3 237.0	1 917.3	5 154.3	5.0	62.8
August	2 279.7	3 031.1	127.2	173.4	3 204.6	1 955.3	5 159.9	5.4	62.1

(a) The number of unemployed in each group expressed as a percentage of the labour force in the same group.

(b) The labour force in each group expressed as a percentage of the civilian population aged 15 years and over in the same group.

Source: Labour Force, Australia, Preliminary (Cat. no. 6202.0).

5 UNEMPLOYMENT RATE—ORIGINAL



Source: Labour Force, Australia, Preliminary (Cat. no. 6202.0)

	Unit	Latest period	New South Wales			Australia		
			Latest figure	Change	Change	Latest figure	Change	Change
				from prior period	from same period prior year		from prior period	from same period prior year
%	%	%	%					
Raw coal won								
Underground	'000 tonnes	June 2000	3 793	-32.3	-27.2	7 315	-20.2	-19.3
Open cut	'000 tonnes	June 2000	6 443	-25.2	-13.5	17 805	-5.0	2.5
Total	'000 tonnes	June 2000	10 237	-28.0	-19.1	25 120	-10.0	-5.0
Electricity	mill. kWh	June qtr 2000	17 334	6.1	5.9	47 374	2.9	4.7
Gas(a)	teraJ	June qtr 2000	n.p.	n.p.	n.p.	198 931	30.2	9.3

(a) Available for issue through mains. Includes ACT.

Source: Joint Coal Board for NSW and Australia from ABS unpublished statistics, *Manufacturing Production, Australia* (Cat. no. 8301.0).

	Raw coal won			Electricity	Gas(a)
	Underground	Open cut	Total		
	'000 tonnes	'000 tonnes	'000 tonnes		
1997-98	58 299	75 710	134 009	61 804	111 665
1998-99	51 158	80 209	131 367	63 743	110 092
1999-2000	52 709	80 186	132 895	65 934	n.p.
1999					
January	3 273	6 159	9 432	15 609	22 367
February	3 848	6 913	10 761		
March	4 921	7 827	12 748		
April	3 525	5 768	9 293	16 365	30 428
May	4 664	6 303	10 967		
June	5 209	7 448	12 657		
July	r 4 560	r 6 706	r 11 266	16 977	32 555
August	r 3 861	r 6 442	r 10 303		
September	r 5 467	r 8 408	r 13 875		
October	r 4 015	r 6 369	r 10 384	15 284	26 029
November	r 4 573	r 6 323	r 10 596		
December	r 5 918	r 6 967	r 11 985		
2000					
January	r 3 633	r 5 907	r 9 541	16 339	n.p.
February	r 3 834	r 6 376	r 10 210		
March	r 4 799	r 6 549	r 11 348		
April	r 3 854	r 5 084	r 8 938	17 334	n.p.
May	r 5 601	r 8 611	r 14 212		
June	3 793	6 443	10 237		

(a) Available for issue through mains. Includes ACT.

Source: Joint Coal Board, *Manufacturing Production, Australia* (Cat. no. 8301.0).

	Unit	Latest period	Latest figure	New South Wales		Australia		
				Change from prior period %	Change from same period prior year %	Latest figure	Change from prior period %	Change from same period prior year %
Number of dwelling units(a) (seasonally adjusted (b))—								
New houses	no.	July 2000	1 365	-27.9	-49.5	5 895	-18.1	-40.0
Total	no.	July 2000	1 967	-36.0	-54.9	9 195	-14.0	-34.9
Value of new residential building (seasonally adjusted)	\$m	July 2000	292.3	-27.7	-51.4	1 161.8	-11.5	-30.3
Value of alterations and additions to residential building(c) (seasonally adjusted)	\$m	July 2000	73.1	-5.1	-32.9	258.3	0.9	-11.6
Value of non-residential building(d) (original)	\$m	July 2000	282.3	-18.0	-46.1	1 156.6	16.8	-6.3
Value of all building (original)	\$m	July 2000	670.9	-16.9	-47.1	2 609.2	1.1	-20.6

(a) Includes dwelling units approved as part of the construction of non-residential building and alterations and additions to existing buildings (including conversions to dwelling units).

(b) Seasonally adjusted and trend estimates to April 2000 have been revised. See Building Approvals, Australia (Cat. no. 8731.0).

(c) Valued at \$10,000 or more. Includes conversions of existing buildings into residential buildings.

(d) Valued at \$50,000 or more.

	Number of dwelling units(a), seasonally adjusted				Value of building approvals(b)			
	New houses		Total		Seasonally adjusted		Original	
	Private sector	Total	Private sector	Total	New residential building	Alterations and additions to residential building(c)	Non-residential building(d)	All building
	no.	no.	no.	no.	\$m	\$m	\$m	\$m
1996-97	5 169.2	11 356.6
1997-98	5 910.9	13 348.6
1998-99	4 543.4	11 932.3
1999								
May	2 566	2 592	4 494	4 604	540.5	107.3	424.7	1 147.3
June	2 518	2 533	4 244	4 382	585.9	91.7	503.7	1 173.7
July	2 692	2 705	4 208	4 365	601.9	109.0	523.6	1 268.5
August	2 611	2 614	4 609	4 663	627.2	114.8	509.0	1 282.8
September	2 321	2 355	4 422	4 467	538.8	111.8	260.5	935.5
October	2 712	2 737	4 468	4 609	569.3	116.0	266.0	897.3
November	2 755	2 774	4 119	4 192	514.0	104.4	264.1	978.8
December	2 958	2 975	4 387	4 433	562.6	113.9	278.1	948.5
2000								
January	2 675	2 689	4 142	4 235	606.4	91.9	359.2	935.6
February	2 802	2 818	4 171	4 285	556.4	122.0	279.5	936.4
March	2 592	2 602	4 148	4 177	519.3	121.6	444.5	1 083.5
April	r 2 258	r 2 278	r 3 632	r 3 772	r 490.6	118.6	382.0	r 914.9
May	r 2 063	r 2 081	r 3 804	r 3 889	r 525.5	121.0	300.8	r 1 074.2
June	r 1 887	r 1 894	r 2 952	r 3 075	404.4	77.0	344.3	807.5
July	1 358	1 365	1 880	1 967	292.3	73.1	282.3	670.9

(a) Includes dwelling units approved as part of the construction of non-residential building and alterations and additions to existing buildings (including conversions to dwelling units).

(b) From July 2000, value data for both residential and non-residential building approvals will be on a GST inclusive basis.

(c) Valued at \$10,000 or more. Includes conversions of existing buildings into residential buildings.

(d) Valued at \$50,000 or more.

Source: Building Approvals, Australia (Cat. no. 8731.0).

	Latest period	New South Wales			Australia		
		Latest figure	Change from prior period		Latest figure	Change from prior period	
			\$m	%		%	%
Food retailing	Jul 2000	1 600.6	1.1	2.8	4 999.1	0.7	3.2
Department stores	Jul 2000	303.1	-33.8	-16.5	886.2	-30.4	-16.6
Clothing and soft good retailing	Jul 2000	274.2	-26.5	-10.0	722.2	-27.5	-10.0
Household good retailing	Jul 2000	439.9	-24.0	8.6	1 390.4	-22.4	4.6
Recreational good retailing	Jul 2000	216.6	6.2	11.2	601.4	-1.5	-0.1
Other retailing	Jul 2000	396.1	-17.5	-4.8	1 262.5	-9.9	-0.6
Hospitality and services	Jul 2000	924.7	4.2	8.0	2 149.0	1.6	4.3
Total value of retail sales	Jul 2000	4 155.1	-9.0	1.4	12 010.7	-8.7	0.3

(a) The figures shown are derived from a monthly survey of retail establishments. Excludes motor vehicle, boat and caravan dealers, service stations, smash repairers, tyre and battery retailers, bread and milk vendors, footwear repairers and electrical appliance repairers n.e.c. Retail establishments which do not have employees are excluded from the survey. Turnover includes retail sales, wholesale sales, takings from repairs, meals and hiring of goods; and commissions from agency activity (e.g. commissions received from collecting dry cleaning, selling lottery tickets etc.).

Source: Retail Trade, Australia (Cat. no. 8501.0).

	Food retailing	Department stores	Clothing and soft good retailing	Household good retailing	Recreational good retailing	Other retailing	Hospitality and services	Total
	\$m	\$m	\$m	\$m	\$m	\$m	\$m	\$m
1999								
May	1 547.5	357.7	302.5	392.9	181.2	425.6	899.0	4 106.2
June	1 566.5	345.3	311.4	398.2	192.2	405.2	882.3	4 101.0
July	1 557.0	363.1	304.6	405.2	194.8	416.1	856.2	4 097.0
August	1 591.1	371.8	322.2	430.7	195.1	426.9	843.8	4 181.6
September	1 593.4	364.9	318.4	450.8	193.5	427.2	868.6	4 216.7
October	1 589.3	378.4	323.5	457.4	190.0	425.8	849.0	4 213.4
November	1 593.0	373.6	329.3	436.4	184.4	434.7	845.4	4 196.7
December	1 601.7	371.2	322.7	418.8	185.1	444.4	854.3	4 198.2
2000								
January	1 542.4	372.6	310.4	441.5	198.2	421.7	855.0	4 141.9
February	1 544.6	376.5	293.6	456.3	197.1	429.4	861.2	4 158.7
March	1 544.8	370.3	319.2	451.4	200.3	425.6	868.9	4 180.5
April	1 561.3	378.9	301.3	446.6	202.4	429.1	872.9	4 192.5
May	1 553.2	382.3	311.3	459.2	210.7	440.3	875.5	4 232.7
June	1 582.9	457.8	373.0	578.8	203.9	480.3	887.3	4 564.0
July	1 600.6	303.1	274.2	439.9	216.6	396.1	924.7	4 155.1

(a) The figures shown are derived from a monthly survey of retail establishments. Excludes motor vehicle, boat and caravan dealers, service stations, smash repairers, tyre and battery retailers, bread and milk vendors, footwear repairers and electrical appliance repairers n.e.c. Retail establishments which do not have employees are excluded from the survey. Turnover includes retail sales, wholesale sales, takings from repairs, meals and hiring of goods; and commissions from agency activity (e.g. commissions received from collecting dry cleaning, selling lottery tickets etc.).

(b) Data from July 2000 reference month onwards are recorded inclusive of GST.

(c) Data for previous months have been revised due to concurrent seasonal adjustment methodology. See Explanatory Notes in Retail Trade, Australia (Cat. no. 8501.0).

Source: Retail Trade, Australia (Cat. no. 8501.0).

	Latest period	New South Wales			Australia		
		Latest figure	Change from prior period	Change from same period prior year	Latest figure	Change from prior period	Change from same period prior year
		no.	%	%	no.	%	%
Passenger vehicles	July 2000	23 289	67.4	18.6	68 570	77.2	32.4
Other vehicles (excluding motor cycles)	July 2000	2 945	-20.6	-21.4	9 086	-19.9	-16.1
Total registrations (excluding motor cycles)	July 2000	26 234	48.9	12.2	77 656	55.2	24.0

(a) Includes vehicles (other than those of the defence forces) owned by Government departments and authorities. Excludes mobile plant and equipment, tractors, trailers and non-motorised caravans.

Source: *New Motor Vehicle Registrations, Australia, Preliminary (Cat. no. 9301.0)*.

	Passenger vehicles	Other vehicles (excluding motor cycles)	Total (excluding motor cycles)
	no.	no.	no.
1999			
May	18 845	3 184	22 029
June	19 442	3 363	22 805
July	19 633	3 748	23 381
August	17 713	3 449	21 162
September	18 022	3 553	21 574
October	17 819	3 802	21 621
November	18 426	3 942	22 368
December	19 679	4 395	24 074
2000			
January	17 675	3 672	21 347
February	18 376	3 977	22 352
March	18 314	3 530	21 844
April	17 517	3 451	20 968
May	16 439	3 661	20 100
June	13 911	3 708	17 619
July	23 289	2 945	26 234

(a) Includes vehicles (other than those of the defence forces) owned by Government departments and authorities. Excludes mobile plant and equipment, tractors, trailers and non-motorised caravans.

Source: *New Motor Vehicle Registrations, Australia, Preliminary (Cat. no. 9301.0)*.

14 ACCOMMODATION ESTABLISHMENTS(a) NSW AND AUSTRALIA—ORIGINAL

	Unit	Latest period	Latest figure	New South Wales		Australia		
				Change from prior period	Change from same period prior year	Change from prior period	Change from same period prior year	
				%	%	Latest figure	%	%
Room nights	'000	Mar qtr 2000	3 388.1	-1.0	5.4	10 088.1	-3.1	5.2
Room occupancy rate	%	Mar qtr 2000	60.3	-1.0	-0.5	58.2	-2.5	0.2
Takings	\$'000	Mar qtr 2000	397 869	-0.7	10.3	1 088 603	-2.1	8.5

(a) Licensed hotels with facilities, motels and guest houses and serviced apartments with 15 or more rooms or units.

Source: *Tourist Accommodation, Australia (Cat. no. 8635.0)*.

15 ACCOMMODATION ESTABLISHMENTS(a) SYDNEY AND NSW—ORIGINAL

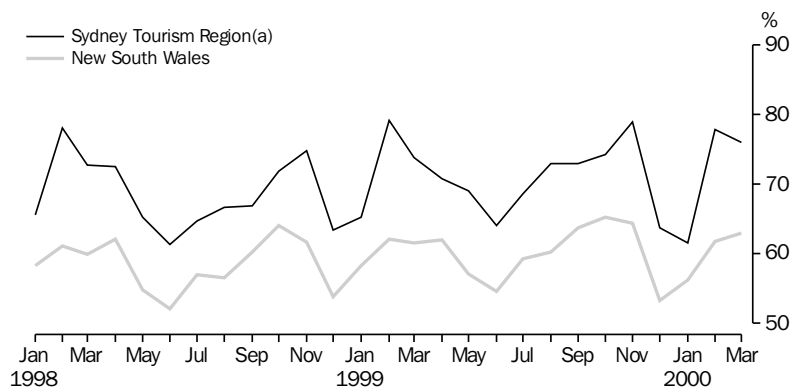
	Sydney Tourism Region(b)			New South Wales		
	Room nights	Room occupancy rate	Takings	Room nights	Room occupancy rate	Takings
	'000	%	\$'000	'000	%	\$'000
1998						
December qtr	1 777.0	70.0	246 125	3 210.5	59.8	359 172
1999						
March qtr	1 828.8	72.5	248 997	3 213.2	60.6	360 674
June qtr	1 731.3	68.0	226 273	3 099.9	57.9	332 669
September qtr	1 865.9	71.6	247 543	3 345.0	61.1	375 014
December qtr	1 962.5	72.3	276 165	3 423.1	60.9	395 165
2000						
March qtr 2000	1 980.0	71.7	279 374	3 388.1	60.3	397 869

(a) Licensed hotels with facilities, motels and guest houses and serviced apartments with 15 or more rooms or units.

(b) Excludes Gosford, Wyong and Blue Mountains Statistical Local Areas.

Source: *Tourist Accommodation, Small Area Data, New South Wales (Cat. no. 8635.1.40.001)*.

16 ACCOMMODATION ESTABLISHMENTS, MONTHLY ROOM OCCUPANCY RATE—ORIGINAL



(a) Excludes Gosford, Wyong and Blue Mountains Statistical Local Areas.

Source: *Tourist Accommodation, Small Area Data, NSW (Prod. no. 8635.1.40.001)*.

17 CONSUMER AND PRODUCER PRICE INDEXES—NSW AND AUSTRALIA

	Unit	New South Wales(a)				Australia(b)		
		Latest period	Latest figure	Change from prior period	Change from same period prior year	Latest figure	Change from prior period	Change from same period prior year
				%	%		%	%
Consumer Price Index (all groups)	1989–90 =100.0	June qtr 2000	127.0	1.0	3.3	126.2	0.8	3.2
Price index of materials used in house building (all groups)	1989–90 =100.0	June qtr 2000	131.2	2.5	7.7	125.5	1.4	5.3
Price index of materials used in building other than house building (all groups)	1989–90 =100.0	June qtr 2000	117.3	0.8	1.6	117.4	0.9	1.7

(a) Refers to State capital city—Sydney.

(b) For the Consumer Price Index this is the weighted average of eight capital cities and for the other two indexes, the weighted average of the six State capital cities.

Source: Consumer Price Index, Australia (Cat. no. 6401.0); Price Index of Materials Used in Building Other Than House Building, Six State Capital Cities (Cat. no. 6407.0); Price Index of Materials Used in House Building, Six State Capital Cities (Cat. no. 6408.0).

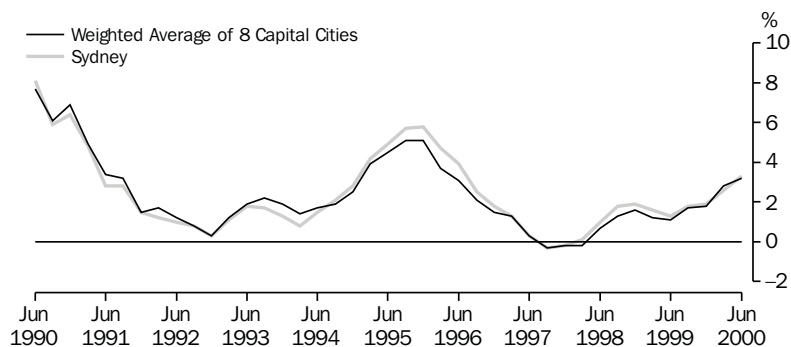
18 CONSUMER AND PRODUCER PRICE INDEXES—NSW(a)

	Consumer Price Index, all groups	Price Index of materials used in house building, all groups	Price Index of materials used in building other than house building, all groups
	1989–90 = 100.0	1989–90 = 100.0	1989–90 = 100.0
1999			
March qtr	122.6	122.0	115.2
June qtr	123.0	121.8	115.4
September qtr	124.1	123.7	115.1
December qtr	124.7	124.4	115.3
2000			
March qtr	125.8	128.0	116.4
June qtr	127.0	131.2	117.3

(a) Refers to State capital city—Sydney.

Source: Consumer Price Index, Australia (Cat. no. 6401.0); Price Index of Materials Used in Building Other Than House Building, Six State Capital Cities (Cat. no. 6407.0); Price Index of Materials Used in House Building, Six State Capital Cities (Cat. no. 6408.0).

19 CONSUMER PRICE INDEX, ANNUAL RATE OF CHANGE



Source: Consumer Price Index (Cat. no. 6401.0).

SECURED HOUSING FINANCE COMMITMENTS TO INDIVIDUALS FOR OWNER OCCUPATION—NSW AND AUSTRALIA

	Latest period	New South Wales			Australia		
		Latest figure	Change from prior period	Change from same period prior year	Latest figure	Change from prior period	Change from same period prior year
Lending commitments for the construction or purchase of dwellings—							
Construction of dwellings	Jul 2000	176	-10.8	-35.2	545	-10.4	-38.5
Purchase of newly erected dwellings	Jul 2000	69	-19.8	-28.1	183	-26.2	-25.0
Purchase of established dwellings(a)	Jul 2000	1 432	-12.2	-19.8	3 498	-1.8	-10.3
Refinancing of existing dwellings	Jul 2000	431	-9.1	28.6	1 018	-13.9	17.5
Lending commitments for alterations and additions	Jul 2000	89	-15.5	-4.6	226	-14.4	-8.8
Total lending commitments to individuals for housing(b)	Jul 2000	2 107	-11.7	-15.3	5 244	-6.4	-11.0
Total lending commitments to individuals for housing (seasonally adjusted)(b)	Jul 2000	2 100	-5.4	-12.9	5 328	2.7	-7.8

(a) Excludes refinancing.

(b) Excludes alterations and additions.

Source: *Housing Finance for Owner Occupation, Australia (Cat. no. 5609.0)*.

SECURED HOUSING FINANCE COMMITMENTS TO INDIVIDUALS FOR OWNER OCCUPATION—NSW

	Lending commitments for the construction or purchase of dwellings				Lending commitments for alterations and additions	Total lending commitments to individuals for housing(b)	
	Construction of dwellings	Purchase of newly erected dwellings	Purchase of established dwellings(a)	Refinancing of existing dwellings		Original	Seasonally adjusted
	\$m	\$m	\$m	\$m		\$m	\$m
1997-98	2 625	1 280	14 445	3 573	1 174	21 923	..
1998-99	2 990	1 147	16 761	4 026	1 126	24 925	..
1999-2000	r 3 268	1 129	r 21 637	r 4 993	1 271	r 31 027	..
1999							
May	276	96	1 787	364	110	2 524	2 387
June	300	116	1 851	418	105	2 686	2 476
July	271	96	1 786	335	93	2 489	2 410
August	286	90	1 800	396	96	2 572	2 525
September	315	101	1 841	394	106	2 652	2 524
October	290	104	1 956	418	110	2 768	2 993
November	329	115	2 122	460	120	3 026	2 889
December	275	90	1 893	415	105	2 672	2 792
2000							
January	226	70	1 404	309	83	2 010	2 712
February	324	103	1 759	423	114	2 609	2 709
March	296	101	1 956	488	123	2 842	2 428
April	213	r77	1 581	358	94	2 229	r 2 406
May	246	94	1 909	524	119	2 772	2 428
June	r 197	86	r 1 630	r 474	105	r 2 387	r 2 219
July	176	69	1 432	431	89	2 107	2 100

(a) Excludes refinancing.

(b) Excludes alterations and additions.

Source: *Housing Finance for Owner Occupation, Australia (Cat. no. 5609.0)*.

	July–May			
	Preliminary Actual		Estimates	
	1998–99	1999–2000	1998–99	1999–2000
	\$m	\$m	\$m	\$m
Current receipts				
Stamp duties	3 947	3 747	3 588	4 150
Payroll tax	3 617	3 637	3 317	3 426
Land tax	958	859	835	814
Motor vehicle taxes	1 055	977	947	903
Gaming and betting	1 419	1 558	1 221	1 367
Commonwealth safety net taxes	1 975	1 989	1 801	1 837
Other taxes	1 251	1 245	1 112	1 131
Commonwealth general purpose grants	4 687	5 162	4 238	4 799
Commonwealth specific purpose grants	3 464	3 449	3 118	3 240
Dividends/tax equivalents	1 280	1 173	1 126	975
Other current receipts	1 316	1 256	1 104	1 227
<i>Total current receipts</i>	<i>24 969</i>	<i>25 052</i>	<i>22 407</i>	<i>23 869</i>
Current payments				
Interest payments	1 393	1 124	977	898
Superannuation	1 499	1 640	1 224	1 684
Subsidies to non-budget sector				
Redundancies	n.a.	86	68	41
Services	n.a.	840	927	713
Total	990	926	995	754
Departmental payments				
Redundancies	n.a.	98	52	79
Health	n.a.	5 949	4 835	5 584
Education	n.a.	5 440	4 313	5 030
Law and order(a)	n.a.	1 862	1 499	1 720
Community services	n.a.	1 253	1 056	1 195
Other	n.a.	6 105	4 634	5 472
Total	20 406	20 707	16 389	19 080
Treasurer's advances(b)	..	160
Less User charges	-2 092	-2 110	-1 700	-2 045
<i>Total current outlays</i>	<i>22 196</i>	<i>22 447</i>	<i>17 885</i>	<i>20 371</i>
Current result surplus/deficit (-)	2 773	2 605	2 599	3 498
Capital receipts—				
Commonwealth specific purpose grants	831	784	612	690
Other capital receipts	437	151	371	58
<i>Total capital receipts</i>	<i>1 268</i>	<i>935</i>	<i>983</i>	<i>748</i>
Capital outlays—				
Gross fixed capital payments	2 946	2 798	2 312	2 188
Capital grants	1 102	1 104	931	921
Less Asset sales	-597	-576	-431	-328
<i>Total capital outlays</i>	<i>3 451</i>	<i>3 326</i>	<i>2 812</i>	<i>2 781</i>
Capital result surplus/deficit (-)	-2 183	-2 391	-1 829	-2 033
Government Finance Statistics result surplus/deficit (-)	590	214	770	1 465

(a) Includes Attorney Generals Department, Department of Corrective Services and Police Services.

(b) Expenditure from the Treasurer's Advance is included in the relevant current payments figures.

Source: Financial Statement released by NSW Treasury. Figures may differ from data published in annual ABS publications.

Type of asset	Latest period	New South Wales			Australia		
		Latest figure	Change from prior period	Change from same period prior year	Latest figure	Change from prior period	Change from same period prior year
		\$m	%	%	\$m	%	%
New buildings and structures	Jun qtr 2000	968	0.8	0.9	2 966	5.6	-5.1
Equipment, plant and machinery	Jun qtr 2000	2 895	3.4	13.8	7 529	-1.2	-1.0
Total	Jun qtr 2000	3 863	2.7	10.3	10 495	0.7	-2.2

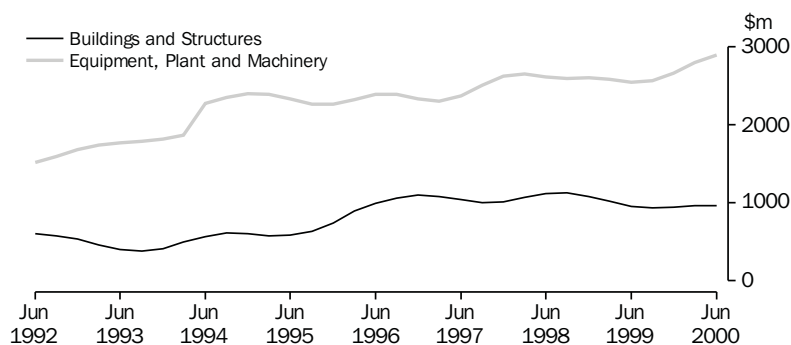
Source: State Estimates of Private New Capital Expenditure (Cat. no. 5646.0).

24 ACTUAL PRIVATE NEW FIXED CAPITAL EXPENDITURE, CURRENT PRICES—NSW, TREND

	Type of asset		
	New buildings and structures	Equipment, plant and machinery	Total
	\$m	\$m	\$m
1999			
March qtr	1 018	2 585	3 603
June qtr	959	2 543	3 502
September qtr	935	2 562	3 497
December qtr	949	2 666	3 615
2000			
March qtr	960	2 800	3 760
June qtr	968	2 895	3 863

Source: State Estimates of New Capital Expenditure (Cat. no. 5646.0).

25 ACTUAL PRIVATE NEW FIXED CAPITAL EXPENDITURE, CURRENT PRICES, NSW—TREND



Source: State Estimates of New Capital Expenditure (Cat. no. 5646.0).

	Latest period	New South Wales			Australia		
		Latest figure	Change from prior nperiod	Change from same period prior year	Latest figure	Change from prior period	Change from same period prior year
		\$m	%	%	\$m	%	%
Overseas imports into NSW	July 2000	4 549	-7.3	30.1	9 814	-6.4	20.0
Total overseas exports(c)	July 2000	1 758	-0.1	16.1	8 864	3.7	32.9
Export commodities and SITC(d) code							
Meat and meat preparations (01)	July 2000	99	7.1	20.2	440	3.9	22.6
Cereals and cereal preparations (04)	July 2000	138	22.9	26.0	390	4.4	10.3
Wool and other animal hair (268)	July 2000	64	-1.8	19.3	251	-8.0	45.8
Coal, coke and briquettes (32)	July 2000	316	17.9	5.9	865	9.9	25.8
Iron and steel (67)	July 2000	64	-31.6	44.7	100	-38.0	15.6
Aluminium (684)	July 2000	127	-1.3	22.3	328	6.7	25.5
Office machines and automatic data processing machines (75)	July 2000	30	4.2	-7.2	46	-1.4	-18.3

(a) Figures shown are Customs value.

(b) Figures shown are Free On Board (FOB) values.

(c) Excludes re-exported goods.

(d) Standard International Trade Classification Revision 3.

Source: ABS unpublished data, International Trade database.

	Overseas exports of SITC(c) commodities								
	Overseas imports into NSW	Total overseas exports(d)	Meat and meat preparations (01)	Cereals and cereal preparations (04)	Wool and other animal hair (268)	Coal, coke and briquettes (32)	Iron and steel (67)	Aluminium (684)	Office machines and automatic data processing machines (75)
	\$m	\$m	\$m	\$m	\$m	\$m	\$m	\$m	\$m
1998-99	42 142	17 948	948	r 1 234	685	3 766	958	1 151	333
1999-2000	r 48 019	r 18 947	r 1 047	r 1 261	r 826	3 092	830	r 1 341	r 380
1999									
May	3 603	r 1 505	75	79	57	283	103	93	39
June	3 594	1 451	76	r 113	46	260	59	95	31
July	3 497	1 514	83	r 110	54	298	45	104	33
August	3 806	r 1 535	85	106	50	r 277	48	96	35
September	4 098	1 573	81	94	69	249	59	107	29
October	3 765	1 553	91	103	78	239	53	105	29
November	4 272	r 1 577	90	107	93	244	67	104	34
December	r 3 975	1 577	94	112	83	211	68	112	28
2000									
January	3 462	1 331	68	68	55	261	50	101	22
February	3 737	1 516	86	114	72	226	61	122	32
March	4 347	1 637	95	123	78	238	79	132	43
April	r 3 543	1 610	87	94	59	285	r 99	r 109	35
May	r 4 609	1 764	93	118	r 69	295	108	122	30
June	4 908	r 1 759	r 93	112	r 66	r 268	94	r 129	29
July	4 549	1 758	99	138	64	316	64	127	30

(a) Figures shown are Customs value.

(b) Figures shown are Free On Board (FOB) values.

(c) Standard International Trade Classification Revision 3.

(d) Excludes re-exported goods.

Source: ABS unpublished data, International Trade database.

FOR MORE INFORMATION...

- INTERNET* **www.abs.gov.au** the ABS web site is the best place to start for access to summary data from our latest publications, information about the ABS, advice about upcoming releases, our catalogue, and Australia Now—a statistical profile.
- LIBRARY* A range of ABS publications is available from public and tertiary libraries Australia-wide. Contact your nearest library to determine whether it has the ABS statistics you require, or visit our web site for a list of libraries.
- CPI INFOLINE* For current and historical Consumer Price Index data, call 1902 981 074 (call cost 77c per minute).
- DIAL-A-STATISTIC* For the latest figures for National Accounts, Balance of Payments, Labour Force, Average Weekly Earnings, Estimated Resident Population and the Consumer Price Index call 1900 986 400 (call cost 77c per minute).

INFORMATION SERVICE

Data which have been published and can be provided within five minutes are free of charge. Our information consultants can also help you to access the full range of ABS information—ABS user-pays services can be tailored to your needs, time frame and budget. Publications may be purchased. Specialists are on hand to help you with analytical or methodological advice.

- PHONE* **1300 135 070**
- EMAIL* **client.services@abs.gov.au**
- FAX* 1300 135 211
- POST* Client Services, ABS, GPO Box 796, Sydney 1041

WHY NOT SUBSCRIBE?

ABS subscription services provide regular, convenient and prompt deliveries of ABS publications and products as they are released. Email delivery of monthly and quarterly publications is available.

- PHONE* 1300 366 323
- EMAIL* subscriptions@abs.gov.au
- FAX* 03 9615 7848
- POST* Subscription Services, ABS, GPO Box 2796Y, Melbourne 3001



2130710010001
ISSN 1031-8534

RRP \$17.50