



MONTHLY SUMMARY OF STATISTICS

VICTORIA

EMBARGO: 11:30AM (CANBERRA TIME) TUES 22 AUG 2000

CONTENTS

	<i>page</i>
Notes	2
Selected features	3
TABLES	
List of tables.....	4
Demography.....	5
Labour.....	6
Wages.....	9
Prices.....	10
Meat production.....	11
Building.....	12
Finance.....	15
Retail.....	16
Trade.....	17
Tourism.....	18

- For further information about these and related statistics, contact the National Information Service on 1300 135 070, or Robert Letheby on Melbourne 03 9615 7643.

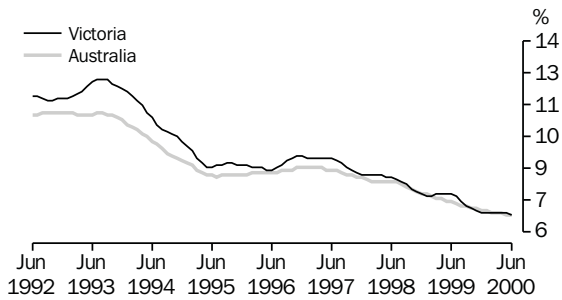
NOTES

FORTHCOMING ISSUES	<table border="0"> <thead> <tr> <th style="text-align: left;"><i>ISSUE</i></th> <th style="text-align: left;"><i>RELEASE DATE</i></th> </tr> </thead> <tbody> <tr> <td>August 2000</td> <td>19 September 2000</td> </tr> <tr> <td>September 2000</td> <td>17 October 2000</td> </tr> <tr> <td>October 2000</td> <td>21 November 2000</td> </tr> <tr> <td>November 2000</td> <td>19 December 2000</td> </tr> <tr> <td>December 2000</td> <td>23 January 2001</td> </tr> <tr> <td>January 2001</td> <td>20 February 2001</td> </tr> </tbody> </table>	<i>ISSUE</i>	<i>RELEASE DATE</i>	August 2000	19 September 2000	September 2000	17 October 2000	October 2000	21 November 2000	November 2000	19 December 2000	December 2000	23 January 2001	January 2001	20 February 2001				
<i>ISSUE</i>	<i>RELEASE DATE</i>																		
August 2000	19 September 2000																		
September 2000	17 October 2000																		
October 2000	21 November 2000																		
November 2000	19 December 2000																		
December 2000	23 January 2001																		
January 2001	20 February 2001																		
ABOUT THIS PUBLICATION	<p>The aim of this publication is to provide users with a range of the latest statistics available at the end of each month of issue. Consequently, the dates and periods shown are not always the same for each table, but are in each case the latest figures available at that time.</p>																		
SEASONAL ADJUSTMENT	<p>Seasonal adjustment is a means of removing the estimated effects of normal seasonal variations from economic time series so that the effects of other influences are obvious. Seasonal variations are the systematic (though not necessarily regular) intra-year movements of economic time series. These are often the result of non-economic phenomena, such as climatic changes and regular religious festivals, e.g. Christmas and Easter.</p>																		
TREND ESTIMATE	<p>Smoothing seasonally adjusted series produces a measure of trend by removing the impact of the irregular component of the series. The trend estimates are derived by applying a 13-term Henderson weighted moving average to the respective seasonally adjusted series. Readers are reminded that trend estimates are subject to revision as subsequent months' data become available.</p>																		
CHANGES IN THIS ISSUE	<p>Data relating to 'Conversions etc.' will no longer appear in table 12. State level conversions data is available in <i>Building Approvals, Victoria</i> (Cat. no. 8731.2).</p>																		
SYMBOLS AND OTHER USAGES	<table border="0"> <tr> <td>n.a.</td> <td>not available</td> </tr> <tr> <td>n.e.c.</td> <td>not elsewhere classified</td> </tr> <tr> <td>n.p.</td> <td>not available for publication but included in totals where applicable</td> </tr> <tr> <td>n.y.a.</td> <td>not yet available</td> </tr> <tr> <td>p</td> <td>preliminary—figure or series subject to revision</td> </tr> <tr> <td>r</td> <td>figure or series revised since previous issue</td> </tr> <tr> <td>*</td> <td>estimate has a relative standard error greater than 25% and is therefore subject to sampling variability too high for most practical uses</td> </tr> <tr> <td>. .</td> <td>not applicable</td> </tr> <tr> <td>—</td> <td>nil or rounded to zero</td> </tr> </table>	n.a.	not available	n.e.c.	not elsewhere classified	n.p.	not available for publication but included in totals where applicable	n.y.a.	not yet available	p	preliminary—figure or series subject to revision	r	figure or series revised since previous issue	*	estimate has a relative standard error greater than 25% and is therefore subject to sampling variability too high for most practical uses	. .	not applicable	—	nil or rounded to zero
n.a.	not available																		
n.e.c.	not elsewhere classified																		
n.p.	not available for publication but included in totals where applicable																		
n.y.a.	not yet available																		
p	preliminary—figure or series subject to revision																		
r	figure or series revised since previous issue																		
*	estimate has a relative standard error greater than 25% and is therefore subject to sampling variability too high for most practical uses																		
. .	not applicable																		
—	nil or rounded to zero																		

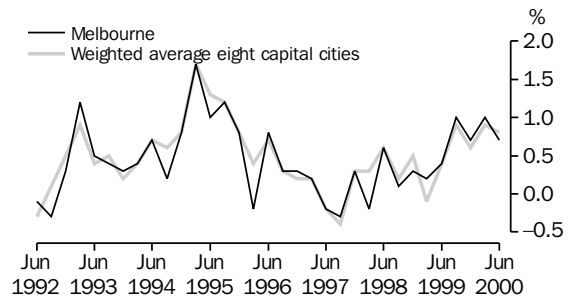
Zia ABBASI,
Regional Director, Victoria

SELECTED FEATURES

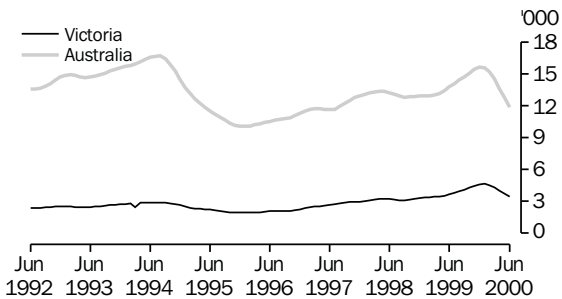
UNEMPLOYMENT RATE, Trend—Monthly



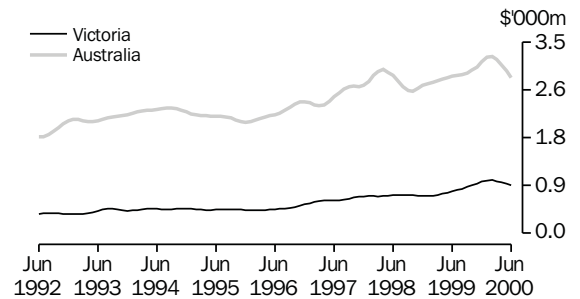
CONSUMER PRICE INDEX, Change from previous quarter



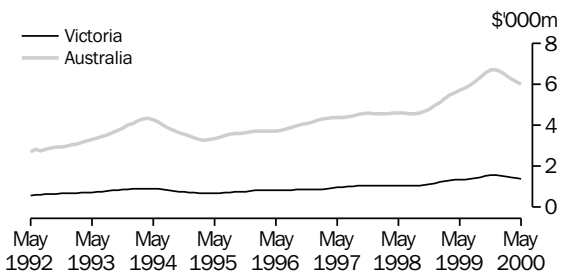
NEW DWELLING UNITS APPROVED, Trend—Monthly



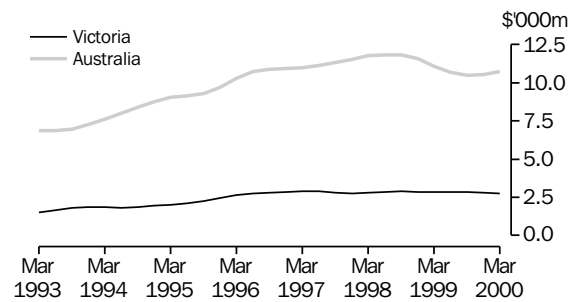
VALUE OF ALL BUILDINGS APPROVED, Trend—Monthly



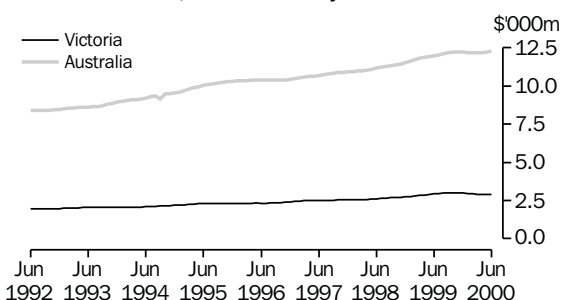
TOTAL VALUE OF SECURED HOUSING FINANCE COMMITMENTS TO INDIVIDUALS, Trend—Monthly



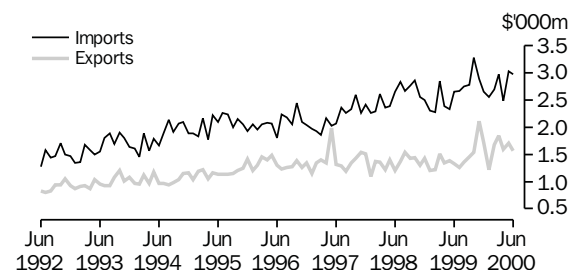
PRIVATE NEW CAPITAL EXPENDITURE, Trend—Quarterly



RETAIL TURNOVER, Trend—Monthly



MERCHANDISE IMPORTS AND EXPORTS, Original—Monthly



LIST OF TABLES

			Page
DEMOGRAPHY	1	Estimated resident population	5
	2	Births, deaths, marriages and divorces	5
LABOUR	3	Labour force status of the civilian population aged 15 years and over	6
	4	Employed persons, by industry	7
	5	Job vacancies	8
	6	Industrial disputes causing stoppage of work	8
	7	Average weekly earnings of employees	9
	8	Consumer price index—Melbourne	10
	9	Price index of materials used in building—Melbourne	10
MEAT PRODUCTION	10	Livestock slaughterings	11
	11	Meat production	11
BUILDING	12	Building approvals—Melbourne and Victoria	12
	13	New houses and other residential buildings, number of dwelling units	13
	14	Value of building	14
FINANCE	15	Private new capital expenditure, by selected industries and type of asset	15
	16	Commercial finance commitments	15
	17	Secured housing finance commitments, dwelling units	16
RETAIL	18	Retail turnover, by industry (excluding motor vehicles, parts, petrol, etc.)	16
TRADE	19	Exports and imports, by sections of the Australian export and import classifications	17
	20	Overseas trade, major trading partners	17
	21	Value of overseas trade—Victoria and Australia	18
TOURISM	22	Tourist accommodation	18

1

ESTIMATED RESIDENT POPULATION

	<i>At end of period</i>			<i>Increase during period</i>		<i>Melbourne Statistical Division at 30 June(a)</i>
	<i>Males</i>	<i>Females</i>	<i>Persons</i>	<i>Natural</i>	<i>Total</i>	
	<i>'000</i>	<i>'000</i>	<i>'000</i>	<i>'000</i>	<i>'000</i>	
1996-97	2 275.2	2 330.0	4 605.2	28.7	45.1	3 321.8
1997-98	2 301.0	2 353.9	4 654.9	27.7	49.7	3 367.0
1998-99	2 330.1	2 382.1	4 712.2	26.2	57.2	3 417.2
1997						
September qtr	2 281.9	2 336.0	4 617.8	6.1	12.6	..
December qtr	2 286.3	2 341.1	4 627.4	7.4	9.6	..
1998						
March qtr	2 295.3	2 348.9	4 644.3	7.4	16.9	..
June qtr	2 301.0	2 353.9	4 654.9	6.8	10.7	..
September qtr p	2 308.2	2 360.8	4 669.0	6.4	14.1	..
December qtr p	2 315.3	2 368.6	4 683.8	6.6	14.8	..
1999						
March qtr p	2 324.6	2 376.8	4 701.4	6.9	17.6	..
June qtr p	2 330.1	2 382.1	4 712.2	6.4	10.8	..
September qtr p	2 337.8	2 388.9	4 726.6	6.2	14.4	..
December qtr p	2 345.1	2 396.3	4 741.5	6.3	14.9	..

(a) Based on the 1998 Statistical Division boundaries.

Source: Australian Demographic Statistics (Cat. no. 3101.0) (quarterly).

2

BIRTHS, DEATHS, MARRIAGES AND DIVORCES

	<i>Registrations</i>				<i>Annual rate per 1,000 of mean estimated resident population</i>				
	<i>Births</i>	<i>Deaths (including infant deaths)</i>	<i>Marriages</i>	<i>Divorces</i>	<i>Births</i>	<i>Deaths</i>	<i>Marriages</i>	<i>Divorces</i>	<i>Infant deaths per 1,000 live births</i>
	<i>no.</i>	<i>no.</i>	<i>no.</i>	<i>no.</i>	<i>rate</i>	<i>rate</i>	<i>rate</i>	<i>rate</i>	<i>rate</i>
1996-97	61 232	32 570	25 664	13 046	13.36	7.11	5.60	2.85	4.46
1997-98	60 143	32 423	25 955	11 916	13.00	7.01	5.61	2.58	4.86
1998-99 p	59 016	32 769	26 249	12 614	12.60	7.00	5.60	2.69	5.74
1997									
September qtr	15 437	9 344	3 822	3 164
December qtr	15 259	7 813	7 533	3 181
Year—1997	60 610	32 760	25 456	12 463	13.16	7.11	5.53	2.71	4.82
1998									
March qtr	14 577	7 169	8 530	2 663
June qtr	14 870	8 097	6 070	2 908
September qtr p	p 15 550	p 9 131	3 912	3 188
December qtr p	p 15 193	p 8 614	7 860	3 548
Year—1998	p 60 190	p 33 011	26 372	12 307	12.93	7.09	5.67	2.64	5.15
1999									
March qtr p	13 492	6 618	8 659	2 774
June qtr p	14 781	8 406	5 818	3 104
September qtr p	14 965	8 747	4 210	3 461
December qtr p	14 554	8 220	8 462	3 438
Year—1999 p	57 792	31 991	27 149	12 777	12.26	6.79	5.76	2.71	5.69

Source: Demography, Victoria (Cat. no. 3311.2) (annual); Australian Demographic Statistics (Cat. no. 3101.0) (quarterly).

LABOUR FORCE STATUS OF THE CIVILIAN POPULATION AGED 15 YEARS AND OVER

	<i>Employed</i>		<i>Unemployed looking for work</i>			<i>Labour force</i>	<i>Not in labour force</i>	<i>Civilian population 15 years and over</i>	<i>Unemployment rate</i>	<i>Participation rate</i>
	<i>Full-time</i>	<i>Total</i>	<i>Full-time</i>	<i>Part-time</i>	<i>Total</i>					
	'000	'000	'000	'000	'000					
MALES										
1999										
April	1 065.9	1 229.7	91.6	19.7	111.3	1 341.0	491.9	1 832.9	8.3	73.2
May	1 065.2	1 220.4	88.8	21.9	110.7	1 331.1	504.2	1 835.3	8.3	72.5
June	1 072.6	1 248.4	87.4	11.5	98.8	1 347.2	490.4	1 837.7	7.3	73.3
July	1 082.6	1 243.2	80.7	14.8	95.5	1 338.7	501.3	1 840.0	7.1	72.8
August	1 072.4	1 225.7	80.3	18.1	98.4	1 324.2	518.2	1 842.3	7.4	71.9
September	1 079.6	1 243.7	82.8	17.7	100.5	1 344.2	500.5	1 844.7	7.5	72.9
October	1 077.2	1 242.2	71.5	15.9	87.4	1 329.6	518.0	1 847.6	6.6	72.0
November	1 068.9	1 228.3	74.6	14.4	89.0	1 317.4	533.2	1 850.5	6.8	71.2
December	1 097.1	1 262.9	74.8	20.1	95.0	1 357.9	495.6	1 853.5	7.0	73.3
2000										
January	1 077.8	1 232.6	78.0	13.5	91.4	1 324.0	531.6	1 855.6	6.9	71.4
February	1 102.6	1 254.6	71.9	18.8	90.7	1 345.3	512.6	1 857.8	6.7	72.4
March	1 084.4	1 249.8	71.7	21.1	92.8	1 342.5	517.5	1 860.0	6.9	72.2
April	1 084.6	1 255.0	69.1	21.0	90.1	1 345.1	517.1	1 862.2	6.7	72.2
May	1 091.6	1 254.7	75.4	17.0	92.4	1 347.2	517.1	1 864.3	6.9	72.3
June	1 088.9	1 259.4	66.3	16.9	83.2	1 342.6	523.9	1 866.5	6.2	71.9
FEMALES										
1999										
April	520.0	936.8	45.6	28.2	73.8	1 010.6	902.9	1 913.5	7.3	52.8
May	520.3	940.0	43.5	28.0	71.5	1 011.5	904.4	1 915.9	7.1	52.8
June	523.6	951.8	44.5	25.1	69.6	1 021.4	896.8	1 918.2	6.8	53.2
July	542.5	963.3	38.6	35.3	73.9	1 037.2	883.4	1 920.6	7.1	54.0
August	527.8	953.3	38.4	29.0	67.4	1 020.6	902.3	1 922.9	6.6	53.1
September	539.5	981.9	45.5	33.9	79.3	1 061.2	864.1	1 925.3	7.5	55.1
October	536.0	975.8	42.3	25.8	68.1	1 043.9	884.1	1 928.0	6.5	54.1
November	533.8	975.3	38.5	27.7	66.3	1 041.6	889.1	1 930.7	6.4	54.0
December	568.0	997.4	43.5	26.8	70.4	1 067.8	865.6	1 933.4	6.6	55.2
2000										
January	547.3	943.2	43.4	33.8	77.3	1 020.5	915.0	1 935.4	7.6	52.7
February	546.2	965.8	49.9	34.2	84.1	1 049.9	887.6	1 937.5	8.0	54.2
March	546.9	981.2	47.6	33.3	80.9	1 062.1	877.4	1 939.5	7.6	54.8
April	541.5	978.8	44.0	30.3	74.3	1 053.1	888.3	1 941.5	7.1	54.2
May	544.2	990.4	45.5	25.6	71.1	1 061.6	881.8	1 943.4	6.7	54.6
June	562.8	1 009.7	42.2	25.0	67.2	1 076.8	868.5	1 945.3	6.2	55.4
PERSONS										
1999										
April	1 585.9	2 166.6	137.3	47.8	185.1	2 351.6	1 394.8	3 746.5	7.9	62.8
May	1 582.8	2 160.3	132.3	49.9	182.2	2 342.6	1 408.6	3 751.2	7.8	62.4
June	1 596.2	2 200.2	131.9	36.6	168.4	2 368.6	1 387.3	3 755.9	7.1	63.1
July	1 625.1	2 206.5	119.4	50.1	169.4	2 375.9	1 384.6	3 760.6	7.1	63.2
August	1 600.2	2 179.0	118.7	47.1	165.8	2 344.8	1 420.5	3 765.3	7.1	62.3
September	1 619.1	2 225.5	128.3	51.6	179.9	2 405.4	1 364.5	3 770.0	7.5	63.8
October	1 613.2	2 218.0	113.7	41.8	155.5	2 373.5	1 402.1	3 775.6	6.6	62.9
November	1 602.7	2 203.7	113.2	42.1	155.3	2 359.0	1 422.2	3 781.2	6.6	62.4
December	1 665.1	2 260.3	118.3	47.0	165.3	2 425.7	1 361.2	3 786.8	6.8	64.1
2000										
January	1 625.1	2 175.8	121.4	47.3	168.7	2 344.5	1 446.6	3 791.1	7.2	61.8
February	1 648.7	2 220.4	121.8	53.0	174.8	2 395.2	1 400.1	3 795.3	7.3	63.1
March	1 631.3	2 230.9	119.3	54.4	173.7	2 404.6	1 394.9	3 799.6	7.2	63.3
April	1 626.1	2 233.8	113.1	51.3	164.4	2 398.2	1 405.4	3 803.6	6.9	63.1
May	1 635.8	2 245.2	120.9	42.7	163.6	2 408.8	1 399.0	3 807.7	6.8	63.3
June	1 651.7	2 269.0	108.5	41.9	150.4	2 419.4	1 392.4	3 811.8	6.2	63.5

Source: Labour Force, Victoria (Cat. no. 6202.2) (quarterly).

4

EMPLOYED PERSONS, BY INDUSTRY

Industry division	Feb 1999	May 1999	Aug 1999	Nov 1999	Feb 2000	May 2000
	'000	'000	'000	'000	'000	'000
MALES						
Agriculture, forestry and fishing	57.9	58.6	56.3	56.1	56.6	63.2
Mining	*3.8	*3.1	*2.9	*3.6	5.1	7.4
Manufacturing	259.0	241.9	236.6	244.6	255.5	256.0
Electricity, gas and water supply	13.4	14.4	13.9	10.6	11.1	14.2
Construction	125.7	130.1	133.8	137.0	136.3	140.5
Wholesale trade	86.5	81.6	88.6	90.4	77.6	76.9
Retail trade	170.1	166.0	161.7	163.9	166.0	163.8
Accommodation, cafes and restaurants	42.4	41.7	40.0	41.2	46.2	46.0
Transport and storage	78.5	72.0	75.5	70.8	71.8	72.8
Communication services	28.5	27.8	27.9	29.6	35.7	38.2
Finance and insurance	45.4	43.4	36.8	38.9	42.7	38.7
Property and business services	138.3	154.3	162.2	148.7	144.5	143.6
Government administration and defence	28.6	28.8	27.7	35.2	34.3	29.3
Education	40.4	45.4	46.4	50.2	48.0	44.2
Health and community services	46.6	42.3	39.5	36.4	41.5	44.0
Cultural and recreational services	25.1	27.3	32.3	30.4	31.7	32.4
Personal and other services	41.2	41.5	43.4	40.8	50.0	43.6
Total	1 231.2	1 220.4	1 225.7	1 228.3	1 254.6	1 254.7
FEMALES						
Agriculture, forestry and fishing	28.8	26.8	26.4	29.1	25.8	29.2
Mining	*0.0	*0.3	*0.6	*0.8	*1.4	*2.0
Manufacturing	98.3	98.1	94.5	98.9	101.6	108.1
Electricity, gas and water supply	*2.7	*3.9	*3.0	*2.4	*2.4	*2.8
Construction	16.5	17.2	17.3	18.5	21.0	17.4
Wholesale trade	40.2	42.8	46.1	50.0	34.5	37.2
Retail trade	167.6	168.5	174.9	172.2	173.7	170.7
Accommodation, cafes and restaurants	43.8	44.6	47.0	48.9	48.3	56.9
Transport and storage	22.1	22.2	20.8	22.7	20.9	23.7
Communication services	10.9	14.0	14.1	17.3	19.5	17.5
Finance and insurance	45.1	37.3	39.7	45.7	49.4	48.1
Property and business services	108.0	108.9	123.6	114.5	116.8	118.4
Government administration and defence	38.2	38.7	38.6	40.7	34.2	34.8
Education	84.0	101.1	105.1	97.1	93.6	99.8
Health and community services	155.4	144.3	137.6	149.6	156.8	158.7
Cultural and recreational services	26.2	32.6	26.2	26.4	24.9	28.4
Personal and other services	41.5	38.7	37.6	40.4	41.0	36.9
Total	929.5	940.0	953.3	975.3	965.8	990.4
PERSONS						
Agriculture, forestry and fishing	86.6	85.3	82.7	85.2	82.4	92.4
Mining	*3.8	*3.4	*3.5	*4.4	6.5	9.3
Manufacturing	357.4	340.0	331.2	343.5	357.1	364.1
Electricity, gas and water supply	16.2	18.3	16.9	13.0	13.5	17.0
Construction	142.2	147.3	151.1	155.6	157.3	157.9
Wholesale trade	126.7	124.4	134.7	140.4	112.1	114.1
Retail trade	337.6	334.5	336.7	336.0	339.7	334.5
Accommodation, cafes and restaurants	86.3	86.3	87.1	90.0	94.5	102.9
Transport and storage	100.6	94.2	96.4	93.5	92.7	96.5
Communication services	39.4	41.9	42.0	46.9	55.1	55.7
Finance and insurance	90.5	80.7	76.5	84.7	92.1	86.8
Property and business services	246.3	263.3	285.8	263.2	261.3	262.0
Government administration and defence	66.8	67.5	66.3	75.8	68.5	64.1
Education	124.4	146.5	151.5	147.3	141.6	144.0
Health and community services	202.0	186.6	177.1	186.0	198.3	202.7
Cultural and recreational services	51.4	60.0	58.5	56.8	56.6	60.8
Personal and other services	82.8	80.2	80.9	81.2	91.0	80.5
Total	2 160.8	2 160.3	2 179.0	2 203.7	2 220.4	2 245.2

Source: Labour Force, Victoria (Cat. no. 6202.2) (quarterly).

5

JOB VACANCIES

	Vacancies all persons '000	Sector		Job vacancy rate %
		Public	Private	
		'000	'000	
1998				
November	34.4	1.9	32.5	1.58
1999				
February	15.6	*2.4	13.3	0.73
May	22.1	2.5	19.6	1.05
August	29.3	3.0	26.4	1.39
November	31.0	3.8	27.1	1.49
2000				
February	27.0	4.4	22.5	1.33
May	30.9	6.7	24.2	1.50

Source: Job Vacancies and Overtime, Australia (Cat. no. 6354.0) (quarterly).

6

INDUSTRIAL DISPUTES CAUSING STOPPAGE OF WORK

	Disputes		Employees involved		Working days lost				
	Beginning in period	Total	Beginning in period	Total	Manufacturing	Construction	Education, health, community services	Other industries	Total
	no.	no.	'000	'000	'000	'000	'000	'000	'000
1999									
February	17	20	2.5	3.7	1.4	1.5	—	1.7	4.7
March	29	32	3.6	4.2	7.3	1.0	—	1.3	9.6
April	15	21	13.9	14.8	7.1	13.0	—	1.8	21.9
May	23	25	3.6	3.9	7.5	0.1	0.1	1.2	8.8
June	23	25	10.9	11.3	13.1	1.2	0.1	1.2	15.6
July	16	23	10.3	11.0	11.5	6.6	1.1	0.5	19.6
August	29	34	75.9	76.5	42.7	8.5	10.6	6.1	67.9
September	13	14	14.0	14.1	19.2	4.6	—	0.2	24.0
October	21	23	8.2	8.4	1.6	5.1	0.7	0.6	8.0
November	17	21	17.8	17.9	5.2	19.6	—	0.6	25.4
December	29	34	5.6	6.5	6.2	1.7	—	0.5	8.4
2000									
January	19	24	2.7	2.9	3.9	2.4	—	0.8	7.1
February	18	24	7.8	8.5	6.4	12.8	—	1.5	20.7
March	17	21	4.9	8.1	4.9	10.4	2.0	2.4	19.7
April	6	13	1.3	3.7	3.1	4.0	0.5	1.4	9.0

Source: Industrial Disputes, Australia (Cat. no. 6321.0) (monthly).

7

AVERAGE WEEKLY EARNINGS OF EMPLOYEES

	Males			Females			Persons		
	Full-time adult ordinary time earnings	Full-time adult total earnings	All males total earnings	Full-time adult ordinary time earnings	Full-time adult total earnings	All females total earnings	Full-time adult ordinary time earnings	Full-time adult total earnings	All employees total earnings
	\$	\$	\$	\$	\$	\$	\$	\$	\$
1998									
November	781.80	842.10	716.80	657.40	673.30	473.90	736.30	780.30	602.40
1999									
February	769.20	823.70	710.90	658.10	673.20	474.40	729.00	769.20	600.30
May	783.00	835.00	717.60	666.20	679.80	486.50	740.60	778.60	608.00
August	772.30	821.00	705.70	685.20	700.80	488.40	740.80	777.60	601.60
November	780.80	838.80	726.90	695.40	712.40	488.80	750.10	793.40	610.80
2000									
February	797.80	843.70	732.30	696.70	710.00	492.60	761.30	795.40	616.20

Source: Average Weekly Earnings, States and Australia (Cat. no. 6302.0) (quarterly).

8

CONSUMER PRICE INDEX—MELBOURNE

	Food	Clothing	Housing	Household equipment and operation	Transport- ation	Tobacco and alcohol	Health and personal care	Recreation and education	All groups	Weighted average of eight capital cities—All groups
1997-98	120.5	108.9	86.5	115.0	123.3	161.4	162.2	127.6	119.8	120.3
1998-99	125.1	108.1	86.7	115.1	120.8	166.9	161.1	129.6	120.9	121.8
1999-2000	128.7	107.1	90.7	114.7	127.9	174.2	158.9	131.5	124.1	124.7
1998										
March qtr	120.7	109.0	84.1	115.1	122.1	162.0	163.6	129.4	119.6	120.3
June qtr	121.6	108.9	86.2	115.1	122.0	163.9	165.8	128.8	120.3	121.0
September qtr	123.6	108.9	85.3	115.3	121.0	165.0	166.7	128.4	120.4	121.3
December qtr	124.3	108.2	86.6	115.3	120.6	166.0	165.3	129.0	120.8	121.9
1999										
March qtr	125.8	107.5	87.3	114.7	119.9	167.6	155.7	131.0	121.0	121.8
June qtr	126.7	107.8	87.5	115.1	121.6	169.1	156.6	129.8	121.5	122.3
September qtr	127.8	107.5	88.8	114.3	125.9	169.4	157.0	130.7	122.7	123.4
December qtr	128.6	107.1	90.4	114.4	125.2	173.7	157.0	131.0	123.5	124.1
2000										
March qtr	128.3	106.9	91.7	114.3	129.2	176.5	160.5	132.2	124.7	125.2
June qtr	130.0	106.9	91.7	115.7	131.2	177.3	161.0	131.9	125.6	126.2

Base of each group: year 1989-90 = 100.0.

Source: Consumer Price Index, Australia (Cat. no. 6401.0) (quarterly).

9

PRICE INDEX OF MATERIALS USED IN BUILDING—MELBOURNE

Group	1999-2000						Weighted average of six state capital cities—Jun qtr 2000
	1997-98	1998-99	1999-2000	Dec qtr	Mar qtr	Jun qtr	
House building							
All groups	117.1	118.0	121.7	120.5	122.9	124.2	125.5
Other than house building							
Structural timber	115.6	116.2	118.5	117.6	119.9	123.2	137.8
Clay bricks	117.9	119.6	123.8	119.3	126.3	130.3	127.0
Ready mix concrete	111.4	112.9	110.8	111.3	110.3	110.1	102.4
Precast concrete products	115.7	123.9	130.9	127.5	133.6	135.8	130.1
Steel decking and cladding	109.4	108.0	109.3	108.5	108.0	113.0	118.2
Structural steel	104.9	104.9	101.3	102.0	100.8	101.0	112.3
Reinforcing steel bar, mesh, etc.	100.8	99.5	93.8	92.6	94.7	94.0	104.5
Aluminium windows	100.0	100.4	105.1	103.6	104.9	110.0	118.3
Fabricated steel products	120.0	124.7	125.6	125.5	125.6	126.1	118.0
Builders' hardware	119.6	122.7	127.6	125.7	126.0	133.6	133.1
Sand and aggregate	116.3	120.5	120.6	120.2	120.2	120.6	123.3
Carpet	102.6	100.1	98.9	99.3	98.0	98.7	102.4
Paint and other coatings	144.7	153.8	162.4	163.0	164.3	164.1	150.7
Non-ferrous pipes and fittings	113.0	111.2	116.6	117.6	117.6	118.2	132.1
All groups excluding electrical materials and mechanical services	111.0	112.3	113.0	112.3	112.9	114.7	116.5
All electrical materials	109.8	112.4	116.8	116.6	117.2	117.4	122.7
All mechanical services	114.9	118.2	120.6	120.1	120.9	121.6	119.8
All plumbing materials	122.8	122.8	127.7	126.1	128.2	130.6	132.5
All groups	111.4	113.2	114.4	113.8	114.5	116.0	117.4

Base of each index: year 1989-90 = 100.0.

Source: Price Index of Materials Used in Building Other Than House Building, Six State Capital Cities (Cat. no. 6407.0) (quarterly); Price Index of Materials Used in House Building, Six State Capital Cities (Cat. no. 6408.0) (quarterly).

10

LIVESTOCK SLAUGHTERINGS

	Cattle	Calves	Sheep	Lambs	Pigs
	'000	'000	'000	'000	'000
1997-98	1 798.0	767.2	3 285.6	6 385.7	1 567.7
1998-99	1 751.3	714.4	3 079.6	6 699.4	1 572.8
1999-2000	1 524.2	678.5	3 815.7	7 144.0	1 443.7
1999					
March	146.1	15.0	314.3	574.6	132.9
April	128.3	24.5	263.9	510.4	126.6
May	134.3	43.8	262.6	466.2	135.2
June	126.2	78.5	230.4	524.4	133.1
July	124.9	90.6	246.1	554.1	127.0
August	117.4	182.8	238.9	535.4	123.0
September	112.3	142.5	282.6	625.0	126.3
October	123.3	50.2	329.1	605.3	116.2
November	132.5	20.7	344.2	639.7	117.3
December	133.5	9.0	339.1	610.6	131.2
2000					
January	124.0	7.2	341.0	530.8	109.9
February	136.1	8.1	398.8	590.6	117.6
March	140.8	16.9	392.6	627.4	131.2
April	106.9	26.4	273.0	515.7	110.1
May	140.7	50.1	341.0	655.0	126.7
June	131.7	74.0	289.3	654.4	107.2

Source: Unpublished data, Monthly Livestock Collection.

11

MEAT PRODUCTION

	Meat (carcass weight)				
	Beef	Veal	Mutton	Lamb	Pigmeat
	tonnes	tonnes	tonnes	tonnes	tonnes
1997-98	389 087	15 578	63 470	119 972	112 504
1998-99	398 815	14 225	61 647	128 379	114 581
1999-2000	351 371	13 371	76 713	140 205	106 691
1999					
March	33 412	332	6 217	11 110	9 635
April	30 360	497	5 104	9 786	9 527
May	30 429	878	5 121	9 085	10 164
June	28 023	1 520	4 615	10 337	9 824
July	28 011	1 729	4 976	11 002	9 358
August	26 379	3 563	4 894	10 232	9 197
September	25 749	2 797	5 943	12 233	9 442
October	28 673	1 010	7 278	11 770	8 698
November	31 629	425	7 038	12 338	8 796
December	31 062	208	6 897	11 709	9 403
2000					
January	29 030	177	6 749	10 608	8 029
February	31 668	198	7 647	11 693	8 499
March	32 739	364	7 598	12 316	9 595
April	24 523	533	5 268	10 200	7 866
May	32 077	970	6 634	13 158	9 689
June	29 831	1 397	5 791	12 946	8 119

Source: Unpublished data, Monthly Livestock Collection.

	<i>New dwelling units(a)</i>						Alterations, additions and conversions(d)	<i>Non-residential building(c)</i>		Total all building
	<i>Private sector</i>		<i>Public sector</i>		<i>Total(b)</i>			<i>Private sector</i>	<i>Total</i>	
	no. r	\$m	no.	\$m	no. r	\$m		\$m	\$m	
MELBOURNE STATISTICAL DIVISION										
1997-98	27 490	3 026.5	752	56.0	28 242	3 082.6	701.2	2 168.2	2 593.0	6 376.8
1998-99	28 615	3 550.4	666	49.6	29 276	3 600.0	800.3	1 918.6	2 642.3	7 042.6
1999-2000	36 843	5 058.7	611	51.1	37 454	5 109.8	1 019.0	2 226.9	2 654.3	8 783.1
1999										
March	2 554	326.1	39	4.0	2 591	330.1	75.3	159.7	226.8	632.3
April	2 446	281.8	52	3.4	2 498	285.1	72.3	126.7	157.4	515.0
May	2 642	337.1	37	2.4	2 679	339.5	63.0	174.4	202.0	604.5
June	2 450	320.9	46	4.0	2 495	324.9	69.2	108.4	125.1	519.2
July	2 755	353.0	r 88	6.3	2 843	359.3	92.2	183.6	208.6	660.2
August	3 775	494.7	39	4.3	3 814	499.0	86.1	159.3	226.3	811.5
September	3 046	406.8	72	5.9	3 118	412.7	76.9	203.3	218.9	708.6
October	2 817	372.2	93	8.0	2 910	380.2	84.7	r 158.2	201.6	666.5
November	3 213	r 417.2	59	4.6	3 272	421.2	93.0	167.5	194.5	r 709.3
December	3 122	r 443.9	r 65	6.4	3 187	450.1	72.0	148.6	213.2	r 735.5
2000										
January	3 250	r 535.7	19	1.6	3 269	r 537.3	66.9	171.6	188.6	r 792.8
February r	3 474	457.3	54	4.1	3 528	461.4	87.5	208.2	262.5	811.5
March	3 809	r 533.3	9	0.8	3 818	r 534.0	84.9	153.0	171.1	r 790.1
April	2 548	336.3	r 30	2.3	2 578	338.6	97.8	232.1	289.9	726.3
May	2 600	363.4	40	3.5	2 640	r 637.0	83.7	r 158.1	r 173.4	r 624.1
June	2 434	344.8	43	3.3	2 477	348.1	93.3	283.3	305.5	747.0
TOTAL VICTORIA										
1997-98	34 178	3 811.3	1 171	88.6	35 349	3 899.8	858.5	2 476.9	3 064.5	7 822.8
1998-99	37 194	4 482.6	894	67.2	38 088	4 549.9	951.2	2 262.5	3 125.7	8 626.8
1999-2000	47 474	6 318.8	787	65.1	48 261	6 383.9	1 210.7	2 622.3	3 215.2	10 809.8
1999										
March	3 467	425.2	61	5.5	3 528	430.7	90.5	188.4	275.0	796.3
April	3 196	365.7	57	3.8	3 253	369.5	85.7	146.3	183.9	639.0
May	3 516	436.2	42	3.1	3 558	439.3	74.4	202.3	241.6	755.4
June	3 214	408.5	51	4.6	3 265	413.2	83.4	156.3	183.2	679.8
July	3 574	445.9	134	9.2	3 708	r 457.1	105.2	212.7	249.0	809.4
August	4 626	587.9	66	r 6.4	4 692	r 596.0	101.9	204.6	282.9	979.3
September	3 972	514.7	105	r 8.6	4 077	r 521.3	95.7	222.1	245.6	864.6
October r	3 788	488.4	98	8.4	3 886	497.2	99.5	186.1	240.9	837.2
November	4 161	529.3	68	5.4	4 229	535.6	107.3	198.0	235.7	877.8
December	4 047	555.1	67	r 6.6	4 114	r 565.8	88.1	186.6	266.2	916.0
2000										
January r	4 046	630.6	27	2.3	4 073	638.4	80.3	196.5	235.1	948.3
February r	4 597	592.8	73	5.9	4 670	598.2	101.2	235.1	325.5	1 025.5
March r	4 791	653.1	12	1.1	4 803	656.1	103.3	185.8	215.8	973.4
April	3 334	433.0	39	r 3.0	3 373	r 437.0	112.8	257.2	327.3	876.1
May r	3 412	462.0	49	4.2	3 461	467.4	103.5	213.2	240.2	810.0
June	3 126	425.9	49	3.8	3 175	431.6	111.7	324.3	350.9	892.2

(a) Valued at \$10,000 and over.

(b) Excludes dwelling units created as a result of conversions or construction of non-residential buildings.

(c) Valued at \$50,000 and over.

(d) Includes alterations and additions creating dwellings, alterations and additions not creating dwellings and conversions.

Source: *Building Approvals, Victoria (Cat. no. 8731.2) (quarterly)*.

NEW HOUSES AND OTHER RESIDENTIAL BUILDINGS, NUMBER OF DWELLING UNITS

	<i>New houses</i>				<i>New other residential buildings</i>			
	<i>Approved</i>	<i>Commenced</i>	<i>Under construction(a)</i>	<i>Completed</i>	<i>Approved</i>	<i>Commenced</i>	<i>Under construction(a)</i>	<i>Completed</i>
	<i>no.</i>	<i>no.</i>	<i>no.</i>	<i>no.</i>	<i>no.</i>	<i>no.</i>	<i>no.</i>	<i>no.</i>
1996-97	19 805	18 652	8 937	17 613	6 805	6 047	4 151	5 727
1997-98	27 937	26 004	12 368	22 425	7 412	7 598	5 148	6 542
1998-99	29 227	29 165	14 455	26 926	8 861	8 307	6 198	7 029
1998								
December qtr	6 873	7 399	13 127	6 995	2 375	1 682	5 175	1 906
1999								
March qtr	7 071	6 494	13 846	5 699	2 461	2 159	5 752	1 559
June qtr	7 757	7 910	14 455	7 281	2 319	2 466	6 198	1 864
September qtr	9 280	8 155	15 667	6 939	3 173	3 354	7 844	1 702
December qtr r	9 412	8 817	15 741	8 719	2 373	2 680	8 910	1 566
2000								
March qtr	9 417	8 860	18 261	6 340	3 435	2 458	9 118	2 211

(a) Under construction at the end of the period.

Source: *Building Activity, Victoria* (Cat. no. 8752.2) (quarterly); *Building Approvals, Victoria* (Cat. no. 8731.2) (quarterly).

	Residential buildings		Non-residential buildings						Total
	New	Alterations and additions	Shops	Factories	Offices	Education	Health	Other	
	\$m	\$m	\$m	\$m	\$m	\$m	\$m	\$m	
COMMENCED									
1996-97	2 692.2	761.0	348.2	343.8	508.5	410.3	303.6	1 003.3	6 371.1
1997-98	3 850.5	891.1	598.5	241.8	428.6	270.9	250.2	1 399.8	7 931.4
1998-99	4 496.3	987.2	444.1	263.6	428.1	485.0	239.9	1 186.0	8 530.2
1998									
December qtr	1 066.4	291.0	137.8	79.9	136.2	175.6	95.1	429.7	2 411.7
1999									
March qtr	1 046.8	223.8	75.3	64.4	98.3	98.2	41.1	190.0	1 837.9
June qtr	1 257.1	250.4	119.8	64.3	91.1	78.7	76.9	341.1	2 279.4
September qtr	1 540.9	305.2	119.0	69.5	83.6	86.0	71.7	242.1	2 518.0
December qtr r	1 544.5	278.8	110.4	65.8	176.6	83.2	75.9	188.1	2 523.2
2000									
March qtr	1 483.2	303.1	110.3	89.0	108.4	122.6	103.4	149.3	2 569.3
UNDER CONSTRUCTION AT END OF PERIOD									
1996-97	1 582.3	358.5	284.6	214.9	233.4	310.0	236.2	1 741.7	4 961.6
1997-98	2 274.1	412.4	406.6	141.9	241.6	320.2	279.8	1 466.0	5 542.6
1998-99	2 745.1	451.3	420.8	120.9	190.2	485.8	243.5	1 611.2	6 268.8
1998									
December qtr	2 430.6	450.5	427.2	134.7	253.1	489.2	257.4	1 566.8	6 009.6
1999									
March qtr	2 644.3	471.4	402.8	138.2	203.8	522.4	243.7	1 461.3	6 087.9
June qtr	2 745.1	451.3	420.8	120.9	190.2	485.8	243.5	1 611.2	6 268.8
September qtr	3 229.8	531.2	440.2	117.8	129.6	527.3	237.1	1 503.3	6 716.2
December qtr r	3 493.2	561.2	305.7	110.0	206.0	491.7	219.6	1 433.6	6 821.0
2000									
March qtr	3 923.4	642.0	361.2	137.0	228.2	504.2	283.6	1 480.8	7 560.4
COMPLETED									
1996-97	2 617.6	768.5	364.8	295.6	404.0	342.0	194.6	1 106.7	6 093.8
1997-98	3 213.6	866.6	474.7	338.4	449.4	283.2	208.2	1 738.4	7 572.4
1998-99	4 068.1	992.4	487.3	294.3	524.9	328.5	305.1	1 110.3	8 111.0
1998									
December qtr	1 080.2	259.6	179.9	70.0	139.6	107.3	51.6	340.7	2 229.1
1999									
March qtr	855.2	215.9	100.6	64.1	155.6	69.2	56.6	312.4	1 829.5
June qtr	1 134.9	280.2	118.0	83.1	121.3	118.8	93.2	210.2	2 159.7
September qtr	1 075.3	235.3	116.3	76.1	147.0	50.2	81.2	375.3	2 156.7
December qtr r	1 319.3	260.9	277.4	75.1	101.6	110.3	94.0	279.1	2 517.6
2000									
March qtr	1 088.9	238.3	67.2	63.7	86.7	109.1	40.2	327.8	1 935.3

Source: Building Activity, Victoria (Cat. no. 8752.2) (quarterly).

15

PRIVATE NEW CAPITAL EXPENDITURE, BY SELECTED INDUSTRIES AND TYPE OF ASSET

	Selected industries				Type of asset	
	Mining	Manufacturing	Other selected industries	Total	New buildings and structures	Equipment, plant and machinery
	\$m	\$m	\$m	\$m	\$m	\$m
ACTUAL						
1997-98	833	3 401	6 809	11 044	2 858	8 185
1998-99	1 234	2 951	7 166	11 352	3 210	8 141
1998						
December qtr	288	780	1 900	2 968	819	2 149
1999						
March qtr	321	652	1 665	2 639	862	1 776
June qtr	306	803	1 758	2 868	668	2 200
September qtr	205	918	1 709	2 832	799	2 034
December qtr r	194	928	1 849	2 970	710	2 260
2000						
March qtr	66	720	1 615	2 400	595	1 805
EXPECTED						
1999-2000	813	3 513	6 547	10 872	2 664	8 208
2000-01	704	3 824	5 501	10 029	2 086	7 943

Source: State Estimates of Private New Capital Expenditure (Cat. no. 5646.0) (quarterly).

16

COMMERCIAL FINANCE COMMITMENTS

	Fixed loan facilities						Type of lender			
	Construction	Purchase of real property	Purchase of plant and equipment	Wholesale	Other	Total	Revolving credit facilities	Total commitments	Banks	All other lenders
	\$m	\$m	\$m	\$m	\$m	\$m	\$m	\$m	\$m	\$m
1999										
March	110.5	477.6	190.6	329.7	1 220.7	2 329.2	2 467.0	4 796.2	3 984.1	812.2
April	82.5	469.2	170.8	79.0	501.9	1 303.4	1 361.5	2 664.9	2 104.1	560.8
May	183.6	508.8	157.4	39.4	771.1	1 660.2	1 569.8	3 230.1	2 837.0	393.1
June	171.3	623.3	211.8	88.4	2 189.9	3 284.7	1 748.3	5 033.0	4 695.6	337.4
July	137.8	521.0	159.0	14.9	684.6	1 517.2	1 977.9	3 495.1	3 074.9	420.2
August	234.0	555.5	169.2	25.2	755.8	1 739.7	1 214.0	2 953.7	2 759.9	193.8
September	147.8	546.9	205.8	33.8	719.7	1 654.1	1 372.4	3 026.5	2 632.9	393.6
October	266.0	610.1	195.8	25.0	1 128.8	2 225.7	1 544.8	3 770.5	3 329.0	441.5
November	235.6	633.8	214.3	65.0	502.9	1 651.7	1 288.5	2 940.2	2 572.5	367.7
December	155.9	689.3	250.1	77.7	571.2	1 744.2	1 853.3	3 597.5	3 231.8	365.6
2000										
January r	194.5	527.0	151.5	60.5	407.3	1 340.7	1 145.5	2 485.6	2 196.5	289.1
February r	118.6	657.0	194.6	57.5	520.9	1 548.6	1 515.9	3 064.4	2 799.4	265.0
March	123.0	671.5	204.7	91.9	684.3	1 775.6	2 010.7	3 786.3	3 202.3	583.9
April	129.1	528.3	178.5	218.3	531.7	1 586.0	1 386.8	2 972.8	2 630.6	342.2
May	147.6	706.5	205.9	91.5	575.7	1 727.1	2 555.2	4 282.3	3 994.5	287.8

Source: Commercial Finance, Australia (Cat. no. 5643.0) (monthly).

17

SECURED HOUSING FINANCE COMMITMENTS, DWELLING UNITS

	Original series		Seasonally adjusted		Trend estimates	
	no.	\$m	no.	\$m	no.	\$m
1999						
March	12 455	1 520	11 394	1 362	10 693	1 313
April	11 014	1 348	10 942	1 374	10 743	1 334
May	10 896	1 389	10 752	1 344	10 694	1 341
June	11 305	1 445	10 420	1 346	10 642	1 348
July	10 518	1 334	10 355	1 323	10 686	1 369
August	10 855	1 397	10 668	1 370	10 875	1 409
September	11 377	1 475	11 069	1 408	11 179	1 466
October	11 386	1 534	11 740	1 600	11 509	1 526
November	12 231	1 639	12 127	1 628	r 11 669	r 1 565
December	11 652	1 592	11 617	1 568	r 11 584	r 1 567
2000						
January	8 962	1 242	11 342	1 521	r 11 298	r 1 535
February	11 184	1 498	11 051	1 554	r 10 942	r 1 488
March	11 558	1 554	10 526	1 389	r 10 623	r 1 442
April	8 681	1 172	9 349	1 298	r 10 370	r 1 402
May	12 163	1 615	11 040	1 455	10 189	1 374

Source: *Housing Finance for Owner Occupation, Australia (Cat. no. 5609.0) (monthly)*.

18

RETAIL TURNOVER, BY INDUSTRY (EXCLUDING MOTOR VEHICLES, PARTS, PETROL, ETC.)

	Food retailing	Department stores	Clothing and soft good retailing	Household good retailing	Recreational good retailing	Other retailing	Hospitality and services	Total
	\$m	\$m	\$m	\$m	\$m	\$m	\$m	\$m
1999								
April	1 159.1	236.6	213.5	324.7	141.1	300.0	398.2	2 773.1
May	1 167.0	253.5	215.8	338.6	140.1	291.6	398.7	2 805.4
June	1 126.2	220.4	217.2	333.9	143.7	303.8	392.7	2 737.7
July	1 210.5	263.2	219.0	336.4	136.5	322.8	438.8	2 927.2
August	1 177.9	221.3	209.5	337.6	139.8	315.1	422.3	2 823.5
September	1 186.2	248.5	222.6	347.8	149.5	324.5	438.8	2 917.9
October	1 242.0	259.3	234.5	379.3	148.5	324.2	448.9	3 036.6
November	1 231.9	304.1	243.3	392.3	157.8	338.4	441.7	3 109.6
December	1 463.8	528.1	339.8	498.2	233.8	439.8	526.4	4 030.0
2000								
January	1 219.9	228.0	221.5	358.1	138.2	267.6	412.3	2 845.5
February	1 155.2	195.9	181.7	326.1	120.7	268.1	406.6	2 654.2
March	1 244.7	224.2	217.4	342.8	132.1	292.6	451.7	2 905.5
April	1 163.1	260.6	224.2	309.6	117.4	291.9	388.4	2 755.3
May	1 180.1	265.3	248.2	349.8	118.9	305.2	393.8	2 861.3
June	1 173.5	298.6	279.7	416.3	124.1	313.6	399.9	3 005.8

Source: *Retail Trade, Australia (Cat. no. 8501.0) (monthly)*.

19

EXPORTS AND IMPORTS, BY SECTIONS OF THE AUSTRALIAN EXPORT AND IMPORT CLASSIFICATIONS(a)

	1998-99		Twelve months ending June 2000	
	Imports	Exports	Imports	Exports
	\$m	\$m	\$m	\$m
0 Food and live animals chiefly for food	1 313	3 972	1 358	4 412
1 Beverages and tobacco	134	166	141	187
2 Crude materials, inedible (except fuels)	585	1 403	625	1 579
3 Mineral fuels, lubricants, and related materials	1 150	798	1 763	1 215
4 Animal and vegetable oils, fats and waxes	108	108	93	113
5 Chemicals and related products, n.e.c.	3 247	977	3 352	1 022
6 Manufacturing goods classified chiefly by material	4 470	2 422	4 684	2 677
7 Machinery and transport equipment	13 489	r 2 892	14 769	3 966
8 Miscellaneous manufactured articles	5 343	1 039	5 835	1 162
9 Commodities and transactions of merchandise trade, n.e.c.	1 175	r 2 707	1 135	2 692
Total	31 014	r 16 484	33 755	19 025

(a) Any discrepancies between sums of the component items and totals are due to rounding.

Source: Overseas Trade: Fasttraccs Database.

20

OVERSEAS TRADE, MAJOR TRADING PARTNERS(a)

Country	1997-98		1998-99		Twelve months ending June 2000	
	Imports	Exports	Imports	Exports	Imports	Exports
	\$m	\$m	\$m	\$m	\$m	\$m
Belgium-Luxembourg	243	91	239	102	258	110
Brazil	134	76	118	48	105	46
Canada	390	122	392	125	445	134
China	2 154	624	2 537	669	3 030	1 121
Fiji	133	245	180	242	194	286
Finland	193	12	188	9	187	9
France	631	168	619	131	622	136
Germany	2 116	268	2 341	407	2 402	397
Hong Kong (SAR of China)	338	1 073	431	900	403	944
India	256	188	261	192	262	193
Indonesia	637	325	1 078	226	893	293
Italy	963	396	1 038	288	1 037	332
Japan	3 847	1 686	4 133	1 676	4 416	1 855
Korea, Republic of	882	1 039	847	862	870	1 241
Malaysia	668	517	873	431	1 118	513
Mexico	80	77	103	90	111	74
Netherlands	254	81	292	109	318	105
New Zealand	1 311	1 552	1 333	r 1 635	1 491	2 298
Pakistan	97	87	87	43	85	55
Papua New Guinea	163	235	64	188	67	139
Philippines	135	388	157	387	163	385
Saudi Arabia	107	268	107	511	221	704
Singapore	492	989	510	1 080	632	1 476
South Africa	147	272	125	217	166	229
Sweden	585	41	598	25	606	29
Switzerland	277	24	335	34	319	40
Taiwan	852	657	905	920	922	835
Thailand	400	341	523	343	673	439
United Kingdom	1 694	453	1 839	1 169	1 793	693
United States of America	7 027	1 603	6 891	1 469	7 702	1 630
Other and unknown	1 645	2 033	1 870	1 956	2 244	2 284
Total	28 851	15 931	31 014	r 16 484	33 755	19 025

(a) The list of countries in this table reflects the volume of trade with Victoria. Information about Victoria's trade with other countries is available on request.

Source: Overseas Trade: Fasttraccs Database.

21

VALUE OF OVERSEAS TRADE—VICTORIA AND AUSTRALIA

	Victoria				Australia
	Imports	Exports	Imports	Exports	Excess of exports
	\$m	\$m	\$m	(including re-exports) \$m	
1998-99	31 014	r 16 484	97 611	85 992	-11 619
1999-2000	33 755	19 025	110 083	97 255	-12 828
1999					
April	2 393	1 341	7 731	6 433	-1 298
May	2 331	1 381	7 746	6 967	-779
June	2 652	1 332	8 142	6 893	-1 249
July	2 663	1 256	8 181	7 158	-1 023
August	2 748	1 352	8 871	7 349	-1 522
September	2 777	1 460	8 965	7 392	-1 573
October	3 282	1 536	10 216	7 987	-2 229
November	2 892	2 105	9 701	r 8 470	-1 231
December r	2 653	1 716	8 923	8 373	-550
2000					
January r	2 556	1 217	8 110	6 823	-1 287
February r	2 702	1 678	8 660	8 231	-429
March r	2 979	1 840	9 653	8 817	-836
April r	2 490	1 598	7 962	8 263	301
May	3 035	r 1 703	10 348	9 200	-1 148
June	2 978	1 564	10 493	9 192	-1 301

Source: Overseas Trade: Fastraccs Database.

22

TOURIST ACCOMMODATION

Quarter ended	Hotels, motels, guest houses and serviced apartments(a)						
	Establishments	Guest rooms	Bed spaces	Room nights occupied	Room occupancy rate	Persons employed	Takings from accommodation
	no.	no.	no.	'000	%	no.	\$'000
1998							
September	676	29 404	80 902	1 464.3	54.4	20 776	169 966
December	682	29 717	81 976	1 602.6	58.7	20 813	182 207
1999							
March	686	30 160	83 420	1 680.8	62.0	21 129	195 573
June	698	30 766	85 247	1 545.6	55.4	21 725	170 130
September	698	30 934	85 483	1 589.5	56.0	21 780	184 105
December	705	31 317	86 058	1 672.7	58.1	21 633	191 644
2000							
March	707	31 332	86 134	1 773.4	62.3	21 498	213 272

(a) Comprising establishments with 15 or more rooms or units.

Source: Tourist Accommodation, Australia (Cat. no. 8635.0) (quarterly).

FOR MORE INFORMATION...

- INTERNET* **www.abs.gov.au** the ABS web site is the best place to start for access to summary data from our latest publications, information about the ABS, advice about upcoming releases, our catalogue, and Australia Now—a statistical profile.
- LIBRARY* A range of ABS publications is available from public and tertiary libraries Australia-wide. Contact your nearest library to determine whether it has the ABS statistics you require, or visit our web site for a list of libraries.
- CPI INFOLINE* For current and historical Consumer Price Index data, call 1902 981 074 (call cost 77c per minute).
- DIAL-A-STATISTIC* For the latest figures for National Accounts, Balance of Payments, Labour Force, Average Weekly Earnings, Estimated Resident Population and the Consumer Price Index call 1900 986 400 (call cost 77c per minute).

INFORMATION SERVICE

Data which have been published and can be provided within five minutes are free of charge. Our information consultants can also help you to access the full range of ABS information—ABS user-pays services can be tailored to your needs, time frame and budget. Publications may be purchased. Specialists are on hand to help you with analytical or methodological advice.

- PHONE* **1300 135 070**
- EMAIL* **client.services@abs.gov.au**
- FAX* 1300 135 211
- POST* Client Services, ABS, GPO Box 796, Sydney 1041

WHY NOT SUBSCRIBE?

ABS subscription services provide regular, convenient and prompt deliveries of ABS publications and products as they are released. Email delivery of monthly and quarterly publications is available.

- PHONE* 1300 366 323
- EMAIL* subscriptions@abs.gov.au
- FAX* 03 9615 7848
- POST* Subscription Services, ABS, GPO Box 2796Y, Melbourne 3001



2130320007002
ISSN 0158-202X

RRP \$17.50

© Commonwealth of Australia 2000