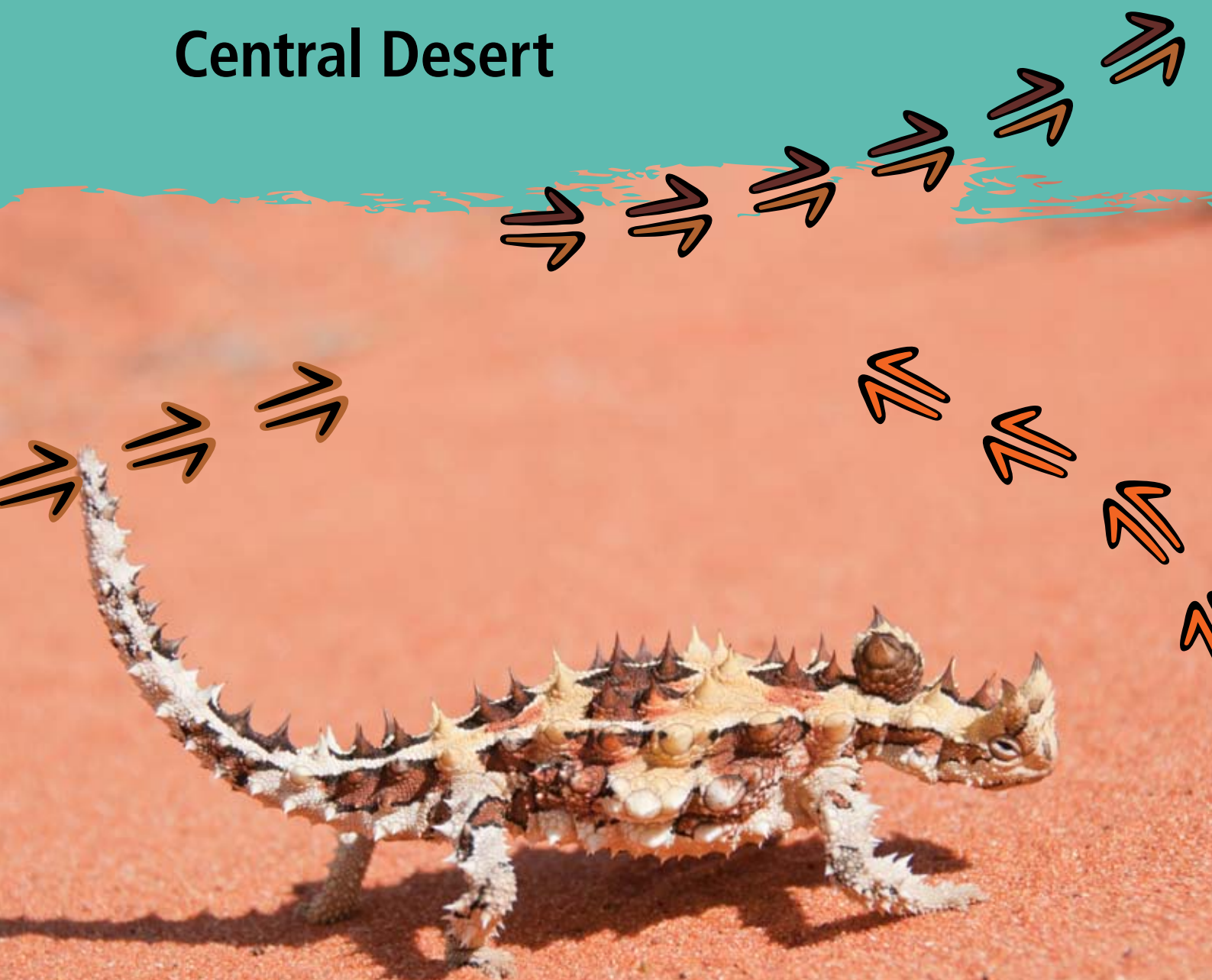


NORTHERN TERRITORY

## Central Desert



# 2016 CENSUS STORY



NORTHERN TERRITORY

# Central Desert



2016 (CENSUS STORY)

## Glossary

<b>Caring for Children</b>	People who spent time caring for a child/children (under 15 years) without pay in the two weeks prior to Census night.
<b>Children</b>	Are people aged under 15 years of age.
<b>Completed Year 12</b>	Includes people aged 15 years and over who are no longer attending primary or secondary school.
<b>Families</b>	Includes couple families with and without children, single parents, and other families.
<b>Houses</b>	Includes private dwellings, occupied and unoccupied. A dwelling is a structure which is intended to have people live in it, and which was habitable on Census night, for example houses, flats, caravans and humpies.
<b>Language</b>	Top Australian Indigenous language spoken at home.
<b>People</b>	Total population figures are based on place of 'usual residence' or where that person usually lives.
<b>Students</b>	Includes everyone who said they were attending a school, university or technical institution.
<b>Weekly Income</b>	Includes people aged 15 years and over and is the middle value (median) of total weekly personal income.
<b>Working</b>	Includes everyone who said they were working full-time or part-time, or were away from work. This does not include people involved in the Community Development Program (CDP).



# Contents

Glossary	2
Artwork	4
The ABS says thanks	5
Australia	6
Northern Territory	7
Central Desert Region	8
Atitjere	10
Engawala	12
Lajamanu	14
Laramba	16
Nturiya	18
Nyirripi	20
Pmara Jutunta	22
Ti Tree	24
Willowra	26
Wilora	28
Yuelamu	30
Yuendumu	32
Know more	36



## Artwork

The artwork in this story book was commissioned by the Centre of Excellence for Aboriginal and Torres Strait Islander Statistics to embody what the centre represents. The work incorporates Larrakia Artist Shaun Lee's (AKA Gwarkabah's) diverse heritage, through contemporary and traditional hand-created designs. Using spray-paint medium on hardwood, the work features and combines various traditional stories and symbols from local areas and across Australia. Together, the artwork tells the story of the Centre of Excellence and its people. The designs were digitalised by Dreamtime Creative.



## Traditional stories and symbol break down



**Star shape:** National courage – representing navigation, called the 'Guiding Star'.

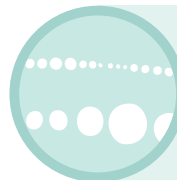
**Core centre design:** Black represents the earth and the soil; the pattern symbolises an 'ageless recognition' used through Northern Australia, and perhaps wider Australia. An 'ageless recognition' is the closest translation into English. It's derived from a number of terms that describe an instant identification of a particular established symbol of connection or linkage.



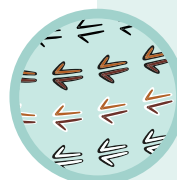
**Message sticks:** Representing unique messages; signifies that a story is being told and needs to be received.

Is a connection to and from Larrakia Country, and between other Indigenous cultures.

- **Top message stick:** Country and regions across Australia
- **Middle message stick:** Coming together and meeting
- **Bottom message stick:** Two half-moons facing inwards represents the people; and the two lines on either side identifies that the message is inclusive of both male and female.



**Dots:** Symbolises the link between people, organisations, States and Territories, representing the importance of strong linkage and communication. A dot in a dot in a dot: Traditional Larrakia design colours represent the artist's own diversity – his Northern Larrakia, Wardaman, Karrijarri heritage, and his acknowledgement of all of these people.



**Kangaroo tracks:** Acknowledge the journey and pathways that have been taken; and symbolises moving forward, as the kangaroo is known for not moving backwards.

**Track colours:** Represent diversity and the differences between people. The kangaroo is an iconic Australian animal, representing our uniqueness, and recognition Nationally.



**Paperbark vessel:** Carrying safely all the gathered information and knowledge

# THE ABS SAYS THANKS



The Australian Bureau of Statistics would like to thank the Aboriginal and Torres Strait Islander communities who helped to make the 2016 Census a success.

## Central Desert, your numbers are in.

The results of our latest national Census reveal who we are, where we live, what we do, and where we're headed.

The information we've gathered will inform planning and decision-making for our future, like where we build schools, roads and hospitals. Census data helps us decide where we need funding and services across every community in Australia – this means your community, too!

So here is the story for Central Desert – a living biography updated every five years.

### Future surveys

The ABS also has other surveys. We thank you in advance for your help in completing these. They may include questions about your health, employment or other details. You can see how this information helps your community at [www.abs.gov.au/participant-info](http://www.abs.gov.au/participant-info).



Photos by the Australian Bureau of Statistics, taken from the Jabiru township.

# Australia



**23.4**  
million

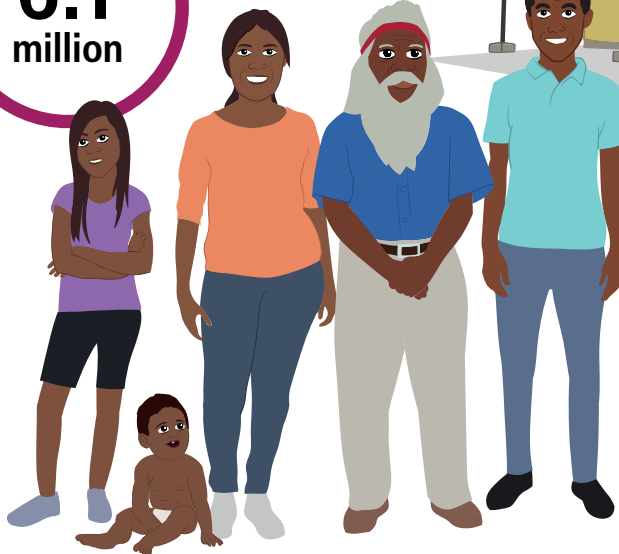
People

**649 168**

Aboriginal and/or  
Torres Strait  
Islander people

## FAMILIES

**6.1**  
million



**9.9**  
million

HOUSES

**11.9 million**  
Females



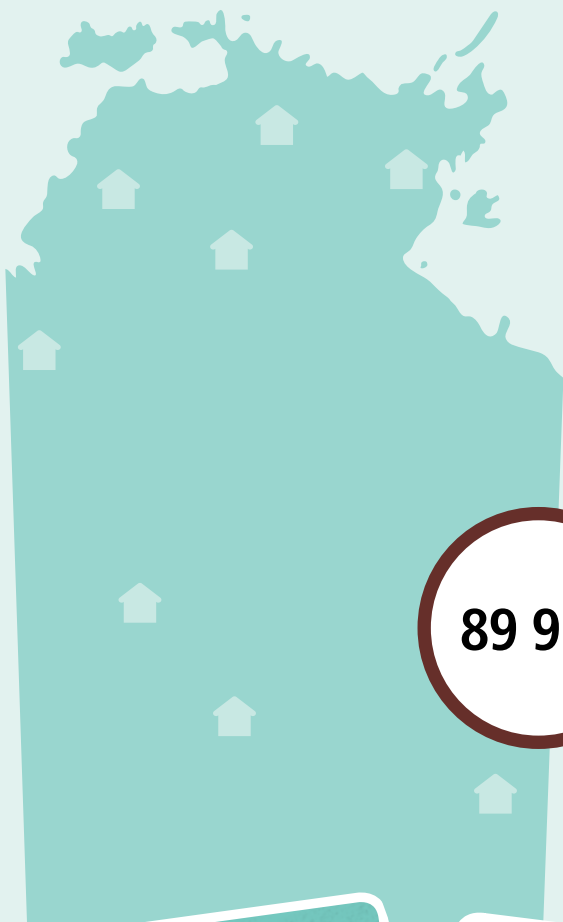
**11.5 million**  
Males



**4.4 million**  
Children



# Northern Territory



228 833

People

58 247

Aboriginal and/or  
Torres Strait  
Islander people

89 959 HOUSES

110 266

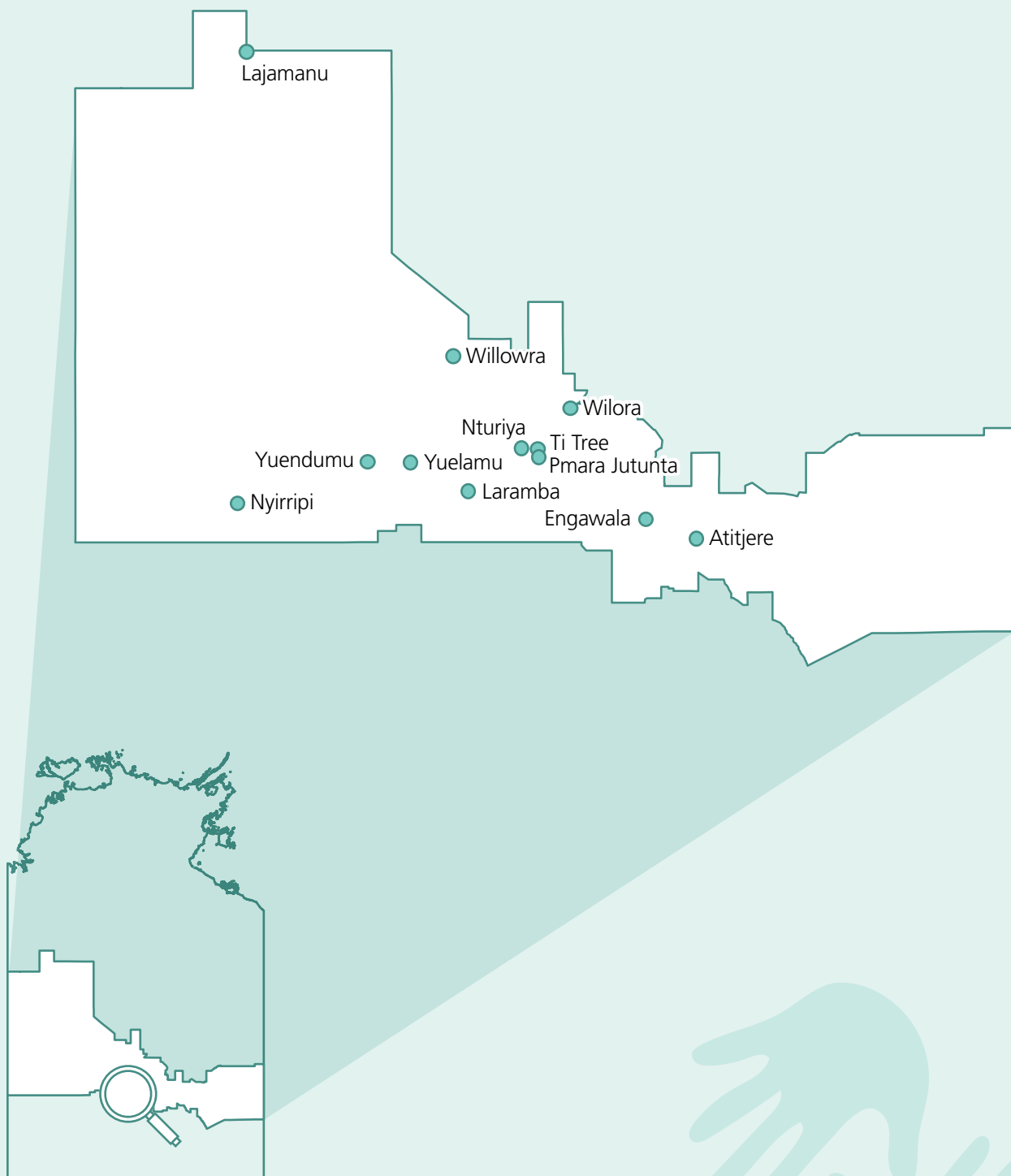
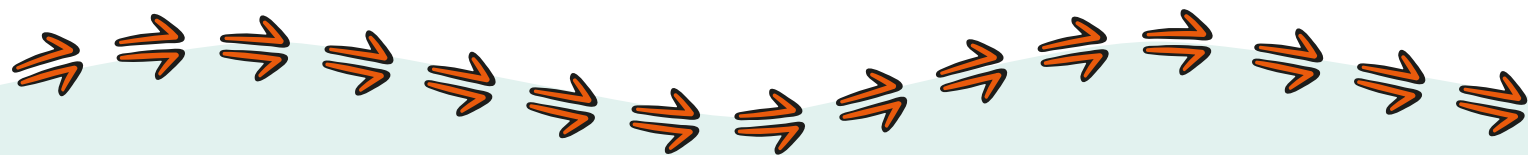
FEMALES

118 570  
MALES

49 474

(CHILDREN

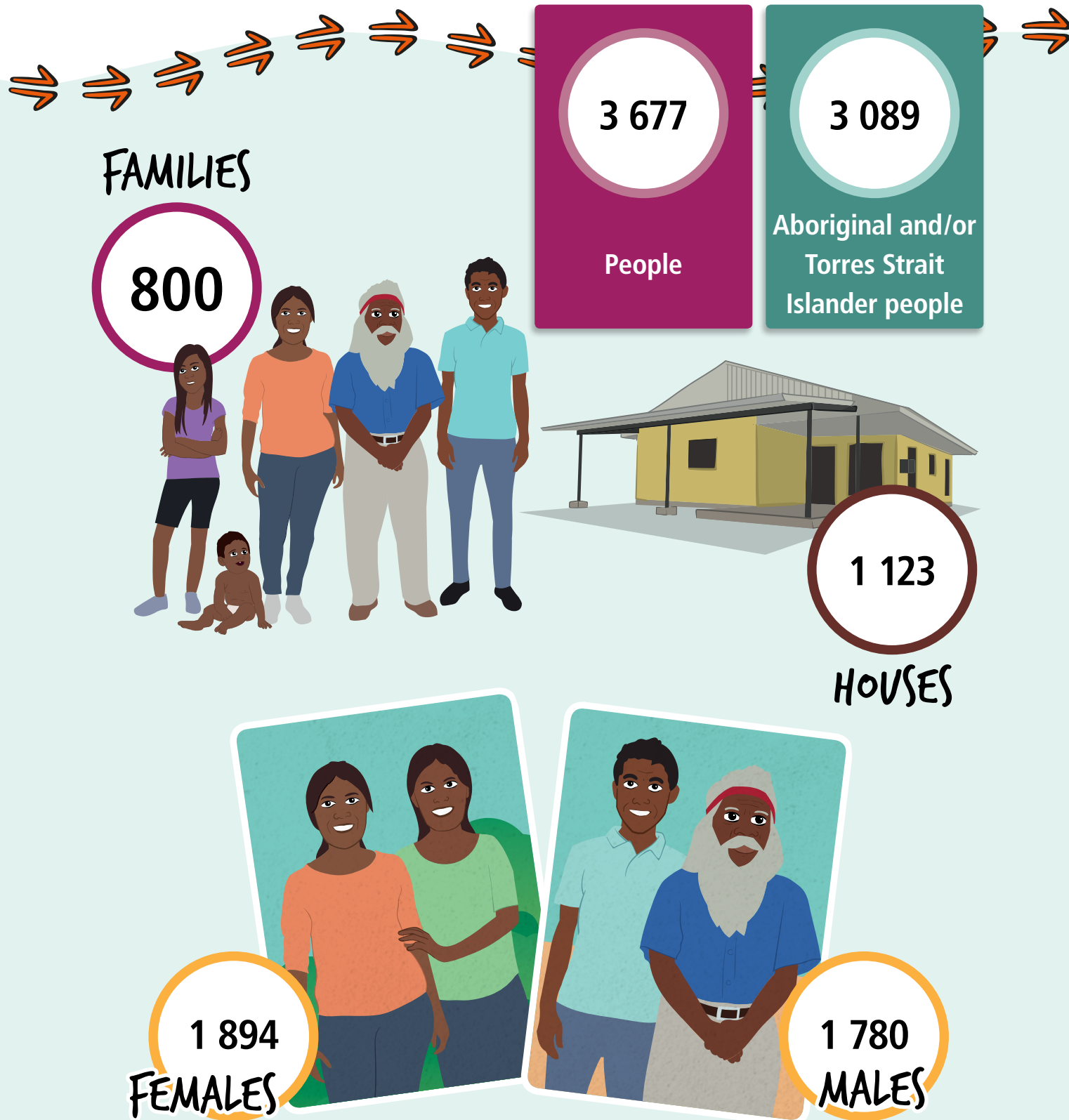
# Central Desert Region



A decorative border at the bottom of the page featuring Aboriginal art motifs. It includes a series of purple arrows pointing left, a stylized brown and orange pattern, and a large, faint, light blue handprint in the background.



# Central Desert Region



Geography: Central Desert (R) LGA



# Atitjere

LANGUAGE SPOKEN  
Arrernte, nec

224

People

173

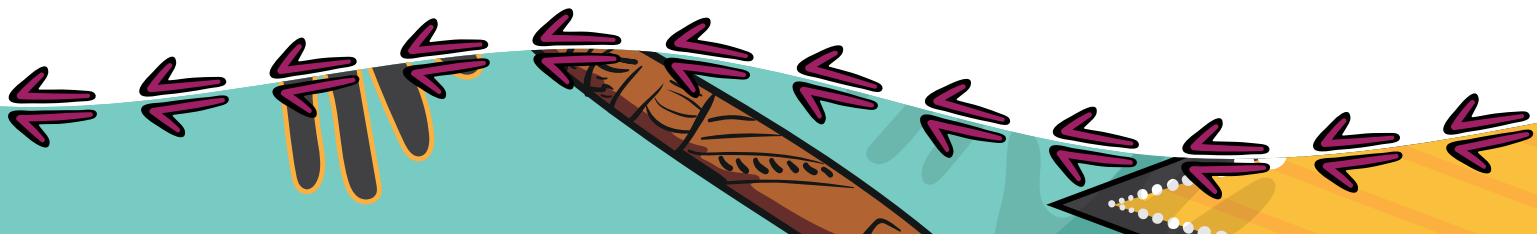
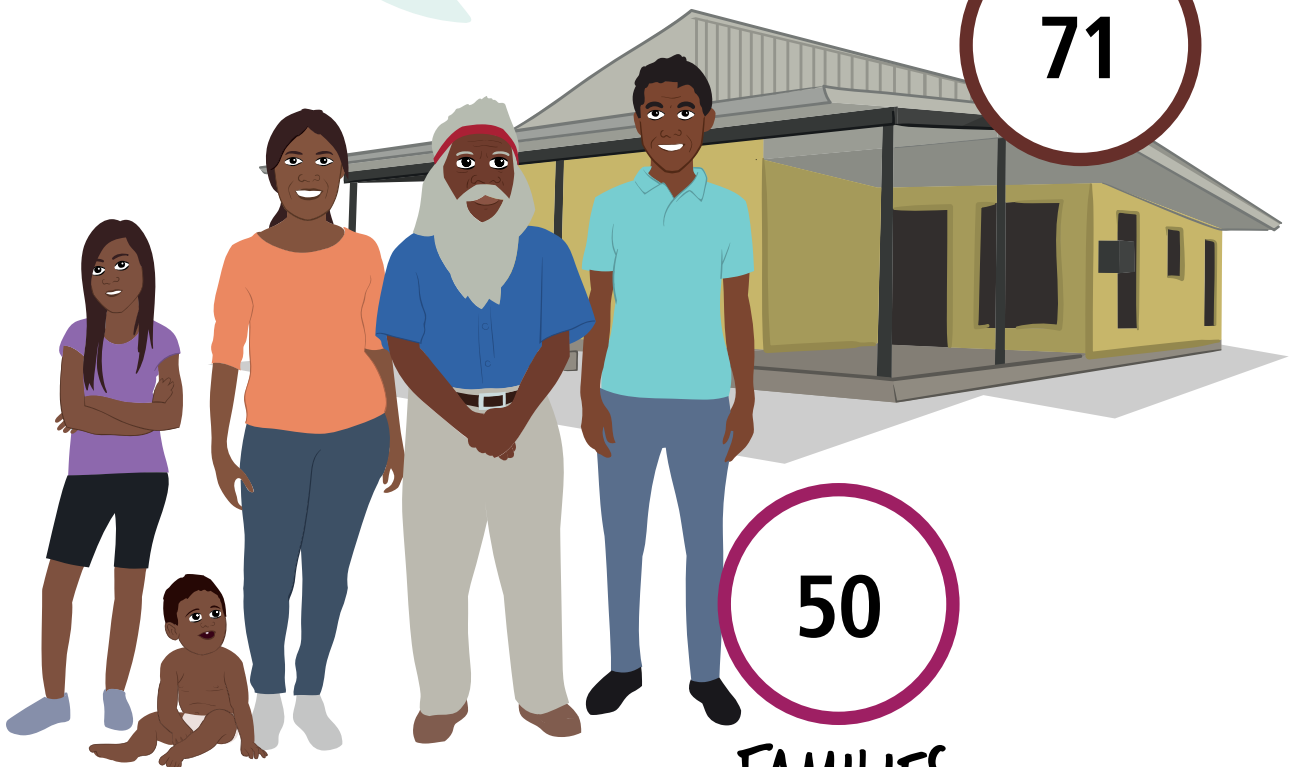
Aboriginal and/or  
Torres Strait  
Islander people

HOUSES

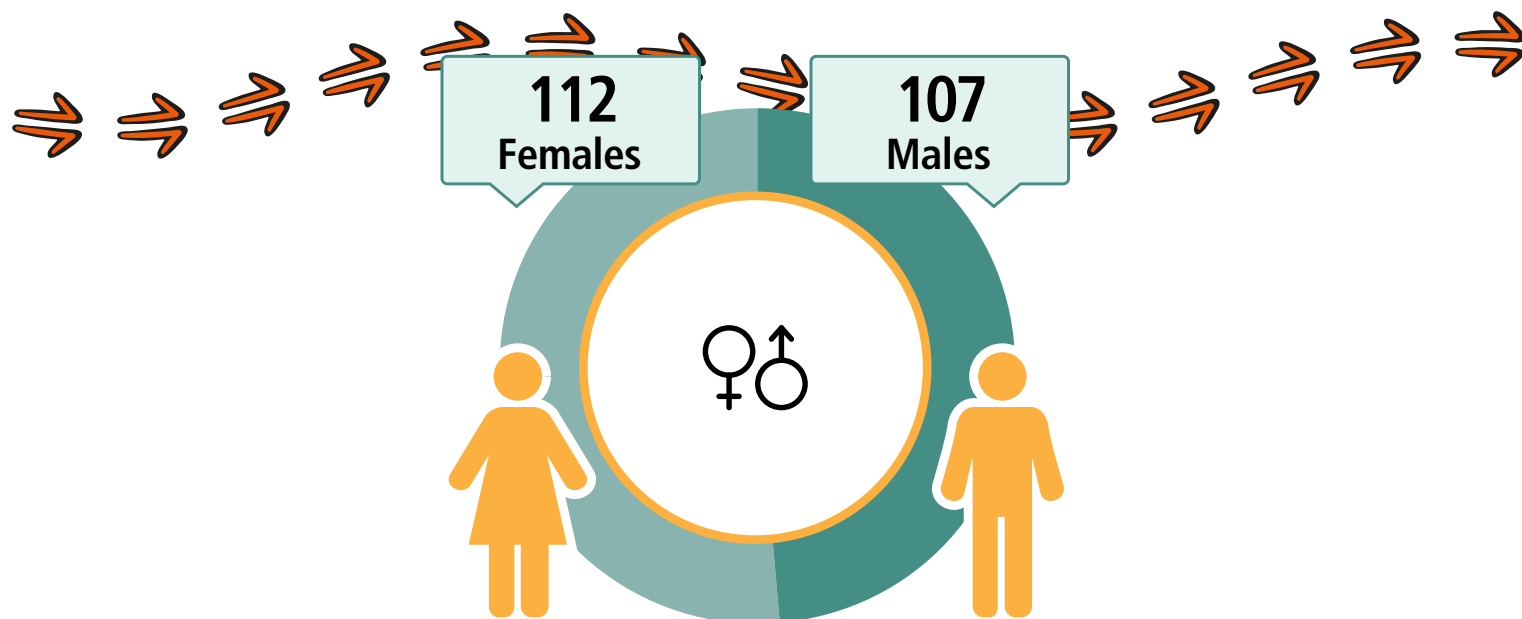
71

50

FAMILIES



# Atitjere



## CARED FOR CHILDREN



56%

**71**  
Working



**\$403**  
Weekly Income



**84**  
Students



**33**  
Completed  
Year 12



Geography: Atitjere ILOC

# Engawala

LANGUAGE SPOKEN  
Eastern Arrernte

154

People

143

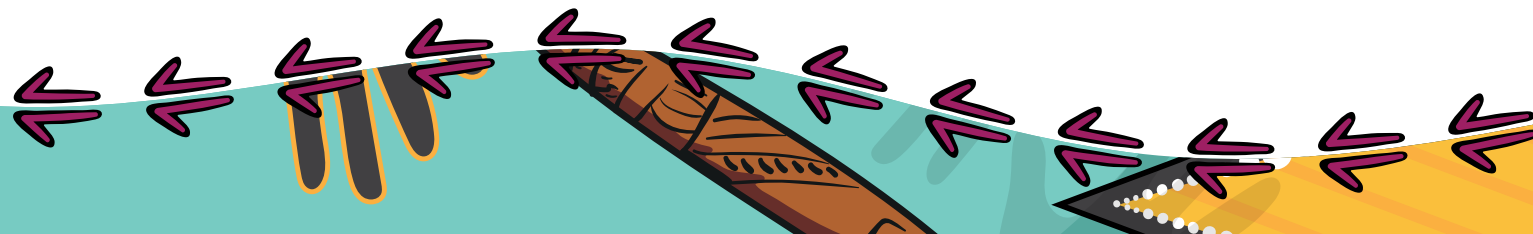
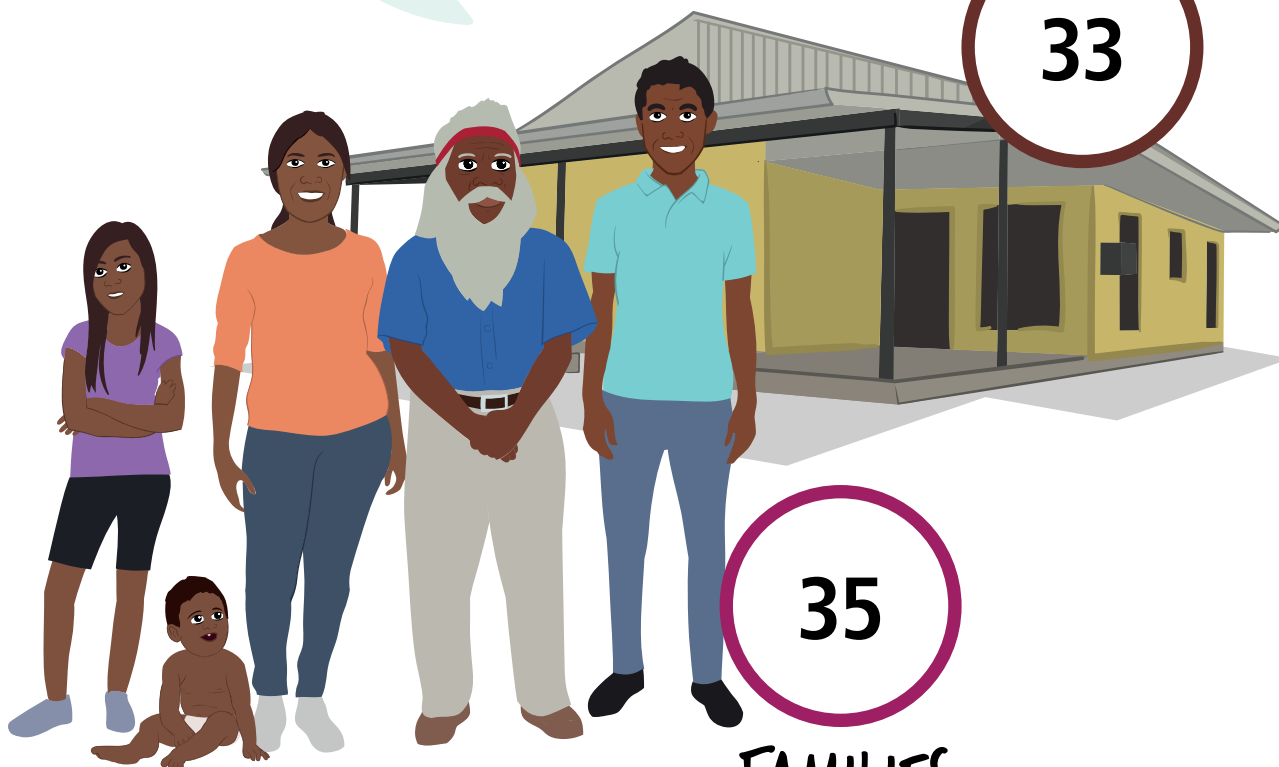
Aboriginal and/or  
Torres Strait  
Islander people

HOUSES

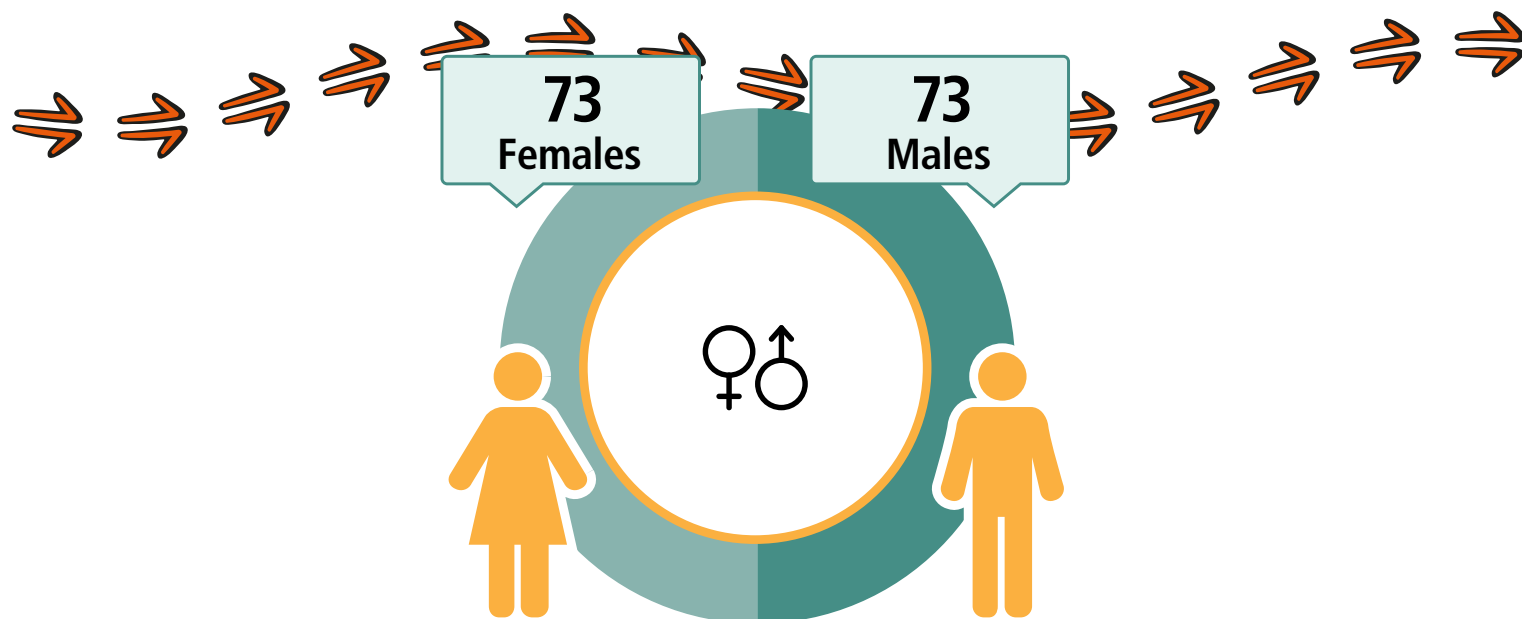
33

35

FAMILIES



# Engawala



## CARED FOR CHILDREN



**53%**

**33**  
Working



**\$269**  
Weekly Income



**35**  
Students



**19**  
Completed  
Year 12



Geography: Engawala ILOC

# Lajamanu

LANGUAGE SPOKEN  
Warlpiri

598

People

529

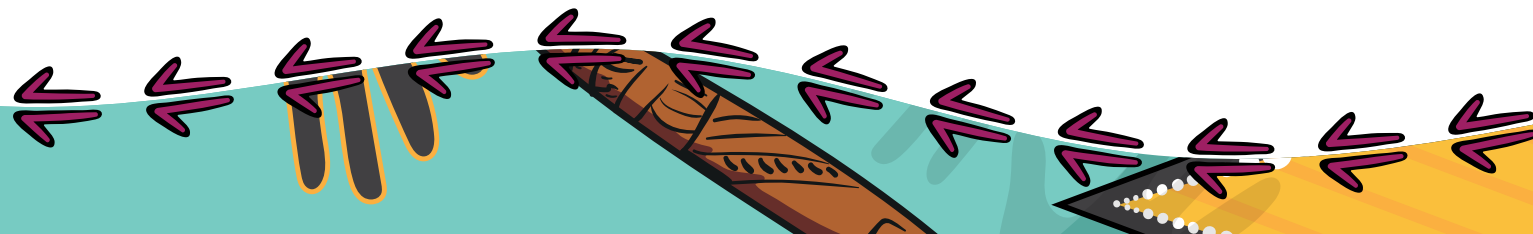
Aboriginal and/or  
Torres Strait  
Islander people

HOUSES

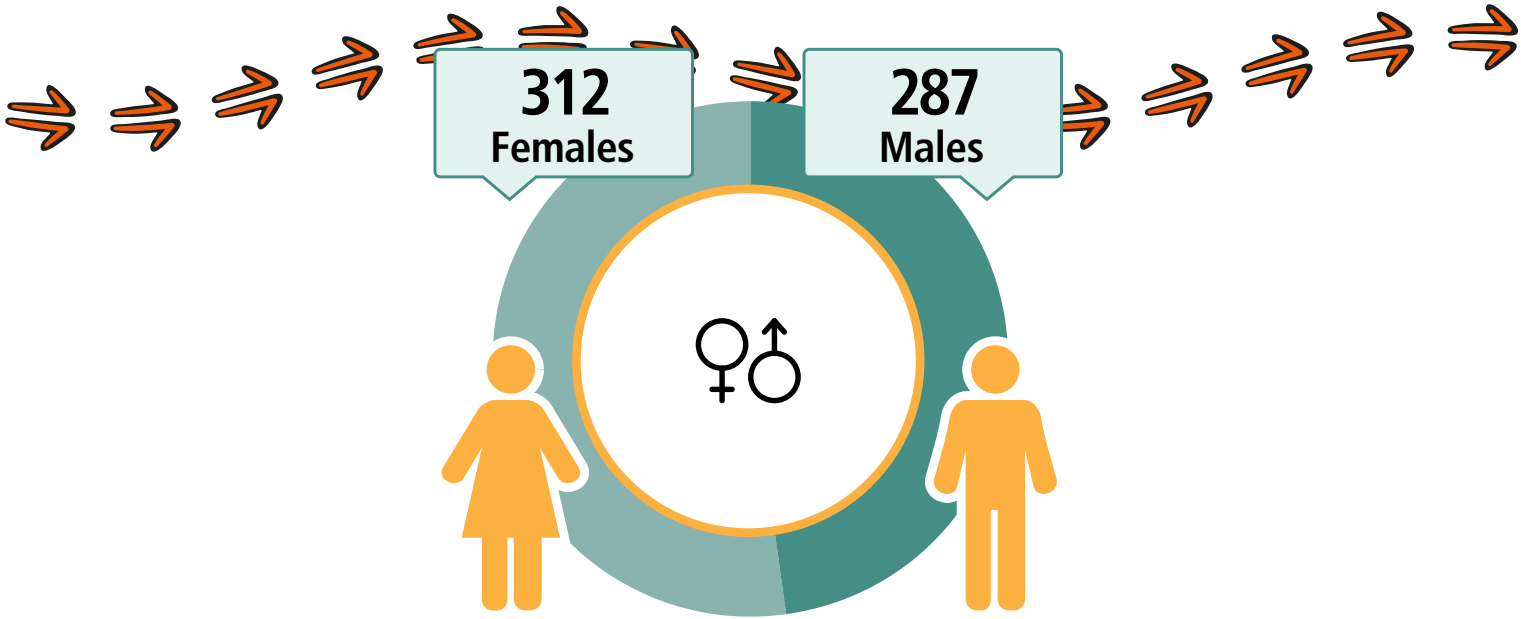
162

127

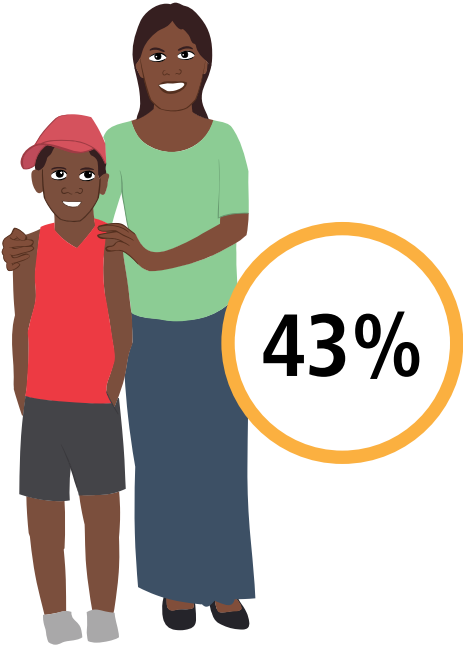
FAMILIES



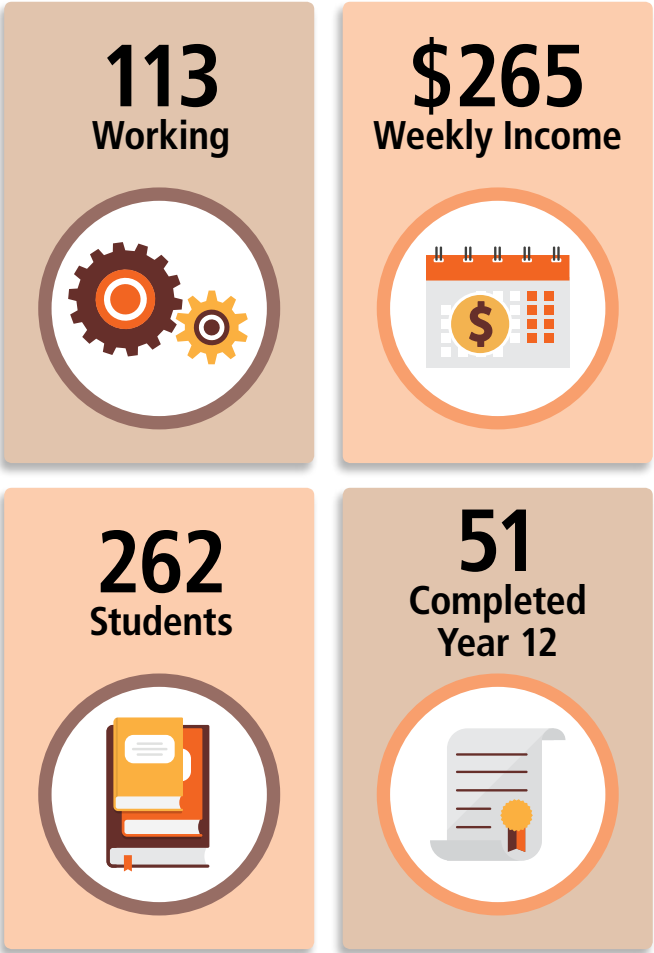
# Lajamanu



## CARED FOR CHILDREN



Geography: Lajamanu ILOC



A decorative border at the bottom of the page featuring stylized Aboriginal art. It includes a yellow and black pattern on the left, a teal and black pattern in the center, and a brown and black pattern on the right, all with white dots and lines.

# Laramba

LANGUAGE SPOKEN  
Anmatyerr, nec

239

People

231

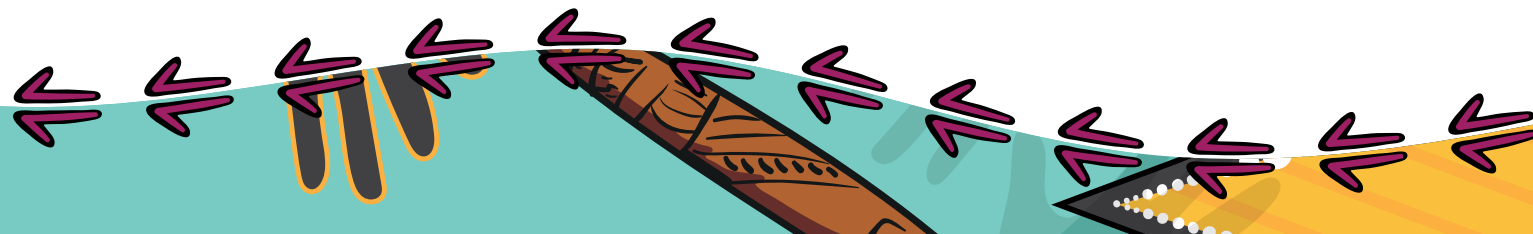
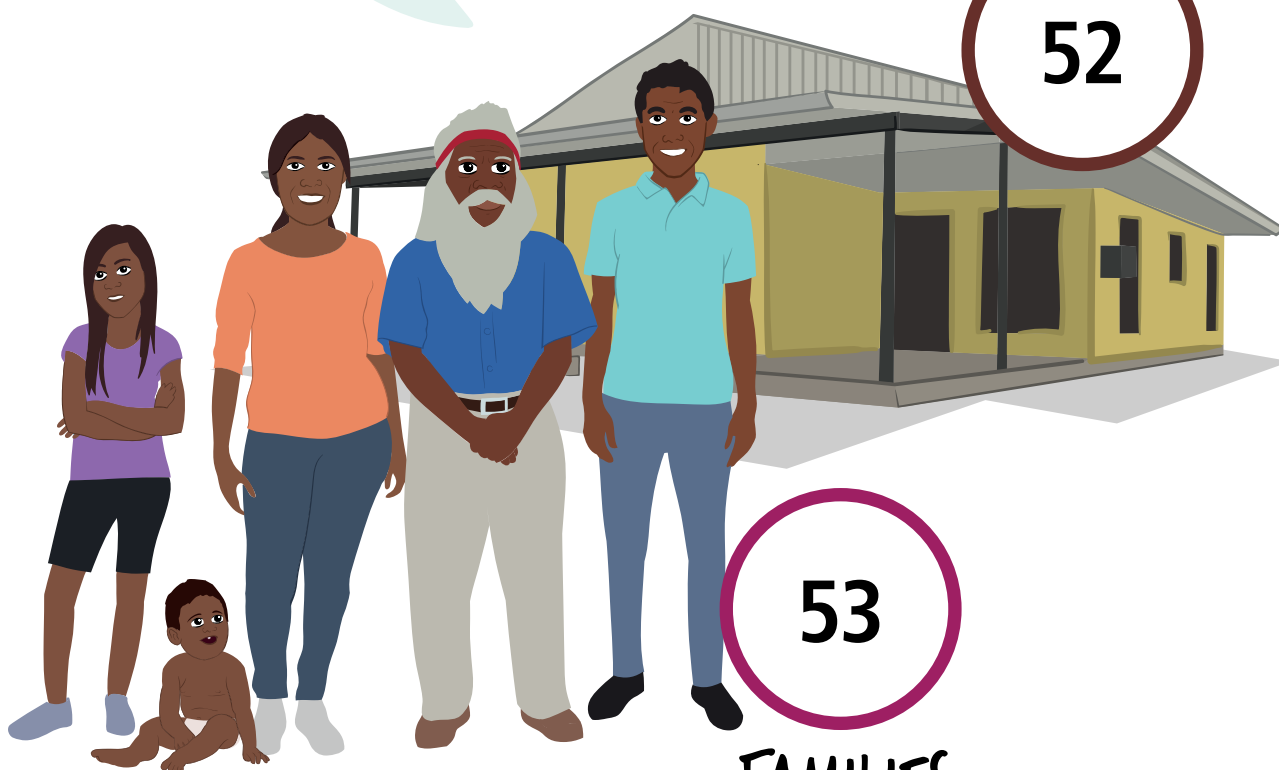
Aboriginal and/or  
Torres Strait  
Islander people

HOUSES

52

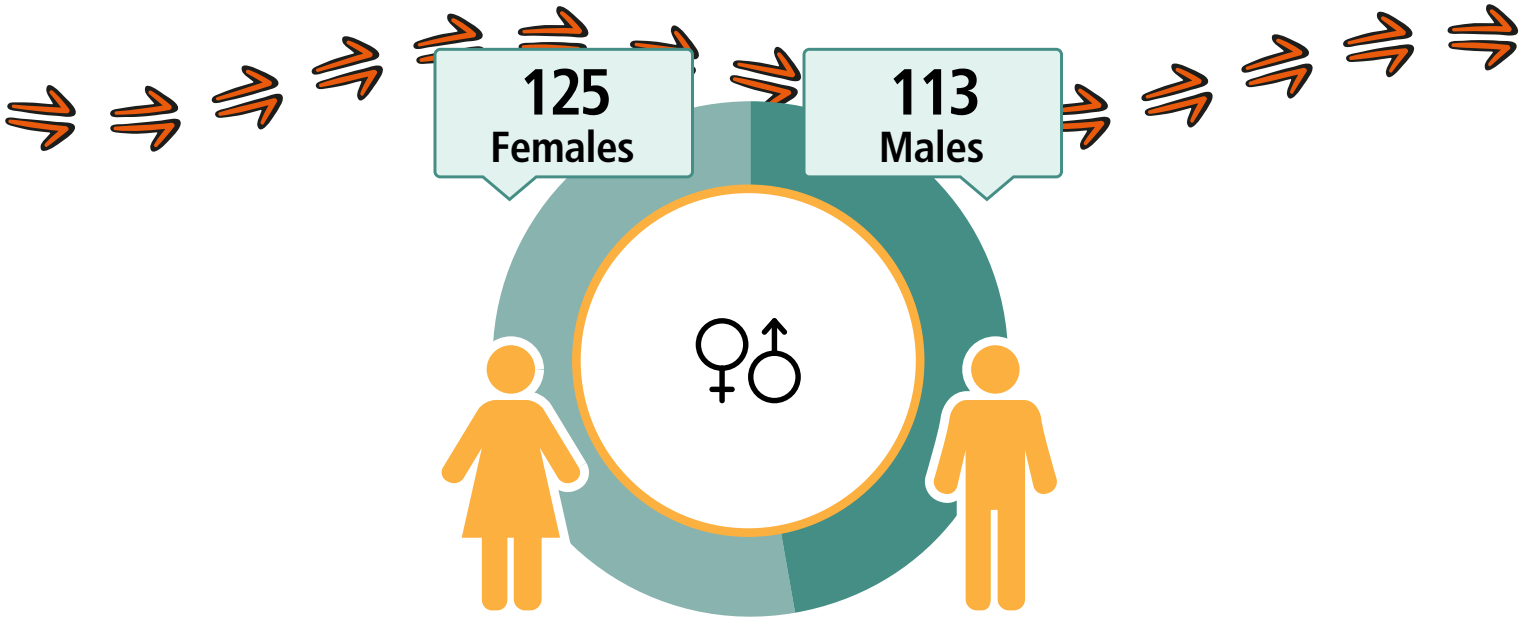
53

FAMILIES

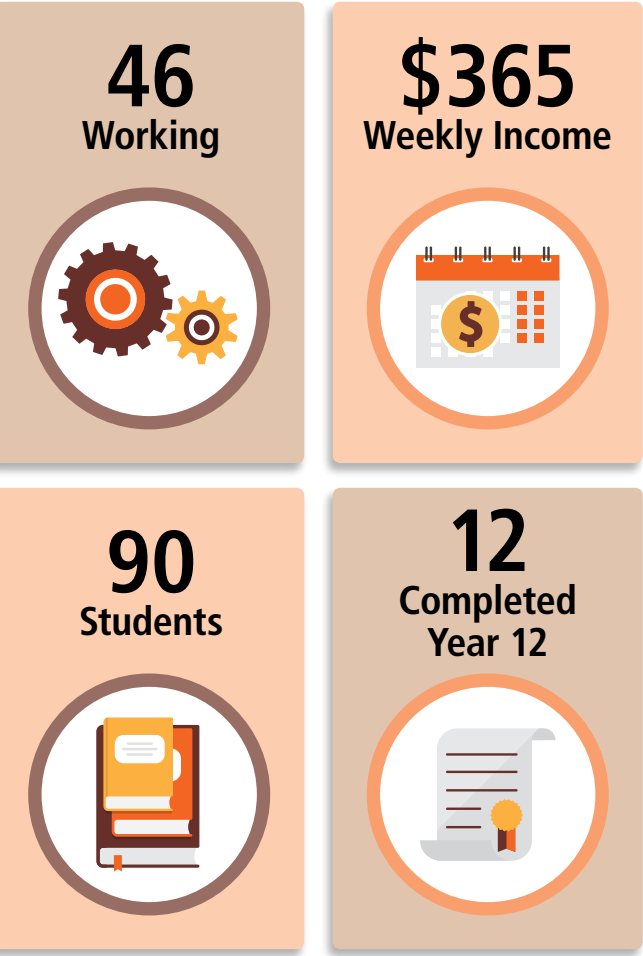
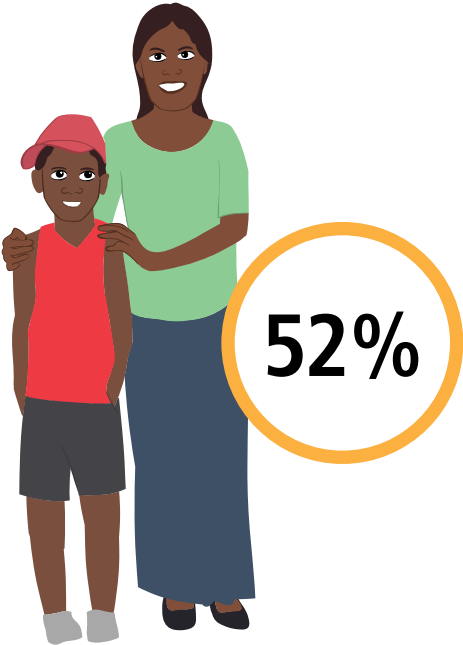




# Laramba



## CARED FOR CHILDREN



Geography: Laramba ILOC

# Nturiya

LANGUAGE SPOKEN  
Anmatyerr, nec

94

People

88

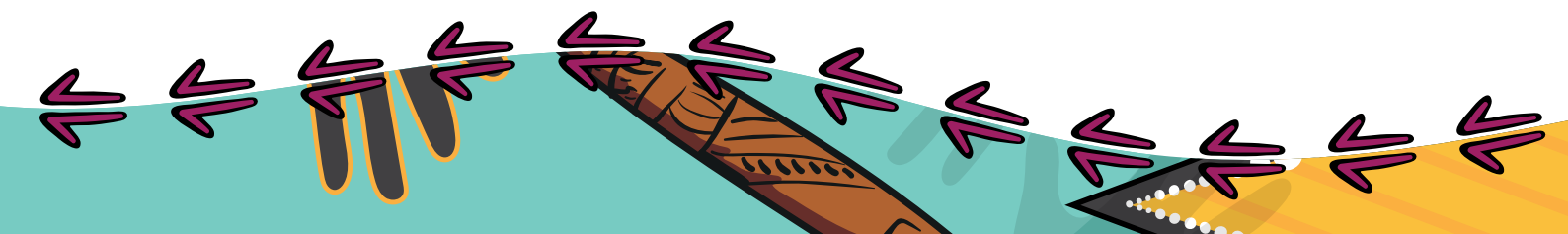
Aboriginal and/or  
Torres Strait  
Islander people

HOUSES

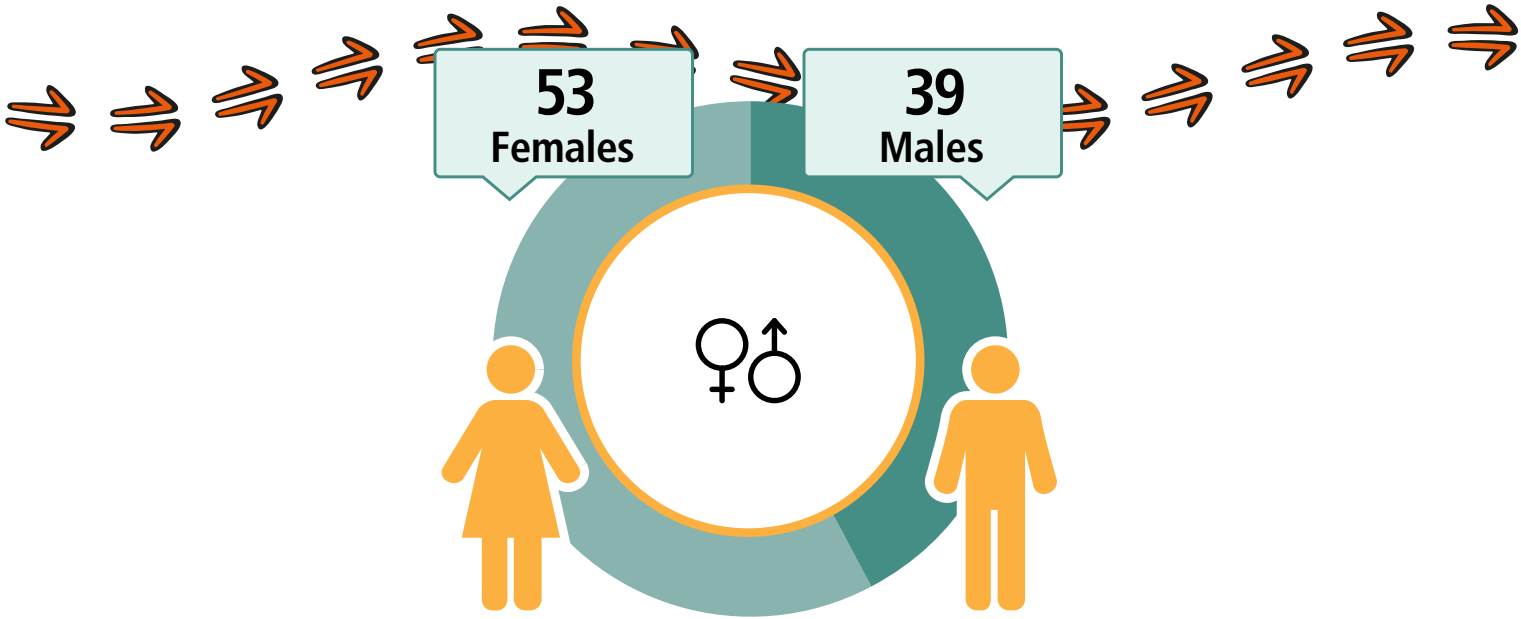
24

21

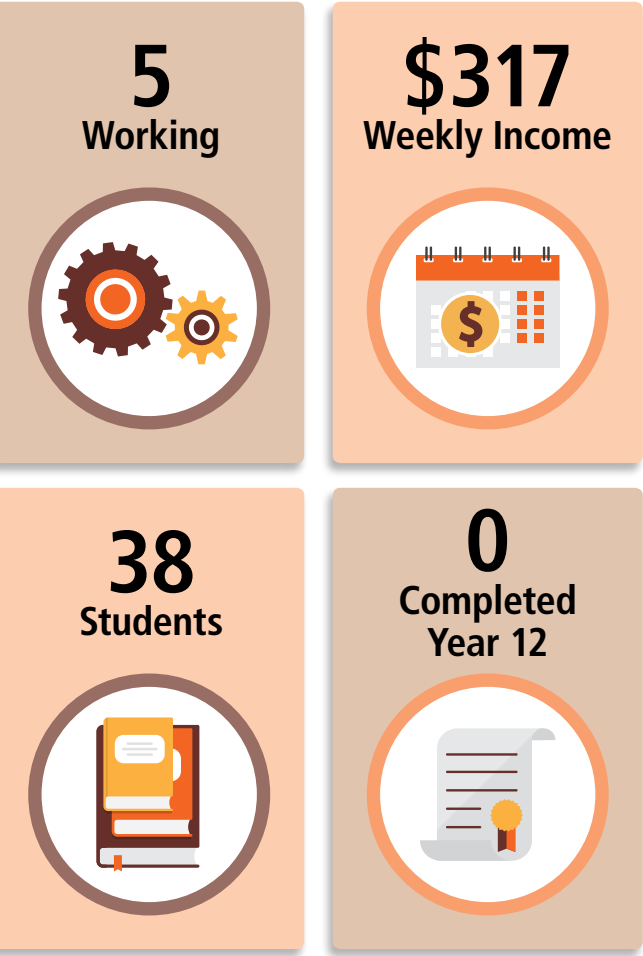
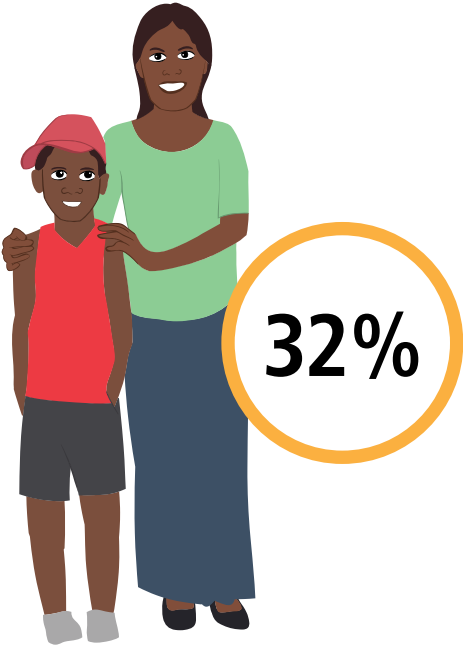
FAMILIES



# Nturiya



## CARED FOR CHILDREN



Geography: Nturiya ILOC

# Nyirripi

LANGUAGE SPOKEN  
Warlpiri

236

People

214

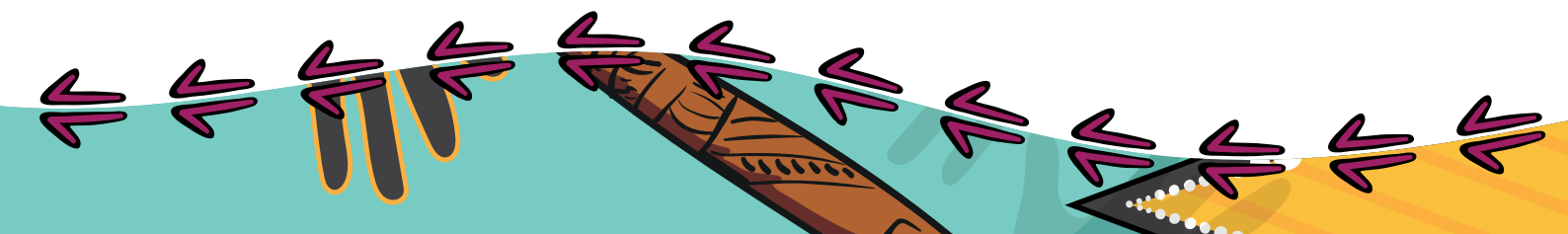
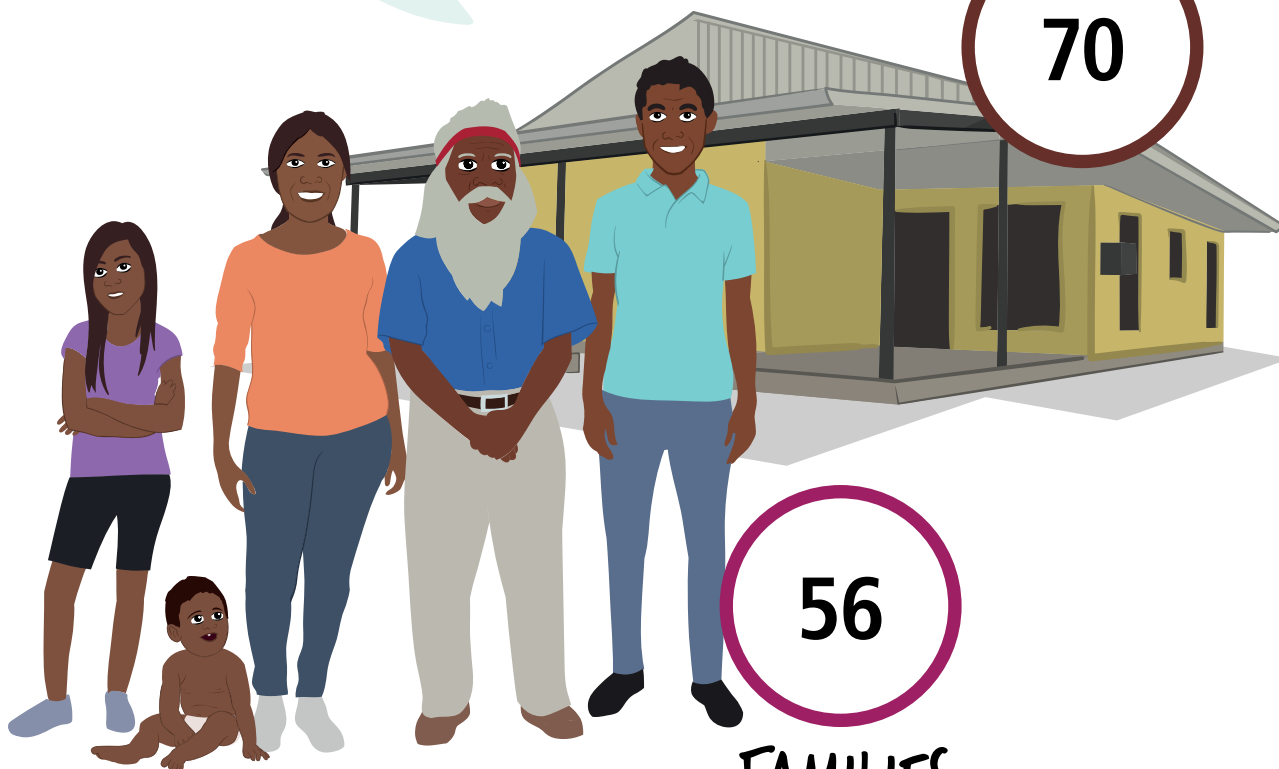
Aboriginal and/or  
Torres Strait  
Islander people

HOUSES

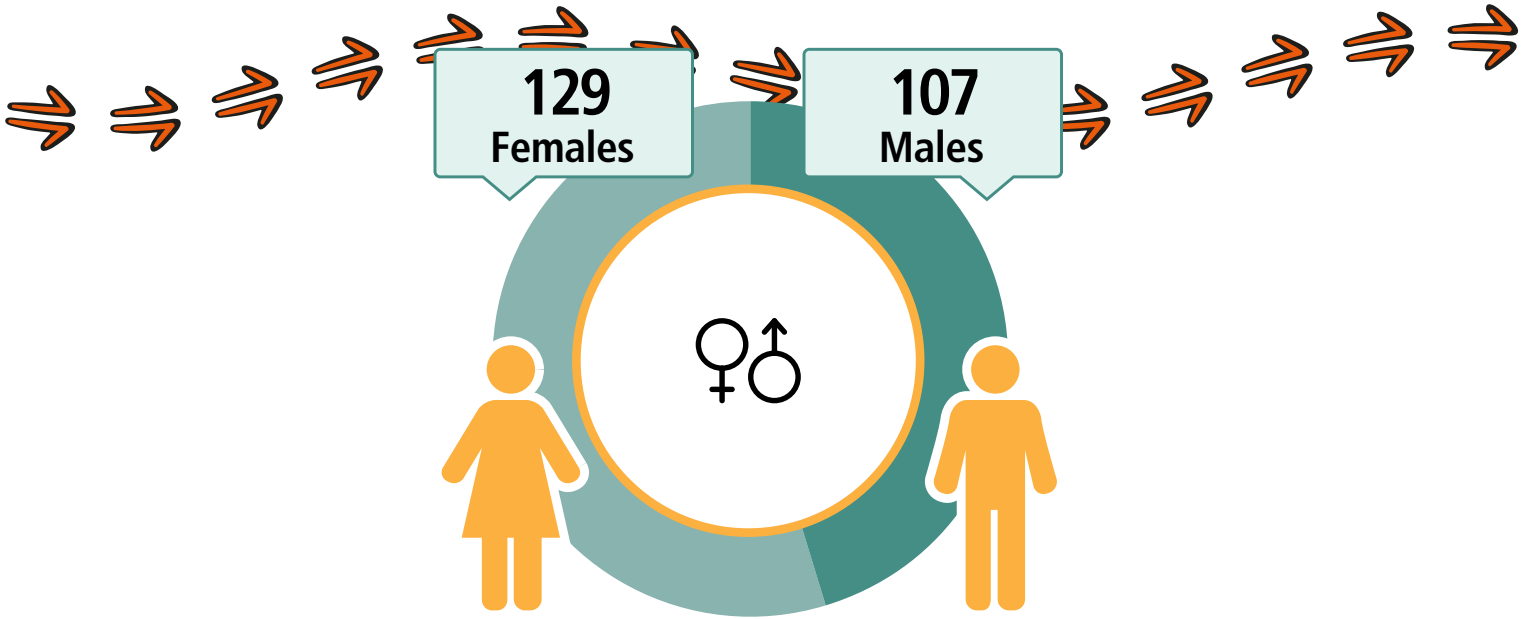
70

56

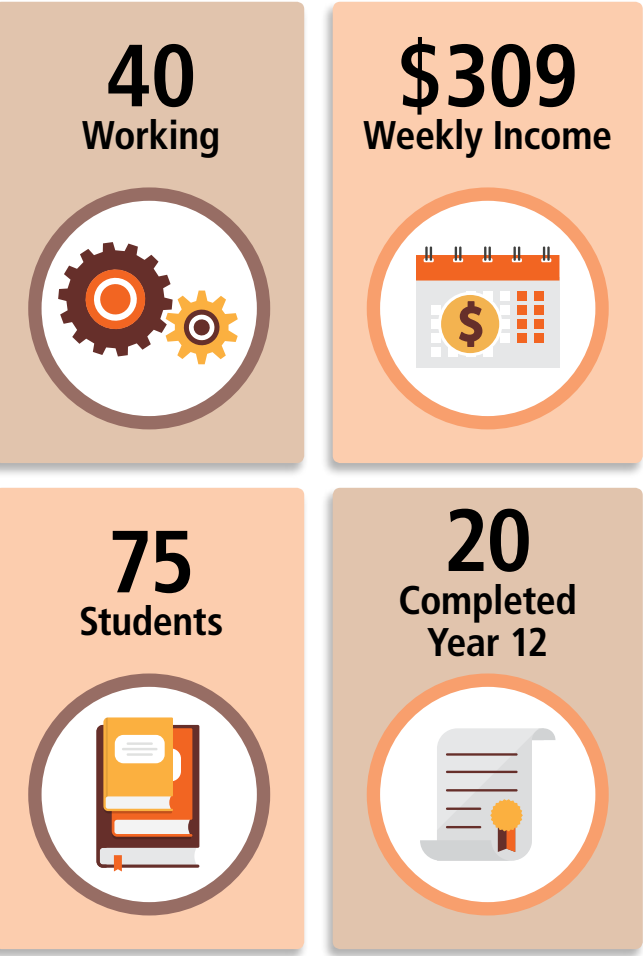
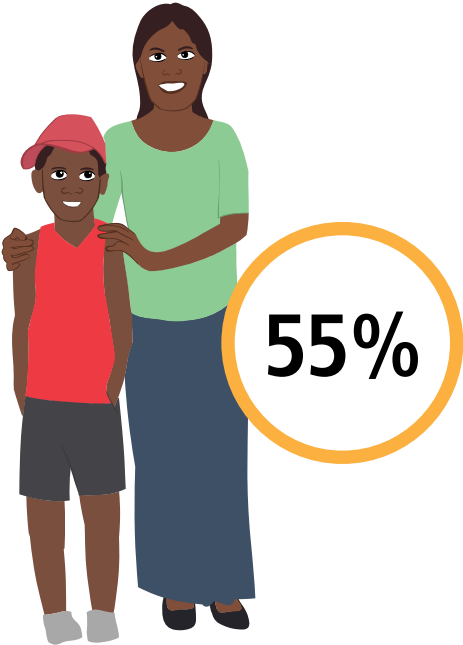
FAMILIES



# Nyirripi



## CARED FOR CHILDREN



Geography: Nyirripi ILOC

# Pmara Jutunta

LANGUAGE SPOKEN  
Anmatyerr, nec

176

People

176

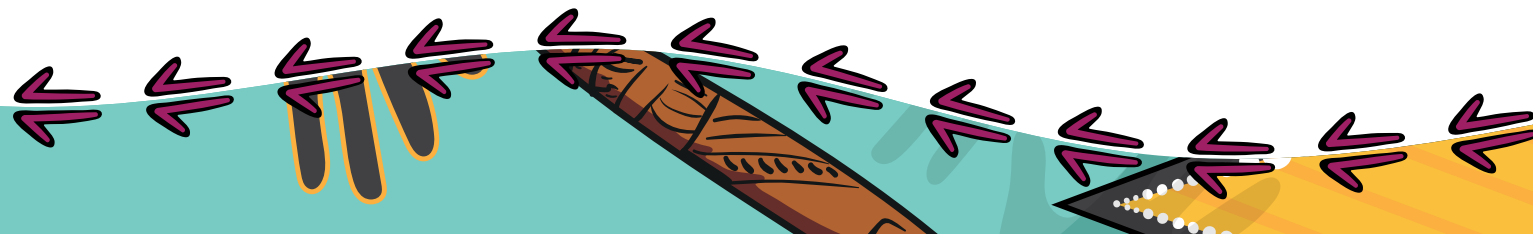
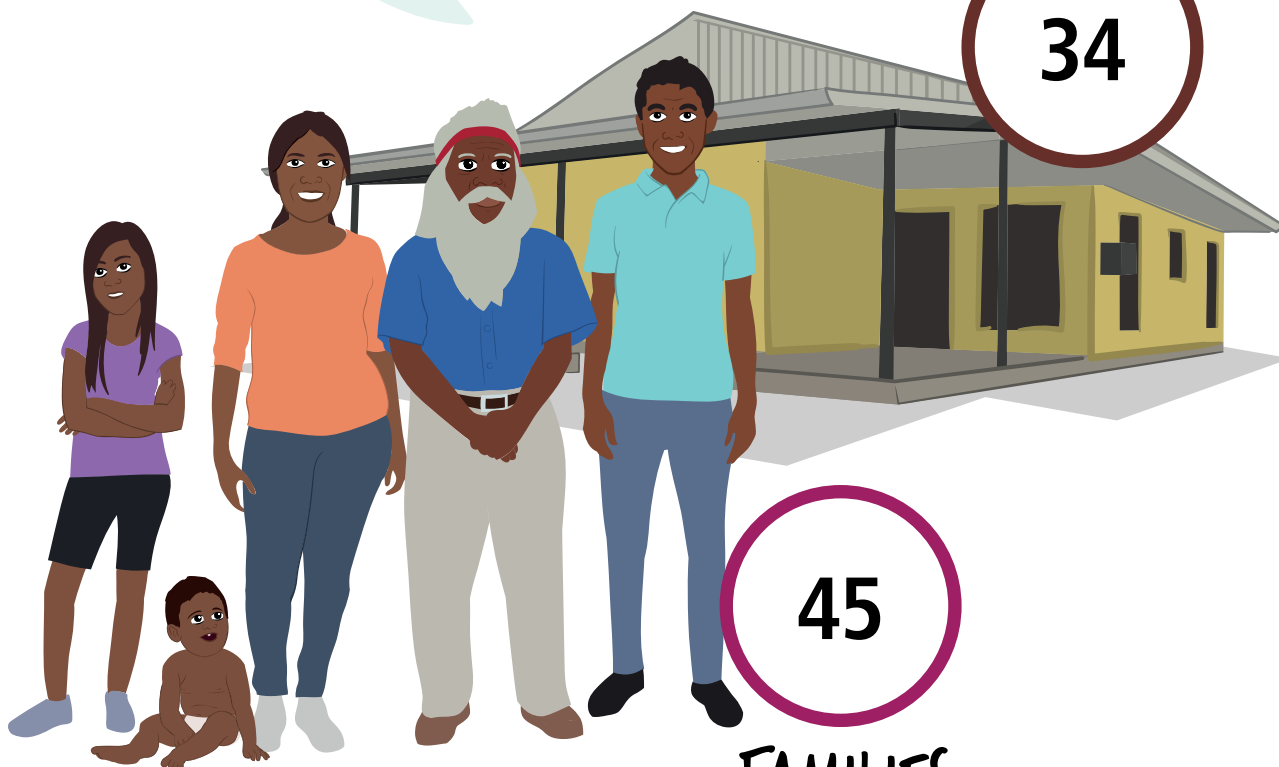
Aboriginal and/or  
Torres Strait  
Islander people

HOUSES

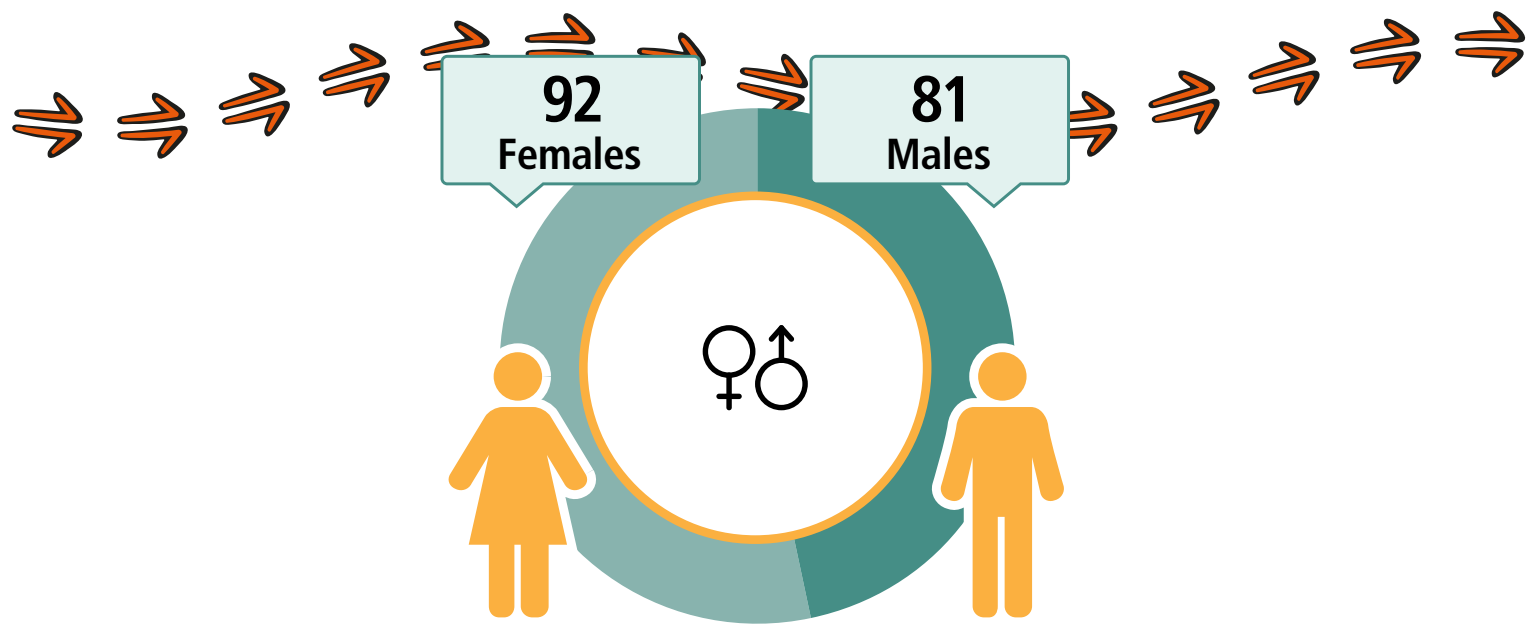
34

45

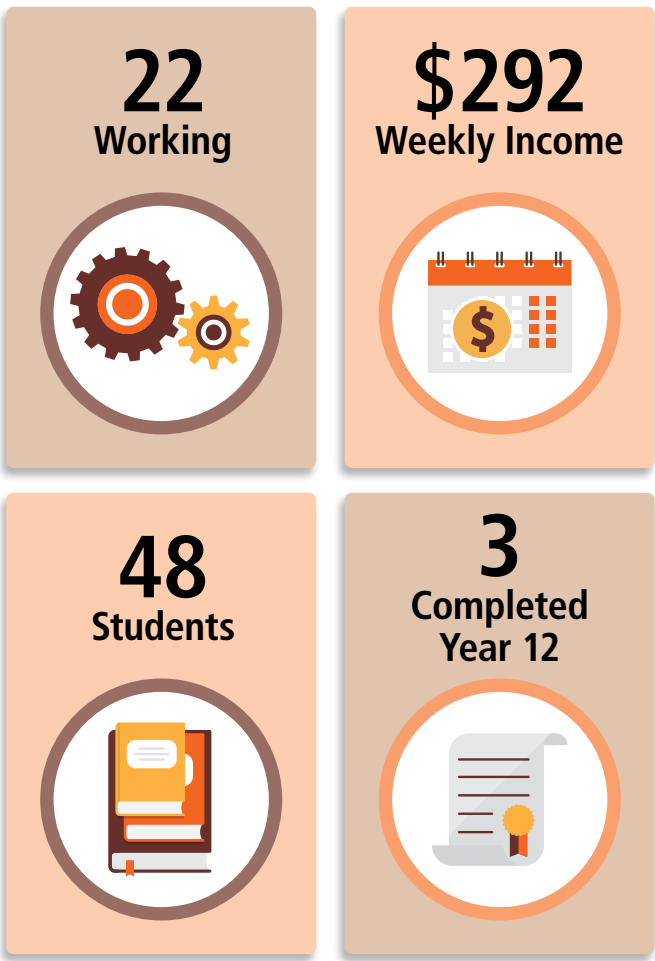
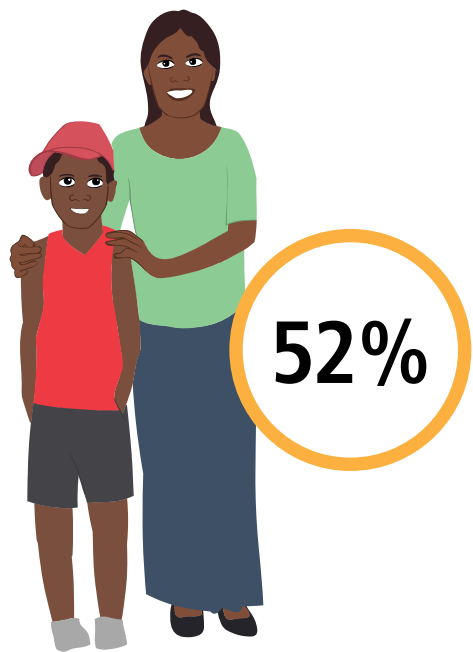
FAMILIES



# Pmara Jutunta



## CARED FOR CHILDREN



Geography: Pmara Jutunta ILOC

A decorative Aboriginal art pattern at the bottom of the page, featuring stylized hands, a boomerang, and various geometric shapes in teal, yellow, and black.



# Ti Tree

LANGUAGE SPOKEN  
Anmatyerr, nec

70

People

33

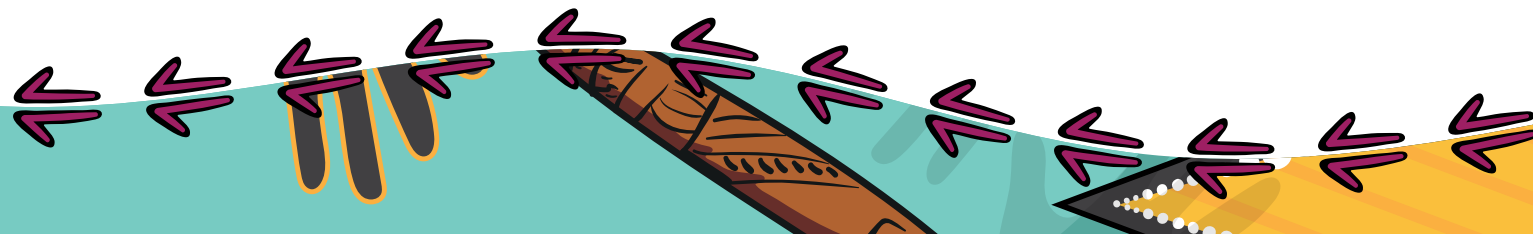
Aboriginal and/or  
Torres Strait  
Islander people

HOUSES

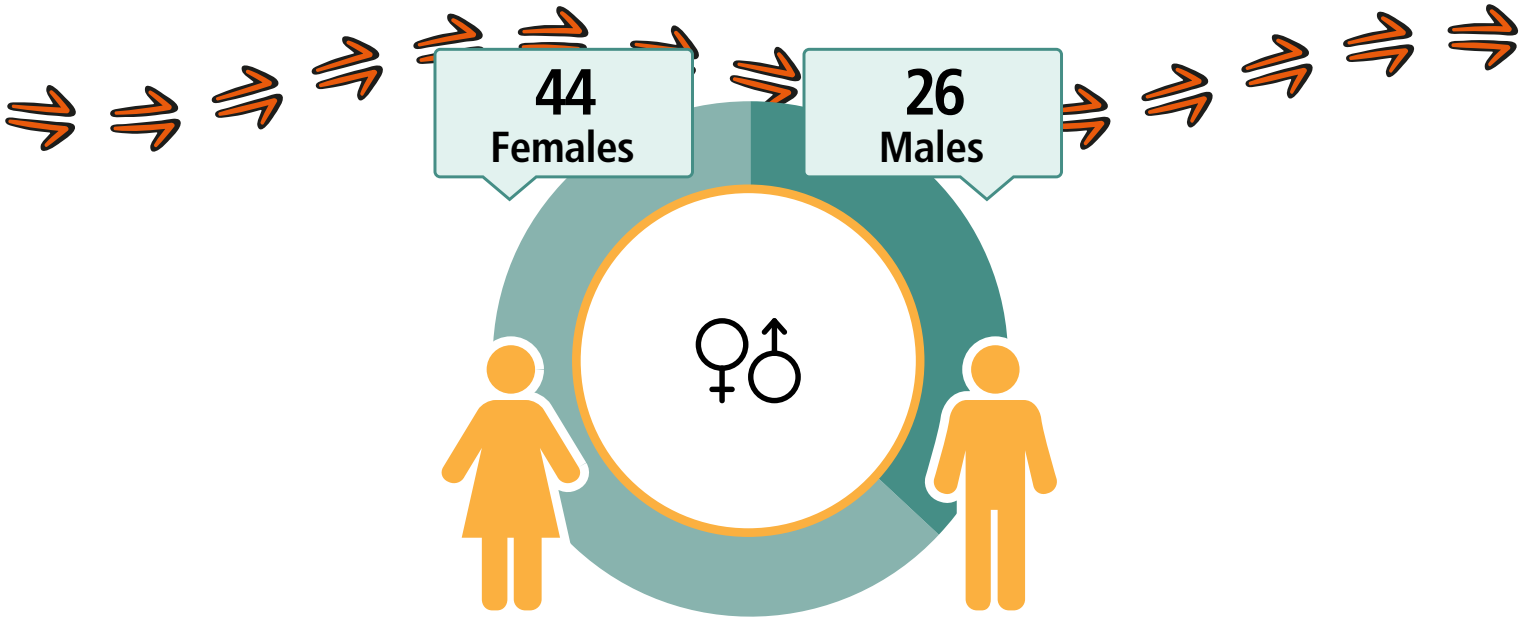
35

14

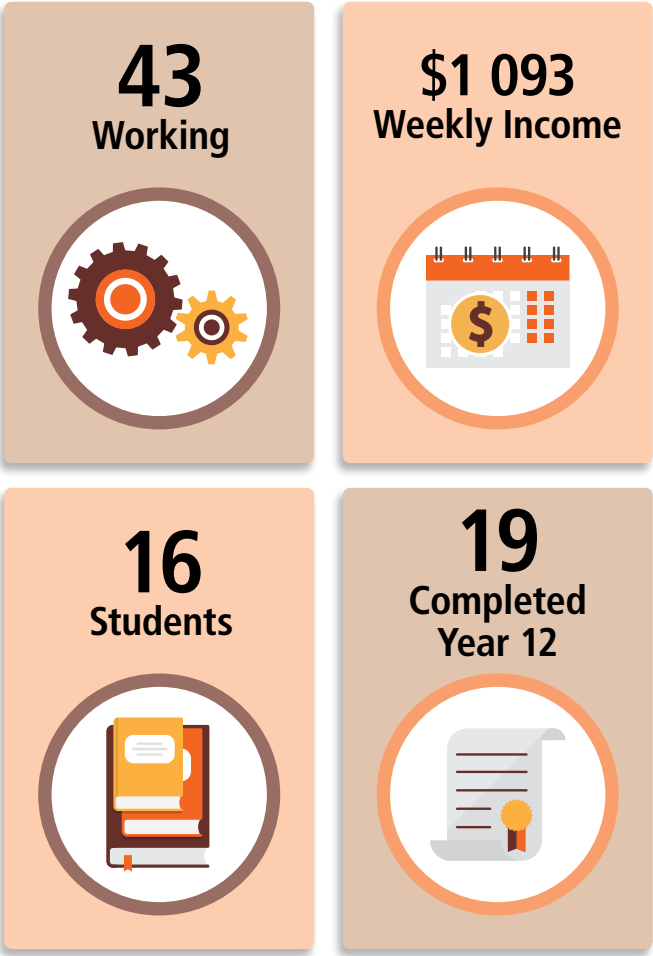
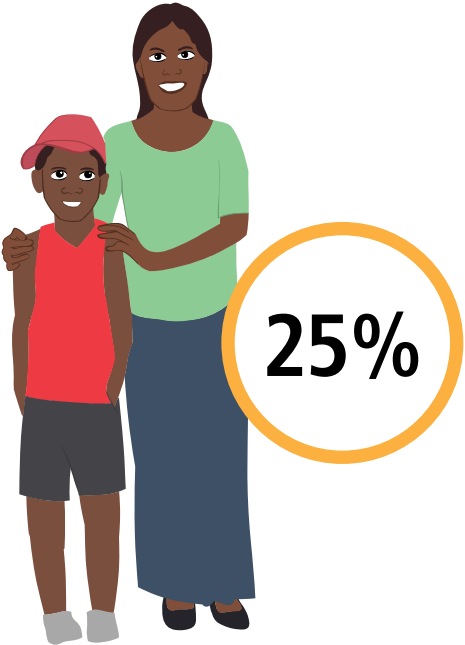
FAMILIES



# Ti Tree



## CARED FOR CHILDREN



Geography: Anmatjere - Ti Tree ILOC

A decorative border at the bottom of the page featuring stylized Aboriginal art. It includes a yellow and black pattern on the left, a teal and black pattern in the center, and a brown and black pattern on the right, all with white dots and arrows.

# Willowra

LANGUAGE SPOKEN  
Warlpiri

301

People

272

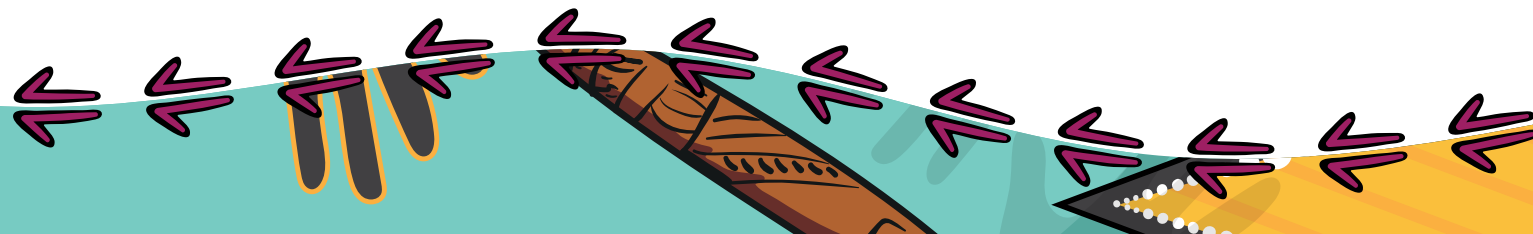
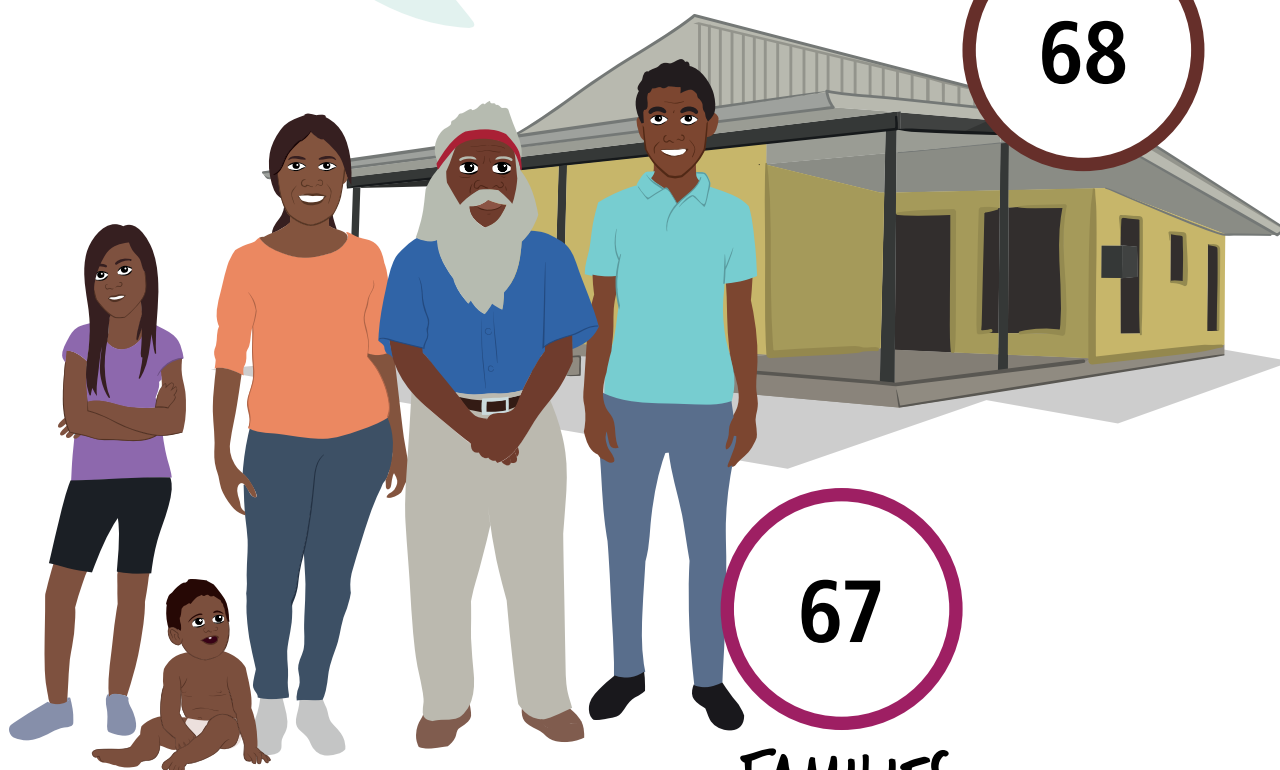
Aboriginal and/or  
Torres Strait  
Islander people

HOUSES

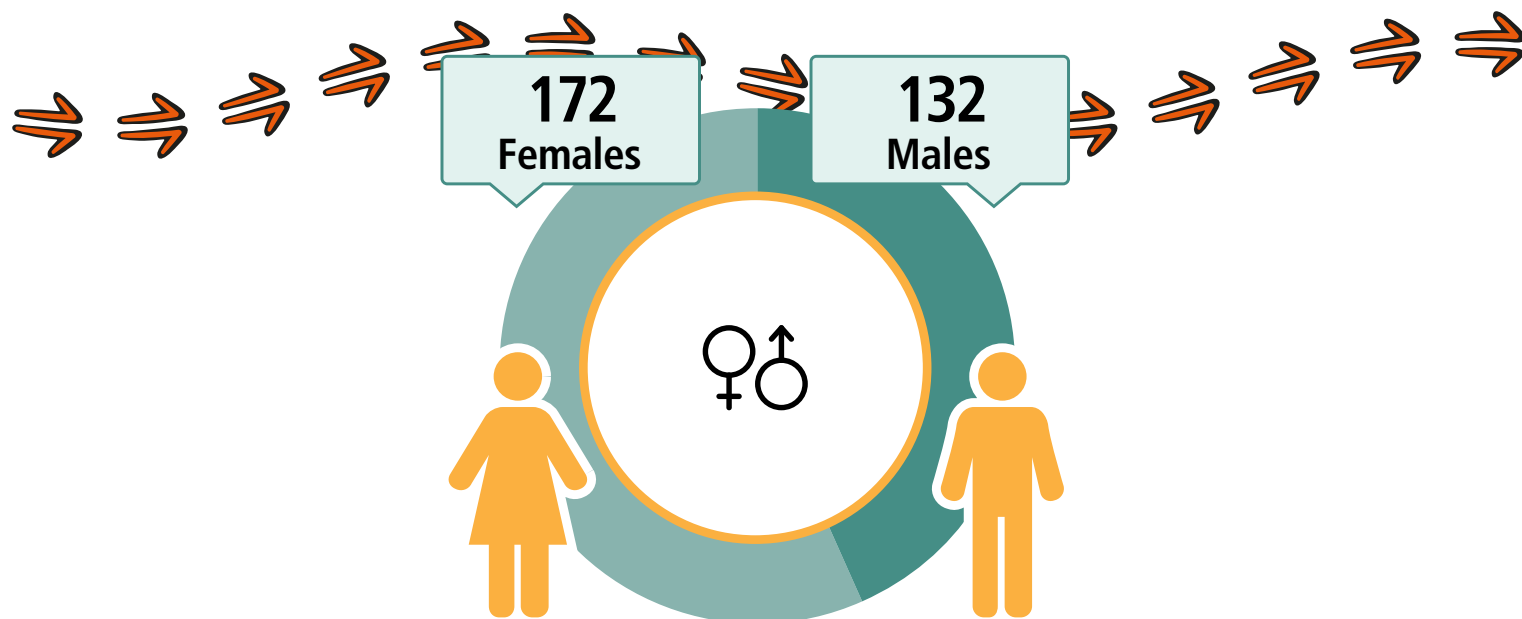
68

67

FAMILIES



# Willowra



## CARED FOR (CHILDREN



**56%**

**47**  
Working



**\$388**  
Weekly Income



**85**  
Students



**24**  
Completed  
Year 12



Geography: Willowra ILOC

# Wilora

LANGUAGE SPOKEN  
Anmatyerr, nec

95

People

95

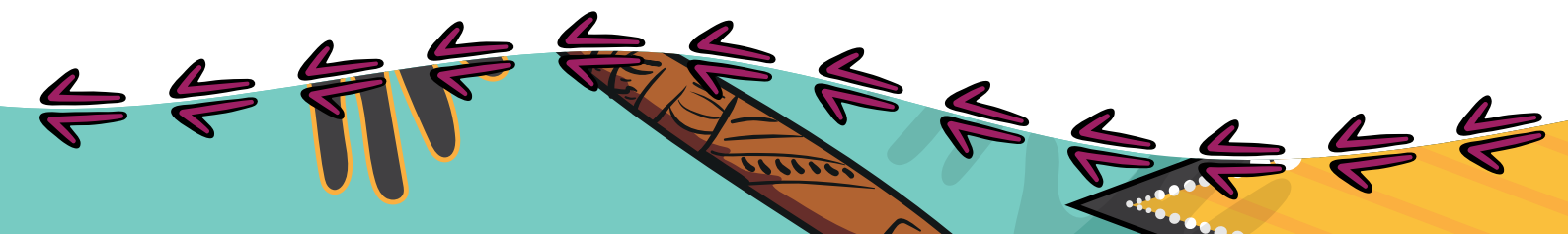
Aboriginal and/or  
Torres Strait  
Islander people

HOUSES

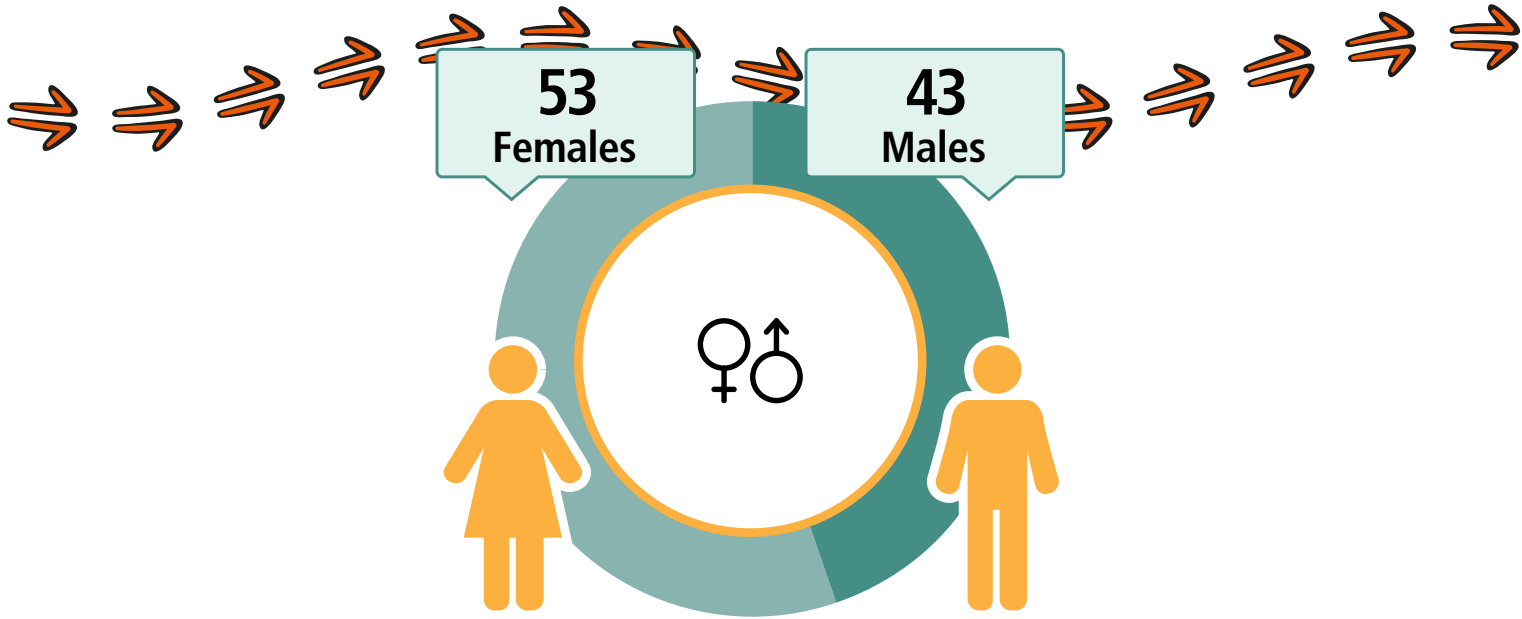
23

23

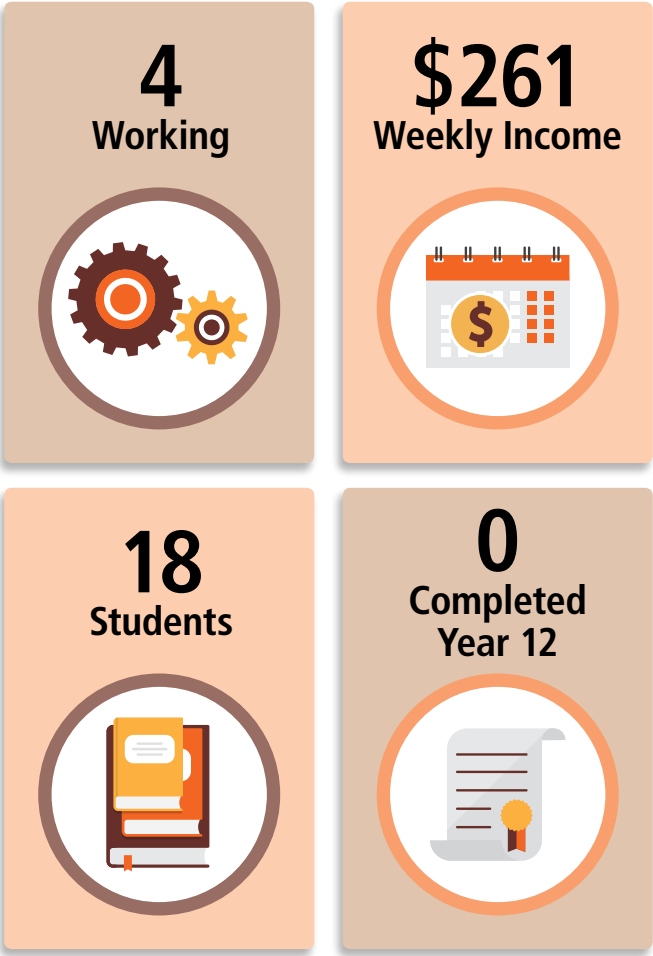
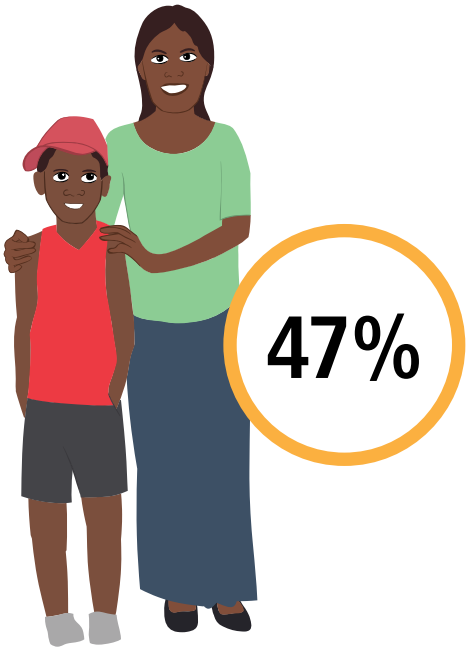
FAMILIES



# Wilora



## CARED FOR CHILDREN



Geography: Wilora ILOC

A decorative Aboriginal artwork at the bottom of the page, featuring a stylized landscape with a yellow and orange sun or moon, a teal body of water, and purple and black arrows pointing in various directions.

# Yuelamu

LANGUAGE SPOKEN  
Anmatyerr, nfd

220

People

205

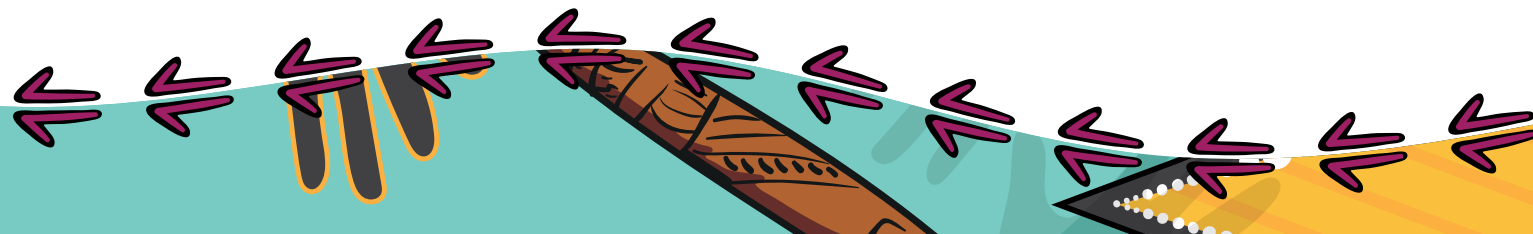
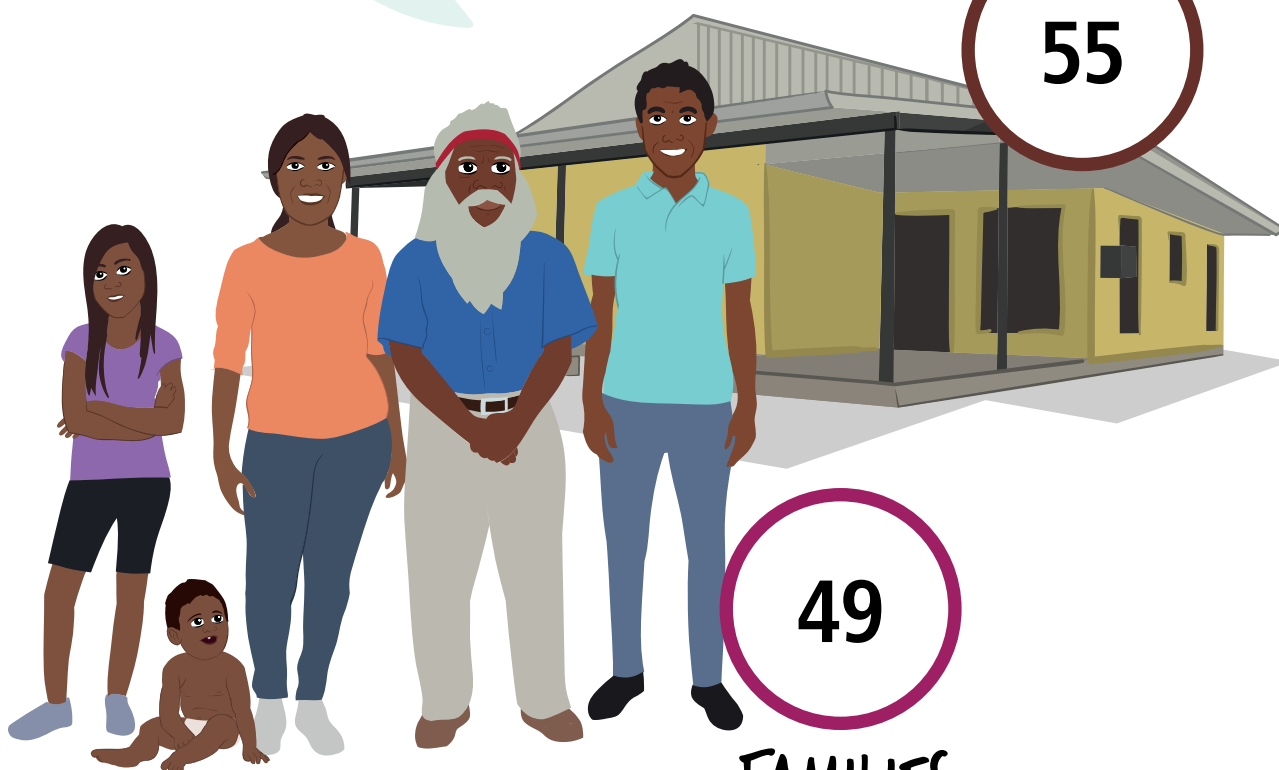
Aboriginal and/or  
Torres Strait  
Islander people

HOUSES

55

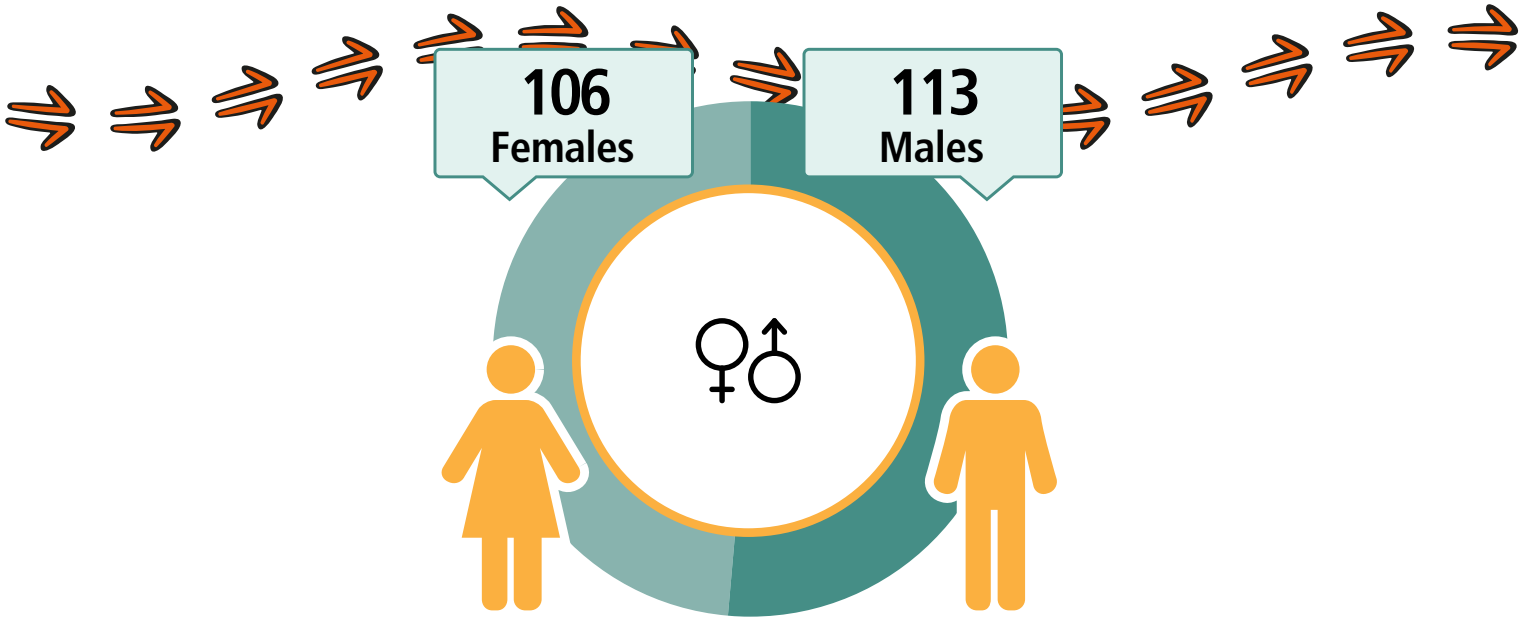
49

FAMILIES

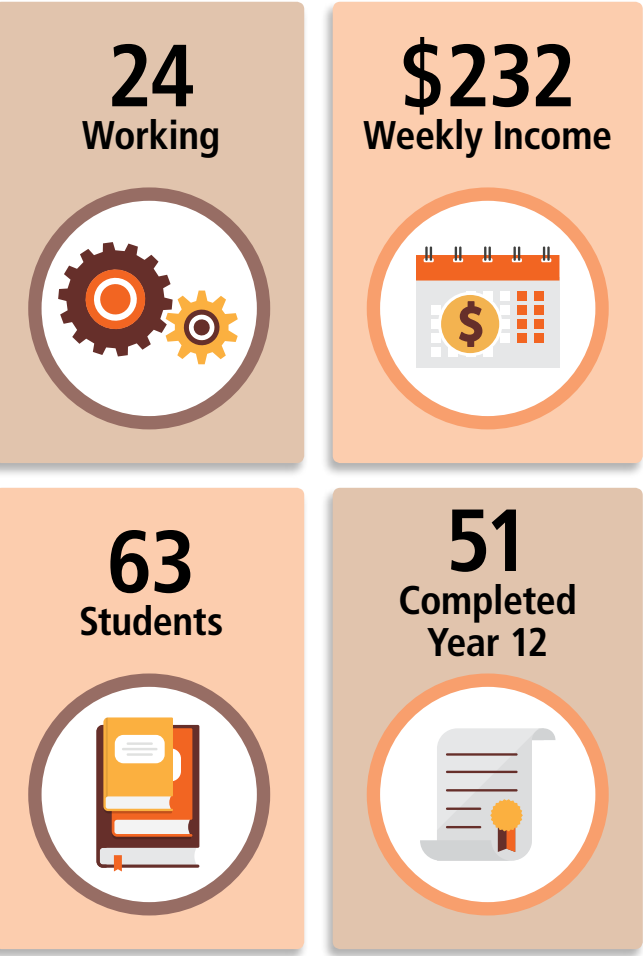
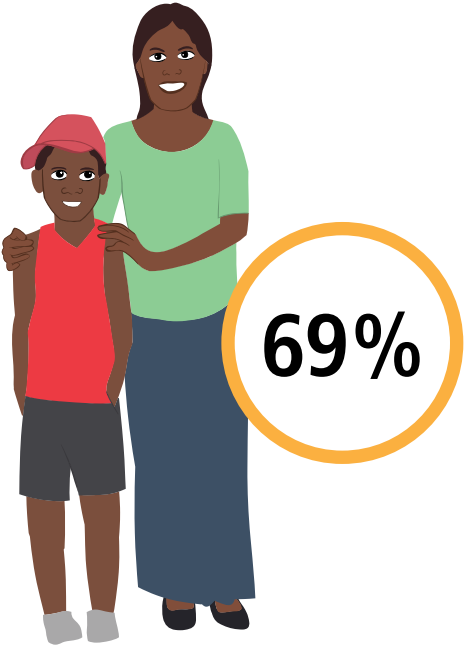




# Yuelamu



## CARED FOR CHILDREN



Geography: Yuelamu ILOC

A decorative border at the bottom of the page featuring stylized Aboriginal art. It includes a yellow and black pattern on the left, a teal and black pattern in the center, and a brown and black pattern on the right, all with white dots and arrows.

# Yuendumu

LANGUAGE SPOKEN  
Warlpiri

759

People

655

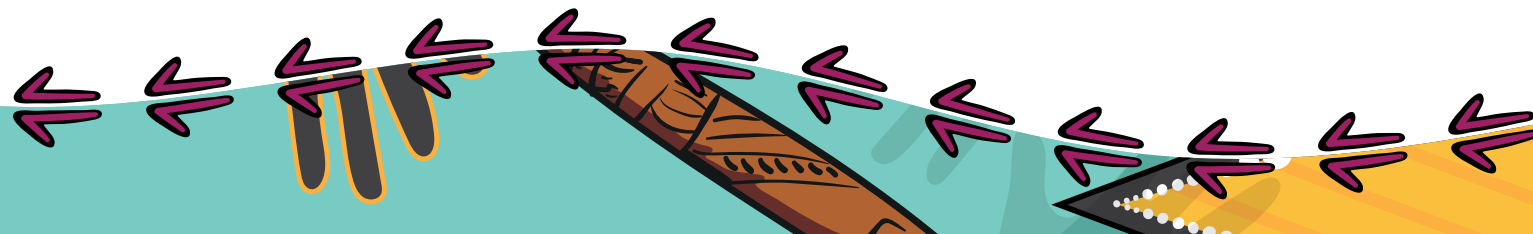
Aboriginal and/or  
Torres Strait  
Islander people

HOUSES

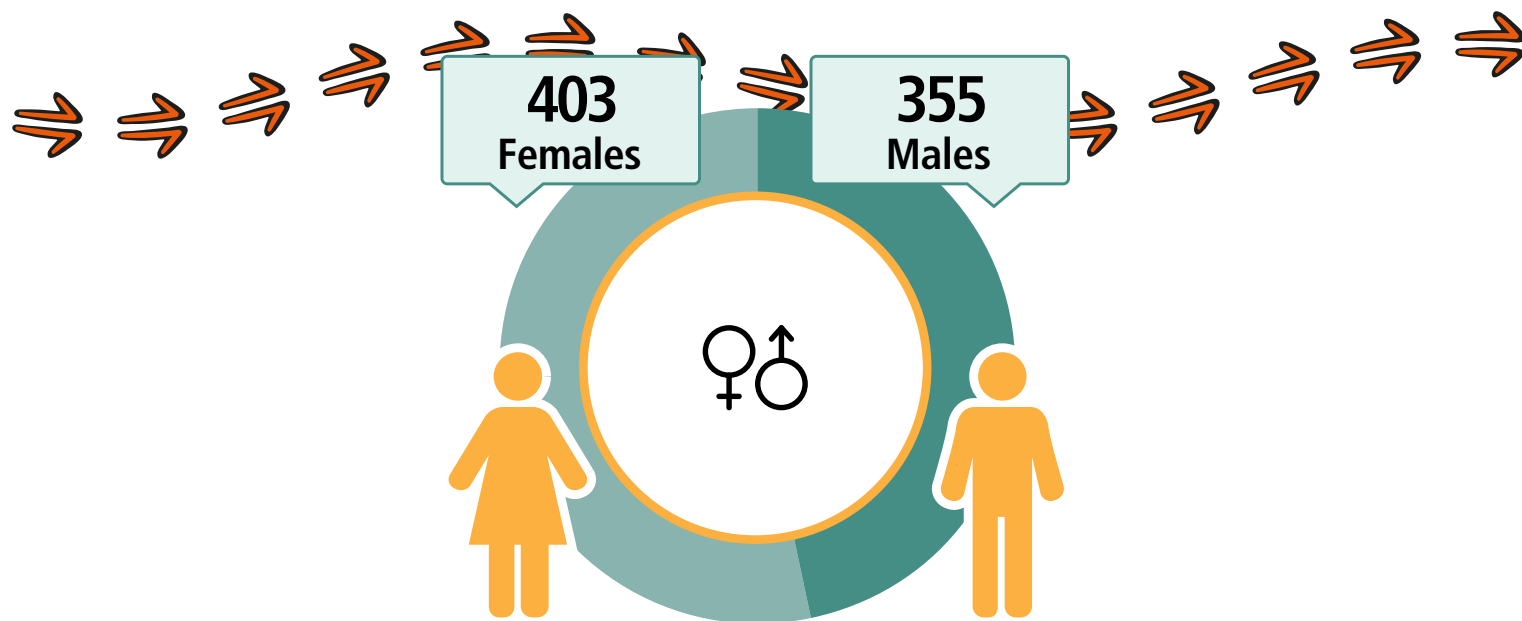
210

158

FAMILIES



# Yuendumu



## CARED FOR CHILDREN



57%

**157**  
Working



**\$254**  
Weekly Income



**272**  
Students



**116**  
Completed  
Year 12



Geography: Yuendumu SSC









## Know more

You can find more information on your region for free at [www.abs.gov.au/census](http://www.abs.gov.au/census) using these data products.



Contact the Centre of Excellence for Aboriginal and Torres Strait Islander Statistics

**Phone:** 1300 135 070

**Email:** [CoEATSIS@abs.gov.au](mailto:CoEATSIS@abs.gov.au)

### Disclaimer

The data displayed for the purposes of this publication may slightly differ to other Census products available on the ABS website.

All data in this publication is based on Total People, Total Dwellings and Total Families for each area.

Community names are generally based upon a commonly identified name or combination of names for the area/community. It is acknowledged that some communities may have an alternative name or different spelling.

### Confidentiality

By law, your personal information is kept private and will not be shared with anyone. The ABS makes sure that no one can be identified by the information in this book.



