

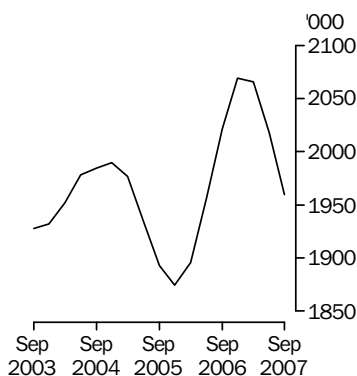
LIVESTOCK PRODUCTS

AUSTRALIA

EMBARGO: 11.30AM (CANBERRA TIME) WED 14 NOV 2007

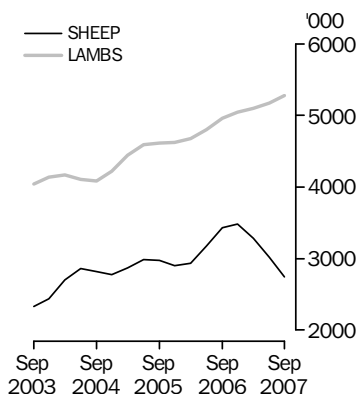
Cattle slaughtering's

Excluding calves
Trend



Sheep and lamb slaughtering's

Trend



KEY FIGURES

TREND ESTIMATES

	Sep Qtr 2006	Jun Qtr 2007	Sep Qtr 2007
	'000	'000	'000

Number slaughtered			
Cattle	2 021.9	2 017.3	1 959.6
Calves	223.1	237.4	226.7
Sheep	3 431.6	3 013.5	2 747.0
Lambs	4 965.7	5 176.5	5 279.7
Pigs	1 330.2	1 333.4	1 332.1
Chickens	111 880.2	114 319.6	114 804.8

TREND ESTIMATES

	Sep Qtr 2006	Jun Qtr 2007	Sep Qtr 2007
	tonnes	tonnes	tonnes

Meat produced			
Beef	548 495	538 641	525 402
Veal	7 470	7 660	7 410
Mutton	70 184	61 613	57 234
Lamb	102 200	105 941	108 246
Pig meat	95 457	96 020	96 178
Chicken meat	198 728	203 151	202 303
Wool receivals	117 615	112 448	107 932

TREND ESTIMATES

	Jun Qtr 2006	Mar Qtr 2007	Jun Qtr 2007
	ML	ML	ML

Whole milk intake by factories	2 586	2 320	2 265
--------------------------------	-------	-------	-------

KEY POINTS

TREND ESTIMATES

- In September quarter 2007, the trend estimate for the number of cattle slaughtered fell by 3% to 2.0 million.
- In September quarter 2007, the trend estimate for the number of sheep slaughtered fell by 9% to 2.7 million.
- In September quarter 2007, the trend estimate for the number of lambs slaughtered rose by 2% to 5.3 million.
- In September quarter 2007, the trend estimate for the number of pigs slaughtered remained steady at 1.3 million.

INQUIRIES

For further information about these and related statistics, contact the National Information and Referral Service on 1300 135 070 or Nigel Gibson on Hobart (03) 6222 5940.

NOTES

FORTHCOMING ISSUES

<i>ISSUE (Quarter)</i>	<i>RELEASE DATE</i>
December 2007	14 February 2008
March 2008	14 May 2008
June 2008	14 August 2008



CHANGES IN THIS ISSUE

There are no changes in this issue.



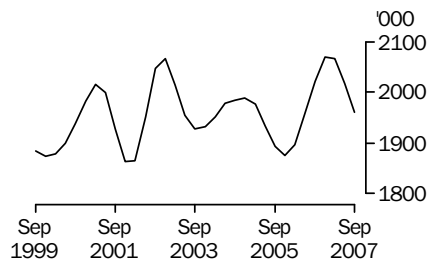
ABBREVIATIONS

ABS Australian Bureau of Statistics
ML megalitre
t tonne
UHT ultra heat treated

Brian Pink
Australian Statistician

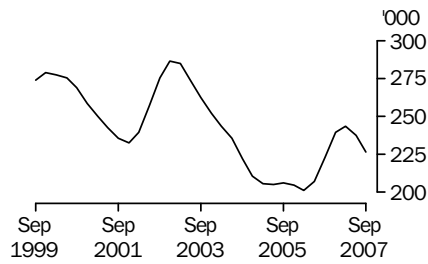
LIVESTOCK SLAUGHTERED TREND

CATTLE (EXCLUDING CALVES)



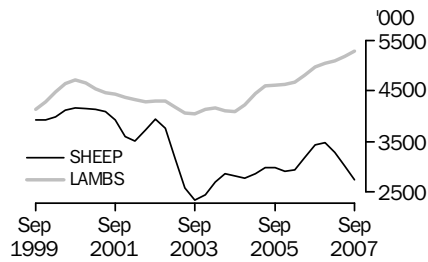
The trend estimate for the number of cattle slaughtered in September quarter 2007 fell by 3% to 2.0 million.

CALVES



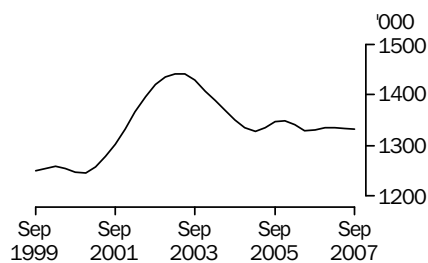
The trend estimate for the number of calves slaughtered in September quarter 2007 fell by 5% to 227,000.

SHEEP AND LAMBS



In September quarter 2007, the trend estimate for the number of sheep slaughtered fell by 9% to 2.7 million. The number of lambs slaughtered rose by 2% to 5.3 million.

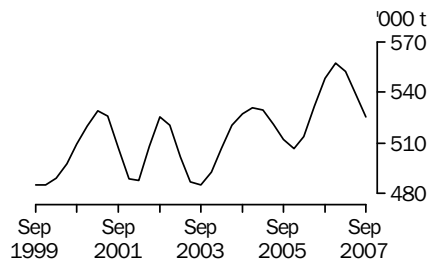
PIGS



In September quarter 2007, the trend estimate for the number of pigs slaughtered remained steady at 1.3 million.

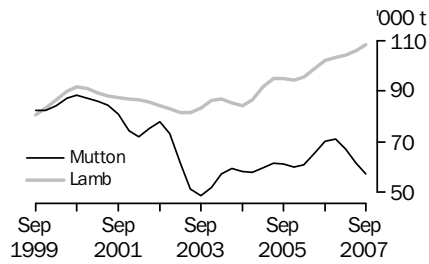
MEAT PRODUCTION TREND

BEEF



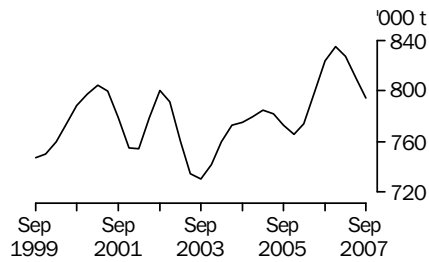
In September quarter 2007, the trend estimate for beef production fell by 2% to 525,000 tonnes.

MUTTON AND LAMB



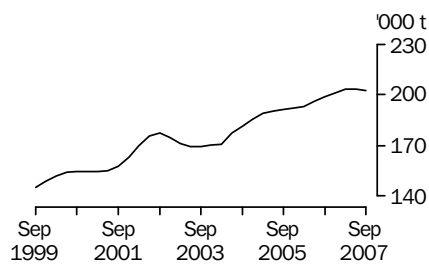
In September quarter 2007, the trend estimate for mutton production fell by 7% to 57,200 tonnes. The trend estimate for lamb production rose by 2% to 108,000 tonnes.

TOTAL RED MEAT



The trend estimate for red meat production fell by 2% to 794,000 tonnes in September quarter 2007.

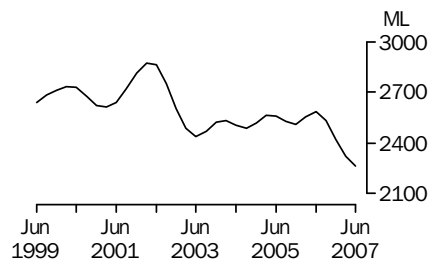
CHICKEN MEAT



The trend estimate for chicken meat production remained steady at 202,000 tonnes in September quarter 2007.

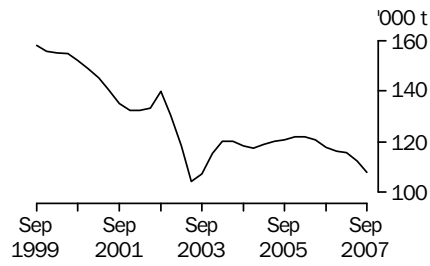
LIVESTOCK PRODUCTS TREND

WHOLE MILK INTAKE BY FACTORIES



The trend estimate for whole milk intake by factories in June quarter 2007 fell by 2% to 2.3 billion litres.

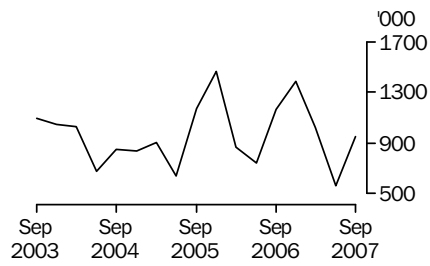
BROKERS AND DEALERS RECEIVALS OF TAXABLE WOOL



The trend estimate for wool receipts by brokers and dealers in September quarter 2007 fell by 4% to 108,000 tonnes.

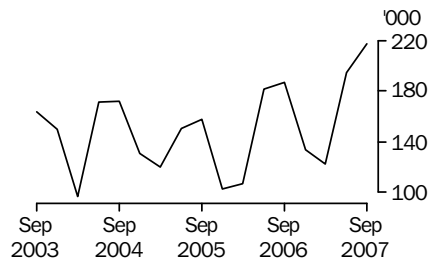
LIVESTOCK EXPORTS ORIGINAL

EXPORTS OF LIVE SHEEP



Live sheep exports rose by 70% to 953,000 in September quarter 2007. Gross value rose by 74% for the quarter, up to \$65.7 million. Unit value rose by 2% to \$68.94.

EXPORTS OF LIVE CATTLE



Live cattle exports rose by 12% to 217,000 in September quarter 2007. Gross value rose by 8% for the quarter, up to \$140 million. Unit value fell by 3% to \$641.83.

LIST OF TABLES AND GRAPHS

page

OVERVIEW

1	Livestock slaughtered, Australia	9
2	Livestock products, Australia	10

LIVESTOCK SLAUGHTERINGS

3	Number of livestock slaughtered, bulls, bullocks and steers, by state	11
4	Number of livestock slaughtered, cows and heifers, by state	12
5	Number of livestock slaughtered, total cattle (excluding calves), by state	13
6	Number of livestock slaughtered, calves, by state	14
7	Number of livestock slaughtered, sheep, by state	15
8	Number of livestock slaughtered, lambs, by state	16
9	Number of livestock slaughtered, pigs, by state	17
10	Number of chickens slaughtered, by state	18
11	Number of livestock slaughtered, financial year, by state	19

MEAT PRODUCED

12	Red meat produced, beef, by state	20
13	Red meat produced, veal, by state	21
14	Red meat produced, mutton, by state	22
15	Red meat produced, lamb, by state	23
16	Red meat produced, pig meat, by state	24
17	Total red meat produced, by state	25
18	Chicken meat produced, by state	26
19	Meat produced, financial year, by state	27

EXPORTS OF MEAT AND LIVE ANIMALS

20	Exports of fresh, frozen and processed meat, Australia	28
21	Exports of live sheep and cattle, Australia	29

LIVESTOCK PRODUCTS

22	Whole milk intake by factories, by state	30
23	Market milk sales by factories, by state	31
24	Brokers and dealers receivals of taxable wool, by state	32
25	Livestock products, financial year, by state	33

LIVESTOCK SLAUGHTERED, Australia(a): All Series

<i>Quarter</i>	<i>Bulls, bullocks and steers</i> '000	<i>Cows and heifers</i> '000	<i>Cattle (excluding calves)</i> '000	<i>Calves</i> '000	<i>Sheep</i> '000	<i>Lambs</i> '000	<i>Pigs</i> '000	<i>Chickens</i> '000
ORIGINAL								
2006								
June	1 050.8	964.0	2 014.8	194.7	2 858.1	4 904.1	1 381.5	107 648.8
September	1 145.4	850.6	1 996.0	386.7	2 736.8	4 686.8	1 329.2	112 282.7
December	1 162.6	928.4	2 091.1	182.0	4 100.7	5 180.6	1 314.2	115 061.6
2007								
March	1 072.6	960.5	2 033.1	129.7	3 883.8	5 270.3	1 319.8	114 226.4
June	1 010.2	1 031.2	2 041.5	220.4	2 549.8	5 020.7	1 358.7	112 339.6
September	1 038.2	946.3	1 984.5	405.2	2 282.1	5 182.5	1 348.3	113 435.5
SEASONALLY ADJUSTED								
2006								
June	1 064.7	879.7	1 944.4	206.1	3 181.3	4 812.2	1 334.6	109 666.8
September	1 112.3	858.6	1 970.9	213.9	3 387.4	4 973.7	1 323.6	113 234.9
December	1 134.0	984.6	2 118.7	250.0	3 624.9	5 036.6	1 337.0	112 016.5
2007								
March	1 115.0	985.9	2 100.9	248.2	3 322.8	5 208.3	1 348.8	114 220.1
June	1 027.2	943.1	1 970.4	233.3	2 861.1	4 945.8	1 313.7	114 567.2
September	1 009.1	958.8	1 967.8	225.2	2 835.3	5 470.1	1 343.3	114 400.8
TREND								
2006								
June	1 083.3	872.9	1 956.2	207.3	3 180.3	4 802.7	1 329.2	110 554.4
September	1 113.8	908.1	2 021.9	223.1	3 431.6	4 965.7	1 330.2	111 880.2
December	1 121.8	947.5	2 069.4	239.5	3 482.2	5 046.5	1 335.4	113 023.3
2007								
March	1 096.5	969.5	2 066.1	243.7	3 287.1	5 096.7	1 334.8	113 802.0
June	1 050.5	966.9	2 017.3	237.4	3 013.5	5 176.5	1 333.4	114 319.6
September	1 009.3	950.4	1 959.6	226.7	2 747.0	5 279.7	1 332.1	114 804.8

(a) For more information refer to paragraphs 5, and 7 to 9 of the Explanatory Notes.

LIVESTOCK PRODUCTS, Australia(a): All Series

Quarter	RED MEAT						Chicken meat	Whole milk intake by factories	Brokers and dealers receipts of taxable wool
	Beef	Veal	Mutton	Lamb	Pig meat	Total red meat			
	tonnes	tonnes	tonnes	tonnes	tonnes	tonnes	tonnes	ML	tonnes
ORIGINAL									
2006									
June	538 887	6 924	56 852	102 183	101 451	806 297	196 175	1 927	97 177
September	549 188	10 553	57 470	96 061	96 384	809 655	198 358	2 504	123 159
December	560 541	6 738	85 508	104 276	92 769	849 833	206 225	3 197	131 950
2007									
March	548 468	5 846	77 931	109 039	92 959	834 242	204 254	2 144	114 583
June	537 517	7 441	50 079	103 208	99 754	797 998	202 754	1 734	95 043
September	530 877	10 757	49 637	106 211	98 271	795 753	199 865	nya	108 620
SEASONALLY ADJUSTED									
2006									
June	527 277	6 962	63 964	99 677	96 526	794 406	196 485	2 591	120 996
September	544 399	7 317	69 721	102 288	94 834	818 559	199 549	2 601	115 958
December	563 533	8 158	74 138	102 780	95 412	844 021	203 661	2 377	115 182
2007									
March	560 373	7 934	68 614	106 953	96 753	840 627	205 201	2 272	116 417
June	527 961	7 467	56 476	100 657	94 959	787 520	203 232	2 317	116 683
September	526 911	7 485	60 288	112 534	96 722	803 940	200 940	nya	102 266
TREND									
2006									
June	531 686	6 992	65 224	98 783	95 773	798 458	196 250	2 586	120 738
September	548 495	7 470	70 184	102 200	95 457	823 806	198 728	2 530	117 615
December	557 185	7 862	71 140	103 423	95 571	835 181	201 401	2 419	116 342
2007									
March	552 202	7 864	67 053	104 208	95 768	827 095	203 268	2 320	115 579
June	538 641	7 660	61 613	105 941	96 020	809 875	203 151	2 265	112 448
September	525 402	7 410	57 234	108 246	96 178	794 470	202 303	nya	107 932

nya not yet available

(a) For more information refer to paragraphs 5 to 9 and 13 to 15 of the Explanatory Notes.

NUMBER OF LIVESTOCK SLAUGHTERED (a), Bulls, bullocks and steers: All Series

Quarter	New South Wales	Victoria	Queensland	South Australia	Western Australia	Tasmania	Australia
	'000	'000	'000	'000	'000	'000	'000
ORIGINAL							
2006							
June	234.3	137.5	575.7	39.1	45.0	19.0	1 050.8
September	230.8	139.1	673.0	37.2	47.2	18.0	1 145.4
December	230.4	183.9	618.3	50.0	53.8	26.0	1 162.6
2007							
March	254.3	176.9	522.6	51.1	44.9	22.6	1 072.6
June	225.8	134.7	543.3	41.1	43.2	21.9	1 010.2
September	221.7	124.9	587.1	38.4	48.4	17.4	1 038.2
SEASONALLY ADJUSTED							
2006							
June	234.2	145.1	575.7	41.4	49.9	18.7	1 064.7
September	234.8	160.4	597.0	46.7	49.8	21.3	1 112.3
December	236.8	168.9	605.7	43.8	46.0	25.5	1 134.0
2007							
March	243.0	160.6	612.3	45.7	45.9	20.2	1 115.0
June	226.3	143.3	543.5	43.6	47.6	21.6	1 027.2
September	225.5	144.1	522.0	48.0	50.8	20.6	1 009.1
TREND							
2006							
June	232.2	150.0	589.1	45.0	49.3	19.6	1 083.3
September	236.5	159.3	601.7	44.8	48.8	21.5	1 113.8
December	238.3	163.9	604.3	44.5	47.0	22.7	1 121.8
2007							
March	236.2	158.6	590.4	44.9	46.6	22.2	1 096.5
June	231.2	149.4	558.9	45.3	47.8	21.2	1 050.5
September	225.5	141.4	527.6	46.4	49.7	20.4	1 009.3

(a) For more information refer to paragraphs 4, 5 and 7 of the Explanatory Notes.

NUMBER OF LIVESTOCK SLAUGHTERED(a), Cows and heifers: All Series

Quarter	New South Wales	Victoria	Queensland	South Australia	Western Australia	Tasmania	Australia
	'000	'000	'000	'000	'000	'000	'000
ORIGINAL							
2006							
June	204.4	208.1	417.9	37.3	60.1	35.1	964.0
September	167.1	192.9	372.6	30.8	59.0	27.2	850.6
December	213.9	247.0	330.1	46.1	61.3	29.0	928.4
2007							
March	203.4	255.9	347.3	47.1	71.5	34.2	960.5
June	224.4	236.8	424.1	38.4	67.8	38.7	1 031.2
September	205.3	221.7	389.3	29.8	67.0	32.2	946.3
SEASONALLY ADJUSTED							
2006							
June	189.9	202.6	352.5	36.4	60.4	31.6	879.7
September	174.3	207.0	354.0	36.6	60.1	30.4	858.6
December	214.5	242.9	386.9	44.9	63.6	32.4	984.6
2007							
March	209.5	248.9	379.3	42.4	67.8	31.2	985.9
June	208.5	231.1	358.8	37.8	67.6	34.8	943.1
September	214.8	239.2	372.3	35.5	68.5	35.9	958.8
TREND							
2006							
June	181.9	203.7	356.0	37.6	59.3	30.9	872.9
September	191.5	217.8	366.9	39.2	61.0	31.3	908.1
December	201.6	233.6	373.7	41.6	63.9	31.5	947.5
2007							
March	209.3	241.4	375.3	41.6	66.4	32.5	969.5
June	212.6	240.6	370.7	39.0	68.0	34.1	966.9
September	211.8	236.2	365.0	36.0	68.6	35.5	950.4

(a) For more information refer to paragraphs 4, 5 and 7 of the Explanatory Notes.

NUMBER OF LIVESTOCK SLAUGHTERED (a), Total cattle (excluding calves): All Series

Quarter	New South Wales	Victoria	Queensland	South Australia	Western Australia	Tasmania	Australia
	'000	'000	'000	'000	'000	'000	'000
ORIGINAL							
2006							
June	438.7	345.5	993.6	76.3	105.2	54.1	2 014.8
September	397.8	332.0	1 045.5	68.0	106.2	45.1	1 996.0
December	444.2	430.9	948.4	96.1	115.1	55.0	2 091.1
2007							
March	457.7	432.8	869.9	98.2	116.4	56.8	2 033.1
June	450.2	371.5	967.4	79.5	111.0	60.6	2 041.5
September	427.0	346.6	976.5	68.2	115.4	49.6	1 984.5
SEASONALLY ADJUSTED							
2006							
June	424.1	347.8	928.2	77.7	110.3	50.3	1 944.4
September	409.0	367.4	951.0	83.3	110.0	51.7	1 970.9
December	451.3	411.7	992.6	88.7	109.6	57.8	2 118.7
2007							
March	452.5	409.5	991.6	88.1	113.7	51.4	2 100.9
June	434.8	374.5	902.3	81.4	115.2	56.4	1 970.4
September	440.4	383.4	894.3	83.5	119.3	56.5	1 967.8
TREND							
2006							
June	414.1	353.7	945.1	82.6	108.6	50.5	1 956.2
September	428.0	377.1	968.6	84.0	109.7	52.8	2 021.9
December	440.0	397.5	978.0	86.1	110.9	54.2	2 069.4
2007							
March	445.5	400.1	965.7	86.5	113.0	54.8	2 066.1
June	443.9	390.0	929.6	84.3	115.9	55.3	2 017.3
September	437.3	377.5	892.6	82.5	118.3	55.9	1 959.6

(a) For more information refer to paragraphs 4, 5 and 7 of the Explanatory Notes.

NUMBER OF LIVESTOCK SLAUGHTERED (a), Calves: All Series

Quarter	New South Wales	Victoria	Queensland	South Australia	Western Australia	Tasmania	Australia
	'000	'000	'000	'000	'000	'000	'000
ORIGINAL							
2006							
June	55.3	117.3	17.0	1.2	0.9	2.8	194.7
September	54.6	284.6	16.8	1.3	1.1	28.1	386.7
December	58.9	102.3	11.7	0.9	0.7	7.2	182.0
2007							
March	62.1	48.0	16.0	1.4	0.8	1.4	129.7
June	56.5	139.8	17.4	1.3	1.1	4.1	220.4
September	51.6	297.9	15.6	1.4	1.1	37.5	405.2
SEASONALLY ADJUSTED							
2006							
June	52.0	123.8	15.3	1.0	0.9	9.5	206.1
September	55.9	132.0	16.3	1.2	1.0	9.7	213.9
December	62.3	159.6	13.4	1.2	0.7	10.0	250.0
2007							
March	61.0	183.3	16.3	1.4	0.8	14.9	248.2
June	53.3	147.5	15.6	1.2	1.1	13.7	233.3
September	52.8	139.0	15.2	1.2	1.0	13.0	225.2
TREND							
2006							
June	52.6	130.8	15.4	1.1	0.9	9.5	207.3
September	57.1	141.6	15.1	1.1	0.9	9.8	223.1
December	60.2	157.7	15.1	1.2	0.9	11.4	239.5
2007							
March	59.2	165.1	15.3	1.3	0.9	13.0	243.7
June	55.9	157.2	15.5	1.3	1.0	13.8	237.4
September	52.3	143.6	15.7	1.2	1.1	13.8	226.7

(a) For more information refer to paragraphs 4, 5 and 7 of the Explanatory Notes.

NUMBER OF LIVESTOCK SLAUGHTERED (a), Sheep: All Series

Quarter	New South Wales	Victoria	Queensland	South Australia	Western Australia	Tasmania	Australia
	'000	'000	'000	'000	'000	'000	'000
ORIGINAL							
2006							
June	995.0	850.3	246.0	203.0	491.9	71.9	2 858.1
September	803.4	826.5	206.9	287.3	560.9	51.9	2 736.8
December	1 215.5	1 262.7	244.1	440.0	805.3	133.1	4 100.7
2007							
March	1 168.6	1 230.4	273.0	390.8	697.1	123.8	3 883.8
June	701.0	658.4	276.2	296.0	550.5	67.7	2 549.8
September	546.4	694.1	187.3	287.0	524.9	42.4	2 282.1
SEASONALLY ADJUSTED							
2006							
June	971.0	906.6	231.9	246.9	584.2	76.0	3 181.3
September	1 027.9	1 027.1	228.6	338.1	658.6	86.0	3 387.4
December	1 132.6	1 140.3	245.8	363.7	695.3	121.0	3 624.9
2007							
March	1 041.3	1 070.5	261.9	349.3	610.8	91.1	3 322.8
June	683.4	700.8	259.0	359.6	647.6	72.1	2 861.1
September	705.1	864.0	209.1	339.1	615.5	70.7	2 835.3
TREND							
2006							
June	991.8	950.1	234.1	283.0	593.9	78.6	3 180.3
September	1 068.6	1 048.1	235.4	317.6	647.2	95.4	3 431.6
December	1 074.0	1 075.3	247.7	351.8	664.8	102.2	3 482.2
2007							
March	966.9	991.3	254.4	359.5	649.4	94.5	3 287.1
June	806.8	868.0	246.3	352.1	630.2	79.7	3 013.5
September	657.4	769.4	228.7	344.8	616.7	66.5	2 747.0

(a) For more information refer to paragraphs 4, 5 and 7 of the Explanatory Notes.

NUMBER OF LIVESTOCK SLAUGHTERED (a), Lambs: All Series

Quarter	New South Wales	Victoria	Queensland	South Australia	Western Australia	Tasmania	Australia
	'000	'000	'000	'000	'000	'000	'000
ORIGINAL							
2006							
June	1 144.2	2 006.1	83.1	817.2	721.6	131.9	4 904.1
September	1 119.2	2 089.0	63.5	724.2	559.5	131.4	4 686.8
December	1 145.2	2 454.7	75.9	840.5	548.3	115.9	5 180.6
2007							
March	1 086.5	2 399.9	91.3	886.7	695.8	110.1	5 270.3
June	1 106.6	2 156.3	96.3	800.0	719.6	141.9	5 020.7
September	1 236.4	2 237.7	102.8	883.6	592.9	129.1	5 182.5
SEASONALLY ADJUSTED							
2006							
June	1 128.2	2 021.3	77.3	782.5	677.7	120.8	4 812.2
September	1 192.0	2 204.1	60.7	859.0	601.6	125.7	4 973.7
December	1 113.7	2 313.2	81.4	813.1	536.3	124.8	5 036.6
2007							
March	1 066.0	2 396.5	96.0	822.9	710.6	118.5	5 208.3
June	1 092.9	2 179.8	89.7	768.3	670.7	129.3	4 945.8
September	1 311.6	2 357.4	98.8	1 038.0	639.0	123.4	5 470.1
TREND							
2006							
June	1 125.0	2 036.0	69.3	811.5	644.0	124.7	4 802.7
September	1 150.6	2 199.7	72.0	826.2	608.1	123.6	4 965.7
December	1 114.6	2 301.7	79.6	811.9	607.8	123.0	5 046.5
2007							
March	1 098.3	2 316.8	88.7	814.3	642.2	123.7	5 096.7
June	1 143.7	2 301.1	95.0	859.3	668.3	124.3	5 176.5
September	1 221.7	2 292.6	97.1	937.1	669.7	125.2	5 279.7

(a) For more information refer to paragraphs 4, 5 and 7 of the Explanatory Notes.

NUMBER OF LIVESTOCK SLAUGHTERED (a), Pigs: All Series

Quarter	New South Wales	Victoria	Queensland	South Australia	Western Australia	Tasmania	Australia
	'000	'000	'000	'000	'000	'000	'000
ORIGINAL							
2006							
June	412.9	208.5	324.6	270.0	153.7	10.3	1 381.5
September	396.7	203.0	320.8	261.5	135.1	10.7	1 329.2
December	405.4	196.0	303.0	256.7	140.5	10.9	1 314.2
2007							
March	391.5	180.6	318.7	273.4	144.8	9.4	1 319.8
June	407.8	208.4	327.2	255.6	147.6	11.7	1 358.7
September	410.1	182.1	336.6	270.2	139.0	10.3	1 348.3
SEASONALLY ADJUSTED							
2006							
June	398.5	199.5	317.9	260.0	146.8	10.4	1 334.6
September	393.0	204.6	316.8	262.8	134.2	10.6	1 323.6
December	405.6	197.5	308.9	265.3	148.0	10.0	1 337.0
2007							
March	409.7	185.9	323.1	274.0	145.3	10.2	1 348.8
June	394.0	199.5	320.8	246.2	140.9	11.8	1 313.7
September	406.5	183.7	332.5	271.1	138.3	10.3	1 343.3
TREND							
2006							
June	394.7	202.9	319.2	256.9	143.4	10.6	1 329.2
September	397.4	200.7	314.7	263.5	142.0	10.3	1 330.2
December	402.8	197.0	314.3	266.4	143.3	10.3	1 335.4
2007							
March	403.6	193.5	318.4	263.8	144.0	10.6	1 334.8
June	402.9	190.7	324.2	261.8	142.2	10.8	1 333.4
September	401.6	188.5	330.4	261.7	138.2	10.9	1 332.1

(a) For more information refer to paragraphs 4, 5 and 7 of the Explanatory Notes.

NUMBER OF CHICKENS SLAUGHTERED(a): All Series

Quarter	New South Wales	Victoria	Queensland	South Australia	Western Australia	Australia
	'000	'000	'000	'000	'000	'000
ORIGINAL						
2006						
June	37 042.3	30 687.6	18 641.7	np	np	107 648.8
September	37 198.0	31 713.9	21 416.9	np	np	112 282.7
December	37 672.9	32 323.5	23 123.2	np	np	115 061.6
2007						
March	38 363.6	31 106.6	22 607.2	np	np	114 226.4
June	37 010.4	31 159.4	22 428.6	np	np	112 339.6
September	36 320.3	30 704.8	23 697.8	np	np	113 435.5
SEASONALLY ADJUSTED						
2006						
June	37 442.8	30 769.7	19 776.6	np	np	109 666.8
September	37 186.8	32 475.1	21 511.8	np	np	113 234.9
December	37 344.2	31 522.7	21 812.2	np	np	112 016.5
2007						
March	38 294.2	31 100.8	22 567.4	np	np	114 220.1
June	37 388.9	31 210.3	23 808.0	np	np	114 567.2
September	36 348.6	31 459.3	23 788.6	np	np	114 400.8
TREND						
2006						
June	37 195.6	31 329.7	20 482.5	np	np	110 554.4
September	37 390.9	31 719.3	21 005.2	np	np	111 880.2
December	37 647.8	31 657.5	21 893.5	np	np	113 023.3
2007						
March	37 697.9	31 363.4	22 751.7	np	np	113 802.0
June	37 367.1	31 207.7	23 421.0	np	np	114 319.6
September	36 787.8	31 316.9	24 000.3	np	np	114 804.8

np not available for publication but included in totals where applicable, unless otherwise indicated

(a) For more information refer to paragraphs 8 and 9 of the Explanatory Notes.

NUMBER OF LIVESTOCK SLAUGHTERED (a): Original

Financial year	New South Wales '000	Victoria '000	Queensland '000	South Australia '000	Western Australia '000	Tasmania '000	Australia '000
BULLS, BULLOCKS AND STEERS							
2004-05	925.8	600.2	2 330.6	191.1	228.7	109.2	4 386.9
2005-06	915.3	577.7	2 299.0	176.8	187.4	81.1	4 238.5
2006-07	941.3	634.5	2 357.2	179.4	189.0	88.5	4 390.9
COWS AND HEIFERS							
2004-05	774.6	915.5	1 359.8	168.0	281.8	94.9	3 598.7
2005-06	675.0	803.6	1 347.9	148.0	246.6	116.2	3 341.6
2006-07	808.7	932.7	1 474.1	162.5	259.7	129.1	3 770.8
CATTLE (excluding calves)							
2004-05	1 700.4	1 515.7	3 690.5	359.1	510.5	204.1	7 985.6
2005-06	1 590.3	1 381.3	3 646.9	324.8	434.0	197.3	7 580.1
2006-07	1 750.0	1 567.2	3 831.3	341.9	448.7	217.5	8 161.7
CALVES							
2004-05	201.2	539.0	73.3	5.3	4.3	44.1	867.9
2005-06	204.6	505.2	62.3	4.4	3.7	40.2	821.2
2006-07	232.1	574.7	61.9	4.9	3.7	40.8	918.9
SHEEP							
2004-05	3 548.4	3 465.4	918.9	979.1	2 205.2	325.6	11 442.6
2005-06	3 707.5	3 722.0	940.0	1 061.9	2 120.6	277.7	11 829.7
2006-07	3 888.6	3 978.0	1 000.2	1 414.0	2 613.8	376.5	13 271.2
LAMBS							
2004-05	4 110.4	6 787.1	287.2	3 236.2	2 466.7	442.9	17 330.6
2005-06	4 227.3	7 613.5	283.6	3 231.2	2 798.4	511.6	18 665.6
2006-07	4 457.5	9 099.9	327.0	3 251.5	2 523.2	499.3	20 158.3
PIGS							
2004-05	1 614.6	847.3	1 285.4	894.8	647.0	45.6	5 342.5
2005-06	1 633.1	777.8	1 292.9	1 018.9	599.2	41.8	5 370.1
2006-07	1 601.4	788.0	1 269.7	1 047.3	568.1	42.7	5 321.9
CHICKENS							
2004-05	147 973.2	124 726.5	84 086.2	np	np	np	437 640.9
2005-06	149 432.5	122 320.1	82 723.2	np	np	np	437 864.5
2006-07	150 244.9	126 303.4	89 576.0	np	np	np	453 910.2

np not available for publication but included in totals where applicable, unless otherwise indicated

(a) For more information refer to paragraphs 4, 5 and 7 to 9 of the Explanatory Notes.

RED MEAT PRODUCED(a), Beef: All Series

<i>Quarter</i>	<i>New South Wales</i>	<i>Victoria</i>	<i>Queensland</i>	<i>South Australia</i>	<i>Western Australia</i>	<i>Tasmania</i>	<i>Australia</i>
	tonnes	tonnes	tonnes	tonnes	tonnes	tonnes	tonnes
ORIGINAL							
2006							
June	110 770	81 297	284 858	19 413	27 570	14 699	538 887
September	105 667	79 103	306 129	17 829	27 843	12 348	549 188
December	114 184	102 841	273 353	24 906	29 466	15 528	560 541
2007							
March	120 231	102 959	253 459	26 256	29 559	15 740	548 468
June	112 983	85 567	274 034	21 145	27 565	15 964	537 517
September	107 427	83 312	280 138	17 671	28 998	13 077	530 877
SEASONALLY ADJUSTED							
2006							
June	109 191	82 786	268 491	20 133	29 568	13 876	527 277
September	110 074	86 429	275 381	22 557	29 171	14 642	544 399
December	114 629	98 737	286 674	22 578	27 384	15 772	563 533
2007							
March	116 278	96 701	289 543	22 904	28 630	14 180	560 373
June	111 691	87 445	258 475	22 062	29 379	15 061	527 961
September	112 188	91 137	252 427	22 306	30 296	15 432	526 911
TREND							
2006							
June	108 207	84 288	273 807	21 712	28 895	14 009	531 686
September	111 663	89 504	280 146	21 997	28 710	14 710	548 495
December	114 021	94 271	283 839	22 501	28 319	14 975	557 185
2007							
March	114 370	94 617	279 547	22 671	28 504	14 948	552 202
June	113 445	91 980	266 878	22 386	29 303	14 974	538 641
September	111 925	89 299	252 684	22 241	30 153	15 129	525 402

(a) For more information refer to paragraphs 4 to 7 of the Explanatory Notes.

	<i>New South Wales</i>	<i>Victoria</i>	<i>Queensland</i>	<i>South Australia</i>	<i>Western Australia</i>	<i>Tasmania</i>	<i>Australia</i>
<i>Quarter</i>	tonnes	tonnes	tonnes	tonnes	tonnes	tonnes	tonnes
ORIGINAL							
2006							
June	3 609	2 344	795	38	60	65	6 924
September	3 561	5 615	703	41	77	544	10 553
December	3 814	2 171	511	33	50	147	6 738
2007							
March	4 039	1 012	657	42	49	35	5 846
June	3 697	2 858	672	41	72	89	7 441
September	3 393	5 938	579	41	76	718	10 757
SEASONALLY ADJUSTED							
2006							
June	3 422	2 451	719	35	60	197	6 962
September	3 664	2 712	692	39	65	194	7 317
December	4 005	3 204	571	39	51	199	8 158
2007							
March	3 950	3 347	670	43	60	260	7 934
June	3 516	2 999	604	37	72	268	7 467
September	3 487	2 881	571	38	64	257	7 485
TREND							
2006							
June	3 434	2 627	697	36	59	191	6 992
September	3 712	2 831	662	38	58	195	7 470
December	3 903	3 084	639	40	58	217	7 862
2007							
March	3 843	3 199	621	40	61	243	7 864
June	3 660	3 095	608	39	65	262	7 660
September	3 457	2 936	593	38	69	268	7 410

(a) For more information refer to paragraphs 4 to 7 of the Explanatory Notes.

RED MEAT PRODUCED(a), Mutton: All Series

Quarter	New South Wales	Victoria	Queensland	South Australia	Western Australia	Tasmania	Australia
	tonnes	tonnes	tonnes	tonnes	tonnes	tonnes	tonnes
ORIGINAL							
2006							
June	20 187	15 424	4 689	4 722	10 537	1 293	56 852
September	17 826	15 664	4 244	6 910	11 818	1 009	57 470
December	26 352	24 339	5 193	10 322	16 721	2 580	85 508
2007							
March	24 510	22 802	5 231	9 045	14 015	2 328	77 931
June	13 863	12 070	5 187	6 685	10 999	1 275	50 079
September	12 301	14 576	3 848	7 207	10 880	825	49 637
SEASONALLY ADJUSTED							
2006							
June	20 570	17 803	4 656	5 913	12 707	1 386	63 964
September	22 616	19 347	4 642	7 940	13 725	1 681	69 721
December	23 312	20 733	4 928	8 425	14 224	2 325	74 138
2007							
March	22 252	19 771	5 090	8 180	12 440	1 710	68 614
June	14 116	14 007	5 140	8 362	13 132	1 374	56 476
September	15 714	17 977	4 247	8 291	12 615	1 382	60 288
TREND							
2006							
June	21 301	18 116	4 738	6 651	12 738	1 480	65 224
September	22 813	19 654	4 736	7 471	13 560	1 817	70 184
December	22 693	19 834	4 927	8 198	13 658	1 956	71 140
2007							
March	20 337	18 523	5 027	8 382	13 218	1 802	67 053
June	17 137	16 997	4 883	8 313	12 824	1 521	61 613
September	14 399	16 024	4 586	8 294	12 578	1 284	57 234

(a) For more information refer to paragraphs 4 to 7 of the Explanatory Notes.

<i>Quarter</i>	<i>New South Wales</i>	<i>Victoria</i>	<i>Queensland</i>	<i>South Australia</i>	<i>Western Australia</i>	<i>Tasmania</i>	<i>Australia</i>
tonnes	tonnes	tonnes	tonnes	tonnes	tonnes	tonnes	tonnes
ORIGINAL							
2006							
June	22 921	41 343	1 602	18 298	15 262	2 756	102 183
September	22 375	42 470	1 222	15 910	11 318	2 768	96 061
December	22 800	49 030	1 437	17 891	10 733	2 385	104 276
2007							
March	21 816	49 433	1 680	19 843	14 062	2 205	109 039
June	21 864	43 981	1 710	18 228	14 497	2 928	103 208
September	24 900	46 042	2 021	19 059	11 564	2 625	106 211
SEASONALLY ADJUSTED							
2006							
June	22 844	41 830	1 470	17 327	14 110	2 502	99 677
September	23 568	44 573	1 169	19 095	12 258	2 625	102 288
December	22 143	46 082	1 540	17 772	10 615	2 582	102 780
2007							
March	21 500	49 473	1 792	17 976	14 353	2 407	106 953
June	21 861	44 705	1 575	17 354	13 289	2 647	100 657
September	25 933	48 293	1 943	22 603	12 561	2 488	112 534
TREND							
2006							
June	22 536	41 625	1 326	17 751	13 277	2 586	98 783
September	22 984	44 684	1 377	18 224	12 390	2 565	102 200
December	22 233	46 578	1 492	17 917	12 232	2 544	103 423
2007							
March	21 960	47 193	1 636	17 955	12 821	2 534	104 208
June	22 845	47 218	1 760	18 968	13 277	2 528	105 941
September	24 362	47 189	1 837	20 662	13 235	2 535	108 246

(a) For more information refer to paragraphs 4 to 7 of the Explanatory Notes.

<i>Quarter</i>	<i>New South Wales</i>	<i>Victoria</i>	<i>Queensland</i>	<i>South Australia</i>	<i>Western Australia</i>	<i>Tasmania</i>	<i>Australia</i>
tonnes	tonnes	tonnes	tonnes	tonnes	tonnes	tonnes	tonnes
ORIGINAL							
2006							
June	29 394	15 612	24 634	20 587	10 575	576	101 451
September	27 765	15 304	24 035	19 469	9 115	621	96 384
December	26 827	14 246	22 144	19 277	9 558	635	92 769
2007							
March	26 147	13 285	23 279	19 652	9 988	541	92 959
June	28 897	15 481	24 818	19 610	10 239	690	99 754
September	28 902	13 387	24 903	20 900	9 570	609	98 271
SEASONALLY ADJUSTED							
2006							
June	27 830	14 749	23 587	19 561	10 017	587	96 526
September	27 114	15 175	23 454	19 371	9 054	609	94 834
December	27 439	14 620	22 846	20 277	10 171	586	95 412
2007							
March	27 757	13 869	24 166	19 789	10 006	593	96 753
June	27 367	14 596	23 793	18 685	9 690	701	94 959
September	28 220	13 294	24 324	20 760	9 531	597	96 722
TREND							
2006							
June	27 436	14 960	23 714	19 176	9 743	603	95 773
September	27 294	14 896	23 337	19 660	9 666	592	95 457
December	27 411	14 636	23 341	19 826	9 802	599	95 571
2007							
March	27 526	14 318	23 666	19 637	9 896	621	95 768
June	27 740	13 987	24 009	19 665	9 799	637	96 020
September	27 942	13 688	24 282	19 881	9 524	640	96 178

(a) For more information refer to paragraphs 4 to 7 of the Explanatory Notes.

TOTAL RED MEAT PRODUCED(a): All Series

Quarter	New South Wales	Victoria	Queensland	South Australia	Western Australia	Tasmania	Australia
	tonnes	tonnes	tonnes	tonnes	tonnes	tonnes	tonnes
ORIGINAL							
2006							
June	186 881	156 022	316 578	63 058	64 005	19 389	806 297
September	177 193	158 156	336 332	60 159	60 171	17 290	809 655
December	193 977	192 627	302 638	72 430	66 529	21 275	849 833
2007							
March	196 744	189 491	284 305	74 838	67 673	20 850	834 242
June	181 305	159 956	306 421	65 709	63 372	20 946	797 998
September	176 923	163 255	311 488	64 877	61 088	17 854	795 753
SEASONALLY ADJUSTED							
2006							
June	183 857	159 619	298 923	62 969	66 462	18 548	794 406
September	187 036	168 236	305 338	69 002	64 273	19 751	818 559
December	191 528	183 376	316 559	69 091	62 445	21 464	844 021
2007							
March	191 737	183 161	321 261	68 892	65 489	19 150	840 627
June	178 551	163 752	289 587	66 500	65 562	20 051	787 520
September	185 542	173 582	283 512	73 998	65 067	20 156	803 940
TREND							
2006							
June	182 914	161 616	304 282	65 326	64 712	18 869	798 458
September	188 466	171 569	310 258	67 390	64 384	19 879	823 806
December	190 261	178 403	314 238	68 482	64 069	20 291	835 181
2007							
March	188 036	177 850	310 497	68 685	64 500	20 148	827 095
June	184 827	173 277	298 138	69 371	65 268	19 922	809 875
September	182 085	169 136	283 982	71 116	65 559	19 856	794 470

(a) For more information refer to paragraphs 4 to 7 of the Explanatory Notes.

CHICKEN MEAT PRODUCED(a): All Series

Quarter	New South Wales	Victoria	Queensland	South Australia	Western Australia	Australia
	tonnes	tonnes	tonnes	tonnes	tonnes	tonnes
ORIGINAL						
2006						
June	74 330	56 196	28 983	np	np	196 175
September	68 809	60 927	33 565	np	np	198 358
December	73 668	58 997	35 030	np	np	206 225
2007						
March	75 905	56 976	36 036	np	np	204 254
June	73 524	59 120	34 970	np	np	202 754
September	68 748	57 002	37 640	np	np	199 865
SEASONALLY ADJUSTED						
2006						
June	73 059	56 372	30 276	np	np	196 485
September	70 112	61 460	32 897	np	np	199 549
December	73 890	57 860	33 628	np	np	203 661
2007						
March	75 481	57 518	36 721	np	np	205 201
June	72 171	59 280	36 571	np	np	203 232
September	70 328	57 282	36 833	np	np	200 940
TREND						
2006						
June	72 048	57 472	32 415	np	np	196 250
September	72 515	58 915	32 555	np	np	198 728
December	73 358	59 032	33 955	np	np	201 401
2007						
March	73 773	58 388	35 801	np	np	203 268
June	72 830	58 001	36 678	np	np	203 151
September	70 967	58 057	37 196	np	np	202 303

np not available for publication but included in totals where applicable, unless otherwise indicated

(a) For more information refer to paragraphs 8 and 9 of the Explanatory Notes.

MEAT PRODUCED(a): Original

<i>Financial year</i>	<i>New South Wales</i> tonnes	<i>Victoria</i> tonnes	<i>Queensland</i> tonnes	<i>South Australia</i> tonnes	<i>Western Australia</i> tonnes	<i>Tasmania</i> tonnes	<i>Australia</i> tonnes
BEEF							
2004-05	440 720	363 226	1 046 410	93 049	131 407	56 859	2 132 810
2005-06	411 202	331 311	1 054 198	83 547	113 318	54 807	2 049 521
2006-07	453 065	370 471	1 106 975	90 136	114 434	59 580	2 195 713
VEAL							
2004-05	12 941	11 393	3 451	176	250	886	29 147
2005-06	13 288	10 011	2 994	149	250	809	27 551
2006-07	15 110	11 655	2 543	157	249	815	30 579
MUTTON							
2004-05	77 517	68 026	18 899	22 721	43 842	6 351	237 356
2005-06	78 795	70 562	19 102	24 098	45 939	5 294	243 791
2006-07	82 552	74 875	19 854	32 962	53 553	7 192	270 988
LAMB							
2004-05	82 550	135 948	5 564	72 157	49 122	8 950	354 290
2005-06	84 763	153 449	5 457	69 636	58 080	10 452	381 837
2006-07	88 855	184 913	6 048	71 871	50 610	10 286	412 583
PIG MEAT							
2004-05	119 085	62 740	96 365	63 525	43 999	2 538	388 598
2005-06	115 908	57 015	95 628	76 663	40 977	2 374	388 863
2006-07	109 637	58 316	94 276	78 008	38 901	2 487	381 865
TOTAL RED MEAT							
2004-05	732 812	641 332	1 170 689	251 627	268 620	75 584	3 142 201
2005-06	703 956	622 349	1 177 380	254 093	258 563	73 735	3 091 562
2006-07	749 219	700 230	1 229 696	273 136	257 746	80 360	3 291 728
CHICKEN MEAT							
2004-05	265 716	219 508	128 669	np	np	np	750 029
2005-06	285 294	215 448	135 650	np	np	np	772 613
2006-07	291 907	236 020	139 601	np	np	np	811 591

np not available for publication but included in totals where applicable, unless otherwise indicated

(a) For more information refer to paragraphs 4 to 9 in the Explanatory Notes.

Period	FRESH, CHILLED OR FROZEN MEAT									PROCESSED MEAT	
	<i>Beef bone-in</i>	<i>Beef bone-out</i>	<i>Veal bone-in</i>	<i>Veal bone-out</i>	<i>Mutton bone-in</i>	<i>Mutton bone-out</i>	<i>Lamb bone-in</i>	<i>Lamb bone-out</i>	<i>Pork</i>	<i>Bacon and ham</i>	<i>Canned meat</i>
	tonnes	tonnes	tonnes	tonnes	tonnes	tonnes	tonnes	tonnes	tonnes	tonnes	tonnes
2004-05	44 636	959 391	3 320	5 775	101 740	41 790	106 518	21 699	43 495	449	22 835
2005-06	52 196	890 604	3 266	5 793	106 948	41 458	119 523	26 491	44 007	292	20 857
2006-07	52 389	971 531	3 753	5 792	124 851	42 826	127 491	29 042	41 313	550	16 051
2006											
June	12 370	238 262	778	1 560	26 379	10 379	32 688	7 682	12 331	59	5 261
September	14 128	247 157	937	1 943	24 009	9 464	30 856	6 373	10 976	125	5 311
December	15 027	267 379	943	1 971	43 691	13 141	35 094	7 098	10 410	145	4 989
2007											
March	11 598	218 939	883	517	35 039	11 717	30 773	7 527	9 656	134	3 130
June	11 636	238 056	989	1 363	22 112	8 503	30 767	8 045	10 272	145	2 621
September	12 873	231 366	1 059	1 957	20 198	7 901	31 820	8 200	10 966	98	2 767

(a) For more information refer to paragraphs 10 and 11 of the Explanatory Notes.

<i>Period</i>	<i>Number</i>	<i>Gross weight</i>	<i>Gross value</i>	<i>Unit value</i>
	'000	'000 tonnes	\$'000	\$
.....				
SHEEP				
2004-05	3 233.2	166.1	206 678	63.92
2005-06	4 247.7	209.5	291 452	68.61
2006-07	4 137.9	198.8	288 697	69.77
2006				
June	742.4	33.0	50 771	68.38
September	1 166.3	56.9	83 620	71.70
December	1 388.7	63.0	97 768	70.40
2007				
March	1 021.5	50.2	69 493	68.03
June	561.4	28.7	37 815	67.36
September	953.1	45.5	65 705	68.94
.....				
CATTLE				
2004-05	573.7	191.7	374 060	652.01
2005-06	548.8	182.7	357 793	651.99
2006-07	638.0	216.1	437 427	685.58
2006				
June	181.4	58.7	114 888	633.45
September	187.2	60.8	127 170	679.31
December	133.6	45.3	92 966	695.98
2007				
March	122.4	40.9	88 267	721.36
June	194.9	69.1	129 024	662.01
September	217.4	74.2	139 557	641.83

(a) For more information refer to paragraph 12 of the Explanatory Notes.

WHOLE MILK INTAKE, By Factories(a)(b): All Series

	<i>New South Wales</i>	<i>Victoria</i>	<i>Queensland</i>	<i>South Australia</i>	<i>Western Australia</i>	<i>Tasmania</i>	Australia
<i>Quarter</i>	ML	ML	ML	ML	ML	ML	ML
ORIGINAL							
2006							
March	288	1 546	142	166	83	173	2 397
June	268	1 171	132	160	86	111	1 927
September	295	1 685	151	162	93	117	2 504
December	311	2 192	147	194	98	255	3 197
2007							
March	255	1 363	124	159	77	167	2 144
June	247	1 045	113	145	81	103	1 734
SEASONALLY ADJUSTED							
2006							
March	305	1 658	149	172	93	159	2 536
June	298	1 714	145	176	90	168	2 591
September	290	1 735	142	172	90	172	2 601
December	274	1 552	137	164	88	162	2 377
2007							
March	270	1 467	131	164	86	154	2 272
June	274	1 517	124	160	86	156	2 317
TREND							
2006							
March	305	1 671	151	174	93	159	2 553
June	298	1 710	146	174	91	167	2 586
September	287	1 674	141	171	89	168	2 530
December	278	1 587	136	167	88	163	2 419
2007							
March	272	1 511	131	163	86	157	2 320
June	270	1 471	125	160	85	154	2 265

(a) For more information refer to paragraph 13 of the Explanatory Notes.

(b) Data for Australian Capital Territory are included in New South Wales; data for Northern Territory are included in South Australia.

Source: Original series data from Dairy Australia.

MARKET MILK SALES, By Factories(a)(b): All Series

	<i>New South Wales</i>	<i>Victoria</i>	<i>Queensland</i>	<i>South Australia</i>	<i>Western Australia</i>	<i>Tasmania</i>	<i>Australia</i>
<i>Quarter</i>	ML	ML	ML	ML	ML	ML	ML
ORIGINAL							
2006							
March	162	121	111	49	54	14	511
June	167	127	112	50	56	14	525
September	173	129	119	53	59	14	545
December	170	126	118	51	55	13	532
2007							
March	167	126	118	51	57	14	532
June	175	129	121	53	59	14	550
SEASONALLY ADJUSTED							
2006							
March	164	124	113	50	55	14	519
June	166	127	113	50	56	14	525
September	169	127	116	51	57	14	534
December	171	126	118	51	55	13	535
2007							
March	170	128	119	52	58	14	540
June	174	129	122	53	59	14	550
TREND							
2006							
March	164	124	112	50	55	13	518
June	166	126	114	50	56	14	526
September	169	127	116	51	56	14	532
December	170	127	118	51	57	14	537
2007							
March	172	128	120	52	58	14	542
June	173	128	121	53	58	14	547

(a) For more information refer to paragraph 13 of the Explanatory Notes.

(b) Data for Australian Capital Territory are included in New South Wales; data for Northern Territory are included in South Australia.

Source: Original series data from Dairy Australia.

BROKERS AND DEALERS RECEIVALS OF TAXABLE WOOL(a): All Series

Quarter	New South Wales	Victoria	Queensland	South Australia	Western Australia	Tasmania	Australia	% of total received by brokers
	tonnes	tonnes	tonnes	tonnes	tonnes	tonnes	tonnes	%
ORIGINAL								
2006								
June	33 959	23 261	5 157	12 120	20 083	2 598	97 177	75.4
September	38 527	29 009	6 492	17 892	27 695	3 545	123 159	80.2
December	37 574	38 146	3 452	20 110	29 061	3 608	131 950	78.0
2007								
March	30 236	30 828	3 206	18 777	29 578	1 958	114 583	78.5
June	30 477	23 457	5 054	15 490	18 158	2 407	95 043	74.8
September	37 528	25 965	3 744	17 841	20 646	2 896	108 620	83.6
SEASONALLY ADJUSTED								
2006								
June	39 360	29 815	4 679	15 554	28 560	3 029	120 996	..
September	33 921	29 779	4 840	16 151	27 993	3 273	115 958	..
December	34 085	30 379	4 278	17 126	26 580	2 734	115 182	..
2007								
March	33 834	31 138	4 314	19 921	24 617	2 594	116 417	..
June	34 956	29 719	4 555	19 549	25 158	2 745	116 683	..
September	32 637	26 797	2 742	16 386	21 044	2 659	102 266	..
TREND								
2006								
June	37 870	30 097	4 790	15 444	29 461	3 076	120 738	..
September	35 646	30 211	4 559	16 260	27 895	3 044	117 615	..
December	34 081	30 513	4 549	17 871	26 472	2 856	116 342	..
2007								
March	33 944	30 404	4 350	18 884	25 299	2 700	115 579	..
June	33 963	29 343	3 937	18 774	23 781	2 648	112 448	..
September	33 534	27 972	3 442	17 933	22 370	2 681	107 932	..

.. not applicable

(a) For more information refer to paragraphs 4, 14 and 15 of the Explanatory Notes.

<i>Financial year</i>	<i>New South Wales</i>	<i>Victoria</i>	<i>Queensland</i>	<i>South Australia</i>	<i>Western Australia</i>	<i>Tasmania</i>	<i>Australia</i>
.....							
WHOLE MILK INTAKE BY FACTORIES (b) (ML)							
2004-05	1 218	6 613	619	679	396	600	10 125
2005-06	1 217	6 583	609	680	377	622	10 089
2006-07	1 108	6 285	535	660	349	642	9 579
.....							
MARKET MILK SALES BY FACTORIES (b) (ML)							
2004-05	641	480	429	199	215	53	2 017
2005-06	656	495	445	198	219	53	2 066
2006-07	684	509	475	207	230	55	2 160
.....							
BROKERS AND DEALERS RECEIVALS OF TAXABLE WOOL (Tonnes)							
2004-05	149 193	120 360	20 217	67 516	107 054	10 881	475 221
2005-06	153 227	119 383	21 016	61 939	118 801	12 360	486 726
2006-07	136 813	121 439	18 204	72 269	104 492	11 518	464 736

(a) For more information refer to paragraphs 13 to 15 of the Explanatory Notes.

(b) Data for Australian Capital Territory are included in New South Wales; data for Northern Territory are included in South Australia.

Source: Original series milk data from Dairy Australia.

EXPLANATORY NOTES

INTRODUCTION

1 This publication contains information on livestock slaughterings, meat production, exports of live sheep and live cattle, exports of fresh, chilled, frozen and processed meat, and whole milk intake by factories, market milk sales by factories and receivals of taxable wool by wool brokers and dealers.

2 The figures shown in this publication have been revised where necessary and as a consequence may not agree with similar data shown in previous publications.

3 Where figures have been rounded, discrepancies may occur between sums of the component items and totals.

4 Unless indicated otherwise, Australian totals include data for all states and both territories. Where states and territories do not appear in tables, this is for reasons of confidentiality.

LIVESTOCK SLAUGHTERINGS AND MEAT PRODUCTION

5 The statistics on slaughterings for red meat production are based on a monthly collection from abattoirs and other major slaughtering establishments and include estimates of animals slaughtered on farms and by country butchers and other small slaughtering establishments.

6 Red meat is shown in carcass weight and excludes offal.

7 Care should be taken when using this information as the figures only relate to slaughterings for human consumption and do not include animals condemned, slaughtered for pet food or those killed for boiling down.

8 Poultry slaughterings and meat produced statistics have been compiled from quarterly returns supplied by commercial poultry slaughtering establishments and comprise boilers, fryers and roasters. Many small producers are excluded from the collection; however, the statistics represent a high level of coverage. Tasmanian, Northern Territory and Australian Capital Territory data are excluded from the Australian total.

9 Chicken meat is shown in dressed weight of whole birds, pieces and giblets. Some slaughterings and meat production statistics for 'Ducks and Drakes' and 'Other Fowls and Turkeys' are available by contacting the ABS on Hobart (03) 6222 5838 or by writing to GPO Box 66, Hobart Tasmania 7001 (Attention: Agriculture Section).

EXPORTS OF FRESH, CHILLED, FROZEN AND PROCESSED MEAT

10 Table 20 shows exports of fresh, chilled, frozen and processed meat. International trade statistics are compiled by the ABS from information submitted by exporters and importers or their agents to the Australian Customs Service. Factors can be applied to beef, veal, mutton and lamb bone-out figures to derive bone-in carcass weight which, when added to bone-in figures, shows total exports in carcass weight. The factor for beef and veal is 1.5 and for mutton and lamb, 2.0. This information is sourced from Department of Agriculture, Fisheries and Forestry – Australia.

11 Beef also includes buffalo meat. Bacon and ham shown is the cured carcass weight of smoked or cooked bacon and ham. It also includes the stated net weight of packs of canned bacon and ham. Canned meat is shown as the canned weight and excludes canned bacon and ham.

LIVE SHEEP AND CATTLE EXPORTS

12 Table 21 contains statistics of the number of live sheep and cattle exported, the gross weight, gross value and unit value. The unit value is obtained by dividing the gross value by the number of animals exported. Sheep and cattle exported for breeding are excluded.

MILK

13 Tables 2, 22, 23 and 25 contain statistics collected by Dairy Australia. Whole milk intake by factories includes the whole milk equivalent of farm cream intake. Market milk sales includes white, flavoured, high and low fat milk and UHT milk. Interstate transfers of UHT milk have been included in their state of destination.

EXPLANATORY NOTES *continued*

WOOL RECEIVALS

14 The statistics in tables 2, 24 and 25 show the amount of taxable wool received by brokers and purchased by dealers from wool producers. It excludes wool received by brokers on which tax has already been paid by other dealers (private buyers) or brokers.

15 The information shown is on the basis of the state in which wool has actually been received and does not necessarily reflect the production of wool in that state.

SEASONAL ADJUSTMENT

16 Seasonal adjustment is a means of removing the estimated effects of normal seasonal variation from the series so that the effects of other influences can be more clearly recognised.

17 In the seasonal adjustment of the livestock estimates, account has been taken of both normal seasonal factors and 'trading day' effects, where significant, (arising from the varying length of each quarter and the varying numbers of Sundays, Mondays, Tuesdays etc. in the quarter). Adjustments are also made for the effects of change in the date of Easter holidays, again, where significant. Seasonal adjustment does not remove from the series the effect of irregular influences (e.g. abnormal weather, industrial disputes).

18 The state component series have been seasonally adjusted independently. Therefore, the adjusted components may not add to the Australian group totals.

19 In this publication, the seasonally adjusted estimates are produced by the concurrent seasonal adjustment method which takes account of the latest available original estimates. This method improves the estimation of seasonal factors and therefore, the seasonally adjusted and trend estimates for the current and previous quarters. As a result of this improvement, revisions to the seasonally adjusted and trend estimates will be observed for recent periods. In most instances the only noticeable revisions will be to the previous quarter and the same quarter one year ago. A more detailed review is conducted annually prior to the September quarter release, using data up to and including the June quarter. The concurrent seasonal adjustment methodology replaces the forward factor methodology used previously.

20 More recently, the ABS has implemented improved methods of producing seasonally adjusted estimates, focused on the application of Autoregressive Integrated Moving Average (ARIMA) modelling techniques. ARIMA modelling is a technique that can be used to extend original estimates beyond the end of a time series. For more information on the details of ARIMA modelling, see the feature article '*Use of ARIMA modelling to reduce revisions*' in the October 2004 issue of *Australian Economic Indicators* (cat. no. 1350.0).

TREND ESTIMATES

21 A trend estimate is obtained by reducing the irregular component from the seasonally adjusted series. In this publication trend estimates are generally derived by applying a 7-term Henderson moving average to the seasonally adjusted series. The 7-term Henderson (like all Henderson averages) is symmetric, but as the end of a time series is approached, asymmetric forms of the average are applied. Unlike the weights of the standard 7-term Henderson moving average, the weights employed here have been tailored to suit the particular characteristics of individual series. While the asymmetric weights enable the trend to be calculated for recent quarters, it does result in revisions to the estimates for the most recent three quarters as additional observations become available. Revisions of trend estimates will also occur with revisions to the original data and re-estimation of seasonal factors.

22 Sensitivity analysis indicates the potential magnitude and direction of revisions created to the last three estimates. It aims to show how a specified movement in the seasonally adjusted data in the next period will affect the trend path of the time series. By showing how sensitive the trend estimates are to the addition of new data, the

EXPLANATORY NOTES *continued*

TREND ESTIMATES *continued*

analysis provides information which can be used in the assessment of the trend's stability.

23 The state component series have been adjusted independently. Therefore, the adjusted components may not add to the Australian group totals.

24 For further information, see *Information Paper: A Guide to Interpreting Time Series – Monitoring 'Trends', an Overview* (cat. no. 1348.0) or contact the Assistant Director, Time Series Analysis on Canberra (02) 6252 6345.

RELATED PUBLICATIONS

25 Current publications and other products released by the ABS are listed in the *Catalogue of Publications and Products* (cat. no. 1101.0). The Catalogue is available from any ABS office or the ABS web site <<http://www.abs.gov.au>>. The ABS also issues a daily Release Advice on the web site which details products to be released in the week ahead.

GENERAL ACKNOWLEDGMENT

26 ABS publications draw extensively on information provided freely by individuals, businesses, governments and other organisations. Their continued cooperation is very much appreciated. Without it, the wide range of statistics published by the ABS would not be available. Information received by the ABS is treated in strict confidence as required by the *Census and Statistics Act 1905*.

APPENDIX WHAT IF ... ? REVISIONS TO TREND ESTIMATES

TREND REVISIONS

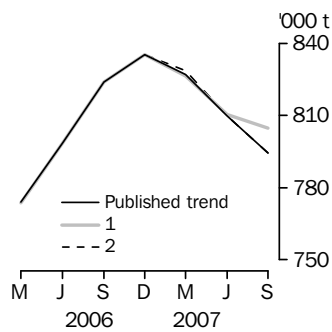
Recent seasonally adjusted and trend estimates are likely to be revised when original estimates for subsequent quarters become available. The approximate effects of possible scenarios on trend estimates are presented in the 'What-if' graphs below. These illustrate the impact on trend estimates if next quarter's seasonally adjusted estimate either rises (1) or falls (2) by a certain percentage, based on the historical average of movements in seasonally adjusted estimates.

For further information, see paragraphs 21 to 23 of the Explanatory Notes.

Red meat production

1. The next quarter's seasonally adjusted estimate of red meat production is 2.2% higher than the September quarter 2007 estimate.
2. The next quarter's seasonally adjusted estimate of red meat production is 2.2% lower than the September quarter 2007 estimate.

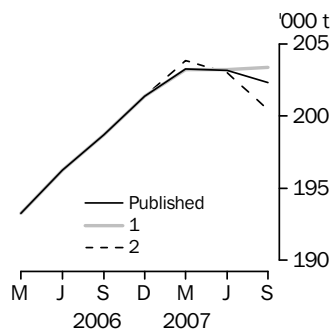
WHAT-IF RED MEAT PRODUCTION



Chicken meat production

1. The next quarter's seasonally adjusted estimate of chicken meat production is 2.6% higher than the September quarter 2007 estimate.
2. The next quarter's seasonally adjusted estimate of chicken meat production is 2.6% lower than the September quarter 2007 estimate.

WHAT-IF CHICKEN MEAT PRODUCTION

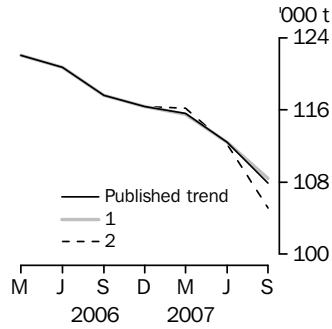


APPENDIX WHAT IF ... ? REVISIONS TO TREND ESTIMATES *continued*

Wool receivals

1. The next quarter's seasonally adjusted estimate of wool receivals is 5.6% higher than the September quarter 2007 estimate.
2. The next quarter's seasonally adjusted estimate of wool receivals is 5.6% lower than the September quarter 2007 estimate.

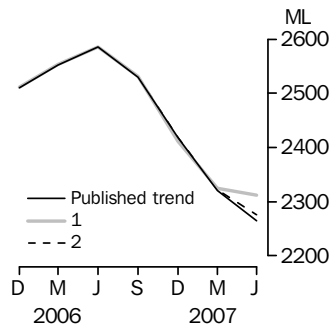
WHAT-IF WOOL RECEIVALS



Whole milk intake by factories

1. The next quarter's seasonally adjusted estimate of whole milk intake by factories is 2.5% higher than the June quarter 2007 estimate.
2. The next quarter's seasonally adjusted estimate of whole milk intake by factories is 2.5% lower than the June quarter 2007 estimate.

WHAT-IF WHOLE MILK INTAKE BY FACTORIES



FOR MORE INFORMATION . . .

- INTERNET* **www.abs.gov.au** the ABS website is the best place for data from our publications and information about the ABS.
- LIBRARY* A range of ABS publications are available from public and tertiary libraries Australia wide. Contact your nearest library to determine whether it has the ABS statistics you require, or visit our website for a list of libraries.

INFORMATION AND REFERRAL SERVICE

Our consultants can help you access the full range of information published by the ABS that is available free of charge from our website, or purchase a hard copy publication. Information tailored to your needs can also be requested as a 'user pays' service. Specialists are on hand to help you with analytical or methodological advice.

- PHONE* 1300 135 070
- EMAIL* client.services@abs.gov.au
- FAX* 1300 135 211
- POST* Client Services, ABS, GPO Box 796, Sydney NSW 2001

FREE ACCESS TO STATISTICS

All statistics on the ABS website can be downloaded free of charge.

- WEB ADDRESS* www.abs.gov.au



2721500013076

ISSN 0728 4047

RRP \$26.00