



# STATE AND REGIONAL INDICATORS

VICTORIA

EMBARGO: 11:30AM (CANBERRA TIME) TUES 7 MAY 2002

## CONTENTS

	<i>page</i>
Notes . . . . .	2
Main features . . . . .	3
Feature article: Part-time employment in Victoria . . . . .	5
TABLES	
List of tables . . . . .	13
Summary of statistical indicators: State comparison . . . . .	15
Summary . . . . .	15
State final demand . . . . .	16
Population . . . . .	18
Labour market . . . . .	19
Price indexes . . . . .	26
Business expectations . . . . .	30
Finance . . . . .	31
Construction . . . . .	37
Motor vehicle sales . . . . .	44
Retail . . . . .	45
Tourism . . . . .	48
Production . . . . .	49
Trade . . . . .	51
Natural resources . . . . .	54
Other . . . . .	56
ADDITIONAL INFORMATION	
Glossary . . . . .	58

- For further information about these and related statistics, contact the National Information and Referral Service on 1300 135 070, or James Darragh on Melbourne 03 9615 7476.

## NOTES

FORTHCOMING ISSUES	<p><i>ISSUE</i></p> <p>June 2002</p> <p>September 2002</p>	<p><i>RELEASE DATE</i></p> <p>6 August 2002</p> <p>6 November 2002</p>
CHANGES IN THIS ISSUE	<p>Categories in Lease Finance Commitments (table 27) have been amended in line with those released in Australian Bureau of Statistics (ABS) AusStats spreadsheets. New Motor Vehicle Sales (table 36) replace New Motor Vehicle Registrations; for a comparison of the series, see ABS <i>Information Paper: Developments in Motor Vehicle Statistics</i> (Cat. no. 9313.0). Individual pollutant indexes for Ozone and Visibility replace the combined air quality index (table 46).</p>	
ABBREVIATIONS AND SYMBOLS	<p>ABS Australian Bureau of Statistics</p> <p>AHECC Australian Harmonised Export Commodity Classification</p> <p>ANZSCC Australian and New Zealand Standard Commodity Classification</p> <p>ANZSIC Australian and New Zealand Standard Industrial Classification</p> <p>ARIA Accessibility/Remoteness Index of Australia</p> <p>EPA Environment Protection Authority</p> <p>ISP Internet Service Provider</p> <p>Mb megabyte</p> <p>ML megalitres</p> <p>MSD Melbourne Statistical Division</p> <p>MSR Major Statistical Region</p> <p>n.a. not available</p> <p>n.e.c. not elsewhere classified</p> <p>n.e.s. not elsewhere specified</p> <p>NMVR New Motor Vehicle Registrations</p> <p>n.p. not available for publication but included in totals where applicable</p> <p>n.y.a. not yet available</p> <p>p preliminary — figure or series subject to revision</p> <p>POP Point of Presence</p> <p>r figure or series revised since previous issue</p> <p>SITC Standard International Trade Classification</p> <p>SD Statistical Division</p> <p>* estimate is subject to sampling variability too high for most practical purposes</p> <p>. . not applicable</p> <p>— nil or rounded to zero (including null cells)</p>	
EXPLANATORY NOTES	<p>The statistics shown are the latest available as at 4 April 2002. Explanatory Notes in the form found in other ABS publications are not included in <i>State and Regional Indicators, Victoria</i>. Readers are directed to the Explanatory Notes contained in related ABS publications.</p>	

Vince Lazzaro  
Regional Director, Victoria

## MAIN FEATURES

### STATE FINAL DEMAND

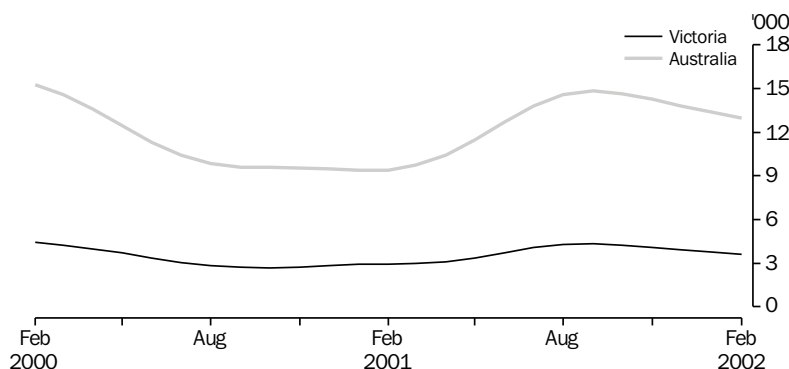
In the December quarter 2001, the trend series chain volume measure of State final demand for Victoria was \$41,356m. This was 1.6% higher than the figure for the previous quarter, and 5.1% greater than in the December quarter 2000. The comparable measure for Australia, domestic final demand, increased 1.5% from the previous quarter, and 4.1% since the December quarter 2000.

Public gross fixed capital formation for Victoria has been growing relatively rapidly, with the December quarter 2001 figure being 5.8% more than the value for the September quarter, and 19.0% higher than in the December quarter 2000. However, at \$1,392m in the December quarter 2001, public gross fixed capital formation still accounted for only a small proportion (3.4%) of total State final demand. Private gross fixed capital formation grew by 3.3%, to \$8,024m, from the September to December quarters 2001. The fastest-growing components of private gross fixed capital formation were dwellings (5.3% quarterly growth) and machinery and equipment (4.4%).

### HOUSING

The number of Victorian dwelling unit approvals fell to 3,618 in trend terms in February 2002. This represents a 16.8% decrease since a peak in September 2001. A similar pattern is apparent in national dwelling approvals, which have dropped 12.7% since a peak in September 2001.

DWELLING UNITS APPROVED: Trend estimates



Source: *Building Approvals, Australia* (Cat. no. 8731.0).

Melbourne house price indexes also indicated a slowing of the housing sector, with the index for established homes rising only 1.4% from the September to the December quarters 2001. This contrasted with the previous quarterly rise of 8.0%, and 30.4% growth for the year ending September quarter 2001. However the index for project home prices grew by 1.9% from the September to December quarters 2001, the first time it grew faster than the index for established homes since the September quarter 2000.

## HOUSING CONTINUED

In terms of number of dwelling units, monthly trend estimates of secured housing finance commitments for owner occupation have shown slow growth since August 2001, with a 1.1% increase, to 12,705 dwellings, over the three months to January 2002. This followed a period of more rapid growth (20.4%) from February to August 2001. However, in terms of value, the trend for monthly secured housing finance commitments has continued to rise steadily, growing 3.5%, to \$1,959m, over the three months to January 2002.

## INTERNET ACTIVITY

For the first time, this issue includes data from the ABS Internet Activity Survey. Care should be taken with these estimates as the figures relate to a combination of data for dial-up and permanent subscribers, as well as household, business and government subscribers, and the proportions of the various types of subscriber would be expected to vary between regional areas.

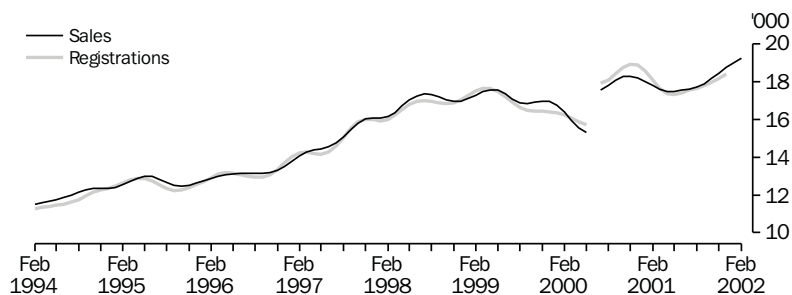
In the September quarter 2001, the majority (82%) of Victoria's 1,175,000 Internet subscribers connected to a Point of Presence (POP) in the Melbourne Statistical Division (SD). The average number of subscribers per access line was lowest (8.0) for Melbourne POPs, and ranged from 8.4 (Goulburn SD) to 16.1 (East Gippsland SD) outside Melbourne.

An analysis based on the Accessibility/Remoteness Index of Australia (ARIA) showed that the average number of subscribers per access line increased with remoteness, from 8.2 for POPs in highly accessible areas, to 11.1 for accessible and 14.9 for moderately accessible parts of the State.

## NEW MOTOR VEHICLES

The ABS ceased collection of New Motor Vehicle Registrations (NMVR) with the release of December 2001 data. The ABS now publishes data collected by the Federal Chamber of Automotive Industries. The graph below compares the two series. Further comparisons of the two collections may be found in *Information Paper: Developments in New Motor Vehicle Statistics, 2001* (Cat. no. 9313.0).

NEW MOTOR VEHICLES(a), Victoria: Trend estimates(b)



(a) Excludes motorcycles.

(b) A break in series occurred in July 2000 with the introduction of the GST.

Source: *New Motor Vehicle Registrations* (Cat. no. 9303.0.55.001);  
*Sales of New Motor Vehicles* (Cat. no. 9314.0).

In February 2002, the trend estimate for new motor vehicle sales in Victoria was 19,257 vehicles, up 1.3% from January 2002, and the tenth successive monthly increase. Sales in February 2002 were 8.3% higher than in February 2001.

## FEATURE ARTICLE

## PART-TIME EMPLOYMENT IN VICTORIA

### INTRODUCTION

A significant change in the Australian labour market since the early 1970s has been the shift away from full-time employment to part-time employment. In February 1982, an estimated 15.6% of all employed persons in Victoria were employed part-time (based on trend estimates of full-time and total employment). In January 2002, part-time employment had grown to an estimated 27.3%. The rapid increase in part-time employment (not to be confused with casual employment) has been evident in both metropolitan and non-metropolitan Victoria, and among both male and female employed persons, although the rates of growth have differed.

This article uses estimates from the ABS Labour Force Survey to examine the growth in part-time employment in Victoria. It identifies differences between metropolitan Melbourne and non-metropolitan Victoria, differences between industries within Victoria, and differences between age groups and sex.

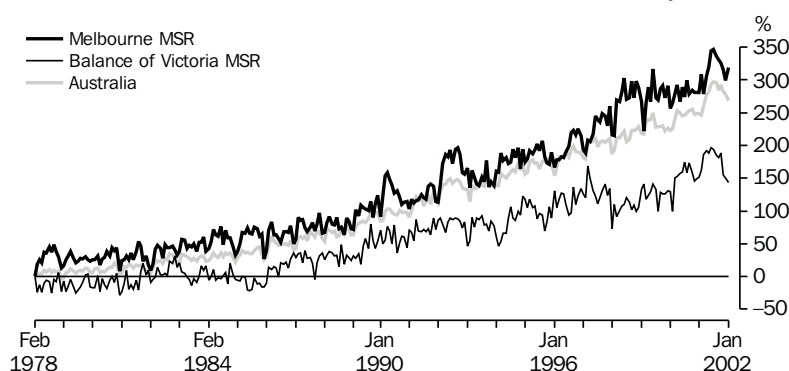
Growth in part-time employment can be viewed as either a positive or a negative outcome, depending on changes in other factors (such as full-time employment). Some positive aspects of part-time employment are that it indicates increased flexibility in the labour market and allows some people who are not able to work full-time to participate in the labour market. However, part-time employment growth can also be seen as negative if it is perceived to be at the expense of full-time employment. Labour market commentators have argued that the standard unemployment rate measure can give a misleading indication of the status of the market, because it does not account for people who are currently employed part-time and looking for full-time employment, often referred to as 'hidden unemployment'. The extent of this underemployment can be analysed by looking at separate estimates of part-time employment by those who prefer to work more hours and those who do not.

### PART-TIME EMPLOYMENT BY SEX AND PART OF STATE

Participation in part-time employment in Victoria, as for Australia as a whole, varies by sex, age group and metropolitan and non-metropolitan areas. Approximately 14% of all employed males in Australia are employed part-time, with very similar rates recorded in Melbourne and non-metropolitan Victoria. Within metropolitan Australia (the six Statistical Divisions of State Capital Cities), approximately 40–45% of employed females are employed part-time. This is very similar to the rate for Melbourne. However, higher rates of female part-time employment are observed within non-metropolitan Australia, in the range of 45–50% of all employed females. Currently, the rate observed within non-metropolitan Victoria (all areas of Victoria, outside the Melbourne Statistical Division (MSD)), is higher again, ranging between 50–55%. Overall, in Melbourne approximately 25% of all employed persons work part-time, while in non-metropolitan Victoria the rate is approximately 30%.

Differences are also apparent in the rate of growth of part-time employment. At the national level, the rate of growth in part-time employed males is very similar in both metropolitan and non-metropolitan Australia. The Melbourne (MSD) also displayed very similar rates of growth in male part-time employment to the national average throughout the 1980s and early 1990s. However, small differences have become apparent over the past few years. There was a higher rate of growth in male part-time employment in Melbourne throughout 1997, which has since levelled off. Another difference is apparent in the rate of growth of part-time male employment in non-metropolitan Victoria. The growth rate has been lower than the rate observed nationally for most of the time since the early 1980s, although the rate of growth in non-metropolitan Victoria has been similar to the national growth rate since 1998.

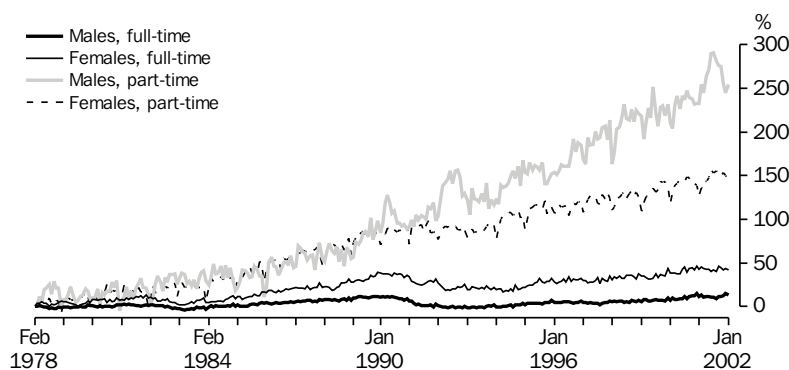
GROWTH IN MALE PART-TIME EMPLOYMENT, % increase since February 1978



Source: ABS data available on request, Labour Force.

The rate of growth in female part-time employment has been very similar in Melbourne, non-metropolitan Victoria, and Australia as a whole. The rate of growth of female part-time employment has been lower than the rate of growth in male part-time employment since the early 1990s. In addition, the rate of growth in part-time employment has been much greater than the rate of growth in full-time employment for both males and females throughout the 1980s and 1990s.

GROWTH IN EMPLOYMENT, % increase since February 1978—Victoria



Source: Labour Force, Australia (Cat. no. 6203.0).

Part-time employment by industry

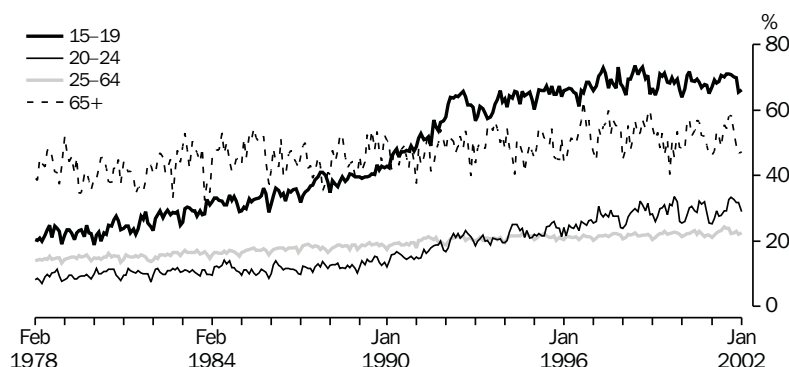
Rates of part-time employment differ markedly from industry to industry. In Victoria, the retail trade; accommodation, cafes and restaurants; health and community services and, cultural and recreational services industries all employ a greater proportion of part-time workers than the all industry average. In the mid-1980s, accommodation, cafes, and restaurants had the greatest proportion of part-time workers of any ANZSIC industry division. However, in the 15 years since then, that particular industry has shown little growth in the proportion of part-time employment. In contrast, the proportions of part-time workers in the retail trade and health and community services industries have risen steadily throughout the 1980s and 1990s, and now are at levels very similar to accommodation, cafes and restaurants (approximately 40-50%).

The industries (ANZSIC Divisions) with the smallest proportions of part-time workers in Victoria (mining; manufacturing; electricity, gas and water; construction; communication services and transport and storage) have shown low rates of growth in the proportions of part-time workers over the past 15 years.

EMPLOYMENT GROWTH BY AGE GROUP

In the late 1970s, part-time employment in Victoria was most common for workers aged 65 and over, with 40-50% of employed people in this age group working part-time. This was at least twice the rate of any other age group. Currently, employed persons aged 65 and over have a slightly higher rate of participation in part-time work than in the late 1970s (approximately 50-60%), but have been overtaken by the 15-19 year old group as the group with the highest proportion of employed persons in part-time work (approximately 65-70%). The proportion of 15-19 year old workers employed part-time increased rapidly from 1978 to 1991, particularly over 1989-1991. Slightly slower growth occurred between 1992 and 1996, and since 1997, a relatively stable rate of approximately 65-70% has been maintained. There has also been a strong rate of growth in the proportion of 20-24 year old workers employed part-time, from approximately 10% of all employed 20-24 year olds in the early 1980s, to approximately 30% today. These patterns and rates are very similar to the corresponding national estimates.

PROPORTION OF WORKERS IN PART-TIME EMPLOYMENT, Victoria



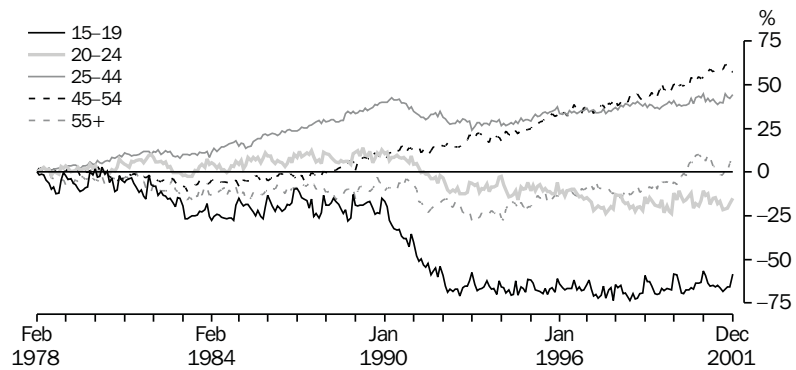
Source: ABS data available on request, Labour Force.

EMPLOYMENT GROWTH BY AGE GROUP *CONTINUED*

The growth in full-time employment since the late 1970s has been strongest for the 25–44 and 45–54 year old age groups, although there have been quite different patterns to the growth in that time. The number of 25–44 year olds in full-time employment grew quite strongly throughout the 1980s, but much more moderately in the mid to late 1990s, following a contraction in the early 1990s. Interestingly, the contraction in employment observed over 1990–1992 cannot be seen in the full-time employment of 45–54 year olds, although it is present for all other age groups. On the other hand, the number of 45–54 year olds employed full-time showed very little change from 1978 to 1986, but since 1988, has shown constant growth (approximately 3.3% per year).

These patterns of growth in full-time employment are very similar to the patterns observed at the national level. The main exception is that Victoria experienced a greater contraction in full-time employment during the economic slowdown of the early 1990s than the national average. This greater level of contraction in full-time jobs can be seen across all age groups.

GROWTH IN FULL-TIME EMPLOYMENT, Victoria

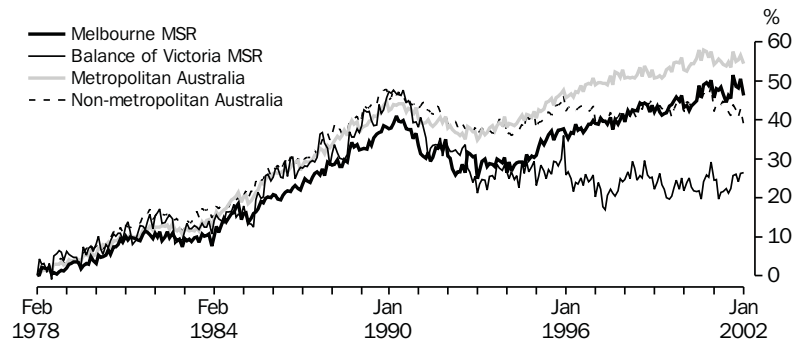


Source: ABS data available on request, Labour Force.

Similarly, the spread of full-time employment growth across age groups has been very similar in both Melbourne and non-metropolitan Victoria, with one exception. Full-time employment growth for the 25 to 44 age group in non-metropolitan Victoria has been flat since the mid-1990s, whereas full-time employment for this age group has continued to rise steadily within Melbourne. The 25–44 age group accounts for approximately 50% of all full-time employed persons in both Melbourne and non-metropolitan Australia. The flat employment growth observed in non-metropolitan Victoria is also seen in other non-metropolitan regions in Australia.



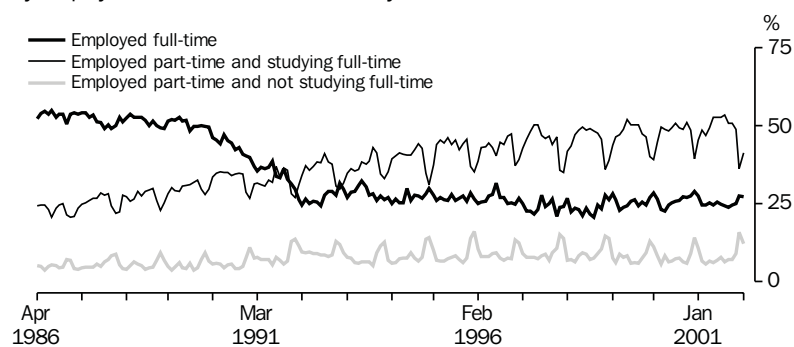
GROWTH IN FULL-TIME EMPLOYMENT, % increase since February 1978—  
25–44 year old age group



Source: ABS data available on request, Labour Force.

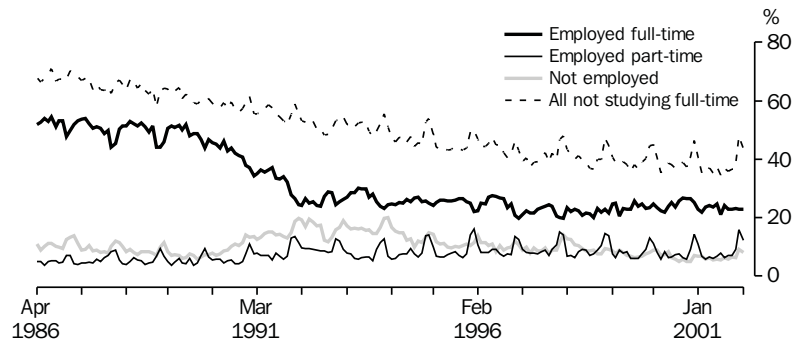
The greatest contraction in full-time employment has been in the 15–19 year old age group. Full-time employment loss for this age group has been counter-balanced by increased rates of participation in full-time education. In the mid 1980s, 30–35% of 15–19 year olds attended an educational institution full-time. By 2001, this had increased to 60–65%. Approximately 80% of full-time students aged 15–19 work part-time, so the growth for this age group in participation in full-time education is similar to the growth of 15–19 year olds with part-time employment. The growth in full-time students has been relatively steady throughout the past 15 years, however the bulk of the decrease in the number of 15–19 year olds employed full-time occurred during 1990 and 1991. Since that time, there has been very little growth in full-time employment for this age group. There is a similar pattern (although not as pronounced) for full-time employment of 20–24 year olds. Once again there has been very little growth — in fact, since 1992, a small decline — in the number employed full-time.

PROPORTION OF 15–19 YEAR OLDS EMPLOYED,  
By employment status and full-time study status: Victoria



Source: ABS data available on request, Labour Force.

PROPORTION OF 15–19 YEAR OLDS NOT IN FULL-TIME STUDY,  
By employment status: Victoria

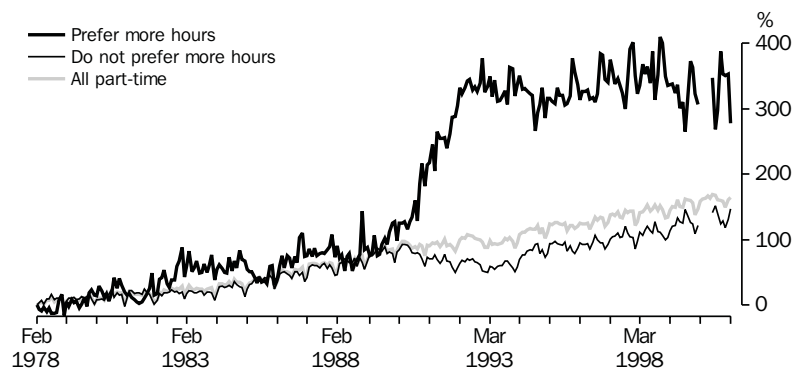


Source: ABS data available on request, Labour Force.

PART-TIME WORKERS  
PREFERRING MORE HOURS  
OF WORK

It is interesting to note that economic recessions associated with the contraction in employment in 1982–1983 and 1990–1992 have not had a great effect on the growth of part-time employment, although it has affected the proportions of ‘underemployed’ part-time workers (those who prefer to work more hours) within the total number of part-time workers. There was very rapid growth in the number of Victorians employed part-time and preferring to work more hours from 1990 to 1992. From 1978 to 1989 the number of part-time workers preferring more hours grew at approximately the same rate as the total number of part-time employed persons (i.e. the proportion of part-time workers preferring more hours remained relatively stable). Since 1993, the number of part-time workers preferring more hours has not showed consistent growth or decline. As the total number of part-time employed persons has increased over this period, the proportion of part-time workers preferring more hours has been declining.

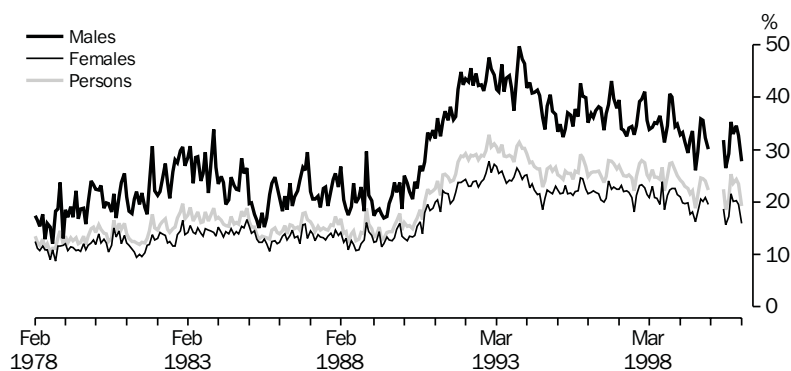
GROWTH IN PART-TIME EMPLOYMENT: Victoria



Source: ABS data available on request, Labour Force.

Since 1978, there has been a greater proportion of male part-time workers preferring more hours than females. During 1990–1992, this proportion increased more rapidly for males than for females. Conversely, since 1993 the male proportion has fallen more rapidly than the female proportion.

PROPORTION OF PART-TIME EMPLOYED PREFERRING MORE HOURS: Victoria

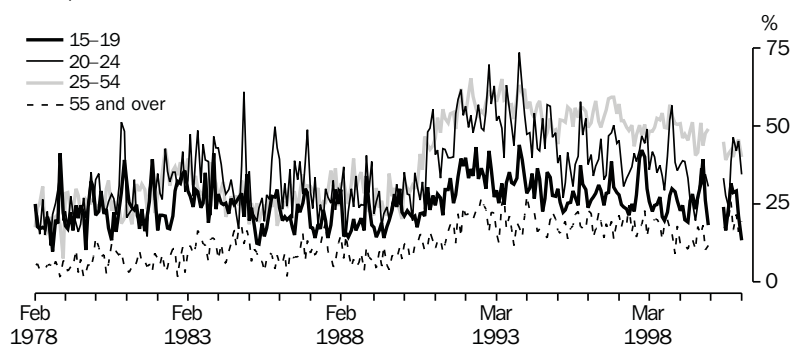


Source: ABS data available on request, Labour Force.

For both males and females, the age group with the lowest proportion of Victorian part-time workers preferring more hours is persons aged 55 years and over. The proportion for this age group has been consistently lower than the proportion for all ages at all times since 1978. Part-time workers aged 20–24 have consistently had a greater proportion of people preferring to work more hours than the all age average since 1978. The 15–19 year old age group displayed markedly less growth in 1990–1992 in the proportion of part-time workers preferring more hours than the all age average. In the early 1980s the proportion of 15–19 year old part-time workers preferring more hours was consistently higher than the all age average proportion, however, since 1991 the two proportions have been very similar.

Since 1991, a high proportion of male part-time workers in the 25–54 age group have preferred more hours. This proportion has been in the order of 50% in the latter half of the 1990s, and more recently around 40%–45%.

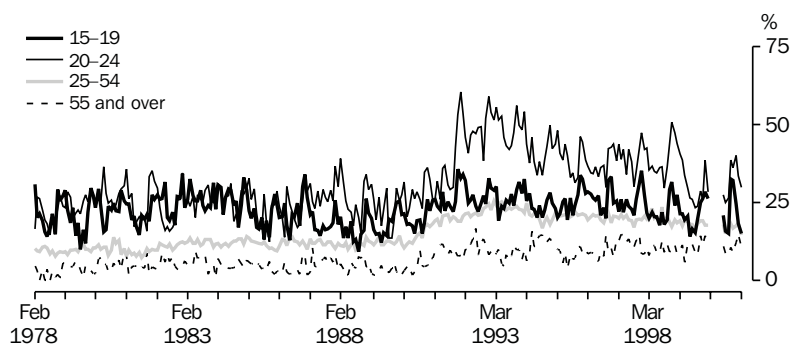
PROPORTION OF PART-TIME EMPLOYED PREFERRING MORE HOURS:  
Males, Victoria



Source: ABS data available on request, Labour Force.

This difference cannot be observed for female part-time workers aged 25—54, where the proportion of females preferring more hours has been very similar to the all age average since 1978. This is not unexpected as this age group comprises approximately 60% of all female part-time workers.

PROPORTION OF PART-TIME EMPLOYED PREFERRING MORE HOURS:  
**Females, Victoria**



Source: ABS data available on request, *Labour Force*.

**LIST OF TABLES**

Page

SUMMARY	<b>1</b>	Summary of statistical indicators: State comparison	15
STATE FINAL DEMAND	<b>2</b>	State final demand: original	16
	<b>3</b>	State final demand, chain volume measures: seasonally adjusted and trend	17
POPULATION	<b>4</b>	Estimated resident population and components of population change	18
	<b>5</b>	Registration of births, deaths, marriages and divorces	18
LABOUR MARKET	<b>6</b>	Civilian labour force: all series	19
	<b>7</b>	Civilian labour force, by region	20
	<b>8</b>	Employed persons, by industry, February 2002	22
	<b>9</b>	Part-time workers, by sex	22
	<b>10</b>	Duration of unemployment, by sex and major statistical region	23
	<b>11</b>	Job vacancies	24
	<b>12</b>	Industrial disputes causing stoppage of work	24
	<b>13</b>	Average weekly earnings of employees, by sex: all series	25
	<b>14</b>	Wage costs indexes	26
	PRICE INDEXES	<b>15</b>	Consumer price index, by group: Melbourne
<b>16</b>		House price indexes: Melbourne and weighted average of eight capital cities	27
<b>17</b>		Price indexes of materials used in building: Melbourne	27
<b>18</b>		Price indexes of materials used in manufacturing industries: Australia	28
<b>19</b>		Price indexes of articles produced by manufacturing industry: Australia	29
<b>20</b>		Export price indexes, by selected commodities: Australia	29
BUSINESS EXPECTATIONS	<b>21</b>	Business expectations, short-term outlook	30
	<b>22</b>	Business expectations, medium-term outlook	30

FINANCE	<b>23</b>	Private new capital expenditure, by type of asset and industry: original	31
	<b>24</b>	Private new capital expenditure, by type of asset: seasonally adjusted and trend	31
	<b>25</b>	Bank deposits as at end of month: all banks	32
	<b>26</b>	Commercial finance commitments	32
	<b>27</b>	Lease finance commitments, by purpose	33
	<b>28</b>	Personal finance commitments	34
	<b>29</b>	Secured housing finance commitments, dwelling units: all series	35
	<b>30</b>	Secured housing finance commitments, dwelling units, by type of borrower	36
CONSTRUCTION	<b>31</b>	Building approvals: all series	37
	<b>32</b>	Building approvals, by major statistical region	38
	<b>33</b>	Building approvals, by local government area	40
	<b>34</b>	Value of building work, chain volume measures	42
	<b>35</b>	Value of building activity other than houses, by local government area, September quarter 2001	43
NEW MOTOR VEHICLE SALES	<b>36</b>	New motor vehicle sales: all series	44
RETAIL	<b>37</b>	Retail turnover by industry: all series	45
	<b>38</b>	Retail turnover, chain volume measures: all series	47
TOURISM	<b>39</b>	Tourist accommodation	48
	<b>40</b>	Tourist accommodation, by tourism region, December quarter 2001	48
PRODUCTION	<b>41</b>	Livestock slaughterings and meat production: all series	49
	<b>42</b>	Other production	50
TRADE	<b>43</b>	International merchandise trade, by commodity	51
	<b>44</b>	Balance of international merchandise trade	52
	<b>45</b>	International merchandise trade, by major trading partners	53
NATURAL RESOURCES	<b>46</b>	Air quality	54
	<b>47</b>	Storage volumes in Victorian water storages, by river basin	55
OTHER	<b>48</b>	Internet activity by Statistical Division	56
	<b>49</b>	Internet activity by ARIA category	57

# 1

## SUMMARY OF STATISTICAL INDICATORS: STATE COMPARISON

	Period	% change from the same period in the previous year						
		Vic. as a proportion of Aust.	Vic.	NSW	Qld	SA	WA	Aust.
State final demand (trend, chain volume measure)	Dec qtr 01	24.9	<b>5.1</b>	1.7	5.2	5.0	6.7	4.1
Population								
Total population	Sep qtr 01	24.9	<b>1.3</b>	1.0	1.7	0.4	1.3	1.2
Natural increase(a)	Sep qtr 01	..	<b>0.6</b>	0.6	0.7	0.4	0.7	0.6
Net overseas migration(a)	Sep qtr 01	..	<b>0.5</b>	0.7	0.4	0.2	0.8	0.5
Net interstate migration(a)	Sep qtr 01	..	<b>0.2</b>	-0.3	0.6	-0.3	-0.2	..
Labour								
Number employed (trend)	Feb 02	25.2	<b>0.7</b>	1.1	2.5	1.8	0.9	1.5
Unemployment rate (trend)(b)	Feb 02	..	<b>0.4</b>	0.5	-0.3	—	—	0.2
Participation rate (trend)(b)	Feb 02	..	<b>-0.1</b>	0.4	0.2	0.7	-0.5	0.3
Working days lost for 12 months ended	Dec 01	33.4	<b>-6.2</b>	-1.0	-39.3	-1.3	-53.4	-16.2
Job vacancies	Feb 02	33.0	<b>-1.5</b>	-29.5	33.5	8.4	-18.0	-8.0
Average weekly FT adult total earnings (trend)	Nov 01	..	<b>5.7</b>	7.0	4.8	4.0	3.5	5.4
Wage cost index (total hourly rates of pay excluding bonuses)	Dec qtr 01	..	<b>3.4</b>	3.5	3.3	3.5	3.6	3.4
Prices								
Consumer price index	Dec qtr 01	..	<b>3.1</b>	3.3	3.2	3.1	3.0	3.1
Price index of materials used in house building	Dec qtr 01	..	<b>0.8</b>	1.2	0.1	0.3	-0.1	0.6
Price index of materials used in building other than house building	Dec qtr 01	..	<b>1.7</b>	1.7	0.8	1.3	1.5	1.5
Established house price index	Dec qtr 01	..	<b>20.6</b>	17.2	9.7	15.2	7.7	15.5
Finance								
Capital expenditure (trend)	Dec qtr 01	25.0	<b>0.3</b>	-13.4	14.0	-4.0	14.0	3.0
Bank deposits	Jan 02	22.5	<b>12.8</b>	15.2	12.9	11.0	7.5	13.4
Commercial finance commitments	Jan 02	22.4	<b>7.0</b>	12.6	6.4	42.2	63.1	14.9
Lease finance commitments	Jan 02	25.1	<b>15.3</b>	12.0	9.5	43.3	-4.1	13.2
Personal finance commitments	Jan 02	26.1	<b>11.8</b>	8.2	13.3	7.1	10.0	10.0
Secured housing finance commitments (trend)	Jan 02	23.7	<b>45.8</b>	30.1	49.2	31.7	30.1	36.8
Building								
Dwelling units approved (trend)	Feb 02	28.0	<b>23.0</b>	34.3	56.9	85.8	48.0	37.7
Value of residential building approved (trend)	Feb 02	30.8	<b>26.0</b>	37.9	64.0	75.3	37.4	38.6
Total value of building approved (trend)	Feb 02	31.2	<b>26.8</b>	34.2	34.7	67.9	25.5	30.3
Value of building commenced (chain volume measure)	Sep qtr 01	30.7	<b>26.3</b>	26.3	35.9	27.5	18.4	27.2
Value of building work done (seas. adj., chain volume measure)	Sep qtr 01	30.7	<b>11.6</b>	-10.7	14.7	11.0	4.4	2.8
Consumer spending								
New motor vehicle sales (trend)	Feb 02	27.1	<b>8.3</b>	7.0	14.0	14.4	14.3	9.6
Retail turnover (trend)	Feb 02	24.3	<b>8.8</b>	5.8	4.9	11.2	12.4	7.5
Takings from tourist accommodation	Dec qtr 01	18.3	<b>1.7</b>	-12.2	1.0	1.7	-6.6	-4.5
International merchandise trade								
Imports	Feb 02	31.7	<b>12.3</b>	19.0	24.8	12.2	-2.7	15.6
Exports	Feb 02	19.1	<b>-6.7</b>	6.8	7.9	5.0	-5.2	1.0

(a) Percentage change figures for components of population increase indicate the contribution of each component to the total population increase.

(b) Percentage change columns indicate the difference between the percentage rate for the reference period, and the percentage rate for the same period in the previous year.

## 2

## STATE FINAL DEMAND: ORIGINAL(a)

	Mar qtr 2000	Jun qtr 2000	Sep qtr 2000	Dec qtr 2000	Mar qtr 2001	Jun qtr 2001	Sep qtr 2001	Dec qtr 2001
CURRENT PRICES (\$m)								
Final consumption expenditure								
General government	6 696	7 103	7 153	7 144	6 917	7 270	7 006	7 316
Households	22 638	23 808	24 541	26 135	24 227	25 731	26 222	28 035
Gross fixed capital formation								
Private								
Dwellings	2 346	2 944	2 558	2 408	2 242	2 508	2 735	2 984
Other buildings and structures	1 146	1 304	1 192	1 228	1 215	1 268	1 280	1 317
Machinery and equipment	2 467	2 824	3 045	2 726	2 408	2 676	2 676	3 224
Livestock	120	120	163	163	163	163	152	152
Intangible fixed assets	683	699	724	784	764	773	760	756
Ownership transfer costs	578	549	532	504	521	572	697	734
<i>Total private</i>	7 338	8 440	8 215	7 812	7 311	7 960	8 300	9 168
Public	1 318	1 336	1 033	1 217	1 098	1 541	1 128	1 437
<b>State final demand</b>	<b>37 991</b>	<b>40 688</b>	<b>40 942</b>	<b>42 308</b>	<b>39 555</b>	<b>42 503</b>	<b>42 656</b>	<b>45 956</b>
International trade—exports of goods	4 980	5 271	5 557	6 341	5 734	6 137	6 178	6 156
International trade—imports of goods	8 238	8 465	9 268	9 704	8 667	8 845	9 350	9 741
Compensation of employees	19 586	20 016	20 286	21 594	20 934	20 854	21 041	21 918
CHAIN VOLUME MEASURES(b) (\$m)								
Final consumption expenditure								
General government	6 667	6 871	6 815	6 829	6 670	6 850	6 723	6 906
Households	22 542	23 601	23 674	25 133	23 097	24 363	24 738	26 391
Gross fixed capital formation								
Private								
Dwellings	2 327	2 849	2 246	2 112	1 948	2 171	2 358	2 535
Other buildings and structures	1 140	1 281	1 163	1 181	1 155	1 195	1 202	1 231
Machinery and equipment	2 492	2 840	3 166	2 787	2 443	2 697	2 741	3 302
Livestock	120	120	118	118	118	118	115	115
Intangible fixed assets	688	715	751	825	815	833	832	842
Ownership transfer costs	604	560	541	498	476	519	591	566
<i>Total private</i>	7 362	8 344	7 986	7 522	6 955	7 532	7 839	8 590
Public	1 331	1 338	1 029	1 203	1 077	1 502	1 109	1 410
<b>State final demand</b>	<b>37 893</b>	<b>40 160</b>	<b>39 503</b>	<b>40 687</b>	<b>37 798</b>	<b>40 248</b>	<b>40 408</b>	<b>43 297</b>
International trade—exports of goods	4 987	5 005	5 147	5 537	4 987	5 180	5 247	5 247
International trade—imports of goods	8 256	8 014	8 749	8 618	7 802	7 717	8 303	8 670

(a) Figures have been revised since last issue.

(b) Reference year for chain volume measures is 1999–2000.

Source: Australian National Accounts: National Income, Expenditure and Product (Cat. no. 5206.0); ABS data available on request, Australian National Accounts.



## 3

## STATE FINAL DEMAND, CHAIN VOLUME MEASURES(a): SEASONALLY ADJUSTED AND TREND

	Mar qtr 2000	Jun qtr 2000	Sep qtr 2000	Dec qtr 2000	Mar qtr 2001	Jun qtr 2001	Sep qtr 2001	Dec qtr 2001
SEASONALLY ADJUSTED (\$m)								
Final consumption expenditure								
General government	6 747	6 862	6 885	6 751	6 708	6 819	6 809	6 852
Households	23 596	23 829	23 612	23 864	24 290	24 500	24 812	25 076
Gross fixed capital formation								
Private								
Dwellings	2 487	2 787	2 242	2 029	2 086	2 120	2 364	2 433
Other buildings and structures	1 219	1 269	1 157	1 126	1 238	1 174	1 196	1 176
Machinery and equipment	2 880	2 715	3 047	2 634	2 834	2 578	2 625	3 123
Livestock	120	120	118	118	118	118	115	115
Intangible fixed assets	699	719	757	800	828	838	839	816
Ownership transfer costs	615	570	531	498	493	512	580	565
Total private	8 030	8 140	7 853	7 205	7 596	7 341	7 720	8 228
Public	1 384	1 119	1 146	1 263	1 103	1 299	1 233	1 489
<b>State final demand</b>	<b>39 763</b>	<b>39 945</b>	<b>39 496</b>	<b>39 083</b>	<b>39 698</b>	<b>39 959</b>	<b>40 573</b>	<b>41 645</b>
International trade—exports of goods	5 109	5 106	5 282	5 186	5 102	5 282	5 368	4 907
International trade—imports of goods	8 500	8 372	8 432	8 342	8 068	8 044	8 015	8 442
TREND ESTIMATES(b) (\$m)								
Final consumption expenditure								
General government	6 723	6 845	6 846	6 785	6 752	6 778	6 821	6 845
Households	23 738	23 689	23 725	23 911	24 199	24 528	24 807	25 055
Gross fixed capital formation								
Private								
Dwellings	2 512	2 537	2 354	2 112	2 043	2 171	2 310	2 432
Other buildings and structures	1 258	1 217	1 180	1 169	1 181	1 196	1 190	1 179
Machinery and equipment	2 843	2 859	2 845	2 802	2 690	2 661	2 767	2 888
Livestock	120	119	119	118	118	117	116	115
Intangible fixed assets	699	724	760	797	827	836	834	826
Ownership transfer costs	559	574	540	500	499	525	555	571
Total private	7 986	8 016	7 786	7 494	7 360	7 506	7 770	8 024
Public	1 300	1 215	1 159	1 170	1 194	1 235	1 316	1 392
<b>State final demand</b>	<b>39 749</b>	<b>39 765</b>	<b>39 515</b>	<b>39 360</b>	<b>39 505</b>	<b>40 045</b>	<b>40 712</b>	<b>41 356</b>
International trade—exports of goods	5 218	5 213	5 171	5 184	5 217	5 238	5 204	5 108
International trade—imports of goods	8 527	8 470	8 380	8 282	8 120	8 056	8 132	8 294
TREND ESTIMATES (% CHANGE FROM PREVIOUS QUARTER)								
Final consumption expenditure								
General government	2.8	1.8	—	-0.9	-0.5	0.4	0.6	0.4
Households	0.2	-0.2	0.1	0.8	1.2	1.4	1.1	1.0
Gross fixed capital formation								
Private								
Dwellings	8.6	1.0	-7.2	-10.3	-3.2	6.3	6.4	5.3
Other buildings and structures	-0.7	-3.3	-3.0	-0.9	1.0	1.3	-0.5	-0.9
Machinery and equipment	1.4	0.6	-0.5	-1.5	-4.0	-1.1	4.0	4.4
Livestock	0.3	-0.8	-0.6	-0.3	-0.2	-0.7	-1.1	-0.7
Intangible fixed assets	3.8	3.6	4.9	4.9	3.7	1.1	-0.3	-1.0
Ownership transfer costs	8.4	2.6	-5.9	-7.4	-0.2	5.2	5.7	3.0
Total private	3.7	0.4	-2.9	-3.7	-1.8	2.0	3.5	3.3
Public	-8.0	-6.5	-4.6	0.9	2.1	3.5	6.6	5.8
<b>State final demand</b>	<b>1.0</b>	<b>—</b>	<b>-0.6</b>	<b>-0.4</b>	<b>0.4</b>	<b>1.4</b>	<b>1.7</b>	<b>1.6</b>
International trade—exports of goods	2.3	-0.1	-0.8	0.3	0.6	0.4	-0.7	-1.8
International trade—imports of goods	0.5	-0.7	-1.1	-1.2	-2.0	-0.8	0.9	2.0

(a) Reference year for chain volume measures is 1999–2000.

(b) Trend estimates for aggregates are derived directly, rather than as the sum of components. As a result, the sum of the trend estimates of individual components of a particular aggregate will not sum to the overall trend estimate of the aggregate.

Source: Australian National Accounts: National Income and Expenditure (Cat. no. 5206.0); ABS data available on request, Australian National Accounts.

## 4

### ESTIMATED RESIDENT POPULATION AND COMPONENTS OF POPULATION CHANGE

Period	Population at end of period			Components of population change				% change from previous 12 months	
	Males '000	Females '000	Persons '000	Natural increase '000	Net overseas migration '000	Net interstate migration '000	Total increase(a) '000	Victoria	Australia
1995-96	2 252.6	2 307.5	4 560.2	28.5	25.7	-12.8	42.8	1.0	1.3
1996-97	2 275.2	2 330.0	4 605.2	28.7	21.1	-4.7	45.1	1.0	1.2
1997-98	2 301.0	2 353.9	4 654.9	27.7	20.8	1.2	49.7	1.1	1.1
1998-99	2 328.1	2 379.5	4 707.6	27.1	21.6	4.0	52.7	1.1	1.1
1999-2000	2 359.0	2 407.8	4 766.8	27.7	24.8	6.7	59.2	1.3	1.2
2000-01	2 392.4	2 436.6	4 829.0	26.6	27.6	7.9	62.2	1.3	1.2
1999									
December	2 343.7	2 394.5	4 738.2	7.0	p 5.9	2.3	15.2	1.2	1.1
2000									
March	2 352.8	2 402.4	4 755.2	7.3	p 7.9	1.9	17.0	1.2	1.2
June	2 359.0	2 407.8	4 766.8	6.4	p 3.7	1.5	11.6	1.3	1.2
September p	2 368.2	2 415.6	4 783.8	6.2	9.0	1.8	17.0	1.3	1.2
December p	2 375.6	2 422.7	4 798.3	6.2	6.4	1.9	14.5	1.3	1.2
2001									
March p	2 385.5	2 430.6	4 816.1	6.7	8.4	2.7	17.8	1.3	1.2
June p	2 392.4	2 436.6	4 829.0	7.5	3.9	1.5	12.9	1.3	1.2
September p	2 400.7	2 443.6	4 844.2	6.2	(b) 7.4	1.6	15.3	1.3	1.2

(a) Differences between total growth and the sum of natural increase and net migration arise from retrospective adjustments (which are made after each Census) to compensate for any intercensal discrepancy.

(b) The resident population as at 30 September 2001 is a projection, because the ABS has yet to receive the data necessary to estimate net overseas migration.

Source: Australian Demographic Statistics (Cat. no. 3101.0); ABS data available on request, Australian Demographic Statistics.

## 5

### REGISTRATION OF BIRTHS, DEATHS, MARRIAGES AND DIVORCES

Period	Births	Infant deaths(a)	Total deaths	Marriages	Divorces
REGISTRATIONS (no.)					
1998-99	59 374	318	32 298	26 351	12 579
1999-2000	59 733	304	31 992	27 558	12 818
2000-01	58 615	257	32 013	25 703	12 495
1999					
September qtr	15 655	79	8 636	4 211	3 461
December qtr	14 909	75	7 912	8 462	3 438
2000					
March qtr	14 626	73	7 350	8 683	2 733
June qtr	14 543	77	8 094	6 202	3 186
September qtr	p 14 633	p 63	p 8 403	3 943	3 088
December qtr	p 15 520	p 68	p 9 356	8 024	3 394
2001					
March qtr p	13 609	51	6 870	8 049	2 590
June qtr p	14 853	75	7 384	5 687	3 423
September qtr p	15 550	80	9 325	3 613	3 756
RATE PER 1,000 MEAN ESTIMATED RESIDENT POPULATION					
1998-99	12.68	5.36	6.90	5.63	2.69
1999-2000	12.61	5.09	6.75	5.82	2.71
2000-01	r 12.22	4.38	6.67	5.36	2.60

(a) Rate for infant deaths is per 1,000 live births, and not per 1,000 mean population. Infant deaths are understated due to incomplete identification of age at death data. Rates will be revised when calendar year numbers are finalised.

Source: Australian Demographic Statistics (Cat. no. 3101.0).

## 6

## CIVILIAN LABOUR FORCE(a): ALL SERIES

Month	Employed		Unemployed '000	Labour force '000	Unemployment rate		Participation rate	
	Full-time '000	Total '000			Victoria %	Australia %	Victoria %	Australia %
ORIGINAL								
2001								
February	1 707.1	2 315.6	166.1	2 481.7	6.7	7.4	64.4	63.8
March	1 682.6	2 305.7	161.7	2 467.5	6.6	6.9	63.9	63.6
April	1 685.6	2 310.7	155.9	2 466.6	6.3	6.8	63.8	63.9
May	1 677.8	2 313.0	157.4	2 470.4	6.4	6.9	63.9	63.7
June	1 659.4	2 322.1	146.4	2 468.5	5.9	6.7	63.7	63.7
July	1 665.5	2 320.9	147.5	2 468.4	6.0	6.3	63.7	63.6
August	1 648.5	2 303.1	152.0	2 455.1	6.2	6.6	63.2	63.3
September	1 698.0	2 341.0	158.3	2 499.3	6.3	6.8	64.3	64.2
October	1 684.0	2 323.8	164.7	2 488.6	6.6	6.7	63.9	63.7
November	1 685.0	2 324.7	147.3	2 472.0	6.0	6.4	63.4	63.4
December	1 723.0	2 350.0	161.2	2 511.3	6.4	6.6	64.3	64.3
2002								
January	1 693.3	2 315.8	170.2	2 486.1	6.8	7.4	63.6	63.4
February	1 685.7	2 324.4	173.9	2 498.3	7.0	7.3	63.9	64.0
SEASONALLY ADJUSTED r								
2001								
February	1 689.2	2 322.6	150.2	2 472.8	6.1	6.6	64.2	63.7
March	1 688.1	2 308.7	150.6	2 459.3	6.1	6.5	63.7	63.6
April	1 694.2	2 314.8	153.7	2 468.5	6.2	6.7	63.9	63.9
May	1 685.0	2 317.1	158.5	2 475.6	6.4	6.8	64.0	63.8
June	1 675.1	2 316.2	153.0	2 469.1	6.2	6.9	63.8	63.8
July	1 654.5	2 307.3	156.2	2 463.5	6.3	6.9	63.5	63.6
August	1 672.1	2 321.8	156.4	2 478.2	6.3	6.8	63.8	63.9
September	1 692.3	2 319.1	151.1	2 470.2	6.1	6.7	63.6	63.5
October	1 682.1	2 318.1	173.9	2 492.0	7.0	7.0	64.0	63.8
November	1 692.0	2 324.8	158.9	2 483.7	6.4	6.8	63.7	63.6
December	1 690.4	2 322.9	162.7	2 485.6	6.5	6.7	63.7	63.6
2002								
January	1 694.5	2 353.7	166.3	2 520.0	6.6	7.0	64.5	64.1
February	1 667.5	2 331.1	157.6	2 488.7	6.3	6.6	63.6	63.9
TREND ESTIMATES r								
2001								
February	1 693.7	2 314.1	149.1	2 463.2	6.1	6.5	63.9	63.6
March	1 689.8	2 315.3	151.5	2 466.8	6.1	6.6	63.9	63.7
April	1 684.8	2 315.3	153.2	2 468.6	6.2	6.7	63.9	63.7
May	1 679.6	2 314.9	154.3	2 469.3	6.3	6.8	63.8	63.8
June	1 675.5	2 314.7	155.2	2 469.9	6.3	6.8	63.8	63.8
July	1 673.7	2 315.2	156.1	2 471.3	6.3	6.8	63.7	63.7
August	1 675.4	2 316.4	157.6	2 474.0	6.4	6.9	63.7	63.7
September	1 679.8	2 318.4	159.4	2 477.8	6.4	6.9	63.7	63.7
October	1 684.8	2 320.8	161.2	2 482.0	6.5	6.9	63.8	63.7
November	1 687.8	2 323.8	162.5	2 486.3	6.5	6.8	63.8	63.7
December	1 688.2	2 326.6	163.1	2 489.7	6.6	6.8	63.8	63.8
2002								
January	1 687.1	2 329.3	163.1	2 492.4	6.5	6.8	63.8	63.8
February	1 683.9	2 331.0	162.8	2 493.8	6.5	6.7	63.8	63.9

(a) Civilian population aged 15 years and over. From April 2001 the Labour Force Survey was conducted using a redesigned questionnaire containing additional data items and some minor definitional changes. Although the impact on core labour force series has been minor, revisions have been made to estimates previously published to ensure continuity. The revised series were released on 3 May 2001. *Information Paper: Implementing the Redesigned Labour Force Survey Questionnaire* (Cat. no. 6295.0) contains further information about the questionnaire changes and the revised series. For details on the content of the redesigned questionnaire, see *Information Paper: Questionnaires Used in the Labour Force Survey* (Cat. no. 6232.0).

Source: *Labour Force, Australia* (Cat. no. 6202.0); *Labour Force, Victoria* (Cat. no. 6202.2).

## 7

## CIVILIAN LABOUR FORCE(a) BY REGION

Month	<i>Employed</i>			<i>Unemployed</i>	<i>Labour force</i>	<i>Unemployment rate</i>	<i>Participation rate</i>
	<i>Full-time</i>	<i>Part-time</i>	<i>Total</i>				
	'000	'000	'000				
MELBOURNE MAJOR STATISTICAL REGION							
2000							
December	1 293.8	428.5	1 722.3	103.2	1 825.6	5.7	65.0
2001							
January	1 262.3	409.9	1 672.2	110.1	1 782.3	6.2	63.3
February	1 279.2	432.3	1 711.5	122.2	1 833.7	6.7	65.1
March	1 266.5	433.8	1 700.2	125.7	1 825.9	6.9	64.7
April	1 272.6	441.7	1 714.4	115.2	1 829.5	6.3	64.8
May	1 269.6	448.8	1 718.4	115.2	1 833.6	6.3	64.8
June	1 255.4	463.8	1 719.2	107.3	1 826.5	5.9	64.5
July	1 267.2	457.4	1 724.5	108.2	1 832.7	5.9	64.6
August	1 256.2	456.6	1 712.8	108.1	1 820.8	5.9	64.1
September	1 293.9	447.3	1 741.2	116.7	1 857.9	6.3	65.2
October	1 278.1	443.1	1 721.2	124.1	1 845.3	6.7	64.7
November	1 278.7	445.9	1 724.6	108.4	1 833.0	5.9	64.1
December	1 306.1	438.9	1 745.0	126.1	1 871.2	6.7	65.3
2002							
January	1 274.3	449.1	1 723.4	131.0	1 854.4	7.1	64.6
February	1 265.0	466.3	1 731.3	129.1	1 860.4	6.9	64.7
BARWON-WESTERN DISTRICT STATISTICAL REGION							
2000							
December	119.4	52.7	172.1	10.0	182.1	5.5	62.1
2001							
January	118.3	41.9	160.3	8.8	169.1	5.2	59.2
February	123.4	47.7	171.1	12.8	183.9	6.9	62.7
March	120.1	42.8	162.9	11.4	174.3	6.5	62.0
April	125.8	48.7	174.5	11.0	185.5	5.9	62.8
May	116.5	51.6	168.1	9.0	177.1	5.1	61.9
June	113.0	57.8	170.8	7.7	178.5	4.3	63.1
July	115.8	56.0	171.8	8.6	180.3	4.8	62.9
August	111.9	55.0	166.9	8.8	175.8	5.0	60.3
September	115.8	58.6	174.4	5.7	180.1	3.1	61.5
October	118.1	54.9	173.0	10.2	183.2	5.6	62.2
November	118.3	56.5	174.8	9.3	184.1	5.0	62.0
December	121.2	55.5	176.7	10.7	187.4	5.7	63.5
2002							
January	127.4	50.4	177.7	7.9	185.6	4.3	61.8
February	125.1	48.1	173.3	11.5	184.8	6.2	62.0
CENTRAL HIGHLANDS-WIMMERA STATISTICAL REGION							
2000							
December	73.8	22.0	95.8	8.3	104.1	8.0	64.2
2001							
January	67.2	26.3	93.5	9.4	103.0	9.2	63.5
February	68.9	29.1	98.1	6.7	104.8	6.4	64.9
March	66.3	33.3	99.6	7.1	106.7	6.7	64.1
April	60.3	33.1	93.5	4.8	98.2	4.8	61.6
May	58.2	32.4	90.6	5.4	96.1	5.7	60.8
June	59.5	33.9	93.4	6.9	100.3	6.9	61.0
July	54.8	36.6	91.4	6.0	97.4	6.1	58.5
August	52.1	35.6	87.7	8.7	96.4	9.0	59.7
September	54.9	31.7	86.5	9.6	96.1	9.9	60.9
October	53.6	34.5	88.2	8.5	96.7	8.8	58.7
November	53.9	28.4	82.3	7.0	89.3	7.8	56.7
December	58.2	29.3	87.5	7.2	94.8	7.6	59.1
2002							
January	58.3	27.7	86.1	7.8	93.9	8.4	59.4
February	61.0	27.2	88.2	6.5	94.7	6.9	59.1

For footnotes see end of table.

...continued

Month	Employed			Unemployed '000	Labour force '000	Unemployment rate %	Participation rate %
	Full-time '000	Part-time '000	Total '000				
LODDON-MALLEE STATISTICAL REGION							
2000							
December	81.0	34.5	115.5	9.4	124.9	7.5	63.0
2001							
January	75.3	38.7	114.0	12.4	126.4	9.8	63.4
February	78.2	35.7	113.9	9.8	123.7	7.9	62.6
March	75.9	37.8	113.7	9.3	123.0	7.5	62.0
April	77.5	36.0	113.5	9.8	123.3	8.0	62.9
May	73.7	35.2	108.9	10.0	118.9	8.4	61.1
June	74.4	35.9	110.4	9.9	120.2	8.2	61.5
July	72.0	34.8	106.8	10.0	116.8	8.6	61.6
August	77.7	33.1	110.8	11.0	121.9	9.1	63.2
September	77.3	37.6	114.9	11.9	126.8	9.4	64.7
October	79.8	37.9	117.7	9.2	126.9	7.3	65.5
November	82.5	36.4	118.9	7.8	126.7	6.1	63.7
December	84.4	35.3	119.6	7.7	127.4	6.0	64.8
2002							
January	82.5	34.1	116.6	8.8	125.4	7.0	64.9
February	80.9	37.6	118.6	8.9	127.5	7.0	64.9
GOULBURN-OVENS-MURRAY STATISTICAL REGION							
2000							
December	100.2	36.5	136.7	9.6	146.3	6.6	66.4
2001							
January	98.7	38.6	137.4	11.6	149.0	7.8	67.5
February	94.5	36.1	130.6	7.5	138.1	5.4	65.1
March	89.7	40.1	129.8	9.5	139.3	6.8	64.1
April	86.9	36.8	123.7	7.5	131.2	5.7	62.3
May	92.6	37.8	130.4	9.2	139.6	6.6	62.7
June	95.6	40.8	136.4	6.3	142.7	4.4	64.3
July	94.3	44.1	138.4	7.0	145.4	4.8	63.6
August	90.0	46.0	135.9	7.7	143.7	5.4	62.9
September	96.1	37.6	133.7	7.1	140.8	5.1	62.2
October	95.5	39.4	134.9	6.3	141.2	4.5	63.1
November	95.3	42.9	138.1	9.0	147.1	6.1	65.6
December	96.1	39.3	135.4	5.4	140.8	3.8	62.3
2002							
January	93.4	35.9	129.3	8.2	137.5	6.0	61.8
February	95.2	35.4	130.6	8.9	139.4	6.4	64.3
ALL GIPPSLAND STATISTICAL REGION							
2000							
December	60.2	26.1	86.3	7.7	94.0	8.2	59.0
2001							
January	65.1	23.2	88.3	8.6	96.9	8.9	58.1
February	62.0	24.1	86.1	12.6	98.7	12.8	57.5
March	62.9	26.0	88.8	10.1	98.9	10.2	56.9
April	62.5	28.7	91.1	7.7	98.8	7.8	55.9
May	67.3	29.3	96.6	8.6	105.2	8.1	59.1
June	61.5	30.4	91.9	8.3	100.3	8.3	57.1
July	61.5	26.5	88.0	7.9	95.9	8.2	56.9
August	60.6	28.4	88.9	7.7	96.6	7.9	58.5
September	60.1	30.2	90.2	7.4	97.6	7.6	58.7
October	58.9	29.9	88.8	6.5	95.2	6.8	58.7
November	56.2	29.7	85.9	5.8	91.7	6.4	56.8
December	57.0	28.8	85.8	4.0	89.7	4.4	55.8
2002							
January	57.4	25.3	82.7	6.5	89.2	7.3	54.3
February	58.4	24.1	82.5	8.9	91.5	9.8	54.9

(a) Civilian population aged 15 years and over. From April 2001 the Labour Force Survey was conducted using a redesigned questionnaire containing additional data items and some minor definitional changes. Although the impact on core labour force series has been minor, revisions have been made to estimates previously published to ensure continuity. The revised series were released on 3 May 2001. *Information Paper: Implementing the Redesigned Labour Force Survey Questionnaire* (Cat. no. 6295.0) contains further information about the questionnaire changes and the revised series. For details on the content of the redesigned questionnaire, see *Information Paper: Questionnaires Used in the Labour Force Survey* (Cat. no. 6232.0).

## 8

## EMPLOYED PERSONS, BY INDUSTRY(a), FEBRUARY 2002

Industry division	Males	Females	Persons
	'000	'000	'000
Agriculture, forestry and fishing	64.4	34.9	99.3
Mining	4.1	0.8	4.9
Manufacturing	249.4	94.9	344.3
Electricity, gas and water supply	12.2	2.6	14.8
Construction	165.6	21.9	187.5
Wholesale trade	65.2	31.1	96.3
Retail trade	174.3	184.6	358.9
Accommodation, cafes and restaurants	39.6	52.6	92.2
Transport and storage	71.5	20.1	91.6
Communication services	35.4	18.2	53.5
Finance and insurance	43.6	47.8	91.4
Property and business services	161.6	121.0	282.7
Government administration and defence	40.7	37.8	78.5
Education	55.5	103.5	159.1
Health and community services	49.1	173.1	222.2
Cultural and recreational services	31.7	29.5	61.2
Personal and other services	45.6	40.5	86.1
<b>Total</b>	<b>1 309.5</b>	<b>1 014.9</b>	<b>2 324.4</b>

(a) From April 2001 the Labour Force Survey was conducted using a redesigned questionnaire containing additional items and some minor definitional changes. Revisions have been made to core labour force estimates to ensure continuity. However, counts of employed persons by industry, being non-core data items, have not been revised. Thus data from April 2001 onwards are not strictly comparable with earlier unrevised data. Further information is contained in footnotes to tables 6 and 7.

Source: ABS data available on request, Labour Force.

## 9

## PART-TIME WORKERS(a), BY SEX

Month	Preferred to work more hours					
	Preferred not to work more hours	Had actively looked for more hours and were available to work more hours	Wanted to work full-time	All part-time workers who preferred to work more hours	Total part-time workers	Proportion of part-time workers preferring to work more hours
	'000	'000	'000	'000	'000	%
MALES						
2001						
May	127.4	23.8	18.6	58.4	185.8	31.4
August	126.0	24.4	19.6	64.2	190.2	33.8
November	109.1	21.8	18.1	68.9	177.9	38.7
2002						
February	114.8	24.8	19.3	61.7	176.4	34.9
FEMALES						
2001						
May	356.2	33.3	19.8	93.2	449.4	20.7
August	365.1	33.8	20.4	99.3	464.4	21.4
November	340.4	34.0	20.5	121.4	461.8	26.3
2002						
February	357.1	38.1	21.6	105.1	462.3	22.7
PERSONS						
2001						
May	483.6	57.1	38.4	151.6	635.1	23.9
August	491.2	58.2	40.0	163.5	654.7	25.0
November	449.5	55.8	38.6	190.2	639.7	29.7
2002						
February	471.9	62.9	40.9	166.8	638.7	26.1

(a) Civilian population aged 15 years and over. From April 2001 the Labour Force Survey was conducted using a redesigned questionnaire containing additional data items and some minor definitional changes. For details on the content of the redesigned questionnaire, see *Information Paper: Questionnaires Used in the Labour Force Survey* (Cat. no. 6232.0). Additional quarters of data will be available in future issues.

Source: ABS data available on request, Labour Force.

## DURATION OF UNEMPLOYMENT, BY SEX AND MAJOR STATISTICAL REGION

Month	Melbourne MSR			Balance of Victoria MSR			Victoria		
	Males '000	Females '000	Persons '000	Males '000	Females '000	Persons '000	Males '000	Females '000	Persons '000
NUMBER OF PERSONS UNEMPLOYED FOR UNDER 13 WEEKS									
2001									
April	31.4	26.9	58.3	8.5	8.1	16.6	39.9	35.0	75.0
May	25.6	25.6	51.3	9.8	6.9	16.7	35.4	32.5	68.0
June	24.3	22.8	47.1	8.7	6.4	15.1	33.0	29.2	62.2
July	28.9	24.6	53.5	8.0	4.4	12.4	36.9	28.9	65.9
August	30.8	22.9	53.7	9.9	5.6	15.5	40.7	28.6	69.3
September	32.3	25.2	57.5	9.8	7.9	17.6	42.1	33.0	75.1
October	36.0	24.5	60.4	9.4	6.3	15.6	45.3	30.7	76.1
November	29.4	23.5	52.9	9.9	7.8	17.7	39.3	31.3	70.6
December	34.7	31.8	66.5	8.3	5.7	14.0	43.0	37.5	80.5
2002									
January	43.6	30.2	73.8	10.0	8.5	18.5	53.6	38.7	92.3
February	35.5	31.5	67.0	12.5	10.2	22.7	47.9	41.8	89.7
NUMBER OF PERSONS UNEMPLOYED FOR 13 AND UNDER 52 WEEKS									
2001									
April	20.9	14.2	35.1	5.1	5.1	10.2	26.0	19.2	45.3
May	22.2	19.1	41.3	6.6	6.7	13.4	28.9	25.8	54.7
June	18.1	17.4	35.4	7.0	5.2	12.2	25.1	22.6	47.7
July	19.3	15.7	35.0	8.2	7.3	15.5	27.5	23.0	50.5
August	19.8	14.8	34.5	9.6	7.4	17.1	29.4	22.2	51.6
September	22.6	15.2	37.7	11.2	*4.3	15.5	33.8	19.5	53.2
October	22.8	19.0	41.8	9.1	*4.3	13.4	31.9	23.3	55.2
November	22.2	15.1	37.3	6.9	*4.0	10.9	29.1	19.1	48.2
December	20.3	16.3	36.7	5.6	*3.4	9.0	25.9	19.7	45.6
2002									
January	18.7	14.5	33.2	7.0	*4.3	11.4	25.8	18.8	44.6
February	16.4	18.3	34.7	8.1	*3.6	11.7	24.5	21.9	46.4
NUMBER OF PERSONS UNEMPLOYED FOR 52 WEEKS AND OVER									
2001									
April	13.2	8.6	21.8	9.6	*4.3	13.9	22.8	12.9	35.7
May	11.7	10.9	22.6	6.8	5.3	12.2	18.6	16.2	34.8
June	15.7	9.1	24.8	6.2	5.6	11.7	21.9	14.6	36.5
July	12.4	7.4	19.7	5.8	5.7	11.5	18.2	13.0	31.2
August	12.7	7.1	19.8	6.3	5.1	11.3	18.9	12.2	31.1
September	12.9	8.5	21.4	4.9	*3.6	8.5	17.8	12.1	29.9
October	11.6	10.3	21.9	7.9	*3.7	11.6	19.5	14.0	33.5
November	8.8	9.4	18.2	6.2	*4.1	10.3	15.0	13.5	28.5
December	11.3	11.7	23.0	7.5	4.6	12.1	18.8	16.3	35.1
2002									
January	13.8	10.2	24.0	5.4	*3.9	9.4	19.2	14.1	33.3
February	16.4	11.0	27.4	6.2	*4.2	10.4	22.6	15.2	37.8
TOTAL UNEMPLOYED PERSONS									
2001									
April	65.5	49.7	115.2	23.3	17.5	40.8	88.8	67.1	155.9
May	59.6	55.6	115.2	23.2	19.0	42.2	82.8	74.6	157.4
June	58.1	49.2	107.3	21.9	17.2	39.1	80.0	66.4	146.4
July	60.6	47.6	108.2	22.0	17.3	39.4	82.6	64.9	147.5
August	63.2	44.8	108.1	25.8	18.2	43.9	89.0	63.0	152.0
September	67.8	48.8	116.7	25.9	15.7	41.6	93.7	64.6	158.3
October	70.3	53.7	124.1	26.4	14.3	40.6	96.7	68.0	164.7
November	60.4	48.0	108.4	23.0	15.9	38.9	83.4	63.9	147.3
December	66.3	59.8	126.1	21.4	13.7	35.1	87.7	73.5	161.2
2002									
January	76.1	54.9	131.0	22.5	16.7	39.2	98.6	71.6	170.2
February	68.3	60.8	129.1	26.8	18.0	44.8	95.0	78.9	173.9

Source: ABS data available on request, Labour Force.

# 11

## JOB VACANCIES

Month	Victoria				Australia
	Job vacancies '000	Sector		Job vacancy rate	Job vacancy rate
		Public	Private		
		'000	'000	%	%
2000					
November	35.2	5.0	30.2	1.69	1.46
2001					
February	29.5	3.7	25.7	1.41	1.30
May	23.8	3.2	20.6	1.11	1.10
August	28.7	3.8	24.9	1.39	1.24
November	25.3	3.0	22.3	1.23	1.12
2002					
February	29.0	3.9	25.1	1.38	1.16

Source: Job Vacancies, Australia (Cat. no. 6354.0).

# 12

## INDUSTRIAL DISPUTES CAUSING STOPPAGE OF WORK

Month	Disputes		Employees involved				Working days lost			
	Commenced in period	Total	Newly involved	Total	Manufacturing	Construction	Education, health, community services	Other industries	Total	Rate per thousand employees, 12 months ended
2000										
October	16	24	9.6	11.1	7.9	8.7	—	0.2	16.8	83
November	22	28	2.2	2.6	5.4	0.9	—	0.8	7.1	73
December	15	19	2.3	2.6	3.2	0.4	0.2	0.5	4.2	71
2001										
January	18	21	2.6	2.7	2.2	1.3	—	0.1	3.6	69
February	20	23	2.7	2.9	9.2	1.5	—	0.1	10.8	64
March	22	25	11.1	11.8	3.6	8.2	—	1.5	13.3	60
April	20	25	1.8	2.8	1.6	0.3	—	1.8	3.7	57
May	17	20	7.8	8.3	6.8	4.3	—	2.3	13.5	58
June	17	21	2.1	2.9	9.0	1.6	—	0.1	10.8	58
July	24	34	4.7	5.4	12.9	1.0	0.2	0.5	14.9	62
August	18	25	7.1	8.1	2.6	10.4	0.9	—	14.3	62
September	r 23	r 29	r 3.5	r 3.7	r 1.1	r 1.0	0.1	0.6	r 4.0	58
October	21	25	11.2	11.8	8.7	12.7	—	0.3	21.7	60
November	28	38	5.2	7.3	11.6	3.3	—	0.4	15.4	64
December	8	17	1.9	4.2	3.0	0.9	—	1.1	5.0	65

Source: Industrial Disputes, Australia (Cat. no. 6321.0); ABS data available on request, Industrial Disputes.



## AVERAGE WEEKLY EARNINGS OF EMPLOYEES, BY SEX: ALL SERIES

	Males			Females			Persons		
	Full-time ordinary time earnings	Full-time adult total earnings	All males total earnings	Full-time ordinary time earnings	Full-time adult total earnings	All females total earnings	Full-time ordinary time earnings	Full-time adult total earnings	All employees total earnings
ORIGINAL(\$)									
2000									
August	813.10	861.40	741.80	724.10	740.40	513.80	781.60	818.60	632.30
November	808.70	857.00	737.80	716.20	732.70	509.80	776.20	813.30	627.60
2001									
February	826.20	865.60	748.00	736.60	749.90	533.10	794.00	824.00	645.20
May	836.50	883.60	761.10	733.40	747.30	519.60	799.60	834.90	644.10
August	853.80	899.10	770.50	749.10	763.60	527.40	816.80	851.30	653.60
November	864.00	912.90	786.40	762.00	777.20	526.40	829.30	866.80	663.20
SEASONALLY ADJUSTED(\$)									
2000									
August	816.00	864.30	747.80	723.80	740.40	514.20	782.10	819.40	635.60
November	809.80	852.60	732.50	714.80	729.30	512.40	775.80	809.80	626.80
2001									
February	822.70	866.50	742.70	738.10	752.70	529.60	793.90	825.80	640.50
May	836.10	884.40	766.00	734.00	748.20	520.10	799.80	836.00	646.50
August	856.70	902.00	776.60	748.50	763.30	527.50	817.10	852.00	656.80
November	865.30	908.40	780.80	760.60	773.80	529.10	829.10	863.10	662.50
TREND ESTIMATES(\$)									
2000									
August	809.00	856.50	741.30	716.50	732.60	511.50	775.90	812.30	630.70
November	814.40	859.50	740.40	723.90	739.20	518.50	782.20	816.90	633.80
2001									
February r	823.30	868.10	746.50	730.40	744.90	522.20	790.60	824.20	638.30
May r	837.30	883.10	760.80	738.70	753.10	524.70	802.40	836.70	647.00
August r	853.10	898.70	774.60	748.60	762.70	526.60	815.90	850.70	655.70
November	867.40	911.70	785.00	757.70	771.40	527.70	828.40	863.30	662.60
PERCENTAGE CHANGE (FROM AUGUST 2001 TO NOVEMBER 2001)									
Original	1.2	1.5	2.1	1.7	1.8	-0.2	1.5	1.8	1.5
Seasonally adjusted	1.0	0.7	0.5	1.6	1.4	0.3	1.5	1.3	0.9
Trend	1.7	1.4	1.3	1.2	1.1	0.2	1.5	1.5	1.1
PERCENTAGE CHANGE (FROM NOVEMBER 2000 TO NOVEMBER 2001)									
Original	6.8	6.5	6.6	6.4	6.1	3.3	6.8	6.6	5.7
Seasonally adjusted	6.9	6.5	6.6	6.4	6.1	3.3	6.9	6.6	5.7
Trend	6.5	6.1	6.0	4.7	4.4	1.8	5.9	5.7	4.5

Source: Average Weekly Earnings, Australia (Cat. no. 6302.0).

# 14

## WAGE COST INDEXES(a)

Quarter Ended	Total hourly rates of pay excluding bonuses		Ordinary time hourly rates of pay excluding bonuses	
	Index number	% change from previous period	Index number	% change from previous period
1997-98	101.1	. .	101.1	. .
1998-99	104.2	3.1	104.1	3.0
1999-2000	107.2	2.9	107.1	2.9
2000-01	110.8	3.4	110.8	3.5
1998				
December	103.8	0.6	103.8	0.6
1999				
March	104.5	0.7	104.5	0.7
June	105.1	0.6	105.0	0.5
September	106.1	1.0	106.1	1.0
December	106.8	0.7	106.7	0.6
2000				
March	107.6	0.7	107.5	0.7
June	108.3	0.7	108.2	0.7
September	109.4	1.0	109.4	1.1
December	110.4	0.9	110.3	0.8
2001				
March	111.2	0.7	111.2	0.8
June	112.2	0.9	112.1	0.8
September	113.6	1.2	113.5	1.2
December	114.2	0.5	114.2	0.6

(a) Base of each index: September quarter 1997 = 100.0.

Source: Wage Cost Index, Australia (Cat. no. 6345.0).

# 15

## CONSUMER PRICE INDEX(a), BY GROUP: MELBOURNE

Group	Dec qtr 2000	Mar qtr 2001	Jun qtr 2001	Sep qtr 2001	Dec qtr 2001	% change from Sep qtr 2001 to Dec qtr 2001		% change from Dec qtr 2000 to Dec qtr 2001	
						Melbourne	Weighted average of eight capital cities	Melbourne	Weighted average of eight capital cities
Food	132.8	136.8	138.8	140.1	143.1	2.1	2.6	7.8	7.5
Alcohol and tobacco	189.1	194.8	198.0	200.7	201.2	0.2	0.1	6.4	5.0
Clothing and footwear	115.4	112.5	113.2	112.7	112.9	0.2	1.4	-2.2	-0.4
Housing	98.3	99.1	98.8	101.4	102.1	0.7	0.6	3.9	2.8
Household furnishings, supplies and services	117.1	117.8	119.5	119.0	121.0	1.7	1.2	3.3	3.4
Health	172.8	177.8	177.7	177.9	177.7	-0.1	-0.2	2.8	2.6
Transportation	135.6	136.2	138.6	135.6	135.8	0.1	-0.7	0.1	-0.2
Communication	104.6	104.3	103.7	103.5	105.3	1.7	1.7	0.7	0.5
Recreation	127.4	126.1	125.1	125.7	127.1	1.1	1.7	-0.2	2.3
Education	179.8	187.6	187.6	187.7	187.8	0.1	0.1	4.4	4.3
Miscellaneous	159.4	160.2	159.9	161.4	160.9	-0.3	0.1	0.9	3.4
<b>All groups</b>	<b>130.8</b>	<b>132.2</b>	<b>133.0</b>	<b>133.6</b>	<b>134.8</b>	<b>0.9</b>	<b>0.9</b>	<b>3.1</b>	<b>3.1</b>

(a) Base of each index: 1989-1990 = 100.0.

Source: Consumer Price Index, Australia (Cat. no. 6401.0).

# 16

## HOUSE PRICE INDEXES(a): MELBOURNE AND WEIGHTED AVERAGE OF EIGHT CAPITAL CITIES

Period	Melbourne				Weighted average of eight capital cities			
	Established homes		Project homes		Established homes		Project homes	
	Index number	% change from previous period	Index number	% change from previous period	Index number	% change from previous period	Index number	% change from previous period
1998–99	126.8	10.9	112.5	3.6	130.4	6.2	113.1	2.5
1999–2000	144.6	14.0	122.0	8.4	142.3	9.1	120.7	6.7
2000–01	159.1	10.0	136.9	12.2	152.8	7.4	134.9	11.8
2000								
September	143.6	-5.3	135.7	8.7	147.1	-0.1	134.3	9.3
December	157.5	9.7	136.4	0.5	150.6	2.4	134.8	0.4
2001								
March	161.8	2.7	138.0	1.2	153.9	2.2	135.1	0.2
June	173.3	7.1	137.6	-0.3	159.4	3.6	135.4	0.2
September	187.2	8.0	140.0	1.7	167.7	5.2	136.4	0.7
December	189.9	1.4	142.6	1.9	174.0	3.8	137.6	0.9

(a) Base of each index: 1988–1989 = 100.0.

Source: House Price Indexes (Cat. no. 6416.0).

# 17

## PRICE INDEXES OF MATERIALS USED IN BUILDING(a): MELBOURNE

Group					% change from Sep qtr 2001 to Dec qtr 2001		% change from Dec qtr 2000 to Dec qtr 2001	
	Mar qtr 2001	Jun qtr 2001	Sep qtr 2001	Dec qtr 2001	Melbourne	Weighted average of six state capital cities	Melbourne	Weighted average of six state capital cities
<b>House building (all groups)</b>	<b>122.8</b>	<b>123.1</b>	<b>124.3</b>	<b>124.4</b>	<b>0.1</b>	<b>0.4</b>	<b>0.8</b>	<b>0.6</b>
Other than house building								
Structural timber	122.0	119.7	122.0	123.4	1.1	1.7	-0.3	-2.4
Clay bricks	130.7	130.6	130.8	131.1	0.2	0.2	0.3	0.2
Ready mixed concrete	107.1	107.2	106.4	105.6	-0.8	-0.4	-3.6	-3.8
Precast concrete products	146.6	149.2	151.9	151.9	—	0.4	6.8	2.3
Steel decking and cladding	113.7	111.9	111.5	111.1	-0.4	-0.3	-1.4	-0.3
Structural steel	100.2	102.0	101.1	101.5	0.4	0.7	1.7	2.2
Reinforcing steel bar, mesh, etc.	90.3	88.4	88.6	88.5	-0.1	-0.8	-0.3	1.3
Aluminium windows	113.3	114.5	114.5	117.0	2.2	1.0	3.4	2.5
Fabricated steel products	126.1	126.0	126.8	128.8	1.6	1.7	2.3	3.3
Builders' hardware	134.2	138.4	136.0	136.2	0.1	-0.5	1.5	4.1
Sand and aggregate	125.5	125.5	126.2	126.2	—	-0.3	6.4	2.7
Carpet	96.1	93.7	91.7	93.5	2.0	0.6	-1.0	1.4
Paint and other coatings	167.3	169.0	177.3	177.3	—	0.5	5.2	0.9
Non-ferrous pipes and fittings	131.1	131.5	133.0	133.8	0.6	1.7	4.8	1.1
All plumbing materials	131.2	132.9	134.2	133.7	-0.4	0.9	2.1	1.5
All groups excluding electrical materials and mechanical services	115.7	116.2	116.4	117.0	0.5	0.4	1.6	1.4
All electrical materials	117.1	118.8	118.3	117.7	-0.5	0.4	1.6	1.9
All mechanical services	117.3	118.1	119.7	120.2	0.4	0.9	2.6	1.9
<b>All groups</b>	<b>115.7</b>	<b>116.4</b>	<b>116.8</b>	<b>117.3</b>	<b>0.4</b>	<b>0.5</b>	<b>1.7</b>	<b>1.5</b>

(a) Base of each index: 1989–1990 = 100.0.

Source: Producer Price Indexes, Australia (Cat. no. 6427.0); ABS data available on request, Producer Price Indexes.

<i>Manufacturing subdivision or group</i>	<i>Sep qtr 2000</i>	<i>Dec qtr 2000</i>	<i>Mar qtr 2001</i>	<i>Jun qtr 2001</i>	<i>Sep qtr 2001</i>	<i>Dec qtr 2001</i>	<i>% change from Sep qtr 2001 to Dec qtr 2001</i>	<i>% change from Dec qtr 2000 to Dec qtr 2001</i>
Food, beverages and tobacco	116.8	118.3	120.8	128.0	135.7	138.8	2.3	17.3
Textiles, clothing, footwear & leather								
Textiles and textile products	98.7	100.7	102.9	106.7	105.2	104.2	-1.0	3.5
Knitting mills and clothing	102.9	107.0	106.3	109.7	109.5	110.5	0.9	3.3
Footwear	112.1	120.1	122.6	126.3	127.8	132.0	3.3	9.9
Leather and leather products	103.4	106.9	108.4	109.9	102.1	107.1	4.9	0.2
Wood & paper products								
Sawmilling and timber products	129.0	131.7	133.1	137.4	136.5	137.1	0.4	4.1
Paper and paper products	107.1	110.3	111.0	111.6	110.1	111.5	1.3	1.1
Printing and publishing	112.2	116.7	117.9	119.2	118.6	118.8	0.2	1.8
Petroleum, coal, chemical & assoc. products								
Petroleum and coal products	205.9	240.5	204.3	220.1	197.7	168.8	-14.6	-29.8
Chemicals	122.5	124.8	126.9	130.8	122.3	123.4	0.9	-1.1
Rubber and plastics	119.6	122.4	125.4	128.2	124.8	122.9	-1.5	0.4
Non-metallic mineral products	111.1	110.8	111.5	112.5	112.1	112.7	0.5	1.7
Metal products								
Basic mineral products	97.6	102.3	101.7	105.2	106.0	105.3	-0.7	2.9
Fabricated metal products	109.7	111.9	112.0	113.1	111.3	110.3	-0.9	-1.4
Machinery and equipment								
Transport equipment and parts	123.1	125.3	125.2	127.2	124.6	125.0	0.3	-0.2
Electronic equipment & other machinery	106.1	107.9	108.1	109.8	107.3	107.3	—	-0.6
Other manufacturing	123.4	126.3	125.7	126.9	125.2	125.5	0.2	-0.6
<b>All manufacturing</b>	<b>127.8</b>	<b>133.9</b>	<b>130.3</b>	<b>137.7</b>	<b>134.5</b>	<b>132.0</b>	<b>-1.9</b>	<b>-1.4</b>

(a) Base of each index: 1989–1990 = 100.0.

Source: *Producer Price Indexes, Australia (Cat. no. 6427.0)*.

<i>Manufacturing subdivision or group</i>	<i>Sep qtr 2000</i>	<i>Dec qtr 2000</i>	<i>Mar qtr 2001</i>	<i>Jun qtr 2001</i>	<i>Sep qtr 2001</i>	<i>Dec qtr 2001</i>	<i>% change from Sep qtr 2001 to Dec qtr 2001</i>	<i>% change from Dec qtr 2000 to Dec qtr 2001</i>
Food, beverages and tobacco	127.2	129.3	132.0	136.9	137.6	140.6	2.2	8.7
Textiles, clothing, footwear & leather								
Textiles and textile products	106.4	108.0	109.4	110.5	110.3	109.3	-0.9	1.2
Knitting mills, clothing, footwear and leather	119.1	120.6	121.2	121.9	121.7	122.0	0.2	1.2
Wood & paper products								
Log sawmilling and other wood products	131.3	131.9	130.1	129.5	130.5	132.0	1.1	0.1
Paper and paper products	113.1	115.3	115.5	115.6	115.9	115.2	-0.6	-0.1
Printing, publishing and recorded media	151.5	152.1	152.4	153.6	155.7	155.1	-0.4	2.0
Petroleum, coal, chemical & assoc. products								
Petroleum and coal products	190.5	207.0	174.5	188.8	170.4	155.4	-8.8	-24.9
Chemicals	114.0	116.1	116.1	116.8	115.4	113.7	-1.5	-2.1
Rubber and plastics	116.2	118.4	120.0	121.6	122.9	123.9	0.8	4.6
Non-metallic mineral products	117.8	118.0	117.7	117.7	117.6	117.8	0.2	-0.2
Metal products								
Basic metal products	112.0	117.4	115.6	116.4	110.9	107.4	-3.2	-8.5
Fabricated metal products	116.6	116.3	116.7	117.2	118.0	118.3	0.3	1.7
Machinery and equipment								
Transport equipment and parts	121.5	123.9	124.7	126.3	127.5	128.2	0.5	3.5
Electronic equipment and other machinery	110.6	111.8	112.4	114.2	114.2	114.5	0.3	2.4
Other manufacturing	126.8	128.9	129.2	130.4	131.0	130.6	-0.3	1.3
<b>All manufacturing</b>	<b>126.2</b>	<b>129.3</b>	<b>127.7</b>	<b>130.7</b>	<b>129.2</b>	<b>128.4</b>	<b>-0.6</b>	<b>-0.7</b>

(a) Base of each index: 1989-1990 = 100.0.

Source: *Producer Price Indexes, Australia (Cat. no. 6427.0)*.

<i>Period</i>	<i>Live animals, animal products</i>	<i>Vegetable products</i>	<i>Products of chemical or allied industries</i>	<i>Textiles and textile articles</i>	<i>Gold, diamonds and coin</i>	<i>Motor vehicles, aircraft and vessels</i>	<i>All groups</i>
1998-99	100.7	90.9	95.6	61.4	93.1	113.0	95.7
1999-2000	107.8	83.9	101.5	62.5	93.5	113.2	98.0
2000-01	126.4	99.8	120.1	74.3	106.0	127.0	114.8
1999							
March	99.6	88.6	93.5	58.8	92.5	111.6	93.1
June	98.5	83.9	89.8	60.0	86.2	110.2	90.6
September	102.7	80.8	93.2	60.5	83.1	110.5	91.5
December	105.0	83.4	96.3	62.1	94.4	111.5	95.4
2000							
March	107.8	83.1	104.2	60.2	96.0	112.4	99.5
June	115.6	88.1	112.4	67.3	100.5	118.4	105.7
September	116.6	90.9	114.9	69.6	102.1	121.0	107.9
December	124.1	98.4	122.5	71.9	107.9	128.0	115.8
2001							
March	127.5	102.9	121.0	74.8	105.9	127.8	115.3
June	137.2	107.1	121.9	80.8	108.1	131.3	120.3
September	140.1	107.2	118.6	79.4	112.6	132.6	119.2
December	146.8	109.5	115.3	75.7	113.1	133.3	117.2

(a) Base of each index: 1989-1990 = 100.0.

(b) AHECC Sections are 01, 02, 06, 11, 14 and 17.

Source: *International Trade Price Indexes, Australia (Cat. no. 6457.0)*.

# 21

## BUSINESS EXPECTATIONS, SHORT-TERM OUTLOOK(a)

Business Performance Indicators	Expected aggregate change over the previous quarter								Jun qtr 2002	
	Jun qtr 2000	Sep qtr 2000	Dec qtr 2000	Mar qtr 2001	Jun qtr 2001	Sep qtr 2001	Dec qtr 2001	Mar qtr 2002	Victoria	Australia
	%	%	%	%	%	%	%	%	%	%
<b>Trading performance</b>										
Operating income	1.4	1.2	1.7	-2.6	-0.4	-0.3	1.8	-3.5	0.9	1.3
Selling prices	—	0.2	—	—	-0.4	-0.4	-0.3	0.5	0.8	0.2
Profit	9.9	3.9	5.1	-30.5	-6.6	-5.1	10.4	-31.9	6.2	8.4
<b>Investment</b>										
Capital expenditure	4.5	1.7	4.0	1.6	4.8	3.2	-2.0	1.6	5.3	2.8
Inventories	-0.3	-1.0	0.2	-1.6	-0.7	-1.9	-1.1	-0.9	-0.7	-1.2
<b>Employment</b>										
Full-time equivalent	—	-0.3	-0.8	-1.5	-0.5	-0.3	-1.4	-1.0	-0.6	-0.7

(a) Short-term outlook refers to the expected change between the calendar quarter in which the data are reported and the following calendar quarter. For example, the estimates for March quarter 2002 reflect the expectations of businesses during June quarter 2002 for future performance over the following calendar quarter.

Source: Australian Business Expectations (Cat. no. 5250.0).

# 22

## BUSINESS EXPECTATIONS, MEDIUM-TERM OUTLOOK(a)

Business Performance Indicators	Expected aggregate change over the same quarter of the previous year								Mar qtr 2003	
	Mar qtr 2001	Jun qtr 2001	Sep qtr 2001	Dec qtr 2001	Mar qtr 2002	Jun qtr 2002	Sep qtr 2002	Dec qtr 2002	Victoria	Australia
	%	%	%	%	%	%	%	%	%	%
<b>Trading performance</b>										
Operating income	2.3	2.0	2.1	1.4	1.9	0.7	0.7	1.3	2.3	2.0
Selling prices	1.2	1.3	1.0	0.7	0.2	0.3	-0.2	1.8	1.8	0.9
Profit	13.1	11.6	7.2	-5.4	5.7	4.8	9.1	6.8	14.0	10.8
<b>Investment</b>										
Capital expenditure	3.2	2.4	0.4	2.3	5.5	3.5	-2.0	3.1	3.1	5.1
Inventories	-0.1	-0.7	-1.2	-1.3	-0.1	-1.8	-2.2	-1.4	-0.5	-0.9
<b>Employment</b>										
Full-time equivalent	0.3	-0.6	0.3	0.1	0.6	-0.9	-0.9	-1.0	0.2	0.1

(a) Medium-term outlook refers to the expected change between the calendar quarter in which the data are reported and the same calendar quarter in the following year. For example, the estimates for March quarter 2003 reflect the expectations of businesses during March quarter 2002 for future performance over the following four calendar quarters.

Source: Australian Business Expectations (Cat. no. 5250.0).

## 23

## PRIVATE NEW CAPITAL EXPENDITURE, BY TYPE OF ASSET AND INDUSTRY: ORIGINAL

Period	Selected industries				Type of asset		
	Mining	Manufacturing	Other selected industries	Total	New buildings and structures	Equipment, plant and machinery	All assets
	\$m	\$m	\$m	\$m	\$m	\$m	\$m
1998-99	1 234	2 954	7 180	11 368	3 211	8 157	11 368
1999-2000	615	3 363	6 999	10 977	2 761	8 217	10 977
2000-01	363	3 121	6 606	10 090	2 226	7 864	10 090
2000							
September	77	965	1 623	2 665	566	2 099	2 665
December	108	771	1 729	2 607	598	2 010	2 607
2001							
March	81	575	1 528	2 184	436	1 748	2 184
June	97	809	1 727	2 634	626	2 008	2 634
September r	147	573	1 632	2 352	365	1 987	2 352
December	180	792	1 857	2 829	486	2 343	2 829

Source: Private New Capital Expenditure, State Estimates (Cat. no. 5646.0); ABS data available on request, Survey of New Capital Expenditure.

## 24

## PRIVATE NEW CAPITAL EXPENDITURE, BY TYPE OF ASSET: SEASONALLY ADJUSTED AND TREND

Period	Seasonally adjusted				Trend			
	New buildings and structures		Equipment, plant and machinery		All assets		All assets	
	\$m	\$m	\$m	% change from previous period	\$m	\$m	\$m	% change from previous period
1998-99	3 230	8 144	11 376	3.2	3 120	8 147	11 267	0.6
1999-2000	2 760	8 212	10 972	-3.6	2 701	r 8 268	10 968	-2.7
2000-01	2 222	7 875	10 096	-8.0	r 2 172	r 7 851	r 10 024	r -8.6
2000								
September	541	2 107	2 648	-0.6	574	2 012	2 586	-3.1
December	556	1 895	2 451	-7.4	549	r 1 972	r 2 521	r -2.5
2001								
March	492	1 970	2 462	0.4	r 539	r 1 922	r 2 461	r -2.4
June	633	1 902	2 535	3.0	r 511	r 1 945	r 2 456	r -0.2
September	r 348	r 1 994	r 2 342	r -7.6	r 461	r 2 032	r 2 493	r 1.5
October	453	2 209	2 662	13.7	414	2 115	2 529	1.4

Source: Private New Capital Expenditure, State Estimates (Cat. no. 5646.0).

# 25

## BANK DEPOSITS AS AT END OF MONTH: ALL BANKS

Month	Current bearing interest	Current not bearing interest	Term(a)	Investment savings	Other(b)	Total
	\$m	\$m	\$m	\$m	\$m	\$m
2000						
November	20 624	4 759	46 364	6 444	11 354	89 545
December	21 202	5 297	48 545	6 431	11 329	92 804
2001						
January	21 868	4 875	50 326	6 368	11 557	94 993
February	21 383	4 664	54 042	6 318	10 950	97 357
March	21 830	4 692	51 018	6 379	11 987	95 905
April	22 475	4 959	54 515	6 424	11 440	99 815
May	22 698	4 522	58 301	6 473	12 567	104 560
June	24 291	5 002	57 180	6 633	11 664	104 769
July	23 981	4 897	54 534	6 624	11 881	101 916
August	23 865	4 509	57 377	6 614	12 030	104 396
September	24 873	4 818	56 468	6 687	12 923	105 770
October	25 663	5 031	56 533	6 780	14 297	108 304
November	26 389	4 967	54 863	6 792	13 318	106 329
December	27 054	5 521	52 673	6 873	13 410	105 530
2002						
January	27 454	5 084	54 667	6 906	13 057	107 168

(a) Includes certificates of deposit.

(b) Includes statement savings and passbook/school savings.

Source: Unpublished data, Australian Prudential Regulating Authority.

# 26

## COMMERCIAL FINANCE COMMITMENTS(a)

Period	Fixed loan facilities						Revolving credit facilities	Total commercial finance
	Construction	Purchase of real property	Purchase of motor vehicles	Purchase of other plant & equipment	Other(b)	Total		
	\$m	\$m	\$m	\$m	\$m	\$m	\$m	\$m
1998-99	1 329.0	5 597.6	1 189.8	883.7	12 224.5	21 224.7	23 403.1	44 627.9
1999-2000	2 086.6	7 432.2	1 416.8	1 103.2	9 681.8	21 720.7	19 560.3	41 280.9
2000-01	1 846.5	7 529.9	1 647.5	1 032.9	12 558.6	24 615.4	19 569.6	44 185.0
2000								
November	181.7	581.8	124.8	79.2	603.2	1 570.8	1 464.4	3 035.2
December	134.6	527.8	126.3	97.1	745.6	1 631.2	2 353.6	3 984.9
2001								
January	115.7	555.7	110.6	62.0	584.2	1 428.1	1 591.2	3 019.3
February	97.1	516.2	125.5	70.6	1 691.2	2 500.5	1 825.1	4 325.6
March	240.9	659.9	130.0	110.6	1 433.4	2 574.9	1 508.0	4 083.0
April	133.5	617.8	189.0	60.8	487.5	1 488.7	1 369.9	2 858.6
May	74.9	819.3	137.9	90.2	1 470.0	2 592.2	1 834.2	4 426.5
June	141.1	1 106.0	210.5	146.5	1 819.9	3 424.0	1 885.2	5 309.2
July	193.1	934.7	153.4	125.7	619.1	2 025.9	1 233.8	3 259.7
August	129.5	995.5	186.4	93.5	692.2	2 097.2	1 448.8	3 545.9
September	105.4	861.5	160.7	127.1	713.5	1 968.1	1 278.3	3 245.1
October	109.7	952.5	193.8	105.1	991.1	2 352.1	1 694.9	4 047.0
November	155.3	924.1	206.8	98.3	945.4	2 329.9	1 175.1	3 505.1
December	171.5	855.3	210.6	103.7	1 115.4	2 456.6	1 345.9	3 802.5
2002								
January	188.7	955.4	172.3	68.9	563.0	1 948.4	1 282.9	3 231.3

(a) Purchase of plant and equipment has been divided into two categories.

(b) Includes wholesale finance.

Source: ABS data available on request, Commercial Finance.



Period	New cars & station wagons(b)	Used cars & station wagons(b)	New trucks	Used trucks	Trailers, buses & other motor vehicles(c)	Agricultural, Construction & Manu- facturing equipment	Office equipment	Other goods(d)	Total lease finance
	\$m	\$m	\$m	\$m	\$m	\$m	\$m	\$m	\$m
1998-99	661.4	174.7	157.9	26.4	47.9	354.7	502.2	201.7	2 126.9
1999-2000	517.8	120.2	137.0	35.4	33.8	295.6	598.2	140.8	1 878.9
2000-01	353.3	121.9	53.6	18.8	20.4	136.2	595.1	108.6	1 407.9
2000									
November	29.8	10.2	5.6	2.1	1.7	9.1	56.0	9.4	123.9
December	33.2	10.1	7.0	0.7	1.8	12.4	117.1	14.7	196.9
2001									
January	29.8	10.1	3.6	0.6	1.8	14.6	41.5	3.1	105.1
February	22.4	12.0	3.2	0.9	1.3	6.2	25.5	3.5	74.9
March	26.9	12.4	2.3	1.4	2.2	8.5	38.2	4.4	96.1
April	25.5	9.4	3.0	2.1	1.3	6.5	42.8	9.1	99.6
May	28.3	12.7	3.9	2.8	1.7	11.6	37.9	11.5	110.3
June	39.3	16.4	7.3	3.2	4.0	23.5	59.9	14.7	168.3
July	39.0	16.6	7.7	0.8	5.3	16.2	47.8	9.7	143.1
August	40.6	26.0	5.2	1.1	6.4	14.3	58.9	5.2	157.7
September	37.9	14.0	4.7	0.8	2.0	6.8	58.4	5.2	129.6
October	39.5	11.8	6.3	1.4	3.8	20.5	51.3	6.7	141.3
November	42.2	13.8	6.4	1.9	3.3	11.7	96.4	8.9	184.5
December	38.2	13.7	5.9	1.1	1.4	6.7	45.4	7.3	119.6
2002									
January	31.1	9.8	4.2	1.4	1.1	11.6	57.0	5.2	121.2

(a) Excludes leveraged leases.

(b) Includes small passenger vehicles.

(c) Includes coaches and other motor vehicles. Excludes other transport equipment.

(d) Includes other transport equipment.

Source: ABS data available on request, Lease Finance.

Period	Fixed loan facilities					Revolving credit facilities				
	Purchase of motor vehicles (a)	Purchase of individual residential blocks of land	Debt consolidation & refinancing	Other	All personal fixed loans	New and increased credit limits	Cancellations and reductions in credit limits	Total used and unused credit limits available at end of period(b)	Credit used at end of period(b)	Total personal finance
	\$m	\$m	\$m	\$m	\$m	\$m	\$m	\$m	\$m	\$m
1998-99	2 519.9	396.2	938.3	1 346.9	5 201.2	5 861.5	1 820.8	19 155.1	8 137.6	11 062.7
1999-2000	2 663.0	374.1	990.3	1 419.6	5 447.0	8 108.8	2 455.3	25 873.1	10 874.8	13 555.8
2000-01	2 588.1	411.0	1 080.9	1 369.2	5 449.3	8 166.8	3 137.3	28 866.6	12 772.6	13 616.0
2001										
January	207.4	24.5	79.1	98.2	409.2	587.0	283.4	26 425.0	11 807.8	996.1
February	199.3	30.7	88.7	105.9	424.6	555.6	239.8	26 853.0	12 033.2	980.1
March	223.5	40.0	95.4	117.0	475.8	702.8	228.7	27 332.1	12 126.7	1 178.6
April	191.4	37.9	86.7	108.9	424.9	577.9	279.4	27 593.4	12 233.4	1 002.8
May	227.6	53.1	116.5	135.8	533.0	790.8	266.0	28 116.3	12 512.2	1 323.8
June	223.2	50.7	120.5	156.9	551.2	972.9	307.5	28 866.6	12 772.6	1 524.0
July	220.2	51.7	116.6	124.9	513.4	827.4	355.6	29 370.0	12 847.4	1 340.8
August	220.3	56.9	102.1	135.7	515.0	749.9	377.5	29 203.0	12 975.3	1 264.9
September	184.2	46.4	88.6	125.9	445.1	686.9	248.4	29 648.0	13 037.2	1 132.0
October	221.3	54.2	103.4	143.1	522.1	744.7	421.7	29 967.8	13 117.5	1 266.8
November	220.6	48.2	106.1	154.1	529.0	783.4	310.2	30 441.0	13 266.5	1 312.4
December	198.6	46.8	90.1	133.3	468.8	698.5	261.1	30 876.8	13 394.5	1 167.3
2002										
January(c)	223.6	40.8	101.6	129.9	495.9	617.6	344.2	30 545.2	13 403.3	1 113.5

(a) Includes motor cycles.

(b) This data item is a STOCK (i.e. balance at end of month) item. Users of the data should exercise care to ensure that this item is not aggregated.

(c) Normally the change in level of 'Total Available Credit Limits at End of Month' from month to month reflects the net effect of new and increased credit limits and cancellations and reductions. However, in January 2002, one or more lenders revised their total available credit limits. The revisions are not reflected in new and increased credit limits or cancellations and reductions for the latest month, resulting in a significant discrepancy between the change in the level of the series and the net of new and increased credit limits and cancellations and reductions for January 2002.

Source: ABS data available on request, Personal Finance.

Period	Original series		Seasonally adjusted(b)		Trend estimates r	
	no.	\$m	no.	\$m	no.	\$m
VALUE						
1998-99	122 029	14 376	121 700	14 322	121 763	14 304
1999-2000	130 348	17 310	129 796	17 243	130 148	17 276
2000-01	126 452	16 667	126 711	16 687	126 672	16 716
2001						
January	9 104	1 231	10 335	1 354	10 335	1 344
February	9 349	1 230	9 751	1 296	10 416	1 387
March	11 278	1 561	10 724	1 462	10 633	1 449
April	10 197	1 412	10 759	1 510	11 005	1 530
May	13 146	1 821	11 642	1 632	11 504	1 626
June	12 149	1 744	12 018	1 723	12 010	1 723
July	12 705	1 847	12 696	1 853	12 375	1 799
August	13 286	1 919	12 621	1 842	12 539	1 846
September	11 424	1 696	12 761	1 906	12 571	1 872
October	13 419	2 031	12 541	1 901	12 567	1 892
November	12 821	1 944	12 083	1 847	12 588	1 913
December	11 544	1 798	12 418	1 875	12 645	1 938
2002						
January	11 763	1 857	13 337	2 074	12 705	1 959
PERCENTAGE CHANGE (FROM PREVIOUS MONTH)						
2001						
January	-10.3	-7.4	-4.4	-2.2	-0.1	2.0
February	2.7	-0.1	-5.7	-4.3	0.8	3.2
March	20.6	26.9	10.0	12.8	2.1	4.5
April	-9.6	-9.5	0.3	3.3	3.5	5.6
May	28.9	29.0	8.2	8.1	4.5	6.3
June	-7.6	-4.2	3.2	5.6	4.4	6.0
July	4.6	5.9	5.6	7.5	3.0	4.4
August	4.6	3.9	-0.6	-0.6	1.3	2.6
September	-14.0	-11.6	1.1	3.5	0.3	1.4
October	17.5	19.8	-1.7	-0.3	—	1.1
November	-4.5	-4.3	-3.7	-2.8	0.2	1.1
December	-10.0	-7.5	2.8	1.5	0.5	1.3
2002						
January	1.9	3.3	7.4	10.6	0.5	1.1

(a) For owner occupation. Excludes alterations and additions. Includes refinancing.

(b) Financial year data has been revised since previous issue.

Source: *Housing Finance for Owner Occupation, Australia (Cat. no. 5609.0)*; ABS data available on request, *Housing Finance for Owner Occupation*.

## SECURED HOUSING FINANCE COMMITMENTS(a), DWELLING UNITS, BY TYPE OF BORROWER

Period	First home buyers				Other home buyers			
	Number of dwellings financed	Number as proportion of all dwellings financed	Value of commitments	Average borrowing size	Number of dwellings financed	Number as proportion of all dwellings financed	Value of commitments	Average borrowing size
	no.	%	\$m	\$'000	no.	%	\$m	\$'000
1998-99	30 019	24.6	3 376.0	112.5	92 010	75.4	11 000.1	119.6
1999-2000	32 144	24.7	4 092.3	127.3	98 204	75.3	13 217.6	134.6
2000-01	30 479	24.1	3 736.0	122.6	95 973	75.9	12 930.5	134.7
2001								
January	1 984	21.8	261.4	131.8	7 120	78.2	969.5	136.2
February	1 977	21.1	241.6	122.2	7 372	78.9	988.7	134.1
March	2 291	20.3	296.7	129.5	8 987	79.7	1 264.0	140.6
April	2 331	22.9	305.5	131.1	7 866	77.1	1 106.1	140.6
May	3 053	23.2	395.9	129.7	10 093	76.8	1 424.7	141.2
June	2 947	24.3	396.7	134.6	9 202	75.7	1 347.7	146.5
July r	3 307	26.0	455.6	137.8	9 398	74.0	1 391.6	148.1
August	3 466	26.1	477.5	137.8	9 820	73.9	1 441.9	146.8
September	2 740	23.9	395.2	144.2	8 719	76.1	1 299.5	149.0
October	3 301	24.6	483.3	146.4	10 118	75.4	1 548.0	153.0
November	3 388	26.4	489.8	144.6	9 433	73.6	1 453.9	154.1
December	3 035	26.3	458.2	151.0	8 509	73.7	1 339.5	157.4
2002								
January	3 126	26.6	474.3	151.7	8 637	73.4	1 382.6	160.1

(a) For owner occupation. Excludes alterations and additions. Includes refinancing.

Source: Housing Finance for Owner Occupation, Australia (Cat. no. 5609.0); ABS data available on request, Housing Finance for Owner Occupation.

Period	Dwelling units(a)		Value of residential alterations, additions and conversions(b)		Total value of all building		
	no.	% change from previous period	Value of new residential building(a) \$m	Value of residential alterations, additions and conversions(b) \$m	Value of all residential building \$m	\$m	% change from previous period
ORIGINAL							
1998-99	39 722	9.0	4 552.0	951.2	5 503.1	8 628.8	10.3
1999-2000	50 133	26.2	6 418.0	1 211.0	7 629.0	10 840.8	25.6
2000-01	35 575	-29.0	5 116.3	1 190.8	6 307.0	10 367.9	-4.4
2000							
December	3 015	-3.2	470.0	79.4	549.4	861.1	4.2
2001							
January	2 607	-13.5	387.3	73.2	460.5	727.3	-15.5
February	3 186	22.2	450.3	89.4	539.7	797.6	9.7
March	3 394	6.5	528.5	126.1	654.6	1 156.2	45.0
April	2 456	-27.6	365.6	78.8	444.3	791.2	-31.6
May	3 702	50.7	538.0	116.7	654.7	1 171.9	48.1
June	3 329	-10.1	465.5	117.7	583.2	799.6	-31.8
July r	3 752	12.7	551.8	110.4	662.2	951.5	19.0
August r	5 714	52.3	1 056.3	137.6	1 193.9	1 493.5	57.0
September r	4 289	-24.9	594.0	132.1	726.1	961.4	-35.6
October r	4 187	-2.4	618.4	130.5	748.8	1 184.6	23.2
November r	3 808	-9.1	555.3	101.9	657.1	1 028.8	-13.2
December	3 903	2.5	561.1	99.9	661.1	1 101.2	7.0
2002							
January	3 404	-12.8	546.2	85.9	632.1	893.7	-18.8
February	3 820	12.2	612.6	110.9	723.5	1 251.1	40.0
SEASONALLY ADJUSTED							
2000							
December	3 137	8.9	478.1	97.6	575.7	877.4	16.6
2001							
January	3 122	-0.5	458.4	90.3	548.7	854.4	-2.6
February	2 949	-5.5	422.1	93.6	515.8	714.7	-16.4
March	2 902	-1.6	434.4	108.9	543.3	971.4	35.9
April	2 602	-10.3	408.4	75.2	483.5	865.8	-10.9
May	3 605	38.5	504.3	113.1	617.4	1 056.6	22.0
June	3 493	-3.1	468.2	126.4	594.6	893.2	-15.5
July r	4 041	15.7	613.4	114.9	728.3	1 149.2	28.7
August r	5 400	33.6	1 046.1	129.1	1 175.2	1 442.9	25.6
September r	4 363	-19.2	597.4	135.7	733.1	943.3	-34.6
October r	4 522	3.6	658.1	113.3	771.4	1 224.0	29.8
November r	3 473	-23.2	537.6	93.6	631.2	982.1	-19.8
December	3 957	13.9	553.5	119.0	672.5	1 091.2	11.1
2002							
January	3 947	-0.3	617.7	104.0	721.7	1 012.7	-7.2
February	3 538	-10.4	573.1	116.1	689.1	1 124.9	11.1
TREND ESTIMATES							
2000							
December	2 829	3.1	415.8	90.5	506.4	784.2	4.6
2001							
January r	2 905	2.7	430.3	92.3	522.6	821.1	4.7
February r	2 941	1.2	433.8	94.5	528.3	853.4	4.0
March r	2 979	1.3	436.5	96.7	533.3	890.5	4.3
April r	3 105	4.2	453.7	101.1	554.9	926.6	4.0
May r	3 371	8.6	493.8	108.4	602.2	964.2	4.1
June r	3 734	10.8	550.8	116.0	666.8	1 000.2	3.7
July r	4 076	9.1	604.5	121.7	726.2	1 029.6	2.9
August r	4 300	5.5	638.6	123.6	762.2	1 046.4	1.6
September r	4 348	1.1	645.4	121.6	767.1	1 054.3	0.8
October r	4 242	-2.4	629.9	117.1	747.0	1 059.3	0.5
November r	4 075	-3.9	606.2	112.9	719.1	1 063.0	0.4
December	3 908	-4.1	586.0	110.1	696.1	1 067.0	0.4
2002							
January	3 760	-3.8	571.1	108.7	679.8	1 069.5	0.2
February	3 618	-3.8	558.0	107.5	665.5	1 081.9	1.2

(a) Valued at \$10,000 and over.

(b) Includes alterations and additions creating dwellings, alterations and additions not creating dwellings, and conversions.

Source: Building Approvals, Victoria (Cat. no. 8731.2); ABS data available on request, Building Approvals collection.

Period	Number of new dwelling units(a)				Value of building approvals					
	All new dwelling units(b)				All building					
	Private sector	Public sector	Total	Proportion of State total	New dwelling units(a)	Residential alterations, additions and conversions(c)	Non-residential building(d)	Total	Proportion of State total	
no.	no.	no.	%	\$m	\$m	\$m	\$m	\$m	%	
MELBOURNE										
1998-99	28 632	661	29 293	76.9	3 601.8	800.3	2 642.3	7 044.4	81.6	
1999-2000	37 091	611	37 702	77.7	5 142.4	1 019.4	2 650.9	8 812.7	81.3	
2000-01	26 263	374	26 637	77.7	4 117.5	990.5	3 470.5	8 578.5	82.7	
2000										
December	2 377	11	2 388	80.8	395.4	63.2	260.6	719.1	83.5	
2001										
January	1 983	51	2 034	79.1	315.1	59.0	225.7	599.9	82.5	
February	2 490	25	2 515	79.6	363.2	73.9	232.7	669.8	84.0	
March	2 582	19	2 601	79.8	436.2	106.7	434.6	977.5	84.5	
April	1 810	19	1 829	75.3	287.9	63.3	309.3	660.5	83.5	
May	2 763	15	2 778	75.6	422.2	97.1	451.1	970.5	82.8	
June	2 387	51	2 438	75.6	356.5	96.2	173.1	626.0	78.3	
July r	2 696	138	2 834	75.8	426.5	94.4	215.1	735.9	77.3	
August r	4 508	41	4 549	80.2	901.6	115.0	245.1	1 261.7	84.5	
September r	3 009	56	3 065	76.6	466.3	115.3	197.8	779.3	81.1	
October r	2 987	47	3 034	72.9	464.0	110.2	375.2	949.3	80.1	
November r	2 605	74	2 679	70.6	404.7	83.0	320.8	808.4	78.6	
December	2 731	59	2 790	74.2	428.4	80.8	400.7	909.8	82.6	
2002										
January	2 534	19	2 553	75.8	433.7	69.8	207.0	710.5	79.5	
February	2 737	26	2 763	73.2	470.5	91.1	471.0	1 032.6	82.5	
BALANCE OF VICTORIA										
1998-99	8 580	233	8 813	23.1	950.1	150.9	483.4	1 584.4	18.4	
1999-2000	10 641	176	10 817	22.3	1 275.6	191.6	560.9	2 028.1	18.7	
2000-01	7 550	91	7 645	22.3	998.7	200.4	590.1	1 789.3	17.3	
2000										
December	562	5	567	19.2	74.7	16.2	51.1	142.0	16.5	
2001										
January	531	7	538	20.9	72.1	14.2	41.1	127.4	17.5	
February	642	3	645	20.4	87.1	15.6	25.1	127.7	16.0	
March	655	4	659	20.2	92.3	19.4	66.9	178.6	15.4	
April	595	5	600	24.7	77.7	15.5	37.6	130.7	16.5	
May	875	21	896	24.4	115.7	19.6	66.1	201.4	17.2	
June	772	14	786	24.3	109.0	21.5	43.2	173.7	21.7	
July	875	32	907	24.2	125.3	16.0	74.3	215.6	22.7	
August	1 093	27	1 120	19.8	154.7	22.6	54.5	231.8	15.5	
September r	924	14	938	23.4	127.7	16.8	37.6	182.1	18.9	
October r	1 104	23	1 127	27.1	154.4	20.3	60.5	235.2	19.9	
November r	1 105	9	1 114	29.4	150.6	18.9	50.8	220.3	21.4	
December	930	38	968	25.8	132.7	19.2	39.5	191.4	17.4	
2002										
January	780	35	815	24.2	112.5	16.1	54.5	183.2	20.5	
February	991	22	1 013	26.8	142.1	19.8	56.5	218.4	17.5	

For footnotes see end of table.

...continued

Period	Number of new dwelling units(a)				Value of building approvals					
	All new dwelling units(b)				All building					
	Private sector	Public sector	Total	Proportion of State total	New dwelling units(a)	Residential alterations, additions and conversions(c)	Non-residential building(d)	Total	Proportion of State total	
no.	no.	no.	%	\$m	\$m	\$m	\$m	\$m	%	
VICTORIA										
1998–99	37 212	894	38 106	100	4 551.9	951.2	3 125.7	8 628.8	100	
1999–2000	47 732	787	48 519	100	6 418.0	1 211.0	3 211.8	10 840.8	100	
2000–01	33 779	465	34 244	100	5 110.2	1 190.9	4 060.6	10 361.8	100	
2000										
December	2 939	16	2 955	100	470.0	79.4	311.6	861.1	100	
2001										
January	2 514	58	2 572	100	387.3	73.2	266.8	727.3	100	
February	3 132	28	3 160	100	450.3	89.4	257.8	797.6	100	
March	3 237	23	3 260	100	528.5	126.1	501.5	1 156.2	100	
April	2 408	24	2 429	100	365.6	78.8	346.9	791.2	100	
May	3 638	36	3 674	100	538.0	116.7	517.2	1 171.9	100	
June	3 159	65	3 224	100	465.5	117.7	216.4	799.6	100	
July r	3 571	170	3 741	100	551.8	110.4	289.3	951.5	100	
August r	5 601	68	5 669	100	1 056.3	137.6	299.6	1 493.5	100	
September r	3 933	70	4 003	100	594.0	132.1	235.4	961.4	100	
October r	4 091	70	4 161	100	618.4	130.5	435.7	1 184.6	100	
November r	3 710	83	3 793	100	555.3	101.9	371.6	1 028.8	100	
December	3 661	97	3 758	100	561.1	99.9	440.2	1 101.2	100	
2002										
January	3 314	54	3 368	100	546.2	85.9	261.5	893.7	100	
February	3 728	48	3 776	100	612.6	110.9	527.5	1 251.1	100	

(a) Valued at \$10,000 and over.

(b) Excludes dwelling units created as a result of conversions or construction of non-residential buildings.

(c) Includes alterations and additions creating dwellings, alterations and additions not creating dwellings, and conversions.

(d) Valued at \$50,000 and over.

Source: *Building Approvals, Victoria* (Cat. no. 8731.2).

Local Government Area	December quarter 2001			12 months ending December 2001			
	Number of dwelling units(a)	Number of building jobs	Value of all approvals	Number of dwelling units(a)	Number of building jobs	Value of all approvals	Number of dwelling units per '000 population
	no.	no.	\$m	no.	no.	\$m	
Alpine (S)	37	45	7.6	116	184	25.6	9.2
Ararat (RC)	16	29	3.3	42	90	11.7	3.7
Ballarat (C)	196	291	38.1	655	1 055	177.0	8.0
Banyule (C)	186	244	48.7	583	893	152.6	4.9
Bass Coast (S)	207	256	26.0	742	967	103.6	32.0
Baw Baw (S)	80	137	18.5	273	434	55.5	7.7
Bayside (C)	137	252	48.6	610	1 228	259.8	6.7
Boroondara (C)	117	458	113.8	625	1 625	382.0	3.9
Brimbank (C)	353	417	134.3	1 734	1 750	370.4	10.5
Buloke (S)	2	9	0.3	4	27	3.3	0.6
Campaspe (S)	75	110	13.3	237	391	60.4	6.7
Cardinia (S)	201	265	37.7	682	911	122.2	14.9
Casey (C)	1 087	1 204	159.0	3 530	4 287	577.4	20.2
Central Goldfields (S)	12	22	3.4	38	86	7.6	3.0
Colac-Otway (S)	59	85	18.9	177	280	53.4	8.8
Corangamite (S)	11	30	2.5	47	157	18.5	2.8
Darebin (C)	158	238	42.8	605	1 044	174.7	4.7
Delatite (S)	67	72	14.2	166	248	32.5	8.3
East Gippsland (S)	110	148	21.7	322	488	58.4	8.2
Frankston (C)	301	371	55.0	1 060	1 266	197.2	9.3
Gannawarra (S)	4	17	1.9	24	92	8.2	2.0
Glen Eira (C)	156	254	50.7	645	1 063	189.1	5.2
Glenelg (S)	16	52	8.6	55	174	26.6	2.8
Golden Plains (S)	36	49	5.1	124	185	18.3	8.6
Greater Bendigo (C)	239	337	46.3	721	1 108	150.9	8.2
Greater Dandenong (C)	65	149	35.8	316	710	136.1	2.4
Greater Geelong (C)	634	824	119.3	1 983	2 741	377.4	10.4
Greater Shepparton (C)	138	200	33.9	427	708	99.2	7.6
Hepburn (S)	41	82	6.6	109	227	27.8	7.7
Hindmarsh (S)	6	8	1.3	12	33	9.1	1.9
Hobsons Bay (C)	184	209	54.4	634	833	168.7	7.6
Horsham (RC)	33	54	6.4	112	197	24.8	6.2
Hume (C)	472	555	98.9	1 716	2 139	397.3	12.9
Indigo (S)	32	52	6.4	103	191	19.6	7.2
Kingston (C)	278	375	70.1	1 033	1 400	267.1	7.6
Knox (C)	361	396	79.3	1 246	1 517	364.8	8.5
Latrobe (C)	63	128	16.6	218	529	55.1	3.2
Loddon (S)	11	18	1.9	21	60	4.8	2.4
Macedon Ranges (S)	134	169	34.3	339	538	84.3	9.3
Manningham (C)	140	201	48.6	595	801	177.4	5.2
Maribyrnong (C)	133	166	27.9	564	696	138.7	9.2
Maroondah (C)	181	254	43.2	601	962	222.7	6.1
Melbourne (C)	408	280	565.6	3 021	1 145	1 741.6	58.1
Melton (S)	608	593	98.0	2 049	2 107	331.5	40.6
Mildura (RC)	125	188	28.5	458	635	89.8	9.4
Mitchell (S)	113	138	15.9	346	501	62.2	12.7
Moira (S)	53	89	10.3	148	289	36.3	5.6
Monash (C)	176	310	69.7	850	1 375	314.4	5.2
Moonee Valley (C)	136	230	40.0	483	928	162.5	4.3
Moorabool (S)	53	86	10.3	189	314	35.2	7.8
Moreland (C)	257	314	60.4	872	1 126	184.5	6.4
Mornington Peninsula (S)	523	776	110.3	1 977	2 928	434.3	15.5
Mount Alexander (S)	30	54	5.1	95	171	17.7	5.7
Moyne (S)	26	61	7.4	81	197	21.8	5.1
Murrindindi (S)	39	60	4.7	124	210	17.6	9.5
Nillumbik (S)	65	138	21.0	242	549	82.3	4.0
Northern Grampians (S)	15	37	3.8	36	102	8.3	2.8
Port Phillip (C)	302	189	89.9	1 550	786	468.2	19.0
Pyrenees (S)	4	15	1.0	18	55	5.2	2.7

For footnotes see end of table.

...continued



<i>Local Government Area</i>	<i>December quarter 2001</i>			<i>12 months ending December 2001</i>			
	<i>Number of dwelling units(a)</i>	<i>Number of building jobs</i>	<i>Value of all approvals</i>	<i>Number of dwelling units(a)</i>	<i>Number of building jobs</i>	<i>Value of all approvals</i>	<i>Number of dwelling units per '000 population</i>
	<i>no.</i>	<i>no.</i>	<i>\$m</i>	<i>no.</i>	<i>no.</i>	<i>\$m</i>	
Queenscliffe (B)	12	19	3.0	36	71	12.4	10.5
South Gippsland (S)	64	100	10.6	221	355	44.4	8.7
Southern Grampians (S)	12	36	4.5	43	155	16.3	2.6
Stonnington (C)	205	292	82.9	751	1 102	471.8	8.1
Strathbogie (S)	9	25	4.3	39	83	11.9	4.2
Surf Coast (S)	126	180	25.5	455	605	92.8	22.8
Swan Hill (RC)	29	55	6.5	93	215	26.5	4.5
Towong (S)	8	24	2.1	15	51	4.0	2.4
Wangaratta (RC)	30	61	6.2	122	247	32.1	4.7
Warrnambool (C)	70	100	16.5	266	426	74.3	9.2
Wellington (S)	51	104	10.0	178	362	33.2	4.4
West Wimmera (S)	—	4	0.3	3	23	1.2	0.6
Whitehorse (C)	122	304	52.4	599	1 215	228.7	4.1
Whittlesea (C)	394	360	62.5	1 349	1 430	232.7	11.6
Wodonga (RC)	92	123	13.9	301	470	56.4	9.4
Wyndham (C)	648	718	183.2	2 047	2 286	458.1	23.8
Yarra (C)	210	396	44.8	861	1 456	191.9	12.4
Yarra Ranges (S)	113	166	38.5	555	707	348.5	3.9
Yarriambiack (S)	1	3	0.2	7	22	1.8	0.8
Unincorporated Vic	—	1	0.1	1	2	0.3	14.1
<b>Victoria</b>	<b>11 898</b>	<b>15 861</b>	<b>3 314.5</b>	<b>44 327</b>	<b>59 016</b>	<b>12 164.7</b>	<b>9.3</b>

(a) Valued at \$10,000 and over. Excludes dwelling units created as a result of conversions or construction of non-residential buildings.

Source: ABS data available on request, *Building Approvals*.

Period	New residential building			Alterations and additions to residential buildings	Non-residential building		
	Houses	Other residential building	Total		Private sector	Total	Total building
	\$m	\$m	\$m	\$m	\$m	\$m	\$m
WORK COMMENCED — ORIGINAL							
1998–99	3 753.5	1 069.3	4 823.5	1 065.8	2 217.1	3 183.5	9 085.3
1999–2000	4 700.0	1 661.6	6 361.5	1 295.7	2 453.9	3 263.1	10 920.3
2000–01	r 3 170.8	r 1 543.7	r 4 714.5	r 997.0	r 2 943.8	r 3 637.8	r 9 349.4
2000							
June	1 175.1	379.4	1 554.6	370.6	697.5	1 068.1	2 996.5
September	807.8	397.4	1 205.2	237.2	696.4	800.1	2 242.5
December	769.5	256.3	1 025.8	265.2	r 622.0	r 771.6	r 2 062.6
2001							
March	731.3	r 452.3	r 1 183.6	208.4	r 664.0	r 915.5	r 2 307.6
June	r 862.2	r 437.7	r 1 299.9	r 286.2	r 961.4	r 1 150.6	r 2 736.7
September	1 141.6	638.3	1 779.9	349.6	556.8	703.6	2 833.1
WORK DONE — ORIGINAL							
1998–99	3 609.3	996.9	4 604.7	1 070.7	2 834.6	3 685.7	9 382.8
1999–2000	4 468.4	1 351.6	5 819.9	1 269.3	2 666.6	3 430.7	10 520.0
2000–01	r 3 425.2	r 1 322.1	r 4 747.4	r 1 047.2	r 2 572.9	r 3 395.6	r 9 190.0
2000							
June	1 332.1	414.3	1 746.6	387.0	683.8	901.0	3 032.2
September	925.5	347.8	1 273.4	229.1	638.9	839.4	2 341.8
December	828.0	321.0	1 149.0	275.0	664.7	870.5	2 294.5
2001							
March	r 801.7	302.4	1 104.1	250.8	601.3	811.9	2 166.8
June	r 870.0	r 350.9	r 1 220.9	r 292.3	r 668.0	r 873.8	r 2 386.9
September	1 002.6	383.0	1 385.5	298.7	696.4	923.9	2 608.1
WORK DONE — SEASONALLY ADJUSTED							
2000							
June	1 332.6	404.2	1 721.7	369.6	679.4	896.7	r 3 010.1
September	911.0	316.2	1 227.2	240.5	628.5	r 830.4	r 2 298.1
December	775.3	327.6	1 102.9	252.1	r 609.0	r 799.9	r 2 154.9
2001							
March	867.6	r 336.8	1 204.4	275.6	r 672.7	r 898.6	r 2 378.6
June	r 871.3	r 341.5	r 1 212.8	r 279.0	r 662.7	r 866.6	r 2 358.5
September	986.5	348.3	1 334.8	314.1	686.5	916.5	2 565.5

(a) Reference year for chain volume measures is 1999–2000. See paragraphs 28 to 31 of the Explanatory Notes in *Building Activity, Victoria* (Cat. no. 8752.2).

Source: *Building Activity, Victoria* (Cat. no. 8752.2).

Local Government Area	Value of building commenced \$'000	Value of building under construction at end of quarter \$'000	Value of building completed \$'000	Value of work yet to be done at end of quarter \$'000	Value of work done \$'000
Alpine (S)	601	5 486	1 068	1 844	2 078
Ararat (RC)	2 919	3 624	91	2 395	1 135
Ballarat (C)	28 457	92 042	3 784	39 291	23 861
Banyule (C)	18 562	39 353	17 730	20 165	14 713
Bass Coast (S)	4 833	10 702	7 437	3 837	6 335
Baw Baw (S)	3 044	8 263	553	2 802	2 721
Bayside (C)	25 138	77 610	11 848	43 671	23 826
Boroondara (C)	18 898	136 427	29 335	66 044	39 300
Brimbank (C)	23 047	77 607	90 951	32 164	40 149
Buloke (S)	498	498	888	188	657
Campaspe (S)	3 120	14 656	3 994	12 434	4 383
Cardinia (S)	8 051	8 558	4 203	7 123	3 061
Casey (C)	21 672	204 501	31 439	66 324	42 571
Central Goldfields (S)	45	226	2 150	64	731
Colac-Otway (S)	1 996	24 866	901	7 890	8 277
Corangamite (S)	1 463	6 579	1 359	2 639	2 320
Darebin (C)	26 917	69 452	24 385	31 918	24 198
Delatite (S)	198	1 375	6 663	813	819
East Gippsland (S)	3 394	5 952	2 130	1 912	2 668
Frankston (C)	10 865	34 700	12 256	17 662	17 785
Gannawarra (S)	1 031	1 380	1 742	722	1 214
Glen Eira (C)	33 855	67 227	15 049	33 549	18 270
Glenelg (S)	937	6 034	2 507	910	3 494
Golden Plains (S)	50	1 350	50	300	439
Greater Bendigo (C)	10 309	21 624	6 999	9 812	12 624
Greater Dandenong (C)	19 499	48 878	28 977	13 495	29 702
Greater Geelong (C)	21 956	57 600	15 532	27 067	21 432
Greater Shepparton (C)	4 797	12 493	12 612	5 106	7 859
Hepburn (S)	4 022	10 327	1 159	6 675	3 514
Hindmarsh (S)	1 848	5 477	—	2 353	1 334
Hobsons Bay (C)	21 245	39 233	17 016	24 069	15 005
Horsham (RC)	1 778	6 130	2 921	1 849	1 855
Hume (C)	37 631	85 245	73 904	35 607	48 113
Indigo (S)	311	689	—	182	238
Kingston (C)	36 360	69 257	29 781	33 354	28 120
Knox (C)	43 565	170 637	35 894	126 100	40 788
Latrobe (C)	6 153	6 919	4 117	3 016	5 353
Loddon (S)	335	417	4 165	91	643
Macedon Ranges (S)	3 289	8 173	4 453	1 662	4 233
Manningham (C)	23 323	48 782	9 407	26 678	14 367
Maribyrnong (C)	13 530	62 228	35 364	25 433	26 582
Maroondah (C)	13 742	123 232	10 594	80 047	30 389
Melbourne (C)	599 650	2 672 816	185 865	1 450 956	380 736
Melton (S)	8 951	31 557	4 619	19 185	12 364
Mildura (RC)	7 141	14 203	5 087	8 940	7 433
Mitchell (S)	6 797	9 703	538	5 110	3 902
Moira (S)	2 519	2 378	558	981	1 739
Monash (C)	29 245	133 626	56 846	42 994	58 735
Moonee Valley (C)	27 391	66 776	17 950	33 666	24 636
Moorabool (S)	1 672	5 167	361	1 553	2 069
Moreland (C)	30 047	67 772	16 351	34 599	19 096
Mornington Peninsula (S)	21 060	61 919	14 886	25 743	23 393
Mount Alexander (S)	1 057	2 285	4 850	898	2 435
Moyne (S)	1 443	2 063	15 753	953	5 695
Murrindindi (S)	433	4 222	912	2 289	1 041
Nillumbik (S)	3 113	9 609	5 667	3 496	3 807
Northern Grampians (S)	275	1 298	409	364	557
Port Phillip (C)	47 779	699 782	102 531	378 880	132 881
Pyrenees (S)	877	1 103	1 394	721	904

...continued

Local Government Area	Value of building commenced \$'000	Value of building under construction at end of quarter \$'000	Value of building completed \$'000	Value of work yet to be done at end of quarter \$'000	Value of work done \$'000
Queenscliffe (B)	505	4 392	671	2 031	2 267
South Gippsland (S)	3 756	9 969	3 380	4 467	4 821
Southern Grampians (S)	1 078	2 197	1 357	757	1 745
Stonnington (C)	31 041	299 855	41 053	134 425	63 278
Strathbogie (S)	1 294	2 232	670	1 101	1 225
Surf Coast (S)	2 910	18 273	4 905	7 471	6 718
Swan Hill (RC)	6 273	6 435	214	3 973	2 390
Towong (S)	—	—	—	—	—
Wangaratta (RC)	8 633	22 756	5 234	12 802	4 308
Warrnambool (C)	22 951	25 277	909	19 641	4 758
Wellington (S)	2 314	2 664	2 080	1 553	1 868
West Wimmera (S)	—	—	—	—	—
Whitehorse (C)	18 539	98 338	21 709	61 038	24 306
Whittlesea (C)	17 205	33 040	47 707	17 514	17 893
Wodonga (RC)	1 529	16 730	7 483	8 583	3 580
Wyndham (C)	43 995	77 818	14 322	44 782	24 326
Yarra (C)	73 946	258 519	23 946	176 550	60 415
Yarra Ranges (S)	9 066	36 306	15 575	14 212	16 294
Yarriambiack (S)	—	64	242	29	40
Unincorporated Vic.	—	—	—	—	—
<b>Victoria</b>	<b>1 537 765</b>	<b>6 376 950</b>	<b>1 191 437</b>	<b>3 341 510</b>	<b>1 498 804</b>

Source: ABS data available on request, Building Activity.

## 36

## NEW MOTOR VEHICLE SALES(a): ALL SERIES

Period	Original series			Seasonally adjusted			Trend estimates			
	Passenger vehicles	Other vehicles	Total vehicles	Passenger vehicles	Other vehicles	Total vehicles	Passenger vehicles	Other vehicles	Total vehicles	% change from previous period
	no.	no.	no.	no.	no.	no.	no.	no.	no.	
1998–99	155 782	51 960	207 742	155 692	51 700	207 392	155 567	51 643	207 210	7.4
1999–2000	142 040	53 433	195 473	141 507	53 485	194 992	143 031	53 885	196 916	-5.0
2000–01	166 500	57 924	224 424	167 448	58 511	225 959	156 550	57 566	214 116	8.7
2000										
December 2001	16 591	5 542	22 133	16 350	5 353	21 703	13 265	4 937	18 202	-0.5
2001										
January	10 340	3 753	14 093	13 092	4 992	18 084	13 040	4 966	18 006	-1.1
February	11 668	4 338	16 006	12 307	4 790	17 097	12 834	4 955	17 789	-1.2
March	13 353	5 215	18 568	12 643	4 953	17 596	12 695	4 898	17 593	-1.1
April	11 444	4 522	15 966	13 047	5 008	18 055	12 651	4 831	17 482	-0.6
May	12 686	5 179	17 865	12 355	4 828	17 183	12 669	4 819	17 488	—
June	14 226	5 809	20 035	12 700	4 255	16 955	12 661	4 891	17 552	0.4
July	15 192	5 112	20 304	15 173	5 278	20 451	12 608	5 012	17 620	0.4
August	13 337	5 365	18 702	12 743	5 281	18 024	12 576	5 139	17 715	0.5
September	11 546	4 749	16 295	12 572	5 468	18 040	12 626	5 267	17 893	1.0
October	13 174	5 268	18 442	12 117	5 297	17 414	12 773	5 387	18 160	1.5
November	13 743	5 801	19 544	12 559	5 480	18 039	12 961	5 490	18 451	1.6
December	14 286	5 216	19 502	13 970	5 184	19 154	13 153	5 597	18 750	1.6
2002										
January	11 154	4 504	15 658	14 051	6 023	20 074	13 310	5 707	19 017	1.4
February	11 918	5 418	17 336	12 603	5 989	18 592	13 426	5 831	19 257	1.3

(a) Excludes motorcycles, plant and equipment, and unpowered vehicles.

Source: Sales of New Motor Vehicles, (Cat. no. 9314.0.55.001).

Month								<i>Total</i>	
	<i>Food retailing</i>	<i>Department stores</i>	<i>Clothing and soft good retailing</i>	<i>Household good retailing</i>	<i>Recreational good retailing</i>	<i>Other retailing</i>	<i>Hospitality and services</i>	<i>\$m</i>	<i>% change from previous month</i>
	<i>\$m</i>	<i>\$m</i>	<i>\$m</i>	<i>\$m</i>	<i>\$m</i>	<i>\$m</i>	<i>\$m</i>	<i>\$m</i>	
ORIGINAL									
2000									
December	1 515.4	543.4	350.2	481.6	207.5	504.7	480.6	4 083.3	29.1
2001									
January	1 309.7	240.0	212.4	366.5	141.2	312.4	428.0	3 010.1	-26.3
February	1 228.9	202.0	182.3	336.7	117.2	317.8	411.2	2 796.0	-7.1
March	1 365.9	261.7	228.7	361.7	130.3	341.8	475.0	3 165.1	13.2
April	1 299.1	259.1	227.7	358.2	119.8	333.6	456.3	3 053.8	-3.5
May	1 301.8	269.0	231.4	389.6	131.7	374.6	461.8	3 159.9	3.5
June	1 261.3	256.4	222.4	421.3	133.2	357.5	466.7	3 118.7	-1.3
July	1 284.7	270.6	216.2	417.7	134.3	387.1	488.0	3 198.5	2.6
August	1 338.9	227.1	205.2	425.7	138.3	395.3	492.6	3 223.1	0.8
September	1 292.6	245.8	208.3	419.3	131.1	378.9	459.2	3 135.1	-2.7
October	1 362.9	274.3	235.5	471.5	144.2	399.9	500.5	3 388.9	8.1
November	1 399.8	322.5	240.4	477.5	153.7	422.9	507.7	3 524.4	4.0
December	1 571.9	563.8	337.0	580.3	215.4	566.3	569.6	4 404.3	25.0
2002									
January	1 408.3	247.9	223.3	459.8	153.3	374.8	491.6	3 359.0	-23.7
February	1 276.3	203.0	192.2	403.6	134.1	353.6	474.5	3 037.3	-9.6
SEASONALLY ADJUSTED r									
2000									
December	1 293.2	278.8	238.1	362.0	133.5	353.5	418.2	3 077.3	1.6
2001									
January	1 299.0	280.6	225.9	360.8	135.6	353.9	434.9	3 090.8	0.4
February	1 325.8	283.9	230.1	374.6	134.8	377.3	448.3	3 174.7	2.7
March	1 332.5	288.0	238.9	385.5	136.5	352.8	461.7	3 196.0	0.7
April	1 353.8	278.9	230.5	392.5	137.5	357.4	461.8	3 212.5	0.5
May	1 326.4	276.0	219.8	401.3	144.4	388.6	469.9	3 226.5	0.4
June	1 326.3	286.9	227.9	442.6	145.1	381.3	485.9	3 296.0	2.2
July	1 325.4	288.6	226.5	435.7	146.1	398.4	495.6	3 316.3	0.6
August	1 331.4	272.8	225.1	436.5	143.8	393.2	485.5	3 288.3	-0.8
September	1 352.3	273.7	227.9	441.2	136.1	386.4	476.4	3 294.0	0.2
October	1 351.5	283.4	237.4	457.0	145.9	384.1	493.0	3 352.3	1.8
November	1 358.3	284.9	228.9	446.3	146.3	390.7	497.4	3 352.9	—
December	1 351.6	283.7	231.6	445.2	138.9	402.1	504.5	3 357.7	0.1
2002									
January	1 378.8	284.1	236.0	452.8	147.0	423.4	502.9	3 424.8	2.0
February	1 379.0	285.9	242.6	449.1	154.3	420.2	516.9	3 447.9	0.7

For footnotes see end of table.

...continued

Month	Food retailing \$m	Department stores \$m	Clothing and soft good retailing \$m	Household good retailing \$m	Recreational good retailing \$m	Other retailing \$m	Hospitality and services \$m	Total	
								\$m	% change from previous month
TREND ESTIMATES r									
2000									
December	1 289.1	277.8	227.5	360.9	132.1	355.7	426.6	3 066.5	1.4
2001									
January	1 305.6	279.9	231.3	366.5	133.5	361.5	435.2	3 109.5	1.4
February	1 320.6	281.7	232.5	373.9	135.4	366.1	445.1	3 151.2	1.3
March	1 330.3	283.0	231.7	382.8	137.9	370.5	456.1	3 189.4	1.2
April	1 334.2	283.3	229.5	393.0	140.2	375.7	466.5	3 222.3	1.0
May	1 334.0	282.6	227.4	404.5	142.0	381.0	475.0	3 249.9	0.9
June	1 333.1	281.3	226.3	416.6	143.3	385.3	480.8	3 272.5	0.7
July	1 333.3	280.4	226.3	427.7	143.8	387.7	484.5	3 290.1	0.5
August	1 336.1	279.8	227.0	437.1	143.4	388.8	486.9	3 304.2	0.4
September	1 342.0	280.0	228.7	443.6	142.8	390.0	489.1	3 318.6	0.4
October	1 349.8	280.8	230.6	447.2	142.7	392.2	492.0	3 335.4	0.5
November	1 357.2	281.9	232.4	448.9	143.6	397.0	496.1	3 356.6	0.6
December	1 364.0	283.5	234.4	449.9	145.1	403.6	501.3	3 381.2	0.7
2002									
January	1 370.2	284.8	236.4	450.4	146.9	410.4	506.4	3 405.6	0.7
February	1 375.3	286.5	238.3	450.8	149.0	417.4	511.5	3 428.8	0.7

(a) Excludes motor vehicles, parts, petrol, etc.

Source: *Retail Trade, Australia (Cat. no. 8501.0)*.

Quarter Ended	Original		Seasonally adjusted r		Trend estimates r	
	Victoria	Australia	Victoria	Australia	Victoria	Australia
TURNOVER (\$m)						
2000						
September	8 156.7	35 189.0	8 442.5	36 185.1	8 649.9	36 574.5
December	9 870.9	40 987.8	8 755.2	36 736.8	8 759.2	36 828.5
2001						
March	8 533.0	35 482.3	8 996.9	37 302.6	8 966.8	37 236.1
June	8 817.5	36 243.4	9 183.3	37 678.2	9 162.4	37 730.8
September	8 992.8	37 217.1	9 303.3	38 291.5	9 291.9	38 178.4
December	10 583.2	43 039.8	9 363.6	38 492.3	9 379.5	38 550.2
PERCENTAGE CHANGE (FROM PREVIOUS QUARTER)						
2000						
September	-4.9	-1.8	-6.0	-3.4	-0.7	0.1
December	21.0	16.5	3.7	1.5	1.3	0.7
2001						
March	-13.6	-13.4	2.8	1.5	2.4	1.1
June	3.3	2.1	2.1	1.0	2.2	1.3
September	2.0	2.7	1.3	1.6	1.4	1.2
December	17.7	15.6	0.6	0.5	0.9	1.0
PERCENTAGE CHANGE (FROM SAME QUARTER OF PREVIOUS YEAR)						
2000						
September	-6.6	-1.1	-6.6	-1.1	-3.8	0.0
December	-3.6	-0.9	-3.7	-0.9	-3.0	0.1
2001						
March	1.6	1.9	1.8	2.2	0.9	1.4
June	2.8	1.1	2.2	0.6	5.2	3.2
September	10.3	5.8	10.2	5.8	7.4	4.4
December	7.2	5.0	6.9	4.8	7.1	4.7

(a) Excludes motor vehicles, parts, petrol, etc.

(b) Reference year for chain volume measures is 1999-2000.

Source: Retail Trade, Australia (Cat. no. 8501.0).

<i>Hotels, motels, guest houses and serviced apartments(a)</i>								
<i>Quarter ended</i>	<i>Establish-ments</i>	<i>Guest rooms</i>	<i>Bed spaces</i>	<i>Persons employed</i>	<i>Room nights occupied</i>	<i>Room occupancy rate</i>	<i>Guest nights occupied</i>	<i>Takings from accommodation</i>
<i>no.</i>	<i>no.</i>	<i>no.</i>	<i>no.</i>	<i>'000</i>	<i>%</i>	<i>'000</i>	<i>\$m</i>	
2000								
March	707	31 332	86 134	21 498	1 773.4	62.3	2 982.4	213.0
June	705	31 384	86 372	21 586	1 628.9	57.1	2 655.9	185.3
September	703	31 158	85 719	21 784	1 608.7	56.2	2 663.8	207.4
December	701	31 155	85 238	21 700	1 698.9	59.4	2 838.7	217.3
2001								
March	706	32 023	87 185	21 890	1 787.2	62.1	3 054.5	241.4
June	705	32 295	87 866	22 008	1 619.6	55.1	2 699.3	202.6
September	707	32 274	87 398	22 011	1 649.2	55.5	2 797.1	214.1
December	711	32 548	88 604	21 333	1 757.3	58.7	2 990.0	221.0

(a) Comprising establishments with 15 or more rooms or units.

Source: *Tourist Accommodation, Australia (Cat. no. 8635.0)*.

<i>Hotels, motels, guest houses and serviced apartments(a)</i>					
<i>Tourism Region</i>	<i>Room occupancy rate</i>	<i>Guest nights</i>	<i>Guest arrivals</i>	<i>Average length of stay</i>	<i>Takings from accommodation</i>
	<i>%</i>	<i>'000.</i>	<i>'000.</i>	<i>days</i>	<i>\$'000</i>
Melbourne	68.7	1 993.6	802.2	2.5	170 799
Melbourne East	37.7	19.3	13.2	1.5	1 528
Peninsula	43.4	53.7	30.5	1.8	3 631
Geelong	49.9	60.7	34.7	1.7	3 857
Western	54.8	138.8	88.7	1.6	7 254
Western Grampians	50.1	37.1	27.3	1.4	1 786
Central Highlands	46.9	31.3	21.2	1.5	1 267
Ballarat	53.6	91.3	53.7	1.7	3 957
Macedon	29.0	2.6	1.3	1.9	232
Spa Country	63.3	11.0	5.8	1.9	1 059
Bendigo Loddon	55.7	71.1	44.8	1.6	3 529
Wimmera	48.4	7.6	4.6	1.7	291
Mallee	51.5	101.3	62.5	1.6	4 399
Central Murray	48.8	47.2	30.5	1.5	2 094
Goulburn	49.5	50.8	35.5	1.4	2 525
Upper Yarra	32.8	18.1	9.3	2.0	1 477
High Country	24.0	85.4	47.1	1.8	3 665
Murray East	38.8	25.3	16.1	1.6	1 084
Lakes	40.7	47.4	32.6	1.5	1 957
Gippsland	40.1	55.0	33.0	1.7	2 759
Phillip Island	49.3	41.7	24.7	1.7	1 827
<b>Total Victoria</b>	<b>58.7</b>	<b>2 990.0</b>	<b>1 419.3</b>	<b>2.1</b>	<b>220 977</b>

(a) Comprising establishments with 15 or more rooms or units.

Source: *Tourist Accommodation, Small Area Data, Victoria (Cat. no. 8635.2.40.001)*.



Period	Livestock slaughterings					Meat (carcass weight)				
	Cattle '000	Calves '000	Sheep '000	Lambs '000	Pigs '000	Beef tonnes	Veal tonnes	Mutton tonnes	Lamb tonnes	Pigmeat tonnes
ORIGINAL										
1998-99	1 751.3	714.4	3 079.6	6 699.4	1 572.8	398 815	14 225	61 646	128 380	114 582
1999-2000	1 523.8	678.5	3 816.0	7 144.5	1 443.7	351 273	13 370	76 719	140 215	106 690
2000-01	1 523.9	608.9	4 193.3	8 090.0	1 065.6	354 819	11 842	84 016	157 898	78 954
2000										
December	123.6	5.7	290.3	642.8	86.8	28 150	131	6 097	12 364	6 758
2001										
January	137.3	6.0	392.0	687.6	84.7	32 199	138	7 865	13 223	6 260
February	137.5	5.2	411.0	658.3	83.6	32 188	115	7 828	12 987	5 975
March	134.7	14.0	428.5	684.2	90.5	31 177	283	7 897	13 286	6 499
April	112.5	19.4	315.2	602.3	87.3	25 500	378	5 924	11 499	6 424
May	139.9	46.8	407.9	718.1	95.9	32 470	900	7 797	14 145	6 846
June	109.7	61.7	320.3	592.6	84.8	25 053	1 184	6 136	11 608	6 284
July	113.8	77.8	316.7	548.5	88.6	26 908	1 476	6 193	10 580	6 694
August	115.8	165.1	275.2	595.4	95.9	27 649	3 169	5 445	11 646	6 838
September	103.1	104.4	258.4	530.7	82.5	24 787	1 999	5 192	10 253	6 093
October	131.3	52.4	379.1	655.9	94.2	31 580	1 006	7 612	12 620	6 725
November	129.5	18.3	389.3	682.1	93.5	31 406	440	7 825	13 078	6 448
December	103.7	8.2	312.2	579.0	93.3	24 839	266	6 238	11 086	6 252
2002										
January	127.3	8.3	387.3	622.5	86.5	30 556	254	7 528	11 951	6 162
February	122.9	7.7	371.2	541.5	81.2	30 210	252	7 052	10 622	5 638
SEASONALLY ADJUSTED										
2000										
December	129.7	41.3	289.2	667.0	88.2	29 129	762	6 074	12 974	7 057
2001										
January	126.3	43.9	336.5	677.7	89.2	28 995	772	6 677	12 920	6 658
February	128.2	44.4	338.9	686.7	91.7	29 410	779	6 607	13 453	6 707
March	127.3	48.6	363.8	691.7	88.3	29 344	884	7 020	13 468	6 412
April	125.5	44.5	355.0	676.0	87.4	28 593	837	6 877	13 239	6 409
May	124.0	48.6	406.6	679.4	83.5	29 162	946	8 193	13 156	5 931
June	118.3	49.8	411.3	661.4	84.5	27 869	983	7 949	13 013	6 162
July	120.6	47.3	400.8	561.8	84.5	28 978	960	7 692	10 603	6 322
August	121.5	51.7	328.0	594.0	93.6	29 526	1 005	6 522	11 727	6 603
September	123.1	44.7	317.8	530.6	89.6	30 160	841	6 190	10 230	6 586
October	125.8	46.6	329.7	585.9	95.0	29 657	908	6 122	11 345	6 659
November	118.7	47.8	330.9	608.8	95.8	28 110	1 055	6 505	11 695	6 580
December	109.3	59.2	308.5	610.2	93.8	26 202	1 569	6 096	11 899	6 430
2002										
January	112.4	55.8	332.3	595.3	90.6	26 766	1 305	6 503	11 211	6 564
February	114.0	65.5	306.3	563.5	89.0	27 557	1 715	5 957	10 978	6 320
TREND ESTIMATES										
2000										
December	129.0	41.7	318.6	676.3	89.1	29 789	763	6 410	13 095	6 711
2001										
January	128.1	42.4	324.1	682.3	89.3	29 372	761	6 448	13 168	6 688
February	127.1	43.9	339.5	686.9	88.9	29 064	789	6 699	13 264	6 600
March	126.1	45.8	360.4	686.8	87.9	28 892	838	7 067	13 359	6 460
April	124.5	47.3	378.7	677.5	86.6	28 789	889	7 399	13 345	6 307
May	123.0	48.2	388.3	658.6	85.8	28 794	926	7 580	13 161	6 226
June	122.2	48.3	386.9	631.5	85.9	28 951	933	7 550	12 770	6 244
July	122.0	48.0	375.3	604.1	87.3	29 186	929	7 310	12 280	6 332
August	121.9	47.6	358.4	584.9	89.5	29 325	928	6 957	11 827	6 447
September	121.4	47.8	340.9	577.5	91.8	29 217	959	6 600	11 514	6 544
October	120.1	49.1	327.9	579.9	93.2	28 818	1 038	6 348	11 360	6 584
November	118.0	51.4	321.2	586.4	93.5	28 238	1 158	6 236	11 325	6 568
December	115.7	54.5	318.1	591.1	93.1	27 634	1 298	6 193	11 332	6 527
2002										
January	113.5	57.8	315.8	593.2	92.4	27 114	1 437	6 165	11 323	6 481
February	111.8	60.7	316.6	590.9	91.2	26 706	1 562	6 186	11 350	6 427

(a) The majority of data in this table have been revised since the last issue.

Source: ABS data available on request, Livestock Slaughtering Collection.

	Units	Sep qtr 2000	Dec qtr 2000	Mar qtr 2001	Jun qtr 2001	Sep qtr 2001	Dec qtr 2001
<b>Livestock products</b>							
Milk							
Factory intake	million litres	1 668.9	r 2 465.0	r 1 552.9	r 1 089.8	1 688.4	2 616.6
Market sales by factories(b)	million litres	115.5	112.2	112.5	115.4	117.6	114.3
Milk products							
Cheese	tonnes	48 619	75 087	64 902	56 524	r 65 756	94 097
Whole milk powder(c)	tonnes	51 408	74 246	48 942	27 588	44 602	78 388
Skim milk/buttermilk powder	tonnes	65 309	100 576	48 964	38 615	r 59 173	104 866
Butter/butteroil	tonnes	32 158	50 350	32 673	24 845	31 792	52 500
Wool receivals							
Original	tonnes	38 369	53 391	32 811	23 763	r 36 536	45 617
Seasonally adjusted	tonnes	35 776	35 265	42 292	37 405	r 34 134	30 312
Trend(d)	tonnes	37 358	r 37 822	r 38 753	r 37 700	r 34 466	31 185
Live sheep exports							
Quantity	number	—	220 658	353 767	328 409	195 721	282 637
Gross weight	tonnes	—	11 724	19 172	16 127	9 766	14 537
Chickens slaughtered							
Original	'000	26 285.8	26 591.2	26 067.6	25 135.4	24 681.4	25 130.9
Seasonally adjusted	'000	26 966.0	25 818.7	26 075.4	25 441.9	25 251.5	24 205.7
Trend(d)	'000	26 676.4	26 288.8	r 25 868.5	r 25 510.2	r 25 036.7	24 461.0
Chicken meat							
Original	tonnes	42 735	46 915	42 335	43 788	41 170	43 033
Seasonally adjusted	tonnes	43 657	45 098	42 469	44 517	42 037	41 367
Trend(d)	tonnes	44 219	44 168	r 43 831	r 43 267	r 42 456	41 727
<b>Other products</b>							
Electricity(e)	'000 megawatt hours	10 405	11 117	11 776	11 756	11 978	10 274
Ready mixed concrete(f)(g)	'000 cubic metres	1 029	1 016	959	1 102	1 179	n.y.a.
Hardwood woodchips(f)(h)	tonnes	44 063	48 952	29 416	44 594	41 677	n.y.a.

(a) Quarterly statistics on Victoria's production of gold, oil and gas are available in Australian Mineral Statistics, published by the Australian Bureau of Agricultural and Resource Economics.

(b) Original series.

(c) Data from September quarter 2001 onwards are for Australia. For confidentiality reasons, State data are no longer available. The majority of whole milk powder production occurs in Victoria.

(d) Trend estimates for the most recent quarters are subject to revision when data for the subsequent quarters become available.

(e) Total metered generation of all generators in Victoria.

(f) Compiled from the ABS manufacturing production collection. Excludes details relating to both single establishment manufacturing enterprises with fewer than four persons employed, and establishments predominantly engaged in non-manufacturing activities which may also undertake some limited manufacturing activity. However, the effect of these establishments on production levels and movements is usually marginal.

(g) ANZSCC 375.01.01. Reported production of ready mixed concrete for sale as such. Excludes production used, or for use, in the same business. (An improvement in coverage for Melbourne Statistical Division from June month 2000 contributed approximately a 4% increase in the June month 2000 production level for Victoria).

(h) ANZSCC 312.03.01. Expressed as greenweight; excludes chips which are not sold or are used in own works.

Source: Australian Dairy Corporation; ABS data available on request, Wool Receivals and Purchases; ABS data available on request, Merchandise Exports; ABS data available on request, Poultry and Game Birds Slaughtered; National Electricity Market Management Company; ABS data available on request, Manufacturing Production Survey.

Section and Division of the SITC Rev3	1999–2000		2000–01		Eight months ended February 2002	
	Exports	Imports	Exports	Imports	Exports	Imports
	\$m	\$m	\$m	\$m	\$m	\$m
0 Food and live animals chiefly for food(d)(e)	4 426	1 357	5 772	1 430	4 342	1 011
1 Beverages and tobacco(d)(e)	187	141	228	211	182	167
2 Crude materials, inedible (except fuels)(d)(e)	1 580	625	2 164	677	1 285	419
3 Mineral fuels, lubricants, and related materials(e)	1 221	1 764	1 393	2 309	796	1 271
4 Animal and vegetable oils, fats and waxes(d)(e)	113	93	108	96	67	69
5 Chemicals and related products, n.e.c.(d)(e)	1 024	3 352	1 258	3 855	888	2 580
6 Manufacturing goods classified chiefly by material(d)(e)	2 681	4 648	2 901	4 772	1 861	3 269
7 Machinery and transport equipment(d)(e)	3 963	14 768	4 079	15 435	2 670	10 628
8 Miscellaneous manufactured articles(d)(e)	1 162	5 835	1 403	6 205	884	4 443
9 Commodities and transactions of merchandise trade, n.e.c.(f)						
97 Gold, non-monetary (excluding gold ores and concentrates)	1 965	203	1 940	335	921	354
98 Combined confidential items of trade	446	920	1 017	1 152	703	811
Other Section 9	265	9	242	8	176	10
<i>Total Section 9</i>	<i>2 677</i>	<i>1 133</i>	<i>3 200</i>	<i>1 494</i>	<i>1 800</i>	<i>1 175</i>
<b>Total</b>	<b>19 034</b>	<b>33 717</b>	<b>22 506</b>	<b>36 485</b>	<b>14 777</b>	<b>25 030</b>

(a) Victorian imports are those imported goods released from Customs control within Victoria. Victorian exports are those whose final stage of production or manufacture occurred within Victoria.

(b) Standard International Trade Classification.

(c) Any discrepancies between sums of the component items and totals are due to rounding.

(d) Excludes export commodities subject to a confidentiality restriction. These are included in Section 9.

(e) Excludes imports commodities subject to a confidentiality restriction. These are included in Section 9.

(f) Includes export and import commodities subject to a confidentiality restriction.

Source: ABS data available on request, *Merchandise Exports Collection*; ABS data available on request, *Merchandise Imports Collection*.

Period	Victoria(a)				Australia			
	Exports \$m	Imports \$m	Excess of exports \$m	Exports (including re-exports) \$m	Imports \$m	Excess of exports \$m	Victoria exports as a proportion of Australia %	Victoria imports as a proportion of Australia %
1998-99	16 484	31 014	-14 530	85 991	97 611	-11 620	19.2	31.8
1999-2000	19 034	33 717	-14 683	97 286	110 078	-12 792	19.6	30.6
2000-01 r	22 506	36 485	-13 978	119 539	118 317	1 222	18.8	30.8
2000								
December	1 836	2 819	-984	10 294	9 250	1 044	17.8	30.5
2001								
January	1 485	2 882	-1 397	8 327	9 267	-940	17.8	31.1
February	1 903	2 711	-808	9 223	8 322	901	20.6	32.6
March	2 073	3 074	-1 001	10 571	9 930	641	19.6	31.0
April	1 835	2 954	-1 120	10 306	9 574	732	17.8	30.9
May	1 986	3 073	-1 087	10 696	9 979	717	18.6	30.8
June r	1 980	2 818	-838	10 621	9 510	1 110	18.6	29.6
July r	1 896	2 971	-1 076	10 584	9 718	866	17.9	30.6
August r	2 004	3 418	-1 414	10 493	10 613	-120	19.1	32.2
September r	1 934	2 961	-1 027	10 613	9 693	920	18.2	30.5
October r	2 110	3 517	-1 406	10 798	11 525	-728	19.5	30.5
November r	1 697	3 336	-1 639	10 125	10 485	-359	16.8	31.8
December	1 818	2 874	-1 056	10 179	9 140	1 039	17.9	31.4
2002								
January	1 543	2 908	-1 365	8 964	9 356	-392	17.2	31.1
February	1 775	3 046	-1 270	9 317	9 620	-303	19.1	31.7

(a) Victorian imports are those imported goods released from Customs control within Victoria. Victorian exports are those whose final stage of production or manufacture occurred within Victoria.

Source: *International Merchandise Imports (Cat. no. 5439.0)*; ABS data available on request, *Merchandise Exports Collection*; ABS data available on request, *Merchandise Imports Collection*.

Country	1999–2000		2000–01		Eight months ending February 2002	
	Exports	Imports	Exports	Imports	Exports	Imports
	\$m	\$m	\$m	\$m	\$m	\$m
Belgium-Luxembourg	110	258	168	275	67	187
Brazil	46	105	70	123	37	99
Canada	135	445	195	412	130	234
China	1 124	3 029	1 430	3 891	943	3 034
Fiji	286	194	361	142	156	97
Finland	9	187	10	227	7	146
France	136	622	156	748	110	585
Germany	397	2 402	507	2 585	265	1 859
Hong Kong (SAR of China)	945	403	1 062	408	769	317
India	193	262	220	291	169	229
Indonesia	295	893	391	1 049	320	760
Italy	332	1 036	464	1 028	276	748
Japan	1 860	4 416	2 248	4 828	1 381	3 204
Korea, Republic of (South)	1 236	870	1 305	1 065	783	709
Malaysia	514	1 118	531	1 037	369	717
Mexico	74	111	157	130	109	79
Netherlands	105	318	150	302	71	257
New Zealand	2 297	1 491	1 876	1 535	1 343	1 178
Pakistan	56	85	76	112	26	66
Papua New Guinea	139	67	145	22	81	8
Philippines	385	163	474	175	320	114
Saudi Arabia	704	221	1 206	314	918	120
Singapore	1 475	632	1 518	685	816	558
South Africa	229	166	204	208	160	159
Sweden	29	607	28	541	23	313
Switzerland	40	319	47	342	30	237
Taiwan	835	922	816	959	437	630
Thailand	439	673	491	802	364	549
United Kingdom	694	1 793	696	1 842	385	1 240
United States of America	1 630	7 701	2 073	7 377	1 461	4 803
Other and unknown	2 286	2 205	3 431	3 029	2 451	1 793
<b>Total(c)</b>	<b>19 034</b>	<b>33 717</b>	<b>22 506</b>	<b>36 485</b>	<b>14 777</b>	<b>25 030</b>

(a) Victorian imports are those imported goods released from Customs control within Victoria. Victorian exports are those whose final stage of production or manufacture occurred within Victoria.

(b) The list of countries in this table reflects the volume of trade with Victoria.

(c) Any discrepancies between sums of component items and the total are due to rounding.

Source: ABS data available on request, Merchandise Exports Collection; ABS data available on request, Merchandise Imports Collection.

	Proportion of days per quarter with Ozone Pollutant Index(b) at stated level(c)						Proportion of days per quarter with Visibility Pollutant Index(b) at stated level(c)					
	2000				2001		2000				2001	
	Mar	Jun	Sep	Dec	Mar	Jun	Mar	Jun	Sep	Dec	Mar	Jun
	%	%	%	%	%	%	%	%	%	%	%	%
West(d)												
Very good	50	93	86	53	44	89	72	51	42	62	64	48
Good	44	7	14	44	47	11	24	36	42	34	30	31
Fair	6	—	—	3	9	—	2	7	13	2	1	19
Poor	—	—	—	—	—	—	—	3	—	1	3	2
Very poor	—	—	—	—	—	—	1	3	2	—	1	—
East(d)												
Very good	54	96	99	73	49	93	74	28	39	77	64	21
Good	40	4	1	26	44	7	25	46	30	21	29	44
Fair	7	—	—	1	7	—	—	15	16	2	3	20
Poor	—	—	—	—	—	—	—	8	10	—	1	15
Very poor	—	—	—	—	—	—	1	3	4	—	2	—
City(d)												
Very good	70	100	100	89	68	100	71	52	61	84	62	43
Good	30	—	—	11	32	—	26	35	31	15	32	39
Fair	—	—	—	—	—	—	2	6	5	1	2	16
Poor	—	—	—	—	—	—	1	4	2	—	1	2
Very poor	—	—	—	—	—	—	—	3	2	—	2	—
Geelong(d)												
Very good	80	96	100	75	57	94	79	67	63	85	74	51
Good	20	4	—	24	38	6	21	24	30	15	21	37
Fair	—	—	—	1	6	—	—	2	7	—	3	10
Poor	—	—	—	—	—	—	—	6	—	—	1	2
Very poor	—	—	—	—	—	—	—	1	—	—	—	—
Latrobe Valley(d)												
Very good	69	97	90	79	59	93	60	15	35	74	47	21
Good	31	3	10	20	40	7	37	55	42	26	42	41
Fair	—	—	—	1	1	—	1	23	20	—	8	30
Poor	—	—	—	—	—	—	2	6	3	—	3	8
Very poor	—	—	—	—	—	—	—	1	—	—	—	1

(a) The EPA reports air quality as an index for any given pollutant as its concentration expressed as a percentage of the relevant standard. It enables easy interpretation of whether the pollutant is at a level which may cause harm. An index value of 100 means the pollutant is currently at a concentration equal to the National Environment Protection Measure (Air NEPM) or State Environment Protection Policy (The Air Environment) (SEPP) standard levels (levels designed to protect human health and the environment). Indexes are calculated separately for each measured pollutant: Ozone, Nitrogen Dioxide, Sulfur Dioxide, Carbon Monoxide, Fine Particulates (PM10), Visibility (Airborne Particle Index). For each station, the daily pollutant indexes are the maximum index values for that day. Note that not all pollutants are measured at each station. The EPA also calculates an overall Air Quality Index, which amalgamates each pollutant index into an overall measure of air quality at each station.

(b) Data have been provided for the Ozone and Visibility (or Airborne Particle) Indexes as these are the dominant pollutants and are widely measured across the EPA network. It should also be noted that meteorological conditions are a major determinant on the incidence of elevated pollutant levels. Hence significant daily, seasonal and annual variations can be expected in air quality. For more information on Air Quality, see the EPA web site, <[www.epa.vic.gov.au](http://www.epa.vic.gov.au)>.

(c) The index is converted into a qualitative scale with 5 commonly understood terms Very good (0–33), Good (34–66) and Fair (67–99), (which represent measurements within the health standards) while Poor (100–149) and Very poor (150+) represent measurements exceeding the health standards.

(d) For reporting purposes the Port Phillip Region (PPR) has been divided into 4 regions: East, West, City and Geelong. Air monitoring stations assigned to each region are: East — Alphington, Brighton, Box Hill, Dandenong; City — RMIT, Richmond; West — Footscray, Mount Cottrell, Point Cook, Paisley; Geelong — Point Henry, Geelong South. In addition, the Latrobe Valley has stations at Moe and Traralgon. The regional index is considered to be the maximum of the station indexes calculated within each particular region. The daily index reported for a region is the maximum region index recorded each day.

Source: Environment Protection Authority, Victoria.

Basin	Capacity at full service level ML	Storage levels at end of month (percent of capacity)						Change (percent of capacity) from	
		Jan 2001	Feb 2001	Mar 2001	Jan 2002	Feb 2002	Mar 2002	Feb 2002 to Mar 2002	Mar 2001 to Mar 2002
Goulburn	3 833 500	44.5	39.8	35.1	33.5	29.8	24.1	-5.7	-11.0
Broken	405 000	63.4	60.8	57.5	52.2	48.8	44.9	-3.9	-12.5
Campaspe	387 500	84.6	77.7	70.2	51.9	44.8	36.8	-8.0	-33.3
Loddon	284 300	81.8	75.0	67.4	52.0	46.8	40.6	-6.2	-26.8
Murray	7 113 210	71.9	66.8	60.9	69.2	65.2	56.0	-9.2	-4.9
Ovens	37 500	89.1	80.8	65.5	87.2	77.8	52.2	-25.6	-13.3
Werribee	76 020	72.4	65.0	60.7	70.5	65.1	58.0	-7.1	-2.6
Maribymong	24 900	37.4	34.5	32.9	29.3	27.9	28.8	0.9	-4.1
Glenelg/Wimmera	770 040	14.3	13.0	12.5	23.2	21.2	19.8	-1.4	7.3
Thomson/Latrobe	1 521 200	55.8	50.4	46.0	58.9	56.3	53.0	-3.2	7.1
<b>Total</b>	<b>14 453 170</b>	<b>60.2</b>	<b>55.3</b>	<b>50.1</b>	<b>54.9</b>	<b>51.1</b>	<b>44.1</b>	<b>-7.0</b>	<b>-6.0</b>
<b>Total Volume of Water</b>									
In Melbourne Water storages(a)	1 787 500	58.2	55.2	52.7	56.9	55.3	53.0	-2.3	0.3
In rural water authority storages(b)	9 773 565	56.9	52.0	46.7	50.2	46.3	39.2	-7.0	-7.5

(a) The total volume in Melbourne Water storages is calculated as the sum of volumes in store in Thomson, Upper Yarra, O'Shannassy, Maroondah, Sugarloaf, Yan Yean, Greenvale, Silvan and Cardinia (Tarago and Devil Bend are excluded).

(b) The total volume in rural water authority storages is calculated (as an approximation) as the sum of volumes in store for all listed storages, minus the volume in Thomson reservoir, minus half of the volume stored in the Murray Basin.

Source: Department of Natural Resources and Environment web site, <[www.nre.vic.gov.au/vro](http://www.nre.vic.gov.au/vro)>.

	ISPs(a)	POPs(b)	Access lines(c)	All subscribers(d)	Data downloaded by subscribers (d)(e)	Average number of subscribers per access line(f)	Average data downloaded per subscriber (e)(f)
	no.	no.	no.	'000	million Mbs	no.	Mbs
SEPTEMBER QUARTER 2001							
Melbourne	194	246	120 626	962	291	8.0	302
Barwon	31	36	4 256	38	8	8.8	215
Western District	10	13	1 063	15	3	14.3	178
Central Highlands	26	27	3 191	30	6	9.3	199
Wimmera	5	10	417	5	n.p.	13.2	n.p.
Mallee	14	17	1 937	19	4	9.7	223
Loddon	17	27	2 860	30	5	10.4	170
Goulburn	19	32	3 482	29	5	8.4	170
Ovens-Murray	10	12	690	6	n.p.	8.9	n.p.
East Gippsland	7	16	608	10	2	16.1	252
Gippsland	17	29	2 750	31	6	11.2	184
<b>Victoria</b>	<b>222</b>	<b>465</b>	<b>141 880</b>	<b>1 175</b>	<b>331</b>	<b>8.3</b>	<b>282</b>
PERCENTAGE CHANGE FROM PREVIOUS QUARTER (JUNE 2001)							
Melbourne	-0.5	-1.2	1.6	2.5	—	1.3	-2.5
Barwon	3.3	2.9	-33.7	-1.3	31.5	49.2	36.3
Western District	11.1	8.3	5.1	5.2	52.0	3.6	24.3
Central Highlands	8.3	8.0	-0.3	-6.0	-3.7	-4.1	2.4
Wimmera	—	—	6.1	12.1	n.p.	3.9	n.p.
Mallee	—	—	-2.9	-1.3	27.0	2.1	40.9
Loddon	-5.6	3.8	-10.6	-6.8	-6.5	4.0	9.2
Goulburn	—	6.7	3.2	2.3	11.6	1.2	19.2
Ovens-Murray	11.1	9.1	13.1	14.6	n.p.	8.5	n.p.
East Gippsland	—	6.7	12.4	13.1	160.2	-3.0	126.7
Gippsland	-5.6	—	-5.2	-3.8	13.7	1.8	18.0
<b>Victoria</b>	<b>-1.8</b>	<b>1.3</b>	<b>-0.3</b>	<b>1.8</b>	<b>1.6</b>	<b>2.5</b>	<b>—</b>
PERCENTAGE CHANGE FROM SAME QUARTER OF PREVIOUS YEAR (SEPTEMBER 2000)							
Melbourne	-15.7	-15.8	-6.4	12.6	-2.0	21.2	-13.0
Barwon	-11.4	-14.3	-28.2	-1.1	25.8	37.5	n.p.
Western District	25.0	18.2	-55.8	78.4	63.4	297.2	-8.4
Central Highlands	8.3	3.8	48.3	32.4	38.7	-10.6	n.p.
Wimmera	-16.7	-9.1	n.p.	10.4	n.p.	n.p.	n.p.
Mallee	27.3	21.4	n.p.	101.2	358.8	n.p.	127.9
Loddon	-15.0	-6.9	11.8	23.7	-26.1	10.6	-40.3
Goulburn	18.8	14.3	81.5	31.6	-23.8	-27.0	n.p.
Ovens-Murray	—	9.1	5.3	12.9	n.p.	7.2	n.p.
East Gippsland	-12.5	—	-8.6	3.3	321.6	13.4	307.8
Gippsland	-5.6	16.0	31.5	41.9	218.2	8.7	124.2
<b>Victoria</b>	<b>-16.9</b>	<b>-7.9</b>	<b>-4.5</b>	<b>15.1</b>	<b>1.3</b>	<b>20.3</b>	<b>-12.0</b>

(a) An Internet Service Provider (ISP) is a resident Australian individual or business offering Internet access services to customers. ISPs are counted in each Statistical Division (SD) where that ISP has a presence.

(b) A Point of Presence (POP) is a server in a geographic location where an ISP can be accessed by a subscriber via access lines.

(c) Lines, points, ports and modem access points available to subscribers to access their ISP.

(d) Subscribers and data downloaded have been apportioned to a SD according to the location of the POP where the activity took place.

(e) A megabyte (Mb) is a data unit of 1,048,576 bytes, sometimes interpreted as 1 million bytes.

(f) Average figures are calculated using actual data as opposed to rounded figures.

Source: *Internet Activity, Australia* (Cat. no. 8153.0).



ARIA category(b)	ISPs(c) no.	POPs(d) no.	Access lines(e) no.	All subscribers (f) '000	Data downloaded by subscribers (f)(g) million Mbs	Average number of subscribers per access line(h) no.	Average data downloaded per subscriber (g)(h) Mbs
SEPTEMBER QUARTER 2001							
Highly accessible	216	413	138 335	1 134	324	8.2	286
Accessible	30	40	3 263	36	7	11.1	187
Moderately accessible	5	12	282	4	1	14.9	181
<b>Victoria</b>	<b>222</b>	<b>465</b>	<b>141 880</b>	<b>1 175</b>	<b>331</b>	<b>8.3</b>	<b>282</b>
PERCENTAGE CHANGE FROM PREVIOUS QUARTER (JUNE 2001)							
Highly accessible	-1.4	1.7	1.2	-0.4	1.7	2.5	-0.5
Accessible	-3.2	-2.4	35.2	-1.3	2.6	4.7	30.9
Moderately accessible	0.0	0.0	136.2	24.2	16.9	-15.3	123.6
<b>Victoria</b>	<b>-1.8</b>	<b>1.3</b>	<b>1.6</b>	<b>-0.3</b>	<b>1.8</b>	<b>2.5</b>	<b>0.0</b>
PERCENTAGE CHANGE FROM SAME QUARTER OF PREVIOUS YEAR (SEPTEMBER 2000)							
Highly accessible	-16.3	-9.0	n.p.	-5.1	15.2	20.6	n.p.
Accessible	3.4	2.6	n.p.	38.4	14.8	-16.5	n.p.
Moderately accessible	0.0	0.0	n.p.	-30.0	-6.5	33.0	n.p.
<b>Victoria</b>	<b>-16.9</b>	<b>-8.0</b>	<b>1.3</b>	<b>-4.5</b>	<b>15.1</b>	<b>20.3</b>	<b>-12.0</b>

(a) Accessibility/Remoteness Index of Australia.

(b) Victoria does not have regions coded to the ARIA categories 'remote' and 'very remote'.

(c) An Internet Service Provider (ISP) is a resident Australian individual or business offering Internet access services to customers. ISPs are counted in each ARIA category where that ISP has a presence.

(d) A Point of Presence (POP) is a server in a geographic location where an ISP can be accessed by a subscriber via access lines.

(e) Lines, points, ports and modem access points available to subscribers to access their ISP.

(f) Subscribers and data downloaded have been apportioned to an ARIA category according to the location of the POP where the activity took place.

(g) A megabyte (Mb) is a data unit of 1,048,576 bytes, sometimes interpreted as 1 million bytes.

(h) Average figures are calculated using actual data as opposed to rounded figures.

Source: *Internet Activity, Australia* (Cat. no. 8153.0).

## GLOSSARY

**Chain Volume Measures** Annually-reweighted chain Laspeyres indexes referenced to the current price values in a chosen reference year (i.e. the year when the quarterly chain volume measures sum to the current price annual values). Chain Laspeyres volume measures are compiled by linking together (compounding) movements in volumes, calculated using the average prices of the previous financial year, and applying the compounded movements to the current price estimates of the reference year. Quarterly chain volume estimates are benchmarked to annual chain volume estimates, so that the quarterly estimates for a financial year sum to the corresponding annual estimate.

Generally, chain volume measures are not additive. In other words, component chain volume measures do not sum to a total in the way original current price components do. In order to minimise the impact of this property, the ABS uses the latest base year as the reference year. By adopting this approach, additivity exists for the quarters following the reference year (currently 1999–2000) and non-additivity is relatively small for the quarters in the reference year and the quarters immediately preceding it. The latest base year and the reference year will be advanced one year with the release of the June quarter data each year. A change in reference year changes levels but not growth rates, although some revision to recent growth rates can be expected because of the introduction of a more recent base year (and revisions to the current price estimates underlying the chain volume measures).

**Duration of Unemployment** The elapsed period to the end of the reference week since a person began looking for work, or since a person last worked for two weeks or more, whichever is the shorter. Brief periods of work (of less than two weeks) since the person began looking for work are disregarded.

**Employed** Persons aged 15 years and over who, during the reference week:

- worked for one hour or more for pay, profit, commission or payment in kind, in a job or business or on a farm (comprising employees, employers and own account workers); or
- worked for one hour or more without pay in a family business or on a farm (i.e. contributing family workers); or
- were employees who had a job but were not at work and were:
  - away from work for less than four weeks up to the end of the reference week; or
  - away from work for more than four weeks up to the end of the reference week and received pay for some or all of the four week period to the end of the reference week; or
  - away from work as a standard work or shift arrangement; or
  - on strike or locked out; or
  - on workers' compensation and expected to return to their job.
- were employers or own account workers who had a job, business or farm, but were not at work.

<b>Part-Time Workers</b>	Employed persons who usually worked less than 35 hours a week (in all jobs) and either did so during the reference week, or were not at work in the reference week.
<b>Seasonal Adjustment</b>	A means of removing the estimated effects of normal seasonal variations from economic time series so that the effects of other influences are obvious. Seasonal variations are the systematic (though not necessarily regular) intra-year movements of economic time series. These are often the result of non-economic phenomena, such as climatic changes and regular religious festivals, e.g. Christmas and Easter.
<b>State Final Demand</b>	Conceptually identical to domestic final demand at the national level (the sum of private and government final consumption expenditure and private and public gross fixed capital formation).  National estimates are based on the concepts and conventions embodied in the <i>System of National Accounts</i> , 1993, but for regional (including State) estimates there is no separate international standard. Although national concepts are generally applicable to State accounts, there remain several conceptual and measurement issues that either do not apply or are insignificant nationally. Most of the problems arise in the measurement of gross state product for the transport and storage, communication services, and finance and insurance industries, where production often takes place across State borders. In these cases, a number of conceptual views can be applied to the allocation of value added by State. For more information, see chapter 28 of <i>Australian System of National Accounts: Concepts, Sources and Methods</i> (Cat. no. 5216.0).
<b>Trend Estimates</b>	Smoothing seasonally adjusted series produces a measure of trend by removing the impact of the irregular component of the series. The trend estimates are derived by applying a 13-term Henderson weighted moving average to the respective seasonally adjusted series. Readers are reminded that trend estimates are subject to revision as subsequent months' data become available.
<b>Unemployed</b>	Persons aged 15 years and over who were not employed during the reference week, and: <ul style="list-style-type: none"> <li>■ had actively looked for full-time or part-time work at any time in the four weeks up to the end of the reference week and: <ul style="list-style-type: none"> <li>■ were available for work in the reference week; or</li> <li>■ were waiting to start a new job within four weeks from the end of the reference week, and could have started in the reference week if the job had been available then.</li> </ul> </li> </ul>

## FOR MORE INFORMATION...

- INTERNET* **www.abs.gov.au** the ABS web site is the best place to start for access to summary data from our latest publications, information about the ABS, advice about upcoming releases, our catalogue, and Australia Now—a statistical profile.
- LIBRARY* A range of ABS publications is available from public and tertiary libraries Australia-wide. Contact your nearest library to determine whether it has the ABS statistics you require, or visit our web site for a list of libraries.
- CPI INFOLINE* For current and historical Consumer Price Index data, call 1902 981 074 (call cost 77c per minute).
- DIAL-A-STATISTIC* For the latest figures for National Accounts, Balance of Payments, Labour Force, Average Weekly Earnings, Estimated Resident Population and the Consumer Price Index call 1900 986 400 (call cost 77c per minute).

## INFORMATION SERVICE

Data which have been published and can be provided within five minutes are free of charge. Our information consultants can also help you to access the full range of ABS information—ABS user-pays services can be tailored to your needs, time frame and budget. Publications may be purchased. Specialists are on hand to help you with analytical or methodological advice.

- PHONE* **1300 135 070**
- EMAIL* **client.services@abs.gov.au**
- FAX* 1300 135 211
- POST* Client Services, ABS, GPO Box 796, Sydney 1041

## WHY NOT SUBSCRIBE?

ABS subscription services provide regular, convenient and prompt deliveries of ABS publications and products as they are released. Email delivery of monthly and quarterly publications is available.

- PHONE* 1300 366 323
- EMAIL* subscriptions@abs.gov.au
- FAX* 03 9615 7848
- POST* Subscription Services, ABS, GPO Box 2796Y, Melbourne 3001



2136720003026  
ISSN 1445-6710

RRP \$24.00