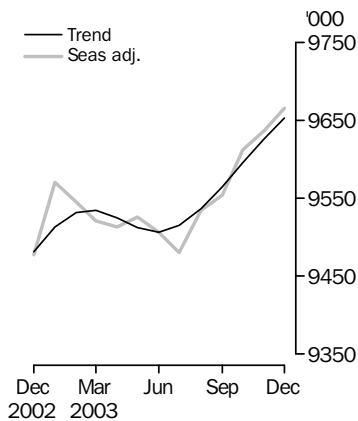


LABOUR FORCE

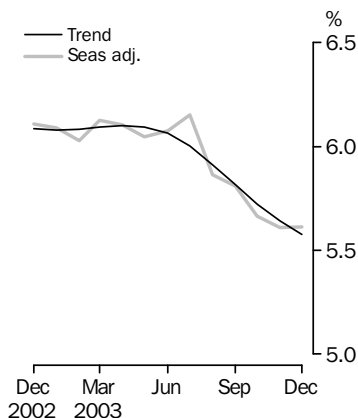
AUSTRALIA

EMBARGO: 11.30AM (CANBERRA TIME) THURS 15 JAN 2004

Employed persons



Unemployment rate



KEY FIGURES

	Nov 2003	Dec 2003	Nov 03 to Dec 03	Dec 02 to Dec 03
Trend				
Employed persons ('000)	9 625.8	9 653.0	27.3	1.8 %
Unemployed persons ('000)	575.8	570.3	-5.5	-7.2 %
Unemployment rate (%)	5.6	5.6	-0.1 pts	-0.5 pts
Participation rate (%)	63.7	63.8	0.1 pts	-0.3 pts
Seasonally Adjusted				
Employed persons ('000)	9 636.5	9 666.1	29.6	2.0 %
Unemployed persons ('000)	572.9	574.9	2.0	-6.8 %
Unemployment rate (%)	5.6	5.6	0.0 pts	-0.5 pts
Participation rate (%)	63.7	63.8	0.1 pts	-0.3 pts

KEY POINTS

TREND ESTIMATES (MONTHLY CHANGE)

- EMPLOYMENT increased to 9,653,000.
- UNEMPLOYMENT decreased to 570,300.
- UNEMPLOYMENT RATE remained at 5.6%.
- PARTICIPATION RATE increased to 63.8%.

NOTE:
Seasonal adjustment
method has changed.
See page 2

SEASONALLY ADJUSTED ESTIMATES (MONTHLY CHANGE)

EMPLOYMENT

- increased by 29,600 to 9,666,100. Full-time employment increased by 16,100 to 6,927,500 and part-time employment increased by 13,500 to 2,738,500.

UNEMPLOYMENT

- increased by 2,000 to 574,900. The number of persons looking for full-time work increased by 1,500 to 422,700 and the number of persons looking for part-time work increased slightly to 152,100.

UNEMPLOYMENT RATE

- remained at 5.6%. The male unemployment rate decreased slightly but the rounded estimates remained at 5.3% and the female rate remained at 6.0%.

PARTICIPATION RATE

- increased marginally to 63.8%.

INQUIRIES

- For further information about these and related statistics, contact the National Information and Referral Service on 1300 135 070 or Craig Blair on Canberra (02) 6252 6525.

FORTHCOMING ISSUES

<i>ISSUE</i>	<i>RELEASE DATE</i>
January 2004	12 February 2004
February 2004	11 March 2004
March 2004	8 April 2004
April 2004	13 May 2004
May 2004	10 June 2004
June 2004	8 July 2004



CHANGES TO SEASONAL ADJUSTMENT PROCESSES

The ABS has introduced concurrent seasonal adjustment to the Labour Force Survey (LFS), replacing the forward factor adjustment method previously used to produce seasonally adjusted estimates. Under concurrent seasonal adjustment, seasonal factors are reanalysed each month using original data up to the current month.

By increasing the frequency of seasonal reanalyses from annually to monthly, concurrent seasonal adjustment produces initial seasonally adjusted estimates that are usually closer on average to their final values, as any change in seasonality is picked up sooner.

While revisions under the concurrent seasonal adjustment method are generally smaller, users should be aware that seasonally adjusted estimates will now (potentially) be revised *each month*.

Recent investigations by the ABS have found that the proximity of the survey reference period to holiday periods can have an impact on LFS estimates. For this reason, a specific adjustment for Easter and January holiday periods has been introduced to coincide with the introduction of concurrent seasonal adjustment.

For further information on these changes, refer to paragraphs 17 to 23 of Explanatory Notes or *Information Paper: Forthcoming Changes to Labour Force Statistics* (cat. no. 6292.0), released on 16 December 2003.

CAI IMPLEMENTATION

In October 2003, the ABS began the progressive implementation of computer assisted interviewing (CAI) into the LFS. Under CAI, interviewers record responses directly onto an electronic questionnaire in a laptop computer.

For October, November and December 2003, the CAI method was used on a random 10% sub-sample of survey interviews. The remaining 90% of interviews each month were conducted using the traditional 'pen and paper' method.

The change to the interviewing method is not expected to affect the published estimates in any meaningful way. Nonetheless, the ABS is monitoring the situation carefully and has conducted a range of analyses on each month's data. These analyses have confirmed that any effect that the change in interview method in the 10% CAI sub-sample may have had on survey responses has not materially affected the aggregate estimates for any month.

Dennis Trewin
Australian Statistician

FORTHCOMING CHANGES

PROGRESSIVE IMPLEMENTATION OF CAI

In February 2004, the ABS will increase the sub-sample of survey interviews conducted using the CAI method from 10% to 40%. Subject to further analysis continuing to confirm that the change in method is not having a significant impact on survey estimates, the ABS intends to increase the use of CAI to 70% in April 2004 and finally to 100% in May 2004.

Users will continue to be informed of the progress of CAI implementation, including the results of further analyses, through updates in this publication.

REVISIONS TO UNIT RECORD DATA

The ABS will also be introducing a number of changes to labour force statistics with the release of February 2004 LFS data. These changes involve revisions to detailed original data at the unit record level which will flow through to published aggregated data.

The changes which will impact upon this publication and associated electronic products are detailed below. Further information on all the changes is available in *Information Paper: Forthcoming Changes to Labour Force Statistics* (cat. no. 6292.0), released on 16 December 2003. This information paper is available free from the ABS web site <<http://www.abs.gov.au>>.

REVISION OF POPULATION BENCHMARKS

LFS estimates of persons employed, unemployed and not in the labour force are calculated in such a way as to add up to independent estimates of the civilian population aged 15 and over (population benchmarks). These population benchmarks are revised every five years following the Census of Population and Housing. From February 2004, LFS estimates will be compiled using revised population benchmarks based on results from the 2001 Census. LFS estimates for the period January 1999 to January 2004 will also be revised based on the updated population benchmarks. The revised estimates will be available with the release of the February 2004 issue of this publication on 11 March 2004.

The population benchmarks currently used by the LFS are classified by state/territory of usual residence, capital city/rest of state, age and sex. In addition to these population benchmarks, from February 2004 the LFS will use population benchmarks for labour force region by sex. There are currently 68 labour force regions across Australia. The introduction of regional benchmarks will improve the quality of estimates for labour force regions without compromising the quality of estimates at national, state and territory levels.

LFS estimates for labour force regions (available each month in electronic products) will be revised back to January 1999.

DEFINITIONAL CHANGE

In February 2004, the ABS will introduce a minor change to the definition of unemployed persons. The change relates to a small group of persons ('future starters') who had not actively looked for work because they were waiting to start a new job within four weeks from the end of the survey reference week, and would have started in the reference week if the job had been available then. These persons are currently classified as not in the labour force. From February 2004 they will be classified as unemployed, in line with International Labour Organisation guidelines.

FORTHCOMING CHANGES *continued*

DEFINITIONAL CHANGE *continued*

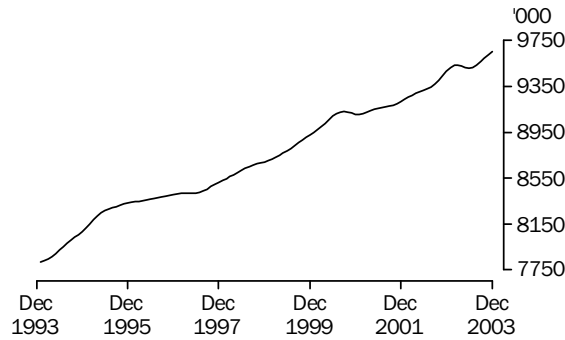
Data to support this change has been available since the new LFS questionnaire was introduced in April 2001. However, the ABS announced then that, due to concerns that such a change could result in a break in some core labour force series, implementation of the change would be deferred until February 2004 (see *Information Paper: Implementing the Redesigned Labour Force Survey Questionnaire* (cat. no. 6295.0) which was released on 3 May 2001). This timing coincides with the five-yearly revision of population benchmarks mentioned above.

LFS estimates will be revised back to April 2001 to reflect this change. Revised estimates will be available with the release of the February 2004 issue of this publication on 11 March 2004. Analysis has shown that the unemployment rate will increase as a result of this definitional change by an average of 0.1 - 0.2 percentage points. A small break will remain in the unemployed persons and unemployment rate series at April 2001.

PRINCIPAL LABOUR FORCE SERIES TREND ESTIMATES

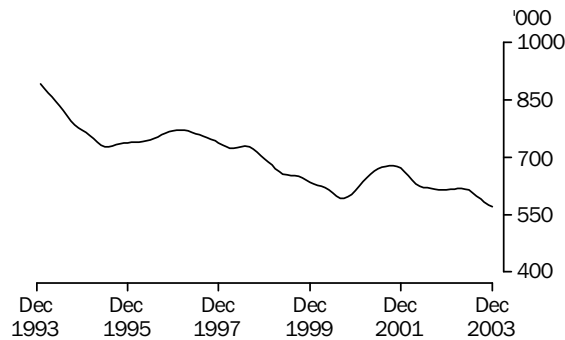
EMPLOYED PERSONS

The trend estimate of employed persons generally rose from a low of 7,637,500 in December 1992 to 9,132,700 in September 2000. The trend estimate then fell slightly to 9,108,100 in January 2001, before rising to 9,535,300 in March 2003. The trend estimate then fell for three months, before rising to stand at 9,653,000 in December 2003.



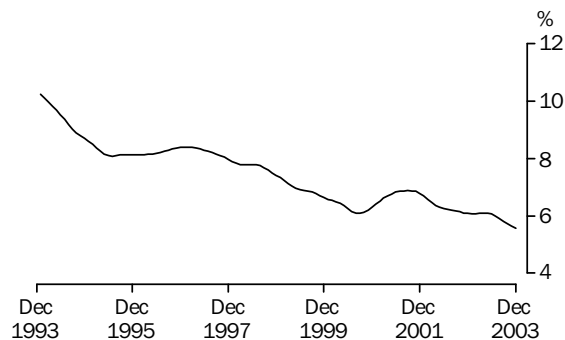
UNEMPLOYED PERSONS

The trend estimate of unemployed persons fell rapidly from 920,700 in September 1993 to 728,100 in July 1995. The trend estimate then rose to 771,500 in February 1997, before falling to 592,300 in September 2000. After rising to 678,100 in October 2001, the trend estimate has generally fallen to stand at 570,300 in December 2003.



UNEMPLOYMENT RATE

The trend unemployment rate fell rapidly from 10.7% in August 1993 to 8.1% in July 1995. The trend estimate then rose slowly, reaching 8.4% in February 1997, before falling to 6.1% in September 2000. After rising to 6.9% in September 2001, the trend estimate has generally fallen to stand at 5.6% in December 2003.



LABOUR FORCE STATUS (AGED 15 & OVER): Trend

	EMPLOYED			UNEMPLOYED			UNEMPLOYMENT RATE		
	Full time	Part time	Total	Looking for f/t work	Total	Labour force	Looking for f/t work	Total	Participation rate
	'000	'000	'000	'000	'000	'000	%	%	%
MALES									
December 2000	4 422.3	680.4	5 102.6	306.8	361.1	5 463.7	6.5	6.6	72.4
December 2001	4 419.4	732.9	5 152.3	323.4	386.3	5 538.6	6.8	7.0	72.4
2002									
December	4 478.7	779.3	5 258.1	282.8	345.7	5 603.8	5.9	6.2	72.1
2003									
January	4 493.6	778.0	5 271.5	284.5	346.4	5 617.9	6.0	6.2	72.2
February	4 503.0	776.3	5 279.3	286.4	347.3	5 626.7	6.0	6.2	72.2
March	4 505.8	774.9	5 280.7	287.7	348.1	5 628.8	6.0	6.2	72.2
April	4 504.0	773.9	5 277.9	287.7	347.6	5 625.5	6.0	6.2	72.0
May	4 502.3	773.4	5 275.7	286.3	345.6	5 621.3	6.0	6.1	71.9
June	4 505.7	773.0	5 278.6	283.2	342.0	5 620.6	5.9	6.1	71.7
July	4 516.2	773.5	5 289.7	278.2	336.0	5 625.7	5.8	6.0	71.7
August	4 532.2	776.0	5 308.2	271.7	328.2	5 636.4	5.7	5.8	71.7
September	4 549.7	780.9	5 330.5	264.9	319.8	5 650.4	5.5	5.7	71.8
October	4 566.1	787.0	5 353.1	258.4	312.1	5 665.2	5.4	5.5	71.8
November	4 580.5	793.4	5 373.9	252.5	305.4	5 679.3	5.2	5.4	71.9
December	4 592.7	799.4	5 392.2	247.6	299.7	5 691.9	5.1	5.3	72.0
FEMALES									
December 2000	2 269.5	1 736.7	4 006.2	159.0	251.9	4 258.0	6.5	5.9	54.8
December 2001	2 226.5	1 838.6	4 065.2	185.5	285.0	4 350.2	7.7	6.6	55.3
2002									
December	2 295.7	1 927.4	4 223.0	173.9	268.8	4 491.8	7.0	6.0	56.3
2003									
January	2 300.2	1 942.0	4 242.2	176.8	269.4	4 511.6	7.1	6.0	56.5
February	2 300.9	1 952.2	4 253.1	179.2	270.0	4 523.1	7.2	6.0	56.5
March	2 297.6	1 956.9	4 254.5	180.6	270.6	4 525.1	7.3	6.0	56.5
April	2 291.0	1 956.3	4 247.3	181.1	271.3	4 518.6	7.3	6.0	56.3
May	2 285.0	1 951.6	4 236.6	180.9	271.8	4 508.4	7.3	6.0	56.1
June	2 282.7	1 945.3	4 228.0	180.3	271.9	4 499.9	7.3	6.0	55.9
July	2 285.8	1 939.5	4 225.3	179.3	271.6	4 496.9	7.3	6.0	55.8
August	2 293.1	1 935.2	4 228.3	178.3	271.2	4 499.5	7.2	6.0	55.7
September	2 302.2	1 932.3	4 234.5	177.2	270.8	4 505.3	7.1	6.0	55.7
October	2 312.2	1 930.8	4 243.0	176.0	270.5	4 513.5	7.1	6.0	55.7
November	2 321.9	1 929.9	4 251.8	174.8	270.4	4 522.3	7.0	6.0	55.7
December	2 331.3	1 929.5	4 260.9	173.7	270.6	4 531.4	6.9	6.0	55.8
PERSONS									
December 2000	6 691.7	2 417.1	9 108.8	465.8	612.9	9 721.7	6.5	6.3	63.5
December 2001	6 645.9	2 571.6	9 217.5	508.8	671.3	9 888.8	7.1	6.8	63.7
2002									
December	6 774.4	2 706.7	9 481.1	456.7	614.5	10 095.6	6.3	6.1	64.1
2003									
January	6 793.7	2 720.0	9 513.7	461.4	615.8	10 129.6	6.4	6.1	64.2
February	6 804.0	2 728.5	9 532.4	465.6	617.3	10 149.7	6.4	6.1	64.3
March	6 803.4	2 731.9	9 535.3	468.4	618.7	10 153.9	6.4	6.1	64.2
April	6 795.0	2 730.2	9 525.2	468.8	618.9	10 144.1	6.5	6.1	64.0
May	6 787.3	2 725.0	9 512.3	467.1	617.4	10 129.7	6.4	6.1	63.9
June	6 788.4	2 718.2	9 506.6	463.5	613.8	10 120.5	6.4	6.1	63.7
July	6 802.0	2 713.0	9 515.0	457.5	607.6	10 122.6	6.3	6.0	63.6
August	6 825.3	2 711.2	9 536.5	450.0	599.4	10 135.9	6.2	5.9	63.6
September	6 851.9	2 713.1	9 565.0	442.1	590.6	10 155.7	6.1	5.8	63.6
October	6 878.4	2 717.7	9 596.1	434.3	582.6	10 178.7	5.9	5.7	63.7
November	6 902.4	2 723.4	9 625.8	427.3	575.8	10 201.6	5.8	5.6	63.7
December	6 924.1	2 729.0	9 653.0	421.4	570.3	10 223.3	5.7	5.6	63.8

LABOUR FORCE STATUS (AGED 15 & OVER): **Seasonally Adjusted**

	EMPLOYED			UNEMPLOYED			UNEMPLOYMENT RATE		
	<i>Full time</i>	<i>Part time</i>	<i>Total</i>	<i>Looking for f/t work</i>		<i>Labour force</i>	<i>Looking for f/t work</i>		<i>Participation rate</i>
	'000	'000	'000	'000	'000	'000	%	%	%
MALES									
December 2000	4 434.2	674.3	5 108.5	304.9	361.1	5 469.6	6.4	6.6	72.5
December 2001	4 421.9	727.5	5 149.3	312.5	371.8	5 521.2	6.6	6.7	72.1
2002									
December	4 475.4	781.4	5 256.8	285.2	349.2	5 606.0	6.0	6.2	72.2
2003									
January	4 516.4	772.1	5 288.5	286.9	350.9	5 639.5	6.0	6.2	72.5
February	4 512.2	769.0	5 281.2	282.8	345.1	5 626.3	5.9	6.1	72.2
March	4 509.6	781.2	5 290.8	287.9	340.9	5 631.7	6.0	6.1	72.2
April	4 492.9	777.6	5 270.5	288.9	352.3	5 622.8	6.0	6.3	72.0
May	4 504.5	770.6	5 275.0	286.6	345.1	5 620.1	6.0	6.1	71.8
June	4 499.3	772.6	5 271.9	285.8	346.7	5 618.6	6.0	6.2	71.7
July	4 501.4	777.5	5 278.9	279.5	338.0	5 616.9	5.8	6.0	71.6
August	4 539.4	768.9	5 308.2	269.5	325.4	5 633.7	5.6	5.8	71.7
September	4 551.1	779.3	5 330.3	264.0	318.0	5 648.3	5.5	5.6	71.8
October	4 571.0	786.4	5 357.5	263.0	315.5	5 673.0	5.4	5.6	72.0
November	4 585.2	791.7	5 376.9	245.2	299.2	5 676.1	5.1	5.3	71.8
December	4 592.0	811.2	5 403.2	248.2	300.5	5 703.8	5.1	5.3	72.1
FEMALES									
December 2000	2 258.2	1 753.6	4 011.8	162.9	251.6	4 263.3	6.7	5.9	54.9
December 2001	2 212.3	1 837.4	4 049.8	180.5	282.9	4 332.7	7.5	6.5	55.1
2002									
December	2 304.2	1 916.3	4 220.6	170.6	267.6	4 488.1	6.9	6.0	56.2
2003									
January	2 310.8	1 971.3	4 282.1	180.0	269.6	4 551.7	7.2	5.9	57.0
February	2 319.3	1 944.8	4 264.0	176.6	267.3	4 531.3	7.1	5.9	56.6
March	2 274.8	1 955.4	4 230.2	188.7	280.2	4 510.4	7.7	6.2	56.3
April	2 289.5	1 953.6	4 243.1	177.6	266.1	4 509.2	7.2	5.9	56.2
May	2 296.9	1 953.7	4 250.6	177.1	268.0	4 518.6	7.2	5.9	56.2
June	2 274.7	1 960.7	4 235.4	180.7	268.2	4 503.5	7.4	6.0	56.0
July	2 281.3	1 920.3	4 201.6	183.4	283.4	4 485.0	7.4	6.3	55.6
August	2 287.9	1 939.0	4 226.9	174.9	268.6	4 495.5	7.1	6.0	55.7
September	2 304.2	1 920.2	4 224.3	182.5	271.5	4 495.8	7.3	6.0	55.6
October	2 313.7	1 941.4	4 255.1	169.7	261.5	4 516.6	6.8	5.8	55.7
November	2 326.3	1 933.3	4 259.6	176.0	273.6	4 533.2	7.0	6.0	55.8
December	2 335.5	1 927.4	4 262.8	174.6	274.3	4 537.2	7.0	6.0	55.8
PERSONS									
December 2000	6 692.4	2 427.9	9 120.2	467.8	612.7	9 732.9	6.5	6.3	63.6
December 2001	6 634.2	2 564.9	9 199.1	493.0	654.7	9 853.9	6.9	6.6	63.5
2002									
December	6 779.6	2 697.7	9 477.3	455.9	616.7	10 094.1	6.3	6.1	64.1
2003									
January	6 827.3	2 743.4	9 570.6	466.9	620.5	10 191.2	6.4	6.1	64.6
February	6 831.4	2 713.8	9 545.2	459.4	612.4	10 157.7	6.3	6.0	64.3
March	6 784.3	2 736.6	9 521.0	476.6	621.2	10 142.2	6.6	6.1	64.1
April	6 782.4	2 731.2	9 513.6	466.5	618.4	10 132.0	6.4	6.1	64.0
May	6 801.4	2 724.3	9 525.6	463.7	613.1	10 138.8	6.4	6.0	63.9
June	6 774.0	2 733.3	9 507.2	466.5	614.8	10 122.1	6.4	6.1	63.7
July	6 782.7	2 697.8	9 480.5	462.9	621.4	10 101.9	6.4	6.2	63.5
August	6 827.2	2 707.9	9 535.1	444.4	594.1	10 129.2	6.1	5.9	63.6
September	6 855.3	2 699.4	9 554.7	446.5	589.5	10 144.2	6.1	5.8	63.6
October	6 884.7	2 727.9	9 612.6	432.7	577.0	10 189.6	5.9	5.7	63.7
November	6 911.4	2 725.1	9 636.5	421.2	572.9	10 209.4	5.7	5.6	63.7
December	6 927.5	2 738.5	9 666.1	422.7	574.9	10 240.9	5.8	5.6	63.8

LABOUR FORCE STATUS (AGED 15 & OVER): Original

	EMPLOYED			UNEMPLOYED			UNEMPLOYMENT RATE			Participation rate	
	Full time	Part time	Total	Looking for f/t work	Total	Labour Force	Not in labour force	Civilian population aged 15 and over	Looking for f/t work		Total
	'000	'000	'000	'000	'000	'000	'000	'000	%		%
MALES											
December 2000	4 512.4	663.7	5 176.1	304.7	365.1	5 541.2	2 005.1	7 546.3	6.3	6.6	73.4
December 2001	4 501.3	715.0	5 216.3	313.2	376.5	5 592.8	2 060.2	7 653.0	6.5	6.7	73.1
2002											
December	4 556.1	767.7	5 323.8	285.8	353.7	5 677.5	2 089.9	7 767.4	5.9	6.2	73.1
2003											
January	4 511.4	736.0	5 247.3	316.7	380.6	5 627.9	2 151.2	7 779.1	6.6	6.8	72.3
February	4 532.8	739.5	5 272.2	309.3	376.4	5 648.6	2 142.1	7 790.7	6.4	6.7	72.5
March	4 493.9	786.5	5 280.4	289.6	349.8	5 630.2	2 172.2	7 802.4	6.1	6.2	72.2
April	4 468.8	794.8	5 263.6	288.2	357.6	5 621.2	2 191.5	7 812.7	6.1	6.4	71.9
May	4 488.8	780.9	5 269.7	283.7	344.0	5 613.7	2 209.4	7 823.1	5.9	6.1	71.8
June	4 473.0	800.9	5 274.0	282.2	338.7	5 612.7	2 220.8	7 833.5	5.9	6.0	71.6
July	4 503.9	787.6	5 291.5	261.9	314.6	5 606.1	2 239.1	7 845.2	5.5	5.6	71.5
August	4 490.8	780.3	5 271.0	258.9	309.2	5 580.3	2 276.6	7 856.9	5.5	5.5	71.0
September	4 582.3	776.0	5 358.3	264.2	322.3	5 680.5	2 188.1	7 868.6	5.5	5.7	72.2
October	4 576.9	798.4	5 375.3	253.7	301.6	5 676.9	2 207.4	7 884.3	5.3	5.3	72.0
November	4 578.5	780.1	5 358.7	234.6	282.3	5 641.0	2 259.0	7 900.0	4.9	5.0	71.4
December	4 675.6	797.0	5 472.6	248.3	303.9	5 776.5	2 139.2	7 915.7	5.0	5.3	73.0
FEMALES											
December 2000	2 313.5	1 751.5	4 065.0	167.0	252.0	4 317.0	3 447.0	7 764.0	6.7	5.8	55.6
December 2001	2 263.2	1 834.8	4 098.1	185.5	285.0	4 383.0	3 480.4	7 863.5	7.6	6.5	55.7
2002											
December	2 354.8	1 912.9	4 267.7	175.0	270.5	4 538.2	3 440.8	7 979.0	6.9	6.0	56.9
2003											
January	2 332.3	1 860.0	4 192.3	191.3	272.2	4 464.5	3 526.6	7 991.1	7.6	6.1	55.9
February	2 335.6	1 908.1	4 243.8	199.4	303.3	4 547.1	3 456.1	8 003.1	7.9	6.7	56.8
March	2 268.2	1 950.0	4 218.2	200.1	307.0	4 525.2	3 490.0	8 015.2	8.1	6.8	56.5
April	2 261.8	1 972.2	4 234.0	176.9	272.2	4 506.2	3 520.0	8 026.1	7.3	6.0	56.1
May	2 276.7	1 972.2	4 248.9	182.8	276.9	4 525.8	3 511.2	8 037.1	7.4	6.1	56.3
June	2 237.4	2 012.3	4 249.6	179.1	263.6	4 513.3	3 534.8	8 048.0	7.4	5.8	56.1
July	2 294.7	1 921.7	4 216.4	165.4	253.4	4 469.7	3 591.2	8 060.9	6.7	5.7	55.4
August	2 247.2	1 954.2	4 201.4	163.4	254.3	4 455.6	3 618.2	8 073.8	6.8	5.7	55.2
September	2 346.5	1 941.3	4 287.8	178.8	268.5	4 556.3	3 530.4	8 086.7	7.1	5.9	56.3
October	2 312.0	1 950.1	4 262.0	158.9	248.1	4 510.1	3 592.6	8 102.7	6.4	5.5	55.7
November	2 324.2	1 944.5	4 268.7	166.8	253.7	4 522.4	3 596.2	8 118.6	6.7	5.6	55.7
December	2 385.8	1 923.8	4 309.5	179.8	278.9	4 588.4	3 546.1	8 134.6	7.0	6.1	56.4
PERSONS											
December 2000	6 825.9	2 415.2	9 241.1	471.8	617.1	9 858.2	5 452.1	15 310.3	6.5	6.3	64.4
December 2001	6 764.5	2 549.9	9 314.4	498.7	661.5	9 975.8	5 540.6	15 516.5	6.9	6.6	64.3
2002											
December	6 910.9	2 680.7	9 591.5	460.7	624.1	10 215.7	5 530.7	15 746.4	6.2	6.1	64.9
2003											
January	6 843.7	2 596.0	9 439.7	507.9	652.7	10 092.4	5 677.7	15 770.1	6.9	6.5	64.0
February	6 868.4	2 647.6	9 516.0	508.7	679.7	10 195.7	5 598.1	15 793.8	6.9	6.7	64.6
March	6 762.1	2 736.5	9 498.6	489.8	656.8	10 155.4	5 662.2	15 817.6	6.8	6.5	64.2
April	6 730.6	2 767.1	9 497.7	465.1	629.7	10 127.4	5 711.5	15 838.9	6.5	6.2	63.9
May	6 765.5	2 753.1	9 518.6	466.5	620.9	10 139.5	5 720.6	15 860.2	6.5	6.1	63.9
June	6 710.4	2 813.2	9 523.6	461.3	602.4	10 125.9	5 755.6	15 881.6	6.4	5.9	63.8
July	6 798.6	2 709.2	9 507.9	427.3	568.0	10 075.9	5 830.3	15 906.1	5.9	5.6	63.3
August	6 738.0	2 734.4	9 472.4	422.3	563.5	10 035.9	5 894.8	15 930.7	5.9	5.6	63.0
September	6 928.8	2 717.2	9 646.1	443.0	590.7	10 236.8	5 718.5	15 955.3	6.0	5.8	64.2
October	6 888.8	2 748.5	9 637.3	412.6	549.7	10 187.0	5 800.0	15 987.0	5.7	5.4	63.7
November	6 902.7	2 724.7	9 627.4	401.4	536.1	10 163.5	5 855.1	16 018.6	5.5	5.3	63.4
December	7 061.4	2 720.7	9 782.1	428.1	582.8	10 364.9	5 685.3	16 050.2	5.7	5.6	64.6

LABOUR FORCE STATUS (AGED 15 & OVER)—New South Wales

	TREND					SEASONALLY ADJUSTED					Civilian population '000
	Employed full time '000	Total employed '000	Total unemp-loyed '000	Unemp-loyment rate %	Partici-pation rate %	Employed full time '000	Total employed '000	Total unemp-loyed '000	Unemp-loyment rate %	Partici-pation rate %	
MALES											
December 2000	1 488.0	1 708.0	106.5	5.9	71.2	1 489.2	1 711.9	107.2	5.9	71.4	2 549.4
December 2001	1 488.9	1 722.3	115.6	6.3	71.2	1 492.1	1 722.8	105.5	5.8	70.9	2 580.3
2002											
December	1 506.8	1 758.8	108.8	5.8	71.5	1 505.4	1 747.9	113.0	6.1	71.2	2 612.9
2003											
January	1 509.0	1 762.4	110.3	5.9	71.6	1 511.3	1 767.8	112.1	6.0	71.9	2 615.5
February	1 509.2	1 763.6	112.1	6.0	71.6	1 514.1	1 771.8	110.3	5.9	71.9	2 618.1
March	1 507.4	1 761.8	113.8	6.1	71.6	1 512.9	1 769.9	107.8	5.7	71.6	2 620.6
April	1 504.8	1 757.5	114.9	6.1	71.4	1 499.1	1 748.4	118.3	6.3	71.2	2 622.7
May	1 503.2	1 752.8	115.0	6.2	71.2	1 502.8	1 752.7	117.1	6.3	71.2	2 624.8
June	1 504.7	1 750.5	113.8	6.1	71.0	1 504.4	1 756.8	114.8	6.1	71.2	2 626.8
July	1 509.8	1 752.8	111.0	6.0	70.9	1 494.0	1 733.9	113.8	6.2	70.3	2 630.0
August	1 517.3	1 759.9	106.9	5.7	70.9	1 527.6	1 764.1	103.9	5.6	70.9	2 633.1
September	1 525.1	1 769.0	102.3	5.5	71.0	1 526.0	1 764.1	101.3	5.4	70.8	2 636.2
October	1 531.6	1 778.1	98.3	5.2	71.1	1 535.1	1 788.6	99.1	5.2	71.5	2 640.0
November	1 536.5	1 786.2	94.8	5.0	71.2	1 543.1	1 789.8	93.9	5.0	71.3	2 643.8
December	1 540.0	1 793.2	92.0	4.9	71.3	1 530.4	1 791.5	91.3	4.8	71.1	2 647.6
FEMALES											
December 2000	788.0	1 329.7	71.5	5.1	53.4	783.9	1 328.6	73.7	5.3	53.4	2 626.4
December 2001	768.9	1 349.6	89.0	6.2	54.3	761.3	1 338.1	89.3	6.3	53.8	2 651.9
2002											
December	781.7	1 388.5	87.2	5.9	55.0	786.5	1 388.1	84.6	5.7	54.9	2 682.6
2003											
January	784.3	1 396.9	87.8	5.9	55.3	781.7	1 411.1	89.0	5.9	55.9	2 685.4
February	785.5	1 402.2	87.8	5.9	55.4	797.2	1 402.1	87.7	5.9	55.4	2 688.1
March	784.6	1 403.3	87.3	5.9	55.4	783.2	1 395.4	90.6	6.1	55.2	2 690.8
April	781.8	1 401.2	86.9	5.8	55.3	773.3	1 402.6	83.8	5.6	55.2	2 692.9
May	779.1	1 397.9	86.6	5.8	55.1	783.3	1 402.1	86.1	5.8	55.2	2 695.1
June	778.2	1 395.5	86.6	5.8	54.9	778.6	1 396.2	83.8	5.7	54.9	2 697.3
July	779.3	1 394.4	86.7	5.9	54.8	773.1	1 387.4	92.4	6.2	54.8	2 700.7
August	782.4	1 394.7	86.9	5.9	54.8	784.3	1 392.1	84.2	5.7	54.6	2 704.2
September	786.2	1 395.7	86.9	5.9	54.7	785.7	1 398.3	87.5	5.9	54.9	2 707.6
October	790.0	1 397.4	86.6	5.8	54.7	789.9	1 397.0	86.2	5.8	54.7	2 711.7
November	793.5	1 399.0	86.1	5.8	54.7	796.7	1 404.3	87.0	5.8	54.9	2 715.7
December	796.9	1 400.7	85.8	5.8	54.7	797.4	1 398.0	84.4	5.7	54.5	2 719.8
PERSONS											
December 2000	2 276.0	3 037.7	178.1	5.5	62.1	2 273.0	3 040.5	180.9	5.6	62.2	5 175.8
December 2001	2 257.8	3 071.9	204.6	6.2	62.6	2 253.4	3 061.0	194.9	6.0	62.2	5 232.2
2002											
December	2 288.6	3 147.3	195.9	5.9	63.1	2 291.8	3 135.9	197.7	5.9	63.0	5 295.6
2003											
January	2 293.2	3 159.4	198.0	5.9	63.3	2 293.0	3 178.9	201.2	6.0	63.8	5 300.8
February	2 294.7	3 165.8	199.8	5.9	63.4	2 311.3	3 173.8	198.0	5.9	63.5	5 306.1
March	2 292.1	3 165.1	201.2	6.0	63.4	2 296.1	3 165.2	198.4	5.9	63.3	5 311.4
April	2 286.7	3 158.6	201.9	6.0	63.2	2 272.4	3 151.1	202.1	6.0	63.1	5 315.6
May	2 282.3	3 150.8	201.6	6.0	63.0	2 286.1	3 154.8	203.2	6.1	63.1	5 319.9
June	2 282.8	3 145.9	200.4	6.0	62.8	2 283.1	3 153.0	198.6	5.9	63.0	5 324.1
July	2 289.1	3 147.2	197.7	5.9	62.7	2 267.0	3 121.2	206.3	6.2	62.4	5 330.7
August	2 299.7	3 154.5	193.8	5.8	62.7	2 311.9	3 156.2	188.1	5.6	62.7	5 337.3
September	2 311.3	3 164.7	189.2	5.6	62.8	2 311.8	3 162.5	188.8	5.6	62.7	5 343.8
October	2 321.5	3 175.5	184.9	5.5	62.8	2 325.0	3 185.6	185.3	5.5	63.0	5 351.7
November	2 329.9	3 185.3	181.0	5.4	62.8	2 339.8	3 194.1	181.0	5.4	63.0	5 359.5
December	2 336.9	3 193.9	177.7	5.3	62.9	2 327.8	3 189.6	175.7	5.2	62.7	5 367.4

	TREND					SEASONALLY ADJUSTED					Civilian population '000
	Employed full time	Total employed	Total unemployed	Unemployment rate	Participation rate	Employed full time	Total employed	Total unemployed	Unemployment rate	Participation rate	
	'000	'000	'000	%	%	'000	'000	'000	%	%	
MALES											
December 2000	1 126.4	1 300.4	84.2	6.1	73.5	1 127.3	1 299.2	85.4	6.2	73.5	1 883.1
December 2001	1 124.7	1 307.4	91.4	6.5	73.0	1 128.3	1 307.9	86.0	6.2	72.7	1 916.2
2002											
December	1 124.0	1 318.3	81.6	5.8	71.8	1 128.5	1 331.7	81.0	5.7	72.5	1 948.7
2003											
January	1 127.6	1 321.5	80.5	5.7	71.8	1 133.2	1 323.3	82.2	5.9	72.0	1 951.6
February	1 129.6	1 323.1	79.9	5.7	71.8	1 130.1	1 317.5	80.1	5.7	71.5	1 954.5
March	1 130.0	1 323.1	80.0	5.7	71.7	1 133.0	1 326.7	74.4	5.3	71.6	1 957.4
April	1 129.5	1 323.0	80.3	5.7	71.6	1 126.2	1 322.6	82.1	5.8	71.7	1 959.8
May	1 129.8	1 324.7	80.5	5.7	71.6	1 124.1	1 322.4	82.5	5.9	71.6	1 962.2
June	1 132.2	1 328.9	79.9	5.7	71.7	1 131.7	1 323.7	80.9	5.8	71.5	1 964.6
July	1 135.7	1 334.9	78.5	5.6	71.8	1 137.0	1 336.2	80.4	5.7	72.0	1 967.6
August	1 139.0	1 341.2	76.3	5.4	71.9	1 140.3	1 340.0	74.3	5.3	71.8	1 970.6
September	1 141.2	1 347.1	74.0	5.2	72.0	1 143.1	1 354.5	73.6	5.2	72.4	1 973.6
October	1 142.2	1 352.1	72.0	5.1	72.0	1 148.0	1 353.0	72.0	5.1	72.0	1 978.0
November	1 142.2	1 356.1	70.6	4.9	72.0	1 137.3	1 351.8	68.1	4.8	71.6	1 982.3
December	1 141.5	1 359.0	69.6	4.9	72.0	1 138.0	1 359.5	72.1	5.0	72.1	1 986.7
FEMALES											
December 2000	564.9	1 005.5	60.3	5.7	54.4	563.9	1 004.7	56.6	5.3	54.1	1 960.3
December 2001	558.9	1 021.4	70.5	6.5	55.0	554.6	1 013.8	73.2	6.7	54.7	1 987.4
2002											
December	584.6	1 079.3	60.5	5.3	56.5	586.5	1 076.0	62.4	5.5	56.4	2 017.5
2003											
January	583.8	1 083.4	60.5	5.3	56.6	586.0	1 095.8	60.2	5.2	57.2	2 020.2
February	581.7	1 084.3	61.3	5.3	56.6	588.7	1 095.7	52.8	4.6	56.8	2 022.9
March	578.3	1 081.4	62.9	5.5	56.5	564.8	1 069.2	65.6	5.8	56.0	2 025.6
April	573.7	1 075.4	64.6	5.7	56.2	581.6	1 073.9	67.0	5.9	56.3	2 028.2
May	568.8	1 068.0	65.7	5.8	55.8	571.7	1 071.1	67.5	5.9	56.1	2 030.9
June	564.8	1 061.4	65.9	5.8	55.4	560.2	1 063.4	67.5	6.0	55.6	2 033.6
July	562.9	1 057.5	65.2	5.8	55.1	563.0	1 054.8	63.7	5.7	54.9	2 036.8
August	563.4	1 056.5	64.3	5.7	54.9	561.1	1 049.6	64.3	5.8	54.6	2 040.1
September	565.7	1 057.1	64.1	5.7	54.9	562.4	1 057.6	60.1	5.4	54.7	2 043.3
October	569.4	1 058.9	64.6	5.8	54.9	565.5	1 056.6	65.9	5.9	54.8	2 047.5
November	573.5	1 061.4	65.4	5.8	54.9	582.5	1 067.8	65.9	5.8	55.3	2 051.7
December	577.8	1 064.3	66.3	5.9	55.0	579.8	1 066.5	68.7	6.0	55.2	2 055.8
PERSONS											
December 2000	1 691.2	2 306.0	144.5	5.9	63.8	1 691.2	2 303.9	142.0	5.8	63.6	3 843.4
December 2001	1 683.5	2 328.8	161.9	6.5	63.8	1 682.9	2 321.7	159.2	6.4	63.6	3 903.5
2002											
December	1 708.6	2 397.6	142.1	5.6	64.0	1 715.0	2 407.6	143.3	5.6	64.3	3 966.2
2003											
January	1 711.4	2 404.9	141.0	5.5	64.1	1 719.2	2 419.1	142.4	5.6	64.5	3 971.8
February	1 711.3	2 407.4	141.2	5.5	64.1	1 718.8	2 413.1	133.0	5.2	64.0	3 977.4
March	1 708.3	2 404.6	142.9	5.6	64.0	1 697.7	2 395.9	140.0	5.5	63.7	3 983.0
April	1 703.2	2 398.4	144.9	5.7	63.8	1 707.8	2 396.5	149.1	5.9	63.8	3 988.1
May	1 698.7	2 392.7	146.2	5.8	63.6	1 695.7	2 393.6	150.0	5.9	63.7	3 993.1
June	1 697.0	2 390.3	145.8	5.7	63.4	1 691.9	2 387.1	148.3	5.9	63.4	3 998.2
July	1 698.6	2 392.4	143.6	5.7	63.3	1 700.0	2 391.1	144.1	5.7	63.3	4 004.5
August	1 702.4	2 397.7	140.6	5.5	63.3	1 701.4	2 389.5	138.6	5.5	63.0	4 010.7
September	1 707.0	2 404.2	138.1	5.4	63.3	1 705.5	2 412.1	133.8	5.3	63.4	4 017.0
October	1 711.5	2 411.0	136.7	5.4	63.3	1 713.5	2 409.6	137.9	5.4	63.3	4 025.5
November	1 715.8	2 417.5	136.0	5.3	63.3	1 719.8	2 419.6	134.0	5.2	63.3	4 034.0
December	1 719.2	2 423.3	135.9	5.3	63.4	1 717.9	2 426.0	140.8	5.5	63.5	4 042.5

	TREND					SEASONALLY ADJUSTED					Civilian population '000
	Employed full time	Total employed	Total unemp- loyed	Unemp- loyment rate	Partici- pation rate	Employed full time	Total employed	Total unemp- loyed	Unemp- loyment rate	Partici- pation rate	
	'000	'000	'000	%	%	'000	'000	'000	%	%	
MALES											
December 2000	816.9	939.9	80.1	7.9	72.8	823.9	948.9	77.8	7.6	73.3	1 400.1
December 2001	817.7	958.6	87.2	8.3	73.4	815.6	959.1	88.1	8.4	73.5	1 424.8
2002											
December	837.7	991.9	70.9	6.7	73.0	827.1	989.9	72.3	6.8	73.0	1 454.2
2003											
January	841.4	994.4	71.2	6.7	73.1	853.4	1 002.7	69.5	6.5	73.5	1 458.2
February	843.8	995.3	71.1	6.7	72.9	846.8	995.0	68.1	6.4	72.7	1 462.3
March	844.4	994.7	70.8	6.6	72.7	841.0	991.6	78.3	7.3	73.0	1 466.3
April	843.6	993.4	70.3	6.6	72.4	844.3	992.6	70.0	6.6	72.3	1 470.2
May	842.5	992.6	69.9	6.6	72.1	849.0	997.2	64.1	6.0	72.0	1 474.0
June	842.4	993.4	69.5	6.5	71.9	831.9	989.7	69.8	6.6	71.7	1 477.9
July	844.8	996.5	68.9	6.5	71.9	843.8	993.3	70.4	6.6	71.8	1 481.2
August	850.0	1 001.7	68.0	6.4	72.0	851.3	1 000.0	70.0	6.5	72.1	1 484.6
September	856.7	1 007.9	66.9	6.2	72.2	857.1	1 009.4	66.0	6.1	72.3	1 488.0
October	864.2	1 014.5	65.2	6.0	72.4	862.0	1 015.0	68.4	6.3	72.6	1 492.1
November	871.5	1 020.7	63.4	5.8	72.5	870.1	1 021.7	59.1	5.5	72.2	1 496.2
December	878.8	1 026.5	61.4	5.6	72.6	887.7	1 030.3	60.9	5.6	72.7	1 500.3
FEMALES											
December 2000	415.2	749.6	62.8	7.7	56.9	414.0	752.9	66.1	8.1	57.3	1 428.3
December 2001	416.3	765.5	63.6	7.7	56.9	414.6	767.4	63.2	7.6	57.0	1 456.4
2002											
December	428.7	796.8	64.0	7.4	57.7	424.5	791.9	63.1	7.4	57.4	1 490.3
2003											
January	429.5	801.0	64.3	7.4	57.9	441.0	807.4	63.1	7.3	58.2	1 494.9
February	429.7	804.4	64.5	7.4	58.0	428.3	809.5	65.7	7.5	58.4	1 499.4
March	429.4	807.2	64.6	7.4	58.0	426.3	806.5	67.1	7.7	58.1	1 504.0
April	429.6	809.0	64.3	7.4	57.9	425.9	801.3	63.0	7.3	57.3	1 508.1
May	430.8	810.4	63.5	7.3	57.8	434.3	815.6	62.6	7.1	58.1	1 512.3
June	433.1	812.3	62.2	7.1	57.7	431.8	812.7	62.1	7.1	57.7	1 516.4
July	436.5	815.4	60.6	6.9	57.6	434.4	812.2	61.9	7.1	57.5	1 520.1
August	440.0	819.3	59.2	6.7	57.6	437.9	818.6	59.2	6.7	57.6	1 523.9
September	442.9	823.2	58.0	6.6	57.7	453.6	822.7	59.4	6.7	57.7	1 527.7
October	445.3	826.9	57.1	6.5	57.7	439.7	829.8	52.0	5.9	57.6	1 531.8
November	447.4	830.1	56.4	6.4	57.7	445.3	831.8	57.6	6.5	57.9	1 536.0
December	449.2	833.1	56.1	6.3	57.8	451.3	832.1	58.3	6.5	57.8	1 540.2
PERSONS											
December 2000	1 232.1	1 689.6	142.9	7.8	64.8	1 237.9	1 701.8	143.8	7.8	65.3	2 828.4
December 2001	1 234.0	1 724.0	150.9	8.0	65.1	1 230.2	1 726.5	151.2	8.1	65.2	2 881.2
2002											
December	1 266.4	1 788.7	134.9	7.0	65.3	1 251.6	1 781.7	135.3	7.1	65.1	2 944.5
2003											
January	1 270.9	1 795.3	135.5	7.0	65.4	1 294.3	1 810.2	132.7	6.8	65.8	2 953.1
February	1 273.5	1 799.7	135.7	7.0	65.4	1 275.1	1 804.4	133.7	6.9	65.4	2 961.7
March	1 273.8	1 801.9	135.4	7.0	65.2	1 267.4	1 798.1	145.3	7.5	65.4	2 970.3
April	1 273.1	1 802.4	134.6	6.9	65.0	1 270.2	1 793.9	133.0	6.9	64.7	2 978.3
May	1 273.3	1 803.0	133.4	6.9	64.8	1 283.3	1 812.7	126.8	6.5	64.9	2 986.3
June	1 275.5	1 805.7	131.7	6.8	64.7	1 263.8	1 802.4	131.9	6.8	64.6	2 994.3
July	1 281.3	1 811.9	129.6	6.7	64.7	1 278.2	1 805.5	132.2	6.8	64.6	3 001.4
August	1 290.0	1 821.0	127.2	6.5	64.7	1 289.2	1 818.6	129.2	6.6	64.7	3 008.5
September	1 299.6	1 831.1	124.9	6.4	64.8	1 310.7	1 832.0	125.3	6.4	64.9	3 015.7
October	1 309.5	1 841.4	122.3	6.2	64.9	1 301.7	1 844.8	120.4	6.1	65.0	3 023.9
November	1 318.9	1 850.9	119.9	6.1	65.0	1 315.4	1 853.5	116.7	5.9	65.0	3 032.2
December	1 328.0	1 859.6	117.5	5.9	65.1	1 339.0	1 862.4	119.2	6.0	65.2	3 040.5

LABOUR FORCE STATUS (AGED 15 & OVER)—South Australia

	TREND					SEASONALLY ADJUSTED					
	<i>Employed full time</i>	<i>Total employed</i>	<i>Total unemp-loyed</i>	<i>Unemp-loyment rate</i>	<i>Partici-pation rate</i>	<i>Employed full time</i>	<i>Total employed</i>	<i>Total unemp-loyed</i>	<i>Unemp-loyment rate</i>	<i>Partici-pation rate</i>	<i>Civilian population</i>
	'000	'000	'000	%	%	'000	'000	'000	%	%	'000
MALES											
December 2000	323.6	377.7	32.0	7.8	69.3	323.7	374.6	31.9	7.8	68.7	591.5
December 2001	319.2	378.4	31.8	7.7	68.9	317.1	376.3	31.6	7.7	68.5	595.1
2002											
December	331.2	387.9	26.7	6.4	69.0	332.2	388.2	23.9	5.8	68.7	600.2
2003											
January	332.9	388.5	27.1	6.5	69.2	334.8	389.0	28.3	6.8	69.5	600.9
February	334.7	389.5	27.7	6.6	69.3	336.5	388.8	28.7	6.9	69.4	601.6
March	336.3	390.9	28.1	6.7	69.6	333.5	390.5	27.7	6.6	69.4	602.3
April	337.6	392.7	28.2	6.7	69.9	335.8	391.9	28.6	6.8	69.8	602.7
May	338.4	394.3	27.8	6.6	70.0	337.8	394.8	27.7	6.5	70.1	603.0
June	338.6	395.4	27.1	6.4	70.0	343.1	396.0	28.2	6.7	70.3	603.4
July	338.2	395.9	26.3	6.2	69.9	339.1	397.7	26.1	6.2	70.2	603.8
August	337.1	395.9	25.9	6.1	69.8	335.9	396.4	24.5	5.8	69.7	604.3
September	335.8	395.6	25.8	6.1	69.7	334.1	394.7	25.2	6.0	69.4	604.7
October	334.7	395.5	26.0	6.2	69.6	334.3	393.2	26.1	6.2	69.3	605.5
November	333.9	395.5	26.4	6.3	69.6	333.9	395.6	26.8	6.3	69.7	606.4
December	333.2	395.7	26.8	6.3	69.6	334.7	397.7	27.9	6.6	70.1	607.2
FEMALES											
December 2000	156.7	298.7	20.0	6.3	51.7	155.4	298.3	20.2	6.3	51.6	616.9
December 2001	154.2	305.9	20.1	6.2	52.6	154.9	305.8	20.5	6.3	52.6	620.1
2002											
December	159.5	315.3	18.5	5.5	53.4	158.7	313.1	17.9	5.4	53.0	625.2
2003											
January	162.2	317.7	18.2	5.4	53.7	162.5	319.0	17.8	5.3	53.8	625.8
February	164.5	319.8	18.1	5.4	54.0	166.0	319.5	18.4	5.5	54.0	626.3
March	166.0	321.5	18.3	5.4	54.2	166.8	323.4	18.5	5.4	54.5	626.9
April	166.7	322.5	18.6	5.4	54.4	166.9	321.4	18.6	5.5	54.2	627.1
May	166.8	322.8	19.0	5.6	54.5	166.1	323.9	18.7	5.4	54.6	627.4
June	166.3	322.5	19.4	5.7	54.5	164.5	322.1	19.4	5.7	54.4	627.6
July	165.5	321.8	19.9	5.8	54.4	167.9	321.5	20.1	5.9	54.4	628.1
August	164.3	320.9	20.4	6.0	54.3	162.8	320.8	20.1	5.9	54.2	628.4
September	162.7	319.9	20.9	6.1	54.2	164.9	320.5	21.7	6.3	54.4	628.9
October	161.0	318.9	21.3	6.3	54.0	160.9	319.4	20.5	6.0	54.0	629.7
November	159.3	318.0	21.7	6.4	53.9	158.0	316.4	22.0	6.5	53.7	630.5
December	157.7	317.4	22.0	6.5	53.8	156.2	317.6	22.2	6.5	53.8	631.3
PERSONS											
December 2000	480.2	676.4	52.0	7.1	60.3	479.1	672.9	52.1	7.2	60.0	1 208.4
December 2001	473.4	684.3	51.8	7.0	60.6	472.0	682.0	52.1	7.1	60.4	1 215.2
2002											
December	490.7	703.2	45.1	6.0	61.1	490.9	701.3	41.8	5.6	60.6	1 225.4
2003											
January	495.1	706.2	45.3	6.0	61.3	497.3	708.0	46.1	6.1	61.5	1 226.7
February	499.1	709.3	45.8	6.1	61.5	502.5	708.3	47.1	6.2	61.5	1 227.9
March	502.3	712.5	46.4	6.1	61.8	500.3	713.8	46.2	6.1	61.8	1 229.2
April	504.3	715.3	46.8	6.1	62.0	502.7	713.3	47.2	6.2	61.8	1 229.8
May	505.2	717.2	46.8	6.1	62.1	503.8	718.8	46.3	6.1	62.2	1 230.4
June	505.0	718.0	46.5	6.1	62.1	507.6	718.1	47.6	6.2	62.2	1 231.0
July	503.7	717.7	46.2	6.0	62.0	507.0	719.2	46.2	6.0	62.1	1 231.9
August	501.4	716.7	46.3	6.1	61.9	498.7	717.2	44.6	5.9	61.8	1 232.7
September	498.6	715.5	46.7	6.1	61.8	499.1	715.2	46.8	6.1	61.8	1 233.5
October	495.7	714.4	47.3	6.2	61.7	495.1	712.6	46.6	6.1	61.5	1 235.2
November	493.2	713.5	48.0	6.3	61.6	491.9	712.0	48.8	6.4	61.5	1 236.8
December	490.9	713.0	48.8	6.4	61.6	490.9	715.3	50.1	6.5	61.8	1 238.5

LABOUR FORCE STATUS (AGED 15 & OVER)—Western Australia

	TREND					SEASONALLY ADJUSTED					
	<i>Employed full time</i>	<i>Total employed</i>	<i>Total unemp-loyed</i>	<i>Unemp-loyment rate</i>	<i>Partici-pation rate</i>	<i>Employed full time</i>	<i>Total employed</i>	<i>Total unemp-loyed</i>	<i>Unemp-loyment rate</i>	<i>Partici-pation rate</i>	<i>Civilian population</i>
	'000	'000	'000	%	%	'000	'000	'000	%	%	'000
MALES											
December 2000	454.2	525.3	37.5	6.7	75.2	459.0	525.9	37.7	6.7	75.3	748.6
December 2001	458.9	534.0	38.9	6.8	75.3	457.4	534.2	39.2	6.8	75.3	761.1
2002											
December	461.8	545.6	37.7	6.5	75.4	462.3	544.1	38.0	6.5	75.3	773.6
2003											
January	465.4	547.5	37.0	6.3	75.4	465.9	547.9	37.8	6.5	75.6	774.9
February	468.8	549.7	36.4	6.2	75.5	469.4	549.3	35.6	6.1	75.4	776.1
March	471.4	551.8	35.7	6.1	75.6	474.1	552.5	34.6	5.9	75.5	777.3
April	472.6	553.4	35.0	5.9	75.6	471.7	552.9	36.4	6.2	75.7	778.6
May	472.7	554.1	34.5	5.9	75.5	474.9	555.6	34.9	5.9	75.7	779.8
June	472.4	554.0	34.3	5.8	75.3	473.2	556.2	33.6	5.7	75.5	781.0
July	472.8	553.8	34.3	5.8	75.2	468.2	552.6	33.3	5.7	74.9	782.5
August	474.3	554.2	34.3	5.8	75.1	472.4	552.2	33.5	5.7	74.7	783.9
September	476.8	555.5	34.2	5.8	75.1	477.9	555.0	36.3	6.1	75.3	785.3
October	479.7	557.6	34.0	5.7	75.1	479.6	554.8	35.1	6.0	74.9	787.3
November	482.6	560.0	33.6	5.7	75.2	484.9	560.7	33.4	5.6	75.3	789.3
December	485.3	562.5	33.1	5.6	75.4	486.3	568.0	30.9	5.2	75.7	791.3
FEMALES											
December 2000	220.7	412.8	24.1	5.5	58.3	220.9	415.1	23.6	5.4	58.5	749.4
December 2001	205.6	410.9	26.9	6.2	57.5	204.0	408.5	25.1	5.8	56.9	761.6
2002											
December	213.4	425.8	24.7	5.5	58.1	215.8	427.0	28.5	6.3	58.8	774.6
2003											
January	213.8	426.5	24.5	5.4	58.1	220.2	435.8	24.5	5.3	59.3	775.9
February	214.4	426.4	24.2	5.4	58.0	214.3	425.9	23.1	5.1	57.8	777.2
March	215.1	425.7	24.2	5.4	57.8	205.8	419.7	24.0	5.4	57.0	778.5
April	215.5	424.5	24.5	5.5	57.6	216.4	423.3	24.4	5.4	57.4	779.8
May	215.7	423.0	25.2	5.6	57.4	220.2	424.7	24.0	5.3	57.4	781.0
June	216.1	421.7	26.0	5.8	57.2	219.1	425.0	25.0	5.5	57.5	782.3
July	216.7	420.9	26.9	6.0	57.1	215.8	419.7	31.1	6.9	57.5	783.9
August	217.1	420.4	27.6	6.2	57.0	212.0	421.5	27.3	6.1	57.1	785.4
September	217.6	420.1	28.3	6.3	57.0	216.6	413.1	26.1	6.0	55.8	787.0
October	218.4	420.4	29.0	6.5	56.9	221.8	423.3	28.5	6.3	57.3	789.1
November	219.4	421.0	29.8	6.6	57.0	221.8	422.8	29.7	6.6	57.2	791.2
December	220.3	421.7	30.4	6.7	57.1	218.5	422.8	32.3	7.1	57.4	793.3
PERSONS											
December 2000	674.9	938.1	61.6	6.2	66.7	679.9	941.0	61.3	6.1	66.9	1 498.0
December 2001	664.6	944.9	65.9	6.5	66.4	661.5	942.7	64.3	6.4	66.1	1 522.7
2002											
December	675.2	971.4	62.4	6.0	66.8	678.1	971.1	66.6	6.4	67.0	1 548.3
2003											
January	679.3	974.0	61.6	5.9	66.8	686.1	983.7	62.3	6.0	67.5	1 550.8
February	683.2	976.1	60.7	5.9	66.7	683.7	975.2	58.7	5.7	66.6	1 553.3
March	686.4	977.5	59.9	5.8	66.7	679.9	972.2	58.6	5.7	66.3	1 555.8
April	688.1	977.9	59.5	5.7	66.6	688.1	976.2	60.8	5.9	66.5	1 558.3
May	688.4	977.1	59.6	5.8	66.4	695.1	980.3	58.9	5.7	66.6	1 560.8
June	688.5	975.7	60.3	5.8	66.3	692.3	981.2	58.5	5.6	66.5	1 563.4
July	689.5	974.8	61.2	5.9	66.1	684.0	972.4	64.4	6.2	66.2	1 566.3
August	691.4	974.6	62.0	6.0	66.0	684.3	973.7	60.8	5.9	65.9	1 569.3
September	694.4	975.6	62.5	6.0	66.0	694.5	968.1	62.5	6.1	65.5	1 572.3
October	698.2	977.9	63.0	6.1	66.0	701.4	978.1	63.6	6.1	66.1	1 576.4
November	701.9	980.9	63.3	6.1	66.1	706.8	983.5	63.1	6.0	66.2	1 580.5
December	705.6	984.2	63.5	6.1	66.2	704.8	990.8	63.2	6.0	66.5	1 584.6

LABOUR FORCE STATUS (AGED 15 & OVER)—Tasmania

	TREND					SEASONALLY ADJUSTED					Civilian population
	Employed full time	Total employed	Total unemployed	Unemployment rate	Participation rate	Employed full time	Total employed	Total unemployed	Unemployment rate	Participation rate	
	'000	'000	'000	%	%	'000	'000	'000	%	%	'000
MALES											
December 2000	94.7	111.7	12.2	9.9	68.5	95.0	112.4	12.0	9.6	68.8	180.8
December 2001	93.6	110.0	11.8	9.7	67.2	93.8	109.3	11.6	9.6	66.7	181.2
2002											
December	94.7	110.3	11.6	9.5	66.9	94.7	110.1	12.8	10.4	67.5	182.1
2003											
January	94.8	110.3	12.0	9.8	67.1	96.2	110.3	11.8	9.7	67.0	182.3
February	94.8	110.4	12.1	9.9	67.1	94.0	109.3	12.8	10.5	66.9	182.5
March	94.9	110.6	11.9	9.7	67.1	93.9	110.5	12.3	10.0	67.2	182.7
April	95.0	111.0	11.4	9.3	66.9	95.3	111.8	10.7	8.7	67.0	182.9
May	95.3	111.4	10.7	8.8	66.7	95.8	111.8	10.5	8.6	66.8	183.2
June	95.8	112.0	10.1	8.3	66.6	95.1	110.6	11.3	9.3	66.5	183.4
July	96.2	112.4	9.8	8.0	66.5	96.6	113.0	8.1	6.7	65.9	183.7
August	96.5	112.7	9.6	7.9	66.5	96.8	113.1	9.8	8.0	66.8	183.9
September	96.8	113.0	9.5	7.8	66.5	96.6	112.7	9.5	7.8	66.4	184.2
October	96.9	113.1	9.5	7.7	66.4	96.8	113.5	10.0	8.1	66.9	184.6
November	97.1	113.3	9.4	7.7	66.4	97.7	113.1	9.8	8.0	66.4	185.0
December	97.2	113.3	9.4	7.6	66.3	96.6	112.9	8.9	7.3	65.7	185.4
FEMALES											
December 2000	43.5	90.1	7.0	7.2	50.9	43.3	90.8	6.6	6.8	51.0	190.9
December 2001	44.6	89.1	7.2	7.5	50.2	44.2	88.4	6.8	7.1	49.6	191.8
2002											
December	44.7	89.9	7.6	7.8	50.5	46.1	90.6	7.9	8.1	51.1	193.1
2003											
January	44.8	90.5	7.6	7.7	50.7	44.0	91.1	7.3	7.4	50.9	193.3
February	44.8	91.1	7.5	7.6	51.0	45.4	90.6	7.8	7.9	50.9	193.5
March	44.9	91.5	7.5	7.5	51.1	44.8	91.4	7.5	7.5	51.0	193.8
April	45.2	91.9	7.3	7.4	51.1	43.9	92.3	6.9	6.9	51.1	194.1
May	45.7	92.3	7.1	7.1	51.2	46.2	93.0	7.5	7.5	51.7	194.4
June	46.4	92.9	6.8	6.8	51.2	46.1	91.4	7.0	7.1	50.6	194.6
July	47.1	93.7	6.5	6.5	51.4	47.9	93.1	6.6	6.6	51.2	194.9
August	47.6	94.4	6.2	6.1	51.5	47.8	95.2	5.8	5.8	51.8	195.2
September	47.9	95.0	6.0	5.9	51.6	48.1	95.4	5.6	5.6	51.7	195.5
October	48.0	95.5	5.9	5.8	51.7	48.0	96.2	5.8	5.7	52.1	195.9
November	48.1	95.8	5.8	5.7	51.8	47.4	95.5	5.9	5.9	51.7	196.3
December	48.2	96.0	5.9	5.8	51.9	48.6	95.2	6.3	6.2	51.6	196.7
PERSONS											
December 2000	138.1	201.8	19.2	8.7	59.5	138.3	203.2	18.6	8.4	59.6	371.8
December 2001	138.3	199.1	19.0	8.7	58.4	138.1	197.7	18.4	8.5	57.9	373.0
2002											
December	139.4	200.2	19.2	8.8	58.5	140.8	200.8	20.8	9.4	59.1	375.1
2003											
January	139.5	200.9	19.5	8.9	58.7	140.2	201.4	19.1	8.7	58.7	375.6
February	139.5	201.5	19.6	8.9	58.8	139.4	200.0	20.6	9.3	58.7	376.0
March	139.7	202.1	19.3	8.7	58.8	138.7	201.9	19.8	8.9	58.9	376.5
April	140.2	202.8	18.7	8.4	58.8	139.3	204.1	17.6	7.9	58.8	377.0
May	141.1	203.7	17.8	8.0	58.7	142.0	204.8	18.0	8.1	59.0	377.5
June	142.2	204.9	16.9	7.6	58.7	141.2	202.0	18.3	8.3	58.3	378.0
July	143.3	206.0	16.2	7.3	58.7	144.5	206.2	14.7	6.7	58.3	378.6
August	144.1	207.1	15.8	7.1	58.8	144.6	208.3	15.7	7.0	59.1	379.1
September	144.6	208.0	15.5	6.9	58.8	144.6	208.1	15.1	6.8	58.8	379.7
October	145.0	208.6	15.4	6.9	58.9	144.8	209.7	15.8	7.0	59.3	380.5
November	145.2	209.1	15.3	6.8	58.9	145.1	208.6	15.7	7.0	58.8	381.3
December	145.4	209.4	15.3	6.8	58.9	145.2	208.1	15.2	6.8	58.4	382.1

TREND

	<i>Employed full time</i>	<i>Total employed</i>	<i>Total unemployed</i>	<i>Unemployment rate</i>	<i>Participation rate</i>	<i>Civilian population</i>
	'000	'000	'000	%	%	'000
MALES						
December 2000	44.1	52.1	3.7	6.7	75.7	73.8
December 2001	44.0	54.4	4.7	7.9	79.7	74.2
2002						
December	45.3	54.6	3.4	5.8	78.7	73.8
2003						
January	45.4	54.9	3.4	5.9	79.2	73.7
February	45.4	55.1	3.5	6.0	79.6	73.7
March	45.3	55.2	3.6	6.2	79.7	73.7
April	45.1	55.0	3.7	6.3	79.5	73.8
May	44.8	54.6	3.6	6.2	78.8	73.9
June	44.5	54.2	3.4	5.9	78.0	74.0
July	44.2	53.9	3.2	5.6	77.2	74.0
August	43.9	53.7	3.0	5.3	76.8	73.9
September	43.6	53.7	2.8	5.0	76.6	73.8
October	43.4	53.8	2.7	4.9	76.5	73.8
November	43.3	53.9	2.7	4.7	76.6	73.8
December	43.3	53.9	2.6	4.7	76.7	73.8
FEMALES						
December 2000	28.6	41.0	1.7	4.0	63.3	67.5
December 2001	28.1	43.2	3.5	7.6	68.2	68.6
2002						
December	29.7	44.2	2.3	4.9	68.0	68.4
2003						
January	29.3	44.0	2.5	5.4	68.1	68.3
February	28.8	43.5	2.8	6.0	67.8	68.3
March	28.5	42.9	3.0	6.5	67.2	68.2
April	28.2	42.1	3.0	6.7	66.2	68.2
May	28.1	41.4	3.1	6.9	65.1	68.3
June	28.0	40.8	3.1	7.0	64.2	68.3
July	27.9	40.4	3.0	6.9	63.6	68.3
August	27.8	40.4	2.9	6.7	63.4	68.3
September	27.7	40.6	2.8	6.4	63.4	68.3
October	27.8	40.9	2.6	6.0	63.6	68.4
November	27.9	41.2	2.5	5.7	63.9	68.4
December	28.0	41.6	2.3	5.3	64.1	68.5
PERSONS						
December 2000	72.7	93.2	5.4	5.5	69.8	141.3
December 2001	72.1	97.7	8.2	7.7	74.2	142.7
2002						
December	75.0	98.9	5.7	5.4	73.5	142.1
2003						
January	74.7	98.9	6.0	5.7	73.8	142.0
February	74.2	98.7	6.3	6.0	73.9	142.0
March	73.7	98.1	6.6	6.3	73.7	141.9
April	73.3	97.1	6.7	6.5	73.1	142.0
May	72.9	96.0	6.7	6.5	72.3	142.2
June	72.6	95.0	6.5	6.4	71.4	142.3
July	72.1	94.3	6.2	6.2	70.7	142.2
August	71.7	94.1	5.9	5.9	70.3	142.2
September	71.3	94.3	5.6	5.6	70.3	142.1
October	71.2	94.6	5.4	5.4	70.3	142.2
November	71.2	95.1	5.1	5.1	70.5	142.2
December	71.2	95.5	5.0	4.9	70.7	142.3

TREND

	<i>Employed full time</i>	<i>Total employed</i>	<i>Total unemployed</i>	<i>Unemployment rate</i>	<i>Participation rate</i>	<i>Civilian population</i>
	'000	'000	'000	%	%	'000
MALES						
December 2000	75.2	88.6	4.8	5.2	78.6	118.9
December 2001	73.1	87.9	4.7	5.1	77.0	120.2
2002						
December	78.0	90.9	4.8	5.0	78.5	121.9
2003						
January	77.4	90.8	4.7	5.0	78.3	122.0
February	76.7	90.6	4.7	4.9	78.1	122.0
March	75.7	90.4	4.6	4.8	77.8	122.0
April	74.9	90.3	4.4	4.7	77.5	122.1
May	74.4	90.1	4.2	4.5	77.2	122.2
June	74.1	90.0	4.0	4.3	76.9	122.3
July	74.1	90.1	3.9	4.2	76.7	122.5
August	74.3	90.2	3.9	4.1	76.7	122.6
September	74.5	90.4	3.9	4.1	76.8	122.7
October	74.6	90.7	3.9	4.1	77.0	123.0
November	74.7	91.1	3.9	4.1	77.2	123.2
December	74.8	91.5	4.0	4.2	77.4	123.4
FEMALES						
December 2000	50.2	80.9	3.2	3.9	67.7	124.3
December 2001	50.5	79.6	2.9	3.5	65.7	125.6
2002						
December	53.5	83.2	2.8	3.2	67.6	127.3
2003						
January	52.9	83.0	2.8	3.3	67.4	127.4
February	52.0	82.7	2.9	3.4	67.2	127.4
March	51.3	82.2	3.1	3.6	66.9	127.5
April	50.8	81.7	3.2	3.8	66.6	127.6
May	50.7	81.3	3.4	4.0	66.3	127.7
June	50.9	81.0	3.5	4.1	66.1	127.9
July	51.1	81.0	3.5	4.1	66.0	128.1
August	51.3	81.3	3.5	4.2	66.1	128.3
September	51.3	81.7	3.5	4.1	66.3	128.5
October	51.3	82.1	3.4	4.0	66.5	128.7
November	51.2	82.6	3.3	3.9	66.7	128.8
December	51.1	82.9	3.3	3.8	66.9	129.0
PERSONS						
December 2000	125.4	169.6	8.1	4.6	73.0	243.2
December 2001	123.6	167.5	7.6	4.3	71.2	245.9
2002						
December	131.5	174.1	7.5	4.2	72.9	249.2
2003						
January	130.3	173.8	7.6	4.2	72.8	249.3
February	128.7	173.3	7.6	4.2	72.5	249.4
March	127.0	172.7	7.6	4.2	72.2	249.5
April	125.8	172.0	7.6	4.2	71.9	249.8
May	125.1	171.4	7.6	4.2	71.6	250.0
June	125.0	171.1	7.5	4.2	71.4	250.2
July	125.2	171.1	7.4	4.1	71.3	250.6
August	125.6	171.4	7.4	4.1	71.3	250.9
September	125.8	172.1	7.4	4.1	71.4	251.2
October	125.8	172.9	7.3	4.1	71.6	251.6
November	125.9	173.7	7.3	4.0	71.8	252.0
December	125.9	174.4	7.3	4.0	72.0	252.4

	EMPLOYED			UNEMPLOYED			UNEMPLOYMENT RATE			Participation rate	
	Full time	Part time	Total	Looking for f/t work	Total	Labour force	Not in labour force	Civilian population aged 15 and over	Looking for f/t work		Total
	'000	'000	'000	'000	'000	'000	'000	'000	%		%
MALES											
New South Wales	1 555.5	253.4	1 808.9	77.0	95.1	1 904.0	743.6	2 647.6	4.7	5.0	71.9
Victoria	1 166.7	212.5	1 379.2	57.0	74.1	1 453.3	533.3	1 986.7	4.7	5.1	73.2
Queensland	902.4	139.1	1 041.5	51.8	60.9	1 102.4	397.9	1 500.3	5.4	5.5	73.5
South Australia	340.1	63.5	403.6	23.8	28.4	432.1	175.1	607.2	6.5	6.6	71.2
Western Australia	492.7	83.8	576.5	25.0	29.2	605.7	185.6	791.3	4.8	4.8	76.6
Tasmania	99.2	16.3	115.5	8.0	8.9	124.4	61.0	185.4	7.5	7.2	67.1
Northern Territory	43.8	10.6	54.4	2.7	2.8	57.2	16.6	73.8	5.7	4.9	77.5
Australian Capital Territory	75.2	17.8	93.0	3.0	4.4	97.3	26.1	123.4	3.8	4.5	78.9
Australia	4 675.6	797.0	5 472.6	248.3	303.9	5 776.5	2 139.2	7 915.7	5.0	5.3	73.0
FEMALES											
New South Wales	811.3	601.8	1 413.2	57.3	85.6	1 498.7	1 221.1	2 719.8	6.6	5.7	55.1
Victoria	594.8	481.5	1 076.3	41.9	69.2	1 145.5	910.3	2 055.8	6.6	6.0	55.7
Queensland	460.1	380.7	840.8	39.3	59.9	900.7	639.5	1 540.2	7.9	6.7	58.5
South Australia	160.2	161.3	321.5	14.0	21.7	343.2	288.0	631.3	8.0	6.3	54.4
Western Australia	228.0	205.5	433.5	19.4	30.8	464.3	329.0	793.3	7.8	6.6	58.5
Tasmania	49.3	48.1	97.4	5.2	6.5	103.9	92.8	196.7	9.5	6.3	52.8
Northern Territory	28.5	13.8	42.3	1.5	2.3	44.6	23.9	68.5	5.1	5.2	65.1
Australian Capital Territory	53.4	31.2	84.7	1.2	2.8	87.5	41.5	129.0	2.2	3.2	67.8
Australia	2 385.8	1 923.8	4 309.5	179.8	278.9	4 588.4	3 546.1	8 134.6	7.0	6.1	56.4
PERSONS											
New South Wales	2 366.8	855.3	3 222.1	134.4	180.6	3 402.7	1 964.7	5 367.4	5.4	5.3	63.4
Victoria	1 761.5	694.0	2 455.5	99.0	143.3	2 598.8	1 443.7	4 042.5	5.3	5.5	64.3
Queensland	1 362.6	519.8	1 882.3	91.1	120.8	2 003.2	1 037.4	3 040.5	6.3	6.0	65.9
South Australia	500.3	224.8	725.1	37.8	50.2	775.3	463.2	1 238.5	7.0	6.5	62.6
Western Australia	720.8	289.2	1 010.0	44.4	60.1	1 070.1	514.6	1 584.6	5.8	5.6	67.5
Tasmania	148.5	64.3	212.8	13.2	15.5	228.3	153.8	382.1	8.1	6.8	59.8
Northern Territory	72.3	24.4	96.7	4.2	5.1	101.8	40.5	142.3	5.5	5.0	71.5
Australian Capital Territory	128.7	49.0	177.7	4.2	7.1	184.8	67.6	252.4	3.1	3.9	73.2
Australia	7 061.4	2 720.7	9 782.1	428.1	582.8	10 364.9	5 685.3	16 050.2	5.7	5.6	64.6

	EMPLOYED		UNEMPLOYED		UNEMPLOYMENT RATE		Participation rate	Employment to population ratio	Unemployment to population ratio — looking for full-time work
	Full time	Total	Looking for f/t work	Total	Looking for f/t work	Total			
	'000	'000	'000	'000	%	%			
MALES									
December 2000	142.8	336.8	40.8	73.7	22.2	17.9	59.2	48.6	5.9
December 2001	143.4	336.2	42.9	78.0	23.0	18.8	59.4	48.2	6.2
2002									
December	144.4	340.5	37.3	71.4	20.5	17.3	58.8	48.6	5.3
2003									
January	146.1	340.2	38.0	71.2	20.7	17.3	58.7	48.5	5.4
February	147.1	339.4	38.3	71.0	20.6	17.3	58.5	48.4	5.5
March	147.0	337.9	38.0	70.8	20.5	17.3	58.2	48.1	5.4
April	145.8	335.8	37.4	70.4	20.4	17.3	57.9	47.8	5.3
May	144.0	333.7	36.9	70.3	20.4	17.4	57.6	47.5	5.3
June	142.8	332.4	36.7	70.3	20.4	17.5	57.4	47.4	5.2
July	143.0	332.9	36.5	69.9	20.3	17.4	57.4	47.4	5.2
August	144.7	335.7	36.3	69.0	20.0	17.0	57.6	47.8	5.2
September	147.3	340.1	35.8	67.6	19.5	16.6	58.0	48.4	5.1
October	150.2	345.3	35.0	65.9	18.9	16.0	58.4	49.0	5.0
November	152.8	350.3	34.0	64.2	18.2	15.5	58.8	49.7	4.8
December	155.3	355.4	33.1	62.6	17.6	15.0	59.2	50.3	4.7
FEMALES									
December 2000	90.7	336.7	25.8	59.3	22.2	15.0	59.9	50.9	3.9
December 2001	83.0	332.0	30.1	66.4	26.6	16.7	59.8	49.8	4.5
2002									
December	80.8	348.0	27.4	62.2	25.3	15.2	61.2	51.9	4.1
2003									
January	81.3	350.0	28.0	61.2	25.6	14.9	61.3	52.1	4.2
February	81.8	351.3	28.4	60.0	25.7	14.6	61.2	52.3	4.2
March	82.5	352.0	28.2	59.0	25.5	14.3	61.2	52.4	4.2
April	83.4	351.7	27.7	58.2	24.9	14.2	61.0	52.3	4.1
May	84.4	350.5	26.9	57.7	24.2	14.1	60.7	52.1	4.0
June	85.0	349.0	26.1	57.3	23.5	14.1	60.4	51.9	3.9
July	85.2	347.9	25.7	57.5	23.2	14.2	60.3	51.7	3.8
August	84.8	347.4	25.8	58.3	23.3	14.4	60.3	51.6	3.8
September	84.1	347.5	26.1	59.3	23.7	14.6	60.4	51.6	3.9
October	83.4	347.9	26.3	60.2	24.0	14.7	60.5	51.6	3.9
November	82.8	348.3	26.5	61.1	24.3	14.9	60.6	51.6	3.9
December	82.4	348.7	26.7	61.9	24.5	15.1	60.7	51.5	4.0
PERSONS									
December 2000	233.5	673.6	66.6	133.0	22.2	16.5	59.5	49.7	4.9
December 2001	226.4	668.2	73.0	144.3	24.4	17.8	59.6	49.0	5.4
2002									
December	225.3	688.5	64.7	133.6	22.3	16.2	60.0	50.2	4.7
2003									
January	227.4	690.2	66.1	132.4	22.5	16.1	60.0	50.3	4.8
February	229.0	690.8	66.6	131.0	22.5	15.9	59.8	50.3	4.9
March	229.5	689.9	66.2	129.7	22.4	15.8	59.7	50.2	4.8
April	229.2	687.5	65.0	128.7	22.1	15.8	59.4	50.0	4.7
May	228.4	684.2	63.8	128.0	21.8	15.8	59.1	49.8	4.6
June	227.9	681.4	62.8	127.6	21.6	15.8	58.9	49.6	4.6
July	228.2	680.8	62.2	127.4	21.4	15.8	58.8	49.5	4.5
August	229.5	683.1	62.1	127.3	21.3	15.7	58.9	49.7	4.5
September	231.4	687.7	61.8	126.8	21.1	15.6	59.1	50.0	4.5
October	233.6	693.2	61.3	126.1	20.8	15.4	59.4	50.3	4.4
November	235.6	698.6	60.5	125.3	20.4	15.2	59.7	50.6	4.4
December	237.7	704.0	59.9	124.5	20.1	15.0	60.0	50.9	4.3

	EMPLOYED		UNEMPLOYED		UNEMPLOYMENT RATE		Participation rate	Employment to population ratio	Unemployment to population ratio — looking for full-time work
	Full time	Total	Looking for f/t work	Total	Looking for f/t work	Total			
	'000	'000	'000	'000	%	%			
MALES									
December 2000	146.5	338.8	38.3	72.3	20.7	17.6	59.3	48.9	5.5
December 2001	145.8	331.9	41.6	73.1	22.2	18.1	58.1	47.6	6.0
2002									
December	145.2	340.6	38.0	72.5	20.7	17.5	59.0	48.6	5.4
2003									
January	146.9	338.7	38.8	72.0	20.9	17.5	58.6	48.3	5.5
February	148.7	340.1	36.4	68.9	19.7	16.8	58.3	48.5	5.2
March	147.8	337.8	41.1	71.1	21.8	17.4	58.3	48.1	5.9
April	146.0	335.1	35.9	70.7	19.7	17.4	57.8	47.7	5.1
May	146.3	342.1	37.4	70.4	20.3	17.1	58.8	48.7	5.3
June	139.9	328.5	35.4	70.2	20.2	17.6	56.8	46.8	5.0
July	140.9	323.5	35.0	69.4	19.9	17.7	56.0	46.1	5.0
August	143.0	338.6	37.3	68.2	20.7	16.8	57.9	48.2	5.3
September	146.8	339.0	38.1	70.4	20.6	17.2	58.3	48.3	5.4
October	153.0	346.8	36.5	68.3	19.2	16.5	59.0	49.3	5.2
November	154.4	351.2	30.6	59.7	16.5	14.5	58.3	49.8	4.3
December	154.8	358.7	32.6	62.0	17.4	14.7	59.5	50.8	4.6
FEMALES									
December 2000	91.4	339.9	27.1	59.1	22.9	14.8	60.3	51.4	4.1
December 2001	81.4	332.6	28.0	66.7	25.6	16.7	59.9	49.9	4.2
2002									
December	82.1	348.7	22.9	57.5	21.8	14.2	60.5	52.0	3.4
2003									
January	81.0	349.6	29.7	62.1	26.8	15.1	61.3	52.1	4.4
February	81.5	350.9	29.4	61.6	26.5	14.9	61.4	52.2	4.4
March	84.7	354.0	30.0	59.8	26.2	14.4	61.6	52.7	4.5
April	79.2	352.2	28.0	58.3	26.1	14.2	61.1	52.4	4.2
May	85.0	349.7	25.8	56.7	23.3	14.0	60.4	52.0	3.8
June	85.0	349.0	25.2	56.7	22.8	14.0	60.3	51.9	3.7
July	89.3	349.8	23.0	54.4	20.4	13.5	60.1	52.0	3.4
August	83.4	343.5	29.1	64.1	25.9	15.7	60.6	51.0	4.3
September	84.9	345.0	26.9	56.9	24.1	14.2	59.7	51.2	4.0
October	79.4	351.0	24.2	58.8	23.3	14.3	60.7	52.0	3.6
November	84.4	351.3	26.8	61.9	24.1	15.0	61.2	52.0	4.0
December	83.3	346.5	27.2	62.8	24.6	15.3	60.5	51.2	4.0
PERSONS									
December 2000	237.9	678.8	65.4	131.3	21.6	16.2	59.8	50.1	4.8
December 2001	227.2	664.5	69.6	139.8	23.5	17.4	59.0	48.7	5.1
2002									
December	227.3	689.2	60.9	130.0	21.1	15.9	59.7	50.3	4.4
2003									
January	227.9	688.4	68.5	134.2	23.1	16.3	59.9	50.2	5.0
February	230.2	691.1	65.8	130.5	22.2	15.9	59.8	50.3	4.8
March	232.5	691.9	71.1	130.9	23.4	15.9	59.9	50.4	5.2
April	225.1	687.4	63.9	129.0	22.1	15.8	59.4	50.0	4.6
May	231.4	691.7	63.2	127.1	21.4	15.5	59.6	50.3	4.6
June	224.9	677.5	60.6	126.9	21.2	15.8	58.5	49.3	4.4
July	230.3	673.2	58.0	123.7	20.1	15.5	58.0	49.0	4.2
August	226.4	682.1	66.4	132.3	22.7	16.2	59.2	49.6	4.8
September	231.7	684.0	65.0	127.3	21.9	15.7	59.0	49.7	4.7
October	232.4	697.7	60.6	127.1	20.7	15.4	59.8	50.6	4.4
November	238.9	702.5	57.4	121.6	19.4	14.8	59.7	50.9	4.2
December	238.1	705.3	59.8	124.8	20.1	15.0	60.0	51.0	4.3

	EMPLOYED			UNEMPLOYED			UNEMPLOYMENT RATE			Unemployment to population ratio — looking for full-time work		
	Full time	Part time	Total	Looking for f/t work	Total	Labour force	Not in labour force	Civilian population aged 15-19	Looking for f/t work	Total	Participation rate	Unemployment to population ratio — looking for full-time work
	'000	'000	'000	'000	'000	'000	'000	'000	%	%	%	%
NOT ATTENDING FULL-TIME EDUCATION												
Males												
December 2000	147.1	63.3	210.4	37.8	46.3	256.7	54.8	311.5	20.4	18.0	82.4	12.1
December 2001	144.6	66.2	210.8	40.5	47.9	258.7	46.4	305.1	21.9	18.5	84.8	13.3
December 2002	145.8	68.9	214.7	35.6	42.1	256.9	46.3	303.2	19.6	16.4	84.7	11.8
December 2003	151.1	72.9	224.0	31.5	37.4	261.4	48.6	309.9	17.3	14.3	84.3	10.2
Females												
December 2000	94.6	85.9	180.5	28.0	35.8	216.3	49.4	265.6	22.8	16.5	81.4	10.5
December 2001	80.1	96.6	176.6	24.6	35.1	211.7	50.4	262.2	23.5	16.6	80.8	9.4
December 2002	80.6	99.8	180.3	23.4	31.4	211.7	52.5	264.2	22.5	14.8	80.1	8.9
December 2003	83.8	99.3	183.1	26.7	34.1	217.2	50.7	267.9	24.2	15.7	81.1	10.0
Persons												
December 2000	241.6	149.3	390.9	65.8	82.1	472.9	104.2	577.1	21.4	17.4	82.0	11.4
December 2001	224.6	162.8	387.4	65.1	83.0	470.4	96.8	567.3	22.5	17.6	82.9	11.5
December 2002	226.4	168.7	395.1	59.0	73.6	468.6	98.8	567.4	20.7	15.7	82.6	10.4
December 2003	234.9	172.2	407.1	58.3	71.4	478.5	99.3	577.8	19.9	14.9	82.8	10.1
ATTENDING FULL-TIME EDUCATION												
Males												
December 2000	14.9	138.6	153.6	8.2	39.5	193.1	188.7	381.8	35.4	20.5	50.6	2.1
December 2001	17.3	128.6	145.8	9.0	38.2	184.0	208.6	392.6	34.3	20.7	46.9	2.3
December 2002	15.7	135.4	151.2	9.1	42.3	193.5	203.9	397.4	36.6	21.9	48.7	2.3
December 2003	21.4	139.5	160.9	6.7	34.5	195.4	201.3	396.7	23.8	17.7	49.3	1.7
Females												
December 2000	8.5	176.6	185.1	5.4	32.7	217.7	178.5	396.2	39.1	15.0	54.9	1.4
December 2001	11.8	169.0	180.8	9.9	42.3	223.2	181.1	404.3	45.7	19.0	55.2	2.5
December 2002	11.9	182.3	194.2	4.7	35.5	229.7	177.0	406.7	28.3	15.5	56.5	1.2
December 2003	9.9	178.9	188.8	6.3	39.1	227.9	180.9	408.8	38.8	17.1	55.7	1.5
Persons												
December 2000	23.4	315.2	338.7	13.7	72.2	410.8	367.2	778.0	36.8	17.6	52.8	1.8
December 2001	29.1	297.5	326.6	19.0	80.5	407.2	389.7	796.9	39.4	19.8	51.1	2.4
December 2002	27.6	317.7	345.3	13.8	77.8	423.2	380.9	804.1	33.3	18.4	52.6	1.7
December 2003	31.3	318.4	349.7	13.0	73.6	423.3	382.2	805.5	29.3	17.4	52.6	1.6
TOTAL												
Males												
December 2000	162.0	202.0	364.0	46.0	85.8	449.8	243.5	693.2	22.1	19.1	64.9	6.6
December 2001	161.8	194.8	356.6	49.5	86.1	442.7	255.0	697.7	23.4	19.4	63.5	7.1
December 2002	161.6	204.3	365.9	44.7	84.5	450.4	250.2	700.6	21.7	18.8	64.3	6.4
December 2003	172.5	212.4	384.9	38.2	71.9	456.8	249.9	706.6	18.1	15.7	64.6	5.4
Females												
December 2000	103.0	262.5	365.6	33.4	68.4	434.0	227.9	661.9	24.5	15.8	65.6	5.1
December 2001	91.9	265.5	357.5	34.6	77.4	434.9	231.6	666.5	27.3	17.8	65.3	5.2
December 2002	92.4	282.0	374.5	28.1	66.9	441.4	229.5	670.9	23.3	15.2	65.8	4.2
December 2003	93.7	278.1	371.9	33.0	73.1	445.0	231.6	676.7	26.1	16.4	65.8	4.9
Persons												
December 2000	265.0	464.5	729.5	79.4	154.2	883.8	471.3	1 355.1	23.1	17.5	65.2	5.9
December 2001	253.7	460.3	714.1	84.1	163.5	877.6	486.5	1 364.1	24.9	18.6	64.3	6.2
December 2002	254.0	486.4	740.4	72.8	151.4	891.8	479.7	1 371.5	22.3	17.0	65.0	5.3
December 2003	266.2	490.6	756.8	71.3	145.0	901.8	481.5	1 383.3	21.1	16.1	65.2	5.2

	EMPLOYED			UNEMPLOYED			UNEMPLOYMENT RATE			Unemployment to population ratio — looking for full-time work		
	Full time	Part time	Total	Looking for f/t work	Total	Labour force	Not in labour force	Civilian population aged 15-19	Looking for f/t work	Total	Participation rate	Unemployment to population ratio — looking for full-time work
	'000	'000	'000	'000	'000	'000	'000	'000	%	%	%	%
NOT ATTENDING FULL-TIME EDUCATION												
New South Wales	74.3	53.2	127.5	16.6	21.2	148.8	38.1	186.8	18.3	14.3	79.6	8.9
Victoria	41.0	38.8	79.8	9.4	13.0	92.8	23.9	116.7	18.6	14.0	79.5	8.0
Queensland	59.2	40.8	100.0	15.5	17.6	117.6	14.8	132.3	20.8	14.9	88.8	11.7
South Australia	17.6	11.6	29.2	6.1	6.9	36.1	5.5	41.5	25.9	19.0	86.9	14.8
Western Australia	30.8	18.6	49.4	7.7	9.6	59.0	10.9	69.9	20.0	16.3	84.4	11.0
Tasmania	7.1	3.9	11.0	1.5	1.6	12.6	1.9	14.5	17.3	12.7	86.6	10.3
Northern Territory	2.5	1.6	4.1	*0.6	*0.6	4.7	3.6	8.2	*20.0	*13.1	56.7	*7.4
Australian Capital Territory	2.4	3.8	6.1	*0.8	*0.9	7.1	*0.7	7.8	*26.1	*13.4	91.1	*10.7
Australia	234.9	172.2	407.1	58.3	71.4	478.5	99.3	577.8	19.9	14.9	82.8	10.1
ATTENDING FULL-TIME EDUCATION												
New South Wales	*5.3	100.0	105.3	*4.1	20.3	125.6	139.9	265.5	*43.6	16.2	47.3	*1.5
Victoria	7.9	86.3	94.1	*3.4	22.7	116.8	105.5	222.3	*30.1	19.4	52.5	*1.5
Queensland	10.8	63.6	74.4	*2.0	13.6	88.1	50.6	138.7	*15.6	15.5	63.5	*1.4
South Australia	*1.2	24.1	25.4	*0.8	6.1	31.5	30.6	62.1	*39.5	19.4	50.7	*1.3
Western Australia	4.2	28.4	32.6	*1.9	7.8	40.3	34.9	75.2	*31.6	19.3	53.6	*2.6
Tasmania	*0.9	6.7	7.6	*0.8	1.2	8.8	10.8	19.6	*47.2	14.1	45.0	*4.0
Northern Territory	*0.5	2.1	2.6	*—	*0.2	2.8	3.5	6.3	*—	*6.2	44.1	*—
Australian Capital Territory	*0.6	7.2	7.8	*—	1.6	9.4	6.4	15.8	*—	17.4	59.6	*—
Australia	31.3	318.4	349.7	13.0	73.6	423.3	382.2	805.5	29.3	17.4	52.6	1.6
TOTAL												
New South Wales	79.6	153.2	232.8	20.7	41.5	274.4	178.0	452.3	20.6	15.1	60.7	4.6
Victoria	48.9	125.0	173.9	12.8	35.7	209.6	129.4	339.0	20.7	17.0	61.8	3.8
Queensland	70.0	104.4	174.4	17.5	31.2	205.6	65.4	271.0	20.0	15.2	75.9	6.5
South Australia	18.8	35.7	54.6	7.0	13.0	67.5	36.0	103.6	27.0	19.2	65.2	6.7
Western Australia	35.0	47.0	82.0	9.6	17.4	99.3	45.8	145.2	21.6	17.5	68.4	6.6
Tasmania	8.0	10.6	18.6	2.3	2.8	21.4	12.7	34.1	22.1	13.3	62.7	6.6
Northern Territory	3.0	3.7	6.7	*0.6	*0.8	7.5	7.1	14.6	*17.2	*10.6	51.2	*4.2
Australian Capital Territory	2.9	11.0	13.9	*0.8	2.6	16.5	7.1	23.6	*22.0	15.7	70.0	*3.5
Australia	266.2	490.6	756.8	71.3	145.0	901.8	481.5	1 383.3	21.1	16.1	65.2	5.2

* estimate is subject to sampling variability too high for most practical purposes

— nil or rounded to zero (including null cells)

WHAT IF...? REVISIONS TO TREND ESTIMATES

EFFECT OF NEW SEASONALLY ADJUSTED ESTIMATES ON TREND ESTIMATES

TREND REVISIONS

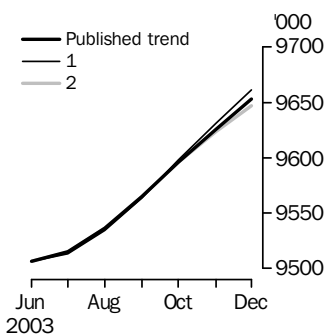
Each time new seasonally adjusted estimates become available, trend estimates are revised. This revision is a combined result of the concurrent seasonal adjustment process and the application of surrogates of the Henderson average to the seasonally adjusted series (see paragraphs 17 to 21 of Explanatory Notes).

The examples in the tables below show two illustrative scenarios and the consequent revisions to previous trend estimates of employment and the unemployment rate. The revisions in the scenarios below are only due to the use of surrogates of the Henderson average, as the impact of revision of the seasonally adjusted estimates can not be estimated in advance.

- (1) The January seasonally adjusted estimate is *higher* than the December estimate by:
 - 0.27% for employment
 - 1.80% for the unemployment rate
- (2) The January seasonally adjusted estimate is *lower* than the December estimate by:
 - 0.27% for employment
 - 1.80% for the unemployment rate

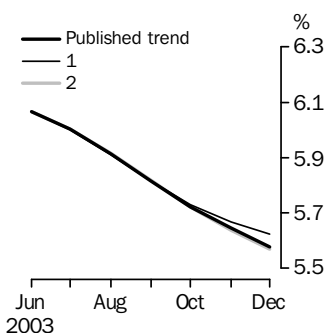
The percentage changes of 0.27% and 1.80% were chosen because they represent the average absolute monthly percentage changes in employment and the unemployment rate respectively.

EMPLOYMENT



	Trend as published	WHAT IF NEXT MONTH'S SEASONALLY ADJUSTED ESTIMATE IS:	
		(1) 9692.2 i.e. rises by 0.27%	(2) 9640.0 i.e. falls by 0.27%
2003			
September	9 565.0	9 564.1	9 565.0
October	9 596.1	9 598.1	9 595.7
November	9 625.8	9 631.4	9 623.7
December	9 653.0	9 661.3	9 646.8

UNEMPLOYMENT RATE



	Trend as published	WHAT IF NEXT MONTH'S SEASONALLY ADJUSTED ESTIMATE IS:	
		(1) 5.7 i.e. rises by 1.80%	(2) 5.5 i.e. falls by 1.80%
2003			
September	5.8	5.8	5.8
October	5.7	5.7	5.7
November	5.6	5.7	5.6
December	5.6	5.6	5.6

EXPLANATORY NOTES

INTRODUCTION

1 This publication contains estimates of the civilian labour force derived from the Labour Force Survey component of the Monthly Population Survey. More detailed estimates are released one week after this publication in various electronic formats - see *Labour Force, Australia, Detailed - Electronic Delivery* (cat. no. 6291.0.55.001).

CONCEPTS, SOURCES AND METHODS

2 The conceptual framework used in Australia's Labour Force Survey aligns closely with the standards and guidelines set out in Resolutions of the International Conference of Labour Statisticians. Descriptions of the underlying concepts and structure of Australia's labour force statistics, and the sources and methods used in compiling the estimates, are presented in *Labour Statistics: Concepts, Sources and Methods* (cat. no. 6102.0) which is also available on the ABS web site <<http://www.abs.gov.au>> (About Statistics—Concepts and Classifications).

MONTHLY POPULATION SURVEY

3 The population survey is based on a multi-stage area sample of private dwellings (currently about 30,000 houses, flats, etc.) and a list sample of non-private dwellings (hotels, motels, etc.), and covers about 0.45% of the population of Australia. The information is obtained from the occupants of selected dwellings by specially trained interviewers. The information obtained relates to the week before the interview (i.e. the reference week).

4 Households selected for the Labour Force Survey are interviewed each month for 8 months, with one eighth of the sample being replaced each month. The first interview is conducted face-to-face. Subsequent interviews are conducted by telephone (if acceptable to the respondent).

5 The interviews are generally conducted during the two weeks beginning on the Monday between the 6th and 12th of each month. Each year, to deal with operational difficulties involved with collecting and processing the Labour Force Survey around the Christmas and New Year holiday period, interviews for December start four weeks after November interviews start, and January interviews start five weeks after December interviews start. As a result, January interviewing may commence as early as the 8th or as late as the 14th, depending on the year. Occasionally, circumstances that present significant operational difficulties for survey collection can result in a change to the normal pattern for the start of interviewing.

6 Estimates from the Labour Force Survey are published first in this publication 31 days after the commencement of interviews for that month, with the exception of estimates for each December which are published 38 days after the commencement of interviews.

SCOPE OF SURVEY

7 The Labour Force Survey includes all persons aged 15 and over except members of the permanent defence forces, certain diplomatic personnel of overseas governments customarily excluded from census and estimated population counts, overseas residents in Australia, and members of non-Australian defence forces (and their dependants) stationed in Australia.

COVERAGE

8 In the Labour Force Survey, coverage rules are applied which aim to ensure that each person is associated with only one dwelling, and hence has only one chance of selection. The coverage rules are necessarily a balance between theoretical and operational considerations. Nevertheless, the chance of a person being enumerated at two separate dwellings in the survey is considered to be negligible.

EXPLANATORY NOTES *continued*

POPULATION BENCHMARKS

9 Labour Force Survey estimates are calculated in such a way as to add up to independent estimates of the civilian population aged 15 and over (population benchmarks). From February 1999, labour force estimates have been compiled using benchmarks based on the results of the 1996 Census of Population and Housing. Small revisions were made to many of the historical estimates from January 1995 to January 1999. The ABS expects to introduce new benchmarks, based on the 2001 census, in February 2004.

COMPARABILITY OF SERIES

10 From April 1986, the definition of employed persons was changed to include persons who worked without pay between 1 and 14 hours per week in a family business or on a farm (i.e. contributing family workers). For further information, see paragraphs 36 and 37 of the Explanatory Notes to the February 1987 issue of *Labour Force, Australia* (cat. no. 6203.0).

11 The ABS introduced telephone interviewing into the Labour Force Survey in August 1996. Implementation was phased in for each new sample group from August 1996 to February 1997. During the period of implementation, the new method produced different estimates than would have been obtained under the old methodology. The effect dissipated over the final months of implementation and was no longer discernible from February 1997. The estimates for February 1997 and onwards are directly comparable to estimates for periods prior to August 1996. For further details, see the feature article in the June 1997 issue of *Labour Force, Australia* (cat. no. 6203.0).

12 From April 2001 the Labour Force Survey has been conducted using a redesigned questionnaire containing additional data items and some minor definitional changes. Core labour force series were revised for the period April 1986 to March 2001 to ensure continuity. For further details, see *Information Paper: Implementing the Redesigned Labour Force Survey Questionnaire* (cat. no. 6295.0) and *Information Paper: Questionnaires Used in the Labour Force Survey* (cat. no. 6232.0).

SURVEY SAMPLE REDESIGN

13 The Labour Force Survey sample was last reselected using information collected in the 2001 Census of Population and Housing.

14 The bulk of the new sample was phased in over the period November 2002 to June 2003, with one eighth of this portion of the sample being introduced every month. The remainder of the sample (about 18% of the total), which covers less settled areas of Australia and non-private dwellings was rotated in full for New South Wales, Victoria, Tasmania, Northern Territory and Australian Capital Territory in November 2002, and for Queensland, South Australia and Western Australia in December 2002. Such a pattern of implementation means that any changes to labour force estimates due to differences between the two samples, or any other influences, were spread over the eight months.

15 For further details, see *Information Paper: Labour Force Survey Sample Design* (cat. no. 6269.0) and *Technical Report: New Labour Force Survey sample selections: analysis of the effect on estimates* in the October 2003 issue of *Australian Labour Market Statistics* (cat. no. 6105.0).

EXPLANATORY NOTES *continued*

RELIABILITY OF ESTIMATES

16 Two types of error are possible in an estimate based on a sample survey: sampling error and non-sampling error.

Sampling error occurs because a sample, rather than the entire population, is surveyed. One measure of the likely difference resulting from not including all dwellings in the survey is given by the standard error. There are about two chances in three that a sample estimate will differ by less than one standard error from the figure that would have been obtained if all dwellings had been included in the survey, and about nineteen chances in twenty that the difference will be less than two standard errors. Standard errors of estimates for the latest month and of estimates of movements since the previous month are shown on pages 27 and 28. Standard errors of other estimates and other movements may be determined by using information in the Technical Notes in *Labour Force, Australia* (cat. no. 6203.0).

Non sampling error arises from inaccuracies in collecting, recording and processing the data. Every effort is made to minimise reporting error by the careful design of questionnaires, intensive training and supervision of interviewers, and efficient data processing procedures.

SEASONAL ADJUSTMENT AND TREND ESTIMATION

17 Seasonal adjustment is a means of removing the estimated effects of normal seasonal variation from time series so that the effects of other influences on the series can be seen more clearly. The Labour Force Survey uses the concurrent seasonal adjustment method to derive seasonal factors.

18 Concurrent seasonal adjustment uses data up to the current month to estimate seasonal factors for the current and all previous months. This process can result in revisions each month to estimates for earlier periods. However, in most instances, the only noticeable revisions will be to the seasonally adjusted estimates for the previous month and one year prior to the current month. For more information, see *Information Paper: Forthcoming Changes to Labour Force Statistics* (cat. no. 6292.0).

19 While seasonal factors for the complete time series are estimated each month, they will continue to be reviewed annually at a more detailed level to take into account each additional year's original data. This annual review will not normally result in significant changes to published estimates. The review will be conducted in February each year with the results released in the February issue of this publication.

20 The smoothing of seasonally adjusted series to produce 'trend' series reduces the impact of the irregular component of the seasonally adjusted series. These trend estimates are derived by applying a 13-term Henderson-weighted moving average to all months except the last six. The last six monthly trend estimates are obtained by applying surrogates of the Henderson average to the seasonally adjusted series. Trend estimates are used to analyse the underlying behaviour of a series over time.

21 While this smoothing technique enables estimates to be produced for the latest month, it does result in revisions in addition to those caused by the revision of seasonally adjusted estimates. Generally, revisions due to the use of surrogates of the Henderson average become smaller, and after 3 months have a negligible impact on the series.

EXPLANATORY NOTES *continued*

SEASONAL ADJUSTMENT AND TREND ESTIMATION *continued*

22 Trend estimates are published for the Northern Territory in table 10 and for the Australian Capital Territory in table 11. Unadjusted series for the two territories have shown, historically, a high degree of variability, which can lead to considerable revisions to the seasonally adjusted estimates each month when seasonal factors are estimated. For this reason, seasonally adjusted estimates are not currently published for the two Territories. In addition, caution should be exercised in the interpretation of trend estimates for the two territories, particularly for the three most recent months, where revisions may be relatively large.

23 For further information, see *A Guide to Interpreting Time Series—Monitoring 'Trends': an Overview* (cat. no. 1348.0) or contact the Assistant Director, Time Series Analysis on (02) 6252 6345.

RELATED PUBLICATIONS

24 Users may also wish to refer to *Australian Labour Market Statistics* (cat. no. 6105.0). This publication contains additional tables and a detailed list of related publications. For further information about this publication, please contact the Assistant Director, Labour Market Statistics on (02) 6252 7636.

25 ABS Information about the labour market can be found on the Labour theme page on the ABS web site <<http://www.abs.gov.au>> (Themes—People, Labour), or from ABS Bookshops.

26 Current publications and other products released by the ABS are listed in the *Catalogue of Publications and Products* (cat. no. 1101.0). The Catalogue is available from any ABS office or the ABS web site <<http://www.abs.gov.au>> (Products and Services). The ABS also issues a daily Release Advice on the web site (Information on Releases) which details products to be released in the week ahead.

DATA AVAILABLE ON REQUEST

27 As well as the statistics included in this and related publications, the ABS may have other relevant data available. Inquiries should be made to Craig Blair on (02) 6252 6525 or to any ABS office.

EFFECTS OF ROUNDING

28 Estimates have been rounded and discrepancies may occur between sums of the component items and totals.

29 Estimates of movement shown in this publication are obtained by taking the difference of unrounded estimates. The movement estimate is then rounded to one decimal place. Therefore where a discrepancy occurs between the reported movement and the difference of the rounded estimates, the reported movement will be more accurate.

SYMBOLS AND OTHER USAGES

30 SYMBOLS AND OTHER USAGES

pts percentage points

STANDARD ERRORS

STANDARD ERRORS

The estimates in this publication are based on information gained from the occupants of a sample survey of dwellings. Because the entire population is not surveyed, the published estimates are subject to sampling error. The most common way of quantifying such sampling error is to calculate the standard error for the published estimate or statistic.

LEVEL ESTIMATES

To illustrate, let us say the published level estimate for employed persons aged 15 to 19 is 700,000. The calculated standard error in this case is 9,800. The standard error is then used to interpret the level estimate of 700,000. For instance, the standard error of 9,800 indicates that:

- There are approximately two chances in three that the real value falls within the range 690,200 to 709,800 (700,000 + or - 9,800)
- There are approximately nineteen chances in twenty that the real value falls within the range 680,400 to 719,600 (700,000 + or - 19,600).

The real value in this case is the result we would obtain if we could enumerate the total population.

The following table shows the standard errors for this month's level estimates.

AUSTRALIA												
.....												
		NSW	Vic.	Qld	SA	WA	Tas.	NT	ACT	Males	Females	Persons
Aged 15 and over												
Employed												
Full time	'000	19.0	14.4	11.3	5.1	5.6	1.9	1.3	1.8	22.1	16.1	29.6
Part time	'000	10.8	8.8	7.8	3.7	4.1	1.4	0.8	1.2	10.4	14.8	17.0
Total	'000	23.0	17.3	12.7	5.9	6.2	2.1	1.4	2.1	24.4	21.1	39.5
Unemployed												
Looking for f/t work	'000	5.0	3.9	3.8	1.8	2.1	0.8	0.4	0.4	6.6	5.9	8.2
Looking for p/t work	'000	3.6	3.0	2.4	1.2	1.4	0.4	0.2	0.4	3.8	4.7	5.6
Total	'000	5.6	4.5	4.3	2.1	2.4	0.8	0.5	0.5	7.2	6.9	9.2
Labour force	'000	23.8	17.9	13.1	6.1	6.3	2.2	1.4	2.1	25.4	21.8	41.8
Not in labour force	'000	17.0	12.9	10.1	5.0	5.0	1.9	1.0	1.4	15.4	19.0	25.1
Unemployment rate												
Looking for f/t work	pts	0.2	0.2	0.3	0.3	0.3	0.5	0.6	0.3	0.1	0.2	0.1
Looking for p/t work	pts	0.4	0.4	0.4	0.5	0.5	0.6	1.0	0.8	0.4	0.2	0.2
Total	pts	0.2	0.2	0.2	0.3	0.2	0.4	0.5	0.3	0.1	0.2	0.1
Participation rate	pts	0.4	0.4	0.4	0.5	0.4	0.6	1.0	0.9	0.3	0.3	0.3
Aged 15 - 19												
Employed												
Full time	'000	4.3	3.1	3.4	1.4	1.9	0.6	0.4	0.4	5.8	4.6	6.8
Part time	'000	5.3	4.2	4.1	1.8	2.2	0.7	0.4	0.6	6.3	6.9	8.6
Total	'000	6.1	4.8	5.0	2.1	2.6	0.9	0.5	0.7	7.8	7.7	10.2
Unemployed												
Looking for f/t work	'000	2.7	1.8	1.9	0.9	1.2	0.4	0.2	0.3	3.3	3.1	4.2
Looking for p/t work	'000	2.7	2.3	1.7	0.9	1.1	0.2	0.1	0.3	3.1	3.3	4.2
Total	'000	3.5	2.8	2.5	1.2	1.5	0.4	0.2	0.4	4.2	4.2	5.4
Labour force	'000	6.5	5.2	5.4	2.3	2.8	0.9	0.5	0.8	8.4	8.3	10.9
Not in labour force	'000	5.5	4.3	3.4	1.8	2.1	0.7	0.5	0.5	6.7	6.5	8.6
Unemployment rate												
Looking for f/t work	pts	2.6	3.0	2.2	3.6	2.6	3.7	5.8	6.6	1.5	2.4	1.2
Looking for p/t work	pts	1.5	1.6	1.5	2.1	2.0	1.9	3.2	2.5	1.3	1.0	0.8
Total	pts	1.3	1.3	1.2	1.8	1.5	1.9	3.1	2.3	0.9	1.0	0.6
Participation rate	pts	1.4	1.5	2.0	2.2	2.0	2.7	3.7	3.2	1.2	1.2	0.8
Unemployment to population ratio — looking for f/t work	pts	0.6	0.5	0.7	0.9	0.8	1.1	1.4	1.1	0.5	0.5	0.3

STANDARD ERRORS *continued*

MOVEMENT ESTIMATES

The following example illustrates how to use the standard error to interpret a movement estimate. Let us say that one month the published level estimate for females employed part time in Australia is 1,890,000; the next month the published level estimate is 1,900,000. The calculated standard error for the movement estimate is 10,300. The standard error is then used to interpret the published movement estimate of 10,000. For instance, the standard error of 10,300 indicates that:

- There are approximately two chances in three that the real movement between the two months falls within the range -300 to 20,300 (10,000 + or - 10,300)
- There are approximately nineteen chances in twenty that the real movement falls within the range -10,600 to 30,600 (10,000 + or - 20,600).

The following table shows the standard errors for this month's movement estimates.

AUSTRALIA												
.....												
		NSW	Vic.	Qld	SA	WA	Tas.	NT	ACT	Males	Females	Persons
Aged 15 and over												
Employed												
Full time	'000	10.0	7.7	7.0	3.2	4.0	1.3	1.1	1.0	14.3	11.3	16.6
Part time	'000	7.1	5.6	5.1	2.4	2.9	0.9	0.7	0.8	7.6	10.5	11.8
Total	'000	11.1	8.6	7.8	3.6	4.4	1.4	1.2	1.2	15.1	13.9	18.6
Unemployed												
Looking for f/t work	'000	3.8	2.9	2.7	1.3	1.6	0.5	0.4	0.3	5.0	4.5	6.1
Looking for p/t work	'000	2.7	2.2	1.9	0.9	1.1	0.3	0.2	0.3	3.0	3.6	4.3
Total	'000	4.2	3.3	3.0	1.4	1.7	0.6	0.4	0.4	5.4	5.3	6.8
Labour force	'000	11.4	8.8	8.0	3.7	4.5	1.5	1.2	1.2	15.4	14.2	19.0
Not in labour force	'000	9.5	7.3	6.4	3.1	3.6	1.3	0.9	0.9	11.1	13.0	15.5
Unemployment rate												
Looking for f/t work	pts	0.2	0.2	0.2	0.2	0.2	0.3	0.5	0.3	0.1	0.2	0.1
Looking for p/t work	pts	0.3	0.3	0.3	0.4	0.4	0.5	0.8	0.6	0.3	0.2	0.1
Total	pts	0.1	0.1	0.2	0.2	0.2	0.3	0.4	0.2	0.1	0.1	0.1
Participation rate	pts	0.2	0.2	0.3	0.3	0.3	0.4	0.9	0.5	0.2	0.2	0.1
Aged 15 - 19												
Employed												
Full time	'000	3.2	2.3	2.5	1.0	1.5	0.5	0.3	0.3	4.4	3.6	5.2
Part time	'000	4.0	3.1	2.9	1.3	1.6	0.5	0.3	0.5	4.8	5.2	6.4
Total	'000	4.6	3.5	3.4	1.5	1.9	0.6	0.4	0.5	5.9	5.8	7.5
Unemployed												
Looking for f/t work	'000	2.0	1.4	1.5	0.7	1.0	0.3	0.2	0.2	2.6	2.5	3.2
Looking for p/t work	'000	2.0	1.8	1.4	0.7	0.9	0.2	0.1	0.3	2.5	2.6	3.3
Total	'000	2.6	2.0	1.9	0.9	1.2	0.3	0.2	0.3	3.2	3.3	4.2
Labour force	'000	4.9	3.7	3.6	1.6	2.1	0.6	0.5	0.5	6.3	6.2	8.0
Not in labour force	'000	4.4	3.4	2.7	1.3	1.7	0.6	0.5	0.4	5.4	5.2	6.8
Unemployment rate												
Looking for f/t work	pts	2.1	2.4	1.8	2.8	2.1	2.9	4.9	5.8	1.2	1.9	1.0
Looking for p/t work	pts	1.2	1.2	1.2	1.6	1.6	2.1	3.0	2.0	1.0	0.8	0.6
Total	pts	0.9	1.0	0.9	1.3	1.2	1.5	2.6	1.8	0.7	0.7	0.5
Participation rate	pts	1.1	1.1	1.3	1.5	1.4	1.9	3.1	2.3	0.9	0.9	0.6
Unemployment to population ratio — looking for f/t work												
	pts	0.4	0.4	0.6	0.7	0.7	0.9	1.2	0.9	0.4	0.4	0.2

GLOSSARY

Actively looking for work	Includes writing, telephoning or applying in person to an employer for work; answering an advertisement for a job; checking factory noticeboards or the touchscreens at the Centrelink offices; being registered with Centrelink as a jobseeker; checking or registering with any other employment agency; advertising or tendering for work; and contacting friends or relatives.
Attending full-time education	Persons aged 15 to 24 enrolled at secondary or high school or enrolled as a full time student at a Technical and Further Education (TAFE) college, university, or other educational institution in the reference week.
Attending school	Persons aged 15 to 19 years enrolled at secondary or high school in the reference week.
Attending tertiary educational institution full time	Persons aged 15 to 24 years enrolled full time at a TAFE college, university, or other educational institution in the reference week, except those persons aged 15 to 19 years who were still attending school.
Civilian population aged 15 years and over	All usual residents of Australia aged 15 years and over except members of the permanent defence forces, certain diplomatic personnel of overseas governments customarily excluded from census and estimated population counts, overseas residents in Australia, and members of non-Australian defence forces (and their dependants) stationed in Australia.
Employed	All persons aged 15 years and over who, during the reference week: <ul style="list-style-type: none">■ worked for one hour or more for pay, profit, commission or payment in kind in a job or business, or on a farm (comprising employees, employers and own account workers); or■ worked for one hour or more without pay in a family business or on a farm (i.e. contributing family workers); or■ were employees who had a job but were not at work and were:<ul style="list-style-type: none">■ away from work for less than four weeks up to the end of the reference week; or■ away from work for more than four weeks up to the end of the reference week and received pay for some or all of the four week period to the end of the reference week; or■ away from work as a standard work or shift arrangement; or■ on strike or locked out; or■ on workers' compensation and expected to return to their job; or■ were employers or own account workers, who had a job, business or farm, but were not at work.
Employment to population ratio	For any group, the number of employed persons expressed as a percentage of the civilian population in the same group.
Full-time workers	Employed persons who usually worked 35 hours or more a week (in all jobs) and those who, although usually working less than 35 hours a week, worked 35 hours or more during the reference week.
Labour force	For any group, persons who were employed or unemployed, as defined.
Labour force status	A classification of the civilian population aged 15 years and over into employed, unemployed or not in the labour force, as defined. The definitions conform closely to the international standard definitions adopted by the International Conferences of Labour Statisticians.
Not in labour force	Persons who were not in the categories employed or unemployed as defined.
Participation rate	For any group, the labour force expressed as a percentage of the civilian population aged 15 years and over in the same group.
Part-time workers	Employed persons who usually worked less than 35 hours a week (in all jobs) and either did so during the reference week, or were not at work in the reference week.

GLOSSARY *continued*

Seasonally adjusted series	A time series of estimates with the estimated effects of normal seasonal variation removed. See Explanatory Notes 17 to 19 for more detail.
Trend series	A smoothed seasonally adjusted series of estimates. See Explanatory Notes 20 to 22 for more detail.
Unemployed	Persons aged 15 years and over who were not employed during the reference week, and: <ul style="list-style-type: none">■ had actively looked for full-time or part-time work at any time in the four weeks up to the end of the reference week and:<ul style="list-style-type: none">■ were available for work in the reference week; or■ were waiting to start a new job within four weeks from the end of the reference week and could have started in the reference week if the job had been available then.
Unemployed looking for full-time work	Unemployed persons who: <ul style="list-style-type: none">■ actively looked for full-time work and were available for work in the reference week; or■ actively looked for work and were not available for work in the reference week because they were waiting to start a new full-time job.
Unemployed looking for part-time work	Unemployed persons who: <ul style="list-style-type: none">■ actively looked for part-time work only and were available for work in the reference week; or■ actively looked for work and were not available for work in the reference week because they were waiting to start a new part-time job.
Unemployment rate	For any group, the number of unemployed persons expressed as a percentage of the labour force in the same group.
Unemployment to population ratio	For any group, the number of unemployed persons expressed as a percentage of the civilian population in the same group.

FOR MORE INFORMATION . . .

- INTERNET* **www.abs.gov.au** the ABS web site is the best place to start for access to summary data from our latest publications, information about the ABS, advice about upcoming releases, our catalogue, and Australia Now—a statistical profile.
- LIBRARY* A range of ABS publications is available from public and tertiary libraries Australia-wide. Contact your nearest library to determine whether it has the ABS statistics you require, or visit our web site for a list of libraries.
- CPI INFOLINE* For current and historical Consumer Price Index data, call 1902 981 074 (call cost 77c per minute).
- DIAL-A-STATISTIC* For the latest figures for National Accounts, Balance of Payments, Labour Force, Average Weekly Earnings, Estimated Resident Population and the Consumer Price Index call 1900 986 400 (call cost 77c per minute).

INFORMATION SERVICE

Data already published that can be provided within five minutes will be free of charge. Our information consultants can also help you to access the full range of ABS information—ABS user pays services can be tailored to your needs, time frame and budget. Publications may be purchased. Specialists are on hand to help you with analytical or methodological advice.

- PHONE* 1300 135 070
- EMAIL* client.services@abs.gov.au
- FAX* 1300 135 211
- POST* Client Services, ABS, GPO Box 796, Sydney NSW 2001

WHY NOT SUBSCRIBE?

ABS subscription services provide regular, convenient and prompt deliveries of ABS publications and products as they are released. Email delivery of monthly and quarterly publications is available.

- PHONE* 1300 366 323
- EMAIL* subscriptions@abs.gov.au
- FAX* 03 9615 7848
- POST* Subscription Services, ABS, GPO Box 2796Y, Melbourne Vic 3001



2620200012030

ISSN 1448 2819

RRP \$22.00