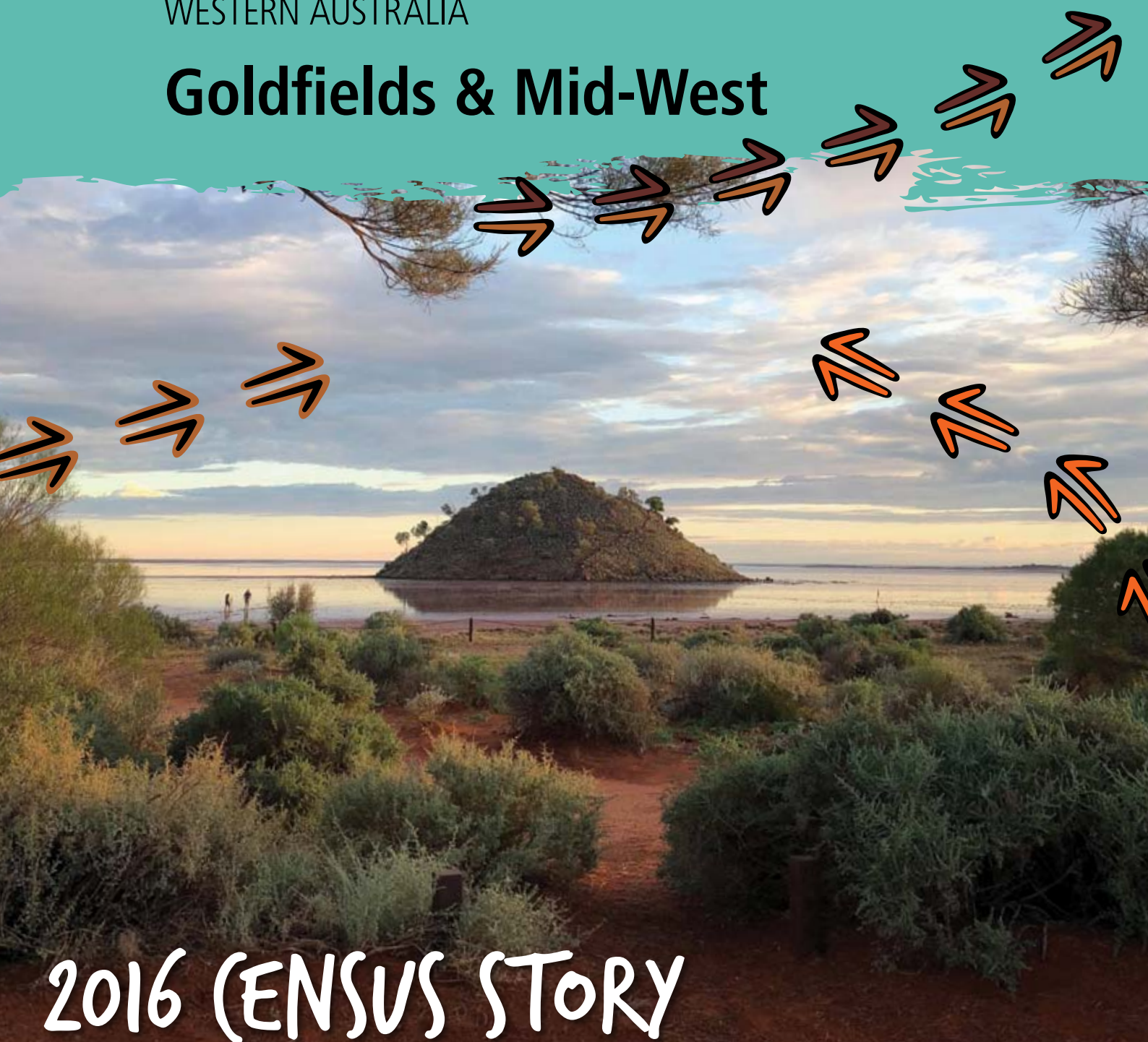


WESTERN AUSTRALIA

Goldfields & Mid-West



2016 CENSUS STORY

WESTERN AUSTRALIA

Goldfields & Mid-West



2016 CENSUS STORY

Glossary

Caring for Children	People who spent time caring for a child/children (under 15 years) without pay in the two weeks prior to Census night.
Children	Are people aged under 15 years of age.
Completed Year 12	Includes people aged 15 years and over who are no longer attending primary or secondary school.
Families	Includes couple families with and without children, single parents, and other families.
Houses	Includes private dwellings, occupied and unoccupied. A dwelling is a structure which is intended to have people live in it, and which was habitable on Census night, for example houses, flats, caravans and humpies.
Language	Top Australian Indigenous language spoken at home.
People	Total population figures are based on place of 'usual residence' or where that person usually lives.
Students	Includes everyone who said they were attending a school, university or technical institution.
Weekly Income	Includes people aged 15 years and over and is the middle value (median) of total weekly personal income.
Working	Includes everyone who said they were working full-time or part-time, or were away from work. This does not include people involved in the Community Development Program (CDP).

Contents

Glossary	2
Artwork	4
The ABS says thanks	5
Western Australia	7
Goldfields Region	8
Cosmo Newberry	10
Irrunuytju	12
Jameson	14
Kurrawang	16
Leonora	18
Mount Margaret	20
Ningia Mia	22
Papulankutja	24
Tjuntjuntjarra	26
Wanarn	28
Warakurna	30
Warburton	32
Mid-West Region	34
Burringurrah	36
Karalundi	38
Know more	40



Artwork

The artwork in this story book was commissioned by the Centre of Excellence for Aboriginal and Torres Strait Islander Statistics to embody what the centre represents. The work incorporates Larrakia Artist Shaun Lee's (AKA Gwarkabah's) diverse heritage, through contemporary and traditional hand-created designs. Using spray-paint medium on hardwood, the work features and combines various traditional stories and symbols from local areas and across Australia. Together, the artwork tells the story of the Centre of Excellence and its people. The designs were digitalised by Dreamtime Creative.



Traditional stories and symbol break down



Star shape: National courage – representing navigation, called the 'Guiding Star'.

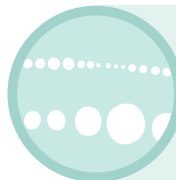
Core centre design: Black represents the earth and the soil; the pattern symbolises an 'ageless recognition' used through Northern Australia, and perhaps wider Australia. An 'ageless recognition' is the closest translation into English. It's derived from a number of terms that describe an instant identification of a particular established symbol of connection or linkage.



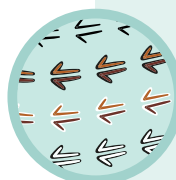
Message sticks: Representing unique messages; signifies that a story is being told and needs to be received.

Is a connection to and from Larrakia Country, and between other Indigenous cultures.

- **Top message stick:** Country and regions across Australia
- **Middle message stick:** Coming together and meeting
- **Bottom message stick:** Two half-moons facing inwards represents the people; and the two lines on either side identifies that the message is inclusive of both male and female.



Dots: Symbolises the link between people, organisations, States and Territories, representing the importance of strong linkage and communication. A dot in a dot in a dot: Traditional Larrakia design colours represent the artist's own diversity – his Northern Larrakia, Wardaman, Karrijarri heritage, and his acknowledgement of all of these people.



Kangaroo tracks: Acknowledge the journey and pathways that have been taken; and symbolises moving forward, as the kangaroo is known for not moving backwards.

Track colours: Represent diversity and the differences between people. The kangaroo is an iconic Australian animal, representing our uniqueness, and recognition Nationally.



Paperbark vessel: Carrying safely all the gathered information and knowledge

THE ABS SAYS THANKS



The Australian Bureau of Statistics would like to thank the Aboriginal and Torres Strait Islander communities who helped to make the 2016 Census a success.

Goldfields & Mid-West, your numbers are in.

The results of our latest national Census reveal who we are, where we live, what we do, and where we're headed.

The information we've gathered will inform planning and decision-making for our future, like where we build schools, roads and hospitals. Census data helps us decide where we need funding and services across every community in Australia – this means your community, too!

So here is the story for Goldfields & Mid-West – a living biography updated every five years.

Future surveys

The ABS also has other surveys. We thank you in advance for your help in completing these. They may include questions about your health, employment or other details. You can see how this information helps your community at www.abs.gov.au/participant-info.



Photos by the Australian Bureau of Statistics, taken from the Jabiru township.

Australia



23.4
million

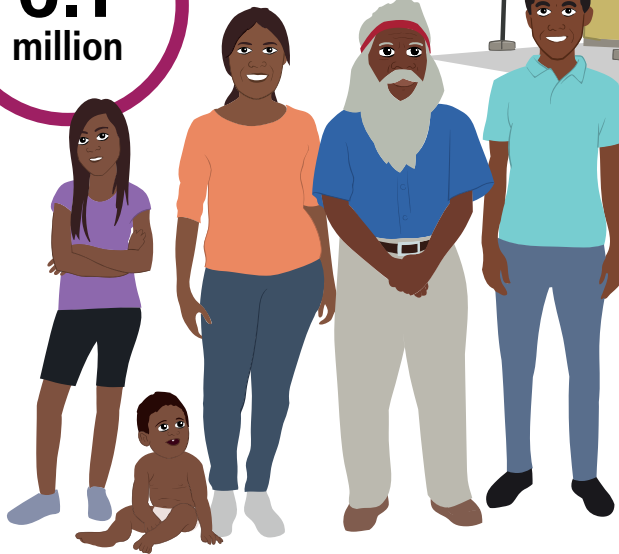
People

649 168

Aboriginal and/or
Torres Strait
Islander people

FAMILIES

6.1
million



9.9
million

HOUSES

11.9 million
Females



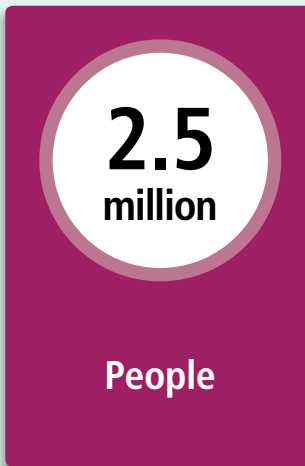
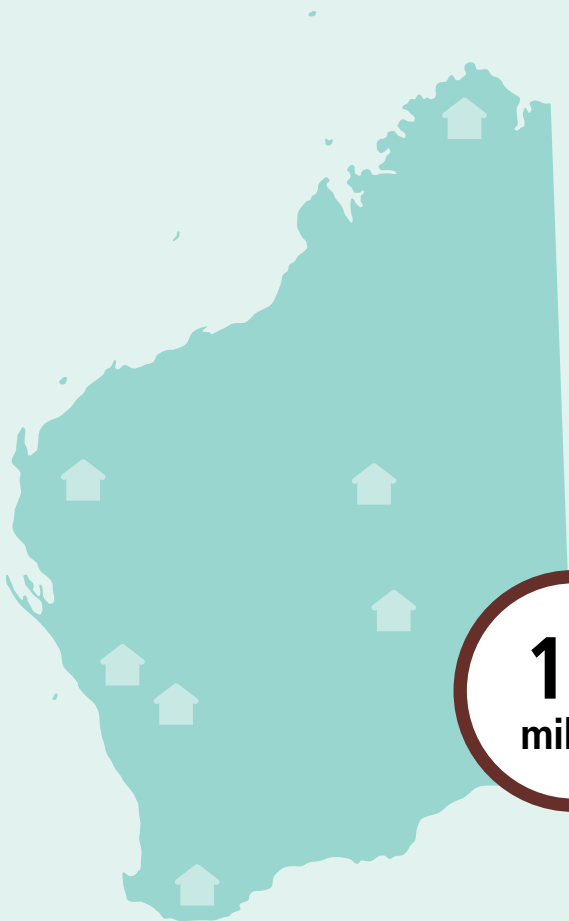
11.5 million
Males



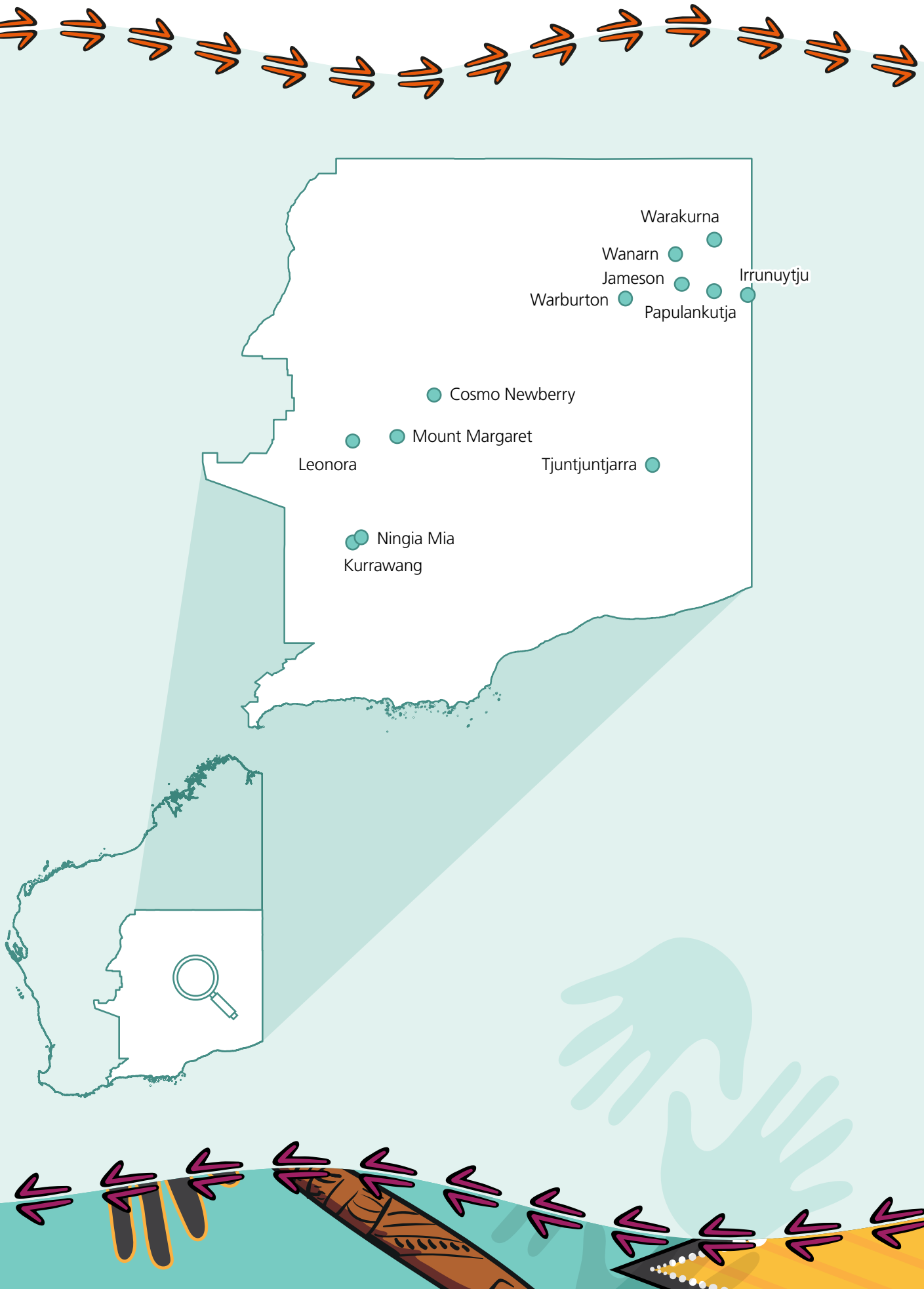
4.4 million
Children



Western Australia



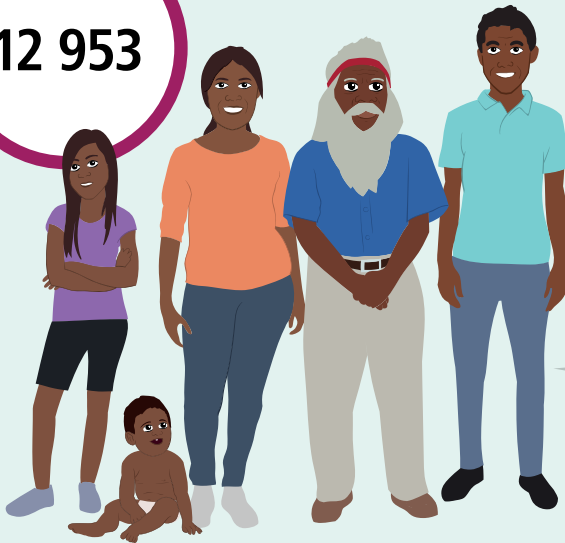
Goldfields Region



Goldfields Region

FAMILIES

12 953

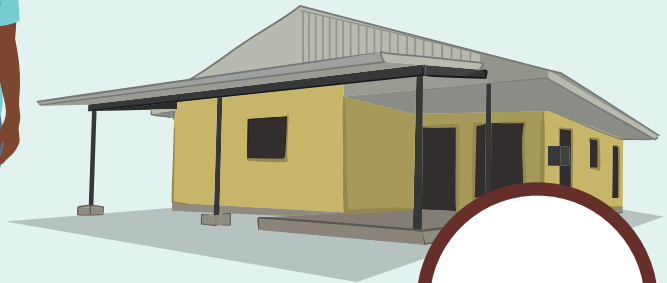


55 813

People

5 631

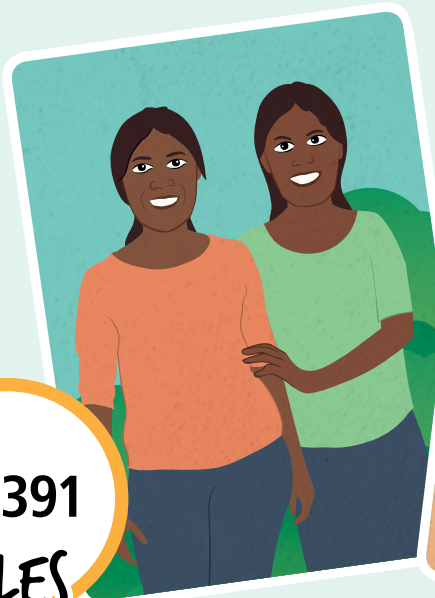
Aboriginal and/or
Torres Strait
Islander people



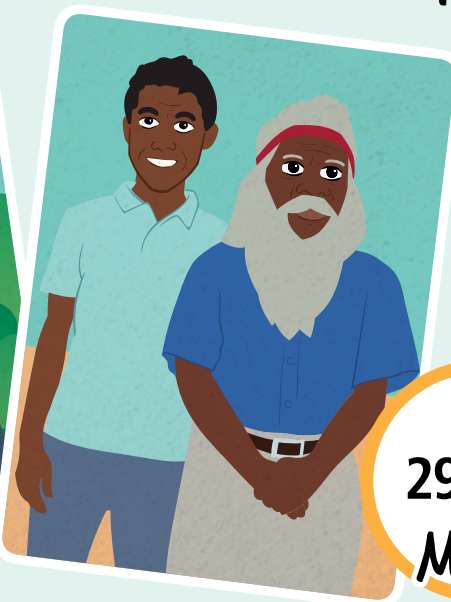
25 244

HOUSES

26 391
FEMALES



29 419
MALES



Cosmo Newberry

LANGUAGE SPOKEN
Ngaanyatjarra

58

People

49

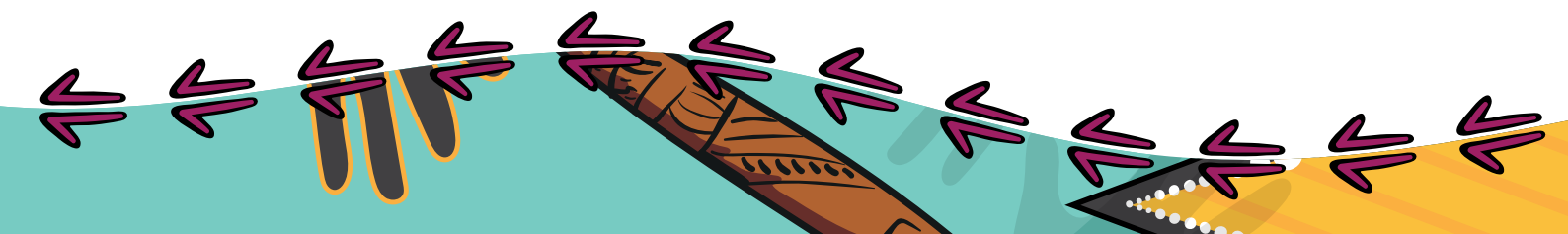
Aboriginal and/or
Torres Strait
Islander people

HOUSES

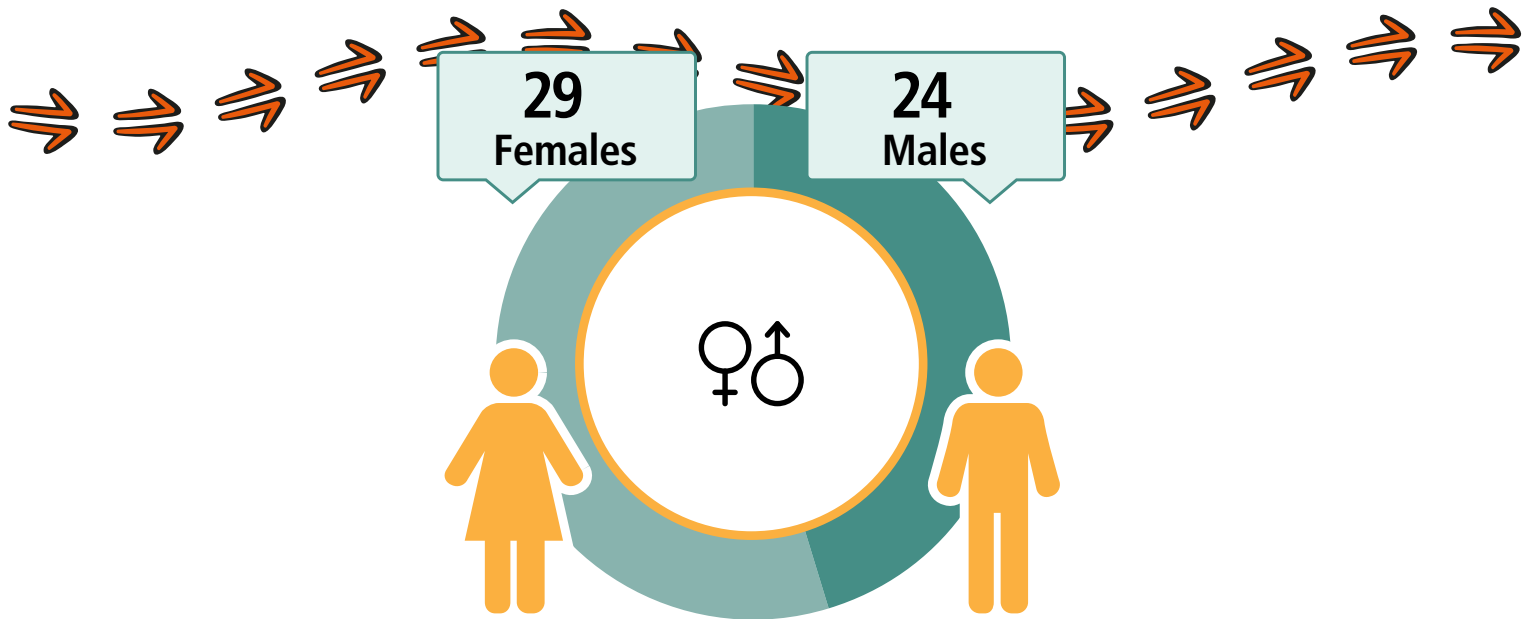
34

11

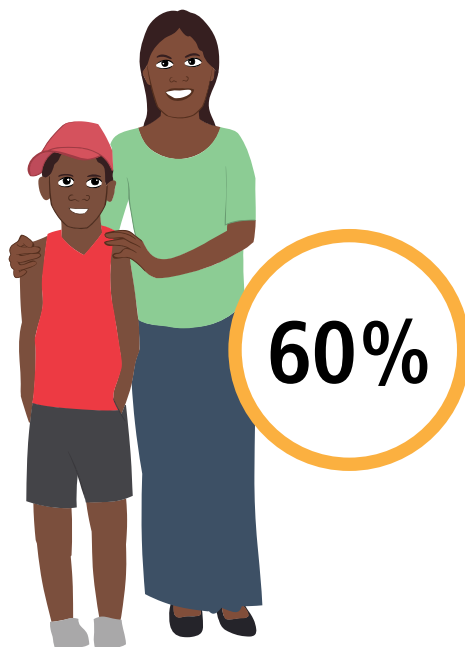
FAMILIES



Cosmo Newberry



CARED FOR CHILDREN



12
Working



\$288
Weekly Income



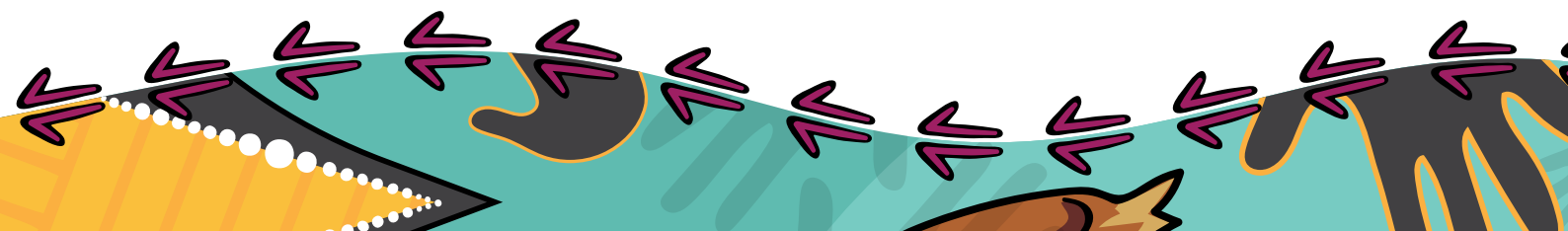
17
Students



3
Completed
Year 12



Geography: Cosmo Newberry ILOC



Irrunuytju

LANGUAGE SPOKEN
Pitjantjatjara

179

People

159

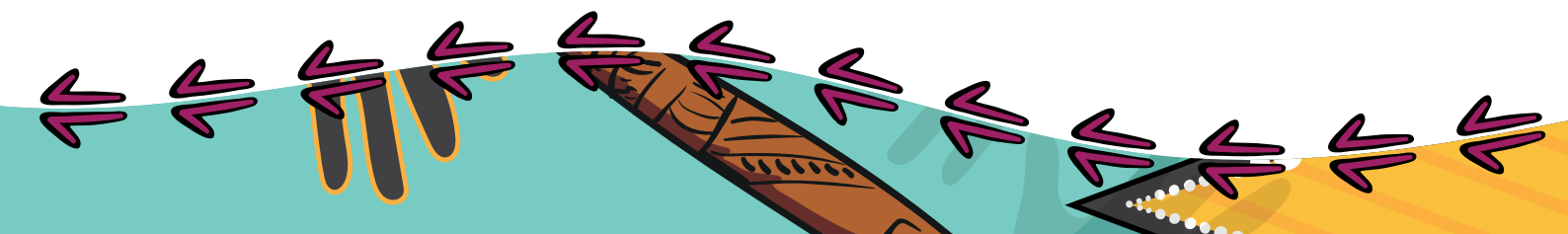
Aboriginal and/or
Torres Strait
Islander people

HOUSES

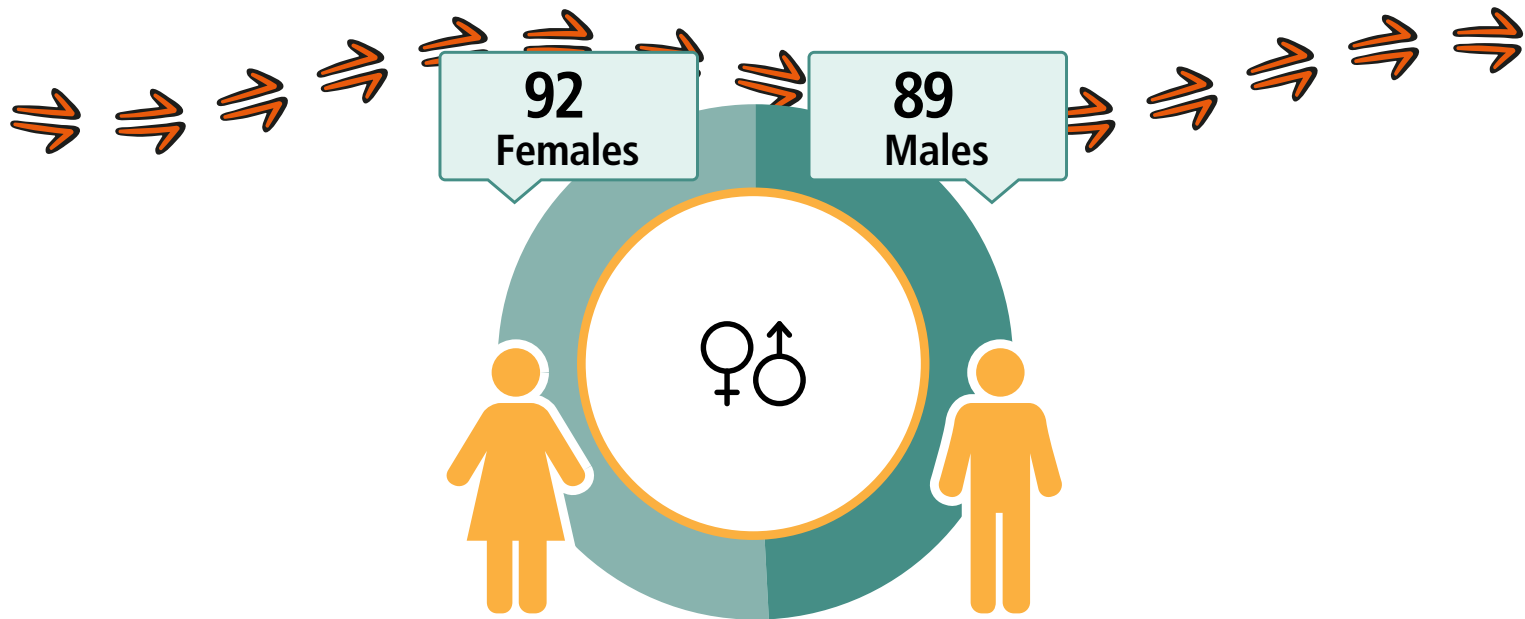
48

47

FAMILIES



Irrunuytju



CARED FOR (CHILDREN



54%

38
Working



\$285
Weekly Income



67
Students



7
Completed
Year 12



Geography: Irrunuytju ILOC

A decorative border at the bottom of the page featuring stylized Aboriginal art. It includes a yellow and orange pattern on the left, a teal and black pattern in the center, and a brown and black pattern on the right, all with white dots and arrows.

Jameson

LANGUAGE SPOKEN
Ngaanyatjarra

135

People

115

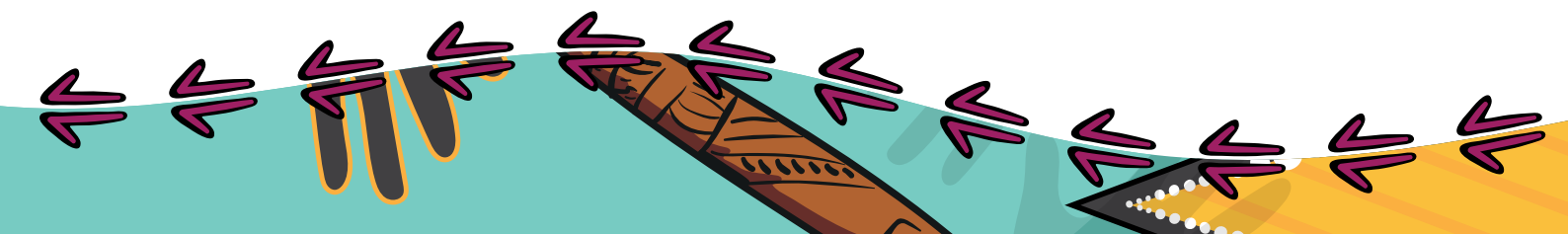
Aboriginal and/or
Torres Strait
Islander people

HOUSES

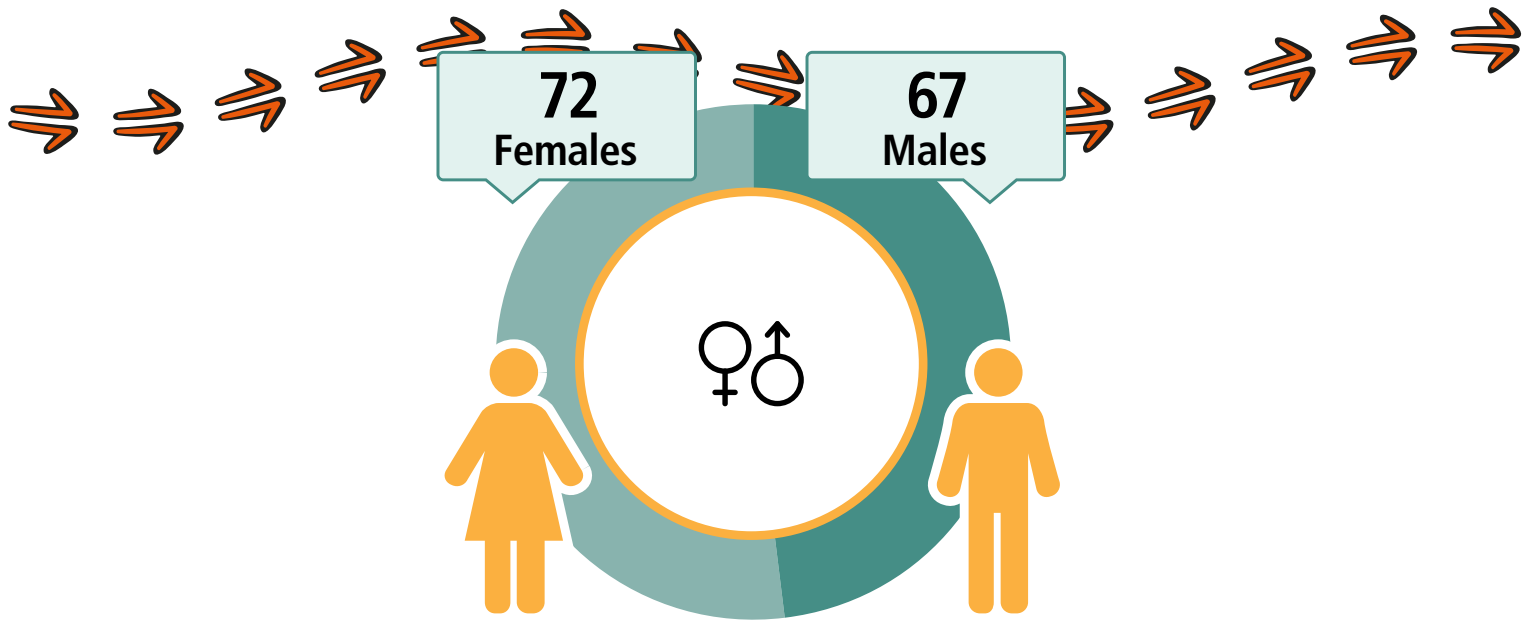
42

33

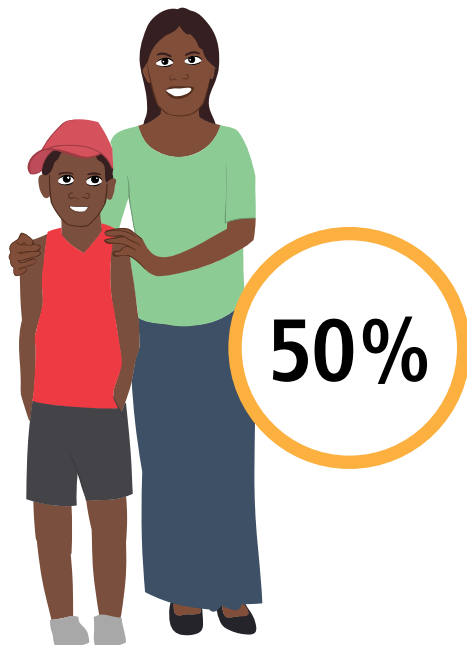
FAMILIES



Jameson



CARED FOR CHILDREN



18
Working



\$385
Weekly Income



57
Students



14
Completed
Year 12



Geography: Jameson ILOC

A decorative border at the bottom of the page featuring stylized Aboriginal art. It includes a yellow and orange pattern on the left, a teal and black pattern in the center, and a brown and black pattern on the right, all with white dots and arrows.

Kurrawang

LANGUAGE SPOKEN
Wangkatha

90

People

81

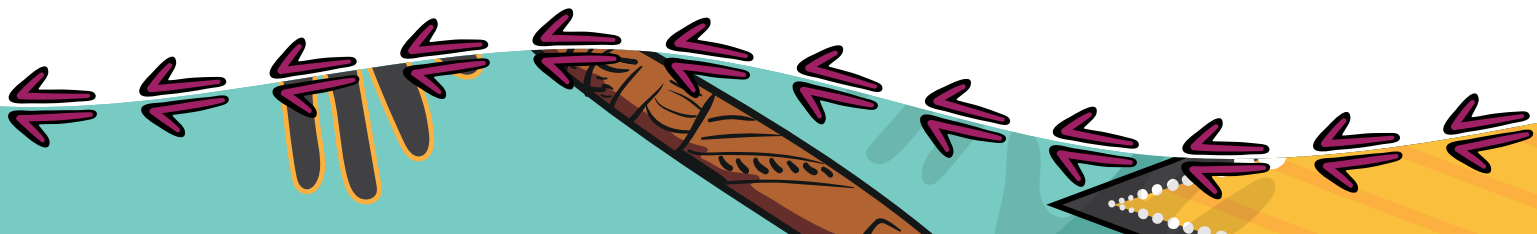
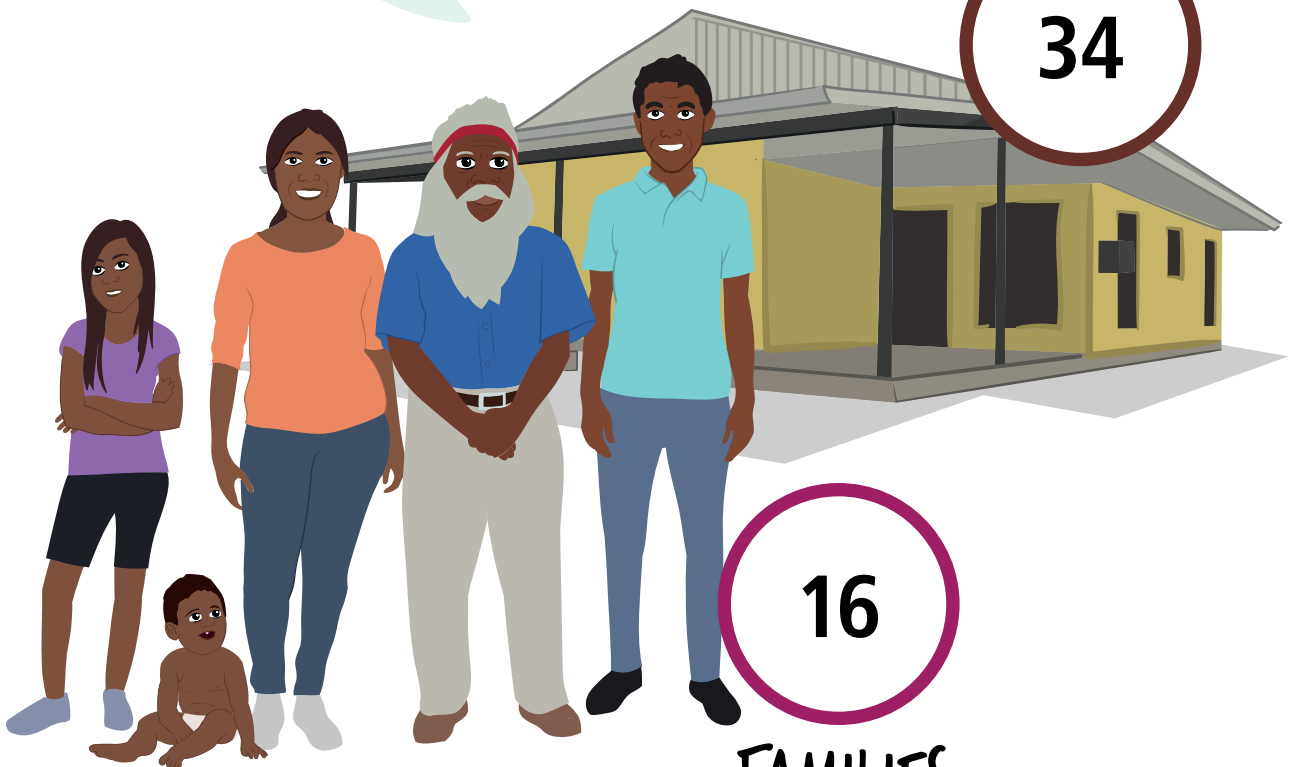
Aboriginal and/or
Torres Strait
Islander people

HOUSES

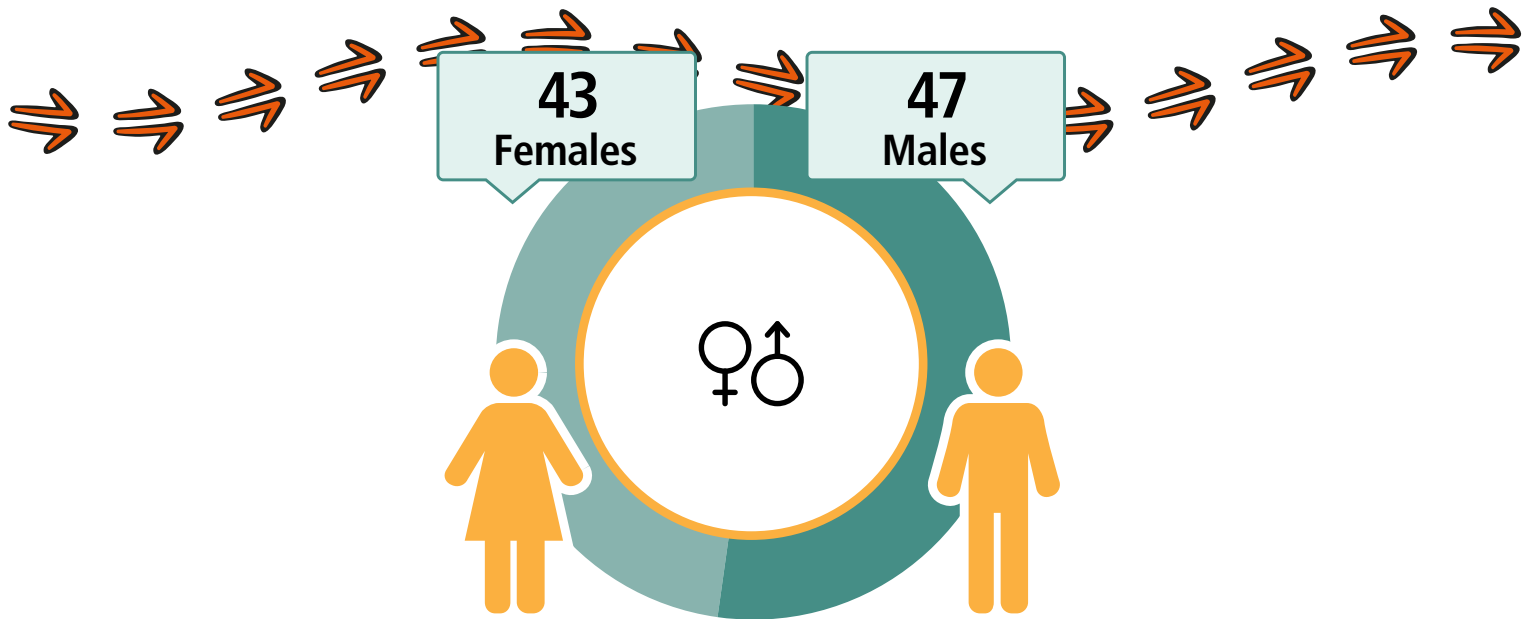
34

16

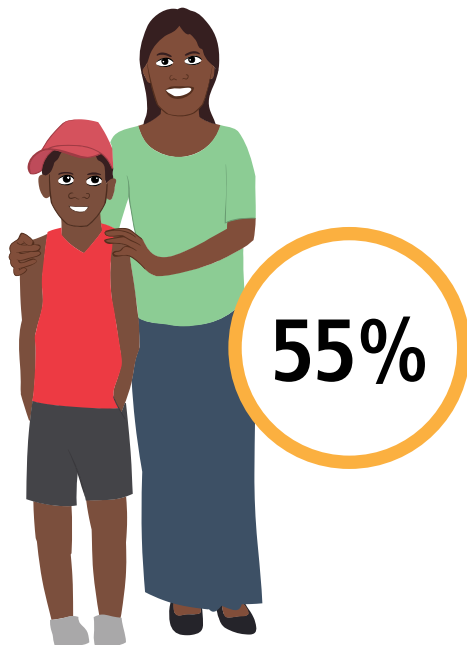
FAMILIES



Kurrawang



CARED FOR CHILDREN



18
Working



\$350
Weekly Income



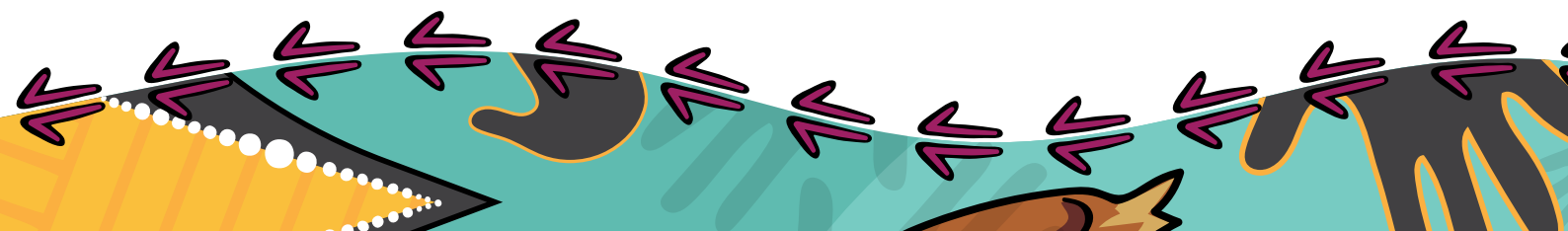
28
Students



5
Completed
Year 12



Geography: Kurrawang ILOC



Leonora

LANGUAGE SPOKEN
Wangkatha

556

People

158

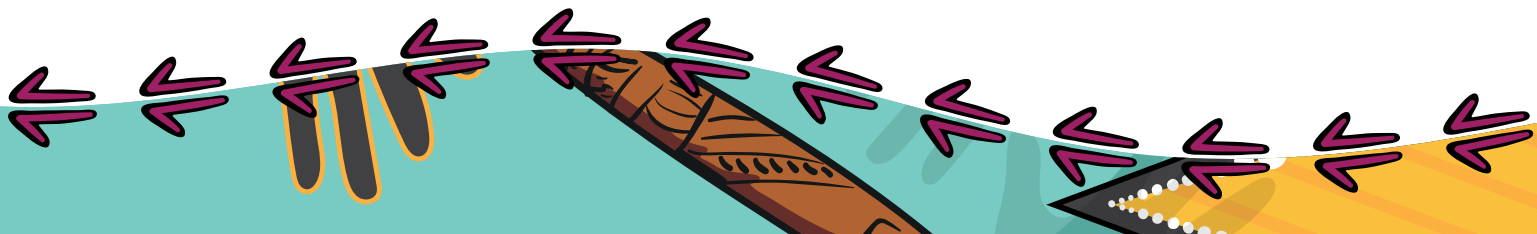
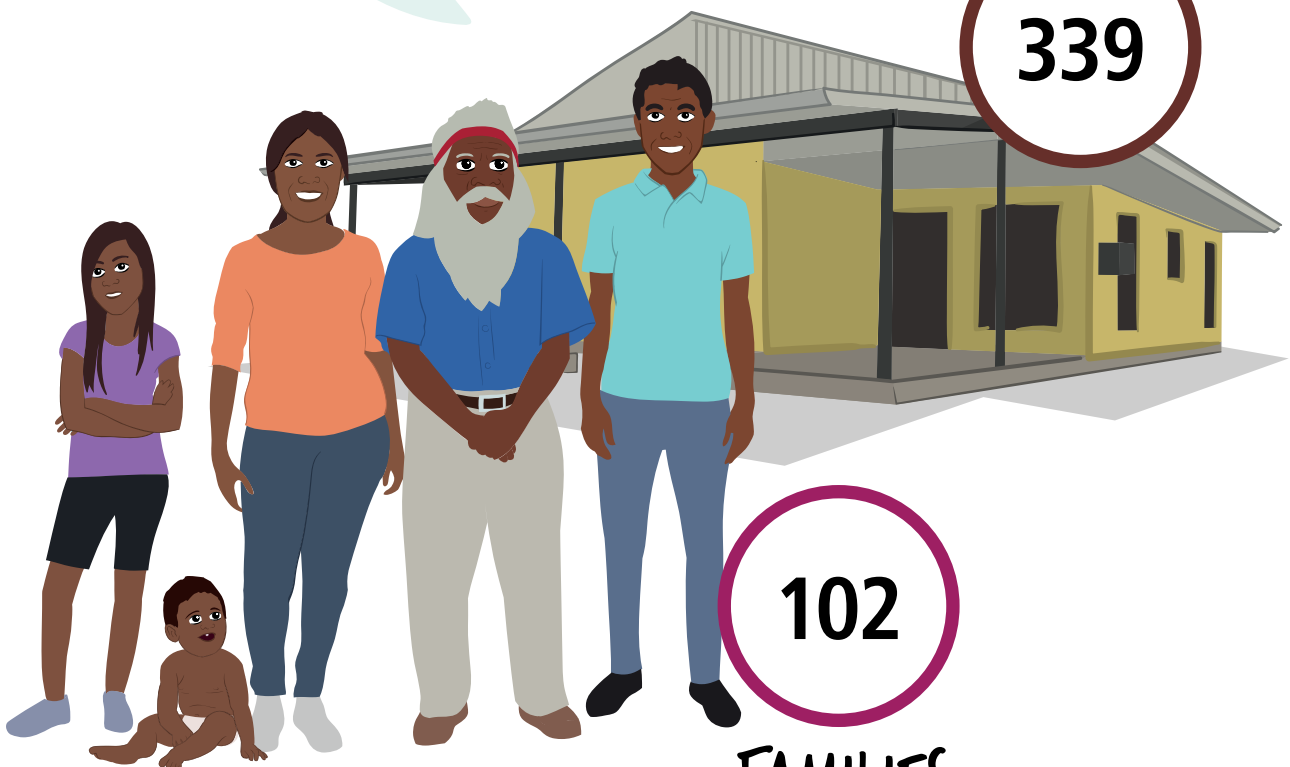
Aboriginal and/or
Torres Strait
Islander people

HOUSES

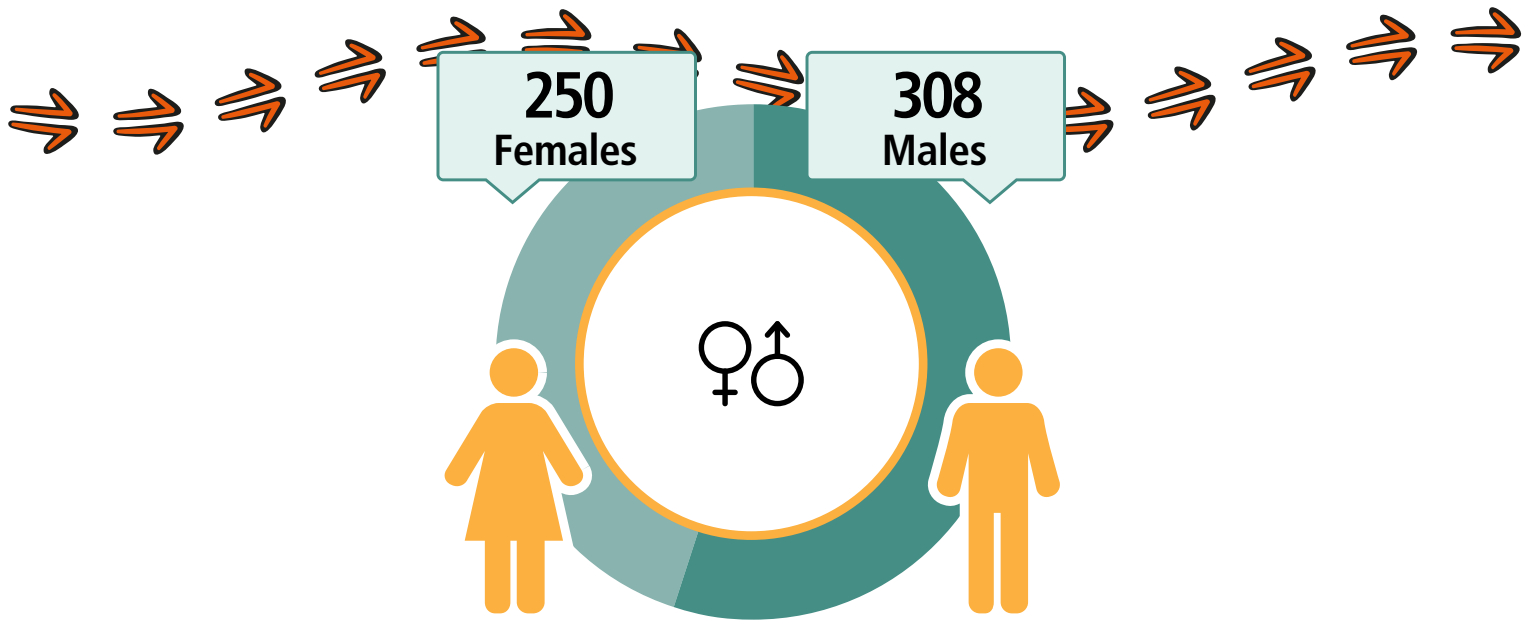
339

102

FAMILIES



Leonora



CARED FOR CHILDREN



18%

202
Working



\$743
Weekly Income



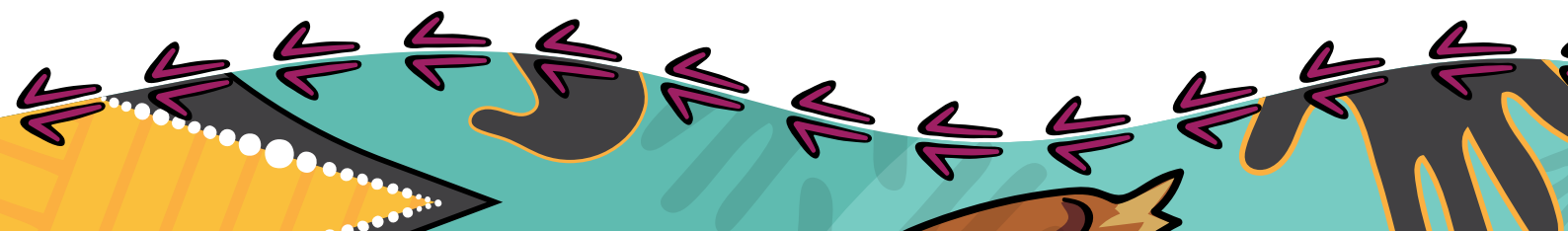
206
Students



149
Completed
Year 12



Geography: Leonora ILOC



Mount Margaret

LANGUAGE SPOKEN
Wangkatha

100

People

94

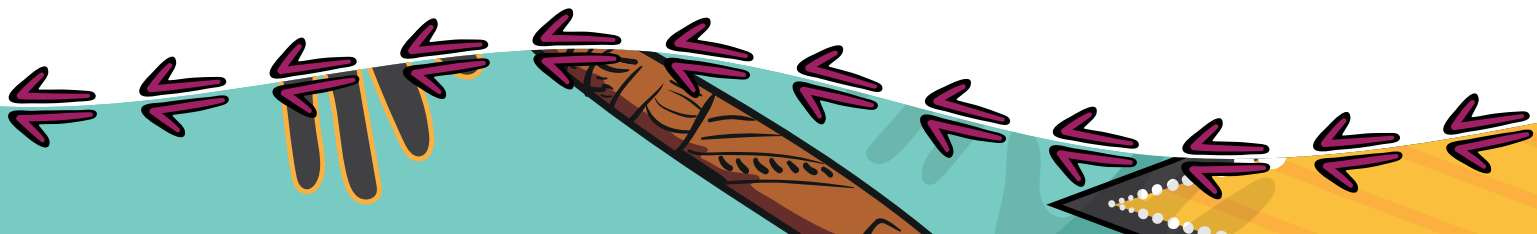
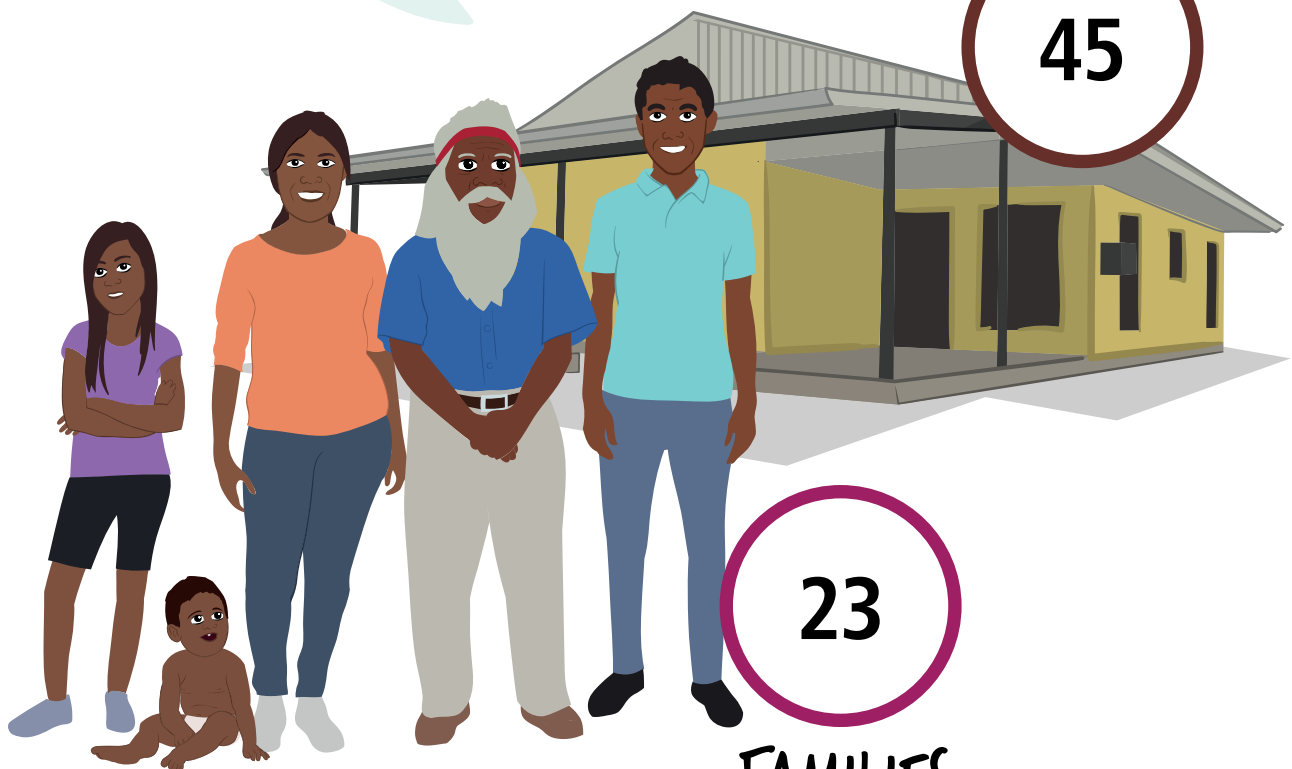
Aboriginal and/or
Torres Strait
Islander people

HOUSES

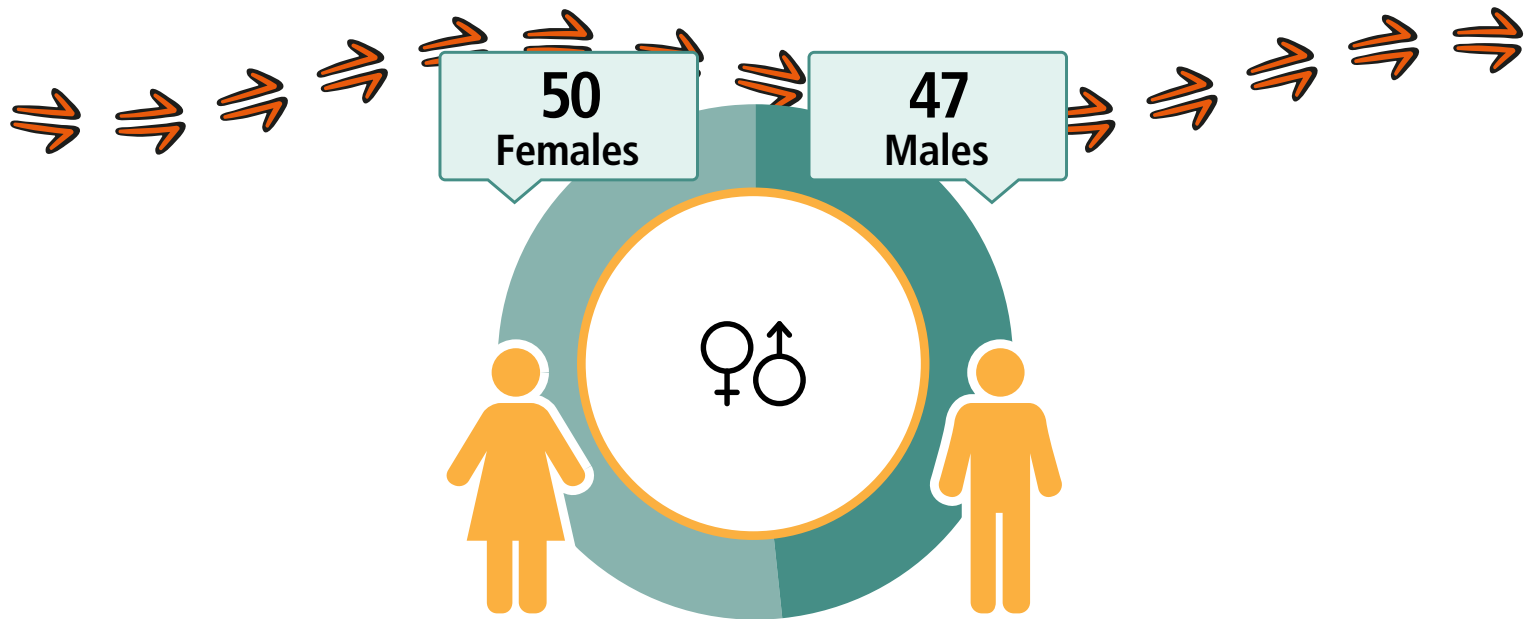
45

23

FAMILIES



Mount Margaret



CARED FOR CHILDREN



52%

7
Working



\$258
Weekly Income



33
Students



8
Completed
Year 12



Geography: Mount Margaret ILOC

A decorative border at the bottom of the page featuring stylized Aboriginal art. It includes a yellow and orange patterned area on the left, a teal wavy line, and various purple and black arrow-like shapes pointing in different directions.

Ningia Mia

LANGUAGE SPOKEN
Wangkatha

56

People

48

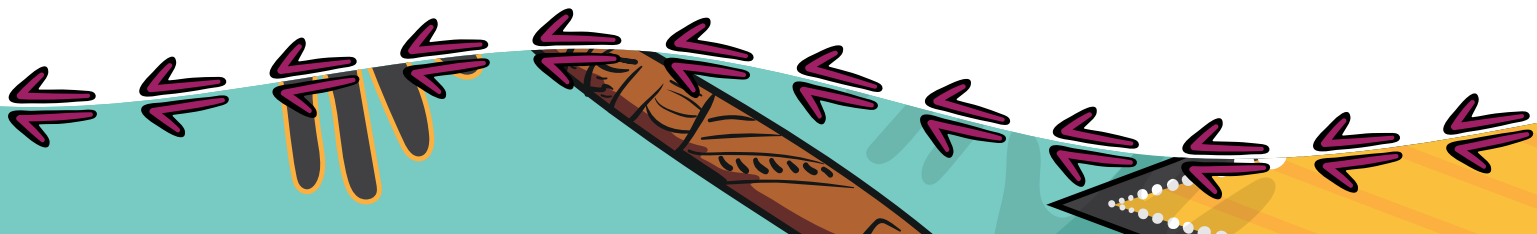
Aboriginal and/or
Torres Strait
Islander people

HOUSES

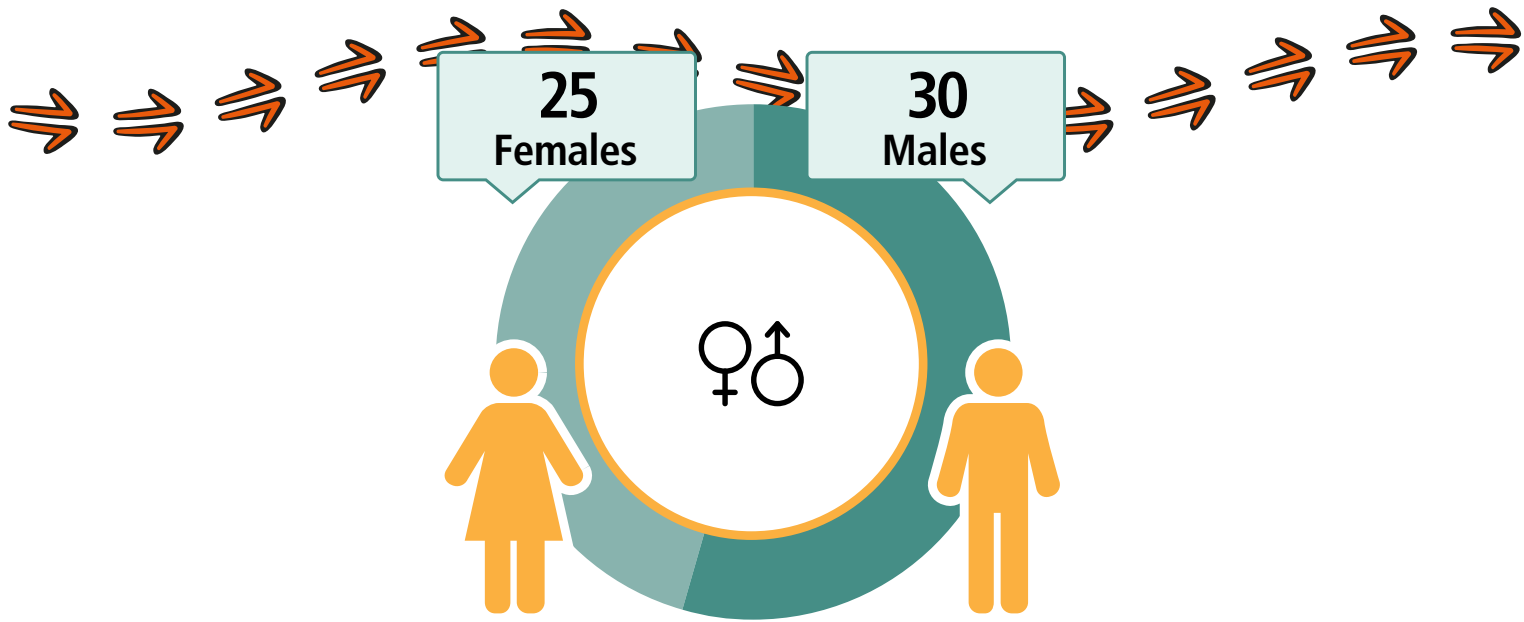
23

12

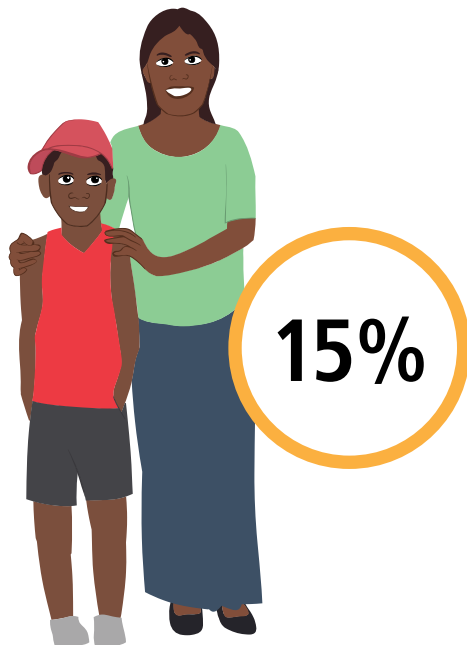
FAMILIES



Ningia Mia



CARED FOR CHILDREN



3
Working



\$242
Weekly Income



14
Students



8
Completed
Year 12



Geography: Ningia Mia ILOC

Papulankutja

LANGUAGE SPOKEN
Ngaanyatjarra

176

People

152

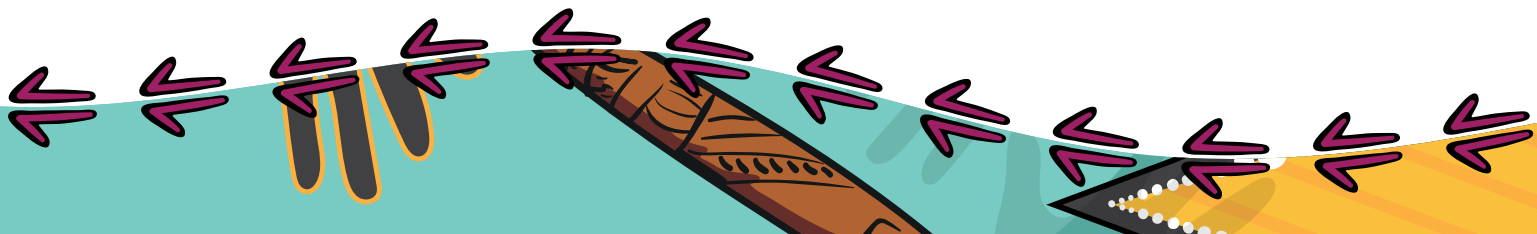
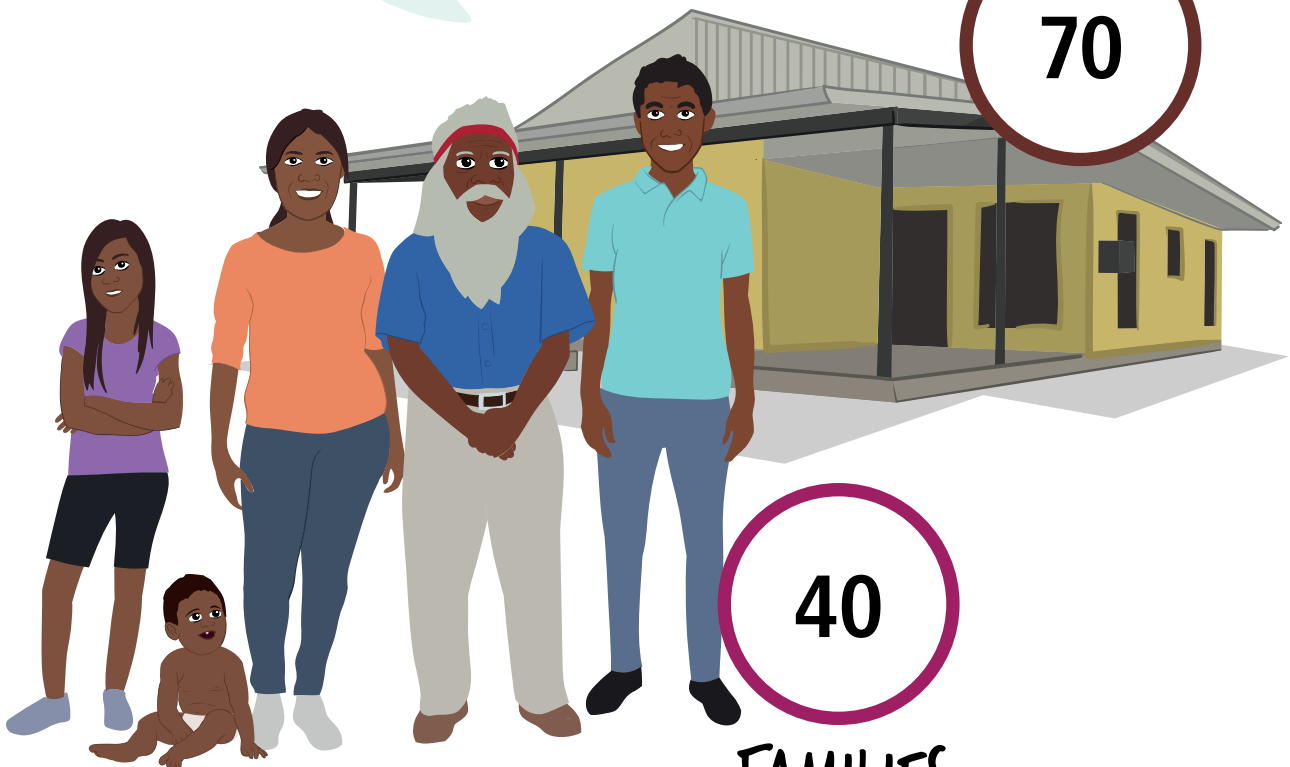
Aboriginal and/or
Torres Strait
Islander people

HOUSES

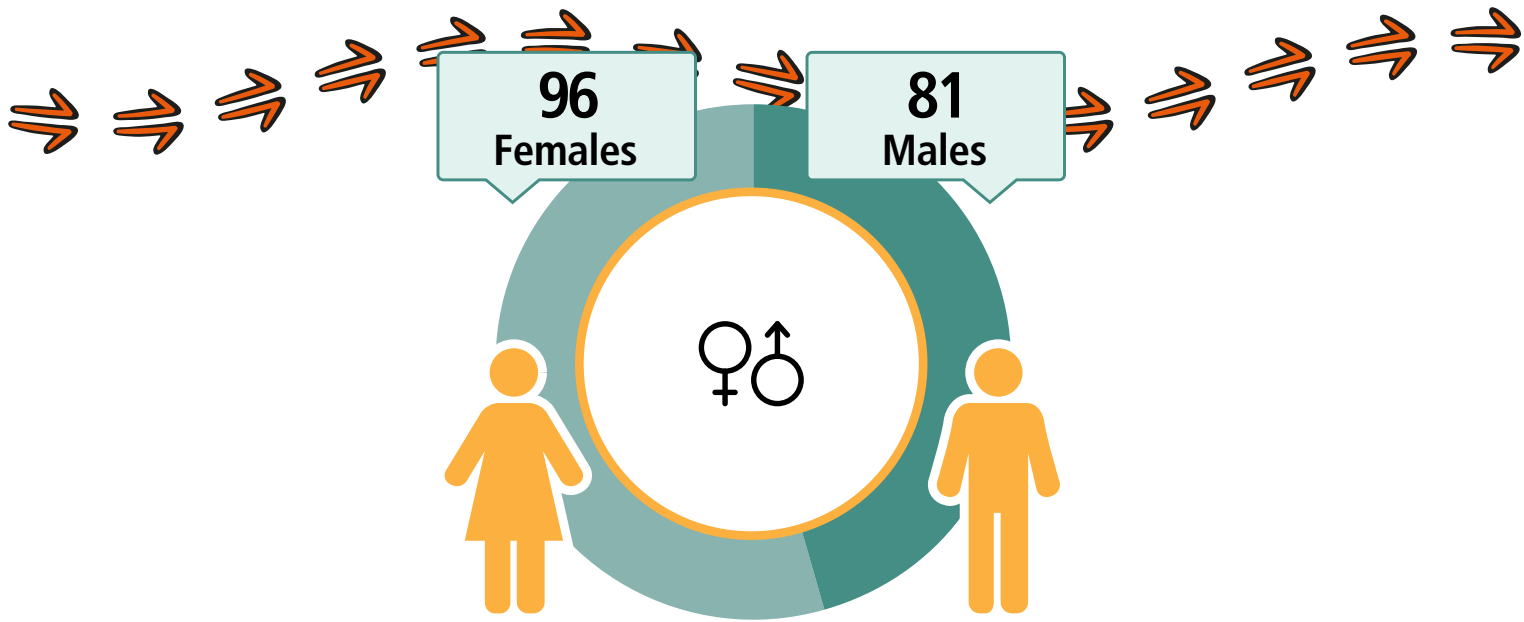
70

40

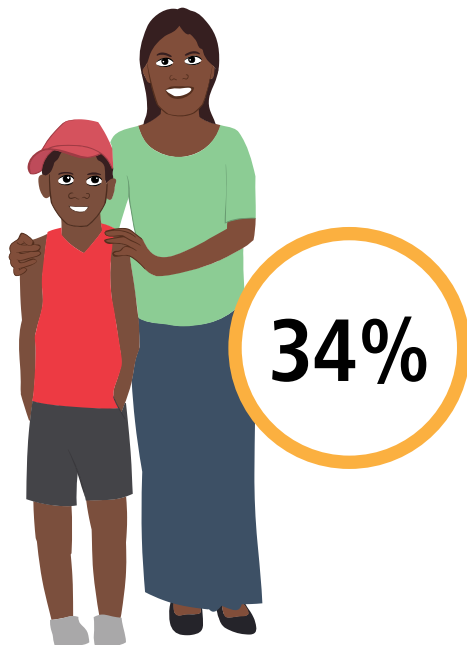
FAMILIES



Papulankutja



CARED FOR CHILDREN



20
Working



\$240
Weekly Income



87
Students



4
Completed
Year 12



Geography: Papulankutja ILOC

Tjuntjuntjarra

LANGUAGE SPOKEN
Pitjantjatjara

184

People

163

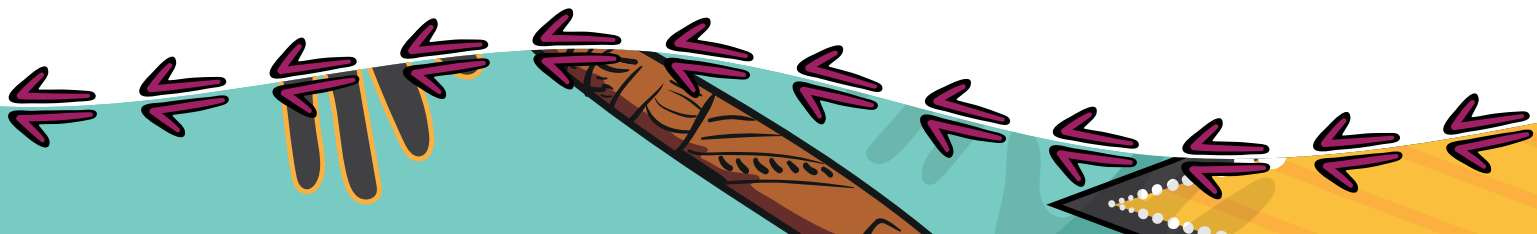
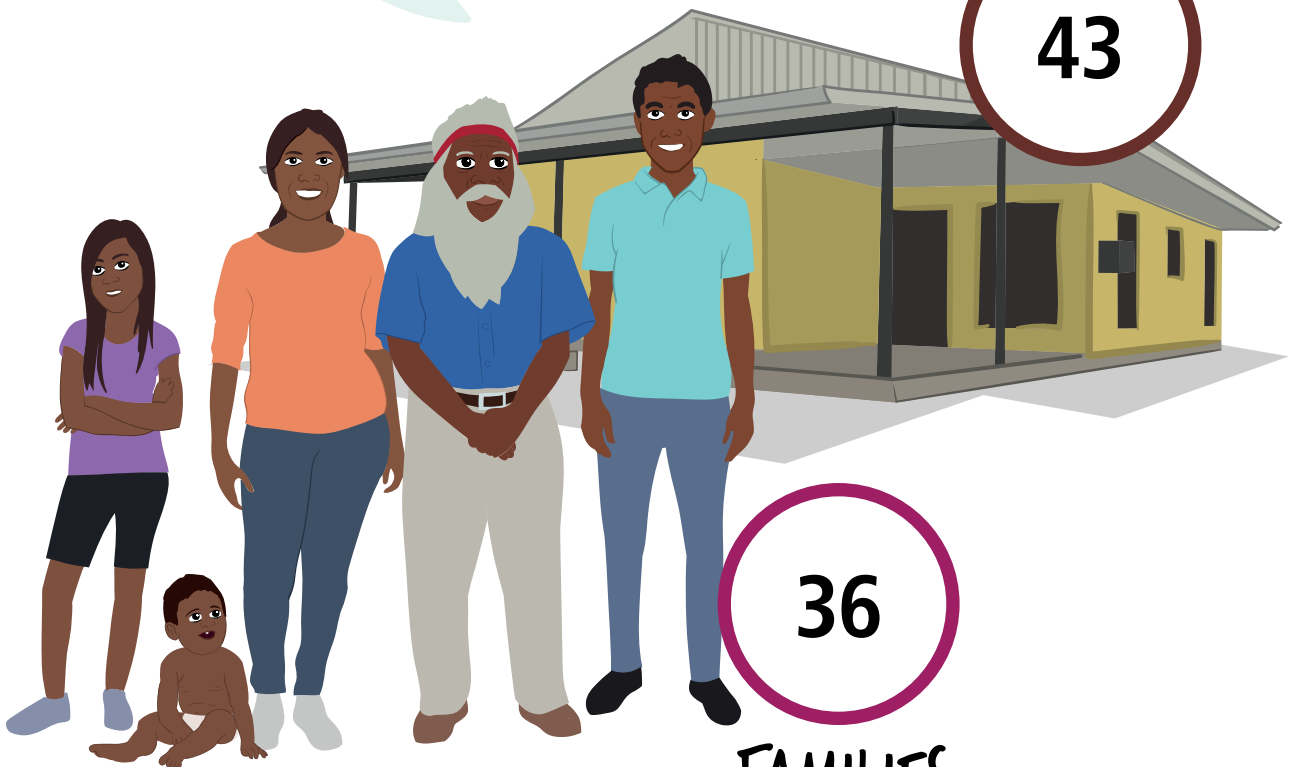
Aboriginal and/or
Torres Strait
Islander people

HOUSES

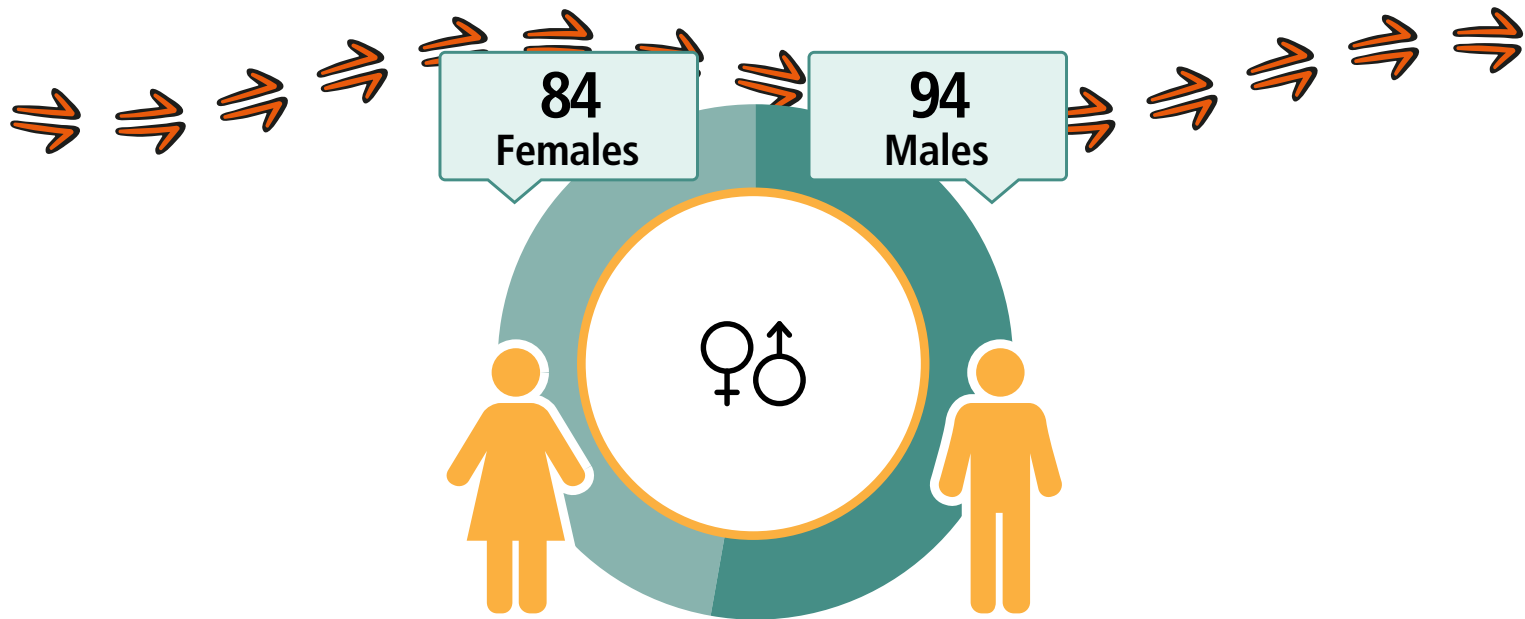
43

36

FAMILIES



Tjuntjuntjarra



CARED FOR (CHILDREN



40%

39
Working



\$290
Weekly Income



38
Students



37
Completed
Year 12



Geography: Tjuntjuntjarra ILOC

Wanarn

LANGUAGE SPOKEN
Ngaanyatjarra

142

People

121

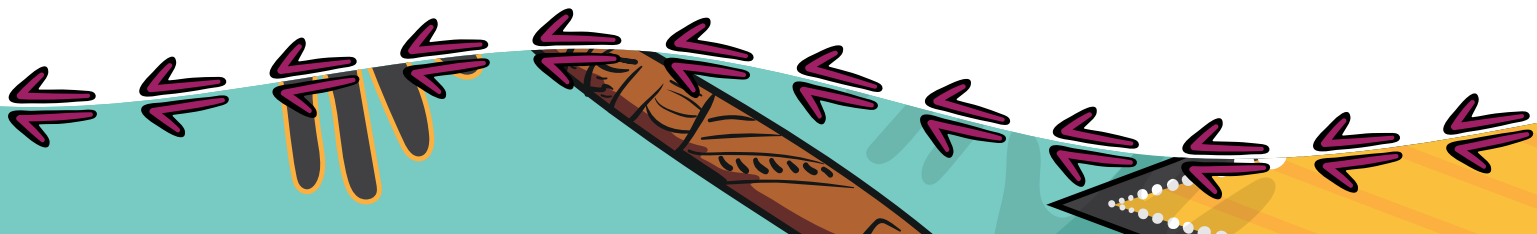
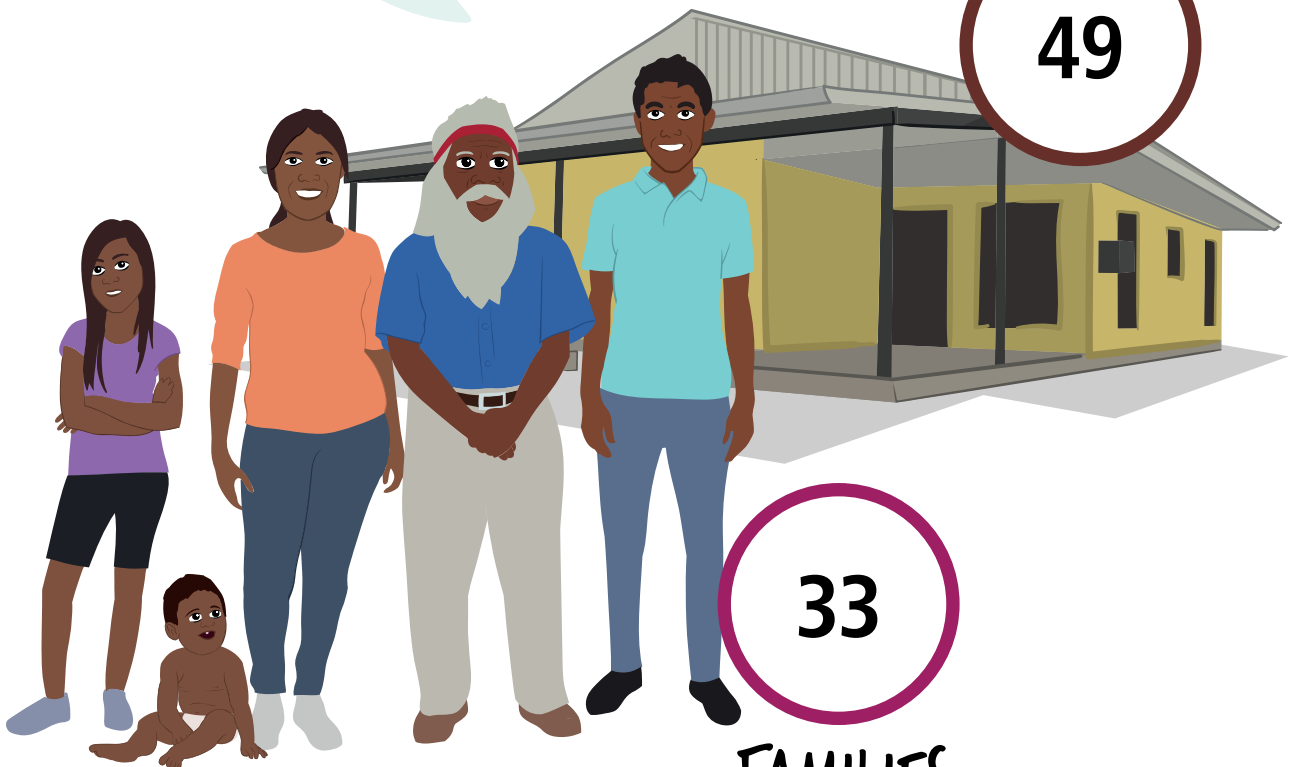
Aboriginal and/or
Torres Strait
Islander people

HOUSES

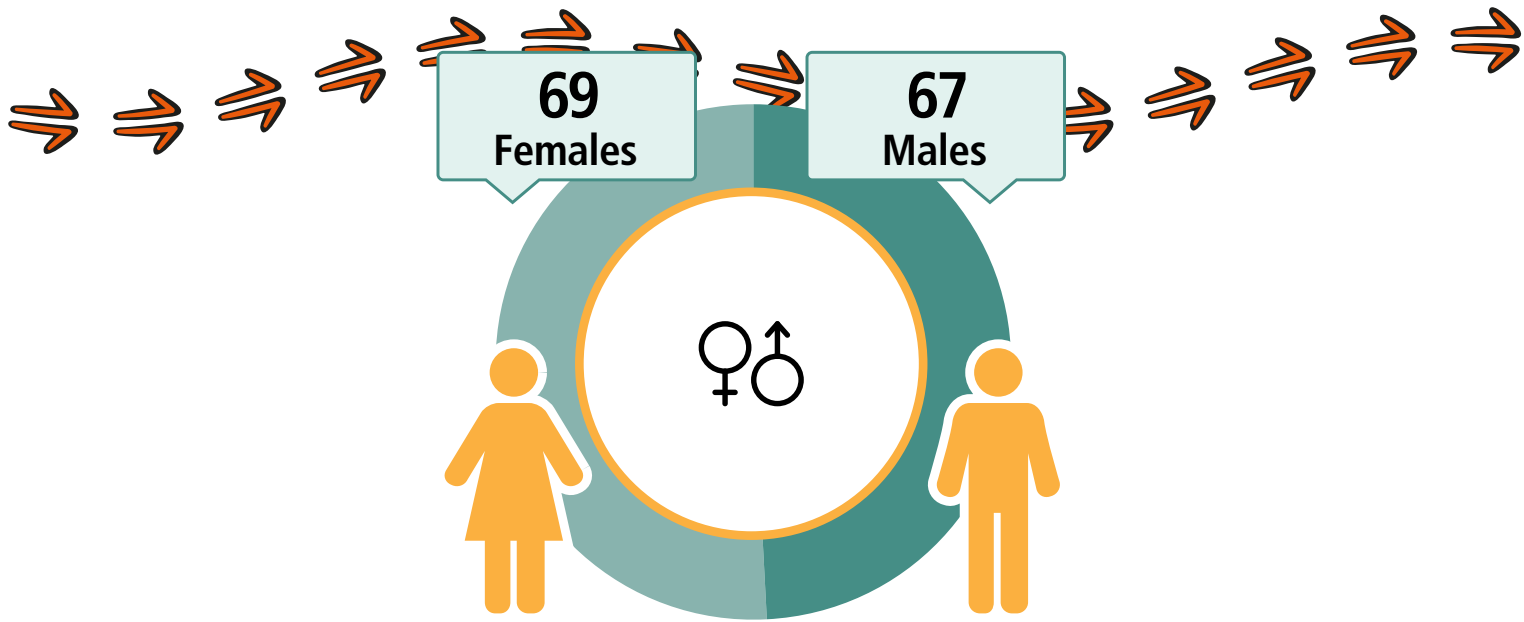
49

33

FAMILIES



Wanarn



CARED FOR (CHILDREN



34%

25
Working



\$340
Weekly Income



72
Students



13
Completed
Year 12



Geography: Wanarn ILOC

A decorative border at the bottom of the page featuring stylized Aboriginal art. It includes a yellow and orange pattern on the left, a teal and black pattern in the center, and a black and white pattern on the right, all with purple arrows pointing in various directions.

Warakurna

LANGUAGE SPOKEN
Ngaanyatjarra

268

People

239

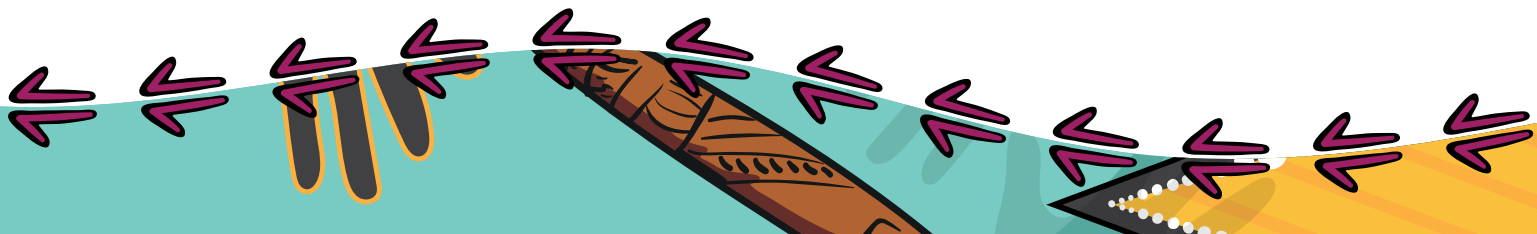
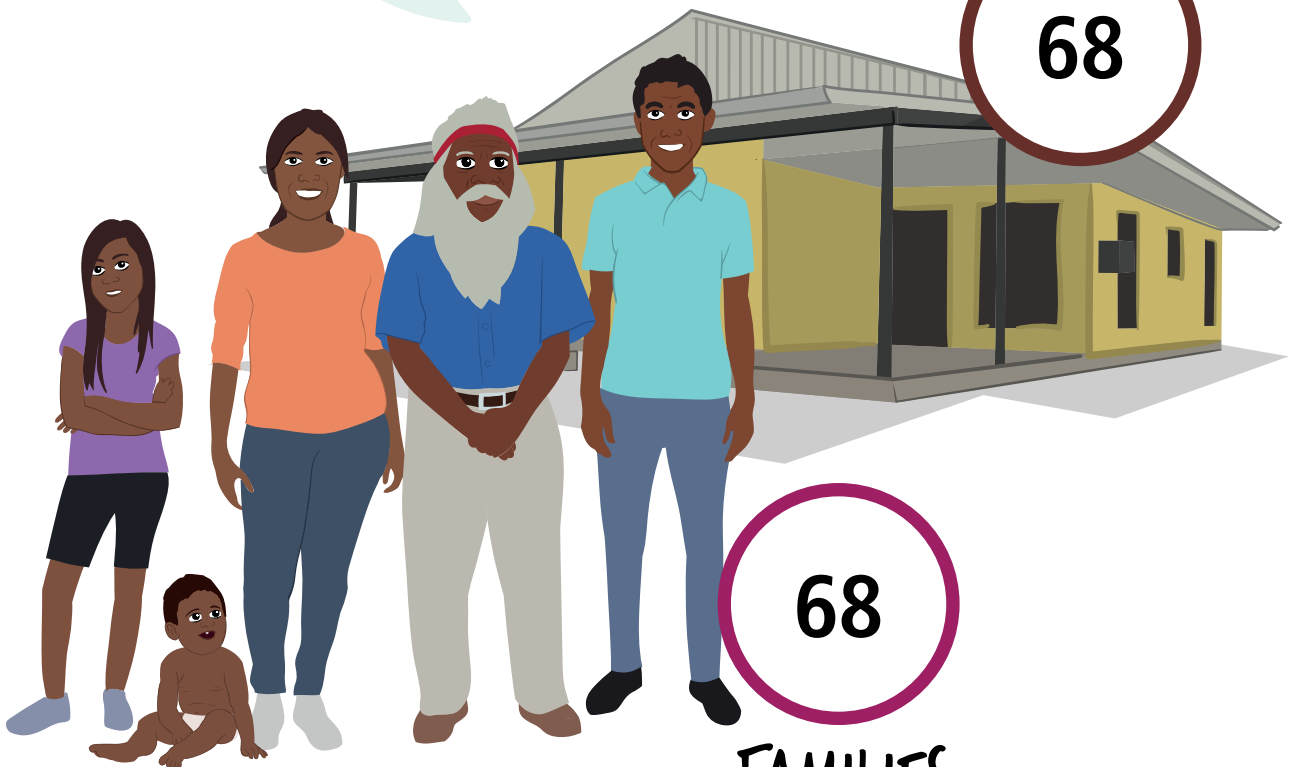
Aboriginal and/or
Torres Strait
Islander people

HOUSES

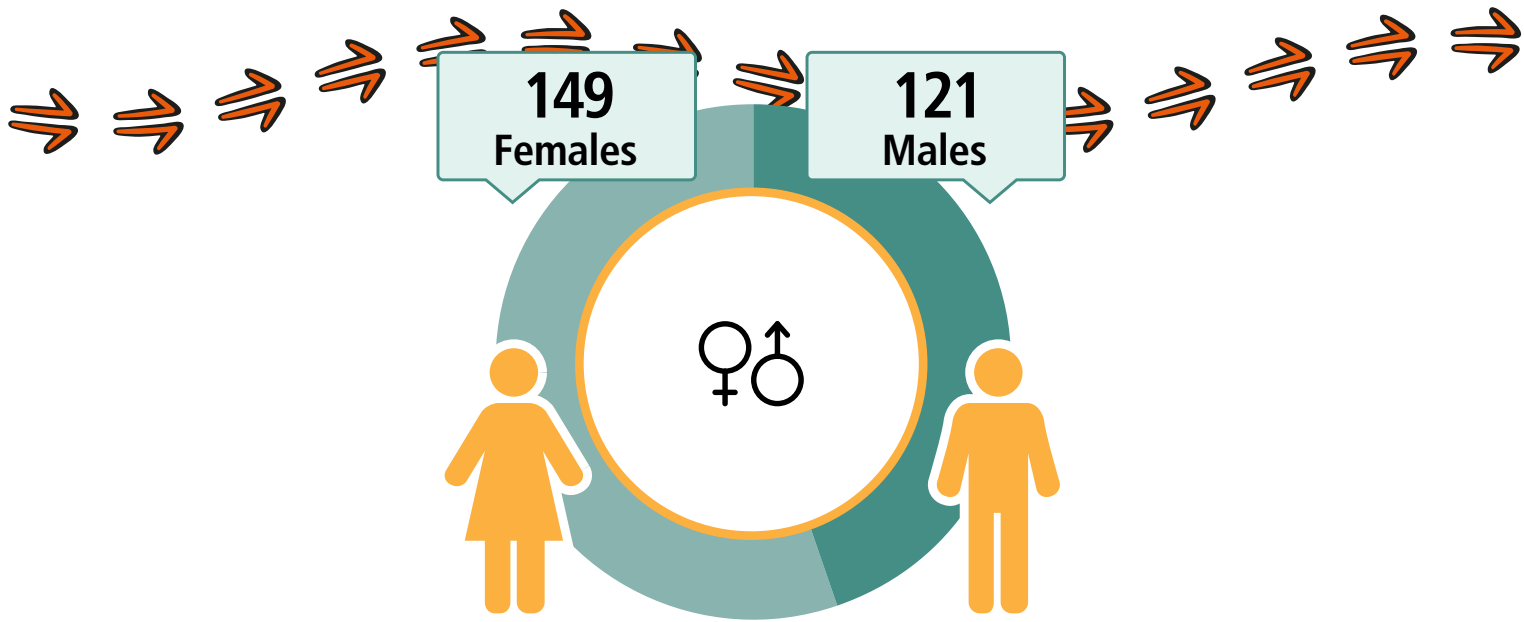
68

68

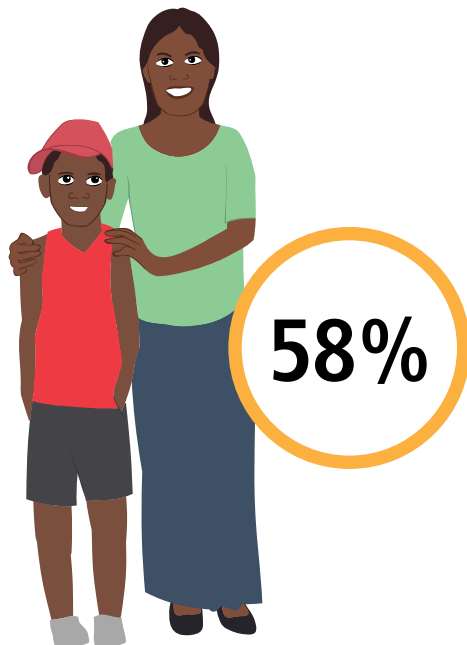
FAMILIES



Warakurna



CARED FOR CHILDREN



44
Working



\$248
Weekly Income



97
Students



24
Completed
Year 12



Geography: Warakurna ILOC

A decorative border at the bottom of the page featuring stylized Aboriginal art. It includes a yellow and orange patterned area on the left, a teal wavy line, and various purple and black arrow-like shapes pointing in different directions.

Warburton

LANGUAGE SPOKEN
Ngaanyatjarra

576

People

490

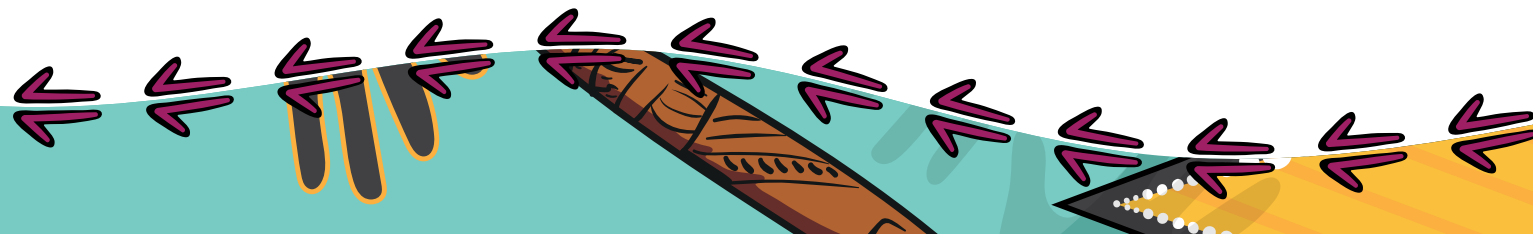
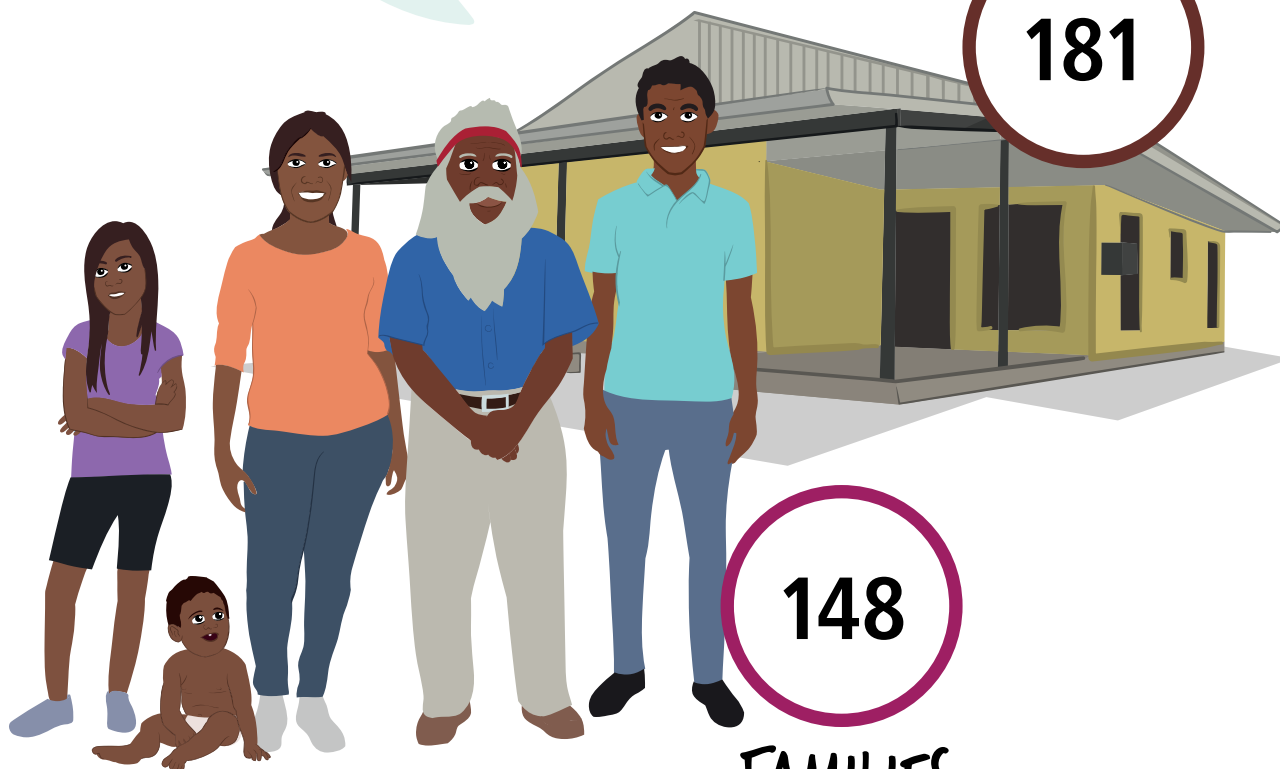
Aboriginal and/or
Torres Strait
Islander people

HOUSES

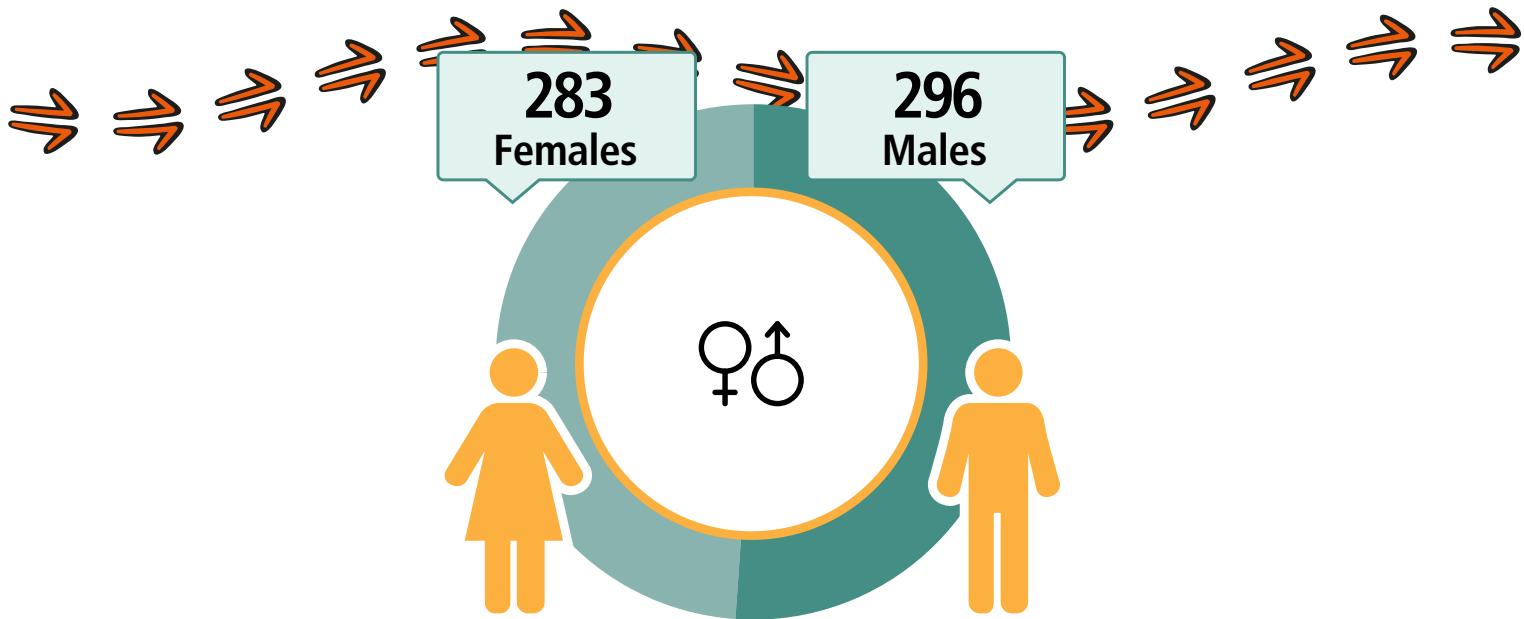
181

148

FAMILIES



Warburton



CARED FOR CHILDREN



51%

125
Working



\$326
Weekly Income



182
Students

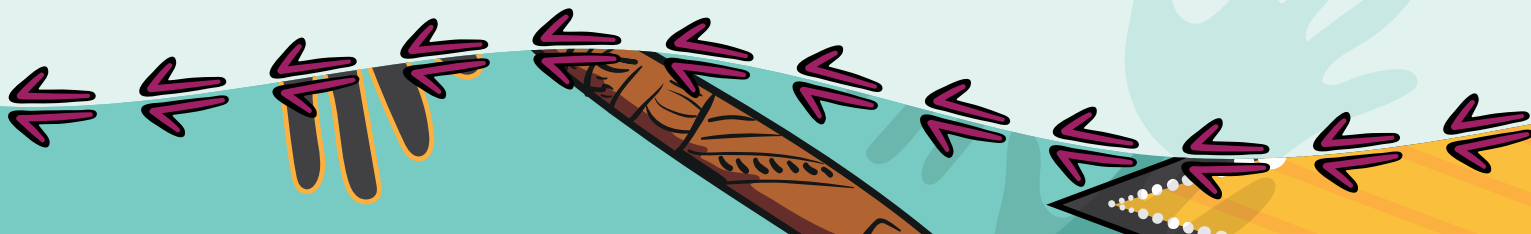
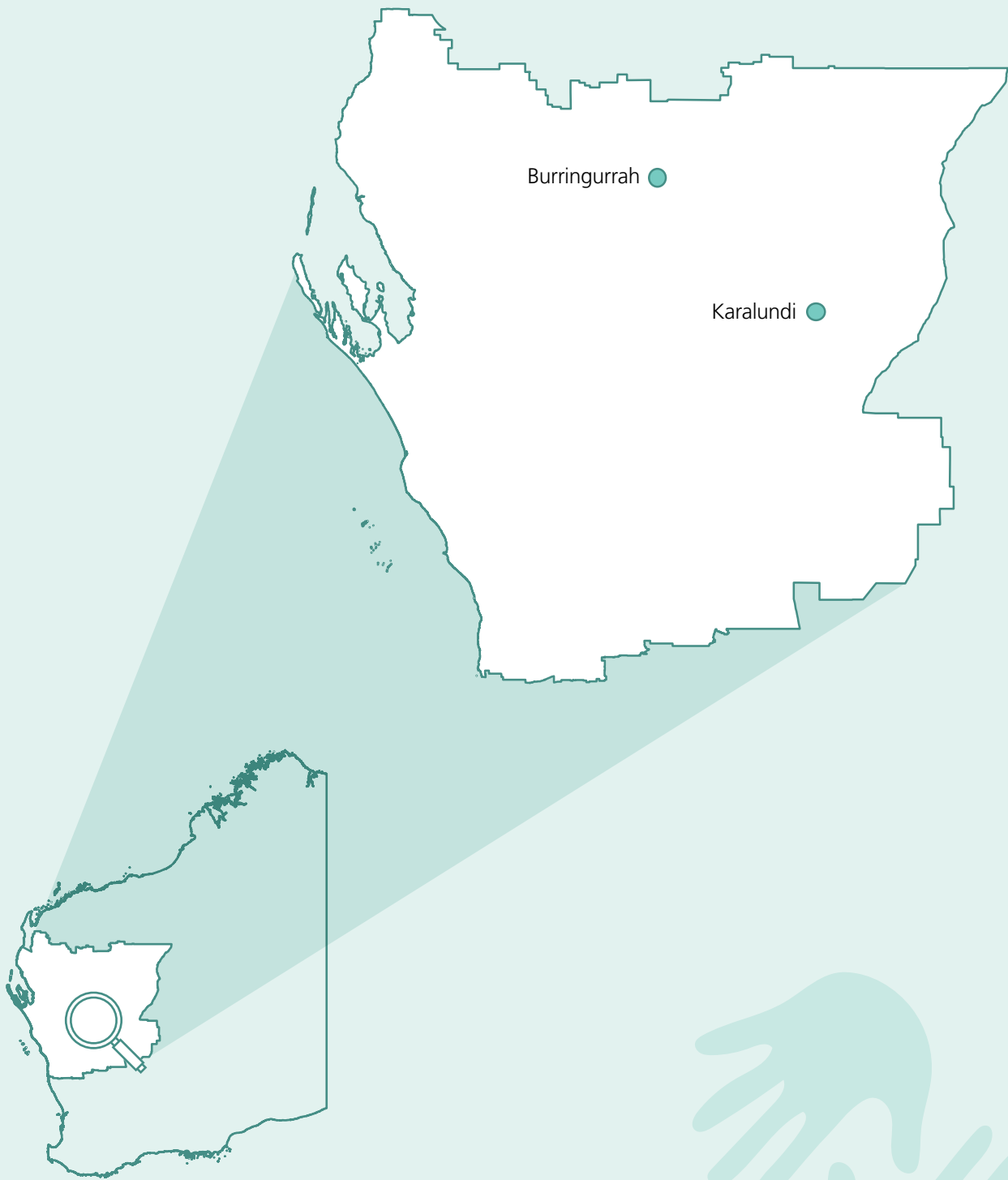
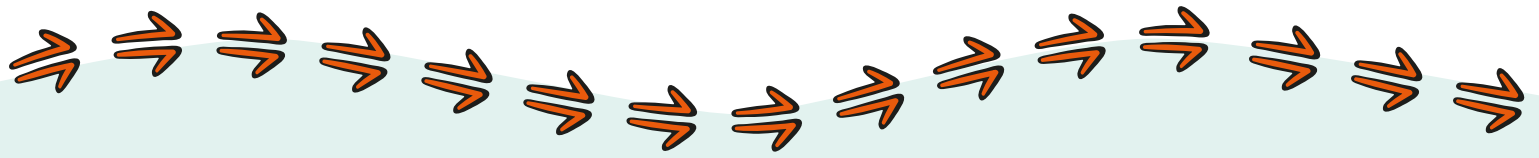


86
Completed
Year 12

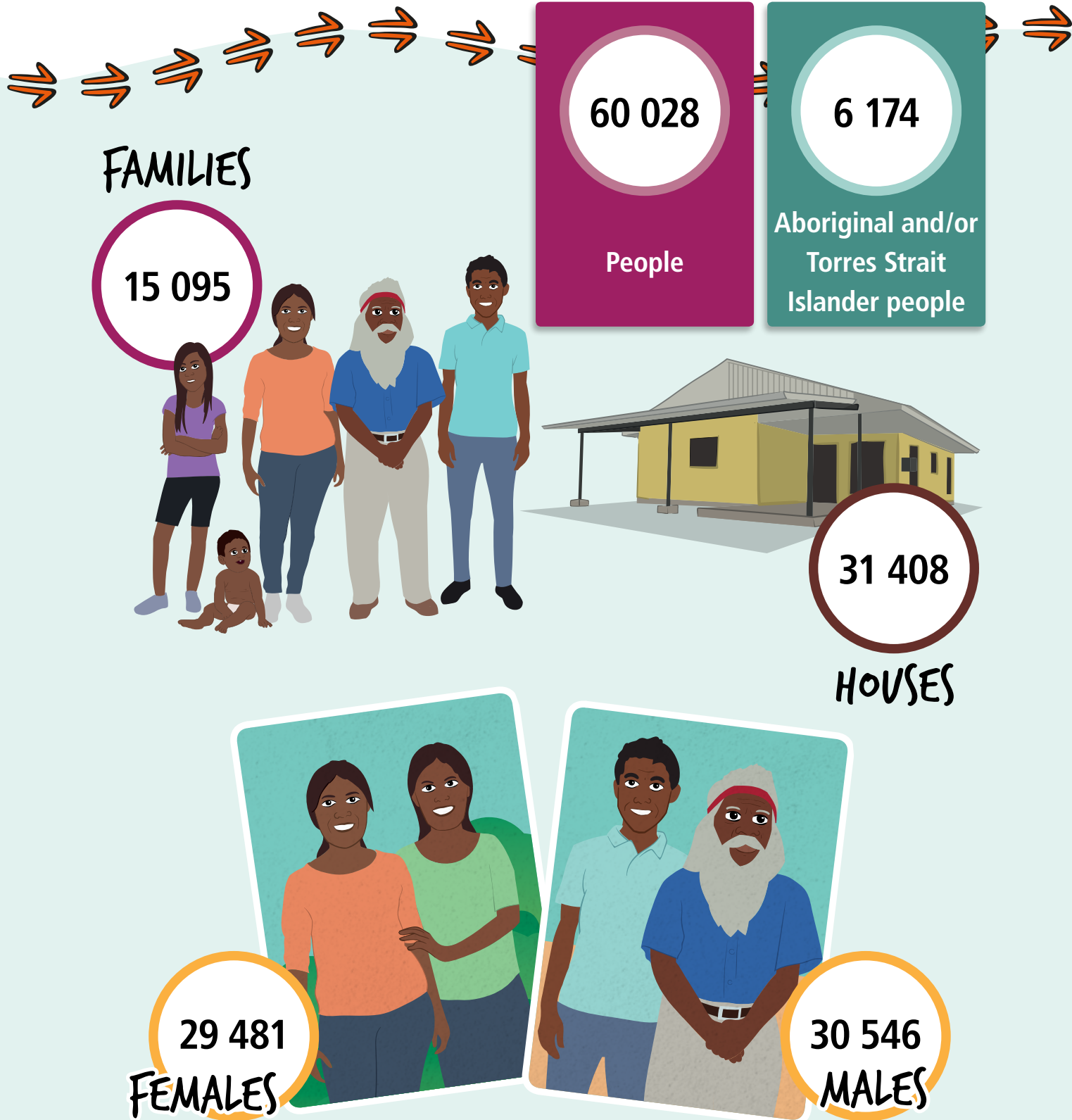


Geography: Warburton ILOC

Mid-West Region



Mid-West Region



Burringurrah

LANGUAGE SPOKEN
Wajarri

143

People

129

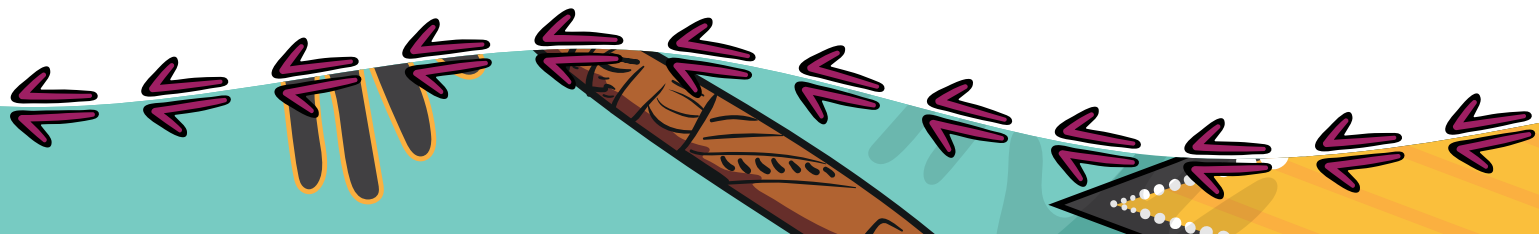
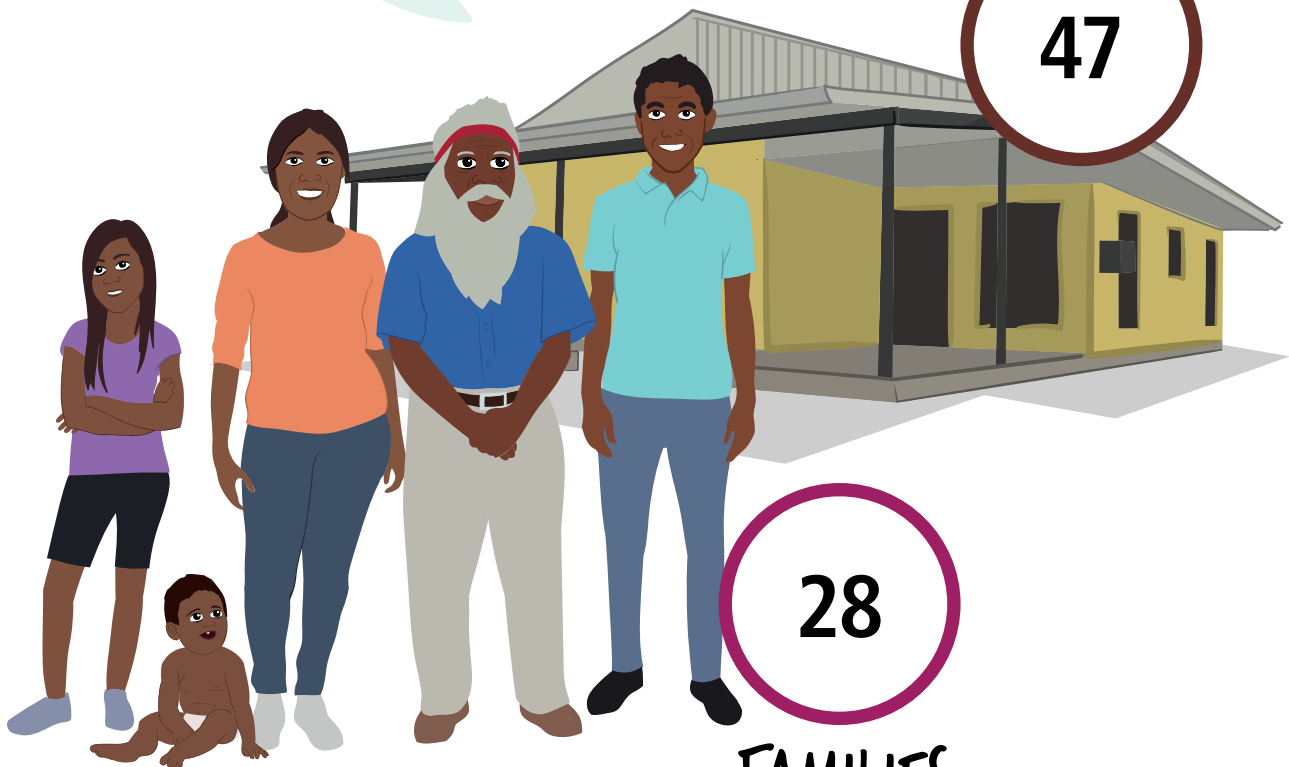
Aboriginal and/or
Torres Strait
Islander people

HOUSES

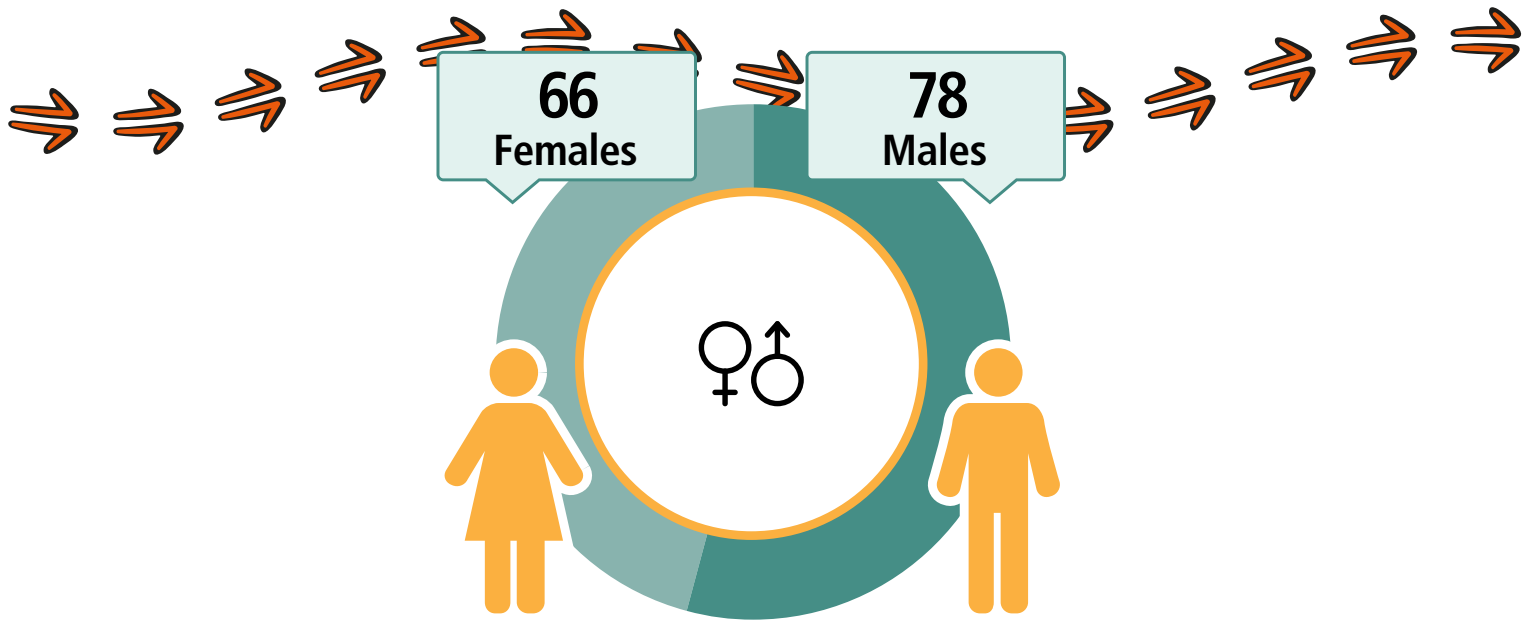
47

28

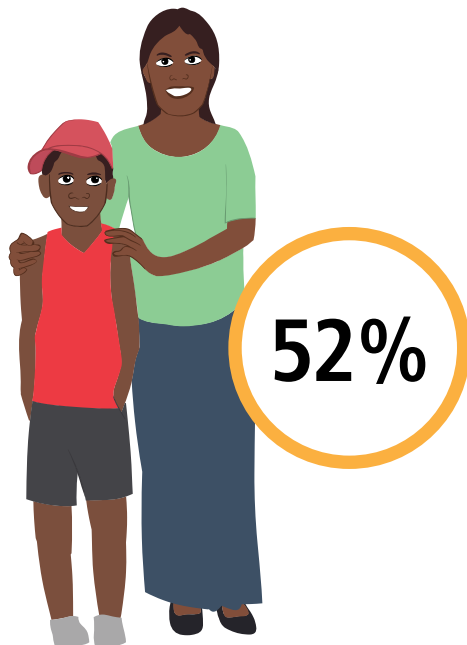
FAMILIES



Burringurrah



CARED FOR CHILDREN



21
Working



\$380
Weekly Income



60
Students



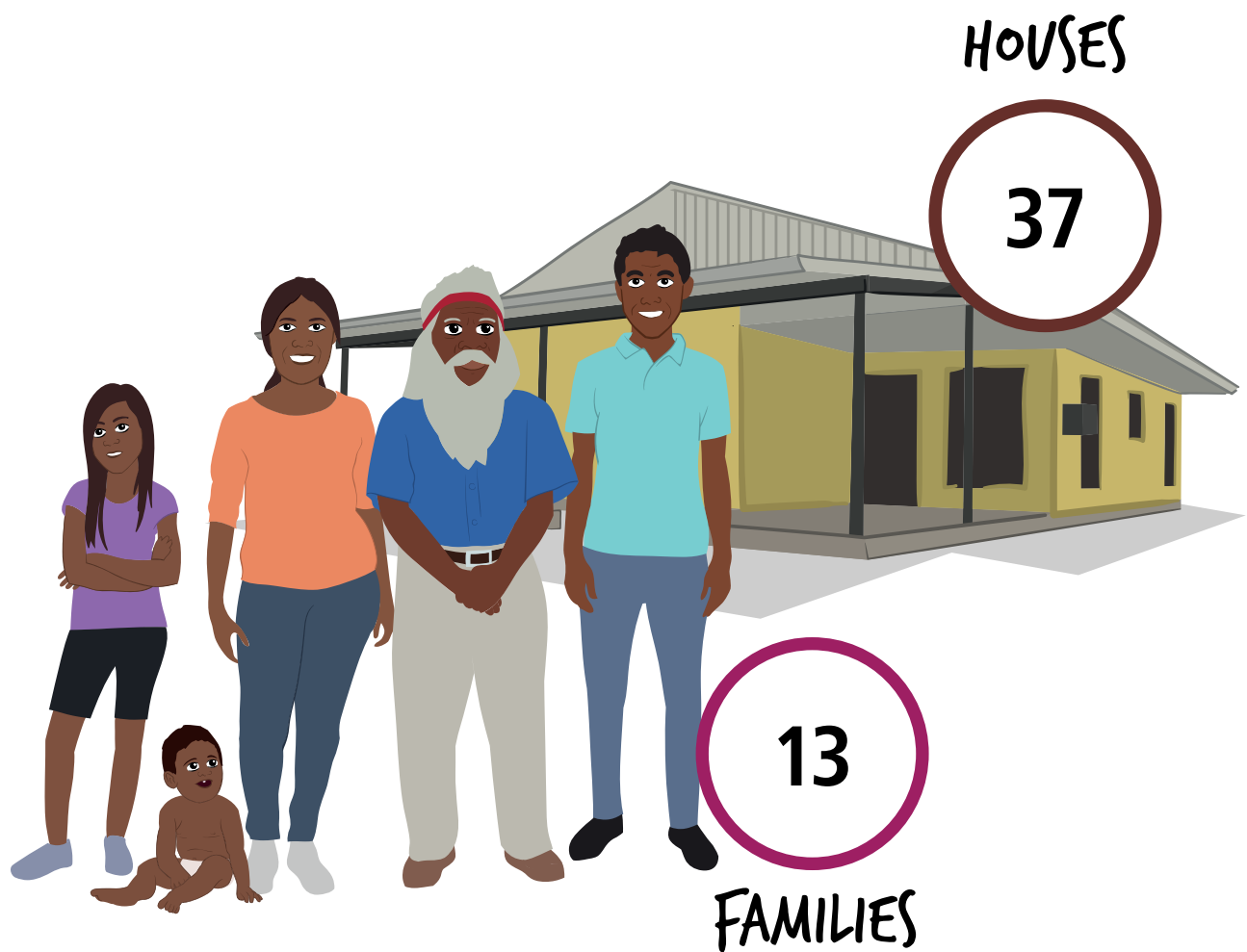
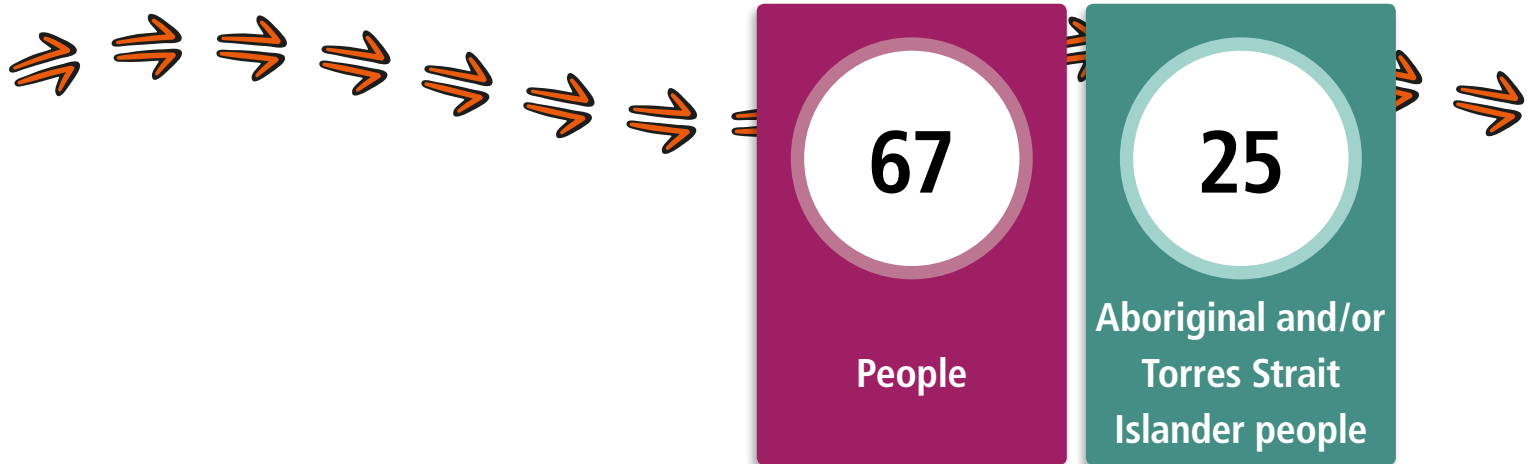
13
Completed
Year 12



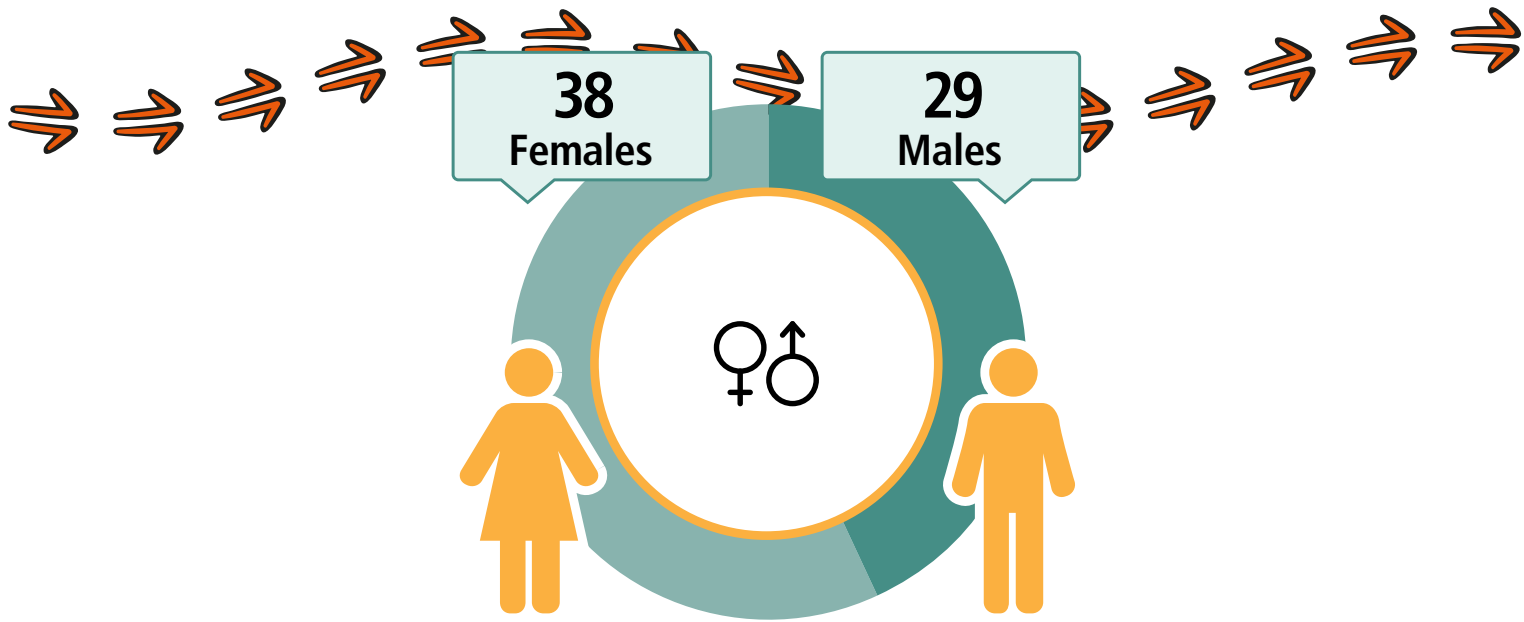
Geography: Burringurrah ILOC

A decorative border at the bottom of the page featuring stylized Aboriginal art. It includes a yellow and black pattern on the left, a teal wavy line in the center, and a brown and yellow pattern on the right, all with purple arrows pointing in various directions.

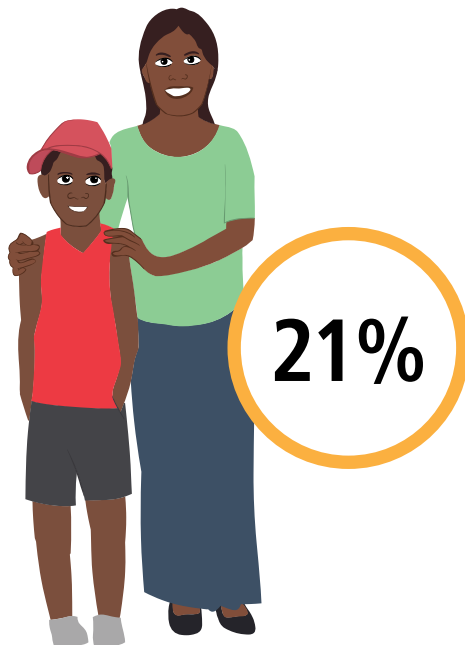
Karalundi



Karalundi



CARED FOR CHILDREN



24
Working



\$850
Weekly Income



32
Students



14
Completed
Year 12



Geography: Karalundi ILOC



Know more

You can find more information on your region for free at www.abs.gov.au/census using these data products.



Contact the Centre of Excellence for Aboriginal and Torres Strait Islander Statistics

Phone: 1300 135 070

Email: CoEATSIS@abs.gov.au

Disclaimer

The data displayed for the purposes of this publication may slightly differ to other Census products available on the ABS website.

All data in this publication is based on Total People, Total Dwellings and Total Families for each area.

Community names are generally based upon a commonly identified name or combination of names for the area/community. It is acknowledged that some communities may have an alternative name or different spelling.

Confidentiality

By law, your personal information is kept private and will not be shared with anyone. The ABS makes sure that no one can be identified by the information in this book.

