

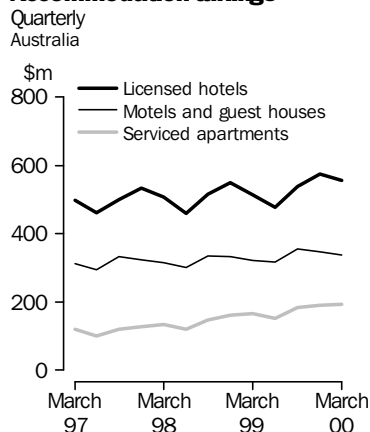


TOURIST ACCOMMODATION AUSTRALIA

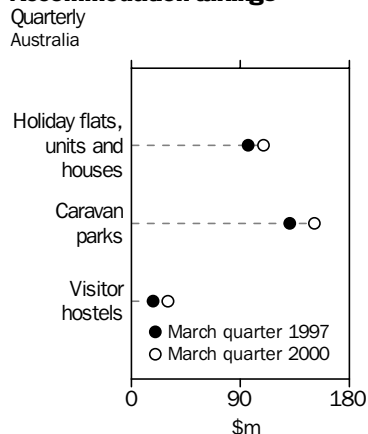
EMBARGO: 11:30AM (CANBERRA TIME) FRI 7 JULY 2000

MARCH QTR KEY FIGURES

Accommodation takings



Accommodation takings



LICENSED HOTELS	Mar Qtr 1999	Mar Qtr 2000	change
Rooms available (no.)	71 637	73 760	3.0 %
Room occupancy rate (%)	62.4	63.3	0.9 pts
Takings from accommodation (\$'000)	514 165	556 825	8.3 %

MOTELS AND GUEST HOUSES	Mar Qtr 1999	Mar Qtr 2000	change
Rooms available (no.)	84 614	85 821	1.4 %
Room occupancy rate (%)	53.7	53.1	-0.6 pts
Takings from accommodation (\$'000)	322 196	338 177	5.0 %

SERVICED APARTMENTS	Mar Qtr 1999	Mar Qtr 2000	change
Rooms available (no.)	27 610	31 542	14.2 %
Room occupancy rate (%)	60.6	60.0	-0.6 pts
Takings from accommodation (\$'000)	166 699	193 602	16.1 %

HOLIDAY FLATS, UNITS AND HOUSES	Mar Qtr 1997	Mar Qtr 2000	change
Units, etc. available (no.)	27 882	28 253	1.3 %
Unit occupancy rate (%)	54.0	54.2	0.2 pts
Takings from accommodation (\$'000)	96 679	109 667	13.4 %

CARAVAN PARKS	Mar Qtr 1997	Mar Qtr 2000	change
Sites, cabins, etc. available (no.)	254 809	245 850	-3.5 %
Site occupancy rate (%)	49.8	50.7	0.9 pts
Takings from accommodation (\$'000)	131 234	151 597	15.5 %

VISITOR HOSTELS	Mar Qtr 1997	Mar Qtr 2000	change
Bed spaces available (no.)	30 291	39 792	31.4 %
Bed occupancy rate (%)	48.9	50.4	1.5 pts
Takings from accommodation (\$'000)	18 498	30 664	65.8 %

MARCH QTR KEY POINTS

STRONG GROWTH IN SUPPLY

- The room occupancy rate for licensed hotels increased by 0.9 percentage points to 63.3% in March quarter 2000 compared with the corresponding quarter in 1999. Room occupancy rates dropped by 0.6 percentage points between the same periods for both motels and guest houses and serviced apartments.
- Strong growth in supply continued for serviced apartments, with rooms available up 14.2% on March quarter 1999.
- Visitor hostels recorded a large increase in capacity (31.4%) and takings (65.8%) comparing March quarter 1997 with March quarter 2000.

- For further information about these and related statistics contact Paull Hoffmann on 07 3222 6201 or the National Information Service on 1300 135 070.

This page intentionally blank

98-06-29.sam

NOTES

FORTHCOMING ISSUES

ISSUE

RELEASE DATE

June Quarter 2000

22 September 2000

INTRODUCTION

For the four quarters of 2000, the scope of the Survey of Tourist Accommodation (STA) has been expanded. Over this period the following accommodation sectors will be covered:

- hotels, motels, guest houses and serviced apartments with 15 or more rooms;
- holiday flats, units and houses operated by owners, managers or real estate agents who have sole letting rights to at least 15 flats, units or houses for short term letting;
- caravan parks with 40 or more powered sites, cabins, etc; and
- visitor hostels with 25 or more bed spaces.

CHANGES IN THIS ISSUE

Table numbers in this publication have changed to allow for inclusion of data on the additional sectors for the March quarter 2000.

Outlined below are the table formats to be used for the March, June, September and December quarters of 2000 and a comparison with equivalent tables in the December quarter 1999 issue:

- Table 1: Summary of hotels, motels and serviced apartments (no change).
- Table 2, 3 and 4: New summary tables for each of the other accommodation sectors:
 - Holiday flats, units and houses - Table 2.
 - Caravan Parks - Table 3.
 - Visitor hostels - Table 4.
- Tables 5 to 13: Tables for hotels, motels, guest houses and serviced apartments for Australia, States and Territories (previously Tables 2 to 10).
- Tables 14 to 20: Tables for hotels, motels guest houses and serviced apartments by Tourism Regions for each State and Territory (previously Tables 11 to 17).
- Tables 21 -27: New tables by State and Territory for the additional accommodation sectors as follows:
 - Holiday flats, units and houses - Table 21 to 23.
 - Caravan Parks - Table 24 to 26.
 - Visitor hostels - Table 27.

HISTORICAL

COMPARISONS

Statistics for hotels, motels, guest houses and serviced apartments are presented for the last 6 quarters to allow for comparison over time. However, data for caravan parks, holiday flats, units and houses and visitor hostels are compared with the corresponding period in 1997 when the data were last collected.

REVISIONS

A minor revision was made to guest arrivals for motels and guest houses with facilities for December quarter 1998. This revision only effects the national totals in Table 1.

SYMBOLS AND OTHER USAGES

- n.a. not available
- n.p. not available for publication but included in totals where applicable
- r revised
- .. not applicable
- nil or rounded to zero

Dennis Trewin
Acting Australian Statistician

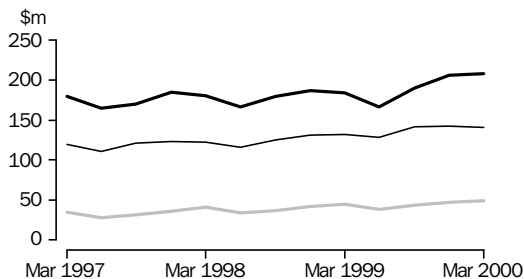
CONTENTS

	Page
Notes	2
Graphs	4
TABLES	
Summary of accommodation establishments	
1 Hotels, motels, guest houses and serviced apartments, Australia	6
2 Holiday flats, units and houses, Australia	7
3 Caravan parks, Australia	8
4 Visitor hostels, Australia	9
Hotels, motels, guest houses and serviced apartments, by star grading	
5 Australia	10
6 New South Wales	12
7 Victoria	14
8 Queensland	16
9 South Australia	18
10 Western Australia	20
11 Tasmania	22
12 Northern Territory	24
13 Australian Capital Territory	26
Hotels, motels, guest houses and serviced apartments, by Tourism Region	
14 New South Wales	28
15 Victoria	30
16 Queensland	32
17 South Australia	34
18 Western Australia	35
19 Tasmania	36
20 Northern Territory and Australian Capital Territory	37
Holiday flats, units and houses: States, Territories and Australia	
21 Real estate agents	38
22 Other letting entities	39
23 Total	40
Caravan parks: States, Territories and Australia	
24 Short-term	41
25 Long-term	42
26 Total	43
Visitor hostels	
27 States, Territories and Australia	44
INFORMATION	
Explanatory notes	45
Glossary	48

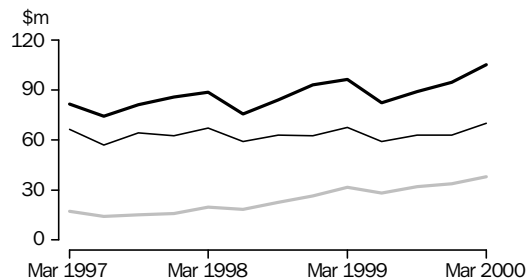
ACCOMMODATION TAKINGS

Licensed hotels
 Motels and guest houses
 Serviced apartments

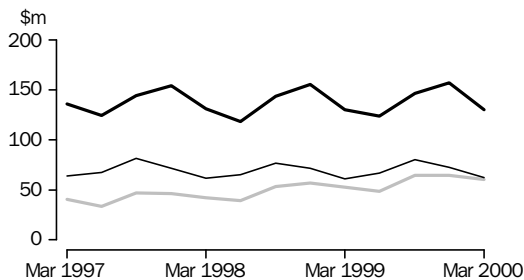
NEW SOUTH WALES



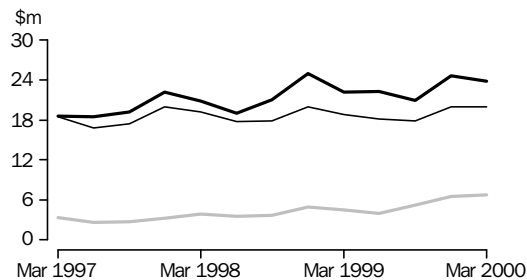
VICTORIA



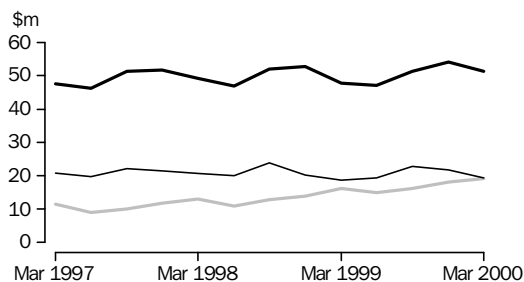
QUEENSLAND



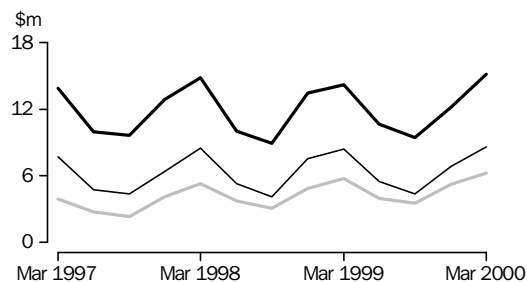
SOUTH AUSTRALIA



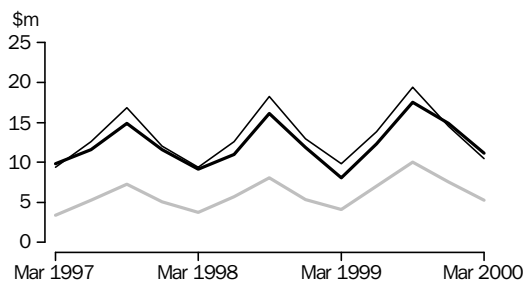
WESTERN AUSTRALIA



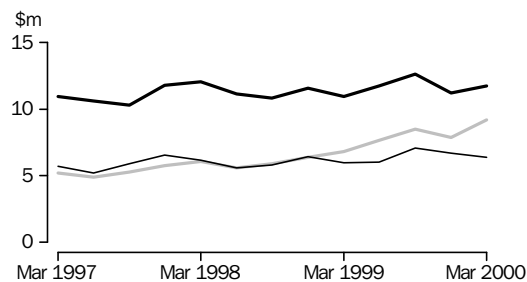
TASMANIA



NORTHERN TERRITORY



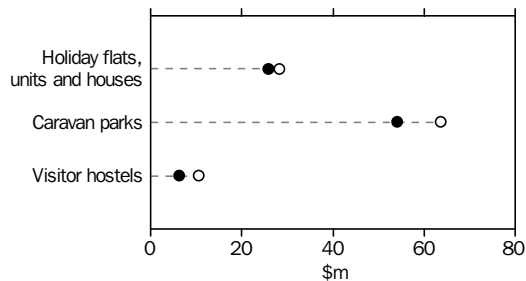
AUSTRALIAN CAPITAL TERRITORY



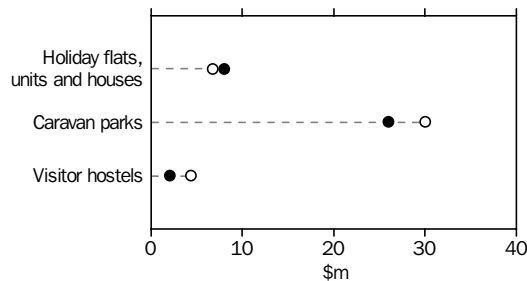
ACCOMMODATION TAKINGS

● March quarter 1997 ○ March quarter 2000

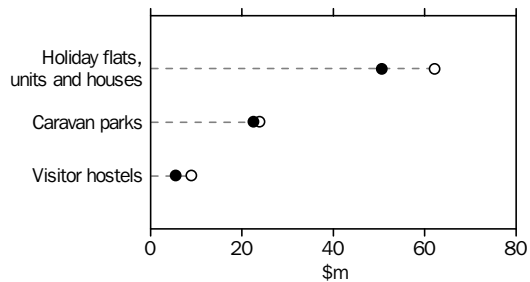
NEW SOUTH WALES



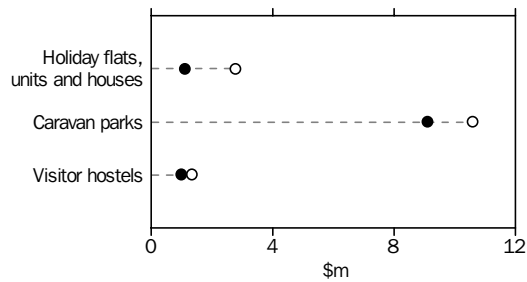
VICTORIA



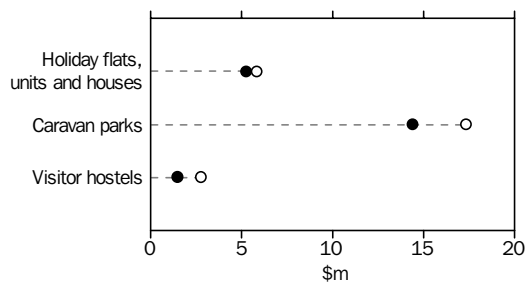
QUEENSLAND



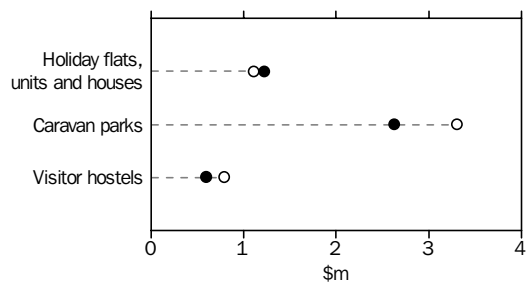
SOUTH AUSTRALIA



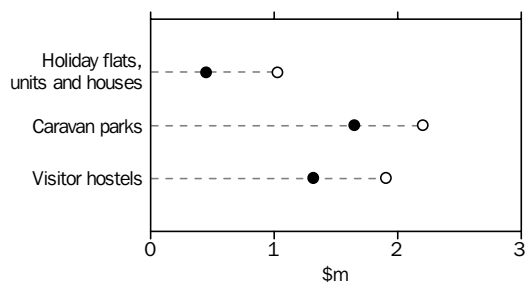
WESTERN AUSTRALIA



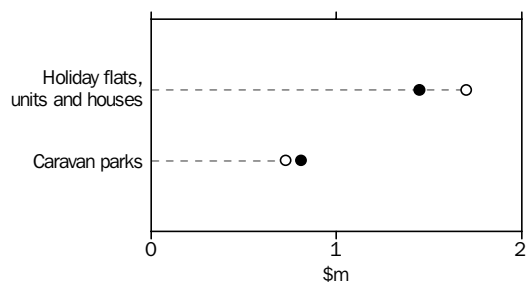
TASMANIA



NORTHERN TERRITORY



AUSTRALIAN CAPITAL TERRITORY



<i>Period</i>	<i>Establish-ments</i>	<i>Guest rooms</i>	<i>Bed spaces</i>	<i>Persons employed</i>	<i>Room nights occupied</i>	<i>Room occupancy rate</i>	<i>Guest nights</i>	<i>Bed occupancy rate</i>	<i>Guest arrivals</i>	<i>Average length of stay</i>	<i>Takings from accom-modation</i>
	no.	no.	no.	no.	'000	%	'000	%	'000	days	\$'000
LICENSED HOTELS WITH FACILITIES											
1998											
December quarter	747	70 802	191 147	71 468	4 194	64.5	6 884	39.2	2 946	2.3	550 378
1999											
March quarter	753	71 637	193 366	70 611	4 004	62.4	6 575	38.0	2 783	2.4	514 165
June quarter	747	71 908	194 135	70 079	3 902	60.1	6 301	35.9	2 759	2.3	476 859
September quarter	753	72 265	194 757	71 644	4 281	64.9	7 122	40.0	3 074	2.3	537 904
December quarter	766	73 416	196 329	72 872	4 389	65.1	7 239	40.1	3 148	2.3	574 687
2000											
March quarter	767	73 760	197 179	72 728	4 239	63.3	6 950	38.9	2 989	2.3	556 825
Year ended March 1999	15 879	61.7	26 059	37.7	11 237	2.3	2 039 014
Year ended March 2000	16 811	63.4	27 612	38.7	11 970	2.3	2 146 275
MOTELS AND GUEST HOUSES WITH FACILITIES											
1998											
December quarter	2 386	84 701	252 044	31 543	4 247	54.7	7 477	32.3	4 149	1.8	331 903
1999											
March quarter	2 386	84 614	251 693	30 938	4 083	53.7	7 276	32.2	3 939	1.8	322 196
June quarter	2 398	84 972	253 031	30 629	4 080	52.9	7 074	30.8	3 907	1.8	316 845
September quarter	2 396	85 267	253 219	31 872	4 411	56.3	7 791	33.5	4 278	1.8	356 224
December quarter	2 413	86 019	255 588	31 429	4 328	54.8	7 578	32.3	4 163	1.8	347 480
2000											
March quarter	2 411	85 821	254 335	31 464	4 138	53.1	7 295	31.6	3 947	1.8	338 177
Year ended March 1999	16 474	53.7	29 033	31.8	16 102	1.8	1 290 646
Year ended March 2000	16 957	54.3	29 737	32.0	16 294	1.8	1 358 725
SERVICED APARTMENTS											
1998											
December quarter	552	26 558	93 563	9 863	1 463	60.6	3 199	37.5	869	3.7	160 874
1999											
March quarter	564	27 610	96 217	10 074	1 499	60.6	3 261	37.8	875	3.7	166 699
June quarter	575	28 423	99 507	10 183	1 445	56.2	3 038	33.8	852	3.6	152 662
September quarter	582	29 308	102 314	10 670	1 704	63.9	3 709	39.8	955	3.9	183 666
December quarter	600	30 644	107 748	10 851	1 696	60.8	3 673	37.3	1 002	3.7	190 280
2000											
March quarter	611	31 542	107 951	10 807	1 712	60.0	3 792	38.8	995	3.8	193 602
Year ended March 1999	5 501	60.1	11 937	37.0	3 237	3.7	595 701
Year ended March 2000	6 557	60.3	14 212	37.5	3 804	3.7	720 210
TOTAL HOTEL, MOTEL, GUEST HOUSES AND SERVICED APARTMENTS											
1998											
December quarter	3 685	182 061	536 754	112 874	9 904	59.4	17 560	35.7	7 964	2.2	1 043 155
1999											
March quarter	3 703	183 861	541 276	111 623	9 586	58.1	17 112	35.2	7 598	2.3	1 003 060
June quarter	3 720	185 303	546 673	110 891	9 427	56.2	16 412	33.1	7 518	2.2	946 366
September quarter	3 731	186 840	550 290	114 186	10 396	60.8	18 623	37.0	8 307	2.2	1 077 794
December quarter	3 779	190 079	559 665	115 152	10 414	59.7	18 490	36.0	8 313	2.2	1 112 447
2000											
March quarter	3 789	191 123	559 465	114 999	10 088	58.2	18 037	35.5	7 931	2.3	1 088 603
Year ended March 1999	37 854	57.7	67 029	34.7	30 575	2.2	3 925 361
Year ended March 2000	40 325	58.7	71 561	35.4	32 068	2.2	4 225 210

(a) Comprising establishments with 15 or more rooms or units (see Explanatory Notes).

2

SUMMARY OF HOLIDAY FLATS, UNITS AND HOUSES—AUSTRALIA

FLATS, UNITS AND HOUSES.

<i>Period</i>	<i>Letting entities(a)</i> no.	<i>Single bedroom</i> no.	<i>Multiple bedroom</i> no.	<i>Total</i> no.	<i>Bed spaces</i> no.	<i>Persons employed(b)</i> no.	<i>Unit nights occupied</i> '000.	<i>Unit occupancy rate</i> %	<i>Unit lettings</i> '000	<i>Average length of stay</i> days	<i>Takings from accommodation</i> \$'000
REAL ESTATE AGENTS											
1997											
March quarter	222	690	13 244	13 934	69 368	—	567	45.3	71	7.9	33 021
2000											
March quarter	197	744	12 790	13 534	68 737	—	570	46.3	77	7.4	41 527
OTHER LETTING ENTITIES											
1997											
March quarter	428	3 743	10 205	13 948	55 777	2 757	786	62.6	159	4.9	63 658
2000											
March quarter	446	4 132	10 587	14 719	58 988	2 701	819	61.4	171	4.8	68 140
TOTAL HOLIDAY FLATS, UNITS AND HOUSES											
1997											
March quarter	650	4 433	23 449	27 882	125 145	2 757	1 354	54.0	231	5.9	96 679
2000											
March quarter	643	4 876	23 377	28 253	127 725	2 701	1 389	54.2	249	5.6	109 667

(a) The number of owners, managers or real estate agents with 15 or more self-contained units (see Explanatory Notes).

(b) Employment numbers exclude real estate agents and their employees.

CAPACITY.....

<i>Period</i>	<i>Establish-ments</i>	<i>On-site vans</i>	<i>Other powered sites</i>	<i>Un-powered sites</i>	<i>Cabins, etc.</i>	<i>Total capacity</i>	<i>Persons employed</i>	<i>Sites occupied by long-term guests</i>	<i>Other sites permanently reserved</i>	<i>Site nights occupied</i>	<i>Site occupancy rate</i>	<i>Takings from accom-modation</i>
	no.	no.	no.	no.	no.	no.	no.	no.	no.	'000	%	\$'000
SHORT-TERM CARAVAN PARKS (b)												
1997												
March quarter	1 185	7 680	116 035	40 556	9 932	174 203	5 485	9 625	42 228	7 520	48.0	84 199
2000												
March quarter	1 197	8 509	114 782	35 109	15 656	174 056	6 122	10 734	43 022	7 742	48.9	102 286
LONG-TERM CARAVAN PARKS (b)												
1997												
March quarter	704	9 980	51 972	11 674	6 980	80 606	3 017	33 010	2 173	3 901	53.8	47 035
2000												
March quarter	630	10 345	43 266	8 926	9 257	71 794	2 941	28 359	2 498	3 603	55.1	49 310
TOTAL CARAVAN PARKS												
1997												
March quarter	1 889	17 660	168 007	52 230	16 912	254 809	8 502	42 635	44 401	11 421	49.8	131 234
2000												
March quarter	1 827	18 854	158 048	44 035	24 913	245 850	9 063	39 093	45 520	11 344	50.7	151 597

(a) Comprising establishments with 40 or more powered sites and cabins, etc (see Explanatory Notes).

(b) For definitions of short-term and long-term caravan parks (see Glossary).

4

SUMMARY OF VISITOR HOSTELS (a)—AUSTRALIA

<i>Period</i>	<i>Establishments</i>	<i>Bed spaces</i>	<i>Persons employed</i>	<i>Guest nights</i>	<i>Bed occupancy rate</i>	<i>Guest arrivals</i>	<i>Average length of stay</i>	<i>Takings from accommodation</i>
	no.	no.	no.	no.	%	no.	days	\$'000
1997								
March quarter	388	30 291	1 863	1 313 991	48.9	490 568	2.7	18 498
2000								
March quarter	478	39 792	3 300	1 810 102	50.4	670 190	2.7	30 664

(a) Comprising establishments with 25 or more bed spaces (see Explanatory Notes).

5

HOTELS, MOTELS, GUEST HOUSES AND SERVICED APARTMENTS (a)—Australia

STAR GRADING

Period	Licensed hotels with facilities	Motels and guest houses	Serviced apartments	1	2	3	4	5	Ungraded	Total
ESTABLISHMENTS, CAPACITY AND EMPLOYMENT (number)										
March quarter 1999										
Establishments	753	2 386	564	74	566	1 864	705	66	428	3 703
Guest rooms	71 637	84 614	27 610	2 202	16 513	69 905	58 580	16 423	20 238	183 861
Bed spaces	193 366	251 693	96 217	6 757	49 761	209 625	175 353	44 190	55 590	541 276
Persons employed	70 611	30 938	10 074	866	6 768	27 595	38 578	29 157	8 659	111 623
March quarter 2000										
Establishments	767	2 411	611	69	508	1 825	805	87	495	3 789
Guest rooms	73 760	85 821	31 542	2 122	14 552	71 153	62 661	21 508	19 127	191 123
Bed spaces	197 179	254 335	107 951	6 672	43 379	213 429	184 349	57 035	54 601	559 465
Persons employed	72 728	31 464	10 807	860	5 996	29 470	36 527	34 997	7 149	114 999
ROOM NIGHTS OCCUPIED ('000)										
1999										
March quarter	4 003.5	4 083.2	1 499.1	66.6	656.7	3 484.8	3 456.1	1 052.6	869.0	9 585.8
2000										
January	1 298.3	1 352.1	609.3	22.2	201.5	1 192.5	1 164.0	437.9	241.5	3 259.7
February	1 403.5	1 294.9	524.6	20.0	181.1	1 112.6	1 206.7	463.4	239.2	3 223.0
March	1 536.8	1 490.8	577.7	23.8	206.3	1 281.3	1 333.0	491.8	269.0	3 605.3
March quarter	4 238.7	4 137.8	1 711.6	66.0	588.9	3 586.5	3 703.7	1 393.1	749.7	10 088.1
ROOM OCCUPANCY RATES (%)										
1999										
March quarter	62.4	53.7	60.6	33.6	44.3	55.4	65.6	71.2	49.0	58.1
2000										
January	57.1	50.9	63.1	33.8	44.8	54.1	59.9	65.7	42.9	55.3
February	65.7	52.1	57.7	32.6	43.1	53.9	66.4	74.4	43.9	58.3
March	67.3	56.1	59.2	36.2	46.0	58.1	68.6	73.9	45.6	60.9
March quarter	63.3	53.1	60.0	34.2	44.6	55.4	65.0	71.3	44.2	58.2
GUEST NIGHTS ('000)										
1999										
March quarter	6 575.5	7 276.1	3 260.9	108.3	1 224.3	6 463.7	6 094.3	1 740.7	1 481.3	17 112.5
2000										
January	2 346.1	2 663.6	1 527.8	41.3	396.4	2 461.1	2 355.0	810.3	473.4	6 537.5
February	2 203.7	2 134.4	1 079.2	32.3	307.0	1 936.4	2 001.2	742.6	397.8	5 417.3
March	2 399.8	2 497.0	1 184.9	41.2	360.5	2 237.6	2 207.1	780.8	454.6	6 081.8
March quarter	6 949.6	7 295.0	3 791.9	114.8	1 063.9	6 635.1	6 563.3	2 333.6	1 325.8	18 036.5
BED OCCUPANCY RATES (%)										
1999										
March quarter	38.0	32.2	37.8	17.8	27.4	34.3	38.6	43.8	30.3	35.2
2000										
January	38.6	33.9	46.1	20.0	29.5	37.2	41.2	45.9	29.4	37.9
February	38.6	29.0	34.7	16.7	24.5	31.3	37.4	45.0	25.6	33.5
March	39.3	31.7	35.4	19.9	27.0	33.8	38.6	44.3	27.0	35.1
March quarter	38.9	31.6	38.8	18.9	27.1	34.2	39.1	45.0	27.4	35.5

(a) Comprising establishments with 15 or more rooms or units (see Explanatory Notes).

STAR GRADING

Period	Licensed hotels with facilities	Motels and guest houses	Serviced apartments	1	2	3	4	5	Ungraded	Total
GUEST ARRIVALS ('000)										
1999										
March quarter	2 782.9	3 939.4	875.3	56.3	680.1	3 248.9	2 441.5	623.1	547.8	7 597.6
2000										
January	947.8	1 419.3	361.7	21.8	222.8	1 164.1	883.7	254.8	181.6	2 728.9
February	981.2	1 164.4	297.4	16.4	174.1	950.3	859.4	280.9	161.9	2 443.0
March	1 060.1	1 363.0	335.9	21.1	205.3	1 108.5	947.2	290.5	186.3	2 758.9
March quarter	2 989.1	3 946.8	995.0	59.3	602.3	3 222.9	2 690.3	826.2	529.8	7 930.8
AVERAGE LENGTH OF STAY (days)										
1999										
March quarter	2.4	1.8	3.7	1.9	1.8	2.0	2.5	2.8	2.7	2.3
2000										
March quarter	2.3	1.8	3.8	1.9	1.8	2.1	2.4	2.8	2.5	2.3
TAKINGS FROM ACCOMMODATION (\$'000)										
1999										
March quarter	514 165	322 196	166 699	3 351	41 190	277 421	401 708	194 304	85 086	1 003 060
2000										
January	171 527	113 127	72 729	1 258	12 951	104 449	138 542	79 195	20 988	357 382
February	181 923	104 580	56 901	1 087	10 748	91 472	138 147	81 920	20 029	343 403
March	203 375	120 470	63 973	1 273	12 086	104 860	156 747	89 898	22 955	387 818
March quarter	556 825	338 177	193 602	3 617	35 785	300 781	433 436	251 013	63 972	1 088 603
AVERAGE TAKINGS PER ROOM NIGHT OCCUPIED (\$) (b)										
1999										
March quarter	128.4	78.9	111.2	50.4	62.7	79.6	116.2	184.6	97.9	104.6
2000										
January	132.1	83.7	119.4	56.6	64.3	87.6	119.0	180.9	86.9	109.6
February	129.6	80.8	108.5	54.2	59.3	82.2	114.5	176.8	83.7	106.5
March	132.3	80.8	110.7	53.5	58.6	81.8	117.6	182.8	85.3	107.6
March quarter	131.4	81.7	113.1	54.8	60.8	83.9	117.0	180.2	85.3	107.9
AVERAGE TAKINGS PER AVAILABLE ROOM NIGHT (\$) (b)										
1999										
March quarter	80.2	42.4	67.4	16.9	27.8	44.1	76.2	131.5	48.0	60.8
2000										
January	75.5	42.6	75.3	19.1	28.8	47.4	71.3	118.8	37.3	60.6
February	85.1	42.1	62.6	17.7	25.6	44.3	76.0	131.6	36.8	62.1
March	89.1	45.3	65.5	19.4	26.9	47.6	80.7	135.1	38.9	65.5
March quarter	83.2	43.4	67.9	18.7	27.1	46.5	76.0	128.4	37.7	62.8

(a) Comprising establishments with 15 or more rooms or units (see Explanatory Notes).

(b) Including bed tax where applicable.

STAR GRADING

Period	Licensed hotels with facilities	Motels and guest houses	Serviced apartments	1	2	3	4	5	Ungraded	Total
ESTABLISHMENTS, CAPACITY AND EMPLOYMENT (number)										
March quarter 1999										
Establishments	179	993	122	36	211	659	184	14	190	1 294
Guest rooms	20 636	33 255	5 551	1 221	6 052	22 276	16 892	3 541	9 460	59 442
Bed spaces	51 971	99 530	19 518	4 220	18 276	66 813	47 881	8 686	25 143	171 019
Persons employed	19 392	12 236	2 196	383	2 181	8 368	11 695	7 498	3 699	33 824
March quarter 2000										
Establishments	181	1 001	124	34	193	669	197	20	193	1 306
Guest rooms	22 046	33 587	6 334	1 221	5 448	24 294	17 956	5 334	7 714	61 967
Bed spaces	55 185	100 907	22 161	4 232	16 386	71 869	50 420	12 575	22 771	178 253
Persons employed	20 815	12 564	2 432	347	1 933	9 505	12 129	9 470	2 427	35 811
ROOM NIGHTS OCCUPIED ('000)										
1999										
March quarter	1 255.4	1 619.3	338.5	34.9	265.9	1 153.3	1 093.5	244.8	421.0	3 213.2
2000										
January	395.0	557.4	120.6	11.7	84.7	429.2	350.3	105.1	92.0	1 073.1
February	475.3	517.8	113.7	11.0	75.2	407.0	388.5	129.5	95.5	1 106.7
March	499.3	587.7	121.3	12.7	84.9	457.2	414.2	133.9	105.4	1 208.3
March quarter	1 369.6	1 662.9	355.5	35.4	244.8	1 293.4	1 153.0	368.5	292.9	3 388.1
ROOM OCCUPANCY RATES (%)										
1999										
March quarter	68.7	54.4	68.3	31.7	49.1	57.6	72.0	76.8	52.0	60.6
2000										
January	58.2	53.6	62.6	31.0	50.2	57.0	63.0	63.6	40.1	56.2
February	74.3	53.3	63.1	31.1	47.6	57.8	74.6	83.7	43.7	61.8
March	73.1	56.5	62.0	33.5	50.3	60.7	74.4	81.0	44.4	63.0
March quarter	68.4	54.5	62.6	31.9	49.4	58.5	70.6	75.9	42.8	60.3
GUEST NIGHTS ('000)										
1999										
March quarter	1 991.3	2 937.6	691.0	59.9	504.1	2 138.7	1 821.5	404.8	691.0	5 620.0
2000										
January	683.5	1 127.6	287.8	21.2	171.1	886.5	667.0	176.4	176.7	2 098.9
February	722.3	864.6	219.9	17.7	130.1	697.9	608.3	192.9	159.9	1 806.7
March	751.0	993.6	234.0	21.1	151.3	784.2	647.6	195.2	179.2	1 978.6
March quarter	2 156.7	2 985.8	741.6	60.1	452.5	2 368.6	1 922.9	564.5	515.7	5 884.2
BED OCCUPANCY RATES (%)										
1999										
March quarter	43.2	32.9	39.6	15.8	30.8	35.6	42.4	51.8	31.8	36.8
2000										
January	40.3	36.1	42.5	16.2	33.7	39.8	42.7	45.2	26.1	38.2
February	45.1	29.6	34.7	14.4	27.4	33.5	41.6	52.9	24.8	35.1
March	43.9	31.8	34.2	16.1	29.8	35.2	41.4	50.1	25.6	35.8
March quarter	43.1	32.6	37.1	15.6	30.3	36.2	41.9	49.3	25.5	36.4

(a) Comprising establishments with 15 or more rooms or units (see Explanatory Notes).

STAR GRADING

Period	Licensed hotels with facilities	Motels and guest houses	Serviced apartments	1	2	3	4	5	Ungraded	Total
GUEST ARRIVALS ('000)										
1999										
March quarter	839.6	1 680.4	202.5	32.1	280.4	1 185.1	799.9	164.6	260.3	2 722.5
2000										
January	286.2	640.8	79.9	10.8	98.2	461.4	289.4	63.9	83.0	1 006.8
February	317.6	496.5	68.4	8.8	76.0	360.1	288.1	74.7	74.7	882.5
March	329.2	572.9	72.8	10.7	87.6	413.2	304.7	75.7	83.1	974.9
March quarter	933.1	1 710.2	221.0	30.4	261.8	1 234.7	882.2	214.3	240.9	2 864.3
AVERAGE LENGTH OF STAY (days)										
1999										
March quarter	2.4	1.7	3.4	1.9	1.8	1.8	2.3	2.5	2.7	2.1
2000										
March quarter	2.3	1.7	3.4	2.0	1.7	1.9	2.2	2.6	2.1	2.1
TAKINGS FROM ACCOMMODATION (\$'000) (b)										
1999										
March quarter	184 374	131 742	44 557	1 974	16 847	98 001	141 183	56 121	46 549	360 674
2000										
January	60 087	48 998	17 881	731	5 734	39 925	48 184	24 640	7 754	126 967
February	72 361	43 324	15 133	664	4 628	35 955	51 331	30 181	8 059	130 818
March	75 342	48 685	16 057	742	5 157	39 544	54 348	31 289	9 003	140 084
March quarter	207 791	141 007	49 072	2 137	15 520	115 424	153 862	86 110	24 816	397 869
AVERAGE TAKINGS PER ROOM NIGHT OCCUPIED (\$) (b)										
1999										
March quarter	146.9	81.4	131.6	56.6	63.4	85.0	129.1	229.2	110.6	112.2
2000										
January	152.1	87.9	148.3	62.4	67.7	93.0	137.6	234.4	84.3	118.3
February	152.3	83.7	133.1	60.3	61.5	88.3	132.1	233.0	84.4	118.2
March	150.9	82.8	132.4	58.5	60.7	86.5	131.2	233.7	85.5	115.9
March quarter	151.7	84.8	138.0	60.3	63.4	89.2	133.4	233.7	84.7	117.4
AVERAGE TAKINGS PER AVAILABLE ROOM NIGHT (\$) (b)										
1999										
March quarter	100.8	44.2	89.9	18.0	31.1	48.9	93.0	176.1	57.5	68.0
2000										
January	88.6	47.1	92.8	19.3	34.0	53.0	86.6	149.0	33.8	66.4
February	113.2	44.6	84.0	18.7	29.3	51.0	98.6	195.1	36.9	73.0
March	110.2	46.8	82.1	19.6	30.5	52.5	97.6	189.2	38.0	73.0
March quarter	103.8	46.2	86.3	19.2	31.3	52.2	94.2	177.4	36.2	70.8

(a) Comprising establishments with 15 or more rooms or units (see Explanatory Notes).

(b) Including bed tax where applicable.

7

HOTELS, MOTELS, GUEST HOUSES AND SERVICED APARTMENTS (a)—Vic.

STAR GRADING

Period	Licensed hotels with facilities	Motels and guest houses	Serviced apartments	1	2	3	4	5	Ungraded	Total
ESTABLISHMENTS, CAPACITY AND EMPLOYMENT (number)										
March quarter 1999										
Establishments	117	501	68	11	93	388	148	10	36	686
Guest rooms	10 340	16 117	3 703	242	2 548	12 299	10 810	2 930	1 331	30 160
Bed spaces	25 284	47 112	11 024	654	7 982	35 140	28 947	6 597	4 100	83 420
Persons employed	13 826	5 814	1 489	156	927	4 457	6 335	8 618	636	21 129
March quarter 2000										
Establishments	125	506	76	9	81	376	173	15	53	707
Guest rooms	10 895	16 254	4 183	217	2 126	12 078	11 502	3 456	1 953	31 332
Bed spaces	26 282	47 232	12 620	585	6 586	34 610	30 749	7 783	5 821	86 134
Persons employed	14 016	5 904	1 578	125	780	4 467	6 552	8 771	803	21 498
ROOM NIGHTS OCCUPIED ('000)										
1999										
March quarter	653.6	793.8	233.3	7.9	95.1	624.6	685.6	209.6	58.1	1 680.8
2000										
January	212.8	253.9	89.1	2.4	26.7	199.6	222.0	77.6	27.6	555.8
February	230.7	248.4	84.7	1.9	23.9	183.9	241.6	82.9	29.6	563.8
March	260.5	294.3	99.0	2.4	29.6	222.4	276.4	89.1	33.8	653.7
March quarter	704.0	796.5	272.8	6.7	80.3	605.9	740.0	249.5	91.0	1 773.4
ROOM OCCUPANCY RATES (%)										
1999										
March quarter	70.2	54.7	71.0	36.2	41.7	56.4	70.5	79.5	49.9	62.0
2000										
January	63.0	50.4	69.4	35.6	40.5	53.3	62.3	72.4	46.5	57.3
February	73.0	52.8	70.5	29.9	38.8	52.5	72.4	82.7	53.8	62.2
March	77.1	58.4	76.4	36.2	44.9	59.4	77.5	83.1	55.9	67.3
March quarter	71.0	53.9	72.1	34.0	41.5	55.1	70.7	79.3	52.0	62.3
GUEST NIGHTS ('000)										
1999										
March quarter	993.7	1 401.3	442.0	13.3	185.5	1 128.3	1 118.4	287.7	103.9	2 837.0
2000										
January	342.8	495.7	191.9	4.8	53.8	395.8	412.1	116.1	47.9	1 030.4
February	337.8	407.6	150.0	3.5	42.3	313.1	373.6	117.0	45.8	895.4
March	384.2	496.5	175.9	4.7	55.5	385.7	431.7	126.9	52.0	1 056.6
March quarter	1 064.8	1 399.8	517.8	13.0	151.6	1 094.6	1 217.4	360.1	145.8	2 982.4
BED OCCUPANCY RATES (%)										
1999										
March quarter	43.7	33.0	45.0	22.6	25.9	35.7	42.9	48.5	28.7	37.8
2000										
January	42.1	33.9	49.6	26.2	26.3	36.9	43.2	48.1	27.2	38.7
February	44.3	29.8	41.5	20.8	22.1	31.2	41.9	51.9	28.3	35.9
March	47.2	33.9	45.0	26.1	27.2	35.9	45.3	52.6	28.9	39.6
March quarter	44.5	32.6	45.4	24.5	25.3	34.8	43.5	50.8	28.1	38.1

(a) Comprising establishments with 15 or more rooms or units (see Explanatory Notes).

7 HOTELS, MOTELS, GUEST HOUSES AND SERVICED APARTMENTS (a)—Vic. *continued*

STAR GRADING

Period	Licensed hotels with facilities	Motels and guest houses	Serviced apartments	1	2	3	4	5	Ungraded	Total
GUEST ARRIVALS ('000)										
1999										
March quarter	451.8	775.4	131.4	7.4	112.5	589.3	506.2	110.5	32.7	1 358.6
2000										
January	146.8	268.3	48.5	2.7	32.3	194.2	176.0	42.5	16.0	463.7
February	157.1	230.6	45.1	2.1	26.1	161.8	176.0	50.2	16.6	432.8
March	176.7	277.6	54.6	2.8	33.2	200.6	199.6	53.7	18.9	508.9
March quarter	480.7	776.5	148.2	7.6	91.6	556.6	551.5	146.4	51.5	1 405.4
AVERAGE LENGTH OF STAY (days)										
1999										
March quarter	2.2	1.8	3.4	1.8	1.6	1.9	2.2	2.6	3.2	2.1
2000										
March quarter	2.2	1.8	3.5	1.7	1.7	2.0	2.2	2.5	2.8	2.1
TAKINGS FROM ACCOMMODATION (\$'000)										
1999										
March quarter	96 321	67 486	31 766	401	5 792	50 442	87 283	44 905	6 751	195 573
2000										
January	30 275	22 439	12 366	125	1 731	16 882	27 348	15 705	3 289	65 081
February	33 340	21 467	11 204	103	1 489	14 431	29 548	16 865	3 574	66 011
March	41 886	26 055	14 240	138	1 805	18 242	37 657	19 977	4 361	82 181
March quarter	105 501	69 960	37 811	367	5 026	49 555	94 553	52 547	11 224	213 272
AVERAGE TAKINGS PER ROOM NIGHT OCCUPIED (\$)										
1999										
March quarter	147.4	85.0	136.1	50.9	60.9	80.8	127.3	214.3	116.2	116.4
2000										
January	142.3	88.4	138.7	52.2	64.8	84.6	123.2	202.5	119.1	117.1
February	144.5	86.4	132.2	54.8	62.2	78.5	122.3	203.5	120.9	117.1
March	160.8	88.5	143.9	56.8	61.0	82.0	136.2	224.3	128.9	125.7
March quarter	149.8	87.8	138.6	54.6	62.6	81.8	127.8	210.6	123.3	120.3
AVERAGE TAKINGS PER AVAILABLE ROOM NIGHT (\$)										
1999										
March quarter	103.5	46.5	96.6	18.4	25.4	45.6	89.7	170.3	58.0	72.2
2000										
January	89.6	44.5	96.2	18.6	26.3	45.1	76.7	146.6	55.4	67.1
February	105.5	45.6	93.2	16.4	24.2	41.2	88.6	168.3	65.0	72.8
March	124.0	51.7	109.8	20.6	27.4	48.7	105.6	186.5	72.1	84.6
March quarter	106.4	47.3	99.9	18.6	26.0	45.1	90.3	167.1	64.2	74.9

(a) Comprising establishments with 15 or more rooms or units (see Explanatory Notes).

STAR GRADING

Period	Licensed hotels with facilities	Motels and guest houses	Serviced apartments	1	2	3	4	5	Ungraded	Total
ESTABLISHMENTS, CAPACITY AND EMPLOYMENT (number)										
March quarter 1999										
Establishments	173	511	236	14	131	439	232	24	80	920
Guest rooms	20 812	18 234	11 429	385	3 623	16 362	19 583	5 741	4 781	50 475
Bed spaces	64 560	54 729	41 631	985	11 229	52 370	63 682	18 083	14 571	160 920
Persons employed	20 423	6 423	3 781	121	1 651	5 977	12 447	8 338	2 093	30 627
March quarter 2000										
Establishments	172	513	255	11	111	410	268	31	109	940
Guest rooms	20 530	18 523	12 768	265	2 808	16 087	19 736	8 281	4 644	51 821
Bed spaces	63 504	55 016	44 325	755	8 506	52 562	62 049	25 790	13 183	162 845
Persons employed	20 740	6 570	3 921	121	1 365	6 733	9 369	11 898	1 745	31 231
ROOM NIGHTS OCCUPIED ('000)										
1999										
March quarter	1 076.9	869.2	543.2	14.8	141.3	780.2	1 019.5	339.1	194.5	2 489.4
2000										
January	372.7	283.5	243.7	3.8	38.3	277.9	350.2	167.5	62.2	899.9
February	345.0	269.9	180.2	3.4	32.1	236.0	313.3	155.3	55.0	795.1
March	376.0	305.7	193.6	3.5	35.0	268.9	344.3	162.3	61.2	875.2
March quarter	1 093.7	859.0	617.5	10.7	105.3	782.8	1 007.8	485.2	178.4	2 570.2
ROOM OCCUPANCY RATES (%)										
1999										
March quarter	57.6	53.0	53.0	42.7	43.5	53.1	57.8	65.6	45.6	54.9
2000										
January	58.6	49.6	62.5	46.8	44.5	55.7	57.2	65.3	45.8	56.3
February	58.1	50.5	48.7	44.2	39.9	50.6	54.8	65.0	41.5	53.1
March	59.2	53.3	49.0	42.6	40.4	53.9	56.3	63.5	42.7	54.6
March quarter	58.7	51.1	53.4	44.5	41.6	53.5	56.1	64.6	43.3	54.7
GUEST NIGHTS ('000)										
1999										
March quarter	2 038.5	1 532.0	1 309.6	21.7	261.3	1 512.4	2 052.0	647.0	385.8	4 880.1
2000										
January	774.0	553.4	679.5	8.4	76.5	604.9	815.6	368.3	133.4	2 006.9
February	614.0	442.8	429.5	5.6	55.4	431.7	604.7	291.6	97.2	1 486.3
March	670.3	507.1	462.4	8.2	60.3	494.3	662.3	305.0	109.6	1 639.7
March quarter	2 058.3	1 503.3	1 571.4	22.2	192.2	1 530.9	2 082.6	964.9	340.2	5 133.0
BED OCCUPANCY RATES (%)										
1999										
March quarter	35.2	31.1	35.1	24.4	25.9	32.2	35.8	39.8	29.7	33.8
2000										
January	39.4	32.6	49.9	35.8	29.3	37.1	42.4	46.1	34.2	39.9
February	33.4	27.9	33.4	25.7	22.7	28.3	33.6	39.2	25.8	31.6
March	34.1	29.7	33.7	34.9	23.0	30.3	34.5	38.3	26.9	32.5
March quarter	35.7	30.1	39.1	32.3	25.0	32.0	36.9	41.3	29.0	34.7

(a) Comprising establishments with 15 or more rooms or units (see Explanatory Notes).

STAR GRADING

Period	Licensed hotels with facilities	Motels and guest houses	Serviced apartments	1	2	3	4	5	Ungraded	Total
GUEST ARRIVALS ('000)										
1999										
March quarter	743.0	735.1	278.7	9.4	138.6	625.1	662.4	203.6	117.8	1 756.7
2000										
January	249.5	259.0	125.9	3.9	43.0	227.3	230.0	93.6	36.6	634.4
February	235.5	214.8	96.7	2.5	31.8	179.8	205.1	96.3	31.5	547.0
March	251.3	244.6	106.5	3.7	34.8	206.5	221.9	98.6	36.9	602.5
March quarter	736.4	718.3	329.1	10.1	109.6	613.6	657.1	288.5	105.0	1 783.9
AVERAGE LENGTH OF STAY (days)										
1999										
March quarter	2.7	2.1	4.7	2.3	1.9	2.4	3.1	3.2	3.3	2.8
2000										
March quarter	2.8	2.1	4.8	2.2	1.8	2.5	3.2	3.3	3.2	2.9
TAKINGS FROM ACCOMMODATION (\$'000)										
1999										
March quarter	130 165	61 243	52 992	575	9 624	56 615	101 657	58 374	17 553	244 399
2000										
January	48 341	20 938	26 147	199	2 357	24 066	36 047	27 040	5 717	95 426
February	38 914	19 426	16 356	146	1 804	18 403	28 165	21 747	4 430	74 696
March	43 107	22 060	17 657	164	1 923	20 828	31 470	23 578	4 862	82 824
March quarter	130 362	62 424	60 160	509	6 083	63 296	95 683	72 364	15 010	252 946
AVERAGE TAKINGS PER ROOM NIGHT OCCUPIED (\$)										
1999										
March quarter	120.9	70.5	97.5	38.9	68.1	72.6	99.7	172.2	90.2	98.2
2000										
January	129.7	73.9	107.3	51.9	61.6	86.6	102.9	161.4	92.0	106.0
February	112.8	72.0	90.7	43.1	56.2	78.0	89.9	140.0	80.6	93.9
March	114.6	72.2	91.2	46.8	55.0	77.4	91.4	145.3	79.4	94.6
March quarter	119.2	72.7	97.4	47.4	57.7	80.9	94.9	149.1	84.1	98.4
AVERAGE TAKINGS PER AVAILABLE ROOM NIGHT (\$)										
1999										
March quarter	69.6	37.3	51.7	16.6	29.6	38.5	57.7	113.0	41.1	53.9
2000										
January	76.1	36.7	67.0	24.3	27.4	48.3	58.9	105.5	42.1	59.8
February	65.6	36.3	44.2	19.0	22.4	39.4	49.2	91.0	33.4	49.9
March	67.9	38.4	44.7	19.9	22.2	41.8	51.5	92.3	33.9	51.6
March quarter	69.9	37.2	52.1	21.1	24.0	43.2	53.3	96.4	36.4	53.8

(a) Comprising establishments with 15 or more rooms or units (see Explanatory Notes).

STAR GRADING

Period	Licensed hotels with facilities	Motels and guest houses	Serviced apartments	1	2	3	4	5	Ungraded	Total
ESTABLISHMENTS, CAPACITY AND EMPLOYMENT (number)										
March quarter 1999										
Establishments	61	145	22	5	49	125	37	4	8	228
Guest rooms	4 053	5 119	888	129	1 392	4 734	2 318	1 263	224	10 060
Bed spaces	10 042	15 685	2 975	348	3 842	13 936	7 373	2 560	643	28 702
Persons employed	4 179	2 076	356	105	769	2 562	1 699	1 321	155	6 611
March quarter 2000										
Establishments	62	146	26	7	55	117	41	4	10	234
Guest rooms	4 065	5 168	1 213	205	1 519	4 553	2 645	1 263	261	10 446
Bed spaces	10 163	15 597	4 422	539	4 271	13 331	8 656	2 588	797	30 182
Persons employed	4 093	1 996	462	164	831	2 317	1 822	1 291	126	6 551
ROOM NIGHTS OCCUPIED ('000)										
1999										
March quarter	217.2	254.9	52.6	3.6	50.4	238.3	139.6	85.4	7.5	524.8
2000										
January	64.0	82.5	21.9	1.7	18.7	73.2	46.8	23.7	4.2	168.4
February	71.9	80.1	21.8	1.7	16.8	70.3	51.8	29.4	3.8	173.7
March	85.8	97.4	25.3	2.4	20.7	85.9	60.0	35.5	4.1	208.5
March quarter	221.6	260.0	69.1	5.7	56.2	229.4	158.6	88.6	12.1	550.7
ROOM OCCUPANCY RATES (%)										
1999										
March quarter	59.6	55.3	65.8	30.8	40.3	55.9	66.9	75.1	37.0	58.0
2000										
January	50.8	51.5	58.3	26.8	39.8	51.9	57.1	60.6	52.0	52.0
February	61.3	53.4	61.9	27.8	38.8	53.2	67.5	80.1	50.6	57.5
March	68.5	60.8	67.4	37.0	44.6	60.9	73.2	90.7	50.1	64.5
March quarter	60.1	55.3	62.6	30.6	41.1	55.4	65.9	77.1	50.9	58.0
GUEST NIGHTS ('000)										
1999										
March quarter	330.2	446.2	111.5	5.6	85.3	433.5	236.9	114.4	12.2	887.9
2000										
January	109.3	161.0	50.5	2.9	35.7	146.0	92.1	34.8	9.4	320.8
February	104.0	133.6	40.2	2.4	29.0	117.5	84.3	38.0	6.6	277.9
March	118.8	158.1	47.3	3.3	35.4	140.3	95.2	42.6	7.3	324.1
March quarter	332.1	452.8	138.0	8.5	100.0	403.9	271.7	115.4	23.4	922.9
BED OCCUPANCY RATES (%)										
1999										
March quarter	36.5	31.6	41.7	18.0	24.7	34.6	35.7	49.6	21.1	34.4
2000										
January	34.7	33.3	36.9	17.2	26.9	35.3	34.3	43.4	38.2	34.3
February	35.6	29.5	31.4	15.3	23.8	30.4	33.6	50.6	28.6	31.8
March	38.0	32.7	34.5	19.6	27.2	34.0	35.5	53.1	29.7	34.7
March quarter	36.1	31.9	34.3	17.4	26.0	33.3	34.5	49.0	32.3	33.7

(a) Comprising establishments with 15 or more rooms or units (see Explanatory Notes).

STAR GRADING

<i>Period</i>	<i>Licensed hotels with facilities</i>	<i>Motels and guest houses</i>	<i>Serviced apartments</i>	<i>1</i>	<i>2</i>	<i>3</i>	<i>4</i>	<i>5</i>	<i>Ungraded</i>	<i>Total</i>
GUEST ARRIVALS ('000)										
1999										
<i>March quarter</i>	155.5	253.2	35.8	3.0	48.1	234.1	105.8	46.9	6.6	444.5
2000										
January	49.4	90.9	16.3	2.0	19.6	77.9	39.2	14.5	3.5	156.6
February	50.6	75.6	14.4	1.6	15.9	64.0	39.6	17.6	2.0	140.6
March	55.1	89.3	16.7	2.0	19.9	74.8	44.0	17.8	2.6	161.1
<i>March quarter</i>	155.1	255.8	47.4	5.5	55.4	216.6	122.7	50.0	8.2	458.3
AVERAGE LENGTH OF STAY (days)										
1999										
<i>March quarter</i>	2.1	1.8	3.1	1.9	1.8	1.9	2.2	2.4	1.9	2.0
2000										
<i>March quarter</i>	2.1	1.8	2.9	1.5	1.8	1.9	2.2	2.3	2.9	2.0
TAKINGS FROM ACCOMMODATION (\$'000)										
1999										
<i>March quarter</i>	22 181	18 793	4 516	151	2 532	16 812	14 665	10 969	362	45 490
2000										
January	6 339	6 333	2 127	79	1 028	5 448	5 061	2 872	310	14 798
February	7 734	6 110	2 085	77	854	5 138	5 636	3 962	261	15 928
March	9 666	7 514	2 527	105	1 073	6 321	6 625	5 308	276	19 707
<i>March quarter</i>	23 738	19 956	6 739	261	2 955	16 907	17 321	12 142	847	50 433
AVERAGE TAKINGS PER ROOM NIGHT OCCUPIED (\$)										
1999										
<i>March quarter</i>	102.1	73.7	85.9	42.1	50.2	70.6	105.1	128.4	48.5	86.7
2000										
January	99.1	76.7	97.0	46.4	54.8	74.4	108.0	120.9	73.8	87.9
February	107.6	76.3	95.7	46.3	50.8	73.1	108.8	135.0	68.2	91.7
March	112.7	77.1	99.8	44.7	51.9	73.6	110.3	149.5	67.9	94.5
<i>March quarter</i>	107.1	76.7	97.6	45.7	52.5	73.7	109.2	137.0	70.0	91.6
AVERAGE TAKINGS PER AVAILABLE ROOM NIGHT (\$)										
1999										
<i>March quarter</i>	60.8	40.8	56.5	13.0	20.2	39.5	70.3	96.5	18.0	50.2
2000										
January	50.3	39.5	56.6	12.4	21.8	38.6	61.7	73.4	38.3	45.7
February	66.0	40.8	59.3	12.9	19.7	38.9	73.5	108.2	34.5	52.7
March	77.2	46.9	67.2	16.6	23.1	44.8	80.8	135.6	34.1	61.0
<i>March quarter</i>	64.4	42.4	61.1	14.0	21.6	40.8	72.0	105.6	35.7	53.1

(a) Comprising establishments with 15 or more rooms or units (see Explanatory Notes).

STAR GRADING

<i>Period</i>	<i>Licensed hotels with facilities</i>	<i>Motels and guest houses</i>	<i>Serviced apartments</i>	<i>1</i>	<i>2</i>	<i>3</i>	<i>4</i>	<i>5</i>	<i>Ungraded</i>	<i>Total</i>
ESTABLISHMENTS, CAPACITY AND EMPLOYMENT (number)										
March quarter 1999										
Establishments	131	113	60	4	35	127	45	10	83	304
Guest rooms	9 147	5 413	2 957	91	1 039	7 298	3 844	2 173	3 072	17 517
Bed spaces	23 368	14 758	10 471	223	2 639	20 148	11 469	6 522	7 596	48 597
Persons employed	6 891	2 046	1 025	49	587	2 997	2 345	2 376	1 608	9 962
March quarter 2000										
Establishments	134	121	68	3	24	127	61	13	95	323
Guest rooms	9 477	5 766	3 603	65	846	7 276	5 138	2 399	3 122	18 846
Bed spaces	23 571	15 525	12 469	155	2 201	19 896	14 999	6 569	7 745	51 565
Persons employed	6 932	2 013	1 190	38	429	2 808	2 858	2 492	1 510	10 135
ROOM NIGHTS OCCUPIED ('000)										
1999										
<i>March quarter</i>	464.2	250.2	164.5	1.7	42.0	338.6	216.6	142.1	137.9	878.9
2000										
January	152.0	81.9	68.0	0.5	10.8	105.8	91.3	52.2	41.2	301.9
February	159.5	78.0	57.9	0.3	9.8	101.0	95.1	51.8	37.2	295.4
March	178.1	89.5	67.5	0.7	9.9	117.7	108.2	55.8	42.8	335.0
<i>March quarter</i>	489.5	249.4	193.4	1.5	30.5	324.5	294.6	159.9	121.2	932.3
ROOM OCCUPANCY RATES (%)										
1999										
<i>March quarter</i>	56.4	51.4	61.8	21.3	44.9	51.5	62.6	72.7	49.9	55.8
2000										
January	52.1	46.1	61.6	24.2	41.1	46.9	57.3	70.2	44.6	52.0
February	58.0	46.6	55.9	17.9	40.0	47.9	63.8	74.5	41.5	54.1
March	60.6	50.1	60.4	32.8	37.9	52.2	67.9	75.0	44.2	57.3
<i>March quarter</i>	56.9	47.6	59.4	25.1	39.7	49.0	63.0	73.2	43.4	54.5
GUEST NIGHTS ('000)										
1999										
<i>March quarter</i>	688.8	436.5	383.4	2.6	73.4	614.5	364.4	243.0	210.7	1 508.7
2000										
January	256.6	156.0	173.9	1.0	19.7	212.4	179.9	97.4	76.0	586.5
February	235.8	123.9	121.4	0.6	14.8	171.9	151.9	83.7	58.3	481.1
March	265.6	148.3	138.7	0.9	16.0	203.6	171.9	91.0	69.3	552.6
<i>March quarter</i>	758.0	428.2	434.1	2.5	50.4	587.9	503.7	272.1	203.6	1 620.2
BED OCCUPANCY RATES (%)										
1999										
<i>March quarter</i>	32.8	32.9	40.7	13.1	30.9	33.9	35.3	41.4	30.8	34.5
2000										
January	35.3	32.5	45.6	21.6	28.8	34.4	38.7	47.9	33.1	36.9
February	34.5	27.5	33.9	12.5	23.1	29.8	34.9	43.9	26.4	32.3
March	36.3	30.8	35.9	18.6	23.4	33.0	37.0	44.7	28.8	34.6
<i>March quarter</i>	35.4	30.4	38.5	17.7	25.2	32.5	36.9	45.5	29.5	34.6

(a) Comprising establishments with 15 or more rooms or units (see Explanatory Notes).

STAR GRADING

Period	Licensed hotels with facilities	Motels and guest houses	Serviced apartments	1	2	3	4	5	Ungraded	Total
GUEST ARRIVALS ('000)										
1999										
March quarter	295.4	202.0	98.7	1.8	33.9	254.1	132.3	75.7	98.3	596.1
2000										
January	116.3	69.3	43.3	0.9	8.9	89.9	67.2	31.0	31.0	228.9
February	111.0	59.0	33.9	0.4	6.5	75.5	65.8	30.2	25.6	203.9
March	124.2	66.8	41.9	0.5	7.7	86.6	74.2	33.0	30.9	232.9
March quarter	351.5	195.1	119.2	1.8	23.1	252.0	207.2	94.1	87.5	665.8
AVERAGE LENGTH OF STAY (days)										
1999										
March quarter	2.3	2.2	3.9	1.5	2.2	2.4	2.8	3.2	2.1	2.5
2000										
March quarter	2.2	2.2	3.6	1.4	2.2	2.3	2.4	2.9	2.3	2.4
TAKINGS FROM ACCOMMODATION (\$'000)										
1999										
March quarter	47 850	18 742	16 193	82	2 711	26 040	23 771	19 631	10 551	82 786
2000										
January	15 761	6 654	7 329	26	786	8 644	10 227	7 348	2 715	29 744
February	16 889	5 979	5 434	18	665	7 740	10 412	7 306	2 161	28 303
March	18 667	6 745	6 341	25	682	8 925	11 937	7 628	2 557	31 754
March quarter	51 318	19 378	19 105	69	2 133	25 309	32 576	22 281	7 433	89 801
AVERAGE TAKINGS PER ROOM NIGHT OCCUPIED (\$)										
1999										
March quarter	103.1	74.9	98.4	47.2	64.5	76.9	109.7	138.1	76.5	94.2
2000										
January	103.7	81.3	107.7	53.3	73.0	81.7	112.0	140.7	65.9	98.5
February	105.9	76.7	93.9	53.2	67.8	76.6	109.5	140.9	58.1	95.8
March	104.8	75.4	94.0	38.3	68.6	75.8	110.3	136.7	59.8	94.8
March quarter	104.8	77.7	98.8	46.6	69.9	78.0	110.6	139.4	61.3	96.3
AVERAGE TAKINGS PER AVAILABLE ROOM NIGHT (\$)										
1999										
March quarter	58.1	38.5	60.8	10.1	29.0	39.6	68.7	100.4	38.2	52.5
2000										
January	54.0	37.5	66.4	12.9	30.0	38.3	64.2	98.8	29.3	51.3
February	61.5	35.8	52.5	9.5	27.1	36.7	69.9	105.0	24.1	51.9
March	63.5	37.7	56.8	12.5	26.0	39.6	74.9	102.6	26.4	54.4
March quarter	59.6	37.0	58.6	11.7	27.7	38.2	69.7	102.1	26.6	52.5

(a) Comprising establishments with 15 or more rooms or units (see Explanatory Notes).

STAR GRADING

Period	Licensed hotels with facilities	Motels and guest houses	Serviced apartments	1 and ungraded	2	3	4 and 5	Total
ESTABLISHMENTS, CAPACITY AND EMPLOYMENT (number)								
March quarter 1999								
Establishments	54	51	24	8	17	71	33	129
Guest rooms	2 898	1 749	865	246	478	2 609	2 179	5 512
Bed spaces	7 935	5 431	3 321	556	1 217	8 203	6 711	16 687
Persons employed	2 848	714	428	92	256	1 315	2 327	3 990
March quarter 2000								
Establishments	55	51	25	11	15	73	32	131
Guest rooms	2 931	1 747	892	337	415	2 993	1 825	5 570
Bed spaces	8 082	5 415	3 523	925	1 069	9 354	5 672	17 020
Persons employed	3 027	754	439	155	232	2 186	1 647	4 220
ROOM NIGHTS OCCUPIED ('000)								
1999								
March quarter	168.8	104.1	54.9	7.3	20.9	155.2	144.4	327.8
2000								
January	51.2	31.2	19.4	3.8	4.9	54.7	38.5	101.9
February	59.5	33.9	18.7	3.7	5.4	59.9	43.1	112.1
March	62.1	38.3	20.6	3.7	6.0	66.5	44.7	120.9
March quarter	172.8	103.4	58.8	11.2	16.4	181.0	126.3	334.9
ROOM OCCUPANCY RATES (%)								
1999								
March quarter	64.7	66.1	70.5	33.0	48.6	66.1	73.6	66.1
2000								
January	56.4	57.7	70.3	36.4	38.4	58.9	68.0	59.0
February	70.0	66.9	72.5	38.1	45.1	69.0	81.4	69.4
March	69.0	70.7	74.3	35.5	46.7	72.3	79.1	70.4
March quarter	65.0	65.0	72.4	36.7	43.4	66.7	76.0	66.2
GUEST NIGHTS ('000)								
1999								
March quarter	274.7	204.9	124.2	12.9	33.4	310.3	247.3	603.9
2000								
January	94.6	63.1	49.3	10.0	7.8	115.9	73.2	207.0
February	97.2	62.6	39.2	7.8	8.0	111.8	71.5	199.1
March	100.5	70.6	42.2	7.9	9.4	122.9	73.2	213.4
March quarter	292.4	196.3	130.8	25.7	25.2	350.6	218.0	619.4
BED OCCUPANCY RATES (%)								
1999								
March quarter	38.5	41.9	41.6	25.8	30.5	42.0	40.9	40.2
2000								
January	37.8	37.6	45.1	34.8	23.6	40.0	41.6	39.2
February	41.5	39.9	38.4	29.1	25.7	41.2	43.5	40.3
March	40.5	42.1	38.7	27.4	28.3	42.7	41.7	40.6
March quarter	39.9	39.8	40.8	30.5	25.9	41.3	42.2	40.1

(a) Comprising establishments with 15 or more rooms or units (see Explanatory Notes).

STAR GRADING

Period	Licensed hotels with facilities	Motels and guest houses	Serviced apartments	1 and ungraded	2	3	4 and 5	Total
GUEST ARRIVALS ('000)								
1999								
March quarter	159.0	118.1	61.5	5.3	20.9	186.4	126.0	338.6
2000								
January	51.7	35.1	20.4	4.9	5.5	61.2	35.6	107.2
February	54.3	34.3	17.0	3.8	5.2	59.5	37.0	105.5
March	58.3	42.6	19.2	4.1	6.8	69.9	39.3	120.1
March quarter	164.3	112.0	56.6	12.8	17.5	190.5	112.0	332.8
AVERAGE LENGTH OF STAY (days)								
1999								
March quarter	1.7	1.7	2.0	2.5	1.6	1.7	2.0	1.8
2000								
March quarter	1.8	1.8	2.3	2.0	1.4	1.8	1.9	1.9
TAKINGS FROM ACCOMMODATION (\$'000)								
1999								
March quarter	14 215	8 408	5 728	422	943	11 611	15 375	28 351
2000								
January	4 545	2 766	2 179	325	240	4 631	4 294	9 490
February	5 245	2 821	1 951	278	269	4 801	4 668	10 017
March	5 394	3 042	2 104	282	280	5 207	4 770	10 540
March quarter	15 184	8 629	6 233	886	790	14 639	13 732	30 046
AVERAGE TAKINGS PER ROOM NIGHT OCCUPIED (\$)								
1999								
March quarter	84.2	80.8	104.4	57.8	45.1	74.8	106.5	86.5
2000								
January	88.7	88.6	112.0	85.5	48.6	84.7	111.6	93.1
February	88.2	83.2	104.1	74.6	49.6	80.2	108.4	89.3
March	86.9	79.4	102.3	76.1	46.6	78.3	106.6	87.2
March quarter	87.9	83.4	106.1	78.8	48.2	80.9	108.7	89.7
AVERAGE TAKINGS PER AVAILABLE ROOM NIGHT (\$)								
1999								
March quarter	54.5	53.4	73.6	19.0	21.9	49.4	78.4	57.2
2000								
January	50.0	51.1	78.8	31.1	18.7	49.9	75.9	55.0
February	61.7	55.7	75.4	28.5	22.4	55.3	88.2	62.0
March	59.9	56.2	76.1	27.0	21.8	56.6	84.3	61.3
March quarter	57.1	54.3	76.8	28.9	20.9	53.9	82.7	59.4

(a) Comprising establishments with 15 or more rooms or units (see Explanatory Notes).

STAR GRADING

Period	Licensed hotels with facilities	Motels and guest houses	Serviced apartments	1 and Ungraded	2	3	4 and 5	Total
ESTABLISHMENTS, CAPACITY AND EMPLOYMENT (number)								
March quarter 1999								
Establishments	24	48	16	18	23	33	14	88
Guest rooms	1 984	3 025	1 038	555	977	2 598	1 917	6 047
Bed spaces	5 636	9 048	3 219	1 598	2 921	7 801	5 583	17 903
Persons employed	1 691	1 075	365	231	288	1 188	1 424	3 131
March quarter 2000								
Establishments	23	48	18	20	20	33	16	89
Guest rooms	1 938	3 073	1 171	626	803	2 471	2 282	6 182
Bed spaces	5 501	9 319	3 719	1 785	2 446	7 487	6 821	18 539
Persons employed	1 788	1 072	370	235	251	980	1 764	3 230
ROOM NIGHTS OCCUPIED ('000)								
1999								
March quarter	71.9	113.0	44.9	19.0	23.8	109.7	77.3	229.8
2000								
January	24.3	37.7	17.6	5.9	8.0	29.7	36.1	79.7
February	28.9	40.2	18.3	6.5	7.8	30.8	42.3	87.4
March	32.9	47.7	19.4	7.7	9.4	36.6	46.4	100.1
March quarter	86.1	125.7	55.4	20.1	25.2	97.1	124.8	267.2
ROOM OCCUPANCY RATES (%)								
1999								
March quarter	40.3	41.5	48.2	38.0	27.1	47.0	44.8	42.2
2000								
January	40.5	39.9	48.6	31.9	32.1	38.8	51.0	41.8
February	51.4	45.2	53.9	35.7	33.7	43.0	63.9	48.8
March	54.8	50.7	53.5	39.5	39.5	47.8	65.6	52.5
March quarter	48.8	45.2	52.0	35.7	35.0	43.2	60.1	47.7
GUEST NIGHTS ('000)								
1999								
March quarter	113.4	181.1	78.0	30.3	43.1	179.3	119.8	372.5
2000								
January	41.4	61.2	36.1	10.3	13.8	53.4	61.2	138.7
February	46.2	57.3	31.5	10.0	11.7	50.9	62.4	135.0
March	51.3	72.1	33.6	12.5	14.2	60.8	69.6	157.1
March quarter	138.9	190.7	101.1	32.7	39.7	165.2	193.2	430.7
BED OCCUPANCY RATES (%)								
1999								
March quarter	22.4	22.2	27.0	21.1	16.4	25.6	23.8	23.1
2000								
January	24.3	21.4	31.3	19.4	18.2	23.0	28.9	24.2
February	28.9	21.2	29.2	19.3	16.5	23.4	31.5	25.1
March	30.1	25.3	29.1	22.5	19.6	26.2	32.9	27.5
March quarter	27.7	22.6	29.9	20.4	18.1	24.2	31.1	25.6

(a) Comprising establishments with 15 or more rooms or units (see Explanatory Notes).

STAR GRADING

Period	Licensed hotels with facilities	Motels and guest houses	Serviced apartments	1 and Ungraded	2	3	4 and 5	Total
GUEST ARRIVALS ('000)								
1999								
March quarter	68.1	104.6	28.0	13.8	26.7	106.1	54.1	200.8
2000								
January	24.5	31.8	10.9	4.8	7.9	28.5	26.0	67.2
February	29.1	30.4	10.6	4.1	6.4	29.2	30.4	70.1
March	32.3	39.5	11.4	5.1	7.5	34.9	35.7	83.3
March quarter	85.9	101.7	32.9	14.1	21.8	92.5	92.1	220.5
AVERAGE LENGTH OF STAY (days)								
1999								
March quarter	1.7	1.7	2.8	2.2	1.6	1.7	2.2	1.9
2000								
March quarter	1.6	1.9	3.1	2.3	1.8	1.8	2.1	2.0
TAKINGS FROM ACCOMMODATION (\$'000) (b)								
1999								
March quarter	8 117	9 836	4 112	1 155	1 527	10 903	8 481	22 065
2000								
January	3 142	3 067	1 677	397	423	3 034	4 033	7 886
February	3 734	3 352	1 720	414	412	3 143	4 838	8 807
March	4 327	4 011	1 899	505	512	3 795	5 426	10 238
March quarter	11 203	10 431	5 297	1 315	1 347	9 972	14 297	26 931
AVERAGE TAKINGS PER ROOM NIGHT OCCUPIED (\$) (b)								
1999								
March quarter	112.9	87.0	91.6	60.8	64.2	99.4	109.7	96.0
2000								
January	129.1	81.3	95.0	66.7	53.0	102.2	111.8	98.9
February	129.4	83.3	93.9	63.9	52.6	101.9	114.5	100.7
March	131.4	84.0	97.7	65.8	54.4	103.7	116.9	102.3
March quarter	130.1	83.0	95.6	65.4	53.4	102.7	114.6	100.8
AVERAGE TAKINGS PER AVAILABLE ROOM NIGHT (\$) (b)								
1999								
March quarter	45.5	36.1	44.2	23.1	17.4	46.7	49.2	40.6
2000								
January	52.3	32.4	46.2	21.2	17.0	39.6	57.0	41.3
February	66.4	37.6	50.7	22.8	17.7	43.9	73.1	49.1
March	72.0	42.6	52.3	26.0	21.5	49.5	76.7	53.7
March quarter	63.5	37.5	49.7	23.4	18.7	44.3	68.8	48.0

(a) Comprising establishments with 15 or more rooms or units (see Explanatory Notes).

(b) Including bed tax where applicable.

STAR GRADING

<i>Period</i>	<i>Licensed hotels with facilities</i>	<i>Motels and guest houses</i>	<i>Serviced apartments</i>	<i>1 and ungraded</i>	<i>2</i>	<i>3</i>	<i>4 and 5</i>	<i>Total</i>
ESTABLISHMENTS, CAPACITY AND EMPLOYMENT (number)								
March quarter 1999								
Establishments	14	24	16	9	7	22	16	54
Guest rooms	1 767	1 702	1 179	703	404	1 729	1 812	4 648
Bed spaces	4 570	5 400	4 058	1 710	1 655	5 214	5 449	14 028
Persons employed	1 361	554	434	197	109	731	1 312	2 349
March quarter 2000								
Establishments	15	25	19	9	9	20	21	59
Guest rooms	1 878	1 703	1 378	619	587	1 401	2 352	4 959
Bed spaces	4 891	5 324	4 712	1 980	1 914	4 320	6 713	14 927
Persons employed	1 317	591	415	213	175	474	1 461	2 323
ROOM NIGHTS OCCUPIED ('000)								
1999								
<i>March quarter</i>	95.3	78.7	67.1	27.5	17.3	85.0	111.4	241.1
2000								
January	26.4	23.9	28.8	6.6	9.4	22.5	40.6	79.1
February	32.8	26.7	29.2	9.7	10.0	23.7	45.4	88.8
March	42.1	30.3	31.1	12.6	10.7	26.1	54.0	103.4
<i>March quarter</i>	101.3	80.9	89.1	28.8	30.1	72.3	140.1	271.3
ROOM OCCUPANCY RATES (%)								
1999								
<i>March quarter</i>	59.9	51.4	63.2	43.4	47.5	54.6	68.3	57.6
2000								
January	50.6	45.3	67.4	50.3	51.5	51.8	55.7	53.6
February	60.3	54.1	73.1	53.9	58.7	58.2	66.6	61.7
March	72.3	57.3	72.7	65.4	59.1	60.1	74.1	67.3
<i>March quarter</i>	61.5	52.2	71.0	57.3	56.4	56.7	65.4	60.9
GUEST NIGHTS ('000)								
1999								
<i>March quarter</i>	144.9	136.4	121.2	39.5	38.2	146.7	177.9	402.4
2000								
January	43.9	45.5	58.9	12.7	18.1	46.2	71.3	148.3
February	46.4	42.0	47.4	14.7	15.8	41.5	63.7	135.7
March	58.1	50.6	50.9	19.8	18.5	45.7	75.6	159.7
<i>March quarter</i>	148.4	138.1	157.1	47.2	52.3	133.5	210.6	443.7
BED OCCUPANCY RATES (%)								
1999								
<i>March quarter</i>	35.2	28.1	33.2	25.7	25.7	31.3	36.3	31.9
2000								
January	33.1	27.6	40.3	29.9	30.4	34.5	34.3	33.4
February	32.7	27.2	34.7	25.6	28.5	33.2	32.7	31.4
March	38.3	30.7	34.8	32.3	31.1	34.2	36.3	34.5
<i>March quarter</i>	34.8	28.5	36.6	29.3	30.0	34.0	34.5	33.1

(a) Comprising establishments with 15 or more rooms or units (see Explanatory Notes).

STAR GRADING

<i>Period</i>	<i>Licensed hotels with facilities</i>	<i>Motels and guest houses</i>	<i>Serviced apartments</i>	<i>1 and ungraded</i>	<i>2</i>	<i>3</i>	<i>4 and 5</i>	<i>Total</i>
GUEST ARRIVALS ('000)								
1999								
<i>March quarter</i>	70.6	70.6	38.8	15.5	19.0	68.7	76.7	180.0
2000								
January	23.4	24.2	16.6	3.3	7.5	23.8	29.5	64.2
February	25.9	23.2	11.5	4.5	6.2	20.5	29.3	60.5
March	32.8	29.8	12.7	6.0	7.8	22.0	39.4	75.2
<i>March quarter</i>	82.1	77.1	40.8	13.8	21.6	66.3	98.3	199.9
AVERAGE LENGTH OF STAY (days)								
1999								
<i>March quarter</i>	2.1	1.9	3.1	2.5	2.0	2.1	2.3	2.2
2000								
<i>March quarter</i>	1.8	1.8	3.9	3.4	2.4	2.0	2.1	2.2
TAKINGS FROM ACCOMMODATION (\$'000)								
1999								
<i>March quarter</i>	10 942	5 945	6 834	1 911	1 214	6 997	13 599	23 721
2000								
January	3 036	1 932	3 022	578	652	1 821	4 939	7 990
February	3 706	2 101	3 017	930	625	1 860	5 408	8 824
March	4 986	2 359	3 146	1 207	654	1 998	6 633	10 491
<i>March quarter</i>	11 727	6 392	9 185	2 714	1 931	5 679	16 980	27 305
AVERAGE TAKINGS PER ROOM NIGHT OCCUPIED (\$)								
1999								
<i>March quarter</i>	114.8	75.5	101.9	69.6	70.2	82.4	122.1	98.4
2000								
January	115.2	80.8	104.9	87.5	69.6	81.0	121.6	101.0
February	112.8	78.7	103.3	96.2	62.6	78.6	119.0	99.4
March	118.5	77.9	101.3	96.2	60.8	76.5	122.8	101.4
<i>March quarter</i>	115.8	79.0	103.1	94.2	64.1	78.6	121.2	100.7
AVERAGE TAKINGS PER AVAILABLE ROOM NIGHT (\$)								
1999								
<i>March quarter</i>	68.8	38.8	64.4	30.2	33.4	45.0	83.4	56.7
2000								
January	58.2	36.6	70.7	44.0	35.8	41.9	67.7	54.1
February	68.0	42.5	75.5	51.8	36.7	45.8	79.3	61.4
March	85.6	44.7	73.7	62.9	35.9	46.0	91.0	68.2
<i>March quarter</i>	71.2	41.2	73.3	54.0	36.1	44.5	79.3	61.3

(a) Comprising establishments with 15 or more rooms or units (see Explanatory Notes).

Period	South Coast	Illawarra	Sydney	Snowy Mountains	Capital Country	Murray	Riverina	Central West
ESTABLISHMENTS, CAPACITY AND EMPLOYMENT (number)								
March quarter 1999								
Establishments	83	55	269	57	45	99	70	117
Guest rooms	2 036	1 772	28 468	2 230	1 447	2 830	1 949	3 336
Bed spaces	6 242	5 310	72 712	8 575	4 282	9 144	5 825	10 363
Persons employed	599	1 060	20 930	341	480	948	674	1 276
March quarter 2000								
Establishments	81	55	278	59	45	98	69	122
Guest rooms	1 984	1 805	30 492	2 357	1 438	2 849	1 946	3 526
Bed spaces	6 184	5 361	77 997	9 044	4 328	9 199	5 751	11 027
Persons employed	630	1 115	22 564	363	463	945	681	1 253
ROOM NIGHTS OCCUPIED ('000)								
1999								
March quarter	101.3	84.7	1 828.8	31.2	60.2	136.4	89.0	144.4
2000								
January	38.8	29.2	576.8	13.0	18.9	43.5	28.9	50.1
February	29.7	28.9	685.5	8.4	17.5	38.5	28.5	45.9
March	32.8	32.1	717.6	11.0	22.5	52.9	35.0	56.1
March quarter	101.3	90.1	1 980.0	32.4	59.0	134.8	92.4	152.1
ROOM OCCUPANCY RATES (%)								
1999								
March quarter	55.3	53.8	72.5	15.5	46.2	53.6	51.1	48.1
2000								
January	63.1	52.1	61.6	18.0	42.5	49.2	47.9	45.9
February	51.7	55.1	77.8	12.6	42.0	46.6	50.5	44.9
March	53.3	57.3	76.0	15.3	50.5	59.9	58.0	51.3
March quarter	56.1	54.8	71.7	15.4	45.1	52.0	52.2	47.4
GUEST NIGHTS ('000)								
1999								
March quarter	206.5	152.7	2 997.8	62.6	106.5	262.2	145.3	257.2
2000								
January	87.3	60.1	1 019.3	30.7	39.0	92.3	52.9	103.5
February	55.3	47.9	1 082.4	15.8	29.3	68.4	43.9	73.2
March	61.5	51.0	1 123.4	20.4	37.7	94.8	55.9	93.8
March quarter	204.1	159.0	3 225.0	66.9	106.0	255.5	152.7	270.5
GUEST ARRIVALS ('000)								
1999								
March quarter	117.0	82.1	1 160.6	29.9	73.4	149.3	107.4	188.4
2000								
January	45.5	34.6	390.5	13.2	27.7	50.1	40.7	79.0
February	32.1	28.5	439.9	7.7	20.1	41.0	31.9	51.8
March	35.1	30.0	452.9	10.2	27.1	53.5	39.7	65.9
March quarter	112.7	93.2	1 283.3	31.1	74.9	144.6	112.3	196.7
TAKINGS FROM ACCOMMODATION (\$'000)								
1999								
March quarter	7 351	8 237	248 997	2 172	3 954	9 431	5 658	9 335
2000								
January	3 289	3 004	81 785	1 047	1 329	3 312	1 953	3 454
February	2 014	2 931	96 878	567	1 148	2 696	1 902	2 990
March	2 183	3 318	100 711	711	1 524	3 763	2 322	3 692
March quarter	7 486	9 253	279 374	2 324	4 001	9 770	6 176	10 136

<i>Period</i>	<i>Hunter</i>	<i>Mid North Coast</i>	<i>Holiday Coast</i>	<i>Northern Rivers</i>	<i>New England/ North West</i>	<i>Outback</i>	<i>Central Coast</i>	<i>Blue Mountains</i>
ESTABLISHMENTS, CAPACITY AND EMPLOYMENT (number)								
March quarter 1999								
Establishments	96	87	46	75	89	37	37	32
Guest rooms	3 440	2 219	1 768	1 986	2 453	907	1 342	1 259
Bed spaces	11 239	6 877	5 792	6 278	7 406	2 653	4 613	3 708
Persons employed	2 142	773	1 011	598	825	250	915	1 002
March quarter 2000								
Establishments	95	84	46	77	88	37	38	34
Guest rooms	3 541	2 165	1 756	2 159	2 425	891	1 338	1 295
Bed spaces	11 504	6 808	5 960	6 917	7 286	2 606	4 519	3 762
Persons employed	2 104	768	1 119	690	819	270	950	1 077
ROOM NIGHTS OCCUPIED ('000)								
1999								
<i>March quarter</i>	165.7	110.3	97.4	86.4	112.6	33.2	72.6	59.2
2000								
January	56.9	43.3	40.5	37.7	38.6	10.4	27.7	18.6
February	53.6	30.0	27.9	29.7	32.7	9.4	22.7	18.0
March	56.7	33.1	32.3	31.7	37.5	12.5	22.9	21.7
<i>March quarter</i>	167.2	106.4	100.7	99.1	108.8	32.3	73.2	58.3
ROOM OCCUPANCY RATES (%)								
1999								
<i>March quarter</i>	54.1	55.8	61.2	48.6	51.0	40.7	60.1	52.3
2000								
January	52.0	64.6	74.4	56.4	51.4	37.8	66.8	46.4
February	52.1	47.7	54.8	47.4	46.4	36.3	58.4	48.0
March	51.7	49.4	59.3	47.4	49.9	45.1	55.1	54.1
<i>March quarter</i>	51.9	54.0	63.0	50.4	49.3	39.8	60.1	49.5
GUEST NIGHTS ('000)								
1999								
<i>March quarter</i>	312.1	224.8	197.5	171.1	198.1	55.3	159.7	110.7
2000								
January	119.9	101.1	103.6	85.6	78.9	18.4	68.4	38.0
February	91.4	54.9	55.0	52.9	50.5	14.2	41.9	29.8
March	97.0	61.3	65.6	56.4	60.8	19.8	41.1	37.9
<i>March quarter</i>	308.3	217.3	224.2	194.8	190.3	52.5	151.4	105.8
GUEST ARRIVALS ('000)								
1999								
<i>March quarter</i>	168.4	136.7	101.5	103.3	136.7	36.4	75.8	55.5
2000								
January	60.1	55.3	50.2	47.7	54.1	12.8	25.4	19.7
February	53.9	34.3	26.9	33.3	35.3	9.4	19.7	16.6
March	56.7	37.9	33.5	35.8	43.9	12.8	20.3	19.8
<i>March quarter</i>	170.7	127.5	110.6	116.7	133.4	35.0	65.4	56.1
TAKINGS FROM ACCOMMODATION (\$'000)								
1999								
<i>March quarter</i>	17 271	8 522	9 149	6 439	7 497	1 877	8 058	6 726
2000								
January	6 708	4 032	4 669	3 331	2 887	610	3 300	2 257
February	5 689	2 220	2 212	2 199	2 103	542	2 504	2 223
March	6 011	2 461	2 540	2 325	2 427	732	2 529	2 837
<i>March quarter</i>	18 408	8 714	9 420	7 854	7 417	1 884	8 334	7 317

Period	Melbourne	Wimmera	Mallee	Western	Western Grampians	Bendigo Loddon	Peninsula	Central Murray	Goulburn	High Country
ESTABLISHMENTS, CAPACITY AND EMPLOYMENT (number)										
March quarter 1999										
Establishments	213	6	42	56	21	28	20	21	27	73
Guest rooms	17 019	117	1 275	1 499	496	698	661	558	677	1 944
Bed spaces	42 996	332	3 888	4 725	1 441	2 147	1 841	1 600	2 006	7 039
Persons employed	15 422	30	492	743	200	320	378	163	349	568
March quarter 2000										
Establishments	230	6	43	56	20	31	20	21	27	72
Guest rooms	17 994	117	1 300	1 512	484	779	681	561	698	1 924
Bed spaces	45 252	335	3 964	4 657	1 394	2 375	1 800	1 705	2 070	7 035
Persons employed	15 583	29	486	788	204	362	403	161	371	572
ROOM NIGHTS OCCUPIED ('000)										
1999										
March quarter	1 112.2	3.2	49.4	92.7	20.9	32.1	32.0	25.8	30.7	49.8
2000										
January	367.4	1.2	17.9	33.3	5.7	11.4	10.4	9.1	10.5	17.5
February	389.3	1.0	15.9	27.3	6.5	11.3	9.8	7.4	10.3	13.4
March	445.2	1.6	19.6	29.2	8.7	14.5	10.9	9.9	11.6	18.1
March quarter	1 201.9	3.9	53.4	89.8	20.9	37.2	31.1	26.4	32.3	49.1
ROOM OCCUPANCY RATES (%)										
1999										
March quarter	72.8	30.5	43.0	68.7	46.7	51.0	53.8	51.3	50.3	28.5
2000										
January	65.9	33.4	44.5	71.0	37.9	49.4	49.5	52.4	48.5	29.4
February	74.6	30.9	42.1	62.2	46.6	52.7	49.6	45.4	50.7	24.0
March	79.8	45.3	48.7	62.3	58.1	60.2	51.6	57.2	53.5	30.4
March quarter	73.4	36.6	45.1	65.3	47.5	54.2	50.2	51.8	50.9	28.0
GUEST NIGHTS ('000)										
1999										
March quarter	1 765.1	5.7	85.3	194.8	35.1	59.0	62.1	47.4	50.2	109.9
2000										
January	639.5	2.1	35.7	75.3	10.9	23.0	18.7	19.1	18.4	38.8
February	599.4	1.5	25.0	51.4	10.1	18.8	15.3	13.6	16.1	26.0
March	692.5	2.6	31.4	54.7	14.2	25.8	16.2	17.7	18.3	35.2
March quarter	1 931.4	6.2	92.2	181.5	35.1	67.6	50.1	50.4	52.8	100.0
GUEST ARRIVALS ('000)										
1999										
March quarter	724.6	4.7	53.5	106.5	27.4	41.1	30.4	28.4	32.8	58.6
2000										
January	235.4	1.7	19.9	42.1	8.8	15.7	9.0	12.0	11.8	18.1
February	248.8	1.2	14.9	33.0	7.7	13.5	8.6	8.6	11.4	14.0
March	283.2	1.9	19.5	35.8	10.0	17.6	9.3	11.0	12.7	19.1
March quarter	767.5	4.9	54.4	110.9	26.5	46.7	26.9	31.6	35.9	51.2
TAKINGS FROM ACCOMMODATION (\$'000)										
1999										
March quarter	150 110	164	3 165	8 194	1 363	2 443	3 788	1 854	2 021	3 916
2000										
January	48 782	63	1 189	3 308	406	872	1 380	708	709	1 468
February	51 630	52	1 041	2 371	460	867	1 248	552	695	993
March	65 189	82	1 257	2 495	619	1 154	1 362	720	808	1 339
March quarter	165 602	197	3 487	8 174	1 486	2 892	3 990	1 980	2 212	3 800

Period	Lakes	Gippsland	Melbourne East	Geelong	Macedon	Spa Country	Ballarat	Central Highlands	Upper Yarra	Murray East	Phillip Island
ESTABLISHMENTS, CAPACITY AND EMPLOYMENT (number)											
March quarter 1999											
Establishments	24	37	13	22	3	5	24	15	13	14	9
Guest rooms	662	1 054	406	694	91	119	806	359	425	320	280
Bed spaces	1 982	3 060	947	2 024	195	354	2 596	1 127	1 133	982	1 005
Persons employed	233	359	405	363	64	83	397	94	249	79	138
March quarter 2000											
Establishments	25	34	15	22	4	5	24	15	13	14	10
Guest rooms	671	1 012	467	696	115	118	798	359	424	321	301
Bed spaces	1 987	3 039	1 084	2 129	243	320	2 501	1 130	1 077	973	1 064
Persons employed	256	314	441	381	85	74	391	102	262	78	155
ROOM NIGHTS OCCUPIED ('000)											
1999											
March quarter	27.5	44.8	14.1	40.8	2.9	5.3	37.2	14.4	13.7	14.6	16.8
2000											
January	11.6	10.5	4.7	12.7	0.5	1.6	11.2	4.0	3.6	4.0	7.0
February	8.9	12.4	6.2	11.9	1.5	1.7	11.7	3.8	4.2	3.5	5.8
March	10.1	13.8	6.3	13.7	1.7	2.4	15.0	5.3	5.4	5.5	5.2
March quarter	30.6	36.6	17.2	38.3	3.7	5.7	37.9	13.1	13.2	13.0	18.0
ROOM OCCUPANCY RATES (%)											
1999											
March quarter	46.1	47.2	38.7	65.3	35.8	49.7	51.3	44.5	35.9	50.8	66.8
2000											
January	55.8	33.4	32.4	58.7	14.5	44.9	45.2	35.7	27.6	40.5	74.8
February	47.4	42.3	45.7	59.0	46.0	49.9	50.4	36.5	34.0	37.4	66.0
March	48.5	43.9	43.6	63.5	47.1	64.4	60.8	48.0	41.1	54.9	56.1
March quarter	50.7	39.8	40.5	60.5	35.6	53.1	52.2	40.2	34.2	44.4	65.6
GUEST NIGHTS ('000)											
1999											
March quarter	57.0	64.9	20.3	73.4	3.4	9.2	77.9	27.7	20.7	27.3	40.6
2000											
January	26.0	17.8	7.2	24.7	0.8	3.1	26.4	8.7	6.4	8.3	19.7
February	15.5	17.7	8.8	19.0	1.8	2.9	21.7	7.7	6.2	5.8	11.4
March	18.4	21.0	9.0	23.3	2.0	3.7	30.5	10.6	8.3	9.5	11.6
March quarter	59.8	56.5	25.0	66.9	4.6	9.6	78.5	27.0	20.9	23.6	42.7
GUEST ARRIVALS ('000)											
1999											
March quarter	38.3	35.5	11.5	39.9	2.2	4.9	48.5	18.3	10.9	17.1	23.4
2000											
January	15.5	10.5	4.4	14.2	0.5	1.5	17.2	5.8	3.4	5.7	10.3
February	10.0	10.1	5.1	11.0	1.0	1.2	13.5	5.3	3.2	3.9	6.5
March	11.7	12.6	5.3	13.6	1.3	1.7	18.2	6.7	3.9	6.2	7.5
March quarter	37.3	33.2	14.8	38.9	2.9	4.4	49.0	17.8	10.5	15.8	24.3
TAKINGS FROM ACCOMMODATION (\$'000)											
1999											
March quarter	1 922	2 913	1 492	3 632	313	609	2 893	1 001	1 496	793	1 494
2000											
January	896	727	447	1 153	55	231	931	297	476	264	721
February	572	836	618	1 067	172	238	969	261	644	223	500
March	643	953	640	1 279	190	296	1 226	378	769	341	441
March quarter	2 111	2 516	1 705	3 499	417	765	3 126	935	1 889	828	1 661

Period	Gold Coast	Brisbane	Sunshine Coast	Hervey Bay/ Maryborough	Darling Downs	Bundaberg
ESTABLISHMENTS, CAPACITY AND EMPLOYMENT (number)						
March quarter 1999						
Establishments	144	155	93	44	60	23
Guest rooms	12 887	9 244	4 101	1 587	1 506	549
Bed spaces	43 303	26 721	14 126	5 432	4 726	1 664
Persons employed	8 491	6 698	2 409	702	562	189
March quarter 2000						
Establishments	146	161	95	44	61	24
Guest rooms	13 104	10 048	4 211	1 630	1 581	592
Bed spaces	43 450	28 415	14 475	5 545	4 950	1 771
Persons employed	8 534	6 999	2 416	725	578	199
ROOM NIGHTS OCCUPIED ('000)						
1999						
March quarter	719.1	474.5	185.5	68.0	65.3	26.2
2000						
January	302.5	144.7	87.8	26.8	20.3	8.8
February	230.2	163.4	55.4	21.2	21.4	9.5
March	240.5	184.1	59.3	23.0	24.1	9.9
March quarter	773.2	492.1	202.5	71.0	65.8	28.3
ROOM OCCUPANCY RATES (%)						
1999						
March quarter	62.0	57.0	50.9	47.6	48.2	53.0
2000						
January	74.5	47.3	67.3	53.1	41.4	48.2
February	60.6	56.1	45.4	44.8	46.7	55.3
March	59.3	59.1	45.4	45.5	49.2	54.2
March quarter	64.9	54.2	52.8	47.8	45.7	52.5
GUEST NIGHTS ('000)						
1999						
March quarter	1 597.3	761.3	468.1	139.1	116.5	45.5
2000						
January	759.7	258.0	238.2	66.4	39.6	16.9
February	509.6	247.8	132.2	43.2	34.9	15.8
March	536.7	278.3	142.1	47.8	39.4	15.9
March quarter	1 805.9	784.1	512.5	157.5	113.9	48.7
GUEST ARRIVALS ('000)						
1999						
March quarter	448.9	346.9	129.2	68.8	79.7	30.8
2000						
January	177.1	103.4	58.6	29.9	28.6	11.5
February	145.9	107.2	43.7	22.8	23.4	10.3
March	152.3	122.0	46.8	25.4	27.3	10.6
March quarter	475.3	332.7	149.2	78.1	79.3	32.3
TAKINGS FROM ACCOMMODATION (\$'000)						
1999						
March quarter	72 013	44 354	21 992	4 971	4 186	1 931
2000						
January	32 540	13 027	11 587	2 177	1 305	666
February	21 653	15 001	6 048	1 448	1 360	701
March	22 747	17 080	6 682	1 520	1 548	678
March quarter	76 940	45 107	24 318	5 145	4 213	2 045

<i>Period</i>	<i>Fitzroy</i>	<i>Mackay</i>	<i>Whitsundays</i>	<i>Northern</i>	<i>Tropical North Queensland</i>	<i>Outback</i>	<i>Great Barrier Reef</i>
ESTABLISHMENTS, CAPACITY AND EMPLOYMENT (number)							
March quarter 1999							
Establishments	79	52	17	55	148	50	20
Guest rooms	2 933	1 668	2 312	2 407	10 005	1 276	2 782
Bed spaces	9 525	4 958	8 686	7 169	31 014	3 596	9 574
Persons employed	1 618	922	1 899	1 463	5 165	509	2 581
March quarter 2000							
Establishments	81	52	18	55	150	53	19
Guest rooms	3 084	1 695	2 298	2 398	9 779	1 401	2 709
Bed spaces	9 921	5 039	8 262	6 978	30 090	3 949	9 289
Persons employed	1 626	907	2 012	1 473	5 242	520	2 560
ROOM NIGHTS OCCUPIED ('000)							
1999							
<i>March quarter</i>	134.4	79.9	118.3	118.8	441.3	58.0	141.7
2000							
January	43.6	26.1	48.2	34.7	141.3	15.1	56.4
February	41.4	26.5	32.4	35.6	140.9	17.3	40.2
March	48.0	27.7	38.5	40.9	158.3	21.1	45.9
<i>March quarter</i>	133.0	80.3	119.0	111.2	440.5	53.5	142.4
ROOM OCCUPANCY RATES (%)							
1999							
<i>March quarter</i>	50.9	53.3	56.9	54.8	49.2	50.5	56.6
2000							
January	46.5	49.6	67.6	46.6	46.8	35.3	67.7
February	47.0	53.8	48.6	51.2	50.0	43.4	52.2
March	50.4	52.8	54.0	55.0	52.5	48.6	55.8
<i>March quarter</i>	48.0	52.0	56.9	50.9	49.8	42.4	58.8
GUEST NIGHTS ('000)							
1999							
<i>March quarter</i>	228.8	137.6	263.9	185.7	854.5	81.7	317.1
2000							
January	86.3	54.6	117.3	61.7	284.3	23.9	137.6
February	62.9	40.2	66.7	51.4	258.4	23.1	80.7
March	73.6	42.7	79.2	59.7	295.5	28.8	92.6
<i>March quarter</i>	222.7	137.5	263.2	172.9	838.3	75.8	310.9
GUEST ARRIVALS ('000)							
1999							
<i>March quarter</i>	119.5	60.3	76.9	89.6	263.1	43.1	83.2
2000							
January	40.4	24.3	30.0	31.1	85.1	14.2	33.8
February	32.1	20.8	19.3	26.1	82.7	12.6	24.1
March	36.7	23.0	22.2	32.0	88.9	15.3	27.0
<i>March quarter</i>	109.2	68.2	71.5	89.3	256.7	42.1	84.9
TAKINGS FROM ACCOMMODATION (\$'000)							
1999							
<i>March quarter</i>	10 505	5 715	18 995	8 554	47 729	3 452	25 836
2000							
January	3 997	2 003	9 113	2 773	15 310	929	11 871
February	3 250	1 644	5 474	2 728	14 308	1 081	6 983
March	3 696	1 829	6 252	3 241	16 231	1 320	8 030
<i>March quarter</i>	10 943	5 476	20 839	8 742	45 849	3 329	26 884

Period	South East	Murraylands	Fleurieu Peninsula	Adelaide	Barossa Valley	Riverland	Mid North	Flinders Ranges	Far North	Eyre Peninsula	Yorke Peninsula	Kangaroo Island
ESTABLISHMENTS, CAPACITY AND EMPLOYMENT (number)												
March quarter 1999												
Establishments	32	4	13	89	7	14	5	19	7	25	7	6
Guest rooms	911	96	451	5 633	210	525	144	637	354	785	133	181
Bed spaces	2 775	301	1 389	15 367	645	1 558	425	1 969	1 010	2 325	388	550
Persons employed	435	46	254	3 888	181	551	93	250	185	560	60	108
March quarter 2000												
Establishments	32	4	14	92	8	14	5	18	8	25	8	6
Guest rooms	929	96	466	5 880	351	499	144	586	388	791	149	167
Bed spaces	2 784	299	1 447	16 604	1 033	1 513	447	1 769	1 086	2 295	437	468
Persons employed	429	41	274	3 808	271	517	96	231	175	540	62	107
ROOM NIGHTS OCCUPIED ('000)												
1999												
March quarter	43.3	3.5	20.0	336.4	10.4	21.5	7.2	27.1	9.7	32.6	4.5	8.5
2000												
January	15.2	1.2	8.1	104.3	5.8	6.0	2.4	7.3	3.7	9.3	2.1	3.0
February	13.6	1.3	6.1	116.7	5.0	5.4	2.2	7.0	3.2	9.4	1.6	2.3
March	17.7	1.4	6.5	139.3	5.2	7.2	2.7	8.3	4.1	11.5	1.8	3.0
March quarter	46.5	3.8	20.7	360.3	16.0	18.6	7.3	22.5	11.1	30.2	5.5	8.3
ROOM OCCUPANCY RATES (%)												
1999												
March quarter	52.8	40.7	49.3	66.4	54.9	45.6	55.9	47.3	30.4	46.1	37.4	52.0
2000												
January	52.8	41.1	56.3	57.2	53.0	38.9	52.9	40.2	31.2	37.9	45.5	57.3
February	50.4	45.2	44.9	68.4	49.5	37.1	53.3	41.0	28.9	42.3	36.7	48.0
March	61.5	45.4	45.0	76.4	47.6	46.5	59.8	45.4	33.8	48.3	39.1	58.3
March quarter	55.0	43.9	48.8	67.3	50.1	40.9	55.4	42.2	31.3	42.8	40.5	54.7
GUEST NIGHTS ('000)												
1999												
March quarter	75.2	6.3	46.2	557.4	19.3	35.0	13.4	43.2	15.9	50.1	8.6	17.3
2000												
January	29.4	3.1	21.4	193.6	11.0	11.6	4.8	13.0	6.1	16.3	4.2	6.3
February	21.8	2.4	13.1	183.5	8.9	8.4	3.7	11.6	4.7	13.2	2.3	4.3
March	28.2	2.4	14.3	209.8	9.6	11.4	4.5	13.5	5.9	15.9	2.8	5.7
March quarter	79.4	8.0	48.9	586.9	29.6	31.4	13.0	38.1	16.7	45.4	9.3	16.3
GUEST ARRIVALS ('000)												
1999												
March quarter	49.5	4.6	26.7	235.8	10.6	23.1	8.9	28.1	10.5	32.2	4.7	9.9
2000												
January	19.5	1.9	11.3	76.3	8.4	7.0	3.1	8.9	4.1	10.7	2.5	3.1
February	15.0	1.5	7.8	78.8	6.2	5.8	2.6	7.5	2.9	8.5	1.6	2.4
March	18.6	1.7	8.3	87.3	6.8	7.8	3.2	8.7	3.8	9.8	1.9	3.2
March quarter	53.1	5.1	27.3	242.4	21.4	20.6	8.9	25.1	10.8	29.0	6.0	8.8
TAKINGS FROM ACCOMMODATION (\$'000)												
1999												
March quarter	2 712	199	1 564	33 085	747	1 324	504	1 734	772	1 923	272	654
2000												
January	1 041	70	717	10 155	529	391	167	480	260	581	124	283
February	868	67	473	11 950	493	346	140	472	237	603	88	191
March	1 150	71	490	14 884	542	473	184	585	297	701	89	242
March quarter	3 058	209	1 680	36 989	1 564	1 210	490	1 537	793	1 884	300	717

Period	South East	Goldfields	Midwest	Gascoyne	Pilbara	Kimberley	Perth	Peel	South West	Great Southern	Wheatbelt
ESTABLISHMENTS, CAPACITY AND EMPLOYMENT (number)											
March quarter 1999											
Establishments	10	22	24	9	18	26	97	5	52	19	22
Guest rooms	295	919	795	411	1 106	1 426	8 961	253	2 064	699	588
Bed spaces	881	2 400	2 064	1 146	2 519	4 195	24 637	937	6 389	1 997	1 432
Persons employed	133	424	346	180	476	629	5 863	122	1 299	276	214
March quarter 2000											
Establishments	10	23	25	11	20	27	100	5	58	19	25
Guest rooms	295	1 031	838	504	1 421	1 448	9 290	251	2 370	691	707
Bed spaces	866	2 630	2 194	1 360	3 044	4 241	25 372	894	7 317	1 990	1 657
Persons employed	134	423	373	192	451	631	5 836	127	1 384	318	266
ROOM NIGHTS OCCUPIED ('000)											
1999											
March quarter	15.5	41.9	29.1	13.5	44.4	37.2	529.2	13.3	108.1	30.0	16.8
2000											
January	5.3	11.9	11.2	4.6	14.4	13.1	176.3	6.1	42.6	11.0	5.5
February	4.4	11.3	10.3	4.2	14.9	11.7	181.9	4.2	36.7	9.1	6.7
March	4.6	13.9	11.5	4.5	16.4	16.2	204.8	4.0	39.6	11.8	7.9
March quarter	14.3	37.1	33.0	13.3	45.7	41.0	562.9	14.3	118.8	31.9	20.1
ROOM OCCUPANCY RATES (%)											
1999											
March quarter	58.3	50.6	40.7	36.6	44.6	28.9	65.6	58.4	58.2	47.7	31.8
2000											
January	58.5	37.2	43.1	29.4	32.6	29.2	61.5	77.9	58.3	51.4	28.2
February	51.2	37.8	42.3	29.0	36.2	27.9	67.7	57.7	53.3	45.4	32.6
March	49.8	43.4	44.2	28.6	37.2	36.1	71.1	51.5	53.8	54.9	36.1
March quarter	53.2	39.5	43.2	29.0	35.3	31.1	66.8	62.5	55.2	50.7	32.5
GUEST NIGHTS ('000)											
1999											
March quarter	28.4	59.1	49.1	22.8	57.8	65.2	892.6	29.0	223.4	56.7	24.6
2000											
January	11.8	19.2	20.5	8.7	18.1	24.4	328.8	16.0	107.7	23.1	8.2
February	6.8	15.1	16.0	6.4	17.5	18.6	295.7	8.9	72.5	14.6	9.0
March	7.6	18.6	18.0	6.8	19.6	27.8	337.2	8.6	78.3	19.4	10.8
March quarter	26.1	52.9	54.5	21.9	55.2	70.8	961.8	33.5	258.4	57.1	27.9
GUEST ARRIVALS ('000)											
1999											
March quarter	13.6	29.1	27.4	10.6	27.2	19.0	313.9	14.3	93.6	31.0	16.5
2000											
January	5.2	11.5	9.5	3.9	7.7	5.8	119.8	7.1	41.4	12.1	5.1
February	3.8	8.3	8.1	3.1	7.3	5.7	115.7	4.9	32.6	8.7	5.7
March	3.4	9.3	9.1	2.8	7.6	7.2	133.0	4.9	38.3	10.6	6.9
March quarter	12.3	29.1	26.6	9.8	22.6	18.7	368.5	16.9	112.3	31.4	17.6
TAKINGS FROM ACCOMMODATION (\$'000)											
1999											
March quarter	1 016	3 170	1 888	963	3 222	3 186	55 496	1 177	9 420	2 336	912
2000											
January	376	875	769	380	1 024	1 241	18 542	603	4 669	968	297
February	289	863	679	319	1 069	1 040	19 262	380	3 334	706	361
March	314	1 065	749	294	1 159	1 317	21 626	371	3 532	887	438
March quarter	979	2 803	2 198	994	3 253	3 598	59 430	1 354	11 535	2 562	1 096

Period	Greater Hobart	Southern	East Coast	Northern	Greater Launceston	North West	West Coast
ESTABLISHMENTS, CAPACITY AND EMPLOYMENT (number)							
March quarter 1999							
Establishments	38	14	4	2	30	32	9
Guest rooms	2 091	462	n.p.	n.p.	1 356	980	400
Bed spaces	6 035	1 590	n.p.	n.p.	4 401	2 841	1 150
Persons employed	1 678	256	n.p.	n.p.	1 155	573	208
March quarter 2000							
Establishments	39	14	4	2	30	32	10
Guest rooms	2 129	460	n.p.	n.p.	1 363	984	412
Bed spaces	6 135	1 588	n.p.	n.p.	4 466	2 934	1 230
Persons employed	1 814	267	n.p.	n.p.	1 258	554	205
ROOM NIGHTS OCCUPIED ('000)							
1999							
March quarter	137.4	26.5	n.p.	n.p.	81.0	48.0	24.3
2000							
January	44.0	9.1	n.p.	n.p.	24.4	13.8	6.9
February	49.2	8.6	n.p.	n.p.	27.8	16.0	7.1
March	51.4	9.1	n.p.	n.p.	29.8	17.8	8.8
March quarter	144.6	26.8	n.p.	n.p.	82.0	47.6	22.8
ROOM OCCUPANCY RATES (%)							
1999							
March quarter	73.0	63.7	n.p.	n.p.	66.3	54.4	67.4
2000							
January	66.6	63.7	n.p.	n.p.	57.8	45.1	54.4
February	79.7	64.4	n.p.	n.p.	70.3	56.1	59.0
March	79.0	63.7	n.p.	n.p.	70.6	58.5	69.0
March quarter	75.0	63.9	n.p.	n.p.	66.2	53.2	60.9
GUEST NIGHTS ('000)							
1999							
March quarter	234.8	56.8	n.p.	n.p.	155.4	87.3	46.7
2000							
January	88.5	20.7	n.p.	n.p.	50.3	26.7	12.9
February	85.7	17.1	n.p.	n.p.	49.0	27.4	12.9
March	89.2	18.1	n.p.	n.p.	51.6	31.2	15.7
March quarter	263.4	56.0	n.p.	n.p.	150.9	85.3	41.5
GUEST ARRIVALS ('000)							
1999							
March quarter	99.6	41.7	n.p.	n.p.	90.9	57.6	31.3
2000							
January	36.6	14.4	n.p.	n.p.	27.7	16.1	8.1
February	35.2	12.8	n.p.	n.p.	28.2	17.0	8.1
March	40.6	14.1	n.p.	n.p.	30.0	19.9	10.9
March quarter	112.4	41.3	n.p.	n.p.	85.9	53.0	27.1
TAKINGS FROM ACCOMMODATION (\$'000)							
1999							
March quarter	12 564	2 349	n.p.	n.p.	6 836	4 161	1 737
2000							
January	4 298	892	n.p.	n.p.	2 109	1 301	625
February	4 703	744	n.p.	n.p.	2 390	1 369	585
March	4 799	785	n.p.	n.p.	2 513	1 551	651
March quarter	13 801	2 422	n.p.	n.p.	7 011	4 222	1 861

Period	Darwin	Kakadu	Amhem	Katherine	Tablelands	Petermann	Alice Springs	MacDonnell	Daly	Canberra
ESTABLISHMENTS, CAPACITY AND EMPLOYMENT (number)										
March quarter 1999										
Establishments	34	3	3	9	7	7	23	1	1	54
Guest rooms	2 555	n.p.	n.p.	469	247	n.p.	1 603	n.p.	n.p.	4 648
Bed spaces	7 326	n.p.	n.p.	1 326	665	n.p.	4 924	n.p.	n.p.	14 028
Persons employed	1 430	n.p.	n.p.	166	65	n.p.	736	n.p.	n.p.	2 349
March quarter 2000										
Establishments	34	3	3	10	7	7	22	2	1	59
Guest rooms	2 582	n.p.	n.p.	529	252	n.p.	1 579	n.p.	n.p.	4 959
Bed spaces	7 543	n.p.	n.p.	1 482	677	n.p.	4 964	n.p.	n.p.	14 927
Persons employed	1 448	n.p.	n.p.	204	68	n.p.	799	n.p.	n.p.	2 323
ROOM NIGHTS OCCUPIED ('000)										
1999										
March quarter	97.3	n.p.	n.p.	11.3	5.6	n.p.	64.1	n.p.	n.p.	241.1
2000										
January	38.6	n.p.	n.p.	4.8	1.8	n.p.	17.8	n.p.	n.p.	79.1
February	43.9	n.p.	n.p.	4.7	1.5	n.p.	18.9	n.p.	n.p.	88.8
March	45.3	n.p.	n.p.	5.7	2.0	n.p.	24.2	n.p.	n.p.	103.4
March quarter	127.8	n.p.	n.p.	15.3	5.4	n.p.	60.9	n.p.	n.p.	271.3
ROOM OCCUPANCY RATES (%)										
1999										
March quarter	42.3	n.p.	n.p.	26.9	25.3	n.p.	44.6	n.p.	n.p.	57.6
2000										
January	48.7	n.p.	n.p.	29.3	23.4	n.p.	36.3	n.p.	n.p.	53.6
February	58.7	n.p.	n.p.	30.8	20.6	n.p.	41.4	n.p.	n.p.	61.7
March	56.6	n.p.	n.p.	37.3	26.1	n.p.	49.4	n.p.	n.p.	67.3
March quarter	54.6	n.p.	n.p.	32.4	23.4	n.p.	42.4	n.p.	n.p.	60.9
GUEST NIGHTS ('000)										
1999										
March quarter	151.1	n.p.	n.p.	19.4	9.7	n.p.	102.6	n.p.	n.p.	402.4
2000										
January	65.2	n.p.	n.p.	8.9	3.8	n.p.	31.3	n.p.	n.p.	148.3
February	63.5	n.p.	n.p.	8.8	2.3	n.p.	29.8	n.p.	n.p.	135.7
March	67.1	n.p.	n.p.	9.8	3.2	n.p.	39.4	n.p.	n.p.	159.7
March quarter	195.7	n.p.	n.p.	27.5	9.4	n.p.	100.6	n.p.	n.p.	443.7
GUEST ARRIVALS ('000)										
1999										
March quarter	59.5	n.p.	n.p.	15.0	7.9	n.p.	56.1	n.p.	n.p.	180.0
2000										
January	24.4	n.p.	n.p.	4.9	3.6	n.p.	15.4	n.p.	n.p.	64.2
February	26.6	n.p.	n.p.	4.6	2.1	n.p.	15.9	n.p.	n.p.	60.5
March	27.3	n.p.	n.p.	5.2	2.8	n.p.	21.4	n.p.	n.p.	75.2
March quarter	78.4	n.p.	n.p.	14.7	8.5	n.p.	52.7	n.p.	n.p.	199.9
TAKINGS FROM ACCOMMODATION (\$'000)										
1999										
March quarter	7 986	n.p.	n.p.	817	319	n.p.	4 671	n.p.	n.p.	23 721
2000										
January	3 397	n.p.	n.p.	273	111	n.p.	1 287	n.p.	n.p.	7 990
February	3 915	n.p.	n.p.	279	89	n.p.	1 449	n.p.	n.p.	8 824
March	3 977	n.p.	n.p.	330	120	n.p.	1 872	n.p.	n.p.	10 491
March quarter	11 289	n.p.	n.p.	882	319	n.p.	4 607	n.p.	n.p.	27 305

	New South Wales	Victoria	Queensland	South Australia	Western Australia	Tasmania	Northern Territory	Australian Capital Territory	Australia
LETTING ENTITIES, CAPACITY AND EMPLOYMENT									
March quarter 1997									
Letting entities(a)	118	19	71	8	4	—	—	2	222
Flats, units and houses									
Single bedroom	363	40	239	10	n.p.	—	—	n.p.	690
Multiple bedroom	7 034	999	4 296	558	n.p.	—	—	n.p.	13 244
Total	7 397	1 039	4 535	568	n.p.	—	—	n.p.	13 934
Bed spaces	37 637	6 339	20 590	3 145	n.p.	—	—	n.p.	69 368
March quarter 2000									
Letting entities(a)	108	14	62	8	4	—	—	1	197
Flats, units and houses									
Single bedroom	506	22	181	7	n.p.	—	—	n.p.	744
Multiple bedroom	6 812	971	4 131	614	n.p.	—	—	n.p.	12 790
Total	7 318	993	4 312	621	n.p.	—	—	n.p.	13 534
Bed spaces	38 290	6 003	20 021	3 055	n.p.	—	—	n.p.	68 737
UNIT NIGHTS OCCUPIED ('000)									
1997									
March quarter	307.7	24.9	194.9	20.6	n.p.	—	—	n.p.	567.1
2000									
January	164.7	15.3	86.4	12.0	n.p.	—	—	n.p.	283.8
February	88.0	3.3	47.6	4.1	n.p.	—	—	n.p.	146.8
March	77.2	2.6	52.3	3.2	n.p.	—	—	n.p.	139.3
March quarter	329.8	21.2	186.3	19.3	n.p.	—	—	n.p.	569.9
UNIT OCCUPANCY RATES (%)									
1997									
March quarter	46.4	26.6	47.9	40.3	n.p.	—	—	n.p.	45.3
2000									
January	72.6	49.7	64.6	62.3	n.p.	—	—	n.p.	67.6
February	41.5	11.6	38.3	22.8	n.p.	—	—	n.p.	37.5
March	34.0	8.4	39.3	16.4	n.p.	—	—	n.p.	33.3
March quarter	49.5	23.5	47.6	34.1	n.p.	—	—	n.p.	46.3
UNIT LETTINGS ('000)									
1997									
March quarter	39.6	3.6	23.9	3.0	n.p.	—	—	n.p.	71.4
2000									
January	19.8	1.9	11.0	1.8	n.p.	—	—	n.p.	35.2
February	12.3	0.5	6.7	1.1	n.p.	—	—	n.p.	21.0
March	11.6	0.6	7.6	1.0	n.p.	—	—	n.p.	21.2
March quarter	43.6	3.0	25.4	3.8	n.p.	—	—	n.p.	77.4
AVERAGE LENGTH OF STAY (days)									
1997									
March quarter	7.8	7.0	8.2	7.0	n.p.	—	—	n.p.	7.9
2000									
March quarter	7.6	7.0	7.3	5.0	n.p.	—	—	n.p.	7.4
TAKINGS FROM ACCOMMODATION (\$'000)									
1997									
March quarter	18 658	1 713	9 777	1 290	n.p.	—	—	n.p.	33 021
2000									
January	12 760	1 429	7 657	818	n.p.	—	—	n.p.	23 148
February	4 852	243	3 582	273	n.p.	—	—	n.p.	9 385
March	4 182	153	3 946	212	n.p.	—	—	n.p.	8 994
March quarter	21 794	1 825	15 184	1 303	n.p.	—	—	n.p.	41 527

(a) The number of real estate agents with 15 or more self-contained units (see Explanatory Notes).

	New South Wales	Victoria	Queensland	South Australia	Western Australia	Tasmania	Northern Territory	Australian Capital Territory	Australia
LETTING ENTITIES, CAPACITY AND EMPLOYMENT									
March quarter 1997									
Letting entities(a)	51	20	288	16	29	13	4	7	428
Flats, units and houses									
Single bedroom	498	444	2 186	130	n.p.	59	70	n.p.	3 743
Multiple bedroom	858	555	7 168	372	n.p.	203	93	n.p.	10 205
Total	1 356	999	9 354	502	n.p.	262	163	n.p.	13 948
Bed spaces	5 644	3 570	36 589	2 117	n.p.	1 247	648	n.p.	55 777
Persons employed	511	273	1 429	141	n.p.	87	33	n.p.	2 757
March quarter 2000									
Letting entities(a)	49	16	323	12	26	11	4	5	446
Flats, units and houses									
Single bedroom	429	264	2 847	124	n.p.	46	103	n.p.	4 132
Multiple bedroom	809	505	7 871	196	n.p.	187	93	n.p.	10 587
Total	1 238	769	10 718	320	n.p.	233	196	n.p.	14 719
Bed spaces	5 302	3 056	41 891	1 425	n.p.	1 101	810	n.p.	58 988
Persons employed	436	202	1 517	82	n.p.	70	39	n.p.	2 701
UNIT NIGHTS OCCUPIED ('000)									
1997									
March quarter	78.4	61.5	513.7	31.3	n.p.	18.2	7.8	n.p.	786.4
2000									
January	29.4	16.7	245.6	7.5	n.p.	5.6	4.1	n.p.	336.9
February	20.5	14.1	156.9	6.4	n.p.	4.6	4.2	n.p.	229.4
March	23.1	16.6	172.5	6.6	n.p.	5.3	4.4	n.p.	252.9
March quarter	73.0	47.4	575.0	20.5	n.p.	15.5	12.8	n.p.	819.2
UNIT OCCUPANCY RATES (%)									
1997									
March quarter	64.2	68.4	61.0	69.2	n.p.	77.2	53.0	n.p.	62.6
2000									
January	76.6	70.2	74.3	76.0	n.p.	77.3	67.8	n.p.	74.1
February	57.1	63.1	50.8	68.8	n.p.	68.7	74.4	n.p.	54.0
March	60.2	69.6	52.0	66.2	n.p.	73.2	72.6	n.p.	55.5
March quarter	64.8	67.7	59.2	70.4	n.p.	73.2	71.6	n.p.	61.4
UNIT LETTINGS ('000)									
1997									
March quarter	18.4	10.2	95.9	8.3	n.p.	7.9	1.3	n.p.	159.1
2000									
January	5.7	3.1	42.4	1.7	n.p.	2.2	1.8	n.p.	64.3
February	5.0	2.7	30.6	1.9	n.p.	2.0	2.0	n.p.	50.7
March	5.4	3.3	34.0	2.2	n.p.	2.4	2.1	n.p.	56.5
March quarter	16.1	9.0	107.0	5.8	n.p.	6.7	5.8	n.p.	171.4
AVERAGE LENGTH OF STAY (days)									
1997									
March quarter	4.3	6.0	5.4	3.8	n.p.	2.3	6.1	n.p.	4.9
2000									
March quarter	4.5	5.3	5.4	3.6	n.p.	2.3	2.2	n.p.	4.8
TAKINGS FROM ACCOMMODATION (\$'000)									
1997									
March quarter	7 354	6 269	40 810	2 437	n.p.	1 220	452	n.p.	63 658
2000									
January	3 006	1 755	22 092	567	n.p.	440	350	n.p.	30 392
February	1 668	1 474	12 269	444	n.p.	317	337	n.p.	18 465
March	1 849	1 709	12 601	466	n.p.	350	342	n.p.	19 283
March quarter	6 522	4 937	46 961	1 476	n.p.	1 107	1 029	n.p.	68 140

(a) The number of owners or managers with 15 or more self-contained units (see Explanatory Notes).

	New South Wales	Victoria	Queensland	South Australia	Western Australia	Tasmania	Northern Territory	Australian Capital Territory	Australia
LETTING ENTITIES, CAPACITY AND EMPLOYMENT									
March quarter 1997									
Letting entities(a)	169	39	359	24	33	13	4	9	650
Flats, units and houses									
Single bedroom	861	484	2 425	140	296	59	70	98	4 433
Multiple bedroom	7 892	1 554	11 464	930	1 079	203	93	234	23 449
Total	8 753	2 038	13 889	1 070	1 375	262	163	332	27 882
Bed spaces	43 281	9 909	57 179	5 262	6 438	1 247	648	1 181	125 145
Persons employed(b)	511	273	1 429	141	237	87	33	46	2 757
March quarter 2000									
Letting entities(a)	157	30	385	20	30	11	4	6	643
Flats, units and houses									
Single bedroom	935	286	3 028	131	277	46	103	70	4 876
Multiple bedroom	7 621	1 476	12 002	810	994	187	93	194	23 377
Total	8 556	1 762	15 030	941	1 271	233	196	264	28 253
Bed spaces	43 592	9 059	61 912	4 480	5 723	1 101	810	1 048	127 725
Persons employed(b)	436	202	1 517	82	294	70	39	61	2 701
UNIT NIGHTS OCCUPIED ('000)									
1997									
March quarter	386.1	86.4	708.6	51.9	75.6	18.2	7.8	19.0	1 353.5
2000									
January	194.1	32.0	332.0	19.5	26.9	5.6	4.1	6.4	620.6
February	108.5	17.4	204.5	10.5	20.2	4.6	4.2	6.3	376.2
March	100.3	19.2	224.7	9.7	22.2	5.3	4.4	6.4	392.3
March quarter	402.9	68.6	761.2	39.7	69.4	15.5	12.8	19.1	1 389.1
UNIT OCCUPANCY RATES (%)									
1997									
March quarter	49.1	47.1	56.7	53.9	61.1	77.2	53.0	63.7	54.0
2000									
January	73.2	58.6	71.5	67.0	68.3	77.3	67.8	77.9	71.0
February	43.7	34.1	47.2	38.4	54.8	68.7	74.4	81.9	46.1
March	37.8	35.1	48.4	33.3	56.5	73.2	72.6	78.5	44.9
March quarter	51.7	42.8	55.9	46.4	60.0	73.2	71.6	79.4	54.2
UNIT LETTINGS ('000)									
1997									
March quarter	58.0	13.7	119.8	11.3	13.6	7.9	1.3	4.8	230.5
2000									
January	25.5	5.0	53.5	3.5	5.7	2.2	1.8	2.2	99.4
February	17.4	3.2	37.3	2.9	4.8	2.0	2.0	2.1	71.7
March	16.9	3.8	41.7	3.2	5.4	2.4	2.1	2.2	77.7
March quarter	59.8	12.0	132.4	9.6	16.0	6.7	5.8	6.5	248.8
AVERAGE LENGTH OF STAY (days)									
1997									
March quarter	6.7	6.3	5.9	4.6	5.5	2.3	6.1	4.0	5.9
2000									
March quarter	6.7	5.7	5.7	4.1	4.3	2.3	2.2	3.0	5.6
TAKINGS FROM ACCOMMODATION (\$'000)									
1997									
March quarter	26 012	7 982	50 586	3 727	5 250	1 220	452	1 450	96 679
2000									
January	15 766	3 184	29 748	1 385	2 071	440	350	597	53 540
February	6 520	1 716	15 852	717	1 850	317	337	541	27 849
March	6 031	1 861	16 546	678	1 908	350	342	562	28 278
March quarter	28 316	6 762	62 146	2 779	5 828	1 107	1 029	1 699	109 667

(a) The number of owners, managers or real estate agents with 15 or more self-contained units (see Explanatory Notes).

(b) Employment numbers exclude real estate agents and their employees.

	New South Wales	Victoria	Queensland	South Australia	Western Australia	Tasmania	Northern Territory	Australian Capital Territory	Australia
ESTABLISHMENTS, CAPACITY AND EMPLOYMENT									
March quarter 1997									
Establishments	374	343	140	129	139	35	25	2	1 185
Capacity									
On-site vans	2 925	1 798	910	733	1 022	n.p.	107	n.p.	7 680
Other powered sites	42 431	35 272	10 257	11 280	11 950	n.p.	2 308	n.p.	116 035
Unpowered sites	12 650	11 009	5 391	4 794	3 514	n.p.	1 910	n.p.	40 556
Cabins, flats, etc.	3 284	2 384	1 407	1 458	961	n.p.	147	n.p.	9 932
<i>Total Capacity</i>	<i>61 290</i>	<i>50 463</i>	<i>17 965</i>	<i>18 265</i>	<i>17 447</i>	<i>n.p.</i>	<i>4 472</i>	<i>n.p.</i>	<i>174 203</i>
Sites occupied by long-term guests	3 804	1 674	1 715	656	1 304	n.p.	302	n.p.	9 625
Other sites permanently reserved	21 190	15 284	712	1 743	2 273	n.p.	6	n.p.	42 228
Persons employed	1 911	1 371	681	549	686	n.p.	133	n.p.	5 485
March quarter 2000									
Establishments	375	329	158	127	141	34	33	2	1 197
Capacity									
On-site vans	3 366	1 961	1 069	765	955	n.p.	96	n.p.	8 509
Other powered sites	40 804	33 150	11 450	10 898	13 016	n.p.	2 858	n.p.	114 782
Unpowered sites	10 443	9 773	4 713	3 681	3 017	n.p.	2 166	n.p.	35 109
Cabins, flats, etc.	6 443	3 058	2 069	1 679	1 447	n.p.	379	n.p.	15 656
<i>Total Capacity</i>	<i>61 056</i>	<i>47 942</i>	<i>19 301</i>	<i>17 023</i>	<i>18 435</i>	<i>n.p.</i>	<i>5 499</i>	<i>n.p.</i>	<i>174 056</i>
Sites occupied by long-term guests	3 927	1 959	2 004	732	1 653	n.p.	276	n.p.	10 734
Other sites permanently reserved	20 135	16 507	819	2 115	2 390	n.p.	3	n.p.	43 022
Persons employed	2 106	1 444	793	575	806	n.p.	232	n.p.	6 122
SITE NIGHTS OCCUPIED ('000)									
1997									
<i>March quarter</i>	<i>3 312.3</i>	<i>2 290.6</i>	<i>514.2</i>	<i>534.5</i>	<i>624.4</i>	<i>n.p.</i>	<i>56.6</i>	<i>n.p.</i>	<i>7 519.8</i>
2000									
January	1 260.8	940.5	236.3	245.0	265.2	n.p.	22.4	n.p.	3 055.6
February	946.9	707.6	156.4	170.2	201.6	n.p.	20.3	n.p.	2 268.3
March	978.9	771.6	174.8	195.3	208.5	n.p.	26.7	n.p.	2 417.7
<i>March quarter</i>	<i>3 186.5</i>	<i>2 419.7</i>	<i>567.5</i>	<i>610.5</i>	<i>675.3</i>	<i>n.p.</i>	<i>69.4</i>	<i>n.p.</i>	<i>7 741.6</i>
SITE OCCUPANCY RATES (%)									
1997									
<i>March quarter</i>	<i>60.0</i>	<i>50.4</i>	<i>31.8</i>	<i>32.5</i>	<i>39.8</i>	<i>n.p.</i>	<i>14.1</i>	<i>n.p.</i>	<i>48.0</i>
2000									
January	66.6	63.3	39.5	46.4	46.4	n.p.	13.2	n.p.	56.6
February	53.5	50.9	27.9	34.5	37.7	n.p.	12.7	n.p.	44.9
March	51.7	51.9	29.2	37.0	36.5	n.p.	16.4	n.p.	44.9
<i>March quarter</i>	<i>57.4</i>	<i>55.5</i>	<i>32.3</i>	<i>39.4</i>	<i>40.3</i>	<i>n.p.</i>	<i>14.1</i>	<i>n.p.</i>	<i>48.9</i>
TAKINGS FROM ACCOMMODATION (\$'000)									
1997									
<i>March quarter</i>	<i>37 983</i>	<i>20 099</i>	<i>7 467</i>	<i>7 504</i>	<i>8 126</i>	<i>n.p.</i>	<i>994</i>	<i>n.p.</i>	<i>84 199</i>
2000									
January	21 671	11 133	3 996	4 126	4 782	n.p.	471	n.p.	47 184
February	11 867	5 666	2 478	2 287	3 086	n.p.	398	n.p.	26 526
March	11 884	6 625	2 877	2 702	3 201	n.p.	551	n.p.	28 577
<i>March quarter</i>	<i>45 422</i>	<i>23 424</i>	<i>9 350</i>	<i>9 115</i>	<i>11 068</i>	<i>n.p.</i>	<i>1 419</i>	<i>n.p.</i>	<i>102 286</i>

(a) Comprising establishments with 40 or more powered sites and cabins, etc. (see Explanatory Notes).

	New South Wales	Victoria	Queensland	South Australia	Western Australia	Tasmania	Northern Territory	Australian Capital Territory	Australia
ESTABLISHMENTS, CAPACITY AND EMPLOYMENT									
March quarter 1997									
Establishments	212	111	246	32	75	11	13	2	704
Capacity									
On-site vans	3 003	1 534	3 990	218	896	n.p.	168	n.p.	9 980
Other powered sites	16 747	6 985	17 240	2 527	6 054	n.p.	1 367	n.p.	51 972
Unpowered sites	3 438	1 420	3 393	768	1 423	n.p.	468	n.p.	11 674
Cabins, flats, etc.	1 857	1 230	2 419	331	845	n.p.	83	n.p.	6 980
<i>Total Capacity</i>	<i>25 045</i>	<i>11 169</i>	<i>27 042</i>	<i>3 844</i>	<i>9 218</i>	<i>n.p.</i>	<i>2 086</i>	<i>n.p.</i>	<i>80 606</i>
Sites occupied by long-term guests	10 426	4 316	11 940	1 224	3 998	n.p.	646	n.p.	33 010
Other sites permanently reserved	1 094	314	426	34	267	n.p.	8	n.p.	2 173
Persons employed	931	384	1 046	120	374	n.p.	72	n.p.	3 017
March quarter 2000									
Establishments	196	99	207	25	75	10	14	2	630
Capacity									
On-site vans	3 352	1 287	4 020	226	1 015	n.p.	179	n.p.	10 345
Other powered sites	13 642	6 114	13 975	1 911	5 390	n.p.	1 328	n.p.	43 266
Unpowered sites	2 732	1 060	2 344	573	942	n.p.	471	n.p.	8 926
Cabins, flats, etc.	2 728	1 593	2 833	309	1 310	n.p.	235	n.p.	9 257
<i>Total Capacity</i>	<i>22 454</i>	<i>10 054</i>	<i>23 172</i>	<i>3 019</i>	<i>8 657</i>	<i>n.p.</i>	<i>2 213</i>	<i>n.p.</i>	<i>71 794</i>
Sites occupied by long-term guests	8 967	4 101	9 750	1 146	3 453	n.p.	560	n.p.	28 359
Other sites permanently reserved	1 453	331	426	36	214	n.p.	—	n.p.	2 498
Persons employed	972	377	935	90	387	n.p.	63	n.p.	2 941
SITE NIGHTS OCCUPIED ('000)									
1997									
<i>March quarter</i>	<i>1 298.9</i>	<i>517.7</i>	<i>1 337.9</i>	<i>151.8</i>	<i>453.9</i>	<i>n.p.</i>	<i>62.9</i>	<i>n.p.</i>	<i>3 901.1</i>
2000									
January	444.6	174.1	404.0	48.0	146.0	n.p.	27.1	n.p.	1 269.4
February	373.3	160.7	361.9	41.7	133.3	n.p.	24.3	n.p.	1 126.3
March	399.5	174.6	390.1	46.0	144.4	n.p.	26.5	n.p.	1 206.9
<i>March quarter</i>	<i>1 217.3</i>	<i>509.4</i>	<i>1 156.0</i>	<i>135.7</i>	<i>423.7</i>	<i>n.p.</i>	<i>77.9</i>	<i>n.p.</i>	<i>3 602.6</i>
SITE OCCUPANCY RATES (%)									
1997									
<i>March quarter</i>	<i>57.6</i>	<i>51.5</i>	<i>55.1</i>	<i>43.9</i>	<i>54.7</i>	<i>n.p.</i>	<i>33.5</i>	<i>n.p.</i>	<i>53.8</i>
2000									
January	63.9	55.9	56.2	51.3	54.4	n.p.	39.5	n.p.	57.0
February	57.3	55.1	53.8	47.6	53.1	n.p.	37.9	n.p.	54.1
March	57.4	56.0	54.3	49.2	53.8	n.p.	38.7	n.p.	54.2
<i>March quarter</i>	<i>59.6</i>	<i>55.7</i>	<i>54.8</i>	<i>49.4</i>	<i>53.8</i>	<i>n.p.</i>	<i>38.7</i>	<i>n.p.</i>	<i>55.1</i>
TAKINGS FROM ACCOMMODATION (\$'000)									
1997									
<i>March quarter</i>	<i>16 136</i>	<i>5 925</i>	<i>15 016</i>	<i>1 601</i>	<i>6 274</i>	<i>n.p.</i>	<i>672</i>	<i>n.p.</i>	<i>47 035</i>
2000									
January	7 285	2 303	5 176	548	2 198	n.p.	262	n.p.	18 345
February	5 161	1 982	4 406	438	1 889	n.p.	240	n.p.	14 590
March	5 694	2 286	4 967	483	2 171	n.p.	282	n.p.	16 376
<i>March quarter</i>	<i>18 141</i>	<i>6 571</i>	<i>14 549</i>	<i>1 469</i>	<i>6 257</i>	<i>n.p.</i>	<i>784</i>	<i>n.p.</i>	<i>49 310</i>

(a) Comprising establishments with 40 or more powered sites and cabins, etc. (see Explanatory Notes).

	New South Wales	Victoria	Queensland	South Australia	Western Australia	Tasmania	Northern Territory	Australian Capital Territory	Australia
ESTABLISHMENTS, CAPACITY AND EMPLOYMENT									
March quarter 1997									
Establishments	586	454	386	161	214	46	38	4	1 889
Capacity									
On-site vans	5 928	3 332	4 900	951	1 918	299	275	57	17 660
Other powered sites	59 178	42 257	27 497	13 807	18 004	3 131	3 675	458	168 007
Unpowered sites	16 088	12 429	8 784	5 562	4 937	1 633	2 378	419	52 230
Cabins, flats, etc.	5 141	3 614	3 826	1 789	1 806	412	230	94	16 912
<i>Total Capacity</i>	86 335	61 632	45 007	22 109	26 665	5 475	6 558	1 028	254 809
Sites occupied by long-term guests	14 230	5 990	13 655	1 880	5 302	378	948	252	42 635
Other sites permanently reserved	22 284	15 598	1 138	1 777	2 540	1 050	14	—	44 401
Persons employed	2 842	1 755	1 727	669	1 060	213	205	31	8 502
March quarter 2000									
Establishments	571	428	365	152	216	44	47	4	1 827
Capacity									
On-site vans	6 718	3 248	5 089	991	1 970	397	275	166	18 854
Other powered sites	54 446	39 264	25 425	12 809	18 406	3 168	4 186	344	158 048
Unpowered sites	13 175	10 833	7 057	4 254	3 959	1 720	2 637	400	44 035
Cabins, flats, etc.	9 171	4 651	4 902	1 988	2 757	723	614	107	24 913
<i>Total Capacity</i>	83 510	57 996	42 473	20 042	27 092	6 008	7 712	1 017	245 850
Sites occupied by long-term guests	12 894	6 060	11 754	1 878	5 106	329	836	236	39 093
Other sites permanently reserved	21 588	16 838	1 245	2 151	2 604	1 091	3	—	45 520
Persons employed	3 078	1 821	1 728	665	1 189	215	295	68	9 063
SITE NIGHTS OCCUPIED ('000)									
1997									
<i>March quarter</i>	4 611.1	2 808.3	1 852.1	686.2	1 078.3	227.5	119.5	37.9	11 421.0
2000									
January	1 705.3	1 114.6	640.3	292.9	411.2	99.1	49.5	11.9	4 325.0
February	1 320.2	868.3	518.2	211.9	335.0	77.8	44.6	18.6	3 394.6
March	1 378.4	946.2	565.0	241.4	352.8	75.7	53.2	11.8	3 624.5
<i>March quarter</i>	4 403.9	2 929.1	1 723.5	746.2	1 099.0	252.6	147.3	42.4	11 344.1
SITE OCCUPANCY RATES (%)									
1997									
<i>March quarter</i>	59.3	50.6	45.8	34.5	45.0	46.2	20.2	41.0	49.8
2000									
January	65.9	62.0	48.6	47.1	49.0	53.2	20.7	37.8	56.7
February	54.5	51.6	42.1	36.5	42.6	44.6	19.9	63.1	47.6
March	53.2	52.6	42.9	38.8	42.0	40.7	23.0	37.6	47.6
<i>March quarter</i>	58.0	55.5	44.6	40.9	44.6	46.2	21.2	45.8	50.7
TAKINGS FROM ACCOMMODATION (\$'000)									
1997									
<i>March quarter</i>	54 119	26 024	22 483	9 105	14 400	2 626	1 665	811	131 234
2000									
January	28 956	13 436	9 172	4 674	6 980	1 291	732	288	65 529
February	17 028	7 649	6 884	2 725	4 974	997	638	222	41 115
March	17 578	8 910	7 843	3 185	5 372	1 014	833	217	44 953
<i>March quarter</i>	63 563	29 995	23 899	10 584	17 325	3 302	2 203	726	151 597

(a) Comprising establishments with 40 or more powered sites and cabins, etc. (see Explanatory Notes).

	New South Wales	Victoria	Queensland	South Australia	Western Australia	Tasmania	Northern Territory	Australian Capital Territory(b)	Australia
ESTABLISHMENTS, CAPACITY AND EMPLOYMENT									
March quarter 1997									
Establishments	82	38	128	33	46	30	31	—	388
Bed spaces	7 265	3 222	9 632	2 190	3 015	1 864	3 103	—	30 291
Persons employed	390	174	746	163	126	120	144	—	1 863
March quarter 2000									
Establishments	106	61	152	31	70	28	30	—	478
Bed spaces	9 685	5 893	12 846	2 105	4 390	1 712	3 161	—	39 792
Persons employed	670	376	1 445	130	238	124	317	—	3 300
GUEST NIGHTS									
1997									
March quarter	399 469	141 849	416 011	85 629	116 070	49 059	105 904	—	1 313 991
2000									
January	194 255	97 355	194 453	30 873	60 162	18 393	34 364	—	629 855
February	170 926	83 568	177 431	30 273	58 026	14 384	36 352	—	570 960
March	174 655	91 027	188 099	34 723	64 506	14 914	41 363	—	609 287
March quarter	539 836	271 950	559 983	95 869	182 694	47 691	112 079	—	1 810 102
BED OCCUPANCY RATES (%)									
1997									
March quarter	63.3	48.9	48.8	43.4	42.8	29.6	37.9	—	48.9
2000									
January	64.9	53.7	49.2	48.9	45.8	34.7	35.1	—	51.6
February	61.0	49.2	48.3	51.3	45.6	29.0	40.3	—	49.9
March	58.2	50.0	47.9	53.2	47.4	28.1	42.6	—	49.7
March quarter	61.4	51.0	48.5	51.2	46.3	30.6	39.3	—	50.4
GUEST ARRIVALS									
1997									
March quarter	124 300	51 725	160 268	35 037	37 776	29 715	51 747	—	490 568
2000									
January	60 596	32 729	77 252	13 543	20 116	11 352	18 345	—	233 933
February	54 521	28 539	70 300	12 467	19 071	9 128	17 958	—	211 984
March	55 146	31 628	72 126	15 118	19 860	9 905	20 490	—	224 273
March quarter	170 263	92 896	219 678	41 128	59 047	30 385	56 793	—	670 190
AVERAGE LENGTH OF STAY (DAYS)									
1997									
March quarter	3.2	2.7	2.6	2.4	3.1	1.7	2.0	—	2.7
2000									
January	3.2	3.0	2.5	2.3	3.0	1.6	1.9	—	2.7
February	3.1	2.9	2.5	2.4	3.0	1.6	2.0	—	2.7
March	3.2	2.9	2.6	2.3	3.2	1.5	2.0	—	2.7
March quarter	3.2	2.9	2.5	2.3	3.1	1.6	2.0	—	2.7
TAKINGS FROM ACCOMMODATION (\$'000)									
1997									
March quarter	6 329	2 061	5 521	984	1 506	599	1 497	—	18 498
2000									
January	3 815	1 514	3 109	428	928	295	601	—	10 690
February	3 359	1 368	2 803	432	891	244	621	—	9 718
March	3 425	1 480	2 962	484	972	248	686	—	10 256
March quarter	10 599	4 362	8 874	1 344	2 791	787	1 908	—	30 664

(a) Comprising establishments with 25 or more bed spaces (see Explanatory Notes).

(b) Australian Capital Territory data included with New South Wales.

EXPLANATORY NOTES

INTRODUCTION

- 1** This publication contains data from the ABS quarterly Survey of Tourist Accommodation (STA). The STA is a mailout collection that completely enumerates all in-scope accommodation establishments.
- 2** From the March quarter 1998, the scope and collection strategy for the STA were changed to include only significant accommodation establishments. Data series presented in this publication which relate to the 1997 calendar year have been recompiled on the basis of the new scope.

SCOPE

- 3** On a quarterly basis the STA includes hotels, motels, guest houses and serviced apartments with 15 or more rooms.
- 4** Every third year, beginning with 2000 the STA has been expanded to also include:
 - holiday flats, units and houses of letting entities with 15 or more rooms or units;
 - caravan parks with 40 or more powered sites;
 - visitor hostels with 25 or more beds.
- 5** The short-term non-residential accommodation, which is in scope of this survey, is accommodation which is not let out on a lease basis, and which is let out to guests who would generally, although not necessarily, stay for periods of less than two months.
- 6** Some establishments included in the survey such as caravan parks also provide long-term residential accommodation. For hotels, motels and guest houses, the amount of such activity is considered to be insignificant and is included in the data presented in this publication. For serviced apartments, only short-term non-residential accommodation is included.

DEFINITIONS OF ACCOMMODATION ESTABLISHMENTS

- 7** The STA includes the following categories of establishments which provide predominantly short-term non-residential accommodation to the general public:
 - hotels and resorts with facilities - establishments with 15 or more rooms which are licensed to operate a public bar and which provide accommodation on a room/suite basis, with a bath/shower and toilet in most guest rooms, but which do not have full cooking facilities (i.e. hot plates and oven/microwave) in most guest rooms;
 - motels, private hotels and guest houses with facilities - establishments with 15 or more rooms which are not licensed to operate a public bar, and which provide accommodation on a room/suite basis, with a bath/shower and toilet in most guest rooms, but which do not have full cooking facilities (i.e. hot plates and oven/microwave) in most guest rooms;
 - serviced apartments - establishments with 15 or more units which mostly comprise self-contained units at the same location, and which are available on a unit/apartment basis to the general public for a minimum of one night. The units should have full cooking facilities (i.e. hot plates and oven/microwave), refrigerator and bath/shower and toilet facilities; all bed linen and towels should be provided, and daily servicing (i.e. cleaning and bed making) must be available through the on-site management, although this service may not necessarily be used.

EXPLANATORY NOTES *continued*

- holiday flats, units and houses - (excluding establishments predominantly operated on a time-share basis) which are operated by owners, managers or real estate agents who have sole letting rights to at least 15 flats, units or houses for short-term letting. They are mainly self-contained in terms of cooking, bath (or shower) and toilet facilities and do not have breakfast available for guests. Data for holiday flats units or houses include short-term owner operation as well as paying guest occupation.
- caravan parks - establishments with 40 or more powered sites and cabins, etc. which provide either short-term or long-term accommodation to the general public and which provide powered sites for caravans and toilet, shower and laundry facilities for guests.
- visitor hostels - establishments with 25 or more bed spaces which provide accommodation to visitors on a bed basis (rather than by room). This category does not include establishments providing charity type accommodation (e.g. Salvation Army hostels) nor hotels, motels and guest houses without in-room facilities which provide accommodation on a per room basis.

CLASSIFICATION CHANGES

8 As a result of the separate classification of serviced apartments from the March quarter 1998, there have been several changes to definitions of accommodation units. Some units, which were formerly in categories such as hotels, motels or holiday flats, units and houses are now classified as serviced apartments. A small number of establishments which were previously classified as motels have been reclassified as holiday flats, units and houses and are therefore no longer in scope of the quarterly STA, except as described in paragraph 4.

COVERAGE

9 Coverage is comprehensive and from the September quarter 1999, is obtained from the Australian Automobile Association accommodation guide, supplied as an electronic file, which is updated twice yearly. This is supplemented by notification of new tourism developments and their likely opening dates in selected guides, major tourism journals and periodicals and newspapers. Periodic comparison with lists of accommodation establishments provided by the various Tourism Commissions and Industry Associations is also undertaken.

DATA QUALITY

10 The survey does not have a sample component and the data are not subject to sampling variability. However, other inaccuracies collectively referred to as non-sampling error may affect the data. These non-sampling errors may arise from a number of sources, including:

- errors in the reporting of data by respondents;
- errors in the process of capturing data;
- estimation for missing data; and
- definition and classification errors.

Every effort has been made to reduce non-sampling error to a minimum by careful design and testing of questionnaires, and efficient operating procedures and systems used to compile statistics.

11 The March quarter 2000 response rates were:

- 93% licensed hotels, motels and guest houses, serviced apartments.
- 92% holiday flats, units and houses; caravan parks.
- 86% visitor hostels.

EXPLANATORY NOTES *continued*

REGIONAL DATA

12 Survey results are aggregated to Tourism Regions as defined by relevant State and Territory Tourist Commissions or equivalent organisations. Details of the composition of Tourism Regions, including maps, are available on request.

ANNUAL CAPACITY DATA

13 ABS releases counts of accommodation establishments and their capacity as at the end of December each year in respect of the pre-1998 scope of the survey (but recognising serviced apartments separately) as follows:

- hotels, motels and guest houses and serviced apartments with facilities and having five or more rooms;
- holiday flats, units and houses (other than those included with serviced apartments) which are operated by owners, managers or real estate agents who have sole letting rights to at least five flats, units or houses for short term letting;
- all caravan parks regardless of size; and
- all visitor hostels regardless of size.

14 As a result of classification changes applied from March quarter 1998 onward, data will not be comparable with that previously published for particular accommodation types.

15 These counts are published annually in a quarterly issue of *Tourism Indicators, Australia* (Cat. no. 8634.0). Counts in respect of December 1998 were published in the June quarter 1999 edition of that publication.

UNPUBLISHED STATISTICS

16 The ABS may make available on request certain unpublished tourist accommodation statistics, including statistics for past quarters and for specific areas and more detailed information for specific data items. For example, detailed employment statistics showing the number of full-time, part-time or casual employees may be available.

RELATED PUBLICATIONS

17 Other ABS publications and products which may be of interest include:

- Directory of Tourism Statistics, 2000* (Cat. no. 1130.0) (irregular)
- Overseas Arrivals and Departures, Australia* (Cat. no. 3401.0) (issued monthly)
- Tourism Indicators, Australia* (Cat. no. 8634.0) (issued quarterly)
- Tourist Accommodation, Small Area Data* Standard Data Service (SDS) products for each State/Territory (except the ACT) (Cat. no. 8635.n.40.001) (issued quarterly).

18 Current publications produced by the ABS are listed in the *Catalogue of Publications and Products* (Cat. no. 1101.0). The ABS also issues the *Release Advice* (Cat. no. 1105.0) on Tuesdays and Fridays which lists publications to be released in the next few days. Both are available from any ABS office or the ABS web site.

EFFECTS OF ROUNDING

19 Where figures have been rounded, discrepancies may occur between totals and the sum of the component items.

GLOSSARY

Average length of stay	<p>Average length of stay is expressed in numbers of days and calculated:</p> <ul style="list-style-type: none"> • for hotels, motels and guest houses and serviced apartments, by dividing <i>Guest nights</i> by <i>Guest arrivals</i>. • for holiday flats, units and houses, by dividing <i>Unit nights occupied</i> by <i>Unit lettings</i>.
Bed spaces	Three-quarter beds are counted as one bed space; double beds as two bed spaces. Cots are excluded.
Capacity	Capacity in terms of <i>Guest rooms</i> , <i>serviced apartment units</i> , <i>visitor hostel bed spaces</i> , <i>holiday units</i> or <i>caravan park sites</i> is the maximum number available to accommodate paying guests during the survey period. Capacity closed temporarily for seasonal reasons is included.
Caravan park sites	Includes <i>On-site vans</i> , <i>Other powered sites</i> , <i>Unpowered sites</i> and <i>Cabins</i> , etc.
Establishments	For hotels, motels and guest houses and serviced apartments, caravan parks and visitor hostels, the number of establishments within the scope of the survey which operated for any part of the survey period, or which closed temporarily for the quarter for seasonal reasons.
Guest arrivals	The total number of paying guests counted only on the first night they stayed at the accommodation establishment during the survey period.
Guest nights	The total number of paying guests counted on each night they stayed at the accommodation establishment during the survey period.
Guest rooms	The maximum number of rooms available at each establishment during the survey period for accommodating short-term paying guests. Units and apartments within serviced apartments are treated as rooms in these survey results.
Letting entities	For holiday flats, units and houses, the number of owners, managers or real estate agents within the scope of the survey who operated for any part of the survey period.
Long-term caravan parks	Caravan parks where the majority of paying guests occupied sites for periods of more than two months.
Occupancy	<p>Occupancy in terms of <i>Room nights</i>, <i>Unit nights</i> or <i>Site nights occupied</i> refers to the total number of nights each guest room, serviced apartment unit, holiday unit or caravan park site was occupied during the survey period.</p> <p>Occupancy in terms of <i>Guest nights</i> refers to the total number of paying guests counted on each night they stayed at the accommodation establishment during the survey period.</p>
Occupancy rates	<p><i>Occupancy rates</i> represent occupancy expressed as a percentage of total capacity available during the survey period, e.g. for the period</p> $\text{Room occupancy rate (\%)} = \frac{\text{Room nights occupied}}{(\text{Guest rooms}) \times (\text{No. of days in the period})} \times 100$ <p>providing that, for establishments closing (other than for seasonal reasons) or opening during the survey period, the denominator of the above expression includes only operating periods.</p>

GLOSSARY *continued*

Other sites permanently reserved	The total number of powered and unpowered sites, on-site vans and cabins, etc. continuously let for two months or more of the survey period to tenants who occupy the sites only on a casual or sporadic basis.
Persons employed	The total number of persons working at each accommodation establishment at the end of the survey period (including working proprietors and those working on other than accommodation activities).
Room nights available	The number of guest rooms/units available multiplied by the number of days for which they were available during the survey period. For establishments closing (other than for seasonal reasons) or opening during this period, operating periods only are included.
Serviced apartment units	Units and apartments within serviced apartments are treated as rooms in these survey results.
Short-term caravan parks	Caravan parks where the majority of paying guests occupy sites for periods of less than two months.
Site nights available	The total number of nights each caravan park site was occupied during the survey period.
Sites occupied by long-term guests	The total number of sites, etc. occupied at the end of the survey period by guests who have stayed continuously for 2 months or more.
Star grading	<p>The grading of hotels, motels and guest houses with facilities and serviced apartments based on the classification system used by members of the Australian Automobile Association (AAA). The gradings are allocated according to a points system based on the amenities and facilities available to guests. Details of the grading scheme are contained in the RACV-RAASA members' publication <i>Accommodation Australia</i>, or the individual State guides. For the purpose of classifying establishments to a star grading in this publication, 'half' star gradings are ignored (e.g. a two and a half star grading has been shown as two star).</p> <p>From the June quarter 1999, some (very few) large establishments not star graded by the AAA have been allocated a star grade by the ABS for Survey of Tourist Accommodation statistical tabulation purposes.</p>
Takings from accommodation	Gross revenue from the provision of accommodation, including bed taxes. Takings from meals are excluded. Takings from accommodation for each month generally represent the takings received during that month. Where payments are received in advance of, or after, the provision of accommodation to guests, the monthly figure for takings from accommodation may not necessarily bear a direct relationship to the number of guests accommodated during the month.
Unit lettings	The total number of times a holiday flat, unit or house was occupied by a new tenant, counted only on the first night it was occupied by the new tenant.
Unit nights	The total number of nights each holiday flat, unit or house was occupied during the survey period.

FOR MORE INFORMATION...

- INTERNET* **www.abs.gov.au** the ABS web site is the best place to start for access to summary data from our latest publications, information about the ABS, advice about upcoming releases, our catalogue, and Australia Now—a statistical profile.
- LIBRARY* A range of ABS publications is available from public and tertiary libraries Australia-wide. Contact your nearest library to determine whether it has the ABS statistics you require, or visit our web site for a list of libraries.
- CPI INFOLINE* For current and historical Consumer Price Index data, call 1902 981 074 (call cost 77c per minute).
- DIAL-A-STATISTIC* For the latest figures for National Accounts, Balance of Payments, Labour Force, Average Weekly Earnings, Estimated Resident Population and the Consumer Price Index call 1900 986 400 (call cost 77c per minute).

INFORMATION SERVICE

Data which have been published and can be provided within five minutes are free of charge. Our information consultants can also help you to access the full range of ABS information—ABS user-pays services can be tailored to your needs, time frame and budget. Publications may be purchased. Specialists are on hand to help you with analytical or methodological advice.

- PHONE* **1300 135 070**
- EMAIL* **client.services@abs.gov.au**
- FAX* 1300 135 211
- POST* Client Services, ABS, GPO Box 796, Sydney 1041

WHY NOT SUBSCRIBE?

ABS subscription services provide regular, convenient and prompt deliveries of ABS publications and products as they are released. Email delivery of monthly and quarterly publications is available.

- PHONE* 1300 366 323
- EMAIL* subscriptions@abs.gov.au
- FAX* 03 9615 7848
- POST* Subscription Services, ABS, GPO Box 2796Y, Melbourne 3001



2863500003005
ISSN 1031-0770

RRP \$21.00